



AgEcon SEARCH
RESEARCH IN AGRICULTURAL & APPLIED ECONOMICS

The World's Largest Open Access Agricultural & Applied Economics Digital Library

This document is discoverable and free to researchers across the globe due to the work of AgEcon Search.

Help ensure our sustainability.

Give to AgEcon Search

AgEcon Search
<http://ageconsearch.umn.edu>
aesearch@umn.edu

*Papers downloaded from **AgEcon Search** may be used for non-commercial purposes and personal study only. No other use, including posting to another Internet site, is permitted without permission from the copyright owner (not AgEcon Search), or as allowed under the provisions of Fair Use, U.S. Copyright Act, Title 17 U.S.C.*

California Department of Food and Agriculture

Agricultural Commissioners' Crop Reports

Siskiyou County

1957-1962

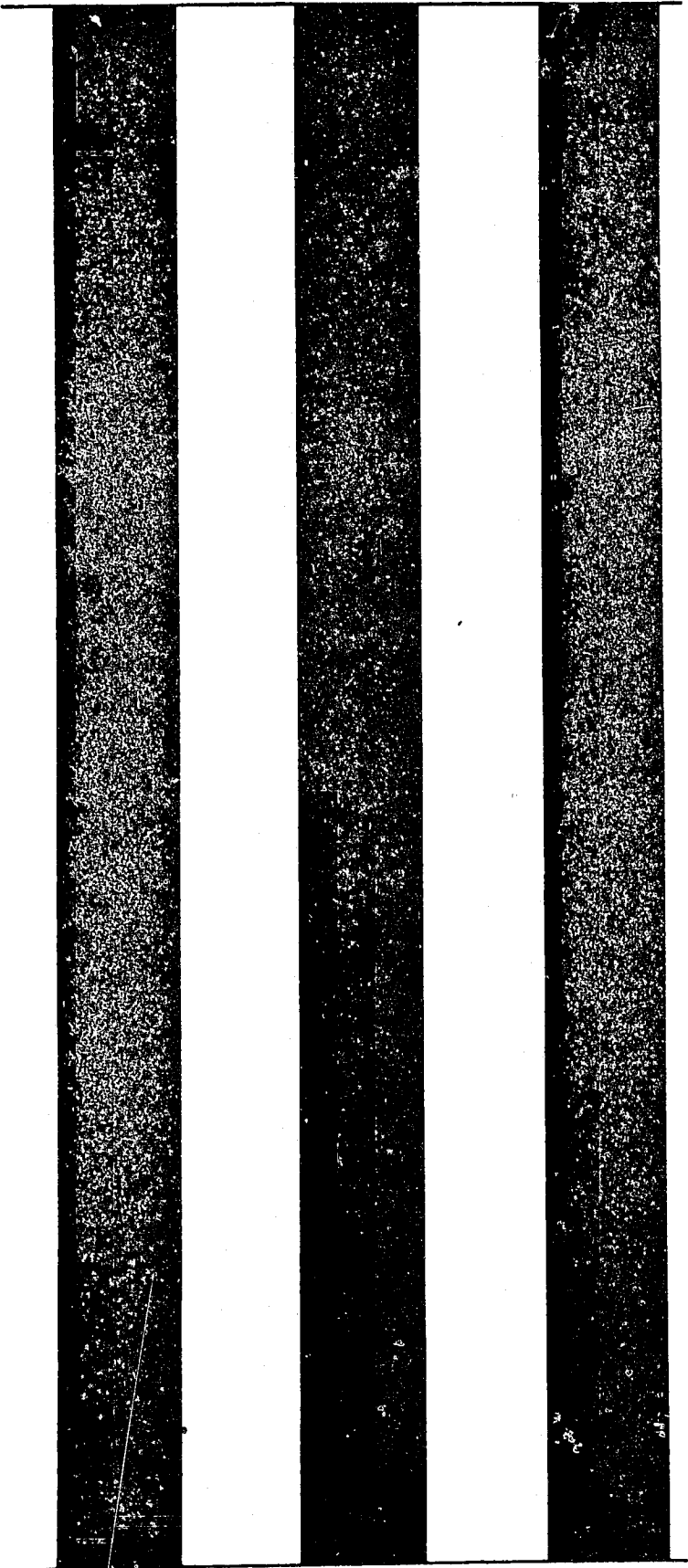
California County Agricultural Commissioners' Reports from the California Department of Food and Agriculture. This collection consists of annual crop and livestock data from each of the 58 California Counties. The collection covers 1915-1981; digitization of the rest of the collection is forthcoming.

This digitization project was funded by the Giannini Foundation of Agricultural Economics,
<http://giannini.ucop.edu/> .

The work was completed by the staff of the Giannini Foundation Library, University of California, Berkeley, <http://are.berkeley.edu/library/> . **Please contact the Library to consult the originals.**

SISKIYOU COUNTY

1957 - 1981



1957



SISKIYOU COUNTY

DEPARTMENT OF AGRICULTURE

ANNUAL CROP REPORT

For

YEAR ENDING DECEMBER 31, 1957

W. C. JACOBSON, DIRECTOR
STATE DEPARTMENT OF AGRICULTURE

BOARD OF SUPERVISORS

DON AVERY	Chairmen.....	District 5
EARL F. AGER	District 1
W. A. BARR	District 2
CLINT JACKSON	District 3
W. C. (BILL) BAIX	District 4

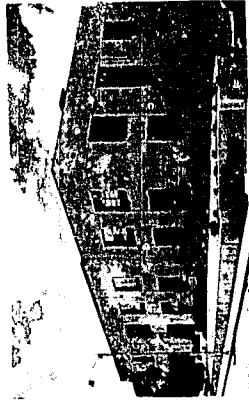
Agriculture Department

JESS R. GRISHAM

AGRICULTURAL COMMISSIONER AND SEALER OF WEIGHTS & MEASURES

BRANCH OFFICE
TULELAKE - PH. 7-1391

MAIN OFFICE
VI 2-3931, EX. 80



County of Siskiyou

COURT HOUSE
YREKA, CALIFORNIA

THE DIRECTOR OF THE STATE DEPARTMENT OF AGRICULTURE THE HONORABLE BOARD OF SUPERVISORS OF SISKIYOU COUNTY

Gentlemen:

This is the Annual Crop Report as required by Section 65.5 of the California Agricultural Code. The following pages cover acreage, production, and value of the various crops grown in the county.

All prices reported here are on an F. O. B. basis. All production costs should be deducted to arrive at the true net value.

Even though most farm commodities declined in price in 1957, cattle prices strengthened, this along with a higher cattle production gives us an increase over 1956. Part of this revenue increase is attributed to our placing a value on pasture.

On request, this report is sent to Federal, State, and County Agencies throughout the United States, and to other interested parties. The members of this department have made a sincere effort to make this report as accurate and complete as possible.

My sincere appreciation is expressed to everyone who has aided my staff in compiling the Annual Crop Report.

Respectfully submitted
Jess R. Grisham
Jess R. Grisham
Agricultural Commissioner

SISKIYOU COUNTY DEPARTMENT OF AGRICULTURE

PERSONNEL

JESS R. GRISHAM AGRICULTURAL COMMISSIONER
SEALER OF WEIGHTS & MEASURES

W. E. BILL (HUSE) DEPUTY AGRICULTURAL COMMISSIONER
DEPUTY SEALER OF WEIGHTS & MEASURES, TULELAKE OFFICE

FRANK WALLER SENIOR AGRICULTURAL INSPECTOR

DON R. HILL AGRICULTURAL INSPECTOR & DEPUTY SEALER OF WEIGHTS & MEASURES

CLIFFORD S. (CLIFF) GIEBNER AGRICULTURAL INSPECTOR

MILDRED WILLIAMS SECRETARY-SEED ANALYST

BERT JOE HAYES SPRAYMAN

WILL E. HOSKINS SPRAYMAN

GENERAL INFORMATION

SISKIYOU COUNTY IS MOUNTAINOUS OVER MOST OF ITS AREA, BUT HAS SEVERAL LARGE UPLAND VALLEYS IN THE CENTRAL AND EAST CENTRAL SECTION. THE LOWEST ELEVATION IS ABOUT 500 FEET, WHILE THE HIGHEST IS 14,161 FEET, THE SUMMIT OF MT. SHASTA. SISKIYOU'S MOUNTAIN AREAS ARE SOME OF THE MOST INACCESSIBLE AND RUGGED IN CALIFORNIA.

THE WESTERN PORTION OF THE COUNTY IS BROKEN UP BY A NUMBER OF LARGE RIVERS AND THEIR TRIBUTARIES, RESULTING IN A SERIES OF DEEP CANYONS AND HIGH RIDGES. CHANGES IN ELEVATION FROM CANYON BOTTOM TO RIDGE TOP ARE ABRUPT AND LARGE, OFTEN FROM 2,000 TO MORE THAN 4,000 FEET. FOR THE MOST PART THE FEW MAIN ROADS FOLLOW THE STREAM COURSES AND INTERVENING FOREST AREAS ARE WITHOUT ACCESS, BUT MORE "ACCESS ROADS" ARE BEING BUILT ALL THE TIME. THERE ARE MANY BEAUTIFUL RANCHES ALONG SOME OF THESE RIVERS.

THE HIGH UPLAND VALLEYS OF THE CENTRAL AND EAST CENTRAL SECTION OF THE COUNTY HAVE RELATIVELY LARGE AREAS OF NON COMMERCIAL FOREST LAND, AND NON FOREST LAND. THE NON COMMERCIAL FOREST LAND IS COMPOSED OF HARDWOODS, WOODLAND GRASS, AND GRASS AREAS. THE NON FOREST LAND IS PRIMARILY IN AGRICULTURE AND URBAN USE. SCOTT AND SHASTA VALLEYS ARE LOCATED IN THIS AREA.

THE EASTERN HALF OF THE COUNTY IS A HIGH PLATEAU, AVERAGING ABOUT 4,500 FEET IN ELEVATION, WITH SCATTERED VOLCANIC BUTTES. THE FOREST AREA IN THIS SECTION WAS READILY ACCESSIBLE AND HAS MOSTLY BEEN LOGGED OFF. HOWEVER, THERE IS A LARGE AREA OF NON FOREST LAND IN THE NORTHEASTERN CORNER OF THE COUNTY. SOME OF THIS NON FOREST LAND IS IN AGRICULTURE USE, BUT THE MAJOR PART IS BARREN OR COVERED WITH SAGE BRUSH. THE RICH TULELAKE AND BUTTE VALLEY AREA IS LOCATED HERE.

THERE IS APPROXIMATELY 1,500,000 ACRES OF TAXABLE LAND, A LITTLE OVER HALF OF THIS PRIVATE LAND IS CLASSIFIED AS TIMBER CROP LAND, APPROXIMATELY ONE EIGHTH CROP LAND USED FOR GROWING POTATOES, SMALL GRAINS, ALFALFA SEED, HAY, AND OTHER FORAGE CROPS. APPROXIMATELY ONE FOURTH INCLUDING SOME OF THE FARM CROP LAND, AND A CONSIDERABLE AMOUNT OF FARM WOODLAND IS USED FOR PASTURE. SOME OF THIS LAND IS MINERAL BEARING, AND IS CURRENTLY USED TO PRODUCE GOLD, SILVER, PUMICE, DIATOMITE, STONE SAND, GRAVEL AND MINERAL WATER.

LAND AREA SISKIYOU COUNTY

THE TOTAL ACREAGE OF SISKIYOU COUNTY IS APPROXIMATELY 4,040,000

DISTRIBUTED AS FOLLOWS:

FEDERAL FOREST LAND COMMERCIAL.....	1,591,000
FEDERAL FOREST LAND NON COMMERCIAL.....	411,000
FEDERAL FOREST LAND RESERVED COMMERCIAL.....	183,000
FEDERAL FOREST LAND RESERVED NON COMMERCIAL.....	64,000
FEDERAL LAND NON FOREST.....	217,000
TOTAL FEDERAL LAND	2,466,000
STATE, COUNTY, MUNICIPAL FOREST LAND COMM.....	18,000
STATE, COUNTY, MUNICIPAL FOREST LAND NON COMM.....	12,000
STATE, COUNTY, MUNICIPAL NON FOREST LAND.....	6,000
TOTAL- STATE, COUNTY, MUNICIPAL	36,000
PRIVATE FOREST LAND COMMERCIAL.....	725,000
PRIVATE FOREST LAND NON COMMERCIAL.....	369,000
PRIVATE NON FOREST.....	444,000
TOTAL PRIVATE	1,538,000

SUMMARY- NATIONAL FOREST GRAZING

SISKIYOU

NATIONAL FOREST	ACRES	NO. HEAD CATTLE	CATTLE MONTHS	NO. HEAD SHEEP	SHEEP MONTHS	** TOTAL A. U. M.	* RATE PER MONTH
USUABLE GRAZING ACRES	470,000	5,030	17,639	2,000	9,116	19,462	49¢ cattle 12¢ sheep
PRIVATE LANDS ADMIN. BY FOREST S.	1,400						

KIAMATH

SHASTA-TRINITY

USUABLE GRAZING ACRES	311,800	997	3,635	5,145	20,760	7,787	49¢ cattle 12¢ sheep
PRIVATE LANDS ADMIN. BY F. S.	62,200						

MODOC

USUABLE GRAZING LAND	58,000	200	850	7,558	18,487	4,547	49¢ cattle 12¢ sheep
PRIVATE LANDS ADMIN. BY F. S.	5,120						
PRIVATE LANDS NOT ADMIN. BY F.S.	2,160						
PUBLIC DOMAIN	78,000	1,500	9,360	5,000	31,200	15,600	15¢ A.U.M.

TOTALS

* Figured each year on 1931 base- 1957 was 125% of base.

Sheep
** 5/ equals 1 Animal Unit

79,563 47,396

SISKIYOU COUNTY DEPARTMENT
OF AGRICULTURE
SUMMARY - YEAR 1957

APICULTURE	26,370
NURSERY	199,650
POULTRY	241,691
DAIRYING	799,000
SEED CROPS	863,273
LIVESTOCK	6,601,151
FIELD CROPS	10,657,636
TOTAL	\$19,388,671

NURSERY

PRODUCT	PRODUCTION	UNIT	PER UNIT	F.O.B. VALUE
BEDDING PLANTS	4,200	FLATS	\$2.50	\$10,500
CUT FLOWERS	40,000	BLOOMS	.20	8,000
ORNAMENTALS	3,500	PLANTS	2.00	7,000

CROP	PRODUCTION			F.O.B. VALUE	
	BEARING	ACREAGE	PER ACRE	UNIT	TOTAL
STRAWBERRY PLANTS	86	135	11,610	M	\$174,150

ORCHARD CROPS *

APPLES	38
PEARS	15
CHERRIES	10
PEACH	8
WALNUTS	5

SUBSIDIES

A.C.P. PROGRAM			\$95,000
SOIL BANK	7,198.5	ACRE	\$20
			\$143,970

* MOSTLY FOR HOME USE.


DAIRYING			F.O.B. VALUE
PRODUCT	PRODUCTION	UNIT	PER UNIT
MARKET MILK	484,000	POUNDS	\$1.44
MANUFACTURED MILK	154,000	POUNDS	.66
POULTRY			
CHICKEN EGGS	15,410	CASES	12.60
TURKEY HATCHING EGGS	2,000	DOZENS	2.85
FRYERS	15,000	HEAD	1.50
HENS	20,500	HEAD	.45
TURKEYS	2,000	HEAD	4.50
MISCELLANEOUS POULTRY			
			1,000
APICULTURE			
HONEY	85	TONS	250.00
BEESWAX	3,000	POUNDS	.54
POLLINATION	700	COLONIES	5.00
			3,500

LIVESTOCK

PRODUCT	PRODUCTION	UNIT	PER UNIT	F. O. B. VALUE
BULLS	1,025	HEAD	\$200	\$205,000
BREEDERS	200	HEAD	375	75,000
COWS	9,615	HEAD	155	1,490,325
CALVES	10,080	HEAD	80	804,800
HEIFERS	7,300	HEAD	150	1,095,000
STEERS	13,600	HEAD	180	2,448,000
HOGS	325	HEAD	28	9,100
PIGS	7,250	HEAD	32	232,000
SHEEP	1,700	HEAD	7	11,900
BREEDERS	100	HEAD	20	2,000
LAMBS	9,150	HEAD	18	164,700
WOOL	86,275	POUNDS	.55	47,451
HORSES & MULES	150	HEAD	50	7,500
NUTRIA	250	HEAD	15	3,750
RABBITS	3,700	HEAD	1.25	4,625

CROP	BEARING ACREAGE	SEED CROPS PRODUCTION		F. O. B. VALUE		
		PER ACRE	TOTAL	UNIT	PER UNIT	TOTAL
ALFALFA, VERNAL	52	500	26,000	LBS	.50	13,000
ALFALFA, BUFFALO	74	200	14,800	LBS	.18	2,640
ALFALFA, OTHER	1,426	200	285,200	LBS	.18	51,336
BARLEY, ATLAS 46	5	30	150	CWT	3.50	525
BARLEY, CLUB MARIOUT	12	30	360	CWT	3.50	1,260
CLOVER, ALSIKE	1,650	475	783,750	LBS	.18	141,075
CLOVER, RED	30	290	8,700	LBS	.18	1,566
FESCUE, GORES	2	400	800	LBS	.12	96
MISCELLANEOUS SEED						2,500
POTATOES	1,313	265	347,945	CWT	1.75	608,904
WHEATGRASS, GREENAR	90	350	31,500	LBS	.50	15,750
WHEATGRASS, TOPAR	130	200	26,000	LBS	.50	13,000
WHEAT, ONAS	5	15	75	CWT	4.00	300
WHEAT, RAMONA	22	18	396	CWT	4.00	1,584
WHEAT, WHITE FEDERATION 54	8	19	152	CWT	4.00	608
WHEAT, PACIFIC BLUESTEM 37	18	30	540	CWT	3.35	1,809
WHEAT, DURUM	30	19	570	CWT	4.00	2,280
PEAS	70	30	2,100	CWT	2.40	5,040

CROP	BEARING ACREAGE	FIELD CROPS		UNIT TONS	F. O. B. VALUE	
		PER ACRE	PRODUCTION TOTAL		PER UNIT \$16	TOTAL \$2,176,000
ALFALFA, HAY	34,000	4	136,000	TONS	15	55,000
OTHER HAY-GRAIN & GRASS	11,000	1	11,000	TONS		
BARLEY - MALTING	21,650	33.65	728,522	CWT	2.35	1,712,037
BARLEY - FEED	37,350	1	37,350	TONS	40	1,494,000
WHEAT - MILLING	3,200	1.5	4,800	TONS	65	312,000
WHEAT - FEED	18,482	.75	13,862	TONS	67	928,754
OATS	13,000	1.25	16,250	TONS	40	650,000
RYE	8,000	6	48,000	CWT	2	96,000
CORN-GRAIN	16	1.5	24	TONS	50	1,200
MILO-GRAIN	15	1	15	TONS	40	600
SORGHUM-GRAIN	15	1	15	TONS	40	600
STRAW-GRAIN, CLOVER, ALFALFA	2,300	1	2,300	TONS	9	20,700
PASTURE-IMPROVED MEADOW	27,000			ACRE	37	999,000
PASTURE-NATURAL MEADOW	50,000			ACRE	16	800,000
PASTURE-RANGE	400,000			ACRE	.30	120,000
PASTURE-STUBBLE	50,000			ACRE	.50	25,000
POTATOES	2,892	265	766,380	CWT	1.25	957,975
ONIONS	305	430	131,150	CWT	1.55	66,650
CORN-SILAGE	35	15	525	TONS	6	3,150



1958

Siskiyou County Agricultural
Crop Report
1958

JESS R. GRISHAM
Agricultural Commissioner

Court House Annex
Yreka, California

AGRICULTURAL COMMISSIONER

SISKIYOU-COUNTY

DEPARTMENT

OF

AGRICULTURE

ANNUAL REPORT

YEAR ENDING DECEMBER 31, 1958

W. C. JACOBSON, DIRECTOR
STATE DEPARTMENT OF AGRICULTURE

BOARD OF SUPERVISORS

W. C. (BILL) EALY	Chairman.....	District 4
EARL F. AGER	District 1
W. A. BARR	District 2
CLINT JACKSON	District 3
DON AVERY	District 5

Agriculture Department

JESS R. GRISHAM
AGRICULTURAL COMMISSIONER AND SEALER OF WEIGHTS & MEASURES

BRANCH OFFICE
TULELAKE - PH 7-1391

MAIN OFFICE
VI 2-3531, EX 80

County of Siskiyou

COURT HOUSE
YREKA, CALIFORNIA

THE DIRECTOR OF THE STATE DEPARTMENT OF AGRICULTURE THE HONORABLE BOARD OF SUPERVISORS

Gentlemen:

This is the Annual Crop Report as required by Section 65.5 of the California Agricultural Code. The following pages cover acreage, production, and value of the various crop grown in the county.

All prices reported here are on F.O.B. basis. All production costs should be deducted to arrive at the true value.

Again as in 1957, most farm commodities declined in price in 1958. The strengthening of cattle prices helped hold the total value from greatly decreasing. Due to an unseasonable mild winter and wet spring, crop production was affected adversely. Insect and disease pest damage, also caused farmers more than the usual trouble. Rains continuing into the summer extended the weed spray season for most growers.

On request, this report is sent to Federal, State, and County Agencies throughout the United States, and to other interested parties. The members of this department have made a sincere effort to make this report as accurate as possible.

My sincere appreciation is extended to the many individuals and organizations who cooperated with my staff in their gathering of the figures for this report, which was compiled by Frank Wallier, Sr. Agricultural Inspector.

Respectfully submitted,

Jess R. Grisham
Jess R. Grisham
Agricultural Commissioner

PERSONNEL

3

GENERAL INFORMATION

Siskiyou County is mountainous over most of its area, but has several large upland valleys in the central and east central section. The lowest elevation is about 500 feet, while the highest is 14,161 feet, the summit of Mt. Shasta. Siskiyou's mountain areas are some of the most inaccessible and rugged in California.

The western portion of the county is broken up by a number of large rivers and their tributaries, resulting in a series of deep canyons and high ridges. Changes in elevation from canyon bottom to ridge top are abrupt and large, often from 2,000 to more than 4,000 feet. For the most part the few main roads follow the stream courses and intervening forest areas are without access, but more "access roads" are being built all the time. There are many beautiful ranches along some of these rivers.

The high upland valleys of the central and east central section of the county have relatively large areas of non commercial forest land, and non forest land. The non commercial forest land is composed of hardwoods, woodland grass, and grass areas. The non forest land is primarily in agriculture and urban use. Scott and Shasta Valleys are located in this area.

The eastern half of the county is a high plateau, averaging about 4,500 feet in elevation, with scattered volcanic buttes. The forest area in this section was readily accessible and has mostly been logged off. However, there is a large area of non forest land in the northeastern corner of the county. Some of this non forest land is in agriculture use, but the major part is barren or covered with sage brush. The rich Tulelake and Butte Valley area is located here.

CROP SUMMARY

FIELD CROPS: The weather and moisture conditions through a very mild winter and spring were most favorable to all field crops, but as will be shown in comments to follow worked adversely on maturing crops, as excessive amounts of rain continued to fall into harvest season.

SEED CROPS: With few exceptions all seed crop acreages were lower than that of 1957 due to lower anticipated prices, crop damage from unusual storms, insect, and disease damage, resulted in some unharvested fields. With the anticipated lower prices becoming a reality plus lower acreages and yields we found ourselves short on the revenue end by \$157,864.

BARLEY: The unusual storms during the growing and harvesting seasons damaged many fields of barley, causing discoloration and disease to set in resulting in lower yields and quality. Prices strengthened over the previous season, but the total revenue was down for this crop in 1958.

WHEAT: The wheat acreage was cut for 1958. Yields and quality dropped due to unseasonal storms causing disease.

Discoloration and poorer prices with the final results showing more than a 50% decrease in revenue over the preceding year.

OATS: The lower acreage and yields as compared with 1957 show slightly more than a 50% drop in revenue. Again the yields and quality are attributed to the many rains, hail, and wind storms. Prices paid remained unchanged over 1957.

RYE: A slight increase in revenue is indicated for this crop over the preceding season even though a smaller acreage was planted. This increase was due to greater yields. Prices received were the same for 1957. The quality of rye was higher than any of the other cereal grains, being grown in the drier areas of the county.

ALFAIFA HAY: Most of the first crop of alfalfa was rain damaged throughout the entire county due to many heavy

unseasonal storms. Most of this hay though of a lower quality was pelleted with the addition of concentrates, thereby being utilized profitably in feed lots. Some loss in tonnage of the first cutting was about offset by a prolonged dry fall allowing an increase in tonnage in the third cutting.

OTHER HAY- GRAIN & GRASS: An increase in acreage and yield over previous year boosted the tonnage over 27% and the value by \$116,250.

POTATOES: An acreage increase of 13% plus a yield increase resulted in only 5% gain in revenue due to lower prices being paid in 1958.

ONIONS: The acreage increased while the yield decreased. Prices paid the grower remained unchanged from 1957. A \$55,257 gain is indicated by the upped acreage.

LIVESTOCK: 1958 shows a drop in cattle sales over 1957, but an increase in revenue of \$607,309. This higher revenue resulted from stronger prices being paid for all types of cattle in 1958. The decline in animals being sold resulted from exceptionally heavy sales in 1957. We note that in the past year more and more stockmen held their weaners and feeders in a finishing program.

SHEEP: We show better than a 25% increase in sheep and lamb sales over the year 1957, gaining \$72,800 in revenue.

WOOL: The increase in sheep is reflected in the increase of wool over the year 1957. The price of wool being lower in 1958 brings our revenue up only slightly.

DAIRYING: Production was down slightly and prices paid the producer were lower than in the previous year. A decline of \$62,820 is indicated for 1958.

POULTRY: From \$241,591 in 1957, we took a jump to \$476,670 in 1958 or an increase of \$235,079, while the prices

received in 1958 remained virtually unchanged over 1957. The big increase is due to our taking credit for the total production of all poultry and poultry products, whereas in past years we took credit only for those products sold, but not of those used by the producer.

RABBITS: The production and the income remain unchanged for 1958.

HORSE & MULES: Demand was high for meat, saddle and pack animals, boosting the price. The net result was a substantial increase in income from this source.

NUTRIA: A 100% increase in numbers and revenue is shown for these fur bearers over the preceding year.

APIARY: Although the honey and wax yield per colony of bees shows an increase over the previous season we show only \$15,120 for 1958 while in 1957 we show \$26,370 or a decrease in revenue of \$11,250. Part of this decrease is partially due to drop in price in honey and wax, but the biggest factor is the change in crop reporting. Formerly we took credit for all the production of bees in our county while now we take only the production of locally owned bees and the out-of-county bees' production goes to bolster their home county revenue.

NURSERY: Strawberry plant acreage increased as did yield and price showing a gain in revenue of over 30%. Other commodities remained unchanged.

CORN-GRAIN: Acreage increased $\frac{2}{3}$ resulting in an increase in yield and revenue of the same amount. Crop matured well due to long late dry fall.

DAIRYING - 1957

PRODUCT	PRODUCTION	UNIT	PER UNIT	F.O.B. VALUE
Market Milk	493,000	Pounds	\$1.31	\$645,830
Manufactured milk	139,000	Pounds	.65	90,350
POULTRY				
Chicken eggs	29,500	Cases	13.00	383,500
Turkey hatching eggs	2,000	Dozens	2.76	5,520
Fryers	35,000	Head	1.50	52,500
Hens	47,000	Head	.45	21,150
Turkeys	2,000	Head	4.50	9,000
Miscellaneous poultry	2,500	Head	2.00	5,000
Total				\$476,670
APICULTURE				
Honey	62	Tons	2.30	14,260
Beeswax	2,000	Pounds	.43	860
Total				15,120

LIVESTOCK

PRODUCT	PRODUCTION	UNIT	PER UNIT	F. O. B. VALUE
Bulls	654	Head	\$275	\$179,850
Breeders	200	Head	400	80,000
Cows	6,860	Head	200	1,372,000
Calves	9,030	Head	125	1,128,750
Heifers	5,331	Head	195	1,039,545
Steers	11,800	Head	225	2,655,000
Hogs	350	Head	36	12,600
Pigs	9,770	Head	42	410,340
Sheep	1,900	Head	7	11,900
Breeders	1,600	Head	12.20	19,500
Lambs	11,000	Head	20	220,000
Wool	96,200	Pounds	.50	48,100
Horses & Mules	150	Head	125	18,750
Nutria	500	Head	15	7,500
Rabbits	3,700	Head	1.25	4,625
TOTAL				\$7,208,460

SEED CROPS

CROP	BEARING ACREAGE	PER ACRE	PRODUCTION		UNIT	PER UNIT	TOTAL
			TOTAL				
Alfalfa, Vernal	52	50	2,600		Lbs.	.45	\$1,170
Alfalfa, Lahonton	50	150	7,500		Lbs.	.45	3,375
Alfalfa, Buffalo	76	150	11,400		Lbs.	.17	1,938
Alfalfa-Other	1,200	200	240,000		Lbs.	.16	38,400
Barley, Club Mariout	12	30	360		Cwt.	2.50	900
Clover, Alsike	1,460	395	576,700		Lbs.	.1925	109,717
Clover, Red	30	395	11,850		Lbs.	.1925	2,281
Fescue, Gores	2	400	800		Lbs.	.12	96
Miscellaneous Seed							2,500
Potatoes	1,487	290	431,230		Cwt.	1.135	489,446
Wheatgrass, Greenar	90	250	22,500		Lbs.	.47	10,500
Wheatgrass, Topar	130	150	19,500		Lbs.	.47	9,165
Wheat, Onas	5	15	75		Cwt.	3.25	243
Wheat, Ramona	22	18	396		Cwt.	3.25	1,287
Wheat, White Federation 54	8	19	152		Cwt.	3.25	474
Wheat, Pacific Bluestem	20	30	600		Cwt.	3.25	1,950
Wheat, Durum	254	34	8,636		Cwt.	3.25	28,067
Peas	52	30	1,560		Cwt.	2.50	3,900
TOTAL							\$705,409

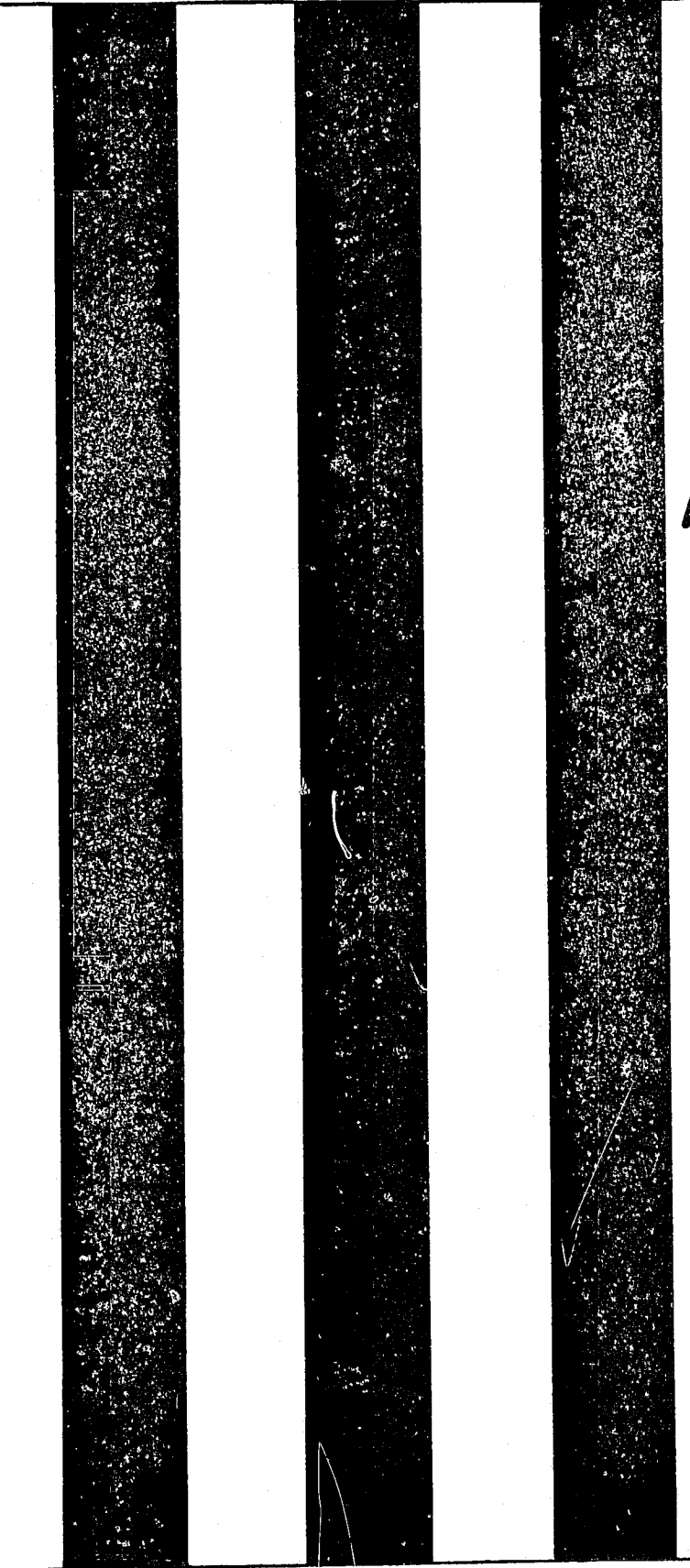
FIELD CROPS

F. O. B. VALUE

CROP	BEARING ACREAGE	PER ACRE	PRODUCTION TOTAL	UNIT	PER UNIT	TOTAL
Alfalfa, Hay	34,000	4	136,000	Tons	\$18.00	\$2,448,000
Other Hay-Grain & Grass	15,000	1 $\frac{1}{4}$	18,750	Tons	15.00	281,250
Barley- Malting	21,000	31.23	662,388	Cwt.	2.50	1,655,970
Barley-Feed	35,791	18	644,238	Cwt.	2.25	1,449,536
Wheat- Milling	427	34	14,518	Cwt.	3.25	47,384
Wheat- Feed	15,564	12	186,768	Cwt.	3.00	560,304
Oats	12,000	12	144,000	Cwt.	2.00	288,000
Rye	6,000	8.5	51,000	Cwt.	2.00	102,000
Flax	3	10	30	Cwt.	4.00	120
Corn- Grain	46	1.5	69	Tons	50.00	3,450
Corn- Silage	35	15	525	Tons	6.00	3,150
Sorghum- Grain	15	1	15	Tons	40.00	600
Sorghum- Forage	15	1	15	Tons	40.00	600
Straw- Grain, Clover, Alfalfa	4,600	1	2,300	Tons	4.50	10,350
Pasture - Improved Meadow	27,000			Acre	37.00	999,000
Pasture- Natural Meadow	50,000			Acre	16.00	800,000
Pasture- Range	400,000			Acre	.30	120,000
Pasture- Stubble	50,000			Acre	.50	25,000
Potatoes	3,322	290	963,380	Cwt.	1.045	1,006,732
Onions	417	400	166,800	Cwt.	1.55	258,540
			TOTAL			\$10,070,136

RECAPITULATION VALUATION

	1957	1958
APIARY	\$26,370.00	\$15,120.00
NURSERY	199,650.00	284,475.00
POULTRY	241,591.00	476,670.00
DAIRYING	799,000.00	736,180.00
SEED CROPS	863,273.00	705,409.00
LIVESTOCK	6,601,151.00	7,208,460.00
FIELD CROPS	<u>10,904,268.00</u>	<u>10,070,136.00</u>
TOTALS	\$19,635,303.00	\$19,496,450.00



1959

AGRICULTURAL COMMISSIONER
COUNTY OF SISKIYOU
YREKA, CALIFORNIA

Siskiyou County Agricultural Crop Report 1959

JESS R. GRISHAM
Agricultural Commissioner and
Sealer of Weights and Measures

Court House Annex
Yreka, California

AGRICULTURAL COMMISSIONER

SISKIYOU-COUNTY

DEPARTMENT

OF

AGRICULTURE

ANNUAL REPORT

YEAR ENDING DECEMBER 31, 1959

WILLIAM E. WARNE, DIRECTOR

STATE DEPARTMENT OF AGRICULTURE

BOARD OF SUPERVISORS

W. C. (BILL) EALY	Chairman.....	District 4
EARL F. AGER	District 1
W. A. BARR	District 2
CLINT JACKSON	District 3
DON AVERY	District 5

Agriculture Department

JESS R. GRISHAM

AGRICULTURAL COMMISSIONER AND SEALER OF WEIGHTS & MEASURES

BRANCH OFFICE

TULELAKE - PH. 7-1391

MAIN OFFICE

VI 2-3531, EX. 80

County of Siskiyou

COURT HOUSE

YREKA, CALIFORNIA

THE DIRECTOR OF THE STATE DEPARTMENT OF AGRICULTURE
THE HONORABLE BOARD OF SUPERVISORS

Gentlemen:

This is the Annual Crop Report as required by Section 65.5 of the Agricultural Code. The following pages cover acreage, production, and value of the various crops grown in the county.

All prices reported here are on F.O.B. basis. All production costs should be deducted to arrive at the true value.

As was the case in 1958 practically all farm commodities with few exceptions held about the same or took a dip in price in 1959. These exceptions were noted in hay, potatoes, durum wheat, and milk, which all show a considerable rise in value.

1959 will not soon be forgotten as one of the driest years ever recorded. A if being plagued with a water shortage (in some areas) was not enough to try the growers' wits, mother nature loosed her vengeance with early and late frosts, cold and hot dry winds, and not a few of her choice boarders from the insect world, which in a few cases caused certain plant diseases, to say nothing of the ever present weeds in crops. In spite of all the above mentioned setbacks the hot dry season aided the grower during the harvesting of crops and in many cases added an extra cutting of alfalfa hay.

On request, this report is sent to Federal, State and County Agencies throughout the United States, and to other interested parties. The members of this department have made a sincere effort to make this report as accurate as possible.

My sincere appreciation is extended to the many individuals and organizations who cooperated with my staff in their gathering of the figures for this report, which was compiled by Frank Wallier, Sr. Agricultural Inspector.

Respectfully submitted,

Jess R. Grisham
Agricultural Commissioner

SISKIYOU COUNTY DEPARTMENT OF AGRICULTURE

PERSONNEL

JESS R. GRISHAM AGRICULTURAL COMMISSIONER
 &
 SEALER OF WEIGHTS & MEASURES

W. E. HOSE DEPUTY AGRICULTURAL COMMISSIONER
 &
 DEPUTY SEALER OF WEIGHTS & MEASURES, TULELAKE OFFICE

FRANK WALLER..... AGRICULTURAL INSPECTOR II

DON R. HILL..... AGRICULTURAL INSPECTOR
 &
 DEPUTY SEALER OF WEIGHTS & MEASURES

CLIFFORD S. GIEBNER AGRICULTURAL INSPECTOR
 &
 DEPUTY SEALER OF WEIGHTS & MEASURES

GERALD L. FEHLMAN..... AGRICULTURAL INSPECTOR I

WILL HOSKINS SPRAYMAN

MILDRED WILLIAMS TYPIST CLERK II

CROP SUMMARY

DAIRYING : Butterfat production increased substantially and along with stronger prices being paid showed a nice increase in revenue over the preceding year.

POULTRY : The highly competitive poultry business has caused a decline in egg and meat production this past year. Prices on eggs and poultry being lower than last season show an 18.20% decrease in value.

LIVESTOCK : Declining prices during the past season in all types of livestock, excepting horses, which prices strengthened, are partially attributable to the extremely dry year causing a shortage of range and pasture feed. This feed shortage flooded the market with livestock, resulting in a considerable reduction in farm income.

APICULTURE : This phase of agriculture suffered a decline of over 100% in revenue. The extended cold dry season held up the honey flow too long making it impossible for the bees to produce a normal crop of honey and wax. Another factor to be considered in this sharp decline was the drastic cut in alfalfa seed acreage, which acreage normally supplies a large percentage of the bee pasture. Prices remained virtually unchanged.

SEED CROPS : The increase in revenue in this department does not necessarily indicate higher prices received, when actually the contrary is the case; there was merely more grain held back for seed, thereby boosting the total seed value. Grass and legume seed crops were sharply curtailed, due to low prices envisioned and also with an outlook of a hay shortage looming on the horizon due to the low precipitation and a long cold spring. Alfalfa seed yields were higher than in the past season.

FIELD CROPS

: Dryland alfalfa suffered from late spring frosts and a moisture shortage, resulting in lower yields. The spotted alfalfa aphid caused considerable damage to a few fields where early controls were not initiated. Wherever water supplies were ample an extra cutting of alfalfa hay was realized, due to the prolonged hot dry curing weather. A considerable acreage of frost damaged grain was hayed. Most of the grass seed acreage was also cut for hay due to low seed prices and a strong demand for all types of hay. a 13% production increase of all hay boosts the total value by almost 100% over the year 1958. The unusually long cold spring, the extra long hot summer, and the late summer frosts took their toll in the cereal crops; stunting of plants, thinning of stands, lowering of yields and quality were evident in many cases. These reverses, however, were somewhat alleviated by higher prices being paid, particularly for malting barley and milling wheat. Onion growers were hard hit, many having to replant three times due to dry freezing winds blowing sand which cut the tender plants off at the ground. Acreage was down $1\frac{1}{3}$, yields down $12\frac{1}{2}\%$, prices remained unchanged. Potato growers were not overlooked by the elements and pests, resulting in lower yields and quality. But, like the hay and grain grower he was fortunate that the price took a healthy rise, thereby compensating somewhat for all his set-backs. This increase in price amounts to a $44\frac{1}{2}\%$ revenue climb.

NURSERY

: The nursery business at the greenhouse level changed only slightly over 1958. The effects of the elements were to a great degree responsible for lower yields of strawberry plants. The harvested acreage of strawberry plants was down slightly over the preceding year. Prices received by the growers remained virtually unchanged, resulting in a cut in revenue of over \$100,000 for this crop.

LIVESTOCK: PRODUCTION AND VALUE

Item	No. of head	Production		Unit	Per unit	Total
			Total liveweight			
Bulls	750	9,750	Cwt.	20.	195,000	
Breeders	200		Head.	400	80,000	
Cows	10,250	102,500	Cwt.	15.	1,537,500	
Calves	8,200	32,800	Cwt.	27.	885,600	
Heifers	6,000	39,000	Cwt.	23.	897,000	
Steers	12,000	96,000	Cwt.	25.	2,400,000	
Feeders (gain basis)	500	1,250	Cwt.	24.	30,000	
Hogs	506	2,024	Cwt.	11.	22,264	
Pigs	9,869	22,205	Cwt.	16.	355,280	
Sheep	2,000	3,000	Cwt.	6.	18,000	
Lambs	8,582	8,582	Cwt.	18.	154,476	
Feeders (gain basis)	12,000	3,000	Cwt.	6.	18,000	
Horses & mules	100		Head.	175.	17,500	
Rabbits	3,500	10,500	Pounds	.35	3,675	
Total					6,614,295	

POULTRY : PRODUCTION AND VALUE

Item Item	Production	Unit	Per Unit Value	Total
Fryers	76,650	Lbs.	.43	32,960
Hens	162,675	Lbs.	.08	13,014
Turkeys	11,700	Lbs.	.25	2,925
Miscellaneous	25,000	Lbs.	.25	6,350
			Total	55,149

LIVESTOCK AND POULTRY PRODUCTS : PRODUCTION AND VALUE

Milk	141,980	Cwt.	5.01	711,000
Market				
Manufacturing	31,870	Cwt.	3.18	101,000
Wool	84,664	Lbs.	.50	42,332
Eggs, Chickens				
Market	880,980	Doz.	.38	334,772
			Total	1,189,104

APIARY PRODUCTS: PRODUCTION AND VALUE

Honey	41,350	Lb.	.11 $\frac{1}{2}$	4,755
Beeswax	825	Lb.	.45	371
Pollination	500	Colony	4.00	2,000
			Total	7,126

FIELD CROPS, ACREAGE, PRODUCTION, AND VALUE

Crop	Harvested acreage	Production Per Acre	Total	Unit	Value Per Unit	Total
Alfalfa, Hay	34,000	4 $\frac{1}{2}$	153,000	Ton	25.00	3,825,000
Other hay, Grain & Grass	25,000	1	25,000	Ton	20.00	500,000
Barley, Malting	18,582	2,800 a/	25,915	Ton	57.00	1,477,155
Barley, Feed	33,611	1,500 a/	26,190	Ton	43.00	1,126,170
Wheat, Milling	1,000	2,600 a/	1,300	Ton	69.00	89,700
Wheat, Feed	13,488	1,000 a/	6,744	Ton	54.00	364,176
Oats	11,067	900 a/	4,980	Ton	47.00	234,030
Rye	5,280	500 a/	1,320	Ton	50.00	66,000
Straw, Grain, Clover, Alfalfa	4,600	1	4,600	Ton	11.00	50,600
Pasture, Improved meadow	30,000			Acre	37.00	1,110,000
Pasture, Natural meadow	50,000			Acre	16.00	800,000
Pasture, Range	400,000			Acre	.30	120,000
Pasture, Stubble	130,000			Acre	.50	65,000
Potatoes	3,666	250	916,500	Cwt.	2.30	2,107,950
Onions	281	350	98,350	Cwt.	1.55	152,443
a/ pounds			Total			\$12,088,254

SEED CROPS, ACREAGE, PRODUCTION, AND VALUE

Crop	Harvested acreage	Production Per Acre	Total	Units	Value Per Unit	Total
Alfalfa, Vernal	52	400	20,800	Lbs.	.42	8,736
Alfalfa, Grimm	120	522	62,640	Lbs.	.25	15,660
Alfalfa, Other	150	300	45,000	Lbs.	.18	8,100
Clover, Alsike	1,756	277	486,412	Lbs.	.20	97,282
Clover, Red	30	227	6,810	Lbs.	.20	1,362
Fescue, Gores	2	400	800	Lbs.	.12	96
Miscellaneous Seed	30	200	6,000	Lbs.	.20	1,200
Potatoes	1,092	250	273,000	Cwt.	2.40	655,200
Wheatgrass, Topar & Greenar	30	125	3,750	Lbs.	.45	1,688
Oats, All	933	900	8,397	Cwt.	2.50	20,993
Barley, All	2,120	1,792	37,990	Cwt.	3.00	113,970
Rye	720	500	3,600	Cwt.	3.00	10,800
Wheat, Omar	60	1,000	600	Cwt.	3.25	1,950
Wheat, Brevor	22	3,000	660	Cwt.	3.25	2,145
Wheat, Pacific Bluestem	440	1,000	4,400	Cwt.	3.25	14,300
Wheat, Durum	550	2,600	14,300	Cwt.	3.45	49,335
Wheat, Other	402	1,500	6,030	Cwt.	3.25	19,598
Peas, Field	97	2,400	2,328	Cwt.	3.30	7,682
Total						\$1,030,097

NURSERY PRODUCTS : PRODUCTION AREA, SALES, AND VALUE

Item	Production area		Quantity sold by producers	Unit	Value	
	House sq.ft.	Field acres			Per Unit	Total
Bedding plants	2,000	1/8	4,000	flat	2.70	10,800
Cut flowers	3,000	1/8	50,000	bloom	.20	10,000
Ornamentals	1,500		3,500	plant	2.25	7,875
Strawberry plants		86	10,320,000	plant	.0155	155,496
				Total		184,171

ORCHARD CROPS *

Apples	38 acres
Pears	15 acres
Cherries	10 acres
Peaches	8 acres
Walnuts	5 acres
Miscellaneous	2 acres

* Mostly for home use

RECAPITULATION VALUATION

	<u>1957</u>	<u>1958</u>	<u>1959</u>
APIARY	\$26,370.00	\$15,120.00	\$7,126.00
NURSERY	199,650.00	284,475.00	184,171.00
POULTRY	241,591.00	476,670.00	389,921.00
DAIRYING	799,000.00	736,180.00	812,000.00
SEED CROPS	863,273.00	705,409.00	1,030,097.00
LIVESTOCK	6,601,151.00	7,208,460.00	6,656,627.00
FIELD CROPS	<u>10,904,268.00</u>	<u>10,070,136.00</u>	<u>12,088,254.00</u>
TOTALS	\$19,635,303.00	\$19,496,450.00	\$ 21,168,196.00

JANUARY I INVENTORIES OF LIVESTOCK AND POULTRY 1960
(in number of head)

Item	January 1, 1960
Cattle and calves, all	57,500
Milk cows 2 years and over	4,000
Cattle and calves on feed	5,500
Sheep and lambs, all	10,883
Stock sheep	10,583
Sheep and lambs on feed	300
Hogs and pigs, all	1,650
Horses and mules, all	2,150
Shetland ponies	50
Hens and pullets of laying age	66,425

GOVERNMENT PAYMENTS MADE TO RANCHERS AND FARMERS IN 1959

Conservation reserve annual payment	\$151,000
Conservation reserve practice payment	39,500
A.C.P. practice payment	147,000
Wool incentive program	22,000
Total	\$359,500

GENERAL INFORMATION

Siskiyou County is mountainous over most of its area, but has several large upland valleys in the central and east central section. The lowest elevation is about 500 feet, while the highest is 14,161 feet, the summit of Mt. Shasta. Siskiyou's mountain areas are some of the most inaccessible and rugged in California.

The western portion of the county is broken up by a number of large rivers and their tributaries, resulting in a series of deep canyons and high ridges. Changes in elevation from canyon bottom to ridge top are abrupt and large, often from 2,000 to more than 4,000 feet. For the most part the few main roads follow the stream courses and intervening forest areas are without access, but more "access roads" are being built all the time. There are many beautiful ranches along some of these rivers.

The high upland valleys of the central and east central section of the county have relatively large areas of non commercial forest land, and non forest land. The non commercial forest land is composed of hardwoods, woodland grass, and grass areas. The non forest land is primarily in agriculture and urban use. Scott and Shasta Valleys are located in this area.

The eastern half of the county is a high plateau, averaging about 4,500 feet in elevation, with scattered volcanic buttes. The forest area in this section was readily accessible and has mostly been logged off. However, there is a large area of non forest land in the northeastern corner of the county. Some of this non forest land is in agriculture use, but the major part is barren or covered with sage brush. The rich Tulelake and Butte Valley area is located here.

1960

1965-1966

AGRICULTURAL ECONOMICS LIBRARY
UNIVERSITY OF CALIFORNIA
DAVIS, CALIF.

Siskiyou County Agricultural Crop Report

1960

JESS R. GRISHAM
Agricultural Commissioner and
Sealer of Weights and Measures

Court House Annex
Yreka, California

AGRICULTURAL COMMISSIONER

SISKIYOU-COUNTY

DEPARTMENT

OF

AGRICULTURE

ANNUAL REPORT

YEAR ENDING DECEMBER 31, 1960

CHARLES PAUL, DIRECTOR

STATE DEPARTMENT OF AGRICULTURE

BOARD OF SUPERVISORS

DON AVERY, CHAIRMAN..... District 5, Etna
EARL F. AGER District 1, Tulalake
W. A. Barr..... District 2 ,Mount Shasta
CLINT JACKSON District 3 , Edgewood
W.C. (BILL) EALY..... District 4 , Yreka

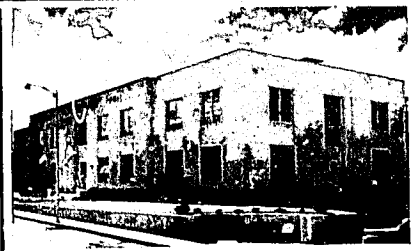
Agriculture Department

JESS R. GRISHAM

AGRICULTURAL COMMISSIONER AND SEALER OF WEIGHTS & MEASURES

BRANCH OFFICE
TULELAKE — PH. 7-1391

MAIN OFFICE
VI 2-3531, EX. 80



County of Siskiyou

COURT HOUSE
YREKA, CALIFORNIA

THE DIRECTOR OF THE STATE DEPARTMENT OF AGRICULTURE
THE HONORABLE BOARD OF SUPERVISORS

Gentlemen:

This is the 1960 Annual Crop Report as required by Section 65.5 of the Agricultural Code. The following pages cover acreage, production, and value of the various crops grown in the county, plus livestock, poultry, and their products.

All prices here are on F.O.B. basis. All production costs should be deducted to arrive at the true value. The 1959 figures are also shown for a quick comparison of gains and losses.

As was the case in the two years proceeding 1960 practically all farm commodities with few exceptions took a dip or held about the same in price in 1960. These exceptions were noted in alfalfa seed, durum wheat, potatoes, swine, eggs, and milk, which all show a moderate rise in price.

1960 again was a below normal year in precipitation, resulting in lower yields not only for the dry farmer, but also for the grower in some of the irrigation districts as well, who had to dispense with at least one irrigation.

Lack of moisture was not the sole cause of lower yields: late spring, summer, and early fall frosts plus cold winds contributed greatly in crop reduction. The cold winds did most of their damage to the onion grower, who in some instances was forced to replant twice, due to the blowing soil uncovering and cutting off the young onion plants. An early fall frost in addition to a June frost hit the potato grower particularly hard, cutting yields 30%. This reduction, however, was just about offset by higher prices being realized. The severe fall frosts probably curbed any late breaking virus diseases in potatoes. Root rot in alfalfa reduced the first cutting of hay materially. Grasshoppers and the various aphids did considerable damage to some crops where no control measures were initiated.

On request, this report is sent to Federal, State, and County Agencies throughout the United States, and to other interested parties. The members of this department have made a sincere effort to make this report as accurate as possible.

My sincere appreciation is extended to the many individuals and organizations who cooperated with my staff in their gathering of the figures for this report, which was compiled by Frank Wallier, Sr. Agricultural Inspector.

Respectfully submitted,

Jess R. Grisham
Jess R. Grisham
Agricultural Commissioner

SISKIYOU COUNTY DEPARTMENT OF AGRICULTURE

PERSONNEL

JESS R. GRISHAM..... AGRICULTURAL COMMISSIONER
&
SEALER OF WEIGHTS & MEASURES

W. E. HUSE..... DEPUTY AGRICULTURAL COMMISSIONER
&
DEPUTY SEALER OF WEIGHTS & MEASURES, TULELAKE OFFICE

CLIFFORD S. GIEBNER..... DEPUTY AGRICULTURAL COMMISSIONER
&
DEPUTY SEALER OF WEIGHTS & MEASURES

DON R. HILL DEPUTY AGRICULTURAL COMMISSIONER
&
DEPUTY SEALER OF WEIGHTS & MEASURES

TRAVIS D. McROBERTS..... DEPUTY SEALER OF WEIGHTS & MEASURES
&
AGRICULTURAL INSPECTOR I

FRANK WALLIER..... AGRICULTURAL INSPECTOR II

GARY C. GOLDEN..... AGRICULTURAL INSPECTOR I

WILL HOSKINS..... WAREHOUSE MAINTENANCE MAN

MILDRED WILLIAMS..... TYPIST CLERK II

FIELD CROPS, ACREAGE, PRODUCTION, AND VALUE

Crop	Year	Harvested acreage	Per acre	Total	Unit	Per Unit	Total
Alfalfa hay	1960	37,000	3.4	125,800	Ton	\$24.00	\$3,019,200
	1959	34,000	4.5	153,000	Ton	25.00	3,825,000
Other hay	1960	25,000	1.	25,000	Ton	20.00	500,000
	1959	25,000	1.	25,000	Ton	20.00	500,000
Barley (Malting)	1960	26,196	27 $\frac{a}{a}$	35,366	Ton	55.17	1,951,142
	1959	18,582	28 $\frac{a}{a}$	25,915	Ton	57.00	1,477,155
Barley (Feed)	1960	28,689	12 $\frac{1}{2}$ $\frac{a}{a}$	17,594	Ton	40.00	703,760
	1959	33,611	15 $\frac{a}{a}$	26,190	Ton	43.00	1,126,170
Wheat (Milling)	1960	1,700	35 $\frac{a}{a}$	2,975	Ton	70.00	208,250
	1959	1,000	26 $\frac{a}{a}$	1,300	Ton	69.00	89,700
Wheat (Feed)	1960	12,000	6 $\frac{1}{2}$ $\frac{a}{a}$	3,900	Ton	53.00	206,700
	1959	13,488	10 $\frac{a}{a}$	6,744	Ton	54.00	364,176
Oats	1960	14,085	12.3 $\frac{a}{a}$	8,663	Ton	47.00	407,161
	1959	11,067	9 $\frac{a}{a}$	4,980	Ton	47.00	234,060
Rye	1960	2,700	6 $\frac{a}{a}$	810	Ton	40.00	32,400
	1959	5,280	5 $\frac{a}{a}$	1,320	Ton	50.00	66,000
Straw (all)	1960	6,000	1.	6,000	Ton	11.00	66,000
	1959	4,600	1.	4,600	Ton	11.00	50,600
Pasture (Seeded)	1960	37,000			Acre	37.00	1,369,000
	1959	30,000			Acre	37.00	1,110,000
Pasture (Natural meadow)	1960	50,000			Acre	16.00	800,000
		50,000			Acre	16.00	800,000
Pasture (Range)	1960	400,000			Acre	.30	120,000
	1959	400,000			Acre	.30	120,000
Pasture (Stubble)	1960	130,000			Acre	.50	65,000
	1959	130,000			Acre	.50	65,000
Total	1960						\$9,448,613
	1959						9,827,861

a/ cwt.

SEED CROPS, ACREAGE, PRODUCTION, AND VALUE

Crop	Year	Harvested acreage	Per Acre	Total	Unit	Per Unit	Total
Alfalfa	1960	660	375	247,500	Lb.	.40	\$99,000
(All)	1959	322	387	128,440	Lb.	.253	32,496
Clover	1960	184	425	78,200	Lb.	.15	11,730
(Alsike)	1959	1,756	277	486,432	Lb.	.20	97,282
Clover	1960	46	400	18,400	Lb.	.40	7,360
(Red)	1959	30	227	6,810	Lb.	.20	1,362
Fescue	1960	2	300	600	Lb.	.85	510
(Gores)	1959	2	400	800	Lb.	1.2	96
Miscellaneous	1960	20	200	4,000	Lb.	.20	,800
	1959	30	200	6,000	Lb.	.20	1,200
Potatoes	1960	1,486	153	227,960	Cwt.	3.57	834,185
	1959	1,092	250	273,000	Cwt.	2.40	655,200
Wheatgrass	1960	10	125	1,250	Lb.	.45	562
	1959	30	125	3,750	Lb.	.45	1,688
Oats (All)	1960	915	12.3	11,255	Cwt.	2.75	29,951
	1959	933	9.	8,397	Cwt.	2.50	20,993
Barley (All)	1960	4,115	14.32	58,900	Cwt.	3.00	176,700
	1959	2,120	17.92	37,990	Cwt.	3.00	113,970
Rye	1960	300	6.	1,800	Cwt.	2.75	4,880
	1959	720	5.	3,600	Cwt.	3.00	10,800
Wheat	1960	60	35.	2,100	Cwt.	4.00	8,400
(Durum)	1959	550	26.	14,300	Cwt.	3.45	49,335
Wheat	1960	540	6 $\frac{1}{2}$	3,510	Cwt.	3.30	11,583
(Others)	1959	924	12.65	11,690	Cwt.	3.25	37,993
Peas							
(Field)	1960	120	25.	3,000	Cwt.	3.50	10,500
	1959	97	24.	2,328	Cwt.	3.30	7,682
Total	1960						\$1,196,161
	1959						1,030,097

LIVESTOCK: PRODUCTION AND VALUE

Item	Year	No. of Head	Total Liveweight	Unit	Per Unit	Total
Bulls	1960	875	11,395	Cwt.	\$ 19.00	\$216,505
	1959	750	9,750	Cwt.	20.00	195,000
Breeder s	1960	250		Head	400.00	100,000
	1959	200		Head	400.00	80,000
Cows	1960	10,000	100,000	Cwt.	13.00	1,300,000
	1959	10,250	102,500	Cwt.	15.00	1,537,500
Calves	1960	12,700	50,800	Cwt.	26.00	1,320,800
	1959	8,200	32,800	Cwt.	27.00	885,600
Heifers	1960	6,900	44,850	Cwt.	22.00	986,000
	1959	6,000	39,000	Cwt.	23.00	897,000
Steers	1960	11,700	93,600	Cwt.	24.00	2,246,400
	1959	12,000	96,000	Cwt.	25.00	2,400,000
Feeders (Gain basis)	1960	600	1,500	Cwt.	23.00	34,500
	1959	500	1,250	Cwt.	24.00	30,000
Hogs	1960	300	1,200	Cwt.	13.00	15,600
	1959	506	2,024	Cwt.	11.00	22,264
Pigs	1960	8,100	18,225	Cwt.	18.00	328,050
	1959	9,869	22,205	Cwt.	16.00	355,280
Sheep	1960	2,000	3,000	Cwt.	2.50	7,500
	1959	3,000	4,500	Cwt.	4.00	18,000
Lambs	1960	8,750	7,875	Cwt.	18.00	141,750
	1959	8,582	8,582	Cwt.	18.00	154,476
Feeders (Gain basis)	1960	12,000	3,000	Cwt.	6.00	18,000
	1959	12,000	3,000	Cwt.	6.00	18,000
Horses & mules	1960	150		Head	150.00	22,500
	1959	100		Head	175.00	17,500
Rabbits	1960	4,000	12,000	Lb.	.30	3,600
	1959	3,500	10,500	Lb.	.35	3,675
Total	1960					\$6,741,205
	1959					6,614,296

LIVESTOCK AND POULTRY PRODUCTS: PRODUCTION AND VALUE

Item	Year	Production	Unit	Per Unit	Total
Milk					
Market	1960	146,301	Cwt.	\$5.17	\$756,000
	1959	141,980	Cwt.	5.01	711,000
Mfg.	1960	31,079	Cwt.	3.15	98,000
	1959	31,870	Cwt.	3.18	101,000
Wool	1960	85,000	Lb.	.45	38,250
	1959	84,664	Lb.	.50	42,332
Eggs (Chicken)	1960	800,000	Doz.	.41	328,000
	1959	880,980	Doz.	.38	334,772
Total	1960				\$1,220,250
	1959				\$1,189,104

APIARY PRODUCTS: PRODUCTION AND VALUE

Item	Year	Production	Unit	Per Unit	Total
Honey	1960	20,000	Lb.	.15	\$3,000
	1959	41,350	Lb.	.11 $\frac{1}{2}$	4,755
Beeswax	1960	400	Lb.	.45	180
	1959	825	Lb.	.45	371
Pollination	1960	500	Colony	4.00	2,000
	1959	500	Colony	4.00	2,000
Total	1960				\$5,180
	1959				\$7,126

VEGETABLE CROPS: ACREAGE, PRODUCTION, AND VALUE

Crop	Year	Harvested acreage	Per Acre	Total	Unit	Per Unit	Total
Potatoes	1960	3,743	168	629,460	Cwt.	\$2.50	\$1,573,650
	1959	3,666	250	916,500	Cwt.	2.30	2,107,950
Onions	1960	430	300	129,000	Cwt.	1.55	199,950
	1959	281	350	98,350	Cwt.	1.55	152,443
Garlic	1960	10	100	1,000	Cwt.	11.00	11,000
	1959	0	0	0		0	0
Total	1960						\$1,784,600
	1959						2,260,393

POULTRY: PRODUCTION AND VALUE

Item	Year	Production	Unit	Per Unit	Total
Fryers	1960	50,000	Lb.	\$0.30	\$15,000
	1959	76,650	Lb.	.43	32,960
Hens	1960	100,000	Lb.	.10	10,000
	1959	162,675	Lb.	.08	13,014
Turkeys	1960	6,000	Lb.	.29	1,740
	1959	11,700	Lb.	.25	2,925
Misc. Poultry	1960	20,000	Lb.	.25	5,000
	1959	25,000	Lb.	.25	6,250
Total	1960				\$31,740
	1959				55,149

NURSERY PRODUCTS: PRODUCTION AREA, SALES, AND VALUE

Item	Year	Production Area		Quantity Sold By Producers	Unit	Value	Total
		House Sq. Ft.	Field Acres			Per Unit	
Bedding plants	1960	3,000	1/2	4,000	Flat	\$2.70	\$10,800
	1959	2,000	1/8	4,000	Flat	2.70	10,800
Cut flowers	1960	3,000	1/2	50,000	Bloom	.20	10,000
	1959	3,000	1/8	50,000	Bloom	.20	10,000
Ornamentals	1960	2,150		5,000	Plant	2.25	11,250
	1959	1,500		3,500	Plant	2.25	7,875
Strawberry Plants	1960		118	17,700	M	15.00	265,500
	1959		86	10,320	M	15.06	155,496
Christmas trees and greens	1960		3,000	70	M	2.00	140,000
	1959	No records					
Total	1960						\$437,550
	1959						184,171

ORCHARD CROPS *

Crop	Acres
Apples	147
Pears	15
Cherries	10
Peaches	8
Walnuts	22
Miscellaneous	7

* Mostly for home use

RECAPITULATION VALUATION

	<u>1958</u>	<u>1959</u>	<u>1960</u>
APIARY	\$15,120	\$7,126	\$5,180
NURSERY	284,475	184,171	\$437,550
POULTRY	476,670	389,921	\$359,740
DAIRYING	736,180	812,000	\$854,000
SEED CROPS	705,409	1,030,097	\$1,196,161
VEGETABLE CROPS	1,265,272	2,260,393	1,784,600
LIVESTOCK	7,208,460	6,656,627	6,779,455
FIELD CROPS	<u>8,804,864</u>	<u>9,827,861</u>	<u>9,448,613</u>
TOTALS	\$19,496,450	\$21,168,196	\$20,865,299

JANUARY 1 INVENTORIES OF LIVESTOCK AND POULTRY 1961

In number of head

Item	January 1 , 1961
Cattle and calves (all)	58,100
Milk cows 2 years and over	3,600
Cattle and calves on feed	5,000
Sheep and lambs (all)	11,500
Stock sheep	11,200
Sheep and lambs on feed	300
Hogs and pigs (all)	2,000
Horses and mules (all)	2,150
Shetland ponies	50
Hens and pullets of laying age	66,550

GOVERNMENT PAYMENTS MADE TO RANCHERS AND FARMERS IN 1960

Conservation reserve annual payment	\$188,500
Conservation reserve practice payment	84,090
A.C.P. practice payment	155,000
Wool incentive payment	12,800
Total	\$440,390

GENERAL INFORMATION

Siskiyou County is mountainous over most of its area, but has several large upland valleys in the central and east central section. The lowest elevation is about 500 feet, while the highest is 14,161 feet, the summit of Mt. Shasta. Siskiyou's mountain areas are some of the most inaccessible and rugged in California.

The western portion of the county is broken up by a number of large rivers and their tributaries, resulting in a series of deep canyons and high ridges. Changes in elevation from canyon bottom to ridge top are abrupt and large, often from 2,000 to more than 4,000 feet. For the most part the few main roads follow the stream courses and intervening forest areas are without access, but more "access roads" are being built all the time. There are many beautiful ranches along some of these rivers.

The high upland valleys of the central and east central section of the county have relatively large areas of non commercial forest land, and non forest land. The non commercial forest land is composed of hardwoods, woodland grass, and grass areas. The non forest land is primarily in agriculture and urban use. Scott and Shasta Valleys are located in this area.

The eastern half of the county is a high plateau, averaging about 4,500 feet in elevation, with scattered volcanic buttes. The forest area in this section was readily accessible and has mostly been logged off. However, there is a large area of non forest land in the northeastern corner of the county. Some of this non forest land is in agriculture use, but the major part is barren or covered with sage brush. The rich Tululake and Butte Valley area is located here.

1961

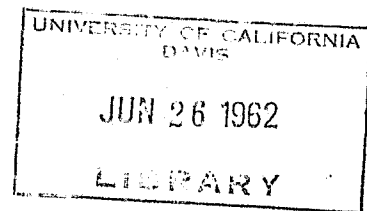
Ref. V.F.
Calif. Counties

Siskiyou County Agricultural Crop Report

1961

JESS R. GRISHAM
Agricultural Commissioner and
Sealer of Weights and Measures

Court House Annex
Yreka, California



AGRICULTURAL COMMISSIONER

SISKIYOU COUNTY

DEPARTMENT

OF

AGRICULTURE

ANNUAL REPORT

YEAR ENDING DECEMBER 31, 1961

CHARLES PAUL, DIRECTOR

STATE DEPARTMENT OF AGRICULTURE

BOARD OF SUPERVISORS

DON AVERY, CHAIRMAN..... District 5, Etna
EARL AGER..... District 1, Tulelake
W. A. FARR..... District 2, Mount Shasta
CLINT JACKSON..... District 3, Edgewood
W. C. (Bill) EALY..... District 4, Yreka

MAIN OFFICE - VICTOR 2-3531, EXT. 80-81

BRANCH OFFICE - TULELAKE 667-5214

COURT HOUSE ANNEX, YREKA, CALIFORNIA

THE DIRECTOR OF THE STATE DEPARTMENT OF AGRICULTURE
THE HONORABLE BOARD OF SUPERVISORS

Gentlemen:

This is the 1961 Annual Crop Report as required by Section 65.5 of the Agricultural Code. The following pages cover acreage, production, and value of the various crops grown in the county, plus livestock, poultry, and their products.

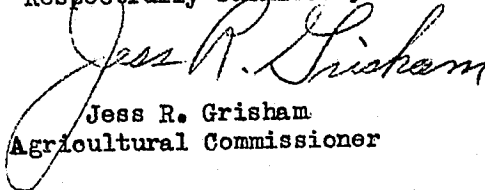
All prices here are on F.O.B. basis. All production costs should be deducted to arrive at the true value. The 1960 figures are also shown for a quick comparison of gains and losses.

As was the case in the three years preceding 1961, practically all farm commodities with few exceptions took a dip or held about the same in price in 1961. These exceptions were noted in durum wheat, eggs and milk, which all show a moderate rise in price. The increase in the total crop value, \$22,478,640 over \$20,853,450 for 1960, is due to increased acreage in several crops and increased production due to good growing conditions, more fertilization and increasingly applied technical know how of individual farmers.

On request, this report is sent to Federal, State, and County Agencies throughout the United States, and to other interested parties. The members of this department have made a sincere effort to make this report as accurate as possible.

My sincere appreciation is extended to the many individuals and organizations who cooperated with my staff in their gathering of the figures for this report, which was compiled by Frank Wallier, Sr. Agricultural Inspector.

Respectfully submitted,


Jess R. Grisham
Agricultural Commissioner

SISKIYOU COUNTY DEPARTMENT OF AGRICULTURE
PERSONNEL

JESS R. GRISHAM AGRICULTURAL COMMISSIONER
&
SEALER OF WEIGHTS & MEASURES

W. E. HUSE..... DEPUTY AGRICULTURAL COMMISSIONER
&
DEPUTY SEALER OF WEIGHTS & MEASURES, TULELAKE OFFICE

CLIFFORD S. GIEBNER..... DEPUTY AGRICULTURAL COMMISSIONER
&
DEPUTY SEALER OF WEIGHTS & MEASURES

DON R. HILL DEPUTY AGRICULTURAL COMMISSIONER
&
DEPUTY SEALER OF WEIGHTS & MEASURES

TRAVIS D. McROBERTS..... DEPUTY SEALER OF WEIGHTS & MEASURES
&
AGRICULTURAL INSPECTOR I

FRANK WALLIER..... AGRICULTURAL INSPECTOR II

GARY C. GOLDEN AGRICULTURAL INSPECTOR I

ROLLIE D. FREDERICK..... WAREHOUSE MAINTENANCE MAN

ALLEN G. WILLIS SPRAY EQUIPMENT OPERATOR

RUBY JO LEVULETT TYPIST CLERK II

MILDRED WILLIAMS..... TYPIST CLERK II

CROP CONDITIONS

Growing conditions in the county for the year 1961, could be considered from good to excellent. Normally the Butte Valley- Tulalake Basin receives a frost every month of the year. No frost occurred during 1961 season which resulted in record, or near record crops.

There was slight damage to some potato fields from extreme heat during the tender stages, and there was some apprehension that this hot spell might pinch the grain crop, but only slight damage was noticed.

A substantial rise in acre yields of grain is being noted with the increased use of commercial fertilizers and irrigation. Four thousand pounds per acre yields are not uncommon, with some growers shooting for five thousand pound yields.

Durum wheat is much in demand from Western Semolina Manufacturers in that they demand a high protein wheat which is easily grown at Tulalake.

The alfalfa weevil, and clover leaf weevil caused considerable damage to stands in the Shasta and Scott Valleys. Five to twenty five percent was noted at Butte Valley and Tulalake. The spotted alfalfa aphid is widely scattered over the county, but did little damage this season.

The lygus bug presented its usual troubles to the alfalfa and clover seed growers with lower yields being realized where control measures were not timely.

Grasshoppers were responsible for some losses of alfalfa hay and pasture where control measures were not taken. Approximately four thousand acres of grain was treated for the control of grasshoppers mostly on U.S. Fish and Wildlife property. These control measures were undertaken to preclude a possible buildup in future years.

FIELD CROPS, ACREAGE, PRODUCTION, AND VALUE

Crop	Year	Harvested Acreage	Per Acre	Total	Unit	Per Unit	Total
Alfalfa hay	1961	41,000	4.	164,000	Ton	\$19.00	\$3,116,000
	1960	37,000	3.4	126,000	Ton	24.00	3,024,000
Other hay	1961	18,000	1.50	27,000	Ton	18.00	486,000
	1960	25,000	1.	25,000	Ton	20.00	500,000
Barley Malting	1961	11,700	1.70	19,900	Ton	46.00	915,400
	1960	26,200	1.35	35,400	Ton	55.20	1,954,000
Barley Feed	1961	32,100	1.50	48,180	Ton	38.00	1,830,840
	1960	28,700	.612	17,600	Ton	40.00	704,000
Oats	1961	14,000	1.	14,000	Ton	42.00	636,000
	1960	14,100	.615	8,670	Ton	47.00	407,000
Pasture Seeded	1961	39,100			Acre	33.00	1,290,300
	1960	37,000			Acre	37.00	1,369,000
Pasture Natural meadow	1961	50,000			Acre	20.00	1,000,000
	1960	50,000			Acre	16.00	800,000
Pasture Range	1961	400,000			Acre	.30	120,000
	1960	400,000			Acre	.30	120,000
Pasture Stubble	1961	130,000			Acre	.50	65,000
	1960	130,000			Acre	.50	65,000
Rye	1961	3,000	.40	1,200	Ton	40.00	48,000
	1960	2,700	.300	810	Ton	40.00	32,400
Straw (all)	1961	6,100	1.	6,100	Ton	10.00	61,000
	1960	6,000	1.	6,000	Ton	11.00	66,000
Wheat Milling	1961	2,300	1.80	4,140	Ton	96.00	397,500
	1960	1,700	1.75	2,980	Ton	70.00	209,000
Wheat Feed	1961	12,100	.75	9,075	Ton	60.00	544,500
	1960	12,000	.325	3,900	Ton	53.00	207,000
Total	1961						\$10,501,540
	1960						9,457,400

SEED CROPS, ACREAGE, PRODUCTION, AND VALUE

Crop	Year	Harvested Acreage	Per Acre	Total	Unit	Per Unit	Total
Alfalfa (All)	1961	1,015	260	263,900	Lb.	.345	\$91,050
	1960	660	375	248,000	Lb.	.40	99,000
Barley (All)	1961	1,200	30	36,000	Cwt.	3.00	108,000
	1960	4,120	14.30	58,900	Cwt.	3.00	177,000
Clover (Alsike)	1961	130	430.80	56,000	Lb.	.15	8,400
	1961	184	425	78,200	Lb.	.15	11,700
Clover (Red)	1961	90	300	27,000	Lb.	.45	12,150
	1960	46	400	18,400	Lb.	.40	7,360
Clover (Ladino)	1961	100	260	26,000	Lb.	.60	15,600
	1960	0	0	0	0	0	0
Miscellaneous	1961	75	100	7,500	Lb.	.50	3,750
	1960	22	210	4,600	Lb.	.285	1,310
Oats (All)	1961	900	20	18,000	Cwt.	3.00	54,000
	1960	915	12.30	11,300	Cwt.	2.75	31,100
Potatoes	1961	1,870	287	535,600	Cwt.	1.77	948,000
	1960	1,490	153	228,000	Cwt.	3.57	814,000
Peas (Field)	1961	85	30	2,550	Cwt.	3.00	7,650
	1960	120	25	3,000	Cwt.	3.50	10,500
Rye	1961	300	8	2,400	Cwt.	3.00	7,220
	1960	300	6	1,800	Cwt.	2.75	4,950
Wheat (Milling)	1961	115	36	4,140	Cwt.	5.50	22,880
	1960	60	35	2,100	Cwt.	4.00	8,400
Wheat (Feed)	1961	600	15	9,000	Cwt.	3.00	36,000
	1960	540	6.50	3,510	Cwt.	3.30	11,600
Wheatgrass	1961	10	125	1,250	Lb.	.40	500
	1960	10	125	1,250	Lb.	.45	560
Total	1961						\$1,315,200
	1960						1,177,480

LIVESTOCK: PRODUCTION AND VALUE

Item	Year	No. of Head	Total Liveweight	Unit	Per Unit	Total
Bulls	1961	900	11,700	Cwt.	\$19.00	\$222,300
	1960	875	11,400	Cwt.	19.00	217,000
Breeder's	1961	250		Head	400.00	100,000
	1960	250		Head	400.00	100,000
Cows	1961	10,300	103,000	Cwt.	13.00	1,339,000
	1960	10,000	100,000	Cwt.	13.00	1,300,000
Calves	1961	13,100	52,400	Cwt.	26.00	1,362,400
	1960	12,700	50,800	Cwt.	26.00	1,321,000
Feeder's (Gain basis)	1961	1,000	2,500	Cwt.	24.00	60,000
	1960	600	1,500	Cwt.	23.00	34,500
Heifers	1961	7,100	46,200	Cwt.	22.00	1,016,400
	1960	6,900	44,800	Cwt.	22.00	986,000
Steers	1961	12,000	96,000	Cwt.	24.00	2,304,000
	1960	11,700	93,600	Cwt.	24.00	2,246,000
Hogs	1961	250	1,000	Cwt.	10.00	10,000
	1960	300	1,200	Cwt.	13.00	15,600
Pigs	1961	7,000	15,700	Cwt.	17.50	274,800
	1960	8,100	18,200	Cwt.	18.00	328,000
Sheep	1961	2,150	3,200	Cwt.	2.00	6,400
	1960	2,000	3,000	Cwt.	2.50	7,500
Lambs	1961	13,500	12,800	Cwt.	17.00	217,600
	1960	8,750	7,875	Cwt.	18.00	141,750
Feeder's (Gain basis)	1961	12,000	3,000	Cwt.	5.50	16,500
	1960	12,000	3,000	Cwt.	6.00	18,000
Horses & mules	1961	150		Head	150.00	22,500
	1960	150		Head	150.00	22,500
Rabbits	1961	4,000	12,000	Lb.	.30	3,600
	1960	4,000	12,000	Lb.	.30	3,600
Total	1961					\$6,955,500
	1960					6,741,450

LIVESTOCK AND POULTRY PRODUCTS: PRODUCTION AND VALUE

Item	Year	Production	Unit	Per Unit	Total
Eggs (Chicken)	1961	885,000	Doz.	.44	\$389,400
	1960	800,000	Doz.	.41	328,000
Milk (Market)	1961	125,000	Cwt.	5.23	654,000
	1960	146,000	Cwt.	5.17	755,000
Milk (Mfg.)	1961	27,200	Cwt.	3.45	93,800
	1960	31,100	Cwt.	3.15	98,000
Wool	1961	106,000	Lb.	.50	53,000
	1960	85,000	Lb.	.45	38,200
Total	1961				\$1,190,200
	1960				1,219,200

APIARY PRODUCTS: PRODUCTION AND VALUE

Item	Year	Production	Unit	Per Unit	Total
Beeswax	1961	600	Lb.	.42	250
	1960	400	Lb.	.45	180
Honey	1961	25,000	Lb.	.13	3,250
	1960	20,000	Lb.	.15	3,000
Pollination	1961	500	Colony	4.00	2,000
	1960	500	Colony	4.00	2,000
Total	1961				\$5,500
	1960				5,180

VEGETABLE CROPS: ACREAGE, PRODUCTION, AND VALUE

Crop	Year	Harvested Acreage	Per Acre	Total	Unit	Per Unit	Total
Garlic	1961	0	0	0	Cwt.	0	0
	1960	10	100	1,000	Cwt.	11.00	11,000
Onions	1961	379	340	129,000	Cwt.	1.60	206,400
	1960	430	300	129,000	Cwt.	1.55	200,000
Potatoes	1961	4,515	264.70	1,195,120	Cwt.	1.65	1,971,800
	1960	3,740	168	629,000	Cwt.	2.50	1,572,000
Total	1961						\$2,178,200
	1960						1,783,000

POULTRY: PRODUCTION AND VALUE

Item	Year	Production	Unit	Per Unit	Total
Fryers	1961	46,500	Lb.	\$0.30	\$13,950
	1960	50,000	Lb.	.43	15,000
Hens	1961	133,400	Lb.	.06	8,000
	1960	100,000	Lb.	.10	10,000
Misc. Poultry	1961	15,000	Lb.	.25	3,750
	1960	20,000	Lb.	.25	5,000
Turkeys	1961	6,000	Lb.	.25	1,500
	1960	6,000	Lb.	.29	1,740
Total	1961				27,200
	1960				31,740

NURSERY PRODUCTS: PRODUCTION AREA, SALES, AND VALUE

Item	Year	Production	Area	Quantity	Unit	Value	Total
		House Sq.Ft.	Field Acres	Sold By Producer		Per Unit	
Bedding plants	1961	3,000	.5	5,000	Flat	\$2.75	\$13,800
	1960	3,000	.5	4,000	Flat	2.70	10,800
Cut flowers	1961	3,000	.5	60,000	Bloom	.20	12,000
	1960	3,000	.5	50,000	Bloom	.20	10,000
Christmas trees and greens	1961		3,000	70	M	2.00	140,000
	1960		3,000	70	M	2.00	140,000
Ornamentals	1961	2,500	.5	6,000	Plant	2.25	13,500
	1960	2,150	.5	5,000	Plant	2.25	11,200
Strawberry plants	1961		120	8,400	M	15.00	126,000
	1960		118	17,700	M	15.00	266,000
Total	1961						\$305,300
	1960						438,000

ORCHARD CROPS *

Crop	Acres
Apples	30
Cherries	10
Pears	15
Peaches	16
Walnuts	5
Miscellaneous	7

* Mostly for home use

RECAPITULATION VALUATION

	1958	1959	1960	1961
APIARY	\$15,120	\$7,126	\$5,180	5,500
DAIRYING	736,180	812,000	853,000	747,800
FIELD CROPS	8,804,864	9,827,861	9,457,400	10,501,560
LIVESTOCK	7,208,460	6,656,627	6,779,650	7,008,500
NURSERY	284,475	184,171	438,000	305,300
POULTRY	476,670	389,921	359,740	416,600
SEED CROPS	705,409	1,030,097	1,177,480	1,315,200
VEGETABLE CROPS	<u>1,265,272</u>	<u>2,260,393</u>	<u>1,783,000</u>	<u>2,178,200</u>
TOTALS	\$19,496,450	\$21,168,196	\$20,853,450	\$22,478,640

JANUARY 1 INVENTORIES OF LIVESTOCK AND POULTRY 1962

In number of head

Item	January 1, 1961	January 1, 1962
Cattle and calves (all)	58,100	59,900
Milk cows 2 years and over	3,600	3,400
Cattle and calves on feed	5,000	5,200
Sheep and lambs (all)	11,500	15,600
Stock sheep	11,200	15,000
Sheep and lambs on feed	300	600
Hogs and pigs (all)	2,000	2,500
Horses and mules (all)	2,150	2,200
Shetland ponies	40	40
Hens and pullets of laying age	66,550	65,200

GOVERNMENT PAYMENTS MADE TO RANCHERS AND FARMERS IN 1961

Conservation reserve annual payment	168,350
Conservation reserve practice payment	25,740
A.C.P. practice payment	135,943
Wool incentive payment	11,985
Total	\$342,018

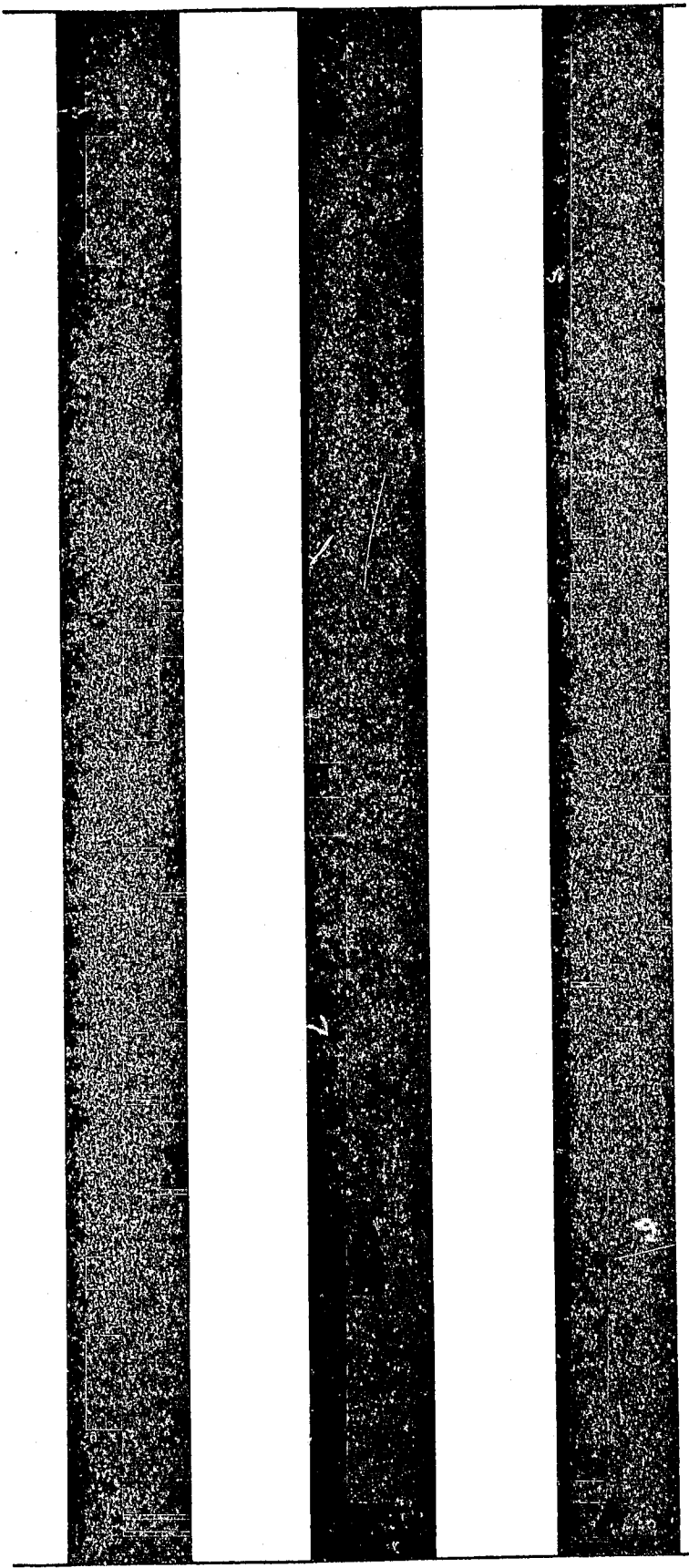
GENERAL INFORMATION

Siskiyou County is mountainous over most of its area, but has several large upland valleys in the central and east central section. The lowest elevation is about 500 feet, while the highest is 14,161 feet, the summit of Mt. Shasta. Siskiyou's mountain areas are some of the most inaccessible and rugged in California.

The western portion of the county is broken up by a number of large rivers and their tributaries, resulting in a series of deep canyons and high ridges. Changes in elevation from canyon bottom to ridge top are abrupt and large, often from 2,000 to more than 4,000 feet. For the most part the few main roads follow the stream courses and intervening forest areas are without access, but more "access roads" are being built all the time. There are many beautiful ranches along some of these rivers.

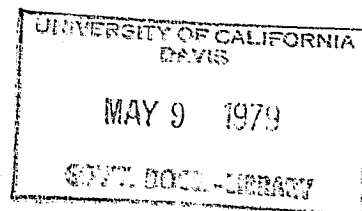
The high upland valleys of the central and east central section of the county have relatively large areas of non commercial forest land, and non forest land. The non commercial forest land is composed of hardwoods, woodland grass, and grass areas. The non forest land is primarily in agriculture and urban use. Scott and Shasta Valleys are located in this area.

The eastern half of the county is a high plateau, averaging about 4,500 feet in elevation, with scattered volcanic buttes. The forest area in this section was readily accessible and has mostly been logged off. However, there is a large area of non forest land in the northeastern corner of the county. Some of this non forest land is in agriculture use, but the major part is barren or covered with sage brush. The rich Tululake and Butte Valley area is located here.



1962

We're not just a . . .



This is SISKIYOU COUNTY'S
1962
AGRICULTURAL CROP REPORT

AGRICULTURAL COMMISSIONER

SISKIYOU COUNTY

DEPARTMENT

OF

AGRICULTURE

ANNUAL REPORT

YEAR ENDING DECEMBER 31, 1962

CHARLES PAUL, DIRECTOR

STATE DEPARTMENT OF AGRICULTURE

BOARD OF SUPERVISORS

DON AVERY, CHAIRMANDistrict 5, Etna
EARL AGER.....District 1, Tulelake
W. A. BARR.....District 2, Mount Shasta
CLINT JACKSON.....District 3, Edgewood
W. C. (Bill) EALYDistrict 4, Yreka

DEPARTMENT OF AGRICULTURE

JESS R. GRISHAM
AGRICULTURAL COMMISSIONER AND
SEALER OF WEIGHTS AND MEASURES

MAIN OFFICE - VICTOR 2-3531, EXT. 80-81

BRANCH OFFICE - TULELAKE 667-5214

COURT HOUSE ANNEX, YREKA, CALIFORNIA

THE DIRECTOR OF THE STATE DEPARTMENT OF AGRICULTURE
THE HONORABLE BOARD OF SUPERVISORS

Gentlemen:

I herewith submit the Annual Crop Report, covering the gross value of agricultural production in Siskiyou County for 1962, as required in Section 63.5 of the California Agricultural Code.

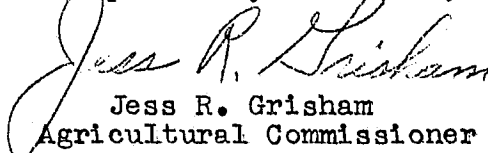
All prices reported here are on an F.O.B. basis. All production costs should be deducted to arrive at the true value.

The gross production of agriculture increased by \$3,900,000. Several factors make up the explanation for this huge increase.

1. A more realistic figure was made to arrive at a value of our pasture land.
2. Increased acreage in most crops, especially in potatoes and onions.
3. Increased cattle inventories and sales.
4. Advanced technical knowledge of our producers.

The response from growers to our questionnaire was gratifying, and I am particularly grateful to those who cooperated. I extend my sincere appreciation to everyone who aided in the preparation of this report, and wish to especially recognize Frank Wallier, Agricultural Inspector, who gathered and compiled figures and information for this report.

Respectfully submitted,


Jess R. Grisham
Agricultural Commissioner

SISKIYOU COUNTY DEPARTMENT OF AGRICULTURE
PERSONNEL

JESS R. GRISHAM AGRICULTURAL COMMISSIONER
&
SEALER OF WEIGHTS & MEASURES

W. E. HUSE DEPUTY AGRICULTURAL COMMISSIONER
&
DEPUTY SEALER OF WEIGHTS & MEASURES, TULELAKE OFFICE

CLIFFORD S. GIEBNER DEPUTY AGRICULTURAL COMMISSIONER
&
DEPUTY SEALER OF WEIGHTS & MEASURES

DON R. HILL DEPUTY AGRICULTURAL COMMISSIONER
&
DEPUTY SEALER OF WEIGHTS & MEASURES

WILLIAM H. PERRY DEPUTY SEALER OF WEIGHTS & MEASURES
&
AGRICULTURAL INSPECTOR I

FRANK WALLIER AGRICULTURAL INSPECTOR II

GENE N. DEAL AGRICULTURAL INSPECTOR I

ROLLIE D. FREDERICK WAREHOUSE MAINTENANCE MAN

RALPH S. RICHARDS SPRAY EQUIPMENT OPERATOR

RUBY JO LEVULETT STENOGRAPHER II

MILDRED WILLIAMS TYPIST CLERK II

WEATHER AND CROP CONDITIONS

1962

Growing conditions in Siskiyou County's Alpine like valleys and the high plateau of Butte Valley and Tulelake Basin, are always hazardous due to late spring and early fall frosts and storms.

Generally, 1962 growing weather was good with the exception of an early fall storm which dumped an unusual amount of rain on the yet unharvested potato, alfalfa, and clover seed crops. Tropical storm "Carla" caught the potato harvest in full swing, causing considerable delay in harvesting of this crop. Seed growers suffered tremendous losses at the same time.

SMALL GRAINS

Both the malting barley and Durum wheat yields were satisfactory, but production did not approach top year. Feed barley acreage took a drastic cut due to the feed grain program. Much of the acreage went out of production or into other crops.

POTATOES

Only the increased acreage (1200) pushed the gross dollar value of potatoes over last year. Production was generally reduced as were prices.

ALFALFA

Alfalfa hay production was cut drastically because of the damage done by the alfalfa weevil. Losses of 30% were not uncommon in individual fields.

SEED CROPS

As was mentioned before, last falls heavy rain caught most alfalfa and clover fields unharvested. Approximately 50% of the crops were lost.

STRAWBERRY PLANTS

Good yields and fair prices plus excellent growing weather for the plants made a fairly successful year for this industry.

HORSE RADISHES

A crop new to the county produced a favorable crop under good conditions. Most of the crop was sold for plants.

ONIONS

Although it appeared that the fall storm would ruin the onion crop, the total acreage was eventually harvested. A record production and increased acreage pushed the total gross production to a new record high.

PASTURE

One of the best years on record was experienced by the growers of irrigated and natural pasture. Late spring rains, and intermittent summer showers extended the growth from early spring to late fall (October). A more realistic value has been placed on our pasture, and has increased the total value.

FIELD CROPS, ACREAGE, PRODUCTION, AND VALUE

Crop	Year	Harvested Acreage	Per Acre	Total	Unit	Per Unit	Total
Alfalfa	1962	40,000	3.	120,000	Ton	\$24.00	\$2,880,000
hay	1961	41,000	4.	164,000	Ton	19.00	3,116,000
Other	1962	20,000	2.	40,000	Ton	19.00	760,000
hay	1961	18,000	1.5	27,000	Ton	18.00	486,000
Barley	1962	21,000	1.4	29,400	Ton	44.00	1,293,600
malting	1961	11,700	1.7	19,900	Ton	46.00	915,400
Barley	1962	17,000	.91	15,470	Ton	43.00	665,200
feed	1961	32,100	1.5	48,180	Ton	38.00	1,830,840
Oats	1962	10,000	1.25	12,500	Ton	42.00	525,000
	1961	14,000	1.	14,000	Ton	42.00	636,000
Pasture	1962	82,000			Acre	42.00	3,440,000
irrigated	1961	39,100			Acre	33.00	1,290,300
Pasture	1962	63,000			Acre	28.00	1,764,000
native							
Pasture	1962	21,000			Acre	5.00	105,000
other seeded							
Pasture	1962	450,000			Acre	.80	360,000
range	1961	400,000			Acre	.30	120,000
Pasture	1962	76,000			Acre	1.50	114,000
stubble	1961	130,000			Acre	.50	65,000
Pasture	1962	1,100			Acre	4.00	4,400
grain							
Rye	1962	600	.75	450	Ton	40.00	18,000
	1961	3,000	.40	1,200	Ton	40.00	32,400
Straw	1962	5,900	1.	5,900	Ton	10.00	59,000
all	1961	6,100	1.	6,100	Ton	10.00	61,000
Wheat	1962	3,500	1.80	6,300	Ton	67.00	422,100
milling	1961	2,300	1.80	4,140	Ton	96.00	397,500
Wheat	1962	7,550	.80	6,040	Ton	60.00	362,400
feed	1961	12,100	.75	9,075	Ton	60.00	544,500
Total	1962						\$12,772,700
	1961						10,510,540

SEED CROPS, ACREAGE, PRODUCTION, AND VALUE

Crop	Year	Harvested Acreage	Per Acre	Total	Unit	Per Unit	Total
Alfalfa (All)	1962	1,450	150	217,500	Lb.	.44	\$95,700
	1961	1,015	260	263,900	Lb.	.345	91,050
Barley (All)	1962	700	26	18,200	Cwt.	2.60	47,300
	1961	1,200	30	36,000	Cwt.	3.00	108,000
Clover (Alsike)	1962	40	400	16,000	Lb.	.15	2,400
	1961	130	430.80	56,000	Lb.	.15	8,400
Clover (Red)	1962	20	700	14,000	Lb.	.38	5,300
	1961	90	300	27,000	Lb.	.45	12,150
Clover (Ladino)	1962	200	250	50,000	Lb.	.60	30,000
	1961	100	260	26,000	Lb.	.60	15,600
Misc.	1962	75	100	7,500	Lb.	.50	3,750
	1961	75	100	7,500	Lb.	.50	3,750
Oats (All)	1962	800	20	16,000	Cwt.	2.50	40,000
	1961	900	20	18,000	Cwt.	3.00	54,000
Potatoes	1962	2,080	225	468,000	Cwt.	1.60	748,800
	1961	1,870	287	535,600	Cwt.	1.77	948,000
Peas (Field)	1962	80	35	2,800	Cwt.	3.15	11,000
	1961	85	30	2,550	Cwt.	3.00	7,650
Rye	1962	100	15	1,500	Cwt.	2.50	3,750
	1961	300	8	2,400	Cwt.	3.00	7,220
Wheat (Milling)	1962	150	36	5,400	Cwt.	4.00	21,600
	1961	115	36	4,140	Cwt.	5.50	22,880
Wheat (Feed)	1962	500	16	8,000	Cwt.	3.40	27,200
	1961	600	15	9,000	Cwt.	3.00	36,000
Wheatgrass	1962	30	100	3,000	Lb.	.40	1,200
	1961	10	125	1,250	Lb.	.40	500
Total	1962						\$1,038,000
	1961						1,315,200

LIVESTOCK: PRODUCTION AND VALUE

Item	Year	No. of Head	Total Liveweight	Unit	Per Unit	Total
Bulls	1962	780	10,140	Cwt.	\$18.00	\$182,500
	1961	900	11,700	Cwt.	19.00	222,300
Breeder's	1962	500		Head	400.00	200,000
	1961	250		Head	400.00	100,000
Cows	1962	11,560	115,600	Cwt.	15.00	1,734,000
	1961	10,300	103,000	Cwt.	13.00	1,339,000
Calves	1962	6,460	25,840	Cwt.	26.00	671,850
	1961	13,100	52,400	Cwt.	26.00	1,362,400
Feeder's (Gain basis)	1962	3,500	8,750	Cwt.	24.00	210,000
	1961	1,000	2,500	Cwt.	24.00	60,000
Heifers	1962	10,100	65,650	Cwt.	23.00	1,510,000
	1961	7,100	46,200	Cwt.	22.00	1,016,400
Steers	1962	16,910	135,280	Cwt.	24.00	3,246,700
	1961	12,000	96,000	Cwt.	24.00	2,304,000
Hogs	1962	200	800	Cwt.	10.00	8,000
	1961	250	1,000	Cwt.	10.00	10,000
Pigs	1962	6,000	13,500	Cwt.	18.00	243,000
	1961	7,000	15,700	Cwt.	17.50	274,800
Sheep	1962	2,200	3,300	Cwt.	2.50	8,250
	1961	2,150	3,200	Cwt.	2.00	6,400
Lambs	1962	15,000	14,200	Cwt.	16.00	227,200
	1961	13,500	12,800	Cwt.	17.00	217,600
Feeder's (Gain basis)	1962	12,000	6,000	Cwt.	17.00	102,000
	1961	12,000	1,000	Cwt.	16.50	16,500
Horses & mules	1962	150		Head	150.00	22,500
	1961	150		Head	150.00	22,500
Rabbits	1962	4,000	12,000	Lb.	.30	3,600
	1961	4,000	12,000	Lb.	.30	3,600
Total	1962					\$8,369,600
	1961					6,955,500

JANUARY 1- INVENTORIES OF LIVESTOCK AND POLUTRY- 1963

In number of head

Item	Jan. 1 ,1961	Jan.1, 1962	Jan. 1,1963
Cattle and calves (all)	\$58,100	\$59,900	\$59,000
Milk cows 2 years and over	3,600	3,400	3,600
Cattle and calves on feed	5,000	5,200	7,000
Sheep and lambs	11,500	15,600	* 16,000
Stock sheep	11,200	15,000	15,900
Sheep and lambs on feed	300	600	100
Goats	250	250	300
Hogs and pigs (all)	2,000	2,500	3,100
Horses and mules (all)	2,150	2,200	2,200
Shetland ponies	40	40	40
Hens and pullets of laying age	66,550	65,200	65,500

GOVERNMENT PAYMENTS MADE TO RANCHERS AND FARMERS IN 1962

Conservation reserve annual payment	\$152,277
Conservation reserve practice payment	602
A.C.P. practice payment	120,745
Wool incentive payment	12,651
Total	\$286,275

* This includes Siskiyou's share (3000 Ewes) interstate herd.

LIVESTOCK AND POULTRY PRODUCTS: PRODUCTION AND VALUE

Item	Year	Production	Unit	Per Unit	Total
Eggs (Chicken)	1962	917,000	Doz.	.39	\$357,600
	1961	885,000	Doz.	.44	389,400
Milk (Market)	1962	135,000	Cwt.	5.21	703,000
	1961	125,000	Cwt.	5.23	654,000
Milk (Mfg.)	1962	24,500	Cwt.	3.47	85,000
	1961	27,200	Cwt.	3.45	93,800
Wool	1962	127,200	Lb.	.50	63,600
	1961	106,000	Lb.	.50	53,000
Total	1962				\$1,209,200
	1961				1,190,200

APIARY PRODUCTS: PRODUCTION AND VALUE

Item	Year	Production	Unit	Per Unit	Total
Beeswax	1962	715	Lb.	.42	300
	1961	600	Lb.	.42	250
Honey	1962	30,000	Lb.	.13	3,900
	1961	25,000	Lb.	.13	3,250
Pollination	1962	200	Colony	5.00	1,000
	1961	500	Colony	4.00	2,000
Total	1962				\$5,200
	1961				5,500

VEGETABLE CROPS: ACREAGE, PRODUCTION, AND VALUE

Crop	Year	Harvested Acreage	Per Acre	Total	Unit	Per Unit	Total
Horseradish	1962	35	2	72	Ton	\$200.00	14,400
Onions	1962	860	425	365,500	Cwt.	1.60	584,800
	1961	379	340	129,000	Cwt.	1.60	206,400
Potatoes	1962	5,560	225	1,251,000	Cwt.	1.60	2,001,600
	1961	4,515	265	1,195,120	Cwt.	1.65	1,971,800
Total	1962						\$2,600,800
	1961						2,178,200

POULTRY: PRODUCTION AND VALUE

Item	Year	Production	Unit	Per Unit	Total
Fryers	1962	40,000	Lb.	\$0.30	\$12,000
	1961	46,500	Lb.	0.30	13,950
Hens	1962	252,000	Lb.	.05	12,600
	1961	133,400	Lb.	.06	8,000
Misc. Poultry	1962	15,000	Lb.	.25	3,750
	1961	15,000	Lb.	.25	3,750
Turkeys	1962	6,000	Lb.	.25	1,500
	1961	6,000	Lb.	.25	1,500
Total	1962				\$29,850
	1961				27,200

NURSERY PRODUCTS: PRODUCTION AREA, SALES, AND VALUE

Item	Year	Production area		Quantity sold by	Unit	Value	
		House	Field			Per Unit	Total
		sq.ft. acres		Producers			
Bedding plants	1962	3,000	.5	5,000	Flat	\$3.00	\$15,000
	1961	3,000	.5	5,000	Flat	2.75	13,800
Cut flowers	1962	3,000	.5	60,000	Bloom	.25	15,000
	1961	3,000	.5	60,000	Bloom	.20	12,000
Christmas trees & greens	1962		3,000	70,000	Piece	2.25	157,500
	1961		3,000	70,000	Piece	2.00	140,000
Ornamentals	1962	2,500	.5	6,000	Plant	2.35	14,100
	1961	2,500	.5	6,000	Plant	2.25	13,500
Strawberry plants	1962		120	16,000	M	12.00	192,000
	1961		120	8,400	M	15.00	126,000
Total	1962						\$393,600
	1961						305,300

ORCHARD CROPS *

Crop	Acres
Apples	30
Cherries	10
Pears	15
Peaches	16
Walnuts	5
Miscellaneous	7

* Mostly for home use

RECAPITULATION VALUATION

	<u>1959</u>	<u>1960</u>	<u>1961</u>	<u>1962</u>
APIARY	\$7,126	\$5,180	\$5,500	\$5,200
DAIRYING	812,000	853,000	747,800	788,000
FIELD CROPS	9,827,861	9,457,400	10,510,560	12,772,700
LIVESTOCK	6,656,627	6,779,650	7,008,500	8,433,200
NURSERY	184,171	438,000	305,300	393,600
POULTRY	389,921	359,740	416,600	387,450
SEED CROPS	1,030,097	1,177,480	1,315,200	1,038,000
VEGETABLE CROPS	<u>2,260,393</u>	<u>1,783,000</u>	<u>2,178,200</u>	<u>2,600,800</u>
TOTALS	\$21,168,196	20,853,450	22,487,660	26,418,950

GENERAL INFORMATION

Siskiyou County is mountainous over most of its area, but has several large upland valleys in the central and east central section. The lowest elevation is about 500 feet, while the highest is 14,161 feet, the summit of Mt. Shasta. Siskiyou's mountain areas are some of the most inaccessible and rugged in California.

The western portion of the county is broken up by a number of large rivers and their tributaries, resulting in a series of deep canyons and high ridges. Changes in elevation from canyon bottom to ridge top are abrupt and large, often from 2,000 to more than 4,000 feet. For the most part the few main roads follow the stream courses and intervening forest areas are without access, but more "access roads" are being built all the time. There are many beautiful ranches along some of these rivers.

The high upland valleys of the central and east central section of the county have relatively large areas of non commercial forest land, and non forest land. The non commercial forest land is composed of hardwoods, woodland grass, and grass areas. The non forest land is primarily in agriculture and urban use. Scott and Shasta Valleys are located here in this area.

The eastern half of the county is high plateau, averaging about 4,500 feet in elevation, with scattered volcanic buttes. The forest area in this section was readily accessible and has mostly been logged off. However, there is a large area of non forest land in the northeastern corner of the county. Some of this non forest land is in agriculture use, but the major part is barren or covered with sage brush. The rich Tulelake and Butte Valley area is located here.

Siskiyou County's natural recreational areas have been augmented by man made reservoirs, serving not only the Isaac Waltons, the Nimrods, and the water enthusiasts, but also the hydro-electric and agricultural interests. These facilities will continue to increase through the years.

Iron Gate Dam on the Klamath River (world famous steelhead fishing stream) is one of our latest projects serving all these groups. Unlike most reservoirs the water level has a maximum fluctuation of only three feet. The main purpose of constructing this facility was to regulate the river flow for fish life down stream from the dam. The fish handling facilities were constructed by Pacific Power & Light Company, who in turn turned ownership over to the California Department of Fish & Game.

Among other projects beyond the drafting board stage are the Box Canyon Dam on the upper Sacramento River near Mt. Shasta, and Juanita Lake in the Butte Valley area. These facilities will be strictly recreational.

We would be in remiss not to mention a few of our more popular and more renown spots of outdoor activities, the Mt. Shasta Ski Bowl is not least among these. The present season with its limited snow in many areas has popularized this largest of ski bowls. Mt. Shasta has fared better by King Winter's white mantle than have most other areas.

The Tulalake Wildlife Refuge is the largest refuge for water fowl in North America. Here the scatter gun artist has ample opportunities to try his skill not only on the water birds, but also the wily ringneck and quail.

For the more adventuresome, the Marble Mountain primitive area and the Trinity Alps offer a real challenge, for one to get into this hinterland a bit of the pioneer spirit is an asset. Here the freeways narrow down to a one way trail for horses only. Dobbin is the only mode of transportation in this remote area. At trails end, the rewards are endless- clear lakes and cascading streams abound in rainbow, cut-throat, eastern brook, and german brown trout, waiting to be taken by the nimble fly-caster. On the peaceful alpine meadows a treat is in store not only in wildflower growth, but the many deer and not too uncommon mother bear and cubs. The majestic peaks which form the backdrop will not soon be forgotten. These forementioned places are but a sample of the boundless supprises in store for the visitors to Siskiyou.

SISKIYOU COUNTY TIMBER PRODUCTION

1961 *

veneER & SAWLOGS

Production

336,813- MBF

MINOR PRODUCTS

Production

362- MBF

CHRISTMAS TREES

Production

15,429 **

Species cut are Douglas Fir, White Fir, Red Fir, Ponderosa
Pine, Jeffrey Pine, Sugar Pine, Lodgepole Pine, Incense
Cedar, Port Orford Cedar and White Oak.

U.S. FOREST SERVICE - TREE NURSERY

McCLOUD, CALIF.

ACRES IN PRODUCTION

52

TREES PRODUCED

8,000 -M

These trees are shipped to the various Federal Forests in
California for reforestation purposes.

* Latest available figures from California Division of Forestry.

** This low production due to early snows at the cutting areas
preventing removal of trees.