



**AgEcon** SEARCH  
RESEARCH IN AGRICULTURAL & APPLIED ECONOMICS

*The World's Largest Open Access Agricultural & Applied Economics Digital Library*

**This document is discoverable and free to researchers across the globe due to the work of AgEcon Search.**

**Help ensure our sustainability.**

Give to AgEcon Search

AgEcon Search  
<http://ageconsearch.umn.edu>  
[aesearch@umn.edu](mailto:aesearch@umn.edu)

*Papers downloaded from **AgEcon Search** may be used for non-commercial purposes and personal study only. No other use, including posting to another Internet site, is permitted without permission from the copyright owner (not AgEcon Search), or as allowed under the provisions of Fair Use, U.S. Copyright Act, Title 17 U.S.C.*

California Department of Food and Agriculture

Agricultural Commissioners' Crop Reports

# San Mateo County

1964-1967

California County Agricultural Commissioners' Reports from the California Department of Food and Agriculture. This collection consists of annual crop and livestock data from each of the 58 California Counties. The collection covers 1915-1981; digitization of the rest of the collection is forthcoming.

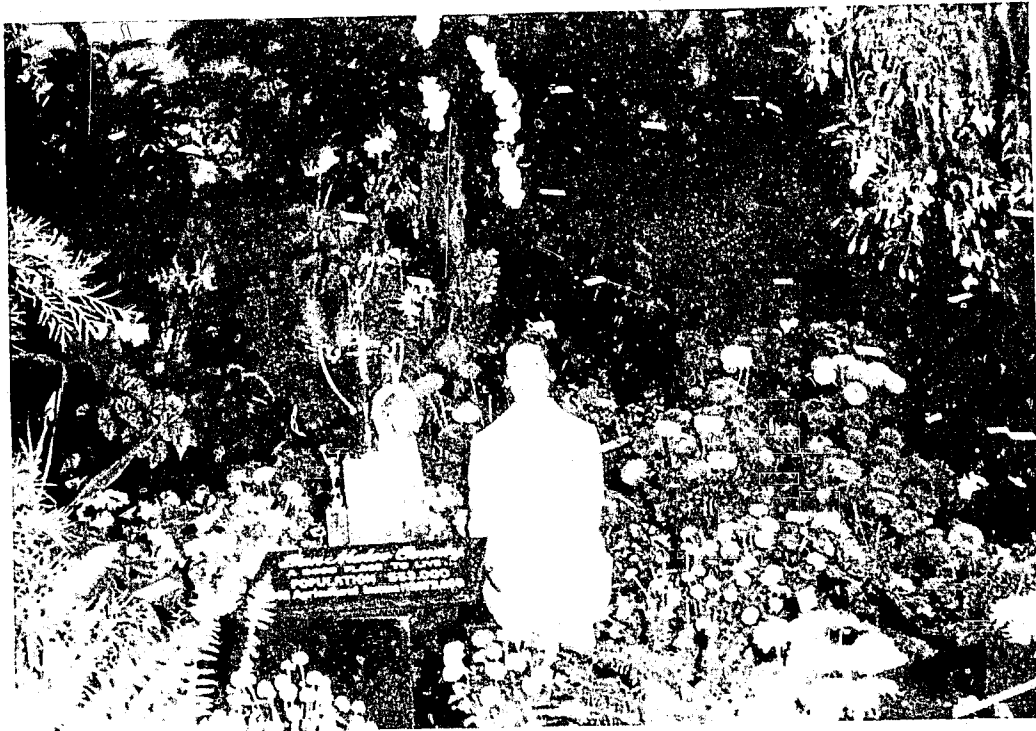
This digitization project was funded by the Giannini Foundation of Agricultural Economics,  
<http://giannini.ucop.edu/> .

The work was completed by the staff of the Giannini Foundation Library, University of California, Berkeley, <http://are.berkeley.edu/library/> . **Please contact the Library to consult the originals.**

1964

# **AGRICULTURAL REPORT**

## **1964**



Our 1964 State Fair Exhibit

UNIVERSITY OF CALIFORNIA  
DAVIS  
MAY 7 1965  
LIBRARY

**SAN MATEO COUNTY**  
AGRICULTURAL COMMISSIONER

We dedicate this report to the memory of

MAX J. LEONARD

who passed away on June 2, 1964 at the  
age of 71. He served as Agricultural  
Commissioner of San Mateo County from  
February 2, 1932 until his retirement on  
June 30, 1960.

Honorable Board of Supervisors  
County of San Mateo  
and  
Charles Paul, Director  
State Department of Agriculture

Gentlemen:

As required by Section 65.5 of the Agricultural Code, a report is hereby submitted showing the acreage, production and value of all agricultural commodities, including livestock, in San Mateo County for the year 1964. Not taken into consideration is the cost of producing, harvesting and packaging.

The total value of \$18,204,486 represents an increase of \$456,616 over the previous year. Carnations led with a value of \$2,335,000 and Brussels Sprouts were second at \$1,675,000.

Floral crops were \$285,900 over the 1963 figure. Besides Carnations, Roses, Marguerites, Potted Plants and Strawflowers showed substantial gains. Declining in value were Acacia, Calla Lilies, Gladiolus, Narcissus and Stock.

Vegetable crops showed a net increase of \$64,286, primarily because of gains by Cabbage, Celery, Lettuce, Peas and Radishes. Showing a decline in value were Artichokes, Beans, Brussels Sprouts and New Zealand Spinach.

Field crops indicated an increase of \$112,000, with Barley, Fava Beans and Oats moving up. Flaxseed and Hay showed a considerable decline in value.

Fruit and Nut crops showed a net gain of \$169,150, with Strawberries accounting for this increase. Apples, Pears and Prunes showed a definite decline.


Livestock and Poultry indicated a loss of \$152,340. All items in this category sustained severe losses due not only to unfavorable marketing conditions, but also to the continued loss to urbanization of good agricultural land.

Seed crops reported a gain of \$19,650. This was made possible by the Vetch seed production.

As we have previously predicted, the construction of additional glasshouse ranges in the Half Moon Bay-Pescadero area will undoubtedly help to maintain our agricultural production at the present level or will even be reflected in an increase in total value.

To all those who cooperated with the Department by furnishing the necessary information I express my sincere appreciation.

Respectfully submitted,

  
Victor A. Canavese, Commissioner  
Department of Agriculture  
County of San Mateo

SAN MATEO COUNTY

Board of Supervisors

James V. Fitzgerald - Chairman

T. Louis Chess  
Alvin S. Hatch

E. R. McDonald  
William M. Werder

E. R. Stallings  
County Manager

DEPARTMENT OF AGRICULTURE

Agricultural Commissioner

Victor A. Canavese

Chief Deputy

Ian J. Campbell

Deputy Commissioners

Mervin J. Cresta  
Emile L. Labadie, Jr.  
Clarence M. Sill

Senior Inspectors

William E. Davis  
Louis A. Masini  
Curtis C. Van Sandt

Inspectors

Philip Economon  
George Ginilo  
George M. Gregory  
Melvin A. Mello  
Wallace L. Plummer  
Robert E. Runels  
Floyd E. Sampson  
Vacant--One Position

Part-time

Apiary Inspector  
Alfred M. Marion

Weed and Rodent

Inspector  
Arnold Roach

Predatory Animal

Hunters  
Marion C. Gray  
Vincent Belleci

Typist Clerk II

Patricia Coffman

Steno Clerk I

Maxine Wright

## FUNCTIONS AND ACTIVITIES

### SAN MATEO COUNTY DEPARTMENT OF AGRICULTURE

Year - 1964

The general purposes and responsibilities of this department include the following:

To promote and protect the agricultural industry.

To protect and benefit both the grower and the consumer by enforcing certain provisions of the Agricultural, Administrative and other State Codes.

Within the authority delegated to us, to further and protect the health and welfare of our citizens.

Additional regulatory duties may be assigned by the County Board of Supervisors.

The following summary lists objectives and statistical information regarding various departmental activities:

#### APIARY

Owners of bees must register with the Agricultural Commissioner each year. Each spring, all bee colonies in the County are inspected to determine the presence of serious bee diseases. Any colonies found to be infected with American Foulbrood, an incurable disease, are required to be destroyed.

	<u>Apiaries</u>	<u>Colonies</u>
Inspections	94	781
Diseased	2	6
Destroyed	-	6

#### CERTIFICATION

In compliance with requirements of other counties, states and foreign countries, regulating the movement of plants and plant products, the following certificates were issued:

Intrastate	64,974
Interstate and Foreign	54,220

#### CIVILIAN DEFENSE

Representing the Food Administration Division of the California Disaster Office, we keep a current inventory of the wholesale foods available in the event of a serious emergency.

## FAIRS

The San Mateo County Exhibit at the California State Fair and Exposition is designed, constructed and manned by our Department. Flowers and ornamental plants are supplied by over one hundred growers in the County.

In competition with other California Counties, San Mateo consistently wins first prize sweepstakes in the cut flower division and in the floricultural feature exhibit. In 1964 a total of \$2,080 in prize money was deposited in the County Treasury.

The Department also participates in the organization of the San Mateo County Fair.

Calls

824

## FIELD, HOME AND ORCHARD

Farmers, home owners, nurserymen, park departments, schools and other jurisdictions are advised concerning many horticultural problems, including the control of plant pests such as diseases, insects and weeds. Information is also available regarding the care, culture and identification of agricultural and ornamental plants.

Calls

957

## LABORATORY

Samples of well water are tested, on request, to determine if the saline content could cause injury to plants.

Tests Made

16

We prepare plant root and foliage specimens in our laboratory for determination, by the State Bureau of Plant Pathology, of the presence of plant parasitic nematodes. This work is primarily in conjunction with a Statewide survey being made to detect Burrowing Nematodes, a serious pest of citrus trees.

Tests Made

293

Times Burrowing Nematode Found

9

Times Other Plant Parasitic Nematodes Found

71

## NURSERY INSPECTION

In San Mateo County there are 268 locations where plants are grown and/or sold. Their annual business is in excess of \$2,750,000. Plants are inspected at these locations, not less than once a year, to determine the presence of insect pests, diseases and weeds. Plants must be free of any new or serious pests, must be reasonably clean of any common pests and are required to be correctly labeled.

Calls

1,816

Nurseries Inspected

342

Notices of Noncompliance

119

Intercounty Nursery Stock

Certificates Issued

64,800

Nurseries Qualified to Use Inter-

county Nursery Stock Certificates

76

## PEST CONTROL

Pest Control Operators are licensed by the State and registered annually by the Agricultural Commissioner in whose County they conduct their business. This Department enforces County and State rules and regulations governing agricultural pest control. Furthermore, if they, or the growers, plan to purchase and/or use certain pesticides which have been designated by the State as injurious materials or herbicides, they are required to obtain a permit from the County concerned.

Permits Issued	341
Pest Control Operators Registered	78

## PLANT QUARANTINE

Plant material is inspected at 197 locations of entry, such as Post Offices, Express Offices, Railroad and Truck Depots, Air Terminals and Nurseries, to prevent the introduction into or spread within the State of serious agricultural pests. During 1964 we intercepted 24 plant shipments infested with serious agricultural pests.

Calls	10,988	
	<u>RELEASED</u>	<u>REJECTED</u>
Shipments	12,967	281
Plants	9,448,102	37,668

## PREDATORY ANIMAL CONTROL

Predatory animal control is primarily for the protection of livestock. Many of the small predators, however, are potential rabies carriers.

This control is accomplished through a cooperative agreement among the Federal Bureau of Sport Fisheries & Wildlife, the California State Department of Agriculture and San Mateo County.

During 1964 one hunter worked full time in the County and a second hunter worked five months in the Southwest portion of the County.

Losses from predatory animals included 112 head of livestock and 1,113 fowl. Products damaged by raccoons included sweet corn, strawberries, cherries and other fruits and vegetables.

Calls	1,062
Bobcats Taken	109
Coyotes Taken	106
Foxes Taken	231
Others Taken (Badgers, Raccoons, etc.)	235

## RODENT AND PEST ANIMAL CONTROL

A Countywide program of eradication of ground squirrels is conducted which is entirely financed with County funds. Ground squirrels are known carriers of human diseases such as Bubonic Plague and Tularemia, as well as being serious pests of agricultural crops.

For control of field mice, gophers and rats, poison baits are sold to commercial growers. We also cooperate with the County Health Department in the control of

rodents in urban areas.

Calls	787
Acres Inspected	13,457
Acres Treated	252

### SEED INSPECTION

The California Seed Law provides that agricultural and vegetable seed by properly labeled and that it meet the specifications stated on the label.

Calls	337
Dealers	251
Lots Inspected	2,469
Lots in Violation	90
Official Samples Taken	15

### STANDARDIZATION

A major activity of our Department is the inspection of vegetables, eggs, fruits, honey, nuts and poultry meat for the purpose of protecting both the producers and consumers of these products.

In 1964 inspections were made in the field, in packing houses, and in both wholesale and retail markets.

Calls	19,311	
<u>COMMODITIES</u>	<u>INSPECTIONS</u>	<u>VIOLATIONS</u>
Produce (containers)	8,527,820	82,251
Eggs (dozens )	3,061,754	57,758
Poultry (packages )	197,924	2
Honey (containers)	77,490	164

Golden Gate Produce Terminal is one of the foremost wholesale outlets for fruits and vegetables in Northern California. Produce is received and sold throughout California, many neighboring states and several foreign countries. The gross business for 1964 was reported to be over 92 million dollars.

### STATISTICS

In compliance with the State Agricultural Code, this office compiles and publishes an annual report showing acreage and value of crops grown in San Mateo County. Information is furnished by over 700 growers. Copies of the Agricultural Report are sent, on request, to other agricultural agencies, educational institutions, allied industries, and to interested parties.

Calls

903

### SURVEY AND PEST DETECTION

Survey and trapping programs are periodically conducted throughout the County for the detection of Brown Tail Moth, Citrus White Fly, Gypsy Moth, Japanese Beetle, Khapra Beetle, and various Fruit Flies. These are all serious agricultural pests

which we hope to keep out of California.

Calls	2,753
Traps Used	299

#### WEED CONTROL

Surveys and eradication programs are conducted to detect and control primary and secondary noxious weeds in the agricultural areas of the County. Under a service agreement with the State Division of Highways, control work is done along certain designated State Highways for which the County is reimbursed.

Calls	518
Acres Inspected	5,392
Acres Treated	201

#### OTHER ACTIVITIES

1. Service calls, from the public regarding plant pest control and other home garden and agricultural problems, numbered 12,047.
2. Members of the Department attended 320 meetings which were sponsored by the State Department of Agriculture, University of California, scientific groups and agricultural organizations.
3. Identification was made of plant material, diseases, insects and weed pests.
4. Staff members, in cooperation with the United States Department of Commerce, operated and maintained two weather stations.
5. On unimproved properties in two residential districts, weed abatement was contracted out and the proportioned cost figured for assessment purposes.
6. Educational talks on various phases of agriculture were given to farm, garden, and service organizations, as well as to school children and other youth groups.
7. Annual and monthly reports were prepared and sent to the State Director of Agriculture. A narrative and statistical report was sent monthly to the San Mateo County Board of Supervisors.
8. The harvesting and handling of crops and livestock, and the effects of weather upon them, were reported weekly to the California State Crop and Livestock Reporting Service.
9. Growing grounds for foreign plant shipments were given periodic post-entry quarantine inspections.
10. Along county roads, elm trees were sprayed to control the Elm Leaf Beetle.
11. In cooperation with the Farm Advisor's Office we distributed publications and other information of the University of California Agricultural Extension Service, of the United States Department of Agriculture and other agencies.
12. With the State Department of Agriculture we cooperated on problems involving injurious spray residues on crops.

13. Through Marketing Orders, certain agricultural commodities are controlled. These Orders, requested by industry, lead to superior quality for the consumer and greater return for the producer.
14. In cooperation with this office, the State Department of Agriculture maintained a seed potato disease test plot on the Coastside.
15. We cooperated with the Air Pollution Control Board in matters related to agriculture.

## ANNUAL CROP REPORT

VEGETABLE CROPS

Crop	Year	Harvested Acreage	P R O D U C T I O N		Unit	V A L U E	
			Per Acre	Total		Per Unit	Total
Artichoke							
Total	1964	650	3.20	2,085	Ton	\$173	\$ 361,500
	1963	767	2.58	1,983	"	185	367,820
Fresh Mkt.	1964	650		1,740	"	180	313,200
	1963	767		1,918	"	188	361,000
Processing	1964			345	"	140	48,300
	1963			65	"	105	6,820
Beans, Green	1964	18	1.89	34	"	158	5,370
	1963	21	2.04	43	"	235	10,100
Beets, Table	1964	12	8.67	104	"	160	16,600
	1963	10	8.5	85	"	166	14,100
Broccoli, Sprouting							
Total	1964	3	2.20	6.6	"	104	686
	1963	38	2.11	80.2	"	113	9,060
Fresh Mkt.	1964	3	2.20	6.6	"	104	686
	1963	19	1.96	37.2	"	81.75	3,040
Processing	1964	-	-	-		-	-
	1963	19	2.26	43	"	140	6,020
Brussels Sprouts							
Total	1964	1,530	5.7	8,720	"	192	1,675,000
	1963	1,420	5.8	8,240	"	207.40	1,709,600
Fresh Mkt.	1964			1,740	"	120	209,000
	1963			410	"	160	65,600
Freezer	1964			6,980	"	210	1,466,000
	1963			7,830	"	210	1,644,000
Cabbage	1964	67	10	670	"	49	32,800
	1963	47	11	517	"	45	23,300
Calabresi	1964	3	3.43	10.3	"	375	3,860
	1963	5	3.4	17	"	380	6,460
Carrots	1964	3	8.4	25.2	"	100	2,520
	1963	4	8.25	33	"	96	3,170

(Continued)

VEGETABLE CROPS

Crop	Year	Harvested Acreage	P R O D U C T I O N			V A L U E	
			Per Acre	Total	Unit	Per Unit	Total
Celery	1964	12	31.17	374	Ton	\$ 63.80	\$ 23,900
	1963	9	36.6	330	"	38.25	12,600
Celery Root	1964	3	4.33	13	"	163.50	2,110
	1963	8	4.42	35.4	"	147	5,200
Chard	1964	27	13.3	360	"	78	28,100
	1963	28	13.3	373	"	70	26,100
Corn	1964	6	4.5	27	"	96	2,590
	1963	5	4.4	22	"	94	2,070
Dandelion Root	1964	3	6.33	19	"	164	3,120
	1963	4	6.25	25	"	160	4,000
Greenleaf* Vegetables	1964	9	6.22	56	"	78	4,370
	1963	8	6.25	50	"	81	4,050
Leeks	1964	5	16.4	82	"	137.50	11,300
	1963	8	16.75	134	"	106	14,200
Lettuce (All Var.)	1964	208	11.1	2,300	"	72.60	167,000
	1963	220	10	2,200	"	69.30	152,500
Parsley	1964	12	9.5	114	"	205	23,400
	1963	13	9.54	124	"	215	26,700
Peas, Market	1964	410	2.4	984	"	204	201,000
	1963	291	2.52	733	"	200	146,600
Potatoes	1964	78	13.33	1,040	"	62.80	65,300
	1963	129	11.54	1,489	"	50.10	74,600
Radish	1964	59	13	767	"	92	70,600
	1963	58	13.12	761	"	84	63,900
Spinach	1964	24	2.62	63	"	138	8,700
	1963	25	2.48	62	"	136	8,430
Spinach, New Zealand	1964	16	8.75	140	"	190	26,600
	1963	26	10	260	"	200	52,000

\* Includes Collards, Kale, Mustard Greens, Rapini and Turnip Greens.

(Continued)

VEGETABLE CROPS

Crop	Year	Harvested Acreage	P R O D U C T I O N			V A L U E	
			Per Acre	Total	Unit	Per Unit	Total
Squash, Winter	1964	18	8.5	153	Ton	\$ 66.20	\$ 10,100
	1963	19	12	228	"	65	14,800
Summer	1964	3	11.3	34	"	138	4,690
	1963	4	11.25	45	"	146	6,570
Miscellaneous*							
Vegetables							
Field and							
Indoor Grown	1964	13					1,553,000
	1963	17					1,482,000
* Includes Anise, Cauliflower, Garlic, Green Onions, Mushrooms, Salsify and Seasoning Plants.							
TOTAL	1964	3,192					\$ 4,304,216
	1963	3,184					4,239,930

# FIELD CROPS

Crop	Year	Harvested Acreage	P R O D U C T I O N		Unit	V A L U E	
			Per Acre	Total		Per Unit	Total
Beans Dry Edible	1964	24	.82	19.8	Ton	\$198	\$ 3,920
	1963	27	.67	18	"	200	3,600
Fava	1964	57	.78	44.7	"	195	8,720
	1963	10	.80	8	"	170	1,360
Barley	1964	3,200	.85	2,720	"	42.40	115,300
	1963	1,700	.60	1,020	"	45	45,900
Flaxseed	1964	340	11.4	3,876	Bu.	3.25	12,600
	1963	1,300	7.26	9,440	"	3.34	31,500
Hay Grain	1964	3,500	1.83	6,400	Ton	24.50	156,800
	1963	4,200	1.61	6,760	"	25	169,000
Other Tame	1964	200	.64	128	"	21.50	2,750
	1963	500	.75	375	"	22	8,250
Oats	1964	3,200	.75	2,400	"	55	132,000
	1963	3,800	.32	1,220	"	46	56,100
Pasture Irrigated	1964	865			Acre	36	31,100
	1963	825			"	38	31,400
Other	1964	39,500			"	3.70	146,000
	1963	39,000			"	3.85	150,000
TOTAL	1964	50,886					\$ 609,190
	1963	51,362					497,110

# SEED CROPS

Crop	Year	Harvested Acreage	P R O D U C T I O N		Unit	V A L U E	
			Per Acre	Total		Per Unit	Total
Brussels Sprouts	1964			325	Lb.	\$ 10	\$ 3,250
	1963			350	"	10	3,500
Vetch	1964	800	.31	248	Ton	133	33,000
	1963	630	.13	82	"	140	11,500
Miscellaneous Seeds	1964	-		-	Lb.	-	-
	1963	40		2,300	"		1,600
TOTAL	1964	800					\$ 36,250
	1963	670					16,600

# FRUIT AND NUT CROPS

Crop	Year	Harvested Acreage	P R O D U C T I O N		Unit	V A L U E	
			Per Acre	Total		Per Unit	Total
Apples							
Total	1964	90	3	270	Ton	\$ 94.07	\$ 25,400
	1963	97	2.97	288	"	112	32,200
Fresh	1964		2.78	250	"	100	25,000
	1963		2.66	258	"	120	31,000
Processing	1964			20	"	20	400
	1963			30	"	40	1,200
Apricots, Dry	1964	3	1	3	"	784	2,350
	1963	3	.67	2	"	970	1,940
Pears	1964	18	2.78	50	"	90	4,500
	1963	22	4.18	92	"	75	6,900
Prunes	1964	22	3.45	76	"	215	16,300
	1963	35	2.71	95	"	254	24,100
Strawberries							
Total	1964	81	10.65	863	"	445.61	384,570
	1963	67	7.54	500.5	"	398	198,970
Fresh	1964			830	"	452	375,000
	1963			492	"	400	197,000
Processing	1964			33	"	290	9,570
	1963			8.5	"	232	1,970
Walnuts	1964	42	.38	16	"	600	9,600
	1963	50	.36	18	"	480	8,640
Miscellaneous*							
Fruits	1964	3					650
	1963	4					1,470
* Includes Grapes, Peaches, Bushberries.							
TOTAL	1964	259				\$	443,370
	1963	278					274,220

FLORAL AND NURSERY CROPS OUTDOOR GROWN

Item	Year	PRODUCTION		Unit	V A L U E	
		Area Acres	Production		Per Unit	Total
Acacia	1964	92	9,200	Tree	\$ 12.25	\$ 113,000
	1963	95	9,500	"	12.50	119,000
Agapanthus	1964	4	11,600	Dozen	.80	9,300
	1963	4	11,400	"	.75	8,550
Asters	1964	1	180,000	Bloom	.037	6,600
	1963	1	183,000	"	.035	6,400
Calla Lily	1964	19	115,000	Dozen	.68	78,200
	1963	20	122,000	"	.72	87,800
Chrysanthemum Total	1964	52				567,000
	1963	60				555,000
Standard	1964	15	720,000	Bloom	.141	102,000
	1963	18	864,000	"	.121	105,000
Medium	1964	12	1,518,000	"	.11	167,000
	1963	15	1,890,000	"	.085	161,000
Pompons	1964	25	548,000	Bunch	.544	298,000
	1963	27	614,000	"	.47	289,000
Cut Foliage	1964	78				181,000
	1963	81				169,000
Gladiolus	1964	2	11,000	Dozen	.75	8,250
	1963	5	27,500	"	.70	19,200
Heather	1964	132	594,000	Bunch	.44	261,000
	1963	135	607,500	"	.43	261,000
Iris	1964	40	130,000	Dozen	.50	65,000
	1963	50	165,000	"	.42	69,300
Marguerites	1964	78	1,216,000	Bunch	.27	328,000
	1963	63	1,052,000	"	.24	252,000
Narcissus	1964	25	1,875,000	Bloom	.018	34,000
	1963	31	2,325,000	"	.02	46,500
Shasta Daisy	1964	37	4,610,000	"	.027	124,000
	1963	31	3,970,000	"	.029	115,000

(Continued)

FLORAL AND NURSERY CROPS OUTDOOR GROWN

Item	Year	PRODUCTION		Unit	V A L U E	
		Area Acres	Production		Per Unit	Total
Stock	1964	36	169,000	Dozen	\$ .42	\$ 71,000
	1963	50	230,000	"	.45	104,000
Strawflowers	1964	115	34,500	Box	14	483,000
	1963	112	30,800	"	14	431,000
Violets	1964	15	82,500	Dz. Bunch	1.25	103,000
	1963	17	93,500	" "	1.25	117,000
Bulbs	1964		805,000	Bulbs		68,500
	1963		965,000	"		75,800
Miscellaneous Flowers	1964	32				62,400
	1963	35				66,500
Herbaceous Perennials	1964	8	757,000	Plants	.109	82,800
	1963	8	825,000	"	.104	85,800
Ornamental Nursery Stock	1964					1,510,000
	1963					1,532,000
TOTAL	1964	766				\$ 4,156,050
	1963	798				4,120,850

FLORAL AND NURSERY CROPS GLASSHOUSE GROWN

Item	Year	PRODUCTION	Production	Unit	V A L U E	
		Area Sq. Ft.			Per Unit	Total
<u>Cut Flowers</u>						
Carnations	1964	2,024,000	41,694,000	Bloom	\$ .056	\$ 2,335,000
	1963	1,931,000	41,222,000	"	.056	2,308,000
Chrysanthemums Total	1964	457,000	4,372,000	"	.122	533,000
	1963	524,000	5,072,000	"	.109	554,000
Standard	1964	143,000	1,305,000	"	.151	197,000
	1963	142,000	1,407,000	"	.139	196,000
Medium	1964	314,000	3,053,000	"	.11	336,000
	1963	382,000	3,365,000	"	.095	348,000
Ferns	1964	199,000	1,493,000	Bunch	.18	269,000
	1963	236,000	1,711,000	"	.15	257,000
Gardenias	1964	132,000	1,997,000	Bloom	.093	186,000
	1963	130,000	2,119,000	"	.095	201,000
Orchids	1964	215,800	501,000	"	.65	326,000
	1963*	213,000	490,000	"	.65	318,000
Roses	1964	410,000	7,300,000	"	.07	511,000
	1963	387,000	5,882,000	"	.067	394,000
Snapdragons	1964	53,000	42,400	Bunch	1.12	47,500
	1963	26,600	21,300	"	1.10	23,400
Miscellaneous Cut Flowers	1964	58,000		Sq. Ft.	.96	56,000
	1963	58,000		" "	.72	41,500
Flowering Pot Plants	1964	858,000	1,797,000	Plants	.954	1,715,000
	1963	888,000	1,588,000	"	1.01	1,604,000

\* Revised.

(Continued)

FLORAL AND NURSERY CROPS GLASSHOUSE GROWN

Item	Year	PRODUCTION		Unit	V A L U E	
		Area Sq. Ft.	Production		Per Unit	Total
<u>Propagated</u>						
Bedding Plants	1964	23,000	10,200	Flats	\$ 3.35	\$ 34,200
	1963	23,100	11,700	"	3.00	35,100
Ornamental Nursery Stock	1964	476,500	17,312,000	Plants	.057	987,000
	1963	432,000	17,238,000	"	.059	1,013,000
<hr/>						
TOTAL	1964	4,904,300				\$ 6,999,700
	1963	4,849,000				6,749,000
<hr/>						
Total Glass and Plastic Area			5,001,000 Square Feet			
136 Glass or Plastic Ranges			190 Growers			
<hr/>						
TOTAL VALUE, ALL FLORAL AND NURSERY CROPS					1964	\$11,155,750
					1963	10,869,850

LIVESTOCK AND POULTRY

Item	Year	P R O D U C T I O N		Unit	V A L U E	
		Number of Head	Total Liveweight		Per Unit	Total
Cattle and Calves	1964	3,700	27,170	Cwt.	\$ 17.52	\$ 476,500
	1963	3,500	23,420	"	21.86	512,000
Milkers Sold	1964	915		Head	232	212,000
	1963	1,030		"	230	237,000
Sheep and Lambs	1964	1,385	1,380	Cwt.	16.30	22,500
	1963	1,585	1,650	"	16.97	28,000
Hogs and Pigs	1964	7,700	16,900	"	16.68	282,000
	1963	9,830	21,400	"	17.20	368,000
Other Meat Animals and Birds	1964	2,525	11,200	Lb.	.214	2,320
	1963	2,710	12,050	"	.22	2,660
TOTAL	1964					\$ 995,320
	1963					1,147,660

# LIVESTOCK, POULTRY AND APIARY PRODUCTS

Item	Year	Production	Unit	V A L U E	
				Per Unit	Total
Milk, Market*	1964	147,000	Cwt.	\$ 4.32	\$ 635,000
	1963	151,000	"	4.44	670,000
Milk, Manufacturing*	1964	3,240	"	3.15	10,200
	1963	6,090	"	2.91	17,700
Wool	1964	12,800	Lb.	.46	5,890
	1963	14,700	"	.415	6,100
Eggs, Chicken	1964	16,000	Dozen	.30	4,800
	1963	17,800	"	.275	4,900
Honey	1964	32,750	Lb.	.12	3,900
	1963	20,000	"	.145	2,900
Beeswax	1964	1,500	"	.40	600
	1963	2,100	"	.428	900
* Adjusted data for 1963.					
TOTAL	1964				\$ 660,390
	1963				702,500

JANUARY 1 INVENTORY OF LIVESTOCK AND POULTRY - 1964-1965

Item	January 1, 1964	January 1, 1965
Cattle and Calves		
All	9,300	10,300
Milk Cows, 2 years and over	1,460	1,490
Sheep and Lambs		
All	1,840	1,850
Stock Sheep	600	600
Hogs and Pigs	5,000	4,500
Horses	100	100
Hens and Pullets	2,000	1,600

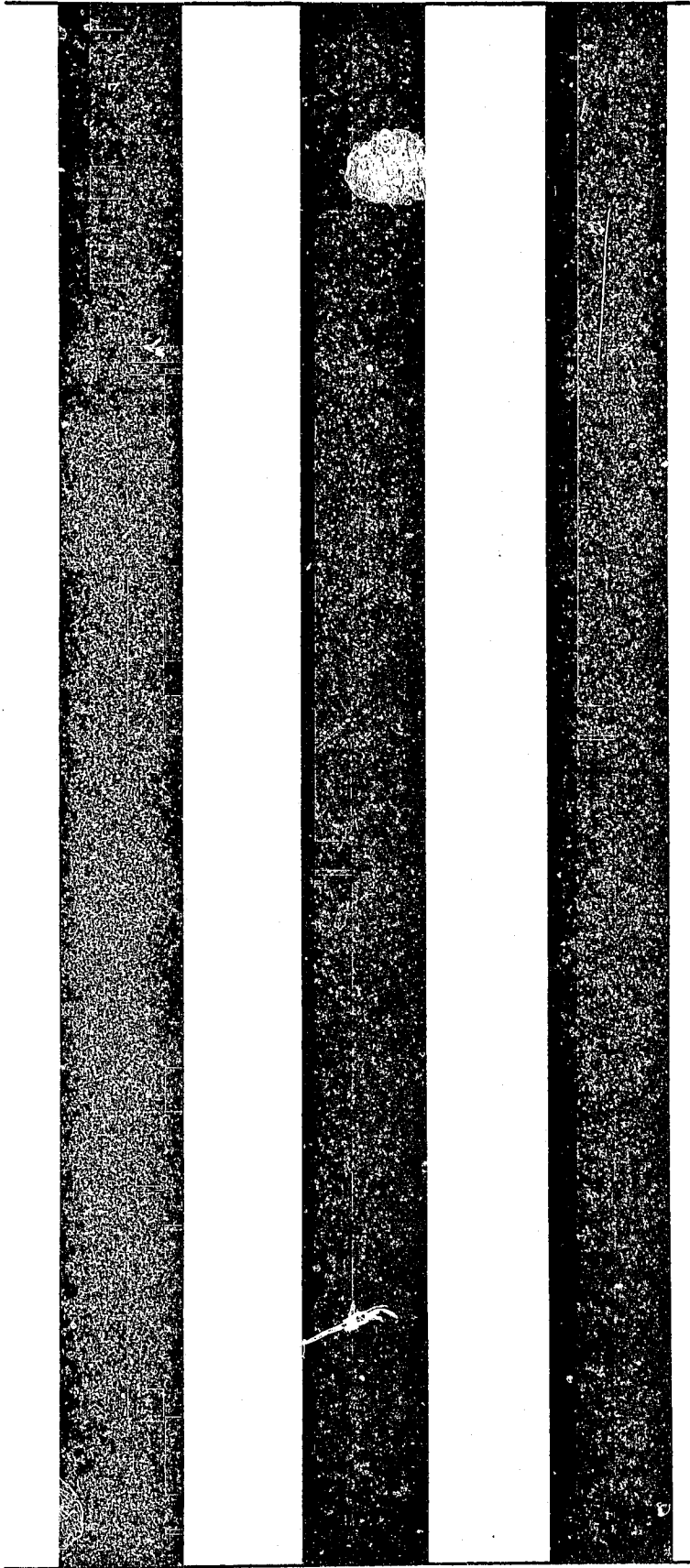
R E C A P I T U L A T I O N

PRODUCTION VALUES

	1963	1964
Vegetable Crops	\$ 4,239,930	\$ 4,304,216
Flower and Nursery Crops	10,869,850	11,155,750
Field Crops	497,110	609,190
Seed Crops	16,600	36,250
Fruit and Nut Crops	274,220	443,370
Livestock and Poultry	1,147,660	995,320
Livestock, Poultry and Apiary Products	702,500	660,390
TOTAL	\$17,747,870	\$18,204,486

COMPARATIVE PRODUCTION VALUES

1955	\$14,689,756
1956	15,791,357
1957	15,774,729
1958	17,154,351
1959	17,817,818
1960	17,389,074
1961	16,394,412
1962	17,658,700

A vertical graphic element consisting of four alternating black and white stripes of equal width, spanning most of the page height. The stripes are slightly irregular, suggesting a scan of a physical document.

1965

*Pacific San Mateo Co. Ag. Commissioner  
Report (Annual)*

# AGRICULTURAL REPORT

1965



Our 1965 State Fair Exhibit

**SAN MATEO COUNTY**  
AGRICULTURAL COMMISSIONER

UNIVERSITY OF CALIFORNIA  
DAVIS  
APR 18 1966  
LIBRARY

Honorable Board of Supervisors  
County of San Mateo  
and  
Charles Paul, Director  
State Department of Agriculture

Gentlemen:

In compliance with the requirements of Section 65.5 of the California Agricultural Code, I hereby submit the annual report showing the acreage, production and gross value of all agricultural commodities grown in San Mateo County for the year 1965. The cost of harvesting, producing and packaging was not taken into consideration.

Following the trend established about 10 years ago the open field acreage and production is steadily declining, while the intensive growing of Carnations, Roses and Potted Plants in glasshouses is increasing sufficiently to offset the losses sustained by the outdoor-grown crops.

The total value of \$18,638,488 shows an increase of \$635,202 over the revised 1964 report. Carnations set a new record for a single crop, with a value of \$2,785,000. Brussels Sprouts were second at \$1,474,000, down \$201,000 from the previous season. The decrease in acreage was caused by the uncertainty of labor supply, and loss of tonnage in the first picking was due to insufficient labor.

Floral production value increased \$1,119,150 over last year. In addition to Carnations, Chrysanthemums, Potted Plants, Strawflowers, Marguerites, Snapdragons and Iris showed substantial gains, while Acacia, Heather, Roses, Calla Lilies, Ferns, Violets and Bulbs were lower.

Vegetable production showed a net increase of \$30,742 due to gain in Artichokes, Peas, Potatoes, Corn, etc., however Brussels Sprouts, Celery and Lettuce lost ground.


Field crops lost \$108,360 and Seed crops lost \$28,760.

Fruit and Nut harvest showed a loss of \$191,340, with Strawberries, Apples, Pears and Prunes all declining.

Livestock and Poultry indicated a loss of \$137,390, with all categories showing lower values.

I wish to express my appreciation to all persons and agencies who have furnished the information necessary to compile this report.

Respectfully submitted,

  
Victor A. Canavese, Commissioner  
Department of Agriculture  
County of San Mateo

VAC:mw  
600 - 3/66

SAN MATEO COUNTY

Board of Supervisors

William M. Werder - Chairman

T. Louis Chess  
Jean Fassler

James V. Fitzgerald  
E. R. McDonald

E. R. Stallings  
County Manager

DEPARTMENT OF AGRICULTURE

Agricultural Commissioner

Victor A. Canavese

Chief Deputy

Ian J. Campbell

Deputy Commissioners

Mervin J. Cresta  
Clarence M. Sill  
Vacant--One Position

Senior Inspectors

William E. Davis  
Louis A. Masini  
Curtis C. Van Sandt

Inspectors

Philip Economon  
George Ginilo  
George M. Gregory  
Melvin A. Mello  
Wallace L. Plummer  
Robert E. Runels  
Floyd E. Sampson  
Vacant--One Position

Part-time

Apiary Inspector

Alfred M. Marion

Weed and Rodent

Inspector

Arnold Roach

Predatory Animal

Hunters

Marion C. Gray  
Vincent Belleci

Typist Clerk II

Muriel Corrie

Steno Clerk I

Maxine Wright

## FUNCTIONS AND ACTIVITIES

### SAN MATEO COUNTY DEPARTMENT OF AGRICULTURE

Year - 1965

The primary functions and responsibilities of this department consist of:

To promote and protect the agricultural industry.

To protect and benefit both the grower and the consumer by enforcing certain provisions of the Agricultural, Administrative and other California State Codes.

Within the authority delegated to us, to further and protect the health and safety of our citizens.

Additional duties may be assigned by the Board of Supervisors.

The following is a summary outlining objectives and giving statistical information concerning the various activities of the Department:

#### APIARY

All owners of bees must register with the Agricultural Commissioner each year. This requirement must be met so that all apiaries can be inspected to determine if American Foul Brood, or other serious bee diseases, are present. If American Foul Brood, an incurable bee disease, is present the bees are required to be destroyed.

	<u>Apiaries</u>	<u>Colonies</u>
Inspections	97	727
Diseased	14	33
Destroyed	1	33

#### CERTIFICATION

Other counties, states and foreign countries regulate the movement of plants and plant products into their area by requiring that shipments be certified free from serious pests as a condition for admittance. The following certificates were issued:

Intrastate	51,222
Interstate and Foreign	42,342

#### CIVILIAN DEFENSE

The Department of Agriculture is San Mateo County's representative of the Food Administration Division of the California Disaster Office. We maintain a current inventory of the food available at the wholesale level in San Mateo County. This supply would be used in the event of a serious emergency.

#### FAIRS

We design, construct and maintain the County's exhibit at the California State

Fair Exposition in Sacramento. The flowers and ornamental plants displayed are supplied by over one hundred of the County's growers. We also select, sort and arrange these flowers and plants for the daily competition with the entries of several other counties. San Mateo is a consistent feature exhibit and sweepstakes winner. Prize money in 1965, deposited in the County's treasury, amounted to a new record of \$2,185.

The Department also participates in the organization of the County Fair and Floral Fiesta.

Calls

626

#### FIELD, HOME AND ORCHARD

We advise nurserymen, growers, farmers, park departments, home owners, schools and other jurisdictions on numerous horticultural problems concerning the identification and control of insects, diseases and weed pests, and cultural care of agricultural and ornamental plants.

Calls

1,131

#### LABORATORY

Upon request we analyze submitted water samples to determine if the saline content could cause plant injury.

Tests Made

22

In cooperation with the State Bureau of Plant Pathology we also prepare and process plant root and foliage specimens in our laboratory. These specimens are then forwarded to Plant Pathology for the determination of serious plant parasitic nematode pests.

Tests Made

389

Times Burrowing Nematode Found

5

Times Other Plant Parasitic

Nematodes Found

81

#### NURSERY INSPECTION

We have 268 nurseries doing an annual business exceeding \$2,800,000. These locations are inspected once or twice every year to determine the freedom from new or serious insect, disease and weed pests. Plants offered for sale must meet the required standard of cleanliness.

Calls

1,865

Nurseries Inspected

306

Notices of Noncompliance

126

Intercounty Nursery Stock

Certificates Issued

51,190

Nurseries Qualified to Use Inter-

county Nursery Stock Certificates

72

#### PEST CONTROL

Agricultural Pest Control Operators must be licensed by the State annually and register with the Agricultural Commissioner in each county where they conduct their businesses. They must conform with all county and state rules

and regulations governing their business. All users are required to obtain permits from our Department to buy or apply injurious or restricted chemicals, which could be dangerous to human, animal or plant life.

Permits Issued	293
Pest Control Operators Registered	80

### PLANT QUARANTINE

In the enforcement of plant quarantines our purpose is to prevent the introduction and spread of harmful agricultural pests within the County and State. The inspection of plant products and plant material is performed at 197 air, rail and truck terminals, post offices, express agencies and other points of entry within the County. During 1965 we intercepted and rejected 97 shipments infested with serious agricultural pests.

Calls	10,320
	<u>RELEASED</u> <u>REJECTED</u>
Shipments	12,374                      97
Plants	8,658,780                      14,053

### PREDATORY ANIMAL CONTROL

For the protection of livestock and because many small predator animals are potential rabies carriers, we cooperated with the Bureau of Sport Fisheries and Wildlife, United States Department of the Interior, and the California Department of Agriculture, in the control of these animals. The damage in 1965 included loss of 46 head of livestock, 483 domestic fowls and 795 wild game.

Calls	1,115
Bobcats Taken	62
Coyotes Taken	88
Foxes Taken	64
Others Taken (Badgers, Raccoons, etc.)	182

### RODENT AND PEST ANIMAL CONTROL

We conduct a countywide program of ground squirrel eradication. These squirrels are serious agricultural pests and are also known carriers of such dangerous human diseases as Tularemia and Bubonic Plague. Poison baits are sold at cost by the Department to commercial growers for the control of rats, field mice and gophers. We cooperate with the County Health Department in urban area rodent control.

Calls	565
Acres Inspected	10,975
Acres Treated	219

### SEED INSPECTION

In compliance with the California Seed Law, agricultural and vegetable seed is inspected to insure that it meets the required quality standards.

Calls	399
Dealers	263
Lots Inspected	2,882
Lots in Violation	163
Official Samples Taken	24

## STANDARDIZATION

One of our major activities is the inspection of fresh fruits, vegetables, eggs, honey, nuts and poultry meat. The purpose of this is to protect both producers and consumers of these products. In 1965 the following field, packing house, wholesale and retail market inspections were made:

Calls	16,546	
<u>COMMODITIES</u>	<u>INSPECTIONS</u>	<u>VIOLATIONS</u>
Produce (containers)	9,505,672	87,812
Eggs (dozens )	2,919,558	70,561
Poultry (packages )	207,648	-
Honey (containers)	192,230	-

The Golden Gate Produce Terminal in South San Francisco is one of the largest wholesale fruit and vegetable outlets in Northern California. It receives and sells produce throughout California, many other states and foreign countries. The 1965 gross was reported to be over 92 million dollars.

## STATISTICS

The State Agricultural Code requires the publication of an annual report, showing the acreage and production value of crops grown in our County. Copies are available, upon request, to other governmental, agricultural and educational agencies; allied industries, and interested parties.

Calls	651
-------	-----

## SURVEY AND PEST DETECTION

In order to prevent the possible introduction and spread of such serious agricultural pests as Gypsy and Brown Tail Moth, Citrus White Fly, Khapra Beetle, Japanese Beetle and various Fruit Flies, we conduct annual surveys and insect trapping programs throughout the County.

Calls	2,452
Traps Used	276

## WEED CONTROL

We continually survey the County's agricultural and suburban areas in order to detect primary or secondary noxious weeds. These weeds, which by their growth and reproduction habits, are extremely difficult to eradicate. Control work, under a service agreement with the State Division of Highways, is done along designated State highways. The County is reimbursed for this work.

Calls	518
Acres Inspected	12,744
Acres Treated	228.82

## OTHER ACTIVITIES

1. A total of 11,902 service calls were received from the public this year. They dealt with plant insect and disease control, weed control and various other agricultural and home garden problems.
2. Attended a total of 366 meetings dealing with problems related to our work and sponsored by the State Department, the University of California,

scientific groups and other agricultural organizations.

3. During the year we examined and identified submitted samples of insects, diseases, weed pests and plant material.
4. Acting as representatives of the United States Department of Commerce we operated and maintained two weather stations.
5. Weed abatement on unimproved properties in two residential districts was contracted out. The proportioned cost was figured for assessment on these properties.
6. During the year we provided speakers for garden, farm and service organizations and school groups.
7. Monthly and annual reports were compiled and forwarded to the State Director of Agriculture and a monthly narrative and statistical report was sent to the County Board of Supervisors.
8. Prepared weekly reports dealing with the harvesting and handling of crops and livestock, and the weather's effect upon them. These reports are sent to the California Crop and Livestock Report Service.
9. Growing grounds for foreign plant shipments were given post-entry quarantine inspections.
10. Elm trees were sprayed along county roads. The spray was applied to control a serious pest of elm trees, Elm Leaf Beetle.
11. We assisted the Agricultural Extension Service in disseminating information and publications supplied by the University of California, the United States Department of Agriculture and various other agencies.
12. We cooperated with the State Department on problems pertaining to poison residue on edible crops.
13. Through the use of Marketing Orders, control of certain agricultural commodities is achieved. These orders are requested by the producers and lead to a superior quality product for the consumer and a greater return for the producer. We assisted the Artichoke and Brussels Sprouts Advisory Boards.
14. Cooperated with the State Department of Agriculture in maintaining a seed potato disease test plot on the Coastside.
15. In matters relating to agriculture we assisted the Air Pollution Control Board.
16. Cooperated with the County Health & Welfare Department and the Industrial Safety Division in matters involving possible injury to agricultural workers from improper handling of pesticides.

## ANNUAL CROP REPORT

VEGETABLE CROPS

Crop	Year	Harvested Acreage	P R O D U C T I O N			V A L U E	
			Per Acre	Total	Unit	Per Unit	Total
Artichoke Total	1965	720	3.83	2,755	Ton	\$184	\$ 507,000
	1964	650	3.20	2,085	"	173	361,500
Fresh Mkt.	1965	720		2,340	"	192	449,000
	1964	650		1,740	"	180	313,200
Processing	1965			415	"	140	58,000
	1964			345	"	140	48,300
Beans, Green	1965	18	3.39	61	"	155.75	9,500
	1964	18	1.89	34	"	158	5,370
Beets, Table	1965	7	8.57	60	"	192	11,500
	1964	12	8.67	104	"	160	16,600
Broccoli, Sprouting	1965	4	2.25	9	"	107	963
	1964	3	2.20	6.6	"	104	686
Brussels Sprouts Total	1965	1,150	5.46	6,280	"	234.70	1,474,000
	1964	1,530	5.7	8,720	"	192	1,675,000
Fresh Mkt.	1965			840	"	200	168,000
	1964			1,740	"	120	209,000
Freezer	1965			5,440	"	240	1,306,000
	1964			6,980	"	210	1,466,000
Cabbage	1965	55	11.81	650	"	48	31,200
	1964	67	10.	670	"	49	32,800
Calabresi	1965	3	3.57	10.7	"	380	4,070
	1964	3	3.43	10.3	"	375	3,860
Carrots	1965	5	8.6	43	"	105	4,520
	1964	3	8.4	25.2	"	100	2,520
Celery	1965	11	30.9	340	"	59.50	20,200
	1964	12	31.17	374	"	63.80	23,900
Celery Root	1965	1	4.4	4.4	"	141.37	625
	1964	3	4.33	13	"	163.50	2,110
Chard	1965	32	13.5	432	"	80	34,600
	1964	27	13.3	360	"	78	28,100

(Continued)

VEGETABLE CROPS

Crop	Year	Harvested Acreage	P R O D U C T I O N			V A L U E	
			Per Acre	Total	Unit	Per Unit	Total
Corn	1965	15	4.27	64	Ton	\$110	\$ 7,040
	1964	6	4.5	27	"	96	2,590
Dandelion Root	1965	3	6.33	19	"	168	3,190
	1964	3	6.33	19	"	164	3,120
Greenleaf* Vegetables	1965	6	6.5	39	"	99.74	3,890
	1964	9	6.22	56	"	78	4,370
Leeks	1965	5	16	80	"	150	12,000
	1964	5	16.4	82	"	137.50	11,300
Lettuce All Var.	1965	180	10.13	1,780	"	75.91	135,000
	1964	208	11.1	2,300	"	72.60	167,000
Parsley	1965	11	9.36	103	"	225	23,200
	1964	12	9.5	114	"	205	23,400
Peas, Market	1965	640	2.38	1,525	"	214	326,000
	1964	410	2.4	984	"	204	201,000
Potatoes	1965	112	13.08	1,465	"	51.40	75,300
	1964	78	13.33	1,040	"	62.80	65,300
Radish	1965	52	13.1	682	"	92	62,700
	1964	59	13	767	"	92	70,600
Spinach	1965	18	2.55	46	"	150	6,900
	1964	24	2.62	63	"	138	8,700
Spinach, New Zealand	1965	15	9	135	"	200	27,000
	1964	16	8.75	140	"	190	26,600
Squash Winter	1965	14	10.28	144	"	48.33	6,960
	1964	18	8.5	153	"	66.20	10,100
Summer	1965	3	10.66	32	"	175	5,600
	1964	3	11.3	34	"	138	4,690

\* Includes Kale, Mustard Greens, Rapini and Turnip Greens.

(Continued)

VEGETABLE CROPS

Crop	Year	Harvested Acreage	<u>P R O D U C T I O N</u>		Unit	<u>V A L U E</u>	
			Per Acre	Total		Per Unit	Total
Miscellaneous*							
Vegetables							
Field and							
Indoor Grown	1965	17					\$ 1,542,000
	1964	13					1,553,000
* Includes Anise, Cauliflower, Garlic, Green Onions, Mushrooms, Parsnips, Turnips and Seasoning Plants.							
TOTAL	1965	3,097					\$ 4,334,958
	1964	3,192					4,304,216

FIELD CROPS

Beans							
Dry Edible	1965	24	.50	12	Ton	\$210	\$ 2,520
	1964	24	.82	19.8	"	198	3,920
Fava	1965	42	.90	38	"	195	7,410
	1964	57	.78	44.7	"	195	8,720
Barley	1965	1,600	.77	1,230	"	47.20	58,100
	1964	3,200	.85	2,720	"	42.40	115,300
Flaxseed	1965	-	-	-		-	-
	1964	340	11.4	3,876	Bu.	3.25	12,600
Hay							
Grain	1965	3,800	1.82	6,920	Ton	22	152,000
	1964	3,500	1.83	6,400	"	24.50	156,800
Other Tame	1965	970	1.46	1,420	"	18	25,600
	1964	200	.64	128	"	21.50	2,750
Oats	1965	3,400	.40	1,360	"	55	74,800
	1964	3,200	.75	2,400	"	55	132,000
Pasture							
Irrigated	1965	780			Acre	39	30,400
	1964	865			"	36	31,100
Other	1965	39,000			"	3.85	150,000
	1964	39,500			"	3.70	146,000
TOTAL	1965	49,616					\$ 500,830
	1964	50,886					609,190

# SEED CROPS

Crop	Year	Harvested Acreage	P R O D U C T I O N		Unit	V A L U E	
			Per Acre	Total		Per Unit	Total
Brussels Sprouts	1965			250	Lb.	\$ 14	\$ 3,500
	1964			325	"	10	3,250
Vetch	1965	35	.43	15	Ton	140	2,100
	1964	800	.31	248	"	133	33,000
Peas	1965	96		105	CWT.	18	1,890
	1964	-		-		-	-
TOTAL	1965	131					\$ 7,490
	1964	800					36,250

# FRUIT AND NUT CROPS

Apples Total	1965	52	4.09	213	Ton	\$107.51	\$ 22,900
	1964	90	3	270	"	94.07	25,400
Fresh	1965		2.94	153	"	130	19,900
	1964		2.78	250	"	100	25,000
Processing	1965			60	"	50	3,000
	1964			20	"	20	400
Apricots, Dry	1965	3	.83	2.5	"	790	2,000
	1964	3	1	3	"	784	2,350
Pears	1965	5	1.8	9	"	125	1,120
	1964	18	2.78	50	"	90	4,500
Prunes	1965	17	2	34	"	224	7,600
	1964	22	3.45	76	"	215	16,300
Strawberries Total	1965	50	9.1	455	"	471.64	214,600
	1964	81	10.65	863	"	445.61	384,570
Fresh	1965			400	"	484	194,000
	1964			830	"	452	375,000
Processing	1965			55	"	374	20,600
	1964			33	"	290	9,570
Walnuts	1965	34	.18	6	"	500	3,000
	1964	42	.38	16	"	600	9,600

(Continued)

FRUIT AND NUT CROPS

Crop	Year	Harvested Acreage	P R O D U C T I O N			V A L U E	
			Per Acre	Total	Unit	Per Unit	Total
Miscellaneous*							
Fruits	1965	3					\$ 810
	1964	3					650
TOTAL	1965	164					\$ 252,030
	1964	259					443,370

\* Includes Grapes, Peaches, Bushberries

FLORAL AND NURSERY CROPS OUTDOOR GROWN

Item	Year	P R O D U C T I O N			V A L U E	
		Area Acres	Production	Unit	Per Unit	Total
Acacia	1965	75	7,500	Tree	\$ 12.75	\$ 95,600
	1964	92	9,200	"	12.25	113,000
Agapanthus	1965	5	14,500	Dozen	.875	12,700
	1964	4	11,600	"	.80	9,300
Asters	1965	1	185,000	Bloom	.035	6,500
	1964	1	180,000	"	.037	6,600
Calla Lily	1965	18	110,000	Dozen	.64	70,000
	1964	19	115,000	"	.68	78,200
Chrysanthemum Total	1965	40				430,500
	1964*	39				423,000
Standard	1965	4	192,000	Bloom	.13	25,000
	1964*	8	384,000	"	.141	54,000
All Other Types**	1965	8	1,037,000	"	.095	98,500
	1964*	9	1,071,000	"	.11	118,000
Pompons	1965	28	606,000	Bunch	.506	307,000
	1964*	22	465,000	"	.54	251,000
Cut Foliage	1965	77				178,000
	1964	78				181,000
Gladiolus	1965	2	11,000	Dozen	.80	8,800
	1964	2	11,000	"	.75	8,250

\*\* Includes Fujii, Spider, Disbuds, Anemone, etc.

(Continued)

## FLORAL AND NURSERY CROPS OUTDOOR GROWN

Item	Year	PRODUCTION		Unit	V A L U E	
		Area Acres	Production		Per Unit	Total
Heather	1965	93	395,000	Bunch	\$ .46	\$ 182,000
	1964	132	594,000	"	.44	261,000
Iris	1965	47	164,000	Dozen	.60	98,400
	1964	40	130,000	"	.50	65,000
Marguerites	1965	93	1,437,000	Bunch	.266	382,000
	1964	78	1,216,000	"	.27	328,000
Narcissus	1965	29	2,146,000	Bloom	.018	39,000
	1964	25	1,875,000	"	.018	34,000
Shasta Daisy	1965	33	4,455,000	"	.028	125,000
	1964	37	4,610,000	"	.027	124,000
Stock	1965	14	65,800	Dozen	.50	32,900
	1964	36	169,000	"	.42	71,000
Strawflowers	1965	139	45,000	Box	14.73	663,000
	1964	115	34,500	"	14.00	483,000
Violets	1965	8	40,000	Dz. Bunch	1.40	56,000
	1964	15	82,500	"	1.25	103,000
Bulbs	1965		685,000	Bulbs		52,000
	1964		805,000	"		68,500
Miscellaneous Flowers	1965	28				58,000
	1964	32				62,400
Herbaceous Perennials	1965	8	712,000	Plants	.114	81,000
	1964	8	757,000	"	.109	82,800
Ornamental Nursery Stock	1965					1,540,000
	1964					1,510,000
* Revised.						
TOTAL	1965	710				\$ 4,111,400
	1964*	753				4,012,050

FLORAL AND NURSERY CROPS GLASSHOUSE GROWN

Item	Year	PRODUCTION		Unit	V A L U E	
		Area Sq. Ft.	Production		Per Unit	Total
<u>Cut Flowers</u>						
Carnations	1965	2,242,000	48,015,000	Bloom	\$ .058	\$ 2,785,000
	1964	2,024,000	41,694,000	"	.056	2,335,000
Chrysanthemums Total	1965	1,677,000				680,000
	1964*	1,064,000				456,600
Standard	1965	1,150,000	3,450,000	"	.1375	474,000
	1964*	544,000	1,632,000	"	.151	246,000
All Other Types**	1965	237,000	995,000	"	.102	101,000
	1964*	241,000	1,012,000	"	.11	111,000
Pompon	1965	290,000	188,000	Bunch	.558	105,000
	1964*	279,000	181,000	"	.55	99,600
Ferns	1965	172,000	1,290,000	Bunch	.185	239,000
	1964	199,000	1,493,000	"	.18	269,000
Gardenias	1965	132,000	1,952,000	Bloom	.098	191,000
	1964	132,000	1,997,000	"	.093	186,000
Orchids	1965	218,300	535,000	"	.68	364,000
	1964	215,800	501,000	"	.65	326,000
Roses	1965	410,000	7,150,000	"	.069	493,000
	1964	410,000	7,300,000	"	.07	511,000
Snapdragons	1965	98,700	79,000	Bunch	1.20	94,800
	1964	53,000	42,400	"	1.12	47,500
Miscellaneous Cut Flowers	1965	63,000		Sq. Ft.	.91	57,300
	1964	58,000		"	.96	56,000
Flowering Pot Plants	1965	978,000	2,222,000	Plants	.97	2,155,000
	1964	858,000	1,797,000	"	.954	1,715,000
<u>Propagated</u>						
Bedding Plants	1965	3,000	900	Flats	4.44	4,000
	1964	23,000	10,200	"	3.35	34,200

\*\* Includes Fujii, Spiders, Disbuds, Anemone, etc.

(Continued)

FLORAL AND NURSERY CROPS GLASSHOUSE GROWN

Item	Year	<u>PRODUCTION</u>		Unit	<u>VALUE</u>	
		Area Sq. Ft.	Production		Per Unit	Total
Ornamental Nursery Stock	1965	359,300	14,665,000	Plants	\$ .060	\$ 880,000
	1964	476,500	17,312,000	"	.057	987,000

\* Revised

TOTAL	1965	6,353,300	\$ 7,943,100			
	1964*	5,513,300	6,923,300			

Total Glass and Plastic Area 5,412,000 Square Feet

124 Glass or Plastic Ranges 177 Growers

TOTAL VALUE, ALL FLORAL AND NURSERY CROPS					1965	\$12,054,500
					1964*	10,935,350

LIVESTOCK AND POULTRY

Item	Year	<u>PRODUCTION</u>		Unit	<u>VALUE</u>	
		Number of Head	Total Liveweight		Per Unit	Total
Cattle and Calves	1965	3,560	25,700	CWT.	\$ 20.35	\$ 523,300
	1964	3,700	27,170	"	17.52	476,500
Milkers Sold	1965	790		Head	240	190,000
	1964	915		"	232	212,000
Sheep and Lambs	1965	1,130	1,120	CWT.	20.17	22,600
	1964	1,385	1,380	"	16.30	22,500
Hogs and Pigs	1965	2,600	5,650	"	21.24	120,000
	1964	7,700	16,900	"	16.68	282,000
Other Meat Animals and Birds	1965	2,100	9,500	lb.	.213	2,030
	1964	2,525	11,200	"	.214	2,320
TOTAL	1965					\$ 857,930
	1964					995,320

LIVESTOCK, POULTRY AND APIARY PRODUCTS

Item	Year	Production	Unit	V A L U E	
				Per Unit	Total
Milk, Market	1965	136,000	CWT.	\$ 4.46	\$ 607,000
	1964*	150,000	"	4.36	654,000
Milk, Manufacturing	1965	2,290	"	3.23	7,400
	1964*	3,290	"	3.16	10,400
Wool	1965	14,200	Lb.	.447	6,350
	1964	12,800	"	.46	5,890
Eggs, Chicken	1965	17,900	Dozen	.301	5,400
	1964	16,000	"	.30	4,800
Honey	1965	42,000	Lb.	.095	4,000
	1964	32,750	"	.12	3,900
Beeswax	1965	1,400	"	.44	600
	1964	1,500	"	.40	600

\* Revised

TOTAL	1965		\$ 630,750
	1964		679,590

JANUARY 1 INVENTORY OF LIVESTOCK AND POULTRY - 1965-1966

Item	January 1, 1965	January 1, 1966
Cattle and Calves		
All	10,300	10,100
Milk Cows, 2 years and over	1,490	1,100
Sheep and Lambs		
All	1,850	2,130
Stock Sheep	600	750
Hogs and Pigs	4,500	2,500
Horses	100	140
Hens and Pullets	1,600	1,600

R E C A P I T U L A T I O N

PRODUCTION VALUES

	1964	1965
Vegetable Crops	\$ 4,304,216	\$ 4,334,958
Flower and Nursery Crops	10,935,350	12,054,500
Field Crops	609,190	500,830
Seed Crops	36,250	7,490
Fruit and Nut Crops	443,370	252,030
Livestock and Poultry	995,320	857,930
Livestock, Poultry and Apiary Products	679,590	630,750
TOTAL	\$18,003,286	\$18,638,488

COMPARATIVE PRODUCTION VALUES

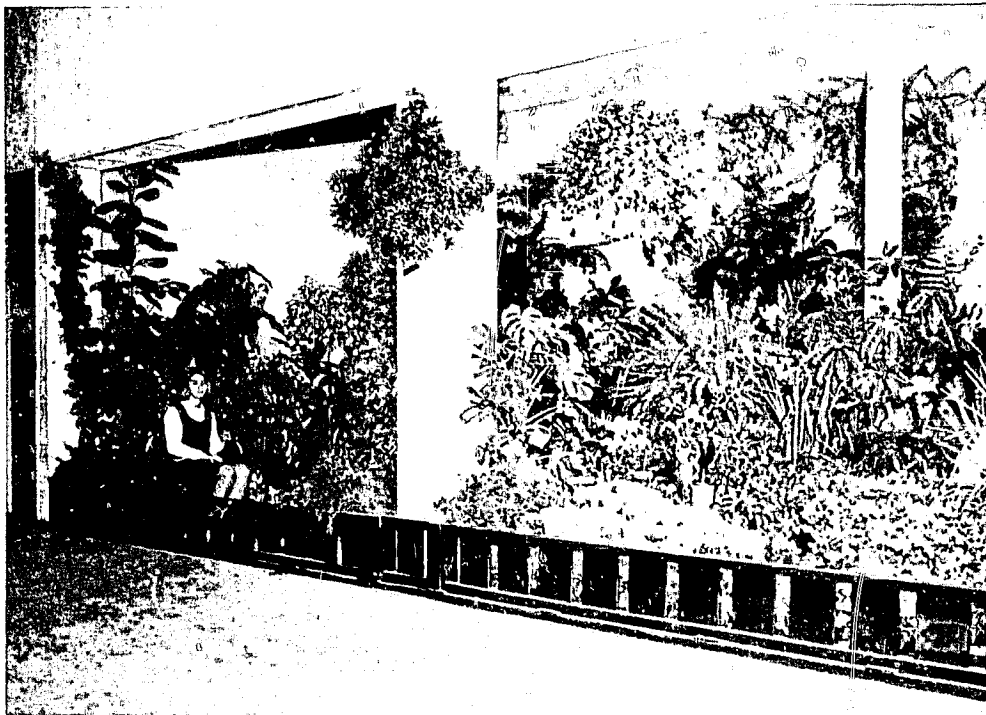
1956	\$15,791,357
1957	15,774,729
1958	17,154,351
1959	17,817,818
1960	17,389,074
1961	16,394,412
1962	17,658,700
1963	17,747,870

A vertical pattern of alternating black and white stripes, resembling a barcode or a stylized 'I' shape, occupies the left half of the page. The stripes are of equal width and extend from near the top to near the bottom of the page.

1966

# AGRICULTURAL REPORT

## 1966



OUR 1966 STATE FAIR EXHIBIT

**SAN MATEO COUNTY**  
AGRICULTURAL COMMISSIONER

Honorable Board of Supervisors  
County of San Mateo  
and  
Earl Coke, Director  
State Department of Agriculture

Gentlemen:

Under the provision of Section 65.5 of the California Agricultural Code, I submit the annual report showing the acreage, production and value of all the agricultural commodities, including livestock, grown in San Mateo County during 1966. Not taken into consideration is the cost of producing, harvesting and packaging.

The total value of \$19,808,137 represents an increase of \$1,169,649. Once again, Carnations set a new record for a single crop with a value of \$3,109,000. In second place we had Brussels Sprouts valued at \$1,726,000.

Floral and Ornamental Plant production value increased \$311,000 over last year. Besides Carnations, with a gain of \$324,000, substantial increases were recorded by Flowering Pot Plants, Chrysanthemums, Roses, Iris, Shasta Daisies, etc., while Ornamental Nursery Stock, Strawflowers, Gardenias, Orchids, etc., sustained losses.

Vegetables showed a net gain of \$526,000, with Brussels Sprouts leading with a \$252,000 increase, followed by Winter Squash, Lettuce, Potatoes, Peas, etc. On the losing side we had Artichokes, Cabbages, Chard, etc.

Field Crops gained \$12,000 with Hay and Dry Beans leading the way.

Fruit and Nut returns were down \$11,400 due to a decrease in Strawberry acreage, and loss of early crops caused by late spring rains.

Livestock and Poultry up \$353,000 with more beef stock and milkers sold at good prices.

I gratefully acknowledge the assistance I have received from many agencies and persons who made available the information contained in this report.

I also wish to extend my sincere appreciation to Ian J. Campbell, Chief Deputy Commissioner, who will retire on May 31, 1967 after 31 years of dedicated service to our department.

Respectfully submitted,



Victor A. Canavese, Commissioner  
Department of Agriculture  
County of San Mateo

VAC:mw  
600 - 3/67

SAN MATEO COUNTY

Board of Supervisors

T. Louis Chess - Chairman

Jean Fassler  
James V. Fitzgerald

Robert B. St. Clair  
William M. Werder

E. R. Stallings  
County Manager

DEPARTMENT OF AGRICULTURE

Agricultural Commissioner

Victor A. Canavese

Chief Deputy

Ian J. Campbell

Deputy Commissioners

Mervin J. Cresta  
Clarence M. Sill  
Vacant--One Position

Senior Inspectors

William E. Davis  
Louis A. Masini  
Curtis C. Van Sandt

Inspectors

Philip Economon  
George Ginilo  
George M. Gregory  
Melvin A. Mello  
Wallace L. Plummer  
Robert E. Runels  
Floyd E. Sampson  
Vacant--One Position

Part-time  
Apiary Inspector

Alfred M. Marion

Weed and Rodent  
Inspector

Arnold Roach

Predatory Animal  
Hunters

Marion C. Gray  
Vincent Belleci

Typist Clerk II

Barbara Marcopulos

Steno Clerk I

Maxine Wright

FUNCTIONS AND ACTIVITIES  
SAN MATEO COUNTY DEPARTMENT OF AGRICULTURE

Year - 1966

The principal functions and responsibilities of this department include:

To promote and protect the agricultural industry.

To protect and benefit both grower and consumer by enforcing certain provisions of the Agricultural, Administrative and other California State Codes.

Within the authority delegated to us, to further protect the health and safety of man and animal.

This work is performed under the general direction of the State Director of Agriculture.

Additional responsibilities may be assigned by the County Board of Supervisors.

Information outlining the activities of this department follow:

APIARY

Each year all owners of bees must register with the Agricultural Commissioner. The primary purpose of this regulation is to prevent the spread of American Foul Brood disease and other serious and highly contagious bee diseases. If inspection indicates American Foul Brood, which is incurable, the bees are required to be destroyed.

	<u>Apiaries</u>	<u>Colonies</u>
Inspections	80	660
Diseased	9	11
Destroyed	3	9

CERTIFICATION

Foreign countries, other states and counties regulate the movement of plants and plant products into their jurisdictions by requiring that all incoming shipments are certified free from serious pests. To comply with these regulations the following certificates were issued:

Intrastate	53,247
Interstate and Foreign	54,873

CIVILIAN DEFENSE

As County Representative of the Food Administration Division of the California Disaster Office, we keep a current inventory of the wholesale foods in the County, for use in the event of a serious emergency.

Calls

49

## FAIRS

San Mateo County's exhibit at the California State Fair in Sacramento is designed, constructed and maintained by this department. By the careful selection, sorting and arranging of flowers and ornamental plants, supplied by more than 60 county growers, the department has consistently won first prize on the feature exhibit and sweepstakes in the cut flower competition against other counties. In 1966 a record \$2,255 was won and deposited in the County treasury.

The department is also involved in the organization of the County Fair and Floral Fiesta and the Agricultural Commissioner is a member of its Board of Directors.

Calls

701

## FIELD, HOME AND ORCHARD

Advice is furnished to farmers, orchardists, nurserymen, park departments, schools, pest control firms, home owners and other jurisdictions on numerous horticultural problems. Their problems involve the identification and control of insects, diseases and genetic defects, weed pests, and the cultural care of agricultural and ornamental plants.

Calls

1,816

## LABORATORY

Upon request, submitted water samples are analyzed to determine if the saline content could cause plant injury.

Tests Made

13

To determine the presence of Burrowing Nematode and other serious parasitic nematode pests, we prepare and process plant root and foliage specimens in our laboratory. Specimens are then forwarded to the Bureau of Plant Pathology for determination.

Tests Made

232

Times Plant Parasitic Nematodes Found

37

## NURSERY INSPECTION

A total of 237 plant nurseries, doing an annual business in excess of \$2,900,000 are located in San Mateo County. Each location is inspected not less than once annually in order that required degrees of cleanliness, provided for by Nursery Inspection Regulations, are maintained.

Calls

1,574

Nurseries Inspected

299

Notices of Noncompliance

111

Intercounty Nursery Stock

Certificates Issued

53,160

Nurseries Qualified to Use

Intercounty Certificates

70

## PEST CONTROL

Agricultural Pest Control Operators must conform with all County and State rules and regulations governing the conduct of their business. They must annually secure a state license and register with the Agricultural Commissioner. The department regulates the use of all chemicals designated as injurious or restricted. Users, in order to buy or apply these chemicals, must secure a permit from this department. These products could be dangerous to human, animal and plant life.

Permits Issued	229
Pest Control Operators Registered	78

## PLANT QUARANTINE

The purpose of Plant Quarantine is to prevent the introduction and spread of harmful plant pests within the County and State. All incoming plants and plant products are required to be held for agricultural inspection. This work is performed at 191 air, rail and truck terminals, post offices, express agencies and other points of entry within the County. In 1966, 90 shipments, found to contain serious agricultural pests, were intercepted and rejected.

Calls	10,054	
	<u>RELEASED</u>	<u>REJECTED</u>
Shipments	10,632	90
Plants	8,043,701	28,777

## PREDATORY ANIMAL CONTROL

To protect livestock and because many small predatory animals are potential rabies carriers, the department, in cooperation with the United States Department of Interior and the California Department of Agriculture, controls these animals. During 1966 damage included loss of 93 head of livestock, 306 domestic fowls and 442 wild game.

Calls	1,266
Bobcats Taken	34
Coyotes Taken	105
Foxes Taken	81
Others Taken (Raccoons, Skunks, etc.)	265

## RODENT AND PEST ANIMAL CONTROL

Ground squirrels are serious agricultural pests and are known carriers of human diseases, such as Tularemia and Bubonic Plague. Because of this, the department conducts a countywide ground squirrel eradication program. Poison baits to control rats, gophers and field mice are sold to commercial growers on a cost basis. Our cooperation is also extended to the County Health Department in urban area rodent control.

Calls	557
Acres Inspected	11,163
Acres Treated	178

## SEED INSPECTION

For the purpose of insuring compliance with the California Seed Law's quality standards, agricultural and vegetable seed is inspected.

Calls	360
Dealers	223
Lots Inspected	1,477
Lots in Violation	76
Official Samples Taken	17

## STANDARDIZATION

In order to protect both producers and consumers, a major activity of our department is the inspection of fresh fruits, vegetables, eggs, honey, nuts and poultry meat. During 1966 the following field, packing house, wholesale and retail market inspections were made:

Calls	16,252	
<u>COMMODITIES</u>	<u>INSPECTIONS</u>	<u>VIOLATIONS</u>
Produce (containers)	9,434,124	74,372
Eggs (dozens )	2,927,792	82,947
Poultry (packages )	295,630	120
Honey (containers)	336,075	-

The Golden Gate Produce Terminal in South San Francisco continues to be one of the largest wholesale fruit and vegetable outlets in the West. Produce at the terminal is received and sold throughout California, the United States and many foreign countries. The 1966 gross was reported to be over 94 million dollars.

## STATISTICS

As required by the State Agricultural Code, the department publishes an annual report showing San Mateo County's acreage and production value of crops grown. Upon request, copies are furnished to other agricultural, educational and governmental agencies; allied industries, and interested parties. Statistical data regarding specific crops is furnished upon request.

Calls	720
-------	-----

## SURVEY AND PEST DETECTION

To detect and prevent the introduction and spread of such serious agricultural pests as Japanese Beetle, Gypsy and Brown Tail Moths, Citrus White Fly, Khapra Beetle and various Fruit Flies, annual surveys and insect trapping programs are conducted throughout the county.

Calls	2,156
Traps Used	326

## WEED CONTROL

Certain weeds, which by their growth and reproductive habits, are extremely difficult to eradicate have been designated by the State Department of Agriculture as primary and secondary noxious weeds. Surveys of the county's agricultural and suburban areas are continually conducted to determine their

presence; control work, under a service agreement with the State Division of Highways, is performed along designated state highways. The county receives reimbursement for this work.

Calls	380
Acres Inspected	5,543.25
Acres Treated	169.95

#### OTHER ACTIVITIES

1. During 1966 a total of 12,129 public service calls were received. Problems of concern included plant insect and disease control, weed control and agricultural and home garden cultural procedures.
2. At the request of the State Department, the University of California, scientific groups and various agricultural organizations, staff members attended 335 meetings involving professional problems.
3. As United States Department of Commerce representatives, this department was responsible for the operation and maintenance of two Coastside weather stations.
4. Supervised the abatement of weeds on unimproved properties in two residential districts and computed proportional costs for property assessments.
5. Staff members spoke before garden, farm and service organizations and school groups.
6. Prepared and issued monthly and annual reports to the State Director of Agriculture and, in addition, a narrative and statistical report was compiled monthly for the County Board of Supervisors.
7. Reported weekly to the California Crop and Livestock Report Service on the harvesting and handling of crops and livestock, and the weather's effect upon them.
8. Post-entry quarantine inspections were performed at the growing grounds of foreign plant importers.
9. Applications of insecticides were applied to elm trees along county roads to control the serious elm pest, Elm Leaf Beetle.
10. In cooperation with the Agricultural Extension Service, information furnished by the University of California, the United States Department of Agriculture and various other agencies was distributed.
11. Collaborated with the State Department of Agriculture on problems related to poison residue on both edible crops and animals.
12. To achieve a superior quality product for the benefit of the consumer and to promote a more equitable return to the growers, Marketing Orders, requested by the industry, control certain agricultural commodities. Our assistance was extended to the Artichoke and Brussels Sprouts Advisory Boards.

13. Assisted the State Department of Agriculture in the maintenance of a seed potato disease test plot on the Coastside.
14. We cooperated with the Air Pollution Control Board in matters relating to agriculture.
15. Extended assistance to the County Health and Welfare Department and the State Division of Industrial Safety in cases involving possible injury to agricultural workers from the improper handling of pesticides.

## ANNUAL CROP REPORT

VEGETABLE CROPS

Crop	Year	Harvested Acreage	P R O D U C T I O N			V A L U E	
			Per Acre	Total	Unit	Per Unit	Total
Artichoke							
Total	1966	710	3.87	2,750	Ton	\$178.36	\$ 490,500
	1965	720	3.83	2,755	"	184	507,100
Fresh Mkt.	1966	710	3.24	2,300	"	184	423,000
	1965	720		2,340	"	192	449,000
Processing	1966			450	"	150	67,500
	1965			415	"	140	58,100
Beans, Green	1966	60	2.42	145	"	166.20	24,100
	1965	18	3.39	61	"	155.75	9,500
Beets, Table	1966	9	8.33	75	"	206	15,400
	1965	7	8.57	60	"	192	11,500
Broccoli, Sprouting	1966	1	2.5	2.5	"	110	275
	1965	4	2.25	9	"	107	963
Brussels Sprouts							
Total	1966	1,350	5.29	7,140	"	241.74	1,726,000
	1965	1,150	5.46	6,280	"	234.70	1,474,000
Fresh Mkt.	1966			1,020	"	192	196,000
	1965			840	"	200	168,000
Processing	1966			6,120	"	250	1,530,000
	1965			5,440	"	240	1,306,000
Cabbage	1966	50	11.4	570	"	51	29,100
	1965	55	11.81	650	"	48	31,200
Calabresi	1966	3	3.5	10.5	"	388	4,070
	1965	3	3.57	10.7	"	380	4,070
Carrots	1966	4	8.4	33.6	"	118	3,960
	1965	5	8.6	43	"	105	4,520
Celery	1966	11	30	330	"	62	20,500
	1965	11	30.9	340	"	59.50	20,200
Celery Root	1966	4	4.35	17.4	"	134	2,330
	1965	1	4.4	4.4	"	141.37	622
Chard	1966	23	13.9	319	"	72	23,000
	1965	32	13.5	432	"	80	34,600

# VEGETABLE CROPS

Crop	Year	Harvested Acreage	P R O D U C T I O N			V A L U E	
			Per Acre	Total	Unit	Per Unit	Total
Corn	1966	14	4.14	58	Ton	\$110	\$ 6,380
	1965	15	4.27	64	"	110	7,040
Dandelion Root	1966	3	6	18	"	170	3,060
	1965	3	6.33	19	"	168	3,190
Greenleaf* Vegetables	1966	6	6.5	39	"	84.61	3,300
	1965	6	6.5	39	"	99.74	3,890
Leeks	1966	8	16	128	"	150	19,200
	1965	5	16	80	"	150	12,000
Lettuce All Var.	1966	189	10.79	2,040	"	77.94	159,000
	1965	180	9.89	1,780	"	75.91	135,000
Parsley	1966	12	9	108	"	240	25,900
	1965	11	9.36	103	"	225	23,200
Peas, Market	1966	542	2.36	1,280	"	273	349,000
	1965	640	2.38	1,523	"	214	326,000
Potatoes	1966	139	15.54	2,160	"	43.70	94,400
	1965	112	13.08	1,465	"	51.40	75,300
Radish	1966	53	12.49	662	"	96	63,600
	1965	52	13.1	682	"	92	62,700
Spinach	1966	22	2.5	55	"	184	10,100
	1965	18	2.55	46	"	150	6,900
Spinach New Zealand	1966	15	8.33	125	"	204	25,500
	1965	15	9	135	"	200	27,000
Squash Winter	1966	50	14.8	740	"	60.13	44,500
	1965	14	10.28	144	"	48.33	6,960
Summer	1966	4	10.5	42	"	191.42	8,040
	1965	3	10.7	32	"	175	5,600

\* Includes Kale and Mustard Greens, Rapini and Turnip Greens.

# VEGETABLE CROPS

Crop	Year	Harvested Acreage	P R O D U C T I O N			V A L U E	
			Per Acre	Total	Unit	Per Unit	Total
Miscellaneous*							
Vegetables,							
Field and In-							
door Grown	1966	24					\$ 1,710,000
	1965	17					1,542,000
* Includes Anise, Cauliflower, Garlic, Green Onions, Mushrooms, Parsnips, Turnips, and Seasoning Plants.							
TOTAL	1966	3,306					\$ 4,861,215
	1965	3,097					4,335,055

## FIELD CROPS

Beans, Dry							
Edible	1966	60	.68	40.5	Ton	\$200	\$ 8,100
	1965	24	.50	12	"	210	2,520
Fava	1966	-					-
	1965	42	.90	38	"	195	7,410
Barley	1966	1,300	.87	1,130	"	49	55,400
	1965	1,600	.77	1,230	"	47.20	58,100
Hay							
Grain	1966	3,700	1.8	6,660	"	25.50	170,000
	1965	3,800	1.82	6,920	"	22	152,000
Other Tame	1966	650	.98	640	"	20	12,800
	1965	970	1.46	1,420	"	18	25,600
Oats	1966	2,300	.60	1,380	"	60	82,800
	1965	3,400	.40	1,360	"	55	74,800
Pasture							
Irrigated	1966	660			Acre	42	27,700
	1965	780			"	39	30,400
Other	1966	40,000			"	3.90	156,000
	1965	39,000			"	3.85	150,000
TOTAL	1966	48,670					\$ 512,800
	1965	49,616					500,830

# SEED CROPS

Crop	Year	Harvested Acreage	P R O D U C T I O N			V A L U E	
			Per Acre	Total	Unit	Per Unit	Total
Brussels Sprouts	1966			175	Lb.	\$ 14	\$ 2,450
	1965			250	"	14	3,500
Vetch	1966	135	.10	14	Ton	120	1,680
	1965	35	.43	15	"	140	2,100
Peas	1966	75		20	cwt	18	360
	1965	96		105	"	18	1,890
						\$	4,490
TOTAL	1966	210					7,490
	1965	131					

# FRUIT AND NUT CROPS

Apples Total	1966	50	4.4	220	Ton	\$109.50	\$ 24,100
	1965	52	4.09	213	"	107.51	22,900
Fresh	1966		3	150	"	142	21,300
	1965		2.94	153	"	130	19,900
Processing	1966			70	"	40	2,800
	1965			60	"	50	3,000
Apricots, Dry	1966	3	1	3	"	880	2,640
	1965	3	.83	2.5	"	790	1,980
Pears	1966	4	1.4	5.6	"	80	448
	1965	5	1.8	9	"	125	1,120
Prunes	1966	17	2.05	35	"	320	11,200
	1965	17	2	34	"	224	7,620
Strawberries Total	1966	46	8.91	410	"	485.10	198,900
	1965	50	9.1	455	"	471.64	214,600
Fresh	1966			372	"	500	186,000
	1965			400	"	484	194,000
Processing	1966			38	"	340	12,900
	1965			55	"	374	20,600
Walnuts	1966	34	.147	5	"	500	2,500
	1965	34	.18	6	"	500	3,000

# FRUIT AND NUT CROPS

Crop	Year	Harvested Acreage	P R O D U C T I O N			V A L U E	
			Per Acre	Total	Unit	Per Unit	Total
Miscellaneous*							
Fruits	1966	3					\$ 840
	1965	3					810
TOTAL	1966	157					\$ 240,628
	1965	164					252,030

\* Includes Grapes, Peaches, Plums and Bushberries.

# FLORAL AND NURSERY CROPS OUTDOOR GROWN

Item	Year	P R O D U C T I O N			V A L U E	
		Area Acres	Production	Unit	Per Unit	Total
Acacia	1966	75	7,500	Tree	\$ 13	\$ 97,500
	1965	75	7,500	"	12.75	95,600
Agapanthus	1966	6	17,100	Dozen	.90	15,400
	1965	5	14,500	"	.875	12,700
Aster	1966	1	175,000	Bloom	.04	7,000
	1965	1	185,000	"	.035	6,480
Calla Lily	1966	20	121,000	Dozen	.65	78,600
	1965	18	110,000	"	.64	70,400
Chrysanthemum Total	1966	45				496,900
	1965	40				430,500
Standard	1966	4	192,000	Bloom	.135	25,900
	1965	4	192,000	"	.13	25,000
All Other Types*	1966	9	1,088,000	"	.11	120,000
	1965	8	1,037,000	"	.095	98,500
Pompon	1966	32	692,000	Bunch	.507	351,000
	1965	28	606,000	"	.506	307,000
Cut Foliage	1966	76				144,000
	1965	77				178,000
Gladiolus	1966	2	10,800	Dozen	.85	9,180
	1965	2	11,000	"	.80	8,800

\* Includes Fujii, Spider, Disbuds, Anemone, etc.

FLORAL AND NURSERY CROPS OUTDOOR GROWN

Item	Year	<u>PRODUCTION</u>		Unit	<u>V A L U E</u>	
		Area Acres	Production		Per Unit	Total
Heather	1966	126	394,000	Bunch	\$ .45	\$ 177,000
	1965	93	395,000	"	.46	182,000
Iris	1966	55	209,000	Dozen	.65	136,000
	1965	47	164,000	"	.60	98,400
Marguerites	1966	95	1,600,000	Bunch	.27	432,000
	1965	93	1,437,000	"	.266	382,000
Narcissus	1966	25	1,875,000	Blcom	.0175	32,800
	1965	29	2,146,000	"	.018	38,600
Shasta Daisy	1966	40	5,200,000	"	.03	156,000
	1965	33	4,455,000	"	.028	125,000
Stock	1966	13	59,800	Dozen	.60	35,900
	1965	14	65,800	"	.50	32,900
Strawflowers	1966	112	35,000	Box	16.40	574,000
	1965	139	45,000	"	14.73	663,000
Violets	1966	9	45,000	Dz. Bunch	1.50	67,500
	1965	8	40,000	" "	1.40	56,000
Bulbs	1966		790,000	Bulbs		63,000
	1965		685,000	"		52,000
Miscellaneous Flowers	1966	29				59,800
	1965	28				58,000
Herbaceous Perennials	1966	9	800,000	Plants	.128	102,000
	1965	8	712,000	"	.114	81,200
Ornamental Nursery Stock	1966					1,175,000
	1965					1,540,000
TOTAL	1966	738				\$ 3,859,580
	1965	710				4,111,580

FLORAL AND NURSERY CROPS GLASSHOUSE GROWN

Item	Year	PRODUCTION		Unit	V A L U E	
		Area	Production		Per	Total
		Sq. Ft.			Unit	
<u>Cut Flowers</u>						
Carnations	1966	2,502,000	51,815,000	Bloom	\$ .06	\$ 3,109,000
	1965	2,242,000	48,015,000	"	.058	2,785,000
Chrysanthemum Total	1966	1,780,000				748,000
	1965	1,677,000				680,000
Standard	1966	1,224,000	3,600,000	"	.144	518,000
	1965	1,150,000	3,450,000	"	.1375	474,000
All Other Types*	1966	267,000	1,121,000	"	.114	128,000
	1965	237,000	995,000	"	.102	101,000
Pompon	1966	289,000	187,000	Bunch	.548	102,000
	1965	290,000	188,000	"	.558	105,000
Ferns	1966	199,000	1,372,000	"	.18	247,000
	1965	172,000	1,290,000	"	.185	239,000
Gardenias	1966	127,000	1,857,000	Bloom	.097	180,000
	1965	132,000	1,952,000	"	.098	191,000
Orchids	1966	237,000	592,500	"	.55	326,000
	1965	218,300	535,000	"	.68	364,000
Roses	1966	468,000	8,164,000	"	.068	555,000
	1965	410,000	7,150,000	"	.069	493,000
Snapdragon	1966	36,400	31,000	Bunch	1.25	38,800
	1965	98,700	79,000	"	1.20	94,800
Miscellaneous Cut Flowers	1966	55,000		Sq. Ft.	1.00	55,000
	1965	63,000		"	.91	57,300
Flowering Pot Plants	1966	1,430,000	2,190,000	Plants	1.06	2,321,000
	1965	978,000	2,222,000	"	.97	2,155,000
<u>Propagated</u>						
Bedding Plants	1966	2,000	1,000	Flats	4.60	4,600
	1965	3,000	900	"	4.44	4,000

\* Includes Fujii, Spiders, Disbuds, Anemone, etc.

FLORAL AND NURSERY CROPS GLASSHOUSE GROWN

Item	Year	P R O D U C T I O N		Unit	V A L U E	
		Area Sq. Ft.	Production		Per Unit	Total
Ornamental Nursery Stock	1966	359,000	14,177,000	Plants	\$ .065	\$ 922,000
	1965	359,300	14,665,000	"	.06	880,000
TOTAL		1966	7,195,400			\$ 8,506,400
		1965	6,353,300			7,943,100

Total Glass and Plastic Area                      5,930,000 Square Feet

123 Glass or Plastic Ranges                              167 Growers

TOTAL VALUE, ALL FLORAL AND NURSERY CROPS	1966	\$12,365,980
	1965	12,054,680

LIVESTOCK AND POULTRY

Item	Year	P R O D U C T I O N		Unit	V A L U E	
		Number of Head	Total Liveweight		Per Unit	Total
Cattle and Calves	1966	5,100	35,150	cwt.	\$ 22.30	\$ 784,000
	1965	3,560	25,700	"	20.36	523,300
Milkers Sold	1966	1,000		Head	260	260,000
	1965	790		"	240	190,000
Sheep and Lambs	1966	1,300	1,295	cwt.	20.78	26,900
	1965	1,130	1,120	"	20.18	22,600
Hogs and Pigs	1966	2,550	5,630	"	24.51	138,000
	1965	2,600	5,650	"	21.24	120,000
Other Meat Animals and Birds	1966	2,100	9,300	lb.	.212	1,970
	1965	2,100	9,500	"	.213	2,020
TOTAL		1966				\$ 1,210,870
		1965				857,920

# LIVESTOCK, POULTRY AND APIARY PRODUCTS

Item	Year	Production	Unit	V A L U E	
				Per Unit	Total
Milk, Market	1966	125,000	cwt.	\$ 4.70	\$ 588,000
	1965*	136,000	"	4.43	602,000
Milk, Manufacturing	1966	1,740	"	3.74	6,500
	1965*	2,170	"	3.18	6,900
Wool	1966	10,500	lb.	.514	5,400
	1965	14,200	"	.447	6,350
Eggs, Chicken	1966	19,300	dz.	.36	6,950
	1965	17,900	"	.301	5,390
Honey	1966	39,000	lb.	.12	4,680
	1965	42,000	"	.095	3,990
Beeswax	1966	1,300	"	.48	624
	1965	1,400	"	.44	616

\* Revised

TOTAL	1966	\$ 612,154
	1965	625,246

## JANUARY 1 INVENTORY OF LIVESTOCK AND POULTRY - 1966-1967

Item	January 1, 1966	January 1, 1967
Cattle and Calves		
All	10,100	9,300
Milk Cows, 2 years and over	1,100	1,000
Sheep and Lambs		
All	2,130	1,650
Stock Sheep	750	550
Hogs and Pigs	2,500	2,500
Horses	140	100
Hens and Pullets	1,600	1,250

R E C A P I T U L A T I O N

PRODUCTION VALUES

	1965	1966
Vegetable Crop	\$ 4,335,055	\$ 4,861,215
Flower and Nursery Crops	12,054,680	12,365,980
Field Crops	500,830	512,800
Seed Crops	7,490	4,490
Fruit and Nut Crops	252,030	240,628
Livestock and Poultry	857,920	1,210,870
Livestock, Poultry and Apiary Products	625,246	612,154
TOTAL	\$18,633,251	\$19,808,137

COMPARATIVE PRODUCTION VALUES

1957	\$15,774,729
1958	17,154,351
1959	17,817,818
1960	17,389,074
1961	16,394,412
1962	17,658,700
1963	17,747,870
1964	18,003,286

Three vertical black bars of varying widths are positioned on the left side of the page. The bars are solid black and extend from near the top to near the bottom of the page.

1967

# AGRICULTURAL REPORT 1967



OUR 1967 STATE FAIR EXHIBIT

UNIVERSITY OF CALIFORNIA  
DAVIS

MAR 29 1968

GOV'T. DOCS. - LIBRARY

**SAN MATEO COUNTY**  
AGRICULTURAL COMMISSIONER

Honorable Board of Supervisors  
County of San Mateo  
and  
Earl Coke, Director  
State Department of Agriculture

Gentlemen:

With great pleasure I submit to you the Annual Crop Report, indicating the value, acreage, and production of all the agricultural commodities, including livestock, grown in San Mateo County during 1967. This report is required by Section 65.5 of the California Agricultural Code and represents the gross value received by the growers.

A new all-time record of \$26,032,152, shows a gain of \$5,906,035 over last year. Carnations once again set a new single crop record of \$4,153,000, an increase of \$1,044,000, and Flowering Potted Plants were second with a value of \$3,243,000.

This substantial increase was made possible by the several glasshouses built on the Coastside the last few years, which have reached full production capacity, by favorable weather and marketing conditions and by the continuously developing efficiency of our growers.

Floriculture and Ornamental Crops increased \$4,393,570 to \$16,759,550. Besides Carnations and Flowering Plants, substantial gains were shown by Chrysanthemums and Roses, while Callas, Iris and Stocks sustained losses.

Vegetables gained \$1,117,305 to \$5,978,520. Healthy gains were recorded by Mushrooms, Pumpkins, Chard and Lettuce, however Peas, Potatoes, Celery and Artichokes were on the losing side.

Livestock was up \$330,268 to \$2,465,122 with Pigs and Hogs showing a gain and Cattle and Calves losing.

Field and Seed Crops increased \$49,350 to \$566,640 with Hay, Pasture, Brussels Sprouts and Fava Bean seed leading, while Oats, Barley and Dry Beans were losing.

Fruit and Nut Crops gained \$15,542 to \$262,320 with Strawberries and Walnuts on the plus side, while Apples, Pears and Prunes declined severely.

I wish to express our appreciation to the many individuals, firms and agencies who have made available the information contained in this report.

Respectfully submitted,



Victor A. Canavese, Commissioner  
Department of Agriculture  
County of San Mateo

VAC:mw  
600 - 3/68

SAN MATEO COUNTY

Board of Supervisors

Jean Fassler..Chairman

T. Louis Chess  
James V. Fitzgerald

Robert B. St. Clair  
William M. Werder

E. R. Stallings  
County Manager

DEPARTMENT OF AGRICULTURE

Agricultural Commissioner

Victor A. Canavese

Assistant Commissioner

Vacant

Deputy Commissioners

Mervin J. Cresta - II  
Clarence M. Sill - II  
William E. Davis - I  
Louis A. Masini - I

Senior Inspectors

Philip Economon  
George Ginilo  
Robert E. Runels  
Curtis C. Van Sandt

Inspectors

George M. Gregory  
Melvin A. Mello  
Wallace L. Plummer  
Floyd E. Sampson  
Two Positions Vacant

Part-Time  
Apiary Inspector

Alfred M. Marion

Weed and Rodent  
Inspector

Arnold F. Roach

Predatory Animal  
Hunters

Marion C. Gray  
Louis Lee

Typist Clerk II

Barbara J. Marcopulos

Steno Clark I

Maxine I. Wright

## FUNCTIONS AND ACTIVITIES

### SAN MATEO COUNTY DEPARTMENT OF AGRICULTURE

Year - 1967

The functions and responsibilities of this department are authorized and under the direction of the State Department of Agriculture. These include the enforcement of applicable provisions of the Agricultural, Administrative and other California State Codes and Federal Regulations; advancement of the agricultural industry; protection of both growers and consumers and, within the authority delegated, to protect the health and safety of man and animal.

Additional responsibilities and activities may be assigned by the County Board of Supervisors.

Following is detailed information covering our activities:

#### APIARY

Registration and inspection of apiaries in the county are made every year, as required by the State Agricultural Code. This helps to prevent the spread of American Foul Brood, and other serious and highly contagious bee diseases. Apiaries or colonies infected with American Foul Brood are required to be destroyed.

	<u>APIARIES</u>	<u>COLONIES</u>
Inspections	79	804
Diseased	12	12
Destroyed	10	10

#### CERTIFICATION

Shipments of plants and plant products exported into foreign countries, other states and counties must be inspected and certified as being pest free. In compliance with these regulations the following certificates were issued:

Intrastate	58,173
Interstate and Foreign	53,390

#### CIVILIAN DEFENSE

A current inventory of the wholesale food stocks in the county is maintained, for use by the California Disaster Office, in the event of a serious emergency.

#### FAIRS

Design, construction and maintenance of San Mateo County's floral exhibit at the California Exposition, in Sacramento, is one of the major projects. Flowers and ornamental plants were supplied by 62 county growers. San Mateo County has been a consistent winner and in 1967 a record \$2,300 was won and deposited in the County Treasury.

Assistance in the judging and organization of the San Mateo County Fair & Fiesta is given and the Agricultural Commissioner is an ex officio member of the Board of Directors.

Calls

702

## LABORATORY

Samples of irrigation water may be submitted for salinity analysis. High saline content may cause plant injury.

Tests Made

7

Poison grains for the control of pest animals is mixed. 1,100 pounds were prepared in 1967.

Specimens of plant roots and foliage are prepared, processed and forwarded to the Bureau of Plant Pathology, Sacramento, for laboratory analysis to determine the presence of Burrowing Nematode and other serious parasitic nematode pests.

Samples Taken and Tests Made	365
Times Plant Parasitic Nematodes Found	72

## NURSERY INSPECTION

San Mateo County has 233 plant nurseries with an annual business in excess of \$3,050,000. State Nursery regulations provide that each location be inspected not less than once each year for compliance with cleanliness and grading standards.

Calls	1,569
Nurseries Inspected	263
Notices of Noncompliance	81
Intercounty Nursery Stock Certificates Issued	58,076
Nurseries Qualified to Use Intercounty Certificates	73

## PEST CONTROL ENFORCEMENT

State regulations provide that all agricultural Pest Control Operators must secure a state license annually and register with the Agricultural Commissioner in those counties where they perform work.

Permits to buy or apply injurious or restricted chemicals are required. Issuance of these permits more effectively controls their use, as these chemicals could prove dangerous to human, animal and plant life.

Calls	89
Permits Issued	238
Pest Control Operators Registered	83

## PEST CONTROL INFORMATION

Assistance and advice to growers, nurserymen, park departments, schools, pest control firms and home owners is given on horticultural and pest control problems. Identification of insects, plants, diseases and weeds, as well as information on the cultural care of agricultural and ornamental plants, is also available.

Calls	2,084
-------	-------

## PLANT QUARANTINE

Quarantine regulations require that all incoming plants and plant products be held for agricultural inspection to prevent the introduction and dissemination of pests and diseases within the county and state. Inspections are made at 191 air, rail and truck terminals, post offices, express agencies and other points of entry within the county.

Calls	10,145	
	<u>RELEASED</u>	<u>REJECTED</u>
Shipments	14,049	91
Plants	6,857,807	10,004

## PREDATORY ANIMAL CONTROL

In cooperation with the United States Department of the Interior and the California Department of Agriculture, San Mateo County has the services of a full time predatory animal hunter, to maintain control of small predators in the area which are potential rabies carriers. During 1967 losses from these animals included 45 head of livestock and 180 domestic fowl.

Calls	1,129
Bobcats Taken	29
Coyotes Taken	163
Foxes Taken	45
Others Taken (Raccoons, Skunks, etc.)	147

## RODENT AND PEST ANIMAL CONTROL

A countywide program for the eradication of ground squirrels, known carriers of Tularemia and Bubonic Plague, is constantly maintained. Poison baits for control of rats, gophers and field mice are sold to commercial growers on a cost basis. Cooperation is given to the County Health Department in their urban area rodent control work.

Calls	697
Acres Inspected	11,400
Acres Treated	166

## SEED INSPECTION

Inspection is made of agricultural and vegetable seed to insure compliance with quality standards of the California Seed Law.

Calls	348
Dealers	210
Lots Inspected	1,716
Lots in Violation	62
Official Samples Taken	35

## STANDARDIZATION

Inspections of fresh fruits, vegetables, eggs, honey, nuts and poultry meat, for conformity to state standards, are made which affords protection to

## STANDARDIZATION - CON'T.

producers and consumers. During 1967 the following field, packing house, whole-sale and retail market inspections were made:

Calls	14,733	
<u>COMMODITIES</u>	<u>INSPECTIONS</u>	<u>VIOLATIONS</u>
Produce (containers)	9,617,275	75,850
Eggs (dozens )	1,599,672	64,039
Poultry (packages )	171,390	16
Honey (containers)	180,775	48

The Golden Gate Produce Terminal in South San Francisco is recognized as one of the largest wholesale fruit and vegetable outlets in the West. Over 8,707,000 containers of produce were received and inspected during 1967, with a reported sales gross of over 97 million dollars.

## STATISTICS

In compliance with the State Agricultural Code an annual report is prepared showing the acreage and production value of crops grown in San Mateo County. This publication is available to agricultural, educational and governmental agencies; allied industries and interested parties. Statistical data for specific crops is furnished upon request.

Calls	736
-------	-----

## SURVEY AND PEST DETECTION

Countywide annual surveys and insect trapping programs are undertaken for detecting and preventing establishment of serious agricultural pests, such as Japanese Beetle, Gypsy and Brown Tail Moths, Citrus White Fly, Khapra Beetle and various Fruit Flies.

Calls	2,448
Traps Used	334

## WEED CONTROL

The State Department of Agriculture has classified as primary and secondary noxious weeds many plants which, because of their growth and reproduction habits, are extremely difficult to eradicate. Surveillance of the county's agricultural and suburban areas, and Southern Pacific's right-of-way, is maintained and assistance in control is given. However, the control of noxious weeds on roads leading to the agricultural area is performed by our department. Under a service agreement with the State Division of Highways weed eradication work is performed along designated state highways. The county is reimbursed for this work.

Calls	411
Acres Inspected	3,821.9
Acres Treated	203.475

## OTHER ACTIVITIES

1. Public service calls during 1967 totaled 11,930. Problems presented were varied and included plant insect and disease control, weed control, agriculture and home garden culture practices.
2. A total of 348 meetings were attended by various staff members. These were held by the State Department of Agriculture, the University of California, scientific panels and numerous agricultural organizations.
3. Operated and maintained two Coastside weather stations as representatives for the United States Commerce Department.
4. Supervised the abatement of weeds on unimproved properties in two residential districts and computed proportional costs for property assessments.
5. Speakers for garden, farm, school and service organizations were provided.
6. Compiled and forwarded monthly and annual reports to the State Director of Agriculture. Also, a narrative and statistical report was prepared monthly for the County Board of Supervisors.
7. Completed a weekly report form for California Crop and Livestock Service on crops harvested, weather effects and livestock conditions.
8. Growing grounds of foreign plant importers were given post-entry quarantine inspections.
9. Insecticide sprays were applied to elm trees along county roads for control of the serious elm pest, Elm Leaf Beetle.
10. Maintained two libraries for pertinent information furnished by the University of California, the U. S. Department of Agriculture and various other agencies.
11. Collaborated with the State Department of Agriculture on problems related to poison residue on edible crops for human or animal consumption.
12. At the request of the Industry Marketing Orders, control certain agricultural commodities. These insure a superior product for the consumer and a more equitable return to the grower. Assistance was given to the Artichoke, Brussels Sprout and Peach and Plum Advisory Boards.
13. Cooperated with the State Department of Agriculture in maintaining a seed potato disease test plot on the Coastside.
14. On agricultural problems assistance was given the Air Pollution Control Board.
15. Assisted the County Health and Welfare Department and the State Division of Industrial Safety in the investigation of cases involving possible injury to agricultural workers from the improper application or handling of injurious pesticides.

LEADING AGRICULTURAL COMMODITIES

Carnations	\$ 4,153,000
Flowering Plants	3,243,000
Brussels Sprouts	1,732,000
Chrysanthemums	1,623,300
Ornamental Nursery Stock	1,242,000
Cuttings & Liners	1,151,000
Roses	805,900
Marguerites	802,000
Hogs and Pigs	795,000
Strawflowers	690,000
Cattle and Calves	642,000
Milk	623,420

\*\*\*\*\*

SAN MATEO COUNTY POPULATION

1940	112,000
1945	167,000
1950	239,000
1955	345,000
1960	444,000
1965	527,000
1967	555,000

## ANNUAL CROP REPORT

VEGETABLE CROPS

Crop	Year	Harvested Acreage	P R O D U C T I O N			V A L U E	
			Per Acre	Total	Unit	Per Unit	Total
Artichoke Total	1967	687	3.59	2,465	Ton	\$195.05	\$ 480,800
	1966	710	3.87	2,750	"	178.36	490,500
	Fresh Mkt.	1967		2,220	"	200.00 (	444,000)
		1966		2,300	"	184.00 (	423,000)
	Processing	1967		245	"	150.00 (	36,800)
		1966		450	"	150.00 (	67,500)
Beans, Snap	1967	21	3.81	80	"	280.00	22,400
	1966	60	2.42	145	"	166.20	24,100
Beets, Table	1967	21	4.33	91	"	219.00	19,900
	1966	9	8.33	75	"	206.00	15,400
Broccoli, Sprouting	1967	5	3.40	17	"	164.00	2,790
	1966	1	2.50	2.5	"	110.00	275
Brussels Sprouts Total	1967	1,220	6.48	7,911	"	219.00	1,732,000
	1966	1,350	5.29	7,140	"	241.74	1,726,000
	Fresh Mkt.	1967		791	"	210.00 (	166,000)
		1966		1,020	"	192.00 (	196,000)
	Processing	1967		7,120	"	220.00 (	1,566,000)
		1966		6,120	"	250.00 (	1,530,000)
Cabbage	1967	83	9.37	778	"	53.60	41,700
	1966	50	11.40	570	"	51.00	29,100
Calabresi	1967	7	10.40	73	"	240.00	17,500
	1966	3	3.50	10.5	"	388.00	4,070
Carrots	1967	7	9.00	63	"	167.00	10,500
	1966	4	8.40	33.6	"	118.00	3,960
Celery	1967	6	28.70	172	"	94.40	16,200
	1966	11	30.00	330	"	62.00	20,500
Celery Root	1967	6	4.00	24	"	168.00	4,030
	1966	4	4.35	17.4	"	134.00	2,330
Chard	1967	25	22.00	551	"	106.00	58,400
	1966	23	13.90	319	"	72.00	23,000

VEGETABLE CROPS

Crop	Year	Harvested Acreage	P R O D U C T I O N			V A L U E	
			Per Acre	Total	Unit	Per Unit	Total
Corn, Sweet	1967	13	4.46	58	Ton	\$100.00	\$ 5,800
	1966	14	4.14	58	"	110.00	6,380
Dandelion Root	1967	6	4.50	27	"	267.00	7,200
	1966	3	6.00	18	"	170.00	3,060
Greenleaf Vegetables*	1967	22	6.50	143	"	253.00	36,200
	1966	6	6.50	39	"	84.61	3,300
Leeks	1967	17	8.00	136	"	219.00	29,800
	1966	8	16.00	128	"	150.00	19,200
Lettuce All Var.	1967	297	6.57	1,950	"	84.00	164,000
	1966	189	10.79	2,040	"	77.94	159,000
Parsley	1967	9	9.00	79	"	375.00	29,600
	1966	12	9.00	108	"	240.00	25,900
Peas, Market	1967	439	1.95	856	"	264.00	226,000
	1966	542	2.36	1,280	"	273.00	349,000
Potatoes	1967	111	11.30	1,250	"	50.40	63,000
	1966	139	15.54	2,160	"	43.70	94,400
Radish	1967	226	4.00	904	"	120.00	108,000
	1966	53	12.49	662	"	96.00	63,600
Spinach	1967	81	2.81	228	"	160.00	36,500
	1966	22	2.50	55	"	184.00	10,100
Spinach New Zealand	1967	28	9.00	252	"	200.00	50,400
	1966	15	8.33	125	"	204.00	25,500
Squash Winter	1967	94	10.50	987	"	80.00	79,000
	1966	50	14.80	740	"	60.13	44,500
Summer	1967	12	10.00	120	"	140.00	16,800
	1966	4	10.50	42	"	191.42	8,040

\* Includes Kale and Mustard Greens, Rapini and Turnip Greens.

# VEGETABLE CROPS

Crop	Year	Harvested Acreage	P R O D U C T I O N			V A L U E	
			Per Acre	Total	Unit	Per Unit	Total
Miscellaneous Vegetables, Field and In- door Grown*	1967	90					\$ 2,720,000
	1966	24					1,710,000
TOTAL	1967	3,533					\$ 5,978,520
	1966	3,306					4,861,215

\* Includes Anise, Cauliflower, Green Onions, Garlic, Mushrooms, Parsnips, Turnips, Tomatoes and Seasoning Plants.

# FIELD CROPS

Beans, Dry Edible	1967	22	.82	18	Ton	\$226.00	\$ 4,070
	1966	60	.68	40.5	"	200.00	8,100
Fava	1967	54	.93	50	"	240.00	12,000
	1966	-					-
Barley	1967	1,350	.76	1,030	"	48.00	49,400
	1966	1,300	.87	1,130	"	49.00	55,400
Hay Grain	1967	4,690	1.89	8,880	"	24.00	213,000
	1966	3,700	1.87	6,660	"	25.50	170,000
Other Tame	1967	683	1.22	830	"	25.00	20,800
	1966	650	.98	640	"	20.00	12,800
Oats	1967	1,420	.47	661	"	52.00	34,400
	1966	2,300	.60	1,380	"	60.00	82,800
Pasture Irrigated	1967	825			Acre	57.00	47,000
	1966	660			"	42.00	27,700
Other	1967	36,200			"	4.50	163,000
	1966	40,000			"	3.90	156,000
TOTAL	1967	45,244					\$ 543,670
	1966	48,670					512,800

# SEED CROPS

Crop	Year	Harvested Acreage	P R O D U C T I O N		Unit	V A L U E	
			Per Acre	Total		Per Unit	Total
Brussels Sprouts	1967			295	Lb.	\$ 33.80	\$ 9,970
	1966			175	"	14.00	2,450
Beans, Fava	1967			520	Cwt.	25.00	13,000
	1966			-			-
Vetch	1967			-			-
	1966	135	.10	14	Ton	120.00	1,680
Peas	1967			-			-
	1966	75		20	Cwt.	18.00	360
TOTAL	1967	-					\$ 22,970
	1966	210					4,490

# FRUIT AND NUT CROPS

Apples Total	1967	41	2.32	95	Ton	\$102.95	\$ 9,780
	1966	50	4.40	220	"	109.50	24,100
Fresh	1967			45	"	173.00 (	7,780)
	1966			150	"	142.00 (	21,300)
Processing	1967			50	"	40.00 (	2,000)
	1966			70	"	40.00 (	2,800)
Prunes	1967	16	1.94	31	"	255.00	7,900
	1966	17	2.05	35	"	320.00	11,200
Strawberries Total	1967	40	9.35	374	"	560.26	209,540
	1966	46	8.91	410	"	485.10	198,900
Fresh	1967			369	"	563.00 (	208,000)
	1966			372	"	500.00 (	186,000)
Processing	1967			5	"	308.00 (	1,540)
	1966			38	"	340.00 (	12,900)
Walnuts	1967	110	.39	43	"	580.00	24,900
	1966*	110	.157	17.3	"	500.00	8,650

# FRUIT AND NUT CROPS

Crop	Year	Harvested Acreage	P R O D U C T I O N		Unit	V A L U E	
			Per Acre	Total		Per Unit	Total
Miscellaneous							
Fruits**	1967	35				\$	10,200
	1966*	10					3,928

\* Revised

\*\* Includes Apricots, Grapes, Pears, Plums, Bushberries, Peaches and Olives.

TOTAL	1967	242				\$	262,320
	1966*	233					246,778

## FLORAL AND NURSERY CROPS OUTDOOR GROWN

Item	Year	P R O D U C T I O N		Unit	V A L U E	
		Area Acres	Production		Per Unit	Total
<u>Cut Flowers</u>						
Acacia	1967	20	80,000	Bunch	\$ .65	\$ 52,000
	1966	75	7,500	Tree	13.00	97,500
Agapanthus	1967	4	11,400	Doz.	.95	10,800
	1966	6	17,100	"	.90	15,400
Aster	1967	1	179,000	Bloom	.05	8,950
	1966	1	175,000	"	.04	7,000
Calla Lily	1967	9	54,400	Doz.	.95	51,700
	1966	20	121,000	"	.65	78,600
Chrysanthemum						
Total	1967	48				774,000
	1966	45				496,900
Standard	1967	( 16)	2,091,000	Bloom	.15	( 314,000)
	1966	( 4)	192,000	"	.135	( 25,900)
All Other Types*	1967	( 8)	1,464,000	"	.105	( 154,000)
	1966	( 9)	1,088,000	"	.11	( 120,000)
Pompon	1967	( 24)	528,000	Bunch	.58	( 306,000)
	1966	( 32)	692,000	"	.507	( 351,000)
Cut Foliage	1967	70	210,000	"	.80	168,000
	1966	76				144,000
Dahlias	1967	5	500,000	Bloom	.025	12,500
	1966	-				-

FLORAL AND NURSERY CROPS OUTDOOR GROWN

Item	Year	PRODUCTION		Unit	V A L U E	
		Area Acres	Production		Per Unit	Total
Heather	1967	124	388,000	Bunch	\$ .60	\$ 233,000
	1966	126	394,000	"	.45	177,000
Iris	1967	36	137,000	Doz.	.79	108,000
	1966	55	209,000	"	.65	136,000
Marguerites	1967	136	2,291,000	Bunch	.35	802,000
	1966	95	1,600,000	"	.27	432,000
Narcissus	1967	21	1,575,000	Bloom	.0225	35,400
	1966	25	1,875,000	"	.0175	32,800
Shasta Daisy	1967	39	5,070,000	"	.048	243,000
	1966	40	5,200,000	"	.03	156,000
Stock	1967	4	18,400	Doz.	.67	12,300
	1966	13	59,800	"	.60	35,900
Strawflowers	1967	116	36,300	Box	19.00	690,000
	1966	112	35,000	"	16.40	574,000
Violets	1967	9	45,000	Dz. Bunch	2.00	90,000
	1966	9	45,000	"	1.50	67,500
Yarrow	1967	9	56,200	Doz.	.28	15,700
	1966	-	-	-	-	-
Miscellaneous Flowers**	1967	52	260,000	Bunch	.50	130,000
	1966	31	-	-	-	68,980

\* Includes Fujii, Spider, Disbuds, Anemone, etc.

\*\* Includes Gladiolus, Sweet William, Tulips, etc.

Sub-Total	1967	703			\$	3,437,350
	1966	729				2,519,580

Ornamentals

Bulbs	1967	11	555,000	Bulb	\$ .08	\$ 44,400
	1966	-	790,000	"		63,000
Bedding Plants	1967	43	30,800	Flat	2.25	69,300
	1966	-	-	-	-	-

FLORAL AND NURSERY CROPS OUTDOOR GROWN

Item	Year	PRODUCTION		Unit	V A L U E	
		Area Acres	Production		Per Unit	Total
Herbaceous Perennials	1967	7	500,000	Plant	\$ .23	\$ 115,000
	1966	9	800,000	"	.128	102,000
Christmas Trees	1967	230	6,580	Tree	4.87	32,000
	1966	-	-	-	-	-
Nursery Stock	1967	76	-	-	-	1,242,000
	1966	58	-	-	-	1,175,000
TOTAL	1967	1,070	-	-	-	\$ 4,940,050
	1966	796	-	-	-	3,859,580

FLORAL AND NURSERY CROPS GLASSHOUSE GROWN

Item	Year	PRODUCTION		Unit	V A L U E	
		Area Sq. Ft.	Production		Per Unit	Total
<u>Cut Flowers</u>						
Carnations	1967	2,658,000	65,919,000	Bloom	\$ .063	\$ 4,153,000
	1966	2,502,000	51,815,000	"	.06	3,109,000
Chrysanthemum Total	1967	1,780,000				849,300
	1966	1,780,000				748,000
Standard	1967	(1,397,000)	4,190,000	"	.16	( 670,000)
	1966	(1,224,000)	3,600,000	"	.144	( 518,000)
All Other Types*	1967	( 162,000)	682,000	"	.12	( 81,800)
	1966	( 267,000)	1,121,000	"	.114	( 128,000)
Pompon	1967	( 221,000)	150,000	Bunch	.65	( 97,500)
	1966	( 289,000)	187,000	"	.548	( 102,000)
Ferns	1967	278,000	1,919,000	"	.185	355,000
	1966	199,000	1,372,000	"	.18	247,000
Gardenias	1967	123,000	1,846,000	Bloom	.13	240,000
	1966	127,000	1,857,000	"	.097	180,000

FLORAL AND NURSERY CROPS GLASSHOUSE GROWN

Item	Year	P R O D U C T I O N		Unit	V A L U E	
		Area Sq. Ft.	Production		Per Unit	Total
Orchids	1967	266,000	744,000	Bloom	\$ .534	\$ 412,000
	1966	237,000	592,500	"	.55	326,000
Roses	1967	526,000	9,371,000	"	.086	805,900
	1966	468,000	8,164,000	"	.068	555,000
Snapdragons	1967	115,000	105,000	Bunch	1.25	131,000
	1966	36,400	31,000	"	1.25	38,800
Miscellaneous Cut Flowers	1967	47,800		Sq. Ft.	1.25	59,800
	1966	55,000		" "	1.00	55,000
<u>Pot Plants</u>						
Flowering	1967	1,366,000	2,748,000	Plant	1.18	3,243,000
	1966	1,430,000	2,190,000	"	1.06	2,321,000
Indoor Decorative	1967	161,000	705,000	"	.54	381,000
	1966	-	-			-
* Includes Fujii, Spiders, Disbuds, Anemone, etc.						
Sub- Total	1967	7,320,800				\$ 10,630,000
	1966	6,834,400				7,579,800
<u>Propagated</u>						
Redding Plants	1967	17,000	17,100	Flat	\$ 2.25	\$ 38,500
	1966	2,000	1,000	"	4.60	4,600
Cuttings and Liners	1967	288,000	16,446,000	Plant	.07	1,151,000
	1966	359,000	14,177,000	"	.065	922,000
TOTAL	1967	7,625,800				\$ 11,819,500
	1966	7,195,400				8,506,400

FLORAL AND NURSERY CROPS GLASSHOUSE GROWN

Total Glass and Plastic Area	6,188,023 square feet.	
TOTAL VALUE ALL FLORAL CROPS	1967	\$ 14,067,350
	1966	10,099,380
TOTAL VALUE ALL NURSERY CROPS	1967	2,692,200
	1966	2,266,600

LIVESTOCK AND POULTRY

Item	Year	P R O D U C T I O N		Unit	V A L U E	
		Number of Head	Total Liveweight		Per Unit	Total
Cattle and Calves	1967	4,250	29,200	Cwt.	\$ 22.00	\$ 642,000
	1966	5,100	35,150	"	22.30	784,000
Milkers Sold	1967	1,200		Head	295.00	354,000
	1966	1,000		"	260.00	260,000
Sheep and Lambs	1967	1,790	1,960	Cwt.	16.50	32,300
	1966	1,300	1,295	"	20.78	26,900
Hogs and Pigs	1967	17,500	38,400	"	20.70	795,000
	1966**	8,910	19,360	"	24.51	474,500
Other Livestock*	1967					1,850
	1966					1,970

\* Includes Rabbits, Ducks and Chickens.

\*\* Revised

TOTAL	1967	\$ 1,825,150
	1966	1,547,370

LIVESTOCK, POULTRY AND APIARY PRODUCTS

Item	Year	Production	Unit	V A L U E	
				Per Unit	Total
Milk, Market	1967	135,000	Cwt.	\$ 4.55	\$ 614,000
	1966*	122,000	"	4.62	564,000
Milk, Manufacturing	1967	2,380	"	3.96	9,420
	1966*	1,560	"	3.74	5,830
Wool	1967	18,400	Lb.	.30	5,520
	1966	10,500	"	.514	5,400
Eggs, Chicken	1967	15,000	Doz.	.284	4,260
	1966	19,300	"	.36	6,950
Honey	1967	48,200	Lb.	.12	5,780
	1966	39,000	"	.12	4,680
Beeswax	1967	1,600	"	.62	992
	1966	1,300	"	.48	624

\* Revised

TOTAL	1967		\$ 639,972
	1966		587,484

JANUARY 1 INVENTORY OF LIVESTOCK AND POULTRY - 1967-1968

Item	January 1, 1967	January 1, 1968
Cattle and Calves		
All	9,600*	10,800
Milk Cows, 2 years and over	1,100*	1,200
Sheep and Lambs		
Stock Sheep	2,300*	2,600
Hogs and Pigs	4,970*	4,300
Horses	100	110
Hens and Pullets	1,250	1,000

\* Revised

RECAPITULATION

PRODUCTION VALUES

	1966	1967
Vegetable Crops	\$ 4,861,215	\$ 5,978,520
Flower and Nursery Crops	12,365,980	16,759,550
Field Crops	512,800	543,670
Seed Crops	4,490	22,970
Fruit and Nut Crops	246,778	262,320
Livestock and Poultry	1,547,370	1,825,150
Livestock, Poultry and Apiary Products	587,484	639,972
TOTAL	\$ 20,126,117	\$ 26,032,152

COMPARATIVE PRODUCTION VALUES

1958	\$ 17,154,351
1959	17,817,818
1960	17,389,074
1961	16,394,412
1962	17,658,700
1963	17,747,870
1964	18,003,286
1965	18,633,251