



**AgEcon** SEARCH

RESEARCH IN AGRICULTURAL & APPLIED ECONOMICS

*The World's Largest Open Access Agricultural & Applied Economics Digital Library*

**This document is discoverable and free to researchers across the globe due to the work of AgEcon Search.**

**Help ensure our sustainability.**

Give to AgEcon Search

AgEcon Search

<http://ageconsearch.umn.edu>

[aesearch@umn.edu](mailto:aesearch@umn.edu)

*Papers downloaded from **AgEcon Search** may be used for non-commercial purposes and personal study only. No other use, including posting to another Internet site, is permitted without permission from the copyright owner (not AgEcon Search), or as allowed under the provisions of Fair Use, U.S. Copyright Act, Title 17 U.S.C.*

*No endorsement of AgEcon Search or its fundraising activities by the author(s) of the following work or their employer(s) is intended or implied.*



New Zealand Agricultural and  
Resource Economics Society (Inc.)

# MEASURING SECTOR PRODUCTIVITY

Kay Cao & Rod Forbes  
Monitoring & Evaluation, MAF Policy

**Paper presented at the 2007 NZARES Workshop, Wellington,  
New Zealand. August 23, 2007.**

Copyright by author(s). Readers may make copies of this document for non-commercial purposes only, provided that this copyright notice appears on all such copies.



Ministry of Agriculture and Forestry  
Te Manatu Ahuwhenua, Ngāherehere

# MEASURING SECTOR PRODUCTIVITY

Kay Cao & Rod Forbes  
Monitoring & Evaluation, MAF Policy  
NZARES Workshop, 23<sup>rd</sup> August 2007

## Purpose & Outline

- Purposes:
  - What MAF's doing and future research;
  - Discussion of an alternative method.
- Outline:
  - o Background
  - o Current results
  - o Current method and data
  - o Alternative method (Labour share)
  - o Results comparison
  - o Conclusion & Future research

## Background

- MAF's Growth and Productivity project
- Productivity measurement, Trade performance, and others
- Started 06/07, now second year
- Productivity measurement works with Statistics NZ and Massey University;
- Currently using 2 methods: Index number (Statistics NZ data) and Malmquist (Massey's project using MAF's Farm Monitoring data)

## Some Definitions

- Total Factor Productivity, not partial productivity;
- TFP measures production efficiency;
- Changes as a result of changes in management practices and technology;
- Important source for long term growth;
- BUT not a measure for profitability;
- TFP contributes to profitability BUT doesn't incl. price effects;
- MAF's TFP measures at aggregated industry level;

## Current TFP results

### Agriculture, forestry, and downstream sectors TFP growth (annual average growth rate %, 1972-2006)

Time Period	Agriculture	Food, Beverage & Tobacco Manufacturing	Forestry & Logging	Wood & Papers Manufacturing	SNZ Measured Sector
1972-2006	2.0%		2.6%		
1972-1984	-0.5%		1.3%		
1984-2006	3.4%		3.4%		
1988-2006	2.2%	1.0%	2.1%	0%	1.5%
1988-1993	-1.3%	1.8%	5.0%	-0.5%	1.1%
1993-2006	3.6%	0.7%	0.9%	0.2%	1.7%

## Current data and method

- Data

- Industry aggregate data from Statistics NZ (GDP, productive capital stock, labour FTEs)

- Method

- Tornquist chained index
- Input index aggregated from K and L index weighted by their shares of total factor income
- K share derived by user cost of capital method; L is residual;

## Method cont.

- User cost of capital

$$UCC = PK_{\text{current prices}} * (d + r)$$

Where d is capital depreciation rate, r is rate of return on capital.

- K share =  $UCC / GDP_{\text{current prices}}$
- L share = 1 - K share
- Total factor input index

$$I_t = \left( \frac{K_t}{K_{t-1}} \right)^{w_{k,t} + w_{k,t-1}} \left( \frac{L_t}{L_{t-1}} \right)^{w_{l,t} + w_{l,t-1}}$$

where  $w_k$  is K share and  $w_l$  is L share

## Alternative method

- Data now available for deriving Labour share
- Advantage:
  - use available National Account data (incl COE, GOS, Tax, Subsidy); and proportion of self-employed;
  - don't have to approximate capital ror and other data required for K share method
- $L \text{ share} = (\text{employee's wage} + \text{self-employed's wage} + \text{production tax attributed to L})/\text{GDP}$
- $K \text{ share} = 1 - L \text{ share}$

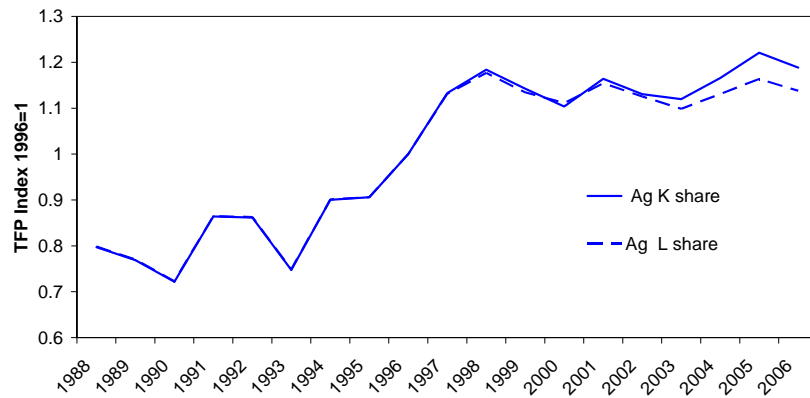
## Results of L share method

**Agriculture, forestry, and downstream sectors TFP growth**  
(annual average growth rate %, 1988-2006)

Time Period	Agriculture		Food, Beverage & Tobacco Manufacturing		Forestry & Logging		Wood & Papers Manufacturing		SNZ Measured Sector
	Capital share method	Labour share method	Capital share method	Labour share method	Capital share method	Labour share method	Capital share method	Labour share method	
1988-2006	2.2%	<u>2.0%</u>	1.0%	<u>0.7%</u>	2.1%	<u>1.7%</u>	0%	<u>0%</u>	1.5%

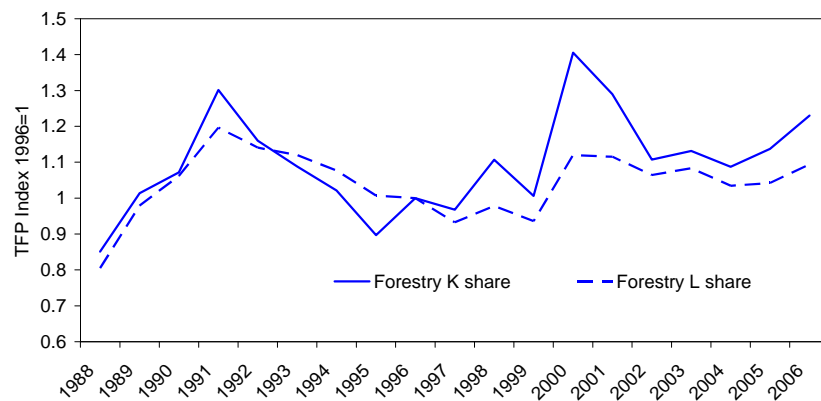
## Results cont.

TFP Agriculture: method comparison



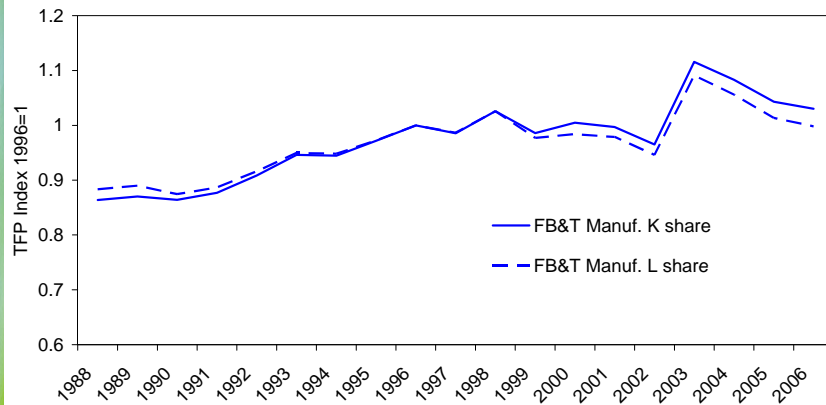
## Results cont.

TFP Forestry: method comparison



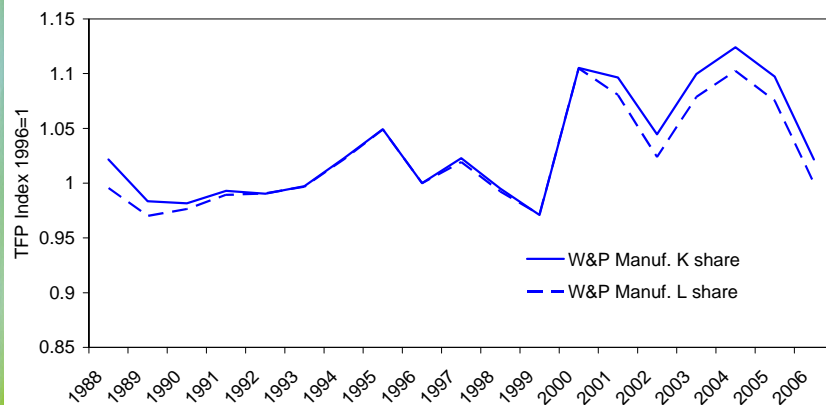
## Results cont.

TFP FB&T: method comparison



## Results cont.

TFP W&P: method comparison



## Results cont.

### Contribution of TFP, capital, and labour to sector GDP growth (annual average growth rate %, 1988-2006)

Time Period		Agriculture		Food, Beverage & Tobacco Manuf.		Forestry & Logging		Wood & Papers Manuf.		SNZ Measured Sectors
		Capital share method	Labour share method	Capital share method	Labour share method	Capital share method	Labour share method	Capital share method	Labour share method	
1988-2006	Output growth	1.5%	<u>1.5%</u>	2.0%	<u>2.0%</u>	4.0%	<u>4.0%</u>	1.8%	<u>1.8%</u>	2.7%
	K contribution	0%	<u>0.2%</u>	0.9%	<u>1.4%</u>	0.5%	<u>2.3%</u>	1.6%	<u>1.6%</u>	1.1%
	L contribution	-0.7%	<u>-0.7%</u>	0.1%	<u>0%</u>	1.3%	<u>-0.1%</u>	0.2%	<u>0.2%</u>	0.1%
	TFP contribution	2.2%	<u>2.0%</u>	1.0%	<u>0.7%</u>	2.1%	<u>1.7%</u>	0%	<u>0%</u>	1.5%

## Conclusion & Future Research

- L share method shows;
  - Slightly lower TFP estimates
  - Higher K contribution;
  - Lower L contribution;
- Advantage of L share method: reflects better factor share as don't have to approx data;
- K share method underestimate K share as missing tax component and approx ror;
- New method only change TFP slightly due to changes in the weighting components NOT the real factor growth

## Future Research

- Qualitative analysis of factors contributing to sector TFP growth;
- Modelling determining factors of TFP growth (Op research contract with Massey Uni);
- TFP measurement for sub-sector level using SNZ aggregate data;
- TFP measurement for sub-sector level using Farm-level data and possibly SNZ Longitudinal Firm Performance Data (LFPD / IBULDD)

## Comments / Questions

To

[Kay.Cao@maf.govt.nz](mailto:Kay.Cao@maf.govt.nz)

Or

[Rod.Forbes@maf.govt.nz](mailto:Rod.Forbes@maf.govt.nz)