



**AgEcon** SEARCH  
RESEARCH IN AGRICULTURAL & APPLIED ECONOMICS

*The World's Largest Open Access Agricultural & Applied Economics Digital Library*

**This document is discoverable and free to researchers across the globe due to the work of AgEcon Search.**

**Help ensure our sustainability.**

Give to AgEcon Search

AgEcon Search  
<http://ageconsearch.umn.edu>  
[aesearch@umn.edu](mailto:aesearch@umn.edu)

*Papers downloaded from **AgEcon Search** may be used for non-commercial purposes and personal study only. No other use, including posting to another Internet site, is permitted without permission from the copyright owner (not AgEcon Search), or as allowed under the provisions of Fair Use, U.S. Copyright Act, Title 17 U.S.C.*

California Department of Food and Agriculture

Agricultural Commissioners' Crop Reports

# San Bernardino County

## 1956-1961

California County Agricultural Commissioners' Reports from the California Department of Food and Agriculture. This collection consists of annual crop and livestock data from each of the 58 California Counties. The collection covers 1915-1981; digitization of the rest of the collection is forthcoming.

This digitization project was funded by the Giannini Foundation of Agricultural Economics,  
<http://giannini.ucop.edu/>.

The work was completed by the staff of the Giannini Foundation Library, University of California, Berkeley, <http://are.berkeley.edu/library/>. **Please contact the Library to consult the originals.**

1956

# *Annual Crop and Livestock Report*

## *1956*



UNIVERSITY OF CALIFORNIA  
DAVIS  
MAR 21 1957  
LIBRARY

**DEPARTMENT OF AGRICULTURE**

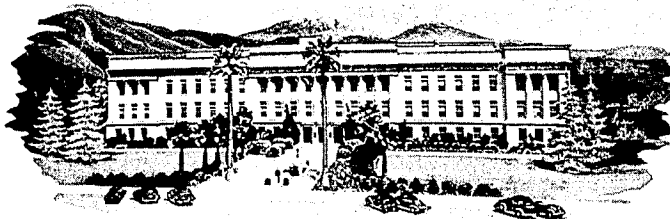
COUNTY DEPARTMENT OF AGRICULTURE  
566 LUGO AVENUE PHONE 6811

HAROLD A. CRANE  
COMMISSIONER

RAYMOND M. SCHNEIDER  
CHIEF DEPUTY

STUART M. GEORGE  
ORCHARD HEATER  
CONTROL OFFICER

DEPUTIES  
ROY F. CAMBLIN  
WAYNE H. STONE  
CECIL E. PRATT



COUNTY OF  
**SAN BERNARDINO**  
SAN BERNARDINO, CALIFORNIA  
ANNUAL CROP AND LIVESTOCK REPORT

1956

To: Honorable W. C. Jacobsen, Director of Agriculture, and the Honorable Board of Supervisors, San Bernardino County

It is required by Section 65.5 of the Agricultural Code that the Agricultural Commissioner compile a report covering the conditions, acreage, production, and value of the agricultural products of the county. Herewith is submitted such a report for the County of San Bernardino.

It should be explained that the valuation figures herein given are gross receipts and not net returns to the grower. It can be said, considering the county's agriculture as a whole, that 1956 was a fairly profitable year. However, in some instances high production costs, lower prices, and short crops have kept the grower net returns at a low level. It should be pointed out that the many business enterprises, both small and large, that are totally dependent upon agriculturalists for their trade may, if similarly appraised, show a combined gross income equal to the 1956 figure given below. The combined figures should give a truer picture of the position agriculture holds in the total economy of the county. A plan is in the making now to establish a method whereby such allied industries may be more accurately appraised. (See page 11.)

On the basis of gross returns to the grower, the total income from the agricultural industries of the county herein listed amounts to \$118,418,009 for 1956 as compared with \$108,352,100 for 1955. This value is the highest on record for the department and is well above the past thirteen year average of \$92,407,690. This increase is due largely to better production and prices for navel and valencia oranges, increased apple production, higher prices for grapes, sweet corn, onions, potatoes, and increased production of beef cattle and in number of dairy cows.

Charts accompanying this report should be consulted to observe trends in certain commodities.

Citrus: The total citrus acreage for San Bernardino County for 1956 was 31,526 acres. Navel oranges account for one-half this total with 15,452 acres,

while valencia oranges account for one-quarter with 7,879 acres. Lemons with 5,738 acres, grapefruit 1,872 acres, miscellaneous oranges at 554, plus 31 acres of non-bearing limes make up the balance. This total figure includes 138 acres of lemons and 5 acres of navel oranges that were added the past year through new plantings and budding. 2,075 acres of oranges, 201 acres of grapefruit, and 246 acres of lemons, or a total of 2,522 acres of citrus, were removed during the year.

For the most part, these citrus removals were marginal orchards, although several good producing groves were removed. These removals are the result of the extension of residential and industrial construction into our farming areas.

Total production for all citrus was 6,607,367 standard boxes, including fruit sold loose as well as packed. This figure represents an increase of 1% in total production from the previous year in spite of the numerous orchard removals. Total valuation was \$26,420,976 which is an increase of 15% over the previous year. Factors contributing to this increased value were improved returns to the grower for his fruit plus the heavy exports of citrus fruits to European markets as a result of the Spanish freeze.

Production and gross receipts for navel oranges show increases over the previous year. Production increased 4% while valuation increased 19%. Valencia orange production also increased slightly by 3% while valuation increased 28%. Lemons decreased in production some 8% while valuation remained practically the same. Acreage and production of lemons in San Bernardino County seem to remain quite constant. Grapefruit production increased 6% while gross returns decreased 6%.

It should be explained that the valuation figures given for all citrus are f.o.b. as fruit leaves the packing house and are gross receipts and not net returns to the grower.

Subtropical fruits (738 acres): This figure includes 575 acres of olive trees, the bulk of which did not produce a commercial crop and were not harvested. Avocado acreage continues to increase with 88 acres now in bearing with 51 acres non-bearing. Persimmons and dates make up the balance of our subtropical fruit acreage. The total value of all subtropicals was \$41,680 which is an increase of 37% over the previous year.

Deciduous fruits (2,655 acres): Acreage of all deciduous fruits is 251 acres less than in 1955. Reductions are noted in apple, peach, and plum acreage. Increases in production were noted in apples and apricots while decreases are shown in peaches and plums which can be directly attributed to reduced acreage. As a result of this decreased production in the major deciduous crops, the total valuation for all deciduous amounted to \$1,376,644, or a reduction of 20% from the previous year.

Grapes (25,558 acres): Grapes continue to show a reduction in acreage with 2,000 acres removed from production the past year. Corresponding decreases are noted in production, although the valuation increased due to better prices received. Total valuation was \$2,952,000 or an increase of 8%.

Berries (312 acres): Bush berries (198 acres) and strawberries (114 acres) make up our berry acreage with a total valuation of \$479,292, a slight increase over the previous year.

Nuts (1,184 acres): Walnuts continue to show a decline in acreage with 767 acres removed from production during the year. Almond acreage remained the same. A promising walnut crop was quickly reduced by a frost in early April. Only the later maturing varieties survived and account for that production shown. Many orchards were not harvested. As a result, the total valuation of the nut crop was only \$234,640 from 458 tons.

Vegetables (7,373 acres): The exact number of acres of vegetables were harvested in 1956 as our report shows for 1955. However, there are a number of variations in acreage totals for certain crops. Increases in acreage are noted in carrots, cauliflower, corn, cantaloupes, onions, and tomatoes. With acreage remaining the same, the valuation jumped 83% over the previous year. This can be attributed to better prices received by the grower for sweet corn, cantaloupe, onions, and potatoes. Potato returns were the best in years with prices remaining high throughout the season. All vegetable crops combined totaled \$7,235,395.

Field crops (41,457 acres): Field crop acreage dropped considerably during the past year from the total for 1955. However, the valuation of those crops harvested amounts to \$5,060,430 which is only \$12,716 less than the previous year. Alfalfa, with 16,859 acres, is again our leading field crop, showing a gross return of \$2,797,950. Permanent irrigated pasture has surpassed blackeye beans again in value as the second leading field crop. Other important crops are field corn, maize, barley, oats, grain hay, sugar beets, and cotton.

Seed crops (1,363 acres): Alfalfa, clover, flower, and barley comprise the important crops raised for seed this year. Alfalfa with 980 acres leads the list producing 490,000 pounds of seed. Combined gross returns for all seed crops amount to \$224,000.

Nursery stock (318 acres): Of this total acreage, 233 acres were devoted to rose production with fruit trees, both deciduous and citrus, shade trees, berries, and other field grown ornamental nursery stock making up the balance. Considerable value was also attained through stock grown under lath and in greenhouses. The estimated gross return for all nursery stock was \$3,108,177 which represents an increase of 9% over the previous year.

Bees (13,271 colonies registered): Honey and beeswax production show an increase over last year, although a normal crop has not been produced for the past four years, particularly in the citrus orchards. A lesser acreage of citrus, combined with more colonies of bees, also cold cloudy weather during the blooming period, seem to be contributing factors. Weak colonies normally do not produce much orange nectar, but build up to peak strength by the time the bloom has passed. This was not the case in 1956. They apparently were about as weak at the end of the bloom which, of course, lessened their honey production in later nectar flows.

The desert areas where most of our wild buckwheat honey is produced had very little rainfall. Colonies left on those locations made little or no honey, except those in flying distance of alfalfa fields. An estimated 1,768,082 pounds of honey were produced. Total estimated income from honey and other products amounted to \$313,885.

Livestock: The estimated figures shown in this report for livestock are, we believe, the best available.

32,686 beef cattle were sold during the year with a total beef and feed lot gain valued at \$2,100,691. This represents an increase of 941 head plus a corresponding increase in valuation over the previous year.

Dairy cows again show an increase with additional dairies being established in the Chino district. It is estimated that there are some 25,737 producing head in the county and over 235 dairies. 32 million gallons of milk were produced with a valuation over 18 million dollars. Total gross income from dairying including milk, calves, stock sold for beef, and fertilizer sold amounted to \$19,894,404, an increase of \$3,099,747 over the previous year.

Producing hens show a slight increase during 1956 bringing the number of hens in the county to 4,895,930. Egg production, however, increased almost 5% with over 95 million dozen produced during the year with a valuation of over 36 million dollars. This valuation figure is a decrease of 3% or 1 million dollars from the previous year due to lower prices received by the producers in spite of increased production per hen. Trends on the number of producing hens, egg production, and values can be observed by consulting the accompanying tables. Total gross income from hens and their products amounted to \$45,228,067; ducks \$90,000; and turkeys \$2,778,673; or a total gross income from all poultry of \$48,096,740.

Hogs grossed \$317,789 with some 8,812 being sold for pork, a slight decrease in number from the previous year. Rabbits and sheep also continue to decline in number sold for meat and value.

There seems to be a steady increase in number and value of certain types of livestock in the county such as feeder beef cattle, dairy cows, producing hens, and turkeys, while other types of livestock continue to decline. Total gross income from all livestock amounts to \$70,861,990, or an increase of 3 million dollars over the previous year and is also the highest value on record.

The members of our department, including office personnel and district inspectors, have made an earnest endeavor to make this report as accurate as possible. Whenever we could, we have checked our figures with those of other agencies. We have also tried to present it in a form that will be most helpful. However, in this regard, suggestions from readers are welcomed.

We are particularly indebted to the deputies and inspectors of our own department who secured basic information for this report. We also extend our sincere appreciation to the Agricultural Extension Service and to other organizations and individuals who cooperated and assisted us in making this report possible.

Respectfully submitted,

*H. A. Crane*

H. A. Crane  
Agricultural Commissioner

AND

*Warren A. Burr*

Warren A. Burr  
Agricultural Inspector II



CITRUS

<u>Year</u>	<u>*Acreage</u>	<u>**Production (Boxes)</u>	<u>Valuation (Gross Receipts)</u>
1938	50,445	7,024,281	\$ 11,767,447
1939	49,663	7,296,182	14,109,169
1940	48,078	8,120,227	17,170,447
1941	51,689	9,588,997	20,071,630
1942	51,320	8,998,780	21,195,403
1943	51,728	7,485,209	23,970,155
1944	50,794	10,980,405	40,075,086
1945	50,615	10,820,769	50,364,665
1946	49,167	10,660,414	39,140,244
1947	50,470	9,781,380	28,524,393
1948	50,000	8,463,319	23,546,951
1949	44,854	4,866,902	14,653,270
1950	43,239	8,523,115	24,056,853
1951	42,036	6,601,573	22,203,826
1952	40,790	6,130,929	19,790,436
1953	38,619	9,602,736	26,640,302
1954	35,955	6,053,618	21,753,413
1955	33,528	6,514,093	22,946,140
1956	31,526	6,607,367	26,420,976
19 Years' Average		8,111,591	\$ 24,600,041

\* Includes Bearing and Non-Bearing Acreage.

\*\* Cartons equal to one-half box.

TOTAL CROP, POULTRY, OTHER LIVESTOCK, AND TOTAL VALUATION FOR THE PAST  
FOURTEEN YEARS AS OF RECORD FOR SAN BERNARDINO COUNTY

-6-

<u>YEAR</u>	<u>ALL CROPS</u>	<u>ALL POULTRY</u>	<u>OTHER LIVESTOCK</u>	<u>TOTAL</u>
1943	\$ 42,123,408	\$ 9,894,927	\$ 9,242,599	\$ 61,260,934
1944	60,563,406	10,621,257	11,389,403	82,574,066
1945	67,114,424	15,469,053	11,879,364	94,462,841
1946	64,167,052	12,746,496	12,548,564	89,462,112
1947	44,524,547	17,725,625	17,013,715	79,263,887
1948	40,055,839	24,234,080	20,639,282	84,929,201
1949	30,441,086	29,206,756	17,063,785	76,711,627
1950	43,343,662	29,713,980	18,249,401	91,307,043
1951	43,747,168	40,555,572	21,672,010	105,974,750
1952	44,402,152	39,614,254	22,674,515	106,690,921
1953	44,655,332	49,199,028	18,689,452	112,543,812
1954	42,896,211	38,262,555	17,321,894	98,488,660
1955	40,559,798	48,555,568	19,236,734	108,352,100
1956	47,556,019	48,096,740	22,765,250	118,418,009

TOTAL POULTRY AND EGG PRODUCTION FOR THE PAST NINE  
YEARS AS OF RECORD FOR SAN BERNARDINO COUNTY

<u>YEAR</u>	<u>PRODUCING HENS</u>	<u>EGG PRODUCTION</u>	<u>EGG VALUATION</u>
1948	2,130,000	29,820,000 Dozen	\$ 16,102,800
1949	2,850,000	40,850,000 "	20,833,500
1950	3,135,000	47,025,000 "	19,280,250
1951	3,460,000	53,341,666 "	29,337,916
1952	3,792,660	60,050,592 "	27,623,273
1953	4,083,845	68,064,083 "	35,393,323
1954	4,385,360	73,089,333 "	28,504,840
1955	4,882,404	91,545,070 "	37,533,478
1956	4,895,930	95,878,620 "	36,433,875

## FRUIT, NUT AND VINE CROPS

	<u>ACREAGE</u>		<u>PRODUCTION</u>		<u>VALUATION</u>
	<u>Bearing</u>		<u>Non-Bearing</u>		
<u>CITRUS</u>					
Oranges: Navels	15,365	87	2,779,001	Pkd. Bxs.*	\$ 13,241,855
Valencias	7,875	4	999,967	" "	5,151,341
Misc.	539	15	35,375	" "	134,352
Lemons	5,054	684	727,211	" "	4,496,469
Grapefruit	1,841	31	383,708	" "	1,424,976
Limes		31			
<u>CITRUS TO BY-PRODUCTS</u>					
Oranges: Navels			428,623	Bxs.	324,766
Valencias			577,532	"	992,959
Misc.			14,415	"	17,798
Lemons			446,987	"	527,759
Grapefruit			214,548	"	108,701
<u>SUBTROPICAL</u>					
Avocados	88	51	71	Tons	29,110
Dates	8		2	"	720
Olives	575		46	"	10,350
Persimmons	15	1	2,500	Lugs	1,500
<u>DECIDUOUS</u>					
Apples	494	87	200,000	Bxs.	448,934
Apples: Culls			160	Tons	3,200
Cider			48,000	Gals.	38,400
Apricots	95	5	164	Tons	13,940
Cherries	33	3	27	"	10,800
Peaches: Clings	400	12	2,295	"	160,650
Frees	879	97	4,576	"	594,880
Pears	30	2	35	"	4,200
Plums	378	140	726	"	101,640
<u>GRAPES</u>					
Wine	25,559		73,800	Tons	2,952,000
<u>BERRIES</u>					
Bushberries	198		727	Tons	145,400
Strawberries	114		166,946	Trays	333,892
<u>NUTS</u>					
Almonds	70		2	Tons	1,200
Walnuts	1,101	13	456	"	223,440
TOTALS	60,711	1,263			\$ 31,495,232

\* Standard half box cartons converted to standard boxes.

## COMMERCIAL VEGETABLE CROPS

	<u>ACRES</u>	<u>PRODUCTION</u>	<u>SIZE</u>	<u>VALUATION</u>
Beans: Green	2	170 crts.	50 lbs.	\$ 595
Beets	14	1,922 "	3 doz.	1,922
Broccoli	4	996 "	42 lbs.	2,241
Cabbage	217	67,933 "	60 "	101,900
Carrots	122	46,916 "	50 "	70,374
Cauliflower	276	81,610 "	40 "	61,208
Corn: Sweet	1,353	287,882 "	5 doz.	719,705
Cucumbers	2	400 lugs	30 lbs.	260
Eggplant	1	350 "	20 "	210
Lettuce	12	1,045 crts.	65 "	2,717
Melons:				
Cantaloupe	101	12,376 "	65 "	24,752
Water	56	360 tons		10,800
Onions: Dry	318	332,986 sks.	50 "	475,434
Peppers: Bell	2	310 lugs	15 "	310
Potatoes:				
Irish	3,114	796,749 sks.	100 "	4,598,891
Fall	150	18,750 "	100 "	56,250
Sweet	1,205	306,090 bxs.	45 "	979,488
Pumpkins	9	90 tons		630
Spinach	8	1,478 crts.	35 "	1,108
Squash:				
Summer	5	1,500 lugs	30 "	2,250
Winter	76	497 tons		13,255
Tomatoes:				
Fresh	22	8,585 lugs	32 "	8,585
Can	76	1,160 tons		26,680
Turnips	10	1,965 crts.	50 lbs.	2,456
Misc. Vegetables	<u>218</u>	43,981 "		<u>73,374</u>
TOTALS	7,373			\$ 7,235,395

## FIELD CROPS

-9-

	<u>ACRES</u>	<u>PRODUCTION</u>	<u>VALUATION</u>
Beans: Blackeye	4,147	62,127 sks. *	\$ 465,953
Corn: Ensilage	1,151	8,635 tons	172,700
Grain	20	35 "	2,100
Maize	1,065	51,950 sks.	155,850
Cotton	188	188 bls.	33,840
Grain: Barley	1,746	20,530 sks.	49,272
Oats	1,525	54,295 "	162,885
Wheat	325	5,941 "	20,794
Hay: Alfalfa	16,859	93,265 tons	2,797,950
Grain	5,775	9,216 "	230,400
Oat	80	213 "	5,751
Sudan	585	2,925 "	73,125
Pasture: Perm. Irrigated	7,031		773,410
Planted Dry Range	400		10,000
Sudan Grass	200		20,000
Sugar Beets	<u>360</u>	7,200 "	<u>86,400</u>
TOTALS	41,457		\$ 5,060,430

\* All sacks 100 lbs.

## SEED CROPS

	<u>ACRES</u>	<u>PRODUCTION</u>	<u>VALUATION</u>
Alfalfa: Certified	780	390,000 lbs.	\$ 97,500
Uncertified	200	100,000 "	23,000
Barley: Rojo	55	275,000 "	13,750
Cantaloupe	27	1,500 "	750
Clover: Kenland	100	20,000 "	10,000
Dichondra	13	6,500 "	16,250
Flower Seed	150	45,000 "	56,250
Oats: Kanota	18	90,000 "	4,500
Watermelon	<u>20</u>	<u>4,000 "</u>	<u>2,000</u>
TOTALS	1,363	932,000 lbs.	\$ 224,000

## NURSERY STOCK

Grown and Sold	318	\$ 3,108,177
----------------	-----	--------------

## APIARY

	<u>PRODUCTION</u>	<u>VALUATION</u>
Honey Production	1,768,082 lbs.	\$ 257,608
Bee Wax	35,360 "	21,216
Nuclei with Queens	5,932	29,661
Pollination Fees		<u>5,400</u>
TOTAL		\$ 313,885

## CONSERVATION, SOIL BANK AND SUBSIDY PROGRAMS

	<u>1955</u>	<u>1956</u>
Payments	\$ 65,214 (A.S.C.)	\$ 118,900

## ESTIMATED LIVESTOCK PRODUCTION

-10-

	<u>SOLD</u>	<u>VALUATION</u>
<u>BEEF CATTLE</u>		
Feeders	25,689 *	\$ 1,348,491
Range	6,997	752,200
Fertilizer	25,250 tons	37,875
<u>DAIRY</u>		
Producing Cows	25,737	
Milk: Wholesale	27,086,172 gal.	14,897,395
Retail	5,345,930 "	3,955,988
Young Stock and Calves	1,552	108,569
Slaughter	6,105	711,396
Fertilizer	196,885 tons	221,056
<u>POULTRY</u>		
Producing Hens	4,895,930	
Eggs	95,878,620 doz.	36,433,875
Hens sold for meat	3,491,660	2,094,996
Fryers	5,109,190	4,797,387
Baby Chicks	6,497,962	1,754,450
Fertilizer	47,771 tons	147,359
<u>DUCKS</u>		
Sold for meat	60,000	90,000
<u>TURKEYS</u>		
Sold for meat	360,172	2,209,361
Poults	673,000	556,750
Eggs	3,750 doz.	12,562
<u>GOATS</u>		
Milk	98,248 gals.	98,248
Slaughter	40	100
<u>HOGS</u>		
Slaughter	8,812	308,420
Fertilizer	4,164 tons	9,369
<u>RABBITS</u>		
Fryers	172,230	215,288
Others	2,600	2,860
Fertilizer	1,210 tons	2,420
<u>SHEEP</u>		
Feeders	8,500 **	21,375
Slaughter	600	12,300
<u>MISCELLANEOUS</u>		61,900
TOTAL		\$ 70,861,990

\* Beef and feed lot gain

\*\* Gain in County

# RECAPITULATION

	<u>ACREAGE *</u>		<u>VALUATION</u>	
	<u>1955</u>	<u>1956</u>	<u>1955</u>	<u>1956</u>
Citrus	33,528	31,526	\$ 22,946,140	\$ 26,420,976
Subtropical	690	738	30,270	41,680
Deciduous	2,906	2,655	1,715,153	1,376,644
Grapes	27,630	25,559	2,721,408	2,952,000
Berries	363	312	424,158	479,292
Nuts	1,925	1,181	214,300	224,640
Vegetables	7,373	7,373	3,949,350	7,235,395
Field Crops	49,372	41,457	5,073,146	5,060,430
Seeds	1,937	1,363	300,696	224,000
Nursery Stock	328	318	2,847,051	3,108,177
Apiary			272,912	313,885
Livestock Including Poultry			67,792,302	70,861,990
Conservation, Soil Bank and Subsidy Programs			65,214	118,900
TOTALS	126,052	112,482	\$108,352,100	\$118,418,009


\* Includes bearing and non-bearing.

NOTE: The above valuation figures represent gross receipts and not net returns to the grower.

## SOME INDUSTRIES AND BUSINESS ENTERPRISES DEPENDENT UPON AGRICULTURE FOR THEIR TRADE AND NOT EVALUATED IN THIS REPORT

Agricultural Pest Control Operators  
Dairy Equipment  
Farm Machinery Manufacturers  
Farm Equipment Dealers  
Feed, Grain, and Seed Dealers  
Fertilizer Dealers  
Fruit and Vegetable Packing Houses

Irrigation Systems and Equipment  
Fruit and Vegetable By-Product Plants  
Meat Packers and Slaughter Houses  
Orchard Heater Manufacturers  
Pest Control Materials Dealers  
Poultry and Egg Wholesalers  
Wind Machine Companies



1957

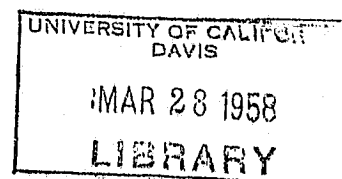


# *Annual Crop and Livestock Report*

1957



**DEPARTMENT OF AGRICULTURE**

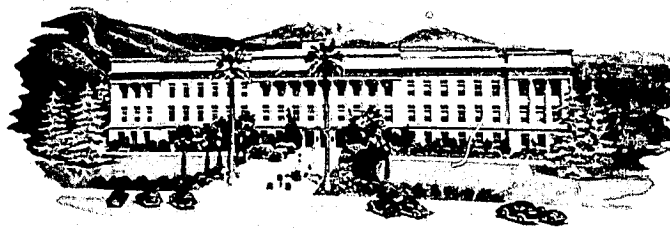


COUNTY DEPARTMENT OF AGRICULTURE  
566 LUGO AVENUE PHONE 6811

HAROLD A. CRANE  
COMMISSIONER

RAYMOND M. SCHNEIDER  
CHIEF DEPUTY

STUART M. GEORGE  
ORCHARD HEATER  
CONTROL OFFICER



DEPUTIES  
ROY F. CAMBLIN  
WAYNE H. STONE  
CECIL E. PRATT

COUNTY OF  
**SAN BERNARDINO**  
SAN BERNARDINO, CALIFORNIA

ANNUAL CROP AND LIVESTOCK REPORT

1957

To: Honorable W. C. Jacobsen, Director of Agriculture, and the Honorable Board of Supervisors, San Bernardino County

It is required by Section 65.5 of the Agricultural Code that the Agricultural Commissioner compile a report covering the conditions, acreage, production and value of the agricultural products of the county. Herewith is submitted such a report for the County of San Bernardino.

It should be explained that the valuation figures herein given are gross receipts and not net returns to the grower. It can be said, considering the county's agriculture as a whole, that 1957 was a fairly profitable year. However, in some instances high production costs, lower prices, and short crops have kept the grower net returns at a low level. It should be pointed out that the many business enterprises, both large and small, that are totally dependent upon agriculturalists for their trade may, if similarly appraised, show a combined gross income equal to the 1957 figure given below. The combined figures should give a truer picture of the position agriculture holds in the total economy of the county. A plan is in the making now to establish a method whereby such allied industries may be more accurately appraised.

On the basis of gross returns to the grower, the total income from the agricultural industries of the county herein listed amounts to \$115,797,842 for 1957 as compared with \$118,418,009 for 1956. This value is the second highest on record for the county topped only by the 1956 valuation. There were 110,472 acres in agricultural production in 1957 which is 2,010 acres less than the previous year but the total valuation dropped only 2% from the 1956 figure.

Charts accompanying this report should be consulted to observe trends in certain commodities.

Citrus: The total citrus acreage for San Bernardino County for 1957 was 30,549 acres. Navel oranges account for one-half this total with 14,878 acres, while valencia oranges account for one-quarter with 7,538 acres. Lemons with 5,798 acres, grapefruit 1,778, miscellaneous oranges at 525, plus 32 acres of limes make up the balance.

1,274 acres of oranges, 97 acres of grapefruit and 50 acres of lemons, or a total of 1,421 acres of citrus, were removed or abandoned during the year. For the most part these citrus removals were marginal orchards, although several good producing groves were removed. These removals are the result of the extension of residential and industrial construction into our farming areas.

Total production for all citrus was 6,936,897 standard boxes, including fruit sold loose as well as packed. This figure represents an increase of 5% in total production over the previous year in spite of the numerous orchard removals and points to the fact that most orchards were back to near normal production from the low years of 1951 and 1952. Total valuation was \$24,016,132 which is a decrease of 10% from the previous year. The main factor contributing to this decrease was the low returns received by the growers for valencia oranges and grapefruit, although the total valuation for all citrus is equal to the twenty year average as can be seen by consulting the supplemental page on citrus in this report.

Production and gross receipts for navel oranges show slight decreases from the previous year. Production was practically the same although 720 acres of navel oranges were removed. Valuation decreased some 9% however. Valencia orange production was also on a par with the previous year but the valuation dropped 19%. Lemons made a comeback with a 15% increase in production while valuation increased only 3%. Grapefruit production also increased considerably but returns were not commensurate.

The valuation figures given for all citrus are f.o.b. as fruit leaves the packing house and are gross receipts and not net returns to the grower. The average returns for other crops are determined on the basis of naked fruit at the growers first delivery point.

Subtropical fruits (730 acres): This figure includes 561 acres of olives and 102 acres of bearing avocados with both producing a fair crop. The balance of our subtropical fruit acreage is made up of 13 acres of persimmons plus 8 acres of dates located at Needles. The total value for all subtropicals was \$64,210 which is an increase of 54% over the previous year.

Deciduous fruits (2,399 acres): Acreage of all deciduous fruits is 256 acres less than the previous year due to peach orchard removals. Reductions are noted in apple, apricot and cherry production while plum production more than doubled. In spite of reduced acreage and production in these commodities, the total valuation of all deciduous fruits was \$1,395,352 or just 1% over the previous year.

Grapes (24,324 acres): Grapes continue to show a reduction in acreage with 1,234 acres removed from production the past year. Production increased, however, as well as prices received by the growers. Total valuation was \$4,105,250 or 39% more than that received the previous year of 1956.

Berries (208 acres): Bush berries continue to decline in acreage with only 66 acres in production in 1957. Strawberries increased 28 acres to make a total of 142 acres in production. Total value of all berries was \$379,260 or a reduction of 21% in total gross returns.

Nuts (1,001 acres): Walnuts continue to show a decline in acreage with 203 acres removed from production during the year leaving only 913 bearing acres. Almond acreage remained the same with 70 acres but there was no harvest on account of adverse weather during the blooming period. As a result, there were only 511 tons of walnuts harvested with a valuation of \$278,400.

Vegetables (8,061 acres): Acreage of all vegetables increased 688 acres over the previous year but the total valuation dropped 44% due mainly to low prices received for potatoes for the year as compared with the high returns in 1956. Acreage increases are noted in carrots, sweet corn and sweet potatoes with corresponding increases in value. Total valuation of all vegetables was \$4,042,498.

Field Crops (42,173 acres): Field crop acreage increased 716 acres over the previous year due chiefly to increases in field corn, milo and castor beans, a new crop to the county. Cotton, however, dropped from 188 acres to only 4 for 1957. Valuation of all field crops also increased 5% over the previous year due mainly to the increased acreage. Alfalfa is again our leading field crop with 16,634 acres followed by grain hay, blackeye beans, barley, permanent pasture and corn. Total values of all field crops was \$5,334,387.

Seed Crops (678 acres): A considerable reduction is noted in acreage of seed crops. In fact there were 685 less acres devoted to seed production compared with the high in 1956. Alfalfa, flower, oats and clover comprise the leading crops raised for seed. Total value of all seed crops amounts to \$104,786.

Nursery Stock (350 acres): Of this total acreage 240 acres were devoted to rose production with fruit trees, shade trees, berries and other field grown ornamental nursery stock making up the balance. Considerable value was also attained through stock grown under lath and in greenhouses. The estimated gross return for all nursery stock was \$3,105,803.

Bees (12,735 colonies registered): Honey and beeswax production show a decrease from 1956. A normal crop of honey has not been produced for the past five years, particularly in the citrus orchards. Reduced citrus acreage combined with adverse weather during the blooming period are contributing factors. Lack of rain in the desert areas where most of our wild buckwheat honey is produced also contributed to low production. An estimated 1,142,000 pounds of honey was produced. Total income from honey and other products amounted to \$178,296.

Livestock: The estimated figures shown in this report are, we believe, the best available.

Approximately 27,000 beef cattle were sold during the year with a total beef and feed lot gain valued at \$2,581,880. This represents an increase of \$481,189 in valuation over the previous year due to higher prices received for the beef cattle.

Dairy cows again show an increase with additional dairies being established in the Chino area. It is estimated there are some 27,151 producing head in the county and over 250 dairies. Almost 38 million gallons of milk were produced with a valuation over 22 million dollars. Total gross income from dairying including milk, calves, stock sold for beef and fertilizer sold amounted to \$23,746,878, an increase of \$3,852,474 over the previous year.

Producing hens in the county show a slight increase over the previous year with an estimated 4,903,780 hens for 1957. As a result egg production increased 1% over the preceding year for a total production of 96,932,980 dozen eggs for the year. Valuation decreased, however, due to lower prices received by the producers. Total gross income from all poultry including eggs, hens sold for meat, fryers, chicks, ducks and turkeys amounted to \$45,385,300.

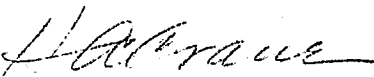
Hogs grossed \$484,664 with some 10,312 being sold for pork, an increase in number and value over the previous year. Rabbits and sheep continue to decline in number sold for meat and value.


Total gross income from all livestock amounts to \$72,679,518 or an increase of \$1,817,528 over the previous year, and is also the highest value on record.

The members of our department, including office personnel and district inspectors, have made an earnest endeavor to make this report as accurate as possible. Whenever we could, we have checked our figures with those of other agencies. We have also tried to present it in a form that will be most helpful. However, in this regard, suggestions from readers are welcomed.

We are particularly indebted to the deputies and inspectors in our own department who secured basic information for this report. We also extend our sincere appreciation to all organizations and individuals who cooperated and assisted us in making this report possible.

Respectfully submitted,

  
H. A. Crane  
Agricultural Commissioner

AND  
  
Warren A. Burr  
Agricultural Inspector II

CITRUS

<u>Year</u>	<u>*Acreage</u>	<u>**Production (Boxes)</u>	<u>Valuation (Gross Receipts)</u>
1938	50,445	7,024,281	\$ 11,767,447
1939	49,663	7,296,182	14,109,169
1940	48,078	8,120,227	17,170,447
1941	51,689	9,588,997	20,071,630
1942	51,320	8,998,780	21,195,403
1943	51,728	7,485,209	23,970,155
1944	50,794	10,980,405	40,075,086
1945	50,615	10,820,769	50,364,665
1946	49,167	10,660,414	39,140,244
1947	50,470	9,781,380	28,524,393
1948	50,000	8,463,319	23,546,951
1949	44,854	4,866,902	14,653,270
1950	43,239	8,523,115	24,056,853
1951	42,036	6,601,573	22,203,826
1952	40,790	6,130,929	19,790,436
1953	38,619	9,602,736	26,640,302
1954	35,955	6,053,618	21,753,413
1955	33,528	6,514,093	22,946,140
1956	31,526	6,607,367	26,420,976
1957	30,549	6,936,897	24,016,132

20 Years' Average

8,002,856

\$ 24,070,840

\* Includes Bearing and Non-Bearing Acreage.

\*\* Cartons equal to one-half box.

TOTAL CROP, POULTRY, OTHER LIVESTOCK, AND TOTAL VALUATION FOR THE PAST  
FOURTEEN YEARS AS OF RECORD FOR SAN BERNARDINO COUNTY

-6-

<u>YEAR</u>	<u>ALL CROPS</u>	<u>ALL POULTRY</u>	<u>OTHER LIVESTOCK</u>	<u>TOTAL</u>
1944	\$ 60,563,406	\$ 10,621,257	\$ 11,389,403	\$ 82,574,066
1945	67,114,424	15,469,053	11,879,364	94,462,841
1946	64,167,052	12,746,496	12,548,564	89,462,112
1947	44,524,547	17,725,625	17,013,715	79,263,887
1948	40,055,839	24,234,080	20,639,282	84,929,201
1949	30,441,086	29,206,756	17,063,785	76,711,627
1950	43,343,662	29,713,980	18,249,401	91,307,043
1951	43,747,168	40,555,572	21,672,010	105,974,750
1952	44,402,152	39,614,254	22,674,515	106,690,921
1953	44,655,332	49,199,028	18,689,452	112,543,812
1954	42,896,211	38,262,555	17,329,894	98,488,660
1955	40,559,798	48,555,568	19,236,734	108,352,100
1956	47,556,019	48,096,740	22,765,250	118,418,009
1957	43,118,324	45,385,300	27,294,218	115,797,842

TOTAL POULTRY AND EGG PRODUCTION FOR THE PAST NINE  
YEARS AS OF RECORD FOR SAN BERNARDINO COUNTY

<u>YEAR</u>	<u>PRODUCING HENS</u>	<u>EGG PRODUCTION</u>	<u>EGG VALUATION</u>
1949	2,850,000	40,850,000 Dozen	\$ 20,833,500
1950	3,135,000	47,025,000 "	19,280,250
1951	3,460,000	53,341,666 "	29,337,916
1952	3,792,660	60,050,592 "	27,623,273
1953	4,083,845	68,064,083 "	35,393,323
1954	4,385,360	73,089,333 "	28,504,840
1955	4,882,404	91,545,070 "	37,533,478
1956	4,895,930	95,878,620 "	36,433,875
1957	4,903,780	96,932,980 "	34,895,873

## FRUIT, NUT AND VINE CROPS

	<u>ACREAGE</u>		<u>PRODUCTION</u>	<u>VALUATION</u>
	<u>Bearing</u>	<u>Non-Bearing</u>		
<u>CITRUS</u>				
Oranges: Navels	14,796	82	5,466,142 Cartons	\$ 12,017,764
Valencias	7,535	3	2,009,136 "	3,929,004
Misc.	510	15	79,738 "	178,023
Lemons	5,166	632	1,796,602 "	4,666,183
Grapefruit	1,749	29	753,068 "	1,171,700
Limes	2	30	2,000 "	2,000
<u>CITRUS TO BY-PRODUCTS</u>				
Oranges: Navels			873,246 "	328,770
Valencias			1,158,492 "	1,057,902
Misc.			70,700 "	33,773
Lemons			915,188 "	495,573
Grapefruit			749,482 "	135,440
<u>SUBTROPICAL</u>				
Avocados	102	46	71 Tons	34,760
Dates	8		2 "	300
Olives	561		126 "	28,350
Persimmons	12	1	20 "	800
<u>DECIDUOUS</u>				
Apples	507	87	112,665 Boxes	201,796
Apples: Cider			46,000 Gallons	39,100
Apricots	96		152 Tons	10,640
Cherries	33	3	14 "	8,400
Peaches: Clings	338	10	1,609 "	102,976
Frees	758	37	4,076 "	652,160
Pears	30	1	5,100 Boxes	10,200
Plums	373	125	1,542 Tons	370,080
<u>GRAPES</u>				
Wine	24,313	11	82,105 Tons	4,105.250
<u>BERRIES</u>				
Bushberries	66		133 Tons	26,600
Strawberries	142		201,520 Trays	352,660
<u>NUTS</u>				
Almonds	70	1	No harvest	
Walnuts	913	17	511 Tons	278,400
TOTALS	58,080	1,130		\$ 30,238,604



## COMMERCIAL VEGETABLE CROPS

	<u>ACRES</u>	<u>PRODUCTION</u>	<u>SIZE</u>	<u>VALUATION</u>
Asparagus	10	1,500 Crts.	36 lbs.	\$ 10,800
Beans: Green	4	320 "	50 "	1,120
Beets	14	2,425 "	3 Doz. Bn.	2,425
Cabbage	214	66,015 "	60 lbs.	99,022
Carrots	500	155,665 "	50 "	311,330
Cauliflower	112	52,450 "	40 "	52,450
Celery	3	2,850 "	6 Doz.	2,850
Corn: Sweet	1,740	374,880 "	5 "	843,480
Cucumbers	1	220 Lugs	30 lbs.	154
Eggplant	1	320 "	20 "	192
Lettuce	19	1,957 Crts.	65 "	4,893
Melons: Cantaloupe	108	22,993 "	65 "	45,986
Water	78	600 Tons		24,000
Other	44	10,246 Crts.	65 "	15,369
Onions: Dry	310	265,746 Sks.	50 "	332,183
Peppers: Bell	2	300 Lugs	15 "	270
Potatoes: Irish	2,856	527,035 Sks.	100 "	1,105,295
Sweet	1,659	431,883 Bxs.	45 "	1,038,032
Pumpkins	5	10 Tons		3,500
Spinach	5	1,010 Crts.	35 "	707
Squash: Summer	19	1,741 Lugs	30 "	2,612
Winter	38	250 Tons		15,000
Tomatillos	10	3,500 Lugs	25 "	14,875
Tomatoes: Fresh	27	8,155 "	32 "	16,310
Canning	21	180 Tons		4,140
Turnips	6	1,381 Crts.	50 "	1,381
Misc. Vegetables	<u>255</u>	62,748 Crts.		<u>94,122</u>
TOTALS	8,061			\$ 4,042,498

## FIELD CROPS

	<u>ACRES</u>	<u>PRODUCTION</u>	<u>VALUATION</u>
Beans: Blackeye	4,055	56,560 sks. *	\$ 429,856
Castor	416	216,000 lbs.	18,360
Corn: Ensilage	1,027	8,562 tons	214,050
Grain	950	47,500 sks.	142,500
Milo	361	10,830 "	27,075
Cotton	4	2 bls.	300
Grain: Barley	2,782	46,207 sks.	106,276
Oats	1,280	23,040 "	69,120
Wheat	320	5,830 "	20,988
Hay: Alfalfa	16,634	106,323 tons	3,189,690
Grain	6,147	13,467 "	350,142
Oat	200	240 "	6,000
Pasture: Permanent	6,952		625,680
Dry Range	230		5,750
Sudan Grass	415		16,600
Sugar Beets	<u>400</u>	8,000 "	<u>112,000</u>
TOTALS	42,173		\$ 5,334,387
* All sacks 100 lbs.			

## SEED CROPS

Alfalfa; Certified	166	57,400 lbs.	\$ 11,682
Uncertified	100	50,000 "	11,500
Barley: Rojo	28	42,000 "	2,310
Clover: Kenland	33	3,300 "	1,089
Flower Seed	165	45,375 "	66,375
Melons: Cantaloupe	14	2,100 "	1,050
Other	22	3,300 "	1,650
Water	12	1,800 "	900
Oats: Kanota	134	160,800 "	8,040
Rye: Merced	<u>4</u>	<u>3,800</u> "	<u>190</u>
TOTALS	678	369,875 "	\$ 104,786

## NURSERY STOCK

Grown and Sold	350	3,105,803
----------------	-----	-----------

## APIARY

	<u>PRODUCTION</u>	<u>VALUATION</u>
Honey	1,142,000 lbs.	\$ 145,364
Beeswax	22,840 "	12,562
Nuclei with Queens	3,894	19,470
Pollination Fees		<u>900</u>
TOTAL		\$ 178,296

## CONSERVATION, SOIL BANK AND SUBSIDY PROGRAMS

	<u>1956</u>	<u>1957</u>
Payments	\$118,900	\$113,950

# ESTIMATED LIVESTOCK PRODUCTION

	<u>SOLD</u>	<u>VALUATION</u>
<u>BEEF CATTLE</u>		
Feeders	17,480 *	\$ 1,206,120
Range	9,488	1,375,760
Fertilizer	16,365 tons	28,638
<u>DAIRY</u>		
Producing Cows 27,151		
Milk: Wholesale	32,084,981 gals.	17,967,590
Retail	5,902,878 "	4,604,245
Young Stock and Calves	1,418	105,049
Slaughter	6,638	829,750
Fertilizer	192,195 tons	240,244
<u>POULTRY</u>		
Producing Hens 4,903,780		
Eggs	96,932,980 doz.	34,895,873
Hens sold for meat	3,290,964	1,974,578
Fryers	4,747,695	3,683,601
Baby Chicks	9,464,323	2,258,895
Fertilizer	60,738 tons	136,660
<u>DUCKS</u>		
Sold for meat	92,400	138,600
<u>TURKEYS</u>		
Sold for meat	438,629	1,886,105
Poults	520,000	390,000
Fryers	15,900	20,988
<u>GOATS</u>		
Milk	71,218 gals.	71,218
<u>HOGS</u>		
Slaughter	10,312	484,664
Fertilizer	3,160 tons	6,320
<u>RABBITS</u>		
Fryers	144,432	180,540
Fertilizer	855 tons	1,795
<u>SHEEP</u>		
Feeders	5,000 **	8,535
Slaughter	1,000	20,000
<u>MISCELLANEOUS</u>		<u>163,750</u>
TOTAL		\$72,679,518

\* Beef and feed lot gain

\*\* Gain in County

## RECAPITULATION

	<u>ACREAGE</u> *		<u>VALUATION</u>	
	<u>1956</u>	<u>1957</u>	<u>1956</u>	<u>1957</u>
Citrus	31,526	30,549	\$ 26,420,976	\$ 24,016,132
Subtropical	738	730	41,680	64,210
Deciduous	2,655	2,398	1,376,644	1,395,352
Grapes	25,559	24,324	2,952,000	4,105,250
Berries	312	208	479,292	379,260
Nuts	1,181	1,001	224,640	278,400
Vegetables	7,373	8,061	7,235,395	4,042,498
Field Crops	41,457	42,173	5,060,430	5,334,387
Seeds	1,363	678	224,000	104,786
Nursery Stock	318	350	3,108,177	3,105,803
Apiary			313,885	178,296
Livestock Including Poultry			70,861,990	72,679,518
Conservation, Soil Bank and Subsidy Programs	_____	_____	<u>118,900</u>	<u>113,950</u>
TOTALS	112,482	110,472	\$118,418,009	\$115,797,842


\* Includes bearing and non-bearing.

NOTE: The above valuation figures represent gross receipts and not net returns to the grower.

SOME INDUSTRIES AND BUSINESS ENTERPRISES DEPENDENT UPON  
AGRICULTURE FOR THEIR TRADE AND NOT EVALUATED IN THIS REPORT

Agricultural Pest Control Operators  
Dairy Equipment  
Farm Machinery Manufacturers  
Farm Equipment Dealers  
Feed, Grain, and Seed Dealers  
Fertilizer Dealers  
Fruit and Vegetable Packing Houses

Irrigation Systems and Equipment  
Fruit and Vegetable By-Product Plants  
Meat Packers and Slaughter Houses  
Orchard Heater Manufacturers  
Pest Control Materials Dealers  
Poultry and Egg Wholesalers  
Wind Machine Companies



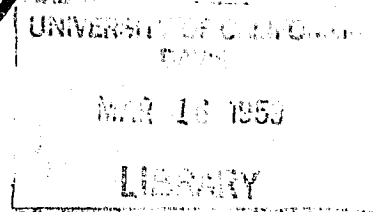
1958

7 15.

Pacif. Cooperative

Annual Crop and Livestock Report

1958

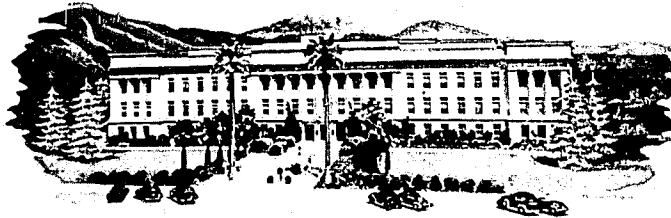


**DEPARTMENT OF AGRICULTURE**

COUNTY DEPARTMENT OF AGRICULTURE  
566 LUGO AVENUE PHONE TURNER 9-0111

HAROLD A. CRANE  
COMMISSIONER  
RAYMOND M. SCHNEIDER  
CHIEF DEPUTY

DEPUTIES  
ROY F. CAMBLIN  
WAYNE H. STONE  
CECIL E. PRATT



COUNTY OF  
**SAN BERNARDINO**  
SAN BERNARDINO, CALIFORNIA

ANNUAL CROP AND LIVESTOCK REPORT

1958

To: Honorable W. C. Jacobsen, Director of Agriculture, and the Honorable Board of Supervisors, San Bernardino County.

It is required by Section 65.5 of the Agricultural Code that the Agricultural Commissioner compile a report covering the conditions, acreage, production and value of the agricultural products of the county. Herewith is submitted such a report for the County of San Bernardino.

It should be explained that the valuation figures herein given are gross receipts and not net returns to the grower. Considering the county's agriculture as a whole 1958 was a fairly profitable year for most growers. Production of some tree fruits, particularly navel oranges, was low while prices were high. Field crops were also low in production in some instances while prices were average. Acreage and production of vegetables continued at a high level with values declining from that of a year ago. Livestock valuation increased due mainly to increased poultry production. Milk production also increased as a result of the increase in dairies.

On the basis of gross returns to the grower, the total income from the agricultural industries of the county herein listed amount to \$109,227,306 for 1958, as compared with \$115,797,842 for 1957. This value is the fourth highest on record for the county and is a 5% reduction from the previous year. There were 111,242 acres in agricultural production in 1958, which is 970 acres more than the previous year.

It should be pointed out that the many business enterprises, both large and small, that are totally dependent upon agriculturalists for their trade may, if similarly appraised, show a combined gross income equal to the 1958 figure. The combined figures should give a truer picture of the position agriculture holds in the total economy of the county.

Charts accompanying this report should be consulted to observe trends in certain commodities.

Citrus: The total citrus acreage for San Bernardino County, for 1958, was 29,744 acres. Navel oranges account for one-half this total with 14,415 acres, while valencia oranges account for one-quarter with 7,330 acres. Lemons with 5,682 acres, grapefruit 1,764 acres, miscellaneous oranges 521 acres, plus 32 acres of limes make-up the balance.

There were 684 acres of oranges, 70 acres of grapefruit, and 120 acres of lemons, or a total of 874 acres of citrus, that were removed or abandoned during the year. For the most part these citrus removals were marginal producing orchards and resulted from the extension of residential and industrial construction into our farming areas. This is, also, the lowest number of acres of citrus removed from production in any one year since 1949.

Total production for all citrus was 2,943,871 standard boxes, including fruit sold loose as well as packed. This is one of the lowest production figures in the history of the citrus industry of the county. Reasons advanced for this low production are a combination of factors that prevailed prior too, and during the time of the young fruit set. Many orange groves were damaged by heavy leaf-drop, resulting in some die-back of the tops of the trees during May. There was a lack of sufficient rainfall in the Spring of 1957, as well as the preceding years. This continued with several days of unseasonably hot weather and dry winds in June, which resulted in considerable loss of the young navel fruits.

Production of navel oranges dropped 75% from the previous year, while valuation decreased 60%. Valencia orange production also decreased some 64%, while valuation decreased 55%. It can thus be noted that while production was at a new low the price returns per box was probably the highest.

Lemon and grapefruit production remained fairly constant, commensurate with removals, and did not seem to be affected by the same conditions that lowered the orange production.

The valuation figures given for all citrus are f.o.b. as fruit leaves the packing house and are gross receipts and not net returns to the grower. The average returns for other crops are determined on the basis of naked fruit at the growers first delivery point.

Subtropical fruits (721 acres): This figure includes 556 acres of olives and 97 acres of bearing avocados. Production of olives decreased while avocado production increased considerably as plantings coming into bearing age were producing more fruit. The balance of our subtropical fruit acreage is made-up of 12 acres of persimmons and 8 acres of dates. Valuation of all subtropicals was considerably lower than the previous year on account of the low olive production.

Deciduous fruits (2,213 acres): Acreage of all deciduous fruits is 186 acres less than the previous year due to apricot and peach orchard removals. Apple acreage remains quite constant and for the first time in years the Oak Glen district was headed for a 100% crop but a hailstorm on August 15th,



resulted in considerable loss to the crop. By-products was able to take care of most of the sub-standard crop as can be noted by the increased cider production. Other deciduous crops as peaches and plums decreased in production commensurate with the decreased acreage.

Grapes (24,282 acres): With acreage remaining practically the same as the previous year production increased 14%. Prices received by the growers also increased. Total valuation was \$4,864,132 or 18% more than that received the previous year of 1957.

Berries (145 acres): Bush berries continue to decline in acreage with only 31 acres in production in 1958. Strawberries also decreased in acreage by 28 acres leaving a total of 114 acres in production. Total value of all berries was \$289,880.

Nuts (953 acres): This figure includes 65 acres of almonds and 888 acres of walnuts. The bulk of the almond acreage is in a state of abandonment and thus there was little or no harvest. Walnut tonnage increased over last years figure in spite of a reduction in acreage, with 534 tons grossing \$197,580.

Vegetables (8895 acres): Acreage of all vegetables increased 834 acres over the previous year with a corresponding increase in total valuation. Acreage increases are noted in sweet corn, cantaloupes, watermelons and irish potatoes. Valuation increased some 30%, due mainly to increased acreage and better returns for potatoes. Total valuation of all vegetables was \$5,263,214.

Field Crops (43,465 acres): Field crop acreage increased 1,292 acres over the previous year due chiefly to increases in alfalfa, grain hay and permanent pasture. Decreases are noted in blackeye beans, field corn, barley and sugar beets. Alfalfa is again our leading field crop with 18,117 acres with a value of over 3 million dollars. Total value of all field crops was \$5,337,539.

Seed Crops (478 acres): Less acreage was devoted to seed crops than formerly due to reductions in certified alfalfa and oats. Flower seeds, however, increased. Total value of all crops grown for seed amounts to \$97,725.

Nursery Stock (346 acres): Of this total acreage 245 acres were devoted to rose production with fruit trees, shade trees, berries and other field grown ornamental nursery stock making up the balance. Considerable value was also attained through stock grown under lath and in greenhouses. The estimated gross return for all nursery stock was \$2,910,809.

Bees (12,281 colonies registered): Honey and beeswax production show an increase over 1957. The wet winter, no doubt, was responsible for this increase. A much larger crop of orange honey was produced than for the past several years, although it did not compare with crops produced during those years when there was a large orange acreage and a lesser number of colonies of bees.

Desert buckwheat areas produced well, although, the locations were not fully covered with bees. However, many beekeepers moved their colonies to sage and pollination locations. An estimated 2,617,794 pounds of honey was produced. Total income from honey and other products amounted to \$373,156.

Livestock: The estimated figures shown in this report are, we believe, the best available.

Approximately 17,500 beef cattle were sold during the year with an estimated value of over \$1,500,000. Of this number over 7,000 were feed lot cattle, figured on the basis of weight gained, while the remainder were sold from the range, on the basis of full weight. This represents a reduction in number of beef cattle from the previous year due to a drop in the number of cattle feed yards in the county.

Dairy cows again show an increase with additional dairies being established, particularly in the Chino area. It is estimated there are some 32,000 producing cows in the county and over 240 dairies. Milk production is given in terms of milk fat this year as we feel it is a more accurate way of determining the production and value of the milk produced. The total production was over 15,000,000 pounds of milk fat with a value of close to \$21,000,000.

Producing hens in the county again show an increase with an estimated 5,400,000 hens for 1958. As a result egg production increased 11% over the preceding year. We believe the county will again be the leading egg producing county in the State and perhaps the country. Total gross income from all poultry including eggs, hens sold for meat, fryers, chicks, and turkeys is estimated at over \$49,000,000.

Hogs grossed \$478,000 with over 9,000 being sold, a slight decrease from the previous year. Rabbits and sheep continue to decline in number sold for meat and value.

Total gross income from all livestock is estimated at \$75,124,200 or an increase of 3% over 1957, and is also the highest value on record.

The members of our Department, including office personnel and District Inspectors, have made an earnest endeavor to make this report as accurate as possible. Whenever we could, we have checked our figures with those of other agencies. We have also tried to present it in a form that will be most helpful. However, in this regard, suggestions from readers are welcomed.

We are particularly indebted to the Deputies and Inspectors in our own Department who secured basic information for this report. We also extend our sincere appreciation to all organizations and individuals who cooperated and assisted us in making this report possible.

Respectfully submitted,

*H. A. Crane*

H. A. Crane  
Agricultural Commissioner

AND

*Warren A. Burr*  
Warren A. Burr  
Assistant to Commissioner

## CITRUS

<u>Year</u>	<u>*Acreage</u>	<u>**Production (Boxes)</u>	<u>Valuation (Gross Receipts)</u>
1938	50,445	7,024,281	\$ 11,767,447
1939	49,663	7,296,182	14,109,169
1940	48,078	8,120,227	17,170,447
1941	51,689	9,588,997	20,071,630
1942	51,320	8,998,780	21,195,403
1943	51,728	7,485,209	23,970,155
1944	50,794	10,980,405	40,075,086
1945	50,615	10,820,769	50,364,665
1946	49,167	10,660,414	39,140,244
1947	50,470	9,781,380	28,524,393
1948	50,000	8,463,319	23,546,951
1949	44,854	4,866,902	14,653,270
1950	43,239	8,523,115	24,056,853
1951	42,036	6,601,573	22,203,826
1952	40,790	6,130,929	19,790,436
1953	38,619	9,602,736	26,640,302
1954	35,955	6,053,618	21,753,413
1955	33,528	6,514,093	22,946,140
1956	31,526	6,607,367	26,420,976
1957	30,549	6,936,897	24,016,132
1958	29,744	2,943,871	13,206,207
21 Years' Average		7,761,952	\$ 23,553,476

\* Includes Bearing and Non-Bearing Acreage.

\*\* Cartons equal to one-half box.

TOTAL CROP, POULTRY, OTHER LIVESTOCK, AND TOTAL VALUATION FOR THE PAST  
FOURTEEN YEARS AS OF RECORD FOR SAN BERNARDINO COUNTY

<u>YEAR</u>	<u>ALL CROPS</u>	<u>ALL POULTRY</u>	<u>OTHER LIVESTOCK</u>	<u>TOTAL</u>
1945	\$ 67,114,424	\$ 15,469,053	\$ 11,879,364	\$ 94,462,841
1946	64,167,052	12,746,496	12,548,564	89,462,112
1947	44,524,547	17,725,625	17,013,715	79,263,887
1948	40,055,839	24,234,080	20,639,282	84,929,201
1949	30,441,086	29,206,756	17,063,785	76,711,627
1950	43,343,662	29,713,980	18,249,401	91,307,043
1951	43,747,168	40,555,572	21,672,010	105,974,750
1952	44,402,152	39,614,254	22,674,515	106,690,921
1953	44,655,332	49,199,028	18,689,452	112,543,812
1954	42,896,211	38,262,555	17,329,894	98,488,660
1955	40,559,798	48,555,568	19,236,734	108,352,100
1956	47,556,019	48,096,740	22,765,250	118,418,009
1957	43,118,324	45,385,300	27,294,218	115,797,842
1958	34,103,106	49,539,200	25,585,000	109,227,306

TOTAL POULTRY AND EGG PRODUCTION FOR THE PAST NINE  
YEARS AS OF RECORD FOR SAN BERNARDINO COUNTY

<u>YEAR</u>	<u>PRODUCING HENS</u>	<u>EGG PRODUCTION</u>	<u>EGG VALUATION</u>
1950	3,135,000	47,025,000 Dozen	\$ 19,280,250
1951	3,460,000	53,341,666 "	29,337,916
1952	3,792,660	60,050,592 "	27,623,273
1953	4,083,845	68,064,083 "	35,393,323
1954	4,385,360	73,089,333 "	28,504,840
1955	4,882,404	91,545,070 "	37,533,478
1956	4,895,930	95,878,620 "	36,433,875
1957	4,903,780	96,932,980 "	34,895,873
1958	5,443,120	107,501,710 "	39,776,000

## FRUIT, NUT AND VINE CROPS

	<u>ACREAGE</u>		<u>PRODUCTION</u>		<u>VALUATION</u>
	<u>Bearing</u>	<u>Non-Bearing</u>			
<u>CITRUS</u>					
Oranges: Navel	14,346	69	1,503,724 Cartons		\$ 4,882,346
Valencias	7,330		869,957 "		2,570,212
Misc.	506	15	49,374 "		153,182
Lemons	5,173	509	1,516,951 "		3,180,804
Grapefruit	1,686	78	673,149 "		1,499,963
Limes	2	30	342 "		1,040
<u>CITRUS TO BY-PRODUCTS</u>					
Oranges: Navels			107,792 "		78,279
Valencias			265,870 "		208,885
Misc.			6,908 "		7,025
Lemons			696,708 "		546,877
Grapefruit			196,968 "		77,594
<u>SUBTROPICAL</u>					
Avocados	97	48	125 Tons		30,000
Dates	8		No Harvest		
Olives	556		14 Tons		1,750
Persimmons	11	1	8 "		480
<u>DECIDUOUS</u>					
Apples	519	92	153,825 Boxes		323,032
Culls			694 Tons		15,268
Cider			79,000 Gallons		75,840
Apricots	80		138 Tons		13,800
Cherries	22	3	28 "		14,000
Peaches: Clings	305		1,088 "		69,088
Frees	651	12	3,205 "		641,000
Pears	29	2	104 "		8,320
Plums	385	113	927 "		259,560
<u>GRAPE</u>					
Wine	24,223	59	93,541 "		4,864,132
<u>BERRIES</u>					
Bushberries	31		93 "		18,600
Strawberries	114		169,550 Trays		271,280
<u>NUTS</u>					
Almonds	64	1	No Harvest		
Walnuts	874	14	534 Tons		197,580
TOTALS	57,012	1,046			\$20,009,937

## COMMERCIAL VEGETABLE CROPS

	<u>ACRES</u>	<u>PRODUCTION</u>	<u>SIZE</u>	<u>VALUATION</u>
Asparagus	10	1,800 Crts.	36 lbs.	\$ 12,600
Beans: Green	3	250 "	50 "	750
Beets	17	2,558 "	3 Doz.Bn.	2,558
Cabbage	172	42,226 "	60 lbs.	88,675
Carrots	220	98,169 "	50 lbs.	166,887
Cauliflower	81	35,275 "	40 lbs.	52,912
Corn: Sweet	1,856	374,305 "	5 doz.	748,610
Cucumbers	2	700 Lugs	30 lbs.	875
Eggplant	3	2,500 "	20 lbs.	3,125
Lettuce	23	1,536 Crts.	65 lbs.	4,147
Melons: Cantaloupe	280	44,450 "	65 lbs.	88,900
Water	126	855 Tons		29,925
Other	73	21,684 Crts.	65 lbs.	37,947
Onions: Green	5	1,350 "	30 lbs.	3,712
Dry	324	257,801 Sacks	50 lbs.	257,801
Peppers: Bell	1	150 Lugs	15 lbs.	135
Potatoes: Sweet	1,317	387,040 "	45 lbs.	1,009,052
Irish	3,994	1,262,900 Sacks	100 lbs.	2,602,835
Spinach	3	825 Crts.	35 lbs.	536
Squash: Summer	11	1,854 Lugs	20 lbs.	1,854
Winter	20	131 Tons		1,048
Tomatillos	8	2,800 Lugs	25 lbs.	11,200
Tomatoes: Fresh	22	8,200 Lugs	32 lbs.	28,450
Can	20	150 Tons		3,750
Turnips	4	1,200 Crts.	50 lbs.	1,080
Misc. Vegetables	300	64,000 "		103,850
TOTALS	8,895			\$ 5,263,214

# FIELD CROPS

	<u>ACRES</u>	<u>PRODUCTION</u>	<u>VALUATION</u>
Beans: Blackeye	3,910	61,087 sks. *	\$ 427,609
Castor	40	60,000 lbs.	4,800
Corn: Ensilage	915	9,090 Tons	72,720
Grain	655	37,750 sks.	98,250
Milo	125	3,500 sks.	8,225
Cotton	35	44 bls.	7,040
Grain: Barley	2,213	31,495 sks.	72,438
Oats	1,270	24,200 sks.	58,080
Wheat	297	5,846 sks.	18,123
Hay: Alfalfa	18,117	124,097 Tons	3,447,145
Grain	7,697	14,129 "	353,225
Pasture: Permanent	7,627		709,311
Planted Dry Range	30		750
Sudan Grass	334		24,048
Sugar Beets	200	2,385 Tons	35,775
TOTALS	43,465		\$5,337,539

\* All sacks 100 lbs.

## SEED CROPS

Alfalfa: Certified	85	19,500 lbs.	\$ 6,825
Uncertified	100	50,000 "	11,500
Barley: Rojo	20	37,000 "	1,480
Rye: Merced	18	35,500 "	1,420
Flower	255	70,125 "	76,500
TOTALS	478		\$97,725

## NURSERY STOCK

Grown and Sold	346 Acres	\$2,910,809
----------------	-----------	-------------

## APIARY

### Production

Honey	2,617,794 lbs.	\$ 316,926
Beeswax	55,520 "	28,870
Nuclei with Queens	5,412	27,060
Pollination Fees		300
TOTALS		\$ 373,156

## CONSERVATION AND SOIL BANK PROGRAMS

	<u>1957</u>	<u>1958</u>
Payments	\$113,950	\$110,726

# ESTIMATED LIVESTOCK PRODUCTION

	<u>PRODUCTION</u>	<u>VALUATION</u>
<u>BEEF CATTLE</u>		
Feeders	7,377 *	\$ 514,000
Range	10,230	1,077,000
<u>DAIRY</u>		
Producing Cows 32,885		
Milk Fat: Market	15,102,000 lbs.	20,840,800
Manufacturing	72,000 "	62,000
Young Stock and Calves sold	1,528	276,500
Slaughter	7,319	1,752,500
Fertilizer sold	209,660 Tons	262,000
<u>POULTRY</u>		
Producing Hens	5,443,120	
Eggs	107,501,710 doz.	39,776,000
Hens Sold for Meat	3,679,800	1,656,000
Fryers	4,978,200	3,902,000
Baby Chicks	6,876,200	1,238,000
Fertilizer sold	56,000 Tons	126,000
<u>DUCKS</u>		
Sold for Meat	114,000	142,500
Young Ducks	300,000	150,000
<u>TURKEYS</u>		
Sold for Meat	524,700	2,500,000
Poults	75,000	48,700
<u>GOATS</u>		
Milk	91,700 Gals.	91,700
<u>HOGS</u>		
Slaughter	9,550	478,000
Fertilizer sold	2,675 Tons	5,000
<u>RABBITS</u>		
Fryers	132,600	159,000
Fertilizer sold	780 Tons	1,700
<u>SHEEP</u>		
Feeding on range	6,400	**21,000
Slaughter	800	20,800
<u>MISCELLANEOUS</u>		
		23,000
TOTAL		\$75,124,200

\* Beef and feed lot gain  
 \*\* Forage value



RECAPITULATION

	<u>ACREAGE</u> *		<u>VALUATION</u>	
	<u>1957</u>	<u>1958</u>	<u>1957</u>	<u>1958</u>
Citrus	30,549	29,744	\$ 24,016,132	\$ 13,206,207
Subtropical	730	721	64,210	32,230
Deciduous	2,398	2,213	1,395,352	1,419,908
Grapes	24,324	24,282	4,105,250	4,864,132
Berries	208	145	379,260	289,880
Nuts	1,001	953	278,400	197,580
Vegetables	8,061	8,895	4,042,498	5,263,214
Field Crops	42,173	43,465	5,334,387	5,337,539
Seeds	678	478	104,786	97,725
Nursery Stock	350	346	3,105,803	2,910,809
Apiary			178,296	373,156
Livestock Including Poultry			72,679,518	75,124,200
Conservation, Soil Bank and Subsidy Programs			113,950	110,726
TOTALS	110,472	111,242	\$115,797,842	\$109,227,306

\* Includes bearing and non-bearing.

SOME INDUSTRIES AND BUSINESS ENTERPRISES DEPENDENT UPON  
AGRICULTURE FOR THEIR TRADE AND NOT EVALUATED IN THIS REPORT

Agricultural Pest Control Operators  
Dairy Equipment  
Farm Machinery Manufacturers  
Farm Equipment Dealers  
Feed, Grain, and Seed Dealers  
Fertilizer Dealers  
Fruit and Vegetable Packing Houses

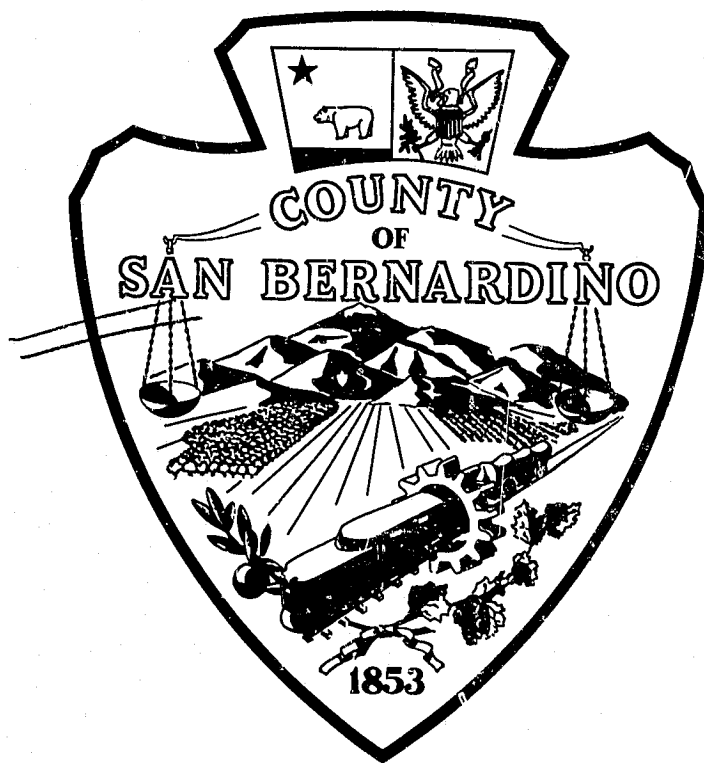
Irrigation Systems and Equipment  
Fruit and Vegetable By-Product Plants  
Meat Packers and Slaughter Houses  
Orchard Heater Manufacturers  
Pest Control Materials Dealers  
Poultry and Egg Wholesalers  
Wind Machine Companier

✓ 1959

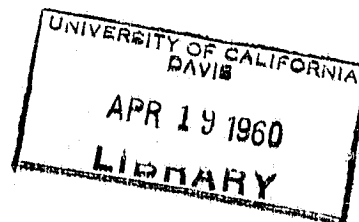
Ref. V. F. / Calif. Counties

# Annual Crop and Livestock Report

1959



**DEPARTMENT OF AGRICULTURE**



COUNTY DEPARTMENT  
OF AGRICULTURE  
566 Lugo Avenue TURNER 9-0111  
SAN BERNARDINO, CALIFORNIA

COUNTY OF  
SAN BERNARDINO

SAN BERNARDINO, CALIFORNIA

HAROLD A. CRANE  
*Commissioner*  
RAYMOND M. SCHNEIDER  
*Chief Deputy*

ROY F. CAMBLIN  
WAYNE H. STONE  
CECIL E. PRATT  
*Deputies*

AGRICULTURAL CROP REPORT

1959

TO: The Honorable William E. Warne, Director  
California Department of Agriculture  
and  
The Honorable Board of Supervisors  
County of San Bernardino

S. Wesley Break, Chairman  
Magda Lawson Nancy E. Smith  
Richard Manley Paul T. Young

In accordance with the provisions of Section 65.5 of the Agricultural Code of the State of California, I hereby submit the Annual Crop and Livestock Report for the year 1959, covering the conditions, acreage, production, and value of the agricultural products for the county of San Bernardino.

It can be noted that the context of the report is somewhat different from that of previous years. This was done as a means towards state-wide reporting whereby statistics could be compared and combined on a uniform basis. It is hoped that this type of reporting will meet with the approval of those concerned with the agricultural industries in the county and others interested in agriculture.

On the basis of gross returns to the grower, the total income from the agricultural industries of the county herein listed amount to \$117,229,663 for 1959, as compared with \$108,863,906 for 1958. This value is the second highest on record for the county and is a 7% increase over the previous year. These gross receipts represent dollars that mostly go into circulation locally and support the county's economy. It has been stated by economists at our state level that the total agricultural impact on the state's economy is around 10 billion dollars. This is more than three times the gross income of all farmers. Then to say, with respect to San Bernardino County, that its total agricultural impact upon our county's economy is in the neighborhood of 250 million dollars annually should be a very conservative estimate.

The members of our department, including office personnel and district inspectors, have made an earnest endeavor to make this report conform to the state recommended form wherever possible. Whenever we could we checked our figures with those of other agencies. We hope this new form will be acceptable, and in this regard suggestions from readers are welcomed.

We are particularly indebted to members of our own department who secured basic information for this report. We also extend our sincere appreciation to all organizations and individuals who cooperated and assisted us in making this report possible.

Respectfully submitted,

*H. A. Crane*

H. A. Crane  
Agricultural Commissioner

## CROP SUMMARY

Citrus: The total citrus acreage for San Bernardino County for 1959 was 28,449 acres. Navel oranges account for one half this total with 13,697 acres, while Valencia oranges account for one quarter with 7,049 acres. Lemons with 5,457 acres, grapefruit 1,723 acres, miscellaneous oranges 491 acres, plus 32 acres of limes make up the balance.

There were 1,033 acres of oranges, 228 acres of lemons, and 43 acres of grapefruit that were removed or abandoned during the year for a total loss of 1,304 acres of citrus. This loss resulted from the extension of residential and industrial construction into our farming areas. In spite of the losses sustained in our citrus acreage, San Bernardino County is still one of the leading citrus counties in the state, being second in navel and miscellaneous oranges, second in grapefruit, fourth in lemons, and sixth in Valencia oranges.

Total citrus production was 6,463,978 standard boxes, including fruit sold for by-products. This production figure shows a return to normal of all citrus following the very low production year of 1958. Navel and Valencia orange production was one of the best in several years, while lemon production was one of the highest in county history. Total valuation of all citrus was \$22,463,970 or an increase of 70% over the 1958 total. By consulting the supplemental page on citrus in this report it can be noted that the 1959 citrus crop was considered very good in spite of the continued reduction in acreage.

The valuation figures for all packed citrus are f.o.b. as fruit leaves the packing house. The production and valuation figures also include fruit that was diverted to by-products.

The average returns for other crops are determined at the grower's first delivery point.

Subtropical and Deciduous fruits: Avocado production increased as more acres came into bearing age, but the total value decreased due to low prices. Olive acreage remains constant with low production in evidence for the past several years. Apple, apricot, cherry and pear production and acreage show no appreciable change from the previous year. Peach acreage was reduced 132 acres due to removals. This fact, plus delayed foliation last spring, was responsible for the reduction in tonnage with a corresponding decrease in valuation. Plum acreage and production increased as more young trees came into bearing. With grape acreage remaining practically the same as last year, production increased 13% while valuation decreased due to lower prices received by the growers.

Vegetables: Acreage of all vegetables decreased 1,179 acres from the previous year with a corresponding decrease in total valuation. Reductions were noted in carrots, cauliflower, sweet corn, lettuce and potatoes. Increases in watermelons, onions, rhubarb and sweet potatoes helped alleviate the loss in other crops.

Field Crops: Field crop acreage also decreased with a reduction of some 6,667 acres. Acreage reductions are found in barley, blackeye beans, corn, hay, pasture and sugar beets. Alfalfa is again our leading field crop with 16,645 acres and a value of \$3,293,940. Total value for all field crops is \$5,018,324.

Nursery Stock: Out of a total of 362 acres of nursery stock harvested, 218 acres were devoted to rose production, with fruit trees, shade trees, berries and other field grown ornamental stock making up the balance. Considerable value was also attained through stock grown under lath, in greenhouses and cut flowers. The estimated gross return for all nursery stock was \$2,944,080.

Livestock: The total value of all livestock production and products is \$74,931,891. This is an increase of only \$171,000 over the previous year, in spite of increases in number of cattle and calves, chickens, and turkeys. Dairy cows increased over 3,000 head as additional dairies were established in the Chino district. There are now over 250 dairies located throughout the county. Correspondingly, milk production increased with an estimated value of nearly \$3,000,000 over the previous year.

Producing hens also increased 11% over the previous year with corresponding increases in egg production. This makes San Bernardino County one of the leading egg producing counties in the nation. However, the prices of eggs, hens sold for meat, and fryers decreased. These lower prices amounted to a deficit of some \$4,000,000 from the previous year, which more than offset the gain obtained in milk production this year. Beef, pork and lamb prices were also lower while prices received for turkeys increased. Values for feed lot cattle were figured on a weight gain basis while the remainder sold from the range and cull dairy stock were figured on the basis of full weight.

The revised figure for the 1958 livestock valuation was the result of specific items being omitted from agricultural production, such as fertilizer, government payments and other minor items.

It should be noted that the valuation figures herein given are gross receipts and not net returns to the grower.

Summary and data compiled by:

Warren A. Burr  
Assistant to Commissioner

SOME INDUSTRIES AND BUSINESS ENTERPRISES DEPENDENT UPON  
AGRICULTURE FOR THEIR TRADE AND NOT EVALUATED IN THIS REPORT

Agricultural Pest Control Operators  
Dairy Equipment  
Farm Machinery Manufacturers  
Farm Equipment Dealers  
Feed, Grain, and Seed Dealers  
Fertilizer Dealers  
Fruit and Vegetable Packing Houses

Irrigation Systems and Equipment  
Fruit and Vegetable By-Product Plants  
Meat Packers and Slaughter Houses  
Orchard Heater Manufacturers  
Pest Control Materials Dealers  
Poultry and Egg Wholesalers  
Wind Machine Companies

## CITRUS; ACREAGE, PRODUCTION, AND VALUATION, 1938-59

- 4 -

Year	*Acreage	**Production (Boxes)	Valuation (Gross Receipts)
1938	50,445	7,024,281	\$ 11,767,447
1939	49,663	7,296,182	14,109,169
1940	48,078	8,120,227	17,170,447
1941	51,689	9,588,997	20,071,630
1942	51,320	8,998,780	21,195,403
1943	51,728	7,485,209	23,970,155
1944	50,794	10,980,405	40,075,086
1945	50,615	10,820,769	50,364,665
1946	49,167	10,660,114	39,140,244
1947	50,470	9,781,380	28,524,393
1948	50,000	8,463,319	23,546,951
1949	44,854	4,866,902	14,653,270
1950	43,239	8,523,115	24,056,853
1951	42,036	6,601,573	22,203,826
1952	40,790	6,130,929	19,790,436
1953	36,619	9,602,736	26,640,302
1954	35,955	6,053,618	21,753,413
1955	33,528	6,514,093	22,946,140
1956	31,526	6,607,367	26,420,976
1957	30,549	6,936,897	24,016,132
1958	29,744	2,943,871	13,206,207
1959	28,449	6,463,978	22,463,970

\* Includes Bearing and Non-Bearing Acreage.

\*\* Cartons equal to one-half box.

TOTAL CROP, POULTRY, OTHER LIVESTOCK, AND TOTAL VALUATION FOR THE PAST  
FOURTEEN YEARS AS OF RECORD FOR SAN BERNARDINO COUNTY

Year	All Crops	All Poultry	Other Livestock	Total
1946	\$ 64,167,052	\$ 12,746,496	\$ 12,548,564	\$ 89,462,112
1947	44,524,547	17,725,625	17,013,715	79,263,887
1948	40,055,839	24,234,080	20,639,282	84,929,201
1949	30,441,086	29,206,756	17,063,785	76,711,627
1950	43,343,662	29,713,980	18,249,401	91,307,043
1951	43,747,168	40,555,572	21,672,010	105,974,750
1952	44,402,152	39,614,254	22,674,515	106,690,921
1953	44,655,332	49,199,028	18,689,452	112,543,812
1954	42,896,211	38,262,555	17,329,894	98,488,660
1955	40,559,798	48,555,568	19,236,734	108,352,100
1956	47,556,019	48,096,740	22,765,250	118,418,009
1957	43,118,324	45,385,300	27,294,218	115,797,842
1958	34,103,106	49,539,200	25,221,600	108,863,906
1959	42,297,772	46,364,506	28,567,385	117,229,663

TOTAL POULTRY AND EGG PRODUCTION FOR THE PAST NINE  
YEARS AS OF RECORD FOR SAN BERNARDINO COUNTY

Year	Producing Hens	Egg Production	Egg Valuation
1951	3,460,000	53,341,666 Dozen	\$ 29,337,916
1952	3,792,660	60,050,592 "	27,623,273
1953	4,083,845	68,064,083 "	35,393,323
1954	4,385,360	73,089,333 "	28,504,840
1955	4,882,404	91,545,070 "	37,533,478
1956	4,895,930	95,878,620 "	36,433,875
1957	4,903,780	96,932,980 "	34,895,873
1958	5,443,120	107,501,710 "	39,776,000
1959	6,064,322	119,712,780 "	35,315,270



FRUIT & NUT CROPS: ACREAGE, PRODUCTION, AND VALUE, 1958-59

Crop	Year	Bearing acreage	Production		Unit	Value	
			Per acre	Total		Per unit	Total
Apples	1959	506	7.1	3,609	ton	\$ 95.00	\$ 342,267
	1958	519	7.2	3,770		90.00	338,300
Apple Cider	1959			55,000	gal	.90	49,500
	1958			79,000		.96	75,840
Apricots	1959	80	1.6	133	ton	90.00	11,970
	1958	80	1.7	138		100.00	13,800
Avocados	1959	116	1.7	194	ton	150.00	29,100
	1958	97	1.3	125		240.00	30,000
Boysenberries	1959	7	2.5	18	ton	164.00	2,950
	1958	31	3.0	93		200.00	18,600
Cherries	1959	23	.0	20	ton	600.00	12,000
	1958	22	1.2	28		500.00	14,000
Grapes Raisins	1959	1,022	Included under wine				
	1958	1,031	"	"	"		
Table	1959	872	Included under wine				
	1958	882	"	"	"		
Wine	1959	22,087	4.4	105,930	ton	47.50	5,031,675
	1958	22,310	3.9	93,541		52.00	4,864,132
Grapefruit	1958-9	1,653	923	1,526,283	carton*	1.17	1,793,222
	1957-8	1,686	516	870,117		1.81	1,577,557
Lemons	1958-9	5,160	611	3,154,446	carton*	1.49	4,699,522
	1957-8	5,173	428	2,213,659		1.68	3,727,681
Limes	1959	2		2,800	carton	3.10	8,680
	1958	2		342		3.04	1,040
Oranges Navel	1958-9	13,661	354	4,847,691	carton*	2.00	9,666,374
	1957-8	14,346	112	1,611,516		3.07	4,960,625
Misc.	1958-9	486	256	124,532	carton*	1.35	169,108
	1957-8	506	111	56,282		2.84	160,207
Valencia	1958-9	7,049	464	3,272,205	carton*	1.87	6,127,064
	1957-8	7,330	155	1,135,827		2.45	2,779,097

FRUIT & NUT CROPS: ACREAGE, PRODUCTION, AND VALUE, 1958-59 (cont.)

Crop	Year	Bearing acreage	Production		Unit	Value	
			Per acre	Total		Per unit	Total
Olives	1959	543	.01	9	ton	\$200.00	\$ 1,860
	1958	556	.02	14		125.00	1,750
Peaches Clingstone	1959	271	2.2	607	ton	64.40	39,094
	1958	305	3.5	1,088		63.50	69,088
Freestone	1959	562	3.9	2,185	ton	180.00	394,600
	1958	651	5.0	3,205		200.00	641,000
Pears	1959	30	1.7	52	ton	130.00	6,800
	1958	29	3.5	104		80.00	8,320
Persimmons	1959	12	2.8	34	ton	67.00	2,278
	1958	11	0.7	8		60.00	480
Plums	1959	404	3.5	1,450	ton	220.00	319,000
	1958	385	2.4	927		280.00	259,560
Strawberries	1959	98	6.8	670	ton	456.00	305,562
	1958	114	6.7	762		356.00	271,280
Walnuts	1959	786	0.6	500	ton	387.00	193,880
	1958	874	0.6	534		370.00	197,580
TOTAL	1959	55,430	XXX	XXXX	XXX	XXX	\$29,206,506
	1958	56,940	XXX	XXXX	XXX	XXX	20,009,937

\* Carton weights - grapefruit 35 lb., lemons 39 lb., oranges 38 lb.

## VEGETABLE CROPS: ACREAGE, PRODUCTION, AND VALUE, 1958-59

Crop	Year	Harvested acreage	Production		Unit	Value	
			Per acre	Total		Per unit	Total
Asparagus	1959	10	3.0	30	ton	\$ 383.00	\$ 11,475
	1958	10	3.2	32		394.00	12,600
Beans, green	1959				ton		
	1958	3	2.0	6.2		121.00	750
Beets	1959				ton		
	1958	17	3.2	55		46.50	2,558
Broccoli	1959	2	1.1	2.3	ton	170.00	392
	1958						
Cabbage	1959	170	8.7	1,477	ton	75.00	110,875
	1958	172	7.4	1,267		70.00	88,675
Carrots	1959	187	10.3	1,940	ton	60.00	116,437
	1958	220	11.0	2,454		68.00	166,887
Cauliflower	1959	56	10.7	602	ton	62.50	37,625
	1958	81	8.7	705		75.00	52,912
Corn, sweet	1959	1,675	4.7	7,945	ton	109.00	864,315
	1958	1,856	4.3	8,047		93.00	748,610
Eggplant	1959	3	11.6	35	ton	178.00	6,250
	1958	3	8.3	25		125.00	3,125
Endive	1959	4	15.0	60	ton	80.00	4,800
	1958						
Lettuce	1959	2	3.9	7.8	ton	77.00	600
	1958	23	2.1	50		83.00	4,147
Melons Cantaloupe	1959	216	4.6	994	ton	63.50	63,120
	1958	280	5.1	1,444		61.50	88,900
Other	1959	97	9.8	946	ton	49.20	46,600
	1958	73	9.6	705		53.80	37,947
Watermelon	1959	196	7.8	1,525	ton	25.00	38,325
	1958	126	6.7	855		35.00	29,925
Onions, dry	1959	353	19.0	6,665	ton	48.50	323,102
	1958	324	20.0	6,445		40.00	257,801

VEGETABLE CROPS: ACREAGE, PRODUCTION, AND VALUE, 1958-59

Crop	Year	Harvested acreage	Production		Unit	Value	
			Per acre	Total		Per unit	Total
Onions, green	1959	60	9.0	540	ton	\$ 112.50	\$ 60,750
	1958	5	4.0	20		185.00	3,712
Peppers, bell	1959				ton		
	1958	1	1.4	1.4		96.00	135
Potatoes	1959	2,825	336	950,073	cwt.	2.10	1,997,562
	1958	3,994	316	1,262,900		2.06	2,602,835
Rhubarb	1959	60	7.8	472	ton	89.00	42,000
	1958						
Spinach	1959				ton		
	1958	3	4.6	14		38.00	536
Squash	1959	25	5.7	143	ton	70.00	9,970
	1958	31	4.8	150		19.50	2,902
Sweet potatoes	1959	1,447	6.0	8,633	ton	116.00	1,004,806
	1958	1,317	5.8	7,740		130.00	1,009,052
Tomatillos	1959	8	4.2	34	ton	300.00	10,227
	1958	8	4.3	35		320.00	11,200
Tomatoes, fresh	1959	6	3.3	20	ton	100.00	2,000
	1958	41	4.6	190		39.00	7,450
Tomatoes, hothouse	1959	5		4,300	22 lb. lug	3.07	13,200
	1958	1		4,500		5.50	24,750
Turnips	1959	11	5.6	62	ton	60.00	3,713
	1958	4	7.5	30		36.00	1,080
Miscellaneous Vegetables	1959	298		1,220	ton		84,862
	1958	302		1,280			104,725
TOTAL	1959	7,716	XXX	XXXX	XXX	XXX	\$4,853,006
	1958	8,895	XXX	XXXX	XXX	XXX	5,263,214

## FIELD CROPS: ACREAGE, PRODUCTION, AND VALUE, 1958-59

Crop	Year	Harvested acreage	Production		Unit	Value	
			Per acre	Total		Per unit	Total
Barley	1959	935	.5	470	ton	\$ 44.00	\$ 20,620
	1958	2,213	.7	1,575		46.00	72,438
Beans, dry	1959	2,964	.7	1,976	ton	150.00	296,436
	1958	3,910	.8	3,054		140.00	427,609
Beans, castor	1959				ton		
	1958	40	.7	30		160.00	4,800
Corn	1959	320	2.6	835	ton	60.00	50,100
	1958	655	2.5	1,638		60.00	98,250
Cotton lint	1959	50	470/lb.	47	bale	.33/lb.	7,690
	1958	35	625/lb.	44		.32/lb.	7,040
Cottonseed	1959	XXXX	.4	19	ton	42.00	795
	1958	XXXX					
Hay Alfalfa	1959	16,645	6.6	109,798	ton	30.00	3,293,940
	1958	18,117	6.8	124,097		27.80	3,447,145
Grain	1959	5,118	1.7	8,778	ton	32.50	285,350
	1958	7,697	1.8	14,129		25.00	353,225
Other tame	1959	634	4.0	2,536	ton	20.00	50,720
	1958	334	3.6	1,202		20.00	24,048
Cats	1959	351	.9	310	ton	55.00	17,083
	1958	1,270	.9	1,215		48.00	58,080
Pasture Irrigated	1959	6,308	XXX	XXXX	acre	115.00	725,420
	1958	7,627	XXX	XXXX		93.00	709,311
Other	1959	1,645	XXX	XXXX	acre	40.00	65,800
	1958	30	XXX	XXXX		25.00	750
Silage, corn	1959	1,328	20.0	26,995	ton	6.20	167,520
	1958	915	9.9	9,090		8.00	72,720
Sorghum, grain	1959	100	1.5	150	ton	50.00	7,500
	1958	125	1.4	175		47.00	8,225

## FIELD CROPS: ACREAGE, PRODUCTION, AND VALUE, 1958-59 (cont.)

Crop	Year	Harvested acreage	Production		Unit	Value	
			Per acre	Total		Per unit	Total
Sugar Beets	1959	50	16.0	800	ton	\$ 17.00	\$ 13,600
	1958	200	12.0	2,385		15.00	35,775
Wheat	1959	350	0.7	262	ton	60.00	15,750
	1958	297	1.0	292		62.00	18,123
TOTAL	1959	36,798	XXX	XXXX	XXX	XXX	\$5,018,324
	1958	43,465	XXX	XXXX	XXX	XXX	5,337,539

## SEED CROPS: ACREAGE, PRODUCTION, AND VALUE, 1958-59

Crop	Year	Harvested acreage	Production		Unit	Value	
			Per acre	Total		Per unit	Total
Alfalfa Certified	1959	45	55	2,500	lb.	\$ .40	\$ 1,000
	1958	85	230	19,500		.35	6,825
Non-certified	1959	150	466	70,000	lb.	.30	21,000
	1958	100	500	50,000		.27	11,500
Barley	1959	20	1,100	22,000	lb.	.04	880
	1958	20	1,350	37,000		.04	1,480
Flower	1959	260	250	65,000	lb.	1.30	84,500
	1958	255	275	70,125		1.10	76,500
Rye	1959	48	800	38,400	lb.	.04	1,536
	1958	18	1,970	35,500		.04	1,420
Sugar Beets	1959	30	3,000	90,000	lb.	.135	12,150
	1958						
TOTAL	1959	553	XXX	XXXX	XXX	XXX	\$ 121,066
	1958	478	XXX	XXXX	XXX	XXX	97,725

## NURSERY PRODUCTS: PRODUCTION AREA, SALES, AND VALUE, 1958-59

Item	Year	Production area		Quantity sold by producers	Unit	Value	
		House sq ft	Field acres			Per unit	Total
<u>Nursery Crops</u>							
Citrus & Sub-tropical fruit trees	1959	XXX	1	50	plant	\$ 2.50	\$ 125
	1958	XXX	1	325		2.50	809
Deciduous fruit & nut trees	1959	XXX	1.5	6,000	plant	.75	4,500
	1958	XXX					
Grape vines	1959	XXX	2.0	20,000	plant	.09	1,800
	1958	XXX					
Rose plants	1959	XXX	218	3,301,200	plant	.50	1,657,950
	1958	XXX	245	3,920,000		.42	1,646,400
Small fruit plants	1959	XXX	1	530,600	plant	.03	17,754
	1958	XXX					
Vegetable plants - field grown	1959	XXX	1	9,900	doz.	.10	990
	1958	XXX					
Ornamental trees & shrubs	1959	15,000	76	375,000	plant	1.60	601,700
	1958		87				945,500
Bedding plants	1959	18,500	8	80,200	flat	3.30	272,136
	1958		7				172,000
Herbaceous perennials	1959		15	303,200	plant	.80	242,800
	1958						
Indoor decorative plants	1959	42,000		43,000	plant	2.48	107,000
	1958						118,000
Bulbs, rhizomes, roots, etc.	1959	2,000	12	30,000		.50	15,000
	1958		3				25,000
Propagative materials budwood, cuttings, pits, etc.	1959	XXX	XXX	450,000	buds	.02	9,000
	1958	XXX	XXX				
TOTAL	1959	77,500	335.5	XXXX	XXX	XXX	\$2,930,755
	1958		343.0	XXXX	XXX	XXX	2,907,709

NURSERY PRODUCTS: PRODUCTION AREA, SALES, AND VALUE, 1958-59

Item	Year	Production area		Quantity sold by producers	Unit	Value	
		House	Field			Per unit	Total
		sq ft	acres				
<u>Cut Flowers &amp; Decoratives</u>							
Chrysanthemums	1959 1958		3.0	5,900	doz.	\$ 1.10	\$ 6,550
Lilacs	1959 1958		3.0 2.0	1,300 1,500	bunch	1.50 2.00	1,950 3,000
Christmas trees	1959 1958	XXX XXX	3.5 1.0	25 25	trees	4.00 4.00	100 100
Cut green decoratives	1959 1958		17.0	13,500	bunch	.35	4,725
TOTAL	1959 1958		26.5 3.0	XXXX XXXX	XXX XXX	XXX XXX	\$ 13,325 3,100

APIARY PRODUCTS: PRODUCTION AND VALUE, 1958-59

Item	Year	Production Total	Unit	Value	
				Per unit	Total
Honey	1959 1958	1,036,000 2,617,794	lb.	.116 .121	\$ 120,353 316,926
Beeswax	1959 1958	20,720 55,520	lb.	.46 .52	9,532 28,870
Nuclei with Queen Bees	1959 1958	4,961 5,412	each	5.00 5.00	24,805 27,060
Pollination	1959 1958	100 100	colony	1.00 3.00	100 300
TOTAL	1959 1958	XXXXX XXXXX	XXX XXX	XXX XXX	\$ 154,790 373,156



## LIVESTOCK AND POULTRY: PRODUCTION AND VALUE, 1958-59

Item	Year	Production		Unit	Value	
		No. of head	Total liveweight		Per unit	Total
Cattle & Calves						
Beef	1959	19,945	60,566	cwt.	\$ 24.50	\$ 1,487,312
	1958	17,607	52,821		30.00	1,591,000
Dairy	1959	43,495	160,076	cwt.	16.90	2,704,619
	1958	34,847	128,236		16.00	2,029,000
Sheep & Lambs	1959	950	945	cwt.	23.00	21,735
	1958	800	760		27.00	20,800
Hogs & Pigs						
Breeding	1959	531	1,805	cwt.	14.00	25,270
	1958					
Feeders	1959	1,380	1,424	cwt.	16.00	22,784
	1958					
Slaughter	1959	5,639	13,368	cwt.	14.50	193,836
	1958	9,550	22,920		20.85	478,000
Horses	1959	10	XXXX	head		5,000
Recreational	1958		XXXX			
Broilers & Fryers	1959	5,592,400	19,598,450	lb.	.19	3,723,700
	1958	4,978,200	17,423,700		.22	3,902,000
Other Chickens	1959	4,843,029	21,100,835	lb.	.08	1,708,184
	1958	3,679,800	14,719,200		.11	1,656,000
Chicks	1959	6,701,849		each	.18	1,228,576
	1958	6,876,200			.18	1,238,000
Turkeys	1959	596,860	13,841,012	lb.	.28	3,865,376
	1958	524,700	12,068,100		.20	2,500,000
Turkey poults	1959	50,000		each	.75	37,500
	1958	75,000			.65	48,700
Rabbits	1959	98,420	425,480	lb.	.24	104,279
	1958	132,600	570,180		.28	159,000
Miscellaneous*	1959	127,300	XXXX	XXX	XXX	182,500
	1958	436,670	XXXX	XXX	XXX	336,500
TOTAL	1959	XXXX	XXXX	XXX	XXX	\$15,310,671
	1958	XXXX	XXXX	XXX	XXX	13,959,000

\* Game birds and ducks 1958 & 59, geese, nutria and transient feeders 1958 only.

LIVESTOCK AND POULTRY PRODUCTS: PRODUCTION AND VALUE, 1958-59

Item	Year	Production	Unit	Value	
				Per unit	Total
Milk Market	1959	4,687,480	cwt.	\$ 5.05	\$ 23,672,000
	1958	4,137,340		5.04	20,861,000*
Manufacturing	1959	21,560	cwt.	3.06	66,000
	1958	21,820		3.25	71,000*
Milk, goats	1959	79,200	gal.	1.00	79,200
	1958	91,700		1.00	91,700
Wool	1959	7,125	lb.	.40	2,850
	1958	6,000		.35	2,100*
Eggs, chicken Market	1959	119,712,780	doz.	.295	35,315,270
	1958	107,501,710		.37	39,776,000
Hatching	1959	862,500	doz.	.56	485,900
	1958				
TOTAL	1959	XXXXX	XXX	XXX	\$ 59,621,220
	1958	XXXXX		XXX	60,801,800

\* Revised

JANUARY 1 INVENTORIES OF LIVESTOCK AND POULTRY, 1959-60  
(in number of head)

Item	January 1, 1959	January 1, 1960
Cattle and calves*		
All	65,600	69,100
Milk cows 2 years and over	34,700	37,700
Cattle and calves on feed	30,900	31,400
Sheep and lambs*	6,900	7,500
Hogs and pigs*	18,500	17,800
Horses	No inventory taken	245
Hens and pullets of laying age	5,443,120	6,064,322
Turkey breeder hens	10,000	14,200

\* Estimates of California Crop and Livestock Reporting Service

## RECAPITULATION


	Acreage*		Valuation	
	1958	1959	1958	1959
Citrus	29,744	28,449	\$ 13,206,207	\$ 22,463,970
Subtropical	721	703	32,230	33,238
Deciduous	2,213	2,040	1,419,908	1,175,231
Grapes	24,282	24,182	4,864,132	5,031,675
Berries	145	105	289,880	308,512
Nuts	953	863	197,580	193,880
Vegetables	8,895	7,716	5,263,214	4,853,006
Field Crops	43,465	36,798	5,337,539	5,018,324
Seeds	478	553	97,725	121,066
Nursery Stock	346	362	2,910,809	2,944,080
Apiary			373,156	154,790
Livestock, including Poultry			74,760,800**	74,931,891
Government Payments			110,726	
TOTALS	111,242	101,771	\$108,863,906**	\$117,229,663

\* Includes bearing and non-bearing.

\*\* Revised figure

## "MILLION DOLLAR" CROP RETURNS

1. Chicken eggs	\$ 35,315,270	9. Alfalfa hay	\$ 3,293,940
2. Dairy industry	26,442,619	10. Potatoes	1,997,562
3. Navel oranges	9,666,374	11. Grapefruit	1,793,222
4. Valencia oranges	6,127,064	12. Hatcheries	1,714,476
5. Grapes	5,031,675	13. Chickens	1,708,184
6. Lemons	4,699,522	14. Rose plants	1,657,950
7. Turkeys	3,902,876	15. Beef cattle	1,487,312
8. Chicken fryers	3,723,700	16. Sweet potatoes	1,004,806



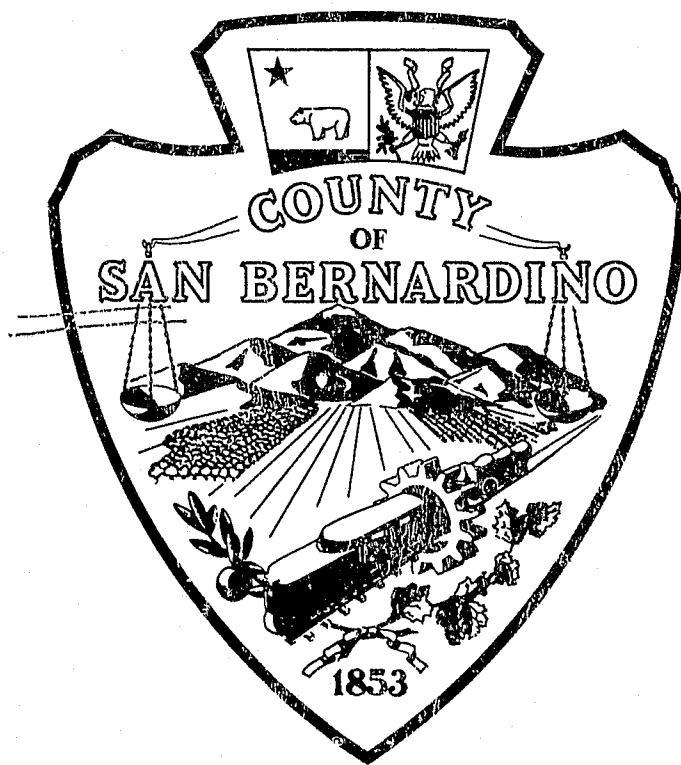
1960

*Ref. V.F.*

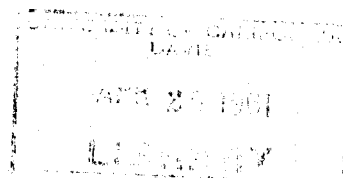
*Calif. Centine*

***Annual Crop and Livestock Report***

**1960**



**DEPARTMENT OF AGRICULTURE**



COUNTY DEPARTMENT  
OF AGRICULTURE  
566 Lugo Avenue TURNER 9-0111  
SAN BERNARDINO, CALIFORNIA

# COUNTY OF SAN BERNARDINO

SAN BERNARDINO, CALIFORNIA  
AGRICULTURAL CROP REPORT

1960

HAROLD A. CRANE  
*Commissioner*  
RAYMOND M. SCHNEIDER  
*Chief Deputy*

ROY F. CAMBLIN  
WAYNE H. STONE  
CECIL E. PRATT  
*Deputies*

To: Charles Paul, Director  
California Department of Agriculture  
and  
The Honorable Board of Supervisors  
County of San Bernardino

Paul T. Young, Chairman

S. Wesley Break  
Ross Dana  
Richard Manley  
Nancy E. Smith

In accordance with the provisions of Section 65.5 of the Agricultural Code of the State of California, I hereby submit the Annual Crop and Livestock Report for the year 1960, covering the conditions, acreage, production and value of the agricultural products for the county of San Bernardino.

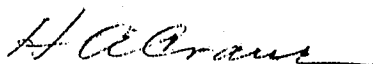
It can be noted that the context of the report is the same as reported last year. This is done as a means toward state-wide reporting whereby statistics can be compared and combined on a uniform basis.

On the basis of gross returns to the grower, the total value of the agricultural industries of the county herein listed amount to \$ 121,464,563 for 1960, as compared with \$ 117,229,663 for 1959. This value is the highest on record for the county and is a 3.6 % increase over the previous year. This increase can be attributed to the dairy and poultry industries in the county. The value of crops was reduced by almost 2.5 million dollars with acreage remaining about the same. Weather conditions were not particularly favorable for the production of crops.

These gross receipts represent dollars that, for the most part, go into circulation locally and support the county's economy. Economists claim that the impact of agriculture on the State's economy is over three times the valuation. On the basis of this statement, the total impact upon the economy in San Bernardino County approximates 300 million dollars.

The members of our department, including office personnel and district inspectors, have made an earnest endeavor to make this report as accurate as possible. We are indebted to the members of our department who secured basic information and to all organizations and individuals who cooperated and assisted us in making this report possible. To them we extend our sincere appreciation.

Respectfully submitted,



H. A. Crane  
Agricultural Commissioner

## CROP SUMMARY

Valuations given in this report for citrus are f.o.b. as fruit leaves the packing house. The production and valuation figures for citrus also include fruit that was diverted to by-products. The average returns for all other crops are determined at the producer's first delivery point. It should be stated that the dollar figures herein given are gross receipts and not net returns to the producer.

Citrus: The total citrus acreage for San Bernardino County for 1960 was 27,739 acres. Navel oranges account for one half of this total with 13,515 acres, while Valencia oranges account for one quarter with 6,853 acres. Lemons with 5,360 acres, grapefruit with 1,703 acres, miscellaneous oranges with 283 acres, plus 25 acres of limes make up the balance.

There were 271 acres of oranges, 167 acres of lemons and 23 acres of grapefruit removed or abandoned during the year for a total loss of 461 acres of citrus. This loss resulted from the extension of residential and industrial construction into our farming areas. In spite of the continual losses sustained in our citrus acreage, San Bernardino County is still one of the leading citrus counties in the State, being second in navel oranges, second in grapefruit, fourth in lemons, and fifth in valencia oranges.

Total citrus production was 5,547,400 standard boxes, including fruit sold for by-products. This figure shows a slight reduction from the previous year due to a lighter crop of all varieties. Total valuation of all citrus was \$21,797,589 or a decrease of 3% from 1959. By consulting the supplemental page on citrus (pg. 5) in this report, it will be noted that the 1960 citrus crop production was considered good in spite of the continued reduction in acreage.

Sub-tropical and Deciduous fruits: Avocado production decreased although there were additional acres that came into bearing. Value, however, increased due to higher prices. There was no commercial harvest of olives due to a poor set. Apple production was the lowest in years due to late spring frosts. Peach production remained normal although 182 acres were removed from production. Plum acreage was reduced by 55 acres with marketable production being further reduced by Marketing Order regulations. Varietal differences in crop volume resulted in only a fair production total for all grapes. High temperatures throughout the summer also reduced the crop in non-irrigated vineyards.

Vegetables: Plantings of all vegetables decreased 731 acres from the previous year with a slight decrease in valuation. Reductions were noted in cabbage, carrots, sweet corn, melons and onions. Increases in endive, lettuce and potatoes helped offset the loss in other crops.

Field Crops: Field crop acreage increased only in the case of alfalfa, hay and pasture. Additional acres of dryland pasture were added to the desert area district for sheep grazing. Other field crops show a considerable reduction. Total value of all field crops was \$4,679,100, a reduction of 9% from the 1959 value.

Nursery Stock: Out of a total of 315 acres of nursery stock harvested, 199 acres were devoted to rose plant production with fruit trees, shade trees, berries and other field grown ornamental stock making up the balance. Considerable value was also attained through stock grown under lath, in greenhouses and cut flowers. The estimated gross return for all nursery stock was over \$2,700,000.

Livestock: The estimated value of all livestock production and products is \$81,625,900 the highest on record. This value is an increase of \$6,600,000 over the previous year. An increase in the number of dairy cows, with corresponding increases in milk production, plus higher prices received for eggs is the main attribute for this record value. Latest figures reveal there are 244 dairies in the county with a total of 45,844 cows, with still more dairy facilities under construction.

Producing hens were estimated at 6,147,800, a slight increase over the previous year. Production per hen remained at 237 eggs per year. Total egg production was 121,838,600 dozen with a valuation of over \$40,000,000. Prices received by producers averaged thirty-three cents per dozen, an increase of three and one half cents over the previous year. This makes San Bernardino County one of the leading egg producing counties in the nation.

A slight increase in chicken fryers and rabbits is also noted. Production and valuation of other livestock was similar to the previous year with the exception of beef cattle which dropped considerably. This was due to a reduction in the number of feed lots and to drought conditions reducing range feed.

Values for feed lot cattle were figured on a weight gain basis while the remainder sold from the range, cull dairy stock and calves were figured on the basis of full weight.

Summary and data compiled by:

Warren A. Burr  
Assistant to Commissioner

SOME INDUSTRIES AND BUSINESS ENTERPRISES DEPENDENT UPON  
AGRICULTURE FOR THEIR TRADE AND NOT EVALUATED IN THIS REPORT

Agricultural Pest Control Operators  
Dairy Equipment  
Farm Machinery Manufacturers  
Farm Equipment Dealers  
Feed, Grain, and Seed Dealers  
Fertilizer Dealers  
Fruit and Vegetable Packing Houses

Irrigation Systems and Equipment  
Fruit and Vegetable By-Product Plants  
Meat Packers and Slaughter Houses  
Orchard Heater Manufacturers  
Pest Control Materials Dealers  
Poultry and Egg Wholesalers  
Wind Machine Companies



FRUIT, NUT AND VINE ACREAGE, 1960

Crop	Bearing	Non-Bearing	Total
Almonds	5	1	6
Apples	425	113	538
Apricots	63	-	63
Avocados	147	32	179
Cherries	24	1	25
Grapes	22,914	325	23,239
Grapefruit	1,600	103	1,703
Lemons	5,288	72	5,360
Limes	25	-	25
Olives	642	2	644
Oranges			
Navel	13,292	223	13,515
Valencia	6,758	95	6,853
Tangerines	78	7	85
Other	195	3	198
Peaches			
Cling	183	1	184
Freestone	457	1	458
Pears	21	-	21
Pecans	9	-	9
Persimmons	10	-	10
Plums	367	22	389
Pomegranates	2	-	2
Prunes	4	-	4
Walnuts	1,805	9	1,814
Total Acres	54,314	1,010	55,324

CITRUS; ACREAGE, PRODUCTION, AND VALUATION, 1938-60

Year	*Acreage	**Production (Boxes)	Valuation (Gross Receipts)
1938	50,445	7,024,281	\$ 11,767,447
1939	49,663	7,296,182	14,109,169
1940	48,078	8,120,227	17,170,447
1941	51,689	9,588,997	20,071,630
1942	51,320	8,998,780	21,195,403
1943	51,728	7,485,209	23,970,155
1944	50,794	10,980,405	40,075,086
1945	50,615	10,820,769	50,364,665
1946	49,167	10,660,414	39,140,244
1947	50,470	9,781,380	28,524,393
1948	50,000	8,463,319	23,546,951
1949	44,854	4,866,902	14,653,270
1950	43,239	8,523,115	24,056,853
1951	42,036	6,601,573	22,203,826
1952	40,790	6,130,929	19,790,436
1953	36,619	9,602,736	26,640,302
1954	35,955	6,053,618	21,753,413
1955	33,528	6,514,093	22,946,140
1956	31,526	6,607,367	26,420,976
1957	30,549	6,936,897	24,016,132
1958	29,744	2,943,871	13,206,207
1959	28,449	6,463,978	22,463,970
1960	27,739	5,547,400	21,797,589

\* Includes Bearing and Non-Bearing Acreage.

\*\* Cartons equal to one-half box.

TOTAL CROP, POULTRY, OTHER LIVESTOCK AND TOTAL VALUATION FOR THE PAST  
FOURTEEN YEARS AS OF RECORD FOR SAN BERNARDINO COUNTY

Year	All Crops	All Poultry	Other Livestock	Total
1947	\$ 44,524,547	\$ 17,725,625	\$ 17,013,715	\$ 79,263,887
1948	40,055,839	24,234,080	20,639,282	84,929,201
1949	30,441,086	29,206,756	17,063,785	76,711,627
1950	43,343,662	29,713,980	18,249,401	91,307,043
1951	43,747,168	40,555,572	21,672,010	105,974,750
1952	44,402,152	39,614,254	22,674,515	106,690,921
1953	44,655,332	49,199,028	18,689,452	112,543,812
1954	42,896,211	38,262,555	17,329,894	98,488,660
1955	40,559,798	48,555,568	19,236,734	108,352,100
1956	47,556,019	48,096,740	22,765,250	118,418,009
1957	43,118,324	45,385,300	27,294,218	115,797,842
1958	34,103,106	49,539,200	25,221,600	108,863,906
1959	42,297,772	46,364,506	28,567,385	117,229,663
1960	39,838,638	50,691,200	30,934,725	121,464,563

TOTAL POULTRY AND EGG PRODUCTION FOR THE PAST NINE  
YEARS AS OF RECORD FOR SAN BERNARDINO COUNTY

Year	Producing Hens	Egg Production	Egg Valuation
1952	3,792,660	60,050,592 Dozen	\$ 27,623,273
1953	4,083,845	68,064,083 "	35,393,323
1954	4,385,360	73,089,333 "	28,504,840
1955	4,882,404	91,545,070 "	37,533,478
1956	4,895,930	95,878,620 "	36,433,875
1957	4,903,780	96,932,980 "	34,895,873
1958	5,443,120	107,501,710 "	39,776,000
1959	6,064,322	119,712,780 "	35,315,270
1960	6,147,800	121,838,600 "	40,206,700

FRUIT & NUT CROPS: ACREAGE, PRODUCTION, AND VALUE, 1959-60

Crop	Year	Bearing acreage	Production		Unit	Value	
			Per acre	Total		Per unit	Total
Apples	1960	425	3.2	1,381	ton	\$ 137.00	\$ 189,335
	1959	506	7.1	3,609		95.00	342,267
Apple Cider	1960			40,250	gal.	1.03	41,457
	1959			55,000		.90	49,500
Apricots	1960	63	2.0	129	ton	89.00	11,455
	1959	80	1.6	133		90.00	11,970
Avocados	1960	147	1.1	165	ton	331.00	54,645
	1959	116	1.7	194		150.00	29,100
Boysenberries	1960	7	2.6	18	ton	308.00	5,545
	1959	7	2.5	18		164.00	2,950
Cherries	1960	24	1.6	38	ton	700.00	26,700
	1959	23	.9	20		600.00	12,000
Grapes							
Raisins	1960	859	Included under wine				
	1959	1,022	"	"	"		
Table	1960	876	Included under wine				
	1959	872	"	"	"		
Wine	1960	21,179	3.8	80,936	ton	48.50	3,923,175
	1959	22,087	4.4	105,930		47.50	5,031,675
Grapefruit	1959-60	1,600	783	1,252,541	carton*	1.30	1,639,485
	1958-59	1,653	923	1,526,283		1.17	1,793,222
Lemons	1959-60	5,288	500	2,647,580	carton*	1.48	3,931,834
	1958-59	5,160	611	3,154,446		1.49	4,699,522
Limes	1960	25		1,890	carton	3.00	5,670
	1959	2		2,800		3.10	8,680
Oranges							
Navel	1959-60	13,292	342	4,541,758	carton*	2.26	10,264,290
	1958-59	13,661	354	4,847,691		2.00	9,666,374
Misc.	1959-60	273	145	39,804	carton*	1.95	77,770
	1958-59	486	256	124,532		1.35	169,108
Valencia	1959-60	6,758	386	2,611,226	carton*	2.25	5,878,540
	1958-59	7,049	464	3,272,205		1.87	6,127,064

FRUIT & NUT CROPS: ACREAGE, PRODUCTION, AND VALUE, 1959-60 (cont.)

Crop	Year	Bearing acreage	Production		Unit	Value	
			Per acre	Total		Per unit	Total
Olives	1960	642	crop failure				
	1959	543	.01	9	ton	\$ 200.00	\$ 1,860
Peaches Ulingstone	1960	183	4.0	746	ton	61.00	45,760
	1959	271	2.2	607		64.40	39,094
Freestone	1960	457	4.7	2,151	ton	157.00	337,185
	1959	562	3.9	2,185		180.00	394,600
Pears	1960	21	1.2	25	ton	152.00	3,800
	1959	30	1.7	52		130.00	6,800
Persimmons	1960	10	0.9	9	ton	108.00	975
	1959	12	2.8	34		67.00	2,278
Plums	1960	367	3.0	1,103	ton	238.00	262,340
	1959	404	3.5	1,450		220.00	319,000
Strawberries	1960	112	7.2	814	ton	368.00	299,600
	1959	98	6.8	670		456.00	305,562
Walnuts	1960	1,805**	0.3	520	ton	430.00	223,600
	1959	786	0.6	500		387.00	193,880
TOTAL	1960	54,413	XXX	XXXX	XXX	XXX	\$27,223,161
	1959	55,430	XXX	XXXX	XXX	XXX	29,206,506

\* Carton weights - grapefruit 33 lb., lemons 38 lb., oranges 37.5 lb.

\*\* Two-thirds of this acreage is not harvested.

VEGETABLE CROPS: ACREAGE, PRODUCTION, AND VALUE, 1959-60

Crop	Year	Harvested acreage	Production		Unit	Value	
			Per acre	Total		Per unit	Total
Asparagus	1960	10	2.2	24	ton	\$ 247.00	\$ 5,920
	1959	10	3.0	30		383.00	11,475
Beets, table	1960	20	14.0	280	ton	60.00	16,800
	1959						
Broccoli	1960				ton		
	1959	2	1.1	2.3		170.00	392
Cabbage	1960	113	11.5	1,301	ton	39.00	51,038
	1959	170	8.7	1,477		75.00	110,875
Carrots	1960	40	15.0	600	ton	65.00	39,000
	1959	187	10.3	1,940		60.00	116,437
Cauliflower	1960	49	14.1	694	ton	44.00	30,480
	1959	56	10.7	602		62.50	37,625
Corn, sweet	1960	1,488	3.8	5,759	ton	107.00	615,545
	1959	1,675	4.7	7,945		109.00	864,315
Cucumber	1960	14	1.8	25	ton	42.00	1,040
	1959						
Eggplant	1960	5	10.8	54	ton	93.00	5,000
	1959	3	11.6	35		178.00	6,250
Endive	1960	55	12.7	700	ton	45.00	31,450
	1959	4	15.0	60		80.00	4,800
Lettuce, leaf	1960	55	13.3	735	ton	40.00	29,400
	1959	2	3.9	7.8		77.00	600
Melons Cantaloupe	1960	70	8.1	570	ton	47.00	26,760
	1959	216	4.6	994		63.50	63,120
Other	1960	65	7.2	470	ton	40.00	19,000
	1959	97	9.8	946		49.20	46,600
Watermelon	1960	88	11.0	968	ton	29.00	28,330
	1959	196	7.8	1,525		25.00	38,325
Onions, dry	1960	278	16.8	4,666	ton	65.00	302,545
	1959	353	19.0	6,665		48.50	323,102

## VEGETABLE CROPS: ACREAGE, PRODUCTION, AND VALUE, 1959-60 (cont.)

Crop	Year	Harvested Acreage	Production		Unit	Value	
			Per acre	Total		Per unit	Total
Onions, green	1960	50	10.5	525	ton	\$ 75.00	\$ 39,375
	1959	60	9.0	540		112.50	60,750
Parsnips	1960	10	15.0	150	ton	50.00	7,500
	1959						
Peppers, bell	1960	7	3.2	23	ton	239.00	5,496
	1959						
Potatoes	1960	2,944	242	712,050	cwt.	2.98	2,118,830
	1959	2,825	336	950,073		2.10	1,997,562
Rhubarb	1960	60	8.0	480	ton	50.00	24,000
	1959	60	7.8	472		89.00	42,000
Romaine	1960	12	14.1	170	ton	36.00	6,075
	1959						
Squash	1960	76	5.5	423	ton	75.00	31,875
	1959	25	5.7	143		70.00	9,970
Sweet potatoes	1960	1,378	5.8	8,065	ton	142.00	1,141,364
	1959	1,447	6.0	8,633		116.00	1,004,806
Tomatillos	1960	10	3.2	32	ton	308.00	9,865
	1959	8	4.2	34		300.00	10,227
Tomatoes, fresh	1960	10	3.2	32	ton	132.00	4,225
	1959	6	3.3	20		100.00	2,000
Tomatoes, hothouse	1960	3		7,448	(22 lb. lug.)	3.23	24,090
	1959	5		4,300		3.07	13,200
Turnips	1960	27	13.7	370	ton	54.00	19,900
	1959	11	5.6	62		60.00	3,713
Miscellaneous Vegetables	1960	48		81	ton		95,555
	1959	298		1,220			84,862
TOTAL	1960	6,985	XXX	XXXX	XXX	XXX	\$4,730,458
	1959	7,716	XXX	XXXX	XXX	XXX	4,853,006

FIELD CROPS: ACREAGE, PRODUCTION AND VALUE, 1959-60

Crop	Year	Harvested acreage	Production		Unit	Value	
			Per acre	Total		Per unit	Total
Barley	1960	487	.4	208	ton	\$ 46.00	\$ 9,980
	1959	935	.5	470		44.00	20,620
Beans, blackeye	1960	1,333	.7	1,008	ton	191.00	192,950
	1959	2,964	.7	1,976		150.00	296,436
Corn, grain	1960	250	2.5	625	ton	60.00	37,500
	1959	320	2.6	835		60.00	50,100
Cotton lint	1960	5	600/lb	3	bale	.39/lb.	585
	1959	50	470/lb	47		.33/lb	7,690
Cottonseed	1960	XXXX	XXX	.7	ton	52.00	38
	1959	XXXX	XXX	19		42.00	795
Hay Alfalfa	1960	16,705	6.8	114,664	ton	27.55	3,159,300
	1959	16,645	6.6	109,798		30.00	3,293,940
Grain	1960	6,472	1.7	11,008	ton	28.30	311,560
	1959	5,118	1.7	8,778		32.50	285,350
Other tame	1960	321	3.8	1,229	ton	24.50	30,170
	1959	634	4.0	2,536		20.00	50,720
Oats	1960	68	.5	36	ton	50.00	1,795
	1959	351	.9	310		55.00	17,083
Pasture Irrigated	1960	6,475	XXX	XXXX	acre	105.00	678,700
	1959	6,308	XXX	XXXX		115.00	725,420
Other	1960	5,367	XXX	XXXX	acre	15.00	81,170
	1959	1,645	XXX	XXXX		40.00	65,800
Rye	1960	5	.4	2	ton	50.00	100
	1959						
Silage, corn	1960	1,264	21.0	26,660	ton	6.17	164,400
	1959	1,328	20.0	26,995		6.20	167,520
Sorghum, grain	1960	9	3.0	27	ton	44.50	1,202
	1959	100	1.5	150		50.00	7,500



FIELD CROPS: ACREAGE, PRODUCTION, AND VALUE, 1959-60 (cont.)

Crop	Year	Harvested acreage	Production		Unit	Value	
			Per acre	Total		Per unit	Total
Sugar Beets	1960	50	16.0	800	ton	\$ 17.00	\$ 13,600
	1959						
Wheat	1960	257	0.7	192	ton	50.00	9,650
	1959	350	0.7	262		60.00	15,750
TOTAL	1960	39,018	XXX	XXXX	XXX	XXX	\$4,679,100
	1959	36,798	XXX	XXXX	XXX	XXX	5,018,324

SEED CROPS: ACREAGE, PRODUCTION, AND VALUE, 1959-60

Crop	Year	Harvested acreage	Production		Unit	Value	
			Per acre	Total		Per unit	Total
Alfalfa Certified	1960	47	200	9,400	lb.	\$ .35	\$ 3,290
	1959	45	55	2,500		.40	1,000
Non- Certified	1960	80	400	32,000	lb.	.27	8,640
	1959	150	466	70,000		.30	21,000
Barley	1960	46	600	27,600	lb.	.038	1,048
	1959	20	1,100	22,000		.04	880
Flower	1960	150	150	22,500	lb.	1.35	30,375
	1959	260	250	65,000		1.30	84,500
Rye	1960	107	850	90,950	lb.	.033	3,002
	1959	48	800	38,400		.04	1,536
Sugar Beets	1960	65	6,500	423,420	lb.	.15	63,513
	1959	30	3,000	90,000		.135	12,150
Wheat	1960	4	375	1,500	lb.	.027	40
	1959						
TOTAL	1960	499	XXX	XXXX	XXX	XXX	\$ 109,908
	1959	553	XXX	XXXX	XXX	XXX	121,066

NURSERY PRODUCTS: PRODUCTION AREA, SALES, AND VALUE, 1959-60

Item	Year	Production area		Quantity sold by producers	Unit	Value	
		House sq. ft.	Field acres			Per unit	Total
<u>Nursery Crops</u>							
Citrus & Sub-tropical fruit trees	1960						
	1959	XXX	1	50	plant	\$ 2.50	\$ 125
Deciduous fruit & nut trees	1960	XXX	2.0	4,800	plant	.65	3,120
	1959	XXX	1.5	6,000		.75	4,500
Grape vines	1960	XXX	1.0	6,000	plant	.10	600
	1959	XXX	2.0	20,000		.09	1,800
Rose plants	1960	XXX	199	3,325,700	plant	.45	1,496,560
	1959	XXX	218	3,301,200		.50	1,657,950
Small fruit plants	1960	XXX	1	130,000	plant	.05	6,500
	1959	XXX	1	530,600		.03	17,754
Vegetable plants - field grown	1960	XXX	1	9,000	doz.	.11	990
	1959	XXX	1	9,900		.10	990
Ornamental trees & shrubs	1960		56	538,600	plant	.87	466,700
	1959	15,000	76	375,000		1.60	601,700
Bedding plants	1960	66,400	6	72,500	flat	4.15	300,780
	1959	18,500	8	80,200		3.30	272,136
Herbaceous perennials	1960	45,750	17	322,883	plant	.99	319,475
	1959		15	303,200		.80	242,800
Indoor decorative	1960	38,000		117,400	plant	.76	89,250
	1959	42,000		43,000		2.48	107,000
Cactus & Succulents	1960	360		605	flat	7.00	4,235
	1959						
Bulbs, rhizomes, roots, etc.	1960		10	28,000	plant	.63	17,500
	1959	2,000	12	30,000		.50	15,000
Propagative materials budwood, cuttings, pits, etc.	1960	XXX	XXX	600,000	buds	.02	12,000
	1959	XXX	XXX	450,000		.02	9,000
TOTAL	1960	150,510	293	XXXX	XXX	XXX	\$2,717,710
	1959	77,500	335.5	XXXX	XXX	XXX	2,930,755

NURSERY PRODUCTS: PRODUCTION AREA, SALES, AND VALUE, 1959-60

Item	Year	Production area		Quantity sold by producers	Unit	Value	
		House sq. ft.	Field acres			Per unit	Total
Cut Flowers & Decoratives							
Chrysanthemums	1960		5.0	6,500	doz.	\$ 1.00	\$ 6,500
	1959		3.0	5,900		1.10	6,550
Orchids	1960	12,000		45,000	blooms	1.00	45,000
	1959						
Lilacs	1960		3.0	2,800	bunch	2.00	5,600
	1959		3.0	1,300		1.50	1,950
Christmas trees	1960	XXX	5.0	62	trees	2.85	177
	1959	XXX	3.5	25		4.00	100
Cut green decoratives	1960		9.0	10,000	bunch	.35	3,500
	1959		17.0	13,500		.35	4,725
Water lilies	1960	7,500		3,000	plant	1.00	3,000
	1959						
TOTAL	1960	19,500	22.0	XXXX	XXX	XXX	\$ 63,777
	1959		26.5	XXXX	XXX	XXX	15,325

APIARY PRODUCTS: PRODUCTION AND VALUE, 1959-60

Item	Year	Production Total	Unit	Per unit	Total
Honey	1960	1,824,000	lb.	.15	\$ 274,638
	1959	1,036,000		.116	120,353
Beeswax	1960	36,480	lb.	.43	15,686
	1959	20,720		.46	9,532
Nuclei with Queen Bees	1960	4,840	each	5.00	24,200
	1959	4,961		5.00	24,805
Pollination	1960				
	1959	100	colony	1.00	100
TOTAL	1960	XXXXX	XXX	XXX	\$ 314,524
	1959	XXXXX	XXX	XXX	154,790

LIVESTOCK AND POULTRY: PRODUCTION AND VALUE, 1959-60

Item	Year	Production		Unit	Value	
		No. of head	Total liveweight		Per unit	Total
Cattle & Calves	1960	14,900	47,000	cwt.	\$ 22.25	\$ 1,046,000
Beef	1959	19,945	60,566		24.50	1,487,312
Dairy	1960	53,611	179,000	cwt.	17.70	3,161,500
	1959	43,495	160,076		16.90	2,704,619
Sheep & Lambs	1960	3,669	3,552	cwt.	18.55	65,900
	1959	950	945		23.00	21,735
Hogs & Pigs	1960	7,013	15,830	cwt.	16.20	256,400
	1959	7,550	16,597		14.50	241,890
Horses	1960					
Recreational	1959	10	XXXX	head		5,000
Broilers & Fryers	1960	5,700,000	19,950,000	lb.	.19	3,790,500
	1959	5,592,400	19,598,450		.19	3,723,700
Other Chickens	1960	4,830,900	20,290,000	lb.	.08	1,649,800
	1959	4,843,029	21,100,835		.08	1,708,184
Chicks	1960	5,303,000		each	.25	1,325,000
	1959	6,701,849			.18	1,228,576
Turkeys	1960	569,600	12,333,600	lb.	.26	3,230,200
	1959	596,860	13,841,012		.28	3,865,376
Turkey poults	1960	350,000		each	.45	157,500
	1959	50,000			.75	37,500
Rabbits	1960	142,500	477,000	lb.	.25	118,600
	1959	98,420	425,480		.24	104,279
Miscellaneous*	1960	332,000	XXXX	XXX	XXXX	267,700
	1959	127,300	XXXX	XXX	XXXX	182,500
TOTAL	1960	XXXX	XXXX	XXX	XXXX	\$15,069,100
	1959	XXXX	XXXX	XXX	XXXX	15,310,671

\* Game birds, ducks, geese and nutria.

LIVESTOCK AND POULTRY PRODUCTS: PRODUCTION AND VALUE, 1959-60

Item	Year	Production	Unit	Value	
				Per unit	Total
Milk Market	1960	5,000,000	cwt.	\$ 5.18	\$ 25,900,000
	1959	4,687,480		5.05	23,672,000
Manufacturing	1960	25,000	cwt.	2.94	73,500
	1959	21,560		3.06	66,000
Milk, goats	1960	34,220	gal.	.75	25,665
	1959	79,200		1.00	79,200
Wool	1960	44,228	lb.	.44	19,460
	1959	7,125		.40	2,850
Eggs, chicken Market	1960	121,838,600	doz.	.33	40,206,700
	1959	119,712,780		.295	35,315,270
Hatching	1960	552,500	doz.	.60	331,500
	1959	862,500		.56	485,900
TOTAL	1960	XXXXXX	XXX	XXX	\$ 66,556,825
	1959	XXXXXX	XXX	XXX	59,621,220

JANUARY 1 INVENTORIES OF LIVESTOCK AND POULTRY, 1960-61  
(in number of head)

Item	January 1, 1960	January 1, 1961
Cattle and calves		
All	69,100	68,070
Milk cows 2 years and over	37,700	45,844
Cattle and calves on feed	31,400	22,226
Sheep and lambs	7,500	9,800
Hogs and pigs	17,800	9,500
Horses	245	1,285
Hens and pullets of laying age	6,064,332	6,147,800
Turkey breeder hens	14,200	14,900

# RECAPITULATION

	Acreage*		Valuation	
	1959	1960	1959	1960
Citrus	28,449	27,739	\$ 22,463,970	\$ 21,797,589
Sub-tropical	703	833	33,238	55,620
Deciduous	2,040	1,682	1,175,231	918,032
Grapes	24,182	23,239	5,031,675	3,923,175
Berries	105	119	308,512	305,145
Nuts	863	1,814	193,880	223,600
Vegetables	7,716	6,985	4,853,006	4,730,458
Field Crops	36,798	39,018	5,018,324	4,679,100
Seeds	553	499	121,066	109,908
Nursery Stock	362	315	2,944,080	2,781,487
Apiary			154,790	314,524
Livestock and Poultry			74,931,891	81,625,925
TOTALS	101,771	102,243	\$117,229,663	\$121,464,563

\* Includes bearing and non-bearing

## "MILLION DOLLAR" CROP RETURNS

1. Chicken eggs	\$ 40,206,700	9. Alfalfa hay	\$ 3,159,300
2. Dairy industry	29,135,000	10. Potatoes	2,118,830
3. Navel oranges	10,264,290	11. Chickens	1,649,800
4. Valencia oranges	5,878,540	12. Grapefruit	1,639,485
5. Lemons	3,931,834	13. Rose plants	1,496,560
6. Grapes	3,923,175	14. Chicks	1,325,000
7. Chicken fryers	3,790,500	15. Sweet potatoes	1,141,364
8. Turkeys	3,230,200	16. Beef cattle	1,046,000

1961

Ref. V.F.

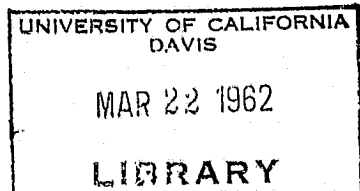
Calif. Counties

# Annual Crop and Livestock Report

1961



**DEPARTMENT OF AGRICULTURE**





COUNTY DEPARTMENT  
OF AGRICULTURE  
566 Lugo Avenue TUrner 9-0111  
SAN BERNARDINO, CALIFORNIA



HAROLD A. CRANE  
*Commissioner*  
RAYMOND M. SCHNEIDER  
*Chief Deputy*

ROY F. CAMBLIN  
WAYNE H. STONE  
CECIL E. PRATT  
*Deputies*

## AGRICULTURAL CROP REPORT

1961

To: Charles Paul, Director  
California Department of Agriculture  
and  
The Honorable Board of Supervisors  
County of San Bernardino

Paul T. Young, Chairman

S. Wesley Break  
Ross Dana

Richard Manley  
Nancy E. Smith

In accordance with the provisions of Section 65.5 of the Agricultural Code of the State of California, I hereby submit the Annual Crop and Livestock Report for the year 1961, covering the conditions, acreage, production and value of the agricultural products for the county of San Bernardino.

On the basis of gross returns to the grower, the total value of the agricultural industries of the county herein listed amount to \$118,487,450 for 1961 as compared with \$121,464,563 for 1960. This value is a 2.5% reduction from the previous year, but is still the second highest on record. The value of crops was reduced by 2 million dollars and livestock by 1 million dollars from the previous year.

Below normal rainfall for the third successive year, record breaking temperatures in June and July, plus delayed foliation all contributed to below normal production. There were also 7,600 less acres in total crop production.

These gross receipts represent dollars that, for the most part, go into circulation locally and support the county's economy. Economists claim that the impact of agriculture on the State's economy is over three times the valuation. On the basis of this statement, the total impact upon the economy in San Bernardino County approximates 300 million dollars.

The members of our department, including office personnel and district inspectors, have made an earnest endeavor to make this report as accurate as possible. We are indebted to the members of our department who secured basic information and to all organizations and individuals who cooperated and assisted us in making this report possible. To them we extend our sincere appreciation.

Respectfully submitted,

H. A. Crane  
Agricultural Commissioner

### CROP SUMMARY

Valuations given in this report for citrus are f.o.b. as fruit leaves the packing house. The average returns for all other crops are determined at the producer's first delivery point. It should be stated that the dollar figures herein given are gross receipts and not net returns to the producer.

Citrus: The total citrus acreage for San Bernardino County for 1961 was 26,436 acres. Navel oranges account for one half of this total with 12,885 acres, while Valencia oranges account for one quarter with 6,654 acres. Lemons with 4,897, grapefruit with 1,704 acres, miscellaneous oranges with 294 acres, plus 2 acres of limes make up the balance.

There were 1,012 acres of oranges, 466 acres of lemons, 51 acres of grapefruit and 23 acres of limes removed or abandoned during the year for a total loss of 1,552 acres of citrus. This loss resulted from the extension of residential, industrial and highway construction into our farming areas. In spite of the continual losses sustained in our citrus acreage, San Bernardino County is still one of the leading citrus counties in the State, being second in navel oranges, second in grapefruit, and fourth in Valencia oranges and lemons.

Total citrus production was 8,125,690 cartons, including fruit sold for processing. This figure shows a reduction of 26% from the previous year due to a lighter crop of all varieties plus reduced acreage. Total valuation of all citrus was \$20,510,200 or a decrease of 6% from the previous year. Thus it can be seen that in spite of a short crop, returns were very good.

Sub-tropical and Deciduous fruits: Avocado production increased slightly, however prices were lower than the previous year resulting in lower returns to the growers. There was no commercial harvest of olives due to a poor set. Apple production was normal although sizes were small. Peach production was one of the lowest in years due to delayed foliation and dry weather. The plum crop turned out to be one of the lightest in history due to unfavorable weather conditions. Wine grape production varied due to varietal differences and location. Irrigated vineyards production was normal while the non-irrigated grapes produced little or no tonnage. Average returns to growers for grapes purchased for crushing were significantly higher than in 1960 resulting in a 40% increase in value. The walnut crop was reduced by delayed foliation and small sizes.

Vegetables: Plantings of all vegetables decreased 161 acres from the previous year with a corresponding decrease in valuation. Reductions were noted in cabbage, carrots, green onions and potato acreage. Increases in sweet corn, lettuce, melons, sweet potatoes and tomatoes helped offset somewhat the loss in acreage in other crops. Total valuation of all vegetables was 17% less than the previous year.

Field Crops: Field crop acreage decreased 4,781 acres. This decrease can be attributed mainly to reductions in the small grains and grain hay crops, due to drought conditions on dryland farms. Increases were noted only in dry beans and alfalfa. Total value of all field crops show a reduction of 18% from the 1960 value.

Nursery Stock: Out of a total of 286 acres of nursery stock and products harvested, 186 acres were devoted to rose plant production with fruit trees, shade trees, cut flowers and other field grown ornamental stock making up the balance. The estimated gross value of all nursery stock was over \$2,800,000.

Livestock: The estimated value of all livestock production and products was \$80,806,600, second only to the record 1960 figure of \$81,625,925 or a 1% reduction. Increases can be noted in beef, sheep, hogs, chicken fryers, turkeys, rabbits and milk production. Dairy cows increased 2500 in number with a corresponding increase in milk production. Latest figures reveal there are 249 dairies in the County with a total of 45,845 cows, with still more dairy facilities under construction in the Chino area. The trend in the balance of the County is for consolidation of dairies resulting in increased herds.

Producing hens were estimated at 5,964,000 a slight decrease of 184,000 from the previous year. This revised figure is the result of an intensive poultry ranch survey by department personnel and we believe it to be the most accurate estimate available. Production per hen remained at 237 eggs per year. Total egg production was 117,800,000 dozen with a valuation of over \$37,000,000. Prices received by producers averaged thirty-one and three quarters cents per dozen, a decrease of one and one quarter cents from the previous year. San Bernardino County continues to be one of the leading egg producing counties in the nation.

Production and valuation of other livestock was similar to the previous year. Values for feed lot cattle were figured on a weight gain basis while the remainder sold from the range, cull dairy stock and calves as well as other livestock were figured on the basis of full weight.

Summary and data compiled by:

Warren A. Burr  
Assistant to the Commissioner

SOME INDUSTRIES AND BUSINESS ENTERPRISES DEPENDENT UPON  
AGRICULTURE FOR THEIR TRADE AND NOT EVALUATED IN THIS REPORT

Agricultural Pest Control Operators  
Dairy Equipment  
Farm Machinery Manufacturers  
Farm Equipment Dealers  
Feed, Grain, and Seed Dealers  
Fertilizer Dealers  
Fruit and Vegetable Packing Houses

Irrigation Systems and Equipment  
Fruit and Vegetable by-Product Plants  
Meat Packers and Slaughter Houses  
Orchard Heater Manufacturers  
Pest Control Materials Dealers  
Poultry and Egg Wholesalers  
Wind Machine Companies

## FRUIT, NUT AND VINE ACREAGE, 1961

Crop	Bearing	Non-Bearing	Total
Almonds	2	1	3
Apples	418	115	533
Apricots	44	126	170
Avocados	138	38	176
Cherries	24	7	31
Grapes	22,922	173	23,095
Grapefruit	1,558	146	1,704
Lemons	4,871	26	4,897
Limes	2	-	2
Olives	631	2	633
Oranges			
Navel	12,685	200	12,885
Tangerines	73	11	84
Valencia	6,418	236	6,654
Other	184	26	210
Peaches			
Cling	112	1	113
Freestone	341	-	341
Pears	21	-	21
Pecans	8	-	8
Persimmons	10	-	10
Plums	293	24	317
Pomegranates	2	-	2
Prunes	3	-	3
Walnuts	1,609	13	1,622
Total Acres	52,369	1,145	53,514

CITRUS: ACREAGE, PRODUCTION, AND VALUATION, 1939-61

Year	*Acreage	**Production(Cartons)	Valuation (Gross Receipts)
1939	49,663	14,592,364	\$ 14,109,169
1940	48,078	16,240,454	17,170,447
1941	51,689	19,177,994	20,071,630
1942	51,320	17,997,560	21,195,403
1943	51,728	14,970,418	23,970,155
1944	50,794	21,960,810	40,075,086
1945	50,615	21,641,538	50,364,665
1946	49,167	21,320,828	39,140,244
1947	50,470	19,562,760	28,524,393
1948	50,000	16,926,638	23,546,951
1949	44,854	9,733,804	14,653,270
1950	43,239	17,046,230	24,056,853
1951	42,036	13,203,146	22,203,826
1952	40,790	12,261,858	19,790,436
1953	36,619	19,205,472	26,640,302
1954	35,955	12,107,236	21,753,413
1955	33,528	13,028,186	22,946,140
1956	31,526	13,214,734	26,420,976
1957	30,549	13,873,794	24,016,132
1958	29,744	5,887,742	13,206,207
1959	28,449	12,927,956	22,463,970
1960	27,739	11,094,800	21,797,589
1961	26,436	8,125,690	20,510,200

\* Includes Bearing and Non-Bearing Acreage.

\*\* Cartons equal to one-half box.

TOTAL CROP, POULTRY, OTHER LIVESTOCK AND TOTAL VALUATION FOR THE PAST  
FOURTEEN YEARS AS OF RECORD FOR SAN BERNARDINO COUNTY

Year	All Crops	All Poultry	Other Livestock	Total
1948	\$ 40,055,839	\$ 24,234,080	\$ 20,639,282	\$ 84,929,201
1949	30,441,086	29,206,756	17,063,785	76,711,627
1950	43,343,662	29,713,980	18,249,401	91,307,043
1951	43,747,168	40,555,572	21,672,010	105,974,750
1952	44,402,152	39,614,254	22,674,515	106,690,921
1953	44,655,332	49,199,028	18,689,452	112,543,812
1954	42,896,211	38,262,555	17,329,894	98,488,660
1955	40,559,798	48,555,568	19,236,734	108,352,100
1956	47,556,019	48,096,740	22,765,250	118,418,009
1957	43,118,324	45,385,300	27,294,218	115,797,842
1958	34,103,106	49,539,200	25,221,600	108,863,906
1959	42,297,772	46,364,506	28,567,385	117,229,663
1960	39,838,638	50,691,200	30,934,725	121,464,563
1961	37,680,850	48,178,500	32,628,100	118,487,450

TOTAL CHICKENS AND EGG PRODUCTION FOR THE PAST NINE  
YEARS AS OF RECORD FOR SAN BERNARDINO COUNTY

Year	Producing Hens	Egg Production	Egg Valuation
1953	4,083,845	68,064,083 Dozen	\$ 35,393,323
1954	4,385,360	73,089,333 "	28,504,840
1955	4,882,404	91,545,070 "	37,533,478
1956	4,895,930	95,878,620 "	36,433,875
1957	4,903,780	96,932,980 "	34,895,873
1958	5,443,120	107,501,710 "	39,776,000
1959	6,064,322	119,712,780 "	35,315,270
1960	6,147,800	121,838,600 "	40,206,700
1961	5,964,000	117,800,000 "	37,402,000

FRUIT & NUT CROPS: ACREAGE, PRODUCTION, AND VALUE, 1960-61

Crop	Year	Bearing acreage	Production		Unit	Value	
			Per acre	Total		Per unit	Total
Apples, fresh	1961	418	5.0	1,732	ton	\$ 139.00	\$ 241,400
	1960	425	3.2	1,381		137.00	189,335
Processed	1961			365	ton	145.00	53,000
	1960			270		154.00	41,457
Apricots	1961	44	Crop Failure				
	1960	63	2.0	129	ton	89.00	11,455
Avocados	1961	138	1.3	186	ton	267.00	49,600
	1960	147	1.1	165		331.00	54,645
Boysenberries	1961	11	1.8	20	ton	292.50	5,850
	1960	7	2.6	18		308.00	5,545
Cherries	1961	24	1.2	30	ton	700.00	21,000
	1960	24	1.6	38		700.00	26,700
Grapes							
Raisins	1961	851	Included under wine				
	1960	859					
Table	1961	875	Included under wine				
	1960	876					
Wine	1961	21,196	3.8	81,200	ton	67.50	5,478,000
	1960	21,179	3.8	80,936		48.50	3,923,175
Grapefruit	1960-61	1,558	710	870,900	carton*	1.76	1,532,000
	1959-60	1,600	783	969,996		1.62	1,572,590
Processed	1960-61			234,700	carton	.29	67,200
	1959-60			282,545		.24	66,895
Lemons	1960-61	4,871	374	1,400,000	carton*	2.70	3,787,000
	1959-60	5,288	500	1,465,159		2.52	3,683,300
Processed	1960-61			421,790	carton	.86	360,900
	1959-60			1,162,421		.21	248,534
Limes	1961	25	100	2,500	carton	3.00	7,500
	1960	25	76	1,890		3.00	5,670
Oranges							
Navel	1960-61	12,685	270	3,234,000	carton*	3.30	10,660,000
	1959-60	13,292	342	3,805,758		2.54	9,859,545
Processed	1960-61			193,400	carton	.69	133,000
	1959-60			656,000		.62	404,745

FRUIT & NUT CROPS: ACREAGE, PRODUCTION, AND VALUE, 1960-61 (cont.)

Crop	Year	Bearing acreage	Production		Unit	Value	
			Per acre	Total		Per unit	Total
Oranges							
Valencia	1960-61	6,418	261	1,242,000	carton*	\$ 2.64	\$ 3,274,000
	1959-60	6,758	386	1,792,080		2.90	5,189,424
Processed	1960-61			433,400	carton	1.20	522,000
	1959-60			819,146		.84	689,116
Misc.	1960-61	257	362	67,000	carton*	1.94	130,000
	1959-60	273	146	34,471		2.13	73,365
Processed	1960-61			26,000	carton	1.40	36,600
	1959-60			5,333		.83	4,405
Peaches							
Clingstone	1961	112	.44	50	ton	102.00	5,100
	1960	183	4.00	746		61.00	45,760
Freestone	1961	341	1.68	574	ton	196.00	112,500
	1960	457	4.70	2,151		157.00	337,185
Pears	1961	21	.09	2	ton	200.00	400
	1960	21	1.20	25		152.00	3,800
Persimmons	1961	10	2.10	21	ton	135.00	2,830
	1960	10	.90	9		103.00	975
Plums	1961	293	.52	154	ton	240.00	36,500
	1960	367	3.00	1,103		238.00	262,340
Strawberries	1961	75	7.20	540	ton	359.00	194,000
	1960	112	7.20	814		368.00	299,600
Walnuts	1961	1,609	.13	220	ton	457.00	100,500
	1960	1,805	.30	520		430.00	223,600
TOTAL	1961	51,832	XXX	XXXX	XXX	XXXX	\$26,810,880
	1960	53,771	XXX	XXXX	XXX	XXXX	27,223,161

\* Carton weights - grapefruit 33 lb., lemons 38 lb., oranges 37.5 lb.



VEGETABLE CROPS: ACREAGE, PRODUCTION, AND VALUE, 1960-61

Crop	Year	Harvested acreage	Production		Unit	Value	
			Per acre	Total		Per unit	Total
Asparagus	1961	10	1.9	19	ton	\$ 161.00	\$ 3,060
	1960	10	2.2	24		247.00	5,920
Beets, table	1961	20	12.0	240	ton	60.00	14,400
	1960	20	14.0	280		60.00	16,800
Cabbage	1961	78	16.3	1,274	ton	48.20	61,400
	1960	113	11.5	1,301		39.00	51,038
Carrots	1961	5	15.0	75	ton	65.30	4,900
	1960	40	15.0	600		65.00	39,000
Cauliflower	1961	42	15.5	650	ton	54.00	35,100
	1960	49	14.1	694		44.00	30,480
Corn, sweet	1961	1,670	3.98	6,650	ton	91.00	605,600
	1960	1,488	3.8	5,759		107.00	615,545
Cucumbers	1961						
	1960	14	1.8	25	ton	42.00	1,040
Eggplant	1961	8	9.0	72	ton	122.20	8,800
	1960	5	10.8	54		93.00	5,000
Endive	1961	56	14.0	782	ton	65.00	50,800
	1960	55	12.7	700		45.00	31,450
Lettuce, leaf	1961	71	9.7	690	ton	85.50	59,000
	1960	55	13.3	735		40.00	29,400
Melons							
Cantaloupe	1961	124	11.9	1,480	ton	51.30	75,900
	1960	70	8.1	570		47.00	26,760
Other	1961	101	14.4	1,455	ton	31.10	45,300
	1960	65	7.2	470		40.00	19,000
Watermelon	1961	47	3.7	177	ton	29.40	5,200
	1960	88	11.0	968		29.00	28,330
Onions, dry	1961	285	14.4	4,110	ton	77.10	317,000
	1960	278	16.8	4,666		65.00	302,545
Onions, green	1961	20	6.1	122	ton	77.50	9,450
	1960	50	10.5	525		75.00	39,375

VEGETABLE CROPS: ACREAGE, PRODUCTION, AND VALUE, 1960-61 (cont.)

Crop	Year	Harvested acreage	Production		Unit	Value	
			Per acre	Total		Per unit	Total
Parsnips	1961	3	15.0	45	ton	\$ 44.40	\$ 2,000
	1960	10	15.0	150		50.00	7,500
Peppers, Bell	1961						
	1960	7	3.2	23	ton	239.00	5,496
Potatoes	1961	2,384	322	767,800	cwt.	1.63	1,250,000
	1960	2,944	242	712,050		2.98	2,118,830
Rhubarb	1961	60	8.5	510	ton	50.00	25,500
	1960	60	8.0	480		50.00	24,000
Romaine	1961						
	1960	12	14.1	170	ton	36.00	6,075
Squash	1961	60	5.0	300	ton	74.30	22,300
	1960	76	5.5	423		75.00	31,875
Sweet Potatoes	1961	1,655	5.7	9,440	ton	130.00	1,227,000
	1960	1,378	5.8	8,065		142.00	1,141,364
Tomatillos	1961	5	3.2	16	ton	306.20	4,900
	1960	10	3.2	32		308.00	9,865
Tomatoes Fresh	1961						
	1960	10	3.2	32	ton	132.00	4,225
Processed	1961	40	10.0	400	ton	32.00	12,800
	1960						
Hothouse	1961	3	8.7	26	ton	308.00	8,000
	1960	3	27.3	82		294.00	24,090
Turnips	1961	21	9.0	190	ton	79.00	15,000
	1960	27	13.7	370		54.00	19,900
Miscellaneous Vegetables	1961	56		270	ton		60,500
	1960	48		81			95,555
TOTAL	1961	6,824	XXX	XXXX	XXX	XXXX	\$ 3,923,910
	1960	6,985	XXX	XXXX	XXX	XXXX	4,730,458

## FIELD CROPS: ACREAGE, PRODUCTION AND VALUE, 1960-61

Crop	Year	Harvested acreage	Production		Unit	Value	
			Per acre	Total		Per unit	Total
Barley	1961	380	.23	88	ton	\$ 47.50	\$ 4,180
	1960	487	.40	208		48.00	9,980
Beans, dry	1961	2,100	.63	1,320	ton	180.00	237,000
	1960	1,333	.70	1,008		191.00	192,950
Corn, grain	1961	210	2.50	525	ton	60.00	31,500
	1960	250	2.50	625		60.00	37,500
Cotton lint	1961						
	1960	5	600/lb	3	bale	.39/lb	585
Cottonseed	1961						
	1960	XXXX	XXX	.7	ton	52.00	38
Hay Alfalfa	1961	17,900	6.20	112,000	ton	23.00	2,574,000
	1960	16,705	6.80	114,664		27.55	3,159,300
Grain	1961	3,710	1.90	7,200	ton	28.20	203,000
	1960	6,472	1.70	11,008		28.30	311,560
Other tame	1961	627	2.60	1,627	ton	20.00	32,500
	1960	321	3.80	1,229		24.50	30,170
Oats	1961	140	.78	110	ton	48.00	5,300
	1960	68	.50	36		50.00	1,795
Pasture Irrigated	1961	6,210	XXX	XXXX	acre	90.00	558,900
	1960	6,475	XXX	XXXX		105.00	678,700
Other	1961	1,760	XXX	XXXX	acre	10.00	17,600
	1960	5,367	XXX	XXXX		15.00	81,170
Rye	1961						
	1960	5	.40	2	ton	50.00	100
Silage, corn	1961	1,180	19.70	23,300	ton	6.06	141,200
	1960	1,264	21.00	26,660		6.17	164,400
Sorghum, grain	1961						
	1960	9	3.00	27	ton	44.50	1,202

- 12 -

FIELD CROPS: ACREAGE, PRODUCTION, AND VALUE, 1960-61 (cont.)

Crop	Year	Harvested acreage	Production		Unit	Value	
			Per acre	Total		Per unit	Total
Wheat	1961	20	0.4	8	ton	\$ 64.00	\$ 520
	1960	257	0.7	192		50.00	9,650
TOTAL	1961	34,237	XXX	XXXX	XXX	XXXX	\$ 3,805,700
	1960	39,018	XXX	XXXX	XXX	XXXX	4,679,100

SEED CROPS: ACREAGE, PRODUCTION, AND VALUE, 1960-61

Crop	Year	Harvested acreage	Production		Unit	Value	
			Per acre	Total		Per unit	Total
Alfalfa Certified	1961	47	250	11,750	lb.	\$ .35	\$ 4,110
	1960	47	200	9,400		.35	3,290
Non- Certified	1961	75	400	30,000	lb.	.28	8,400
	1960	80	400	32,000		.27	8,640
Barley	1961				lb.		
	1960	46	600	27,600		.038	1,048
Flower	1961	100	240	24,000	lb.	1.25	30,000
	1960	150	150	22,500		1.35	30,375
Oats	1961	40	3,250	130,000	lb.	.05	6,500
	1960						
Rye	1961				lb.		
	1960	107	850	90,950		.033	3,002
Sugar Beets	1961	60	1,466	88,000	lb.	.15	13,200
	1960	65	6,500	423,420		.15	63,513
Wheat	1961				lb.		
	1960	4	375	1,500		.027	40
TOTAL	1961	322	XXX	XXXX	XXX	XXX	\$ 62,210
	1960	499	XXX	XXXX	XXX	XXX	109,908

NURSERY PRODUCTS: PRODUCTION AREA, SALES, AND VALUE, 1960-61

Item	Year	Production area		Quantity sold by producers	Unit	Value	
		House sq. ft.	Field acres			Per unit	Total
<u>Nursery Crops</u>							
Deciduous fruit & nut trees	1961	XXX	2	18,000	plant	\$ .65	\$ 11,700
	1960	XXX	2	4,800		.65	3,120
Grape vines	1961	XXX	1	15,000	plant	.15	2,150
	1960	XXX	1	6,000		.10	600
Rose plants	1961	XXX	186	3,008,000	plant	.44	1,311,000
	1960	XXX	199	3,325,700		.45	1,496,560
Small fruit plants	1961	XXX	1	240,000	plant	.03	7,800
	1960	XXX	1	130,000		.05	6,500
Vegetable plants - field grown	1961	XXX	1	14,250	doz.	.50	7,100
	1960	XXX	1	9,000		.11	990
Ornamental trees & shrubs	1961	212,800	37	759,400	plant	.89	673,000
	1960		56	538,600		.87	466,700
Bedding plants	1961	91,780	7	117,400	flat	2.82	330,900
	1960	66,400	6	72,500		4.15	300,780
Herbaceous perennials	1961		17	250,000	plant	1.10	275,000
	1960	45,750	17	322,883		.99	319,475
Indoor decorative	1961	37,000		111,600	plant	.76	84,500
	1960	38,000		117,400		.76	89,250
Cactus & Succulents	1961	5,850		1,330	flat	8.50	11,300
	1960	360		605		7.00	4,235
Bulbs, rhizomes, roots, etc.	1961		9	28,000	plant	.50	14,000
	1960		10	28,000		.63	17,500
Propagative materials	1961	XXX	XXX	800,000	buds	.02	16,000
	1960	XXX	XXX	600,000		.02	12,000
TOTAL	1961	347,430	261	XXXX	XXX	XXX	\$2,744,450
	1960	150,510	293	XXXX	XXX	XXX	2,717,710

NURSERY PRODUCTS: PRODUCTION AREA, SALES, AND VALUE, 1960-61

Item	Year	Production area		Quantity sold by producers	Unit	Value	
		House sq. ft.	Field acres			Per unit	Total
Cut Flowers & Decoratives							
Chrysanthemums	1961		3.0	3,000	doz.	\$ 1.00	\$ 3,000
	1960		5.0	6,500		1.00	6,500
Orchids	1961	13,000		40,500	blooms	1.00	40,500
	1960	12,000		45,000		1.00	45,000
Lilacs	1961		3.0	500	bunch	1.50	750
	1960		3.0	2,800		2.00	5,600
Water lilies	1961	7,500		3,500	plant	1.00	3,500
	1960	7,500		3,000		1.00	3,000
Christmas trees	1961	XXX	5.0	360	trees	4.72	1,700
	1960	XXX	5.0	62		2.85	177
Cut green decoratives	1961		14.0	34,500	bunch	.35	12,050
	1960		9.0	10,000		.35	3,500
TOTAL	1961	20,500	25.0	XXXX	XXX	XXX	\$ 61,500
	1960	19,500	22.0	XXXX	XXX	XXX	63,777

APIARY PRODUCTS: PRODUCTION AND VALUE, 1960-61

Item	Year	Production Total	Unit	Per unit	Total
Honey	1961	1,419,500	lb.	\$ .15	\$220,000
	1960	1,824,000		.15	274,638
Beeswax	1961	28,360	lb.	.43	12,200
	1960	36,480		.43	15,686
Nuclei with Queen Bees	1961	8,000	each	5.00	40,000
	1960	4,840		5.00	24,200
TOTAL	1961	XXXXX	XXX	XXX	\$272,200
	1960	XXXXX	XXX	XXX	314,524

LIVESTOCK AND POULTRY: PRODUCTION AND VALUE, 1960-61

Item	Year	Production		Unit	Value	
		No. of head	Total liveweight		Per unit	Total
Cattle & Calves	1961	11,570	47,500	cwt.	\$ 22.10	\$ 1,051,000
	1960	14,900	47,000		22.25	1,046,000
Beef	1961	59,800	183,700	cwt.	18.00	3,307,000
	1960	53,611	179,000		17.70	3,161,500
Dairy	1961	8,670	6,090	cwt.	15.30	93,400
	1960	3,669	3,552		18.55	65,900
Sheep and Lambs	1961	7,450	14,870	cwt.	18.85	280,200
	1960	7,013	15,830		16.20	256,400
Hogs and Pigs	1961	5,923,000	22,151,000	lb.	.184	4,083,000
	1960	5,700,000	19,950,000		.19	3,790,500
Broilers and Fryers	1961	4,656,000	20,952,000	lb.	.08	1,676,000
	1960	4,830,900	20,290,000		.08	1,649,800
Other Chickens	1961	5,399,000		each	.192	1,037,000
	1960	5,303,000			.25	1,325,000
Chicks	1961	828,000	17,888,000	lb.	.188	3,368,000
	1960	569,600	12,333,600		.26	3,230,200
Turkeys	1961	417,000		each	.573	239,000
	1960	350,000			.45	157,500
Turkey poults	1961	184,000	732,000	lb.	.21	154,000
	1960	142,500	477,000		.25	118,600
Rabbits	1961	270,000	XXXX	XXX	XXXX	241,000
	1960	332,000	XXXX		XXXX	267,700
Miscellaneous*	1961	XXXX	XXXX	XXX	XXXX	\$15,529,600
	1960	XXXX	XXXX		XXXX	15,069,100
TOTAL	1961	XXXX	XXXX	XXX	XXXX	
	1960	XXXX	XXXX		XXXX	

\* Buffalo, ducks, game birds and geese.

## LIVESTOCK AND POULTRY PRODUCTS: PRODUCTION AND VALUE, 1960-61

Item	Year	Production	Unit	Value	
				Per Unit	Total
Milk Market	1961	5,288,000	cwt.	\$ 5.18	\$ 27,392,000
	1960	5,000,000		5.18	25,900,000
Manufacturing	1961	27,000	cwt.	3.02	81,500
	1960	25,000		2.94	73,500
Milk, goats	1961	25,600	gal.	.70	17,900
	1960	34,220		.75	25,665
Wool	1961	24,500	lb.	.41	10,100
	1960	44,228		.44	19,460
Eggs, chicken Market	1961	117,800,000	doz.	.317	37,402,000
	1960	121,838,600		.33	40,206,700
Hatching	1961	570,000	doz.	.61	347,700
	1960	552,500		.60	331,500
Eggs, turkey, hatching	1961	112,000	each	.23	25,800
TOTAL	1961	XXXX	XXX	XXX	\$ 65,277,000
	1960	XXXX	XXX	XXX	66,556,825

JANUARY 1 INVENTORIES OF LIVESTOCK AND POULTRY, 1961-62  
(in number of head)

Item	January 1, 1961	January 1, 1962
Cattle and Calves		
All	68,070	61,100
Milk cows 2 years and over	45,844	48,300
Cattle and calves on feed	22,226	12,800
Sheep and lambs	9,800	11,540
Hogs and pigs	9,500	3,400
Horses	1,285	2,000
Hens and pullets of laying age	6,147,800	5,964,000
Growing pullets	2,000,000	2,000,000
Turkey breeder hens	14,900	16,400



# RECAPITULATION

- 17 -

Item	Acreage*		Valuation	
	1960	1961	1960	1961
Citrus	27,739	26,436	\$ 21,797,589	\$ 20,510,200
Sub-tropical	833	186	55,620	52,430
Deciduous	1,682	1,531	918,032	469,900
Grapes	23,239	23,095	3,923,175	5,478,000
Berries	119	86	305,145	199,850
Nuts	1,814	1,633	223,600	100,500
Vegetables	6,985	6,824	4,730,458	3,923,910
Field Crops	39,018	34,237	4,679,100	3,805,700
Seeds	499	322	109,908	62,210
Nursery Stock	315	286	2,781,487	2,805,950
Apiary			314,524	272,200
Livestock and Poultry			81,625,925	80,806,600
TOTALS	102,243	94,636	\$121,464,563	\$118,487,450

\* Includes bearing and non-bearing.

## "MILLION DOLLAR RETURNS"

1. Chicken Eggs	\$ 37,402,000	9. Alfalfa Hay	\$ 2,574,000
2. Dairy Industry	30,780,500	10. Chickens	1,676,000
3. Navel Oranges	10,793,000	11. Grapefruit	1,599,200
4. Grapes	5,478,000	12. Rose Plants	1,311,000
5. Lemons	4,147,900	13. Potatoes	1,250,000
6. Chicken Fryers	4,083,000	14. Sweet Potatoes	1,227,000
7. Valencia Oranges	3,796,000	15. Beef Cattle	1,051,000
8. Turkeys	3,368,000	16. Baby Chicks	1,037,000