



AgEcon SEARCH
RESEARCH IN AGRICULTURAL & APPLIED ECONOMICS

The World's Largest Open Access Agricultural & Applied Economics Digital Library

This document is discoverable and free to researchers across the globe due to the work of AgEcon Search.

Help ensure our sustainability.

Give to AgEcon Search

AgEcon Search
<http://ageconsearch.umn.edu>
aesearch@umn.edu

*Papers downloaded from **AgEcon Search** may be used for non-commercial purposes and personal study only. No other use, including posting to another Internet site, is permitted without permission from the copyright owner (not AgEcon Search), or as allowed under the provisions of Fair Use, U.S. Copyright Act, Title 17 U.S.C.*

California Department of Food and Agriculture

Agricultural Commissioners' Crop Reports

Inyo-Mono County

1974-1981

California County Agricultural Commissioners' Reports from the California Department of Food and Agriculture. This collection consists of annual crop and livestock data from each of the 58 California Counties. The collection covers 1915-1981; digitization of the rest of the collection is forthcoming.

This digitization project was funded by the Giannini Foundation of Agricultural Economics,
<http://giannini.ucop.edu/>.

The work was completed by the staff of the Giannini Foundation Library, University of California, Berkeley, <http://are.berkeley.edu/library/>. **Please contact the Library to consult the originals.**

INYO-MONO COUNTIES

1974 - 1981

Three vertical black bars of varying widths are positioned on the left side of the page. They are separated by white space and extend from near the top to near the bottom of the page.

1974

DOCUMENTS
STACKS

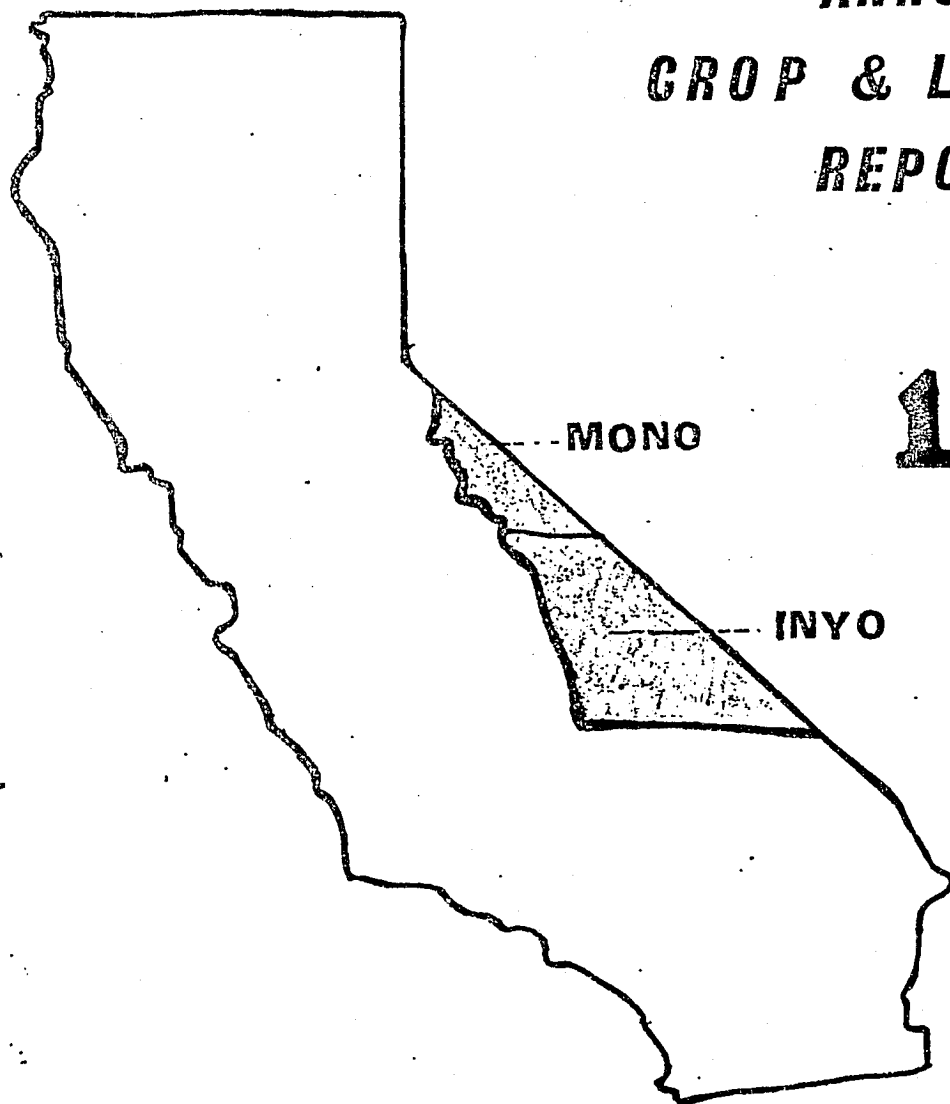
California. Inyo-Mono Counties. Agri-
cultural Commissioner.
Report

LIBRARY USE ONLY

(14.2 : 1974 Office

INYO-MONO COUNTIES

ANNUAL CROP & LIVESTOCK REPORT



1974

UNIVERSITY OF CALIFORNIA
DAVIS
JUN 2 1980
GOV'T. DOCS. - LIBRARY

Agricultural Commissioner



COUNTY OF INYO
AGRICULTURAL COMMISSIONER'S OFFICE
LENORD L. CRAFT

1974

To Luther T. Wallace, Director
California Department of Food and Agriculture

And

Honorable Board of Supervisors
Inyo and Mono Counties

It gives me great pleasure to submit the first annual crop report for the agricultural production of Inyo and Mono Counties in 1974.

This report, which is required by section 2279 of the California Food and Agriculture Code, reflects the gross value of agricultural production in the two counties. It does not take into consideration the cost of production, harvesting, shipping or other expenses incurred by the producer.

The information in this report was gathered from various individuals and agencies, to which I am indebted. A special word of thanks to P. Dean Smith, Inyo and Mono Counties Farm Advisor, for his invaluable assistance.

Respectively submitted,

Lenord L. Craft
Agricultural Commissioner

INYO & MONO COUNTIES

DIRECTOR OF AGRICULTURE - STATE OF CALIFORNIA

DR. LUTHER T. WALLACE

INYO COUNTY
BOARD OF SUPERVISORS

Charles Hapke, Chairman
Herbert London
Robert Fisher
Walter Rollins
Wilma Muth

MONO COUNTY
BOARD OF SUPERVISORS

A. G. Mahan, Chairman
Walter B. Cain
Kenneth Remes
William Falconer
Eugene J. Hanson

LENORD L. CRAFT, AGRICULTURAL COMMISSIONER

1974 AGRICULTURAL PRODUCTION REPORT

INYO COUNTY

LIVESTOCK

Item	Year	Production		Unit	Value	
		Number of Head	Total Liveweight (cwt)		Per Unit	Total
Cattle & Calves	1974	15,930	67,702	cwt	\$26	\$1,760,265
Steers (Gain)	1974	3,500	x	cwt	\$26	182,000
Sheep & Lambs	1974	5,125	5,381	cwt	\$36	193,725
TOTAL LIVESTOCK						\$2,135,990

LIVESTOCK PRODUCTS

Item	Year	Production (cwt)	Unit	Per Unit	Total
Milk, Market	1974	840	cwt	\$8.00	\$ 6,700
Manufacturing	1974	8,900	cwt	\$6.04	53,800
Wool	1974	320	cwt	64.00	20,480
TOTAL LIVESTOCK PRODUCTS					\$ 80,980

INVENTORY OF LIVESTOCK

	January 1, 1975	January 1, 1974
Cattle & Calves	26,300	26,900
Cows & Heifers that have calved	18,800	17,700
Sheep	1,300	4,100

FIELD CROPS

Item	Year	<u>Production</u>		Total Tons	<u>Value</u>		
		Harvested Acreage	Per Acre		Unit	Per Unit	Total
Alfalfa Hay	1974	3,154	5.66	17,852	Ton	\$60	\$1,071,120
Irrigated Pasture	1974	9,286			Acre	7.57	70,295
Dry Grazing	1974	179,918			Acre	.61	109,749
TOTAL FIELD CROPS		192,358					\$1,251,164

FRUIT & VEGETABLE PRODUCTION

Item	Year	Harvested Acreage	Tons Per Acre	Total	Unit	Per Unit	Total
Miscellaneous Fruit	1974	28	2.2	61	Tons	\$218	\$13,298

APIARY PRODUCTS

Item	Year	Production	Unit	Per Unit	Total
Honey	1974	52,750	lb.	.43	\$22,682

INYO COUNTY TOTALS

Livestock	\$2,135,990
Livestock Products	80,980
Field Crops	1,251,164
Fruit & Vegetable Products	13,298
Apiary Products	22,682

1974 TOTAL PRODUCTION

\$3,504,114

1974 AGRICULTURAL PRODUCTION REPORT

MONO COUNTY

LIVESTOCK

Item	Year	Production		Unit	Value	
		Number of Head	Total Liveweight (cwt)		Per Unit	Total
Cattle & Calves	1974	4,770	20,272	cwt	\$26	\$527,085
Steers (Gain)	1974	1,500	x	cwt	\$26	78,000
Sheep & Lambs	1974	3,375	3,544	cwt	\$36	127,575
TOTAL LIVESTOCK						\$732,660

LIVESTOCK PRODUCTS

Item	Year	Production (cwt)	Unit	Per Unit	Total
Wool	1974	20,560	lb.	.64	\$13,158

INVENTORY OF LIVESTOCK

	January 1, 1975	January 1, 1974
Cattle & Calves	15,500	10,000
Cow & Heifers that have calved	5,800	5,300
Sheep	2,600	2,700

FIELD CROPS

Item	Year	<u>Production</u>		Total Tons	Unit	<u>Value</u>	
		Harvested Acreage	Per Acre			Per Unit	Total
Alfalfa Hay	1974	4,219	5.66	23,880	Ton	\$60	\$1,432,800
Pasture -							
Irrigated	1974	7,184	x	x	Acre	7.13	51,221
Dry Grazing	1974	<u>31,096</u>	x	x	Acre	.73	<u>22,700</u>
TOTAL FIELD CROPS		42,499					\$1,506,721

VEGETABLE PRODUCTION


Item	Year	Total Tons	Unit	Per Unit	Total
Misc. Vegetables	1974	1,565	Ton	\$36	\$ 56,340

MONO COUNTY TOTALS

Livestock	\$ 732,660
Livestock Products	13,158
Field Crops	1,506,721
Fruit & Veg. Production	<u>56,340</u>

1974 Total Production

\$2,308,879

Three vertical black bars of varying widths are positioned on the left side of the page. They are solid black and run from near the top to near the bottom of the page.

1975

DOCUMENTS
STACKS

California. Inyo-Mono Counties. Agri-
cultural Commissioner
Report.

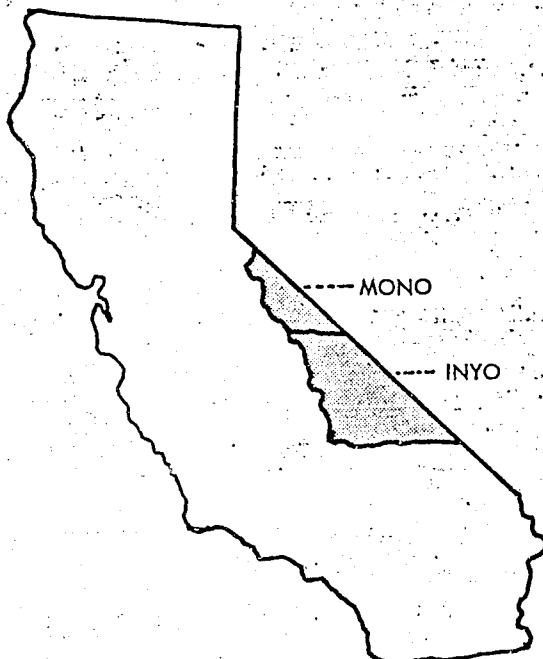
LIBRARY USE ONLY

1973
14.2

1975
ANNUAL
CROP & LIVESTOCK
REPORT

INYO-MONO COUNTIES
DEPARTMENT
OF
AGRICULTURE

OFFICE OF:
AGRICULTURAL COMMISSIONER
SEALER OF WEIGHTS & MEASURES



Inyo-Mono Department of Agriculture
207 W. SOUTH STREET • BISHOP, CALIFORNIA 93514

UNIVERSITY OF CALIFORNIA
DAVIS
JUN 2 1980
GOV'T. DOCS. - LIBRARY

207 W. South St.
Bishop, Ca 93514



TELEPHONE
(714) 873-5891

COUNTY OF INYO
AGRICULTURAL COMMISSIONER'S OFFICE
LENORD L. CRAFT

April 8, 1976

To: Dr. Luther T. Wallace, Director
California Department of Food & Agriculture

And

Inyo County Board of Supervisors	Mono County Board of Supervisors
Wilma Muth, Chairman	Eugene Hanson, Chairman
Herbert London	A. G. Mahan
Charles Hapke	William Falconer
Robert Fisher	Walter Cain
Walter Rollins	Donald Sharp, Jr.

In accordance with the provisions of section 2279 of the California Agricultural Code, I hereby submit the 2nd annual Crop and Livestock Report of the counties of Inyo and Mono, for the calendar year 1975.

Each of the counties show a marked increase in gross production over the previous year. However, in the case of Mono County, the major part of the increase was actually due to a better and more accurate source of information.

This report reflects the gross value of agricultural production in the two counties. It does not take into consideration the cost of production, harvesting, shipping or other expenses incurred by the producer.

I wish to express my sincere appreciation to those individuals and agencies who contributed to the compilation of this report. A special word of thanks again, to P. Dean Smith, Inyo-Mono Farm Advisor, for his invaluable assistance.

Respectively submitted,

Lenord L. Craft, Jr.
Agricultural Commissioner

INYO COUNTY

LIVESTOCK

Item	PRODUCTION		Liveweight (cwt.)	Unit	VALUE	
	Year	Number Head			Price Per Unit	Total
Cattle & calves						
Calves-Steers	1975	9,814	41,709	cwt.	\$35.00	\$ 1,459,832
Heifers	1975	6,542	26,168	cwt.	28.50	745,788
Cows	1975	2,444	24,440	cwt.	19.50	476,580
All cattle and						
Calves	1974	15,930	67,702	cwt.	26.00	1,760,265
Feeders (Gain)	1975	2,500	x	cwt.	35.00	350,000
	1974	3,500	x	cwt.	26.00	182,000
Sheep and Lambs	1975	1,625	1,706	cwt.	42.00	71,652
	1974	5,125	5,381	cwt.	36.00	193,725
TOTAL LIVESTOCK				1975	\$ 3,103,852	
				1974	\$ 2,135,990	

LIVESTOCK PRODUCTS

Item	Year	Production (cwt.)	Unit	Price Per Unit	Total
Milk, Market	1975	--	cwt.	--	--
	1974	840	cwt.	\$ 8.00	\$ 6,700
Manufacturing	1975	2,770	cwt.	6.71	18,600
	1974	8,900	cwt.	6.04	53,800
Wool	1975	13,000 lbs.	cwt.	45.00	5,850
(adjusted)	1974	41,000 lbs.	cwt.	64.00	26,240
TOTAL LIVESTOCK PRODUCTS				1975	\$ 24,450
(adjusted)				1974	\$ 86,740

LIVESTOCK INVENTORY

	January 1, 1975	January 1, 1976
Cattle & Calves	26,300	21,800
Cows & Heifers that have calved	18,800	14,500
Sheep	1,300	1,200

FIELD CROPS

PRODUCTION					VALUE		
Item	Year	Harvested Acreage	Tons Per Acre	Total Tons	Unit	Price Per Unit	Total
Alfalfa Hay	1975	3,154	5.5	17,347	ton	\$60.00	\$ 1,040,820
	1974	3,154	5.66	17,852	ton	60.00	1,071,120
Irrigated Pasture	1975	9,110	x	x	acre	7.50	68,325
	1974	9,286	x	x	acre	7.57	70,295
Dry Grazing	1975	179,910	x	x	acre	.61	109,745
	1974	179,918	x	x	acre	.61	109,749
TOTAL FIELD CROPS					1975	\$ 1,218,890	
					1974	\$ 1,251,164	

FRUIT AND VEGETABLE PRODUCTION

Item	Year	Harvested Acreage	Tons Per Acre	Total Tons	Unit	Price Per Unit	Total
Misc. Fruit	1975	28	1.78	50	ton	\$ 234.00	\$ 11,700
	1974	28	2.2	61	ton	218.00	13,298
TOTAL FRUIT & VEGETABLES					1975	\$ 11,700	
					1974	\$ 13,298	

APIARY PRODUCTS

Item	Year	Production	Unit	Price Per Unit	Total
Honey	1975	36,280	lb.	.41	\$ 14,874
	1974	52,750	lb.	.43	22,682
TOTAL APIARY PRODUCTS					1975 \$ 14,874
					1974 \$ 22,682

INYO COUNTY TOTALS

	1974	1975
Livestock	\$ 2,135,990	\$ 3,103,852
Livestock Products (adjusted)	86,740	24,450
Field Crops	1,251,164	1,218,890
Fruit & Vegetable Production	11,700	13,298
Apiary Products	22,682	14,874
TOTALS	\$ 3,508,276	\$ 4,375,364

MONO COUNTY

LIVESTOCK

PRODUCTION				VALUE		
Item	Year	Number Head	Liveweight (cwt.)	Unit	Price Per Unit	Total
Cattle & Calves						
Calves-Steers	1975	8,983	31,627	cwt.	\$35.00	\$ 1,106,945
Heifers	1975	5,988	20,572	cwt.	28.50	586,302
Cows	1975	754	7,540	cwt.	19.50	147,030
All cattle and calves (adj)	1974	6,270	26,647	cwt.	26.00	692,822
Sheep & Lambs	1975	36,400	32,760	cwt.	42.00	1,375,920
TOTAL LIVESTOCK				1975	\$ 3,216,197	
				1974	\$ 820,397	

LIVESTOCK PRODUCTS

Item	Year	Production (cwt.)	Unit	Price Per Unit	Total
Wool	1975	4,000	cwt.	\$ 45.00	\$ 180,000

LIVESTOCK INVENTORY

	January 1, 1975	January 1, 1976
Cattle & Calves	15,500	22,200
Cows & Heifers that have calved	5,800	6,700
Sheep	2,600	3,000

FIELD CROPS

Item	Year	PRODUCTION			Unit	VALUE	
		Harvested Acreage	Tons Per Acre	Total Tons		Price Per Unit	Total
Alfalfa Hay	1975	4,219	5.5	23,204	ton	\$ 60.00	\$ 1,392,240
	1974	4,219	5.66	23,880	ton	60.00	1,432,880
Irrigated Pasture	1975	7,184	x	x	acre	7.14	51,293
	1974	7,184	x	x	acre	7.13	51,221
Dry Grazing	1975	31,096	x	x	acre	.73	22,700
	1974	31,096	x	x	acre	.73	22,700
Oat Hay	1975	316	2.5	792	ton	55.00	43,560
Sudan Hay	1975	75	2.5	187	ton	50.00	9,350

TOTAL FIELD CROPS 1975 \$ 1,519,143

1974 \$ 1,506,721

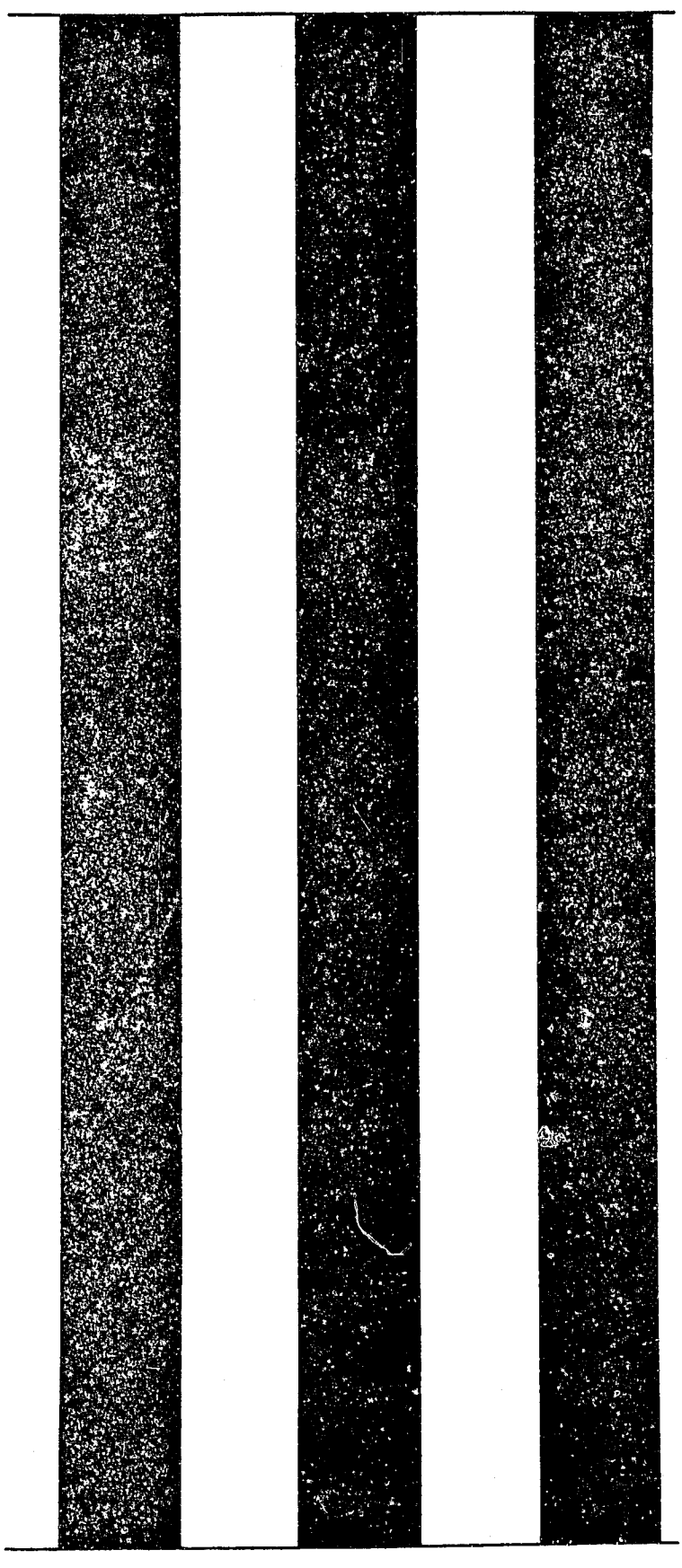
MONO COUNTY TOTALS

Livestock	\$ 3,216,197
Livestock Products	180,000
Field Crops	1,519,143

TOTALS 1975 \$ 4,915,340

1974 (adj.) \$ 2,396,616

2

Three vertical black bars of equal width and height, positioned side-by-side. They have a grainy, textured appearance.

1976

DOCUMENTS
STACKS

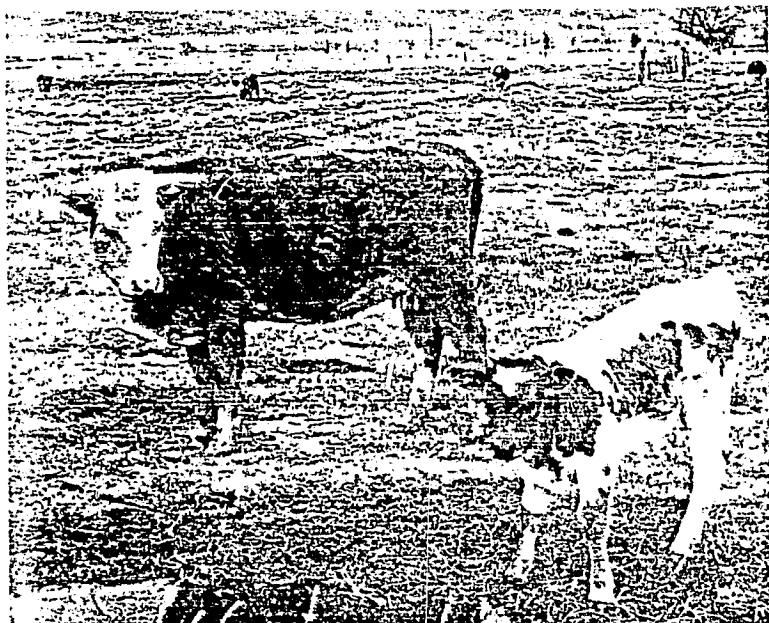
California. Inyo-Mono Counties. Agri-
cultural Commissioner.
Report.

1976
LIBRARY USE ONLY

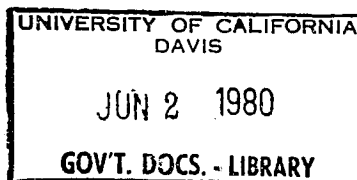
1976
ANNUAL
CROP & LIVESTOCK
REPORT

INYO-MONO COUNTIES
DEPARTMENT
OF
AGRICULTURE

OFFICE OF:
AGRICULTURAL COMMISSIONER
DIRECTOR OF WEIGHTS & MEASURERS



Inyo-Mono Department of Agriculture
207 W. SOUTH STREET • BISHOP, CALIFORNIA 93514





COUNTY OF INYO

EDMOND W. HALE
AGRICULTURAL COMMISSIONER
DIRECTOR OF WEIGHTS AND MEASURES

287 W. SOUTH ST. • BISHOP, CA 93514 • TELEPHONE 873-5831

April 8, 1977

To: Richard E. Rominger, Director
California Department of Food & Agriculture

And The Honorable

Inyo County Board of Supervisors
Herbert London, Chairman
Dick A. Engel
Wilma Muth
Vernon E. Johnson
Richard B. McDonald

Mono County Board of Supervisors
Don Sharp, Jr., Chairman
Arch Mahan
Eugene Hanson
Joan Green
Coy Ziglar

Enclosed is the 1976 Agricultural Crop Report for Inyo and Mono Counties, as required by Section 2279 of the California Agricultural Code.

The gross agricultural production for Inyo County remained approximately the same as in 1975 with a slight decrease in value, and in Mono County a considerable increase was recorded. The decrease in Inyo County was the result of less cattle sold in 1976. Cattle prices through most of the year were depressed and the forced sale of cattle due to the drought began near the end of the year and will affect next year's production. The increase in Mono County was a result of increased alfalfa acreage and other factors.

Alfalfa, the major field crop of both counties, brought good returns throughout 1976 although average yields were reduced slightly due to the drought.

Values shown in this report are gross returns only.

A sincere thank you is due to all who provided the information and records necessary for the compilation of this report. A special word of appreciation to P. Dean Smith, Inyo-Mono County Farm Adviser, for his assistance.

Respectively Submitted,

Edmond W. Hale
Agricultural Commissioner

INYO COUNTY

LIVESTOCK

Item	PRODUCTION		Liveweight (cwt.)	Unit	VALUE	
	Year	Number Head			Price Per Unit	Total
Cattle & calves						
Calves-Steers	1976	6,525	27,731	cwt.	\$ 38.00	\$ 1,053,778
Heifers	1976	4,350	17,400	cwt.	31.00	539,400
Cows	1976	3,625	36,250	cwt.	21.00	761,250
All cattle and						
Calves-(adj)	1975	18,800	92,317	cwt.	29.00	2,677,193
Feeders (Gain)	1976	2,558	x	cwt.	37.00	277,870
	1975	2,500	x	cwt.	35.00	350,000
Sheep and Lambs	1976	1,200	1,080	cwt.	43.00	46,440
	1975	1,625	1,706	cwt.	42.00	71,652

TOTAL LIVESTOCK				1976	\$ 2,678,738	
(adjusted)				1975	\$ 3,098,845	

LIVESTOCK PRODUCTS

Item	Year	Production	Unit	Price Per Unit	Total
Milk, Manufacturing	1976	---	cwt.	---	---
	1975	2,770	cwt.	\$ 6.71	\$ 18,600
Wool	1976	9,600 lbs.	cwt.	40.00	3,840
	1975	13,000 lbs.	cwt.	45.00	5,850

TOTAL LIVESTOCK PRODUCTS				1976	\$ 3,840
				1975	\$24,450

LIVESTOCK INVENTORY

	For Period Ending	
	January 1, 1976	January 1, 1977
Cattle & Calves	21,800	24,800
Cows & Heifers that have calved	14,500	14,000
Sheep	1,200	1,000

FIELD CROPS

PRODUCTION					VALUE		
Item	Year	Harvested Acreage	Tons Per Acre	Total Tons	Unit	Price Per Unit	Total
Alfalfa Hay	1976	3,154	5.25	16,559	ton	\$ 76.50	\$ 1,266,764
	1975	3,154	5.5	17,347	ton	60.00	1,040,820
Irrigated Pasture	1976	9,075	x	x	acre	5.87	53,270
	1975	9,110	x	x	acre	7.50	68,325
Dry Grazing	1976	179,966	x	x	acre	.66	118,778
	1975	179,910	x	x	acre	.61	109,745
TOTAL FIELD CROPS					1976	\$ 1,438,812	
					1975	\$ 1,218,890	

FRUIT AND VEGETABLE PRODUCTION

Item	Year	Harvested Acreage	Tons Per Acre	Total Tons	Unit	Price Per Unit	Total
Misc. Fruit	1976	28	1.93	54	ton	\$ 262	\$ 14,148
	1975	28	1.78	50	ton	234	11,700
TOTAL FRUIT AND VEGETABLES					1976	\$ 14,148	
					1975	\$ 11,700	

APIARY PRODUCTS

Item	Year	Production	Unit	Price Per Unit	Total
Honey	1976	80,150	lb.	\$.40	\$ 32,060
	1975	36,280	lb.	.41	14,874
TOTAL APIARY PRODUCTS				1976	\$ 32,060
				1975	\$ 14,874

INYO COUNTY TOTALS

	1975	1976
Livestock	\$ 3,098,845	\$ 2,678,738
Livestock Production	24,450	3,840
Field Crops	1,218,890	1,438,812
Fruit and Vegetable Production	13,298	14,148
Apiary Products	14,874	32,060
TOTALS	\$ 4,370,357	\$ 4,167,598

MONO COUNTY

LIVESTOCK

Item	Year	PRODUCTION		Unit	VALUE	
		Number Head	Liveweight (cwt.)		Price Per Unit	Total
Cattle & Calves						
Calves-Steers	1976	8,534	36,270	cwt.	\$ 38.00	\$ 1,378,260
Heifers	1976	5,689	22,756	cwt.	31.00	705,436
Cows	1976	1,340	13,400	cwt.	21.00	281,400
All cattle and calves(adj)	1975	15,725	59,739	cwt.	30.50	1,822,040
Sheep & Lambs	1976	36,500	32,850	cwt.	43.00	1,412,550
	1975	36,400	32,760	cwt.	42.00	1,375,920
TOTAL LIVESTOCK				1976	\$ 3,777,646	
				1975	\$ 3,197,960	

LIVESTOCK PRODUCTS

Item	Year	Production (cwt.)	Unit	Price Per Unit	Total
Wool	1976	4,000	cwt.	\$ 69.00	\$ 276,000
	1975	4,000	cwt.	45.00	180,000
TOTAL LIVESTOCK PRODUCTS				1976	\$ 276,000
				1975	\$ 180,000

LIVESTOCK INVENTORY

	For Period Ending	
	January 1, 1976	January 1, 1977
Cattle & Calves	22,200	23,700
Cows & Heifers that have calved	6,700	6,200
Sheep & Lambs	3,000	4,300

FIELD CROPS

Item	Year	PRODUCTION			Unit	VALUE	
		Harvested Acreage	Tons Per Acre	Total Tons		Price Per Unit	Total
Alfalfa Hay	1976	4,606	5.25	24,182	ton	\$ 76.50	\$ 1,849,923
	1975	4,219	5.5	23,204	ton	60.00	1,392,240
Irrigated Pasture	1976	7,184	x	x	acre	5.90	42,386
	1975	7,184	x	x	acre	7.14	51,293
Dry Grazing	1976	31,096	x	x	acre	.81	25,188
	1975	31,096	x	x	acre	.73	22,700
Oat Hay	1976	200	2.25	450	ton	70.00	31,500
	1975	316	2.5	792	ton	55.00	43,560
Sudan Hay	1976	100	2.25	225	ton	64.00	14,400
	1975	75	2.5	187	ton	50.00	9,350
TOTAL FIELD CROPS				1976	\$ 1,963,397		
				1975	\$ 1,519,143		

MONO COUNTY TOTALS

	1975	1976
Livestock	\$ 3,197,960	\$ 3,777,646
Livestock Products	180,000	276,000
Field Crops	<u>1,519,143</u>	<u>1,963,397</u>
TOTALS	\$ 4,897,103	\$ 6,017,043

Three vertical black bars of equal width and height, positioned side-by-side. They have a grainy, textured appearance.

1977

DOCUMENTS
STACKS

California. Inyo-Mono Counties. Agri-
cultural Commissioner.
Report.

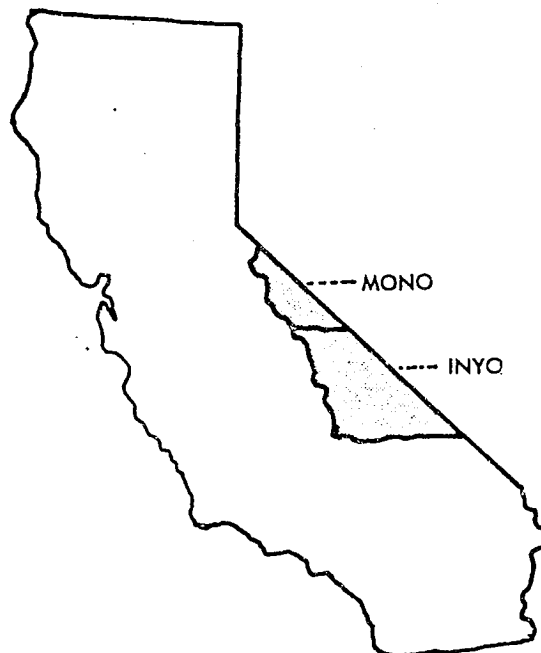
Office
LIBRARY USE ONLY

~~14.2~~
1977

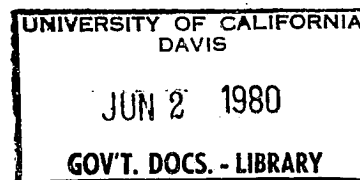
1977
ANNUAL
CROP & LIVESTOCK
REPORT

INYO-MONO COUNTIES
DEPARTMENT
OF
AGRICULTURE

OFFICE OF:
AGRICULTURAL COMMISSIONER
DIRECTOR OF WEIGHTS & MEASURES



Inyo-Mono Department of Agriculture
207 W. SOUTH STREET • BISHOP, CALIFORNIA 93514





COUNTIES OF INYO-MONO

EDMOND W. HALE
AGRICULTURAL COMMISSIONER
DIRECTOR OF WEIGHTS AND MEASURES

207 W. SOUTH ST. • BISHOP, CA 93514 • TELEPHONE 873-5291



April 6, 1978

To: Richard E. Rominger, Director
California Department of Food & Agriculture

And The Honorable

Inyo County Board of Supervisors
Richard B. McDonald, Chairman
Dick A. Engel
Wilma Muth
Herbert London
Vernon E. Johnson

Mono County Board of Supervisors
Arch Mahan, Chairman
Don Sharp, Jr.
Eugene Hanson
Joan Green
Coy Ziglar

Enclosed is the 1977 Agricultural Crop Report for Inyo and Mono Counties, as required by Section 2279 of the California Agricultural Code.

The gross agricultural production for both counties dropped approximately \$1,500,000.

Cattlemen suffered the greatest losses. 1977 will be remembered as a disastrous year for agriculture due primarily to the prolonged drought combined with depressed prices. Throughout the year prices for cattle and calves were below costs of production.

Alfalfa, the major field crop for both counties, brought good returns early in the year but by the end of the year prices received were below production costs. Total acreage and yield increased slightly for both counties.

It is important to remember that values shown in this report are gross returns only and do not reflect net income or losses.

This year a written questionnaire was mailed to all producers with a tremendous response. A sincere thank you goes to all who responded and others who provided information necessary for the compilation of this report.

P. Dean Smith, the Inyo-Mono County Farm Advisor, is due a special word of appreciation for his assistance.

A word of optimism:

The drought is over, with above average rain and snowfall, and if the market improves 1978 could be a much better year.

Respectively Submitted,

Edmond W. Hale
Agricultural Commissioner

INYO COUNTY

LIVESTOCK

PRODUCTION		VALUE			
Item	Year	Number Head	Liveweight (cwt.)	Unit	Price Per Unit Total
Cattle & Calves					
Calves-Steers	1977	4,136	20,680	cwt.	\$41.00 \$847,880
Heifers	1977	3,715	16,717	cwt.	\$36.00 \$601,812
Cows	1977	1,110	11,100	cwt.	\$24.50 \$271,950
Bulls	1977	208	2,808	cwt.	\$35.00 \$ 98,280
All Cattle & Calves (Adj.)	1976	14,500	81,381	cwt.	\$30.00 \$2,441,430
Feeders	1977	1,425	x	cwt.	\$37.00 \$184,538
(Gain)	1976	2,558	x	cwt.	\$37.00 \$277,870
Sheep & Lambs	1977	1,200	1,080	cwt.	\$48.00 \$ 51,840
	1976	1,200	1,080	cwt.	\$43.00 \$ 46,440
TOTAL LIVESTOCK				1977	\$2,056,300
				1976	\$2,678,738

LIVESTOCK PRODUCTS

Item	Year	Production	Unit	Price Per Unit	Total
Milk, Manufacturing	1977	400 cwt.	cwt.	\$ 4.00	\$ 1,600
	1976	96	cwt.	\$ 66.00	\$ 6,336
Wool	1977	96	cwt.	\$ 40.00	\$ 3,840
	1976				
TOTAL LIVESTOCK PRODUCTS				1977	\$7,936
				1976	\$3,840

LIVESTOCK INVENTORY

	January 1, 1977	For Period Ending January 1, 1978
Cattle & Calves	24,800	23,000
Cows & Heifers that have calved	14,000	11,000
Sheep & Lambs	1,000	1,200

INYO COUNTY FIELD CROPS

PRODUCTION				VALUE			
Item	Year	Harvested Acreage	Tons Per Acre	Total Tons	Unit	Price Per Unit	Total
Alfalfa	1977	3,304	6.0	19,824	ton	63.00	1,248,912
Hay	1976	3,154	5.25	16,559	ton	76.50	1,226,764
Irrigated	1977	10,050	x	x	acre	7.20	72,360
Pasture	1976	9,075	x	x	acre	5.87	53,270
Dry	1977	181,000	x	x	acre	.78	141,180
Grazing	1976	179,966	x	x	acre	.66	118,778
TOTAL FIELD CROPS				1977	\$1,462,452		
				1976	\$1,438,812		

FRUIT PRODUCTION

Item	Year	Harvested Acreage	Tons Per Acre	Total Tons	Unit	Price Per Unit	Total
Misc.	1977	28	2.5	70	ton	270.00	18,900
Fruit	1976	28	1.93	54	ton	262.00	14,148
TOTAL FRUIT PRODUCTION				1977	\$18,900		
				1976	\$14,148		

APIARY PRODUCTS

Item	Year	Production	Unit	Price Per Unit	Total
Honey	1977	88,000	lbs.	.53	46,640
	1976	80,150	lbs.	.40	32,060
TOTAL APIARY PRODUCTS			1977	\$46,640	
			1976	\$32,060	

INYO COUNTY TOTALS

	1976	1977
Livestock	\$2,678,738	\$2,056,300
Livestock Products	\$ 3,840	\$ 7,936
Field Crops	\$1,438,812	\$1,462,452
Fruit Production	\$ 14,148	\$ 18,900
Apiary	\$ 32,060	\$ 46,640
TOTALS	\$4,167,598	\$3,592,228

MONO COUNTY

LIVESTOCK

PRODUCTION		VALUE				
Item	Year	Number Head	Liveweight (cwt.)	Unit	Price Per Unit	Total
Cattle & Calves						
Calves-Steers	1977	5,081	25,405	cwt.	\$41.00	\$1,041,605
Heifers	1977	3,855	17,347	cwt.	\$36.00	\$ 624,492
Cows	1977	1,112	11,120	cwt.	\$24.50	\$ 272,440
Bulls	1977	198	2,673	cwt.	\$35.00	\$ 93,555
All Cattle & Calves(adj)	1976	15,563	72,426	cwt.	\$30.00	\$2,172,780
Feeders	1977	200	x	cwt.	\$37.00	\$ 25,900
(Gain)	1976	-----	-----	cwt.	-----	-----
Sheep & Lambs	1977	20,000	18,000	cwt.	\$48.00	\$ 864,000
	1976	36,500	32,850	cwt.	\$43.00	\$1,412,550

TOTAL LIVESTOCK 1977 \$2,921,992
(adjusted) 1976 \$3,777,646

LIVESTOCK PRODUCTS

Item	Year	Production	Unit	Price Per Unit	Total
Milk Manufactur- ing	1977	3,968	lbs.	\$ 4.50	\$ 17,856
	1976	-----	lbs.	-----	-----
Wool	1977	1,600	cwt.	\$66.00	\$ 105,600
	1976	4,000	cwt.	\$69.00	\$ 276,000

TOTAL LIVESTOCK PRODUCTS 1977 \$123,456
1976 \$276,000

LIVESTOCK INVENTORY

	For Period Ending	
	January 1, 1977	January 1, 1978
Cattle & Calves	23,700	20,000
Cows & Heifers that have calved	6,200	8,000
Sheep & Lambs	4,300	5,000

MONO COUNTY

FIELD CROPS

PRODUCTION				VALUE			
Item	Year	Harvested Acreage	Tons Per Acre	Total Tons	Unit	Price Per Unit	Total
Alfalfa	1977	5,080	5.5	27,940	ton	\$63.00	\$1,760,220
Hay	1976	4,606	5.25	24,182	ton	\$76.50	\$1,849,923
Misc.Hay	1977	830	2.50	2,075	ton	\$55.00	\$ 114,125
	1976	300	2.25	675	ton	\$55.00	\$ 45,900
Irrigated	1977	9,000	x	x	acre	\$ 7.20	\$ 64,800
Pasture	1976	7,184	x	x	acre	\$ 5.90	\$ 42,386
Dry	1977	36,000	x	x	acre	\$.81	\$ 29,160
Grazing	1976	31,096	x	x	acre	\$.81	\$ 25,188

TOTAL FIELD CROPS	1977	\$1,968,305
	1976	\$1,963,397

MONO COUNTY TOTALS

	1976	1977
Livestock	\$3,777,646	\$2,921,992
Livestock Products	\$ 276,000	\$ 123,456
Field Crops	\$1,963,397	\$1,968,305
TOTALS	<u>\$6,017,043</u>	<u>\$5,013,753</u>

Three vertical black bars of equal width and height, positioned side-by-side. They have a grainy, textured appearance.

1978

1978 ANNUAL CROP & LIVESTOCK REPORT

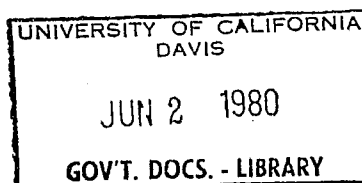
DOCUMENTS
STACKS

INYO-MONO
COUNTIES
DEPARTMENT
OF
AGRICULTURE



HARVEST FESTIVAL
BISHOP, 1886

Inyo-Mono Department of Agriculture
207 W. SOUTH STREET • BISHOP, CALIFORNIA 93514





Counties of Inyo-Mono

EDMOND W. HALE
AGRICULTURAL COMMISSIONER
DIRECTOR OF WEIGHTS AND MEASURES

207 W. SOUTH ST. • BISHOP, CA 93514 • TELEPHONE 873-5291



TO: Richard E. Rominger, Director
California Department of Food & Agriculture

And The Honorable

Inyo County Board of Supervisors
Dick A. Engel
Richard McDonald
Wilma Muth
H.B. Irwin
Vernon E. Johnson

Mono County Board of Supervisors
Joan Green
Eugene Hanson
Coy Ziglar
Robert Stanford

It is with pleasure that I submit to you the 1978 Agricultural Crop Report as required by Section 2279 of the California Food and Agricultural Code.

Gross agricultural production returned \$12,300,924 to local producers in 1978. This is an increase of more than 3.5 million and is due primarily to better prices paid to cattlemen for cattle and calves. Numbers of cattle marketed also increased.

Alfalfa growers, on the average, received lower prices in 1978 for approximately 50,000 tons of alfalfa hay and some growers suffered production losses caused by unseasonal cold weather, insect and weed problems. Mono County alfalfa acreage increased by 1343 acres; while Inyo County acreage remained about the same as in 1977.

Growing conditions for wildflowers and brush were the best in many years contributing to a sizeable increase in honey production.

The values in this report represent gross returns only and do not reflect net income or losses.

A sincere thank you goes to all who responded to my questionnaire; with a special word of thanks to P. Dean Smith, Farm Advisor, and George Milovich, Agricultural Inspector for assistance with this report.

Agriculture continues to be the basic industry of the counties.

Respectively Submitted

Edmond W. Hale
Agricultural Commissioner

INYO COUNTY

* LIVESTOCK *

ITEM	PRODUCTION			UNIT	VALUE	
	YEAR	NUMBER HEAD	(cwt) LIVEWEIGHT		PRICE PER UNIT	TOTAL
Cattle & Calves						
Calves-Steers	1978	4,700	23,500	cwt.	\$71.00	\$1,668,500
Heifers	1978	4,087	18,392	cwt.	\$66.00	\$1,213,872
Cows	1978	1,088	10,880	cwt.	\$40.00	\$435,200
Bulls	1978	200	2,700	cwt.	\$45.00	\$121,500
All Cattle & Calves (adj.)	1977	9,169	51,305	cwt.	\$35.50	\$1,819,922
Feeders	1978	1,575	X	cwt.	\$67.00	\$316,575
(Gain)	1977	1,425	X	cwt.	\$37.00	\$184,538
Sheep & Lambs	1978	1,200	1,080	cwt.	\$60.00	\$64,800
	1977	1,200	1,080	cwt.	\$48.00	\$51,840

TOTAL LIVESTOCK 1978 \$3,820,447
1977 \$2,056,300

LIVESTOCK PRODUCTS

ITEM	YEAR	PRODUCTION	UNIT	PRICE PER UNIT	TOTAL
Milk Manufac- turing	1978	400	cwt.	\$4.00	\$1,600
	1977	400	cwt.	\$4.00	\$1,600
Wool	1978	96	cwt.	\$73.00	\$7,008
	1977	96	cwt.	\$66.00	\$6,336

TOTAL LIVESTOCK PRODUCTS 1978 \$8,608
1977 \$7,936

LIVESTOCK INVENTORY

	For Period Ending	
	January 1, 1978-January 1, 1979	
Cattle & Calves	23,000	23,000
Cows & Heifers that have calved	11,000	10,000
Sheep & Lambs	1,200	1,200

INYO COUNTY FIELD CROPS

ITEM	YEAR	HARVESTED ACREAGE	TONS PER ACRE	TOTAL TONS	UNIT	PRICE PER UNIT	TOTAL
Alfalfa	1978	3,312	5.25	17,388	Ton	\$55.00	\$956,340
Hay	1977	3,304	6.0	19,824	Ton	\$63.00	\$1,248,912
Irrigated Pasture	1978	10,985	X	X	Acre	\$10.50	\$115,342
	1977	10,050	X	X	Acre	\$7.20	\$72,360
Dry Grazing	1978	182,607	X	X	Acre	\$.59	\$107,738
	1977	181,000	X	X	Acre	\$.78	\$141,180
		TOTAL FIELD CROPS		1978	\$1,179,420		
				1977	\$1,462,452		

FRUIT PRODUCTION

ITEM	YEAR	HARVESTED ACREAGE	TONS PER ACRE	TOTAL TONS	UNIT	PRICE PER UNIT	TOTAL
Misc.	1978	28	.1	3	Ton	\$2000.00	\$6,000
Fruit	1977	28	2.5	70	Ton	\$270.00	\$18,900
		TOTAL FRUIT PRODUCTION		1978	\$6,000		
				1977	\$18,900		

ITEM	YEAR	PRODUCTION	UNIT	PRICE PER UNIT	TOTAL
HONEY	1978	267,450	lbs.	.50	\$133,725
	1977	88,000	lbs.	.53	\$46,640
		TOTAL APIARY PRODUCTS		1978	\$133,725
				1977	\$46,640

INYO COUNTY TOTALS

	1977	1978
Livestock	\$2,056,300	\$3,820,453
Livestock Products	\$ 7,936	\$ 8,608
Field Crops	\$1,462,452	\$1,179,420
Fruit Production	\$ 18,900	\$ 6,000
Apiary	\$ 46,640	\$ 133,725
TOTALS	\$3,592,228	\$5,148,206

MONO COUNTY

LIVESTOCK

<u>PRODUCTION</u>		<u>VALUE</u>				
ITEM	YEAR	NUMBER HEAD	(cwt.) LIVEWEIGHT	UNIT	PRICE PER UNIT	TOTAL
Cattle & Calves						
Calves-Steers	1978	5,104	25,520	cwt.	\$71.00	\$1,811,920
Heifers	1978	4,433	19,949	cwt.	\$66.00	\$1,316,634
Cows	1978	1,134	11,340	cwt.	\$40.00	\$453,600
Bulls	1978	209	2,822	cwt.	\$45.00	\$126,990
All Cattle & Calves (adj)	1977	10,246	56,545	cwt.	\$36.00	\$2,032,092
Feeders	1978	1,500	X	cwt.	\$67.00	\$301,500
(Gain)	1977	200	X	cwt.	\$37.00	\$25,900
Sheep & Lambs	1978	20,000	18,000	cwt.	\$60.00	\$1,080,000
	1977	20,000	18,000	cwt.	\$48.00	\$864,000
TOTAL LIVESTOCK				1978	\$5,090,644	
				1977	\$2,921,992	

LIVESTOCK PRODUCTS

ITEM	YEAR	PRODUCTION	UNIT	PRICE PER UNIT	TOTAL
Milk Manufac- turing	1978	-----	---	-----	-----
	1977	3,968	Lbs.	\$4.50	\$17,856
Wool	1978	1,600	cwt.	\$73.00	\$116,800
	1977	1,600	cwt.	\$66.00	\$105,600
TOTAL LIVESTOCK PRODUCTION				1978	\$116,800
				1977	\$123,456

LIVESTOCK INVENTORY

For Period Ending		
January 1, 1978-January 1, 1979		
Cattle & Calves	20,000	24,900
Cows & Heifers that have calved	8,000	10,700
Sheep & Lambs	20,000(adj)	20,000

MONO COUNTY FIELD CROPS

ITEM	YEAR	ACREAGE	TONS PER ACRE	TOTAL TONS	UNIT	PRICE PER UNIT	TOTAL
Alfalfa	1978	6,423	5	32,115	Ton	\$55.00	\$1,766,325
Hay	1977	5,080	5.5	27,940	Ton	\$63.00	\$1,760,220
Misc.	1978	550	2.50	1,375	Ton	\$50.00	\$68,750
Hay	1977	830	2.50	2,075	Ton	\$55.00	\$114,125
Irrigated	1978	9392	X	X	Acre	\$10.66	\$100,119
Pasture	1977	9000	X	X	Acre	\$7.20	\$64,800
Dry	1978	36,000	X	X	Acre	\$.28	\$10,080
Grazing	1977	36,000	X	X	Acre	\$.81	\$29,160
TOTAL FIELD CROPS					1978	\$1,945,274	
					1977	\$1,968,305	

MONO COUNTY TOTALS

Livestock	1977 \$2,921,992	1978 \$5,090,644
Livestock Products	\$ 123,456	\$ 116,800
Field Crops	\$1,968,305	\$1,945,274
TOTALS	\$5,013,753	\$7,152,718

Three vertical black bars of equal width and height, positioned side-by-side. They have a grainy, textured appearance.

1979

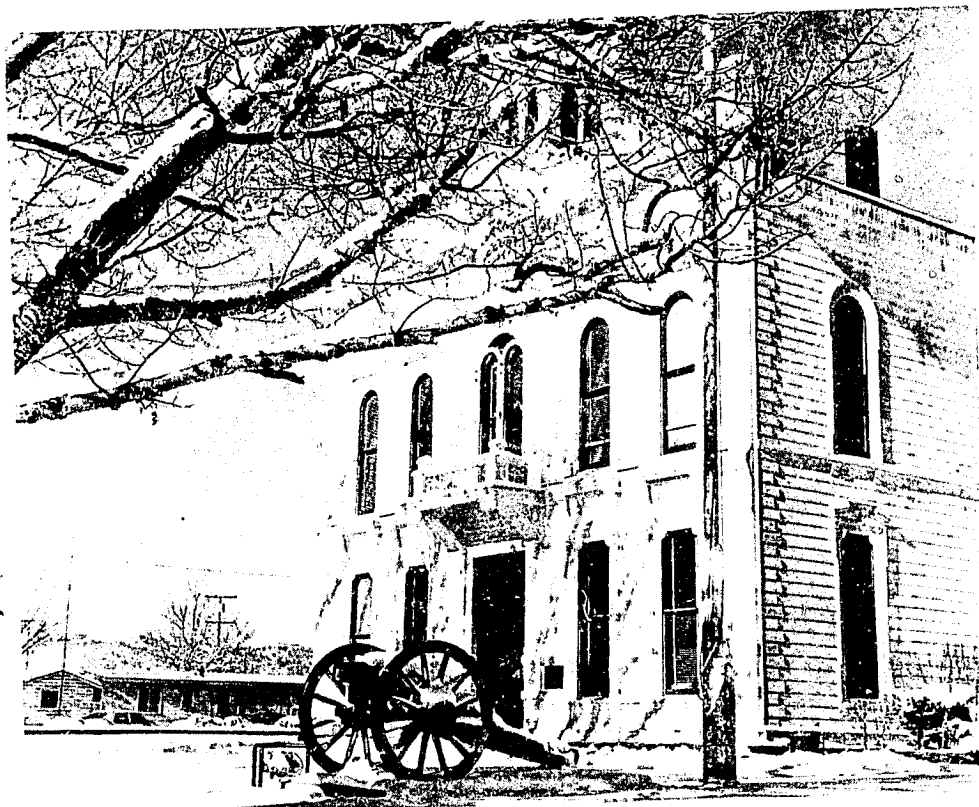
DOCUMENTS
STACKS

California. Inyo-Mono Counties. Agri-
- cultural Commissioner.
Report.

LIBRARY USE ONLY

1979

1979 ANNUAL CROP & LIVESTOCK REPORT



INYO-MONO
COUNTIES
DEPARTMENT
OF
AGRICULTURE

- Mono County
Courthouse
Bridgeport

Inyo-Mono Department of Agriculture
207 W. SOUTH STREET • BISHOP, CALIFORNIA 93514

UNIVERSITY OF CALIFORNIA
DAVIS
JUN 2 1980
GOVT. DOCS. - LIBRARY



Counties of Inyo-Mono

EDMOND W. HALE
AGRICULTURAL COMMISSIONER
DIRECTOR OF WEIGHTS AND MEASURES

207 W. SOUTH ST. • BISHOP, CA 93514 • TELEPHONE 873-5891



TO: Richard E. Rominger, Director
California Department of Food & Agriculture

And The Honorable

Inyo County Board of Supervisors

Mono County Board of Supervisors

Dick E. Engel
H.B. Irwin
Vernon E. Johnson
Richard McDonald
Wilma Muth

Joan Green
Eugene Hanson
Don Sharp
Robert Stanford
Coy Ziglar

It is my pleasure to submit to you the 1979 AGRICULTURAL CROP REPORT as required by Section 2279 of the California Food and Agriculture Code.

Inyo-Mono farmers and ranchers produced food, feed, and fiber from the land with an estimated valuation of \$19,404,739 in 1979. This was a considerable increase over 1978 and was due mainly to increased prices paid to local producers for cattle and alfalfa hay. It must be remembered that the values in this report represent gross returns only and do not reflect net income.

Alfalfa brought good returns, especially late in the year when supplies were insufficient to meet demand. Yields were up slightly. Potatoes, a new crop in 1979, were produced in the Oasis area.

Cattlemen received the best prices in many years for cattle with a slight increase in numbers sold.

A special word of thanks goes to all who assisted with the preparation of this report, especially P. Dean Smith, Inyo-Mono Farm Advisor, and George Milovich, Agricultural Inspector.

Respectively Submitted

Edmond W. Hale
Agricultural Commissioner

INYO COUNTY
* LIVESTOCK *

<u>PRODUCTION</u>				<u>VALUE</u>		
<u>ITEM</u>	<u>YEAR</u>	<u>NUMBER HEAD</u>	<u>LIVEWEIGHT</u>	<u>UNIT</u>	<u>PRICE PER UNIT</u>	<u>TOTAL</u>
CATTLE & CALVES						
Calves-Steers	1979	4,980	24,900	cwt.	\$92.00	\$2,290,800
Heifers	1979	4,400	19,800	cwt.	\$86.00	\$1,702,800
Cows	1979	1,133	11,330	cwt.	\$60.00	\$ 679,800
Bulls	1979	200	2,700	cwt.	\$63.00	\$ 170,100
All Cattle & Calves (adj.)	1978	10,075	55,472	cwt.	\$62.00	\$3,439,072
Feeders	1979	1,500	X	cwt.	\$80.00	\$ 360,000
(Gain)	1978	1,575	X	cwt.	\$67.00	\$ 316,575
Sheep & Lambs	1979	1,440	1,296	cwt.	\$67.00	\$ 86,832
	1978	1,200	1,080	cwt.	\$60.00	\$ 64,800
TOTAL LIVESTOCK				1979	\$ 5,290,332	
				1978	\$ 3,820,447	

LIVESTOCK PRODUCTS

<u>ITEM</u>	<u>YEAR</u>	<u>PRODUCTION</u>	<u>UNIT</u>	<u>PRICE PER UNIT</u>	<u>TOTAL</u>
Wool	1979	115	cwt.	\$77.00	\$8,855
Wool	1978	96	cwt.	\$73.00	\$7,008
Milk Manufac- turing	1979	400	.lbs	\$ 4.00	\$1,600
	1978	400	.lbs	\$ 4.00	\$1,600
TOTAL LIVESTOCK PRODUCTS			1979	\$ 10,455	
			1978	\$ 8,608	

LIVESTOCK INVENTORY

FOR PERIOD
January 1, 1979 - January 1, 1980

Cattle & Calves	23,000	24,400
Cows & Heifers that have calved	10,000	11,000
Sheep & Lambs	1,200	1,400

* INYO COUNTY FIELD CROPS *

<u>ITEM</u>	<u>YEAR</u>	<u>HARVESTED ACREAGE</u>	<u>TONS PER ACRE</u>	<u>TOTAL TONS</u>	<u>UNIT</u>	<u>PRICE PER UNIT</u>	<u>TOTAL</u>
Alfalfa	1979	3,777	6.00	22,662	Ton	\$90.00	\$2,039,580.
Hay	1978	3,312	5.25	17,388	Ton	\$55.00	\$ 956,340.
Irrigated	1979	14,450	X	X	Acre	\$14.00	\$ 202,300.
Pasture	1978	10,985	X	X	Acre	\$10.50	\$ 115,342.
Dry	1979	184,500	X	X	Acre	\$.61	\$ 112,545.
Grazing	1978	182,607	X	X	Acre	\$.59	\$ 107,738.
TOTAL FIELD CROPS				1979	\$2,354,425.		
				1978	\$1,179,420.		

MISCELLANEOUS FRUIT-VEGETABLE PRODUCTION

<u>ITEM</u>	<u>YEAR</u>	<u>ACREAGE</u>	<u>YIELD PER ACRE</u>	<u>TOTAL YIELD</u>	<u>UNIT</u>	<u>PRICE PER UNIT</u>	<u>TOTAL</u>
Misc.Fruits	1979	38	.2	7.6	Ton	\$2,000.00	\$ 15,200.
	1978	28	.1	3	Ton	\$2,000.00	\$ 6,000.
Misc.Veg.	1979	40	400	16,000	cwt	\$ 2.53	\$ 40,480.
	1978	--	--	--	--	--	--
TOTAL FRUIT & VEGETABLE PRODUCTION						1979	\$ 55,680.
						1978	\$ 6,000.

APIARY

<u>ITEM</u>	<u>YEAR</u>	<u>PRODUCTION</u>	<u>UNIT</u>	<u>PRICE PER LB.</u>	<u>TOTAL</u>
Honey	1979	201,450	.lbs	.50	\$100,725.
Honey	1978	267,450	.lbs.	.50	\$133,725.
TOTAL APIARY PRODUCTS				1979	\$100,725.
				1978	\$133,725.

INYO COUNTY TOTALS

	1978	1979
Livestock	\$3,820,453.	\$5,290,332.
Livestock Products	\$ 8,608.	\$ 10,455.
Field Crops	\$1,179,420.	\$2,354,425.
Misc. Fruit & Vegetable Production	\$ 6,000.	\$ 55,680.
Apiary	\$ 133,725.	\$ 100,725.
	<u>\$5,148,206.</u>	<u>\$7,811,617.</u>

* MONO COUNTY FIELD CROPS *

ITEM	YEAR	ACREAGE	TONS PER ACRE	TOTAL TONS	UNIT	PRICE PER UNIT	TOTAL
Alfalfa	1979	6,170	5.5	33,935	Ton	\$90.00	\$3,054,150
Hay	1978	6,423	5.	32,115	Ton	\$55.00	\$1,766,325
Misc.	1979	550	2.50	1,375	Ton	\$60.00	\$ 82,500
Hay	1978	550	2.50	1,375	Ton	\$50.00	\$ 68,750
Irrigated	1979	53,400	X	X	Acre	\$14.00	\$ 747,600
Pasture	1978	9,392	X	X	Acre	\$10.66	\$ 100,115
Dry	1979	37,000	X	X	Acre	\$.28	\$ 10,360
Grazing	1978	36,000	X	X	Acre	\$.28	\$ 10,080
TOTAL FIELD CROPS				1979		\$3,894,610.	
				1978		\$1,945,274.	

MONO COUNTY TOTALS

	1978	1979
Livestock	\$5,090,644.	\$7,529,112.
Livestock Products	\$ 116,800.	\$ 169,400.
Field Crops	<u>\$1,945,274.</u>	<u>\$3,894,610.</u>
TOTALS	\$7,152,718.	\$11,593,122

MONO COUNTY
* LIVESTOCK *

<u>PRODUCTION</u>				<u>VALUE</u>		
<u>ITEM</u>	<u>YEAR</u>	<u>NUMBER HEAD</u>	<u>LIVEWEIGHT</u>	<u>UNIT</u>	<u>PRICE PER UNIT</u>	<u>TOTAL</u>
CATTLE & CALVES						
Calves-Steers	1979	5,690	28,450	cwt.	\$92.00	\$2,617,400
Heifers	1979	4,990	22,455	cwt.	\$86.00	\$1,931,130
Cows	1979	1,280	12,800	cwt.	\$60.00	\$ 768,000
Bulls	1979	220	2,970	cwt.	\$63.00	\$ 187,110
All Cattle & Calves (adj.)	1978	10,880	59,631	cwt.	\$62.00	\$3,709,144
Feeders	1979	1,500	X	cwt.	\$80.00	\$ 360,000
(gain)	1978	1,500	X	cwt.	\$67.00	\$ 301,500
Sheep & Lambs	1979	27,500	24,750	cwt.	\$67.00	\$1,658,250
Sheep & Lambs	1978	20,000	18,000	cwt.	\$60.00	\$1,080,000
Hogs	1979	70	157	cwt.	\$46.00	\$ 7,222
Hogs	1978	-----	-----	----	-----	-----
TOTAL LIVESTOCK				1979	\$ 7,529,112	
				1978	\$ 5,090,644	

LIVESTOCK PRODUCTS					
<u>ITEM</u>	<u>YEAR</u>	<u>PRODUCTION</u>	<u>UNIT</u>	<u>PRICE PER UNIT</u>	<u>TOTAL</u>
Wool	1979	2,200	cwt.	\$77.00	\$169,400
Wool	1978	1,600	cwt.	\$73.00	\$116,800
TOTAL LIVESTOCK PRODUCTS				1979	\$ 169,400
				1978	\$ 116,800

LIVESTOCK INVENTORY

FOR PERIOD

January 1, 1979 - January 1, 1980

Cattle & Calves	24,900	25,000
Cows & Heifers that have calved	10,700	11,000
Sheep & Lambs	20,000	27,500

Three vertical black bars of varying widths are positioned on the left side of the page. The bars are solid black and extend from near the top to near the bottom of the page. The middle bar is the widest, flanked by two narrower bars.

1980

1980 ANNUAL CROP & LIVESTOCK REPORT

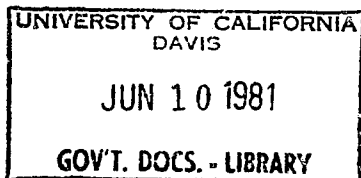
LIBRARY USE ONLY

INYO-MONO
COUNTIES
DEPARTMENT
OF
AGRICULTURE



Inyo-Mono Department of Agriculture

207 W. SOUTH STREET • BISHOP, CALIFORNIA 93514



Mr. Dave Lundquist
Government Document Department
Main Library
University of California
Davis, California 95616



Counties of Inyo-Mono

AGRICULTURAL COMMISSIONER
DIRECTOR OF WEIGHTS AND MEASURES

207 W. SOUTH ST. • BISHOP, CA 93514 • TELEPHONE 873-5891



TO: Richard E. Rominger, Director
California Dept. of Food & Agriculture

And The Honorable

Inyo County Board of Supervisors

H. B. Irwin, Chairman
P. D. Cook
Wilma Muth
Vernon E. Johnson
Robert Bremmer

Mono County Board of Supervisors

Robert J. Stanford, Chairman
Paul Johnson
William M. Reid
E. L. Maner

I would like to submit a preliminary copy of the 1980 Crop Report for Inyo and Mono Counties in accordance with Section 2279 of the California Food & Agriculture Code.

The gross returns for 1980 totaled \$19,552,379, which is a slight increase over last year. The values shown within are gross figures only and do not reflect net income or loss.

A word of thanks to Dean Smith, Inyo/Mono Farm Advisor, Pam Piercey of our department, and all those who assisted in the preparation of this report.

Respectfully submitted,

A handwritten signature in dark ink, appearing to read "George L. Milovich".

George L. Milovich
Agriculture Inspector

GLM:pkp

INYO COUNTY LIVESTOCK

					<u>VALUE</u>	
<u>ITEM</u>	<u>YEAR</u>	<u>NUMBER HEAD</u>	<u>LIVEWEIGHT</u>	<u>UNIT</u>	<u>PRICE PER UNIT</u>	<u>TOTAL</u>
CATTLE & CALVES						
Calves-Steers	1980	6,400	32,000	cwt.	\$80.00	\$2,560,000
Heifers	1980	5,450	24,525	cwt.	\$70.00	\$1,716,750
Cows	1980	1,031	10,310	cwt.	\$55.00	\$ 567,050
Bulls	1980	222	2,997	cwt.	\$57.00	\$ 170,829
All Cattle & Calves (adj.)	1979	10,713	58,730	cwt.	\$75.00	\$4,843,500
Feeders (gain)	1980	950	-	cwt.	\$64.00	\$ 182,400
	1979	1,500	-	cwt.	\$80.00	\$ 360,000
Sheep & Lambs	1980	1,500	1,350	cwt.	\$65.00	\$ 87,750
	1979	1,440	1,296	cwt.	\$67.00	\$ 86,832
TOTAL LIVESTOCK			1980	\$5,284,799		
			1979	\$5,290,332		

LIVESTOCK PRODUCTS

<u>ITEM</u>	<u>YEAR</u>	<u>PRODUCTION</u>	<u>UNIT</u>	<u>PRICE PER UNIT</u>	<u>TOTAL</u>
Wool	1980	120	cwt.	\$78.00	\$9,360
	1979	115	cwt.	\$77.00	\$8,855
Milk Manufac- turing	1980	400	lbs.	\$ 4.25	\$1,700
	1979	400	lbs.	\$ 4.00	\$1,600
TOTAL LIVESTOCK PRODUCTS			1980	\$11,060	
			1979	\$10,455	

LIVESTOCK INVENTORY

FOR PERIOD

January 1, 1980 - January 1, 1981

Cattle & Calves	24,400	22,000
Cows & Heifers that have calved	11,000	11,000
Sheep & Lambs	1,400	1,200

INYO COUNTY FIELD CROPS

<u>ITEM</u>	<u>YEAR</u>	<u>HARVESTED ACREAGE</u>	<u>TONS PER ACRE</u>	<u>TOTAL TONS</u>	<u>UNIT</u>	<u>PRICE PER UNIT</u>	<u>TOTAL</u>
Alfalfa	1980	3,484	6.5	22,646	Ton	\$92.00	\$2,083,432
Hay	1979	3,777	6.0	22,662	Ton	\$90.00	\$2,039,580
Misc.	1980	474	2.5	1,185	Ton	\$70.00	\$ 82,950
Hay	1979	-	-	-	Ton	-	-
Irrigated	1980	14,386	-	-	Acre	\$18.60	\$ 267,580
Pasture	1979	14,450	-	-	Acre	\$14.00	\$ 202,300
Dry	1980	186,399	-	-	Acre	\$.84	\$ 156,575
Grazing	1979	184,500	-	-	Acre	\$.61	\$ 112,545
TOTAL FIELD CROPS				1980	\$2,590,537		
				1979	\$2,354,425		

MISCELLANEOUS FRUIT PRODUCTION

<u>ITEM</u>	<u>YEAR</u>	<u>ACREAGE</u>	<u>PER ACRE YIELD</u>	<u>TOTAL YIELD</u>	<u>UNIT</u>	<u>PRICE PER UNIT</u>	<u>TOTAL</u>
Misc.	1980	38	.15	5.7	Ton	\$2,000	\$11,400
Fruit	1979	38	.20	7.6	Ton	\$2,000	\$15,200
TOTAL FRUIT PRODUCTION					1980	\$11,400	
TOTAL FRUIT & VEGETABLE PRODUCTION					1979	\$55,680	

APIARY

<u>ITEM</u>	<u>YEAR</u>	<u>PRODUCTION</u>	<u>UNIT</u>	<u>PRICE PER LB.</u>	<u>TOTAL</u>
Honey	1980	271,958	lbs.	.50	\$135,979
Honey	1979	201,450	lbs.	.50	\$100,725
TOTAL APIARY PRODUCTS			1980	\$135,979	
			1979	\$100,725	

INYO COUNTY TOTALS

	<u>1979</u>	<u>1980</u>
Livestock	\$5,290,322	\$5,284,779
Livestock Products	10,455	11,060
Field Crops	2,354,425	2,590,537
Misc. Fruit & Vegetable Production	55,680	11,400
Apiary	100,725	135,979
	<u>\$7,811,617</u>	<u>\$8,033,755</u>

MONO COUNTY LIVESTOCK

					<u>VALUE</u>	
<u>ITEM</u>	<u>YEAR</u>	<u>NUMBER HEAD</u>	<u>LIVEWEIGHT</u>	<u>UNIT</u>	<u>PRICE PER UNIT</u>	<u>TOTAL</u>
CATTLE & CALVES						
Calves-Steers	1980	5,214	26,070	cwt.	\$80.00	\$2,085,600
Heifers	1980	4,434	19,953	cwt.	\$70.00	\$1,396,710
Cows	1980	1,018	10,180	cwt.	\$55.00	\$ 559,900
Bulls	1980	200	2,700	cwt.	\$57.00	\$ 153,900
All Cattle & Calves (adj.)	1979	12,180	66,675	cwt.	\$75.00	\$5,503,640
Feeders (gain)	1980	1,550	-	cwt.	\$64.00	\$ 297,600
	1979	1,500	-	cwt.	\$80.00	\$ 360,000
Sheep & Lambs	1980	25,290	22,761	cwt.	\$65.00	\$1,479,465
	1979	27,500	24,750	cwt.	\$67.00	\$1,658,250
Hogs	1980	600	1,260	cwt.	\$36.00	\$ 45,360
	1979	70	157	cwt.	\$46.00	\$ 7,222
TOTAL LIVESTOCK			1980	\$6,018,535		
			1979	\$7,529,112		

LIVESTOCK PRODUCTS

<u>ITEM</u>	<u>YEAR</u>	<u>PRODUCTION</u>	<u>UNIT</u>	<u>PRICE PER UNIT</u>	<u>TOTAL</u>
Wool	1980	2,200	cwt.	\$78.00	\$171,600
	1979	2,200	cwt.	\$77.00	\$169,400
TOTAL LIVESTOCK PRODUCTS			1980	\$171,600	
			1979	\$169,400	

LIVESTOCK INVENTORY

FOR PERIOD

January 1, 1980 - January 1, 1981

Cattle & Calves	25,000	24,180
Cows & Heifers that have calved	11,000	11,588
Sheep & Lambs	27,500	25,290

MONO COUNTY FIELD CROPS


<u>ITEM</u>	<u>YEAR</u>	<u>HARVESTED ACREAGE</u>	<u>TONS PER ACRE</u>	<u>TOTAL TONS</u>	<u>UNIT</u>	<u>PRICE PER UNIT</u>	<u>TOTAL</u>
Alfalfa	1980	6,963	6.0	41,778	Ton	\$92.00	\$3,843,576
Hay	1979	6,170	5.5	33,935	Ton	\$90.00	\$3,054,150
Misc.	1980	1,230	2.0	2,460	Ton	\$70.00	\$ 172,200
Hay	1979	550	2.5	1,375	Ton	\$60.00	\$ 82,500
Irrigated	1980	53,400	-	-	Acre	\$18.97	\$1,012,998
Pasture	1979	53,400	-	-	Acre	\$14.00	\$ 747,600
Dry	1980	39,000	-	-	Acre	\$.41	\$ 15,990
Grazing	1979	37,000	-	-	Acre	\$.28	\$ 10,360
TOTAL FIELD CROPS				1980	\$5,044,764		
				1979	\$3,894,610		

MISCELLANEOUS VEGETABLE PRODUCTION

<u>ITEM</u>	<u>YEAR</u>	<u>ACREAGE</u>	<u>PER ACRE YIELD</u>	<u>TOTAL YIELD</u>	<u>UNIT</u>	<u>PRICE PER UNIT</u>	<u>TOTAL</u>
Misc.	1980	195	300	58,500	cwt.	\$4.85	\$283,725
Vegetables	1979	-	-	-	-	-	-
TOTAL VEGETABLE PRODUCTION				1980	\$283,725		

MONO COUNTY TOTALS

	<u>1979</u>	<u>1980</u>
Livestock	\$ 7,529,112	\$ 6,018,535
Livestock Products	169,400	171,600
Field Crops	3,894,610	5,044,764
Miscellaneous Vegetable Production	-	283,725
	<u>\$11,593,122</u>	<u>\$11,518,624</u>



1981



Calif. Inyo-Mono Counties Agricultural
Commissioner
Counties of Inyo-Mono

LIBRARY USE ONLY

1981

DONALD R. MUSE
AGRICULTURAL COMMISSIONER
DIRECTOR OF WEIGHTS AND MEASURES

207 W. SOUTH ST. • BISHOP, CA 93514 • TELEPHONE 873-5381



April 13, 1982

TO: Richard E. Rominger, Director
California Dept. of Food & Agriculture

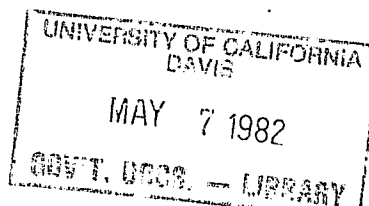
And The Honorable

Inyo County Board of Supervisors

Mono County Board of Supervisors

Wilma Muth, Chairman
H. B. Irwin
P. D. Cook
Vernon E. Johnson
Robert Bremmer

E. L. Maner, Chairman
Robert J. Stanford
Michael R. Jencks
Paul Johnson
William M. Reid



I am pleased to submit the 1981 Crop Report for Inyo and Mono Counties in accordance with Section 2279 of the California Food & Agriculture Code.

The gross returns for 1981 totaled \$18,657,318, which is a decrease of five percent from last year. The values shown within are gross figures only and do not reflect net income or loss.

Lower prices in 1981 for both alfalfa and livestock were the major factor in the overall decrease in Inyo/Mono Counties agricultural production values.

Honey production, adversely affected by a dry summer and the attendant lack of flowering plants, was the worst in several years.

I wish to express my sincere appreciation to the farmers of Inyo and Mono Counties for their willing help in assembling this report.

A special word of thanks to George Milovich and Pam Wright for the responsible manner in which they have performed and to the Inyo/Mono Farm Advisor's Office for their valued help.

Respectfully submitted,

Donald R. Muse

Donald R. Muse
Agricultural Commissioner

INYO COUNTY LIVESTOCK

VALUE

<u>ITEM</u>	<u>YEAR</u>	<u>NUMBER HEAD</u>	<u>LIVEWEIGHT</u>	<u>UNIT.</u>	<u>PRICE PER UNIT</u>	<u>TOTAL</u>
CATTLE & CALVES						
Calves-Steers	1981	5,800	29,000	Cwt.	\$70.00	\$2,030,000
Heifers	1981	4,930	23,418	Cwt.	\$60.00	\$1,405,880
Cows	1981	2,175	21,750	Cwt.	\$48.00	\$1,044,000
Bulls	1981	193	26,055	Cwt.	\$50.00	\$ 130,275
Feeders (gain)	1981	1,900	-	Cwt.	\$56.00	\$ 478,800
	1980	950	-	Cwt.	\$64.00	\$ 182,400
Sheep & Lambs	1981	1,500	1,350	Cwt.	\$55.00	\$ 74,250
	1980	1,500	1,350	Cwt.	\$65.00	\$ 87,750
TOTAL LIVESTOCK			1981	\$5,162,405		
			1980	\$5,284,799		

LIVESTOCK PRODUCTS

<u>ITEM</u>	<u>YEAR</u>	<u>PRODUCTION</u>	<u>UNIT</u>	<u>PRICE PER UNIT</u>	<u>TOTAL</u>
Wool	1981	122	Cwt.	\$88.00	\$10,736
	1980	120	Cwt.	\$78.00	\$9,360
TOTAL LIVESTOCK PRODUCTS				1981	\$10,736
				1980	\$11,060

LIVESTOCK INVENTORY

FOR PERIOD

January 1, 1981 - January 1, 1982

Cattle & Calves	22,000	23,000
Cows & Heifers that have calved	11,000	14,000
Sheep & Lambs	1,200	1,200

INYO COUNTY FIELD CROPS

<u>ITEM</u>	<u>YEAR</u>	<u>HARVESTED ACREAGE</u>	<u>YIELD PER ACRE</u>	<u>TOTAL YIELD</u>	<u>UNIT</u>	<u>PRICE PER UNIT</u>	<u>TOTAL</u>
Alfalfa	1981	3,750	6.25	23,438	Ton	\$80.00	\$1,875,040
Hay	1980	3,484	6.50	22,646	Ton	\$92.00	\$2,083,432
Misc.	1981	540	2.50	1,350	Ton	\$58.00	\$ 78,300
Hay	1980	474	2.50	1,185	Ton	\$70.00	\$ 82,950
Irrigated	1981	14,390	-	-	Acre	\$19.45	\$ 279,886
Pasture	1980	14,386	-	-	Acre	\$18.60	\$ 267,580
Dry	1981	186,399	-	-	Acre	\$ 1.44	\$ 268,415
Grazing	1980	186,399	-	-	Acre	\$.84	\$ 156,575
TOTAL FIELD CROPS				1981	\$2,501,641		
				1980	\$2,590,537		

MISCELLANEOUS FRUIT & VEGETABLE PRODUCTION

<u>ITEM</u>	<u>YEAR</u>	<u>ACREAGE</u>	<u>PER ACRE YIELD</u>	<u>TOTAL YIELD</u>	<u>UNIT</u>	<u>PRICE PER UNIT</u>	<u>TOTAL</u>
Misc.	1981	30	.38	11.40	Ton	\$2,000	\$22,800
Fruit	1980	38	.15	5.70	Ton	\$2,000	\$11,400
Misc.	1981	1.5	120	180	Cwt.	\$ 100	\$18,000
Vegetables	1980	-	-	-	-	-	-
TOTAL FRUIT & VEGETABLE PRODUCTION				1981	\$40,800		
TOTAL FRUIT PRODUCTION				1980	\$11,400		

APIARY

<u>ITEM</u>	<u>YEAR</u>	<u>PRODUCTION</u>	<u>UNIT</u>	<u>PRICE PER LB.</u>	<u>TOTAL</u>
Honey	1981	80,580	Lbs.	.53	\$ 42,707
	1980	271,958	Lbs.	.50	\$135,979

INYO COUNTY TOTALS

	<u>1980</u>	<u>1981</u>
Livestock	\$5,284,779	\$5,162,405
Livestock Products	11,060	10,736
Field Crops	2,590,537	2,501,640
Misc. Field & Vegetable Production	11,400	40,800
Apiary	135,979	42,707
	<u>\$8,033,755</u>	<u>\$7,758,288</u>

INYO COUNTY FIELD CROPS

<u>ITEM</u>	<u>YEAR</u>	<u>HARVESTED ACREAGE</u>	<u>YIELD PER ACRE</u>	<u>TOTAL YIELD</u>	<u>UNIT</u>	<u>PRICE PER UNIT</u>	<u>TOTAL</u>
Alfalfa	1981	3,750	6.25	23,438	Ton	\$80.00	\$1,875,040
Hay	1980	3,484	6.50	22,646	Ton	\$92.00	\$2,083,432
Misc.	1981	540	2.50	1,350	Ton	\$58.00	\$ 78,300
Hay	1980	474	2.50	1,185	Ton	\$70.00	\$ 82,950
Irrigated	1981	14,390	-	-	Acre	\$19.45	\$ 279,886
Pasture	1980	14,386	-	-	Acre	\$18.60	\$ 267,580
Dry	1981	186,399	-	-	Acre	\$ 1.44	\$ 268,415
Grazing	1980	186,399	-	-	Acre	\$.84	\$ 156,575
TOTAL FIELD CROPS				1981	\$2,501,641		
				1980	\$2,590,537		

MISCELLANEOUS FRUIT & VEGETABLE PRODUCTION

<u>ITEM</u>	<u>YEAR</u>	<u>ACREAGE</u>	<u>PER ACRE YIELD</u>	<u>TOTAL YIELD</u>	<u>UNIT</u>	<u>PRICE PER UNIT</u>	<u>TOTAL</u>
Misc.	1981	30	.38	11.40	Ton	\$2,000	\$22,800
Fruit	1980	38	.15	5.70	Ton	\$2,000	\$11,400
Misc.	1981	1.5	120	180	Cwt.	\$ 100	\$18,000
Vegetables	1980	-	-	-	-	-	-
TOTAL FRUIT & VEGETABLE PRODUCTION				1981	\$40,800		
TOTAL FRUIT PRODUCTION				1980	\$11,400		

APIARY

<u>ITEM</u>	<u>YEAR</u>	<u>PRODUCTION</u>	<u>UNIT</u>	<u>PRICE PER LB.</u>	<u>TOTAL</u>
Honey	1981	80,580	Lbs.	.53	\$ 42,707
	1980	271,958	Lbs.	.50	\$135,979

INYO COUNTY TOTALS

	<u>1980</u>	<u>1981</u>
Livestock	\$5,284,779	\$5,162,405
Livestock Products	11,060	10,736
Field Crops	2,590,537	2,501,640
Misc. Field & Vegetable Production	11,400	40,800
Apiary	135,979	42,707
	<u>\$8,033,755</u>	<u>\$7,758,288</u>

MONO COUNTY LIVESTOCK

						VALUE
ITEM	YEAR	NUMBER HEAD	LIVEWEIGHT	UNIT	PRICE PER UNIT	TOTAL
CATTLE & CALVES						
Calves-Steers	1981	5,200	26,000	Cwt.	\$70.00	\$1,820,000
Heifers	1981	4,420	20,995	Cwt.	\$60.00	\$1,259,700
Cows	1981	1,950	1,950	Cwt.	\$48.00	\$ 936,000
Bulls	1981	173	2,336	Cwt.	\$50.00	\$ 116,800
Feeders (gain)	1981	~ 000	-	Cwt.	\$56.00	\$ 504,000
	1980	- 550	-	Cwt.	\$64.00	\$ 297,600
Sheep & Lambs	1981	25,000	22,500	Cwt.	\$55.00	\$1,237,500
	1980	25,290	22,761	Cwt.	\$65.00	\$1,479,465
Hogs	1981	250	500	Cwt.	\$43.00	\$ 21,500
	1980	600	1,260	Cwt.	\$36.00	\$ 45,360
TOTAL LIVESTOCK			1981	\$5,895,500		
			1980	\$6,018,535		

LIVESTOCK PRODUCTS

<u>ITEM</u>	<u>YEAR</u>	<u>PRODUCTION</u>	<u>UNIT</u>	<u>PRICE PER UNIT</u>	<u>TOTAL</u>
Wool	1981	2,038	Cwt.	\$88.00	\$179,344
	1980	2,200	Cwt.	\$78.00	\$171,600
TOTAL LIVESTOCK PRODUCTS				1981	\$179,344
				1980	\$171,600

LIVESTOCK INVENTORY

FOR PERIOD

January 1, 1981 - January 1, 1982

Cattle & Calves	24,180	8,000
Cows & Heifers that have calved	11,588	4,500
Sheep & Lambs	25,290	10,000

MONO COUNTY FIELD CROPS

<u>ITEM</u>	<u>YEAR</u>	<u>HARVESTED ACREAGE</u>	<u>YIELD PER ACRE</u>	<u>TOTAL YIELD</u>	<u>UNIT</u>	<u>PRICE PER UNIT</u>	<u>TOTAL</u>
Alfalfa	1981	6,713	6.00	40,278	Ton	\$80.00	\$3,222,240
Hay	1980	6,963	6.00	41,778	Ton	\$92.00	\$3,843,576
Misc.	1981	1,520	2.50	3,800	Ton	\$58.00	\$ 220,400
Hay	1980	1,230	2.00	2,460	Ton	\$70.00	\$ 172,200
Misc. Field Crops	1981	520	16.75	8,710	Cwt.	\$29.00	\$ 252,590
	1980	-	-	-	-	-	-
Irrigated Pasture	1981	53,379	-	-	Acre	\$19.27	\$1,028,613
	1980	53,400	-	-	Acre	\$18.97	\$1,012,998
Dry Grazing	1981	39,140	-	-	Acre	\$.42	\$ 16,439
	1980	39,000	-	-	Acre	\$.41	\$ 15,990
TOTAL FIELD CROPS				1981	\$4,740,282		
				1980	\$5,044,764		

MISCELLANEOUS VEGETABLE PRODUCTION

<u>ITEM</u>	<u>YEAR</u>	<u>ACREAGE</u>	<u>PER ACRE YIELD</u>	<u>TOTAL YIELD</u>	<u>UNIT</u>	<u>PRICE PER UNIT</u>	<u>TOTAL</u>
Misc. Vegetables	1981	48	460	22,080	Cwt.	\$3.80	\$ 83,904
	1980	195	300	58,500	Cwt.	\$4.85	\$283,725
TOTAL VEGETABLE PRODUCTION				1981	\$ 83,904		
				1980	\$283,725		

MONO COUNTY TOTALS

	<u>1980</u>	<u>1981</u>
Livestock	\$ 6,018,535	\$ 5,895,500
Livestock Products	171,600	179,344
Field Crops	5,044,764	4,740,282
Miscellaneous Vegetable Production	283,725	83,904
	<u>\$11,518,624</u>	<u>\$10,899,030</u>

MONO COUNTY FIELD CROPS

<u>ITEM</u>	<u>YEAR</u>	<u>HARVESTED ACREAGE</u>	<u>YIELD PER ACRE</u>	<u>TOTAL YIELD</u>	<u>UNIT</u>	<u>PRICE PER UNIT</u>	<u>TOTAL</u>
Alfalfa	1981	6,713	6.00	40,278	Ton	\$80.00	\$3,222,240
Hay	1980	6,963	6.00	41,778	Ton	\$92.00	\$3,843,576
Misc.	1981	1,520	2.50	3,800	Ton	\$58.00	\$ 220,400
Hay	1980	1,230	2.00	2,460	Ton	\$70.00	\$ 172,200
Misc. Field Crops	1981	520	16.75	8,710	Cwt.	\$29.00	\$ 252,590
	1980	-	-	-	-	-	-
Irrigated Pasture	1981	53,379	-	-	Acre	\$19.27	\$1,028,613
	1980	53,400	-	-	Acre	\$18.97	\$1,012,998
Dry Grazing	1981	39,140	-	-	Acre	\$.42	\$ 16,439
	1980	39,000	-	-	Acre	\$.41	\$ 15,990
TOTAL FIELD CROPS				1981	\$4,740,282		
				1980	\$5,044,764		

MISCELLANEOUS VEGETABLE PRODUCTION

<u>ITEM</u>	<u>YEAR</u>	<u>ACREAGE</u>	<u>PER ACRE YIELD</u>	<u>TOTAL YIELD</u>	<u>UNIT</u>	<u>PRICE PER UNIT</u>	<u>TOTAL</u>
Misc. Vegetables	1981	48	460	22,080	Cwt.	\$3.80	\$ 83,904
	1980	195	300	58,500	Cwt.	\$4.85	\$283,725
TOTAL VEGETABLE PRODUCTION				1981	\$ 83,904		
				1980	\$283,725		

MONO COUNTY TOTALS

	<u>1980</u>	<u>1981</u>
Livestock	\$ 6,018,535	\$ 5,895,500
Livestock Products	171,600	179,344
Field Crops	5,044,764	4,740,282
Miscellaneous Vegetable Production	283,725	83,904
	<u>\$11,518,624</u>	<u>\$10,899,030</u>