



**AgEcon** SEARCH  
RESEARCH IN AGRICULTURAL & APPLIED ECONOMICS

*The World's Largest Open Access Agricultural & Applied Economics Digital Library*

**This document is discoverable and free to researchers across the globe due to the work of AgEcon Search.**

**Help ensure our sustainability.**

Give to AgEcon Search

AgEcon Search  
<http://ageconsearch.umn.edu>  
[aesearch@umn.edu](mailto:aesearch@umn.edu)

*Papers downloaded from **AgEcon Search** may be used for non-commercial purposes and personal study only. No other use, including posting to another Internet site, is permitted without permission from the copyright owner (not AgEcon Search), or as allowed under the provisions of Fair Use, U.S. Copyright Act, Title 17 U.S.C.*

**Australian Agricultural and Resource Economics Society's  
Annual Conference  
2010**

**ESTIMATING PRODUCTION RESPONSE OF BROADACRE FARMS IN  
WESTERN AUSTRALIA: THE NEXUS OF EMPIRICS AND ECONOMICS  
REVISITED\***

Vilaphonh Xayavong<sup>1</sup> and Nazrul Islam<sup>1&2</sup>

<sup>1</sup>Department of Agriculture and Food, Western Australia

<sup>2</sup>Curtin University of Technology, WA

A contributed paper to the Australian Agricultural & Resource Economics Society's  
annual conference, Adelaide, Feb 10-12, 2010

---

\* The research is part of the 'WA CGE modelling' project. The authors would like to thank John Connell for his support in undertaking this research.

## Abstract

Recently there has been a growing debate as to whether the empirical properties of production response derived from the multi-product framework are consistent with the behavioral assumption in the duality theory of production. This issue could in turn affect the reliable estimates of elasticities which are fundamental requirement to accurate economic forecasting and valid analyses of the impacts of changes in government policies or international events.

The crux of the debate is particularly related to whether to estimate cost or profit function and which types of functional form should be used, as well as imposing restrictions on profit and cost functions when those properties are not satisfied by the estimation models. After reviewing the literature, we found that the duality theory may not always hold in empirical work. This depends on many factors such as risk, stochastic error or data quality, and selected functional forms. We also found that the normalized quadratic function has more advantage than other functional forms, although all of flexible functional forms often fail to pass the regularity condition in the duality theory. As such, there is a requirement to impose curvature restriction if normalized quadratic function is used and monotonicity condition needs to be checked if the cross price elasticities are more than unity.

We examined the above-mentioned issues by estimating production response for broadacre farms in Western Australia. A normalized quadratic profit function is estimated using the ABARE's quasi-micro farm level data for the period 1977/78 to 2005/06. The result reflects the imposition of curvature restrictions for a normalized profit function, and estimated elasticities are found to be less elastic in the short run. The estimated elasticities are also consistent with previous studies.

**Key words:** Production Response, Duality Production Theory, Shape Restriction, Nonlinear Inequality Constraints, Flexible Functional Forms.

## 1. Introduction

Production response estimate (demand and supply elasticities) have relied almost exclusively on the multi-product framework (see for example Lawrence and Zeitsch, 1990; Fisher and Wall, 1990; Coelli, 1996; Ahammad and Islam, 2004; Nguyen *et al.*, 2008). This framework is particularly suitable for modelling Australian broadacre farms where farmers have to make decisions about the optimal mix of inputs and outputs with given prices of inputs and outputs. However, there has been a growing debate as to whether the empirical properties of production response derived from the multi-product framework are consistent with the behavioral assumption in the duality theory of production. This issue in turn could affect the reliable estimates of elasticities which are fundamental requirement to accurate economic forecasting and valid analyses of the impacts of changes in government policies or international events.

The crux of the debate is particularly related to whether to estimate cost or profit function and which types of functional form should be used, as well as imposing restrictions on profit and cost functions when properties of those functions are violated by the estimation models and data (see for example, Lusk *et al.*, 2002; Barnett and Pasupathy, 2003; Edwards and Terrell, 2004; Wolff, 2009). Our review of literature suggests that the duality theory may not always hold in empirical work. This depends on many factors such as risk, stochastic error or data quality, and selected functional forms. We also found that the normalized quadratic function have more advantage than other functional forms, although all of flexible functional forms often fail to pass the regularity property test. As such, imposing curvature restrictions on normalized quadratic function is needed while the monotonicity condition needs to be checked if the cross price elasticities are more than unity.

To examine the points discussed above, we employed a normalized quadratic profit function and used the ABARE's quasi-micro farm level data for the period 1977/78 to 2005/06, to estimate the production response of broadacre farms in Western Australia. The result reflects the imposition of curvature restrictions for a normalized profit function, while estimated elasticities are found to be less elastic in the short run. The estimated elasticities are consistent with previous studies. The rest of this paper is organized as follows: Section 2 addresses issues concerning the estimation methods of

production response through a brief survey of literature. The specification of production technology of broadacre farm in Western Australia and data used for the estimation are discussed in Section 3. Section 4 presents the estimates of elasticities, which are compared with those of the older studies. Some concluding comments are offered in the final section.

## **2. Some issues in the estimates of production response**

Estimates of production response have been approached from different ideological and methodological aspects but two approaches appear to have dominated the study on production of broadacre farms in Australia. One of the approaches assumes that the optimal mix of output is set independently of the optimal mix of input, and hence output price. Although this approach simplifies the modelling and the analysis of agricultural commodity production, it has been criticized for ignoring the production of multi-product pattern which is widely adopted in broadacre farms (McKay et al., 1983; Livernois and Ryan, 1989). An alternative approach, which is widely adopted in recent year, is based on the duality theory of production where either multi-product cost or profit function is specified and estimated (see for example Coelli, 1996; Ahammad and Islam, 2004; Nguyen *et al.*, 2008).

Basically, the duality theory of production states that a profit maximising farmer also minimising cost, and that given a perfectly competitive market the unrestricted profit function contains the same economic information as the indirect cost function (Lau, 1976; Mas-Colell et al., 1995). In this regard, the dual relationship allows researchers to recover production technology parameters from an estimation of either a profit or a cost function. However, in practice there are issues associated with the selection between cost and profit estimation. The main difference between these two approaches is that output is treated as exogenous in the cost function while output is treated as endogenous in the profit function. This makes the profit function more appropriate in portraying the farmers' behavior as an optimiser. However, one can use a cost function along with the optimal output decision rule as an additional equation to avoid the criticism of endogeneity assumption on output (see Kumbhakar and Tsionas, 2008).

While the dual relationship exists in theory, it may not always hold in empirical application. Indeed, Burgess (1975), Appelbaum (1978), Pope (1980, 1982), Weaver (1983), and Lusk et al. (2002) found that the dual relationship fail to hold due to factors such as risk and stochastic error. Thompson and Langworthy (1989) also demonstrated that elasticities calculated from primal and dual approaches will never be consistent if a selected functional form is not identically matched with the underlying data-generating process. However, in some cases, the dual relationship is held (see for example, Asche et al., 2007; and Gao and Featherstone, 2008). Therefore, choosing between cost and benefit functions may also depend on quality of data, data availability, ease of estimation, or other empirical consideration (Lusk et al., 2002).

Other issues are the choice of functional forms and imposing curvature conditions on functional forms, to satisfy with assumptions on farmers' optimal behaviors. This requirement is to ensure that a selected function forms can be complied with or tested for homogeneity, symmetry, regularity (monotonicity and curvature) conditions required by the properties of profit and cost functions.<sup>2</sup> For example, the popular constant elasticity of substitution (CES) and Cobb-Douglas functions are characterized by homogenous technologies and satisfy the regularity conditions but these functions are restrictive by fixing the elasticities of substitutions and not allowed for formal testing of the underlying economic theory (Kim, 2005). Uzawa (1962) also proved that the CES function cannot attain arbitrary elasticities with more than two good. This led to the introduction of various types of flexible functional forms which can provide first order approximation to arbitrary supply or demand function without imposing unwarranted a priori restrictions on elasticities of supply or demand (Diewert, 2004).<sup>3</sup>

Three flexible functional forms dominate the recent empirical production economic literature are Translog, Generalize Leontief, and Normalized Quadratic (Anderson et al., 1996). However, as the number of commodities in the model grew, it proved to be

---

<sup>2</sup> In netput or net output definition, outputs are represented by a positive quantity whereas inputs by a negative quantity.

<sup>3</sup> Most of the available flexible functional forms used in production and consumption analyses are derived from second-order series expansions. These included the translog model of Christensen, Jorgenson, and Lau (1971) and the AIDS (almost ideal demand system) model of Deaton and Muellbauer (1980) use Taylor series expansions in logarithms; while the generalized Leontief model of Diewert (1971) uses a Taylor series expansion in square roots, and the Laurent models of Barnett (1983) use the Laurent series expansion.

impossible to impose the correct curvature conditions on the first two functional forms without destroying the flexibility of the functional forms (Diewert and Walse, 1993; Diewert, 2004). While Diewert and Walse (1993) suggested that the normalized quadratic functional form is the only functional form that restrains from this problem, most of the empirical applications of the flexible functional form exhibit frequent violations of regularity conditions at many data points (Perroni and Rutherford, 1998, Diewert, 2004).

A series of studies such as Moschini (1999), Barnett (2002), Lusk et al., (2002), and Barnett and Pasupathy (2003) noted that violations of the regularity conditions may call into question the applicability of the duality theory to a particular data set. In other words, the violations of the regularity condition indicates the second-order condition for optimizing behavior fails, and so the duality theory. Therefore, the inferences resulting from derived estimating equation become invalid. While regularity-preserving techniques require satisfaction of both curvature and monotonicity conditions, Barnett and Pasupathy (2003) suggested that imposition of curvature may induce violations of monotonicity which otherwise would not have occurred. This gave rise to the debate as to whether imposing regularity restriction to comply with optimizing behavioral assumptions is valid. In deed, Mundlak (2000, p.327) notes that ‘those studies where convexity is not confirmed should go no further because the remaining results have no theoretical support.’

Despite the violation of regularity condition of the flexible functional forms, Barnett and Pasupathy (2003) and Wolff (2009) suggested that the regularity-preserving techniques should be maintained. As Wolff (2009) explained, the regularity violation is caused by the approximation nature of flexible functional forms but their tracking is closed to the true data generation process. In this regards, the regularity-preserving techniques are indispensable. In deed, Edwards and Terrell (2004) examined the impact of imposing the monotonicity and concavity restrictions on cost function and found that the restrictions do improve the precision of elasticity estimates, efficiency estimates and forecasting accuracy. Barnett and Ikuyasu (2006) also found that monotonicity violations in the normalized-quadratic functional form are especially likely to occur when elasticities of substitution are greater than unity. As such, imposing curvature restrictions on this type

of functional form one only needs to check the monotonicity condition if the cross price elasticities are more than unity.

### 3. The empirical model and data used to estimate production response in broadacre farm in Western Australia

To examine the nexus of empirics and the duality theory of production, we use a short-run profit function approach to characterize and estimate the WA broadacre agricultural production system. The normalized-quadratic form is selected for representing a profit function and it can be expressed as follows:

$$\begin{aligned} \Pi / P_m = & \alpha_0 + \sum_{i=1}^{m-1} \alpha_i (P_i / P_m) + \sum_{i=m+1}^n \beta_i Z_i + \frac{1}{2} \sum_{i=1}^{m-1} \sum_{j=1}^{m-1} \gamma_{ij} (P_i / P_m) (P_j / P_m) \\ & + \frac{1}{2} \sum_{i=m+1}^n \sum_{j=m+1}^n \theta_{ij} Z_i Z_j + \frac{1}{2} \sum_{i=1}^{m-1} \sum_{j=m+1}^n \delta_{ij} (P_i / P_m) Z_j \end{aligned} \quad (1)$$

where  $\Pi$  denotes the short-run profit (i.e., gross returns minus variable costs; also called variable profit);  $P$  is the vector of the prices of  $m$  ‘netput’ (or ‘net outputs’ implying outputs if positive quantity and variable inputs if negative quantity);  $Z$  is the vector of  $(n-m)$  quasi-fixed (i.e. fixed in the short run) inputs and other exogenous factors (for example, level of technological know-how); and the  $\alpha$ ,  $\beta$ ,  $\gamma$ ,  $\theta$ ,  $\delta$  are parameters. Note that the  $m$ th netput is the numeraire in the model, and nominal profit and all prices are normalized by its price ( $P_m$ ).

The normalized-quadratic function is a flexible functional form based on a second-order-Taylor’s expansion to approximate the true short-run profit function. To characterize a well-behaved profit function, the normalized-quadratic functional form must satisfy the following conditions:

- Linear homogeneity in prices implies that nominal profit (as opposed to normalized profit) will increase by the same proportion of an increase in all prices (of inputs and outputs).
- Symmetry implies that the second-order partial derivatives of profit function must be invariant to the order of differentiation. This condition requires:



$$\alpha_{ij} = \alpha_{ji} \text{ for } \forall i, j = 1, 2, \dots, (m-1).$$

- Monotonicity requires that all the estimated values for output supply and input demand associated with the profit function must be positive at all data points.
- Convexity in prices is a curvature condition that requires the Hessian matrix of price derivatives  $\left(A = [\alpha_{ij}]\right)$  to be positive semi-definite. This condition ensures that net supply functions have the correct sign.

Hotelling's Lemma (Hotelling, 1932) is used to derive the set of net supply equation associated with (1):

$$Y_i = \partial(\Pi / P_m) / \partial(P_i / P_m) = \alpha_i + \sum_{j=1}^{m-1} \gamma_{ij} (P_i / P_m) + \sum_{j=m+1}^n \delta_{ij} Z_i \quad (2)$$

for  $\forall i, j = 1, 2, \dots, (m-1)$ .

where  $Y$  is a vector of netputs; and the  $P$ s,  $Z$ s and  $\alpha$ s are as defined above. Equation (2) represents an output supply equation when  $Y_i$  is positive and a variable input demand equation when  $Y_i$  is negative. Equations (1) and (2) form our empirical model for WA agricultural production. Note that the net supply equation for the numeraire ( $m$ th netputa) can be recovered from equations (1) and (2), and hence is not explicitly included in the empirical model.

The elasticities that measure the production response to prices and other factors can be estimated from equations (1) and (2) as follows: The elasticity of the supply of the  $i$  th netput ( $Y_i$ ) with respect to the price of the  $j$  th netput ( $P_i$ ) denoted by  $\eta_{ij}$  can be defined as:

$$\eta_{ij} = \frac{\partial Y_i / Y_i}{\partial P_j / P_j} = \frac{\partial Y_i}{\partial P_j} \times \frac{P_j}{Y_i} = \gamma_{ij} \times \frac{(P_j / P_m)}{Y_i} \quad \forall i, j = 1, 2, \dots, (m-1) \quad (3)$$

Equation (3) measures own-price elasticity when  $i = j$ , and cross-price elasticity when  $i \neq j$ . The corresponding elasticities for the numeraire netput can be derived indirectly using the property of “linear homogeneity in prices” of the profit function (1) as follows:

$$\eta_{mi} = -\eta_{im} \frac{Y_i \times (P_i / P_m)}{Y_m}; \eta_{mm} = -\sum_{j=1}^{m-1} \eta_{mj};$$

$$\text{and } \eta_{im} = -\sum_{j=1}^{m-1} \eta_{ij}; \forall i = 1, 2, \dots, (m-1)$$
(4)

We use the ABARE's (Australian Bureau of Agriculture and Resource Economics) annual farm surveys of broadacre agricultural industries to estimate the model. These data are for 28 years covering the period 1977-78 to 2005-06. The details of construction of variable and data series and the summary of descriptive statistics of data series are given in Appendix 1.

#### 4. Empirical estimation and result discussion

As requirement for regression analysis, data used for the estimation must be stationary. We used four methods of unit root test in panel data: Levin-Lin-Chu (LLC), Breitung, Im-Pesaran-Shin (IPS), and Fisher-type tests using Augmented Dickey Fuller (ADF-Fisher). The former two assume common unit root process in series, while the latter two individual unit root process is assumed. The null hypothesis of the tests is that the series contains a unit root, and the alternative is that the series is stationary. The tests are estimate for two cases: individual effect and individual effect + individual linear trends. The summary of the test result is in Table 1 below.

**Table 1: Unit root test**

Variables	Individual effect				Individual effects + individual linear trends			
	Common unit root process		Individual unit root process		Common unit root process		Individual unit root process	
	LLC	Breitung	IPS	ADF-Fisher	LLC	Breitung	IPS	ADF-Fisher
Q1	0.358	-3.298***	-0.176	6.918	-2.209**	-4.246***	-4.961***	31.548***
Q2	-1.701**	-3.017***	-1.091	18.660***	-5.941***	-3.112***	-4.664***	28.989***
Q3	-2.875***	1.159	-2.418***	15.619**	-1.639**	-2.944***	-2.552***	16.111**
Q4	0.262	-0.46	0.748	4.194	-2.533***	-1.422*	-1.430*	10.045
Q5	-2.278**	2.155**	-1.878**	15.232**	-3.163***	-0.683	-3.270***	20.929***
Q6	-1.782**	-0.927	-1.857**	12.538*	-2.072**	2.190**	-0.63	6.77
Q7	2.304**	-1.704**	-0.872	8.53	-4.413***	-3.023***	-2.722***	17.062***
Q8	2.259	-2.082**	3.434	0.139	0.203	1.64	-2.784***	19.823***
P1	-0.983	-1.492*	0.191	3.528	-1.727**	-0.684	-1.784**	11.716*
P2	-4.260***	-4.929***	-6.644***	46.995***	-1.589*	-2.754***	-6.342***	41.114***
P3	1.726**	-1.033	-0.308	5.506	-3.439***	-0.436	-3.022***	20.343***
P4	-0.871	-1.616*	-0.533	5.91	-2.224**	-0.403	-3.216***	19.846***
P5	-1.638**	-0.388	-0.928	7.819	-0.62	1.02	2.058	0.585
P6	-1.777**	-3.303***	-1.27	9.44	-2.313**	-1.856**	-1.903**	12.736**
P7	-1.473*	-1.048	0.587	2.578	-4.706***	-0.348	-3.174***	20.163***
P8	2.259	-2.082**	3.434	0.139	0.203	1.64	-2.784***	19.823***
SP	-2.788***	-2.341***	-1.885**	13.150**	-3.545***	-1.976**	-2.275**	14.346**

Notes: \*\*\*, \*\*, and \* respectively represents the significant levels at 1%, 5%, and 10%.

Over all, the test report under IPS and ADF-Fisher statistics for the case of Individual + individual linear trends suggest that we reject the null hypothesis of most series. Although we could not reject the null hypothesis for Q6 and P5 series in previous case, we can reject the null for Q6 under LLC, IPS and ADF-Fisher for the case of individual effect and under LLC and Breitung for the case of Individual + individual linear trends. As for P5, the test of LLC statistics suggests that P5 is stationary. Therefore, we conclude that all series are stationary. Notice that as the null hypothesis of most series is rejected based on test statistics under the case of Individual + individual linear trends intercept and linear trends. This reflects the fact that data used in the estimation have linear trends (see Figures 1 & 2 in Appendix 1).

To estimate the model, we added a stochastic structure in equations (1) and (2) and estimated this system equations using linear and non-linear seemingly unrelated regressions (SURE) command in SHAZAM (Whistler et al., 2004). We also add region dummies and time trends to capture the data characters discussed in unit root test section. Following Ahammad and Islam (2004), the 1-year lagged price was used as a proxy for the expected output price. The linear SURE method was used for the estimate of unrestricted model (i.e., unrestricted curvature on profit function). The result reported in Table 2 shows that some estimates of own price elasticities (see the diagonal entries) have a wrong sign. This suggests that the curvature condition of profit function is violated. Therefore, the empirical model of profit function is not satisfied the duality theory of production.

**Table 2: Estimated elasticities from unrestricted curvature of profit function**

	1	2	3	4	5	6	7	8	9
1. Wheat	-3.336	0.248	-0.505	0.010	-0.199	-0.073	1.278	-0.197	2.775
2. Barley	0.154	-0.143	0.606	0.129	0.037	0.001	-0.378	-0.021	-0.384
3. Other crops	-0.358	0.692	0.094	0.016	0.229	0.057	0.368	0.068	-1.166
4. Beef-cattle and other	0.008	0.175	0.019	-0.012	0.147	0.045	-0.512	-0.039	0.167
5. Sheep and lamb	-0.170	0.051	0.276	0.148	0.186	-0.221	0.210	-0.097	-0.384
6. Wool	-0.171	0.002	0.187	0.125	-0.606	-0.184	0.946	-0.263	-0.036
7. Other agriculture	1.156	-0.552	0.471	-0.548	0.222	0.365	-1.733	0.413	0.205
8. Materials and services	0.242	0.041	-0.119	0.057	0.139	0.137	-0.559	-0.069	0.130
9. Labour	-3.518	0.785	2.088	-0.251	0.570	0.019	-0.287	0.135	0.458

To overcome the curvature violation, we proceed to impose the semi-definiteness condition on the profit function by using the method due to Diewert and Wales (1988).

This method involves the replacement of the Hessian matrix of the second-order partial derivatives of the profit function (A), as:

$$A = BB^T,$$

where

$$B \equiv [\beta_{ij}] \text{ and } \beta_{ij} = 0, \text{ for } 1 \leq i < j \leq (m-1) \text{ and} \\ \text{for } j = k+1, \dots, (m-1) \text{ when } k < (m-1).$$

$B^T$  is the transpose matrix of  $B$ , which is a lower-triangle matrix of order  $(m-1)$  with zeros in its last  $(m-1-k)$  columns. Note that our model comprises seven outputs and two variable inputs so that  $m = 9$ . Therefore, we can set  $k = 1, 2, \dots, 8$ .

The estimated result with imposing curvature condition is reported in Table 3 below. The elasticities are computed at the sample means and will therefore represent the state-average elasticities for WA in the short-run. Estimated elasticities at the sample mean of each region are reported in Appendix 2.

**Table 3: Estimated elasticities from restricted curvature of profit function**

	1	2	3	4	5	6	7	8	9
1. Wheat	0.520*** (0.091)	-0.380*** (0.066)	-0.227*** (0.056)	-0.311*** (0.053)	-0.340*** (0.039)	0.062*** (0.018)	0.502*** (0.071)	0.023 (0.033)	0.153* (0.090)
2. Barley	-0.212*** (0.037)	0.206*** (0.062)	0.207*** (0.038)	0.131*** (0.026)	0.109*** (0.027)	0.001 (0.008)	-0.220*** (0.038)	-0.029* (0.015)	-0.193*** (0.076)
3. Other crops	-0.128*** (0.032)	0.209*** (0.038)	0.501*** (0.094)	0.012 (0.046)	0.056* (0.032)	0.021* (0.011)	-0.074 (0.051)	0.045** (0.021)	-0.642*** (0.089)
4. Beef-cattle and other	-0.293*** (0.050)	0.221*** (0.044)	0.020 (0.076)	0.232*** (0.052)	0.128*** (0.044)	-0.003 (0.017)	-0.365*** (0.046)	-0.058* (0.032)	0.118 (0.083)
5. Sheep and lamb	-0.263*** (0.030)	0.152*** (0.038)	0.077* (0.045)	0.105*** (0.036)	0.355*** (0.042)	-0.114*** (0.015)	-0.108** (0.047)	-0.067*** (0.023)	-0.137** (0.068)
6. Wool	0.154*** (0.046)	0.003 (0.038)	0.094* (0.053)	-0.009 (0.046)	-0.370*** (0.049)	0.158*** (0.040)	-0.065 (0.060)	0.031 (0.048)	0.004 (0.063)
7. Other agriculture	0.393*** (0.055)	-0.309*** (0.054)	-0.103 (0.071)	-0.304*** (0.038)	-0.109** (0.048)	-0.020 (0.018)	0.520*** (0.082)	0.012 (0.039)	-0.079 (0.085)
8. Materials and services	-0.027 (0.038)	0.061* (0.031)	-0.094** (0.045)	0.072* (0.039)	0.102*** (0.035)	-0.014 (0.022)	-0.018 (0.059)	-0.222*** (0.063)	0.139** (0.065)
9. Labour	-0.197* (0.116)	0.447* (0.175)	1.470*** (0.203)	-0.162 (0.113)	0.229** (0.114)	-0.002 (0.032)	0.129 (0.140)	0.154** (0.072)	-2.067*** (0.378)

Note: \*\*\*, \*\*, \* indicate 1%, 5% and 10% significant level respectively.

As can be seen from Table 3, the own price elasticity for all netput (except labor) are inelastic. The estimate reflects a similar result in other studies report in Table 4. The reason of why the estimated elasticities are inelastic could be explained by the nature of agricultural production process. As Griffith *et al.* (2001) indicated, the agricultural

production are subject to its biological constraints such as cropping seasons, rotation patterns, pasture growth patterns and livestock gestation periods, and the long lead times in bringing new land into use; although farmers can adjust the composition of outputs and input such labor in the short run they can not adjust fixed endowments of livestock, land and capital; this means the short run response to price change is limited. Also notice that the wheat and other agricultural product tend to be larger than the livestock estimates. This may be due to there is more flexibility to alter cropping acreages than livestock numbers, as significant changes in planting decisions can be made from year to year while animal breeding strategies take a much longer period to implement (Vere *et al.*, 1993).

**Table 4: Comparison of estimated own price elasticities with other Australian farm studies**

	This study	Wicks &	Vincent et al	Fisher & Wall	Johnson et al	Low/Hinchy(1	Ahammad/Isi
	for WA	Dillon (1978)	(1980)	(1990)	(1990)	990)	am(2004)
Data period	1978-2005	1975-76	1953-74	1973-87	1953-74	1978-87	1978-97
By all zones							
Wheat	0.52	1.10	-	-	-	0.37	1.23
Sheep	0.36	-	-	-	-	-	1.11
Cattle	0.23	0.69	-	-	-	0.84	0.02
Wool	0.16	0.25	-	-	-	0.99	0.53
By paternal zone							
Wheat	0.52	0.29	2.65	2.67	1.69	-	1.23
Sheep	0.35	-	-	0.39	0.29	-	1.11
Cattle	0.23	0.49	1.01	0.43	0.68	-	0.02
Wool	0.16	0.49	0.08	0.53	0.29	-	0.53
By wheat sheep zone							
Wheat	0.35	1.31	0.77	0.62	0.55	-	1.23
Sheep	0.40	-	0.23	0.36	0.37	-	1.11
Cattle	0.13	0.46	0.26	0.11	0.37	-	0.02
Wool	0.15	0.17	0.26	0.04	0.26	-	0.53
By high rainfall zone							
Wheat	0.03	0.89	0.62	-	0.89	-	1.23
Sheep	0.97	-	0.11	0.49	0.31	-	1.11
Cattle	0.33	0.56	0.34	0.16	0.26	-	0.02
Wool	0.20	0.32	0.06	0.19	0.16	-	0.53

## 5. Summary and conclusion

This study examines the debate on the estimate production response. The debates are related to selections between cost or profit function and types of functional form to be used to estimate the production response. The debates also concerns whether imposing curvature conditions on profit and cost functions is valid. After reviewing the literature,

we found that the duality theory may not always hold in empirical work. This depends on many factors such as risk, stochastic error or data quality, and selected functional forms. We also found that the normalized quadratic function has more advantage than other functional forms, although all of flexible functional forms often fail to pass the regularity condition in the duality theory. As such, there is a requirement to impose curvature restriction if normalized quadratic function is used and monotonicity condition need to be check if the cross price elasticities are more than unity.

We examined the above-mentioned issues by estimating production response for broadacre farms in Western Australia. A normalized quadratic profit function is estimated using the ABARE's quasi-micro farm level data for the period 1977/78 to 2005/06. The result reflects the imposition of curvature restrictions for a normalized profit function, and estimated elasticities are found to be less elastic in the short run. The estimated elasticities are also consistent with previous studies.

## Reference:

- Ahammad, H. and Islam, N. (2004). Regional Agricultural Production Systems: Estimates for Western Australia. *Review of Urban and Regional Development Studies*, Vol 16, No. 3, pp. 189-209.
- Anderson, D., Chaisantikulavat, T., Tan Khee Guan, A., Kebbeh, M., Lin, N. and Shumway, C. (1996), Choice of functional form for agricultural production analysis, *Review of Agricultural Economics*, Vol. 18(2), pp. 223-231.
- Barnett, W. (2002). Tastes and technology: curvature is not sufficient for regularity. *Journal of Econometrics*, Vol 108(1), pp. 199-202.
- Barnett, W. and Pasupathy, M. (2003). Regularity of the Genralized Quadratic Production Model: A Counterexample. *Econometric Reviews*, Vol. 22, No. 2, pp. 135-154.
- Breitung, Joerg. 2000. "The Local Power of Some Unit Root Tests for Panel Data." In B. Baltagi (ed.), *Nonstationary Panels, Panel Cointegration, and Dynamic Panels*, *Advances in Econometrics*, Vol. 15, JAI: Amsterdam, 2000, p. 161-178.
- Edwards, D. and Terrell, D. (2004). Does Theory Matter: Assessing the Impact of Monotonicity and Concavity Constraints on Forecasting Accuracy. Midwest Econometrics Group. 14<sup>th</sup> Annual Meeting, Northwestern University, Evanston, IL.
- Fisher, S. and Wall, A. (1990). Supply Response in the Australian Sheep Industry: A Profit Function Approach. *Australian Journal of Agricultural Economics*, Vol 34, No. 1, pp. 47-66.
- Griffith, G., Anson, K., Hill, d., and Vere, D. (2001). Previous supply elasticity estimates for Australian broadacre agriculture, *Economic Research Report No 6.*, NSW Agriculture.
- Johnson, T. Powell, A., and Dixon, B. (1990). Changes in supply of agricultural products, in Williams, B. (ed), *Agriculture in the Australian Economy*, 3<sup>rd</sup> ed., Sydney University Press and Oxford University Press, South Melbourne, pp. 187-200.
- Lau, J. (1976). A Characterization of the normalized restricted profit function. *Journal of Economic Theory*, Vol. 12, pp. 131-63.
- Lawrence, D. and Zeitsch J. (1990). A Disaggregated Model of Agricultural Production Response. Paper presented to 34<sup>th</sup> Annual Conference of the Australian Agricultural Economics Society, Brisbane 12-15 February, Industries Assistance Commission, Canberra.
- Low, J. and Hinchy, M. (1990). Estimation of supply response in Australian broadacre agriculture: the multi product approach. Paper presented at the 34<sup>th</sup> Annual Conference of the Australian Agricultural Economics Society, Brisbane, February.

- Lusk, J., Allen, M., Teatherstone, A., Marsh, L. and Abdulkadri, A. (2002). Empirical Properties of Duality Theory. *The Australian Journal of Agricultural and Resource Economics*, Vol 46, No. 1, pp. 45-68.
- Moschini, G. (1999). Imposing local curvature conditions in flexible demand system, *Journal of Business and Economic Statistics*, Vol 17, pp.487-490.
- Mundlak, Y. (2000). *Agriculture and Economic Growth: Theory and Measurement*. Harvard University Press: Cambridge, MA.
- Nguyen, D., McLaren, K., and Zhao, X. (2008). Multi-Output Broadacre Agricultural Production: Estimating a Cost Function Using Quasi-Micro Farm Level Data From Australia. Paper presented to 52<sup>nd</sup> Annual Conference of the Australian Agricultural Economics Society, 5-8 February 2008. Rydges Lakeside Canberra, ACT.
- Perroni, C. and Rutherford, T. (1998). A Comparison of the performance of flexible functional forms for use in applied general equilibrium analysis., *Computational Economics*, Vol 11(3), pp. 245-263.
- Vere, T., Griffith, G., and Bootle, B. (1993). Alternative breeding inventory specifications in a livestock market model, *Australian Journal of Agricultural Economics*, Vol 37(3), pp.181-204.
- Vincent, P., Dixon, B. and Powell, A. (1980). The estimation of supply response in Australian agriculture: the CRESH/CRETH production system, *International Economic Review*, Vol. 21(1), pp. 221-242.
- Wicks, A., and Dillon, L. (1978). APMAA estimates of supply elasticities for Australian wool, beff and wheat, *Review of Marketing and Agicultural Economics*, Vol. 46(1), pp. 48-57.
- Whistler, D., Whites, K., Wong, S., and Bates, D. (2004). *SHAZAM Econometrics Software User's Reference Manual Verson 10*. Northwest Econometrics.
- Wolff, H. (2009) Can We Close the Gap Between the Empirical Model and Economic Theory? An Application to the U.S. Demand for Factor of Production.



## **Appendix 1. Sources of data**

The price and quantity data series on an average farm level inputs use and outputs production was sourced from ABARE. This data series is for the years 1977-78 to 2005-06 and it is principally based on ABARE's annual farm surveys of broadacre agriculture industries. The raw database has values and quantities for 12 output and 27 input items. For the modelling purpose outputs are grouped into seven and inputs into three. To aggregate diverse groups of outputs and inputs the divisia indexing procedure was used. Where quantity variables were not available, ABARE derived them by deflating the farm survey value data with the appropriate ABARE's prices paid and received indices (ABARE, 1995b). The prices used are farm gate price.

The 12 output can be broadly grouped to include: grains, meat, wool and other farm incomes. The grains output includes harvested amount wheat, barley, oats, sorghum, oilseeds and other crops. Except for other crops, quantities are measured in tonnes. The implicit prices for these grains were calculated by deflating the values by their respective quantities. For other crops the quantity data is provided by ABARE in index form.

The meat output category includes quantity of sales and positive operative gains of sheep, lamb, beef cattle and other livestock animals. The quantity data is provided in index form. Implicit prices for these items were calculated by deflating their respective values with quantity indices. Wool output is measured in kilograms of wool shorn. The wool price is calculated by deflating the value of wool shorn by the quantity. Other farm income: is measured in index form and the implicit unit price is calculated by deflating the total farm receipt by the quantity index.

The three input groups are capital, labour and materials and services. Capital is composed of land, plant and machinery, structures and livestock. The value variables for land and livestock (beef cattle and sheep) are the opportunity costs of investing funds in those capital items. These are calculated as the average capital value (that is, the average of opening and closing values) multiplied by a real interest rate. The value variables for plant and structures capital are the opportunity costs plus depreciation. In the case of land, the expected value of land which partly reflects the future productivity gains is not included.

Quantity variable used for land is the area operated. For beef cattle and sheep, it is the average of opening and closing numbers. For building and plant capital, it is the average value of capital stock deflated by the respective prices paid indices for each. Unit prices of each of the capital items are calculated by dividing the values by the respective quantities for every item.

Labour consists of four items – owner operator and family labour, hired labour, shearing costs, and stores and rations. The value of owner operator and family labour input is imputed using weeks worked and an award wage. The value of hired labour is wages paid, and the values of shearing and stores and rations are expenditure. The quantity variables for owner operator and family labour and hired labour are number of weeks worked. Expenditure deflated by a shearing prices paid index is the quantity variable for shearing.

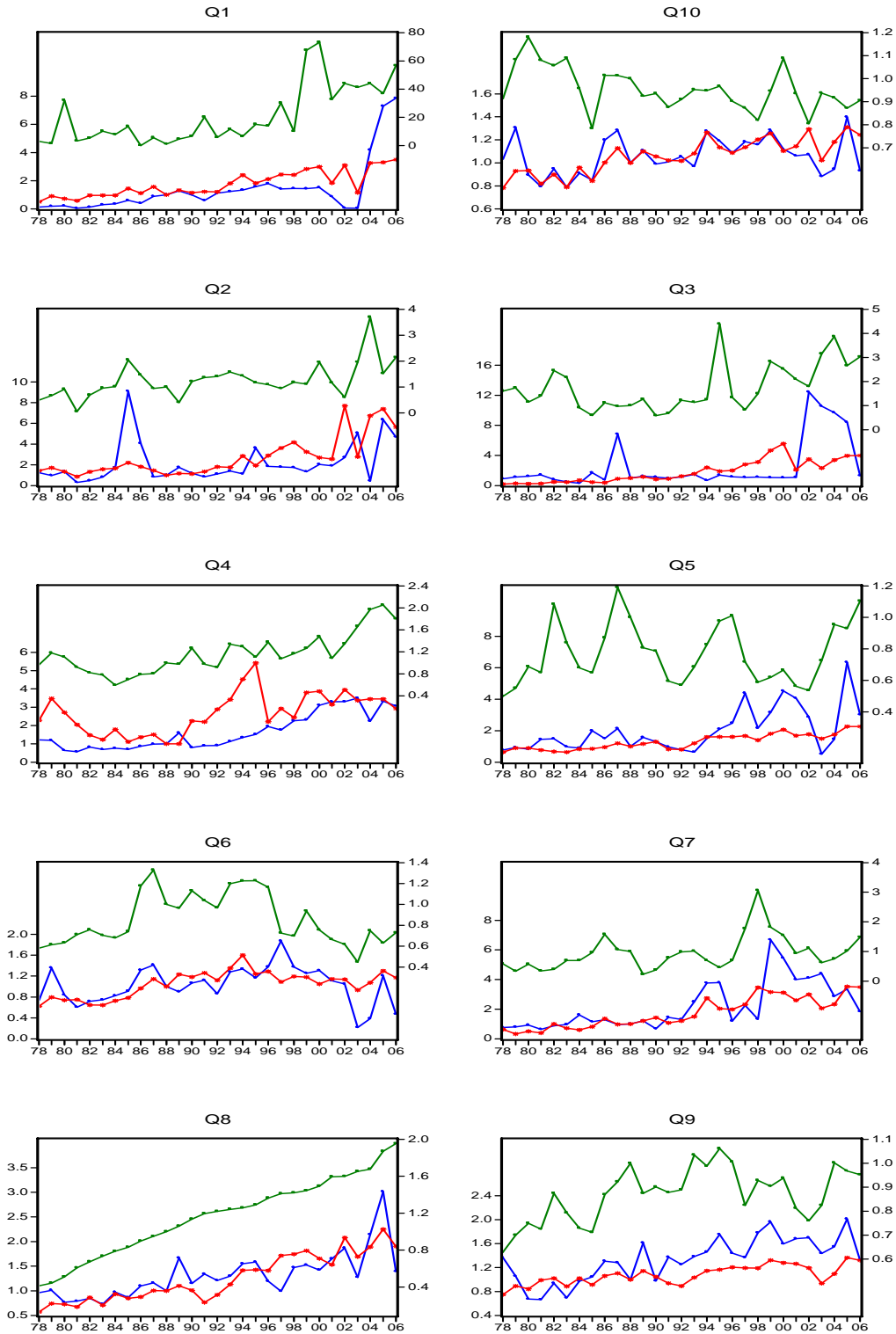
Materials and services include purchases and positive operating gains of sheep, beef cattle and other livestock animals; purchases or user costs of chemicals, livestock materials, fodder, fertilizer, seeds, fuel, and other materials; motor vehicle sundry costs, rates and taxes, administrative costs, miscellaneous livestock costs, contracts, repairs, and other services. Quantities of these inputs are provided in index in the database.

Unit prices for these inputs are calculated by deflating the total value by their respective quantity indices.

**Table 1. Summary statistics for data used in the estimation**

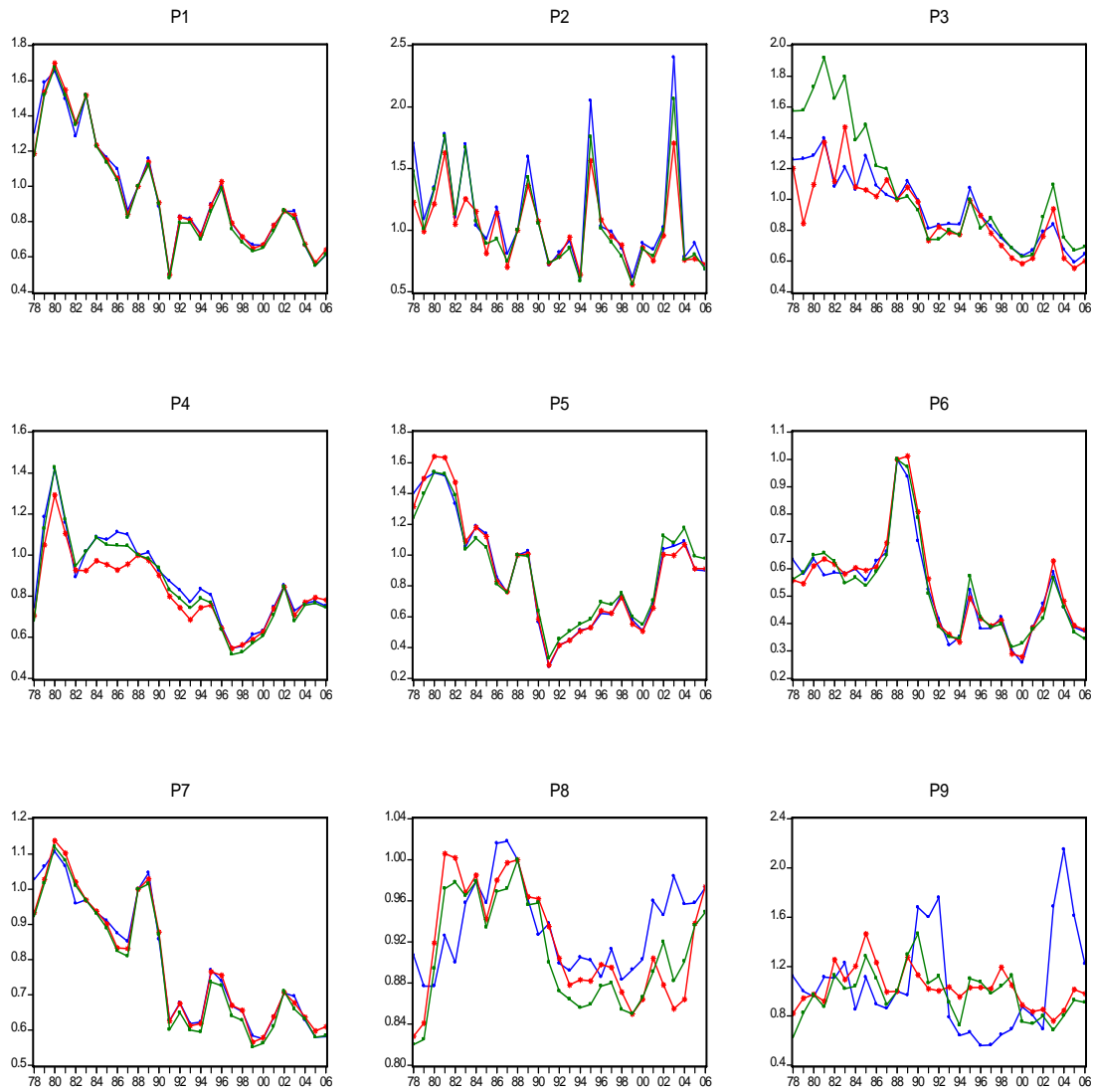
Variables	Mean	Median	Maximum	Minimum	Std. Dev.	Skewness	Kurtosis	Jarque-Bera	Probability	Sum	Sum Sq. Dev.	Observations
P1	0.96	0.86	1.70	0.48	0.32	0.70	2.50	8.07	0.02	83.76	8.74	87
P2	1.06	0.99	2.40	0.56	0.38	1.29	4.38	31.13	0.00	92.11	12.16	87
P3	0.97	0.90	1.92	0.55	0.30	0.99	3.58	15.34	0.00	84.69	7.93	87
P4	0.85	0.81	1.43	0.52	0.20	0.55	3.06	4.42	0.11	74.30	3.41	87
P5	0.90	0.91	1.64	0.28	0.35	0.33	2.21	3.90	0.14	77.95	10.54	87
P6	0.53	0.54	1.01	0.26	0.18	1.02	3.96	18.30	0.00	46.03	2.64	87
P7	0.79	0.74	1.14	0.55	0.18	0.37	1.68	8.36	0.02	68.51	2.74	87
P8	0.92	0.91	1.02	0.82	0.05	0.05	1.96	3.98	0.14	80.14	0.22	87
P9	1.02	1.00	2.15	0.56	0.28	1.32	5.81	53.83	0.00	88.94	6.56	87
Q1	7.99	1.58	73.10	0.00	15.02	2.69	9.83	274.15	0.00	694.82	19411.36	87
Q2	2.03	1.44	9.10	0.06	1.73	2.13	7.49	138.80	0.00	176.99	255.93	87
Q3	2.04	1.25	12.43	0.19	2.21	2.76	11.23	356.26	0.00	177.85	421.22	87
Q4	1.83	1.37	5.43	0.57	1.08	1.02	3.28	15.30	0.00	158.95	99.40	87
Q5	1.36	0.98	6.35	0.50	0.99	2.56	11.00	326.60	0.00	117.96	84.18	87
Q6	0.98	1.00	1.87	0.22	0.30	0.06	2.84	0.14	0.93	85.03	7.58	87
Q7	1.63	1.16	6.67	0.23	1.25	1.56	5.49	57.77	0.00	141.54	134.39	87
Q8	1.24	1.20	3.01	0.41	0.46	0.76	4.17	13.39	0.00	108.03	18.22	87
Q9	1.09	1.01	2.01	0.63	0.30	0.95	3.55	14.20	0.00	95.08	7.87	87
Q10	1.03	1.01	1.40	0.78	0.15	0.39	2.48	3.18	0.20	89.18	1.81	87
SP	3.63	3.00	10.62	0.70	1.84	1.04	4.46	23.52	0.00	315.59	290.62	87

**Figure 1A. Plots of quantity data used in the estimation**



Note: the subscript numbers stand for quantities of 1: wheat, 2: Barley, 3: Other crops, 4: Beef & Other Meat, 5: Sheep & Lamb, 6: Wool, 7: Other Agriculture, 8: Material & Service, 9: Capital, 10: Labour. Green line represents data for high rainfall zone (scale measure in right axis), while red and blue lines for pastoral zone and wheat-sheep zone (scales measure in left axis).

**Figure 2 A. Plots of price data used in the estimation**



Note: the subscript numbers stand for prices of 1: wheat, 2: Barley, 3: Other crops, 4: Beef & Other Meat, 5: Sheep & Lamb, 6: Wool, 7: Other Agriculture, 8: Green line represents data for high rainfall zone, while red and blue lines for pastoral zone and wheat-sheep zone.

## Appendix 2. Elasticities estimated for three agricultural zones in WA

Elasticities estimated at sample mean of WA pastoral zone

	1	2	3	4	5	6	7	8	9
1. Wheat	0.519*** (0.091)	-0.380*** (0.067)	-0.226*** (0.057)	-0.311*** (0.054)	-0.340*** (0.040)	0.062*** (0.019)	0.502*** (0.071)	0.023 (0.033)	0.153* (0.090)
2. Barley	-0.211*** (0.037)	0.205*** (0.062)	0.206*** (0.038)	0.131*** (0.026)	0.109*** (0.028)	0.001 (0.009)	-0.219*** (0.039)	-0.028** (0.015)	-0.193*** (0.076)
3. Other crops	-0.127*** (0.032)	0.208*** (0.039)	0.500*** (0.094)	0.012 (0.046)	0.056* (0.033)	0.021* (0.012)	-0.074 (0.052)	0.044** (0.022)	-0.641*** (0.089)
4. Beef-cattle and other	-0.292*** (0.050)	0.221*** (0.044)	0.020 (0.077)	0.231*** (0.053)	0.127*** (0.044)	-0.003 (0.018)	-0.365*** (0.047)	-0.057* (0.032)	0.117 (0.083)
5. Sheep and lamb	-0.262*** (0.031)	0.151*** (0.038)	0.077* (0.045)	0.104*** (0.036)	0.354*** (0.043)	-0.113*** (0.015)	-0.107** (0.048)	-0.066*** (0.023)	-0.137** (0.069)
6. Wool	0.154*** (0.047)	0.003 (0.039)	0.094*** (0.053)	-0.009 (0.047)	-0.370*** (0.050)	0.157*** (0.041)	-0.065 (0.060)	0.030 (0.048)	0.004 (0.063)
7. Other agriculture	0.393*** (0.056)	-0.309*** (0.054)	-0.103 (0.072)	-0.304*** (0.039)	-0.109** (0.049)	-0.020 (0.019)	0.519*** (0.083)	0.012 (0.039)	-0.078 (0.085)
8. Materials and services	-0.026 (0.037)	0.058** (0.030)	-0.089** (0.043)	0.068* (0.038)	0.096*** (0.034)	-0.014 (0.021)	-0.208*** (0.056)	0.130** (0.059)	0.062 (0.062)
9. Labour	-0.191 (0.113)	0.432*** (0.110)	1.420*** (0.197)	-0.156 (0.110)	0.222** (0.111)	-0.002 (0.031)	0.125 (0.136)	0.144** (0.069)	-1.996*** (0.375)

Elasticities estimated at sample mean of WA wheat sheep zone

	1	2	3	4	5	6	7	8	9
1. Wheat	0.353*** (0.062)	-0.249*** (0.044)	-0.149*** (0.038)	-0.204*** (0.035)	-0.242*** (0.028)	0.042*** (0.013)	0.346*** (0.049)	0.017 (0.024)	0.087 (0.062)
2. Barley	-0.162*** (0.028)	0.152*** (0.046)	0.153*** (0.028)	0.097*** (0.019)	0.088*** (0.022)	0.001 (0.007)	-0.170*** (0.030)	-0.023** (0.012)	-0.134** (0.056)
3. Other crops	-0.120*** (0.030)	0.190*** (0.035)	0.458*** (0.086)	0.011 (0.042)	0.055* (0.033)	0.020* (0.011)	-0.071 (0.049)	0.045** (0.022)	-0.588*** (0.082)
4. Beef-cattle and other	-0.171*** (0.030)	0.125*** (0.025)	0.011 (0.044)	0.131*** (0.030)	0.078*** (0.027)	-0.002 (0.010)	-0.217*** (0.028)	-0.035* (0.020)	0.080* (0.048)
5. Sheep and lamb	-0.279*** (0.033)	0.155*** (0.039)	0.079* (0.047)	0.107*** (0.037)	0.396*** (0.048)	-0.123*** (0.017)	-0.116** (0.052)	-0.075*** (0.026)	-0.144*** (0.072)
6. Wool	0.146*** (0.045)	0.003 (0.035)	0.086* (0.049)	-0.008 (0.043)	-0.368*** (0.049)	0.152*** (0.040)	-0.062 (0.058)	0.031 (0.048)	0.020 (0.060)
7. Other agriculture	0.369*** (0.053)	-0.279*** (0.049)	-0.094 (0.065)	-0.276*** (0.035)	-0.108** (0.048)	-0.019 (0.018)	0.495*** (0.079)	0.012 (0.039)	-0.099 (0.082)
8. Materials and services	-0.024 (0.034)	0.051** (0.026)	-0.079** (0.039)	0.061* (0.034)	0.093*** (0.033)	-0.013 (0.020)	-0.016 (0.058)	-0.204*** (0.058)	0.130** (0.059)
9. Labour	-0.146 (0.104)	0.345** (0.096)	1.222*** (0.170)	-0.160* (0.096)	0.209** (0.104)	-0.010 (0.029)	0.156 (0.128)	0.152** (0.069)	-1.770*** (0.333)

Elasticities estimated at sample mean of WA high rain fall zone

	1	2	3	4	5	6	7	8	9
1. Wheat	0.034*** (0.006)	-0.024*** (0.004)	-0.017*** (0.004)	-0.020*** (0.004)	-0.023*** (0.003)	0.004*** (0.001)	0.033*** (0.005)	0.002 (0.002)	0.012** (0.006)
2. Barley	-0.368*** (0.064)	0.342*** (0.104)	0.413*** (0.076)	0.228*** (0.046)	0.199*** (0.050)	0.001 (0.015)	-0.382*** (0.067)	-0.050** (0.026)	-0.383*** (0.137)
3. Other crops	-0.183*** (0.046)	0.287*** (0.053)	0.828*** (0.156)	0.017 (0.066)	0.084* (0.050)	0.031* (0.018)	-0.107 (0.074)	0.064** (0.031)	-1.023*** (0.143)
4. Beef-cattle and other	-0.414*** (0.071)	0.299*** (0.060)	0.033 (0.125)	0.328*** (0.075)	0.189*** (0.066)	-0.005 (0.026)	-0.518*** (0.066)	-0.081* (0.045)	0.168 (0.130)
5. Sheep and lamb	-0.680*** (0.080)	0.376*** (0.095)	0.230* (0.135)	0.272*** (0.095)	0.965*** (0.116)	-0.303*** (0.041)	-0.280** (0.124)	-0.174*** (0.061)	-0.405** (0.190)
6. Wool	0.185*** (0.057)	0.004 (0.045)	0.130* (0.074)	-0.011 (0.056)	-0.468*** (0.063)	0.195*** (0.051)	-0.078 (0.073)	0.037 (0.058)	0.004 (0.082)
7. Other agriculture	0.900*** (0.128)	-0.677*** (0.119)	-0.273 (0.189)	-0.698*** (0.089)	-0.263 (0.117)	-0.047** (0.044)	1.194*** (0.190)	0.027 (0.091)	-0.162 (0.205)
8. Materials and services	-0.029 (0.042)	0.062** (0.032)	-0.115** (0.056)	0.077* (0.043)	0.114*** (0.040)	-0.016 (0.025)	-0.019 (0.064)	-0.236*** (0.067)	0.161** (0.074)
9. Labour	-0.257** (0.124)	0.526*** (0.136)	2.021*** (0.282)	-0.176 (0.136)	0.295** (0.138)	-0.002 (0.039)	0.126 (0.159)	0.179** (0.082)	-2.713*** (0.469)

Note: \*\*\*, \*\*, \* indicate 1%, 5% and 10% significant level respectively.