



AgEcon SEARCH
RESEARCH IN AGRICULTURAL & APPLIED ECONOMICS

The World's Largest Open Access Agricultural & Applied Economics Digital Library

This document is discoverable and free to researchers across the globe due to the work of AgEcon Search.

Help ensure our sustainability.

Give to AgEcon Search

AgEcon Search
<http://ageconsearch.umn.edu>
aesearch@umn.edu

*Papers downloaded from **AgEcon Search** may be used for non-commercial purposes and personal study only. No other use, including posting to another Internet site, is permitted without permission from the copyright owner (not AgEcon Search), or as allowed under the provisions of Fair Use, U.S. Copyright Act, Title 17 U.S.C.*

California Department of Food and Agriculture

Agricultural Commissioners' Crop Reports

Fresno County

1978-1981

California County Agricultural Commissioners' Reports from the California Department of Food and Agriculture. This collection consists of annual crop and livestock data from each of the 58 California Counties. The collection covers 1915-1981; digitization of the rest of the collection is forthcoming.

This digitization project was funded by the Giannini Foundation of Agricultural Economics,
<http://giannini.ucop.edu/>.

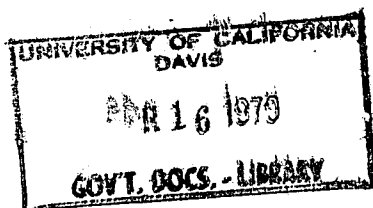
The work was completed by the staff of the Giannini Foundation Library, University of California, Berkeley, <http://are.berkeley.edu/library/>. **Please contact the Library to consult the originals.**

Three vertical black bars of equal width and height, positioned side-by-side. They have a grainy, textured appearance.

1978

California. Fresno (County). Agri-
cultural Commissioner.
Report.

DOCUMENTS
STACKS



county of fresno



DEPARTMENT OF AGRICULTURE

Cosmo C. Insalaco

~~Richard E. Rominger~~

Agricultural Commissioner

Ronald Atmajian

Assistant Agricultural Commissioner

Richard E. Rominger, Director
California Department of Food and Agriculture

The Honorable Board of Supervisors
County of Fresno

Willard H. Johnson, Chairman
Harry Huey Bruce Bronzan
Sharon Levy John R. Donaldson
Allan H. Colman
County Administrative Officer

I am pleased to submit the 1978 Agricultural Crop and Livestock Report for the acreage, production, and value of agricultural crops and products in Fresno County.

1978 represents the largest gross returns in our history, \$1,238,261,100, again exceeding one billion dollars in crop and livestock production for the fourth consecutive year.

The values published in this report represent gross figures only and not net income to the growers.

I sincerely appreciate the professional work performed by Supervising Agricultural Biologist, L. V. Hawley; Agricultural Biologist III, Wayne L. Roberts; and the entire staff of the Agricultural Commissioner's Office for the preparation of this report.

I would like to thank the many individuals, related agencies and members of the agricultural industry for their contributions in the compilation of this report.

Respectfully submitted,


Cosmo C. Insalaco
Agricultural Commissioner

"The great cities rest upon our broad and fertile plains.
Burn down your cities and leave your farms,
and your cities will spring up again as if by magic,
but destroy our farms and the grass will grow
in the streets of every city in the nation."

William Jennings Bryan

The Cover . . .

South Fork of the Kings River which flows into Pine Flat Reservoir.
water from this reservoir supplies much of the irrigation water
needed for crops in Fresno County and is one of the main sources
for replenishing underground water for metropolitan areas.

Courtesy of Kings River Conservation District

1978 IN RETROSPECT

Weather conditions were major contributing factors to production problems experienced by Fresno County growers in 1978. Several weather events of note occurred and should be mentioned. The nearly two-year drought ended with higher than normal rainfall and a heavy snow pack in early 1978. Cotton planting operations were severely affected resulting in considerable replanting and late planting due to persistent recurring storms. The year ended with 17.68 inches of rainfall which is 7.44 inches above the 30-year normal. 1978 was the third wettest year since daily rainfall records began in 1887. The .97 inch that fell on September 4 and 5 was the heaviest September 24-hour amount since 1910. This storm series caught an estimated 80% of the natural sun-dried raisin crop on the ground, on open exposed trays. A severe freeze on December 6 and 7 seriously damaged nearly half of the Navel orange crop. The 13 days in 1978 at or below 32°F. all occurred in December. Many other crops also suffered severe losses. The many interrelated production problems notwithstanding, Fresno County reflected an over-all gross increase of returns paid to growers of 11.5%.

FIELD CROPS: Gross value decreased 8%. Cotton yield was 38% below the five-year average reflecting the planting problems, unusually high season-long insect pest incidence, poor boll set, and delayed maturity. Barley and Wheat gross values were down. Dry Bean, Rice, Safflower and Sugar Beet acreage increased significantly.

SEED CROPS: Acreage increased 32%, gross value decreased 2%. Rain and insect damage resulted in sizeable yield reduction in Alfalfa and other Seed Crops.

VEGETABLE CROPS: Gross production value increased 25% due in part to an 18% increase in commodity prices. Acreage increased 13%. Tomato values increased 16%. Head Lettuce value increased 36% due primarily to an outstanding Spring crop with historically high prices. Cantaloupe acreage was up 74% reflecting surface irrigation water availability following the end of the drought.

FRUIT AND NUT CROPS: Some yields were reduced but gross values increased 15% due to some increases in commodity prices. Grapes retained the number one ranking crop position in Fresno County with an increase of 9% over-all value. Raisins suffered a 47% loss in marketable yield. The 85% price increase reduced the over-all loss in value to less than 2% however. Plum values increased 58% primarily due to a 47% price increase and a 13% acreage increase. Hectarine values rose 37%. Almond production was approximately 25% of normal. Olive yields were up significantly.

NURSERY PRODUCTS: Increased 10% in total value. A sharp reduction in Flower Seed production reflected a decreased acreage of 24%.

LIVESTOCK AND POULTRY: Excellent rangeland feed conditions and improved economic prospects for the Beef industry increased Livestock values by 55%. Poultry was up 19%. Increases were noted in other Livestock categories.

LIVESTOCK AND POULTRY PRODUCTS: Livestock and Poultry products exhibited a modest gain in value of 3.6%. Eggs increased in production and value by 7% and 8% respectively.

APIARY PRODUCTS AND POLLINATION SERVICES: Total values increased 40%. Honey production was very good and increased 124%. Pollination Services reflected an increase of 34% in gross returns.

FRESNO COUNTY'S 10 LEADING CROPS

<u>Crop</u>	<u>1978 Rank</u>	<u>1978 Dollar Value</u>	<u>1977 Rank</u>	<u>1976 Rank</u>	<u>1968 Rank</u>
Grapes	1	\$ 288,371,000	1	2	1
Cotton	2	191,940,000	2	1	2
Cattle & Calves	3	101,775,000	4	3	3
Poultry	4	81,275,000	3	6	4
Dairy Products	5	67,937,000	5	4	6
Tomatoes	6	65,320,000	6	5	7
Plums	7	51,308,000	10*	10	10
Head Lettuce	8	43,189,000	11*	12	17
Citrus	9	42,927,700	8	11	18
Nectarines	10	38,396,000	13	14	14

*Revised

1978 CROP AND LIVESTOCK REPORT OVERVIEW

JANUARY

WEATHER: A series of storms that brought rain to the Valley and a good snowpack to the mountains was the most welcome news of the month. Fresno received 3.16 inches of precipitation. The prospects for drought relief brightened considerably. Unseasonably mild weather caused early bud swelling in almond and deciduous fruit orchards. The monthly temperatures ranged from a low of 33°F. to a high of 66°F.

FIELD CROPS: Barley and Wheat progressed well due to the abundant availability of moisture. There was chlorosis in some grain fields due to an excess of standing water. Alfalfa reflected generally good growth as conditions remained favorable with continuing warm weather. Cotton plowdown activity slowed because of soggy field conditions which prevented entry of equipment. Wet fields also delayed Sugar Beet harvest.

FRUITS AND NUTS: Vineyard pruning, tying, and brush removal was active as weather permitted. There was some grower concern regarding pruning completion prior to bud emergence. Pruning and dormant spray applications in Deciduous Orchards was slow but increased at the end of the month. Almond blooms appeared at the end of the month. Harvest of Navel Oranges was slow; quality was generally good with freeze damage limited to isolated lots. Fig irrigation continued; pruning was slow until the latter part of the month.

VEGETABLES: Winter vegetables harvested this month included Leaf Lettuce, Green Onions, Radishes, Cabbage, Turnips, Mustard Greens, and Chinese Vegetables. Wet ground conditions delayed soil preparation, planting, and thinning for Head Lettuce and other crops.

LIVESTOCK: Rangeland grasses thrived on the mild weather and abundant moisture supply. Cattle were moved into the Westside hills for the first time in two years.

FEBRUARY

WEATHER: Rain, dense early morning and late evening fog, and unseasonably mild weather characterized much of the month. Precipitation totaled 4.31 inches. Temperatures ranged from a high of 71°F. to a low of 36°F. Stagnant air conditions with relatively high pollutant levels occurred during midmonth.

FIELD CROPS: Barley continued to show chlorotic symptoms which was most evident in low portions of fields with standing water. Fertilizer applications were in progress throughout the month. Cotton plowdown from last season's crop was still not complete and the rains hampered progress. New crop soil preparation as well as herbicide applications were also hampered. Current season Sugar Beet planting was slow or delayed altogether because of wet field conditions. Harvest was also slow. Alfalfa continued to show good growth. Some Alfalfa Hay was being green chopped. Pest control measures for weeds and insect pests in Alfalfa took place.

FRUITS AND NUTS: Weather slowed cultural operations in Vineyards. Ground was generally too wet to allow entry of brush disposal equipment. Dormant spraying in Deciduous Orchards was active between rain storms. Grower apprehension increased as dormancy break occurred in many varieties. Almonds were in full bloom. The rainy weather and the late bloom of pollinators contributed to a poor nut set. Navel Orange packing remained active with quality good. The Navel Oranges were estimated to be up to two months ahead of last year's maturity. Lemons and Minneolas continued to be packed with high cullage in the Minneolas. Figs remained under irrigation with some pruning still in progress.

VEGETABLES: Spring Lettuce grew well although cultivation and weed control was halted due to wet field conditions. Melon and Tomato growers expressed concern about the delay in planting because of rain. Spinach and Peas grew well as did Broccoli, Cauliflower, and Dry Onions. Vegetables harvested this month included Green Onions, Cabbage, Radishes, Mustard Greens, Hot House Tomatoes, Leaf Lettuce, Turnips, Broccoli, and Chinese Vegetables.

LIVESTOCK: Foothill grazing conditions continued to be very good with grass in generally excellent growth. Supplemental feed demand was greatly reduced.

MARCH

WEATHER: Rain continued off and on during the month with precipitation of 3.68 inches raising the seasonal total to 15.31 inches. Spring weather conditions prevailed as temperatures reached a high of 81°F. and a low of 40°F.

FIELD CROPS: Barley appeared to make some progress in recovering from chlorosis as drying conditions prevailed. By the end of the month most fields were in the boot stage and a few fields started to head out. Oats headed out early in the month and green chopping occurred in the latter part. Field preparation for the new season's Rice crop was slow. Field activity for Cotton preplanting and planting increased at the end of the month as weather conditions improved. Alfalfa continued to show good growth with weeds becoming a problem in some fields. Seed Alfalfa was sheeped off. Sugar Beets did well as weather improved. Existing Safflower did well but new plantings were delayed.

FRUITS AND NUTS: Routine cultural activities in Vineyards included irrigation, cultivation, vine suckering, and French plowing. Vines continued to leaf out showing rapid development. Pest control measures were taken against weeds, cutworms, and black measles. Nectarines, Peaches, and Plums were blooming and also showing leaves. The threat of brown rot caused considerable concern to growers. Almond bloom was complete by midmonth with reports of erratic and variable nut set at month's end. Navel Orange harvest remained in full swing with heavy cullage from brown rot, clear rot, drying, and rind breakdown. Bloom for the new season's crop had started with about a 10% bloom by the end of the month. Minneolas and Lemons were being picked and packed.

VEGETABLES: Spring Lettuce continued to do well but harvest was interrupted because of the rains. Planting of Melons and Tomatoes was active when soil conditions allowed. Dry Onions and Garlic continued to make good progress. Vegetables harvested this month included Green Onions, Radishes, Cabbage, Leaf Lettuce, Asparagus, Cauliflower, Broccoli, Mustard Greens, Turnips, Hothouse Cucumbers, and Chinese Vegetables.

LIVESTOCK: Range conditions continued to be good. Range cattle and sheep appeared in good condition. Feed lot volume appeared to be up slightly.

APRIL

WEATHER: When April ended the seasonal rainfall total had reached 18.16 inches. A series of storms left 2.85 inches of rain during the month. The high temperature for the month was 82°F. and the low temperature 39°F. Saturated fields caused considerable concern to growers who were forced to put off needed cultural field operations. Applications of fungicides for control of botrytis and other humidity related fungal diseases were being made.

FIELD CROPS: Barley was heading out during the month of April with most fields reaching the soft dough stage. Lodging damage became prevalent in Barley, Oats, and Wheat due to the wet and windy weather. The appearance of various fungal diseases such as net blotch, scald, and barley yellow dwarf was attributed to the wet weather. Growers were expressing concern over reduced yields of small grains and low crop quality. Field preparation for Rice was taking place as field conditions permitted. Cotton planting was delayed because of wet field conditions. By the end of the month 10% of the Cotton had been planted, however concern was expressed over the possibility of Cotton seed rotting in the ground from the excess water. Limited harvesting of Sugar Beets was taking place as weather permitted during the month of April. The Safflower crop was in generally good condition with some of the more advanced fields reaching the flower bud formation stage. Alfalfa Hay production was low during April. Cut Alfalfa became moldy and weed growth in Alfalfa fields reduced the quality of harvested hay. Alfalfa Seed made normal progress throughout the month.

FRUITS AND NUTS: Sulfuring activity in county Vineyards for control of powdery mildew and other fungal diseases took place throughout the month. Botrytis of Grapes was showing up in many vineyards as a result of wet weather. The season's bunch count averaged 30.9 bunches per vine. Deciduous fruit orchards were well leafed out. Fruit thinning and other cultural practices were in progress throughout the month. Some tree loss was reported to be a result of standing water in the orchards. There was a light nut set recorded in Fresno County Almond orchards and many fields were showing evidence of shot hole fungus damage. Navel Orange harvest was ending and the packing of Valencia Oranges was on the increase. Valencia quality was reported to be good. Some Lemons were being packed and their quality was also reported as good. Rain and wet field conditions frequently interrupted the harvest of Fresno County's Strawberry crop. Cullage was reported to be heavy in Strawberries due to moisture related problems.

VEGETABLES: The harvest of Lettuce had to be curtailed frequently because heavy harvesting equipment was unable to enter rain soaked fields. Lettuce quality was reported to be good and Lettuce prices were at an all time high. Onions, Garlic, and Freezer Peas showed normal development throughout the month. Processing Tomatoes were mechanically thinned as weather conditions permitted.

LIVESTOCK: Cattle fed on the plentiful grass in Fresno County's rangelands. Sheep shearing took place throughout the county during the month of April.

MAY

WEATHER: Temperatures warmed dramatically during the month of May. Strong gusty winds swept through the county during the middle of the month. Fresno's high temperature in May was 97°F., low was 45°F.

FIELD CROPS: By the end of the month some Barley fields were mature enough for harvesting to begin. Wheat was maturing well. Oat Hay harvest began and continued throughout the month. Cotton planting was reported to be 98% complete by the end of May. Some Cotton replanting was necessary to replace seed that had rotted in the rain soaked fields. Rice fields were flooded in preparation for planting. By the end of the month 65% of the Rice crop was planted. As the weather warmed and dried, the condition of our Alfalfa Hay improved, showing lower incidence of mold. Safflower and Sugar Beets made normal progress. Some Sugar Beets were dug late in the month.

FRUITS AND NUTS: Grape vines grew rapidly during the month of May. Vineyards were treated with sulfur through the middle of the month. The incidence of Botrytis in Grapes remained heavy. Gibberellins were applied to table Thompsons during the last part of May. Some of the early varieties of tree fruits including Spring Gold Peaches, Spring Crest Peaches, Armgold Peaches, Arm King Nectarines, and Red Beaut Plums were being packed during the last half of May. Apricots were also packed. Fruit thinning of late variety stone fruit took place. Pecans, Walnuts, and Figs were irrigated. Almonds made normal progress throughout the month. Estimates of Almond crop size was lower than preceeding years. Navel Orange harvest came to an end during the month. Valencia Oranges were packed in volume and quality was good. The harvesting of Strawberries continued during May. The over-all quality remained good, however careful culling was necessary.

VEGETABLES AND MELONS: Fresno County's Spring Lettuce harvest came to an end during the second week of May. Processing Tomatoes and Fresh Market Tomatoes made good progress. Tomato bloom and fruit set occurred toward the end of the month. Asparagus, Red Onions and Freezer Peas were harvested in May. Over-all quality was reported good in all three crops. Freezer Beans, Dry Beans and Sweet Potatoes were planted. Cantaloupes were making normal progress through the month. Cantaloupe bloom occurred near the end of the month.

LIVESTOCK: Low elevation rangelands began drying while higher elevation ranges remained green. Cattle were moved to higher pastures or to feed yards as grasslands dried.

JUNE

WEATHER: A high pressure system was the dominant factor controlling Fresno County weather. Temperatures averaged 5°F. above normal for the month of June. High temperature for the month was 105°F., low was 54°F.

FIELD CROPS: By the end of June 75% of the Barley and 60% of the Wheat had been harvested. Barley yields ran about a ton an acre, slightly lower than normal. Cotton emergence was estimated at 100% in June. Cotton had reached the squaring stage by the end of the month. Oat and Alfalfa Hay were harvested throughout the month. Sugar Beets, Field Corn and Onions made normal progress.

FRUITS AND NUTS: Cardinal, Gem Free, Red Haven and Coronet Peaches were packed in June. May Grand, Early Sungrand Nectarines, and Santa Rosa Plums were also packed. Irrigation was taking place in the various fruit and nut orchards. Grapes made good progress during June. Fig orchards were prepared for the beginning of harvesting operations. Fresno County's Nut crops made normal progress during the month. The harvest and packing of Valencia Oranges continued through June.

VEGETABLES: June marked the beginning of the Fresh Tomato harvest in Fresno County. Processing Tomatoes made good progress throughout the month. Cucumbers, Red Onions, Green Onions, Squash and Eggplant were harvested. Land was prepared for planting the county's Fall Lettuce crop.

LIVESTOCK: Feed lots were 60% to 75% full during June. Range grasses were drying, but good forage was still available in the rangelands.

JULY

WEATHER: Warm weather prevailed throughout much of July. Fresno County's crops made normal progress during the month with the exception of cotton which was two weeks behind normal because of the late planting. High temperature for the month was 106°F., and the low was 55°F.

FIELD CROPS: Normal cultural field activity was taking place in Fresno County's Cotton fields. Many Cotton fields had to be treated for Lygus hesperus and mites. By the end of the month Cotton was reported to be at 100% bloom. Some fields were showing light boll set. Alfalfa Hay grew rapidly during the month of July. Insect populations in Alfalfa were increasing and pesticide applications were made in some fields. Field Corn made good progress with normal irrigation and cultivation activity taking place. Sugar Beets were being dug in light volume. Blackeye Beans were beginning to dry.

FRUITS AND NUTS: The Table Grape harvest began in the middle of the month with the packing of Cardinals and Perlettas. The Thompson Seedless Table Grape pack began later in the month. Thompson Seedless Raisin Grapes received their last irrigation of the growing season in July. Weed control and irrigation were the main activities in Fresno County's Almond orchards. Almond growth and development were reported to be good. Valencia Oranges were still being packed during July. The 1979 crop of Navel Oranges were sizing well in the county groves.

VEGETABLES: Fresh Market Tomatoes were harvested at nearly full volume throughout the month. Processing Tomato harvest began in the middle of the month. As a result of the warm weather some harvested Tomatoes exhibited sunscald damage. The over-all condition of the crop was reported fair to good. Excessively warm weather during part of the month was responsible for damage to some Cantaloupe fields. The Cantaloupe and Honeydew Melon harvests got into full swing during July. Some fields of Fall Lettuce were planted during the latter part of the month. Garlic and many different varieties of Summer Vegetables were harvested in July.

LIVESTOCK: Fire danger was high in the grasslands and several scattered range fires occurred. No significant damage was done to Fresno County rangeland. The over-all livestock picture remained virtually unchanged from preceding months.

AUGUST

WEATHER: The first two weeks of August were hot with Fresno posting high temperatures of 109°F., and a low of 55°F. The hot weather brought a drop in egg production estimated to be as much as 3% for some flocks. Hot weather was also responsible for the necessity to irrigate various crops with increased frequency.

FIELD CROPS: Rice was heading out by the end of the month. Fresno County's Cotton crop experienced severe insect problems during August. Cotton production costs increased as pesticide applications were repeated frequently. Boll set was down in many Cotton fields and concern was being expressed over the possibility of reduced yields. Alfalfa Seed and Safflower harvest took place during August.

FRUITS AND NUTS: Thompson Seedless Table Grape harvest continued through August. Some of the Vineyards experienced difficulty meeting maturity requirements during the early part of the month. These problems disappeared as the month progressed. Zante Currant Raisin Grapes were picked and placed on trays on the ground to dry during the month. Vineyards of Thompson Seedless Grapes were prepared for the beginning of the raisin harvest which would start late in the month. The packing of Peaches, Plums and Nectarines continued without interruption throughout the month. Almond harvest got under way during the middle of the month. Sunburn damage was noted in some Walnut orchards as a result of the hot weather. Black Mission Figs were harvested during the month and ground was floated in preparation for the Calimyrna Fig harvest.

VEGETABLES AND MELONS: The harvest of Processing Tomatoes was coming to an end late in August with yields near normal. Fall Lettuce was being planted during the month. Seed Lettuce was past full bloom stage by late in the month. Eggplant, Peppers, Cucumbers, Onions, Squash, Okra, Bitter Melon, and Daikon were packed during August. Lower yields were also reported in Fresno County's Cantaloupe crop. The hot weather was responsible for damage, not only to Cantaloupes, but also to Casaba, Cranshaw and Honeydew Melons.

LIVESTOCK: Sheep were moved into harvested tomato and melon fields to graze during the month of August.

SEPTEMBER

WEATHER: Labor Day brought the beginning of disaster for nearly 5,000 Fresno County growers. A combination of tropical storm Norman moving into California from the south and a cold front moving through California from the Gulf of Alaska, brought unseasonable rains to the county. Rainfall exceeded 1.05 inches. Extensive damage was done to many of Fresno County's major crops. Some crop loss estimates were as high as \$134,000,000. Warm weather and strong winds were needed to dry the rain soaked crops, especially the raisins. The winds however did not arrive in time. Fresno's high temperature for September was 101°F., and the low was 51°F.

FIELD CROPS: Prospects for a good Cotton crop were dim even before the rains in early September. Boll set was a problem in many fields. Many growers were experiencing concern and frustration over the expense of repeated pesticide applications that seemed to have little effect on one of the worst insect outbreaks to hit

Fresno County Cotton in many years. The rain staining of open Cotton bolls was expected to lower the grade of the Cotton which added further injury to this year's crop. Cotton defoliation began toward the end of September. Field estimates of Cotton bales per acre to be harvested ran from 1 to 1.75 bales, a decline from the preceding year. Rain also damaged both the Alfalfa Hay and Alfalfa Seed crops. Forty percent of the Alfalfa Seed crop was reported to have been affected.

FRUITS AND NUTS: Damage to this year's Raisin crop appears to be greater than the disaster in 1976. An estimated 80% of the 1978 Raisin crop was on the ground on open trays when the rains hit the county. At the end of the month growers were still working in their vineyards trying to remove unsalvageable fruit from the trays before rolling and boxing. Many Raisins were sent to the distillers. Packed Juice and Wine Grapes for crush showed the effects from the rain as quality and holding ability was low. Bunch Rot was prevalent in Wine Grapes remaining to be harvested. Varietals harvested included Calmeria, Grenache, Muscat and Zinfandel. Harvest of Stone Fruits was slow; extensive losses due to Brown Rot. Fig growers were washing and drying fruit in continuing reconditioning efforts, but losses may have been as high as 50%. Pomegranates and a few Persimmons were harvested. Navel Oranges were irrigated as fruit continued to size well. A few small lots of Valencia Oranges were packed. Ripe Olives were packed and processed, however prices were low. Almonds were harvested. Walnuts and Pecans continued to mature well.

VEGETABLES AND MELONS: The Processing Tomato harvest was essentially completed by the beginning of September. Garlic harvest was complete by the middle of the month. Onions, Squash, Cucumbers, Green Onions and Cherry Tomatoes were harvested during September. The rains also caused slight damage to the Fresno County Melon crop.

LIVESTOCK: Grass seed germinated with the rains early in September. There was concern expressed over the need for additional moisture to keep the grass growing.

OCTOBER

WEATHER: October weather in Fresno County was warm and sunny. There was no recorded rainfall. Temperatures averaged over seven degrees above normal. The high temperature for the month was 100°F., and the low was 53°F.

FIELD CROPS: By the end of October, 15% of Fresno County's Cotton harvest had been completed. Westside Cotton was approaching the 40% harvested level and the Eastside Cotton harvest was just getting under way. Cotton defoliation took place throughout the month. The warm weather during October increased hope that Cotton harvest prospects would improve; however everyone concerned indicated that it would still be a below average crop year. Hybrid Field Corn and Blackeye Beans were being harvested in October. The Rice harvest was 65% complete and the Milo harvest was 75% complete by the end of the month.

FRUITS AND NUTS: The Grape harvest was winding down. Emperor and Calmeria Table Grapes were packed. The Juice and Wine Grape harvests were coming to an end for the year. September's unseasonable rains affected the quality of the Juice and Wine Grape crops and resulted in a shortened Grape season. Reconditioning of the rain damaged Raisin crop continued. Most of the salvageable crop had been picked up and boxed by the end of the month. Pomegranates were being packed during October with some problems arising due to lack of maturity early in the month. Walnut

harvest was taking place and some figs were packed. Navel Oranges were approaching minimum sugar/acid ratio requirements.

VEGETABLES: Head Lettuce harvest began the second week of the month. Many quality problems plagued the packers. Tipburn was the major quality defect, but there were also incidences of decay and insect injury. Cauliflower was being harvested toward the end of the month. Freezer Limas and Dry Lima Beans were harvested. Fresh Market Tomatoes were packed as well as Green Onions, Snap Beans, Squash, Radishes, Eggplant, Chinese Vegetables, and Romaine Lettuce.

LIVESTOCK: The unseasonably warm temperatures during October dried rangeland grasses and killed off many areas.

NOVEMBER

WEATHER: Several cold fronts moved through California bringing precipitation to Fresno County. Rainfall totaling 1.25 inches was recorded during the month. Temperatures cooled considerably during November. The recorded high for the month was 83°F., and the low was 33°F.

FIELD CROPS: By the end of November, Cotton harvest was approaching 50% completion on Fresno County's Eastside and nearing 85% completion on the Westside. Cotton plowdown began in November and estimates of compliance were about 15%. Late fields of Rice were harvested during the month. The harvest of Rice and Milo ended in November. Ground preparation was under way for the planting of Barley and Wheat. Alfalfa Hay was dormant as a result of freezing temperatures during the month. Sugar Beets were harvested as field conditions permitted. Field Corn was cut for silage.

FRUITS AND NUTS: Emperor Table Grapes were being packed during November. Reports indicated increased activity in export shipments. Deciduous Trees were being pruned and other cultural activities were in progress in Fresno County's orchards and vineyards. Navel Oranges were coloring well and harvest activity was on the upswing. Crop prospects for Navel Oranges were considered good. Other citrus packed in limited quantities included Satsuma Mandarins, and Limes. Packing of Olives and Avocados took place during the month.

VEGETABLES: The harvest of Head Lettuce tapered off and was completed by the end of the month. Some Head Lettuce was being harvested for salad products. While the Fall Lettuce season was coming to an end, the Spring Lettuce crop was being planted and some Lettuce plants were beginning to emerge. Romaine, Red Leaf and Butter Lettuce were also being harvested in November. Tomato beds were being prepared for planting. The Garlic crop for 1979 was planted during November. Cauliflower was harvested for freezer and fresh market.

LIVESTOCK: Rain germinated grass seed in Fresno County's rangeland had not reached the bite-high level by the end of the month.

DECEMBER

WEATHER: Weather related problems again spelled disaster to Fresno County crops. Freezing temperatures during the month severely damaged the citrus crop. High temperature for December was 63°F., and the low was 25°F. There was approximately one-half inch of precipitation.

FIELD CROPS: Barley, Oat and Wheat planting was active and some fields had emerging plants. Rice and Milo harvest was completed. Cotton harvest was virtually complete, and approximately 50% of the Cotton fields had been plowed down in compliance with the Pink Bollworm Regulations. Sugar Beets were harvested when wet field conditions permitted. Seed Alfalfa was planted.

FRUITS AND NUTS: Grapes were pruned and tied with some irrigation taking place. Deciduous Orchards were pruned and dormant sprays were applied. Pecan harvest was active. Oranges suffered large losses from the freezing temperatures during the month and an estimated 40% of the crop was seriously damaged. Many lots of citrus were diverted to by-products. Avocados also experienced extensive losses to freeze damage.

VEGETABLES: Spring Head Lettuce and Tomatoes were planted. Crops of Freezer Peas, Broccoli, and Spinach were doing well. Vegetables harvested included Yams, Sweet Potatoes, Lettuce, Greens, Turnips, Radishes, Green Onions, and various Chinese Vegetables.

LIVESTOCK: Sheep were grazed in alfalfa and abandoned lettuce fields. Stockyard volume was low.

FIELD CROPS: ACREAGE, PRODUCTION AND VALUE - 1978

Crop	Year	Harvested acreage	Production		Unit	Value	
			Per acre	Total		Per unit	Total
Barley	1978	209,000	1.27	265,000	ton	\$ 99.75	\$ 26,434,000
	1977	233,000	1.60	373,000	ton	90.30	33,682,000*
Beans, dry	1978	8,360	.71	5,940	ton	422.00	2,507,000
	1977	5,460	.71	3,880	ton	527.00	2,045,000
Corn	1978	17,000	2.36	40,100	ton	109.50	4,391,000
	1977	15,200	2.73	41,500	ton	98.00	4,067,000
Cotton Lint	1978	390,000	647 ^a / _d	526,000 ^b / _d	bale	.63 ^c / _d	165,690,000
	1977	329,000	998 ^a / _d	684,000 ^b / _d	bale	.54 ^c / _d	184,680,000*
Cotton Seed	1978			210,000	ton	125.00	26,250,000
	1977			274,000	ton	79.00	21,646,000*
Hay							
Alfalfa ^d / _d	1978	82,500	5.45	450,000	ton	56.60	25,470,000
	1977	85,000	6.42	546,000	ton	62.00	33,852,000
Other	1978	9,800	1.80	17,600	ton	41.00	722,000
	1977	10,100	1.80	18,200	ton	43.40	790,000
Pasture and Range							
Alfalfa ^e / _e stubble	1978	65,000			acre	9.00	585,000
	1977	76,500			acre	8.00	612,000
Barley and Wheat stubble ^e / _e	1978	56,000			acre	2.50	140,000
	1977	143,000			acre	3.75	536,000
Misc. ^e / _e stubble	1978	8,600			acre	3.40	29,200
	1977	7,210			acre	3.25	23,400
Irrigated Pasture	1978	40,000			acre	100.00	4,000,000
	1977	40,000			acre	100.00	4,000,000
Native Range	1978	1,090,000			acre	5.00	5,450,000
	1977	1,150,000			acre	2.00	2,300,000*
Rice	1978	13,000	1.95	25,400	ton	152.80	3,881,000
	1977	5,000	2.30	11,500	ton	186.00	2,139,000
Safflower	1978	13,000	1.13	14,700	ton	234.00	3,440,000
	1977	8,970	.81	7,270	ton	235.00	1,708,000
Screenings	1978			2,010	ton	30.00	60,300
	1977			2,500	ton	20.00	50,000*

FIELD CROPS: ACREAGE, PRODUCTION AND VALUE - 1978 (continued)

Crop	Year	Harvested acreage	Production		Unit	Value	
			Per acre	Total		Per unit	Total
Silage							
Corn	1978	13,200	17.00	224,000	ton	\$ 16.50	\$ 3,696,000
	1977	12,200	18.50	226,000	ton	17.00	3,842,000
Sorghum	1978	1,600	16.50	26,400	ton	16.50	436,000
	1977	1,350	16.00	21,600	ton	17.00	367,000
Other	1978	3,300	13.00	42,900	ton	13.00	558,000
	1977	2,500	15.00	37,500	ton	15.50	581,000
Sorghum Grain	1978	4,200	1.75	7,350	ton	85.00	625,000
	1977	3,650	1.80	6,570	ton	85.00	558,000
Straw	1978			5,300	ton	20.50	109,000
	1977			5,830	ton	28.00	163,000
Sugar Beets	1978	16,000	22.13	354,000	ton	24.55	8,691,000
	1977	10,900	18.31	200,000	ton	22.79	4,558,000
Wheat	1978	8,500	1.90	16,200	ton	110.25	1,786,000
	1977	27,200	2.19	59,600	ton	92.40	5,507,000
Other ^{f/}	1978	3,580					503,000
	1977	12,100					1,547,000
Total	1978	1,923,040					\$285,453,500
	1977	1,951,630*					309,253,000*

a/ Pounds of lint per acre

b/ 480 pounds net weight bales

c/ Price per pound, 500 pound bales

d/ Includes bales, cubes and green chop

e/ Not included in total acreage figures

f/ Includes oats, rye, soybeans, and sunflowers

*Revised

SEED CROPS: ACREAGE, PRODUCTION AND VALUE - 1978

Crop	Year	Harvested acreage	Production		Unit	Value	
			Per acre	Total		Per unit	Total
Alfalfa Certified	1978	37,500	330	12,375,000	lb.	\$ 1.25	\$ 15,469,000
	1977	22,300	640	14,272,000	lb.	.95	13,558,000
Alfalfa Non-Certified	1978	8,000	300	2,400,000	lb.	1.15	2,760,000
	1977	10,700	610	6,527,000	lb.	.87	5,678,000
Total All Alfalfa Seed	1978	45,500		14,775,000	lb.		18,229,000
	1977	33,000		20,799,000	lb.		19,236,000
Barley Certified	1978	3,900	2,630	10,257,000	lb.	.056	574,000
	1977	4,200	4,100	17,220,000	lb.	.050	861,000
Barley Non-Certified	1978	1,000	2,400	2,400,000	lb.	.050	120,000
	1977	1,000	3,100	3,100,000	lb.	.046	143,000
Cotton ^{a/}	1978	13,200		11,708,000	lb.	.064	898,000 ^{b/}
	1977	10,650		6,701,000	lb.	.073	524,000
Vegetable ^{c/}	1978	670					484,000
	1977	1,450					650,000
Other ^{d/}	1978	4,500					1,374,000
	1977	<u>2,350</u>					<u>632,000</u>
Total	1978	55,570					\$21,679,000
	1977	42,000					22,046,000

^{a/} Not included in total acreage for "Seed Crops"

^{b/} Includes \$17 per acre approval on 8,748 acres

^{c/} Cabbage, carrot, cucumber, lettuce, onion, squash, tomato and watermelon

^{d/} Certified and non-certified blackeye cowpeas, certified and non-certified brome grass, certified rye grass, certified and non-certified oats, certified and non-certified rice, certified and non-certified safflower, certified sudan grass, certified and non-certified wheat.

VEGETABLE CROPS: ACREAGE, PRODUCTION AND VALUE - 1978

Crop	Year	Harvested acreage	Production		Unit	Value	
			Per acre	Total		Per unit	Total
Beans	1978	1,300	2.5	3,250	ton	\$ 269	\$ 874,000
Snap	1977	2,600	1.5	3,900	ton	336	1,310,000
Chinese ^{a/} Vegetables	1978	547	10.2	5,580	ton	194	1,083,000
	1977	400	11.9	4,760	ton	161	766,000
Cucumbers	1978	200	10.6	2,120	ton	375	795,000
	1977	150	11.8	1,770	ton	308	545,000
Eggplant	1978	100	4.4	440	ton	455	200,000
	1977	200	6.2	1,240	ton	450	558,000
Garlic	1978	2,730	4.8	13,100	ton	276	3,616,000
	1977	2,090	5.3	11,100	ton	237	2,631,000
Lettuce							
Head							
Spring ^{b/}	1978	3,620	19.7	71,300	ton	500	35,650,000
Fall ^{b/}	1978	5,270	9.6	50,600	ton	149	7,539,000
Head	1977	12,300	12.9	159,000	ton	200	31,800,000
Leaf	1978	261	7.3	1,900	ton	192	365,000
	1977	185	10.5	1,940	ton	171	332,000
Melons							
Cantaloupes	1978	25,100	7.8	196,000	ton	195	38,220,000
	1977	14,400	12.0	173,000	ton	178	30,794,000
Casaba	1978	76	6.0	456	ton	160	73,000
	1977	175	6.0	1,050	ton	198	208,000
Cranshaw	1978	210	8.0	1,680	ton	255	428,000
	1977	240	2.5	600	ton	340	204,000
Honeydew ^{b/}	1978	1,440	6.7	9,650	ton	153	1,476,000
Persian ^{b/}	1978	75	8.0	600	ton	225	135,000
Watermelons	1978	300	10.0	3,000	ton	80	240,000
	1977	250	13.2	3,300	ton	77	254,000

VEGETABLE CROPS: ACREAGE, PRODUCTION AND VALUE - 1978 (continued)

Crop	Year	Harvested acreage	Production		Unit	Value	
			Per acre	Total		Per unit	Total
Onions							
Dry							
Fresh	1978	871	6.3	5,490	ton	\$ 188	\$ 1,032,000
	1977	675	15.6	10,500	ton	115	1,208,000
Processed	1978	2,450	14.5	35,500	ton	56	1,988,000
	1977	2,170	15.5	33,600	ton	52	1,747,000*
Green	1978	270	11.3	3,050	ton	400	1,220,000
	1977	90	14.5	1,300	ton	472	614,000
Peppers							
Bell	1978	556	6.0	3,340	ton	430	1,436,000
	1977	230	11.5	2,640	ton	362	956,000
Chili	1978	350	3.0	1,050	ton	700	735,000
Fresh	1977	350	4.0	1,400	ton	700	980,000
Radishes	1978	330	4.5	1,480	ton	240	355,000
	1977	350	4.5	1,580	ton	217	343,000
Squash							
Summer	1978	212	10.3	2,180	ton	328	715,000
	1977	250	10.0	2,500	ton	304	760,000
Winter	1978	89	6.0	534	ton	282	151,000
	1977	100	5.0	500	ton	320	160,000
Sweet Potatoes/Yams	1978	1,000	8.3	8,300	ton	250	2,075,000
	1977	650	9.0	5,850	ton	260	1,521,000
Tomatoes							
Fresh							
Cherry	1978	475	10.5	4,990	ton	460	2,295,000
	1977	285	10.0	2,850	ton	800	2,280,000
Regular	1978	2,780	13.2	36,700	ton	332	12,184,000
	1977	350	20.0	7,000	ton	450	3,150,000
Processed	1978	36,900	25.6	945,000	ton	53.8	50,841,000
	1977	38,650	23.5	908,000	ton	56.1	50,939,000

VEGETABLE CROPS: ACREAGE, PRODUCTION AND VALUE - 1978 (continued)

Crop	Year	Harvested acreage	Production		Unit	Value	
			Per acre	Total		Per unit	Total
Other Vegetables ^{c/}	1978	7,313				\$	8,004,000
	1977	<u>7,100*</u>					<u>5,189,000*</u>
Total	1978	94,825					\$173,725,000
	1977	84,240*					139,249,000*

a/ Includes bitter melon, bok choy, diakon, dunqua, gai choy, gobo, lo bak, moqua, napa, and sinqua.

b/ Not reported separately in the 1977 Crop Report.

c/ Includes alfalfa sprouts, asparagus, bean sprouts, beets, broccoli, cabbage, cauliflower, chili peppers (processed), cucumbers (hothouse), cucumbers (lemon), eggplant (Japanese), endive, escarole, greens (collard, mustard and turnip), leeks, lima beans (processed), lettuce (shredding), melon balls (frozen), melons (Santa Claus and canary), mushrooms, parsley, peas, pumpkins, spinach, sugar cane, sun chokes, sweet corn, Swiss chard, tomatoes (hothouse), turnips.

*Revised

FRUIT AND NUT CROPS: ACREAGE, PRODUCTION AND VALUE - 1978

Crop	Year	Bearing acreage	Production		Unit	Value	
			Per acre	Total		Per unit	Total
Almonds	1978	21,217	.24	5,090	ton	\$ 2,925	\$ 14,888,000
	1977	16,862	.51	8,600	ton	1,495	12,857,000
Almond Hulls	1978			10,200	ton	55	561,000
	1977			17,100	ton	20	342,000
Apricots	1978	238	6.60	1,570	ton	761	1,195,000
	1977	423	7.74	3,270	ton	244	798,000
Avocados ^{a/}	1978	265	2.05	543	ton	553	300,000
Boysenberries	1978	191	4.27	816	ton	1,430	1,667,000
	1977	199	4.41	878	ton	798	701,000
Citrus							
Lemons	1978	798	10.53				
	1977	833	7.90				
Fresh	1978			5,780	ton	238	1,376,000
	1977			2,430	ton	293	712,000
Processed	1978			2,620	ton	16	41,900
	1977			4,150	ton	44	183,000
Oranges							
Navel	1978	15,383	9.70				
	1977	15,933	10.21				
Fresh	1978			115,000	ton	284	32,660,000
	1977			127,000	ton	222	28,194,000
Processed	1978			34,300	ton	15	514,000
	1977			36,000	ton	15	540,000
Valencia	1978	3,356	9.03				
	1977	3,734	11.20				
Fresh	1978			21,900	ton	301	6,592,000
	1977			32,500	ton	200	6,500,000
Processed	1978			8,420	ton	76	640,000
	1977			9,300	ton	31	288,000

FRUIT AND NUT CROPS: ACREAGE, PRODUCTION AND VALUE - 1978 (continued)

Crop	Year	Bearing acreage	Production		Unit	Value	
			Per acre	Total		Per unit	Total
Citrus (continued)							
Oranges ^{b/}	1978	679	6.30				
	1977	726	5.51				
Fresh	1978			3,660	ton	\$ 236	\$ 863,560
	1977			2,080	ton	227	472,160
Processed	1978			617	ton	92	56,764
	1977			1,920	ton	23	44,256
Citrus Total	1978	20,216					42,927,700
	1977	21,226					36,210,200
Figs - Dried	1978	6,717	.41	2,750	ton	1,430	3,932,500
	1977	7,852	.70	5,500	ton	1,204	6,622,000
Grapes							
Raisin Varieties	1978	145,570	7.12				
	1977	147,375	7.92				
Canned	1978			11,800	ton	212	2,502,000
	1977			11,300	ton	159	1,797,000
Crushed	1978			439,000	ton	148	64,972,000
	1977			401,000	ton	110	44,110,000
Dried							
Market	1978			83,000	ton ^{c/}	1,550	129,890,000
	1977			157,000	ton	840	131,880,000
Distillery ^{d/}	1978			36,700	ton ^{c/}	100	3,670,000
Fresh	1978			42,100	ton	640	26,944,000
	1977			39,200	ton	741	29,047,200
Table Varieties	1978	6,286	7.80				
	1977	6,807	8.22				
Crushed	1978			25,300	ton	122	2,843,000
	1977			31,800	ton	110	3,498,000
Fresh	1978			25,700	ton	610	15,677,000
	1977			24,200	ton	581	14,060,000

FRUIT AND NUTS CROPS: ACREAGE PRODUCTION AND VALUE - 1978 (continued)

Crop	Year	Bearing acreage	Production		Unit	Value	
			Per acre	Total		Per unit	Total
Grapes (continued)							
Wine Varieties	1978	36,184	7.82				
	1977	38,908	8.23				
Crushed	1978			272,000	ton	\$ 140	\$ 38,080,000
	1977			295,000	ton	113	33,335,000
Fresh	1978			10,900	ton	348	3,793,000
	1977			25,100	ton	293	7,354,000
Grapes Total	1978	188,040					283,371,000
	1977	193,090					265,081,000
Nectarines	1978	7,751	10.09	78,200	ton	491	38,500,000
	1977	7,013	11.52	80,800	ton	347	28,072,000*
Olives	1978	1,620	3.04	4,920	ton	226	1,112,000
	1977	1,587	.58	920	ton	430	397,000
Peaches							
Clingstone	1978	1,515	12.92	19,600	ton	143	2,803,000
	1977	1,728	14.39	24,900	ton	120	2,988,000
Freestone	1978	7,050	10.58				
	1977	7,610	12.72				
Fresh	1978			63,700	ton	411	26,101,000
	1977			75,100	ton	323	24,257,000
Processed	1978			10,900	ton	88	959,000
	1977			21,700	ton	110	2,387,000
Peaches Total	1978	8,565					29,943,000
	1977	9,338					29,632,000
Pears ^{a/}	1978	119	9.00	1,070	ton	333	356,000
Pecans ^{a/}	1978	136	.45	61	ton	2,300	140,000
Persimmons	1978	49	5.57	273	ton	973	266,000
	1977	64	5.69	364	ton	896	326,000
Plums	1978	10,294	7.85	80,800	ton	635	51,308,000
	1977	9,128	8.23	75,100	ton	432	32,443,000*
Pomegranates	1978	855	2.92	2,500	ton	452	1,130,000
	1977	746	5.39	4,020	ton	380	1,528,000

FRUIT AND NUT CROPS: ACREAGE, PRODUCTION AND VALUE - 1978 (continued)

Crop	Year	Bearing acreage	Production		Unit	Value	
			Per acre	Total		Per unit	Total
Strawberries	1978	164	9.92	1,630	ton	685	\$ 1,117,000
	1977	160	13.25	2,120	ton	595	1,261,000
Nuts	1978	3,569	1.06	3,780	ton	1,160	4,385,000
	1977	4,081	1.22	4,980	ton	686	3,416,000
Miscellaneous ^{e/}	1978	800					2,094,000
	1977	1,720					2,021,000
Total	1978	5,569					484,288,700
	1977	7,349					422,306,200

a/ Included in "Miscellaneous" in 1977

b/ Includes blood oranges, grapefruit, mandarins, tangerines and tangelos

c/ Dried tons

d/ Severely rain damaged raisins diverted to distillery

e/ Includes apples, apple pears (shalees), dried apricots, cherries, fresh figs, substandard figs, dried nectarines, ollalieberries, kiwi, olive oil, dried peaches, pistachio nuts, processed plums, prunes, quince.

*Revised

NURSERY PRODUCTS: PRODUCTION AREA, SALES AND VALUE - 1978

<u>Item</u>	<u>Year</u>	<u>Production Area Acres</u>	<u>Quantity Sold by Producers</u>	<u>Unit</u>	<u>Value</u>
Herbaceous Ornamentals ^{a/}	1978	22	570,000	<u>b/</u>	\$ 504,000
	1977	14	545,000		355,000
Ornamental Trees and Shrubs ^{c/}	1978	67	664,000	plants	1,643,000
	1977	99	565,000		1,903,000
Other Nursery Crops ^{d/}	1978	124			1,328,000
	1977	<u>166</u>			<u>900,000</u>
Total	1978	213			\$3,475,000
	1977	279			3,158,000

a/ Includes cut flowers and cut greens, potted plants, bedding plants and herbaceous perennials

b/ Includes flats, dozens, cans and single plants

c/ Includes Christmas trees

d/ Includes flower seeds, grape rootings, turf grass and vegetable plants.

LIVESTOCK AND POULTRY: PRODUCTION AND VALUE - 1978

Item	Year	Production		Unit	Value	
		No. of Head	Total Liveweight		Per Unit	Total
Cattle and Calves						
Bovine						
Breeding Stock						
Common	1978	1,670		head	\$ 450.00	759,000
	1977	9,060		head	325.00	2,944,500
Registered	1978	480		head	900.00	432,000
	1977	925		head	500.00	262,000
Producers	1978	129,000	260,000	cwt.	54.25	14,105,000
	1977	72,000	137,000	cwt.	36.40	4,987,000
Calves	1978	10,000	98,200	cwt.	52.20	5,176,000
	1977	10,900	96,100	cwt.	33.70	3,239,000
Slaughter Stock						
From Feed Lots	1978	295,000	1,198,000 ^{a/}	cwt.	50.33	60,235,000
	1977	296,000	1,022,000	cwt.	40.28	41,186,000
From Other Sources	1978	6,400	56,400	cwt.	44.48	2,509,000
	1977	7,000	70,000	cwt.	27.00	1,890,000
Dairy						
Breeding Stock	1978	1,650		head	910.00	1,501,000
	1977	8,150		head	627.00	5,110,000
Cull Stock	1978	12,700	188,000	cwt.	34.00	6,318,000
	1977	12,600	187,000	cwt.	22.10	4,133,000
Calves	1978	31,700	94,200	cwt.	50.00	4,710,000
	1977	31,600	79,000	cwt.	23.50	1,856,000
Sheep and Lambs						
Slaughter Stock						
Lambs	1978	49,200	46,700	cwt.	60.00	2,804,000
	1977	46,200	37,000	cwt.	50.50	1,868,000
Sheep	1978	2,600	3,640	cwt.	16.60	60,400
	1977	1,770	2,480	cwt.	10.90	27,000

LIVESTOCK AND POULTRY: PRODUCTION AND VALUE - 1978 (continued)

Item	Year	Production		Unit	Value	
		No.of Head	Total Liveweight		Per Unit	Total
Hogs and Pigs						
Breeding Stock	1978	260		head	\$ 139.00	36,100
	1977	190		head	140.00	26,600
Feeder Pigs and Slaughter Stock	1978	22,100	42,800	cwt.	50.19	2,148,000
	1977	16,200	35,200	cwt.	54.17	1,907,000
Horses and Mules						
Recreational and Working Stock	1978	1,840		head	620.00	1,141,000
	1977	908		head	300.00	272,000
Poultry						
Chickens ^{b/}	1978	42,380,000		each	.820	34,752,000
	1977	39,737,000		each	.728	28,929,000
Turkeys	1978	4,254,000	86,101,000	lb.	.443	38,143,000
	1977	4,416,000	88,316,000	lb.	.350	30,911,000
Turkey Poults	1978	11,174,000		each	.750	8,380,000
	1977	10,903,000		each	.750	8,177,000
Miscellaneous ^{c/}	1978					144,000
	1977					227,000
Total	1978					\$189,423,500
	1977					137,932,000

a/ Net feed lot gain

b/ Includes broilers, fryers, breeders, chicks, pullets, old hens and old roosters

c/ Includes chuckars, earthworms, fish, goats, pheasants, pigeons and rabbits.

LIVESTOCK AND POULTRY PRODUCTS: PRODUCTION AND VALUE - 1978

Commodity	Year	Production	Unit	Value	
				Per Unit	Total
Milk					
All milk	1978	47,000	cwt.	\$ 9.60	\$ 451,000
	1977	47,200	cwt.	8.54	403,000*
Fluid milk	1978	6,715,000	cwt.	10.05	67,486,000
	1977	6,790,000	cwt.	9.61	65,252,000*
Butterfat	1978	769,000	lb.	.73	561,000
	1977	757,000	lb.	.70	537,000
Eggs					
Chicken ^a	1978	10,644,000	dozen	.574	6,110,000
	1977	9,925,000	dozen	.570	5,660,000
Turkey Hatching	1978	5,144,000	each	.36	1,852,000
	1977	5,532,000	each	.35	1,936,000
Total	1978				\$76,460,000
	1977				73,788,000*

a/ Includes market eggs and hatching eggs

JANUARY 1 INVENTORIES OF LIVESTOCK AND POULTRY (In Number of Head)

Item	January 1, 1979	January 1, 1978
Cattle and Calves		
All	380,000	369,000
Dairy Cows and Heifers that have Calved	51,000	50,500
Cattle and Calves on Feed	109,000	116,700
Stock Sheep and Lambs	98,000	100,000
Goats	600	600
Hogs and Pigs	12,200	7,500
Horses	16,900	16,100
Poultry		
Hens and Pullets of Laying Age	362,000	390,000
Chicken and Turkey Breeder Hens	254,000	215,000

*Revised

APIARY PRODUCTS AND POLLINATION SERVICES: PRODUCTION AND VALUE - 1978

Item	Year	Production Total	Unit	Value	
				Per Unit	Total
Apiary Products ^{a/}					
Honey	1978	1,684,000	lb.	\$.45	\$ 758,000
	1977	807,000	lb.	.42	339,000
Beeswax	1978	50,800	lb.	1.68	85,300
	1977	102,000	lb.	1.80	184,000
Pollination ^{b/}					
Seed Crops					
Alfalfa	1978	113,000	colony	12.94	1,462,000
	1977	107,000	colony	11.15	1,193,000
Other ^{c/}	1978	6,940	colony	11.25	78,100
	1977	3,620	colony	9.50	34,400
Tree Fruit ^{d/}	1978	60,000	colony	12.23	734,000
	1977	65,000	colony	10.86	706,000
Cantaloupes	1978	54,000	colony	11.83	639,000
	1977	21,700	colony	10.87	236,000
Total	1978				\$3,756,400
	1977				2,692,000

^{a/} Reflects only the bees registered in Fresno County by commercial and semi-commercial beekeepers: 1978 - 31,926 colonies; 1977 - 35,875 colonies

^{b/} Reflects value of pollination by all bee colonies located in Fresno County for pollination services during 1978. Estimated total colonies: 167,300

^{c/} Cucumbers, onion seed, carrot seed, vegetable seed and other truck crops

^{d/} Almonds, cherries, plums

	1958	-	\$392,600,329*	1968	-	\$
	1959	-	390,211,120	1969	-	458,014,000
	1960	-	388,802,520	1970	-	474,706,000**
	1961	-	385,091,740	1971	-	507,930,000
	1962	-	413,572,210	1972	-	559,307,000**
	1963	-	423,206,000	1973	-	828,682,000**
	1964	-	445,088,000	1974	-	967,350,000
	1965	-	438,253,000	1975	-	1,026,356,000**
	1966	-	452,926,000	1976	-	1,178,373,000**
	1967	-	433,753,000*	1977	-	1,110,424,290*
				1978	-	1,238,261,100

25

*Revised

1979

AGRICULTURAL CROP
AND LIVESTOCK
REPORT
1979

AGRICULTURAL COMMISSIONER
Calif. FRESNO COUNTY
Department of Agriculture



UNIVERSITY OF CALIFORNIA
DAVIS

APR 10 1980

GOV'T. DOCS. - LIBRARY

county of fresno



DEPARTMENT OF AGRICULTURE

Cosmo C. Insalaco

~~Richard E. Rominger~~

Agricultural Commissioner

Ronald Atmajian

Assistant Agricultural Commissioner

Richard E. Rominger, Director
California Department of Food and Agriculture

The Honorable Board of Supervisors
County of Fresno

Sharon Levy, Chairman
Harry Huey Willard H. Johnson
Bruce Bronzan John R. Donaldson
Allan H. Colman
County Administrative Officer

I am pleased to submit the 1979 Agricultural Crop and Livestock Report for the acreage, production, and value of agricultural crops and products in Fresno County.

1979 represents the largest gross returns in our history, \$1,719,235,500 again exceeding one billion dollars in crop and livestock production for the fifth consecutive year.

The values published in this report represent gross figures only and not net income to the growers.

I sincerely appreciate the professional work performed by Supervising Agricultural Biologist, L. V. Hawley; Agricultural Biologist III, Tye T. Hafner; and the entire staff of the Agricultural Commissioner's Office for the preparation of this report.

I would like to thank the many individuals, related agencies and members of the agricultural industry for their contributions in the compilation of this report.

Respectfully submitted,

Cosmo C. Insalaco
Agricultural Commissioner

"The glory of the farmer is that, in the division of labors, it is his part to create. All trade rests at last on his primitive activity. He stands close to Nature; he obtains from the earth the bread and the meat. The food which was not, he causes to be. The first farmer was the first man, and all historic nobility rests on possession and use of land.

"Then the beauty of Nature, the tranquillity and innocence of the countryman, his independence and his pleasing arts -- the care of bees, of poultry, of sheep, of cows, the dairy, the care of hay, of fruits, of orchards and forests, and the reaction of these on the workman, in giving him a strength and plain dignity like the face and manners of Nature -- all men acknowledge."

Ralph Waldo Emerson

The Cover . . .

Courtesy of Bill Fischer, Farm Advisor,
University of California Cooperative Extension
Fresno County Farm and Home Advisors Office

1979 IN RETROSPECT

Fresno County continues to lead the nation in gross cash receipts paid to growers and far exceeds the gross returns of many entire states in the nation. Fresno County comprises some 6,000 square miles with a cropland inventory of 1,190,975 acres. There are in excess of 6,800 farms; the average size is slightly in excess of 300 acres. Soil types range from clays through sands to coarse sandy loams. Soil depths range from less than one foot to in excess of 50 feet. Water availability varies depending on location and may include pump and surface water.

1979 was generally a very good year for Fresno County growers. Weather conditions were uneventful with adequate precipitation. Insect and pest disease problems were well within or less than expected incidence levels, and adequate irrigation water was available. Prices and demand were generally good. Raisin growers (natural sun dried) experienced considerable recovery from the 1978 rain damage disaster. Cotton growers also generally showed profit making yields as they were thankfully relieved of the season-long cultural problems of 1978. Some depressed prices occurred in red wine variety grapes in 1979 with individual losses recorded. However, the over-all wine grape returns were good.

The 1979 gross returns paid to growers represents a 38.5% increase over 1978, or \$478,286,400.

FIELD CROPS: Gross value increased \$253,580,500. Cotton returns were up 102%.

Yield was up 73% over 1978. Wheat acreage increased by 17,500 acres or 206%. Alfalfa hay value increased 104%. Barley yield was up 61% over 1978; the value increased \$10,841,000 even considering an acreage decrease of 36,000 acres.

SEED CROPS: Gross value increased 80%. Seed alfalfa gross value increased 85% and reflected the majority of the increase.

VEGETABLE CROPS: Gross value decreased by 7%. This was due mostly to reduced returns for cantaloupe and head lettuce. Cantaloupes were down \$7,596,000 and head lettuce down \$28,685,000. Processing tomatoes were up 33% in returns.

FRUIT AND NUT CROPS: Gross value increased by 30%. This was due primarily to the increase in production and returns for grapes of \$123,658,000 over 1978. Almonds increased in value by 169% or \$26,168,000. Tree fruit generally reflected a decrease in returns to growers. Peaches, however, showed an increase in value over 1978 due to higher yield. Plums decreased by \$12,051,000.

NURSERY PRODUCTS: Gross value increased 25%.

LIVESTOCK AND POULTRY: Gross value increased 32% reflecting the generally improved economic conditions. Cattle and calves increased 40%. Poultry was up 23%.

LIVESTOCK AND POULTRY PRODUCTS: Gross value increased 14% of which milk reflected an increase of \$9,903,000. Chicken eggs increased \$520,000 in value, but decreased 4% in production.

APIARY PRODUCTS AND POLLINATION SERVICES: Gross value increase of 22%. Honey production decreased 5%. Pollination services increased 31% in value, or \$894,200.

FIELD CROPS: ACREAGE, PRODUCTION AND VALUE - 1979

Crop	Year	Harvested acreage	Production		Unit	Value	
			Per acre	Total		Per unit	Total
Barley	1979	173,000	2.05	355,000	ton	\$ 105.00	\$ 37,275,000
	1978	209,000	1.27	265,000	ton	99.75	26,434,000
Beans, dry	1979	10,100	.87	8,790	ton	449.00	3,947,000
	1978	8,360	.71	5,940	ton	422.00	2,507,000
Corn	1979	8,000	2.80	22,400	ton	133.00	2,979,000
	1978	17,000	2.36	40,100	ton	109.50	4,391,000
Cotton Lint	1979	430,000	1117a/	1,001,000b/	bale	.675c/	337,838,000
	1978	390,000	647a/	526,000	bale	.63 c/	165,690,000
Cotton Seed	1979			400,000	ton	127.00	50,800,000
	1978			210,000	ton	125.00	26,250,000
Hay							
Alfalfa ^{d/}	1979	85,000	7.20	612,000	ton	85.00	52,020,000
	1978	82,500	5.45	450,000	ton	56.60	25,470,000
Other	1979	7,950	2.00	15,900	ton	41.00	652,000
	1978	9,800	1.80	17,600	ton	41.00	722,000
Pasture and Range							
Alfalfa ^{e/} stubble	1979	68,000			acre	7.00	476,000
	1978	65,000			acre	9.00	585,000
Barley and Wheat stubble ^{e/}	1979	49,800			acre	3.20	159,000
	1978	56,000			acre	2.50	140,000
Misc. ^{e/} stubble	1979	8,000			acre	3.20	26,000
	1978	8,600			acre	3.40	29,200
Irrigated Pasture	1979	40,000			acre	100.00	4,000,000
	1978	40,000			acre	100.00	4,000,000
Native Range	1979	1,040,000			acre	5.00	5,200,000
	1978	1,090,000			acre	5.00	5,450,000
Rice	1979	14,700	2.65	39,000	ton	180.00	7,020,000
	1978	13,000	1.95	25,400	ton	152.80	3,881,000
Safflower	1979	16,400	1.19	19,500	ton	254.00	4,953,000
	1978	13,000	1.13	14,700	ton	234.00	3,440,000
Screenings	1979			6,000	ton	30.00	180,000
	1978			2,010	ton	30.00	60,300

1979 IN RETROSPECT

Fresno County continues to lead the nation in gross cash receipts paid to growers and far exceeds the gross returns of many entire states in the nation. Fresno County comprises some 6,000 square miles with a cropland inventory of 1,190,975 acres. There are in excess of 6,800 farms; the average size is slightly in excess of 300 acres. Soil types range from clays through sands to coarse sandy loams. Soil depths range from less than one foot to in excess of 50 feet. Water availability varies depending on location and may include pump and surface water.

1979 was generally a very good year for Fresno County growers. Weather conditions were uneventful with adequate precipitation. Insect and pest disease problems were well within or less than expected incidence levels, and adequate irrigation water was available. Prices and demand were generally good. Raisin growers (natural sun dried) experienced considerable recovery from the 1978 rain damage disaster. Cotton growers also generally showed profit making yields as they were thankfully relieved of the season-long cultural problems of 1978. Some depressed prices occurred in red wine variety grapes in 1979 with individual losses recorded. However, the over-all wine grape returns were good.

The 1979 gross returns paid to growers represents a 38.5% increase over 1978, or \$478,286,400.

FIELD CROPS: Gross value increased \$253,580,500. Cotton returns were up 102%.

Yield was up 73% over 1978. Wheat acreage increased by 17,500 acres or 206%. Alfalfa hay value increased 104%. Barley yield was up 61% over 1978; the value increased \$10,841,000 even considering an acreage decrease of 36,000 acres.

SEED CROPS: Gross value increased 80%. Seed alfalfa gross value increased 85% and reflected the majority of the increase.

VEGETABLE CROPS: Gross value decreased by 7%. This was due mostly to reduced returns for cantaloupe and head lettuce. Cantaloupes were down \$7,596,000 and head lettuce down \$28,685,000. Processing tomatoes were up 33% in returns.

FRUIT AND NUT CROPS: Gross value increased by 30%. This was due primarily to the increase in production and returns for grapes of \$123,658,000 over 1978. Almonds increased in value by 169% or \$26,168,000. Tree fruit generally reflected a decrease in returns to growers. Peaches, however, showed an increase in value over 1978 due to higher yield. Plums decreased by \$12,051,000.

NURSERY PRODUCTS: Gross value increased 25%.

LIVESTOCK AND POULTRY: Gross value increased 32% reflecting the generally improved economic conditions. Cattle and calves increased 40%.

Poultry was up 23%.

LIVESTOCK AND POULTRY PRODUCTS: Gross value increased 14% of which milk reflected an increase of \$9,903,000. Chicken eggs increased \$520,000 in value, but decreased 4% in production.

APIARY PRODUCTS AND POLLINATION SERVICES: Gross value increase of 22%. Honey production decreased 5%. Pollination services increased 31% in value, or \$894,200.

FRESNO COUNTY'S 10 LEADING CROPS

<u>Crop</u>	<u>1979 Rank</u>	<u>1979 Dollar Value</u>	<u>1978 Rank</u>	<u>1977 Rank</u>	<u>1969 Rank</u>
Grapes	1	\$ 412,043,000	1	1	1
Cotton	2	388,638,000	2	2	3
Cattle & Calves	3	142,729,000	3	4	2
Poultry	4	99,979,000	4	3	7
Tomatoes	5	84,520,000	6	6	12
Milk	6	77,840,000	5	5	6
Alfalfa Hay	7	52,020,000	14	9	5
Oranges	8	43,673,000	9	8	14
Almonds	9	41,617,000	16	16	24
Peaches	10	34,297,000	12	12	10

FIELD CROPS: ACREAGE, PRODUCTION AND VALUE - 1979

Crop	Year	Harvested acreage	Production		Unit	Value	
			Per acre	Total		Per unit	Total
Barley	1979	173,000	2.05	355,000	ton	\$ 105.00	\$ 37,275,000
	1978	209,000	1.27	265,000	ton	99.75	26,434,000
Beans, dry	1979	10,100	.87	8,790	ton	449.00	3,947,000
	1978	8,360	.71	5,940	ton	422.00	2,507,000
Corn	1979	8,000	2.80	22,400	ton	133.00	2,979,000
	1978	17,000	2.36	40,100	ton	109.50	4,391,000
Cotton Lint	1979	430,000	1117 ^a / _a	1,001,000 ^b / _b	bale	.675 ^c / _c	337,838,000
	1978	390,000	647 ^a / _a	526,000	bale	.63 ^c / _c	165,690,000
Cotton Seed	1979			400,000	ton	127.00	50,800,000
	1978			210,000	ton	125.00	26,250,000
Hay							
Alfalfa ^d / _d	1979	85,000	7.20	612,000	ton	85.00	52,020,000
	1978	82,500	5.45	450,000	ton	56.60	25,470,000
Other	1979	7,950	2.00	15,900	ton	41.00	652,000
	1978	9,800	1.80	17,600	ton	41.00	722,000
Pasture and Range							
Alfalfa ^e / _e stubble	1979	68,000			acre	7.00	476,000
	1978	65,000			acre	9.00	585,000
Barley and Wheat stubble ^e / _e	1979	49,800			acre	3.20	159,000
	1978	56,000			acre	2.50	140,000
Misc. ^e / _e stubble	1979	8,000			acre	3.20	26,000
	1978	8,600			acre	3.40	29,200
Irrigated Pasture	1979	40,000			acre	100.00	4,000,000
	1978	40,000			acre	100.00	4,000,000
Native Range	1979	1,040,000			acre	5.00	5,200,000
	1978	1,090,000			acre	5.00	5,450,000
Rice	1979	14,700	2.65	39,000	ton	180.00	7,020,000
	1978	13,000	1.95	25,400	ton	152.80	3,881,000
Safflower	1979	16,400	1.19	19,500	ton	254.00	4,953,000
	1978	13,000	1.13	14,700	ton	234.00	3,440,000
Screenings	1979			6,000	ton	30.00	180,000
	1978			2,010	ton	30.00	60,300

FIELD CROPS: ACREAGE, PRODUCTION AND VALUE - 1979 (continued)

Crop	Year	Harvested acreage	Production		Unit	Value	
			Per acre	Total		Per unit	Total
Silage							
Corn	1979	10,000	24.00	240,000	ton	\$ 16.00	\$ 3,840,000
	1978	13,200	17.00	224,000	ton	16.50	3,696,000
Sorghum	1979	1,450	18.00	26,100	ton	16.50	431,000
	1978	1,600	16.50	26,400	ton	16.50	436,000
Other	1979	2,700	15.00	40,500	ton	15.00	608,000
	1978	3,300	13.00	42,900	ton	13.00	558,000
Sorghum Grain	1979	3,900	3.50	13,600	ton	108.00	1,469,000
	1978	4,200	1.75	7,350	ton	85.00	625,000
Straw	1979			4,700	ton	28.00	132,000
	1978			5,300	ton	20.50	109,000
Sugar Beets	1979	20,000	28.18	564,000	ton	29.00	16,356,000
	1978	13,560	26.54	360,000	ton	25.50	9,180,000*
Wheat	1979	26,000	2.55	66,300	ton	135.00	8,950,000
	1978	8,500	1.90	16,200	ton	110.25	1,786,000
Other ^{f/}	1979	1,736					212,000
	1978	3,580					503,000
Total	1979	1,890,936					\$539,523,000
	1978	1,920,600*					285,942,500*

a/ Pounds of lint per acre

b/ 480 pounds net weight bales

c/ Price per pound, 500 pound bales

d/ Includes bales, cubes and green chop

e/ Not included in total acreage figures

f/ Includes oats and soybeans

*Revised

SEED CROPS: ACREAGE, PRODUCTION AND VALUE - 1979

Crop	Year	Harvested acreage	Production		Unit	Value	
			Per acre	Total		Per unit	Total
Alfalfa Certified	1979	40,000	490	19,600,000	lb.	\$ 1.30	\$ 25,480,000
	1978	37,500	330	12,375,000	lb.	1.25	15,469,000
Alfalfa Non-Certified	1979	15,000	460	6,900,000	lb.	1.20	8,280,000
	1978	8,000	300	2,400,000	lb.	1.15	2,760,000
Total All Alfalfa Seed	1979	55,000		26,500,000	lb.		33,760,000
	1978	45,500		14,775,000	lb.		18,229,000
Barley Certified	1979	2,650	3,725	9,871,000	lb.	.053	523,000
	1978	3,900	2,630	10,257,000	lb.	.056	574,000
Barley Non-Certified	1979	1,000	3,050	3,050,000	lb.	.050	152,000
	1978	1,000	2,400	2,400,000	lb.	.050	120,000
Cotton ^{a/}	1979	11,600		8,708,000	lb.	.070	610,000 ^{b/}
	1978	13,200		11,708,000	lb.	.064	898,000
Vegetable ^{c/}	1979	1,180					1,860,000
	1978	670					484,000
Other ^{d/}	1979	6,950					2,089,000
	1978	<u>4,500</u>					<u>1,374,000</u>
Total	1979	66,780					\$38,994,000
	1978	55,570					21,679,000

a/ Not included in total acreage for "Seed Crops"

b/ Includes \$17 per acre approval on 8,748 acres

c/ Cantaloupe, carrot, eggplant, lettuce, onion, pepper, snap bean, squash, tomato and watermelon

d/ Certified and non-certified blackeye cowpeas, certified lima beans, certified and non-certified oats, certified and non certified rice, non-certified safflower, certified and non-certified wheat

VEGETABLE CROPS: ACREAGE, PRODUCTION AND VALUE - 1979

Crop	Year	Harvested acreage	Production		Unit	Value	
			Per acre	Total		Per unit	Total
Beans	1979	1,510	2.2	3,320	ton	\$ 182	\$ 604,000
Snap	1978	1,300	2.5	3,250	ton	269	874,000
Chinese Vegetables ^{a/}	1979	432	13.1	5,660	ton	258	1,460,000
	1978	547	10.2	5,580	ton	194	1,083,000
Cucumbers	1979	100	11.2	1,120	ton	321	360,000
	1978	200	10.6	2,120	ton	375	795,000
Eggplant	1979	150	6.6	990	ton	462	457,000
	1978	100	4.4	440	ton	455	200,000
Garlic	1979	3,070	6.0	18,400	ton	306	5,630,000
	1978	2,730	4.8	13,100	ton	276	3,616,000
Lettuce							
Head							
Spring	1979	3,725	15.7	58,500	ton	115	6,728,000
	1978	3,620	19.7	71,300	ton	500	35,650,000
Fall	1979	4,800	12.0	57,600	ton	135	7,776,000
	1978	5,270	9.6	50,600	ton	149	7,539,000
Leaf	1979	100	8.5	850	ton	315	268,000
	1978	261	7.3	1,900	ton	192	365,000
Melons							
Cantaloupes	1979	22,900	7.7	176,000	ton	174	30,624,000
	1978	25,100	7.8	196,000	ton	195	38,220,000
Cranshaw	1979	193	5.6	1,080	ton	284	307,000
	1978	210	8.0	1,680	ton	255	428,000
Honeydew	1979	915	7.0	6,400	ton	167	1,069,000
	1978	1,440	6.7	9,650	ton	153	1,476,000
Watermelons	1979	190	9.0	1,710	ton	65	111,000
	1978	300	10.0	3,000	ton	80	240,000

VEGETABLE CROPS: ACREAGE, PRODUCTION AND VALUE - 1979 (continued)

Crop	Year	Harvested acreage	Production		Unit	Value	
			Per acre	Total		Per unit	Total
Onions							
Dry							
Fresh	1979	1,187	15.3	18,200	ton	\$ 205	\$ 3,731,000
	1978	871	6.3	5,490	ton	188	1,032,000
Processed	1979	3,587	18.9	67,800	ton	56	3,797,000
	1978	2,450	14.5	35,500	ton	56	1,988,000
Green	1979	200	13.5	2,700	ton	444	1,199,000
	1978	270	11.3	3,050	ton	400	1,220,000
Peppers							
Bell	1979	260	5.2	1,350	ton	433	585,000
	1978	556	6.0	3,340	ton	430	1,436,000
Chili	1979	330	2.5	825	ton	774	639,000
Fresh	1978	350	3.0	1,050	ton	700	735,000
Radishes	1979	300	3.8	1,140	ton	267	304,000
	1978	330	4.5	1,480	ton	240	355,000
Spinach	1979	950	8.1	7,700	ton	67	516,000
Processed ^{b/}							
Squash							
Summer	1979	350	11.5	4,020	ton	341	1,371,000
	1978	212	10.3	2,180	ton	328	715,000
Winter	1979	94	6.0	560	ton	282	158,000
	1978	89	6.0	534	ton	282	151,000
Sweet Potatoes/ Yams	1979	1,473	10.5	15,500	ton	210	3,255,000
	1978	1,000	8.3	8,300	ton	250	2,075,000
Tomatoes							
Fresh							
Cherry	1979	444	15.0	6,660	ton	502	3,343,000
	1978	475	10.5	4,990	ton	460	2,295,000
Regular	1979	2,450	15.4	37,700	ton	362	13,647,000
	1978	2,780	13.2	36,700	ton	332	12,184,000
Processed	1979	41,630	28.6	1,191,000	ton	56.7	67,530,000
	1978	36,900	25.6	945,000	ton	53.8	50,841,000

VEGETABLE CROPS: ACREAGE, PRODUCTION AND VALUE - 1979 (continued)

Crop	Year	Harvested acreage	Production		Unit	Value	
			Per acre	Total		Per unit	Total
Other Vegetables ^{c/}	1979	7,544				\$	7,315,000
	1978	<u>7,313</u>					<u>8,004,000</u>
Total	1979	98,884					\$162,784,000
	1978	94,825					173,725,000

^{a/} Includes bitter melon, bok choy, daikon, dunqua, gai choy, gobo, lo bak, moqua, napa, and sinqua

^{b/} Not reported separately in the 1978 Crop Report

^{c/} Includes alfalfa sprouts, asparagus, bean sprouts, beets, broccoli, cabbage, cauliflower, chili peppers (processed), cucumbers (hothouse), cucumbers (lemon), eggplant (Japanese), endive, escarole, greens (collard, mustard, and turnip), leeks, lima beans (processed), lettuce (shredding), melon balls (frozen), melons (Casaba, Persians, Santa Claus and Canary), mushrooms, parsley, peas, pumpkins, sugar cane, sun chokes, sweet corn, Swiss chard, taro root, tomatoes (hothouse), turnips

FRUIT AND NUT CROPS: ACREAGE, PRODUCTION AND VALUE - 1979

Crop	Year	Bearing acreage	Production		Unit	Value	
			Per acre	Total		Per unit	Total
Almonds	1979	23,433	.56	13,100	ton	\$ 3,100	\$ 40,610,000
	1978	21,217	.24	5,090	ton	2,925	14,888,000
Almond Hulls	1979			21,900	ton	46	1,007,000
	1978			10,200	ton	55	561,000
Apricots	1979	240	8.56	2,050	ton	627	1,285,000
	1978	238	6.60	1,570	ton	761	1,195,000
Avocados	1979	280	1.08	302	ton	901	272,000
	1978	265	2.05	543	ton	553	300,000
Boysenberries	1979	255	2.78	709	ton	1,300	922,000
	1978	191	4.27	816	ton	1,430	1,667,000
Citrus							
Lemons	1979	812	7.18				
	1978	798	10.53				
Fresh	1979			3,900	ton	498	1,942,000
	1978			5,780	ton	238	1,376,000
Processed	1979			1,900	ton	70	133,000
	1978			2,620	ton	16	41,900
Oranges							
Navel	1979	15,476	8.25				
	1978	15,383	9.70				
Fresh	1979			84,800	ton	379	32,139,000
	1978			115,000	ton	284	32,660,000
Processed	1979			42,900	ton	40	1,716,000
	1978			34,300	ton	15	514,000
Valencia	1979	3,351	10.87				
	1978	3,356	9.03				
Fresh	1979			23,300	ton	382	8,901,000
	1978			21,900	ton	301	6,592,000
Processed	1979			13,100	ton	70	917,000
	1978			8,420	ton	76	640,000

FRUIT AND NUT CROPS: ACREAGE, PRODUCTION AND VALUE - 1979 (continued)

Crop	Year	Bearing acreage	Production		Unit	Value	
			Per acre	Total		Per unit	Total
Citrus (continued)							
Other ^{a/}	1979	726	7.16				
	1978	679	6.30				
Fresh	1979			3,700	ton	\$ 292	\$ 1,080,000
	1978			3,660	ton	286	1,047,000
Processed	1979			1,500	ton	25	37,500
	1978			617	ton	92	56,800
Figs - Dried	1979	7,442	.65	4,840	ton	1,460	7,066,000
	1978	8,561	.49	4,190	ton	1,327	5,560,000*
Grapes							
Raisin Varieties	1979	146,095	9.21				
	1978	145,570	7.12				
Canned	1979			13,600	ton	225	3,060,000
	1978			11,800	ton	212	2,502,000
Crushed	1979			335,000	ton	150	50,250,000
	1978			439,000	ton	148	64,972,000
Dried	1979			218,400	ton ^{b/}	1,150	251,160,000
	1978			83,800	ton	1,550	129,890,000
Fresh	1979			56,400	ton	630	35,532,000
	1978			42,100	ton	640	26,944,000
Table Varieties	1979	5,819	7.71				
	1978	6,286	7.80				
Crushed	1979			17,800	ton	133	2,367,000
	1978			23,300	ton	122	2,843,000
Fresh	1979			27,100	ton	626	16,965,000
	1978			25,700	ton	610	15,677,000
Wine Varieties	1979	35,745	8.75				
	1978	36,184	7.82				
Crushed	1979			295,000	ton	156	46,020,000
	1978			272,000	ton	140	38,080,000

FRUIT AND NUT CROPS: ACREAGE, PRODUCTION AND VALUE - 1979 (continued)

Crop	Year	Bearing acreage	Production		Unit	Value	
			Per acre	Total		Per unit	Total
Wine Varieties (continued)							
Fresh	1979			17,800	ton	\$ 375	\$ 6,675,000
	1978			10,900	ton	348	3,793,000
Grapes Total	1979	187,659					412,029,000
	1978	188,040					288,371,000
Nectarines	1979	8,823	11.31	99,800	ton	364	36,327,000
	1978	7,751	10.09	78,200	ton	491	38,396,000
Olives	1979	1,598	1.87	2,990	ton	375	1,121,000
	1978	1,620	3.04	4,920	ton	226	1,112,000
Peaches							
Clingstone	1979	1,562	17.53	27,400	ton	162	4,439,000
	1978	1,515	12.92	19,600	ton	143	2,803,000
Freestone	1979	7,753	11.39				
	1978	7,050	10.58				
Fresh	1979			79,200	ton	361	28,591,000
	1978			63,700	ton	411	26,181,000
Processed	1979			9,050	ton	140	1,267,000
	1978			10,900	ton	88	959,000
Peaches Total	1979	9,315					34,297,000
	1978	8,565					29,943,000
Pears and Apple Pears	1979	144	8.43	1,210	ton	820	992,000
	1978	145	8.05	1,170	ton	382	447,000*
Pecans	1979	173	.80	138	ton	2,400	331,000
	1978	136	.45	61	ton	2,300	140,000
Persimmons	1979	49	6.30	309	ton	1,012	313,000
	1978	49	5.57	273	ton	973	266,000
Pistachio Nuts ^{C/}	1979	201	.40	80	ton	3,200	256,000
Plums	1979	11,170	7.37	82,300	ton	477	39,257,000
	1978	10,294	7.85	80,800	ton	635	51,308,000
Pomegranates	1979	901	3.33	3,000	ton	539	1,617,000
	1978	855	4.62	3,950	ton	452	1,785,000*
Prunes-Dried ^{C/}	1979	410	3.60	1,480	ton	822	1,217,000

FRUIT AND NUT CROPS: ACREAGE, PRODUCTION AND VALUE - 1979 (continued)

Crop	Year	Bearing acreage	Production		Unit	Value	
			Per acre	Total		Per unit	Total
Strawberries	1979	160	9.00	1,440	ton	\$ 710	\$ 1,022,000
	1978	164	9.92	1,630	ton	685	1,117,000
Walnuts	1979	3,568	1.16	4,140	ton	933	3,863,000
	1978	3,569	1.06	3,780	ton	1,160	4,385,000
Miscellaneous ^{d/}	1979	152					961,000
	1978	<u>774</u>					<u>2,203,000*</u>
Total	1979	276,338					\$631,630,500
	1978	272,650*					486,571,700*

a/ Includes blood oranges, grapefruit, mandarins, tangerines, and tangelos

b/ Dried tons

c/ Included in "Miscellaneous" in 1978

d/ Includes apples, dried apricots, cherries, fresh figs, substandard figs, dried nectarines, ollalieberries, kiwi, olive oil, dried peaches, processed plums, quince

*Revised

NURSERY PRODUCTS: PRODUCTION AREA, SALES AND VALUE - 1979

Item	Year	Production Area Acres	Quantity Sold by Producers	Unit	Value
Herbaceous	1979	16	786,000	<u>b/</u>	\$ 424,000
Ornamentals ^{a/}	1978	22	570,000		504,000
Ornamental Trees	1979	83	1,045,000	plants	2,313,000
and Shrubs ^{c/}	1978	67	664,000		1,643,000
Other Nursery Crops ^{d/}	1979	60			1,608,000
	1978	<u>124</u>			<u>1,328,000</u>
Total	1979	159			\$4,345,000
	1978	213			3,475,000

a/ Includes cut flowers and cut greens, potted plants, bedding plants and herbaceous perennials

b/ Includes flats, dozens, cans, and single plants

c/ Includes Christmas trees

d/ Includes flower seeds, grape rootings, turf grass, and vegetable plants

LIVESTOCK AND POULTRY: PRODUCTION AND VALUE - 1979

Item	Year	Production			Value	
		No. of Head	Total Liveweight	Unit	Per Unit	Total
Cattle and Calves						
Beef						
Breeding Stock						
Common	1979	1,680		head	\$ 525.00	\$ 882,000
	1978	1,670		head	450.00	752,000
Registered	1979	490		head	908.00	445,000
	1978	480		head	900.00	432,000
Feeders	1979	116,000	234,000	cwt.	74.40	17,410,000
	1978	129,000	260,000	cwt.	54.25	14,105,000
Calves	1979	29,400	135,000	cwt.	76.70	10,354,000
	1978	19,600	90,200	cwt.	52.20	4,708,000
Slaughter Stock						
From Feed Lots	1979	260,000	1,221,000 ^{a/}	cwt.	66.50	81,196,000
	1978	255,000	1,198,000	cwt.	50.33	60,295,000
From Other Sources	1979	5,208	45,900	cwt.	49.80	2,286,000
	1978	6,400	56,400	cwt.	44.48	2,509,000
Dairy						
Breeding Stock	1979	9,515		head	1,310.00	12,465,000
	1978	8,650		head	910.00	7,872,000
Cull Stock	1979	14,700	218,000	cwt.	47.60	10,377,000
	1978	12,700	188,000	cwt.	34.00	6,392,000
Calves	1979	42,400	106,000	cwt.	69.00	7,314,000
	1978	37,700	94,200	cwt.	50.00	4,710,000
Sheep and Lambs						
Slaughter Stock						
Lambs	1979	69,300	65,800	cwt.	66.60	4,382,000
	1978	49,200	46,700	cwt.	60.90	2,844,000
Sheep	1979	16,800	23,500	cwt.	21.20	498,000
	1978	2,600	3,640	cwt.	16.60	60,400

LIVESTOCK AND POULTRY: PRODUCTION AND VALUE - 1979 (continued)

Item	Year	Production			Value	
		No.of Head	Total Liveweight	Unit	Per Unit	Total
Hogs and Pigs						
Breeding Stock	1979	230		head	\$ 190.00	\$ 43,700
	1978	260		head	139.00	36,100
Feeder Pigs and Slaughter Stock	1979	18,500	38,900	cwt.	45.90	1,786,000
	1978	22,100	42,800	cwt.	50.19	2,148,000
Horses and Mules						
Recreational and Working Stock	1979	1,042		head	750.00	782,000
	1978	1,840		head	620.00	1,141,000
Poultry						
Chickens ^{b/}	1979	48,054,000		each	.741	35,608,000
	1978	42,380,000		each	.820	34,752,000
Turkeys	1979	5,382,000	107,645,000	1b.	.510	54,899,000
	1978	4,254,000	86,101,000	1b.	.443	38,143,000
Turkey Poults	1979	11,990,000		each	.790	9,472,000
	1978	11,174,000		each	.750	8,380,000
Miscellaneous ^{c/}	1979					83,600
	1978					144,000
Total	1979					\$250,283,300
	1978					189,423,500

a/ Net feed lot gain

b/ Includes broilers, fryers, breeders, chicks, pullets,
old hens and old roosters

c/ Includes chuckars, earthworms, fish, goats, pheasants,
pigeons and rabbits

LIVESTOCK AND POULTRY PRODUCTS: PRODUCTION AND VALUE - 1979

Crop	Year	Production	Unit	Value	
				Per Unit	Total
Milk					
Manufacturing	1979	67,700	cwt.	\$ 10.60	\$ 718,000
	1978	47,000	cwt.	9.60	451,000
Market	1979	6,923,000	cwt.	11.14	77,122,000
	1978	6,715,000	cwt.	10.05	67,486,000
Wool	1979	836,000	lb.	.89	744,000
	1978	769,000	lb.	.73	561,000
Eggs					
Chicken ^{a/}	1979	10,263,000	dozen	.646	6,630,000
	1978	10,644,000	dozen	.574	6,110,000
Turkey Hatching	1979	4,735,000	each	.398	1,885,000
	1978	5,144,000	each	.360	<u>1,852,000</u>
Total	1979				\$87,099,000
	1978				76,460,000

^{a/} Includes market eggs and hatching eggs

JANUARY 1 INVENTORIES OF LIVESTOCK AND POULTRY (In Number of Head)

<u>Item</u>	<u>January 1, 1980</u>	<u>January 1, 1979</u>
Cattle and Calves		
All	372,000	380,000
Dairy and Beef Cows	100,000	84,500
Cattle on Feed	113,000	109,000
Stock Sheep and Lambs	110,000	98,000
Goats	600	600
Hogs and Pigs	9,000	12,200
Horses	16,700	16,900
Poultry		
Hens and Pullets of Laying Age	329,000	362,000
Chicken and Turkey Breeder Hens	391,000	254,000

APIARY PRODUCTS AND POLLINATION SERVICES: PRODUCTION AND VALUE - 1979

Item	Year	Production Total	Unit	Value	
				Per Unit	Total
Apiary Products ^{a/}					
Honey	1979	1,468,000	lb.	\$.49	\$ 719,000
	1978	1,684,000	lb.	.45	758,000
Beeswax	1979	28,300	lb.	1.78	50,400
	1978	50,800	lb.	1.68	85,300
Pollination ^{b/}					
Seed Crops					
Alfalfa	1979	133,000	colony	14.93	1,986,000
	1978	113,000	colony	12.94	1,462,000
Other ^{c/}	1979	1,690	colony	12.00	20,300
	1978	6,940	colony	11.25	78,100
Tree Fruit ^{d/}	1979	98,000	colony	13.82	1,354,000
	1978	60,000	colony	12.23	734,000
Cantaloupes	1979	35,300	colony	12.67	447,000
	1978	54,000	colony	11.83	639,000
Total	1979				\$4,576,700
	1978				3,756,400

a/ Reflects only the bees registered in Fresno County by commercial and semi-commercial beekeepers; 1979 - 32,890 colonies; 1978 - 31,926 colonies

b/ Reflects value of pollination by all bee colonies located in Fresno County for pollination services during 1979. Estimated total colonies: 172,111

c/ Cucumbers, onion seed, carrot seed, vegetable seed and other truck crops

d/ Almonds, cherries, plums

Growth of Fresno County Agriculture as Indicated by Gross Value
of Agricultural Products Over a Span of Twenty-One Years

1959 - \$390,211,120
1960 - 388,802,520
1961 - 385,091,740
1962 - 413,572,210
1963 - 423,206,000
1964 - 443,088,000
1965 - 438,253,000
1966 - 452,926,000
1967 - 438,753,000*
1968 - 462,659,000
1969 - 458,014,000

1970 - \$ 474,706,000*
1971 - 507,930,000
1972 - 559,307,000*
1973 - 828,682,000*
1974 - 967,350,000
1975 - 1,026,356,000*
1976 - 1,178,373,000*
1977 - 1,110,424,200*
1978 - 1,241,033,100*
1979 - 1,719,235,500

SIX YEAR COMPARISON STUDY OF GROSS CROP VALUES IN FRESNO COUNTY

	1959	1969	1976	1977	1978	1979
Field Crops	\$162,923,520	\$119,648,000	\$426,163,000*	\$309,253,000*	\$285,942,500*	\$539,523,000
Seed Crops	12,980,830	8,968,000	22,205,000*	22,046,000	21,679,000	38,994,000
Vegetable Crops	22,387,770	41,613,000	170,079,000*	139,249,000*	173,725,000	162,784,000
Fruit and Nut Crops	127,063,560	186,000,000	340,640,000*	422,306,200*	486,571,700*	631,630,500
Nursery Products	489,100	762,000	2,724,000	3,158,000	3,475,000	4,345,000
Livestock and Poultry	64,118,280	100,544,000	213,956,000*	211,720,000*	265,883,500	337,382,300
Apiary	<u>248,060</u>	<u>479,000</u>	<u>2,606,000</u>	<u>2,692,000</u>	<u>3,756,400</u>	<u>4,576,700</u>
Grand Total	\$390,211,120	\$458,014,000	\$1,178,373,000*	\$1,110,424,200*	\$1,241,033,100*	\$1,719,235,500

*Revised

341,159,0



1980

DOCUMENTS
STACKS

Calif. Fresno Agricultural Experiment Station
LIBRARY USE ONLY

County of

FRESNO 

Two

Billion

Dollars



Two Billion Dollars

Department of Agriculture

Cosmo C. Insalaco
Agricultural Commissioner

Richard E. Rominger, Director
California Department of Food and Agriculture

The Honorable Board of Supervisors
County of Fresno

Bruce Bronzan, Chairman
Harry Huey Sharon Levy
Willard H. Johnson Jeff Reich
Allan H. Colman
County Administrative Officer

I am pleased to submit the 1980 Agricultural Crop and Livestock Report for the acreage, production, and value of agricultural crops and products in Fresno County.

1980 represents the largest gross returns in our history, \$2,002,318,900. This also establishes a record. It is the first time in a one-year period the gross returns have exceeded two billion dollars.

The values published in this report represent gross figures only and not net income to the growers.

I sincerely appreciate the professional and dedicated work performed by Supervising Agricultural Biologist L. V. Hawley, Agricultural Biologists Tye T. Hafner and Leilani De Manty, and the staff of the Agricultural Commissioner's Office for the preparation of this report.

My thanks to the many individuals, related agencies and members of the agricultural industry for their contributions in the compilation of this report.

Respectfully submitted,

Cosmo C. Insalaco
Agricultural Commissioner

"The glory of the farmer is that ...

"He is the continuous benefactor. He who digs a well, constructs a stone fountain, plants a grove of trees by the roadside, plants an orchard, builds a durable house, reclaims a swamp, or so much as puts a stone seat by the wayside, makes the land so far lovely and desirable, makes a fortune which he cannot carry away with him, but which is useful to his country long afterwards."

Ralph Waldo Emerson

The Cover . . .

*Stan Hutchison Ranch, Minkler, California
Photograph by Richard Kassabian
Fresno County Department of Agriculture*

1980 IN RETROSPECT

1980 was a record year for Fresno County agriculture. Gross returns paid to growers exceeded two billion dollars for the first time. The \$2,002,318,900 income represents an increase of \$283,083,400 or 16.5% over 1979.

Forty-seven of the top fifty crops statewide are produced commercially in Fresno County. Agriculture continues as the major factor in the economic strength of Fresno County and reflects a multiplier effect in excess of five billion dollars generated to the total economy.

FIELD CROPS: Gross value increased \$96,194,000 or 18%. Cotton returns were up \$54,428,000 or 14%, reflecting a 23% increase in lint price. Yield was down slightly by 3.5%. Alfalfa hay returns were up \$7,635,000 or 15% reflecting a 14% increase in price. Wheat returns were up \$23,656,000 or 264% reflecting an increase of 59,300 acres or 228%. Sugar beet returns were up \$14,218,000 or 87% reflecting a price increase of 67%. Barley returns were down \$10,515,000 or 28% reflecting a decrease in acreage of 67,000 or 39%.

SEED CROPS: Gross value increased \$4,635,000 or 12%. Seed Alfalfa returns were up \$3,585,000 or 11% reflecting mostly yield increase of 10%.

VEGETABLE CROPS: Gross value increased \$23,788,000 or 15%. Processing tomatoes returns decreased \$16,777,000 or 25% reflecting a decrease of 6,750 acres or 16% and price decrease of 16%. Cantaloupe returns increased \$15,296,000 or 50% reflecting an increase in yield and price of 18% each. Head lettuce returns were up \$17,831,000 or 123% due mostly to a price increase of 89%.

FRUIT AND NUT CROPS: Gross value increased \$120,835,900 or 19%. Grapes increased \$66,188,000 or 16% reflecting an increase of \$18,840,000; a 7.5% increase in raisins due mostly to a production increase of 6,600 tons or 3%. Table grapes increased \$6,261,000 or 37%. Wine grapes increased \$8,088,000 or 17.5% due mostly to a production increase of 13%. Plums increased \$23,849,000 or 61% reflecting acreage increase of 1,082 acres, a price increase of 46%. Nectarines increased \$13,632,000 or 37.5% reflecting acreage increase of 1,013 acres and price increase of 17%. Oranges increased \$3,536,000 or 8%. Peaches increased \$5,813,000 or 17%.

NURSERY PRODUCTS: Gross value decreased \$416,000 or 10%.

LIVESTOCK AND POULTRY: Gross value increased \$18,530,600 or 7.4%. Turkeys increased \$17,749,000 or 32% and reflects the major increase. Cattle and calves decreased \$2,718,000 or 2% due mostly to lower prices.

LIVESTOCK AND POULTRY PRODUCTS: Gross value increased \$18,303,000 or 21%. Milk increased \$18,248,000 or 23% reflecting increased price and production of 11% each. Manure included for the first time was valued at \$1,120,000.

APIARY: Gross value increased \$1,212,900 or 26.5%. Honey production increased \$81,000 or 11% due mostly to increased production of 9%. Pollination services increased \$1,122,400 or 29.5% due mostly to a 31% increase in pollination fees.

FRESNO COUNTY'S 10 LEADING CROPS

<u>Crop</u>	<u>1980 Rank</u>	<u>1980 Dollar Value</u>	<u>1979 Rank</u>	<u>1978 Rank</u>	<u>1970 Rank</u>
Grapes	1	\$ 478,217,000	1	1	1
Cotton	2	443,066,000	2	2	2
Cattle & Calves	3	140,011,000	3	3	3
Poultry	4	121,156,000	4	4	6
Milk	5	96,088,000	6	5	5
Tomatoes	6	65,857,000	5	6	15
Plums	7	63,106,000	10*	7	8
Alfalfa Hay	8	59,655,000	7	14	4
Nectarines	9	49,959,000	12	10	12
Oranges	10	47,209,000	8	9	13

*Revised

FIELD CROPS: ACREAGE, PRODUCTION AND VALUE - 1980

Crop	Year	Harvested acreage	Production		Unit	Value	
			Per acre	Total		Per unit	Total
Barley	1980	106,000	2.10	223,000	ton	\$ 120.00	\$ 26,760,000
	1979	173,000	2.05	355,000	ton	105.00	37,275,000
Beans, dry	1980	10,200	.77	7,850	ton	615.00	4,828,000
	1979	10,100	.87	8,790	ton	449.00	3,947,000
Corn	1980	7,400	2.80	20,700	ton	155.00	3,208,000
	1979	8,000	2.80	22,400	ton	133.00	2,979,000
Cotton Lint	1980	424,000	1078 ^a / ₁₁₁₇	929,000 ^b / _{1,001,000}	bale	.830 ^c / _{.675}	385,535,000
	1979	430,000			bale		337,838,000
Cotton Seed	1980			381,000	ton	151.00	57,531,000
	1979			400,000	ton	127.00	50,800,000
Hay							
Alfalfa ^d /	1980	85,000	7.23	615,000	ton	97.00	59,655,000
	1979	85,000	7.20	612,000	ton	85.00	52,020,000
Other ^e /	1980	42,400	1.15	48,800	ton	77.00	3,758,000
	1979	7,950	2.00	15,900	ton	41.00	652,000
Pasture and Range							
Alfalfa ^f / _{stubble}	1980	70,000			acre	10.00	700,000
	1979	68,000			acre	7.00	476,000
Irrigated Pasture	1980	40,000			acre	110.00	4,400,000
	1979	40,000			acre	100.00	4,000,000
Grazing Range	1980	1,000,000			acre	7.00	7,000,000
	1979	1,040,000			acre	5.00	5,200,000
Rice	1980	11,000	2.80	30,800	ton	236.00	7,269,000
	1979	14,700	2.65	39,000	ton	180.00	7,020,000
Safflower	1980	13,800	1.40	19,300	ton	300.00	5,790,000
	1979	16,400	1.19	19,500	ton	254.00	4,953,000
Screenings	1980			8,400	ton	71.00	596,000
	1979			6,000	ton	30.00	180,000
Silage							
Corn	1980	9,200	19.00	175,000	ton	18.00	3,150,000
	1979	10,000	24.00	240,000	ton	16.00	3,840,000
Sorghum	1980	600	21.00	12,600	ton	17.00	214,000
	1979	1,450	18.00	26,100	ton	16.50	431,000

FIELD CROPS: ACREAGE, PRODUCTION AND VALUE - 1980 (continued)

Crop	Year	Harvested acreage	Production		Unit	Value	
			Per acre	Total		Per unit	Total
Sorghum Grain	1980	3,800	1.90	7,220	ton	\$ 128.00	\$ 924,000
	1979	3,900	3.50	13,600	ton	108.00	1,469,000
Straw	1980			9,000	ton	20.00	180,000
	1979			4,700	ton	28.00	132,000
Sugar Beets	1980	22,360	28.30	633,000	ton	48.30	30,574,000
	1979	20,000	28.18	564,000	ton	29.00	16,356,000
Wheat	1980	25,300	2.79	238,000	ton	137.00	32,606,000
	1979	26,000	2.55	66,300	ton	135.00	8,950,000
Other ^{g/}	1980	4,410					1,039,000
	1970	4,436*					1,005,000*
Total	1980	1,865,470					\$635,717,000
	1979	1,890,936					539,523,000

a/ Pounds of lint per acre

b/ 492 pounds net weight bales

c/ Price per pound, 500 pound bales

d/ Includes bales, cubes and green chop

e/ Includes hay from barley, oats, seed alfalfa, and wheat

f/ Not included in total acreage figures; includes acreage from alfalfa hay and seed alfalfa

g/ Includes oats, sesame, soybeans, stubble (barley and wheat), sudan grass and sunflowers

*Revised

SEED CROPS: ACREAGE, PRODUCTION AND VALUE - 1980

Crop	Year	Harvested acreage	Production		Unit	Value	
			Per acre	Total		Per unit	Total
Alfalfa Certified	1980	33,000	550	18,150,000	lb.	\$ 1.30	\$ 23,595,000
	1979	40,000	490	19,600,000	lb.	1.30	25,480,000
Alfalfa Non-Certified	1980	20,000	550	11,000,000	lb.	1.25	13,750,000
	1979	15,000	460	6,900,000	lb.	1.20	8,280,000
Total All Alfalfa Seed	1980	53,000		29,150,000	lb.		37,345,000
	1979	55,000		26,500,000	lb.		33,760,000
Barley Certified	1980	4,300	4,340	18,662,000	lb.	.073	1,362,000
	1979	2,650	3,725	9,871,000	lb.	.053	523,000
Barley Non-Certified	1980	1,300	4,200	5,460,000	lb.	.060	328,000
	1979	1,000	3,050	3,050,000	lb.	.050	152,000
Cotton ^{a/}	1980	8,100		9,720,000	lb.	.080	905,000 ^{b/}
	1979	11,600		8,708,000	lb.	.070	610,000
Vegetable ^{c/}	1980	3,747					2,349,000
	1979	1,180					1,860,000
Other ^{d/}	1980	4,012					1,340,000
	1979	<u>6,950</u>					<u>2,089,000</u>
Total	1980	66,359					\$43,629,000
	1979	66,780					38,994,000

^{a/} Not included in total acreage for "Seed Crops"

^{b/} Includes \$17 per acre approval on 7,499 acres

^{c/} Cabbage, cantaloupe, carrot, cucumber, lettuce, onion, parsley, pepper, snap bean, tomato and watermelon

^{d/} Certified and non-certified blackeye cowpeas, certified lima beans, certified and non-certified oats, certified and non-certified rice, certified and non certified peas, non-certified safflower, certified and non-certified wheat

VEGETABLE CROPS: ACREAGE, PRODUCTION AND VALUE - 1980

Crop	Year	Harvested acreage	Production		Unit	Value	
			Per acre	Total		Per unit	Total
Beans Snap ^{a/}	1980	640	3.1	1,980	ton	\$ 277	548,000
	1979	1,510	2.2	3,320	ton	182	604,000
Chinese Vegetables ^{b/}	1980	716	14.4	10,300	ton	223	2,297,000
	1979	432	13.1	5,660	ton	258	1,460,000
Cucumbers	1980	234	8.7	2,040	ton	302	616,000
	1979	100	11.2	1,120	ton	321	360,000
Eggplant	1980	156	6.2	967	ton	550	532,000
	1979	150	6.6	990	ton	462	457,000
Garlic ^{a/}	1980	3,560	6.8	24,200	ton	262	6,340,000
	1979	3,070	6.0	18,400	ton	306	5,630,000
Lettuce							
Head							
Spring	1980	4,614	15.9	73,400	ton	256	18,790,000
	1979	3,725	15.7	58,500	ton	115	6,728,000
Fall	1980	4,641	13.9	64,500	ton	210	13,545,000
	1979	4,800	12.0	57,600	ton	135	7,776,000
Leaf	1980	158	9.1	1,440	ton	336	484,000
	1979	100	8.5	850	ton	315	268,000
Melons							
Cantaloupes	1980	24,600	9.1	224,000	ton	205	45,920,000
	1979	22,900	7.7	176,000	ton	174	30,624,000
Cranshaw	1980	280	9.9	2,770	ton	516	1,429,000
	1979	193	5.6	1,080	ton	284	307,000
Honeydew	1980	378	9.8	3,704	ton	300	1,111,000
	1979	915	7.0	6,400	ton	167	1,069,000

VEGETABLE CROPS: ACREAGE, PRODUCTION AND VALUE - 1980 (continued)

Crop	Year	Harvested acreage	Production		Unit	Value	
			Per acre	Total		Per unit	Total
Onions							
Dry							
Fresh	1980	1,314	15.7	20,600	ton	\$ 313	\$ 6,448,000
	1979	1,187	15.3	18,200	ton	205	3,731,000
Processed	1980	4,500	22.0	99,000	ton	58	5,742,000
	1979	3,587	18.9	67,800	ton	56	3,797,000
Green	1980	285	13.1	3,730	ton	466	1,738,000
	1979	200	13.5	2,700	ton	444	1,199,000
Peppers							
Bell	1980	141	9.4	1,330	ton	546	726,000
	1979	260	5.2	1,350	ton	433	585,000
Chili Fresh	1980	271	1.8	488	ton	849	414,000
	1979	330	2.5	825	ton	774	639,000
Radishes	1980	200	6.3	1,260	ton	287	362,000
	1979	300	3.8	1,140	ton	267	304,000
Squash							
Summer	1980	299	8.7	2,600	ton	385	1,001,000
	1979	350	11.5	4,020	ton	341	1,371,000
Winter	1980	183	10.4	1,903	ton	218	415,000
	1979	94	6.0	560	ton	282	158,000
Sweet Potatoes/Yams	1980	672	9.0	6,050	ton	443	2,680,000
	1979	1,473	10.5	15,500	ton	210	3,255,000
Tomatoes							
Fresh							
Cherry	1980	475	13.9	6,600	ton	696	4,594,000
	1979	444	15.0	6,660	ton	502	3,343,000
Regular	1980	2,310	10.6	24,500	ton	429	10,510,000
	1979	2,450	15.4	37,700	ton	362	13,647,000
Processed	1980	34,880	30.5	1,064,000	ton	47.7	50,753,000
	1979	41,630	28.6	1,191,000	ton	56.7	67,530,000

VEGETABLE CROPS: ACREAGE, PRODUCTION AND VALUE - 1980 (continued)

Crop	Year	Harvested acreage	Production		Unit	Value	
			Per acre	Total		Per unit	Total
Other Vegetables ^{c/}	1980	8,437				\$	9,577,000
	1979	<u>8,684*</u>					<u>7,942,000*</u>
Total	1980	93,944					\$186,572,000
	1979	98,884					162,784,000

a/ Includes fresh and processed

b/ Includes bitter melon, bok choy, daikon, dunqua, gai choy, gobo, lo bak, moqua, napa, and sinqua

c/ Includes alfalfa sprouts, artichokes, asparagus, bean sprouts, beets, broccoli, cabbage, cauliflower, chili peppers (processed), cucumbers (hothouse), cucumbers (lemon), eggplant (Japanese), endive, escarole, greens (collard, mustard, and turnip), leeks, lima beans (processed), melons (canary, casaba, Persian, Santa Claus, and watermelon), mushrooms, parsley, peas, pumpkins, sugar cane, sun chokes, sweet corn, Swiss chard, taro root, tomatoes (hothouse), turnips

*Revised

FRUIT AND NUT CROPS: ACREAGE, PRODUCTION AND VALUE - 1980

Crop	Year	Bearing acreage	Production		Unit	Value	
			Per acre	Total		Per unit	Total
Almonds	1980	23,992	.59	14,200	ton	\$ 3,000	\$ 42,600,000
	1979	23,433	.56	13,100	ton	3,100	40,610,000
Almond Hulls	1980			23,700	ton	75	1,778,000
	1979			21,900	ton	46	1,007,000
Apricots	1980	236	7.56	1,780	ton	700	1,246,000
	1979	240	8.56	2,050	ton	627	1,285,000
Avocados	1980	324	2.48	804	ton	568	457,000
	1979	280	1.08	302	ton	901	272,000
Boysenberries	1980	275	4.24	1,170	ton	748	875,000
	1979	255	2.78	709	ton	1,300	922,000
Citrus							
Lemons	1980	875	11.20				
	1979	812	7.18				
Fresh	1980			4,800	ton	382	1,834,000
	1979			3,900	ton	498	1,942,000
Processed	1980			5,000	ton	103	515,000
	1979			1,900	ton	70	133,000
Oranges							
Navel	1980	15,939	12.99				
	1979	15,476	8.25				
Fresh	1980			131,000	ton	267	34,977,000
	1979			84,800	ton	379	32,139,000
Processed	1980			76,000	ton	28	2,128,000
	1979			42,900	ton	40	1,716,000
Valencia	1980	3,355	15.05				
	1979	3,351	10.87				
Fresh	1980			33,300	ton	275	9,158,000
	1979			23,300	ton	382	8,901,000
Processed	1980			17,200	ton	55	946,000
	1979			13,100	ton	70	917,000

FRUIT AND NUT CROPS: ACREAGE, PRODUCTION AND VALUE - 1980 (continued)

Crop	Year	Bearing acreage	Production		Unit	Value	
			Per acre	Total		Per Unit	Total
Citrus (continued)							
Other ^{a/}	1980	695	12.17				
	1979	726	7.16				
Fresh	1980			6,480	ton	\$ 316	\$ 2,048,000
	1979			3,700	ton	292	1,080,000
Processed	1980			1,980	ton	28	55,400
	1979			1,500	ton	25	37,500
Figs, Dried	1980	6,980	.79	5,510	ton	1,416	7,802,000
	1979	7,442	.65	4,840	ton	1,460	7,066,000
Grapes							
Raisin Varieties	1980	146,777	11.12				
	1979	146,095	9.21				
Canned	1980			14,000	ton	228	3,192,000
	1979			13,600	ton	225	3,060,000
Crushed	1980			346,000	ton	150	51,900,000
	1979			335,000	ton	150	50,250,000
Dried	1980			225,000	ton	1,200	270,000,000
	1979			218,400	ton	1,150	251,160,000
Fresh	1980			79,000	ton	743	58,697,000
	1979			56,400	ton	630	35,532,000
Juice	1980			18,500	ton	317	5,864,000
Table Varieties	1980	5,907	8.77				
	1979	5,819	7.71				
Crushed	1980			22,400	ton	126	2,822,000
	1979			17,800	ton	133	2,367,000
Fresh	1980			29,400	ton	790	23,226,000
	1979			27,100	ton	626	16,965,000
Wine Varieties	1980	35,170	10.21				
	1979	35,745	8.75				
Crushed	1980			334,000	ton	162	54,108,000
	1979			295,000	ton	156	46,020,000

FRUIT AND NUT CROPS: ACREAGE, PRODUCTION AND VALUE - 1980 (continued)

Crop	Year	Bearing acreage	Production		Unit	Value	
			Per acre	Total		Per unit	Total
Wine Varieties (continued)							
Juice	1980			25,100	ton	\$ 335	\$ 8,408,000
	1979			17,800	ton	375	6,675,000
Grapes Total	1980	187,854					478,217,000
	1979	187,659					412,029,000
Nectarines	1980	9,836	11.85	117,000	ton	427	49,959,000
	1979	8,823	11.31	99,800	ton	364	36,327,000
Olives, Canned	1980	1,578	2.09	3,300	ton	450	1,485,000
	1979	1,598	1.87	2,990	ton	375	1,121,000
Peaches							
Clingstone	1980	1,616	18.31	29,600	ton	188	5,565,000
	1979	1,562	17.53	27,400	ton	162	4,439,000
Freestone	1980	8,575	10.12				
	1979	7,753	11.39				
Fresh	1980			82,100	ton	422	34,646,000
	1979			79,200	ton	361	28,591,000
Processed	1980			4,700	ton	120	564,000
	1979			9,050	ton	140	1,267,000
Peaches Total	1980	10,191					40,775,000
	1979	9,315					34,297,000
Pears and Apple Pears	1980	142	9.00	1,280	ton	845	1,082,000
	1979	144	8.43	1,210	ton	820	992,000
Pecans	1980	203	.50	102	ton	2,000	204,000
	1979	173	.80	138	ton	2,400	331,000
Persimmons	1980	49	8.08	396	ton	635	251,000
	1979	49	6.30	309	ton	1,012	313,000
Pistachio Nuts	1980	271	.78	211	ton	4,500	950,000
	1979	201	.40	80	ton	3,200	256,000
Plums	1980	12,252	7.41	90,800	ton	695	63,106,000
	1979	11,170	7.37	82,300	ton	477	39,257,000
Pomegranates	1980	965	4.01	3,870	ton	494	1,912,000
	1979	901	3.33	3,000	ton	539	1,617,000
Prunes, Dried	1980	418	3.70	1,550	ton	812	1,259,000
	1979	410	3.60	1,480	ton	822	1,217,000

FRUIT AND NUT CROPS: ACREAGE, PRODUCTION AND VALUE - 1980 (continued)

Crop	Year	Bearing acreage	Production		Unit	Value	
			Per acre	Total		Per unit	Total
Strawberries	1980	105	15.07	1,580	ton	\$ 762	\$ 1,204,000
	1979	160	9.00	1,440	ton	710	1,022,000
Walnuts	1980	3,551	1.15	4,080	ton	958	3,909,000
	1979	3,568	1.16	4,140	ton	933	3,863,000
Miscellaneous ^{b/}	1980	185					1,734,000
	1979	<u>152</u>					<u>961,000</u>
Total	1980	280,271					\$752,466,400
	1979	276,338					631,630,500

^{a/} Includes blood oranges, grapefruit, mandarins, minneolas, tangerines, and tangelos

^{b/} Includes apples, dried apricots, fresh figs, substandard figs, loquat, processed nectarines, ollalieberries, kiwi, olive oil, processed plums, quince

NURSERY PRODUCTS: PRODUCTION AREA, SALES AND VALUE - 1980

Item	Year	Production Area Acres	Quantity Sold by Producers	Unit	Value
Herbaceous Ornamentals ^{a/}	1980	16	659,000	b/	\$ 664,000
	1979	16	786,000	b/	424,000
Ornamental Trees and Shrubs ^{c/}	1980	150	960,000	plants	1,507,000
	1979	83	1,045,000	plants	2,313,000
Other Nursery crops ^{d/}	1980	95			1,758,000
	1979	60			1,608,000
Total	1980	261			\$3,929,000
	1979	159			4,345,000

a/ Includes cut flowers and cut greens, potted plants, bedding plants and herbaceous perennials

b/ Includes flats, dozens, cans, and single plants

c/ Includes Christmas trees

d/ Includes grape rootings, turf grass, and vegetable plants

LIVESTOCK AND POULTRY: PRODUCTION AND VALUE - 1980

Item	Year	Production			Value	
		No. of Head	Total Liveweight	Unit	Per Unit	Total
Cattle and Calves						
Beef						
Breeding Stock						
Common	1980	2,000		head	\$525.00	\$ 1,050,000
	1979	1,680		head	525.00	882,000
Registered	1980	500		head	900.00	450,000
	1979	490		head	908.00	445,000
Feeders	1980	111,000	224,000	cwt.	69.30	15,523,000
	1979	116,000	234,000	cwt.	74.40	17,410,000
Calves	1980	34,200	157,000	cwt.	71.60	11,241,000
	1979	29,400	135,000	cwt.	76.70	10,354,000
Slaughter Stock						
From Feed Lots	1980	258,000	1,213,000 ^{a/}	cwt.	65.55	79,512,000
	1979	260,000	1,221,000	cwt.	66.50	81,196,000
From Other Sources	1980	7,500	66,000	cwt.	46.20	3,049,000
	1979	5,208	45,900	cwt.	49.80	2,286,000
Dairy						
Breeding Stock	1980	10,100		head	1,265.00	12,776,000
	1979	9,515		head	1,310.00	12,465,000
Cull Stock	1980	15,800	234,000	cwt.	42.95	10,050,000
	1979	14,700	218,000	cwt.	47.60	10,377,000
Calves	1980	42,400	106,000	cwt.	60.00	6,360,000
	1979	42,400	106,000	cwt.	69.00	7,314,000
Sheep and Lambs						
Slaughter Stock						
Lambs	1980	79,200	75,200	cwt.	63.00	4,738,000
	1979	69,300	65,800	cwt.	66.60	4,382,000
Sheep	1980	19,100	26,700	cwt.	16.10	430,000
	1979	16,800	23,500	cwt.	21.20	498,000

LIVESTOCK AND POULTRY: PRODUCTION AND VALUE - 1980 (continued)

Item	Year	Production			Value	
		No. of Head	Total Liveweight	Unit	Per Unit	Total
Hogs and Pigs						
Breeding Stock	1980	220		head	\$180.00	\$ 40,000
	1979	230		head	190.00	43,700
Feeder Pigs and Slaughter Stock	1980	15,100	31,700	cwt.	49.09	1,556,000
	1979	18,500	38,900	cwt.	45.90	1,786,000
Horses and Mules						
Recreational and Working Stock	1980	1,084		head	750.00	813,000
	1979	1,042		head	750.00	782,000
Poultry						
Chickens ^{b/}	1980	49,730,000		each	.770	38,292,000
	1979	48,054,000		each	.741	35,608,000
Turkeys	1980	6,850,000	134,783,000	lb.	.539	72,648,000
	1979	5,382,000	107,645,000	lb.	.510	54,899,000
Turkey Poults	1980	12,308,000		each	.830	10,216,000
	1979	11,990,000		each	.790	9,472,000
Miscellaneous ^{c/}	1980					69,900
	1979					83,600
Total	1980					\$268,813,900
	1979					250,283,300

a/ Net feed lot gain

b/ Includes broilers, fryers, breeders, chicks, pullets,
old hens and old roosters

c/ Includes chuckars, ducks, geese, mink, pheasants,
and rabbits

LIVESTOCK AND POULTRY PRODUCTS: PRODUCTION AND VALUE - 1980

Crop	Year	Production	Unit	Value	
				Per Unit	Total
Manure ^{a/}	1980	166,000	ton	\$ 6.75	\$ 1,120,000
Milk					
Manufacturing	1980	107,000	cwt.	11.96	1,280,000
	1979	67,700	cwt.	10.60	718,000
Market	1980	7,652,000	cwt.	12.39	94,808,000
	1979	6,923,000	cwt.	11.14	77,122,000
Wool	1980	616,000	lb.	.96	591,000
	1979	836,000	lb.	.89	744,000
Eggs					
Chicken & Turkey	1980	8,202,000	dozen	.927	7,603,000
	1979	10,658,000	dozen	.798	8,515,000
Total	1980				\$105,402,000
	1979				87,099,000

a/ Not previously reported, includes cattle and poultry

b/ Includes market eggs and hatching eggs

JANUARY 1 INVENTORIES OF LIVESTOCK AND POULTRY (In Number of Head)

<u>Item</u>	<u>January 1, 1981</u>	<u>January 1, 1980</u>
Cattle and Calves		
All	364,000	372,000
Dairy and Beef Cows	101,500	100,000
Cattle on Feed	112,600	113,000
Stock Sheep and Lambs	125,000	110,000
Goats	600	600
Hogs and Pigs	8,900	9,000
Horses	22,000	16,700
Poultry		
Hens and Pullets of Laying Age	178,000	329,000
Chicken and Turkey Breeder Hens	228,000	391,000

APIARY PRODUCTS AND POLLINATION SERVICES: PRODUCTION AND VALUE - 1980

Item	Year	Production Total	Unit	Value	
				Per Unit	Total
Apiary Product ^{a/}					
Honey	1980	1,600,000	lb.	\$.50	\$ 800,000
	1979	1,468,000	lb.	.49	719,000
Beeswax	1980	31,500	lb.	1.90	59,900
	1979	28,300	lb.	1.78	50,400
Pollination ^{b/}					
Seed Crops					
Alfalfa	1980	142,000	colony	18.08	2,567,000
	1979	133,000	colony	14.93	1,986,000
Other ^{c/}	1980	880	colony	19.00	16,700
	1979	1,690	colony	12.00	20,300
Tree Fruit ^{d/}	1980	80,200	colony	19.00	1,524,000
	1979	98,000	colony	13.82	1,354,000
Cantaloupes	1980	41,100	colony	20.00	822,000
	1979	35,300	colony	12.67	447,000
Total	1980				\$5,789,600
	1979				4,576,700

a/ Reflects only the bees registered in Fresno County by commercial and semi-commercial beekeepers; 1980 - 26,260 colonies; 1979 - 32,890 colonies

b/ Reflects value of pollination by all bee colonies located in Fresno County for pollination services during 1980. Estimated total colonies: 167,360

c/ Cucumbers, onion seed, carrot seed, vegetable seed and other truck crops

d/ Almonds, cherries, plums

Growth of Fresno County Agriculture as Indicated by Gross Value
of Agricultural Products Over a Span of Twenty-One Years

1960 -	\$388,744,120	1971 -	\$ 507,930,000
1961 -	385,091,740	1972 -	559,307,000*
1962 -	413,572,210	1973 -	828,682,000*
1963 -	423,206,000	1974 -	967,350,000
1964 -	443,088,000	1975 -	1,026,356,000*
1965 -	438,253,000	1976 -	1,178,373,000*
1966 -	452,926,000	1977 -	1,110,424,200*
1967 -	438,753,000*	1978 -	1,241,033,100*
1968 -	462,659,000	1979 -	1,719,235,500
1969 -	458,014,000	1980 -	2,002,318,900
1970 -	474,706,000*		

SIX YEAR COMPARISON STUDY OF GROSS CROP VALUES IN FRESNO COUNTY

	1960	1970	1977	1978	1979	1980
Field Crops	\$167,921,200*	\$139,484,000	\$309,253,000*	\$285,942,500*	\$539,523,000	\$635,717,000
Seed Crops	13,324,000*	17,550,000	22,046,000	21,679,000	38,994,000	43,629,000
Vegetable Crops	24,700,900*	39,713,000	139,249,000*	173,725,000	162,784,000	186,572,000
Fruit and Nut Crops	105,087,850*	173,469,000*	422,306,200*	486,571,700*	631,630,500	752,466,400
Nursery Products	527,990*	740,000	3,158,000	3,475,000	4,345,000	3,929,000
Livestock and Poultry	76,795,570*	103,353,000	211,720,000*	265,883,500	337,382,300	374,215,900
Apiary	386,610*	397,000	2,692,000	3,756,400	4,576,700	5,789,600
Grand Total	\$388,744,120*	\$474,706,000*	\$1,110,424,200*	\$1,241,033,100*	\$1,719,235,500	\$2,002,318,900

*Revised

A series of five vertical bars of equal width, alternating between black and white. The black bars have a grainy, textured appearance, while the white bars are solid white. They are arranged in a row, separated by thin white gaps.

1981

DOCUMENTS
STACKS

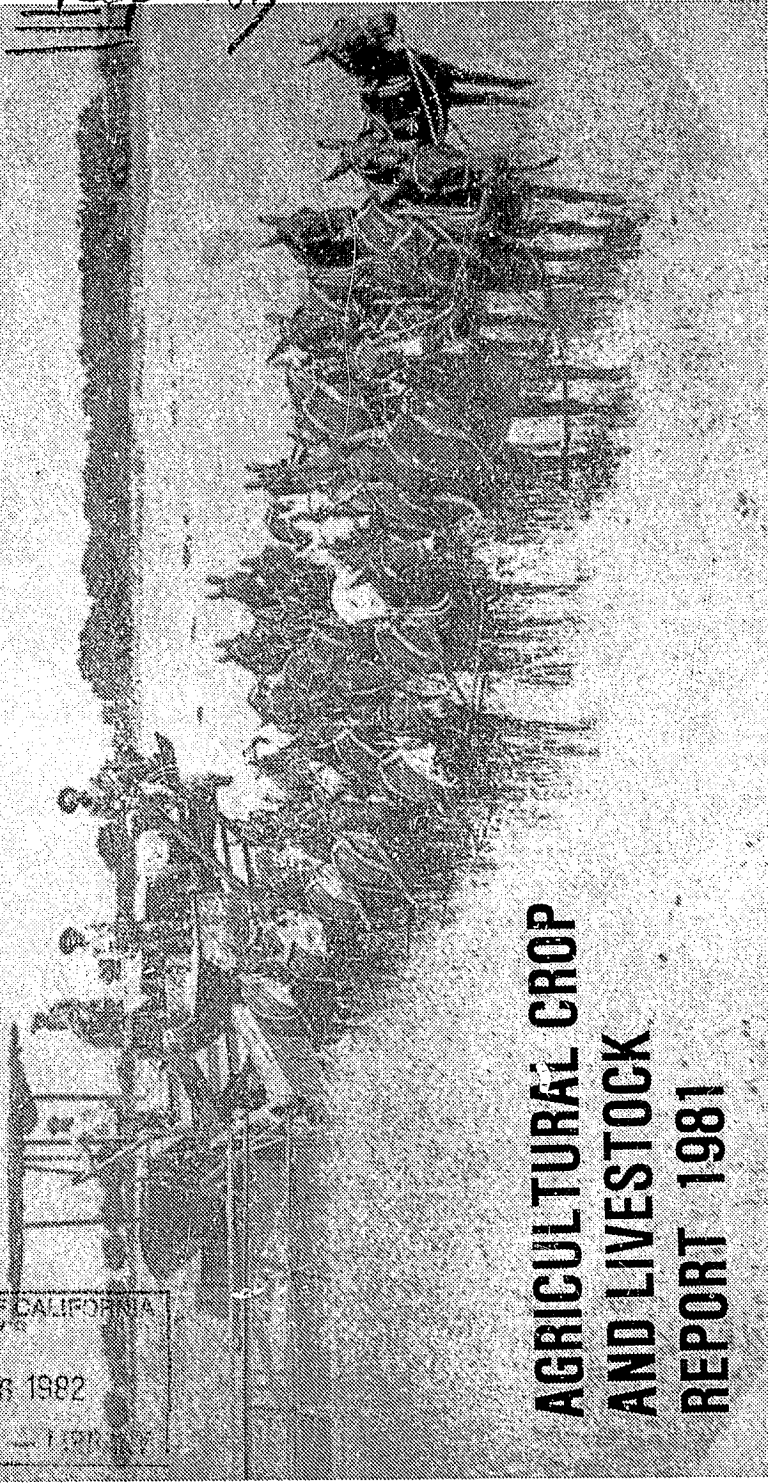
*Calif. Fresno Co. Agricultural
Commission*

LIBRARY USE ONLY

1981

Report

AGRICULTURAL COMMISSIONER
DEPARTMENT OF AGRICULTURE



AGRICULTURAL CROP
AND LIVESTOCK
REPORT 1981

UNIVERSITY OF CALIFORNIA
APR 26 1982
BOUTT, W.C. - LIBRARY

County of

FRESNO

County of



Department of Agriculture

Cosmo C. Insalaco
Agricultural Commissioner

Richard E. Rominger, Director
California Department of Food and Agriculture

The Honorable Board of Supervisors
County of Fresno

Harry Huey, Chairman
Bruce Bronzan Sharon Levy
Willard H. Johnson Jeff Reich
Allan H. Colman
County Administrative Officer

I am pleased to submit the 1981 Agricultural Crop and Livestock Report for the acreage, production, and value of agricultural crops and products in Fresno County.

1981 represents the second largest gross returns in our history, \$1,905,734,240. This also establishes a loss of \$96,714,660 or a 4.8 percent reduction from the revised 1980 Agricultural Crop and Livestock Report. Timber harvest is included for the first time in the 1981 report.

The values published in this report represent gross figures only and not net income to the growers.

I sincerely appreciate the professional and dedicated work performed by Supervising Agricultural Biologist L. V. Hawley, Agricultural Biologists Thomas M. Schackmann, Tye T. Hafner and Susan L. Fitzpatrick as well as the staff of the Agricultural Commissioner's Office for the preparation of this report.

My thanks to the many individuals, related agencies and members of the agricultural industry for their contributions in the compilation of this report.

Respectfully submitted,


Cosmo C. Insalaco
Agricultural Commissioner

'Fresno had great early appeal for me . . . of water flowing
in rivers and ditches, of orchards and vineyards set out in
great geometric patterns, of leaf and blossom and fruit. . .'

--William Saroyan, 'Places Where I've Done Time'

The Cover. . .

1890's combine harvesting grain, commemorating California
Agricultural Commissioners Association's Century of Service,
1881 through 1981. Photograph courtesy of the Fresno City
and County Historical Society Archives, A. W. Peters Collection.

1981 IN RETROSPECT

Fresno County's agricultural diversity reflects forty-seven of the state's top fifty commercially produced crops. Agriculture continues as the leading industry in Fresno County and, through its multiplier effect, had a total economic impact in excess of five and two-thirds billion dollars.

FIELD CROPS: Gross value decreased \$55,479,000 or 8.7%. Cotton decreased in value \$25,511,000 or 5.8% reflecting a reduced price. Sugar beets decreased \$11,364,000 or 37% due mostly to lower prices. Alfalfa hay was down \$11,465,000 or 19% due to lower prices.

SEED CROPS: Gross value increased \$3,087,000 or 7%. Seed alfalfa increased \$4,301,000 or 11.5%.

VEGETABLE CROPS: Gross value decreased \$440,000 or less than 1%. Head lettuce decreased \$9,613,000 or 30% due to poor spring prices. Cantaloupes increased in value \$4,449,000 or 10% due to increased acreage and prices.

FRUIT AND NUT CROPS: Gross value decreased \$72,304,100 or 10%. Grapes decreased \$68,683,000 or 14% due to large reduction in acreage yield in Thompson Seedless and other varieties of up to 39%. Raisin quality was exceptional with reduced yield reflecting a 35,000 ton decrease from 1980. Wine grapes dropped in yield 16% but increased in price. Plums increased in value \$6,469,000 or 10% reflecting an acreage and yield increase. The price decreased 13%. Peaches decreased \$7,830,000 or 19%. Yield and price were both down. Nectarine value was up \$7,389,000 or 15% due to increased prices.

NURSERY PRODUCTS: Gross value increased \$1,746,000 or 44%. Prices were up considerably.

LIVESTOCK AND POULTRY: Gross value increased \$14,264,100 or 5%. Slaughter stock increased 22,450 head reflecting a \$6,210,000 or 7.5% increase. Turkeys were down in total value by \$17,840,000 or 25%.

LIVESTOCK PRODUCTS: Gross value increased \$8,088,000 or 8% due mostly to an increase in price. Milk increased in value \$7,855,000 or 8%.

APIARY: Gross value decreased \$376,660 or 6.5% due to reduced honey yield of 965,000 pounds or 60%.

TIMBER HARVEST: Gross value was \$4,700,000.

FRESNO COUNTY'S 10 LEADING CROPS

<u>Crop</u>	<u>1981 Rank</u>	<u>1981 Dollar Value</u>	<u>1980 Rank</u>	<u>1979 Rank</u>	<u>1971 Rank</u>
Cotton	1	\$ 417,555,000	2	2	2
Grapes	2	409,534,000	1	1	1
Cattle & Calves	3	150,482,000	3	3	3
Milk	4	103,943,000	4	5	4
Plums	5	69,575,000	7	10*	8
Tomatoes	6	61,326,000	6	4	6
Nectarines	7	57,348,000	9	12	10
Oranges	8	54,943,000	10	8	14
Turkeys	9	54,808,000	5*	6*	9
Cantaloupes	10	50,369,000	11	16	5

*Revised



FIELD CROPS



CROP	YEAR	HARVESTED ACREAGE	PRODUCTION		UNIT	VALUE	
			PER ACRE	TOTAL		PER UNIT	TOTAL
Barley	1981	93,800	1.76	165,000	ton	\$ 127.00	\$ 20,955,000
	1980	106,000	2.10	223,000	ton	120.00	26,760,000
Beans, dry	1981	11,300	.92	10,400	ton	672.00	6,989,000
	1980	10,200	.77	7,850	ton	615.00	4,828,000
Corn	1981	6,500	2.52	16,400	ton	180.00	2,952,000
	1980	7,400	2.80	20,700	ton	155.00	3,208,000
Cotton Lint	1981	451,000	1294 ^{a/}	1,179,000 ^{b/}	bale	.63 ^{c/}	371,385,000
	1980	424,000	1078	929,000	bale	.83	385,535,000
Cotton Seed	1981			486,000	ton	95.00	46,170,000
	1980			381,000	ton	151.00	57,531,000
Hay							
Alfalfa ^{d/}	1981	85,000	7.18	610,000	ton	79.00	48,190,000
	1980	85,000	7.23	615,000	ton	97.00	59,655,000
Other ^{e/}	1981	32,000	1.10	35,200	ton	76.00	2,675,000
	1980	42,400	1.15	48,800	ton	77.00	3,758,000
Pasture and Range							
Alfalfa ^{f/} stubble	1981	70,000			acre	12.00	840,000
	1980	70,000			acre	10.00	700,000
Irrigated Pasture	1981	40,000			acre	110.00	4,400,000
	1980	40,000			acre	110.00	4,400,000
Grazing Range	1981	1,000,000			acre	7.00	7,000,000
	1980	1,000,000			acre	7.00	7,000,000
Rice	1981	9,000	3.30	29,700	ton	180.00	5,346,000
	1980	11,000	2.80	20,800	ton	236.00	7,269,000
Safflower	1981	8,349	1.33	11,100	ton	375.00	4,162,000
	1980	13,800	1.40	19,300	ton	300.00	5,790,000
Silage							
Corn	1981	11,000	19.50	214,000	ton	20.00	4,280,000
	1980	9,200	19.00	175,000	ton	18.00	3,150,000

FIELD CROPS: (continued)

CROP	YEAR	HARVESTED ACREAGE	PRODUCTION		UNIT	PER	TOTAL
			PER ACRE	TOTAL		UNIT	
Sorghum Grain	1981	3,800	2.05	7,790	ton	\$ 104.00	\$ 810,000
	1980	3,800	1.90	7,220	ton	128.00	924,000
Sugar Beets	1981	23,216	27.32	634,000	ton	30.30	19,210,000
	1980	22,360	28.30	633,000	ton	48.30	30,574,000
Wheat	1981	99,900	2.41	241,000	ton	131.00	31,571,000
	1980	85,300	2.79	238,000	ton	137.00	32,606,000
Other ^{g/}	1981	17,582					3,303,000
	1980	<u>5,010</u>					<u>2,029,000*</u>
Total	1981	1,983,797					\$580,238,000
	1980	1,865,470					635,717,000

a/ Pounds of lint per acre

b/ 495 pounds net weight

c/ Price per pound, 500 pound bales

d/ Includes bales, cubes and green chop

e/ Includes hay from barley, oats, seed alfalfa, and wheat

f/ Not included in total acreage figures; includes acreage from alfalfa hay and seed alfalfa

g/ Includes oats, screenings, sesame, straw, stubble (barley and wheat), sudan grass and winter forage

*Revised



SEED CROPS



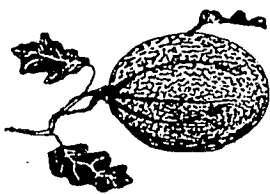
CROP	YEAR	HARVESTED ACREAGE	PRODUCTION		UNIT	VALUE	
			PER ACRE	TOTAL		PER UNIT	TOTAL
Alfalfa Certified	1981	30,000	660	19,800,000	1b.	\$ 1.15	\$ 22,770,000
	1980	33,000	550	18,150,000	1b.	1.30	23,595,000
Alfalfa Non-Certified	1981	26,000	660	17,160,000	1b.	1.10	18,876,000
	1980	20,000	550	11,000,000	1b.	1.25	13,750,000
Total All Alfalfa Seed	1981	56,000		36,960,000	1b.		41,646,000
	1980	53,000		29,150,000	1b.		37,345,000
Barley Certified	1981	2,600	4,375	11,375,000	1b.	.074	842,000
	1980	4,300	4,340	18,662,000	1b.	.073	1,362,000
Barley Non-Certified	1981	1,050	3,520	3,696,000	1b.	.060	222,000
	1980	1,300	4,200	5,460,000	1b.	.060	328,000
Cotton ^{a/}	1981	10,300		12,083,000	1b.	.060	892,000 ^{b/}
	1980	8,100		9,720,000	1b.	.080	905,000
Vegetable ^{c/}	1981	1,620					1,623,000
	1980	3,747					2,349,000
Other ^{d/}	1981	3,685					1,491,000
	1980	<u>4,012</u>					<u>1,340,000</u>
Total	1981	64,955					\$ 46,716,000
	1980	66,359					43,629,000

a/ Not included in total acreage for "Seed Crops"

b/ Includes \$17 per acre approval on 9804 acres

c/ Carrot, lettuce, onion, parsley, snap bean, squash and tomato.

d/ Certified beans, certified and non-certified blackeye cowpeas, certified lima beans, certified and non-certified oats, certified and non-certified rice, certified and non-certified peas, non-certified safflower, certified vetch, certified and non-certified wheat.



VEGETABLE CROPS



CROP	YEAR	HARVESTED ACREAGE	PRODUCTION		UNIT	VALUE	
			PER ACRE	TOTAL		PER UNIT	TOTAL
Beans Snap ^{a/}	1981	1,531	1.5	2,300	ton	\$ 429	\$ 987,000
	1980	1,835	.8	1,470	ton	461	678,000*
Chinese Vegetables ^{b/}	1981	685	14.9	10,200	ton	370	3,774,000
	1980	716	14.4	10,300	ton	223	2,297,000
Cucumbers	1981	209	14.3	2,990	ton	355	1,061,000
	1980	234	8.7	2,040	ton	302	616,000
Eggplant	1981	161	10.4	1,670	ton	361	603,000
	1980	156	6.2	967	ton	550	532,000
Garlic ^{a/}	1981	4,371	6.8	29,700	ton	295	8,762,000
	1980	3,560	6.8	24,200	ton	262	6,340,000
Head Lettuce							
Spring Naked Wrapped Bulk	1981	3,628	17.1				
				46,000	ton		
				15,300	ton		
Season Total	1981	3,628	17.1	61,980	ton	150	9,297,000
	1980	4,614	15.9	73,400	ton	256	18,790,000
Fall Naked Wrapped Bulk	1981	4,679	16.3				
				53,000	ton		
				21,500	ton		
Season Total	1981	4,679	15.6	76,280	ton	176	13,425,000
	1980	4,641	13.9	64,500	ton	210	13,545,000
Melons							
Cantaloupes	1981	25,200	8.3	209,000	ton	241	50,369,000
	1980	24,600	9.1	224,000	ton	205	45,920,000
Cranshaw	1981	156	8.1	1,260	ton	445	561,000
	1980	280	9.9	2,770	ton	516	1,429,000
Honeydew	1981	770	10.8	8,320	ton	390	3,245,000
	1980	378	9.8	3,704	ton	300	1,111,000

VEGETABLES CROPS: (continued)

CROP	YEAR	HARVESTED ACREAGE	PRODUCTION		UNIT	VALUE	
			PER ACRE	TOTAL		PER UNIT	TOTAL
Onions							
Dry							
Fresh	1981	1,434	14.0	20,100	ton	\$ 320	\$ 6,432,000
	1980	1,314	15.7	20,600	ton	313	6,448,000
Processed	1981	6,400	17.0	109,000	ton	65	7,085,000
	1980	4,500	22.0	99,000	ton	58	5,742,000
Green	1981	145	8.7	1,260	ton	824	1,038,000
	1980	285	13.1	3,730	ton	466	1,738,000
Peppers							
Bell	1981	264	5.3	1,400	ton	601	841,000
	1980	141	9.4	1,330	ton	546	726,000
Chili Fresh	1981	350	3.5	1,200	ton	1,196	1,435,000
	1980	271	1.8	488	ton	849	414,000
Radishes	1981	150	7.5	1,130	ton	317	358,000
	1980	200	6.3	1,260	ton	287	362,000
Squash							
Summer	1981	464	7.2	3,340	ton	441	1,473,000
	1980	299	8.7	2,600	ton	385	1,001,000
Winter	1981	166	14.1	2,340	ton	262	613,000
	1980	183	10.4	1,903	ton	218	415,000
Sweet Potatoes/ Yams	1981	802	9.0	7,220	ton	440	3,177,000
	1980	672	9.0	6,050	ton	443	2,680,000
Tomatoes							
Fresh							
Cherry	1981	313	9.0	2,820	ton	564	1,590,000
	1980	475	13.9	6,600	ton	696	4,594,000
Regular	1981	1,825	10.4	19,000	ton	342	6,498,000
	1980	2,310	10.6	24,500	ton	429	10,510,000
Processed	1981	36,640	28.6	1,048,000	ton	50.8	53,238,000
	1980	34,880	30.5	1,064,000	ton	47.7	50,753,000

VEGETABLE CROPS: (continued)

CROP	YEAR	HARVESTED ACREAGE	PRODUCTION		UNIT	VALUE	
			PER ACRE	TOTAL		PER UNIT	TOTAL
Other Vegetables ^{c/}	1981	8,245				\$	10,400,000
	1980	8,437					10,061,000*
Total	1981	101,868				\$	186,262,000
	1980	93,944					186,702,000*

a/ Includes fresh and processed

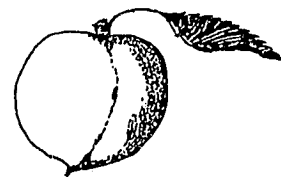
b/ Includes bitter melon, bok choy, daikon, dunqua, gai choy, gobo, lo bak, moqua, napa, and sinqua

c/ Includes alfalfa sprouts, artichokes, asparagus, bean sprouts, beets, broccoli, cabbage, cauliflower, chili peppers (processed), cucumbers (hothouse), cucumbers (lemon), eggplant (Japanese), endive, escarole, greens (collard, mustard, and turnip), leeks, lima beans (processed), melons (canary, casaba, honey cranshaw, Persian, Santa Claus, and watermelon), mushrooms, parsley, peas, pumpkins, sugar cane, sun chokes, sweet corn, Swiss chard, taro root, tomatoes (hothouse), turnips

*Revised



FRUIT & NUT CROPS



CROP	YEAR	BEARING ACREAGE	PRODUCTION		UNIT	VALUE	
			PER ACRE	TOTAL		PER UNIT	TOTAL
Almonds	1981	23,820	.75	17,900	ton	\$1,500	\$ 26,850,000
	1980	23,992	.59	14,200	ton	3,000	42,600,000
Almond Hulls	1981			25,800	ton	50	1,290,000
	1980			23,700	ton	75	1,778,000
Apricots	1981	246	6.73	1,660	ton	863	1,433,000
	1980	236	7.56	1,780	ton	700	1,246,000
Avocados	1981	328	2.40	787	ton	327	257,000
	1980	324	2.48	804	ton	568	457,000
Boysenberries	1981	338	1.89	639	ton	810	518,000
	1980	275	4.24	1,170	ton	748	875,000

FRUIT AND NUT CROPS: (continued)

CROP	YEAR	BEARING ACREAGE	PRODUCTION		UNIT	VALUE	
			PER ACRE	TOTAL		PER UNIT	TOTAL
Citrus							
Lemons	1981	971	15.75				
	1980	875	11.20				
Fresh	1981			5,810	ton	\$ 396	\$ 2,301,000
	1980			4,800	ton	382	1,834,000
Processed	1981			9,480	ton	56	531,000
	1980			5,000	ton	103	515,000
Oranges							
Navel	1981	15,878	13.98				
	1980	15,939	12.99				
Fresh	1981			141,000	ton	280	39,480,000
	1980			131,000	ton	267	34,977,000
Processed	1981			81,000	ton	24	1,944,000
	1980			76,000	ton	28	2,128,000
Valencia	1981	3,274	17.68				
	1980	3,355	15.05				
Fresh	1981			34,500	ton	341	11,764,000
	1980			33,300	ton	275	9,158,000
Processed	1981			23,400	ton	75	1,755,000
	1980			17,200	ton	55	946,000
Other ^{a/}	1981	674	10.40				
	1980	695	12.17				
Fresh	1981			5,080	ton	320	1,626,000
	1980			6,480	ton	316	2,048,000
Processed	1981			1,930	ton	24	46,300
	1980			1,980	ton	28	55,400
Figs, Dried	1981	6,401	.69	4,420	ton	1,193	5,273,000
	1980	6,980	.79	5,510	ton	1,416	7,802,000
Grapes							
Raisin	1981	148,932	6.78				
Varieties	1980	146,777	11.12				
Canned	1981			9,600	ton	225	2,160,000
	1980			14,000	ton	228	3,192,000

FRUIT AND NUT CROPS: (continued)

CROP	YEAR	BEARING ACREAGE	PRODUCTION		UNIT	VALUE	
			PER ACRE	TOTAL		PER UNIT	TOTAL
Grapes (continued)							
Crushed	1981			185,000	ton	\$ 200	\$ 37,000,000
	1980			346,000	ton	150	51,900,000
Dried	1981			190,000	ton	1,300	247,000,000
	1980			225,000	ton	1,200	270,000,000
Fresh	1981			46,000	ton	782	35,972,000
	1980			79,000	ton	743	58,697,000
Juice	1981			9,200	ton	385	3,542,000
	1980			18,500	ton	317	5,864,000
Table Varieties	1981	5,843	7.32				
	1980	5,907	8.77				
Crushed	1981			17,700	ton	188	3,328,000
	1980			22,400	ton	126	2,822,000
Fresh	1981			25,100	ton	818	20,532,000
	1980			29,400	ton	790	23,226,000
Wine Varieties	1981	34,210	8.53				
	1980	35,170	10.21				
Crushed	1981			274,000	ton	195	53,430,000
	1980			334,000	ton	162	54,108,000
Juice	1981			18,000	ton	365	6,570,000
	1980			25,100	ton	335	8,408,000
Grapes Total	1981	188,985					409,534,000
	1980	187,854					478,217,000
Nectarines	1981	11,135	9.70	108,000	ton	531	57,348,000
	1980	9,836	11.85	117,000	ton	427	49,959,000
Olives, Canned	1981	1,166	1.20	1,400	ton	662	927,000
	1980	1,578	2.09	3,300	ton	450	1,485,000
Peaches							
Clingstone	1981	1,473	15.86	23,400	ton	185	4,329,000
	1980	1,616	18.31	29,600	ton	188	5,565,000
Freestone	1981	8,829	8.47				
	1980	8,575	10.12				
Fresh	1981			71,800	ton	393	28,217,000
	1980			82,100	ton	422	34,646,000

FRUIT AND NUT CROPS: (continued)

CROP	YEAR	PLANTING ACREAGE	PRODUCTION		UNIT	VALUE	
			PER ACRE	TOTAL		PER UNIT	TOTAL
Peaches (continued)							
Processed	1981			2,980	ton	\$ 134	\$ 399,000
	1980			4,700	ton	120	564,000
Peaches Total	1981	10,302					32,945,000
	1980	10,191					40,775,000
Pears and Apple Pears	1981	156	7.30	1,139	ton	985	1,122,000
	1980	142	9.00	1,280	ton	845	1,082,000
Pecans	1981	252	.41	103	ton	2,400	247,000
	1980	203	.50	102	ton	2,000	204,000
Persimmons	1981	55	5.73	315	ton	1,185	373,000
	1980	49	8.08	396	ton	635	251,000
Pistachio Nuts	1981	271	.63	171	ton	3,100	530,000
	1980	271	.78	211	ton	4,500	950,000
Plums	1981	12,973	8.90	115,000	ton	605	69,575,000
	1980	12,252	7.41	90,800	ton	695	63,106,000
Pomegranates	1981	967	5.50	5,320	ton	570	3,032,000
	1980	965	4.01	3,870	ton	494	1,912,000
Prunes, Dried	1981	437	4.02	1,760	ton	690	1,214,000
	1980	418	3.70	1,550	ton	812	1,259,000
Strawberries	1981	83	11.25	934	ton	667	623,000
	1980	105	15.07	1,580	ton	762	1,204,000
Walnuts	1981	3,413	1.60	5,460	ton	1,022	5,580,000
	1980	3,551	1.15	4,080	ton	958	3,909,000
Miscellaneous ^{b/}	1981	639					2,044,000
	1980	<u>185</u>					<u>1,734,000</u>
Total	1981	282,764					\$680,162,300
	1980	280,271					752,466,400

a/ Includes blood oranges, grapefruit, mandarins, minneolas, tangerines, and tangelos
b/ Includes apples, processed apricots, fresh figs, substandard figs, processed nectarines, ollalieberries, kiwi, olive oil, fresh olives, and quince



NURSERY PRODUCTS



ITEM	YEAR	PRODUCTION AREA ACRES	QUANTITY SOLD BY PRODUCERS	UNIT	VALUE
Herbaceous Ornamentals ^{a/}	1981	21	1,411,000	b/	\$ 1,036,000
	1980	16	659,000	b/	664,000
Ornamental Trees and Shrubs ^{c/}	1981	138	427,000	plants	1,979,000
	1980	150	960,000	plants	1,507,000
Other Nursery crops ^{d/}	1981	42			2,660,000
	1980	95			1,758,000
Total	1981	201			\$ 5,675,000
	1980	261			3,929,000

^{a/} Includes cut flowers and cut greens, potted plants, bedding plants and herbaceous perennials

^{b/} Includes flats, dozens, cans, and single plants

^{c/} Includes Christmas trees

^{d/} Includes grape rootings, turf grass, and vegetable plants



LIVESTOCK & POULTRY



ITEM	YEAR	PRODUCTION			VALUE	
		NO. OF HEAD	TOTAL LIVEWEIGHT	UNIT	PER UNIT	TOTAL
Cattle and Calves						
Beef						
Breeding Stock						
Common	1981	2,120		head	\$ 475.00	\$1,007,000
	1980	2,000		head	525.00	1,050,000

LIVESTOCK AND POULTRY: (continued)

ITEM	YEAR	PRODUCTION			VALUE	
		NO. OF HEAD	TOTAL LIVEWEIGHT	UNIT	PER UNIT	TOTAL
Beef (continued)						
Registered	1981	530		head	\$ 800.00	\$ 424,000
	1980	500		head	900.00	450,000
Feeders	1981	138,000	276,000	cwt.	63.10	17,416,000
	1980	111,000	224,000	cwt.	69.30	15,523,000
Calves	1981	36,200	167,000	cwt.	60.20	10,053,000
	1980	34,200	157,000	cwt.	71.60	11,241,000
Slaughter Stock						
From Feed Lots	1981	280,000	1,316,000 ^{a/}	cwt.	65.20	85,803,000
	1980	258,000	1,213,000	cwt.	65.55	79,512,000
From Other Sources	1981	7,950	70,000	cwt.	42.40	2,968,000
	1980	7,500	66,000	cwt.	46.20	3,049,000
Dairy						
Breeding Stock	1981	10,700		head	1,310.00	14,017,000
	1980	10,100		head	1,265.00	12,776,000
Cull Stock	1981	15,400	228,000	cwt.	40.00	9,120,000
	1980	15,800	234,000	cwt.	42.95	10,050,000
Calves	1981	44,400	111,000	cwt.	67.00	7,437,000
	1980	42,400	106,000	cwt.	60.00	6,360,000
Sheep and Lambs						
Slaughter Stock						
Lambs	1981	88,200	83,800	cwt.	56.30	4,718,000
	1980	79,200	75,200	cwt.	63.00	4,738,000
Sheep	1981	21,200	29,700	cwt.	17.00	505,000
	1980	19,100	26,700	cwt.	16.10	430,000
Hogs and Pigs						
Feeder Pigs and Slaughter Stock	1981	15,050	31,600	cwt.	48.00	1,517,000
	1980	15,100	31,700	cwt.	49.09	1,556,000
Horses and Mules						
Recreational and Working Stock	1981	2,500		head	1,500.00	3,750,000
	1980	1,084		head	750.00	813,000

LIVESTOCK AND POULTRY: (continued)

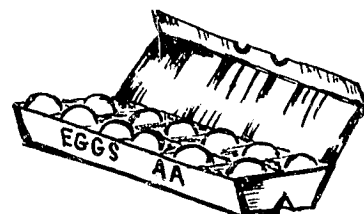
ITEM	YEAR	PRODUCTION			PER UNIT	VALUE	
		NO. OF HEAD	TOTAL LIVEWIGHT	UNIT		TOTAL	
Turkeys	1981	6,186,000	123,720,000	1b.	\$.443	\$54,808,000	
	1980	6,850,000	134,783,000	1b.	.539	72,648,000	
Miscellaneous ^{b/}	1981					69,535,000	
	1980					48,617,900*	
Total	1981					\$283,078,000	
	1980					268,813,900	

a/ Net feed lot gain

b/ Includes chickens, chuckars, ducks, fish, geese, mink, pheasants, rabbits, and turkey poults



LIVESTOCK & POULTRY PRODUCTS

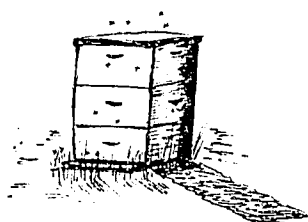


CROP	YEAR	PRODUCTION	UNIT	VALUE	
				PER UNIT	TOTAL
Manure	1981	135,000	ton	\$ 12.00	\$ 1,620,000
	1980	166,000	ton	6.75	1,120,000
Milk					
Manufacturing	1981	28,500	cwt.	12.55	358,000
	1980	107,000	cwt.	11.96	1,280,000
Market	1981	7,769,000	cwt.	13.33	103,585,000
	1980	7,652,000	cwt.	12.39	94,808,000
Wool	1981	594,000	1b.	1.03	612,000
	1980	616,000	1b.	.96	591,000
Eggs					
Chicken & Turkey ^{a/}	1981	5,928,000	dozen	1.234	7,315,000
	1980	8,202,000	dozen	.927	7,603,000
Total	1981				\$113,490,000
	1980				105,402,000

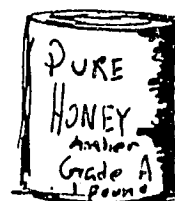
a/ Includes market eggs and hatching eggs.

JANUARY 1 INVENTORIES OF LIVESTOCK AND POULTRY (In Number of Head)

<u>ITEM</u>	<u>January 1, 1982</u>	<u>January 1, 1981</u>
Cattle and Calves		
All	372,000	364,000
Dairy and Beef Cows	108,000	101,500
Cattle on Feed	89,600	112,600
Stock Sheep and Lambs	123,000	125,000
Goats	750	600
Hogs and Pigs	6,800	8,900
Horses	27,000	22,000
Poultry	420,000	406,000



APIARY PRODUCTS and POLLINATION SERVICES

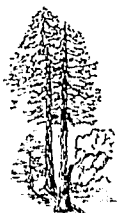


<u>ITEM</u>	<u>YEAR</u>	<u>PRODUCTION TOTAL</u>	<u>UNIT</u>	<u>VALUE</u>	
				<u>PER UNIT</u>	<u>TOTAL</u>
Apiary Product ^{a/}					
Honey	1981	635,000	1b.	\$.51	\$ 324,000
	1980	1,600,000	1b.	.50	800,000
Beeswax	1981	26,500	1b.	1.98	52,500
	1980	31,500	1b.	1.90	59,900
Pollination ^{b/}					
Seed Crops					
Alfalfa	1981	143,000	colony	18.90	2,702,000
	1980	142,000	colony	18.08	2,567,000
Other ^{c/}	1981	300	colony	14.80	4,440
	1980	880	colony	19.00	16,700
Tree Fruit ^{d/}	1981	83,000	colony	21.46	1,781,000
	1980	80,200	colony	19.00	1,524,000

APIARY PRODUCTS AND POLLINATION SERVICES: (continued)

ITEM	YEAR	PRODUCTION TOTAL	UNIT	VALUE	
				PER UNIT	TOTAL
Pollination (continued)					
Cantaloupes	1981	29,400	colony	\$ 18.67	\$ 549,000
	1980	41,100	colony	20.00	822,000
Total	1981				\$5,412,940
	1980				5,789,600

- a/ Reflects only the bees registered in Fresno County by commercial and semi-commercial beekeepers; 1981 - 33,965 colonies; 1980 - 26,260 colonies
b/ Reflects value of pollination by all bee colonies located in Fresno County for pollination services during 1981. Estimated total colonies: 228,095
c/ Cucumbers, onion seed, carrot seed, vegetable seed and other truck crops
d/ Almonds, cherries, plums



TIMBER HARVEST



CROP	YEAR	PRODUCTION	UNIT ^{1/}	VALUE ^{2/}
Timber	1981	55,351,000	Board feet	\$ 4,700,000

- ^{1/} Board feet is the quantity of timber cut and sealed.
^{2/} Value of timber immediately before cutting

GROWTH OF FRESNO COUNTY AGRICULTURE AS INDICATED BY GROSS VALUE
OF AGRICULTURAL PRODUCTS OVER A SPAN OF TWENTY-ONE YEARS

1961 - \$385,091,740
1962 - 413,572,210
1963 - 423,206,000
1964 - 443,088,000
1965 - 438,253,000
1966 - 452,926,000
1967 - 438,753,000*
1968 - 462,659,000
1969 - 458,014,000
1970 - 474,706,000*
1971 - 507,930,000
1972 - \$ 559,307,000*
1973 - 828,682,000*
1974 - 967,350,000
1975 - 1,026,356,000*
1976 - 1,178,373,000*
1977 - 1,110,424,200*
1978 - 1,241,033,100*
1979 - 1,719,235,500
1980 - 2,002,448,900*
1981 - 1,905,734,240

SIX YEAR COMPARISON STUDY OF GROSS CROP VALUES IN FRESNO COUNTY

	1961	1971	1978	1979	1980	1981
Field Crops	\$153,431,490*	\$137,467,000	\$285,942,500*	\$539,523,000	\$635,717,000	\$580,238,000
Seed Crops	12,123,590*	15,216,000	21,679,000	38,994,000	43,629,000	46,716,000
Vegetable Crops	25,072,920*	47,585,000	173,725,000	162,784,000	186,702,000*	186,262,000
Fruit and Nut Crops	114,884,230*	195,375,000	486,571,700*	631,630,500	752,466,400	680,162,300
Nursery Products	605,210*	1,167,000	3,475,000	4,345,000	3,929,000	5,675,000
Livestock and Poultry	78,400,830*	110,494,000	265,883,500	337,382,300	374,215,900	396,568,000
Apiary	573,470*	626,000	3,756,400	4,576,700	5,789,600	5,412,940
Timber Harvest	+	+	+	+	+	4,700,000
Grand Total	\$385,091,740*	\$507,930,000	\$1,241,033,100*	\$1,719,235,500	\$2,002,448,900*	\$1,905,734,240

*Revised

+Not reported