



AgEcon SEARCH
RESEARCH IN AGRICULTURAL & APPLIED ECONOMICS

The World's Largest Open Access Agricultural & Applied Economics Digital Library

This document is discoverable and free to researchers across the globe due to the work of AgEcon Search.

Help ensure our sustainability.

Give to AgEcon Search

AgEcon Search
<http://ageconsearch.umn.edu>
aesearch@umn.edu

*Papers downloaded from **AgEcon Search** may be used for non-commercial purposes and personal study only. No other use, including posting to another Internet site, is permitted without permission from the copyright owner (not AgEcon Search), or as allowed under the provisions of Fair Use, U.S. Copyright Act, Title 17 U.S.C.*

2006 Global Cotton Outlook



Texas Tech University

Cotton Economics Research Institute

CERI Outlook Report 06-02

www.ceri.ttu.edu/policy

CERI (Policy Modeling Group)

Samarendu Mohanty, Associate Professor

Suwen Pan, Research Scientist

Mark Welch, Research Assistant

Mohamadou Fadiga, Research Associate

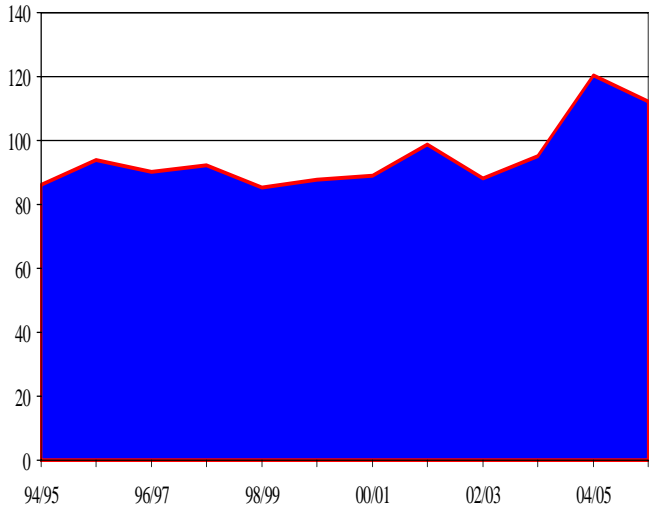
Don Ethridge, Professor

Cotton Economics Research Institute
Department of Agricultural and Applied Economics
Texas Tech University
Lubbock, TX 79409
Telephone: (806) 742-2821
Email: sam.mohanty@ttu.edu
<http://www.ceri.ttu.edu/policy>

SHORT-TERM OUTLOOK

WORLD COTTON PRODUCTION

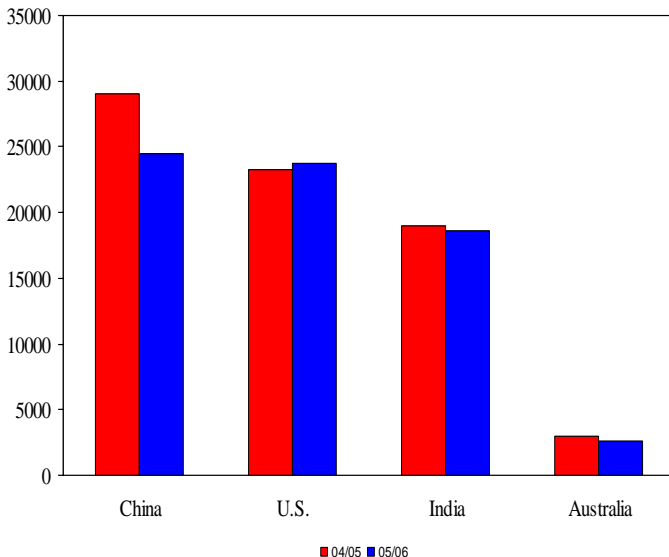
Million Bales



- World cotton production is expected to decline from historic high levels seen in 2004/05, primarily as a result of production shortfalls in China. The 2005/06 level is expected to decrease by 7% compared to 2004/05. World cotton production in 2005/06 is expected to reach around 112 million bales.

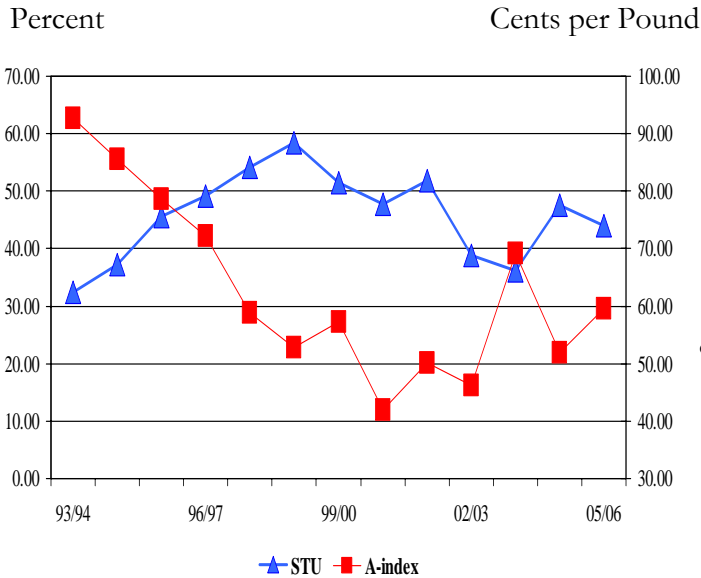
COTTON PRODUCTION IN MAJOR COUNTRIES (2004/05 vs. 2005/06)

000 Bales



- Production in all four of these major producing countries is expected to decrease in 2005/06 except for the U.S.. While China and Australia are declining from high production levels in 2004/05, favorable weather resulted in another outstanding crop in the U.S. in 2005/06.

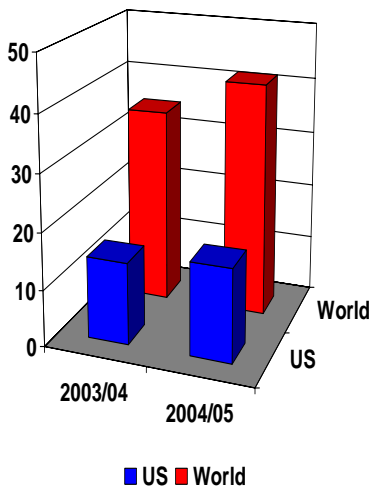
PRICE vs. STOCK-TO-USE RATIO



- The stocks-to-use ratio increased from 33 percent in 2003/04 to 47.1 percent in 2004/05 as a result of increased world production. However, this ratio is expected to decline to a less price suppressing level of 44% in 2005/06.
- Lower production and a lower stock-to-use ratio will lead to a higher price in 2005/06. The A-index is expected to increase to 59.5 cents a pound.

WORLD IMPORTS AND U.S. EXPORTS (2004/05 vs 2005/06)

Million Bales



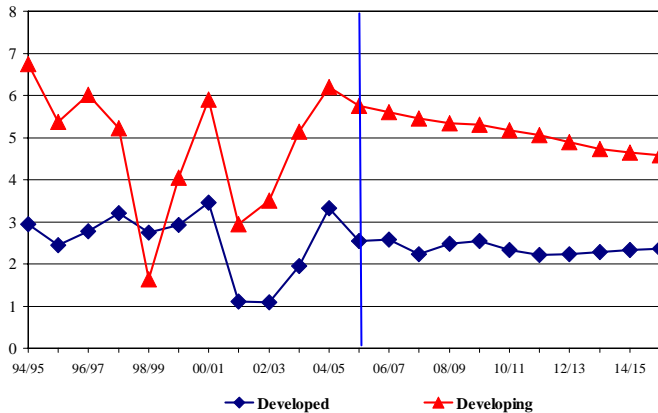
- World cotton imports are expected to increase by 6.7 million bales in 2005/06 compared to 2004/05. This is due to projected lower production and higher mill use, especially in China.
- Exports from the United States are expected to increase from 14.4 million bales in 2004/05 to 16.4 million bales in 2005/06.

MEDIUM-TERM OUTLOOK

MACRO PROJECTIONS

REAL GDP GROWTH RATE (DEVELOPED VS. DEVELOPING)

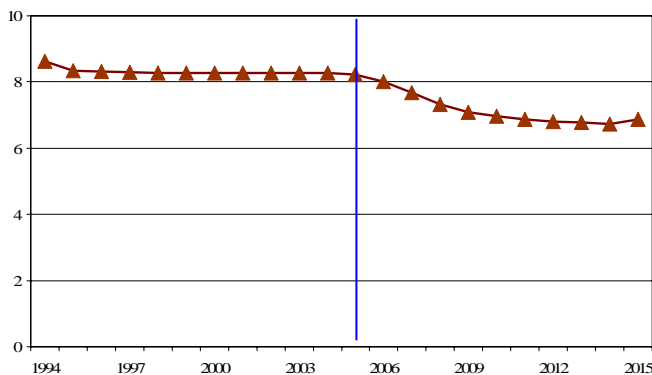
Percent



- Growth in real GDP continues to be lower in the developed countries compared to the developing world. GDP growth in developed countries is expected to be above 3%.
- In the developing countries, however, real GDP growth rate is expected to average around 5% for the projection period though the trend is declining.

CHINESE EXCHANGE RATE PROJECTIONS

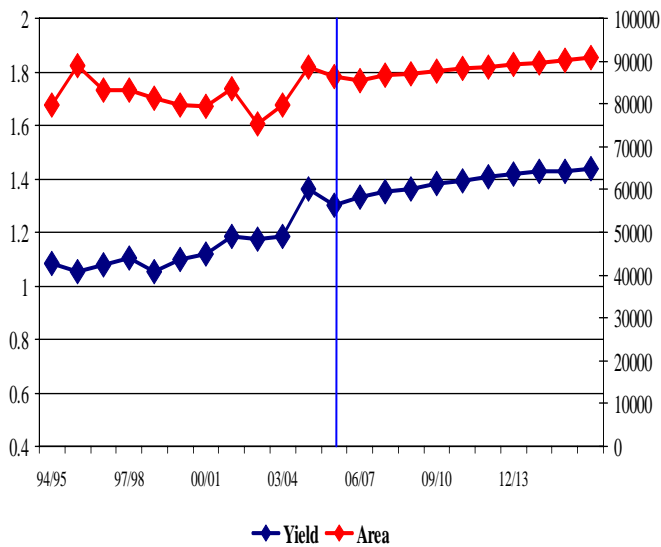
Yuan per Dollar



- Under increasing pressure to revalue its currency relative to the U.S. dollar, the Chinese exchange rate is projected to decrease 4% through 2006.
- However, the exchange rate is projected to appreciate moderately at an average rate of 4.7% through 2007 before stabilizing at annual appreciation of 1.7% during 2007 to 2009.
- For the remainder of the baseline period, it remains flat at around 6.75 Yuan per dollar.

WORLD COTTON AREA AND YIELD

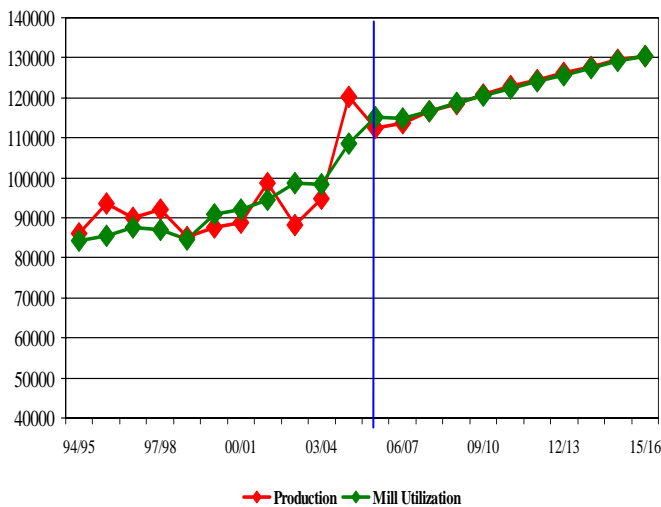
Bales per Acre 000 Acres



- The decline in cotton acreage and yield in 2005/06 is due to a combination of several factors, including ongoing reforms of the textile sector in many producing countries, unfavorable price relationships with respect to competing crops, and poor weather in China.
- From 2006/07 forward, yield is expected to increase by an average 0.75% per year and world acreage is projected to increase by an average 0.54%.

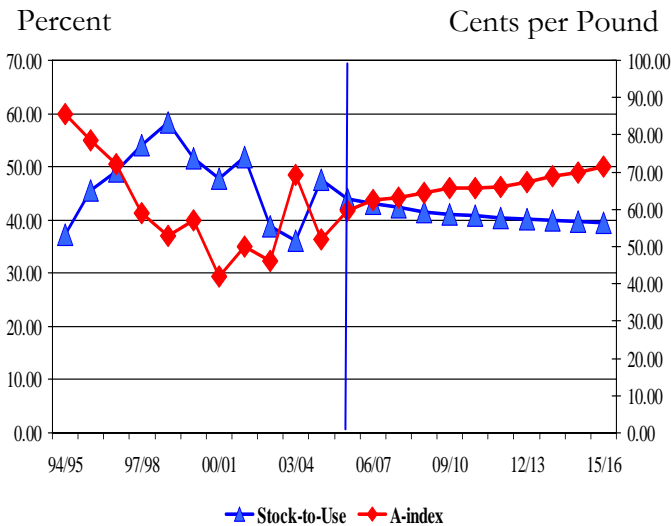
WORLD COTTON PRODUCTION AND UTILIZATION

000 Bales



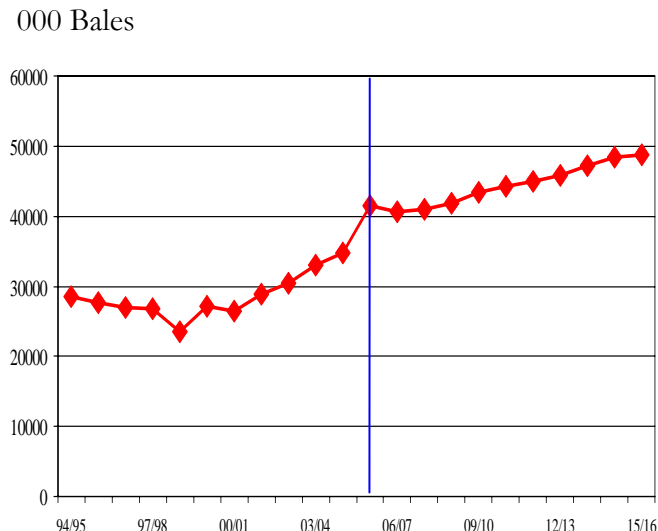
- Growth in yield and acres will result in world cotton production increasing an average of 1.42% per year for the next ten years.
- World mill demand of cotton is projected to follow its historical trend, growing from 115 to 130 million bales between 2005/06 and 2015/16, an average annual growth rate of about 1.3% a year.

WORLD COTTON PRICE vs. STOCK-TO-USE RATIO



- The world cotton price, as measured by the A-index, is expected to be 59.5 cents a pound in 2005/06 primarily because of low production and high mill use in China. From 2006/07 forward, the index is expected to continue its increasing trend, reaching 70.68 cents a pound in 2015/16.
- World stocks-to-use ratio is expected to decline in 2005/06 and remain more or less flat at that level for the remainder of the baseline period.

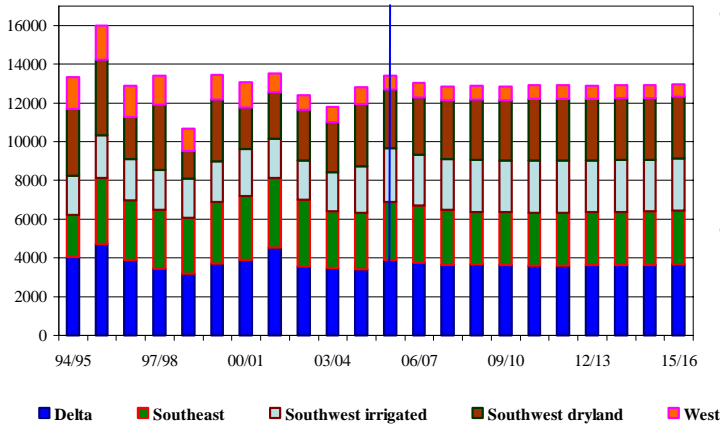
WORLD COTTON TRADE



- The world cotton trade is projected to increase by 19% in 2005/06 compared to 2004/05. From 2006/07 forward, world cotton trade is expected to increase by an average annual growth rate of 1.89% to reach almost 49 million bales by 2015/16.
- Most of the increase in trade flow is attributed to a more liberalized international textile and fiber market, better prices, and improved price relationships with respect to man made fibers.

U.S. UPLAND COTTON ACREAGE

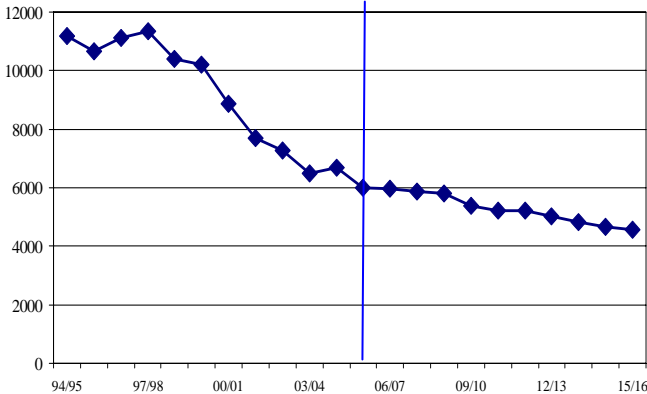
000 Acres



- U.S. harvested acreage in 2005/06 is estimated to be 602,000 acres higher than 2004/05.
- However, cotton acreage is projected to be basically flat during the projection period, just below 13 million acres.

U.S. DOMESTIC COTTON MILL USE

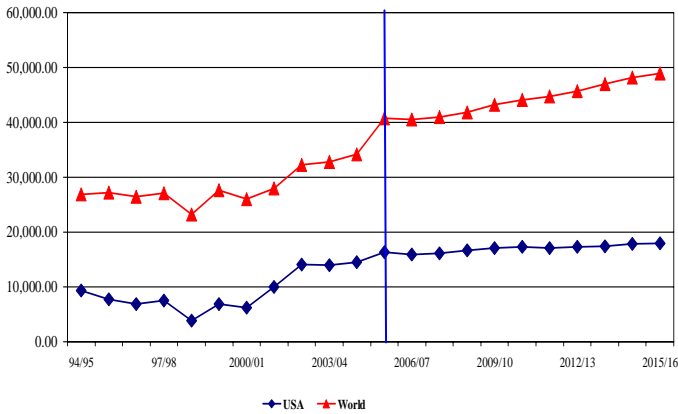
000 Bales



- U.S. cotton mill use is expected to follow its downward trend at an average rate of 3% a year. U.S. mill use is estimated to be 4.5 million bales at the end of the baseline, compared to 6 million bales in 2005/06.

U.S. vs WORLD COTTON EXPORTS

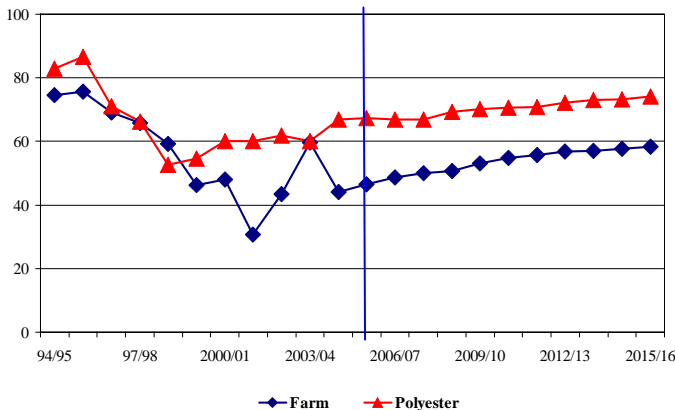
000 Bales



- World trade of cotton is expected to continue its historic upward trend and increase by more than 7.5 million bales in the next ten years.
- U.S. cotton exports are projected to increase over the course of the baseline from 16 million bales in 2006/07 to 18 million bales in 2015/16.

U.S. COTTON FARM PRICE vs POLYESTER PRICE

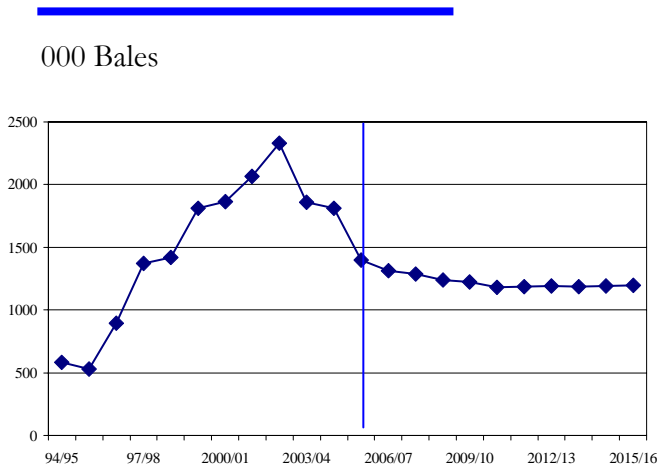
Cents per Pound



- The U.S. cotton farm price, estimated at 46.46 cents a pound in 2005/06, is projected to reach 58 cents per pound by 2015/16.
- The U.S. polyester price is expected to increase steadily from 67 cents in 2005/06 to 74.17 cents a pound by 2015/16.

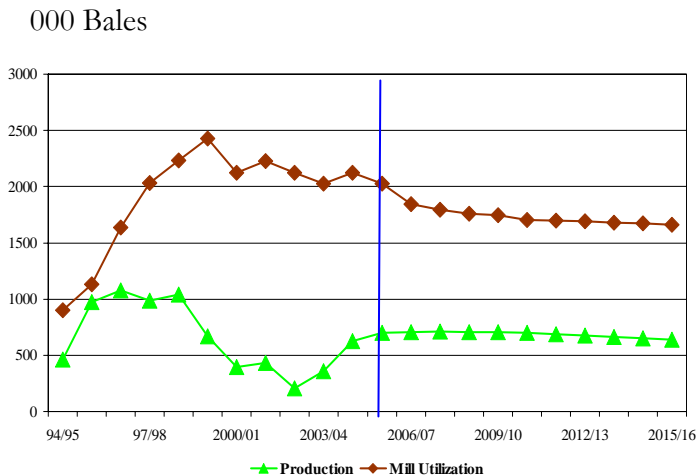
TRADITIONAL MARKETS

MEXICAN COTTON IMPORTS



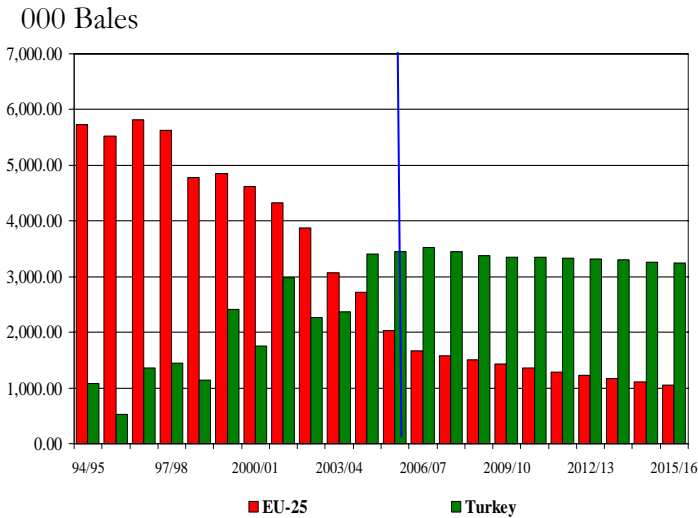
- Mexican cotton imports are expected to fall to 1.4 million bales in 2005/06, compared to 2.3 million bales in 2002/03.
- Imports are projected to decline to 1.2 million bales in 2015/16 under increased competition for Mexican textiles in the U.S. market due to the liberalization of the world textile market.

MEXICAN COTTON PRODUCTION AND UTILIZATION



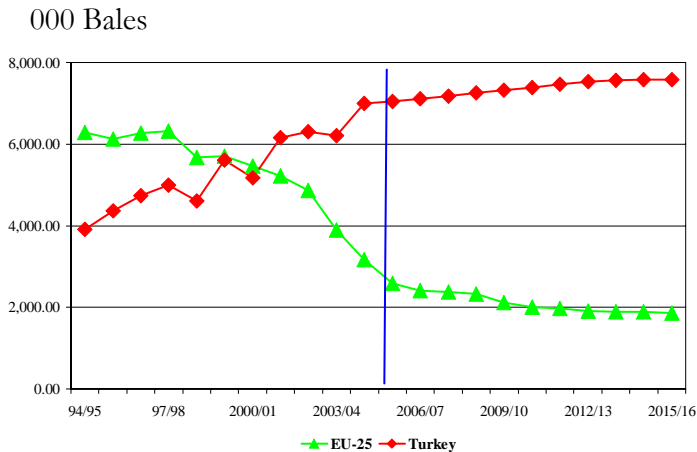
- Mexican Cotton production is projected to remain well below 1 million bales during the baseline period.
- Mill-use is expected to fall below 2 million bales in 2006/07 and continue to decline during the projection period at an average annual rate of about 2% a year.

EU AND TURKISH COTTON IMPORTS



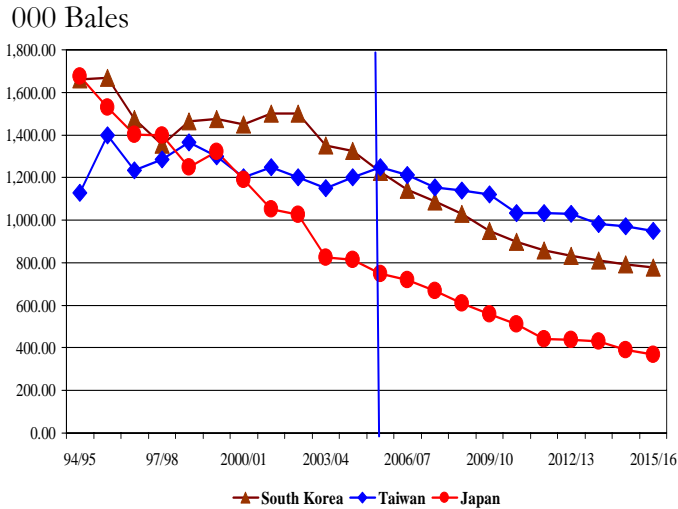
- EU cotton imports in 2004/05 amounted to 2.7 million bales and are expected to decrease by 18% in 2005/06.
- Further decline is expected in the next few years because of rising textile and apparel imports. Raw cotton imports are expected to stabilize at 1 million bales by 2015/16.
- Turkish cotton imports are projected to be stable around 3.3 million bales for the next ten years.

EU AND TURKISH COTTON UTILIZATION



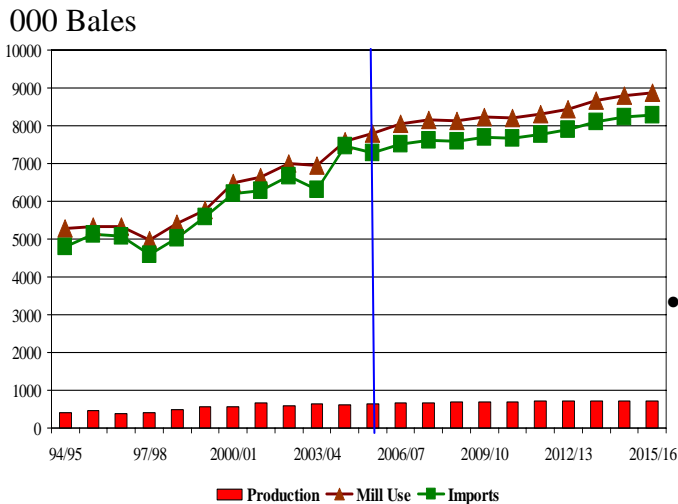
- Rising textile exports increase Turkish cotton mill use from 7 million bales in 2005/06 to close to 7.6 million bales by the end of the projection period.
- EU mill use is projected to follow its downward path as its domestic textile industry continues to contract.

JAPANESE, SOUTH KOREAN AND TAIWANESE MILL USE



- A declining domestic cotton textile industry in Japan, South Korea, and Taiwan is also apparent.
- Mill use in these 3 traditional importers is projected to decline with the most rapid average rate for Japan (6.2%), followed by South Korea (4%), then Taiwan (2.5%).

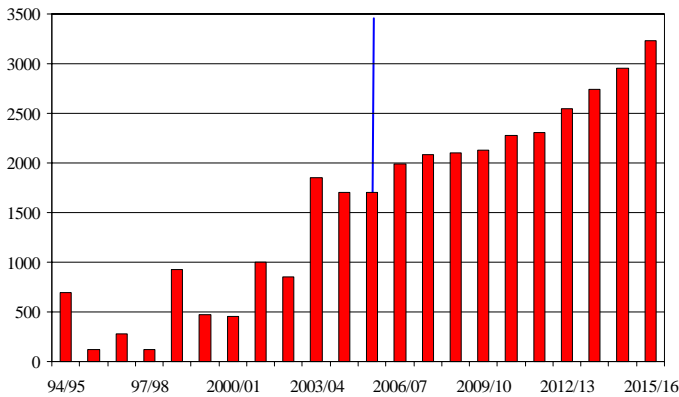
OTHER ASIA MILL USE, IMPORTS, AND PRODUCTION



- Cotton production in other areas of Asia (e.g. Indonesia, Malaysia, Vietnam, Thailand, etc.) is expected to grow by about 1% per year over the course of the baseline, but remain below 1 million bales.
- Textile industry cotton imports and mill use in this region is expected to continue strong growth trends. Imports and mill use will increase by 1 million bales, or by about 14% in 2015/16 compared to 2005/06.

PAKISTANI COTTON NET IMPORTS

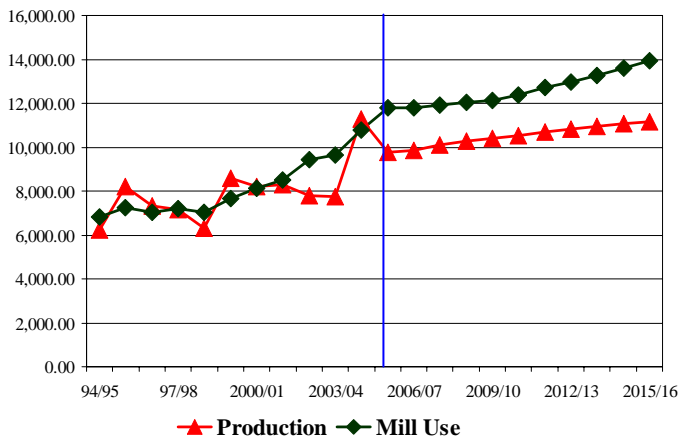
000 Bales



- Pakistani cotton imports are projected to more than double in the next ten years due to a combination of several factors. These include an increasingly differentiated and specialized manufacturing industry that requires a higher quality of cotton and ongoing policy reforms in the trade sector.

PAKISTANI PRODUCTION AND MILL UTILIZATION

000 Bales

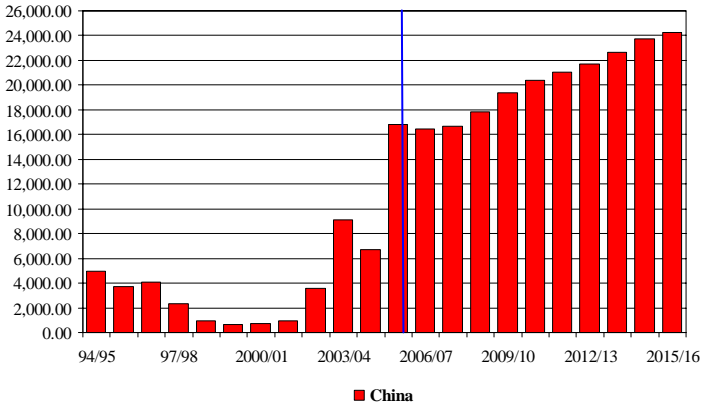


- Cotton mill use in Pakistan is projected to increase by 2.2 million bales during the projection period.
- Production levels will decline in 2005/06 from the high levels seen in 2003/04 but then resume their upward trend reaching around 11 million bales by the end of the baseline.

POTENTIAL GROWTH MARKETS

CHINESE COTTON IMPORTS

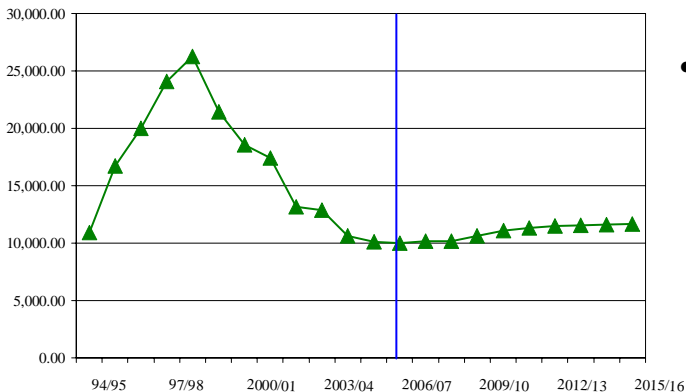
000 Bales



- China is expected to import 17 million bales of cotton in 2005/06, almost three times the level of 2004/05's imports. These imports are expected to continue to grow, reaching 24 million bales by 2015/16.

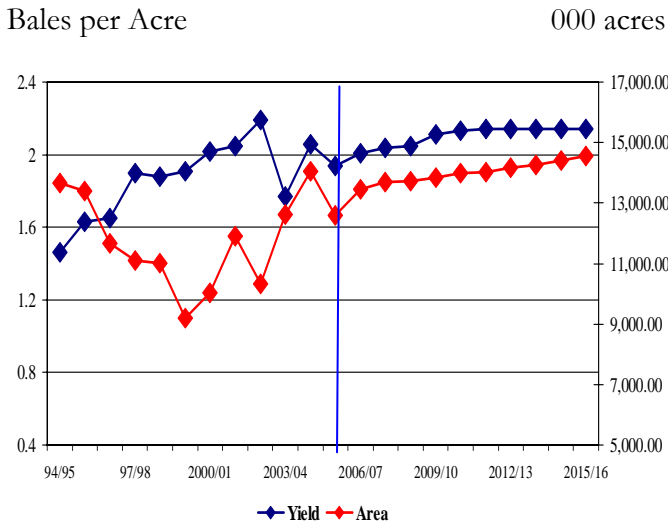
CHINESE COTTON ENDING STOCK

000 Bales



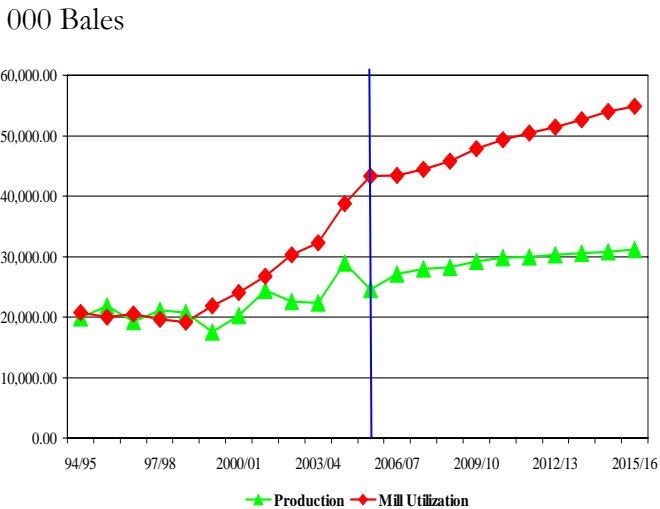
- Chinese ending stocks are expected to have bottomed out their downward trend and are projected to increase slightly over the next ten years, but stay around 11 million bales.

CHINESE COTTON AREA AND YIELD



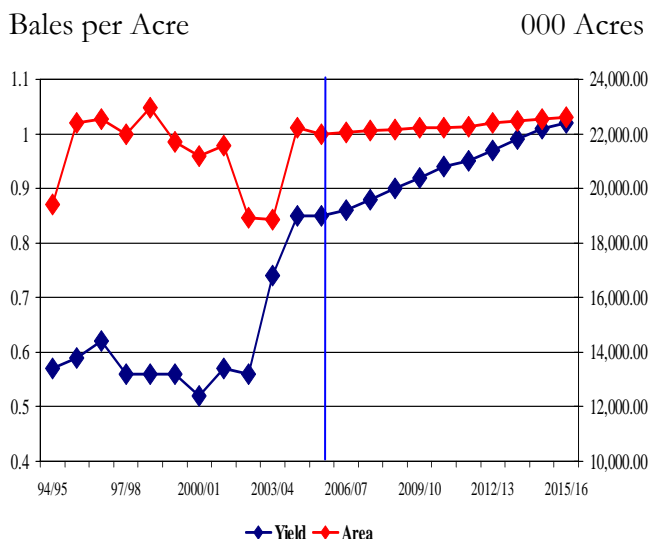
- China's cotton acreage is expected to recover from the dip in 2005/06 and be basically stable for the next ten years. On average, total area is projected to remain around 14 million acres.
- Yields are projected to stay around 2 bales per acre in the next ten years.

CHINESE COTTON PRODUCTION AND UTILIZATION



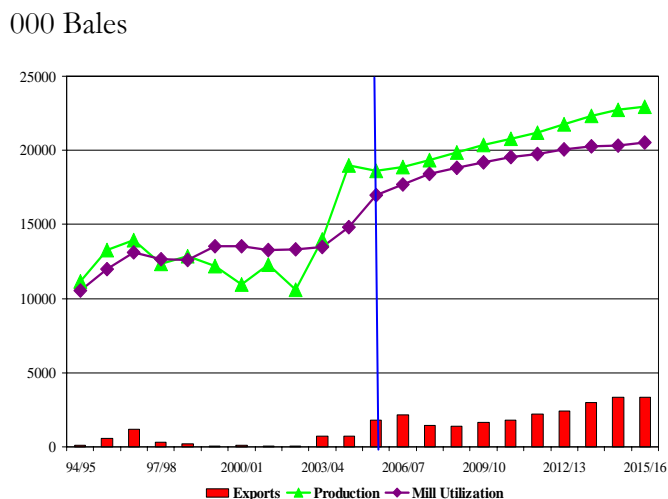
- Cotton mill demand in China is projected to rise by 12 million bales from 2005/06 to 2015/16, increasing from 43 million bales to 55 million bales of usage.
- Domestic cotton production will not keep pace with increased mill use, increasing the importance of the Chinese cotton import market for raw cotton exporters.

INDIAN COTTON AREA AND YIELD



- Indian cotton acreage is projected to be flat in the next ten years.
- However, Indian cotton yields, some of the lowest in the world, are projected to increase by 1.7% annually.
- Thus, Indian cotton production is expected to increase from 19 million bales in 2005/06 to 23 million bales in 2015/16, a 23% increase.

INDIAN COTTON PRODUCTION, MILL USE, AND EXPORTS

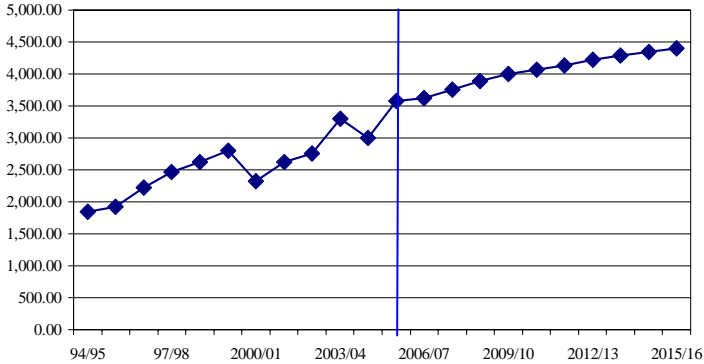


- Indian mill use is projected to follow production growth trends, averaging an annual growth rate of 1.7%. Cotton mill use is projected to increase from 17 million bales in 2005/06 to 21 million bales in 2015/16.
- India is expected to increase its presence in the world cotton export market as well. Exports will grow from 1.8 million bales in 2005/06 to 3.3 million bales in 2015/16.

TRADITIONAL EXPORTERS

WEST AND CENTRAL AFRICAN COTTON EXPORTS

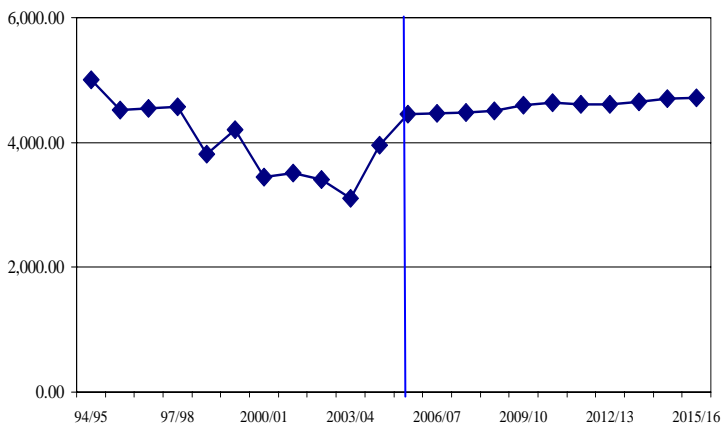
000 Bales



- West and Central African exports are expected to increase in 2005/06 to 3.6 million bales. From 2006/07 to the end of the projection, exports are expected to increase at an average rate of 1.9% a year, reaching 4.4 million bales by the end of the baseline.

UZBEKISTAN COTTON EXPORTS

000 Bales

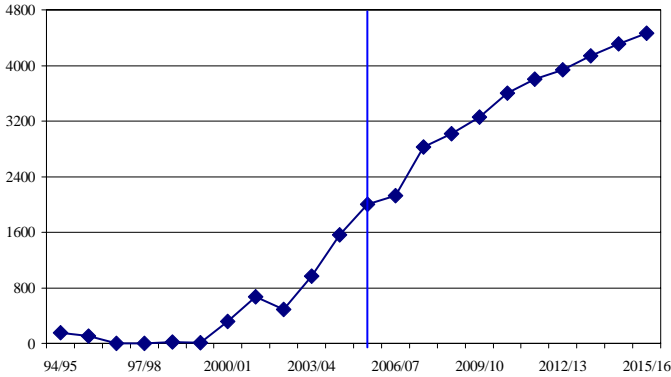


- Slight declines in harvested acres combined with only modest yield growth results in basically flat levels of cotton production in Uzbekistan. With no significant developments in their domestic textile industry, cotton exports are projected to remain around 4.5 million bales.

EXPORTERS TO WATCH!!

BRAZILIAN COTTON EXPORTS

000 Bales

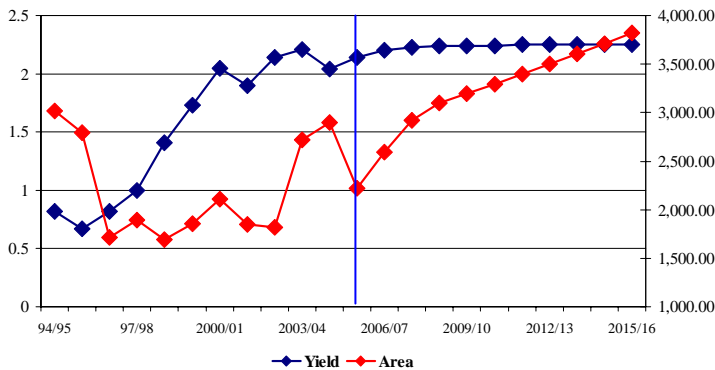


- Brazil is projected to be a growing exporter of cotton in the next ten years. Cotton exports are projected to increase from 1.6 million bales in 2005/06 to 4.5 million bales in 2015/16.

BRAZILIAN COTTON AREA AND YIELD

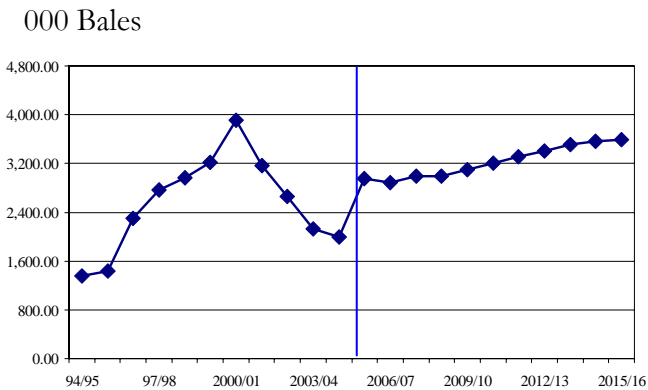
Bales per Acre

000 Acres



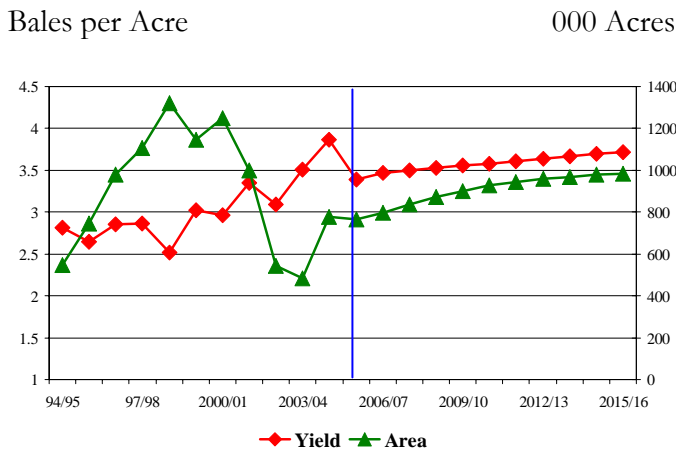
- Even though cotton yields are not expected to continue their same rate of growth, significant cotton production increases are expected from Brazil. Most of the increase in production is projected to come from area expansion, especially in the frontier regions. Cotton acreage increases of 5% per year are anticipated.

AUSTRALIAN COTTON EXPORTS



- Drought conditions have contributed to the recent decline of Australian cotton exports. After bottoming out at 1.7 million bales in 2004/05, the export sector is expected to recover starting in 2005/06.
- From 2005/06, volume of shipments from Australia are expected to average a 2.4% annual increase for the next ten years.

AUSTRALIAN COTTON AREA AND YIELD



- Cotton acreage in Australia is restricted by the availability of water reserves for irrigation. While acreage in 2005/06 is expected to decrease, modest acreage growth is expected over the next ten years.
- Outstanding yields have been achieved in Australian cotton production. These are expected to remain in the 3½ to 4 bale per acre range.

Argentina Fiber Supply and Utilization

	2005/06	2006/07	2007/08	2008/09	2009/10	2010/11	2011/12	2012/13	2013/14	2014/15	2015/16
Cotton											
	Thousand Acres										
Area	741.29	743.04	779.05	783.15	815.61	865.34	926.12	948.02	1001.77	1021.97	1022.46
	Bales Per Acre										
Yield	0.82	0.80	0.81	0.82	0.83	0.84	0.85	0.86	0.87	0.88	0.88
	Thousand Bales										
Domestic Supply	1183.01	1155.76	1164.40	1182.47	1224.23	1287.49	1365.70	1415.05	1484.98	1532.20	1550.81
Production	610.01	596.76	633.47	643.95	677.64	726.82	786.36	814.65	870.32	897.99	898.42
Beginning Stock	573.00	559.00	530.93	538.52	546.58	560.67	579.34	600.40	614.66	634.21	652.39
Domestic Demand	1208.03	1186.73	1203.60	1219.77	1247.73	1282.64	1305.63	1321.44	1353.20	1373.88	1392.00
Mill Utilization	640.01	655.81	665.08	673.18	687.06	703.30	705.23	706.78	718.99	721.49	728.54
Loss	9.02	0.00	0.00	0.00	0.00	0.00	0.00	0.00	0.00	0.00	0.00
Ending Stock	559.00	530.93	538.52	546.58	560.67	579.34	600.40	614.66	634.21	652.39	663.46
Trade											
Imports	125.02	115.65	115.44	115.22	115.05	114.88	114.69	114.46	114.31	114.28	114.19
Exports	100.00	84.69	76.24	77.93	91.55	119.72	174.76	208.07	246.08	272.60	273.00
Man-made Fibers											
	Million Pounds										
Domestic Supply	97.03	89.69	98.65	113.99	129.49	139.22	143.75	146.29	148.46	150.61	152.70
Capacity	191.80	191.84	200.66	200.69	200.68	200.67	200.67	200.67	200.70	200.73	200.76
Utilization	0.51	0.47	0.49	0.57	0.65	0.69	0.72	0.73	0.74	0.75	0.76
Domestic Demand	148.97	183.29	183.70	183.16	183.07	185.32	193.49	205.46	210.81	222.74	227.54
Net Trade	-51.93	-93.60	-85.04	-69.18	-53.58	-46.09	-49.74	-59.17	-62.35	-72.12	-74.85
Prices											
	Pesos Per Pound										
Cotton	1.75	1.92	2.03	2.15	2.25	2.36	2.48	2.63	2.74	2.76	2.83
Polyester	1.95	2.06	2.14	2.29	2.41	2.53	2.66	2.83	2.92	2.93	2.97

Australian Fiber Supply and Utilization

	2005/06	2006/07	2007/08	2008/09	2009/10	2010/11	2011/12	2012/13	2013/14	2014/15	2015/16
Cotton											
	Thousand Acres										
Area	766.00	795.34	836.48	871.38	901.20	927.11	945.85	958.34	969.59	979.78	985.47
	Bales Per Acre										
Yield	3.39	3.47	3.50	3.53	3.56	3.58	3.61	3.64	3.67	3.70	3.72
	Thousand Bales										
Domestic Supply	4552.86	4428.96	4407.18	4437.04	4594.43	4766.09	4913.68	5031.27	5121.51	5189.36	5242.27
Production	2599.84	2760.94	2928.26	3074.45	3204.58	3322.39	3415.43	3486.77	3554.69	3628.46	3667.46
Beginning Stock	1953.02	1668.02	1478.92	1362.59	1389.85	1443.70	1498.25	1544.50	1566.82	1560.90	1574.80
Domestic Demand	1603.02	1537.50	1420.68	1447.65	1501.20	1555.47	1601.43	1623.41	1617.16	1630.78	1648.73
Mill Utilization	60.00	58.58	58.10	57.81	57.50	57.22	56.93	56.60	56.26	55.98	55.69
Loss	-125.00	0.00	0.00	0.00	0.00	0.00	0.00	0.00	0.00	0.00	0.00
Ending Stock	1668.02	1478.92	1362.59	1389.85	1443.70	1498.25	1544.50	1566.82	1560.90	1574.80	1593.04
Trade											
Imports	0.00	0.00	0.00	0.00	0.00	0.00	0.00	0.00	0.00	0.00	0.00
Exports	2949.84	2891.46	2986.50	2989.39	3093.23	3210.62	3312.24	3407.86	3504.35	3558.58	3593.54
Man-made Fibers											
	Million Pounds										
Domestic Supply	2.18	1.57	1.76	2.25	2.65	3.01	3.24	3.43	3.62	3.81	3.98
Capacity	6.61	6.51	6.39	6.25	6.10	5.98	5.93	5.90	5.94	5.98	6.00
Utilization	0.33	0.24	0.27	0.36	0.43	0.50	0.55	0.58	0.61	0.64	0.66
Domestic Demand	80.24	80.55	79.32	77.76	76.12	74.41	72.62	70.71	68.79	66.87	64.85
Net Trade	-78.07	-78.98	-77.57	-75.52	-73.48	-71.40	-69.37	-67.29	-65.16	-63.05	-60.87
Prices											
	Australian Dollars Per Pound										
Cotton	0.77	0.80	0.80	0.81	0.81	0.82	0.82	0.83	0.85	0.85	0.87
Polyester	0.86	0.86	0.84	0.86	0.87	0.87	0.88	0.89	0.90	0.90	0.91

India Fiber Supply and Utilization

	2005/06	2006/07	2007/08	2008/09	2009/10	2010/11	2011/12	2012/13	2013/14	2014/15	2015/16
Cotton											
	Thousand Acres										
Area	21991.60	22038.76	22109.30	22159.45	22213.07	22225.25	22250.88	22396.66	22488.39	22553.19	22604.53
	Bales Per Acre										
Yield	0.85	0.86	0.88	0.90	0.92	0.94	0.95	0.97	0.99	1.01	1.02
	Thousand Bales										
Domestic Supply	27086.27	27977.60	28176.33	28752.58	29436.07	30081.21	30712.42	31321.59	32048.99	32533.02	32800.52
Production	18600.18	18891.51	19350.36	19842.54	20358.71	20792.39	21204.97	21784.15	22319.81	22749.12	22966.56
Beginning Stock	8486.09	9086.09	8825.97	8910.04	9077.36	9288.82	9507.44	9537.44	9729.18	9783.90	9833.96
Domestic Demand	26086.25	26529.46	27333.42	27909.02	28469.77	29049.83	29312.22	29781.29	30031.76	30140.73	30405.58
Mill Utilization	17000.17	17703.49	18423.38	18831.65	19180.96	19542.39	19774.78	20052.11	20247.86	20306.77	20515.92
Loss	0.00	0.00	0.00	0.00	0.00	0.00	0.00	0.00	0.00	0.00	0.00
Ending Stock	9086.09	8825.97	8910.04	9077.36	9288.82	9507.44	9537.44	9729.18	9783.90	9833.96	9889.66
Trade											
Imports	800.00	704.34	629.05	569.32	678.61	762.36	826.40	874.69	910.06	889.51	870.84
Exports	1800.02	2152.48	1471.96	1412.89	1644.91	1793.74	2226.59	2414.99	2927.29	3281.80	3265.78
Man-Made Fibers											
	Million Pounds										
Domestic Supply	3825.39	3731.18	4067.05	4394.08	4518.98	4608.86	4634.17	4680.52	4734.76	4781.69	4801.30
Capacity	5816.90	5817.18	5817.26	5817.01	5816.27	5815.20	5814.57	5813.92	5813.80	5813.75	5813.59
Utilization	0.66	0.64	0.70	0.76	0.78	0.79	0.80	0.81	0.81	0.82	0.83
Domestic Demand	2304.00	1730.36	1789.79	1869.75	1985.23	2246.14	2508.72	2807.74	3094.69	3464.81	3531.24
Net Trade	1521.38	2000.82	2277.26	2524.33	2533.76	2362.72	2125.45	1872.79	1640.06	1316.88	1270.06
Prices											
	Indian Rupees Per Pound										
Cotton	26.56	28.79	29.74	30.81	31.35	31.66	31.99	32.70	33.96	35.27	37.35
Polyester	29.50	30.83	31.34	32.80	33.54	33.96	34.27	35.08	36.21	37.44	39.19

Pakistan Fiber Supply and Utilization

	2005/06	2006/07	2007/08	2008/09	2009/10	2010/11	2011/12	2012/13	2013/14	2014/15	2015/16
Cotton											
Area	7783.54	7789.55	7896.83	7950.73	Thousand Acres						
					7975.32	7977.80	8034.84	8037.30	8059.67	8081.68	8098.08
Yield	1.25	1.27	1.28	1.29	Bales Per Acre						
					1.31	1.32	1.33	1.35	1.36	1.37	1.38
Domestic Supply	13630.14	13066.49	13022.24	13116.66	Thousand Bales						
Production	9750.10	9861.46	10102.63	10277.33	13233.50	13396.54	13621.39	13652.70	13798.23	13973.79	14072.39
Beginning Stock	3880.04	3205.03	2919.61	2839.33	10415.17	10524.42	10706.26	10816.17	10953.28	11090.55	11142.96
Domestic Demand	14980.15	14697.87	14743.33	14846.65	14985.63	15293.23	15542.21	15803.51	16135.08	16516.87	16890.73
Mill Utilization	11775.12	11778.26	11904.00	12028.31	12113.51	12378.11	12705.68	12958.57	13251.84	13587.45	13935.32
Loss	0.00	0.00	0.00	0.00	0.00	0.00	0.00	0.00	0.00	0.00	0.00
Ending Stock	3205.03	2919.61	2839.33	2818.34	2872.13	2915.13	2836.53	2844.94	2883.24	2929.42	2955.42
Trade											
Imports	1700.02	1991.10	2087.41	2103.27	2131.82	2280.25	2308.05	2544.05	2738.01	2951.76	3235.94
Exports	350.00	359.72	366.31	373.28	379.69	383.56	387.23	393.25	401.16	408.67	417.60
Man-Made Fibers											
Domestic Supply	1367.35	1489.15	1520.25	1517.55	Million Pounds						
Capacity	1781.33	1848.82	1878.08	1862.36	1461.92	1455.67	1525.76	1670.18	1908.54	2225.22	2302.15
Utilization	0.77	0.81	0.81	0.81	1785.16	1769.74	1847.28	2012.84	2289.54	2658.00	2971.22
Domestic Demand	826.65	695.33	732.32	824.24	951.44	1024.66	1077.33	1110.73	1142.07	1175.87	1208.21
Net Trade	540.70	793.83	787.92	693.31	510.47	431.01	448.43	559.45	766.47	1049.35	1093.94
Prices											
Cotton	35.78	38.77	41.06	43.66	Pakistani Rupees Per Pound						
Polyester	39.74	41.53	43.27	46.48	45.40	46.80	48.23	50.22	52.84	55.33	59.05

South Korea Fiber Supply and Utilization

	2005/06	2006/07	2007/08	2008/09	2009/10	2010/11	2011/12	2012/13	2013/14	2014/15	2015/16
Cotton											
						Thousand Acres					
Area	2.47	2.47	2.47	2.47	2.47	2.47	2.47	2.47	2.47	2.47	2.47
						Bales Per Acre					
Yield	0.40	0.40	0.40	0.40	0.40	0.40	0.40	0.40	0.40	0.40	0.40
						Thousand Bales					
Domestic Supply	420.00	401.01	384.08	370.20	358.54	350.04	344.37	339.14	333.62	327.93	323.05
Production	1.00	1.00	1.00	1.00	1.00	1.00	1.00	1.00	1.00	1.00	1.00
Beginning Stock	419.00	400.01	383.08	369.20	357.54	349.04	343.37	338.14	332.62	326.93	322.05
Domestic Demand	1625.02	1527.18	1458.98	1388.96	1297.99	1239.87	1197.39	1163.96	1136.59	1114.76	1095.50
Mill Utilization	1225.01	1144.11	1089.77	1031.42	948.94	896.51	859.25	831.34	809.66	792.70	778.80
Loss	0.00	0.00	0.00	0.00	0.00	0.00	0.00	0.00	0.00	0.00	0.00
Ending Stock	400.01	383.08	369.20	357.54	349.04	343.37	338.14	332.62	326.93	322.05	316.71
Trade											
Imports	1215.02	1136.18	1084.90	1028.75	949.45	899.83	863.02	834.82	812.97	796.83	782.45
Exports	10.00	10.00	10.00	10.00	10.00	10.00	10.00	10.00	10.00	10.00	10.00
Man-Made Fibers											
						Million Pounds					
Domestic Supply	4940.43	4541.11	5418.01	5813.16	5862.92	5904.37	5864.82	5871.41	5898.13	5916.78	5942.39
Capacity	6333.88	6290.91	6253.16	6238.21	6230.72	6223.87	6218.96	6215.08	6222.12	6232.07	6236.36
Utilization	0.78	0.72	0.87	0.93	0.94	0.95	0.94	0.94	0.95	0.95	0.95
Domestic Demand	1584.58	1574.98	1580.70	1547.80	1529.93	1511.92	1489.48	1464.84	1440.91	1419.30	1400.19
Net Trade	3355.84	2966.13	3837.31	4265.36	4332.99	4392.46	4375.34	4406.57	4457.22	4497.48	4542.20
Prices											
						Korean Wons per Pound					
Cotton	610.34	655.41	685.18	713.23	725.17	732.28	739.65	754.54	774.36	787.86	817.04
Polyester	678.04	701.94	722.00	759.38	775.81	785.31	792.28	809.60	825.78	836.32	857.31

China Fiber Supply and Utilization

	2005/06	2006/07	2007/08	2008/09	2009/10	2010/11	2011/12	2012/13	2013/14	2014/15	2015/16
Cotton											
	Thousand Acres										
Area	12601.93	13444.67	13709.23	13721.64	13850.79	14006.91	14016.23	14165.60	14271.98	14408.16	14548.12
	Bales Per Acre										
Yield	1.94	2.01	2.04	2.05	2.11	2.13	2.14	2.14	2.14	2.14	2.14
	Thousand Bales										
Domestic Supply	35123.35	37170.86	38028.35	38353.83	39339.03	40419.86	41084.78	41680.22	42011.91	42377.75	42785.39
Production	24500.24	27077.76	28009.19	28181.79	29157.00	29775.52	29998.50	30366.74	30498.19	30840.93	31198.78
Beginning Stock	10623.11	10093.10	10019.16	10172.04	10182.03	10644.34	11086.28	11313.48	11513.72	11536.82	11586.61
Domestic Demand	51893.51	53501.39	54548.08	55962.31	58447.04	60458.28	61749.23	62928.75	64212.82	65626.61	66524.73
Mill Utilization	43300.43	43482.23	44376.04	45780.29	47802.70	49372.00	50435.75	51415.03	52676.00	54040.00	54876.91
Loss	-1500.02	0.00	0.00	0.00	0.00	0.00	0.00	0.00	0.00	0.00	0.00
Ending Stock	10093.10	10019.16	10172.04	10182.03	10644.34	11086.28	11313.48	11513.72	11536.82	11586.61	11647.82
Trade											
Imports	16820.16	16433.76	16684.22	17829.89	19384.49	20381.35	21043.45	21667.71	22664.34	23751.72	24275.59
Exports	50.00	103.23	164.49	221.40	276.48	342.93	379.01	419.18	463.42	502.86	536.24
Man-Made Fibers											
	Million Pounds										
Domestic Supply	36147.01	35645.47	35491.17	35538.48	36025.26	35858.37	35888.23	35603.82	36023.55	37182.14	38247.01
Capacity	40540.79	39502.42	39342.26	39404.43	39914.62	39798.57	39926.97	39734.98	40358.65	41889.49	43510.92
Utilization	0.89	0.90	0.90	0.90	0.90	0.90	0.90	0.90	0.89	0.89	0.88
Domestic Demand	33123.48	36869.47	38265.93	39897.98	41258.10	41617.40	41128.09	40694.25	41955.50	43325.46	45012.85
Net Trade	3023.54	-1224.00	-2774.76	-4359.50	-5232.84	-5759.04	-5239.85	-5090.43	-5931.95	-6143.32	-6765.83
Prices											
	Chinese Yuan Per Pound										
Cotton	5.58	6.05	5.95	5.96	5.89	6.36	6.45	6.41	6.39	6.34	6.44
Polyester	5.47	5.54	5.54	5.73	5.81	5.85	5.87	5.97	6.05	6.06	6.14

Taiwan Fiber Supply and Utilization

	2005/06	2006/07	2007/08	2008/09	2009/10	2010/11	2011/12	2012/13	2013/14	2014/15	2015/16
Cotton											
					Thousand Acres						
Area	0.00	0.00	0.00	0.00	0.00	0.00	0.00	0.00	0.00	0.00	0.00
						Bales Per Acre					
Yield	0.00	0.00	0.00	0.00	0.00	0.00	0.00	0.00	0.00	0.00	0.00
						Thousand Bales					
Domestic Supply	488.01	463.00	446.11	438.97	433.99	430.94	427.14	422.08	415.56	415.97	406.56
Production	0.00	0.00	0.00	0.00	0.00	0.00	0.00	0.00	0.00	0.00	0.00
Beginning Stock	488.01	463.00	446.11	438.97	433.99	430.94	427.14	422.08	415.56	415.97	406.56
Domestic Demand	1713.01	1657.77	1591.70	1573.30	1552.79	1459.36	1455.51	1443.73	1396.77	1377.94	1347.11
Mill Utilization	1250.01	1211.66	1152.73	1139.31	1121.85	1032.22	1033.43	1028.17	980.80	971.38	948.49
Loss	0.00	0.00	0.00	0.00	0.00	0.00	0.00	0.00	0.00	0.00	0.00
Ending Stock	463.00	446.11	438.97	433.99	430.94	427.14	422.08	415.56	415.97	406.56	398.62
Trade											
Imports	1225.01	1194.77	1145.59	1134.33	1118.80	1028.42	1028.37	1021.65	981.21	961.96	940.55
Exports	0.00	0.00	0.00	0.00	0.00	0.00	0.00	0.00	0.00	0.00	0.00
Man-Made Fibers											
					Million Pounds						
Domestic Supply	6785.83	6546.09	6777.69	7152.81	7474.41	7754.13	7969.49	8174.29	8380.23	8582.23	8788.86
Capacity	8377.56	8377.57	8598.03	8818.46	9038.88	9259.31	9479.75	9700.18	9920.63	10141.09	10361.55
Utilization	0.81	0.78	0.79	0.81	0.83	0.84	0.84	0.84	0.84	0.85	0.85
Domestic Demand	6344.01	3479.58	3727.84	4092.06	4487.33	4465.15	4842.97	5211.79	5132.39	5459.82	5362.42
Net Trade	441.82	3066.52	3049.85	3060.76	2987.09	3288.97	3126.52	2962.50	3247.85	3122.41	3426.44
Prices											
					Taiwanese Dollars Per Pound						
Cotton	0.98	1.02	1.00	0.98	0.96	0.95	0.95	0.96	0.98	0.99	1.01
Polyester	1.09	1.09	1.05	1.05	1.03	1.02	1.02	1.03	1.04	1.05	1.06

Japan Fiber Supply and Utilization

	2005/06	2006/07	2007/08	2008/09	2009/10	2010/11	2011/12	2012/13	2013/14	2014/15	2015/16	
Cotton												
					Thousand Acres							
Area	0.00	0.00	0.00	0.00	0.00	0.00	0.00	0.00	0.00	0.00	0.00	
					Bales Per Acre							
Yield	0.00	0.00	0.00	0.00	0.00	0.00	0.00	0.00	0.00	0.00	0.00	
					Thousand Bales							
Domestic Supply	141.00	116.00	103.51	97.84	95.01	93.75	93.42	93.55	93.75	93.97	94.34	
Production	0.00	0.00	0.00	0.00	0.00	0.00	0.00	0.00	0.00	0.00	0.00	
Beginning Stock	141.00	116.00	103.51	97.84	95.01	93.75	93.42	93.55	93.75	93.97	94.34	
Domestic Demand	866.01	824.30	767.44	706.48	652.04	604.57	536.24	533.08	524.07	483.67	463.95	
Mill Utilization	750.01	720.78	669.60	611.46	558.29	511.15	442.70	439.32	430.11	389.33	369.37	
Loss	0.00	0.00	0.00	0.00	0.00	0.00	0.00	0.00	0.00	0.00	0.00	
Ending Stock	116.00	103.51	97.84	95.01	93.75	93.42	93.55	93.75	93.97	94.34	94.59	
Trade												
Imports	725.01	708.30	663.92	608.64	557.03	510.81	442.82	439.53	430.32	389.70	369.61	
Exports	0.00	0.00	0.00	0.00	0.00	0.00	0.00	0.00	0.00	0.00	0.00	
Man-Made Fibers												
					Million Pounds							
Domestic Supply	2076.48	2234.24	2380.76	2537.44	2605.76	2671.73	2766.85	3082.44	3484.94	3593.08	3700.50	
Capacity	3519.46	3738.68	3957.75	4177.42	4287.03	4396.48	4395.80	4725.62	5166.25	5166.25	5166.14	
Utilization	0.59	0.60	0.60	0.61	0.61	0.61	0.63	0.65	0.67	0.70	0.72	
Domestic Demand	1714.10	1893.56	2034.97	2187.07	2335.56	2492.29	2513.56	2908.08	3333.59	3488.12	3589.67	
Net Trade	362.38	340.68	345.79	350.38	270.20	179.43	253.29	174.36	151.35	104.96	110.83	
Prices												
					Yen Per Pound							
Cotton	64.25	63.59	58.89	57.76	56.78	55.77	55.26	55.72	56.34	56.14	57.02	
Polyester	71.38	68.11	62.05	61.50	60.74	59.81	59.19	59.78	60.08	59.60	59.83	

Other Asia Fiber Supply and Utilization

	2005/06	2006/07	2007/08	2008/09	2009/10	2010/11	2011/12	2012/13	2013/14	2014/15	2015/16
Cotton											
					Thousand Acres						
Area	1067.46	1086.59	1105.58	1118.68	1129.62	1136.04	1137.37	1136.63	1137.82	1140.90	1142.61
					Bales Per Acre						
Yield	0.61	0.61	0.61	0.61	0.62	0.62	0.62	0.62	0.62	0.63	0.63
					Thousand Bales						
Domestic Supply	2445.02	2449.05	2461.50	2484.83	2508.64	2534.25	2559.40	2582.64	2602.60	2621.53	2640.77
Production	648.01	662.04	676.07	686.57	695.80	702.29	705.64	707.71	710.98	715.44	716.51
Beginning Stock	1797.01	1787.01	1785.42	1798.26	1812.83	1831.96	1853.76	1874.93	1891.62	1906.09	1924.26
Domestic Demand	9592.09	9833.08	9945.22	9932.08	10072.15	10066.15	10188.14	10336.50	10565.73	10720.10	10798.26
Mill Utilization	7805.08	8047.65	8146.95	8119.24	8240.19	8212.39	8313.21	8444.87	8659.65	8795.85	8861.88
Ending Stock	1787.01	1785.42	1798.26	1812.83	1831.96	1853.76	1874.93	1891.62	1906.09	1924.26	1936.38
Trade											
Imports	7288.07	7525.46	7624.08	7586.90	7701.91	7668.80	7764.25	7888.44	8096.92	8231.10	8289.49
Exports	141.00	141.43	140.37	139.66	138.39	136.90	135.50	134.58	133.79	132.52	132.00
Man-Made Fibers											
					Million Pounds						
Domestic Supply	3911.61	4029.75	4236.23	4475.71	4657.77	4806.67	4912.68	5010.92	5112.16	5213.02	5316.91
Capacity	5215.47	5326.86	5437.33	5548.05	5659.54	5771.07	5882.63	5993.49	6105.34	6217.48	6329.14
Utilization	0.75	0.76	0.78	0.81	0.82	0.83	0.84	0.84	0.84	0.84	0.84
Domestic Demand	5813.92	5885.46	5981.05	5711.81	5660.65	5567.47	5600.55	5610.18	5585.17	5885.19	6073.35
Net Trade	-1902.31	-1855.71	-1744.82	-1236.09	-1002.87	-760.80	-687.88	-599.25	-473.01	-672.17	-756.44

Brazil Fiber Supply and Utilization

	2005/06	2006/07	2007/08	2008/09	2009/10	2010/11	2011/12	2012/13	2013/14	2014/15	2015/16
Cotton											
	Thousand Acres										
Area	2223.87	2590.27	2923.23	3101.58	3196.56	3295.70	3397.54	3501.22	3606.19	3711.98	3818.22
	Bales Per Acre										
Yield	2.14	2.20	2.23	2.24	2.24	2.24	2.25	2.25	2.25	2.25	2.25
	Thousand Bales										
Domestic Supply	9831.10	9847.73	10559.14	11065.25	11449.00	11834.16	12102.44	12376.49	12708.15	13026.66	13342.71
Production	4750.05	5691.68	6531.19	6956.22	7151.10	7391.77	7652.93	7871.01	8099.38	8339.07	8580.25
Beginning Stock	5081.05	4156.04	4027.95	4109.03	4297.90	4442.38	4449.51	4505.49	4608.78	4687.58	4762.46
Domestic Demand	8056.08	7951.11	8044.99	8396.12	8555.39	8584.39	8642.76	8753.50	8850.87	8956.19	9064.01
Mill Utilization	4000.04	3923.16	3935.96	4098.22	4113.01	4134.88	4137.27	4144.73	4163.29	4193.73	4228.56
Loss Demand	-100.00	0.00	0.00	0.00	0.00	0.00	0.00	0.00	0.00	0.00	0.00
Ending Stock	4156.04	4027.95	4109.03	4297.90	4442.38	4449.51	4505.49	4608.78	4687.58	4762.46	4835.45
Trade											
Imports	225.00	230.15	307.84	348.29	361.15	355.91	339.32	312.47	277.29	237.17	190.19
Exports	2000.02	2126.77	2821.99	3017.42	3254.76	3605.67	3799.00	3935.46	4134.57	4307.64	4468.89
Man-Made Fibers											
	Million Pounds										
Domestic Supply	630.28	556.48	468.96	436.41	375.59	322.39	304.29	308.28	355.19	408.97	450.37
Capacity	946.00	1037.44	1014.50	996.37	883.51	762.61	732.42	750.95	862.60	976.59	1040.93
Utilization	0.67	0.54	0.46	0.44	0.43	0.42	0.42	0.41	0.41	0.42	0.43
Domestic Demand	2013.71	2263.05	2417.14	2410.23	2470.40	2529.37	2596.54	2659.56	2723.09	2788.55	2851.75
Net Trade	-1383.43	-1706.56	-1948.18	-1973.82	-2094.80	-2206.99	-2292.25	-2351.27	-2367.90	-2379.58	-2401.39
Prices											
	Cruzeiro Real Per Pound										
Cotton	1.44	1.51	1.65	1.80	1.93	2.04	2.13	2.24	2.37	2.47	2.62
Polyester	1.60	1.62	1.74	1.92	2.07	2.19	2.28	2.41	2.53	2.62	2.75

Other Latin America Fiber Supply and Utilization

	2005/06	2006/07	2007/08	2008/09	2009/10	2010/11	2011/12	2012/13	2013/14	2014/15	2015/16
Cotton											
	Thousand Acres										
Area	1176.18	1119.38	1093.07	1080.63	1075.43	1073.23	1072.29	1072.02	1072.59	1073.70	1074.54
	Bales Per Acre										
Yield	0.96	0.96	0.97	0.97	0.97	0.98	0.98	0.98	0.99	0.99	0.99
	Thousand Bales										
Domestic Supply	1769.02	1720.69	1679.31	1658.62	1648.70	1646.64	1648.59	1651.97	1654.72	1657.44	1657.94
Production	1127.02	1076.69	1055.39	1047.33	1046.23	1048.02	1051.02	1054.69	1059.17	1064.21	1065.04
Beginning Stock	642.00	644.00	623.93	611.28	602.46	598.62	597.57	597.28	595.55	593.24	592.91
Domestic Demand	2079.02	2057.46	2047.54	2073.93	2072.25	2117.40	2169.68	2216.33	2235.71	2253.88	2257.59
Mill Utilization	1435.02	1433.53	1436.26	1471.46	1473.64	1519.83	1572.40	1620.78	1642.47	1660.98	1668.57
Ending Stock	644.00	623.93	611.28	602.46	598.62	597.57	597.28	595.55	593.24	592.91	589.02
Trade											
Imports	758.00	784.31	819.53	845.86	877.10	911.17	944.55	971.24	996.44	1030.16	1052.60
Exports	448.00	447.54	451.30	430.55	453.54	440.41	423.47	406.87	415.45	433.72	452.95
Man-Made Fibers											
	Million Pounds										
Domestic Supply	283.06	234.30	188.65	146.48	100.88	62.32	38.02	27.81	24.69	23.97	24.14
Capacity	389.34	385.84	382.46	381.29	380.88	380.40	380.54	380.74	382.75	385.23	386.89
Utilization	0.73	0.61	0.49	0.38	0.26	0.16	0.10	0.07	0.06	0.06	0.06
Domestic Demand	920.70	820.69	874.75	926.85	945.36	984.73	1024.76	1059.44	1076.64	1091.43	1100.32
Net Trade	-637.63	-586.40	-686.10	-780.38	-844.48	-922.41	-986.74	-1031.64	-1051.95	-1067.46	-1076.18

Mexico Fiber Supply and Utilization

	2005/06	2006/07	2007/08	2008/09	2009/10	2010/11	2011/12	2012/13	2013/14	2014/15	2015/16
Cotton											
					Thousand Acres						
Area	311.34	312.89	313.10	311.07	309.69	305.75	298.60	291.80	285.54	279.69	274.35
					Bales Per Acre						
Yield	2.25	2.26	2.27	2.28	2.29	2.30	2.31	2.32	2.33	2.33	2.33
					Thousand Bales						
Domestic Supply	2019.02	1900.72	1878.23	1874.49	1865.93	1850.66	1826.64	1801.64	1777.73	1754.18	1728.48
Production	700.01	706.71	710.41	708.83	708.84	702.69	688.89	675.87	664.03	653.05	640.33
Beginning Stock	1319.01	1194.01	1167.82	1165.65	1157.09	1147.96	1137.75	1125.77	1113.69	1101.13	1088.15
Domestic Demand	3244.03	3012.84	2961.22	2914.08	2892.06	2842.99	2825.18	2807.39	2779.51	2759.85	2734.20
Mill Utilization	2025.02	1845.02	1795.57	1757.00	1744.10	1705.25	1699.42	1693.69	1678.38	1671.70	1659.60
Loss	25.00	0.00	0.00	0.00	0.00	0.00	0.00	0.00	0.00	0.00	0.00
Ending Stock	1194.01	1167.82	1165.65	1157.09	1147.96	1137.75	1125.77	1113.69	1101.13	1088.15	1074.59
Trade											
Imports	1400.01	1314.16	1284.57	1241.03	1225.73	1180.07	1184.77	1191.48	1188.64	1194.15	1197.93
Exports	200.00	202.04	201.58	201.43	199.60	187.74	186.22	185.73	186.86	188.48	192.21
Man-Made Fibers											
					Million Pounds						
Domestic Supply	1107.72	1106.11	1113.04	1118.60	1120.16	1121.56	1121.22	1121.46	1121.79	1121.78	1121.80
Capacity	1251.12	1251.06	1251.01	1250.97	1250.95	1250.92	1250.90	1250.89	1250.91	1250.93	1250.94
Utilization	0.89	0.88	0.89	0.89	0.90	0.90	0.90	0.90	0.90	0.90	0.90
Domestic Demand	1034.09	1036.14	988.20	949.49	925.08	857.58	827.78	798.64	724.71	705.63	699.11
Net Trade	73.64	69.96	124.84	169.11	195.08	263.98	293.45	322.82	397.08	416.16	422.69
Price											
					Mexican Peso Per Pound						
Cotton	6.54	7.01	7.33	7.69	7.94	8.17	8.44	8.81	9.27	9.75	10.46
Polyester	7.27	7.51	7.73	8.18	8.49	8.76	9.04	9.45	9.89	10.35	10.97

Canada Fiber Supply and Utilization

	2005/06	2006/07	2007/08	2008/09	2009/10	2010/11	2011/12	2012/13	2013/14	2014/15	2015/16
Cotton											
					Thousand Acres						
Area	0.00	0.00	0.00	0.00	0.00	0.00	0.00	0.00	0.00	0.00	0.00
					Bales Per Acre						
Yield	0.00	0.00	0.00	0.00	0.00	0.00	0.00	0.00	0.00	0.00	0.00
					Thousand Bales						
Domestic Supply	90.00	75.00	71.29	70.18	69.49	69.38	69.64	70.00	70.13	70.26	70.76
Production	0.00	0.00	0.00	0.00	0.00	0.00	0.00	0.00	0.00	0.00	0.00
Beginning Stock	90.00	75.00	71.29	70.18	69.49	69.38	69.64	70.00	70.13	70.26	70.76
Domestic Demand	410.00	381.08	362.77	351.87	346.76	345.30	345.70	346.59	347.95	350.24	352.10
Mill Utilization	335.00	309.79	292.59	282.37	277.39	275.66	275.70	276.46	277.69	279.48	281.13
Ending Stock	75.00	71.29	70.18	69.49	69.38	69.64	70.00	70.13	70.26	70.76	70.96
Trade											
Imports	320.00	306.08	291.48	281.68	277.27	275.93	276.06	276.59	277.81	279.98	281.34
Exports	0.00	0.00	0.00	0.00	0.00	0.00	0.00	0.00	0.00	0.00	0.00
Man-Made Fibers											
					Million Pounds						
Domestic Supply	311.45	309.70	320.75	328.87	331.05	333.12	332.91	333.52	334.70	335.95	337.24
Capacity	374.79	374.75	374.72	374.71	374.70	374.69	374.69	374.69	374.70	374.71	374.71
Utilization	0.83	0.83	0.86	0.88	0.88	0.89	0.89	0.89	0.89	0.90	0.90
Domestic Demand	796.34	840.46	865.39	878.51	887.78	895.96	903.67	910.15	916.76	924.36	931.53
Net Trade	-484.89	-530.76	-544.64	-549.64	-556.73	-562.84	-570.76	-576.63	-582.06	-588.41	-594.29
Prices											
					Canadian Dollar Per Pound						
Cotton	0.71	0.72	0.74	0.76	0.77	0.77	0.77	0.78	0.79	0.79	0.80
Polyester	0.79	0.78	0.78	0.81	0.83	0.83	0.83	0.84	0.85	0.84	0.84

United States Fiber Supply and Utilization

	2005/06	2006/07	2007/08	2008/09	2009/10	2010/11	2011/12	2012/13	2013/14	2014/15	2015/16
Cotton											
Thousand Acres											
Area											
Delta Area Harvested	3890.00	3735.56	3637.20	3666.79	3648.48	3607.58	3608.19	3618.60	3626.19	3641.64	3667.58
Southeast Area Harvested	3005.00	2963.10	2828.10	2716.78	2710.11	2721.41	2722.56	2732.67	2741.50	2748.96	2770.95
Southwest Irrigated Area Har	2767.00	2624.64	2630.54	2670.85	2675.09	2692.12	2690.04	2679.55	2681.69	2679.29	2679.85
Southwest dryland Area Harv	3026.00	2965.01	3039.64	3117.91	3115.58	3194.81	3189.76	3188.88	3190.43	3190.78	3189.62
West Area Harvested	723.00	734.17	725.41	716.88	707.71	698.90	689.39	679.96	671.41	663.44	657.83
Total Area	13411.00	13022.49	12860.90	12889.22	12856.97	12914.82	12899.94	12899.67	12911.22	12924.11	12965.81
Bales Per Acre											
Yield											
Delta Yield	1.92	1.92	1.93	1.93	1.96	1.96	1.97	1.97	1.97	1.98	1.98
Southeast Yield	1.64	1.61	1.62	1.62	1.65	1.66	1.67	1.68	1.69	1.69	1.70
Southwest Irrigated Yield	1.99	1.79	1.79	1.80	1.81	1.81	1.82	1.82	1.85	1.85	1.85
Southwest Dryland Yield	0.90	0.73	0.72	0.72	0.73	0.73	0.74	0.75	0.75	0.76	0.76
West Yield	3.31	3.24	3.32	3.35	3.37	3.38	3.40	3.42	3.43	3.44	3.43
Total Yield	1.77	1.68	1.68	1.69	1.70	1.70	1.71	1.71	1.72	1.73	1.73
Thousand Bales											
Domestic Supply	29257.29	28814.66	28610.62	28428.06	27857.25	27339.93	26922.99	26753.54	26680.89	26777.71	26769.83
Delta Production	7470.00	7188.04	7014.42	7086.05	7141.95	7077.18	7094.15	7129.94	7160.13	7205.93	7257.24
Southeast Production	4934.00	4765.36	4570.86	4412.50	4479.87	4520.62	4544.82	4583.95	4621.11	4656.12	4699.00
Southwest Irrigated Productio	5512.00	4691.84	4718.58	4805.97	4829.41	4875.69	4887.68	4883.87	4958.85	4969.59	4970.63
Southwest Dryland Productio	2709.00	2174.59	2183.41	2256.32	2271.79	2346.83	2360.31	2376.44	2394.36	2411.44	2410.36
West Production	2390.23	2378.81	2409.78	2403.31	2385.06	2365.25	2346.36	2322.45	2301.27	2282.20	2259.21
ELS Production	704.00	715.94	716.32	769.54	770.97	776.76	780.79	783.00	785.34	786.09	787.83
Total Production	23719.23	21914.60	21613.36	21733.70	21879.06	21962.33	22014.11	22079.65	22221.06	22311.38	22384.27
Beginning Stock	5538.06	6900.07	6997.26	6694.36	5978.19	5377.60	4908.88	4673.89	4459.83	4466.33	4385.56
Domestic Demand	12900.13	12973.12	12571.55	11797.27	10768.92	10125.82	9887.86	9474.19	9290.51	9042.27	8864.70
Mill Utilization	6000.06	5975.86	5877.19	5819.08	5391.32	5216.94	5213.97	5014.36	4824.18	4656.71	4566.23
Ending Stock	6900.07	6997.26	6694.36	5978.19	5377.60	4908.88	4673.89	4459.83	4466.33	4385.56	4298.48
Trade											
Imports	40.00	37.81	38.54	37.47	41.37	45.27	47.49	72.31	77.20	79.07	78.10
Exports	16397.17	15879.35	16077.61	16668.26	17129.70	17259.38	17082.61	17351.66	17467.58	17814.51	17983.23
Man-Made Fibers											
Million Pounds											
Domestic Supply	9126.10	8921.87	8896.50	8844.16	8788.33	8780.88	8740.96	8705.92	8703.47	8732.02	8776.46
Capacity	10740.00	10517.45	10376.87	10208.15	10097.63	10058.68	10009.04	9962.94	9948.56	9967.74	10004.56
Utilization	0.85	0.85	0.86	0.87	0.87	0.87	0.87	0.87	0.87	0.88	0.88
Domestic Demand	11007.16	10745.77	10566.38	10261.63	9985.40	9820.54	9811.10	9762.76	9687.28	9617.33	9436.93
Net Trade	-1881.06	-1823.91	-1669.89	-1417.47	-1197.07	-1039.66	-1070.13	-1056.84	-983.80	-885.32	-660.47
Fiber Textile Consumption											
Million Pounds											
Cotton Textile	10305.79	10545.57	10579.70	10611.26	10630.97	10656.73	10686.10	10711.55	10733.06	10754.59	10899.20
Non-Cotton Textile	15252.03	15055.93	15000.63	14768.66	14553.34	14431.33	14441.25	14416.04	14376.56	14344.84	14238.57
Fiber Textile Trade											
Cotton Textile	7425.76	7677.16	7758.65	7818.11	8043.13	8152.60	8183.39	8304.65	8417.46	8519.36	8707.41
Non-Cotton Textile	4244.87	4310.16	4434.25	4507.02	4567.94	4610.79	4630.15	4653.28	4689.28	4727.51	4801.64
Prices											
U.S. Cents Per Pound											
Cotton textile Price Index	100.86	98.40	98.68	98.90	103.84	106.50	107.19	110.60	116.14	121.96	145.52
non-Cotton textile Price Index	64.13	73.04	77.65	80.78	83.82	86.34	88.12	90.09	92.16	94.18	96.95
Cotton Farm Price	48.46	48.62	49.99	50.60	53.06	54.77	55.71	56.70	57.03	57.76	58.43
Polyester Price	66.10	66.96	66.96	69.26	70.23	70.64	70.89	72.15	73.05	73.16	74.17

Africa Fiber Supply and Utilization

	2005/06	2006/07	2007/08	2008/09	2009/10	2010/11	2011/12	2012/13	2013/14	2014/15	2015/16
Egypt Cotton											
Area	674.57	700.19	715.03	723.63	Thousand Acres						
					728.62	731.50	733.15	734.11	734.67	735.00	735.18
Yield	1.44	1.49	1.50	1.50	Bales Per Acre						
					1.51	1.51	1.51	1.51	1.51	1.52	1.52
Domestic Supply	1740.02	1697.62	1705.81	1721.65	Thousand Bales						
Production	970.01	1045.61	1072.30	1087.44	1733.73	1741.62	1746.78	1750.75	1753.67	1756.53	1765.38
Beginning Stock	770.01	652.01	633.51	634.21	1097.50	1102.88	1105.56	1108.16	1111.59	1113.82	1119.22
Domestic Demand	1652.02	1593.31	1606.82	1621.50	1637.90	1664.62	1683.03	1680.54	1685.45	1722.64	1702.64
Mill Utilization	1000.01	959.80	972.60	985.27	999.16	1023.40	1040.44	1038.46	1042.75	1076.48	1053.34
Ending Stock	652.01	633.51	634.21	636.23	638.74	641.21	642.59	642.08	642.70	646.16	649.30
Trade											
Imports	575.01	555.28	543.46	536.78	532.99	530.93	530.21	530.75	531.88	532.77	536.64
Exports	663.00	659.59	642.45	636.93	628.82	607.93	593.95	600.96	600.10	566.66	599.38
Western Africa Cotton											
Area	4151.22	4167.95	4329.42	4389.15	Thousand Acres						
					4461.36	4536.25	4584.83	4607.20	4619.87	4636.65	4650.83
Yield	0.89	0.90	0.91	0.92	Bales Per Acre						
					0.94	0.93	0.94	0.95	0.96	0.97	0.97
Domestic Supply	5108.05	5206.85	5457.59	5685.43	Thousand Bales						
Production	3695.04	3757.84	3953.19	4058.18	5891.97	6010.48	6160.83	6306.12	6438.96	6567.24	6635.06
Beginning Stock	1413.01	1449.01	1504.40	1627.25	4176.22	4214.15	4311.99	4385.98	4451.15	4520.61	4534.43
Domestic Demand	1533.01	1579.91	1699.61	1793.75	1890.77	1944.46	2026.93	2089.10	2152.34	2221.72	2240.28
Mill Utilization	84.00	75.51	72.36	78.00	94.44	95.61	106.79	101.28	105.71	121.10	118.87
Ending Stock	1449.01	1504.40	1627.25	1715.75	1796.33	1848.85	1920.14	1987.81	2046.63	2100.63	2121.41
Trade											
Imports	0.00	0.00	0.00	0.00	0.00	0.00	0.00	0.00	0.00	0.00	0.00
Exports	3575.04	3626.94	3757.98	3891.68	4001.21	4066.02	4133.91	4217.02	4286.62	4345.51	4394.78
Other Africa Cotton											
Area	7165.80	7235.40	7324.72	7423.77	Thousand Acres						
					7516.01	7619.53	7703.34	7801.91	7922.37	8042.09	8133.22
Yield	0.45	0.45	0.46	0.46	Bales Per Acre						
					0.46	0.47	0.47	0.48	0.48	0.49	0.49
Domestic Supply	5297.05	5277.15	5080.37	5075.69	Thousand Bales						
Production	3197.04	3260.14	3332.83	3410.78	5118.13	5192.85	5273.46	5363.61	5461.78	5581.40	5685.31
Beginning Stock	2100.02	2017.01	1747.54	1664.91	3486.45	3568.22	3641.59	3722.74	3815.32	3908.60	3952.89
Domestic Demand	3362.03	3046.33	2939.32	2893.01	2884.69	2901.21	2930.11	2957.21	3002.05	3075.08	3128.82
Mill Utilization	1345.02	1298.78	1274.41	1261.34	1260.06	1269.34	1289.25	1310.75	1329.24	1342.66	1353.30
Ending Stock	2017.01	1747.54	1664.91	1631.67	1624.63	1631.87	1640.86	1646.46	1672.81	1732.42	1775.51
Trade											
Imports	583.01	295.45	399.01	379.48	352.70	318.31	290.36	253.41	221.09	181.79	133.14
Exports	2518.03	2526.27	2540.06	2562.16	2586.13	2609.96	2633.71	2659.81	2680.82	2688.11	2689.63
Africa Man-Made Fibers											
Domestic Supply	257.33	231.46	224.96	218.46	Million Pounds						
Capacity	472.45	444.26	433.44	414.51	204.36	190.44	184.38	183.81	197.20	219.32	243.30
Utilization	0.54	0.52	0.52	0.53	383.38	351.11	336.98	333.39	355.90	394.18	434.77
Domestic Demand	1351.34	1397.38	1425.12	1437.02	1442.28	1441.23	1446.06	1456.19	1452.89	1424.09	1395.48
Net Trade	-1094.01	-1165.92	-1200.15	-1218.56	-1237.92	-1250.79	-1261.69	-1272.38	-1255.69	-1204.76	-1152.18
Prices											
					Egyptian Pound per Pound						
Cotton	3.47	3.73	3.88	4.06	4.17	4.25	4.37	4.57	4.72	4.75	4.87
Polyester	3.86	3.99	4.09	4.32	4.46	4.56	4.68	4.90	5.03	5.04	5.11

Middle East Fibers Supply and Utilization

	2005/06	2006/07	2007/08	2008/09	2009/10	2010/11	2011/12	2012/13	2013/14	2014/15	2015/16
Turkey Cotton											
Area	1482.58	1556.16	1616.84	1650.05	1669.04	1678.47	1698.00	1707.02	1712.72	1717.46	1720.29
	Thousand Acres										
Yield	2.39	2.37	2.40	2.43	2.46	2.49	2.51	2.54	2.57	2.59	2.59
	Bales Per Acre										
Domestic Supply	5235.05	5222.75	5419.31	5593.96	5727.00	5827.24	5945.84	6043.54	6130.43	6200.69	6234.16
Production	3550.03	3687.74	3883.35	4009.16	4103.64	4172.36	4264.21	4332.07	4395.74	4442.69	4450.51
Beginning Stock	1685.02	1535.01	1535.96	1584.80	1623.36	1654.88	1681.62	1711.47	1734.68	1758.00	1783.64
	Thousand Bales										
Domestic Demand	8585.08	8644.48	8760.76	8872.55	8974.27	9071.82	9172.93	9266.87	9328.00	9361.40	9381.89
Mill Utilization	7050.07	7108.53	7175.96	7249.18	7319.39	7390.19	7461.46	7532.19	7570.00	7577.76	7584.74
Ending Stock	1535.01	1535.96	1584.80	1623.36	1654.88	1681.62	1711.47	1734.68	1758.00	1783.64	1797.16
Trade											
Imports	3450.04	3521.87	3441.65	3378.89	3347.66	3345.04	3327.62	3323.94	3298.24	3261.39	3248.47
Exports	100.00	100.14	100.20	100.30	100.39	100.46	100.53	100.60	100.66	100.68	100.73
Other Middle East Cotton											
Area	1144.06	1207.61	1240.99	1269.14	1296.60	1320.79	1341.17	1347.94	1352.54	1357.23	1359.52
	Thousand Acres										
Yield	2.06	2.07	2.08	2.09	2.10	2.11	2.13	2.14	2.15	2.16	2.16
	Bales Per Acre										
Domestic Supply	3124.03	3292.75	3402.62	3500.53	3594.14	3684.29	3767.90	3821.80	3863.85	3903.77	3926.74
Production	2355.02	2499.73	2582.76	2655.46	2727.38	2792.86	2850.73	2880.00	2904.86	2930.07	2935.01
Beginning Stock	769.01	793.01	819.86	845.07	866.76	891.43	917.18	941.79	958.99	973.70	991.73
	Thousand Bales										
Domestic Demand	2276.03	2327.87	2402.66	2473.24	2544.81	2616.10	2685.26	2745.43	2803.09	2862.67	2908.66
Mill Utilization	1483.02	1508.01	1557.59	1606.48	1653.38	1698.93	1743.46	1786.44	1829.39	1870.94	1906.54
Ending Stock	793.01	819.86	845.07	866.76	891.43	917.18	941.79	958.99	973.70	991.73	1002.13
Trade											
Imports	178.00	74.95	160.28	147.59	133.22	119.29	110.32	127.60	155.60	181.43	217.22
Exports	1026.00	1039.83	1160.24	1174.87	1182.55	1187.48	1192.97	1203.97	1216.36	1222.52	1235.30
Middle East Man-Made Fiber											
Domestic Supply	2179.96	2134.51	2131.45	2182.72	2263.93	2393.00	2577.03	2852.03	3251.79	3759.23	3797.81
Capacity	2833.81	2890.09	2962.25	3057.00	3175.43	3330.28	3542.92	3841.22	4269.61	4880.21	4969.58
Utilization	0.77	0.74	0.72	0.71	0.71	0.72	0.73	0.74	0.76	0.77	0.76
	Million Pounds										
Domestic Demand	3623.85	3752.18	3883.67	4001.27	4113.93	4223.50	4332.06	4436.27	4542.83	4645.48	4737.60
Net Trade	-1443.89	-1617.67	-1752.21	-1818.55	-1849.99	-1830.50	-1755.02	-1584.25	-1291.04	-886.25	-939.79
Price											
Cotton	80.376847	85.592064	88.327699	92.662819	96.418105	99.71322	102.86178	106.70934	109.66815	110.34173	113.15983
Polyester	89.292598	91.667759	93.074748	98.657958	103.15099	106.93472	110.18091	114.49545	116.95026	117.12907	118.7371
	Turkish Lira Per Pound										

Western Europe Fiber Supply and Utilization

	2005/06	2006/07	2007/08	2008/09	2009/10	2010/11	2011/12	2012/13	2013/14	2014/15	2015/16		
Europe Union Cotton													
Area	1176.18	1008.77	940.25	902.50	Thousand Acres		881.05	868.83	861.78	857.56	854.68	853.12	851.47
Yield	2.04	1.98	1.98	2.00	Bales Per Acre		2.01	2.03	2.05	2.05	2.05	2.05	2.05
Domestic Supply	3546.03	3086.36	2823.21	2733.69	Thousand Bales		2681.28	2656.50	2653.07	2648.09	2644.23	2642.41	2640.22
Production	2401.02	1992.34	1863.24	1808.46	1774.35	1766.34	1768.18	1760.24	1754.58	1752.52	1748.73	1748.73	1748.73
Beginning Stock	1145.01	1094.02	959.98	925.23	906.93	890.16	884.89	887.84	889.66	889.88	889.88	891.49	891.49
Domestic Demand	3687.05	3366.24	3297.80	3226.64	3010.26	2883.63	2859.26	2804.06	2779.88	2776.86	2754.30	2754.30	2754.30
Mill Utilization	2593.04	2406.27	2372.57	2319.71	2120.10	1998.73	1971.42	1914.40	1889.99	1885.38	1864.77	1864.77	1864.77
Ending Stock	1094.02	959.98	925.23	906.93	890.16	884.89	887.84	889.66	889.88	891.49	889.52	889.52	889.52
Trade													
Imports	2030.04	1661.80	1584.82	1510.46	1433.23	1358.63	1290.19	1226.87	1166.81	1110.73	1055.36	1055.36	1055.36
Exports	1889.02	1381.91	1110.23	1017.51	1104.24	1131.50	1084.00	1070.90	1031.16	976.27	941.28	941.28	941.28
Other Europe Cotton													
Area	0.00	0.00	0.00	0.00	Thousand Acres		0.00	0.00	0.00	0.00	0.00	0.00	0.00
Yield	0.00	0.00	0.00	0.00	Bales Per Acre		0.00	0.00	0.00	0.00	0.00	0.00	0.00
Domestic Supply	69.00	54.00	46.84	43.25	Thousand Bales		41.28	40.26	39.80	39.64	39.55	39.48	39.52
Production	0.00	0.00	0.00	0.00	0.00	0.00	0.00	0.00	0.00	0.00	0.00	0.00	0.00
Beginning Stock	69.00	54.00	46.84	43.25	41.28	40.26	39.80	39.64	39.55	39.48	39.52	39.52	39.52
Domestic Demand	213.00	195.94	182.19	169.88	158.20	146.78	135.40	123.83	111.97	100.01	87.38	87.38	87.38
Mill Utilization	159.00	149.11	138.94	128.60	117.94	106.97	95.76	84.27	72.49	60.49	47.98	47.98	47.98
Ending Stock	54.00	46.84	43.25	41.28	40.26	39.80	39.64	39.55	39.48	39.52	39.40	39.40	39.40
Trade													
Imports	146.02	143.96	137.37	128.65	118.94	108.54	97.62	86.20	74.44	62.55	49.89	49.89	49.89
Exports	2.02	2.02	2.02	2.02	2.02	2.02	2.02	2.02	2.02	2.02	2.02	2.02	2.02
Europe Man-Made Fibers													
Domestic Supply	4094.14	3996.36	3796.88	3932.67	4120.18	4205.16	4241.12	4253.16	4294.22	4355.42	4390.57	4390.57	4390.57
Capacity	4971.20	4634.08	4350.30	4396.68	4538.15	4616.71	4645.89	4658.58	4699.18	4759.58	4792.12	4792.12	4792.12
Utilization	0.82	0.86	0.87	0.89	0.91	0.91	0.91	0.91	0.91	0.92	0.92	0.92	0.92
Domestic Demand	8678.67	8648.75	8730.92	8681.17	8050.97	7700.28	7706.87	7592.86	7527.17	7521.08	7446.94	7446.94	7446.94
Net Trade	-4584.53	-4652.39	-4934.04	-4748.50	-3930.79	-3495.12	-3465.75	-3339.70	-3232.95	-3165.67	-3056.37	-3056.37	-3056.37
Price													
Cotton	0.47	0.47	0.44	0.44	Euros Per Pound		0.47	0.48	0.47	0.48	0.48	0.48	0.50
Polyester	0.52	0.50	0.46	0.47	0.50	0.51	0.51	0.51	0.51	0.51	0.51	0.51	0.52

Former Soviet Union Fiber Supply and Utilization

	2005/06	2006/07	2007/08	2008/09	2009/10	2010/11	2011/12	2012/13	2013/14	2014/15	2015/16
Russia Cotton											
					Thousand Acres						
Area	0.00	0.00	0.00	0.00	0.00	0.00	0.00	0.00	0.00	0.00	0.00
					Bales Per Acre						
Yield	0.00	0.00	0.00	0.00	0.00	0.00	0.00	0.00	0.00	0.00	0.00
					Thousand Bales						
Domestic Supply	222.00	222.00	224.11	228.58	234.07	241.48	251.03	262.20	274.06	286.55	300.75
Production	0.00	0.00	0.00	0.00	0.00	0.00	0.00	0.00	0.00	0.00	0.00
Beginning Stock	222.00	222.00	224.11	228.58	234.07	241.48	251.03	262.20	274.06	286.55	300.75
Domestic Demand	1722.02	1740.14	1749.51	1754.80	1758.56	1762.17	1765.48	1768.05	1771.14	1776.67	1781.59
Mill Utilization	1500.02	1516.03	1520.93	1520.73	1517.08	1511.15	1503.28	1493.99	1484.60	1475.92	1466.52
Ending Stock	222.00	224.11	228.58	234.07	241.48	251.03	262.20	274.06	286.55	300.75	315.07
Trade											
Imports	1500.02	1518.13	1525.40	1526.22	1524.49	1520.69	1514.45	1505.85	1497.09	1490.12	1480.83
Exports	0.00	0.00	0.00	0.00	0.00	0.00	0.00	0.00	0.00	0.00	0.00
					Roubles Per Pound						
Price											
Cotton	16.83	17.94	18.57	19.29	19.51	19.46	19.40	19.54	19.73	19.69	20.02
Polyester	18.70	19.21	19.57	20.54	20.87	20.86	20.78	20.97	21.05	20.90	21.01

	2005/06	2006/07	2007/08	2008/09	2009/10	2010/11	2011/12	2012/13	2013/14	2014/15	2015/16
Uzbek Cotton											
	Thousand Acres										
Area	3582.90	3421.99	3449.47	3444.92	3454.00	3466.46	3445.12	3418.98	3402.03	3385.96	3360.40
	Bales Per Acre										
Yield	1.56	1.56	1.57	1.58	1.59	1.61	1.62	1.63	1.64	1.65	1.65
	Thousand Bales										
Domestic Supply	6898.07	6873.97	6929.45	6955.95	7006.49	7069.93	7097.56	7122.19	7157.69	7175.38	7130.86
Production	5600.06	5325.96	5410.99	5442.97	5504.90	5567.16	5568.56	5557.76	5565.71	5574.20	5531.64
Beginning Stock	1298.01	1548.02	1518.46	1512.99	1501.59	1502.77	1529.00	1564.44	1591.98	1601.19	1599.22
Domestic Demand	2448.03	2409.81	2453.85	2453.02	2416.74	2437.37	2489.04	2521.74	2510.79	2471.80	2418.16
Mill Utilization	900.01	891.35	940.87	951.43	913.96	908.37	924.61	929.75	909.61	872.58	830.61
Ending Stock	1548.02	1518.46	1512.99	1501.59	1502.77	1529.00	1564.44	1591.98	1601.19	1599.22	1587.54
Trade											
Imports	5.00	5.00	5.00	5.00	5.00	5.00	5.00	5.00	5.00	5.00	5.00
Exports	4455.05	4469.17	4480.60	4507.93	4594.76	4637.57	4613.52	4605.46	4651.91	4708.58	4717.71
Other FSU Cotton											
	Thousand Acres										
Area	3274.03	3351.47	3328.73	3311.57	3304.28	3299.08	3310.68	3317.33	3328.82	3347.52	3365.67
	Bales Per Acre										
Yield	0.84	0.85	0.85	0.86	0.87	0.87	0.88	0.88	0.89	0.89	0.89
	Thousand Bales										
Domestic Supply	3813.0361	3887.79	3907.97	3916.67	3930.87	3948.15	3980.97	4014.11	4052.06	4098.04	4126.52
Production	2760.0214	2844.77	2844.69	2849.01	2861.71	2876.07	2905.04	2929.81	2959.03	2994.85	3011.08
Beginning Stock	1053.0147	1043.02	1063.28	1067.66	1069.16	1072.08	1075.93	1084.30	1093.03	1103.19	1115.44
Domestic Demand	1814.0227	1789.17	1792.39	1798.99	1810.10	1823.39	1840.41	1858.36	1876.70	1897.47	1907.90
Mill Utilization	771.00684	725.89	724.72	729.83	738.02	747.46	756.11	765.33	773.51	782.03	784.84
Ending Stock	1043.0159	1063.28	1067.66	1069.16	1072.08	1075.93	1084.30	1093.03	1103.19	1115.44	1123.07
Trade											
Imports	106.00098	279.29	332.50	373.39	389.92	394.08	385.94	393.29	448.90	445.83	466.95
Exports	2105.0144	2377.91	2448.08	2491.07	2510.70	2518.83	2526.50	2549.05	2624.26	2646.40	2685.57
FSU Man-Made Fibers											
	Million Pounds										
Domestic Supply	1086.82	1027.32	1482.87	1672.39	1733.41	1545.49	1355.13	1268.81	1226.27	1209.32	1260.93
Capacity	4528.73	3689.13	3688.67	3688.63	3688.48	3688.33	3688.72	3689.12	3690.59	3692.19	3693.20
Utilization	0.24	0.28	0.40	0.45	0.47	0.42	0.37	0.34	0.33	0.33	0.34
Domestic Demand	1532.02	1539.58	1548.46	1549.11	1555.09	1559.19	1554.78	1558.30	1560.58	1561.88	1561.88
Net Trade	-445.20	-512.26	-65.58	123.27	178.32	-13.69	-199.65	-289.49	-334.31	-352.56	-300.95
Price											
	Uzbekistani Som per Pound										
Cotton	724.53	859.70	971.47	1110.19	1224.61	1264.78	1276.19	1316.30	1353.26	1361.57	1396.35
Polyester	804.89	920.72	1023.68	1182.01	1310.13	1356.38	1367.00	1412.34	1443.12	1445.33	1465.17

World Fiber Supply and Utilization

	2005/06	2006/07	2007/08	2008/09	2009/10	2010/11	2011/12	2012/13	2013/14	2014/15	2015/16
Cotton											
	Thousand Acres										
Area	84728.02	85594.98	86574.69	87104.74	87637.70	88251.33	88660.20	89201.77	89734.93	90252.66	90713.23
	Bales Per Acre										
Yield	1.32	1.33	1.35	1.36	1.38	1.39	1.41	1.42	1.43	1.44	1.44
	Thousand bales										
Domestic Supply	163088.41	164408.77	165989.56	167786.42	170072.77	172513.73	174609.84	176563.93	178619.05	180603.22	181970.32
Production	111533.92	113655.28	116554.67	118475.18	121027.29	123009.68	124640.98	126335.17	127909.89	129528.54	130545.09
Beginning Stock	51554.49	50753.49	49434.89	49311.24	49045.48	49504.05	49968.86	50228.76	50709.16	51074.68	51425.23
Domestic Demand	165239.64	164364.08	165885.42	167576.86	169948.03	172276.85	174347.04	176348.84	178499.17	180614.08	182150.82
Mill Utilization	114486.15	114929.19	116574.17	118531.38	120443.98	122307.99	124118.29	125639.67	127424.48	129188.86	130486.52
Ending Stock	50753.49	49434.89	49311.24	49045.48	49504.05	49968.86	50228.76	50709.16	51074.68	51425.23	51664.30
Trade	40779.23	40582.50	41010.21	41926.67	43382.65	44352.44	44997.74	45877.46	47084.46	48168.15	48691.82
Stock-to-mill use ratio	0.44	0.43	0.42	0.41	0.41	0.41	0.40	0.40	0.40	0.40	0.40
	44.331553	43.013347	42.300315	41.377636	41.101305	40.854939	40.468456	40.360789	40.082316	39.806242	39.593596
Man-Made Fiber											
	Million Pounds										
Domestic Supply	78230.17	76826.36	78615.63	80426.23	81777.05	82156.40	82604.07	83298.08	85203.72	87814.56	89658.42
Capacity	98291.26	96324.90	96325.13	96841.19	97712.10	98054.61	98734.64	99645.19	101917.78	105006.20	107543.39
Utilization	0.80	0.80	0.82	0.83	0.84	0.84	0.84	0.84	0.84	0.84	0.83
Domestic Demand	82897.83	83436.59	85675.65	87486.91	88843.71	89197.15	89630.42	90317.95	92175.87	94788.02	96631.87
Unaccounted	-4667.66	-6610.23	-7060.02	-7060.68	-7066.65	-7040.75	-7026.35	-7019.87	-6972.15	-6973.45	-6973.45
Price											
	U.S. Cents per Pound										
Cotton A-index	59.50	62.52	63.54	65.05	65.64	65.87	66.18	67.24	68.50	68.92	70.68
US Polyester Price	66.10	66.96	66.96	69.26	70.23	70.64	70.89	72.15	73.05	73.16	74.17

Cotton Net Trade

	2005/06	2006/07	2007/08	2008/09	2009/10	2010/11	2011/12	2012/13	2013/14	2014/15	2015/16
Net Exporters											
	Thousand Bales										
Argentina	-25.02	-30.97	-39.20	-37.30	-23.50	4.84	60.08	93.61	131.77	158.32	158.81
Australia	2949.84	2891.46	2986.50	2989.39	3093.23	3210.62	3312.24	3407.86	3504.35	3558.58	3593.54
Brazil	1775.02	1896.62	2514.15	2669.13	2893.61	3249.76	3459.68	3622.99	3857.28	4070.47	4278.70
Egypt	88.00	104.32	98.99	100.15	95.83	77.00	63.74	70.21	68.22	33.89	62.73
Western Africa	3575.04	3626.94	3757.98	3891.68	4001.21	4066.02	4133.91	4217.02	4286.62	4345.51	4394.78
Other Africa	1935.02	2230.82	2141.05	2182.68	2233.44	2291.65	2343.35	2406.40	2459.73	2506.32	2556.49
Other Middle East	848.00	964.88	999.96	1027.29	1049.32	1068.19	1082.65	1076.37	1060.76	1041.09	1018.07
Uzbekistan	4450.04	4464.17	4475.59	4502.93	4589.76	4632.57	4608.52	4600.46	4646.90	4703.58	4712.70
Other FSU	1999.01	2098.62	2115.59	2117.68	2120.77	2124.76	2140.56	2155.75	2175.36	2200.57	2218.62
Total Net Exports Excluding t	17594.96	18246.85	19050.62	19443.62	20053.67	20725.40	21204.73	21650.67	22190.99	22618.34	22994.44
The United States	16792.39	15796.86	15934.92	16421.23	16963.59	16977.23	16772.33	17064.26	17270.49	17746.30	18085.63
Total exporters	34387.35	34043.71	34985.54	35864.85	37017.26	37702.63	37977.06	38714.94	39461.48	40364.64	41080.07
Net Importers											
	Thousand Bales										
India	-1000.02	-1448.14	-842.91	-843.57	-966.30	-1031.38	-1400.19	-1540.30	-2017.23	-2392.29	-2394.94
Pakistan	1350.01	1631.38	1721.09	1729.99	1752.13	1896.69	1920.82	2150.81	2336.85	2543.09	2818.35
South Korea	1205.02	1126.18	1074.90	1018.75	939.45	889.83	853.02	824.82	802.97	786.83	772.45
China	16770.16	16330.53	16519.73	17608.49	19108.01	20038.42	20664.45	21248.53	22200.91	23248.87	23739.34
Taiwan	1225.01	1194.77	1145.59	1134.33	1118.80	1028.42	1028.37	1021.65	981.21	961.96	940.55
Japan	725.01	708.30	663.92	608.64	557.03	510.81	442.82	439.53	430.32	389.70	369.61
other Asia	7147.07	7384.03	7483.72	7447.24	7563.52	7531.90	7628.75	7753.86	7963.13	8098.57	8157.49
Other Latin america	310.01	336.77	368.23	415.31	423.56	470.76	521.09	564.36	580.99	596.44	599.64
Mexico	1200.01	1112.12	1082.99	1039.60	1026.13	992.34	998.55	1005.74	1001.78	1005.67	1005.72
canada	320.00	306.08	291.48	281.68	277.27	275.93	276.06	276.59	277.81	279.98	281.34
Turkey	3350.03	3421.73	3341.45	3278.59	3247.27	3244.58	3227.09	3223.34	3197.58	3160.71	3147.74
EU-25	141.02	279.89	474.59	492.95	328.99	227.13	206.19	155.97	135.64	134.45	114.08
Other Western europe	144.00	141.94	135.35	126.63	116.92	106.52	95.60	84.18	72.42	60.53	47.86
Russian	1500.02	1518.13	1525.40	1526.22	1524.49	1520.69	1514.45	1505.85	1497.09	1490.12	1480.83
Total Net Importers	34387.35	34043.71	34985.54	35864.85	37017.26	37702.63	37977.06	38714.94	39461.48	40364.64	41080.07
Price											
	U.S. Cents Per Pound										
A-index	59.50	62.52	63.54	65.05	65.64	65.87	66.18	67.24	68.50	68.92	70.68

Man-made Fiber Net Trade

	2005/06	2006/07	2007/08	2008/09	2009/10	2010/11	2011/12	2012/13	2013/14	2014/15	2015/16
Net Exporters											
	Million Pounds										
India	1521.38	2000.82	2277.26	2524.33	2533.76	2362.72	2125.45	1872.79	1640.06	1316.88	1270.06
Pakistan	540.70	793.83	787.92	693.31	510.47	431.01	448.43	559.45	766.47	1049.35	1093.94
South Korea	3355.84	2966.13	3837.31	4265.36	4332.99	4392.46	4375.34	4406.57	4457.22	4497.48	4542.20
Taiwan	441.82	3066.52	3049.85	3060.76	2987.09	3288.97	3126.52	2962.50	3247.85	3122.41	3426.44
Japan	362.38	340.68	345.79	350.38	270.20	179.43	253.29	174.36	151.35	104.96	110.83
Mexico	73.64	69.96	124.84	169.11	195.08	263.98	293.45	322.82	397.08	416.16	422.69
Sum	6295.76	9237.94	10422.96	11063.25	10829.59	10918.57	10622.48	10298.48	10660.03	10507.22	10866.16
Unaccount	4222.46	6097.96	6994.44	7183.95	7244.97	7027.06	6826.70	6730.38	6637.84	6620.89	6672.51
Total Net Exporters	10518.21	15335.90	17417.40	18247.20	18074.56	17945.64	17449.18	17028.86	17297.87	17128.12	17538.66
Net Importers											
	Million Pounds										
Argentina	51.93	93.60	85.04	69.18	53.58	46.09	49.74	59.17	62.35	72.12	74.85
Australia	78.07	78.98	77.57	75.52	73.48	71.40	69.37	67.29	65.16	63.05	60.87
China	-3023.54	1224.00	2774.76	4359.50	5232.84	5759.04	5239.85	5090.43	5931.95	6143.32	6765.83
Other Asia	1902.31	1855.71	1744.82	1236.09	1002.87	760.80	687.88	599.25	473.01	672.17	756.44
Brazil	1383.43	1706.56	1948.18	1973.82	2094.80	2206.99	2292.25	2351.27	2367.90	2379.58	2401.39
Other Latin America	637.63	586.40	686.10	780.38	844.48	922.41	986.74	1031.64	1051.95	1067.46	1076.18
Canada	484.89	530.76	544.64	549.64	556.73	562.84	570.76	576.63	582.06	588.41	594.29
Africa	1094.01	1165.92	1200.15	1218.56	1237.92	1250.79	1261.69	1272.38	1255.69	1204.76	1152.18
Middle East	1443.89	1617.67	1752.21	1818.55	1849.99	1830.50	1755.02	1584.25	1291.04	886.25	939.79
Western Europe	4584.53	4652.39	4934.04	4748.50	3930.79	3495.12	3465.75	3339.70	3232.95	3165.67	3056.37
the United States	1881.06	1823.91	1669.89	1417.47	1197.07	1039.66	1070.13	1056.84	983.80	885.32	660.47
Total Net Importers	10518.21	15335.90	17417.40	18247.20	18074.56	17945.64	17449.18	17028.86	17297.87	17128.12	17538.66
Price											
	U.S. Cents Per Pound										
the United States Polyester Pri	66.10	66.96	66.96	69.26	70.23	70.64	70.89	72.15	73.05	73.16	74.17