



AgEcon SEARCH
RESEARCH IN AGRICULTURAL & APPLIED ECONOMICS

The World's Largest Open Access Agricultural & Applied Economics Digital Library

This document is discoverable and free to researchers across the globe due to the work of AgEcon Search.

Help ensure our sustainability.

Give to AgEcon Search

AgEcon Search

<http://ageconsearch.umn.edu>

aesearch@umn.edu

*Papers downloaded from **AgEcon Search** may be used for non-commercial purposes and personal study only. No other use, including posting to another Internet site, is permitted without permission from the copyright owner (not AgEcon Search), or as allowed under the provisions of Fair Use, U.S. Copyright Act, Title 17 U.S.C.*

Agricultural Outlook Forum
U.S. Department of Agriculture

Presented: February 26-27, 2009

Present & Future Beekeeping: "Almonds"

Gabriele Ludwig
Senior Manager
Global Technical & Regulatory Affairs
Almond Board of California



Present & Future Beekeeping: "Almonds"

Gabriele Ludwig, Ph.D.
Senior Manager, Global Technical &
Regulatory Affairs
Almond Board of California





US Almond Crop



- **100% of US Almond Production in CA**
- **740,000 ac spanning the Central Valley**
- **Farm Value**
2007: \$2.4 bill
2008: \$2.2 bill
- **Production**
2007: 1.2 bill lbs
2008: 1.5 bill lbs
- **CA grows 80% of the world's supply**

The Almond Board of California (ABC) is a Federal Marketing Order under USDA-AMS which focuses on promotion of and research on almonds

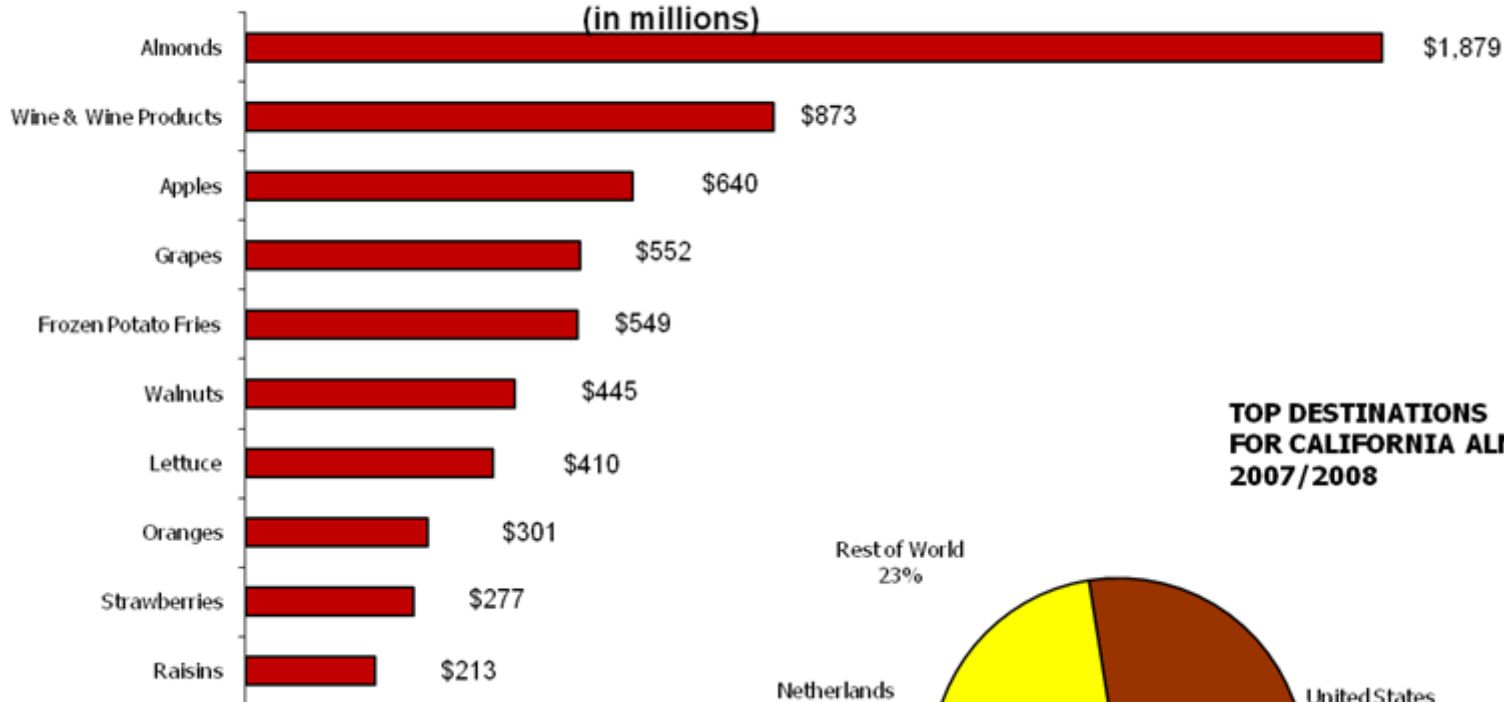




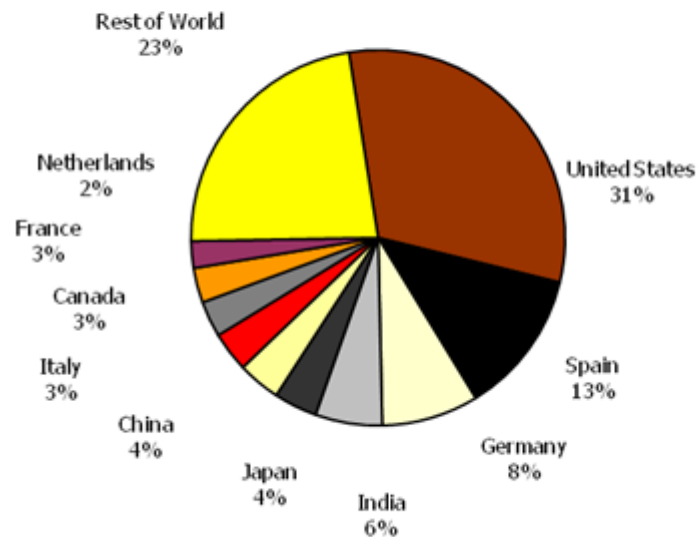
Almond Export Markets



**TOP TEN U. S. SPECIALTY CROP EXPORTS
BY VALUE 2007***
(in millions)



**TOP DESTINATIONS
FOR CALIFORNIA ALMONDS
2007/2008**





Why do Almonds Need Bees?

- Almond varieties are self-incompatible
- Each orchard is planted with 2 or 3 varieties of almonds to allow cross-pollination
- Rely on bees to move the pollen from one variety to another
- Need pollination services mid-February through mid-March





Pollination Costs to Almonds



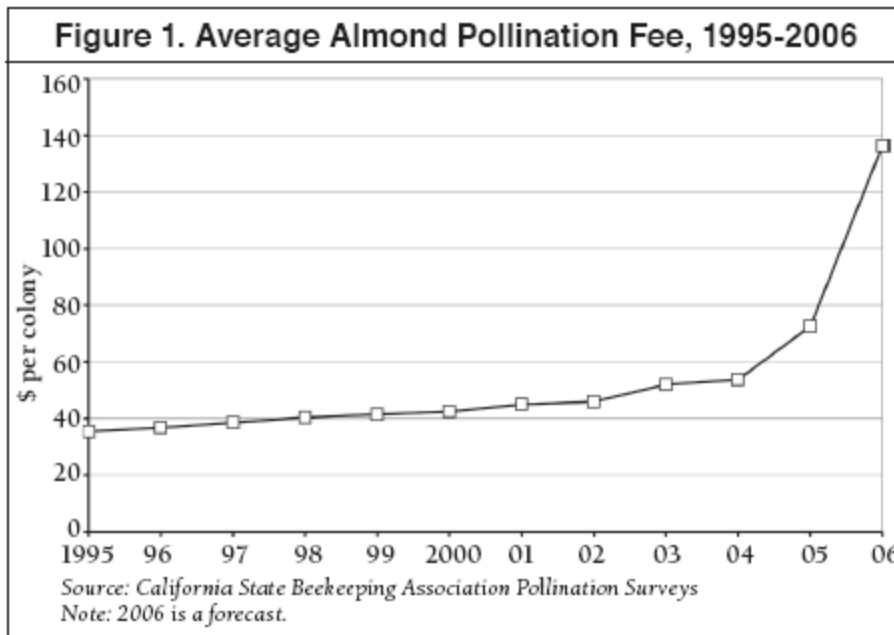
● Average Hive Rental Prices for Almonds

- 2004: \$ 52
- 2005: \$ 72
- 2006: \$137
- 2007: \$143
- 2008: \$149
- 2009 est: \$125-150



● Production Input Costs

- 2004: \$2,000-2,100/ac
- 2008: \$2,400-2,500/ac



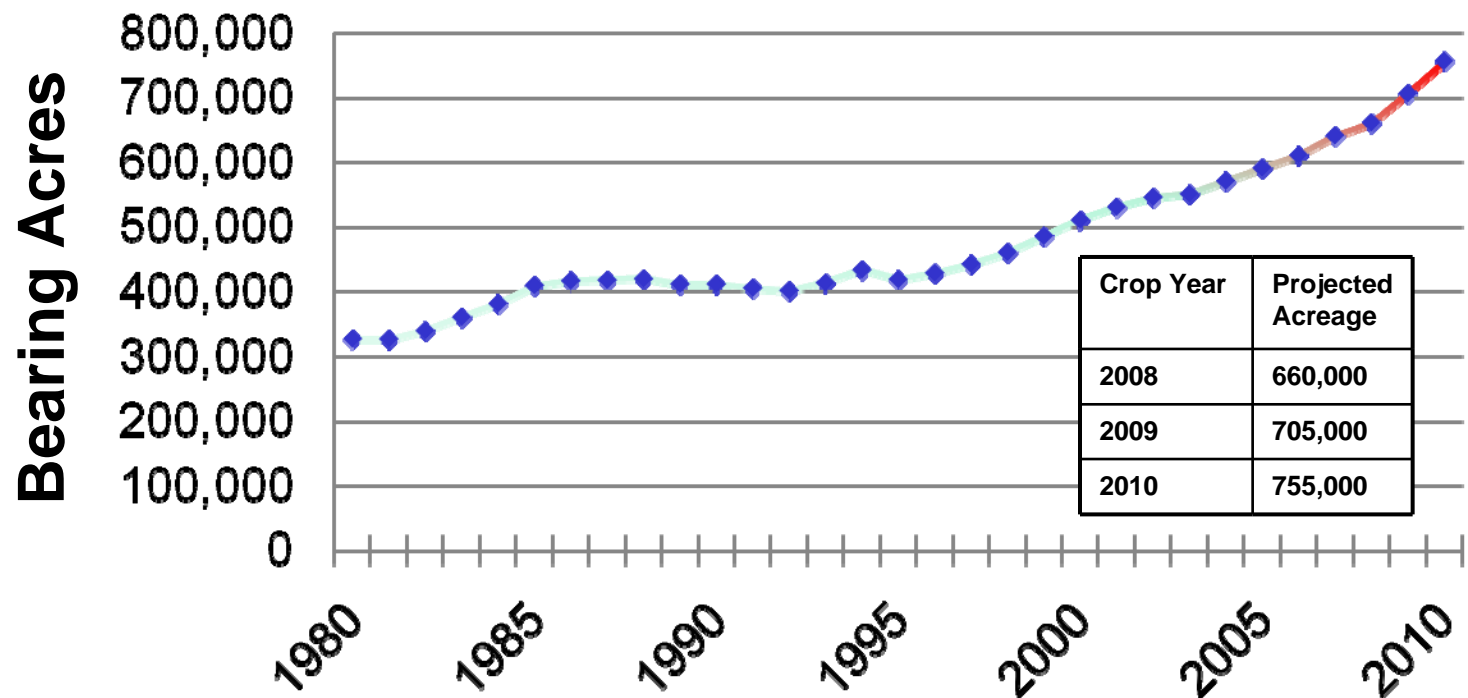
From: Bee-comonics and the Leap in Pollination Fees. DA Sumner & H Boriss, Giannini Foundation of Ag. Econ.(2007)



Why the change in hive prices?

● Bee Demand

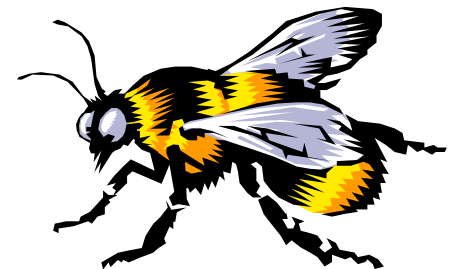
- Almond acreage has doubled in 25 years
 - By 2010, 755,000 bearing almond acres x 2 hives/acre = > 1.5 mill colony demand
- Almonds use 75% of the current available colonies



Why the change in hive prices?

● Bee Supply

- Considerable bee health challenges
 - Colony losses and honey bee health significant issues before CCD came on scene
 - Varroa mites, various pathogens, available forage, nutrition,
 - Colony Collapse Disorder (CCD)
- Honey imports have reduced honey prices
- *Almond pollination is critical to the viability of many beekeeping operations.*

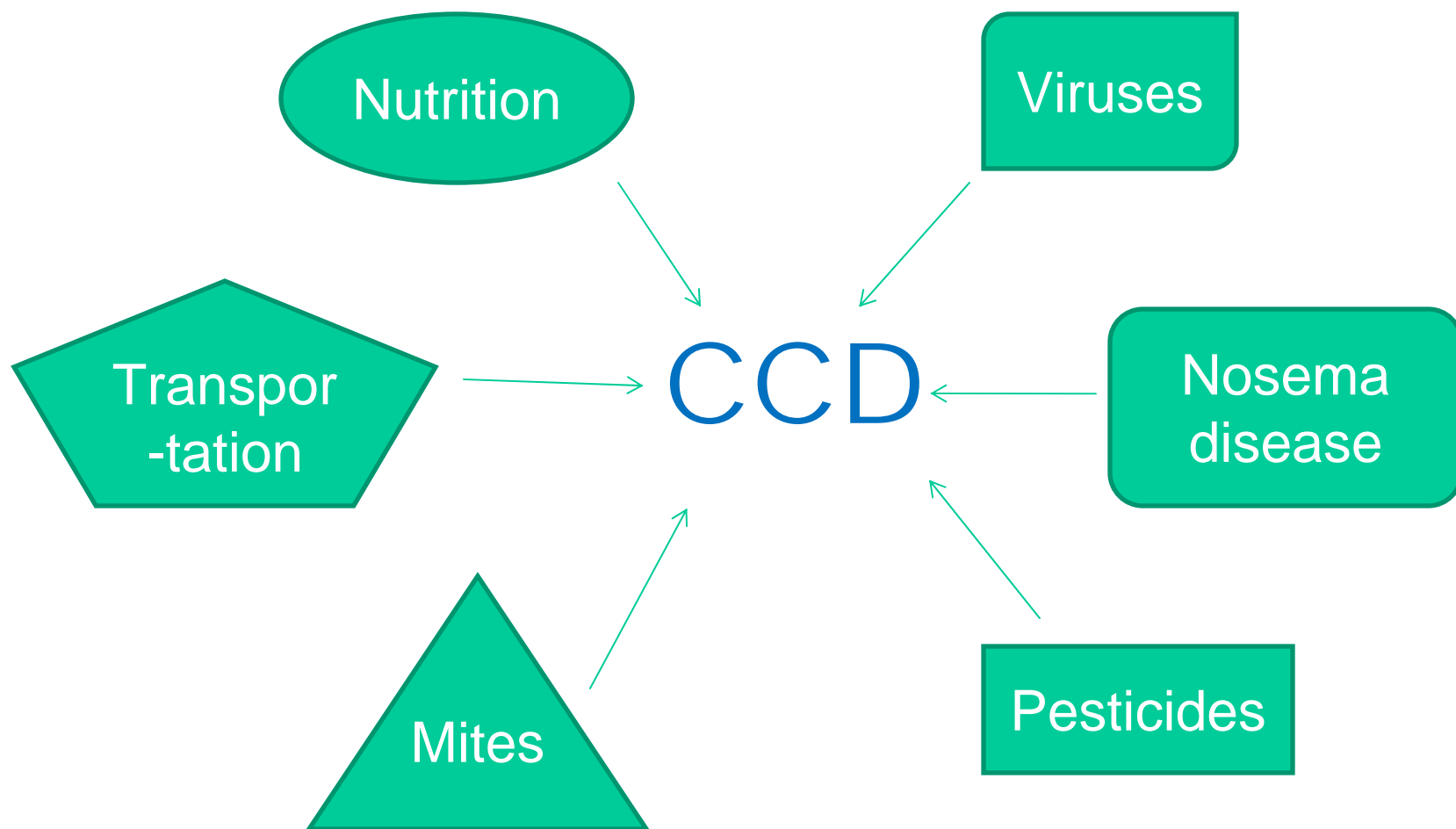




Colony Collapse Disorder (CCD) and Bee Health



No one “smoking gun”, rather a complex of different issues affecting bee health





2009 Outlook



● Bee Supply

- Varroa mites still a major factor
- CCD still a factor
 - In better shape this year than last year at this time

● Bee Demand

- Water restrictions due to drought and Endangered Species are reducing almond production in 2009
 - 200,000 ac in severe water restricted area of CA
- 2008 Almond prices declined
 - Largest crop ever
 - Increased value of \$ vs. other currencies
 - General economic uncertainty





Longer Term Outlook

- Self-compatible almond varieties are being developed
 - First one is in the market
 - Still need bees for pollination, just not as many
- Evaluating native bee options (Blue Orchard Bee) as a supplemental pollinator
- Honey Bees will still be critical to almond production



Almond Board Pollination Programs

- The ABC has funded pollination research since 1976
 - Over \$1.5 million invested in pollination research
- ABC research focused on Honey Bee Health, even prior to the advent of CCD
 - Funded research has addressed
 - bee nutrition,
 - pest and disease management, which now includes CCD
 - breeding
 - Cooperate with USDA-ARS, other bee research groups





almond board

OF CALIFORNIA

Committed to the mission of almonds becoming
"the healthiest specialty crop in the world."

Almond News

Jan. 8, 08 - [Almond Pest Management Alliance Honored by DPR with Second IPM Innovator Award](#)

Almond Suppliers/Exporters

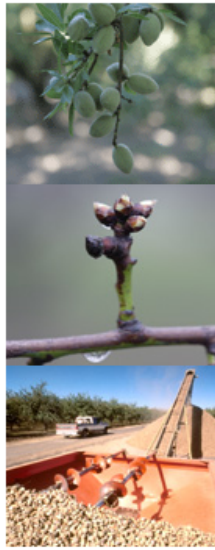
Locate an almond supplier/exporter.

Current Position Report

Monthly publication containing recent almond trade statistics.

Almond Almanac

Annual statistical report and summaries of Almond Board activities.



Almond Board Programs

- [International Issues](#)
- [Global Marketing](#)
- [Environmental Stewardship](#)
- [Food Quality & Safety](#)
- [Nutrition Research](#)
- [Production Research](#)

Almond News

- [Press Releases](#)
- [Environmental News](#)
- [International News](#)
- [California Almonds Newsletter](#)
- [Online Newsletter Sign-Up](#)

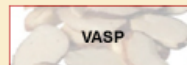


Almond Trade & Statistics

- [Almond Suppliers/Exporters](#)
- [Statistics](#)
- [Technical Information](#)
- [Almond Board Publications](#)

Industry Resources

- [E-Learning Modules](#)
- [Almond Fact Sheets](#)
- [Pollination](#)
- [Almond Recipes](#)

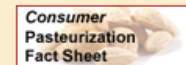


About the Almond Board

- [What is the Almond Board?](#)
- [Calendar of Events](#)
- [35th ANNUAL CONFERENCE](#)
- [Employment Opportunities](#)
- [2007-2008 Budget](#)

Other Almond Board Sites

- [Almonds Are In](#)
- [Get Your E](#)
- [PortfolioEatingPlan](#)
- [International Sites](#)



•Pollination Directory

