



**AgEcon** SEARCH  
RESEARCH IN AGRICULTURAL & APPLIED ECONOMICS

*The World's Largest Open Access Agricultural & Applied Economics Digital Library*

**This document is discoverable and free to researchers across the globe due to the work of AgEcon Search.**

**Help ensure our sustainability.**

Give to AgEcon Search

AgEcon Search  
<http://ageconsearch.umn.edu>  
[aesearch@umn.edu](mailto:aesearch@umn.edu)

*Papers downloaded from **AgEcon Search** may be used for non-commercial purposes and personal study only. No other use, including posting to another Internet site, is permitted without permission from the copyright owner (not AgEcon Search), or as allowed under the provisions of Fair Use, U.S. Copyright Act, Title 17 U.S.C.*

# The Outlook for Red Meat and Poultry

Agricultural Outlook Forum

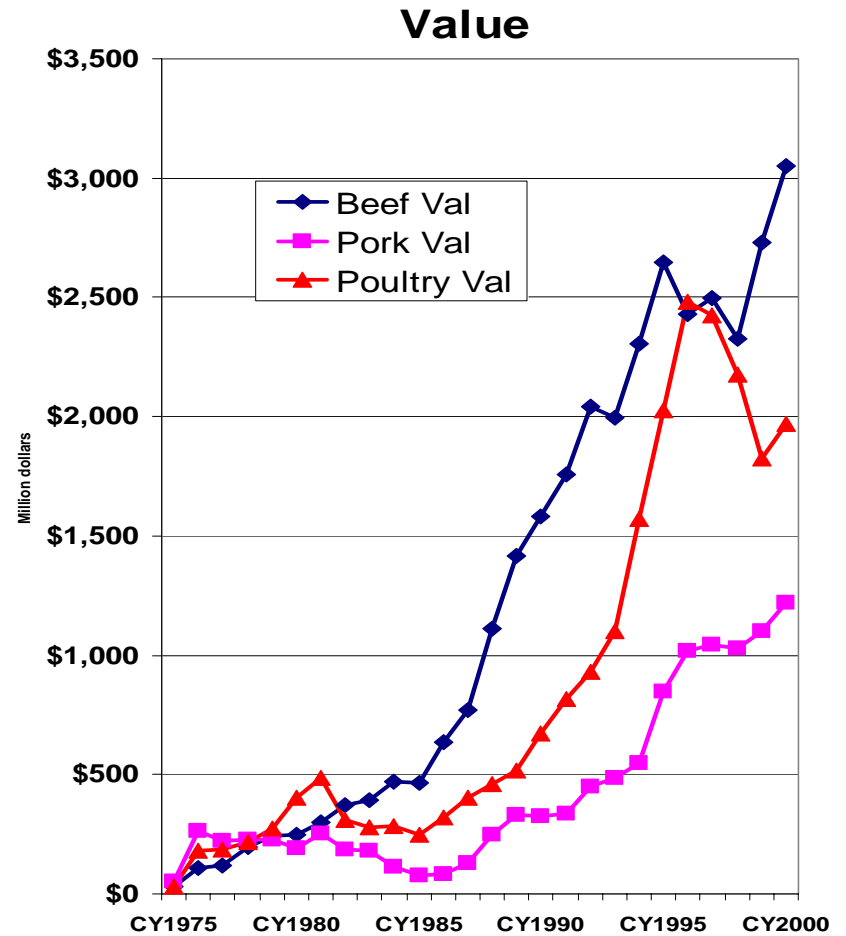
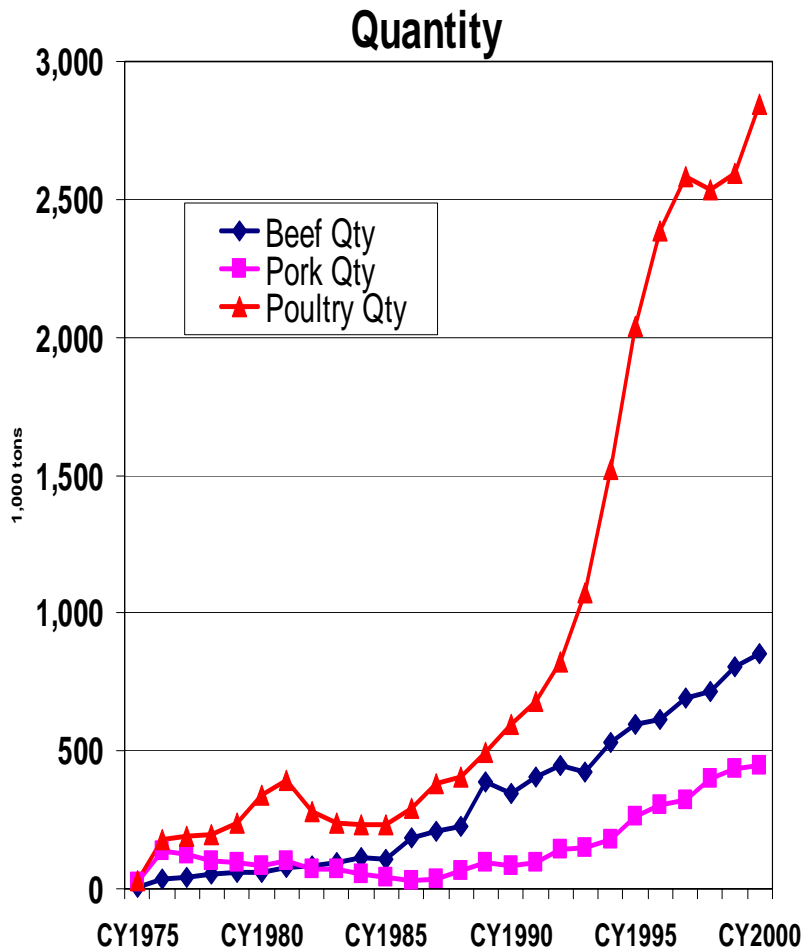
Ronald A. Gustafson

Senior Economist

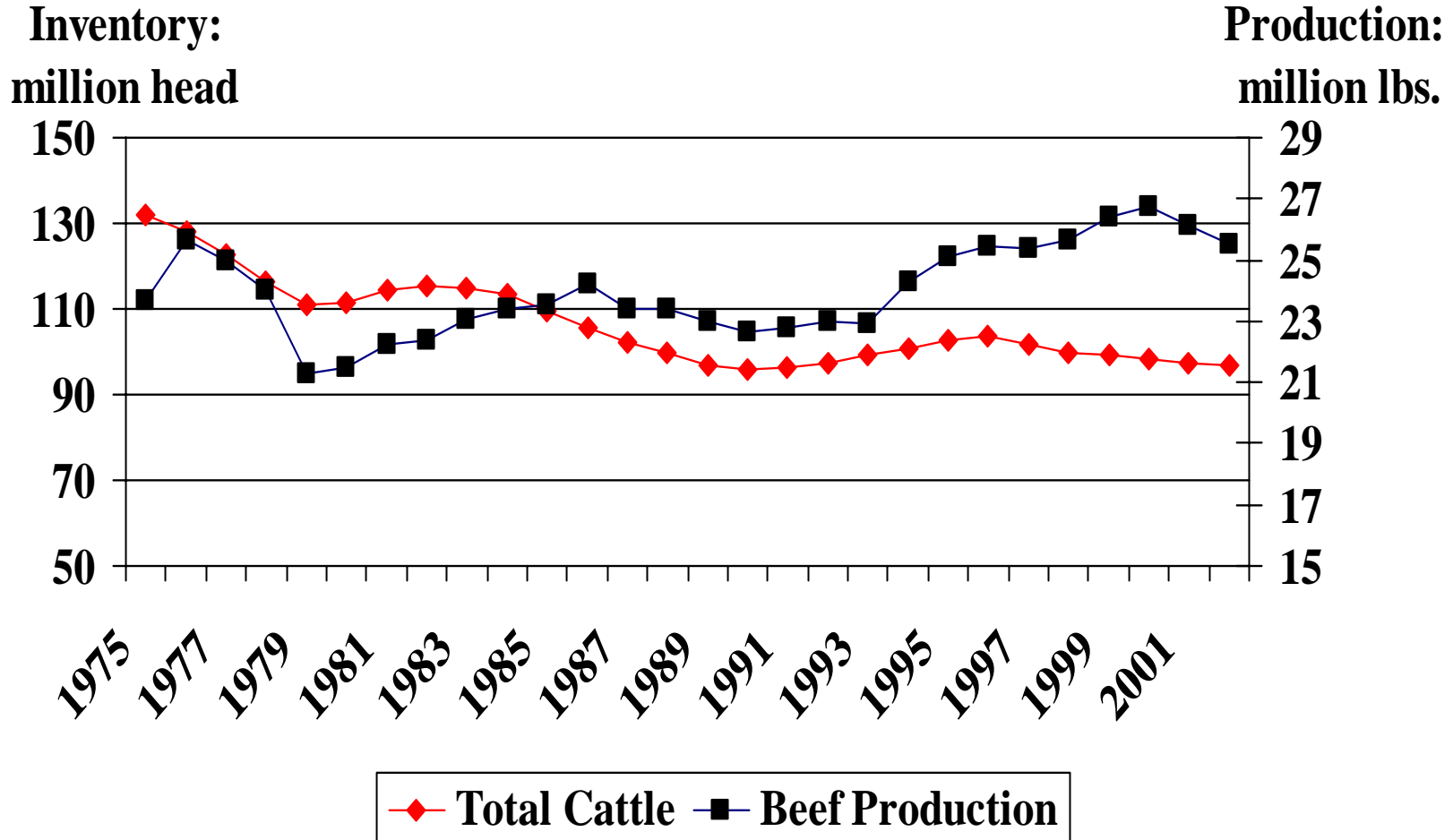
Economic Research Service

February 22 ,2002

# Quantity and Value of U.S. Meat Exports

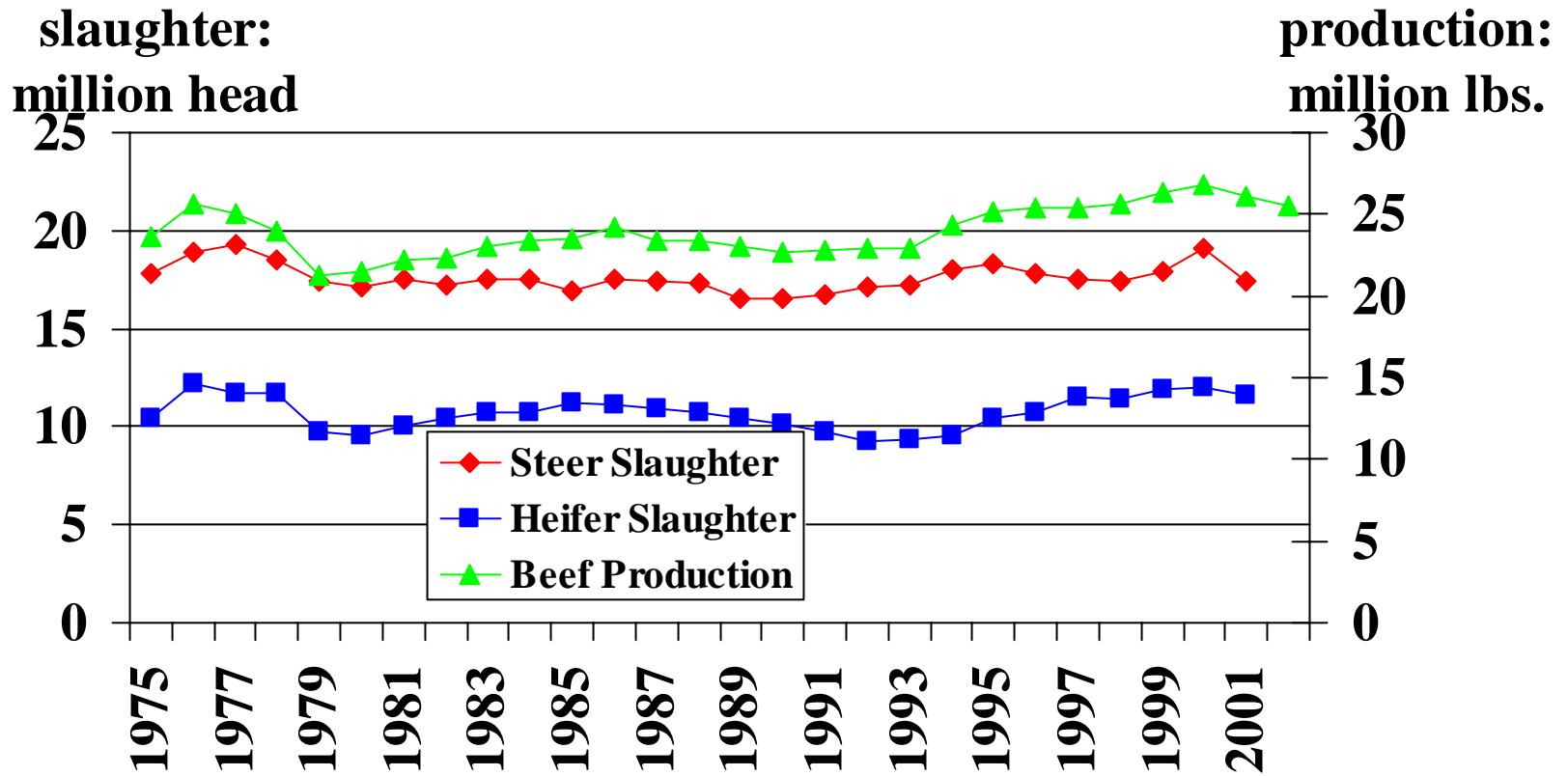


# Cattle Inventory & Beef Production

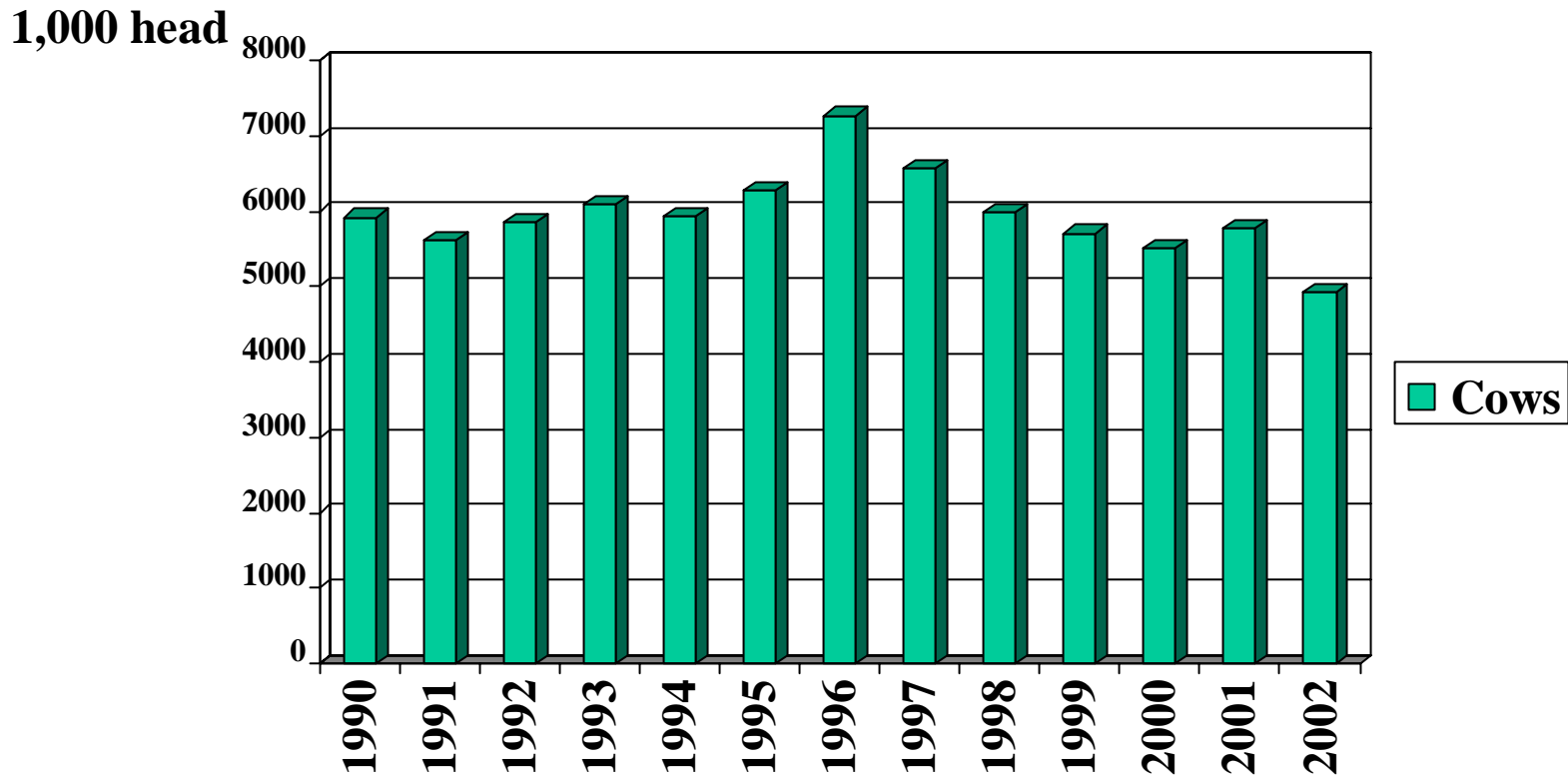


# Beef Production

Enhanced By Heifer Slaughter Since 1992

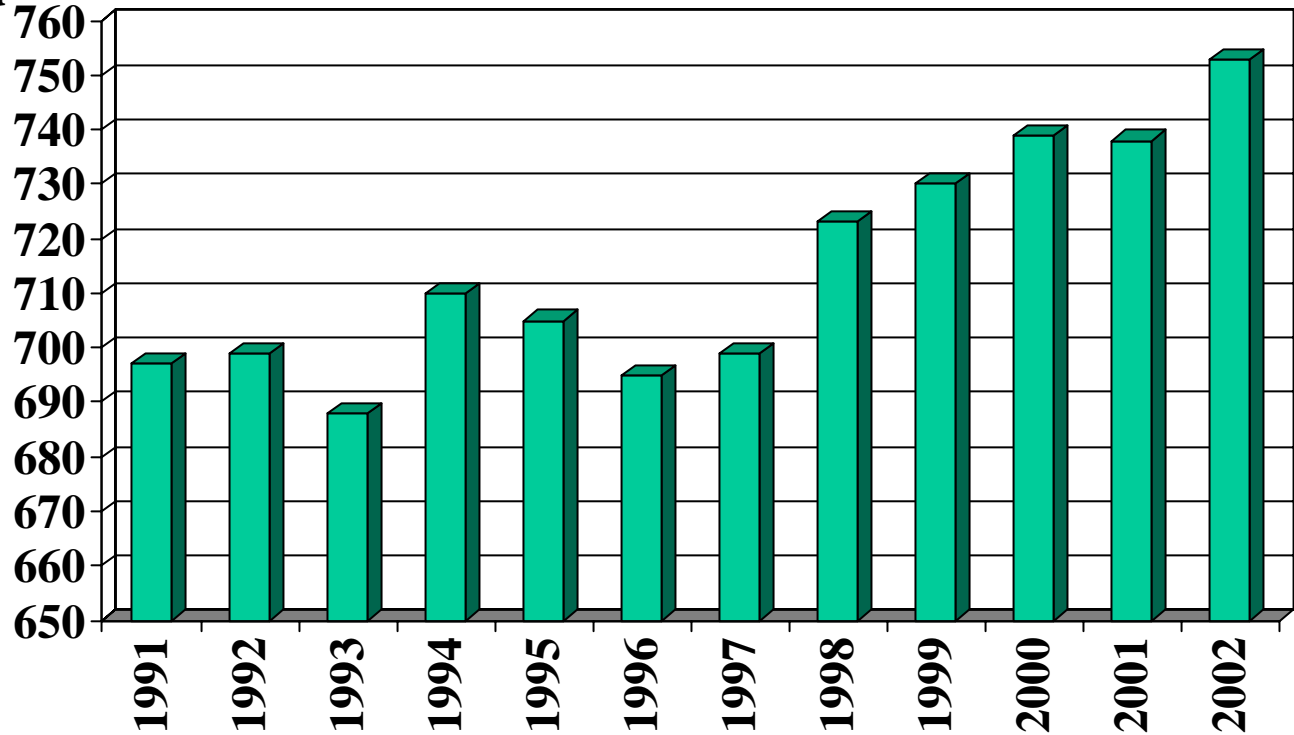


# Cow Slaughter

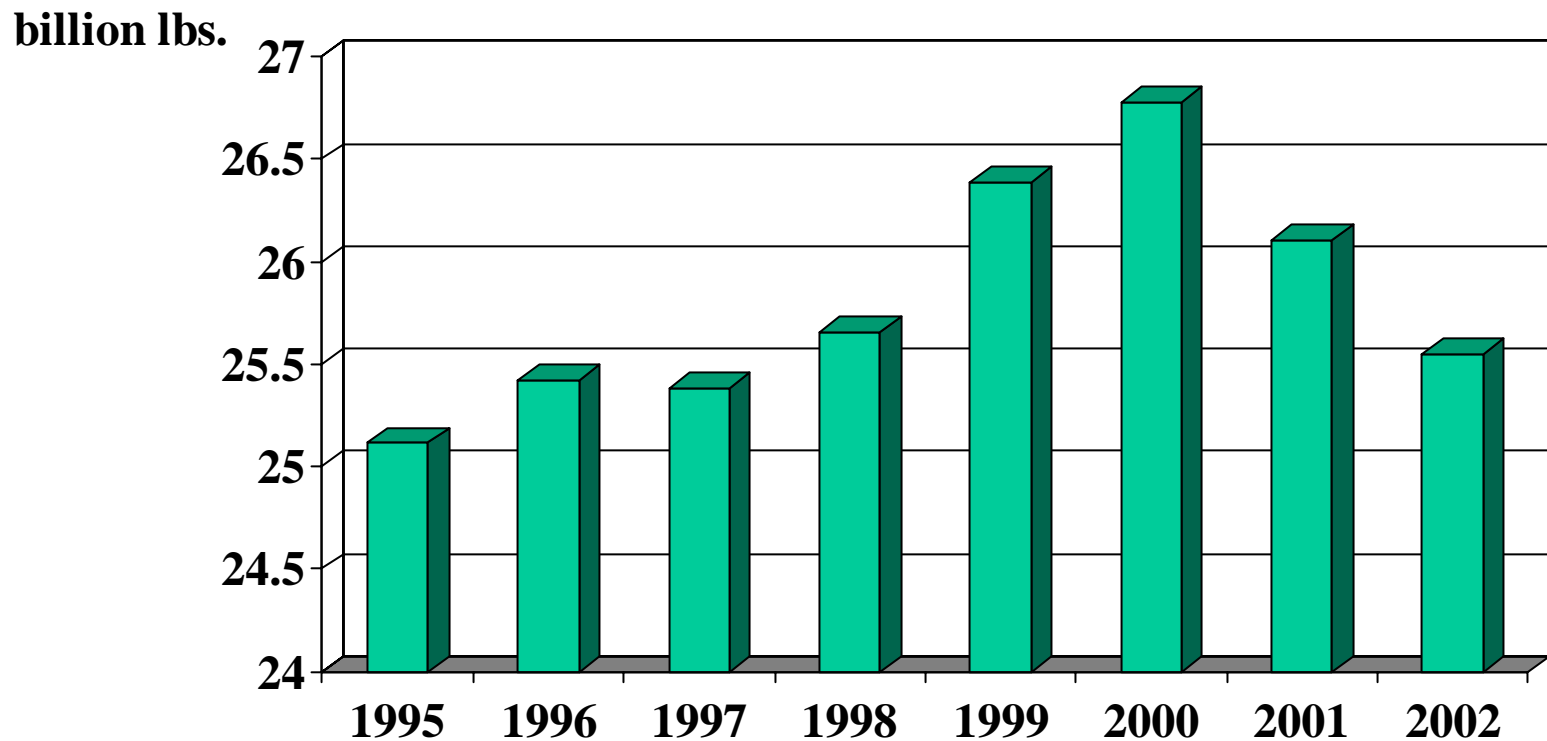


# Commercial Dressed Cattle Weights

lbs. per head

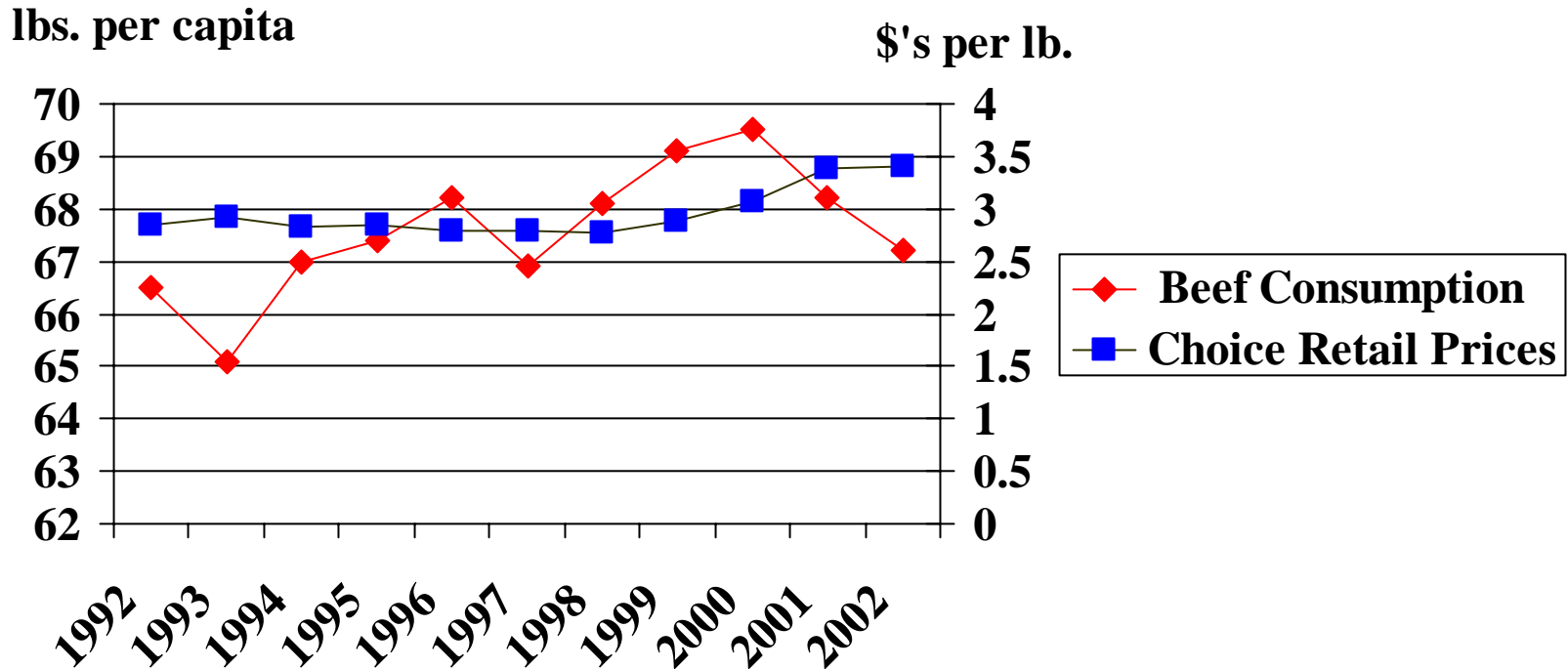


# Commercial Beef Production

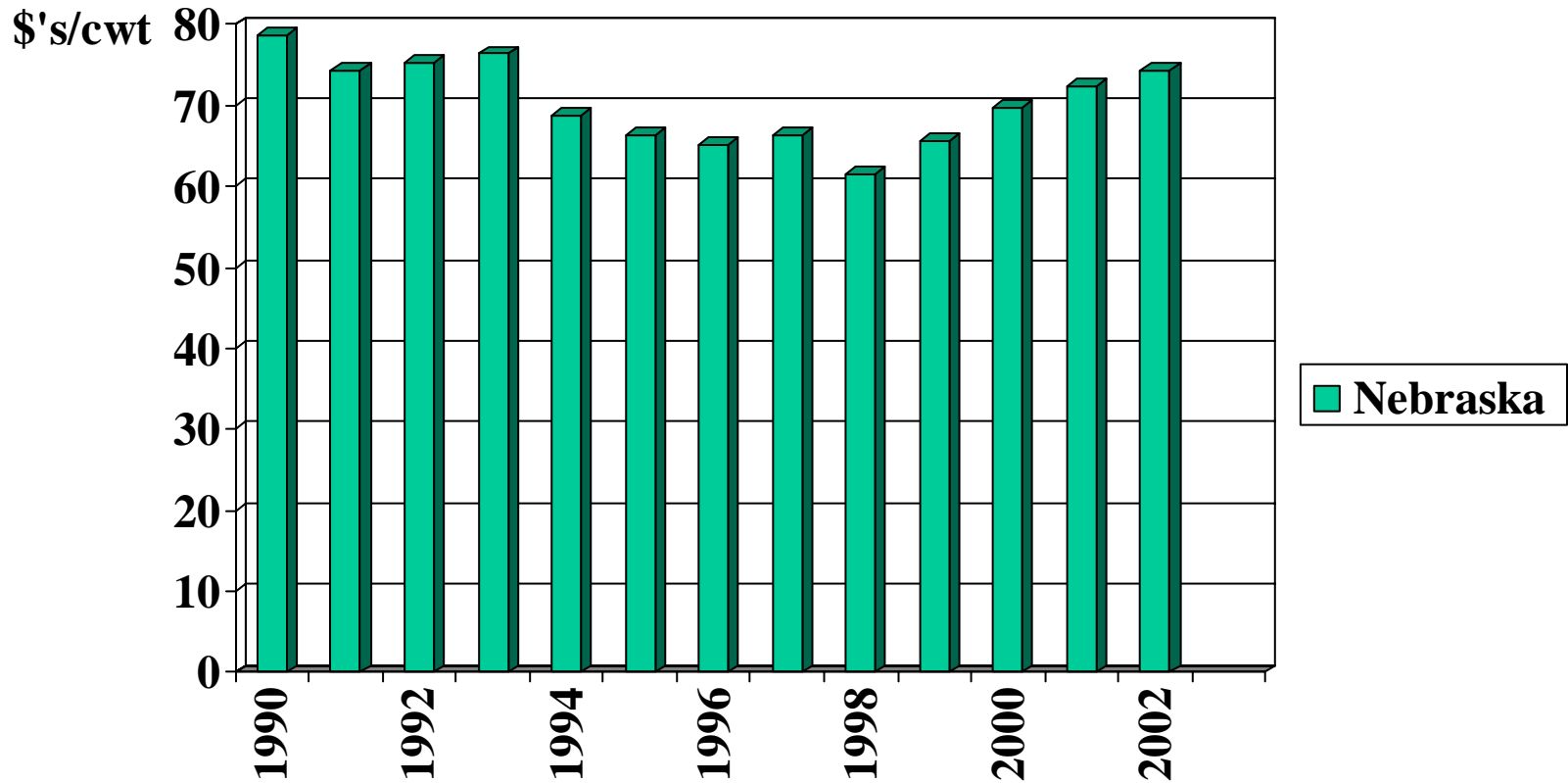




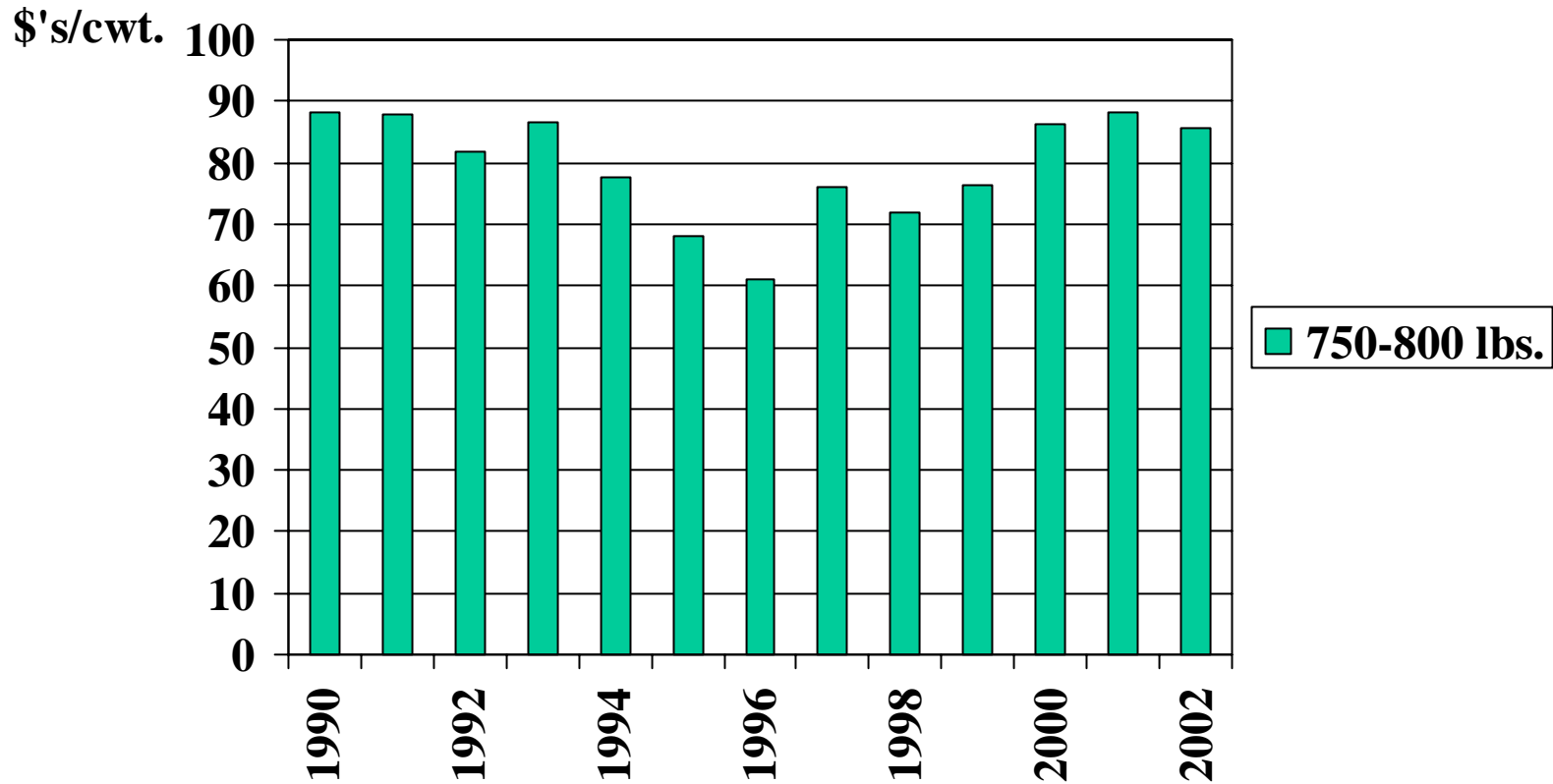
# Retail Beef Prices Strong



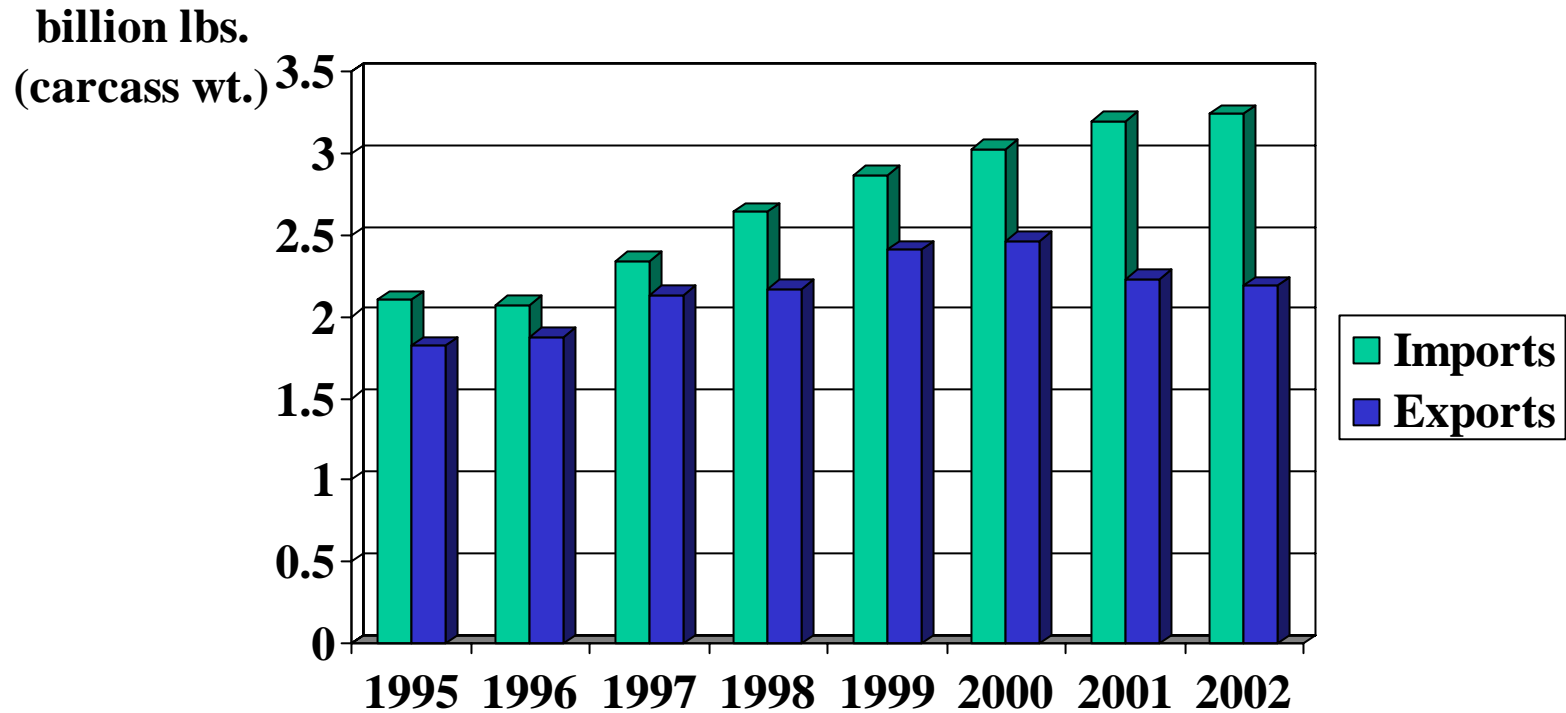
# Choice Steer Prices



# Yearling Feeder Steers Oklahoma City



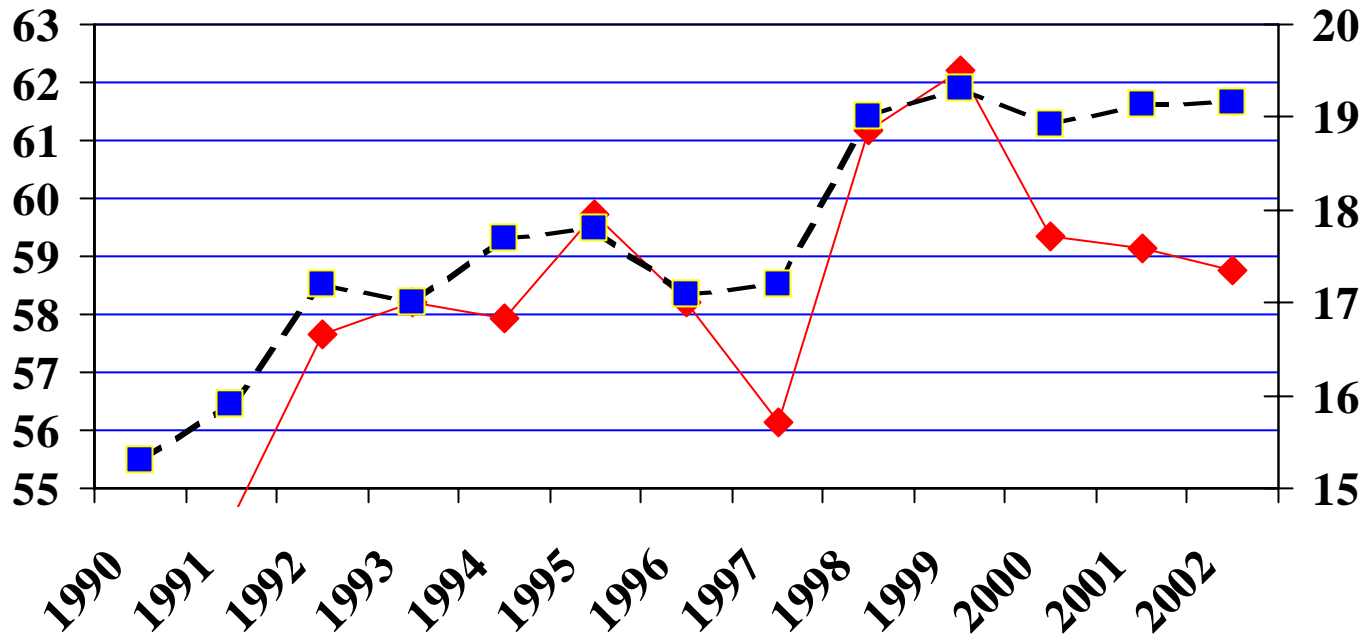
# Beef Trade



# December 1 Hog Inventory--Pork Production

million head

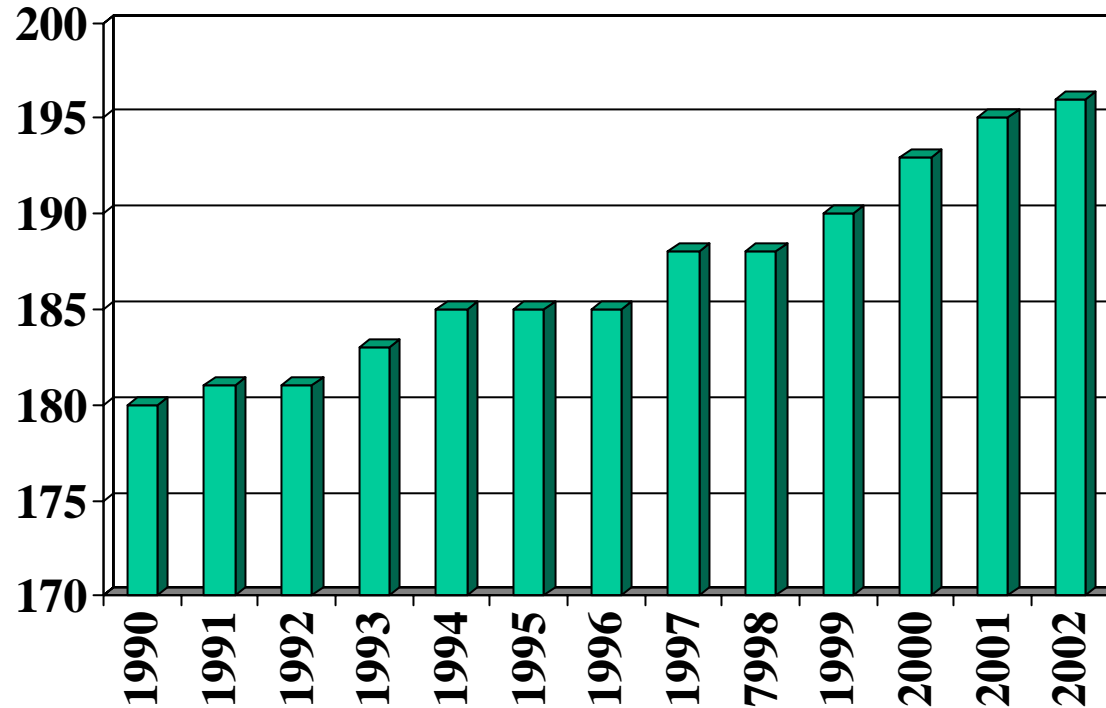
million lbs.



—◆— Inventory —■— Production

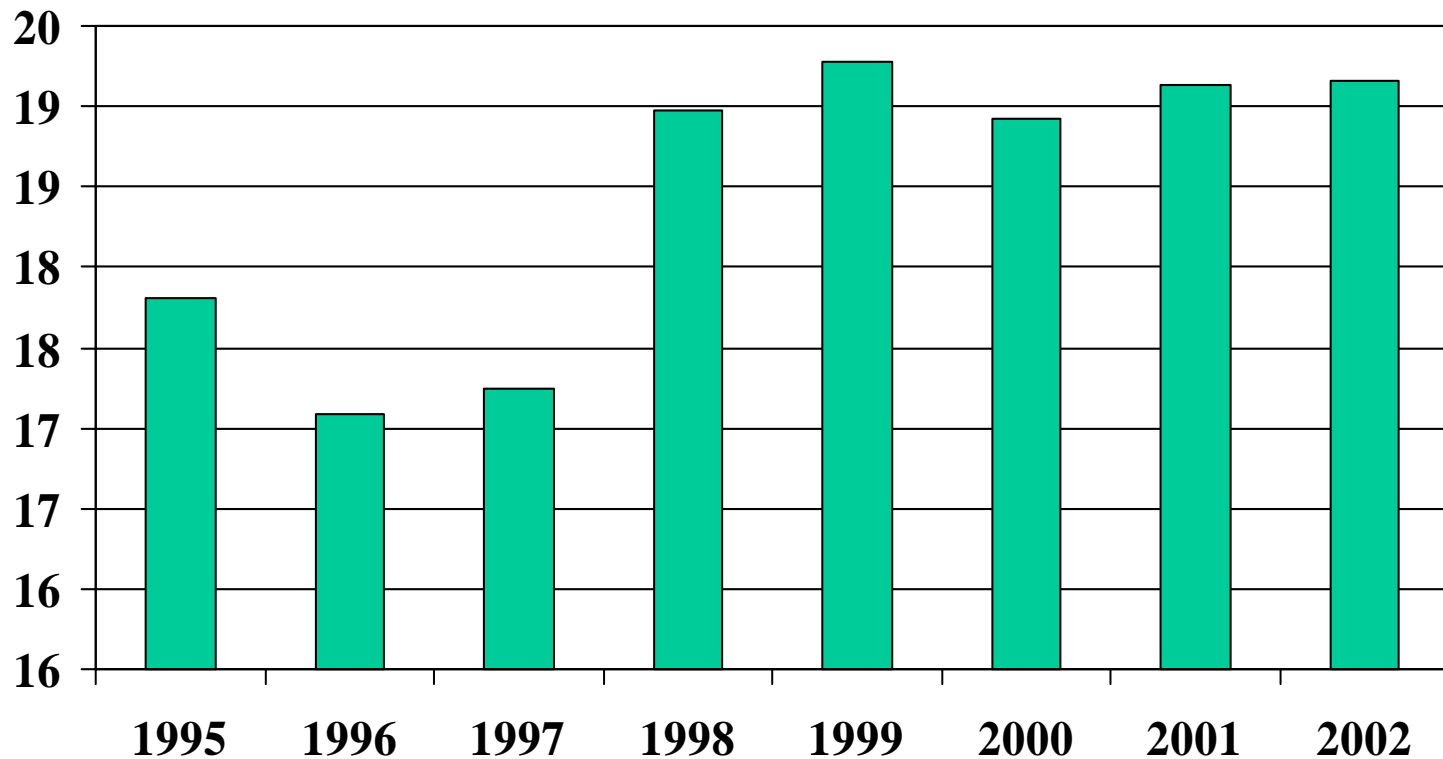
# Commercial Dressed Hog Weights

lbs. per head



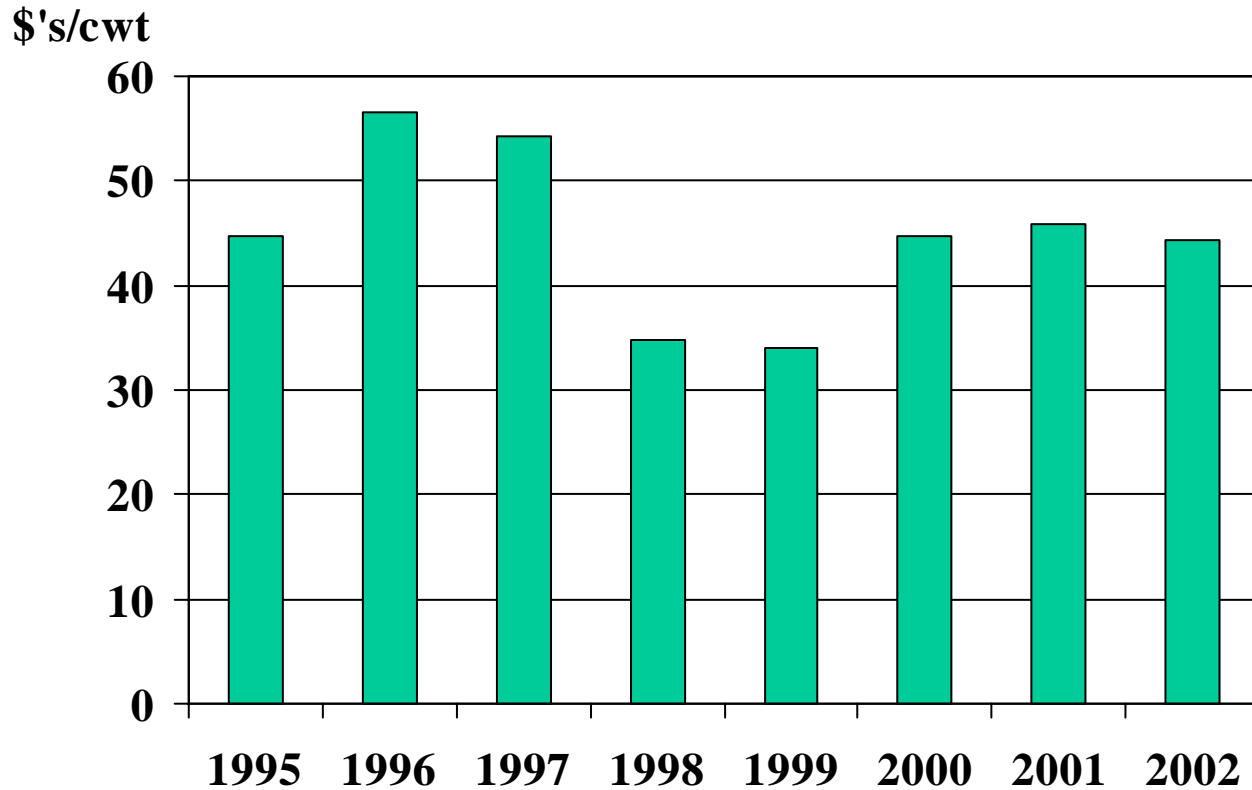
# Commercial Pork Production

billion lbs.



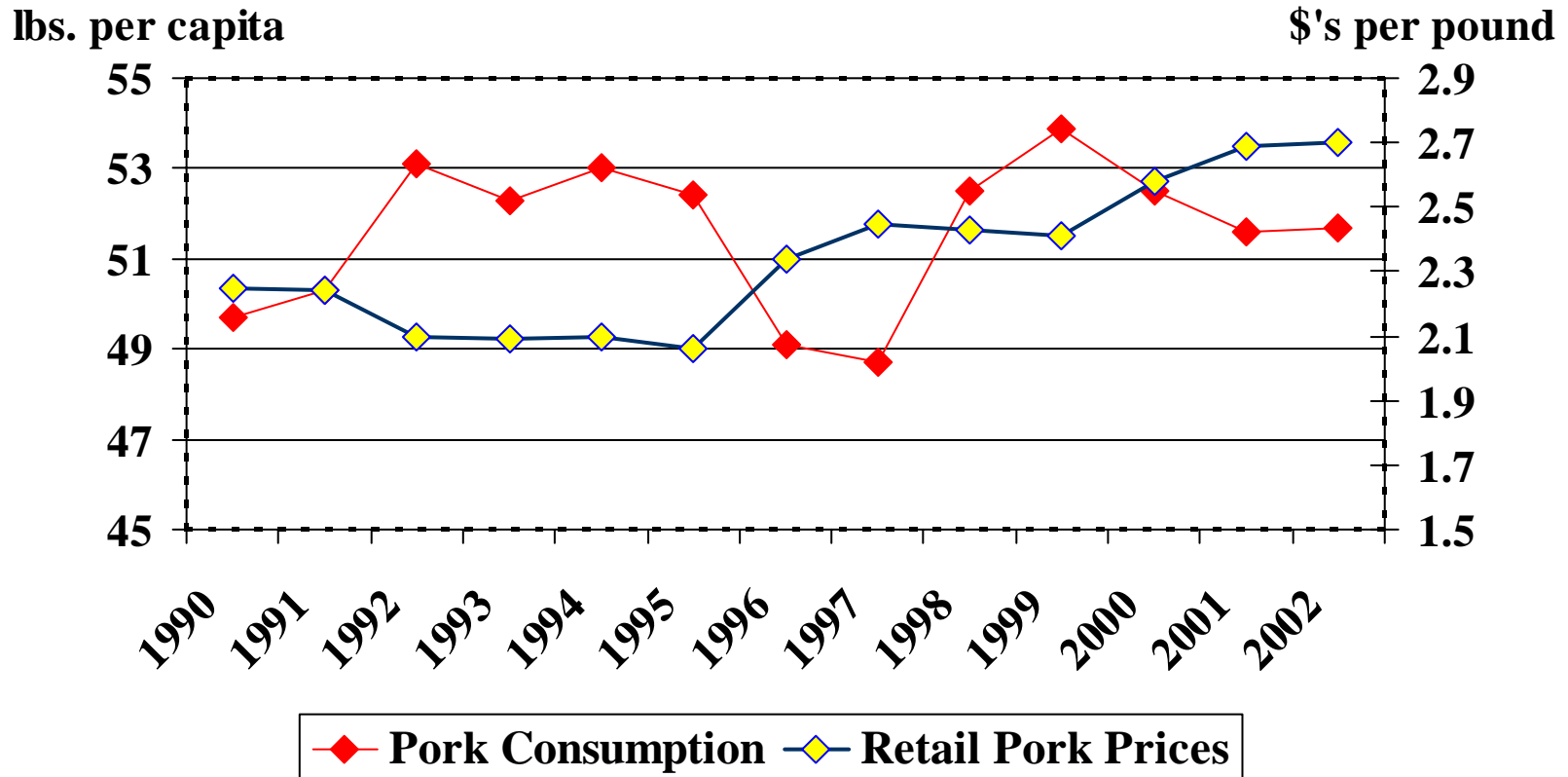
# Barrow and Gilt Price

## \$'s per cwt



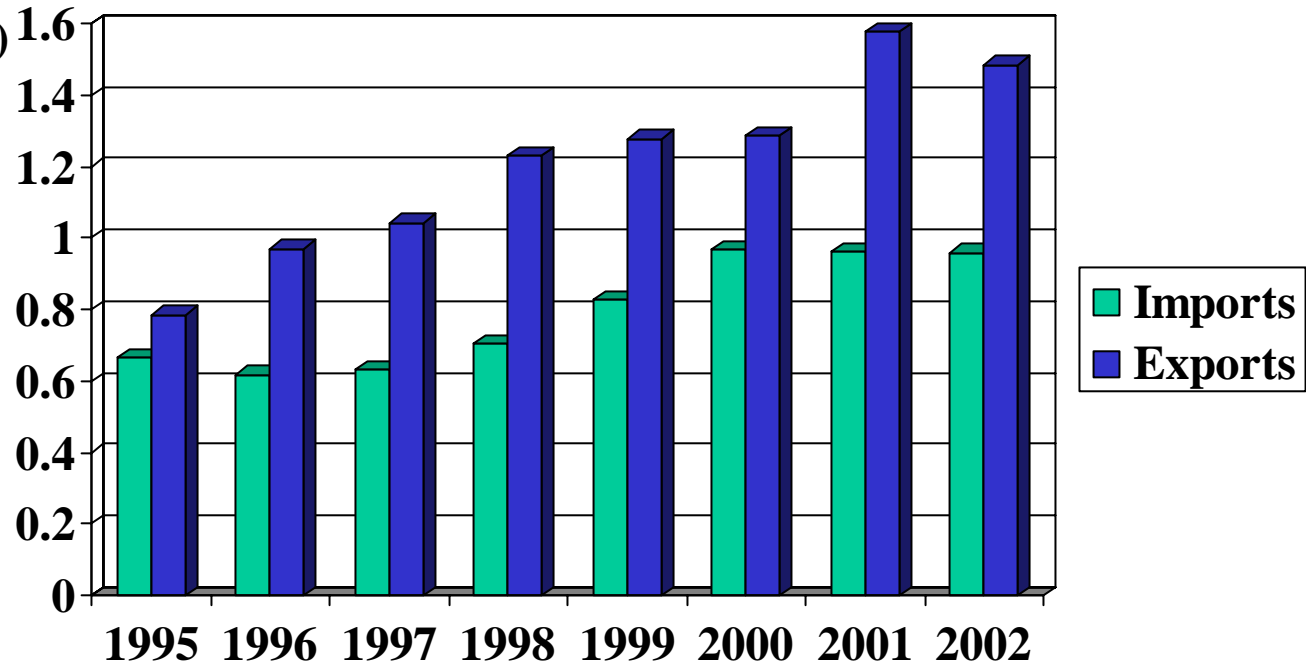


# Retail Pork Prices/Consumption

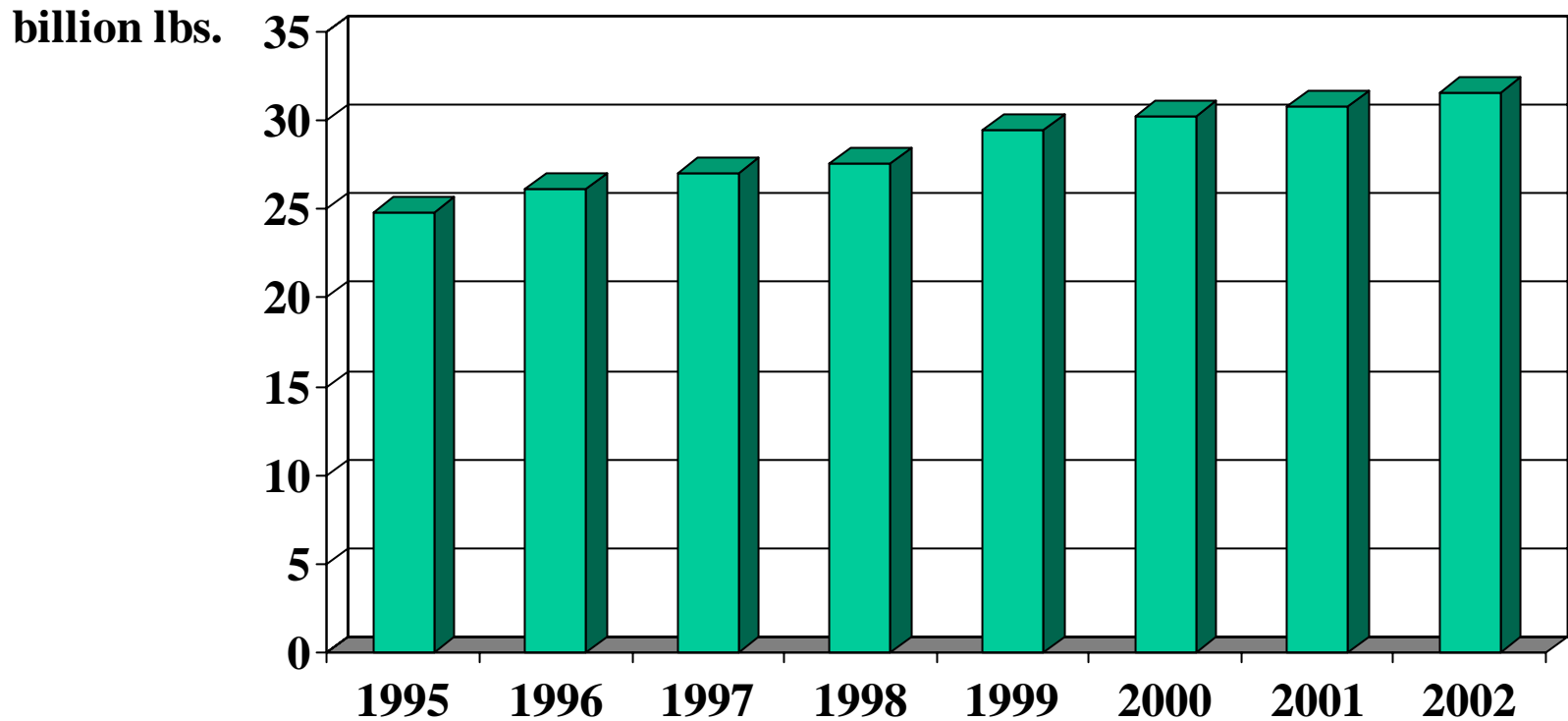


# Pork Trade

billions lbs.  
(carcass wt.)

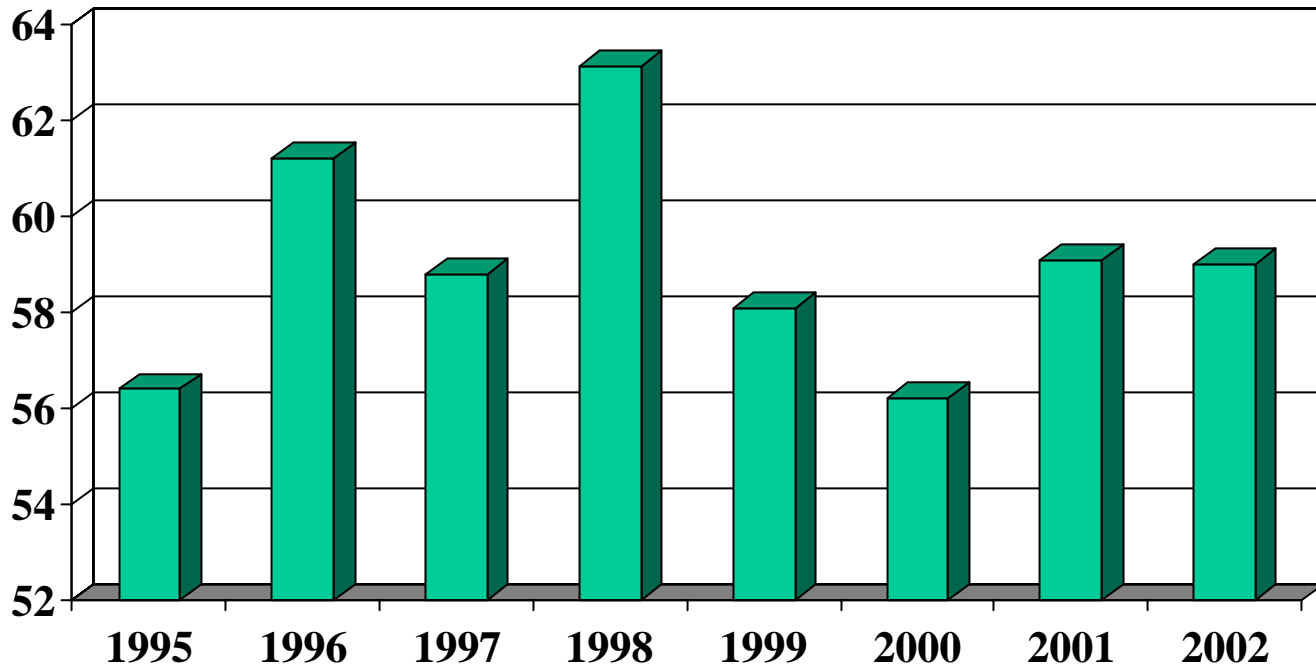


# Broiler Production Ready to Cook



# 12-City Wholesale Broiler Price

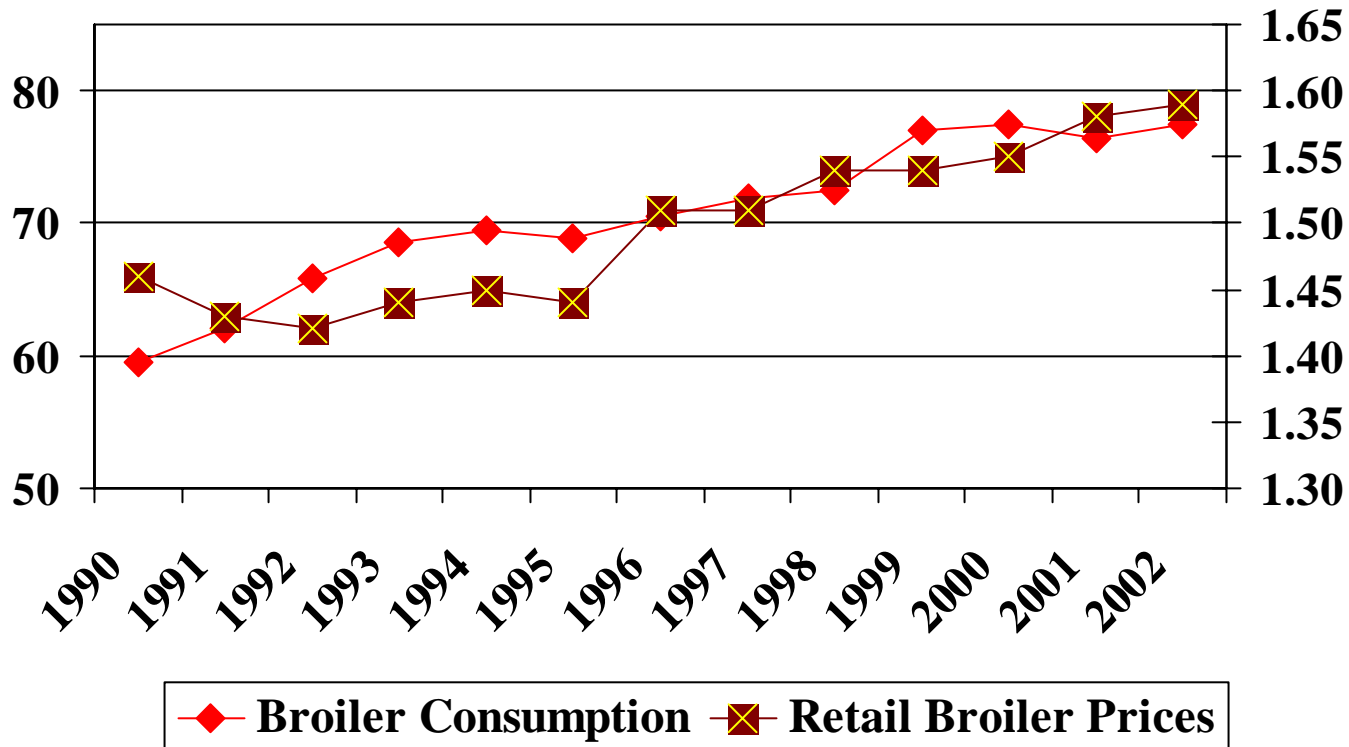
cents per lb.



# Retail Broiler Prices & Consumption

lbs. per capita

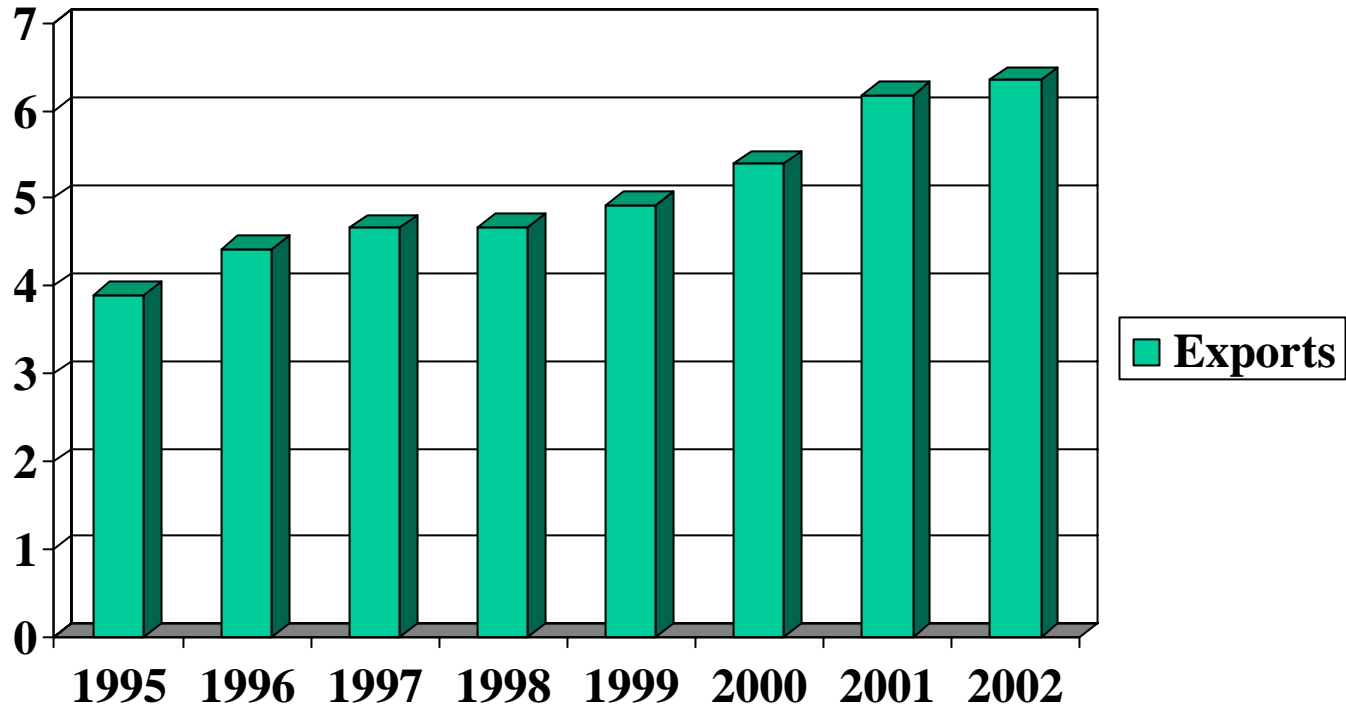
\$'s per lb.



# Broiler Trade

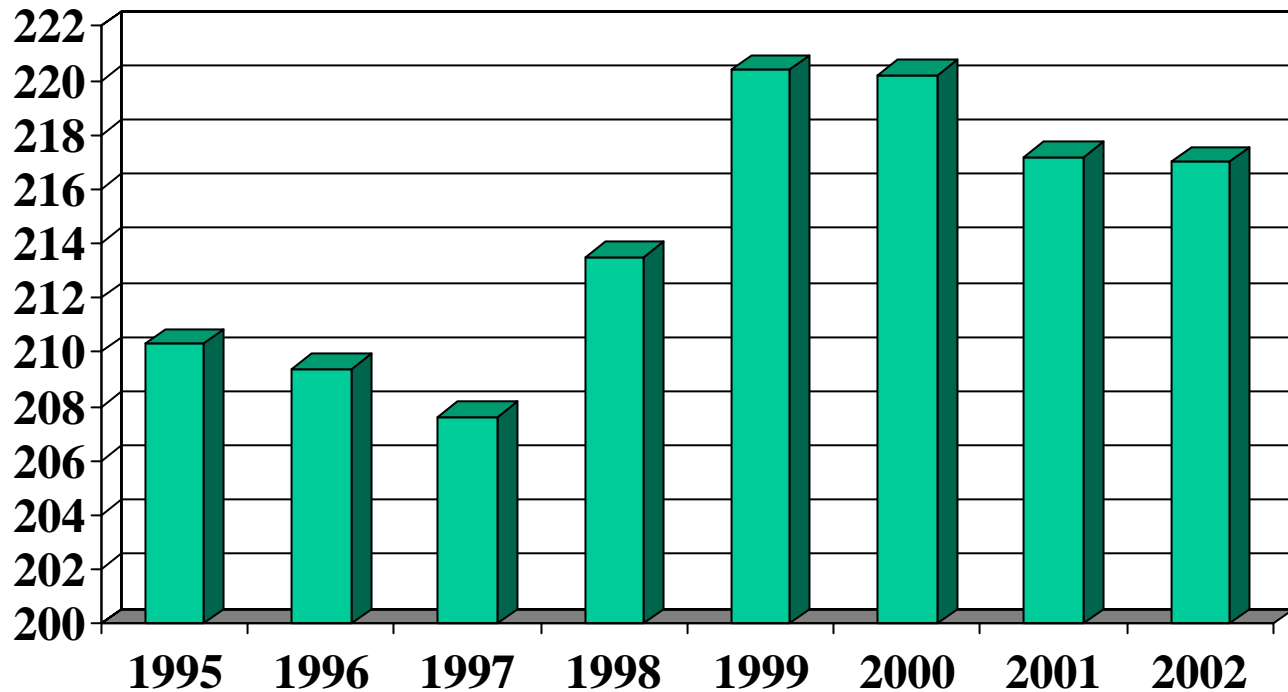
## Ready to Cook

billion lbs.



# Red Meat and Poultry Consumption

lbs. per cap.



# Market Uncertainties

Weather Conditions

Economic Conditions

Disease Outbreaks

Consumer Preferences