



AgEcon SEARCH
RESEARCH IN AGRICULTURAL & APPLIED ECONOMICS

The World's Largest Open Access Agricultural & Applied Economics Digital Library

This document is discoverable and free to researchers across the globe due to the work of AgEcon Search.

Help ensure our sustainability.

Give to AgEcon Search

AgEcon Search
<http://ageconsearch.umn.edu>
aesearch@umn.edu

*Papers downloaded from **AgEcon Search** may be used for non-commercial purposes and personal study only. No other use, including posting to another Internet site, is permitted without permission from the copyright owner (not AgEcon Search), or as allowed under the provisions of Fair Use, U.S. Copyright Act, Title 17 U.S.C.*

Drought-tolerant Technology: A Mixed Blessing

Ziwei Ye

Michigan State University
yeziwei@msu.edu

David A. Hennessy

Michigan State University
hennes64@msu.edu

Felicia Wu

Michigan State University
fwu@msu.edu

*Selected Poster prepared for presentation at the 2021 Agricultural & Applied Economics Association
Annual Meeting, Austin, TX, August 1 – August 3*

Copyright 2021 by Ziwei Ye, David A. Hennessy, and Felicia Wu. All rights reserved. Readers may make verbatim copies of this document for non-commercial purposes by any means, provided that this copyright notice appears on all such copies.



Drought-tolerant Technology: A Mixed Blessing

Ziwei Ye^a, David A. Hennessy^a, Felicia Wu^{a,b}
^aDepartment of Agricultural, Food, and Resource Economics, Michigan State University
^bDepartment of Food Science and Human Nutrition, Michigan State University

Introduction

❖ Motivation

Climate change is projected to increase environmental stress on major crops in the U.S., corn in particular. One potentially promising technology to enhance corn tolerance to heat and water stress is the Drought-tolerant (DT) corn varieties that became broadly available in 2013 (Tollefson 2011).

However, numerous laboratory and empirical studies have suggested penalties associated with higher drought tolerance in various forms (Zhao et al. 2015; Miao et al. 2021). In addition, in actual corn production the DT varieties may perform differently than in the laboratory due to behavioral differences associated with the decision to plant DT corn, such as planting rate (Lobell et al. 2014).

❖ Objective

Systematically evaluate the impacts of Drought-tolerant (DT) technology on yield and yield risk in the U.S. corn production context.

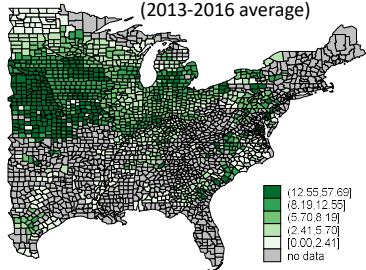
Method and Data

DT technology potentially works through two channels: (1) raise the **stress tolerance threshold** beyond which the stress becomes too extreme to tolerate, and (2) mitigate the **extent of damages** associated with extreme stress. To identify the effects through the two channels separately, we estimate the piecewise linear function for both heat and water stress using DT-planting and non-DT subsample, respectively, to estimate the **thresholds** and **piecewise slopes**. Subsequently, the thresholds and effects are compared across the two DT groups to reveal DT effects. An observation is assigned to DT=1 subsample if the DT planting rate is greater than zero, and to DT=0 otherwise.

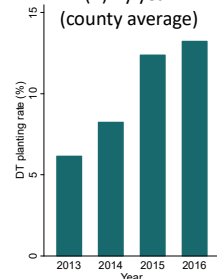
Yield is measured by bushels per harvested acre. Heat- and drought-associated yield risks are operationalized using cause-specific loss-cost ratio (realized indemnity payments associated with the specific cause divided by the maximum indemnity payments recorded in the crop insurance database). The Dryness index is a linear transformation of Palmer Drought Severity Index such that it ranges from 0 to 40 and higher values indicating drier conditions. Our analysis relies on a panel dataset at county level, spanning 2013-2016.

DT planting rate (%)

(A) By county
(2013-2016 average)

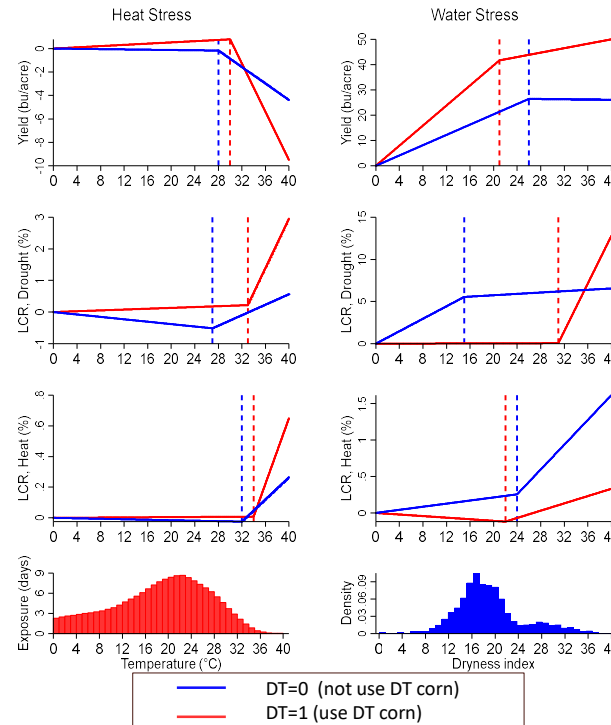


(B) By year
(county average)



Results

Piecewise effects of heat and water stress, by DT group.



Test statistics (p-value) for piecewise slopes

Null Hypothesis	Heat Stress			Water Stress		
	Yield	LCR, Drought	LCR, Heat	Yield	LCR, Drought	LCR, Heat
[DT=0: k1] = 0	0.77	0.00	0.73	0.00	0.01	0.35
[DT=1: k1] = 0	0.22	0.13	0.51	0.00	0.94	0.28
[DT=0: k2] = 0	0.00	0.00	0.01	0.97	0.59	0.05
[DT=1: k2] = 0	0.00	0.00	0.02	0.12	0.01	0.04
[DT=0: k1] = [DT=1: k1]	0.25	0.00	0.65	0.00	0.01	0.19
[DT=0: k2] = [DT=1: k2]	0.00	0.03	0.13	0.51	0.01	0.17

Notes: DT=0 (1) denotes the non-DT (DT) subsample, k1 (k2) denotes the slope for the below (above)-threshold piece. For example, the last row tests whether the above-threshold slopes are statistically equal across the two DT groups.

Conclusions

The results suggest that the DT technology is a mixed blessing. On the one hand, the DT corn generally endures higher levels of stress than does its non-DT counterpart, and this is especially the case for drought-related yield risk: the tolerance thresholds of DT corn are much greater than non-DT for both heat and water stress.

However, on the other hand, yield decreases and yield risks increase at a greater rate beyond the threshold for DT group. That is, the yield and yield risk outcomes are more severely compromised under extreme stress for DT varieties.

Taken together, our data tentatively suggest that while DT corn is less likely to be struck by environmental stress, it suffers greater marginal damage when the stress becomes intolerable. Hence the "mixed blessing".

Discussions

Cautions should be taken in interpreting our results. First, this study does not characterize a pure technical relationship in the way that field and laboratory studies usually do. Rather, we attempt to capture the behavioral factors associated with DT planting, whether they induce DT planting or are in response to it. Hence, the results reflect the aggregate outcome that is possibly mediated by behavioral factors, including but not limited to planting rate (Lobell et al. 2014), co-adoption of other existing traits and tillage.

Second, the average DT planting rate in the DT subsample is 16.8%. Therefore, more precisely the differences between DT and non-DT groups pertain to a relatively low level of DT planting, compared to the traits with long history, such as Bt. However, a higher DT planting rate in the near future is reasonably expected.



References

- Tollefson, J. "Drought-tolerant maize gets US debut." Nature 469 (2011): 144.
- Zhao, P., et al. "Analysis of different strategies adapted by two cassava cultivars in response to drought stress: ensuring survival or continuing growth." Journal of experimental botany 66 (2015): 1477-1488.
- Yu, C., Miao, R. and Khanna, M. "Maladaptation of U.S. corn and soybeans to a changing climate." Scientific Reports 11 (2021): 12351.
- Lobell, D. B., et al. "Greater sensitivity to drought accompanies maize yield increase in the US Midwest." Science 344 (2014): 516-519.