



**AgEcon** SEARCH  
RESEARCH IN AGRICULTURAL & APPLIED ECONOMICS

*The World's Largest Open Access Agricultural & Applied Economics Digital Library*

**This document is discoverable and free to researchers across the globe due to the work of AgEcon Search.**

**Help ensure our sustainability.**

Give to AgEcon Search

AgEcon Search

<http://ageconsearch.umn.edu>

[aesearch@umn.edu](mailto:aesearch@umn.edu)

*Papers downloaded from **AgEcon Search** may be used for non-commercial purposes and personal study only. No other use, including posting to another Internet site, is permitted without permission from the copyright owner (not AgEcon Search), or as allowed under the provisions of Fair Use, U.S. Copyright Act, Title 17 U.S.C.*

*No endorsement of AgEcon Search or its fundraising activities by the author(s) of the following work or their employer(s) is intended or implied.*

March 2021



# Working Paper

004.2021

---

## **The economic impact of weather and climate**

**Richard S. J. Tol**

# The economic impact of weather and climate

By Richard S. J. Tol, University of Sussex, Vrije Universiteit, Tinbergen Institute, CESifo, Colorado School of Mines

## Summary

I propose a new conceptual framework to disentangle the impacts of weather and climate on economic activity and growth: A stochastic frontier model with climate in the production frontier and weather shocks as a source of inefficiency. I test it on a sample of 160 countries over the period 1950-2014. Temperature and rainfall determine production possibilities in both rich and poor countries; positively in cold countries and negatively in hot ones. Weather anomalies reduce inefficiency in rich countries but increase inefficiency in poor and hot countries; and more so in countries with low weather variability. The climate effect is larger than the weather effect.

**Keywords:** Climate Change, Weather Shocks, Economic Growth, Stochastic Frontier Analysis

**JEL Classification:** D72, D73, D74

*Marco Letta expertly assisted with data collection and regressions. Peter Dolton, Jurgen Doornik, Bill Greene, David Hendry, Andrew Martinez, Pierluigi Montalbano and Felix Pretis had excellent comments on earlier versions of this work. I also thank seminar participants at the EMCC-III conference, University of Sussex, UNU-MERIT University, the 2019 IAERE conference, Cambridge University, London School of Economics, Sapienza University of Rome, Shanghai Lixin University, Edinburgh University, University of Southern Denmark, Federal Reserve Bank of San Francisco, and CESifo.*

*Address for correspondence:*

Richard S. J. Tol  
University of Sussex  
Department of Economics  
Brighton, BN1 9RH  
Sussex House, Falmer  
United Kingdom  
E-mail: r.tol@sussex.ac.uk

The opinions expressed in this paper do not necessarily reflect the position of Fondazione Eni Enrico Mattei

Corso Magenta, 63, 20123 Milano (I), web site: [www.feem.it](http://www.feem.it), e-mail: [working.papers@feem.it](mailto:working.papers@feem.it)

# The economic impact of weather and climate

Richard S.J. Tol<sup>a,b,c,d,e,f,1,\*</sup>

<sup>a</sup>*Department of Economics, University of Sussex, Falmer, United Kingdom*

<sup>b</sup>*Institute for Environmental Studies, Vrije Universiteit, Amsterdam, The Netherlands*

<sup>c</sup>*Department of Spatial Economics, Vrije Universiteit, Amsterdam, The Netherlands*

<sup>d</sup>*Tinbergen Institute, Amsterdam, The Netherlands*

<sup>e</sup>*CESifo, Munich, Germany*

<sup>f</sup>*Payne Institute for Earth Resources, Colorado School of Mines, Golden, CO, USA*

---

## Abstract

I propose a new conceptual framework to disentangle the impacts of weather and climate on economic activity and growth: A stochastic frontier model with climate in the production frontier and weather shocks as a source of inefficiency. I test it on a sample of 160 countries over the period 1950-2014. Temperature and rainfall determine production possibilities in both rich and poor countries; positively in cold countries and negatively in hot ones. Weather anomalies reduce inefficiency in rich countries but increase inefficiency in poor and hot countries; and more so in countries with low weather variability. The climate effect is larger than the weather effect. *Keywords:* climate change; weather shocks; economic growth; stochastic frontier analysis *JEL codes:* D24; O44; O47; Q54

---

## 1. Introduction

Climate matters to the economy. Not in the way that classical thinkers such as Guan Zhong, Hippocrates or Ibn Khaldun, or modern thinkers such as [Huntington \(1915\)](#) or [Diamond](#)

---

\*Jubilee Building, BN1 9SL, UK

*Email address:* [r.tol@sussex.ac.uk](mailto:r.tol@sussex.ac.uk) (Richard S.J. Tol)

*URL:* [http://www.ae-info.org/ae/Member/Tol\\_Richard](http://www.ae-info.org/ae/Member/Tol_Richard) (Richard S.J. Tol)

<sup>1</sup>Marco Letta expertly assisted with data collection and regressions. Peter Dolton, Jurgen Doornik, Bill Greene, David Hendry, Andrew Martinez, Pierluigi Montalbano and Felix Pretis had excellent comments on earlier versions of this work. I also thank seminar participants at the EMCC-III conference, University of Sussex, UNU-MERIT University, the 2019 IAERE conference, Cambridge University, London School of Economics, Sapienza University of Rome, Shanghai Lixin University, Edinburgh University, University of Southern Denmark, Federal Reserve Bank of San Francisco, and CESifo.

(1997) argue it does. Environmental determinism is inconsistent with the observations. There are thriving economies in the desert, in the tropics, and in the polar circle. There is destitution, too, in all these places. Climate is not destiny, but it does matter.

The prevailing view among economists, with some exceptions (Bloom and Sachs, 1998, Sachs, 2003, Olsson and Hibbs, 2005, Barrios et al., 2010), is that climate does *not* matter for economic development, only institutions do (Easterly and Levine, 2003, Rodrik et al., 2004). Some argue that climate and geography partly shaped institutions in the past, but have become irrelevant since (Acemoglu et al., 2001, 2002, Alsan, 2015). Institutional determinism is just as inconsistent with the observations. The two halves of the Korean Peninsula and of the island of Hispaniola are powerful reminders of the importance of institutions, but climate matters for agriculture (Mendelsohn et al., 1994, Schlenker et al., 2005), for energy demand (Mansur et al., 2008), for tourism (Lise and Tol, 2002), for transport (Koetse and Rietveld, 2009), for labour productivity (Kjellstrom et al., 2009, Zander et al., 2015), and for health (Sachs and Malaney, 2002)—and thus for the economy as a whole.

Climate matters, but it has been an empirical challenge to demonstrate this using country data. Climate changes only slowly over time, its signal swamped by confounders, many of which change more quickly than climate. Climate varies substantially over space, but so do a great many other things that we know are important for development. The insignificance of climate variables in cross-country studies may be due to a lack of statistical power. Indeed, a climate association is significant in *subnational* income data (Nordhaus, 2006, Dell et al., 2009, Henderson et al., 2018, Kalkuhl and Wenz, 2020) and, as is shown below, in long panels. Because of the confounders,<sup>2</sup> this association cannot be given a causal interpretation.

Unlike the impact of *climate*, the impact of *weather* can be identified—or so people have argued. Identification rests on the fact that weather is random (Heal and Park, 2016), at least from the perspective of the economy. The problem with this argument is that by now many different economic activities have been found to be affected by the weather (see Auffhammer and Aroonruengsawat, 2011, Barreca et al., 2016, Deschenes and Greenstone, 2007, Graff Zivin et al., 2020, Leightner, 1999, Li et al., 2018, Pechan and Eisenack, 2014, Ranson, 2014, Zhang et al., 2018, among others), and these activities impact one another.

Causality notwithstanding, these studies show that weather matters to the economy. However, the impacts of weather shocks cannot readily be extrapolated to the impacts of climate change (Dell et al., 2014, Kolstad and Moore, 2020). Climate is what you expect, weather is what you get. Weather are *draws* from an probability distribution. Climate *is* that distribution. Climate change shifts the moments of the weather distribution (Auffhammer, 2018b). Weather is unpredictable for more than a few days ahead. Adaptation to weather shocks is therefore limited to immediate responses—put up an umbrella when it rains, close the flood gates when it pours. Adaptation to climate change extends to changes in the capital stock—buy an umbrella, build flood gates. Furthermore, adaptation to climate change depends on updates of the expectations for weather (Severen et al., 2018, Lemoine, 2017,

---

<sup>2</sup>Andersen et al. (2016) argue that it is UV radiation, rather than climate, that affects development.

Bogmans et al., 2017). In other words, weather studies estimate the *short-run* elasticity, whereas the *long-run* elasticity is needed to estimate the impact of climate change.

Hsiang (2016) and Deryugina and Hsiang (2017) argue that the marginal effect of a weather shock equals the marginal climate effect. Climate change is not marginal but its total impact is an integral of marginals. Their assumptions are quite restrictive, however. Economic agents need to be (1) rational and their adaptation investments (2) optimized. Adaptation needs to be (3) private and adaptation options (4) continuous. The economy needs to be in a (5) spatial equilibrium and (6) markets complete. Adaptation investments are often long-lived, so both spot and future markets should be complete. Spatial zoning and transport hubs distort the spatial equilibrium. Adaptation is often lumpy, be it air conditioning or irrigation. Some adaptation options, such as coastal protection, are public goods. Other adaptation options, such as protection against infectious disease, have externalities. Agents are not always rational, and decisions suboptimal. The result by Deryugina and Hsiang is almost an impossibility theorem.

Weather affects economic activity, and so the measurement of the impact of climate on economic activity. Weather can be seen as noise, but that noise may well be correlated with climate, the right-hand-side variable of interest. I therefore propose a new way to simultaneously model the impact of climate and weather, to show that both matter and that previous work is misspecified.

The empirical strategy rests on the following assumptions. Climate affects production possibilities. This is obvious for agriculture: Holstein cows do well in Denmark but jasmine rice does not; the reverse is true in Thailand. Climate also affects energy and transport, and thus all other sectors of the economy. Weather affects the realization of the production potential. Hot weather may slow down workers, frost may damage crops, floods may disrupt transport and manufacturing. Conceptualized thus, climate affects the production frontier, and weather the distance from that frontier. The econometric specification is therefore a stochastic frontier analysis with weather variables in inefficiency and climate variables in the frontier.<sup>3</sup> Climate affects potential output, weather the output gap.

I apply the proposed method to a panel of output per worker, measured at the country level. Dell et al. (2012), Letta and Tol (2018) and Newell et al. (2018) find that weather shocks hit the economic growth of *poorer* countries harder. Burke et al. (2015) instead find that *hotter* countries are hit harder, a specification adopted by Pretis et al. (2018) and Kalkuhl and Wenz (2020). Generoso et al. (2020) has a similar result. Within sample, it is difficult to distinguish between these two specifications as hotter countries tend to be poorer. However, out of sample, a hotter, richer world would be *more* vulnerable to weather shocks according to Burke, but *less* vulnerable according to Dell. Kahn et al. (2019) reject heterogeneity. The results below shed new light on these questions.

---

<sup>3</sup>Kumar and Khanna (2019) estimate the impact of temperature and rainfall on inefficiency in output *growth*. I here study inefficiency in output. They omit climate from the frontier.

[Auffhammer \(2018a\)](#) proposes a two-level hierarchical model with the impact of weather at the bottom and its interaction with climate at the top.<sup>4</sup> In the model below, climate and weather interact at the same level.

The cross-validation study of ? finds that weather affects the level of GDP rather than its growth rate, a specification adopted here in line with the intuition sketched above. Furthermore, I assume that the economy is affected by *unusual* weather rather than weather. Frost of -10°C brought Texas to a standstill in February 2021, but is a regular occurrence in North Dakota without major consequences. I therefore standardize the weather, expressing temperature and precipitation in standard deviations from the mean. This introduces an interaction between weather and climate, and an implicit model of adaptation.

The paper proceeds as follows. Section 2 describes methods and data. Section 3 presents the baseline results. Section 4 conducts the sensitivity analysis. Section 5 discusses the implications for climate change. Section 6 concludes.

## 2. Methods and data

### 2.1. Methods

I assume a Cobb-Douglas production function:

$$Y_{c,t} = A_{c,t} K_{c,t}^\beta L_{c,t}^{1-\beta} \quad (1)$$

Total factor productivity  $A_{c,t}$  is the Solow residual in country  $c$  at time  $t$ : It captures everything that affects output  $Y_{c,t}$  that cannot be explained by capital  $K_{c,t}$  or labour  $L_{c,t}$ .

I concentrate Equation (1) by dividing  $K$  and  $L$  by labour force  $L$ , and denote the resulting variables in lower case.

Taking natural logarithms, the equation to be estimated is:

$$\ln y_{c,t} = \alpha + \beta \ln k_{c,t} \quad (2)$$

I assume that total factor productivity is a function of moving averages of weather variables (average temperature,  $\bar{T}_{c,t}$ , and precipitation,  $\bar{R}_{c,t}$ ). This is loosely based on [Nordhaus \(1992\)](#). Weather shocks affect the variance of the stochastic component of permanent income. Hence, Equation (2) becomes:

$$\ln y_{c,t} = \beta_1 \ln k_{c,t} + f(\bar{T}_{c,t}, \bar{R}_{c,t}) + \mu_c + t + v_{c,t} - u_{c,t} \quad (3)$$

---

<sup>4</sup>[Bigano et al. \(2006\)](#) use a similar model for tourist destination choice, with climate at destination at the bottom and climate at origin at the top.

where  $\bar{T}_{c,t}$  and  $\bar{R}_{c,t}$  are the *average* temperature c.q. precipitation in country  $c$  in the thirty years preceding year  $t$ ,  $\mu_c$  is a full set of country fixed effects,  $t$  is a linear time trend,  $v_{c,t} \sim \mathcal{N}(0, \sigma_v^2)$  and

$$u_{c,t} \sim \mathcal{E}(\lambda_{c,t}) = \mathcal{E} \left( \gamma_0 + \gamma_1 g \left( \frac{T_{c,t} - \bar{T}_{c,t}}{\tau_{c,t}} \right) + \gamma_2 g \left( \frac{R_{c,t} - \bar{R}_{c,t}}{\rho_{c,t}} \right) \right) \quad (4)$$

where  $\tau$  and  $\rho$  are the standard deviations of temperature and rainfall, respectively. Instead of the unwieldy  $T - \bar{T}/\tau$ , I write  $z(T)$ ; ditto for  $R$ . This is standardized temperature and precipitation. In the base specification,  $f(\bar{T}_{c,t}, \bar{R}_{c,t}) \equiv \beta_2 \bar{T}_{c,t} + \beta_3 \bar{T}_{c,t}^2 + \beta_4 \bar{R}_{c,t} + \beta_5 \bar{R}_{c,t}^2 + \beta_6 \bar{T}_{c,t} \bar{R}_{c,t}$  and  $g(\cdot) \equiv |\cdot|$ . I refer to Equation (3) as the frontier or potential output, and to Equation (4) as inefficiency or the output gap.

I use the True Fixed-Effect (TFE) model (Greene, 2005) to estimate a one-step stochastic frontier model in a fixed-effect setting with explanatory variables in the inefficiency parameter. I use the SFMODEL package for Stata (Kumbhakar et al., 2015) to estimate the model.

Equation (3) assumes that both error terms are stationary. This is a tall assumption.<sup>5</sup> I am not aware of any statistical test for stationarity that applies to this particular estimator and these distributional assumptions.<sup>6</sup> I use three remedies. First, I include a time trend in Equation (3), and try many variants of that trend. Second, I show robustness to different specifications. Third, I reformulate the model as an error-correction one. The output gap follows

$$\Delta \ln y_{c,t} = \psi_1 \Delta z(T_{c,t}) + \psi_2 \Delta z(R_{c,t}) + \psi_3 V_{c,t} + \mu_c + w_{c,t} \quad (5)$$

where potential output is

$$V_{c,t} = \ln y_{c,t} - \mu_c - \mu_t - \vartheta_1 \ln k_{c,t} - f(\bar{T}_{c,t}, \bar{R}_{c,t}) \quad (6)$$

and  $\mu_t$  are time dummies which act as a non-parametric time trend.<sup>7</sup> This alternative estimation strategy shows that the findings are robust to the inclusion of non-parametric time trends. This alternative specification is also better suited to explicitly model the path of convergence towards the long-term equilibrium in a stochastic setting and provide empirical evidence for the speed of recovery after weather perturbations. I of course also perform the usual stationarity tests on the error-correction model.

I test for heterogeneity by interacting the variables of interest with dummies for poor countries and hot countries. I define a country as “poor” if the World Bank does.<sup>8</sup> Alternative,

---

<sup>5</sup>Taking first differences of all variables may get rid of unit roots in the frontier but would change the distributional assumptions in inefficiency.

<sup>6</sup>Rob Engle (personal communication) suggests that standard stationary tests would roughly apply here.

<sup>7</sup>The use of a non-parametric time trend was not possible in the baseline SFA model because the inclusion of so many time dummies causes convergence issues in an already computationally cumbersome maximum likelihood estimation.

<sup>8</sup>The WB classification of high-income economies is available [here](#).



a country is deemed poor if its GDP per capita was below the 25th percentile of the distribution in the year 1990.<sup>9</sup> A “hot” country is defined as a country whose average annual temperature is above the 75th percentile of the distribution.

## 2.2. Data

The dataset is an unbalanced panel consisting of 160 countries over the period 1950-2014. Data for this study come from two sources. Economic data on output, capital and labour force are taken from the Penn World Table (PWT), PWT 9.0 (Feenstra et al., 2015). Weather data are from the University of Delaware’s *Terrestrial air temperature and precipitation: 1900-2014 gridded time series, (V 4.01)* (Matsuura and Willmott, 2015). These gridded data have a resolution of  $0.5 \times 0.5$  degrees, corresponding roughly to  $55 \times 55$  kilometers at the equator. Following previous literature (Dell et al., 2014, Burke et al., 2015, Auffhammer et al., 2013), we aggregate these grid cells at the country-year level, weighting them by population density in the year 2000 using population data from Version 4 of the *Gridded Population of the World*.<sup>10</sup>, with the exception of Singapore.<sup>11</sup> We use these weather data to construct both the climate and weather variables as defined in Section 2.1. Table 1 presents descriptive statistics for the key variables.<sup>12</sup>

## 3. Results

Table 2 shows the results of the base specification outlined in Equations (3) and (4). Six variants are presented. Column 1 reports homogeneous effects in both the frontier and the inefficiency. In the frontier, capital per worker has a significant impact on output per worker. The output elasticity is around 0.63, in line with previous estimates. This estimate is robust to specification. Long-run temperature (i.e. climate) has a significant impact on the production frontier, but precipitation does not, as in earlier papers (Dell et al., 2012, Burke et al., 2015, Letta and Tol, 2018). Short-term weather anomalies, either temperature or precipitation, are insignificant in determining inefficiency.

Columns 2 and 3 show heterogeneous impacts between rich and poor countries. The hypothesis is that poor countries are disproportionately affected by climate and weather, as economic activity is concentrated in agriculture and public investment in protective measures is limited. Column 2 allows heterogeneity only in the production frontier. That is,

---

<sup>9</sup>1990 is the first year for which we have complete data on PPP GDP per capita for all countries. I choose the 25th percentile of the income distribution because, after testing the 25th, 50th and 75th percentiles, the specification using the 25th percentile resulted the best one according to the Wald Test.

<sup>10</sup>Available [here](#).

<sup>11</sup>Singapore has a surface smaller than the size of the weather grids. Given it is one of the few countries that are both rich and hot and thus increase the statistical power of the analysis, we kept it in the sample by attributing to it the weather data of the grid cell in which it is situated.

<sup>12</sup>See the Appendix for a complete list of countries and regions in the sample.

I interact climate variables with the poor country dummy defined in Subsection 2.1. The interaction terms are individually insignificant. Column 3 adds heterogeneity in inefficiency. Results for the production frontier are almost unchanged. Impacts on inefficiency sharply differ among rich and poor countries: the latter suffer from large and strongly significant effect of temperature and rainfall anomalies, whereas the impact is smaller and positive in rich countries.

Column 4 adds more heterogeneity in inefficiency by interacting weather anomalies with the 'hot country' dummy defined in Section 2.1. These interactions are significant, and strengthen the significance of other parameters in the efficiency. Previous findings had *either* poor countries (e.g. Dell et al., 2012, Letta and Tol, 2018) or hot countries (Burke et al., 2015) particularly vulnerable to weather anomalies. I find *both*.

Columns 1-4 specify that, in the frontier, hot and cold countries respond differently to temperature, and dry and wet countries differently to rainfall. Column 5 adds the interaction between rainfall and temperature to the frontier. This interaction is negative, but less so in poor countries. The rainfall terms are now significant too: Wetter countries are richer, and this effect is weaker for poor countries.

Dropping the insignificant interaction terms between temperature and poverty (column 6) hardly affects the parameter estimates. Column 6 is the preferred specification.

Weather anomalies increase inefficiency in poor countries, as expected. Weather anomalies *decrease* inefficiency in rich countries—that is, unexpectedly much or little water, or unusually hot or cold weather stimulate the economy. This is harder to explain. It may reflect the restoration effort after floods, and crop insurance and government support after droughts. The data are GDP rather than NDP, and thus suffer from Bastiat's broken window. This effect is not observed in poor countries because restoration after natural disasters is limited and delayed (Cavallo and Noy, 2011).

I interpret the effect size below, after discussing the robustness of the results.

## 4. Robustness

I implement three different types of robustness checks: sensitivity to different specifications in the SFA model; an alternative distributional assumption for the inefficiency parameter; and an error-correction model to formally test for non-stationarity. For all these sensitivity tests, with the exception of the error-correction model, I only report estimates of the preferred specification, column 6 of Table 2.

### 4.1. Alternative specifications

This first set of robustness checks implements the same baseline model described in Equations (3) and (4) but adopts a broad set of different specification choices for key variables and interactions.

#### 4.1.1. *Poor v rich*

I test whether the core findings are driven by the somewhat arbitrary discrimination between rich and poor countries. I replace the World Bank classification of countries that are rich<sup>13</sup> by the “poorest 25% in 1990”. Results are in column 2 of Table 3. Column 1 repeats the base specification (column 6) of Table 2.

For the production frontier, results are qualitatively the same as in Table 2. The main difference is that precipitation loses much of its predictive power, highlighting that different economies do respond differently to the availability of water resources. As for the inefficiency, results are again qualitatively similar to the baseline model, but coefficients are closer to zero and less significant. The log-pseudolikelihood is much lower.

#### 4.1.2. *Squared anomalies*

Second, I replace *absolute* weather anomalies in the inefficiency term with *squared* anomalies. This places a heavier weight on larger anomalies. See column 3 of Table 3. The results for the production frontier are largely unaffected, and the qualitative results for the inefficiency are as above. The log-pseudolikelihood falls.

#### 4.1.3. *Linear anomalies*

The weather anomalies in Equation (4) are absolute anomalies. Cold and hot weather, wet and dry spells are assumed to equally increase technical inefficiency. Column 4 of Table 3 instead use the anomalies. Estimates for the production frontier are almost unaltered. The parameters for inefficiency become insignificant. Economies are affected by unusual weather, rather than by the weather *per se*. Adaptation matters.

#### 4.1.4. *Asymmetric anomalies*

I also test for asymmetric anomalies, disentangling negative and positive weather shocks on inefficiency. This is the preferred specification of Kahn et al. (2019). Results are in column 5 of Table 3. The frontier is not affected. The results are much as above, with anomalous weather being good for rich countries but bad for hot and poor countries. While there is some evidence for asymmetry between the impact of wet and dry spells, cold and hot spells, the increase in the log-pseudolikelihood is minimal (less than 6 points) for the six additional parameters estimated.

#### 4.1.5. *Weather in the frontier*

I also look at weather effects on productivity, moving weather anomalies from the inefficiency parameter to the production frontier. Results are in column 6 of Table 3. The frontier does

---

<sup>13</sup>Available [here](#).

not change. Coefficients of weather variables are individually insignificant and the log-pseudolikelihood is sharply lower. This specification, variations of which are often used in literature, is not the preferred one.

#### 4.1.6. Half-normal distribution

Equation (4) assumes an exponential half-normal distribution for inefficiency. Column 7 of Table 3 show results for the half-normal distribution.<sup>14</sup> The estimates for the frontier are as above. The inefficiency parameters are much the same, but the interactions with heat lose significance.

The log-pseudolikelihood falls. One key difference is that the standard deviation of the inefficiency equals its expected value for the exponential distribution, but its expected value times  $\sqrt{0.5\pi - 1}$  for the half-normal distribution. The data are overdispersed for the half-normal.

### 4.2. Institutions

#### 4.2.1. Capital as a substitute for climate

I find a significant association between climate and economic performance. In the concentrated Cobb-Douglas production function, Equation (1), there are two determinants of output per worker: climate and capital per worker. In this specification, capital is a *de facto* substitute for climate, with a constant elasticity. I test that assumption, answering the question whether sufficient capital would make a country immune from the influence of its climate. I therefore interact long-run temperature variables with capital per worker in the production frontier. See Table 4, Columns 2 and 3; column 1 reproduces the base model from Table 2. Rainfall is significant and so are its interactions with capital. The interactions have the opposite signs. That is, climate's influence on output shrinks as capital deepens. The interaction between temperature, rainfall and capital is insignificant. The log-pseudolikelihood increases by 7 points. However, interactions work both ways. The output elasticity of capital now depends on rainfall, varying between 0.73 in the driest countries and 0.93 in the wettest ones. A 5.5% increase in rainfall, well within the climate change projections for this century, would lead to increasing returns to scale and explosive economic growth. I therefore keep the base specification as is.

Column 2 only changes the frontier. In column 3, I replace the interaction with the poverty dummy by an interaction with capital per worker. Signs change and the log-pseudolikelihood falls. Poverty is more than a lack of capital, and poverty drives vulnerability to weather shocks.

---

<sup>14</sup>Truncated-normal models with fixed-effects are known to suffer severe convergence issues, and this case was no exception. It is therefore excluded.

### 4.2.2. Institutions vs climate

In the debate on the long-run determinants of growth and development, some find that climate plays a fundamental role in shaping long-run development, whereas others argue that the impact of climate disappears when accounting for institutions, although climate may have shaped those institutions. I test this in column 4 of Table 4. As a proxy for institutional quality, I use the *Polity2 Score*.<sup>15</sup> This categorical variable is an aggregate score which ranges from -10 (hereditary monarchy) to 10 (consolidated democracy). While this is not the best indicator for institutional quality, it is correlated with other indicators. Historical depth is the key advantage of Polity2 over other indicators, which are available only for recent years. I interact it with long-run precipitation in the production frontier.

The results for inefficiency are essentially the same as in the base specification. In the frontier, the impact of temperature and capital is unchanged. However, the effect of rainfall is very different. Polity2 and its interactions have an insignificant effect.

### 4.3. Cointegration

Non-stationarity is a key concern in any long panel of economic data. The residuals of the stochastic frontier model do not pass a stationarity test. See Table A1. Panel stationarity tests require that the residuals of every country are stationary. Equation (3) has a common trend for all countries. The panel is unbalanced, with fewer observations for hotter and poorer countries in the early years. It should therefore not come as a surprise that the model fails the test for panel cointegration.

Table A2 shows the results if the model is estimated without a trend, a linear trend (as above), and a polynomial trend of order two or three; and if a different linear trend is used for poor and for other countries. Qualitatively, the impact of climate and weather is the same. The differences between estimates are not significant. Although the residuals of the alternative models are not stationary (results not shown), the stability of the results suggest that the regression results are not spurious.

Table A1 supports that suggestion. Output and capital per capita are non-stationary, but the climate and weather variables are. That means that the residuals of the model are non-stationary because output and capital do not cointegrate (after inclusion of a trend). The impact of climate and weather on output per worker is not spurious—climate and weather do not explain the residual trend in output because there is no trend in the climate and weather data.

The rightmost column of Table A1 re-estimates the model in first differences. Note that the difference between two exponential distribution is not an exponential distribution; a stochastic frontier model in first differences is a different specification. Reassuringly, the output elasticity of capital does not significantly change when the model is estimated in first

---

<sup>15</sup>The Polity Project Database, annual national data for the period 1800-2017, can be downloaded [here](#).

differences. The impact of weather and climate either becomes insignificant or much smaller. In the frontier, this is because the impact of climate is primarily estimated from cross-sectional variation, which disappears when differencing. The weather impact on inefficiency, rainfall in poor countries excepted, disappears in the noise.

#### 4.4. Error-correction model

As a further empirical test, I estimate the error-correction model (ECM) defined in Equations (5) and (6). I assume that weather anomalies cause short-term deviations from the long-run equilibrium, while climate affects the long-run equilibrium growth path of the economy. The error-correction model is dynamic, unlike the stochastic frontier models above, tracking the time needed to absorb the perturbation caused by weather anomalies. The ECM specification allows for country and year fixed-effects, replacing the linear time trend in the stochastic frontier.

Table 5 presents the results for the long-run co-integrating vector, Table 6 for the short-run error-correction. In the short-run error-correction estimates,  $V$  is the residual of Table 6, Column 4, since this specification fits the data best.

The output elasticity of capital in the co-integrating vector is much the same as above. The climate variables and their interactions with the poverty dummy are not individually significant, with a few occasional exceptions, but the log-pseudolikelihood reveals that they are jointly significant: 162 points gain for 10 parameters. This is confirmed by Table A4: Without the climate variables, the Im et al. (2003) test firmly rejects the null-hypothesis that the residuals are stationary.

The cointegrating vector and the stochastic frontier model have the same signs on the climate variables and on their interactions with poverty. Qualitatively, the above findings are confirmed.

Table A4 shows that the residuals of the short-run equation are stationary. Table 6 shows the estimates. The cointegrating vector is highly significant. The parameter estimate of 0.06 indicates rather fast convergence to the equilibrium relationship. Precipitation is not significant but temperature is, in poor countries. This result is qualitatively different from the stochastic frontier model—but similar to Dell et al. (2012).

Note that the results in Table 6 are for the standardized temperature and precipitation, rather than their absolute values. This is a further deviation from the stochastic frontier model. Table A3 shows the results for the absolute anomalies. The results are much the same, except that temperature now also affects rich countries. The log-pseudolikelihood is lower, however.

## 5. Implications

The impact of climate change is highly nonlinear in this model. The effect size is therefore hard to grasp. Furthermore, there are 160 countries in the database. There are many scenarios and models of climate change, and many scenarios and models of future economic growth. Exploring all possible futures is a combinatorial explosion, and would shed little light on how the model presented here works. So instead, I used stylized scenarios to illustrate the impact of climate change, according to column 6 in Table 2, on the 2014 population, economy and climate.

The production frontier, Equation (3), depends on the thirty-year average of the *level* of temperature and precipitation. This is projected to change over time. Inefficiency, Equation (4), depends on the absolute value of the *standardized* temperature and rainfall. Without climate change, there are weather shocks to inefficiency and hence economic output. With climate change, weather shocks are different.

I consider warming between 1°C and 6°C, and 0.01°C/year and 0.06°C/year. This is the range shown in the Fifth Assessment Report of the Intergovernmental Panel on Climate Change (IPCC). I let rainfall increase or decrease by up to 30%, again within the range of expectations for this century. The impact of these scenarios on the frontier is immediate.

The impact of climate change on inefficiency follows from the deviation of the actual weather from the expected weather. Without climate change, the expected temperature shock is zero. With a 3°C per century warming, the expected temperature shock is  $15 \times 0.03/\tau_c$  per year, where the factor 15 is there because I use the 30-year average and standard deviation for normalization.

Climate affects production possibilities, and anomalous weather the realisation of those possibilities. Climate change will affect both. Extrapolating statistical models is always tricky. Here, the frontier is estimated on a wide range of climates, while inefficiency depends on time-varying standardization of weather variables. Both help to make extrapolation more reliable.

Figure 1 shows the global average impact, separately for changes in temperature and precipitation. The impact on the frontier is not out of line with previous studies (Tol, 2018): A 5% loss for 3°C warming. The function is almost linear. The impact on inefficiency is more non-linear, but smaller and *positive* because the impact on rich countries dominates.

This is confirmed by the second set of graphs in Figure 1. The above results compute the global average output. The two remaining graphs compute the global average utility, expressed in its income equivalent, assuming a rate of risk aversion of one (Fankhauser et al., 1997). At the frontier, these equity-weighted impact are more linear and larger if warming exceeds 3°C. This is because poorer countries are hit harder by climate change at the frontier. This is more pronounced in inefficiency: The sign flips, and the global average impact is substantially larger than on the frontier.

The right panel of Figure 1 show the impact of changes in precipitation. At the frontier, the impacts are large. Drying would be a loss, wettening a gain. These impacts are less pronounced if the national impacts are equity-weighted. This follows from Table 2: Poor, hot countries have smaller parameters. For inefficiency, change matters rather than the direction of change; inefficiency is determined by deviations from experience, regardless of whether that deviation is more or less water than expected. The impacts are more modest. Equity-weighting again flips the sign: Poor countries are negatively affected, rich countries positively.

Figure 2 shows the results by country, for a 3°C warming and a 20% increase in precipitation over a century. In all figures, the size of the bubble is proportional to the population size in 2014.

The top left figure shows the impact of warming on the frontier, plotted against the average temperature for 1985-2014. The spread is quite large, ranging from a 90% increase to a 70% decrease. Colder countries see more positive impacts, hotter countries more negative ones. The figure separates poor countries—which are essentially on a continuous lines—and rich ones—which are more dispersed because the impact of wealth is interacted with precipitation. Richer countries face more negative impacts.

The top right figure shows the impact of warming on inefficiency, plotted against the standard deviation of the temperature for 1985-2014. Effect sizes are smaller than on the frontier, ranging between a 20% decline and a 15% increase, and fall for countries with greater climate variability. There are three separate graphs, corresponding with the interactions in Table 2. Rich countries see benefits, poor but cool countries moderate losses, and poor and hot countries large losses.

The bottom left figure plots the impact of wettening on the frontier against average precipitation in 1985-2014. Heterogeneity is again large, ranging from the 15% loss to a 90% gain. There is little structure in the graph.

The bottom right figure plots the impact of wettening on inefficiency against the standard deviation of precipitation in 1985-2014. Effect sizes are smaller than on the frontier, ranging between a 10% loss and the 15% gain, and fall with greater climate variability. There are again three separate graphs. Rich countries see gains, poor and cool countries small losses, and poor and hot countries large losses.

## 6. Discussion and conclusion

I use stochastic frontier analysis to jointly model the impacts of weather and climate on economic activity in most countries over 65 years. I distinguish production potential, affected by climate, and the realisation of economic output, affected by weather. Weather shocks thus have a transient effect, climate change a permanent impact. Warming affects production potential, negatively in cold, positively in hot countries; and more so in rich, wet countries.



Changes in precipitation also affect the frontier. The impacts are heterogeneous without an obvious pattern. Climate change also affects inefficiency, particularly in countries with little climate variability, reducing the output gap in rich countries but increasing it in poor and hot countries. The weather effect is small compared to the climate effect. These results are qualitatively and quantitatively robust to alternative specifications, controls, and estimators.

[Dell et al. \(2012\)](#) find that poor countries are particularly vulnerable to weather shocks, [Burke et al. \(2015\)](#) find that hot countries are. In the Burke (Dell) specification, countries would grow more (less) vulnerable to unusual weather in a hotter and richer future. I find that both are true, and that the impact of heat is about as strong as the impact of poverty. Reduced outdoor work and manual labour, decreased relative importance agriculture in output and work force, and greater diffusion of adaptive capital such as air conditioning would help poorer countries to dampen the negative effects of weather shocks—but only to a degree, as the effort needed to alleviate the heat rises with the temperature.

The impact of weather shocks found here cannot directly be compared to previous studies. [Letta and Tol \(2018\)](#) model economic growth as a function of the change in temperature, [Dell et al. \(2012\)](#), [Burke et al. \(2015\)](#), [Pretis et al. \(2018\)](#) and [Kalkuhl and Wenz \(2020\)](#) as a function of the temperature level. [Kahn et al. \(2019\)](#) come closest to my specification, but they use (asymmetric) weather anomalies rather than standardized weather. Another key difference with those papers is that, here, the impact of a weather shock is transitory. Unusual weather increases inefficiency, but the economy bounces back the next year, registering higher growth. If my specification is right, then previous studies that excluded lagged temperature effects are wrong.<sup>16</sup>

Previous studies, [Barrios et al. \(2010\)](#) and [Generoso et al. \(2020\)](#) excepted, did not find a significant impact of precipitation. This is a puzzling result, as droughts and floods are more devastating than heat and cold. The same result is found here, in the frontier, unless I interact precipitation with temperature and poverty. Net water—rainfall minus evaporation—matters rather than gross water—rainfall—and more so in countries that depend more on agriculture. Precipitation also has a significant effect on inefficiency, one that varies strongly with its variability. Previous studies did not standardize weather variables.

The impact on the frontier is larger than in previous studies of the impact of climate change ([Tol, 2018](#)). Compared to some previous empirical studies ([Easterly and Levine, 2003](#), [Rodrik et al., 2004](#)), climate has a significant effect, also when controlling for institutional quality, perhaps because I used more data (as did [Nordhaus, 2006](#), [Dell et al., 2009](#), [Henderson et al., 2018](#), [Kalkuhl and Wenz, 2020](#)), perhaps because I *modelled* heteroskedasticity. Previous studies did not do this and therefore their estimators would be inefficient and, if weather-related heteroskedasticity correlates with climate, may be biased.

Higher income, more capital nor better institutions fully insulate countries from the influence of their climate. This contradicts earlier studies ([Acemoglu et al., 2001, 2002](#), [Alsan, 2015](#)).

---

<sup>16</sup>The lags in [Dell et al. \(2012\)](#) are insignificant.

I do not include all impacts of climate change. I omit direct impacts on human welfare, such as biodiversity and health. The model does not capture the range of events which could be triggered by climate change but lie outside the current range of historical experience, such as thawing permafrost (Wirths et al., 2018), a thermohaline circulation shutdown (Anthoff et al., 2016) or unprecedented sea level rise (Nordhaus, 2019). Because of data availability, I use democracy as a proxy for high-quality government. I limit the attention to aggregate economic activity. Adaptation and expectations are implicit in the model, as are production risks and risk preferences. The projections with respect to climate change are static, not dynamic.

The numerical results are therefore far from final. The methodological advancement in this work is more important: the joint, simultaneous estimation of the impact of two different, but often confused, phenomena: weather and climate. I defer to future research the task of refining the theoretical and empirical framework proposed here, and applying it to other macro contexts and, crucially, household and firm data.

## References

- D. Acemoglu, S. Johnson, and J. A. Robinson. The colonial origins of comparative development: An empirical investigation. *American Economic Review*, 91(5):1369–1401, December 2001. doi: 10.1257/aer.91.5.1369.
- D. Acemoglu, S. Johnson, and J. A. Robinson. Reversal of fortune: Geography and institutions in the making of the modern world income distribution. *The Quarterly Journal of Economics*, 117(4):1231–1294, 2002.
- M. Alsan. The effect of the tsetse fly on African development. *American Economic Review*, 105(1):382–410, January 2015. URL <http://www.aeaweb.org/articles?id=10.1257/aer.20130604>.
- T. B. Andersen, C.-J. Dalgaard, and P. Selaya. Climate and the emergence of global income differences. *The Review of Economic Studies*, 83(4):1334–1363, 2016. URL <http://dx.doi.org/10.1093/restud/rdw006>.
- D. Anthoff, F. Estrada, and R. S. J. Tol. Shutting down the Thermohaline Circulation. *American Economic Review*, 106(5):602–06, May 2016. URL <https://www.aeaweb.org/articles?id=10.1257/aer.p20161102>.
- M. Auffhammer. Climate adaptive response estimation: Short and long run impacts of climate change on residential electricity and natural gas consumption using big data. Working Paper 24397, National Bureau of Economic Research, March 2018a. URL <http://www.nber.org/papers/w24397>.
- M. Auffhammer. Quantifying economic damages from climate change. *Journal of Economic Perspectives*, 32(4):33–52, 2018b.
- M. Auffhammer and A. Aroonruengsawat. Simulating the impacts of climate change, prices and population on california’s residential electricity consumption. *Climatic Change*, 109(1):191–210, Dec 2011. URL <https://doi.org/10.1007/s10584-011-0299-y>.
- M. Auffhammer, S. M. Hsiang, W. Schlenker, and A. Sobel. Using weather data and climate model output in economic analyses of climate change. *Review of Environmental Economics and Policy*, 7(2):181–198, 2013.
- A. Barreca, K. Clay, O. Deschenes, M. Greenstone, and J. Shapiro. Adapting to climate change: The remarkable decline in the us temperature-mortality relationship over the twentieth century. *Journal of Political Economy*, 124(1):105–159, 2016. doi: 10.1086/684582.
- S. Barrios, L. Bertinelli, and E. Strobl. Trends in rainfall and economic growth in Africa: A neglected cause of the African growth tragedy. *The Review of Economics and Statistics*, 92(2):350–366, 2010. URL <https://doi.org/10.1162/rest.2010.11212>.

- A. Bigano, J. M. Hamilton, and R. S. J. Tol. The impact of climate on holiday destination choice. *Climatic Change*, 76:389–406, 2006.
- D. Bloom and J. Sachs. Geography, demography, and economic growth in Africa. *Brookings Papers on Economic Activity*, (2):207–295, 1998. doi: 10.2307/2534695.
- C. Bogmans, G. Dijkema, and M. van Vliet. Adaptation of thermal power plants: The (ir)relevance of climate (change) information. *Energy Economics*, 62:1–18, 2017. doi: 10.1016/j.eneco.2016.11.012.
- M. Burke, S. M. Hsiang, and E. Miguel. Global non-linear effect of temperature on economic production. *Nature*, 527(7577):235–239, 2015.
- E. Cavallo and I. Noy. Natural disasters and the economy - a survey. *International Review of Environmental and Resource Economics*, 5(1):63–102, 2011. doi: 10.1561/101.00000039.
- M. Dell, B. F. Jones, and B. A. Olken. Temperature and income: Reconciling new cross-sectional and panel estimates. *American Economic Review*, 99(2):198–204, May 2009. URL <https://www.aeaweb.org/articles?id=10.1257/aer.99.2.198>.
- M. Dell, B. F. Jones, and B. A. Olken. Temperature shocks and economic growth: Evidence from the last half century. *American Economic Journal: Macroeconomics*, 4(3):66–95, July 2012. URL <http://www.aeaweb.org/articles?id=10.1257/mac.4.3.66>.
- M. Dell, B. F. Jones, and B. A. Olken. What do we learn from the weather? The new climate-economy literature. *Journal of Economic Literature*, 52(3):740–798, 2014.
- T. Deryugina and S. Hsiang. The marginal product of climate. Working Paper 24072, National Bureau of Economic Research, November 2017. URL <http://www.nber.org/papers/w24072>.
- O. Deschenes and M. Greenstone. The economic impacts of climate change: Evidence from agricultural output and random fluctuations in weather. *American Economic Review*, 97(1):354–385, 2007.
- J. Diamond. *Guns, Germs and Steel: A short history of everybody for the last 13,000 years*. W.W. Norton, New York, 1997.
- W. Easterly and R. Levine. Tropics, germs, and crops: how endowments influence economic development. *Journal of Monetary Economics*, 50(1):3–39, 2003. ISSN 0304-3932. doi: [https://doi.org/10.1016/S0304-3932\(02\)00200-3](https://doi.org/10.1016/S0304-3932(02)00200-3).
- S. Fankhauser, R. Tol, and D. Pearce. The Aggregation of Climate Change Damages: a Welfare Theoretic Approach. *Environmental & Resource Economics*, 10(3):249–266, 1997. doi: 10.1023/A:1026420425961.
- R. C. Feenstra, R. Inklaar, and M. P. Timmer. The next generation of the penn world table. *American Economic Review*, 105(10):3150–82, 2015.
- R. Generoso, C. Couharde, O. Damette, and K. Mohaddes. The growth effects of El Niño and La Niña: Local weather conditions matter. *Annals of Economics and Statistics*, (140):83–126, 2020. URL <https://www.jstor.org/stable/10.15609/annaeconstat2009.140.0083>.
- J. Graff Zivin, Y. Song, Q. Tang, and P. Zhang. Temperature and high-stakes cognitive performance: Evidence from the national college entrance examination in China. *Journal of Environmental Economics and Management*, 104, 2020. doi: 10.1016/j.jeem.2020.102365.
- W. Greene. Fixed and random effects in stochastic frontier models. *Journal of productivity analysis*, 23(1):7–32, 2005.
- G. Heal and J. Park. Reflections—Temperature stress and the direct impact of climate change: A review of an emerging literature. *Review of Environmental Economics and Policy*, 10(2):347–362, 2016. URL <http://dx.doi.org/10.1093/reep/rew007>.
- J. V. Henderson, T. Squires, A. Storeygard, and D. Weil. The global distribution of economic activity: Nature, history, and the role of trade. *The Quarterly Journal of Economics*, 133(1):357–406, 2018. URL <http://dx.doi.org/10.1093/qje/qjx030>.
- S. Hsiang. Climate econometrics. *Annual Review of Resource Economics*, 8(1):43–75, 2016. URL <https://doi.org/10.1146/annurev-resource-100815-095343>.
- E. Huntington. *Civilization and climate*. Yale University Press, New Haven, 1915. URL <https://jscholarship.library.jhu.edu/bitstream/handle/1774.2/33468/31151027498744.pdf>.
- K. S. Im, M. Pesaran, and Y. Shin. Testing for unit roots in heterogeneous panels. *Journal of Econometrics*, 115(1):53–74, 2003. URL <https://www.sciencedirect.com/science/article/pii/>

S0304407603000927.

- M. E. Kahn, K. Mohaddes, R. N. C. Ng, M. H. Pesaran, M. Raissi, and J.-C. Yang. Long-term macroeconomic effects of climate change: A cross-country analysis. Working paper, University of Cambridge, 2019.
- M. Kalkuhl and L. Wenz. The impact of climate conditions on economic production. Evidence from a global panel of regions. *Journal of Environmental Economics and Management*, 103:102360, 2020. URL <http://www.sciencedirect.com/science/article/pii/S0095069620300838>.
- T. Kjellstrom, R. Kovats, S. Lloyd, T. Holt, and R. Tol. The direct impact of climate change on regional labor productivity. *Archives of Environmental and Occupational Health*, 64(4):217–227, 2009.
- M. Koetse and P. Rietveld. The impact of climate change and weather on transport: An overview of empirical findings. *Transportation Research Part D: Transport and Environment*, 14(3):205–221, 2009. doi: 10.1016/j.trd.2008.12.004.
- C. D. Kolstad and F. C. Moore. Estimating the economic impacts of climate change using weather observations. *Review of Environmental Economics and Policy*, 14(1):1–24, 2020. URL <https://doi.org/10.1093/reep/rez024>.
- S. Kumar and M. Khanna. Temperature and production efficiency growth: empirical evidence. *Climatic Change*, 156(1-2):209–229, 2019. doi: 10.1007/s10584-019-02515-5.
- S. C. Kumbhakar, H. Wang, and A. P. Horncastle. *A practitioner’s guide to Stochastic Frontier Analysis using Stata*. Cambridge University Press, 2015.
- J. Leightner. Weather-induced changes in the tradeoff between SO<sub>2</sub> and NO<sub>(x)</sub> at large power plants. *Energy Economics*, 21(3):239–259, 1999. doi: 10.1016/S0140-9883(98)00018-8.
- D. Lemoine. Expect above average temperatures: Identifying the economic impacts of climate change. Working Paper 23549, National Bureau of Economic Research, June 2017. URL <http://www.nber.org/papers/w23549>.
- M. Letta and R. S. J. Tol. Weather, climate and total factor productivity. *Environmental and Resource Economics*, 2018. URL <https://doi.org/10.1007/s10640-018-0262-8>.
- J. Li, L. Yang, and H. Long. Climatic impacts on energy consumption: Intensive and extensive margins. *Energy Economics*, 71:332–343, 2018. doi: 10.1016/j.eneco.2018.03.010.
- W. Lise and R. Tol. Impact of climate on tourist demand. *Climatic Change*, 55(4):429–449, 2002.
- E. Mansur, R. Mendelsohn, and W. Morrison. Climate change adaptation: A study of fuel choice and consumption in the US energy sector. *Journal of Environmental Economics and Management*, 55(2):175–193, 2008.
- K. Matsuura and C. Willmott. Terrestrial air temperature and precipitation: 1900–2014 gridded time series (version 4.01), 2015.
- R. Mendelsohn, W. D. Nordhaus, and D. Shaw. The impact of global warming on agriculture: A ricardian analysis. *The American Economic Review*, 84(4):753–771, 1994. URL <http://www.jstor.org/stable/2118029>.
- R. G. Newell, B. C. Prest, and S. Sexton. The GDP temperature relationship: Implications for climate change damages. Technical report, Resources for the Future, 2018. URL <http://www.rff.org/research/publications/gdp-temperature-relationship-implications-climate-change-damages>.
- W. Nordhaus. Economics of the disintegration of the greenland ice sheet. *Proceedings of the National Academy of Sciences*, 116(25):12261–12269, 2019. URL <https://www.pnas.org/content/116/25/12261>.
- W. D. Nordhaus. An optimal transition path for controlling greenhouse gases. *Science*, 258(5086):1315–1319, 1992. URL <https://science.sciencemag.org/content/258/5086/1315>.
- W. D. Nordhaus. Geography and macroeconomics: New data and new findings. *Proceedings of the National Academy of Science*, 103(10):3510–3517, 2006. URL [www.pnas.org/cgi/doi/10.1073/pnas.0509842103](http://www.pnas.org/cgi/doi/10.1073/pnas.0509842103).
- O. Olsson and D. J. Hibbs. Biogeography and long-run economic development. *European Economic Review*, 49(4):909–938, 2005.
- A. Pechan and K. Eisenack. The impact of heat waves on electricity spot markets. *Energy Economics*, 43:63–71, 2014. doi: 10.1016/j.eneco.2014.02.006.
- F. Pretis, M. Schwarz, K. Tang, K. Hausteiner, and M. R. Allen. Uncertain impacts on economic growth when

- stabilizing global temperatures at 1.5°C or 2°C warming. *Philosophical Transactions of the Royal Society A: Mathematical, Physical and Engineering Sciences*, 376(2119):20160460, 2018. doi: 10.1098/rsta.2016.0460.
- M. Ranson. Crime, weather, and climate change. *Journal of Environmental Economics and Management*, 67(3):274 – 302, 2014. ISSN 0095-0696. URL <http://www.sciencedirect.com/science/article/pii/S0095069613001289>.
- D. Rodrik, A. Subramanian, and F. Trebbi. Institutions rule: The primacy of institutions over geography and integration in economic development. *Journal of Economic Growth*, 9(2):131–165, 2004. URL <https://doi.org/10.1023/B:JOEG.0000031425.72248.85>.
- J. Sachs and P. Malaney. The economic and social burden of malaria. *Nature*, 415(6872):680–685, 2002.
- J. D. Sachs. Institutions don't rule: Direct effects of geography on per capita income. Working Paper 9490, National Bureau of Economic Research, February 2003. URL <http://www.nber.org/papers/w9490>.
- W. Schlenker, W. M. Hanemann, and A. C. Fisher. Will us agriculture really benefit from global warming? accounting for irrigation in the hedonic approach. *American Economic Review*, 95(1):395–406, 2005.
- C. Severen, C. Costello, and O. Deschênes. A forward-looking Ricardian approach: Do land markets capitalize climate change forecasts? *Journal of Environmental Economics and Management*, 89:235–254, 2018. ISSN 0095-0696. doi: <https://doi.org/10.1016/j.jeem.2018.03.009>.
- R. S. J. Tol. The economic impacts of climate change. *Review of Environmental Economics and Policy*, 12(1):4–25, 2018. URL <http://dx.doi.org/10.1093/reep/rex027>.
- H. Wirths, J. Rathmann, and P. Michaelis. The permafrost carbon feedback in DICE-2013R modeling and empirical results. *Environmental Economics and Policy Studies*, 20(1):109–124, January 2018. doi: 10.1007/s10018-017-0186-5.
- K. Zander, W. Botzen, E. Oppermann, T. Kjellstrom, and S. Garnett. Heat stress causes substantial labour productivity loss in Australia. *Nature Climate Change*, 5(7):647–651, 2015.
- P. Zhang, O. Deschenes, K. Meng, and J. Zhang. Temperature effects on productivity and factor reallocation: Evidence from a half million Chinese manufacturing plants. *Journal of Environmental Economics and Management*, 88:1 – 17, 2018. ISSN 0095-0696. doi: <https://doi.org/10.1016/j.jeem.2017.11.001>. URL <http://www.sciencedirect.com/science/article/pii/S0095069617304588>.

Table 1: Descriptive statistics

Variable	Unit	Symbol	Mean	Std Dev	Min	Max	Obs
Output per worker	ln(\$)	$\ln(y)$	9.768	1.183	6.047	13.318	7753
Capital per worker	ln(\$)	$\ln(k)$	10.831	1.392	5.650	14.524	7753
Temperature	°C	$\bar{T}$	18.505	7.269	-1.833	29.021	7753
Precipitation	cm/month	$\bar{R}$	9.375	5.674	0.299	32.710	7753
Standardized temperature	-	$ z(T) $	0.961	0.737	0.000	7.395	7753
Standardized precipitation	-	$ z(R) $	0.876	0.709	0.001	6.717	7753
Poverty dummy	-	$P$	0.661	0.473	0	1	7753
Heat dummy	-	$H$	0.245	0.430	0	1	7753
Polity2	-	$G$	1.801	7.383	-10	10	7709

Table 2: Baseline results.  
Dependent variable:  $\ln(\text{output per worker})$ .

	(1)	(2)	(3)	(4)	(5)	(6)
			frontier			
$\ln(k)$	0.628*** (79.19)	0.628*** (79.35)	0.634*** (77.16)	0.631*** (77.18)	0.631*** (76.24)	0.631*** (77.76)
$T$	0.146*** (6.28)	0.140*** (3.76)	0.147*** (3.78)	0.144*** (4.02)	0.189*** (5.23)	0.226*** (8.58)
$T^2$	-0.00380*** (-5.87)	-0.00662** (-2.75)	-0.00750** (-2.89)	-0.00730** (-3.15)	-0.00320 (-1.47)	-0.00457*** (-5.42)
$R$	0.0207 (1.77)	0.0328 (1.34)	0.0258 (1.01)	0.0347 (1.42)	0.246*** (6.75)	0.244*** (6.89)
$R^2$	-0.000236 (-0.69)	-0.00133 (-0.97)	-0.000973 (-0.70)	-0.00148 (-1.09)	0.00554** (2.94)	0.00570** (2.85)
$P \times T$		0.0959 (1.73)	0.0867 (1.57)	0.0914 (1.66)	0.0815 (1.41)	
$P \times T^2$		0.00118 (0.50)	0.00209 (0.85)	0.00172 (0.74)	-0.00229 (-1.03)	
$P \times R$		-0.00236 (-0.08)	0.00565 (0.19)	0.000946 (0.03)	-0.140** (-2.68)	-0.146** (-3.05)
$P \times R^2$		0.000986 (0.68)	0.000609 (0.42)	0.000988 (0.69)	-0.00599** (-3.08)	-0.00614** (-2.96)
$T \times R$					-0.0198*** (-8.55)	-0.0199*** (-8.45)
$P \times T \times R$					0.0167*** (6.20)	0.0172*** (6.50)
			inefficiency			
$ z(T) $	0.0456 (1.27)	0.0475 (1.30)	-0.140* (-2.10)	-0.189** (-3.17)	-0.200*** (-3.47)	-0.202*** (-3.54)
$ z(R) $	0.00560 (0.15)	0.00711 (0.19)	-0.174* (-2.39)	-0.229*** (-3.86)	-0.269*** (-4.56)	-0.266*** (-4.53)
$P \times  z(T) $			0.241** (3.24)	0.247*** (3.70)	0.256*** (3.95)	0.259*** (4.05)
$P \times  z(R) $			0.254** (3.06)	0.249*** (3.48)	0.283*** (4.02)	0.282*** (4.01)
$H \times  z(R) $				0.204** (3.11)	0.229*** (3.50)	0.229*** (3.49)
$H \times  z(T) $				0.201** (2.83)	0.232** (3.26)	0.231** (3.25)
Observations	7753	7753	7753	7753	7753	7753
LpL	2441.1	2454.8	2487.0	2507.9	2557.9	2556.5

$t$  statistics in parentheses  
\*  $p < 0.05$ , \*\*  $p < 0.01$ , \*\*\*  $p < 0.001$

Table 3: Robustness checks. Dependent variable:  $\ln(\text{output per worker})$ .

	(1)	(2)	(3)	(4)	(5)	(6)	(7)
	frontier						
$\ln(k)$	0.631*** (77.76)	0.634*** (79.66)	0.631*** (78.92)	0.628*** (78.62)	0.630*** (77.05)	0.629*** (79.67)	0.622*** (79.73)
$T$	0.226*** (8.58)	0.175*** (7.43)	0.225*** (8.32)	0.227*** (8.14)	0.222*** (8.46)	0.229*** (8.14)	0.278*** (10.89)
$T^2$	-0.00457*** (-5.42)	-0.00337*** (-4.90)	-0.00446*** (-5.18)	-0.00449*** (-5.01)	-0.00451*** (-5.30)	-0.00452*** (-5.14)	-0.00666*** (-8.26)
$R$	0.244*** (6.89)	0.118*** (5.90)	0.232*** (6.54)	0.230*** (6.22)	0.253*** (6.96)	0.223*** (6.16)	0.255*** (7.58)
$R^2$	0.00570** (2.85)	0.000217 (0.59)	0.00572** (2.83)	0.00550** (2.61)	0.00557** (2.78)	0.00567** (2.68)	0.00881*** (5.44)
$T \times R$	-0.0199*** (-8.45)	-0.00553*** (-7.24)	-0.0192*** (-7.92)	-0.0189*** (-7.52)	-0.0202*** (-8.67)	-0.0187*** (-7.34)	-0.0245*** (-10.70)
$P \times R$	-0.146** (-3.05)	-0.148* (-2.16)	-0.135** (-2.79)	-0.134** (-2.69)	-0.151** (-3.12)	-0.130** (-2.63)	-0.205*** (-4.56)
$P \times R^2$	-0.00614** (-2.96)	-0.000814 (-0.94)	-0.00613** (-2.94)	-0.00582** (-2.67)	-0.00605** (-2.92)	-0.00599** (-2.75)	-0.00911*** (-5.40)
$P \times T \times R$	0.0172*** (6.50)	0.00922*** (3.31)	0.0165*** (6.05)	0.0161*** (5.67)	0.0175*** (6.63)	0.0161*** (5.67)	0.0231*** (9.29)
$ z(T) $						-0.000452 (-0.13)	
$ z(R) $						-0.000418 (-0.12)	
$P \times  z(T) $						-0.00469 (-0.88)	
$P \times  z(R) $						0.000884 (0.17)	
$H \times  z(R) $						-0.00892 (-1.35)	
$H \times  z(R) $						0.00177 (0.28)	
	inefficiency						
$f(z(T))$	-0.202*** (-3.54)	-0.0641 (-1.52)	-0.0778*** (-3.52)	-0.0508 (-1.17)			-0.224*** (-4.08)
$f(z(R))$	-0.266*** (-4.53)	-0.120** (-2.73)	-0.0961*** (-4.64)	-0.0195 (-0.48)			-0.254*** (-4.15)
$P \times f(z(T))$	0.259*** (4.05)	0.193** (2.96)	0.111*** (4.52)	0.0939 (1.79)			0.288*** (4.31)
$P \times f(z(R))$	0.282*** (4.01)	0.261*** (3.65)	0.0894*** (3.58)	-0.0307 (-0.60)			0.292*** (3.72)
$H \times f(z(T))$	0.229*** (3.49)	0.156* (2.47)	0.0554* (2.27)	0.114* (2.00)			0.126 (1.88)
$H \times f(z(R))$	0.231** (3.25)	0.151* (2.21)	0.0966*** (3.73)	0.0583 (1.09)			0.168* (2.08)



$z(T)^+$					-0.148*			
					(-2.25)			
$z(T)^-$					0.327***			
					(3.94)			
$z(R)^+$					-0.306***			
					(-4.62)			
$z(R)^-$					0.258**			
					(3.28)			
$P \times z(T)^+$					0.208**			
					(2.86)			
$P \times z(T)^-$					-0.351***			
					(-3.41)			
$P \times z(R)^+$					0.276***			
					(3.37)			
$P \times z(R)^-$					-0.326***			
					(-3.49)			
$H \times z(T)^+$					0.215**			
					(3.04)			
$H \times z(T)^-$					-0.349**			
					(-2.83)			
$H \times z(P)^+$					0.327***			
					(3.57)			
$H \times z(P)^-$					-0.114			
					(-1.32)			
Observations	7753	7753	7753	7753	7753	7753	7753	7753
LpL	2556.5	2517.9	2527.5	2499.8	2561.2	2496.2		2185.8

$P$  = Poverty dummy, World Bank definition except in Column (2): 25<sup>th</sup>ile of 1990 income distribution.

Columns (1), (2), (6), (7):  $f(z(\cdot)) \equiv |z(\cdot)|$ ; column (3):  $f(z(\cdot)) \equiv z(\cdot)^2$ ; column (4):  $f(z(\cdot)) \equiv z(\cdot)$

Columns (1)-(6): Exponential distribution; column (7): Half-normal distribution.

$t$  statistics in parentheses

\*  $p < 0.05$ , \*\*  $p < 0.01$ , \*\*\*  $p < 0.001$

Table 4: Robustness checks. Dependent variable:  $\ln(\text{output per worker})$ .

	(1)	(2)	(3)	(4)
		frontier		
$\ln(k)$	0.631*** (77.76)	0.767*** (27.15)	0.735*** (29.57)	0.664*** (76.47)
$T$	0.226*** (8.58)	0.175*** (7.69)	0.188*** (7.95)	0.289*** (11.66)
$T^2$	-0.00457*** (-5.42)	-0.00307*** (-4.52)	-0.00342*** (-4.90)	-0.00457*** (-6.93)
$R$	0.244*** (6.89)	0.433*** (6.73)	0.382*** (6.43)	0.121*** (7.25)
$R^2$	0.00570** (2.85)	-0.0103*** (-6.53)	-0.00950*** (-6.27)	0.000712 (1.90)
$T \times R$	-0.0199*** (-8.45)	-0.00730*** (-4.57)	-0.00630*** (-4.02)	-0.00611*** (-9.06)
$P \times R$	-0.146** (-3.05)			
$P \times R^2$	-0.00614** (-2.96)			
$P \times T \times R$	0.0172*** (6.50)			
$\ln(k) \times R$		-0.0277*** (-5.26)	-0.0236*** (-4.92)	
$\ln(k) \times R^2$		0.000996*** (6.75)	0.000907*** (6.50)	
$\ln(k) \times T \times R$		0.000108 (1.01)	0.0000654 (0.62)	
Polity2				-0.00350 (-1.74)
Polity2 $\times R$				-0.000467 (-0.99)
Polity2 $\times R^2$				0.00000887 (0.82)
Polity2 $\times T \times R$				0.0000183* (2.38)
		inefficiency		
$ z(T) $	-0.202*** (-3.54)	-0.233*** (-3.88)	0.849*** (3.64)	-0.201*** (-3.61)
$P \times  z(T) $	0.259*** (4.05)	0.305*** (4.38)		0.242*** (4.06)
$\ln(k) \times  z(T) $			-0.0792*** (-3.72)	
$ z(R) $	-0.266*** (-4.53)	-0.237*** (-3.91)	0.525* (1.96)	-0.180*** (-3.40)
$P \times  z(R) $	0.282*** (4.01)	0.271*** (3.57)		0.178** (2.87)

$\ln(k) \times  z(R) $			-0.0531*	
			(-2.21)	
$H \times  z(T) $	0.229***	0.182**	0.171**	0.251***
	(3.49)	(2.69)	(2.60)	(4.27)
$H \times  z(R) $	0.231**	0.165*	0.149*	0.200**
	(3.25)	(2.25)	(2.11)	(3.07)
Observations	7753	7753	7753	7099
LpL	2556.5	2563.6	2547.1	2621.2

*t* statistics in parentheses

\*  $p < 0.05$ , \*\*  $p < 0.01$ , \*\*\*  $p < 0.001$

Table 5: Cointegrating vector.  
 Dependent variable:  $\ln(\text{output per worker})$

	(1)	(2)	(3)	(4)	(5)
$\ln(k)$	0.609*** (14.65)	0.598*** (14.42)	0.599*** (15.36)	0.605*** (17.30)	0.605*** (17.28)
$T$		0.158 (1.66)	0.124 (1.18)	0.222* (2.11)	0.276** (2.68)
$T^2$		-0.00697** (-3.26)	-0.0112* (-2.41)	-0.00783 (-1.63)	-0.00810*** (-3.37)
$R$		-0.0234 (-0.47)	0.0196 (0.22)	0.261 (1.84)	0.287* (2.12)
$R^2$		0.0000157 (0.01)	-0.00217 (-0.61)	0.00678 (1.04)	0.00789 (1.25)
$P \times T$			0.192 (1.00)	0.135 (0.66)	
$P \times T^2$			0.00162 (0.27)	-0.00178 (-0.28)	
$P \times R$			-0.0392 (-0.37)	-0.222 (-1.35)	-0.270 (-1.78)
$P \times R^2$			0.00250 (0.62)	-0.00618 (-0.91)	-0.00731 (-1.10)
$T \times R$				-0.0235* (-1.98)	-0.0262* (-2.51)
$P \times T \times R$				0.0205 (1.65)	0.0242* (2.34)
Observations	7753	7753	7753	7753	7753
LpL	2186.2	2250.7	2295.4	2342.6	2339.1

$t$  statistics in parentheses

\*  $p < 0.05$ , \*\*  $p < 0.01$ , \*\*\*  $p < 0.001$

Table 6: Short-run error-correction.  
 Dependent variable:  $\Delta \ln(\text{output per worker})$

	(1)	(2)	(3)	(4)	(5)
Output gap	0.0634*** (7.54)	0.0632*** (7.52)	0.0632*** (7.50)	0.0632*** (7.50)	0.0632*** (7.51)
$\Delta z(T)$		-0.00134* (-2.46)	0.000351 (0.65)	0.000363 (0.66)	0.000408 (0.79)
$\Delta z(R)$		0.0000500 (0.09)	-0.000546 (-0.85)	-0.000463 (-0.78)	
$\Delta P \times z(T)$			-0.00253** (-2.71)	-0.00246* (-2.29)	-0.00266** (-2.95)
$\Delta P \times z(R)$			0.000845 (0.81)	0.000949 (0.81)	
$\Delta H \times z(T)$				-0.000258 (-0.20)	
$\Delta H \times z(R)$				-0.000629 (-0.43)	
Observations	7591	7591	7591	7591	7591
LpL	10223.0	10225.8	10228.7	10228.8	10228.3

*t* statistics in parentheses

\*  $p < 0.05$ , \*\*  $p < 0.01$ , \*\*\*  $p < 0.001$

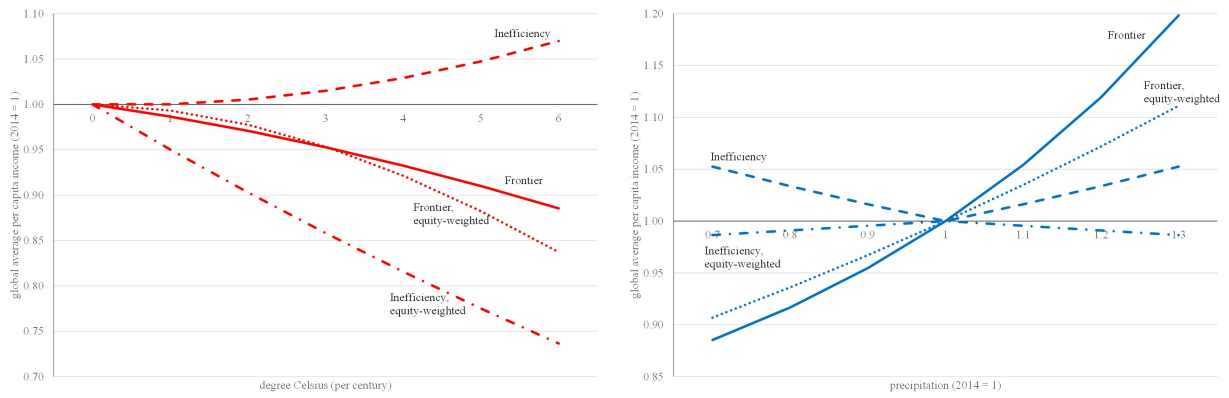


Figure 1: The change in global average output per worker due to changing temperature (left panel) and precipitation (right panel).

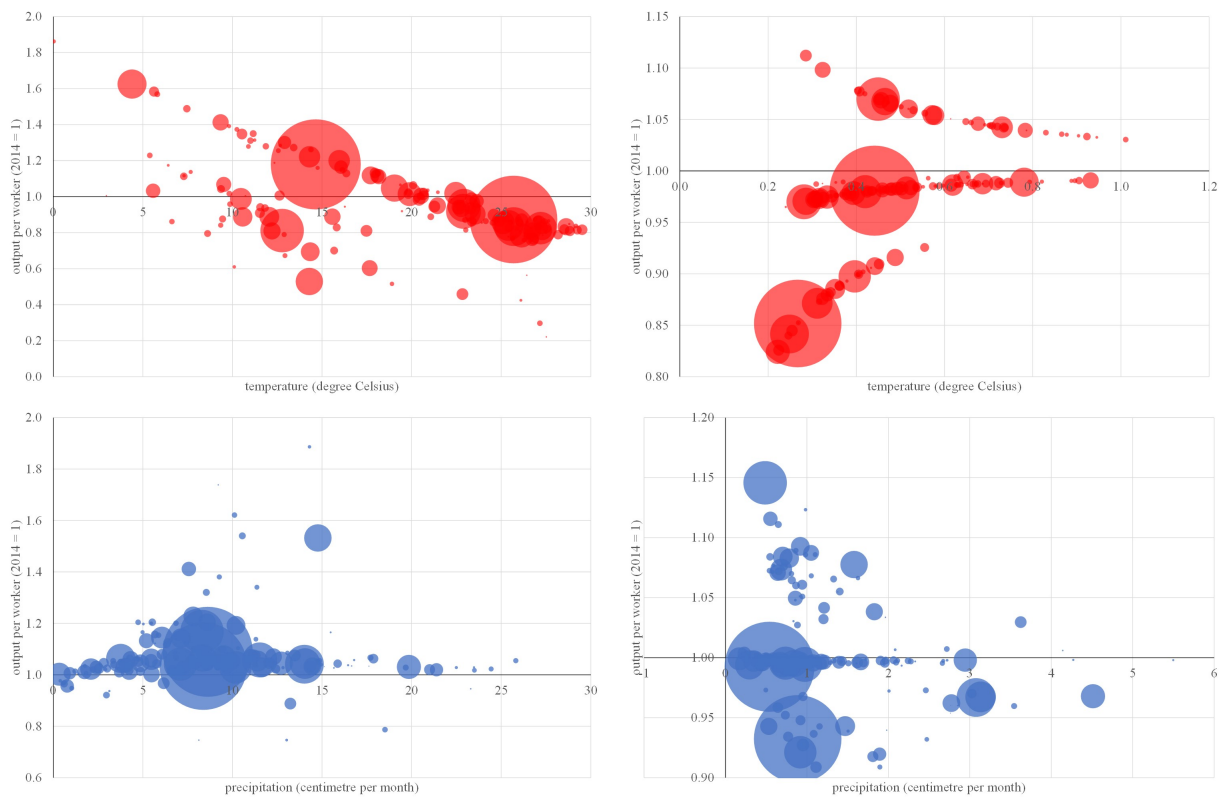


Figure 2: The change in national average output per worker due to changing temperature (top panels) and precipitation (bottom panels), in the frontier (left panels) and inefficiency (right panels). The bubble size is proportional to population size.

Table A1: Stationarity tests

series	statistic	value	p-value
	dependent variable		
$\ln(y)$	$Z_{\bar{t}}$	1.1704889	.87909787
	explanatory variables		
$\ln(k)$	$Z_{\bar{t}}$	4.7080737	.99999875
$T$	$Z_{\bar{t}}$	-5.9142383	1.667e-09
$T^2$	$Z_{\bar{t}}$	-4.8816254	5.261e-07
$R$	$Z_{\bar{t}}$	-4.0643271	.00002409
$R^2$	$Z_{\bar{t}}$	-4.827023	6.929e-07
$T \times R$	$Z_{\bar{t}}$	-6.5881907	2.226e-11
$ z(T) $	$Z_{\bar{t}}$	-47.886946	0
$ z(R) $	$Z_{\bar{t}}$	-49.250722	0
	residuals		
Frontier	$Z_{\bar{t}}$	-.19176587	.4239628
Inefficiency	$Z_{\bar{t}}$	-.42786821	.33437354
Frontier + inefficiency	$Z_{\bar{t}}$	-.205783	.41848021

The null hypothesis is stationarity for each country ([Im et al., 2003](#)).



Table A2: Robustness. Dependent variable:  $\ln(\text{output per worker})$ .

	no trend	linear	quadratic	cubic	split	first diff.
$\ln(k)$	0.692*** (117.70)	0.631*** (77.76)	0.630*** (77.91)	0.619*** (74.82)	0.622*** (75.62)	0.625*** (21.21)
$T$	0.254*** (9.46)	0.226*** (8.58)	0.232*** (7.71)	0.164*** (6.11)	0.218*** (8.08)	0.0909* (2.17)
$T^2$	-0.00244** (-3.10)	-0.00457*** (-5.42)	-0.00463*** (-5.31)	-0.00440*** (-6.01)	-0.00392*** (-4.65)	-0.00233 (-1.60)
$R$	0.233*** (6.03)	0.244*** (6.89)	0.243*** (6.82)	0.253*** (7.24)	0.258*** (7.36)	0.0408 (1.78)
$R^2$	0.00516** (2.67)	0.00570** (2.85)	0.00574** (2.83)	0.00459* (2.45)	0.00685** (3.18)	0.000405 (0.66)
$T \times R$	-0.0185*** (-6.82)	-0.0199*** (-8.45)	-0.0199*** (-8.44)	-0.0200*** (-8.75)	-0.0221*** (-9.00)	-0.00209 (-1.79)
$P \times R$	-0.138* (-2.47)	-0.146** (-3.05)	-0.146** (-3.05)	-0.197*** (-4.82)	-0.212*** (-4.55)	-0.119* (-2.11)
$P \times R^2$	-0.00438* (-2.22)	-0.00614** (-2.96)	-0.00617** (-2.95)	-0.00461* (-2.41)	-0.00664** (-2.99)	-0.00121 (-1.25)
$P \times T \times R$	0.0135*** (4.45)	0.0172*** (6.50)	0.0172*** (6.50)	0.0183*** (7.42)	0.0202*** (7.57)	0.00594** (2.68)
			inefficiency			
$ z(T) $	-0.216*** (-3.76)	-0.202*** (-3.54)	-0.203*** (-3.53)	-0.207*** (-3.48)	-0.187*** (-3.33)	-0.118 (-1.28)
$ z(R) $	-0.215*** (-3.75)	-0.266*** (-4.53)	-0.268*** (-4.50)	-0.299*** (-4.74)	-0.282*** (-4.88)	-0.106 (-0.82)
$P \times  z(T) $	0.257*** (4.03)	0.259*** (4.05)	0.260*** (4.04)	0.236*** (3.46)	0.228*** (3.62)	0.215 (1.68)
$P \times  z(R) $	0.238*** (3.41)	0.282*** (4.01)	0.285*** (3.98)	0.318*** (4.13)	0.296*** (4.35)	0.345* (2.05)
$H \times  z(T) $	0.189** (2.99)	0.229*** (3.49)	0.229*** (3.48)	0.238*** (3.50)	0.246*** (3.84)	0.135 (1.00)
$H \times  z(R) $	0.183** (2.70)	0.231** (3.25)	0.232** (3.25)	0.245*** (3.33)	0.259*** (3.73)	-0.0492 (-0.28)
$L \cdot  z(T) $						0.124 (1.38)
$L \cdot  z(R) $						-0.0305 (-0.29)
$P \times L \cdot  z(T) $						-0.201 (-1.75)
$P \times L \cdot  z(R) $						0.0307 (0.91)
$H \times L \cdot  z(T) $						-0.0466 (-0.39)
$H \times L \cdot  z(R) $						0.0387 (0.27)

Observations	7753	7753	7753	7753	7753	7591
LpL	2439.0	2556.5	2556.7	2775.4	2585.7	11337.1

*t* statistics in parentheses

\*  $p < 0.05$ , \*\*  $p < 0.01$ , \*\*\*  $p < 0.001$

Table A3: Short-run error-correction.  
 Dependent variable:  $\Delta \ln(\text{output per worker})$

	(1)	(2)	(3)	(4)	(5)
Output gap	0.0634*** (7.54)	0.0634*** (7.54)	0.0634*** (7.54)	0.0634*** (7.54)	0.0633*** (7.54)
$\Delta( z(T) )$		-0.00107 (-1.51)	0.00120* (2.32)	0.00145** (2.77)	0.00122* (2.40)
$\Delta( z(R) )$		-0.00121 (-1.76)	-0.000721 (-0.65)	-0.00119 (-1.18)	
$\Delta(P \times  z(T) )$			-0.00329** (-2.92)	-0.00297* (-2.43)	-0.00338** (-3.05)
$\Delta(P \times  z(R) )$			-0.000632 (-0.45)	-0.000951 (-0.61)	
$\Delta(H \times  z(T) )$				-0.00171 (-1.07)	
$\Delta(H \times  z(R) )$				0.00251 (1.35)	
Observations	7591	7591	7591	7591	7591
LpL	10223.0	10225.3	10227.6	10229.1	10226.3

*t* statistics in parentheses

\*  $p < 0.05$ , \*\*  $p < 0.01$ , \*\*\*  $p < 0.001$

Table A4: Stationarity tests—Error-Correction Model

model	statistic	value	p-value
Long-run			
(1)	$Z_{\bar{t}}$	-.62047954	.26747106
(2)	$Z_{\bar{t}}$	1.0554008	.85437896
(3)	$Z_{\bar{t}}$	-2.7926792	.00261368
(4)	$Z_{\bar{t}}$	-1.9118767	.027946
(5)	$Z_{\bar{t}}$	-.32010646	.37444381
Short-run			
(4) + (1)	$Z_{\bar{t}}$	-41.963767	0
(4) + (2)	$Z_{\bar{t}}$	-42.106363	0
(4) + (3)	$Z_{\bar{t}}$	-41.939126	0
(4) + (4)	$Z_{\bar{t}}$	-41.941283	0
(4) + (5)	$Z_{\bar{t}}$	-41.95429	0

The null hypothesis is stationarity for each country ([Im et al., 2003](#)). “model” refers to columns in [Tables 5 and 6](#).

## List of countries

Albania  
Algeria  
Angola  
Argentina  
Armenia  
Australia  
Austria  
Azerbaijan  
Bahamas  
Bangladesh  
Belarus  
Belgium  
Belize  
Benin  
Bhutan  
Bolivia  
Bosnia and Herzegovina  
Botswana  
Brazil  
Brunei  
Bulgaria  
Burkina Faso  
Burundi  
Cabo Verde  
Cambodia  
Cameroon  
Canada  
Central African Republic  
Chad  
Chile  
China  
Colombia  
Comoros  
Congo  
Costa Rica  
Croatia  
Cyprus  
Czech Republic  
D.R. of the Congo  
Denmark  
Djibouti

Dominican Republic  
Ecuador  
Egypt  
El Salvador  
Equatorial Guinea  
Estonia  
Ethiopia  
Fiji  
Finland  
France  
Gabon  
Gambia  
Georgia  
Germany  
Ghana  
Greece  
Guatemala  
Guinea  
Guinea-Bissau  
Haiti  
Honduras  
Hungary  
Iceland  
India  
Indonesia  
Iran  
Iraq  
Ireland  
Israel  
Italy  
Ivory Coast  
Jamaica  
Japan  
Jordan  
Kazakhstan  
Kenya  
Kuwait  
Kyrgyzstan  
Lao People's DR  
Latvia  
Lebanon  
Lesotho  
Liberia

Lithuania  
Luxembourg  
Macedonia  
Madagascar  
Malawi  
Malaysia  
Mali  
Mauritania  
Mauritius  
Mexico  
Mongolia  
Montenegro  
Morocco  
Mozambique  
Myanmar  
Namibia  
Nepal  
Netherlands  
New Zealand  
Nicaragua  
Niger  
Nigeria  
Norway  
Oman  
Pakistan  
Panama  
Paraguay  
Peru  
Philippines  
Poland  
Portugal  
Qatar  
Republic of Korea  
Republic of Moldova  
Romania  
Russian Federation  
Rwanda  
Sao Tome and Principe  
Saudi Arabia  
Senegal  
Serbia  
Sierra Leone  
Singapore

Slovakia  
Slovenia  
South Africa  
Spain  
Sri Lanka  
St. Vincent and the Grenadines  
Sudan (Former)  
Suriname  
Swaziland  
Sweden  
Switzerland  
Syria  
Taiwan  
Tajikistan  
Tanzania  
Thailand  
Togo  
Trinidad and Tobago  
Tunisia  
Turkey  
Turkmenistan  
Uganda  
Ukraine  
United Arab Emirates  
United Kingdom  
United States  
Uruguay  
Uzbekistan  
Venezuela  
Vietnam  
Yemen  
Zambia  
Zimbabwe

### **List of regions**

Eastern Europe and Central Asia  
Latin America and the Caribbean  
Middle East and North Africa  
South and East Asia and the Pacific  
Sub-Saharan Africa  
Western Europe and offshoots



FONDAZIONE ENI ENRICO MATTEI WORKING PAPER SERIES  
“NOTE DI LAVORO”

Our Working Papers are available on the Internet at the following address:  
<http://www.feem.it/getpage.aspx?id=73&sez=Publications&padre=20&tab=1>

“NOTE DI LAVORO” PUBLISHED IN 2021

1. 2021, Alberto Arcagni, Laura Cavalli, Marco Fattore, [Partial Order Algorithms for the Assessment of Italian Cities Sustainability](#)
2. 2021, Jean J. Gabszewicz, Marco A. Marini, Skerdilajda Zanaj, [Random Encounters and Information Diffusion about Product Quality](#)
3. 2021, Christian Gollier, [The Welfare Cost of Ignoring the Beta](#)
4. 2021, Richard S.J. Tol, [The Economic Impact of Weather and Climate](#)



**Fondazione Eni Enrico Mattei**

Corso Magenta 63, Milano - Italia

Tel. +39 02.520.36934

Fax. +39.02.520.36946

E-mail: [letter@feem.it](mailto:letter@feem.it)

**[www.feem.it](http://www.feem.it)**

