



AgEcon SEARCH
RESEARCH IN AGRICULTURAL & APPLIED ECONOMICS

The World's Largest Open Access Agricultural & Applied Economics Digital Library

This document is discoverable and free to researchers across the globe due to the work of AgEcon Search.

Help ensure our sustainability.

Give to AgEcon Search

AgEcon Search

<http://ageconsearch.umn.edu>

aesearch@umn.edu

*Papers downloaded from **AgEcon Search** may be used for non-commercial purposes and personal study only. No other use, including posting to another Internet site, is permitted without permission from the copyright owner (not AgEcon Search), or as allowed under the provisions of Fair Use, U.S. Copyright Act, Title 17 U.S.C.*

COVID-19: Effects on U.S. Labor, Supply Chains and Consumption Imagery Article

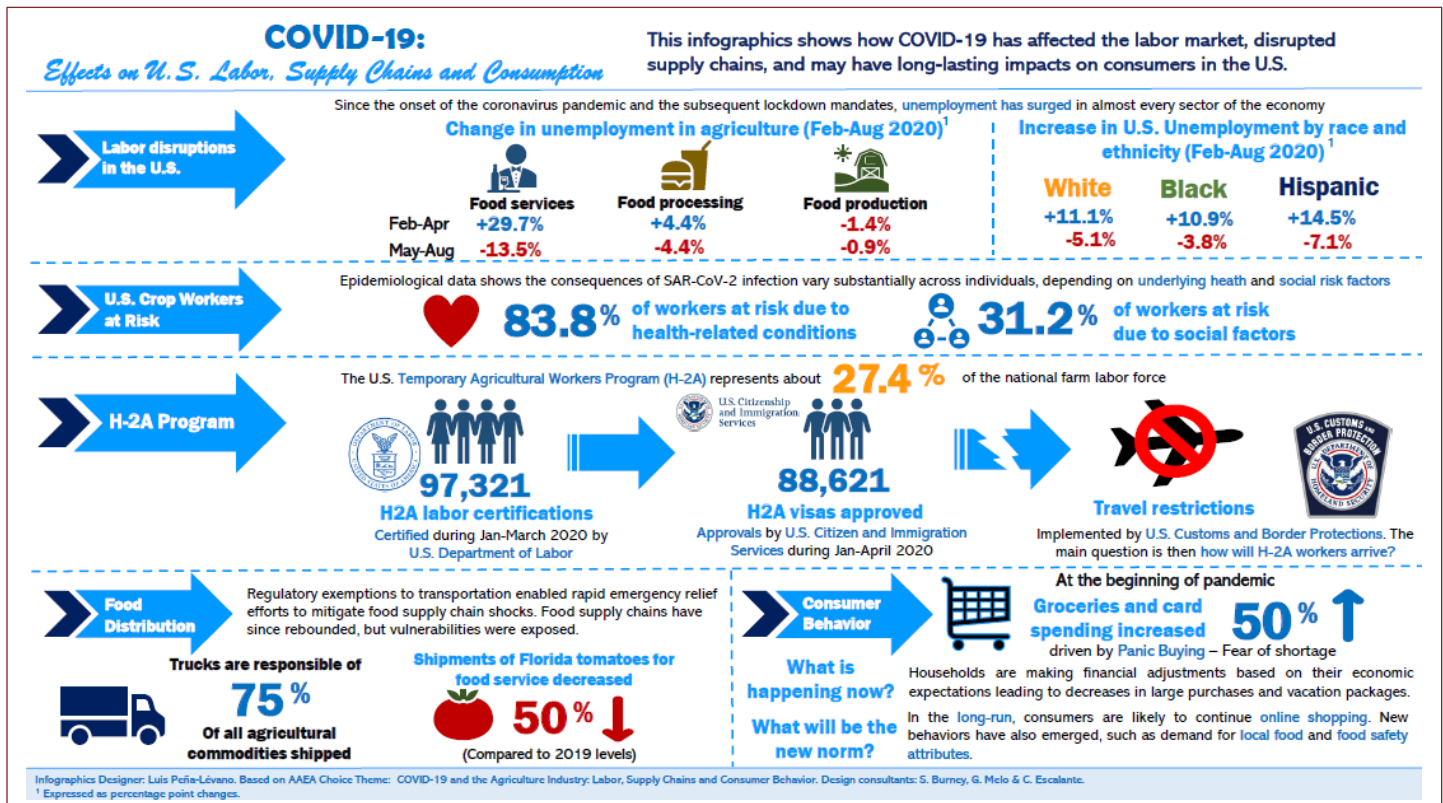
Luis Peña-Lévano, Shaheer Burney, Grace Melo, and Cesar Escalante

JEL Classifications: N/A

Keywords: N/A

Background

COVID-19 has disrupted labor employment, supply chains and consumer behavior in the U.S. This infographic discusses these effects paying particular attention to labor concerns in agriculture and the unemployment effect by ethnicity and race, as well as the effect on the supply changes and the long-run effects in consumers behavior and how the pandemic has restricted the access of H2A workers into the U.S. which may have effects on crop production. The epidemiological data in this infographic also suggests that crop workers are susceptible to COVID-19 due to underlying health and social risk factors. Given the rapidity with which the crisis induced by the pandemic has evolved, the main intent of this infographic is to describe the situation in its current form. However, it highlights long-term implications for the agricultural industry.



Data Source

- Peña-Lévano, L., G. Melo, and S. Burney. 2020. "Theme Overview: COVID-19 and the Agriculture Industry: Labor, Supply Chains, and Consumer Behavior" Choices. Quarter 3. Available online: <https://www.choicesmagazine.org/choices-magazine/theme-articles/covid-19-and-the-agriculture-industry-labor-supply-chains-and-consumer-behavior/theme-overview-covid-19-and-the-agriculture-industry-labor-supply-chains-and-consumer-behavior>
- Peña-Lévano, Luis, S. Burney, and C. Adams. 2020. "Labor Disruptions Caused by COVID-19 in the U.S. Agriculture and Nonfarm Industries." Choices. Quarter 3. Available online: <https://www.choicesmagazine.org/choices-magazine/theme-articles/covid-19-and-the-agriculture-industry-labor-supply-chains-and-consumer-behavior/labor-disruptions-caused-by-covid-19-in-the-us-agriculture-and-nonfarm-industries>
- Farnsworth, Derek. 2020. "U.S. COVID-19 Policy Affecting Agricultural Labor." Choices. Quarter 3. Available online: <https://www.choicesmagazine.org/choices-magazine/theme-articles/covid-19-and-the-agriculture-industry-labor-supply-chains-and-consumer-behavior/us-covid-19-policy-affecting-agricultural-labor>
- Onel, G., S. Simnitt, J. Stacciarini, and A. Tovar-Aguilar. 2020. "COVID-19 Risk Factors Vary by Legal Status among Florida Crop Workers." Choices. Quarter 3. Available online: <https://www.choicesmagazine.org/choices-magazine/theme-articles/covid-19-and-the-agriculture-industry-labor-supply-chains-and-consumer-behavior/covid-19-risk-factors-vary-by-legal-status-among-florida-crop-workers>
- Escalante, C.L., T. Luo, and C.E. Taylor. 2020. "The Availability of H-2A Guest Farm Workers during the COVID-19 Pandemic." Choices. Quarter 3. Available online: <https://www.choicesmagazine.org/choices-magazine/theme-articles/covid-19-and-the-agriculture-industry-labor-supply-chains-and-consumer-behavior/the-availability-of-h-2a-guest-farm-workers-during-the-covid-19-pandemic>
- Walters, L., T. Wade, and S. Suttles. 2020. "Food and Agricultural Transportation Challenges Amid the COVID-19 Pandemic." Choices. Quarter 3. Available online: <https://www.choicesmagazine.org/choices-magazine/theme-articles/covid-19-and-the-agriculture-industry-labor-supply-chains-and-consumer-behavior/food-and-agricultural-transportation-challenges-amid-the-covid-19-pandemic>
- Melo, Grace. 2020. "The Path Forward: U.S. Consumer and Food Retail Responses to COVID-19." Choices. Quarter 3. Available online: <https://www.choicesmagazine.org/choices-magazine/theme-articles/covid-19-and-the-agriculture-industry-labor-supply-chains-and-consumer-behavior/the-path-forward-us-consumer-and-food-retail-responses-to-covid-19>

Author Information: Designer and creator of the infographic: Luis Peña-Lévano (lpenalevano@ufl.edu) is Faculty Lecturer, Food and Resource Economics Department, Plant City, FL.
Consultants/Contributors: Shaheer Burney (shaheer.burney@uwrf.edu) is Assistant Professor of Agricultural Business, Department of Agricultural Economics, University of Wisconsin-River Falls, River Falls, WI.
Grace Melo (grace.melo@uc.cl) is Assistant Professor, Agricultural Economics Department, Pontifical Catholic