



The World's Largest Open Access Agricultural & Applied Economics Digital Library

This document is discoverable and free to researchers across the globe due to the work of AgEcon Search.

Help ensure our sustainability.

Give to AgEcon Search

AgEcon Search

<http://ageconsearch.umn.edu>

aesearch@umn.edu

*Papers downloaded from **AgEcon Search** may be used for non-commercial purposes and personal study only. No other use, including posting to another Internet site, is permitted without permission from the copyright owner (not AgEcon Search), or as allowed under the provisions of Fair Use, U.S. Copyright Act, Title 17 U.S.C.*

No endorsement of AgEcon Search or its fundraising activities by the author(s) of the following work or their employer(s) is intended or implied.



The United Nations
University

WIDER

World Institute for Development Economics Research

Research in Progress 15

**WAR, HUNGER AND FLIGHT: THE POLITICAL
ECONOMY OF HUMANITARIAN EMERGENCIES**

E. Wayne Nafziger and Juha Auvinen

June 1997

Research in Progress 15

War, Hunger and Flight: The Political Economy of Humanitarian Emergencies

E. Wayne Nafziger
UNU/WIDER

Juha Auvinen
University of Lapland

June 1997

This paper is to be presented to the UNU/WIDER-Queen Elizabeth House (Oxford) meeting on the Political Economy of Humanitarian Emergencies, Oxford, UK, 3-5 July 1997.

We thank G. A. Cornia, Raimo Väyrynen, Frances Stewart, Manuel Montes, Kisangani Emizet, Cecilia Ugaz, Renato Paniccià, Susan Woodward, William Reno, Peter Uvin, David Norman, Nguyuru Lipumba, Germano Mwabu, Henry Owusu, Helinä Melkas, and other colleagues at UNU/WIDER and on this project for their help, but we are solely responsible for errors.

This study has been prepared within the UNU/WIDER project on the Wave of Emergencies of the Last Decade: Causes, Extent, Predictability and Response, which is co-directed by Professor E. Wayne Nafziger, Senior Research Fellow, and Professor Raimo Väyrynen, University of Notre Dame, Indiana, USA.

UNU/WIDER gratefully acknowledges the financial contribution to the project by the Ministry for Foreign Affairs of Finland and the Government of Sweden (Swedish International Development Cooperation Agency - Sida).

Research in Progress (RIP) is a UNU/WIDER in-house publication series, which is distributed free-of-charge in limited numbers. The studies issued in the series are complete drafts prepared as part of the Institute's research programme and are circulated among project networkers and other scholars to elicit feedback and comments. In several cases, the studies will be published at a later stage in a revised form in the Institute's official publication series or in edited volumes published by academic publishers. RIP studies should not be quoted without the author's permission.

UNU World Institute for Development Economics Research (UNU/WIDER)

A research and training centre of the United Nations University

The Board of UNU/WIDER

Harris Mutio Mule

Sylvia Ostry

Jukka Pekkarinen

Maria de Lourdes Pintasilgo, Chairperson

George Vassiliou

Ruben Yevstigneyev

Masaru Yoshitomi

Ex Officio

Heitor Gurgulino de Souza, Rector of UNU

Giovanni Andrea Cornia, Director of UNU/WIDER

UNU World Institute for Development Economics Research (UNU/WIDER) was established by the United Nations University as its first research and training centre and started work in Helsinki, Finland in 1985. The purpose of the Institute is to undertake applied research and policy analysis on structural changes affecting the developing and transitional economies, to provide a forum for the advocacy of policies leading to robust, equitable and environmentally sustainable growth, and to promote capacity strengthening and training in the field of economic and social policy making. Its work is carried out by staff researchers and visiting scholars in Helsinki and through networks of collaborating scholars and institutions around the world.

UNU World Institute for Development Economics Research (UNU/WIDER)

Katajanokanlaituri 6 B

00160 Helsinki, Finland

Copyright © UNU World Institute for Development Economics Research (UNU/WIDER) 1997

Camera-ready typescript prepared by Liisa Roponen at UNU/WIDER.

The views expressed in this publication are those of the author(s). Publication does not imply endorsement by the Institute or the United Nations University of any of the views expressed.

ISSN 1455-3090

ISBN 952-9520-60-3

CONTENTS

LIST OF TABLES AND FIGURES	iv
ABSTRACT	v
I INTRODUCTION	1
II VARIABLES	6
2.1 Stagnation and decline in incomes	6
2.2 Income inequality	9
2.3 Distributional shifts during adjustment programmes	11
2.4 Growth, distribution, adjustment and elite interests	12
2.5 Military centrality	12
2.6 Conflict tradition	13
III QUANTITATIVE EMPIRICAL ANALYSIS OF COMPLEX HUMANITARIAN EMERGENCIES	14
IV STAGNATION AND DECLINE IN INCOMES	22
4.1 African countries	23
4.2 Asian countries	23
4.3 Latin American countries	24
4.4 Central and Eastern Europe and Central Asia	24
4.5 Conclusion	25
V INCOME INEQUALITY	26
5.1 Nigeria: increased elite inequality during rapid growth	26
5.2 South Africa: inequality under apartheid	27
5.3 Chiapas: regional inequality	28
5.4 Conclusion	29
VI INFLATION	30
VII REGIONAL AND ETHNIC ECONOMIC COMPETITION	31
7.1 Communal identity and conflict	31
7.2 African case studies	32
7.3 Pakistan	34
7.4 Sri Lanka	35
7.5 Conclusion	37
VIII ELITE INTERESTS DURING ADJUSTMENT PROGRAMMES	38
8.1 Liberalization and adjustment after 1980	38
8.2 Adjustment, clientelism, and predatory rule in Africa	40
8.3 African case studies	42
8.4 Adjustment in the former Yugoslavia	44
8.5 Conclusion	45

IX	THE FAILURE OF AGRICULTURAL DEVELOPMENT	46
9.1	The food crisis	46
9.2	Agricultural policies before liberalization	48
9.3	Agricultural policies during liberalization	49
9.4	Food entitlements, elite violence, and famines	50
X	MILITARY CENTRALITY	54
XI	CONFLICT TRADITION	57
XII	CONCLUSION	58
	APPENDIX: THE INDICATORS	59
	REFERENCES	64

LIST OF TABLES AND FIGURES

Table 1	Simple correlations between major components of complex humanitarian emergencies	2
Table 2	The number of war casualties in humanitarian emergencies in 1992-94	3
Table 3	Refugees and internally displaced people in 1995	4
Table 4	Complex humanitarian emergencies: OLS regression models	15
Table 5	Complex humanitarian emergencies: GLS regression models	17
Table 6	Complex humanitarian emergencies: fixed (LSDV) and random effects (GLS) models	20
Table 7	Growth in selected former Soviet republics	25
Figure 1	Growth in food production per capita, 1960-91	47

ABSTRACT

This paper uses econometric methods and case-study evidence to examine the political economy of complex humanitarian emergencies, multidimensional crises characterized by warfare, disease, hunger, and displacement. We find that stagnation and decline in real GDP, high income inequality, inflation, the response of elites to growth and distribution, military expenditures as a percentage of GNP, and conflict tradition are sources of emergencies. In addition, the slow growth in food production per capita, as a major component of slow growth in GDP per capita, contributes to emergencies. Three expected variables - adjustment and stabilization programmes, commodity terms of trade, and official development assistance per capita - do not explain emergencies. Our analysis suggests that to reduce vulnerability to emergencies, the international community needs to create a world economic order that facilitates widespread growth, accelerates food output growth, supports developing countries in reducing income inequality, assists poor countries in adjusting to external and internal equilibria, promotes good governance, and reduces the sales of armaments.

I INTRODUCTION

Is genocide a universal human phenomenon? Or is mass murder an aberration of the Holocaust? Väyrynen (1996) and Katz (1996:19-38) observe that the Holocaust is unique, killing 6 million people, two-thirds of European Jewry. But Prunier (1995:264-5) contends that for a three month period the 800 thousand estimated deaths (11 per cent of the population) from genocide in Rwanda April-July 1994 were perhaps the highest non-natural casualty rate in history.

Rummel (1994) analyses democide, that is, the murder of any person by a government; the murder may be because of the victims' indelible group membership (genocide), politics, or for other political purposes (politicide). He lists the Soviet Union, Communist China, Nazi Germany, and 15 other instances in the twentieth century (as of 1987) in which governments intentionally killed at least one million people. Some 170 million people were killed through democides, compared to about 30 million people in armed conflict. Most of these hundreds of millions of people were victims of humanitarian emergencies.

We define a complex humanitarian emergency as a man-made crisis, in which large numbers of people die and suffer from war, physical violence (often by the state), disease, hunger, or displacement (Väyrynen 1996).² We use quantitative statistical analysis of our data on developing countries, 1980-95, as well as qualitative arguments, to support our positions. In the quantitative analysis, we use four indicators to measure our concept of complex humanitarian emergencies. Battle-related deaths, a proxy for deaths resulting from direct violence, measures the intensity of armed conflict in the country. The number of refugees indicates the extent of displacement across national boundaries. The daily calorie supply per capita is used as a proxy for malnutrition, whereas infant mortality rate is used as a proxy for disease.³

Are the four indicators: deaths, refugees, malnutrition, and disease, a part of a single phenomenon, complex humanitarian emergencies? The simple correlations between these indicators are given in table 1. Our data show that battle-related deaths as a percentage of the population are closely associated with displacement (that is, number of refugees as a percentage of the population of the source country, $r=0.57$) and less, but nevertheless statistically significantly, associated, with hunger (the negative deviation of the growth in calorie supply per day from the whole sample; $r=-0.17$), and disease (the positive deviation of the infant mortality rate's decline from the whole sample; $r=0.08$).

² The two necessary conditions for a complex emergency are: (1) large numbers of people dying, suffering, or being displaced from war or massive physical violence, *and* (2) large numbers of people being victims of disease, hunger, or population displacement.

³ In interpreting our results, we have considered (1) problems in the measurement and validity of different components of emergencies (discussed in the appendix; Melkas 1997, and Väyrynen 1996 provide further elaboration) and (2) missing observations systematically related to low levels of economic development (one of our explanatory variables) or wars (a component of complex humanitarian emergencies by our definition).

Our proxy for war deaths does not include the large number of civilian deaths, including those that result from genocides.

Refugee flows are associated with slow calorie supply growth ($r=-0.27$) as well as with slow reductions of infant mortality ($r=0.15$). Slow calorie supply growth and slow reduction of infant mortality are also correlated, albeit quite weakly ($r=-0.06$). Table 1 shows that the four dimensions of complex humanitarian emergencies, as represented by our measures, are indeed intercorrelated, but except for the death-refugee and refugee-calorie growth correlations, the associations are not very strong.

TABLE 1
SIMPLE CORRELATIONS BETWEEN MAJOR COMPONENTS OF COMPLEX
HUMANITARIAN EMERGENCIES

		LDEATHPO	LREFUPOP	LCALAVE	LINFAVE
Pearson Correlation	LDEATHPO	1.000	.572***	-.171***	.084***
	LREFUPOP	.572***	1.000	-.274***	.145***
	LCALAVE	-.171***	-.274***	1.000	-.060**
	LINFAVE	.084***	.145***	-.060**	1.000
Sig. (2-tailed)	LDEATHPO	.	.000	.000	.001
	LREFUPOP	.000	.	.000	.000
	LCALAVE	.000	.000	.	.018
	LINFAVE	.001	.000	.018	.
N	LDEATHPO	1861	1861	1457	1681
	LREFUPOP	1861	1984	1560	1800
	LCALAVE	1457	1560	1560	1530
	LINFAVE	1681	1800	1530	1800

*** Correlation is significant at the 0.01 level (2-tailed).

** Correlation is significant at the 0.05 level (2-tailed).

Note: LDEATHPOP = natural logarithm of deaths per population; LREFUPOP = natural logarithm of refugees per population; LCALAVE = natural logarithm of deviation from the trend of calorie supply; LINFAVE = natural logarithm of deviation from the trend of infant mortality; Sig = statistical significance of the correlation coefficients (2-tailed test); N = number of observations (pairwise exclusion of missing data). The data are for 124 developing countries, 1980 to 1995; thus, our correlations are for 1,984 cross-sections.

To the extent that a complex emergency includes disease and hunger, the causes of an emergency will vary from those of a revolution or other internal political conflicts (see the discussion of the food crisis). Indeed, the early stages of famine and other forms of complex humanitarian emergencies are not easily distinguishable from endemic poverty (Green 1986:288-310).⁴ Thus, the determinants of poverty and underdevelopment (discussed comprehensively in Nafziger 1997) overlap substantially with the causes of complex humanitarian emergencies. Still, this paper does not repeat the vast literature

⁴ We conducted correlation analyses with different lag structures on the four dimensions of complex humanitarian emergencies and found that wars may be more conducive to refugee flows and sluggish calorie supply growth than vice versa. Refugee flows seem to be conducive to slow calorie supply growth rather than vice versa. However, largely due to the invariability of the indicators, particularly those of deaths and refugee flows, the differences between the lag and lead correlation coefficients are not great.

on economic development, but instead focuses on a different literature, which will, however, also enhance our understanding of underdevelopment.

Although our econometric analysis examines humanitarian emergencies from 1980 to 1995, in tables 2 and 3 we identify twenty-seven countries with current emergencies as those with at least 2,000 war casualties in 1992-94 *or* at least 100,000 internally displaced persons in 1995. At the peak of the Sudanese famine, partially man-made as argued below, during nine weeks in June-August 1988, 7 per cent of the population of the camp in Meiram, southern Kordofan died *each* week (Keen 1994:76). Even in 1995, Sudan had 450 thousand refugees, while in the same year Afghanistan and Rwanda each had more than one million refugees (Väyrynen 1996:19).

TABLE 2
THE NUMBER OF WAR CASUALTIES IN HUMANITARIAN EMERGENCIES IN 1992-94

	Number	The worst year
Rwanda	200,000-500,000	1994
Angola	100,000	1994
Burundi	100,000	1993
Mozambique	100,000	1992
Liberia	20,000-50,000	1993
Bosnia-Herzegovina	10,000-30,000	1993
Croatia	10,000	1992
Afghanistan	6,000	1992
Sudan	6,000	1993
Somalia	6,000	1993
Tajikistan	4,000-30,000	1992
Sri Lanka	4,000	1993
Turkey	4,000	1993
Colombia	3,500	1992
Peru	3,100	1992
South Africa	3,000-4,500	1993
Georgia	2,000	1992
Azerbaijan-Armenia	2,000-7,000	1993
Algeria	2,000-3,000	1993
Iraq	2,000	1993
Guatemala	2,000	1993
Myanmar	2,000	1992

Source: Väyrynen 1996.

Note: We have not included India, with 5,500 war casualties in two states, Kashmir and Punjab, with a combined population of 28 million, only 3 per cent of the country's 1996 population of 950 million, which was substantially in excess of Africa's population.

Using a threshold of 2,000 biases the list toward countries with larger populations. As an example, Sierra Leone, with a population of 4.6 million, suffered an estimated 1,500 war deaths in 1992-94 (Stockholm International Peace Research Institute 1996:29), a share of the population more than three times that for Colombia, with 3,500 war casualties in a population of 38 million.

TABLE 3
REFUGEES AND INTERNALLY DISPLACED PEOPLE IN 1995

	Refugees	Internally displaced persons	Total	Share of total population (%)
Afghanistan	2,328,000	500,000	2,828,000	14.1
Bosnia	906,000	1,300,000	2,206,000	63.0
Sudan	448,000	1,700,000	2,148,000	7.6
Rwanda	1,545,000	500,000	2,045,000	25.7
Turkey	15,000	2,000,000	2,015,000	3.3
Angola	313,000	1,500,000	1,813,000	16.4
Liberia	725,000	1,000,000	1,725,000	56.7
Iraq	623,000	1,000,000	1,623,000	8.0
Sierra Leone	363,000	1,000,000	1,363,000	30.2
Sri Lanka	96,000	1,000,000	1,096,000	6.0
Azerbaijan	390,000	670,000	1,060,000	14.0
Myanmar	160,000	750,000	910,000	2.0
Somalia	480,000	300,000	780,000	8.4
Ethiopia	500,000	111,000	611,000	1.1
Colombia	-	600,000	600,000	1.7
Mozambique	97,000	500,000	597,000	3.7
Eritrea	325,000	200,000	525,000	14.9
South Africa	10,000	500,000	510,000	1.2
Burundi	290,000	216,000	506,000	7.9
Peru	-	480,000	480,000	2.0
Tajikistan	174,000	300,000	474,000	7.8
Croatia	200,000	225,000	425,000	9.6
Lebanon	-	400,000	400,000	13.2
Armenia	200,000	185,000	385,000	10.7
Georgia	105,000	280,000	385,000	7.1

Source: Väyrynen 1996.

Note that the threshold of 385,000 people displaced exerts a large-country bias, similar to that discussed in the note to Table 2.

According to the International Federation of Red Cross and Red Crescent Societies (*World Disasters Report 1994*), mortality from all non-natural disasters increased from 1968 to the early 1990s. The United States Mission to the United Nations (1996:3-4) estimates an increase in mortality and population displacement⁵ from humanitarian emergencies from 1983 to 1994, despite the end of the Cold War. To be sure, the United Nations High Commissioner for Refugees (1995:244-55) warns: 'Serious statistical problems . . . arise in large, complex, and rapidly changing emergencies. . . . A life and death struggle for food and influence is hardly ever compatible with accurate

⁵ The U.S. Mission estimates an increase in the number of refugees and internally displaced people from 12 million in 1983 to 44 million in 1994.

enumeration.' Still, the increase in mortality and displacement from man-made disasters is faster than the growth in population.

The purpose of this paper is to analyze the economic sources of humanitarian emergencies.⁶ By stressing the political economy of complex humanitarian emergencies, we depart from the simple primordialist model of ethnic conflict, based on differences of language, race, tribe, religion, national origin, or some other cultural sense of identity between disputants. According to this model, ethnicity is considered the primary factor explaining a complex humanitarian emergency (Rabushka and Shepsle 1972:8, 20). Horowitz, for whom ethnic conflict is the centre of politics, remarks that for social scientists 'ethnic conflict has been viewed through the lenses of categories that tend to blur the phenomenon by treating it as part of something else.' That something else is a product of 'dogma' that includes 'the supremacy of social class . . . overtak[ing] ethnic interests' or the position 'that the competition for scarce values and material goods is exactly what propels people to see themselves as distinct ethnic groups, whose interests conflict with those of other ethnic groups' (Horowitz 1985:12-15). For Horowitz (1985:17), 'ethnic groups in conflict [he studies such as Hutu and Tutsi in Rwanda and Burundi or Sinhalese and Tamil in Sri Lanka] do not stand in a hierarchical or ranked relationship to each other,' but '[r]ather, they are parallel or unranked groups, divided by a vertical cleavage.' In contrast to Rabushka-Shepsle and Horowitz, the political economy model views ethnic conflict, not as primordial or an independent variable, but shaped by economic development or collapse, income and asset distribution, structural economic change, and their accompanying socio-political changes.

In this study, we assume that interest groups (regional elites, business people, factory workers, peasant farmers) are motivated by benefit and cost, although their reasoning may be unsystematic or flawed. In most states, political leaders make decisions, not on the basis of national interests (themselves in dispute), but in the interest of a small ruling elite, a ruling clique of generals, the army, a dominant ethnic group, or some other subnational class or group.

This paper is constructed as follows: in section II we set out our hypotheses on the sources of complex humanitarian emergencies. Section III presents the result of our quantitative statistical analysis. Using a pool of 124 less developed countries in 1980-95, we apply different types of econometric methods to unveil the associations between complex humanitarian emergencies and their hypothesized sources. In the remaining sections we discuss our findings in more detail and develop our arguments on how economics and politics interact in generating complex humanitarian emergencies. We support our arguments with case-study evidence along the way.

⁶ Or in probabilistic terms, the purpose of this paper is to examine the economic variables that increase the likelihood of humanitarian emergencies.

II VARIABLES

Most literature uses geopolitical and ethnic approaches to explain the recent increase in complex humanitarian emergencies. While relevant, these approaches are incomplete in analyzing the factors that are pivotal in shaping and triggering conflicts in developing countries. What follows is a conceptualization of the main political economy variables that lie behind the increase in humanitarian emergencies in the 1990s. Broadly speaking, we expect the following sets of factors - stagnation and decline of income, high inequality, falling real aid, shifts in wealth distribution during adjustment programmes, the interaction of income and adjustment with elite interests, the share of military expenditures in GNP, and tradition for violent conflict - to contribute to complex humanitarian emergencies.

2.1 Stagnation and decline in incomes

Despite political conflicts associated with Quebec, Northern Ireland, and the Basque provinces, humanitarian disasters are rarely found among high-income countries, unless you include the roughly 20,000 people killed yearly, mostly by guns, in the United States' cities. Moreover, complex humanitarian emergencies are only found in low- and middle-income (that is, developing) countries,⁷ establishing a threshold above which emergencies do not occur (Stockholm International Peace Research Institute 1996:13-30; Holsti 1991:274-78; Jung, Schlichte, and Siegelberg 1996:50-54). Furthermore, as indicated below, most Afro-Asian countries in tables 2 and 3 had negative growth in real GDP per capita in the period before the emergencies.

A factor common to 12 of the 15 countries that Rummel (1994) indicates have had more than one million democides in the twentieth century is stagnation and protracted declines in average incomes during the period before democide. This includes early twentieth-century feudal Russia, the Soviet Union during the 1917 revolution and War Communism, the imperial dynasty and republican government just before Chiang Kai-shek's regime, China's Kuomintang regime before Chinese Communist rule, post-World War I pre-Nazi Germany, pre-1975 Cambodia, pre-1945 Vietnam, the declining Turkish Ottoman state before World War I, World War II Poland and Yugoslavia, and North Korea. Three cases, Pakistan since independence (Nafziger 1994:143-65), Japan (1936-45) (Nafziger 1995), and pre-revolutionary late nineteenth-century Mexico, in which some one million Indian families lost their land, are exceptions, with positive per-capita growths but high income inequalities.⁸

⁷ The World Bank (1995a:162-3) divides countries into four groups on the basis of per capita GNP. In 1993, these categories were low-income countries (less than \$700), lower-middle-income countries (\$700-2,800), upper-middle-income countries (\$2,800-12,000), and high-income countries (more than \$12,000). While the margin of error is substantial and the boundary between category rises each year with inflation, few countries shifted categories between 1974 and 1993 (Nafziger 1997:9-37).

When we use the World Bank concept, all transitional countries are also developing countries.

⁸ Rummel (1994) demonstrates that democracies do not perpetuate thousands of democides. Instead all 15 of these major humanitarian disasters or megamurders took place in societies with authoritarian governments. Indeed Rummel (1994:2) finds that 'Never has there been a war involving violent military

We use the concepts of relative and absolute deprivation to depict the effects of economic growth and stagnation on humanitarian emergencies. For the theory of relative deprivation, economic decline is an important variable in explaining political conflict. Relative deprivation is the actors' perception of social injustice from a growing discrepancy between goods and conditions they expect and those they can get or keep. Relative deprivation spurs social discontent, and sometimes anger, which provides motivation for potential collective violence (Gurr 1970). Among the various components of emergencies, war and violence have major catalytic roles, 'add[ing] to social disruption and political instability, undermin[ing] economic activities, spread[ing] hunger and disease, and fuel[ing] refugee flows' (Väyrynen 1996:19).⁹

Relative deprivation is essentially a diachronic concept: people feel deprived of something they had but subsequently lost, or when others have gained relative to them. Consequently a short-term income reduction is more important than protracted income decline or stagnation in analyzing war and conflict dimensions of complex humanitarian emergencies. Indeed one who grows accustomed to being destitute may not feel frustrated at all. Deterioration of living conditions over a prolonged period thus entails absolute rather than relative deprivation. Although low or declining average incomes can become a source of relative deprivation in comparison to neighbouring countries or to incomes from an earlier period, aggression is unlikely to result from such an abstract and remote source. Tangible and salient factors such as a marked deterioration of living conditions, especially during a period of high expectations, are more likely to produce socio-political discontent that may be mobilized into political violence (cf. Davies 1962:5-19).

Only a portion of violence, however, results from insurgent action. In fact, Holsti (1997:25) demonstrates that the policies of governing elites are at the root of most humanitarian emergencies. As pointed out below, slow or negative growth puts more pressure on ruling elites, reducing the number of allies and clients they can support, undermining the legitimacy of the regime, and increasing the probability of regime turnover. To forestall threats to the regime, political elites may use repression to capture a greater share of the majority's shrinking surplus. These repressive policies may entail acts of direct violence against or withholding food and other supplies from politically disobedient groups (Keen 1994; Duffield 1994; and de Waal 1989; as discussed below). Moreover, repression and economic discrimination may generate relative deprivation and trigger socio-political mobilization on the part of the groups affected, leading to further violence and worsening the humanitarian crisis.

Also absolute deprivation can contribute to a complex humanitarian emergency. Protracted economic stagnation can increase the probability of non-conflict components of a complex emergency, that is, population displacement, hunger, and disease. As the literature on economic behaviour under situations of extreme distress shows, economic

action between stable democracies.' Holsti (1996:149) shows, however, in his discussion of South America, that while democracy is sufficient, it 'is not a necessary condition for the development of no-war zones, and possibly even for zones of peace.'

⁹ Bariagaber's (1995:214) summary indicates that 'All in all, the literature views refugee flows as resulting from or coinciding with violent political conflicts.'

Darwinism tends to become dominant when food, resource, and employment scarcity becomes chronic. Under such circumstances, Darwinist behaviour tends to prevail over the behaviour dictated by the legal norms and social conventions regulating access to resources and respect of property rights, and by the moral and judicial condemnation of theft, robbery, and expropriation. Protracted stagnation is also likely to weaken the moral sentiments of solidarity vis-à-vis weaker groups and redistribution in their favour. Protracted stagnation may also spur elites to violently expropriate the assets and resources of weaker social communities, particularly if political, ethnic, or class tensions already exist (as in the case, discussed below, of Sudan in the 1980s).

The relationship between stagnation, economic Darwinism, and the breakdown of social cohesion needs to be qualified on several counts. Obviously, countries with higher initial incomes per capita can withstand longer periods of stagnation without experiencing major social tensions and may be able to introduce the necessary political or economic reforms to address the sources of the stagnation. Also, as the situation of Tanzania suggests, economic stagnation within a context of 'shared poverty' may not be inherently destabilizing at the local level. In addition, of major relevance is the effect of stagnation on the provision of basic needs and infrastructure, and the impact of these factors on social and political integration. And finally, repression and political control may, at least temporarily, avoid the violent manifestations that could otherwise emerge if economic destitution continues unabated.

The causes and accompaniments of economic stagnation or decline vary enormously. Two factors that appear to be most frequently related to the explosion of humanitarian emergencies are international economic shocks and deterioration as well as the failure of agricultural development.

In developing countries, sudden external shocks and long-term deterioration in international economic position can contribute to stagnation or precipitous slumps. Abrupt shocks may include large shifts in terms of trade, falling real official development assistance or aid, and interest-rate shocks (factors frequently observed in the early 1980s and 1990s), while protracted deterioration may include a long-run decline in commodity terms of trade, rising foreign protection, or the gradual exclusion from international capital markets and flows of foreign direct investment. For example, during its slow and negative per-capita growth, the sub-Sahara experienced declining commodity terms of trade (price index of exports divided by the price index of imports) – a fall of 52 per cent from 1970 to 1992 (or 38 per cent from 1980 to 1992). Sub-Saharan Africa's income terms of trade or export purchasing power, the commodity terms of trade times export volume, declined 46 per cent from 1970 to 1992 (or 29 per cent from 1980 to 1992) (Nafziger 1993:67-71). This substantial fall in export purchasing power and material levels of living made the sub-Sahara more vulnerable to political crises. As an example, declines in terms of trade (and aggregate income) exacerbated Nigeria's political vulnerability. From a peak in 1980, Nigeria's export purchasing power (or income terms of trade) fell 72 per cent in 1982 and 60 per cent in 1983, placing an unbearable burden on the newly re-elected, but corrupt, government of President Shehu Shagari, which was overthrown by the military (Nafziger 1993:67-69). Also in 1986-87 and in the early 1990s, Zambia's conflict with the IMF over eliminating maize meal subsidies, which contributed to urban riots and political instability, occurred after a decade of collapsing copper prices (1975-85) and several years when the annual

debt service was almost one-half as much as export receipts (Auvinen 1990). While the distributive effects can vary, and some of the countries affected have been able to adjust, the depressive effect of these trends on weak economies, especially those difficult to restructure, are largely unavoidable.

Agriculture is a major component of GDP in low-income countries and a major contributor to the industrial and services sectors through increased food supplies, added foreign exchange, labour supply, capital transfer, and larger markets (Johnston and Mellor 1961:571-81). Frequently the failure of food and agricultural development is a key element of a protracted stagnation or decline, and rising social tensions. As in several sub-Saharan countries, agricultural stagnation may be associated with factor market imperfections, delayed technological modernization, unfavourable government policies, obsolete agrarian structures, and slow institutional modernization. Declining rural productivity may not only contribute to increased economic Darwinism among severely impoverished rural populations, but may also spur rural-urban migration, increasing urban unemployment and underemployment, political discontent, and humanitarian emergencies.

Agricultural development failure and international economic deterioration affect income and its distribution domestically by region, ethnic group, and class. This distribution affects social mobilization, which can set the stage for potential crises.

2.2 Income inequality

The vulnerability of populations suffering deprivation from humanitarian emergencies is exacerbated if income concentration is substantial. Alesina and Perotti's (1996:1203-38) cross-sectional study of 71 LDCs, 1960-85, finds that income inequality, by fuelling social discontent, increases socio-political instability, as measured by deaths in domestic disturbances and assassinations (per million population) and coups (both successful and unsuccessful). Severe social tensions leading to complex humanitarian emergencies may also arise under conditions of positive (even rapid) growth and expanding resource availability. High inequality can contribute to the immiseration or absolute deprivation of portions of the population, even with growth. Absolute deprivation during substantial growth was experienced, for instance, by Igbo political elites, dominant in Nigeria's Eastern Region, in 1964-65. The East lost oil tax revenues from a change in its regional allocation by the federal government, which ceased distributing mineral export revenues to regional governments.

Moreover, through the demonstration effect of consumption levels of the relatively well off, high income concentration increases the perception of relative deprivation by substantial sections of the population, even when these do not experience absolute deprivation. The risk of political disintegration increases with a surge of income disparities by class, region, and community, especially when these disparities lack legitimacy among the population. Class and communal (regional, ethnic, and religious) economic differences often overlap, exacerbating perceived grievances and potential strife.

The trends and policies leading to this type of high income inequality can be summarized as follows:

- *Historical legacies* (from colonialism or imperialism,¹⁰ apartheid, failed past policies, and so forth), which have remained unresolved, are often a source of this inequality. Affluent classes and dominant ethnic communities use the accumulated advantages of the past – ready access to capital, greater information and mobility, superior education and training, privileged access to licences and concessions from government, and a lower discount of future earnings – to start enterprises, buy farms, and obtain government jobs in disproportionate numbers. Less affluent and influential groups are underrepresented in entrepreneurial activity, investment, and employment (Nafziger 1986). Moreover, even if current policies no longer discriminate against a particular social group, large and uncorrected differentials in the initial distribution of assets and opportunities lead, by sheer market forces, to growth patterns characterized by large, and rising, inequalities. The inability to rectify initial imbalances may therefore, over time, contribute to increasing conflicts.

- *Government policies* in distributing land and other assets, taxation, and the benefits of public expenditure, affect political and social cohesion. Included are policies that contribute to differential regional, communal, and generational opportunities in employment (especially in government), education, and the armed forces; the effects of these opportunities on regional, ethnic, and generational grievances; and the influence of these grievances on social mobilization and political protest. Another policy instrument is the access to financing by classes and communities during periods of major expansion of asset acquisition, such as indigenization, privatization, or outright expropriation.

- *Regional and ethnic economic competition* is associated with income disparities. Growing regional inequality and limited regional economic integration, often found in economic enclaves, can exacerbate ethnic and regional competition and conflict.

Regional factors contributing to conflict include educational differentials, regional and ethnic employment differentials, interregional revenue allocation formulas, and disaffection of minority language communities that lack government jobs because of examinations in majority languages. In Africa, interregional and interethnic opportunities for employment or asset acquisitions during the waves of indigenization measures of the 1960s and the 1970s, and privatization measures of the 1980s and the 1990s have been important sources of conflict.¹¹

¹⁰ Nafziger 1988:35-64; Nafziger 1983:27-74; and Nafziger 1995:6-10, 66-84 discuss how colonialism and imperialism in Africa and Asia contributed to their underdevelopment and political instability.

¹¹ Political cohesion is partly a function of the extent of interregional trade, capital flows, and migration. Lack of regional economic integration not only increases the transactions costs of trade, investment, and migration but also reduces the extent to which major social forces in the regions have a vested interest in remaining politically integrated with other regions, as Nafziger 1983:94-8 and Nafziger 1994:165 show in the emergencies in Nigeria, 1966-70, and Pakistan, 1971, and Emizet 1997:37 in Zaïre's 1997 emergency. However, in our sample of 124 countries, it is not possible to determine whether the flows of trade, capital, and migrants evince a high degree of salience because of the lack of data and the incomparability in the number of regions across countries.

2.3 Distributional shifts during adjustment programmes

Adjustment and stabilization programmes, almost universal among developing countries during the 1980s and early 1990s, were mostly introduced in response to chronic macroeconomic imbalances and external deficits, often associated with negative or slow growth. These programmes are usually shaped by financing from and conditions set by International Monetary Fund (IMF) and World Bank loans of last resort. The programmes redistribute the timing and extent of costs and benefits among economic actors. The costs of most expenditure-reducing policies (including government employment cuts, removal of subsidies, increases in real interest rates, and the control of money supply) and of some expenditure-switching policies (such as real domestic-currency devaluation) tend to impose large welfare costs immediately, while their benefits emerge only after one to two years. Stabilization and adjustment programmes affect real wages and staple commodity prices, and may thus elicit the responses of the population groups affected (the poor and the organized middle class).

Stabilization and adjustment programmes affect the distribution of power within a country. Thus, in the first place, social conflicts may erupt during the early period of stabilization and adjustment, especially if there are few funds to support the income and social services of those hurt by the programmes. Second, adjustment programmes may become a source of potential instability if the public perceives that structural measures, such as privatization, price decontrol, and public employment policies, favour specific interest groups, such as military and political leaders, leading families, dominant ethnic communities, or high-level civil servants. This can spur regional, communal, and class conflicts. Third, national leaders of developing countries, who usually only borrow from the Bank or Fund as a last resort, complain about the secrecy of the recipient country's letter of intent, which reduces internal political dialogue and increases the difficulty of the adjustment programme's implementation (Mills 1989). These problems can undermine the legitimacy of political elites, spurring a challenge to leadership.

Trade and exchange rate policies, a part of adjustment programmes, influence the differential origin and allocation of export and other revenues and affect internal sectoral terms of trade. These shape the costs and benefits to classes, regions, and communities; and how these benefits and costs contribute to perceived grievances by classes and communities.

Is there any relationship between political troubles and intervention by Bretton Woods' institutions? Auvinen's (1996a, 1996b) statistical analysis of political conflict in developing countries in the 1980s indicates that IMF intervention, with its accompanying austerity measures and their stifling effect on short-term living standards, contributes to political protest and rebellion. Indeed the longer the history of Fund stabilization and adjustment is, the more extensive is the political conflict. Furthermore, IMF adjustment also has a trigger effect, damaging the politically powerful and mobilized groups and the urban working-class and poor.

In their analysis of Africa, Morrisson, Lafay, and Dessus (1994:174) contend that 'Most of the stabilization and adjustment measures run the risk of causing political troubles. Cuts in subsidies, tax increases, privatization of public enterprises or removal of commercial protection threaten the income and employment of either large numbers of

people or of well-organized groups.' Africa has the highest rate of economic decline (and thus greatest Bank/Fund requirements for economic adjustment and stabilization), and also the highest incidence of political conflict and humanitarian emergencies. According to Morrisson et al.'s (1994:174-91) and Haggard, Lafay, and Morrisson's (1995:108-09) evidence, IMF interventions require stabilization measures within one year, the most risky of which are a cut in food subsidies and devaluation's fillip to inflation, both of which contribute to strikes, demonstrations, and repression.

Thus, we expect that stabilization and adjustment programmes, which contribute to developing countries' political conflict, will also increase their vulnerability to humanitarian emergencies. Specifically, we hypothesize a direct relationship between IMF intervention and complex humanitarian emergencies.

2.4 Growth, distribution, adjustment and elite interests

How elites and masses react to these three major economic phenomena and their changes - stagnation and economic decline, high and increasing inequality, and distributional shifts from adjustment programmes - influences the probability of political conflict and humanitarian disasters. Elites may be threatened by adverse economic changes and the reaction of non-elites to these changes. The strategies of political elites to maintain power and affluence, in the midst of economic crises and shifts, may exacerbate conflict and the potential for humanitarian emergencies.

The struggle over economic benefits helps shape, consolidate, and modify ruling political elites. Economic growth usually expands the perquisites and benefits that ruling elites can distribute to allies and subordinates, while economic decline or cuts in expenditures from liberalization shrink the clientele base, often requiring greater coercion and corruption to maintain power. Or in reaction to economic decline and liberalization, ruling elites need new ways of exercising power, and sometimes use foreign firms and private operators to regularize revenues and expenditures. Whether or not elites are successful in creating new patron-client patterns, economic and state expenditure declines increase the potential for destabilizing the polity and threatening a humanitarian crisis.

Africa's political stability has been especially threatened by the widespread negative per-capita growth of the late 1970s, 1980s, and early 1990s. When growth becomes negative, as in parts of Africa, it becomes more difficult to support so large a ruling elite. Contradictions and disunity can grow among the previously dominant elite. Negative real economic growth narrows the communal and class support of ruling coalitions, and threatens political cohesion.

2.5 Military centrality

The military centrality theory focuses on the military's prominent position in LDCs. In many countries the military institution has more resources and a more effective organization than the civilian government. We expect military centrality, as indicated by military expenditure as a percentage of GNP, to contribute to humanitarian emergencies through four different dynamics.

Military resources are used to support authoritarian political structures, which generate (1) desperate action and (2) military build-up in the opposition; under political deprivation and in the absence of political mechanisms to settle grievances, full-scale rebellion becomes more likely. (3) A strong military is apt to overthrow both civilian and authoritarian regimes, which may lead to political instability and humanitarian crises. For civilian regimes in less developed countries, powerful armed forces constitute a constant threat. Particularly during economic austerity they are afraid to cut back military spending. Moreover, they may strengthen the military in order to stave off threats from the opposition. This, in turn, entails heavy socio-economic costs for the population, (4) inducing further discontent and increasing the risk of rebellion. In very poor countries, budget allocations for the military may produce downright starvation and destitution. We will develop these arguments below.

2.6 Conflict tradition

Not all economically-destitute countries with inegalitarian income distributions and predatory political structures supported by a strong military establishment were subject to humanitarian emergencies. Countries with a history of mass political mobilization for conflict, such as Colombia, Burundi, and Rwanda, are likely to be more susceptible to new conflict components of complex humanitarian emergencies than other, historically more peaceful countries. Gurr and Duvall used conflict traditions as an indicator of the justifications for political violence. 'Tension', a multiplicative term incorporating stress, strain, and conflict traditions, 'is the primary driving force behind manifest conflict' (Gurr and Duvall 1973:157). Gurr and Lichbach's (1986) pure 'persistence of conflict model' also explained some of the variance in political conflict which underlines the relevance of this variable.

Citizens adapt to a certain, acceptable level of violence through the cultural experience of violence (Gurr, 1970:155-92; Gurr 1972:21; Rapkin and Avery 1986:114). A tradition of intensive political violence makes societies more susceptible to war and humanitarian emergencies. Muller and Weede (1994) regressed the number of deaths from domestic violence in 1973-77 on the corresponding measure in 1968-72 and found a strong and significant association. We expect to find a direct association between the number of deaths from domestic violence in the 1960s and 1970s and humanitarian emergencies in the 1980s and 1990s.

III QUANTITATIVE EMPIRICAL ANALYSIS OF COMPLEX HUMANITARIAN EMERGENCIES

Several types of econometric and politimetric methods were applied to analyze the political economy sources of complex humanitarian emergencies. We made appropriate variable transformations to reduce the probability of heteroskedasticity and correlation analyses were applied to avoid problems of collinearity. Pooled cross-country time-series regression techniques were applied to a sample of 124 countries in 1980-95, for a total of 1984 (16 x 124) cases. In addition to the basic ordinary least squares model, we applied a generalized least squares model with the Prais-Winsten transformation because of autocorrelated disturbances within the cross-sectional units. The GLS model is more credible than the OLS model due to the corrected autocorrelation but we nevertheless also present OLS results for comparison. Two-stage least squares models were applied where two-way causality was suspected between the predictors and the dependent variable.

We constructed three different measures for the dependent variable. Our first most simple measure is based on the information that battle deaths and refugees per population are closely related:

$$(1) \text{ DEATHREF} = (\text{DEATHPOP} + 1) * (\text{REFUPOP} + 1),$$

where DEATHPOP, REFUPOP = battle-related deaths and refugees per population, respectively.

The variable combines two important components of complex humanitarian emergencies, but for a positive score both components do not have to be present (the reason for adding two constants in the equation). The variable thus gets positive values not only when there are both deaths and refugees, but also when there are deaths but no refugees or refugees but no deaths. The inclusiveness of this variable brings the advantage of several non-zero observations which increases the variability of the dependent variable. However, a second equation assures that a humanitarian emergency comprises both components, that is

$$(2) \text{ HUMEMERG} = \text{DEATHPOP} * \text{REFUPOP}.$$

We construct a composite indicator that also includes famine and disease as parts of complex humanitarian emergencies:

$$(3) \text{ CHE2} = (1 + \text{DEATHPOP}) * (1 + \text{REFUPOP}) * ((100 - \text{CALAVE}) / 10) * ((100 + \text{INFAVE}) / 10),^{12}$$

where CALAVE = deviation from trend (average annual increase) in calorie supply and INFAVE = deviation from trend (average annual decrease) in infant mortality rate.¹³

¹² By adding a constant 100 to CALAVE and INFAVE we eliminate the possibility of obtaining - what would be counterintuitive - negative composite measures of complex humanitarian emergencies. Dividing the scores of CALAVE and INFAVE by 10 avoids large scores of the composite indicators.

¹³ We also created a fourth variable,

The negative sign before CALAVE refers to the fact that the cases that have had smaller than average calorie supply growth are more likely to be a part of a complex humanitarian emergency, whereas the positive sign before INFMORT indicates that smaller than average infant mortality *reductions* are expected to increase the probability of a complex emergency. Of the three indicators, CHE2 is the most inclusive and HUMEMERG the most exclusive, since it only includes cases with both deaths and refugees. We present the findings of OLS linear regression analysis in table 4.

TABLE 4
COMPLEX HUMANITARIAN EMERGENCIES: OLS REGRESSION MODELS

Explanatory Variables	(1) LDEATHREF	(2) LHUMEMER	(3) LCHE2
Constant	7.31*** (2.67)	4.27** (1.85)	15.07*** (2.51)
LGDPGRO[-1]	-1.83*** (0.55)	-1.16*** (0.38)	-2.54*** (0.52)
LGINI[-1]	0.29** (0.12)	0.18** (0.08)	0.36*** (0.11)
LGNPCAP[-1]	-0.15*** (0.03)	-0.07*** (0.02)	-0.19*** (0.03)
LIMFGNP[-1]	-0.10*** (0.03)	-0.05*** (0.02)	-0.06** (0.03)
LCPIDIFF[-1]	0.26*** (0.06)	0.20*** (0.04)	0.27*** (0.05)
LMILCENT[-1]	0.18*** (0.03)	0.16*** (0.02)	0.15*** (0.03)
LDEATRAD	0.04*** (0.01)	-	0.02* (0.01)
R square	0.18	0.16	0.19
N	663	663	663
DW	0.34	0.31	0.38

Note: The figures are parameter estimates and standard errors (in parentheses), respectively. LGDPGRO = ln real GDP growth; LGINI = ln gini index; LGNPCAP = ln GNP per capita; LIMFGNP = ln use of IMF credit/GNP; LCPIDIFF= ln consumer price index, annual change; LMILCENT = ln military expenditures/GNP; LDEATRAD = ln deaths from domestic violence 1963-77. Coefficient significant *** = at the 1 percent level (2-tailed test), ** = 5 percent level and * = 10 percent level; DW = Durbin-Watson test statistic for serial correlation.

Most of our hypotheses are supported by the OLS linear regression analysis. All our measures of humanitarian emergencies are inversely associated with the rate of real GDP growth (LGDPGRO). The analysis further corroborates the theses that humanitarian emergencies occur in low-income conditions (LGNPCAP) and under conditions of high inequality, as depicted by the Gini index of income concentration (LGINI). Our dependent variables vary directly with military centrality (LMILCENT) and a tradition of violent conflict, as indicated by deaths from domestic violence, 1963-

(4) CHE = DEATHPOP * REFUPOP * ((100 - CALAVE) / 10) * ((100 + INFAVE) / 10), which added to HUMEMERG the information on hunger and disease. However, this variable suffered from lack of observations - all four dimensions had to be present in order for the variable to be registered - and was therefore dropped from the analysis.

77 (LDEATRAD).¹⁴ The tradition of violent conflict is not associated with the measure which includes both deaths and refugees (LHUMEMER). This indicates that while a cultural experience of violence may lower the threshold for violence in the future¹⁵, the combination of deaths and refugees may represent a phenomenon less affected by the culture of conflict. The models are only capable of accounting for 16 - 19 percent of the variation in the dependent variables. A low coefficient of determination is to be expected in a cross-sectional model with very different units of analysis.

We get four unexpected findings. Firstly, IMF funding as a percentage of GNP (LIMFGNP) is inversely associated with humanitarian emergencies, which is contrary to our expectations. Some of the explanation may stem from the IMF's refraining from funding 'basket cases' devastated by war and displacement. In that case, the negative coefficient would be picking up a reverse causal relationship. We applied a two-stage least squares model and different lag structures to inspect the relationship between LIMFGNP and CHEs. The two-stage least squares results do not dramatically differ from those of the OLS model. However, when LIMFGNP was used as a predictor for *lagged* LDEATREF, its coefficient is slightly larger than in equation (1)¹⁶, indicating that perhaps deaths and refugees keep away the IMF rather than vice versa.

Secondly, we did not expect that inflation, as measured by the annual percentage change in the consumer price index (LCPIDIFF), would be a source of humanitarian emergencies, since real economic growth adjusts for inflation, and the distributional aspects of inflation would be captured in income inequality. However, table 4 indicates that inflation is a major source of complex humanitarian emergencies. The relative invariability of data on income distribution (from infrequent surveys, so that 33 out of 76 countries, for which we have data, had no more than one change in their Gini coefficient, 1980-95) means that we rarely can measure shifts in income concentration. Inflation, measured here on a year-by-year basis, may capture the destabilizing effect of income distributional shifts on political violence and emergencies, an effect that cannot be captured due to Gini's invariability in our data set. Inflation redistributes income, at least in the early stages, from low-income workers and those on fixed income to high-income classes.

¹⁴ We also experimented with variables from Ted Gurr's Minorities at Risk database (1993). Political rights demands (POLRI) turned out to be significant in the model for DEATHREF. The variable includes ethnic minority groups' diffuse political grievances (excluding demands for political autonomy) and the groups' 'seek[ing] of greater political rights, central participation, equal civil rights and change in officials/policies'. It is notable that POLRI is the strongest correlate of humanitarian emergencies out of many candidates in the database, including economic discrimination, economic, cultural and political differentials, economic and social grievances. Our economic variables are likely to pick up some of the variation between the 'minorities variables' and emergencies but even when we restrict our variables' coefficients to zero, POLRI is more strongly associated than the economic status and demands of ethnic minorities with humanitarian emergencies. We have not included POLRI in Table 4 due to its large number of missing observations which substantially reduces the degrees of freedom in the model.

¹⁵ As indicated by the variable's positive association with battle deaths only (DEATHPOP; not depicted here).

¹⁶ The coefficient was significant at the 1 percent level for $t - 2$, $t - 1$, t , $t + 1$, and $t + 2$.

Thirdly, international economic shocks, as indicated by the terms of trade index or its change, are not associated with any of our measures of humanitarian emergencies. Part of this finding may be explained by a lack of data, as we had observations for terms of trade for only 960 (out of 1984) cases. Moreover, since falling terms of trade are likely to have an adverse impact on economic growth, GDP growth may capture some of the variation between terms of trade and humanitarian emergencies.¹⁷ Fourthly, official development assistance, as measured by grants received in U.S. dollars per capita, whether level or its percentage change, is also unassociated with our measures of humanitarian emergencies. However, falling aid may not measure a deterioration in the international economic position of countries, as some graduated from receiving aid, particularly grants, because of development success. Argentina, Brazil, Chile, Ecuador, South Korea, Uruguay and Venezuela received practically no grants in 1980-95, nor did they experience humanitarian emergencies.

Because of the high degree of first-order autocorrelation, which is likely to result from the omission of lagged values of the dependent variable in the models, we applied a GLS model with Prais-Winsten corrective procedure. The results are shown in table 5.

TABLE 5
COMPLEX HUMANITARIAN EMERGENCIES: GLS (PRAIS-WINSTEN) REGRESSION
MODELS

Explanatory Variables	(1) LDEATHREF	(2) LHUMEMER	(3) LCHE2
Constant	-2.69*** (0.81)	1.18 ^a (0.73)	2.82*** (0.57)
LGDPGRO[-1]	.b	-0.29** (0.14)	.a
LFOODGRO [-1]	-0.19* (0.12)	.b	.b
LGINI[-1]	0.97*** (0.16)	0.14** (0.08)	0.56*** (0.14)
LGNPCAP[-1]	-0.14*** (0.04)	-0.07*** (0.02)	-0.21*** (0.03)
LIMFGNP[-1]	a	a	a
LCPIDIFF[-1]	0.16*** (0.04)	a	0.19*** (0.04)
LMILCENT[-1]	0.19*** (0.04)	0.10*** (0.02)	0.19*** (0.03)
LDEATRAD	0.05*** (0.01)	0.02*** (0.007)	0.03*** (0.01)
Rho	0.85*** (0.02)	0.88*** (0.02)	0.83*** (0.02)
N	600	753	732
DW	1.93	1.63	1.98

Note: The figures are parameter estimates and standard errors (in parentheses), respectively. LGDPGRO = ln real GDP growth; LFOODGRO = ln growth of food production per capita; LGINI = ln gini index; LGNPCAP = ln GNP per capita; LIMFGNP = ln use of IMF credit/GNP; LCPIDIFF = ln consumer price index, annual change; LMILCENT = ln military expenditures/GNP; LDEATRAD = ln deaths from domestic violence 1963-77. Coefficient significant *** = at the 1

¹⁷ Although the coefficient of terms of trade remains insignificant even when GDP growth is eliminated from the equation.

percent level (2-tailed test), ** = 5 percent level and * = 10 percent level; ^a = not significant, and ^b = not included in the equation. DW = Durbin-Watson test statistic for serial correlation.

After correcting for autocorrelation, IMF funding is no longer associated with humanitarian emergencies, which may reflect the IMF's rejection of countries plagued by wars and humanitarian catastrophes. Also the relationship between economic growth and humanitarian emergencies is weakened. The coefficient of LGDPGRO is significant only in the model for LHUMEMER and even then only when inflation is dropped from the equation. This may reflect the two-way causality between humanitarian emergencies and growth: some of the impact of economic growth on LDEATHREF is carried over from past interactions between war, refugees and economic growth. Stewart et al. (1997:11-41)¹⁸ show that complex humanitarian emergencies contribute to falls in GNP per capita. We estimated two-stage least squares models, with humanitarian emergencies and economic growth as the endogenous variables, to correct for the possible simultaneous equations bias caused by the two-way causality. The results did not substantially differ from the OLS results. We also experimented with different lag structures which indicate that GDP growth seems to have a decreasing impact on humanitarian emergencies rather than vice versa.¹⁹ A poor economic performance, as indicated by sluggish real GDP growth seems to be an important variable in explaining the rise of humanitarian emergencies.

We introduced the growth of food production per capita (LFOODGRO) in lieu of GDP growth in both OLS and GLS models.²⁰ In GLS equation (1), the coefficient of LFOODGRO is significant, albeit only at the 10 percent level, indicating the importance of the availability of food in generating wars and/or refugee flows. In contrast to the OLS results, the tradition of violent conflict (LDEATRAD) is a significant determinant of humanitarian emergencies including the combination of deaths and refugee flows. Some of its impact may have been picked up by autocorrelation in the OLS models, given that the autocorrelation is due to the omission of lagged values of the dependent variables.

We also applied two-stage least squares model and different lag structures to inspect the relationship between military centrality and complex humanitarian emergencies. Particularly if the conflict or war during a humanitarian emergency is violent and intensive, military expenditures are likely to increase. Our additional analyses indicate that our measures of humanitarian emergencies are correlated rather than causally related to military expenditures: the association is strongest without any lags or leads.

¹⁸ Also Barro (1991) finds a direct association between economic growth and political stability but shies away from positing causation to either direction.

¹⁹ Consider equation (2) as an example. OLS: LHUMEMER, with LGDPGRO - for t-2, t-1, t, and t+1, the coefficient is significant at the 1 percent level; for t+2, the coefficient is only significant at the 5 percent level. For GLS: LHUMEMER, with LGDPGRO, for t-1 and t, the coefficient is significant at the 10 percent level; for t-2, t+1, and t+2, the coefficient is not significant. All other variables are held constant in the model.

²⁰ We did not introduce LFOODGRO in equation (3) where the dependent variable includes calorie supply as one of its components.

The OLS model assumed that the effects of X_i on Y were the same irrespective of the cross-sectional units. This assumption of constant coefficients is unrealistic in a pool which contains as many as 124 different types of cross sectional units. Because of the great variety of countries in our sample we expect that there will be differential effects across the cross sections, due for example to historical developments that lead to different structures. We therefore specified two further models, ‘fixed effects’ and ‘random effects’ regression models.

The fixed effects, or least squares dummy variable (LSDV) model, captures variation unique to cross-sections in an intercept that varies from one cross section to another. In other words, each case has a unique variance. In contrast to the fixed effects model the random effects, or error component, model, assumes that the magnitude and the direction of the relationships among the cross-sections are random but captured and specified in the error term explicitly. As in the OLS model, a single intercept is again postulated, but the differential intercepts are merged within the error term.

The findings from these analyses (see Table 6) differ from the OLS and the GLS (Prais-Winsten) models. Most notably, the coefficient of Gini index changes sign in all of the fixed effects equations and in the random effects model for LDEATHREF. Its coefficient loses statistical significance in the random effects models for LHUMEMER and LCHE. In other words, when country-specific differences are taken into account, economic inequality is inversely related to humanitarian emergencies. What are the likely reasons for this counterintuitive association? First, as we noted, our Gini index is quite invariant, and the cross-sectional unit effects are likely to capture a portion of the variation between the Gini and the dependent variables. Secondly, the countries experiencing humanitarian emergencies also lack data on the Gini index. Among countries with high income inequality, we are more likely to have data on those that did not experience emergencies, such as Brazil and Chile, than on countries with emergencies, such as Somalia, Liberia, and Zaïre.

TABLE 6. COMPLEX HUMANITARIAN EMERGENCIES: FIXED (LSDV) AND RANDOM EFFECTS (GLS) MODELS

Explanatory Variables	LDEATHREF		LHUMEMER		LCHE2	
	fixed	random	fixed	random	fixed	random
Constant	3.52*** (0.85)	3.68** (1.46)	0.69** (0.32)	0.11 ^a (0.27)	11.10*** (1.56)	8.61*** (1.19)
LGDPGRO[-1]		-0.45* (0.27)			-0.72*** (0.26)	-0.53** (0.25)
LGINI[-1]	-0.90*** (0.23)	-0.44*** (0.19)			-0.50** (0.23)	
LGNPCAP[-1]			-0.11** (0.05)	-0.07** (0.03)	-0.19*** (0.05)	-0.22*** (0.04)
LCPIDIFF[-1]				0.07** (0.03)		
LMILCENT[-1]	0.23** (0.03)*	0.20*** (0.03)	0.17*** (0.03)	0.17*** (0.03)	0.23*** (0.03)	0.23*** (0.03)
LDEATRAD		0.05** (0.02)				
No of units	69	62	91	77	61	83
R square	0.08	0.07	0.04	0.10	0.10	0.18
N	885	775	1102	933	752	996

Note: The figures are parameter estimates and standard errors (in parentheses), respectively. LGDPGRO = ln real GDP growth; LGINI = ln gini index; LGNPCAP = ln GNP per capita; LCPIDIFF= ln consumer price index, annual change; LMILCENT = ln military expenditures/GNP; LDEATRAD = ln deaths from domestic violence 1963-77. Coefficient significant *** = at the 1 percent level (2-tailed test), ** = 5 percent level and * = 10 percent level; R square is for 'within effects' in the fixed effects model and for overall effects in the random effects model; no of units = number of cross-sectional units taken into account by the analysis.

The impact of the level of economic development is also weaker than in the previous models. In addition, LGNPCAP is quite invariant and unit effects seem to capture its variation particularly with LDEATHREF. Death tradition (LDEATRAD) is significant only in the random effects model for LDEATHREF.²¹ GDP growth is still inversely, but sometimes statistically insignificantly, related to our different measures of dependent variables. Inflation is directly associated with the dependent variables. However, its coefficient is significant only in the random effects model for LHUMEMER.

Which models are to be preferred? The F test rejected the hypothesis of equal constant terms for the cross-sectional units, indicating that there are indeed differences across cross-sections. Also the Breusch-Pagan Lagrange multiplier test indicates that the random effects model is preferable over the OLS with no unit-specific effects. Which, then, should be favoured, the fixed effects or the random effects model? One of the

²¹The fixed effects, within-country, estimation does not allow us to assess its impact on the dependent variables as the variable measures deaths from domestic violence, 1963-77, and is invariant in our data for 1980-95.

assumptions of the GLS model was that the individual effects are uncorrelated with the other regressors. If they are correlated, the random effects treatment may suffer from the inconsistency due to omitted variables. The Hausman specification test allows us to test for orthogonality of the random effects and the regressors. Under the hypothesis of no correlation, both OLS in the LSDV model and GLS are consistent, but OLS is inefficient, while under the alternative, OLS is consistent, but GLS is not. Therefore, under the null hypothesis, the two estimates should not differ systematically. Our results indicate that this assumption of the random effects model is not fulfilled.

The fixed effects specification seems preferable also for other reasons. Random effects models generally warrant a more specified theory than fixed effects models. To our knowledge this is the first effort to model humanitarian emergencies - we do not have a well-specified theory in hand. As Greene notes, the fixed effects model may be viewed as applying only to the cross-sectional units in the study, not to additional ones outside the sample. Our sample of 124 countries does not leave many LDCs outside. Thus the cross-sectional units are not drawn from a large population in which case the random effects model would be more appropriate (Greene 1993: 469). One of the standard arguments against the least squares dummy variable model is the loss of degrees of freedom. In our case we lose 60-90 degrees of freedom, depending on the model, but that still leaves us 750 to 1100 to work with.

From the point of view of this study the prevalence of the fixed effects model is a double-edged sword. On the negative side, many variables that we hypothesized to be related to humanitarian emergencies are not estimated as such by the model. On the positive side, we can perhaps have faith in the variables that fulfil the promise, military centrality being the most robust variable of all. The counterintuitive finding on the Gini index reminds us of the dangers associated with the data gaps in our sample, which tend to be greater among countries that experience humanitarian emergencies.

Our quantitative empirical analysis corroborates some of the hypotheses on the sources of humanitarian emergencies while rejecting and raising doubts on others. We will now move on to elaborate our hypotheses in light of these findings as well as case study evidence.

IV STAGNATION AND DECLINE IN INCOMES

Since economic deceleration or collapse can disrupt ruling coalitions and exacerbate mass discontent, we should not be surprised that since 1980 the globe, particularly Africa, has been more vulnerable to political violence and humanitarian emergencies. From 1960-73 to 1973-96 (and especially after 1980), growth decelerated in both less-developed countries (LDCs) and developed countries (DCs) (Nafziger 1997:13-7, based on World Bank data). Africa especially experienced a great descent in real GDP per capita after 1973. In sub-Saharan Africa, growth fell from 2.0 per cent yearly, 1966 to 1973, to -0.7 per cent yearly from both 1974 to 1984 and 1985 to 90, and -0.9 per cent from 1991 to 1994 (World Bank 1996a:77; World Bank 1996b:18).

The majority of countries with humanitarian emergencies have experienced several years (or even decades) of negative or stagnant growth, where growth refers to real growth in gross national product (GNP) or gross domestic product (GDP) per capita.²² Virtually all emergencies listed in tables 2 and 3 from 1992 to 1995 were preceded by slow or negative economic growth. Indeed twelve of the sixteen Afro-Asian countries listed in these tables, for which data exist, had negative growth in the preceding period. Rwanda, Angola, Liberia, Sudan, Somalia, Mozambique, Ethiopia-Eritrea, Sierra Leone (from sub-Saharan Africa), Lebanon, Algeria (from the Middle East), Afghanistan, and Iraq (from Asia) had negative growths in real GNP per capita in the years 1980 to 1991, while Burundi, South Africa (the sub-Sahara), Sri Lanka, and Turkey (Asia) had positive growths (World Bank 1993b:238-9)

Widespread negative growth among populations where a majority is close to levels of subsistence increases the vulnerability to humanitarian disasters. Consider low- and middle-income (developing) countries. From 1980 to 1991, 25 of 35 (71 per cent of) sub-Saharan African countries and 40 of 58 (69 per cent of) Afro-Asian countries experienced negative growth, according to the World Bank's *World Development Report* (1993:238-9). In contrast, from 1960 to 1980, only 8 of 29 (28 per cent of) sub-Saharan countries and 9 of 53 (17 per cent of) Afro-Asian countries (which includes three, Israel, Hong Kong, and Singapore, which have since graduated to high-income-country status) had negative economic growth, according to the earlier World Bank annual (1982:110-1). In addition, the positive growth of Latin America and the Caribbean during the 1960s and 1970s also reversed to a negative rate in the 1980s, according to the same World Bank sources. The following discussion, which briefly summarizes the interrelationships between growth and emergencies of the countries listed in tables 2 and 3, suggests that the increase in humanitarian emergencies in the 1990s is linked to the developing world's disastrous growth record of the 1980s.

²² GNP is the total output of goods and services in terms of income earned by a country's residents, and GDP the total output of goods and services in terms of income within a country's boundaries.

4.1 African countries

Angola and Mozambique, which fought wars of independence until 1975 and for years after that against forces supported by the United States and South Africa,²³ both suffered massive economic disruption during much of the last two decades. Sudan and Ethiopia, fighting civil wars in the 1980s, also suffered from economic collapse during the 1980s. Somalia's negative per-capita growth during the period of General Siyad Barre's authoritarian regime from 1969 to 1991 turned to more rapid economic decline during the fighting between factions during 1991-92, and was not reversed during the United Nations humanitarian intervention of 1992-94. The economies of Liberia and Sierra Leone, which experienced economic decline during the 1980s, virtually collapsed during their conflicts during the 1990s. Liberia's GNP fell an estimated 77 per cent from 1989 to 1993, while Sierra Leone's GNP declined by about one-half between the start of the civil war in 1991 and 1995 (Reno 1996a:1).²⁴

Rwanda's economic growth was positive until the mid-1980s, when it turned negative due to an agricultural crisis (Uvin 1996). Burundi grew moderately during the 1980s, not suffering from negative growth until its crisis from 1993 on.

4.2 Asian countries

Afghanistan's growth, which was slow before the Soviet coup of 1978, was highly negative during the subsequent wars with guerrilla forces. While data are scarce, economists believe that Myanmar's internal conflicts prevented positive economic growth during the 1980s and early 1990s.

On the other hand, the civil war by the government of Sri Lanka with militant Tamil separatists from 1983 until the present devastated only a small portion of the country. As a result, Sri Lanka's moderate growth in gross domestic product per capita and high levels of social indicators (literacy and life expectancy) among Asian countries in the 1970s remained during these years, although because of wartime capital destruction, the growth of *net* domestic product per capita would have been slower. In a similar fashion, Turkey's conflict with its minority Kurds had little effect in slowing down overall growth.

During the Iran-Iraq war, 1980-88, Iraq's GDP per capita (in constant 1980 prices) fell by 58 per cent. The United Nations' comprehensive embargo on Iraq beginning in

²³ Angola and Mozambique, together with the other seven Southern African Development Coordination Conference (SADCC now SADC) states – Botswana, Lesotho, Malawi, Tanzania, Swaziland, Zambia, and Zimbabwe – lost substantially from South African military and economic destabilization, including the disruption of transport links. The ECA (Economic Commission for Africa: 1989) estimates that the nine SADCC states lost \$60 billion GDP (or one-fourth), 1980-88, from South Africa's impairment. South Africa was supported in its policies in the 1980s by the 'constructive engagement' of the United States and Britain.

²⁴ Stewart (1993:357-80) shows that daily calories as a per cent of requirements fell in five of seven African countries at war during the 1980s: Angola, Ethiopia, Liberia, Somalia, and Sudan; remained the same in Mozambique; and increased in Uganda.

August 1990, followed by the United States-led bombing and war with the US and United Nations of January-February 1991, contributed to a further 64 per cent decline in GDP per head (cumulative impact since 1980 was an 85 per cent fall) by 1991. From 1991 to 1994, average GDP declined an additional 33 per cent, for an accumulative fall of 90 per cent! (Alnasrawi 1994:152; Alnasrawi 1996b:8).

4.3 Latin American countries

Urban and rural violence in Colombia, which includes clashes between the army and guerrillas that displaced hundreds of thousands of Colombians in the 1990s, has not prevented the country from a moderate rate of economic growth in recent years. Nicaragua had a negative growth in GNP per capita of 4.4 per cent yearly, 1980 to 1991 (World Bank 1993b:238), which included a decade-long war with the United States and its Contra supporters. Guatemala has suffered economic decline from its decades-long civil war and conflict with rebels, while Peru experienced an economic setback from attacks beginning in the late 1970s from the *Sendero Luminoso* (Shining Path), based in the poverty-stricken Andean region, who were skilled in rural guerrilla warfare.

4.4 Central and Eastern Europe and Central Asia

In Yugoslavia, from 1980 to 1990, real GDP per capita declined and annual inflation averaged more than 35 per cent. Since the breakup of Yugoslavia and the war of the early 1990s, Bosnia-Herzegovina's economy has been massively disrupted, leading to its further collapse (Woodward 1995), while Croatia, although it resumed growth in 1994, had a real GDP in 1996 36 per cent below its 1989 level (Bartholdy 1996:282, 291).

Bartholdy (1996:282, 291) indicates that after the breakdown of the Soviet Union, all of its republics experienced an income collapse, even if we assume that as much as one-fifth of income, from the black market or informal sector, is unreported. Among these were several republics facing humanitarian crises in the 1990s: Russia (with a secessionist conflict in Chechnya), Armenia, Azerbaijan, Georgia, and Tajikistan (see table 7).

TABLE 7
GROWTH IN SELECTED FORMER SOVIET REPUBLICS

	Real GDP ^{a)}					1995 est.	1996 proj.	Est. level of real GDP in	Proj. level of real GDP in
	1990	1991	1992	1993	1994			1995	1996
	(Percentage change)							(1989=100)	(1989=100)
Armenia	-7	-11	-52	-15	5	7	7	38	40
Azerbaijan	-12	-1	-23	-23	-21	-17	-7	34	32
Georgia	-12	-14	-40	-39	-35	-5	5	17	18
Russia	-4	-13	-15	-9	-13	-4	3	55	56
Tajikistan	-2	-7	-29	-11	-21	-12	-8	40	37
The Former Soviet Union ^{b)}	-4	-12	-15	-10	-14	-5	2	53	54

Source: Bartholdy 1996:282, 291.

Notes: ^{a)} Data for 1989-93 represent the most recent official estimates of outturns as reflected in publications from the national authorities, the International Monetary Fund, the World Bank, the Organization for Economic Cooperation and Development, the UN Economic Commission for Africa, PlanEcon and the Institute of International Finance. Data for 1995 are preliminary actuals, mostly official government estimates. Data for 1996 represent European Bank projections.

^{b)} Here taken to include all countries of the former Soviet Union, except Estonia, Latvia and Lithuania. Estimates for real GDP represent weighted averages. The weights used were European Bank estimates of nominal dollar-GDP for 1995.

4.5 Conclusion

Our analysis indicates that, holding other variables constant, slow real GDP growth helps explain complex humanitarian emergencies. We also provide econometric and case-study evidence that humanitarian emergencies contribute to reduced (often negative) growth, although, according to our tests, the direction of causation is weaker than from growth to emergencies.²⁵ Contemporary humanitarian disaster is rarely episodic but is usually the culmination of longer-term politico-economic decay over a period of a decade or more. Negative growth interacts with political predation in a downward spiral, a spiral seen in African countries such as Angola, Mozambique, Ethiopia, Sudan, Somalia, Liberia, Sierra Leone, Zaïre (Congo), and (post-1980) Nigeria. The metaphor appears to be not that of steadily climbing a mountain to the summit of high material welfare and ethnic harmony, but of Sisyphus pushing a huge rock uphill, where every slip means backsliding or even plunging to the abyss below.

²⁵ See note 19 in the section on quantitative empirical analysis.

V INCOME INEQUALITY

Our regressions indicate that high income inequality (measured by a Gini coefficient) is associated with political conflict and complex humanitarian emergencies. Humanitarian emergencies are more likely if the less advantaged can identify the sources of their poverty and suffering. The following examples of Nigeria, South Africa, and Mexico illustrate how discriminatory government policies cause economic inequality, fuel social discontent, and lead to political conflict and humanitarian emergencies. These dynamics may even occur when either the nation's real per-capita GDP is growing, as in Nigeria, or when the disadvantaged group's economic position is improving, as for nonwhite South Africans from the 1970s through the early 1990s.

5.1 Nigeria: increased elite inequality during rapid growth

As indicated before, humanitarian disasters rarely occur in high-income countries. However, shouldn't we expect some instances where developing countries are split asunder into a humanitarian crisis from conflict over the potential for abundant resources and rapid economic growth? Yes, this can happen, as illustrated by the Nigerian-Biafran war, 1967-70, in which perhaps four million people died from hunger and other war-related causes and several million people were displaced. The war was fought for control of Nigeria's rich resources, especially in oil, but in the mid-1960s, political elites from the Eastern Region (subsequently Biafra) expected economic loss in the midst of rapid Nigerian economic growth. Election fraud and manipulation during Nigeria's 1964-65 elections undermined the previously critical position of Igbos, the dominant ethnic group in the Eastern Region, in the federal coalition. The East, which had produced two-thirds of Nigeria's petroleum, lost profits and other tax revenues from oil under a change in formula for revenue allocation. Moreover, Igbo and other Eastern ethnic groups were losing in the contention for key positions in the federal civil service and modern sector of Lagos, and had fled from business and high-level employment in the politically dominant North. Thus, Igbo political elites, government employees, and emigré business people experienced not only relative, but also absolute, economic decline.

The Nigerian civil war followed a period of 3 per cent real annual growth in GDP per capita from fiscal years' 1958/59 to 1965/66 (at constant 1962/63 prices); petroleum expansion led the way, but industrial and agricultural growths were also steady. Moreover, in the mid to late 1960s, Nigeria's regional elites foresaw some of the growth potential of the subsequent decade. Thus, despite the massive resource diversion and destruction, GDP per head only fell 4 per cent yearly during the war. In addition, Nigeria's oil-fuelled real economic growth per person accelerated after the war to 8 per cent yearly from fiscal years' 1969-70 to 1978-79 (at 1974/75 prices, a year of high oil prices, thus moderately overstating growth for the period) (Nafziger 1983:93-122, 139-42, 178-81).

But Nigeria's case is an exception that almost proves the rule. In few cases is a current humanitarian disaster listed in tables 2 and 3 a conflict over the potential for rapid economic growth; most instead are struggles to maintain slices of shrinking economic pies.

5.2 South Africa: inequality under apartheid

The South African case demonstrates that, if the perceived inequality is sufficiently grave, even improved material welfare for the disadvantaged group will not guarantee the absence of conflict. South Africa's real GDP per capita stagnated or declined from the early 1970s through the early 1990s.²⁶ However, per-capita incomes of the white population fell, while the per-capita incomes of the African population apparently increased slightly, at least during the period between 1985 and 1990 (Schlemmer 1994:100). Still, a survey conducted in 1988 demonstrated that only a very small proportion of a nation-wide sample of the black population was satisfied with various dimensions of their lives. More importantly, the results showed a deterioration of over 40 percent in blacks' perceived life satisfaction as compared with a survey in 1983 (Möller, Schlemmer, and du Toit 1989). Why did grievances and dissatisfaction among the African population rise as its average income increased?

The political exclusion of the African population by the apartheid regime doubtless accounts for a great deal of the generalized dissatisfaction, but the role of income differentials should not be discounted either. To Africans, the increase in incomes during the previous two decades may have been insufficient, considering the substantial discrepancies in favour of the white population. In 1992, at the peak of the *de facto* civil war which led to the toppling of apartheid two years later, the purchasing-power adjusted GDP per capita of black, Asian, and mixed-race South Africa was I\$ (international dollars) 1,710, about the same as Senegal's I\$1,680, and in excess of the I\$1,116 for Africa as a whole. Yet this low income for 36.1 million nonwhite South Africans stood in stark contrast to that of 7.3 million whites, I\$14,920 income per capita, a figure higher than New Zealand's I\$13,970 (Nafziger 1997:32).

South Africa's Gini coefficient of income concentration was 0.65, with the top 10 percent of the population receiving more than 50 percent of the national income, while the bottom 40 percent received less than one tenth. This made South Africa, alongside Mexico and Brazil, one of the countries with the most unequal distribution of income in the world (Schlemmer and Giliomee 1994:1). Esterhuyse (1992:24) notes that even during the country's rapid growth in the 1960s, wealth failed to trickle down 'in any significant manner' to the black population, creating mistrust in the benefit of growth to the poor. Moreover, life expectancy, an indicator of health, was 52 years for blacks, 62 for Asians and mixed races, 74 for whites, and 54 for Africa generally, while the adult literacy rate was 67 per cent for nonwhites and 85 per cent for whites (Nafziger 1997:32).

²⁶ In 1990, real GDP per capita was about 90 percent of its level in 1975 (Esterhuyse 1992:23). See also Nafziger 1997:15, citing annual World Bank data.

It was not difficult for the African National Congress (ANC) to mobilize the masses against the apartheid regime as the perceived source of inequality. Both inequality and the emergency resulted from the actions of the regime, which dug its own grave by a conscious policy of discrimination against the majority of the population. There is mounting evidence that even the destructive political conflict of 1990-94 between the ANC and the Inkatha Freedom Party was directly manipulated and fuelled by the regime in its effort to maintain power (Auvinen and Kivimäki 1997:9-10, 16-17). The South African case illustrates how economic inequality, combined with authoritarian structures and rules of governance, contributes to humanitarian emergencies.

5.3 Chiapas: regional inequality

In Chiapas state, as in Mexico generally, economic and political power remained for decades in the hands of the landowning oligarchy, which had been supported by Mexico's ruling Institutional Revolutionary Party (*Partido Revolucionario Institucional* (PRI). Moreover, in Chiapas, GDP per capita, measured in purchasing-power parity dollars, was 43 per cent below, and adult literacy 24 per cent below the national average in the early 1990s (UNDP 1994:98-9).

On New Year's day 1994, the Zapatista army (*Ejército Zapatista de Liberación Nacional*, EZLN), representing Indian smallholders and landless workers or *campesinos*, launched a rebellion against the PRI and the oligarchy, which the EZLN held responsible for their poverty and distress. During two weeks of fierce fighting, perhaps 150-200 died before a cease-fire between the EZLN and the Mexican army. About 15,000 to 30,000 people fled the battles to more untroubled areas in Chiapas or in the neighbouring Guatemala. A cholera epidemic, which had spread to the region earlier, intensified during the conflict. The Chiapas conflict, abated but still not extinguished in 1997, can be characterized as a local humanitarian emergency that can develop in regions most neglected and discriminated against by a central government.

The Zapatistas' demands were for eliminating income and land disparities between landowners and *campesinos*, as well as for greater political rights and democracy. For the Zapatistas, the government had betrayed the ideal of Emiliano Zapata, the national hero of Mexico's liberation, by implementing a constitutional reform which resulted in the commercialization of *ejidos*, the common lands, which had enjoyed special protection in the past. The rebels viewed both domestic and foreign forces as the people's enemies. Symbolically, the Zapatistas launched their rebellion on the day when the North American Free Trade Area (NAFTA) came into force. NAFTA was a threat to Chiapas' smallholder and cooperative primary producers, placing them at a disadvantage relative to high-technology and capital-intensive agricultural production in the U.S. (Pirttijärvi 1994)

Despite the Zapatistas' nationalistic rhetoric, they were also considered Maoists, anarchists, or Trotskyists, depending on the observer. Because of their extensive use of the internet in their information campaigns, they were labelled the first postmodern

rebels. The mysterious *subcomandante* Marcos, the media hero of the Zapatistas, characterized his movement as follows:

We have always spoken about the basic rights of the human: [rights to] education, housing, health, food, land, good pay for our work, democracy, [and] liberty. . . . If you want to call it Mexican socialism or the Mexican way to liberty, that's a good name for it' (Weinberg 1994).

5.4 Conclusion

High income inequality can be a source of humanitarian emergencies in both rapidly- and slow-growing countries. However, once a population is dissatisfied with income discrepancies and social discrimination, as the majority nonwhites were in white-ruled South Africa, the rising expectations associated with incremental reductions in poverty and inequality may actually spur the revolt, conflict, and state hostile action that exacerbates the probability of a humanitarian emergency (Davies 1963:5-19).

VI INFLATION

Our regression analyses indicates that inflation is robustly associated with humanitarian emergencies although we suggest that inflation may capture some income-distributional changes left unaccounted for by the invariable Gini coefficient. Inflation is indicative of an unresolved conflict over incomes claims which the government has not been able to accommodate. Relative deprivation theory suggests that the more rapid the inflation, the more discontented the population, and the greater the likelihood of political conflict. Inflation reduces purchasing power and breeds uncertainty within different social groups. Governments that seek to maintain legitimacy and power by indexing wages and prices tend to compensate their major constituencies - the military, government employees, and organized labour in the politically mobilized urban areas, penalizing those who are left outside the system. This frequently includes poor people in the informal sector, who are rarely crucial for the government's support.

To avoid social unrest, the government may even compensate informal-sector poor by other means such as subsidies for food and fuel. In the absence of any indexation, the 'inflation tax' contributes to a growing sense of social and economic injustice. This is the basic mechanism through which inflation may serve as a source of discontent and incite conflict behaviour, particularly in the cities.

The thesis on inflation's politically destabilizing effects is backed by empirical evidence. According to Franzosi, political strikes can be expected to vary directly with high levels of inflation, although the relationship may be correlational rather than causal (Franzosi 1989, 348-353). In Latin America, 1976-82, inflation was associated with 'austerity protest' (Walton and Seddon 1994, 44). Furthermore, in sub-Saharan Africa, inflation was found to be particularly destabilizing, whereas purchasing-power growth decreased the number of disturbances (Morrisson et al. 1993, 10-11). In general, social unrest from inflation may invite repressive responses from authoritarian regimes, which tend to fuel violence and spur humanitarian crises.

VII REGIONAL AND ETHNIC ECONOMIC COMPETITION

7.1 Communal identity and conflict

Colonial rule exacerbated precolonial differences of class, region, and community in Africa. Indeed colonial governments did not need deliberately to divide to rule. Foreign rule itself is sufficient to cause division and conflict. Since hostility cannot be directed to the powerful foreign oppressor, it is transferred to an indigenous scapegoat (Burton 1966:124).

Communal conflicts and discrepancies originating before and during colonialism were often reinforced by post-independence policies that exacerbated regional and ethnic inequalities in income, employment, educational opportunities, and social services. Class and ethnic identities cross-pressure African workers and peasants. Most elites received their support from ethnic and regional bases, allied with other communal elites to control the state, and used this power to distribute benefits to their communities. The communal competition for these benefits transfers potential hostility from class differences to the elites and masses of others.

Ethnic identity is less a primordial phenomenon than an awareness formed in the process of modern social competition and political mobilization. Prunier (1995:140-1) explains that *if* ethnic communities or

tribes did not exist, they would have to be invented. In a world where illiteracy is still the rule, where most of the population has horizons which are limited to their parochial world, where ideologies are bizarre foreign gadgets reserved for intellectuals, solidarity is best understood in terms of close community. In turn, these positive (or negative) group feelings are manipulated by the elite in their struggles for controlling scarce and even shrinking financial, cultural and political resources. Rwanda offers a perfect example of this process.

The salience of multiple levels of identities – extended family, subgroup, clan, ethnic or linguistic community, nation-state, or world region – varies, depending on the nature of social interaction and conflict. Thus, for example, in Zaïre in the 1950s and early 1960s, Mongo self-awareness grew with the competition for education, government jobs, and political office, but declined after President Mobutu Sese Seko seized power in 1965, regrouped provinces, and eliminated electoral politics (Anderson, von der Mehden, and Young 1974:28-78). On the other hand, Igbo identity in Nigeria, enhanced by the competition for benefits from the nationalist movement and decolonization from the 1940s through the early 1960s, increased in the mid- and late 1960s with the competition for government jobs, the election crises and coups, the politicization of the army, the violence against Igbos in the North, the return of Igbos to their ethnic homeland, the interregional contention for oil revenues, and the Biafran secession and civil war, 1967-70. After the Biafran defeat, Igbo identity declined. In East Pakistan

(Bangladesh after 1971), Muslim identity asserted itself with the nationalism and the partition of the Indian sub-continent between a Hindu-dominated India and Muslim Pakistan. However, as the East's resentment festered from a lack of sharing in the economic fruits of independence and modernization, Bengali nationalism grew. Later, with conflicts with West Bengal and India over water and border regions, Bangladesh emphasized its Islamic identity rather than its Bengali nationality.

While we acknowledge that primordialist sentiments may account for some of the violence and intensity of complex humanitarian emergencies, we think of ethnicity in constructivist terms, which stress the manufacture of ethnic identity (Väyrynen 1994:10-11) for a particular societal purpose. In the manufacture of such an identity, politics and economics play a substantial role. Ethnic identities may be strengthened in order to build up political autonomy, to defend a group's status against economic discrimination by political authorities or other communities, or to mobilize to compete for the benefits of modernization. Leaders have an important role to play in raising ethnic consciousness and private economic and political aspirations may be at stake.²⁷

Previously the paper showed how economic factors helped shape ethnic conflict in the Nigerian civil war. This section discusses regional and ethnic conflicts in Rwanda, Burundi, Sri Lanka, and Pakistan (the East's or Bangladesh's 1971 secessionist civil war, during which hundreds of thousands of people were killed and hundreds of thousands more were dislocated). These conflicts took place under conditions of slow growth or, in the case of Rwanda since the mid-1980s, negative per-capita growth. The evidence suggests that politico-economic factors, not primordial ethnic variables, are instrumental in contributing to these humanitarian disasters.

7.2 African case studies

In Rwanda's precolonial history, there is no evidence of systematic violence between Tutsi and Hutu but clashes between Banyarwanda and foreign tribes or inter-lineage fighting. Indeed ethnographers regard the precolonial relationship between cattle-tending Tutsis as patrons and the Hutu agriculturists as clients as hierarchical, with an elaborate web of economic contracts and ritual exchange that provided for movement between categories (Gaffney 1994:1; Turton 1997:79-80). From 1959 to 1961, on the eve of Rwanda's independence, a small Hutu elite revolted against the Tutsi elite, protesting against the unequal treatment of the two elites by the Belgian colonial authorities. During that period, the Belgians broke with their protégés among the Tutsi elite and replaced most Tutsi chiefs with Hutu ones. The elections of 1960 and 1961, won by the Mouvement Démocratique Rwandais/Parti du Mouvement et de l'Emancipation Hutu (MDR-PARMEHUTU), completed the ethnic transfer of power to Hutus. Control of the state meant control of access to salaried jobs in the public service or in development projects, or even jobs in the private sector, which required Ministry

²⁷ Whereas the constructivist approach focuses on societal objectives, the instrumentalist approach to ethnicity stresses individualistic material objectives in building ethnic consciousness. We do not emphasize the differences between the different approaches but rather state that 'ethnicity' in itself and as defined by the primordialists is hardly a sufficient explanation for complex humanitarian emergencies.

of Labour permission. A UN Trusteeship Council report (1961) commented that 'An oppressive system has been replaced by another one.' Hutu violence, which killed thousands and displaced hundreds of thousands of Tutsis from 1959 to 1964, forced half the Rwandan Tutsis into exile, primarily in Uganda and Burundi, from which base armed Tutsis attacked Hutus in Rwanda. Meanwhile, during this period and extending through the 1990s, Tutsis were politically marginalized and restricted by quotas in positions in the civil service and army, although because of their higher levels of education, disproportionately represented in the private sector, especially with foreign firms and agencies.

Yet from the early 1970s to the 1980s, Rwanda's economic growth was positive and faster than growth in the rest of Africa. However, in the late 1980s, with collapsing coffee and tin prices and falling food production, Rwanda's Hutu political elite lacked the revenue and output base to provide the clientage base for regional leaders. In 1989, the central budget was reduced by 40 per cent, cutting spending for education, health, and infrastructure that hurt peasants and workers. At the same time, there was more discontent among Hutu intellectuals, entrepreneurs, and disadvantaged clans, with the narrowing of the ruling group to favour a small clique of army officers and business people (disproportionately from Gisenyi prefecture), the appropriation of forest land for a cattle-raising project that benefited political leaders, and the increased days of forced labour extracted from the population. The press and newly formed associations denounced government corruption and its promotion of ethnic strife to legitimize its hold on power. By late 1990, the Rwandan political system was on the verge of collapse. The civil war between the Tutsi-exile-led Rwandan Patriotic Force and the Rwandan government from 1990 onwards and government violence cost thousands of lives (both Hutus and Tutsis), created thousands of refugees, and diverted public funds. The pogroms of both Hutus and Tutsis in neighbouring Burundi in late 1993 and the assassination of Rwanda's President Juvenal Habyarimana in April 1994 provided the pretext for a genocide of approximately 800 thousand Tutsis within the next three months, set in motion, with numbing precision and elaborate preparation, by Hutu government officials, local authorities, and militiamen (Médecins Sans Frontières 1995:32-46; Prunier 1995:49-280; Uvin 1996; Gaffney 1996b:10-1). Indeed Human Rights Watch (1995 viii) cites the Rwandan government in 1994 as an example of

a government's willingness to play on existing communal tensions to entrench its own power or advance a political agenda is a key factor in the transformation of those tensions into communal violence. . . . In the spring of 1994, a small group of Rwandan politicians, in an attempt to maintain their control of the government, directed fellow Hutu – the overwhelming ethnic majority in the country – to kill any and all members of the Tutsi minority, as well as Hutu moderates, who were also seen as a threat to their power, . . . to destroy the support base of the oncoming rebel army of the Rwanda Patriotic Front (RPF), a predominantly Tutsi force.

The political battle for Burundi's independence in 1962 did not centre on a Hutu- Tutsi conflict. The Union for National Progress (UPRONA), the nationalist victors of the

1961 election, drew from both ethnic groups. Ethnic chauvinism was initiated by the upper and middle classes who were influenced by the Rwandan revolt of 1959 to 1961. Hutus regarded this social revolution as a model, while Tutsis wanted to avoid this revolt at all costs. The breaking point took place in 1965, when Hutu gendarmes attempted a coup, which was followed by Hutu massacres of Tutsi farmers in midwestern Burundi. The Tutsis' lasting fear and ensuing repression incited efforts to edge out Hutus from political life. In 1972, in southwestern Burundi, Hutus rebelled and slaughtered several thousand Tutsis. The reprisal by the Tutsi authorities resulted in the genocidal killing of much of the Hutu elite, leaving the Tutsis with a monopoly of power in the army and administration. Indeed, although 84 per cent of Burundi's population is Hutu and 15 per cent Tutsi, since 1972 the Tutsis have dominated politics, the army, the universities, and the professions. In October 1993, elements in the armed forces attempted a coup, during which they assassinated Burundi's Hutu President Melchior Ndadaye. During the next two months, Hutu resentment fuelled the killings of an estimated thirty thousand Tutsis, with retaliation by Tutsi armed forces, who killed twenty thousand Hutus. The rising cycle of violence resulted in 700 thousand refugees and hundreds of thousands of others displaced internally (Médecins Sans Frontières 1995:19-31; Gaffney 1996a; Prunier 1995).

7.3 Pakistan

Political and economic factors have helped shape ethnic conflicts in post-independent Pakistan and Sri Lanka. In Pakistan's military government, the economic and political dominance of elites in the Western wing, who carried out economic policies that exacerbated inequalities between West and East, contributed to the humanitarian crisis of 1971. In the half century before independence in 1947, landlords, traders, lawyers, and other professionals were formed into the political elite, virtually all in the West, by their leadership in the Muslim nationalist movement in India (through the Muslim League). After independence, they were joined by (and sometimes overlapped with) an emerging class of Muslim industrial and merchant capitalists, the essentially newly created civil servants, and army officers, primarily from the West.

In West Pakistan, where the top 0.1 per cent and bottom 64.5 per cent of the landowners each owned 15.0 per cent of the agricultural land in 1960 (Gini index of inequality = 0.81, compared with 0.68 for the East), large landlords were the dominant indigenous social and political group since the early British period. In the East, in contrast, landowners were limited to a ceiling of 13 hectares each as a result of land reform legislation passed in the 1950s, which took land from Hindu rajas, who had held 75 per cent of the land.

At independence, when more than half of the manufacturing sector was controlled by Hindus, the government, or foreigners, barely 1 per cent of national income originated in manufacturing. By 1959 when the percentage had risen to over 6, Muslims indigenous to the Indo-Pakistani sub-continent controlled two-thirds of the sector. However, 96 per cent of indigenous industrial investment, 1947 to 1958, was by west Indian emigrés or

West Pakistanis who invested in the Western wing.²⁸ In the East, the petty bourgeoisie, who constituted the top of the class hierarchy, directed their discontent against the dominant landed and business elite in the West, who feared that a major capitalist class allowed to establish itself in East Pakistan, with a majority of the country's population, would give it the political and economic strength to become the dominant force in national politics.

Pakistani policies in the 1950s and 1960s to redistribute resources from agricultural exports (primarily in the East) to industry (largely in the West) increased regional, as well as class and sectoral, inequalities. In Pakistan, the average material level of living was higher in the West than the East in the years just after independence (1947), and these disparities increased over time. In 1949-50 GDP per capita, based on official sources, was 10 per cent higher in the West than in the East. This difference increased to 30-36 per cent in 1959-60, and to 60 per cent in 1969-70. For the West, this represented a real growth in GDP per head of 1.1 per cent annually in the decade 1949/50-1959/60, at the same time this measure was declining in the East by at least one per cent yearly. In the next decade, 1959/60-1969/70, real GDP per capita grew in the East at 1.5 per cent yearly, and in the West by 3.6 per cent annually. The Pakistani government redistributed income from export and subsistence agriculture to industry and domestically oriented commercial agriculture through policies of an overvalued rupee (which favoured imported inputs for industry and large-scale agriculture relative to jute, tea, and other primary-product exports), a compulsory government procurement of foodgrains at low prices for urban areas, generous tax concessions to industry, and the lack of these to peasant agriculture. These policies transferred savings from agriculture to industry, primarily a transfer from Eastern small farming to Western industry. Conservative estimates, based on world prices, indicate that over 24 per cent of gross product originating in the agricultural sector – or about 70 per cent of its savings – was transferred to the nonagricultural sector in 1964-65. As Eastern peasants and small farmers became increasingly conscious of the way in which much of economic policy was being used largely on behalf of a Western industrial and commercial ruling elite, discontent with the political leadership intensified, contributing to the humanitarian disaster of 1971 (Nafziger 1983:197-212; Griffin and Khan 1972).

7.4 Sri Lanka

Tens of thousands have died in the Sri Lankan civil war, which in the 1990s is largely a war between the Sri Lankan state, identified with Sinhalese political hegemony, and Tamil nationalists, primarily the Liberation Tigers of Tamil Eelam, whose objective is a separate Tamil homeland. Sri Lanka's ruling ethnic group, the Sinhalese, who are

²⁸ West Indian business communities, Memons, Khojas, and Bohras, which comprised only 1/2 of 1 percent of the Muslim population in Pakistan, accounted for 43 percent of industrial investment by Muslims; Bengalis, from East Pakistan, with 50 percent of the Muslim population, comprised only 4 percent of Muslim industrial investment in Pakistan between 1947 and 1958. (See Nafziger 1983: 206-08, who provides more details on the disproportional representation of Western Pakistani ethnic communities and Indian emigrés and the substantial underrepresentation of Bengalis in high-level political, military, bureaucratic, business, and professional positions.)

predominantly Buddhist, comprise 74 per cent of the population, while the Tamils, largely Hindu, consist of only 18 per cent of the population.²⁹

During the early twentieth century, Tamils, as Igbos in Nigeria, limited by population density from expanding their land holdings, were overrepresented in the public services and the professions, and well represented in jobs and businesses outside their regions of ethnic dominance. But the majority Sinhalese perception of Tamil economic success as a threat to their own economic opportunities increased during the period of slow growth and high unemployment after independence in 1948, and prevented the formation of an ethnic alliance to share economic largess among Sinhalese and Tamil upper- and middle-classes. The Sinhalese, who resented the English examinations for the civil service and Tamil representation in government jobs, passed the Official Language Act of 1956, declaring Sinhalese as the only official language of Sri Lanka, a reversal of the early post-independence elite consensus that Sinhalese and Tamil jointly should replace English. Moreover, while Tamil was recognized as the national language of the Tamils and the administrative language of the Northern and Eastern provinces, largely Tamil, in 1957, this concession was abrogated under Sinhalese protest the following year. The Tamils saw the economic advantages achieved during the British period rapidly eroded after independence.

For the Tamils, demands for a separate state, military resistance, and the fighting of a civil war centred on grievances from discrimination and declining opportunities in education, employment, and other economic activity. The clamour for Tamil autonomy was intensified in 1958, contributing to virulent anti-Tamil riots in 1958 by a substantial portion of the Sinhalese population. The Sri Lankan government reacted by banning the nonviolent Tamil Federal Party (TFP) and putting the TFP leaders under house arrest.

In the early 1960s, during her first term in office, Prime Minister Sirimavo Bandaranaike steadily phased out Tamils from the armed forces, civil service, and other forms of government employment. She also forcibly repatriated to India more than half of the 800,000 Indian Tamils, most of whom were born in Sri Lanka but were descendants of workers recruited to Ceylon's tea and coffee plantations in the late nineteenth century.³⁰

To fuel Tamil discontent further, the state sponsored settler schemes in the Northern and Eastern provinces, which were primarily utilized by Sinhalese. These colonization schemes, meant to dilute the concentration of Tamils in the two provinces, were accelerated by President Junius R. Jayawardene in the mid-1980s, and provoked further Tamil terrorism and government counterviolence (O'Ballance 1989; Olsen 1989).

²⁹ Conflicting historical myths about whether and by how long during the ancient period the Sinhalese arrived on the island before the Sri Lankan Tamils have helped to reinforce post-independence hostilities. The legacy of British colonial rule from 1818 to independence in 1948 exacerbated ethnic animosities.

³⁰ Indian Tamils, who presently comprise 5 per cent of the population, were denied citizenship until 1984 and were uprooted from work on the plantations, which were nationalized or distributed as estates only to citizens in the 1970s.

The conflict was exacerbated by divisions within the two major ethnic communities. Indian Tamils, who were disproportionately represented in the working class and were of lower-caste background, were alienated from Sri Lankan Tamils. In addition, throughout much of the 1970s and 1980s, the major Tamil resistance groups were bitter rivals, who tried to kill or kidnap members of rival groups.

Furthermore, the Sinhalese urban poor and unemployed formed a volatile social base for armed resistance to the Sinhalese ruling elite during the 1970s and 1980s. While the war began with Sinhalese ethnic riots against Tamils in the early 1980s, the state was substantially weakened by a 1971 Sinhalese-led youth insurgency of the Janatha Vimukthi Peramuna (JVP), which attracted many middle-class discontented youths, often unemployed graduates. The JVP, widely supported by Sinhalese nationalists, continued a protracted armed rebellion against the state and favoured militarism in 1989 when factions of the ruling United National Party (UNP) regime were agreeing to devolution in an effort to resolve the ethnic conflict. In the midst of a challenge by the JVP to the military, a weakened state re-established its authority by creating and deploying new organizations for violence (including secret death squads to abduct and execute JVP rebels), virtually annihilating the JVP by late 1989 (Uyangoda 1996:118-30; O'Ballance 1989).

7.5 Conclusion

Ruling elites in Africa and other LDCs utilized sentiment associated with ethnic and regional identities to transfer potential hostilities from class disparities within their own communities to differences with and antagonisms toward other ethnic groups and regions. Political leaders pursued and implemented economic policies that served their advantage. These policies had the effect of increasing ethnic animosities between Hutus and Tutsis in Rwanda and Burundi, between West and East Pakistan, between Sinhalese and Tamils in Sri Lanka, and, as discussed in an earlier section, between Igbos and Northerners in Nigeria. Though patterns of perceived deprivation differed, major ethnic communities in these countries viewed their economic position in the state as threatened, and used violence or repression that contributed to humanitarian disasters. The next section on adjustment programmes also indicates the importance of economic factors exacerbating ethnic conflict in the former Yugoslavia.

VIII ELITE INTERESTS DURING ADJUSTMENT PROGRAMMES

Our empirical evidence does not support the hypothesis that the use of IMF credit as a percentage of GNP contributes to complex humanitarian emergencies; indeed, most of our tests suggest that any relationship is the opposite: that humanitarian emergencies fall as IMF credit proportions rise.³¹ Thus, we need to reformulate the explanation for the relationship between adjustment and emergencies. Our revision reinforces the importance of slow growth as a determinant of humanitarian disasters. Slow (or negative) growth, frequently accompanied by chronic external deficits and debt, intensifies the need for economic adjustment and stabilization. Under current rules of the international economic system, countries requiring adjustment must, as a last resort, either acquire IMF credits or IMF approval for loans, aid, or debt reduction from the World Bank, other international agencies, bilateral contributors, or commercial banks. Those countries that could meet IMF conditions were less likely to be vulnerable to a humanitarian crisis than countries that lacked access to IMF and other funds or concessions.

Let us illustrate by discussing sub-Saharan Africa (henceforth Africa), which is disproportionately represented both among countries with slow growth and external disequilibria, and major humanitarian emergencies (table 2). In *Inequality in Africa* (1988), Nafziger shows how shrinking economic pie slices and growing political consciousness added pressures to national leaders, whose response was usually not only anti-egalitarian but also anti-growth, hurting small farmers' incentives, appropriating peasant surplus for parastatal industry, building parastatal enterprises beyond management capacity, and using these inefficient firms to dispense benefits to clients. Regime survival in a politically fragile system required marshalling elite support at the expense of economic growth.³² Spurring peasant production through market prices and exchange rates interfered with state leaders' ability to build political support, especially in urban areas.

8.1 Liberalization and adjustment after 1980

More than a decade of slow or negative per-capita growth, rising borrowing costs, reduced concessional aid, a mounting debt crisis, and the increased economic liberalism of donors and international financial institutions, forced African elites to change their

³¹ Furthermore, our finding is corroborated when we replace in the equations IMFGNP with a dummy variable of the Fund's high-conditionality intervention, as indicated by the presence or absence of standby arrangements and Extended Fund Facilities ('CONDFIN'). Whereas IMFGNP includes the use of all IMF credits except drawings from the Reserve Tranche, CONDFIN only includes non-concessional finance and thus would be expected to pick up the conflict-inducing impact of IMF intervention better than IMFGNP. However, also CONDFIN is inversely associated with our different measures of humanitarian emergencies.

³² Ake (1996:1, 18) reinforces this contention when he states that for Africa, 'the problem is not so much that development has failed as that it was never really on the agenda in the first place. . . . [W]ith independence African leaders were in no position to pursue development; they were too engrossed in the struggle for survival.'

strategies during the 1980s. In 1987, International Monetary Fund (IMF) Managing Director Jacques de Larosiere asserted: 'Adjustment is now virtually universal [among LDCs]. Never before has there been such an extensive yet convergent adjustment effort.'³³ After 1979, when most African countries were facing external debt crises and chronic international balance of goods and services deficits, economic policymaking, characterized by structural adjustment, macroeconomic stabilization, and liberalization, has been largely determined by conditions of IMF/World Bank lending. The IMF became gatekeeper and watchdog for the international financial system, because an IMF 'seal of approval' of a country's macroeconomic stabilization programme served as a necessary condition for World Bank or bilateral aid or loans, debt reduction, or commercial bank lending. IMF approval usually required price decontrol, currency depreciation, privatization, government spending reductions, economic structural changes, and various forms of market liberalization. Virtually all LDCs had to adopt these policies to participate in the world economic system. The evidence in table 4 is consistent with the fact that those LDCs that were more successful in receiving IMF (and other international financial and bilateral) credits and aid also experienced less conflict and humanitarian emergencies. As Bienen and Gersovitz (1985) argue, cuts in government spending are less likely to contribute to political conflict than the alternative of debt repudiation and exclusion from credit.³⁴ Those that lacked access to the international financial system still had to play by the same rules of adjustment and liberalization, but were nevertheless highly vulnerable economically and politically.

Any substantial economic change, such as the liberalization and adjustment of the 1980s and 1990s, provided chances for challenging existing elites, threatening their position, and often contributing to increased opportunistic rent-seeking and overt repression. And cuts in spending reduced the funds to distribute to clients, and required greater military and police support to remain in power. All these changes increased the potential for political instability and a humanitarian emergency.

With liberalization and adjustment, similar to the controls of the 1960s and 1970s, contemporary African elites used their dependency on the global economy as a way to consolidate power, but they used different approaches. Indeed the distribution of benefits and costs from stabilization and restructuring have influenced the shifts of power and money within African countries. Of course, many African elites saw the handwriting on the wall, with some African political leaders, finance ministers, and government economists (similar to many of their counterparts in Central Europe in the 1990s) experiencing an overnight conversion from Marxism to the liberalism and monetarism of Milton Friedman. Most African elites supported liberalization, becoming, with their accomplices and clients, the nouveau riche. For privatization (which required access to credit), price decontrol, and restructuring offered these elites new opportunities for expanded clientage. Moreover, controlling restructuring also enabled these elites to protect their interests from reform and competition. Still the

³³ *IMF Survey*, 23 February 1987, p. 50.

³⁴ Bienen and Gersovitz 1986 also argue that a few prominent cases of connections between consumer subsidy cuts and political conflict have captured disproportionate attention and that in most countries these cuts did not generate conflict.

opportunities also came with the risk of a shrinking power base, increased conflict with newly rising classes, and displacement by new economic and political groups.

Sub-Saharan external debt increased from \$56 billion in 1980 to \$97 billion in 1985 to \$174 billion in 1990 to \$194 billion in 1992 to \$223 billion in 1995 (World Bank 1993a:170-1; World Bank 1996c). The origins of the African debt crisis have been widely discussed. In the early 1980s, the sub-Sahara's international goods and services deficits, continuing from the previous decade, worsened from external shocks, such as the recession in the DCs, a declining commodity terms of trade, and the decline in real official development assistance (ODA), in the midst of rapidly increasing world real interest rates. But there had also been widespread misdirection by political elites during the 1970s, when many African countries borrowed to expand their patronage resource base without increasing their capacity to service the foreign debt in subsequent years.³⁵

8.2 Adjustment, clientelism, and predatory rule in Africa

After 1979, with the increased emphasis by the IMF, World Bank, and bilateral and multilateral funding agencies on competition, deregulation, liberalization, and the privatization and commercialization of customary state activities, the African political elites needed to form new patterns of clientage in order to maintain legitimacy. Slow growth and chronic external deficits, together with the failure to stabilize and adjust the economy under pressure from the international financial institutions and high-income Organisation for Economic Cooperation and Development (OECD) countries to liberalize and deregulate, was conducive to patrimonialism and predation, especially in Africa.

Authoritarian regimes, which are less dependent on popular pressures and can use repression, may be better equipped to implement adjustment policies than democratic regimes (Lafay and Lecaillon 1992, 95; Kaufman 1985; Nelson 1990:22-24; Sheahan 1980). Many authoritarian governments have also been committed to implementing adjustment policies since their legitimacy is dependent on good economic performance. Thus these governments have been more prone to choose orthodox macroeconomic stabilization policies than their democratic counterparts, especially in Latin America (Kaufman and Stallings 1989:202-212; Nelson 1990:334-335). If we identify political authoritarianism with a lack of political rights and civil liberties and abuse of human rights, several different types of governance fall under the definition. One type is the 'efficient authoritarianism' of Pinochet's Chile (1973-89) or Alberto Fujimori's Peru (1990-). A very different type is the 'weak authoritarianism' often found in Africa, where introducing stabilization and adjustment, as in the 1980s and 1990s, proved to be a threat rather than an opportunity.

Most African states are soft states, in which the authorities who decide policies rarely enforce them (if enacted into law) and only reluctantly place obligations on people (Myrdal, vol. 2, 1968:895-900). These states are dependent on buying political support

³⁵ Nafziger 1993 discusses Africa's slow growth and external disequilibrium, and subsequent efforts to adjust in more detail.

through concessions to powerful interest groups. During the 1960s and 1970s, most African ruling elites eschewed policies promoting competition, decentralized decision-making, and reliance on market prices and exchange rates, as these policies reduced their ability to use subsidies, rebates, and inducements to strengthen alliances and patron-client relationships.

Clientelism, the dominant pattern in Africa, is a personalized relationship between patrons and clients, commanding unequal wealth, status, or influence, based on conditional loyalties and involving mutual benefits. Clientelism overlaps with, but reaches beyond, ethnicity. The ethnic identity of the client may be amalgamated with, widened, or subordinated to the identity of the patron, who exchanges patronage, economic security, and protection for the client's personal loyalty and obedience. Clientelism often operates within a political party, as in the case of the *Parti Democratique de la Côte d'Ivoire* (PDCI), or the Northern People's Congress, 1960-66, an instrument of Northern Nigeria's traditional aristocracy (Lemarchand 1972:68-90).

In several African countries that experienced negative growth and political decay in the 1980s and early 1990s, ethnic and regional competition for the bounties of the state gave way to a patrimonial state. In reaction to economic decline and liberalization, rulers in states such as Nigeria, Sierra Leone, Zaïre, and Liberia adopted predatory rule. Predatory rule is that by a personalistic regime ruling through coercion, material inducement, and personality politics, a regime that tends to degrade the institutional foundations of the economy and state (Lewis 1996:80; Holsti 1996:104-05). In some predatory states, the ruling elite and their clients 'use their positions and access to resources to plunder the national economy through graft, corruption, and extortion, and to participate in private business activities' (Holsti 1997:13-14). Ake (1996:42) contends that 'Instead of being a public force, the state in Africa tends to be privatized, that is, appropriated to the service of private interests by the dominant faction of the elite.' People use funds at the disposal of the state for systematized corruption, from petty survival venality at the lower echelons of government to kleptocracy at the top.

In weakened African states, such as Zaïre, Nigeria, Sierra Leone, and Liberia, the shrinking external resources after the cold war, together with World Bank (1994:22-51) support of the private-sector (even management contracting) in place of customary state activities in electricity, transport, telecommunications, water, sewerage, roads, and ports, contributed to a patrimonial state, where rulers strengthened their personalistic grip on power in the midst of state and bureaucratic decay by relying on external private and military resources for survival. Predation in Africa frequently means the consolidation of an avaricious dictatorship (Reno 1995:109). According to Ayoob (1995:41), the 'unrepresentative and authoritarian character of many [African] regimes . . . spawns a vicious circle of violence and counterviolence as regimes are challenged and react with brutal force.'

8.3 African case studies

Nigeria, a potential humanitarian emergency, is representative of the changes in Africa in the relative importance of government spending. In Nigeria, government expenditures as a percentage of GDP rose from 9 per cent in 1962 to 44 per cent in 1979 but fell to 17 per cent during World Bank structural adjustment programmes (SAPs), such as the one in effect from 1986 to 1990, which emphasized privatization, market prices, and reduced government expenditures. Nigeria centralized power during its 1967-70 civil war with the breakup of four regions into thirteen states, and in the 1970s, as the oil boom enhanced the centre's fiscal strength. Expansion of the government's share of the economy did little to increase political and administrative capacity, but it did increase incomes and jobs that governing elites could distribute to their clients (Nafziger 1993:50). But with a decline in GNP per capita, 1980 to 1990, 12 per cent yearly (partly from falling oil prices), and from 1990 to 1994, 4 per cent annually (World Bank 1996a:34), together with growing pressure from the IMF and World Bank, Nigeria had to reduce both absolute and relative sizes of the government sector.

Nigeria's first structural adjustment loan from the Bretton Woods' agencies started auspiciously, due to President Ibrahim Babangida skilfully playing the World Bank against the IMF for public relations gains. From 1985 to 1986, Babangida conducted a year-long dialogue with the Nigerian public, resulting in a rejection of IMF terms for borrowing. The Babangida military government secured standby approval from the IMF but rejected its conditions, while agreeing to impose similar terms 'on its own' approved by the Bank. In October 1986, the Bank, with Western commercial and central support, delivered \$1,020 million in quickly disbursed loans and \$4,280 million in three-year project loans (Nafziger 1993:130).

However, in subsequent years, Nigeria's state elites, encouraged by Bank/Fund secrecy, inaugurated and maintained economic adjustment without a supportive constituency. The regime continued power through tactics of 'political manipulation, populist side-payments, elite dispensation, expansion of the parallel economy, and overt repression' (Lewis 1996:87). Liberalization and privatization opened the gates to state elites appropriating public assets for private purposes. Privatization created a wide circle of beneficiaries, as well-connected insiders took advantage of sales and divestiture of liquidated state companies. The opening of bank licenses in Nigeria in 1986 provided a new source of patronage and rent distribution, as investors and managers from the military, civil service, manufacturing, trade, and the professions scrambled to enter banking, especially attracted by dealing in foreign currency.

In the 1990s, the Nigerian government lost hundreds of millions of dollars in revenue from top government officials smuggling petroleum and selling it illicitly. 'For elites,' Lewis (1996:91) contends, 'the state provided special access to nascent markets and illegal activities, and manipulated key policies to provide opportune "rents".' Indeed high-ranking venal military officers and ineffectual civilians abandoned macroeconomic management to use policy levers to enhance their own wealth and provide perquisites for clients. By 1994: 'more than a thousand million dollars annually – equalling as much as 15 per cent of recorded government revenues – flowed to smuggling networks and

confidence teams, many of whom operated with connivance of top elites' (Lewis 1996:97). A circle of military elites and civilian allies made extravagant gains, creating a nouveau riche in currency trading, finance, trade, real estate, and speculative activities in contrast to middle-income and low-income populations, whose real incomes were declining.

Sierra Leone was caught in a bind between the end of the cold war and the pressure of liberalization and adjustment of the Bank/Fund. In 1991, the World Bank, IMF, and bilateral creditors offered loans and debt rescheduling worth \$625 million, about 80 per cent of GNP, if Sierra Leone reduced government expenditures and employment. In response, Freetown heeded the World Bank's advice (1994:22-51) to use private operators to run state services for a profit. But privatization did not eliminate the pressures of clients demanding payoffs but merely shifted the arena of clientage to the private sector. Sierra Leone's ruling elites, needing new ways of exercising power, used foreign firms to consolidate power and stave off threats from political rivals. In the 1990s, Sierra Leonean heads of state have relied on exclusive contracts with foreign firms for diamond mining to 'regularize' sources of revenue in lieu of a government agency to collect taxes, foreign mercenaries and advisors as a replacement for the national army to provide security, and foreign contractors (sometimes the same as the mining or security firms) to provide other state services. In the process, rulers may have found it advantageous to 'destroy state agencies, to "cleanse" them of politically threatening patrimonial hangers-on and use violence to extract resources from people under their control.' To stay in power, hard-pressed rulers in weak African states often had 'to mimic the "warlord" logic characteristic of many of their non-state rivals.' (Reno 1996b:7-8, 12).

In 1994, Zaïre received creditor leniency in return for austerity plans reducing public employment from 600,000 to 50,000. But with the shrinking patronage base, to prevent a coup from newly marginalized groups in the army or bureaucracy, Mobutu, similar to rulers in other retrenching African states, needed to reconfigure political authority; in this situation, foreign firms and contractors served as a new source of patronage networks (Reno 1996b:9). However, indigenous commercial interests that profit from the new rules are not independent capitalists whose interests are distinct from the state. Indeed as Reno (1996b:16) points out, 'Those who do not take part in accumulation on the ruler's terms are punished.'

In Liberia, Charles Taylor used external commercial networks (foreign firms), some a legacy of the Samuel Doe regime of the late 1980s, to control internal power, including a large proportion of old Liberia, and at times, the eastern periphery of Sierra Leone. Taylor's territory has had its own currency and banking system, telecommunications network, airfields, export trade (in diamonds, timber, gold, and farm products) to support arms imports, and (until 1993) a deepwater port. (Reno 1995:111; Reno 1996a:8).

8.4 Adjustment in the former Yugoslavia

Another example of how failed adjustment policies contributed to a humanitarian emergency is the former Yugoslavia. Woodward (1995) blames the Yugoslav conflict not on historical ethnic hostilities but the disintegration of government authority and breakdown of political and civil order from transforming a socialist society to a market economy and democracy. Yugoslavia's rapid growth during the 1960s and 1970s, fuelled by foreign borrowing, was reversed by more than a decade of an external debt crisis in the midst of declining terms of trade and global credit tightening, forcing austerity and declining living standards, during the 1980s, and early 1990s. Moreover, with the winding down of the cold war and the decline of the importance of Yugoslavia as an independent communist state, the country received less debt relief and concessional aid from the West. In an economy declining largely from reduced external resources and returning guest workers, the political conflicts over the distribution of falling economic resources and rising debt obligations between central and regional governments and the nature of economic and political reform became constitutional crises and ultimately a crisis of state among politicians unwilling to compromise. For example, economic decline fuelled rising Serbian nationalist agitation, contributing to the 1987 'putsch' within the League of Communists of Serbia by Slobodan Milosevic, whose faction broke with the pattern of ethnic compromise; recentralized power within Serbia; overthrew the political leadership in Montenegro and in Serbia's autonomous provinces, Kosovo and Vojvodina; tried to subvert Croatia and Slovenia, the two republics that most vociferously opposed him; and tried to enlarge Serbia at the expense of Bosnia and Herzegovina (Lukic and Lynch 1996:144-99).

For Woodward (1995:383):

The primary problem, however, lay in the lack of recognition and accommodation for the socially polarizing and politically disintegrating consequences of [the 1980s'] IMF-conditionality program . . . The austerities of policies of demand-repression led to conditions that could not easily foster a political culture of tolerance and compromise. Instead, the social bases for stable government and democratization were being radically narrowed by economic polarization between rich and poor, fiscal crises for most government budgets, deindustrialization without prospects of new investment in poorer regions, growing uncertainty and individuals' resort to nonmonetary means of obtaining necessities because of rising inflation, and serious unemployment among young people and unskilled workers that began to affect even the secure jobs and incomes of public-sector professionals, skilled workers, administrators, and their children. The architects of the programs of macroeconomic stabilization and economic austerity ignored the necessity of creating not only social safety nets but even more important a political capacity to recognize and manage these conflicts.

Amidst Yugoslavia's austerity and economic collapse, Bosnia-Herzegovina, an agricultural, forestry, and mineral exporter at the periphery of the economy, was among

the most vulnerable, hurt substantially by declining terms of trade and by the loss of export markets to the Middle East, Central and Eastern Europe, and the former Soviet Union. Additionally, Bosnia-Herzegovina suffered substantial deaths, dislocation, and devastation after the outbreak of war in March 1992 (Woodward 1996).

8.5 Conclusion

In Africa in the 1960s and 1970s, the state was the major focus for struggle among ruling elites and between them and the masses. Ruling elites used taxes, government spending, public programmes, market intervention, and indigenization policies to maintain their size and stabilize their rule. But Africa's slow economic growth, particularly since 1979, compelled these elites to reduce the size of the coalition they supported or use repression to extract a greater share of the majority's tiny surplus, increasing the probability of coups or other regime turnovers, and eventual humanitarian disaster. Ironically, heightened insecurity put pressure on the state class to rely even more on short-run palliatives that benefited the military, civil service, and other privileged groups but increased economic disparities and further alienated the masses.

During the 1980s and 1990s, elites in LDCs faced increasing pressure from slow growth and international debt crises, as well as external pressure by donors and international financial institutions to liberalize and privatize. Pressures to cut the size of the state, in the midst of shrinking resources, put substantial constraints on the ability of elites, particularly in Africa, to reward and sanction political actors, contributing to greater instability and the potential for humanitarian emergencies.

IX THE FAILURE OF AGRICULTURAL DEVELOPMENT

9.1 The food crisis

According to our regression analysis, slow food production per-capita growth is a source of humanitarian emergencies (see table 5, equation 1). A test of lags and leads indicates that slow food production growth is conducive to humanitarian emergencies (when these are defined to exclude its nutritional component) rather than vice versa.

We can illustrate the relationship between food availability and humanitarian emergencies in sub-Saharan Africa. Africa's food crisis since the 1960s has made it especially vulnerable to humanitarian emergencies. Cornia, Jolly, and Stewart (1987) explain how declining real household income (through falling income or rising food prices among the low-income households) reduces household food availability, decreasing nutrient intake and increasing malnutrition, and increasing disease and mortality (especially among infants and children) (summarized in Panicià 1996).

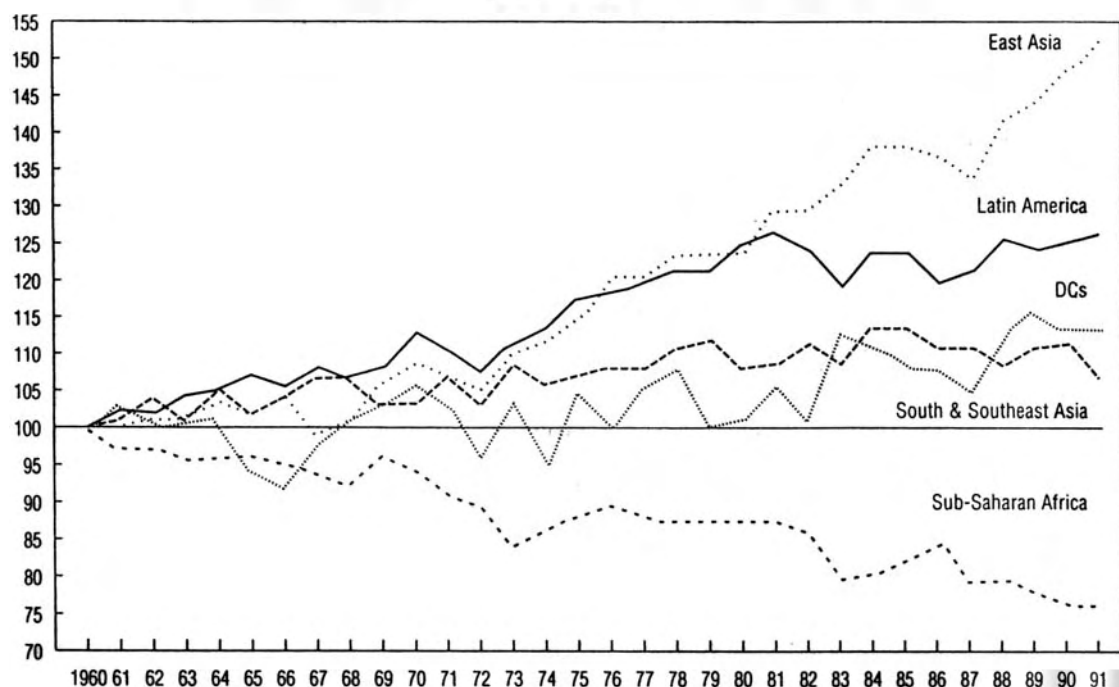
From 1962 to 1989, food output per capita grew at an annual rate of 0.5 per cent in developing countries, 0.3 per cent in developed countries, and 0.4 per cent overall, but declined 0.8 per cent in sub-Saharan Africa, meaning that food production there grew more slowly than population. (The data are calculated from figure 3, using a five-year moving average to smooth out annual weather fluctuations.) Food production per person increased from 1962 to 1989 in all world regions except the sub-Sahara (figure 1).

Africa's daily calorie consumption per capita, 2116 (the same as in the early 1960s and less than the 2197 of the mid-1970s), was 92 per cent of the requirement by the FAO, 1988-90; calorie consumption in all other regions exceeded FAO requirements. Only South Africa, Congo, Côte d'Ivoire, Benin, Mauritania, Mali, and Guinea had a daily consumption at least as great as the minimum required; Ethiopia's was only 71 per cent of the minimum, Mozambique's 77 per cent, Angola's and Rwanda's 80 per cent, Somalia's 81 per cent, and Sudan's 83 per cent (United Nations Development Programme 1994:27, 118-20, 132-33, 207-08; Economic Commission for Africa 1983:9). Africa's food security index, as measured by the International Fund for Agricultural Development, is low (and falling since the 1960s) (Jazairy, Alamgir, and Panuccio 1992:27, 398-99), not only because of large food deficits but also because of domestic output and foreign-exchange reserve fluctuations, as well as foreign food-aid reductions. Cereal consumption per capita has had a high coefficient of variation since 1965 (Kirkpatrick and Diakosavvas 1989:2). In 1989, Adedeji spoke of 'the humiliation it has brought to Africa in having to go round with the begging bowl for food aid' (1989:2).

Illustrative of the enormity of the sub-Sahara's difference from other LDCs is that while the sub-Sahara and India both produced 50 million tons of foodgrains in 1960, in 1988 India produced 150 million tons (after the Green Revolution and other farm technological improvements) and sub-Saharan Africa (with faster population growth) was still stuck at little more than 50 million tons. India's yield per hectare increased by

2.4 per cent yearly, while the sub-Sahara's grew at a negligible annual rate of 0.1 per cent. Thus, the sub-Sahara, which was on parity with India in 1960, produced only about one-third of Indian output in 1988 (Singer 1990:178-81).

FIGURE 1
GROWTH IN FOOD PRODUCTION PER CAPITA, 1960-91
(1960 = 100)



Source: Nafziger 1997:176

Additionally, the increasing population density on agricultural land has already exacerbated conflict and humanitarian disaster in low-income Africa and Haiti.³⁶ Population pressure on limited land contributed to the diaspora from the Eastern Region to the rest of Nigeria in the one to two decades before the 1967-70 civil war. The East had a 1963 population density of 1,088 per square kilometre compared to Nigeria's density of 404. Contemporary Rwanda, with only 5 per cent of its population, and Burundi, with only 6 per cent of population living in urban areas and low labour

³⁶ Homer-Dixon and Percival (1996:8-10) and Homer-Dixon (1994:18) find little empirical support for environmental scarcity, at least among renewable resources, contributing directly to interstate conflict. But this scarcity can contribute to population movements, economic decline, and weakened states, which can cause ethnic conflicts, insurgencies, and coups d'etat, and perhaps emergencies.

Perhaps the increasing pressures of population (2.9 percent annual sub-Saharan growth, which doubles population in 24 years) on resources and the environment would portend more wars, misery, population displacement, and humanitarian disasters in LDCs as part of a longer-run (decades or centuries) threat to the human species (Nafziger 1997:175-92, 211-42, 336-75). The fact that empirical testing fails to show that these pressures are determinants of emergencies for a shorter period (ten to twenty years) does not mean these pressures do not explain crises over a longer period. Indeed Lundahl (1997:5) contends that in Haiti, 'perhaps the most solid underpinning of [these statistics] comes from the interplay between population growth and soil erosion: a process that in the long run slowly and steadily, but at an accelerating pace, tends to make rural per capita income decline.'

productivity, have a population density of 1,295 persons per square kilometre (Gaffney 1996a:17). This density is about the same as that of Italy (1298), which is 67 per cent urban, and exceeds that of France (717), which is 74 per cent urban.³⁷

9.2 Agricultural policies before liberalization

Africa's deteriorating food position began before the droughts in the Sahel (including the Sudan and Ethiopia) in 1968 to 1974 and in 1984 to 1985. While the roots of Africa's food crisis can be traced back to colonialism (Eicher and Baker 1982:20-3; Ghai and Radwan 1983:16-21), the continuing crisis is due to African governments' neglect of agriculture. Here we concentrate on the policies of African political elites and government decision-makers in the decade or two before 1979, the period of liberalization.

After independence, African political elites required the support of urban elites and working classes to maintain power. Elites increased their political benefits, not through market prices for smallholders, research and extension on traditional food crops, and recognizing traditional communal property, but by expanding patronage through commercial and estate agriculture, easing land purchase by the urban affluent, and selective projects and subsidies. Furthermore, African governments preferred project-based to price-based policies to increase agricultural supplies because projects help to build and reinforce a political patron-client system.

Despite development plans proclaiming agriculture's priority and rhetoric stressing the poor rural masses, governments used pricing and exchange-rate policies, spending on investment and social services, and subsidies and protection to allocate most resources to cities, a policy of urban bias (Lipton 1977). African politicians responded to the more powerful and articulate urban dwellers. Thus, during the last quarter of the twentieth century, the policies of ruling elites diverted farm land from growing food crops, such as sorghum, millet, and local brands of maize, roots, and tubers for hungry villagers, to produce cash crops, including rice, wheat, hybrid maize, and export crops, like tobacco and natural rubber; this production shift and the greater concentration of wealth and income distribution and its effect on food demand meant that food crops declined more rapidly (or grew more slowly) than cash and export crops (Cornia 1994:217-29). Political leaders spent scarce capital on highways and steel mills, instead of on water pumps, tube wells, and other equipment essential for growing food. Moreover, governments used high-cost administrative and management talent to design office buildings and sports stadiums rather than village wells and agricultural extension services.

In sub-Saharan Africa, there is generally an inverse relationship between farm size and land yields because of the low imputed costs to own labour and the low costs of

³⁷ Andre and Platteau (1997) argue that 'the prevailing state of extreme land hunger [in Rwanda] created a troubled environment which made the most desperate people . . . ready to seize any opportunity to change their present predicament or reverse the present order of things. . . . [T]here can be no doubt that the strained situation engendered by economic scarcities goes a long way towards explaining why violence spread so quickly throughout the country' in 1994.

monitoring and supervising labour on small farms (Cornia 1994:217-29). Yet there is a policy bias toward large farms, since government leaders and ministry officials increase clientage more by expanding production in the estate and commercial sector than by the growth of smallholder agriculture. And they profit more by subsidising farm implement, fertilizer, and seed costs than by spurring prices to produce farm goods. Political elites can manipulate farmers better through market intervention than with a free market.

Most African states have tried to keep food prices low to satisfy urban workers and their employers (multinational corporations, indigenous capital, and government). Urban unrest from increasing living costs sometimes has contributed to governments losing power or even being overthrown. To insure political survival, insecure African ruling elites forwent policies promoting rural innovation and reducing urban-rural income gaps.

9.3 Agricultural policies during liberalization

During the liberalization of the 1980s and early 1990s, the World Bank, IMF, and external donors, in setting conditions for agricultural policy in Africa for adjustment loans, emphasized eliminating price distortions. However, empirical studies indicate that farm price distortions comprised only a fraction of the explanation for Africa's reduced average agricultural output (Cleaver 1985; Cornia 1994:221). The rest of the explanation is from infrastructural and other institutional factors such as the insecure tenancy of cultivators, the highly inefficient new private commercial agricultural production (often by favoured urban elites), the limited emphasis on traditional food crops from agricultural research and extension, the increased transaction and litigation costs, and the land, credit, and insurance market imperfections, such as farmers' lack of access to credit, that contribute to greater dualism. But in Africa, the stress of externally funded adjustment programmes on commercialization means a decline in the production of traditional food crops, increased farm shares to medium and large farmers, and an increase in the purchase of farm land by urban elites as a hedge against inflation (Cornia 1994:222-31).

And the emphasis on individual property-rights systems by international financial institutions and African elites has reduced agricultural efficiency. Under most traditional community or village systems, farm families not only have tenure security but land rights are highly transferable. Greater agricultural intensification from population growth gives rise to the assertion for increasingly formal private property rights. Ironically, however, registering individualized land titles reduces tenure security in the short run, as the number of land disputes surge. Clever, well-informed and powerful individuals jockey to have parcels not previously theirs registered in their own name, while rural masses may be unaware of the implications of registration. Women especially face difficulties in having their customary rights recognized by political authorities. And in the longer run, the high costs of land registration and lack of familiarity with the government bureaucracy displace weak or politically marginalized groups, and redistribute land to the commercial and estate sectors, increasing the concentration of land holdings. As an example, Kenya's systematic, compulsory

individualized titling of all farmlands since the 1950s contributed to a substantial gap between the control of rights reflected in the land register and recognized by most local communities, providing opportunities for affluent town dwellers to establish property rights through land registration. In Nigeria, under cover of national development projects, state officials granted extensive land tracts to friends, dispossessing many villagers from their customary lands. But reallocation through individualized titling not only increased inequality but also reduced labour intensity, capital formation, and innovation, contributing to the inverse relationship between farm size and yields noted above (Platteau 1996:29-86; Cornia 1994:222-31; Place and Hazell 1993:10-19).

9.4 Food entitlements, elite violence, and famines

We have been careful in our regression analysis to separate the per-capita food production growth variable as an independent variable from hunger or famine as a part of the dependent variable. Our econometric analysis indicates that, while the slow growth of food availability is stronger in explaining complex emergencies than vice versa, emergencies do increase nutritional vulnerability. Relief agencies indicate 20 million deaths from severe malnutrition in 1991 in six African countries where food trade was disrupted by domestic political conflict – Ethiopia, Liberia, Sudan, Somalia, Angola, and Mozambique. Moreover, while, on the one hand, food deficits contribute to refugee problems, on the other hand, the 5 million or so refugees annually fleeing civil wars, natural disasters, and political repression (including before 1990, South Africa's destabilization) added to Africa's food shortages (Daley 1992:115; Goliber 1989:10-11).

Since we are interested in famine as a component of the dependent variable, we integrate politics and economics to explain famine in this section. The conventional economic approach examines food (or total) output and its distribution, focusing on agricultural production, poverty rates, and Gini indices of concentration. According to this explanation, famine arises from a lack of total food supply. Sen (1981, 1983b, 1995) criticizes this explanation, emphasising that nutrition depends on society's system of entitlement. Entitlement refers to the set of alternative commodity bundles that a person can command in a society using the totality of rights and opportunities that he or she possesses. An entitlement helps people acquire capabilities (like being well nourished). In a market economy, the entitlement limit is based on ownership of factors of production and exchange possibilities (through trade or a shift in production possibilities). For most people, entitlement depends on the ability to find a job, the wage rate, and the prices of commodities bought. In a welfare or socialist economy, entitlement also depends on what families can obtain from the state through the established system of command. A hungry, destitute person will be entitled to something to eat, not by society's low Gini inequality and a high food output per capita, but by a relief system offering free food. Thus, in 1974, thousands of people died in Bangladesh despite its low inequality, because floods reduced rural employment along with output, and inflation cut rural labourers' purchasing power.

Sen argues that food is 'purchased' with political pressure as well as income. Accordingly, one-third of the Indian population goes to bed hungry every night and leads a life ravaged by regular deprivation. India's social system takes nonacute endemic

hunger in stride; there are no headlines or riots. But while India's politicians do not provide entitlements for chronic or endemic malnutrition, they do so for potential severe famine through food imports, redistribution, and relief. In Maoist China, the situation was almost the opposite. Its political commitment ensured lower regular malnutrition through more equal access to means of livelihood and state-provided entitlement to basic needs of food, clothing, and shelter. In a normal year, China's poor were much better fed than India's. Yet if there was a political and economic crisis that confused the regime so that it pursued disastrous policies with confident dogmatism, then it could not be forced to change its policies by crusading newspapers or effective political opposition pressure, as in India (Sen 1983a:757-60; Sen 1983b; Sen 1986:125-32; Sen 1987:10-14).

The political economy approach, however, analyzes the behaviour of ruling elites during periods of Darwinian pressures and food crises. This approach goes beyond the Sen approach, to examine ruling elites' deliberate withholding of entitlement, or even use of violence, to achieve their goals of acquiring or maintaining power, which often involves benefits at the expense of other segments of the population. Thus, according to the political economy interpretation, Mao's effort to increase control through collective labour-intensive water projects during the 1958-60 Great Leap Forward contributed to China's famine, in which per-capita food production from 1957-59 to 1959-61 dropped 25 per cent. Indeed in the midst of Mao's campaign for increasing collectivization in 1959, the pressure of the party establishment contributed to false reports of bumper crops (Prybyla 1970:264-9; Lardy 1983:152-3; Putterman 1993:11).

Sen turns a blind eye to the possibility that the state may be the cause of famine through deliberate policy to transfer resources and food entitlements from a politically marginal group to a politically favoured one. To be sure, Drèze and Sen (1989:5-6) point out that 'the dependence of one group's ability to command food on its relative position and comparative power vis-à-vis other groups can be especially important in a market economy.' But for the two authors, famines and food shortages result from entitlement and state policy failure, and not from state action to damage the food entitlements of a group. They attribute the Soviet famines of the 1930s and the Kampuchean famines of the late 1970s to inflexible government policies that undermine the power of particular sections of the population to command food. Drèze and Sen's emphasis is on the need for public action by a benign state, making decisions about more or less food entitlements, rather than an ill-intentioned state making decisions to intervene in favour of one group at the expense of another and its food entitlement. For Drèze and Sen (1989:17-8), avoiding famine involves the 'division of benefits [from the] differential pulls coming from divergent interest groups,' not the desistance of the denial of groups' entitlements.

As Keen (1994:5) contends, in Sen and Drèze's view, 'There are victims of famine, but few immediate culprits or beneficiaries.' Sen and Drèze do not consider the possibility that states or politically powerful groups that control states may obstruct relief and contribute to famine for rational purposes of their own. Indeed the Drèze and Sen conception of the state is essentially a liberal one, in which the failure to factor in the public interest is perceived as a failure of public policy. Most scholars and international

agencies share the Drèze-Sen view, widely perceiving famine as relief 'blunders' and the result of poverty and market forces, and failing to see how markets are shaped or forced by state-condoned raiding, collusion, and intimidation.

Amidst state building in Africa and other socially heterogeneous post-colonial societies, Ake (1997:2) sees widespread conflict and emergencies (including famine) as almost inevitable, since

State-making is perhaps best understood as the political equivalent of primitive accumulation, except that it is more violent still. It entails conquest and subjugation - conquest, because the state power which is projected in the process is arbitrary power since those on whom it is projected originally owed no political allegiance to the state makers. State making entails revoking the autonomy of communities and subjecting them to alien rulership within a bigger political order, laying claim to the resources of the subordinated territory including claims over the lives of those who live there. To effect these claims, the state must appropriate and monopolize the means of violence.³⁸

For ruling elites to organize war and conflict involves shifting alliances with groups and individuals in authority at the local level. Where the centre lacks the resources to 'buy' the loyalty of local elites, it may procure their loyalty by tolerating exploitation at a local level. In political conflict, the need to form alliances with local groups and elites may contribute to increased levels of abuse of civilians and the natural environment. Even civilians may find it safer and more advantageous to join armed exploiters rather than risk becoming one of the unarmed exploited (Keen 1996).

The political economy approach to famine, associated with the emphasis by de Waal (1989), Duffield (1994), and Keen (1994) on famine as an outcome of government's forcible asset transfer from the politically weak to the politically strong, contrasts with that of Sen's economic approach. Duffield and Keen point out that in the 1980s, the Sudanese government, under pressure from a shrinking economic pie, stripped the politically marginal Dinka of cattle and other major assets, distributing these to more favoured ethnic groups (Keen 1994; Duffield 1994:50-69). De Waal contends that marginalized communities in southern Somalia became destitute not only from drought but from forcible alienation of farmland and pasture. Victims usually lacked lobbying power not purchasing power (Keen 1994; Duffield 1994:50-69; de Waal 1994:141).

As Duffield (1994:55) asserts:

The emergence of a political economy that includes asset transfer is extremely destructive and creates ever-deepening poverty and misery. Moreover, since subsistence assets are a finite resource, once such an

³⁸ Compare Holsti (1996:41-81), who contends that, in state formation since 1945, 'the *ideas and myths* that sustain the legitimacy of political orders and the communities on which those orders are based . . . have been muddled or murky' (quotation from *ibid.*, pp. 45, 80).

economy is established it demands fresh inputs as the wealth of different groups is exhausted. Asset transfer becomes a moving feast on an ethnic table . . . [and] once systemic, becomes synonymous with cultural genocide and the destruction of group rights.

Famine is an extended economic and political process, usually a result of the disruption of a way of life, involving hunger and destitution and not just death, and often long-term rather than just transitory. The state may withhold relief from famine victims, allowing more politically influential groups to appropriate the food and resources.³⁹ Belligerents, such as Nigeria and Biafra in 1967-70 and the Sudanese government in the 1980s, are especially likely to block food supplies in a civil war. And even international agencies, non-governmental organizations (NGOs), and other donors, facing government obstruction of relief and under pressure to cooperate with national authorities to at least provide relief in government-held areas, may discount independent accounts of famine that reflect on their negligence (Keen 1994; de Waal 1989). In contrast to the entitlement approach, the view of the political economy approach is that famine and humanitarian emergencies arise not from policy errors but from deliberate policy choices by ruling elites, who are trying to preserve or enhance power.⁴⁰ We must integrate politics and economics, analysing poverty, malnutrition, food distribution, agricultural price incentives, land tenure, entitlement, and the interests and behaviour of political elites.

³⁹ Indeed Kofi Annan (1996:178) contends that 'In Somalia, . . . it became patently clear that continuing high death rate was being caused not so much by the absence of food and the presence of natural disaster as by a group of ambitious armed men who prevented food from reaching the needy.'

⁴⁰ In this vein, Keen's book (1994) about Sudan in the 1980s is entitled *The Benefits of Famine*.

X MILITARY CENTRALITY

In the regression analysis, military centrality, as indicated by military expenditures per GNP, turned out to be the strongest and the most robust correlate of humanitarian emergencies. We say correlate, as there is a two-way causal relationship between military expenditures and emergencies. Especially violent and protracted emergencies necessitate high military spending. We emphasized the reverse dynamic, hypothesizing that military centrality, as indicated by military expenditures per GNP, contributes to complex humanitarian emergencies through four different dynamics.

First, military expenditures are needed to support authoritarian political structures, which are susceptible to violent and destructive forms of conflict. Prolonged and ruthless repression is likely to create a profound sense of injustice and deprivation within the population and the opposition. Political deprivation arises from a lack of meaningful participation in making political decisions, whether this participation is prevented by law or through repression. In effect, a constant and frequent use of repression indicates lack of legitimacy and political capacity (Jackman 1993). Efficient repression may prolong authoritarian rule, as demonstrated for example by Augusto Pinochet's Chile and Hastings Kamuzu Banda's Malawi, but eventually the people are likely to challenge the regime from a 'desperate bargainer' position. Desperate underdogs will fight regardless of the consequences if they feel they have nothing to lose. South Africa's black population had been driven to such a position by the apartheid regime. The country would have lapsed into civil war no matter how strong the repressive machinery of the white establishment was and no matter how little hope there was for the African National Congress coalition to win militarily (Auvinen and Kivimäki 1997:7-9).

Military centrality may intensify conflicts and spark new ones. Given a strong military, a government is likely to deploy it to contain various kinds of challenges. Scant military resources indicate that the government is predisposed to solving crises by other, more pacific means. A strong military is likely to exert power over the government decisions and favour strong over weak responses to suppress conflict. Excessive force and fire power against peaceful demonstrations are likely to trigger further violence, which happened in South Africa in 1990-92 and in Pinochet's Chile. According to Gurr (1994), ethno-political conflicts tend to begin with limited protests and clashes that escalate into sustained violence.

Secondly, since authoritarian rule relies on military power, one needs considerable military resources to challenge it. Provided that repressive rule has not (yet) generated an opposition of desperate underdogs, political opponents will not attempt to challenge the regime until they have managed to collect enough military capacity. As in the case of desperate bargaining, the resulting conflict is likely to be bloody and intense. Military centrality thus has an impact on the form of conflict: large military resources may deter popular protest but encourage opponents to build up resources for large-scale warfare; rebellion promises a better chance of success than protest, or the only chance.

Thirdly, military centrality is conducive to irregular executive transfers, which can lead to humanitarian emergencies. Jenkins and Kposowa found military centrality the most consistent independent force behind coups. The greater the resources of the military, the more likely were military interventions. While this finding was based on Africa, it is supported by earlier studies. (Jenkins and Kposowa 1990, 862, 869; Kposowa and Jenkins 1993, 147) In many LDCs, military takeovers of governments have occurred routinely (see Johnson et al., 1984), although in most of Latin America they seemed to have discontinued during the 1980s.⁴¹

Frequently these coups have led to humanitarian crises. To illustrate, the military has traditionally occupied a central position in Haitian politics. From the late 1930s until 1957, when Francois Duvalier (better known as Papa Doc) assumed the presidency, 'the army exercised the effective power and decided for how long the sitting president would be able to retain power' (Lundahl 1997, 14). Duvalier was able to undermine the military's power with the help of his own paramilitary force, the *tonton macoutes*. The Duvaliers were able to stave off the threat of the military until 1986, when Francois's son, Jean-Claude Duvalier, was finally ousted in a coup. When the army reconstituted itself in Haitian politics, a new wave of coups and counter-coups followed. In September 1991, the military overthrew President Jean-Bertrand Aristide, as it felt threatened by his plans to return the police force from the military to civilian control 'since this struck at the heart of their [the military's] illegal activities' (Dupuy 1997:116-8). This move led to a humanitarian crisis in Haiti with notorious consequences (see Lundahl 1997:34-41). Other instances include Nigeria's two coups in 1966, which set the stage for the 1967-70 civil war, and Pakistan's military coups in 1958 and 1969, which contributed to the conflict between East and West Pakistan in 1971.

Military coups have often been economically motivated. Jenkins and Kposowa (1990) found that debt dependence was a major predictor of coup activity in black Africa. 1957 to 1984. O'Donnell's (1973, 1978) bureaucratic-authoritarian thesis suggests that Latin American militaries intervened in politics during periods of economic hardship, legitimizing the action by the need to establish order amid social unrest. Even more generally, economic crisis periods tend to strengthen the military's position. Civilian governments avoid cutting back military budgets and privileges to keep the armed forces satisfied (Kimenyi and Mbaku 1993:395). African governments favoured defence in budgeting during periods of austerity (although they discriminated against defence when budget resources were increasing) (Gyimah-Brempong 1992:191).

There is a vicious circle: during economic hardship, the repressive machinery needs to be strengthened, or at least not to be cut back in proportion to other sectors, in order to withstand the opposition's potential mobilization against austerity. The inability to reduce military spending, in turn, is a further economic burden on the citizens. Where per capita incomes are low, even small changes in budget allocation have great distributive impact on the peoples' welfare. Money for the military allocates funds away

⁴¹ Hunter (1994) points out, though, that, even in the 1990s, civil-military tensions persisted in Latin America. In Venezuela, Argentina, Brazil and Chile, the military has intervened in politics as a reaction to domestic and international challenges to their professional standing and corporate integrity.

from other goods and services, including health care, clean water, and housing. In extremely poor countries such as Sudan, Ethiopia and Chad, the allocation of funds for defence implies starvation (Gyimah-Brempong 1992).

The vicious circle indicates a fourth dynamic of how military centrality breeds humanitarian emergencies: it has direct welfare-reducing costs for the population. Furthermore, it has a dampening impact on economic growth. Most empirical evidence supports an inverse association between military expenditure and growth - 'the tank-tractor trade-off'. Deger and Smith (1983, 352) found that military spending had a small positive effect on growth through modernization effects but larger negative effects through reduced savings, which resulted in a net negative effect of military expenditure on growth. In Sudan, military expenditure had substantial economic costs, particularly on investment, human resource accumulation, trade balance and economic growth, although Mohammed (1992) also mentions some limited positive spin-offs to the productive sectors. In conclusion, there are several mechanisms through which military centrality causes or exacerbates complex humanitarian emergencies, whether by generating violent conflicts or economic destitution.

XI CONFLICT TRADITION

As expected, we found a connection between violent conflict in the 1960s and 1970s (specifically 1963 to 1977) and humanitarian emergencies in the 1980s and 1990s. Conflict cultures vary from one country to another and have been shaped by history. Certain forms of conflict are institutionalized in some countries, and would never occur in other countries. The histories of Latin America and Africa abound with irregular executive transfers. Haiti is a prime example. Despite the army's political weakness and the consequent absence of irregular executive transfers between 1957 and 1986, Haiti has nevertheless had twelve successful coups since 1956 (Brogan 1992). This is a continuation of the trend in the late nineteenth and early twentieth centuries. According to Heinl and Heinl (1978:404) Haiti experienced more than a hundred more or less successful uprisings between 1843 and the landing of the U.S. Marines in 1915. As many as 17 of the 22 presidents during this period were deposed by a coup d'état or revolution (Lundahl 1997:11).

Although Asia has experienced relatively fewer coups, some countries such as Thailand stand out. Typical features of conflict behaviour in South Korea have been self-immolations by fire and huge riots with a very small number of deaths. A war-induced humanitarian emergency would be unlikely in such a country. In Chad, a civil war involving several foreign interventions has continued, with only three short interruptions, since the late 1960s (Brogan 1992:19-26). The selection of the forms to express grievances is strongly affected by the conflict culture.

Intensity of past conflicts, as indicated by a large number of casualties, indicates that violence is not atypical for a conflict culture. Colombia is a violent society. During *La Violencia* in 1946-57, some 300,000 people were killed in the fighting between partisans of the Conservative and Liberal Parties. In 1988, when the country was not involved in active warfare, it experienced about 20,000 murders - about six times the murder rate in the United States (Brogan 1992:513) Past violence is likely to lower the threshold for using violence as a means of expressing dissent, making intensive forms of political conflict normatively justifiable.

XII CONCLUSION

This paper analyses the political economy of complex humanitarian emergencies, multidimensional crises characterized by warfare, disease, hunger, and displacement. Our focus has been on the economic sources of emergencies. We have demonstrated that a major factor responsible for the increase in emergencies in the 1990s is the developing world's stagnation and protracted decline in incomes, primarily in the 1980s. A major contributor to slow growth was agricultural stagnation. Slow or negative per-capita growth, which was often accompanied by a chronic external disequilibrium, necessitated stabilization and adjustment; those countries whose adjustment policies failed, so that they did not qualify for the IMF 'Good Housekeeping seal,' were more vulnerable to humanitarian disaster. A second factor, high income inequality, contributed to regional, ethnic, and class discrepancies that engendered crises. A third contributor, inflation, increased popular discontent, especially among low-income classes. A fourth factor, the strategies of political elites in response to stagnation, inequality, inflation, and adjustment, and mass reaction to these changes, were instrumental in determining the potential for political conflict and humanitarian emergencies. A fifth explanation for emergencies is military centrality, which can spur conflicts as well as increase poverty. A sixth factor, the tradition for violent conflict, in which violence becomes normatively justifiable in a society, increased the probability of conflict-driven humanitarian crises. These factors suggest that the international community, to reduce complex humanitarian emergencies, needs to create an international economic order that facilitates widespread growth, to support developing countries in reducing disparities in income and wealth, to assist poor countries in adjusting to external and internal equilibria, to promote good governance, and to reduce trade in arms and weapons.

APPENDIX: THE INDICATORS

I The Components of Humanitarian Emergencies

1. War

We selected the number of battle-related deaths per population as the proxy for war. Two sources were identified: the Correlates of War (COW) database for civil wars (Singer, J. David & Melvyn Small. *Correlates of War Database*, 1994 update) and the Stockholm Peace Research Institute's database on battle-related deaths in major armed conflicts (SIPRI Yearbook. 1989-96 [successive years]. *World Armaments and Disarmament*. Stockholm International Peace Research Institute. United States: Oxford University Press). The information yielded by the two sources was compared with each other.

The Correlates of War database includes major civil wars, where (a) military action was involved, (b) the national government at the time was actively involved, (c) effective resistance (as measured by the ratio of fatalities of the weaker to the stronger forces) occurred on both sides, and (d) at least 1,000 battle deaths resulted during the civil war. Also a minimum population of 500,000 and either diplomatic recognition by at least two major powers or membership in the League of Nations or United Nations were required. A total number of 150 such wars occurred in 1816-1988 (The Correlates of War Project, 1994), whereas 38 such wars were recorded during the period under observation, 1980-95. Furthermore, the Ogaden (1976-83) and the Tigrean (1978-1991) wars were extracted from the Correlates of War Dataset on *International Wars* and classified under Ethiopia as civil wars. Besides Ethiopia, six other countries experienced two civil wars in 1980-95.

The problem with the COW dataset is that casualties are reported from the entire war, not per annum. To obtain annual figures for the pooled dataset, the deaths were divided by the number of years that the conflict endured. Consequently the number of deaths is invariant from year to year, unless one war was replaced by another with a different death-rate. This is unfortunate, but of course the pool's cross-sectional variation remains.

The civil war in El Salvador will serve as an example of how the figures were arrived at: The war lasted for 14 years, from 1979 until 1992. According to the COW data, 25,000 lives were lost in fighting. The number of 25,000 battle-related deaths is divided by 14 years, which gives 1,786 deaths during each year, 1980 to 1992. The year 1979 falls out of the period under investigation. The number of deaths is then divided by the annual population estimate, and the resulting score is finally multiplied by 100 to eliminate a high concentration of figures close to zero. For example in 1980 the country's population was 4.52 million, yielding the score 3.95, and in 1992 5.04 million, yielding the score 3.31, for battle-related deaths per population (DEATHPOP).

SIPRI provides estimates of battle-related deaths for 36 countries in the present sample. However, information is missing for a total of eight years, 1980-87. In addition, the coding procedure seems to be more conservative than that of the Correlates of War Project. Even during the period 1988-95 SIPRI fails, in many cases, to report any estimate of the death toll even if a major conflict was underway during a given year. Besides the numerous cases of 'not available' data, SIPRI does not report the conflicts of Armenia (1992-), Burundi (neither the 1988 nor the early 1990s' war), Georgia (1991), Romania (1989), and Russia (1991) - which fulfil the criteria applied by the COW project. For the SIPRI data, deaths per population were multiplied by 10,000 in order to avoid a concentration of observations very close to zero.

The basic problem of the COW dataset is less dramatic: it does not contain data for the year 1995, which leaves out the conflicts in Sierra Leone and Russia (Chechnya). Because of its superior coverage, the COW figures were adopted as a basis for indicator construction. It should be noted, however, that, as compared to SIPRI statistics, COW does not record the conflicts in Algeria 1993 -, Bangladesh 1989-95, Cambodia (only) 1992, Chad (only) 1989-92, Georgia 1993-94, Guatemala 1988-95, Indonesia 1988-95, Iran 1988-93, Mauritania 1988-89, South Africa 1988 and 1990-93, Turkey (only) 1989-90, Uganda 1989 and 1991, and Yemen 1994.

2. Displacement

As discussed in detail by Melkas (1997), the statistics for internally displaced populations are particularly unreliable. Therefore, the number of refugees by origin adjusted for the source country's population (REFUPOP) was chosen as a proxy for displacement. (The score was multiplied by 100 in order to avoid concentration of observations close to zero.) Source: World Refugee Survey (1980-96, successive years) World Refugee Statistics. The United States Committee for Refugees (USCR). Washington DC: Immigration and Refugee Services of America.

In collecting the information, refugees from the former Soviet bloc to the Western countries before the 1980s were excluded from the dataset since neither their sources or living conditions are related to humanitarian emergencies in the 1980s and 1990s. Cuban refugees to the United States were excluded for the same reason. Several annual figures had to be estimated on the basis of previous or adjacent years because of lacking data. Normally this was unproblematic, as the *status quo* was the typical condition. The *Survey's* reporting of any significant repatriations was helpful in changing circumstances. In some other cases estimation was more difficult, for example, when the number of refugees was reported from a group of countries such as from 'Indochina'. The statistics for individual the countries (in this case Cambodia, Laos and Vietnam) would be calculated from the adjacent years' data, giving each country the average proportional share of the total number of refugees from Indochina one year before and after. Another example of the difficulties involved is the change from reporting the number of refugees by country of origin in 1980 to reporting by country of asylum in 1981. In one case the figures simply provided no basis for judging, and the number of refugees from Zambia in 1981 was estimated at 2,000.

3. Hunger

The measure selected to indicate hunger is the annual calorie supply per capita (FAOSTAT 1995). Although ‘starvation’ is rarely the ‘cause’ of famine deaths, food shortages may provoke people into actions which increase their exposure to other risks, such as death from disease (Seaman 1993, 27). A low calorie supply is an indicator of poverty rather than humanitarian emergency. One should look at changes in calorie supply rather than levels. Looking at the trend of calorie supply from 1980 to 1995 one observes an encouraging, albeit weak, upward trend in the countries under study. Any downward deviation of this general trend could be indicative of a humanitarian emergency. The indicator of hunger (CALAVE) is expressed as a deviation of calorie supply from the annual average change in the whole sample:

$$\text{CALAVE} = \text{CALINDEX} - \text{AVERAGE}(\text{CALINDEX}),$$

where $\text{AVERAGE}(\text{CALINDEX})$ = average annual change in the index of calorie supply in the whole sample; $\text{CALINDEX} = \text{LAG}(\text{CALINDEX}) + (((\text{CALSUPP} - \text{LAG}(\text{CALSUPP})) / \text{LAG}(\text{CALSUPP})) * 100)$, or index of change in the calorie supply for N_1, \dots, N_k ; 1980 = 100. Source: FAOSTAT TS 1995 Database. Rome: Copyright by the United Nations Food and Agricultural Programme. Software by the United States Department of Agriculture, Economic Research Service.

Negative values indicate that a country is below the general trend towards increased calorie supply, which is hypothesized to be an indicator of a potential complex humanitarian emergency. The data on calorie supply were extrapolated for all countries for 1993-95 except for Morocco, Russia and Yugoslavia, where they were extrapolated for 1992-95.

4. Disease

Since infants are highly susceptible to disease, we used the infant mortality rate per 1,000 live births as a proxy for disease. Disease claims human lives during emergencies due to lack of food and sanitation. Seaman (1993, 27) points out that the immediate cause of death is generally from infection, electrolyte imbalance or a range of other biological events. As with calorie supply, infant mortality in itself is also an indicator of poverty. For instance, poor countries cannot afford health services that would prevent diseases. There is a need to resort once again to a measure indicating a deviation from the general trend. Encouragingly, during 1980-95, we observe a clear reduction in infant mortality during 1980-95 in the countries under study. The indicator is constructed as follows:

$$\text{INFAVE} = \text{INFINDEX} - \text{AVERAGE}(\text{INFINDEX}),$$

where AVERAGE (INFINDEX) = average annual change in the index of infant mortality; $\text{INFINDEX} = \text{LAG}(\text{INFINDEX}) + (((\text{INFMORT} - \text{LAG}(\text{INFMORT})) / \text{LAG}(\text{INFMORT})) * 100)$, or index of change in the infant mortality rate for N_1, \dots, N_k ; 1980=100. Source: World Tables Database 1993 Update. Socio-Economic Access and Retrieval System, vers. 2.5, April 1992. Washington DC: The World Bank.

The data on infant mortality were extrapolated for 1993-95 for all countries and for 1980-81 for Lithuania, Belize and Slovenia.

II The Sources of Humanitarian Emergencies

CPI - Consumer Price Index, 1980-93 (1980=100). Source: Social Indicators of Development (SID) 1995 Database. Socio-Economic Access and Retrieval System (converted from 1987=100). Washington DC: The World Bank.

DEATRAD - 'death tradition': number of deaths from political violence, 1963-77. Source: Taylor, Charles Lewis & David A. Jodice (1983) World Handbook of Political and Social Indicators. 3rd edition. Vol. 2: Political Protest and Government Change. New Haven and London: Yale University Press.

GDPGRO - Gross domestic product (average annual growth, %), 1980-92. Source: World Tables Database 1993 Update. Socio-Economic Access and Retrieval System, vers. 2.5, April 1992. Washington DC: The World Bank.

GINI - Gini Index as defined by Deininger & Squire (1996), requiring that observations be based on household surveys, on comprehensive coverage of the population, and on comprehensive coverage of income sources. Source: Deininger, Klaus & Lyn Squire. 1996. A New Data Set Measuring Income Inequality. *The World Bank Economic Review* 10(3): 565-91.

GNPCAP - Gross national product per capita, 1980-93 (US\$, Atlas method). Source: Social Indicators of Development (SID) 1995 Database. Socio-Economic Access and Retrieval System. Washington DC: The World Bank.

FOODGRO - Annual growth of food production per capita. Source: World Tables Database 1993 Update. Socio-Economic Access and Retrieval System, vers. 2.5, April 1992 (calculated). Washington DC: The World Bank.

IMFGNP - Use of IMF credit as a percentage of GNP: The use of IMF resources except those resulting from drawings in the reserve tranche. Source: World Debt Tables 1996 Database. Socio-Economic Access and Retrieval System, vers. 3.0, May 1993 (calculated). Washington DC: The World Bank.

MILCENT- 'Military centrality': Annual military expenditures as a percentage of GNP
Source: SIPRI Yearbook (1986-95, successive years) World Armaments and
Disarmament. Stockholm International Peace Research Institute (SIPRI). United States:
Oxford University Press.

ODAGRO - Official Development Assistance per capita growth. Source: World
Development Report (successive years; calculated from 'Official Development
Assistance: receipts'). Washington DC: The World Bank and Oxford University Press.

POLRI - Summary Index of 'Political Rights Grievances', i.e., demands for greater
political rights other than autonomy, sum of codings on five ordinal scales:

POL1 Diffuse Political Grievances

POL2 Seek Greater Political Rights

POL3 Seek Greater Central Participation

POL4 Seek Equal Civil Rights

POL5 Seek Change in Officials/Policies

POL6 Other Political Grievances

Source: Gurr, Ted Robert (1993) Minorities at Risk. A Global View of Ethnopolitical
Conflicts. Washington DC: United States Institute of Peace Press.

TOT - Terms of Trade Index (1980=100,US\$-based). Source: World Tables Database
1993 Update. Socio-Economic Access and Retrieval System, vers. 2.5, April 1992
(converted from 1987=100). Washington DC: The World Bank.

REFERENCES

- Adam, Hussein M. 1995. 'Somalia: A Terrible Beauty Being Born?' In Zartman, pp. 69-89.
- Adedeji, Adebayo. 1989. *Towards a Dynamic African Economy: Selected Speeches and Lectures, 1975-1986*. London: Frank Cass.
- Ake, Claude. 1996. *Democracy and Development in Africa*. Washington, D.C.: Brookings Institution.
- Ake, Claude. 1997. 'Why Humanitarian Emergencies Occur: Insights from the Interface of State, Democracy and Civil Society.' United Nations University/World Institute for Development Economics Research, Research for Action 31. Helsinki, Finland.
- Alesina, Alberto, and Perotti, Roberto. 1996. 'Income Distribution, Political Instability, and Investment.' *European Economic Review* 40(6) (June): 1203-28.
- Alnasrawi, Abbas. 1992. 'Iraq: Economic Consequences of the 1991 Gulf War and Future Outlook.' *Third World Quarterly* 13(2): 335-52.
- Alnasrawi, Abbas. 1994. *The Economy of Iraq: Oil, Wars, Destruction of Development and Prospects, 1950-2010*. Westport, CN: Greenwood.
- Alnasrawi, Abbas. 1996a. 'The Political Economy of Human Emergencies: Iraq as a Special Case.' Paper presented to a UNU/WIDER-Queen Elizabeth House, Oxford University meeting on 'The Political Economy of Humanitarian Emergencies.' Helsinki, Finland. 6-8 October.
- Alnasrawi, Abbas. 1996b. 'What Economic Future for Iraq?' *Middle Eastern Executive Reports* 19(3) (March): 8-19.
- Anderson, Charles W.; Von der Mehden, Fred R.; and Young, Crawford. 1974. *Issues of Political Development*. Englewood Cliffs, NJ: Prentice Hall.
- André, Catherine, and Platteau, Jean-Philippe. 1997. 'Land Relations under Unbearable Stress: Rwanda Caught in the Malthusian Trap.' Paper presented to the UNU/WIDER meeting on Land Reform. Helsinki, Finland. 30-31 May.
- Annan, Kofi A. 1996. 'The Peace-keeping Prescription.' In Kevin M. Cahill, ed. *Preventive Diplomacy: Stopping Wars before They Start*, pp. 174-90. New York: Basic Books.
- Auvinen, Juha. 1990. 'Taloudellinen epävakaisuus poliittisen epävakaisuuden selittäjänä kehitysmaissa. Vaihteittainen tarkastelu poliittiseen epävakauteen johtaneista tekijöistä Sambiassa.' Yleisen valtio-opin pro gradu -tutkielma. Helsingin yliopisto. ('Economic instability as a source of political instability in the developing countries - a case study on Zambia'). University of Helsinki. Master's thesis.
- Auvinen, Juha Yrjö. 1996a. 'Economic Performance, Adjustment, and Political Conflict in the Developing Countries: Cross-National Statistical Analysis of the Determinants of Political Conflict with Case Study on Chile.' University of Sussex, U.K., D.Phil. dissertation.

- Auvinen, Juha Y. 1996b. 'IMF Intervention and Political Protest in the Third World - a conventional wisdom refined. *Third World Quarterly* 17(3) (September): 377-400.
- Auvinen, Juha & Timo Kivimäki. 1997. 'Towards more Effective Preventive Diplomacy. Lessons from Conflict Transformation in South Africa.' Working Paper no 4. Series C. University of Lapland: Faculty of Social Sciences.
- Ayoob, Mohammed. 1995. *The Third World Security Predicament: State Making, Regional Conflict, and the International System*. Boulder, Colo.: Lynne Rienner.
- Bariagaber, Assefaw. 1995. 'Linking Political Violence and Refugee Situations in the Horn of Africa: An Empirical Approach.' *International Migration* 33(2): 209-234.
- Barro, Robert J. 1991. 'Economic Growth in a Cross-Section of Countries.' *Quarterly Journal of Economics* 106(2) (May): 407-443.
- Bartholdy, Kasper. 1996. 'Assessing Progress in Economies in Transition.' *Economics of Transition* 4(1) (May): 270-94.
- Bates, Robert H. 1981. *Markets and States in Tropical Africa: The Political Basis of Agricultural Policies*. Berkeley: University of California Press.
- Bienen, Henry & Mark Gersovitz. 1985. 'Economic Stabilization, Conditionality, and Political Stability.' *International Organization* 39 (Autumn): 729-754.
- Bienen, Henry & Mark Gersovitz. 1986. 'Consumer Subsidy Cuts, Violence, and Political Stability.' *Comparative Politics* 19(1) (October): 25-44.
- Bienen, Henry & Nicolas van de Walle. 1989. 'Time and Power in Africa.' *American Political Science Review* 83(1): 19-34.
- Blacker, Coit D. 1994. 'Emerging States and Military Legacies in the Former Soviet Union.' In Janne E. Nolan, ed. *Global Engagement: Cooperation and Security in the 21st Century*. Washington, D.C.: Brookings Institution, pp. 353-90.
- Brogan, Patrick, 1992. *World Conflicts. Why and Where They Are Happening*. London: Bloomsbury.
- Burton, J.W. 1966. *Systems, States, Diplomacy and Rules*. Cambridge: Cambridge University Press.
- Cleaver, Kevin M. 1985. 'The Impact of Price and Exchange Rate Policies on Agriculture in Sub-Saharan Africa.' World Bank Staff Working Paper No. 728. Washington, D.C.
- Cornia, Giovanni Andrea. 1994. 'Neglected Issues in the Decline of Africa's Agriculture: Land Tenure, Land Distribution and R&D Constraints.' In Cornia and Helleiner, pp. 217-47.
- Cornia, Giovanni Andrea, and Helleiner, Gerald K. 1994. *From Adjustment to Development in Africa: Conflict, Controversy, Convergence, Consensus?* Houndsmills, U.K.: St. Martin's Press.
- Cornia, Giovanni Andrea; Jolly, Richard; and Stewart, Frances, eds. 1987. *Adjustment with a Human Face: Protecting the Vulnerable and Promoting Growth*. 2 vols. Oxford: Clarendon Press.

- Daley, Patricia. 1992. 'The Politics of the Refugee Crisis in Tanzania.' In Horace Campbell and Howard Stein, eds. *Tanzania and the IMF: The Dynamics of Liberalization*. Boulder, Colo.: Westview.
- Davies, James C. 1962. 'Toward a Theory of Revolution.' *American Sociological Review* 27(1) (February): 5-19.
- De Waal, Alex W.L. 1989. *Famine That Kills: Darfur, Sudan, 1984-1985*. Oxford: Clarendon Press.
- De Waal, Alex W. L. 1994. 'Dangerous Precedents? Famine Relief in Somalia 1991-93.' In Macrae and Zwi, pp. 139-59.
- Deger, Saadet, and Smith, Ron. 1983. 'Military Expenditure and Growth in Less Developed Countries.' *Journal of Conflict Resolution* 27(2) (June): 335-353.
- Drèze, Jean, and Sen, Amartya. 1989. *Hunger and Public Action*. Oxford: Clarendon Press.
- Duffield, Mark. 1994. 'The Political Economy of Internal War: Asset Transfer, Complex Emergencies and International Aid.' In Macrae and Zwi, pp. 50-69.
- Economic Commission for Africa. 1983. *ECA and Africa's Development, 1983-2008: A Preliminary Perspective Study*. Addis Ababa.
- Economic Commission for Africa. 1989. *South African Destabilization: The Economic Cost of Frontline Resistance to Apartheid*. Addis Ababa.
- Eicher, Carl K., and Baker, Doyle C. 1982. *Research on Agricultural Development in sub-Saharan Africa: A Critical Survey*. East Lansing: Michigan State University International Development Paper no. 1.
- Emizet, Kisangani N. 1997. 'Zaire after Mobutu: A Case of Humanitarian Emergency.' Helsinki: UNU World Institute for Development Economic Research, Research for Action 32.
- Esterhuyse, W. 1992. 'Scenarios for South Africa - Instability and Violence or Negotiated Transition?' *Long Range Planning* 25(3): 21-26.
- Fields, Gary S. 1994. 'Poverty and Income Distribution: Data for Measuring Poverty and Inequality Changes in the Developing Countries.' *Journal of Development Economics* 44(2) (June): 87-97.
- Food and Agriculture Organization of the United Nations. 1991. *The State of Food and Agriculture*. 1990. Rome.
- Franzosi, Roberto. 1989. 'One Hundred Years of Strike Statistics: Methodological and Theoretical Issues in Quantitative Strike Research.' *Industrial and Labor Relations Review* 42(3) (April): 348-61.
- Gaffney, Patrick D. 1994. 'Rwanda: A Crisis of Humanitarian Security.' Joan B. Kroc Institute for International Peace Studies *Report*, University of Notre Dame, no. 7 (Fall): pp. 1-4.
- Gaffney, Patrick D. 1996a. 'Binding up the Broken Promises of Democracy in Burundi: Causes, Results, and Prospects for Overcoming Cycles of Ethnic Violence.' Unpublished paper. University of Notre Dame, Notre Dame, Indiana.

- Gaffney, Patrick D. 1996b. 'The International Response to Burundi, 1993-1995, Compared to Rwanda, 1990-1994.' Paper presented to the International Studies Association meetings, San Diego, 17 April.
- Ghai, Dharam, and Radwan, Samir, eds. 1983. *Agrarian Policies and Rural Poverty in Africa*. Geneva: International Labour Office.
- Giliomee, Herman & Lawrence Schlemmer, eds. 1994. *The Bold Experiment. South Africa's New Democracy*. Halfway House: Southern Books.
- Goliber, Thomas. 1989. 'Africa's Expanding Population: Old Problems, New Policies.' *Population Bulletin* 44 (November): 10-11.
- Green, Reginald H. 1986. 'Hunger, Poverty and Food Aid in Sub-Saharan Africa: Retrospect and Potential.' *Disasters* 10(4): 288-310
- Greene, William H. 1993. *Econometric Analysis*. 2nd ed. Englewood Cliffs, NJ: Prentice Hall.
- Griffin, Keith B., and Khan, Azizur Rahman, eds. 1972. *Growth and Inequality in Pakistan*. London: Macmillan.
- Gurr, Ted Robert. 1970. *Why Men Rebel*. Princeton, N.J.: Princeton University Press.
- Gurr, Ted Robert. 1972. *Politimetrics. An Introduction to Quantitative Macropolitics*. Englewood Cliffs, NJ: Prentice Hall.
- Gurr, Ted Robert. 1993. *Minorities at Risk. A Global View of Ethnopolitical Conflicts*. Washington D.C.: The United States Institute of Peace Press.
- Gurr, Ted Robert and Duvall, Raymond Duvall. 1973. 'Civil Conflict in the 1960s: A Reciprocal Theoretical System With Parameter Estimates'. *Comparative Political Studies* 6(2) (July):135-170.
- Gurr, Ted Robert and Lichbach, Mark Irving. 1986. 'Forecasting Internal Conflict. A Competitive Evaluation of Empirical Theories'. *Comparative Political Studies* 19(1) (April): 3-38.
- Haggard Stephan, Lafay, Jean-Dominique, and Morrisson, Christian. 1995. *The Political Feasibility of Adjustment in Developing Countries*. Paris: Organisation for Economic Co-operation and Development.
- Holsti, Kalevi J. 1991. *Peace and War: Armed Conflicts and International Order, 1648-1989*. Cambridge: Cambridge University Press.
- Holsti, Kalevi J. 1996. *The State, War, and the State of War*. Cambridge: Cambridge University Press.
- Holsti, Kalevi J. 1997. 'Political Sources of Humanitarian Emergencies.' United Nations University/World Institute for Development Economics Research, Research for Action. Helsinki, Finland.
- Homer-Dixon, Thomas F. 1994. 'Environmental Scarcities and Violent Conflict: Evidence from Cases.' *International Security* 19(1) (Summer): 5-40.
- Homer-Dixon, Thomas F., and Percival, Valerie. 1996. *Environmental Scarcity and Violent Conflict: Briefing Book*. Toronto: American Association for the Advancement of Science.

- Horowitz, Donald L. 1985. *Ethnic Groups in Conflict*. Berkeley: University of California Press.
- Human Rights Watch. 1995. *Playing the 'Communal Card': Communal Violence and Human Rights*. New York.
- Hunter, Wendy. 1994. 'Contradictions of Civilian Control: Argentina, Brazil and Chile in the 1990s.' *Third World Quarterly* 15(4): 633-653.
- International Federation of Red Cross and Red Crescent Societies. 1994. *World Disasters Report 1994*. Dordrecht, Netherlands: Martinus Nijhoff.
- International Federation of Red Cross and Red Crescent Societies. 1996. *World Disasters Report 1996*. Oxford: Oxford University Press.
- International Labour Office. 1995 *World Labour Report, 1995*. Geneva.
- International Labour Organization. Jobs and Skills Program for Africa. 1981. *First Things First: Meeting the Basic Needs of the People of Nigeria*. Addis Ababa.
- Jazaury, Idriss; Alamgir, Mohiuddin; and Panuccio, Theresa. 1992. *The State of World Rural Poverty: An Inquiry into it's Causes and Consequences*. Published for the International Fund for Agricultural Development. New York: New York University Press.
- Jenkins, J. Craig and Kposowa, Augustine J. 1990. 'Explaining Military Coups d'État: Black Africa, 1957-84.' *American Sociological Review* 55 (December): 861-875.
- Jenkins, J. Craig and Kposowa, Augustine J. 1992. 'The Political Origins of African Military Coups.' *International Studies Quarterly* 36: 271-292.
- Johnson, T.H., Slater, R.O, and McGowan, P. 1984. 'Explaining African Military Coups d'État, 1960-82.' *American Political Science Review* 78(3): 622-640.
- Johnston, Bruce F., and John W. Mellor. 1961. 'The Role of Agriculture in Economic Development.' *American Economic Review* 51 (September): 571-81.
- Jung, Dietrich; Schlichte, Klaus; and Siegelberg, Jens. 1996. 'Ongoing Wars and their Exploitation.' In Van de Goor, Rupesinghe, and Sciarone, eds.
- Jung, Dietrich; Schlichte, Klaus; and Siegelberg, Jens. 1996. 'Ongoing Wars and their Exploitation.' In Van de Goor, Rupesinghe, and Sciarone, eds.
- Katz, Steven T. 1996. 'The Uniqueness of the Holocaust: The Historical Dimension.' In Rosenbaum, ed., pp. 19-38.
- Kaufman, Robert F. and Stallings, Barbara . 1989. 'Debt and Democracy in the 1980s: The Latin American Experience.' In Barbara Stallings and Robert Kaufman, eds. *Debt and Democracy in Latin America*. Boulder, Colo.: Westview.
- Keen, David. 1994. *The Political Economy of Famine and Relief in Southwestern Sudan, 1983-1989*. Princeton, N.J.: Princeton University Press.
- Keen, David. 1996. 'Violence, the Law, and Access to Resources.' Paper presented to a UNU/WIDER-Queen Elizabeth House, Oxford University meeting on 'The Political Economy of Humanitarian Emergencies.' Helsinki, Finland. 6-8 October.
- Kimenyi, Mwangi S. and Mbaku, John M. 1993. 'Rent-Seeking and Institutional Stability in Developing Countries.' *Public Choice* 77(2): 385-405.

- Kirkpatrick, Colin, and Diakosavvas, Dimitris. 1985. 'Food Insecurity and Foreign-Exchange Constraints in Sub-Saharan Africa.' *Journal of Modern African Studies* 23 (June): 326-42.
- Kposowa, Augustine J. and Jenkins, J. Craig. 1993. 'The Structural Sources of Military Coups in Postcolonial Africa, 1957-1984.' *American Journal of Sociology* 99(1) (July): 126-163.
- Lafay, Jean-Dominique and Lecaillon, Jacques. 1992. *La Dimension Politique de L'Ajustement Économique*. Texte préparé pour le Centre de Développement de l'OCDE, Paris, Septembre.
- Lardy, Nicholas R. 1983. *Agriculture in China's Modern Economic Development*. Cambridge: Cambridge University Press.
- Lemarchand, Rene. 1972. 'Political Clientalism and Ethnicity in Tropical Africa: Competing Solidarities in Nation-building.' *American Political Science Review* 66 (March): 68-90.
- Lewis, Peter. 1996. 'From Prebendalism to Predation: the Political Economy of Decline in Nigeria.' *Journal of Modern African Studies* 34(1) (March): 79-103.
- Lipton, Michael. 1977. *Why Poor People Stay Poor: A Study of Urban Bias in World Development*. London: Maurice Temple Smith.
- Lipton, Michael, and van der Gaag, Jacques, eds. 1993. *Including the Poor--Proceedings of a Symposium Organized by the World Bank and the International Food Policy Research Institute*. Washington, D.C.: World Bank.
- Lukic, Reneo, and Lynch, Allen. 1996. *Europe from the Balkans to the Urals: The Disintegration of Yugoslavia and the Soviet Union*. Oxford: Oxford University Press.
- Lundahl, Mats. 1997. 'Towards the Abyss? The Political Economy of Emergency in Haiti.' United Nations University/World Institute for Development Economics Research, Working Paper. Helsinki, Finland.
- Lunde, Tormod K. 1991 'Modernization and Political Instability: Coups d'Etat in Africa 1955-85.' *Acta Sociologica* 34(1): 13-32.
- Macrae, Joanna, and Zwi, Anthony, eds. 1994. *War and Hunger: Rethinking International Responses to Complex Emergencies*. London: Zed Books.
- Médecins Sans Frontiers. 1995. *Populations in Danger, 1995*. Edited by Francois Jean. London.
- Melkas. Helinä. 1997. 'Measurement of the Seriousness and Dynamics of Complex Humanitarian Emergencies: Prospects and Limitations.' United Nations University/World Institute for Development Economics Research Working Paper. Helsinki, Finland.
- Mills, Cadman Atta. 1989. 'Structural Adjustment in Sub-Saharan Africa.' Economic Development Institute Policy Seminar Report No. 18. Washington, D.C.: World Bank.
- Mohammed, Nadir A.L. 1992. 'Tank-Tractor Trade-off in the Sudan: The Socio-Economic Impact of Military Expenditure.' Paper prepared for CODESRIA Research Network on 'The Military and Militarism in Africa.' Dakar, Senegal, 16-19 December.

- Möller, V., Schlemmer, L., and du Toit, S.H.C. 1989. *Quality of Life in South Africa: Measurement and Analysis*. Pretoria: Human Sciences Research Council.
- Morrisson, Christian; Lafay, Jean-Dominique; and Dessus, Sebastien. 1994. 'Adjustment Programmes and Politico-Economic Interactions in Developing Countries: Lessons from an Empirical Analysis of Africa in the 1980s.' In Cornia and Helleiner, pp. 174-91.
- Moustafa, Moustafa Ahmed. 1995. 'The Political Economy of the Peace Process in a Changing Middle East.' Helsinki: UNU World Institute for Development Economic Research World Development Studies 8. December.
- Muller, Edward N. and Weede, Erich. 1994. 'Theories of Rebellion. Relative Deprivation and Power Contention'. *Rationality and Society* 6 (1) (January):40-57.
- Myrdal, Gunnar. 1968. *Asian Drama: An Inquiry into the Poverty of Nations*. 3 vols. Middlesex, England: Penguin Books.
- Möller, V., Schlemmer L., and du Toit, S.H.C. 1989. *Quality of Life in South Africa: Measurement and Analysis*. Pretoria: HSRC.
- Nafziger, E. Wayne. 1983. *The Economics of Political Instability: The Nigerian-Biafran War*. Boulder, Colo.: Westview Press.
- Nafziger, E. Wayne. 1986. *Entrepreneurship, Equity, and Economic Development*. Greenwich, CN: JAI Press.
- Nafziger, E. Wayne. 1988. *Inequality in Africa: Political Elites, Proletariat, Peasants, and the Poor*. Cambridge: Cambridge University Press.
- Nafziger, E. Wayne. 1993. *The Debt Crisis in Africa*. Baltimore: Johns Hopkins University Press.
- Nafziger, E. Wayne. 1994. *Poverty and Wealth: Comparing Afro-Asian Development*. Greenwich, Conn.: JAI Press.
- Nafziger, E. Wayne. 1995. *Learning from the Japanese: Japan's Prewar Development and the Third World*. Armonk, NY: M.E. Sharpe.
- Nafziger, E. Wayne. 1997. *The Economics of Developing Countries*. 3rd edition. Upper Saddle River, NJ: Prentice Hall.
- Nelson, Joan M., ed. 1990. *Economic Crisis and Policy Choice*. The Politics of Adjustment in the Third World. Princeton, New Jersey: Princeton University Press.
- O'Ballance, Edgar. 1989. *The Cyanide War: Tamil Insurrection in Sri Lanka (1973-88)*. London, Brassey's.
- Olsen, Bendigt. 1989. *The Sri Lanka Conflict: A Study of Elite Perceptions*. Bergen, Norway: Development Research and Action Programme (DERAP) Publication No. 251.
- Organization for Economic Cooperation and Development. 1995. *Efforts and Policies of the Members of the Development Assistance Committee: Development Cooperation: 1994 Report*. Report by James H. Michel, Chair of the Development Assistance Committee. Paris.
- Paniccià, Renato. 1996. 'Impoverishment, Food Consumption, and Health in Central and Eastern Europe during the Transition.' United Nations University/World Institute for Development Economics Research Working Paper. Helsinki, Finland.

- Payer, Cheryl. 1974. *The Debt Trap: The IMF and the Third World*. New York: Monthly Review Press.
- Pirttijärvi, Jouni. 1995. 'Zapatistit - uudenlainen kapinaliike.' *Kosmopolis* 25(3): 37-52. (Zapatistas - a new kind of rebellion movement?)
- Place, Frank, and Hazell, Peter. 1993. 'Productivity Effects of Indigenous Land Tenure Systems in Sub-Saharan Africa.' *American Journal of Agricultural Economics* 75(1) (February): 10-19.
- Platteau, J.P. 1996. 'The Evolutionary Theory of Land Rights as Applied to Sub-Saharan Africa: A Critical Assessment.' *Development and Change* 27(1) (January): 29-86.
- Population Reference Bureau. 1996. *1996 World Population Data Sheet*. Washington, D.C.: 1995.
- Prunier, Gérard. 1995. *The Rwanda Crisis, 1959-1994: History of a Genocide*. London: Hurst & Co.
- Prybyla, Jan. S. 1970. *The Political Economy of Communist China*. Scranton, PA: International Textbook.
- Putterman, Louis. 1993. *Continuity and Change in China's Rural Development: Collective and Reform Eras in Perspective*. New York: Oxford University Press.
- Rabushka, Alvin, and Shepsle, Kenneth A. 1972. *Politics in Plural Societies: A Theory of Democratic Instability*. Columbus, Ohio: Charles E. Merrill.
- Rapkin, David P. and Avery, William P. 1986. 'World Markets and Political Instability within Less Developed Countries'. *Cooperation and Conflict* 21 (2):99-117.
- Reno, William. 1995. 'Reinvention of an African Patrimonial State: Charles Taylor's Liberia.' *Third World Quarterly* 16(1) (March): 109-20.
- Reno, William. 1996a. 'Humanitarian Emergencies: and Warlord Politics in Liberia and Sierra Leone.' Paper presented to a UNU/WIDER-Queen Elizabeth House, Oxford University meeting on 'The Political Economy of Humanitarian Emergencies.' Helsinki, Finland. 6-8 October.
- Reno, William. 1996b. 'Ironies of Post-Cold War Structural Adjustment in Sierra Leone.' *Review of African Political Economy*, no. 67 (March): 7-18.
- Rosenbaum, Alan S., ed. 1996. *Is the Holocaust Unique? Perspectives in Comparative Genocide*. Boulder, Colo.: Westview.
- Rummel, Rudolph J. 1994. *Death by Government*. New Brunswick, NJ: Transaction Publishers.
- Schlemmer, Lawrence. 1994. 'Sustainable Development for South Africa: Proposition and Scenarios for Debate'. In Herman Giliomee and Lawrence Schlemmer, eds. *The Bold Experiment. South Africa's New Democracy*. Halfway House: Southern Books, pp. 99-111.
- Schlemmer, Lawrence and Giliomee, Herman. 1994. 'Introduction: In the Throes of a Brave and Bold Experiment'. In Herman Giliomee and Lawrence Schlemmer, eds. *The Bold Experiment. South Africa's New Democracy*. Halfway House: Southern Books, pp. 1-3.
- Seaman, John. 1993. 'Famine Mortality in Africa.' *IDS Bulletin* 24(4): 27-31.

- Sen, Amartya K. 1981. *Poverty and Famines: An Essay on Entitlement and Deprivation*. Oxford: Clarendon Press.
- Sen, Amartya K. 1983a. 'Development: Which Way Now?' *Economic Journal* 93 (December): 757-60.
- Sen, Amartya K. 1983b. *On Economic Inequality*. Oxford: Clarendon Press.
- Sen, Amartya K. 1986. 'The Causes of Famine: A Reply.' *Food Policy* 11 (May): 125-32.
- Sen, Amartya K. 1987. 'Reply: Famine and Mr. Bowbrick.' *Food Policy* 12 (February): 10-14.
- Sen, Amartya K. 1992. *Inequality Reexamined*. Cambridge, Mass.: Harvard University Press.
- Sen, Amartya K. 1995. 'Food, Economics, and Entitlements.' In Jean Drèze, Amartya Sen, and Athar Hussain, eds. *The Political Economy of Hunger: Selected Essays*. Oxford: Clarendon Press, pp. 50-68.
- Singer, Hans. 1990. 'The Role of Food Aid.' In James Pickett and Hans Singer, eds. *Towards Economic Recovery in Sub-Saharan Africa: Essays in Honour of Robert Gardiner*. London: Routledge, pp. 178-81.
- Squire, Lyn. 1981. *Employment Policy in Developing Countries: A Survey of Issues and Evidence*. New York: Oxford University Press.
- Stewart, Frances. 1993. 'War and Underdevelopment: Can Economic Analysis Help Reduce the Cost?' *Journal of International Development* 5(4) (July-August): 357-80.
- Stewart, Frances; Humphreys, Frank P.; and Lea, Nick. 1997. 'Civil Conflict in Developing Countries over the Last Quarter of a Century: An Empirical Overview of Economic and Social Consequences.' *Oxford Development Studies* 25(1) (February): 11-41.
- Stockholm International Peace Research Institute. 1995. *SIPRI Yearbook, 1995: Armaments, Disarmament and International Security*. Oxford: Oxford University Press.
- Stockholm International Peace Research Institute. 1996. *SIPRI Yearbook, 1996: Armaments, Disarmament and International Security*. Oxford: Oxford University Press.
- Turton, David. 1997. 'War and Ethnicity: Global Connections and Local Violence in North East Africa and Former Yugoslavia.' *Oxford Development Studies* 25 (February): 77-94.
- United Nations Development Programme. 1992. *Human Development Report, 1992*. New York: Oxford University Press.
- United Nations Development Programme. 1993. *Human Development Report, 1993*. New York: Oxford University Press.
- United Nations Development Programme. 1994. *Human Development Report, 1994*. New York: Oxford University Press.
- United Nations High Commissioner for Refugees. 1995. *The State of the World's Refugees*. Oxford: Oxford University Press.

- United Nations Trusteeship Council. 1961. *Report on Rwanda*. New York.
- United States Department of Agriculture. 1996. 'World Agricultural Supply and Demand Estimates.' Washington, D.C.
- United States Mission to the United Nations. 1996. *Global Humanitarian Emergencies, 1996*. New York.
- Uvin, Peter. 1996. 'Development, Aid, and Conflict: Reflections Starting from the Case of Rwanda.' Paper presented to the United Nations Department of Humanitarian Affairs, New York. 1 July.
- Uyangoda, Jayadeva. 1996. 'Militarization, Violent State, Violent Society: Sri Lanka.' In Kumar Rupesinghe and Khawar Mumtaz, eds. *Internal Conflicts in South Asia*. London: Sage.
- Väyrynen, Raimo. 1994. *Towards a Theory of Ethnic Conflicts and their Resolution*. Joan B. Kroc Institute for International Peace Studies, University of Notre Dame, Occasional Paper 6.
- Väyrynen, Raimo. 1996. 'The Age of Humanitarian Emergencies.' United Nations University/World Institute for Development Economics Research, Research for Action 25. Helsinki, Finland.
- Van de Goor, Luc; Rupesinghe, Kumar; and Sciarone, Paul, eds. 1996. *Between Development and Destruction: An Enquiry into the Causes of Conflict in Post-Colonial States*. Houndmills, England: Macmillan.
- Walton, John & David Seddon. 1994. *Free Markets and Food Riots*. The Politics of Global Adjustment. London: Basil Blackwell.
- Weinberg, Bill. 1995. 'From an antiauthoritarian perspective: interview with insurgent subcommander Marcos of the Zapatista National Liberation Army (EZLN). Love and Rage.' New York News Bureau, Newsgroup Soc.culture.mexican, 3 April.
- Woodward, Susan L. 1995. *Balkan Tragedy: Chaos and Dissolution after the Cold War*. Washington, D.C.: Brookings Institution.
- Woodward, Susan L. 1996. 'Bosnia and Herzegovina: Case Study in Political and Institutional Causes of Humanitarian Emergencies.' Paper presented to a UNU/WIDER-Queen Elizabeth House, Oxford University meeting on 'The Political Economy of Humanitarian Emergencies.' Helsinki, Finland. 6-8 October.
- World Bank. 1973. *World Bank Atlas: Population, Per Capita Product and Growth Rates*. Washington, D.C.
- World Bank. 1982. *World Development Report, 1982*. New York: Oxford University Press.
- World Bank. 1988. *Adjustment Lending Policies for Sustainable Growth*. Washington, D.C.
- World Bank. 1989. *Rwanda Public Expenditure Program: An Instrument of Economic Strategy*. Vol. I. South Central and Indian Ocean Department, Africa Region.
- World Bank. 1992. *World Development Report, 1992*. New York: Oxford University Press.

- World Bank. 1993a. *World Debt Tables: External Finance for Developing Countries, 1993-94*. Vol. 1. *Analysis and Summary Tables*. Washington, D.C.
- World Bank. 1993b. *World Development Report, 1993*. New York: Oxford University Press.
- World Bank. 1994. *World Development Report, 1994*. New York: Oxford University Press.
- World Bank. 1995a. *Global Economic Prospects and the Developing Countries, 1995*. Washington, D.C.
- World Bank. 1995b. *World Development Report, 1995*. New York: Oxford University Press.
- World Bank. 1996a. *African Development Indicators, 1996*. Washington, D.C.
- World Bank. 1996b. *Global Economic Prospects and the Developing Countries, 1996*. Washington, D.C.
- World Bank. 1996c. *World Debt Tables: External Finance for Developing Countries, 1996-97*. Vol. 1. *Analysis and Summary Tables*. Washington, D.C.
- Zartman, I. William, ed. 1995. *Collapsed States: The Disintegration and Restoration of Legitimate Authority*. Boulder, Colo.: Lynne Rienner.

Research in Progress RIP
UNU/WIDER's in-house publication series

RIP1 Transition and Income Distribution: Theory, Evidence and Initial Interpretation
by Giovanni Andrea Cornia, March 1996

RIP2 The Liberalization of Food Marketing in Sub-Saharan Africa by Pekka Seppälä,
September 1996

RIP3 The Distribution of Assets in Transitional Economies by Juha Honkkila, October
1996

RIP4 Labour Market Shocks, Psychosocial Stress and the Transition's Mortality Crisis
by Giovanni Andrea Cornia, October 1996

RIP5 Humanitarian Emergencies: Indicators, Measurements and Data Considerations
by Helinä Melkas, October 1996

RIP6 Financial Repression, Interest Rates, and Credit Allocation in Sub-Saharan Africa
by Michael Graham, October 1996

RIP7 A Review of Social Policy Implementation in Nigeria with Emphasis on Education
by Daniel Edevbaro, October 1996

**RIP8 Sharing in Community-based Social Services in Rural Tanzania: A Case Study of
Mtwara and Lindi Regions** by Marja-Liisa Swantz, October 1996

**RIP9 Impoverishment, Food Consumption and Health in Central and Eastern Europe
during the Transition** by Renato Panicià, October 1996

RIP10 Provision of Public and Merit Goods: Towards an Optimal Policy Mix? by Reino
Hjerppe, February 1997

RIP11 Poverty Alleviation during the Transition in Rural China by Zhu Ling, April 1997

RIP12 A Review of Welfare Changes in Asian Transitional Economies by Lu Aiguo,
April 1997

**RIP13 The Investment Decline in Transition Economies: Policy versus Non-Policy
Factors** by Vladimir Popov, May 1997

**RIP14 Short- and Long-Term Determinants of Cardiovascular Mortality: An
Econometric Assessment of the Working Age Population in Russia, 1965-95** by Renato
Panicià, June 1997

RIP15 War, Hunger and Flight: The Political Economy of Humanitarian Emergencies
by E. Wayne Nafziger and Juha Auvinen, June 1997

UNU/WIDER Publications

Katajanokanlaituri 6 B

00160 Helsinki, Finland

Telephone (+358-9) 6159911

Facsimile (+358-9) 61599333

Telex 123455 unuei fi

E-mail wider@wider.unu.edu