



AgEcon SEARCH
RESEARCH IN AGRICULTURAL & APPLIED ECONOMICS

The World's Largest Open Access Agricultural & Applied Economics Digital Library

This document is discoverable and free to researchers across the globe due to the work of AgEcon Search.

Help ensure our sustainability.

Give to AgEcon Search

AgEcon Search
<http://ageconsearch.umn.edu>
aesearch@umn.edu

*Papers downloaded from **AgEcon Search** may be used for non-commercial purposes and personal study only. No other use, including posting to another Internet site, is permitted without permission from the copyright owner (not AgEcon Search), or as allowed under the provisions of Fair Use, U.S. Copyright Act, Title 17 U.S.C.*

Multiple Progressions

A Newsletter for Alumni and Friends of the Department of Agricultural and Applied Economics



Department Head Named



James P. Houck

James P. Houck is the new head of the Department of Agricultural and Applied Economics. He was appointed as acting head in March, 1990 following Michael Boehlje's automobile accident and served in that capacity until his permanent appointment in October.

Houck, whose research and teaching have focused on trade and trade policy, completed his bachelor's and master's degrees at the Pennsylvania State University. He completed his Ph.D.

in Agricultural Economics here at the University of Minnesota in 1963. Following his doctoral work, Houck spent a year as an assistant professor at Penn State then went on to the Harvard Business School as a visiting assistant professor.

In 1965 Houck returned here to the Department of Agricultural Economics as an assistant professor, and was promoted to associate professor in 1967, and full professor three years later. He has served on the executive board of the American Agricultural Economics Association (AAEA) and was editor of the American Journal of Agricultural Economics and the AAEA Newsletter. He has been a visiting professor at several universities, including

The Department Head's Corner

Welcome to the second issue of the Department's alumni newsletter! I enjoyed introducing the first issue so much that I seized the chance to become department head in order to do it again. First of all, notice our new name on the masthead, *Multiple Progressions*. I like it! Submitted by 1977 alum, Dan Pearson, it captures the spirit of this enterprise. This makes Dan the winner of our official newsletter naming contest. His prize is having his picture appear somewhere in this issue. Look for it!

As you can see, this issue is not quite as hefty as the last one, but there is a lot of good stuff in these pages including a fascinating glimpse at the department's history. All of this material has been carefully winnowed and sifted by our seasoned editor, Mark Bultmann. Please continue to feed him information about your doings, interests, and travels. We certainly intend to publish a third issue, sooner or later.

(see Message, page 5)



Andrew Boss

the University of Sydney, in Australia, and Kasetstart University, in Bangkok, Thailand. He is the fourteenth permanent department head—several have served on an interim basis—and the fourth department alumnus to serve in that position, the first since Sherwood Berg (1957-63).

Houck's appointment continues a history of national and international agricultural economics scholars that have brought vision and strong, but diverse, talents to the position as department head. Throughout the past one hundred years, the department has grown larger and more sophisticated in its work. Its contributions have been widely recognized and its graduates are spread all around the world. The individuals who have led the department have all had a role in shaping those directions and accomplishments. Borrowing liberally from Willard Cochrane's, *Agricultural Economics at the University of Minnesota, 1886-1979*, published in 1983, we get some idea of what these leaders have contributed.

The first person to head the department was Andrew Boss, generally



John D. Black

regarded as the pioneer agricultural economist at the University of Minnesota. Appointed chief of the Division of Agronomy and Farm Management, Boss was involved in several professional areas, including animal and meat science, plant breeding, and animal breeding. As he turned his attention toward learning how farmers could become more profitable, his work came to include farm management.

He started the university's first farm management research by gathering data from fifteen farmers in the Northfield area who were willing to share their daily cropping information for an entire year. A fieldman visited the fifteen farms every day to gather the records from the previous day. Work on this project, which was the first of its kind in the nation, officially began on January 1, 1902. This project changed and expanded in the years that followed. New districts or counties were included and new information sought. In October 1906 Willet M. Hayes and Edward C. Parker published results of this research in the Minnesota Agricultural Experiment Station Bulletin (no. 97) under the title, "*The Cost of Producing Farm Products.*" This

research also laid the groundwork for the first agricultural economics course offered by the university, listed simply as "Farm Management" in the General Catalog.

In 1911 the Board of Regents established the Bureau of Research in Agricultural Economics in the Department of Agriculture. The new bureau was led by Assistant Professor Carl W. Thompson who served as director from 1912 to 1913. L.D.H. Weld transferred from the Department of Economics, on the Minneapolis campus, to take the position in 1913 and remained until 1915, when E. Dana Durand took over. Durand served until 1917.

John D. Black's arrival in 1918, with his newly earned Ph.D. from the University of Wisconsin, signaled new directions and dimensions in agricultural economics. The Division of Research in Agricultural Economics continued its work in farm marketing and cooperative organization, but expanded into areas such as land tenure, farm credit, production economics, consumption economics, price analysis, and farm policy. Black's dynamic leadership



O.B. Jesness



Sherwood Berg

and keen intellect advanced agricultural economics to new levels here at Minnesota and nationwide. He left the department in September 1927 to become a professor at Harvard University. In 1928 Farm Management and Agricultural Economics, which had been separate divisions since 1912, were combined.

Oscar Bernard (O.B.) Jesness left the University of Kentucky in 1928 to return to the University of Minnesota, where he had once been a student, to assume the leadership of the newly established Division of Farm Management and Agricultural Economics. He remained at that position for twenty-nine years. A prime example of the powerful academic department heads of the time, Jesness led with a strong hand. He was an influential leader and an intellectual who was an effective spokesperson for agricultural economics, for the department, and for the university.

The first two decades of Jesness' tenure was a stable period of little growth. However, the end of World War II brought changes. Class sizes increased and new faculty members were added. Research during this

era was focused on Minnesota and the commodities produced in the state.

Jesness retired in 1957 and was replaced by Sherwood "Woody" Berg, who arrived from Copenhagen, Denmark, where he had been with the Foreign Agricultural Service of the USDA. He had been serving as a U.S. agricultural attache to Norway and Denmark. Berg had begun his college education here at the School of Agriculture and had later returned to earn his Ph.D. in Agricultural Economics at the university. In between, he had gotten his B.S. from South Dakota State College in Brookings, and his M.S. from Cornell. His easygoing style was a dramatic change from Jesness. He sought faculty input on issues and brought democracy to many key decisions. Berg quickly ignited new energy in the department as the faculty found new freedom to move into expanded areas of research. Under his leadership, significant work was done in agricultural policy and international trade in agricultural products. Berg resigned as head in

1963 to become dean of the Institute of Agriculture, Home Economics and Forestry. He later went on to become president of South Dakota State University. Since his retirement from South Dakota State, Berg has continued to be active in the profession and has been involved in several international projects.

Elmer Learn, who had been a member of the faculty since 1957, served as head in 1963 and 1964. During his short tenure, he carried on many of Berg's initiatives. He left the department to become assistant to the president of the university. In 1968 Learn left Minnesota to take an administrative position at the University of California-Davis. He has recently retired from that position, but continues to teach and do research in the UC-Davis agricultural economics department.

Vernon Ruttan became the new department head in 1965. His previous work with the International Rice Research Institute in the Philippines fit well with President O. Meridith Wilson's efforts to expand the



Elmer Learn



Vernon W. Ruttan

university's involvement in the international arena. He had received his B.A. from Yale and his M.A. and Ph.D. from the University of Chicago. During Ruttan's tenure, involvement with several technical assistance projects, and grants from the Agency for International Devel-



Wesley "Burt" Sundquist

opment (AID) and the Ford Foundation, moved the department boldly into new international areas.

His focus was not singularly international, however. He expanded the department's work in such areas as consumption economics, regional economics, and planning and resource economics. He oversaw the integration of 14 extension staff into the department in 1966. Compared to several of his predecessors, Ruttan's tenure was short, but the department he left—renamed Agricultural and Applied Economics—was larger, more productive and more influential. He stepped down on July 1, 1970.

In 1971 Wesley "Burt" Sundquist left Washington where he was deputy administrator of the USDA Economic Research Service, to become the next department head.

Sundquist, who grew up in North Dakota, had completed his bachelor's degree at North Dakota State, his master's degree at the University of Kentucky, and his Ph.D. at Michigan State University. Coming here was something of a homecoming. He had developed alliances with the university from 1958 to 1965 when he was the agricultural economist for the Farm Production Economics Division of the Economic Research Service, USDA, stationed here in the Department. Known for his firm and steady leadership, Sundquist oversaw some notable changes, the most visible of which was the 1973 move from Haecker Hall to the new Classroom Office Building. The third floor of Haecker Hall had been home to the department since 1928.

While continuing to support the international programs, Sundquist strengthened undergraduate teaching. The number of undergraduates majoring in Agricultural Economics and Agricultural Business Administration increased dramatically during his tenure, as did the number of teaching faculty. The graduate program grew from seventy students in 1971 to one hundred in 1979, with much of the growth occurring during the last three or four years of the decade. He also increased support to such areas of applied economics as resources, regional development and planning, consumption, and public services. In 1979 he returned to teaching and research in the department, giving up his position as head.

G. Edward Schuh, internationally known for his work in foreign trade and international monetary exchange, succeeded Sundquist in July 1979. He had received his B.S. from Purdue, his M.S. from Michigan State, and his Ph.D. from the University of Chicago. Schuh had been on leave from Purdue before coming

to Minnesota, serving as USDA Deputy Assistant Secretary of Agriculture for International Programs. Schuh brought his abundant personal energy and unique style to the department head position. During his tenure, he reemphasized the department's international programs, while maintaining his involvement with his own scholarly and professional work. Throughout his career, he had worked on foreign technical assistance programs for Purdue and the Ford Foundation.

In 1984 Schuh left the department and the university to become the director of the Department of Agriculture and Rural Development at the World Bank in Washington, D.C. He returned, however, in 1987, to become dean of the Humphrey Institute of Public Affairs, where he has been able to maintain his ties with the department.

Willard Cochrane suggests that the history of the department parallels many of the national trends in agricultural economics, and—to some extent—the state of agriculture. The 1985 selection of Michael Boehlje,



G. Edward Schuh

as Schuh's successor, continued that parallel. In Minnesota, and throughout the Upper Midwest, production agriculture was in the midst of a financial crisis. Boehlje brought to his position a strong background in agricultural finance and farm management. He was able to maintain a leadership role in the profession: nationally, regionally, and at the state level.

He came to Minnesota from Iowa State University, where he had been assistant dean of the College of Agriculture. He earned his B.S. from Iowa State, and his M.S. and Ph.D. from Purdue.

During the 80s the College of Agriculture responded to significant enrollment declines with a renewed emphasis on undergraduate programs. Under Boehlje, the department extensively revised its undergraduate curriculum and took an active leadership role in Project Sunrise, the college's effort to modernize curriculum and strengthen the experience of undergraduates. The department strengthened two critical initiatives with the newly created Center for International Food and Agricultural Policy, and the Center for Farm Financial Management which provided strong support to farmers, lenders and extension staff.

Following a serious automobile accident in January 1990, Boehlje chose not to seek reappointment and stepped down last summer. He continues his research, teaching and extension, and is again actively contributing to the intellectual work of the department and the profession.

As the department moves into the 90s, it faces many challenges. Some will be familiar, such as budget and reallocation. Others are unforeseen and will be dictated by factors in and



Michael Boehlje

out of the department. Effective leadership has been an important part of the department's history; it will be continue to be an important factor in the future.

(Message from page 1)

As most everyone knows, these are not good times for the State of Minnesota or the University. Financial stringency and budget difficulties seep into every corner, including our own department. However, the high quality of our faculty, staff, and students along with the importance of our programs allows me to remain quite optimistic about our future. We have an effective five-year reallocation plan in hand that will allow us to move more resources into high priority areas identified at both the collegiate and department levels. These include environmental economics, international economic relations, food markets and marketing, and

small business development to name a few. Our undergraduate course enrollments have been growing recently, and our graduate program continues to attract many high-quality applicants.

At the moment, I am rather confident that we will be able to recruit and fill the two vacancies created by the resignations of John Lawrence and Ted Graham-Tomasi. John is leaving to join the extension faculty at Iowa State University, a move that is professionally attractive and one that brings him back to his home state. Ted is joining the Agricultural Economics Department at Michigan State University; his wife, Robin, is also joining the MSU faculty in the field of Public Health. We are all very reluctant to see these valued colleagues depart, but we surely wish them the very best.

Now sit back and browse through your copy of *Multiple Progressions*. We are very glad to be with you again. Please stay in touch with us.

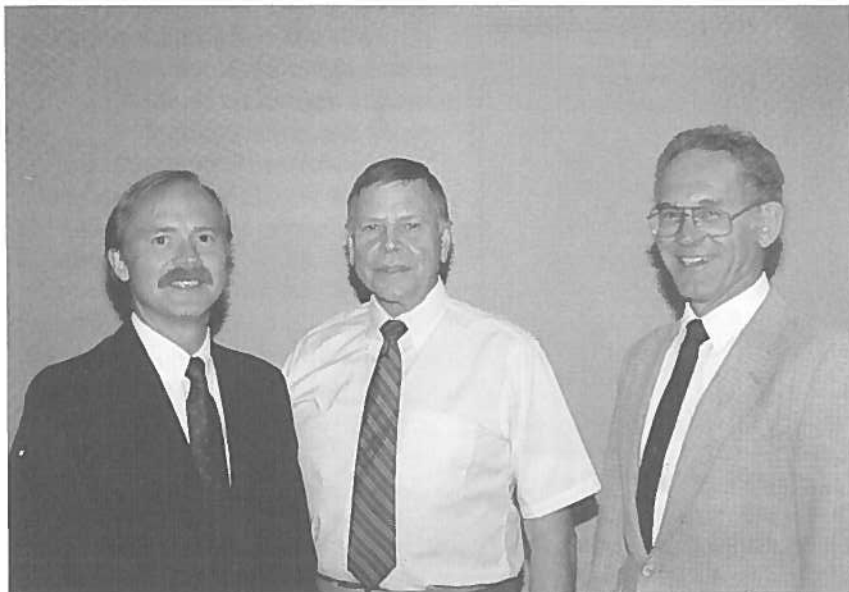


James P. Houck

Alumni News?

We would like to hear from you. Our address and a form you can use are at the back of this newsletter (or send us a letter or card).

The Undergraduate Programs



Glenn Pederson, left, Major Coordinator for Agricultural Business Management, Reynold Dahl, Major Coordinator for Applied Economics and Vernon Cardwell, Major Coordinator for Agricultural Industries and Marketing and Professor of Agronomy and Plant Genetics, co-hosted the second annual undergraduate luncheon for students in the three majors on May 17 at the Earle Brown Center of the St. Paul Campus.

The major in Applied Economics has been well-received. In fall quarter 1990, 60 students were enrolled (including 16 students in the old major in Agricultural Economics). The number inquiries from students in the College of Liberal Arts and the number of such students registering for ag econ courses is increasing. The intent of this curriculum is to offer flexibility to students while providing a strong core of knowledge of economics principles and their applications. Areas of emphasis include: management and finance; marketing; trade and development; resources and environment; as well as an individual area of emphasis. The Applied Economics major is a good alternative to a major in Agricultural Business Management. It prepares students for careers in private industry, government agencies,

agribusinesses or for graduate work. Reynold Dahl took over the role of major coordinator, replacing John Waelti.

Glenn Pederson is the new major coordinator for Agricultural Business Management major. He replaced Rob King, who was on sabbatical leave this past year. The Ag Business major has seen a modest growth in its enrollment over the past year.

On May 17, 1991, the major coordinators for Agricultural Business Management, Applied Economics and Agricultural Industries, hosted the second annual undergraduate luncheon. Over 75 students and advisors from the three programs attended. The luncheon provided students and advisors the opportunity to get together for an

end-of-year social. During the luncheon, there was a short awards ceremony to recognize some of the special accomplishments of the students. Several scholarship presentations were also made during the ceremony. Many of the scholarship winners are pictured on the following page.

Undergraduate Awards

The 1991 Wall Street Journal Award, given annually to the graduating senior with the highest GPA in the Department, was won this year by Bradley Nosbush of Fairfax, Minnesota. Brad will receive a special engraved paperweight and a year's subscription to the Wall Street Journal. His name will also be placed on a Wall Street plaque that hangs in the department conference room. This is the 25th year that the faculty has awarded the Wall Street Journal Award.



Bradley Nosbush

Deborah Mayo, senior from Sherburne, Minnesota was a Certificate Winner for the Dean Freeman Medal, given annually to the students on the St. Paul Campus who represent the highest contributions and accomplishment of leadership on the campus. The Dean Freeman Medal, represents the highest honor for leadership on the campus and is usually accompanied by 2 to 3 certificate winners. Deborah graduated this June with an exemplary list of leadership experiences as well as a strong academic record. She has been a tremendous contributor to the campus and the department.

Scholarship Winners

During the luncheon on Friday, May 17th, several students were recognized as scholarship winners.

Winners of the Farm Credit Services' Scholarships were **Thomas Johnson**, Crystal, MN, **Julie Schneck**, Milan, MN, and **Barbara von Zomeren**, Alexandria, MN.

Winners of the Cenex Cooperative Foundation Scholarships were **Michael Busch**, St. James, MN, **Lonnie Carrigan**, Hutchinson, MN, **Mark Heil**, Theilman, MN, and **Nori Westrom**, Elbow Lake, MN

Winners of the Benson-Quinn Company Scholarships were **Jon Brekke**, St. James, MN and **Lori Michels**, Madelia, MN. **Larry Neuman**, Benson-Quinn CEO and department alum was on hand to congratulate the winners of the Benson-Quinn Scholarships.



The winners of the Benson-Quinn Scholarships were Jon Brekke and Lori Michels. They are pictured with Larry Neuman, CEO of the Benson-Quinn Company.



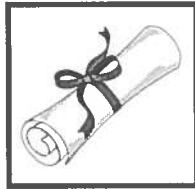
Julie Schneck winner of a Farm Credit Services Scholarship was joined by John Schroeder, Farm Credit Services.



The winners of the Cenex Foundation Cooperative Studies Scholarships, left to right, were Lonnie Carrigan, Mark Heil, Nori Westrom and Michael Busch. Mary Kaste, right, from the Cenex Foundation was on hand for the presentations of the scholarships.

Undergraduate Degrees

The following students have recently completed their undergraduate degrees.



Bachelor of Agricultural Business Administration

Degrees Confirmed as of December 9, 1989

Eric Hartman, Okabena
Wendy K. Holmin, Courtland
Jerry A. Herrle, St. Cloud, with distinction
Michael R. Nimz, Blue Earth
Rose Ann Retka, Le Sueur
Michael J. Rokala, Dassel

March 17, 1990

James Beulke, Wanamingo
Douglas Johnson, Roseville
Steven Radke
Philip Skoog

June 29, 1990

Lynnette Baker, Edgerton
Jodie Butler, Madison, WI
Michael Johnson, Canton
Dean T. Larson
Curvin Everton Maingot
Scott McKay
Danial Wattenhofer, Park Rapids

December 12, 1990

Gregg Adler, Minneapolis
Victoria J. Buchholz
Blaine Gatzke, Preston
Amy Heiskala, Crystal

Timothy Kukowski, Lewiston
Theodore M. Nelson, Webster
Randy Pelphrey, Minford, OH
Gregg Allen Pioske, Le Sueur
Monte E. Rude, Minneapolis
Peter D. Rudeen, Bird Island
Bruce J. Serbus, Danube
Twylla Geise Vetsch,
Pine Island

March 18, 1991

Paula Kay Boehlke, Waverly
Dean W. Boorman, Stillwater
Daniel Jirele, Owatonna
Brian Kahnke, Kenyon
Brett A. Peterson, Mankato
John P. Wieser



Bachelor of Science - Agricultural Economics

Degrees Confirmed as of December 9, 1989

Even Bjornstad, Rindal, Norway
Jorunn Grande, Steinkjer, Norway
Lawrence Jelinski
Janet Sletner, St. Paul

March 17, 1990

Tissah Georges Ntsche, Cameroon
Mark Zenner, Belgrade

June 29, 1990

Paul Cebulla, Browerville
Brian Pfeiffer, Shoreview
David Rosenhamer, Sleepy Eye
Dennis Walz, Belgrade

August 22, 1990

Darrin M. Rosha, Owatonna

December 12, 1990

Kristine G. Lekander, Kimball
Troy J. Michels
Shane Rossow, Minneapolis
Robert A. Sommers, Faribault

March 18, 1991

Duane C. Anderson, Lake Lillian
Ruth E. Hernandez
Jon D. Luhman, Goodhue, with high distinction
Dean G. Meyer, Melrose

Do You Have Any Old Photos?

If you have any old photographs of department events, the faculty or fellow students, don't throw them away. We would be interested in seeing them. If you can, send along any information you can provide such as approximate date, names of those in the pictures and the event. Send them to Editor, *Multiple Progressions*, Department of Ag & Applied Economics, 231 Classroom Office Building, University of Minnesota, St. Paul, MN 55108.

The Graduate Program



Pictured above are some of the students who began the graduate programs in the fall of 1990. Front row: Zenaida Huelgas, Debra Elias, James Heintz, Barnabas Kiiza-Amoot, Ricardo Cavalcanti. Second row: Joe Ssenteza, Chan jin Chung, Lynn Kennedy, Geoffrey Green. Third row: Sabine Rhades, Timothy Soulen, Mietek Glowka, Godfrey Bahiigwa, Jun Zhao.

The graduate program in the Department of Agricultural and Applied Economics continues to be one of the strongest in the nation. This year there were over 100 students enrolled, 61 percent in the Ph.D. program, 57 percent from foreign countries and one-third female. Fifty-six percent of the women and 37 percent of the men were from the United States.

The students came from 32 different countries. Besides the United States, the countries most represented in our graduate program are China with nine students, the Philippines and India with 5 students each, Pakistan and Peru with 4 students each, Korea, Morocco and Uganda with 3 students each and Brazil, Canada,

Mexico, Nigeria, and Norway with 2 students each. We have one student from each of 18 other countries. Jean Kinsey is the current Director of Graduate Studies and Florence Hanson remains the secretary for the program. They are kept very busy with new applications as well as the stream of administrative details for the current students. The demand for our graduate program remains strong. We had over 135 applications in the past year; by June 1 we had admitted 78 (57%) on academic grounds. The most popular fields of interest among the new applicants are natural resources and environmental economics and international development.

We had less money than usual to allocate to research assistantships this year, but seven of our new students will be arriving with fellowships for the first year including one USDA National Needs Fellowship to work in the area of International Marketing. Two of our current students received doctoral dissertation fellowships for next year, one from the Graduate School and one from CYMMIT, an international agricultural research institute in Mexico. Another student received a two year fellowship to conduct research in Nigeria from the International Institute of Tropical Agriculture. Other students have fellowships from the MacArthur Foundation, the Fulbright Foundation, and the World Bank and with our own Center for International Food and Agricultural Policy.

In the past year we graduated 16 students with Ph.D.s and 22 with M.S. degrees. That brings the total number of graduate degrees from this department to 1041 since 1914. Among the group that graduated in this last year, jobs were taken at General Mills, CENEX, the USDA - Foreign Agricultural Service and Economic Research Service, the State of Minnesota, the International Food Policy Research Institute, the University of North Dakota, and Michigan State University.

With a rich tradition, a strong faculty and a vibrant and active graduate student body, we are looking forward to continuing a high quality program into the next century.

The Grad Club

The Grad Club has continued to be active this past year. Through the Grad Club, students organize social



Bob Hearne

and sporting activities, provide necessary services for fellow students and the department as a whole, represent student

issues in both the Faculty and Graduate Committee meetings, and serve on most of the Department's committees. Officers are elected by the students and the President of the Grad Club appoints colleagues to serve on the various departmental committees.

Grad Club officers for the 90-91 school year were: Bob Hearne, President; Michael Collins, Ph.D. Representative; Dana Huseby, M.S. Representative; Fouad Harraqi, Foreign Student Representative; and Ulrich Hausner, Treasurer. This group set as its primary goal the promotion of informal interaction among faculty and graduate students.

This year graduate students became more active in informal and intramural sporting activities. Departmental teams were formed in softball, volleyball, and soccer. The Grad Club has promoted this activity through the purchase of volleyball and soccer equipment. Although practice may not make perfect, graduate students have enjoyed these activities on a semi-regular basis.

The Grad Club again sponsored the annual Steak Fry/ Orientation Picnic, The International Dinner, and occasional Friday afternoon Happy Hours. This year The International Dinner was a big success with over 150 people attending. New features included a pinata and international music. Students, staff, faculty, and families danced to music from four continents. Of course, the food was delicious.

The Third Floor Coffee Lounge has continued to be a center of weird discussion and absurd hypotheses. Recently, dialogue has been fueled by premium "gourmet" coffee. Do not fear that the new smells and tastes have completely changed room 325, Dr. Raup still decorates the lounge with files and data.

The graduate student computer lab in room 124 has also been improved. With the financial assistance of the Department, the facility is undergoing a steady renovation. New personal computers and printers have been installed. While supply still does not meet demand during peak hours, the new faster machines with hard drives are a great improvement over the past.

Graduate Degrees

Master's Students

Amitrajeet Amarnath Batabyal completed his degree in July 1990. His thesis title was *A Simple General Equilibrium Model of the Effects of Unilateral Environmental Controls*.

David Brewer completed his degree in October 1990. His thesis title was *Transboundary Phosphorus Pollution in the Great Lakes: A Public Choice Analysis*.

Zhuo Cao completed her degree in June 1990. Her thesis title was *A Supply and Demand Analysis of the Urban Pork Market in China*.

Kelly Ann Day completed her degree in August 1990. Her thesis title was *Federal Funding of Natural Resource Research and Development, 1978-1988*.

Lafayette P. Duarte completed his degree in August 1990. His thesis title was *Evaluation of the Agricultural Financial Analysis Expert Systems*.

Augusto A. Herrera completed his degree in June 1990. His thesis title was *Evaluation of the Agricultural Policies on Pricing and Trading Decision Concerning Rice and Coffee in Panama During the Period 1970 to 1987*.

Frank P. Jetter completed his degree in October 1990. His thesis title was *An Economic Analysis of the Profitability of Option Writing on Soybeans*.

Stuart T. Lee completed his degree in September 1990. His thesis title was *The Waterfowl Hunting Value of Restored Wetlands in Minnesota*.

Bruce E. Lyman completed his degree in January 1990. His thesis title was *Sustainable Farming: An Evaluation of Selected Options for a Cash Grain Farm in Southwest Minnesota*.



In 1964, several members of the faculty put together a skit that provided some good natured kidding for a group of enterprising, male graduate students who shared an apartment on Larpenteur Ave near the campus. Harold Jensen, the barber plays the part of Don Taylor, known for his bargain haircuts for fellow graduate students. Darrel Fienup, sitting in the barber's chair, played the part of a student taking advantage of Don's discount cut. (Do you think he got an extra discount?) To the left, Elmer Learn, playing the part of Osama Al-Zand, was actively marketing Don's discount cuts. Burt Sundquist, sitting to the right, in the apron, and waiting for the next cut, played the role of Orval Kerchner, a cook of some renown among his peers.

Mark McGuire completed his degree in October 1990. His thesis title was *Lost Directions: U.S. Foreign Assistance Policy Since New Directions*.

James D. Monke completed his degree in April 1990. His thesis title was *Pre-Retirement Investment Strategies for Farmers*.

Marcelo E. Montero completed her degree in December 1990. Her thesis title was *Nonparametric Tests in Production Analysis: An Empirical Application to the U.S. Agricultural Sector*.

Kathleen M. Novak completed her degree in August 1990. His thesis title was *State Government and Telecommunications in Rural Development: A Case Study of the Minnesota Department of Revenue Remote Telephone Collection Office*.

Catherine S. Otte completed her degree in September 1990. Her thesis title was *The West German Currency Reform in 1948 and Implication for Economic Reforms in the Soviet Union*.

David A. Pottebaum completed his degree in August 1990. His thesis title was *The Benefits of Groundwater Pollution Avoidance: A Case Study in Southeastern Minnesota*.

Winston T. Rego completed his degree in March 1990. His thesis title was *Is the Use of Mathematical Models in Agricultural Economics Scientific?*

Charles A. Rodgers completed his degree in May 1990. His thesis title was *The Off-Site Economics Benefits of Soil Conservation: A Review and Discussion of Recent Literature on the Recreational Demand for Water Quality Improvement*.

Andrew L. Schwab completed his degree in December 1990. His thesis title was *The Effect of Sugarbeets on Relative Land Prices in Southern Minnesota*.

Jong Wang completed his degree in July 1990. His thesis title was *Economic Analysis of the United States Aluminum Industry*.

Scott M. Wulff completed his degree in February 1990.

Zhi Xu completed his degree in April 1990. His thesis title was *Regional Impact of Technical Change in Forestry: The Case of Structural Particleboard in the United States*.

David E. Zanussi completed his degree in January 1990. His thesis title was *Applied Risk Management Strategy for a Mid-Continent Refiner*.

Ph.D. Students

Hans A. Andersson completed his degree in February 1990. His dissertation title was *Owner Operated Land, Fixed Rent Leases and Share-Leasing Arrangements: Some Implications for Asset and Debt Restructuring on Minnesota Farms*.

Jong H. Bae completed his degree in June 1990. His dissertation title was *Estimating Dynamic Input Demand Primal and Dual*.

Nir E. Becker completed his degree in July 1990. His dissertation title was *Dynamic Supply from a Common Property Resource: Water Diversions from the Great Lakes*.

Anthony C. Crooks completed his degree in August 1990. His dissertation title was *Modeling the Dairy Cooperatives Sector for Policy Analysis*.

Joan R. Fulton completed her degree in December 1990. Her dissertation title was *Centralization Versus Decentralization of Decision Making Authority in Grain Marketing Cooperatives*.

Hermanto completed his degree in August 1990. His dissertation title was *Demand for Inputs and Supply of Rice Under Risk and Selectivity Bias: A Study of Indonesian Farmers*.

David D. Johnson completed his degree in August 1990. His dissertation title was *Dynamic Aspects of Grain Merchandising Decisions*.

Martin A. Johnson completed his degree in December 1990. His dissertation title was *Agricultural Policies as Nash Equilibria*.

Hun Kim completed his degree in October 1990. His dissertation title was *Information in the Term Structure of Commodity-Specific Interest Rates in the Chicago Wheat Futures Market*.

Luis F. Macagno completed his degree in September 1990. His dissertation title was *The Nature and Distribution of Gains from Quality Improving Research in a Multimarket Framework: The Case of Barley*.

Anita Regmi completed her degree in September 1990. Her dissertation title was *The Value of Information in Integrated Pest Management of Corn Rootworm and European Corn Borer in Minnesota*.

Iain G. Shuker completed his degree in December 1990. His dissertation title was *The Economics of Information Production and Use: An Application to Agribusiness Cooperatives*.



In 1978, Jeff Madsen, Howard Leathers, Laura Bipes and Brian Oleson (left to right) provided some of the entertainment at the annual International Dinner

Champak P. Pokharel completed his degree in August 1990. His dissertation title was *Portfolio Adjustment and Asset Fixity Under Uncertainty at Agricultural Banks*.

Jorge Ramirez completed his degree in August 1990. His dissertation title was *The Role of Irrigation Development in the Indian Foodgrain Sector*.

Peter L. Stenberg completed his degree in July 1990. His dissertation title was *A University's Relationship to High-Tech Industry and the Regional Economy: The Case of Minnesota and the U.S.*

Man-Sik Yoo completed his degree in October 1990. His dissertation title was *An Application of a Linear-Quadratic Regulator Optimal Control Problem for a Beef Cattle Operator and Its Implications*.

Faculty News

Jeffrey Apland, associate professor, has spent this past year on a sabbatical leave at the Swedish University of Agricultural Sciences (referred to in Sweden as Ultuna), Department of Economics in Upsala, Sweden. His work there has focused on a dairy project that is attempting to assess the economic impacts of deregulation in the sector. From all accounts, Jeff has enjoyed his time in Sweden. He will be returning to the Department in September.

Mike Boehlje, professor, as noted in the article on department heads has made a dramatic recovery from his accident in January of 1990. He has returned to his work in teaching, research and extension. He plans to take a sabbatical at Purdue University during the 1991-92 year. He will be working at the Center for Agribusiness Management where he intends to teach, take courses and develop research and educational programming ideas in the areas of food safety/quality, and strategic management of small businesses. He will return to the Department in the summer of 1992 and participate in teaching, research and extension programs with a focus in these new areas of work. While at Purdue, Mike also hopes to take advantage of their Aviation Technology program and complete his instrument training so he can fly regularly without getting caught in inclement weather.

Mike passed along this update: "I have had three rounds of surgery since leaving the hospital in March of 1990 and they all have been very successful. My therapy continues to go well and except for periodic checkups, I am about done with the

reconstruction process. As a friend of mine quipped recently, 'When those doctors get done with you, you'll be in better shape than before the accident!'. I have been enjoying my increased flexibility during recent months to write, work with students, and contribute more substantially to our extension education program.

Thanks again for all your support and encouragement during the past few months and years and I look forward to continued challenges and opportunities in the Department of Agricultural and Applied Economics at the University of Minnesota."

Karen Brooks, assistant professor, is currently on leave with the World Bank in Washington D.C. working in the Agricultural Policy Division of the Agriculture and Rural Development Program. The attention of her work has been in Eastern Europe and the USSR. She has devoted most of her attention to land reform and the implications of price liberalization in Eastern Europe. She recently returned to the University to be a keynote presenter in the University's MacArthur Program on the economic transition in East Europe and the USSR.

K. William Easter, professor, presented papers at the Association of Environmental and Resource Economists workshop on "The Management of Nonpoint-source Pollution" and the "Workshop on Water use Conflicts in Asian Metropolises" He also attended an IFPRI-IIMI workshop on Irrigation Performance in London. Bill will be spending 1991-92 with the World Bank in Washington, D.C. working on water policy questions. He is also the proud grandparent of a granddaughter born in September, 1991.

Ted Graham-Tomasi, associate professor, along with 1988 Ph.D. alum, Wiktor Adamowicz, and Jerry Fletcher, Purdue University received the Outstanding Journal Article Award from the *Canadian Journal of Agricultural Economics*. The full citation for the article is: Adamowicz, W.D., T. Graham-Tomasi, and J.J. Fletcher, "Inequality Constrained Estimation of Consumer Surplus, *Canadian Journal of Agricultural Economics*, 37:3, Nov. 1989.

James P. Houck, professor and department head was recently elected as president-elect for the American Agricultural Economics Association. Jim has held several other positions for the AAEA. He is the 7th member of the Minnesota faculty to hold the AAEA presidency.

Rob King, professor, has spent the past year on a sabbatical leave in the Department of Agricultural and Resource Economics at Oregon State University in Corvallis, OR. Rob's work at Oregon has centered on two areas. One is a research project on farm information systems. The second is further study and work on the decision processes of farm and agribusiness firms. Rob and Iain Shuker received the 1990 Edwin G. Nourse Award, presented by the American Institute of Cooperation for Iain's dissertation. The award is given annually for the top dissertation submitted for work on cooperatives.

Jean Kinsey, professor, has been appointed by the Board of Governors of the Federal Reserve System to serve as a Director on the Board of Directors for the Ninth Federal Reserve District. The Ninth District, with its headquarters in Minneapolis, is made up of Minnesota, Montana, North and South Dakota, northwestern Wisconsin and the Upper



The annual faculty retreat, held in May, brought together faculty and staff to discuss important issues of priorities and future directions. It also provided an opportunity for photographs. Standing, left to right, Yacov Tsur, Steven Taff, Carole Yoho, Harald von Witzke, Jean Kinsey, George Morse, Bill Easter, Ben Senauer. Seated, left to right, Philip Raup, Laura Bipes, James Houck, Terry Roe, Willard Cochrane and Reynold Dahl.

Peninsula of Michigan. The responsibilities of the directors are broad, ranging from overseeing the general operations of the Reserve Bank to reporting information concerning district economic conditions. Directors play a more direct role in the formulation of monetary policy. They establish the discount rate every 14 days, subject to review and approval by the Board of Governors. This is the interest rate financial institutions pay when borrowing from the Federal Reserve for temporary, emergency or seasonal needs. Jean also is a co-author on a new book, *Food Trends and the Changing Consumer* along with Ben Senauer and Elaine Asp, *Food Science and Nutrition*.

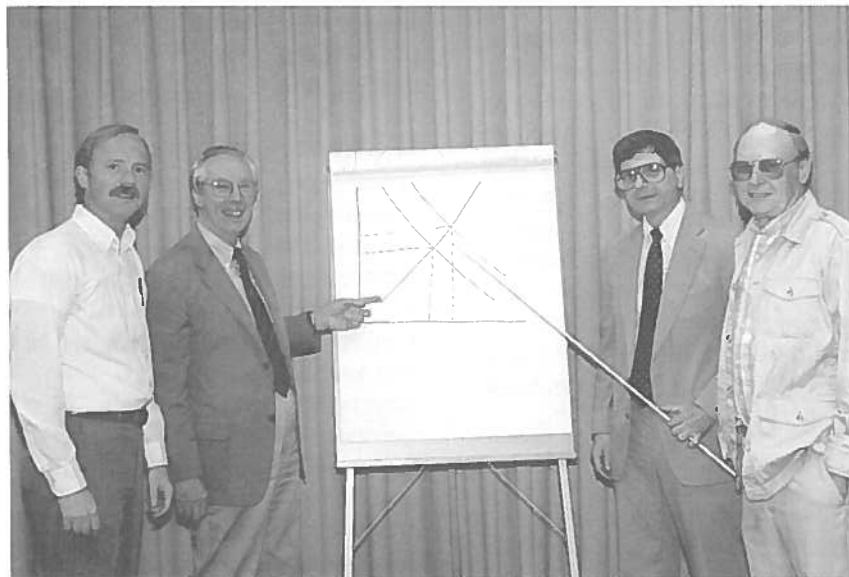
William Lazarus was promoted to an associate professor with tenure in the Spring of 1991. Bill's work is in farm business and financial management, the economics of alternative enterprises and technologies and agricultural information systems.

Jerry Hammond, professor, received the Farmers Union Milk Marketing Cooperative's Meritorious Service Award for his ongoing efforts in milk marketing. In particular his outstanding efforts in

support of national Class I pooling and other meaningful reforms of the federal milk order system through the ongoing national order hearing process were recognized. The award was given to Jerry on February 1 at the Farmers Union Milk Marketing Cooperative's annual awards banquet in Madison, Wisconsin.

Kent Olson was promoted to an associate professor with tenure in the spring of 1991. Kent's work is in the area of farm and financial management, farm records and production economics.

C. Ford Runge, associate professor, is currently on a sabbatical leave in Europe. During his leave he will be at the University of Dijon in France and the University of Padova in Italy. He will be conducting research European Community's use of health, safety and environmental regulations as non-tariff trade barriers in connection with the 1992 Single European Act. His sabbatical, which began this past May will run through April 1992.



Left to right, Glenn Pederson, Vernon Ruttan, James Houck, Willis Peterson



Standing, left to right, Arley Waldo, Mike Boehlje. Seated, left to right, Evette Harris, James Houck, Vernon Eidman, Mark Bultmann.

Vernon Ruttan, regents professor, was recently awarded an Honorary Degree by Purdue University. His degree was given in recognition of his major scholarly contributions to the economics of agricultural development and his distinguished service to the agricultural economics profession and the international development community. Ruttan was on the faculty at Purdue from 1954 until 1963.

Ruttan was also the inaugural lecturer at the Pennsylvania State University's College of Agriculture Distinguished Lecture Series in April. Ruttan presented three lectures during his three-day stay at Penn State. The first was "Constraints on Agricultural Development: Into the 21st Century." The other two lectures were "Induced Technical and Institutional Innovation" and "Ethical Responsibility in Agricultural Research."

Ed Schuh, dean, Humphrey Institute of Public Affairs and professor, De-

partment of Agricultural and Applied Economics, is currently chairing a national task force that has a mandate to suggest ways to revitalize United States' foreign aid policy. The Task Force is an initiative of the Board for Interna-



Standing, left to right, Rob King, Kent Olson, Ted Graham-Tomasi, Claudia Parliament, Jerry Hammond, Burt Sundquist, Michael Schmitz, Dick Levins, Bill Lazerus. Sitting, left to right, Delane Welsch, Beth Walter Honadle, James Houck, Ed Lotterman, Ken Thomas, Earl Fuller.

tional Food and Agricultural Development and Economic Cooperation, the Ford Foundation and the Rockefeller Foundation. The Task Force is made up of nationally and internationally recognized scholars in international development.

Ben Senauer, professor, along with Jean Kinsey and Elaine Asp, Department of Food Science and Nutrition, have written a book, *Food Trends and the Changing Consumer*, scheduled for publication by Eagan Press, Eagan, MN in the summer of 1991.

Stanley Stevens was promoted to an associate professor with tenure in the spring of 1991. Stan's work focuses on grain marketing.

Burt Sundquist is the Vice President for Programs for the AAEA Foundation Board. A new initiative of the board is to help strengthen the agricultural economics profession in the central European countries via more intensive involvement with AAEA. Burt will be spending part of the 1991 summer in Uganda to

work with the Ministry of Agriculture in Planning an organizational unit to work on policy and strategy analysis. The work is being done under the sponsorship of MUCIA.

New Faculty

Richard Alderfer joined the faculty in December of 1990. His position is unique to the department in that he is stationed at the West Central Experiment Station in Morris, Minnesota. His work will be directed toward applied production economics and extension farm management, working with the staff of the Experiment Station and the faculty here in the Department. Richard came to the department after finishing his Ph.D. at Michigan State University. He earned both his master's and bachelor's degrees from Purdue University.

Beth Walter Honadle joined the faculty in September, 1990. She is a program leader in the Minnesota Extension Service's Community Economic Development program. Beth completed her Ph.D. at Syracuse University. She completed masters' degrees in both Economics and Public Administration also at Syracuse University. Her bachelor's degree is from the University of Wisconsin at Madison. Prior to coming to Minnesota, she was the National Program Leader for Economic Development, Extension Service, Natural Resources and Rural Development unit, U.S. Department of Agriculture. In the next year, Beth plans a series of staff development activities for Minnesota Extension Agents in economic

development, a national growth management workshop and working closely with a legislative committee on state economic development policy. Beth and her husband George live on a 170 acre farm in Chisago County.

Departures

John Lawrence, extension economist and assistant professor, specializing in livestock marketing, resigned June 30, 1991 to accept a position at Iowa State University. John had joined the Minnesota faculty in January 1990.

Glenn Nelson resigned his position as professor on December 30, 1990. Glenn had been a member of the faculty since 1977. He focused much of his work on political economy including with interests in public service, rural development and agricultural policy. He also taught classes on public services and finance. Glenn is pursuing his research interests at the University of Michigan. Glenn is an alum of the department having finished a bachelor's degree in Agricultural Economics in 1965.

John Waelti resigned his position as professor to accept the position of department head, New Mexico State University in Las Cruces, New Mexico. John had been a member of the faculty since 1967 working in resource economics and carrying an active teaching load. He had served both as the director of graduate

studies and director of undergraduate studies during his tenure at Minnesota. For his farewell dinner, the poet laureates of the department created a special farewell poem for John. The third verse was a favorite:

In December as you sip your tequila,
In your house on a street in Mesilla,
All us pals that you know
Hunkered here in the snow
Will be just itching to pack and
come see 'ya.

A Correction

Our apologies for an error in our article last year remembering John Helmberger. We listed his retirement date from the Department as 1975. It should have been 1985.

New Initiatives in Eastern and Central Europe

The Agency for International Development recently approved a grant for a project proposed by a consortium of the Humphrey Institute for Public Affairs, the Department of Agricultural and Applied Economics, and the Carlson School of Management of the University of Minnesota in conjunction with Land O' Lakes, Inc., Sparks Commodities Inc., and the American Trust for Agriculture in Poland. The project, designated as *Management Training and Economics Education for Central and Eastern Europe* seeks to support market economics and management training programs in Poland. The program will provide in-country training courses for privatizing enterprises and entrepreneurs of small and medium businesses. Special emphasis will be placed on rural enterprises, recently formed joint ventures with foreign companies and entrepreneurial opportunities for women.

The program also seeks strengthen university economics and business departments and schools through programs directed to "educating the educator". Training programs will be co-sponsored by U.S and Polish collaborating institutions. The primary Polish institutions include the Warsaw School of Economics, Bialystok Technical University, Agricultural-Technical Academy in Olsztyn, the University of Maria Curie-Sklodowska in Lubin and the Foundations for Development of Polish Agriculture.

The project will start in July 1991. All training and associated programs will be done in Poland. Terry Roe, Ag and Applied Economics and Ed Schuh, dean of the Humphrey Institute are program leaders for the grant.

Civil Service News

Florence Hanson celebrated her 25th anniversary in the department this past February. She received a commemorative clock from the University and was honored with a special reception and ceremony in the department. Florence continues her work as the secretary for the graduate program, providing support for Jean Kinsey and working closely with the graduate students.

Mark Bultmann, coordinator of undergraduate advising, was awarded the University's Gordon L. Starr Award for his dedicated service to undergraduate students. Recognized for his ongoing commitment to undergraduate students, Bultmann received his award at a banquet hosted by Nils Hasselmo, University President in May. Bultmann has been in his position since 1986. He works closely with undergraduate students, the faculty on undergraduate advising issues and is also the co-chair of the Undergraduate Committee.



Alumni Society

There are currently over 1100 members of the College of Agriculture Alumni Society. This society is part of the University of Minnesota Alumni Association. It's a volunteer organization serving the University and its alumni. The society seeks to provide services and activities that generate pride in the institution and fellowship among alumni. This overall mission is supported through projects and events sponsored by the College of Agriculture Alumni Society and its Board of Directors.

The activities of the society have included: assisting the College of Agriculture in the recruiting of students; supporting UMAA's legislative network; sponsoring a spring picnic and annual meeting for current and interested members; presenting annual awards for student leadership, outstanding alumnus, faculty leadership, outstanding friend of the College of Agriculture; and participating in college searches to provide alumni perspective

Plans for this year's events and activities are underway. The COA Alumni Society will be participating in the Greater Minnesota Day on September 14. Greater Minnesota Day is an event to feature Minnesota agriculture and will include several events in conjunction with the Gopher Football Game on September 14. For more information on this and the College of Agriculture Alumni Society, contact:

Sam Berens, (612) 624-7473
Alumni Society Program Director
201 Coffey Hall
1420 Eckles Avenue
University of Minnesota
St. Paul, MN 55108

The Publications List

During the last year, the following books have been published by Department members. Additional information on these books or any other Department publications are available through Waite Library, 232 Classroom Office Building. The phone number is 625-1705. Keep in mind that you can request a copy of the annual *List of Departmental Publications in Agricultural and Applied Economics*. It will be available in August.

Ackello-Ogutu, C. and John J. Waelti. *Basic Concepts of Microeconomics with Special Reference to Kenya*. Nairobi: Nairobi University Press, 1990, 194 pages.

Easter, K. William, John A. Dixon and Maynard M. Hufschmidt, eds. *Watershed Resources Management: Studies from Asia and the Pacific*. revised edition. Singapore: Institute of Southeast Asian Studies, 1991, 222 pages.

Fan, Shenggen. *Regional Productivity Growth in China's Agriculture*. Boulder: Westview Press, 1990, 196 pages.

Peterson, Willis L. *Principles of Economics: Macro*. Eighth Edition. Homewood, IL: Richard D. Irwin, Inc., 1991, 413 pages.

Peterson, Willis L. *Principles of Economics: Micro*. Eighth Edition. Homewood, IL: Richard D. Irwin, Inc., 1991, 396 pages.

Senauer, Benjamin, Elaine Asp and Jean Kinsey. *Food Trends and the Changing Consumer*. Eagen, MM: Eagen Press, 1991, 380 pages.

Smith, Marcella, Jean M. Underwood and Mark Bultmann. *Careers in Agribusiness and Industry*. Danville, IL: Interstate Publishers, Inc., 1991, 395 pages.

Italian Visitors

In September 1990, the Center for International Food and Agricultural Policy hosted a delegation of visitors from Italy. Members of the delegation represented the University of Padova, the University of Bologna, the University of Viterbo, and the Regional Economic Development Authority, Veneto Region in Italy. The group spent a week in Minnesota including a four day conference with members of the faculty. The visit was part of an exchange that began in August of 1989 when a group of faculty from the department spent a week in Padova, Italy. The members of the delegation, pictured to the right, in the back row, left to right were; Fanco Mari, Guido Bazzani, Giuseppe Stellin, Girogio Franceschetti, and Maurizio Grillenzoni. Front row: Tiziano Tempesta, Paolo Rosato, Agostino Consultar, Carlo Giupponi, Danilo Agostini and Cesare Dosi.



Retired Faculty and Staff

Uel Blank (retired 1982) is living in Columbia, Missouri. He has continued consulting and writing in the field of tourism industry development economics (including the publication of *The Community Tourism Industry Imperative* in Fall 1989). In addition, he devotes considerable time to volunteer work. He is an officer in the Missouri Conference, United Church of Christ. He's involved in various efforts directed toward seeking international peace, such as serving as a board member of the Friends of Peace Studies (a support group for a curriculum devoted to teaching international conflict resolution at the University of Missouri). He is a board member of the Columbia Interfaith Peace Alliance and a member of Veterans for Peace (joining with other military veterans). He is also the chairman of the building committee of the local Habitat for Humanity affiliate.

Willard W. Cochrane (retired 1981) and Ford Runge have completed the manuscript on a new book entitled, *Reforming Farm Policy: Toward a National Agenda*. Iowa State Press has agreed to publish it. They are hoping for publication in the Spring of 1992. He has given a little thought to updating *The Development of American Agriculture: A Historic Analysis* and would be interested in any reaction that readers of this newsletter might have to such a project. He says, "A letter from you to the University of Minnesota Press might get the Press interested."

For those who remember Willard's horse activities he says "I am now down to one horse, Jason. We will be boarding Jason, so no more foals, shows, or stall cleaning for me".

Clifford Hildreth (retired 1987) writes that his wife Mary Lou is a Docent at the University of Oregon Art Museum. Cliff is a Courtesy Professor in the U of Oregon Economics Department and in the Oregon State University Department of Agricultural and Resource Economics. He and their daughter Mary Jane are partners in operating two woodlots. He writes; "All are well. Best wishes to everyone in the Department!"

John Hoyt (retired 1982) tells us that as a filler he took a job at Braemar Golf Course as Supervisor of Starters and Rangers. One thing led to another and he is now CEO of Effective Golf Course Systems, Inc. (EGCS), which consults on golf course feasibility and management for public and private courses. He's still active at Braemar and works nearly full-time on contract work. As a result, he reports "I am retired in name only."

Eileen G. Miley (retired 1981) and her husband, Grant, have traveled somewhere every year since she retired. Grant is retired from the C & O Railroad, (now the CSX Railroad). They have been in every state, including Hawaii and Alaska (for the second time), and to Europe, Eastern and Western Canada and Nova Scotia. When home, she works with her daughter who teaches sewing and crafts to the Leisure Center (Seniors) in St. Anthony Park. Eileen is also on the Board of the School of Agriculture Alumni Association on the St. Paul Campus.

Eileen and Grant see to the needs of a family friend in Faribault. Eileen sews with women in her neighborhood once a week for 9 months a year and raises flowers all year long.

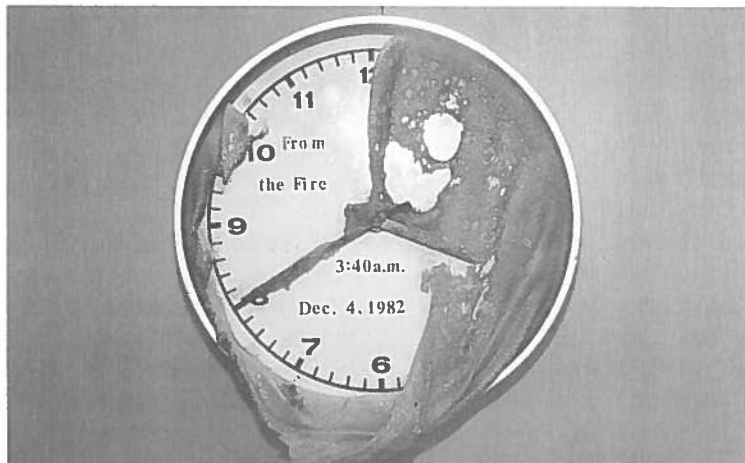
She enjoys crafts, which helps raise money for the Seniors at their twice-a-year sales. She also makes crafts for church sales. With all this, she still has some time left for reading and lunches with friends.

Philip M. Raup (retired 1984) has continued to travel and pursue his professional interests. His recent travel has included a trip to Ciechocinek, Poland, in September, 1990, for the Ninth International Conference on Soviet and Eastern European Agriculture and then to the All-Union Institute of Agricultural Economics in Moscow for the Technical Mission on Agricultural Finance with the USDA. In December, 1990, he presented a paper at a conference on The World Field Crops Economy: Scope and Limits of the Liberalization of Agricultural Policies in Paris. In May of this year he went to Moscow and Kiev, USSR, for a lecture tour on land reform sponsored by the U.S. Information Agency. He recently published "Structural Contrasts and Convergence in Socialist and Capitalist Agriculture", Chap. 6, *Communist Agriculture* (Karl-Eugen Waedekin, Ed., London, Routledge, 1990, pp90-104).

His wife Marian is currently serving as President of the Alliance Francaise in the Twin Cities.

Marian and Phil celebrated their 50th wedding anniversary on February 1, 1991.

Gordon Rose (retired 1987) has continued to do occasional consulting with the Bush Foundation, which keeps him directly involved with changes occurring in rural Minnesota, North Dakota and South Dakota. In addition, he is volunteering assistance to the Bush Founda-



Since the Spring of 1983, the most frequently asked question in Waite Library has been "What happened to your clock?" For anyone who has visited the library, you will probably remember the clock that hangs in a prominent location, marred by soot and with a melted face. Most people in the department in 1982 will remember the story of the "Fire Clock." To assist the staff in handling the usual questions about this clock, James Houck wrote this statement that now hangs beneath the clock.

The Fire Clock

Sometime during the early morning hours of December 4, 1982, three destructive fires were started in this building by unknown hands. One was set in the computer laboratory on the first floor; one was set in the workroom on the third floor; and one set right here in Waite Library. At exactly 3:40 a.m., the blaze in a wastebasket on the third floor reached this clock as it hung on the wall. The clear plastic cover over the clock's face melted and drooped, as you see, over the hands, bringing them to a permanent stop.

The fire clock is displayed here as a reminder of that unhappy day and as a symbol of the complete restoration, especially of the Waite Library, that was accomplished with the help of many department people.

tion funded program in the department. He has been able to assist the extension agents in the program in various ways. He was invited to and has accepted serving on an advisory committee to the Minnesota Newspaper Foundation which emphasizes starting NewsCurrent, an electronic data base of background information for reporters for rural newspapers. He is writing a monthly newsletter for his masonic lodge. He is beginning some family history research and has completed one trip and is planning another for this proj-

ect. He hopes to visit his son in Moscow, USSR, some time in the next year. He says, "I am enjoying life immeasurably."

Margaret Engene (Mrs. Selmer, "Sam") writes "In this past year's adjustment I have found it helpful to be living at 1666 Coffman—many supportive friends and neighbors, fine dining and potlucks, concerts, lectures, special holiday celebrations, and attending exercise class to stay fit. There's just about anything one could possibly desire. When

there's a lack for something to do, there's the never-ending paperwork and reports."

Last July Margaret and a friend, Verna Mikesh took a 10-day bus trip to Banff, Lake Louise, Glacier National Park, the Columbia Icefields, and the Rocky Mountains. Margaret reports that traveling through Montana the ripening grain fields thrilled them both, taking them back to their earlier days on their family farms.

In June, she will be attending her first Elderhostel at St. Olaf. The courses will be "Mining Your Memories," "What Happened to That Old-Time Religion?," and "Was it Really so Wicked to Waltz?"

In her spare time, she's done some writing, volunteer work at her church and at 1666 Coffman. She plans to help again as a teacher in the literacy program for the Hmong people.

She continues "It's always a pleasure to get together with Sam's colleagues, their wives, and other personnel of the Agricultural Economics Department. Sam and I shared this fellowship at many retirement dinners, faculty dances, and social events for 9-1/2 years. There are many warm memories, and I too continue to enjoy these faculty contacts."

Frank J. Smith (retired 1982) continues to teach part-time and do other tasks as opportunity arises. He has a consulting practice primarily focused on litigation.

Sam C. Hsieh Receives University and Department Alumni Awards



Sam C. Hsieh is pictured above with Charles Casey, Chairperson, Board of Regents and James Houck.

Dr. Sam C. Hsieh, governor of the Central Bank of China in the Republic of China (Taiwan) recently received two alumni awards for his professional accomplishments. In a ceremony in the Department of Agricultural and Applied Economics on September 26, 1990, Hsieh received the Outstanding Achievement Award from the University of Minnesota Board of Regents. The award was presented by Board of Regents Chair, Charles H. Casey on behalf of the University. The award, the highest given to university alumni, recognizes exceptional achievement in a professional field. Dr. Hsieh was also awarded the Department's Outstanding Alumni Award for 1990-91. As a part of the awards ceremony, Dr. Hsieh presented a seminar for students, faculty and guests entitled "Implications of Asian Economic Development".

Born in China, Hsieh received bachelor's and master's degrees in agricultural economics from the Na-

tional Central University in China. He came to Minnesota for his doctoral studies and earned a Ph.D. from the Department of Agricultural and Applied Economics in 1957. After returning to Taiwan, he held several posts including, the director general of the Joint Commission on Rural Reconstruction; head of the project department at the newly established Asian Development Bank in the Philippines; vice chair of the Council for Economic Planning of the Taiwan Cabinet; and board member of Taiwan's Central Bank of China. He became governor of the bank in 1989. As the governor of the Central Bank of China, his position could be compared to that of Alan Greenspan, Chairman of the Board of Governors of the U.S. Federal Reserve.

Hsieh has gained a strong reputation as scholar for his analyses of agricultural development in Taiwan, and of the factors affecting the growth of rice production in the Philippines, Thailand and Taiwan, among other

studies. He also directed two major studies of agricultural development in Asia as guides to the Asian Development Bank's agricultural lending programs.

The Department's Outstanding Alumni Award is now in its 6th year of presentation. It is based on the nomination, review and recommendation of the faculty. The past recipients of the award include:

William Tomek (Ph.D., 1961)
Cornell University, 1985-86
Alex McCalla (Ph.D., 1966) Uni-
versity of California-Davis, 1986-87
Rachel Dardis (Ph.D., 1965) Uni-
versity of Maryland, 1987-88
Bernard Stanton (Ph.D., 1954)
Cornell University, 1988-89
Robert Herdt (Ph.D., 1969)
Rockefeller Foundation, 1989-90

Hayami Selected AAEA Fellow

Dr. Yujiro Hayami, Professor of Economics, School of International Politics, Economics and Business at Aoyama Gakuin University was recently selected as a fellow of the American Agricultural Economics Association. Dr. Hayami was a Visiting Professor in the Department from 1968-1970. Since his visit here, he has continued several personal and professional ties to the Department. He has received several awards for his research from AAEA and has been an active member. He is widely regarded for his contributions to knowledge in the fields of agricultural development, political economy and agricultural and trade policy. He is the first non-U.S. member of the AAEA to be selected as a fellow.

And the Winner is.....



Daniel R. Pearson

Some of you have been waiting for this for a whole year. In last year's edition, we invited suggestions for names for the Alumni Newsletter. We even promised a prize for the winner. Well, a few of you tried out your creativity and sent suggestions for titles. The one we selected was *Multiple Progressions*, submitted by Daniel R. Pearson. Dan who is a public policy analyst at Cargill Inc. explained his idea. "Multiple is appropriate because there are a lot of alums. I was tempted to use 'regressions' instead of 'progressions' as the second word, but one can never go back (no matter how much fun the Ag & Applied Econ Dept. was) only forward." The judges thought it also has a sort of nice economist sound to it.

The selection committee decided that one of the prizes for this award was to get a picture in the newsletter. Dan's picture is located on this page. Dan (B.S.-Ag Econ 1975, M.S. 1977) spent 1-1/2 years after graduation traveling and working on

farms in Europe, Africa, Australia, New Zealand and South America. Late in 1978 he returned to Ogilvie to raise corn and broiler chickens on a rented farm. Before realizing what he was getting into, Dan accepted a position as agricultural legislative assistant to Senator Rudy Boschwitz in February 1981. In that capacity he managed to survive both the 1981 and 1985 farm bills and served as staff of the Subcommittee on Foreign Agricultural Policy, chaired by Senator Boschwitz. Since March, 1987, Dan has been a public policy analyst for Cargill in Minneapolis, focusing on agricultural trade and the effects of domestic commodity policy on international competitiveness.

Alumni News

Charles L. Anderson (B.S. Bus Adm 1966) lives in Litchfield, Minnesota. After spending 20 years working for Control Data, he is back home running an 800 acre farm, raising corn and soybeans. He reports that "much of what I learned at the farm campus continues to help me in my farm management and marketing decisions."

Peter C. Anyandu (B.S.-Ag Econ 1978) is living in Nigeria. He previously had a part-time job with Presage Engineering Projects in Lagos, Nigeria, as their Agricultural Information Officer. Now he works for the Imo State Education Board as a Senior Agriculture Teacher in charge of the High School Agriculture Program.

Amitrajeet A. Batabyal (M.S. 1990) is pursuing a Ph.D. in the Department of Agricultural and Resource Economics at the University of California, Berkeley.

Nir Becker (Ph.D. 1990) is working as a Lecturer in the Economics Department of Hifa University in Israel. His Ph.D. thesis, *Dynamic Supply From A Common Property Resource: Water Diversions in the Great Lakes*, was selected for "Honorable Mention" by the 1991 Awards Committee of the American Agricultural Economics Association.

S. Bisaliah (Ph.D. 1975) is currently at the University of Agricultural Sciences in Bangalore, India, where he is a Professor of Economics and the Coordinator for the Regional Centre for Planning, Monitoring & Evaluation of Social Forestry Programmes in South India. He sends an "affectionate greeting from the Bisaliahs to the students and faculty of the Department."

Anthony C. Crooks (Ph.D. 1990) is in Fort Collins, Colorado, working for the USDA.

Laurie Ann Erdman (M.S. 1991) will be attending law school in California this fall.

Jonathan R. Hall (B.S.-Ag Bus Adm 1985) is here in St. Paul. He worked for 3 years after graduation and then decided to study law. He received his law degree from Hamline in May, 1991. He says, "I have good memories of my time spent in the College of Agriculture. The people I met and worked with on the St. Paul Campus provided me with not only good memories but also a place to return after graduation for support and mentoring in my career."

Hermanto (Ph.D. 1990) is working for the Center for Agro Economics in Bogor, Indonesia.

Guido Hommelsheim (M.S. 1990) is living in St. Paul, Minnesota.

Dana Huseby (M.S. 1991) is working as an Assistant Commodity Merchandiser for General Mills in Great Falls, Montana.

David D. Johnson (Ph.D. 1990) is at the Department of Agricultural Economics of North Dakota State University where he's an Assistant Professor.

Bret Kealy (B.S.-Ag Econ 1988) is an Advertising Representative for

Larbi Fatime Nee Maamouri (M.S. 1973) is in Tunisia where she works in the Ministry of Agriculture in charge of International Agricultural Cooperation. She writes "I want to keep in touch with the Department of Agricultural and Applied Economics."

Neal A. MacDougall (M.S. 1991) will be pursuing a PhD through the Agricultural Economics Department at California Berkeley.

Karl Meilke (Ph.D. 1973) was elected Chair of the International Agricultural Trade Research Consortium in December of 1989. He is on the faculty of the Department of Agricultural Economics, University of Guelph, in Guelph,

Alex McCalla (Ph.D., 1966) was the keynote speaker at the plenary session for the 75th Anniversary Celebrations of the College of Agriculture and Forestry at the University of Alberta. McCalla completed his bachelor of Science degree in Agriculture and a master of arts degree from the University of Alberta prior to coming to Minnesota for his doctoral work. He was featured in a profile article in the *Agriculture & Forestry Bulletin* (Summer 1990) published by the University of Alberta, Ontario, Canada.



This was the 1977 edition of the women's touch football team. Known as the "Dummy Variables", they posted a record of 1 win and 4 losses. Team members included, from left to right, back row: Mike Olson, offensive coach, Nancy van Hemert, Judy Ohanessian, Maureen Van Ort, unknown, unknown, Richard Bipes, defensive coach. Middle row Jean Sussman, unknown. Front row unknown, Debbie Olson, Laura Bipes, Molly Van Hemert, Norma, Rita Fishman. Team members not pictured were: Terri Erickson, Sharon Knowles, Sally Thompson and Karen Gulliver.

the *The Farmer/The Dakota Farmer* magazines. He has a ten state territory and spends most of his time traveling.

Todd Lee (M.S. 1990) moved to Seattle and has entered the Ph.D. program at the University of Washington.

Luis F. Macagno (Ph.D. 1990) is working for the Instituto Nacional de Tecnologia Agropecuaria (INTA), Instituto de Economia y Sociologia Rural (IESR), in Buenos Aires, Argentina.

Louis Mahe (Ph.D. 1976) is a researcher for Institut National de la Recherche Agronomique in Rennes, France.

James D. Monke (M.S. 1990) received the DeKalb Genetics Agribusiness Fellowship to pursue a PhD in the University of Illinois Agricultural Economics Department.

Kathleen M. Novak (M.S. 1990) is a Legislative Analyst for the Minnesota House of Representatives.

Catherine S. Otte (M.S. 1990) is in Washington, DC, working for the Foreign Agriculture Service of the USDA in the Grain & Feed Division.

Robert F. Odegard (B.S.-Ag Bus Adm 1942) lives in St. Paul.

Jacalyn (Plagge) Lehman (M.S. 1989) is currently in Salt Lake City working at the Utah Medical Association as a research associate. She is working on issues related to the socioeconomics of medicine.

Robert L. Pool (B.S.-Ag Bus Adm 1950) is currently living in Edina, Minnesota.

Charles Rossmann (M.S. 1991) is continuing his graduate studies in the Economics Department of the University of Colorado, Boulder.

Anita Regmi (Ph.D. 1990) is working for UNICEF in Kigali, Rwanda.

Timothy J. Ryan (Ph.D. 1978) has been with the Australian Wheat Board since 1988, and now he heads the Division of Corporate Affairs, which provides all the Corporate Services, Legal/Secretariat, Personnel and Administration, Public Affairs as well as Policy & Economics and some smaller areas. His responsibilities have placed him in the domestic political scene. He is heavily involved with various grower organizations and with the Administrators in Canberra. His oldest son Sean, born in Minneapolis, has taken up baseball and was on the under 16 State Champion team this summer. Sue has taken to scoring the baseball games where all three of their sons are playing with great enthusiasm; so much so that she is teaching their elder daughter, Katie, also a Minnesotan, to keep score.

R. Bruce Schulte (M.S. 1982) lives in Lilongwe, Malawi, where he has been working as Chief Technical Advisor to the Malawi National Early Warning System for Food Security since December, 1988. He asks "Does Houck still play first base?"

Andrew Schwab (M.S. 1990) is in Saskatchewan, Canada.

Iain Shuker (Ph.D. 1990) is presently working for the International Food Policy Research Institute in Washington, DC. He and Rob King received the 1990 Edwin G. Norse Award, presented by the American Institute of Cooperation for the top dissertation submitted for work on Cooperatives.

(see *Alumni*, page 26)

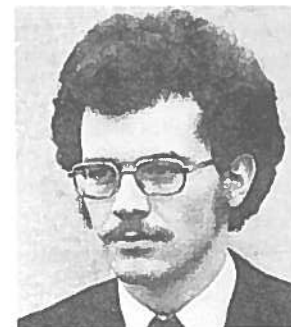
Who Were They?



In last year's edition, we ran a series of photos of the faculty and graduate students from 1963. We invited readers' help in correcting our errors or naming those people that we couldn't. Well, it didn't take long to clear up some of the mysteries. Don Stitts, professor at the University of Connecticut, wrote to tell us that he was one of the people we couldn't identify. He is sitting second from the left in the top photo. We had identified the person sitting second from the left on the bottom photo as Don. Who was the person we thought was Don Stitts? Ken Egertson tells us that person is Al Keating. (Don has yet to send us his annual alumni contribution, but we hope that clearing up this issue will make amends for our error). Phil Raup sent out calls for help with this question and brought help from two sources. Dean Chen, professor at Texas A&M wrote to tell us that he believes the man standing third from the left in the top photo is Torng Chuan Wu. John English wrote saying that the person sitting to the left of Reese Dahl in the bottom photo is Richard Dancey, not Richard Davey as we had reported. Dancey is with the Agricultural Advisory Service in London. We still do not know who the gentleman is seated last on the right, in front of Philip Raup. Any help anyone?

Who Are These Alums ?

For Several Years, the Ag Business and Ag Econ Club published resume books to introduce graduates to potential employers. We ran across copies from 1963, 1964, 1965, 1973 and 1974. The photos and bits of information were interesting and we know that many of you are still out there. Take a look at these pictures and see if you can identify any old friends or colleagues. The answers are on page 27.



(Alumni from page 25)

Peter Stenberg (Ph.D. 1990) is in Washington, DC, working for the Agriculture and Rural Economy Division of the USDA-ERS.

Edward C. Usset (B.S.-Ag Econ 1979, M.S. 1981) is currently the Director of Commodity Operations for the Pillsbury Company Flour Milling Division. He is responsible for the procurement of wheat for 8 flour mills located throughout the United States.

Paul Wilson (Ph.D. 1982) is an Associate Professor concentrating on issues concerning production economics under uncertainty and agricultural finance. He has initiated a new junior-senior level course entitled "Ethical Issues in Agricultural and Natural Resource Policies." This course has a strong orientation towards welfare economics and public choice/transaction cost theory.

Who Are These Alums? (from p. 24)

Row 1, left to right: Marvin Lindo '64, Richard Cashman '64, Rudolph Hasbargen '64, Eugene Bromenshenkel '64.

Row 2, left to right: Gene Egdorf '73, Donald Belter '73, Roger Kingstrom '73, Gerald Meiners '73

Row 3, left to right: Roger Chamberlin '74, Douglas Tiffany '74, Roger Opp, '74, Gary Redman '74.

NEW STUDENT REFERRALS

If you know students who are considering studying agricultural economics or other programs in the College of Agriculture, we would be pleased to forward them information about our programs or the other programs in the College. The College has recently undergone a major restructuring of the undergraduate programs. The majors hold promise for exciting programs as well as challenging careers in the broad field of agriculture. Write or call the Department or:

COA Prospective Student Services Office
277 Coffey Hall
1420 Eckles Ave.
University of Minnesota
St. Paul, MN 55108

If you know someone who might be interested in graduate education we would also welcome a referral. Requests for information can be sent to

Jean Kinsey, Director of Graduate Studies
231 Classroom Office Building
Department of Agricultural and Applied Economics
University of Minnesota
1994 Buford Avenue
St. Paul, MN 55108
Phone (612) 625-1222.

Multiple Progressions is published by the Department of Agricultural and Applied Economics, College of Agriculture, University of Minnesota. Questions or comments about the publication should be addressed to:

Mark Bultmann, Editor
Department of Agricultural and Applied Economics
231 Classroom Office Building
University of Minnesota
1994 Buford Ave
St. Paul, MN 55108

Department Head: James P. Houck
Editor: Mark Bultmann
Editorial Assistant: Andrea Cutting
Technical Consultant: Jerome Norlander

The University of Minnesota is committed to the policy that all persons shall have equal access to its programs, facilities, and employment without regard to race, religion, color, sex, national origin, handicap, age, veteran status or sexual preference.

Multiple Progressions

AGRICULTURAL AND APPLIED ECONOMICS
231 CLASSROOM OFFICE BUILDING
UNIVERSITY OF MINNESOTA
1994 BUFORD AVE.
ST. PAUL, MN 55108

ADDRESS CORRECTION REQUESTED