



AgEcon SEARCH
RESEARCH IN AGRICULTURAL & APPLIED ECONOMICS

The World's Largest Open Access Agricultural & Applied Economics Digital Library

This document is discoverable and free to researchers across the globe due to the work of AgEcon Search.

Help ensure our sustainability.

Give to AgEcon Search

AgEcon Search
<http://ageconsearch.umn.edu>
aesearch@umn.edu

*Papers downloaded from **AgEcon Search** may be used for non-commercial purposes and personal study only. No other use, including posting to another Internet site, is permitted without permission from the copyright owner (not AgEcon Search), or as allowed under the provisions of Fair Use, U.S. Copyright Act, Title 17 U.S.C.*



Design and Rating of Risk-Contingent Credit for Balancing Business and Financial Risks for Kenyan Farmers

A. Shee¹; C. Turvey²; L. You³

1: Natural Resources Institute University of Greenwich, , United Kingdom, 2: Cornell University, Charles H. Dyson School of Applied Economics and Management, United States of America, 3: International Food Policy Research Institute, , United States o

Corresponding author email: a.shee@gre.ac.uk

Abstract:

Weather related agricultural risks and limited access to credit are serious impediments to agricultural productivity and growth in developing countries. This paper describes a novel insurance linked credit model piloted in Kenya, where insurance markets are effectively absent and farmers do not borrow because of the risk of losing their collateral. One of the challenges in designing bundled credit products, in the absence of traded securities, is the actuarial pricing and risk rating of the insurance and the loan product. We develop a rainfall linked risk-contingent credit that transfers drought risk related perils from borrower to lender via insurance mechanism that provide a balance between business and credit risks for smallholder farmers. We describe the methodology used to design and rating of a risk-contingent structured operating agricultural credit instrument using CHIRPS rainfall data from 1981-2016 in Kenya. We illustrate the use of Monte Carlo methods to risk modelling that can be integrated within general insurance and credit rating framework. The innovative design and methodology presented in this paper are as important as the product delivery mechanism and will be of interest to specialists in development economics and agricultural finance.

Acknowledgment: This research was funded through Global Resilience Partnership by Rockefeller Foundation and US Agency for International Development (USAID) and Agricultural Insurance Thematic Window of the International Initiative for Impact Evaluation (3ie). We appreciate generous hospitality provided by our project partner Equity Bank Kenya Ltd. The opinions expressed in this paper do not necessarily reflect the views of our donors or partners. Any errors that remain are the authors' responsibility.

JEL Codes: Q14, C44

#2220



Design and Rating of Risk-Contingent Credit for Balancing Business and Financial Risks for Kenyan Farmers

Abstract

Weather related agricultural risks and limited access to credit are serious impediments to agricultural productivity and growth in developing countries. This paper describes a novel insurance linked credit model piloted in Kenya, where insurance markets are effectively absent and farmers do not borrow because of the risk of losing their collateral. One of the challenges in designing bundled credit products, in the absence of traded securities, is the actuarial pricing and risk rating of the insurance and the loan product. We develop a rainfall linked risk-contingent credit that transfers drought risk related perils from borrower to lender via insurance mechanism that provide a balance between business and credit risks for smallholder farmers. We describe the methodology used to design and rating of a risk-contingent structured operating agricultural credit instrument using CHIRPS rainfall data from 1981-2016 in Kenya. We illustrate the use of Monte Carlo methods to risk modelling that can be integrated within general insurance and credit rating framework. The innovative design and methodology presented in this paper are as important as the product delivery mechanism and will be of interest to specialists in development economics and agricultural finance.

Keywords: Kenya, bundled credit, risk rationing, agricultural weather risk, risk modeling

This research was funded through Global Resilience Partnership by Rockefeller Foundation and US Agency for International Development (USAID) and Agricultural Insurance Thematic Window of the International Initiative for Impact Evaluation (3ie). We appreciate generous hospitality provided by our project partner Equity Bank Kenya Ltd. The opinions expressed in this paper do not necessarily reflect the views of our donors or partners. Any errors that remain are the authors' responsibility.

1. Introduction

Uninsured risks are a major cause of low agricultural productivity in Sub-Saharan Africa. The main uncertainty in Kenya's agricultural economy is drought and other adverse weather conditions that severely affect agricultural livelihoods. Moreover, lack of capital and perceived risks limit farmers' ability to purchase agricultural inputs and access credit, contributing to low agricultural productivity. Lenders in Kenyan credit market limit the supply of credit to borrowers because of the issue of asymmetric information caused due to uninsured risk. Kenyan farmers can borrow only under relatively high collateral where farmers are not willing to expose to the high risk of collateral loss. Borrowers voluntarily withdraw from the credit market because of increased collateral requirement by the lenders as a result of uninsured risks. Ultimately, lack of access to credit force farmers to adopt low-risk low-return activities and considered main driver of persistent poverty (Barrett et al. 2006; Santos and Barrett 2006). To better understand household's credit rationing status, we conducted a qualitative survey and elicited the reasons for farmers being credit constrained. Evidence from the survey suggests that the fear of losing collateral if one cannot repay the loan is the primary deterrent to not borrowing from credit market. This result is in line with recent studies in microfinance which showed limited demand for microcredit at market rate (Johnston and Morduch 2008; Banerjee et al. 2015). Since the fear of losing collateral comes from uninsured risk it is important to minimize the risk of credit default to make the credit market work of Kenya.

With 80% of the population employed in agriculture and 22% of the country's overall GDP derived from agriculture, enhancing agricultural productivity is critical for Kenya. According to Government of Kenya, four consecutive years (2008-2011) of drought amounted to US \$12.1 billion in losses, including losses in assets and from disruptions in the economy flow

across all sectors. Such severe shocks cannot be financed by the government and donor community alone. Some market-based innovative risk management solutions are necessary to manage agricultural weather risks and to provide access to credit to the farmers. We develop a linked financial product in the form of Risk-Contingent Credit (RCC) that embeds within its structure an insurance protection which, when triggered, offsets loan payments due to the lender providing a risk-efficient balance between business and financial risks. The underlying risk is captured through a satellite-derived rainfall data validated with weather station data based on state-of-the-art remote sensors. The main objective of RCC is to provide a financial tool that transfers drought risk-related perils from borrower to the lender via insurance and reinsurance markets. The covariate nature of drought risk reduces lenders' willingness to supply credit into the agricultural market place, while inaccessible insurance markets to protect against covariate risks, discourages farmers from borrowing in those markets that credit is accessible. In a single financial product RCC reduces credit rationing and risk rationing, reversing these effects. With RCC, a risk-transfer agreement by an insurance intermediary ensures that, when triggered by a specific drought event, insurance indemnities are transferred directly to the farmer-borrower's loan account at the bank on behalf of the borrower.

Because the insurance component of RCC substitutes for collateral, it is more financially inclusive than conventional credit products where a collateral is usually needed. Thus RCC can bring risk-rationed farmers (who tend not to borrow or borrow less than optimal for fear of losing collateral and falling into a credit-driven poverty trap) into the credit market. In RCC the indemnity from the insurance is applied to the underlying debt obligation or debt service, thereby reducing the probability of default on loans by producers, improving risk bearing ability and trust which can encourage high uptake of RCC. It also eliminates the drawbacks of standalone index

insurance products by not requiring the farmers to pay premium upfront. As early as Bester (1985) it was shown that there could be a tradeoff between higher interest rate and lower collateral and that no credit rationing would occur if lenders offered different interest rates and collateral requirements. RCC avoids the stringent collateral requirement by determining the interest rates (risk premium) that breakeven for the lender linking repayments with underlying risk by embedding weather insurance. RCC thus offers a market based solution that would provide larger and long term credit to cater to the investment need for agriculture in Kenya.

There has in recent years been great interest in the design, piloting, and scaling up of bundled or linked-credit products. In the fall of 2017 our group piloted RCC for the first time in Machakos County in Kenya, with loan indemnities linked to long and short rains. The implementation design was a randomized control experiment including no-loan, traditional loan, and Risk Contingent credit, with a sub-experiment, also randomized, on RCC premium subsidization. Uptake of offered traditional and RCC loans were about 40%. In time, our group will evaluate the impact on agricultural productivity, household income, consumption smoothing, savings and investment, household nutrition and so on using traditional credit vs RCC against the no-credit counterfactual.

One of the challenges in designing bundled credit products, in the absence of traded securities, is the actuarial pricing and risk rating of the insurance and the loan product. Since few attempts have been made on delivering RCC to farm households, it is important for agricultural economists, insurance specialists, finance specialists and integrators to understand the financial engineering employed in the design and rating of bundled insurance. In this paper we present the details of our rating methodology as actually employed in the field with banking and insurance partners. It is our belief that the innovative designs and methods are as important as the product

delivery mechanism itself, and with rising interest in bundled credit products like RCC this paper will be of interest to specialists in development economics, agricultural finance, development finance, agricultural insurance and agricultural micro insurance. The paper is structured as follows. Section 2 develops the risk-contingent credit model. Section 3 describes the geographic region and summarizes the data on which the model is based. Section 4 presents the empirical structure and rate making of RCC. Section 5 provides concluding comments and implementation challenges.

2. Risk-contingent credit model

Unlike traditional credit products, RCC structure facilitates risk management by layering hedging protection into loan payment obligations. The payout from the insurance is applied to the underlying debt obligation or debt service, thereby reducing the probability of default on loans by producers, improving risk bearing ability, enhancing the supply of credit, and facilitating investment and development. An emerging literature on RCC includes Shee and Turvey (2012) who investigated an imbedded price option for pulse crops in India; Shee et al. (2015) who conducted a field based feasibility of RCC with Kenyan pastoralists and dairy farmers; Carter (2011) who examined the impacts of RCC on financial market deepening and its impacts on farm households; Giné and Yang (2009) who investigated adoption of an operating loan in Malawi in which the payoff was determined by rainfall; Karlan et al. (2011) who investigate the adoption of price-contingent credit in Ghana; and Casaburi and Willis (2015) who implemented insurance linked contract farming found 71.6% take-up rate. These papers investigate linking risk to loans directly made to farmers or agribusiness. Miranda and Gonzalez-

Vega (2011) and Collier et al. (2011) provide conceptual frameworks in which financial institutions themselves link their loan portfolios to El Nino risks in Central America.

Below we provide a brief description of RCC and how it can protect farmers from drought related production risk. In Figure 1 the upper graph shows loan repayment and the lower graph illustrates the underlying insurance payout in relation to worsening conditions (to the left). If the underlying risk (weather-related) worsens and crosses a certain threshold, or trigger, the total repayment obligation of a farmer falls linearly with the difference deposited directly into the borrowers loan account at the bank by the insurer. On the other hand, if the underlying risk is not triggered the loan has to be repaid at the risk-contingent interest rate (which will be higher than the market base rate). RCC is designed with an actuarially fair interest rate that is interlinked with the underlying weather risk.

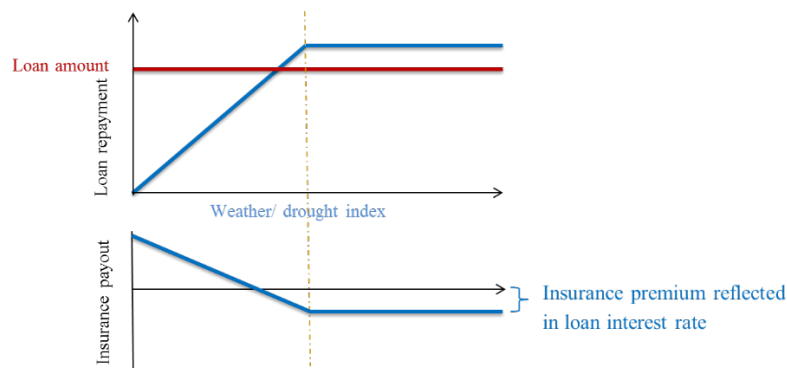


Figure 1 Illustration of Risk-Contingent Credit (RCC) mechanism

Most of the Kenyan medium and small farmers we met require operating loans for a crop year (around 8 months to 1 year) starting in September before the beginning of the long rains and ending in May, shortly after the end of short rains. Farmers take money for the investment on the

crop production and generally repay the loan amount by selling their produce after the harvest. Whether long rains, and/or short rains fail directly affects their repayment ability to the banks. Facing these weather risks the proposed RCC is designed with a cumulative, dual trigger, weather insurance based on the lower-partial moments of the rainfall probability distribution below a specified rainfall coverage level. This coverage level is determined by the rainfall measured at the 15th percentile, which in probability amounts to a payout in about 15 of 100 years. The essence of the RCC design is to insure the loan against adverse rainfall movements by directly imbedding onto the operating loan contract weather insurance.

Losses can come from both the long rains and the short rains. We define the seasonal rainfalls as $R_L(t_L, T_L)$ for long rains starting around October 15 and ending around January 15, and short rains starting around March 15 and ending around May 15. Since the rainfall distributions differ by season and region, we treat each differently and define $g_i(R_i(t_i, T_i))$, $i = L, S$ as separate probability distributions for long and short rains.

A particular problem is in defining the loss. To capture this we examine the historical probabilities and determine a particular rainfall coverage (or trigger or strike) below which a loss arises. This we do for both seasons. The loss is measured by $Max(0, Z_i - R_i(t_i, T_i))$ to capture the rainfall deviation below the trigger level, Z_i . We set this trigger level equal to that rainfall measure recorded at the 15th percentile¹. If actual rainfall is below the trigger then the rain shortfall is $Z_i - R_i(t_i, T_i)$. Otherwise if $Z_i \leq R_i(t_i, T_i)$ rainfall is deemed sufficient to harvest a crop and repay

¹ Setting the trigger or strike level requires trade-off between coverage level and cost of insurance. We followed Chantararat et al. (2013) and depicted the time series of cumulative sub-county level rainfall for last 35 year and compared severe drought events reported by the communities and found that the rainfall levels at 15 percentile for all short and long rain failures were able to trigger the reported drought events. Higher triggers of course can capture any short and long rain failures but risk premium would become excessively high for farmers' risk bearing ability.

the loan. Across all possible rainfall outcomes defined by the probability distribution function $g_i(R_i(t_i, T_i))$ the mean deviation below the trigger is defined by

$$E[Max(0, Z_i - R_i(t_i, T_i))] = \int_{Min(R_i(t_i, T_i))}^{Z_i} (Z_i - R_i(t_i, T_i)) g_i(R_i(t_i, T_i)) dR_i$$

To capture the economic loan loss we define a ‘tick’ by

$$\psi_i = \frac{f}{Z_i - Min(R_i(t_i, T_i))}.$$

Here, f is the loan principal (e.g. 10,000 shillings) and $Min(R_i(t_i, T_i))$ is the minimum recorded rainfall recorded in our data series. The tick value is defined so that an amount ψ_i is paid on every mm of rainfall below Z_i . If actual rainfall breaches the minimum rainfall then the loan indemnity equals f exactly; in other words in the worst case scenario the farmer pays only the interest on the loan.

Under these assumptions, we define the present value of loan repayment as

$$B = e^{-iT} \left(fe^{i^*T} - (\psi_L [Max(0, Z_L - R_L(t_L, T_L))] + \psi_S [Max(0, Z_S - R_S(t_S, T_S))]) \right),$$

where i^* is the standard interest rate on operating loans (e.g. 12%). The amount of loan including interest that would ordinarily be repaid at the end of the loan period is fe^{i^*T} . This loan repayment is discounted at the bank’s cost of capital, i . Across all possible long and short rain outcomes the expected loan repayment is given by

$$E[B] = e^{-iT} \left(fe^{i^*T} - (\psi_L E[Max(0, Z_L - R_L(t_L, T_L))] + \psi_S E[Max(0, Z_S - R_S(t_S, T_S))]) \right)$$

In practice we have found that, while low, the correlation between rainfall in the long and short rains is positive. We therefore draw from joint or correlated probability distribution functions

so that across all possible rainfall outcomes in both the long and short rains the expected loan losses to the lender is given by

$$v = \int_{\text{Min}(R_L(t_i, T_i))}^{Z_L} \int_{\text{Min}(R_S(t_i, T_i))}^{Z_S} (\psi_L(Z_L - R_L(t_L, T_L)) + \psi_S(Z_S - R_S(t_s, T_s))) g(R_L, R_S) dR_L dR_S$$

The value, v , is also equal to the actuarial value of the losses.

The present value of such an operating loan for a borrowed amount f and embedded rainfall insurance can be written as,

$$(1) E[B] = e^{-iT} (fe^{i^*T} - v)$$

In the absence of rainfall risk the present value of the loan without the imbedded insurance is,

$$(2) B_1 = e^{-iT} fe^{(i^*)T}.$$

Therefore, to hedge the weather risk with the embedded rainfall insurance, the interest rate charged by the lender (i^*) can be calculated by equating (1) and (2);

$$(3) e^{-iT} (fe^{i^*T} - v) = e^{-iT} fe^{(i^*)T},$$

and solving for i^* ;

$$(4) i^* = \frac{\ln \left[\frac{v}{f} + e^{(i^*)T} \right]}{T},$$

or

$$(5) i^* = \frac{\ln \left[\frac{E[\psi_L(Z_L - R_L(t_L, T_L)) + \psi_S(Z_S - R_S(t_s, T_s))]}{f} + e^{(i^*)T} \right]}{T}$$

Equation (5) provides the exact formula for calculating the interest rate on an operating loan with payment protection against drought conditions arising from shortfalls in long and/or short rains.

3. Geographic region, risk rationing and rainfall data

Machakos County is a semi-arid and hilly terrain area in Eastern province of Kenya. It receives very low annual rainfall of around 700 mm per year with average rainfall in long and short rain seasons being 315 and 266 mm, respectively (GOK 2014). Due to this semi-arid climate agriculture is practiced smallholder farmers with maize being the main food crop. The RCC pilot area covers eleven divisions in the Machakos County including Central Machakos, Yathui, Yatta, Masinga, Matungulu, Kalama, Kathiani, Mwala, Kangundo, Ndithini, and Mavoko. Maize is the dominant crop in the area with some intercropping with perennial fruits or other cash crops. Most farms in this area are smallholder farms, with limited resources, and little to no access to credit. It is universally acknowledged by farmers that the primary risk faced are failures in the long and/or short rains. While rainfall is variable in the long and short rain periods (October 15th – January 15th, and March 15th -May 15th) the infrequent failure of one or the other, and sometimes both rainfalls causes great hardship, and almost certain default on loans if credit were provided.

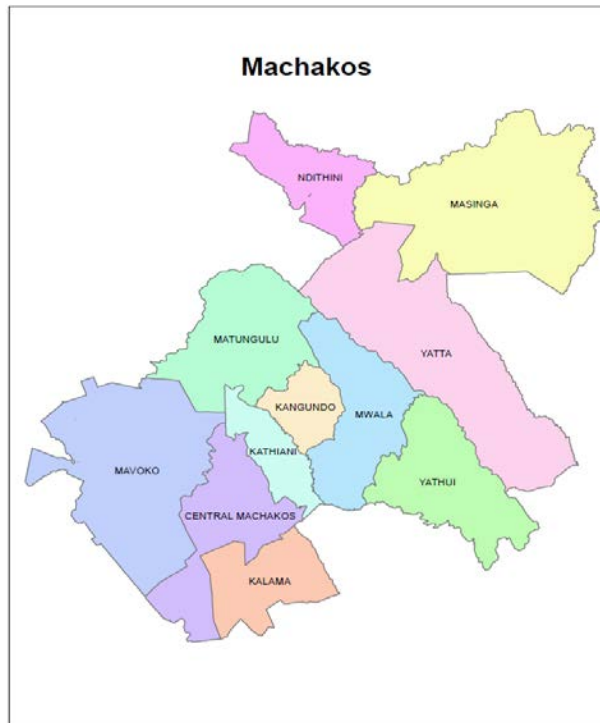


Figure 2 Geographical coverage area

From the project baseline household survey we found that almost half of the sample household are credit rationed. Interestingly, 42% of the household are risk-rationed who voluntarily withdraw themselves from the credit market. RCC mechanism is very relevant for this population because RCC tool can bring these population into the credit market by acting as a substitutes for collateral.

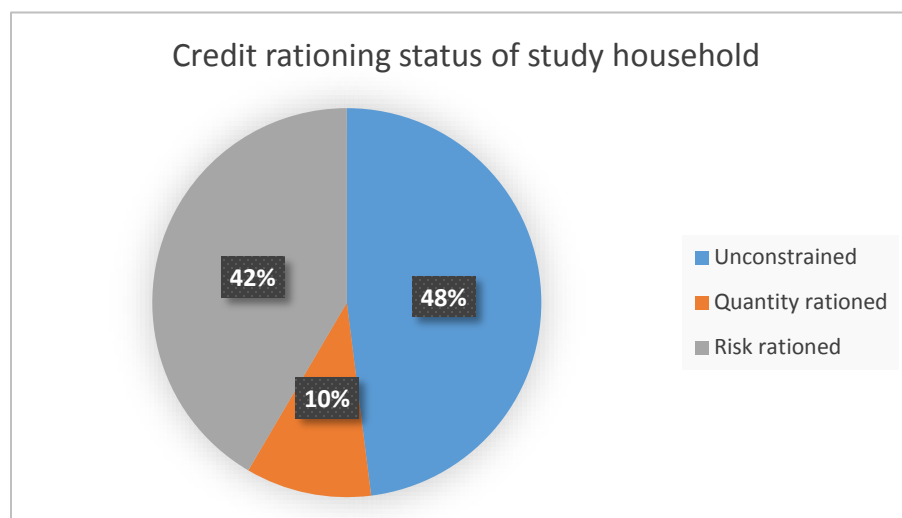


Figure 3 Credit rationing status of study household (Source: project household survey)

We analyze Climate Hazards Group InfraRed Precipitation with Station Data (CHIRPS) supported by National Aeronautics and Space Administration (NASA) and National Oceanic and Atmospheric Administration (NOAA). 5km dekadal (10-daily) CHIRPS rainfall (satellite validated with station data) data from 1981 to present are extracted from <http://chg.geog.ucsb.edu/data/chirps/>. CHIRPS data are extracted every 10 days, i.e., 3 values per month, for each pixel that falls into the contract coverage sub-county. These values are accumulated over long rains (Oct 15-Jan 15) and short rains (Mar 15-May 15) to represent cumulative rainfall conditions of a sub-county over a season. Hence, this measure is the best practical indicator of a drought situation in marginal areas. Loan period extends from September 1 2017 to May 15 2018 (8 months). In discussions with farmers the rare events occur about 1 in 10 years, with hardship years about 15 in every 100 years. There is no discernable pattern to the failure of the rains. Figure 1 illustrates the rainfall pattern for Central Machakos between 1981 and 2016 for long and short rains.

We estimate using Monte Carlo methods that rainfall will fall below 114.59mm and 94.14 mm for long and short rains in 15 of every 100 years (15th percentile) as marked. Breaching the 114.59mm mark occurred in about 5 of 34 years for long years or about 14.7% of years, while it breached the 94.14 mm mark for short rains about 6 times in the 35 year period for about 17% of years.

We see no discernable patterns in the magnitudes of rainfall year-to-year. Simple regressions marked in Figure 1 show that there is no statistical relationship between rainfall and years for both long and short rain. The regressions are;

$$LR = 201.94 - 0.3903Year, R^2 = 0.0027$$

$$SR = 164.17 - 0.8444Year, R^2 = 0.0317$$

Both regressions suggest a decrease in rainfall over time, but these are not meaningful in a statistical sense. The low R^2 values indicate that changes across time offers no explanation for rainfall patterns.

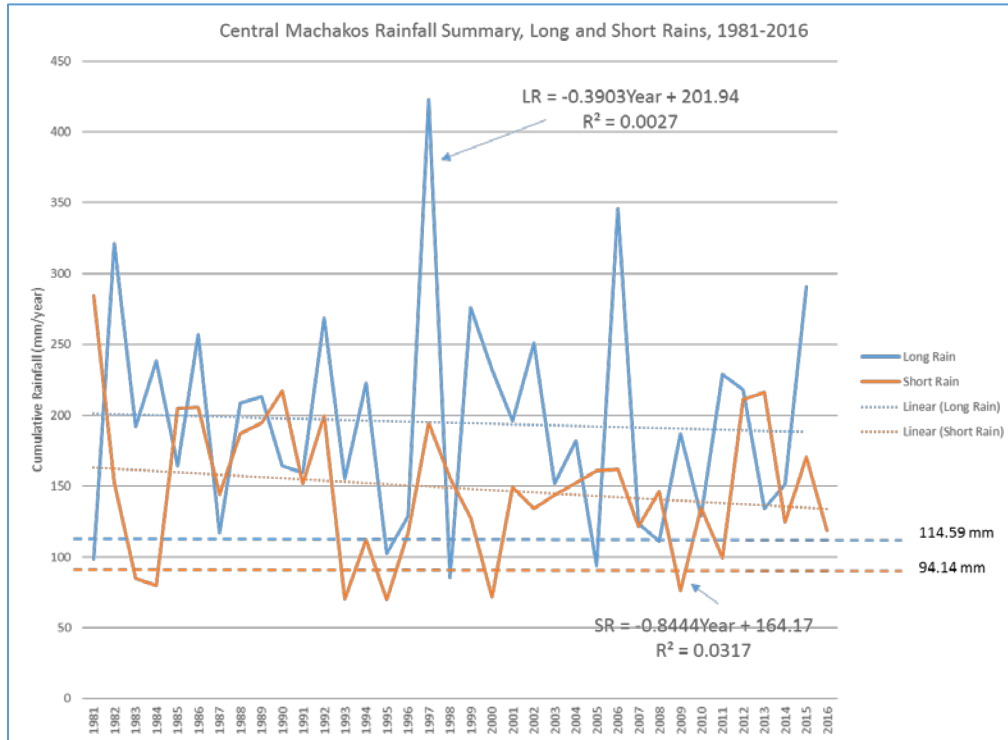


Figure 4 Central Machakos Rainfall Summary, Long and Short Rains, 1981-2016

Further, we compute in a following section the correlations between long and short rains and find the correlations to be weak. In other words, if rainfall is low in the long rain it is not jointly probable that rainfalls will also be lower in the short rains. On the other hand, correlation assessment shows that the rainfall totals across all 11 regions are highly correlated within the long rain period and within the short rain period, but not between long and short rains.

Statistical independence in year-over-year cumulative rainfall measures supports our use of Monte Carlo simulation methods to measure weather risks, establish and compute the indemnity structure, and compute interest rates on RCC. Using the distribution fitting tool in @RISK (www.palisade.com) the best-fit probability distribution for virtually all regions across both long and short rains is the PERT distribution. The PERT distribution is a 3-parameter distribution fit to the lowest rainfall, most likely rainfall, and highest rainfall recorded. It is appealing because it is bounded by the historical record and does not drift off to zero or infinite in the tails as other distributions do. This important property ensures that probabilities below a target are not over-stated and therefore do not introduce bias into indemnity structures and RCC interest rate measures. An example of PERT distribution for long and short rains at Central Machako is provided in Figure 2.

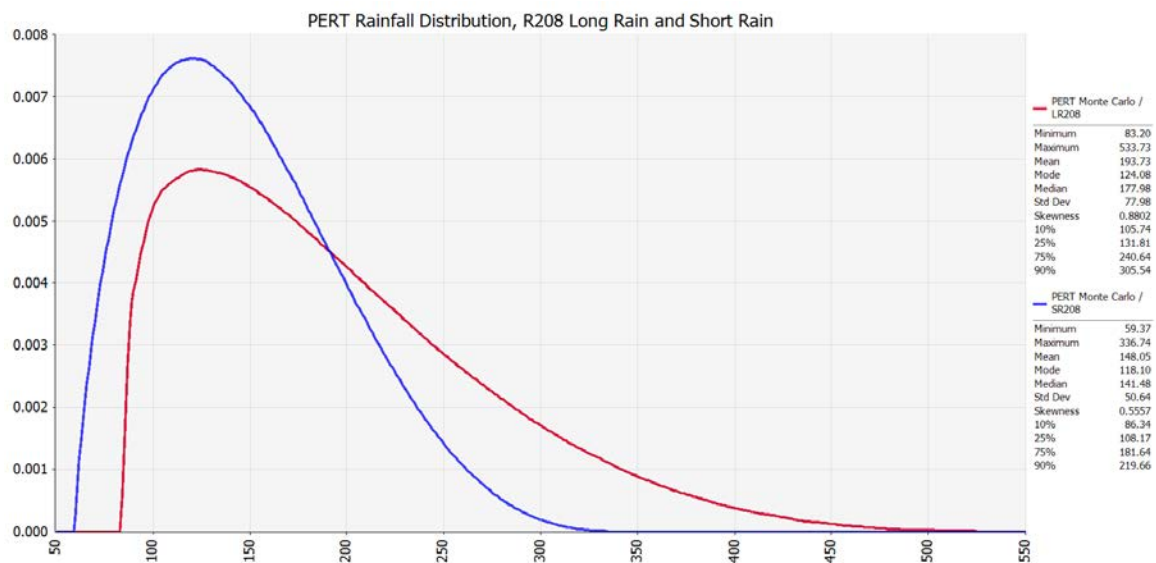


Figure 5 PERT Distribution of Long and Short Rains, Central Machakos, 1981-2016

4. Empirical rating of RCC

This section provides the rating methodology as applied to the rating model in the previous section. It describes a) the selection of rainfall trigger or strike, b) the calculation of the tick value, c) the computation of indemnities, and d) the imputation of RCC interest rates to be charged on the loans. On this latter point we explore two approaches to interest rate determination. The first is the interest rate to be charged if the insurer is willing to be paid the premium at the time the loan is repaid (ex post) and the second is if the insurer requires receipt of insurance premiums up front (ex ante).

4.1 Determining Rainfall Triggers

The first step is to determine the rainfall triggers. As mentioned we use Monte Carlo simulation techniques across correlated PERT distributions uniquely defined for each region in both long and short rain seasons. Upon discussions with farmers and extension experts we are recommending that rainfall triggers be based on the rainfall recorded at the 15th percentile. This suggests that farmers would receive payouts from either the long rains or short rains (and possibly both) on average, about once in every 6.7 years. Because of differences in location and altitude, the records shows that minimum, maximum, and most likely rainfalls differ across regions. To avoid excessive basis risk in rainfall measurement we have determined it best to provide rainfall coverage at the regional or district level, rather than the Machakos region as a whole. Thus we have 22 different rainfall triggers each determined by 22 uniquely defined PERT distributions, covering each of 11 districts, across the 2 seasons.

Figure 6 shows the simulation output for long rains in Central Machakos showing minimum recorded rainfall of 83.2mm, and trigger rainfall of 114.6mm imputed from 15th percentile of

PERT distribution. In this case, the trigger is 114.6 mm, and RCC indemnities would not be triggered unless cumulated rainfall between October 15 and January 15th fell below this level, i.e. $Max(0, Z_i - R_i(t_i, T_i)) = Max(0, 114.6 - R(10/15, 01/15))$. For example if the actual rainfall was only 100 mm then the rainfall deficit on which the loan indemnity would be paid is 14.6mm. However, if the actual rainfall was 150 mm, then no indemnity would be paid.

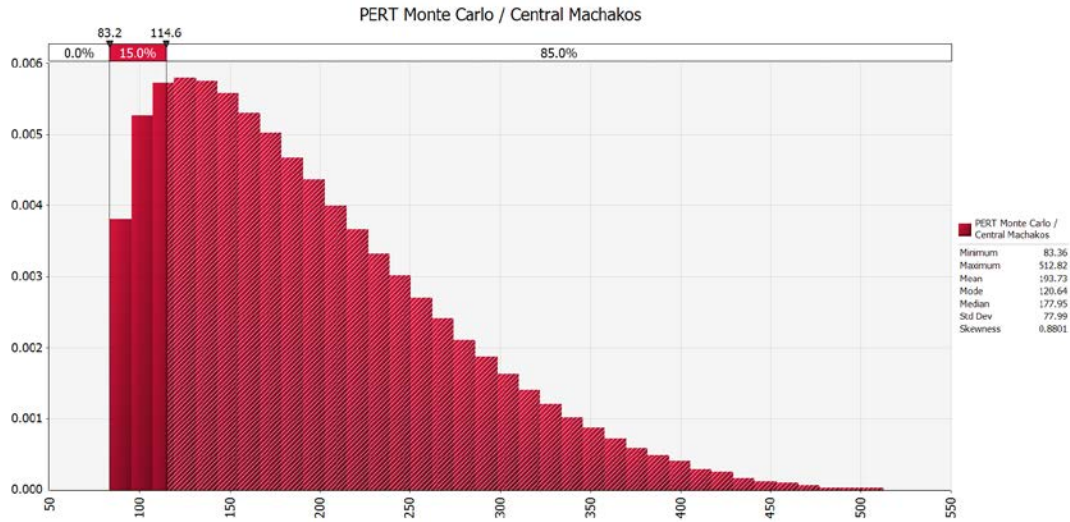


Figure 6 Simulation Output for Long Rains in Central Machakos showing Minimum recorded rainfall of 83.2mm, and Trigger Rainfall of 114.6mm Imputed from 15th Percentile of PERT Distribution

Figure 7 shows the suggested rainfall triggers for long and short rains and for each of the 11 target regions. All triggers are computed at the 15th percentile, and all are drawn from jointly distributed PERT distributions (i.e. correlated across space and time).

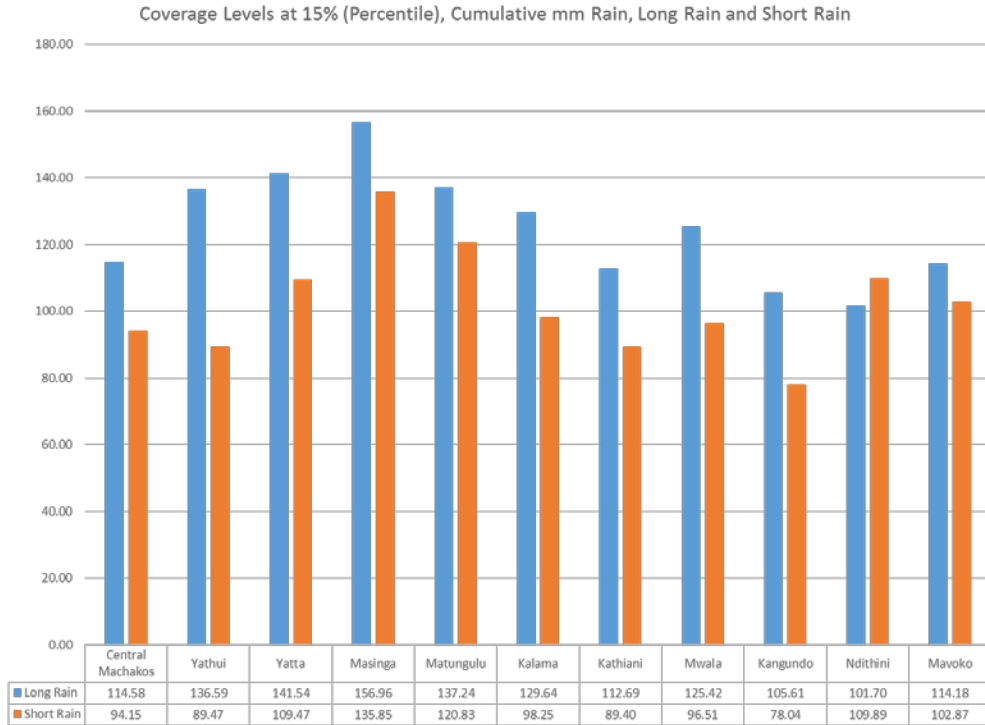


Figure 7 Coverage Levels at 15% (Percentile), Cumulative mm Rain, Long Rain and Short Rain

4.2 Determining the Tick Value

The conversion of rainfall shortfalls in mm to Kenyan Shillings is done using a ‘tick’ conversion. We assume a 10,000 Ksh loan for convenience. This is scalable in the sense that a 50,000 Ksh loan would pay 5-times the indemnity in nominal terms, but ultimately the interest rate charged on RCC loans is independent of loan amount.

The tick conversion is computed using

$$\psi_i = \frac{f}{Z_i - \text{Min}(R_i(t_i, T_i))} = \frac{10,000 \text{ Ksh}}{114.6\text{mm} - 83.2\text{mm}} = 318.47 \text{ Ksh/mm}.$$

We use the minimum recorded rainfall values from the history available to us. Beyond the pilot program it may be determined that loan coverage should occur at a higher rainfall amount. For

now, however, our design is to ensure that if rainfall is no more than 83.2mm then the full loan principal is recovered by the insurance policy.

Although we recommend setting triggers at the 15th percentile as discussed above, there may be occasion where a product might be reduced to the 10th percentile with a lower frequency payout, or at the 20th percentile with a higher frequency payout.

Figure 8 illustrates the average triggers and tick across all 11 regions for different percentile selection criteria. The rainfall triggers are recorded on the right axis and show the increase in trigger corresponding to increased percentile. The left axis shows the tick values. The tick values are decreasing but at a decreasing rate. In all cases they are anchored to the minimal rainfall recorded. Regardless of coverage, and corresponding tick values, the maximum indemnity cannot exceed the base 10,000 Ksh loan.

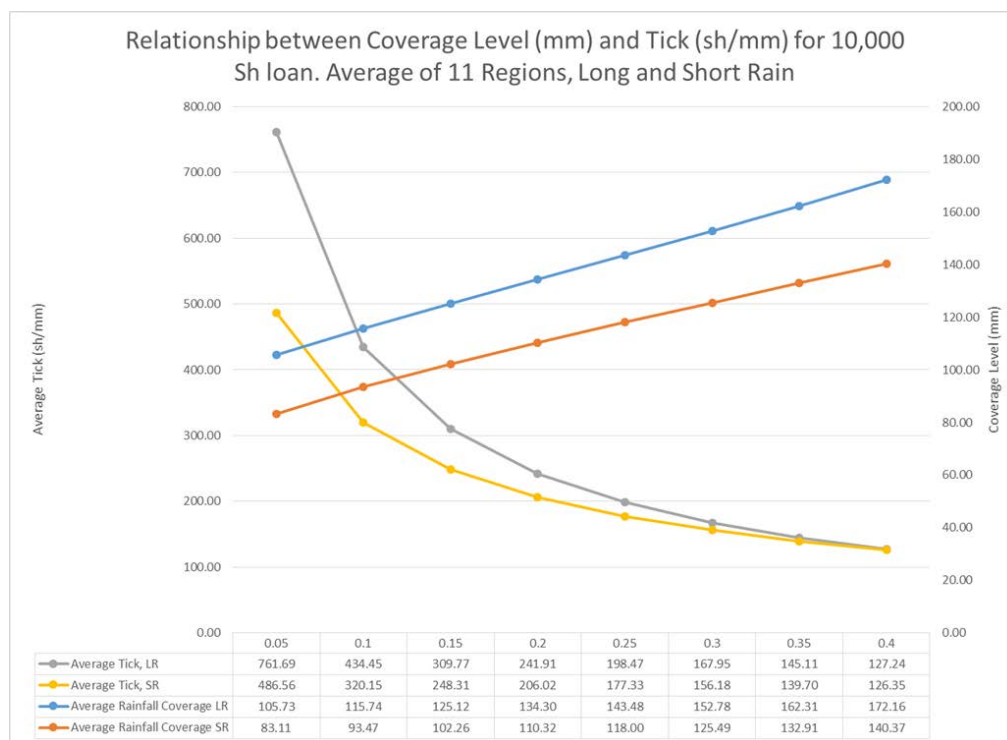


Figure 8 Relationship between Coverage Level (mm) and Tick (sh/mm) for 10,000 Sh loan. Average of 11 Regions, Long and Short Rain

4.3 Calculation of Indemnities and Insurance Premiums

The indemnity is calculated by multiplying the tick, by the rainfall shortfall. For example, if the actual rainfall in Central Machakos is 100 mm, the shortfall is 14.6mm. Each mm receives 318.47 shillings so that the indemnity paid on a 10,000 Ksh loan would be 4,649.66 Ksh. The farmer would have to pay only 5,350.34 Ksh plus interest. If measured rainfall is 150mm there would be no payout, but if rainfall is 83.2mm or lower then the rainfall shortfall of (114.6 – 83.2) 31.4 mm times the tick of 318.47 exactly equals 10,000 Ksh.

These indemnities are calculated for both the long and short rains. While it may be possible to offer insurance only for long rain or only for short rain, our indemnity structure for this pilot program is based on payments from either or both. In either case the maximum indemnity is 10,000 Ksh.

$$I = \text{Min}\left(10000, \psi_L \left[\text{Max}(0, Z_L - R_L(t_L, T_L)) \right] + \psi_S \left[\text{Max}(0, Z_S - R_S(t_s, T_s)) \right] \right) .$$

Figure 9 shows the average of the expected indemnities across all 11 regions, by percentile. At the 15th percentile

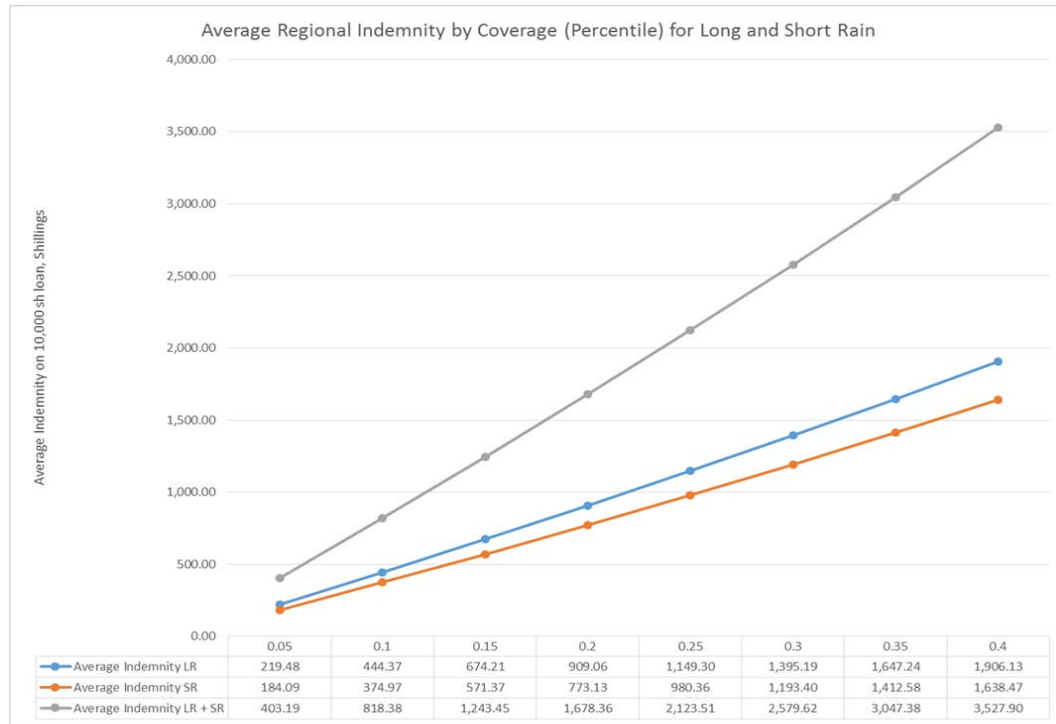


Figure 9 Average Regional Indemnities by Coverage Level

On average the 15th percentile indemnities are 674.21 Ksh for long rains, 571.37 Ksh for short rains and 1,243.45 for combined long and short rains, including years in which indemnities are collected on both. In general these suggest that across years indemnities can be expected to cover 6.74%, 5.71%, and 12.43% of loan principle meaning on average that farmers would expect to pay about 93.25%, 94.29%, and 87.57% of loan principal plus interest. In comparison if the 40th percentile was selected, with a payment about 2 of every 5 years, the insurer could expect to pay in indemnities about 35.28% of loan principal, while farmers would expect to pay on average about 64.72% of loan principal. Of course, with high frequency events, insurers would anticipate higher premiums and farmers would expect to pay much higher risk premiums on their RCC loan interest rates.

Insurance Loading

We use a 25% loading, $\delta = 0.25$, on expected indemnities to cover administrative, underwriting, and settlement costs. The load-adjusted indemnity is given by

$$v = E \left[\text{Min} \left(10000, \psi_L \left[\text{Max}(0, Z_L - R_L(t_L, T_L)) \right] (1 + \delta) + \psi_S \left[\text{Max}(0, Z_S - R_S(t_s, T_s)) \right] (1 + \delta) \right) \right]$$

4.4 Imputing RCC Interest Rates

There are two approaches to computing RCC interest rates. The first is what we refer to as ex-post pricing which is based on the insurer getting paid for the premium at the time that the loan is repaid. The second, is ex ante in which the insurer is paid in advance. In the ex ante approach the insurer is paid the premium up front and the premium is added to the base loan amount.

Interest Rate on Ex Post Risk Contingent Credit

As previously derived the formula used to impute the interest rate is given by

$$i^* = \frac{\ln \left[\frac{E \left[\psi_L (Z_L - R_L(t_L, T_L)) (1 + \delta) + \psi_S (Z_S - R_S(t_s, T_s)) (1 + \delta) \right]}{f} + e^{(i^*)T} \right]}{T}$$

Based on the average values for all 11 regions use of the formula can be illustrated following

$$\psi_L = 309.77 Ksh$$

$$\psi_S = 248.31 Ksh$$

$$\delta = 0.25$$

$$f = 10,000 Ksh$$

$$i^{**} = 12\%$$

$$T = 8 months = .667 years$$

$$E[\psi_L (Z_L - R_L(t_L, T_L))](1 + \delta) = 309.77(125.12 - R_L(t_L, T_L))(1 + .25) = 674.22 Ksh$$

$$E[\psi_S (Z_S - R_S(t_s, T_s))](1 + \delta) = 248.31(102.26 - R_S(t_s, T_s))(1 + .25) = 571.37$$

$$i^* = \frac{\ln \left[\frac{1,243.53}{10,000} + e^{0.12 \times 0.667} \right]}{0.667} = 32.14\%$$

Interest Rate on Ex Ante Risk Contingent Credit

With ex ante risk contingent credit the insurer is paid the insurance premium up front. This premium, measured in terms of the expected indemnity is added to the base loan. The formula for computing ex ante interest rates is given by

$$i^* = \frac{\ln \left[\frac{(f + I) e^{i^{**} T}}{f} \right]}{T}$$

Using the same values as above,

$$i^* = \frac{\ln \left[\frac{(10,000 + 1,243.53) e^{0.12 \times 0.667}}{10,000} \right]}{0.667} = 33.67\%$$

As expected the interest rate on the ex ante model is slightly higher than the ex post model because of the additional compounding of interest on the up-front indemnity.

Figures 10 and 11 summarize the final simulated results for interest rates on RCC. Figure 7 summarizes ex-post results, while Figure 8 summarizes ex ante results. The ex ante results

which assumes that insurance premiums are posted at the time the loan is made and added to loan principal are about 1.5% points higher.

The three bars in Figures 7 and 8 represent three separate models; Only long rains are insured, only short rains are insured and both long and short rains are insured.

Our interest is in the combined model. It is self-defeating to insure only one of the rainfalls, since failure in the other would only lead to increased financial risk. The interest rates for the combined insurance are naturally higher because it is possible that indemnities can be received from both sources. Although correlations between long and short rains are weak, they still have some effect on joint outcomes.

Because of the nature of insurance markets it is likely that the insurer would need to be paid upfront so we will only focus on the ex ante model. Interest rates are remarkably consistent across regions, with only slight variations due to different weather risks. The interest rates range from 32.51% in Mavoko to 35.11% in Yatta. Recall that the base interest rates for basic loans is 12% and that these interest rates include a 25% loading factor. Beyond the loading factor they are actuarially sound.

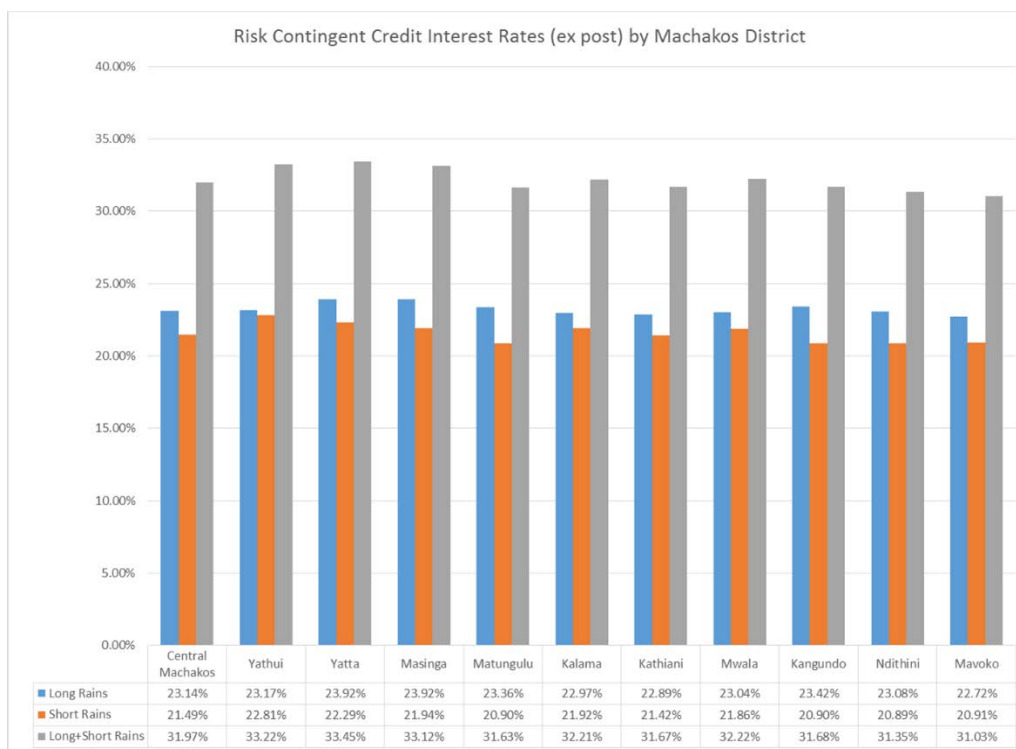


Figure 10 Risk Contingent Credit Interest Rates (ex post) by Machakos District

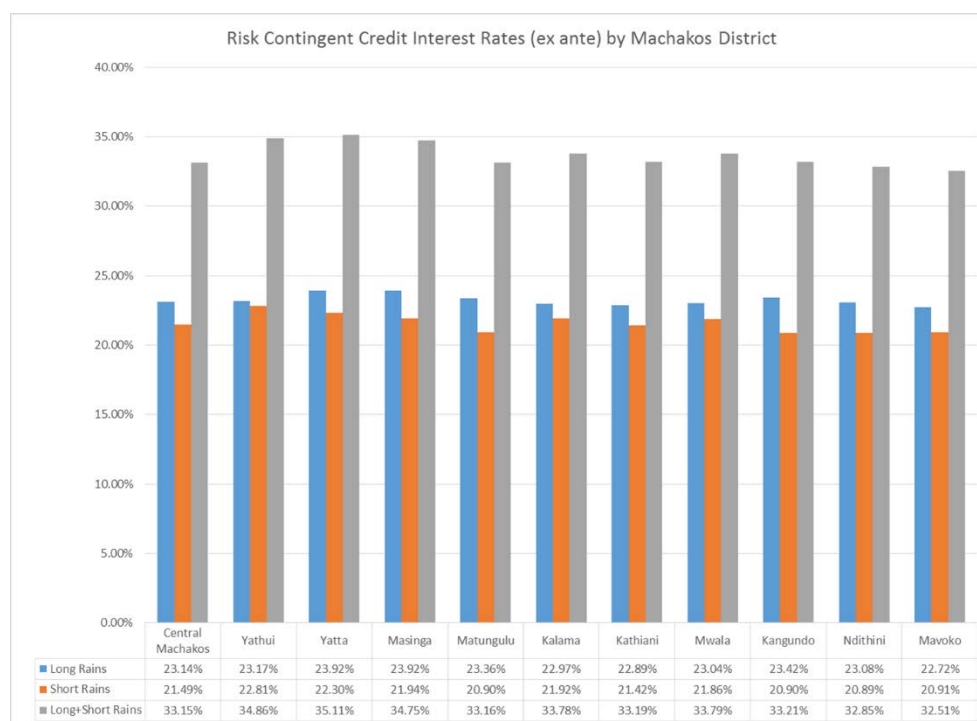


Figure 11 Risk Contingent Credit Interest Rates (ex ante) by Machakos District

4.5 Indemnities

Covariate risks are important considerations for any insurance product. If the failure in rains is significant in one district it is highly likely that the rains have failed also in other districts. This section provides an overview of the frequency of payments and number of regions likely to receive payments. This does not speak to the magnitude of payments which, capped at 10,000 Ksh, are discussed separately.

The frequency of payouts, determined from Monte Carlo simulations are summarized in Table 1. For long rains the probability that no district will receive an indemnity is 75.16%, for short rains 72.41% and there is a 55.9% chance that neither long nor short rains will receive an indemnity. This latter probability is equivalent to saying that at least one district will receive an indemnity in either long or short rains 40.1% of the time, or at least once every 4 years.

Table 1 Frequency of Regions Receiving Indemnity in a Season

<i>Number of Districts</i>	<i>Long Rain</i>	<i>Short Rain</i>	<i>Long and/or Short Rain</i>
0	75.16%	72.41%	55.90%
1	3.86%	5.02%	6.07%
2	2.27%	3.19%	4.14%
3	1.74%	2.11%	2.83%
4	1.31%	1.65%	2.40%
5	1.11%	1.34%	1.97%
6	1.03%	1.32%	2.02%
7	1.31%	1.39%	2.33%
8	1.33%	1.67%	2.63%
9	1.53%	2.03%	3.09%
10	2.21%	2.10%	3.85%
11	7.17%	5.80%	12.81%

That drought conditions are so severe that all 11 districts receive an indemnity in one year is rare. There is only a 7.17% chance that all 11 districts would receive an indemnity in long rains, 5.8% chance for short rains, and a 12.81% chance that all districts would receive indemnities in either long or short rains. In other words, in about 13 of every 100 years it can be expected that the insurer will pay indemnities in all districts for either the long or short rains.

Figure 12 illustrates the conditional probabilities by Baye's rule on the frequency of indemnities given that at least 1 district receives an indemnity. It is U-shaped as expected because of the high degree of correlation amongst rainfalls. At the lower end the probability that only 1 district receives a payment in either long and short rains is 13.76%. A season in which only 1 or a few districts receive indemnities comes about by chance. This will arise as a result of uncorrelated weather patterns or weather patterns that are not wide-spread across the regions. On the other

hand, Figure 12 shows the significant of covariate risks. Given that at least one district receives an indemnity there is a 28.86% chance that all 11 districts will receive a long rain indemnity; a 21.02% chance that all districts will receive a short rain indemnity, and a 29.03% chance that all 11 districts will receive an indemnity in either the long rain or short rain.

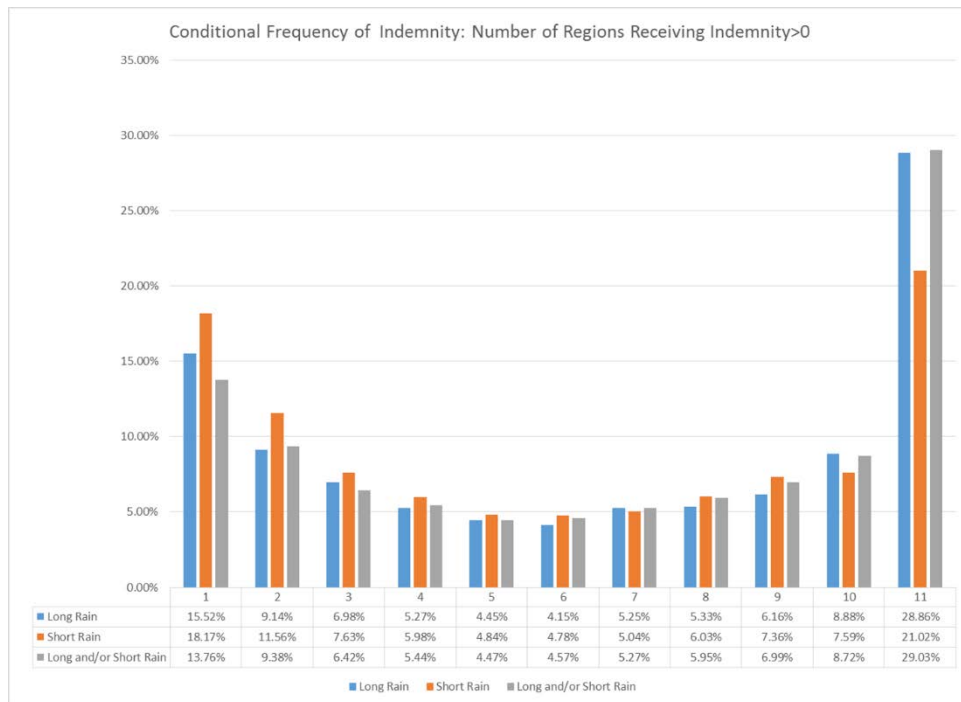


Figure 12 Conditional Probabilities of Frequency of Indemnities across Districts

Table 2 summarizes the joint distribution between number of districts receiving indemnity in long rains and receiving the stated number also receiving indemnities in the short rains. There is a 55.89% chance that no district in either long rain or short rain receives an indemnity. If there is no indemnity in the long rain there is a 3.515% chance that 1 district and 3.93% chance that all 11 districts will receive an indemnity in the short rains. Likewise there is a 4.595% chance that all 11 districts will receive an indemnity in the long rains but 0 districts in the short rains. At the lower right of Table 2, the likelihood that a total catastrophic failure of both long and short rains

will result in indemnities for all 11 districts in both seasons is 0.62% or about 6 in every 1,000 years.

Table 2 Joint Distribution of Number of Districts Receiving Indemnity between Long and Short Rains

<i>Short Rain</i>	<i>Long Rains</i>											
	0	1	2	3	4	5	6	7	8	9	10	11
0	55.895	2.505	1.555	1.065	0.890	0.680	0.745	0.955	0.960	1.005	1.555	4.595
1	3.515	0.235	0.140	0.115	0.075	0.105	0.090	0.060	0.090	0.080	0.085	0.425
2	2.245	0.145	0.085	0.070	0.055	0.055	0.030	0.040	0.040	0.070	0.070	0.285
3	1.465	0.135	0.040	0.045	0.045	0.015	0.000	0.015	0.030	0.035	0.045	0.235
4	1.105	0.080	0.060	0.050	0.040	0.025	0.010	0.030	0.020	0.035	0.045	0.150
5	0.965	0.045	0.020	0.035	0.005	0.025	0.025	0.005	0.000	0.030	0.045	0.135
6	0.935	0.045	0.050	0.025	0.030	0.025	0.010	0.010	0.035	0.020	0.025	0.110
7	0.975	0.090	0.030	0.030	0.015	0.005	0.015	0.015	0.020	0.025	0.060	0.110
8	1.200	0.075	0.025	0.060	0.025	0.020	0.010	0.025	0.015	0.040	0.035	0.135
9	1.515	0.090	0.020	0.035	0.020	0.025	0.015	0.025	0.025	0.040	0.045	0.175
10	1.415	0.120	0.065	0.055	0.035	0.015	0.025	0.030	0.020	0.055	0.065	0.195
11	3.930	0.290	0.180	0.150	0.075	0.110	0.055	0.095	0.070	0.095	0.130	0.620

Indemnity Payouts

Core to the successful application of Risk Contingent Credit is the effective transfer of risk from lenders and borrowers to an insurer. Figure 13 shows the simulated loan repayment and indemnity transfer structure of RCC for Central Machakos with long rain coverage at the 15th percentile. The top panel shows the loan repayment schedule for the farmer-borrower with rainfall on the x axis and loan repayment at the Y-axis. The trigger for insurance indemnities is 114.6 mm. Below this trigger the farmer's loan repayment is decreased in proportion to the rainfall deficit. If the rainfall shortfall is substantially high there is a chance that the farmer will not have to repay any principal at all, paying only the interest on the loan.

The lower panel of Figure 13 shows the indemnity transfer to the lender. The money is deposited from the insurer into the borrower's account at the bank. The loan transfer is isomorphic to the loan repayment schedule.

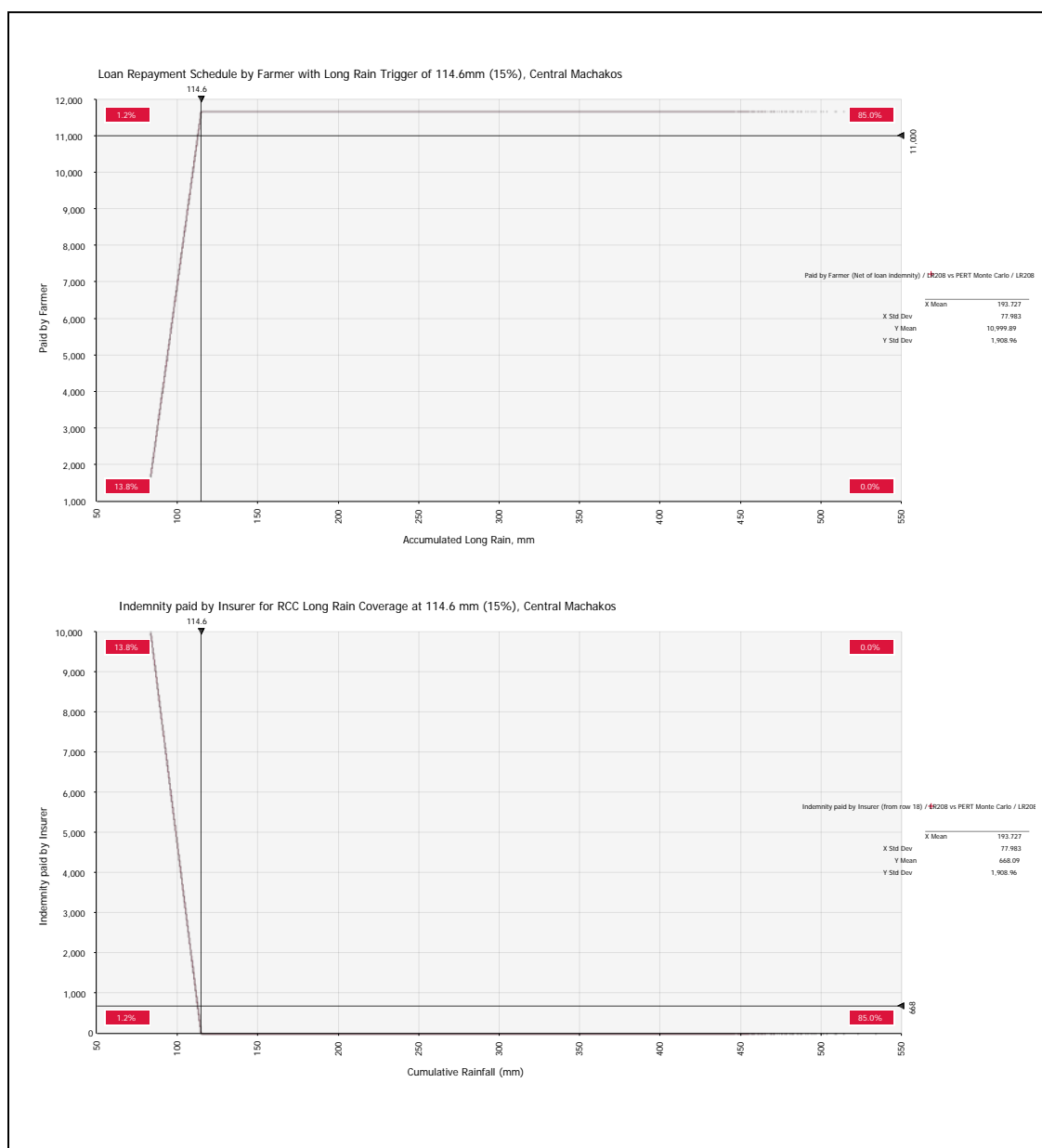


Figure 13 Simulated Loan Repayment Schedules and Indemnity Transfer

From the banker's point of view the combined payment from the indemnity schedule plus the repayment schedule, satisfies the loan principal repayment. Figure 14 shows the iso-repayment line to the lender. The iso-repayment line shows the sources of loan repayment to lender from borrower on the Y-axis and the insurer on the X-axis. In this example, the loan repayment including interest is 12,376 Ksh. The vertical and horizontal lines show, e.g., that if the indemnity is 4,000 Ksh paid by the insurer, borrower pays 8,376. This dollar-for-dollar substitution assures that all combinations along the sloped line = 12,376. This, of course, is the targeted and desired result: With assured repayment against drought risks the lender's exposure to repayment risk is virtually eliminated, which should increase the supply of credit to farmers, while the reduction in business and financial risks facing the farmer should encourage loan demand.

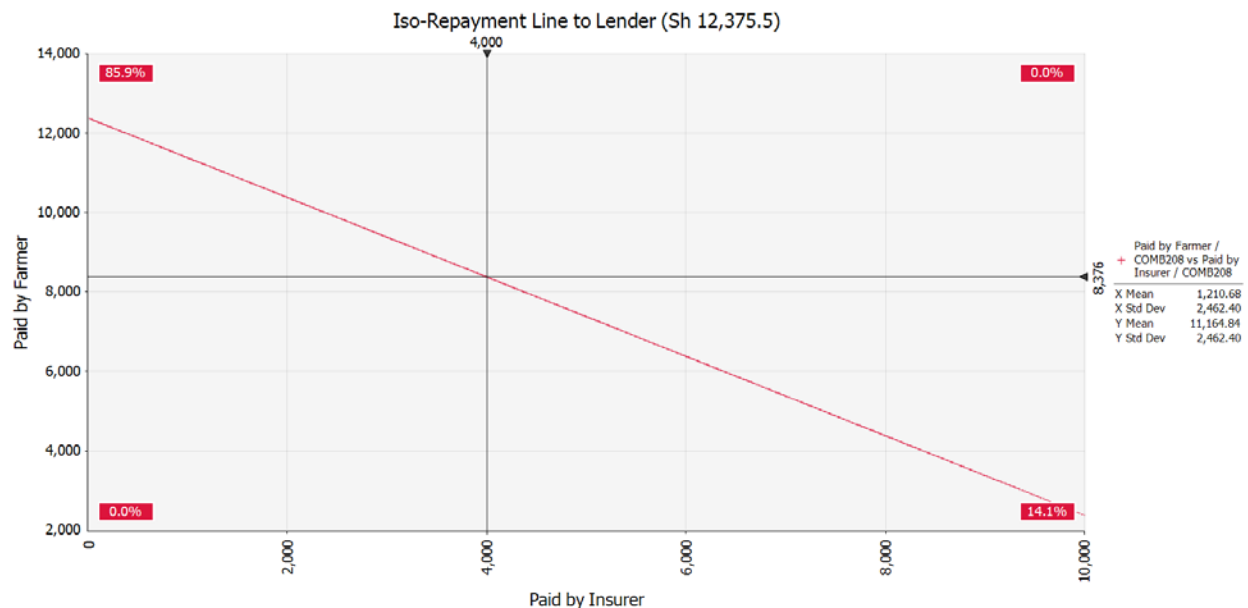


Figure 14 Iso-Repayment Line with Risk-Contingent Credit

Distribution of Indemnities

This section reviews the relationships between RCC indemnities and loan repayment. We use as a base a 10,000 Ksh loan with indemnities arising from either long rains, short rains, or both. The numbers reported are the averages across all 11 districts. The mean payments are going to be sensitive to the trigger levels elected. Although we are recommending coverage at the 15th percentile, Figure 15 shows the relationship between mean indemnity, mean repayment, and total loan amount with increasing coverage to the 40th percentile. The loan amounts (principal plus interest) increase because of the increased interest rates with higher coverage.

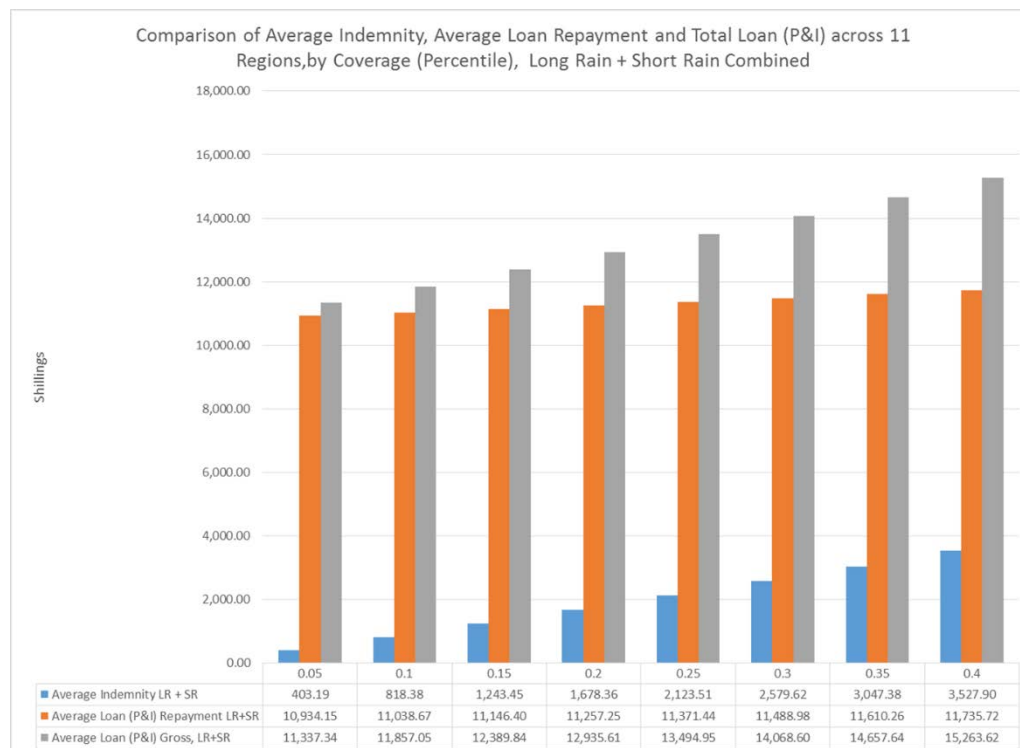


Figure 15 Comparison of average indemnity

At the lowest coverage level (5th percentile) the expected indemnity would be 403.19 Ksh. The amount to be repaid is 11,337.34 Ksh so the expected amount that the farmer would repay is 10,934.15 Ksh. At the 15th percentile, the insurer can expect to pay across all 11 districts about 1,234.45 Ksh/year on a loan of 12,289.84 Ksh. The farmer-borrower in the region will pay on average 11,146.40 Ksh. As the coverage levels increase to 40% the mean indemnities increase to

3,527 Ksh on a loan repayment amount of 15,263.62 Ksh, of which the average repayment by the farmer would be 11,735.72 Ksh.

5. Conclusions and implementation challenges

This paper has described the design and rating of risk-contingent credit that has been commercially piloted recently in Machakos County in Kenya. Looking at weather related agricultural risks and limited access to credit for Kenyan farmers this paper designs a novel insurance linked credit model. We develop a rainfall linked risk-contingent credit that transfers drought risk related perils from borrower to lender via insurance mechanism that provide a balance between business and credit risks for smallholder farmers. We describe the methodology used to design and rating of a risk-contingent structured operating agricultural credit instrument using CHIRPS rainfall data from 1981-2016 in Kenya. We illustrate the use of Monte Carlo methods to risk modelling that can be integrated within general insurance and credit rating framework. The step-by-step design could provide guidance to practitioners and policy makers about the pricing and bundling of insurance and credit together. The methodology can be easily replicated to other areas as similar high quality biophysical data would be available easily.

This RCC product has many innovative features: 1) It appears to be the first to develop scientific bundling (bundling itself is not new, we developed scientific bundling technique in financial engineering framework) of rainfall based index insurance and agricultural term loan through actuarially fair pricing, 2) Because the insurance component of RCC substitutes for collateral, it is more financially inclusive than conventional credit products, 3) It minimizes the probability of default on loans by producers, improves their risk bearing abilities, and bridges trust in the lender-borrower relationship, 4) The removal of critical liquidity constraints, combined with the inter-temporal transfer of climate risk, an RCC mechanism can achieve better targeting of poorer farmers, provide climate resilience, and eliminate climate-based poverty traps, 5) Finally, it also eliminates the drawbacks of standalone index insurance products by not requiring the farmers to pay a premium upfront.

Risk-Contingent Credit is a financial innovation that links loan repayment to some underlying risk condition. In this paper we design a dual-trigger RCC linked to failures of either long or short rains or both. Our target is grain and cash crop farmers from 11 Sub-Counties in

Machakos County of Kenya. It is designed to balance the business and financial risks between borrower and lender when long and or short rains fail.

1. RCC is not intended to cover common risks. We recommend that coverage be set at the 15th percentile; that is, at the district level rainfall triggers are established so that an indemnity would be paid on average about 15 in every 100 years.
2. Across all 11 counties we compute an average RCC interest rate of 33.67%. This includes a 25% load on the actuarially fair premium. To account for unmeasurable risks, we feel that an annual interest rate of 36% or about 24% above the base rate of 12%/year would be reasonable. A 36% annual interest rate is about the same as offered by NGO micro-credit organizations. In addition, many farmers invest in a ROSCA in which they pay 100% per year. Nonetheless, financial outreach will be required to explain RCC to borrowers. We have conducted games and focus groups in Marsabit and Machakos, as well as dairy regions and all evidence points to a strong interest in RCC. This suggests that the demand for credit is quite inelastic, suggesting that higher interest rates due to a measurable and defined risk premium would not discourage farmers from borrowing at a 3% per month rate.
3. We recommend that loan terms not exceed 8 months for similar areas. Loans made in September leading up to the long rains in October should be repaid by the end of May, following the short rains.

There are a range of implementation challenges that are subject to future research. First, since there might be local variation on rainfall realization and other factors that may lead to different production outcome, RCC linked to only rainfall may be subject to basis risk. We plan on developing a composite index using rainfall, vegetation and soil moisture data along with fitting a response function with maize yield data in the region to minimize design related basis risk. Second, our experience from the first round of RCC loan disbursement in Machakos has shown the need of a carefully designed financial education and extension effort to building awareness and making an informed decision for the farmers. Being an insurance bundled credit product RCC is complex and difficult to understand, particularly for populations with low level of literacy. In this regards we developed a participatory pictorial game to communicate RCC to farmers (Shee et al. 2015) which is not only useful for understanding the product but shows promise to generating demand for the RCC product. Finally, commercial financial institutions

should be dedicated and see RCC as a new tool to expand their market and hence should build capacity inside the institution. Financial institutions should explore various insurance and reinsurance options depending on the number of target clients and risk profile in the area. The RCC is currently being implemented in Machakos County in Kenya by Equity Bank Kenya Ltd. with APA Insurance Ltd. as the underwriter. Notwithstanding the challenges, the RCC pilot has shown a considerable promise within the smallholder farming communities.

References

- Banerjee, A., Duflo, E., Glennerster, R. and Kinnan, C. (2015). "The miracle of microfinance? Evidence from a randomized evaluation" *American Economic Journal: Applied Economics* 7(1): 22-53.
- Barrett, C.B., Carter, M. and Little, P. (2006). "Understanding and reducing persistent poverty in Africa: introduction to a special issue" *Journal of Development Studies*, 42: 167-177
- Bester, H. (1985). "Screening vs. Rationing in Credit Markets with Imperfect Information." *American Economic Review* 75(4): 850-55.
- Carter, M.R. (2011). "The Impact of Interlinked Index Insurance and Credit Contracts on Financial Market Deepening and Small Farm Productivity." Selected Paper. Annual Meeting of the American Applied Economics Association, Pittsburgh PA, July 24-26.
- Casaburi, L. and Wills, J. (2015). "Time vs. state in insurance: experimental evidence from contract farming in Kenya." Working Paper, Stanford University.
- Chantararat, S., A. G., Mude, C.B. Barrett, and M.R. Carter, (2013). "Designing index-based livestock insurance for managing asset risk in northern Kenya", *Journal of Risk and Insurance*, 80(1), 205-237.

Collier, B. A. L. Katchova, J. R. Skees (2011). "Loan portfolio performance and El Niño, an Intervention Analysis", *Agricultural Finance Review*, 71(1):98 – 119.

Giné, X. and D. Yang (2009). "Insurance, Credit, and Technology Adoption: Field Experimental Evidence from Malawi" *Journal of Development Economics* 89 (2009) 1-11.

GOK (Government of Kenya) (2014) "KENYA: Situation Analysis for a National Agricultural Insurance Policy (NAIP)"

Johnstone, D.J. and Morduch, J. (2008). "The unbanked: evidence from Indonesia" *World Bank Economic Review* 22(3): 517-537.

Karlan, D., E. Kutsoati, M. McMillan and C. Udry (2011). "Crop Price Indemnified Loans for Farmers: a Pilot Experiment in Rural Ghana." *The Journal of Risk and Insurance*, 2011, Vol. 78, No. 1, 37-55.

Miranda, M.J. and C. Gonzalez-Vega (2011). "Systemic Risk, Index Insurance, and Optimal Management of Agricultural Loan Portfolios in Developing Countries" *American Journal of Agricultural Economics*, 93(2): 399-406.

Santos, P. and Barrett, C.B. (2011). "Persistent poverty and informal credit" *Journal of Development Economics*, 96(2): 337-347.

Shee, A. and Turvey, C. G. (2012). "Collateral-Free Lending with Risk-Contingent Credit for Agricultural Development: Indemnifying Loans against Pulse Crop Price Risk in India." *Agricultural Economics*, 43: 561-574.

Shee, A., Turvey, C.G. and Woodard, J.D. (2015). "A field study for assessing risk-contingent credit for Kenyan pastoralists and dairy farmers" *Agricultural Finance Review*, 75(3): 330-348.