



**AgEcon** SEARCH  
RESEARCH IN AGRICULTURAL & APPLIED ECONOMICS

*The World's Largest Open Access Agricultural & Applied Economics Digital Library*

**This document is discoverable and free to researchers across the globe due to the work of AgEcon Search.**

**Help ensure our sustainability.**

Give to AgEcon Search

AgEcon Search

<http://ageconsearch.umn.edu>

[aesearch@umn.edu](mailto:aesearch@umn.edu)

*Papers downloaded from **AgEcon Search** may be used for non-commercial purposes and personal study only. No other use, including posting to another Internet site, is permitted without permission from the copyright owner (not AgEcon Search), or as allowed under the provisions of Fair Use, U.S. Copyright Act, Title 17 U.S.C.*

Vol XXXII  
No. 1

ISSN 0019-5014

JANUARY-  
MARCH  
1977

# INDIAN JOURNAL OF AGRICULTURAL ECONOMICS



INDIAN SOCIETY OF  
AGRICULTURAL ECONOMICS,  
BOMBAY

## PUBLICATIONS RECEIVED

Agrawal, R. C., *et. al*, *A Study of Agricultural Finance with special reference to the Role of Nationalized Banks in South Kanara (India)*, Post-Graduate Training Centre for Agricultural Development, Institute of Socio-Economics of Agricultural Development, Technical University of Berlin, Berlin, Second Edition, 1976. Pp. xii+248 (mimeo.).

Agrawal, R. C., *et. al*, *A Study of Hill Agriculture in Almora (India)—Present Status and Future Strategy for Development*, Post-Graduate Training Centre for Agricultural Development, Institute of Socio-Economics of Agricultural Development, Technical University of Berlin, Berlin, 1976. Pp. xi+193 (mimeo.).

Arndt, Thomas M.; Dalrymple, Dana G. and Ruttan, Vernon W. (Eds.), *Resource Allocation and Productivity in National and International Agricultural Research*, University of Minnesota Press, Minneapolis, U.S.A., 1977. Pp. xxviii+617. \$25.00.

Askari, Hossein and Cummings, John Thomas, *Agricultural Supply Response: A Survey of the Econometric Evidence*, Praeger Publishers Inc., New York, U.S.A., 1976. Pp. xvii+446. \$32.50.

Baster, Nancy, *Distribution of Income and Economic Growth: Concepts and Issues*, United Nations Research Institute for Social Development, Geneva, Switzerland, 1970. Pp. viii+80. \$1.00.

Bhattacharya, Pranab and Majid, Abdul, *The Small Farmers of Punjab*, Research Study No. 76/3, Agricultural Economics Research Centre, University of Delhi, Delhi-7, 1976. Pp. 41 (mimeo.).

Boerma, Addeke H. with the collaboration of Mackenzie, Colin, *A Right to Food: A Selection from Speeches*, Food and Agriculture Organization of the United Nations, Rome, Italy, 1976. Pp. 177.

Brahmbhatt, D. M., *Samaldevi (Panchmahals District, Gujarat)—An Economic Survey in a Backward District*, Indian Village Studies No. 21, Agro-Economic Research Centre (for Gujarat & Rajasthan), Sardar Patel University, Vallabh Vidyanagar, Gujarat, 1977. Pp. v+xvi+iv+126 (mimeo.).

Brahmbhatt, D. M. and Bapat, M.T., *Transforming Tribal Agriculture (An Evaluation of the Leap Forward Project of the Gujarat State Fertilizers Company Limited)*, Research Study No. 48, Agro-Economic Research Centre (for Gujarat & Rajasthan), Sardar Patel University, Vallabh Vidyanagar, 1976. Pp. vii+83 (mineo.).

Brewis, T. N., *Regional Development in Canada*, Report No. 71.4, United Nations Research Institute for Social Development, Geneva, Switzerland, 1971. Pp. v+75+4 charts+4 maps (mimeo.).

Chattopadhyay, Boudhayan, *Water, Cereals and Economic Growth in South & East Asia in the Fifties & Sixties*, People's Publishing House Pvt. Ltd., New Delhi, 1977. Pp. ix+389. Rs. 40.00.

Connell, John; Dasgupta, Biplab; Laishley, Roy and Lipton, Michael, *Migration from Rural Areas: The Evidence from Village Studies*, Institute of Development Studies Village Studies Programme, University of Sussex, Brighton (U.K.); International Labour Office, Geneva; Oxford University Press, Delhi, 1976. Pp. vii+228. Rs. 40.00.

Cornell, John and Lipton, Michael, *Assessing Village Labour Situations in Developing Countries*, Institute of Development Studies Village Studies Programme, University of Sussex, Brighton (U.K.); International Labour Office, Geneva; Oxford University Press, Bombay, 1977. Pp. 180. Rs. 35.00.

Dasgupta, Biplab with Laishley, Roy; Lucas, Henry and Mitchell, Brian, *Village Society and Labour Use*, Institute of Development Studies Village Studies Programme, University of Sussex, Brighton (U.K.); International Labour Office, Geneva; Oxford University Press, Bombay, 1977. Pp. vi+229. Rs. 40.00.

Dillon, John L., *The Analysis of Response in Crop and Livestock Production*, Second Edition, Pergamon Press Ltd., Headington Hill Hall, Oxford, England, 1977. Pp. xiii+213. Flexicover: \$8.50; Hard case: \$14.50.

Drewnowski, Jan, *Studies in the Measurement of Levels of Living and Welfare*, Report No. 70.3, United Nations Research Institute for Social Development, Geneva, Switzerland, 1970. Pp. ix+103 (mimeo.).

Food and Agriculture Organization of the United Nations, *Credit for Agriculture in the Developing World: Report on the World Conference on Credit for Farmers in Developing Countries*, held in Rome, 14-21 October, 1975, Rome, Italy, 1976. Pp. vii+48+A50+B12.

George, P. S. and Chokshi, S. N., *Dairy Development Decisions at Farm Level*, CMA Monograph No. 66, Centre for Management in Agriculture, Indian Institute for Management, Ahmedabad, 1977. Pp. 96 (mimeo.).

Ghatak, Subrata, *Rural Money Markets in India*, The Macmillan Company of India Ltd., New Delhi-2, 1976. Pp. vii+230. Rs. 58.00.

Ghosh, B. N., *Disguised Unemployment in Underdeveloped Countries (with special reference to India)*, Heritage Publishers, New Delhi-1, 1977. Pp. xiii+152. Rs. 20.00.

Grimwood, Brian E. with contributions by Ashman, F.; Dendy, D.A.V.; Jarman, C. G.; Little, E.C.S. and Timmins, W. H., *Coconut Palm Products: Their Processing in Developing Countries*, FAO Agricultural Development Paper No. 99, Food and Agriculture Organization of the United Nations, Rome, Italy, 1975. Pp. xvii + 261.

India, Government of, *Bulletin on Food Statistics*, Directorate of Economics and Statistics, Ministry of Agriculture and Irrigation, New Delhi, 1976. Pp. viii + 244. Rs. 71.00.

India, Government of, *Commodity Transport Studies—Foodgrains*, JTG/Report/No. 13, Joint Technical Group for Transport, Planning Commission, New Delhi, 1968. Pp. xxii + 231 + appendices.

India, Government of, *Studies in Economics of Farm Management in I.A.D.P. Region of Surat and Bulsar, Gujarat, Combined Report for the Years 1966-67 to 1968-69*, Directorate of Economics and Statistics, Ministry of Agriculture and Irrigation, New Delhi, 1975, Controller of Publications, Delhi-6, 1976. Pp. xiii + 464. Rs. 85.00.

India, Government of, *Studies in Economics of Farm Management in Coimbatore District (Tamil Nadu), Three-Year Combined Report (1970-71 to 1972-73)*, Directorate of Economics and Statistics, Ministry of Agriculture and Irrigation, New Delhi, Controller of Publications, Delhi-6, 1976. Pp. iv + 241. Rs. 32.00.

International Rice Research Institute, *1974 Supplement to the International Bibliography of Rice Research*, compiled by Zamora, Milagros, Los Banos, Laguna, Manila, The Philippines, 1975. Pp. ix + 386.

Ishikawa, Shigeru, *Agricultural Development Strategies in Asia: Case Studies of the Philippines and Thailand*, The Asian Development Bank, Manila, The Philippines and Japan, 1970. Pp. xii + 128.

Joy, J. L. and Everitt, Elizabeth (Eds.), *The Kosi Symposium—The Rural Problem in North-East Bihar: Analysis, Policy and Planning in the Kosi Area*, Institute of Development Studies at the University of Sussex, Brighton (U. K.), 1976. Pp. x + 277.

Kabra, K. N., *Planning Process in a District*, Indian Institute of Public Administration, New Delhi-2, 1977. Pp. ix + 110. Rs. 30.00.

Kale, B. D., and Hasalkar, J. B., *Employment and Wage among Rural Labourers*, J.S.S. Institute of Economic Research, Dharwar-4, Karnataka State, 1976. Pp. xiv + 184 + xlviii. Rs. 30.00.

Karnataka, Government of, *Drought Prone Areas Programme for Shirahatti Taluk (Dharwar District), State Sector, Annual Plan for 1976-77*, Directorate of Drought Prone Areas Programme, Karnataka Government Secretariat, Bangalore, 1976. Pp. iv + 8 + 2 maps (mimeo.).

Krishnaswamy, M.S. assisted by Prakash, Hari, *A Report on the Problem of Delay in Agricultural Administration in Gujarat State*, CMA Monograph No. 64, Centre for Management in Agriculture, Indian Institute of Management, Ahmedabad, 1976. Pp. 108. Rs. 8.00 (mimeo.).

Mandl, Pierre Emeric, *Preparation of the Child for Modernization: Skills and Intellectual Requirements (A Review of the Literature)*, Report No. 70.16, United Nations Research Institute for Social Development, Geneva, Switzerland, 1969. Pp. 88 (mimeo.).

Merrill, William G., *The Impact of Agricultural Mechanization on Employment and Food Production*, Occasional Paper No. 1, Economics and Sector Planning Division, Office of Agriculture, Technical Assistance Bureau, U.S. Agency for International Development, Washington, D.C., U.S.A., 1975. Pp. 45.

Meyer-Dohm, Peter (Ed.), *Economic and Social Aspects of Indian Development*, Vol. 19, Horst Erdmann Verlag für Internationalen Kulturaustausch, Tubingen-Basel, Federal Republic of Germany, and Shakuntala Publishing House, Bombay, 1975. Pp. 293.

Mishra, G. P., *Some Aspects of Change in Agrarian Structure*, I. S. E. C. Monograph 4, Institute for Social and Economic Change, Bangalore; Sterling Publishers Pvt. Ltd., New Delhi-6, 1977. Pp. xii + 86. Rs. 20.00.

Mundle, Sudipto, *District Planning in India*, Indian Institute of Public Administration, New Delhi-2, 1977. Pp. viii + 95. Rs. 30.00.

Nabar, Veena, *Factors Affecting Public Milk Procurement: A Case Study of the Delhi Milk Scheme, 1965-66 to 1974-75*, Research Study No. 76/4, Agricultural Economics Research Centre, University of Delhi, Delhi-7, 1976. Pp. 93 (mimeo.).

Organisation for Economic Co-operation and Development, *Land Use Policies and Agriculture*, Paris, France, 1976. Pp. 84. \$ 4.50.

Organisation for Economic Co-operation and Development, *Study of Trends in World Supply and Demand of Major Agricultural Commodities*, Paris, France, 1976. Pp. 350. \$ 13.50.

Pandey, S. M. (Ed.), *Rural Labour in India: Problems and Policy Perspectives*, Shri Ram Centre for Industrial Relations and Human Resources, New Delhi, 1976. Pp. xii + 300. Rs. 45.00.

Pushkarnath, *Potato in Sub-tropics*, Orient Longman Ltd., New Delhi-2, 1976. Pp. xv + 289. Rs 40.00.

Rae, Allan N., *Crop Management Economics*, Granada Publishing Ltd., Frogmore, St. Albans, Hertfordshire, London, 1977. Pp. xi + 525. \$ 12.50.

Reserve Bank of India, *All-India Debt and Investment Survey (1971-72): Assets of Rural Households as on June 30, 1971*, Economic Department, Bombay, 1976. Pp. vii + 209. Rs. 17.00.

Reserve Bank of India, *Marginal Farmers and Agricultural Labourers Development Agencies, 1973—A Field Study*, Economic Department, Bombay, 1976. Pp. xii + 214. Rs. 18.00.

Reserve Bank of India, *Report on Currency and Finance, Vol. I, Economic Review 1975-76*, Bombay, 1977. Pp. xii + 298. Rs. 20.00.

Reserve Bank of India, *Report on Currency and Finance, Vol. II, Statistical Statements, 1975-76*, Bombay, 1977. Pp. ii + 214. Rs. 15.00.

Reserve Bank of India, *Statistical Statements Relating to the Co-operative Movement in India, 1973-4—Part I: Credit Societies*, Agricultural Credit Department, Bombay, 1975. Pp. ix + 208. Rs. 22.00; and *Part II: Non-credit Societies*, Agricultural Credit Department, Bombay, 1976. Pp. vii + 348. Rs. 30.00.

Rudra, Ashok; Majid, A.; Talib, B. D. and Others, *Big Farmers of Punjab—Report of a Survey*, Agricultural Economics Research Centre, University of Delhi, Delhi-7, 1976. Pp. 114 + appendices (mimeo.).

Sane, G. D., *Soviet Agriculture—Trials and Triumphs*, Popular Prakashan Pvt. Ltd., Bombay-34, 1976. Pp. viii + 182. Rs. 32.00.

Scott, Wolf with Argalias, Helen and McGranahan, D. V., *The Measurement of Real Progress at the Local Level: Examples from the Literature and a Pilot Study*, Report No. 73.3, United Nations Research Institute for Social Development, Geneva, Switzerland, 1973. Pp. 61 (mimeo.).

Sharan, Girja and Chokshi, S. N., *Rasulia Dug Well: An Irrigation Scheme*, CMA Monograph No. 65, Centre for Management in Agriculture, Indian Institute of Management, Ahmedabad, 1976. Pp. 53. Rs. 6.00 (mimeo.).

Sharma, R. N., *Thirty Years of Indian Journal of Agricultural Economics: Cumulative Index of Vol. I—XXX (1946-1975)*, Concept Publishing Company, Delhi-35, 1977. Pp. 257. Rs. 200.00.

Shepherd, Geoffrey S.; Futrell, Gene A. and Strain, J. Robert, *Marketing Farm Products: Economic Analysis*, Sixth Edition, The Iowa State University Press, Ames, Iowa, U.S.A., 1976. Pp. 485. \$ 18.00.

Srivastava, U. K. and Das, V. Mukunda, *The Economics of Sunflower Cultivation and Processing*, CMA Monograph No. 61, Centre for Management in Agriculture, Indian Institute of Management, Ahmedabad, 1976. Pp. 85. Rs. 10.00 (mimeo.).

Thompson, Kenneth W. and Fogel, Barbara R., *Higher Education and Social Change: Promising Experiments in Developing Countries, Volume 1: Reports*, International Council for Educational Development, Praeger Publishers, Inc., New York, U.S.A., 1976. Pp. xvi + 226. \$ 7.50.

Thompson, Kenneth W.; Fogel, Barbara R. and Danner, Helen E. (Eds.), *Higher Education and Social Change: Promising Experiments in Developing Countries, Volume 2: Case Studies*, International Council for Educational Development, Praeger Publishers, Inc., New York, U.S.A., 1977. Pp. xxiii + 564. \$ 10.00.

United Nations Research Institute for Social Development, *Social Prognosis*, Report No 70.19, Geneva, Switzerland, 1970. Pp. vi + 41 (mimeo.).

von Buchwald, Ulrike and other staff, *Vocational Training in Developing Countries: A Survey of Expert Experiences*, Report No. 73.1, United Nations Research Institute for Social Development, Geneva, Switzerland, 1973. Pp. xiii + 215 (mimeo.).



## ARE YOU DREAMING OF A BIGGER HARVEST ?

Make a list of the items you need for your farm along with the estimate and come to us. We will turn your dreams into reality. We can give you loans for tractors, tubewells, pumpsets, high-yielding varieties of seeds, fertilisers and pesticides ... even for bunding, levelling, irrigation and fencing of your land.

We also give loans for dairy farming, poultry and horticulture. Unemployed engineers can also contact us for help in setting up custom service units and agro-service centres.

*For further details please contact our nearest branch*



**punjab national bank**

---

**CANADIAN JOURNAL OF AGRICULTURAL ECONOMICS**


---

Vol. 25, No. 2

July, 1977

*Articles*

- An Econometric Analysis of The Canadian Egg Market *Surendra N. Kulshreshtha and Chung-Fah Ng*
- The Demand for Fats and Oils In Canada *Osama A. Al-Zand and Zuhair A. Hassan*
- Relative Rates of Resource Returns for Ontario Commercial Farms—A Farm to Non-Farm Comparison 1971-1974 *George L. Brinkman and Jack A. Gellner*
- The Output Decision Process of Canadian Broiler Marketing Boards *Larry J. Martin and Douglas C. Holliday*
- North American-Japanese Pork Trade: An Application of Quadratic Programming *Renato G. Pierl, Karl D. Meilke and T. Gordon MacAulay*
- Pesticide Input Subsidies in African Agriculture: The Nigerian Experience *Francis S. Idachaba*

*Note*

- The Performance and Costs of Alternative Route Development Procedures *Daniel R. Strang and Doyle A. Eiler*

*Reply*

- An Intertemporal Comparison of Price and Income Elasticities for Food *Z. A. Hassan, S. R. Johnson and R. M. Finley*

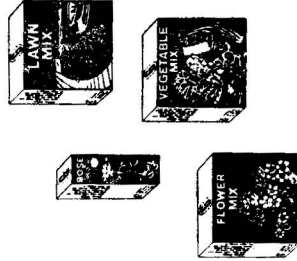
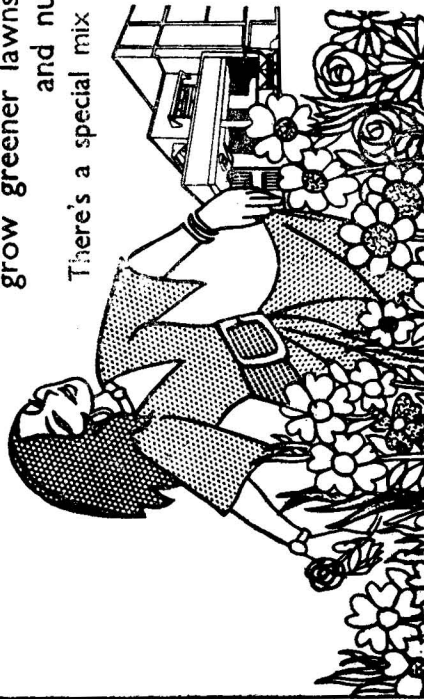
**Book Reviews**

Published by : **The Canadian Agricultural Economics Society**  
 Editorial Office: School of Agricultural Economics and Extension  
 Education, University of Guelph, Guelph, Ontario, Canada, N1G 2W1.

The *Canadian Journal of Agricultural Economics* is published three times yearly in February, July and November, with additional issues of Workshop and Annual Meeting Proceedings. Requests for subscriptions (\$20.00 annually), or membership applications (regular membership, \$15.00 annually; student membership, \$11.25 annually) should be addressed to The Treasurer, Canadian Agricultural Economics Society, Suite 907, 151 Slater Street, Ottawa, Ontario, Canada, K1P 5H4.

**Great news for garden lovers!**  
**GSFC's Special Garden Fertilizers**  
 grow greener lawns, beautiful flowers  
 and nutritious vegetables.

There's a special mix for rose lovers, too!



GSFC's Garden Fertilizer Mixtures have been specially formulated to meet the requirements of gardening enthusiasts and horticulturists. Properly applied, they ensure vigorous, healthy growth and finer quality.

GSFC's Garden Fertilizer Mixtures are available in convenient cartons-Flowers, Lawns and Vegetable Mix in 1½ Kg., Rose Special in ½ Kg.-with detailed instructions on use.

And if you have any special problems regarding your home garden, please feel free to write to us. We have specialists at GSFC who can guide you.



**GUJARAT STATE FERTILIZERS COMPANY LTD.** P. O. Fertilizer Nagar 391750, Dist. : Baroda.

## WAERSA/CAB ABSTRACTS ON-LINE

**CAB Abstracts**, the world's leading database in agriculture and related fields are now available on-line through Lockheed's **Dialog Retrieval Service**.

Features of the service include:

- records taken from 8,500 world serials in 37 languages.
- 450,000 records on tape since January 1972, increasing by 10,000 monthly.
- searches may encompass the whole database or be limited to one or more journals like WAERSA, or to groups of "animal" or "plant" subfiles.

**World Agricultural Economics and Rural Sociology Abstracts (WAERSA)** is still available both in its normal form and in microform at the same price. In 1976 it included 7,683 fully indexed abstracts on agricultural economics and policy; development and agrarian reform; land use and conservation; rural development; supply, prices, marketing and trade; farm management and production economics; education, extension and research; co-operation; rural sociology.

1977 Subscription Rates:   US \$110 (1 year)   US \$210 (2 years)  
                                      £ 24.00           "       £ 46.00       "  
  (members of CAB)



*For information and orders contact:—*

**Commonwealth Agricultural Bureaux,  
Farnham House,  
Farnham Royal,  
Slough, SL2 3BN, England.**

## MONEY SAVED IS MONEY EARNED

Invest in our Savings Schemes and  
watch your money grow with us.

Contact nearest branch of our Bank for details:

### STATE BANK OF MYSORE

*Head Office*  
Bangalore-560.009

H. C. Sarkar  
*Managing Director*

## MILLION TREES BUT TWO CHILDREN

*Our Branches in Greater Bombay:*

1. Bombay: Post Box 1066, 24/26, Dalal Street,  
Fort, Bombay-1.
2. Chembur: 296/A, Central Avenue Road, Bombay 71.
3. Mahim: "Karma Bhoomi," Mori Road, Mahim (West),  
Bombay-16.
4. Matunga: Kings Circle, Bombay-19.

## INTERNATIONAL LABOUR REVIEW

The oldest international journal publishing articles, comparative studies and original research reports on employment and unemployment, inflation and living standards, wages and other conditions of work, industrial relations, workers' participation and collective bargaining, occupational safety and health, etc., by scholars and practitioners of outstanding merit from all countries as well as by the international staff of the ILO.

Annual subscription (1977) Indexed and abstracted in the *Journal of Sw. frs. 40 or \$15.95* *Economic Literature* and the *PAIS Bulletin*

Publications may be obtained through major booksellers, or from ILO Publications, International Labour Office, CH-1211 Geneva 22, Switzerland, or from ILO Area Office, 7 Sardar Patel Marg, Chanakyapuri, New Delhi-21.

## WE SOW SELF-RELIANCE THROUGH CO-OPERATIVE ENDEAVOUR

As you sow, so you reap. We made multisided efforts to sow self-reliance in Rural and Urban Maharashtra through Primary Agricultural Co-operative Credit Societies, Marketing Societies, Artisans and Jungle Kamgar Societies, Co-operative Hospitals, Industrial Societies, Urban Banks and Salary Earners Societies.

### AND WE SEE

The face of Rural and Urban Maharashtra is changed

## THE MAHARASHTRA STATE CO-OPERATIVE BANK LTD.

9, Bakehouse Lane, Fort, Bombay-400 023.

**A BANK WITH A MISSION**

## SOCIAL AND ECONOMIC STUDIES

Published by

INSTITUTE OF SOCIAL AND ECONOMIC RESEARCH  
UNIVERSITY OF THE WEST INDIES  
MONA, JAMAICA, WEST INDIES

*A Journal devoted to the publication of research and discussion on agricultural, anthropological, demographic, economic, educational, monetary, political and sociological questions, with emphasis on the problems of the developing territories, particularly those in the Caribbean.*

Vol. 25 No. 4, December 1976

#### Articles:

**Edwin Jones and G. E. Mills**

Institutional Innovation and Change in the Commonwealth Caribbean

**F. E. Nunes**

The Nonsense of Neutrality

**Compton Bourne**

The Determination of Jamaican Money Stock 1961-1971

**Milton A. Iyoha**

The Demand for Money in Nigeria

**Walter L. Goldfrank**

Inequality and Revolution in Rural Mexico

*Notes and Comments:*

Edward C. Green: Rum: A Special-purpose Money in Matawai Society

*Review Articles:*

Wilma Bailey: A Social Geography of Stereotypes

**Book Reviews**

#### *Subscription Rates:*

Per volume: J\$12.00, T.T. \$26.50, U.K. £6.00, U.S. \$15.00.

Single number: J\$3.50, T.T. \$8.00, U.K. £1.75, U.S.\$4.50.

Subscriptions and orders for back numbers should be addressed to: The Publications Editor, **Social and Economic Studies**, Institute of Social and Economic Research, University of West Indies, Mona, Kingston 7, Jamaica, W.I.

## SERVICE WITH A SMILE

Our Customer is more than a customer to us. That is why our Customers at our doors are received with a smile and treated in a regal manner.

Like an individual, the Syndicate Bank too has a personality of its own—'Cordial, helpful, Courteous'. It is in the excellence of service that we treat our Customers as Kings. This is the secret behind our having lakhs of accounts.

**Our Motto is: NO MAN IS TOO SMALL FOR A BANK ACCOUNT.**

## SYNDICATE BANK

Where Service is a Way of Life

Head Office : Manipal 576 119 (Karnataka)

## THE MALAYAN ECONOMIC REVIEW

Editors : You Poh Seng, Augustine H. H. Tan, V. V. Bhanoji Rao

Vol. XXI, No. 1

April 1976

### Articles

- |  |   |
|--|---|
| The Production and Cost Functions of A Multi-Product Public Enterprise—The Case of the United States Post Office | <i>Ow Chin Hock</i>                           |
| Trade Policies and Industrialization in a Developing Country: The Case of West Malaysia                          | <i>K. V. Rabenau</i>                          |
| Financial Deepening and Economic Growth: A Cross-Section Analysis  | <i>Y. C. Jao</i>                              |
| The Role of Agriculture in Economic Development: The Experiences of Postwar Thailand and Meiji Japan             | <i>Sawai Boonma</i>                           |
| Hours Worked, Methods of Wage Payment and Wage Rates in West Malaysian Manufacturing: A Note                     | <i>David Lim</i>                              |
| Sectoral Value-Added Projections for Singapore Based on the 1970 and 1967 Input-Output Tables                    | <i>Tien-Tung Hsueh</i>                        |
| Elasticity of Capital-Labour Substitution in West Malaysian Manufacturing: Estimates and Appraisal               | <i>V. V. Bhanoji Rao<br/>and K. V. Ramana</i> |
| The Maximum Revenue Tariff   | <i>Edward Tower</i>                           |

### Book Notices

This journal is published twice a year, in April and October. The annual subscription is \$25. Subscription orders should be sent direct to:

The Editorial Board, **Malayan Economic Review**, c/o Economic Research Centre, University of Singapore, Singapore 10.

A Must for All Collections on Agriculture and Economics

**THIRTY YEARS OF INDIAN JOURNAL OF AGRICULTURAL  
ECONOMICS**

**Cumulative Index to Volumes I-XXX (1946-1975)**

Compiled by R. N. Sharma

Dy. Librarian, I.I.P.A., New Delhi.

Foreword by

Prof. M. L. Dantwala

This index consists of six parts: Author Index, Title Index, Subject Index, Index to Book Reviews, Reviewers' Index and Appendix embodying the subjects discussed at the Annual Conferences of the Indian Society of Agricultural Economics.

"..the index would prove useful to teachers and research scholars in universities and other research institutions engaged in Agricultural Economics research."

*Prof. M. L. Dantwala in his Foreword*

*Published by:*

**CONCEPT PUBLISHING COMPANY**

65-F, Anand Nagar,  
DELHI-110035.  
Tel: 563967



## USEFUL BOOKS

### Agricultural Legislation in India

● Bulletin on Commercial Crop Statistics 1963-64 to 1968-69	Rs. 27.50
● Vol. VI. Land Reforms	Rs. 15.00
● Vol. IX. Agricultural Taxes	Rs. 15.00
● Vol. I. Regulation of Money Lending (Rev. ed.)	Rs. 5.00
● Vol. VII. Live Stock and Fisheries	Rs. 5.00
● Vol. II. Consolidation of Holdings (Rev. ed.)	Rs. 3.25
● Approach to Agricultural Development in the Fourth Five-Year Plan	Rs. 1.80
● Bulletin on Jute Statistics in India (District-wise)	Rs. 1.65
● Collection of Agricultural Prices in India	Re. 0.75

### Crop Weather Studies

● Indian Crop Calendar (Rev. ed.)	Rs. 17.50
● Growth Rates in Agriculture 1949-50 to 1964-65	Rs. 15.00
● Studies in the Economics of Poultry Farming in Punjab	Rs. 14.00
● Indian Agricultural Atlas, 1958	Rs. 12.00
● Report on Farm Planning and Management	Rs. 11.00
● Market Intelligence in India Vol. II	Rs. 9.50
● Studies in Agricultural Economics Vol. II	Rs. 5.75
● Guide to Current Agricultural Statistics (Rev. ed.)	Rs. 4.25
● Indian Tea Statistics, 1948 and 1949	Rs. 2.55
● Bulletin No. 1 Ludhiana Distt. (Punjab) Crop Wheat	Rs. 2.10
● Bulletin No. 2 Tanjavur Distt. (Tamil Nadu) Crop Rice	Rs. 2.10
● Indian Rice Statistics	Re. 0.50

Available from all authorised selling agents:

#### For Cash Sale

#### KITAB MAHAL

Unit No. 21, State Emporia Building,  
Baba Kharak Singh Marg, New Delhi.  
(Phone: 343708)

#### GOVERNMENT OF INDIA BOOK DEPOT

8, K. S. Roy Road, Calcutta-700001  
(Phone: 233813)

#### GOVERNMENT OF INDIA BOOK DEPOT

Ground Floor, New C. G. O. Building,  
New Marine Lines, Bombay-400020.

#### DEPARTMENT OF PUBLICATION SALE COUNTERS IN NEW DELHI

- UDYOG BHAVAN (Phone : 372082)
- DEPARTMENT OF PUBLICATION, CIVIL LINES, DELHI-110054
- C. B. R. BUILDING, BAHADUR SHAH ZAFAR MARG.

FOR MAIL ORDERS  
CONTROLLER  
OF PUBLICATIONS

CIVIL LINES  
DELHI-110054

NOTE: Postal Charges extra for mail orders below Rs. 5 in India @ 20% of cost.  
Registration Charges extra if supply is desired by regd. post.

davp 77/71

## THE MAHARASHTRA STATE CO-OPERATIVE LAND DEVELOPMENT BANK LTD., BOMBAY

J. K. Building, 2nd floor, N. M. Marg, Ballard Estate, Fort, Bombay-400 038.

Phone: 267801-2-3

Telegram: "MORTGAGE"

### SALIENT FEATURES OF THE BANK

	As on 30/6/1976 (Rs. in lakhs)
1) Paid-up share capital .. .. .	2,784.83
2) Loan outstanding .. .. .	15,821.46
3) Reserve funds and other funds .. .. .	710.21
4) Debentures in circulation .. .. .	19,648.30
5) Loan advanced during the year 1975-76 .. .. .	2,311.87

The Bank is having a loaning programme of Rs. 28 crores for the year 1976-77.

As a part of 20-point economic programme, the Bank has formulated schemes for small and marginal farmers and new allottees of land, under which loans for 400 wells and pump-sets in each District will be sanctioned. They are eligible for 25% subsidy from Government of Maharashtra under this Scheme.

We also advance loans for renovation of old wells and construction of new wells, oil engines, electric motors, power tillers, tractors, crushers, lift irrigation schemes, pipe lines, horticulture and dairy development schemes, etc.

For further details, contact District Branch/Sub-branch Office of the Bank in the State.

**D. G. Tungare, I. A. S.,**  
MANAGING DIRECTOR

**G. H. Lalwani**  
CHAIRMAN

## AGRICULTURAL SITUATION IN INDIA

A Monthly Journal of the Directorate of Economics and Statistics,  
Ministry of Agriculture.

### Main features:

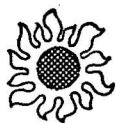
- \* Articles from experts to enable critical appreciation of current trends and prospects.
- \* Extensive commentary on the agricultural development in India and abroad.
- \* Reviews on important agricultural commodities.
- \* Comprehensive statistical tables—crop production, wages, prices, import and export, rainfall and crop estimates.

Commanding a wide and influential readership in India and abroad, **Agricultural Situation in India** is an invaluable guide to business executives, administrators and students of agricultural economics.

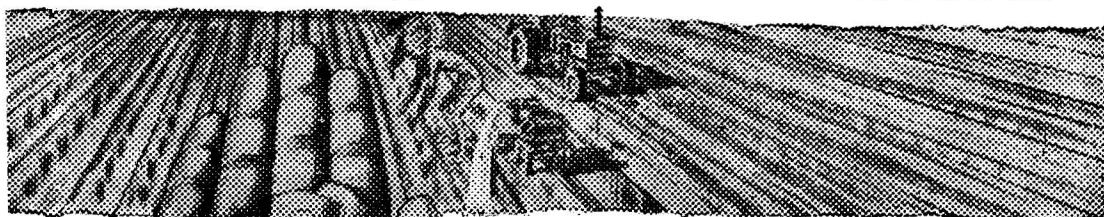
Subscription { Single copy : Rs. 4.00 or £ 0.47 or \$1.44  
Annual : Rs. 48.00 or £ 5.60 or \$17.28

Available from:

The Controller of Publications, Civil Lines, Delhi-110 006.



## The sun, the rain, your sweat and Bank of Baroda



### can make any field give better yield

Bank of Baroda's assistance to the agriculturist extends to diverse fields. Seeds and fertilizers, agriculture implements and tractors, land development, farm structures, pumps and other minor irrigation facilities—name your need. Extend your activities to such profitable lines like piggery, dairy, poultry, go-bur gas, vegetable and fruit gardens.

Bank of Baroda will recognise your sweat and render possible assistance in all these spheres. For details, go to the nearest branch.



## Bank of Baroda

A Government of India Undertaking

### ARTHA VIJNANA

Quarterly Journal of the  
Gokhale Institute of Politics and Economics

CONTENTS

Vol. 19, No. 1

March 1977

Measuring Capital Formation .. .. .	<i>Ram N. Lal</i>
Unemployment among Degree and Diploma Holders in Engineering .. .. .	<i>J. P. Saxena</i>
On Assessing Trends in Urbanisation between 1961 and 1971 .. .. .	<i>Vasant P. Pethe</i>
<i>Notes and Memoranda</i>	
Government Versus Private Net Savings: Study of India .. .. .	<i>Bharat R. Hazari and Onko T. Kingma</i>
An Analysis of Effect of Export Price on Temporal Variation in Indian Exports of East India Leathers .. .. .	<i>R. E. Benjamin, K. Kalirajan and T. Vallythi Varagunasingsh</i>
A Note on Feldman's Planning Model .. .. .	<i>K. K. Upadhyaya</i>
<i>Book Reviews</i>	

Revised Subscription Rates from 1-1-1977 (inclusive of postage)

Annual: Rs. 30; \$10; £5.

Single issue: Rs. 10; \$3; £1.50.

Please address all correspondence relating to academic matters (e.g., articles, book reviews, etc.) to Dr. Vasant P. Pethe, Managing Editor, *Artha Vijnana* and other correspondence (e.g., subscriptions, etc.) to the Editorial Assistant, *Artha Vijnana*, Gokhale Institute of Politics and Economics, Poona-411 004, India.

**ADVERTISEMENT TARIFF**  
**FOR**  
**INDIAN JOURNAL OF AGRICULTURAL ECONOMICS**  
**(Quarterly)**

Mechanical Data

Size of printed page:  $19\frac{1}{2}$  cms.  $\times$   $12\frac{1}{2}$  cms.

No. of columns: One

Width of column:  $12\frac{1}{2}$  cms.

Average No. of pages per issue:

about 300 for Conference Number;  
 about 120 to 140 for other numbers  
 on fine quality printing paper.

**RATES**

	<i>Per issue</i>	<i>Per Annum (4 issues)</i>
Half page	Rs. 150/-	Rs. 500/-
Full page (ordinary)	Rs. 300/-	Rs. 1,000/-
Inside Back Cover page	Rs. 400/-	Rs. 1,400/-
Back Outer Cover page	Rs. 500/-	Rs. 1,800/-

Membership Fee per Annum: Rs. 30.00 or £5.50 or \$10.50

Corporate Membership Fee per Annum: Rs. 100.00.

Annual Subscription: Rs. 45.00 or £9.50 or \$16.00  
 —post free.

Student Concessional Subscription per Annum: Rs. 15.00  
 —post free.

*For further particulars please contact:*

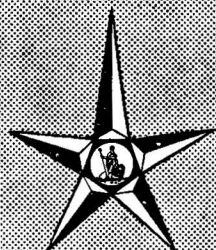
The Honorary Secretary

**THE INDIAN SOCIETY OF AGRICULTURAL ECONOMICS**

46-48, Esplanade Mansions, Mahatma Gandhi Road  
 Fort, Bombay 400 023 (India)



**Progress and  
plenty in field  
and factory**



**Bank of India**  
(A Government of India Undertaking)

daCunha/BOI/3 a.

INDIAN JOURNAL OF AGRICULTURAL  
ECONOMICS—REPRINTS

Many back issues/volumes of the Indian Journal of Agricultural Economics are currently out of print. Enquiries have been received by the Society for the supply of the back volumes of the Journal. With a view to enabling the interested readers, agricultural universities, colleges and other research institutions to complete their holdings of the back issues/volumes of the Journal, the Society has entered into an agreement with the Researchco Reprints, Delhi whereby the Researchco Reprints has been given full rights of reprinting of all the issues of Volumes 1 to 29 of the Journal which are out of print now. The Researchco Reprints is presently preparing the reprints of the above-said volumes of the Journal. Kindly direct your orders and enquiries for back issues/volumes of the Journal (including reprints) to the Researchco Reprints, 1865 Trinagar, Delhi-110 035 (India).

STATEMENT ABOUT OWNERSHIP AND OTHER PARTICULARS OF  
THE INDIAN JOURNAL OF AGRICULTURAL ECONOMICS

[ In terms of Rule 8 of the Registration of Newspapers (Central) Rules 1956 ]

FORM IV

1. Place of Publication : The Indian Society of Agricultural Economics, 46-48, Esplanade Mansions, Mahatma Gandhi Road, Fort, Bombay-400 023.
2. Periodicity of its Publication : Quarterly
3. Printer's Name : Shri T. R. Sundaram  
Nationality : Indian  
Address : No. 7, Dey's Building, Jawaharlal Nehru Road, Mulund (West), Bombay-400 080.
4. Publisher's Name : Shri T. R. Sundaram  
Nationality : Indian  
Address : No. 7, Dey's Building, Jawaharlal Nehru Road, Mulund (West), Bombay-400 080.
5. Editor's Name : *Editorial Board*  
Prof. M. L. Dantwala .. Chairman  
Shri V. M. Jakhade .. Editor  
Dr. Gunvant M. Desai  
Dr. D. S. Sidhu  
Dr. L. J. Singh  
Dr. A. S. Sirahi  
Dr. (Mrs.) R. Thamarajakshi  
Dr. L. S. Venkataramanan } Members
- Address :
- (1) Professor M. L. Dantwala, Laxman Apartments, Block No. A-29, Sixth Floor, Azad Road, Off Vivekanand Road, Andheri West, Bombay-400 058.
- (2) Shri V. M. Jakhade, Flat No. 11, "Tarangini Apartments," Bombay Dyeing Estate, Off Veer Savarkar Marg, (Cadell Road), Prabhadevi, Bombay-400 025.
- (3) Dr. Gunvant M. Desai, Professor, Indian Institute of Management, Vastrapur, Ahmedabad-15.
- (4) Dr. D. S. Sidhu, CIMMYT, (International Maize and Wheat Improvement Center), Londres 40, Mexico 6, D. F. Apdo. Postal 6-641 U. S. A.
- (5) Dr. I. J. Singh, Professor and Head, Department of Agricultural Economics, Haryana Agricultural University, Hissar.
- (6) Dr. A. S. Sirahi, Professor of Agricultural Economics and Head, Division of Agricultural Economics, Indian Agricultural Research Institute, New Delhi-12.
- (7) Dr. (Mrs.) R. Thamarajakshi, Director, Agricultural Prices Commission (Department of Agriculture), Ministry of Agriculture, Government of India, New Delhi.
- (8) Dr. L. S. Venkataramanan, Senior Fellow, Institute for Social and Economic Change, Post Bag No. 4003, Bangalore-560 040.
6. Names and addresses of individuals who own the newspaper and partners or share holders holding more than one per cent of the total capital. The Indian Journal of Agricultural Economics is owned by the Indian Society of Agricultural Economics, 46-48 Esplanade Mansions, Mahatma Gandhi Road, Fort, Bombay-400 023.

I, T. R. Sundaram, hereby declare that the particulars given above are true to the best of my knowledge and belief.

Sd/  
T. R. SUNDARAM  
Name of the Publisher

28th February, 1977

## GUIDELINES FOR SUBMISSION OF PAPERS BY AUTHORS

1. **Subjects:** The objective of the *Journal* is to provide a forum for dissemination and exchange of findings of research on agricultural economics. Purely descriptive material is not appropriate for such a journal. Papers dealing with (i) new developments in research and methods of analysis, or (ii) which apply existing empirical research methods and techniques to new problems or situations, or (iii) which attempt to test new hypotheses/ theoretical formulations or modifications of existing theories or policies to explain economic phenomena especially in the Indian context, or (iv) papers based on research done by the authors bringing out new facts or data presented in an analytical frame will be preferred. Younger economists are advised to seek guidance from their seniors in the preparation of the paper for the *Journal*. A one-page statement indicating the author's own assessment of the importance and relevance of the findings reported in his paper in the context of recent researches would be welcome.

2. **Size of Paper :** In view of the exorbitant increase in the cost of printing, it has become necessary to restrict the length of the papers accepted for publication to 20 (double space) typed pages (of the size 8½-by-11 inches) including tables and appendices (with margins on all sides of at least 1½ inches). Papers exceeding this size limit will be returned to the authors. The authors may however send along with their papers such "supporting material" as may be of help to the referees in evaluating them. Abstracts not exceeding 100 words should be submitted in duplicate along with the paper.

3. **Copies :** Two copies of each paper should be submitted along with a processing fee of Rs. 15/- either by M.O. or crossed I.P.O. (\$ 4.00 or £ 2.50) drawn in the name of the Indian Society of Agricultural Economics, to meet partly the postage and other incidental charges.

4. **Author's identification :** To protect the anonymity of authors while referring the Papers for expert opinion on their merits, authors are advised to avoid disclosing their identity in the text and to attach a separate page showing the name(s) and affiliation(s) of the author(s) along with any footnotes containing bibliographical information or acknowledgements.

5. **Mathematical notations :** Only essential mathematical notations may be used; it is prohibitively costly to typeset such notations. All statistical formulae should be neatly typed.

6. **Figures-Charts and Tables :** Professional assistance should be availed of while presenting figures and charts. They should be drawn in black ink which can be easily reproduced by photographic process. Typescript is not suitable for reproduction. Roman numerals may be used for tables.

7. **Footnotes :** Footnotes should be numbered consecutively in plain arabic superscripts.

8. **References and citations :** Only cited works should be included in the reference list. Please follow the style of citations as in previous issues of this *Journal*.

9. **General :** While sending papers the authors should state that the material has not been published elsewhere or is not being published or being considered for publication elsewhere.

10. **Reprints :** Ten free reprints of the paper would be given to the author; additional reprints, if required, are supplied at cost which may be ascertained from the Editor.

---

*Printer :* Shri G.R. Shetty; Type-setting on Postscript laser printer at Indian School of Political Economy, Arhabodhi, Pune - 411 016; Place of printing : Mudra, 383 Narayan Peth, Pune - 411 030; *Publisher :* Shri G.R.Shetty; Place of Publication and Owners : The Indian Society of Agricultural Economics, 46-48, Esplanade Mansions, Mahatma Gandhi Road, Fort, Bombay-400 001.

*SOME OF THE  
PUBLICATIONS OF THE INDIAN SOCIETY OF  
AGRICULTURAL ECONOMICS*

1. INDIAN JOURNAL OF AGRICULTURAL ECONOMICS 1940-1964-SELECTED READINGS (1966)	25.00
2. EVALUATION OF LAND REFORMS (with special reference to the Western Region of India) by Prof. M.L. Dantwala and Dr. C.H. Shah (1971)	15.00
3. COMPARATIVE EXPERIENCE OF AGRICULTURAL DEVELOPMENT IN DEVELOPING COUNTRIES OF ASIA AND THE SOUTH-EAST SINCE WORLD WAR II (1972)	Cloth bound \$ 9.00, £ 3.60 Card bound 30.00
4. INDIAN AGRICULTURAL DEVELOPMENT SINCE INDEPENDENCE (1986)	135.00
5. AGRICULTURAL DEVELOPMENT IN INDIA: THE NEXT STAGE (1988)	190.00
6. AGRICULTURAL DEVELOPMENT POLICY: ADJUSTMENTS AND REORIENTATION (1990)	250.00

SEMINAR SERIES

7. No. IV. SEMINAR-CUM-WORKSHOP ON PROBLEMS OF FARM PRODUCTION PLANNING AND PROGRAMMING (1964)	10.00
8. No. VI. SEMINAR ON FARM PRODUCTION PLANNING AND PROGRAMMING (1965)	8.00
9. No. VIII. SEMINAR ON FOODGRAINS BUFFER STOCKS IN INDIA (1969)	12.00
10. No. XII. SEMINAR ON RURAL DEVELOPMENT FOR WEAKER SECTIONS (1974)	25.00
11. No. XIII. SEMINAR ON THE ROLE OF IRRIGATION IN THE DEVELOPMENT OF INDIA'S AGRICULTURE (1976)	30.00
12. No. XV. SEMINAR ON CROP INSURANCE (1983)	60.00
13. TECHNOLOGY OPTIONS AND ECONOMIC POLICY FOR DRYLAND AGRICULTURE: POTENTIAL AND CHALLENGE Edited by Dr. N.S. Jodha (1989)	250.00
14. LIVESTOCK ECONOMY OF INDIA (1989)	95.00

Nos. 4, 6 and 14 can be had from:  
OXFORD & IBH PUBLISHING CO. PVT. LTD.,  
66, JANPATH, NEW DELHI-110001.

No. 5 from:  
HIMALAYA PUBLISHING HOUSE,  
Ramdoot, Dr. Bhalerao Marg, Girgaon, Bombay-400 004.

No. 13 from:  
CONCEPT PUBLISHING COMPANY,  
A-15-16, Commercial Block,  
Mohan Garden,  
New Delhi-110 059.

The rest can be had from:  
THE INDIAN SOCIETY OF AGRICULTURAL ECONOMICS,  
46-48, Esplanade Mansions,  
Mahatma Gandhi Road, Fort, Bombay-400 001.