



**AgEcon** SEARCH  
RESEARCH IN AGRICULTURAL & APPLIED ECONOMICS

*The World's Largest Open Access Agricultural & Applied Economics Digital Library*

**This document is discoverable and free to researchers across the globe due to the work of AgEcon Search.**

**Help ensure our sustainability.**

Give to AgEcon Search

AgEcon Search  
<http://ageconsearch.umn.edu>  
[aesearch@umn.edu](mailto:aesearch@umn.edu)

*Papers downloaded from **AgEcon Search** may be used for non-commercial purposes and personal study only. No other use, including posting to another Internet site, is permitted without permission from the copyright owner (not AgEcon Search), or as allowed under the provisions of Fair Use, U.S. Copyright Act, Title 17 U.S.C.*

***Invited presentation at the 2018 Southern Agricultural  
Economics Association Annual Meeting, February 2-6, 2018,  
Jacksonville, Florida***

*Copyright 2018 by Author(s). All rights reserved. Readers may make verbatim copies of this document for non-commercial purposes by any means, provided that this copyright notice appears on all such copies.*



# Western Kentucky corn and soybean storage returns and risk management potential

Eric Schwenke and Todd Davis  
Department of Agricultural Economics, University of Kentucky



## Background:

- Managing storage provides another way to improve profitability by avoiding sales at harvest.
- Returns to storage is a challenge given limited appreciation and cost of on-farm and commercial storage

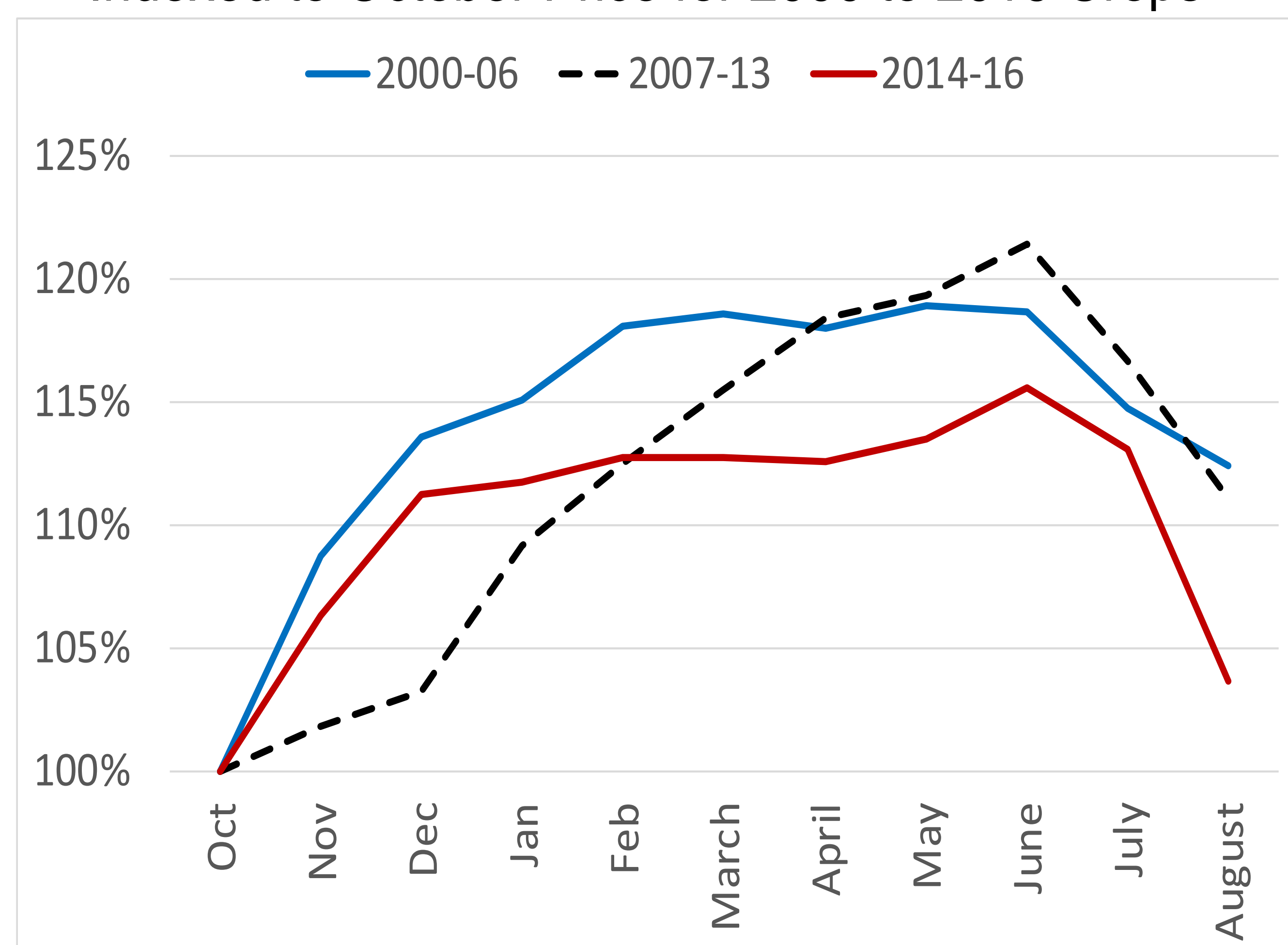
## Assumptions:

- Opportunity cost of corn and soybeans is the prime interest rate for each year + ½% (Dhuyvetter, 1999).
- Cost of shrink for corn stored on-farm is 1.25% of harvest price. Commercial shrink charged 1.4% of harvest price (Edwards).
- Monthly on-farm storage charged \$0.02/bushel/month and commercial storage charged \$0.05/bushel/month (Knorr).

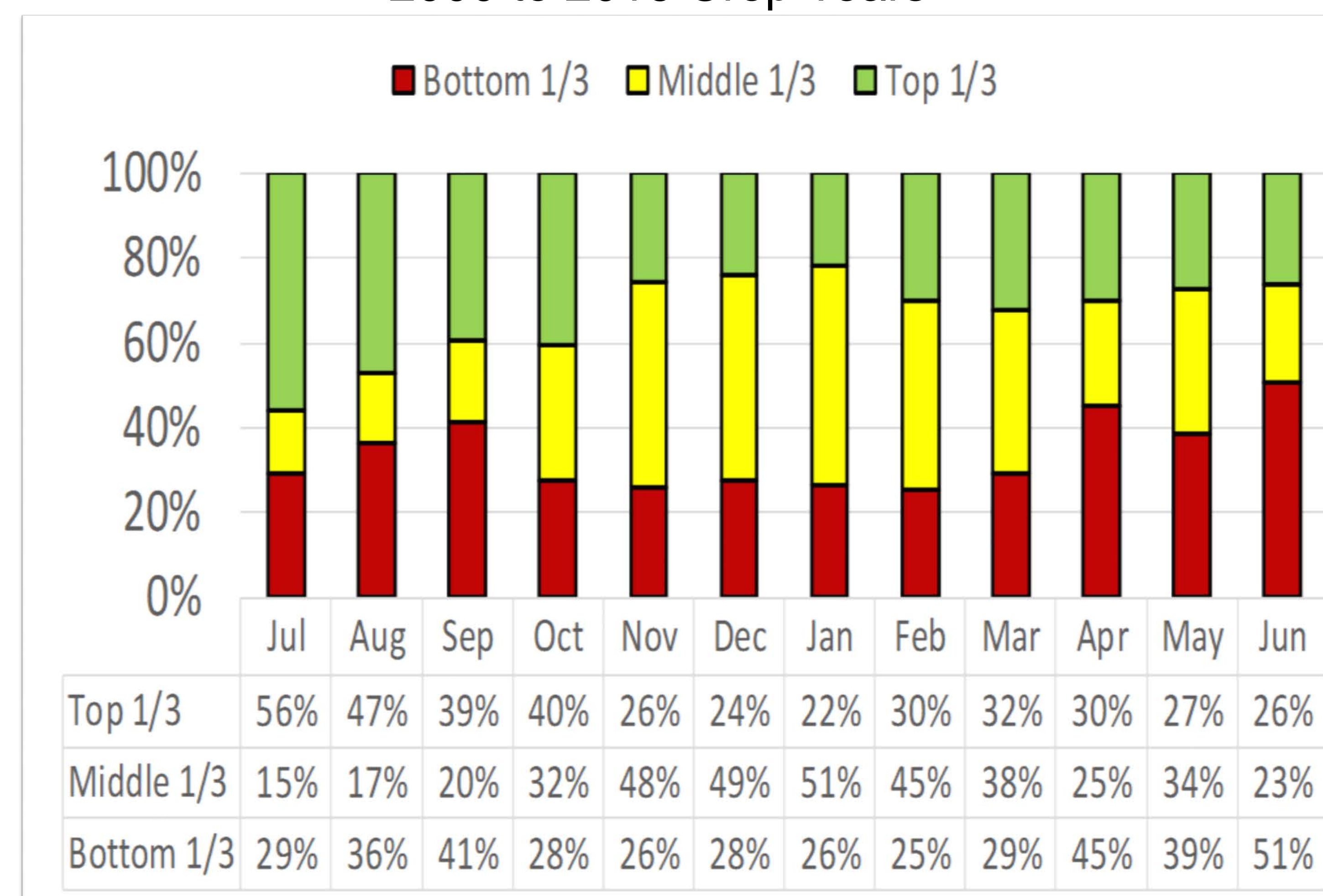
## Conclusions

- Cash corn price had an average appreciation of 18% from October to May for the 2000 to 2006 crop years with appreciation of 21% from 2007 to 2013.
- Soybean appreciation from October to June/July averaged 21% for 2000 – 2006 and 2007-13 periods.
- The 2014-16 average corn appreciation was 15% from October to June.
- Soybean appreciation for 2014-16 also muted with maximum average appreciation of 10% from October to July.

Western Kentucky Corn Spot Price Appreciation Indexed to October Price for 2000 to 2016 Crops



JULY Corn Futures Price Distribution Thirds by Month for 2000 to 2016 Crop Years



## Corn Storage Returns

Return to On-Farm Corn Storage - Without Hedging										
	Nov	Dec	Jan	Feb	March	April	May	June	July	August
2000-16 Avg.	+\$0.05	+\$0.10	+\$0.18	+\$0.25	+\$0.27	+\$0.26	+\$0.26	+\$0.27	+\$0.10	-\$0.12
2000-06 Avg.	+\$0.12	+\$0.18	+\$0.18	+\$0.23	+\$0.20	+\$0.14	+\$0.14	+\$0.10	-\$0.05	-\$0.14
2007-13 Avg.	-\$0.04	-\$0.05	+\$0.17	+\$0.29	+\$0.38	+\$0.42	+\$0.42	+\$0.46	+\$0.27	-\$0.03
2014-16 Avg.	+\$0.11	+\$0.23	+\$0.22	+\$0.22	+\$0.19	+\$0.16	+\$0.16	+\$0.21	+\$0.07	-\$0.27

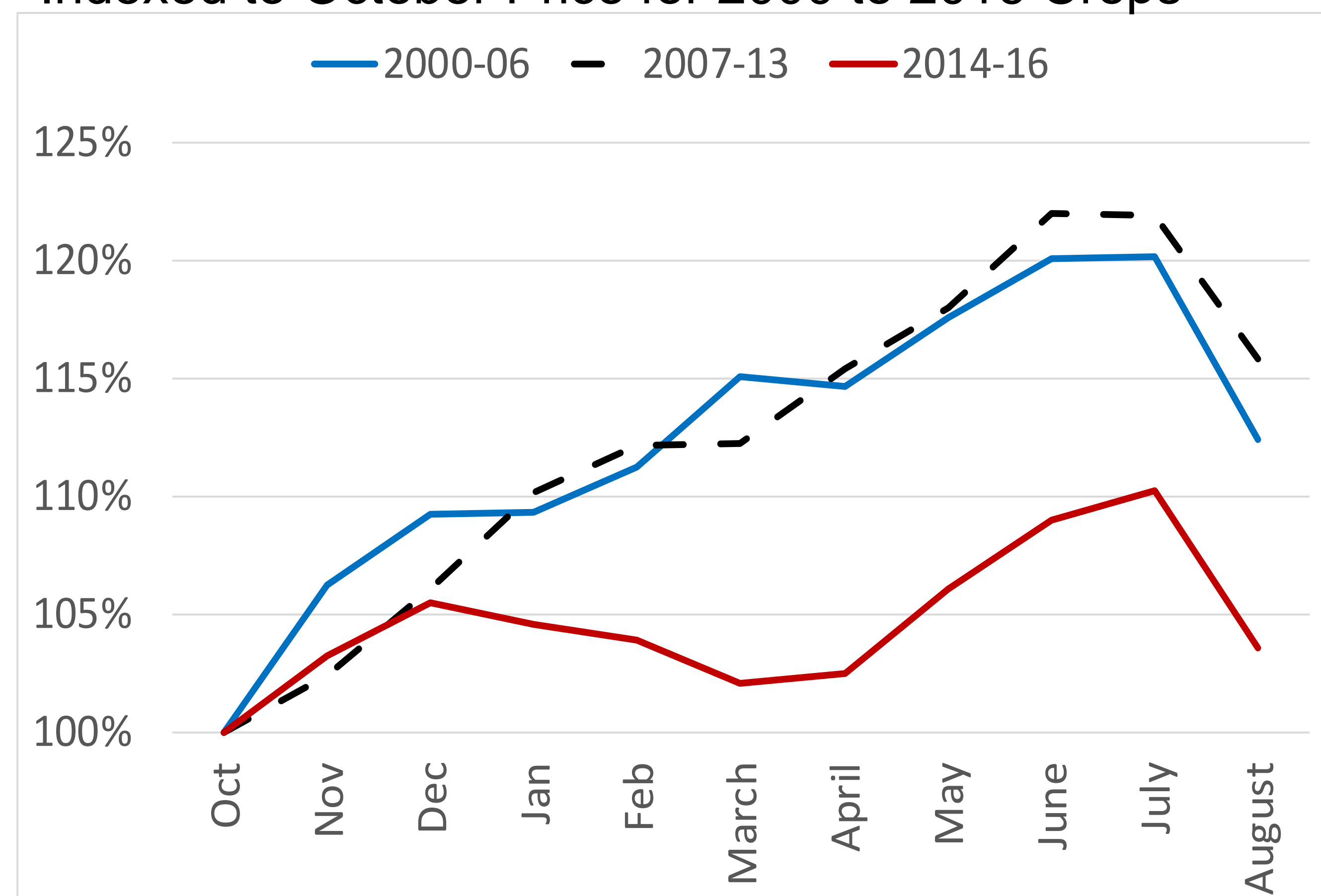
  

Return to Commercial Corn Storage - Without Hedging										
	Nov	Dec	Jan	Feb	March	April	May	June	July	August
2000-16 Avg.	-\$0.01	+\$0.00	+\$0.06	+\$0.10	+\$0.09	+\$0.04	+\$0.01	-\$0.01	-\$0.20	-\$0.45
2000-06 Avg.	+\$0.06	+\$0.09	+\$0.06	+\$0.08	+\$0.02	-\$0.07	-\$0.11	-\$0.17	-\$0.36	-\$0.47
2007-13 Avg.	-\$0.11	-\$0.15	+\$0.04	+\$0.13	+\$0.19	+\$0.20	+\$0.18	+\$0.18	-\$0.03	-\$0.37
2014-16 Avg.	+\$0.04	+\$0.14	+\$0.09	+\$0.07	+\$0.00	-\$0.06	-\$0.08	-\$0.07	-\$0.24	-\$0.61

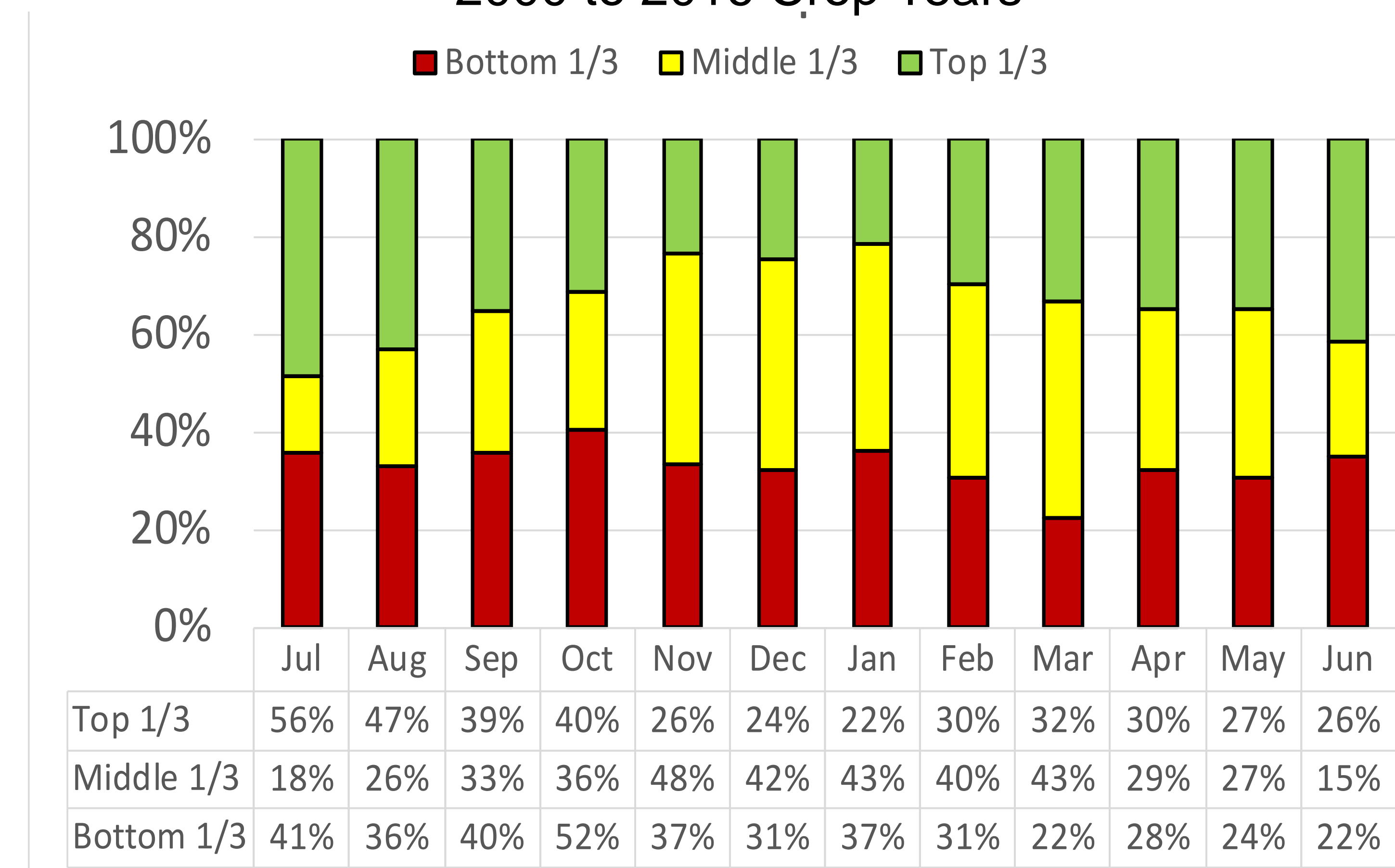
  

July Corn Futures Sold in the July Before Harvest and Offset in:										
	Nov	Dec	Jan	Feb	March	April	May	June		
2000-16 Avg.	+\$0.11	+\$0.10	+\$0.03	-\$0.02	-\$0.04	-\$0.02	+\$0.01	-\$0.01		
2000-06 Avg.	-\$0.04	-\$0.04	-\$0.09	-\$0.14	-\$0.13	-\$0.07	-\$0.03	-\$0.01		
2007-13 Avg.	+\$0.22	+\$0.22	+\$0.06	-\$0.00	-\$0.08	-\$0.12	-\$0.08	-\$0.12		
2014-16 Avg.	+\$0.21	+\$0.17	+\$0.22	+\$0.21	+\$0.27	+\$0.30	+\$0.32	+\$0.24		

Western Kentucky Soybean Spot Price Appreciation Indexed to October Price for 2000 to 2016 Crops



JULY Soybean Futures Price Distribution Thirds by Month for 2000 to 2016 Crop Years



## Soybean Storage Returns

Return to On-Farm Soybean Storage - Without Hedging										
	Nov	Dec	Jan	Feb	March	April	May	June	July	August
2000-16 Avg.	+\$0.21	+\$0.42	+\$0.52	+\$0.60	+\$0.63	+\$0.71	+\$0.87	+\$1.06	+\$1.00	+\$0.35
2000-06 Avg.	+\$0.27	+\$0.38	+\$0.36	+\$0.44	+\$0.63	+\$0.56	+\$0.65	+\$0.69	+\$0.58	+\$0.05
2007-13 Avg.	+\$0.12	+\$0.46	+\$0.78	+\$0.95	+\$0.94	+\$1.20	+\$1.40	+\$1.71	+\$1.65	+\$0.88
2014-16 Avg.	+\$0.24	+\$0.40	+\$0.26	+\$0.15	-\$0.07	-\$0.10	+\$0.17	+\$0.37	+\$0.46	-\$0.21

Return to Commercial Soybean Storage - Without Hedging										
	Nov	Dec	Jan	Feb	March	April	May	June	July	August
2000-16 Avg.	+\$0.15	+\$0.33	+\$0.40	+\$0.45	+\$0.45	+\$0.50	+\$0.63	+\$0.79	+\$0.70	+\$0.02
2000-06 Avg.	+\$0.21	+\$0.29	+\$0.24	+\$0.29	+\$0.45	+\$0.35	+\$0.41	+\$0.42	+\$0.28	-\$0.28
2007-13 Avg.	+\$0.06	+\$0.37	+\$0.66	+\$0.80	+\$0.76	+\$0.99	+\$1.16	+\$1.44	+\$1.35	+\$0.55
2014-16 Avg.	+\$0.18	+\$0.31	+\$0.14	+\$0.00	-\$0.25	-\$0.31	-\$0.07	+\$0.10	+\$0.16	-\$0.54

July Soybean Futures Sold in the July Before Harvest and Offset in:										
	Nov	Dec	Jan	Feb	March	April	May	June		
2000-16 Avg.	+\$0.20	+\$0.03	-\$0.10	-\$0.24	-\$0.37	-\$0.48	-\$0.63	-\$0.87		
2000-06 Avg.	-\$0.10	-\$0.18	-\$0.23	-\$0.35	-\$0.67	-\$0.64	-\$0.70	-\$0.80		
2007-13 Avg.	+\$0.34	+\$0.07	-\$0.26	-\$0.49	-\$0.55	-\$0.84	-\$1.03	-\$1.43		
2014-16 Avg.	+\$0.55	+\$0.44	+\$0.57	+\$0.60	+\$0.74	+\$0.72	+\$0.49	+\$0.27		