



AgEcon SEARCH
RESEARCH IN AGRICULTURAL & APPLIED ECONOMICS

The World's Largest Open Access Agricultural & Applied Economics Digital Library

This document is discoverable and free to researchers across the globe due to the work of AgEcon Search.

Help ensure our sustainability.

Give to AgEcon Search

AgEcon Search
<http://ageconsearch.umn.edu>
aesearch@umn.edu

*Papers downloaded from **AgEcon Search** may be used for non-commercial purposes and personal study only. No other use, including posting to another Internet site, is permitted without permission from the copyright owner (not AgEcon Search), or as allowed under the provisions of Fair Use, U.S. Copyright Act, Title 17 U.S.C.*



**CARIBBEAN FOOD
CROPS SOCIETY**

47

**Forty-Seventh
Annual Meeting 2011**

**Bridgetown, Barbados
Volume XLVII – Number 1
T-STAR Invasive Species Symposium**

PROCEEDINGS
OF THE
47th ANNUAL MEETING

Caribbean Food Crops Society
47th Annual Meeting
July 3–8, 2011

Lloyd Erskine Sandiford Centre
Bridgetown, Barbados

“Assuring Caribbean food and nutrition security in the context of climate change”

**United States Department of Agriculture,
T-STAR Sponsored Invasive Species Symposium**

**Toward a Collective Safeguarding System for the Greater Caribbean Region:
Assessing Accomplishments since the first Symposium in Grenada (2003)
and Coping with Current Threats to the Region**

**Special Symposium Edition
Edited by
Edward A. Evans, Carlton G. Davis, and Fredy Ballen**

Published by the Caribbean Food Crops Society

© Caribbean Food Crops Society, 2011

Copies of this publication may be received from:

Secretariat, CFCS
c/o University of the Virgin Islands
USVI Cooperative Extension Service
Route 02, Box 10,000
Kingshill, St. Croix
US Virgin Islands 00850

Or from

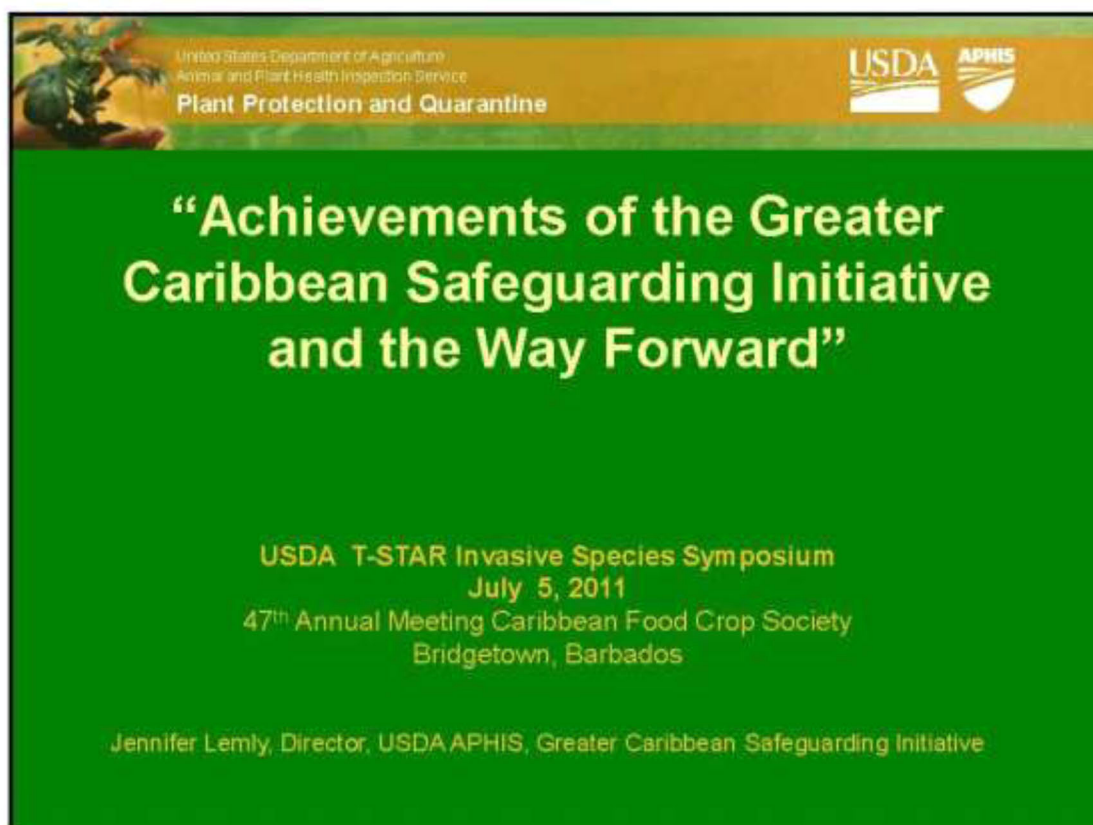
CFCS Treasurer
P.O. Box 506
Isabella, Puerto Rico 00663

Mention of company and trade names does not imply endorsement by the Caribbean Food Crops Society.

The Caribbean Food Crops Society is not responsible for statements and opinions advanced in its meeting or printed in its proceedings; they represent the views of the individuals to whom they are credited and are not binding on the Society as a whole.

ACHIEVEMENTS OF GREATER CARIBBEAN SAFEGUARDING INITIATIVE AND THE WAY FORWARD

Jennifer Lemly, Director, Caribbean Safeguarding Initiative, USDA/APHIS, 4700 River Road, Riverdale, MD 20010 USA. Telephone: 301-734-8295; Email: jennifer.r.lemly@aphis.usda.gov.





United States Department of Agriculture
Animal and Plant Health Inspection Service
Plant Protection and Quarantine



Greater Caribbean Safeguarding Initiative Mission

To **strengthen** the **safeguarding** system in the Greater Caribbean Region (GCR) by establishing **partnerships** with countries in the GCR to **prevent, detect, and control** existing and emerging plant pest threats.



United States Department of Agriculture
Animal and Plant Health Inspection Service
Plant Protection and Quarantine



Partnerships

- **USDA APHIS**
 - International Services
 - Offshore Pest Information Program
 - Center for Plant Health Science and Technology
 - Emergency and Domestic Programs



United States Department of Agriculture
Animal and Plant Health Inspection Service
Plant Protection and Quarantine

Partnerships

- Caribbean Plant Health Director Forum
 - Technical Working Groups
- Central America
 - OIRSA (Regional Plant Protection Organization)



United States Department of Agriculture
Animal and Plant Health Inspection Service
Plant Protection and Quarantine

Partnerships

- International Organizations
 - **CARICOM**: Caribbean Community and Common Market
 - **CARDI**: Caribbean Agricultural Research and Development Institute
 - **FAO**: Food and Agriculture Organization of the United Nations
 - **IICA**: Inter-American Institute for Cooperation on Agriculture



United States Department of Agriculture
Animal and Plant Health Inspection Service
Plant Protection and Quarantine

USDA APHIS

Partnerships

- International Organizations Cont'
 - CABI: CAB International
 - IDB: Inter-American Development Bank
 - CISWG: Caribbean Invasive Species Working Group
- Universities:
 - UF: University of Florida
 - FAMU: Florida Agricultural and Mechanical University
 - UWI: University of West Indies



United States Department of Agriculture
Animal and Plant Health Inspection Service
Plant Protection and Quarantine

USDA APHIS

Strengthening

- UWI Regional Plant Quarantine Training
- Increased Communication
 - Video conferencing
 - Website
- Outreach Initiatives




United States Department of Agriculture
Animal and Plant Health Inspection Service
Plant Protection and Quarantine




Strengthening

- Funding
 - Farm Bill Projects
 - Strengthen Offshore Safeguarding Efforts in the Greater Caribbean Region
 - Real Time Internet Invasive Pest Identification Training
 - Allocated Program Funding



United States Department of Agriculture
Animal and Plant Health Inspection Service
Plant Protection and Quarantine



Prevention

- GCSI Pest List
 - 52 pests of priority
- Notification of Non-Compliance among National Plant Protection Organizations
- Safeguarding Project
 - UWI Grad Student



United States Department of Agriculture
Animal and Plant Health Inspection Service
Plant Protection and Quarantine

USDA APHIS

Detection

- Caribbean Pest Diagnostic Network
 - Addition of 5 countries
- Pest Surveys and Workshops
 - Red Palm Weevil
 - Cotton Seed Bug
 - Fruit Flies
 - *Tuta absoluta* & *Anastrepha grandis*
 - Lepidoptera



United States Department of Agriculture
Animal and Plant Health Inspection Service
Plant Protection and Quarantine

USDA APHIS

The Way Forward

- Break Work up into Feasible Projects
- Harmonization and Updating of Legislation
- Continued Regional Collaboration
 - Communication and information sharing
 - Regional projects versus country-by-country
 - Minimize duplication

United States Department of Agriculture
Animal and Plant Health Inspection Service
Plant Protection and Quarantine

USDA APHIS

The Way Forward

- Involve the public and industry
 - Actively conduct outreach and engage the private sector

United States Department of Agriculture
Animal and Plant Health Inspection Service
Plant Protection and Quarantine

USDA APHIS

Thank You



Greater Caribbean Safeguarding Initiative

The map shows the Caribbean region, including the Atlantic Ocean, Caribbean Sea, and surrounding landmasses. It features various geographical labels such as the Atlantic Ocean, Caribbean Sea, and several Caribbean islands. A small globe icon is visible in the bottom right corner of the map area.