



**AgEcon** SEARCH  
RESEARCH IN AGRICULTURAL & APPLIED ECONOMICS

*The World's Largest Open Access Agricultural & Applied Economics Digital Library*

**This document is discoverable and free to researchers across the globe due to the work of AgEcon Search.**

**Help ensure our sustainability.**

Give to AgEcon Search

AgEcon Search  
<http://ageconsearch.umn.edu>  
[aesearch@umn.edu](mailto:aesearch@umn.edu)

*Papers downloaded from **AgEcon Search** may be used for non-commercial purposes and personal study only. No other use, including posting to another Internet site, is permitted without permission from the copyright owner (not AgEcon Search), or as allowed under the provisions of Fair Use, U.S. Copyright Act, Title 17 U.S.C.*

Vol XXIV  
No. 1

ISSN 0019-5014

JANUARY-  
MARCH  
1969

# INDIAN JOURNAL OF AGRICULTURAL ECONOMICS



INDIAN SOCIETY OF  
AGRICULTURAL ECONOMICS,  
BOMBAY



# ANNOUNCEMENTS

## SUBJECTS SELECTED FOR THE NEXT CONFERENCE OF THE SOCIETY

The 29th Annual Conference of our Society will be held sometime in the last week of December, 1969. The exact dates and the venue of the Conference will be communicated in due course.

The following subjects are selected for discussion at the Conference.

1. Capital Formation in Indian Agriculture.
2. Economics of Rural Electrification.
3. Economic Problems of Plantations.

### INDICATIVE OUTLINE

#### *I. CAPITAL FORMATION IN INDIAN AGRICULTURE*

Indian agriculture is witnessing a remarkable technological transformation. In this context, a study of capital formation assumes great importance.

There is evidence of rising investment in tube-wells and setting up of electric /diesel pump-sets, power tillers, tractors, etc. Thus both the magnitude and the pattern of investment are changing rapidly. This, therefore, would appear to be a proper occasion for research workers to study the problem.

Some of the aspects which deserve our attention are :

- (1) Estimation of the increase in the rate of capital formation by regions and/or the country as a whole in the private and public sectors.
- (2) Change in the pattern of capital formation. Levels and types of enterprise (size of holdings, tenancy, cropping) at which investment takes place.
- (3) Sources of finance for capital formation : owned funds, role of different credit institutions in assisting capital formation—Land Development Bank, Commercial Banks, Agricultural Finance Corporation, Agricultural Refinance Corporation.
- (4) Future projections of the types and quantum of investment in private and public sector—irrigation, mechanization, roads, storage, etc.—necessary or desirable in the light of the technological transformation.
- (5) Suggestions for economic policy and institutional framework for promoting capital formation—taxation policy, credit policy, input marketing organizations/systems, land reforms, etc.

#### *II. ECONOMICS OF RURAL ELECTRIFICATION*

With the spread of 'Green Revolution' in the rural areas the problem of rural electrification has assumed urgency. There is a growing demand for power to energize surface wells and tube-wells to extend area under irrigation. But the supply of power to rural areas requires laying of high and low tension cables over vast areas. This is a costly activity and involves heavy losses to suppliers. Many electricity boards are already incurring heavy losses. It is necessary therefore to undertake the cost-benefit analysis of the supply of power to rural areas to investigate whether the accounting losses are adequately covered by social benefits.

There are three other related problems. Firstly, it may be necessary to investigate into the remedies that might help raising the load factor, *i.e.*, the intensity of use of power with a view to reducing operational costs. It may be advantageous to examine the contribution the spread of the 'Green Revolution' is likely to make to raising of the load factor. It may be useful to study in this context in general the factors that influence the demand for power in rural areas. A projection of demand for electricity into future for different regions may be a useful exercise for the strategy of the power supply in future.

The second problem relates to pricing of power supply to rural areas. On the one hand, suppliers of electricity have to cover their costs, on the other the users,—*viz.*, farmers—should find it economic to use. Two questions need to be examined in this context : At what level will the supply price be remunerative to both ? Is it necessary and advisable to subsidise price of power supply to rural areas; if so what should determine its quantum and the length of the period for which subsidy should be operative ? Is discriminatory treatment in favour of small farmers feasible/desirable ?

The problem of rural electrification may be considered also at the farmers' level. In particular two aspects may be investigated. What will be the cost-benefit relationship of the pump-set and the energized tube-wells in comparison with that of other sources of power supply, mechanical or otherwise, for irrigation.

Both at the farmers' level and at the level of suppliers of power, credit facilities have crucial role to play. The form of such credit, its quantum and suitability of different agencies may be evaluated.

### III. ECONOMIC PROBLEMS OF PLANTATIONS

Unremunerative and declining prices in the foreign markets, urgent need for rehabilitation and modernization of older plantations and the unorganized nature of some of the plantations appear to be the principal problems facing the plantations in India. While the Plan documents take cognizance of these problems, relatively little seems to have been done over the three Five-Year Plans to exploit systematically the production and foreign exchange potential of plantation crops. For example, the Second Plan observed : "For tea, coffee and rubber, firm development programmes have yet to be approved;" also, the Draft Outline of the Fourth Plan devotes only two short paragraphs under "Export Promotion" mentioning cursorily a few production targets in relation to plantation crops.

Since the problems of international trade in relation to these crops figured in one of the subjects discussed at the 28th Conference of the Society held last year (International Trade in Agricultural Commodities with particular reference to Primary Producing Countries), attention may now be focussed on the economic, technological and organizational problems and their bearing on the viability and competitiveness of the plantations in India. The following issues may be taken up for detailed investigations.

- (a) Trends in productivity—productivity and modernization problems of older plantations—financial and employment implications of modernization.
- (b) Problems of labour supply—labour legislation and movement of wages in relation to labour productivity.
- (c) Availability and cost of long-term finance—scope for financing by the commercial banks.
- (d) Problems of production and marketing in the less-organized sector—scope for scalar and organizational improvements—alternative forms of organization and their efficiency.
- (e) Trends in domestic and foreign demand—scope for extending the areas under plantation crops—working of international agreements and quotas.
- (f) Critical evaluation of the activities of the special committees and boards entrusted with the responsibility of planning and development of specific crops.
- (g) Status of technological research in plantation crops, extension, demonstration, publicity.



## TWENTY-SECOND CONGRESS OF THE INSTITUT INTERNATIONAL DE SOCIOLOGIE

The Institut International De Sociologie (I.I.S.) is holding its 22nd Congress in Rome in September, 1969. Two subjects are selected for discussion at the Congress, sub-divided as follows : (1) Methodology of the social sciences—(a) the problem of forecasting in the social sciences and (b) measurement and classification in the social sciences—and (2) Socio-cultural transformations in developing countries—(a) significance and forms of modernization, (b) forms and mechanisms to accelerate social change and (c) autonomy and independence in the international system. Papers on the official subjects invited for the Congress should not exceed 5,000 words while independent papers on subjects of the I.I.S. members' choice should be limited to 2,500 words, besides summaries not exceeding 200 words. Enrolment fees amount to \$20 or 80 francs or 10,000 Italian lire. Members are entitled to receive the volume of the *Acta* free of cost. An exhibition of books on sociology is being arranged by the Organization Committee. Correspondence may be addressed to the Chairman of the Organization Committee, Segreteria del XXII Congresso dell' I.I.S., Istituto di Statistica e Ricerca Sociale, C. Gini, Citta Universitaria, 00100 Roma.

## THE 1969 ATHENS EKISTIC MONTH

The Athens Centre of Ekistics, established in 1963 by the Athens Technological Organization at Athens (Greece) seeks to foster a concerted programme of research, education, documentation and international co-operation in all major fields related to the development of human settlements. The 1969 Athens Ekistics Month organized by the Athens Centre of Ekistics is scheduled to be held at Athens from July 7 to August 1, 1969. The major programmes of the Athens Ekistics Month include (1) research discussions on "Society and Human Settlements : Analysis and Definition of Problems," by a group of invited experts, (2) Delos symposium on "Society and Human Settlements : Policies for the Future," by a group of invited experts, (3) visit to ancient Greek Settlements, (4) annual meeting of the world society for Ekistics, (5) meeting of the executive and advisory editorial board of the Ekistics journal, (6) discussion on education in Ekistics and (7) international seminar on "Society and Human Settlements : Programmes and Plans for the Future." Additional information may be obtained from the Director, International Programmes, Athens Centre of Ekistics, P. O. Box 471, Athens (Greece).

The way we look at our Farmer  
... is an extremely decisive  
element in marketing fertilizers.

The world of the farmer is  
different. So are his responses  
and his stimuli. Effective  
fertilizer marketing is never  
complete unless he is told of  
many a thing that goes with  
fertilizers.

For instance, what is good farm  
management? What are good  
pesticides? When and how to  
use them? How to create,  
procure and sustain irrigation  
and water resources? How  
and when to use good seeds?  
How and when to use what  
fertilizers for what crop? In

fact, the farmer needs to be  
sold a dream -- a dream  
which makes farming a  
profession supported by a right  
attitude towards it.

Our Consumer services at  
GSFC include, among many  
other things, extensive  
research on fertilizers and  
crops and extension work  
devised to reach farmers,  
at individual level.

All these are aided by  
demonstration farms and a vast  
array of literature giving  
detailed information on  
fertilizer applications. We  
also ensure that our fertilizers  
reach the farmer factory-fresh

by packing our fertilizers in  
specially designed jute-laminated  
tarpaulin bags.

Now that we have started our  
distribution outside Gujarat  
we would like to convince  
farmers elsewhere in India  
that at GSFC we always keep  
our Farmer In Our Eye.

GSFC is basic to India's  
progress



GUJARAT STATE  
FERTILIZERS  
COMPANY LIMITED  
FERTILIZER NAGAR,  
DIST. BARODA.

THE WAY  
WE LOOK AT  
OUR FARMER



Published monthly in English, French and Spanish by the International Labour Office, Geneva. Articles and information on topics relating to labour, human resources utilisation, incomes policy, industrial relations and other current issues affecting conditions of life and work in all countries.

**New I. L. O. Publication :**

This new edition presents a summary of the principal statistics relating to labour in all parts of the world; information is given for more than 170 countries and territories. Wherever possible, the data cover the last ten years (1958-67) and, for some tables, one period near the middle of 1968.

**Total and economically active population \* Employment \* Unemployment  
Hours of work \* Productivity \* Wages \* Consumer prices \* Industrial  
accidents \* Industrial disputes.**

**About 800 pages, fully indexed, 45 tables**

**Price** { paper: \$ 10; Rs. 75.00  
cloth: \$ 12; Rs. 90.00

Obtainable post free from the International Labour Office, Sales Section, CH-12U,  
Geneva, Switzerland or from the I.L.O. Branch Office, Mandi House, New Delhi-1.

A monthly journal presenting a factual and integrated picture of the agricultural and food situation in India against an appropriate background.

This journal, issued by the Directorate of Economics and Statistics, Union Ministry of Food and Agriculture, has as its regular features :

- \* **A monthly news-letter surveying the latest developments in the field.**
- \* **Authoritative special articles on topics of current interest.**
- \* **Extensive information on events and trends in India and abroad.**
- \* **Reviews of production and prices of various commodities.**
- \* **A comprehensive statistical section.**

Commanding a wide and influential readership in India and abroad, **Agricultural Situation in India** is an invaluable guide to students of agricultural economics, business executives and administrators.

Annual subscription.....Rs. 24.00 or 37sh.

Available from:

1. **The Manager of Publications, Civil Lines, Delhi 8.**
2. **The Secretary to the High Commissioner for India, "India House," Aldwych, LONDON, W.C.2.**

**CENTRAL  
AT WORK  
HERE !**



Central Bank offered Agricultural Finance to 100 Farmers of Shrigonda Taluka, Ahmednagar Dist., Maharashtra and as a result production of sugarcane was raised by 62½%. Picture shows actual location of farm and investigation by bank officials in progress.

THE  
**CENTRAL BANK**  
OF INDIA LIMITED

**THE BANK THAT MOVES OUT TO PEOPLE AND PLACES**



REGISTERED OFFICE: MAHATMA GANDHI ROAD, FORT, BOMBAY-1. ■ V. C. PATEL—Chairman.

PHB-CBI-67-69

## THE ASIAN ECONOMIC REVIEW

The Quarterly Journal of the Indian Institute of Economics

Volume XI

November 1968

No. I

### Articles

Industrialisation Via Import Substitution in Developing Countries ... ..	A. C. Minocha
The Role of Savings in Indian Planning ... ..	Balbir S. Sahni
Ministerial Control of Public Enterprises ... ..	K. R. Gupta
Quantitative Relationship between Wages, Non-Wage Income and Prices based on the Input-Output Table for the Indian Economy—1959...	T. R. Gupta
Unit Cost of Education — A Case Study of Haryana Colleges ... ..	Ruddar Dutt
Trade Union Wage Policy ... ..	Abdul Aziz

### Reviews — Notes and Memoranda

Per Copy : Rs. 5.00.

Annual Subscription; Rs. 20.00

Copies can be had from :

The Registrar

THE INDIAN INSTITUTE OF ECONOMICS

Himayatnagar, Hyderabad-29 (India)

## ARTHA VIJNANA

( Quarterly Journal of the Gokhale Institute of Politics and Economics  
Poona 4 INDIA.)

Vol. II No. I

Contents

March 1969

Impact of the Implementation of Land Reforms —A Case Study in Andhra Pradesh .. ..	P. T. George
The Technical Constraint in the Programmes for Farm Employment ... ..	V. M. Rao and G. Ahmed
Household Size and Expenditure ... ..	Devendra B. Gupta
India's Comparative Growth Record—Growth Investment and Incremental Capital-Output Ratios with reference to ECAFE Countries : 1950-1959 ... ..	Gladys D. Sumithra
Labour-Force Projections for Uttar Pradesh 1961-81 ... ..	A. N. Mehra
A Consistency Model of Regional Growth ... ..	A. Dhar and G. K. Kadekodi
Preference Indexes for Goods Traffic by Different Modes of Transport in Maharashtra ... ..	B. W. Chavan
The Quality of Observational Data ... ..	A. R. Kamat

Subscription Rates :  
(Inclusive of postage)

Please address all correspondence to :

Annual : Rs. 25.00 ; \$ 7.50; 45s.  
Single Issue : Rs. 7.50 ; \$ 2.00; 15s.

The Editor, Artha Vijnana,  
Gokhale Institute of Politics  
and Economics, Poona 4. (INDIA)



**The Seed Corn:** There is one quick way of bringing a farm to an end, and that is to rob the farmer of his seed corn. Out of each harvest, a farmer must put by a percentage of his corn to plant again in the next season. And if he has to expand and to plant new fields, then he must retain more and more of his crop to have more and more seed corn.

Profit is the seed corn of industry. As the corn grows and the seed increases, so profits flow out of industry. They are not a weed, to be scythed by the scythe of taxation or to be eradicated by the hoe of nationalization. They are the measure of an industry's efficiency. They are the new power generated by that industry for the creation of further industries.



## THE PAKISTAN DEVELOPMENT REVIEW

**Quarterly Journal of the Pakistan Institute of Development Economics,  
Karachi, Pakistan**

Volume VIII

Winter 1968

No. 4

### Articles

- |   |                   |
|---|-------------------|
| A Programming Model for Reduction of Import Dependence of Pakistan ... .. | S. M. Naseem      |
| Commodity Exports, Net Exchange Earning and Investment Criteria ... ..    | Nurul Islam       |
| Choice of Technique and the Volume of Saving ...                          | Md. Anisur Rahman |

### Review Article

- |                               |               |
|-------------------------------|---------------|
| Myrdal's "Asian Drama" ... .. | Jan Tinbergen |
|-------------------------------|---------------|

### Notes and Comments

- |   |  |
|---|--|
| "The Value of Irrigation Water Used for Land Reclamation": A Comment ... .. | C. E. Finney                               |
| Rejoinder ... ..  | Ch. M. Rafiq, M. Alim Mian and R. Brinkman |

### Book Reviews — Books Received

Subscription : Rs. 12.00 or US \$ 5.00 per annum or equivalent in other currencies; individual copies : Rs. 3.00 or US \$ 1.50 each.

Manuscripts and editorial correspondence should be addressed to the Managing Editor of **The Pakistan Development Review**, Old Sind Assembly Building, Bunder Road, Karachi-I. Style Instructions for guidance in preparing manuscripts in acceptable form will be provided upon request to the Editor. Books for review should be sent to the Book Review Editor.

## THE AUSTRALIAN JOURNAL OF AGRICULTURAL ECONOMICS

Published by the Australian Agricultural Economics Society

Volume 12

December 1968

No. 2

### Contents :

- |  |  |
|--|--|
| On the Growth of the Agricultural Firm ... ..  | F. G. Jarrett                                  |
| The Wool Board's Second Report on Marketing : A Review Article ... ..                                  | I. M. Sturgess                                 |
| The Capacity of the N. S. W. Pig Market to Absorb Possible Increases in North Coast Pig Production ... | Janet R. Hill                                  |
| Optimizing the Transfer of Tax Exemptions in New Zealand Farm Development ... ..                       | Wayne Cartwright                               |
| Expected Values of Costs and Revenues Dependent on Drought   | A. M. W. Verhagen,<br>F. Hirst and A. G. Lloyd |

### Book Reviews — Publications Received — Personal Notes

Published twice yearly

**Editor:** Warren F. Musgrave, Faculty of Agricultural Economics, University of New England, Armidale, N. S. W. 2351, Australia.

**Membership \$5 or \$U.S. 6 from the Secretary, Mr. A. R. Moore, Reserve Bank of Australia, Box 1631M, G.P.O., Melbourne 3001, Australia.**

**big helping hand  
to AGRICULTURE****We welcome proposals from agriculturists for:**

Short-term advances for purchase of fertilisers, seeds, pesticides, etc. ■ Medium-term advances for purchase of agricultural equipments like pump-sets, tractors, etc., and for irrigation, electrification of wells and construction of farm houses, etc. ■ Long-term advances for development of farms, plantations, poultry farming, dairy farming, etc.

■ We also offer financial assistance to manufacturers and distributors of agricultural inputs and equipments for their marketing and distribution operations.

Contact any of our Branches or Agricultural Finance Department at our Central Office in Bombay.

**THE BANK OF INDIA LTD.**

T. D. KANSARA, Chairman

YOU HAVE  
A FUTURE  
IN THIS STAR



AS/B/106





## CANADIAN JOURNAL OF AGRICULTURAL ECONOMICS

### Articles

- |   |   |
|---|---|
| Effets des Facteurs de Production et Effets Régionaux sur le Revenu Agricole ... .. | Jean-Pierre Wampach                             |
| Philosophical Dimensions of Rural Poverty in Canada ...                             | M. W. Menzies                                   |
| ARDA and Poverty—Lessons in Developmental Planning                                  | Leonard E. Poetschke                            |
| Rural Anti-Poverty Policy for the Future ... ..                                     | Desmond M. Connor                               |
| Canada's Contribution to Agricultural Foreign Aid ...                               | S. C. Hudson and Frank Shefrin                  |
| Aiding Agricultural Development—Some Lessons ...                                    | Helen C. Abell                                  |
| Canadian Industry and Food Production in Developing Countries—An Approach ... ..    | J. T. Hill                                      |
| Cross-Cultural Incompatibilities Complicating Economic Development ... ..           | T. S. Rackham                                   |
| The Role of the Agricultural Economist in Foreign Agricultural Assignments ... ..   | G. R. Purnell                                   |
| The 1971 Census of Agriculture ... ..   | R. S. Ellis                                     |
| Economics of Environmental Control for Livestock ...                                | D. O. Osburn and L. Hahn                        |
| Economic Integration and Model Building ... ..                                      | R. E. Capel and T. D. Harris                    |
| Intracity Retail Food Price Behavior and the Impact of Price Enquiries ... ..       | M. H. Hawkins, A. A. Warrack and W. S. Pattison |

with Notes, Book Reviews and Announcements

**VOL. 16, No. 3**

**OCTOBER, 1968**

The Canadian Journal of Agricultural Economics is published by the Canadian Agricultural Economics Society. Annual dues or subscription are \$10.00. Address editorial communication to Gordon A. MacEachern, Editor, Agricultural Economics Research Council of Canada, Carleton University, Ottawa, Ontario, Canada.

## SOCIAL AND ECONOMIC STUDIES

A journal devoted to research, especially in the problems of economic growth, social change and political action in the developing territories.

**Vol. 17, No. 3 (September 1968)**

### SPECIAL NUMBER

#### AGRICULTURAL DEVELOPMENT AND PLANNING IN THE CARIBBEAN

Selected Papers

From the Third West Indies Agricultural Economics Conference

Mona, Jamaica, April 1—6, 1968

**Edited by G. L. Beckford**

Annual subscription per volume of 4 numbers £ 2, U.S. \$ 5.60, W.I. \$ 9.60  
Single numbers 12/6; U.S. \$ 1.75; W.I. \$ 3.00

**INSTITUTE OF SOCIAL AND ECONOMIC RESEARCH**

**University of the West Indies, Jamaica**

## THE MAHARASHTRA STATE CO-OPERATIVE BANK LIMITED

(Incorporating the Vidarbha Co-op. Bank Ltd.)

**Head Office** : 9, Bake House Lane, Fort, Bombay-1.  
**Regional Office** : Mahal, Nagpur.  
**Telephones** : 259864, 259997, 250189, 259667  
**Telegrams** : FARMERBANK

Money deposited with this Bank helps the Indian Agriculturists and Small Industries and Sugar Factories organised on a co-operative basis.

	(Rs. in lakhs)
<b>Paid-up Share Capital</b>	} 1298.84
<b>Reserve &amp; Other Funds</b>	
<b>Total Deposits</b>	6318.93
<b>Working Capital</b>	11323.71

Collection arrangements in all the important cities of Indian Union. Banking business of every description transacted. Deposits of all kinds accepted.

*Chairman* : **Shri Vasantao Patil**

**Dr. W. C. Shrishrimal**  
*Manager*

**Shri V. M. Joglekar**  
*General Manager*

## OUR BOOKS ON AGRICULTURAL ECONOMICS

### FOUNDATIONS OF INDIAN AGRICULTURE

Edited by Vadilal Dagli  
 Editor, 'Commerce' Weekly, Bombay.

Written by 30 eminent contributors  
 on Indian Agriculture ... 25.00

### THE SOCIAL FRAMEWORK OF AGRICULTURE

India, Middle-East and England  
 Harold H. Mann ... 25.00  
 Edited by Daniel Thorner

### CHANGING INDIAN AGRICULTURE

Edited by S. C. Jain  
 Sixteen contributors ... 15.00

### AGRICULTURAL ECONOMIC THEORY AND INDIAN ECONOMY

J. R. Bellerby & N. A. Mujumdar 7.50

### ECONOMICS OF UNDERDEVELOPED AGRICULTURE

Edited by Tara Shukla ... 22.50

### CAPITAL FORMATION IN INDIAN AGRICULTURE

Tara Shukla ... 20.00

### AGRICULTURAL DEVELOPMENT IN NEPAL

Y. P. Pant and S. C. Jain 20.00

### AGRICULTURAL DEVELOPMENT OF AFRICAN NATIONS Vol. I & II

S. C. Jain each 20.00

### AGRARIAN REFORMS IN WESTERN COUNTRIES

3.00

### ECONOMICS OF RIVER BASIN DEVELOPMENT IN INDIA

Karuna Moy Mukerji & Mammen 8.00

**VORA & CO. PUBLISHERS  
PRIVATE LTD.**

3, Round Building, Bombay-2

**VORA & CO.**

Gandhi Chambers, Gandhi Road,  
Ahmedabad.

**JOURNAL OF AGRICULTURAL ECONOMICS**

Vol. XX

January 1969

No. 1

**Contents**

The Value of Agricultural Land	Colin Clark
Information and Communication : The Services of the Commonwealth Bureau of Agricultural Economics	J. O. Jones
A Post-Kennedy Round Look at Some Problems in Agricultural Trade	H. J. Kraus
The Future Development of Mid Wales	D. I. Bateman, D.P. Garbett Edwards and E. G. Griffiths
Economic Relationships in Milk Production	R. E. Williams & M. T. Jones
Stability in Farm Incomes	R. Bennett Jones
Sugar Beet or Sugar Cane	F. G. Sturrock
Some Aspects of Food Consumption and Its Long- term Perspective in Pakistan	M. H. Khan
Note on Tree Crops : The Capital Profile and Valuations	M. Upton

With Reviews, etc.  
Journal of

**THE AGRICULTURAL ECONOMICS SOCIETY**

Published thrice yearly; annual subscription 63s.

**Editor :** O. J. Beilby, Department of Agriculture and Fisheries for Scotland, St.  
Andrew's House, Edinburgh, 1, Scotland.

**Secretary :** Dr. T. W. Gardner, Department of Agricultural Economics, The  
University, Manchester, 13.

**THE MALAYAN ECONOMIC REVIEW**

Vol. XIII

October 1968

No. 2

**Articles**

Immiserizing Tariff-Induced Capital Accumulation and Technical Change	Augustine H. H. Tan
Production Functions, Technological Change and the Developing Economics : A Review Article	Jeffrey G. Williamson C. T. Edwards
A Value Added Tax ?	
McKinnon's Value-Added Tax and Industrial Development in Singapore	Wu Ta-Yeh
A Business Activity Index for Singa- pore, 1960-68	Koh Foong Yin and G. W. Betz
The Evolution of Agriculture and Land Owner- ship in Salong Mukim	Robert Ho
Rice Price, Marketing and Food Policy in Indonesia	Mubyarto
The Public Finance of Hong Kong	D. W. Stammer

**Book Reviews**

This journal is published two times a year, in April and October. The annual subscription is Malayan \$ 14.00 (US \$ 5.00 or Sterling 32s. 6d.). Subscription may be sent to any bookseller or direct to : **Malaysia Book Limited, 48 Trafalgar Street, Singapore-2.**

# “RODAFARIN”

## KILLS TO THE LAST RAT

- Rodafarin** : Not harmful to Human and Animal Life.
- Rodafarin** : Based on ‘Warfarin’ the most extensively used Rodenticide in the world; especially on farms.
- Rodafarin** : In three Product Categories ‘R’, ‘C’ and ‘S’—‘R’ is ready for use (domestic). In ‘C’ (concentrate) and ‘S’ (water soluble) forms it is most suitable for eradicating rats in farm lands. Rodafarin can be placed around nesting sites and along the perimeter of fields 30 feet apart. Approximately 1 kg. each of ‘C’ and ‘S’ per acre required.
- Rodafarin** : Unlike other Rodent poisons it does not make the rat suspicious that it is being harmed, and hence, signal warning to other rats. To allow all rodents to eat the bait, baiting must be continuous for 10 days.
- Rodafarin** : Extensively used in residences, shops, offices, food stores, farm buildings, godowns, rice & flour mills, etc.

### PEST CONTROL (INDIA) PRIVATE LTD.

Yusuf Building, Flora Fountain, Bombay 1.	Tel. : 251546/7 251594 443216	} Head Office Factory: Sewri.
---	-------------------------------------	----------------------------------

### BRANCHES :

Allahabad, Bangalore, Baroda, Calcutta, Chandigarh, Coimbatore, Cochin,  
Calicut, Goa, Hyderabad, Lucknow, Madras, Mangalore, New Delhi,  
Poona, Vijayawada, Visakhapatnam.

### CHARY PUBLICATIONS

Read and Advertise in India's Topmost Technical Periodicals

- \* **AGRICULTURE AND AGRO-INDUSTRIES JOURNAL—Monthly.**  
Single copy—Rs. 2; Annual Subscription—Rs. 20/-
- \* **ELECTRICAL INDIA—Monthly—Official Organ of the Indian Electrical Manufacturers Association.**  
Single copy—Rs. 2; Annual Subscription—Rs. 20/-
- \* **MACHINE BUILDING INDUSTRY—Bi-monthly—Officially recognised by the Indian Machine Tool Manufacturers Association.**  
Single copy—Rs. 3; Annual Subscription—Rs. 15/-
- \* **INDUSTRIAL ENGINEERING AND MANAGEMENT—Quarterly—Official Organ of the Institute of Industrial Engineers (India).**  
Single copy—Rs. 5; Annual Subscription—Rs. 16/-
- \* **TEXTILE MACHINERY ACCESSORIES & STORES—Bi-monthly.**  
Single copy—Rs. 3; Annual Subscription—Rs. 15/-
- \* **INDIAN DRUGS & PHARMACEUTICALS INDUSTRY—Bi-monthly.**  
Single Copy—Rs. 3; Annual Subscription—Rs. 15/-
- \* **CIVIL ENGINEERING, CONSTRUCTION AND PUBLIC WORKS JOURNAL—Bi-monthly.**  
Single Copy—Rs. 3; Annual Subscription—Rs. 15/-

For details, contact :

**CHARY PUBLICATIONS (Publishers)**

City Office :  
18 Military Square Lane  
Kalaghoda, Bombay-1.  
Tel : 255060-257714

Regd. Office :  
14, Sidh Prasad,  
Ghatkopar Mahul Road,  
Chembur, Bombay-71.

### SALES ACCOUNTING METHODS

A Study Group of the Institute of Office Management, London, conducted a survey in "Sales Accounting Methods." The members of the study group were employed in various large offices including the British Treasury, Imperial Chemical Industries Ltd., Unilever Ltd., and published a comprehensive report in the form of a book. The systems described in the report are not necessarily those used in these offices.

Our Institute (IOMI), which has professional collaboration with the Institute of Office Management of U.K., has obtained a limited number of copies of this publication for the interest and benefit of business organizations keen to reduce their overhead office expenses.

We have pleasure in offering the same at a price of Rs. 44.00 exclusive of postage and packing charges. Please write to the Executive Officer, Institute of Office Management—India, N-34, Jangpura Extension, New Delhi-14.

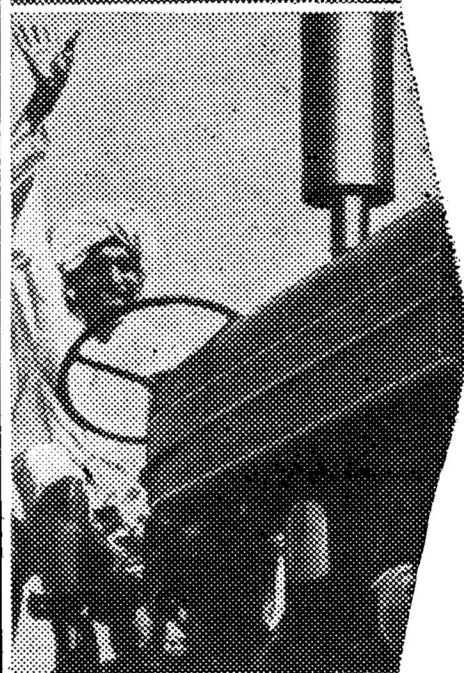




**Yesterday's  
way of farming  
low yields...  
lower profits**

Next time you need new agricultural equipment, such as tractors, sprayers, or power tillers, call at your nearest branch of the State Bank.

The State Bank will help you modernise your farm for increased agricultural production through loans or cash credit, under its Direct Finance Scheme to farmers.



**Today's  
modern farming  
bumper crops...  
bumper profits**

**STATE BANK  
FOR SERVICE**

**WORLD AGRICULTURAL ECONOMICS  
AND  
RURAL SOCIOLOGY ABSTRACTS**

**(W A E R S A)**

Is the **ONLY** comprehensive source of information on a world scale covering all significant publications on International, Regional and National aspects of

**Agricultural Policy  
Trade, Marketing and Prices  
Finance and Credit  
Production Economics  
Co-operation  
Education and Training  
Rural Sociology  
Research Methods and Techniques  
and Related Topics**

Each quarterly number includes over 1,000 classified and indexed abstracts. Review articles which include comprehensive bibliographies have so far dealt with: Production Function Analysis; Marketing Poultry Meat; Part-time Farming; Agriculture in Centrally Planned Economies; Measurement of Productivity in Soviet Agriculture; The Adoption and Diffusion of Agricultural Practices; The Evaluation of Extra-Market Benefits; The Growth of Work Study and Allied Techniques in Agriculture.

Heavy subsidies contributed by Governments of the British Commonwealth and the Republic of Ireland reduce the annual subscription well below cost.

*Contributing Countries: £4.10s. Non-contributing Countries: £7.10s (\$19.50)*

**Produced quarterly by the :**

Commonwealth Bureau  
of Agricultural Economics  
31A St. Giles, Oxford.

**Orders and Subscriptions to:**

C. A. B. Central Sales  
Farnham Royal, near Slough  
Bucks, England.

# They saved the ancient banyan tree and now their daring knows no bounds

'Let it stand,' someone said of the banyan tree as the site was being cleared for the Hindustan Lever Research Centre, at Andheri.

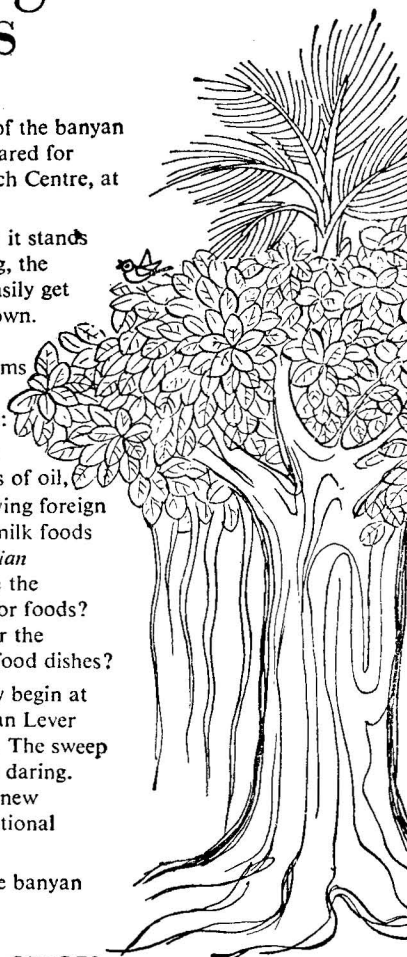
So the tree still stands—and it stands for quite a lot. For one thing, the tree signifies that we can't easily get away from what is home-grown.

Appropriately, therefore, the Centre will tackle problems rooted in India—the kind that can only be solved here:

Can we discover and exploit hitherto unused *local* sources of oil, thus cutting imports and saving foreign exchange? Can we develop milk foods that are ideally suited to *Indian* needs? How can we improve the nutritive value of protein-poor foods? Can we develop processes for the preservation of Indian type food dishes?

Research on all this can only begin at home. It has, at the Hindustan Lever Research Centre in Andheri. The sweep and thrust of the studies are daring. The scientists are producing new devices for old, making traditional things happen in new ways.

They have, of course, left the banyan tree alone to grow by itself.



## Hindustan Lever



# THE AHMEDABAD DISTRICT CO-OPERATIVE BANK LIMITED

T. No. 26364

Tilak Road, Ahmedabad

Estd : 1925

Paid-up Share Capital	.. .. .	Rs.	1,41,86,000
Reserve and other funds	.. .. .	Rs.	79,48,500
Deposits	.. .. .	Rs.	7,43,12,000
Working Capital	.. .. .	Rs.	12,80,60,000

## 41 Branches of the Bank in Ahmedabad & Gandhinagar Districts

### Attractive rates of Interest on Fixed Deposits

7 days notice call deposit  $2\frac{1}{2}$  %91 days  $4\frac{1}{2}$  %                      12 months  $5\frac{1}{2}$  %6 months  $4\frac{1}{2}$  %                      5 years  $6\frac{1}{2}$  %

Savings Deposit 4 %

Recurring Deposits upto  $7\frac{1}{2}$  %

Contact to the nearest branch.

**VITHALBHAI PATEL***Manager***KANTILAL GHIYA***Chairman*

## ARTHA-VIKAS

Vol. 5

January 1969

No. 1

### I Articles

University and Industry	... ..	R. B. Amin
Input-Output Analysis: Nature and Significance	... ..	R. G. Nambiar
Incentive for Industrial Labour: A Survey	... ..	G. P. Keshava
Integration of Farm and Non-Farm Employment	... ..	V. S. Vyas and G. O. Parikh
Two Views on Foreign Aid (A Review Article)	... ..	H. M. Patel

### II Notes and Comments

Cultivation of Hybrid Bajra in Gujarat State	... ..	G. A. Patel and R. L. Shah
Experience of Hybrid Bajra in the Kaira District	... ..	M. D. Desai
Economics of Ghee Manufacture: A Study at Micro Level—A Comment	... ..	A. G. K. Murthy and D. A. Patel
A Reply	... ..	M. H. Maharaja

### III Book Reviews

Annual Subscription in India Rs. 8.00 and abroad \$ 2.50 or 15sh. Price for single copy Rs. 4.50 or \$1.50 or 9 sh. The subscription rates for students are Rs. 5.00 or \$2 or 10sh. per annum and Rs. 3.00 or \$1 or 5 sh. for a single copy. All communications should be addressed to the Managing Editor, **Artha-Vikas**, Department of Economics, Sardar Patel University, Vallabh Vidyanagar (W. Rly.), Gujarat, India.

# ***MILESTONES ON THE TRACK OF TIME***

## **KIRLOSKAR**

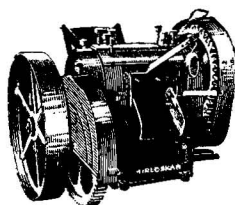
**AGRICULTURAL AND  
INDUSTRIAL  
MACHINERY**

We have come a long way from a humble beginning in 1888, to the gigantic complex we are today, but over the years, we have achieved a series of firsts, milestones on the road to economic progress, both on the agricultural and industrial front.

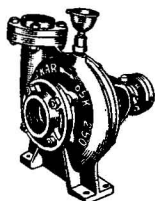
Today, we have a sizable export market for our output, and at home, Kirloskar machinery has become synonymous with the very best in design, choice of materials and standard of workmanship.



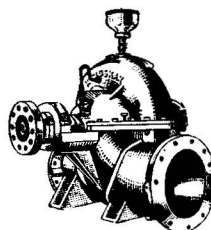
Steam Valve



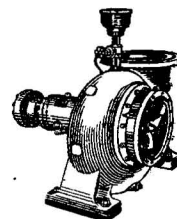
Sugarcane Crusher



K-KE Pump



UP Pump



MF Pump

### **KIRLOSKAR BROTHERS LIMITED**

Udyog Bhavan, Tilak Road, Poona 9

Sales Offices and Depots at: Ahmedabad • Bangalore • Bhubaneswar • Calcutta • Indore • Jaipur • Madras • New Delhi • Secunderabad

STROMACHS N. 5466 AM

## ICAR PUBLICATIONS

**STATISTICAL METHODS FOR AGRICULTURAL WORKERS** (Reprint Edition) by V. G. Panse and P.V. Sukhatme.  
Pp. 381; 16.5 cm x 25.5 cm. Price Rs. 15.00. Postage Rs. 3.00.

Written by two of the foremost authorities on the subject, this book presents the general statistical principles as they are applied to agricultural research. It gives the students of agriculture a fundamental knowledge about the statistical methods and design of experiments in relation to agriculture.

**FARMERS OF INDIA—VOL. IV** by M. S. Randhawa, V. Nath, Suresh Vaidya, H. M. Patel, M. D. Patel and B.S. Kadam. Pp. 318 + xv; 16.5 cm x 23.5 cm, 1968; Ills. 101. Price Rs. 29.00. Postage Rs. 2.50.

The present volume is the fourth in the series of books on farmers of India which the Indian Council of Agricultural Research is bringing out to promote a fuller understanding of the farming communities in the country. It presents a panoramic view of the agricultural conditions obtaining in Madhya Pradesh, Rajasthan, Gujarat and Maharashtra and provides a succinct account of the topography, soils, climate, crops, agricultural practices, village organisation and folk culture of these states. The select photographs included in the book make the study more interesting.

### AGRICULTURAL ENTOMOLOGY

Pp. 370; Price Rs. 10.25. Postage Rs. 2.50.

Agricultural Entomology is a compilation of fifteen papers circulated at the Entomological workers conference held at I.A.R.I., New Delhi. These papers review the progress made during the year 1955 to 1962 in various aspects of agricultural entomology such as insect morphology and physiology, life economy of insects biology, ecology, control of pests and insects of veterinary and medical importance. This will be a useful reference book for research workers and agriculture and veterinary students.

**DRY FARMING IN INDIA** by N. V. Kanitkar, S. S. Surur and D. R. Gokhale. Pp. 470; Price Rs. 21.00. Postage Rs. 3.00.

The Second enlarged edition of 'Dry Farming in India' provides all relevant data on research in dry farming principles and practices conducted at different research stations during the period 1940 to 1954. Additional information on soil conservation and soil studies was also included to make the monograph more comprehensive.

**Copies available from:**

**The Business Manager,  
INDIAN COUNCIL OF AGRICULTURAL RESEARCH  
Krishi Bhavan, New Delhi.**

# STATE BANK OF MYSORE

( Subsidiary of the State Bank of India )

HEAD OFFICE : BANGALORE-9

: o : o : o :

Transacts all types of Banking business

— INLAND AND FOREIGN —



OFFERS attractive rates of interest on deposits

RENDERS financial assistance to SMALL SCALE  
INDUSTRIES

ACCEPTS free remittance of cash and cheques up  
to Rs. 2,500 per day

RUPEE TRAVELLERS CHEQUES ISSUED  
AT PAR

**T. R. Sivaraman**  
GENERAL MANAGER

---

## **The Economics of Agricultural Policy**

GRAHAM HALLETT

Although agriculture makes heavy demands on the public purse in nearly all countries, few comprehensive academic studies of its economics have been published in recent years. The author provides a systematic analysis of the industry which for the most part is of international applicability.

631 11090 9

50s. net

## **Mechanisation and the World's Rice**

This important volume contains the proceedings of a conference organized by Massey-Ferguson in collaboration with F.A.O. to support International Rice Year. The 25 papers by experts from all over the world are a permanent and valuable contribution to the literature of the subject.

631 10140 3

63s. net

## **Agricultural Producers and their Markets**

*Edited by* T. R. WARLEY

This is a collection of papers given at an international seminar dealing with marketing topics primarily from the point of view of producers. The authors are marketing specialists, university research workers and senior executives from food trading industries.

631 10330 9

84s. net

*New Edition*

## **Choice of Techniques**

A. K. SEN

One of the most difficult problems facing an underdeveloped economy attempting planned economic growth is the choice between alternative techniques of production. The author critically examines the factors so far discussed, and shows the need for considering a number of other aspects of the problem.

631 10830 0

25s. net

## **Year Book of Agricultural Co-operation 1968**

*Edited by the Plunkett Foundation for Co-operative Studies*

The Year Book, which has appeared regularly since 1927, aims at presenting an annual picture of the development of agricultural co-operation throughout the world, including the long-established organizations of Europe and North America, the expanding movements of the developing countries, and the very different forms of organization in Communist countries.

631 07170 7

63s. net



**BASIL BLACKWELL**  
Oxford, England.

---

Telegram :  
**"KHETIBANK"**

Telephones :  
 Ahmedabad : **50515/50539**  
 Rajkot : **3608 / 3788**

## **The Gujarat State Co-operative Land Development Bank Limited**

( Regd. Office Ahmedabad )

**Estd. 1951**

489, Ashram Road, Navrangpura, Ahmedabad-9

**Branches : 181**

**Membership : 6,39,455**

### **FINANCIAL POSITION**

( As on 30-6-1968 )

Amount  
 (Rs. in Lacs)

Authorised Share Capital	..	1,000
Paid-up Share Capital	..	501
Reserve & Other Funds	..	98
Sinking Fund Investments	..	1,330
Debentures	..	7,241

The Bank is playing an important role in increasing agricultural production by creating capital assets on land by advancing productive loans for New wells, Oil engines, Electric motors, Tractors, Bundings, Farm houses, Reclamation of land, etc. Total loans advanced Rs. 81.32 crores.

**H. H. Trivedi, I. A. S., (Retd.)**

*Managing Director*

**Maganbhai R. Patel**

*Vice-Chairman*

**Udaybhansinhji,**

(Yuvraj of Porbandar)

*Chairman*

**ADVERTISEMENT TARIFF**  
**FOR**  
**INDIAN JOURNAL OF AGRICULTURAL ECONOMICS**  
**( Quarterly )**

Mechanical Data

Size of printed page:  $19\frac{1}{2}$  cms.  $\times$   $12\frac{1}{2}$  cms.

No. of columns : One

Width of column:  $12\frac{1}{2}$  cms.

Average No. of pages per issue :

about 300 for Conference Number ;

\*about 120 to 140 for other numbers  
on fine quality printing paper.

**RATES**

	<i>Per Issue</i>	<i>Per Annum (4 issues)</i>
Half page	Rs. 100/-	Rs. 360/-
Full page (ordinary)	Rs. 200/-	Rs. 700/-
Inside Back Cover page	Rs. 300/-	Rs. 1,050/-
Back Outer Cover page	Rs. 400/-	Rs. 1,400/-

**Membership Fee per Annum:** Rs. 20.00 or £2-10-0 or \$6.00.

**Annual Subscription:** Rs. 20.00 or £2-10-0 or \$6.00—post free.

**Conference Number:** Single copy: Rs. 7.00 or 18s. or \$2.00  
—postage extra.

**Other Issues:** Single copy: Rs. 5.00 or 12s. or \$1.50—postage extra.

**The Honorary Secretary**

**THE INDIAN SOCIETY OF AGRICULTURAL ECONOMICS**  
**46-48, Esplanade Mansions, Mahatma Gandhi Road,**  
**BOMBAY I.**

## **LIST OF CONTRIBUTORS**

### **AUTHORS**

- Ved P. Gandhi : Professor of Taxation, Indian Institute of Management, Vastrapur, Ahmedabad-6.
- A. I. Medani : Faculty of Agriculture, University of Khartoum, Khartoum, Republic of the Sudan.
- N. S. Shetty : Junior Research Officer, Planning and Development Unit, Department of Economics, University of Bombay, Bombay-1.

### **REVIEWERS**

- Ahmad Raza : Bombay.
- M. G. Chandrachud : The Maharashtra State Co-operative Bank Ltd., Bombay-1.
- R. R. Pradhan : Bombay.
- B. K. Bapat : Bombay.



STATEMENT ABOUT OWNERSHIP AND OTHER PARTICULARS OF THE  
INDIAN JOURNAL OF AGRICULTURAL ECONOMICS

[ In terms of Rule 8 of the Registration of Newspapers (Central) Rules, 1956 ]

FORM IV

1. Place of Publication : The Indian Society of Agricultural Economics,  
46-48, Esplanade Mansions, Mahatma Gandhi  
Road, Fort, Bombay-1.
2. Periodicity of its Publication : Quarterly.
3. Printer's Name : Shri T. R. Sundaram.  
Nationality : Indian.  
Address : No. 7, Dey's Building, Jawaharlal Nehru Road,  
Mulund (West), Bombay-80.
4. Publisher's Name : .. .. Shri T. R. Sundaram.  
Nationality : Indian.  
Address : No. 7, Dey's Building, Jawaharlal Nehru Road,  
Mulund (West), Bombay-80.
5. Editor's Name : *Editorial Board :*  
  
Prof. M. L. Dantwala : *Chairman*  
Shri V. M. Jakhade : *Editor*  
  
Dr. S. S. Johl  
Dr. C. H. Hanumantha Rao  
Dr. Nilakantha Rath  
Dr. C. H. Shah } *Members*
- Address : (1) Prof. M. L. Dantwala,  
Kumar Villa, 1st Pasta Lane,  
Colaba, Bombay-5.  
  
(2) Shri V. M. Jakhade,  
25, 'Bank House',  
156, Backbay Reclamation,  
Bombay-1.  
  
(3) Dr. S. S. Johl,  
Professor of Agricultural Economics and Sociology,  
Punjab Agricultural University, Ludhiana.  
  
(4) Dr. C. H. Hanumantha Rao,  
Institute of Economic Growth, University Enclave,  
Delhi-7  
  
(5) Dr. Nilakantha Rath,  
Gokhale Institute of Politics & Economics, Poona-4.  
  
(6) Dr. C. H. Shah,  
Reader in Agricultural Economics, Department of  
Economics, University of Bombay, Bombay.
6. Names and Addresses of individuals who own the newspapers and partners or shareholders, holding more than one per cent of the total capital: The Indian Journal of Agricultural Economics is owned by the Indian Society of Agricultural Economics, 46-48, Esplanade Mansions, Mahatma Gandhi Road, Fort, Bombay-1.

I, T. R. Sundaram, hereby declare that the particulars given above are true to the best of my knowledge and belief.

Sd./- T. R. SUNDARAM

Date : 31st March, 1969

*Name of the Publisher*

## GUIDELINES FOR SUBMISSION OF PAPERS BY AUTHORS

**1. Subjects:** The objective of the *Journal* is to provide a forum for dissemination and exchange of findings of research on agricultural economics. Purely descriptive material is not appropriate for such a journal. Papers dealing with (i) new developments in research and methods of analysis, or (ii) which apply existing empirical research methods and techniques to new problems or situations, or (iii) which attempt to test new hypotheses/ theoretical formulations or modifications of existing theories or policies to explain economic phenomena especially in the Indian context, or (iv) papers based on research done by the authors bringing out new facts or data presented in an analytical frame will be preferred. Younger economists are advised to seek guidance from their seniors in the preparation of the paper for the *Journal*. A one-page statement indicating the author's own assessment of the importance and relevance of the findings reported in his paper in the context of recent researches would be welcome.

**2. Size of Paper :** In view of the exorbitant increase in the cost of printing, it has become necessary to restrict the length of the papers accepted for publication to 20 (double space) typed pages (of the size 8½-by-11 inches) including tables and appendices (with margins on all sides of at least 1½ inches). Papers exceeding this size limit will be returned to the authors. The authors may however send along with their papers such "supporting material" as may be of help to the referees in evaluating them. Abstracts not exceeding 100 words should be submitted in duplicate along with the paper.

**3. Copies :** Two copies of each paper should be submitted along with a processing fee of Rs. 15/- either by M.O. or crossed I.P.O. (\$ 4.00 or £ 2.50) drawn in the name of the Indian Society of Agricultural Economics, to meet partly the postage and other incidental charges.

**4. Author's identification :** To protect the anonymity of authors while referring the Papers for expert opinion on their merits, authors are advised to avoid disclosing their identity in the text and to attach a separate page showing the name(s) and affiliation(s) of the author(s) along with any footnotes containing bibliographical information or acknowledgements.

**5. Mathematical notations :** Only essential mathematical notations may be used; it is prohibitively costly to typeset such notations. All statistical formulae should be neatly typed.

**6. Figures-Charts and Tables :** Professional assistance should be availed of while presenting figures and charts. They should be drawn in black ink which can be easily reproduced by photographic process. Typescript is not suitable for reproduction. Roman numerals may be used for tables.

**7. Footnotes :** Footnotes should be numbered consecutively in plain arabic superscripts.

**8. References and citations :** Only cited works should be included in the reference list. Please follow the style of citations as in previous issues of this *Journal*.

**9. General :** While sending papers the authors should state that the material has not been published elsewhere or is not being published or being considered for publication elsewhere.

**10. Reprints :** Ten free reprints of the paper would be given to the author; additional reprints, if required, are supplied at cost which may be ascertained from the Editor.

---

*Printer :* Shri G.R. Shetty; Type-setting on Postscript laser printer at Indian School of Political Economy, Arhabodh, Pune - 411 016; Place of printing : Mudra, 383 Narayan Peth, Pune - 411 030; *Publisher :* Shri G.R.Shetty; Place of Publication and Owners : The Indian Society of Agricultural Economics, 46-48, Esplanade Mansions, Mahatma Gandhi Road, Fort, Bombay-400 001.

*SOME OF THE  
PUBLICATIONS OF THE INDIAN SOCIETY OF  
AGRICULTURAL ECONOMICS*

1. INDIAN JOURNAL OF AGRICULTURAL ECONOMICS 1940-1964-SELECTED READINGS (1966)	25.00
2. EVALUATION OF LAND REFORMS (with special reference to the Western Region of India) by Prof. M.L. Dantwala and Dr. C.H. Shah (1971)	15.00
3. COMPARATIVE EXPERIENCE OF AGRICULTURAL DEVELOPMENT IN DEVELOPING COUNTRIES OF ASIA AND THE SOUTH-EAST SINCE WORLD WAR II (1972)	
Cloth bound \$ 9.00, £ 3.60	45.00
Card bound	30.00
4. INDIAN AGRICULTURAL DEVELOPMENT SINCE INDEPENDENCE (1986)	135.00
5. AGRICULTURAL DEVELOPMENT IN INDIA: THE NEXT STAGE (1988)	190.00
6. AGRICULTURAL DEVELOPMENT POLICY: ADJUSTMENTS AND REORIENTATION (1990)	250.00

SEMINAR SERIES

7. No. IV. SEMINAR-CUM-WORKSHOP ON PROBLEMS OF FARM PRODUCTION PLANNING AND PROGRAMMING (1964)	10.00
8. No. VI. SEMINAR ON FARM PRODUCTION PLANNING AND PROGRAMMING (1965)	8.00
9. No. VIII. SEMINAR ON FOODGRAINS BUFFER STOCKS IN INDIA (1969)	12.00
10. No. XII. SEMINAR ON RURAL DEVELOPMENT FOR WEAKER SECTIONS (1974)	25.00
11. No. XIII. SEMINAR ON THE ROLE OF IRRIGATION IN THE DEVELOPMENT OF INDIA'S AGRICULTURE (1976)	30.00
12. No. XV. SEMINAR ON CROP INSURANCE (1983)	60.00
13. TECHNOLOGY OPTIONS AND ECONOMIC POLICY FOR DRYLAND AGRICULTURE: POTENTIAL AND CHALLENGE Edited by Dr. N.S. Jodha (1989)	250.00
14. LIVESTOCK ECONOMY OF INDIA (1989)	95.00

Nos. 4, 6 and 14 can be had from:  
OXFORD & IBH PUBLISHING CO. PVT. LTD.,  
66, JANPATH, NEW DELHI-110001.

No. 5 from:  
HIMALAYA PUBLISHING HOUSE,  
Ramdoot, Dr. Bhalerao Marg, Girgaon, Bombay-400 004.

No. 13 from:  
CONCEPT PUBLISHING COMPANY,  
A-15-16, Commercial Block,  
Mohan Garden,  
New Delhi-110 059.

The rest can be had from:  
THE INDIAN SOCIETY OF AGRICULTURAL ECONOMICS,  
46-48, Esplanade Mansions,  
Mahatma Gandhi Road, Fort, Bombay-400 001.