



AgEcon SEARCH
RESEARCH IN AGRICULTURAL & APPLIED ECONOMICS

The World's Largest Open Access Agricultural & Applied Economics Digital Library

This document is discoverable and free to researchers across the globe due to the work of AgEcon Search.

Help ensure our sustainability.

Give to AgEcon Search

AgEcon Search
<http://ageconsearch.umn.edu>
aesearch@umn.edu

*Papers downloaded from **AgEcon Search** may be used for non-commercial purposes and personal study only. No other use, including posting to another Internet site, is permitted without permission from the copyright owner (not AgEcon Search), or as allowed under the provisions of Fair Use, U.S. Copyright Act, Title 17 U.S.C.*

378.784
U664
106



**THE
UPPER
GREAT PLAINS
TRANSPORTATION
INSTITUTE**

**NORTH DAKOTA GRAIN AND OILSEED
TRANSPORTATION STATISTICS
1994-95**

Scott Andreson
Kimberly Vachal

UGPTI Publication No. 106
September 1995

North Dakota State University
Fargo, North Dakota

NDSU

WAITE LIBRARY
DEPT. OF APPLIED ECONOMICS
1994 BUFORD AVE. - 232 COB
UNIVERSITY OF MINNESOTA
ST. PAUL, MN 55108-6040
U.S.A.

North Dakota Grain and Oilseed Transportation Statistics 1994-95

Scott Andreson

Student Research Assistant

and

Kimberly Vachal

Research Assistant

Upper Great Plains Transportation Institute
North Dakota State University
Fargo, North Dakota

in cooperation with

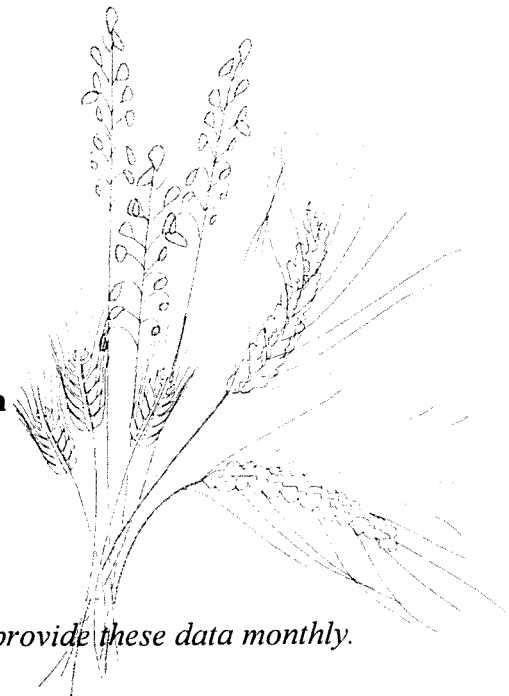
North Dakota Wheat Commission

Bismarck, ND

and

North Dakota Public Service Commission

Bismarck, ND



With special thanks to the North Dakota grain elevator industry who provide these data monthly.



Preface

The 1994-95 North Dakota Grain and Oilseed Transportation Statistics Report was prepared by Scott Andreson and Kimberly Vachal, Upper Great Plains Transportation Institute. The authors gratefully acknowledge the desktop publishing assistance of Bev Trittin in constructing this report.

This report represents a continuation of analysis concerned with the patterns and methods of distributing grains and oilseeds from North Dakota. This series began with the analysis of 1956-57 data and was published in Agricultural Economics Reports 15, 17, 44, 56, and 86 and Agricultural Experiment Station Bulletin 462. The compilation and analysis of data for the year 1967-68 in this series was assumed by the Upper Great Plains Transportation Institute. Also, the data representing the 1967-68 period were the first results of the requirements of the North Dakota Public Service Commission that all North Dakota elevators report monthly movements of grains and oilseeds by truck and rail. Prior to 1967-68, these data had been estimated from questionnaires completed by a sample of country elevators.

North Dakota State Wheat Commission

Sharold Geist, Chair

Alan Lee, Vice Chair
Maynard Satrom, Oriska
Tom DeKrey, Steele

Willard Peterson, Northwood
Frank Dilse, Scranton
Larry Lee, Velva

Mel Maier, Administrator
Neal Fisher, Deputy Administrator
Margie Martin, Production Promotion Specialist
Ellen Huber, Program Assistant

North Dakota Public Service Commission

Commissioners:

Susan Wefald, President
Bruce Hagen
Leo M. Reinbold

Transportation Division:

Robert Senger, Director

Grain Elevator Division:

Jon Mielke, Director

CONTENTS

	Page
North Dakota Grain and Oilseed Transportation Statistics	i
<i>Objective of Report</i>	i
<i>Scope of Report</i>	i
<i>Source of Data</i>	i
<i>Organization of the Remainder of the Report</i>	i
North Dakota Crop Reporting Districts and Counties.	ii
Total Grain and Oilseed Shipments	1
Hard Red Spring Wheat	13
Durum	21
Barley	29
Sunflower	37
Oats	45
Soybeans	53
Flax	61
Corn	69

NORTH DAKOTA GRAIN AND OILSEED TRANSPORTATION STATISTICS 1994-95

Objective of Report

This report represents a continuation of analysis concerned with the patterns and methods of distributing grain from North Dakota. The collection and compilation of this type of data began in 1956-57. The objectives of this report, like prior reports, is to provide the necessary database for identifying trends in the distribution of grain and oilseeds from North Dakota.

Scope of Report

Data are tabulated according to major characteristics which typically describe commodity flows. The major shipment characteristics considered are destination, mode, origin, time and commodity. These characteristics are defined as follows:

- ◆ **Destination:** Minneapolis-St. Paul, Duluth-Superior, West (ID, OR, WA), and miscellaneous markets. Miscellaneous markets consist of Other Minnesota/Wisconsin, Midland/Southwest States (AR, AZ, CA, CO, IA, KS, LA, MO, MT, NE, NM, NV, OK, SD, TX, and WY), North Dakota and other destinations.
- ◆ **Mode:** Rail or truck. Rail includes Commodity Credit Corporation shipments.
- ◆ **Origin:** The nine crop reporting districts in North Dakota (Figure 1).
- ◆ **Time:** By month, from July 1994 to June 1995, and previous years.
- ◆ **Commodity:** Hard red spring wheat, durum, barley, sunflower, oats, soybeans, flax and corn.

Source of Data

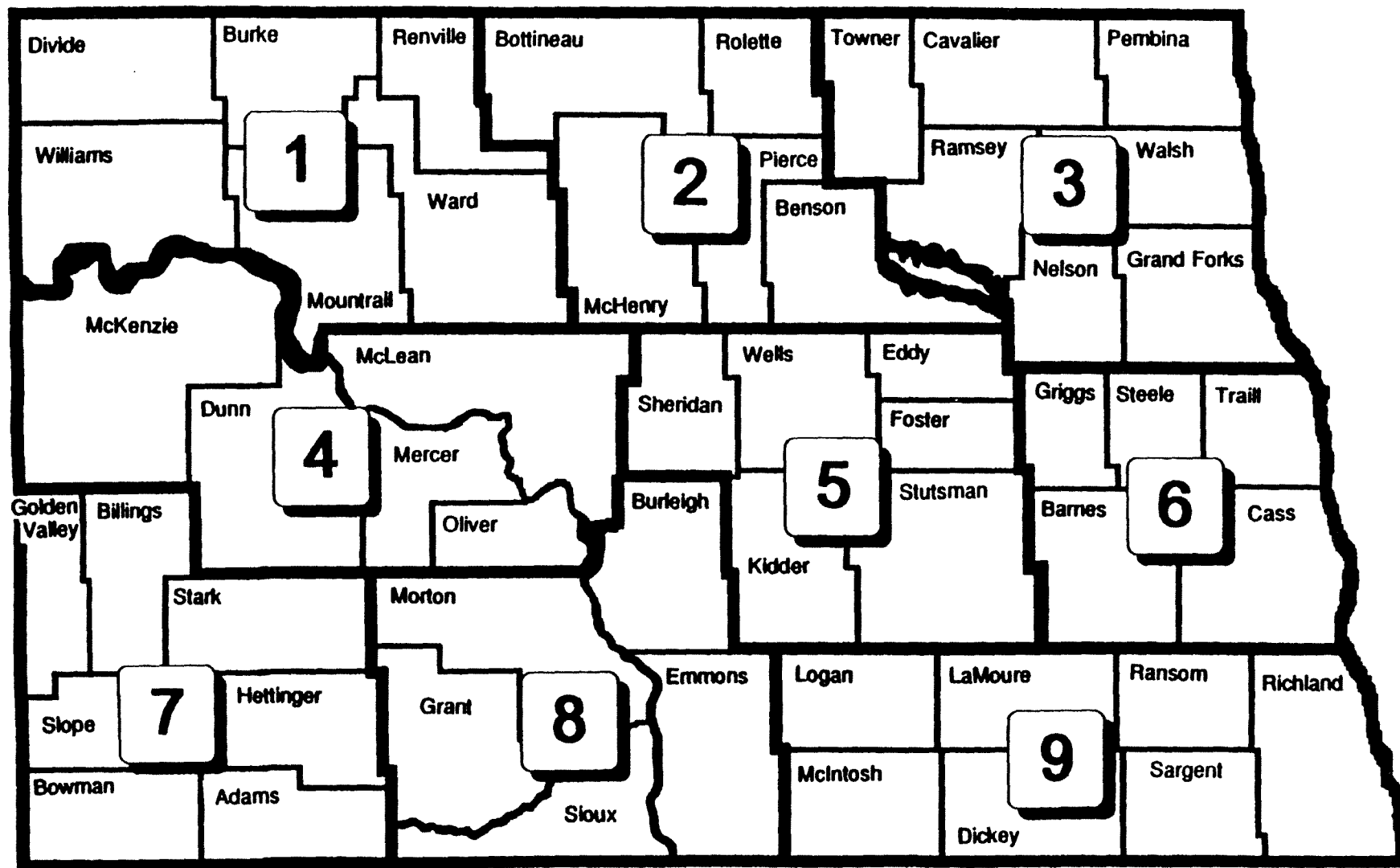
The data used to analyze North Dakota grain distribution patterns for the period July 1994 through June 1995 were obtained from all country elevators in North Dakota. The data source is the North Dakota Public Service Commission's "Grain Movement Report." Every country elevator in North Dakota is required under state statute to assemble and submit a "Grain Movement Report" to the Public Service Commission on a monthly basis.

Organization of the Remainder of the Report

The same general commodity flow characteristics are considered in this report as in previous years' reports. Flow patterns for each type of grain are described in separate sections in the following order: (1) Total Grain and Oilseed Shipments, (2) Hard Red Spring Wheat, (3) Durum, (4) Barley, (5) Sunflower, (6) Oats, (7) Soybeans, (8) Flax, and (9) Corn.

Some small inconsistencies in totals may be noted when comparing tables and graphs due to rounding error.

1994-95 totals are preliminary, representing 99 percent of the required reports.



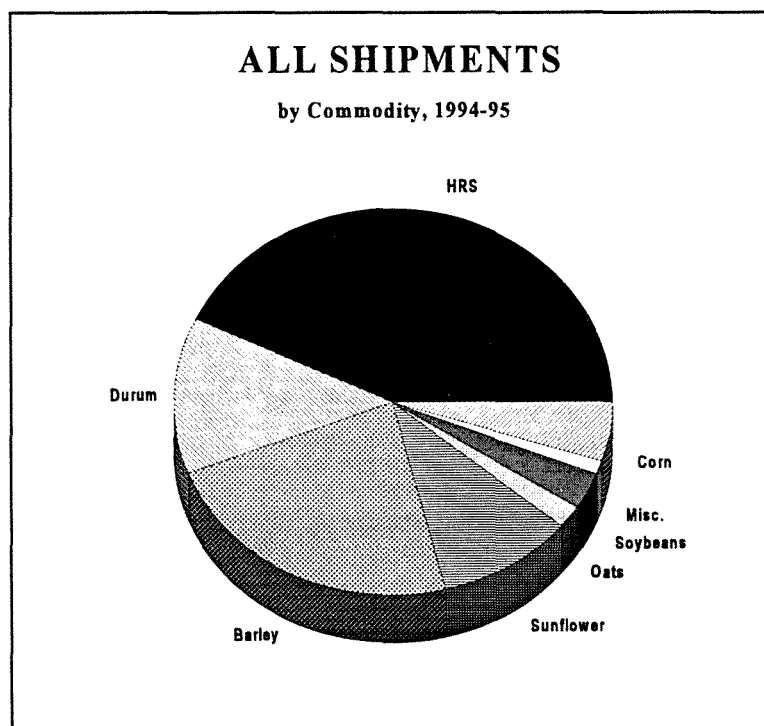
North Dakota Crop Reporting Districts and Counties



***TOTAL
GRAIN & OILSEED
SHIPMENTS***

NORTH DAKOTA GRAIN AND OILSEED SHIPMENTS
1984-85 to 1994-95
(thousand bu.)

YEAR	HRS	Durum	Barley	Sunflower	Oats	Soybeans	Flax	Misc.	Corn	TOTAL
1984-85	183,109 (36%)	80,670 (16%)	106,030 (21%)	77,412 (15%)	11,232 (2%)	14,292 (3%)	4,098 (1%)	12,389 (2%)	22,623 (4%)	511,855 (100%)
1985-86	181,089 (38%)	87,344 (18%)	105,436 (22%)	53,541 (11%)	7,706 (2%)	12,116 (3%)	5,503 (1%)	12,261 (3%)	13,394 (3%)	478,390 (100%)
1986-87	193,962 (34%)	104,968 (18%)	146,342 (26%)	61,067 (11%)	9,387 (2%)	9,990 (2%)	6,666 (1%)	12,500 (2%)	26,437 (5%)	571,319 (100%)
1987-88	187,835 (36%)	77,395 (15%)	104,399 (20%)	63,418 (12%)	15,577 (3%)	18,415 (4%)	6,110 (1%)	14,263 (3%)	30,426 (6%)	517,838 (100%)
1988-89	135,640 (36%)	43,906 (12%)	92,715 (25%)	39,056 (10%)	4,297 (1%)	12,160 (3%)	2,013 (1%)	13,243 (4%)	29,344 (8%)	372,376 (100%)
1989-90	192,485 (40%)	72,003 (15%)	112,256 (23%)	32,174 (7%)	5,015 (1%)	14,015 (3%)	1,077 (1%)	14,632 (3%)	34,764 (7%)	478,421 (100%)
1990-91	191,072 (38%)	78,309 (15%)	114,046 (23%)	37,086 (7%)	5,601 (1%)	10,185 (2%)	2,258 (0%)	39,229 (8%)	28,434 (6%)	506,220 (100%)
1991-92	261,169 (43%)	83,827 (14%)	124,755 (20%)	57,364 (9%)	7,601 (1%)	16,464 (3%)	4,058 (1%)	21,047 (3%)	36,084 (6%)	612,376 (100%)
1992-93	344,261 (49%)	88,080 (12%)	131,139 (19%)	66,965 (10%)	13,272 (2%)	15,528 (2%)	3,621 (1%)	12,257 (2%)	18,054 (3%)	704,083 (100%)
1993-94	252,566 (49%)	82,921 (16%)	109,935 (21%)	26,017 (5%)	11,427 (2%)	9,815 (2%)	2,200 (1%)	12,429 (2%)	8,047 (2%)	515,357 (100%)
1994-95	221,373 (43%)	69,201 (13%)	119,405 (23%)	49,642 (10%)	10,248 (2%)	14,504 (3%)	2,261 (0)	7,402 (1%)	24,398 (5%)	518,434 (100%)



**NORTH DAKOTA GRAIN AND OILSEED SHIPMENTS
BY DESTINATION
1984-85 to 1994-95
(thousand bu.)**

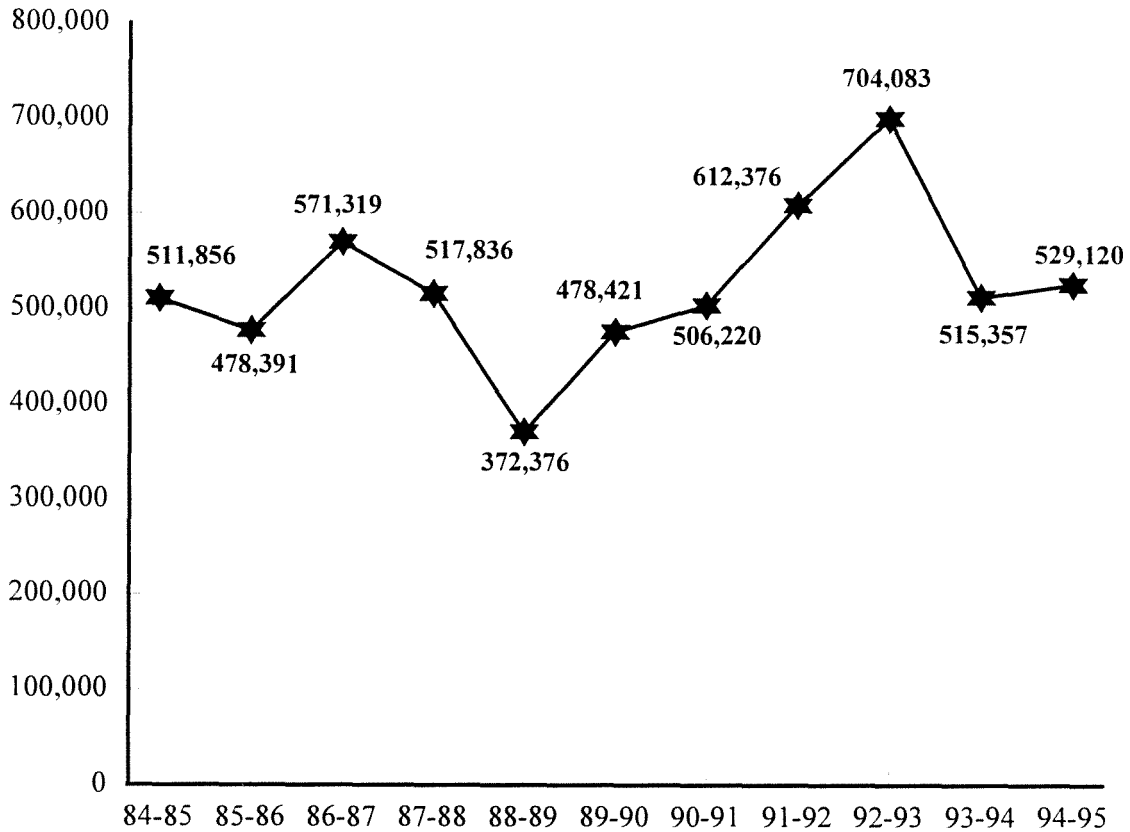
YEAR	Minneapolis- St. Paul	Duluth- Superior	West	North Dakota	Misc. Markets	TOTAL
1984-85	129,455 (25%)	178,299 (35%)	61,002 (12%)	41,521 (8%)	101,578 (20%)	511,856 (100%)
1985-86	131,879 (28%)	109,232 (23%)	44,812 (9%)	58,337 (12%)	134,130 (28%)	478,391 (100%)
1986-87	121,620 (21%)	119,016 (21%)	92,923 (16%)	66,874 (12%)	170,887 (33%)	571,319 (100%)
1987-88	124,984 (24%)	92,320 (18%)	64,727 (12%)	64,982 (13%)	170,823 (33%)	517,836 (100%)
1988-89	85,561 (23%)	50,767 (14%)	67,862 (18%)	50,854 (14%)	117,333 (31%)	372,376 (100%)
1989-90	107,958 (22%)	85,112 (18%)	67,347 (14%)	54,110 (11%)	163,894 (35%)	478,421 (100%)
1990-91	114,712 (23%)	80,740 (16%)	77,311 (15%)	61,987 (12%)	171,470 (34%)	506,220 (100%)
1991-92	134,437 (22%)	73,029 (12%)	75,720 (12%)	74,695 (12%)	254,491 (42%)	612,376 (100%)
1992-93	145,713 (21%)	82,087 (12%)	95,005 (13%)	89,780 (13%)	291,497 (41%)	704,083 (100%)
1993-94	122,774 (24%)	65,572 (13%)	82,292 (16%)	53,760 (10%)	189,762^a (37%)	515,357 (100%)
1994-95	134,298 (25%)	62,349 (12%)	81,831 (15%)	77,092 (15%)	172,116 (33%)	529,120 (100%)

^aMiscellaneous markets include shipments to Midland/Southwest destinations, other Minnesota/Wisconsin destinations, and all other markets.

ALL COMMODITY SHIPMENTS

1984-85 to 1994-95

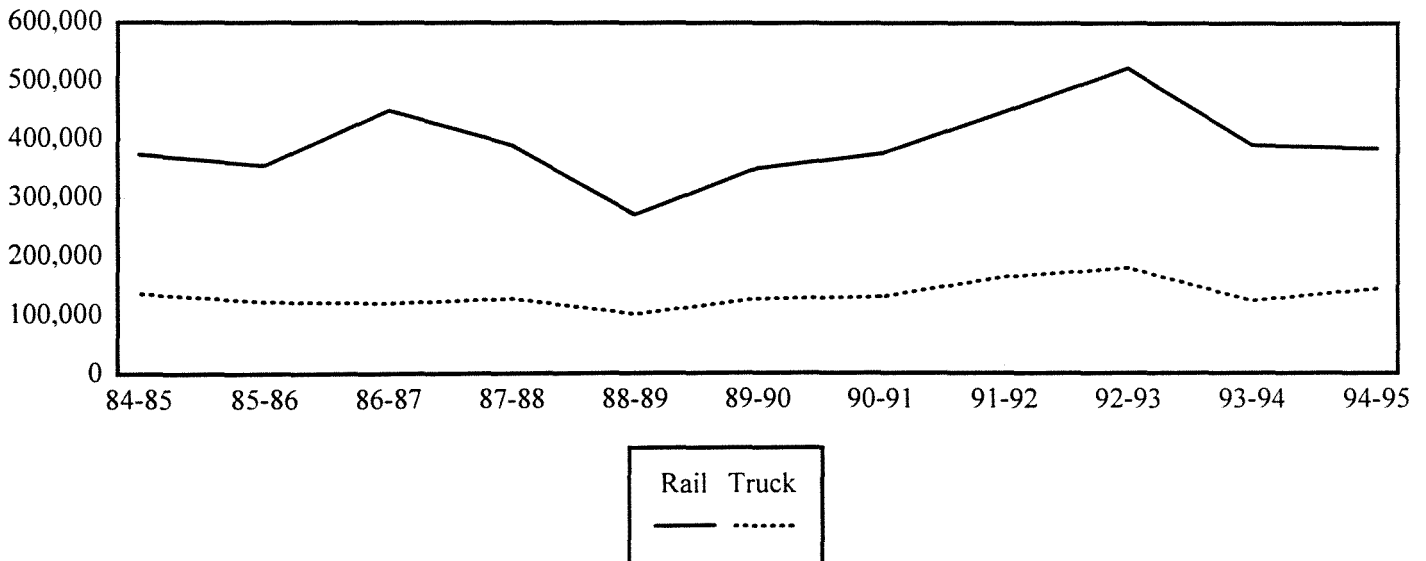
thousand bushels



ALL COMMODITY SHIPMENTS

1984-85 to 1994-95

thousand bushels

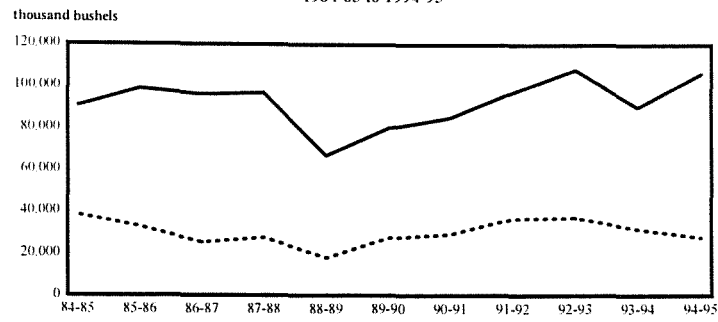


**NORTH DAKOTA GRAIN AND OILSEED SHIPMENTS
BY RAIL, TRUCK AND DESTINATION
(thousand bu.)**

YEAR	Minneapolis-St. Paul		Duluth-Superior		West		Misc. Markets		TOTAL	
	Rail	Truck	Rail	Truck	Rail	Truck	Rail	Truck	Rail	Truck
1984-85	90,807 (70%)	38,648 (30%)	145,495 (82%)	32,804 (18%)	51,786 (85%)	9,217 (15%)	86,921 (61%)	56,179 (39%)	375,009 (73%)	136,847 (27%)
1985-86	99,046 (75%)	32,833 (25%)	88,796 (81%)	20,436 (19%)	38,091 (85%)	6,722 (15%)	129,454 (67%)	63,013 (33%)	355,387 (74%)	123,004 (26%)
1986-87	96,166 (79%)	25,454 (21%)	101,009 (85%)	18,008 (15%)	87,738 (94%)	5,185 (6%)	165,655 (70%)	72,105 (30%)	450,569 (79%)	120,750 (21%)
1987-88	97,285 (78%)	27,699 (22%)	72,835 (79%)	19,485 (21%)	59,834 (92%)	4,893 (8%)	160,318 (68%)	75,487 (32%)	390,272 (75%)	127,564 (25%)
1988-89	67,358 (79%)	18,203 (21%)	37,044 (73%)	13,723 (27%)	62,570 (92%)	5,291 (8%)	103,988 (62%)	64,199 (38%)	270,961 (73%)	101,416 (27%)
1989-90	80,412 (74%)	27,546 (26%)	59,256 (70%)	25,857 (30%)	62,826 (93%)	4,520 (7%)	148,839 (68%)	69,165 (32%)	351,333 (73%)	127,088 (27%)
1990-91	85,295 (74%)	29,416 (26%)	55,844 (69%)	24,896 (31%)	74,543 (96%)	2,768 (4%)	160,029 (69%)	73,430 (31%)	375,712 (74%)	130,510 (26%)
1991-92	97,591 (73%)	36,846 (27%)	46,537 (64%)	26,492 (36%)	72,253 (95%)	3,466 (5%)	231,055 (70%)	98,129 (30%)	447,439 (73%)	164,937 (27%)
1992-93	108,441 (74%)	37,272 (26%)	59,021 (72%)	23,067 (28%)	90,912 (96%)	4,093 (4%)	265,465 (70%)	115,813 (30%)	523,839 (74%)	180,244 (26%)
1993-94	90,920 (74%)	31,854 (26%)	45,243 (69%)	20,330 (31%)	79,660 (97%)	2,632 (3%)	174,906 (72%)	68,616 (28%)	390,885 (76%)	124,472 (24%)
1994-95	106,350 (79%)	27,948 (21%)	43,560 (70%)	18,789 (30%)	78,852 (96%)	2,979 (4%)	136,694 (79%)	35,423 (21%)	384,341 (73%)	144,779 (27%)

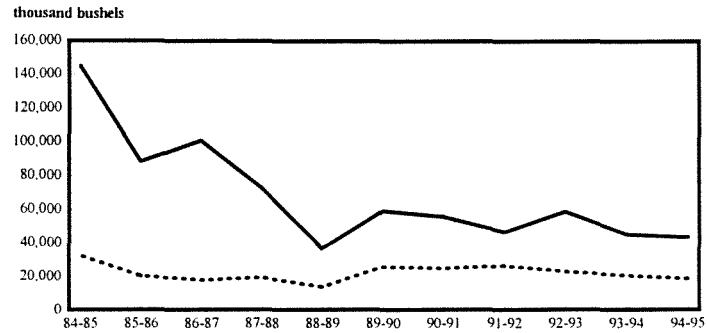
ALL SHIPMENTS TO MINNEAPOLIS

1984-85 to 1994-95



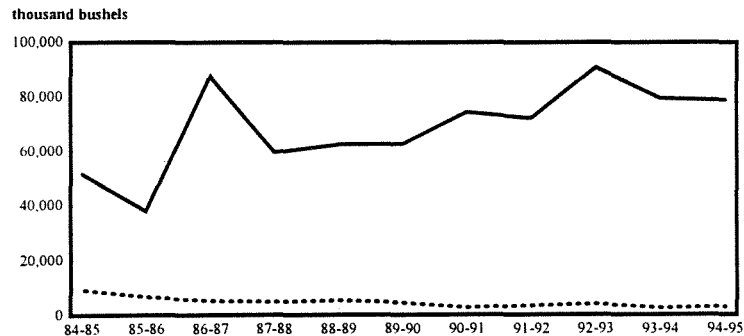
ALL SHIPMENTS TO DULUTH-SUPERIOR

1984-85 to 1994-95



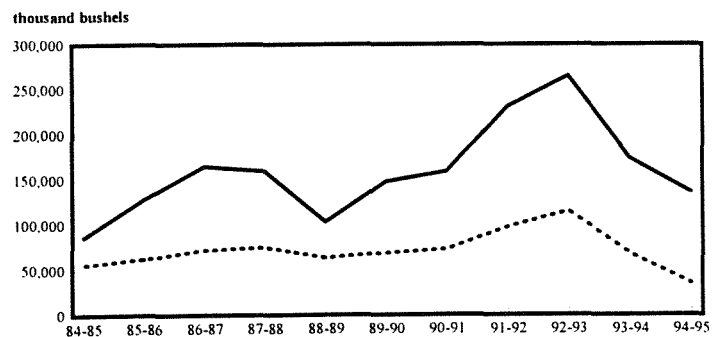
ALL SHIPMENTS TO WEST

1984-85 to 1994-95



ALL SHIPMENTS TO MISCELLANEOUS MARKETS

1984-85 to 1994-95

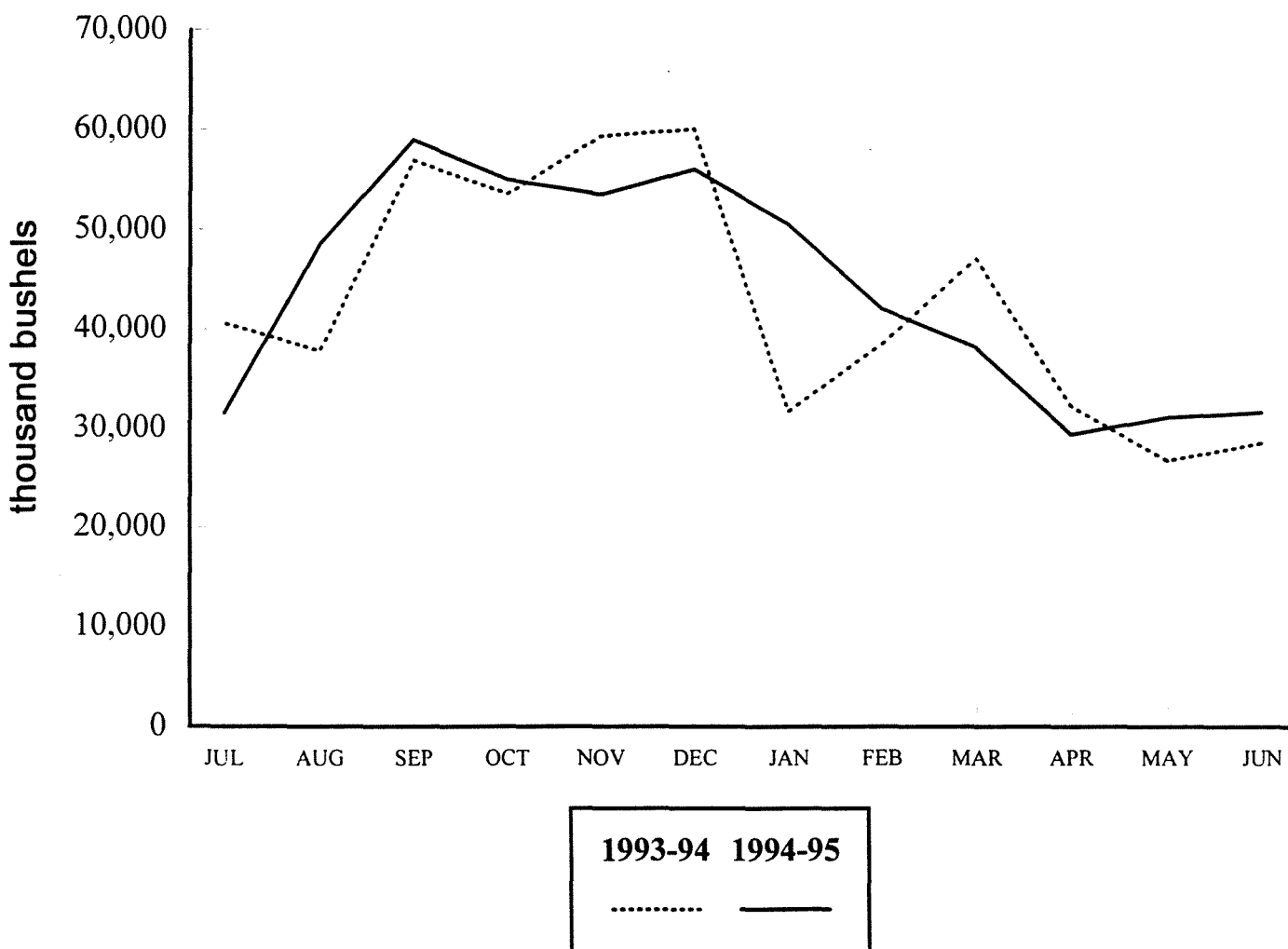


**NORTH DAKOTA GRAIN AND OILSEED MOVEMENTS
BY MONTH
July 1994 - June 1995
(thousand bu.)**

MONTH	HRS	Durum	Soyb	Flax	Barley	Oats	Corn	SF	Misc.	TOTAL
July	11,732	3,134	950	119	11,566	914	628	1,748	786	31,577
August	16,357	4,535	600	265	22,151	1,794	607	1,391	935	48,635
September	27,250	9,524	332	472	16,076	2,006	553	1,081	1,825	59,118
October	23,581	8,106	1,860	385	10,261	1,023	1,381	5,439	3,158	55,195
November	21,556	7,817	1,295	203	8,801	878	3,214	8,391	1,989	53,743
December	24,859	7,009	1,862	216	11,554	396	3,554	5,463	1,444	56,346
January	18,112	6,897	1,838	192	11,254	661	3,172	7,220	1,526	50,871
February	15,821	5,844	1,697	90	9,273	849	3,789	3,645	1,367	42,374
March	15,275	5,405	891	212	7,667	542	2,257	4,687	1,464	38,399
April	12,561	4,405	1,428	46	3,210	467	1,984	3,785	1,738	29,623
May	17,113	3,243	1,029	19	3,563	360	1,564	3,469	990	31,352
June	17,568	3,281	722	44	4,029	358	1,694	3,322	878	31,886
TOTAL	221,373	69,201	14,504	2,261	119,405	10,248	24,398	49,642	18,088	529,120

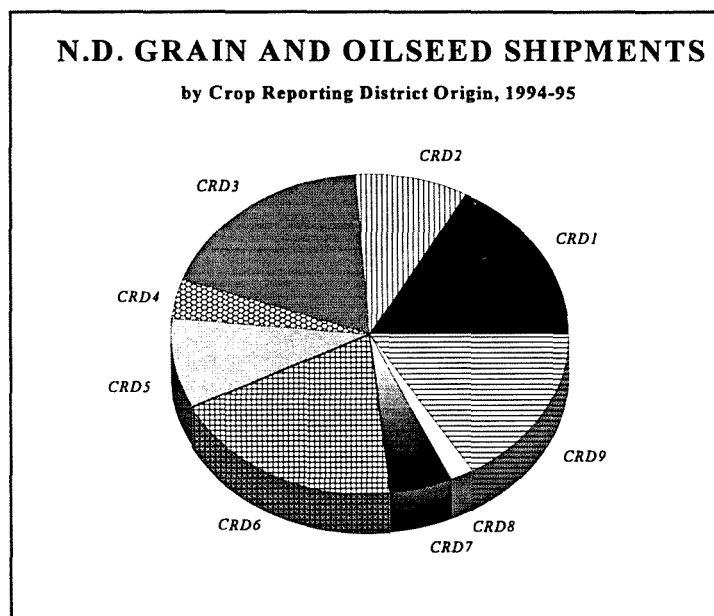
ALL COMMODITY SHIPMENTS

By Month, 1993-94 and 1994-95



NORTH DAKOTA GRAIN AND OILSEED SHIPMENTS
BY CROP REPORTING DISTRICT ORIGIN
1984-85 to 1994-95
(thousand bu.)

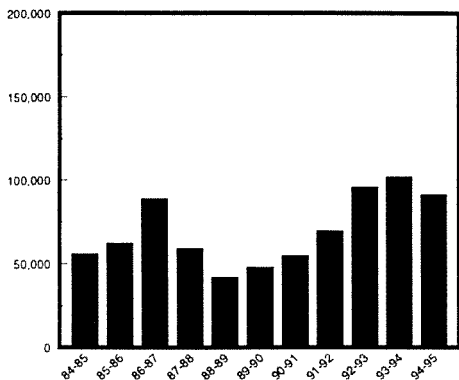
YEAR	Crop Reporting District									TOTAL
	1	2	3	4	5	6	7	8	9	
1984-85	56,106 (11%)	40,973 (9%)	119,549 (23%)	16,346 (3%)	51,963 (10%)	101,475 (20%)	28,236 (5%)	16,856 (3%)	80,352 (15%)	511,856 (100%)
1985-86	62,459 (13%)	39,674 (8%)	104,951 (22%)	19,241 (4%)	51,713 (11%)	86,015 (18%)	27,497 (6%)	15,567 (3%)	71,301 (15%)	478,391 (100%)
1986-87	88,714 (16%)	53,092 (9%)	123,222 (22%)	23,220 (4%)	59,899 (10%)	100,863 (18%)	29,473 (5%)	14,906 (3%)	77,929 (14%)	571,319 (100%)
1987-88	59,183 (11%)	32,984 (6%)	131,537 (25%)	16,035 (3%)	50,741 (10%)	104,169 (20%)	27,701 (5%)	14,721 (3%)	80,764 (16%)	517,835 (100%)
1988-89	41,877 (11%)	23,012 (6%)	91,616 (25%)	8,148 (2%)	34,629 (9%)	88,380 (24%)	16,943 (5%)	6,565 (2%)	61,205 (16%)	372,376 (100%)
1989-90	47,958 (10%)	35,000 (7%)	124,101 (26%)	10,596 (2%)	35,032 (7%)	109,025 (23%)	22,581 (5%)	6,830 (2%)	87,298 (18%)	478,421 (100%)
1990-91	55,109 (11%)	41,253 (8%)	117,055 (23%)	13,028 (3%)	41,778 (8%)	118,104 (23%)	15,336 (3%)	6,649 (1%)	97,908 (19%)	506,220 (100%)
1991-92	69,889 (11%)	49,595 (8%)	151,523 (25%)	15,580 (3%)	58,815 (10%)	130,741 (21%)	24,399 (4%)	12,668 (2%)	99,162 (16%)	612,376 (100%)
1992-93	96,075 (14%)	55,530 (8%)	181,745 (26%)	20,567 (3%)	71,819 (10%)	132,408 (19%)	32,897 (4%)	15,456 (2%)	97,586 (14%)	704,083 (100%)
1993-94	102,070 (20%)	53,508 (10%)	95,577 (18%)	19,843 (4%)	51,371 (10%)	83,238 (16%)	34,431 (7%)	13,665 (3%)	61,662 (12%)	515,357 (100%)
1994-95	91,367 (17%)	49,478 (9%)	97,642 (18%)	19,721 (4%)	48,105 (9%)	98,373 (19%)	27,532 (5%)	12,301 (2%)	84,602 (16%)	529,120 (100%)



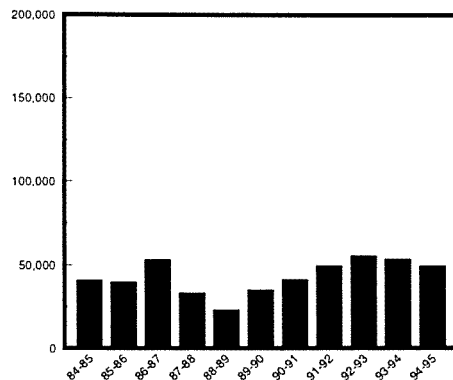
ALL GRAIN AND OILSEED SHIPMENTS BY CROP REPORTING DISTRICT

(thousand bushels)

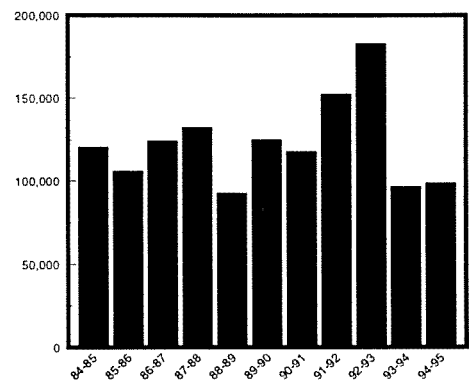
CRD 1



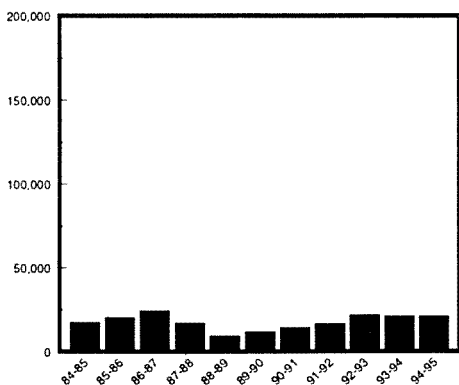
CRD 2



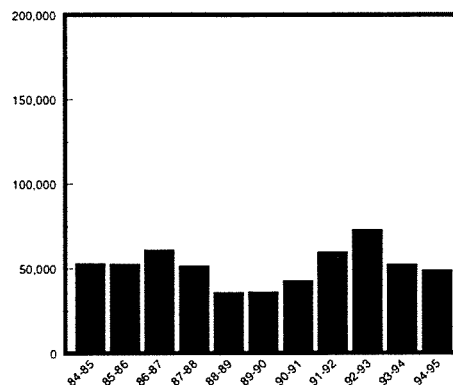
CRD 3



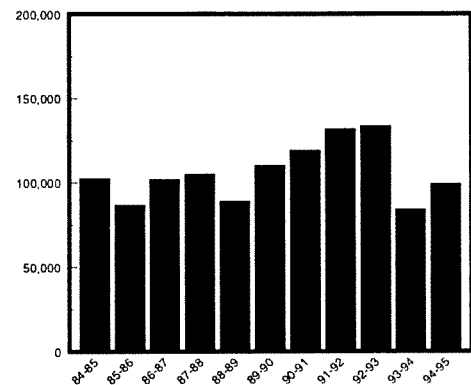
CRD 4



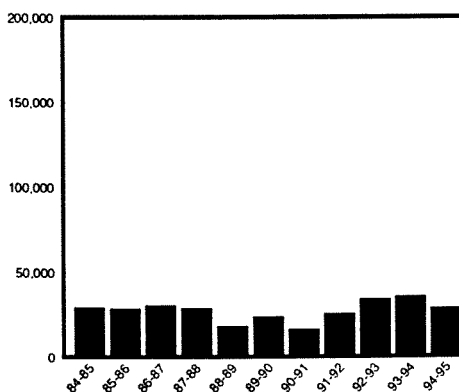
CRD 5



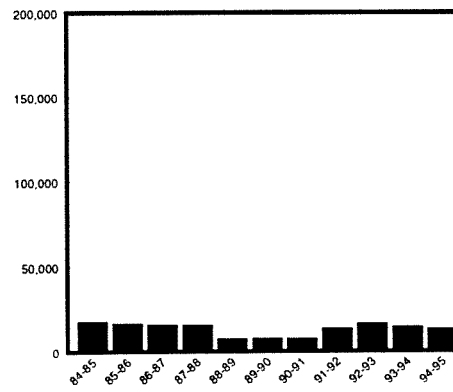
CRD 6



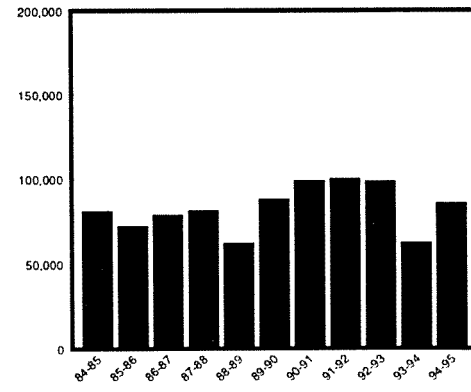
CRD 7



CRD 8



CRD 9





***HRS
WHEAT
SHIPMENTS***

**NORTH DAKOTA HARD RED SPRING WHEAT SHIPMENTS
BY DESTINATION
(thousand bu.)**

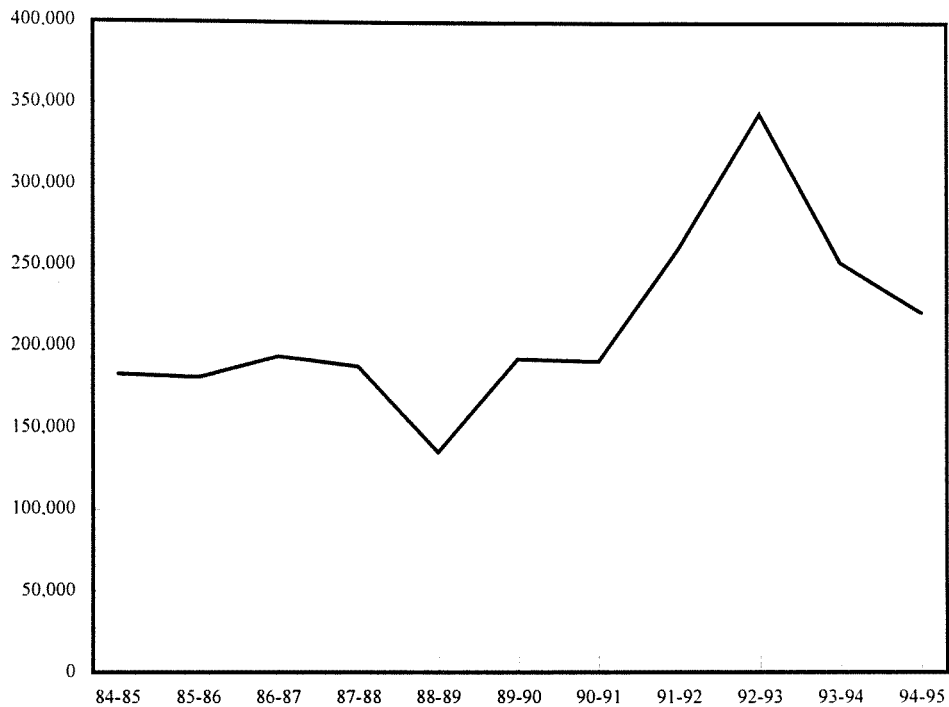
YEAR	Minneapolis- St. Paul	Duluth- Superior	West	Misc. Markets	TOTAL
1984-85	66,796 (36%)	56,002 (31%)	28,452 (16%)	31,859 (17%)	183,109 (100%)
1985-86	68,458 (38%)	48,723 (27%)	21,311 (12%)	42,597 (24%)	181,088 (100%)
1986-87	59,020 (30%)	51,564 (27%)	24,446 (13%)	28,933 (30%)	193,962 (100%)
1987-88	62,463 (33%)	36,755 (20%)	23,549 (13%)	65,069 (34%)	187,836 (100%)
1988-89	42,265 (31%)	26,239 (19%)	29,789 (29%)	37,347 (28%)	135,640 (100%)
1989-90	58,880 (31%)	38,510 (20%)	25,131 (13%)	69,964 (36%)	192,485 (100%)
1990-91	56,356 (29%)	39,229 (21%)	39,521 (21%)	55,966 (29%)	191,072 (100%)
1991-92	74,751 (29%)	23,891 (9%)	29,125 (11%)	133,400 (51%)	261,169 (100%)
1992-93	81,210 (24%)	38,573 (11%)	62,458 (18%)	162,021^a (47%)	344,261 (100%)
1993-94	63,417 (25%)	35,405 (14%)	65,754 (26%)	87,990 (35%)	252,566 (100%)
1994-95	61,810 (28%)	34,567 (16%)	52,174 (24%)	72,822 (33%)	221,373 (100%)

^aMiscellaneous markets include shipments to Midland/Southwest destinations (8%), other Minnesota/Wisconsin destinations (6%), and all other markets including North Dakota processors (19%).

HRS WHEAT SHIPMENTS

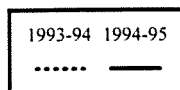
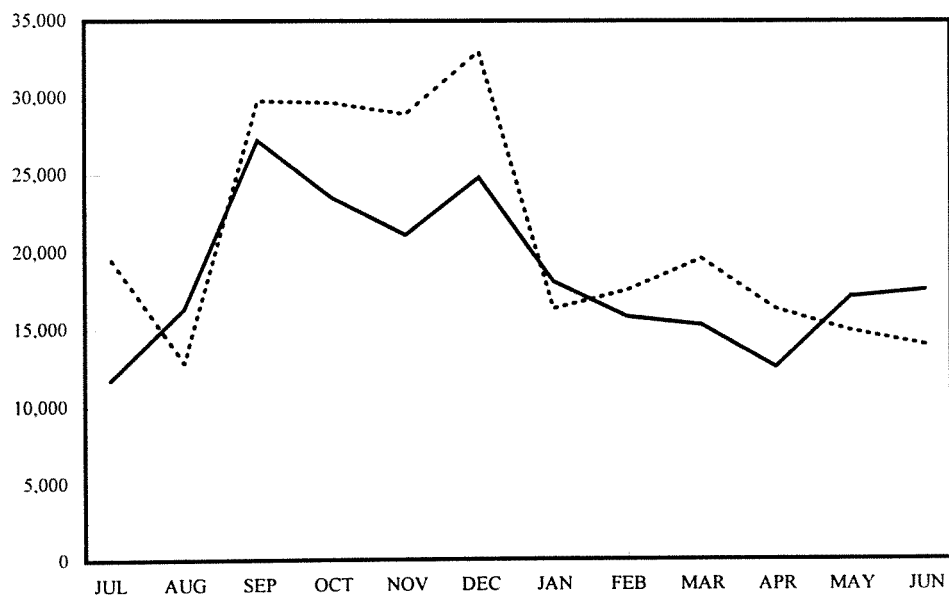
1984-85 to 1994-95

thousand bushels



HRS WHEAT SHIPMENTS by Month, 1993-94 TO 1994-95

thousand bushels



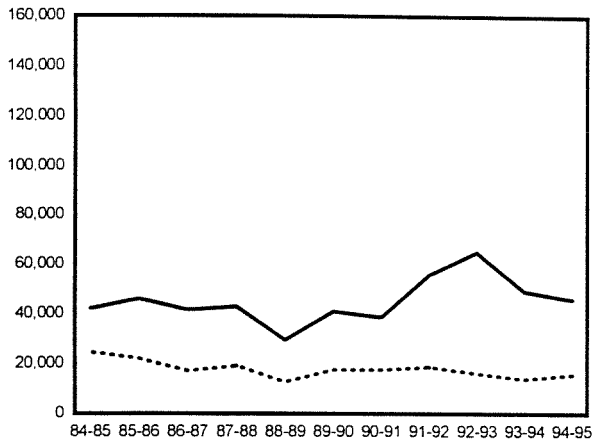
**NORTH DAKOTA HARD RED SPRING WHEAT SHIPMENTS
BY RAIL, TRUCK AND DESTINATION
(thousand bu.)**

YEAR	Minneapolis-St. Paul		Duluth-Superior		West		Misc. Markets		TOTAL	
	Rail	Truck	Rail	Truck	Rail	Truck	Rail	Truck	Rail	Truck
1984-85	42,183 (63%)	24,613 (37%)	43,780 (78%)	12,223 (22%)	21,322 (75%)	7,130 (25%)	22,765 (71%)	9,094 (29%)	130,050 (71%)	53,061 (25%)
1985-86	46,269 (68%)	22,189 (32%)	37,313 (77%)	11,409 (23%)	16,478 (77%)	4,832 (23%)	31,648 (74%)	10,948 (26%)	131,709 (73%)	49,379 (27%)
1986-87	41,857 (71%)	17,163 (29%)	41,516 (81%)	10,048 (19%)	20,491 (84%)	3,955 (16%)	49,533 (84%)	9,399 (16%)	153,397 (79%)	40,565 (21%)
1987-88	43,082 (69%)	19,381 (31%)	27,911 (76%)	8,844 (24%)	20,068 (85%)	3,481 (15%)	49,838 (77%)	15,231 (23%)	140,899 (75%)	46,937 (25%)
1988-89	29,566 (70%)	12,700 (30%)	16,414 (63%)	9,825 (37%)	25,688 (86%)	4,100 (14%)	27,697 (74%)	9,650 (26%)	99,365 (73%)	36,275 (27%)
1989-90	41,249 (70%)	17,631 (30%)	27,148 (70%)	11,362 (30%)	21,552 (86%)	3,578 (14%)	57,236 (82%)	12,728 (18%)	147,186 (76%)	45,299 (24%)
1990-91	38,707 (69%)	17,649 (31%)	29,079 (74%)	10,150 (26%)	37,359 (95%)	2,162 (5%)	45,281 (81%)	10,685 (19%)	150,426 (79%)	40,646 (21%)
1991-92	55,940 (75%)	18,811 (25%)	16,154 (68%)	7,737 (32%)	27,087 (83%)	2,037 (17%)	116,553 (87%)	16,843 (13%)	215,738 (83%)	45,431 (17%)
1992-93	65,059 (80%)	16,150 (20%)	27,958 (72%)	10,616 (28%)	60,140 (96%)	2,317 (4%)	148,773 (92%)	13,247 (8%)	301,930 (88%)	42,331 (12%)
1993-94	49,416 (80%)	14,001 (20%)	28,137 (79%)	7,269 (21%)	63,604 (97%)	2,150 (3%)	76,529 (87%)	11,460 (13%)	217,685 (86%)	34,880 (14%)
1994-95	46,051 (75%)	15,759 (25%)	26,132 (76%)	8,435 (24%)	50,163 (96%)	2,011 (4%)	60,967 (84%)	11,855 (16%)	183,314 (83%)	38,059 (17%)

HRS WHEAT TO MINNEAPOLIS

1984-85 to 1994-95

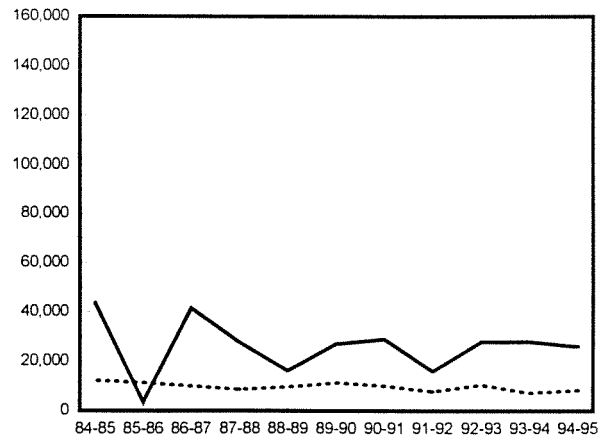
thousand bushels



HRS WHEAT TO DULUTH-SUPERIOR

1984-85 to 1994-95

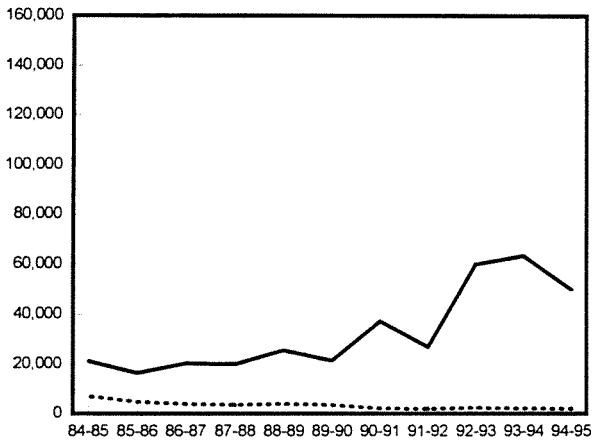
thousand bushels



HRS WHEAT TO WEST

1984-85 to 1994-95

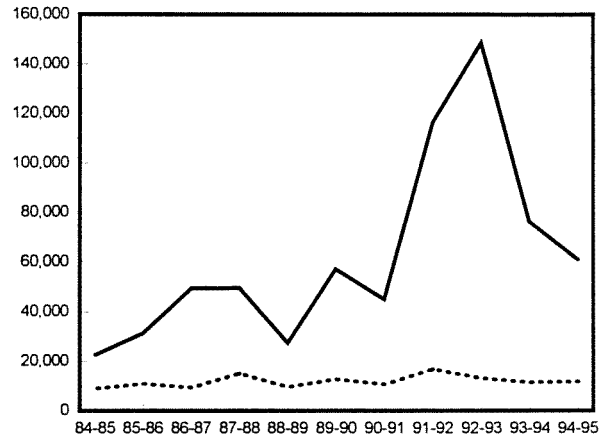
thousand bushels



HRS WHEAT TO MISCELLANEOUS MARKETS

1984-85 to 1994-95

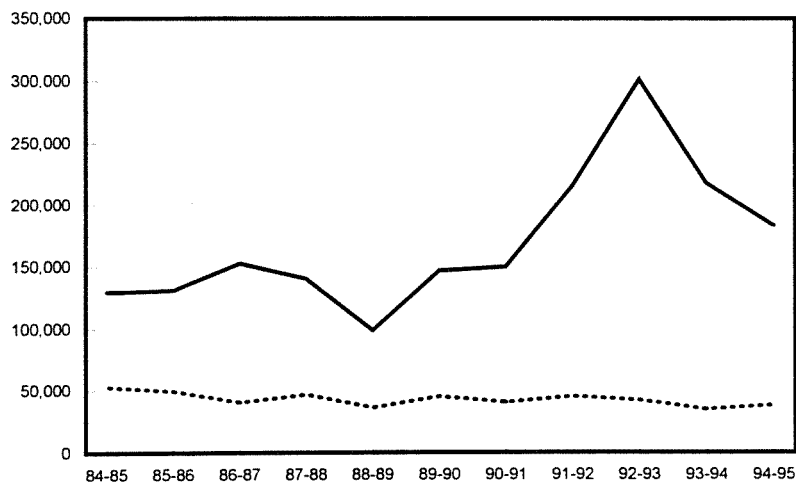
thousand bushels



HRS WHEAT SHIPMENTS

1984-85 to 1994-95

thousand bushels



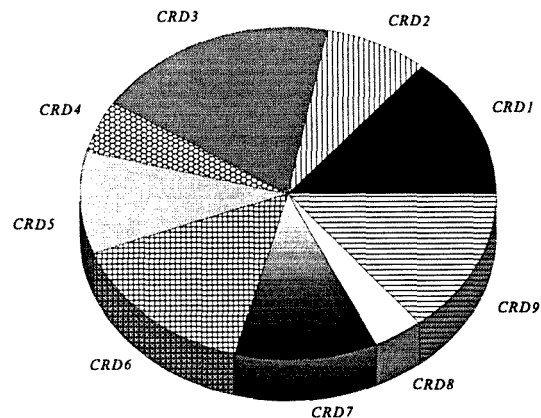
Rail Truck
—

**NORTH DAKOTA HARD RED SPRING WHEAT SHIPMENTS
BY CROP REPORTING DISTRICT ORIGIN**
(thousand bu.)

YEAR	Crop Reporting District									TOTAL
	1	2	3	4	5	6	7	8	9	
1984-85	13,898 (8%)	7,035 (4%)	45,117 (25%)	5,923 (3%)	17,297 (9%)	36,598 (20%)	18,091 (10%)	10,937 (6%)	28,213 (15%)	183,109 (100%)
1985-86	17,154 (9%)	7,247 (4%)	35,921 (20%)	7,160 (4%)	23,066 (13%)	30,432 (17%)	21,285 (12%)	11,428 (6%)	27,395 (15%)	181,089 (100%)
1986-87	20,393 (11%)	7,885 (4%)	44,955 (23%)	8,137 (4%)	24,189 (12%)	32,423 (17%)	20,379 (11%)	10,701 (6%)	24,901 (13%)	193,962 (100%)
1987-88	16,285 (9%)	4,600 (2%)	51,209 (27%)	6,060 (3%)	18,106 (10%)	37,842 (18%)	19,422 (12%)	9,545 (5%)	24,766 (13%)	187,835 (100%)
1988-89	14,445 (10%)	4,157 (3%)	40,595 (29%)	3,595 (3%)	12,453 (9%)	26,334 (19%)	13,016 (9%)	4,373 (3%)	16,673 (12%)	135,640 (100%)
1989-90	16,523 (9%)	6,775 (4%)	58,154 (30%)	4,477 (2%)	15,229 (8%)	40,511 (21%)	18,217 (9%)	5,043 (3%)	27,556 (14%)	192,485 (100%)
1990-91	16,896 (9%)	8,751 (5%)	48,869 (26%)	5,299 (3%)	20,484 (11%)	46,365 (24%)	12,921 (7%)	5,890 (3%)	25,597 (13%)	191,072 (100%)
1991-92	22,914 (9%)	12,920 (5%)	66,696 (26%)	7,854 (3%)	28,334 (11%)	53,005 (20%)	21,429 (8%)	11,389 (4%)	36,623 (14%)	261,169 (100%)
1992-93	37,519 (10%)	18,768 (5%)	94,790 (28%)	10,260 (5%)	36,094 (10%)	57,697 (17%)	29,701 (9%)	12,519 (4%)	46,910 (14%)	344,261 (100%)
1993-94	38,854 (15%)	21,648 (8%)	47,873 (19%)	11,948 (5%)	29,456 (12%)	36,425 (14%)	30,408 (12%)	11,148 (4%)	24,805 (10%)	252,566 (100%)
1994-95	30,429 (14%)	17,330 (8%)	41,768 (19%)	10,003 (5%)	22,851 (10%)	32,801 (15%)	24,976 (11%)	9,638 (4%)	31,576 (14%)	221,373 (100%)

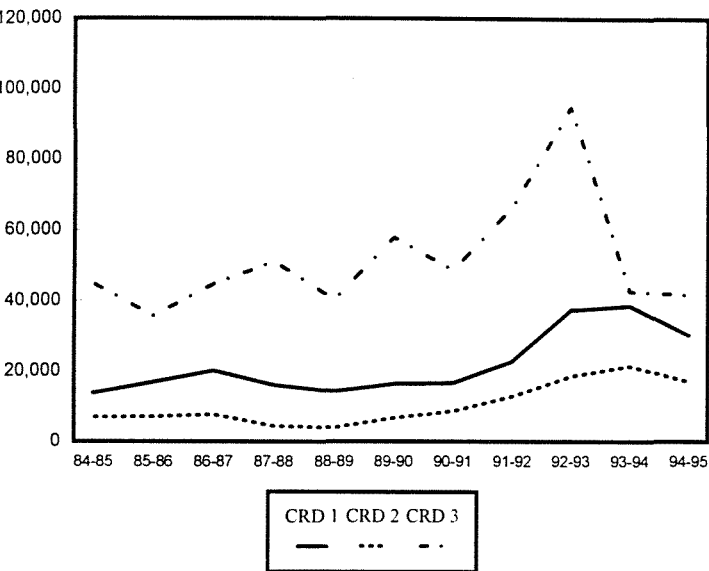
HARD RED SPRING WHEAT SHIPMENTS

by Crop Reporting District Origin, 1994-95

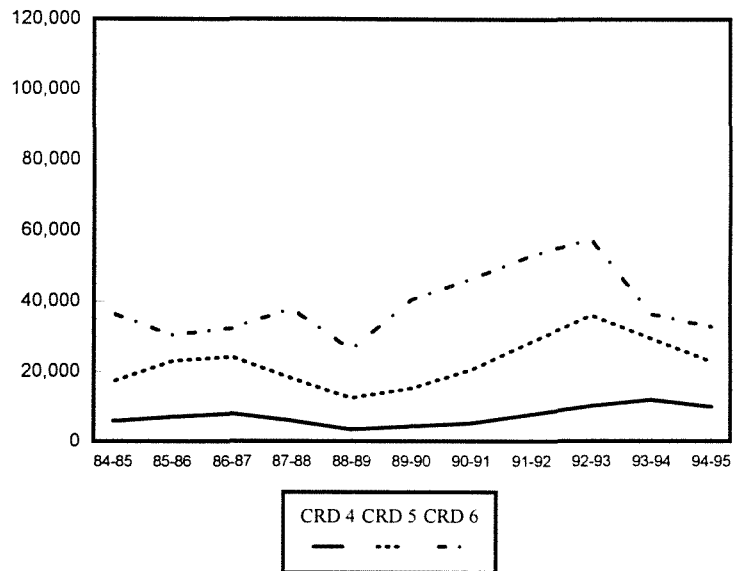


HARD RED SPRING WHEAT SHIPMENTS BY CROP REPORTING DISTRICT

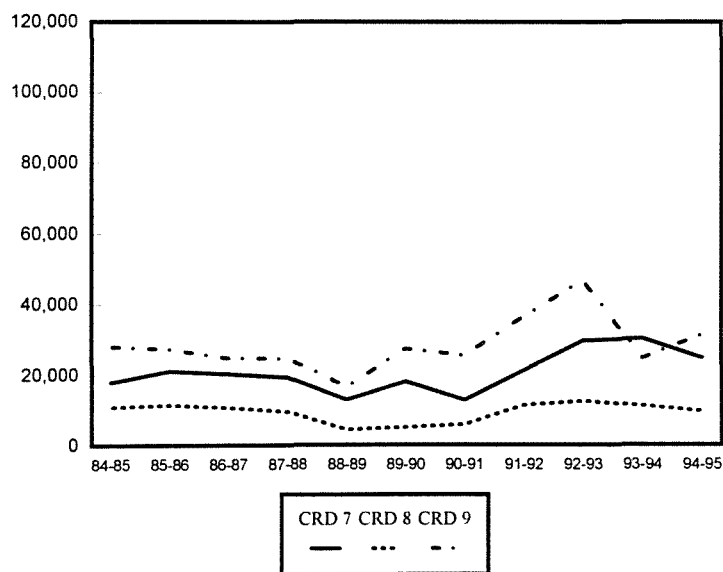
NORTHERN CROP REPORTING DISTRICTS
(thousand bushels)



CENTRAL CROP REPORTING DISTRICTS
(thousand bushels)



SOUTHERN CROP REPORTING DISTRICTS
(thousand bushels)





***DURUM
SHIPMENTS***

**NORTH DAKOTA DURUM SHIPMENTS
BY DESTINATION
(thousand bu.)**

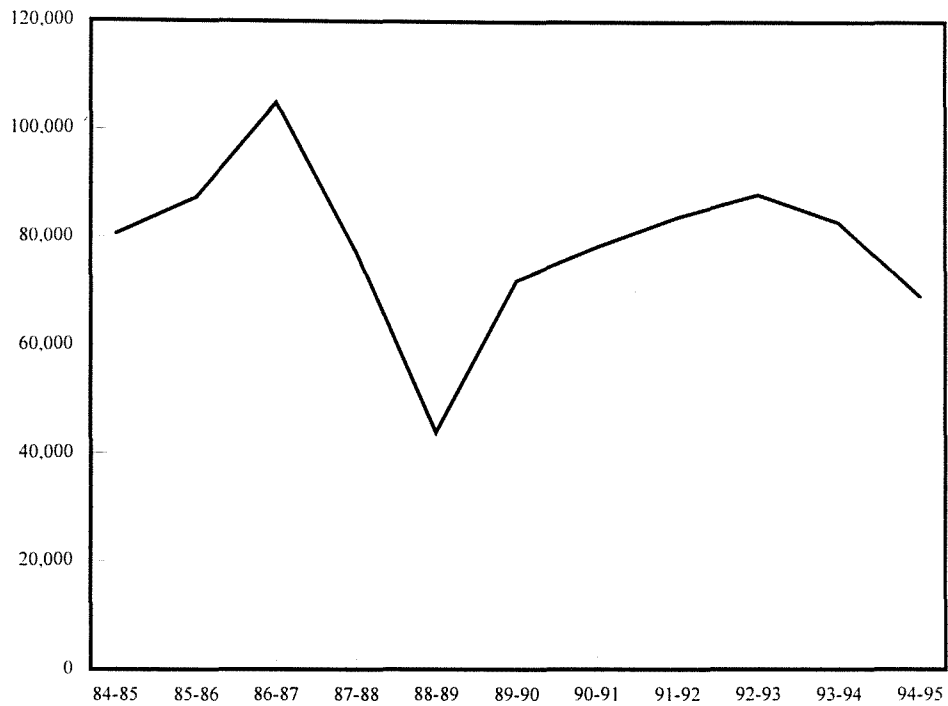
YEAR	Minneapolis - St. Paul	Duluth- Superior	West	Misc. Markets	TOTAL
1984-85	18,352 (23%)	48,137 (60%)	1,420 (2%)	12,761 (16%)	80,670 (100%)
1985-86	23,498 (27%)	38,026 (44%)	2,925 (3%)	22,895 (26%)	87,344 (100%)
1986-87	17,350 (17%)	46,150 (44%)	2,969 (3%)	38,498 (37%)	104,968 (100%)
1987-88	15,347 (20%)	28,215 (36%)	1,183 (2%)	32,649 (42%)	77,394 (100%)
1988-89	10,665 (24%)	10,033 (23%)	1,437 (3%)	21,769 (50%)	43,905 (100%)
1989-90	15,612 (22%)	21,103 (29%)	1,127 (2%)	34,161 (47%)	72,003 (100%)
1990-91	18,159 (23%)	24,167 (31%)	929 (1%)	35,054 (45%)	78,309 (100%)
1991-92	16,379 (20%)	26,063 (31%)	1,191 (1%)	40,191 (48%)	83,827 (100%)
1992-93	19,434 (22%)	20,627 (23%)	2,424 (3%)	45,596^a (52%)	88,080 (100%)
1993-94	20,725 (25%)	12,760 (15%)	2,196 (3%)	47,240 (57%)	82,921 (100%)
1994-95	25,258 (36%)	6,328 (9%)	1,570 (2%)	36,046 (52%)	69,201 (100%)

^aMiscellaneous markets include shipments to Midland/Southwest destinations (18%), other Minnesota/Wisconsin destinations (8%), and all other markets including North Dakota processors (25%).

DURUM SHIPMENTS

1984-85 to 1994-95

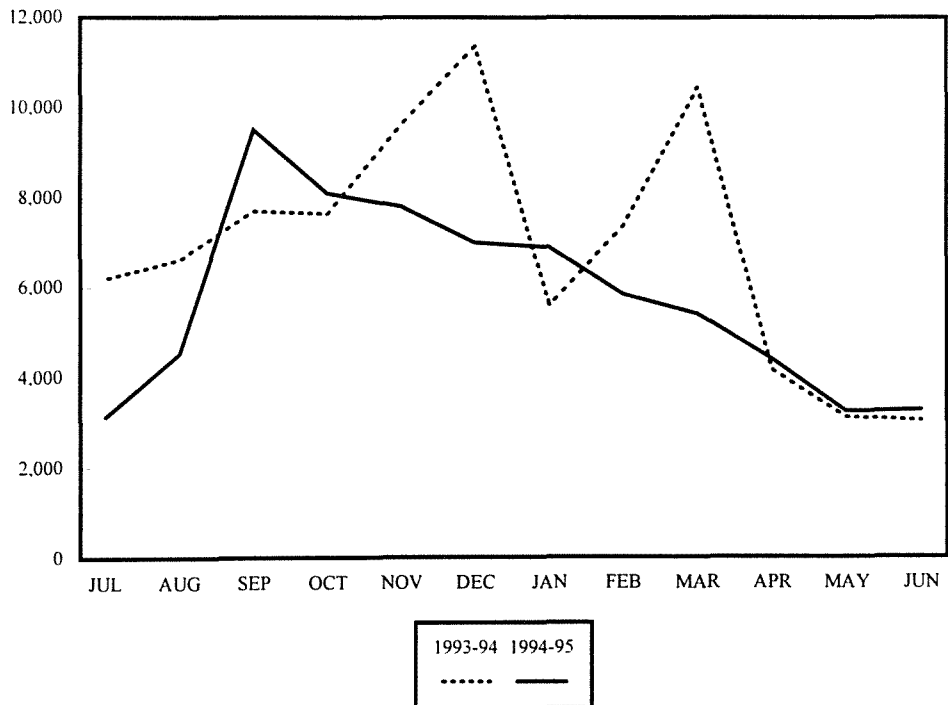
thousand bushels



DURUM SHIPMENTS

by Month, 1993-94 TO 1994-95

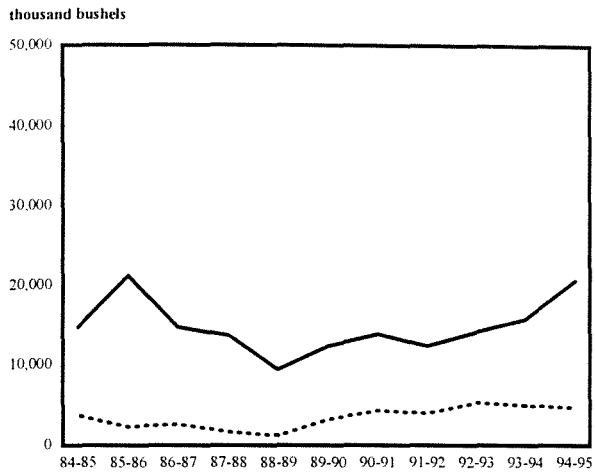
thousand bushels



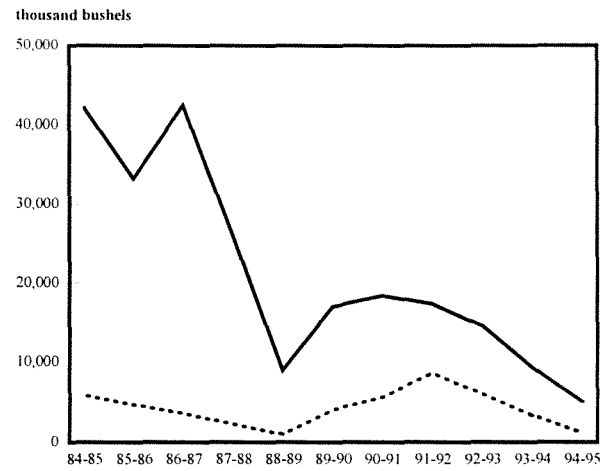
**NORTH DAKOTA DURUM SHIPMENTS
BY RAIL, TRUCK AND DESTINATION
(thousand bu.)**

YEAR	Minneapolis - St. Paul		Duluth - Superior		West		Misc. Markets		TOTAL	
	Rail	Truck	Rail	Truck	Rail	Truck	Rail	Truck	Rail	Truck
1984-85	14,652 (80%)	3,700 (20%)	42,238 (88%)	5,899 (12%)	1,241 (87%)	180 (13%)	9,856 (77%)	2,905 (23%)	67,987 (84%)	12,684 (16%)
1985-86	21,191 (90%)	2,307 (10%)	33,330 (88%)	4,695 (12%)	2,850 (97%)	75 (3%)	18,695 (82%)	4,200 (18%)	76,067 (87%)	11,278 (13%)
1986-87	14,679 (85%)	2,671 (15%)	42,543 (92%)	3,608 (8%)	2,932 (99%)	37 (1%)	34,843 (91%)	3,656 (9%)	94,996 (91%)	9,972 (9%)
1987-88	13,662 (89%)	1,685 (11%)	25,969 (92%)	2,246 (6%)	1,110 (94%)	73 (6%)	26,542 (81%)	6,107 (19%)	67,283 (87%)	10,111 (13%)
1988-89	9,421 (88%)	1,244 (12%)	8,995 (90%)	1,037 (10%)	1,426 (99%)	10 (1%)	15,444 (71%)	6,324 (29%)	35,288 (80%)	8,617 (20%)
1989-90	12,346 (79%)	3,265 (21%)	17,022 (81%)	4,081 (19%)	1,118 (99%)	8 (1%)	28,039 (82%)	6,123 (18%)	58,525 (81%)	13,478 (19%)
1990-91	13,842 (76%)	4,317 (24%)	18,463 (76%)	5,705 (24%)	914 (98%)	15 (2%)	28,391 (81%)	6,662 (19%)	61,610 (79%)	16,699 (21%)
1991-92	12,373 (76%)	4,005 (24%)	17,382 (67%)	8,680 (33%)	1,149 (96%)	42 (4%)	18,479 (78%)	5,162 (22%)	65,658 (78%)	18,168 (22%)
1992-93	14,129 (73%)	5,305 (27%)	14,565 (71%)	6,062 (29%)	2,317 (96%)	106 (4%)	39,340 (86%)	6,256 (14%)	70,351 (80%)	17,730 (20%)
1993-94	15,747 (76%)	4,977 (24%)	9,376 (73%)	3,384 (27%)	2,195 (100%)	1 (0%)	41,286 (87%)	5,954 (13%)	68,604 (83%)	14,317 (17%)
1994-95	20,576 (81%)	4,691 (19%)	5,100 (81%)	1,228 (19%)	1,555 (99%)	14 (1%)	28,744 (80%)	7,302 (20%)	55,966 (81%)	13,235 (19%)

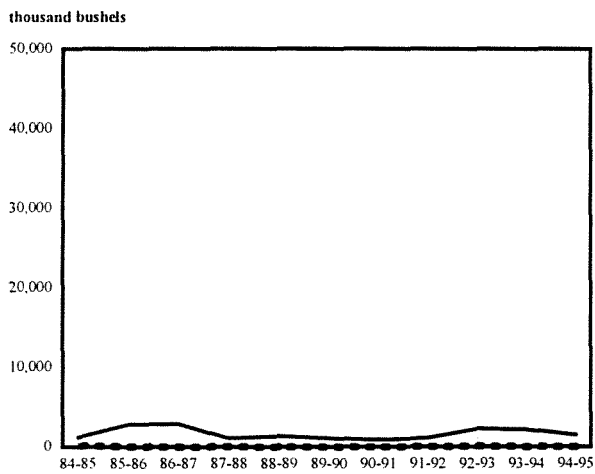
DURUM TO MINNEAPOLIS
1984-85 to 1994-95



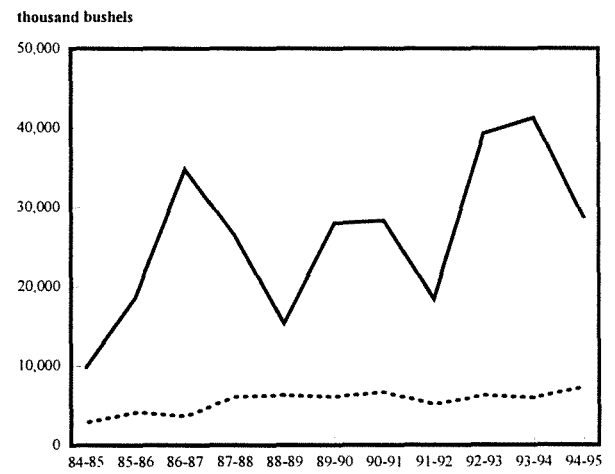
DURUM TO DULUTH-SUPERIOR
1984-85 to 1994-95



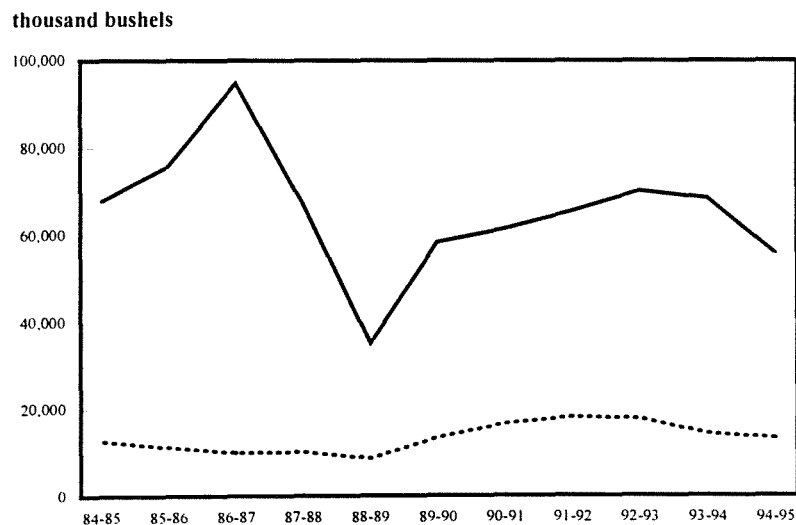
DURUM TO WEST
1984-85 to 1994-95



DURUM TO MISCELLANEOUS MARKETS
1984-85 to 1994-95



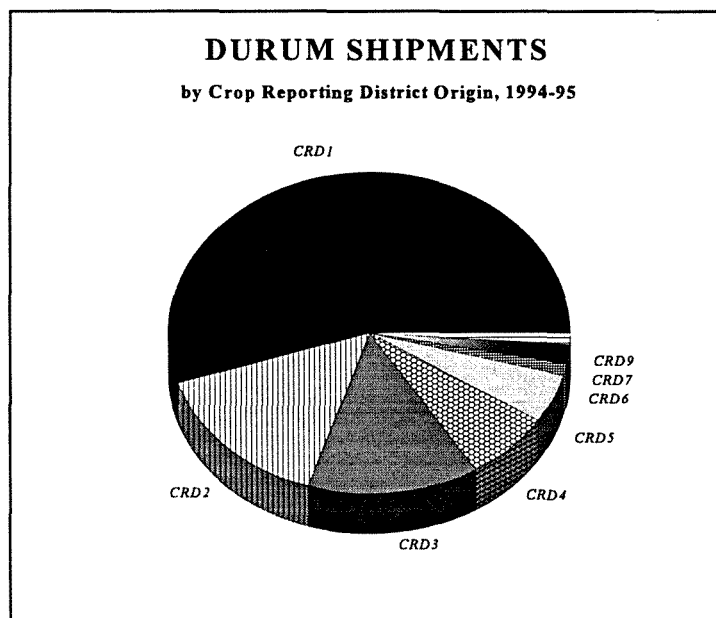
DURUM SHIPMENTS
1984-85 to 1994-95



Rail	Truck
—

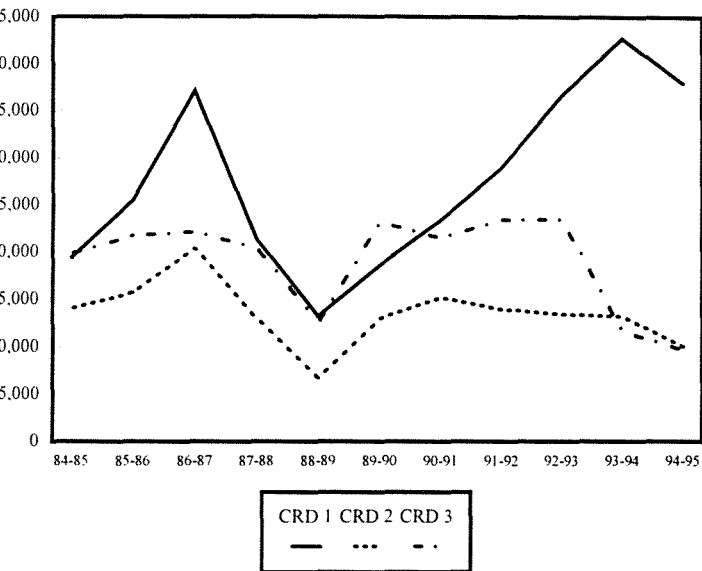
**NORTH DAKOTA DURUM SHIPMENTS
BY CROP REPORTING DISTRICT ORIGIN**
(thousand bu.)

YEAR	Crop Reporting District									TOTAL
	1	2	3	4	5	6	7	8	9	
1984-85	19,441 (24%)	14,079 (17%)	19,872 (25%)	4,423 (15)	9,092 (11%)	5,115 (6%)	3,341 (4%)	795 (1%)	4,511 (6%)	80,670 (100%)
1985-86	25,555 (29%)	15,786 (18%)	21,760 (25%)	5,956 (7%)	6,383 (7%)	4,246 (5%)	2,192 (3%)	553 (1%)	4,915 (6%)	87,344 (100%)
1986-87	37,163 (35%)	20,465 (19%)	22,148 (21%)	7,038 (7%)	7,989 (7%)	3,536 (3%)	3,421 (3%)	505 (0%)	2,703 (3%)	104,968 (100%)
1987-88	21,414 (28%)	13,049 (17%)	20,479 (26%)	3,272 (4%)	6,993 (9%)	3,455 (4%)	3,552 (5%)	472 (1%)	4,707 (6%)	77,393 (100%)
1988-89	13,346 (30%)	6,820 (16%)	12,607 (29%)	1,671 (4%)	2,919 (7%)	2,596 (6%)	1,394 (3%)	229 (1%)	2,320 (5%)	43,902 (100%)
1989-90	18,690 (26%)	13,063 (18%)	23,198 (32%)	4,035 (6%)	4,013 (5%)	2,703 (4%)	2,991 (4%)	478 (1%)	2,832 (4%)	72,003 (100%)
1990-91	23,441 (30%)	15,241 (19%)	21,489 (27%)	4,446 (6%)	5,039 (6%)	3,641 (5%)	2,008 (3%)	175 (0%)	2,829 (4%)	78,309 (100%)
1991-92	28,978 (35%)	14,003 (17%)	23,461 (28%)	5,114 (6%)	4,269 (5%)	3,485 (4%)	1,874 (2%)	193 (0%)	2,445 (3%)	83,827 (100%)
1992-93	36,683 (42%)	13,516 (15%)	23,491 (27%)	5,136 (6%)	3,547 (4%)	2,012 (2%)	1,711 (2%)	430 (0%)	1,551 (2%)	88,080 (100%)
1993-94	42,796 (52%)	13,255 (16%)	11,754 (14%)	4,669 (6%)	4,270 (5%)	1,720 (2%)	2,661 (3%)	225 (0%)	1,570 (2%)	82,921 (100%)
1994-95	37,976 (55%)	10,153 (15%)	9,824 (14%)	4,956 (7%)	3,209 (5%)	883 (1%)	1,301 (2%)	153 (0%)	747 (1%)	69,201 (100%)

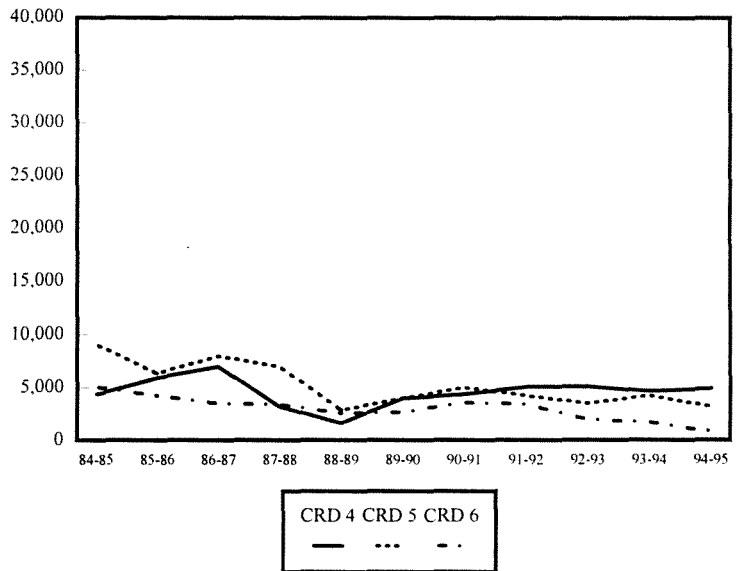


DURUM SHIPMENTS BY CROP REPORTING DISTRICT

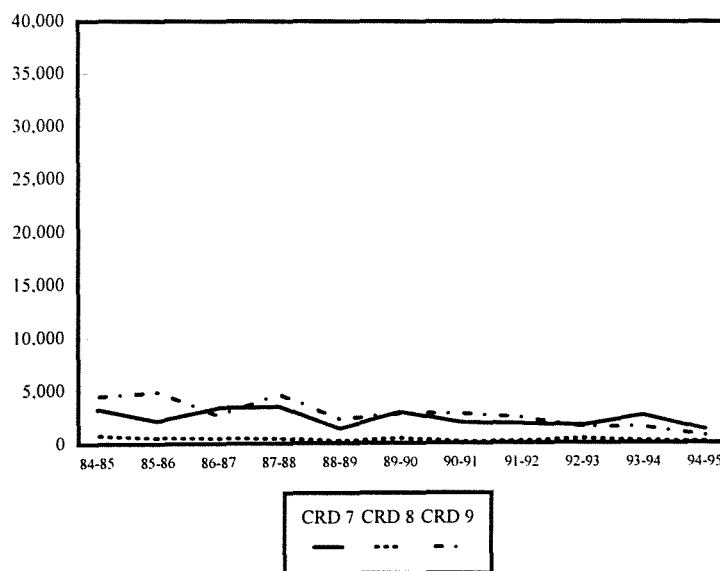
BY NORTHERN CROP REPORTING DISTRICTS
(thousand bushels)



BY CENTRAL CROP REPORTING DISTRICTS
(thousand bushels)



SOUTHERN CROP REPORTING DISTRICTS
(thousand bushels)





***BARLEY
SHIPMENTS***

**NORTH DAKOTA BARLEY SHIPMENTS
BY DESTINATION
(thousand bu.)**

YEAR	Minneapolis - St. Paul	Duluth - Superior	Midland/ Southwest	Misc. Markets	TOTAL
1984-85	22,827 (22%)	26,665 (25%)	-	-	106,030 (100%)
1985-86	20,434 (19%)	8,175 (8%)	- ^a	- ^a	105,436 (100%)
1986-87	29,521 (20%)	10,136 (7%)	19,154 (13%)	87,531 (60%)	146,342 (100%)
1987-88	27,230 (26%)	16,112 (15%)	16,203 (16%)	44,854 (43%)	104,399 (100%)
1988-89	22,691 (24%)	9,735 (11%)	12,486 (13%)	47,803 (52%)	92,715 (100%)
1989-90	23,464 (21%)	22,893 (20%)	19,061 (17%)	46,838 (42%)	112,256 (100%)
1990-91	24,174 (21%)	14,200 (12%)	20,482 (18%)	55,190 (48%)	114,046 (100%)
1991-92	28,184 (23%)	19,398 (16%)	22,430 (17%)	54,740 (44%)	124,755 (100%)
1992-93	29,461 (23%)	20,799 (16%)	18,724 (14%)	62,153^b (47%)	131,139 (100%)
1993-94	25,580 (23%)	16,257 (15%)	18,105 (16%)	49,991 (46%)	109,935 (100%)
1994-95	33,912 (28%)	14,514 (12%)	11,790 (10%)	59,188 (50%)	119,405 (100%)

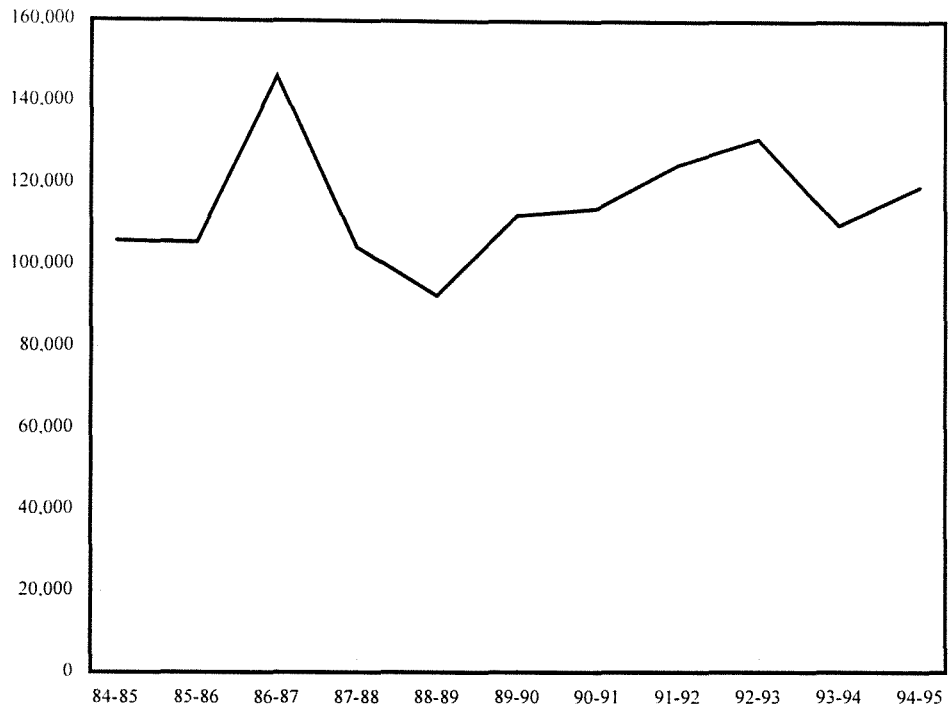
^aNot available prior to 1986-87.

^bMiscellaneous markets include shipments to Pacific Northwest destinations (6%), other Minnesota/Wisconsin destinations (14%), North Dakota destinations, and all other markets (31%).

BARLEY SHIPMENTS

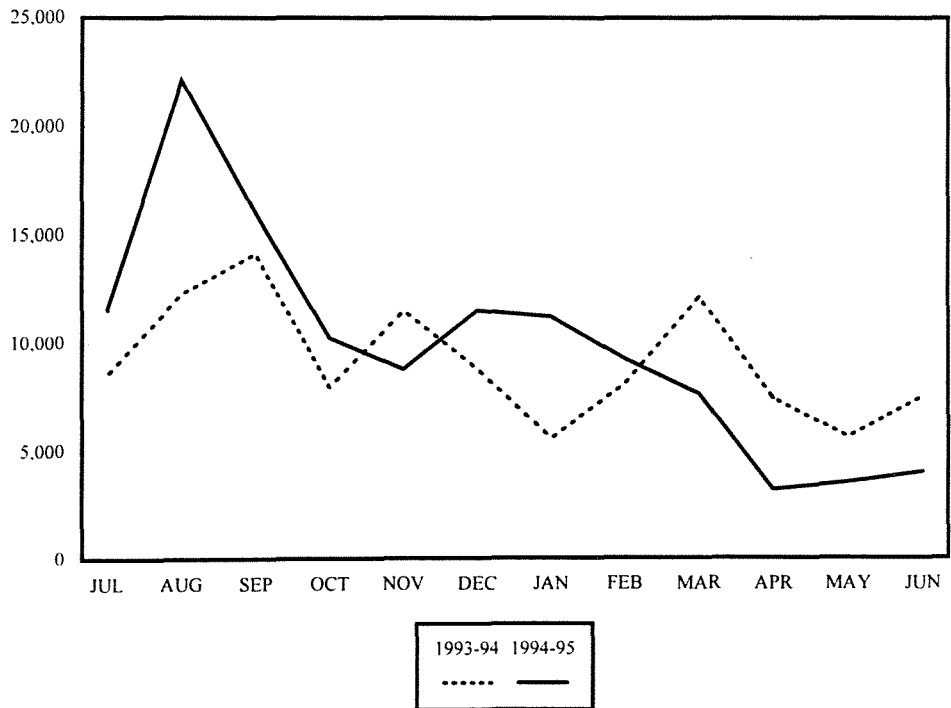
1984-85 to 1994-95

thousand bushels



BARLEY SHIPMENTS BY MONTH, 1993-94 TO 1994-95

thousand bushels

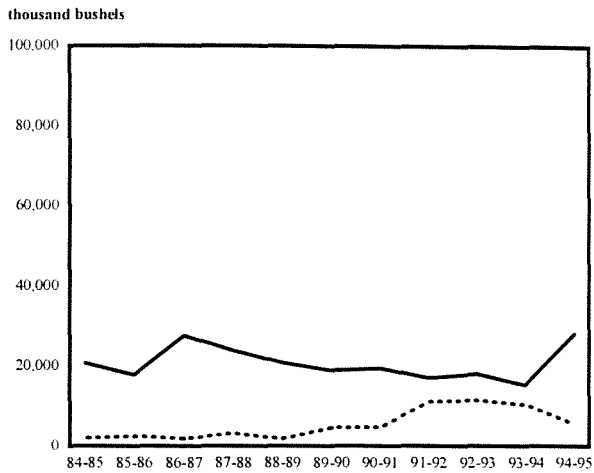


**NORTH DAKOTA BARLEY SHIPMENTS
BY RAIL, TRUCK AND DESTINATION
(thousand bu.)**

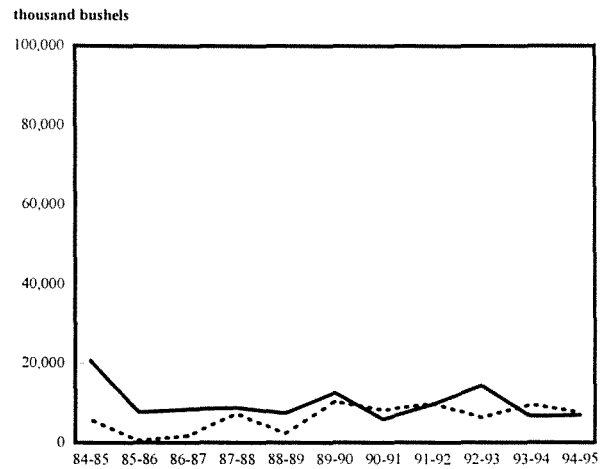
YEAR	Minneapolis - St. Paul		Duluth - Superior		Midland/ Southwest		Misc. Markets		TOTAL	
	Rail	Truck	Rail	Truck	Rail	Truck	Rail	Truck	Rail	Truck
1984-85	20,821 (91%)	2,006 (9%)	20,822 (78%)	5,843 (22%)	-	-	-	-	87,901 (83%)	18,128 (17%)
1985-86	17,888 (88%)	2,546 (12%)	7,610 (93%)	565 (7%)	-	-	-	- ^a	91,717 (87%)	13,719 (13%)
1986-87	27,731 (94%)	1,789 (6%)	8,429 (83%)	1,707 (17%)	17,858 (93%)	1,296 (7%)	82,176 (94%)	5,356 (6%)	136,194 (93%)	10,148 (7%)
1987-88	23,958 (88%)	3,272 (12%)	8,827 (55%)	7,285 (45%)	15,522 (96%)	681 (4%)	35,271 (79%)	9,583 (21%)	83,548 (80%)	20,851 (20%)
1988-89	20,908 (92%)	1,782 (8%)	7,395 (76%)	2,340 (24%)	11,566 (93%)	920 (7%)	36,599 (77%)	11,204 (23%)	76,467 (82%)	16,248 (18%)
1989-90	18,892 (81%)	4,572 (19%)	12,603 (55%)	10,290 (45%)	17,919 (94%)	1,142 (6%)	35,370 (76%)	11,468 (24%)	84,784 (76%)	27,472 (24%)
1990-91	19,533 (81%)	4,641 (19%)	5,969 (42%)	8,231 (58%)	19,678 (96%)	804 (4%)	45,005 (82%)	10,185 (18%)	90,185 (79%)	23,861 (21%)
1991-92	17,098 (61%)	11,085 (39%)	9,599 (49%)	9,798 (51%)	21,710 (97%)	719 (3%)	38,878 (71%)	15,860 (29%)	87,290 (70%)	37,465 (30%)
1992-93	18,070 (61%)	11,391 (39%)	14,468 (70%)	6,331 (30%)	10,472 (97%)	327 (3%)	50,921 (73%)	19,159 (27%)	93,931 (72%)	37,208 (28%)
1993-94	15,293 (60%)	10,287 (40%)	6,705 (41%)	9,551 (59%)	17,208 (95%)	897 (5%)	35,239 (70%)	14,754 (30%)	74,445 (68%)	35,490 (32%)
1994-95	28,247 (83%)	5,665 (17%)	6,980 (48%)	7,534 (52%)	10,890 (92%)	900 (8%)	23,247 (55%)	19,241 (45%)	86,064 (72%)	33,341 (28%)

^aBefore 1986-87, Midland/Southwest shipments were included in Miscellaneous Markets.

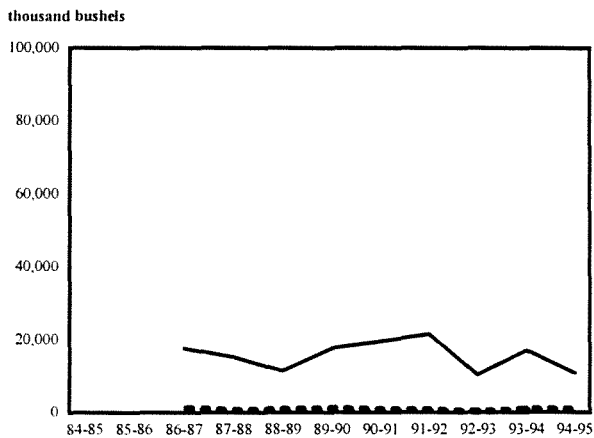
BARLEY TO MINNEAPOLIS
1984-85 to 1994-95



BARLEY TO DULUTH-SUPERIOR
1984-85 to 1994-95

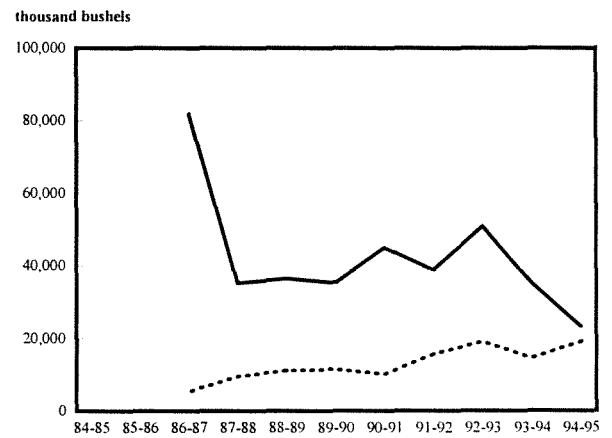


BARLEY TO MIDLAND/SOUTHWEST
1984-85 to 1994-95



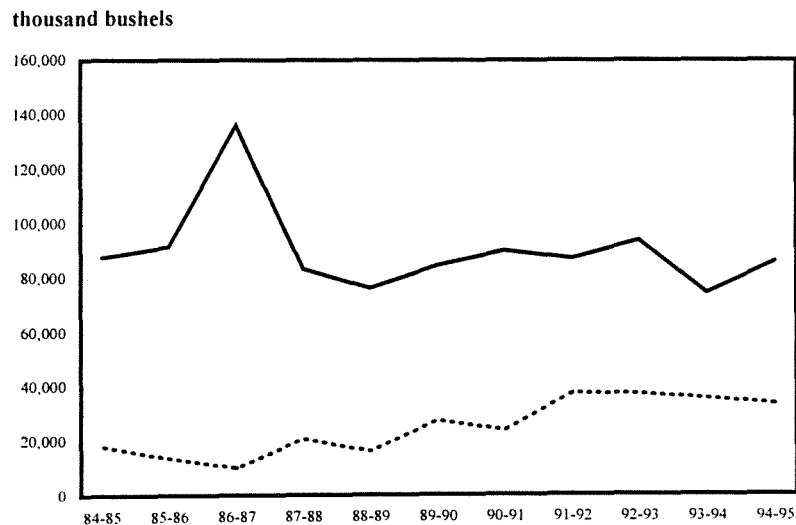
Prior to 1986-87, shipments to Midland/Southwest destinations were included in Miscellaneous

BARLEY TO MISCELLANEOUS MARKETS
1984-85 to 1994-95



Prior to 1986-87, shipments to Midland/Southwest destinations were included in Miscellaneous

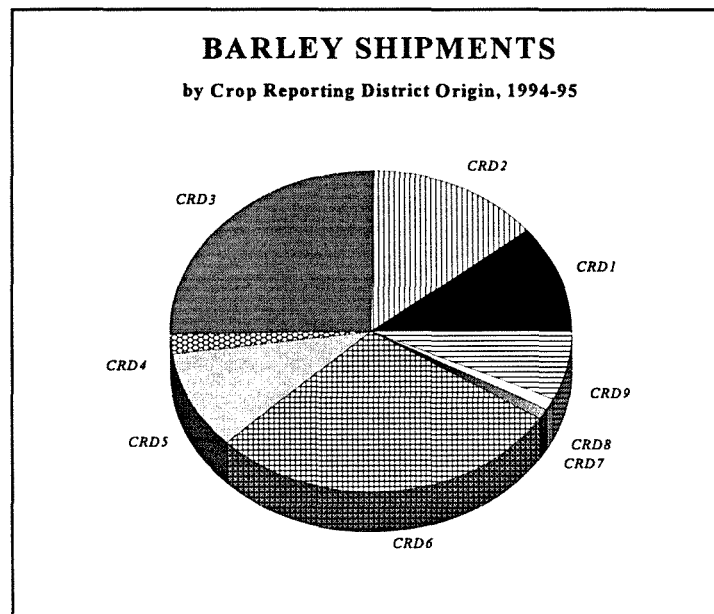
BARLEY SHIPMENTS
1984-85 to 1994-95



Rail Truck
—

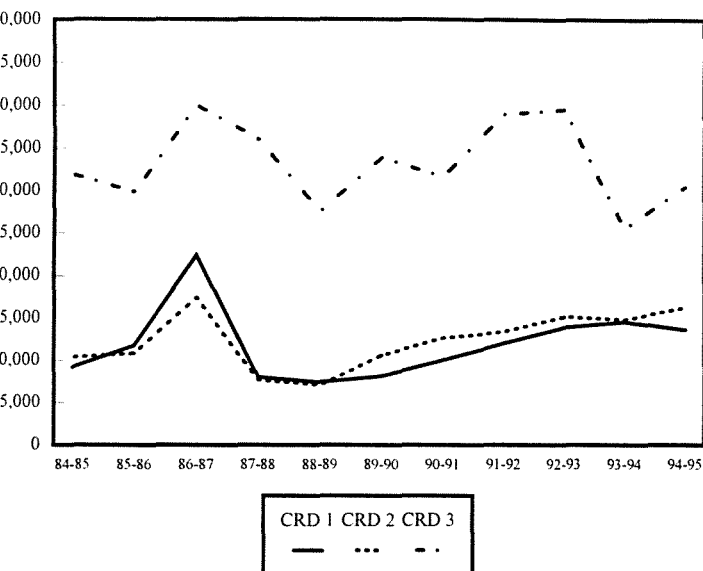
**NORTH DAKOTA BARLEY SHIPMENTS
BY CROP REPORTING DISTRICT ORIGIN**
(thousand bu.)

YEAR	Crop Reporting District									TOTAL
	1	2	3	4	5	6	7	8	9	
1984-85	9,245 (9%)	10,420 (10%)	32,002 (30%)	692 (1%)	8,587 (8%)	29,904 (28%)	1,386 (1%)	1,006 (1%)	12,789 (12%)	106,030 (100%)
1985-86	11,790 (11%)	10,918 (10%)	29,931 (28%)	1,328 (1%)	10,275 (10%)	28,258 (27%)	1,232 (1%)	611 (1%)	11,092 (11%)	105,436 (100%)
1986-87	22,443 (15%)	17,501 (12%)	40,032 (27%)	2,698 (2%)	15,079 (10%)	33,838 (23%)	3,883 (3%)	945 (1%)	9,931 (7%)	146,342 (100%)
1987-88	8,070 (8%)	7,713 (7%)	36,026 (35%)	658 (1%)	9,370 (9%)	32,593 (31%)	1,053 (1%)	497 (1%)	8,419 (8%)	104,399 (100%)
1988-89	7,472 (8%)	7,135 (8%)	27,618 (30%)	413 (0%)	10,072 (11%)	33,502 (36%)	535 (1%)	211 (0%)	5,752 (6%)	92,710 (100%)
1989-90	8,234 (7%)	10,645 (10%)	33,912 (30%)	419 (0%)	7,755 (7%)	40,160 (36%)	798 (1%)	123 (0%)	10,210 (9%)	112,256 (100%)
1990-91	10,057 (9%)	12,675 (11%)	31,650 (28%)	756 (1%)	7,936 (7%)	39,682 (35%)	117 (0%)	187 (0%)	10,986 (10%)	114,046 (100%)
1991-92	12,025 (10%)	13,402 (11%)	38,945 (31%)	1,088 (1%)	10,569 (8%)	37,116 (30%)	794 (1%)	531 (0%)	10,281 (8%)	124,755 (100%)
1992-93	13,966 (11%)	15,193 (12%)	39,522 (30%)	1,762 (1%)	9,106 (7%)	36,618 (28%)	883 (1%)	1,084 (1%)	13,000 (10%)	131,138 (100%)
1993-94	14,600 (13%)	14,854 (14%)	25,579 (23%)	1,308 (1%)	10,867 (10%)	26,844 (24%)	847 (1%)	930 (1%)	14,105 (13%)	109,935 (100%)
1994-95	13,695 (11%)	16,334 (14%)	30,456 (26%)	2,400 (2%)	12,390 (10%)	34,246 (29%)	846 (1%)	1,059 (1%)	7,979 (7%)	119,405 (100%)

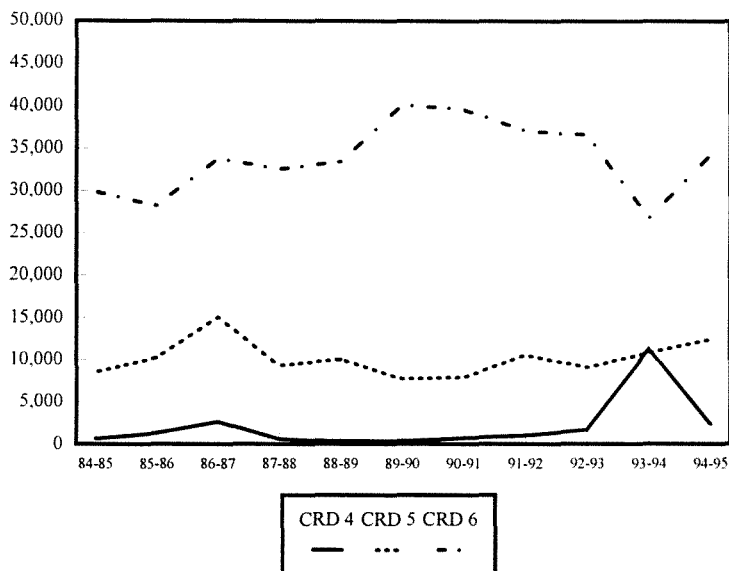


BARLEY SHIPMENTS BY CROP REPORTING DISTRICT

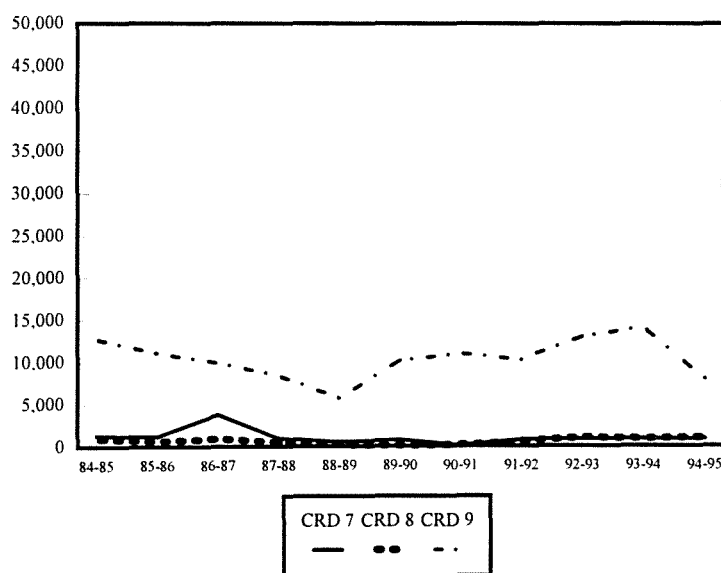
BY NORTHERN CROP REPORTING DISTRICTS
(thousand bushels)



BY CENTRAL CROP REPORTING DISTRICTS
(thousand bushels)



SOUTHERN CROP REPORTING DISTRICTS
(thousand bushels)





***SUNFLOWER
SHIPMENTS***

**NORTH DAKOTA SUNFLOWER SHIPMENTS
BY DESTINATION
(thousand bu.)**

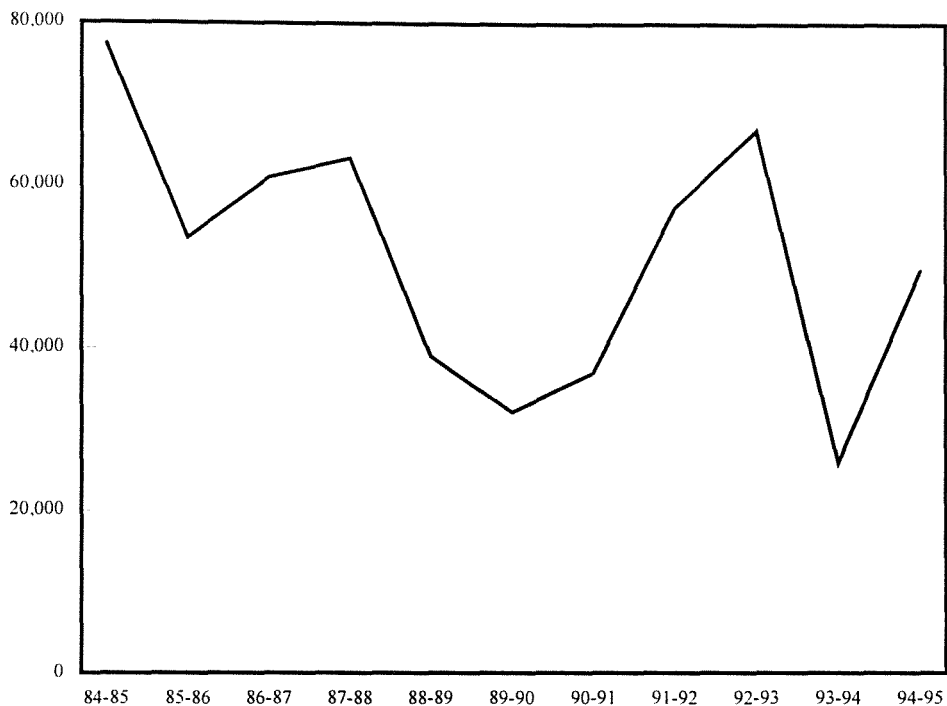
YEAR	Minneapolis - St. Paul	Duluth - Superior	North Dakota	Misc. Markets	TOTAL
1984-85	5,636 (7%)	42,875 (55%)	12,931 (17%)	15,969 (21%)	77,412 (100%)
1985-86	3,623 (7%)	12,659 (24%)	27,393 (51%)	9,866 (18%)	53,541 (100%)
1986-87	3,142 (5%)	9,705 (16%)	38,131 (62%)	10,088 (17%)	61,067 (100%)
1987-88	4,085 (6%)	7,629 (12%)	32,153 (51%)	19,552 (31%)	63,419 (100%)
1988-89	2,496 (6%)	105 (0%)	20,834 (53%)	15,619 (40%)	39,056 (100%)
1989-90	2,219 (7%)	433 (1%)	20,964 (65%)	8,558 (27%)	32,174 (100%)
1990-91	4,264 (11%)	716 (2%)	20,866 (56%)	11,240 (30%)	37,086 (100%)
1991-92	4,050 (7%)	1,157 (2%)	33,428 (58%)	18,720 (33%)	57,364 (100%)
1992-93	4,367 (7%)	845 (1%)	47,059 (70%)	14,964 (22%)	66,965 (100%)
1993-94	1,992 (9%)	38 (1%)	16,507 (64%)	6,520^a (26%)	26,017 (100%)
1994-95	2,590 (5%)	2,741 (6%)	32,542 (66%)	10,636 (21%)	49,642 (100%)

^aMiscellaneous markets for sunflower in 1994-95 include Other Minnesota and Wisconsin destinations (1%), Midland/Southwest markets (3%), Pacific Northwest destinations (1%), and all other markets (17%).

SUNFLOWER SHIPMENTS

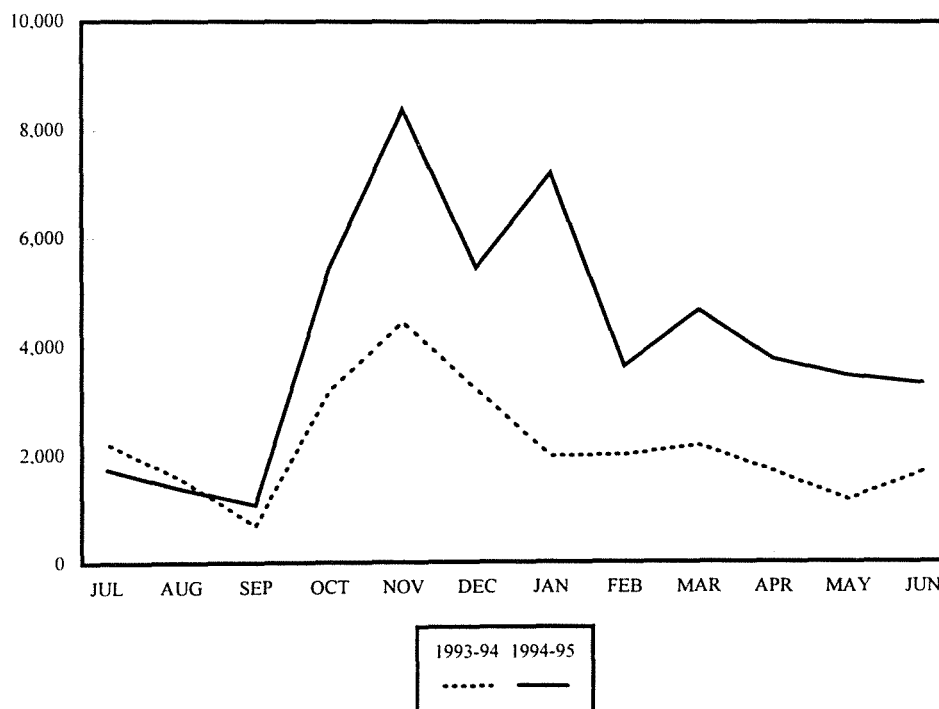
1984-85 to 1994-95

thousand bushels



SUNFLOWER SHIPMENTS by Month, 1993-94 TO 1994-95

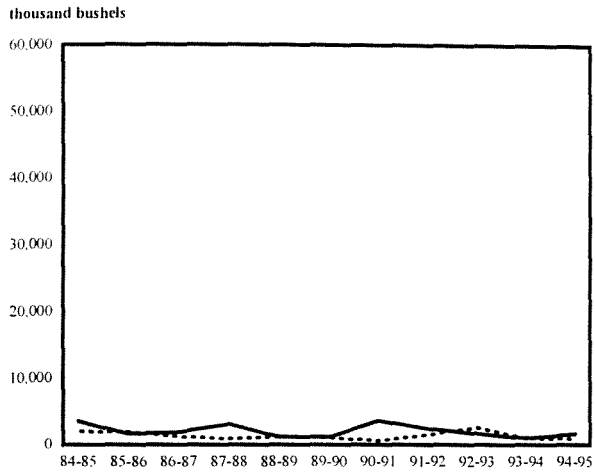
thousand bushels



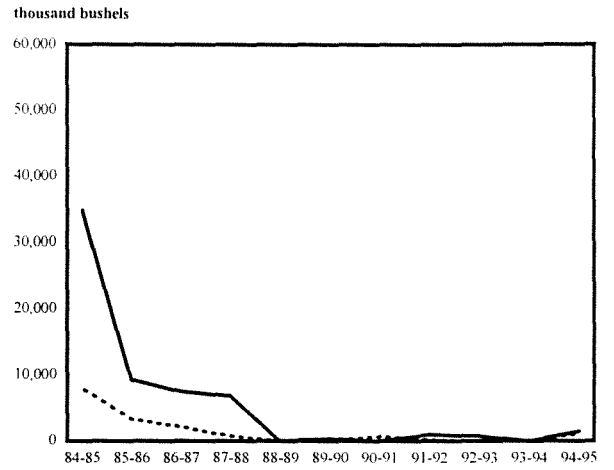
**NORTH DAKOTA SUNFLOWER SHIPMENTS
BY RAIL, TRUCK AND DESTINATION
(thousand bu.)**

YEAR	MINNEAPOLIS - ST. PAUL		DULUTH - SUPERIOR		NORTH DAKOTA		MISC. MARKETS		TOTAL	
	Rail	Truck	Rail	Truck	Rail	Truck	Rail	Truck	Rail	Trucks
1984-85	3,617 (64%)	2,019 (36%)	34,912 (81%)	7,963 (19%)	1,442 (31%)	3,217 (69%)	8,646 (54%)	7,323 (46%)	48,618 (63%)	28,793 (37%)
1985-86	1,690 (47%)	1,932 (53%)	9,286 (73%)	3,373 (27%)	7,343 (27%)	20,050 (73%)	4,291 (43%)	5,575 (57%)	22,610 (42%)	30,931 (58%)
1986-87	1,925 (61%)	1,217 (39%)	7,521 (77%)	2,185 (23%)	4,850 (13%)	33,280 (87%)	4,805 (48%)	5,283 (52%)	19,101 (31%)	41,965 (65%)
1987-88	3,214 (79%)	871 (21%)	6,842 (90%)	787 (10%)	9,540 (30%)	22,613 (70%)	10,730 (55%)	8,821 (45%)	30,327 (48%)	33,092 (52%)
1988-89	1,227 (49%)	1,269 (51%)	70 (67%)	35 (33%)	4,306 (21%)	16,529 (79%)	6,942 (44%)	8,678 (56%)	12,545 (32%)	26,510 (68%)
1989-90	1,159 (52%)	1,060 (48%)	420 (97%)	13 (3%)	4,750 (23%)	16,214 (77%)	2,041 (24%)	6,517 (76%)	8,370 (26%)	23,804 (74%)
1990-91	3,653 (86%)	610 (14%)	0 (0%)	716 (100%)	4,875 (23%)	15,991 (77%)	4,843 (43%)	6,398 (57%)	13,371 (36%)	23,715 (64%)
1991-92	2,464 (61%)	1,582 (39%)	1,010 (87%)	146 (13%)	4,421 (13%)	29,007 (87%)	8,648 (46%)	10,065 (54%)	16,553 (29%)	40,810 (71%)
1992-93	1,746 (40%)	2,621 (60%)	803 (95%)	42 (5%)	3,918 (8%)	43,141 (92%)	3,215 (21%)	11,478 (89%)	9,682 (14%)	57,283 (86%)
1993-94	1,027 (52%)	965 (48%)	0 (0%)	38 (100%)	1,012 (6%)	15,494 (94%)	950 (15%)	5,570 (86%)	3,125 (12%)	22,891 (88%)
1994-95	1,692 (65%)	898 (35%)	1,582 (58%)	1,159 (42%)	3,066 (9%)	29,475 (91%)	3,853 (36%)	6,783 (64%)	10,341 (21%)	39,301 (79%)

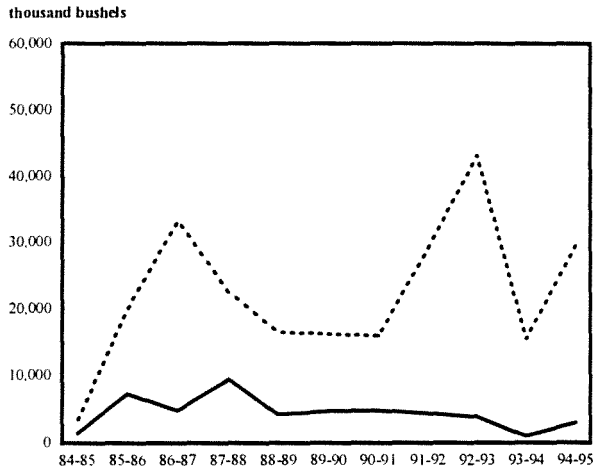
SUNFLOWER TO MINNEAPOLIS
1984-85 to 1994-95



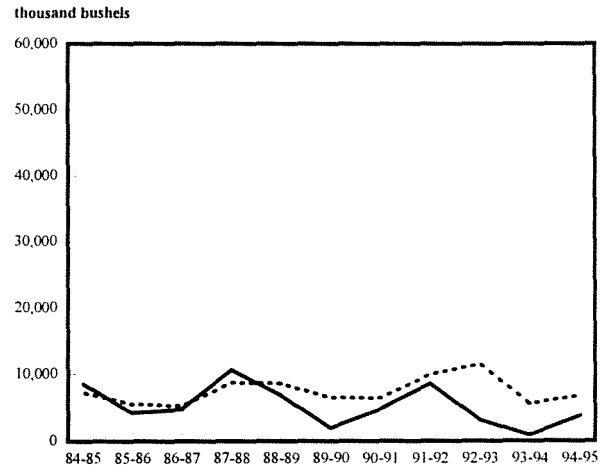
SUNFLOWER TO DULUTH-SUPERIOR
1984-85 to 1994-95



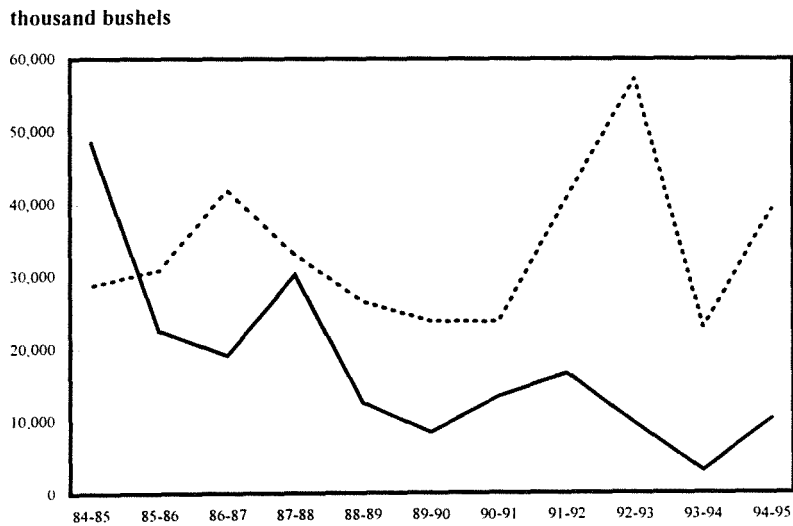
SUNFLOWER TO NORTH DAKOTA
1984-85 to 1994-95



SUNFLOWER TO MISCELLANEOUS MARKETS
1984-85 to 1994-95



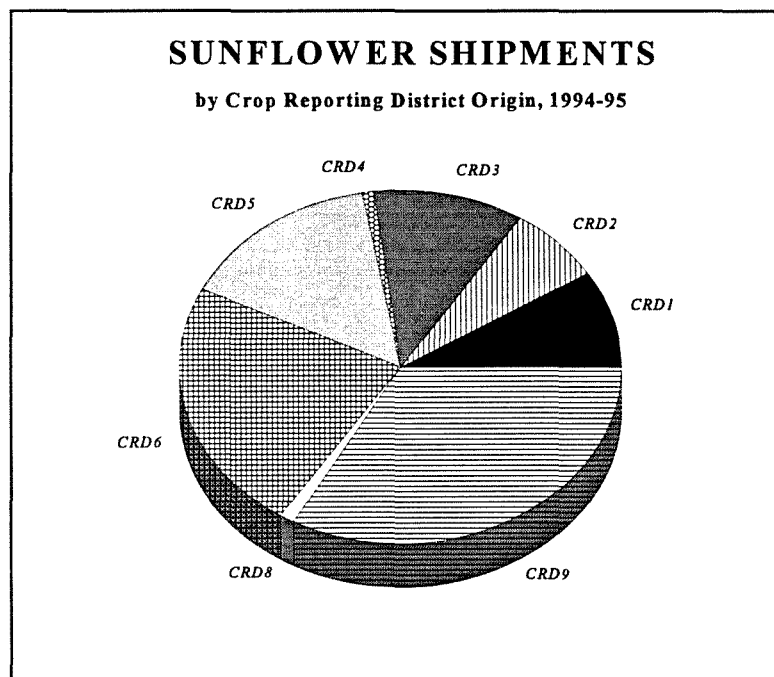
SUNFLOWER SHIPMENTS
1984-85 to 1994-95



Rail Truck

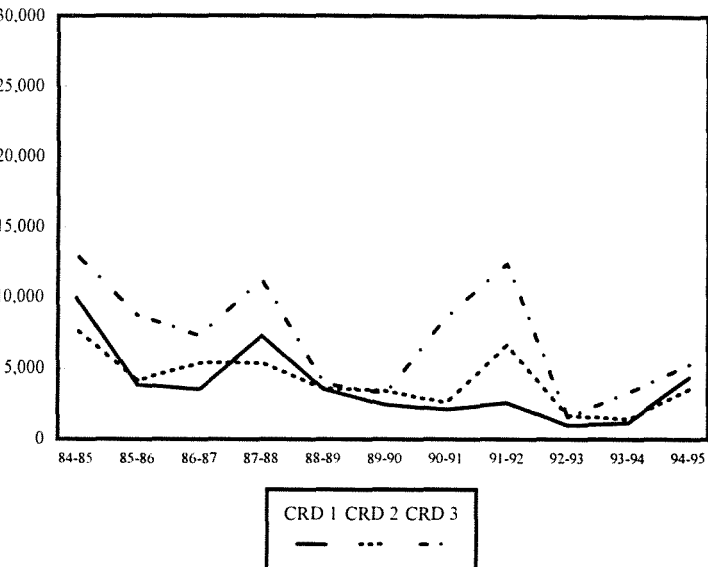
**NORTH DAKOTA SUNFLOWER SHIPMENTS
BY CROP REPORTING DISTRICT ORIGIN**
(thousand bu.)

YEAR	Crop Reporting District									TOTAL
	1	2	3	4	5	6	7	8	9	
1984-85	10,002 (13%)	7,761 (10%)	13,053 (17%)	3,701 (5%)	13,962 (18%)	12,943 (17%)	3,573 (5%)	2,277 (3%)	10,140 (13%)	77,412 (100%)
1985-86	3,899 (7%)	4,208 (8%)	8,722 (16%)	2,894 (5%)	9,382 (18%)	10,994 (21%)	2,077 (4%)	2,153 (4%)	9,211 (17%)	53,541 (100%)
1986-87	3,582 (6%)	5,414 (9%)	7,336 (12%)	2,753 (5%)	10,284 (17%)	14,437 (24%)	830 (1%)	1,875 (3%)	14,556 (24%)	61,067 (100%)
1987-88	7,305 (12%)	5,414 (9%)	11,280 (18%)	3,031 (5%)	11,429 (18%)	9,926 (16%)	1,543 (2%)	2,371 (4%)	11,120 (18%)	63,419 (100%)
1988-89	3,608 (9%)	3,631 (9%)	3,983 (10%)	1,554 (4%)	7,228 (19%)	11,054 (28%)	1,076 (3%)	1,019 (3%)	5,899 (15%)	39,052 (100%)
1989-90	2,487 (8%)	3,466 (11%)	3,258 (10%)	810 (3%)	6,560 (20%)	7,460 (23%)	308 (1%)	613 (2%)	7,212 (22%)	32,174 (100%)
1990-91	2,146 (6%)	2,648 (7%)	8,634 (23%)	1,357 (4%)	6,893 (19%)	7,900 (21%)	118 (0%)	291 (1%)	7,099 (19%)	37,086 (100%)
1991-92	2,635 (5%)	6,689 (12%)	12,414 (22%)	385 (1%)	13,507 (23%)	11,307 (19%)	78 (0%)	185 (0%)	10,142 (18%)	57,364 (100%)
1992-93	1,033 (6%)	1,681 (9%)	1,571 (8%)	520 (2%)	5,216 (28%)	5,191 (28%)	29 (0%)	53 (0%)	3,451 (18%)	18,750 (100%)
1993-94	1,223 (1%)	1,443 (1%)	3,333 (13%)	81 (1%)	4,339 (17%)	7,873 (30%)	59 (1%)	79 (1%)	7,586 (29%)	26,017 (100%)
1994-95	4,413 (9%)	3,582 (7%)	5,310 (11%)	552 (1%)	7,584 (15%)	11,316 (23%)	45 (0%)	411 (1%)	16,430 (33%)	49,642 (100%)

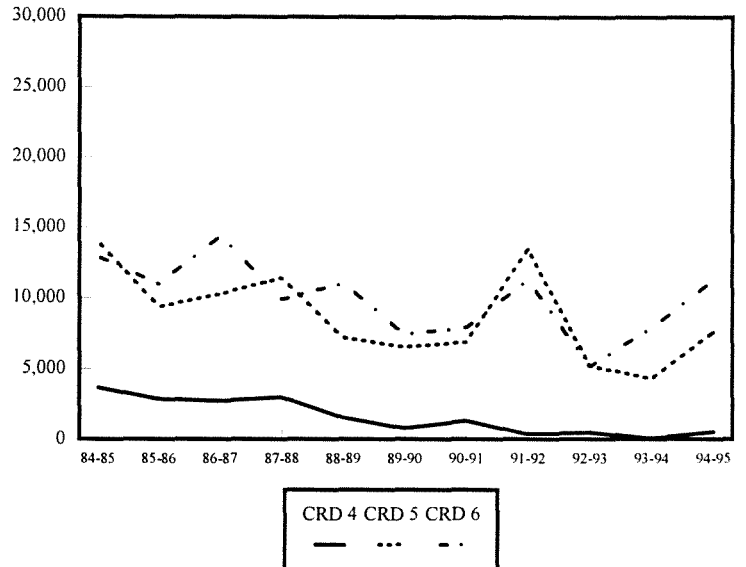


SUNFLOWER SHIPMENTS BY CROP REPORTING DISTRICT

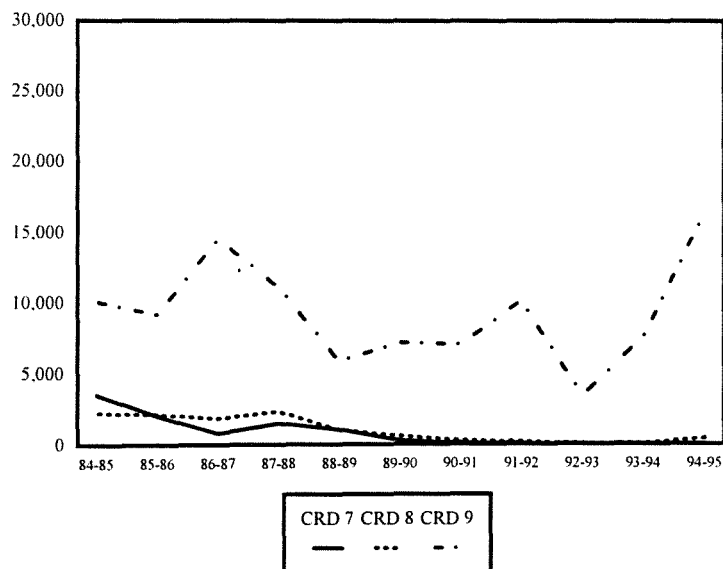
BY NORTHERN CROP REPORTING DISTRICTS
(thousand bushels)



BY CENTRAL CROP REPORTING DISTRICTS
(thousand bushels)



SOUTHERN CROP REPORTING DISTRICTS
(thousand bushels)





OATS
SHIPMENTS

**NORTH DAKOTA OATS SHIPMENTS
BY DESTINATION
(thousand bu.)**

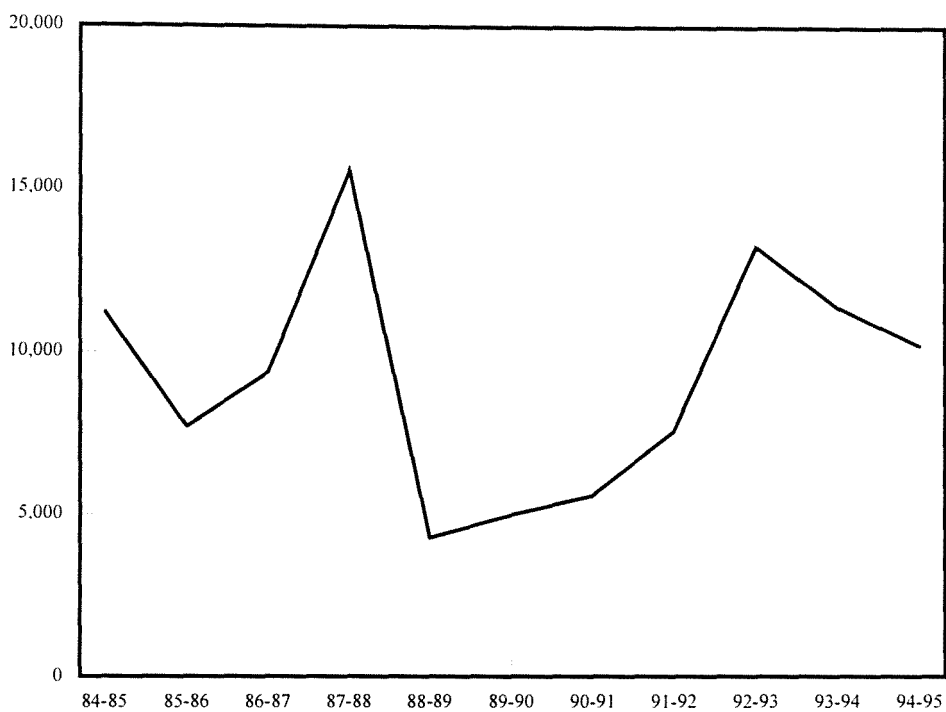
YEAR	Minneapolis - St. Paul	Duluth - Superior	West	Misc. Markets	TOTAL
1984-85	6,467 (58%)	166 (1%)	437 (4%)	4,163 (37%)	11,233 (100%)
1985-86	4,029 (52%)	115 (1%)	431 (6%)	3,131 (41%)	7,706 (100%)
1986-87	4,690 (50%)	74 (1%)	193 (2%)	4,430 (47%)	9,387 (100%)
1987-88	8,272 (53%)	25 (0%)	96 (1%)	7,183 (46%)	15,576 (100%)
1988-89	2,999 (70%)	83 (2%)	17 (0%)	1,197 (28%)	4,296 (100%)
1989-90	3,179 (63%)	36 (1%)	12 (0%)	1,788 (36%)	5,015 (100%)
1990-91	2,496 (45%)	45 (1%)	316 (6%)	2,744 (49%)	5,601 (100%)
1991-92	4,518 (59%)	146 (2%)	181 (2%)	2,754 (37%)	7,601 (100%)
1992-93	5,468 (41%)	284 (0%)	270 (2%)	7,505^a (57%)	13,272 (100%)
1993-94	6,361 (56%)	206 (2%)	47 (0%)	4,812 (42%)	11,427 (100%)
1994-95	5,848 (57%)	105 (1%)	67 (1%)	4,228 (41%)	10,248 (100%)

^aMiscellaneous markets include shipments to North Dakota destinations (1%), Midland/Southwest destinations (24%), other Minnesota/Wisconsin destinations (9%), and all other markets (8%).

OATS SHIPMENTS

1984-85 to 1994-95

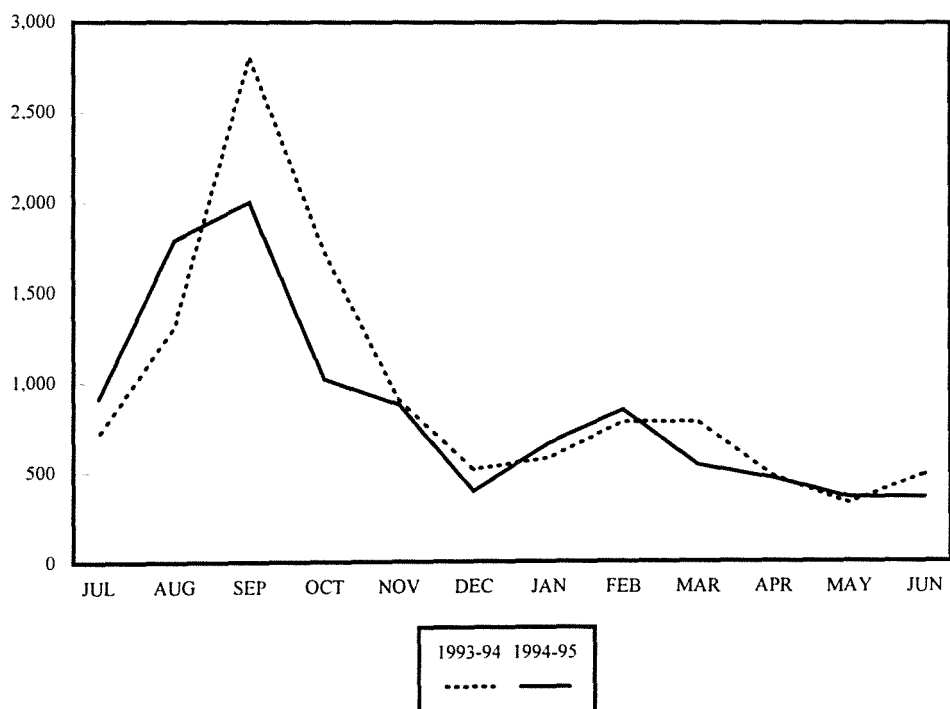
thousand bushels



OATS SHIPMENTS

by Month, 1993-94 TO 1994-95

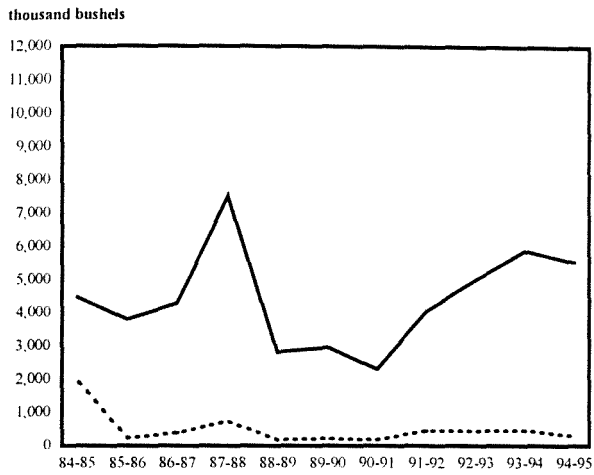
thousand bushels



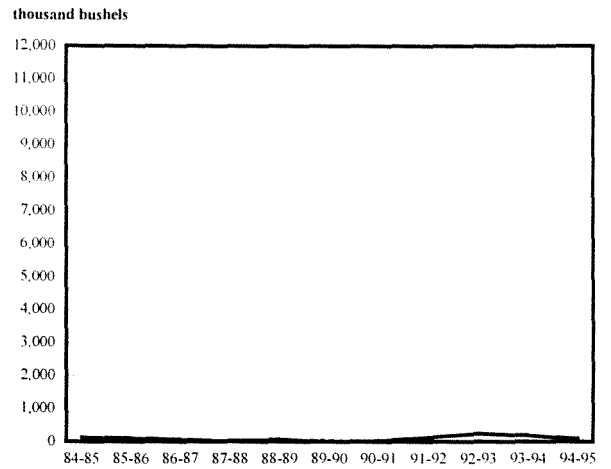
**NORTH DAKOTA OATS SHIPMENTS
BY RAIL, TRUCK AND DESTINATION
(thousand bu.)**

YEAR	Minneapolis - St. Paul		Duluth - Superior		West		Misc. Markets		TOTAL	
	Rail	Truck	Rail	Truck	Rail	Truck	Rail	Truck	Rail	Truck
1984-85	4,481 (69%)	1,986 (31%)	137 (83%)	29 (17%)	30 (7%)	407 (93%)	1,406 (34%)	2,757 (66%)	6,054 (51%)	5,179 (49%)
1985-86	3,796 (94%)	233 (6%)	109 (95%)	6 (5%)	190 (44%)	241 (56%)	1,237 (40%)	1,894 (60%)	5,333 (69%)	2,373 (31%)
1986-87	4,287 (91%)	403 (9%)	73 (98%)	1 (2%)	55 (28%)	139 (72%)	2,659 (60%)	1,771 (40%)	7,074 (75%)	2,314 (25%)
1987-88	7,525 (91%)	747 (9%)	24 (96%)	1 (4%)	61 (64%)	35 (36%)	6,005 (84%)	1,178 (16%)	13,615 (87%)	1,961 (13%)
1988-89	2,810 (94%)	189 (6%)	82 (98%)	1 (2%)	8 (51%)	8 (49%)	736 (61%)	461 (39%)	3,637 (85%)	660 (15%)
1989-90	2,959 (93%)	220 (7%)	5 (13%)	31 (87%)	9 (73%)	3 (27%)	511 (29%)	1,277 (71%)	3,484 (69%)	1,531 (31%)
1990-91	2,306 (92%)	191 (8%)	36 (80%)	9 (20%)	240 (76%)	75 (24%)	924 (34%)	1,820 (66%)	3,506 (63%)	2,095 (37%)
1991-92	4,055 (90%)	461 (10%)	140 (96%)	5 (4%)	149 (82%)	31 (8%)	1,411 (51%)	1,341 (49%)	5,758 (76%)	1,842 (24%)
1992-93	5,018 (92%)	450 (8%)	251 (88%)	3 (12%)	74 (27%)	196 (73%)	5,415 (72%)	2,090 (28%)	10,533 (79%)	2,739 (21%)
1993-94	5,893 (93%)	468 (7%)	195 (95%)	11 (5%)	20 (43%)	26 (57%)	2,596 (54%)	2,216 (46%)	8,705 (76%)	2,722 (24%)
1994-95	5,546 (95%)	302 (5%)	99 (94%)	7 (6%)	52 (77%)	15 (23%)	2,551 (60%)	1,678 (40%)	8,247 (80%)	2,001 (20%)

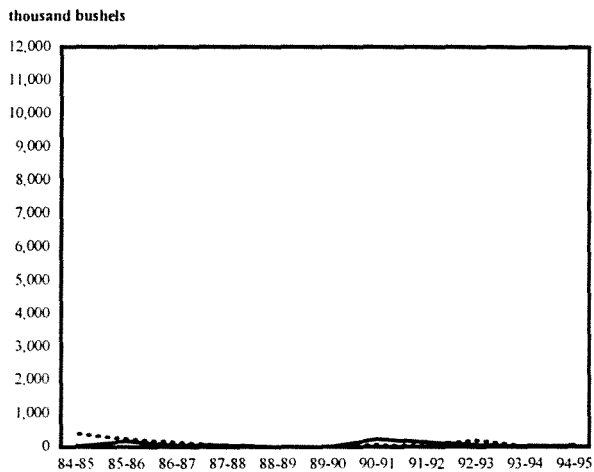
OATS TO MINNEAPOLIS
1984-85 to 1994-95



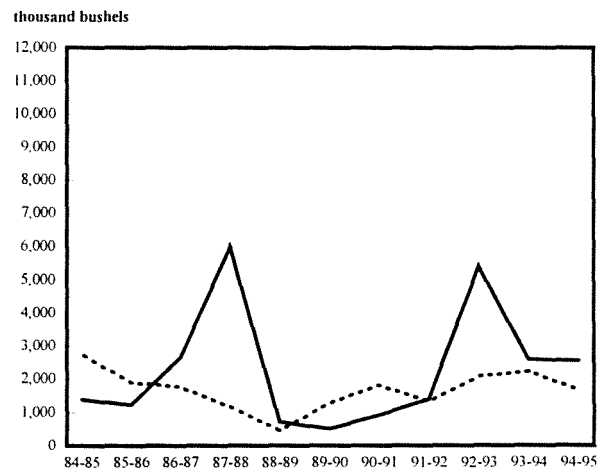
OATS TO DULUTH-SUPERIOR
1984-85 to 1994-95



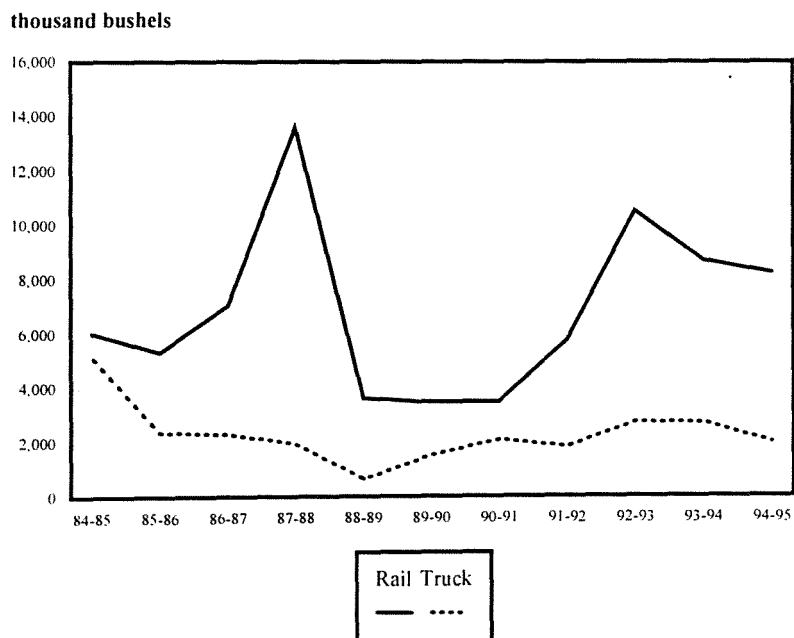
OATS TO WEST
1984-85 to 1994-95



OATS TO MISCELLANEOUS MARKETS
1984-85 to 1994-95

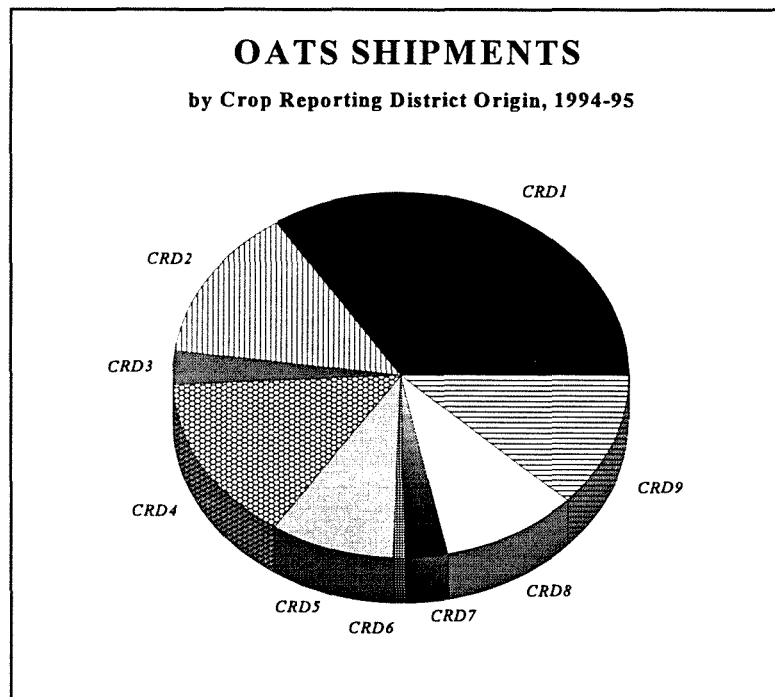


OATS SHIPMENTS
1984-85 to 1994-95



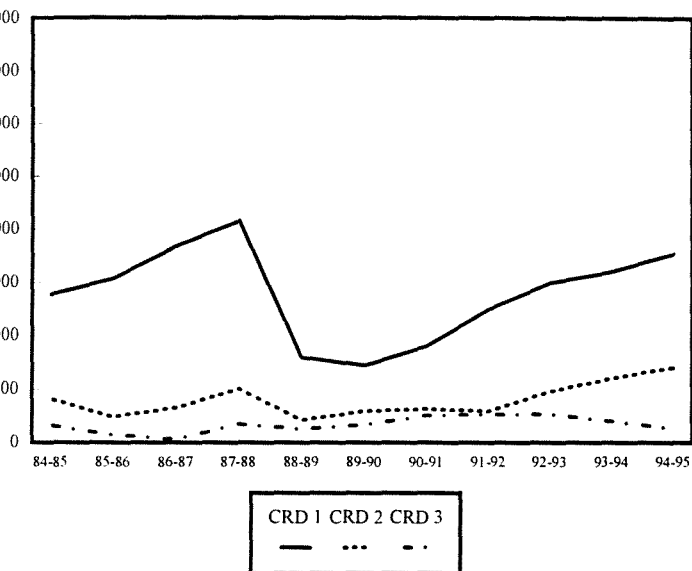
**NORTH DAKOTA OATS SHIPMENTS
BY CROP REPORTING DISTRICT ORIGIN
(thousand bu.)**

YEAR	Crop Reporting District									TOTAL
	1	2	3	4	5	6	7	8	9	
1984-85	2,780 (24%)	828 (7%)	328 (3%)	1,085 (10%)	956 (9%)	824 (7%)	823 (7%)	1,101 (10%)	2,509 (21%)	11,234 (100%)
1985-86	3,078 (40%)	490 (6%)	150 (2%)	1,306 (17%)	404 (5%)	599 (8%)	301 (4%)	312 (4%)	1,065 (14%)	7,705 (100%)
1986-87	3,681 (39%)	656 (7%)	72 (1%)	1,858 (20%)	642 (7%)	354 (4%)	452 (5%)	463 (5%)	1,211 (13%)	9,387 (100%)
1987-88	4,162 (27%)	1,017 (7%)	352 (2%)	2,001 (13%)	2,101 (13%)	729 (5%)	1,443 (9%)	1,365 (9%)	2,398 (15%)	15,568 (100%)
1988-89	1,600 (37%)	424 (10%)	255 (6%)	402 (9%)	587 (14%)	158 (4%)	192 (4%)	363 (8%)	313 (7%)	4,294 (100%)
1989-90	1,453 (29%)	600 (12%)	342 (7%)	330 (7%)	409 (8%)	794 (16%)	75 (1%)	240 (5%)	772 (15%)	5,015 (100%)
1990-91	1,809 (32%)	636 (11%)	515 (9%)	605 (11%)	386 (7%)	911 (16%)	52 (1%)	70 (1%)	617 (11%)	5,601 (100%)
1991-92	2,492 (33%)	596 (8%)	532 (7%)	848 (11%)	499 (7%)	763 (10%)	73 (1%)	322 (4%)	1,472 (19%)	7,601 (100%)
1992-93	2,997 (23%)	971 (7%)	539 (4%)	1,308 (10%)	3,209 (24%)	948 (7%)	289 (2%)	1,127 (9%)	1,879 (14%)	13,271 (100%)
1993-94	3,211 (28%)	1,210 (11%)	409 (4%)	1,616 (14%)	1,537 (13%)	455 (4%)	337 (3%)	1,032 (9%)	1,618 (14%)	11,427 (100%)
1994-95	3,544 (35%)	1,412 (14%)	260 (3%)	1,540 (15%)	968 (9%)	79 (1%)	276 (3%)	975 (10%)	1,195 (12%)	10,248 (100%)

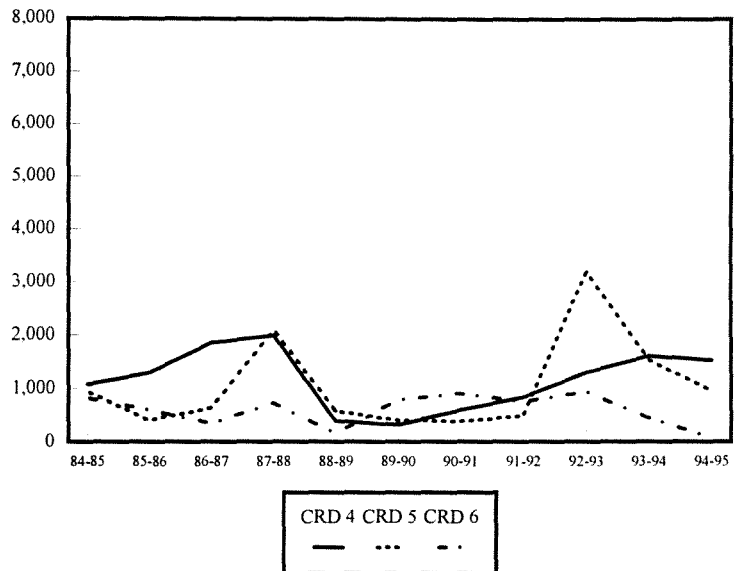


OATS SHIPMENTS BY CROP REPORTING DISTRICT

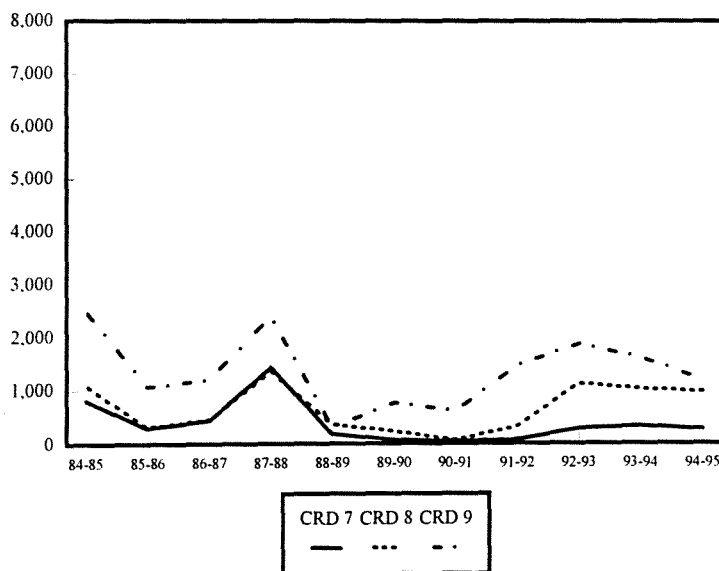
BY NORTHERN CROP REPORTING DISTRICTS
(thousand bushels)



BY CENTRAL CROP REPORTING DISTRICTS
(thousand bushels)



SOUTHERN CROP REPORTING DISTRICTS
(thousand bushels)





***SOYBEAN
SHIPMENTS***

**NORTH DAKOTA SOYBEAN SHIPMENTS
BY DESTINATION
(thousand bu.)**

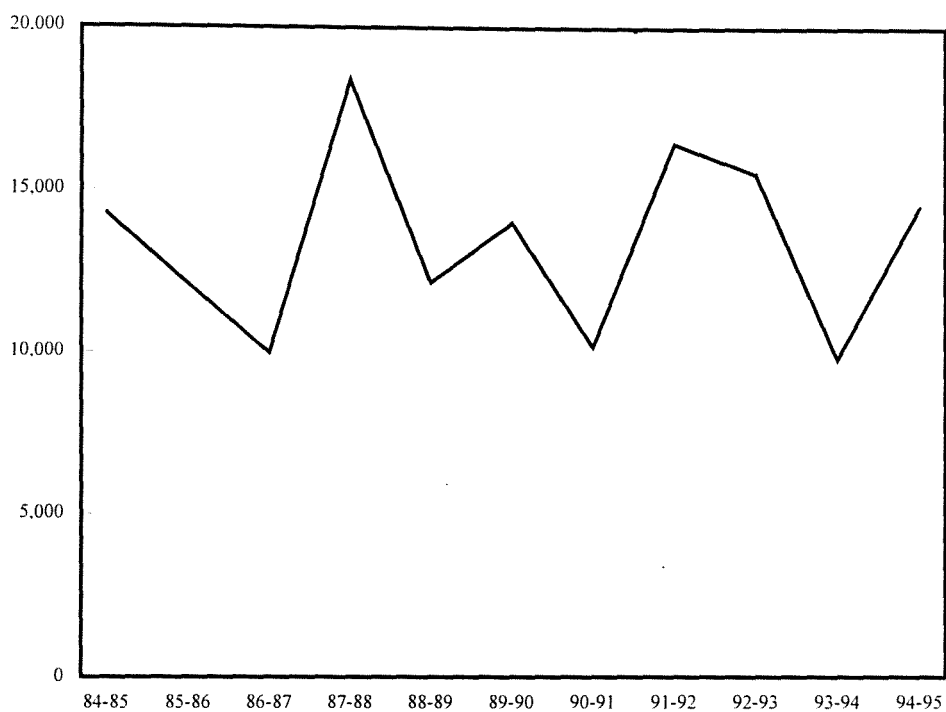
YEAR	Minneapolis - St. Paul	Duluth - Superior	West	Misc. Markets	TOTAL
1984-85	4,361 (31%)	491 (3%)	6,825 (48%)	2,615 (18%)	14,292 (100%)
1985-86	5,739 (47%)	184 (2%)	3,631 (30%)	2,563 (21%)	12,116 (100%)
1986-87	4,933 (49%)	166 (2%)	2,144 (21%)	2,747 (27%)	9,990 (100%)
1987-88	4,666 (25%)	2,800 (15%)	7,797 (42%)	3,150 (17%)	18,413 (100%)
1988-89	2,315 (19%)	2,347 (19%)	5,375 (44%)	2,121 (17%)	12,160 (100%)
1989-90	1,819 (13%)	1,379 (10%)	6,712 (48%)	4,105 (29%)	14,015 (100%)
1990-91	1,802 (18%)	1,268 (12%)	4,001 (39%)	3,114 (31%)	10,185 (100%)
1991-92	3,025 (18%)	510 (3%)	7,552 (46%)	5,374 (33%)	16,464 (100%)
1992-93	3,594 (23%)	354 (2%)	8,396 (54%)	3,184^a (21%)	15,528 (100%)
1993-94	3,115 (32%)	621 (6%)	3,669 (37%)	2,410 (25%)	9,815 (100%)
1994-95	2,824 (19%)	3,110 (21%)	6,716 (46%)	1,853 (13%)	14,504 (100%)

^aMiscellaneous markets include shipments to other Minnesota/Wisconsin destinations (4%), Midland/Southwest destinations (1%), and all other markets including North Dakota processors (8%).

SOYBEAN SHIPMENTS

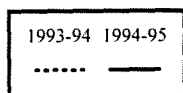
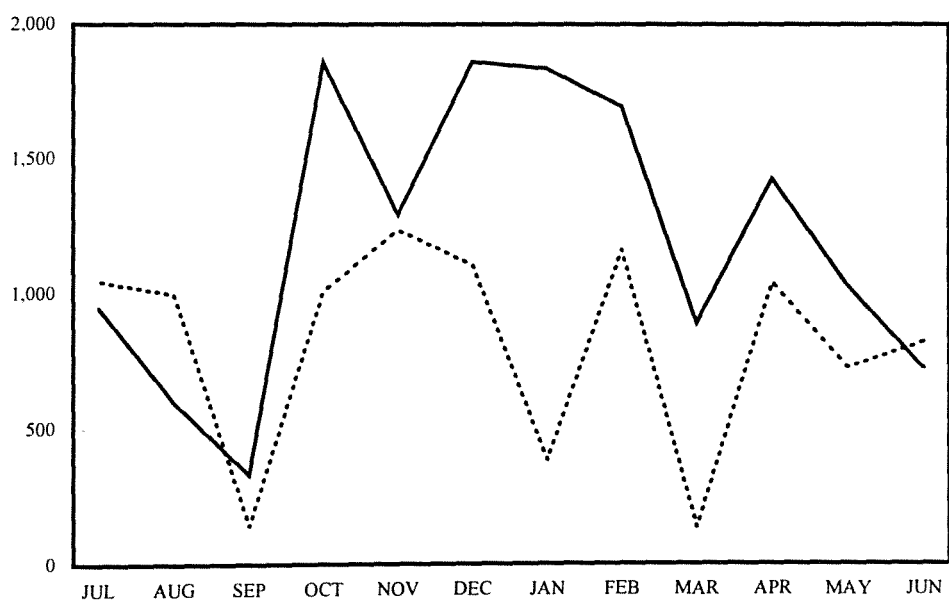
1984-85 to 1994-95

thousand bushels



SOYBEAN SHIPMENTS by Month, 1993-94 TO 1994-95

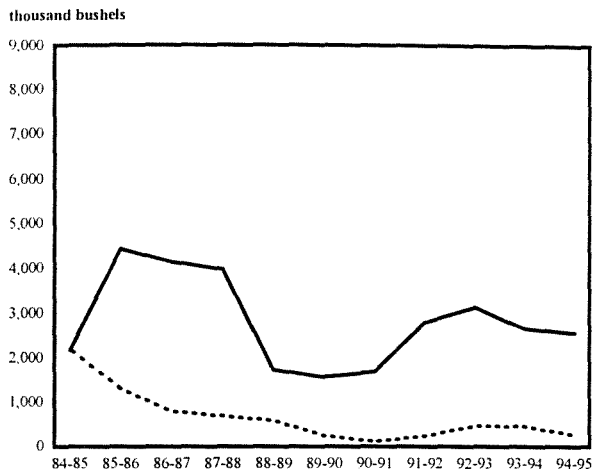
thousand bushels



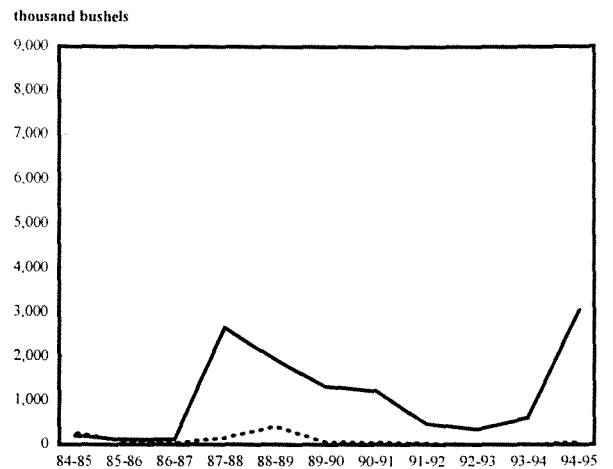
**NORTH DAKOTA SOYBEAN SHIPMENTS
BY RAIL, TRUCK AND DESTINATION
(thousand bu.)**

YEAR	Minneapolis - St. Paul		Duluth - Superior		West		Misc. Markets		TOTAL	
	Rail	Truck	Rail	Truck	Rail	Truck	Rail	Truck	Rail	Truck
1984-85	2,162 (50%)	2,199 (50%)	212 (43%)	279 (57%)	6,788 (99%)	37 (1%)	255 (10%)	2,361 (90%)	9,417 (66%)	4,876 (34%)
1985-86	4,434 (77%)	1,305 (23%)	112 (61%)	72 (39%)	3,532 (97%)	100 (3%)	175 (7%)	2,388 (93%)	8,252 (68%)	3,864 (32%)
1986-87	4,137 (84%)	797 (16%)	123 (74%)	42 (26%)	2,132 (99%)	12 (1%)	1,532 (56%)	1,215 (44%)	7,924 (79%)	2,066 (21%)
1987-88	3,979 (85%)	687 (15%)	2,645 (94%)	155 (6%)	7,778 (100%)	19 (0%)	1,692 (54%)	1,458 (46%)	16,094 (87%)	2,319 (13%)
1988-89	1,732 (75%)	583 (25%)	1,931 (82%)	416 (18%)	5,162 (96%)	213 (4%)	468 (22%)	1,652 (78%)	9,294 (76%)	2,865 (24%)
1989-90	1,565 (86%)	254 (14%)	1,320 (96%)	60 (4%)	6,705 (100%)	7 (0%)	618 (15%)	3,486 (85%)	10,208 (73%)	3,807 (27%)
1990-91	1,683 (93%)	120 (7%)	1,215 (96%)	54 (4%)	3,816 (95%)	185 (5%)	772 (25%)	2,340 (75%)	7,486 (74%)	2,699 (26%)
1991-92	2,782 (92%)	242 (8%)	479 (94%)	31 (6%)	7,184 (95%)	367 (5%)	2,987 (56%)	2,386 (44%)	13,434 (82%)	3,029 (18%)
1992-93	3,131 (87%)	463 (13%)	349 (99%)	5 (1%)	8,387 (100%)	8 (0%)	2,126 (67%)	1,058 (33%)	13,992 (90%)	1,536 (10%)
1993-94	2,655 (85%)	460 (15%)	614 (99%)	7 (1%)	3,667 (100%)	3 (0%)	1,855 (77%)	556 (23%)	8,789 (89%)	1,026 (11%)
1994-95	2,552 (90%)	273 (10%)	3,047 (98%)	63 (2%)	6,452 (96%)	264 (4%)	1,290 (70%)	563 (30%)	13,341 (92%)	1,162 (8%)

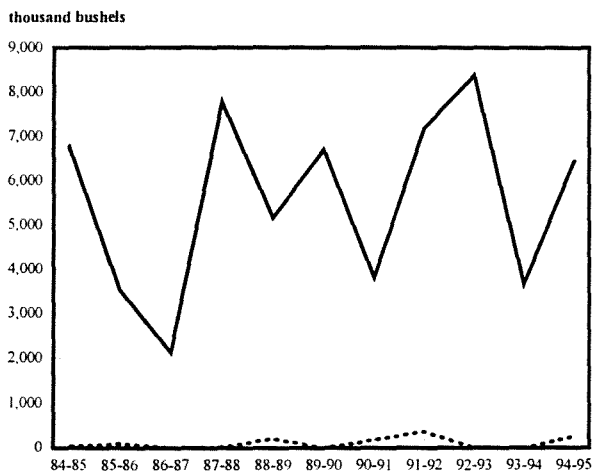
SOYBEANS TO MINNEAPOLIS
1984-85 to 1994-95



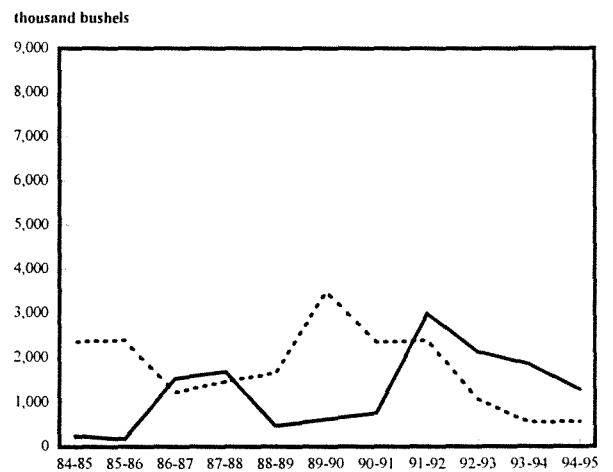
SOYBEANS TO DULUTH-SUPERIOR
1984-85 to 1994-95



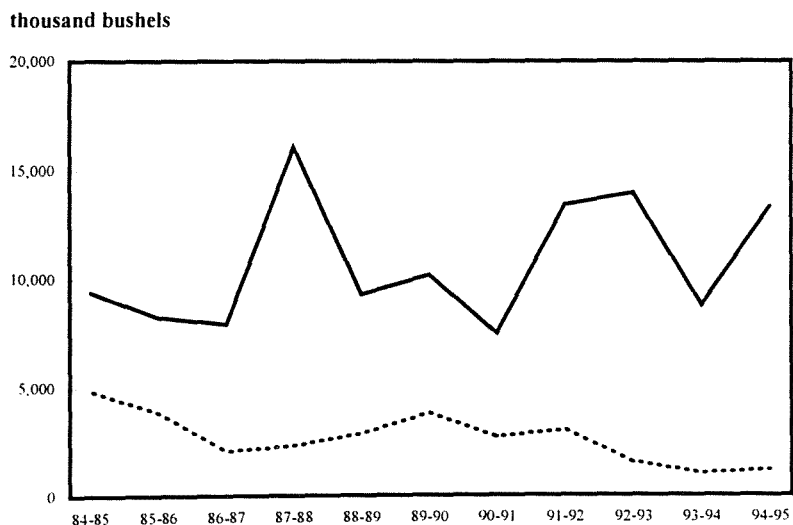
SOYBEANS TO WEST
1984-85 to 1994-95



SOYBEANS TO MISCELLANEOUS MARKETS
1984-85 to 1994-95



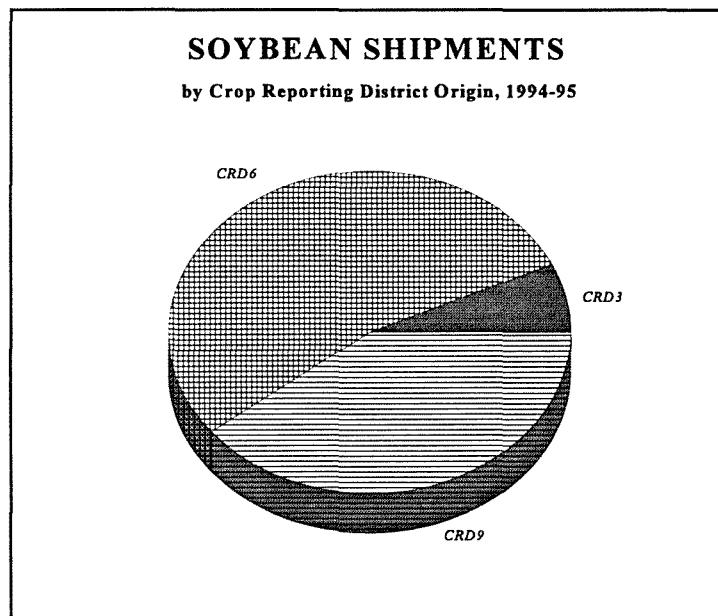
SOYBEAN SHIPMENTS
1984-85 to 1994-95



Rail Truck
—

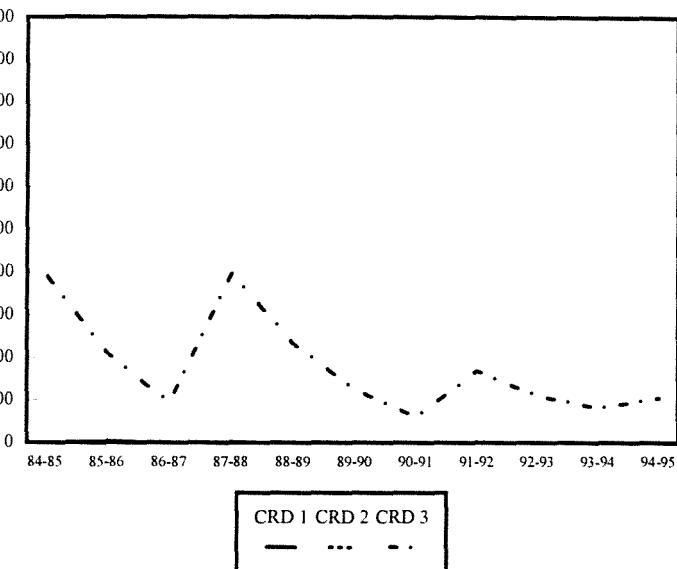
**NORTH DAKOTA SOYBEAN SHIPMENTS
BY CROP REPORTING DISTRICT ORIGIN**
(thousand bu.)

YEAR	Crop Reporting District									TOTAL
	1	2	3	4	5	6	7	8	9	
1984-85	2 (0%)	2 (0%)	3,954 (29%)	5 (0%)	145 (1%)	6,736 (47%)	18 (0%)	7 (0%)	3,424 (24%)	14,292 (100%)
1985-86	43 (0%)	4 (0%)	2,114 (17%)	15 (0%)	44 (0%)	5,575 (46%)	0 (0%)	5 (0%)	4,317 (36%)	12,116 (100%)
1986-87	0 (0%)	9 (0%)	958 (10%)	0 (0%)	11 (0%)	4,540 (45%)	0 (0%)	3 (0%)	4,469 (45%)	9,990 (100%)
1987-88	20 (0%)	15 (0%)	3,966 (21%)	1 (0%)	47 (0%)	7,780 (42%)	113 (1%)	18 (0%)	6,555 (35%)	18,414 (100%)
1988-89	7 (0%)	6 (0%)	2,331 (19%)	0 (0%)	35 (0%)	5,502 (45%)	0 (0%)	18 (0%)	4,258 (35%)	12,157 (100%)
1989-90	0 (0%)	14 (0%)	1,251 (9%)	3 (0%)	77 (1%)	6,491 (46%)	4 (0%)	3 (0%)	6,172 (44%)	14,015 (100%)
1990-91	3 (0%)	6 (0%)	622 (6%)	29 (0%)	36 (0%)	5,369 (53%)	0 (0%)	122 (1%)	3,998 (39%)	10,185 (100%)
1991-92	0 (0%)	11 (0%)	1,696 (10%)	883 (5%)	78 (0%)	8,491 (51%)	220 (1%)	0 (0%)	6,184 (37%)	16,464 (100%)
1992-93	8 (0%)	4 (0%)	1,112 (7%)	8 (0%)	14 (0%)	7,900 (51%)	--	3 (0%)	6,475 (42%)	15,527 (100%)
1993-94	3 (0%)	0 (0%)	827 (8%)	0 (0%)	22 (0%)	4,986 (51%)	0 (0%)	0 (0%)	3,976 (41%)	9,815 (100%)
1994-95	0 (0%)	5 (0%)	1,057 (7%)	0 (0%)	15 (0%)	7,727 (53%)	0 (0%)	0 (0%)	5,700 (39%)	14,504 (100%)

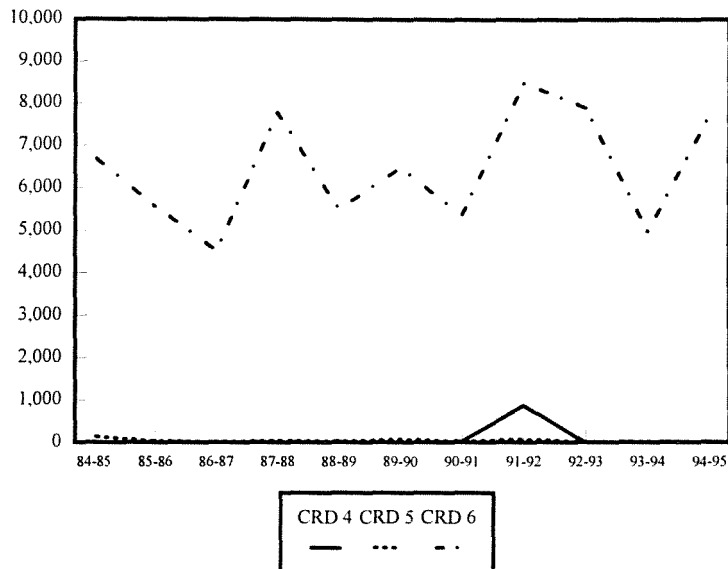


SOYBEAN SHIPMENTS BY CROP REPORTING DISTRICT

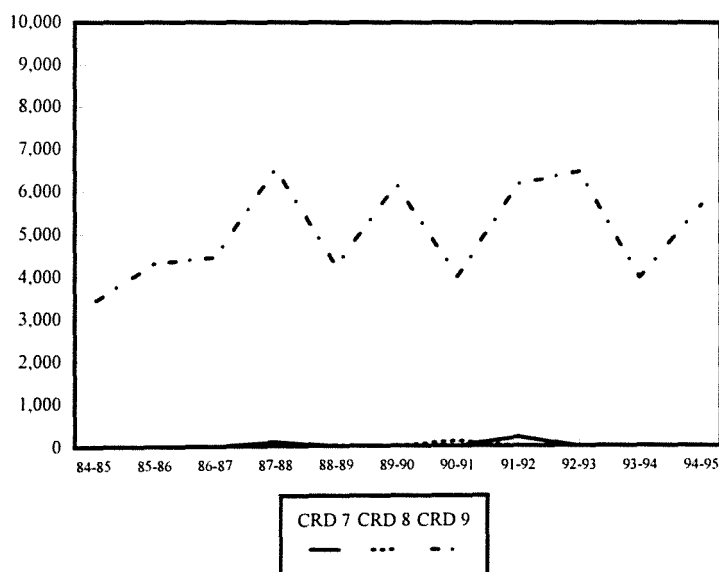
BY NORTHERN CROP REPORTING DISTRICTS
(thousand bushels)



BY CENTRAL CROP REPORTING DISTRICTS
(thousand bushels)



SOUTHERN CROP REPORTING DISTRICTS
(thousand bushels)





***FLAX
SHIPMENTS***

**NORTH DAKOTA FLAXSEED SHIPMENTS
BY DESTINATION
(thousand bu.)**

YEAR	Minneapolis - St. Paul	Other Minnesota - Wisconsin	North Dakota	Misc.	TOTAL
1984-85	1,555 (38%)	-	-	-	4,098 (100%)
1985-86	2,171 (39%)	-	-	^a	5,503 (100%)
1986-87	1,055 (16%)	1,829 (27%)	2,495 (37%)	1,287 (19%)	6,666 (100%)
1987-88	1,202 (20%)	2,007 (33%)	1,758 (29%)	1,143 (19%)	6,110 (100%)
1988-89	214 (11%)	849 (42%)	650 (32%)	299 (15%)	2,013 (100%)
1989-90	209 (19%)	269 (25%)	425 (39%)	174 (16%)	1,077 (100%)
1990-91	422 (19%)	487 (22%)	1,068 (47%)	281 (12%)	2,258 (100%)
1991-92	1,141 (28%)	504 (12%)	1,750 (43%)	659 (16%)	4,058 (100%)
1992-93	469 (13%)	567 (16%)	1,501 (41%)	1,084 (30%)	3,621 (100%)
1993-94	750 (34%)	539 (25%)	683 (31%)	227^b (10%)	2,200 (100%)
1994-95	512 (23%)	447 (20%)	917 (41%)	386 (17%)	2,261 (100%)

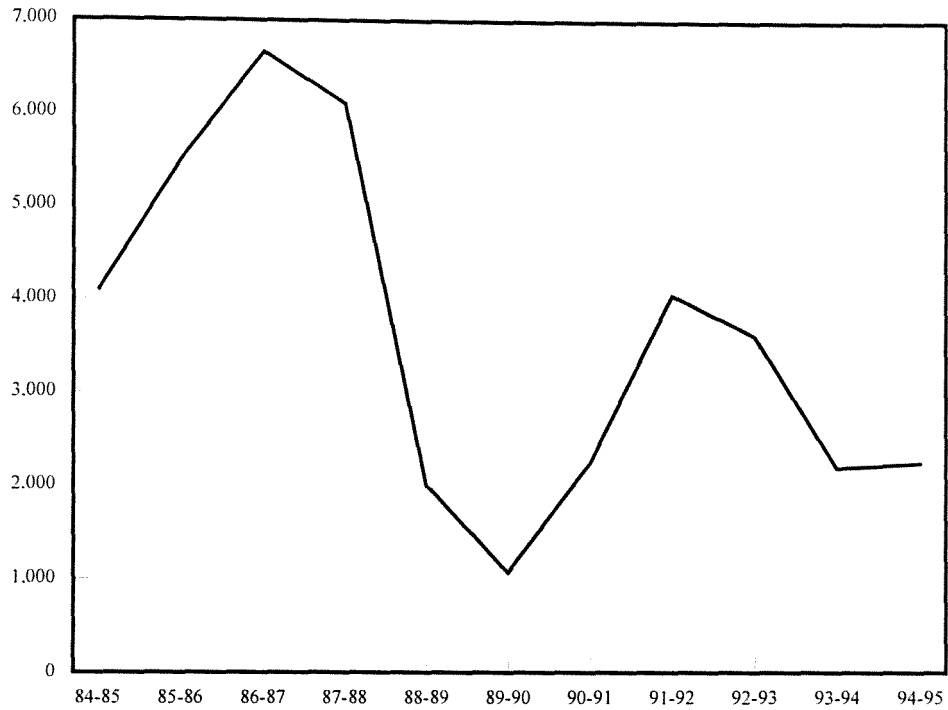
^aNot available prior to 1986-87.

^bMiscellaneous markets include shipments to Duluth Superior destinations (5%), Midland/Southwest markets (2%), Pacific Northwest markets (0%), and all other markets (10%).

FLAX SHIPMENTS

1984-85 to 1994-95

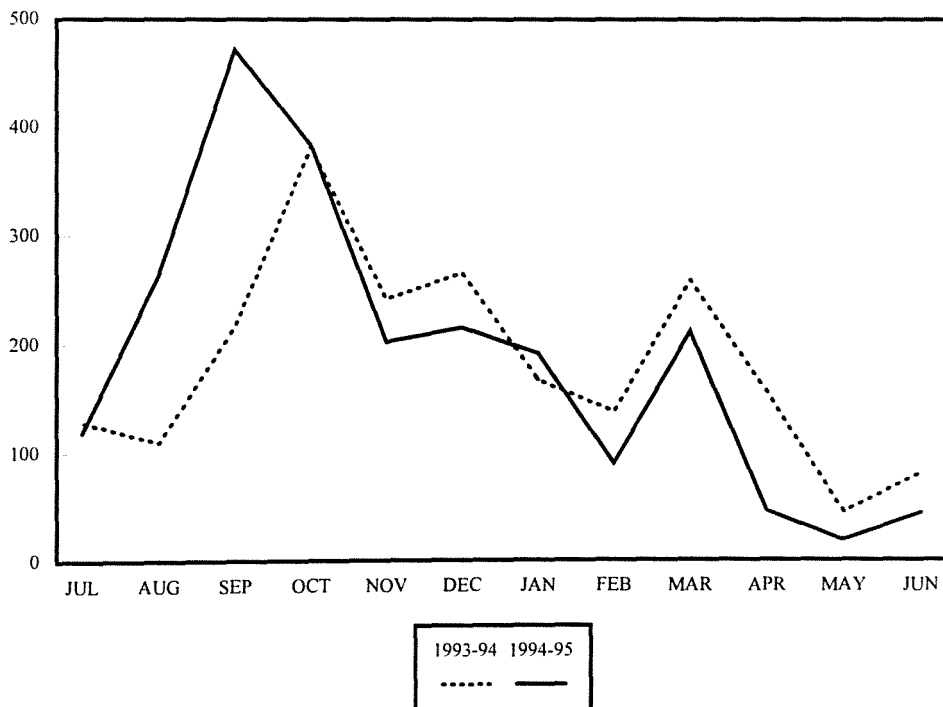
thousand bushels



FLAX SHIPMENTS

by Month, 1993-94 TO 1994-95

thousand bushels

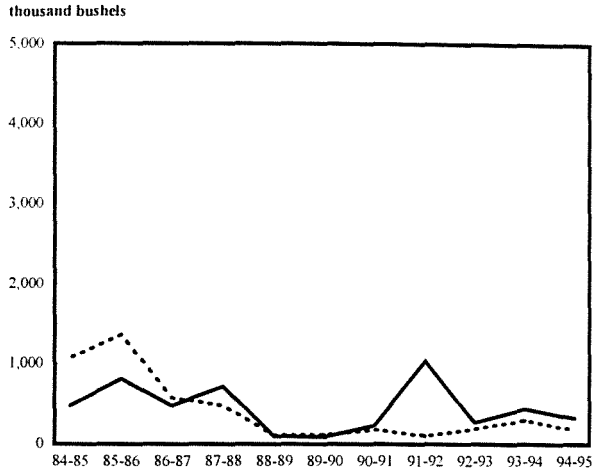


**NORTH DAKOTA FLAXSEED SHIPMENTS
BY RAIL, TRUCK AND DESTINATION
(thousand bu.)**

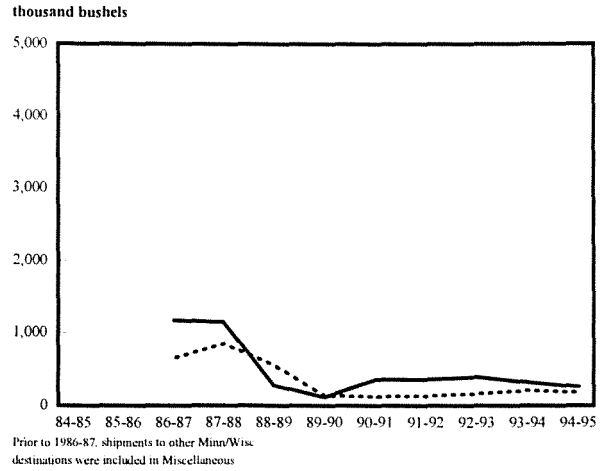
YEAR	Minneapolis-St. Paul		Other Minnesota - Wisconsin		North Dakota		Misc. Markets		TOTAL	
	Rail	Truck	Rail	Truck	Rail	Truck	Rail	Truck	Rail	Truck
1984-85	480 (31%)	1,075 (69%)	-	-	-	-	-	-	996 (24%)	3,103 (76%)
1985-86	813 (37%)	1,358 (63%)	-	-	-	-	-	- ^a	1,768 (32%)	3,736 (68%)
1986-87	478 (45%)	577 (55%)	1,175 (64%)	654 (36%)	413 (17%)	2,082 (83%)	830 (64%)	457 (36%)	2,896 (43%)	3,770 (57%)
1987-88	721 (60%)	481 (40%)	1,152 (57%)	855 (43%)	445 (25%)	1,313 (75%)	404 (35%)	737 (65%)	2,722 (45%)	3,386 (55%)
1988-89	101 (47%)	112 (53%)	288 (34%)	561 (66%)	44 (7%)	606 (93%)	125 (42%)	174 (58%)	559 (28%)	1,454 (72%)
1989-90	92 (44%)	116 (56%)	125 (46%)	144 (54%)	25 (6%)	400 (94%)	61 (35%)	113 (65%)	304 (28%)	773 (72%)
1990-91	238 (56%)	184 (44%)	358 (74%)	129 (26%)	117 (11%)	951 (89%)	145 (52%)	136 (48%)	858 (38%)	1,400 (62%)
1991-92	1,039 (91%)	102 (9%)	364 (72%)	140 (28%)	160 (9%)	1,590 (91%)	499 (76%)	158 (24%)	2,065 (51%)	1,993 (49%)
1992-93	275 (59%)	195 (41%)	398 (70%)	169 (30%)	81 (5%)	1,420 (95%)	819 (75%)	266 (25%)	1,572 (43%)	2,050 (57%)
1993-94	449 (60%)	302 (40%)	327 (61%)	213 (39%)	19 (3%)	664 (97%)	78 (34%)	150 (66%)	872 (40%)	1,329 (60%)
1994-95	330 (65%)	181 (35%)	260 (58%)	187 (42%)	122 (13%)	794 (87%)	155 (40%)	231 (60%)	867 (38%)	1,394 (62%)

^aPrior to 1986-87 crop year, Other Minn./Wisconsin and North Dakota destinations were included in "Miscellaneous" Markets. Miscellaneous markets now includes shipments to Duluth-Superior and Pacific Northwest destinations.

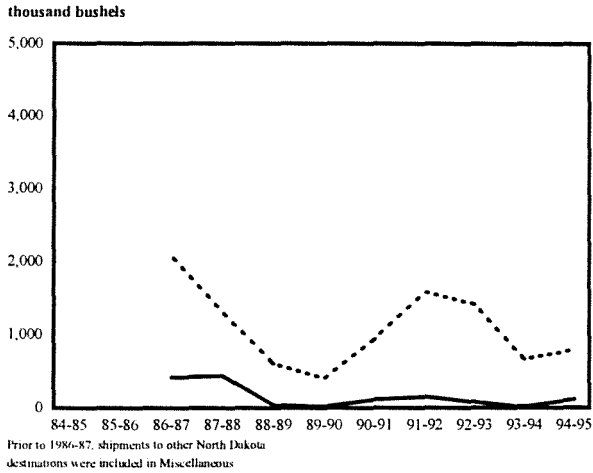
FLAX TO MINNEAPOLIS
1984-85 to 1994-95



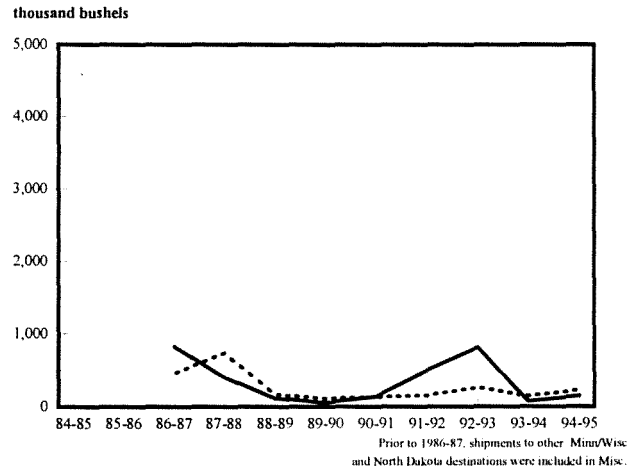
FLAX TO OTHER MINN/WISC
1984-85 to 1994-95



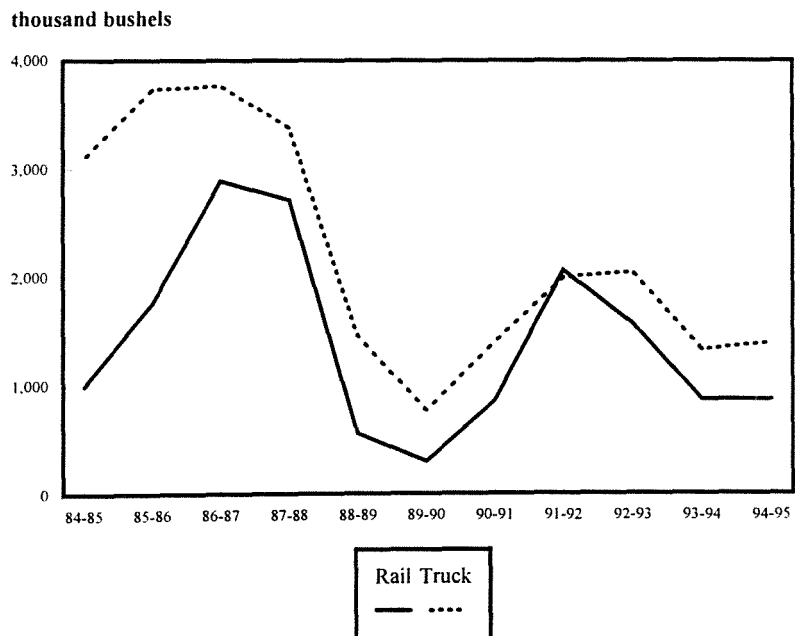
FLAX TO NORTH DAKOTA
1984-85 to 1994-95



FLAX TO MISCELLANEOUS MARKETS
1984-85 to 1994-95

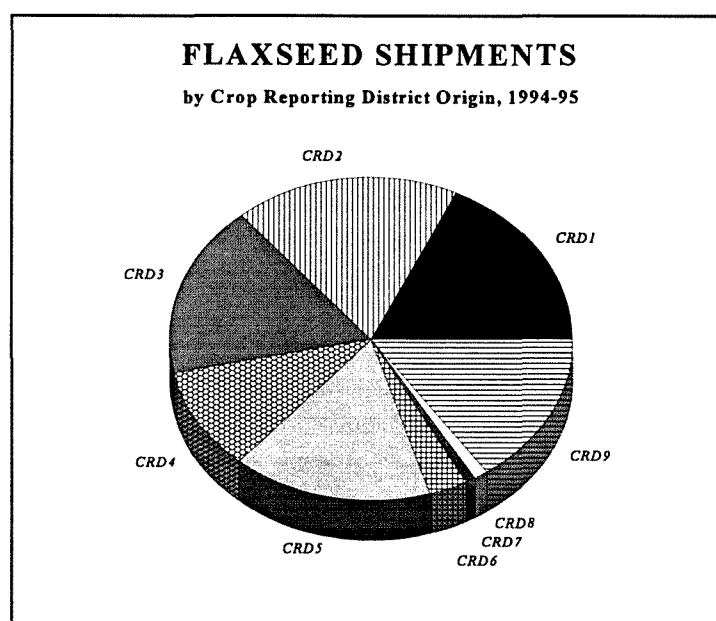


FLAX SHIPMENTS
1984-85 to 1994-95



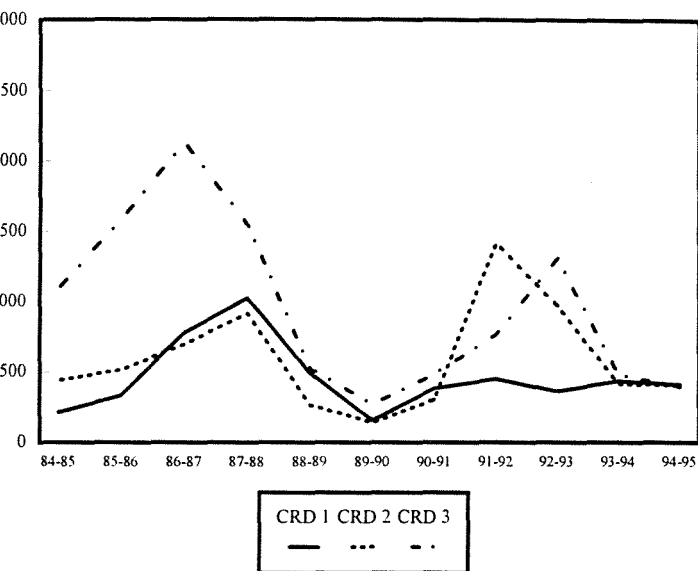
**NORTH DAKOTA FLAXSEED SHIPMENTS
BY CROP REPORTING DISTRICT ORIGIN**
(thousand bu.)

YEAR	Crop Reporting District									TOTAL
	1	2	3	4	5	6	7	8	9	
1984-85	217 (5%)	443 (11%)	1,097 (27%)	266 (6%)	541 (13%)	249 (6%)	204 (5%)	265 (6%)	816 (20%)	4,098 (100%)
1985-86	336 (6%)	518 (9%)	1,587 (29%)	373 (7%)	1,188 (22%)	573 (10%)	45 (1%)	247 (4%)	635 (12%)	5,503 (100%)
1986-87	780 (12%)	697 (10%)	2,132 (32%)	454 (7%)	803 (12%)	759 (11%)	62 (1%)	280 (4%)	697 (11%)	6,666 (100%)
1987-88	1,026 (17%)	918 (15%)	1,548 (25%)	545 (9%)	835 (14%)	436 (7%)	54 (1%)	244 (4%)	503 (8%)	6,109 (100%)
1988-89	494 (25%)	268 (13%)	525 (26%)	169 (8%)	187 (9%)	112 (6%)	19 (1%)	67 (3%)	168 (98%)	2,009 (100%)
1989-90	161 (15%)	145 (13%)	276 (26%)	72 (7%)	146 (13%)	84 (9%)	9 (1%)	30 (3%)	154 (14%)	1,077 (100%)
1990-91	388 (17%)	308 (14%)	490 (22%)	102 (5%)	523 (23%)	241 (11%)	4 (0%)	16 (1%)	186 (8%)	2,258 (100%)
1991-92	456 (11%)	1,421 (35%)	769 (19%)	173 (4%)	423 (10%)	413 (10%)	13 (0%)	5 (0%)	381 (9%)	4,058 (100%)
1992-93	367 (10%)	974 (27%)	1,312 (36%)	140 (4%)	313 (9%)	200 (6%)	9 (0%)	25 (1%)	278 (8%)	3,621 (100%)
1993-94	442 (20%)	418 (19%)	483 (22%)	182 (8%)	323 (15%)	114 (5%)	5 (0%)	19 (1%)	213 (10%)	2,200 (100%)
1994-95	411 (18%)	404 (18%)	395 (17%)	234 (10%)	363 (16%)	61 (3%)	13 (1%)	33 (1%)	347 (15%)	2,261 (100%)

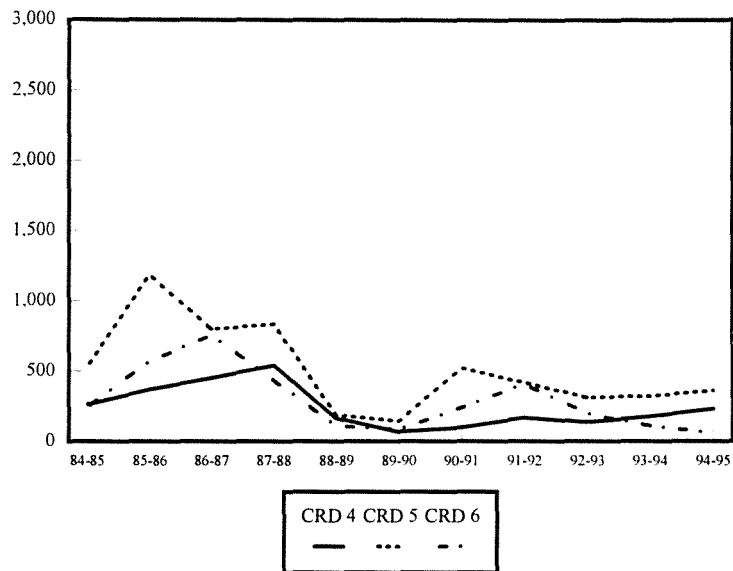


FLAX SHIPMENTS BY CROP REPORTING DISTRICT

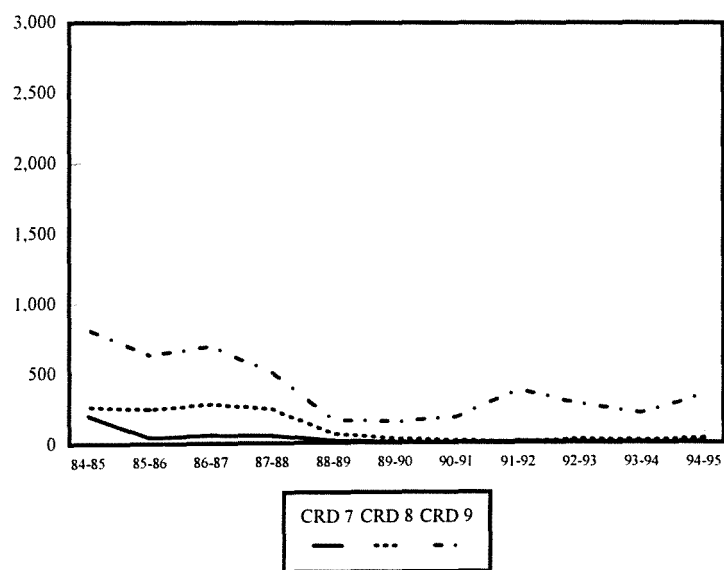
BY NORTHERN CROP REPORTING DISTRICTS
(thousand bushels)



BY CENTRAL CROP REPORTING DISTRICTS
(thousand bushels)



SOUTHERN CROP REPORTING DISTRICTS
(thousand bushels)





CORN SHIPMENTS

**NORTH DAKOTA CORN SHIPMENTS
BY DESTINATION
(thousand bu.)**

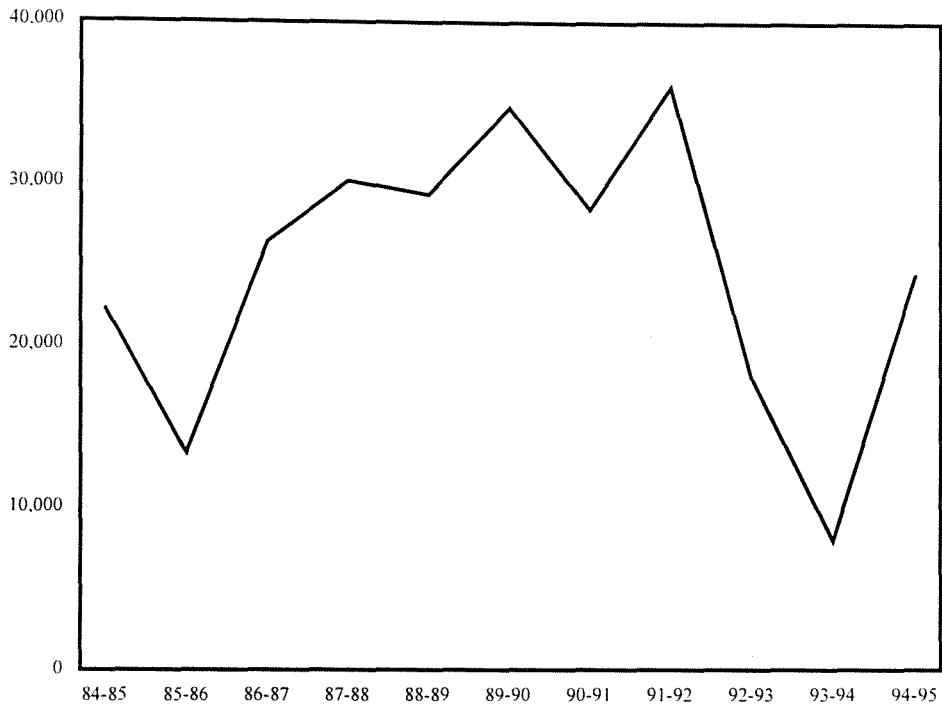
YEAR	Minneapolis - St. Paul	Duluth - Superior	West	Misc. Markets	TOTAL
1984-85	1,189 (5%)	2,859 (13%)	13,659 (60%)	4,916 (22%)	22,623 (100%)
1985-86	1,254 (9%)	68 (1%)	6,488 (48%)	5,584 (42%)	13,394 (100%)
1986-87	359 (1%)	59 (0%)	18,952 (72%)	7,067 (27%)	26,437 (100%)
1987-88	312 (1%)	55 (0%)	23,742 (79%)	6,080 (20%)	30,189 (100%)
1988-89	603 (2%)	1,741 (6%)	21,861 (74%)	5,138 (18%)	29,344 (100%)
1989-90	900 (3%)	358 (1%)	26,133 (75%)	7,374 (21%)	34,764 (100%)
1990-91	944 (3%)	710 (2%)	19,590 (69%)	7,190 (25%)	28,434 (100%)
1991-92	1,556 (4%)	665 (2%)	25,034 (69%)	8,826 (24%)	36,084 (100%)
1992-93	807 (5%)	0 (0%)	8,903 (49%)	8,344^a (46%)	18,054 (100%)
1993-94	196 (2%)	75 (1%)	1,465 (18%)	6,309 (79%)	8,047 (100%)
1994-95	1,098 (5%)	114 (0%)	13,703 (56%)	9,431 (39%)	24,398 (100%)

^aMiscellaneous markets include shipments to North Dakota destinations (20%), Midland/Southwest destinations (6%), and all other markets (12%).

CORN SHIPMENTS

1984-85 to 1994-95

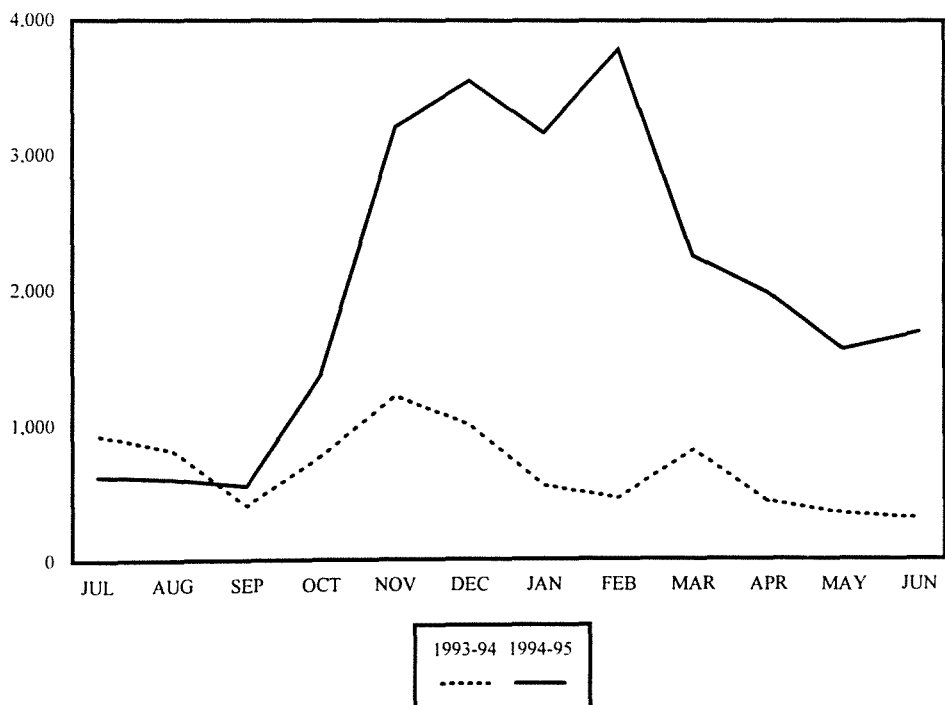
thousand bushels



CORN SHIPMENTS

by Month, 1993-94 TO 1994-95

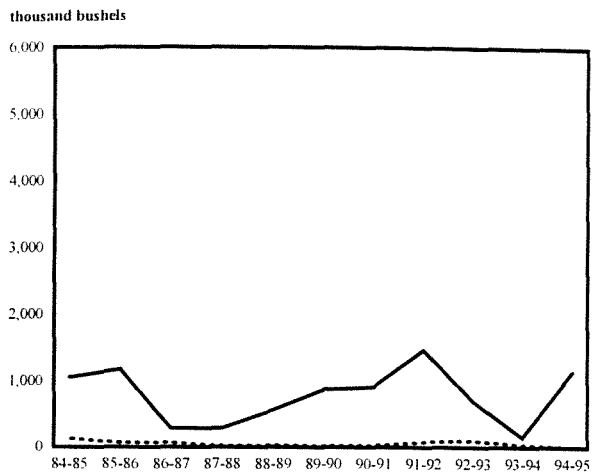
thousand bushels



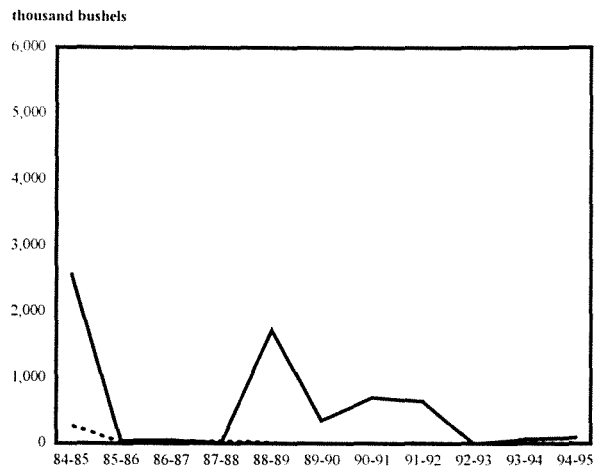
**NORTH DAKOTA CORN SHIPMENTS
BY RAIL, TRUCK AND DESTINATION**
(thousand bu.)

YEAR	Minneapolis - St. Paul		Duluth - Superior		West		Misc. Markets		TOTAL	
	Rail	Truck	Rail	Truck	Rail	Truck	Rail	Truck	Rail	Truck
1984-85	1,057 (89%)	132 (11%)	2,579 (90%)	280 (10%)	13,623 (100%)	36 (0%)	1,156 (24%)	3,759 (76%)	18,415 (81%)	4,207 (19%)
1985-86	1,185 (95%)	69 (5%)	43 (64%)	24 (36%)	6,305 (97%)	183 (3%)	2,815 (50%)	2,769 (50%)	10,348 (77%)	3,046 (23%)
1986-87	287 (80%)	71 (20%)	56 (95%)	3 (5%)	18,407 (97%)	544 (3%)	2,703 (38%)	4,364 (62%)	21,454 (81%)	4,982 (19%)
1987-88	291 (93%)	21 (7%)	14 (25%)	41 (75%)	23,742 (99%)	236 (1%)	2,524 (42%)	3,556 (58%)	26,571 (87%)	3,854 (13%)
1988-89	570 (95%)	32 (5%)	1,727 (99%)	13 (1%)	21,498 (98%)	362 (2%)	2,175 (42%)	2,962 (58%)	25,972 (89%)	3,371 (11%)
1989-90	876 (97%)	24 (3%)	357 (100%)	1 (0%)	25,720 (98%)	412 (2%)	3,914 (53%)	3,460 (47%)	30,867 (89%)	3,897 (11%)
1990-91	915 (97%)	28 (3%)	708 (100%)	2 (0%)	19,555 (100%)	35 (0%)	3,913 (54%)	3,278 (46%)	25,091 (88%)	3,343 (12%)
1991-92	1,474 (95%)	81 (5%)	651 (98%)	13 (2%)	24,641 (98%)	392 (2%)	4,731 (54%)	4,093 (46%)	31,501 (87%)	4,583 (13%)
1992-93	705 (87%)	102 (13%)	0 (0%)	0 (0%)	8,807 (99%)	96 (1%)	2,680 (32%)	5,663 (68%)	12,192 (68%)	5,861 (32%)
1993-94	162 (83%)	35 (17%)	69 (92%)	6 (8%)	1,451 (99%)	14 (1%)	761 (12%)	5,550 (88%)	2,444 (30%)	5,604 (70%)
1994-95	1,147 (100%)	3 (0%)	97 (85%)	17 (15%)	13,700 (100%)	4 (0%)	2,528 (27%)	6,903 (73%)	17,472 (72%)	6,927 (28%)

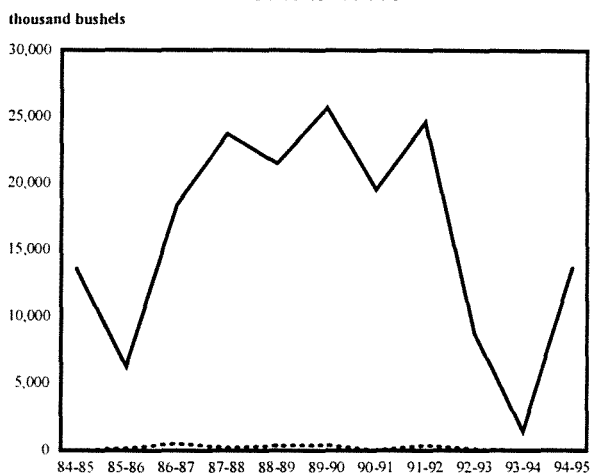
CORN TO MINNEAPOLIS
1984-85 to 1994-95



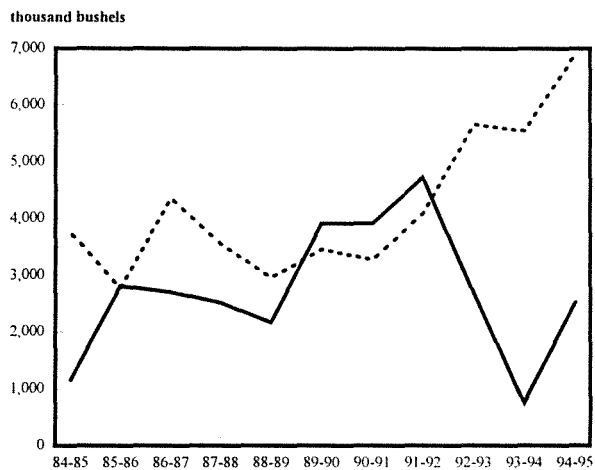
CORN TO DULUTH-SUPERIOR
1984-85 to 1994-95



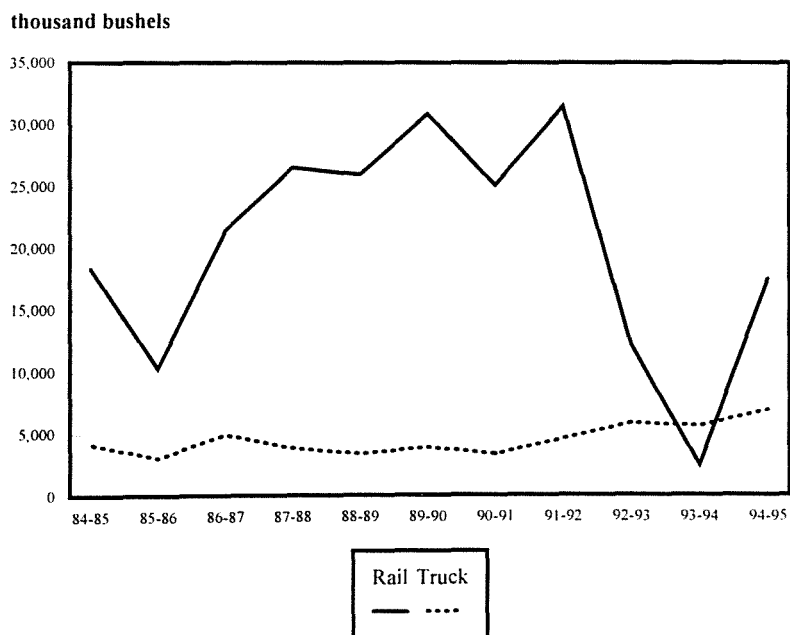
CORN TO WEST
1984-85 to 1994-95



CORN TO MISCELLANEOUS MARKETS
1984-85 to 1994-95

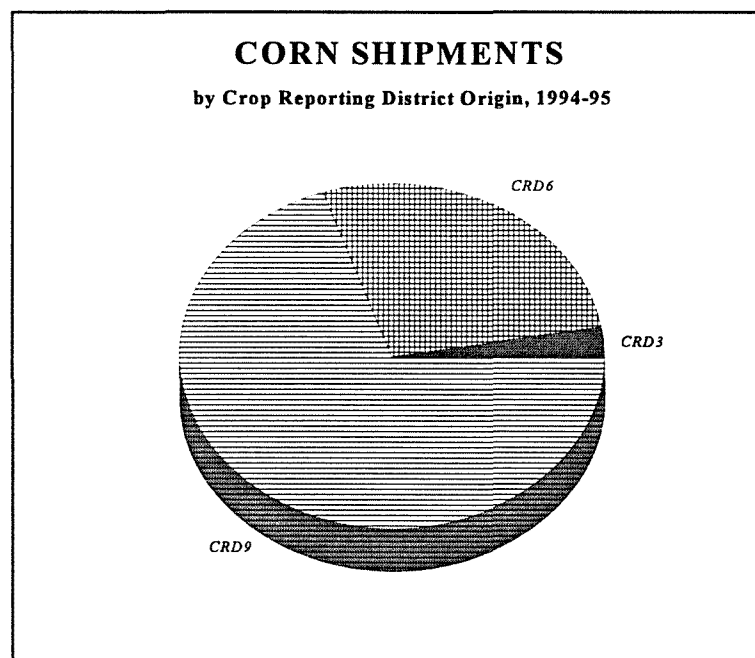


CORN SHIPMENTS
1984-85 to 1994-95



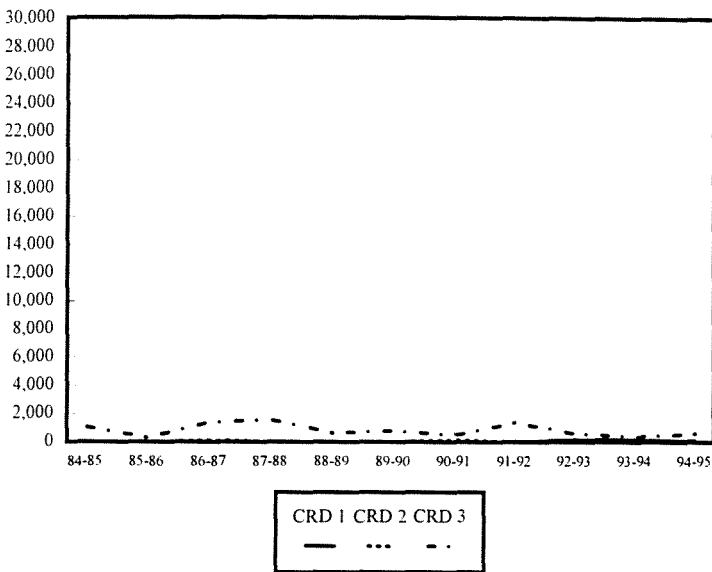
**NORTH DAKOTA CORN SHIPMENTS
BY CROP REPORTING DISTRICT
(thousand bu.)**

YEAR	Crop Reporting District									TOTAL
	1	2	3	4	5	6	7	8	9	
1984-85	0 (0%)	20 (0%)	1,109 (5%)	49 (0%)	600 (3%)	6,800 (30%)	496 (2%)	304 (1%)	13,246 (59%)	22,623 (100%)
1985-86	1 (0%)	9 (0%)	334 (2%)	12 (0%)	162 (1%)	3,181 (24%)	12 (0%)	11 (0%)	9,671 (72%)	13,394 (100%)
1986-87	0 (0%)	129 (0%)	1,394 (5%)	95 (0%)	383 (1%)	9,360 (35%)	54 (0%)	12 (0%)	15,008 (57%)	26,437 (100%)
1987-88	14 (0%)	26 (0%)	1,591 (5%)	127 (0%)	582 (2%)	8,516 (28%)	9 (0%)	116 (0%)	19,445 (64%)	30,426 (100%)
1988-89	12 (0%)	0 (0%)	648 (2%)	40 (0%)	173 (1%)	6,926 (23%)	0 (0%)	0 (0%)	21,542 (73%)	29,341 (100%)
1989-90	7 (0%)	0 (0%)	797 (2%)	7 (0%)	153 (1%)	7,784 (22%)	1 (0%)	0 (0%)	26,015 (75%)	34,764 (100%)
1990-91	0 (0%)	144 (1%)	479 (2%)	142 (0%)	78 (0%)	6,812 (24%)	0 (0%)	871 (3%)	19,908 (70%)	28,434 (100%)
1991-92	30 (0%)	18 (0%)	1,391 (4%)	20 (0%)	593 (2%)	9,660 (27%)	1 (0%)	17 (0%)	24,350 (67%)	36,084 (100%)
1992-93	208 (1%)	6 (0%)	623 (3%)	11 (0%)	27 (0%)	4,599 (25%)	1 (0%)	7 (0%)	12,567 (70%)	18,053 (100%)
1993-94	173 (2%)	10 (0%)	389 (5%)	12 (0%)	20 (0%)	1,738 (22%)	0 (0%)	101 (1%)	5,604 (70%)	8,047 (100%)
1994-95	108 (0%)	7 (0%)	621 (3%)	12 (0%)	115 (0%)	6,636 (27%)	0 (0%)	26 (0%)	16,873 (69%)	24,398 (100%)

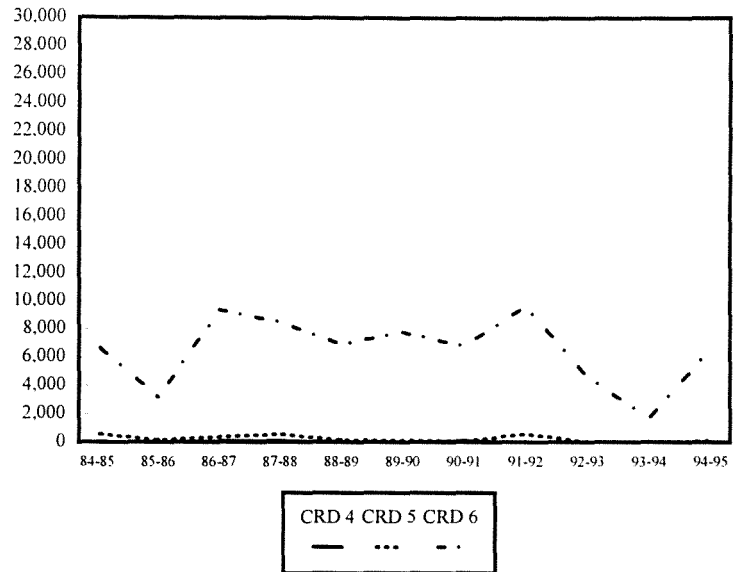


CORN SHIPMENTS BY CROP REPORTING DISTRICT

BY NORTHERN CROP REPORTING DISTRICTS
(thousand bushels)



BY CENTRAL CROP REPORTING DISTRICTS
(thousand bushels)



SOUTHERN CROP REPORTING DISTRICTS
(thousand bushels)

