



**AgEcon** SEARCH  
RESEARCH IN AGRICULTURAL & APPLIED ECONOMICS

*The World's Largest Open Access Agricultural & Applied Economics Digital Library*

**This document is discoverable and free to researchers across the globe due to the work of AgEcon Search.**

**Help ensure our sustainability.**

Give to AgEcon Search

AgEcon Search

<http://ageconsearch.umn.edu>

[aesearch@umn.edu](mailto:aesearch@umn.edu)

*Papers downloaded from **AgEcon Search** may be used for non-commercial purposes and personal study only. No other use, including posting to another Internet site, is permitted without permission from the copyright owner (not AgEcon Search), or as allowed under the provisions of Fair Use, U.S. Copyright Act, Title 17 U.S.C.*

# 1998 OUTLOOK OF THE U.S. AND WORLD WHEAT INDUSTRIES

Won W. Koo  
Richard D. Taylor



Department of Agricultural Economics ! Agricultural Experiment Station  
North Dakota State University ! Fargo, ND 58105-5636

## ACKNOWLEDGMENTS

The authors extend appreciation to professors George Flaskerud, Demcey Johnson, Timothy Petry, and William Wilson for their constructive comments and suggestions. Special thanks go to Ms. Charlene Lucken, who provided editorial comments, and Ms. Carol Jensen, who helped to prepare the manuscript.

We would be happy to provide a single copy of this publication free of charge. You can address your inquiry to: Carol Jensen, Department of Agricultural Economics, North Dakota State University, P.O. Box 5636, Fargo, ND, 58105-5636, Ph. 701-231-7441, Fax 701-231-7400, e-mail [cjensen@ndsuent.nodak.edu](mailto:cjensen@ndsuent.nodak.edu) . This publication is also available electronically at this web site: <http://agecon.lib.umn.edu/ndsuent.html>

### NOTICE:

The analyses and views reported in this paper are those of the author. They are not necessarily endorsed by the Department of Agricultural Economics or by North Dakota State University.

North Dakota State University is committed to the policy that all persons shall have equal access to its programs, and employment without regard to race, color, creed, religion, national origin, sex, age, marital status, disability, public assistance status, veteran status, or sexual orientation.

Information on other titles in this series may be obtained from: Department of Agricultural Economics, North Dakota State University, P.O. Box 5636, Fargo, ND 58105. Telephone: 701-231-7441, Fax: 701-231-7400, or e-mail: [cjensen@ndsuent.nodak.edu](mailto:cjensen@ndsuent.nodak.edu).

Copyright © 1998 by Won W. Koo and Richard D. Taylor. All rights reserved. Readers may make verbatim copies of this document for non-commercial purposes by any means, provided that this copyright notice appears on all such copies.

## TABLE OF CONTENTS

	<u>Page</u>
List of Tables . . . . .	ii
List of Figures . . . . .	iii
Abstract . . . . .	iv
Highlights . . . . .	v
Introduction . . . . .	1
Outlook for the World Wheat Industry . . . . .	1
United States . . . . .	3
Canada . . . . .	6
European Union . . . . .	11
Australia . . . . .	13
Argentina . . . . .	13
Importing Countries . . . . .	19
Asian Importers . . . . .	19
Former Soviet Union . . . . .	20
African Region . . . . .	20
Latin America . . . . .	20
Concluding Remarks . . . . .	20
References . . . . .	25
Appendix . . . . .	27

## LIST OF TABLES

<u>Table</u>		<u>Page</u>
1	Wheat Production, Consumption, Exports, and Carry-over Stocks in the United States . . . . .	3
2	Wheat Production, Consumption, Exports, and Carry-over Stocks in Canada . . . . .	6
3	Wheat Production, Consumption, Exports, and Carry-over Stocks in the European Union . . . . .	11
4	Wheat Production, Consumption, Exports, and Carry-over Stocks in Australia . . . . .	13
5	Wheat Production, Consumption, Exports, and Carry-over Stocks in Argentina . . . . .	13
6	Imports of Common and Durum Wheat by Major Importing Countries . . . . .	19

## LIST OF FIGURES

<u>Figure</u>		<u>Page</u>
1	World Wheat Trade, 1996 to 2007 . . . . .	2
2	U.S. Wheat Export Prices, 1996 to 2007 . . . . .	4
3	U.S. Wheat Production, 1996 to 2007 . . . . .	5
4	U.S. Domestic Wheat Consumption, 1996 to 2007 . . . . .	7
5	U.S. Wheat Export, 1996 to 2007 . . . . .	8
6	U.S. Wheat Ending Stocks, 1997 to 2007 . . . . .	9
7	Canadian Western Red Spring Wheat Production and Utilization, 1996 to 2007 . . . . .	10
8	Canadian Western Amber Durum Wheat Production and Utilization, 1996 to 2007 . . . . .	12
9	E.U. Common Wheat Production and Utilization, 1996 to 2007 . . . . .	14
10	E.U. Durum Wheat Production and Utilization, 1996 to 2007 . . . . .	15
11	Australia Common Wheat Production and Utilization, 1996 to 2007 . . . . .	16
12	Argentina Common Wheat Production and Utilization, 1996 to 2007 . . . . .	17
13	Common Wheat Imports by Major Asian Countries, 1996 to 2007 . . . . .	18
14	Common and Durum Wheat Imports by Former Soviet Union, 1996 to 2007 . . . . .	21
15	Common and Durum Wheat Imports by Major African Countries, 1996 to 2007 . . . . .	22
16	Common and Durum Wheat Imports by Latin American Countries, 1996 to 2007 . . . . .	23

## **ABSTRACT**

This report evaluates the U.S. and world wheat markets for the 1997-2007 period by using the World Wheat Policy Simulation Model. This analysis is based on a series of assumptions about general economic conditions, agricultural policies, the weather, and technological change.

Both the U.S. and world wheat economies are predicted to be optimistic for the next ten years. World demands for both common and durum wheat are expected to grow faster than world production of the two wheat classes, resulting in gradual increases in prices of the wheats. World trade volumes of both classes of wheat are expected to expand, but trade volume of durum wheat may grow faster than common wheat.

**Key words:** common wheat, durum wheat, production, exports, consumption, ending stocks.

## HIGHLIGHTS

Total world wheat trade is projected to increase by 3.83% from 96.1 million metric tons in 1997 to 99.9 million metric tons in 2007. Durum wheat trade is expected to grow faster than common wheat trade.

Production of all wheat classes except soft red winter wheat in the United States is predicted to increase for the 1997-2007 period. The largest increase in production occurs for U.S. durum wheat, followed by white wheat. U.S. soft red winter wheat production is predicted to decrease due mainly to decreased import demand in Southeast Asia.

U.S. consumption of durum wheat is expected to grow faster than consumption of other wheats for the 1997-2007 period, mainly because of the increasing popularity of pasta products in the United States.

U.S. wheat exports are predicted to be strong for the 1997-2007 period. U.S. durum wheat exports to offshore markets will grow faster than those of other wheats.

Production of both Canadian western red spring (CWRS) and western amber durum (CWAD) wheat is predicted to increase for the 1997-2007 period. However, CWAD wheat production will grow faster than CWRS wheat production.

Domestic consumption of CWRS and CWAD wheat is predicted to increase for the 1997-2007 period. CWAD wheat exports are projected to increase faster than CWRS wheat exports.

Common wheat production in the European Union (E.U.) is predicted to increase by 7.2% from 1997 to 2007, while durum wheat production decreases by 4.6%. Exports of both wheat classes are predicted to decrease substantially.

Australia's wheat production will grow by 13.15% over the 1997-2007 period. Domestic wheat consumption will increase 8.3% from 3.9 million metric tons in 1997 to 4.2 million metric tons in 2007. Wheat exports also will increase substantially from 12.4 million metric tons in 1997 to 14.9 million metric tons in 2007.

Argentine wheat production is projected to increase 8.9% from 13.8 million metric tons in 1997 to 16.4 million metric tons in 2007. Domestic wheat consumption will increase 13.6% from 4.4 million metric tons to 5.0 million metric tons for the period. Wheat exports will increase substantially from 6.8 million metric tons in 1997 to 11.4 million metric tons in 2007.

For the 1997-2007 period, the United States will be the largest wheat exporter, followed by Canada. Australia will be the third largest exporter.

Most importing countries are predicted to increase their imports for both common and durum wheat. Among those countries, import demand for common wheat from China and Egypt will grow faster than from other countries. Import demand for durum wheat from the Former Soviet Union, Algeria, and Venezuela is predicted to grow faster than common wheat.



# 1998 OUTLOOK OF THE U.S. AND WORLD WHEAT INDUSTRIES

Won W. Koo and Richard D. Taylor\*

## INTRODUCTION

This report evaluates the U.S. and world wheat industries for the 1998-2007 period by using the World Wheat Policy Simulation Model. The model was developed by Benirschka and Koo and is operational at North Dakota State University. The outlook projection is based on an assumption that current farm and trade policies adopted by wheat exporting and importing countries are unchanged. Assumptions associated with macroeconomic variables, such as GDP growth rates, interest rates, inflation rates, exchange rates, and consumer price indices in the United States and other countries are based on forecasts prepared by the WEFA Group and Project LINK. Average weather conditions and historical rates of technological change are also assumed to prevail during the projection period.

Wheat is a differentiated product. Substitution among wheat classes is imperfect, and consumer preferences differ among countries, suggesting that wheat characteristics are an important determinant of trade flows. The World Wheat Policy Simulation Model is a partial equilibrium model that distinguishes eight classes of wheat. The wheat classes are Argentine wheat, Australian soft wheat (ASW), Canadian western red spring (CWRS), Canadian western amber durum (CWAD) wheat, E.U. common wheat, E.U. durum wheat, U.S. common wheat, and U.S. hard amber durum wheat. U.S. common wheat is further divided into four classes; hard red winter (HRW), hard red spring (HRS), soft red winter (SRW), and white wheat.

The model contains 5 exporting countries (Argentina, Australia, Canada, the United States, and the European Union) and 13 importing countries and regions (Algeria, Brazil, China, Egypt, the Former Soviet Union, Japan, Mexico, Morocco, South Korea, Taiwan, Tunisia, Venezuela, and a Rest of the World region). The model simulates production, consumption, stocks, exports, and trade flows for wheat classes over a 10-year period. The model is solved for a set of equilibrium wheat prices in which demand for each wheat class equals supply for every year. The model is linked to the Food Agricultural Policy Research Institute (FAPRI) model and uses the predicted prices of all agricultural commodities, except wheat, from the model. The model is used to project supply and demand conditions for 1997 to 2007. Thus, 1997 is the first year of the simulation.

## OUTLOOK FOR THE WORLD WHEAT INDUSTRY

Total world wheat trade is projected to increase by 3.83% from 96.1 million metric tons in 1997 to 99.8 million metric tons in 2007 (Figure 1). Except for E.U. common wheat, trade of all wheat classes will increase for the 1997-2007 period. The E.U.'s exports will decrease, mainly because reductions in E.U. subsidies under WTO will make E.U. wheat production less competitive. Common wheat production in Argentina is predicted to increase faster than that in other countries.

---

\*Professor and research associate, respectively, in the Department of Agricultural Economics, North Dakota State University, Fargo.

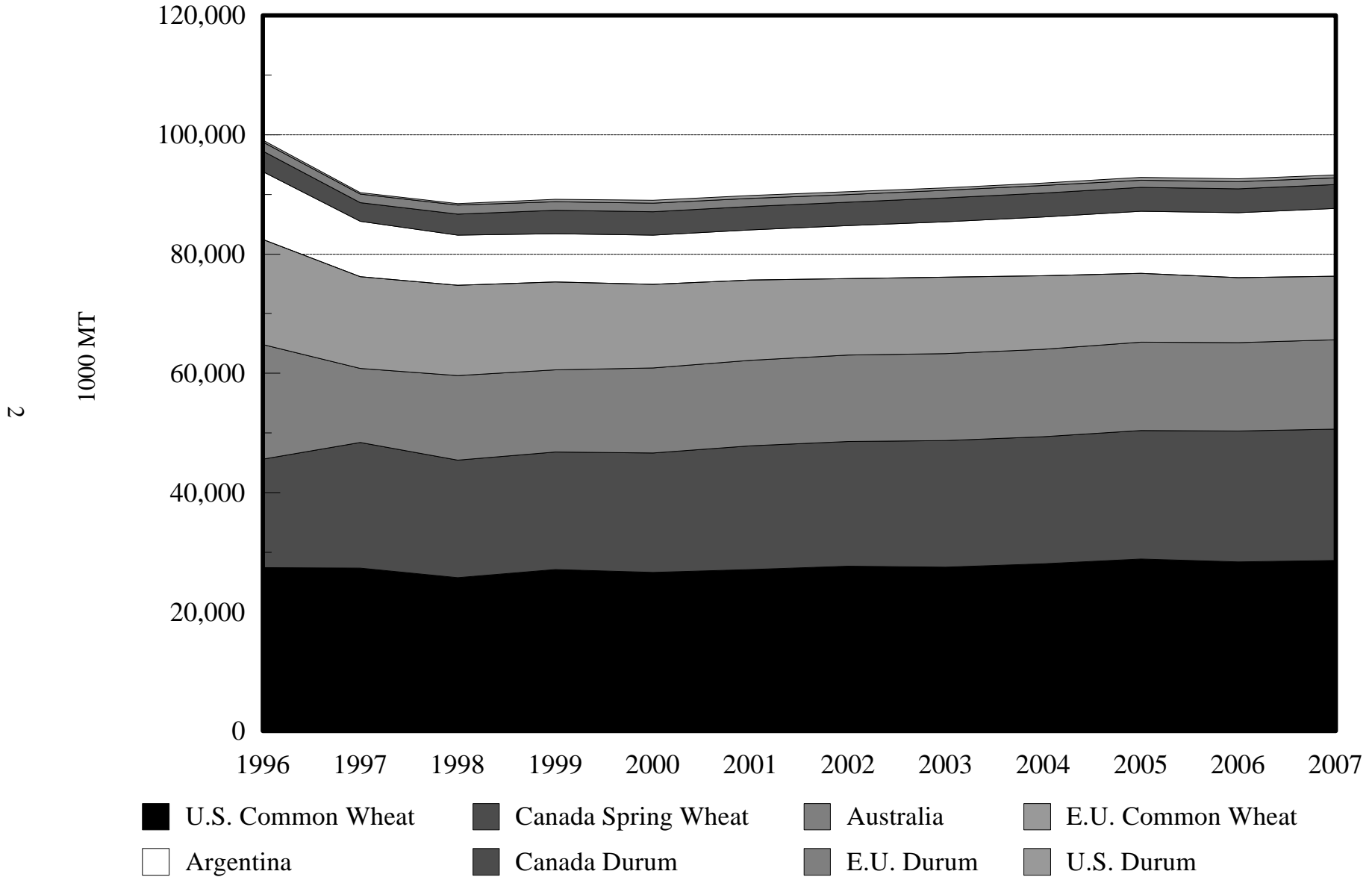


Figure 1. World Wheat Trade, 1996 to 2007

The wheat export price of U.S. common wheat is projected to increase gradually 14.67%, from \$136.2 per metric ton in 1997 to \$156.16 per metric ton in 2007 (Figure 2). The price of U.S. durum wheat is projected to decrease from \$200 per metric ton in 1997 to \$171 in 2000 and increase gradually for the remaining period.

### United States

Table 1 shows wheat production, consumption, exports, and ending stocks in the United States. Total U.S. wheat production will grow by 3.65% from 1997 to 2007. Predicted production of each class of wheat in 1997 is slightly higher than the 5-year average production of the wheat class. For the 1997-2007 period, the largest increases in production occur for U.S. durum (21.28%) and U.S. white wheat (12.74%). U.S. hard red spring wheat production increases by only 2.68% and SRW production even decreases 4.45% due mainly to a decrease in import demand in Southeast Asian countries. Changes in production of different classes of wheat are shown in Figure 3. For all classes of wheat produced in the United States, production will decrease from 1997 to 1999 and then increase gradually for the remaining period.

Total wheat harvested area will decrease from 64.3 million acres in 1997 to 62.7 million acres in 2007 while average yields will increase from 39.5 bushels per acre to 42.0 bushels per acre. Hard red spring wheat area will decrease 0.2 million acres and U.S. durum area will increase 0.3 million acres.

Table 1. Wheat Production, Consumption, Exports, and Carry-over Stocks in the United States

	Average (1992-1996)	1997	2007	% Change (1997-2007)
-----thousand metric tons-----				
<u>Production</u>				
Common	61,429	66,215	68,118	2.87
White	8,512	8,757	9,873	12.74
SRW	11,600	12,788	12,219	4.45
HRW	26,214	28,616	29,542	3.23
HRS	15,103	16,054	16,484	2.68
Durum	2,604	2,929	3,552	21.28
<u>Consumption</u>				
Common	30,852	34,341	39,093	13.84
Durum	2,214	2,474	2,853	15.29
<u>Exports</u>				
Common	30,650	27,372	28,649	4.38
Durum	502	280	480	176.28
<u>Carry over</u>				
Common	12,158	15,564	22,282	43.15
Durum	869	1,184	1,097	7.31

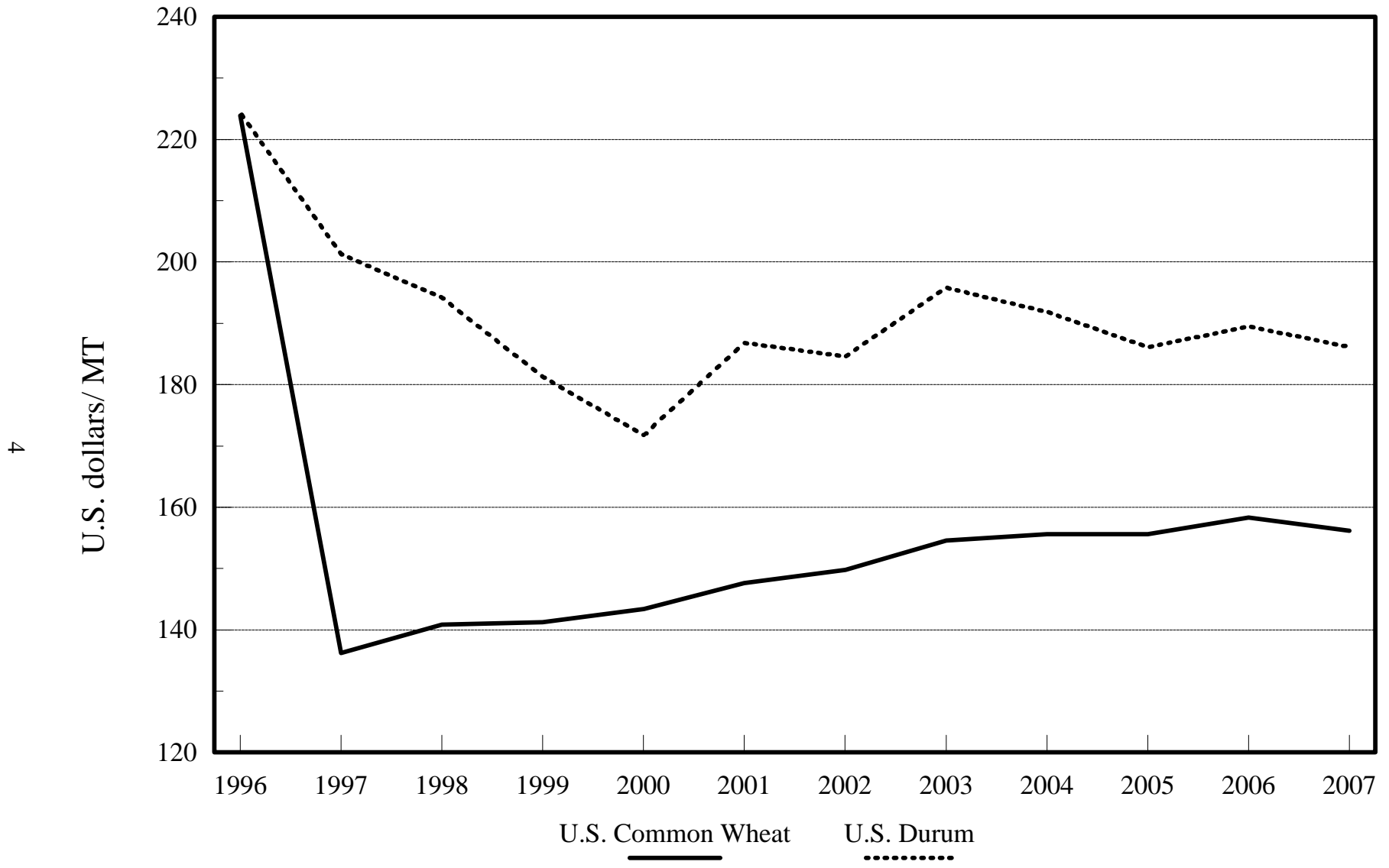


Figure 2. U.S. Wheat Export Prices, 1996 to 2007

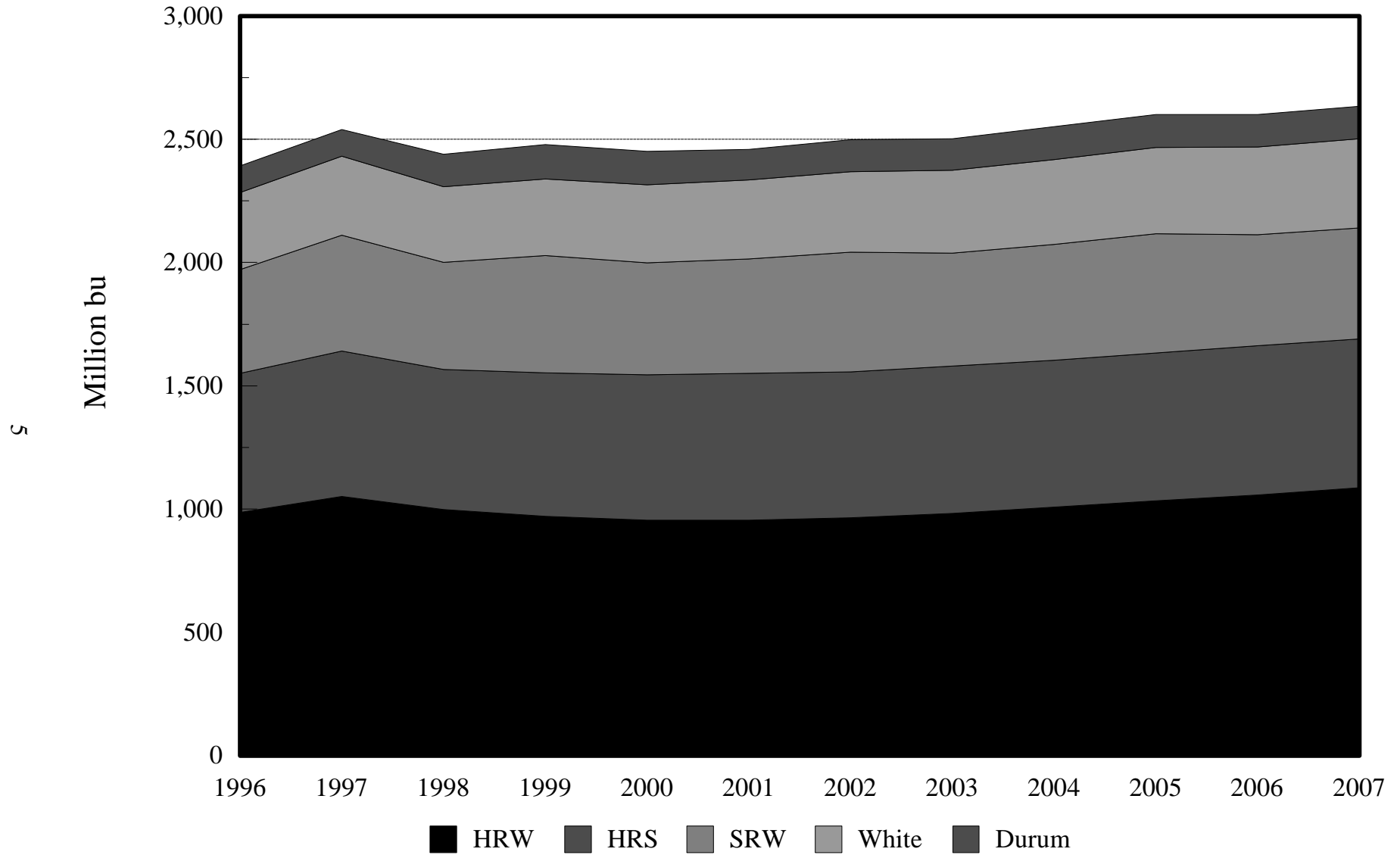


Figure 3. U.S. Wheat Production, 1996 to 2007

U.S. wheat consumption is projected to grow 13.8% for common wheat and 15.3% for U.S. durum wheat for the 1997-2007 period (Figure 4). Durum wheat consumption grows a little faster than common wheat consumption, mainly because of the increasing popularity of pasta products in the United States.

U.S. durum exports are projected to increase 176% from 280 thousand metric tons in 1997 to 480 thousand metric tons to 2007, which, however, is 8.6 percent lower than the 5-year average export from 1992 to 1996. Common wheat exports are also predicted to increase gradually from 27.4 million metric tons in 1997 to 28.6 million metric tons in 2007. For both wheat classes, the exports are expected to be the lowest in 1998 and increase gradually for the remaining period (Figure 5).

Ending stocks are expected to increase for common wheat, but to decrease for durum wheat for the 1997-2007 period. Total ending stocks for common wheat are predicted to increase by 52.6% from 1997 to 2007, while ending stocks for U.S. durum are predicted to decrease 7.36% (Figure 6).

9

### Canada

The predicted production, consumption, exports, and carry-over stocks of CWRS and CWAD wheat in 1997 are larger than the recent 5-year averages of the two wheat classes (Table 2). For the 1997-2007 period, Canadian WRS and WAD wheat production increase by 2.1% and 20.5%, respectively. Total area for WRS wheat decreases from 12.3 million hectares in 1997 to 11.6 million hectares in 2007, while WAD wheat area increases from 1.9 million hectares to 2.2 million hectares. This implies that there is a trend which replaces WRS wheat area with WAD wheat area in Canada, mainly because of a strong demand for durum wheat in major importing countries.

Table 2. Wheat Production, Consumption, Exports, and Carry-over Stocks in Canada

	Average (1992-1996)	1997	2007	% Change (1997-2007)
-----thousand metric tons-----				
<u>Production</u>				
WRS	23,065	29,170	29,784	2.10
WAD	3,829	4,163	5,015	20.47
<u>Consumption</u>				
WRS	6,882	6,759	8,032	18.83
WAD	865	859	999	16.30
<u>Exports</u>				
WRS	16,462	20,980	22,042	5.06
WAD	3,020	3,131	4,004	27.88
<u>Carry over</u>				
WRS	7,223	7,895	8,480	7.41
WAD	1,804	2,058	2,257	9.67

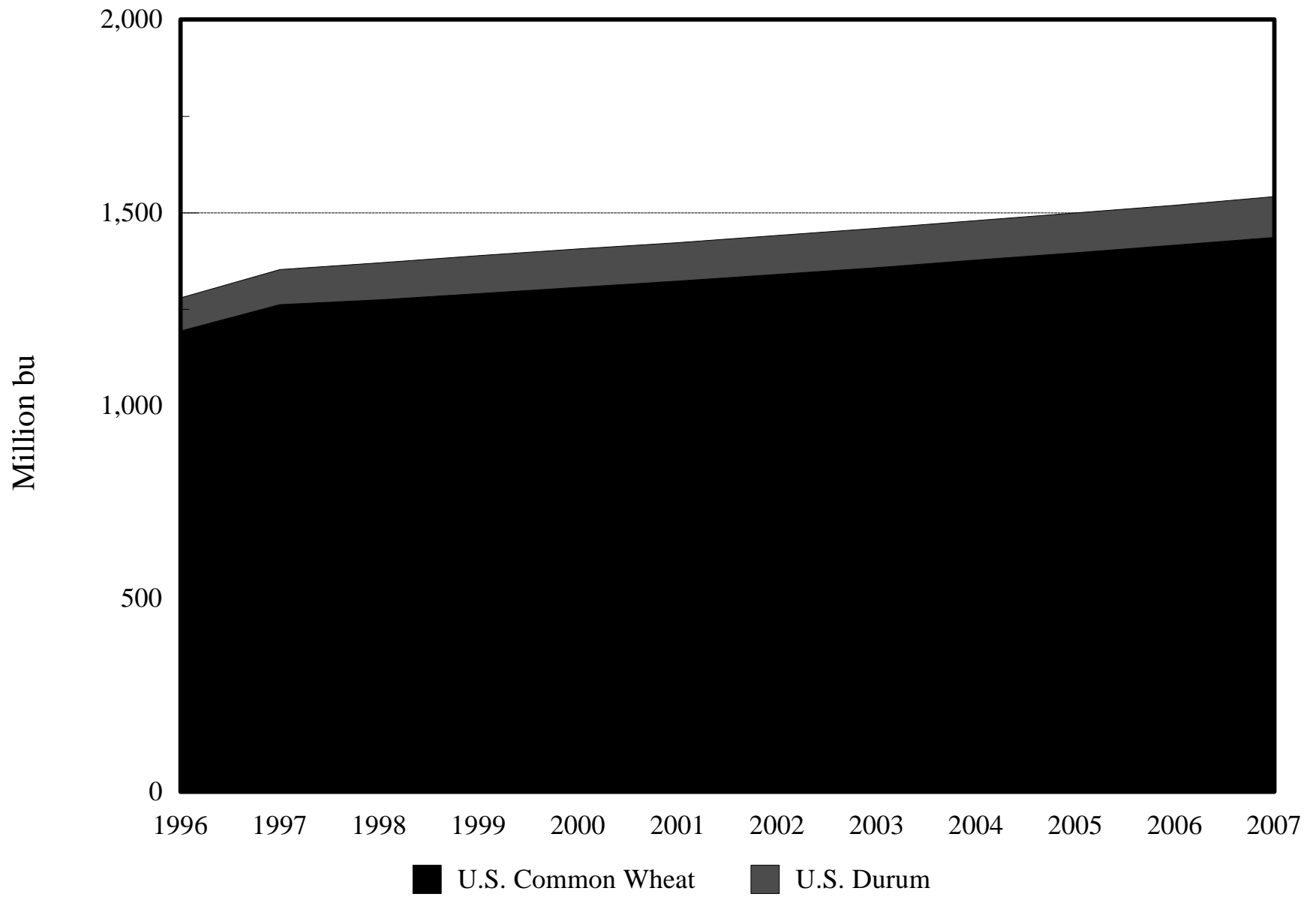


Figure 4. U.S. Domestic Wheat Consumption, 1996 to 2007

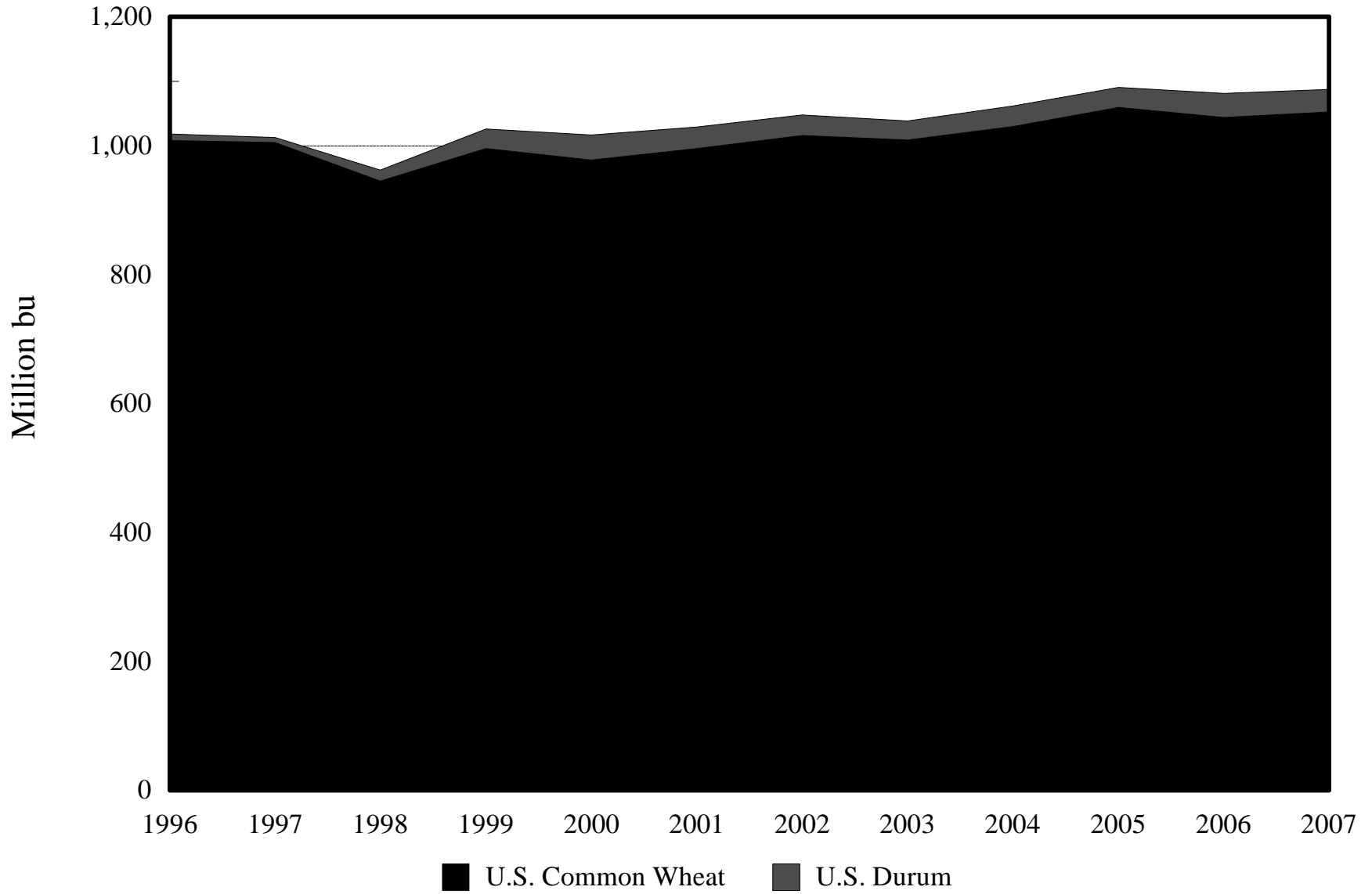


Figure 5. U.S. Wheat Exports, 1996 to 2007



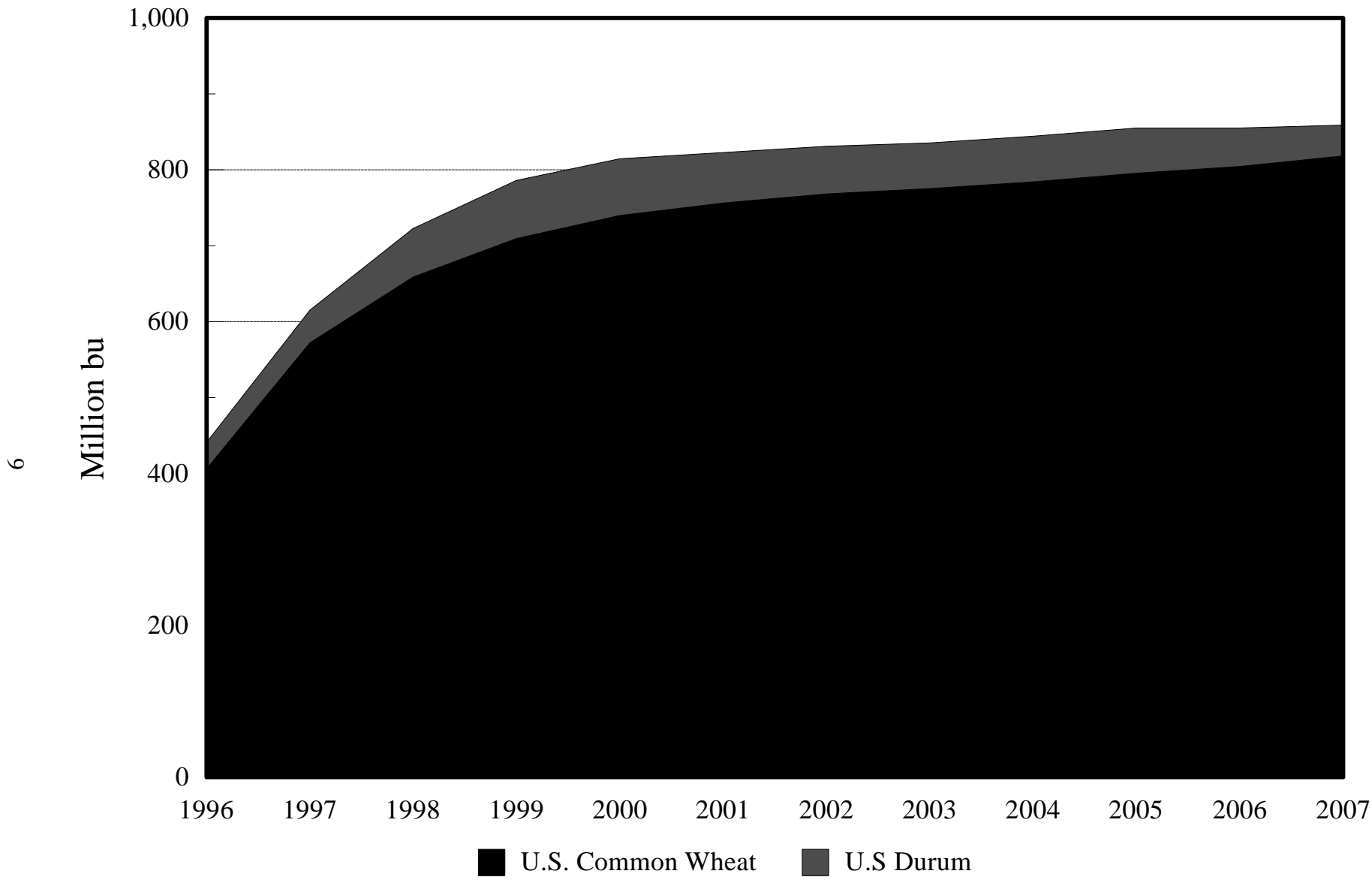


Figure 6. U.S. Wheat Ending Stocks, 1996 to 2007

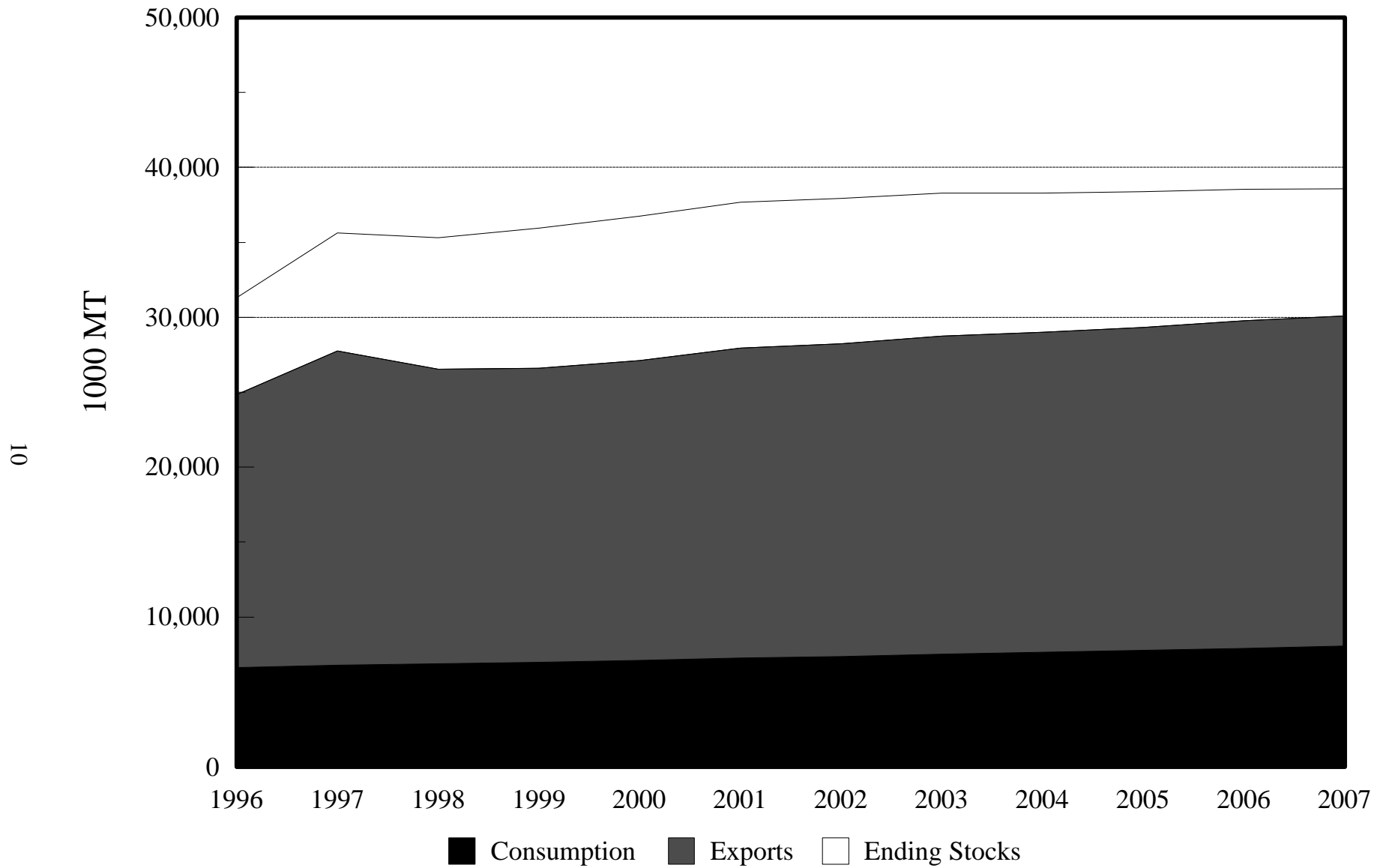


Figure 7. Canadian Western Red Spring Wheat Production and Utilization, 1996 to 2007

Domestic consumption of WRS and WAD wheat will increase by 18.8% and 16.3%, respectively, for the 1997-2007 period. Canadian WAD wheat exports are projected to increase 27.9% from 3.1 million metric tons in 1997 to 4.0 million metric tons in 2007. However, WRS wheat exports are predicted to increase by only 5.1%.

Ending stocks are predicted to increase 7.41% for WRS wheat and 9.67% for WAD wheat for the 1997-2007 period.

Figure 7 shows changes in production, consumption, exports, and ending stocks of WRS wheat in Canada from 1996 to 2007. Consumption, exports, and ending stock of WRS wheat will increase gradually for the period, while production will decrease until 1998 and then increase until 2007. For WAD wheat, production, consumption, exports, and ending stocks will increase gradually. However, the rate of increase for production is slower than that for consumption, exports, and ending stocks (Figure 8).

### **European Union**

Table 3 presents production, consumption, exports, and ending stocks of common and durum wheat in the E.U. for 1997-2007 period. Common wheat production in the European Union will increase by 7.2% from 1997 to 2007, while durum wheat production will decrease by 4.6%.

Domestic consumption of common wheat is projected to increase 17.7% from 67 million metric tons in 1997 to 78.9 million metric tons in 2007. However, consumption of durum wheat is predicted to be unchanged. Exports of both wheat classes are predicted to decrease substantially: 30.9% for common wheat and 21.6% for durum wheat. Ending stocks for common wheat will increase significantly, while those for durum wheat will remain unchanged.

Table 3. Wheat Production, Consumption, Exports, and Carry-over Stocks in the European Union

	Average (1992-1996)	1997	2007	% Change (1997-2007)
-----thousand metric tons-----				
<u>Production</u>				
Common	76,725	83,414	89,400	7.18
Durum	8,126	8,730	8,327	-4.61
<u>Consumption</u>				
Common	62,686	67,062	78,904	17.66
Durum	7,503	7,181	7,182	0.01
<u>Exports</u>				
Common	15,803	15,360	10,612	-30.91
Durum	1,174	1,456	1,141	-21.63
<u>Carry over</u>				
Common	12,413	10,344	12,562	21.44
Durum	2,056	2,058	2,257	5.10

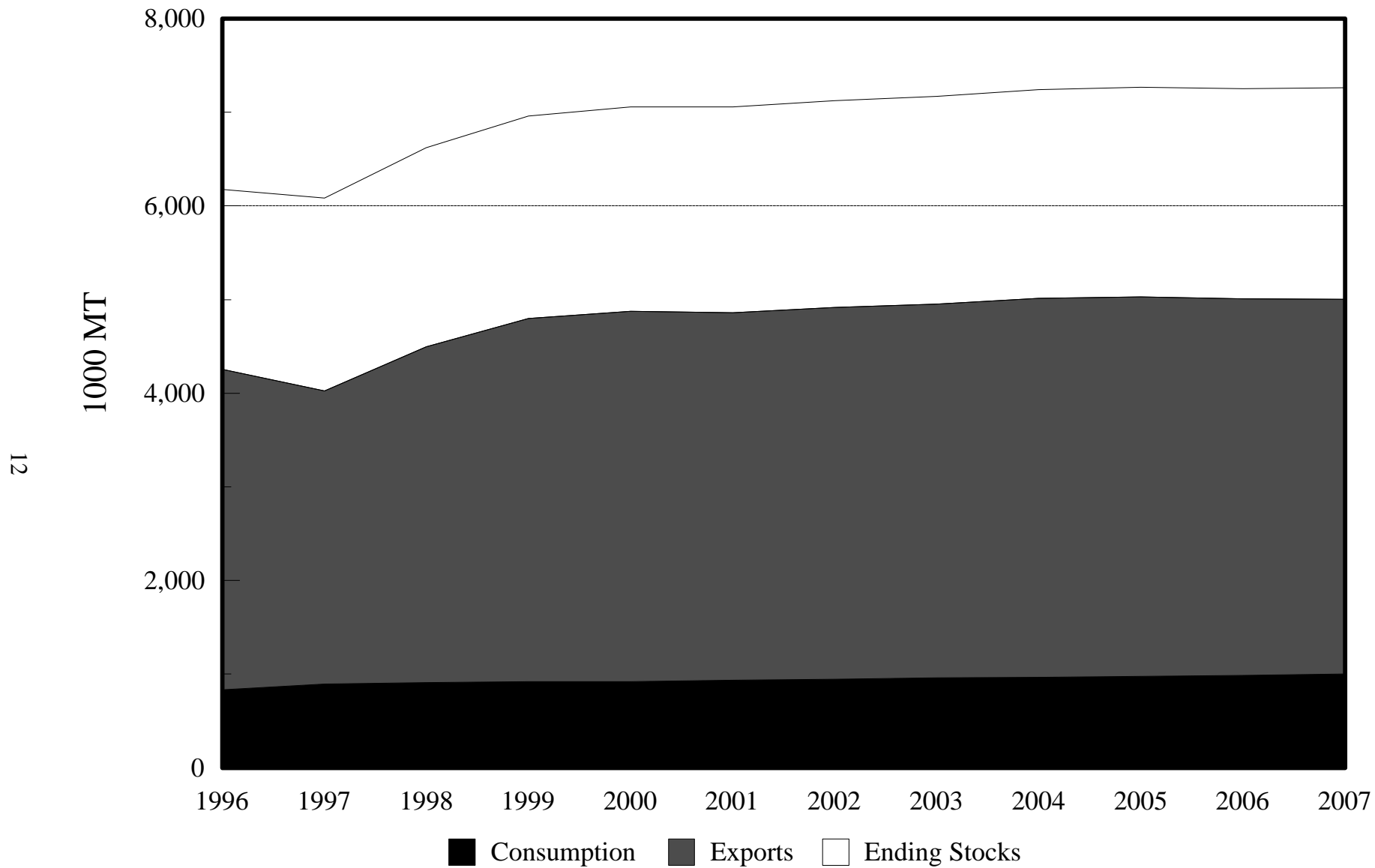


Figure 8. Canadian Western Amber Durum Wheat Production and Utilization, 1996 to 2007

Figures 9 and 10 show changes in production, consumption, exports, and ending stocks of common and durum wheat for the 1997-2007 period. For common wheat, production, consumption, and ending stocks will increase gradually, while exports will decrease. Production and exports of durum wheat will decrease for the period, while exports and ending stocks will remain unchanged.

### Australia

Australia's wheat production is projected to grow by 13.15% over the 1997-2007 period (Table 4). Yields will increase gradually at the historical trend line, while wheat area will remain almost unchanged. Domestic wheat consumption will increase 8.3% from 3.9 million metric tons in 1997 to 4.2 million metric tons in 2007. Wheat exports also will increase substantially from 12.4 million metric tons in 1997 to 14.9 million metric tons in 2007. Because of increases in domestic consumption and exports, ending stocks are predicted to decrease 5%. Figure 11 shows changes in consumption, exports, and ending stocks for the 1997-2007 period.

Table 4. Wheat Production, Consumption, Exports, and Carry-over Stocks in Australia

	Average (1992-1996)	1997	2007	% Change (1997-2007)
	-----thousand metric tons-----			
Production	16,255	16,848	19,063	13.15
Consumption	4,021	3,907	4,230	8.27
Exports	12,319	12,456	14,916	19.75
Carry over	3,215	2,931	2,784	-5.00

### Argentina

Argentine production is projected to increase 8.9% from 13.8 million metric tons in 1997 to 16.4 million metric tons in 2007 (Table 5). Wheat area will increase from 5.7 million hectares in 1997 to 6.0 million hectares in 2007. Domestic wheat consumption will increase 13.6% from 4.4 million metric tons to 5.0 million metric tons. Wheat exports will increase substantially from 6.8 million metric tons in 1997 to 11.4 million metric tons in 2007, a 68.6% increase. Ending stocks also will increase 7.4%. Figure 12 shows changes in consumption, exports, and ending stocks for the 1997-2007 period.

Table 5. Wheat Production, Consumption, Exports, and Carry-over Stocks in Argentina

	Average (1992-1996)	1997	2007	% Change (1997-2007)
	-----thousand metric tons-----			
Production	10,983	13,848	16,446	18.88
Consumption	4,231	4,436	5,038	13.57
Exports	9,300	6,763	11,405	68.63
Carry over	216	388	416	7.36

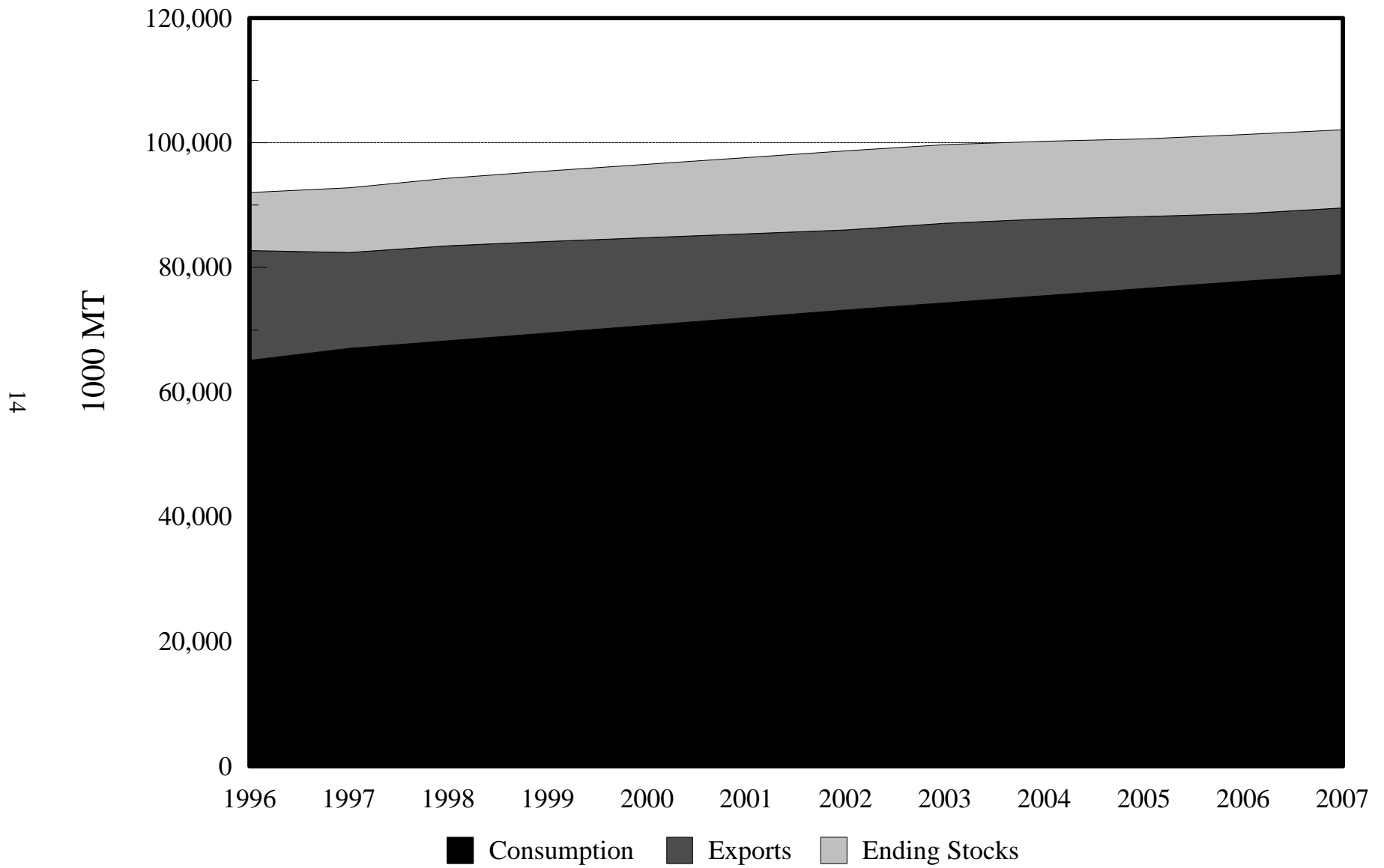


Figure 9. E.U. Common Wheat Production and Utilization, 1996 to 2007

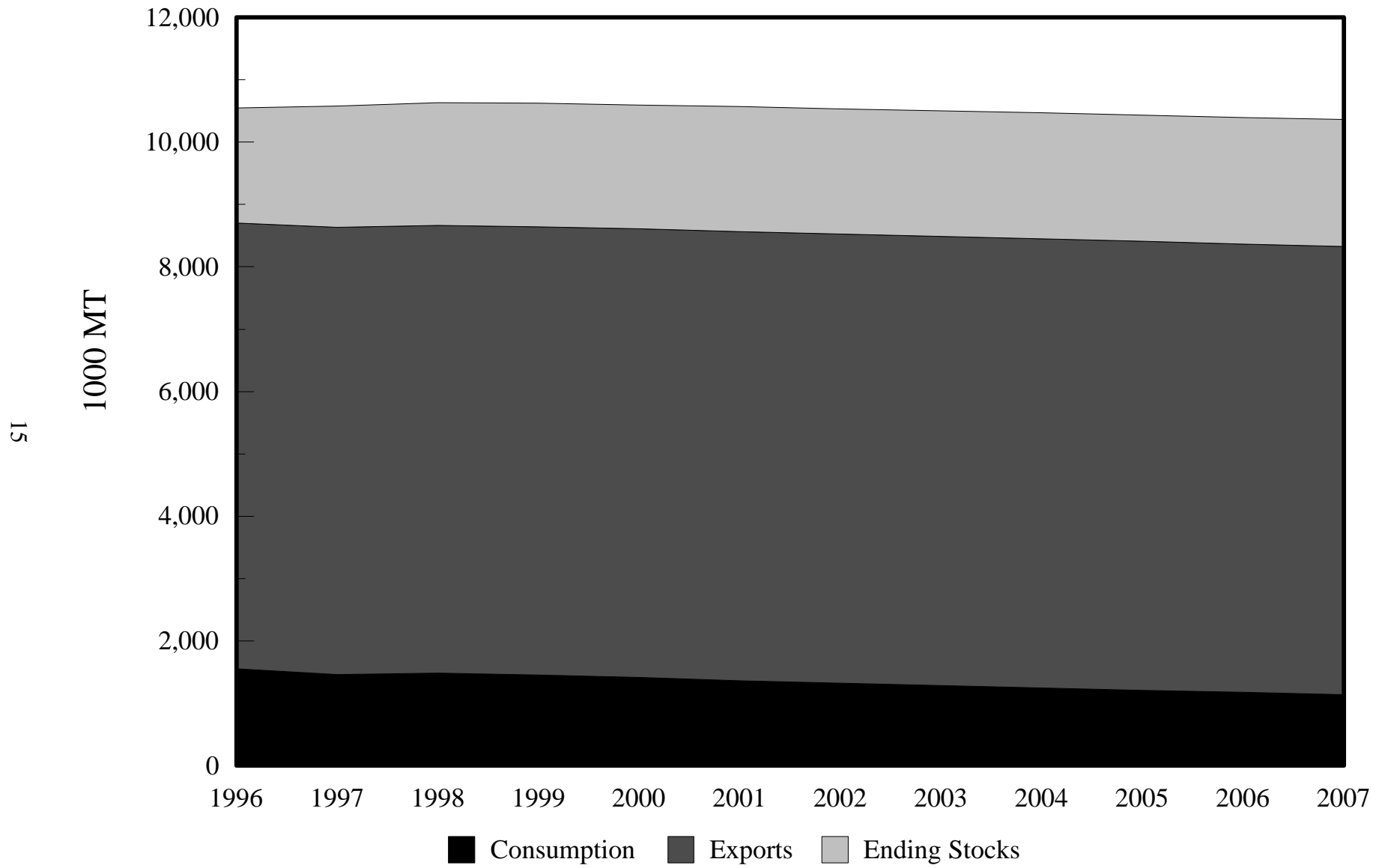


Figure 10. E.U. Durum Wheat Production and Utilization, 1996 to 2007

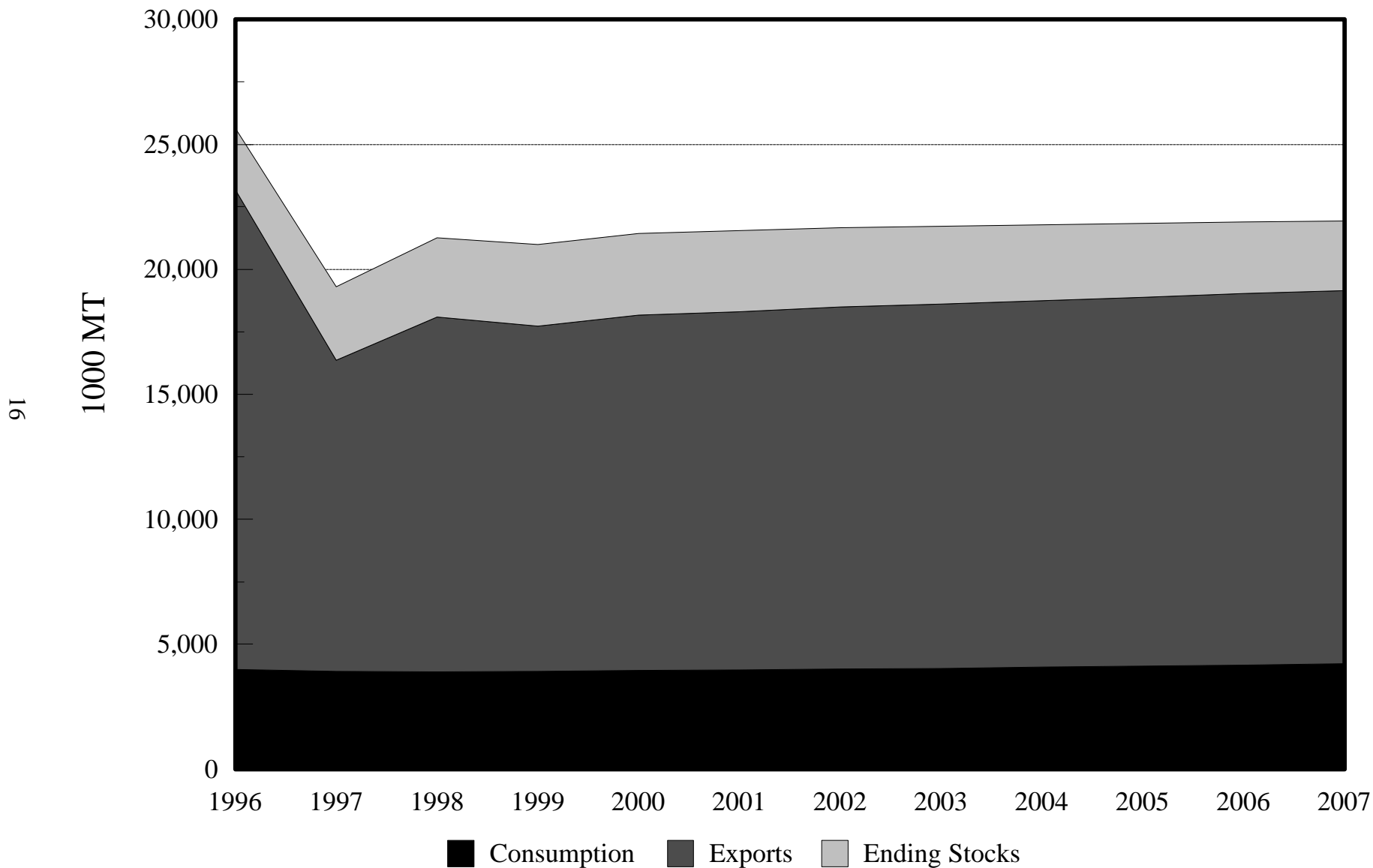


Figure 11. Australia Common Wheat Production and Utilization, 1996 to 2007



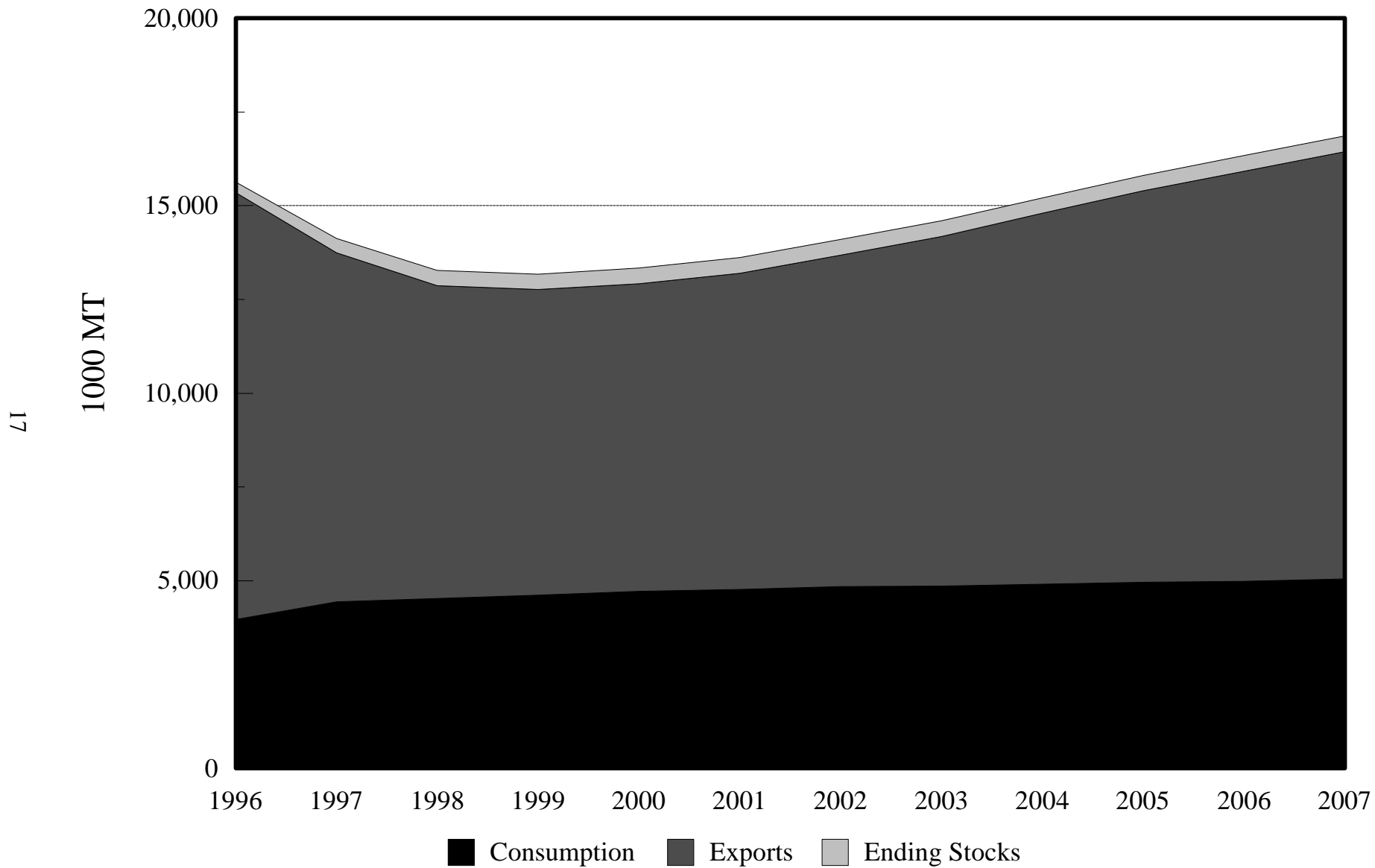


Figure 12. Argentina Common Wheat Production and Utilization, 1996 to 2007

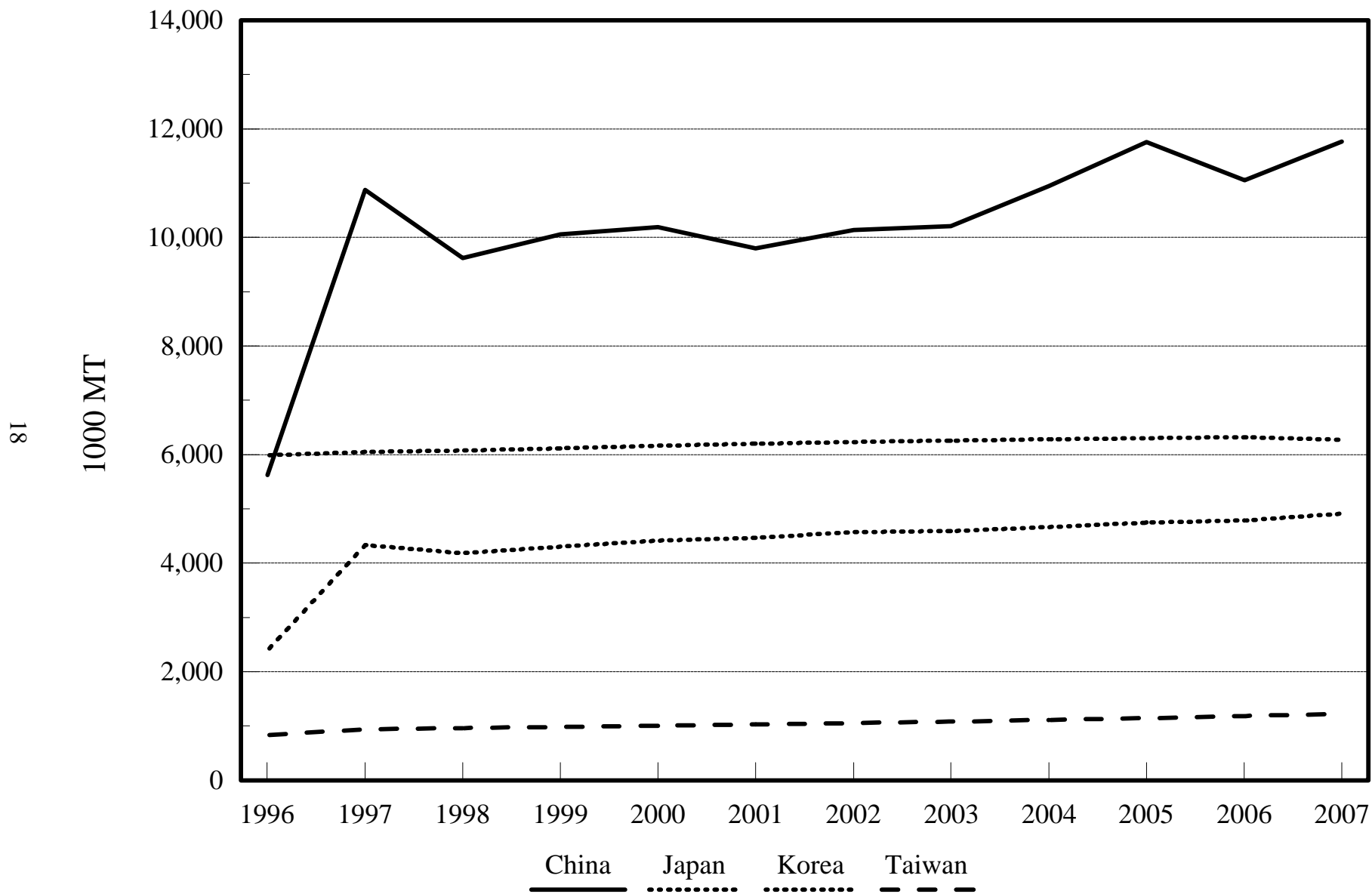


Figure 13. Common Wheat Imports by Major Asian Countries, 1996 to 2007

## Importing Countries

Importing countries are grouped into the Asian region (China, Japan, Korea, and Taiwan), the African region (Algeria, Egypt, Morocco, and Tunisia), Latin America (Mexico, Brazil, and Venezuela), and the Former Soviet Union (Table 6).

**Table 6. Imports of Common and Durum Wheat by Major Importing Countries**

Wheat Class	Average (1992-96)	1997	2007	% Change (1997-2007)
-----thousand metric tons-----				
<u>Former Soviet Union</u>				
Common	6,762	4,054	896	-77.85
Durum	413	534	1,282	140.45
<u>Southeast Asia Common Wheat</u>				
China	7,715	10,874	11,763	8.18
Korea	3,764	4,336	4,910	13.24
Japan	5,781	6,051	6,270	3.63
Taiwan	895	941	1,228	30.50
<u>North Africa</u>				
Algeria Common	1,917	2,747	2,375	-13.57
Algeria Durum	2,319	2,296	3,347	45.79
Morocco Common	1,821	2,823	2,988	5.84
Egypt Common	6,045	6,265	7,695	22.83
Tunisia Common	831	874	1,259	44.05
Tunisia Durum	150	199	247	24.12
<u>Latin America</u>				
Brazil Common	5,840	6,668	7,148	7.20
Mexico Common	1,425	1,253	2,325	85.55
Venezuela Common	825	932	1,076	15.45
Venezuela Durum	275	288	389	35.07

### Asian Importers

Asian imports of wheat are projected to increase 8.9% between 1997 and 2007. China is the largest importer of wheat in the world. Its imports are projected to increase 8.2% from 10.9 million metric tons to 11.8 million metric tons for the 1997-2007 period. Japan's imports of wheat are projected to increase only 3.6% from 6.1 million tons to 6.3 million metric tons between 1997 and 2007. Korea's imports of wheat are projected to increase 13.2% from 4.4 million metric tons in 1997 to 4.9 million metric tons in 2007. Taiwan's imports are projected to increase 30.5% from 0.9 million metric tons in 1997 to 1.2 million metric tons in 2007.

### Former Soviet Union

Total imports of wheat are projected to decrease by 52.5% between 1997 and 2007 in the FSU. Imports of durum wheat are projected to increase by 140.5% from 0.5 million metric tons to 1.3 million metric tons, while imports of common wheat are projected to decrease 77.9% from 4.1 million metric tons to 0.9 million metric tons from 1997 to 2007 (Figure 14).

### African Region

North African imports of wheat are projected to increase 17.8% between 1997 and 2007. Egyptian imports of wheat are projected to increase 22.8% from 6.3 million metric tons to 7.7 million metric tons between 1997 and 2007. Algeria imports both common wheat and durum wheat. Algerian imports of common wheat are projected to decrease 13.6% from 2.7 million metric tons in 1997 to 2.4 million metric tons in 2007, while durum wheat imports are projected to increase 45.8% from 2.3 million metric tons to 3.3 million metric tons. Morocco's imports of wheat are projected to increase 5.8% from 2.8 million metric tons to 3.0 million metric tons. Tunisia imports both common wheat and durum wheat. Tunisian imports of common wheat are projected to increase 45.1% from 0.9 million metric tons to 1.3 million metric tons between 1997 and 2007. Its durum wheat imports are projected to increase 24.1% from 0.2 million metric tons to 0.3 million metric tons between 1997 and 2007 (Figure 15).

### Latin America

Mexican imports are projected to increase 85.6% from 1.3 million metric tons to 2.3 million metric tons between 1997 and 2007. Venezuela imports both common and durum wheat. Common wheat imports are projected to increase 15.5% from 0.9 million metric tons in 1997 to 1.1 million metric tons in 2007, and durum wheat imports are projected to increase 35.1% from 0.3 million metric tons to 0.4 million metric tons (Figure 16). Brazilian imports are projected to increase 7.2% from 6.7 million metric tons in 1997 to 7.1 million metric tons in 2007.

## **CONCLUDING REMARKS**

This report evaluates the U.S. and world wheat industries for the 1997-2007 period by using the World Wheat Policy Simulation Model which is operational at North Dakota State University. The baseline projections are based on a series of assumptions about the general economy, agricultural policies, the weather, and technological changes.

World wheat trade is projected to increase by 3.83% from 96.1 million metric tons in 1997 to 99.9 million metric tons in 2007. Durum wheat trade is expected to grow faster than common wheat trade. Because of the financial crisis in South and Southeast Asian countries, their import demand for common wheat is expected to be weak for the next 2-3 years.

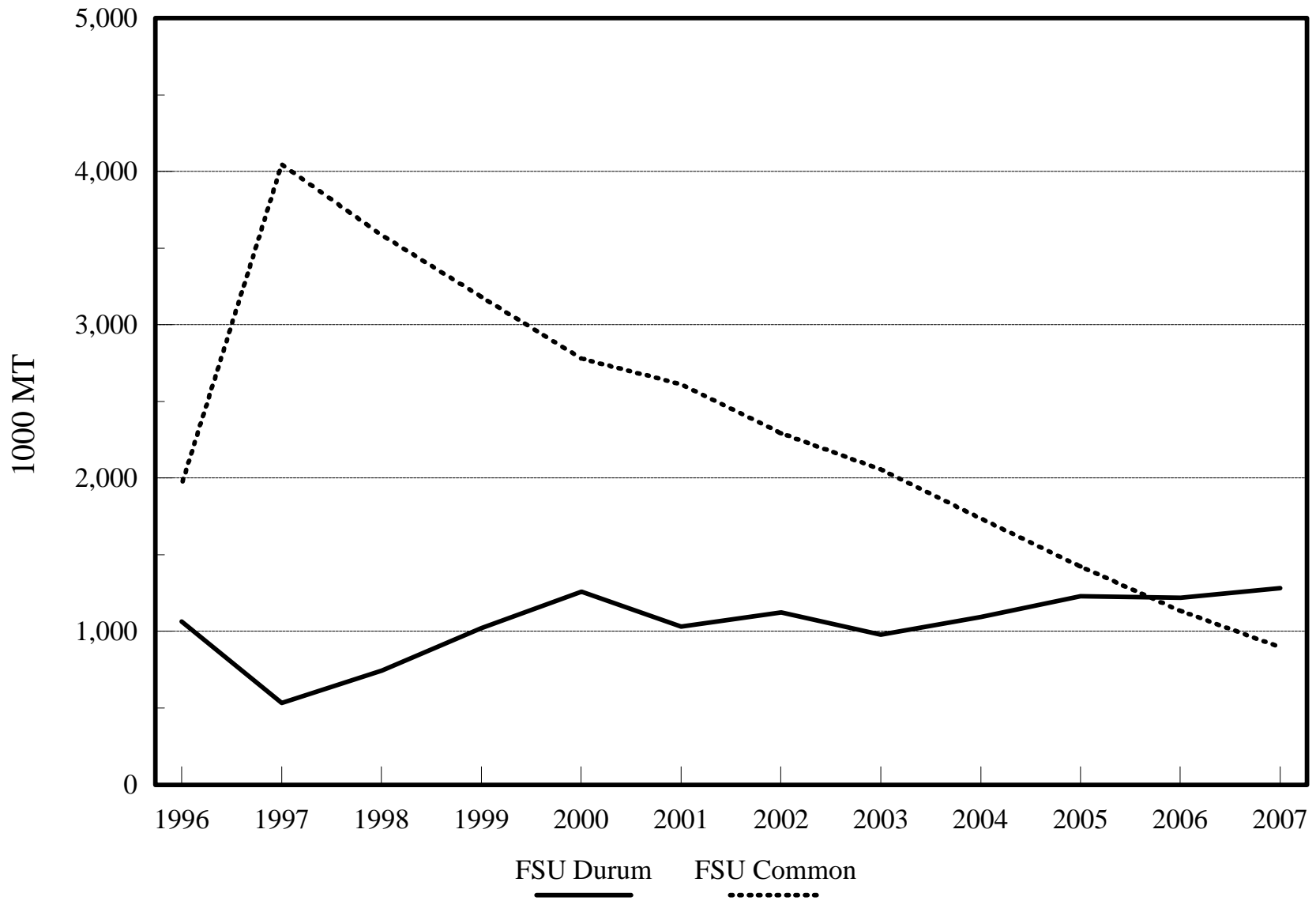


Figure 14. Common and Durum Wheat Imports by Former Soviet Union, 1996 to 2007

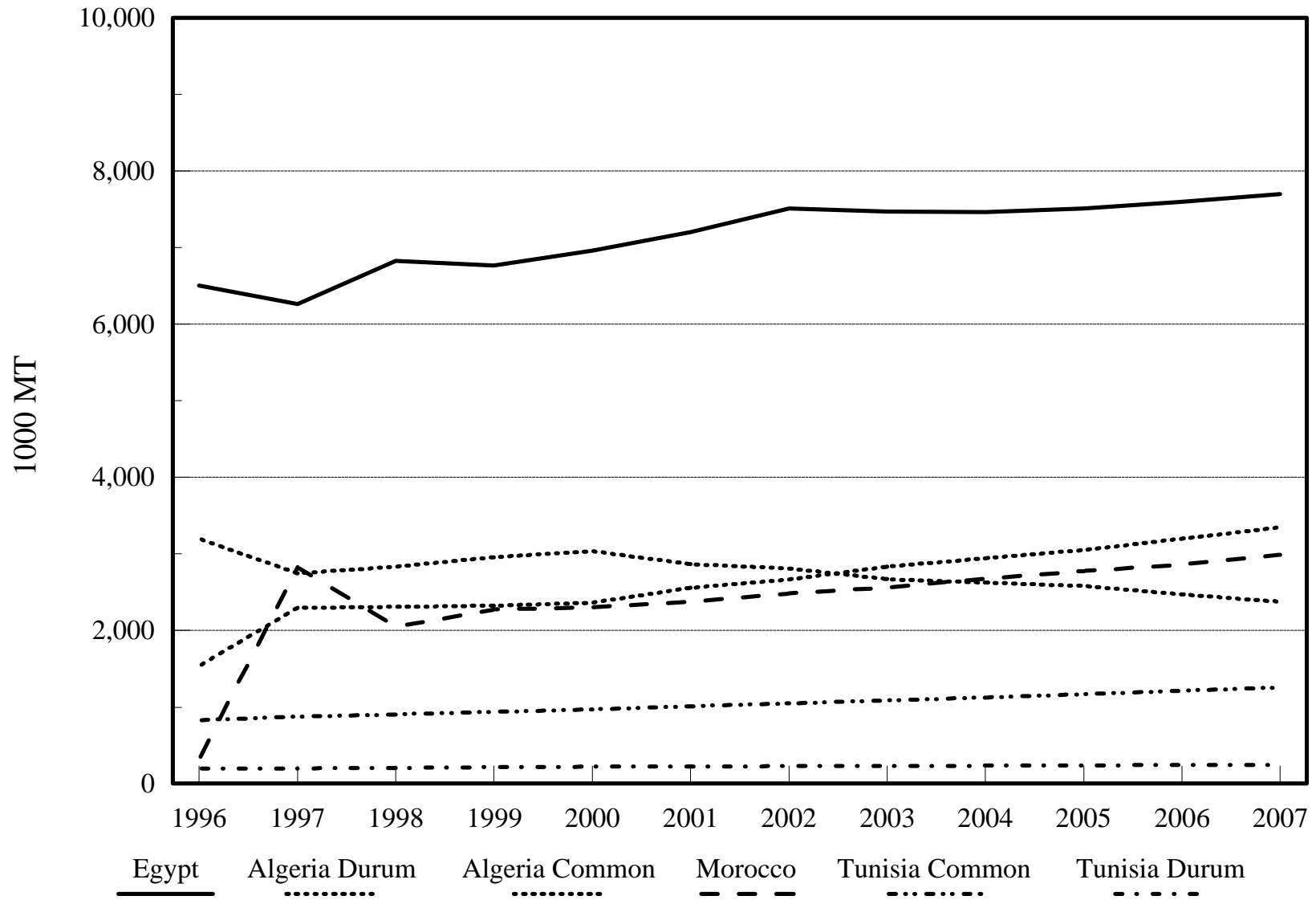


Figure 15. Common and Durum Wheat Imports by Major African Countries, 1996 to 2007

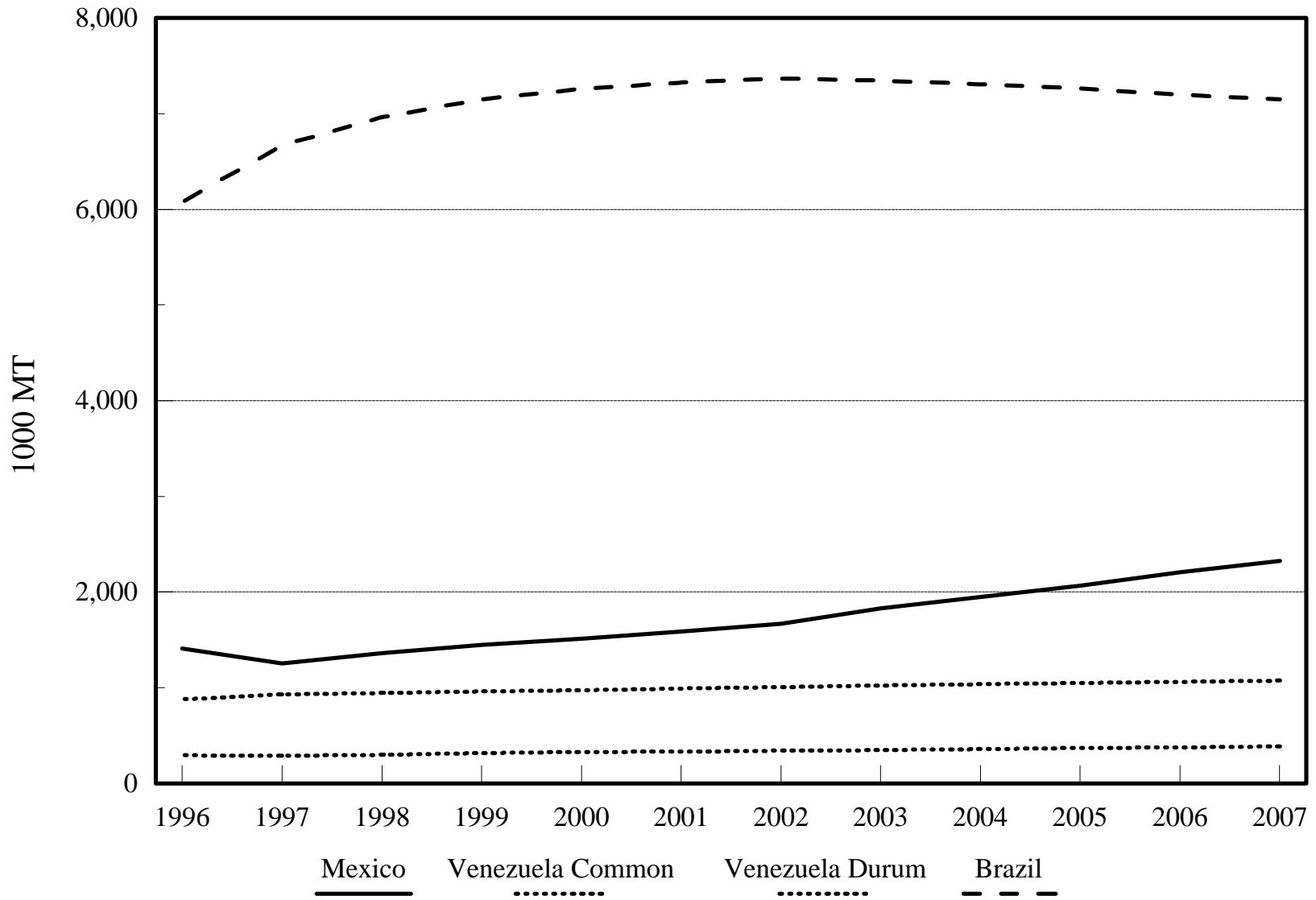


Figure 16. Common and Durum Wheat Imports by Latin American Countries, 1996 to 2007

All exporting countries except the E.U. are predicted to increase their production and exports of common wheat for the 1997-2007 period. World consumption of common wheat is expected to increase slightly faster than the world production, resulting in a gradual increase in the world price of common wheat. Production and exports of common wheat in Argentina are predicted to grow faster than those in other exporting countries. It is predicted that durum wheat exports in the E.U. will decrease although its production will increase during the period. Some of the common wheat produced will be used as feed in the E.U.

The United States and Canada are expected to increase their durum wheat production and exports for the forecasting period, while the E.U. will decrease its production and exports. This implies that the E.U. may become less competitive in durum wheat production under the UR Agreement.

Common wheat demand in Southeast Asian countries except China is predicted to grow slowly for the 1997-2007 period mainly because of the recent financial crisis in the region. China, the largest importer of wheat in the world, will continue to increase its imports of common wheat. China's imports for common wheat will grow faster than other countries in the region.

The Former Soviet Union will increase its imports of durum wheat for the 1997-2007 period, but will decrease its import of common wheat. The country will increase its domestic production of common wheat gradually for the forecasting period.

Egypt, the largest importer of common wheat in the region, will increase its imports of common wheat. Its imports will grow faster than other countries in the region. Import demands for both common and durum wheat in countries in the region except Algeria will increase. Algeria's import demand for common wheat will decrease slowly.

Import demands for common wheat in Brazil and Mexico are expected to be strong for the 1997- 2007 period, while import demands for common wheat in Venezuela are predicted to be weak. Import demand for durum wheat in Venezuela will be strong for the forecasting period.



## REFERENCES

- Australian Wheat Board. *Annual Report 1993/94*. Melbourne, Australia, 1995.
- Australian Wheat Board. *Crop Report*. Melbourne, Australia, various years.
- Benirschka, Martin, and Won W. Koo. *World Wheat Policy Simulation Model: Description and Computer Program Documentation*. Department of Agricultural Economics. North Dakota State University, Fargo. December 1995.
- Canadian Wheat Board. *Grains from Western Canada 1993-94*. Winnipeg, Manitoba.
- Canadian Grain Council. *Canadian Grains Industry Statistical Handbook*. Winnipeg, Manitoba, various issues.
- Commission of the European Communities. *Agricultural Markets*. Brussels, various issues.
- Eurostat. *Agricultural Prices: Price Indices and Absolute Prices*. Luxembourg, various issues.
- Eurostat. *Agriculture: Statistical Yearbook*. Luxembourg, various issues.
- Food and Agricultural Policy Research Institute. *FAPRI 1997: U.S. Agricultural Outlook*. Staff Report #1-97. Iowa State University and University of Missouri-Columbia, January 1997.
- International Monetary Fund. *International Financial Statistics CD-ROM*. Washington, DC, September 1997.
- International Wheat Council. *World Grain Statistics*. London, U.K, various issues.
- Statistics Canada. *Grain Trade of Canada*. Ottawa: Statistics Canada. Catalogue 22-201 Annual, various issues.
- U.S. Department of Agriculture, Agricultural Stabilization and Conservation Service. Program Data (computer files), Washington, DC, 1993.
- U.S. Department of Agriculture, Economic Research Service. *Wheat Situation and Outlook Report*. Washington, DC, various issues.
- U.S. Department of Agriculture, Economic Research Service. *Europe: International Agriculture and Trade Reports - Situation and Outlook Series*. Washington, DC, various issues.
- U.S. Department of Agriculture, Economic Research Service. *PS&D View* (computer files).

Blank page for duplexing.

# Appendix

World Wheat Policy Simulation Model (Common Wheat and Durum Wheat)

1997 Baseline Solution

United States

Nominal Market Prices (U.S. dollars/bushel)

	1990	1991	1992	1993	1994	1995	1996	1997	1998	1999	2000	2001	2002	2003	2004	2005	2006	2007
HRW Wheat	2.94	3.77	3.67	3.6	3.97	5.49	5.47	3.44	3.55	3.56	3.61	3.71	3.75	3.87	3.89	3.89	3.95	3.9
Durum Wheat	3.48	3.61	3.88	5.76	5.98	7.04	6.31	5.68	5.48	5.13	4.86	5.28	5.22	5.53	5.42	5.26	5.35	5.26

Nominal Farm Prices (U.S. dollars/bushel)

	1990	1991	1992	1993	1994	1995	1996	1997	1998	1999	2000	2001	2002	2003	2004	2005	2006	2007
HRS Wheat	2.61	3.25	3.34	3.57	3.43	4.53	4.28	3.05	3.15	3.16	3.21	3.3	3.34	3.45	3.47	3.47	3.53	3.48
HRW Wheat	2.52	3.26	3.23	3.13	3.48	4.58	4.33	2.99	3.08	3.09	3.14	3.23	3.27	3.37	3.4	3.4	3.45	3.41
SRW Wheat	2.56	3.17	3.29	2.99	3.36	4.46	4.21	2.99	3.08	3.09	3.14	3.22	3.27	3.36	3.39	3.39	3.44	3.4
White Wheat	2.75	3.65	3.69	3.12	3.75	4.85	4.6	3.35	3.44	3.45	3.5	3.59	3.64	3.74	3.76	3.76	3.82	3.77
Durum Wheat	2.63	2.82	3.05	4.48	4.62	5.64	5.16	4.6	4.43	4.12	3.89	4.25	4.2	4.47	4.37	4.24	4.32	4.24

Wheat Area Planted (million acres)

	1990	1991	1992	1993	1994	1995	1996	1997	1998	1999	2000	2001	2002	2003	2004	2005	2006	2007
HRS Wheat	16.2	14.3	17.8	17.5	17.6	16.1	16	16.1	15.3	15.6	15.8	15.9	15.7	15.8	15.7	15.8	15.9	15.9
HRW Wheat	38	35.5	36.2	36.3	34.9	33.8	35.7	36.6	34.7	33.6	33.1	32.9	33.2	33.5	34.2	34.8	35.4	36.1
SRW Wheat	14.2	11.3	10.5	11	9.9	10.5	11.3	12.2	10.2	10.5	10.5	10.6	10.9	10.8	11	11.2	10.9	10.8
White Wheat	5.2	5.5	5.2	5.4	5.1	5.3	5.9	6	5.7	5.7	5.7	5.8	5.8	5.9	6	6	6.1	6.1
Durum Wheat	3.6	3.3	2.5	2.2	2.8	3.4	3.4	3.3	4	4.2	4	3.6	3.7	3.7	3.8	3.8	3.7	3.6
All Wheat	77.1	69.9	72.2	72.4	70.3	69.2	72.3	74.2	69.8	69.7	69.1	68.9	69.4	69.8	70.7	71.6	71.9	72.4

Wheat Seed Use (million bushels)

	1990	1991	1992	1993	1994	1995	1996	1997	1998	1999	2000	2001	2002	2003	2004	2005	2006	2007
Common Wheat	88.6	94.3	96	92.4	84.8	101.1	95.8	88.9	88.5	88	88.2	88.8	89.4	90.4	91.7	92.3	93.1	93.6
Durum Wheat	4.3	3.4	3.1	3.9	4.4	4.9	4.4	5.4	5.7	5.5	4.9	5	5	5.1	5.1	4.9	4.9	4.7
All Wheat	92.9	97.7	99.1	96.3	89.2	106	100.3	94.4	94.2	93.4	93.1	93.8	94.4	95.5	96.8	97.2	97.9	98.4

Wheat Area Harvested (million acres)

	1990	1991	1992	1993	1994	1995	1996	1997	1998	1999	2000	2001	2002	2003	2004	2005	2006	2007
Hard Red Spring	15.4	13.8	17.3	16	17	15.7	15.4	15.5	14.7	15.1	15.2	15.3	15.2	15.3	15.2	15.2	15.3	15.3
Hard Red Winter	32.6	27.4	29.5	30.1	28.7	27.7	29	29.9	28.1	27.1	26.6	26.4	26.6	27	27.6	28.2	28.8	29.4
Soft Red Winter	12.8	9.5	8.6	9.3	8.5	9.2	9.7	10.5	9.6	10.4	9.9	10	10.3	9.7	9.9	10.1	9.3	9.2
White	5	3.9	4.8	5.2	4.9	5	5.1	5.2	4.9	4.9	4.9	5	5	5.1	5.2	5.2	5.3	5.3
Durum	3.5	3.2	2.5	2.1	2.7	3.4	3.3	3.2	3.9	4.1	3.9	3.6	3.6	3.6	3.7	3.7	3.6	3.5
All Wheat	69.3	57.8	62.8	62.7	61.8	61	62.5	64.3	61.3	61.6	60.5	60.3	60.8	60.7	61.5	62.4	62.2	62.7

Wheat Yield (bushels/acre harvested)

	1990	1991	1992	1993	1994	1995	1996	1997	1998	1999	2000	2001	2002	2003	2004	2005	2006	2007
Hard Red Spring	36.08	31.15	40.93	31.94	30.28	30.22	36.65	38.07	38.46	38.64	38.78	38.9	39.03	39.16	39.28	39.41	39.53	39.66
Hard Red Winter	36.66	32.83	32.78	35.39	33.86	29.79	33.98	35.18	35.59	35.8	35.95	36.09	36.23	36.37	36.5	36.64	36.77	36.91
Soft Red Winter	42.89	34.4	49.35	43.08	51.28	48.87	43.3	44.84	45.06	45.53	45.95	46.39	46.82	47.25	47.68	48.11	48.54	48.97
White	62.28	56.56	55.17	67.32	62.08	66.64	61.77	62.01	62.63	63.28	63.92	64.57	65.22	65.86	66.51	67.16	67.81	68.45
Durum	34.91	32.52	39.66	33.56	35.63	30.48	33.01	33.51	33.87	34.23	34.58	34.94	35.29	35.64	36	36.35	36.7	37.06
All Wheat	39.45	34.26	39.3	38.21	37.57	35.85	38.28	39.53	39.82	40.22	40.49	40.79	41.07	41.24	41.47	41.7	41.83	42.02

Wheat Production (million bushels)

	1990	1991	1992	1993	1994	1995	1996	1997	1998	1999	2000	2001	2002	2003	2004	2005	2006	2007
Hard Red Spring	554.7	431.2	706.7	511.8	515.3	475.3	565.2	589.8	567	582.6	589.1	596.3	591.9	597.3	595.8	600.6	604.3	605.6
Hard Red Winter	1195.6	900.8	967.2	1065.9	971.2	824.5	986.5	1051.3	998.8	970.2	955.7	954.4	965.4	982.3	1007.2	1032.8	1057.6	1085.3
Soft Red Winter	547.1	325.2	426.7	401.3	434.2	449.6	419	469.8	434.3	474.7	454.6	463.7	483.1	459.4	470.3	483.5	450.6	448.9
White	313.4	219	266.3	346.9	303.6	333.8	312.9	321.7	306.8	310	315.6	320.9	328.4	335.4	343.3	350.3	356.2	362.7
Durum	122.4	104	99.9	70.5	96.7	102.3	109.1	107.6	132.4	140.2	136.2	124.4	128.2	128	133.8	134.5	131.3	130.5
All Wheat	2733.2	1980.1	2466.8	2396.4	2321	2185.5	2392.6	2540.2	2439.3	2477.8	2451.1	2459.7	2497.1	2502.4	2550.3	2601.7	2600	2633

World Wheat Policy Simulation Model (Common Wheat and Durum Wheat)

1997 Baseline Solution

United States

Common Wheat Supply and Utilization (million bushels)

	1990	1991	1992	1993	1994	1995	1996	1997	1998	1999	2000	2001	2002	2003	2004	2005	2006	2007
Carry-in Stocks	486.5	806.1	420	481.7	540.5	480.6	324.1	406.4	571.8	659.1	709.9	739.8	756.3	768.3	775.5	784.5	795.5	804.9
Production	2610.8	1876.2	2366.9	2326	2224.2	2083.3	2283.5	2432.6	2306.9	2337.6	2315	2335.3	2368.9	2374.4	2416.6	2467.2	2468.7	2502.5
Net Exports	999.1	1216.6	1261.6	1096	1078.3	1186	1008.3	1005.6	945.3	996.4	977.9	996	1016.4	1009.3	1030.2	1059.5	1044.1	1052.5
Exports	1016.5	1237.3	1306.6	1173.8	1148.3	1235 #N/A	#N/A	#N/A	#N/A	#N/A	#N/A	#N/A	#N/A	#N/A	#N/A	#N/A	#N/A	#N/A
Imports	17.4	20.7	45	77.8	69.9	49 #N/A	#N/A	#N/A	#N/A	#N/A	#N/A	#N/A	#N/A	#N/A	#N/A	#N/A	#N/A	#N/A
Consumption	1292.1	1045.7	1043.6	1171.2	1205.8	1053.7	1192.9	1261.6	1274.4	1290.4	1307.2	1323	1340.5	1357.9	1377.3	1396.7	1415.2	1436.2
Food	717.7	707	754	807.1	776.2	777.7	807.8	825.2	836.7	848.2	860	871.6	883.4	896.3	908.8	921.6	934.4	947.7
Seed	88.6	94.3	96	92.4	84.8	101.1	95.8	88.9	88.5	88	88.2	88.8	89.4	90.4	91.7	92.3	93.1	93.6
Feed	485.8	244.4	193.6	271.7	344.8	175	289.2	347.5	349.1	354.2	359	362.5	367.7	371.2	376.8	382.9	387.7	394.9
Carry-out Stocks	806.1	420	481.7	540.5	480.6	324.1	406.4	571.8	659.1	709.9	739.8	756.3	768.3	775.5	784.5	795.5	804.9	818.6

Durum Wheat Supply and Utilization (million bushels)

	1990	1991	1992	1993	1994	1995	1996	1997	1998	1999	2000	2001	2002	2003	2004	2005	2006	2007
Carry-in Stocks	50	62	55	49	28	26	22	34.6	43.5	64.2	76.1	74.9	66.5	62.6	60.3	59.6	59.8	49.9
Production	122.4	104	99.9	70.5	96.7	102.3	109.1	107.6	132.4	140.2	136.2	124.4	128.2	128	133.8	134.5	131.3	130.5
Net Exports	34	25	22	23	18	19	10.3	7.8	16.9	30	38.8	33.2	31.6	28.9	32.1	31.2	37.3	35.3
Exports	53	45	47	54	40	40 #N/A	#N/A	#N/A	#N/A	#N/A	#N/A	#N/A	#N/A	#N/A	#N/A	#N/A	#N/A	#N/A
Imports	19	20	25	31	22	21 #N/A	#N/A	#N/A	#N/A	#N/A	#N/A	#N/A	#N/A	#N/A	#N/A	#N/A	#N/A	#N/A
Consumption	76.4	86	83.9	68.5	80.7	87.3	86.2	90.9	94.8	98.2	98.7	99.6	100.4	101.4	102.3	103.1	103.9	104.8
Food	72.1	82.5	80.8	64.6	76.3	82.3	81.8	85.5	89.1	92.8	93.7	94.5	95.4	96.3	97.2	98.2	99.1	100
Seed	4.3	3.4	3.1	3.9	4.4	4.9	4.4	5.4	5.7	5.5	4.9	5	5	5.1	5.1	4.9	4.9	4.7
Feed	0	0	0	0	0	0	0	0	0	0	0	0	0	0	0	0	0	0
Carry-out Stocks	62	55	49	28	26	22	34.6	43.5	64.2	76.1	74.9	66.5	62.6	60.3	59.6	59.8	49.9	40.3

All Wheat Supply and Utilization (million bushels)

	1990	1991	1992	1993	1994	1995	1996	1997	1998	1999	2000	2001	2002	2003	2004	2005	2006	2007
Carry-in Stocks	536.5	868.1	475	530.7	568.5	506.6	346.1	441.1	615.3	723.3	786.1	814.7	822.7	830.9	835.8	844.1	855.3	854.8
Production	2733.2	1980.1	2466.8	2396.4	2321	2185.5	2392.6	2540.2	2439.3	2477.8	2451.1	2459.7	2497.1	2502.4	2550.3	2601.7	2600	2633
Net Exports	1033.1	1241.6	1283.6	1119	1096.3	1205	1018.6	1013.4	962.2	1026.4	1016.6	1029.1	1048	1038.2	1062.3	1090.7	1081.4	1087.9
Exports	1069.5	1282.3	1353.6	1227.8	1188.3	1275 #N/A	#N/A	#N/A	#N/A	#N/A	#N/A	#N/A	#N/A	#N/A	#N/A	#N/A	#N/A	#N/A
Imports	36.4	40.7	70	108.8	91.9	70 #N/A	#N/A	#N/A	#N/A	#N/A	#N/A	#N/A	#N/A	#N/A	#N/A	#N/A	#N/A	#N/A
Consumption	1368.5	1131.6	1127.5	1239.7	1286.6	1141	1279.1	1352.5	1369.2	1388.6	1405.9	1422.5	1440.9	1459.3	1479.7	1499.8	1519.2	1541
Food	789.8	789.5	834.8	871.7	852.5	860	889.6	910.7	925.8	940.9	953.8	966.2	978.9	992.6	1006.1	1019.7	1033.5	1047.7
Seed	92.9	97.7	99.1	96.3	89.2	106	100.3	94.4	94.2	93.4	93.1	93.8	94.4	95.5	96.8	97.2	97.9	98.4
Feed	485.8	244.4	193.6	271.7	344.8	175	289.2	347.5	349.1	354.2	359	362.5	367.7	371.2	376.8	382.9	387.7	394.9
Carry-out Stocks	868.1	475	530.7	568.5	506.6	346.1	441.1	615.3	723.3	786.1	814.7	822.7	830.9	835.8	844.1	855.3	854.8	858.9

Wheat Net Exports (1000 metric tons)

	1990	1991	1992	1993	1994	1995	1996	1997	1998	1999	2000	2001	2002	2003	2004	2005	2006	2007
Common Wheat	27191	33111	34335	29828	29347	32278	27441	27369	25726	27117	26613	27105	27661	27469	28038	28835	28416	28645
Durum Wheat	925	680	599	626	490	517	281	212	460	818	1055	903	860	788	874	850	1015	962

World Wheat Policy Simulation Model (Common Wheat and Durum Wheat)

1997 Baseline Solution

**Canada**

Canada - Nominal Wheat Export Prices (Canadian dollars/metric ton)

	1990	1991	1992	1993	1994	1995	1996	1997	1998	1999	2000	2001	2002	2003	2004	2005	2006	2007
Common Wheat	137.68	171.86	172.85	184.48	217.19	308.43	305.09	184.11	189	186.92	183.58	183.27	183.68	187.46	187.04	185.74	187.9	184.57
Durum Wheat	140.01	150.09	160.76	259.3	289.88	344.08	305.76	272.12	260.67	239.94	219.83	231.92	226.43	237.56	230.67	222.2	224.86	220.03

Canada - Nominal Domestic Prices (Canadian dollars/metric ton)

	1990	1991	1992	1993	1994	1995	1996	1997	1998	1999	2000	2001	2002	2003	2004	2005	2006	2007
Spring Wheat	129.19	168.69	177.95	242.38	275.98	316.45	315.04	172.02	179.53	180.22	183.83	190.66	194.12	201.92	203.65	203.66	208.15	204.6
Durum Wheat	143.97	158.56	178.42	316.73	323.38	326.18	290.83	259.87	250.33	233.03	220.25	240.43	237.48	252.54	247.23	239.54	244.05	239.58

Canada - Wheat Seed Use (metric tons/hectare harvested)

	1990	1991	1992	1993	1994	1995	1996	1997	1998	1999	2000	2001	2002	2003	2004	2005	2006	2007
CWRS Wheat	0.1	0.1	0.09	0.08	0.1	0.1	0.1	0.1	0.1	0.1	0.1	0.1	0.1	0.1	0.1	0.1	0.1	0.1
CWAD Wheat	0.09	0.07	0.1	0.16	0.09	0.1	0.1	0.1	0.1	0.1	0.11	0.11	0.11	0.11	0.11	0.11	0.11	0.11
All Wheat	0.1	0.1	0.09	0.08	0.1	0.11	0.11	0.1	0.1	0.1	0.1	0.1	0.1	0.1	0.1	0.1	0.1	0.11

Canada - Wheat Area Harvested (1000 hectares)

	1990	1991	1992	1993	1994	1995	1996	1997	1998	1999	2000	2001	2002	2003	2004	2005	2006	2007
CWRS Wheat	12005	12169	12371	10536	8552	9088	10661	12298	11484	11275	11285	11438	11413	11465	11448	11483	11531	11562
CWAD Wheat	2092	1992	1459	1441	2287	1989	1988	1850	2012	2123	2145	2131	1981	2162	2184	2188	2174	2169
All Wheat	14098	14161	13830	12377	10838	11077	12649	14148	13496	13398	13430	13569	13564	13627	13632	13671	13705	13731

Canada - Wheat Yield (metric tons/hectare)

	1990	1991	1992	1993	1994	1995	1996	1997	1998	1999	2000	2001	2002	2003	2004	2005	2006	2007
CWRS Wheat	2.32	2.25	2.16	2.18	2.16	2.28	2.4	2.37	2.39	2.41	2.43	2.45	2.47	2.49	2.51	2.53	2.56	2.58
CWAD Wheat	2.01	2.3	2.15	2.33	2.05	1.8	2.2	2.25	2.27	2.28	2.28	2.29	2.29	2.29	2.3	2.3	2.31	2.31
All Wheat	2.28	2.26	2.16	2.2	2.13	2.19	2.37	2.36	2.37	2.39	2.41	2.42	2.44	2.46	2.48	2.5	2.52	2.53

Canada - Canadian Western Red Spring Wheat Supply and Utilization (1000 metric tons)

	1990	1991	1992	1993	1994	1995	1996	1997	1998	1999	2000	2001	2002	2003	2004	2005	2006	2007
Carry-in Stocks	5080	8719	7860	10136	9415	4401	5701	6464	7895	8786	9333	9631	9717	9677	9511	9300	9062	8770
Production	27902	27360	26733	23873	18433	20702	25586	29170	27428	27159	27418	28030	28207	28575	28772	29099	29463	29784
Net Exports	18898	22266	18026	16358	16731	13000	18198	20980	19685	19645	20021	20699	20874	21229	21345	21573	21855	22042
Exports	18898	22288	18049	16378	16733	12500	12500 #N/A	#N/A	#N/A	#N/A	#N/A	#N/A	#N/A	#N/A	#N/A	#N/A	#N/A	#N/A
Imports	0	22	23	20	2	0	0 #N/A	#N/A	#N/A	#N/A	#N/A	#N/A	#N/A	#N/A	#N/A	#N/A	#N/A	#N/A
Consumption	5365	5953	6431	8236	6716	6403	6625	6759	6852	6967	7098	7245	7373	7512	7637	7764	7899	8032
Food	1975	1942	2053	2190	2208	2139	2127	2181	2202	2224	2245	2281	2301	2332	2352	2372	2398	2423
Seed	1154	1217	1091	824	869	1065	1223	1143	1125	1131	1151	1154	1164	1168	1177	1187	1196	1205
Feed	2236	2794	3287	5222	3639	3198	3275	3435	3525	3613	3702	3811	3907	4012	4109	4205	4305	4405
Carry-out Stocks	8719	7860	10136	9415	4401	5701	6464	7895	8786	9333	9631	9717	9677	9511	9300	9062	8770	8480

Canada - Canadian Western Amber Durum Wheat Supply and Utilization (1000 metric tons)

	1990	1991	1992	1993	1994	1995	1996	1997	1998	1999	2000	2001	2002	2003	2004	2005	2006	2007
Carry-in Stocks	1362	1567	2206	2057	1703	1540	1801	1921	2058	2125	2161	2181	2196	2208	2218	2228	2237	2246
Production	4197	4586	3138	3358	4689	3587	4374	4163	4563	4833	4895	4873	4928	4962	5021	5040	5016	5015
Net Exports	3232	3090	2279	2895	4027	2480	3423	3131	3586	3879	3953	3923	3971	3993	4043	4054	4021	4004
Exports	3232	3090	2279	2903	4027	3500	3500 #N/A	#N/A	#N/A	#N/A	#N/A	#N/A	#N/A	#N/A	#N/A	#N/A	#N/A	#N/A
Imports	0	0	0	8	0	0	0 #N/A	#N/A	#N/A	#N/A	#N/A	#N/A	#N/A	#N/A	#N/A	#N/A	#N/A	#N/A
Consumption	760	857	1008	817	825	846	831	895	910	918	922	935	945	958	968	976	986	999
Food	206	188	180	166	153	159	163	171	177	186	193	194	199	201	206	212	216	222
Seed	191	145	140	225	212	196	187	206	220	224	225	229	232	237	239	240	241	245
Feed	363	524	688	426	460	491	481	518	513	508	505	512	514	521	523	525	529	532
Carry-out Stocks	1567	2206	2057	1703	1540	1801	1921	2058	2125	2161	2181	2196	2208	2218	2228	2237	2246	2257

World Wheat Policy Simulation Model (Common Wheat and Durum Wheat)

1997 Baseline Solution

Canada

Canada - All Wheat Supply and Utilization (1000 metric tons)

	1990	1991	1992	1993	1994	1995	1996	1997	1998	1999	2000	2001	2002	2003	2004	2005	2006	2007
Carry-in Stocks	6442	10286	10066	12193	11118	5941	7502	8385	9953	10911	11493	11812	11913	11885	11729	11527	11299	11015
Production	32098	31946	29871	27232	23122	24289	29960	33333	31991	31992	32313	32903	33135	33537	33793	34139	34479	34799
Net Exports	22130	25356	20305	19253	20758	15479	21621	24111	23271	23524	23974	24622	24845	25223	25389	25628	25877	26046
Exports	22130	25378	20328	19281	20760	16000	16000 #N/A	#N/A	#N/A	#N/A	#N/A	#N/A	#N/A	#N/A	#N/A	#N/A	#N/A	#N/A
Imports	0	22	23	28	2	0	0 #N/A	#N/A	#N/A	#N/A	#N/A	#N/A	#N/A	#N/A	#N/A	#N/A	#N/A	#N/A
Consumption	6124	6810	7439	9054	7541	7249	7456	7654	7762	7886	8020	8181	8318	8470	8605	8740	8886	9032
Food	2181	2130	2233	2356	2361	2299	2291	2352	2379	2410	2438	2475	2500	2533	2558	2584	2614	2645
Seed	1345	1362	1231	1049	1081	1261	1410	1349	1345	1355	1376	1382	1396	1404	1416	1427	1437	1450
Feed	2598	3318	3975	5649	4099	3689	3756	3953	4038	4121	4207	4323	4421	4533	4631	4729	4834	4938
Carry-out Stocks	10286	10066	12193	11118	5941	7502	8385	9953	10911	11493	11812	11913	11885	11729	11527	11299	11015	10737

Canada - Wheat Exports (1000 metric tons)

	1990	1991	1992	1993	1994	1995	1996	1997	1998	1999	2000	2001	2002	2003	2004	2005	2006	2007
Common Wheat	18898	22266	18026	16358	16731	13000	18198	20980	19685	19645	20021	20699	20874	21229	21345	21573	21855	22042
Durum Wheat	3232	3090	2279	2895	4027	2480	3423	3131	3586	3879	3953	3923	3971	3993	4043	4054	4021	4004

World Wheat Policy Simulation Model (Common Wheat and Durum Wheat)

1997 Baseline Solution

European Union

European Union - Nominal Producer Prices (ECU/metric ton)

	1990	1991	1992	1993	1994	1995	1996	1997	1998	1999	2000	2001	2002	2003	2004	2005	2006	2007
Common Wheat	161.78	158.71	160.76	133.65	134.57	133.94	150	126.32	126.24	126.89	127.66	128.46	129.28	130.13	131.76	133.53	135.02	136.34
Durum Wheat	225.53	203.46	216.77	171.13	162.04	150	165	156.8	155.99	155.74	155.62	155.53	155.45	155.38	155.31	155.25	155.2	155.16

European Union - Wheat Area Harvested (1000 hectares)

	1990	1991	1992	1993	1994	1995	1996	1997	1998	1999	2000	2001	2002	2003	2004	2005	2006	2007
Common Wheat	12773	13487	13588	12142	12314	13241	13734	13774	13816	13897	13981	14066	14150	14234	14318	14404	14489	14574
Durum Wheat	2985	3388	3245	2969	2905	2900	3318	3243	3228	3212	3196	3180	3164	3148	3132	3115	3098	3081
All Wheat	15758	16875	16833	15111	15220	16141	17052	17016	17044	17109	17178	17246	17314	17382	17450	17519	17587	17656

European Union - Wheat Yield (metric tons/hectare)

	1990	1991	1992	1993	1994	1995	1996	1997	1998	1999	2000	2001	2002	2003	2004	2005	2006	2007
Common Wheat	5.73	5.86	5.57	5.99	6	5.95	6	6.06	6.08	6.09	6.1	6.1	6.11	6.11	6.12	6.12	6.13	6.13
Durum Wheat	2.48	3.35	2.79	2.36	2.69	2.69	2.7	2.69	2.69	2.69	2.7	2.7	2.7	2.7	2.7	2.7	2.7	2.7
All Wheat	5.11	5.36	5.04	5.28	5.37	5.36	5.36	5.42	5.44	5.45	5.46	5.47	5.48	5.49	5.5	5.51	5.53	5.54

European Union - Common Wheat Supply and Utilization (1000 metric tons)

	1990	1991	1992	1993	1994	1995	1996	1997	1998	1999	2000	2001	2002	2003	2004	2005	2006	2007
Carry-in Stocks	11360	14423	18178	19455	13603	10008	9651	9352	10344	10871	11330	11780	12224	12664	12599	12460	12508	12678
Production	73126	79089	75734	72788	73905	78793	82404	83414	83978	84622	85234	85831	86423	87014	87605	88202	88802	89400
Net Exports	16826	17261	19694	17594	14179	9979	17572	15360	15158	14657	14059	13456	12853	12763	12269	11529	10864	10612
Exports	31848	33141	35223	34378	30859	27919	#N/A	#N/A	#N/A	#N/A	#N/A	#N/A	#N/A	#N/A	#N/A	#N/A	#N/A	#N/A
Imports	15022	15880	15529	16784	16680	17940	#N/A	#N/A	#N/A	#N/A	#N/A	#N/A	#N/A	#N/A	#N/A	#N/A	#N/A	#N/A
Consumption	53237	58073	54763	61046	63321	69171	65130	67062	68293	69507	70725	71931	73130	74316	75475	76625	77767	78904
Food	29694	33514	31709	31830	32282	33186	32775	33249	33346	33441	33539	33634	33719	33792	33846	33888	33918	33937
Feed	23543	24559	23054	29216	31039	35985	32355	33813	34947	36066	37186	38297	39411	40523	41629	42736	43849	44967
Carry-out Stocks	14423	18178	19455	13603	10008	9651	9352	10344	10871	11330	11780	12224	12664	12599	12460	12508	12678	12652

European Union - Durum Wheat Supply and Utilization (1000 metric tons)

	1990	1991	1992	1993	1994	1995	1996	1997	1998	1999	2000	2001	2002	2003	2004	2005	2006	2007
Carry-in Stocks	1618	1757	4600	3685	1585	1585	1585	1844	1937	1966	1979	1989	1998	2007	2015	2022	2027	2032
Production	7394	11333	9042	7018	7811	7800	8959	8730	8693	8654	8615	8574	8534	8493	8453	8411	8369	8327
Net Exports	1809	2302	2428	631	631	631	1550	1456	1478	1451	1410	1365	1322	1281	1243	1206	1172	1141
Exports	2111	2567	2642	1171	1171	1171	#N/A	#N/A	#N/A	#N/A	#N/A	#N/A	#N/A	#N/A	#N/A	#N/A	#N/A	#N/A
Imports	302	265	214	540	540	540	540	#N/A	#N/A	#N/A	#N/A	#N/A	#N/A	#N/A	#N/A	#N/A	#N/A	#N/A
Consumption	5446	6188	7529	8487	7180	7169	7150	7181	7185	7190	7195	7200	7203	7205	7203	7199	7192	7182
Food	5446	6188	7529	8487	7180	7169	7150	7181	7185	7190	7195	7200	7203	7205	7203	7199	7192	7182
Feed	0	0	0	0	0	0	0	0	0	0	0	0	0	0	0	0	0	0
Carry-out Stocks	1757	4600	3685	1585	1585	1585	1844	1937	1966	1979	1989	1998	2007	2015	2022	2027	2032	2035

European Union - All Wheat Supply and Utilization (1000 metric tons)

	1990	1991	1992	1993	1994	1995	1996	1997	1998	1999	2000	2001	2002	2003	2004	2005	2006	2007
Carry-in Stocks	12978	16180	22778	23140	15188	11593	11236	11196	12281	12837	13309	13769	14222	14671	14614	14481	14535	14710
Production	80520	90422	84776	79806	81716	86593	91363	92145	92670	93276	93849	94406	94957	95507	96058	96613	97171	97727
Net Exports	18635	19563	22122	18225	14810	10610	19123	16817	16637	16107	15469	14821	14175	14044	13512	12736	12037	11753
Exports	33959	35708	37865	35549	32030	29090	#N/A	#N/A	#N/A	#N/A	#N/A	#N/A	#N/A	#N/A	#N/A	#N/A	#N/A	#N/A
Imports	15324	16145	15743	17324	17220	18480	#N/A	#N/A	#N/A	#N/A	#N/A	#N/A	#N/A	#N/A	#N/A	#N/A	#N/A	#N/A
Consumption	58683	64261	62292	69533	70501	76340	72280	74243	75478	76697	77920	79132	80333	81520	82678	83824	84959	86086
Food	35140	39702	39238	40317	39462	40355	39924	40430	40531	40631	40734	40834	40922	40997	41049	41087	41110	41120
Feed	23543	24559	23054	29216	31039	35985	32355	33813	34947	36066	37186	38297	39411	40523	41629	42736	43849	44967
Carry-out Stocks	16180	22778	23140	15188	11593	11236	11196	12281	12837	13309	13769	14222	14671	14614	14481	14535	14710	14598

European Union - Wheat Net Exports (1000 metric tons)

	1990	1991	1992	1993	1994	1995	1996	1997	1998	1999	2000	2001	2002	2003	2004	2005	2006	2007
Common Wheat	16826	17261	19694	17594	14179	9979	17572	15360	15158	14657	14059	13456	12853	12763	12269	11529	10864	10612
Durum Wheat	1809	2302	2428	631	631	631	1550	1456	1478	1451	1410	1365	1322	1281	1243	1206	1172	1141



World Wheat Policy Simulation Model (Common Wheat and Durum Wheat)

1997 Baseline Solution

**Australia**

Australia - Nominal Wheat Export Prices (Australian dollars/metric ton)

	1990	1991	1992	1993	1994	1995	1996	1997	1998	1999	2000	2001	2002	2003	2004	2005	2006	2007
U.S. HRW	151.17	192.56	194.72	210.29	217.53	303.17	302.61	184.47	191.12	192.14	195.6	201.76	205.06	211.98	213.72	213.95	217.89	214.96
U.S. Durum	153.73	168.17	181.1	295.58	290.32	338.21	303.27	272.65	263.59	246.64	234.23	255.3	252.79	268.63	263.57	255.95	260.75	256.25

Australia - Nominal Domestic Prices (Australian dollars/metric ton)

	1990	1991	1992	1993	1994	1995	1996	1997	1998	1999	2000	2001	2002	2003	2004	2005	2006	2007
Common Wheat	136.17	163.5	155.67	140.67	233.5	267	320	156.2	161.91	162.79	165.76	171.04	173.87	179.8	181.3	181.5	184.87	182.36

Australia - Wheat Area Harvested (1000 hectares), Yield (metric tons/hectare), and Production (1000 metric tons)

	1990	1991	1992	1993	1994	1995	1996	1997	1998	1999	2000	2001	2002	2003	2004	2005	2006	2007
Area Harvested	9218	7183	9101	8383	8003	9851	11100	10637	10430	10361	10364	10393	10390	10381	10372	10373	10373	10366
Yield	1.63	1.47	1.78	1.97	1.11	1.69	2.08	1.58	1.76	1.72	1.75	1.76	1.77	1.79	1.8	1.81	1.83	1.84
Production	15066	10557	16184	16479	8903	16623	23088	16848	18326	17824	18166	18268	18418	18536	18660	18800	18938	19063

Australia - Wheat Supply and Utilization (1000 metric tons)

	1990	1991	1992	1993	1994	1995	1996	1997	1998	1999	2000	2001	2002	2003	2004	2005	2006	2007
Carry-in Stocks	3035	2823	2870	5017	3711	2367	2537	2445	2931	3169	3267	3276	3243	3180	3107	3030	2951	2868
Production	15066	10557	16184	16479	8903	16623	23088	16848	18326	17824	18166	18268	18418	18536	18660	18800	18938	19063
Net Exports	11790	7103	9853	13700	6343	12500	19200	12456	14203	13815	14209	14333	14469	14577	14661	14752	14857	14916
Consumption	3488	3407	4184	4085	3904	3953	3980	3907	3885	3911	3948	3968	4011	4032	4077	4127	4164	4230
Food	1988	2041	2290	2325	2271	2253	2275	2065	2040	2036	2021	1995	1980	1948	1937	1930	1907	1911
Feed	1500	1366	1894	1760	1633	1700	1705	1842	1846	1876	1927	1973	2032	2084	2140	2197	2257	2320
Carry-out Stocks	2823	2870	5017	3711	2367	2537	2445	2931	3169	3267	3276	3243	3180	3107	3030	2951	2868	2784

World Wheat Policy Simulation Model (Common Wheat and Durum Wheat)

1997 Baseline Solution

Argentina

Argentina - Wheat Area Planted and Harvested (1000 hectares), Yield (metric tons/hectare), and Production (1000 metric tons)

	1990	1991	1992	1993	1994	1995	1996	1997	1998	1999	2000	2001	2002	2003	2004	2005	2006	2007
Area Planted	6178	4751	4548	4910	5308	5067	5154	6152	5654	5510	5495	5528	5648	5767	5940	6095	6218	6338
Area Harvested	5798	4547	4255	4777	5221	4781	6700	5783	5323	5190	5177	5207	5318	5428	5587	5731	5844	5955
Yield	2.07	2.17	2.32	2.02	2.17	1.8	2.31	2.39	2.42	2.46	2.5	2.54	2.57	2.61	2.65	2.69	2.72	2.76
Production	11992	9884	9874	9659	11306	8600	15477	13834	12887	12770	12930	13202	13685	14170	14798	15394	15919	16446

Argentina - Wheat Supply and Utilization (1000 metric tons)

	1990	1991	1992	1993	1994	1995	1996	1997	1998	1999	2000	2001	2002	2003	2004	2005	2006	2007
Carry-in Stocks	31	822	345	45	449	149	149	290	388	406	414	419	418	417	413	412	413	413
Production	11992	9884	9874	9659	11306	8600	15477	13834	12887	12770	12930	13202	13685	14170	14798	15394	15919	16446
Net Exports	5592	5780	5850	4996	7300	4300	11369	9300	8348	8146	8206	8438	8849	9312	9893	10439	10938	11405
Exports	5592	5780	5850	4996	7300	4300	11000	#N/A	#N/A	#N/A	#N/A	#N/A	#N/A	#N/A	#N/A	#N/A	#N/A	#N/A
Imports	0	0	0	0	0	0	30	#N/A	#N/A	#N/A	#N/A	#N/A	#N/A	#N/A	#N/A	#N/A	#N/A	#N/A
Consumption	5609	4581	4324	4259	4306	4300	3967	4436	4521	4616	4718	4765	4837	4882	4907	4954	4982	5038
Carry-out Stocks	822	345	45	449	149	149	290	388	406	414	419	418	417	413	412	413	413	416

World Wheat Policy Simulation Model (Common Wheat and Durum Wheat)

1997 Baseline Solution

**Algeria**

Algeria - Wheat Production (1000 metric tons)

	1990	1991	1992	1993	1994	1995	1996	1997	1998	1999	2000	2001	2002	2003	2004	2005	2006	2007
Common Wheat	200	550	450	250	340	340	346.8	353.74	360.81	368.03	375.39	382.9	390.55	398.36	406.33	414.46	422.75	431.2
Durum Wheat	575	1250	1300	1100	950	950	969	988.38	1008.15	1028.31	1048.88	1069.85	1091.25	1113.08	1135.34	1158.04	1181.21	1204.83
All Wheat	775	1800	1750	1350	1290	1290	1315.8	1342.12	1368.96	1396.34	1424.26	1452.75	1481.8	1511.44	1541.67	1572.5	1603.95	1636.03

Algeria - Wheat Imports (1000 metric tons)

	1990	1991	1992	1993	1994	1995	1996	1997	1998	1999	2000	2001	2002	2003	2004	2005	2006	2007
Common Wheat	2114	1609	1626	2672	2250	1500	1538.92	2295.63	2308.39	2323.56	2362.27	2556.82	2666.52	2833.95	2941.31	3050.68	3198.13	3346.83
Durum Wheat	2485	2481	2381	2265	2250	1500	3196.99	2747.44	2833.01	2956.11	3035.19	2866.81	2808.98	2668.95	2624.69	2579.26	2470.74	2374.72
All Wheat	4599	4090	4007	4937	4500	3000	4735.91	5043.07	5141.4	5279.67	5397.46	5423.63	5475.5	5502.9	5566.01	5629.94	5668.87	5721.55

**Brazil**

Brazil - Wheat Area Harvested (1000 hectares), Yield (metric tons/hectare), and Production (1000 metric tons)

	1990	1991	1992	1993	1994	1995	1996	1997	1998	1999	2000	2001	2002	2003	2004	2005	2006	2007
Area Harvested	3280	2145	1937	1408	1365	1034	1263	1445	1252	1160	1133	1153	1213	1295	1412	1543	1681	1834
Yield	1.01	1.43	1.37	1.5	1.6	1.46	1.26	1.27	1.28	1.28	1.29	1.3	1.31	1.31	1.32	1.33	1.33	1.34
Production	3300	3078	2739	2107	2185	1511	1596	1836	1600	1490	1463	1498	1583	1700	1864	2047	2242	2458

Brazil - Wheat Supply and Utilization (1000 metric tons)

	1990	1991	1992	1993	1994	1995	1996	1997	1998	1999	2000	2001	2002	2003	2004	2005	2006	2007
Carry-in Stocks	177	77	144	869	676	861	861	549	517	502	492	484	474	464	452	440	428	414
Production	3300	3078	2739	2107	2185	1511	1596	1836	1600	1490	1463	1498	1583	1700	1864	2047	2242	2458
Net Imports	4444	4165	5825	5700	6300	5300	6078	6668	6962	7148	7260	7326	7368	7345	7307	7262	7197	7148
Exports	0	0	0	0	0	0 #N/A	#N/A	#N/A	#N/A	#N/A	#N/A	#N/A	#N/A	#N/A	#N/A	#N/A	#N/A	#N/A
Imports	4444	4165	5825	5700	6300	5300 #N/A	#N/A	#N/A	#N/A	#N/A	#N/A	#N/A	#N/A	#N/A	#N/A	#N/A	#N/A	#N/A
Consumption	7844	7176	7839	8000	8300	6811	7986	8535	8577	8648	8731	8833	8961	9057	9183	9320	9452	9618
Carry-out Stocks	77	144	869	676	861	861	549	517	502	492	484	474	464	452	440	428	414	402

**China**

China - Wheat Area Harvested (1000 hectares), Yield (metric tons/hectare), and Production (1000 metric tons)

	1990	1991	1992	1993	1994	1995	1996	1997	1998	1999	2000	2001	2002	2003	2004	2005	2006	2007
Area Harvested	30753	30948	30500	30240	28981	28807	30198	30989	30882	30843	30818	30804	30800	30783	30760	30719	30661	30608
Yield	3.19	3.1	3.33	3.52	3.43	3.54	3.56	3.59	3.61	3.63	3.65	3.67	3.69	3.71	3.73	3.75	3.76	3.78
Production	98229	96000	101590	106390	99300	102000	107618	111117	111390	111888	112421	112983	113570	114106	114613	115047	115412	115792

China - Wheat Supply and Utilization (1000 metric tons)

	1990	1991	1992	1993	1994	1995	1996	1997	1998	1999	2000	2001	2002	2003	2004	2005	2006	2007
Carry-in Stocks	21907	23513	23690	22853	22730	21715	22695	21819	21901	21969	21896	21788	21715	21616	21536	21426	21315	21334
Production	98229	96000	101590	106390	99300	102000	107618	111117	111390	111888	112421	112983	113570	114106	114613	115047	115412	115792
Net Imports	9406	15863	6627	4133	10210	11980	5625	10874	9616	10049	10187	9799	10136	10202	10947	11752	11050	11763
Exports	0	0	92	177	25	20 #N/A	#N/A	#N/A	#N/A	#N/A	#N/A	#N/A	#N/A	#N/A	#N/A	#N/A	#N/A	#N/A
Imports	9406	15863	6719	4310	10235	12000 #N/A	#N/A	#N/A	#N/A	#N/A	#N/A	#N/A	#N/A	#N/A	#N/A	#N/A	#N/A	#N/A
Consumption	106029	111686	109054	110646	110525	113000	114119	121909	120938	122010	122715	122855	123805	124388	125670	126910	126442	127574
Carry-out Stocks	23513	23690	22853	22730	21715	22695	21819	21901	21969	21896	21788	21715	21616	21536	21426	21315	21334	21316

World Wheat Policy Simulation Model (Common Wheat and Durum Wheat)

1997 Baseline Solution

Egypt

Egypt - Wheat Area Harvested (1000 hectares), Yield (metric tons/hectare), and Production (1000 metric tons)

	1990	1991	1992	1993	1994	1995	1996	1997	1998	1999	2000	2001	2002	2003	2004	2005	2006	2007
Area Harvested	740	760	878	894	730	966	986	997	921	963	978	1001	1025	1046	1071	1093	1115	1138
Yield	5.79	5.9	5.26	5.35	5.62	5.28	5.34	5.4	5.45	5.49	5.52	5.55	5.58	5.6	5.62	5.64	5.65	5.66
Production	4286	4482	4617	4780	4100	5100	5271	5382	5018	5287	5402	5562	5717	5860	6021	6159	6296	6442

Egypt - Wheat Supply and Utilization (1000 metric tons)

	1990	1991	1992	1993	1994	1995	1996	1997	1998	1999	2000	2001	2002	2003	2004	2005	2006	2007
Carry-in Stocks	800	500	500	700	830	830	830	817	836	869	910	965	1036	1122	1168	1206	1245	1288
Production	4286	4482	4617	4780	4100	5100	5271	5382	5018	5287	5402	5562	5717	5860	6021	6159	6296	6442
Net Imports	5692	5807	6004	5866	5850	6000	6506	6265	6826	6770	6960	7200	7512	7473	7462	7509	7596	7695
Exports	0	0	0	0	0	0	#N/A	#N/A	#N/A	#N/A	#N/A	#N/A	#N/A	#N/A	#N/A	#N/A	#N/A	#N/A
Imports	5692	5807	6004	5866	5850	6000	#N/A	#N/A	#N/A	#N/A	#N/A	#N/A	#N/A	#N/A	#N/A	#N/A	#N/A	#N/A
Consumption	10278	10289	10421	10516	9950	11100	11790	11628	11812	12016	12307	12691	13143	13287	13445	13629	13848	14088
Carry-out Stocks	500	500	700	830	830	830	817	836	869	910	965	1036	1122	1168	1206	1245	1288	1337

Japan

Japan - Wheat Production (1000 metric tons)

	1990	1991	1992	1993	1994	1995	1996	1997	1998	1999	2000	2001	2002	2003	2004	2005	2006	2007
Common Wheat	952	759	759	638	565	444	421.8	400.71	380.67	361.64	343.56	326.38	310.06	294.56	279.83	265.84	252.55	239.92

Japan - Wheat Imports (1000 metric tons)

	1990	1991	1992	1993	1994	1995	1996	1997	1998	1999	2000	2001	2002	2003	2004	2005	2006	2007
Common Wheat	5207	5358	5487	5671	5857	5900	5988	6051	6077	6114	6160	6199	6230	6258	6282	6303	6320	6270

South Korea

South Korea - Wheat Imports (1000 metric tons)

	1990	1991	1992	1993	1994	1995	1996	1997	1998	1999	2000	2001	2002	2003	2004	2005	2006	2007
Common Wheat	4206	4396	3994	5647	4293	2500	2386	4336	4181	4306	4416	4467	4574	4590	4664	4746	4788	4910

Mexico

Mexico - Wheat Area Harvested (1000 hectares), Yield (metric tons/hectare), and Production (1000 metric tons)

	1990	1991	1992	1993	1994	1995	1996	1997	1998	1999	2000	2001	2002	2003	2004	2005	2006	2007
Area Harvested	950	982	947	884	965	870	945	967	984	997	1007	1015	1022	1029	1036	1041	1047	1053
Yield	4.11	3.29	3.3	4.07	4.3	3.98	3.8	3.74	3.74	3.78	3.83	3.9	3.97	4.04	4.11	4.19	4.26	4.34
Production	3900	3227	3127	3596	4151	3460	3589	3613	3681	3765	3857	3955	4054	4156	4258	4361	4464	4566

Mexico - Wheat Supply and Utilization (1000 metric tons)

	1990	1991	1992	1993	1994	1995	1996	1997	1998	1999	2000	2001	2002	2003	2004	2005	2006	2007
Carry-in Stocks	250	175	375	450	450	567	452	606	620	639	658	675	677	648	669	693	717	743
Production	3900	3227	3127	3596	4151	3460	3589	3613	3681	3765	3857	3955	4054	4156	4258	4361	4464	4566
Net Imports	486	739	1350	1828	1286	1250	1413	1253	1363	1450	1510	1590	1670	1832	1947	2068	2205	2325
Exports	0	0	0	0	0	0	#N/A	#N/A	#N/A	#N/A	#N/A	#N/A	#N/A	#N/A	#N/A	#N/A	#N/A	#N/A
Imports	486	739	1350	1828	1286	1250	#N/A	#N/A	#N/A	#N/A	#N/A	#N/A	#N/A	#N/A	#N/A	#N/A	#N/A	#N/A
Consumption	4461	3766	4402	5424	5320	4825	4848	4852	5025	5196	5349	5544	5752	5968	6182	6404	6643	6893
Carry-out Stocks	175	375	450	450	567	452	606	620	639	658	675	677	648	669	693	717	743	741

World Wheat Policy Simulation Model (Common Wheat and Durum Wheat)

1997 Baseline Solution

**Morocco**

Morocco - Wheat Area Harvested (1000 hectares), Yield (metric tons/hectare), and Production (1000 metric tons)

	1990	1991	1992	1993	1994	1995	1996	1997	1998	1999	2000	2001	2002	2003	2004	2005	2006	2007
Area Harvested	2720	2642	2228	2310	3050	1700	3060	2782	2955	2971	3029	3075	3123	3173	3222	3272	3323	3372
Yield	1.33	1.87	0.7	0.68	1.81	0.65	1.5	1.28	1.32	1.3	1.3	1.29	1.28	1.27	1.26	1.25	1.24	1.23
Production	3614	4939	1562	1573	5523	1100	4596	3562	3912	3869	3926	3956	3991	4026	4059	4094	4127	4158

Morocco - Wheat Supply and Utilization (1000 metric tons)

	1990	1991	1992	1993	1994	1995	1996	1997	1998	1999	2000	2001	2002	2003	2004	2005	2006	2007
Carry-in Stocks	368	598	1800	1073	930	1516	1600	914	1397	1345	1367	1372	1372	1395	1407	1435	1463	1482
Production	3614	4939	1562	1573	5523	1100	4596	3562	3912	3869	3926	3956	3991	4026	4059	4094	4127	4158
Net Imports	1667	1552	2811	2403	1215	2350	327	2823	2048	2275	2305	2376	2482	2561	2676	2774	2860	2988
Exports	0	0	0	0	0	0	#N/A	#N/A	#N/A	#N/A	#N/A	#N/A	#N/A	#N/A	#N/A	#N/A	#N/A	#N/A
Exports	1667	1552	2811	2403	1215	2350	#N/A	#N/A	#N/A	#N/A	#N/A	#N/A	#N/A	#N/A	#N/A	#N/A	#N/A	#N/A
Consumption	5051	5289	5100	4119	6152	3366	5609	5901	6013	6121	6227	6331	6451	6575	6707	6839	6968	7110
Carry-out Stocks	598	1800	1073	930	1516	1600	914	1397	1345	1367	1372	1372	1395	1407	1435	1463	1482	1518

**Former Soviet Union**

Former Soviet Union - Wheat Production (1000 metric tons)

	1990	1991	1992	1993	1994	1995	1996	1997	1998	1999	2000	2001	2002	2003	2004	2005	2006	2007
All Wheat	101891	72028	89714	83363	60710	59781	59781	59781	60977	62196	63440	64709	66003	67323	68670	70043	71444	72873

Former Soviet Union - Wheat Net Imports (1000 metric tons)

	1990	1991	1992	1993	1994	1995	1996	1997	1998	1999	2000	2001	2002	2003	2004	2005	2006	2007
Common Wheat	13484	19888	16520	7018	3521	4790	1963	4045	3583	3181	2779	2611	2293	2056	1737	1422	1133	896
Durum Wheat	1165	1777	783	2	214	0	1064	534	745	1023	1258	1032	1123	978	1092	1230	1218	1282
All Wheat	14649	21665	17303	7020	3735	4790	3027	4579	4328	4203	4037	3644	3416	3034	2829	2652	2351	2178

**Tunisia**

Tunisia - Wheat Production (1000 metric tons)

	1990	1991	1992	1993	1994	1995	1996	1997	1998	1999	2000	2001	2002	2003	2004	2005	2006	2007
Common Wheat	225	362	261	267	90	90	144	148.32	152.77	157.35	162.07	166.94	171.94	177.1	182.41	187.89	193.52	199.33
Durum Wheat	897	1424	1323	1133	410	440	704	725.12	746.87	769.28	792.36	816.13	840.61	865.83	891.81	918.56	946.12	974.5
All Wheat	1122	1786	1584	1400	500	530	848	873.44	899.64	926.63	954.43	983.06	1012.56	1042.93	1074.22	1106.45	1139.64	1173.83

Tunisia - Wheat Imports (1000 metric tons)

	1990	1991	1992	1993	1994	1995	1996	1997	1998	1999	2000	2001	2002	2003	2004	2005	2006	2007
Common Wheat	762	532	597	824	1236	666	831	874	904	936	970	1008	1047	1086	1126	1169	1213	1259
Durum Wheat	144	22	11	-18	274	284	200	199	205	213	220	221	227	228	234	239	243	247
All Wheat	906	554	608	806	1510	950	1031	1072	1109	1149	1190	1229	1274	1315	1360	1408	1455	1507

**Taiwan**

Taiwan - Wheat Imports (1000 metric tons)

	1990	1991	1992	1993	1994	1995	1996	1997	1998	1999	2000	2001	2002	2003	2004	2005	2006	2007
Common Wheat	846	847	929	916	895	900	835	941	963	985	1008	1029	1055	1081	1112	1147	1184	1228

**Venezuela**

Venezuela - Wheat Imports (1000 metric tons)

	1990	1991	1992	1993	1994	1995	1996	1997	1998	1999	2000	2001	2002	2003	2004	2005	2006	2007
Common Wheat	914	907	866	771	861	750	879	932	946	960	974	993	1007	1024	1037	1049	1062	1076
Durum Wheat	237	272	288	266	280	250	293	288	301	316	330	332	343	347	358	370	378	389
All Wheat	1151	1179	1154	1037	1141	1000	1172	1220	1247	1276	1304	1325	1350	1371	1395	1419	1440	1465

**Rest of the World**

Rest of the World - Wheat Imports (1000 metric tons)

	1990	1991	1992	1993	1994	1995	1996	1997	1998	1999	2000	2001	2002	2003	2004	2005	2006	2007
Common Wheat	31069	23858	35122	39027	30126	28170	22448	38174	37224	36756	36198	36684	36592	36754	36763	36854	36977	37510
Durum Wheat	1935	1520	1843	1636	2130	1594	1069	1093	1234	1422	1571	1459	1527	1462	1542	1635	1645	1704