



**AgEcon** SEARCH  
RESEARCH IN AGRICULTURAL & APPLIED ECONOMICS

*The World's Largest Open Access Agricultural & Applied Economics Digital Library*

**This document is discoverable and free to researchers across the globe due to the work of AgEcon Search.**

**Help ensure our sustainability.**

Give to AgEcon Search

AgEcon Search  
<http://ageconsearch.umn.edu>  
[aesearch@umn.edu](mailto:aesearch@umn.edu)

*Papers downloaded from **AgEcon Search** may be used for non-commercial purposes and personal study only. No other use, including posting to another Internet site, is permitted without permission from the copyright owner (not AgEcon Search), or as allowed under the provisions of Fair Use, U.S. Copyright Act, Title 17 U.S.C.*

# GHG abatement welfare cost curves for Norwegian agriculture

by

**David Blandford**

The Pennsylvania State University, University Park, PA, U.S.A.

**Ivar Gaasland**

University of Bergen, Norway

**Erling Vårdal**

University of Bergen, Norway

## *Abstract*

*Agriculture makes a significant contribution to Norway's emissions of greenhouse gases (GHG). Although agriculture accounts for only 0.3 per cent of GDP, it accounts for roughly 9 per cent of total GHG emissions. Norwegian agriculture is dominated by livestock production; ruminants (cattle and sheep) are particularly important. There are opportunities for GHG mitigation under existing technology through changes in agricultural practices. Analytically we derive abatement cost curves for Norway in terms of the change in economic welfare, and on a theoretical basis we examine the impact of various policy objectives on the abatement cost curve. In particular we consider the policy objective of keeping the production of calories at the current level. We use a detailed economic model to assess the impact and welfare implication of a reduction in GHG emissions.*

**Keywords:** greenhouse gas mitigation; economic model; abatement costs

**JEL codes:** C61, Q18, Q54



## 1. Introduction

Situated on the northern rim of Europe, Norway has clear disadvantages in agriculture. Not only does it have a cold climate and a short growing season, but also a topography that entails steep and scattered land plots. Only 3 per cent of the total land area is infield agricultural land, and only one third of that land is suitable for food grain production. Consequently, most of Norway's agricultural land can only be utilized by ruminants (beef cows and sheep) that generate relatively high greenhouse gas (GHG) emissions.

Despite the harsh production conditions, Norway is more or less self-sufficient in animal products and close to self-sufficient in feed grains, while the self-sufficiency rate for food grain normally is between 50-75 per cent. Substantial agricultural support, estimated by the OECD as equal to 63 per cent of the production value, is required to keep output at high levels. Although Norwegian agriculture accounts for roughly 0.3% of gross domestic product, it accounts for roughly 9 per cent of the country's total GHG emissions.

Norway has been a strong supporter of initiatives to reduce global GHG emissions. Taking into consideration the relatively high emissions from the country's agricultural sector, it is important to investigate the implications of efforts to reduce these. To this end, a familiar method is to estimate the marginal abatement cost curve (MAC). Most commonly, this is computed as the effect of abatement options on costs at the farm level (e.g., MacLeod et al., 2010). However, this approach can provide an incomplete picture of the benefits and costs of abatement if there are significant implications for economic welfare (Morris et al., 2012).

A welfare-based perspective is particularly appropriate for Norway because as far as agriculture is concerned the country is essentially a closed economy. Changes in production associated with GHG abatement will not only have significant implications for producer costs and economic surplus, but also for consumer surplus and taxpayer costs.

In this paper we derive analytically abatement costs for Norway in terms of the change in economic welfare. This is done under the assumption that we shall preserve the current cultivated land area (often expressed as a public good objective). But even if cultivated land



should be kept open and productive, it does not necessarily have to be used in existing ways i.e., the use of set-aside or a land bank is permitted. On a theoretical basis we also examine the impact of policy constraints on the abatement cost curve. The policy objective that we consider is to maintain the current self-sufficiency rate for food (often expressed in the form of a production target). We illustrate the implications of this policy objective for the abatement cost curve by assuming that per capita production of calories should be kept at the current level. When the abatement cost curve is subject to a constraint related to production of calories and proteins, the abatement cost curve changes markedly.

To measure abatement costs and economic welfare we use a partial equilibrium model of the Norwegian agricultural sector that has been adapted for climate policy analysis, see for example Blandford et al. (2013) and Blandford et al. (2014). We use the results from these articles as a point of reference and derive the unconstrained abatement cost curve.

In the next section we derive the basic principles utilizing a simplified structure. Sections 3-4 outline the empirical model and the results obtained, while Section 5 offers the main conclusions.

## **2. A simplified exposition of the basis of our analysis**

Using simplifying assumptions this section outlines key issues involved in deriving the abatement cost curve for Norwegian agriculture. We consider a small country facing given world market prices. The country we look at follows a policy of self-sufficiency, so agriculture is protected through prohibitive tariffs. For analytical purposes we assume that the sector produces only two commodities: corn and red meat. These are chosen since red meat is an example of a high emission product, while for corn it is the other way around. We require that all available land has to be used. And we assume a simple Cobb-Douglas production structure for both commodities.

### Corn

Corn is produced at farms which use land ( $L_C$ ) and an aggregate of other inputs ( $K_C$ ), hereafter referred to as capital. The Cobb-Douglas function writes:

$$(1) \quad Y_C = K_C^{\alpha_C} L_C^{\beta_C}.$$

The farmer can increase production by using more land or by using more capital. The effect on production by using more capital is given by  $\alpha_C$ .

As for the emission connected to the production of corn,  $E_C$ , we assume it to be described by the formula,

$$(2) \quad E_C = \left( \frac{K_C}{L_C} \right)^{\rho_C} Y_C, \quad \rho_C > 0.$$

Our motivation for (2) is as follows: In practice, the level of emissions depends on the chosen production techniques. A technique that is intensive in the use of for example fertilizer (which is part of  $K$ ) pollutes more than a less intensive technique. The parameter  $\rho_C$  measures the strength of this effect, which we will refer to as the intensity effect in emission. Secondly, the size of the production matters. We will refer to this as the *production effect*. So for corn emission is effected by the intensity in the use of  $K$ , but also to the production level. The relationship (2) is exceedingly simple, but it captures several key factors. In particular, if more land is used in corn farming,  $Y_C$  will increase and so will emissions. In contrast, by holding  $K_C$  constant, production will become less capital intensive and emissions per unit of output will decrease. These effects can be clarified by differentiating (2) with respect to  $L_C$ :

$$(3) \quad \frac{dE_C/E_C}{dL_C/L_C} = \beta_C - \rho_C$$

The percentage increase in emissions from a one percent increase in land use equals the production effect, which follows from the distribution parameter for land in the Cobb-Douglas production function ( $\beta_C$ ), minus the intensity effect, which equals the parameter  $\rho_C$  in (1). In our analysis we take for granted that the production effect surpass the substitution effect, i.e.

$$\beta_C - \rho_C > 0.$$

### *Cow farm*

In the case of cow farming as a representative of ruminants, red meat ( $R$ ) is produced. The Cobb-Douglas production function is now written as:

$$(4) \quad Y_R = (K_R)^{\alpha_R} (L_R)^{\beta_R}.$$

$K_R$  is an aggregate of other inputs (labour, corn, fertilizer, real capital, etc.), again referred to as capital. On a cow farm land,  $L_R$ , is used to grow grass, which is then used as feed for cows. As for emission, in the case of cows methane is the most important source. The formula is given as

$$(5) \quad E_R = \gamma_R \left( \frac{K_R}{L_R} \right)^{\rho_R} Y_R, \quad \rho_R < 0.$$

Here,  $\rho_R$  measure the substitution effect.  $\gamma_R$  is a parameter that is set such that the emission in cow farming is larger than for corn. If more land is used, keeping capital constant, the intake of grass increases and so will production and emission (production effect). But the substitution parameter  $\rho_R$  is in this case negative. Since capital (read corn) is constant, the feed composition changes toward grass, which means more emission. Therefore, in the case of cows the substitution effect reinforces the production effect.

### *Aggregate relationships*

For the country we require that all land will be used, i.e.

$$(6) \quad L_G + L_C = \bar{L},$$

where  $\bar{L}$  is the amount of land available.

We also keep track of the calorie content from consuming Norwegian products. Denote  $\kappa_C$  as the per kilo calorie content of corn, and  $\kappa_R$  as the corresponding parameter for red meat. The population's total intake of calories from consuming food,  $F$ , based on Norwegian agriculture commodities is:

$$(7) \quad F = \kappa_C Y_C + \kappa_R Y_R$$



### *Illustrations of model solutions*

From the production side, the aggregate model consists of the equations (1), (4) and (6). We take input prices on capital connected to the production of corn and red meat for given. Based on these assumptions we can trace out the production possibility frontier marked as I-I in Figure 1. On the vertical and horizontal axis we have quantities of red meat and corn respectively. The market solution is marked as 1, meaning that the relative price between red meat and corn,  $\bar{P}_C/\bar{P}_R$ , is set such that point 1 is reached. Underlying the market prices  $\bar{P}_C$  and  $\bar{P}_R$  is production subsidies, so these prices reflect national preferences. Point 1 will be referred to as the base solution.

### **Figure 1 in here**

Assume now that the sector has to meet a emission requirement,  $\bar{E}$ ,

$$E_C + E_R \leq \bar{E},$$

say that emissions have to be decreased with 30 % compared to the level implied by the base solution. Taking into account the pollution formulas (2) and (5), the revised production possibility frontier is marked as II-II. The shape of this curve will reflect two different types of substitution. First, we have substitution within the separate product lines. Requirements to emit less carbon, for example through a carbon tax, motivate to use production techniques that pollute less. This applies to both product lines. Second substitution will also take place between product lines. Since red meat is more polluting than corn, economic efficiency counts in favour of corn. The new solution is marked as point 2 in Figure 1. Since point 2 lies below the straight line going through the origin, the reduction in red meat is larger than for corn. Notice that we have not changed relative prices.<sup>1</sup>

---

<sup>1</sup> In the model we use in Sections 3-4, welfare is measured as the sum of consumer and producer surplus. A detailed outline of the procedure behind this is given in Blandford et al. (2014).



In Figure 2 we have drawn in the abatement cost curve behind the experiments in Figure 1. In the literature a standard abatement cost curve is drawn into a diagram where the horizontal axis marks reduction in emissions, while the vertical axis measure the marginal costs connected to these reductions. Instead of marginal costs we use change in welfare, i.e. the vertical axis measure the worsening in welfare as a result of less emissions. In Figure 2 point 1 refers to the base solution, while point 2 marks the 30 % reduction in emissions. The line drawn between point 1 and 2 is the result of experiments using continuous reductions in emissions. Observe that most of the abatement cost curve lies below the horizontal axis. That means that from an economic point of view it will be welfare enhancing to reduce activity in Norwegian agriculture, and simultaneously generate lower emissions. Organic soil employed for beef and sheep production will typically be at the low end of the abatement cost curve (yielding the highest welfare gain). These activities are not only emissions intensive, but also costly and land extensive. In contrast, vegetable production on the most productive land in south-east part of Norway, which generates low emissions, can be found at the upper end of the abatement cost curve.

### Figure 2 in here

Assume now that the policy of the authorities is that the Norwegian agricultural sector shall produce a certain amount of calories, for example the same amount as in the base solution,  $F^1$ . In Figure 3, the line F-F marks the selection of diets based on red meat and corn that provide the required amount of calories. Production possibility frontiers I-I, as well as point 1 and 2 are the same as in We see here that it will be impossible for the authorities to meet both the calorie target,  $F^1$ , and the 30 % reduction in emissions. The largest reduction in emissions that can be obtained is  $\bar{E}$ , which the production possibility curve III-III in Figure 3 is based on.

The dotted line in Figure 2 is the abatement cost curve based on the assumption that the calorie requirement must be met. We see that the abatement cost curve shifts upwards, and, compared to the unrestricted curve, becomes steeper with increasing emissions reduction. For example, at the lower end of the curve, proteins and calories can be produced with both lower





costs and emissions by switching from ruminants to vegetable produce and white meat. However, when land suitable for grain and vegetables is exhausted, remaining calories and proteins have to come from ruminants that can utilize grassland. Consequently, the abatement cost curve becomes steeper.

**Figure 3 in here**

### **3. The model and the representation of GHG emissions**

Our sector model (Jordmod) has been used previously to address a number of policy issues (Brunstad *et al.*, 1999 and 2005, Blandford *et al.* 2010). An overview and a technical description of Jordmod is given in Blandford *et al.* (2014). Next we provide a brief overview of the model, with an emphasis on how the model has been adapted to reflect GHG emissions.

Functions and coefficients have been attached to activities and production factors in Jordmod to reflect GHG emissions, based on the Intergovernmental Panel Climate Change (IPCC) methodology, adapted to Norwegian conditions and practices.<sup>2</sup> Details are given in Gaasland and Glomsrød (2010). For milk cows, emissions from enteric fermentation are represented as a function of the amount and mixture of feed, while for all other animals they are reflected by an animal-specific constant parameter per head. The amount of manure, which leads to emissions of methane and nitrous oxide from manure management and nitrous oxide from the use of manure as fertilizer, is modelled as a function of fodder intake for milk cows and as an animal-specific constant for other animals. For manure management, animal-specific emission parameters depend on the manure management system. Constant parameters per unit of nitrogen, which differ between the use of manure and synthetic fertilizer, represent emission of nitrous oxide from the use of fertilizer. Emissions from land use relate to carbon dioxide that is released from tilled mineral soil (estimated to be 1,000 kg per hectare per year).

---

<sup>2</sup> Values are for 100-year time horizon global warming potential relative to CO<sub>2</sub> from the IPCC second assessment report (SAR, 1995). These values are those currently used by the Norwegian authorities in preparing GHG inventory reports for the United Nations. Although values have been revised in the fourth assessment report (AR4, 2007) we chose not to use these in order to maintain consistency with Norway's reporting procedures. Changing the coefficients would affect our numerical results but would not affect the qualitative conclusions reached.

**Table 1 in here**

GHG emissions estimated by the model, distributed by sources and gases for the base year of 2004, are given in Table 1. Norwegian agricultural production and agricultural policy have been relatively stable in recent years, so the base year is representative. Methane from enteric fermentation accounted for 45 per cent of total emissions in 2004, while manure management contributed 27 per cent. Use of synthetic fertilizer and carbon loss from soil each account for about 10 per cent. Total emissions estimated by the model for 2004 are 4,131 thousand tons. The figure actually reported to the United Nations for the same year (National Inventory Report 2013 – Norway) was 4,311 thousand tons.<sup>3</sup>

Table 2 presents estimates of emissions for representative farm types in the model. These illuminate the potential for mitigation by means of substitution through changes in the structure of output in Norwegian agriculture. It can be seen that emissions generated in the production of beef and sheep/lamb meat are by far the highest, both per kg and in terms of output valued at world market prices. White meat and eggs are in the middle range per kg of product, and at the low end in terms of the value of output. Emissions relating to milk production are relatively low, especially per kg of milk. They are by far the lowest for vegetables, represented by potatoes.

**Table 2 in here**

Mitigating options and mechanisms included in the model, e.g. as a response to a carbon tax, are as follows: 1) activities with high emissions (e.g., ruminants) may decline to the benefit of those with lower emissions (e.g., monogastric animals, grain, and vegetables); 2) the intensity of fertilizer use may decrease (i.e., land may be substituted for fertilizer); 3) the intensity of feeding of dairy cows may change (the use of more grain and protein feed); and 4) a switch between tilled land (regularly ploughed), grassland and pasture may take place.

---

<sup>3</sup>[http://unfccc.int/national\\_reports/annex\\_i\\_ghg\\_inventories/national\\_inventories\\_submissions/items/3734.php](http://unfccc.int/national_reports/annex_i_ghg_inventories/national_inventories_submissions/items/3734.php)

#### 4. Empirical analysis

We investigate the welfare cost by reducing GHG emissions relating to the use of land in agricultural production. Our analysis takes the perspective of a small country with a comparative disadvantage in agricultural production, but whose political objective, nevertheless, is to keep agricultural activity as high as possible within an assumed constraint on GHG emissions.

The point of departure is existing policy, as reflected in the model, for the base year 2004. Since Norwegian agricultural markets are highly distorted by subsidies and import tariffs, the solutions that result from our analysis are not economically efficient, but rather reflect an adjustment of existing agricultural policies. The closed economy character of the Norwegian agricultural sector due to tariffs implies that import costs are far above domestic market prices, and this eliminates the possibility of carbon leakage in our analysis (i.e., export of GHG emissions). Consequently, depending on the prevailing supply and demand conditions, a carbon tax will be reflected in domestic consumer and producer prices for agricultural products.

As stated above we assume that GHG emissions relating to use of land in agricultural production must be reduced by 30 per cent, which can be interpreted as a sector specific target for emission reduction. In order to provide incentives to reduce emissions by changing farm level practices or shifting from high to low emission outputs, we introduce a Pigovian tax of NOK 300 per ton of GHG emissions (measured in CO<sub>2</sub> equivalent). Based on the change in practices and production composition that follows from imposing the tax, we then scale the aggregate level of production (i.e., the policy objective variable) up or down to meet the 30 per cent emission target.

A GHG tax has differential impacts on profitability for Norwegian farming systems. As shown in Table 2, ruminants like cattle and sheep cause high emissions, both relative to output and the use of farm land, while emissions are moderate for milk and relatively low for white meat, eggs, grain and vegetables. We have also seen that only a minor part of differences in emissions can be mitigated by farm level adaptation, e.g., by changing existing practices in livestock feeding or the use of fertilizer. Consequently, in order to achieve substantial abatement of emissions while achieving the objective of maintaining aggregate food production, sector

level adjustments will be necessary in the form of a switch in the structure of production from high to low emission products. The sectoral results derived from Jordmod in Table 3 illustrate this adjustment. We first compute the base solution. For this solution every number is normalized, i.e. set equal to 100. The base solution was marked as point 1 in Figures 1-3.

### **Table 3 in here**

Table 3 shows the main results compared to the base solution. Column 2 shows that a 23 per cent reduction in agricultural production is required to achieve the 30 per cent GHG abatement target. Adaptation, both at farm and sector level, explains why production declines less than emissions. At the sector level ruminants like beef and sheep suffer a larger reduction in output than white meat and milk. The reduction for grain is mainly a result of lower agricultural activity that reduces the demand for grain-based feed. While the 30 per cent emission abatement involves costs in terms of production forgone, gains are generated from lower taxpayer expenditures on agricultural support and there is a resulting 19 % increase in economic welfare. This welfare result is more or less a consequence of lower support-driven agricultural production. This means that the results from the experiment fit the drawing of the abatement cost curves in Figure 2.

## **5. Conclusion**

In this paper we have examined GHG emission abatement costs in terms of change in welfare. The point of departure is the current situation where the Norwegian agricultural sector is highly protected and a key policy objective is to keep production as high as possible. When a carbon tax is introduced more emission friendly techniques will be used. Production will also be somewhat reduced, since it become more costly. That means that from an economic point of view it will be welfare enhancing to reduce activity in Norwegian agriculture, and simultaneously generate lower emissions. Organic soil employed for beef and sheep production will typically be at the low end of the abatement cost curve (yielding the highest welfare gain). These activities are not



only emissions intensive, but also costly and land extensive. In contrast, vegetable production on the most productive land in south-east part of Norway, which generates low emissions, can be found at the upper end of the abatement cost curve.

Even though our analysis is confined to the particular circumstances of Norway it has implications for other northern European countries whose agriculture is dominated by ruminants. In addition, the results are supportive of arguments made by others on the need for changes in input mix and a shift to lower emitting sources of protein if the food needs of growing global population are to be satisfied, while at the same time constraining the contribution of agricultural activity to the accumulation of greenhouse gases in the atmosphere.

## References

AR4, 2007.

Blandford, D., Gaasland I., Garcia, R. and Vårdal, E., 2010. How effective are WTO disciplines on domestic support and market access for agriculture? *The World Economy* 33, 1470-1485.

Blandford, D., Gaasland, I. and Vårdal, E., 2013. Extensification versus intensification in reducing green house gas emissions in agriculture: Insides from Norway. *Eurochoice* 12(3), 4-9.

Blandford, D., Gaasland, I. and Vårdal, E., 2014. The trade-off between food production and green house gas mitigation in Norwegian agriculture. *Agriculture, Ecosystems and Environment*.

Brunstad, R. J., Gaasland, I. and Vårdal, E., 1999. Agricultural production and the optimal level of landscape preservation. *Land Economics* 75, 538-546.

Brunstad, R. J., Gaasland, I. and Vårdal, E., 2005. Multifunctionality of agriculture: an inquiry into the complementarity between landscape preservation and food security. *European Journal of Agricultural Economics* 32, pp. 469-488.

Gaasland, I. and Glomsrød, S., (2010). Environmental indicators in Jordmod [In Norwegian]. Arbeidsnotat nr. 01/10. Foundation in Economics and Business Administration, Bergen.

Macleod, M., Moran, D., Eory, V., Rees, R.M., Barnes, A., Topp, C.F.E., Ball, B., Hoad, S., McVittie, A., Pajot, G., Matthews, R., Smith, P. and Moxey, A. 'Developing greenhouse gas marginal abatement cost curves for agricultural emissions from crops and soils in the UK', *Agricultural Systems*, Vol. 103, (2010) pp. 198-209.

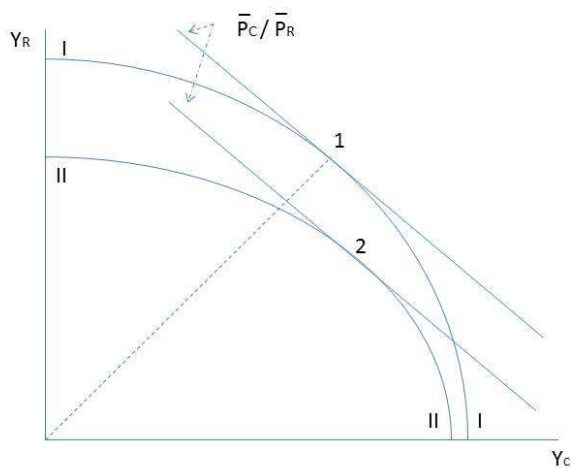
Morris, J., Paltsev, J. and Reilly, J. 'Marginal abatement costs and marginal welfare costs for greenhouse gas emissions reductions: results from the EPPA model', *Environmental Modeling & Assessment* Vol. 17, (2012) pp. 325-336.

SAR, 1995.

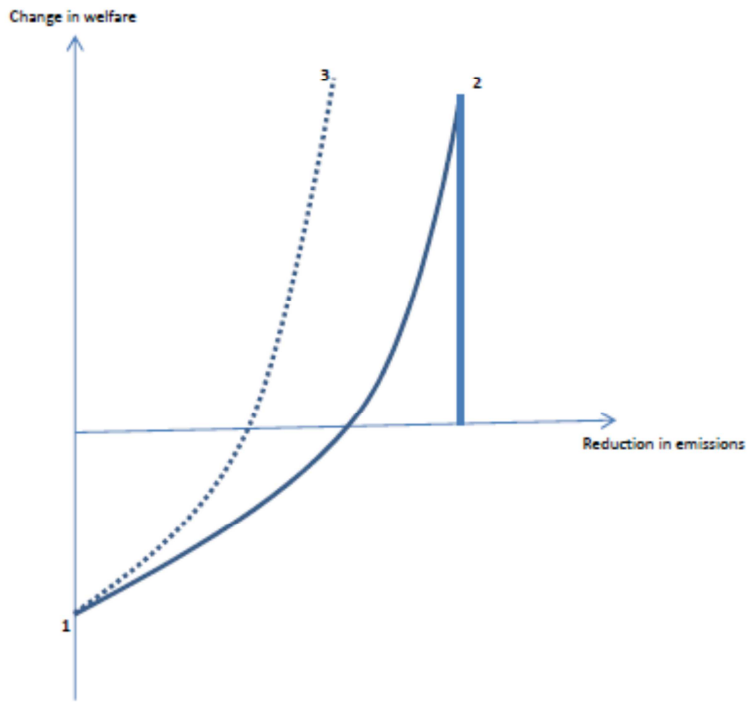
Statistics Norway, 2013. Emissions of greenhouse gases, 2012, preliminary figures. [www.wwb.no/en/klimagassn](http://www.wwb.no/en/klimagassn). Accessed November 5, 2013.

## Figures

**Figure 1:** The production possibility frontier of the agricultural sector

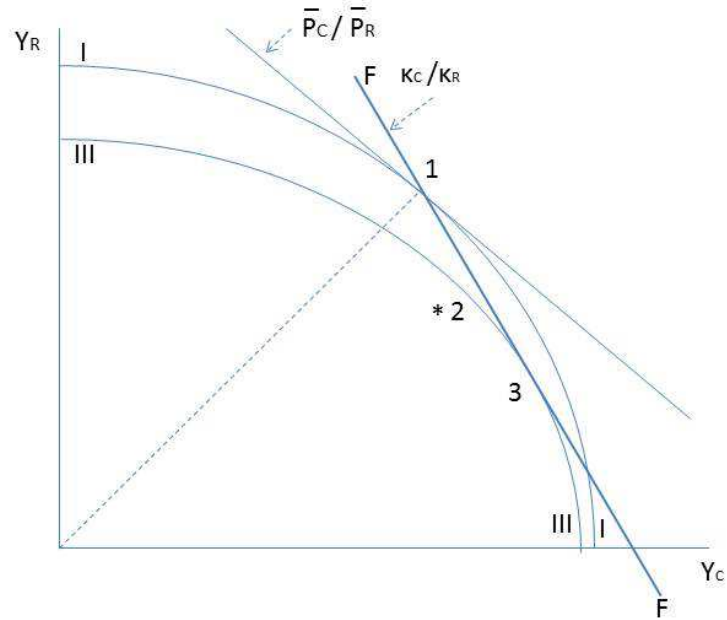


**Figure 2:** Abatement cost curves



**Figure 3:** The restricted production possibility frontier of the agricultural sector





## Tables

**Table 1.** GHG emissions in CO<sub>2</sub> equivalent (1,000 tons) distributed by sources and gases (2004). Global warming potential (GWP) values: CH<sub>4</sub> = 21, N<sub>2</sub>O = 310, and CO<sub>2</sub> = 1.

| Source                | Methane<br>(CH <sub>4</sub> ) | Nitrous oxide<br>(N <sub>2</sub> O) | Carbon dioxide<br>(CO <sub>2</sub> ) | Total | (share) |
|-----------------------|-------------------------------|-------------------------------------|--------------------------------------|-------|---------|
| Enteric fermentation  | 1,843                         |                                     |                                      | 1,843 | 41 %    |
| Manure management     | 689                           | 420                                 |                                      | 1,109 | 24 %    |
| Fertilizer, manure    |                               | 231                                 |                                      | 231   | 5 %     |
| Fertilizer, synthetic |                               | 504                                 |                                      | 504   | 11 %    |
| Nitrogen runoff       |                               | 69                                  |                                      | 69    | 2 %     |
| Land, net carbon loss |                               |                                     | 375                                  | 375   | 8 %     |
| Fossil fuel           |                               |                                     | 411                                  | 411   | 9 %     |
| Total                 | 2,532                         | 1,224                               | 786                                  | 4,542 |         |
| (share)               | 56 %                          | 27 %                                | 17 %                                 |       |         |

**Table 2.** Estimated GHG emissions (CO<sub>2</sub> equivalents in kg) for representative farm types – including emissions related to purchased feed<sup>a</sup>

| Farm types             | Per kg            | Per NOK <sup>b</sup> | Per ha |
|------------------------|-------------------|----------------------|--------|
| Extensive beef         | 27.28             | 2.10                 | 3,829  |
| Sheep                  | 19.69             | 0.98                 | 3,982  |
| Pigs                   | 4.42              | 0.37                 | 3,948  |
| Poultry                | 3.00              | 0.33                 | 4,278  |
| Eggs                   | 1.85              | 0.19                 | 2,194  |
| Combined milk and beef | 0.66 <sup>c</sup> | 0.60                 | 3,852  |
| Grain                  | 0.38              | 0.50                 | 1,661  |
| Potatoes               | 0.12              | 0.05                 | 1,581  |

<sup>a</sup> CO<sub>2</sub> emission estimated at 0.41 kg per unit of purchased grain, based on an average barley yield of 3,670 feed units per ha and 84 kg N fertilizer per ha.

<sup>b</sup> Emission is divided by production at the farm valued at world market prices. NOK = Norwegian krone. According to arguments made in footnote 6, the exchange rate is \$1=7.50 NOK.

<sup>c</sup> Per kg of milk. Emissions from beef production are deducted (assuming 20 kg CO<sub>2</sub> equivalent per kg of beef).

**Table 3.** Sector level mitigation – model simulations

|   | Base solution | Carbon tax |
|---|---------------|------------|
| <b>Production</b>   | 100           | 77         |
| Cow milk  | 100           | 82         |
| Other ruminants   | 100           | 66         |
| White meat and eggs   | 100           | 83         |
| Grains and potatoes   | 100           | 74         |
| <b>Farm land usage</b>  | 100           | 74         |
| <b>Production intensity</b>   |               |            |
| Nitrogen per ha   | 100           | 95         |
| Yield per dairy cow   | 100           | 119        |
| Share of grass fodder   | 100           | 96         |
| <b>Emissions from agricultural activity (CO<sub>2</sub> equivalent)</b> | <b>100</b>    | <b>70</b>  |
| Per NOK produced (at world market prices)                               | 100           | 91         |
| Per hectare   | 100           | 96         |
| <b>Agricultural support</b>   | 100           | 74         |
| <b>Economic welfare</b>   | 100           | 119        |