



AgEcon SEARCH
RESEARCH IN AGRICULTURAL & APPLIED ECONOMICS

The World's Largest Open Access Agricultural & Applied Economics Digital Library

This document is discoverable and free to researchers across the globe due to the work of AgEcon Search.

Help ensure our sustainability.

Give to AgEcon Search

AgEcon Search
<http://ageconsearch.umn.edu>
aesearch@umn.edu

*Papers downloaded from **AgEcon Search** may be used for non-commercial purposes and personal study only. No other use, including posting to another Internet site, is permitted without permission from the copyright owner (not AgEcon Search), or as allowed under the provisions of Fair Use, U.S. Copyright Act, Title 17 U.S.C.*

PORT OF NEW YORK & NEW JERSEY RAIL FACILITY EXPANSION PROGRAM

Transportation Research Forum

March 8, 2005

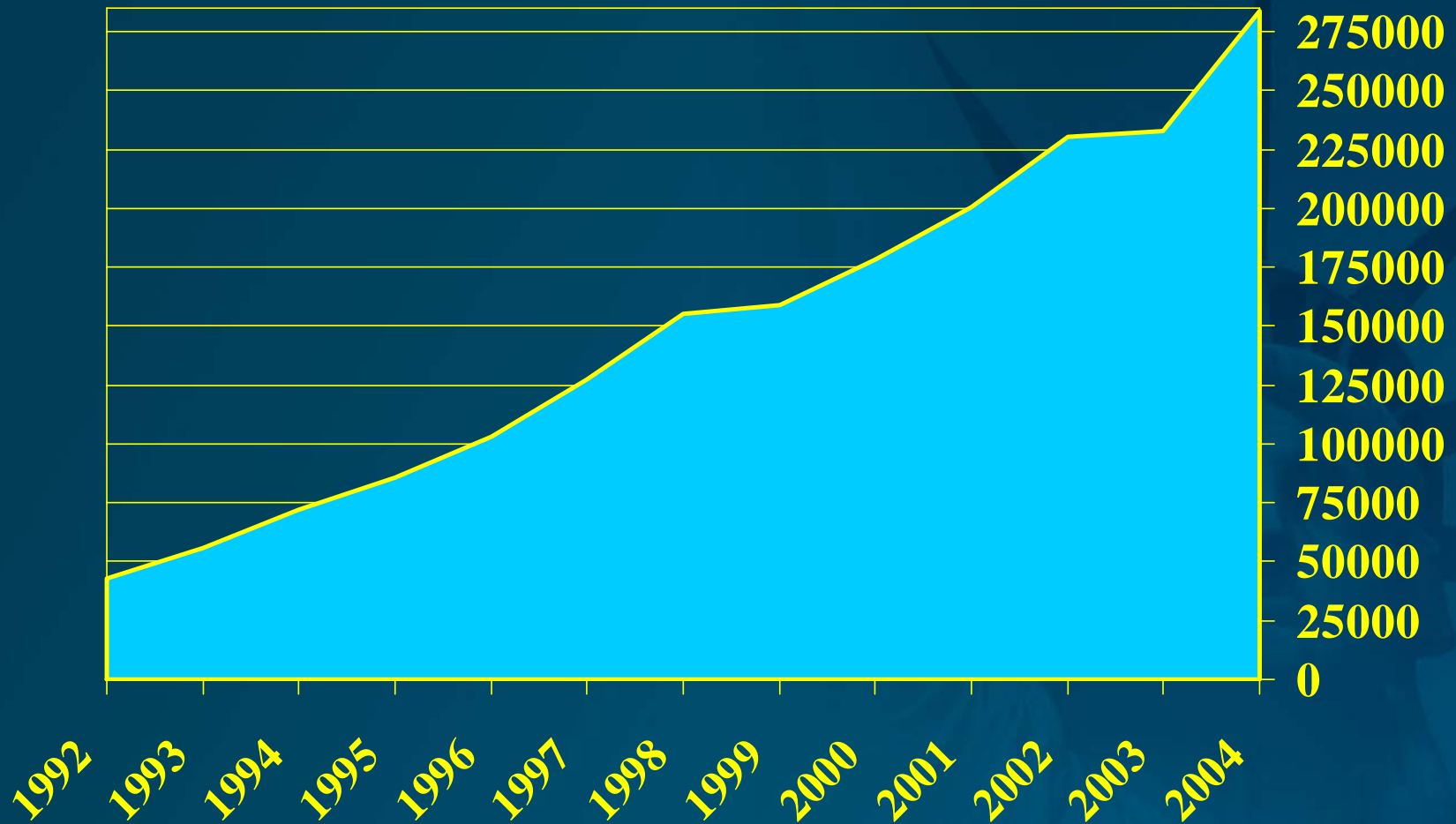


**THE PORT AUTHORITY
OF NEW YORK & NEW JERSEY**

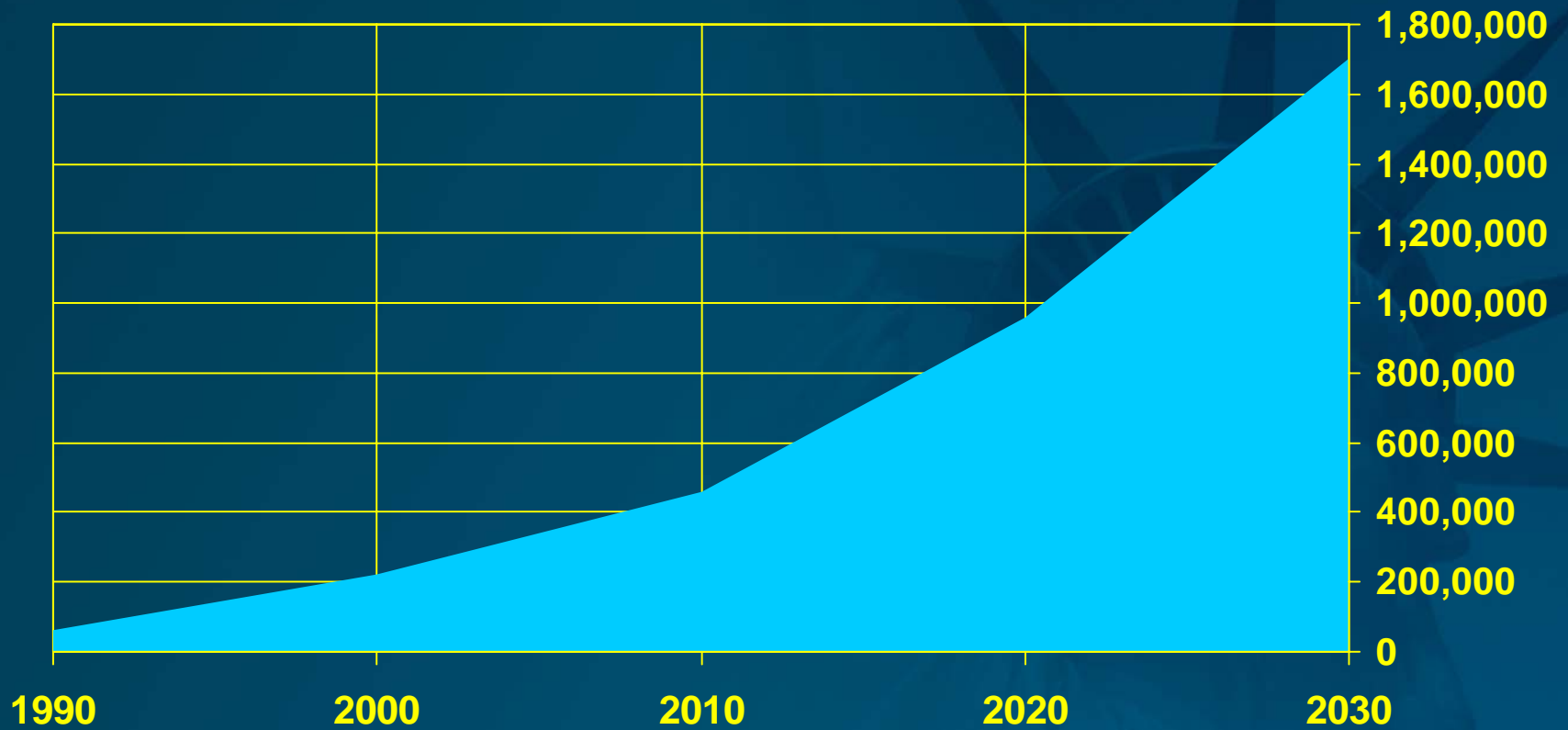
Port of New York & New Jersey Intermodal Rail Linkages



Port of New York & New Jersey On-Dock Rail Volume is Growing



Port of New York & New Jersey Projected Rail Growth



■ Rail Volume (LIFTS)



THE PORT AUTHORITY
OF NEW YORK & NEW JERSEY

Port of New York & New Jersey

Reasons for Projected Rail Growth

Port Throughput is Growing

- **Global economy**
- **Increased demand for imports and exports**
- **Rail participates in port growth**
- **Increasing demand for rail transport**
- **Higher trucking costs**
- **More short-haul rail**



Port of New York & New Jersey

Advantages of Rail Transportation

- **More port volume lowers cost per unit**
- **More port-related jobs**
- **Enhanced port competitive position**
- **Improved fuel efficiency vs. trucking (2 to 4 times more efficient)**
- **Environmental benefits (about 1/3 NOx of trucks)**
- **Alleviates traffic congestion
(one train = 500 trucks)**
- **Safety, including hazardous materials transport**



Port of New York & New Jersey

Intermodal Rail Program

Dedicated Rail Terminals including:

- **ExpressRail (APM & Maher - Elizabeth)**
- **PNCT Rail Terminal (Port Newark)**
- **Port Ivory (Howland Hook)**

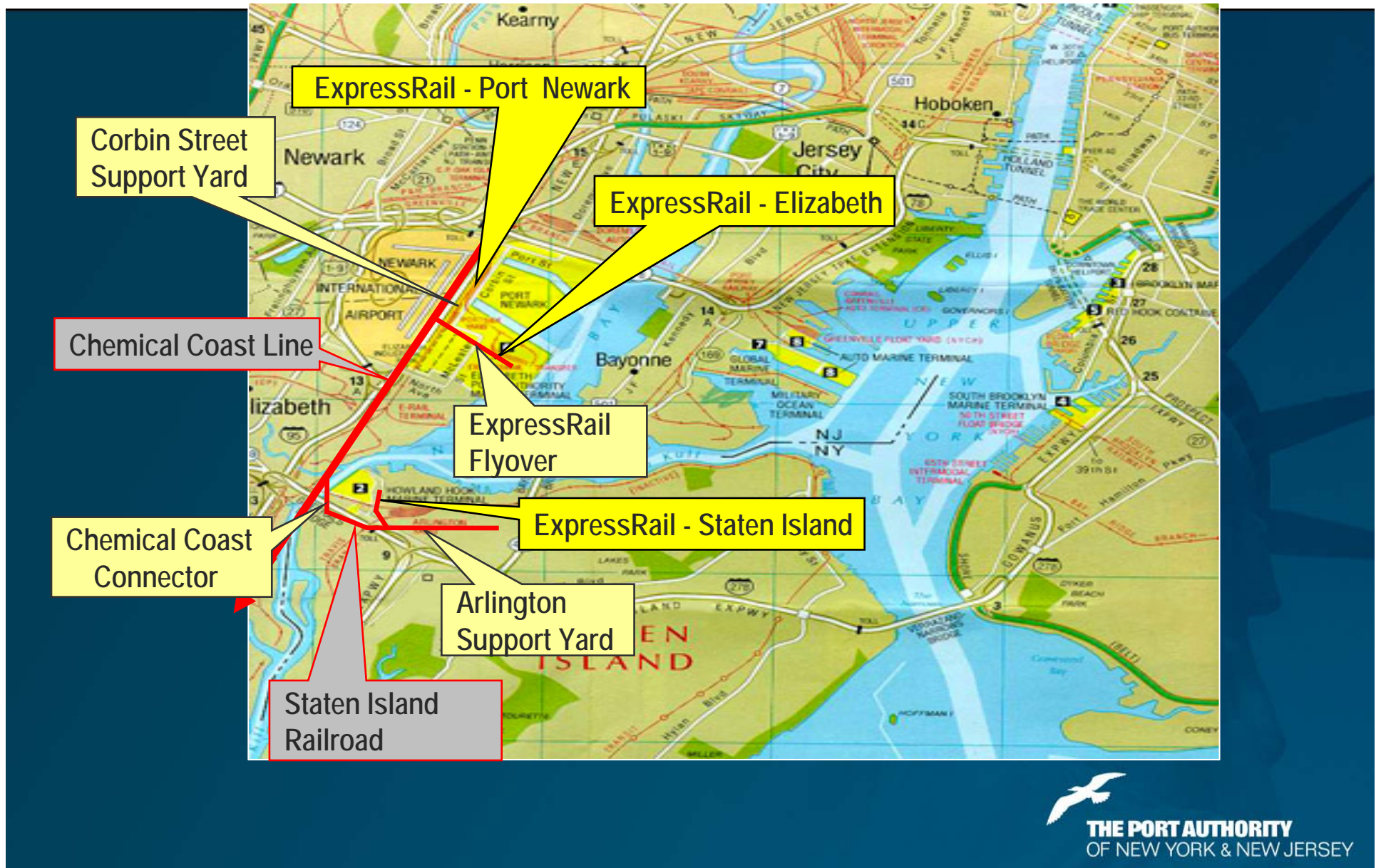
Intermodal Support Yards including:

- **Corbin Street Yard (Newark/Elizabeth)**
- **Arlington Yard (Staten Island)**

Regional Rail Capacity Enhancements



Port of New York & New Jersey ExpressRail Intermodal System



ExpressRail Elizabeth

Old Corbin Street Grade Crossing



ExpressRail Elizabeth

New McLester Street Grade Crossing Separation



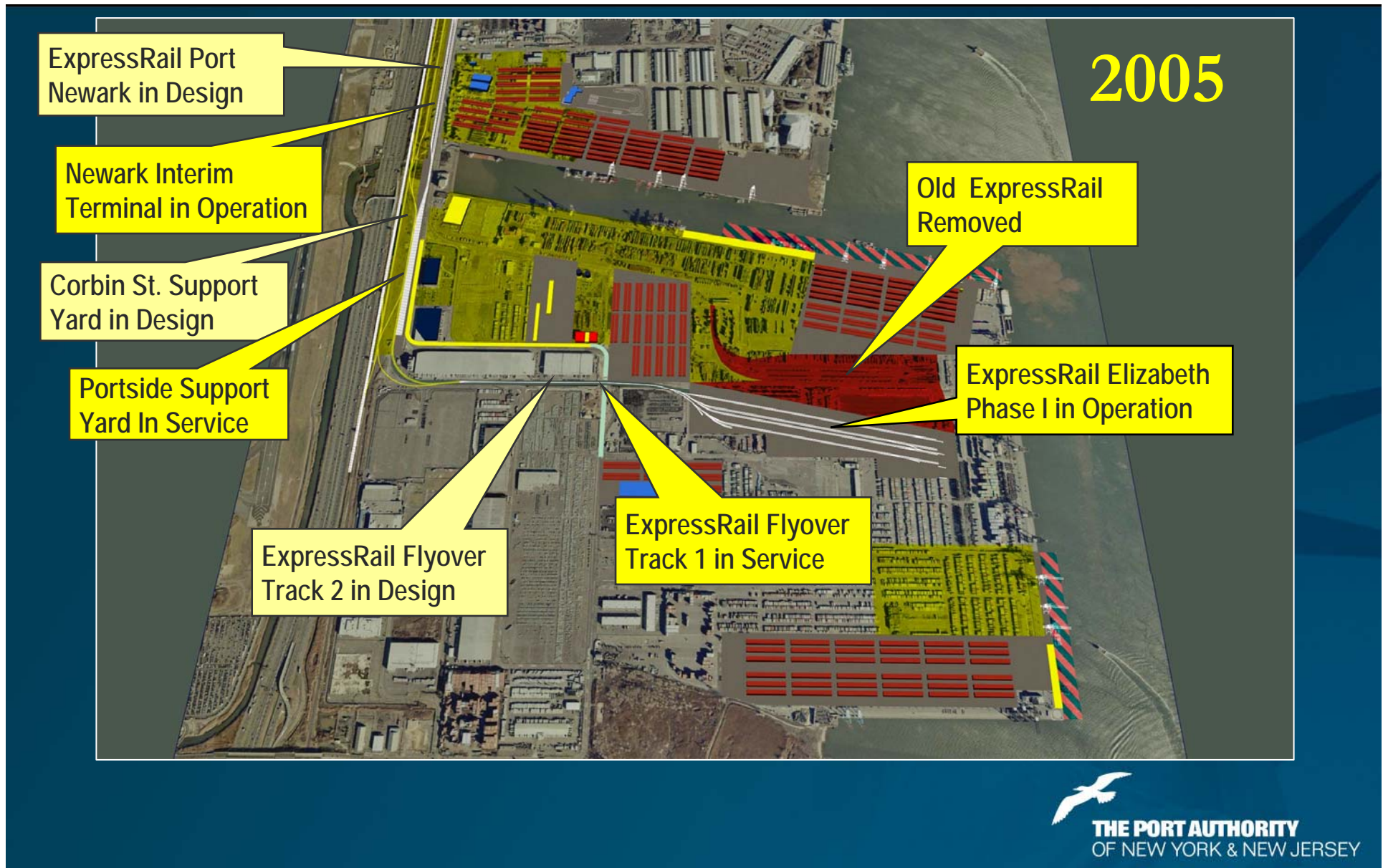
THE PORT AUTHORITY
OF NEW YORK & NEW JERSEY

ExpressRail Elizabeth New Terminal Opened October, 2004

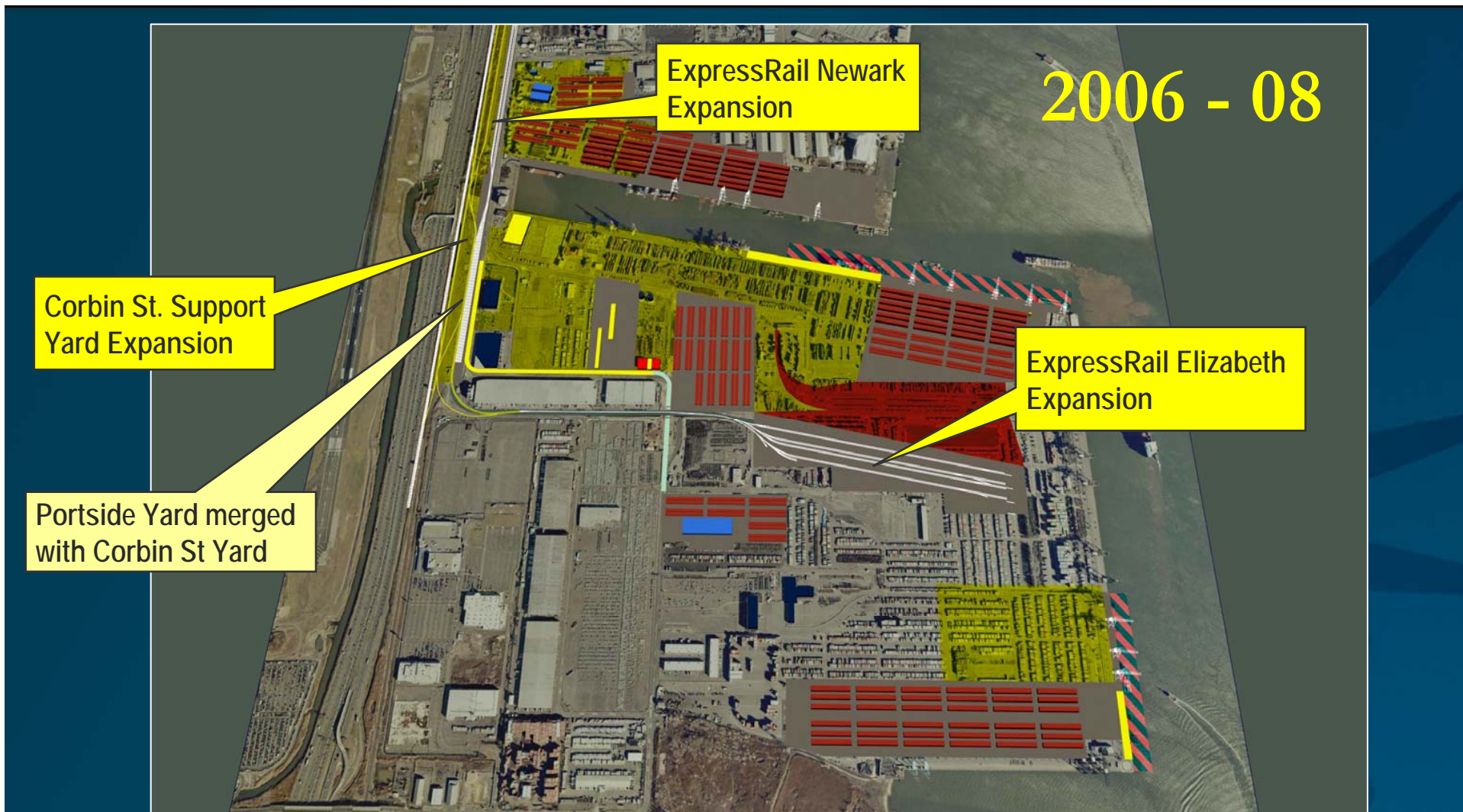


**THE PORT AUTHORITY
OF NEW YORK & NEW JERSEY**

New Jersey Marine Terminals Intermodal Rail Projects



New Jersey Marine Terminals Intermodal Rail Program



Howland Hook Marine Terminal Intermodal Rail Project



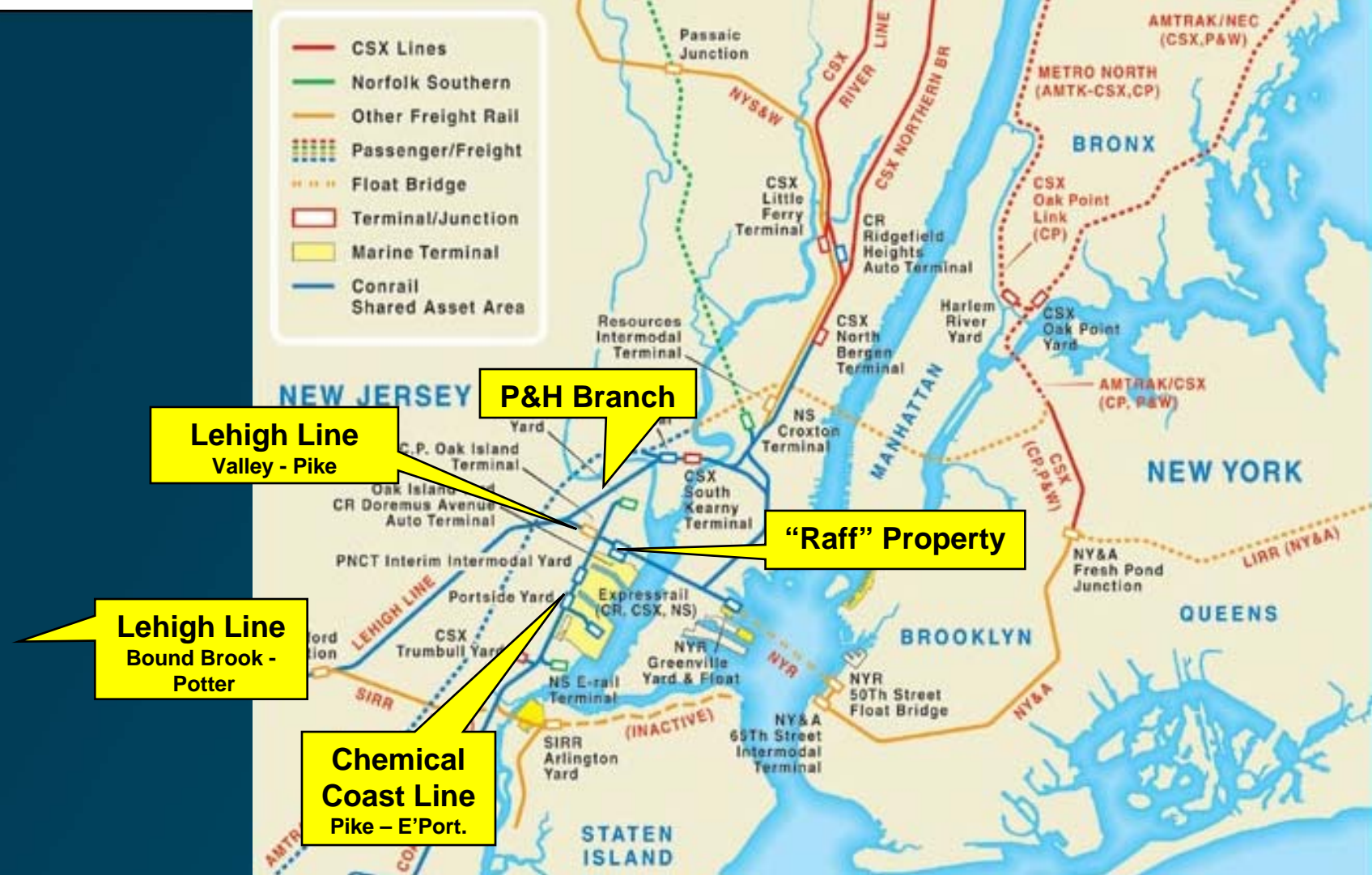








North Jersey Regional Rail Freight Program (Phase I: Port Authority – NJDOT – Railroads)



Port Inland Distribution Network (PIDN)





Albany Business Relationships

PIDN

**THE PORT AUTHORITY
OF NY & NJ**

Cooperation Agreement

**New York State
Dept. of Transportation**

Contract:

- \$25/box service payment;
- \$5/box repayment after break-even;
- \$200,000 marketing assistance.



Federal Funds:

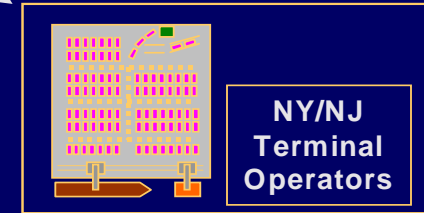
- Economic Development = Capital;
- CMAQ = operating (80% reimbursement of net deficit)

Stevedoring at or Near Cost



Sole Source

MOU



Stevedoring at or Near Cost

TRAC Lease



Contract (Bid)

Tug Company



Ocean Carriers



Shippers



PANYNJ



**THE PORT AUTHORITY
OF NEW YORK & NEW JERSEY**