



AgEcon SEARCH
RESEARCH IN AGRICULTURAL & APPLIED ECONOMICS

The World's Largest Open Access Agricultural & Applied Economics Digital Library

This document is discoverable and free to researchers across the globe due to the work of AgEcon Search.

Help ensure our sustainability.

Give to AgEcon Search

AgEcon Search

<http://ageconsearch.umn.edu>

aesearch@umn.edu

*Papers downloaded from **AgEcon Search** may be used for non-commercial purposes and personal study only. No other use, including posting to another Internet site, is permitted without permission from the copyright owner (not AgEcon Search), or as allowed under the provisions of Fair Use, U.S. Copyright Act, Title 17 U.S.C.*



Status of Accommodating the A380 – March 2006

John F. Kennedy Airport



THE PORT AUTHORITY OF NY & NJ

Presentation Outline

- **The Aircraft and Buyers**
- **Importance to JFK**
- **Our Plan for Accommodation**
- **Status of Approvals**
- **Airfield & Terminal Construction Progress**
- **Construction Costs**



What Is The A380?

The “New Large Aircraft”

- Greater than 500 seats
- Two Full Decks
- For Trans-Atlantic,
Trans-Pacific
Intra Pacific Markets



- Passenger Version Late 06, Freighter Version 08/09
- Designed to Replace 747-400
- Length 238', Wingspan 262', Tail 79'
- Range 8,000 nm



A380 Interiors



A380 First Flight

Toulouse, 27th April 2005, 10:29 a.m.

First Flight MSN1



A380: Flight Testing

Cold Weather Tests – Iqaluit, Canada

February 6-11, 2006

Blizzard conditions:

Air temperature: - 22 °F

Wind chill: - 58 °F



A380: Flight Testing

Airport Proven

29 October 2005: Tested at Frankfurt, Terminal 2, Gate E9



Who Are The A380 Customers?

Airline	Orders	Airline	Orders
Air France *	10	Lufthansa *	15
China Southern	5	Malaysia Airlines	6
Emirates *	43	Qantas Airways	12
Etihad Airlines	4	Qatar Airways	2
Federal Express	10	Singapore Airlines *	10
ILFC	10	Thai Airways International	6
Kingfisher Airlines	5	United Parcel Service	10
Korean Air Lines *	5	Virgin Atlantic Airways *	6

* Coming to JFK

Grand Total 159



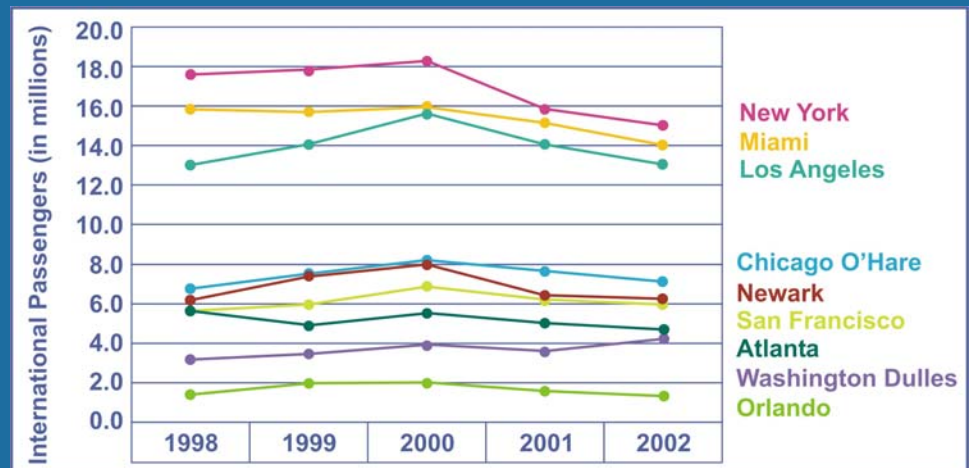
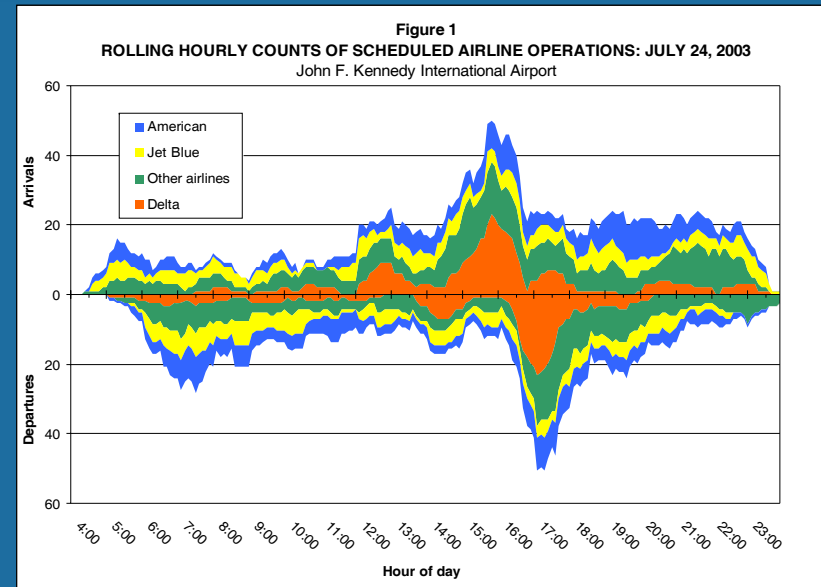
THE PORT AUTHORITY OF NY & NJ

Importance To JFK

Operational Benefits

The A380 Will:

- Increase Seat Capacity Without Increasing Operations
- Replace Some B747 Operations
- Consolidate Flights in Markets with High Load Factors
- Encourage International Travel Through Lower Seat Mile Costs



Importance To JFK

Regional Economic Benefits

•Visitor, On-Airport, Induced Impacts

	2008	2016
Output	\$62.9 M	\$167 M
Payroll	\$24.9 M	\$66 M
Employment	860 Jobs	2,300 Jobs

•Construction Related

	2008
Output	\$18.9
Payroll	\$6.6
Employment	180



Plan For Accommodation

Airfield Separations

	Group V	Group VI	JFK
Runway Width	150'	200'	3- 150', 1-200'
Taxiway Width	75'	100'	75'
Rwy/Txy	400'	600'	400'
Txy/Txy	267'	324'	300'
Txy/Fixed Object	160'	193'	130'

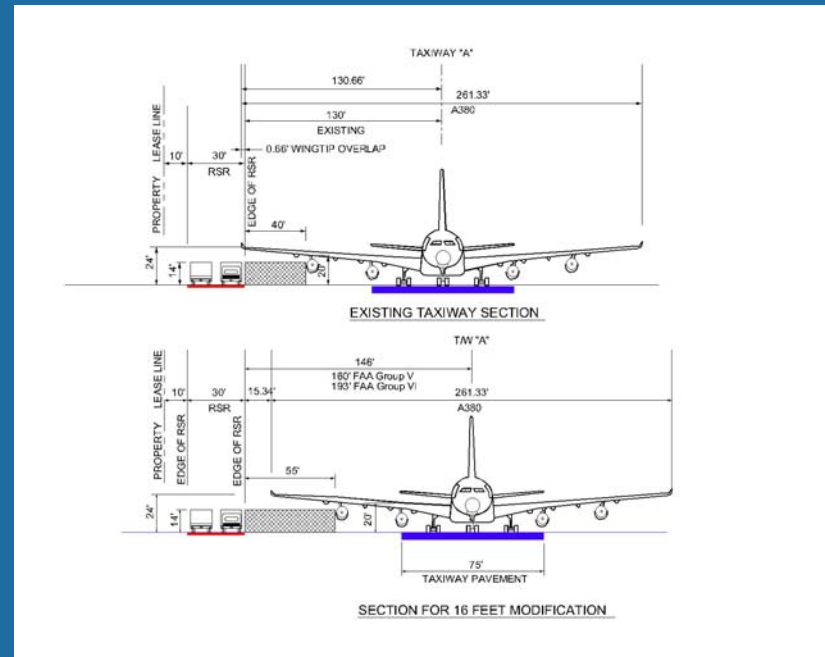
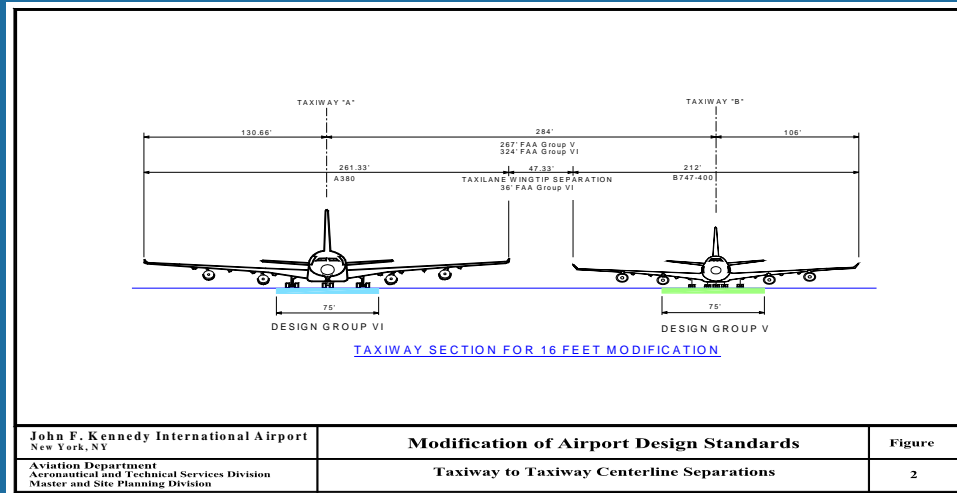




Plan for Accommodation

Operating Plan

- A380 Restricted to Alpha
- 14' RSR Height Limit
- Improve Delineator & Centerline Spacing
- Restrict Bridge Crossing



Status of Approvals

Five Modification of Airfield Standards Submitted 1/02

- Twy to Fixed Object
- Twy to Twy
- Twy Width
- Rwy to Twy
- “Interim” Rwy Width

“Conditional Approval” Received 9/04 for Four Modifications

Runway Width to Be Managed Through Aircraft Certification Process

FONSI Awarded 9/04

PFC Application Approved 2/06



Airfield Construction Plans



Taxiway A Bridges Completed 6/05, Twy B Bridges To Be Completed 6/06

Taxiway A North/South, Start 10/05, to be Complete 3/07

Taxiway A Start 10/04, Complete 9/05

Taxiway A West Start 7/06, Complete 7/07

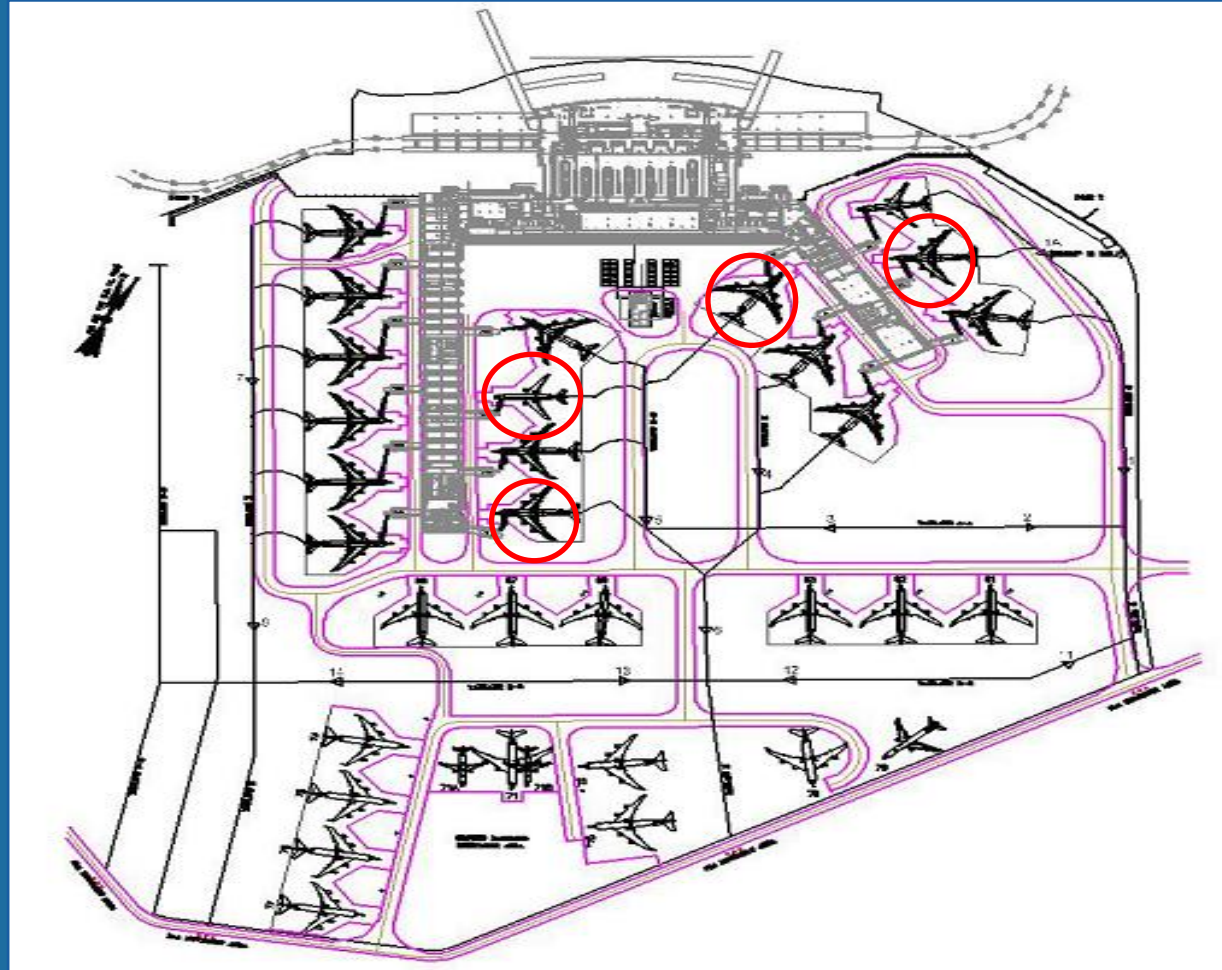
Rehab & Widen Rwy 13L/31R 2008

Terminal Construction Plans

Terminal Four:

Emirates, Virgin,
Singapore

- Designed for A380
- Few Changes Required



Terminal Construction Plans

Terminal Four:

- Exp With 500+ Pax Flights
- Most Gate Infrastructure in Place
- Gate Plans:
 - Start With One UD, One LD



Terminal Construction Plans

- T-4 Designed for A380
 - Open Hold Rooms
 - Ticket Counters
 - Baggage Facilities

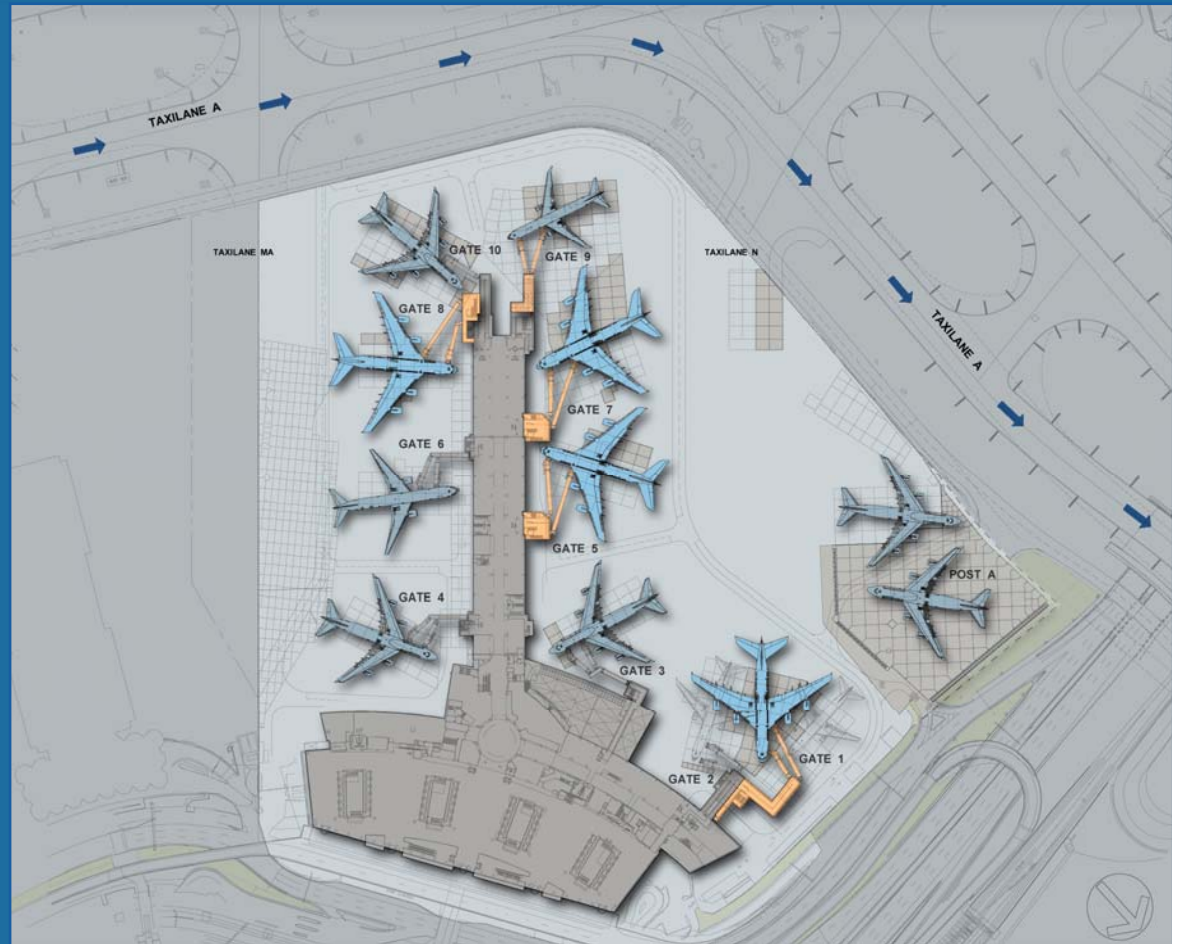


Terminal Improvements

Terminal One:

Air France,
Lufthansa, Korean

- Will Add Hold room Space
- Expand Ramp
- Pax Bridge Slope Issue for UD



THE PORT AUTHORITY OF NY & NJ

Costs For Accommodating The A380

It Depends...

- **Twy November Changes – A380 Only**
- **Twy Bridge Strengthening- A380 & A340-600**
- **Twy Alpha Move- Part of State of Good Repair Program**
- **Rwy 13R 150' to 200' Width- A380 & Snow Removal**

To Be Funded Through Passenger Facility Charges



Conclusion

A380 – A Worthwhile Investment

- **Fits Strategic Plan**
- **Airfield Improvements Benefit Other Aircraft**
- **Economic Benefits to The Regional Economy are Significant**
- **FAA Modification of Standards Process Provides Flexibility**
- **State of Good Repair Approach Helps Mitigate Costs**
- **A380 at JFK Summer 2007**

