



AgEcon SEARCH
RESEARCH IN AGRICULTURAL & APPLIED ECONOMICS

The World's Largest Open Access Agricultural & Applied Economics Digital Library

This document is discoverable and free to researchers across the globe due to the work of AgEcon Search.

Help ensure our sustainability.

Give to AgEcon Search

AgEcon Search
<http://ageconsearch.umn.edu>
aesearch@umn.edu

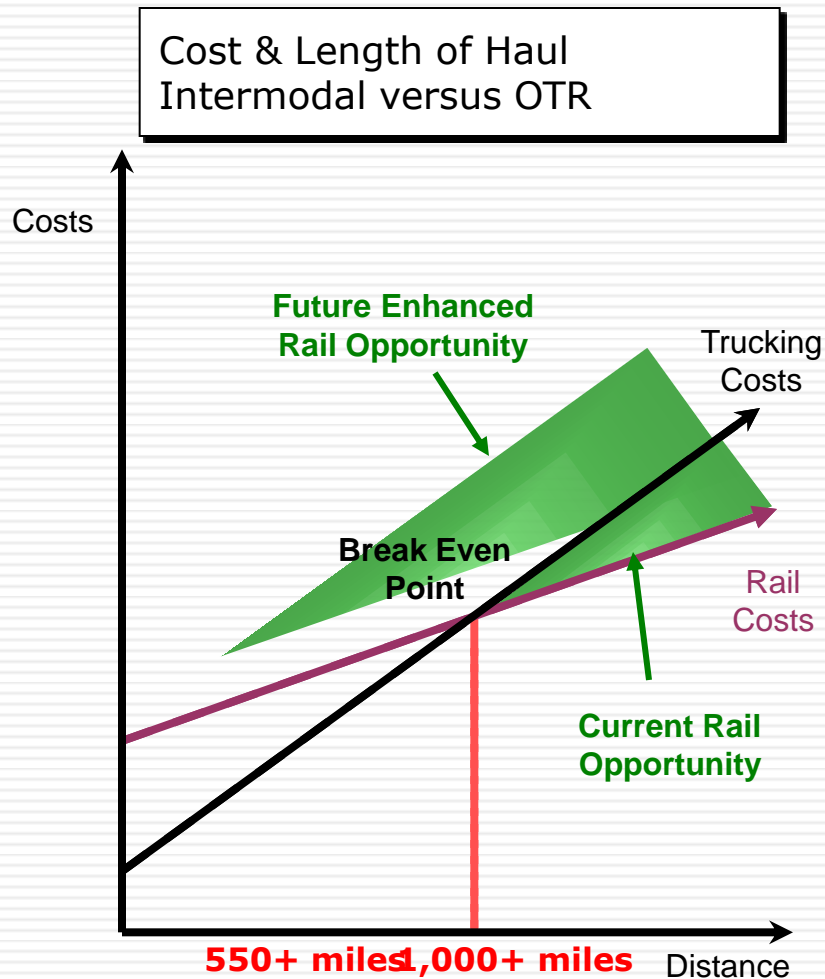
*Papers downloaded from **AgEcon Search** may be used for non-commercial purposes and personal study only. No other use, including posting to another Internet site, is permitted without permission from the copyright owner (not AgEcon Search), or as allowed under the provisions of Fair Use, U.S. Copyright Act, Title 17 U.S.C.*

How tomorrow moves



*Transportation Research Forum
Tampa, Florida
March 9, 2012*

Regional intermodalism is on the rise



Rising labor costs

- Trucking competes with other cyclical industries for labor
- As the economy recovers, driver capacity will tighten

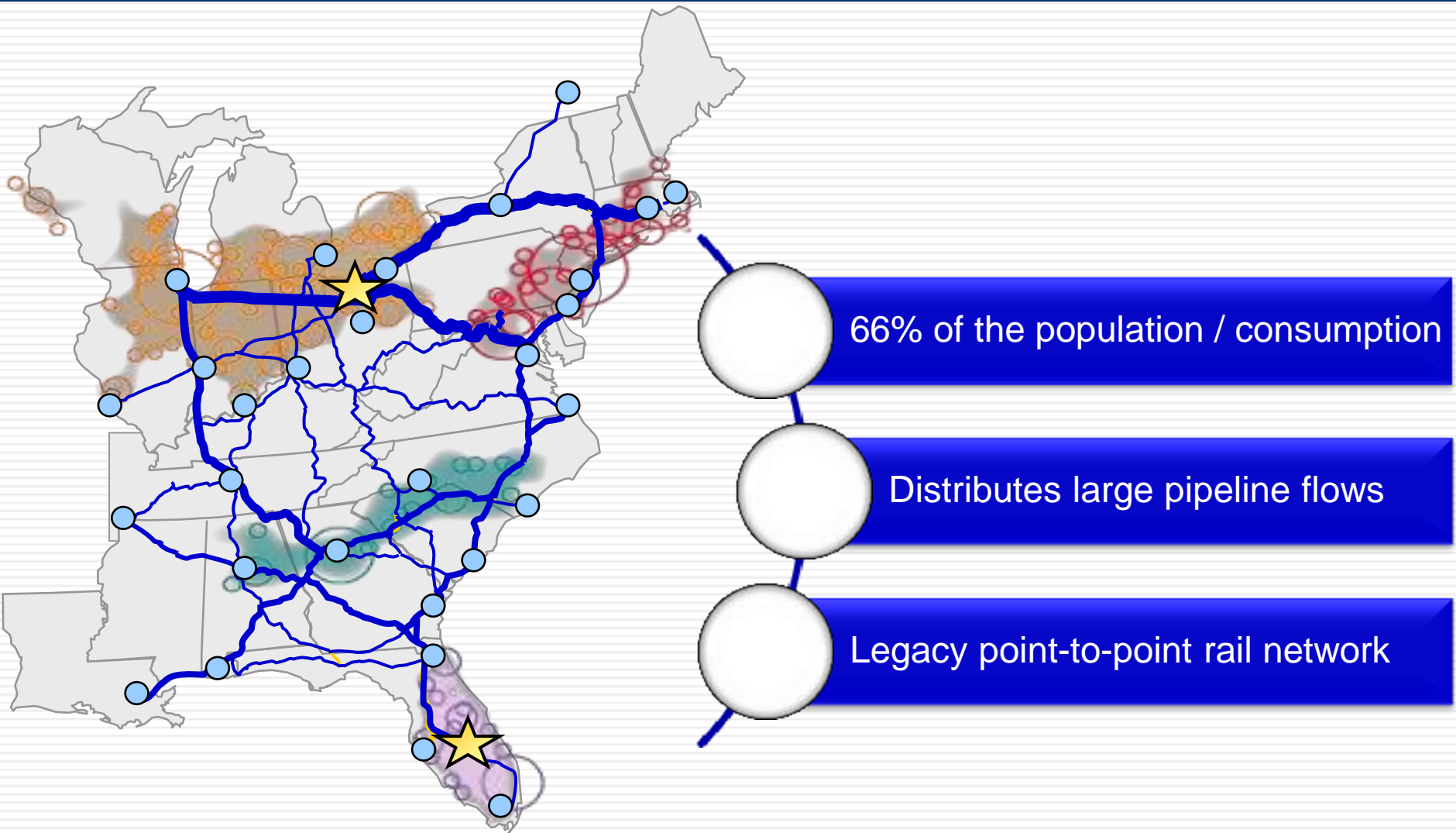
Rising fuel costs

- Fuel costs will increase with the recovery and regulation
- Intermodal is twice as fuel efficient as an OTR movement

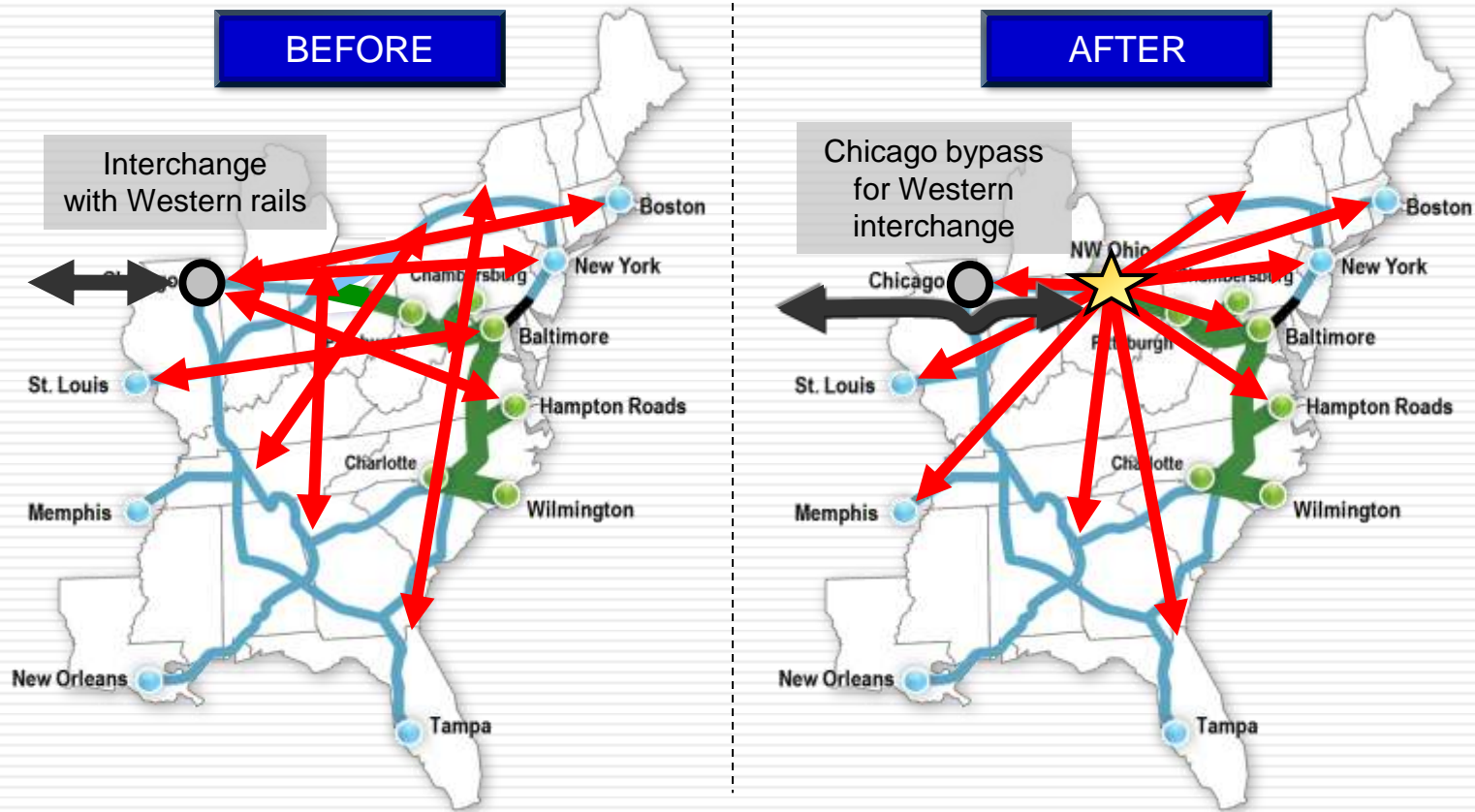
15% Long-term reduction in TL capacity
(Source: Stifel & Nicholaus, May 2009)



Rail networks connect supply & consumption



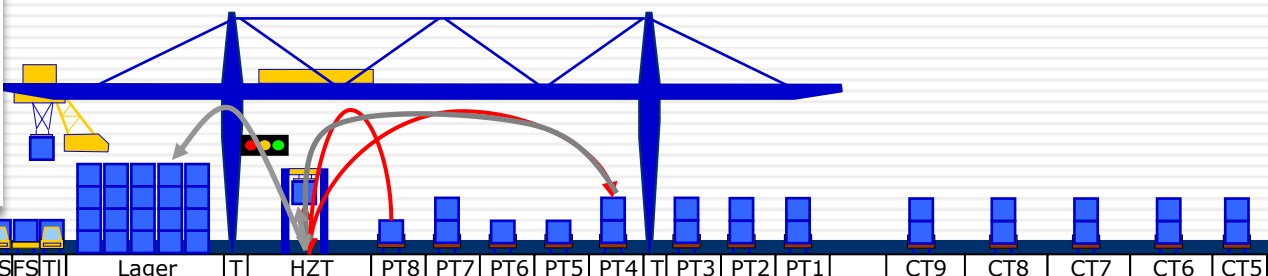
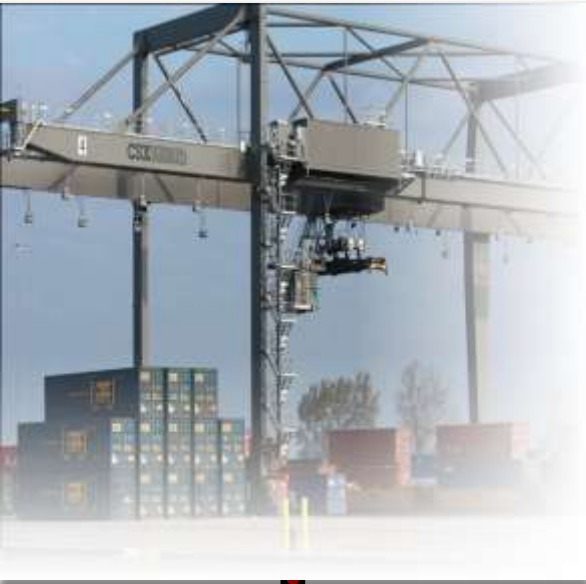
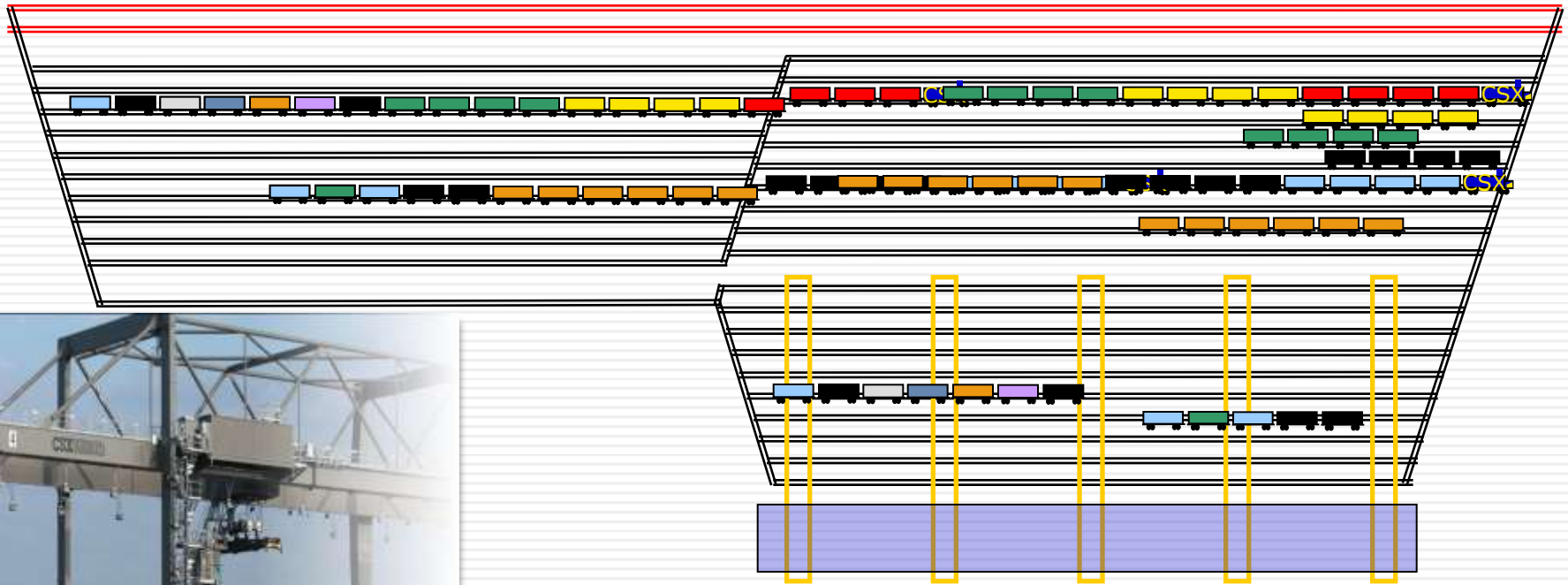
Investments must create network flexibility



New terminal paradigms

“CSX has designed its new facility in Northwest Ohio to deliver new levels of efficiency and productivity”

World Cargo News



Gate WZ Trailer Wheeled FSFS TI Lager T HZT PT8 PT7 PT6 PT5 PT4 T PT3 PT2 PT1 CT9 CT8 CT7 CT6 CT5

How tomorrow moves



