



AgEcon SEARCH
RESEARCH IN AGRICULTURAL & APPLIED ECONOMICS

The World's Largest Open Access Agricultural & Applied Economics Digital Library

This document is discoverable and free to researchers across the globe due to the work of AgEcon Search.

Help ensure our sustainability.

Give to AgEcon Search

AgEcon Search
<http://ageconsearch.umn.edu>
aesearch@umn.edu

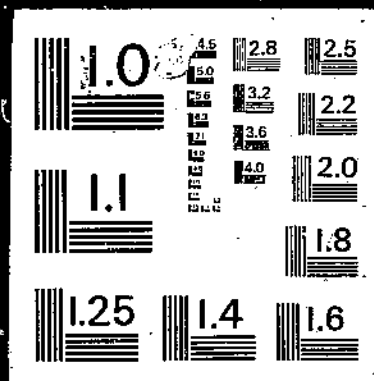
*Papers downloaded from **AgEcon Search** may be used for non-commercial purposes and personal study only. No other use, including posting to another Internet site, is permitted without permission from the copyright owner (not AgEcon Search), or as allowed under the provisions of Fair Use, U.S. Copyright Act, Title 17 U.S.C.*

USDA/FATUS-
MAR 78

FATUS/FOREIGN AGRICULTURAL TRADE OF THE UNITED STATES, 1978 MARCH. Washington, DC:
Economic Research Service.

(NAL Call No. A286.9/AgB)

1 OF 1 USDA FATUS-MAR



78

FATUS

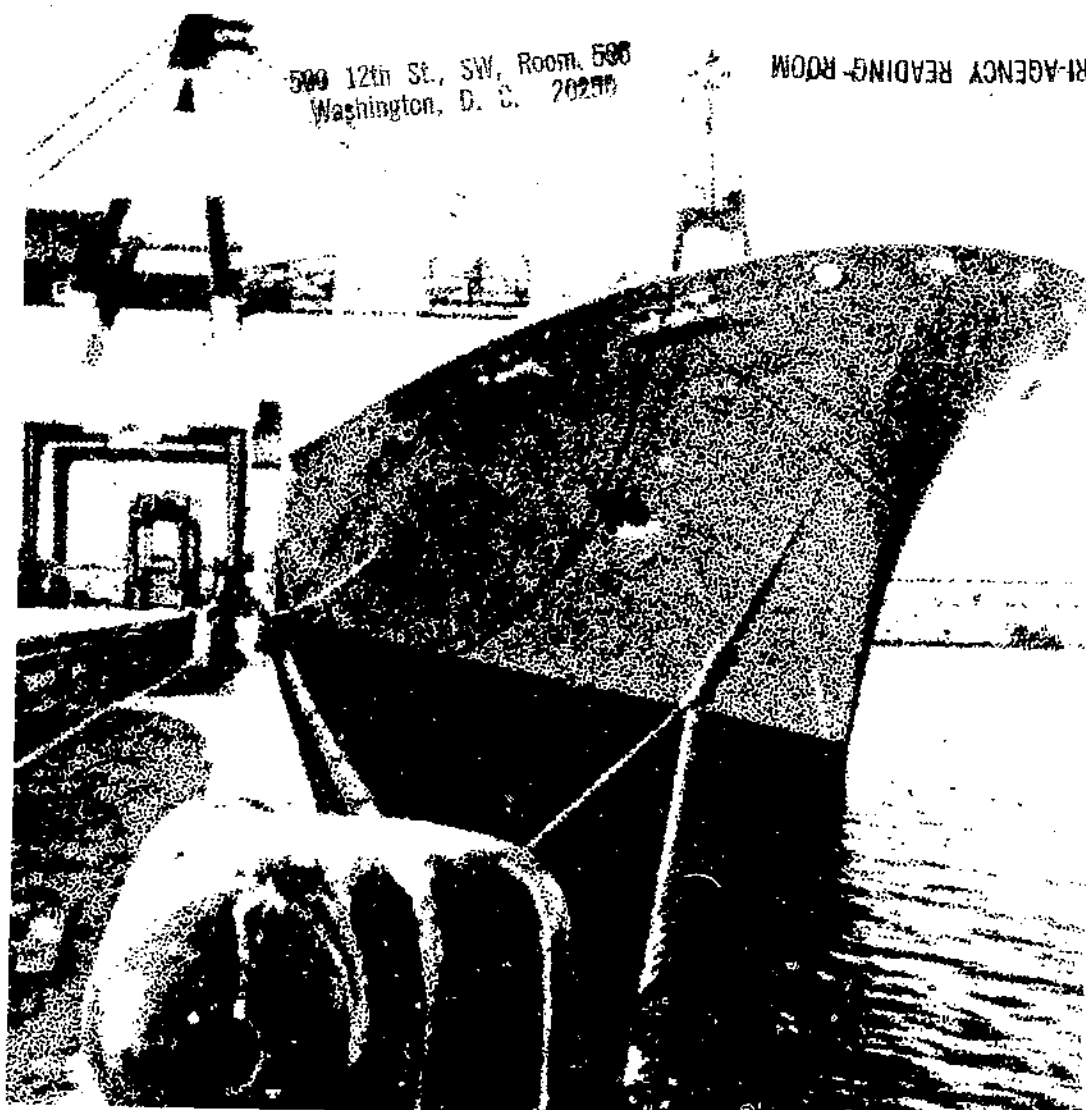
FOREIGN AGRICULTURAL TRADE
OF THE UNITED STATES
MARCH 1978

TRI-AGENCY READING ROOM

500 12th St., SW, Room 500
Washington, D. C. 20250

500 12th St., SW, Room 500
Washington, D. C. 20250

TRI-AGENCY READING ROOM



ECONOMICS, STATISTICS, AND COOPERATIVES SERVICE • U.S. DEPARTMENT OF AGRICULTURE

CONTENTS

	<u>Page</u>
Farm Product Exports Down 4 Percent During October-January	4
U.S. Farm Imports Increase slightly in October-January 1977/78	17
Agricultural Trade With Ireland	35
International Price Highlights	42
Selected prices of international significance	43
Quantity indexes:	
Exports	45
Imports	46
Explanatory Note	47

* * * * *
* Detailed statistics which usually appear in this *
* publication were not available when this issue *
* went to press because of delays occasioned by *
* changes in the U.S. export schedules. *
* * * * *

The contributors to this issue are Susan A. Libbin, H. Christine Collins, and Pearl S. Williams. Principal coordinators are Robert L. Tontz, Thomas A. Marden, and Thomasine McCall, Statistics Program Area, Foreign Demand and Competition Division, Economics, Statistics, and Cooperatives Service, Washington, D.C.

DIGEST

Farm Product Exports Down 4 Percent During October-January (see p. 4). January's agricultural export value totaled \$1.94 billion. In October 1977 through January 1978, cumulative exports amounted to \$8 billion, compared with \$8.36 billion during similar months the previous year. Coarse grain accounted for most of the reduction. Wheat and corn prices averaged substantially lower.

U.S. Farm Imports Increase Slightly in October-January 1977/78 (see p. 17). Noncompetitive imports, mainly green coffee, declined in October-January from a year ago, while competitive imports increased. Value increases for sugar, beef and veal, live animals, and vegetables more than offset the drop in vegetable oil imports.

Agricultural Trade With Ireland (see p. 35). Agricultural imports from Ireland were up in 1977 to \$20.7 million compared to \$16.6 million in 1976. Even though U.S. exports to Ireland declined from \$33.9 million in 1977 to \$32.4 million in 1976, we still show a favorable agricultural trade balance.

International Price Highlights (see p. 42). In January, international commodity prices generally stayed at their December level. Wheat, corn and grain sorghum export prices rose slightly, while soybean export price declined. International rice prices are at their highest point of 2 years. Among import commodities, coffee prices strengthened slightly while cocoa beans declined. The London Daily Price for sugar showed unexpected strength.

FARM PRODUCTS EXPORTS DOWN 4 PERCENT DURING OCTOBER-JANUARY

In January, farm product exports totaled \$1.94 billion, down somewhat from their December level, but above that for January 1977. Grain exports, at just over 5.7 million metric tons, were considerably below December's 7.3 million-ton rate. While grain movements were up from last January's 5.4 million-ton volume, prices averaged well below those a year earlier.

For the October-January period, agricultural exports amounted to \$8 billion, 4 percent below those for the same months last year. Coarse grain shipments--mainly feed corn--dropped to 16 million tons, 13 percent below their year earlier level; value fell 25 percent to \$1.5 billion. Export unit values for coarse grains averaged \$95 per ton, compared with \$110 from October 1976 to January 1977.

The decline in coarse grain exports more than offset increased values for most other agricultural export commodities. Wheat volume was up 8 percent from its year earlier rate; however, lower prices resulted in a 9-percent value decline.

Soybean and other oilseed product exports continued to expand. From October to January, oilseed and product exports yielded \$2.5 billion versus \$2.27 billion a year ago. Soybean shipments were up 17 percent--to 7.5 million tons--averaging \$220 per ton against \$250 during October 1976 to January 1977.

January cotton exports surged to 520,000 bales, reflecting good foreign demand and the continued shipments of unfilled orders built up during the September-November longshoremen's strike.

Other export value increases during October to January from year-earlier levels included animal products--mainly live animals, dairy products, fats and oils, and beef--fresh fruits, and edible nuts.

The October-January agricultural trade surplus amounted to \$3.85 billion, 11 percent below similar months a year earlier.

Table 1--Agricultural, nonagricultural, and total trade balance

Item	October-January		January	
	1976/77	1977/78	1977	1978
	-- Million dollars --			
Agricultural exports <u>1/</u>	8,360	8,049	1,907	1,938
Nonagricultural exports <u>2/</u>	30,509	30,885	6,911	7,276
Total exports <u>2/</u>	38,869	38,934	8,818	9,214
Agricultural imports <u>3/</u>	4,018	4,201	1,139	1,247
Nonagricultural imports <u>4/</u>	39,798	45,784	9,880	11,561
Total imports <u>4/</u>	43,816	49,985	11,019	12,808
Agricultural trade balance	4,342	3,848	768	691
Nonagricultural trade balance ..	-9,289	-14,899	-2,969	-4,285
Total trade balance	-4,947	-11,051	-2,201	-3,594

1/ Domestic exports including Department of Defense shipments (F.A.S. value).

2/ Domestic and foreign exports excluding Department of Defense shipments (F.A.S. value).

3/ Imports for consumption (Customs value).

4/ General imports (Customs value).

Table 2 --U.S. agricultural exports: Value by commodity,
October-January 1976/77 and 1977/78 and January 1977 and 1978

Commodity	October-January		Change	January		Change
	1976/77	1977/78		1977	1978	
	Million dollars	Percent		Million dollars	Percent	
Animals and animal products:						
Dairy products	45	50	+11	14	14	---
Fats, oils, and greases	165	183	+11	34	40	+18
Hides and skins, including furskins :	264	244	-8	93	85	-9
Cattle hides, whole	173	153	-12	44	40	-9
Furskins	72	70	-3	42	39	-7
Other hides and skins	19	21	+11	7	6	-14
Meats and meat products	201	184	-8	41	50	+22
Poultry and poultry products	97	114	+18	22	29	+32
Other	68	73	+7	14	14	---
Total animals and animal products :	840	848	+1	218	232	+6
Cotton, excluding linters	435	466	+7	127	156	+23
Feeds and fodders, excl. protein meal:						
Corn byproducts	69	74	+7	17	25	+47
Alfalfa meal	25	14	-44	5	3	-40
Other	105	72	-31	31	13	-58
Total feeds and fodders, excl. protein meal	199	160	-20	53	41	-23
Fruits and preparations	248	297	+20	50	67	+34
Grains and preparations:						
Feed grains, excluding products	2,064	1,526	-26	432	378	-12
Rice	208	217	+4	39	38	-3
Wheat and products	997	911	-9	191	227	+19
Other	71	84	+18	14	25	+79
Total grains and preparations	3,340	2,738	-18	676	668	-1
Nuts and preparations	92	114	+24	11	17	+55
Oilseeds and products:						
Cottonseed and soybean oil	144	198	+38	38	43	+13
Soybeans	1,606	1,646	+2	369	323	-12
Protein meal	316	341	+8	90	112	+24
Other	206	433	+110	33	62	+88
Total oilseeds and products	2,272	2,618	+10	530	540	+2
Tobacco, unmanufactured	432	426	-1	126	96	-24
Vegetables and preparations	222	149	-33	49	35	-29
Other	280	232	-17	67	86	+28
Total agricultural exports	8,360	8,048	-4	1,907	1,938	+2

Table 3--Export quantities of selected commodities,
October-January 1976/77 and 1977/78 and January 1977 and 1978

Commodity	October-January		January	
	1976/77	1977/78	1977	1978
-- 1,000 metric tons --				
Animal products:				
Fats, oils, and greases	428	439	86	96
Meats and meat products	123	117	26	29
Poultry meat, fresh or frozen :	71	66	15	16
Grains:				
Wheat and wheat flour	7,279	7,842	1,410	1,863
Feed grains	18,723	16,114	3,943	3,790
Rice	693	629	108	93
Oilseeds and products:				
Soybeans	6,398	7,484	1,386	1,432
Protein meal	1,625	1,726	433	582
Vegetable oils and waxes	349	480	89	104
Other:				
Fruits and preparations <u>1/</u>	471	504	109	124
Vegetables and preparations <u>2/</u> :	571	271	142	71
Tobacco	118	101	35	24
Cotton, excluding linters	264	326	77	113
Feeds and fodders <u>3/</u>	1,389	1,110	352	218
Total	38,502	37,209	8,211	8,555

1/ Includes fresh fruits, canned fruits, and dried fruits.

2/ Includes fresh vegetables, canned vegetables, and pulses.

3/ Includes prepared animal feeds, corn byproducts, and alfalfa meal and cubes.

Table 4--U.S. agricultural exports: Value by months, October 1968 to September 1978 (Million dollars)

Months	1968/69	1969/70 1/	1970/71	1971/72	1972/73	1973/74	1974/75	1975/76	1976/77 2/	1977/78 2/
October	463.8	644.9	729.9	465.9	907.5	1,734.4	1,711.9	2,081.9	2,250.7	1,705.1
November	609.4	657.8	725.8	630.2	1,080.4	2,085.6	2,352.5	2,175.6	2,120.9	2,081.5
December.....	610.7	590.9	744.6	841.5	1,108.6	1,973.3	2,119.5	1,959.4	2,081.4	2,323.9
October-December ...	1,683.9	1,893.6	2,200.3	1,937.6	3,096.5	5,793.3	6,183.9	6,216.9	6,453.0	6,110.5
January	177.7	524.1	670.3	769.7	1,135.5	1,833.9	2,452.9	1,994.1	1,906.8	1,937.7
February	239.5	559.6	634.5	714.2	1,180.1	1,909.8	1,920.2	1,715.1	2,045.9	
March	517.2	569.7	714.5	668.2	1,411.4	2,092.6	1,911.0	1,873.3	2,293.1	
January-March	934.4	1,653.4	2,019.3	2,152.1	3,727.0	5,836.3	6,284.1	5,582.5	6,245.8	
October-March	2,618.3	3,547.0	4,219.6	4,089.7	6,823.5	11,629.6	12,468.0	11,799.4	12,698.8	
April	602.0	558.4	632.1	627.7	1,265.5	2,011.1	1,757.6	1,932.3	2,208.9	
May	583.6	573.7	623.1	711.5	1,367.3	1,796.5	1,496.2	1,848.4	2,199.4	
June	513.2	599.4	607.1	743.5	1,376.1	1,704.4	1,389.6	1,823.8	1,882.1	
April-June	1,698.8	1,731.5	1,862.3	2,082.7	4,008.9	5,512.0	4,643.4	5,604.5	6,290.4	
July	499.8	567.8	578.5	680.8	1,223.7	1,631.5	1,532.4	1,798.6	1,748.9	
August	438.4	537.5	546.2	679.0	1,478.1	1,452.3	1,600.4	1,759.6	1,541.6	
September	471.5	568.3	749.3	709.5	1,449.2	1,382.6	1,609.8	1,796.9	1,733.8	
July-September	1,409.7	1,673.6	1,874.0	2,069.3	4,151.0	4,466.4	4,742.6	5,355.1	5,024.3	
April-September	3,108.5	3,405.1	3,736.3	4,152.0	8,159.9	9,978.4	9,366.0	10,959.6	11,314.7	
October-September <u>3/</u>	5,726.8	6,952.1	7,955.9	8,241.7	14,983.4	21,608.0	21,854.0	22,759.0	24,013.5	
Monthly average ...	477.2	579.3	663.0	686.8	1,248.6	1,800.7	1,821.2	1,896.6	2,001.1	

1/ Beginning Jan. 1970, export values include small amounts of commodities formerly classified as nonagricultural.

2/ Preliminary.

3/ Totals may not add due to rounding.

Table 5--U.S. agricultural imports: Value by commodity.

Commodity	Oct-January			January		
	1977	1978	Change	1977	1978	Change
	Million dollars		Percent	Million dollars		Percent
Complementary						
Bananas, fresh	102	103	+1	24	25	+4
Cocoa and chocolate:						
Cocoa beans	127	149	+17	57	69	+21
Cocoa butter	28	23	-18	7	6	-14
Cocoa cake, powder, and chocolate	36	82	+128	11	21	+91
Coffee:						
Coffee, green or crude	1,205	1,105	-8	402	414	+3
Coffee, soluble	70	50	-29	20	28	+40
Drugs, crude	41	39	-5	9	5	-44
Essential oils	26	22	-15	7	5	-29
Fibers, unmanufactured	10	7	-30	2	1	-50
Rubber, crude:						
Rubber, crude, dry form	174	181	+4	51	39	-23
Rubber, latex	17	19	+12	5	2	-60
Silk, raw	2	1	-50	1/	1/	---
Spices	40	37	-7	10	9	-10
Tea, crude	38	33	-13	9	7	-22
Wool, carpet	7	1	-86	2	1/	---
Other complementary products	62	146	+136	16	73	+169
Total complementary products	1,985	1,997	+1	632	676	+7
Supplementary						
Animals and animal products:						
Cattle and calves	85	103	+21	16	17	+6
Dairy products and eggs	120	117	-2	25	26	+4
Hides and skins, including furskins	45	56	+24	12	17	+42
Meats and meat products, excluding poultry:						
Beef and veal	248	261	+5	63	62	-2
Pork	146	135	-8	37	43	+16
Other meats and meat products	13	14	+8	3	5	+67
Sausage casings	11	10	-9	3	2	-33
Wool, apparel	19	18	-5	6	7	+17
Other animals and animal products	55	44	-20	16	16	---
Total animals and animal products	742	758	+2	181	193	+7
Cotton, raw, excluding linters	10	1	-90	1	0	---
Feeds and fodders	24	21	-12	6	6	---
Fruits and preparations	93	124	+33	30	39	+30
Grains and preparations	52	48	-8	14	11	-21
Nuts and preparations	66	63	-4	15	12	-20
Oilseeds, oilnuts, and products:						
Coconut oil	74	57	-23	17	13	-24
Palm and palm kernel oil	66	35	-47	24	8	-67
Olive oil, edible	13	11	-15	3	3	---
Other oilseeds and products	53	32	-40	16	8	-50
Seeds, cut flowers, & nursery stk., excl.						
oilseeds	41	47	+15	11	11	---
Sugar and molasses:						
Sugar, cane or beet	277	384	+42	45	52	+16
Molasses, inedible	28	22	-21	7	4	-43
Tobacco, unmanufactured, incl. bulk smoking	93	109	+17	27	31	+15
Vegetables and preparations	143	212	+48	50	101	+102
Wines and malt beverages:						
Wines	122	122	---	29	33	+14
Malt beverages	48	36	-25	13	1	-92
Other supplementary vegetable products	80	110	+38	17	48	+182
Total supplementary products	2,025	2,202	+9	506	574	+13
Total agricultural imports	4,010	4,200	+5	1,138	1,247	+10

1/ Less than \$500.

Table 6--U.S. agricultural exports to 15 countries: Value by commodity, 1975-77.

Country and year ending Dec. 30. 1/	Wheat and flour	Rice	Coarse grains	Oilseeds	Oilcake and meal	Fruits, nuts, and vegetables	Cotton ex. linters	Tobacco unmg.	Animals and products	Other	Total
-- Million dollars --											
Japan:											
1975	506	7	958	668	1	160	201	132	312	137	3,082
1976	522	4	1,023	697	22	203	239	223	473	137	3,563
1977	375	2/	1,061	965	56	203	110	260	472	155	3,657
Netherlands:											
1975	130	12	605	651	42	48	2	40	41	151	1,722
1976	94	18	538	773	68	67	3	39	72	213	1,885
1977	70	15	430	987	106	58	6	51	93	308	2,124
Germany, Fed. Rep.:											
1975	137	24	554	330	161	90	7	128	63	71	1,565
1976	125	26	677	356	210	122	8	105	99	99	1,827
1977	9	20	369	464	236	122	14	122	126	174	1,656
Canada:											
1975	2/	28	83	135	45	525	35	2	217	235	1,305
1976	2/	23	68	130	58	520	47	3	357	279	1,485
1977	7	25	29	150	85	566	68	4	312	304	1,550
U.S.S.R.:											
1975	667	9	429	2/	0	8	2/	0	19	1	1,233
1976	230	15	1,081	125	0	10	0	0	5	1	1,487
1977	427	25	385	159	2	19	2/	0	8	12	1,037
Korea:											
1975	269	175	65	7	2/	2	237	5	64	6	830
1976	259	39	121	33	2/	1	256	13	110	8	830
1977	202	22	158	44	2/	3	315	21	157	7	919
United Kingdom:											
1975	60	11	98	78	14	68	6	124	80	50	569
1976	5	11	173	89	10	107	12	109	134	49	699
1977	7	8	289	160	10	91	21	83	147	64	880
Italy:											
1975	74	2	334	191	55	17	21	51	39	14	798
1976	58	11	346	205	81	20	20	52	73	13	877
1977	36	7	202	241	94	22	27	68	61	49	807
Mexico:											
1975	13	2/	309	9	4	53	2/	0	128	70	586
1976	2/	2/	84	70	2	25	2/	2/	130	59	370
1977	41	2/	243	126	58	22	2/	0	124	60	664
Spain:											
1975	6	2/	407	263	21	16	14	16	29	7	779
1976	5	4	218	259	52	20	9	20	39	9	617
1977	7	0	165	323	31	13	34	9	45	7	634
Taiwan:											
1975	72	0	90	212	2/	5	123	27	28	8	565
1976	78	0	99	148	2/	7	84	19	29	10	474
1977	64	0	120	195	3	7	134	38	39	12	612
Egypt:											
1975	169	0	69	1	4	2/	4	14	45	119	425
1976	216	2/	74	2/	5	2/	0	18	54	87	454
1977	180	2/	51	13	9	2	47	44	64	130	540
France:											
1975	20	6	6	71	123	51	11	9	80	29	406
1976	10	4	39	75	95	71	8	11	116	29	458
1977	11	2	25	147	19	71	22	9	131	28	465
Belgium-Luxembourg:											
1975	24	5	116	61	42	12	6	11	37	33	347
1976	7	9	213	106	37	24	7	10	59	44	516
1977	5	6	194	115	11	22	3	17	62	26	461
Iran:											
1975	138	166	12	2/	2/	2	0	1	16	88	423
1976	33	75	34	0	8	1	0	7	16	44	238
1977	133	163	17	2/	12	5	0	8	23	62	423
Others:											
1975	3,008	413	1,203	468	160	315	374	317	488	742	7,338
1976	2,360	390	1,209	494	251	444	336	321	614	798	7,217
1977	1,309	415	1,124	719	236	480	528	375	803	1,053	7,042
Totals:											
1975	5,293	858	5,238	3,145	672	1,372	991	877	1,686	1,761	21,893
1976	4,040	629	5,979	3,560	899	1,642	1,049	940	2,380	1,879	22,997
1977	2,883	698	4,862	4,798	968	1,706	1,529	1,109	2,667	2,451	23,671

1/ Not adjusted for transshipments
2/ Less than \$2 million.

Table 7 --Export quantities of selected commodities,
October-December and December 1976 and 1977

Commodity	October-December		December	
	1976	1977	1976	1977
-- 1,000 metric tons --				
Animal products:				
Fats, oils, and greases	345	351	135	118
Meats and meat products	115	104	37	39
Poultry meat, fresh or frozen :	55	49	20	17
Grains:				
Wheat and products	5,996	6,136	1,628	2,522
Feed grains and products	14,856	12,439	4,264	4,796
Rice	585	536	261	189
Oilseeds and products:				
Soybeans	5,012	6,052	1,543	1,552
Protein meal	1,191	1,221	444	488
Vegetable oils and waxes	251	366	93	131
Other:				
Fruits and preparations <u>1/</u> ...:	362	380	110	134
Vegetables and preparations <u>2/</u> :	515	266	168	91
Tobacco	83	77	35	47
Cotton, excluding linters	187	212	82	108
Feeds and fodders <u>3/</u>	639	605	209	142
Total	30,192	28,794	9,029	10,374

1/ Includes fresh fruits, canned fruits, and dried fruits.

2/ Includes fresh vegetables, canned vegetables, and pulses.

3/ Includes prepared animal feeds, corn byproducts, and alfalfa meal and cubes.

Table 8--U.S. agricultural exports by regions, October-December and December 1976 and 1977

Region 1/	October-December		December		Change	
	1976	1977	1976	1977	Oct-Dec. 1977	December 1977
	-- Million dollars --				-- Percent --	
Western Europe	2,661	2,268	840	838	-15	---
Enlarged European Community	2,245	1,772	695	613	-21	-12
Other Western Europe	416	495	145	224	+19	+55
Eastern Europe and USSR	465	406	160	176	-13	+10
USSR	266	240	104	107	-10	+3
Eastern Europe	199	166	56	69	-17	+23
Asia	1,978	2,005	672	829	+1	+23
West Asia	248	232	81	88	-5	+9
South Asia	207	75	31	25	-64	-19
Southeast Asia, ex. Japan and PRC	527	557	203	244	+6	+20
Japan	995	1,078	357	447	+8	+25
Peoples Republic of China	---	63	---	25	---	---
Latin America	477	566	155	191	+19	+23
Canada, excluding transshipments	411	375	135	121	-9	-10
Canadian transshipments	124	130	8	25	+5	+213
Africa	300	318	102	128	+6	+26
North Africa	172	192	52	76	+12	+46
Other Africa	128	125	49	52	-2	+6
Oceania	37	44	11	17	+19	+55
Total 2/	6,453	6,111	2,081	2,324	-6	+12

1/ Not adjusted for transshipments.

2/ Totals may not add due to rounding.

Table 9 -- U.S. AGRICULTURAL EXPORTS: QUANTITY AND VALUE BY COMMODITY

COMMODITY	UNIT	OCTOBER-DECEMBER				DECEMBER			
		QUANTITY		VALUE		QUANTITY		VALUE	
		75/76	76/77 1/	74/75	76/77 1/	1976	1977 1/	1976	1977 1/
	THOU.	THOU.	1,000 DOL.	1,000 DOL.	THOU.	THOU.	1,000 DOL.	1,000 DOL.	
ALL COMMODITIES	---	---	---	30,064,600	29,728,990	---	---	10,596,310	11,131,500
NON-AGRICULTURAL COMMODITIES	---	---	---	23,611,650	23,618,350	---	---	8,914,855	8,807,605
AGRICULTURAL COMMODITIES	---	---	---	6,452,949	6,110,640	---	---	2,681,445	2,323,895
ANIMALS AND ANIMAL PRODUCTS	---	---	---	619,762	641,042	---	---	219,934	246,425
ANIMALS LIVE, EX POULTRY	---	---	---	29,160	33,981	---	---	7,179	13,330
CATTLE	NO	37	35	18,965	22,691	7	12	4,240	8,703
SWINE	---	---	---	10,694	11,290	---	---	2,940	4,627
DAIRY PRODUCTS	---	---	---	31,284	35,735	---	---	11,492	15,234
ANHYDROUS MILK FAT	KG	9	7	27	24	3	1	11	2
BUTTER	KG	35	91	67	256	19	50	34	167
CHEESE AND CURD	KG	1,132	1,346	3,169	3,820	426	420	1,186	1,127
MILK AND CREAM:									
CONDENSED OR EVAPORATED	KG	3,911	4,274	2,530	2,636	1,332	1,571	899	1,013
DRY, WHOLE MILK AND CREAM	KG	2,533	1,973	1,844	1,859	795	519	627	616
FRESH	LIT	1,708	2,755	1,199	1,748	597	927	417	474
NONFAT DRY	KG	8,962	9,951	10,715	13,030	2,413	4,144	3,390	6,314
OTHER	---	---	---	11,933	12,362	---	---	4,928	5,522
FATS, OILS, AND GREASES	KG	395,881	350,894	130,864	143,217	134,869	118,113	50,829	48,354
LARD AND OTHER RENDERED PIG FAT	KG	32,324	21,327	13,661	9,548	13,065	7,119	5,541	3,094
FALLOWS:									
EDIBLE	KG	5,794	2,488	2,231	1,080	2,825	1,300	1,077	576
INEDIBLE	KG	290,988	297,129	107,191	119,152	114,128	95,736	41,621	38,553
OTHER	KG	15,932	29,967	7,782	13,437	4,872	14,058	2,590	6,130
MEATS AND MEAT PREPARATIONS	KG	114,554	103,875	157,249	159,276	37,473	39,345	50,065	60,456
BEEF AND VEAL, EXCEPT OFFALS	KG	9,166	11,688	26,872	34,877	2,723	4,593	8,522	13,821
PORK, EXCEPT OFFALS	KG	35,582	33,787	69,719	59,736	9,388	10,296	16,028	19,197
OFFALS, EDIBLE, VARIETY MEATS	KG	52,624	42,496	45,539	38,449	18,732	17,109	16,124	16,219
OTHER	KG	17,178	15,907	24,119	26,221	6,631	7,348	9,391	11,219
POULTRY AND POULTRY PRODUCTS	---	---	---	75,429	84,772	---	---	26,701	31,926
POULTRY, LIVE:									
BREEDING CHICKS	NO	2,358	2,250	4,696	4,510	859	736	1,423	1,601
BAND CHICKS, EX BREEDING CHICKS	NO	4,840	3,674	1,498	1,947	1,339	1,066	562	269
OTHER	---	---	---	1,626	2,212	---	---	493	913
POULTRY MEAT, FRESH, FROZEN:									
CHICKENS	KG	43,549	39,644	38,093	37,603	16,341	13,149	14,186	12,169
TURKEYS	KG	8,574	7,207	10,550	8,720	2,791	2,738	3,151	3,246
OTHER	KG	3,594	2,524	3,388	3,102	491	997	1,252	1,235
POULTRY, CANNED AND SPECIALTIES	KG	719	721	1,049	1,244	426	178	505	385
EGGS IN THE SHELL, FOR HATCHING	DOZ	4,296	4,655	6,061	6,364	1,399	1,412	1,955	2,024
EGGS IN THE SHELL, OTHER	DOZ	4,464	1,645	2,744	6,182	1,274	3,486	892	2,163
EGGS, DRIED	KG	153	498	864	2,243	47	271	294	1,088
EGGS OTHERWISE PRESERVED	KG	535	1,340	755	2,011	419	534	432	754

CONTINUED

Table 9 --U.S. AGRICULTURAL EXPORTS: QUANTITY AND VALUE BY COMMODITY--CONTINUED

COMMODITY	UNIT	OCTOBER-DECEMBER				DECEMBER			
		QUANTITY		VALUE		QUANTITY		VALUE	
		75/76	76/77 1/2	75/76	76/77 1/2	1976	1977 1/2	1976	1977 1/2
		THOU.	THOU.	1,000 DOL.	1,000 DOL.	THOU.	THOU.	1,000 DOL.	1,000 DOL.
HIDES AND SKINS, INC FURSKINS	---	---	---	171,280	159,410	---	---	65,225	66,422
CATTLE HIDES, WHOLE	NO	6,336	5,411	128,441	113,286	2,250	2,223	49,065	45,122
FURSKINS	---	---	---	29,604	30,407	---	---	17,066	14,196
OTHER	---	---	---	13,235	15,716	---	---	4,095	6,104
OTHER ANIMAL PRODUCTS	---	---	---	24,695	24,651	---	---	8,442	10,703
HAIR, ANIMAL, EX WOOL OR FINE HAIR	KG	103	76	194	116	13	26	21	32
SAUSAGE CASINGS	KF	2,001	1,800	7,541	6,980	839	684	2,530	2,692
WOL, UNMANUFACTURED, INC FINE HAIR	KG	1,012	1,163	7,475	8,314	335	636	2,458	4,333
OTHER	---	---	---	7,485	9,241	---	---	3,434	3,645
VEGETABLE PRODUCTS	---	---	---	5,832,987	5,469,589	---	---	1,661,512	2,077,471
COTTON, UNMANUFACTURED	RBA	919	1,014	307,333	367,194	394	509	131,112	157,186
COTTON, RAW	RBA	659	977	304,933	305,602	376	496	130,353	156,599
LINTERS	RBA	59	36	2,400	1,592	18	14	759	588
FRUITS AND PREPARATIONS	---	---	---	198,766	229,428	---	---	61,467	80,423
CANNED	KG	41,278	41,189	25,890	26,602	12,176	11,575	7,990	7,669
CHERRIES	KG	1,774	2,382	1,737	2,656	759	821	780	891
FRUIT COCKTAIL	KG	11,026	12,475	7,018	8,114	3,338	3,949	2,132	2,542
PEACHES	KG	15,675	16,297	4,178	4,481	3,978	3,931	2,064	1,999
PEARS	KG	852	1,014	521	633	293	354	192	198
PINEAPPLES	KG	6,604	3,822	3,723	2,728	2,451	836	1,623	626
OTHER	KG	6,023	5,195	4,713	3,990	1,358	1,684	1,199	1,419
DRIED	KG	35,874	39,553	37,525	48,339	11,455	13,435	13,012	15,868
PRUNES	KG	17,593	20,575	14,542	21,577	4,522	6,629	3,883	6,754
GRAPE (RAISINS)	KG	13,702	14,919	17,028	20,527	5,033	5,199	6,888	5,946
OTHER	KG	4,663	4,459	5,955	6,236	1,900	1,607	2,242	2,168
FRESH	KG	225,053	299,244	99,088	118,920	86,949	108,819	30,323	43,380
APPLES	KG	41,676	61,417	14,424	27,162	17,592	31,124	6,343	14,069
BERRIES	KG	2,561	2,422	1,319	1,536	652	827	351	494
GRAPEFRUITS	KG	59,994	49,289	13,540	11,516	13,694	13,197	3,607	3,081
GRAPES	KG	40,884	54,254	21,581	29,515	7,502	10,253	4,812	6,908
LEMONS AND LIMES	KG	47,097	42,145	19,676	15,534	15,447	15,526	5,736	4,934
ORANGES, TANGERINES, & CLEMENTINES	KG	73,332	69,427	20,587	21,563	24,924	25,599	6,875	9,026
PEARS	KG	9,551	17,152	3,107	6,371	3,882	9,051	1,240	3,235
OTHER	KG	9,953	12,146	3,955	5,725	3,257	3,243	1,360	1,554
FRUIT JUICES	LIT	49,195	40,759	30,538	30,786	13,573	15,314	9,079	12,091
GRAPEFRUIT	LIT	5,883	6,659	3,815	3,810	1,561	2,422	879	1,802
ORANGE	LIT	27,239	18,465	21,911	18,624	8,029	7,821	6,036	7,515
OTHER	LIT	15,983	15,624	5,512	8,272	3,984	5,072	2,164	2,774
FROZEN FRUITS	KG	3,809	3,252	3,318	2,264	594	835	468	590
OTHER	KG	4,942	4,550	2,308	2,597	1,412	1,609	595	825
NUTS AND PREPARATIONS	---	---	---	83,994	101,038	---	---	19,067	22,932
ALMONDS, SHELLED BASIS	KG	18,657	14,889	35,321	45,034	5,174	5,537	9,323	13,363
PALNUTS, NOT SHELLED BASIS	KG	35,132	37,677	33,682	37,058	5,151	6,319	4,976	3,563
OTHER	---	---	---	15,991	18,947	---	---	4,766	6,066

CONTINUED

Table 9 --U.S. AGRICULTURAL EXPORTS: QUANTITY AND VALUE BY COMMODITY--CONTINUED

COMMODITY	UNIT	OCTOBER-DECEMBER				DECEMBER			
		QUANTITY		VALUE		QUANTITY		VALUE	
		75/76 THOU.	76/77 1/ THOU.	75/76 1,000 DOL.	76/77 1/ 1,000 DOL.	1976 THOU.	1977 1/ THOU.	1976 1,000 DOL.	1977 1/ 1,000 DOL.
GRAINS AND PREPARATIONS	---	---	---	2,659,993	2,065,368	---	---	763,723	843,485
FEED GRAINS AND PRODUCTS	MT	14,854	12,437	1,643,468	1,159,145	4,264	4,795	461,580	472,792
FEED GRAINS	MT	14,741	12,355	1,631,636	1,148,099	4,242	4,765	454,260	468,718
BARLEY	MT	593	306	74,543	26,642	155	84	19,144	8,154
CORN	MT	12,574	10,535	1,385,348	984,703	3,455	3,883	374,465	395,874
GRAIN SORGHUMS	MT	1,566	1,424	165,971	127,643	623	764	63,598	71,156
OATS	MT	48	93	5,773	9,111	9	34	1,052	3,534
MALT AND FLOUR, INC BARLEY MALT	KG	3,680	5,554	2,993	1,783	1,739	2,279	549	695
CORN GRITS AND HOMINY	KG	3,709	2,805	604	453	1,474	774	245	153
CORNMEAL	KG	19,116	28,440	3,755	4,791	6,285	10,489	1,245	1,773
CORN STARCH	KG	8,347	7,976	3,525	3,118	3,126	3,595	1,199	1,239
BARLEY AND GROATS	KG	2,430	2,689	732	665	128	338	46	98
BARLEY & OATS, ROLLED, ETC	KG	598	344	223	197	95	163	36	116
RICE	KG	589,861	536,054	169,433	178,542	260,762	188,888	72,695	65,492
MILLED	KG	517,988	461,739	150,468	159,563	228,189	170,159	64,950	60,112
HUSKED, BROWN	KG	76,873	74,316	18,965	18,979	32,573	18,730	7,945	5,380
RYE	MT	1	4	8	19	0	0	2	11
WHEAT AND PRODUCTS	MT	5,995	6,136	805,635	683,528	1,628	2,522	216,944	290,587
WHEAT	MT	5,766	5,825	765,818	639,894	1,552	2,378	203,403	270,043
WHEAT FLOUR	KG	103,992	154,022	23,610	28,941	19,729	69,496	4,144	13,215
OTHER WHEAT PRODUCTS	KG	76,333	87,506	16,247	14,693	42,734	43,083	9,397	7,329
BAKERY PRODUCTS	KG	5,492	6,645	6,136	7,245	2,012	1,953	2,153	2,067
DIETETIC FOODS	KG	213	232	659	471	92	21	384	144
BLENDED FOOD PRODUCTS	KG	62,246	53,173	21,792	20,951	17,130	18,655	6,215	6,221
OTHER	---	---	---	12,860	15,597	---	---	3,628	6,170
FEEDS AND FODDERS, EX OIL CAKE MEAL	---	---	---	151,203	122,515	---	---	54,197	39,082
HAY, FODDER, ROOTS, LUPINES, ETC	MT	98	34	10,193	3,132	22	11	2,196	1,028
CORN BYPRODUCTS, FEED	MT	392	407	52,572	49,426	138	86	18,845	11,472
ALFALFA MEAL, DEHYDRATED	MT	78	24	10,261	2,543	15	6	1,941	577
ALFALFA MEAL, SUN-CURED	MT	55	44	5,345	4,370	9	15	1,043	1,481
ALFALFA HAY CUBES	MT	42	36	4,537	3,643	16	14	1,729	1,375
ANIMAL FEED, PREPARED	MT	72	95	22,334	20,878	31	21	8,988	7,368
OTHER	---	---	---	45,461	38,530	---	---	19,455	15,781
OILSEEDS AND PRODUCTS	MT	6,813	6,284	1,739,121	1,965,775	2,175	2,354	562,234	594,531
OIL CAKE AND MEAL	MT	1,191	1,221	224,186	229,073	444	488	87,187	89,640
SOYBEAN OIL CAKE AND MEAL	MT	1,146	1,165	217,760	219,831	422	472	82,755	87,455
OTHER	MT	44	56	8,426	9,242	23	16	4,433	2,184
WILDCOATS	MT	5,364	6,690	1,359,190	1,514,990	1,636	1,731	420,887	418,161
FLAXSEED	MT	1	24	0	5,141	0	0	0	0
SOYBEANS	MT	5,012	6,002	1,235,770	1,323,415	1,543	1,552	386,261	355,338
SUNFLOWER SEED	KG	262,289	429,970	75,444	111,043	65,141	118,375	18,764	26,612
SAFFLOWER SEED	KG	4,813	6,241	1,655	1,645	5	1,422	2	385
PEANUTS	KG	56,408	89,494	38,233	64,651	18,057	44,641	12,551	32,295
OTHER	KG	23,364	36,210	7,088	9,095	9,288	14,317	2,510	3,532
VEG OILS AND WAXES	KG	291,386	365,685	144,414	214,382	92,932	131,350	53,067	79,361
COTTONSEED OIL	KG	57,173	73,762	29,837	47,728	34,731	39,595	18,432	20,030
SOYBEAN OIL	KG	141,415	213,277	76,429	106,569	38,664	79,638	20,376	39,016
PEANUT OIL	KG	2,955	14,944	1,934	12,973	1,776	4,479	1,051	4,193
OTHER	KG	49,913	61,769	38,214	47,111	17,760	16,637	13,208	16,123
PROTEIN SUBSTANCES	KG	6,191	7,125	7,330	7,331	1,620	3,435	1,891	3,370

CONTINUED

Table 9--U.S. AGRICULTURAL EXPORTS: QUANTITY AND VALUE BY COMMODITY--CONTINUED

COMMODITY	UNIT	OCTOBER-DECEMBER				DECEMBER			
		QUANTITY		VALUE		QUANTITY		VALUE	
		75/76	76/77 1/	75/76	76/77 1/	1976	1977 1/	1976	1977 1/
	THOU.	THOU.	1,000 DOL.	1,000 DOL.	THOU.	THOU.	1,000 DOL.	1,000 DOL.	
TOBACCO, UNMANUFACTURED	KG	53,273	77,194	365,610	329,916	34,646	46,529	133,244	203,020
BURLEY	KG	5,158	1,555	21,705	7,372	2,362	941	10,640	4,674
CIGAR WRAPPER	KG	554	432	8,053	4,894	210	231	2,727	2,504
DARK-PIPED KENTUCKY AND TENNESSEE	KG	2,256	1,595	6,705	6,014	502	924	1,536	3,566
FLUE-CURED	KG	56,656	97,394	247,951	311,799	24,558	34,430	112,673	186,452
MARYLAND	KG	938	126	3,360	421	240	120	847	402
BULK SMOKING TOBACCO	KG	1,646	238	5,183	521	353	97	1,288	236
OTHER	KG	16,014	15,885	12,654	8,895	6,419	9,786	3,492	5,185
VEGETABLES AND PREPARATIONS	---	---	---	213,349	147,432	---	---	73,120	55,721
CANNED	KG	4,799	32,013	22,779	21,138	13,157	11,948	7,661	8,197
ASPARAGUS	KG	320	313	369	522	174	218	181	356
CORN	KG	7,291	10,899	4,423	5,993	2,466	4,085	1,444	2,252
SOUPS	KG	3,797	3,840	2,680	2,789	956	1,698	799	1,265
TOMATOES, TOMATO SAUCE AND PUREE	KG	7,316	7,397	4,907	5,610	2,946	2,272	1,518	1,746
OTHER	KG	22,075	9,564	10,399	6,314	7,516	3,674	3,719	2,577
PULSES	KG	95,113	59,596	36,942	28,696	25,697	18,903	10,313	9,107
DRIED BEANS	KG	54,829	47,452	20,597	22,397	14,017	13,460	5,455	6,543
DRIED PEAS, INC CORN AND CHICK	KG	26,451	10,651	9,741	4,981	8,510	5,144	3,300	2,344
DRIED LENTILS	KG	13,773	1,493	6,674	1,311	3,171	299	1,558	220
FRESH	KG	378,801	173,659	77,425	47,222	129,423	59,684	26,875	15,921
ASPARAGUS	KG	159	167	91	114	135	76	68	44
LETTUCE	KG	45,184	45,423	9,680	9,456	15,516	14,562	2,909	2,996
ONIONS	KG	73,111	19,468	14,643	4,591	25,595	8,831	5,351	2,092
POTATOES, EXCEPT SWEET POTATOES	KG	181,657	28,426	26,784	4,524	55,461	4,190	8,049	726
TOMATOES	KG	21,233	26,577	10,447	10,072	10,293	9,112	3,431	2,891
OTHER	KG	56,451	53,599	16,179	18,475	22,423	22,913	7,068	7,172
FROZEN VEGETABLES	KG	19,439	11,115	9,703	6,804	7,184	4,685	3,539	2,802
POPS, INCLUDING EXTRACTS	KG	4,354	2,560	9,643	5,714	1,510	1,677	3,436	3,759
SOUPS AND VEGETABLES, DEHYDRATED	KG	14,392	7,464	14,280	10,976	5,955	3,514	5,259	4,930
TOMATO JUICE, CANNED	LIT	7,137	4,434	2,439	2,415	2,468	1,229	1,012	668
VEGETABLE SEASONINGS	KG	5,643	4,372	6,798	5,111	2,004	1,865	2,516	2,162
OTHER	---	---	---	30,940	19,361	---	---	11,508	8,085
OTHER VEGETABLE PRODUCTS	---	---	---	173,619	200,842	---	---	63,348	85,090
COFFEE	KG	3,561	5,670	14,265	20,119	1,213	1,938	4,992	7,248
DRUGS, FERBS, ROOTS, ETC	KG	1,344	1,229	13,242	19,714	398	610	3,128	2,173
ESSENTIAL OILS AND RESINOIDS	KG	1,799	1,177	24,302	18,999	673	619	8,831	10,947
FLAVORING SIRUPS, SUGARS, EXTRACTS	---	---	---	21,658	22,875	---	---	7,555	9,418
HONEY	KG	432	588	570	854	123	273	178	417
NURSERY STOCK	---	---	---	19,244	10,333	---	---	3,489	4,275
SEEDS, EXCEPT OILSEEDS	KG	33,869	113,691	44,537	65,405	17,080	55,358	21,740	33,112
SPICES	KG	1,321	1,349	3,319	3,385	426	568	1,102	1,543
OTHER	---	---	---	41,442	39,158	---	---	12,332	15,958

1/ PRELIMINARY

U.S. FARM IMPORTS INCREASE SLIGHTLY IN OCTOBER-JANUARY 1977/78

From October 1977 to January 1978, U.S. agricultural imports were valued at \$4.2 billion, 4 percent higher than a year ago. Noncompetitive imports declined from the level during the previous period. Most of the value decrease was in green coffee, due chiefly to a fall-off in roastings and consumption and relatively favorable inventories. The volume of imported green coffee declined by more than the value as unit import prices rose from \$1.40 per pound during October 1976 to January 1977 to about \$1.80 per pound in the first one-third of fiscal 1978. A 6-percent rise in January in the unit import price of green coffee caused the month's coffee imports to increase about one-third to \$414 million, the highest since last April. The quantity imported in January declined slightly.

Among other noncompetitive imports value imports of soluble coffee declined while price inflation caused value increases in cocoa beans, cocoa powder, and dry rubber. Volume imports of the three latter products declined.

During the first third of fiscal 1978, competitive imports rose as value increases for sugar, beef and veal, live animals, and vegetables more than offset the large decline in vegetable oils (mainly palm and coconut oils). The value of sugar imports rose by 42 percent, mainly due to a record \$185 million December imports in anticipation of higher U.S. import fees. Sugar imports in January valued at \$52 million were the lowest since last March.

A new fixed import fee structure for sugar was announced in January to replace the variable system established in November. Beginning January 21, all imported raw sugar is subject to fixed fees of 2.7 cents per pound and refined sugar to 3.22 cents per pound, provided the fees do not exceed 50 percent of the value of imported sugar.

Imports of palm oil fell by about one-half from a year ago as some substitution occurred with domestic soybean oil. In recent months, soybean and palm oil prices have been about the same, reducing the incentive to import.

In fiscal 1978, it is expected that imports of noncompetitive products, mainly tropical, will increase while competitive commodities will decline. Price increases for cocoa beans are expected to result in larger imports, which will offset small value declines anticipated for coffee and tea.

Among competitive imports, moderate growth is expected for meat and meat products, dairy and poultry products, wine, and tobacco. These increases will be more than offset by anticipated declines in imports of vegetables and preparations, sugar, and vegetable oils. The extent of the drop in sugar imports will depend partly on draw-down in domestic stock levels and the size of U.S. production. ^{1/}

Imports of palm oil are expected to be about the same or slightly less in fiscal 1978 as larger anticipated supplies of soybean oil and similar prices for soybean and palm oil may reduce the need to import. ^{2/} High prices for coconut oil and larger domestic supplies of other vegetable oils may reduce coconut oil imports in fiscal 1978.

^{1/} U.S. Department of Agriculture, Economics, Statistics, and Cooperatives Service, Sugar and Sweetener Report, Feb. 1978.

^{2/} U.S. Department of Agriculture, Economics, Statistics, and Cooperatives Service, Fats and Oils Situation, Feb. 1978.

Table 10--U.S. agricultural imports: Value by months, October 1968 to September 1978 (Million dollars)

Months	1968/69 1/	1969/70 1/	1970/71	1971/72	1972/73	1973/74	1974/75	1975/76	1976/77 2/	1977/78 2/
October	396.0	469.1	480.3	302.5	573.6	712.2	740.9	828.6	811.4	855.1
November	413.4	411.2	442.9	298.2	547.7	862.5	837.3	804.9	971.7	814.5
December	419.8	481.8	522.3	540.2	550.2	778.6	965.6	768.3	1,095.6	1,284.7
October-December ...	1,235.2	1,362.1	1,445.5	1,140.9	1,671.5	2,353.3	2,543.8	2,401.8	2,878.7	2,954.3
January	208.6	491.0	506.6	575.6	648.9	786.9	810.9	817.5	1,139.3	1,246.7
February	315.6	457.5	419.7	591.6	615.3	819.4	693.9	768.6	1,127.2	
March	474.8	523.9	499.6	506.6	658.9	984.2	749.0	960.3	1,300.4	
January-March	999.0	1,472.4	1,425.9	1,673.8	1,923.1	2,590.5	2,253.8	2,546.4	3,566.9	
October-March	2,234.2	2,834.5	2,871.4	2,814.7	3,594.6	4,943.8	4,797.6	4,948.2	6,445.6	
April	487.9	514.5	554.4	489.5	696.5	877.8	761.9	895.7	1,403.9	
May	438.1	443.5	477.9	529.0	786.5	890.1	688.4	847.6	1,256.8	
June	430.0	499.4	529.8	520.6	664.4	841.7	827.3	1,020.1	1,240.1	
April-June	1,356.0	1,457.4	1,562.1	1,539.1	2,147.4	2,609.6	2,277.6	2,763.4	3,900.8	
July	434.0	461.7	489.0	471.6	635.0	897.9	762.1	957.9	1,014.8	
August	407.7	463.8	555.1	563.7	720.4	854.1	687.7	931.6	1,006.2	
September	398.6	469.0	650.5	547.1	639.8	751.1	945.3	913.7	1,016.2	
July-September	1,240.3	1,394.5	1,694.6	1,582.4	1,995.2	2,503.1	2,395.1	2,803.2	3,037.2	
April-September ...	2,596.3	2,851.9	3,256.7	3,121.5	4,142.6	5,112.7	4,672.7	5,566.6	6,938.0	
October-September ^{3/}	4,830.5	5,686.4	6,128.1	5,936.2	7,737.2	10,056.5	9,470.3	10,514.8	13,383.6	
Monthly average ..	402.5	473.9	510.7	494.7	644.8	838.0	789.2	876.2	1,115.3	

1/ Monthly totals for July-Dec. 1969 do not include furskins.

2/ Preliminary. Oct. 1976 data excludes coconut oil imports.

3/ Totals may not add due to rounding.

Table II—U.S. AGRICULTURAL IMPORTS: QUANTITY AND VALUE BY COMMODITY AND COUNTRY

COMMODITY AND COUNTRY	UNIT	OCTOBER-JANUARY				JANUARY			
		QUANTITY		VALUE		QUANTITY		VALUE	
		76/77	77/78 1/	76/77	77/78 1/	1977	1978 1/	1977	1978 1/
		1,000 DOL.		1,000 DOL.		1,000 DOL.		1,000 DOL.	
BANANAS, FRESH	MT	696,919	730,326	102,366	103,263	167,942	183,917	24,462	24,650
GUATEMALA		72,432	70,623	6,802	7,373	17,793	14,245	1,654	1,499
HONDURAS		168,726	153,214	26,550	26,574	38,462	32,400	6,135	5,216
NICARAGUA		42,392	67,281	7,244	7,607	7,200	32,270	1,222	1,575
COSTA RICA		236,482	179,161	35,233	27,475	49,000	33,095	7,190	5,457
PANAMA		27,836	48,918	4,204	6,965	16,585	26,327	2,373	3,901
COLOMBIA		28,628	54,173	3,970	7,513	6,348	14,056	875	1,970
ECUADOR		114,224	137,680	17,793	17,977	30,075	28,982	4,740	4,663
OTHER		6,196	9,273	569	1,378	2,475	2,539	273	370
PLANTAINS, FRESH	MT	21,387	19,832	2,617	3,692	4,291	3,720	571	689
HONDURAS		1,196	68	156	0	17	4	4	0
COSTA RICA		1,859	1,622	298	378	549	415	93	95
COLOMBIA		10,621	9,891	993	1,670	2,115	2,125	199	350
ECUADOR		6,901	7,301	1,067	1,459	1,474	950	258	198
OTHER		798	948	103	176	134	223	16	46
COFFEE, GREEN	MT	390,838	278,180	1,205,107	1,104,673	119,649	100,923	401,651	414,434
MEXICO		29,859	29,002	105,979	108,364	10,753	16,914	42,843	64,034
GUATEMALA		23,060	23,320	71,390	93,136	7,440	5,804	24,867	24,491
EL SALVADOR		16,911	5,934	57,480	22,598	2,521	2,898	9,131	12,305
HONDURAS		4,246	5,982	13,022	23,227	2,359	3,820	7,885	15,790
COSTA RICA		3,455	6,801	12,287	26,260	794	996	3,204	4,172
DOMINICAN REPUBLIC		9,170	24,470	33,837	89,719	4,695	8,424	18,359	32,945
ECUADOR		48,878	44,997	164,520	192,488	17,125	10,085	59,982	44,680
PERU		22,014	12,661	64,636	43,939	5,585	4,632	18,922	16,476
BRAZIL		14,010	16,027	39,748	62,056	3,601	4,655	12,338	15,397
INDONESIA		105,617	19,197	339,818	117,657	38,433	12,521	129,196	81,234
IVORY COAST		12,276	9,192	29,707	26,796	4,780	1,650	13,340	5,501
UGANDA		13,484	4,123	37,670	14,701	504	1,006	1,536	3,638
OTHER		24,859	17,627	61,088	64,009	7,494	10,166	19,974	33,904
OTHER		62,994	58,841	173,924	219,722	13,558	17,346	40,075	59,867
COFFEE, SOLUBLE, EXT	MT	9,592	3,258	69,729	49,834	2,425	1,759	20,020	28,324
CANADA		199	160	2,128	2,392	55	0	730	3
NICARAGUA		0	116	0	1,157	0	25	0	243
COLOMBIA		338	1	2,024	12	59	0	385	0
BRAZIL		6,963	2,000	50,653	26,329	1,883	1,171	15,145	15,848
FRANCE		617	494	6,616	12,974	172	243	1,896	6,893
FED. REP. OF GERMANY		381	59	2,175	1,022	64	12	356	161
SPAIN		397	203	3,632	4,354	135	203	1,245	4,354
OTHER		694	222	2,502	1,593	53	102	264	821
SOYBEANS	MT	67,935	38,317	126,857	149,419	31,093	19,710	57,224	68,900
MEXICO		2,513	604	5,700	2,469	1,423	404	3,281	1,634
GUATEMALA		395	894	1,079	3,456	246	459	695	1,656

CONTINUED

Table 11 --U.S. AGRICULTURAL IMPORTS: QUANTITY AND VALUE BY COMMODITY AND COUNTRY--CONTINUED

COMMODITY AND COUNTRY	UNIT :	OCTOBER-JANUARY				JANUARY			
		QUANTITY		VALUE		QUANTITY		VALUE	
		76/77	77/78 1/	76/77	77/78 1/	1977	1978 1/	1977	1978 1/
		1,000 DOL.		1,000 DOL.		1,000 DOL.		1,000 DOL.	
COSTA RICA		1,391	1,019	3,704	4,198	502	162	1,440	655
DOMINICAN REPUBLIC		4,649	3,435	12,543	12,410	1,621	1,732	4,604	5,832
ECUADOR		2,269	172	6,033	722	431	0	1,233	0
BRAZIL		13,598	9,991	26,295	40,843	2,697	2,143	5,362	7,904
PAPUA NEW GUINEA		1,858	3,015	4,056	13,805	666	217	1,286	1,018
IVORY COAST		24,823	12,837	39,152	46,198	18,966	11,610	30,416	40,955
GHANA		4,318	1,015	6,291	4,040	1,778	508	2,788	1,332
NIGERIA		8,811	3,396	15,066	14,232	1,421	1,954	2,671	6,191
OTHER		3,307	1,935	6,938	7,046	1,337	517	2,849	1,723
COCOA BUTTER	MT	6,045	4,891	28,035	23,312	1,464	1,301	7,417	5,671
MEXICO		1,214	505	5,088	2,087	50	305	171	1,258
COLOMBIA		150	150	584	608	50	0	204	0
VENEZUELA		89	278	375	1,079	64	49	268	147
BRAZIL		1,469	1,296	5,808	7,595	423	175	1,875	850
UNITED KINGDOM		150	243	964	1,161	0	124	0	481
NETHERLANDS		285	138	1,230	661	61	36	294	173
PHILIPPINES		256	154	942	604	54	127	222	499
IVORY COAST		2,086	1,800	11,657	7,969	679	343	4,934	1,527
OTHER		343	326	1,388	1,549	81	149	349	737
COCOA, POWDER & CAKE	MT	26,879	18,455	36,466	81,508	7,427	4,654	11,264	20,694
ECUADOR		515	423	477	2,124	100	100	104	550
BRAZIL		8,692	3,527	10,230	15,978	2,688	542	3,320	2,758
UNITED KINGDOM		271	538	315	2,132	18	136	5	549
NETHERLANDS		8,049	7,139	13,044	34,009	2,032	1,557	3,762	8,282
FRANCE		888	782	1,440	3,632	307	199	563	972
FED. REP. OF GERMANY		3,172	2,493	4,089	6,185	1,047	1,275	1,556	3,102
CAMEROON		432	378	512	1,889	0	0	0	0
IVORY COAST		1,628	1,306	2,410	8,030	583	582	914	3,159
GHANA		749	1,063	949	4,852	50	299	113	1,103
NIGERIA		1,180	300	1,159	1,125	267	0	414	0
OTHER		1,300	502	1,841	1,553	341	61	513	218
ESSENTIAL OILS	MT	2,417	1,548	25,755	21,508	517	396	6,887	4,865
MEXICO		166	136	2,828	2,692	33	1	435	97
BAHAMAS		9	17	318	512	4	0	218	0
HAITI		73	58	1,844	1,526	24	10	840	373
BRAZIL		489	342	2,518	1,965	176	92	942	476
PARAGUAY		76	90	581	659	6	41	54	284
FRANCE		287	135	7,008	3,985	91	50	1,864	1,175
SPAIN		54	30	718	473	7	6	141	89
ITALY		13	18	322	647	3	7	76	350
INDIA		13	12	970	833	3	1	210	181
INDONESIA		215	95	1,980	1,951	29	41	437	563
PEOPLES REP OF CHINA		457	124	1,252	1,576	6	38	16	213
REP. OF CHINA (TAIWAN)		87	76	267	565	41	13	99	56

CONTINUED

Table 11--U.S. AGRICULTURAL IMPORTS: QUANTITY AND VALUE BY COMMODITY AND COUNTRY--CONTINUED

COMMODITY AND COUNTRY	UNIT	OCTOBER-JANUARY				JANUARY			
		QUANTITY		VALUE		QUANTITY		VALUE	
		76/77	77/78 1/	76/77	77/78 1/	1977	1978 1/	1977	1978 1/
		1,000 DOL.		1,000 DOL.				1,000 DOL.	
MALAGASY REPUBLIC		158	102	759	670	17	35	94	160
FRENCH IND OCEAN APS		21	2	1,191	194	9	0	496	14
OTHER		292	305	3,199	3,258	63	65	962	843
FIBERS, EX COTTON, JUTE	MT	21,606	17,112	9,962	7,809	3,221	1,990	1,666	952
MEXICO		1,195	2,092	732	1,381	322	708	199	501
ECUADOR		3,306	1,529	2,199	1,025	883	76	593	48
BRAZIL		5,009	2,586	1,011	842	1,005	171	323	40
INDIA		15	1,382	2	470	0	0	0	0
SRI LANKA (CEYLON)		577	2,930	133	557	18	594	4	111
THAILAND		3,017	2,410	2,040	1,461	580	56	363	56
PHILIPPINES		6,816	3,172	3,085	1,601	43	35	25	18
KENYA		852	232	364	66	150	95	64	38
TANZANIA		484	495	228	255	150	61	73	29
OTHER		331	270	168	151	67	190	21	111
RUBBER, DRY FORM	MT	225,740	222,768	174,258	181,334	65,512	45,751	50,705	39,009
THAILAND		23,091	13,173	17,389	10,235	9,111	450	6,763	353
MALAYSIA		66,196	56,903	54,733	49,285	17,123	12,786	14,363	11,516
SINGAPORE		7,281	10,945	5,546	8,738	2,232	1,504	1,782	1,290
INDONESIA		108,148	124,586	79,344	98,295	32,150	27,740	23,639	22,845
LIBERIA		15,849	14,725	12,229	12,278	4,147	2,269	3,306	1,934
OTHER		4,772	2,435	5,018	2,504	746	1,000	852	1,071
RUBBER, LATEX	MT	19,834	20,362	17,084	18,640	5,809	1,777	5,040	2,690
MALAYSIA		7,984	6,801	7,340	6,628	2,525	812	2,255	784
INDONESIA		3,661	3,897	2,792	3,400	1,304	196	956	164
LIBERIA		8,140	9,332	6,907	8,284	1,968	699	1,717	742
OTHER		48	331	45	328	11	0	11	0
PEPPER, BLACK, UNGROUND	MT	9,966	5,923	16,694	12,965	2,870	1,421	5,021	3,633
BRAZIL		3,663	3,157	5,817	7,168	658	795	943	2,271
INDIA		60	146	125	346	60	100	125	229
SRI LANKA (CEYLON)		0	143	0	282	0	7	0	14
MALAYSIA		872	206	1,480	451	200	6	384	13
SINGAPORE		480	154	805	337	0	46	0	100
INDONESIA		4,870	2,079	8,429	4,309	1,950	445	3,568	961
OTHER		21	35	39	72	0	20	1	45
TEA, CRUDE OR PREPARED	MT	30,004	16,720	38,054	32,626	7,284	4,092	9,382	6,771
CANADA		720	731	1,905	3,393	191	185	520	857
UNITED KINGDOM		121	234	355	780	25	109	77	289
NETHERLANDS		357	805	416	1,546	70	156	90	245
INDIA		3,831	1,066	5,700	3,036	675	89	974	336
SRI LANKA (CEYLON)		7,059	3,677	5,401	7,084	1,124	885	1,565	1,096
INDONESIA		4,597	3,120	6,057	6,221	1,650	806	2,313	1,452
PEOPLES REP OF CHINA		1,939	532	1,816	1,145	764	40	631	85

CONTINUED

Table 11--U.S. AGRICULTURAL IMPORTS: QUANTITY AND VALUE BY COMMODITY AND COUNTRY--CONTINUED

COMMODITY AND COUNTRY	UNIT	OCTOBER-JANUARY				JANUARY			
		QUANTITY		VALUE		QUANTITY		VALUE	
		76/77	77/78 1/	76/77	77/78 1/	1977	1978 1/	1977	1978 1/
		1,000 DOL.	1,000 DOL.			1,000 DOL.	1,000 DOL.		
REP. OF CHINA (TAIWAN)		1,793	874	1,241	1,076				
JAPAN		1,327	1,123	628	924	263	201	188	231
KENYA		3,257	1,919	4,725	3,825	231	240	135	175
MOZAMBIQUE		854	393	792	669	999	660	1,403	1,226
MALANI		1,325	723	1,395	993	207	53	161	67
OTHER		3,121	1,515	2,624	1,936	274	115	327	160
WOOL, UNMFG., DUTY FREE						863	547	998	552
ARGENTINA	MT	2,905	536	6,942	1,304				
UNITED KINGDOM		264	129	636	317	859	16	2,127	46
SPAIN		544	50	1,355	147	82	0	204	0
ITALY		46	10	96	27	118	16	336	46
SYRIA		74	15	142	31	6	0	18	0
NEW ZEALAND		128	70	196	140	11	0	19	0
OTHER		1,671	237	4,203	621	98	0	153	0
		175	22	314	22	512	0	1,264	0
						70	0	135	0
CATTLE, DUTTABLE									
CANADA	MND	535	588	83,455	102,125	106	100	16,078	17,052
MEXICO		180	216	36,939	48,712	28	26	6,088	7,249
OTHER		355	372	44,951	53,353	78	74	9,809	9,785
		0	0	1,569	59	0	0	181	18
CHEESE									
ARGENTINA	MT	45,675	41,211	95,348	88,569	8,149	6,583	18,083	16,766
NORWAY		1,832	1,351	2,565	2,970	673	106	975	223
FINLAND		2,342	2,751	6,555	6,336	300	470	894	1,351
DENMARK		4,199	3,641	8,273	7,079	549	828	2,082	1,798
NETHERLANDS		4,243	3,203	10,699	8,642	783	821	2,063	2,270
FRANCE		1,672	1,606	4,831	4,850	142	143	394	430
FED. REP. OF GERMANY		2,223	1,761	7,557	6,302	611	490	2,016	1,680
AUSTRIA		917	557	1,948	1,129	153	45	339	116
SWITZERLAND		2,722	3,202	5,290	6,264	433	761	1,025	1,743
ITALY		2,744	2,216	7,651	6,759	703	676	1,714	1,924
AUSTRALIA		2,973	2,064	11,232	8,665	783	524	2,586	2,172
NEW ZEALAND		2,207	2,913	2,635	3,558	482	371	569	490
OTHER		13,906	11,906	18,929	16,278	1,392	653	1,909	981
		3,689	4,054	7,183	7,727	739	758	1,519	1,587
CASEIN AND MIXTURES									
ARGENTINA	MT	19,453	20,105	19,702	22,523	4,377	5,590	4,293	6,535
UNITED KINGDOM		1,388	500	1,146	586	714	225	579	280
IRELAND		66	421	102	548	8	7	10	12
POLAND		443	1,291	481	1,732	30	615	46	827
USSR		1,078	505	1,031	510	610	18	552	21
AUSTRALIA		286	862	243	777	150	108	122	114
NEW ZEALAND		4,524	3,980	4,548	4,645	449	1,883	445	2,177
OTHER		11,352	12,029	11,685	13,108	2,301	2,541	2,380	2,870
		312	514	465	617	112	187	158	234
SHEEP AND LAMB SKINS									
IRAN	MT	3,212	3,433	10,805	13,478	1,003	969	3,248	4,113
		1,655	1,801	5,744	7,320	536	442	1,852	2,066

CONTINUED

Table 11—U.S. AGRICULTURAL IMPORTS: QUANTITY AND VALUE BY COMMODITY AND COUNTRY—CONTINUED

COMMODITY AND COUNTRY	UNIT	OCTOBER—JANUARY				JANUARY			
		QUANTITY		VALUE		QUANTITY		VALUE	
		76/77	77/78 1/	76/77 1,000 DOL.	77/78 1/ 1,000 DOL.	1977	1978 1/ 1977	1,000 DOL.	1978 1/ 1,000 DOL.
AFGHANISTAN		221	88	1,028	435	78	20	316	118
NEW ZEALAND		457	667	1,066	2,133	122	105	300	350
SUDAN		157	50	566	180	71	0	224	0
NIGERIA		191	222	1,036	1,128	8	141	66	744
REP SOUTH AFRICA		110	254	433	1,322	32	81	130	420
OTHER		420	348	930	960	154	177	360	414
BEEF AND VEAL	MT	187,787	201,909	248,130	260,511	46,530	47,135	62,842	61,862
CANADA		10,113	8,142	13,253	12,427	3,705	3,188	4,844	5,049
MEXICO		12,145	12,889	14,743	18,294	1,591	3,149	2,043	4,588
GUATEMALA		6,375	6,080	9,515	9,876	1,494	1,196	2,254	2,023
HONDURAS		6,357	7,190	8,646	10,421	3,356	1,067	4,420	1,598
NICARAGUA		9,330	11,233	13,028	16,767	3,852	1,927	5,444	3,103
COSTA RICA		7,486	4,997	10,192	7,726	7,453	944	10,146	1,419
BRAZIL		8,005	4,565	14,687	8,244	1,366	742	2,516	1,263
ARGENTINA		13,707	10,708	22,910	17,776	3,299	2,449	5,685	3,970
AUSTRALIA		82,278	104,210	98,572	119,639	14,406	28,070	18,051	33,202
NEW ZEALAND		25,808	29,911	32,949	35,515	4,998	4,128	5,927	5,067
OTHER		6,178	1,979	9,635	3,826	966	271	1,511	580
PORK	MT	46,344	41,978	145,908	134,770	11,762	12,959	36,831	42,974
CANADA		3,418	4,597	6,488	7,864	716	1,098	1,305	1,949
DENMARK		13,267	13,716	45,395	48,835	3,652	3,860	12,210	13,823
NETHERLANDS		7,572	4,074	25,060	14,708	1,778	1,509	5,804	5,482
HUNGARY		2,550	2,562	6,978	7,889	682	986	1,812	3,060
POLAND		12,300	9,839	40,785	32,840	2,892	2,811	9,589	9,720
YUGOSLAVIA		4,197	4,203	13,302	13,417	1,031	1,337	3,279	4,470
ROMANIA		2,260	2,284	5,333	6,957	734	1,164	1,943	3,809
OTHER		777	700	2,566	3,260	274	193	889	660
GELATIN	---	0	0	9,887	12,447	0	0	2,823	3,718
MEXICO		0	0	571	638	0	0	105	137
COLOMBIA		0	0	185	547	0	0	18	117
BRAZIL		0	0	219	1,319	0	0	64	347
ARGENTINA		0	0	98	599	0	0	60	113
SWEDEN		0	0	586	990	0	0	104	211
UNITED KINGDOM		0	0	1,613	1,492	0	0	558	181
NETHERLANDS		0	0	386	367	0	0	70	90
BELGIUM-LUXEMBOURG		0	0	1,275	888	0	0	244	221
FRANCE		0	0	2,337	2,574	0	0	961	1,546
FED. REP. OF GERMANY		0	0	561	368	0	0	177	111
SWITZERLAND		0	0	26	660	0	0	3	89
ITALY		0	0	232	78	0	0	18	31
YUGOSLAVIA		0	0	186	376	0	0	4	155
PEOPLES REP. OF CHINA		0	0	594	361	0	0	126	16
JAPAN		0	0	250	502	0	0	106	89
AUSTRALIA		0	0	491	437	0	0	73	229
OTHER		0	0	278	251	0	0	133	36

CONTINUED

TABLE II--U.S. AGRICULTURAL IMPORTS: QUANTITY AND VALUE BY COMMODITY AND COUNTRY--CONTINUED

COMMODITY AND COUNTRY	UNIT	OCTOBER-JANUARY				JANUARY			
		QUANTITY		VALUE		QUANTITY		VALUE	
		76/77	77/78 1/	76/77	77/78 1/	1977	1978 1/	1977	1978 1/
		1,000 DOL.	1,000 DOL.			1,000 DOL.	1,000 DOL.		
SAUSAGE CASINGS		0	0	10,799	9,978	0	0	2,636	2,103
CANADA		0	0	932	1,269	0	0	297	149
MEXICO		0	0	856	662	0	0	99	57
DOMINICAN REPUBLIC		0	0	382	162	0	0	109	28
ARGENTINA		0	0	332	303	0	0	117	71
SWEDEN		0	0	684	383	0	0	130	19
DENMARK		0	0	1,119	1,358	0	0	399	270
NETHERLANDS		0	0	1,242	1,386	0	0	245	498
BELGIUM-LUXEMBOURG		0	0	297	91	0	0	82	18
FED. REP. OF GERMANY		0	0	1,602	1,610	0	0	439	480
SPAIN		0	0	628	670	0	0	150	112
PORTUGAL		0	0	361	365	0	0	101	60
YUGOSLAVIA		0	0	456	75	0	0	122	35
PEOPLES REP. OF CHINA		0	0	63	221	0	0	0	174
AUSTRALIA		0	0	405	82	0	0	139	0
NEW ZEALAND		0	0	900	624	0	0	102	13
OTHER		0	0	540	717	0	0	106	120
WOOL, UNMFD, EX FREE									
ARGENTINA	MT	7,590	6,053	19,314	17,901	2,378	2,259	5,988	7,278
UNITED KINGDOM		986	1,138	2,117	2,675	405	305	980	759
BELGIUM-LUXEMBOURG		32	202	125	588	8	171	40	490
AFGHANISTAN		24	77	59	759	15	61	4	571
PEOPLES REP. OF CHINA		42	99	202	795	0	96	0	776
MONGOLIA		176	310	713	1,986	63	99	276	568
AUSTRALIA		113	43	519	353	24	8	122	36
NEW ZEALAND		5,246	2,022	12,774	4,959	1,511	605	3,614	1,643
OTHER		662	1,736	1,621	4,433	206	799	498	2,050
		305	424	1,185	1,293	143	111	454	285
COTTON, RAW									
MEXICO	MT	6,984	249	10,048	605	381	0	989	0
PERU		4,029	0	5,773	0	18	0	16	0
EGYPT		1,595	0	3,099	0	0	0	0	0
SUDAN		187	32	492	100	180	0	492	0
OTHER		95	216	263	505	0	0	0	0
		182	0	481	0	182	0	481	0
STRAWBERRIES, FRESH									
MEXICO	MT	4,544	3,558	2,391	2,009	1,305	1,686	680	988
NEW ZEALAND		4,501	3,522	2,320	1,924	1,294	1,686	680	987
OTHER		42	35	72	83	0	0	0	0
		0	0	0	2	0	0	0	2
STRAWBERRIES, FROZEN									
MEXICO	MT	5,051	4,454	3,345	2,435	2,263	2,208	1,481	1,195
POLAND		2,938	2,776	1,881	1,453	1,670	1,296	1,068	670
OTHER		2,112	1,614	1,464	923	593	891	412	504
		0	63	0	49	0	21	0	21
ORANGES, CANNED									
PEP. OF CHINA (TAIWAN)	MT	9,835	6,627	6,553	7,397	1,908	2,303	1,276	1,919
		945	721	512	525	341	504	199	365

CONTINUED

Table 11--U.S. AGRICULTURAL IMPORTS: QUANTITY AND VALUE BY COMMODITY AND COUNTRY--CONTINUED

COMMODITY AND COUNTRY	UNIT	OCTOBER-JANUARY				JANUARY			
		QUANTITY		VALUE		QUANTITY		VALUE	
		76/77	77/78 1/	76/77 1,000 DOL.	77/78 1/ 1,000 DOL.	1977	1978 1/ 1977	1,000 DOL.	1,000 DOL.
JAPAN		8,865	7,590	5,964	6,640	1,507	1,718	1,036	1,498
OTHER		124	316	76	233	60	80	41	56
PINEAPPLES, CANNED	MT	52,065	52,318	25,382	26,858	14,365	13,844	6,585	6,772
MEXICO		4,234	5,529	2,425	3,004	773	1,260	401	669
THAILAND		11,772	9,199	5,617	4,472	2,956	3,144	1,419	1,512
MALAYSIA		2,317	1,240	1,214	622	788	367	419	199
SINGAPORE		1,525	1,640	798	873	250	408	131	218
PHILIPPINES		27,733	31,216	12,664	16,009	8,250	7,775	3,535	3,656
REP. OF CHINA (TAIWAN)		3,452	1,954	1,795	1,081	802	524	430	302
REP. SOUTH AFRICA		1,106	998	518	519	440	229	203	128
OTHER		922	638	351	317	102	433	46	88
CASHEW NUTS	MT	16,242	6,912	34,773	25,340	3,801	1,551	8,072	5,332
BRAZIL		2,445	1,239	4,950	3,851	570	524	1,140	1,308
INDIA		6,487	1,389	15,661	6,080	1,542	136	3,772	515
PEOPLES REP. OF CHINA		839	754	1,550	3,395	159	359	285	1,587
KENYA		208	310	472	1,246	34	73	79	296
TANZANIA		743	464	1,480	2,203	237	19	470	85
MOZAMBIQUE		5,033	2,663	9,437	8,208	1,238	437	2,271	1,537
OTHER		493	89	1,224	357	19	3	55	4
COCONUT MEAT	MT	19,321	16,245	9,673	13,205	5,511	4,696	2,950	4,118
COSTA RICA		258	247	178	313	57	57	59	75
PHILIPPINES		17,368	15,786	8,602	12,730	5,254	4,574	2,785	3,990
HONG KONG		811	0	403	0	22	0	12	0
OTHER		882	212	491	163	176	64	94	53
BARLEY	MT	704	936	5,590	4,912	429	323	3,413	1,681
CANADA		703	936	5,589	4,910	429	323	3,413	1,679
OTHER		0	0	1	2	0	0	0	2
BISCUITS, CAKES, WAFERS, ETC	MT	12,901	12,202	20,575	20,102	2,791	3,327	4,203	5,692
CANADA		4,823	5,096	6,067	6,499	1,147	1,258	1,396	1,512
MEXICO		592	717	469	645	149	121	133	114
COLOMBIA		280	533	195	441	109	113	76	94
DENMARK		1,587	948	4,179	2,376	256	172	675	451
UNITED KINGDOM		1,856	1,456	2,707	2,775	429	383	651	767
NETHERLANDS		819	376	1,420	726	153	236	272	458
FED. REP. OF GERMANY		700	527	1,489	1,277	104	87	218	208
AUSTRIA		68	578	142	1,685	0	351	0	1,037
SWITZERLAND		84	155	216	403	21	90	65	231
ITALY		279	211	706	526	22	35	91	86
JAPAN		531	416	1,159	1,043	107	84	219	218
OTHER		1,276	1,184	1,825	1,706	290	392	406	516
MACARONI, SPAGHETTI, ETC	MT	9,390	9,399	7,135	6,988	2,262	2,670	1,746	2,083
CANADA		3,551	3,654	2,610	2,377	734	1,009	529	634

CONTINUED

Table 11--U.S. AGRICULTURAL IMPORTS: QUANTITY AND VALUE BY COMMODITY AND COUNTRY--CONTINUED

COMMODITY AND COUNTRY	UNIT	OCTOBER-JANUARY				JANUARY			
		QUANTITY		VALUE		QUANTITY		VALUE	
		76/77	77/78 1/	75/77 1,000 DOL.	77/78 1/ 1,000 DOL.	1977	1978 1/	1977 1,000 DOL.	1978 1/ 1,000 DOL.
MEXICO		1,007	1,066	394	547	189	200	85	103
DOMINICAN REPUBLIC		100	197	164	174	42	110	38	97
ITALY		2,458	2,403	1,546	1,421	762	613	482	371
PHILIPPINES		186	211	241	265	66	82	82	104
PEOPLES REP OF CHINA		271	324	322	381	65	98	71	97
HONG KONG		358	321	524	529	102	107	150	172
REP. OF CHINA (TAIWAN)		221	156	381	258	71	72	109	112
JAPAN		619	417	560	471	101	91	103	100
OTHER		514	644	391	557	125	282	97	292
OILSEEDS AND OILNUTS	MT	58,787	26,023	30,931	16,740	12,991	5,872	7,338	3,052
CANADA		41,152	13,270	13,131	4,498	8,474	3,470	2,679	1,009
MEXICO		6,307	4,971	4,539	4,075	1,308	1,388	953	1,238
GUATEMALA		1,194	1,126	868	847	626	635	458	441
NICARAGUA		693	583	645	557	202	84	191	82
DOMINICAN REPUBLIC		1,109	1,917	777	1,431	275	0	151	0
ARGENTINA		458	506	317	360	142	0	98	0
NETHERLANDS		847	445	1,106	527	146	171	218	178
SPAIN		540	122	900	229	131	0	211	0
REP. OF CHINA (TAIWAN)		618	364	666	388	132	1	170	3
JAPAN		2,544	1,052	4,217	1,768	713	2	1,183	5
OTHER		3,319	1,661	3,765	2,059	837	117	1,026	95
COCONUT OIL	MT	188,598	119,990	73,787	56,532	39,362	29,727	17,456	13,029
PHILIPPINES		184,049	116,975	72,100	55,068	38,863	29,727	17,230	13,028
OTHER		4,549	3,015	1,686	1,464	499	0	226	1
OLIVE OIL, EDIBLE	MT	10,416	9,031	13,320	11,070	2,622	2,247	3,419	2,890
SPAIN		3,850	4,477	4,669	5,263	575	1,237	708	1,516
PORTUGAL		142	76	304	159	48	19	104	36
ITALY		4,628	3,745	6,163	5,024	1,120	938	1,576	1,258
GREECE		218	94	328	142	28	44	46	67
MALAYSIA		0	523	0	328	0	0	0	0
TUNISIA		1,355	0	1,619	0	710	0	849	0
OTHER		221	113	238	156	139	7	137	13
PALM OIL	MT	137,088	53,827	53,411	24,941	47,282	14,252	18,931	5,994
INDIA		0	1,006	0	528	0	0	0	0
MALAYSIA		123,910	38,332	48,230	17,910	46,772	12,229	18,706	5,048
SINGAPORE		7,131	504	2,924	205	510	0	225	0
INDONESIA		5,526	13,036	2,021	5,815	0	1,003	0	509
OTHER		521	949	236	464	0	1,020	0	438
PALM KERNEL OIL	MT	24,293	16,539	12,760	9,791	9,745	3,508	4,885	1,763
NETHERLANDS		3,416	2,778	3,309	2,871	1,044	488	998	468
MALAYSIA		17,374	12,241	7,886	5,902	8,194	3,019	3,674	1,295
INDONESIA		1,902	1,513	894	3,013	0	0	0	0

CONTINUED

Table 11--U.S. AGRICULTURAL IMPORTS: QUANTITY AND VALUE BY COMMODITY AND COUNTRY--CONTINUED

COMMODITY AND COUNTRY	UNIT	OCTOBER-JANUARY				JANUARY			
		QUANTITY		VALUE		QUANTITY		VALUE	
		76/77	77/78 1/	76/77	77/78 1/	1977	1978 1/	1977	1978 1/
		1,000 DOL.		1,000 DOL.		1,000 DOL.		1,000 DOL.	
LIBERIA		1,013	0	458	0	0	0	0	0
OTHER		506	5	213	6	506	0	213	0
SUGAR, CANE OR BEET	MT	1,309,269	2,034,131	277,491	393,915	225,315	251,040	44,741	52,064
CANADA		9,705	51,813	2,957	14,807	2,081	4,619	617	1,497
GUATEMALA		88,994	19,191	17,542	3,195	18,890	2,422	4,503	457
EL SALVADOR		17,915	37,273	3,152	7,797	12,175	16,459	2,127	3,806
COSTA RICA		23,890	0	3,893	0	18,493	0	2,744	0
JAMAICA		14,705	0	3,459	0	4,310	0	828	0
DOMINICAN REPUBLIC		339,809	169,092	64,296	35,188	47,972	20,090	8,616	4,594
PERU		51,278	75,836	13,907	13,739	5,877	0	985	0
BOLIVIA		4,938	22,007	988	4,560	0	0	0	0
BRASIL		0	417,691	0	74,540	0	59,328	0	12,052
ARGENTINA		30,031	172,780	5,750	31,993	15,751	0	2,542	0
FED. REP. OF GERMANY		0	17,105	1	5,331	0	0	0	0
PHILIPPINES		353,051	479,772	90,474	92,843	47,759	107,327	11,899	19,791
AUSTRALIA		236,650	366,383	42,123	68,745	25,905	29,621	4,141	6,886
MAURITIUS		26,501	14,529	5,042	2,162	0	0	0	0
MOZAMBIQUE		17,600	23,399	3,872	5,897	0	0	0	0
REP. SOUTH AFRICA		937	32,985	176	5,794	0	0	0	0
SWAZILAND		25,114	39,025	5,979	9,773	10,132	11,164	2,267	2,977
MALAWI		15,603	23,439	4,003	4,360	0	0	0	0
OTHER		52,539	71,603	5,877	13,191	17,962	6	3,473	3
MOLASSES, INEDIBLE	HLTR	373,384	417,811	28,010	22,060	88,714	84,462	6,692	4,375
MEXICO		28,560	83,330	2,058	4,206	2,648	6,214	155	316
GUATEMALA		9,078	29,386	653	2,171	9,078	0	653	0
PANAMA		3,723	15,339	341	888	0	11,284	0	666
DOMINICAN REPUBLIC		7,288	21,160	750	1,318	0	0	0	0
TRINIDAD-TOBAGO		8,095	157	623	16	5,622	38	421	4
COLOMBIA		19,504	0	1,636	0	0	0	0	0
GUYANA		8,337	12,252	657	633	0	0	0	0
ECUADOR		13,578	9,229	606	514	0	4,597	0	256
PERU		7,626	20,062	801	1,102	7,626	10,294	801	699
CHILE		11,368	9,674	944	494	11,368	0	944	0
BRASIL		40,243	42,470	3,894	2,385	17,592	8,261	1,662	351
FRANCE		25,686	0	1,914	0	0	0	0	0
AUSTRALIA		93,978	69,832	6,773	3,855	26,721	21,116	1,616	676
OTHER PAC ISLS, NEC		9,998	10,467	580	488	0	0	0	0
EGYPT		12,900	0	836	0	0	0	0	0
MAURITIUS		13,132	35,719	831	1,642	0	15,225	0	625
REP. SOUTH AFRICA		25,105	29,852	1,673	1,102	0	8,669	0	378
OTHER		35,105	25,882	2,440	1,246	8,059	7,764	440	404
CONFECTIONERY PRODUCTS	MT	16,861	11,003	21,241	14,917	3,022	3,038	3,436	3,760
CANADA		392	253	550	324	46	66	56	79
COLOMBIA		1,106	1,067	766	774	182	291	123	219

CONTINUED

Table II—U.S. AGRICULTURAL IMPORTS: QUANTITY AND VALUE BY COMMODITY AND COUNTRY—CONTINUED

COMMODITY AND COUNTRY	UNIT	OCTOBER-JANUARY				JANUARY			
		QUANTITY		VALUE		QUANTITY		VALUE	
		76/77	77/78 1/	76/77	77/78 1/	1977	1978 1/	1977	1978 1/
		1,000 DOL.		1,000 DOL.		1,000 DOL.		1,000 DOL.	
BRAZIL		911	492	717	369	144	284	115	208
ARGENTINA		1,162	1,321	799	969	192	188	158	143
SWEDEN		736	402	788	436	231	75	249	32
DENMARK		419	221	601	344	89	69	131	126
UNITED KINGDOM		6,826	2,674	7,580	3,408	1,371	1,183	1,456	1,469
NETHERLANDS		721	332	1,084	582	148	71	228	126
FED. REP. OF GERMANY		281	308	565	920	40	67	73	149
SPAIN		1,102	1,347	3,278	2,947	31	138	43	192
ITALY		821	759	1,478	1,305	74	95	173	181
HONG KONG		418	278	665	426	45	98	61	148
JAPAN		85	90	244	326	18	14	59	50
OTHER		1,872	1,452	2,125	1,786	405	392	511	588
TOMATOES, FRESH									
MEXICO	MT	53,165	87,381	16,706	48,622	24,584	56,906	5,721	35,330
OTHER		52,863	86,917	16,636	48,453	24,385	56,772	5,680	35,267
		301	463	69	169	198	134	41	63
BEANS, DRIED, INC MUNG									
CANADA	MT	3,296	2,243	1,688	1,358	1,897	113	502	133
MEXICO		275	398	108	255	54	0	21	0
PERU		71	127	37	87	3	5	1	32
CHILE		91	106	57	71	9	0	4	0
ARGENTINA		111	319	56	149	37	0	21	0
BELGIUM-LUXEMBOURG		33	419	15	162	16	0	7	0
AZORES		68	331	28	144	0	0	0	0
PORTUGAL		87	58	71	45	3	0	1	0
THAILAND		63	81	55	72	0	0	0	0
PEOPLES REP OF CHINA		1,556	66	845	45	1,126	1	580	3
JAPAN		20	43	9	42	0	0	0	2
KENYA		15	12	18	38	12	0	8	0
MALAGASY REPUBLIC		27	135	33	112	16	55	20	47
OTHER		581	0	241	0	527	0	208	0
		290	142	114	135	88	49	29	49
MUSHROOMS, PREP OR PRES									
KOREA, REPUBLIC OF	MT	5,443	11,949	12,416	27,840	2,136	3,364	4,560	7,594
HONG KONG		3,124	2,929	7,234	6,734	1,669	1,000	3,886	2,225
REP. OF CHINA (TAIWAN)		0	727	0	1,536	0	232	0	486
OTHER		1,914	7,777	4,134	18,183	292	1,967	628	4,402
		404	515	1,048	1,387	175	164	447	481
OLIVES, IN BRINE									
SPAIN	MLTR	19,185	29,054	23,683	17,951	4,199	16,578	5,169	3,347
GREECE		17,660	26,920	22,520	17,196	3,825	15,341	4,859	3,121
OTHER		1,193	1,671	922	547	314	1,133	267	203
		332	463	241	209	60	104	43	23
TOMATOES, PREP OR PRES									
MEXICO	MT	26,721	19,025	11,406	8,494	7,926	6,141	3,301	2,480
CHILE		2,632	2,236	1,280	1,310	480	156	258	88
		1,041	77	390	52	80	65	27	46

CONTINUED

Table II—U.S. AGRICULTURAL IMPORTS: QUANTITY AND VALUE BY COMMODITY AND COUNTRY--CONTINUED

COMMODITY AND COUNTRY	UNIT	OCTOBER-JANUARY				JANUARY			
		QUANTITY		VALUE		QUANTITY		VALUE	
		75/77	77/78 1/	76/77	77/78 1/	1977	1978 1/	1977	1978 1/
		1,000 DOL.		1,000 DOL.				1,000 DOL.	
BRAZIL		35	419	24	321	1	28	1	22
SPAIN		4,750	5,423	1,873	2,236	1,479	2,221	606	841
PORTUGAL		6,557	566	3,194	406	1,105	28	504	24
ITALY		5,748	7,232	2,539	2,910	1,838	2,883	814	1,190
ISRAEL		3,445	2,467	1,014	929	1,369	733	417	265
REP. OF CHINA (TAIWAN)		1,927	284	806	154	1,523	14	646	4
OTHER		583	316	285	176	48	0	29	0
CUT FLOWERS	---	0	0	10,324	14,886	0	0	2,799	3,500
CANADA		0	0	406	414	0	0	36	28
COLOMBIA		0	0	9,184	13,279	0	0	2,573	3,191
NETHERLANDS		0	0	318	580	0	0	69	118
OTHER		0	0	416	614	0	0	101	162
MALT LIQUORS	MLTR	93,023	89,029	48,352	47,021	21,850	25,610	11,513	14,163
CANADA		21,013	28,197	8,710	10,525	5,072	6,808	2,037	2,560
MEXICO		6,692	7,738	2,962	3,915	644	1,863	302	330
NETHERLANDS		45,395	34,400	26,152	22,024	11,836	10,979	6,956	7,277
FED. REP. OF GERMANY		10,884	9,050	6,338	5,908	2,169	2,939	1,254	1,966
OTHER		9,039	9,644	4,190	4,649	2,129	3,021	963	1,429
TOBACCO, UNMANUFACTURED	MT	41,503	44,321	93,206	108,598	12,356	11,759	27,476	30,515
MEXICO		470	1,789	935	3,816	176	155	292	430
DOMINICAN REPUBLIC		1,703	1,140	2,911	2,042	464	284	730	592
BRAZIL		2,308	4,145	3,596	7,738	888	749	1,268	1,302
ITALY		3,541	4,029	4,335	5,347	881	888	1,133	1,193
YUGOSLAVIA		2,226	2,099	7,005	7,025	621	660	2,069	2,220
GREECE		3,781	2,823	13,642	9,403	653	820	2,389	3,000
BULGARIA		1,353	2,623	4,022	8,223	363	694	1,145	2,243
TURKEY		13,636	12,737	34,032	39,068	4,065	4,042	11,264	12,261
SYRIA		401	901	1,307	2,408	196	466	527	1,293
LEBANON		1,265	1,063	3,599	2,181	258	185	728	504
PHILIPPINES		2,539	1,899	2,226	2,113	1,112	519	1,038	893
KOR. REPUBLIC OF		2,339	1,924	4,522	4,817	769	382	1,794	1,006
OTHER		5,935	7,143	11,074	14,418	1,603	1,911	3,188	3,578
TOBACCO LEAF, ORIENTAL	MT	25,147	23,647	67,400	71,765	7,021	7,344	19,359	22,542
ITALY		2,854	1,658	3,631	2,338	880	421	1,132	599
YUGOSLAVIA		2,224	2,090	7,002	7,013	619	660	2,067	2,220
GREECE		3,735	2,566	13,567	9,009	653	819	2,389	2,999
BULGARIA		1,353	2,623	4,022	8,223	363	694	1,145	2,243
TURKEY		13,010	12,299	33,662	38,862	3,972	3,865	11,207	12,182
SYRIA		401	841	1,307	2,380	196	466	527	1,293
LEBANON		1,265	713	3,599	1,961	258	184	728	504
OTHER		301	854	640	1,980	76	230	164	593
WINES	MLTR	83,581	78,519	121,889	121,591	20,703	22,240	28,754	32,673
FRANCE		16,239	13,661	42,629	39,202	3,934	3,879	10,203	11,090
FED. REP. OF GERMANY		14,166	11,116	21,517	21,636	3,749	3,076	5,498	6,281
SPAIN		9,206	7,442	11,398	10,737	1,960	2,046	2,155	2,163
PORTUGAL		8,135	6,946	9,742	8,314	1,862	2,123	2,097	2,262
ITALY		31,823	34,926	31,151	35,690	8,149	9,685	7,565	8,948
OTHER		4,012	4,428	5,451	6,013	1,052	1,243	1,237	1,930

L/ PRELIMINARY

Table 12--U.S. AGRICULTURAL IMPORTS: QUANTITY AND VALUE BY COMMODITY

COMMODITY	UNIT	OCTOBER-DECEMBER				DECEMBER			
		QUANTITY		VALUE		QUANTITY		VALUE	
		75/76	76/77 1/	75/76	76/77 1/	1976	1977 1/	1976	1977 1/
		THOU.	THOU.	1,000 DOL.	1,000 DOL.	THOU.	THOU.	1,000 DOL.	1,000 DOL.
ALL COMMODITIES	---	---	---	32,635,500	37,063,500	---	---	11,542,800	13,212,000
NONAGRICULTURAL COMMODITIES	---	---	---	29,757,266	34,109,261	---	---	10,447,229	11,927,342
AGRICULTURAL COMMODITIES	---	---	---	2,878,234	2,954,239	---	---	1,095,571	1,284,658
COMPLEMENTARY	---	---	---	1,353,011	1,323,178	---	---	553,353	550,681
BANANAS, FRESH	KG	522,972	546,489	77,904	79,612	172,117	192,614	25,471	24,639
PLANTAINS, FRESH	KG	17,096	16,112	2,046	3,003	6,061	5,322	757	1,016
BANANAS, PLANTAINS, DRIED OR PREPARED	KG	3,987	7,711	1,116	2,255	1,097	2,056	346	645
COFFEE, GREEN	KG	271,129	177,257	803,457	658,239	111,499	80,234	343,621	316,055
COFFEE, SOLUBLE, EXTRACTS	KG	7,166	1,502	99,709	21,510	2,782	587	19,041	7,729
COFFEE, ROASTED OR GROUND	KG	4,829	4,441	13,782	17,479	1,341	1,684	3,814	6,846
COCCA BEANS	KG	36,842	18,407	69,533	80,519	16,759	5,692	31,652	23,404
COCCA BUTTER	KG	4,581	3,520	20,412	17,641	2,135	1,161	10,894	5,619
COCCA, POWDER & CAKE	KG	19,442	13,851	25,203	60,614	6,359	4,863	8,829	21,625
CHOCOLATE PREPARATIONS	KG	13,199	16,458	26,044	73,610	4,133	4,763	8,435	24,910
DRUGS, HERBS, ROOTS, LEAVES, ETC	KG	14,202	15,233	32,101	33,405	7,582	7,635	11,056	14,551
ESSENTIAL OILS	KG	1,977	1,152	18,868	16,643	713	455	6,601	7,085
FIBERS, EX COTTON, JUTE	MT	12	15	4,296	6,591	7	6	3,510	2,422
RUBBER, AND ALLIED GUMS:									
RUBBER, DRY FORM	KG	159,827	177,117	123,553	142,325	64,393	76,048	49,481	62,148
RUBBER, LATEX	KG	14,322	12,655	12,044	16,949	5,509	7,257	4,843	6,467
ALLIED GUMS	KG	586	497	1,024	1,277	265	316	578	830
SILK, RAW	KG	86	55	1,413	1,081	19	38	328	770
SPICES	KG	12,143	13,820	29,985	28,744	6,763	4,936	10,335	13,364
PEPPER, BLACK, UNGROUND	KG	7,096	4,582	11,673	9,332	3,142	1,517	5,273	3,143
VANILLA BEANS	KG	387	272	6,300	5,578	66	232	943	5,092
OTHER	KG	10,699	9,145	12,013	13,833	3,554	3,181	4,118	5,123
TEA, CRUD OR PREPARED	KG	22,722	12,622	28,672	25,855	8,288	4,955	10,535	9,729
WOOL, UNMANUFACTURED, FREE	KG	2,066	522	4,815	1,252	865	132	2,217	305
OTHER	---	---	---	2,730	3,367	---	---	948	1,322
SUPPLEMENTARY	---	---	---	1,525,223	1,631,260	---	---	542,218	733,977
ANIMAL AND ANIMAL PRODUCTS	---	---	---	572,530	581,134	---	---	197,927	229,721
ANIMALS, LIVE	---	---	---	86,519	101,192	---	---	41,855	42,795
CATTLE, DUTIABLE	NO	450	488	67,381	85,073	259	226	35,505	35,705
CATTLE FOR BREEDING, FREE	NO	3	1	2,547	1,263	1	1	545	543
HORSES	NO	3	3	15,240	12,929	1	1	5,363	5,973
SWINE	NO	9	10	1,204	1,296	3	3	333	417
OTHER	---	---	---	347	637	---	---	109	158
DAIRY PRODUCTS	---	---	---	94,719	30,181	---	---	43,255	47,081
CHEESE	KG	37,522	34,622	77,264	71,802	19,327	19,712	35,942	39,012
BLUE MOLD, INCLUDING ROGUEFORT	KG	1,022	641	3,198	2,234	491	346	1,402	1,133
CHEDDAR	KG	2,993	1,899	4,581	3,389	2,268	1,183	3,379	1,645
EDAM AND GOUDA	KG	1,557	1,665	4,303	4,556	714	1,155	2,932	3,114
EMMENTHALER OR SWISS, INC GRUYERE	KG	3,969	9,386	23,117	22,124	3,875	4,586	8,807	10,572

CONTINUED

Table 12--U.S. AGRICULTURAL IMPORTS: QUANTITY AND VALUE BY COMMODITY--CONTINUED

COMMODITY	UNIT	OCTOBER-DECEMBER				DECEMBER			
		QUANTITY		VALUE		QUANTITY		VALUE	
		75/76 THOU.	76/77 1/ THOU.	75/76 1,000 DOL.	76/77 1/ 1,000 DOL.	1976 THOU.	1977 1/ THOU.	1976 1,000 DOL.	1977 1/ 1,000 DOL.
ROMANO,REGGIANO,PARMESANO	KG	1,264	1,700	3,232	4,901	320	919	716	2,883
PECORINO AND SHEEPSMILK	KG	2,366	2,518	7,725	5,297	891	820	3,032	2,910
OTHER	KG	18,363	17,819	31,109	29,321	10,768	10,717	16,581	16,762
CASEIN AND MIXTURES	KG	15,076	14,516	15,908	15,988	6,639	6,051	6,835	6,749
NONFAT DRY MILK	KG	426	99	251	51	173	18	94	9
OTHER	---	---	---	1,795	2,340	---	---	977	1,304
HIDES AND SKINS, INCLUDING FURSKINS	---	---	---	32,709	39,563	---	---	15,594	22,348
CALF AND KIP SKINS	KG	69	107	132	227	66	60	129	118
CATTLE HIDES, WHOLE	KG	5,835	6,531	4,318	4,891	1,572	2,017	987	1,585
GOAT AND KID SKINS	KG	156	132	585	347	63	95	286	239
SHEEP AND LAMB SKINS	KG	2,299	2,464	7,557	9,366	549	1,504	1,767	5,592
FURSKINS	---	---	---	18,869	23,102	---	---	12,051	14,306
OTHER	---	---	---	1,249	1,630	---	---	375	507
MEAT AND MEAT PRODUCTS	KG	181,118	188,478	304,579	299,831	42,727	95,983	78,852	154,669
MEATS-P.L.88-482	KG	116,804	140,210	148,146	173,872	22,710	72,292	28,006	90,313
BEEF AND VEAL	KG	141,257	154,774	185,288	198,649	29,753	78,118	39,702	100,242
CANNED	KG	13,624	9,831	23,111	16,154	4,552	3,761	7,598	6,207
FRESH OR FROZEN	KG	121,544	141,300	151,111	175,102	23,409	72,972	28,783	91,086
PREPARED OR PRESERVED	KG	6,088	3,643	11,066	7,393	1,793	1,385	3,322	2,949
MUTTON, GOAT, AND LAMB	KG	2,180	1,705	3,147	2,847	570	1,365	834	2,257
PORK	KG	34,582	29,019	109,477	91,796	11,590	15,401	36,418	49,657
FRESH OR FROZEN	KG	2,340	3,137	3,824	4,572	707	1,123	1,322	1,785
HAMS AND SHOULDERS, CND, COOKED	KG	29,059	24,087	97,884	82,824	9,362	13,205	31,514	45,411
OTHER	KG	3,122	1,795	7,369	4,400	1,522	1,073	3,582	2,461
OTHER, INC EDIBLE OFFALS, GANE	KG	3,099	2,981	7,066	6,540	814	1,099	1,898	2,513
POULTRY AND POULTRY PRODUCTS	---	---	---	14,912	13,520	---	---	4,937	6,347
BABY CHICKS	NO	524	599	384	609	182	190	148	294
EGGS IN SHELL	DOZ	1,108	338	602	459	713	77	363	153
FEATHERS AND DOWNS, CRUDE, SORTED	KG	2,406	1,006	12,945	10,950	757	465	4,189	5,342
POULTRY MEAT	KG	33	109	369	710	9	37	103	258
OTHER	---	---	---	613	791	---	---	134	299
OTHER ANIMAL PRODUCTS.	---	---	---	39,092	36,842	---	---	12,834	16,483
BEEWAX	KG	290	371	756	1,286	111	146	303	351
BONES, HOFS, AND HORNS	---	---	---	687	850	---	---	302	383
BRISTLES, CRUDE OR PREPARED	KG	461	69	3,271	500	96	32	601	213
FATS, OILS, AND GREASES	KG	2,393	1,788	967	1,023	764	488	336	314
GELATIN	---	---	---	7,064	8,729	---	---	2,262	3,876
HAIR, UNMANUFACTURED	KG	382	522	972	1,432	144	223	399	577
OSSEIN	KG	1,121	1,503	1,511	1,922	356	812	495	1,122
SAUSAGE CASINGS	---	---	---	8,163	7,874	---	---	2,971	3,246
WOOL, UNMANUFACTURED, EX FREE	KG	5,212	3,794	13,326	10,623	1,706	1,754	4,568	5,352
OTHER	---	---	---	2,366	2,604	---	---	597	1,046
VEGETABLE PRODUCTS	---	---	---	952,693	1,049,926	---	---	344,292	444,256
COTTON, UNMANUFACTURED	RBA	38	12	9,697	1,551	4	4	463	252
COTTON, RAJ	RBA	26	1	9,459	605	1	0	272	0
LINTERS	RBA	11	11	638	946	4	4	192	252

CONTINUED

Table 12--U.S. AGRICULTURAL IMPORTS: QUANTITY AND VALUE BY COMMODITY--CONTINUED

COMMODITY	UNIT	OCTOBER-DECEMBER				DECEMBER			
		QUANTITY		VALUE		QUANTITY		VALUE	
		75/76 THOU.	76/77 1/ THOU.	75/76 1,000 DOL.	76/77 1/ 1,000 DOL.	1976 THOU.	1977 1/ THOU.	1976 1,000 DOL.	1977 1/ 1,000 DOL.
FRUITS AND PREPARATIONS	---	---	---	63,286	82,651	---	---	22,904	30,386
APPLES, FRESH	KG	4,886	11,817	2,824	3,886	2,660	5,001	1,001	1,969
APPLES, PREPARED OR PRESERVED	KG	1,053	973	474	512	392	278	174	123
APRICOTS	KG	619	305	284	505	215	202	325	413
BERRIES:									
BLUEBERRIES, FRESH OR FROZEN	KG	624	1,836	750	3,215	123	314	161	563
STRAWBERRIES, FRESH	KG	3,149	1,871	1,711	1,021	2,304	1,413	1,206	774
STRAWBERRIES, FROZEN	KG	2,788	2,246	1,864	1,240	1,341	998	891	550
OTHER	KG	4,437	2,226	1,568	1,276	276	378	241	268
CANDIED OR GLACE FRUITS	KG	1,164	1,062	1,327	1,390	299	304	381	458
CITRUS:									
GRAPEFRUIT, FRESH	KG	3,707	2,720	1,060	880	413	475	141	163
LIMES, FRESH	KG	1,219	2,252	289	496	390	931	112	226
ORANGES, CANNED	KG	8,527	6,324	5,277	5,478	2,223	2,395	1,499	2,093
ORANGES, FRESH	KG	21,922	14,585	6,942	3,945	11,637	9,402	3,413	2,675
OTHER	KG	38	26	47	41	15	17	22	23
DATES	KG	1,373	8,632	717	4,705	1,366	2,436	703	1,514
FIGS	KG	2,613	2,271	2,211	2,414	334	505	310	675
FRUIT JUICES									
APPLE AND PEAR	LIT	26,253	23,006	3,485	4,385	5,088	5,102	1,067	922
GRAPE	LIT	435	1,323	101	291	95	28	26	21
ORANGE, CONCENTRATED	LIT	16,814	76,822	1,526	13,925	11,359	30,525	978	5,597
PINEAPPLE	LIT	14,945	21,990	1,418	2,964	6,557	5,978	593	1,058
OTHER	LIT	3,227	3,251	1,337	1,307	722	699	358	486
FRUIT PEEL, PASTE AND PULP	KG	3,562	3,780	1,788	1,438	2,244	1,459	1,232	781
GRAPES, FRESH	KG	2,333	1,726	607	296	163	2	37	1
JAMS AND JELLIES	KG	971	852	996	927	336	253	310	294
MANGOES, FRESH OR PREPARED	KG	279	651	175	438	92	123	54	101
MELONS, FRESH	KG	1,652	2,708	387	674	709	1,513	242	510
PEARS, FRESH	KG	137	165	112	109	44	43	21	20
PINEAPPLES, FRESH	KG	11,821	11,238	1,826	1,415	3,087	4,314	317	524
PINEAPPLES, CANNED	KG	33,779	36,474	18,798	20,126	11,450	12,077	5,470	5,226
PINEAPPLES, PREPARED, EXC CANNED	KG	277	237	168	147	170	19	105	14
PRUNES, PLUMS	KG	446	343	461	500	191	197	207	266
RAISINS, CURRANTS	KG	1,354	657	1,474	608	835	515	946	451
OTHER	---	---	---	1,582	2,076	---	---	370	626
NUTS AND PREPARATIONS	---	---	---	58,633	50,604	---	---	16,201	14,688
BRAZIL	KG	2,744	2,281	3,712	4,744	496	410	814	952
CASHEWS	KG	12,442	5,367	26,701	20,009	4,210	1,557	8,885	6,078
CHESTNUTS	KG	4,666	4,487	3,679	5,340	917	1,375	753	1,459
COCONUTS, IN SHELL	40	7,935	6,259	1,254	988	2,756	2,454	426	373
COCONUT MEAT, FRESH OR PREPARED	KG	13,814	11,549	6,723	9,087	9,501	3,893	2,806	3,439
FILBERTS	KG	1,486	584	2,198	987	559	205	805	360
PECANS	KG	525	278	995	670	426	152	822	346
PISTACHE	KG	1,330	2,494	4,276	8,143	210	464	631	1,495
OTHER	---	---	---	1,095	668	---	---	262	187
GRAINS AND PREPARATIONS	---	---	---	38,737	36,823	---	---	13,257	14,580
BARLEY	KG	13,196	29,412	2,176	3,231	8,803	18,283	1,461	1,900
BARLEY AND OTHER MALT	KG	6,026	7,297	1,490	1,647	2,064	1,452	483	313
CORN, EXC SEED	KG	13,391	15,794	1,726	1,388	4,504	1,915	599	187
OATS	KG	1,579	6,427	164	537	1,139	2,545	112	220
RICE	KG	39	831	138	278	307	306	79	114
WHEAT, EXC. SEED	KG	1	18	100	5	1	2	100	0

CONTINUED

Table 12--U.S. AGRICULTURAL IMPORTS: QUANTITY AND VALUE BY COMMODITY--CONTINUED

COMMODITY	UNIT	OCTOBER-DECEMBER				DECEMBER			
		QUANTITY		VALUE		QUANTITY		VALUE	
		75/76 THOU.	76/77 1/ THOU.	75/76 1,000 DOL.	76/77 1/ 1,000 DOL.	1976 THOU.	1977 1/ THOU.	1976 1,000 DOL.	1977 1/ 1,000 DOL.
WHEAT FLOUR	KG	264	11	73	7	182	5	19	3
WHEAT GLUTEN	KG	6,638	5,711	6,448	5,597	2,461	2,840	2,344	2,716
BISCUITS, CAKES, WAFERS ETC	KG	13,111	8,875	16,372	14,415	3,574	3,288	4,827	5,644
BREAD CRUMBS	KG	3,436	3,785	2,943	2,330	1,055	888	541	579
BREAD, YEAST-LEAVENED	KG	517	615	452	512	213	223	165	217
PACARONI, SPAGHETTI, ETC	KG	7,124	6,729	5,389	4,906	2,324	2,852	1,826	2,149
OTHER	---	---	---	2,163	1,974	---	---	605	540
GILSEEDS AND PRODUCTS	KG	326,242	187,821	147,150	189,447	115,516	67,397	55,178	37,153
OIL CAKE AND MEAL	KG	3,247	1,731	349	316	978	987	126	161
GILSEEDS AND GILHEUTS	KG	45,811	29,231	23,604	13,808	14,332	6,916	7,642	4,965
FLAXSEED	KG	22,073	256	6,560	44	6,826	195	2,036	32
MUSTARD SEED	KG	9,499	6,778	3,545	2,044	2,948	2,079	1,092	719
POPPY SEED	KG	816	344	1,124	385	167	271	226	300
SESAME SEED	KG	5,743	4,646	4,206	3,777	2,101	1,439	1,563	1,137
SUNFLOWER SEED	KG	62	1,664	352	361	129	245	196	73
OTHER	KG	7,864	7,242	7,817	7,197	2,168	2,697	2,529	2,705
VEGETABLE OILS AND WAXES	KG	277,184	165,860	123,197	95,323	108,206	59,493	47,410	32,028
CARNAUBA WAX	KG	71	455	1,400	829	255	171	525	310
CASTOR OIL	KG	8,933	11,614	7,443	10,763	2,679	794	2,966	740
COCOA OIL	KG	149,236	99,254	56,331	43,503	65,363	42,947	26,599	19,678
OLIVE OIL, EDIBLE	KG	7,794	6,784	9,901	8,181	2,988	3,315	3,904	4,035
PALM OIL	KG	89,807	39,575	34,990	18,947	22,856	8,142	9,399	3,517
PALM KERNEL OIL	KG	14,548	13,031	7,875	8,029	3,805	2,981	2,038	2,046
RAPESEED OIL	KG	855	831	466	534	88	88	47	54
SESAME OIL	KG	351	249	712	535	105	117	217	254
TUNG OIL	KG	2,592	1,101	2,167	1,825	1,463	397	972	806
OTHER	KG	2,303	1,947	2,423	2,178	662	642	741	587
SUGAR AND RELATED PRODUCTS	---	---	---	289,764	381,713	---	---	98,159	196,647
SUGAR, CANE OR BEET	MT	1,084	1,783	232,749	341,851	386	936	85,266	184,920
MOLASSES, INEDIBLE	LIT	284,672	333,352	21,317	17,684	60,138	86,401	4,362	4,474
MAPLE SYRUP AND SIRUP	KG	1,296	1,128	1,963	1,999	378	425	627	750
CONFECTIONERY PRODUCTS	KG	13,848	7,965	17,805	11,157	4,417	2,877	5,567	4,234
HONEY	KG	2,832	6,576	2,117	4,988	1,494	1,946	1,113	1,495
OTHER	---	---	---	4,913	4,133	---	---	1,284	774
VEGETABLES AND PREPARATIONS	---	---	---	96,448	119,769	---	---	39,424	53,474
FRESH OR FROZEN:	---	---	---	---	---	---	---	---	---
ASPARAGUS, EX FROZEN	KG	535	426	189	331	25	31	7	23
BEANS	KG	987	1,435	242	1,346	914	1,251	212	1,223
BROCCOLI, CAULIFLOWER, OKRA, SLC, FRZ	KG	4,657	4,467	2,159	2,173	1,584	1,513	744	727
CABBAGE	KG	84	421	13	54	55	140	8	14
CARROTS	KG	14,841	14,654	2,214	1,981	5,303	4,218	760	540
CUCUMBERS	KG	12,396	22,969	1,670	4,655	11,052	18,472	1,469	3,754
DASHENES	KG	3,427	3,237	1,334	1,245	1,209	824	360	318
EGGPLANT	KG	1,822	1,947	215	428	1,427	1,827	160	405
ENDIVE	KG	167	137	310	312	63	53	121	113
GARLIC	KG	141	187	134	244	6	27	5	32
LETTUCE	KG	275	177	119	75	41	37	21	15
OKRA	KG	242	908	84	232	183	435	59	79
ONIONS	KG	3,751	5,243	775	1,454	3,381	3,823	619	877
PEAS	KG	738	945	662	880	577	481	456	473
PEPPERS	KG	3,695	4,817	1,166	2,893	2,637	3,364	756	2,627
POTATOES, WHITE OR IRISH	KG	2,234	13,976	189	1,512	1,217	7,804	93	817
SQUASH	KG	3,936	4,831	903	2,232	2,824	4,258	362	2,109
TOMATOES	KG	28,581	30,475	13,985	13,291	19,788	9,957	3,382	4,195
TURNIPS OR RUTABAGAS	KG	15,994	13,739	1,980	1,708	5,127	4,169	647	501
OTHER	---	---	---	1,974	2,616	---	---	782	861

CONTINUED

Table 12--U.S. AGRICULTURAL IMPORTS: QUANTITY AND VALUE BY COMMODITY--CONTINUED

COMMODITY	UNIT	OCTOBER-DECEMBER				DECEMBER			
		QUANTITY		VALUE		QUANTITY		VALUE	
		75/76 THOU.	76/77 1/ THOU.	75/76 1,000 DOL.	76/77 1/ 1,000 DOL.	1976 THOU.	1977 1/ THOU.	1976 1,000 DOL.	1977 1/ 1,000 DOL.
DRIED:									
BEANS, INCLUDING MUNG	KG	1,399	2,130	786	1,226	677	866	355	500
CHICKPEAS	KG	1,483	3,522	783	2,046	956	1,056	463	707
MUSHROOMS	KG	107	95	1,556	1,371	42	26	549	396
PEAS, EXCEPT CHICKPEAS	KG	793	2,489	353	753	293	709	104	241
OTHER	---	---	---	2,270	3,289	---	---	753	1,320
PREPARED OR PRESERVED:									
ARTICHOKES	KG	1,550	991	1,411	1,418	532	384	503	520
ASPARAGUS	KG	723	839	932	1,220	166	229	241	315
BEAN CAKE, CURD	KG	314	274	414	377	113	111	161	153
CASSAVA, FLOUR, STARCH, TAPIOCA	KG	9,586	7,239	1,083	1,314	2,472	3,470	483	620
HOPS, INCLUDING EXTRACTS	KG	1,357	196	4,100	434	1,263	46	3,880	123
MUSHROOMS	KG	3,307	8,585	7,455	20,246	1,525	3,384	3,436	7,682
OLIVES, IN BRINE	LIT	14,986	12,476	18,515	14,665	4,970	6,504	6,178	7,759
ONIONS	KG	825	725	965	851	270	325	328	342
PALM HEARTS	KG	165	164	232	161	41	41	55	64
PEAS, INCLUDING COMPEAS	KG	1,666	412	979	371	947	89	527	76
PINIENTOS	KG	1,071	307	1,378	405	614	115	740	156
SOUPS AND SAUCES	KG	4,252	4,096	5,584	5,758	1,582	1,591	2,146	2,271
STARCH, POTATO	KG	2,325	1,240	513	275	665	528	144	119
TOMATOES	KG	18,705	12,884	9,185	6,013	4,041	6,625	3,379	2,856
WATERCHESTNUTS	KG	370	1,453	388	1,057	117	496	121	350
OTHER	---	---	---	11,327	16,861	---	---	3,865	7,811
OTHER VEGETABLE PRODUCTS									
BROOMCORN	MT	3	3	265,978	267,429	---	---	98,704	97,075
CUT FLOWERS	---	---	---	7,524	11,387	---	---	1,050	1,074
ESSENTIAL OILS	KG	288	315	994	661	61	115	352	260
FEEDS & FODDERS, EX OIL CAKE & MEAL	---	---	---	17,850	15,890	---	---	5,964	5,915
FLAVORING EXTRACTS	---	---	---	3,073	3,465	---	---	1,176	1,385
JUTE AND JUTE BUTTS, UNMANUFACTURED	MT	6	2	1,105	578	2	1	310	322
MALT LIQUORS	LIT	71,173	63,420	36,839	32,858	22,957	27,231	12,034	15,014
NURSERY & GREENHOUSE STOCK	---	---	---	12,320	13,791	---	---	2,252	2,041
SEEDS, EXCEPT OILSEEDS	KG	11,530	11,562	10,433	11,269	5,428	5,647	3,956	4,711
SPICES	KG	2,973	1,662	3,958	2,389	1,842	1,212	2,470	1,723
TOBACCO, UNMANUFACTURED	KG	31,648	33,107	73,183	80,765	12,462	11,156	30,838	26,808
TOBACCO LEAF, ORIENTAL	KG	18,126	16,303	48,342	49,223	7,908	4,669	22,172	14,414
WINES	LIT	52,878	56,288	93,135	88,918	23,727	21,952	34,886	32,871
WINES, STILL GRAPE, UNDER 14% ALCH	LIT	46,984	44,764	66,107	64,658	17,913	17,354	25,240	24,275
OTHER	---	---	---	1,999	2,134	---	---	624	581

1/ PRELIMINARY

AGRICULTURAL TRADE WITH IRELAND

by
Pearl L. Williams

Because Ireland's domestic market is small, the country looks to the export market to achieve greater economies of scale. In 1977, exports played a massive role in the Irish economy, accounting for 47 percent of its gross national product. Ireland's total exports, valued at \$4.38 billion in 1977, were up from \$3.25 billion in 1976. Volume is estimated to have risen by 15 percent with the remainder of the increase due to higher prices. In 1977, the value of total imports rose to \$5.42 billion from \$4.09 billion in 1976.

Ireland's agricultural exports, valued at \$1.8 billion, accounted for 41 percent of total exports in 1977, compared with a value of \$1.3 billion, and 40 percent of total exports in 1976. In 1977, the remaining countries in the European Community (EC) took 76 percent of total Irish exports, of which about half went to the United Kingdom. The United States was the most important non-EC export market for Irish goods, accounting for more than 6 percent of total Irish exports. Major agricultural exports to the United States were beef, animal feeds, dairy products, and fruits and vegetables.

In 1977, the share of agricultural imports was 14 percent of the total, amounting to \$752.5 million, compared with 13 percent and \$532.4 million a year earlier. The EC supplied 68.1 percent of total Irish imports. The United States was again the most important non-EC supplier, with 9.1 percent of total imports. Principal agricultural imports are fruits and vegetables, live animals (mostly for breeding), grains, unmanufactured tobacco, and soybean cake and meal (mostly soybean meal).

Major Agricultural Commodities in U.S.-Irish Trade

The U.S.-Irish agricultural trade balance has traditionally favored Ireland, but this situation was reversed for 4 years during the 1970-77 period. U.S. statistics show that U.S. farm exports to Ireland exceeded Ireland's shipments to the United States by \$9.5 million in 1972, \$3.4 million in 1975, \$17.3 million in 1976, and \$11.7 million in 1977.

Based on U.S. statistics, the value of U.S. farm exports to Ireland averaged \$30.1 million during 1974-77, but Irish statistics show that the value imports of U.S. farm products by Ireland during that period averaged \$72.0 million. The higher value shown by Irish statistics undoubtedly reflects transshipments of U.S. agricultural products into Ireland through Canada, the United Kingdom, and other Western European countries.

The recent shift in the U.S.-Irish balance of agricultural trade is partly a result of the virtual cessation of Irish beef exports to the United States since spring 1976, and partly because of the fact that Ireland is finding more attractive markets within the EC. Ireland, along with the United Kingdom and Denmark, joined the EC on January 1, 1973. The U.S. share of Ireland's total agricultural exports dropped from an average of 6.9 percent in 1971/72 (prior to admission into the EC) to an average of 1.5 percent in 1976/77.

Although the trade flow between the United States and Ireland for some agricultural commodities is one way, numerous commodities (within a general trade classification) flow in both directions.

Tobacco

In 1977, the United States exported \$7.5 million worth of unmanufactured tobacco to Ireland, a decline from the \$10 million in 1976. Some U.S. tobacco exports are usually transshipped to Ireland through other EC members and Canada and are not reflected in these statistics. The United States provides a substantial share of Ireland's tobacco imports--45 percent of the total value in 1976. In turn, the United States imported roughly \$500,000 worth of pipe tobacco from Ireland that same year.

Oilseeds and Oilseed Products

The United States exported \$10.5 million in oilseeds and oilseed products in 1977, well above the \$8.1 million exported in 1976 and the highest since \$15 million were exported to Ireland in 1973. However, according to Irish statistics, shipments of oilseed cake and meal, valued at more than \$27 million in 1977, were imported by Ireland from the United States, compared with approximately \$24 million in 1976 and \$20 million in 1975. Irish officials attribute these higher values to transshipments through other EC countries, particularly the Netherlands and the United Kingdom.

Ireland's only crushing mill processes many oil crops, including copra and rapeseed, but not soybeans. Thus, most of their purchases from the United States have been soybean cake and meal. Most Irish imports of soybean cake and meal are likely to continue to be of U.S. origin. Currently, Ireland imports more than half of its total oilseed products from the United States.

Grains and Grain Preparations

Traditionally, the United States has been an important supplier of grain to Ireland. But after 1972, U.S. exports of grain dropped because France increased its share to Ireland. However, in 1976 the value of U.S. grain and grain preparation exports to Ireland recovered substantially--to \$3.2 million--because of the widespread drought on the Continent and increased feed usage in Ireland. With the return of total EC grain production in 1977/78 to more normal levels, shipments of U.S. grain to Ireland declined 100 percent in 1977.

Fruits, Vegetables, and Preparations

In 1977, total U.S. exports of fruits, vegetables, and combined preparations to Ireland were valued at \$2.4 million. Ireland's imports of fruits and vegetables have increased in recent years in response to increasing domestic demand. Ireland is capable of expanding both their domestic and export markets.

Livestock and Livestock Products

In 1974, when the United States imported a record 21,000 metric tons of frozen boneless beef from Ireland, the total value of U.S. agricultural imports from Ireland was \$60.5 million--more than double the value of U.S. shipments of agricultural items to Ireland, which was \$29.6 million. However, in reaction to the EC export subsidy on frozen boneless beef from Ireland, the United States imposed a 21.3-cent countervailing duty on imports of frozen boneless beef from the EC in April 1976. Frozen boneless imports have been virtually nil since then. In 1977, only 113 metric tons of meat and meat products were imported from Ireland.

Another important feature of Irish-U.S. livestock trade since 1970 has been the sale of Irish carcass beef for the U.S. military forces in Europe; in 1977, Ireland supplied 11,221 metric tons.

Live animals, primarily breeding horses and cattle, are an important U.S. farm product export to Ireland. For instance, in 1976 and 1977 live animal exports accounted for as much as 15 percent or more of the total value of U.S. agricultural shipments. However, in 1977, the United States imported \$7.2 million in live animals from Ireland also for breeding purposes.

Dairy Products

Ireland's emphasis on diversification from some of the traditional dairy products to more specialized products, for example casein and casein products (a protein taken from milk which forms the basis of cheese and certain plastics), provides the major portion of imports of dairy products by the United States. During 1977, the United States imported \$2.7 million in dairy products (mainly casein, casein products, and various types of cheeses), compared to \$1.9 million in 1976. U.S. exports of dairy products to Ireland are negligible.

Miscellaneous

In 1976 and 1977, U.S. imports of chocolate and chocolate preparations increased and were valued at over \$3 million.

The United States shifted as the principal supplier of hops in 1977, primarily because of increasing freight cost and import levies. In 1977, U.S. exports of hops to Ireland amounted to only \$672,000, compared to exports valued at \$1.4 million in 1976.

Quantities of U.S. cotton exports to Ireland have fluctuated during the past few years, while domestic use has been sporadic. Quantities were down in 1976, but the value rose to \$1.1 million. In 1977, quantity and value were both reduced by 50 and 60 percent respectively.

Outlook for Irish Trade and Implications for the United States

Live cattle and beef exports will provide the main sources for growth in Irish agricultural trade during 1978. Exports of lamb and live sheep will gain momentum as sheep flocks are rebuilt in response to the January 1, 1978 agreement between France and Ireland. Irish lamb of suitable quality will have unrestricted access to the French market. In 1977, Irish lamb exports to France were disrupted by massive import charges and the intermittent closures of French markets to all lamb imports. Further, a projected 10-to-15 percent growth in feed consumption is expected to increase grain imports.

Expansion of U.S. agricultural exports to the Irish market is difficult for two main reasons: (1) Different sanitary and veterinary regulations, and (2) Ireland's increasing trade links with the EC.

The United States will most likely continue as the major supplier of soybean meal and corn, mainly because of increased feed use. A scarcity of apples is apparent in Ireland. With smaller French crops in 1977 and possibly into 1978, apples may be exported to the Irish for the first time in a number of years. In the near future, Irish exports of livestock products to the United States are likely to continue relatively stable. Exports of beef will probably be negligible again in 1978.

Table 13--Principal U.S. farm exports to Ireland, calendar years, 1970-77^{2/}

Commodity	Unit	1970	1971	1972	1973	1974	1975	1976	1977
<u>Quantity (Thousands of units)</u>									
Tobacco, unmanufactured. . . .	Lb.	10,195	8,966	14,300	8,948	10,172	8,208	7,710	5,366
Oilseeds and products.	S. ton	68	41	76	82	45	53	53	51
Animals, live, excl. poultry . .	No.	1/	1/	1/	1/	1/	1/	1/	1/
Grains and preparations.	Bu.	1,389	1,820	5,919	939	0	0	1,087	0
Wheat.	Bu.	0	1,295	375	0	0	0	504	0
Corn	Bu.	1,389	525	5,406	134	0	5	583	0
Fruits and preparations.	Lb.	3,291	2,164	2,076	800	1,014	3,718	1,627	2,949
Vegetables and preparations. . .	Lb.	9,020	2,157	3,003	5,552	6,168	3,116	4,132	3,815
Oils, fats, tallow, n.e.c.--animal	Lb.	6,935	2,744	2,871	2,801	0	0	0	0
Cotton, raw excl. linters. . . .	Rbl.	4	4	6	1	2	4	3	2
<u>Value (Thousand dollars)</u>									
Tobacco, unmanufactured.		11,262	9,272	15,155	10,373	12,843	11,144	10,006	7,461
Oilseeds and products.		6,613	3,505	7,884	15,385	8,329	8,091	8,074	10,468
Animals, live, excl. poultry . .		1,333	952	3,313	6,072	2,234	1,244	5,146	7,704
Grains and preparations		1,943	2,903	8,769	1,564	0	47	3,210	0
Wheat.		0	2,228	600	0	0	0	1,646	0
Corn		1,942	675	7,974	224	0	47	1,564	0
Fruits and preparations.		587	318	677	532	293	811	431	642
Vegetables and preparations. . .		746	298	340	648	1,698	1,418	2,559	1,723
Oils, fats, tallow, n.e.c.--animal		590	246	210	305	0	0	0	0
Cotton, raw excl. linters. . . .		528	639	912	141	585	964	1,085	438
Other agricultural products. . .		1,382	3,948	2,736	3,606	3,648	2,920	3,508	3,984
Total.		24,984	22,081	39,996	38,626	29,630	26,629	33,919	32,420

1/ Less than 500.

2/ 1977 data preliminary

Source: U.S. Foreign Agricultural Trade Statistical Reports.

Table 14--Principal U.S. farm imports from Ireland, calendar years, 1970-77^{2/}

Commodity	Unit	1970	1971	1972	1973	1974	1975	1976	1977
<u>Quantity (Thousands of units)</u>									
Meat and meat products	Lb.	68,963	63,994	31,221	22,145	44,411	6,949	5,197	249
Beef and veal	Lb.	68,963	63,902	30,980	21,956	44,014	6,803	4,446	0
Other meats	Lb.	0	92	241	189	397	146	751	249
Dairy products	Lb.	2,359	1,869	1,444	38,787	22,578	724	355	215
Fruits, vegetables & prep.	Lb.	0	671	818	1,443	1,523	1,031	377	309
Chocolate and prep.	Lb.	20,923	11,473	11,556	5,413	1,534	3,546	9,417	6,628
Animal feeds	Cwt.	245	116	106	120	56	116	66	124
Tobacco, mfg. or unmfg.	Lb.	79	143	330	187	493	406	203	66
Oilseeds and products	Lb.	0	0	0	1,086	368	241	0	0
Casein and casein glue	Lb.	32	905	4,439	13,600	1/	1/	1/	1/
<u>Value (Thousand dollars)</u>									
Meat and meat products		34,596	34,854	17,461	18,815	32,920	3,466	3,072	83
Beef and veal		34,596	34,780	17,350	18,540	32,444	3,315	2,306	0
Other meats		0	74	111	275	476	151	766	83
Dairy products		802	673	643	16,057	13,533	5,073	1,858	2,727
Fruits, Vegetables & prep.		0	295	381	639	724	558	264	243
Chocolate & prep.		3,885	2,172	2,634	1,374	649	1,601	3,734	3,122
Animal feeds		2,899	1,708	2,515	3,382	2,493	4,357	1,755	2,833
Tobacco, mfg. or unmfg.		115	198	535	314	906	805	427	151
Oilseeds and products		0	0	0	597	185	334	371	0
Casein and casein glue		9	303	2,481	5,927	1/	1/	1/	1/
Other agricultural products		9,515	4,784	3,803	4,340	9,090	7,085	5,175	11,571
Total		51,821	44,987	30,453	51,495	60,500	23,279	16,656	20,730

1/ Included with dairy products.

2/ Preliminary

Source: U.S. Foreign Agricultural Trade Statistical Reports.

Table 15--Ireland: Agricultural and total exports by area of destination, 1974-76

Commodity	Year	Total		United States		EC Countries		Rest of the world	
		Million \$	Million \$	% of total	Million \$	% of total	Million \$	% of total	
Live cattle	1974	150.6	1.2	0.8	141.6	94.0	7.8	5.2	
	1975	245.3	1.1	0.4	238.1	97.1	6.1	2.5	
	1976	138.1	---	---	117.5	85.1	20.6	14.9	
Beef, fresh, chilled, frozen	1974	319.3	35.5	11.1	255.1	79.9	28.7	9.0	
	1975	443.9	11.4	2.6	400.5	90.2	32.0	7.2	
	1976	308.3	1.2	0.4	279.0	90.5	28.1	9.1	
Other meat and poultry	1974	100.9	0.5	0.5	95.7	94.8	4.7	4.7	
	1975	84.8	0.3	0.4	78.2	92.2	6.3	7.4	
	1976	114.4	0.3	0.7	94.7	82.8	18.9	16.5	
Dairy products	1974	200.7	13.1	6.5	126.2	62.9	61.4	30.6	
	1975	336.7	0.7	0.3	308.9	91.7	27.1	8.0	
	1976	352.1	0.3	---	310.1	88.2	41.7	11.8	
Fruit and vegetables	1974	27.6	0.9	3.3	22.2	80.4	4.5	16.3	
	1975	35.4	0.6	1.7	28.2	79.7	6.6	18.6	
	1976	34.5	0.4	1.2	25.8	74.7	8.3	24.1	
Sugar and sugar preparations	1974	11.3	1.0	8.9	9.5	84.1	0.8	7.0	
	1975	39.7	0.6	1.5	29.8	75.1	9.3	23.4	
	1976	50.0	2.4	4.8	20.7	41.4	26.9	53.8	
Chocolate and products	1974	45.7	0.7	1.5	42.4	92.8	2.6	5.7	
	1975	49.5	2.4	4.8	44.7	90.4	2.4	4.8	
	1976	48.7	3.4	7.0	44.0	90.3	1.3	2.7	
Miscellaneous food preparations	1974	27.8	3.1	11.2	16.6	59.7	8.1	29.1	
	1975	60.6	3.8	6.3	28.3	46.7	28.5	47.0	
	1976	89.2	2.1	2.4	39.8	44.6	47.3	53.0	
Other	1974	143.2	3.7	2.6	119.5	83.4	20.0	14.0	
	1975	162.2	4.1	2.5	137.5	84.8	20.6	12.7	
	1976	209.1	7.7	3.7	178.7	85.4	22.7	10.9	
Total agricultural exports	1974	1,027.1	59.7	5.8	828.8	80.7	138.6	13.5	
	1975	1,458.1	25.0	1.7	1,294.2	88.8	138.9	9.5	
	1976	1,344.4	18.3	1.4	1,110.3	82.6	215.8	16.0	
Total exports	1974	2,629.5	240.5	9.2	1,965.7	74.7	422.3	16.1	
	1975	3,178.5	200.0	6.4	2,523.6	79.3	454.9	14.3	
	1976	3,251.3	241.7	7.4	2,465.4	75.9	544.2	16.7	

--- None or negligible.

Source: Compiled from UN trade runs, 1974-75 and Trade Statistics of Ireland, 1976.

Table 16--Ireland: Agricultural and total imports by area of origin, 1974-76

Commodity	Year	Total		United States		EC Countries		Rest of the world	
		Million \$	Million \$	% of total	Million \$	% of total	Million \$	% of total	
Live cattle	1974	35.5	0.8	2.2	34.4	97.0	0.3	0.8	
	1975	31.2	1.3	4.2	29.7	95.2	0.2	0.6	
	1976	31.0	0.6	1.9	30.3	97.7	0.1	0.4	
Wheat	1974	38.0	0.8	2.1	29.7	78.2	7.5	19.7	
	1975	43.8	8.2	18.7	29.1	66.4	6.5	14.9	
	1976	28.4	6.0	21.1	18.3	64.4	4.1	14.5	
Feedgrains	1974	60.4	8.7	14.4	47.4	78.5	4.3	7.1	
	1975	56.6	21.8	38.5	34.1	60.2	0.7	1.3	
	1976	69.6	28.2	40.5	33.8	48.6	7.6	10.9	
Fruits and vegetables	1974	69.7	4.8	6.9	21.2	30.4	43.7	62.7	
	1975	71.5	4.7	6.6	23.5	32.9	43.3	60.5	
	1976	71.9	4.4	6.1	26.5	36.9	41.0	57.0	
Oilseed cake and meal	1974	33.0	22.2	67.2	6.0	18.2	4.8	14.6	
	1975	24.7	20.1	81.4	1.1	4.4	3.5	14.2	
	1976	37.8	24.1	63.8	5.8	15.3	7.9	20.9	
Unmanufactured tobacco	1974	37.1	13.9	37.5	---	---	23.2	62.5	
	1975	41.3	10.0	24.2	---	---	31.3	75.8	
	1976	23.7	10.6	44.7	3.2	13.5	9.9	41.8	
Other	1974	243.4	4.9	2.0	144.6	59.4	93.9	38.6	
	1975	261.8	6.0	2.3	159.2	60.8	96.6	36.9	
	1976	270.0	5.2	1.9	174.9	64.8	89.9	33.3	
Total agricultural imports	1974	517.1	56.1	10.8	283.3	54.8	177.7	34.4	
	1975	530.9	72.1	13.6	276.7	52.1	182.1	34.3	
	1976	532.4	79.1	14.9	292.8	55.0	160.5	30.1	
Total imports	1974	3,813.1	247.0	6.5	2,604.0	68.3	962.1	25.2	
	1975	3,768.6	271.5	7.2	2,605.8	69.2	891.3	23.6	
	1976	4,087.6	348.2	8.5	2,836.8	69.4	902.6	22.1	

--- None or negligible.

Source: Compiled from UN trade runs, 1974-75 and Trade Statistics of Ireland, 1976.

INTERNATIONAL PRICE HIGHLIGHTS

In January, international commodity prices generally stayed at their December level. The Dow Jones commodity spot price index, reflecting the commodity price situation, went from an index of 349 in December to 348 in January.

At the Gulf ports, U.S. Hard Winter wheat rose 2 percent to \$3.25 a bushel. C.i.f. Rotterdam prices for U.S. Hard Winter wheat and Dark Northern Spring wheat also increased slightly.

Corn and grain sorghum also showed only slight price increases, with the Gulf ports price for corn reaching \$2.57 a bushel. Soybeans, which enjoyed a short price rally in December as a result of strong export demand, settled down to a Gulf ports export price of \$6.24 a bushel. In the soybean complex, January's U.S. soybean meal prices were \$200 a metric ton in Rotterdam, the same as in December.

The Thai white rice price reached \$338 a ton, the highest point in well over 2 years, as the price effects of short rice crops in Thailand, Indonesia, Malaysia, and the United States took hold.

The c.i.f. Osaka price for Arizona cotton strengthened to 64 cents a pound after a 9-month downslide. Strong export demand for U.S. cotton buoyed prices. Among imported commodities, cow meat rose 16 percent to 78 cents a pound.

New York's spot price for coffee rose slightly to \$2.09 a pound. The New York cocoa bean futures price declined slightly to \$1.31 a pound, as new crop supply reports of lower grindings in major importing countries helped ease prices from last year's record levels.

Since November, there have been no New York spot price quotations for raw cane sugar. The London Daily Price, which is also used as an indicator of world sugar price movements, has been strengthening since November. Its price for raw cane sugar, c.i.f. U.K., was 9.72 cents a pound, 8 percent higher in dollar terms and 4 percent higher in terms of British pounds than the December quotations.

Fundamentals point to a buildup in world sugar stocks during 1978, but recent large Chinese purchases of raw sugar, and the hopes pinned on the new International Sugar Agreement have strengthened sugar prices in recent months.

In addition to specific commodity developments, the weakening of the dollar in international money markets may also have contributed to the buoying of international commodity prices.

Table 17--Selected prices of international significance--Continued

Year and month	Imported cow meat, 90-percent lean, frozen, boneless, f.o.b. U.S. port of entry		Coffee, from Santos, No. 4, New York, Spot		Sugar, cane, 96% spot, New York		Sugar, cane, raw, 96% spot, f.o.b. and stowed, port of origin				New York cocoa bean futures price		Crude rubber, No. 1 ribbed smoked sheets New York spot		Dow Jones commodity spot price index
	c/lb.	\$/m.t.	c/lb.	\$/m.t.	c/lb.	\$/m.t.	c/lb.	\$/m.t.	c/lb.	\$/m.t.	c/lb.	\$/m.t.	c/lb.	\$/m.t.	1950=100
1977 Average	68.43	1,506	249.62	5,304	10.99	242	8.21	181	5.41	185	172.93	3,793	41.6	917	359
January	71.55	1,277	222.10	4,896	10.95	241	8.37	185	5.29	183	154.4	3,404	40.8	899	380
February	74.35	1,638	240.50	5,302	11.06	244	8.56	189	5.40	185	172.6	3,609	41.1	906	393
March	73.56	1,622	316.10	6,969	11.67	257	8.93	197	5.91	196	193.4	4,047	41.5	915	435
April	70.33	1,551	327.30	7,216	12.57	277	10.12	223	5.92	219	162.2	3,576	40.9	902	431
May	67.95	1,495	304.77	6,719	11.34	250	8.94	197	5.70	192	170.0	3,748	40.2	886	422
June	66.28	1,461	279.58	6,164	10.23	227	7.82	172	7.64	165	195.1	4,301	39.0	866	405
July	64.31	1,418	215.00	4,866	10.15	224	7.35	163	7.55	166	200.9	4,429	39.4	869	381
August	63.01	1,389	202.00	4,453	11.21	247	7.61	166	5.61	190	179.7	3,962	40.7	897	360
September	64.18	1,415	197.00	4,366	10.41	230	7.30	161	7.51	172	177.8	3,919	44.4	979	370
October	66.37	1,463	185.00	4,978	10.24	226	7.08	156	5.31	163	159.5	3,516	44.5	981	367
November	67.23	1,487	190.25	4,194	n.q.	n.q.	n.q.	n.q.	n.q.	n.q.	160.3	3,534	44.0	970	368
December	71.69	1,546	224.68	4,517	n.q.	n.q.	n.q.	n.q.	n.q.	n.q.	148.3	3,269	42.6	939	349
1978 Average															
January	77.81	1,715	208.62	4,599	n.q.	n.q.	n.q.	n.q.	n.q.	n.q.	131.2	2,892	43.5	959	346
February															
March															
April															
May															
June															
July															
August															
September															
October															
November															
December															

n.q. = No quotation.

1/ Offering prices.

2/ New York spot price minus .625 cents duty and minus freight and insurance from Caribbean to New York.

Source: Monthly Bulletin of Agricultural Economics and Statistics, FAD; Rice Trade Intelligence, FAD; The Public Ledger, London; Grain Market News, AMA, USDA; Rice Market News, AMS, USDA; Foreign Agriculture, FAS, USDA; Bangkok Board of Trade; Reuter's; Cotton and General Economic Review, Liverpool; The National Provisions, Chicago; The Wall Street Journal; The Journal of Commerce; New York Coffee Sugar Exchange; Bureau of Labor Statistics, Spot Market Prices; and Oil World, Hamburg.

Table 18 --Quantity Indexes: U.S. agricultural exports,
October-September 1969-77, monthly and accumulated, October 1976 to date

Year and month	Animals and animal products	Cotton and linters	Tobacco, unmanu- factured	Grains and feeds	Oilseeds and products	Fruits and vegetables	All agricultural commodities
-- (Calendar year 1967 = 100) --							
1968/69	107	64	94	85	104	97	91
1969/70	103	70	95	101	163	109	109
1970/71	121	106	106	104	161	97	115
1971/72	138	77	92	112	152	115	119
1972/73	125	145	105	185	174	128	162
1973/74	132	147	119	161	202	137	161
1974/75	133	107	106	162	158	144	149
1975/76	154	84	105	192	195	170	172
1976/77	170	115	114	182	197	184	177
-- Adjusted for seasonal variation --							
Monthly 1976/77:							
October	169	107	102	228	200	180	190
November	167	120	72	168	187	198	165
December	176	115	129	164	198	211	172
January	159	109	133	147	195	186	159
February	183	130	126	164	207	197	175
March	146	121	122	180	231	168	182
April	160	141	68	181	203	189	177
May	148	114	92	187	250	178	187
June	169	131	115	182	154	177	166
July	182	93	178	184	175	178	179
August	185	71	127	189	168	163	171
September	208	92	151	217	167	185	204
1977/78:							
October	160	74	31	153	239	136	158
November	153	152	73	151	251	135	170
December	183	154	167	195	218	178	195
January							
February							
March							
April							
May							
June							
July							
August							
September							
-- Not adjusted for seasonal variation --							
1976/77:							
October	167	70	118	225	229	203	201
November	165	88	107	191	251	223	191
December	100	124	169	175	230	210	188
January	165	116	165	150	211	172	167
February	171	160	116	162	226	176	177
March	173	168	119	176	269	172	194
April	171	169	63	177	231	189	183
May	160	128	79	177	235	196	179
June	162	144	86	171	147	195	159
July	161	88	110	180	134	178	158
August	159	58	99	187	103	134	150
September	183	64	143	211	100	163	173
1977/78:							
October	158	48	35	151	273	153	168
November	151	110	109	173	336	152	197
December	188	163	220	208	254	177	214
January							
February							
March							
April							
May							
June							
July							
August							
September							

Table 1g--Quantity indexes: U.S. agricultural imports, October-September 1969-77, monthly and accumulated, October 1976 to date

Year and month	Supplementary				Total	Complementary			All agricultural commodities
	Animals and animal products	Grains and feeds	Oilseeds and products	Sugar and related products		Cocoa, coffee, and tea	Rubber and allied gums	Total	
-- (Calendar year 1967 = 100) --									
1968/69	113	103	106						
1969/70	120	145	104	101	109	92	123	97	104
1970/71	118	127	107	111	117	100	126	102	111
1971/72	125	212	137	116	121	111	135	113	118
1972/73	140	256	134	115	134	96	128	103	121
1973/74	137	261	120	113	150	109	143	115	136
1974/75	109	236	145	126	152	105	154	113	136
1975/76	135	243	205	96	131	93	140	101	118
1976/77	134	255	186	100	154	105	164	115	138
				113	163	90	168	107	140
-- Adjusted for seasonal variation --									
Monthly 1976/77:									
October	135	203	88	121	154	86	135	98	131
November	128	212	223	105	153	108	145	118	139
December	130	199	206	119	162	110	167	123	146
January	113	249	240	112	149	103	163	113	135
February	130	252	210	128	169	104	159	115	146
March	125	260	182	102	155	98	205	113	137
April	139	291	180	112	171	108	198	123	150
May	144	254	163	116	170	90	141	110	144
June	138	345	273	94	167	79	187	102	138
July	141	235	142	109	163	60	206	85	130
August	144	243	174	110	164	58	128	83	134
September	141	320	149	126	177	63	184	96	147
1977/78:									
October	110	193	97	120	147	58	198	87	122
November	91	189	101	151	127	62	107	76	106
December	190	228	129	270	220	75	199	100	169
January									
February									
March									
April									
May									
June									
July									
August									
September									
-- Not adjusted for seasonal variation --									
1976/77:									
October	133	226	^{1/} 91	128	^{1/} 147	68	132	86	^{1/} 122
November	138	229	298	82	153	99	137	112	136
December	139	221	216	112	163	113	181	126	148
January	126	221	234	69	149	123	184	129	141
February	128	194	219	113	168	108	147	114	141
March	130	232	186	96	166	121	171	134	146
April	129	248	151	123	174	115	217	128	153
May	133	286	159	113	174	115	187	128	155
June	134	391	233	112	163	92	133	105	139
July	131	230	145	112	171	81	185	^{2/} 105	^{2/} 143
August	138	263	155	122	158	60	191	86	128
September	142	319	141	130	163	54	129	78	128
1977/78:									
October	109	211	101	129	141	45	192	75	113
November	98	204	137	118	127	57	100	72	104
December	204	253	136	254	221	77	216	104	172
January									
February									
March									
April									
May									
June									
July									
August									
September									

^{1/} Excludes imports of coconut oil. ^{2/} Excludes imports of fibers, excl. cotton and jute.

Explanatory Note

U.S. foreign agricultural trade statistics in this report include official U.S. data based on compilations of the Bureau of the Census. Agricultural commodities consist of (1) nonmarine food products and (2) other products of agriculture which have not passed through complex processes of manufacture such as raw hides and skins, fats and oils, and wine. Such manufactured products as textiles, leather, boots and shoes, cigarettes, naval stores, forestry products, and distilled alcoholic beverages are not considered agricultural.

The trade statistics exclude shipments between the 50 States and Puerto Rico, between the 50 States and the island possessions, between Puerto Rico and the island possessions, among the island possessions, and intransit through the United States from one foreign country to another when documented as such through U.S. Customs.

EXPORTS The export statistics also exclude shipments to the U.S. armed forces and diplomatic missions abroad for their own use and supplies for vessels and aircraft engaged in foreign trade. Data on shipments valued at less than \$251 are not compiled by commodity and are excluded from agricultural statistics but are reflected in non-agricultural and overall export totals in this report. The agricultural export statistics include shipments under P.L. 83-480 (Agricultural Trade Development and Assistance Act), and related laws; under P.L. 87-195 (Act for International Development); and involving Government payments to exporters through 1974. USDA payments are excluded from the export value. Separate statistics on Government Program exports are compiled by USDA from data obtained from operating agencies.

The export value, the value at the port of exportation, is based on the selling price (or cost if not sold) and includes inland freight, insurance, and other charges to the port. The country of destination is the country of ultimate destination or where the commodities are to be consumed, further processed, or manufactured. When the shipper does not know the ultimate destination, the shipments are credited to the last country known to him at the time of shipment from the United States. Shipments of certain U.S. grain from Great Lakes ports to Canadian ports are designated as exports to "unidentified countries." Except for Canada, export shipments valued at \$251-\$999 are included on the basis of sampling estimates; shipments to Canada valued at \$251-\$1,999 are sampled.

IMPORTS Imports for consumption are a combination of entries for immediate consumption and withdrawals from warehouses for consumption. Data on shipments valued at less than \$251 are estimated on the basis of a 1-percent sample and are not compiled by commodity. They are excluded from agricultural statistics but are reflected in nonagricultural and overall import totals in this report.

The import value, defined generally as the market value in the foreign country, excludes import duties, ocean freight, and marine insurance. The country of origin is defined as the country where the commodities were grown or processed. When the country of origin is not known, the imports are credited to the country of shipment.

Imports similar to agricultural commodities produced commercially in the United States and others that are interchangeable in use to any significant extent with such U.S. commodities are supplementary or partly competitive. All other commodities are complementary or noncompetitive.

Further explanatory material on foreign trade statistics and compilation procedures of the Bureau of the Census is contained in the publications of that agency.

END

DATE

FILMED

7-14-79

NTIS