



AgEcon SEARCH
RESEARCH IN AGRICULTURAL & APPLIED ECONOMICS

The World's Largest Open Access Agricultural & Applied Economics Digital Library

This document is discoverable and free to researchers across the globe due to the work of AgEcon Search.

Help ensure our sustainability.

Give to AgEcon Search

AgEcon Search

<http://ageconsearch.umn.edu>

aesearch@umn.edu

*Papers downloaded from **AgEcon Search** may be used for non-commercial purposes and personal study only. No other use, including posting to another Internet site, is permitted without permission from the copyright owner (not AgEcon Search), or as allowed under the provisions of Fair Use, U.S. Copyright Act, Title 17 U.S.C.*

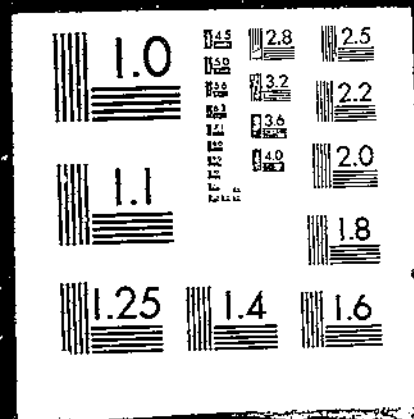
USDA/FATUS-
JAN 74

FATUS/FOREIGN AGRICULTURAL TRADE OF THE UNITED STATES, 1974 JANUARY. Washington, DC:
Economic Research Service.

(NAL Call No. A286.9/Ag8)

1 OF 1
USDA
FATUS-JAN

74



JANUARY 1974

FATUG

FOREIGN AGRICULTURAL TRADE OF THE UNITED STATES

U.S.-Taiwan Trade Booming

**U.S. Agricultural Exports
Adjusted for Transshipments**

**Government Program Highlights,
July-September**

Trade Statistics, July-November

ECONOMIC RESEARCH SERVICE • U.S. DEPARTMENT OF AGRICULTURE

CONTENTS

	<u>Page</u>
Special in this issue:	
U.S.-Taiwan Trade Booming	5
U.S. Agricultural Exports Adjusted for Transshipments	15
Government Program Export Highlights, July-September	24
Export Highlights, July-November	29
Import Highlights, July-November	40
U.S. agricultural trade data for November and July-November:	
U.S. imports: Quantity and value by commodity	45
U.S. exports: Quantity and value by commodity	50
U.S. exports and imports: Value by country	54
Quantity indexes; by commodity groups, July-November:	
Exports	56
Imports	57
Explanatory Note	58

Principal Coordinators

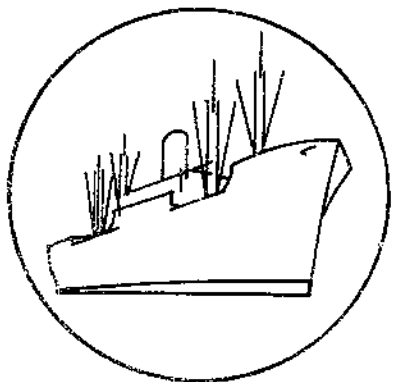
Glenn R. Samson

Dewain H. Rahe

Thomas A. Warden

(202) 447-8474

Statistical Program Area
Foreign Demand and Competition Division
Economic Research Service



FOREIGN AGRICULTURAL TRADE OF THE UNITED STATES

Digest

U.S.-Taiwan Trade Booming (see p. 5). U.S. agricultural exports to Taiwan during the first 10 months of 1973 increased to \$300 million from \$218 million during the same period a year earlier. The agricultural trade balance has always been in favor of the United States, while the industrial trade balance was in deficit during 1969-73. Wheat, corn, soybeans, and cotton were the major U.S. agricultural commodities exported to Taiwan during the first 10 months of 1973. U.S. agricultural imports from Taiwan during the period totaled \$57 million, about 7 percent less than the level of a year earlier. Sugar, canned mushrooms, canned pineapple, canned oranges, and water chestnuts were the major agricultural commodities imported from Taiwan.

* * * * *

U.S. Agricultural Exports Adjusted for Transshipments (see p. 15). Because of transshipments through intermediate ports, statistics on U.S. agricultural exports to some countries are overstated, while exports to other destinations are considerably understated. The main intransit countries are Canada, the Netherlands, and Belgium. On January 1, 1973, a separate country designation was established for shipments of certain grains and oilseeds previously attributed to Canada. Destinations for transshipments of wheat, barley, rye, oats, corn, flaxseed, and soybeans through eastern Canadian ports are included in this article. Estimated transshipments through the Netherlands and Belgium by commodity and country are also shown.

* * * * *

Government Program Export Highlights (see p. 24). Exports under Government-financed programs during the first quarter of fiscal 1974 totaled \$92.6 million, down nearly 30 percent from the year-earlier level. Except for a small increase in shipments under the World Food Program, Title II donations, exports under all programs declined. Although quantities exported were generally lower for most commodities, unit values were sharply higher.

* * * * *

U.S. Agricultural Exports Nearly Doubled in July-November (see p. 29). A sharp increase in agricultural exports in November to a record \$2.1 billion pushed July-November exports to an alltime high of \$7.95 billion--96 percent above the level of a year earlier. About two-thirds of the value increase stemmed from higher prices. A substantial rise in grain exports accounted for about two-thirds of the overall increase.

Large gains also occurred in exports of cotton, tobacco, fruits and vegetables, and meat and live animals.

* * * * *

U.S. Agricultural Imports At New Peak in November (see p. 40). A record \$851 million in farm products came in during November 1973. The July-November total jumped to \$3.55 billion, 31 percent above similar months last year. Higher prices, increased demand, and expanded import quotas were the principal factors. Price increases raised values of cattle, meat, sugar, oilbearing materials, wine, coffee, rubber, and spices. Dairy product imports in July-November more than doubled year-earlier levels.



SPECIAL in this issue

U.S.-TAIWAN TRADE BOOMING

by
Amjad H. Gill ^{1/}

U.S. agricultural trade with Taiwan continued its rapid expansion in 1972 and 1973. In the first 10 months of 1973, U.S. agricultural exports to Taiwan reached \$300 million, up 92 percent from the same period a year earlier. Farm imports from Taiwan during the period totaled \$57 million down from \$61 during the first 10 months of 1972. The big jump in 1973 export values was due primarily to higher world prices for agricultural commodities.

The agricultural trade balance with Taiwan has always been in favor of the United States. The surplus stood at \$49 million in 1960, totaled \$71 million in 1967, and reached a whopping \$123 million in 1972 (table 5).

Our industrial trade balance with Taiwan has been in deficit since 1969, however. It was \$41 million in surplus in 1960 and fluctuated yearly but always on the plus side through 1968. In 1969, the trade balance was \$58 million in deficit. The deficit kept increasing until 1972, when it reached \$779 million. This large negative trade balance was due to U.S. imports of electronic and other machine equipment and textiles.

The total U.S. trade balance with Taiwan, although fluctuating, was always on the plus side between 1960 and 1969. In 1970, it was minus about \$21 million, and increased to minus \$304 million in 1971 and to minus \$656 million in 1972. The negative trade balances reflect heavy imports of industrial goods from Taiwan.

Taiwan is receiving about a billion dollars a year in foreign investments. The United States is by far the biggest investor with about 34 percent of total foreign investments in Taiwan. The largest U.S. investments are in the field of electronics, including components and assembly of black and white TV's for export back to this country. Machinery and metal products are the second largest category. Other investments are in shipbuilding, sewing machines, textile, tableware, chemical, and pharmaceutical industries.

A basic incentive for the U.S. investors has been the stable economic and social climate in Taiwan, relatively cheap, efficient labor, and low overhead costs. Taiwan also grants other incentives to foreign investors, including a 5-year income tax holiday.

Taiwan continued to show very impressive economic growth during fiscal 1973. Total exports were close to \$3.6 billion, while imports were \$2.9 billion, leaving a favorable balance of trade of \$700 million. Taiwan's GNP rose to \$4.44 billion in the first half

^{1/} Agricultural Economist, Asia Program Area, Foreign Demand and Competition Division, Economic Research Service.

of 1973, an increase of 11.6 percent over the corresponding period in 1972. Per capita income is expected to have soared 25 percent to reach \$466 in 1973. Per capita income in 1972 was at a record level of \$372 in current prices. Taiwan's economy is changing very rapidly from an agricultural to an industrial base. Industrialization, initiated in the early fifties, has been followed by a strong trend toward urbanization in recent years. Large numbers of rural people are migrating to urban areas every year. This change in the distribution of rural-urban population has had a substantial effect on forms of agricultural production and patterns of food consumption in Taiwan. Urban people, who tend to have higher per capita incomes, are consuming higher quality foodstuffs and demanding more animal protein in their diet.

In 1972, agricultural production, including forestry and fisheries, was 15.7 percent of GNP, and industrial production, 48 percent. Agriculture as a share of the GNP has been declining.

U.S. Agricultural Exports to Taiwan

Wheat, corn, soybeans, cotton, and tobacco are the major U.S. farm exports to Taiwan, with shipments of these commodities totaling \$274 million during the first 10 months of 1973. During the period, the United States provided nine-tenths of Taiwan's import needs of these five key commodities. The \$300 million worth of total U.S. agricultural imports were all dollar purchases. For U.S. farm products, Taiwan is the fourth biggest customer in the Far East, behind Japan, P.R. China, and South Korea.

The rising consumer demand, particularly for meat, wheat, and dairy products, which Taiwan is unable to meet, will help sustain this import growth in the short as well as long run.

Soybeans have been one of the most important food and feed crops in Taiwan for many decades. Since domestic production is insufficient to meet demand, imports must constitute the major share of the soybean supply in Taiwan. Nearly all the soybean imports are from the United States. In the first 10 months of 1973, we supplied 455,000 tons, valued at \$91.5 million, compared with 563,000 tons worth \$56.4 million a year earlier. The 1973 shipment and value were the highest on record. Taiwan's consumption of soybean oil increased in 1973, but not as much as that of soybean meal, primarily because of the rapidly expanding livestock industry and the worldwide shortage of fishmeal.

Corn is used both for human food consumption and for animal feed in Taiwan. Prior to 1960, over 60 percent of the corn was consumed as human food, while use for feed accounted for less than 35 percent. Since 1962, corn used for livestock and poultry feeds has increased greatly, with the result that feed use has become the major share of corn utilization. Before 1960, the consumption of corn was met from domestic production. Significant corn imports began in 1962, when the United States exported about 17,000 tons. Since then, U.S. corn exports have fluctuated between 2,000 and 308,000 tons yearly. Thailand was the chief supplier of corn to Taiwan until 1972, when the United States took the lead. In the first 10 months of 1973, U.S. corn exports to Taiwan totaled a record 542,000 tons valued at \$47.7 million, compared with 206,000 tons shipped during the same period of 1972. Taiwan has developed a very sophisticated livestock, poultry, and hog industry. To have a stable and supply to meet its domestic demand, Taiwan recently signed a trade agreement with the United States, under which we will export about 1.35 million tons of corn to Taiwan during the next 3 years.

The United States has been the main supplier of wheat to Taiwan since 1953. Between 1953 and 1967, U.S. wheat exports included both government-assisted and commercial shipments. Since then, all the exports have been a dollar basis. During the first 10 months of 1973, U.S. wheat exports to Taiwan were valued at \$48.6 million--\$24.8

million more than during January-October 1972. Under a new 3-year trade agreement, the United States will export about 1.65 million tons of wheat to Taiwan. The first installment, 500,000 tons was scheduled to begin in November 1973; 550,000 tons are scheduled for 1974; and 600,000 tons for 1975.

Taiwan depends almost entirely on imports for its cotton. During 1960-70, Taiwan's cotton spinning industry expanded rapidly and cotton imports increased accordingly. U.S. cotton exports to Taiwan during January-October 1973 totaled 106,000 tons, valued at \$68.1 million--an alltime high--compared with 52,000 tons in the corresponding period of 1972.

U.S. exports of tobacco and cattle hides to Taiwan reached new highs in 1972, and the 1973 exports of these commodities are expected to have been even higher. Tobacco exports in the first 10 months of 1973 totaled \$18.1 million, compared with \$14.6 million a year earlier. As Taiwan is stressing high-quality cigarette production, exports of U.S. tobacco should continue to increase. U.S. exports of nonfat dry milk, cattle hides, and inedible tallow to Taiwan amounted to about \$9 million during January-October 1973, compared with \$6.3 million during the same period of 1972.

U.S. Farm Imports From Taiwan

U.S. agricultural imports from Taiwan during January-October 1973, at \$57 million, were about 7 percent less than January-October 1972 imports of \$61 million. Sugar, canned mushrooms, canned pineapple, canned oranges, and water chestnuts are the major agricultural commodities we import from Taiwan.

In the early 1960's, sugar was of major importance in Taiwan's expansion of exports to the United States. Sugar's role has declined, however, relative to the value of our imports of canned mushrooms, canned pineapples, and fruits and vegetables from Taiwan. Sugar imports from Taiwan decreased to \$10.3 million in January-October 1973 from \$11.0 million a year earlier. Imports of canned mushrooms dropped sharply from \$22.5 million in January-October 1972 to \$16.6 million in the same period of 1973. Canned pineapple imports in January-October 1973 totaled 18,900 tons valued at \$5.1 million--a decline from the 30,500 tons valued at \$7 million a year earlier. The United States remained the largest importer of Taiwan's canned pineapple, however.

Canned oranges are another important commodity we import from Taiwan. These imports began in 1964 with 3,310 tons worth \$1.3 million. During the last 10 years, the imports of canned oranges have increased almost three and a half times over the 1964 level. January-October 1973 imports totaled 14,500 tons valued at \$5.3 million. Other commodities we imported from Taiwan in January-October 1973 were tea, valued at \$1.6 million, water chestnuts at \$2.8 million, feathers at \$2.7 million, and citronella oil at \$0.6 million.

Taiwan's Total Agricultural Exports

During the last 15 years, the composition of Taiwan's exports has changed markedly. In 1958, the share of total exports accounted for by raw and processed agricultural goods was 86.3 percent. That share had declined to 56 percent by 1964 and to only 17.1 percent by 1972. On the other hand, the industrial share of total exports rose from 14 percent in 1958 to 44 percent in 1964 and to about 83 percent in 1972.

Taiwan's total agricultural exports rose from \$316.1 million in 1971 to a record \$463.6 million in 1972, a 47-percent increase. Sugar and mushrooms were the leading farm exports, totaling \$139.2 million in 1972 (about 30 percent of total agricultural exports) and \$108 million in 1971. The volume of sugar exports dropped from 523,000 tons in 1971 to 488,500 tons in 1972, but higher world prices brought considerably more revenue. The major export markets for Taiwan's sugar in 1972 were Japan, the United States, South Korea, South Vietnam, and Sudan.

Taiwan's mushrooms are exported primarily to two markets, the United States and West Germany. In 1972, total mushroom exports were 63,100 tons, up from 52,200 tons exported in 1971. Of the total in 1972, about 32 percent went to the United States and about 33 percent to West Germany. Other markets included Canada, the Netherlands, Belgium, Italy, Switzerland, and Sweden.

Taiwan's exports of canned and fresh pineapples have expanded rapidly. Canned pineapple exports increased from only 38,000 tons in 1960 to 82,500 tons in 1969 and to 87,200 tons in 1971. A decline occurred in 1972 to 78,600 tons as canneries were finding it increasingly difficult to compete with other employers for low-cost labor. The United States and West Germany, the biggest markets for Taiwan's pineapples, took about 31 and 15 percent of the total, respectively, in 1972.

Like mushrooms, asparagus is a recently developed crop, mainly produced for export. In 1964, canned asparagus exports amounted to nearly 1,000 tons, rose to 66,000 tons in 1969 and to 81,000 tons in 1971, and dropped to 70,100 tons in 1972. Almost 50 percent of Taiwan's 1972 asparagus exports went to the United States. West Germany and Western Europe were the other major customers.

Taiwan's other leading farm exports are bananas and canned and fresh oranges. Most of the bananas are exported to Japan, Hong Kong, South Korea, and the Ryukyu Islands. In 1972, banana exports were about 230,000 tons, much lower than the 382,000 tons exported in 1967. Taiwan is getting hard competition from Ecuador, the major banana-producing country in the world, especially in the Japanese market. Taiwan's orange exports have been increasing steadily over the past decade. Orange exports expanded from \$400,000 in 1960 to \$6.7 million in 1972. South Asia is the major market for Taiwan's oranges.

Taiwan's Agricultural Imports

Taiwan's imports, like its exports, have undergone a fundamental change in composition. In 1952, agricultural and industrial raw materials accounted for 74 percent of total imports and capital goods, for only 13 percent. In 1972, 37 percent of total imports were capital goods and 57 percent were agricultural and industrial raw materials.

Taiwan's 1972 agricultural imports amounted to \$489.5 million, sharply higher than the 1971 imports of \$354.5 million. Wheat, corn, and soybeans showed the biggest import rise in 1972, increasing to \$227.9 million from \$143.1 million in 1971.

Wheat imports in 1960, at about 278,000 tons, represented more than 86 percent of the total wheat consumed in Taiwan. In 1972, wheat imports rose to 735,000 tons, accounting for about 96 percent of total consumption. The United States was the major supplier in 1972, providing 70 percent of Taiwan's wheat imports.

Because of rapid expansion in the hog, dairy cattle, and poultry industries, Taiwan's corn imports have increased sharply. They totaled 1.32 million tons in 1972, compared with 602,000 tons in 1971. The United States supplied almost 25 percent of the 1972 total. Taiwan's corn imports are expected to increase in the future.

Soybean imports by Taiwan increased from 525,000 tons in 1971 to 712,000 tons in 1972, when U.S. soybeans accounted for about 96 percent of the total.

Taiwan's imports of raw cotton totaled only 44,000 tons in 1960, rose to 65,000 tons in 1965, and to 140,000 tons worth \$85.2 million in 1971. In 1972, due to high world prices, Taiwan's cotton imports declined to 123,000 tons, but the cost rose to \$88.7 million, an alltime high. The United States, the major supplier of Taiwan's cotton imports, accounted for 49 percent of the total in 1972.

Taiwan's barley imports increased from 321,000 tons in 1971 to 436,000 tons in 1972, when the United States replaced Thailand as the major supplier. Under a 3-year trade agreement with the United States, Taiwan will import 750,000 tons of U.S. barley. The first shipments were to start in November 1973.

Other commodities which Taiwan imported during 1972 were tobacco valued at \$11.3 million, hides and skins at \$6.3 million, and powdered dry milk at \$21.2 million.

Outlook

Taiwan's booming economy continues to offer excellent prospects for U.S. exports of wheat, corn, barley, cotton, soybeans, and tobacco. Production of these commodities in Taiwan is insufficient to meet the growing demand. Rising incomes and large capital investment increase the market potential. General market conditions are being reinforced by a Taiwan Government policy to encourage imports from the United States in order to decrease the trade deficit between the two countries. The removal of almost all import restrictions as an anti-inflationary measure should also facilitate more U.S. agricultural imports. The agricultural trade outlook for 1974, especially for U.S. grains and soybeans, looks very promising. Taiwan's total corn imports in 1973 are estimated to have been 1.5 million tons and soybeans, 768,000 tons--both above the record 1972 level. Imports of wheat may stay at about the 1972 level of 700,000 tons.

Taiwan's imports of breeding livestock are also expected to increase significantly in 1974. Taiwan has imported beef heifers from Oregon, and more beef, dairy cattle, and hogs may be imported in the future. Australia and New Zealand are also supplying large amounts of breeding stock. Taiwan's 1973 imports of U.S. cotton are also expected to exceed the 1972 imports, which were below the 1971 level. With rapid expansion taking place in livestock and poultry industries, there will also be a greater need for imported feeds.

Table 1.--United States: Exports of selected products to Taiwan, value and quantity, 1960-73

Year	Total	Wheat	Corn	Tobacco	Soybeans	Cotton	Nonfat dry milk	Cattle hides ^{1/}	Tallow inedible	Other
-- Million dollars --										
1960	58.4	16.2	---	1.8	15.9	17.5	1.1	0.1	1.4	2.6
1961	71.0	15.8	---	2.4	14.0	26.1	3.0	.1	2.4	2.1
1962	72.3	17.2	0.9	3.1	9.3	30.6	1.5	.1	2.3	2.8
1963	79.0	23.4	.7	2.6	14.0	26.4	.5	.3	3.3	3.9
1964	79.9	17.5	.4	1.6	21.2	25.0	1.2	.3	3.9	4.4
1965	74.3	20.1	1.9	3.9	17.6	20.3	1.7	.2	3.8	1.8
1966	76.2	17.7	.6	5.4	15.0	28.6	.9	.2	4.1	2.3
1967	111.4	27.0	.2	6.3	37.1	28.5	1.7	.4	3.4	3.8
1968	116.7	25.8	.2	6.0	38.4	37.0	.9	.7	2.9	4.2
1969	107.1	20.8	.7	8.9	46.5	21.4	.1	1.0	3.0	4.7
1970	134.4	30.8	2.0	8.7	61.4	19.5	.2	1.3	4.1	4.8
1971	162.3	22.1	2.8	9.8	60.8	53.2	.1	1.7	2.1	6.8
1972	195.9	31.2	17.3	14.6	75.9	40.6	.9	3.1	3.2	9.1
Jan.-Oct. 1973	299.9	48.6	47.7	18.1	91.5	68.1	.4	4.6	3.6	16.4
-- Thousand metric tons										
1960	NA	265	---	1	185	34	3	12	9	NA
1961	NA	254	1	1	138	44	15	10	14	NA
1962	NA	257	17	2	98	56	7	8	15	NA
1963	NA	384	13	1	140	48	2	65	24	NA
1964	NA	267	8	1	208	28	4	54	23	NA
1965	NA	346	32	2	167	40	4	23	17	NA
1966	NA	282	10	3	135	61	2	16	22	NA
1967	NA	431	3	3	334	63	4	51	23	NA
1968	NA	440	2	3	377	81	2	94	22	NA
1969	NA	358	15	4	468	47	---	113	20	NA
1970	NA	556	27	4	586	42	---	166	21	NA
1971	NA	372	46	5	534	92	---	235	11	NA
1972	NA	508	308	6	637	60	2	202	18	NA
Jan.-Oct. 1973	NA	387	542	8	455	106	3	249	14	NA

^{1/} Quantity shown in thousands.

NA = Not applicable.

Table 2.--United States: Imports of selected agricultural products from Taiwan, value and quantity, 1960-73

Year	Total	Tea	Citronella oil	Feathers crude	Pineapple canned	Sugar cane	Mushroom canned	Oranges canned	Water chestnuts
-- Million dollars --									
1960	9.8	2.1	1.3	1.0	1.7	1.3	---	---	---
1961	27.2	1.7	1.7	.9	2.2	18.0	---	---	---
1962	26.2	1.7	2.0	1.1	3.9	11.9	3.0	---	---
1963	27.5	1.8	2.6	1.2	4.4	8.6	5.6	---	---
1964	29.2	1.8	1.7	1.7	4.9	9.4	4.3	1.3	0.9
1965	32.5	1.9	2.6	1.3	7.4	6.7	5.9	2.2	.6
1966	32.0	1.9	1.8	1.3	8.3	6.4	6.7	1.0	.8
1967	40.9	1.6	.2	1.4	8.4	12.9	9.2	1.4	1.3
1968	42.2	1.7	.9	1.8	8.4	11.4	10.6	1.4	1.3
1969	42.3	1.3	1.2	1.5	8.6	11.0	10.2	2.2	1.4
1970	50.5	1.3	2.1	2.0	8.3	12.4	12.9	2.8	1.9
1971	53.2	1.9	1.2	1.9	7.8	11.0	16.5	2.8	2.2
1972	72.7	2.2	1.2	2.7	7.9	15.8	25.0	3.3	2.8
January-October 1973	56.7	1.6	.6	2.7	5.1	10.3	16.6	5.3	2.8
-- Thousand metric tons --									
1960	NA	3.7	.8	.5	7.5	9.2	---	---	---
1961	NA	2.7	.8	.3	9.6	148.3	---	---	---
1962	NA	2.9	.8	.4	15.8	112.8	2.9	---	---
1963	NA	3.1	.8	.5	19.0	65.8	5.1	---	---
1964	NA	3.2	1.0	.6	21.2	71.5	4.0	3.3	2.4
1965	NA	3.8	1.9	.5	31.3	52.5	5.3	5.8	1.8
1966	NA	3.5	1.3	.4	35.5	48.1	5.8	3.0	2.4
1967	NA	2.8	.1	.5	37.8	89.9	7.5	4.1	3.8
1968	NA	3.0	.6	.8	37.4	76.0	8.6	4.3	3.8
1969	NA	2.1	.7	.6	36.2	71.1	8.5	6.9	4.2
1970	NA	2.4	.8	.6	34.5	76.4	10.1	8.1	5.4
1971	NA	3.6	.5	.7	32.5	64.5	11.3	8.2	6.0
1972	NA	3.7	.5	1.0	34.4	85.9	16.8	10.2	7.4
January-October 1973	NA	2.6	.2	.9	18.9	50.4	11.4	14.5	7.1

NA = Not applicable.

Table 3.--Taiwan: Exports of selected agricultural products, value and quantity, 1960-72

Year	Total	Rice	Bananas	Pineapple canned	Mushrooms canned	Asparagus canned	Sugar	Oranges fresh	Canned bamboo shoots
-- Million dollars --									
1960	98.7	5.1	6.1	7.9	---	---	72.2	0.4	0.7
1961	133.3	9.4	9.6	10.4	1.6	---	56.4	1.0	.8
1962	104.9	6.1	7.1	9.9	8.1	---	45.6	1.1	.8
1963	186.8	17.9	7.0	10.5	16.0	---	102.4	1.4	1.1
1964	246.9	20.0	29.6	12.8	14.4	0.4	128.3	1.7	1.4
1965	239.6	41.1	48.7	17.2	19.4	10.5	58.8	1.9	2.2
1966	233.9	29.7	48.5	17.8	25.1	13.4	52.7	1.5	1.6
1967	236.4	20.0	52.0	17.5	30.1	22.7	39.2	1.7	2.2
1968	241.2	12.4	46.5	17.2	29.0	25.3	45.2	1.8	4.7
1969	259.7	5.4	47.6	18.7	27.1	35.0	45.9	3.6	4.3
1970	254.9	.8	31.1	19.4	32.0	33.6	45.4	4.4	5.3
1971	316.1	5.1	43.2	18.4	44.9	32.6	63.1	6.0	5.8
1972	463.6	1.9	30.3	17.4	55.5	41.4	83.7	6.7	NA
-- Thousand metric tons --									
1960	NA	35	46	38	---	---	862	2	2
1961	NA	65	73	53	2	---	619	5	3
1962	NA	42	53	47	12	---	634	4	3
1963	NA	119	53	48	23	---	646	5	4
1964	NA	128	190	59	21	1	838	7	5
1965	NA	257	319	76	27	15	782	8	10
1966	NA	178	345	78	33	19	841	7	7
1967	NA	116	382	80	40	35	557	8	11
1968	NA	68	341	77	41	42	629	8	22
1969	NA	34	367	82	37	66	528	14	20
1970	NA	5	212	81	40	75	410	18	23
1971	NA	34	256	87	52	82	523	23	27
1972	NA	16	230	79	63	70	488	28	NA

NA = Not applicable.

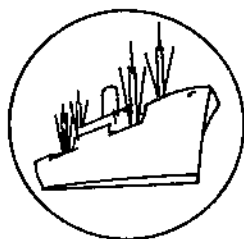
Table 4.--Taiwan: Imports of selected agricultural products, value and quantity, 1960-72

Year	Total	Milk powdered	Wheat	Corn	Beans and peas	Tobacco	Soybeans	Cotton	Barley	Hides buffalo and cow
-- Million dollars --										
1960	95.6	1.9	20.3	0.1	0.5	2.7	14.2	21.8	0.3	1.1
1961	96.4	2.8	19.4	.1	.7	2.8	15.9	26.8	1.2	1.1
1962	87.1	3.5	19.2	.1	.9	3.0	6.9	28.8	.7	1.2
1963	122.5	3.7	27.8	.4	1.4	4.0	19.7	40.1	.4	.9
1964	124.7	4.7	23.7	1.2	1.4	2.3	13.0	31.1	.6	1.4
1965	132.4	4.6	27.9	4.1	2.0	3.5	19.3	36.3	.4	1.7
1966	132.7	5.9	21.1	4.2	3.5	4.5	19.8	38.3	---	1.9
1967	183.3	6.5	21.8	8.9	2.6	11.1	43.2	44.4	1.8	2.2
1968	204.1	8.0	32.1	21.1	2.4	1.7	44.2	45.5	3.0	2.1
1969	277.6	10.1	46.0	23.6	3.0	3.7	52.3	52.3	4.8	3.3
1970	330.8	12.9	38.8	41.6	3.7	12.7	73.5	66.6	12.4	4.9
1971	354.5	16.1	36.1	38.5	3.2	11.6	68.5	85.2	19.7	4.2
1972	489.5	21.2	50.1	81.5	5.0	11.3	96.3	88.7	25.1	6.3
-- Thousand metric tons --										
1960	NA	2	278	2	5	1	144	44	4	3
1961	NA	2	266	1	7	1	145	44	22	3
1962	NA	3	255	2	7	2	62	49	10	3
1963	NA	4	371	6	11	2	182	66	6	2
1964	NA	5	301	9	11	1	182	54	10	4
1965	NA	5	377	37	18	2	161	65	7	5
1966	NA	6	286	65	32	2	165	69	---	5
1967	NA	7	296	134	22	6	351	88	27	6
1968	NA	9	449	361	20	2	385	87	53	7
1969	NA	13	706	388	24	2	472	102	93	8
1970	NA	17	603	602	29	6	618	128	239	11
1971	NA	16	517	554	25	6	525	140	321	14
1972	NA	20	735	1,320	40	6	712	123	436	16

NA = Not applicable.

Table 5.--U.S. trade with Taiwan, 1960-72

Year	Exports			Imports			Balance of trade		
	All commodities	Nonagri-cultural	Agricultural	All commodities	Nonagri-cultural	Agricultural	All commodities	Nonagri-cultural	Agricultural
	-- 1,000 dollars --								
1960	110,194	51,827	58,367	20,353	10,616	9,737	+89,841	+41,211	+48,630
1961	135,643	64,638	71,005	42,045	14,801	27,244	+93,598	+49,837	+21,168
1962	128,952	56,695	72,257	56,883	30,650	26,233	+72,069	+26,045	+46,024
1963	138,018	59,009	79,009	57,644	30,182	27,462	+80,374	+28,827	+50,182
1964	145,364	65,466	79,898	76,560	47,348	29,212	+68,804	+18,118	+50,686
1965	172,022	97,713	74,309	93,029	60,544	32,485	+78,993	+37,169	+41,824
1966	180,098	103,865	76,233	117,169	85,187	31,982	+62,929	+18,678	+44,251
1967	332,631	221,195	111,436	164,447	123,577	40,870	+168,184	+97,618	+70,566
1968	387,093	270,394	116,699	267,828	225,666	42,162	+119,265	+44,728	+74,537
1969	392,831	285,722	107,109	385,804	343,457	42,347	+7,027	-57,735	+64,762
1970	526,561	392,218	134,343	547,456	496,964	50,492	-20,895	-104,746	+83,851
1971	508,612	346,270	162,342	812,437	759,235	53,202	-303,825	-412,965	+109,140
1972	629,471	433,560	195,911	1,285,618	1,212,955	72,663	-656,147	-779,395	+123,248



SPECIAL in this issue

U.S. AGRICULTURAL EXPORTS ADJUSTED FOR TRANSSHIPMENTS

Effective January 1, 1973, an "unidentified countries" designation was established in U.S. export statistics to reflect the transshipment of certain grains and oilseeds through Canadian ports. ^{1/} Earlier, transshipments were treated as exports to Canada when shippers did not know the final destination. Now, however, the statistics show substantial amounts of grains and oilseeds in the new country designation. Shipments of wheat, barley, rye, oats, and flaxseed to Canada are assumed to be for transshipment to other countries. Selected shipments of corn and soybeans are reported as transshipments when the Shipper's Export Declaration indicates certain St. Lawrence port destinations known to be storage and transit facilities.

Transshipment destinations for U.S. commodities are reported by the Canadian Grain Commission after the commodities have moved from storage facilities. The Canadian data are included on a monthly basis in Grain Market News, a report of the USDA's Agricultural Marketing Service. Average export unit values, free-on-board (f.o.b.) or free-alongside-vessel (f.a.s.), U.S. port, are used to make value estimates.

To determine country-of-destination for transshipments prior to 1973, the Canadian Grain Commission data should be deducted from U.S. exports to Canada. For 1973 and subsequent periods, the Canadian Grain Commission data should be deducted from U.S. exports to "unidentified countries." In both instances, the data should then be added to the appropriate country of destination.

Data on fiscal 1973 exports of U.S. agricultural products to Canada should be adjusted by deducting about \$105 million worth. For July-December 1972, transshipments were reported as "exports to Canada." For January-June 1973, shipments to "unidentified countries" totaled \$167 million. Thus, for the entire fiscal year, shipments to "unidentified countries" totaled \$272 million. Final destinations for the July-December 1972 period (transshipments from Canada) and July 1972-June 1973 (transshipments from Canada plus exports to "unidentified countries") are shown in table 6.

Since a substantial part of U.S. grain and oilseed exports to Canada subsequently moves to other transit ports, primarily in the Netherlands and Belgium, further transshipment adjustments must be made in U.S. agricultural export statistics. Due to difficulties in isolating transit grain from shipments to Holland and Belgium, the difference between U.S. export volume and other countries' imports are considered to be transshipments. For example, direct U.S. wheat exports to the Netherlands plus transshipments through Canada amounted to 1,210,275 metric tons in 1972/73. However, the Netherlands' wheat imports from the United States during this period totaled only 770,558 metric tons, so the 439,717-ton difference, disregarding a shipping lag of about 2-3 weeks is assumed to be the transshipment volume (table 8).

^{1/} Special announcement in U.S. Bureau of the Census, Report FT 410, January 1973.

For Belgium, direct U.S. wheat exports plus transshipments through Canada and the Netherlands, totaled 232,530 metric tons in 1972/73. Imports of U.S. wheat by Belgium-Luxembourg totaled 193,000 tons. Export unit values were applied to the nearly 40,000-ton difference in calculating the transshipment value in table 10.

The destinations of U.S. agricultural exports change substantially after adjustments for transshipments. Initial data on agricultural exports to Canada, Belgium, and the Netherlands are exaggerated, while those to West Germany, the United Kingdom, France, Spain, and other areas are understated. Direct U.S. farm product exports (unadjusted for transshipments) show West Germany as the fifth largest market, whereas with adjustments it is second to Japan. The Netherlands ranks second if transshipments are not considered, but that country's position falls to fifth largest--behind the USSR and Canada, in third and fourth place, respectively--after transshipments are deducted.

Transshipments of U.S. farm products through Canada from 1959, when the St. Lawrence Seaway was opened, to 1968 were published in the April 1970 issue of Foreign Agricultural Trade of the United States. Fiscal year data through 1968/69 were also included in that issue. The annual supplement, U.S. Foreign Agricultural Trade Statistical Report for Fiscal Year 1971 shows transshipments for 1969/70 and 1970/71; the fiscal year 1973 supplement contains subsequent years' data.

Table 6.--Transshipments of U.S. agricultural products through Canada: Estimated quantity and value, commodity by country, fiscal year 1973 1/ 2/

Country	Wheat	Corn	Barley	Rye	Flaxseed	Soybeans
-- Metric tons --						
European Community (EC):						
Belgium-Luxembourg	36,768	25,121	4,725	---	---	5,144
France	45,205	---	---	---	---	24,984
Italy	80,449	7,341	74,830	---	---	---
Netherlands	275,643	197,790	20,553	---	9,093	59,411
West Germany	21,664	68,224	67,951	---	12,496	11,947
Subtotal	459,729	298,476	168,059	---	21,589	101,486
Denmark	---	---	---	---	---	4,736
Ireland	---	1,600	---	---	---	---
United Kingdom	156,516	41,072	---	---	---	26,318
Subtotal	156,516	42,672	---	---	---	31,054
COMECON:						
Poland	---	---	---	---	---	22,888
USSR	76,857	451,967	47,213	33,355	---	67,658
Subtotal	76,857	451,967	47,213	33,355	---	90,546
Other Europe:						
Austria	41,340	---	---	---	---	---
Greece	---	---	12,083	---	---	---
Malta	---	2,769	2,765	---	---	---
Norway	44,389	---	---	---	---	3,184
Portugal	---	16,383	---	---	---	---
Spain	---	91,465	---	---	---	45,450
Switzerland	5,688	5,359	---	---	---	---
Yugoslavia	23,133	---	---	---	---	---
Subtotal	114,550	115,976	14,848	---	---	48,634
Asia:						
Bangladesh	91,526	---	---	---	---	---
China, Peoples Republic of ..	---	59,360	---	---	---	---
India	61,779	---	---	---	---	---
Israel	28,331	19,380	---	---	---	---
Japan	---	1,041	---	---	---	118,823
Lebanon	---	13,716	---	---	---	---
Korea, Republic of	---	14,148	---	---	---	---
Pakistan	28,685	---	---	---	---	---
Taiwan	---	---	24,929	---	---	---
Subtotal	210,321	107,645	24,929	---	---	118,823
Africa:						
Algeria	20,820	---	---	---	---	---
Ghana	26,834	---	---	---	---	---
Morocco	12,601	---	---	---	---	---
Nigeria	2,449	1,092	---	---	---	---
Zaire	5,280	---	---	---	---	---
Subtotal	67,984	1,092	---	---	---	---
Latin America:						
Dominican Republic	14,996	---	---	---	---	---
Mexico	19,405	---	---	---	---	---
Venezuela	3,320	---	---	---	---	---
Subtotal	37,721	---	---	---	---	---
In storage	---	202,301	---	---	---	32,714
Total	1,123,678	1,220,129	255,049	33,355	21,589	423,257

Continued--

Table 6.--Transshipments of U.S. agricultural products through Canada: Estimated quantity and value, commodity by country, fiscal year 1973 1/ 2/--Continued

Country	Wheat	Corn	Barley	Rye	Flaxseed	Soybeans	Total
-- 1,000 dollars --							
European Community (EC):							
Belgium-Luxembourg	2,851	1,872	301	---	---	658	5,682
France	3,646	---	---	---	---	4,146	7,792
Italy	6,656	560	5,166	---	---	---	12,382
Netherlands	23,027	12,836	1,352	---	1,080	8,196	46,491
West Germany	1,954	4,521	4,819	---	1,486	2,450	15,230
Subtotal	38,134	19,789	11,638	---	2,566	15,450	87,577
Denmark	---	---	---	---	---	1,119	1,119
Ireland	---	85	---	---	---	---	85
United Kingdom	13,411	2,340	---	---	---	4,948	20,699
Subtotal	13,411	2,425	---	---	---	6,067	21,903
COMECON:							
Poland	---	---	---	---	---	2,926	2,926
USSR	5,299	28,782	3,136	2,057	---	15,126	54,400
Subtotal	5,299	28,782	3,136	2,057	---	18,052	57,326
Other Europe:							
Austria	2,850	---	---	---	---	---	2,850
Greece	---	---	769	---	---	---	769
Malta	---	148	176	---	---	---	324
Norway	4,138	---	---	---	---	752	4,890
Portugal	---	1,249	---	---	---	---	1,249
Spain	---	5,024	---	---	---	7,639	12,663
Switzerland	403	285	---	---	---	---	688
Yugoslavia	1,595	---	---	---	---	---	1,595
Subtotal	8,986	6,706	945	---	---	8,391	25,028
Asia:							
Bangladesh	8,892	---	---	---	---	---	8,892
China, Peoples Republic of	---	4,525	---	---	---	---	4,525
India	4,899	---	---	---	---	---	4,899
Israel	1,953	1,477	---	---	---	---	3,430
Japan	---	56	---	---	---	19,682	19,738
Lebanon	---	1,046	---	---	---	---	1,046
Korea, Republic of	---	935	---	---	---	---	935
Pakistan	1,978	---	---	---	---	---	1,978
Taiwan	---	---	1,803	---	---	---	1,803
Subtotal	17,722	8,039	1,803	---	---	19,682	47,246
Africa:							
Algeria	2,023	---	---	---	---	---	2,023
Ghana	2,607	---	---	---	---	---	2,607
Morocco	1,224	---	---	---	---	---	1,224
Nigeria	238	58	---	---	---	---	296
Zaire	513	---	---	---	---	---	513
Subtotal	6,605	58	---	---	---	---	6,663
Latin America:							
Dominican Republic	1,457	---	---	---	---	---	1,457
Mexico	1,336	---	---	---	---	---	1,336
Venezuela	229	---	---	---	---	---	229
Subtotal	3,022	---	---	---	---	---	3,022
In storage	---	15,421	---	---	---	7,727	23,148
Total	93,179	81,220	17,522	2,057	2,566	75,369	271,913

1/ Includes an estimated \$104,782,000 shown as "exports to Canada" during July-December 1972. The balance of \$167,131,000 was shown as "exports to unidentified countries" in January-June 1973. 2/ Revised.

Table 7.--Transshipments of U.S. agricultural products through Canada: Estimated quantity and value, commodity by country, July-December 1972

Country	Wheat	Corn (maize)	Barley	Flaxseed	Soybeans
-- Metric tons --					
Austria	41,340	---	---	---	---
Belgium-Luxembourg	25,583	1,880	4,725	---	5,144
France	26,426	---	---	---	16,193
Germany, Federal Republic	5,334	29,591	11,104	12,497	3,429
Greece	---	---	12,083	---	---
India	39,109	---	---	---	---
Ireland	---	1,600	---	---	---
Israel	28,331	---	---	---	---
Italy	41,095	---	28,338	---	---
Japan	---	1,041	---	---	77,374
Korea, Republic of	---	6,248	---	---	---
Malta	---	2,769	2,765	---	---
Mexico	19,405	---	---	---	---
Netherlands	133,001	97,638	15,349	9,029	53,859
Nigeria	---	1,092	---	---	---
Norway	6,205	---	---	---	---
Poland	---	---	---	---	22,888
Spain	---	84,836	---	---	28,576
Switzerland	5,307	5,359	---	---	---
United Kingdom	63,630	34,468	---	---	11,703
USSR	76,857	246,964	32,060	---	7,893
Venezuela	3,320	---	---	---	---
Yugoslavia	23,133	---	---	---	---
Pakistan	28,685	---	---	---	---
Total	566,761	513,486	106,424	21,526	227,059
-- 1,000 dollars --					
Austria	2,850	---	---	---	2,850
Belgium-Luxembourg	1,764	100	301	658	2,823
France	1,822	---	---	2,070	3,892
Germany, Federal Republic	368	1,576	707	1,483	4,572
Greece	---	---	769	---	769
India	2,696	---	---	---	2,696
Ireland	---	85	---	---	85
Israel	1,953	---	---	---	1,953
Italy	2,833	---	1,803	---	4,636
Japan	---	56	---	9,892	9,948
Korea, Republic of	---	333	---	---	333
Malta	---	148	176	---	324
Mexico	1,338	---	---	---	1,338
Netherlands	9,169	5,201	976	1,072	23,303
Nigeria	---	58	---	---	58
Norway	428	---	---	---	428
Poland	---	---	---	2,926	2,926
Spain	---	4,519	---	3,653	8,172
Switzerland	366	285	---	---	651
United Kingdom	4,387	1,836	---	1,496	7,719
USSR	5,299	13,156	2,040	1,009	21,504
Venezuela	229	---	---	---	229
Yugoslavia	1,595	---	---	---	1,595
Pakistan	1,978	---	---	---	1,978
Total	39,075	27,353	6,772	2,555	104,782

Table 8.--Transshipments of U.S. agricultural products through the Netherlands:
Estimated quantity and value, commodity by country, fiscal year 1973

Country	Wheat	Barley	Corn (maize)	Grain sorghum	Soybeans	
-- Metric tons --						
EC:						
Belgium-Luxembourg	60,334	---	14,884	17,024	24,990	
France	19,875	---	78,058	3,292	34,190	
Germany, Federal Republic	71,805	3,974	139,382	2,505	741,515	
Subtotal	152,014	3,974	232,324	22,821	800,695	
Denmark	5,700	10,107	52,217	135	---	
Ireland	---	---	99,434	13,746	2,500	
United Kingdom	264,168	728	828,826	18,406	226,940	
Total EC	421,882	14,809	1,212,801	55,108	1,030,135	
Other Western Europe:						
Finland	---	---	5,131	603	39,842	
Norway	---	---	---	---	7,971	
Portugal	7,307	---	2,962	---	5,328	
Spain	---	---	571	84	2,400	
Sweden	3,412	---	18,031	18	---	
Switzerland	---	---	136,304	8,558	11,322	
Subtotal	10,719	---	162,999	9,263	86,863	
Africa:						
Canary Islands	---	---	3,705	---	---	
Liberia	---	---	800	---	---	
Libya	5,015	---	---	---	---	
Senegal	---	---	24,071	---	---	
Tunisia	2,101	---	---	---	---	
Subtotal	7,116	---	28,576	---	---	
Asia:						
Cyprus	---	---	2,750	---	---	
Israel	---	---	9,257	---	---	
Subtotal	---	---	12,007	---	---	
Total	439,717	14,809	1,416,383	64,371	1,096,998	
	Wheat	Barley	Corn (maize)	Grain sorghum	Soybeans	Total
-- 1,000 dollars --						
EC:						
Belgium-Luxembourg	4,460	---	967	1,040	4,130	10,597
France	1,469	---	5,069	201	5,650	12,389
Germany, Federal Republic	5,398	257	9,051	153	122,535	137,304
Subtotal	11,227	257	15,087	1,394	132,315	160,290
Denmark	421	655	3,391	8	---	4,475
Ireland	---	---	6,457	840	413	7,710
United Kingdom	19,527	47	53,824	1,124	37,502	112,024
Total EC	31,185	959	78,759	3,366	170,230	284,499
Other Western Europe:						
Finland	---	---	333	37	6,584	6,954
Norway	---	---	---	---	1,317	1,317
Portugal	540	---	193	---	881	1,614
Spain	---	---	37	5	397	439
Sweden	252	---	1,171	1	---	1,424
Switzerland	---	---	8,852	523	1,871	11,246
Subtotal	792	---	10,585	566	11,050	22,993
Africa:						
Canary Islands	---	---	241	---	---	241
Liberia	---	---	52	---	---	52
Libya	371	---	---	---	---	371
Senegal	---	---	1,563	---	---	1,563
Tunisia	155	---	---	---	---	155
Subtotal	526	---	1,856	---	---	2,382
Asia:						
Cyprus	---	---	179	---	---	179
Israel	---	---	601	---	---	601
Subtotal	---	---	780	---	---	780
Total	32,503	959	91,980	3,932	181,280	310,654

Table 9.--Transshipments of U.S. agricultural products through the Netherlands:
Estimated quantity and value, commodity by country, fiscal year 1972

Country	Wheat	Corn (maize)	Grain sorghum	Soybean	Oilcake and meal	
-- Metric tons --						
EC:						
Belgium-Luxembourg	7,554	7,729	5,672	40,461	10,242	
France	6,767	84,762	1,243	56,393	23,908	
Italy	---	---	---	505	---	
West Germany	---	295,830	3,605	428,005	---	
EC applicants:						
Denmark	---	83,248	30	23	2,982	
Ireland	8,561	37,547	14,903	---	6,140	
United Kingdom	56,030	1,056,191	26,489	84,143	10,112	
Subtotal	78,912	1,565,307	51,942	609,530	53,284	
Other Western Europe:						
Austria	---	205	---	---	---	
Finland	---	10,281	---	---	---	
Iceland	---	558	---	12,530	---	
Malta	---	3,782	---	---	---	
Sweden	350	5,404	---	---	---	
Switzerland	---	51,815	---	---	2,170	
Subtotal	350	72,052	---	4,811	3,221	
COMECON:						
Czechoslovakia	---	---	---	18	---	
East Germany	---	---	---	300	---	
Poland	---	---	---	---	---	
USSR	---	28,945	---	---	2,626	
Subtotal	---	28,945	---	318	2,626	
Africa:						
Libya	3,741	---	---	---	---	
Senegal	---	1,400	---	---	---	
Sierra Leone	---	1,589	---	---	---	
Tunisia	---	5,000	---	---	---	
Subtotal	3,741	7,989	---	---	---	
Asia:						
Cyprus	---	1,378	---	---	---	
Israel	---	---	---	1,218	---	
Subtotal	---	1,378	---	1,218	---	
Other:						
Surinam	---	3,230	---	---	---	
Total	83,003	1,678,904	51,942	628,407	61,401	
	Wheat	Corn (maize)	Grain sorghum	Soybean	Oilcake and meal	Total
-- 1,000 dollars, f.o.b. --						
EC:						
Belgium-Luxembourg	469	421	322	4,815	973	7,000
France	420	4,616	71	6,711	2,271	14,089
Italy	---	---	---	60	---	60
West Germany	---	16,111	205	50,932	---	67,248
EC applicants:						
Denmark	---	4,534	2	3	283	4,822
Ireland	532	2,045	848	---	583	4,008
United Kingdom	3,479	57,521	1,506	10,013	961	73,480
Subtotal	4,900	85,248	2,954	72,534	3,071	170,707
Other Western Europe:						
Austria	---	11	---	---	---	11
Finland	---	560	---	---	---	560
Iceland	---	30	---	1,491	---	2,051
Malta	---	206	---	---	---	206
Sweden	22	294	---	---	---	316
Switzerland	---	2,822	---	---	206	3,048
Subtotal	22	3,893	---	2,063	306	7,000
COMECON:						
Czechoslovakia	---	---	---	2	---	2
East Germany	---	---	---	36	---	36
Poland	---	---	---	---	---	---
USSR	---	1,576	---	---	250	1,826
Subtotal	---	1,576	---	38	250	1,864
Africa:						
Libya	232	---	---	---	---	232
Senegal	---	76	---	---	---	76
Sierra Leone	---	87	---	---	---	87
Tunisia	---	272	---	---	---	272
Subtotal	232	435	---	---	---	667
Asia:						
Cyprus	---	75	---	---	---	75
Israel	---	---	---	145	---	145
Subtotal	---	75	---	145	---	220
Other:						
Surinam	---	176	---	---	---	176
Total	5,154	91,433	2,954	74,780	5,833	180,154

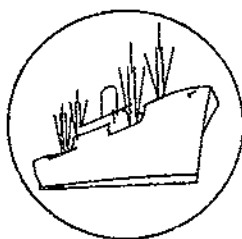
Table 10.--Transshipments of U.S. agricultural products through Belgium;
Estimated quantity and value, commodity by country, fiscal year 1973

Country	Wheat	Barley	Corn (maize)	Soybeans	Oilcake	
-- Metric tons --						
EC:						
France	37,982	585	84,765	61,033	31,400	
Germany, Fed. Rep.	---	501	---	5	---	
Netherlands	---	1,038	52,342	142	---	
Subtotal	37,982	2,124	137,107	61,180	31,400	
Denmark	---	---	1,771	---	---	
United Kingdom ..	1,336	---	45,028	---	3,072	
Total EC	39,318	---	183,906	61,180	34,472	
Other:						
Cuba	---	---	48,937	---	---	
Sweden	420	---	---	51	---	
Switzerland	---	2,601	42,797	112	---	
Subtotal	420	2,601	91,734	163	---	
Total	39,738	4,725	275,640	61,343	34,472	
	Wheat	Barley	Corn (maize)	Soybeans	Oilcake	Total
-- 1,000 dollars --						
EC:						
France	2,568	37	5,080	10,667	5,388	23,740
Germany, Fed. Rep.	---	32	---	1	---	33
Netherlands	---	66	3,137	25	---	3,228
Subtotal	2,568	135	8,217	10,693	5,388	27,001
Denmark	---	---	106	---	---	106
United Kingdom ..	90	---	2,698	---	527	3,315
Total EC	2,658	135	11,021	10,693	5,915	30,422
Other:						
Cuba	---	---	2,933	---	---	2,933
Sweden	28	---	---	8	---	36
Switzerland	---	166	2,565	20	---	2,751
Subtotal	28	166	5,498	28	---	5,720
Total	2,686	301	16,519	10,721	5,915	36,142

Table 11.--U.S. agricultural exports adjusted for transshipments: Estimated value to selected countries, fiscal years 1968-73 1/

Year	EC-6						EC-3			Total EC-9
	Belgium-Luxembourg	France	Italy	Netherlands	West Germany	Total EC-6	Denmark	Ireland	Kingdom	
-- 1,000 dollars --										
1967/68	143,119	171,396	241,011	350,701	469,516	1,375,743	84,433	27,586	456,053	1,943,815
1968/69	133,522	164,298	221,774	320,039	500,105	1,339,738	65,768	19,793	388,793	1,814,092
1969/70	139,293	190,865	229,369	384,152	532,078	1,475,757	78,806	25,304	456,603	2,036,470
1970/71	200,217	218,047	260,785	486,781	702,637	1,868,467	99,394	30,864	513,684	2,512,409
1971/72	130,771	253,556	307,741	466,267	683,442	1,841,777	106,640	25,462	514,230	2,488,109
1972/73	168,941	396,223	508,912	707,119	1,044,158	2,825,353	143,455	49,819	664,784	3,683,411
-- 1,000 dollars --										
	Canada	Mexico	Austria	Finland	Norway	Portugal	Spain	Sweden	Switzerland	Yugoslavia
1967/68	464,827	71,125	7,934	12,180	49,189	16,847	163,701	51,393	57,745	41,210
1968/69	494,630	86,260	4,732	11,818	28,713	17,494	131,879	52,422	75,220	21,906
1969/70	541,965	138,932	10,200	12,333	37,571	28,367	190,131	54,788	87,528	22,113
1970/71	549,427	130,619	10,223	15,047	45,448	52,996	184,477	60,585	96,641	106,996
1971/72	659,292	130,695	9,393	16,583	48,564	56,666	225,437	56,648	107,106	48,565
1972/73	823,829	253,791	16,808	24,739	73,203	81,180	399,870	59,992	146,653	92,378
-- 1,000 dollars --										
	USSR	Poland	Czechoslovakia	East Germany	Hungary	Bulgaria	Romania	Total COMECON	Cyprus	Malta
1967/68	6,155	52,770	6,761	16,599	5,032	3,300	516	91,133	2,510	643
1968/69	9,368	55,459	4,919	18,352	6,915	1,860	3,594	100,467	2,025	265
1969/70	17,763	53,343	5,785	24,266	12,934	4,428	14,966	133,485	3,189	480
1970/71	12,363	51,720	25,939	15,788	19,158	3,633	51,054	179,655	7,882	1,053
1971/72	158,653	63,432	23,656	18,408	15,472	707	27,347	307,675	3,160	1,784
1972/73	955,098	202,013	55,153	10,930	20,826	1,983	70,493	1,316,496	7,557	3,012
-- 1,000 dollars --										
	Algeria	Tunisia	Morocco	Iran	Lebanon	Syria	Israel	Japan	Taiwan	Venezuela
1967/68	23,153	30,929	48,708	11,682	16,148	5,472	86,055	902,673	122,091	88,379
1968/69	25,519	22,758	19,822	7,702	11,933	249	79,115	853,196	113,418	92,252
1969/70	17,045	27,680	28,447	19,353	11,811	531	102,317	1,108,524	114,117	97,958
1970/71	26,113	27,499	63,851	43,420	29,507	7,403	124,070	1,230,743	170,367	112,257
1971/72	38,896	26,389	57,238	77,655	26,960	116,645	115,400	1,184,143	169,430	113,008
1972/73	37,348	17,783	37,956	79,650	26,049	1,180	148,909	2,310,655	244,276	148,243

1/ Adjusted for transshipments through Canada, Belgium, and the Netherlands.



Government Program Export Highlights

JULY-SEPTEMBER 1973/74

While total U.S. agricultural exports were at a record \$4.1 billion during the first quarter of 1973/74 and nearly double the year-earlier level, exports under Government-financed programs declined nearly 30 percent to \$92.6 million. The only category showing an increase was donated shipments under P.L. 480, Title II, the World Food Program. These shipments, up \$1.1 million, were destined mainly for Bangladesh, Nicaragua, and the drought stricken countries of western Africa. Sales for local currency continued to decline and totaled less than \$50,000 as this program is now nearly phased out. Compared with shipments during the first quarter of fiscal 1973, long-term dollar credit sales were off \$18.3 million, Government-to-government donations were down \$8.1 million, and donations through voluntary relief agencies totaled \$12.4 million less.

On a commodity basis, Government-financed shipments of wheat, corn, grain sorghum, tobacco, cotton, cornmeal, and corn-soya-milk increased in value. Unit values were sharply higher for all commodities, but the quantities shipped were generally below the level of a year earlier. There were no reported shipments of nonfat dry milk, which used to be one of the main commodities shipped under Government-financed programs. Because of the lack of U.S. supplies available for export, rice exports amounted to only \$6 million in the first quarter of fiscal 1974, compared with \$54 million for the comparable period a year earlier.

Barter for overseas procurement (exports of U.S. farm products in exchange for goods and services needed abroad by U.S. agencies) increased slightly during July-September, totaling \$144.5 million, compared with \$143.8 million in the year-earlier quarter.

Exports under CCC credit declined sharply to only \$130.8 million--during the first quarter of fiscal 1973 they totaled \$185.1 million.

Shipments under Export-Import Bank loans and guarantees rose to \$7.1 million from \$1.3 million last year.

Table 12.--U.S. agricultural exports: Specified Government-financed programs, commercial sales for dollars, and total; value by commodity, July-September 1972 and 1973

Commodity	Specified Government-financed programs ^{1/}			Commercial ^{2/}			Total agricultural exports		
	1972	1973	Change	1972	1973	Change	1972	1973	Change
	-- Million dollars --								
Total	131.2	92.6	-38.6	1,938.2	4,043.7	+2,105.5	2,069.4	4,136.3	+2,066.9
Wheat and wheat flour	31.7	33.1	+1.4	318.3	1,199.9	+881.6	350.0	1,233.0	+883.0
Feed grains, excluding products ..	11.4	27.3	+15.9	433.5	1,084.6	+651.1	444.9	3/1,111.9	+667.0
Rice, milled	53.7	6.0	-47.7	37.5	87.5	+50.0	91.2	93.5	+2.3
Cotton, excluding linters	6.1	10.0	+3.9	35.4	148.2	+112.8	41.5	158.2	+116.7
Tobacco, unmanufactured	2.0	2.8	+ .8	140.2	159.5	+19.3	142.2	162.3	+20.1
Oilseeds and products	10.0	8.4	-1.6	426.1	585.7	+159.6	436.1	594.1	+158.0
Dairy products	10.3	---	-10.3	23.5	13.8	-9.7	33.8	13.8	-20.0
Animal products, except dairy products	---	---	---	218.0	323.7	+105.7	218.0	323.7	+105.7
Fruits and preparations	---	---	---	120.9	141.2	+20.3	120.9	141.2	+20.3
Vegetables and preparations	---	---	---	47.5	79.3	+31.8	47.5	79.3	+31.8
Other	6.0	5.0	-1.0	137.3	220.3	+83.0	143.3	225.3	+82.0

^{1/} Includes sales for foreign currency, long-term dollar and convertible local currency credit sales, Government-to-government donations, and donations through voluntary relief agencies authorized by P.L. 480. Exports under Mutual Security (AID) programs, authorized by P.L. 87-195, are regularly included in "Government-financed programs," but were omitted and will be worked only on a 6-month basis.

^{2/} "Exports outside specified Government-financed programs" or "Commercial sales" include, in addition to unassisted commercial transactions, shipments of some commodities with governmental assistance in the form of (1) barter transactions involving overseas procurement for U.S. agencies, which benefit the balance of payments and rely primarily on authority other than P.L. 480; (2) extension of credits and credit guarantees for relatively short periods; (3) sales of Government-owned commodities at less than domestic market prices; and (4) export payments in cash.

^{3/} Total exports of feed grains, excluding products, include the estimated value of donations of grain sorghums through voluntary relief agencies under P.L. 480, not separately reported by the Bureau of the Census: 1973, \$0.2 million.

Table 13.--Barter: Shipments under contracts for overseas procurement for U.S. agencies, July-September 1972 and 1973 ^{1/}

Commodity	Unit	Quantity		Value	
		1972	1973	1972	1973
		Thousands	Thousands	Million dollars	Million dollars
Total		---	---	143.8	144.5
Wheat (60 lb.)	Bu.	10,846	---	17.3	---
Barley (48 lb.)	do.	236	2,438	.3	4.9
Corn (56 lb.)	do.	31,371	4,170	42.3	10.6
Grain sorghums (56 lb.)	do.	3,823	2,301	5.0	4.4
Rice	Cwt.	867	925	7.3	13.9
Wheat flour	do.	59	89	.2	.1
Tallow	Lb.	182,981	121,100	14.4	18.8
Grease	do.	16,515	2,722	1.3	.3
Cotton	Rbale	82	295	13.0	43.8
Tobacco, unmanufactured	Lb.	27,343	28,398	30.8	34.4
Soybean oil	do.	13,504	33,980	1.6	6.8
Cottonseed oil	do.	69,532	34,871	10.3	6.5

^{1/} Authorized by the Charter Act of the Commodity Credit Corporation and other legislation.

Table 14.--U.S. credit sales of agricultural commodities: Value by commodity, July-September 1972 and 1973 ^{1/}

Commodity	Export-Import Bank loans and medium-term guarantees ^{2/}		CCC credit sales		Total credit sales	
	1972	1973	1972	1973	1972	1973
	-- Million dollars --					
Total	1.3	7.1	185.1	130.8	186.4	137.9
Wheat	---	---	82.8	62.2	82.8	62.2
Corn	---	---	68.2	13.6	68.2	13.6
Grain sorghums	---	---	1.7	.5	1.7	.5
Rice	---	---	3.0	2.5	3.0	2.5
Wheat flour	---	---	---	5.9	---	5.9
Tobacco	---	---	6.7	.6	6.7	.6
Cotton	1.3	7.1	14.4	38.9	15.7	46.0
Soybean oil	---	---	6.2	1.8	6.2	1.8
Cottonseed oil	---	---	---	.8	---	.8
Linseed oil	---	---	1.7	3.5	1.7	3.5
Tallow	---	---	.1	.4	.1	.4
Cattle	^{3/}	---	---	.1	^{3/}	.1
Raisins	---	---	.1	---	.1	---
Prunes	---	---	.2	---	.2	---

^{1/} Credit sales for relatively short periods repayable in dollars plus interest (covering the financial costs of the lending agency).

^{2/} Includes disbursements by the Export-Import Bank and disbursements by the U.S. commercial banks under Export-Import Bank medium-term guarantees against political and/or financial risk.

^{3/} Less than \$50,000.

Table 15.--U.S. agricultural exports: Specified Government-financed programs; quantity and value by commodity, July-September 1972 and 1973

Commodity	Unit	Title I				Title II donations						Specified Government-financed programs	
		Local currency		Long-term dollar credit sales		Government-to-government		World food program		Voluntary relief agencies		1972	1973
		1972	1973	1972	1973	1972	1973	1972	1973	1972	1973		
-- Thousand units --													
Milk, nonfat dry	:Lb.	---	---	---	---	5,642	---	1,530	---	23,715	---	30,887	---
Wheat (60 lb.)	:Bu.	---	---	9,953	9,388	5,487	199	208	---	991	---	16,639	9,587
Rice, milled	:Cwt.	---	---	7,172	454	306	---	---	---	---	---	7,478	454
Corn (56 lb.)	:Bu.	283	---	3,310	3,454	79	39	421	176	---	---	4,093	3,669
Grain sorghums (56 lb.)	:do.	---	---	3,921	6,180	112	1,336	212	700	4	128	4,249	8,344
Wheat flour	:Cwt.	---	---	231	94	476	172	214	95	398	72	1,319	433
Cornmeal	:do.	---	---	---	---	4	16	50	85	45	1	99	102
Bulgur wheat	:Lb.	---	---	---	---	9,031	---	1,361	1,895	16,683	---	27,075	1,895
Rolled wheat	:do.	---	---	---	---	200	---	---	---	---	---	200	---
Oatmeal and rolled oats	:do.	---	---	---	---	203	---	33	217	3,828	146	4,064	363
Corn-soya-milk	:do.	---	---	---	---	8,977	13,061	240	2,624	14,300	8,283	23,517	23,968
Wheat-soya-blend	:do.	---	---	---	---	2,420	2,686	55	42	8,140	660	10,615	3,388
Soya flour	:dq.	---	---	---	---	500	---	---	---	---	---	500	---
Tobacco, unmanufactured	:do.	---	---	2,255	2,414	---	---	---	---	---	---	2,255	2,414
Cotton	:R. bale	---	1/	40	62	---	---	---	---	---	---	40	62
Soybean oil	:Lb.	---	---	46,229	14,734	951	6,028	7,160	6,731	15,856	11,758	70,196	39,251
-- Million dollars --													
Total		.9	2/	91.9	73.6	16.9	8.8	4.3	5.4	17.2	4.8	131.2	92.6
Milk, nonfat dry		---	---	---	---	1.9	---	.5	---	7.9	---	10.3	---
Wheat (60 lb.)		---	---	16.2	29.9	8.2	.6	.4	.1	1.8	---	26.6	30.6
Rice, milled		---	---	50.7	6.0	3.0	---	---	---	---	---	53.7	6.0
Corn (56 lb.)		.5	---	4.5	9.5	.1	.1	.7	.5	---	---	5.8	10.1
Grain sorghums (56 lb.)		---	---	5.1	12.1	.2	3.3	.3	1.6	2/	.2	5.6	17.2
Wheat flour		---	---	.9	.5	1.8	1.0	.8	.6	1.6	.4	5.1	2.5
Cornmeal		---	---	---	---	2/	.1	.2	.5	.2	2/	.4	.6
Bulgur wheat		---	---	---	---	.4	---	.1	.1	.8	---	1.3	.1
Rolled wheat		---	---	---	---	2/	---	---	---	---	---	2/	---
Oatmeal and rolled oats		---	---	---	---	2/	---	2/	2/	.2	2/	.2	2/
Corn-soya-milk		---	---	---	---	.8	2.1	2/	.4	1.3	1.3	2.1	3.8
Wheat-soya-blend		---	---	---	---	.2	.3	2/	2/	.6	.1	.8	.4
Soya flour		---	---	---	---	.1	---	---	---	---	---	.1	---
Tobacco, unmanufactured		---	---	2.0	2.8	---	---	---	---	---	---	2.0	2.8
Cotton		---	2/	6.1	10.0	---	---	---	---	---	---	6.1	10.0
Soybean oil		---	---	5.6	2.7	.2	1.3	1.3	1.6	2.8	2.8	9.9	8.4
Other		.4	---	.8	.1	---	---	---	---	---	---	1.2	.1

1/ Less than 500.
2/ Less than \$50,000.

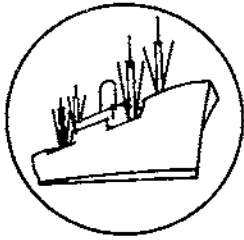
Table 16.--U.S. agricultural exports: Specified Government-financed programs, commercial and total; quantity and value, by commodity, July-September 1972 and 1973

Commodity	Unit	Specified-Government financed programs				Commercial				Total agricultural exports			
		Quantity		Value		Quantity		Value		Quantity		Value	
		1972	1973	1972	1973	1972	1973	1972	1973	1972	1973	1972	1973
		Thousands	Thousands	Million dollars	Million dollars	Thousands	Thousands	Million dollars	Million dollars	Thousands	Thousands	Million dollars	Million dollars
Total		---	---	131.2	92.6	---	---	1,938.2	4,043.7	---	---	2,069.4	4,136.3
Milk, nonfat dry	Lb.	30,887	---	10.3	---	56,854	1,253	12.4	.4	87,741	1,253	22.7	.4
Wheat (60 lb.)	Bu.	16,639	9,587	26.6	30.6	184,469	372,400	304.7	1,165.4	201,108	381,987	331.3	1,196.0
Rice, milled	Cwt.	7,478	454	53.7	6.0	3,959	5,162	37.5	87.5	11,437	5,616	91.2	93.5
Corn (56 lb.)	Bu.	4,093	3,669	5.8	10.1	264,248	368,478	363.6	872.1	268,341	372,147	369.4	832.2
Grain sorghums	do.	4,249	8,344	5.6	17.2	42,876	59,811	57.7	125.3	1/47,125	1/68,155	63.3	1/142.5
Wheat flour	Cwt.	1,319	433	5.1	2.5	3,285	5,009	13.7	34.6	4,604	5,442	18.8	37.1
Cornmeal	do.	99	102	.4	.6	331	708	1.5	3.9	430	810	1.9	4.5
Bulgur wheat	Lb.	27,075	1,895	1.3	.1	119,805	74,004	5.7	5.8	146,880	75,899	7.0	5.9
Rolled wheat	do.	200	---	2/	---	785	1,462	.1	.3	985	1,462	.1	.3
Oatmeal and rolled oats	do.	4,064	363	.2	2/	10,093	6,582	.6	.5	1/14,157	1/6,945	1/1.8	.5
Corn-soya-milk	do.	23,517	23,968	2.1	3.8	64,563	39,094	5.6	5.3	3/88,080	3/63,062	3/7.7	3/9.1
Wheat-soya-blend	do.	10,615	3,388	.8	.4	3,876	12,531	.4	1.7	3/14,491	3/15,919	3/1.2	3/2.1
Soya flour	do.	500	---	.1	---	203,784	17,279	10.8	3.0	204,284	17,279	10.9	3.0
Tobacco, unmanufactured	do.	2,235	2,414	2.0	2.8	132,183	141,739	140.2	159.5	134,438	144,153	142.2	162.3
Cotton	R.bale	40	62	6.1	10.0	210	914	35.4	148.2	250	976	41.5	158.2
Soybean oil	Lb.	70,196	39,251	9.9	8.4	197,791	165,061	24.9	28.8	267,987	204,312	34.8	37.2
Other		---	---	1.2	.1	---	---	923.4	1,401.4	---	---	924.6	1,401.5

1/ Total exports include those reported by Census plus foreign donations through voluntary relief agencies. Relief shipments of these commodities are not separately reported by Census.

2/ Less than \$50,000.

3/ Total exports include those reported by Census plus Government-to-government donations. Nonrelief shipments of these items are not separately reported by Census.



Export Highlights

AGRICULTURAL EXPORTS NEARLY DOUBLED IN JULY-NOVEMBER

U.S. exports of farm products during July-November continued to accelerate, reaching an alltime high of \$7,952 million--96 percent above the \$4,057 million level of a year earlier. Exports of grains and preparations were up 165 percent, accounting for over two-thirds of the total increase. Increases for cotton, tobacco, soybeans, meats, live cattle, fruits, nuts, and vegetables also contributed. However, there were declines for dairy products, hides and skins, and vegetable oils. Over two-thirds of the \$3.9-billion increase in total farm exports stemmed from higher prices. But even with these substantial higher prices, volume of agricultural exports was up one-fourth.

November 1973 agricultural exports hit an alltime monthly high of \$2.1 billion, nearly doubling the November 1972 level of \$1.1 billion, and also substantially better than the previous record of \$1.7 billion in October 1973. The November record came from sharp gains in shipments of wheat, feed grains, soybeans, soybean meal, tobacco, live animals, and fruits and vegetables. Again, higher prices played a big role in the value gain.

The July-November 1973 growth in U.S. agricultural exports went to virtually every country and area. Most significant was the more than doubling of exports to Asia, Latin America, and Africa. Exports to the People's Republic of China advanced to nearly \$360 million from \$43 million during the comparable period in 1972. Japan was a market for \$1.2 billion worth of agricultural exports in July-November 1973, compared with \$628 million a year earlier. Exports to Western Europe were up by nearly two-thirds--gains occurred in shipments to both the enlarged EC and to non-EC countries. Exports to Eastern Europe and the USSR were up by nearly a third. However, shipments to the USSR are below the first quarter pace when exports were large because purchases made in fiscal 1973 were not shipped until the first quarter of fiscal 1974. With a record 1973 grain crop of 220 million metric tons in the USSR, our agricultural exports to that country are expected to taper off considerably during the remainder of the year.

For the first 5 months of the current fiscal year, the agricultural trade balance reached an alltime high of nearly \$4.4 billion, substantially larger than the \$1.4 billion for these months of fiscal 1973. The trade balance for nonagricultural products also improved somewhat--to a deficit of \$3.6 billion from a deficit of \$4.5 billion for July-November 1972. With the upsurge in the agricultural trade balance, the total trade balance for the United States advanced to a \$804 million surplus for the first 5 months of fiscal 1974.

Grains and preparations.--Increases in the volume of wheat and feed grain shipments boosted U.S. exports of grains and preparations to a record \$4.3 billion in July-November 1973--more than 1½ times above the level for the comparable period in 1972. Higher prices accounted for over two-thirds of the value gain. Exports of wheat,

Table 17.--U.S. agricultural exports: Value by commodity,
July-November 1972 and 1973

Commodity	July-November		Change
	1972	1973 ^{1/}	
	-- Million dollars --		Percent
Animals and animal products:			
Dairy products	48	24	-50
Fats, oils, and greases	91	167	+84
Hides and skins, including furskins	165	149	-10
Cattle hides, whole	139	115	-17
Furskins	9	16	+78
Other hides and skins	17	18	+6
Meats and meat products	89	139	+56
Poultry and poultry products	40	58	+45
Other	43	130	+202
Total animals and products	476	667	+40
Cotton, excluding linters	128	265	+107
Feeds and fodders, excl. protein meal:			
Corn byproducts	24	45	+88
Alfalfa meal	7	11	+57
Other	39	65	+67
Total feeds and fodders, except oil cake and meal	70	121	+73
Fruits and preparations	203	263	+30
Grains and preparations:			
Feed grains, excluding products	742	1,744	+135
Rice	165	216	+31
Wheat and products	689	2,277	+230
Other	41	99	+141
Total grains and preparations	1,637	4,336	+165
Nuts and preparations	51	72	+41
Oilseeds and products:			
Cottonseed and soybean oil	83	76	-8
Soybeans	632	953	+51
Protein meal	191	398	+108
Other	101	143	+42
Total oilseeds and products	1,007	1,570	+56
Tobacco, unmanufactured	274	345	+26
Vegetables and preparations	98	162	+65
Other	113	151	+34
Total agricultural exports	4,057	7,952	+96

^{1/} Preliminary.

Table 18.--U.S. agricultural exports by regions, July-November 1972 and 1973

Region <u>1/</u>	1972	1973	Change
	-- <u>Million dollars</u> --		<u>Percent</u>
Western Europe	1,451	2,370	+63
Enlarged EC	1,166	1,901	+63
Eastern Europe and USSR <u>2/</u>	373	518	+39
USSR	232	293	+26
Asia	1,334	2,934	+120
Japan	628	1,221	+94
People's Republic of China	43	360	---
Latin America	396	901	+128
Canada, excluding transshipments	296	458	+55
Canadian transshipments	83	433	---
Africa	99	275	+178
Oceania	25	42	+68
Total	4,057	7,952	+96

1/ Not adjusted for transshipments.

2/ Includes Yugoslavia.

Table 19.--U.S. agricultural exports: Value by months, July 1963 to November 1973

Months	1963/64	1964/65	1965/66	1966/67	1967/68	1968/69	1969/70 1/	1970/71	1971/72	1972/73	1973/74 2/
-- Million dollars --											
July	410.5	479.7	548.0	489.9	472.2	465.6	499.8	567.8	578.5	680.8	1,218.1
August	408.7	419.6	459.3	571.0	468.1	489.0	438.4	537.5	546.2	679.0	1,469.5
September	432.9	494.7	484.6	564.0	488.9	469.6	471.5	568.3	749.3	709.5	1,448.7
July-September	1,252.1	1,394.0	1,491.9	1,624.9	1,429.2	1,424.2	1,409.7	1,673.6	1,874.0	2,069.3	4,136.3
October	552.3	575.7	587.1	622.4	531.8	463.8	644.9	729.9	465.9	907.5	1,733.7
November	574.5	607.7	651.4	697.7	667.4	609.4	657.8	725.8	630.2	1,080.5	2,082.0
December	588.1	669.5	648.3	638.6	563.6	610.7	590.9	744.6	841.5	1,108.6	
October-December	1,714.9	1,852.9	1,886.8	1,958.7	1,762.8	1,683.9	1,893.6	2,200.3	1,937.6	3,096.6	
July-December	2,967.0	3,246.9	3,378.7	3,583.6	3,192.0	3,108.1	3,303.3	3,873.9	3,811.6	5,165.9	
January	542.8	210.4	505.7	530.2	545.0	177.7	524.1	670.3	769.7	1,136.1	
February	523.2	325.7	519.7	512.0	547.4	239.5	559.6	634.5	714.2	1,179.4	
March	523.6	696.2	619.5	552.0	544.4	517.2	569.7	714.5	668.2	1,407.7	
January-March	1,589.6	1,232.3	1,644.9	1,594.2	1,636.8	934.4	1,653.4	2,019.3	2,152.1	3,723.2	
April	521.1	553.8	552.3	524.5	523.7	602.0	558.4	632.1	627.7	1,264.1	
May	530.5	532.9	549.4	548.1	497.5	583.6	573.7	623.1	711.5	1,364.9	
June	459.4	530.9	551.1	521.0	461.3	513.2	599.4	607.1	743.5	1,376.0	
April-June	1,511.0	1,617.6	1,652.8	1,593.6	1,482.5	1,698.8	1,731.5	1,862.3	2,082.7	4,005.0	
January-June	3,100.6	2,849.9	3,297.7	3,187.8	3,119.3	2,633.2	3,384.9	3,881.6	4,234.8	7,728.2	
July-June 3/	6,067.6	6,096.8	6,676.4	6,771.4	6,311.3	5,741.3	6,688.2	7,755.6	8,046.4	12,894.1	
Monthly average	505.6	508.1	556.4	564.3	525.9	478.4	557.4	646.3	670.5	1,074.5	

1/ Beginning January 1970 export values include small amounts of commodities formerly classified as nonagricultural.

2/ Preliminary.

3/ Totals may not add due to rounding.

Table 20.--U.S. farm export unit values, July-November 1972 and 1973 ^{1/}

Commodity	Unit	Average unit value ^{2/}		Change	
		1972	1973	Dollars	Percent
		Dollars	Dollars	Dollars	Percent
Dried peas	Lb.	.06	.14	+0.08	+133
Soybean meal	S.ton	109.06	244.06	+135.00	+124
Wheat	Bu.	1.74	3.55	+1.81	+104
Rice, milled basis	Lb.	.09	.18	+0.09	+100
Soybeans	Bu.	3.48	6.20	+2.72	+78
Almonds, shelled	Lb.	.79	1.41	+0.62	+78
Corn	Bu.	1.40	2.41	+1.01	+72
Feed grains	M.ton	55.06	94.26	+39.20	+71
Chickens, fresh or frozen	Lb.	.25	.42	+0.17	+68
Dried beans	do.	.10	.16	+0.06	+60
Grain sorghum	Bu.	1.42	2.22	+0.80	+56
Alfalfa meal, dehydrated	S.ton	50.04	75.31	+25.27	+50
Raisins	Lb.	.34	.50	+0.16	+47
Cottonseed oil	do.	.13	.19	+0.06	+46
Soybean oil	do.	.13	.19	+0.06	+46
Beef and veal, except offals	do.	.93	1.23	+0.30	+32
Pork, except offals	do.	.52	.66	+0.14	+27
Peaches, canned	do.	.15	.19	+0.04	+27
Offals, edible	do.	.37	.45	+0.08	+22
Fruit cocktail, canned	do.	.19	.23	+0.04	+21
Tallow, inedible	do.	.08	.17	+0.09	+13
Cotton, raw	R.bale	161.90	177.62	+15.72	+10
Tobacco, flue-cured stemmed	Lb.	1.36	1.47	+0.11	+8
Tobacco, unmanufactured	do.	1.08	1.15	+0.07	+6
Tobacco, flue-cured unstemmed	do.	1.03	1.09	+0.06	+6
Grapes, fresh	do.	.19	.20	+0.01	+5
Cattle hides	No.	16.93	17.77	+0.84	+5
Lemons and limes	Lb.	.12	.12	---	---
Oranges ^{3/}	do.	.10	.10	---	---

^{1/} Listed in order of percent change from previous year. ^{2/} Total export value reported divided by total quantity exported. ^{3/} Includes tangerines and clementines.

including products, advanced by nearly two-thirds to a record 17.5 million, accounting for about 55 percent of the total estimate of 32 million tons for all of fiscal 1974. Principal gains occurred in exports to the USSR, the People's Republic of China, Italy, India, Brazil, Argentina, Colombia, Poland, Chile, Indonesia, North Africa, South Korea, Japan, Republic of China, and the Middle East. The People's Republic of China became the top foreign market, taking 2.5 million tons and accounting for almost one-third of the total increase in wheat exports during July-November. The USSR was the second largest market, with 1.8 million tons--a gain of 5 percent over the year-earlier level. The average export unit value for wheat was \$130 per ton during July-November 1973, compared with \$65 a year earlier. U.S. wheat exports have been strengthened by continuing tight world supply situations and increased foreign consumption.

The volume of rice exports, at 552,000 tons, was over one-third below the level of a year earlier. But value, at \$216 million, was up nearly one-third. Most of the decline in rice shipments occurred under Government programs, primarily to South Vietnam, Indonesia, and Korea. Exports were also off sharply to Iran and the Philippines. South Korea took no U.S. rice exports during July-November 1973, compared with 262,000 tons a year earlier. Somewhat offsetting these substantial declines were gains to Canada, the Dominican Republic, Singapore, Hong Kong, Malaysia, Greece, Saudi Arabia, Senegal, the Malagasy Republic, and Turkey.

Feed grain exports during July-November 1973 were 5 million tons and \$1 billion larger than during the same period a year earlier. Volume--at nearly 18.5 million tons--was up 37 percent. But higher prices helped to push value up by 135 percent to a total of \$1.7 billion. Japan, the People's Republic of China, other Far East countries, the enlarged EC, Eastern Europe, the USSR, India, Mexico, and Egypt accounted for the bulk of the increase. The export unit value of feed grains averaged \$94 per ton in July-November 1973, compared with \$55 a year earlier. Demand for feed grains is exceptionally strong during the current fiscal year because of reduced feedings of high-priced wheat, a substitution of grains for high-priced protein, especially in the European Community, and reduced supplies of nongrain feeds in the Western Europe.

Oilseeds and products.--A substantial increase in soybean exports in November pushed total exports of oilseeds and products to \$1.6 billion for July-November 1973--56 percent ahead of the \$1 billion worth shipped a year earlier. Soybean exports during July-November totaled 154 million bushels, 28 million less than the year-earlier level. A late harvest and reduced stock levels crippled exports during the first 5 months of the current fiscal year. In addition, high prices and the tight shipping situation were influential. But exports are expected to pick up sharply in the coming months. Export unit values of soybeans averaged \$6.20 per bushel for July-November 1973--up substantially from the \$3.48 for these months last year. The decline in soybean exports occurred primarily in shipments to Spain, Japan, the USSR, and the enlarged EC. Although the volume was down, higher prices caused the value to increase 51 percent to \$953 million. Soybean meal exports at 1.5 million short tons, were more than 100,000 tons below the year-earlier level. However, as a result of higher prices, value doubled. Most of the decline occurred in exports to Venezuela, Canada, Yugoslavia, the enlarged EC and Hungary. But exports to Japan and to other East European countries gained during July-November. Exports to the enlarged EC, the largest market for U.S. protein meal, totaled 849,000 tons, about one-fifth below the level of a year earlier. Exports of soybean oil also declined to 249 million pounds from 462 million a year earlier. But with higher prices, value was down by less than a fifth. Cottonseed oil exports totaled nearly 154 million pounds--about one-fifth below the year-earlier level--but higher prices pushed value up by 16 percent to \$30 million.

Cotton.--U.S. cotton exports during the first 5 months of fiscal 1974 rose to 1.5 million bales from 793,000 bales a year earlier. The value increase was even larger because of higher prices--\$265 million, compared with \$128 million a year earlier. The increase in cotton exports occurred primarily in shipments to Canada, Japan, the People's Republic of China, other Far East countries, the enlarged EC, Spain, and Switzerland.

Tobacco.--U.S. tobacco exports rose 19 percent to 301 million pounds in July-November 1973 from 254 million pounds a year earlier. Value was up 26 percent because of both increased volume and higher prices. The gains were in shipments of flue-cured, Maryland, burley, and bulk smoking tobaccos. The enlarged EC, Switzerland, Malaysia, Egypt, the Dominican Republic, Brazil, Uruguay, Spain, the Philippines, and the People's Republic of China accounted for most of the increase.

Fruits and preparations.--U.S. exports of fruits and preparations rose by over one-fourth to \$263 million. The increase occurred for all types of fruits, but fresh deciduous fruits, canned fruits, dried fruits, and fruit juices made up the bulk of the increase. Exports of fresh citrus fruits gained slightly. While quantity was up for most items, approximately three-fourths of the value increase stemmed from higher prices. A better domestic supply situation and more competitive prices strengthened U.S. exports.

Nuts and preparations.--U.S. exports of nuts and preparations, particularly almonds, walnuts, pecans, and filberts, rose by nearly two-fifths during July-November. Big increases occurred in shipments of almonds to Japan, the Netherlands, West Germany, and Canada. Again, higher prices contributed to much of the value gain.

Vegetables and preparations.--U.S. exports of vegetables and preparations rose by nearly two-thirds to \$162 million. Most of the increase was in fresh vegetables and pulses. Exports of dried beans were about double the level of a year earlier. The United Kingdom, the Netherlands, West Germany, the Dominican Republic, Jamaica, Mexico, Australia, New Zealand, Israel, Kuwait, and Senegal took most of the increase. Exports of dried peas were up sharply in value, and canned vegetables were up 118 percent.

Animal and animal products.--U.S. exports of animal and animal products rose by two-fifths in July-November 1973, reflecting higher incomes in the major markets and a more competitive U.S. position stemming from realignment of currencies. The big value increase occurred in live cattle, poultry meats, meats, and inedible tallow. There were declines for dairy products and hides and skins. Especially noteworthy was the substantial rise in exports of cattle to Canada. U.S. exports of live cattle to Canada totaled about \$67 million during July-November--sharply above the \$8 million of a year earlier. Higher cattle prices in Canada attracted many U.S. slaughter cattle. Increased shipments of U.S. livestock to Canada continued despite the imposition of restrictions and higher duties by the Canadians.

Table 21.--U.S. exports to the EC: Value by commodity,
November and July-November 1972 and 1973

Commodity	November		July-November	
	1972	1973	1972	1973
-- 1,000 dollars --				
Variable-levy commodities: <u>1/</u>				
Feed grains	33,340	68,037	177,866	405,386
Corn	32,140	59,325	168,165	350,000
Grain sorghums	422	34	6,930	15,319
Barley	691	4,131	2,684	13,398
Oats	87	4,547	87	26,669
Rice	2,779	6,155	7,475	15,943
Rye grain	0	0	0	747
Wheat grain	9,085	13,901	49,852	102,157
Wheat flour	62	137	289	414
Beef and veal, excl. variety meats ..	148	185	582	758
Pork, excl. variety meats	25	8	150	220
Lard <u>2/</u>	28	34	229	68
Dairy products	5	6	33	95
Poultry and eggs	1,658	2,110	6,213	10,977
Live poultry	80	43	562	683
Broilers and fryers	97	39	108	387
Stewing chickens	0	15	0	21
Turkeys	1,386	1,770	4,805	8,583
Other fresh poultry	0	0	4	535
Eggs	95	243	734	768
Other	2,331	1,224	6,464	11,907
Total	49,461	91,797	249,153	548,672
Nonvariable-levy commodities:				
Canned poultry <u>3/</u>	111	5	412	47
Cotton, excl. linters	12,641	4,234	16,179	18,792
Fruits and preparations	8,244	10,963	35,843	46,244
Fresh fruits	1,413	2,138	9,788	9,781
Citrus	1,364	1,632	9,601	9,140
Oranges and tangerines	1	575	3,015	3,924
Lemons and limes	587	641	5,039	3,586
Grapefruits	776	410	1,537	1,601
Other	0	6	10	29
Apples	5	0	5	8
Grapes	24	84	32	119
Other	20	422	150	514
Dried fruits	2,593	5,299	7,205	13,775
Raisins	377	1,091	1,311	2,831
Prunes	2,045	4,029	5,113	10,472
Other	171	179	781	472
Fruit juices	506	742	3,596	5,471
Orange	292	391	2,450	3,432
Grapefruit	63	178	564	942
Other	151	173	582	1,097
Canned fruits <u>4/</u>	3,457	2,562	14,346	15,378
Peaches	532	769	3,975	4,963
Fruit cocktail	554	826	2,312	2,867
Pineapples	385	414	3,160	4,157
Other	1,986	553	4,899	3,391

Continued--

Table 21.--U.S. exports to the EC: Value by commodity,
November and July-November 1972 and 1973--Continued

Commodity	November		July-November	
	1972	1973	1972	1973
-- 1,000 dollars --				
Nonvariable-levy commodities--Con:				
Other fruits	275	222	908	1,839
Vegetables and preparations	5,550	3,135	12,267	15,820
Pulse	4,115	1,735	7,268	10,731
Dried beans	3,200	1,608	4,792	7,956
Dried peas	915	127	2,476	2,775
Fresh vegetables	127	247	159	337
Canned vegetables	347	193	695	957
Asparagus	0	0	25	52
Other	347	193	670	905
Hops	378	243	803	432
Other vegetables and preparations..	583	717	3,342	3,363
Hides and skins	5,485	2,929	21,491	16,056
Cattle hides	4,018	1,164	15,674	7,828
Calf and kip skins	118	46	930	566
Other	1,349	1,719	4,887	7,662
Oilseeds and products	143,413	241,684	390,954	601,023
Oil cake and meal	31,037	59,095	116,291	211,802
Soybean	29,965	56,071	105,396	196,867
Other	1,072	3,024	10,895	14,935
Oilseeds	110,178	180,734	266,111	375,070
Soybeans	90,362	165,735	223,487	346,195
Flaxseed	7,262	23	16,655	23
Other	12,554	14,976	25,969	28,852
Vegetable oils	2,198	1,855	8,552	14,151
Cottonseed	283	382	1,449	1,095
Soybean	3	1	16	1,523
Linseed	1,124	5	2,098	1,862
Other	788	1,467	4,989	9,671
Tallow	1,857	10,790	9,962	37,354
Tobacco, unmanufactured	10,310	16,523	63,704	89,705
Variety meats, fresh or frozen ^{3/} ..	5,553	5,508	25,686	33,670
Nuts and preparations	5,124	10,180	17,291	25,883
Corn byproducts, feed ^{5/}	5,549	10,826	23,200	43,915
Food for relief and charity	137	0	160	16
Other	8,650	14,846	32,150	61,515
Total nonvariable-levy items	212,624	331,623	649,299	990,040
Total EC	262,085	423,420	898,452	1,538,712

^{1/} Grains, poultry, and pork were subject to variable levies beginning on July 30, 1962; rice, on Sept. 1, 1964; and beef and dairy products, on Nov. 1, 1964. ^{2/} Lard for food is a variable-levy commodity, while lard for industrial use is bound in the General Agreement on Tariffs and Trade (GATT) at 3 percent ad valorem. U.S. lard is for food use. ^{3/} Although canned poultry and pork variety meats are subject to variable levies, these cannot exceed the amount of import duties bound in GATT. ^{4/} Variable levy on sugar-added content. ^{5/} Mainly corn gluten feed and meal, which are nonvariable-levy commodities; but may contain small quantities of other corn products, subject to variable levies (see "Export Highlights, March 1970").

Table 22.--U.S. exports to the Enlarged EC: Value by commodity,
November and July-November 1972 and 1973

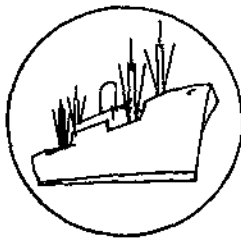
Commodity	November		July-November	
	1972	1973	1972	1973
-- 1,000 dollars --				
Variable-levy commodities: <u>1/</u>				
Feed grains	45,957	78,396	219,416	469,401
Corn	43,679	69,684	206,184	412,872
Grain sorghums	1,500	34	10,459	16,462
Barley	691	4,131	2,686	13,398
Oats	87	4,547	87	26,669
Rice	4,690	8,129	11,808	21,335
Rye grain	0	0	0	747
Wheat grain	10,421	13,904	65,212	109,431
Wheat flour	64	137	304	419
Beef and veal, excl. variety meats ..	167	227	745	1,120
Pork, excl. variety meats	27	60	155	309
Lard <u>2/</u>	3,141	2,379	6,270	5,089
Dairy products	6	11	94	123
Poultry and eggs	2,204	2,926	8,055	13,691
Live poultry	83	54	588	713
Broilers and fryers	108	192	124	663
Stewing chickens	0	15	4	21
Turkeys	1,821	2,293	6,088	10,111
Other fresh poultry	2	0	44	536
Eggs	190	372	1,207	1,647
Other	2,744	1,647	8,078	14,641
Total	69,421	107,816	320,137	636,306
Nonvariable-levy commodities:				
Canned poultry <u>3/</u>	159	6	465	55
Cotton, excl. linters	13,859	5,463	18,222	23,690
Fruits and preparations	10,111	15,612	44,400	60,469
Fresh fruits	1,801	2,762	11,119	11,730
Citrus	1,429	1,746	10,490	10,423
Oranges and tangerines	1	575	3,568	4,700
Lemons and limes	609	699	5,303	3,949
Grapefruits	819	466	1,609	1,712
Other	0	6	10	62
Apples	74	81	150	111
Grapes	196	425	204	502
Other	102	510	275	694
Dried fruits	3,346	8,239	12,265	20,274
Raisins	648	2,475	3,604	5,341
Prunes	2,377	5,479	6,937	13,680
Other	321	285	1,724	1,253
Fruit juices	875	986	4,436	7,020
Orange	542	499	3,003	4,463
Grapefruit	165	219	727	1,224
Other	168	268	706	1,333
Canned fruits <u>4/</u>	3,672	3,253	15,296	18,651
Peaches	533	978	4,059	5,814
Fruit cocktail	626	1,157	2,624	4,115
Pineapples	442	539	3,373	4,853
Other	2,071	579	5,240	3,869

Continued--

Table 22.--U.S. exports to the Enlarged EC: Value by commodity,
November and July-November 1972 and 1973--Continued

Commodity	November		July-November	
	1972	1973	1972	1973
-- 1,000 dollars --				
Nonvariable-levy commodities--Con:				
Other fruits	417	372	1,284	2,794
Vegetables and preparations	7,343	10,618	18,686	36,477
Pulse	4,718	7,299	9,798	25,563
Dried beans	3,539	6,050	6,404	20,304
Dried peas	1,179	1,249	3,394	5,259
Fresh vegetables	137	284	173	460
Canned vegetables	450	538	1,138	2,471
Asparagus	16	70	283	489
Other	434	468	855	1,982
Hops	841	519	1,841	708
Other vegetables and preparations ..	1,197	1,978	5,736	7,275
Hides and skins	7,254	4,416	26,044	22,607
Cattle hides	5,047	1,421	17,077	8,904
Calf and kip skins	140	78	1,051	662
Other	2,067	2,917	7,916	13,041
Oilseeds and products	167,083	257,114	446,471	656,159
Oil cake and meal	34,305	60,481	122,376	226,773
Soybean	33,184	56,080	110,808	207,658
Other	1,121	4,401	11,568	19,115
Oilseeds	130,138	194,554	310,729	412,190
Soybeans	110,155	178,687	267,134	378,837
Flaxseed	7,262	23	16,655	23
Other	12,721	15,834	26,940	33,330
Vegetable oils	2,640	2,079	13,366	17,196
Cottonseed	452	390	3,533	1,768
Soybean	29	4	77	1,533
Linseed	1,328	5	3,126	1,873
Other	831	1,680	6,630	12,022
Tallow	2,338	11,345	11,489	38,884
Tobacco, unmanufactured	31,993	60,086	150,361	213,856
Variety meats, fresh or frozen <u>3/</u> ..	6,860	6,744	33,384	40,747
Nuts and preparations	6,304	13,508	23,555	35,188
Corn byproducts, feed <u>5/</u>	5,550	10,827	23,202	43,927
Food for relief and charity	140	1	165	17
Other	13,008	22,957	49,213	93,006
Total nonvariable-levy items	272,002	418,697	845,657	1,265,082
Total EC	341,423	526,513	1,165,794	1,901,388

1/ Grains, poultry, and pork were subject to variable levies beginning on July 30, 1962; rice, on Sept. 1, 1964; and beef and dairy products, on Nov. 1, 1964. 2/ Lard for food is a variable-levy commodity, while lard for industrial use is bound in the General Agreement on Tariffs and Trade (GATT) at 3 percent ad valorem. U.S. lard is for food use. 3/ Although canned poultry and pork variety meats are subject to variable levies, these cannot exceed the amount of import duties bound in GATT. 4/ Variable levy on sugar-added content. 5/ Mainly corn gluten feed and meal, which are nonvariable-levy commodities; but may contain small quantities of other corn products, subject to variable levies (see "Export Highlights, March 1970").



Import Highlights

U.S. AGRICULTURAL IMPORTS AT NEW PEAK IN NOVEMBER

U.S. agricultural imports broke previous monthly records during November, totaling nearly \$851 million, compared with the previous high of \$786 million in May 1973. October 1973 imports totaled \$710 million and November 1972 imports, \$548 million. Sharp advances in imports of cattle, meat, dairy products, sugar, fruits and vegetables, wines, and crude rubber accounted for a large part of the increase over October 1973 and November 1972 levels. In addition to the usual increase in imports of seasonal commodities--fruits, nuts, vegetables, and wines--there were larger imports of butter, cheese, eggs, swine, canned hams, sugar, and vegetable oils.

For July-November 1973, U.S. agricultural imports were valued at \$3.55 billion, or 31 percent above similar months a year ago. The increase reflected substantially higher import prices and some volume gains, mainly in dairy products. Emergency quota allowances raised import levels of nonfat dry milk and butter. Volume also expanded for pork, vegetable oils, and tobacco.

Feeder cattle entries (200-700 lb. each) totaled 172,000 head in July-November 1973, compared with 298,000 head for the same months of 1972. Value fell slightly to \$39.6 million from \$41.4 million. Because of Mexico's export controls on feeder cattle, our imports from that country totaled only 117,000 head (\$24.3 million) against 241,000 (\$31.8 million) a year earlier. Imports of feeder cattle from Canada fell to 55,000 from 57,000, while higher prices pushed value to \$15 million from \$9.6 million.

Imports of heavy-weight cattle (excluding dairy cattle) rose from 14,000 to 32,000 head, and value jumped from \$7 million to \$17.2 million. Canada shipped nearly 23,000 head (\$13.1 million) in July-November 1973, compared with 13,000 (\$6.4 million) in July-November 1972. Imports from Mexico rose sharply to about 9,000 head (\$3 million).

Compared with the year-earlier level, boneless beef imports declined 4 percent to 620.5 million pounds in July-November 1973. However, higher prices drove value up 35 percent; import unit values averaged 83 cents per pound against 59 cents during July-November 1972. Demand growth in Western Europe and Japan made those markets more attractive to exporters, while currency realignments raised import prices in U.S. dollar terms. Mexico's beef export restrictions also reduced the volume entering from that country.

Canned ham import volume advanced moderately, while higher prices in the principal exporting countries--Denmark, the Netherlands, and Poland--raised values sharply. Frozen pork imports from Canada showed strong growth.

Because of increased import quotas, dairy product inflows were up substantially in the July-November period. Nonfat dry milk volume totaled 182.7 million pounds (\$61 million), compared with negligible amounts a year earlier. France, Canada, Belgium, Australia, New Zealand, Ireland, and the Netherlands were the principal sources. Butter imports in November amounted to 40 million pounds (\$23 million), mostly from New Zealand

and Ireland. Cheese imports for July-November totaled 112 million pounds (\$72 million). Volume was 36 percent above the year-earlier level and value advanced 45 percent.

Sugar imports accelerated sharply in November, apparently responding to additional quota allocations. In separate actions on September 28, October 5, and November 2, 1973, it was announced that 220,431 short tons (raw value) of sugar would be allowed to enter from any foreign supplier except Cuba and Rhodesia before November 16 on a first-come, first-served basis. Sugar imports in November totaled more than 556,000 short tons (tel quel or Census terms), compared with 318,000 tons in November 1972. Shipments from Peru, the Dominican Republic, Australia, Brazil, Fiji Islands, Argentina, Mexico, and Swaziland accounted for most of the increase.

Other import gains during July-November 1973 occurred in unmanufactured tobacco, coconut oil, live swine, apple juice, frozen strawberries, olives, onions, tomatoes, and eggs.

Agricultural imports in July-November 1973, compared with year-earlier levels, reflected a 38-percent increase in competitive or "supplementary" imports. Volume changed little, but price increases for most commodities raised values to \$2.4 billion. Non-competitive farm product entries declined in volume, while higher prices pushed value up 20 percent to over \$1.1 billion. Unit values for coffee, cocoa, rubber, spices, essential oils, and carpet wools were substantially above year-earlier levels.

Table 23.--U.S. agricultural imports: Value by commodity,
July-November 1972 and 1973

Commodity or commodity group	July-November		Change
	1972	1973	
<u>Supplementary</u>	-- Million dollars --		Percent
Animals and animal products:			
Cattle and calves	60	69	+15
Dairy products and eggs	72	186	+158
Hides and skins, including furskins	40	50	+25
Meats and meat products, excluding poultry:			
Beef and veal	449	604	+35
Pork	118	202	+71
Other meats and products	24	23	-4
Sausage casings	11	12	+9
Wool, apparel	12	10	-17
Other animals and animal products	45	70	+56
Total animals and products	831	1,226	+48
Cotton, raw, excluding linters	3	3	---
Feeds and fodders, excluding oil cake	17	22	+29
Fruits and preparations	62	72	+16
Grains and preparations	43	51	+19
Nuts and preparations, edible	51	65	+27
Oilseeds, oilnuts, and products:			
Coconut oil	20	43	+115
Copra	9	19	+111
Olive oil, edible	10	15	+50
Other oilseeds and products	37	64	+73
Seeds and nursery stock, excluding oilseeds	25	33	+32
Sugar and molasses:			
Sugar, cane	336	403	+20
Molasses, inedible	20	39	+95
Tobacco, unmanufactured	63	69	+10
Vegetables and preparations	89	106	+19
Wines and malt beverages:			
Wines	93	128	+38
Malt beverages	18	23	+28
Other supplementary vegetable products	37	48	+30
Total supplementary products	1,764	2,429	+38
<u>Complementary</u>			
Bananas, fresh	79	80	+1
Cocoa and chocolate:			
Cocoa beans	36	48	+33
Cocoa butter	9	15	+67
Cocoa and chocolate prepared	26	31	+19
Coffee:			
Coffee, green or crude	554	595	+7
Coffee, soluble	35	32	-9
Drugs, crude	12	11	-8
Essential oils	16	24	+50
Fibers, unmanufactured	8	9	+13
Rubber, crude:			
Rubber, crude, dry form	65	166	+155
Rubber, latex	11	13	+18
Silk, raw	3	1	-67
Spices	21	28	+33
Tea, crude	25	29	+16
Wool, carpet	19	18	-5
Other complementary products	20	25	+25
Total complementary products	939	1,125	+20
Total agricultural imports	2,704	3,554	+31

Table 24.--U.S. agricultural imports: Value by months, July 1963 to November 1973

Month	1963/64	1964/65	1965/66	1966/67	1967/68	1968/69	1969/70	1970/71	1971/72	1972/73	1973/74 1/
-- Million dollars --											
July	335.2	316.7	260.3	342.6	346.8	438.6	434.0	461.7	489.0	471.6	634.6
August	346.7	315.2	318.7	352.6	369.4	442.1	407.7	463.8	555.0	563.7	719.9
September	343.1	338.4	354.0	415.3	347.7	460.3	398.6	469.0	650.5	547.1	638.5
July-September ...	1,025.0	970.3	933.0	1,110.5	1,063.9	1,341.0	1,240.3	1,394.5	1,694.5	1,582.4	1,993.0
October	374.3	347.7	411.0	388.1	376.3	396.0	469.1	480.3	302.5	573.6	710.3
November	317.5	381.6	398.8	358.6	379.7	419.4	411.2	442.9	298.2	547.7	850.6
December	367.1	370.6	428.1	351.6	388.3	419.8	481.8	522.3	540.2	550.2	
October-December ..	1,058.9	1,099.9	1,237.9	1,098.3	1,144.3	1,235.2	1,362.1	1,445.5	1,140.9	1,671.5	
July-December	2,083.9	2,070.2	2,170.9	2,208.8	2,208.2	2,576.2	2,602.4	2,840.0	2,835.4	3,253.9	
January	331.7	175.1	352.7	413.0	414.7	208.6	491.0	506.6	575.6	648.9	
February	294.5	269.3	371.2	353.7	402.4	315.6	457.5	419.7	591.6	615.3	
March	381.7	420.3	430.7	412.9	369.7	474.8	523.9	499.6	506.6	658.7	
January-March	1,007.9	864.7	1,154.6	1,179.6	1,186.8	999.0	1,472.4	1,425.9	1,673.8	1,922.9	
April	361.2	368.5	383.0	362.8	439.5	487.9	514.5	554.4	489.5	696.2	
May	328.6	337.9	358.1	337.0	434.4	438.1	443.5	477.9	529.0	786.3	
June	314.1	344.6	387.1	364.8	386.7	430.0	499.4	529.8	520.6	664.0	
April-June	1,003.9	1,051.0	1,128.2	1,064.6	1,260.6	1,356.0	1,457.4	1,562.1	1,539.1	2,146.5	
January-June	2,011.8	1,915.7	2,282.8	2,244.2	2,447.4	2,355.0	2,929.8	2,988.0	3,212.9	4,069.4	
July-June 2/	4,095.7	3,985.9	4,453.7	4,453.0	4,655.6	4,931.2	5,532.2	5,828.0	6,048.3	7,323.3	
Monthly average ..	341.3	332.2	371.1	371.1	388.0	410.9	461.0	485.7	504.0	610.3	

1/ Preliminary.

2/ Totals may not add due to rounding.

Table 25.--Average unit values for principal imported agricultural products:
July-November 1972 and 1973

Commodity	Unit	July-November	
		1972	1973
-- Dollars --			
Cattle, 200-700 lbs.	No.	138.93	229.96
Cattle, 700 lbs. and over	do.	425.29	575.14
Beef, boneless, fresh or frozen	Lb.	.59	.83
Pork, hams and shoulders, canned	do.	.84	1.36
Pork, frozen	do.	.51	.72
Cheese, Emmenthaler	do.	.63	.67
Cheese, Edam and Gouda	do.	.64	.70
Milk, dry, not over 3% butterfat	do.	.28	.33
Casein, excluding mixtures	do.	.49	.46
Sheep and lamb skins	do.	2.36	3.67
Mink furskins	No.	11.07	16.18
Wool, apparel	Glb.	.68	1.38
Cotton, raw	Rble.	140.24	240.78
Apples, fresh	Lb.	.07	.11
Oranges, fresh	do.	.06	.07
Oranges, canned, mandarin	do.	.23	.23
Canteloupe, fresh	do.	.03	.06
Pineapples, canned	do.	.12	.13
Strawberries, frozen	do.	.16	.22
Brazil nuts, shelled	do.	.46	.61
Pistacnio nuts, not shelled	do.	.74	.85
Cashew nuts, shelled	do.	.63	.78
Barley, unmilled	Bu.	1.45	3.10
Biscuits, cakes and wafers	Lb.	.44	.48
Copra	do.	.05	.15
Coconut oil	do.	.08	.17
Palm oil	do.	.08	.14
Sugar, cane and beet	Ston.	159.60	183.69
Molasses, inedible	Gal.	.14	.27
Cucumbers, fresh	Lb.	.04	.08
Onions, fresh or dry	do.	.13	.13
Peppers, fresh	do.	.17	.16
Squash, fresh	do.	.09	.14
Tomatoes, fresh	do.	.13	.14
Tomatoes, canned	do.	.11	.15
Tomato paste and sauce	do.	.15	.18
Tobacco leaf, oriental	do.	.61	.61
Beer and ale	Gal.	1.28	1.44
Wine, still grape, less than 14% alcohol	do.	4.27	5.30
Bananas, fresh	Lb.	.05	.05
Coffee, green	do.	.45	.57
Coffee, roasted or ground	do.	.60	.62
Coffee, soluble	do.	1.37	1.56
Cocoa beans	do.	.27	.48
Cocoa butter	do.	.58	1.23
Lime oil	do.	6.31	6.57
Sisal and henequin	Lton.	120.29	180.64
Rubber, natural, dry	Lb.	.14	.28
Rubber, natural, latex	do.	.16	.24
Pepper, unground, black	do.	.38	.51
Silk, raw	do.	8.32	13.76
Vanilla beans	do.	2.99	5.18
Tea, crude	do.	.41	.40
Wool carpet	Glb.	.55	1.06

TABLE 26.--U.S. AGRICULTURAL IMPORTS: QUANTITY AND VALUE BY COMMODITY

COMMODITY	UNIT	JULY-NOVEMBER				NOVEMBER			
		QUANTITY		VALUE		QUANTITY		VALUE	
		1972 THOU.	1973 1/ THOU.	1972 1,000 DOL.	1973 1/ 1,000 DOL.	1972 THOU.	1973 1/ THOU.	1972 1,000 DOL.	1973 1/ 1,000 DOL.
ALL COMMODITIES	---	---	---	23,578,800	29,866,600	---	---	5,157,500	6,781,600
NONAGRICULTURAL COMMODITIES	---	---	---	20,875,028	26,312,685	---	---	4,609,761	5,931,050
AGRICULTURAL COMMODITIES	---	---	---	2,703,772	3,553,915	---	---	547,739	850,550
SUPPLEMENTARY	---	---	---	1,764,486	2,429,203	---	---	362,676	606,105
ANIMALS AND ANIMAL PRODUCTS	---	---	---	830,836	1,225,536	---	---	182,313	302,360
ANIMALS, LIVE	---	---	---	68,681	85,138	---	---	34,951	31,509
BABY CHICKS	NO	1,736	1,527	682	740	157	248	49	95
CATTLE, DUTIABLE	NO	364	246	56,343	64,633	208	112	31,441	26,250
CATTLE FOR BREEDING, FREE	NO	6	5	3,590	4,017	2	1	1,035	1,143
HORSES	NO	1	1	5,209	6,949	0	0	1,772	2,282
OTHR	---	---	---	2,857	8,800	---	---	655	1,738
DAIRY PRODUCTS	---	---	---	70,604	183,444	---	---	16,878	54,055
CHEESE	LB	82,665	112,098	49,674	72,297	20,328	29,209	12,687	19,954
BLUE MOLD, INCLUDING ROQUEFORT	LB	2,992	4,328	3,039	3,838	667	1,065	632	1,073
CHEDDAR	LB	6,196	9,616	3,109	5,330	1,540	2,392	789	1,290
COLBY	LB	634	1,018	253	497	83	51	31	22
EDAM AND GOUDA	LB	4,655	5,360	2,989	3,755	1,180	1,110	746	791
ROMANO,REGGIANO,PARMESANO	LB	4,764	3,207	3,252	2,995	556	648	511	685
PECORINO	LB	8,580	8,103	6,564	6,493	2,877	2,223	2,173	2,103
SWISS	LB	21,371	32,234	13,691	22,113	4,998	8,614	3,301	6,004
OTHER	LB	33,472	48,232	16,776	27,277	8,427	13,106	4,424	7,986
BUTTER	LB	329	43,092	212	24,925	51	41,185	35	23,875
CASEIN AND MIXTURES	LB	36,659	48,253	18,244	22,335	8,309	10,529	3,879	5,227
NONFAT DRY MILK	LB	69	182,695	20	60,977	47	12,469	14	3,987
OTHR	---	---	---	2,454	2,910	---	---	364	1,012
HIDES AND SKINS, INCLUDING FURSKINS	---	---	---	39,520	49,797	---	---	6,740	8,529
CALF AND KIP SKINS	LB	1,560	2,474	959	1,664	575	292	404	224
CATTLE HIDES	LB	4,573	18,073	1,728	6,154	1,219	3,998	519	1,238
GOAT AND KID SKINS	LB	2,158	546	2,314	779	320	98	350	120
SHEEP AND LAMB SKINS	LB	16,266	11,828	17,788	17,981	1,719	1,666	2,188	3,058
FURSKINS	---	---	---	13,719	20,006	---	---	2,589	3,314
OTHER	---	---	---	3,012	3,212	---	---	690	575
MEATS AND MEAT PREPARATIONS	---	---	---	591,497	829,191	173,501	183,585	111,489	184,167
BEEF AND VEAL	LB	751,126	718,377	449,005	603,940	131,621	141,921	79,351	131,561
CANNED	LB	41,901	44,912	26,176	38,095	8,824	8,615	5,524	8,257
FRESH OR FROZEN	LB	680,020	647,385	400,634	536,136	119,097	129,333	71,311	118,342
PREPARED OR PRESERVED	LB	29,204	26,079	22,190	29,709	3,701	3,972	2,516	4,962
MUTTON, GOAT, AND LAMB	LB	39,588	12,779	13,036	8,119	2,821	2,573	970	1,917
PORK	LB	155,012	166,000	118,369	202,472	34,915	35,586	28,284	47,210
FRESH OR FROZEN	LB	25,659	28,539	12,479	20,783	4,011	4,088	2,226	3,093
HAMS AND SHOULDERS,CND,CONKED,ETC	LB	117,104	126,017	97,992	170,598	27,735	28,659	24,138	41,254
OTHER	LB	12,248	11,444	7,898	11,091	3,169	2,839	1,920	2,863
OTHER	LB	17,646	15,179	11,088	14,660	4,143	3,505	2,884	3,479

CONTINUED--

TABLE 26.--U.S. AGRICULTURAL IMPORTS: QUANTITY AND VALUE BY COMMODITY--CONTINUED

COMMODITY	UNIT	JULY-NOVEMBER				NOVEMBER			
		QUANTITY		VALUE		QUANTITY		VALUE	
		1972 THOU.	1973 1/ THOU.	1972 1,000 DOL.	1973 1/ 1,000 DOL.	1972 THOU.	1973 1/ THOU.	1972 1,000 DOL.	1973 1/ 1,000 DOL.
POULTRY PRODUCTS	---	---	---	1,510	3,596	---	---	279	503
EGGS, DRIED AND OTHERWISE PRESERVED	LR	24	17	15	12	3	1	1	1
EGGS IN THE SHELL	DOZ	1,103	4,711	1,065	2,867	114	566	87	307
POULTRY MEAT	LR	313	495	430	717	153	89	191	195
OTHER ANIMAL PRODUCTS	---	---	---	59,023	74,371	---	---	11,976	23,597
BEESWAX	LB	806	1,295	520	1,086	76	326	45	284
BONES, HOOFES, AND HORNS	---	---	---	2,743	1,661	---	---	742	260
BRISTLES, CRUDE OR PREPARED	LR	1,275	1,492	5,267	6,243	271	255	847	1,179
FATS, OILS, AND GREASES	LR	7,119	27,277	906	11,558	2,015	18,000	213	9,370
FEATHERS AND DOWN, CRUDE, SORTED	LR	3,303	3,562	6,359	6,285	602	733	1,184	1,342
GELATIN	---	---	---	6,063	8,429	---	---	1,276	1,863
HAIR, UNMANUFACTURED	LB	3,021	2,546	3,145	2,873	374	457	491	491
SAUSAGE CASINGS	---	---	---	11,152	12,243	---	---	2,112	2,422
OSSEIN	LR	5,231	5,141	2,267	2,483	1,111	1,703	460	815
RENNET	LR	419	759	1,393	1,170	94	109	339	316
WOOL, UNMANUFACTURED, FX FREE IN BOND	GLB	16,985	7,115	11,513	9,823	4,201	1,761	3,029	2,694
OTHER	---	---	---	7,694	10,516	---	---	1,238	2,559
VEGETABLE PRODUCTS	---	---	---	933,650	1,203,667	---	---	180,363	303,745
COTTON, UNMANUFACTURED	RBA	38	35	3,243	4,363	5	9	284	1,015
COTTON, RAW	RBA	19	13	2,661	3,201	2	3	173	670
LINTERS	RBA	19	22	583	1,162	3	5	111	345
FRUITS AND PREPARATIONS	---	---	---	61,634	71,577	---	---	15,059	16,779
APPLES, FRESH	LB	40,662	26,844	3,016	2,842	18,598	9,018	1,132	1,224
APPLE AND PEAR JUICES	GAL	3,307	9,340	1,834	6,930	836	2,910	541	2,425
BLUEBERRIES	LR	8,530	9,509	2,610	3,397	1,926	685	639	292
STRAWBERRIES	LR	19,676	27,165	3,350	6,107	4,272	3,912	822	904
OTHER BERRIES	LB	10,373	14,613	1,974	3,307	1,901	2,904	371	514
CHEERRIES	LB	6,248	3,654	1,998	1,660	885	91	274	53
DATES	LB	1,200	724	146	105	457	4	48	3
FIGS	LB	5,572	2,757	958	926	2,147	1,846	444	688
GRAPES	LB	11,456	10,479	1,519	2,302	4,660	1,557	686	176
MELONS	LB	1,868	13,406	113	404	791	1,735	76	70
ORANGES, MANDARIN, CANNED	LB	40,025	39,373	9,302	9,153	7,077	8,276	1,705	1,988
ORANGES, FRESH	LR	50,608	45,215	3,049	3,122	15,030	25,698	1,153	1,821
ORANGE JUICE, CONCENTRATED	GAL	11,870	5,284	4,591	2,046	3,145	956	1,224	371
PEARS, FRESH	LB	5,336	610	691	128	798	231	103	71
PEARS, PREP OR PRES	LB	5,178	244	583	58	315	6	37	2
PINEAPPLES, CND, PREP OR PRES	LR	47,503	89,903	11,837	12,295	22,918	18,535	2,879	2,566
PINEAPPLE JUICE	GAL	4,235	3,758	1,045	870	120	870	46	200
JELLIES AND JAMS	LR	4,399	3,825	1,420	1,591	682	958	222	382
OTHER	---	---	---	11,597	14,334	---	---	2,655	3,029

CONTINUED--

TABLE 26.--U.S. AGRICULTURAL IMPORTS: QUANTITY AND VALUE BY COMMODITY--CONTINUED

COMMODITY	UNIT	JULY-NOVEMBER				NOVEMBER			
		QUANTITY		VALUE		QUANTITY		VALUE	
		1972 THOU.	1973 1/ THOU.	1972 1,000 DOL.	1973 1/ 1,000 DOL.	1972 THOU.	1973 1/ THOU.	1972 1,000 DOL.	1973 1/ 1,000 DOL.
NUTS AND PREPARATIONS	---	---	---	50,823	64,916	---	---	10,603	13,763
ALMONDS	LB	187	26	127	42	58	2	38	2
BRAZIL NUTS	LB	29,032	24,028	7,691	8,633	2,639	2,685	982	1,259
CASHEW NUTS	LB	47,505	39,973	30,223	31,454	7,879	6,180	4,966	5,404
CHESTNUTS	LB	7,646	9,220	2,863	3,386	5,786	7,298	2,106	2,708
COCONUT MEAT, FR., PREP. OR PRES.	LB	44,392	48,105	4,569	9,478	10,119	14,081	1,011	3,063
FILBERTS	LB	2,679	4,913	1,553	2,917	852	1,388	491	838
PISTACHE NUTS	LB	3,257	8,866	2,510	7,674	974	225	682	202
WALNUTS	LB	296	195	185	166	43	0	28	0
OTHER	---	---	---	1,101	1,165	---	---	300	288
GRAINS AND PREPARATIONS	---	---	---	42,695	51,003	---	---	10,579	13,553
BARLEY	BU	6,779	3,642	9,818	11,283	1,920	1,524	3,013	4,473
BARLEY MALT	CWT	91	83	472	535	17	8	89	73
CORN	HU	348	564	597	1,497	0	35	0	65
OATS	BU	1,333	128	1,051	218	202	35	161	46
RICE	LB	7,497	9,436	553	868	7,176	2,875	491	248
RYE	BU	154	0	166	0	0	0	0	0
WHEAT	BU	0	1	1	98	0	0	1	0
WHEAT FLOUR	CWT	18	24	88	272	0	0	0	0
WHEAT GLUTEN	LB	13,002	10,849	3,265	3,411	2,706	2,210	690	756
BISCUITS, CAKES, WAFERS, ETC.	LB	1,349	40,880	18,097	19,634	8,851	9,093	4,031	4,663
BREAD CRUMBS	LB	9,640	13,190	1,405	2,536	2,280	3,490	347	715
BREAD, YEAST-LEAVENED	LB	2,335	2,035	530	609	443	565	118	176
MACARONI, SPAGHETTI, ETC.	LB	17,949	18,842	3,426	4,989	5,002	4,395	960	1,303
OTHER	---	---	---	3,225	5,052	---	---	678	1,034
OILBEARING MATERIALS AND PRODUCTS	---	---	---	76,262	140,815	---	---	10,026	43,153
OIL CAKE AND MEAL	STN	7	3	344	244	2	2	73	134
OILSEEDS AND OILNUTS	---	---	---	15,014	26,320	---	---	1,224	11,953
COPRA	LB	172,574	133,480	9,067	19,430	0	61,802	0	10,104
SESAME SEED	LB	15,977	15,193	2,964	3,567	2,918	2,711	557	855
OTHER	---	---	---	2,984	3,323	---	---	667	993
VEGETABLE OILS AND WAXES	---	---	---	60,903	114,251	---	---	8,729	31,067
CARNAUBA	LB	3,578	3,508	1,411	1,468	857	961	362	419
CASTOR OIL	LB	38,632	48,633	7,571	20,267	6,344	7,680	1,601	2,917
COCONUT OIL	LB	236,102	247,285	19,882	43,211	37,256	64,777	3,033	14,866
OLIVE OIL, EDIBLE	LB	24,170	25,432	9,883	14,738	3,462	3,757	1,378	2,202
PALM OIL	LB	182,645	150,699	14,865	20,481	12,248	39,217	1,016	6,242
PALM KERNEL OIL	LB	33,219	44,411	3,525	7,502	5,808	9,494	614	2,176
TUNG OIL	LB	6,230	6,661	555	1,162	1,102	840	73	166
OTHER	LB	14,878	17,969	3,212	5,423	2,330	6,719	653	2,081

CONTINUED--

TABLE 26.--U.S. AGRICULTURAL IMPORTS: QUANTITY AND VALUE BY COMMODITY--CONTINUED

COMMODITY	UNIT	JULY-NOVEMBER				NOVEMBER			
		QUANTITY		VALUE		QUANTITY		VALUE	
		1972	1973 1/	1972	1973 1/	1972	1973 1/	1972	1973 1/
	THOU.	THOU.	1,000 DOL.	1,000 DOL.	THOU.	THOU.	1,000 DOL.	1,000 DOL.	
SUGAR AND RELATED PRODUCTS	---	---	---	376,016	465,347	---	---	60,878	121,963
SUGAR	STN	2,103	2,193	335,643	402,897	318	566	52,419	107,579
MOLASSES, INEDIBLE	GAL	149,069	143,896	20,363	38,892	31,823	27,683	3,829	7,441
MAPLE SUGAR AND SIRUP	LB	4,264	4,843	2,789	2,716	748	939	494	600
CONFECTIONERY PRODUCTS	LH	36,005	39,774	13,300	18,326	8,392	10,306	3,601	5,616
HONEY	LH	13,156	3,820	3,207	1,441	1,914	987	406	429
OTHER	---	---	---	714	1,074	---	---	89	97
VEGETABLES AND PREPARATIONS	---	---	---	89,355	105,774	---	---	22,918	28,223
FRESH OR FROZEN:									
BEANS	LB	287	237	46	36	26	21	6	3
CARROTS	LB	29,310	26,995	1,444	1,213	14,331	11,011	637	457
CUCUMBERS	LB	3,737	2,678	210	223	1,270	1,180	103	106
DASHTEENS	LH	9,064	10,777	1,132	1,306	2,061	2,908	262	380
EGGPLANT	LB	1,819	1,411	213	166	1,796	1,220	209	146
GARLIC	LB	5,952	7,479	1,591	2,090	797	593	265	219
ONIONS	LB	8,188	13,004	1,056	1,678	2,752	5,060	296	464
PEAS	LB	695	1,462	231	464	148	131	49	50
PEPPERS	LB	2,229	4,337	368	684	599	1,051	126	206
POTATOES, WHITE OR IRISH	CWT	106	147	306	613	58	93	158	426
SQUASH	LB	592	484	50	67	79	293	10	43
TOMATOES	LB	28,915	40,528	3,822	5,766	16,589	17,624	2,356	2,275
TURNIPS OR RUTABAGAS	CWT	373	365	2,117	2,198	153	140	861	842
OTHER	---	---	---	3,514	4,075	---	---	853	766
PREPARED OR PRESERVED:									
CASSAVA, FLOUR, STARCH, AND TAPIOCA	LB	44,629	45,694	1,924	2,273	14,605	12,375	605	636
HOPS	LB	943	784	846	1,110	713	781	672	1,108
MUSHROOMS, INCLUDING DRIED	LB	20,910	21,844	15,756	16,113	2,521	4,573	1,807	3,327
OLIVES, IN BRINE	GAL	6,687	7,457	19,762	25,162	1,568	1,839	4,840	6,662
ONIONS	LB	2,541	2,501	765	934	758	1,080	227	390
PEAS, EX DRIED	LB	3,263	3,016	773	618	728	490	197	107
PICKLED VEGETABLES	LB	27,179	24,380	3,359	3,124	5,830	4,790	909	817
TOMATOES	LB	42,693	23,804	4,560	3,506	13,494	9,847	1,408	1,771
TOMATO PASTE AND SAUCE	LB	36,953	34,221	5,584	6,245	12,582	5,715	1,946	1,196
OTHER	---	---	---	19,925	26,108	---	---	4,115	5,827
OTHER VEGETABLE PRODUCTS	---	---	---	233,622	299,872	---	---	50,918	65,296
BROOMCORN	STN	7	6	3,942	4,121	1	1	694	800
CUT FLOWERS	---	---	---	1,690	6,071	---	---	584	1,488
ESSENTIAL OR DISTILLED OILS	LH	889	641	2,385	2,329	348	99	582	375
FEEDS AND FOODS, EX OIL CAKE/MEAL	---	---	---	16,575	21,809	---	---	3,698	4,844
FLAVORING EXTRACTS	---	---	---	2,215	2,988	---	---	414	460
JUTE AND JUTE BUTTS, UNMANUFACTURED	LTN	3	12	984	1,742	0	1	36	94
MALT LIQUORS	GAL	13,742	15,972	17,534	23,066	2,158	3,183	2,739	4,846
NURSERY AND GREENHOUSE STOCK	---	---	---	16,167	17,589	---	---	1,069	1,691
SEEDS, EXCEPT OILSEEDS	LH	19,837	13,436	7,027	8,945	4,822	2,823	1,653	2,073
SPICES	LB	5,831	8,248	2,078	3,270	2,258	3,911	751	1,692
TOBACCO, UNMANUFACTURED	LB	103,801	114,507	62,618	69,197	18,210	23,866	11,177	14,652
WINES	GAL	20,601	23,316	93,322	128,208	5,246	5,241	25,061	30,165
OTHER	---	---	---	7,085	10,531	---	---	1,638	2,217

CONTINUED--

TABLE 26.--U.S. AGRICULTURAL IMPORTS: QUANTITY AND VALUE BY COMMODITY--CONTINUED

COMMODITY	UNIT	JULY-NOVEMBER				NOVEMBER			
		QUANTITY		VALUE		QUANTITY		VALUE	
		1972 THOU.	1973 1/ THOU.	1972 1,000 DOL.	1973 1/ 1,000 DOL.	1972 THOU.	1973 1/ THOU.	1972 1,000 DOL.	1973 1/ 1,000 DOL.
COMPLEMENTARY	---	---	---	939,286	1,124,712	---	---	185,063	244,445
BANANAS	LB	1,734,440	1,728,664	78,590	80,307	352,478	398,854	15,789	19,348
PLANTAINS	LB	43,973	50,555	2,007	1,943	8,062	11,797	321	434
COFFEE, GREEN	LB	1,220,868	1,051,819	553,567	594,595	217,300	214,863	103,902	122,878
COFFEE EXTRACTS, ESSENCES, CONCENTRATES	LB	25,627	20,698	35,157	32,278	4,038	5,900	7,485	9,559
COCOA BEANS	LB	136,049	100,625	36,324	48,114	22,391	24,806	6,807	14,129
COCOA BUTTER	LB	16,020	12,051	9,258	14,837	3,390	1,963	2,190	2,328
COCOA AND CHOCOLATE PREPARATIONS	LB	94,248	101,677	25,817	31,278	24,508	26,510	7,090	8,477
DRUGS, HERBS, ROOTS, ETC	LB	33,746	24,452	12,252	11,275	10,257	3,720	2,663	2,016
ESSENTIAL OR DISTILLED OILS	LB	5,551	5,550	16,396	24,338	905	1,171	3,106	5,618
FIBERS, UNMANUFACTURED	LTN	36	30	7,943	8,781	8	6	1,637	1,957
RUBBER, CRUDE, NATURAL:									
RUBBER, DRY FORM	LB	464,932	589,664	65,183	166,441	105,862	113,794	14,503	34,715
RUBBER, LATEX	LB	69,704	53,587	11,117	12,936	18,058	12,375	2,771	3,216
SILK, RAW	LB	321	89	2,673	1,230	85	11	685	214
SPICES:									
PEPPER, UNGROUND, BLACK	LB	28,174	21,227	10,671	10,817	5,293	5,013	1,972	2,609
VANILLA BEANS	LB	285	585	851	3,031	49	125	199	498
OTHER	LB	26,094	27,453	9,497	14,565	5,946	6,585	2,134	3,663
TEA	LB	61,054	72,186	24,827	28,904	11,460	16,506	4,571	7,141
WOOL, UNMANUFACTURED, FREE IN BOND	GLR	34,939	16,598	19,220	17,557	5,830	1,697	3,230	1,883
OTHER	---	---	---	17,935	21,484	---	---	4,007	3,763

1/ PRELIMINARY

TABLE 27.--U.S. AGRICULTURAL EXPORTS: QUANTITY AND VALUE BY COMMODITY

COMMODITY	UNIT	JULY-NOVEMBER				NOVEMBER			
		QUANTITY		VALUE		QUANTITY		VALUE	
		1972 THOU.	1973 1/ THOU.	1972 1,000 DOL.	1973 1/ 1,000 DOL.	1972 THOU.	1973 1/ THOU.	1972 1,000 DOL.	1973 1/ 1,000 DOL.
ALL COMMODITIES	---	---	---	20,504,900	30,654,800	---	---	4,527,200	7,037,800
NONAGRICULTURAL COMMODITIES	---	---	---	16,447,615	22,702,799	---	---	3,446,755	4,955,844
AGRICULTURAL COMMODITIES	---	---	---	4,057,285	7,952,001	---	---	1,080,445	2,081,956
ANIMALS AND ANIMAL PRODUCTS	---	---	---	476,324	666,567	---	---	118,854	155,953
ANIMALS LIVE, EX POULTRY	---	---	---	27,836	104,922	---	---	13,301	23,854
CATTLE	NO	37	145	17,623	83,770	25	38	10,089	17,080
OTHER	---	---	---	10,213	21,152	---	---	3,211	6,774
DAIRY PRODUCTS	---	---	---	48,127	24,064	---	---	7,394	4,834
ANHYDROUS MILK FAT	LB	11	126	8	186	2	1	2	1
BUTTER	LB	142	128	94	107	26	22	21	19
CHEESE AND CURD	LB	2,520	3,219	2,110	2,966	619	573	486	584
MILK AND CREAM:									
CONDENSED OR EVAPORATED	LB	19,878	16,148	3,480	3,195	4,608	2,532	576	515
DRY, WHOLE MILK AND CREAM	LB	16,983	19,122	2,623	3,823	2,430	4,260	701	656
FRESH	GAL	624	682	1,016	1,417	128	178	190	444
NONFAT DRY	LB	113,984	2,598	29,057	879	11,920	558	3,020	188
OTHER	---	---	---	9,740	11,570	---	---	2,398	2,427
FATS, OILS, AND GREASES	LB	1,081,155	952,201	90,757	166,787	270,792	226,613	23,975	42,853
LARD AND OTHER RENDERED PIG FAT	LB	76,137	43,658	8,815	8,945	31,677	15,496	3,642	3,641
TALLOW:									
EDIBLE	LB	9,325	10,581	815	1,732	8,057	304	657	63
INEDIBLE	LB	928,891	830,961	74,607	143,374	222,029	196,909	18,636	36,190
OTHER	LB	66,802	67,001	6,520	12,736	9,029	13,905	1,040	2,959
MEATS AND MEAT PREPARATIONS	LB	181,958	217,580	88,973	138,610	38,334	43,311	18,726	32,405
BEEF AND VEAL, EXCEPT OFFALS	LB	22,345	34,487	20,886	42,579	6,561	9,866	5,645	12,259
PORK, EXCEPT OFFALS	LB	41,686	34,756	21,660	22,984	6,516	7,632	3,209	5,376
OFFALS, EDIBLE, VARIETY MEATS	LB	104,380	113,048	38,960	51,020	22,098	18,253	8,238	8,845
OTHER	LB	13,547	35,288	7,467	22,027	3,159	7,560	1,634	5,924
POULTRY AND POULTRY PRODUCTS	---	---	---	40,246	57,631	---	---	8,961	13,741
POULTRY, LIVE:									
BREEDING CHICKS	NO	5,237	4,945	5,627	6,680	923	700	1,247	1,163
BARY CHICKS, EX BREEDING CHICKS	NO	8,505	9,514	1,572	1,742	1,348	1,715	247	359
OTHER	---	---	---	1,287	1,098	---	---	271	533
POULTRY MEAT, FRESH, FROZEN:									
CHICKENS	LB	39,407	40,918	9,924	17,347	6,485	10,032	1,658	4,402
TURKEYS	LB	21,680	26,497	9,082	14,522	6,317	6,678	2,628	3,740
OTHER	LB	4,919	5,816	1,833	3,046	1,247	1,349	416	781
POULTRY, CANNED AND SPECIALTIES	LB	5,068	2,751	1,862	1,459	1,223	585	492	361
EGGS IN THE SHELL, FOR HATCHING	DOZ	4,749	4,447	4,820	5,446	894	805	954	1,078
EGGS IN THE SHELL, OTHER	DOZ	2,096	1,288	795	845	732	387	290	230
EGGS, DRIED AND OTHERWISE PRESERVED	LB	2,190	2,600	1,719	3,063	300	598	256	723
HIDES AND SKINS, INC FURSKINS	---	---	---	164,828	149,184	---	---	43,235	33,228
CATTLE HIDES, WHOLE	NO	8,016	6,282	139,265	115,234	1,706	1,378	37,421	24,691
OTHER	---	---	---	25,562	33,950	---	---	5,813	8,538

CONTINUED--

TABLE 27.--U.S. AGRICULTURAL EXPORTS: QUANTITY AND VALUE BY COMMODITY--CONTINUED

COMMODITY	UNIT	JULY-NOVEMBER				NOVEMBER			
		QUANTITY		VALUE		QUANTITY		VALUE	
		1972 THOU.	1973 1/ THOU.	1972 1,000 DOL.	1973 1/ 1,000 DOL.	1972 THOU.	1973 1/ THOU.	1972 1,000 DOL.	1973 1/ 1,000 DOL.
OTHER ANIMAL PRODUCTS	---	---	---	15,558	25,369	---	---	3,262	5,039
HAIR, ANIMAL, EX WOOL OR FINE HAIR	LB	287	322	156	296	32	63	28	71
SAUSAGE CASINGS	LB	5,542	6,741	4,825	7,988	895	1,130	747	1,842
WOOL, UNMANUFACTURED, INC FINE HAIR	CLB	8,815	6,011	5,268	8,684	1,483	823	1,072	1,100
OTHER	---	---	---	5,309	8,401	---	---	1,416	2,025
VEGETABLE PRODUCTS	---	---	---	3,580,960	7,285,434	---	---	961,591	1,926,002
COTTON, UNMANUFACTURED	RBA	853	2,042	130,257	269,222	368	282	56,882	57,735
COTTON, RAW	RBA	793	1,492	128,339	265,065	352	257	56,451	56,645
LINTERS	RBA	60	550	1,918	4,156	16	25	431	1,090
FRUITS AND PREPARATIONS	---	---	---	203,096	263,490	---	---	36,716	55,590
CANNED	LB	191,062	204,155	33,087	42,354	40,485	37,346	7,324	8,235
CHERRIES	LB	19,439	8,989	4,174	3,389	9,355	1,214	1,973	526
FRUIT COCKTAIL	LB	45,241	52,875	8,503	12,186	10,024	13,071	1,864	3,073
PEACHES	LB	71,544	80,421	10,704	14,927	11,967	15,221	1,822	2,902
PEARS	LB	6,665	4,848	973	1,014	675	1,222	124	244
PINEAPPLES	LB	32,448	42,923	5,438	7,214	5,738	3,860	932	694
OTHER	LB	15,724	14,099	3,294	3,624	2,725	2,757	628	796
DRIED	LB	87,194	108,702	28,570	47,135	18,794	41,522	6,606	18,206
PRUNES	LB	40,696	59,593	12,277	22,930	11,753	21,867	3,700	8,203
GRAPES (RAISINS)	LB	35,299	38,241	11,844	19,119	4,837	17,009	1,979	8,697
OTHER	LB	11,199	10,868	4,448	5,085	2,203	2,616	926	1,305
FRESH	LB	915,212	1,022,398	112,925	135,268	139,921	167,545	16,635	21,724
APPLES	LB	45,691	72,503	5,479	9,994	10,955	32,157	1,324	4,351
BERRIES	LB	10,390	12,088	2,389	2,991	1,371	957	286	213
GRAPEFRUITS	LB	103,189	117,743	10,882	12,719	34,253	31,742	2,882	2,942
GRAPES	LB	171,005	188,784	32,178	38,462	18,258	18,133	4,136	4,465
LEMONS AND LIMES	LB	160,157	155,335	19,001	18,885	21,756	16,900	2,496	2,435
ORANGES, TANGERTINES, AND CLEMENTINE	LB	240,799	244,565	23,039	24,763	40,183	50,964	4,045	4,688
PEARS	LB	33,068	55,669	3,974	7,408	5,588	12,381	625	1,774
OTHER	LB	150,913	175,711	15,983	20,847	7,558	4,311	841	855
FRUIT JUICES	GAL	12,933	16,428	25,449	32,101	2,559	3,784	5,351	6,198
GRAPEFRUIT	GAL	2,281	2,511	3,699	3,934	358	510	689	728
ORANGE	GAL	6,549	8,624	16,073	20,160	1,272	1,651	3,320	3,556
OTHER	GAL	4,102	5,294	5,677	8,008	929	1,623	1,342	1,914
FROZEN FRUITS	LB	6,578	12,589	1,367	3,887	1,872	1,449	393	428
OTHER	---	---	---	1,698	2,745	---	---	408	798
NUTS AND PREPARATIONS	---	---	---	---	---	---	---	---	---
ALMONDS	LB	80,610	79,567	51,499	72,181	22,527	30,871	15,363	27,835
WALNUTS	LB	38,378	28,582	29,926	38,765	12,283	11,292	10,014	15,388
OTHER	LB	27,959	35,391	10,909	18,593	6,972	14,774	2,875	7,594
OTHER	LB	14,273	15,595	10,665	14,823	3,272	4,805	2,474	4,852

CONTINUED--

TABLE 27.--U.S. AGRICULTURAL EXPORTS: QUANTITY AND VALUE BY COMMODITY--CONTINUED

COMMODITY	UNIT	JULY-NOVEMBER				NOVEMBER			
		QUANTITY		VALUE		QUANTITY		VALUE	
		1972 THOU.	1973 1/ THOU.	1972 1,000 DOL.	1973 1/ 1,000 DOL.	1972 THOU.	1973 1/ THOU.	1972 1,000 DOL.	1973 1/ 1,000 DOL.
GRAINS AND PREPARATIONS	---	---	---	1,636,913	4,336,447	---	---	384,551	989,253
FEED GRAINS AND PRODUCTS	MT	13,640	18,675	754,168	1,759,065	2,751	---	3,542	158,522
FEED GRAINS	MT	13,474	18,500	741,846	1,743,873	2,705	3,510	155,318	358,297
BARLEY	BU	16,263	44,632	16,343	98,561	1,859	9,171	2,059	20,501
CORN	BU	437,434	576,336	614,036	1,388,118	90,045	112,177	130,650	287,696
GRAIN SORGHUMS	BU	77,446	96,348	109,679	214,229	14,761	15,051	22,426	39,844
OATS	3U	2,879	30,490	1,786	42,965	166	5,395	184	7,806
MALT AND FLOUR, INC BARLEY MALT	LB	48,960	35,976	3,182	2,843	8,124	4,456	531	418
CORN GRITS AND HOMINY	LB	13,332	26,253	606	1,468	3,868	4,396	178	242
CORNMEAL	CWT	986	1,166	4,350	6,124	323	238	1,393	813
CORN STARCH	LB	22,550	29,843	2,571	3,866	5,117	5,419	596	759
OATMEAL AND GROATS	CWT	67	79	374	534	0	5	0	39
OATMEAL & OATS, ROLLED, ETC	LB	17,873	3,329	1,239	356	7,221	1,591	506	177
RICE, MILLED BASIS	LB	1,901,089	1,216,020	165,348	216,163	444,129	401,681	45,356	73,599
MILLED	LB	1,187,298	1,052,124	113,982	191,443	384,713	293,275	39,858	56,752
HUSKED, BROWN	LR	713,791	163,895	51,366	24,720	9,416	108,405	5,498	16,846
RYE	BU	25	20,775	37	46,095	8	2,187	11	5,904
WHEAT AND PRODUCTS	BU	391,547	642,491	688,719	2,276,532	90,347	122,798	173,102	543,454
WHEAT	BU	368,620	624,555	641,950	2,216,712	83,978	120,508	158,515	533,819
WHEAT FLOUR	CWT	7,893	6,763	33,752	47,139	2,099	661	10,102	5,474
OTHER WHEAT PRODUCTS	BU	4,941	2,714	13,017	12,682	1,587	784	4,486	4,161
BAKERY PRODUCTS	LB	8,661	10,734	3,206	4,376	2,145	2,872	806	1,200
INFANTS AND DIETETIC FOODS	LR	70,569	63,310	7,397	10,258	27,597	14,451	3,018	2,270
BLENDED FOOD PRODUCTS	LB	131,758	93,897	11,339	12,791	22,110	13,193	1,904	1,488
OTHER	---	---	---	6,699	11,166	---	---	1,832	3,041
FEEDS AND FEEDERS, EX OIL CAKE & MEAL	---	---	---	70,489	121,291	---	---	16,684	24,576
CORN BYPRODUCTS, FEED 2/	STN	370	461	23,573	44,958	79	107	5,612	11,254
ALFALFA MEAL, DEHYDRATED	STN	74	72	3,703	5,422	16	3	803	284
ALFALFA MEAL, SUN-CURED	STN	74	77	3,393	3,510	12	1	516	51
ALFALFA HAY CUBES	STN	7	45	343	2,491	2	6	80	406
POULTRY FEEDS, PREPARED	STN	48	44	8,247	12,258	10	11	1,712	2,712
OTHER	---	---	---	31,230	52,652	---	---	7,960	9,870
OILSEEDS AND PRODUCTS	---	---	---	1,006,876	1,570,251	---	---	322,495	587,474
OIL CAKE AND MEAL	STN	1,774	1,672	190,970	398,088	486	548	54,424	115,625
SOYBEAN OIL CAKE AND MEAL	STN	1,627	1,496	177,398	365,113	471	496	53,033	105,860
OTHER	STN	148	176	13,572	32,976	15	52	1,392	9,765
OILSEEDS	---	---	---	699,965	1,041,136	---	---	239,828	450,235
FLAXSEED	BU	6,204	96	18,832	444	2,379	12	7,570	37
SOYBEANS	BU	181,770	153,883	632,246	953,350	61,240	74,442	214,812	419,807
SAFFLOWER SEED	LB	68,473	130,858	3,470	7,952	21,543	351	946	20
OTHER	---	---	---	45,417	79,391	---	---	16,501	30,371
VEG OILS AND WAXES	LB	883,031	653,441	115,941	131,027	239,903	87,469	28,243	21,613
COTTONSEED OIL	LB	194,199	153,895	25,435	29,549	70,609	24,907	8,169	5,291
SOYBEAN OIL	LB	462,231	249,229	57,884	46,765	118,915	31,937	13,527	7,338
OTHER	LR	226,601	250,316	32,621	54,713	50,379	30,626	6,546	8,984

CONTINUED--

TABLE 27.--U.S. AGRICULTURAL EXPORTS: QUANTITY AND VALUE BY COMMODITY--CONTINUED

COMMODITY	UNIT	JULY-NOVEMBER				NOVEMBER			
		QUANTITY		VALUE		QUANTITY		VALUE	
		1972 THOU.	1973 1/ THOU.	1972 1,000 DOL.	1973 1/ 1,000 DOL.	1972 THOU.	1973 1/ THOU.	1972 1,000 DOL.	1973 1/ 1,000 DOL.
TOBACCO, UNMANUFACTURED	LB	253,635	301,024	274,148	345,406	64,196	84,268	70,814	99,719
RURLEY	LB	21,083	26,885	24,272	33,770	5,032	5,966	5,952	7,655
CIGAR WRAPPER	LB	1,291	640	7,889	3,276	258	75	1,762	551
DARK-FIRED KENTUCKY AND TENNESSEE	LB	7,186	7,827	5,347	6,119	2,197	2,487	1,620	1,920
FLUE-CURED	LB	168,840	198,777	211,481	269,038	40,474	58,098	55,347	83,233
MARYLAND	LB	5,300	4,957	5,940	5,728	1,279	138	1,531	146
BULK SMOKING TOBACCO	LB	9,180	13,619	10,362	18,028	1,091	2,371	1,400	3,024
OTHER	LB	40,765	48,319	6,857	9,446	13,866	15,132	3,202	3,289
VEGETABLES AND PREPARATIONS	---	---	---	98,229	162,216	---	---	29,839	45,519
CANNED	LB	52,524	97,071	9,960	20,888	14,424	28,075	2,772	6,337
ASPARAGUS	LB	1,639	2,088	575	832	201	347	101	140
CORN	LB	10,554	24,453	1,779	4,547	3,538	6,573	577	1,224
SOUPS	LB	9,151	13,040	1,935	3,091	1,614	1,866	341	498
TOMATOES, TOMATO SAUCE AND PUREE	LB	15,966	37,498	2,643	8,447	5,110	13,017	805	3,177
OTHER	LB	15,214	19,993	3,028	3,971	3,961	6,272	868	1,297
PULSES	LB	240,020	341,784	22,274	53,665	92,918	69,442	9,149	14,258
DRIED BEANS	LB	117,504	233,763	12,326	36,495	61,584	50,907	6,435	10,600
DRIED PEAS, INC COW AND CHICK	LB	78,027	77,869	4,982	10,861	19,071	16,150	1,245	3,163
DRIED LENTILS	LB	44,490	30,151	4,966	6,309	12,262	2,385	1,470	495
FRESH	LB	484,272	514,910	31,294	41,060	115,400	140,214	8,208	10,784
LETTUCE	LB	96,426	79,603	5,424	5,509	35,544	22,855	2,327	1,468
ONIONS	LB	43,098	86,507	2,673	7,399	8,694	32,699	509	2,911
POTATOES, EXCEPT SWEET POTATOES	LB	175,057	181,940	6,083	7,357	28,577	46,270	1,032	1,651
TOMATOES	LB	67,793	71,091	8,484	10,187	13,071	13,125	1,896	1,870
OTHER	LB	101,898	95,769	8,629	10,608	29,515	25,265	2,445	2,905
FROZEN VEGETABLES	LB	11,999	23,705	2,302	5,163	2,792	6,600	515	1,503
HOPS	LB	5,231	4,096	4,507	4,165	3,295	2,626	2,694	2,465
SOUPS AND VEGETABLES, DEHYDRATED	LB	13,298	14,519	6,224	7,414	3,430	3,874	1,498	1,993
TOMATO JUICE, CANNED	GAL	594	832	648	943	160	216	155	258
VEGETABLE SEASONINGS	LB	20,944	23,441	4,932	7,425	4,117	5,239	994	1,556
OTHER	---	---	---	16,089	21,493	---	---	3,854	6,365
OTHER VEGETABLE PRODUCTS	---	---	---	109,452	144,930	---	---	28,247	38,302
COFFEE	LB	11,096	16,117	10,807	16,525	2,526	5,185	2,672	4,495
DRUGS, HERBS, ROOTS, ETC	LB	4,108	5,274	6,901	7,922	895	835	2,563	2,710
ESSENTIAL OILS AND RESINOIDS	LB	5,406	6,741	15,376	21,982	924	1,499	2,824	5,486
FLAVORING SIRUPS, SUGARS, EXTRACTS	---	---	---	18,851	21,211	---	---	2,972	5,174
HONEY	LB	2,354	10,565	786	4,626	654	763	220	375
NURSERY STOCK	---	---	---	4,014	4,377	---	---	1,020	1,157
SEEDS, EXCEPT DULSEEDS	LB	108,206	75,907	24,076	30,802	55,158	20,822	9,971	10,809
SPICES	LB	3,649	3,732	2,455	3,047	745	932	527	670
OTHER	---	---	---	26,186	34,439	---	---	5,479	7,426

1/ PRELIMINARY

Table 28.--U.S. agricultural exports and imports: Value by country,
July-November 1972 and 1973

Country	Exports		Imports		Country	Exports		Imports	
	1972	1973	1972	1973		1972	1973	1972	1973
World 1/	4,057,285	7,952,001	2,703,772	3,553,915	Europe--Continued	-- 1,000 dollars --			
Major Trade Blocs:					Sweden	28,637	37,953	6,931	7,278
GACM	34,695	59,705	183,264	216,965	Norway	24,883	40,343	3,673	6,322
LAFTA	280,765	708,901	688,770	751,684	Finland	6,979	11,030	4,625	6,716
EC	898,452	1,538,712	216,145	343,476	Denmark	45,051	52,798	77,303	107,040
EASTERN EUROPE	141,471	225,983	46,123	68,477	United Kingdom	206,389	292,653	24,920	35,260
Greenland	0	0	0	0	Ireland	15,902	17,226	12,093	34,955
Canada 2/	379,014	458,216	150,139	235,126	Netherlands	327,250	530,454	59,929	114,349
Miquelon and St. Pierre Islands	26	59	0	0	Belgium-Luxembourg	65,958	95,373	7,358	19,188
Mexico	98,921	189,209	167,699	190,556	France	108,582	148,977	68,168	107,223
Central America	34,695	59,705	183,263	216,965	West Germany	288,404	514,374	39,141	51,253
Guatemala	6,252	10,153	43,628	51,261	East Germany	3,309	17,247	20	50
Belize	1,026	1,064	2,746	3,140	Austria	7,027	9,298	4,608	7,720
El Salvador	3,338	11,994	20,460	29,458	Czechoslovakia	18,386	27,279	242	551
Honduras	3,728	4,429	31,569	42,178	Hungary	4,083	2,358	2,053	3,889
Nicaragua	3,293	8,252	24,895	33,894	Switzerland	42,491	60,642	13,957	14,160
Costa Rica	5,055	9,968	47,857	46,430	Estonia	0	0	0	0
Panama	12,003	13,845	12,108	10,604	Latvia	0	0	0	29
Canal Zone	0	0	0	0	Lithuania	0	0	0	0
Caribbean	75,036	123,362	93,531	106,868	Poland	33,272	117,867	30,246	39,567
Bermuda	4,357	5,687	6	10	USSR	231,702	292,515	2,129	2,259
Bahamas	11,328	16,082	33	68	Azores	16	649	33	39
Cuba	0	0	1	0	Spain	141,196	176,955	47,714	63,956
Jamaica	16,500	29,695	6,432	1,708	Portugal	23,010	45,658	16,858	18,748
Haiti	4,200	7,974	6,767	5,183	Cibraltar	12	60	3	20
Dominican Republic	15,538	30,939	78,015	97,249	Malta-Gozo	484	1,997	4	1
Leeward-Windward Islands	2,651	4,055	297	317	Italy	108,257	249,534	41,551	51,463
Barbados	1,983	3,100	119	752	Yugoslavia	51,460	38,881	10,332	18,204
Trinidad-Tobago	9,806	15,254	1,821	1,440	Albania	57	91	160	55
Netherlands Antilles	7,518	9,121	37	32	Greece	9,856	82,115	14,672	13,243
French West Indies	1,155	1,455	3	109	Romania	20,270	21,271	3,372	4,710
South America	187,369	528,719	528,879	562,314	Bulgaria	634	990	698	1,449
Colombia	18,954	64,845	82,499	114,166	Turkey	7,123	24,268	28,519	34,138
Venezuela	53,258	70,730	9,291	9,570	Cyprus	4,452	8,609	315	323
Guyana	3,198	5,037	7,616	1,057	Asia	1,322,158	2,901,576	412,634	612,247
Surinam	2,250	3,889	187	65	Syrian Arab Republic	813	1,249	918	1,527
French Guiana	77	101	5	64	Lebanon	9,059	8,556	3,361	3,333
Ecuador	7,502	14,426	36,989	42,566	Iraq	234	17,834	1,535	1,080
Peru	29,913	56,739	39,076	44,817	Iran	25,953	41,816	14,810	16,829
Bolivia	2,807	4,260	1,281	1,407	Israel	51,569	103,537	2,636	3,103
Chile	14,353	80,561	1,129	1,458	Jordan	5,874	8,576	0	0
Brazil	39,158	137,874	301,586	279,983	Gaza Strip	22	0	0	0
Paraguay	637	183	5,132	8,879	Kuwait	1,507	3,414	0	0
Uruguay	12,977	1,059	448	688	Saudi Arabia	13,034	34,367	27	128
Argentina	2,265	89,055	43,640	57,594	Qatar	59	150	0	0
Falkland Islands	0	0	0	0	United Arab Emirates	401	2,270	43	52
Europe	1,835,834	2,920,942	520,754	764,452	Yemen Arab Republic	856	4,685	31	199
Iceland	722	1,477	127	294	Yemen (Aden)	117	79	41	60
					Oman	11	1,316	0	0
					Bahrain	559	1,073	0	0
					Afghanistan	213	178	854	624
					India	34,827	199,205	39,698	47,300
					Pakistan	40,818	50,474	1,439	1,870

Continued--

Table 28.--U.S. agricultural exports and imports: Value by country, July-November 1972 and 1973--Continued

Country	Exports		Imports		Country	Exports		Imports	
	1972	1973	1972	1973		1972	1973	1972	1973
	-- 1,000 dollars --					-- 1,000 dollars --			
Asia--Continued					Africa--Continued				
Nepal	1,150	352	61	134	Federal Republic of Cameroon	1,213	1,057	11,491	9,867
Bangladesh	49,791	46,807	1,063	1,405	Senegal	918	11,232	9	20
Sri Lanka (Ceylon)	4,954	5,853	8,774	10,560	Mali	4	2,896	0	0
Butma	357	13	4	0	Guinea	310	2,478	0	569
Thailand	22,195	25,803	7,239	17,655	Sierra Leone	1,823	3,536	1,761	762
North Vietnam	0	0	0	0	Ivory Coast	862	1,148	25,712	29,281
South Vietnam	56,297	30,169	258	296	Ghana	4,283	10,265	11,001	10,201
Laos	877	1,856	0	0	The Gambia	124	1,075	0	0
Cambodia (Khmer Republic)	7,598	13,059	0	20	Niger	139	3,409	17	0
Malaysia	4,301	13,356	43,940	83,599	Togo	555	807	0	21
Singapore	10,637	29,868	8,391	15,390	Nigeria	8,928	21,165	2,866	16,446
Indonesia	40,569	70,738	64,916	109,947	Central African Republic	2	7	0	0
Philippines	44,403	53,496	145,202	230,303	Cabon	83	81	0	0
Nacao	31	14	0	0	Chad	18	501	0	2
Southern-Southeastern Asia, n.e.c.	18	41	357	69	British West Africa	0	0	4	0
Peoples Republic of China	42,920	360,221	7,334	8,483	Madeira Islands	0	0	74	59
Outer Mongolia	0	0	543	314	Upper Volta	284	2,225	0	0
North Korea	0	0	0	0	Dahomey	969	1,485	532	769
Korea, Republic of	124,195	249,176	3,658	4,581	Angola	1,944	738	35,443	42,461
Hong Kong	33,201	83,422	2,646	3,331	Congo (Brazzaville)	202	381	100	38
Republic of China	64,723	217,854	27,721	24,502	Western Portuguese Africa, n.e.c.	187	688	0	0
Japan	628,015	1,220,699	25,134	25,553	Liberia	3,012	5,767	11,029	21,167
					Zaire (Congo-Kinshasa)	1,480	2,855	9,029	6,982
Australia and Oceania	25,076	42,438	411,663	578,764	Burundi	38	123	8,954	8,522
Australia	17,134	30,558	276,520	368,000	Rwanda	188	147	7,701	7,582
Papua New Guinea	115	133	6,030	14,974	Somali Republic	309	0	0	0
New Zealand	4,346	6,946	125,293	189,757	Ethiopia	479	2,496	27,011	32,271
Western Samoa	33	84	23	45	Afars-Issas	227	344	8	18
British Pacific Islands	1	59	11	0	Uganda	50	35	30,010	22,987
French Pacific Islands	1,457	2,097	9	11	Kenya	637	6,162	6,964	10,188
Trust Territory of Pacific Islands	1,829	2,333	6	1	Seychelles-Dependencies	31	30	266	334
Pacific Islands, n.e.c.	161	228	3,771	5,976	Tanzania	760	615	9,709	10,919
					Mauritius-Dependencies	855	383	2,818	2,943
Africa	99,138	275,073	235,211	286,621	Mozambique	107	179	8,356	12,768
Morocco	9,184	38,312	1,456	1,287	Malagasy Republic	328	6,365	7,573	11,807
Algeria	7,855	34,474	118	68	French Indian Ocean Areas	2	1,841	532	904
Tunisia	6,407	9,280	2,007	939	Republic of South Africa	14,069	27,925	5,893	8,695
Libya	1,072	2,322	0	0	Botswana	0	800	2	2
Egypt	22,146	48,940	622	659	Zambia	137	218	7	1
Sudan	1,067	14,867	1,089	1,622	Swaziland	88	49	3,008	5,861
Canary Islands	5,056	4,852	0	1	Rhodesia	1	1	0	0
Spanish Africa, n.e.c.	2	6	0	0	Malawi	124	9	1,197	3,146
Equatorial Guinea	0	0	470	4,319	Lesotho	471	786	0	0
Mauritania	108	16	272	113	Unidentified 3/	---	452,702	---	0

-35-

1/ May not add due to rounding.
 2/ Excludes transshipments of grains and oilseeds beginning Jan. 1, 1973.
 3/ Transshipments through Canada where final destination was not known at the time of export.

Table 29.--Quantity indexes: U.S. agricultural exports, fiscal year 1968-73, monthly and accumulated, July 1972 to date

Year and month	(Calendar year 1967 = 100)							All agricultural commodities ^{1/}
	Animals and animal products	Cotton and linters	Tobacco, and unmanufactured	Grains and feeds	Vegetable oils and oilseeds	Fruits and Vegetables		
1967/68	96	101	100	104	99	91	101	
1968/69	110	69	100	85	106	93	92	
1969/70	101	75	101	97	148	109	106	
1970/71	117	98	98	106	157	103	115	
1971/72	134	89	94	103	159	107	115	
1972/73	126	126	102	167	182	118	152	
July 1972:								
1972/73	126	126	102	167	182	118	152	
1973/74	134	126	102	167	182	118	152	
<u>Adjusted for seasonal variation 2/</u>								
<u>Monthly</u>								
<u>1972/73:</u>								
July	159	44	100	127	149	120	126	
August	122	47	111	148	155	109	137	
September	118	36	97	153	107	108	133	
October	124	95	99	145	177	106	132	
November	131	134	89	151	198	129	144	
December	112	146	94	157	170	114	145	
January	118	162	115	174	194	113	159	
February	118	125	121	167	237	112	160	
March	127	141	104	191	247	117	176	
April	131	148	100	194	201	122	174	
May	129	138	96	185	191	134	166	
June	124	171	112	215	126	129	170	
<u>1973/74:</u>								
July	119	152	106	189	92	138	155	
August	124	230	100	232	73	124	180	
September	136	108	111	204	65	138	163	
October	167	117	121	182	144	130	168	
November	125	98	88	184	193	144	158	
December								
January								
February								
March								
April								
May								
June								
<u>Not adjusted for seasonal variation</u>								
<u>1972/73:</u>								
July	136	33	80	128	125	129	117	
August	112	14	92	142	116	105	118	
September	114	26	107	147	82	109	118	
October	124	59	121	142	215	126	133	
November	146	111	135	143	205	132	176	
December	129	173	128	172	211	112	166	
January	117	211	89	179	197	99	164	
February	112	168	94	166	229	94	159	
March	140	219	100	186	255	216	182	
April	129	195	86	177	185	121	163	
May	132	141	94	192	189	136	167	
June	128	158	96	211	125	145	169	
<u>1973/74:</u>								
July	103	129	88	190	80	131	143	
August	114	143	85	223	56	120	156	
September	131	84	114	196	52	138	147	
October	167	85	113	179	182	145	169	
November	141	84	109	187	187	132	162	
December								
January								
February								
March								
April								
May								
June								

^{1/} Based on 359 classifications in 1971.

^{2/} The seasonal adjustment series has been revised to incorporate the Bureau of the Census Method X-11. This new method of adjusting for seasonal variations is a continuing system which takes into account changing seasonal patterns. For detailed explanation of the new adjustment procedures, see U.S. Department of Commerce, Bureau of the Census, The X-11 Variant of the Seasonal Method II Seasonal Adjustment Program, Technical Paper No. 13, U.S. Government Printing Office, Washington, D.C., 1965.

Table 36.--Quantity indexes: U.S. agricultural imports, fiscal years 1968-73, monthly and accumulated, July 1972 to date

Year and month	(Calendar year 1967 = 100)					Complementary 1/			All agricultural commodities 2/
	Animals and animal products	Grains and feeds	Supplementary 1/ : Vegetable oils and Oilseeds	Sugar, molasses, and syrups	Total	Cocoa, coffee, and tea	Rubber and allied gums	Total	
1967/68	108	92	97	102	105	104	107	104	105
1968/69	115	96	105	103	110	100	127	103	107
1969/70	121	131	104	107	116	101	131	104	111
1970/71	114	136	111	113	118	98	124	101	111
1971/72	115	145	119	118	122	105	138	108	116
1972/73	127	122	129	109	128	111	136	112	121
July-November:									
1972/73	136	13	117	107	124	102	128	104	116
1973/74	133	90	114	111	126	89	150	96	113
<u>Adjusted for seasonal variation 3/</u>									
Monthly									
1972/73:									
July	119	130	151	99	119	88	123	92	108
August	133	95	135	118	133	100	122	110	120
September	135	160	122	99	126	112	109	113	121
October	141	174	131	112	130	103	145	107	120
November	145	131	87	119	136	97	150	102	121
December	118	126	159	83	112	97	138	103	109
January	130	132	84	125	135	104	141	107	123
February	124	112	165	117	138	115	134	117	132
March	106	94	132	117	121	143	130	133	125
April	114	115	125	103	123	130	127	122	121
May	135	87	150	145	144	148	152	140	143
June	119	106	129	86	123	99	157	101	114
1973/74:									
July	122	73	114	105	126	93	125	94	113
August	136	67	142	111	133	87	154	102	117
September	111	76	105	93	109	78	175	92	102
October	144	126	81	72	122	79	152	89	108
November	146	118	183	180	162	101	149	105	138
December									
January									
February									
March									
April									
May									
June									
<u>Not adjusted for seasonal variation</u>									
1972/73									
July	119	135	151	107	115	85	102	89	104
August	139	69	108	144	135	105	135	108	124
September	134	132	112	104	123	113	105	110	117
October	142	169	146	96	126	113	150	116	122
November	145	148	67	83	121	91	148	98	112
December	125	192	121	97	123	90	148	99	113
January	134	96	138	108	135	125	154	126	132
February	116	79	183	78	124	115	130	117	121
March	109	85	144	123	127	126	156	126	126
April	114	137	98	122	135	121	115	116	127
May	127	121	142	130	142	143	147	127	140
June	117	108	140	115	131	99	140	101	119
1973/74:									
July	121	76	114	113	122	90	107	90	109
August	142	72	117	143	135	93	172	101	121
September	109	65	97	99	107	78	167	89	99
October	143	121	92	62	118	84	158	98	119
November	146	134	148	134	146	95	148	101	127
December									
January									
February									
March									
April									
May									
June									

1/ Supplementary agricultural imports consist of all imports similar to agricultural commodities produced commercially in the United States together with all other agricultural imports interchangeable to any significant extent with such United States commodities. Complementary agricultural imports include all others, about 98 percent of which consist of rubber, coffee, raw silk, cacao beans, wool for carpets, bananas, tea, and vegetable fibers.

2/ Based on 430 classifications in 1971.

3/ The seasonal adjustment series has been revised to incorporate the Bureau of the Census Method X-11. The new method of adjusting for seasonal variations is a continuing system which takes into account changing seasonal patterns. For detailed explanation of the new adjustment procedures, see U.S. Department of Commerce, Bureau of the Census, The X-11 Variant of the Seasonal Method 11 Seasonal Adjustment Program, Technical Paper No 15, U.S. Government Printing Office, Washington, D.C., 1965.

Explanatory Note

U.S. foreign agricultural trade statistics in this report include official U.S. data based on compilations of the Bureau of the Census. Agricultural commodities consist of (1) nonmarine food products and (2) other products of agriculture which have not passed through complex processes of manufacture such as raw hides and skins, fats and oils, and wine. Such manufactured products as textiles, leather, boots and shoes, cigarettes, naval stores, forestry products, and distilled alcoholic beverages are not considered agricultural.

The trade statistics exclude shipments between the 50 States and Puerto Rico, between the 50 States and the island possessions, between Puerto Rico and the island possessions, among the island possessions, and intransit through the United States from one foreign country to another when documented as such through U.S. Customs.

EXPORTS The export statistics also exclude shipments to the U.S. armed forces and diplomatic missions abroad for their own use and supplies for vessels and planes engaged in foreign trade. Data on shipments valued at less than \$251 are not compiled by commodity and are excluded from agricultural statistics but are reflected in nonagricultural and overall export totals in this report. The agricultural export statistics include shipments under P.L. 83-480 (Agricultural Trade Development and Assistance Act), and related laws; under P.L. 87-195 (Act for International Development); and involving Government payments to exporters. (USDA payments are excluded from the export value.) Separate statistics on Government program exports are compiled by USDA from data obtained from operating agencies.

The export value, the value at the port of exportation, is based on the selling price (or cost if not sold) and includes inland freight, insurance, and other charges to the port. The country of destination is the country of ultimate destination or where the commodities are to be consumed, further processed, or manufactured. When the shipper does not know the ultimate destination, the shipments are credited to the last country, as known to him at the time of shipment from the United States, to which the commodities are to be shipped in their present form. Except for Canada, export shipments valued at \$251-\$499 are included on the basis of sampling estimates; shipments to Canada valued at \$251-\$1,999 are sampled.

IMPORTS Imports for consumption are a combination of entries for immediate consumption and withdrawals from warehouses for consumption. Data on shipments valued at less than \$251 are estimated on the basis of a 1-percent sample and are not compiled by commodity. They are excluded from agricultural statistics but are reflected in nonagricultural and overall import totals in this report.

The import value, defined generally as the market value in the foreign country, excludes import duties, ocean freight, and marine insurance. The country of origin is defined as the country where the commodities were grown or processed. When the country of origin is not known, the imports are credited to the country of shipment.

Imports similar to agricultural commodities produced commercially in the United States and others that are interchangeable in use to any significant extent with such U.S. commodities are supplementary or partly competitive. All other commodities are complementary or noncompetitive.

Further explanatory material on foreign trade statistics and compilation procedures of the Bureau of the Census is contained in the publications of that agency.

END

DATE

FILMED

7-14-79

NTIS