



AgEcon SEARCH
RESEARCH IN AGRICULTURAL & APPLIED ECONOMICS

The World's Largest Open Access Agricultural & Applied Economics Digital Library

This document is discoverable and free to researchers across the globe due to the work of AgEcon Search.

Help ensure our sustainability.

Give to AgEcon Search

AgEcon Search

<http://ageconsearch.umn.edu>

aesearch@umn.edu

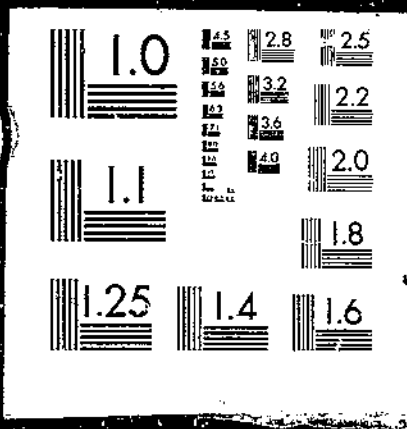
*Papers downloaded from **AgEcon Search** may be used for non-commercial purposes and personal study only. No other use, including posting to another Internet site, is permitted without permission from the copyright owner (not AgEcon Search), or as allowed under the provisions of Fair Use, U.S. Copyright Act, Title 17 U.S.C.*

USDA/FATUS-
FEB 73

FATUS/FOREIGN AGRICULTURAL TRADE OF THE UNITED STATES, 1973 FEBRUARY. Washington, DC:
Economic Research Service.

(NAL Call No. A286:9/Ag8)

1 OF 1
USD A
FATUS
FEB 73



Reserve

4286.9

Ag 8

FEBRUARY 1973

FATUS

FOREIGN AGRICULTURAL TRADE OF THE UNITED STATES

U. S. DEPT. OF AGRICULTURE
NATIONAL AGRICULTURAL LIBRARY
RECEIVED

MAR 9 1973

PROCUREMENT SECTION
CURRENT SERIAL RECORDS

Farm Export Record in 1972

Farm Imports Rose 11 Percent in 1972

Bloom Buying Boosted

Trade Statistics, July-December

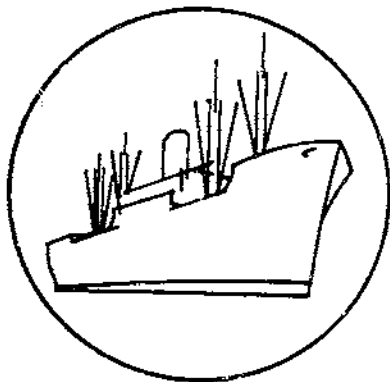
ECONOMIC RESEARCH SERVICE • U.S. DEPARTMENT OF AGRICULTURE

7 L

CONTENTS

	<u>Page</u>
Special in this issue:	
Farm Export Record in 1972	5
Farm Imports Rose 11 Percent in 1972	19
Bloom Buying Boosted	27
Export Highlights	39
Import Highlights	46
U.S. agricultural trade data for December and July-December:	
U.S. imports: Quantity and value by commodity	50
U.S. exports: Quantity and value by commodity	55
U.S. exports and imports: Value by country	59
Quantity indexes, by commodity groups, July-December:	
Exports	61
Imports	62
Explanatory Note	63

Statistics Branch
Foreign Demand and Competition Division
Economic Research Service



FOREIGN AGRICULTURAL TRADE OF THE UNITED STATES

Digest

Farm Export Record in 1972 (see p. 5). U.S. agricultural exports in calendar 1972 advanced to a new high of \$9.4 billion--22 percent or \$1.7 billion above the previous year's record. Higher prices, which averaged about 9 percent above 1971, were responsible for about one-third of the increase; greater volume accounted for most of the gain. Grains and products alone accounted for nearly two-thirds of the total increase in value. Other substantial increases occurred for soybeans, soybean meal, tobacco, vegetables, nuts, fruits, cattle hides, and meats. Exports of dairy products and cotton fell. Exports in the last half of 1972 jumped to a record \$5.2 billion--\$1 billion more than in the first half.

Massive grain purchases by the USSR; reduced grain supplies or capacity to move grain in other major exporting countries; increased world demand for protein meal, because of reduced supplies of fishmeal from Peru and other protein meal; and general economic improvement in many nations--all contributed to our export gain last year. Yet, one factor, reduced agricultural production in many foreign countries because of adverse weather conditions, stood out as the cause behind record U.S. shipments.

Exports to all major areas showed substantial gains in 1972. The USSR became an important market, taking \$438 million worth (excluding transshipments) of U.S. agricultural products compared with only \$30 million a year earlier. Exports to Japan advanced to a record \$1.4 billion from \$1.1 billion in 1971. After a 20-year lapse, People's Republic of China emerged as a significant market for U.S. agricultural exports, taking \$58 million. Exports to Western Europe and Latin America each advanced by 16 percent. There were also significant increases to many Far East countries and a slight increase to Africa.

* * * * *

Farm Imports Rose 11 Percent in 1972 (see p. 19). Total U.S. imports of agricultural products in calendar 1972 approached \$6.5 billion, 11 percent above 1971. Price increases accounted for nearly two-thirds of this rise. Greater demand for livestock products, fruits, vegetables, and wine raised competitive imports to \$4.3 billion. Higher prices among some noncompetitive items resulted in a value gain of 2 percent to \$2.2 billion.

* * * * *

Bloom Buying Boosted (see p. 27). Topping \$3.2 million in 1971/72, the value of U.S. imports of fresh-cut flowers was up a fourth from a year earlier, nearly double the 1969/70 level, and many times the \$110,000 in 1961/62. In 1963/64, U.S. fresh-cut flower imports represented less than 1 percent of total nursery and greenhouse stock imports, but by 1971/72 they had jumped to 16 percent. Colombia was the principal source of U.S. imports of fresh-cut flowers in 1971/72, supplying \$1.3 million worth, two-fifths of the total.

Imports of all nursery and greenhouse stock (including cut flowers) totaled \$20.8 million, up only slightly from 1970/71, but a tenth above the 1969/70 rate and 57 percent higher than in 1963/64. The Netherlands supplied nearly \$13 million worth, or more than three-fifths of total U.S. nursery and greenhouse stock imports in 1971/72. Canada ranked second, Colombia third, and Japan fourth.

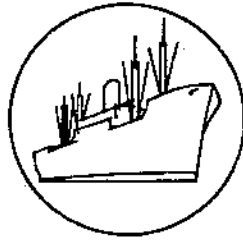
* * * * *

Exports During First Half of Fiscal Year 1973 Set Record (see p. 39). For the third month in a row, U.S. agricultural exports established new monthly records. Agricultural exports in December 1972 totaled a monthly high of \$1.11 billion, a little over the \$1.08 billion in November and a third above December 1971. For July-December, U.S. agricultural exports rose 36 percent to a record of \$5.17 billion. Exports of grains accounted for about two-thirds of this increase. Exports of cattle hides, tobacco, fruits, nuts, vegetables, meats, and soybeans also rose sharply. Exports of cotton, dairy products, animal fats and oils, and vegetable oils were down from the previous year's level. U.S. agricultural exports to USSR rose to \$323 million (excluding transshipments) from only \$21 million a year earlier. People's Republic of China took \$58 million in July-December 1972 compared with nothing a year earlier. Exports to Japan, other countries of Asia, the European Community, Eastern Europe, and Latin America also showed substantial gains. But exports to Africa (excluding the Republic of South Africa) fell 18 percent from a year earlier to \$117 million.

* * * * *

U.S. Agricultural Imports Up Sharply in July-December (see p. 46). Agricultural imports during the first 6 months of 1972/73 totaling \$3.25 billion exceeded last year's pace by 15 percent. Four-fifths of the increase stemmed from higher prices. Competitive imports accounted for a large part of the value gain, rising 18 percent to \$2.1 billion. Livestock products, fruits, vegetables, grains, and wine moved significantly above year-earlier levels. Noncompetitive items rose 9 percent to \$1.1 billion, mostly because of price increases.

* * * * *



SPECIAL in this issue

FARM EXPORT RECORD IN 1972

A sharp upturn in U.S. agricultural exports in the last half of calendar year 1972 brought exports to the unprecedented level of \$9.4 billion. The record was 22 percent above the \$7.7 billion of 1971. Higher prices alone contributed about one-third of the \$1.7 billion gain in 1972. Substantial price increases occurred for cattle hides, soybeans, soybean meal, meats, most fruits and vegetables, cotton, tobacco, and rice. Although grain prices increased sharply in recent months, the gain for all of 1972 was quite moderate. For example, wheat prices averaged \$1.75 per bushel in 1972, compared with \$1.69 in 1971. Corn prices in 1972 averaged \$1.40 a bushel, compared with \$1.46 a bushel in 1971 when southern corn blight and unfavorable weather in parts of the Corn Belt cut output and raised prices. The other two-thirds of the increase stemmed from expanded volume, especially of grains, soybeans, tobacco, and fruits and vegetables.

The 1972 U.S. agricultural trade balance rose to a record of \$3.0 billion despite a 11-percent increase in agricultural imports to \$6.5 billion. This trade surplus helped to offset the record deficit in nonagricultural products of \$9.4 billion in 1972.

In many ways, 1972 was a very unusual year for U.S. agricultural exports. Exports started very briskly in the early months as delayed shipments from the longshoremen's strikes in October-November 1971 got rolling again. Next, reports appeared that corn and grain sorghum production in Argentina would be down substantially. While South African coarse grain production increased in 1972, the level of exports was limited by the capacity of the transportation system. With reduced supplies of grains from the other major suppliers, importers turned to us for feed grains. In summer there were indications that the USSR grain production was down sharply. At the same time, world exportable rice supplies fell off substantially with reduced output in Burma and Thailand--the big rice exporters in Asia. Later in the year, People's Republic of China started purchasing U.S. agricultural products for the first time in 2 decades.

Protein supplies also became scarce in 1972. Peruvian fishmeal production fell sharply as a change in the ocean currents caused anchovies to move to deeper water. Peru has had an embargo on anchovy fishing since September 1972. Supplies of peanuts were down in Africa and India, and sunflower seeds were in short supply in USSR and Eastern Europe. But world demand for protein has increased with continued world livestock expansion, especially in Japan and Western Europe.

Demand for U.S. agricultural exports gained from more vigorous economic activity in our principal markets. For example, Japanese industrial production rose an estimated 10 percent in 1972 compared with a 5-percent gain 1971. In Western Europe, output jumped 5 percent against the weak 2 percent of a year earlier.

U.S. agricultural exports showed substantial gains to all major areas in 1972. The USSR emerged as a principal market, taking \$438 million, excluding transshipments, worth of U.S.

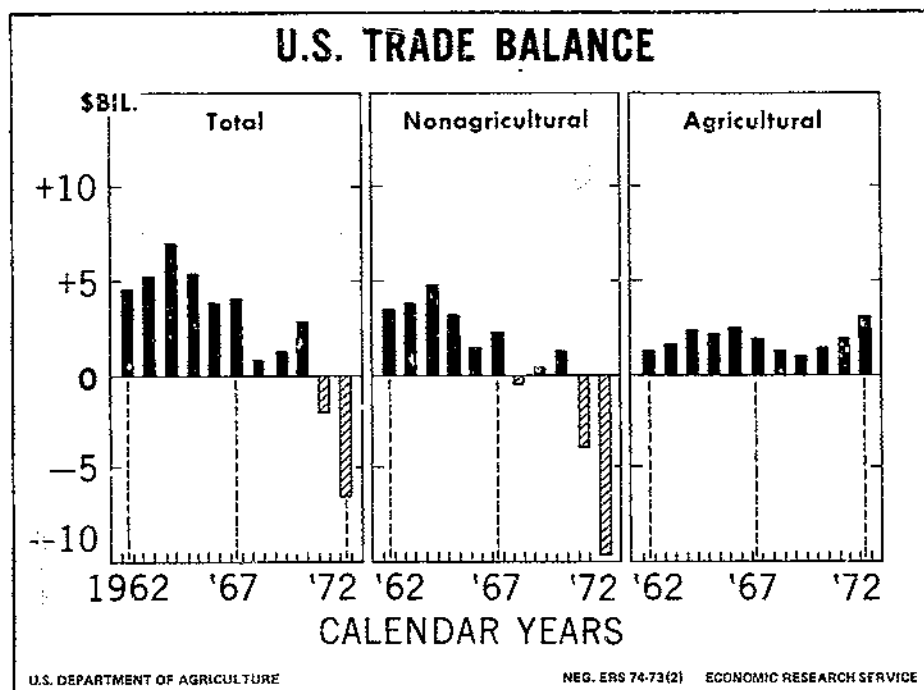


Figure 1

farm products compared with only \$30 million a year earlier. The bulk of 1972 exports moved since September. The partial failure of the grain crop caused the USSR to make massive grain purchases in the 1972/73 marketing year. The United States will ship about 16 million tons. Total value of these shipments is estimated at \$1 billion for delivery during 1972/73. Over \$250 million of these purchases moved out during calendar year 1972. Wheat exports to USSR totaled \$159 million in 1972, corn \$167 million, soybeans \$52 million, barley \$31 million, and cattle hides \$10 million. Exports to other Eastern Europe rose to \$184 million from \$163 million a year earlier.

Exports to Japan, the top foreign market for our farm products, totaled \$1.4 billion, up \$300 million from a year earlier. Japan purchased substantially more feed grains and somewhat larger amounts of wheat, fruits and vegetables (especially lemons and grapefruits), nuts, pork, and cattle hides. Exports to other Far East countries also showed substantial increases in 1972. Again, grains accounted for the bulk of the increase, which was mostly commercial sales.

Communist China emerged as a market for U.S. agricultural exports in calendar year 1972. Exports totaled \$58 million in 1972 compared with nothing a year earlier. The purchases were primarily wheat, feed grains, and soybean oil.

Exports to Western Europe rose a tenth to \$3.5 billion. Oilseeds and products were the big value gainers, but considerably more grains moved also. Exports to Latin America also showed an increase of over a tenth, largely because a drought spurred Mexican import requirements for grains.

Grains and preparations.--U.S. exports of grains and products rose by over two-fifths to \$3.50 billion in 1972, and accounted for nearly two-thirds of the overall increase in farm exports. All major grains showed substantial increases.

Table 1.--U.S. agricultural exports: Value by commodity, calendar years 1971 and 1972

Commodity	1971	1972 ^{1/}	Change
	-- Million dollars --		Percent
Animals and animal products:			
Dairy products	196	150	-23
Fats, oils, and greases	268	209	-22
Hides and skins, including furskins	199	354	+78
Meats and meat products	151	204	+35
Poultry products	78	90	+15
Other	81	109	+35
Total animals and products	973	1,116	+15
Cotton, excluding linters	533	503	-14
Feeds and fodders, excluding protein meal:			
Corn byproducts	35	53	+51
Alfalfa meal and cubes	25	17	-32
Other	70	90	+29
Total feeds and fodders, except oil cake and meal	130	160	+23
Fruits and preparations	351	429	+22
Grains and preparations:			
Feed grains, excluding products	972	1,522	+57
Rice	256	388	+52
Wheat and products	1,112	1,483	+33
Other	91	95	+4
Total grains and preparations	2,431	3,488	+43
Nuts and preparations	77	93	+21
Oilseeds and products:			
Cottonseed and soybean oils	311	240	-23
Soybeans	1,327	1,508	+14
Protein meal	420	435	+4
Other	131	224	+71
Total oilseeds and products	2,189	2,407	+10
Tobacco, unmanufactured	496	672	+35
Vegetables and preparations	216	257	+19
Other	247	279	+13
Total exports	7,693	9,404	+22

^{1/} Preliminary.

U.S. feed grain shipments rose by 57 percent to 28 million metric tons, valued at \$1.50 billion. Argentine supplies were reduced by smaller corn and grain sorghum output. As output of other major exporters edged downward, importers turned to the United States for feed grains during 1972. Corn exports, rising to 880 million bushels in 1972 from only 506 million bushels a year earlier, benefited most. Grain sorghum exports advanced almost a third to 150 million bushels. Japan accounted for much of the corn and sorghum increases; purchases rebounded from 3.7 million tons in 1971 to 5.7 million tons of feed grains in 1972. USSR feed-grain purchases of 4.1 million tons in 1972 compared with more than 240,000 tons in 1971. The United Kingdom, European Community (EC), Mexico, Spain, Yugoslavia, People's Republic of China, Taiwan, Portugal, Romania, and Venezuela also made substantially larger purchases.

U.S. exports of wheat and wheat products rose to 841 million bushels in 1972 from 654 million a year earlier. The upturn in U.S. wheat exports stemmed from adverse weather in several major producing countries, mainly the world's largest wheat producer, USSR; declines in rice supplies in Asia; reduced grain production in India; and uncertainty about grain supplies in the People's Republic of China. At the same time, we had the available supplies and capability to move wheat into export channels.

In 1972, the top outlets for U.W. wheat were the USSR, Japan, EC, Republic of Korea, Pakistan, Bangladesh, Venezuela, United Kingdom, Mexico, and Iran. However, exports to Turkey, Brazil, and India fell off sharply from a year earlier.

Exports to Japan edged up to 92 million bushels in 1972. The USSR became the top outlet by taking 98 million bushels. Because of its poor crop, Mexico purchased 22 million bushels of wheat compared with 7 million in 1971. Mexico is normally a wheat exporter. Australian wheat production fell sharply in 1972, and although Argentine production was estimated at 2 million tons, it was not in an export position until in

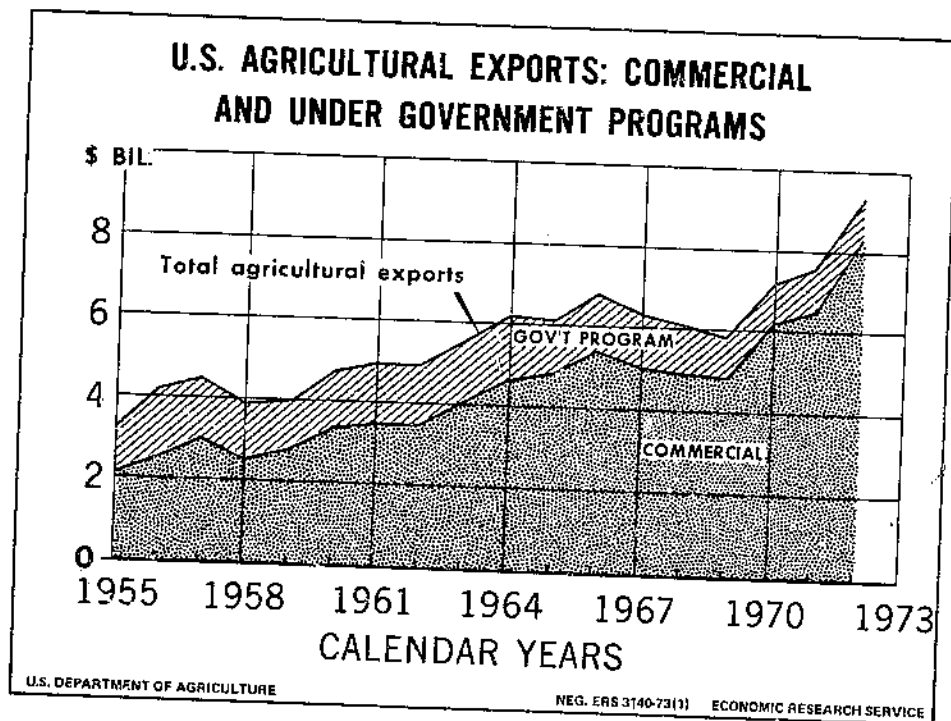


Figure 2

November. Canadian wheat exports are somewhat limited by the capacity of the country's transportation system. Although the EC had a record 1972 grain crop, wet weather during harvest season reduced overall quality, so the EC imported more U.S. wheat for blending.

U.S. rice exports increased to 44.9 million bags in 1972, up 12 million bags from a year earlier. With less rice grown in Burma, Thailand, the Philippines, and Latin America, import demand for rice picked up sharply. Shipments under Government programs accounted for most of the gain in U.S. shipments in 1972. Substantially more rice moved to the Republic of Korea, South Vietnam, Indonesia, Philippines, Iran, Saudi Arabia, Bangladesh, Cambodia, the Republic of South Africa, the EC, and Canada.

Oilseeds and products.--U.S. exports of oilseeds and products rose 10 percent over 1971. Soybean exports, accounting for the bulk of the increase, rose to 440 million bushels valued at \$1.50 billion. Exports of soybean oil fell 428 million pounds from a year earlier. Protein meal shipments fell in 1972 by 474,000 tons, but value rose \$15 million to \$441 million. Demand for U.S. soybeans continued unusually strong in both the United States and major foreign markets. This demand has outpaced production gains in recent years, judging by advances in unit value to \$3.42 a bushel in 1972 from \$3.13 in 1971 and \$2.80 in 1970. Reasons behind record U.S. soybean exports last year all hinge on meal, rather than oil, markets: Further expansion of livestock production in Western Europe, Canada, and Japan; purchase of 1 million tons by USSR; and the sharp reduction in world output of other protein meals, particularly fishmeal production in Peru.

Exports of oil cake and meal dipped to 4.2 million short tons in 1972, limited by the supply of U.S. soybean meal available for export. Value, however, advanced. Soybean meal prices rose to nearly \$105 a ton in 1972 from \$89 a ton a year earlier, underscoring the strength in the demand for U.S. oil cake and meal in the world market. Currently, the soybean meal price in Rotterdam is over \$200 a ton.

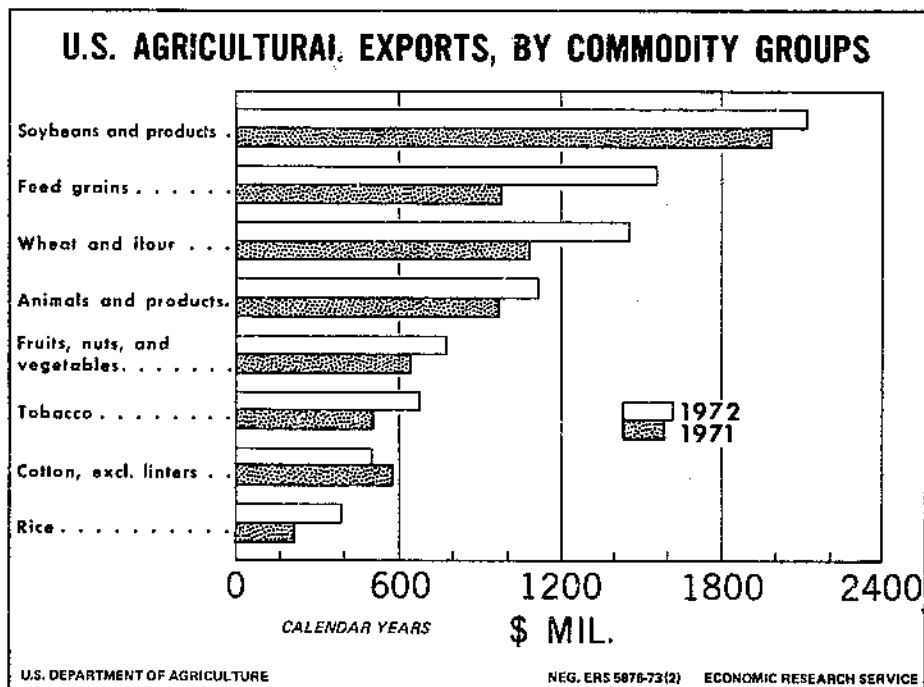


Figure 3

Table 2.--U.S. agricultural exports: Value by commodity, calendar years 1961-72

Commodity	1961	1962	1963	1964	1965	1966	1967	1968	1969	1970 ^{1/}	1971	1972 ^{2/}
-- Million dollars --												
Animals and animal products:												
Dairy products ^{3/}	120	120	170	211	183	114	109	131	121	127	196	150
Fats, oils, and greases	182	148	173	250	227	192	179	152	167	247	268	209
Hides and skins, excl. furskins:	86	83	75	93	109	154	127	121	151	187	199	354
Meats and meat products	66	62	87	115	104	107	105	118	156	132	151	204
Poultry products ^{4/}	85	89	75	74	70	67	59	57	57	56	78	90
Other	80	76	82	84	73	75	82	82	92	101	81	109
Total animals, etc.	619	578	662	827	766	709	661	661	744	850	973	1,116
Cotton, excluding linters	875	528	577	682	486	432	464	459	280	372	583	503
Fruits and preparations	271	285	275	277	312	314	309	275	325	334	351	429
Grains and preparations:												
Feed grains, excl. products ...	516	787	793	854	1,131	1,331	1,052	923	860	1,064	972	1,522
Rice, milled	112	153	178	206	244	230	316	348	348	314	256	388
Wheat and flour	1,298	1,135	1,330	1,532	1,183	1,534	1,206	1,100	830	1,111	1,090	1,456
Other	74	82	82	75	76	97	108	97	91	107	113	122
Total grains, etc.	2,000	2,157	2,383	2,667	2,634	3,192	2,632	2,468	2,129	2,596	2,431	3,488
Oilseeds and products:												
Cottonseed and soybean oils ...	127	185	165	210	241	154	154	107	128	244	311	240
Soybeans	343	407	472	567	650	767	772	810	822	1,228	1,327	1,508
Protein meal	48	91	125	145	187	227	246	262	284	358	420	435
Other	50	42	56	86	95	93	84	101	87	91	131	224
Total oilseeds, etc.	568	725	818	1,008	1,173	1,241	1,256	1,280	1,321	1,921	2,189	2,407
Tobacco, unmanufactured	391	373	403	413	383	482	498	524	540	517	496	672
Vegetables and preparations	132	159	182	169	166	188	175	182	192	206	216	257
Other	168	229	284	305	309	323	335	379	405	463	454	532
Total exports	5,024	5,034	5,584	6,348	6,229	6,881	6,380	6,228	5,936	7,259	7,693	9,404

^{1/} Beginning January 1970, export values include small amounts of commodities formerly classified as nonagricultural.

^{2/} Preliminary.

^{3/} Includes some additional commodities starting in 1971.

^{4/} Includes live poultry starting in 1971.

U.S. exports of soybean oil totaled 1.30 billion pounds in 1972, down 428 million pounds from a year earlier. A larger quantity of soybean oil is available in the world market from the crushing of U.S. soybeans by European processors. In addition, there has been an expansion in production of other fats and oils. Increased supplies at attractive prices lifted U.S. cottonseed oil exports to 476 million pounds in 1972 from 401 million pounds in 1971. This oil is being used in Western Europe to replace the sunflower oil formerly available from USSR and Eastern Europe.

Fruits, nuts, and vegetables.--U.S. agricultural exports of fruits, nuts, and vegetables rose a fifth to \$782 million, with increases for all major products. Fruit and preparation exports totaled \$432 million--\$78 million more than a year earlier, largely reflecting higher prices. Exports were stimulated by higher incomes in major market countries and by competitive prices, but limited U.S. supplies held down exports of some products. For example, U.S. supplies of raisins and canned peaches were very tight during most of 1972 and prices rose sharply. U.S. exports of fresh citrus gained over one-third. Increases occurred for shipments of lemons, oranges, and grapefruits. Canada bought over one-third of fresh citrus exports in 1972, but Japan scored the largest gains in purchases. Grapefruit exports to Japan benefited from trade liberalization, zooming to \$22 million in 1972 from \$3 million in 1971. Our canned fruit exports showed an increase of 25 percent to over \$62 million during 1972, with canned peaches and fruit cocktail accounting for the increase. Exports of canned fruits in 1971 were hampered by the longshoremen's strike on the West Coast. In addition, supplies in the United States were lower and competition was strong from other suppliers. Although the quantity of dried fruit exports declined over 20 percent, value was up by 11 percent to nearly \$60 million. A freeze in California sharply reduced the supplies of raisins, causing the price to move up sharply. Exports of fruit juices gained about 6 percent to \$66 million. We have been exporting increased quantities of citrus juices to Europe.

U.S. exports of nuts and preparations nearly cracked the \$100 million mark in 1972. A gain in exports of shelled walnuts to Western Europe and Japan accounted for much of the increase. However, almond exports also showed substantial gains. The introduction of new production and harvesting methods made U.S. nuts competitive in world markets. Exports of nuts and preparations about equaled imports in 1972. Just 5 years ago imports exceeded exports by \$50 million.

Exports of vegetables and preparations rose to over \$250 million in 1972 from \$216 million a year earlier. Fresh vegetables and dried and dehydrated vegetables all gained in 1972. Fresh vegetables, gaining 23 percent to over \$90 million, accounted for most of the increase. U.S. exports of fresh potatoes, tomatoes, lettuce, celery, onions, and peppers showed value gains in 1972 while exports of pulses were up only slightly from last year's \$52 million level.

Animals and animal products.--Exports of animals and animal products rose 15 percent to a new record of \$1.1 billion. Nearly 90 percent of the \$144 million increase was accounted for by increased shipments of cattle hides at higher prices in 1972. Other substantial increases occurred for meats and meat products, poultry products, and live animals. Cattle hide exports rose to nearly 18 million pieces--more than double a year earlier. The unit value of cattle hides increased sharply to over \$14 each compared with slightly over \$8 a year earlier. Demand for leather products in foreign countries has increased sharply with greater use of leather for coats and other apparel as well as footwear. But world exportable supplies have declined drastically with the embargo on hide exports from Argentina. Argentina has imposed an embargo to stimulate its leather industry. This shortage was partially balanced by increased Argentine leather exports. Japan continues to be the top market for U.S. cattle hides, taking approximately two-fifths of the total in 1972. However, exports to Eastern and Western Europe also advanced.

U.S. exports of variety meats rose 14 percent in value to \$89 million in 1972. Higher prices due to strengthening demand accounted for the increase. Exports of fresh beef increased by 46 percent in 1972. Canada accounted for a considerable part of this increase, but other areas, including the Caribbean, took more U.S. beef. Pork exports jumped to \$49 million in 1972 from \$25 a year earlier, with Japan accounting for most of the gain, but exports were also up to Canada. Generally tight supplies and increased demand from expanding personal incomes have stimulated U.S. exports of meats and products. These increases in U.S. meat exports have occurred despite higher prices.

Exports of dairy products fell to \$150 million in 1972 from \$196 million a year earlier. Butter accounted for most of the decline but nonfat dry milk and condensed milk exports also declined.

U.S. exports of poultry and poultry products rose 15 percent to around \$90 million. Turkey exports, principally to EC, were about 60 percent larger than a year earlier, and exports of eggs and egg products were up a fourth to over \$17 million. Exports of fresh and frozen chicken were about equal to the \$26 million level of 1971.

Exports of animal fats and oils declined to \$212 million from \$270 million a year earlier. Lard exports to the United Kingdom were off sharply with increased supplies available on the European continent. U.S. tallow exports faced increased competition from other fats and oils.

Cotton.--U.S. exports of cotton dropped by 1 million running bales to 3 million in 1972. Exports during the last half of 1972 were hampered by depleted U.S. cotton stocks, which resulted from small 1971 output and relatively large exports during 1971. In addition, the late harvest in 1972 has shifted the export pattern to a later period in the 1972/73 marketing year. Foreign demand for U.S. cotton continues relatively strong. Export unit value in 1972 averaged \$162 per running bale, up sharply from \$141 per bale in 1971. Much of the decline occurred in shipments to the Far East under Government-financed programs. But exports also were off sharply to Japan and moderately to Western Europe.

Tobacco.--U.S. exports of tobacco totaled 635 million pounds in 1972, up substantially from the 504 million in 1971. Value totaled \$672 million--up a third. Exports delayed by the longshoremen's strike in October-November 1971, which moved out in early 1972, accounted for most of the increase. In 1972, substantial gains occurred to the EC, other Western Europe, Japan, and the Far East. Flue-cured tobaccos accounted for most of the increase, but exports of burley and Maryland tobaccos also gained. U.S. tobacco has been facing increased competition from many developing countries. In addition, the more extensive foreign use of filter cigarettes is lowering tobacco required per unit.

The uncertainty about Rhodesia's future as a tobacco exporter caused many importers to buy from the United States only for current needs. The export unit value of all tobacco averaged \$1.06 a pound in 1972 compared with 98 cents a year earlier. Higher U.S. tobacco prices during the past decade have stimulated production overseas and have slowed the growth of U.S. exports.

Table 3.--U.S. agricultural exports: Value by months, January 1961 to December 1972

Months	1961	1962	1963	1964	1965	1966	1967	1968	1969	1970 1/	1971	1972 2/
-- Million dollars --												
January	422.2	379.1	201.9	542.8	210.4	505.7	530.2	545.0	177.7	524.1	670.3	769.7
February	425.6	410.8	492.2	523.2	325.7	519.7	512.0	547.4	239.5	559.6	634.5	714.5
March	469.4	428.0	505.2	523.6	696.2	619.5	552.0	544.4	517.2	569.7	714.5	668.3
January-March	1,317.2	1,217.9	1,199.3	1,589.6	1,232.3	1,644.9	1,594.2	1,636.8	934.4	1,653.4	2,019.3	2,152.5
April	394.4	410.9	499.7	521.1	553.8	552.3	524.5	523.7	602.0	558.4	632.1	627.7
May	395.3	474.2	505.4	530.5	532.9	549.4	548.1	497.5	583.6	573.7	623.1	711.5
June	348.7	470.7	412.9	459.4	530.9	551.1	521.0	461.3	513.2	599.4	607.1	742.7
April-June	1,138.4	1,355.8	1,418.0	1,511.0	1,617.6	1,652.8	1,593.6	1,482.5	1,698.8	1,731.5	1,862.3	2,081.9
January-June	2,455.6	2,573.7	2,617.3	3,100.6	2,849.9	3,297.7	3,187.8	3,119.3	2,633.2	3,384.9	3,881.6	4,234.4
July	350.4	402.0	410.5	479.7	548.0	489.9	472.2	465.6	499.8	567.8	578.5	681.0
August	391.4	359.4	408.7	419.6	459.3	571.0	468.1	489.0	438.4	537.5	546.2	683.3
September	371.5	396.3	432.9	494.7	484.6	564.0	488.9	469.6	471.5	568.3	749.3	709.7
July-September	1,113.3	1,157.7	1,252.1	1,394.0	1,491.9	1,624.9	1,429.2	1,424.2	1,409.7	1,673.6	1,874.0	2,074.0
October	495.2	389.2	552.3	575.7	587.1	622.4	531.8	463.8	644.9	729.9	465.9	907.4
November	490.2	451.4	574.5	607.7	651.4	697.7	667.4	609.4	657.8	725.8	630.2	1,079.6
December	469.6	462.0	588.1	669.5	648.3	638.6	563.6	610.7	590.9	744.6	841.5	1,110.1
October-December	1,455.0	1,302.6	1,714.9	1,852.9	1,886.8	1,958.7	1,762.8	1,683.9	1,893.6	2,200.3	1,937.6	3,097.1
July-December	2,568.3	2,460.3	2,967.0	3,246.9	3,378.7	3,583.6	3,192.0	3,108.1	3,303.3	3,873.9	3,811.6	5,171.1
January-December 3/	5,023.9	5,034.0	5,584.3	6,347.5	6,228.6	6,881.3	6,379.8	6,227.6	5,936.5	7,258.6	7,693.2	9,403.6
Monthly average	418.7	419.5	465.4	529.0	519.1	573.4	531.6	518.9	494.7	604.9	641.1	783.6

1/ Beginning January 1970, export values include small amounts of commodities formerly classified as nonagricultural.

2/ Preliminary, monthly totals for 1972 are not revised and will not add to total.

3/ Totals may not add due to rounding.

Table 4.--Average export unit prices for selected agricultural products, calendar years 1969-72

Commodity	Unit	Average unit price				Percentage change from 1971 to 1972
		1969	1970	1971	1972	
		-- Dollars --				Percent
Beef, fresh	Lb.	1.06	1.07	1.02	1.04	+2
Pork, fresh	do.	.43	.41	.40	.51	+28
Broilers and fryers	do.	.33	.32	.32	.30	-6
Wheat	Bu.	1.65	1.58	1.69	1.75	+4
Rice	Cwt.	8.70	7.93	7.84	8.66	+10
Feed grains	M.ton	51.26	54.45	57.66	54.83	-5
Corn	Bu.	1.31	1.44	1.46	1.40	-4
Grain sorghums	do.	1.23	1.30	1.46	1.44	-1
Oranges, fresh	Lb.	.09	.09	.10	.09	-10
Lemons, fresh	do.	.11	.10	.11	.11	0
Raisins	do.	.18	.18	.18	.26	+44
Peaches, canned	do.	.12	.12	.13	.14	+8
Fruit cocktail	do.	.16	.17	.19	.19	0
Beans, dried	Cwt.	8.38	9.69	10.35	11.17	+8
Peas, dried	do.	5.86	6.19	5.57	5.81	+4
Soybean meal	S.ton	81.88	85.15	88.74	102.62	+16
Tobacco	Lb.	.94	.97	.98	1.06	+8
Flue-cured, unstemmed	do.	.86	.92	.95	1.02	+7
Flue-cured, stemmed	do.	1.22	1.25	1.26	1.33	+6
Cattle hides	No.	8.60	8.40	8.11	14.98	+85
Cotton	R.bale	116.91	124.80	141.30	162.76	+15
Soybeans	Bu.	2.64	2.79	3.13	3.42	+9
Tallow, inedible	Lb.	.07	.09	.09	.08	-11
Soybean oil, crude	do.	.10	.12	.13	.12	-8
Cottonseed oil, crude	do.	.11	.12	.15	.13	-13

Table 5.--U.S. agricultural exports: Quantity and value by commodity, calendar years 1971 and 1972

Commodity	Unit	Quantity		Value	
		1971	1972 <u>1/</u>	1971	1972 <u>1/</u>
		Thou- sands	Thou- sands	1,000 dollars	1,000 dollars
All commodities	---	---	---	43,491,800	48,876,200
Nonagricultural commodities	---	---	---	35,708,598	39,472,619
Agricultural commodities	---	---	---	7,693,202	9,403,581
Animals and animal products	---	---	---	972,838	1,115,849
Animals, live excluding poultry	---	---	---	46,210	67,115
Cattle	No.	93	196	32,700	43,796
Other	---	---	---	13,510	23,317
Meat and meat products	Lb.	407,093	458,931	151,490	203,981
Meat, fresh, frozen	Lb.	353,928	410,228	127,188	178,308
Beef and veal, except offals	Lb.	30,645	43,265	30,688	44,897
Pork, except offals	Lb.	4,288	81,125	18,071	41,404
Variety meats	Lb.	272,119	272,373	76,133	86,131
Other	Lb.	5,876	13,465	2,296	5,876
Meats, prepared and preserved	Lb.	53,165	48,703	24,302	25,673
Beef	Lb.	11,397	8,891	5,331	4,923
Pork	Lb.	20,021	18,151	6,998	8,033
Other	Lb.	21,747	21,661	11,973	12,717
Poultry and poultry products	---	---	---	78,335	90,353
Poultry, live	---	---	---	20,905	20,660
Baby chicks, ex. breeding chicks	No.	13,582	17,481	3,282	3,581
Breeding chicks	No.	15,249	13,030	16,098	14,866
Other	---	---	---	1,525	2,213
Poultry meats, fresh or frozen	Lb.	133,269	144,064	38,270	44,075
Chickens	Lb.	101,982	97,319	25,881	25,286
Turkeys	Lb.	23,031	36,390	9,456	15,012
Other	Lb.	8,256	10,355	2,933	3,777
Poultry meats, prepared, preserved	Lb.	6,799	11,538	2,388	4,150
Eggs	---	---	---	13,441	17,020
Eggs, dried and otherwise preserved	Lb.	869	4,151	933	3,626
Eggs in the shell for hatching	Doz.	11,788	11,815	12,091	12,208
Eggs in the shell, other	Doz.	1,057	3,111	417	1,186
Other	---	---	---	3,331	4,448
Dairy products	---	---	---	196,131	149,731
Anhydrous milk fat	Lb.	623	960	318	355
Butter	Lb.	91,999	42,430	46,875	22,658
Cheese and curd	Lb.	6,536	6,490	4,822	5,252
Milk and cream:	---	---	---	---	---
Condensed or evaporated	Lb.	67,829	55,360	15,341	11,310
Dry, whole milk and cream	Lb.	24,978	38,269	5,117	6,242
Fresh	Gal.	1,447	1,521	2,153	2,340
Nonfat dry	Lb.	357,627	282,461	96,874	78,184
Other	---	---	---	24,631	23,390
Fats, oils and greases	Lb.	2,903,282	2,543,185	268,181	209,225
Lard and other rendered pig fat	Lb.	282,288	164,386	33,284	18,908
Tallow:	---	---	---	---	---
Edible	Lb.	6,198	12,435	691	1,173
Inedible	Lb.	2,439,913	2,194,711	215,683	172,891
Other	Lb.	174,883	171,653	18,523	16,253
Hides and skins, inc. furskins	---	---	---	198,704	353,927
Cattle hides, whole	No.	15,514	17,089	125,890	256,068

Continued--

Table 5.--U.S. agricultural exports: Quantity and value by commodity, calendar years 1971 and 1972--Continued

Commodity	Unit	Quantity		Value	
		1971	1972 1/	1971	1972 1/
		Thou- sands	Thou- sands	1,000 dollars	1,000 dollars
Hides and skins, inc. furskins--Continued:					
Furskins	---	---	---	43,633	62,280
Other	---	---	---	29,181	35,579
Other animal products					
Hair, animal, ex. wool or fine hair	Lb.	1,752	1,896	741	706
Sausage casings	Lb.	12,324	13,591	11,735	11,267
Wool, unmanufactured, inc. fine hair	Clb.	18,743	30,542	10,445	16,812
Other	---	---	---	10,866	12,732
Vegetable products					
Cotton, unmanufactured	Rba.	4,296	3,254	588,653	507,818
Cotton, raw	Rba.	4,127	3,089	583,150	502,752
Linters	Rba.	169	165	5,503	5,066
Fruits and preparations					
Canned					
Cherries	Lb.	314,474	368,258	50,230	62,590
Fruit cocktail	Lb.	3,192	24,045	1,155	5,500
Peaches	Lb.	76,832	92,738	14,308	17,222
Pears	Lb.	137,811	134,159	17,820	19,290
Pineapples	Lb.	10,109	13,047	1,257	1,852
Other	Lb.	63,321	71,310	10,543	11,879
Dried					
Prunes	Lb.	23,209	32,959	5,147	6,847
Other	Lb.	255,946	204,757	53,388	59,023
Grapes (raisins)	Lb.	84,431	82,081	19,846	23,972
Other	Lb.	151,045	101,007	26,769	26,621
Fresh					
Apples	Lb.	20,470	21,669	6,773	8,430
Berries	Lb.	1,814,954	2,123,796	180,782	234,910
Grapefruits	Lb.	111,196	127,621	11,411	14,137
Grapes	Lb.	23,563	28,391	5,867	7,122
Lemons and limes	Lb.	219,017	414,554	16,521	38,144
Oranges, tangerines, and clementines	Lb.	281,413	217,854	35,061	41,588
Pears	Lb.	301,396	345,164	32,642	38,594
Other	Lb.	565,683	604,786	53,781	61,742
Fruit juices	Lb.	51,829	58,705	5,244	6,639
Grapefruit	Gal.	260,857	264,721	20,262	26,894
Orange	Gal.	35,892	35,679	62,316	66,317
Other	Gal.	6,247	6,358	10,017	10,251
Frozen fruits	Gal.	19,744	18,450	39,754	42,477
Other	Gal.	9,901	10,871	12,545	13,589
Frozen fruits					
Other	Lb.	6,132	10,531	1,284	2,202
Nuts and preparations					
Almonds	Lb.	128,280	144,699	76,578	93,127
Walnuts	Lb.	73,189	72,858	50,219	55,988
Other	Lb.	24,483	36,356	6,998	14,190
Grains and preparations					
Feed grains and major products					
Feed grains	Mt.	17,250	28,124	999,408	1,548,869
Barley	Bu.	16,857	27,761	971,992	1,522,112
Corn	Bu.	50,940	57,384	65,082	57,799
Grain sorghums	Bu.	506,727	880,505	741,417	1,234,739
Oats	Bu.	111,093	150,359	162,499	215,930
Malt and flour, inc. barley malt	Bu.	3,802	22,581	2,994	13,644
Corn grits and hominy	Lb.	78,832	109,264	5,109	6,966
Cornmeal	Lb.	94,095	55,248	3,502	2,111
Other	Cwt.	2,226	2,048	10,656	8,918

Continued--

Table 5.--U.S. agricultural exports: Quantity and value by commodity, calendar years 1971 and 1972--Continued

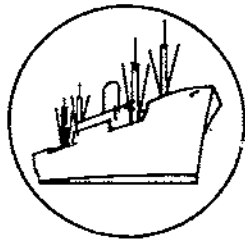
Commodity	Unit	Quantity		Value	
		1971	1972 ^{1/}	1971	1972 ^{1/}
		Thou- sands	Thou- sands	1,000 dollars	1,000 dollars
Grains and preparations--Continued:					
Corn starch	Lb.	46,312	56,150	5,343	6,364
Oatmeal and groats	Cwt.	13	80	78	452
Oatmeal and oats, rolled, etc.	Lb.	42,026	26,979	2,728	1,946
Rice, milled basis	Lb.	3,266,207	4,484,328	255,979	388,138
Rye	Bu.	5,353	195	6,588	236
Wheat and major products	Bu.	653,397	840,653	1,111,701	1,482,801
Wheat	Bu.	596,006	782,925	1,004,729	1,368,964
Wheat flour	Cwt.	20,965	20,695	85,176	86,546
Other wheat products	Bu.	9,753	10,568	21,796	27,291
Bakery products	Lb.	18,878	22,148	6,967	8,072
Dietetic foods	Lb.	104,704	212,086	9,831	22,408
Blended food products	Lb.	340,417	284,869	29,661	24,419
Other	---	---	---	10,690	13,415
Feeds and fodders, ex. oil cake and meal					
Corn byproducts, feed	Stn.	622	862	129,673	160,402
Alfalfa meal, dehydrated	Stn.	260	168	35,010	53,344
Alfalfa meal, sun-cured	Stn.	234	144	13,524	8,557
Alfalfa hay cubes	Stn.	---	19	11,343	7,065
Poultry feeds, prepared	Stn.	132	118	---	977
Other	---	---	---	18,912	18,999
Oilseeds and products					
Oil cake and meal	Stn.	4,724	4,250	2,189,258	2,407,084
Soybean oil cake and meal	Stn.	4,504	3,990	419,946	434,599
Other	Stn.	220	260	399,734	409,401
Oilseeds	---	---	---	20,212	25,198
Flaxseed	Bu.	422	10,557	1,392,617	1,657,514
Soybeans	Bu.	423,967	440,653	1,111	32,165
Safflower seed	Lb.	111,577	93,155	1,326,816	1,507,658
Other	---	---	---	6,381	4,295
Vegetable oils and waxes	Lb.	2,499,952	2,263,651	58,309	113,396
Cottonseed oil	Lb.	400,756	475,705	376,695	314,971
Soybean oil	Lb.	1,728,660	1,300,867	63,864	64,622
Other	Lb.	370,536	487,079	247,136	175,348
Tobacco, unmanufactured					
Burley	Lb.	504,202	634,895	496,497	672,038
Cigar wrapper	Lb.	36,535	53,665	38,540	61,264
Dark-fired Kentucky and Tennessee ..	Lb.	2,537	3,024	11,374	15,180
Flue-cured	Lb.	19,622	20,630	13,402	15,277
Maryland	Lb.	341,785	422,882	375,318	514,275
Bulk-smoking	Lb.	9,004	10,992	8,932	11,558
Other	Lb.	30,657	28,719	34,434	32,601
Vegetables and preparations					
Canned	---	---	---	215,636	256,615
Asparagus	Lb.	96,607	114,378	18,730	21,733
Corn	Lb.	4,484	3,822	1,607	1,247
Soups	Lb.	14,744	20,372	2,636	3,507
Tomatoes, tomato sauce and puree ..	Lb.	17,930	20,327	3,983	4,411
Other	Lb.	27,649	35,330	4,557	5,822
Pulses, ex. seeds	Lb.	31,800	34,527	5,947	6,746
Dried beans	Lb.	609,427	577,178	52,159	52,472
Dried peas, inc. cow and chick	Lb.	321,499	275,051	33,264	30,717
Dried lentils	Lb.	223,185	226,700	12,420	13,163
Fresh	Lb.	64,743	75,427	6,475	8,592
Lettuce	Lb.	1,189,278	1,424,291	74,230	91,356
	Lb.	292,849	338,283	16,583	18,241

Continued--

Table 5.--U.S. agricultural exports: Quantity and value by commodity, calendar years 1971 and 1972--Continued

Commodity	Unit	Quantity		Value	
		1971	1972 ^{1/}	1971	1972 ^{1/}
		Thou- sands	Thou- sands	1,000 dollars	1,000 dollars
Vegetables and preparations--Continued:					
Onions	Lb.	137,018	128,817	6,937	7,837
Potatoes, except sweet potatoes	Lb.	288,434	383,774	8,198	12,445
Tomatoes	Lb.	107,592	136,751	12,999	17,480
Other	Lb.	363,385	436,666	29,513	35,353
Frozen vegetables	Lb.	17,921	25,962	3,265	4,778
Hops	Lb.	16,926	19,589	15,105	18,807
Soups and vegetables, dehydrated	Lb.	23,065	29,567	10,785	13,438
Tomato juice, canned	Gal.	1,461	1,592	1,691	1,744
Vegetable seasonings	Lb.	38,970	49,913	10,404	12,570
Other	---	---	---	29,267	39,717
Other vegetables products	---	---	---	242,378	273,618
Coffee	Lb.	20,296	31,170	23,009	30,129
Drugs, herbs, roots, etc.	Lb.	10,040	10,630	10,198	14,267
Essential oils and resinoids	Lb.	13,075	13,368	36,091	36,643
Flavoring sirups, sugars, extracts	---	---	---	46,883	52,955
Honey	Lb.	7,564	4,102	1,835	1,429
Nursery stock	---	---	---	9,815	11,473
Seeds, field and garden	---	---	---	62,827	63,677
Spices	Lb.	6,924	8,434	5,140	5,841
Other	---	---	---	46,580	57,204

^{1/} Preliminary



SPECIAL in this issue

FARM IMPORTS ROSE 11 PERCENT IN 1972

U.S. agricultural imports in 1972 totaled nearly \$6.5 billion, 11 percent above 1971. Higher prices accounted for nearly two-thirds of the expansion. Over the past 5 years, U.S. agricultural import growth has been uneven. After major gains in 1968 and 1970, imports rose only 1 percent in 1971, due in part to longshoremen's strikes. A temporary import surcharge and currency revaluations also impeded 1971 imports. Duty reductions effective January 1, 1972, attracted certain commodities in greater volume, including some which would have otherwise entered in 1971.

In 1972, imports surged again, featuring livestock products, grain products, fruits, vegetables, and wine. Competitive imports gained 16 percent in value to \$4.3 billion, with higher prices comprising nearly half of the increase. Voluntary import restraints on certain meats--fresh-chilled or frozen beef, veal, and mutton--were eased in March 1972 and removed in July. Beef and veal import volume rose 13 percent to 1.5 billion pounds, while value rose 17 percent to \$862 million. Feeder cattle and calf entries were up a fifth to 1.17 million, while sharp price increases pushed value up 42 percent to \$152 million. Dairy-product imports jumped 46 percent in value to \$167 million, mostly because of higher prices.

Fruit and vegetable entries advanced 17 percent to \$546 million. Sugar imports dipped slightly to 5 23 million short tons, but price rises pushed value up 8 percent to \$824 million. At 47 million gallons, wine purchases grew 30 percent; import value rose to \$210 million.

Imports of noncompetitive agricultural items, primarily tropical products, advanced 2 percent to \$2.2 billion in 1972. This increase resulted from higher import prices, particularly for coffee and carpet wool. Green coffee imports declined 4 percent in volume, while value rose 1 percent to \$1.2 billion. Average import prices moved up to 43 cents per pound from 41 cents. In particular, import prices for Brazilian coffee averaged 44 cents per pound against 41 cents in 1971. This rise resulted from freeze damage in Brazil. Volume increases occurred for several noncompetitive commodities, including bananas, roasted and soluble coffees, prepared cocoa, certain spices, essential oils, and crude drugs. Reductions took place for cocoa beans, natural rubber, tea, and black pepper.

Table 6.--U.S. agricultural imports: Value by commodity, calendar years 1961-72

Commodity	1961	1962	1963	1964	1965	1966	1967	1968	1969	1970	1971	1972
-- Million dollars --												
<u>Supplementary</u>												
Animals and animal products:												
Cattle, dutiable	94	110	68	42	98	97	59	91	94	111	107	152
Dairy products	54	54	55	62	73	118	115	101	101	125	113	167
Hides and skins	61	63	59	71	73	83	54	71	58	110	105	117
Meats and meat products, excluding poultry ...	375	469	524	411	427	598	644	744	860	1,010	1,046	1,219
Wool, apparel	90	120	111	115	157	157	102	110	85	59	31	25
Other animals and animal products	61	67	75	82	92	106	105	105	112	146	126	151
Total animals and products	735	883	892	783	920	1,159	1,379	1,222	1,310	1,561	1,528	1,831
Cotton, raw, excluding linters	31	25	24	21	18	18	28	12	6	6	7	12
Fruits and preparations	66	66	84	101	99	101	98	149	145	146	167	182
Grains and preparations	57	45	43	46	40	41	45	49	57	70	71	97
Nuts, edible, and preparations	62	59	67	72	75	81	76	110	96	100	105	116
Oilseeds and products:												
Coconut oil	16	25	39	47	51	60	55	64	50	77	79	63
Copra	50	47	38	43	55	42	46	62	47	38	33	26
Olive oil	15	16	13	18	14	15	18	20	18	20	20	26
Other oilseeds and products	63	58	52	47	51	3	63	74	67	67	78	98
Sugar and molasses:												
Sugar, cane	458	505	611	458	441	502	587	641	638	725	763	824
Molasses, inedible	26	29	43	34	24	31	43	42	38	43	45	54
Tobacco, unmanufactured	114	101	99	110	130	127	129	142	128	139	152	150
Vegetables and preparations	105	111	116	133	148	181	216	220	240	298	299	364
Wines and malt beverages:												
Wines	46	52	54	62	68	77	87	100	117	145	162	210
Malt beverages	16	18	19	23	21	23	23	26	27	32	34	36
Other supplementary vegetable products	78	88	98	98	92	101	103	104	105	141	145	188
Total supplementary products	1,938	2,128	2,292	2,096	2,247	2,627	2,696	3,037	3,089	3,608	3,688	4,277
<u>Complementary</u>												
Bananas, fresh	77	77	82	127	162	179	174	182	181	188	182	186
Cocoa beans	160	132	135	131	120	122	147	136	168	201	181	151
Coffee, green	961	986	955	1,197	1,059	1,067	963	1,140	894	1,160	1,166	1,181
Drugs, crude	20	19	21	18	21	25	28	27	24	25	25	31
Essential oils	19	21	22	23	31	29	28	34	27	32	29	40
Fibers, unmanufactured	34	33	37	35	31	25	21	21	18	19	18	19
Rubber, crude, excluding allied gums	216	228	197	201	182	177	170	188	275	231	211	190
Silk, raw	27	27	27	22	20	23	18	18	13	7	2	5
Spices	35	35	32	35	47	44	40	42	47	55	58	59
Tea, crude	54	60	58	60	57	57	58	61	53	53	71	63
Wool, carpet	108	89	115	90	71	72	37	48	43	31	35	43
Other complementary products	42	33	38	47	39	44	72	89	125	159	158	214
Total complementary products	1,753	1,740	1,719	1,986	1,840	1,864	1,756	1,986	1,868	2,161	2,136	2,182
Total agricultural imports 2/	3,691	3,868	4,011	4,082	4,087	4,491	4,452	5,024	4,957	5,770	5,823	6,459

1/ Preliminary.

2/ Totals may not add due to rounding.

Table 7.--U.S. agricultural imports: Value by months, January 1961 to December 1972

Month	1961	1962	1963	1964	1965	1966	1967	1968	1969	1970	1971	1972 ^{1/}
-- Million dollars --												
January	298.7	326.0	232.9	331.7	175.1	352.7	413.0	414.7	208.6	491.0	506.6	575.6
February	276.2	299.9	374.5	294.5	269.3	371.2	353.7	402.4	315.6	457.5	419.7	591.6
March	345.5	325.3	352.7	381.7	420.3	430.7	412.9	369.7	474.8	523.9	499.6	506.6
January-March	920.4	951.2	959.9	1,007.9	864.7	1,154.6	1,179.6	1,186.8	999.0	1,472.4	1,425.9	1,673.8
April	286.9	312.7	348.4	361.2	368.5	383.0	362.8	439.5	487.9	514.5	554.4	486.0
May	294.9	335.9	323.3	328.6	337.9	358.1	337.0	434.4	438.1	443.5	477.9	525.1
June	314.8	288.0	295.7	314.1	344.6	387.1	364.8	386.7	430.0	499.4	529.8	520.6
April-June	896.6	936.6	967.4	1,003.9	1,051.0	1,128.2	1,064.6	1,260.6	1,356.0	1,457.4	1,562.1	1,531.7
January-June	1,817.0	1,887.8	1,927.3	2,011.8	1,915.7	2,282.8	2,244.2	2,447.4	2,355.0	2,929.8	2,988.0	3,205.5
July	315.1	296.5	335.2	316.7	260.3	342.6	346.8	438.6	434.0	461.7	489.0	471.6
August	334.4	330.0	346.7	315.2	318.7	352.6	369.4	442.1	407.7	463.8	555.1	563.8
September	296.6	313.1	343.1	338.4	354.0	415.3	347.7	460.3	398.6	469.0	650.5	547.1
July-September	946.1	939.6	1,025.0	970.3	933.0	1,110.5	1,063.9	1,341.0	1,240.3	1,394.5	1,694.6	1,582.5
October	320.8	332.5	374.3	347.7	411.0	388.1	376.3	396.0	469.1	480.3	302.5	573.6
November	305.5	356.8	317.5	381.6	398.8	358.6	379.7	419.4	411.2	442.9	298.2	547.3
December	301.6	351.3	367.1	370.6	428.1	351.6	388.3	419.8	481.8	522.3	540.2	549.9
October-December	927.9	1,040.6	1,058.9	1,099.9	1,237.9	1,098.3	1,144.3	1,235.2	1,362.1	1,445.5	1,140.9	1,670.8
July-December	1,874.0	1,980.2	2,083.9	2,070.2	2,170.9	2,208.8	2,208.2	2,576.2	2,602.4	2,840.0	2,835.5	3,253.3
January-December ^{2/}	3,691.0	3,868.0	4,011.2	4,082.0	4,086.6	4,491.4	4,452.2	5,023.6	4,957.2	5,769.8	5,823.5	6,458.8
Monthly average	307.6	322.3	334.3	340.2	340.5	374.3	371.0	418.6	413.1	480.8	485.3	538.2

^{1/} Preliminary.

^{2/} Totals may not add due to rounding.

Table 8.--Average unit values for principal U.S. agricultural commodity imports, calendar years 1968-72

Commodity	Unit	1968	1969	1970	1971	1972 1/
-- Dollars --						
Cattle; feeder, 200-700 lbs.	No.	84.61	84.14	86.30	100.50	122.66
Beef, boneless; fresh or frozen	Lb.	.42	.46	.50	.53	.57
Pork, fresh or frozen	do.	.41	.49	.44	.37	.47
Pork; hams or shoulders, canned	do.	.75	.83	.88	.84	.85
Cheese, Emmenthaler	do.	.37	.53	.56	.58	.62
Casein, excluding mixtures	do.	.22	.21	.22	.29	.47
Sheep and lamb skins	do.	.67	.84	.81	.81	.97
Wool, apparel	Glb.	.57	.61	.52	.48	.60
Cotton, raw	Rble.	156.51	138.32	168.65	171.82	162.01
Olives, in brine	Gal.	2.27	2.26	2.35	2.66	2.87
Oranges, canned mandarin	Lb.	.19	.19	.21	.21	.22
Pineapples, canned	do.	.11	.11	.12	.12	.12
Strawberries, frozen	do.	.17	.17	.14	.13	.15
Barley, unmilled	Bu.	1.21	1.11	1.19	1.19	1.39
Biscuits, cakes, wafers, etc.	Lb.	.36	.36	.37	.37	.42
Coconut meat, prepared	do.	.18	.14	.13	.13	.11
Cashew nuts, shelled	do.	.56	.55	.60	.59	.62
Coconut oil	do.	.15	.12	.13	.12	.09
Copra	do.	.10	.08	.09	.08	.06
Sugar, cane or beet	Ston.	128.63	134.16	138.68	143.69	157.64
Molasses, inedible	Gal.	.12	.10	.11	.11	.13
Cucumbers, fresh	Lb.	.07	.09	.09	.09	.08
Hops	do.	.98	.93	.98	.99	.95
Mushrooms, canned	do.	.57	.56	.60	.67	.67
Peppers, fresh	do.	.16	.18	.18	.18	.18
Tomatoes, fresh	do.	.12	.15	.15	.15	.15
Tomato paste and sauce	do.	.14	.15	.14	.14	.15
Tobacco, cigarette leaf, unstemmed	do.	.69	.68	.67	.64	.61
Still grape table wines	Gal.	4.34	4.31	4.45	4.09	4.21
Beer and ale	do.	1.08	1.11	1.17	1.18	1.24
Bananas, fresh	Lb.	.05	.05	.05	.04	.04
Coffee, green	do.	.34	.33	.44	.41	.43
Coffee, roasted or ground	do.	.35	.37	.47	.46	.56
Coffee, soluble	do.	.97	1.05	1.32	1.46	1.39
Cocoa beans	do.	.27	.34	.32	.26	.24
Cocoa butter	do.	.63	.88	.68	.52	.56
Cocoa, unsweetened powder	do.	.11	.15	.17	.17	.17
Chocolate, unsweetened	do.	.32	.43	.39	.34	.31
Chocolate, sweetened, excluding bars	do.	.27	.33	.30	.46	.49
Lime oil	do.	7.51	7.37	7.23	6.28	6.42
Sisal and henequin	Lton.	115.30	123.50	107.36	108.67	113.98
Rubber, natural, dry form	Lb.	.15	.21	.19	.15	.14
Rubber, natural, latex	do.	.19	.20	.18	.16	.16
Silk, raw	do.	8.10	7.08	7.75	7.93	8.18
Pepper, unground black	do.	.27	.29	.43	.44	.39
Vanilla beans	do.	4.55	4.77	4.63	4.46	4.59
Tea, crude	do.	.39	.38	.38	.41	.41
Wool, carpet	Glb.	.33	.36	.35	.36	.50

1/ Preliminary.

Table 9.--U.S. agricultural imports: Quantity and value by commodity, calendar years 1971 and 1972

Commodity	Unit	Quantity		Value	
		1971	1972 <u>1/</u>	1971	1972 <u>1/</u>
		Thou- sands	Thou- sands	1,000 dollars	1,000 dollars
All commodities	---	---	---	45,515,800	55,282,300
Nonagricultural commodities	---	---	---	39,692,432	48,823,427
Agricultural commodities	---	---	---	5,823,368	6,458,873
Supplementary	---	---	---	3,687,616	4,276,997
Animals and animal products	---	---	---	1,527,770	1,831,350
Animals, live	---	---	---	138,380	182,768
Baby chicks	No.	3,436	3,291	2,135	1,563
Cattle, draftable	No.	969	1,169	106,836	152,084
Cattle for breeding, free	No.	21	17	9,967	9,874
Horses	No.	3	3	14,032	11,470
Other	---	---	---	5,410	7,777
Dairy products	---	---	---	113,494	167,341
Cheese	Lb.	135,927	179,356	75,707	110,310
Blue mold, including Roquefort	Lb.	6,156	6,960	5,033	6,958
Cheddar	Lb.	9,324	9,512	4,574	4,903
Colby	Lb.	523	792	186	317
Edam and Gouda	Lb.	10,126	10,149	5,598	6,523
Romano, Reggiano, Parmesano	Lb.	7,310	12,159	5,848	8,521
Pecorino	Lb.	16,566	22,950	11,177	17,950
Swiss	Lb.	36,390	47,037	20,701	29,514
Other	Lb.	49,532	69,797	22,590	35,624
Butter	Lb.	627	714	393	474
Casein and mixtures	Lb.	105,939	105,401	31,956	50,920
Ice cream	Gal.	326	176	265	161
Other	---	---	---	5,173	5,476
Hides and skins, including furskins	---	---	---	104,669	116,993
Calf and kip skins	Lb.	2,817	3,600	798	1,868
Cattle hides	Lb.	14,212	16,351	2,117	5,071
Goat and kid skins	Lb.	3,117	5,242	2,535	5,392
Sheep and lamb skins	Lb.	49,046	46,447	39,512	45,084
Furskins	---	---	---	53,290	51,792
Other	---	---	---	6,417	7,786
Meats and meat preparations	Lb.	1,788,575	2,012,501	1,046,462	1,219,354
Beef and veal	Lb.	1,310,653	1,480,856	734,675	861,674
Canned	Lb.	92,530	100,459	56,547	63,501
Fresh or frozen	Lb.	1,141,903	1,324,241	606,389	754,750
Prepared or preserved	Lb.	76,220	56,156	71,739	43,423
Mutton, goat, and lamb	Lb.	70,464	92,866	24,145	30,945
Pork	Lb.	356,472	394,740	262,790	301,994
Fresh or frozen	Lb.	62,297	64,389	22,880	29,998
Hams and shoulders, cnd., cooked, etc.	Lb.	264,672	298,950	220,560	251,626
Other	Lb.	29,503	31,401	19,350	20,370
Other	Lb.	50,986	44,039	24,852	24,741
Poultry products	---	---	---	5,242	2,809
Eggs, dried and otherwise preserved	Lb.	1,763	48	1,080	35
Eggs in the shell	Doz.	5,734	1,771	2,975	1,652
Poultry meat	Lb.	1,033	976	1,187	1,122
Other animal products	---	---	---	119,523	142,085
Beeswax	Lb.	3,016	2,862	2,008	1,909

Continued--

Table 9.--U.S. agricultural imports: Quantity and value by commodity, calendar years 1971 and 1972--Continued

Commodity	Unit	Quantity		Value	
		1971	1972 1/	1971	1972 1/
		Thou- sands	Thou- sands	1,000 dollars	1,000 dollars
Other animal products--Continued					
Bones, hoofs, and horns	---	---	---	3,340	6,270
Bristles, crude or prepared	Lb.	2,368	3,401	7,009	13,283
Fats, oils and greases	Lb.	17,625	18,852	2,459	3,526
Feathers and downs, crude, sorted	Lb.	5,017	8,278	9,047	15,152
Gelatin	---	---	---	10,584	15,109
Hair, unmanufactured	Lb.	4,572	5,858	3,847	6,228
Sausage casings	---	---	---	27,660	27,270
Ossein	Lb.	8,759	13,242	2,491	5,547
Rennet	Lb.	882	1,107	2,091	3,292
Wool, unmanufactured, ex. free in bond	Glb.	64,994	41,288	30,945	24,914
Other	---	---	---	18,042	19,585
Vegetable products					
Cotton, unmanufactured	Rba.	9	127	8,724	13,778
Cotton, raw	Rba.	38	75	6,509	12,153
Linters	Rba.	61	52	2,215	1,625
Fruits and preparations					
Apples, fresh	Lb.	95,861	99,605	9,342	9,054
Apple and pear juices	Gal.	34,024	25,566	8,775	8,599
Blueberries	Lb.	12,365	13,984	3,471	4,399
Strawberries	Lb.	149,637	136,041	20,567	21,356
Other berries	Lb.	16,149	16,158	2,847	3,232
Cherries	Lb.	9,334	9,147	2,775	2,919
Dates	Lb.	29,836	26,101	2,958	2,787
Figs	Lb.	15,646	18,177	1,535	2,089
Grapes	Lb.	33,035	36,356	3,997	5,470
Melons	Lb.	323,968	340,393	13,128	13,661
Oranges, mandarin, canned	Lb.	83,061	81,055	17,606	17,710
Oranges, fresh	Lb.	90,926	109,670	6,239	6,952
Orange juice, concentrated	Gal.	19,343	38,075	7,267	14,836
Pears, fresh	Lb.	33,266	21,606	3,124	3,062
Pears, prep. or pres.	Lb.	23,940	8,990	2,802	1,031
Pineapples, cnd., prep., or pres.	Lb.	265,675	257,068	32,962	30,685
Pineapple juice	Gal.	13,142	10,680	3,321	2,554
Jellies and jams	Lb.	11,083	12,107	3,014	3,505
Other	---	---	---	21,116	27,873
Nuts and preparations					
Almonds	Lb.	254	327	194	252
Brazil nuts	Lb.	25,829	38,232	8,500	11,882
Cashew nuts	Lb.	97,444	106,797	57,952	66,029
Chestnuts	Lb.	7,553	10,621	2,330	3,911
Coconut meat, fr., prep., or pres.	Lb.	107,889	118,367	14,202	12,813
Filberts	Lb.	5,438	5,560	3,239	3,235
Pistache nuts	Lb.	25,892	17,786	15,988	14,318
Walnuts	Lb.	480	758	177	440
Other	---	---	---	2,832	2,779
Grains and preparations					
Barley	Bu.	9,410	16,535	11,191	22,964
Barley malt	Cwt.	265	275	1,343	1,414
Corn	Bu.	1,292	922	2,361	1,724
Oats	Bu.	1,273	4,379	1,288	3,509
Rice	Lb.	137,206	31,709	6,795	1,924
Rye	Bu.	331	154	348	166
Wheat	Bu.	96	1	178	4

Continued--

Table 9.--U.S. agricultural imports: Quantity and value by commodity, calendar years 1971 and 1972--Continued

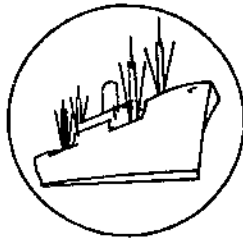
Commodity	Unit	Quantity		Value	
		1971	1972 <u>1/</u>	1971	1972 <u>1/</u>
		Thou- sands	Thou- sands	1,000 dollars	1,000 dollars
Grains and preparations--Continued					
Wheat flour	Cwt.	39	40	241	210
Wheat gluten	Lb.	22,106	32,064	5,012	8,085
Biscuits, cakes, wafers, etc.	Lb.	78,469	89,461	29,079	37,396
Bread crumbs	Lb.	21,992	23,020	2,895	3,315
Bread, yeast-leavened	Lb.	5,626	6,320	1,064	1,416
Macaroni, spaghetti, etc.	Lb.	29,208	42,198	5,509	8,110
Other	---	---	---	4,001	6,893
Oilbearing materials and products					
Oil cake and meal	Stn.	5	16	210,121	213,148
Oilseeds and oilnuts	---	---	---	310	719
Copra	Lb.	419,646	460,714	48,551	42,040
Sesame seed	Lb.	45,442	47,220	33,070	25,607
Other	---	---	---	7,832	8,249
				7,649	8,184
Vegetable oils and waxes					
Carnauba	Lb.	1,140,253	1,438,705	161,260	170,389
Castor oil	Lb.	9,333	9,065	3,457	3,739
Coconut oil	Lb.	76,475	97,530	10,476	17,608
Olive oil, edible	Lb.	627,737	676,969	78,782	62,644
Palm oil	Lb.	61,681	67,105	20,280	25,906
Palm kernel oil	Lb.	216,880	431,109	23,315	38,739
Tung oil	Lb.	95,751	101,021	14,765	12,080
Other	Lb.	22,239	21,597	2,806	2,105
		30,157	34,309	7,379	7,568
Sugar and related products					
Sugar	Stn.	---	---	839,182	924,738
Molasses, inedible	Gal.	5,311	5,230	763,153	824,432
Maple sugar and sirup	Lb.	399,762	406,848	45,295	53,813
Confectionery products	Lb.	10,457	10,052	5,204	6,276
Honey	Lb.	72,867	85,156	21,761	29,577
Other	---	---	---	1,732	8,900
				2,037	1,740
Vegetables and preparations					
Fresh or frozen:					
Beans	Lb.	---	---	299,082	364,025
Carrots	Lb.	12,279	17,965	1,630	2,354
Cucumbers	Lb.	52,647	51,030	2,315	2,386
Dasheens	Lb.	157,364	169,518	13,796	13,857
Eggplant	Lb.	16,869	19,784	1,576	2,334
Garlic	Lb.	23,252	29,034	2,587	3,331
Onions	Lb.	14,717	17,272	3,293	4,261
Peas	Lb.	51,336	62,323	4,356	5,416
Peppers	Lb.	8,160	9,251	1,984	2,324
Potatoes, white or Irish	Cwt.	78,446	64,888	13,956	11,446
Squash	Lb.	1,484	756	3,853	2,020
Tomatoes	Lb.	29,377	38,495	3,675	5,117
Turnips or rutabagas	Lb.	575,352	586,844	84,317	88,745
Other	Cwt.	892	847	3,051	4,086
		---	---	9,398	11,116
Prepared or preserved:					
Cassava, flour, starch, and tapioca	Lb.	182,022	141,848	7,070	5,888
Hops	Lb.	7,588	13,827	7,525	13,109
Mushrooms, including dried	Lb.	31,623	53,416	23,659	39,655
Olives, in brine	Gal.	15,710	17,471	41,753	50,112
Onions	Lb.	6,813	6,436	1,755	1,781
Peas, ex. dried	Lb.	12,770	16,471	2,791	3,910
Pickled vegetables	Lb.	38,079	49,330	5,395	7,069
Tomatoes	Lb.	108,557	158,630	9,688	16,059

Continued--

Table 9.--U.S. agricultural imports: Quantity and value by commodity, calendar years 1971 and 1972--Continued

Commodity	Unit	Quantity		Value	
		1971	1972 1/	1971	1972 1/
		Thou- sands	Thou- sands	1,000 dollars	1,000 dollars
Vegetables and preparations--Continued					
Tomato paste and sauce	Lb.	97,570	126,241	13,288	18,483
Other	---	---	---	35,871	49,166
Other vegetable products					
Broomcorn	Stn.	10	11	6,118	6,904
Cut flowers	---	---	---	2,738	4,030
Essential or distilled oils	Lb.	1,646	2,527	6,363	9,421
Feeds and fodders, ex. oil cake & meal	---	---	---	32,453	39,072
Flavoring extracts	---	---	---	3,829	5,533
Jute and jute butts, unmanufactured	Ltn.	17	13	3,259	3,635
Malt liquors	Gal.	28,555	28,854	33,744	35,674
Nursery and greenhouse stock	---	---	---	16,766	22,703
Seeds, except oilseeds	Lb.	104,595	85,447	20,513	21,196
Spices	Lb.	25,172	29,160	7,704	10,619
Tobacco, unmanufactured	Lb.	256,704	252,183	151,950	150,456
Wines	Gal.	36,437	47,332	162,402	210,158
Other	---	---	---	11,333	15,994
Complementary					
Bananas	Lb.	4,142,108	4,168,710	182,251	186,148
Plantains	Lb.	86,733	105,090	3,826	5,099
Coffee, green	Lb.	2,863,275	2,745,619	1,166,130	1,181,433
Coffee, extracts, essences, concentrates	Lb.	35,980	56,535	52,333	79,098
Cocoa beans	Lb.	707,550	632,070	181,347	150,685
Cocoa butter	Lb.	33,868	46,252	17,753	25,926
Cocoa and chocolate preparations	Lb.	188,168	239,816	50,276	61,046
Drugs, herbs, roots, etc.	Lb.	49,851	88,257	25,412	31,365
Essential or distilled oils	Lb.	9,833	13,000	29,260	40,141
Fibers, unmanufactured	Ltn.	97	91	18,474	19,079
Rubber, crude, natural:					
Rubber, dry form	Lb.	1,208,929	1,162,722	184,387	160,594
Rubber, latex	Lb.	163,565	186,108	26,300	29,780
Silk, raw	Lb.	290	551	2,299	4,513
Spices:					
Pepper, unground, black	Lb.	54,941	47,440	24,204	18,332
Vanilla beans	Lb.	1,855	2,366	8,267	11,231
Other	Lb.	64,322	75,074	25,865	29,870
Tea	Lb.	175,547	151,495	71,440	62,827
Wool, unmanufactured, free in bond	Glb.	98,025	86,361	35,391	43,306
Other	---	---	---	30,537	41,403

1/ Preliminary



SPECIAL in this issue

BLOOM BUYING BOOSTED

by
Isaac E. Lemon 1/

The value of U.S. fresh-cut flower imports multiplied more than 28 times within the past decade. At over \$3.2 million in 1971/72, these imports were up a fourth from a year earlier and nearly double the 1969/70 level. Fresh-cut flower imports have risen steadily since 1963/64, when they represented less than 1 percent of total imports of nursery and greenhouse stock. The share rose to 9 percent in 1969/70, and was nearly 16 percent by 1971/72 (table 10). The sharp gains of the past few years have contributed significantly to total nursery and greenhouse stock imports. 2/ U.S. imports of all nursery and greenhouse stock in 1971/72 totaled \$20.8 million, up only slightly from a year earlier, but a tenth above 1969/70 and 57 percent higher than in 1963/64.

In 1971/72, cut-flower imports came from 30 countries representing all continents. Colombia was the leading supplier, providing \$1.3 million worth, or two-fifths of the total. Canada, Ecuador, the Netherlands, Guatemala, and Australia collectively furnished over half.

For total U.S. nursery and greenhouse stock imports, the Netherlands supplied nearly \$13.0 million worth, or more than three-fifths in 1971/72; in 1970/71, the Netherlands' share was seven-tenths. Canada ranked second with \$2.8 million (a 14-percent share), and Colombia and Japan sold us \$1.3 million and \$1.2 million, respectively.

Bulbs, roots, and corms (tulip, hyacinth, narcissus, gladiolus, lily, crocus, iris, lily of the valley, begonia, and related planting materials) have accounted for a large but steadily declining share of total U.S. nursery imports--75 percent in 1971/72, compared with 86 percent in 1969/70 and 96 percent in 1961/62. Tulips and hyacinths led the bulb imports in 1971/72, accounting for 36 percent and 12 percent, respectively.

Imports other than bulbs, roots, corms, and related materials including relatively small quantities of seedling and grafted fruit stocks, orchid plants, rose stocks and plants, fresh-cut flowers, and miscellaneous live plants for planting.

The Netherlands supplied four-fifths of all U.S. imports of bulbs, roots, and corms in 1971/72, and Canada, Belgium-Luxembourg, and Japan provided most of the remainder. The Netherlands led in supplying most types of bulbs. Belgium-Luxembourg led in shipments of begonia tubers, providing nearly three-fifths of the U.S. total, while West Germany

1/ Agricultural Economist, Statistics Branch, Foreign Demand and Competition Division, Economic Research Service.

2/ For statistics for 1962-67 fiscal years, see Lemon, Isaac E., Bloom Buying Boom, ERS-Foreign 318, April 1971, and "U.S. Foreign Trade in Nursery and Greenhouse Stock," Foreign Agricultural Trade of the United States, April 1969.

Table 10.--Fresh-cut flowers: U.S. imports, fiscal years 1962-72

Year	Imports	Change from previous year		Change from 1961/62		Share of total nursery and green-house stock imports
		1,000 dollars	1,000 dollars	Percent	1,000 dollars	
1961/62	110	---	---	---	---	0.78
1962/63	131	+21	+19	+21	+19	.98
1963/64	97	-34	-26	-13	-12	.73
1964/65	192	+95	+98	+82	+75	1.34
1965/66	285	+93	+48	+175	+159	2.03
1966/67	318	+33	+12	+208	+189	2.08
1967/68	548	+230	+72	+438	+398	3.58
1968/69	941	+393	+72	+831	+755	5.69
1969/70	1,705	+764	+81	+1,595	+1,450	9.01
1970/71	2,532	+827	+49	+2,422	+2,202	12.20
1971/72	3,245	+713	+28	+3,135	+2,850	15.59
11-year total	10,104	3,135	+31	8,894	+88	5.71
1961/62-1971/72 weighted average	919	285	+31	809	+88	5.71

Table 11.--Nursery and greenhouse stock: Distribution of U.S. imports by type of product, fiscal years 1962-72

Fiscal years	Bulbs, roots, and crows		Flowers, fresh cut		Fruit tree cuttings, seedlings, grafted, etc.		Orchid plants	
	1,000 dollars	Percent	1,000 dollars	Percent	000 dollars	Percent	1,000 dollars	Percent
1961/62	13,616	96.1	110	0.8	61	0.4	34	0.2
1962/63	12,855	95.9	131	1.0	54	.4	49	.3
1963/64	12,652	95.7	97	.7	89	.7	45	.3
1964/65	13,627	95.1	192	1.3	100	.7	59	.4
1965/66	13,182	94.0	285	2.0	99	.7	91	.7
1966/67	14,393	94.1	318	2.1	126	.8	110	.7
1967/68	14,058	91.8	548	3.6	99	.6	105	.7
1968/69	14,871	89.9	941	5.7	95	.6	119	.7
1969/70	16,324	86.2	1,705	9.0	99	.5	77	.4
1970/71	16,925	81.5	2,532	12.2	94	.5	60	.3
1971/72	15,699	75.4	3,245	15.6	71	.3	86	.4
11-year total and weighted average percent	158,202	89.5	10,104	5.7	987	.6	835	.5
1961/62-1971/72 average	14,382	89.5	919	5.7	90	.6	76	.5
			Rose stocks and plants		Live plants for planting, not elsewhere specified		Total ^{1/}	
	1,000 dollars	Percent	1,000 dollars	Percent	1,000 dollars	Percent		
1961/62	21	0.2	321	2.3	14,163	100.0		
1962/63	17	.1	305	2.3	13,411	100.0		
1963/64	15	.1	326	2.5	13,224	100.0		
1964/65	7	.1	337	2.4	14,322	100.0		
1965/66	18	.1	349	2.5	14,024	100.0		
1966/67	16	.1	328	2.2	15,291	100.0		
1967/68	19	.1	492	3.2	15,322	100.0		
1968/69	14	.1	690	3.0	16,532	100.0		
1969/70	36	.2	690	3.7	18,930	100.0		
1970/71	254	1.2	894	4.3	20,759	100.0		
1971/72	309	1.5	1,410	6.8	20,821	100.0		
11-year total and weighted average percent	726	.4	5,944	3.3	176,799	100.0		
1961/62-1971/72 average	66	.4	540	3.3	16,073	100.0		

^{1/} Columns may not add to total due to rounding.

Table 12.--Nursery and greenhouse stock: U.S. imports by countries, fiscal years 1968-72

Commodity by country	1967/68	1968/69	1969/70	1970/71	1971/72
-- 1,000 dollars --					
Total	15,322	16,532	18,930	20,759	20,821
Netherlands	11,847	12,614	13,747	14,467	12,966
Canada	712	1,139	1,957	2,548	2,816
Colombia	69	75	292	595	1,288
Japan	740	722	870	832	1,167
Belgium	848	843	822	781	898
Ecuador	183	257	337	513	400
Guatemala	36	37	43	166	296
Australia	149	170	181	240	212
Honduras	4	16	17	94	159
South Africa	170	176	125	128	151
France	171	170	251	121	97
West Germany	115	64	58	37	59
Mexico	2	12	14	14	50
Costa Rica	50	44	46	67	48
Italy	45	49	51	30	47
Other countries	181	144	119	126	167
Bulbs, roots, and corms	14,059	14,871	16,324	16,925	15,699
Tulip bulbs	5,620	5,789	6,186	6,605	5,721
Netherlands	5,313	5,494	5,808	6,281	5,398
Japan	273	266	281	257	306
France	5	1	76	23	3
Denmark	11	13	17	---	---
Italy	4	4	2	---	---
Other countries	14	11	1	44	14
Hyacinth bulbs	1,750	1,973	2,105	2,266	1,940
Netherlands	1,738	1,959	2,077	2,246	1,921
France	4	3	25	6	5
Japan	1	2	3	2	5
Other countries	7	2	---	12	9
Narcissus bulbs	1,236	1,341	1,478	1,591	1,370
Netherlands	1,169	1,269	1,376	1,508	1,265
Italy	26	32	36	24	44
France	27	24	46	24	33
Japan	7	10	10	11	12
Canada	4	4	8	13	10
Other countries	3	2	2	11	6
Gladiolus bulbs	956	1,025	1,351	1,196	1,087
Netherlands	869	966	1,227	1,119	1,028
Belgium	4	3	34	21	38
Canada	7	6	10	11	16
Japan	14	13	49	14	5
Costa Rica	27	31	31	30	---
Other countries	35	6	---	1	1/
Begonia tubers	1,115	1,092	1,086	957	1,115
Belgium	663	636	514	509	651
Netherlands	417	452	570	446	462
United Kingdom	1	1	1	1	2
West Germany	25	---	---	---	1/
Other countries	9	3	1	1	1/
Crocus corms	514	564	602	544	509
Netherlands	508	558	578	523	503
Japan	4	3	15	8	6
France	1	---	9	4	---
Other countries	1	3	---	9	---

Continued--

Table 12.--Nursery and greenhouse stock: U.S. imports by countries, fiscal years 1968-72--Continued

Commodity by country	1967/68	1968/69	1969/70	1970/71	1971/72
	-- 1,000 dollars --				
Bulbs, roots, and corms--Continued:					
Lily bulbs	288	278	325	310	428
Japan	215	208	259	242	329
Netherlands	54	45	48	54	73
France	17	19	16	12	15
Italy	1	1	1	1/	2
Canada	---	3	1	---	1/
Other countries	1	2	---	2	9
Iris bulbs	311	221	309	231	267
Netherlands	292	213	303	222	260
Japan	9	8	5	6	3
Other countries	10	1/	1	3	4
Lily of the valley pips	78	67	90	67	65
West Germany	60	50	51	27	39
Netherlands	16	15	28	38	21
Japan	2	2	11	2	3
Other countries	---	---	---	---	---
Other bulbs, roots, clumps, etc.	2,190	2,519	2,792	3,157	3,197
Netherlands	1,243	1,375	1,402	1,595	1,547
Canada	384	554	800	1,001	1,108
Belgium	175	199	270	218	192
Japan	132	154	124	172	150
South Africa	169	176	125	128	148
Australia	---	7	9	15	18
India	3	5	5	4	10
Peru	---	12	6	11	8
Turkey	8	5	4	1	5
West Germany	5	1	4	2	3
Italy	13	5	11	4	2
France	1	3	2	3	1
Denmark	12	17	23	---	---
Guatemala	15	5	4	---	---
Israel	---	---	---	---	---
Other countries	30	1	3	3	5
Fruit tree cuttings, seedlings, etc.	73	51	39	28	18
Canada	65	45	38	20	17
United Kingdom	6	4	---	---	1
Other countries	2	2	1	8	1/
Fruit tree cuttings, grafted, etc.	26	44	60	66	53
Canada	23	32	57	64	52
New Zealand	---	9	2	1	---
Other countries	3	3	1	1	1
Rose stocks and plants	19	14	36	254	309
Canada	3	11	33	253	308
Netherlands	13	3	3	---	---
Other countries	3	---	---	1	1
Orchid plants	105	119	77	60	86
France	83	81	46	21	27
Guatemala	1	1	2	2	24
United Kingdom	2	5	6	7	6
Thailand	2	5	4	3	5
Brazil	7	5	6	7	3

Continued--

Table 12.--Nursery and greenhouse stock: U.S. imports by countries, fiscal years 1968-72--Continued

Commodity by country	1967/68	1968/69	1969/70	1970/71	1971/72
-- 1,000 dollars --					
Orchid plants--Continued:					
Philippines	1	1	3	---	3
Australia	---	1	2	5	1/
Other countries	9	20	8	15	18
Live plants for planting, n.e.s.					
Canada	492	492	690	894	1,410
Japan	192	232	371	458	628
Netherlands	82	53	114	116	343
Honduras	185	175	157	159	146
Guatemala	5	16	16	92	142
West Germany	6	6	16	29	63
United Kingdom	11	1	2	4	13
Belgium	1	3	6	12	6
Other countries	4	3	2	4	3
	6	3	6	20	66
Flowers, cut, fresh					
Colombia	548	941	1,705	2,532	3,245
Canada	67	74	291	593	1,285
Ecuador	32	245	638	721	674
Netherlands	183	257	337	513	400
Guatemala	27	89	169	265	343
Australia	4	25	21	136	232
Costa Rica	149	163	170	220	193
Mexico	23	12	14	35	47
France	---	10	12	7	16
Panama	31	38	31	25	13
Israel	2	2	1	3	10
United Kingdom	6	---	1	---	8
Bermuda	1	1	9	3	2
Brazil	1	3	2	2	2
Italy	---	1	5	1	1
Sweden	1	5	1	1	1
South Africa	9	7	1	2	1
Other countries	1	---	---	1/	---
	11	9	2	5	17

1/ Less than \$500.

shipped three-fifths of the lily of the valley pips, and Japan furnished 77 percent of the lily bulbs.

Canada supplied nearly all of our 1971/72 imports of fruit tree stocks and rose plants and stocks, as well as nearly half of other live plants for planting (not elsewhere specified). Japan, the Netherlands, Honduras, and Guatemala also supplied sizable quantities of other live plants.

France and Guatemala provided three-fifths of our orchid plant inshipments, with the United Kingdom, Thailand, Brazil, and the Philippines supplying moderate quantities.

In 1961/62, U.S. imports of nursery and greenhouse stocks and cut flowers, valued at \$14.2 million, together with exports worth \$6.1 million, yielded total U.S. nursery trade of \$20.3 million. A decade later, imports had advanced to \$20.8 million and exports to \$11.1 million, so 1971/72 trade totaled \$31.9 million. Trade in nursery and greenhouse stock and fresh-cut flowers in 1971/72 represented about one-fourth of 1 percent of total U.S. foreign agricultural trade.

Exports

U.S. exports of nursery stock including fresh-cut flowers in 1971/72 reached a peak value of \$11.1 million, up nearly a fifth from a year earlier. Exports represent roughly half of the value of imports.

U.S. exports of cut flowers and buds advanced to nearly \$2.0 million in 1971/72 from \$1.6 million in 1970/71. They declined precipitously to \$1.1 million in 1969/70, but large gains during the past 2 years brought them back up to previous high levels. In 1971/72, Canada bought over half of U.S. cut-flower exports. Other leading customers included Italy, Bermuda, Sweden, Bahamas, Japan, West Germany, and Jamaica.

U.S. outshipments of foliage, shrubs, and bushes totaled \$1.8 million, up \$610,000 from a year earlier. Leading foreign markets were West Germany (38 percent of the total), Canada (35 percent), and Mexico (11 percent).

U.S. exports of bulbs, roots, and corms in 1971/72 totaled \$1.5 million, a tenth above the 1970/71 level. After a peak of \$2.2 million in 1966/67, these exports fell sharply to only \$1.1 million by 1969/70. Leading bulb markets in 1971/72 were the Netherlands (a third), the United Kingdom (a fourth), and Canada (23 percent). U.S. exports of herbaceous plants advanced to \$2.1 million from \$1.8 million a year earlier. Canada took nearly half and Mexico slightly over a fourth.

Canada bought most of the nearly \$1 million worth of U.S. rose plants and rose stock exported in 1971/72. Exports in the basket category labeled "other nursery stock" totaled \$2.8 million, with Canada taking more than two-fifths of the total. Other leading markets were Colombia, Mexico, West Germany, the Netherlands, Bahamas, Italy, and Japan.

Overall, Canada was the outstanding buyer of U.S. nursery and greenhouse products in 1971/72. U.S. exports to Canada reached \$5.2 million or 46 percent of the total. Other large markets included West Germany, Mexico, the Netherlands, Italy, the Bahamas, and the United Kingdom.

Table 13.--Fresh-cut flowers, buds, foliage, etc.: U.S. exports, fiscal years 1962-72

Year	Exports	Change from previous year		Change from 1961/62		Share of total nursery and green-house stock exports
	1,000 dollars	1,000 dollars	Percent	1,000 dollars	Percent	Percent
1961/62	1,808	---	---	---	---	29.7
1962/63	1,574	-234	-12.9	-234	-12.9	26.8
1963/64	1,762	+188	+11.9	-46	-2.5	25.6
1964/65	1,881	+119	+6.8	+73	+4.0	23.8
1965/66	2,376	+495	+26.3	+568	+31.4	25.6
1966/67	2,641	+265	+11.2	+833	+46.1	24.9
1967/68	1,762	-879	-33.3	-46	-2.5	17.2
1968/69	2,051	+289	+16.4	+243	+13.4	19.8
1969/70	1,126	-925	-45.1	-682	-37.7	13.6
1970/71	1,603	+477	+42.4	-205	-11.3	17.2
1971/72	1,982	+379	+23.6	+174	+9.6	17.8
11-year total	21,412	+174	+8.1	+678	+3.2	22.3
1961/62-1971/72 weighted average ...	1,947	+16	+8.1	+62	+3.2	22.3

shipped three-fifths of the lily of the valley pips, and Japan furnished 77 percent of the lily bulbs.

Canada supplied nearly all of our 1971/72 imports of fruit tree stocks and rose plants and stocks, as well as nearly half of other live plants for planting (not elsewhere specified). Japan, the Netherlands, Honduras, and Guatemala also supplied sizable quantities of other live plants.

France and Guatemala provided three-fifths of our orchid plant inshipments, with the United Kingdom, Thailand, Brazil, and the Philippines supplying moderate quantities.

In 1961/62, U.S. imports of nursery and greenhouse stocks and cut flowers, valued at \$14.2 million, together with exports worth \$6.1 million, yielded total U.S. nursery trade of \$20.3 million. A decade later, imports had advanced to \$20.8 million and exports to \$11.1 million, so 1971/72 trade totaled \$31.9 million. Trade in nursery and greenhouse stock and fresh-cut flowers in 1971/72 represented about one-fourth of 1 percent of total U.S. foreign agricultural trade.

Exports

U.S. exports of nursery stock including fresh-cut flowers in 1971/72 reached a peak value of \$11.1 million, up nearly a fifth from a year earlier. Exports represent roughly half of the value of imports.

U.S. exports of cut flowers and buds advanced to nearly \$2.0 million in 1971/72 from \$1.6 million in 1970/71. They declined precipitously to \$1.1 million in 1969/70, but large gains during the past 2 years brought them back up to previous high levels. In 1971/72, Canada bought over half of U.S. cut-flower exports. Other leading customers included Italy, Bermuda, Sweden, Bahamas, Japan, West Germany, and Jamaica.

U.S. outshipments of foliage, shrubs, and bushes totaled \$1.8 million, up \$610,000 from a year earlier. Leading foreign markets were West Germany (38 percent of the total), Canada (35 percent), and Mexico (11 percent).

U.S. exports of bulbs, roots, and corms in 1971/72 totaled \$1.5 million, a tenth above the 1970/71 level. After a peak of \$2.2 million in 1966/67, these exports fell sharply to only \$1.1 million by 1969/70. Leading bulb markets in 1971/72 were the Netherlands (a third), the United Kingdom (a fourth), and Canada (23 percent). U.S. exports of herbaceous plants advanced to \$2.1 million from \$1.8 million a year earlier. Canada took nearly half and Mexico slightly over a fourth.

Canada bought most of the nearly \$1 million worth of U.S. rose plants and rose stock exported in 1971/72. Exports in the basket category labeled "other nursery stock" totaled \$2.8 million, with Canada taking more than two-fifths of the total. Other leading markets were Colombia, Mexico, West Germany, the Netherlands, Bahamas, Italy, and Japan.

Overall, Canada was the outstanding buyer of U.S. nursery and greenhouse products in 1971/72. U.S. exports to Canada reached \$5.2 million or 46 percent of the total. Other large markets included West Germany, Mexico, the Netherlands, Italy, the Bahamas, and the United Kingdom.

Table 14.--Nursery and greenhouse stock: Distribution of U.S. exports by type of product, fiscal years 1962-72

Fiscal years	Bulbs, corms, roots, pips, and tubers		Rose stocks and plants		Herbaceous plants, etc.		Cut flowers, buds, etc.	
	1,000 dollars	Percent	1,000 dollars	Percent	1,000 dollars	Percent	1,000 dollars	Percent
1961/62	729	11.9	NA	---	NA	---	1,808	29.7
1962/63	897	15.2	NA	---	NA	---	1,574	26.8
1963/64	1,176	17.1	NA	---	NA	---	1,762	25.6
1964/65	1,536	19.4	283	3.6	1,796	22.7	1,881	23.8
1965/66	1,700	18.3	488	5.3	2,727	29.4	2,376	25.6
1966/67	2,201	20.8	926	8.7	2,450	23.1	2,641	24.9
1967/68	1,981	19.3	633	6.2	2,487	24.2	1,762	25.4
1968/69	1,664	16.1	686	6.6	2,542	24.5	2,051	19.8
1969/70	1,137	13.7	871	10.5	2,232	27.0	1,126	13.6
1970/71	1,343	14.4	928	10.0	1,809	19.4	1,603	17.2
1971/72	1,486	13.4	972	8.8	2,078	18.7	1,982	17.8
11-year total and weighted average percent	15,849	16.5					21,412	22.3
1961/62-1971/72 average	1,441	16.5					1,947	22.3
			Foliage, shrubs, and bushes		Other nursery stock		Total	
	1,000 dollars	Percent	1,000 dollars	Percent	1,000 dollars	Percent		
1961/62	NA	---	1/3,559	58.4	6,095	100.0		
1962/63	NA	---	1/3,411	58.0	5,882	100.0		
1963/64	NA	---	1/3,958	57.4	6,896	100.0		
1964/65	256	3.2	2,159	27.3	7,911	100.0		
1965/66	663	7.2	1,319	14.2	9,273	100.0		
1966/67	833	7.9	1,546	14.5	10,597	100.0		
1967/68	846	8.2	1,710	16.7	10,265	100.0		
1968/69	869	8.4	2,551	24.6	10,364	100.0		
1969/70	680	8.2	2,238	27.0	8,285	100.0		
1970/71	1,160	12.5	2,461	26.5	9,304	100.0		
1971/72	1,770	15.9	2,818	25.4	11,106	100.0		
11-year total and weighted average percent					95,978	100.0		
1961/62-1971/72 average					8,725	100.0		

NA = Not available.

1/ Includes foliage, shrubs, and bushes, rose plants and stocks, herbaceous plants, and other nursery stocks not elsewhere specified (not listed separately in 1962-64).

Table 15.--Nursery and greenhouse stock: U.S. exports by countries, fiscal years 1968-72--Continued

Commodity by country	1967/68	1968/69	1969/70	1970/71	1971/72
-- 1,000 dollars --					
Cut flowers and buds	1,762	2,051	1,126	1,603	1,982
Canada	1,190	1,387	757	1,086	1,101
Italy	98	92	54	127	281
Bermuda	66	191	64	143	195
Sweden	47	26	42	30	116
Bahamas	100	127	60	61	88
Japan	39	18	19	24	52
West Germany	91	82	38	15	35
Jamaica	3	15	5	2	31
Mexico	30	26	15	25	17
Netherlands	1	2	2	5	11
South Africa	1	3	11	---	10
United Kingdom	2	2	---	6	8
French Pacific Islands	1	2	---	3	7
Australia	12	31	27	23	7
Haiti	3	4	1	5	4
Venezuela	11	1	7	6	4
Guatemala	1	2	4	2	2
France	3	4	1/	2	2
Malaysia	---	1/	1	2	2
Netherlands Antilles	33	5	1/	---	---
Norway	13	9	---	21	---
Other countries	17	22	25	15	9
Florage, shrubs, bushes, etc.	846	869	680	1,160	1,770
West Germany	170	131	135	320	667
Canada	357	279	242	480	623
Mexico	156	313	90	150	201
Bahamas	34	47	25	25	49
Venezuela	42	38	65	41	46
Guatemala	---	---	---	9	28
Italy	10	8	19	3	28
Australia	29	25	42	49	26
France	1/	---	3	9	15
Japan	28	2	2	1	15
Netherlands	---	1	1	3	15
Belgium-Luxembourg	---	1	12	11	14
Netherlands Antilles	1	16	6	2	11
United Kingdom	4	---	7	4	5
Jamaica	---	2	---	1	5
Other countries	15	6	31	18	22
Herbaceous plants, etc.	2,487	2,542	2,232	1,809	2,078
Canada	1,363	1,178	1,074	916	954
Mexico	720	863	855	454	549
Bahamas	60	87	50	92	154
Cameroon	---	---	1	---	107
Algeria	---	---	---	---	60
Spain	5	10	5	10	36
Netherlands	36	42	71	104	35
Korea, Republic of	1/	4	1	1	32
West Germany	111	92	53	111	31
Guatemala	3	2	3	33	28
Belgium-Luxembourg	7	22	4	5	14
South Africa	1	3	1	1	11
Venezuela	1	12	1	3	9
Japan	2	5	1	1	9
Afghanistan	1	---	---	---	7
Italy	21	24	7	12	6
France	20	21	8	8	6

Continued--

Table 15.--Nursery and greenhouse stock: U.S. exports by countries, fiscal years 1968-72

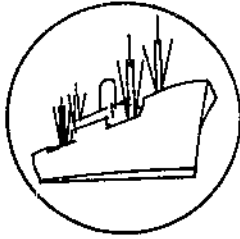
Commodity by country	1967/68	1968/69	1969/70	1970/71	1971/72
-- 1,000 dollars --					
Total	10,265	10,364	8,285	9,304	11,106
Canada	5,254	4,959	4,034	4,550	5,153
West Germany	651	540	422	618	989
Mexico	1,271	1,707	1,227	904	970
Netherlands	766	603	534	774	694
Italy	289	281	199	225	408
Bahamas	518	543	411	480	454
United Kingdom	340	299	229	385	433
Colombia	54	94	212	319	289
Japan	134	93	87	85	232
Bermuda	79	199	67	147	199
Sweden	74	47	124	68	156
Jamaica	23	46	26	16	116
Venezuela	99	105	131	105	112
Cameroon	---	---	1	---	107
Guatemala	23	30	39	83	87
South Africa	40	50	61	43	61
Algeria	---	1/	---	---	60
Australia	90	98	88	91	52
France	67	74	43	51	50
Belgium-Luxembourg	27	44	32	26	42
Spain	14	18	17	13	41
Korea, Republic of	1/	4	1	3	36
Iran	5	2	25	14	30
Switzerland	62	48	25	38	25
Brazil	4	4	19	21	23
Denmark	40	37	15	17	23
French Pacific Islands	2	10	3	13	21
Costa Rica	84	17	23	8	20
Norway	46	57	36	39	---
Other countries	209	355	154	168	143
Bulbs, corms, roots, pips, and tubers ..	1,981	1,664	1,137	1,343	1,486
Netherlands	673	522	420	619	483
United Kingdom	273	255	195	326	371
Canada	549	456	228	168	340
West Germany	76	77	68	65	88
Italy	85	69	52	30	37
South Africa	26	29	32	27	33
Japan	9	15	15	3	21
France	22	28	25	13	18
Switzerland	33	23	5	14	14
New Zealand	16	21	21	28	12
Bahamas	3	6	2	1	9
Colombia	41	55	17	---	8
Belgium-Luxembourg	6	14	6	4	8
French Pacific Islands	---	---	1/	1	8
Denmark	13	12	6	8	5
Mexico	8	22	6	9	4
Spain	1	---	4	---	4
Honduras	2	1/	1	1	4
Venezuela	5	1	2	1	3
Chile	---	1	---	---	3
Guatemala	5	5	4	3	2
Jamaica	10	9	6	1	2
Korea, Republic of	---	---	---	---	2
Australia	4	7	2	1	2
Costa Rica	69	9	---	---	---
Other countries	52	28	20	20	5

Continued--

Table 15.--Nursery and greenhouse stock: U.S. exports by countries, fiscal years 1968-72--Continued

Commodity by country	1967/68	1968/69	1969/70	1970/71	1971/72
-- 1,000 dollars --					
Herbaceous plants, etc.--Continued:					
Honduras	---	---	1/	1	4
United Kingdom	20	19	6	6	4
Colombia	2	12	7	1	3
Iran	1	---	2	11	3
Thailand	---	1/	---	---	3
Jamaica	4	3	2	3	2
Brazil	---	---	1/	3	2
Nicaragua	19	21	---	---	---
Norway	33	44	36	---	---
Other countries	58	78	44	33	9
Rose plants and rose stock					
Canada	633	686	871	928	972
Guatemala	588	630	813	886	906
Mexico	8	18	10	5	23
United Kingdom	11	15	25	19	11
Bahamas	1	---	---	1	10
Israel	6	5	6	3	9
France	---	---	---	---	9
Colombia	---	1	---	---	3
El Salvador	---	2	4	5	---
Venezuela	2	3	1	---	---
Japan	3	1	4	---	---
Other countries	1	---	---	---	---
	13	11	8	14	1
Other nursery stock					
Canada	2,556	2,551	2,238	2,461	2,818
Colombia	1,209	1,029	920	1,013	1,228
Mexico	10	26	183	314	277
West Germany	345	467	236	247	188
Netherlands	203	154	127	104	167
Bahamas	55	36	40	40	151
Italy	314	272	269	299	145
Japan	73	88	67	16	137
Jamaica	58	53	50	56	136
Venezuela	10	15	13	8	76
Sweden	38	53	52	55	50
United Kingdom	1	13	79	33	38
Iran	39	23	22	43	34
Brazil	3	5	13	3	27
Costa Rica	3	4	11	15	19
Denmark	---	2	8	5	18
Australia	25	14	7	8	15
Panama	41	35	17	18	15
Ivory Coast	---	---	5	---	10
South Africa	---	1	1	---	8
Switzerland	11	15	11	2	8
France	12	14	18	15	8
Hong Kong	21	20	8	15	8
Malaysia	1	1	---	19	7
French Pacific Islands	8	9	4	---	6
Guatemala	1	6	3	11	6
Belgium-Luxembourg	6	3	17	8	5
Nicaragua	11	7	9	31	4
British Honduras	---	125	---	5	4
Other countries	1/	1	---	4	1
	58	60	48	44	30

1/ Less than \$500.



Export Highlights

EXPORTS DURING FIRST HALF OF FISCAL YEAR 1973 SET RECORD

U.S. agricultural exports set a new record in December, for the third month in a row. Exports of \$1.11 billion were 3 percent above the November 1972 record and 32 percent above the December 1971 total of \$842 million. During December, exports of wheat, feed grains, soybeans, tobacco, cattle hides, and nuts showed substantial gains over a year before.

For the first half of 1972/73, agricultural exports hit an alltime high of \$5.17 billion and were 36 percent above the comparable period in 1971/72. About one-third of the value increase during July-December represented higher prices, table 19. Exports of grains and products alone created about two-thirds of the overall increase. Value of soybeans, protein meal, tobacco, hides and skins, meats, fruits, nuts, and vegetables, all showed substantial export gains, while exports of cotton, dairy products, animal fats and oil, and vegetable oils were down.

U.S. agricultural exports to Japan rose by 49 percent to \$810 million, benefiting from a substantial rise in exports of feed grains, wheat, cattle hides, fruits, and vegetables. Reduced production of feed grains in Australia and Thailand caused Japan to buy a bigger share from the United States. Wheat exports to Japan were also up sharply. During July-December 1971, exports were hampered by the longshoremen's strikes at the East and West Coast ports.

U.S. agricultural exports to the European Community (EC) increased nearly a fourth to \$1.17 billion. Both variable- and nonvariable-levy commodities increased. Of the variable-levy items, which rose one-fifth to \$844 million, corn and wheat accounted for most of the gain. But exports of poultry products and meats also gained. Dairy products were off from the level of a year ago. Higher prices for cattle hides and oilseeds and products accounted for much of the increase in exports of nonvariable-levy items in July-December (see table 20).

Shipments to Eastern Europe were over 5 times as large, totaling \$428 compared with \$85 million in July-December 1971. Exports of wheat and feed grains to the USSR accounted for most of the increase, but soybeans also advanced, as did cattle hides. U.S. exports were somewhat higher to Czechoslovakia, Poland, Romainia, and Bulgaria. Agricultural exports to the People's Republic of China totaled \$58 million in July-December 1972 compared with none a year earlier. This is the first time in 2 decades the United States has exported agricultural products to China. Exports of wheat totaled \$33 million, corn \$23 million, and soybean oil slightly over \$2 million.

Exports to Latin American countries gained 29 percent to \$490 million; grains accounted for about 90 percent of this increase. Substantial gains occurred in exports to Mexico, Venezuela, Chile, Brazil, and Uruguay.

Table 16.--U.S. agricultural exports to the People's Republic of China:
Quantity and value by commodity, December and July-December 1972

Commodity	Unit	December		July-December	
		Quantity	Value	Quantity	Value
		Thousands	1,000 dollars	Thousands	1,000 dollars
Wheat, unmilled	Mton	69	4,254	527	32,967
Corn, unmilled	do.	195	13,123	362	23,022
Barley, unmilled	do.	0	0	0	0
Oats, unmilled	do.	0	0	0	0
Soybeans	do.	0	0	0	0
Oil cake and meal	do.	0	0	0	0
Cattle hides, whole	No.	0	0	0	0
Other	---	---	1,100	---	2,200
Total	---	---	18,477	---	58,189

Agricultural exports to Asia, excluding Japan, were up one-fourth to \$906 million. Again, grains accounted for most of the overall increase. Bangladesh, Thailand, South Vietnam, Cambodia, the Philippines, Indonesia, Pakistan, Singapore, Republic of Korea, Taiwan, and the People's Republic of China made substantially larger purchases. Exports to Africa, excluding Republic of South Africa, fell about one-fourth to \$98 million in July-December 1972. Smaller shipments to Tanzania, Nigeria, Guinea, the Zaire, Kenya, and Morocco accounted for most of the decline.

Table 17.--U.S. agricultural exports to COMECON: Quantity and value by principal commodities and countries, July-December 1971 and 1972

Commodity	Unit	USSR				Poland				Romania			
		Quantity		Value		Quantity		Value		Quantity		Value	
		1971	1972	1971	1972	1971	1972	1971	1972	1971	1972	1971	1972
		1,000	1,000			1,000	1,000	Thou.	Thou.	1,000	1,000		
		Thou.	Thou.	dol.	dol.	Thou.	Thou.	dol.	dol.	Thou.	Thou.	dol.	dol.
Wheat, unmilled	Mton	3	26,780	723	162,062	0	111	0	6,610	0	29	0	1,440
Corn, unmilled	do.	200	1,662	10,941	90,277	209	143	11,466	8,081	0	162	0	8,525
Barley, unmilled	do.	0	159	0	6,316	17	59	705	2,844	0	0	0	0
Oats, unmilled	do.	41	37	1,829	1,355	0	0	0	0	0	0	0	0
Soybeans	do.	0	0	0	52,145	15	30	1,653	3,860	0	109	0	1,515
Oil cake and meal	do.	0	0	0	0	508	735	5,067	8,595	0	0	0	0
Cattle hides, whole	No.	356	295	4,142	7,190	255	308	2,027	5,812	331	659	2,433	13,190
Other				9,202	3,299			8,367	10,198			3,515	181
Total				20,837	322,644			29,285	46,000			5,948	24,851
		Czechoslovakia				Hungary				East Germany			
		Quantity		Value		Quantity		Value		Quantity		Value	
		1971	1972	1971	1972	1971	1972	1971	1972	1971	1972	1971	1972
		Thou.	Thou.	1,000	1,000	Thou.	Thou.	1,000	1,000	Thou.	Thou.	1,000	1,000
				dol.	dol.			dol.	dol.			dol.	dol.
Wheat, unmilled	Mton	0	0	0	0	0	0	0	0	0	42	0	2,490
Corn, unmilled	do.	52	18	2,683	994	0	0	0	0	180	0	9,298	0
Barley, unmilled	do.	0	16	0	920	0	0	0	0	0	0	0	0
Oats, unmilled	do.	0	0	0	0	0	0	0	0	0	0	0	0
Soybeans	do.	0	0	0	0	0	0	0	0	0	0	0	0
Oil cake and meal	do.	426	816	3,604	10,432	753	163	8,038	2,268	0	0	0	0
Cattle hides, whole	No.	371	511	2,895	8,832	83	43	382	683	14	0	158	0
Other				496	4,223			759	1,410			676	865
Total				9,678	25,403			9,379	4,361			10,132	3,353
		Bulgaria				Total COMECON							
		Quantity		Value		Quantity		Value					
		1971	1972	1971	1972	1971	1972	1971	1972				
		Thou.	Thou.	1,000	1,000	Thou.	Thou.	1,000	1,000				
				dol.	dol.			dol.	dol.				
Wheat, unmilled	Mton	0	0	0	0	7	26,965	723	172,602				
Corn, unmilled	do.	0	0	0	0	641	1,985	34,388	107,877				
Barley, unmilled	do.	0	0	0	0	17	234	705	10,080				
Oats, unmilled	do.	0	0	0	0	41	37	1,829	1,355				
Soybeans	do.	0	0	0	0	15	419	1,653	56,005				
Oil cake and meal	do.	0	0	0	0	1,687	1,823	16,709	22,810				
Cattle hides, whole	No.	5	4	50	75	1,415	1,822	12,287	35,782				
Other				0	834			17,015	21,012				
Total				50	909			85,309	427,523				

Table 18.--U.S. agricultural exports: Value by commodity,
July-December 1971 and 1972

Commodity	July-December		Change
	1971	1972 <u>1/</u>	
	-- Million dollars --		Percent
Animals and animal products:			
Dairy products	122	54	-56
Fats, oils, and greases	124	105	-15
Hides and skins, including furskins	90	209	+132
Cattle hides, whole	65	173	+166
Furskins	11	15	+36
Other hides and skins	14	21	+50
Meats and meat products	81	107	+32
Poultry and poultry products	41	49	+20
Other	35	61	+74
Total animals and products	493	585	+19
Cotton, excluding linters	240	214	-11
Feeds and fodders, excluding protein meal:			
Corn byproducts	20	28	+40
Alfalfa meal	11	9	-18
Other	34	51	+50
Total feeds and fodders, except oil cake and meal	65	88	+35
Fruits and preparations	189	236	+25
Grains and preparations:			
Feed grains, excluding products	506	909	+80
Rice	127	209	+65
Wheat and products	498	913	+83
Other	48	50	+4
Total grains and preparations	1,179	2,081	+77
Nuts and preparations	52	61	+17
Oilseeds and products:			
Cottonseed and soybean oils	146	94	-36
Soybeans	701	816	+16
Protein meal	10	247	+18
Other	66	135	+105
Total oilseeds and products	1,123	1,292	+15
Tobacco, unmanufactured	242	344	+42
Vegetables and preparations	99	118	+19
Other	130	152	+17
Total exports	3,812	5,171	+36

1/ Preliminary.

Table 19.--U.S. farm export unit values, July-December 1971 and 1972 1/

Commodity	Unit	Average unit value <u>2/</u>		Change	
		1971	1972	Dollars	Percent
		Dollars	Dollars	Dollars	Percent
Cattle hides	No.	8.30	17.87	+9.57	+115
Raisins	Lb.	.18	.34	+1.16	+89
Grapes, fresh	do.	.12	.19	+0.07	+58
Pork, except offals	do.	.39	.51	+0.12	+31
Soybean meal	Ston	68.28	111.57	+23.29	+26
Dried peas	Lb.	.05	.06	+0.01	+20
Almonds, shelled	do.	.68	.80	+0.12	+18
Offals, edible	do.	.28	.32	+0.04	+14
Soybeans	Bu.	3.16	3.54	+0.38	+12
Rice, milled basis	Lb.	.08	.09	+0.01	+12
Tobacco, flue-cured <u>3/</u>	do.	.97	1.06	+0.09	+9
Lemons and limes	do.	.11	.12	+0.01	+9
Wheat	Bu.	1.67	1.80	+0.13	+8
Tobacco, unmanufactured	Lb.	1.02	1.10	+0.08	+8
Peaches	do.	.14	.15	+0.01	+7
Cotton, raw	Rbale	153.06	160.87	+7.81	+5
Tobacco, flue-cured <u>4/</u>	Lb.	1.29	1.36	+0.07	+5
Corn	Bu.	1.38	1.43	+0.05	+4
Feed grains	Mton	54.84	56.22	+1.38	+3
Grain sorghum	Bu.	1.42	1.45	+0.03	+2
Beef and veal, except offals	Lb.	.91	.92	+0.01	+1
Oranges <u>5/</u>	do.	.10	.10	0	0
Fruit cocktail	do.	.19	.19	0	0
Chickens	do.	.26	.25	-0.01	-4
Alfalfa meal <u>6/</u>	Ston	54.98	50.69	-4.29	-8
Dried beans	Lb.	.11	.10	-0.01	-9
Tallow, inedible	do.	.09	.08	-0.01	-11
Cottonseed oil	do.	.16	.13	-0.03	-19
Soybean oil	do.	.15	.12	-0.03	-20

1/ Listed in order of percentage change from previous year. 2/ Total export value reported divided by total quantity exported. 3/ Unstemmed. 4/ Stemmed. 5/ Includes tangerines and clementines. 6/ Dehydrated.

Table 20.--U.S. exports to the EC: Value by commodity,
December and July-December 1971 and 1972

Commodity	December		July-December	
	1971	1972	1971	1972
-- 1,000 dollars --				
Variable-levy commodities: <u>1/</u>				
Feed grains	37,636	55,184	203,335	233,050
Corn	37,636	52,377	196,922	220,542
Grain sorghums	0	357	6,251	7,287
Barley	0	2,060	162	4,744
Oats	0	390	0	477
Rice	1,120	2,942	7,406	10,417
Rye grain	138	175	410	175
Wheat grain	684	14,280	29,508	66,687
Wheat flour	66	36	534	326
Beef and veal, excl. variety meats ..	49	32	429	613
Pork, excl. variety meats	36	1	155	151
Lard <u>2/</u>	0	0	129	229
Dairy products	34	1	252	34
Poultry and eggs	721	977	5,614	7,189
Live poultry	54	30	686	591
Broilers and fryers	151	29	587	136
Stewing chickens	0	0	2	0
Turkeys	475	738	3,740	5,543
Other fresh poultry	3	0	7	4
Eggs	38	180	592	915
Other	293	1,451	2,339	9,153
Total	40,777	75,079	250,111	328,024
Nonvariable-levy commodities:				
Canned poultry <u>3/</u>	55	45	87	457
Cotton, excl. linters	8,305	19,810	27,819	35,990
Fruits and preparations	6,819	6,134	30,186	41,978
Fresh fruits	852	1,014	10,962	10,801
Citrus	820	812	10,694	10,413
Oranges and tangerines	338	2	3,868	3,017
Lemons and limes	223	426	5,727	5,465
Grapefruits	256	381	1,096	1,918
Other	3	3	3	13
Apples	0	93	0	98
Grapes	0	75	84	107
Other	32	34	184	183
Dried fruits	2,133	1,456	6,213	8,662
Raisins	503	491	1,465	1,802
Prunes	1,433	686	4,387	5,799
Other	197	279	361	1,061
Fruit juices	1,504	1,017	4,237	4,614
Orange	1,001	695	2,659	3,145
Grapefruit	85	59	560	623
Other	418	263	1,018	846
Canned fruits <u>4/</u>	2,226	2,472	8,442	16,818
Peaches	1,043	480	3,280	4,455
Fruit cocktail	484	397	1,392	2,710
Pineapples	509	903	3,050	4,062
Other	190	692	720	5,591

Continued--

Table 20.--U.S. exports to the EC: Value by commodity,
December and July-December 1971 and 1972--Continued

Commodity	December		July-December	
	1971	1972	1971	1972
-- 1,000 dollars --				
Nonvariable-levy commodities--Con:				
Other fruits	104	175	332	1,083
Vegetables and preparations	4,039	3,936	13,740	16,202
Pulse	1,613	2,967	6,140	10,234
Dried beans	1,192	1,908	3,717	6,699
Dried peas	421	1,059	2,423	3,535
Fresh vegetables	178	150	280	307
Canned vegetables	148	39	409	733
Asparagus	68	2	85	27
Other	80	37	324	706
Hops	1,050	309	3,452	1,112
Other vegetables and preparations ..	1,050	471	3,459	3,816
Hides and skins	3,543	4,012	13,321	25,571
Cattle hides	1,961	1,818	7,397	17,681
Calf and kip skins	245	206	835	1,014
Other	1,337	1,988	5,089	6,876
Oilseeds and products	113,364	127,590	434,667	519,559
Oil cake and meal	34,937	36,837	143,371	153,559
Soybean	34,393	35,172	136,879	140,999
Other	544	1,665	6,492	12,560
Oilseeds	73,734	87,127	270,046	353,822
Soybeans	71,679	72,018	266,114	295,505
Flaxseed	15	4,528	36	21,183
Other	2,040	10,581	3,896	37,134
Vegetable oils	4,693	3,626	21,250	12,178
Cottonseed	1,273	752	7,337	2,201
Soybean	2	0	43	16
Linseed	0	438	134	2,536
Other	3,418	2,436	13,736	7,425
Tallow ^{3/}	2,041	1,614	15,670	11,576
Tobacco, unmanufactured	5,414	8,340	66,353	72,043
Variety meats, fresh or frozen ^{3/} ..	7,480	4,826	26,129	30,528
Nuts and preparations	4,270	3,121	19,642	20,412
Corn byproducts, feed ^{5/}	1,666	4,810	19,922	28,009
Food for relief and charity	166	0	177	160
Other	10,020	10,195	34,531	41,547
Total nonvariable-levy items	167,182	194,433	702,244	844,032
Total EC	207,959	269,512	952,355	1,172,056

^{1/} Grains, poultry, and pork were subject to variable levies beginning on July 30, 1962; rice, on Sept. 1, 1964; and beef and dairy products, on Nov. 1, 1964. ^{2/} Lard for food is a variable-levy commodity, while lard for industrial use is bound in the General Agreement on Tariffs and Trade (GATT) at 3 percent ad valorem. U.S. lard is for food use. ^{3/} Although canned poultry, tallow, and variety meats are subject to variable levies, these cannot exceed the amount of import duties bound in GATT. ^{4/} Variable levy on sugar-added content. ^{5/} Mainly corn gluten feed and meal, which are nonvariable-levy commodities; but may contain small quantities of other corn products, subject to variable levies (see "Export Highlights, March 1970").



Import Highlights

U.S. AGRICULTURAL IMPORTS UP SHARPLY IN JULY-DECEMBER

Increased demand and higher prices contributed to a sharp gain in U.S. agricultural imports during July-December 1972. At nearly \$3.25 billion, these inflows were 15 percent above similar months last year when longshoremen's strikes affected import levels. Higher prices accounted for four-fifths of the value increase; the quantity index advanced 3 percent to 115 (1967 = 100).

A temporary surcharge on some agricultural imports--items representing about 27 percent of the total--was in effect between August 15 and December 20, 1971. The surcharge tended to dampen imports during that period, but most items--including duty-free and quota-controlled commodities--were not affected. The last stage of tariff reductions agreed to in 1967 took place on January 1, 1972. About 500 agricultural commodities benefited.

Most of the growth in U.S. agricultural imports took place among competitive or "supplementary" commodities. Competitive farm-product imports, at \$2.1 billion, were 18 percent above the previous year's level. Noncompetitive commodities advanced 9 percent to \$1.1 billion.

Overall meat imports were up nearly one-fourth, with beef, pork, lamb, mutton, and various meat preparations all showing gains. Import restraints were suspended in July 1972 to meet increased domestic demand. The restraints had affected primarily fresh, chilled, or frozen beef, veal, and mutton in the 1971 period. Pork imports, mainly canned hams, were also larger in response to expanded demand. Beef and veal purchases of all types gained 17 percent to 853 million pounds; value was up a fourth to \$510 million. Frozen boneless beef--the largest meat component--expanded 25 percent in volume to 736 million pounds and 36 percent in value to \$431 million. The increase was due to larger shipments from Australia, New Zealand, Central America, and Mexico. Pork imports advanced 9 percent to 186 million pounds and 16 percent in value to \$144 million, mainly because of canned ham entries from Denmark, Poland, Yugoslavia, and Romania. Fresh and frozen pork imports, principally from Canada, also increased.

Both the volume and value of dutiable cattle imports were greater in July-December 1972 than a year earlier. Because of sharply higher prices, value jumped 44 percent to \$90 million, while numbers were up 23 percent to 605,000. The increase came primarily in feeder cattle from Mexico. Feeder-cattle entries (weighing 200-700 pounds each) totaled 527,000 head against 422,000 in July-December 1971, and prices averaged \$138.00 per head compared with \$114.00 for similar months of 1971. Value thus jumped to \$72 million from \$48 million a year earlier.

Dairy-product imports gained significantly from higher prices and additional volume for cheese. Cheese volume increased 43 percent to 102 million pounds, while value jumped 54 percent to \$62 million. Casein volume fell to 41 million pounds from 46 million, but higher prices lifted value to \$20 million from \$15 million.

Higher prices for sheep and lamb skins, cattle hides, and furskins were primary factors in raising the combined value of hide and skin imports by a third to \$50 million. Similarly, apparel wool volume remained about the same as a year earlier while value jumped 22 percent to \$13 million. A wide variety of animal byproducts also advanced, including bones, bristles, feathers, gelatin, crude hair, casings, ossin, and rennet. Live swine from Canada declined to 30,000 from 42,000 last year, but value rose to \$2.8 million from \$2.3 million.

U.S. fruit imports totaled \$78 million, a fourth larger than a year earlier. Nearly all types of fruits advanced in value, especially apples, blueberries, citrus, pears, and pineapples. Increased demand, bad weather in some U.S. producing regions, and higher prices were contributing factors.

Vegetable imports rose nearly 42 percent in value to \$119 million. Both fresh and processed categories were higher. Cucumbers, squash, tomatoes, mushrooms, olives, tomato products, and many other processed items advanced significantly.

Although sugar imports declined 11 percent in volume, value approached last fiscal year's level. Inedible molasses volume slipped 1 percent, but higher prices raised value 19 percent. Maple sugar, confectionery products, and honey imports gained sharply. Wine inflows were up 28 percent.

Among grain products, barley, wheat gluten, and processed items were higher, raising value one-third to \$53 million. A poor quality U.S. crop was the main factor in raising barley imports.

The change in competitive imports from a year ago stemmed largely from price increases, especially for green coffee and carpet wools. Green coffee purchases fell 4 percent in volume while value gained 13 percent. Coffee concentrate and roasted or ground coffee advanced sharply in both volume and value. Volume also gained for bananas, cocoa products, essential oils, and silk. Declines included cocoa beans, natural rubber, and tea.

Table 21.--U.S. agricultural imports: Value by months,
July 1969 to December 1972

Month	1969/70	1970/71	1971/72	1972/73
-- Million dollars --				
July	441.6	461.7	489.0	471.6
August	416.2	463.8	555.0	563.8
September	408.4	469.0	650.5	547.1
July-September	1,266.2	1,394.5	1,694.5	1,582.5
October	478.5	480.3	302.5	573.7
November	419.3	442.9	298.2	547.3
December	498.2	522.3	540.2	549.9
October-December	1,396.0	1,445.5	1,140.9	1,670.9
July-December	2,662.2	2,839.9	2,835.4	3,253.4
January	491.0	506.6	575.6	
February	457.5	419.7	591.6	
March	423.9	499.6	506.6	
January-March	1,472.4	1,425.9	1,673.8	
April	514.5	554.4	486.0	
May	443.5	477.9	525.1	
June	499.4	529.8	520.6	
April-June	1,457.4	1,562.1	1,531.7	
January-June	2,929.8	2,988.0	3,205.5	
July-June	5,592.0	5,827.9	6,041.2	

Table 22.--U.S. agricultural imports: Value by commodity,
July-December 1971 and 1972

Commodity or commodity group	July-December		Change
	1971	1972	
<u>Supplementary</u>	-- Million dollars --		Percent
Animals and animal products:			
Cattle and calves	66	95	+44
Dairy products and eggs	62	89	+44
Hides and skins, including furskins	38	50	+32
Meats and meat products, excluding poultry:			
Beef and veal	409	510	+25
Pork	124	144	+16
Other meats and products	21	26	+24
Sausage casings	13	13	0
Wool, apparel	11	13	+18
Other animals and animal products	39	54	+38
Total animals and products	783	994	+27
Cotton, raw, excluding linters	2	3	+50
Feeds and fodders, excluding oil cake	16	20	+25
Fruits and preparations	64	78	+22
Grains and preparations	40	53	+33
Nuts and preparations, edible	59	62	+5
Oilseeds, oilnuts, and products:			
Coconut oil	30	24	-20
Copra	14	12	-14
Olive oil	9	11	+22
Other oilseeds and products	33	45	+36
Seeds and nursery stock, excluding oilseeds	18	26	+44
Sugar and molasses:			
Sugar, cane	406	398	-2
Molasses, inedible	20	23	+15
Tobacco, unmanufactured	83	74	-11
Vegetables and preparations	84	119	+42
Wines and malt beverages:			
Wines	91	117	+29
Malt beverages	18	20	+11
Other supplementary vegetable products	32	51	+59
Total supplementary products	1,802	2,130	+18
<u>Complementary</u>			
Bananas, fresh	86	95	+10
Cocoa and chocolate:			
Cocoa beans	79	60	-24
Cocoa butter	7	14	+100
Cocoa and chocolate prepared	25	31	+24
Coffee:			
Coffee, green or crude	566	637	+13
Coffee, soluble	24	44	+83
Drugs, crude	13	14	+8
Essential oils	15	20	+33
Fibers, unmanufactured	10	9	-10
Rubber, crude:			
Rubber, crude, dry form	93	81	-13
Rubber, latex	14	13	-7
Silk, raw	2	3	+
Spices	27	27	0
Tea, crude	35	29	-17
Wool, carpet	20	23	+15
Other complementary products	17	23	+35
Total complementary products	1,033	1,123	+9
Total agricultural imports	2,835	3,253	+15

TABLE 23.--U.S. AGRICULTURAL IMPORTS: QUANTITY AND VALUE BY COMMODITY

COMMODITY	UNIT	JULY-DECEMBER				DECEMBER			
		QUANTITY		VALUE		QUANTITY		VALUE	
		1971 THOU.	1972 1/ THOU.	1971 1,000 DOL.	1972 1/ 1,000 DOL.	1971 THOU.	1972 1/ THOU.	1971 1,000 DOL.	1972 1/ 1,000 DOL.
ALL COMMODITIES	---	---	---	23,085,300	28,319,300	---	---	4,174,300	4,760,100
NONAGRICULTURAL COMMODITIES	---	---	---	20,249,473	25,065,927	---	---	3,634,114	4,210,157
AGRICULTURAL COMMODITIES	---	---	---	2,835,427	3,253,373	---	---	540,186	549,943
SUPPLEMENTARY	---	---	---	1,802,305	2,130,098	---	---	348,343	365,484
ANIMALS AND ANIMAL PRODUCTS	---	---	---	783,305	993,973	---	---	172,427	162,839
ANIMALS, LIVE	---	---	---	77,991	104,905	---	---	31,275	36,224
BABY CHICKS	NO	1,610	1,935	961	747	103	194	65	65
CATTLE, DUTIABLE	NO	491	605	61,705	90,147	247	242	28,534	33,844
CATTLE FOR BREEDING, FREE	NO	10	8	4,454	4,612	2	2	785	1,022
HORSES	NO	2	2	7,972	6,070	0	0	1,434	861
OTHER	---	---	---	2,899	3,289	---	---	456	433
DAIRY PRODUCTS	---	---	---	60,171	87,311	---	---	13,803	16,414
CHEESE	LB	71,716	102,635	40,105	61,891	15,257	19,944	7,970	12,217
BLUE POLD, INCLUDING ROQUEFORT	LB	3,491	3,899	2,879	3,847	971	928	753	824
CHEDDAR	LB	7,126	7,285	3,471	3,644	2,397	1,089	1,047	535
COLBY	LB	347	670	136	269	131	36	51	17
EDAM AND GOUDA	LB	5,997	6,263	3,405	3,968	1,359	1,588	829	963
ROMANO, REGGIANO, PARMESANO	LB	4,175	6,325	3,395	4,244	876	1,546	562	986
PECORINO	LB	6,245	10,910	4,259	8,370	456	2,338	438	1,814
SWISS	LB	18,819	26,418	10,816	16,691	2,986	5,047	1,727	3,000
OTHER	LB	25,517	40,865	11,744	20,457	6,081	7,373	2,564	4,041
BUTTER	LB	248	427	154	277	15	47	4	65
CASEIN AND MIXTURES	LB	50,244	43,909	17,258	21,668	14,813	7,250	4,989	3,624
ICE CREAM	GAL	7	0	5	0	7	0	5	0
OTHER	---	---	---	2,648	3,475	---	---	830	708
HIDES AND SKINS, INCLUDING FURSKINS	---	---	---	37,622	50,175	---	---	10,099	10,655
CALF AND KIP SKINS	LB	1,019	1,861	298	1,169	0	201	0	209
CATTLE HIDES	LB	5,581	6,044	827	2,358	226	1,471	42	624
GOAT AND KID SKINS	LB	1,437	2,519	1,228	2,763	628	360	563	450
SHEEP AND LAMB SKINS	LB	17,081	17,635	14,645	14,591	3,447	1,370	3,000	1,803
FURSKINS	---	---	---	18,339	20,592	---	---	6,164	6,573
OTHER	---	---	---	2,205	3,703	---	---	330	691
MEATS AND MEAT PREPARATIONS	---	---	---	554,032	680,460	188,022	137,571	168,365	89,963
BEEF AND VEAL	LB	725,298	853,278	409,461	509,958	144,014	102,152	78,415	60,653
CANNED	LB	54,103	47,597	35,266	29,655	7,158	5,695	4,670	3,680
FRESH OR FROZEN	LB	632,269	773,298	339,832	455,870	133,694	93,278	69,566	55,231
PREPARED OR PRESERVED	LB	38,927	32,383	34,464	24,433	3,157	3,179	2,479	2,243
MUTTON, GOAT, AND LAMB	LB	27,693	40,983	9,152	13,536	2,416	1,395	749	500
PORK	LB	170,644	185,767	123,863	143,981	37,631	30,755	28,839	24,612
FRESH OR FROZEN	LB	29,754	28,701	10,762	14,191	4,381	3,042	1,704	1,712
HAMS AND SHOULDERS, CND, COOKED, ETC	LB	126,745	141,538	103,704	119,780	30,525	24,434	25,395	21,788
OTHER	LB	14,144	15,528	9,397	10,010	2,726	3,279	1,741	2,112
OTHER	LB	20,349	20,915	11,555	12,985	3,962	3,269	1,962	1,897

CONTINUED--

TABLE 23.--U.S. AGRICULTURAL IMPORTS: QUANTITY AND VALUE BY COMMODITY--CONTINUED

COMMODITY	UNIT	JULY-DECEMBER				DECEMBER			
		QUANTITY		VALUE		QUANTITY		VALUE	
		1971 THOU.	1972 1/ THOU.	1971 1,000 DOL.	1972 1/ 1,000 DOL.	1971 THOU.	1972 1/ THOU.	1971 1,000 DOL.	1972 1/ 1,000 DOL.
POULTRY PRODUCTS	---	---	---	2,164	1,664	---	---	214	154
EGGS, DRIED AND OTHERWISE PRESERVED	LB	518	28	325	18	4	4	2	3
EGGS IN THE SHELL	DOZ	1,499	1,192	1,261	1,116	117	89	96	51
POULTRY MEAT	LB	409	374	578	530	116	61	116	100
OTHER ANIMAL PRODUCTS	---	---	---	51,325	69,457	---	---	8,671	10,430
BEEWAX	LB	1,421	966	951	619	245	159	166	49
BONES, HOOF, AND HORNS	---	---	---	1,785	3,038	---	---	339	295
BRISTLES, CRUDE OR PREPARED	LB	1,092	1,430	3,996	5,777	253	155	811	511
FATS, OILS, AND GREASES	LB	6,968	8,693	1,057	1,193	1,407	1,346	262	283
FEATHERS AND DOWNS, CRUDE, SORTED	LB	2,164	3,787	3,954	7,363	570	484	844	1,603
GELATIN	---	---	---	4,418	7,146	---	---	492	1,084
HAIR, UNMANUFACTURED	LB	1,334	3,590	1,782	3,745	276	569	514	499
SAUSAGE CASINGS	---	---	---	12,982	13,181	---	---	2,710	2,029
OSSEIN	LB	4,630	7,610	1,152	3,268	966	2,379	344	1,061
RENNET	LB	394	448	1,071	1,590	78	29	327	197
WOOL, UNMANUFACTURED, EX FREE IN BOND	GLB	22,872	19,555	10,960	13,399	1,420	2,570	748	1,886
OTHER	---	---	---	7,214	9,138	---	---	1,115	1,444
VEGETABLE PRODUCTS	---	---	---	1,019,000	1,136,125	---	---	175,916	202,644
COTTON, UNMANUFACTURED	RBA	35	41	3,067	3,470	6	3	748	158
COTTON, RAW	RBA	13	20	2,206	2,786	4	0	568	57
LINTERS	RBA	22	21	861	684	2	2	80	101
FRUITS AND PREPARATIONS	---	---	---	64,061	77,825	---	---	16,389	16,131
APPLES, FRESH	LB	27,899	50,223	2,225	3,867	6,475	8,352	757	791
APPLE AND PEAR JUICES	GAL	14,748	4,816	4,073	2,705	6,947	1,509	1,615	870
BLUEBERRIES	LB	7,044	9,371	1,617	2,957	403	842	104	347
STRAWBERRIES	LB	37,095	27,230	4,981	4,786	13,876	7,554	1,748	1,436
OTHER BERRIES	LB	13,997	11,547	2,453	2,235	83	1,174	22	261
CHEERRIES	LB	6,097	6,713	1,864	2,136	314	465	81	138
DATES	LB	22,773	19,221	2,266	2,195	22,306	18,021	2,217	2,049
FIGS	LB	4,202	6,196	720	1,060	735	624	122	102
GRAPES	LB	8,928	13,383	689	1,884	1,834	1,926	148	365
MELONS	LB	3,469	4,897	148	302	1,070	3,029	57	189
ORANGES, MANDARIN, CANNED	LB	37,220	45,530	7,886	10,661	12,221	5,505	2,586	1,360
ORANGES, FRESH	LB	43,658	69,614	3,052	4,617	10,812	19,005	1,019	1,568
ORANGE JUICE, CONCENTRATED	GAL	16,165	16,382	5,614	6,088	1,794	4,511	685	1,497
PEARS, FRESH	LB	865	6,067	133	868	34	730	7	177
PEARS, PREP OR PRES	LB	1,458	5,807	965	563	255	629	31	80
PINEAPPLES, CND, PREP OR PRES	LB	103,842	111,123	12,867	13,537	27,571	13,620	3,455	1,700
PINEAPPLE JUICE	GAL	4,772	4,530	1,181	1,104	949	296	220	59
JELLIES AND JAMS	LB	5,702	5,075	1,575	1,629	712	675	180	209
OTHER	---	---	---	9,752	14,528	---	---	1,340	2,932

CONTINUED--

-51-

TABLE 23.--U.S. AGRICULTURAL IMPORTS: QUANTITY AND VALUE BY COMMODITY--CONTINUED

COMMODITY	UNIT	JULY-DECEMBER				DECEMBER			
		QUANTITY		VALUE		QUANTITY		VALUE	
		1971 THOU.	1972 1/ THOU.	1971 1,000 DOL.	1972 1/ 1,000 DOL.	1971 THOU.	1972 1/ THOU.	1971 1,000 DOL.	1972 1/ 1,000 DOL.
NUTS AND PREPARATIONS									
ALMONDS	LB	107	250	52,629	61,715	---	---	12,181	10,892
BRAZIL NUTS	LB	19,774	30,600	92	173	25	63	29	46
CASHEN NUTS	LB	56,973	56,868	6,172	8,514	1,879	1,568	937	823
CHESTNUTS	LB	7,224	9,261	34,564	35,806	13,269	9,363	7,913	5,583
COCOA BEAN, FR, PREP, OR PRES	LB	54,266	54,587	2,214	3,459	2,915	1,616	853	597
FILBERTS	LB	2,460	3,560	6,895	5,571	11,093	10,195	1,341	1,002
PISTACHE NUTS	LB	8,717	5,667	1,437	2,071	789	881	453	517
WALNUTS	LB	18	339	5,781	4,380	315	2,410	255	1,870
OTHER	---	---	---	7	218	0	43	0	32
				1,468	1,523	---	---	400	423
GRAINS AND PREPARATIONS									
BARLEY	BU	7,260	9,422	39,596	53,418	---	---	8,091	10,723
BARLEY WALE	CWT	124	104	8,399	14,080	3,193	2,643	3,620	4,262
CORN	BU	639	421	641	552	31	14	149	80
DATS	BU	633	1,562	1,072	754	55	72	88	156
RICE	BU	75,263	12,104	536	1,240	139	225	114	189
RYE	BU	241	154	3,637	887	5,576	4,607	291	335
WHEAT	BU	96	0	258	166	0	0	0	0
WHEAT FLOUR	CWT	7	18	177	1	0	0	0	0
WHEAT GLUTEN	LB	10,930	15,979	47	89	0	0	0	0
BISCUITS, CAKES, WAFERS, ETC	LB	39,602	48,171	2,583	4,029	1,974	2,977	474	764
BREAD CRUMBS	LB	11,336	11,777	15,439	21,301	5,376	6,822	2,208	3,203
BREAD, YEAST-LEAVENED	LB	2,974	2,720	1,430	1,728	1,506	2,138	186	322
MACARONI, SPAGHETTI, ETC	LB	13,345	21,777	592	629	532	394	108	99
OTHER	---	---	---	2,559	4,185	2,532	3,799	508	759
				2,224	3,777	---	---	345	553
OILSEEDS, MATERIALS AND PRODUCTS									
OIL CAKE AND MEAL	STN	3	9	86,078	92,226	---	---	12,506	15,964
OILSEEDS AND OILNUTS	---	---	---	196	420	1	2	36	76
COPRA	LB	194,248	223,478	19,938	18,840	76,850	50,904	6,271	3,826
SESAME SEED	LB	16,192	18,594	13,739	11,704	2,447	2,617	5,221	2,637
OTHER	---	---	---	3,066	3,495	---	---	508	532
				3,133	3,641	---	---	542	657
VEGETABLE OILS AND WAXES									
CANOLA	LB	479,380	643,934	65,944	72,965	41,709	105,281	6,199	12,062
CASTOR OIL	LB	3,945	4,326	1,483	1,742	562	748	209	331
COCOA OIL	LB	25,705	46,288	3,510	9,719	1,933	7,656	281	2,148
OLIVE OIL, POIBLE	LB	256,968	286,534	30,435	23,835	16,122	50,432	1,778	3,953
PALM OIL	LB	27,826	27,355	9,335	11,368	4,205	3,185	1,406	1,425
PALM KERNEL OIL	LB	104,267	203,269	11,170	16,578	7,636	20,624	757	1,663
TUNG OIL	LB	41,162	49,879	6,314	5,240	7,940	16,660	1,067	1,715
OTHER	LB	8,394	8,810	920	840	1,426	2,580	174	285
	LB	11,112	17,473	2,778	3,753	1,884	3,395	468	541

CONTINUED--

TABLE 23.--U.S. AGRICULTURAL IMPORTS: QUANTITY AND VALUE BY COMMUNITY--CONTINUED

COMMODITY	UNIT	JULY-DECEMBER				DECEMBER			
		QUANTITY		VALUE		QUANTITY		VALUE	
		1971 THOU.	1972 1/ THOU.	1971 1,000 DOL.	1972 1/ 1,000 DOL.	1971 THOU.	1972 1/ THOU.	1971 1,000 DOL.	1972 1/ 1,000 DOL.
SUGAR AND RELATED PRODUCTS	---	---	---	441,228	445,238	---	---	77,277	69,515
SUGAR	STN	2,607	2,489	406,309	398,314	474	386	71,175	62,671
MOLASSES, INEDIBLE	GAL	174,760	172,457	19,563	23,373	43,020	24,472	4,063	3,292
MAPLE SUGAR AND SIRUP	LB	3,641	4,782	2,074	3,165	602	541	331	384
CONFECTIONERY PRODUCTS	LB	34,502	42,719	10,998	15,846	4,626	6,714	1,367	2,545
HONEY	LB	5,274	13,907	934	3,406	1,369	751	273	199
OTHER	---	---	---	1,350	1,135	---	---	67	421
VEGETABLES AND PREPARATIONS	---	---	---	83,890	118,757	---	---	19,724	29,406
FRESH OR FROZEN:									
BEANS	LB	2,292	3,166	311	420	1,888	2,879	255	374
CARROTS	LB	40,012	36,908	1,909	1,822	7,007	7,597	380	378
CUCUMBERS	LB	16,349	28,678	1,116	2,513	15,557	24,941	1,040	2,307
DASHEENS	LB	7,538	10,615	780	1,318	1,128	1,551	105	186
EGGPLANT	LB	3,401	6,318	160	735	3,023	4,499	132	521
GARLIC	LB	4,846	6,523	1,323	1,616	729	600	734	229
ONIONS	LB	17,602	15,911	1,287	1,594	2,959	7,723	240	539
PEAS	LB	1,286	1,179	372	370	566	483	146	139
PEPPERS	LB	6,846	4,871	1,114	898	3,966	2,642	717	530
POTATOES, WHITE OR IRISH	CWT	549	207	1,213	612	325	101	672	306
SQUASH	LB	2,717	4,925	300	658	2,600	4,333	286	608
TOMATOES	LB	39,961	43,565	5,096	6,096	18,965	14,650	2,519	2,274
TURNIPS OR RUTABAGAS	CWT	460	471	1,717	2,687	93	98	316	571
OTHER	---	---	---	3,545	4,429	---	---	875	914
PREPARED OR PRESERVED:									
CASSAVA, FLOUR, STARCH, AND TAPIOCA	LB	58,615	46,806	2,565	2,035	4,678	2,177	231	111
HOPS	LB	1,192	2,854	1,279	2,821	1,080	1,911	1,183	1,975
MUSHROOMS, INCLUDING DRIED	LB	11,807	24,172	9,246	18,084	1,906	3,262	1,485	2,328
OLIVES, IN BRINE	GAL	7,807	8,779	21,072	24,770	1,073	2,092	3,366	5,009
ONIONS	LB	3,117	3,176	734	931	1,527	635	240	167
PEAS, EX DRIED	LB	3,457	3,491	795	827	201	229	50	54
PICKLED VEGETABLES	LB	20,896	30,601	2,789	3,924	2,919	3,422	509	565
TOMATOES	LB	40,191	60,714	3,669	6,520	4,495	18,022	427	1,960
TOMATO PASTE AND SAUCE	LB	38,859	58,069	5,277	8,839	9,725	21,116	1,374	3,254
OTHER	---	---	---	16,220	24,037	---	---	2,942	4,112
OTHER VEGETABLE PRODUCTS	---	---	---	242,450	283,478	---	---	28,999	49,456
BROOMCORN	STN	6	8	3,927	4,544	1	1	604	602
CUT FLOWERS	---	---	---	1,516	2,301	---	---	437	612
ESSENTIAL OR DISTILLED OILS	LB	766	1,054	1,662	2,872	52	165	98	487
FEEDS AND FODDERS, EX OIL CAKE & MEAL	---	---	---	15,706	20,380	---	---	2,482	3,805
FLAVORING EXTRACTS	---	---	---	1,459	2,909	---	---	713	694
JUTE AND JUTE BUTTS, UNMANUFACTURED	LTW	6	4	1,050	1,281	2	1	109	296
MALT LIQUORS	GAL	14,745	15,882	17,526	20,245	2,441	2,140	2,886	2,711
NURSERY AND GREENHOUSE STOCK	---	---	---	11,841	16,968	---	---	668	861
SEEDS, EXCEPT OILSEEDS	LB	16,640	24,895	6,651	8,778	3,089	5,058	1,150	1,751
SPICES	LB	6,615	10,140	2,052	3,625	2,392	4,309	700	1,547
TOBACCO, UNMANUFACTURED	LB	141,384	124,017	82,617	73,850	16,126	20,216	9,160	11,232
WINES	GAL	18,978	25,655	91,119	117,278	2,230	5,053	9,544	23,956
OTHER	---	---	---	5,324	8,447	---	---	948	1,361

CONTINUED--

TABLE 23.--U.S. AGRICULTURAL IMPORTS: QUANTITY AND VALUE BY COMMODITY--CONTINUED

COMMODITY	UNIT	JULY-DECEMBER				DECEMBER			
		QUANTITY		VALUE		QUANTITY		VALUE	
		1971 THOU.	1972 1/ THOU.	1971 1,000 DOL.	1972 1/ 1,000 DOL.	1971 THOU.	1972 1/ THOU.	1971 1,000 DOL.	1972 1/ 1,000 DOL.
COMPLEMENTARY	---	---	---	1,033,122	1,123,275	---	---	191,843	184,459
BANANAS	LB	1,955,644	2,088,307	86,322	94,565	509,524	354,907	23,118	16,029
PLANTAINS	LB	41,541	52,962	1,801	2,364	10,984	9,158	497	363
COFFEE, GREEN	LB	1,442,142	1,391,286	565,632	636,862	240,480	170,418	92,945	83,705
COFFEE EXTRACTS, ESSENCES, CONCENTRATES	LB	18,626	31,739	74,109	44,320	2,528	6,111	2,464	9,163
COCOA BEANS	LB	339,553	216,864	79,171	59,925	112,739	80,775	25,381	23,591
COCOA BUTTER	LB	13,348	21,735	6,854	13,574	930	5,716	443	4,316
COCOA AND CHOCOLATE PREPARATIONS	LB	90,041	115,186	24,751	31,005	20,167	20,978	4,593	5,148
DRUGS, HERBS, ROOTS, ETC	LB	24,873	34,617	13,071	14,334	1,919	871	1,856	2,082
ESSENTIAL OR DISTILLED OILS	LB	4,396	6,390	15,033	19,892	827	839	2,056	3,496
FIBERS, UNMANUFACTURED	LTR	50	42	9,700	9,052	7	6	1,787	1,108
RUBBER, CRUDE, NATURAL:									
RUBBER, DRY FORM	LB	619,206	577,011	92,731	81,092	108,463	112,979	16,020	15,910
RUBBER, LATEX	LB	85,488	82,261	13,573	13,003	17,883	12,557	2,955	1,886
SILK, RAW	LB	193	340	1,555	2,837	63	19	522	164
SPICES:									
PEPPER, UNGROUND, BLAC.	LB	27,446	33,239	11,924	12,536	3,936	5,066	1,568	1,864
VANILLA BEANS	LB	515	598	2,084	2,547	21	313	103	1,696
OTHER	LB	31,431	31,226	12,825	11,532	6,907	5,132	2,957	2,055
TEA	LB	85,154	71,785	35,497	29,409	11,862	10,731	4,991	4,582
WAX, UNMANUFACTURED, FREE IN BOND	GLB	1,671	39,996	20,064	22,973	11,530	5,056	4,459	3,753
OTHER	---	---	---	16,476	21,453	---	---	3,127	3,518

-54-

1/ PRELIMINARY

TABLE 24.--U.S. AGRICULTURAL EXPORTS: QUANTITY AND VALUE BY COMMODITY

COMMODITY	UNIT	JULY-DECEMBER				DECEMBER			
		QUANTITY		VALUE		QUANTITY		VALUE	
		1971 THOU.	1972 1/ THOU.	1971 1,000 DOL.	1972 1/ 1,000 DOL.	1971 THOU.	1972 1/ THOU.	1971 1,000 DOL.	1972 1/ 1,000 DOL.
ALL COMMODITIES	---	---	---	21,022,900	25,061,600	---	---	4,031,500	4,559,600
NON-AGRICULTURAL COMMODITIES	---	---	---	17,211,301	19,090,446	---	---	3,189,972	3,449,524
AGRICULTURAL COMMODITIES	---	---	---	3,811,599	5,171,154	---	---	841,528	1,110,076
ANIMALS AND ANIMAL PRODUCTS	---	---	---	493,329	584,665	---	---	115,177	106,525
ANIMALS LIVE, EX POULTRY	---	---	---	---	---	---	---	---	---
CATTLE	HD	27	55	19,009	40,680	---	---	7,788	17,848
OTHER	---	---	---	7,094	16,288	---	---	4,775	6,773
DAIRY PRODUCTS	---	---	---	122,750	54,234	---	---	36,884	6,130
ANHYDRIOUS MILK FAT	LR	421	14	228	11	385	3	202	3
BUTTER	LB	85,051	1,200	43,332	667	42,223	1,058	21,445	568
CHEESE AND CURD	LR	3,046	3,064	2,393	2,613	741	544	587	503
MILK AND CREAM:	---	---	---	---	---	---	---	---	---
CONDENSED OR EVAPORATED	LR	20,749	23,321	4,611	4,141	5,908	3,444	1,357	661
DRY, WHOLE MILK AND CREAM	LR	17,275	19,009	3,233	3,027	1,598	2,026	400	404
FRESH	GAL	689	840	1,015	1,251	122	216	185	236
LOWFAT (1%)	LR	194,240	119,879	55,094	30,908	38,785	5,976	10,600	1,874
OTHER	---	---	---	12,343	11,622	---	---	2,107	1,882
FATS, OILS, AND GREASES	LR	1,384,761	1,275,662	124,175	105,211	233,508	167,831	20,481	14,544
LARD AND OTHER RENDERED PIG FAT	LS	100,167	80,495	11,931	9,390	3,875	4,357	532	574
TALLOW:	---	---	---	---	---	---	---	---	---
EDIBLE	LR	2,143	9,604	268	851	0	279	0	37
INEDIBLE	LR	1,196,954	1,074,224	102,923	86,843	214,958	149,521	18,521	12,559
OTHER	LB	85,497	111,340	9,054	8,176	14,674	13,674	1,428	1,374
MEATS AND MEAT PREPARATIONS	LR	213,913	238,571	80,801	107,015	53,058	41,270	18,711	18,029
BEEF AND VEAL, EXCEPT OFFALS	LR	19,610	28,074	17,776	25,930	3,937	5,729	3,684	5,044
PORK, EXCEPT OFFALS	LR	43,501	48,090	17,117	24,761	9,567	6,404	3,119	3,101
OFFALS, EDIBLE, VARIETY MEATS	LB	139,417	146,264	39,545	47,525	37,496	26,541	10,662	8,551
OTHER	LR	11,384	16,143	6,363	8,800	2,058	2,596	1,245	1,333
POULTRY AND POULTRY PRODUCTS	---	---	---	40,780	49,089	---	---	7,234	8,843
POULTRY, LIVE:	---	---	---	---	---	---	---	---	---
BREEDING CHICKS	HD	7,826	6,246	7,517	6,872	1,271	1,009	1,144	1,245
BABY CHICKS, EX BREEDING CHICKS	HD	4,964	9,539	1,653	1,817	1,073	1,033	315	246
OTHER	---	---	---	730	1,478	---	---	102	191
POULTRY MEAT, FRESH, FROZEN:	---	---	---	---	---	---	---	---	---
CHICKENS	LR	53,825	48,515	14,254	12,300	11,265	9,108	2,928	2,376
TURKEYS	LR	14,954	26,518	6,250	11,033	2,688	4,837	1,011	1,951
OTHER	LR	4,415	6,016	1,576	2,245	1,074	1,097	370	412
POULTRY, CANNED AND SPECIALTIES	LR	2,632	6,019	941	2,223	531	951	180	361
EGGS IN THE SHELL, FOR HATCHING	DOZ	5,152	5,617	5,365	5,775	850	868	829	954
EGGS IN THE SHELL, OTHER	DOZ	725	2,404	770	926	152	308	59	132
EGGS, DRIED AND OTHERWISE PRESERVED	LB	537	2,827	580	2,219	89	638	94	501

CONTINUED--

TABLE 24.--U.S. AGRICULTURAL EXPORTS: QUANTITY AND VALUE BY COMMODITY--CONTINUED

COMMODITY	UNIT	JULY-DECEMBER				DECEMBER			
		QUANTITY		VALUE		QUANTITY		VALUE	
		1971 THOU.	1972 1/ THOU.	1971 1,000 DOL.	1972 1/ 1,000 DOL.	1971 THOU.	1972 1/ THOU.	1971 1,000 DOL.	1972 1/ 1,000 DOL.
OTHER ANIMAL PRODUCTS	---	---	---	106,314	228,435	---	---	24,079	46,131
HAIR, ANIMAL, EX WOOL OR FINE HAIR	LB	485	420	249	272	58	133	42	67
HIDES AND SKINS, INCL FURSKINS	---	---	---	89,869	209,400	---	---	20,611	42,676
SAUSAGE CASINGS	LB	5,577	6,699	4,978	5,960	1,187	1,157	880	1,135
WOOL, UNMANUFACTURED, INC FINE HAIR	CLR	11,084	10,023	5,869	6,069	3,209	1,208	1,686	800
OTHER	---	---	---	5,349	6,785	---	---	860	1,452
VEGETABLE PRODUCTS	---	---	---	3,318,270	4,586,488	---	---	726,351	1,003,551
COTTON, UNMANUFACTURED	RMA	1,634	1,414	247,287	216,104	441	560	65,963	86,339
COTTON, RAW	RMA	1,570	1,327	240,261	213,530	417	534	65,196	85,684
LINTERS	RMA	68	87	2,025	2,574	24	27	767	656
FRUITS AND PREPARATIONS	---	---	---	189,146	236,490	---	---	35,854	33,394
CANNED	LB	150,675	221,710	24,979	38,708	36,739	30,649	6,070	5,621
CHERRIES	LB	1,643	22,792	610	4,900	647	3,353	253	817
FRUIT COCKTAIL	LB	37,504	51,883	7,070	9,855	9,911	6,647	1,861	1,351
PEACHES	LB	66,179	80,698	9,131	12,181	17,678	9,154	2,412	1,477
PEARS	LB	3,406	7,158	576	1,057	826	493	137	84
PINEAPPLES	LB	28,457	40,656	4,745	6,767	4,770	8,208	873	1,324
OTHER	LB	13,487	18,527	2,845	3,858	2,912	2,798	533	563
DRIED	LB	145,636	99,296	31,165	33,296	40,041	12,102	8,156	4,726
PRUNES	LB	48,488	46,124	11,562	14,293	13,075	5,428	3,239	2,016
GRAPES (RAISINS)	LB	85,145	40,114	15,388	13,903	24,744	4,815	4,222	1,958
OTHER	LB	12,003	13,058	4,215	5,200	2,223	1,860	695	751
FRESH	LB	1,010,621	1,048,561	103,150	129,560	138,281	133,349	14,445	16,635
APPLES	LB	56,743	66,615	5,799	7,820	19,447	20,924	1,841	2,341
BERRIES	LB	9,151	11,035	1,951	2,539	2,276	645	415	149
GRAPFRUITS	LB	96,987	126,354	8,409	12,839	21,565	23,164	1,760	1,957
GRAPES	LB	252,125	184,681	30,559	35,513	17,572	17,676	2,790	4,336
LEMONS AND LIMES	LB	156,263	280,133	17,005	21,261	18,516	19,977	2,200	2,260
ORANGES, TANGERINES, AND CLEMENTINE	LB	230,119	281,249	22,272	27,358	50,784	40,451	4,442	4,319
PEARS	LB	38,174	40,375	3,861	4,833	6,481	7,508	596	858
OTHER	LB	171,058	153,919	13,293	16,397	1,690	3,085	201	414
FRUIT JUICES	GAL	15,070	16,030	27,009	31,341	3,770	3,097	6,832	5,893
GRAPEFRUIT	GAL	2,124	2,716	3,617	4,520	534	434	1,055	821
ORANGE	GAL	7,855	8,132	17,818	14,570	1,764	1,583	3,904	3,797
OTHER	GAL	5,090	5,182	6,379	6,951	1,471	1,080	1,873	1,274
FROZEN FRUITS	LB	3,013	7,466	660	1,554	409	888	107	187
OTHER	---	---	---	1,384	2,031	---	---	243	333
NUTS AND PREPARATIONS	LB	89,529	93,997	51,753	60,960	19,601	13,818	11,641	9,683
ALMONDS	LB	51,033	45,803	34,671	36,085	10,011	7,425	7,173	6,159
WALNUTS	LB	27,470	31,257	6,285	12,249	4,773	3,298	1,481	1,341
OTHER	LB	16,027	16,931	10,847	12,627	4,818	3,095	2,987	2,164

CONTINUED--

TABLE 24--U.S. AGRICULTURAL EXPORTS: QUANTITY AND VALUE BY COMMODITY--CONTINUED

COMMODITY	UNIT	JULY-DECEMBER				JULY-DECEMBER			
		QUANTITY		VALUE		QUANTITY		VALUE	
		1971 THOU.	1972 1/ THOU.	1971 1,000 BBL.	1972 1/ 1,000 BBL.	1971 THOU.	1972 1/ THOU.	1971 1,000 BBL.	1972 1/ 1,000 BBL.
GRAINS AND PREPARATIONS	---	---	---	1,170,231	2,031,779	---	---	222,294	439,115
FEED GRAINS AND PRODUCTS	BT	9,357	16,375	516,231	924,231	2,245	2,729	116,339	169,351
FEED GRAINS	MT	9,214	16,177	505,550	909,407	2,189	2,697	114,994	167,299
BARLEY	BU	13,963	23,276	12,042	26,132	5,505	7,013	6,915	9,760
CORN	BU	307,259	521,631	418,624	764,376	65,563	83,766	27,320	131,070
GRAIN SORGHUMS	BU	46,697	93,563	66,225	135,551	14,328	16,117	18,675	25,912
OATS	BU	3,577	3,390	2,654	2,300	2,995	311	2,076	519
MALT AND FLOUR, INC BARLEY MALT	LR	41,255	60,366	2,771	3,961	8,039	11,466	615	778
CORN GRITS AND NOBILITY	LA	11,865	17,621	611	801	1,415	4,294	32	125
CORNFEEF	CWT	818	1,162	3,760	5,137	75	176	313	705
CORN STARCH	LR	27,673	28,050	2,563	3,161	2,537	3,500	349	589
OATMEAL AND GROATS	CWT	12	67	68	374	0	0	0	0
OATMEAL & OATS, ROLLED, ETC	LR	16,283	20,055	957	1,440	1,411	2,151	87	261
RICE, MILLED BASIS	LR	1,580,037	2,305,391	127,137	202,990	232,405	407,302	19,974	43,701
MILLED	LR	1,121,679	1,476,212	94,631	146,743	202,421	288,914	16,802	32,901
HUSKED, BROWN	LR	458,358	829,179	32,505	62,247	29,984	118,388	3,172	10,801
RYE	BU	1,747	191	2,107	231	143	166	156	194
WHEAT AND PRODUCTS	BU	294,280	507,759	492,70	912,725	49,153	111,332	82,264	219,877
WHEAT	BU	268,218	475,105	448,690	854,832	45,335	107,321	74,963	200,358
WHEAT FLOUR	CWT	9,345	9,526	38,337	41,605	1,331	1,315	5,333	7,249
OTHER WHEAT PRODUCTS	BU	4,911	5,946	11,343	16,287	786	1,006	1,919	3,270
BAKERY PRODUCTS	LR	10,136	10,663	3,722	4,033	2,455	2,002	830	825
INFANTS AND DIETETIC FOODS	LR	71,301	80,127	6,921	8,553	2,071	4,553	369	1,156
BLENDED FOOD PRODUCTS	LR	222,954	166,425	19,484	14,576	18,154	36,667	1,680	3,237
OTHER	---	---	---	5,212	7,891	---	---	751	1,192
FEEDS AND FODDERS, EX OIL CAKE/MEAL	---	---	---	65,043	87,562	---	---	14,091	17,072
CORN BYPRODUCTS, FEED 2/	STN	358	436	20,123	28,467	31	66	1,716	4,894
ALFALFA MEAL, DEHYDRATED	STN	118	87	6,480	4,401	50	12	2,355	696
ALFALFA MEAL, SUN-CURED	STN	106	82	4,788	3,993	47	8	2,041	600
ALFALFA HAY CUBES	STN	0	13	0	628	0	6	0	285
POULTRY FEEDS, PREPARED	STN	65	58	9,822	10,035	16	10	2,554	1,787
OTHER	---	---	---	23,832	30,038	---	---	4,926	8,808
OILSEEDS AND PRODUCTS	---	---	---	1,123,194	1,292,804	---	---	253,647	288,819
OIL CAKE AND MEAL	STN	2,380	2,245	210,121	247,087	571	467	49,737	55,565
SOYBEAN OIL CAKE AND MEAL	STN	2,258	2,068	199,309	230,776	555	437	48,376	52,925
OTHER	STN	122	177	10,813	16,231	16	29	1,361	2,659
OILSEEDS	---	---	---	729,080	910,089	---	---	166,102	212,337
FLAXSEED	BU	9	8,667	39	26,946	3	2,458	15	8,114
SOYBEANS	BU	222,089	230,642	701,385	815,622	50,255	49,537	158,435	185,535
SAFFLOWER SEED	LR	109,235	86,399	6,146	3,963	31,682	17,926	1,911	693
OTHER	---	---	---	21,509	63,558	---	---	5,741	18,195
VEG OILS AND WAXES	LB	1,203,291	1,037,029	183,993	135,708	261,658	163,894	37,847	20,898
COTTONSEED OIL	LR	208,250	226,353	33,013	29,259	58,455	32,154	8,869	3,824
SOYBEAN OIL	LR	778,266	517,287	113,462	64,544	156,964	64,952	21,176	7,790
OTHER	LB	216,776	293,389	37,517	41,906	46,238	66,768	7,803	9,284

CONTINUED--

TABLE 24.--U.S. AGRICULTURAL EXPORTS: QUANTITY AND VALUE BY COMMODITY--CONTINUED

COMMODITY	UNIT	JULY-DECEMBER				DECEMBER			
		QUANTITY		VALUE		QUANTITY		VALUE	
		1971 THOU.	1972 1/ THOU.	1971 1,000 DOL.	1972 1/ 1,000 DOL.	1971 THOU.	1972 1/ THOU.	1971 1,000 DOL.	1972 1/ 1,000 DOL.
TOBACCO, UNMANUFACTURED									
BIRLEY	LP	236,091	313,244	241,895	343,623	59,913	59,614	62,800	69,475
CIGAR WRAPPER	LB	14,324	23,576	16,056	27,100	1,466	2,493	1,787	2,828
DARK-FIRED KENTUCKY AND TENNESSEE	LB	1,557	1,515	9,434	9,543	223	235	1,282	1,653
FLUO-CURED	LB	10,849	9,131	7,605	6,804	804	1,945	643	1,457
MARYLAND	LB	153,148	211,781	176,103	268,594	44,942	42,941	56,231	57,114
BULK SMOKING TOBACCO	LB	6,005	5,817	6,083	6,456	649	517	622	516
OTHER	LB	17,214	11,960	19,893	13,695	291	3,427	285	4,031
	LB	32,993	49,470	6,721	11,427	11,538	8,057	1,950	1,872
VEGETABLES AND PREPARATIONS									
CANNED	---	---	---	98,898	118,217	---	---	27,682	25,384
ASPARAGUS	LB	48,243	63,217	9,260	12,004	11,232	10,693	2,190	2,048
CORN	LB	2,127	1,927	774	690	679	288	235	115
SOUPS	LB	8,660	12,904	1,570	2,718	2,662	2,349	458	439
TOMATOES, TOMATO SAUCE AND PUREE	LB	9,032	10,793	2,054	2,782	2,281	1,643	497	347
OTHER	LB	13,148	19,241	2,076	3,193	2,077	3,276	345	550
PULSES	LB	15,277	18,351	2,787	3,626	3,533	3,137	655	598
DRIED BEANS	LB	337,442	314,527	28,564	29,215	98,574	74,500	8,518	6,941
DRIED PEAS, INC CORN AND CHICK	LB	157,554	153,356	17,159	16,019	39,551	35,852	4,591	3,693
DRIED LENTILS	LB	132,001	106,724	6,605	6,783	38,948	28,690	1,909	1,801
FRESH	LB	47,887	54,447	4,801	6,413	20,075	9,957	2,018	1,447
LETTUCE	LB	458,742	597,655	30,688	39,552	110,667	113,383	8,846	8,259
ONIONS	LB	111,111	128,892	7,219	7,414	36,898	32,466	2,360	1,990
POTATOES, EXCEPT SWEET POTATOES	LB	50,666	52,571	2,374	3,259	11,996	9,473	589	586
TOMATOES	LB	127,276	186,957	3,478	6,555	8,178	11,899	277	472
OTHER	LB	65,748	82,697	7,816	10,363	12,864	14,904	1,614	1,879
FROZEN VEGETABLES	LB	103,940	146,538	9,801	11,961	40,731	44,639	4,006	3,332
HOPS	LB	9,941	13,926	1,762	2,653	2,055	1,927	354	351
SOUPS AND VEGETABLES, DEHYDRATED	LB	9,314	7,907	8,288	7,557	3,219	2,677	2,882	3,050
TOMATO JUICE, CANNED	GALE	12,959	10,264	5,785	7,580	2,489	2,966	1,068	1,356
VEGETABLE SEASONINGS	LB	505	827	567	913	147	233	169	265
OTHER	LB	17,378	24,677	4,840	5,813	4,264	3,728	1,131	881
	---	---	---	9,144	12,926	---	---	2,524	2,233
OTHER VEGETABLE PRODUCTS									
COFFEE	---	---	---	126,824	149,449	---	---	32,338	34,270
DRUGS, HERBS, ROOTS, ETC	LB	10,912	14,544	12,224	13,650	2,234	2,867	2,699	2,746
ESSENTIAL OILS AND RESINOIDS	LB	4,903	4,965	6,326	8,719	885	857	1,747	1,818
FLAVORING SIRUPS, SUGARS, EXTRACTS	---	6,152	7,073	18,049	19,036	1,228	1,667	4,170	3,710
HONEY	---	---	---	24,423	28,227	---	---	3,736	9,376
MIRSBRY STICK	LB	3,133	2,742	882	938	346	388	136	152
SEEDS, EXCEPT OILSEEDS	---	---	---	4,494	4,861	---	---	1,147	847
SPICES	LB	87,452	141,814	29,564	32,739	43,897	33,608	13,627	8,663
OTHER	LB	3,475	4,331	2,437	2,946	634	682	423	491
	---	---	---	28,428	38,283	---	---	4,655	6,467

1/ PRELIMINARY

Table 25.--U.S. agricultural exports and imports: Value by country, July-December 1971 and 1972

Country	Exports		Imports		Country	Exports		Imports	
	1971	1972	1971	1972		1971	1972	1971	1972
World 1/	3,814,249	5,174,375	2,835,427	3,253,373					
	-- 1,000 dollars --					-- 1,000 dollars --			
Major Trade Blocs:					Europe--Continued				
CACM	24,843	27,807	182,825	205,650	Sweden	31,993	34,158	5,221	8,572
LAFTA	244,745	347,968	729,644	844,252	Norway	22,264	26,654	4,188	5,413
EC	952,355	1,172,056	210,792	267,355	Finland	7,480	8,523	5,065	6,735
EASTERN EUROPE	86,078	427,579	28,814	45,256	Denmark	49,016	49,121	74,709	92,429
Greenland	0	0	2	0	United Kingdom	209,117	259,740	26,279	30,497
Canada	432,985	472,232	150,261	182,022	Ireland	5,976	24,518	20,028	14,580
Miquelon and St. Pierre Islands	16	26	0	0	Netherlands	332,200	417,656	71,226	73,085
Mexico	60,264	111,099	171,320	225,073	Belgium-Luxembourg	90,257	80,219	6,032	9,785
Central America	44,743	44,103	199,866	221,621	France	103,823	135,070	57,586	84,303
Guatemala	8,044	8,206	41,451	53,186	West Germany	305,284	385,207	36,081	48,562
British Honduras	1,818	1,280	1,803	2,758	East Germany	10,132	3,355	56	24
El Salvador	3,796	4,192	22,664	21,465	Austria	6,197	7,746	3,097	5,941
Honduras	4,755	4,782	49,807	38,098	Czechoslovakia	9,678	25,403	805	375
Nicaragua	3,451	4,187	23,814	32,956	Hungary	9,379	4,361	1,892	2,566
Costa Rica	4,797	6,440	45,089	59,945	Switzerland	42,023	51,623	12,928	17,026
Panama	18,082	15,016	15,123	13,213	Estonia	0	0	0	0
Canal Zone	0	0	115	0	Latvia	768	0	0	0
Caribbean	85,989	91,088	72,158	107,407	Lithuania	0	0	0	0
Bermuda	4,296	5,120	5	6	Poland	0	0	0	0
Bahamas	14,580	13,915	183	199	USSR	29,285	46,000	22,950	36,055
Cuba	0	0	44	1	Azores	20,837	322,644	1,588	2,776
Jamaica	18,804	20,116	5,042	7,571	Spain	206	24	53	39
Haiti	4,452	5,201	6,545	7,592	Portugal	73,894	172,549	47,962	60,519
Dominican Republic	21,376	19,513	53,369	89,146	Gibraltar	26,903	27,383	16,778	22,687
Leeward-Windward Islands	2,690	3,286	154	387	Malta-Gozo	38	17	8	3
Barbados	1,865	2,505	691	158	Italy	887	582	0	4
Trinidad-Tobago	9,292	10,967	2,188	2,303	Yugoslavia	120,790	153,905	39,867	51,621
Netherlands Antilles	7,997	9,116	14	41	Albania	14,797	63,679	14,417	12,759
French West Indies	1,637	1,349	3,923	3	Greece	0	57	98	194
South America	189,333	243,763	570,474	627,416	Romania	11,164	11,233	15,628	17,519
Colombia	27,711	24,849	90,054	101,755	Bulgaria	5,948	24,851	858	2,815
Venezuela	47,734	72,923	6,736	10,539	Turkey	50	909	568	851
Guyana	2,044	3,974	12,039	8,039	Cyprus	17,461	7,456	38,671	34,476
Surinam	2,750	2,838	111	187		1,544	4,06	277	398
French Guiana	57	81	0	11	Asia				
Ecuador	10,055	11,896	35,590	43,702	Syrian Arab Republic	1,275,967	1,715,410	508,199	500,919
Peru	32,555	38,452	46,630	49,234	Lebanon	7,975	816	1,042	1,173
Bolivia	6,286	3,019	1,650	1,456	Iraq	12,803	13,409	3,933	3,877
Chile	8,420	16,006	859	1,359	Iran	5,367	434	2,236	3,120
Brazil	43,700	53,164	304,803	347,209	Israel	34,577	34,990	13,166	18,336
Paraguay	2,232	682	6,442	7,348	Jordan	63,253	63,348	2,264	3,354
Uruguay	756	13,070	1,363	586	Gaza Strip	2,265	6,250	0	0
Argentina	5,033	2,809	64,197	55,991	Kuwait	3	22	0	0
Falkland Islands	0	0	0	0	Saudi Arabia	2,336	1,963	0	0
Europe	1,560,336	2,350,147	525,042	642,404	Arabia Peninsula States, n.e.c.	13,924	16,353	28	27
Iceland	945	998	126	195	Qatar 2/	71	---	286	---
					United Arab Emirates 2/	---	76	---	0
					Yemen Arab Republic 2/	---	463	---	50
					Oman 2/	---	856	---	31
					Yemen (Aden)	---	12	---	0
					Bahrain	53	128	84	41
					Afghanistan	517	655	0	0
					India	4,859	2,140	1,116	975
						147,365	41,504	48,547	48,820

Continued--

Table 24.--U.S. agricultural exports and imports: Value by country,
July-December 1971 and 1972--Continued

Country	Exports		Imports		Country	Exports		Imports	
	1971	1972	1971	1972		1971	1972	1971	1972
-- 1,000 dollars --					-- 1,000 dollars --				
Asia--Continued					Africa--Continued				
Pakistan	49,796	49,240	1,863	1,635	Equatorial Guinea	0	0	345	470
Nepal	13	1,150	231	65	Mauritania	408	188	164	272
Bangladesh 1	---	66,763	---	1,269	Federal Republic of Cameroon	1,320	1,370	8,012	12,150
Sri Lanka (Ceylon)	6,678	7,711	13,941	10,527	Senegal	1,958	2,074	0	9
Burma	321	337	0	35	Mali	635	589	82	35
Thailand	23,161	31,270	10,859	9,101	Guinea	4,995	371	1,235	301
North Vietnam	0	0	0	0	Sierra Leone	1,900	1,922	1,117	1,777
South Vietnam	39,660	70,608	80	325	Ivory Coast	1,072	976	34,970	38,308
Laos	576	1,104	97	28	Ghana	3,429	5,652	29,455	16,484
Cambodia (Khmer Republic)	3,507	8,505	4	0	The Gambia	406	139	0	0
Malaysia	6,760	7,547	66,472	52,252	Niger	62	166	57	17
Singapore	6,942	12,892	11,697	9,710	Togo	601	643	172	0
Indonesia	52,977	66,634	61,025	78,278	Liguria	16,219	11,665	14,963	7,198
Philippines	35,317	52,320	215,750	179,587	Central African Republic	26	5	0	0
Macao	70	31	0	0	Gabon	86	123	0	0
Southern-Southeastern Asia, n.e.c.	14	19	87	710	Chad	46	20	6	0
Peoples Republic of China	0	58,144	3,983	8,160	British West Africa	0	0	0	4
Outer Mongolia	0	0	436	54	Madagascar	419	0	245	95
North Korea	0	0	0	0	Upper Volta	916	328	2	0
Korea, Republic of	117,613	164,389	3,086	4,043	Dahomey	746	1,158	502	973
Hong Kong	27,721	39,513	1,885	3,237	Angola	2,343	2,235	43,145	38,543
Republic of China	58,850	85,775	21,672	31,202	Congo (Brazzaville)	177	208	180	106
Japan	543,690	809,804	22,302	30,408	Western Portuguese Africa, n.e.c.	189	224	117	177
Nansei Islands, n.e.c. 4/	6,231	---	27	---	Liberia	4,796	3,769	13,391	12,787
Australia and Oceania	23,040	29,815	355,713	464,274	Zaire (Congo-Kinshasa)	3,907	2,021	15,551	11,002
Australia	16,737	20,543	224,666	312,649	Burundi	297	77	7,986	9,172
Papua New Guinea	106	121	9,137	7,486	Rwanda	309	149	6,393	8,373
New Zealand and Western Samoa	3,516	---	114,497	---	Somali Republic	70	318	2	0
New Zealand 2/	---	4,909	---	137,641	Ethiopia	400	500	22,021	28,577
Western Samoa 2/	---	39	---	25	Afars-Issas	193	265	0	8
British Pacific Islands	24	2	9	11	Uganda	195	64	20,011	31,973
French Pacific Islands	1,124	1,763	17	9	Kenya	2,457	682	10,567	7,888
Trust Territory of Pacific Islands	1,210	2,237	0	6	Seychelles-Dependencies	38	31	404	332
Pacific Islands, n.e.c.	323	201	7,277	6,448	Tanzania	4,335	799	6,955	10,803
Africa	141,577	116,694	282,389	282,242	Mauritius-Dependencies	1,416	1,377	3,391	2,818
Morocco	29,378	10,012	730	1,927	Mozambique	140	124	9,103	9,935
Algeria	6,304	8,357	33	218	Malagasy Republic	798	430	15,123	13,840
Tunisia	6,858	7,007	699	2,020	French Indian Ocean Areas	27	2	685	670
Libya	1,735	1,405	0	0	Republic of South Africa	12,459	18,713	9,154	7,063
Egypt	23,642	22,765	939	727	Botswana	223	0	4	3
Sudan	320	1,466	2,222	1,089	Zambia	211	175	5	11
Canary Islands	1,924	5,530	1	0	Swaziland	51	88	1,114	3,008
Spanish Africa, n.e.c.	1	2	0	0	Rhodesia	30	1	57	0
					Malawi	58	135	1,198	1,329
					Lesotho	1,102	474	0	0

1/ May not add due to rounding.
2/ Separately classified Jan. 1, 1972.
3/ Separately classified May 1, 1972.
4/ Separately classified prior to June 1, 1972.
5/ Less than \$500.

Table 26.--Quantity indexes: U.S. agricultural exports fiscal years 1968-73, monthly and accumulated, July 1971 to date

(Calendar year 1967 = 100)							
Year and month	Animals and animal products	Cotton and linters	Tobacco, unmanufactured	Grains and feeds	Vegetable oils and oilseeds	Fruits and vegetables	All agricultural commodities 1/
1967/68	96	101	100	104	99	91	101
1968/69	110	69	100	85	106	93	92
1969/70	101	75	101	97	148	109	106
1970/71	117	98	98	106	157	103	115
1971/72	134	89	94	103	159	107	115
July-December: 1971/72	137	85	78	95	164	106	111
July-December: 1972/73	125	70	110	149	169	117	137
<u>Adjusted for seasonal variation 2/</u>							
<u>Monthly</u>							
<u>1971/72:</u>							
July	103	79	86	90	204	90	106
August	111	69	78	83	169	79	102
September	145	103	112	135	186	75	138
October	115	77	6	68	101	86	80
November	127	81	2	79	62	120	89
December	213	72	75	112	162	142	126
January	166	91	266	105	207	112	138
February	127	101	226	112	172	94	128
March	130	116	74	87	137	117	106
April	121	94	47	95	158	119	105
May	128	52	105	132	139	113	124
June	125	55	78	138	167	132	118
<u>1972/73:</u>							
July	146	40	93	133	152	127	107
August	108	25	83	143	147	111	105
September	119	28	72	155	112	88	110
October	121	70	107	148	166	87	128
November	125	100	71	138	83	131	134
December	127	90	74	168	157	117	191
January							
February							
March							
April							
May							
June							
<u>Not adjusted for seasonal variation</u>							
<u>1971/72:</u>							
July	96	67	74	87	168	85	98
August	115	52	87	82	133	75	92
September	139	100	166	128	135	93	129
October	119	65	7	65	131	125	83
November	149	90	3	92	196	120	113
December	202	138	131	115	218	137	149
January	146	108	220	101	186	98	131
February	121	124	180	108	150	84	122
March	136	137	61	98	136	110	112
April	121	87	39	97	148	107	104
May	140	51	89	127	140	117	121
June	127	45	64	131	167	137	125
<u>1972/73:</u>							
July	136	33	80	128	125	120	117
August	112	19	92	142	116	105	118
September	114	26	107	147	82	109	118
October	124	59	120	142	215	126	133
November	146	111	135	161	265	132	170
December	120	173	128	172	211	112	166
January							
February							
March							
April							
May							
June							

1/ Based on 359 classifications in 1971.

2/ The seasonal adjustment series has been revised to incorporate the Bureau of the Census Method X-11. This new method of adjusting for seasonal variations is a continuing system which takes into account changing seasonal patterns. For detailed explanation of the new adjustment procedures, see U.S. Department of Commerce, Bureau of the Census, The X-11 Variant of the Seasonal Method II Seasonal Adjustment Program, Technical Paper No. 15, U.S. Government Printing Office, Washington, D.C., 1965.

Explanatory Note

U.S. foreign agricultural trade statistics in this report include official U.S. data based on compilations of the Bureau of the Census. Agricultural commodities consist of (1) nonmarine food products and (2) other products of agriculture which have not passed through complex processes of manufacture such as raw hides and skins, fats and oils, and wine. Such manufactured products as textiles, leather, boots and shoes, cigarettes, naval stores, forestry products, and distilled alcoholic beverages are not considered agricultural.

The trade statistics exclude shipments between the 50 States and Puerto Rico, between the 50 States and the island possessions, between Puerto Rico and the island possessions, among the island possessions, and intransit through the United States from one foreign country to another when documented as such through U.S. Customs.

EXPORTS The export statistics also exclude shipments to the U.S. armed forces and diplomatic missions abroad for their own use and supplies for vessels and planes engaged in foreign trade. Data on shipments valued at less than \$251 are not compiled by commodity and are excluded from agricultural statistics but are reflected in nonagricultural and overall export totals in this report. The agricultural export statistics include shipments under P.L. 83-480 (Agricultural Trade Development and Assistance Act), and related laws; under P.L. 87-195 (Act for International Development); and involving Government payments to exporters. (USDA payments are excluded from the export value.) Separate statistics on Government program exports are compiled by USDA from data obtained from operating agencies.

The export value, the value at the port of exportation, is based on the selling price (or cost if not sold) and includes inland freight, insurance, and other charges to the port. The country of destination is the country of ultimate destination or where the commodities are to be consumed, further processed, or manufactured. When the shipper does not know the ultimate destination, the shipments are credited to the last country, as known to him at the time of shipment from the United States, to which the commodities are to be shipped in their present form. Except for Canada, export shipments valued at \$251-\$499 are included on the basis of sampling estimates; shipments to Canada valued at \$251-\$1,999 are sampled.

IMPORTS Imports for consumption are a combination of entries for immediate consumption and withdrawals from warehouses for consumption. Data on shipments valued at less than \$251 are estimated on the basis of a 1-percent sample and are not compiled by commodity. They are excluded from agricultural statistics but are reflected in nonagricultural and overall import totals in this report.

The import value, defined generally as the market value in the foreign country, excludes import duties, ocean freight, and marine insurance. The country of origin is defined as the country where the commodities were grown or processed. When the country of origin is not known, the imports are credited to the country of shipment.

Imports similar to agricultural commodities produced commercially in the United States and others that are interchangeable in use to any significant extent with such U.S. commodities are supplementary or partly competitive. All other commodities are complementary or noncompetitive.

Further explanatory material on foreign trade statistics and compilation procedures of the Bureau of the Census is contained in the publications of that agency.

END

DATE

FILMED

9-10-79

NTIS