



**AgEcon** SEARCH  
RESEARCH IN AGRICULTURAL & APPLIED ECONOMICS

*The World's Largest Open Access Agricultural & Applied Economics Digital Library*

**This document is discoverable and free to researchers across the globe due to the work of AgEcon Search.**

**Help ensure our sustainability.**

Give to AgEcon Search

AgEcon Search

<http://ageconsearch.umn.edu>

[aesearch@umn.edu](mailto:aesearch@umn.edu)

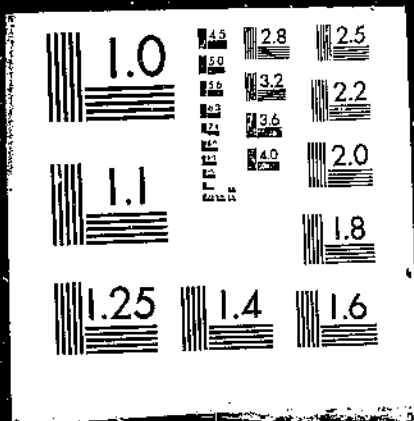
*Papers downloaded from **AgEcon Search** may be used for non-commercial purposes and personal study only. No other use, including posting to another Internet site, is permitted without permission from the copyright owner (not AgEcon Search), or as allowed under the provisions of Fair Use, U.S. Copyright Act, Title 17 U.S.C.*

USDA/FATUS-  
OCT 67

FATUS/FOREIGN AGRICULTURAL TRADE OF THE UNITED STATES, 1967 OCTOBER. Washington, DC:  
Economic Research Service.

(NAL Call No. A286.9/Ag8)

1 OF 1  
USDA  
FATUS  
OCT 67



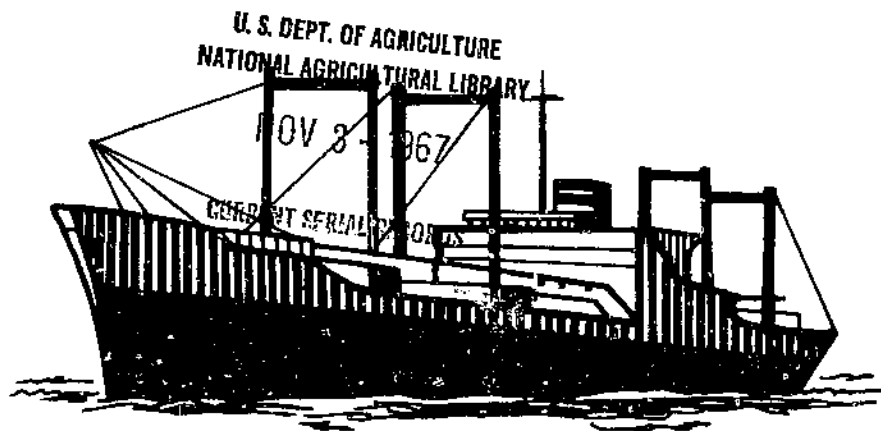
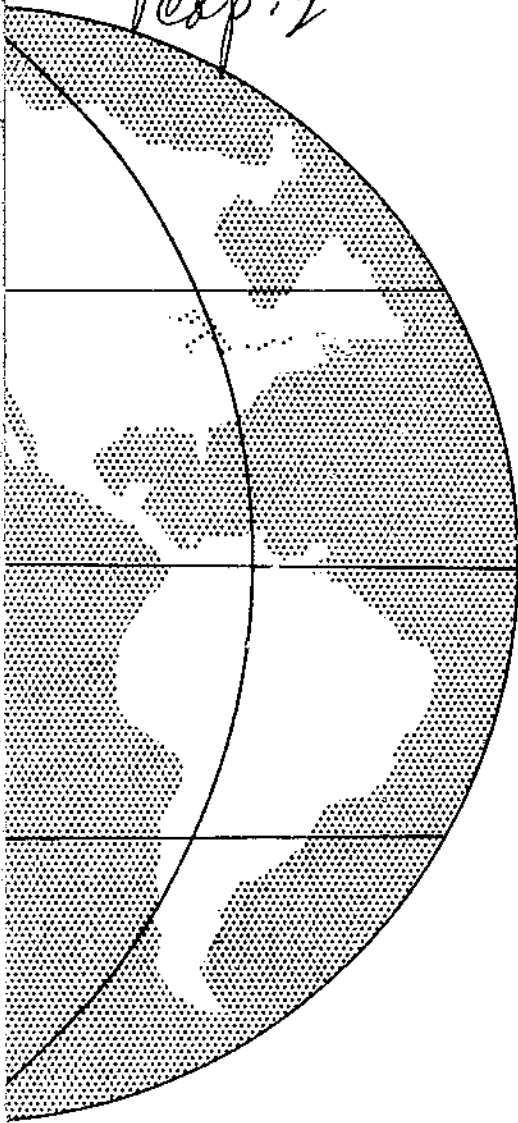
A 2861 9  
Ag 8  
cap. 2

24 Oct 3,240  
OCTOBER 1967

Sod

# FOREIGN AGRICULTURAL TRADE OF THE UNITED STATES

500 5420  
24 Oct  
3240 cap.



## IN THIS ISSUE:

**The Role of Air Carriers in Our Expanding Agricultural Exports**

**Italy, A Leading Market for U.S. Corn**

**U.S. Agricultural Imports 1966: Total Value and Volume Increase as Market Sources Shift**

**Exports Compared With Production**

**Export Highlights**

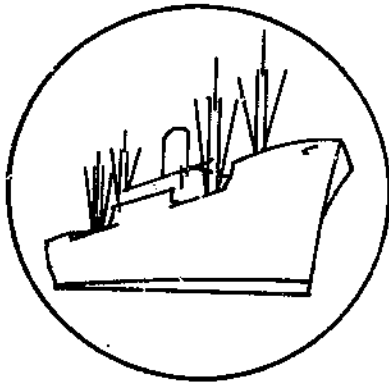
**Trade Statistics, July 1966 and 67**

Published Monthly by Economic Research Service U. S. Department of Agriculture

## Contents

	<u>Page</u>
Digest .....	3
Special in this issue:	
The Role of Air Carriers in Our Expanding Agricultural Exports .....	5
Italy, A Leading Market for U.S. Corn .....	11
U.S. Agricultural Imports 1966: Total Value and Volume Increase as Market Sources Shift .....	17
Exports Compared With Production .....	40
Export Highlights .....	42
Explanatory Note .....	59
Table 1.--U.S. agricultural exports and imports of selected commodities by air freight, 1965 and 1966 .....	6
Table 2.--Value of total U.S. exports, by carrier, monthly and total 1966 .....	7
Table 3.--Percentage distribution of the value of selected agricultural exports by vessel and air freight, 1966 .....	8
Table 4.--Air freight rates per pound from New York City to selected destinations, as of mid-1967 by commodity .....	10
Table 5.--Air freight rates per pound from selected U.S. origins to foreign destinations, as of mid-1967 by commodity .....	10
Table 6.--The importance of Italian corn imports as a part of total feed grain imports, 1957-66 .....	12
Table 7.--U.S. share of Italy's total feed grain imports, 1955-66 .....	13
Table 8.--Italy's net feed grain imports, 1957-66 .....	14
Table 9.--U.S. agricultural imports: Value by major areas and share of total, 1960-66 .....	19
Table 10.--U.S. agricultural imports from the Latin American Free Trade Association: Value by country, 1960-66, with 1960-64 average .....	21
Table 11.--U.S. agricultural imports from the Central American Common Market: Value by country, 1960-66, with 1960-64 average .....	21
Table 12.--U.S. agricultural imports from the European Economic Community: Value by country, 1960-66, with 1960-64 average .....	21
Table 13.--U.S. agricultural imports from the European Free Trade Association: Value by country, 1960-66, with 1960-64 average .....	22
Table 14.--U.S. agricultural imports from Council of Mutual Economic Assistance (COMECON) countries: Value by country, 1960-66, with 1960-64 average .....	22
Table 15.--U.S. agricultural imports: Value by country of origin, specified calendar years .....	23
Table 16.--U.S. agricultural imports: Major countries of origin by commodity groups, specified calendar years .....	26
Table 17.--U.S. agricultural exports of specified commodities compared with production: Quantity, fiscal years 1962-64 average, 1965, 1966, and 1967 .....	41
Table 18.--U.S. agricultural exports: Value by commodity, July-August 1966 and 1967 .....	43
Table 19.--U.S. agricultural exports to the European Economic Community: Value by commodity and country, 1962/63 through 1966/67 .....	46
Table 20.--U.S. agricultural exports: Quantity and value by commodity, July 1966 and 1967 .....	49
Table 21.--U.S. agricultural imports for consumption: Quantity and value by commodity, July 1966 and 1967 .....	53
Table 22.--U.S. agricultural exports and imports (for consumption): Value by country, July 1967 .....	57

Trade Statistics and Analysis Branch  
Foreign Development and Trade Division  
Economic Research Service



# FOREIGN AGRICULTURAL TRADE OF THE UNITED STATES

---

## Digest

---

The Role of Air Carriers in Our Expanding Agricultural Exports (see page 5). Of total U.S. exports in 1966, airlines carried 461 million pounds of freight valued at \$2.6 billion. This was less than 1 percent of total quantity, but amounted to about 9 percent of the value of total exports. Thus, air freight is made up principally of high-value merchandise. Exports of agricultural products by air totaled \$37 million in 1966, and was an almost insignificant portion of total agricultural exports.

Air carriers at present do not share in transporting many agricultural products. The greatest growth in air freight has occurred among those commodities most susceptible to damage or deterioration, such as live animals, eggs, fresh fruits and vegetables, fresh and frozen meats, and horticultural products. Exports of live animals, shell eggs, and horticultural products move predominantly in air craft. Air exports of live animals accounted for 84 percent of total live animal exports by vessel and air; 99 percent of the live poultry -- mostly baby chicks -- were exported by air. Among the horticultural products, cut flowers made up a large share of the air exports. Horticultural products less susceptible to deterioration, such as bulbs and nursery stock, moved principally by vessel.

\* \* \* \* \*

Italy, A Leading Market for U.S. Corn (see page 11). The Italians are eating more meat. For American farmers, this fact has meant a growing market for our feed grain exports. Corn exports comprise more than 80 percent of total U.S. feed grain exports to Italy. In 1966, exports of corn to Italy, sixth among the dollar customers for U.S. farm products, represented 11 percent of total U.S. corn exports and accounted for \$95.8 million in total value. Much of the growth in U.S. exports to Italy has been possible because of the increased per capita income and higher standard of living among the Italian people. In 1966, the average Italian ate 82 pounds of meat, more than twice as much as 12 years earlier. Italy's imports of both live and butchered meat have increased, amounting to over half a billion dollars during 1966. To diminish the resulting trade deficit, the Italian Government adopted a program of expansion in the livestock industry. The increased demand of that industry for feed grains had to be met by imports, which have increased about ten times in the period 1955-56 to 1965-66. In addition to increased imports, efforts have been made to increase domes-

tic feed grain production. As a result, a record Italian corn crop of over 4 million metric tons is expected in 1967. This record crop and the effects of a higher import price imposed by the Common Market, explain in part the decline in corn exports to Italy recorded in the first months of 1967. Although Italian domestic corn production is increasing, Italy will not be self-sufficient in feed grains in the near future. This is one reason why Italy may continue to be a promising market for American corn.

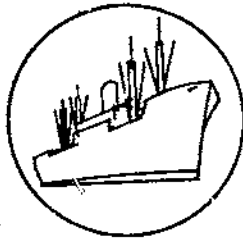
\* \* \* \* \*

U.S. Agricultural Imports, 1966: Total Value and Volume Increase as Market Sources Shift (see page 17). The value of U.S. agricultural imports in 1966 increased again to total \$4,492 million. The increase in banana imports accounted for \$17 million of the total \$24 million increase in the complementary import class. The value of supplementary imports increased 17 percent in 1966, due to increases in the importation of sugar; fruits, nuts, and vegetables; cattle and meats; and dairy products. Europe, Africa, and Oceania benefited most from the increases in U.S. agricultural imports. As in 1965, imports of cattle and meat from Canada contributed most to the increase in total imports from that country. Even with the record value of imports, however, the agricultural balance of trade remained favorable.

\* \* \* \* \*

U.S. Agricultural Exports: July-August (see page 42). U.S. agricultural exports were an estimated \$948 million in the first 2 months of fiscal year 1967/68, 11 percent lower than the \$1,061 million in July-August of the previous year. Exports of cotton, which totaled \$51 million, declined 12 percent below the value of cotton exports of the previous year. Grains and preparations, the principal export commodity, totaled \$430 million for July-August, down 18 percent from the same period last year. Exports of rice totaled \$30 million, 19 percent below that for the same months of the previous year. The total value of animal and animal product exports for July-August 1967 was down 8 percent. Exports of oilseeds and products rose 17 percent, and vegetables and preparations increased 4 percent, partly offsetting the overall decline.

U.S. exports of farm products to the European Economic Community (EEC) totaled \$1.5 billion in fiscal year 1967, down 5 percent from the previous year. This decline resulted primarily from a decrease in exports of commodities subject to the EEC's variable import levies. Exports not subject to the EEC's import levies increased. West Germany accounted for the largest share of U.S. agricultural exports, which totaled \$494 million in fiscal 1967. The Netherlands ranked second as a recipient of U.S. agricultural exports in 1966/67. However, these data reflect some discrepancy, since the Netherlands is a major transshipping point for many U.S. agricultural exports. Exports of variable-levy commodities to Italy decreased sharply in 1966/67 from the previous year, falling 53 percent to \$81 million. Exports to France increased 7 percent, reaching \$153 million in 1966/67, while those to Belgium and Luxembourg were down 2 percent to \$179 million.



## SPECIAL in this issue

---

### THE ROLE OF AIR CARRIERS IN OUR EXPANDING AGRICULTURAL EXPORTS

by  
Joseph R. Corley and Mildred R. DeWolfe <sup>1/</sup>

Airplanes are generally considered as carriers of passengers, but their importance as freight carriers has increased substantially in the past 10 years. Total passenger miles flown by U.S. scheduled airlines increased 189 percent to 80 billion in 1966 from 1956. Total revenue ton miles rose 244 percent to 12 billion for the same period for both domestic and foreign commerce.

Decreasing charges for transporting air freight have contributed toward the growth in such freight. The airlines have been able to pass on savings to shippers because of increased efficiency both in handling and facilities. Air freight is just beginning to expand. If expected improvements in handling are made, air carriers will become increasingly important as transporters of relatively small shipments requiring speed of movement and special handling. Many agricultural products are in this category.

Of total U.S. exports in 1966, airlines carried 461 million pounds of freight valued at \$2.6 billion (table 1). In terms of volume, the share of total exports transported by air was 0.1 percent, but in terms of value, the air freight share was 9 percent. This relationship of the volume share to the value share shows that air freight is made up substantially of high-valued merchandise.

Of total exports from the United States in 1966, 64 percent, calculated on a value basis, was allocated to vessels. Nine percent moved by air carrier. The remaining 27 percent represents rail and truck shipments, which account for the bulk of the exports to Canada and Mexico.

Exports of agricultural products by air totaled about \$37 million in 1966. This is an almost insignificant portion (less than 1 percent) of total agricultural exports valued at \$6.9 billion in 1966. Air carriers at present do not share in transporting many agricultural products. The greatest growth in air freight has occurred among those commodities most susceptible to damage or deterioration from excessive transit time or handling. Live animals, eggs, fresh fruits and vegetables, and fresh and frozen meats were the principal products moving into export channels by air in 1965 and 1966 (table 2). High value products also tend to be shipped by air. Thus, while the total amount moving by air carrier into export channels is very small when compared with total agricultural exports, certain commodities move predominantly by air carrier.

---

<sup>1/</sup> International Economist, Trade Statistics and Analysis Branch, Foreign Development and Trade Division, and Survey Statistician, Marketing Economics Division, Economic Research Service.



Table 1.--U.S. agricultural exports and imports of selected commodities by air freight,  
1965 and 1966

Commodity	Exports				Imports			
	Quantity		Value		Quantity		Value	
	1965	1966	1965	1966	1965	1966	1965	1966
	1,000 pounds	1,000 pounds	1,000 dollars	1,000 dollars	1,000 pounds	1,000 pounds	1,000 dollars	1,000 dollars
Live animals .....	12,738	8,905	17,920	16,883	680	31	9,592	188
Poultry .....	2,380	3,623	8,724	11,771	35	---	131	---
Meats and preparations .....	3,803	4,170	2,401	3,445	6,017	7,694	2,356	3,134
Beef, fresh, chilled, frozen .....	1,090	1,460	1,127	1,725	5,389	7,025	2,039	2,735
Dairy products .....	463	538	161	162	155	85	76	51
Eggs in the shell .....	7,299	8,689	4,819	5,822	55	134	58	131
Hides and skins .....	433	770	892	725	720	515	5,474	2,832
Crude animal materials .....	240	253	850	979	82	38	1,194	247
Grains and preparations .....	1,277	1,150	187	314	63	61	27	26
Fruits, nuts, and preparations .....	4,621	4,479	822	920	4,443	5,148	307	363
Vegetables and preparations .....	1,829	2,796	356	568	2,544	4,202	244	365
Sugar and sugar preparations .....	361	402	130	121	49	6	11	2
Coffee, tea, cocoa, spices .....	391	435	235	295	132	708	106	4,458
Prepared animal feeds .....	800	944	51	71	119	47	56	11
Feed preparations .....	2,665	1,382	630	754	97	103	72	130
Beverages .....	1,262	550	600	105	225	---	65	---
Oilseeds, nuts, kernels .....	15	39	6	7	---	---	---	---
Crude rubber .....	471	101	184	29	42	---	13	---
Crude vegetable matter .....	4,108	4,606	4,337	4,410	4,302	3,636	4,728	2,853
Animal, vegetable oils, fats .....	176	320	37	918	24	265	14	3,223
<b>Total .....</b>	<b>42,952</b>	<b>40,529</b>	<b>34,618</b>	<b>36,528</b>	<b>19,749</b>	<b>22,673</b>	<b>24,393</b>	<b>18,014</b>

Table 2.--Value of total U.S. exports, by carrier,  
monthly and total 1966

Month	Air	Vessel	Other <u>1/</u>	Total
-- 1,000 dollars --				
January .....	201,803	1,333,611	569,861	2,105,275
February .....	201,367	1,391,699	670,949	2,264,015
March .....	248,104	1,733,356	796,952	2,778,412
April .....	207,221	1,531,293	819,400	2,557,914
May .....	219,939	1,530,142	817,970	2,568,051
June .....	210,657	1,518,734	649,799	2,379,190
July .....	191,256	1,509,134	550,725	2,251,115
August .....	167,796	1,514,144	533,551	2,215,491
September .....	247,112	1,500,110	597,658	2,344,880
October .....	233,279	1,642,798	676,955	2,553,032
November .....	213,033	1,646,972	630,922	2,490,927
December .....	247,725	1,637,006	677,256	2,561,987
<b>Total .....</b>	<b>2,589,292</b>	<b>18,488,999</b>	<b>7,991,998</b>	<b>29,070,289</b>
Percentage by type of carrier .....	8.9	63.6	27.5	100.0

1/ Includes mostly rail and truck shipments to Canada and Mexico.

#### U.S. Agricultural Exports by Air Carrier

In 1966, nearly 41 million pounds of selected agricultural products, principally unmanufactured, were shipped to foreign markets by air (table 3). This was 6 percent below the volume in 1965, but total value increased \$1.9 million, or 6 percent, in 1966 from 1965.

Air exports of live animals and shell eggs in 1966 accounted for 62 percent of the total value of agricultural shipments. Other commodities accounting for a sizeable share of the air exports were meats and preparations; fruits, nuts, and preparations; vegetables and preparations; and crude vegetable materials.

However, exports by air freight accounted for a very small share of total exports of some of these commodities. In 1966, U.S. exports of fruits, nuts, and preparations by both aircraft and vessel totaled nearly \$84 million. Of this total, 99 percent was transported by vessel (table 3). The percentages were similar for vegetables and preparations, and meats and preparations. On the other hand, exports of live animals, shell eggs, and horticultural products moved mostly in aircraft. Air exports of live animals accounted for 84 percent of total live animal exports by vessel and air. Ninety-nine percent of the live poultry -- (mostly baby chicks) -- were exported by air. Among the horticultural products, cut flowers made up a large share of the air exports. Bulbs and nursery stock accounted for the bulk of the horticultural products moving by vessel.

Table 3.--Percentage distribution of the value of selected agricultural exports by vessel and air freight, 1966

Commodity	Type of Carrier	
	Air	Vessel
	<u>Percent</u>	
Live animals .....	84	16
Poultry .....	99	1
Meats and preparations .....	3	97
Bird's eggs .....	74	26
Fruits, nuts, and preparations .....	1	99
Vegetables and preparations .....	1	99
Nursery stock, bulls, cut flowers .....	67	33

#### U.S. Agricultural Imports by Air

Imports of selected agricultural products by the United States totaled \$18 million in 1966, down 26 percent from the \$24 million in 1965. Principal commodities imported by the United States included coffee, tea, and cocoa; spices; animal and vegetable fats and oils; meats and preparations; crude vegetable materials; and hides and skins. These commodities had a total combined value of \$16.5 million, and accounted for 92 percent of the total value of air imports of agricultural products in 1966.

A large share of the coffee, tea, cocoa, and spices was made up of coffee and coffee extracts, chocolate, and chocolate preparations. These items originated in Europe and the Far East. A large portion of these imports, no doubt, were specialty products, since they are imported from Denmark, Hong Kong, and other countries exporting such products.

The imports of animal and vegetable fats and oils were almost totally essential oils and resins, such as oils, perfume, polishing, and cleaning materials. Fresh, chilled, and frozen beef, originating principally in Latin America, accounted for most of the imports of meats and preparations.

Crude vegetable materials were made up primarily of vegetable products for use in perfumery and pharmacy, plant seeds, bulbs, nursery stock, and flowers. Imports of such commodities originated in European and Far Eastern countries.

Hide and skin imports by air freight were primarily specialty skins of animals. Large imports of such raw skins originated in European and Latin American countries.

#### Air Freight Costs and Facilities for Agricultural Exports

The cost of shipping freight by air has declined substantially in recent years. In 1963, the rate for shipping berries to European markets was 30 cents per pound. During the peak sales period of January-April, more than 61 tons of U.S. berries were exported.

For the same period in 1964, with the rate at 27 cents a pound, U.S. berry exports had gone up to 156 tons. By 1965, the rate was down to 23 cents and the volume shipped was almost seven times that of 1963. Current air freight rates for principal agricultural commodities moving by air are shown in tables 4 and 5.

A principal factor contributing to the lower rates and increased volume of many agricultural products moving by air freight has been the improved facilities and techniques for handling perishable commodities. The improvement in facilities was due in large part to the shift from propeller driven aircraft to jet aircraft. For example, cargo capacity increased from about 15 tons on a 4-engine propeller craft to 45 tons on a 4-engine jet craft. It is anticipated that jumbo cargo jets, that will carry well over 100 tons of freight, will be introduced in the 1970's.

Further improvements in terminal facilities have tended to reduce overall costs for handling freight. On the basis of current rates for shipping many commodities adaptable to air freight handling, further reductions appear necessary before a great expansion will occur in the volume of air freight. In the 10-year period from 1956 through 1966, air cargo's contribution to total airline revenue rose slightly more than 1 percentage point to 12.2 percent.

However, much of the export air freight business is just beginning to advance. Terminal facilities in the United States and foreign markets are being improved to meet the anticipated needs of shippers and increased flow of merchandise. The use of containers for handling shipments will greatly facilitate the movement of freight and reduce shipping charges. Airlines are allowing a rate discount for specified containerized shipments. Containers available to shippers hold loads up to 10,000 pounds.

Tests have been run using containers equipped with nitrogen cooling systems. These experimental containers might prove satisfactory enough to be used in the export of highly perishable commodities. Such containers would provide temperature control with much less weight than mechanical refrigeration equipment, and at the same time, eliminate the need for handling individual packages. The result would be lower transportation costs, with quicker delivery and less handling, and a better product in the foreign market.

Table 4.--Air freight rates per pound from New York City to selected destinations, as of mid-1967 by commodity 1/

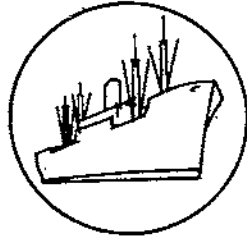
Commodity	New York to Paris		New York to London		New York to Rome		New York to Frankfurt		New York to Madrid	
	Rate	:Minimum :Weight	Rate	:Minimum :Weight	Rate	:Minimum :Weight	Rate	:Minimum :Weight	Rate	:Minimum :Weight
	Dols.	Lbs.	Dols.	Lbs.	Dols.	Lbs.	Dols.	Lbs.	Dols.	Lbs.
Baby chicks, under 72 hours old .....	0.92	99	0.86	99	0.99	99	0.97	99	0.92	99
Other live animals, edible .....	1.22	2/	1.13	2/	1.33	2/	1.30	2/	1.22	2/
Bovine calves, not more than 90 days old, in containers .....	0.38	2,205	0.38	2,205	0.38	2,205	0.38	2,205	0.38	2,205
Fresh fruits and vegetables .....	0.17	1,102	0.16	1,102	0.19	1,102	0.18	1,102	0.17	1,102
Strawberries .....	0.23	2,205	0.23	2,205	0.24	2,205	0.23	2,205	0.23	2,205
Foodstuffs, spices, and beverages n.e.s. ....	---	---	---	---	---	---	---	---	---	---
Foodstuffs, spices, and beverages, n.e.s., excluding caviar and hatching eggs .....	0.27	2,205	0.27	2,205	0.28	2,205	0.27	2,205	0.27	2,205
Hatching eggs .....	0.24	4,409	0.24	4,409	0.25	4,409	0.24	4,409	0.24	4,409
Meat, including slaughtered poultry and game, sausage, bologna, and frankfurts .....	0.18	2,205	0.17	2,205	0.20	2,205	0.19	2,205	0.18	2,205

1/ Rates and weights are converted from kilograms and rounded to nearest cent and pound. (Under 0.5 was dropped; over 0.5 raised.)  
2/ Rate applies to any weight.

Table 5.--Air freight rates per pound from selected U.S. origins to foreign destinations, as of mid-1967 by commodity 1/

Commodity	San Francisco to Tokyo		Miami to Rio de Janeiro		Miami to Lima		Miami to Santo Domingo		Miami to Kingston	
	Rate	:Minimum :Weight	Rate	:Minimum :Weight	Rate	:Minimum :Weight	Rate	:Minimum :Weight	Rate	:Minimum :Weight
	Dols.	Lbs.	Dols.	Lbs.	Dols.	Lbs.	Dols.	Lbs.	Dols.	Lbs.
Baby chicks, under 72 hours old .....	1.29	661	0.80	1,102	0.54	1,102	0.14	1,102	0.12	1,102
Other live animals, edible .....	1.29	661	0.80	1,102	0.54	1,102	0.14	1,102	0.12	1,102
Bovine calves, not more than 90 days old, in containers .....	---	---	---	---	---	---	---	---	---	---
Fresh fruits and vegetables .....	---	---	---	---	---	---	---	---	---	---
Strawberries .....	---	---	---	---	---	---	---	---	---	---
Foodstuffs, spices, and beverages n.e.s. ....	0.98	1,102	0.64	1,102	0.43	1,102	0.11	1,102	0.08	99
Foodstuffs, spices, and beverages, n.e.s., excluding caviar and hatching eggs .....	---	---	---	---	---	---	---	---	---	---
Hatching eggs .....	0.98	1,102	0.64	1,102	0.34	1,102	0.08	2,205	0.08	99
Meat, including slaughtered poultry and game, sausage, bologna, and frankfurts .....	---	---	---	---	---	---	---	---	---	---

1/ Rates and weights are converted from kilograms and rounded to nearest cent and pound. (Under 0.5 was dropped; over 0.5 raised.)



## SPECIAL in this issue

---

### ITALY, A LEADING MARKET FOR U.S. CORN

by  
Ann Miller <sup>1/</sup>

For the American farmer, the meaning of the Italian miracolo economico (economic miracle) has been a growing market in Italy for U.S. feed grain exports. Italians are eating more meat; Americans are exporting more corn. Corn exports are the focus of this paper because they comprise more than 80 percent of total U.S. feed grain exports to Italy (table 6). (U.S. exports to Italy of other feed grains have also been increasing. Exports of U.S. wheat are often large, depending on the Italian harvest, but because of wide fluctuations in the past, Italy cannot be considered a dependable market for U.S. wheat.) In 1966, exports of corn to Italy -- sixth among dollar customers for U.S. farm products -- represented 11 percent of total U.S. corn exports and accounted for \$95.8 million in total value. <sup>2/</sup>

For Italians, the economic miracle means an increased per capita income and a higher standard of living. <sup>3/</sup> The well-paid Italian eats less pasta, <sup>4/</sup> more meat. In 1966, he ate 82 pounds of meat, more than twice as much as 12 years earlier. <sup>5/</sup> But even at the current consumption rate, he eats considerably less meat than the average annual meat consumption of all EEC citizens during 1961-63, 109 pounds. Frenchmen ate 142 pounds annually and Americans 216 pounds during that period. <sup>6/</sup>

The increased demand for meat has been met in part by increased imports, both live and butchered. <sup>7/</sup> Italy's livestock and meat imports amounted to over half a billion dollars during 1966; livestock and feed imports totaled over one billion dollars in

---

<sup>1/</sup> Agricultural Economic Assistant, Trade Statistics and Analysis Branch, Foreign Development and Trade Division, Economic Research Service.

<sup>2/</sup> Based upon data reported in U.S. Bureau of the Census, U.S. Export Statistics, Report FT 420, December 1966 (\$91.1 million), plus U.S. exports of corn from Canadian ports, as reported in Foreign Agricultural Trade of the United States, September 1967, page 46, (\$4.7 million).

<sup>3/</sup> The average annual Italian growth rate (per capita gross national product, 1955-65) was 4.8 percent. This compares with an EEC average of 4.1 percent (Statistical Office of the European Communities, Basic Statistics of the Community, 1966).

<sup>4/</sup> The production of pasta declined 2.3 percent in 1966 due to diminished internal demand (Italian Embassy, Economic Profile 1966, Washington, D.C., 1967).

<sup>5/</sup> Rilevazione Generale Sulla Situazione Economica del Paese, Rome, 1967, and Istituto Centrale di Statistics (ISTAT), Annuario Statistico Italiano, various issues.

<sup>6/</sup> Food and Agriculture Organization, Agricultural Commodities Projections for 1975 and 1985, Vol. I, October 1966, p. 160.

<sup>7/</sup> Italy's imports of live cattle increased from 575,000 head in 1964 to 894,000 in 1966. During this period, imports from Eastern Europe almost trebled. Imports from the U.S. increased from 6,000 to 48,000 head between 1964 and 1966; the majority of U.S. live cattle imports are used for breeding, not slaughter (Agra Europe, London, June 7, 1967, p. S/4).

Table 6.--The importance of Italian corn imports as a part of total feed grain imports, 1957-66

Year	Total corn imports		Corn imports from the United States		
	Amount	Percentage of total feed grain imports	Amount	Percentage of total feed grain from U.S.	Percentage of total corn imports
	1,000 M. Tons	Percent	1,000 M. Tons	Percent	Percent
1957	348	48	36	100	10
1958	690	67	39	62	6
1959	1,073	75	105	70	10
1960	1,706	70	15	28	1
1961	1,730	67	106	66	6
1962	2,744	83	612	81	22
1963	3,663	80	1,082	81	30
1964	3,476	82	924	93	27
1965 <sup>1/</sup>	5,153	81	2,162	90	42
1966 <sup>2/</sup>	5,407	81	2,360	86	44

<sup>1/</sup> U.N., Commodity Trade Statistics, D/XV/22.

<sup>2/</sup> Based on U.N. data.

1966 and contributed significantly to the Italian trade deficit. <sup>8/</sup> To diminish the deficit, the Italian Government adopted a program of expansion in the livestock industry.

Because Italy's domestic feed grain production was static or falling during 1957-1966, <sup>9/</sup> the increased demand of the livestock industry for feed had to be met by feed grain imports; such imports increased about ten times from 1955-56 to 1965-66 (table 7).

Beginning in 1962, an increasing share of these imports came from the United States because the EEC regulation initiating a common grain market ended the Italian licensing preference on corn imports from Argentina and South Africa. This preference had been granted in return for import preferences these two countries had given Italian manufactured goods.

During the transitional period of the Common Agricultural Policy, mid-1962 to mid-1967, Italian corn prices were raised very little toward the higher level, long known to become effective in mid-1967. Moreover, through December 1965 the Italian Government maintained seasonally uniform corn prices by not applying to corn prices the seasonal escalation provided for other grains in Italy and for all grains in other EEC countries.

<sup>8/</sup> Based on U.N. data.

<sup>9/</sup> Italian domestic corn production averaged 3,659,000 metric tons 1957-66, declining to lows of 3,263,000 metric tons in 1962 and 3,317,000 in 1965 (USDA, ERS Stat. Bul. 351 and Statistical Office of the European Communities, Agricultural Statistics, 1967 -- No. 3).

Table 7.--U.S. share of Italy's total feed grain imports, 1955-66

Year	Total feed grain imports	Feed grains from United States <sup>1/</sup>	U.S. share of total
	-- 1,000 Metric tons --		Percent
1955	417	16	4
1956	767	50	7
1957	724	36	5
1958	1,034	63	6
1959	1,422	150	11
1960	2,424	53	2
1961	2,585	161	6
1962	3,305	753	23
1963	4,584	1,343	29
1964	4,247	996	24
1965 <sup>2/</sup>	6,360	2,403	38
1966 <sup>3/</sup>	6,696	2,755	41

<sup>1/</sup> ISTAT, Annuario Statistico Italiano.

<sup>2/</sup> U.N. Commodity Trade Statistics, D/XV/22.

<sup>3/</sup> Based on U.N. data.

Source: Statistics on the European Economic Community, Vol. 1, Economic Research Service, ERS-Foreign 43, December 1962.

Italians have wanted to postpone, as long as possible, the adjustment to higher feed grain prices which the Common Agricultural Policy has required, and at least for the time being, to avoid any discouragement to wheat, sugar beet, and tomato production. They were particularly concerned about this because of the recent introduction of new techniques which resulted in lower corn production costs. In addition, they claimed that since most domestically produced corn is fed on the farm where produced, high corn prices would hurt the meat consumer more than they would benefit the corn grower. <sup>10/</sup>

The low price for corn imports into Italy established a trade pattern in the first year of the transitional period, 1962-63, when Italian corn exports to Germany increased over ten fold (table 8). These exports, according to all available information, were re-exports of imported corn, but were reported in Italian trade statistics as exports <sup>11/</sup> because the imported corn, having cleared Italian customs, was considered to be nationalized. In October 1965, for instance, the Italian threshold price for corn was \$64.80 per metric ton and the German intra-Community levy on Italian corn was \$15.95. Thus, it cost \$80.75 plus freight from an Italian port to ship such "Italian" corn into southern Germany. By contrast, the German threshold price governing importation

<sup>10/</sup> Francesco Grinzato, Convegno Nazionale della Maiscoltura, Dei Prezzi del Mais in Relazione alle Esigenze della Produzione Veneto Inserita in Campo Nazionale e Comunitario (Treviso, 1966) in Fred A. Mangum, Changes in the Grain and Livestock Economies of Italy with Projections to 1970 and 1975, unpublished manuscript, prepared under Michigan State University -- U.S. Department of Agriculture Contract No. 12-17-07-04-108, Project No. 511565-13, 1967, p. 101.

<sup>11/</sup> The Italian export figure (Statistica Annuale del Commercio con l'Estero) for the record year 1965 (494,000 metric tons of corn exported to West Germany) approximately agrees with the corresponding German import figure (Aussenhandel) viz. 504,000 metric tons of corn imported from Italy in 1965.



Table 8.--Italy's net feed grain imports, 1957-66

Year	Total imports	Total exports <sup>3/</sup>	Net imports
-- 1,000 Metric tons --			
1957	724	11	713
1958	1,034	4	1,030
1959	1,422	5	1,417
1960	2,424	6	2,418
1961	2,585	5	2,580
1962	3,305	11	3,294
1963	4,584	110	4,474
1964	4,247	219	4,028
1965 <sup>1/</sup>	6,360	676	5,684
1966 <sup>2/</sup>	6,696	188	6,508

<sup>1/</sup> U.N., Commodity Trade Statistics, D/XV/22.

<sup>2/</sup> Based on U.N. data.

<sup>3/</sup> Exports to Germany (Fed. Rep.) accounted for the bulk of these tonnages. They were as follows:

1,000 Metric tons

1962	4
1963	53
1964	170
1965	494
1966	141

through North Sea ports was \$105.30. Thus, it cost \$105.30 plus freight from Hamburg, Bremen, or Emmerich on the Rhine (at the Dutch border) to get corn into southern Germany. <sup>12/</sup> These data imply that importing corn into West Germany through Italy was profitable because of Italy's low import price, in spite of the presumed high cost of transporting grain from Italian ports over the Alps, compared to the cost of river transport from North Sea ports to South Germany and enabled traders through Italian ports to reap windfall profits.

When the Common Market established a uniform price for corn throughout the EEC on July 1, 1967, Italian corn prices were suddenly higher. The loophole allowing re-exports to Germany had previously been narrowed by slightly higher Italian threshold prices and by higher German levies on Italian corn. As of July 1, 1967, the loophole was closed.

While a transitional feature of the 1967 EEC Grain Regulation allows Italy to import corn at a lower price than other EEC countries until mid-1972, the equivalent of this discount in the import levy must be paid when corn is shipped from Italy to other EEC countries.

The levy on corn imported into Italy from non-EEC countries is reduced below the EEC level by \$10.63 per ton during the grain marketing year 1967/68; \$10.00 per ton during

<sup>12/</sup> Threshold price and levy data from CEE Informations, Marchés Agricoles, Prix, No. 10, 1966.

the grain marketing years 1968/69 and 1969/70; and \$7.50 per ton during the years 1970/71 and 1971/72. But even with this concession, the import or threshold price for corn as of July 1967 is 114 percent of a year earlier. 13/

For the first time in recent years, Italian corn production has increased. A record crop of over four million metric tons is expected in 1967. This estimated 15-percent increase over the 1966 corn harvest is in part a response to higher prices, but it is also due to the replanting with corn of northern winter wheat fields which had been flooded in November 1966 and to increased yields resulting from the greater use of hybrid seed and fertilizer.

The increase in Italian domestic production and the increase in Italian domestic stocks built up during 1966 in anticipation of the Common Agricultural Policy's higher prices resulted in a decline in total corn imports into Italy during 1967. Furthermore, the increased 1966/67 feed grain production in other areas of Western Europe, and in Argentina, and Yugoslavia, at a time when U.S. corn prices were higher relative to world prices, 14/ caused a decline in the U.S. share of Italian corn imports in 1967.

Italy's demand for U.S. feed grain has fluctuated widely in the past. In the 1950-1952 period, U.S. feed grains commanded 80 percent of the Italian import market; by 1960-62, the U.S. share had fallen to 12 percent, while Argentina's share had increased from 11 to 60 percent. 15/ Though the relative U.S. share had declined, U.S. feed grain exports to Italy had increased absolutely from 1950 to 1960, reflecting a general trend in which total world exports of corn had quadrupled; those destined for Italy had tripled. The decline in the relative share of U.S. corn in the Italian import market was not alone due to the special trade preference favoring Argentina's Plata and South Africa's Flint corn, but also to the Italian consumer's preference for eggs with dark yolks and for yellow-skinned poultry meat produced when these types of corn are fed -- they contain large amounts of the pigment, xanthophyll. After 1962, with the end of the import-licensing policy which had given U.S. corn a relative disadvantage, the U.S. share of Italian corn imports increased. 16/ An exception to this general trend was reported for the first five months of 1967 when North American corn arrivals in Italy amounted to only 329,000 metric tons, compared to 1,020,000 tons during January-May 1966; North America's share was 69 percent at that time and fell to 20 percent a year later. 17/

13/ \$68.00 per metric ton in July 1966, *Marchés Agricoles, Prix, No. 10, 1967*, and \$88.38 minus \$10.50 equals \$77.88 in July 1967. *Amtsblatt der Europäischen Gemeinschaften, No. 117, p. 2,278, June 19, 1967, and No. 120, p. 2,351, June 21, 1967.*

14/ The wholesale price for August arrival quoted in Milan on May 26, 1967, for USA No. 2 yellow corn (c.i.f. Genoa free out, i.e., not yet unloaded) was \$1.32 or 2 percent more than that quoted for Argentine Plata corn (c.i.f., Genoa, gross, i.e., on the pier). By contrast, during 1961-1964 U.S. corn averaged \$4 per metric ton or 5 percent less Argentine Plata and was less than Plata during each of these 4 years in the Milan market. (*Il Mercato dei Cereali, Milano*, as cited in paper by Dr. Romano Graziani of the U.S. Feed Grains Council, Rome, presented at the U.S. Trade Center, Milan, April 20, 1965.)

15/ J. Breedveld, *Cereals in the EEC 1950-1963*, Report No. 130, Agriculture-Economic Institute; The Hague, June 1965, translated from the Dutch by Joint Publications Research Service, U.S. Department of Commerce, for Economic Research Service, U.S. Dept. of Agr., June 1967, p. 28.

16/ See paper by Graziani.

17/ *Sorveglianza*, Società Italiana per Azioni, Rome.

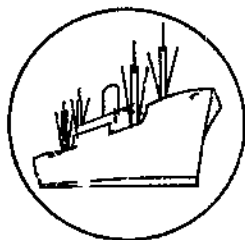
With prospects for a plentiful 1967 corn crop in the United States, the present decline may be an exception to the general trend. The following reasons would lead one to think that Italy will continue to be a promising market for American corn:

- (1) Though Italians prefer corn which has a high xanthophyll content, research has shown the same rich yellow poultry products can be produced by feeding U.S. corn plus a carotene supplement or U.S. broken corn using the xanthophyll-rich kernel in mixed poultry feed and the mealy portion in livestock feed. In contrast to the unusual price relationship currently prevailing, U.S. corn generally is cheaper than flint corns; therefore, mixed poultry feed containing U.S. corn usually is lower priced than feed containing flint corns.
- (2) Though Italian domestic corn production is increasing, Italy will not be self-sufficient in feed grains in the near future. 18/
- (3) The demand for feed grains is projected to continue growing because:
  - a. Per capita income is expected to continue rising and with it, per capita meat consumption; and
  - b. Italy is planning to continue expansion of the livestock industry and is also increasing feeding rates. With this continued growing demand, Italy will continue to import feed grains. 19/

This optimistic view should be qualified. The causes of declining U.S. exports to Italy at present reveal possible problems for the future. Only if Italian feed grain demand continues to rise despite the higher import prices imposed by the Common Agricultural Policy and if the U.S. can meet the competition of other suppliers, will there be a favorable future for America's corn in Italy's markets.

18/ In 1955, Italy was 85 percent self-sufficient in feed grains; by 1965, the level had fallen to 37 percent. See Mangum, *op. cit.*, p. 95.

19/ Projections place feed grain imports into Italy at 3,680,000 metric tons for 1975. Sheldon Tsu and Ernest Koenig, Italian Agriculture: Projections of Supply and Demand in 1965, 1970, and 1975, Economic Research Service, ERS-Foreign 68, January 1964, p. 20.



## SPECIAL in this issue

---

### U.S. AGRICULTURAL IMPORTS, 1966: TOTAL VALUE AND VOLUME INCREASE AS MARKET SOURCES SHIFT

by  
Ann Miller 1/

Records were set in 1966 in the agricultural trade of the United States. Total U.S. agricultural imports for consumption rose for fifth consecutive year, to total \$4,492 million in 1966, a 10-percent increase over 1965. But because agricultural exports also rose to a record level of \$6.9 billion, the agricultural trade balance (exports minus imports) was favorable and at a new high of \$2.4 billion in 1966.

The quantity index for agricultural imports stood at 115 in 1966, a 7-percent increase in volume of agricultural trade since 1965. The increase in 1966 is half of the total increase recorded in the period 1960-66 (the index was 101 in 1960; 1957-59 = 100). 2/

The price level of agricultural imports increased 2 percent over the 1965 level. Though moderate when compared to a 4-percent export price level increase, this was the first increase recorded by the import price index in recent years. 3/

Unlike increases in the value of agricultural imports during the preceding five years, the total was the result of gains in both the value of complementary (noncompetitive) and of supplementary (competitive or partially competitive) imports. The value of complementary imports increased 1 percent, matching a 1-percent increase in their volume. However, complementary imports accounted for only 41 percent of the total U.S. agricultural import value -- their smallest share since World War II, 1942-1945 -- because of a decreasing unit value of such imports.

An increase in banana imports accounted for \$17 million of the \$24 million increase in the value of complementary imports during 1966. The increased total value of U.S. banana imports from the 1960-64 average of \$88 million to the 1966 record of \$179 million is due to increases in unit value and increases in import volume. The increased unit value was justified in part by the transition from stem delivery to box packaging. This transition has reduced the amount of fruit damaged and has made wider distribution possible. In May 1964, the unit value of bananas was revised upward. This revision was first reflected in 1964, when the total value of U.S.

1/ Agricultural Economic Assistant, Trade Statistics and Analysis Branch, Foreign Development and Trade Division, Economic Research Service.

2/ See Economic Research Service, U.S. Foreign Agricultural Trade by Commodities Calendar Year 1966, July 1967, p. 40.

3/ See "U.S. Agricultural Export Prices Up Sharply During Fourth-Quarter 1966," by Hans G. Hirsch, Economic Research Service, Foreign Agricultural Trade of the United States, April 1967, pp. 29-32.

banana imports increased sharply by \$45 million and was fully reflected in 1965, when their total value again increased by \$37 million. Central American banana exporters have shared the gains in U.S. banana importation, while South American banana exports to the U.S. have declined.

Among other complementary imports, declines occurred in the value of crude rubber, carpet wool, tea, and spices; slight increases occurred in cocoa beans and coffee. Though the total value of U.S. coffee imports increased, South American countries did not share in this increase. U.S. coffee imports from Latin American Free Trade Association (LAFTA) countries even declined slightly (from 58 percent in 1965 to 57 percent in 1966) in relative shares, and in absolute value, coffee imports from LAFTA declined \$12 million in the face of competition from Central America, Asia, and Africa. It was the African coffee exporting nations, which supply Robusta coffees used for blending and for instant coffee, that benefited most from the increase in U.S. coffee imports.

The total value of supplementary imports rose to an all-time high of \$2,627 million, a 17-percent increase in value over 1965, partially accounted for by the 13-percent increase in volume registered for supplementary imports in the quantity index. Supplementary imports made up 53 percent of the total value of agricultural imports during 1960-64, compared with 58 percent in 1966.

Among the products in the supplementary import class is sugar. In 1966, U.S. sugar imports increased 14 percent in value, as import quotas, U.S. domestic consumption, and unit values of sugar all increased. But 1966 sugar imports, totaling \$502 million, remained 1 percent below the 1960-64 average.

Imports of fruits, nuts, and vegetables also recorded a 14-percent increase. This brought their value to \$357 million in 1966, compared with a \$252 million annual average during 1960-62. The value of these imports has increased gradually since 1960, but the 1965 to 1966 increase of \$43 million (14 percent) was the largest single annual increase. A significant factor in the 1966 increase was the \$34 million or 50-percent increase of such imports from Mexico. Imports from Mexico contributed to the \$22 million increase in total U.S. tomato imports and the \$9 million increase in total imports of strawberries. Mexican strawberry plantings increased in 1966. A large part of the crop is usually exported to the U.S. as frozen strawberries, at a low cost because of cheaper labor and controlled sugar prices in Mexico.

Imports of cattle and meats rose 32 percent to \$697 million, encouraged by the American consumer's demand for ready-to-cook hamburgers, luncheon meats, and other time-saving foods, which are often processed using imported meats. Consumer demand for time-saving foods also encouraged the importation of dairy products, especially cheese. The value of U.S. dairy product imports rose to a high of \$118 million, an increase of 62 percent over 1965 and 115 percent over the 1960-64 average. Imports of dairy products from Belgium accounted for \$10 million of that total; dairy imports from Belgium had totaled only \$36,000 the year before. The value of total dairy imports has declined sharply since mid-year 1967, when import quotas were extended by executive action to cover butterfat/sugar mixtures used in ice creams, Colby cheese, and other products which were among those that contributed to the sharp dairy import increases in 1966.

Among other selected supplementary items, declines in value were recorded only in imports of tobacco and wool apparel. The value of hides and skins imported increased 14 percent, though their volume declined 11 percent because of unit value increases.

The import value (price times quantity) is generally defined as the market value at the point of exportation. The total value of agricultural imports of \$4,492 million includes neither import duties paid to the U.S. Treasury nor freight and insurance costs, all of which add to the cost paid by the U.S. buyer.

In 1966, dutiable agricultural commodities accounted for 53 percent of the total value of agricultural imports. The customs duties collected on these items averaged 10.7 percent ad valorem and added \$255 million to their cost for the domestic consumer. This customs rate, averaged for total agricultural imports, is 5.6 percent, 2 percent lower than the customs duty average rate for all consumption imports. 4/

The amount added to the cost of imports by freight and insurance charges, based upon 1965 data, is estimated to average 8 percent of the reported value of agricultural imports, compared to a 10-percent average estimated for all imports. 5/

The countries of origin for U.S. agricultural imports are changing in relative importance (table 9). (The country of origin is defined as the country in which the commodity was grown or processed or, if there is doubt, as the country from which the commodity was shipped.) In 1966, the relative importance of areas as sources of U.S. imports when compared with the 1960-64 average shows a decline in the relative importance of Latin America and Asia, and an increase in the importance of Europe, Africa, and Oceania.

Latin America's share of U.S. imports has declined in this decade as imports from Cuba decreased and imports of coffee fell in price and were challenged by Asian and African coffee. Total U.S. imports from Latin America were valued at \$1,811; a 6-percent increase above their 1960-64 average value and 8 percent above their 1965 level. In 1966, 87 percent of these Latin American imports came from members of the

Table 9.--U.S. agricultural imports: Value by major areas and share of total, 1960-66

Area	Average: :1960-64:	1960	1961	1962	1963	1964	1965	1966
-- Million dollars --								
Latin America .....	1,697	1,821	1,609	1,662	1,712	1,685	1,672	1,811
Asia .....	748	785	720	726	738	771	741	750
Europe .....	542	512	524	547	555	569	631	750
Africa .....	405	333	382	389	399	520	466	485
Oceania .....	325	207	261	364	432	361	344	455
Canada .....	180	167	194	188	175	176	234	240
Total .....	3,897	3,825	3,690	3,876	4,011	4,082	4,088	4,492
-- Percent of total --								
Latin America .....	44	48	44	43	43	41	41	40
Asia .....	19	21	20	19	18	19	18	17
Europe .....	14	13	14	14	14	14	16	17
Africa .....	10	9	10	10	10	13	11	11
Oceania .....	8	5	7	9	11	9	8	10
Canada .....	5	4	5	5	4	4	6	5
Total .....	100	100	100	100	100	100	100	100

4/ See "Customs Duties on U.S. Agricultural Imports" by Tom A. Warden, Economic Research Service, Foreign Agricultural Trade of the United States, September 1967, pp. 29-40 for details.

5/ See CIF Value of U.S. Imports, U.S. Tariff Commission, February 1967, esp. pp. 1-4, 7, and 9.

two trade areas: LAFTA and the Central American Common Market (CACM). LAFTA members were the source of 72 percent of 1966 imports from Latin America; CACM the source of 15 percent. Declines in coffee imports from Columbia and Ecuador were offset by increases in cattle-meat and skin-hide imports from Argentina and fruit-vegetable imports from Mexico. (See above.) Imports from Mexico alone accounted for \$52 million of the \$94 million or 55 percent of the increase in the value of LAFTA imports to the U.S. during 1966 (table 10). Imports from the CACM members to the United States totaled \$272 million, a 16-percent increase over 1965 (table 11). Bananas imported from Guatemala, Honduras, and Costa Rica accounted for \$86 million of that total.

Like Latin America, Asia's role as a supplier of U.S. imports has declined relative to the rest of the world. Imports from Asia, totaling \$750 million, increased \$2 million above their 1960-64 average, but \$9 million above their 1965 value. Increases in the imports of sugar from the Philippines and coffee from Indonesia contributed to the 1966 increase. The value of imports from India declined.

Europe's role as a source of U.S. agricultural imports continued to grow in 1966, and for the first time in recent years, imports from Europe, valued at \$750 million, almost equaled imports from Asia. The European Economic Community (EEC) members' share of total U.S. agricultural imports from Europe declined from 43 percent in 1965 to 41 percent in 1966. The European Free Trade Association (EFTA) members' share of the total increased; in 1966 it was 24 percent compared with only 20 percent in 1965. Imports from Greece and Turkey accounted for 15 percent of the total imports from Europe; those from Eastern Europe's Council of Mutual Economic Assistance (COMECON), 7 percent.

Total agricultural imports from the EEC increased 13 percent to a total of \$306 million in 1966 (table 12). Imports from Belgium totaled \$21 million, almost double their 1965 value, as a result of U.S. importation of Belgium dairy and other products. Imports of dairy products and of meat accounted for a significant part of the \$18 million increase in agricultural imports from the Netherlands, which continued to be the leading source of U.S. agricultural imports among EEC countries.

Meat and dairy product imports explain the increase of \$38 million in agricultural imports from Denmark, the leading source of U.S. agricultural imports among EFTA countries (table 13). Total imports from EFTA, valued at \$183 million in 1966, have increased 43 percent since 1965 and have doubled since 1960.

U.S. agricultural imports from COMECON nations have increase 43 percent since 1960 (table 14). In 1966, they totaled \$53 million. Imports from Poland, mainly canned hams, accounted for \$45 million of this total.

Agricultural imports from Oceania increased in 1966, after a 1965 decline. Their total value was \$455 million or 140 percent of the 1960-64 average. Cattle and meat imports from Australia and New Zealand, and also imports of hides and skins and of dairy products, contributed to the 1966 increase.

Imports from the Ivory Coast valued at \$59 million placed that country first among African nations as a source of U.S. agricultural imports. Imports from all of Africa totaled \$485 million in 1966, a 4-percent increase. Coffee imports from the Ivory Coast made up \$50 million of that nation's total. Coffee imports from other African nations shared in increased U.S. coffee imports, though imports of coffee from Ethiopia declined \$8 million.

Imports from Canada totaled \$240 million, up 3 percent from the 1965 total, placing her fifth among the sources of U.S. agricultural imports. Imports of dutiable cattle

and meats made up \$108 million of this total (45 percent of total imports from Canada) compared with \$118 million or 50 percent of total imports in 1965. Increases in grain and dairy imports from Canada compensated for declining cattle-meat imports.

Table 10.--U.S. agricultural imports from the Latin American Free Trade Association: Value by country, 1960-66, with 1960-64 average

Country	:Average: :1960-64:	1960	: 1961	: 1962	: 1963	: 1964	: 1965	: 1966
-- Million dollars --								
Argentina .....	95	84	88	90	134	80	91	109
Brazil .....	481	496	484	462	493	471	413	484
Chile .....	6	5	4	5	6	7	6	7
Colombia .....	230	245	233	234	207	231	208	175
Ecuador .....	63	59	47	63	68	78	95	83
Mexico .....	260	223	263	271	252	292	276	328
Paraguay .....	7	6	6	5	7	9	11	10
Peru .....	78	52	91	89	89	70	75	77
Uruguay .....	16	14	18	18	18	9	27	23
Total .....	1,236	1,184	1,234	1,237	1,274	1,247	1,202	1,296

Table 11.--U.S. agricultural imports from the Central American Common Market: Value by country, 1960-66, with 1960-64 average

Country	:Average: :1960-64:	1960	: 1961	: 1962	: 1963	: 1964	: 1965	: 1966
-- Million dollars --								
Costa Rica .....	40	33	38	38	39	50	54	57
El Salvador .....	34	28	31	39	36	39	44	38
Guatemala .....	58	54	55	57	65	58	62	77
Honduras .....	29	30	28	28	26	36	65	76
Nicaragua .....	25	18	23	24	31	29	31	24
Total .....	186	163	175	186	197	212	256	272

Table 12.--U.S. agricultural imports from the European Economic Community: Value by country, 1960-66, with 1960-64 average

Country	:Average: :1960-64:	1960	: 1961	: 1962	: 1963	: 1964	: 1965	: 1966
-- Million dollars --								
Belgium-Luxembourg .....	10	8	8	10	11	12	11	21
France .....	53	43	53	49	54	66	68	72
Italy .....	64	56	60	64	67	72	71	75
Netherlands .....	78	82	76	80	78	73	80	97
West Germany .....	31	31	30	29	30	35	41	41
Total .....	236	220	227	232	240	258	271	306





Table 15.--U.S. agricultural imports: Value by country of origin, specified calendar years

Country of origin	Average 1960-64	1962	1963	1964	1965	1966
	-- 1,000 dollars --					
Greenland	3	0	0	16	4	39
Canada	180,047	188,276	174,796	175,844	234,228	240,160
Miquelon & St. Pierre Islands	1/	0	0	0	1	0
<b>Latin American Republics:</b>						
Mexico	260,237	270,951	252,195	292,304	275,836	327,619
Guatemala	57,580	56,791	64,589	57,831	62,042	76,796
El Salvador	34,282	38,758	35,467	38,853	43,908	37,891
Honduras	29,257	27,666	25,940	35,577	64,734	76,328
Ricaragua	25,077	23,532	31,245	29,397	31,084	24,124
Costa Rica	39,503	37,519	39,182	50,274	54,261	57,032
Panama	16,439	11,074	15,667	25,181	36,764	45,022
Cuba	70,781	15,087	6,578	4,601	2,560	1,617
Haiti	14,832	15,814	17,516	15,745	13,407	12,697
Dominican Republic	109,576	139,844	127,478	111,096	98,888	116,339
Colombia	229,827	233,977	206,807	230,590	208,315	174,559
Venezuela	19,505	16,088	19,628	19,810	17,713	22,700
Ecuador	62,918	63,052	67,796	77,727	95,379	82,695
Peru	78,278	89,181	89,147	69,915	75,347	77,106
Bolivia	1,854	1,540	1,387	2,686	2,204	3,238
Chile	5,508	5,409	5,817	7,358	6,078	6,978
Brazil	481,078	462,152	492,916	471,205	413,347	483,729
Paraguay	6,796	5,119	7,362	8,918	10,869	10,052
Uruguay	15,769	18,529	18,288	9,191	26,894	22,900
Argentina	95,036	89,584	133,930	79,599	91,209	100,962
Total Latin American Republics	1,654,133	1,621,667	1,658,935	1,637,858	1,630,839	1,768,384
<b>Other Latin America:</b>						
British Honduras	1,702	169	1,896	6,117	1,763	2,062
Canal Zone	141	181	34	20	82	7
Bermuda	161	132	120	43	18	33
Bahamas	1,820	1,096	1,664	3,661	2,530	1,738
Jamaica	14,749	13,927	17,641	16,143	13,334	17,348
Leeward and Windward Islands	1,044	1,059	1,092	788	1,790	1,730
Barbados	1,474	1,382	2,189	1,893	2,379	604
Trinidad and Tobago	7,914	6,900	8,014	5,912	7,071	4,649
Netherlands Antilles	105	80	73	25	78	251
French West Indies	6,926	5,693	14,202	6,181	6,863	6,665
Guyana (British Guiana)	6,246	8,243	5,459	5,121	4,128	6,968
Surinam	979	649	581	1,057	452	655
French Guiana	65	50	10	16	87	6
Falkland Islands	0	0	0	0	0	4
Total Latin America	1,697,459	1,661,228	1,711,910	1,684,835	1,671,414	1,811,304
<b>Europe:</b>						
Iceland	723	912	503	611	429	712
Sweden	2,614	2,638	2,614	2,728	2,963	3,741
Norway	1,491	1,208	1,967	2,514	2,688	2,396
Finland	1,018	1,017	1,126	1,384	1,361	2,667
Danmark	56,676	59,106	66,180	63,861	76,929	114,655
United Kingdom	24,473	25,420	26,506	22,728	24,115	29,615
Ireland	23,074	27,954	29,128	10,059	7,967	21,887
Netherlands	77,878	79,887	77,564	73,250	78,910	97,216
Belgium and Luxembourg	9,709	10,235	10,619	11,481	10,921	21,334
France	52,812	48,608	53,962	65,780	68,108	71,850
West Germany	31,230	29,444	29,712	35,390	40,791	40,951
East Germany	175	8	24	830	171	145
Austria	1,059	874	1,318	1,660	1,980	3,567
Czechoslovakia	1,277	1,207	1,124	955	1,630	1,866
Hungary	520	430	237	331	434	572
Switzerland	12,145	12,629	12,205	11,704	11,678	16,882
Estonia	1/	0	3	0	2	3
Latvia	23	0	114	1/	0	0
Lithuania	3	0	0	0	2	7
Poland and Danzig	30,432	30,766	27,653	30,851	37,773	44,546

Continued -

Table 15.--U.S. agricultural imports: Value by country of origin, specified calendar years

Country of origin	Average 1960-64	1962	1963	1964	1965	1966
-- 1,000 dollars --						
<b>Europe - Continued:</b>						
Union of Soviet Socialist Republics	1,548	1,405	1,665	1,781	2,520	2,771
Azores	91	80	98	73	168	83
Spain	39,550	38,886	36,545	47,114	45,246	53,716
Portugal	4,557	4,167	4,967	5,790	7,807	11,154
Gibraltar	8	1/	11	9	5	23
Malta, Gozo, and Cyprus - 2/	818	---	---	---	---	---
Malta, and Gozo	---	117	13	0	0	1/
Cyprus	---	695	706	1,009	1,303	717
Italy	63,747	63,895	66,722	71,998	71,187	75,030
Trieste 3/	56	13	134	42	24	---
Yugoslavia	12,310	12,447	14,627	15,876	22,345	20,170
Albania	82	113	110	76	134	96
Greece	29,185	28,093	26,567	32,139	39,158	38,064
Rumania	516	257	226	220	395	980
Bulgaria	902	977	922	951	1,380	2,006
Turkey	60,897	63,708	59,403	55,840	69,991	70,560
<b>Total Europe</b>	<b>541,599</b>	<b>547,196</b>	<b>555,273</b>	<b>569,035</b>	<b>630,515</b>	<b>749,382</b>
<b>Asia:</b>						
Syrian Arab Republic	4,499	2,726	4,649	4,749	2,318	3,556
Lebanon	4,037	3,603	5,158	5,247	5,090	5,892
Iraq	7,715	6,440	8,479	7,253	4,733	2,881
Iran	17,542	15,039	16,901	20,142	19,361	19,707
Israel	1,174	932	1,628	1,696	1,871	2,318
Gaza Strip (Palestine)	0	0	0	0	5	18
Jordan	10	7	4	20	1	31
Kuwait	1/	0	0	1	10	0
Saudi Arabia	15	10	6	34	22	22
Other Arabia Peninsula States	815	700	509	1,353	1,235	805
Aden	114	70	47	155	126	778
Bahrain	0	0	0	0	0	1
Afghanistan	1,620	1,400	1,399	1,059	1,167	3,644
India	80,887	78,755	78,204	83,294	86,295	74,375
Goa, Daman, and Diu 2/	---	0	0	0	0	0
Pakistan	21,980	24,247	22,307	16,870	13,655	16,290
Nepal	0	0	0	0	1	160
Ceylon	33,478	31,768	33,128	34,501	31,909	30,265
Burma	417	576	349	207	220	17
Thailand (Siam)	33,475	33,541	33,333	19,017	16,928	15,508
Viet-Nam - 4/	3,124	3,022	1,921	1,881	1,408	---
North Viet-Nam	---	---	---	---	---	0
South Viet-Nam	---	---	---	---	---	1,214
Laos	12	0	19	43	301	248
Cambodia	4,820	4,892	6,098	4,296	2,032	1,069
Malaysia 5/	92,829	---	---	73,886	73,418	---
Malaysia (Malaya)	---	100,495	86,355	---	---	62,976
Singapore	---	9,945	5,711	---	---	3,255
Indonesia	97,600	71,525	71,008	119,833	118,887	141,380
Philippines	264,322	254,073	277,077	294,972	277,641	279,614
Macao (Macau)	0	0	0	0	61	0
Other Portuguese Asia 6/	365	145	---	---	---	---
Other Southern and Southeastern Asia	24	1	21	97	175	172
China	3	2	11	0	0	0
Outer Mongolia	2,892	3,591	3,189	2,505	3,112	2,965
North Korea	3	10	0	0	0	0
South Korea	3,438	2,368	3,679	6,498	6,884	9,992
Korea, Republic of	2,519	2,456	2,399	2,737	2,520	2,293
Hong Kong	23,978	26,233	27,462	29,212	32,485	31,982
Taiwan (Formosa)	44,403	47,495	46,420	40,119	37,231	36,917
Japan	4	1/	4	14	30	1/
Hawaii and Nanpo Islands	---	---	---	---	---	---
<b>Total Asia</b>	<b>748,114</b>	<b>726,168</b>	<b>737,575</b>	<b>771,691</b>	<b>741,140</b>	<b>750,383</b>
<b>Australia and Oceania:</b>						
Australia	182,958	223,900	236,515	211,207	213,933	280,526
New Guinea	1,244	1,667	2,361	1,323	2,807	2,791
New Zealand and Western Samoa	136,819	136,193	166,010	141,969	121,472	167,608
British Western Pacific Islands	3,015	1,597	7,116	6,338	5,936	3,447

Continued -

Table 15--U.S. agricultural imports. Value by country of origin, specified calendar years

Country of origin	Average 1960-64	1962	1963	1964	1965	1966
-- 1,000 dollars --						
<b>Australia and Oceania - Continued:</b>						
French Pacific Islands	218	285	223	148	103	137
Trust Territory of the Pacific Islands	810	565	0	0	0	0
<b>Total Australia and Oceania</b>	<b>325,060</b>	<b>364,207</b>	<b>432,225</b>	<b>360,985</b>	<b>344,251</b>	<b>454,509</b>
<b>Africa:</b>						
Morocco	2,376	2,214	2,034	2,335	1,535	2,338
Algeria	318	480	281	216	234	201
Tunisia	657	1,134	745	589	1,517	416
Libya	4	1/	1	0	2	35
U.A.R. (Egypt)	13,714	13,282	11,437	15,176	8,363	12,397
Sudan	1,140	1,042	1,098	1,786	1,305	1,077
Canary Islands	10	26	14	0	2	0
Other Spanish Africa	272	1	6	79	0	228
Federal Republic of Cameroon	6,179	6,441	5,015	8,898	7,376	19,435
Other Western Equatorial Africa - 1/	848	1,091	1,142	---	---	---
Central African Republic	---	---	---	766	19	1
Gabon	---	---	---	664	201	0
Other Western Africa - 1/	37,164	28,807	36,790	---	---	---
Mauritania	---	---	---	345	1	6
Senegal	---	---	---	96	34	49
Guinea	---	---	---	2,541	7,443	7,940
Ivory Coast	---	---	---	60,705	40,974	59,378
Togo	---	---	---	2,339	709	1,054
Other Western Africa	---	---	---	913	643	1,177
Ghana	50,243	49,426	41,688	60,955	44,623	27,036
Nigeria	36,006	41,393	32,218	25,986	37,505	35,944
British West Africa and Sierra Leone - 2/	1,697	1,312	1,442	---	---	---
Sierra Leone	---	---	---	1,947	1,033	4,986
British West Africa	---	---	---	10	6	2
The Gambia 4/	---	---	---	---	---	0
Madeira Islands	78	41	93	147	126	172
Angola	35,331	37,474	34,505	53,342	46,236	50,670
Other Western Portuguese Africa	1,257	1,193	1,632	1,084	618	941
Liberia	24,498	21,664	19,910	26,912	29,038	32,092
Republic of the Congo - 1/	39,125	31,628	30,083	---	---	---
Congo (Kinshasa)	---	---	---	23,475	14,207	11,192
Burundi and Rwanda	---	---	---	24,105	17,368	16,643
Somali Republic	287	311	180	174	395	239
Ethiopia	34,211	28,212	33,772	52,233	62,698	44,403
French Somaliland	367	564	224	293	202	296
Seychelles and Dependencies	92	103	98	101	286	184
Mauritius and Dependencies	3,274	2,862	10,972	1,681	2,083	2,738
British East Africa and Tanganyika - 1/	58,968	53,783	63,549	---	---	---
Uganda	---	---	---	46,274	41,121	52,050
Kenya	---	---	---	23,260	11,767	17,316
Tanzania - 8/	---	---	---	---	10,609	15,411
Tanganyika	---	---	---	13,190	---	---
Zanzibar	---	---	---	224	---	---
Mozambique	3,740	3,861	4,445	3,653	4,598	5,486
Malagasy Republic	14,557	14,565	16,417	17,447	27,932	20,863
Republic of South Africa	36,314	44,153	46,798	42,995	41,014	38,005
Zambia, Southern Rhodesia, and Malawi - 4/	1,831	1,429	2,852	3,096	2,155	---
Zambia	---	---	---	---	---	9
Rhodesia (Southern Rhodesia)	---	---	---	---	---	1,016
Malawi	---	---	---	---	---	1,767
<b>Total Africa</b>	<b>404,558</b>	<b>388,492</b>	<b>399,441</b>	<b>520,032</b>	<b>465,983</b>	<b>485,193</b>
<b>Total all countries</b>	<b>3,896,840</b>	<b>3,875,567</b>	<b>4,011,220</b>	<b>4,082,438</b>	<b>4,087,536</b>	<b>4,491,570</b>

1/ Less than \$500. 2/ Separately classified beginning 1962. 3/ Not separately classified beginning 1966.  
4/ Separately classified beginning 1966. 5/ Not separately classified 1964 and 1965. 6/ Not separately  
classified beginning 1963. 7/ Separately classified beginning 1964. 8/ Not separately classified beginning 1965.

Table 16.--U.S. agricultural imports: Major countries of origin by commodity groups, specified calendar years

Country and year	Total	Complementary <sup>1/</sup>	Supplementary <sup>1/</sup>	Selected complementary products						
				Coffee	Crude rubber	Cocoa beans	Carpet wool	Bananas	Tea	Spices <sup>2/</sup>
-- 1,000 dollars --										
<b>Total</b>										
Average 1960-64	3,896,840	1,820,833	2,076,007	1,022,951	232,917	139,980	102,766	88,403	57,822	36,529
1962	3,875,567	1,740,649	2,134,918	989,591	228,233	131,407	89,225	77,432	60,336	35,073
1963	4,011,220	1,718,875	2,292,345	956,875	197,396	135,154	114,698	81,968	58,236	32,089
1964	4,082,438	1,985,726	2,096,712	1,200,281	200,629	130,788	90,198	126,509	59,735	34,908
1965	4,087,536	1,839,949	2,247,587	1,060,531	182,331	120,495	71,176	162,344	57,498	46,586
1966	4,491,570	1,864,227	2,627,343	1,068,831	176,918	122,206	72,205	178,607	57,353	44,070
<b>Brazil (1)</b>										
Average 1960-64	481,078	404,117	76,961	374,217	259	19,676	186	17	266	909
1962	462,152	377,996	84,156	362,528	185	7,355	261	10	225	585
1963	492,916	393,303	99,613	363,864	188	19,611	128	50	234	594
1964	471,205	406,666	64,539	377,664	186	17,119	95	0	285	1,408
1965	413,347	329,541	83,806	303,385	222	15,356	103	0	473	2,498
1966	483,729	373,736	109,993	327,681	246	31,161	301	0	312	1,675
<b>Mexico (2)</b>										
Average 1960-64	260,237	75,340	184,897	61,901	g/	3,367	g/	572	0	1,129
1962	270,951	80,383	190,568	65,485	3	4,202	0	442	0	894
1963	252,195	56,767	195,428	37,367	g/	8,249	0	260	0	466
1964	292,304	95,212	197,092	84,175	0	1,257	0	398	0	372
1965	275,836	79,298	196,538	65,329	0	2,567	0	654	0	861
1966	327,619	72,759	254,860	57,427	0	2,702	0	508	0	494
<b>Australia (3)</b>										
Average 1960-64	182,958	477	182,481	1	7	38	212	0	0	g/
1962	223,900	600	223,300	0	0	1	347	0	0	0
1963	256,515	584	255,931	0	0	103	275	0	0	g/
1964	211,207	482	210,725	7	0	87	156	0	0	0
1965	213,933	665	213,268	0	0	117	228	0	0	0
1966	280,526	831	279,695	8	0	95	47	0	0	5
<b>Philippines (4)</b>										
Average 1960-64	264,322	9,205	255,117	19	15	9	0	0	0	0
1962	254,073	8,424	245,649	14	17	0	0	0	0	g/
1963	277,077	8,248	268,829	83	0	0	0	0	0	g/
1964	294,972	8,360	286,612	0	0	44	0	0	0	0
1965	277,641	10,598	267,043	0	0	0	3	0	0	10
1966	279,614	8,463	271,151	0	47	0	0	0	0	0
<b>Canada (5)</b>										
Average 1960-64	180,047	5,209	174,838	8	7	g/	166	14	1,285	2
1962	188,276	4,438	183,838	13	0	0	138	0	1,180	3
1963	174,796	7,382	167,414	11	16	0	157	1	1,653	4
1964	175,844	8,352	167,492	15	0	0	213	71	1,969	1
1965	234,228	8,899	225,329	27	37	17	208	8	2,367	20
1966	240,160	10,221	229,939	7	0	0	170	0	2,675	23
<b>Colombia (6)</b>										
Average 1960-64	229,827	223,889	5,938	223,670	0	33	g/	111	0	g/
1962	233,977	226,488	7,489	226,334	0	88	1	9	0	0
1963	206,807	197,539	9,268	197,416	0	4	0	40	0	3
1964	230,590	229,619	6,971	223,524	0	6	0	0	0	0
1965	208,315	199,637	8,678	199,593	0	9	0	1	0	0
1966	174,559	163,838	10,721	163,784	0	19	0	g/	0	0
<b>New Zealand (7)</b>										
Average 1960-64	136,819	36,800	100,019	g/	0	609	36,074	0	0	0
1962	136,193	30,966	105,227	0	0	938	29,904	0	0	0
1963	166,010	45,717	120,293	0	0	757	44,825	0	0	0
1964	141,969	37,811	104,158	2	0	621	37,109	0	0	0
1965	121,472	30,241	91,231	0	0	47	30,055	0	0	0
1966	167,608	32,596	135,012	0	0	121	32,274	0	0	0

Table 16.-- U.S. agricultural imports: Major countries of origin by commodity groups, specified calendar years

Country and year	Selected supplementary products									Other supply and comple. products
	Gane sugar	Dutiable cattle and meats <u>3/</u>	Fruits, nuts and vege- tables	Fats, oils oilbearing materials <u>4/</u>	Tobacco, unmfed.	Apparel wool	Hides and skins <u>5/</u>	Grains and preps. <u>5/</u>	Dairy prod- ucts <u>7/</u>	
-- 1,000 dollars --										
Total										
Average 1960-64..	508,597	491,625	251,736	153,323	107,918	104,364	64,376	48,620	55,237	429,506
1962 .....	509,344	576,184	230,668	152,124	101,200	120,177	62,695	42,879	54,166	414,833
1963 .....	610,661	589,892	263,046	145,598	98,977	111,322	58,861	42,577	55,289	458,581
1964 .....	458,425	453,575	299,845	159,927	109,741	115,396	71,452	48,624	62,499	459,906
1965 .....	440,502	526,543	313,884	176,624	129,813	157,666	72,661	40,610	73,021	455,251
1966 .....	501,507	697,048	357,241	187,825	126,826	156,681	83,120	42,274	117,996	500,862
Brazil (1)										
Average 1960-64..	33,080	4,724	9,035	22,050	1,119	481	4,382	55	35	10,587
1962 .....	40,062	6,332	6,870	22,972	539	306	4,331	0	51	9,552
1963 .....	58,287	3,936	7,462	21,362	1,818	288	4,156	242	16	10,680
1964 .....	21,805	3,746	9,293	19,012	3,064	1,473	4,391	33	57	11,574
1965 .....	29,816	9,459	10,419	21,752	2,329	1,209	5,280	352	219	10,475
1966 .....	56,207	7,636	12,796	19,501	2,340	2,070	6,423	396	138	14,846
Mexico (2)										
Average 1960-64..	54,913	57,435	48,339	1,653	282	<u>8/</u>	22	76	8	30,540
1962 .....	47,214	76,544	44,158	1,379	125	0	0	170	36	30,299
1963 .....	48,440	64,817	53,117	1,669	537	0	42	14	3	37,214
1964 .....	68,893	38,994	65,980	1,771	745	2	41	128	0	29,548
1965 .....	53,176	54,332	69,074	1,202	1,405	0	45	48	2	27,141
1966 .....	57,137	67,134	103,436	2,410	1,991	0	181	82	0	34,117
Australia (3)										
Average 1960-64..	15,279	121,305	1,148	277	3	35,567	1,636	964	2,820	3,701
1962 .....	17,576	150,638	1,747	295	0	44,297	1,679	930	3,127	3,263
1963 .....	28,319	177,305	2,013	275	0	38,588	1,380	95	3,908	4,254
1964 .....	21,996	129,124	629	400	14	46,274	2,630	1,502	3,130	5,258
1965 .....	22,898	110,857	670	626	0	65,854	1,477	3	5,455	5,748
1966 .....	22,086	175,397	847	239	0	64,078	1,424	8	7,247	9,045
Philippines (4)										
Average 1960-64..	150,293	<u>8/</u>	22,269	76,612	3,709	0	6	3	0	11,387
1962 .....	150,492	0	17,604	72,025	3,151	0	0	2	0	10,768
1963 .....	163,347	0	21,299	77,598	4,291	0	0	5	0	10,454
1964 .....	162,417	0	24,143	91,581	4,619	0	0	3	0	12,165
1965 .....	129,263	0	23,904	107,299	4,414	0	6	9	0	12,733
1966 .....	141,150	0	20,778	102,720	5,175	0	20	4	1	9,719
Canada (5)										
Average 1960-64..	179	69,521	16,906	1,081	49	682	3,957	35,256	2,342	48,592
1962 .....	389	87,175	14,136	1,710	45	746	4,050	29,439	2,703	46,549
1963 .....	1	58,987	18,953	1,174	57	758	3,468	31,761	3,523	54,272
1964 .....	<u>8/</u>	56,642	23,270	744	89	617	3,693	31,797	3,056	53,667
1965 .....	<u>8/</u>	117,547	24,043	675	89	709	4,889	26,095	5,227	52,270
1966 .....	<u>8/</u>	108,180	22,380	1,324	92	468	4,727	27,571	14,099	58,444
Colombia (6)										
Average 1960-64..	3,984	24	11	27	1,706	<u>8/</u>	53	7	0	201
1962 .....	5,750	0	16	65	1,502	0	41	36	0	135
1963 .....	6,451	118	10	11	2,395	0	59	0	0	300
1964 .....	2,718	0	12	7	3,902	<u>8/</u>	125	0	0	296
1965 .....	5,395	0	22	13	2,714	0	87	57	0	424
1966 .....	7,562	0	19	17	2,322	0	88	<u>8/</u>	0	748
New Zealand (7)										
Average 1960-64..	0	62,525	256	482	0	10,494	15,287	<u>8/</u>	6,871	4,221
1962 .....	0	70,161	299	462	0	11,153	13,953	1	5,260	4,062
1963 .....	0	81,181	292	416	0	12,074	14,633	<u>8/</u>	6,394	5,438
1964 .....	0	56,719	427	260	0	13,840	18,858	0	9,063	5,070
1965 .....	0	37,933	309	375	0	14,761	21,041	0	11,323	5,628
1966 .....	0	61,211	485	137	0	18,066	31,157	1	17,848	6,308

Continued -

Table 16.--U.S. agricultural imports: Major countries of origin by commodity groups, specified calendar years - Continued

Country and year	Total	Complementary 1/	Supplementary 1/	Selected complementary products						
				Coffee	Crude rubber	Cocoa beans	Carpet wool	Bananas	Tea	Spices 2/
-- 1,000 dollars --										
<b>Indonesia (8)</b>										
Average 1960-64	97,600	95,261	2,339	7,303	67,124	20	0	0	5,502	13,265
1962	71,525	69,232	2,293	6,521	44,739	29	0	0	5,622	10,069
1963	71,008	69,148	1,860	12,322	35,792	0	0	0	4,731	14,405
1964	119,833	116,912	2,921	13,677	81,454	31	0	0	4,633	14,849
1965	118,887	115,649	3,238	14,293	76,065	4	0	0	5,231	16,152
1966	141,360	134,328	7,052	26,214	81,620	54	0	0	5,853	16,642
<b>Dominican Rcp. (9)</b>										
Average 1960-64	109,576	34,372	75,204	18,198	0	9,712	0	1,711	0	9
1962	139,844	29,882	109,962	17,142	0	7,620	0	1,080	0	14
1963	127,478	30,366	97,112	15,057	0	10,925	0	1,161	0	10
1964	111,096	43,859	67,237	28,310	0	10,852	0	88	0	10
1965	98,888	23,852	75,036	16,312	0	6,790	0	79	0	7
1966	116,339	29,624	86,715	17,680	0	10,832	0	286	0	25
<b>Denmark (10)</b>										
Average 1960-64	56,676	265	56,411	0	0	0	24	0	0	4
1962	59,106	245	58,861	0	0	0	0	0	0	0
1963	66,180	211	65,969	0	0	0	0	0	0	0
1964	63,861	193	63,668	0	0	0	26	0	0	9
1965	76,929	201	76,728	0	0	0	54	0	0	A/
1966	114,655	728	113,927	0	0	0	44	0	0	0
<b>Argentina (11)</b>										
Average 1960-64	95,036	29,153	65,883	41	0	0	28,538	0	133	32
1962	89,584	29,856	59,728	80	0	0	29,043	0	327	50
1963	133,930	29,058	104,872	19	0	0	28,458	0	128	22
1964	79,599	18,999	60,690	0	0	0	18,455	0	72	27
1965	91,209	19,284	71,925	0	0	20	18,796	0	99	20
1966	108,962	20,825	88,137	0	0	0	20,116	0	204	27
<b>Netherlands (12)</b>										
Average 1960-64	77,878	14,153	63,725	46	A/	12	1,929	0	2,268	1,009
1962	79,887	14,502	65,385	25	0	41	1,623	0	3,698	961
1963	77,564	14,091	63,473	38	0	0	2,374	0	2,817	951
1964	73,250	13,588	59,662	76	0	0	1,399	0	2,955	975
1965	78,910	11,553	67,357	0	0	2	144	7	2,484	962
1966	97,216	10,595	86,621	8	0	0	92	0	2,304	1,200
<b>Ecuador (13)</b>										
Average 1960-64	62,918	57,992	4,926	12,241	23	7,614	0	37,406	0	A/
1962	63,052	55,444	7,608	15,118	0	5,375	0	34,444	0	0
1963	67,796	60,055	7,741	11,289	66	8,635	0	39,196	0	0
1964	77,727	72,407	5,320	12,320	0	3,821	0	55,046	0	1
1965	95,379	88,463	6,916	24,712	0	6,441	0	55,286	0	0
1966	82,695	76,018	6,677	19,381	31	6,832	0	48,119	0	0
<b>Peru (14)</b>										
Average 1960-64	78,278	21,280	56,998	19,929	8	23	2	146	26	16
1962	89,181	19,949	69,232	18,681	4	53	0	15	36	13
1963	89,147	20,813	68,334	19,312	6	0	0	33	34	32
1964	69,915	32,196	37,719	30,337	20	7	0	682	34	21
1965	75,347	24,493	50,854	23,635	2	17	0	4	0	9
1966	77,106	23,615	53,491	22,439	32	0	0	46	0	6
<b>Guatemala (15)</b>										
Average 1960-64	57,580	50,655	6,925	43,600	10	149	0	3,993	0	215
1962	56,791	47,371	9,420	42,505	13	84	0	2,135	0	154
1963	64,589	51,655	12,934	47,062	24	131	0	2,102	0	173
1964	57,831	47,925	9,906	43,780	9	87	0	1,131	0	242
1965	62,042	53,808	8,234	50,962	12	102	0	320	0	269
1966	76,796	64,144	12,652	59,333	5	216	0	1,383	0	712

Table 16.--U.S. agricultural imports: Major countries of origin by commodity groups, specified calendar years - Continued

Country and year	Selected supplementary products								Other :supple. :and :comple. :products	
	Cane sugar	Dutiable cattle and meats 3/	Fruits, nuts and vegetables	Fats, oils, oilbearing materials 4/	Tobacco, unmfed.	Apparel wool	Hides and skins 5/	Grains and preps. 6/		Dairy products 7/
-- 1,000 dollars --										
<b>Indonesia (8)</b>										
Average 1960-64.	0	8/	25	1,014	593	8/	539	8/	0	2,215
1962	0	0	13	1,402	525	0	353	0	0	2,252
1963	0	0	38	483	695	0	643	0	0	1,899
1964	0	3	33	135	1,532	0	1,218	8/	0	2,268
1965	0	5	2	500	821	0	1,106	1	0	4,707
1966	0	12	2	5,111	715	0	877	0	0	4,280
<b>Dominican Rep. (9)</b>										
Average 1960-64.	61,370	733	967	1,986	2,764	0	9	709	2	11,406
1962	95,933	275	880	2,069	2,341	0	0	1,024	0	11,466
1963	80,422	5	991	2,461	4,002	0	0	305	0	12,139
1964	52,393	17	1,234	1,563	6,512	0	0	8/	0	10,117
1965	59,649	8	2,169	762	7,019	0	14	162	0	5,517
1966	75,204	2	1,439	107	2,771	0	7	307	0	7,679
<b>Denmark (10)</b>										
Average 1960-64.	8/	42,844	363	325	31	41	178	667	4,371	7,828
1962	0	46,102	343	408	0	70	73	482	4,716	6,912
1963	0	51,542	331	459	0	27	33	719	4,515	8,519
1964	1	48,123	372	256	0	3/	129	1,300	4,768	8,858
1965	1	60,994	442	218	0	0	312	998	4,926	8,994
1966	1	90,427	527	1,161	0	0	704	770	10,881	10,181
<b>Argentina (11)</b>										
Average 1960-64.	7,950	23,587	1,591	4,894	129	7,633	1,421	567	7,918	10,602
1962	949	22,849	1,346	6,341	185	6,826	2,146	316	7,292	11,834
1963	35,919	31,875	2,386	4,406	171	9,743	1,487	845	7,070	11,401
1964	2,553	20,880	2,321	3,613	273	10,783	653	1,252	8,806	9,911
1965	6,611	25,002	1,460	3,419	176	13,019	877	531	9,421	11,758
1966	6,017	37,918	1,562	3,354	167	16,288	2,229	498	7,876	12,706
<b>Netherlands (12)</b>										
Average 1960-64.	534	29,416	2,191	4,850	73	69	1,226	829	3,052	30,374
1962	663	31,246	2,358	4,878	25	155	1,410	962	2,954	28,888
1963	0	30,208	2,060	4,016	65	34	1,000	685	3,272	30,044
1964	1	25,271	2,920	4,241	87	2	1,260	1,013	2,858	30,192
1965	1	29,915	2,831	6,871	95	9	1,052	1,008	3,122	30,407
1966	0	45,969	3,039	7,723	43	1	925	1,258	4,178	30,476
<b>Ecuador (13)</b>										
Average 1960-64.	4,177	2	19	264	2	1	4	0	0	1,165
1962	6,299	0	9	808	0	0	2	0	0	992
1963	6,401	11	41	169	0	6	3	0	0	1,979
1964	4,922	0	39	0	8	0	4	0	0	1,566
1965	5,998	0	37	65	120	3	1	8/	0	2,716
1966	5,398	15	78	145	273	0	1	0	0	2,422
<b>Peru (14)</b>										
Average 1960-64.	45,058	9	804	3	159	4,058	535	119	0	7,383
1962	55,998	0	805	0	0	4,548	512	125	0	8,391
1963	51,407	47	951	0	67	5,248	312	142	0	11,356
1964	26,644	0	1,073	5	7	5,245	394	162	0	5,284
1965	35,945	7	596	0	87	5,879	281	236	0	8,649
1966	41,715	0	456	0	64	4,151	379	179	0	7,639
<b>Guatemala (15)</b>										
Average 1960-64.	3,472	2,833	57	261	0	0	8/	2	0	2,988
1962	4,412	4,268	140	300	0	0	0	0	0	2,780
1963	7,172	4,984	89	318	0	0	0	0	0	2,532
1964	4,918	4,235	4	291	0	0	0	0	0	3,130
1965	3,966	3,445	17	306	0	0	0	0	0	2,643
1966	6,256	5,384	35	124	0	0	0	0	0	3,348

Continued -



Table 16.--U.S. agricultural imports: Major countries of origin by commodity groups, specified calendar years - Continued

Country and year	Total	Complementary 1/	Supplementary 1/	Selected complementary products						
				Coffee	Crude rubber	Cocoa beans	Carpet wool	Bananas	Tea	Spices 2/
-- 1,000 dollars --										
<b>Honduras (16)</b>										
Average 1960-64	29,256	26,086	3,170	9,772	8	0	0	16,057	0	51
1962	27,666	23,977	3,689	6,967	0	0	0	16,668	0	9
1963	25,940	22,354	3,586	9,127	0	0	0	12,915	0	73
1964	35,577	31,279	4,298	10,823	0	0	0	20,218	0	90
1965	64,734	59,725	5,009	15,422	0	0	0	43,965	0	178
1966	76,328	69,265	7,063	12,840	0	0	0	55,920	0	301
<b>Italy (17)</b>										
Average 1960-64	63,747	4,400	59,347	11	8/	0	934	8/	8/	47
1962	63,895	3,419	60,476	8	8/	0	614	0	0	47
1963	66,722	5,049	61,673	19	0	0	1,101	0	0	30
1964	71,998	6,303	65,695	14	0	0	995	2	8/	53
1965	71,187	7,697	63,490	18	0	0	814	0	0	65
1966	75,030	10,337	64,693	20	0	0	531	0	0	11
<b>India (18)</b>										
Average 1960-64	80,887	29,930	50,957	1,517	101	2	2,284	0	14,791	5,620
1962	78,755	29,692	49,063	383	1	8	824	0	16,002	7,838
1963	78,204	25,053	53,151	846	48	0	925	0	15,169	2,674
1964	83,294	27,529	55,765	3,938	64	0	3,156	0	13,549	2,188
1965	86,295	28,402	57,893	3,745	100	0	599	0	11,515	6,168
1966	74,373	25,030	49,343	2,116	74	0	765	0	10,674	5,875
<b>France (19)</b>										
Average 1960-64	52,812	6,767	46,045	0	24	0	1,201	0	4	227
1962	48,608	4,790	43,818	0	2	0	614	0	5	173
1963	53,962	6,249	47,713	0	6	0	1,279	0	3	335
1964	65,780	9,340	56,440	0	0	0	1,185	0	4	306
1965	68,108	8,325	59,783	0	6	0	207	1	4	436
1966	71,850	8,051	63,799	1	0	0	335	0	5	306
<b>Turkey (20)</b>										
Average 1960-64	60,897	2,378	58,519	0	0	0	1,322	0	2	113
1962	63,708	1,429	62,279	0	0	0	846	0	0	61
1963	59,403	3,134	56,269	0	0	0	1,370	0	0	103
1964	55,840	2,475	53,365	0	0	0	1,015	0	10	182
1965	69,991	2,889	67,102	0	0	0	186	0	2	107
1966	70,560	2,166	68,394	0	0	0	117	0	0	196
<b>Malaysia 9/ (21)</b>										
Average 1960-64	92,829	90,875	1,954	174	88,025	8/	0	0	36	462
1962	110,440	108,455	1,985	171	106,550	0	0	0	22	262
1963	92,066	89,225	2,841	104	86,619	8/	0	0	17	271
1964	73,886	71,090	2,796	170	67,250	0	0	0	31	328
1965	73,418	70,003	3,415	122	65,163	0	0	0	50	2,290
1966	62,976	58,071	4,905	871	54,947	0	0	0	131	579
<b>Ivory Coast 10/ (22)</b>										
Average 1960-64	---	---	---	---	---	---	---	---	---	---
1962	---	---	---	---	---	---	---	---	---	---
1963	---	---	---	---	---	---	---	---	---	---
1964	60,705	60,665	40	51,504	88	9,069	0	0	0	0
1965	40,974	39,220	1,754	30,532	74	8,531	0	0	2	0
1966	59,378	58,419	959	50,122	50	8,043	0	0	0	2
<b>Costa Rica (23)</b>										
Average 1960-64	39,503	31,347	8,156	15,493	112	2,922	0	12,752	0	8/
1962	37,519	31,995	5,524	17,119	74	2,459	0	12,220	0	1
1963	39,182	28,142	11,040	12,767	78	2,995	0	12,197	0	1
1964	50,274	39,342	10,932	16,078	49	3,002	0	20,126	0	1
1965	54,261	45,253	9,008	17,214	29	1,523	0	26,201	18	7
1966	57,032	43,172	13,860	12,678	25	1,421	0	28,567	0	39

Table 16.--U.S. agricultural imports: Major countries of origin by commodity groups, specified calendar years - Continued

Country and year	Selected supplementary products									
	Cane sugar	Dutiable cattle and meats	Fruits, nuts and vegetables	Fats, oils, oilbearing materials	Tobacco, unmd.	Apparel wool	Hides and skins	Grains and preps.	Dairy products	Other supple. and comple. products
		3/		4/			5/	6/	7/	
-- 1,000 dollars --										
<b>Honduras (16)</b>										
Average 1960-64.	76	2,525	359	2	132	0	12	0	0	262
1962	0	3,344	303	0	13	0	4	0	0	358
1963	0	2,864	589	12	60	0	9	0	0	291
1964	378	2,886	221	0	585	0	18	0	0	358
1965	292	3,545	192	0	829	0	8/	0	0	311
1966	764	4,452	222	0	1,344	0	1	0	0	484
<b>Italy (17)</b>										
Average 1960-64.	8/	1,343	18,563	5,452	1,166	50	916	923	12,890	21,452
1962	0	1,358	18,736	5,962	988	34	1,603	1,060	12,942	20,543
1963	8/	1,505	19,017	5,072	1,169	65	1,030	844	12,640	24,230
1964	0	1,406	18,698	6,557	1,153	64	1,603	850	14,090	26,513
1965	0	1,323	16,518	5,865	1,115	13	730	811	15,363	28,552
1966	0	1,729	17,620	6,087	436	79	692	867	14,023	32,935
<b>India (18)</b>										
Average 1960-64.	11,811	498	26,876	1,561	40	123	5,112	8/	8/	10,551
1962	12,993	555	24,205	121	19	35	5,244	0	0	10,527
1963	13,754	926	27,250	297	98	8	5,622	3	0	10,584
1964	15,462	335	31,322	122	75	120	3,526	1	1	9,437
1965	15,950	494	30,847	22	391	39	4,047	1	0	12,377
1966	8,502	564	31,296	20	96	7	2,542	2	8/	11,840
<b>France (19)</b>										
Average 1960-64.	1,210	603	5,105	471	88	2,144	4,229	956	3,077	33,473
1962	1	582	5,362	764	99	1,723	3,241	226	2,921	32,895
1963	4,657	530	4,780	310	15	1,404	4,433	256	2,732	33,222
1964	364	734	4,545	173	0	2,284	5,434	2,844	4,342	43,565
1965	89	897	4,840	213	7	3,694	3,471	932	4,289	48,210
1966	0	1,208	4,897	231	0	2,699	3,561	659	7,515	50,433
<b>Turkey (20)</b>										
Average 1960-64.	1,359	0	7,271	329	47,061	155	1,263	0	2	2,020
1962	5,909	0	7,772	684	45,580	123	1,190	0	5	1,558
1963	888	0	7,393	99	46,064	177	467	0	0	2,842
1964	0	0	6,867	386	44,040	162	1,258	0	2	1,913
1965	151	2	7,530	1,078	56,235	138	1,468	0	6	3,088
1966	0	34	5,308	372	56,218	122	1,830	0	22	2,341
<b>Malaysia 9/ (21)</b>										
Average 1960-64.	0	0	1,723	97	0	3	115	8/	0	2,194
1962	0	0	1,802	0	0	0	172	8/	0	1,461
1963	0	0	2,676	12	0	0	143	0	0	2,224
1964	0	0	2,605	2	0	17	134	8/	0	3,349
1965	0	0	3,117	0	0	26	230	0	0	2,420
1966	0	26	2,684	1,961	0	0	215	0	0	1,562
<b>Ivory Coast 10/ (22)</b>										
Average 1960-64.	---	---	---	---	---	---	---	---	---	---
1962	---	---	---	---	---	---	---	---	---	---
1963	---	---	---	---	---	---	---	---	---	---
1964	0	0	25	0	0	0	0	0	0	19
1965	0	0	1	1,747	0	0	0	0	0	87
1966	0	0	3	948	0	0	2	0	0	208
<b>Costa Rica (23)</b>										
Average 1960-64.	3,418	4,297	13	144	9	0	8/	0	0	343
1962	2,560	2,649	5	63	0	0	0	0	0	329
1963	5,478	4,998	26	152	29	0	1	0	0	460
1964	4,622	5,776	36	91	17	0	1	0	0	475
1965	5,018	3,334	23	46	9	0	1	0	0	838
1966	8,783	4,306	21	62	60	0	4	0	9	1,057

Continued

Table 16.--U.S. agricultural imports: Major countries of origin by commodity groups, specified calendar years - Continued

Country and year	Total	Complementary <u>1/</u>	Supplementary <u>1/</u>	Selected complementary products						
				Coffee	Crude rubber	Cocoa beans	Carpet wool	Bananas	Tea	Spices <u>2/</u>
-- 1,000 dollars --										
Spain (24)										
Average 1960-64	39,550	1,538	38,012	0	0	0	707	0	0	126
1962	38,886	1,235	37,651	0	0	0	539	0	0	67
1963	36,545	1,562	34,983	0	0	0	714	0	0	171
1964	47,114	1,898	45,216	0	0	0	787	0	0	342
1965	45,246	2,408	42,838	0	0	0	305	0	0	368
1966	53,716	1,599	52,117	0	0	0	418	0	0	360
Uganda <u>10/</u> (25)										
Average 1960-64	---	---	---	---	---	---	---	---	---	---
1962	---	---	---	---	---	---	---	---	---	---
1963	---	---	---	---	---	---	---	---	---	---
1964	46,274	46,149	125	45,131	0	0	0	0	521	1
1965	41,121	40,855	266	39,146	0	102	0	0	589	20
1966	52,050	51,871	179	50,428	0	494	0	0	714	35
Angola (26)										
Average 1960-64	35,331	34,955	376	34,403	0	214	0	0	0	0
1962	37,474	37,097	377	36,883	0	0	0	0	0	0
1963	34,505	34,225	280	34,039	0	0	0	0	0	0
1964	53,342	53,003	339	52,928	0	7	0	0	0	0
1965	46,236	45,908	328	45,866	0	0	0	0	0	20
1966	50,670	50,136	534	50,132	0	3	0	0	0	0
Panama (27)										
Average 1960-64	16,439	15,151	1,288	473	<u>8/</u>	1,273	0	13,178	0	12
1962	11,074	10,650	424	41	0	1,094	0	9,263	0	61
1963	15,667	14,128	1,539	1,070	0	1,203	0	11,667	0	0
1964	25,181	22,425	2,756	173	0	1,196	0	20,922	0	0
1965	36,764	34,664	2,100	446	0	654	0	33,444	0	0
1966	45,022	42,465	2,557	959	0	815	0	40,563	0	<u>8/</u>
Poland (28)										
Average 1960-64	30,432	119	30,313	0	0	0	0	0	0	97
1962	30,766	142	30,624	0	0	0	0	0	0	107
1963	27,653	146	27,507	0	0	0	0	0	0	129
1964	30,851	124	30,727	0	0	0	0	0	0	162
1965	37,773	129	37,644	0	0	0	0	0	0	118
1966	44,546	187	44,359	0	0	0	11	0	0	159
Ethiopia (29)										
Average 1960-64	34,211	32,423	1,788	32,419	0	0	<u>8/</u>	0	0	<u>8/</u>
1962	28,212	26,581	1,631	26,577	0	0	0	0	0	0
1963	33,772	31,955	1,817	31,953	0	0	0	0	0	2
1964	52,233	40,449	2,784	49,442	0	0	3	0	0	0
1965	62,698	59,751	2,947	59,751	0	0	0	0	0	0
1966	44,403	40,709	3,694	40,666	0	43	0	0	0	0
West Germany (30)										
Average 1960-64	31,230	2,996	28,234	2	<u>8/</u>	2	536	0	11	22
1962	29,444	2,405	27,039	0	1	0	488	0	9	13
1963	29,712	2,830	26,882	4	0	0	565	0	1	25
1964	35,390	2,923	32,467	6	<u>8/</u>	3	382	0	4	37
1965	40,791	2,971	37,820	2	0	0	139	2	4	130
1966	40,951	2,842	38,109	1	0	0	243	0	17	100
Greena (31)										
Average 1960-64	29,185	433	28,752	0	0	0	50	0	0	262
1962	28,093	487	27,606	0	0	0	20	0	0	438
1963	26,567	371	26,196	0	0	0	101	0	0	232
1964	32,139	412	31,727	0	0	0	8	0	0	286
1965	39,158	342	38,816	0	0	0	0	0	0	323
1966	38,064	611	37,453	0	0	0	0	0	0	591

Table 16.--U.S. agricultural imports: Major countries of origin by commodity groups, specified calendar years - Continued

Country and year	Selected supplementary products									Other supple. and comple. products
	Cane sugar	Dutiable cattle and meats <u>3/</u>	Fruits, nuts and vegetables	Fats, oils, oilbearing materials <u>4/</u>	Tobacco, un.mfd.	Apparel wool	Hides and skins <u>5/</u>	Grains and preps. <u>6/</u>	Dairy products <u>7/</u>	
-- 1,000 dollars --										
Spain (24)										
Average 1960-64.	0	45	22,170	8,014	60	25	279	<u>8/</u>	5	8,119
1962	0	50	23,110	7,226	89	19	31	0	2	7,753
1963	0	10	20,351	5,556	99	55	453	2	7	9,127
1964	0	22	24,214	10,430	0	0	644	1	5	10,669
1965	0	9	26,943	5,182	0	51	168	<u>8/</u>	4	12,216
1966	0	17	31,952	8,247	18	79	13	6	13	12,593
Uganda <u>10/</u> (25)										
Average 1960-64.	---	---	---	---	---	---	---	---	---	---
1962	---	---	---	---	---	---	---	---	---	---
1963	---	---	---	---	---	---	---	---	---	---
1964	0	0	33	0	0	0	66	0	0	522
1965	0	0	0	3	0	0	197	0	0	1,064
1966	0	3	0	2	0	0	17	0	0	357
Angola (26)										
Average 1960-64.	0	0	3	115	0	16	0	0	0	580
1962	0	0	7	39	0	0	0	0	0	545
1963	0	0	4	89	0	24	0	0	0	349
1964	0	0	0	0	0	56	0	0	0	351
1965	0	0	0	0	0	0	0	0	0	350
1966	0	0	0	0	0	0	0	0	0	535
Panama (27)										
Average 1960-64.	1,152	52	1	0	0	0	0	0	0	298
1962	336	77	5	0	0	0	0	0	0	197
1963	1,409	116	2	0	0	0	0	0	0	200
1964	2,416	19	0	0	0	0	0	0	0	455
1965	2,063	19	4	0	0	0	0	0	0	134
1966	1,544	941	5	0	0	0	0	0	0	195
Poland (28)										
Average 1960-64.	<u>8/</u>	26,084	526	257	0	0	1,032	8	1,045	1,383
1962	0	25,649	438	248	0	0	1,385	5	1,398	1,536
1963	0	23,960	517	228	0	0	865	17	187	1,750
1964	0	26,778	950	246	0	0	1,539	13	156	1,067
1965	0	33,038	1,055	222	0	0	1,428	13	597	1,302
1966	255	36,230	1,128	282	0	0	1,025	10	2,688	2,758
Ethiopia (29)										
Average 1960-64.	0	0	2	169	<u>8/</u>	<u>8/</u>	1,171	0	0	450
1962	0	0	2	69	0	0	1,130	0	0	434
1963	0	0	4	269	0	0	1,150	0	0	394
1964	0	0	<u>8/</u>	476	<u>8/</u>	2	1,696	0	0	614
1965	0	0	57	784	0	0	1,664	0	0	442
1966	0	0	43	1,436	0	0	1,607	0	0	608
West Germany (30)										
Average 1960-64.	<u>8/</u>	1,324	949	2,472	21	48	1,678	887	609	22,669
1962	1	1,205	802	3,365	2	3	1,715	689	616	20,535
1963	<u>8/</u>	932	920	1,362	8	<u>8/</u>	1,752	489	407	23,247
1964	0	905	996	1,558	20	9	1,503	462	465	29,040
1965	<u>8/</u>	1,100	970	3,085	<u>8/</u>	50	1,688	1,931	515	31,175
1966	<u>8/</u>	2,021	1,468	2,549	12	51	725	1,137	1,152	31,475
Greece (31)										
Average 1960-64.	0	0	1,958	451	25,778	0	54	<u>8/</u>	140	492
1962	0	0	2,005	962	24,198	0	1	<u>8/</u>	99	370
1963	0	0	2,316	954	22,437	0	48	0	86	393
1964	0	0	2,362	122	28,519	0	60	0	251	531
1965	0	0	2,129	266	35,205	0	226	0	405	604
1966	0	18	2,393	117	33,836	0	119	0	420	570

Continued -

Table 16.--U.S. agricultural imports: Major countries of origin by commodity groups, specified calendar years - Continued

Country and year	Total	Selected complementary products								
		Complementary	Supplementary	Coffee	Crude rubber	Cocoa beans	Carpet wool	Bananas	Tea	Spices
		1/	1/							2/
-- 1,000 dollars --										
Rep. of S. Africa (32)										
Average 1960-64	36,314	882	35,432	183	50	17	411	0	28	3
1962	44,153	774	43,379	150	104	25	351	0	44	1
1963	46,793	963	45,835	98	28	0	621	0	10	16
1964	42,995	1,226	41,769	233	47	60	600	0	25	0
1965	41,014	1,821	39,193	843	0	0	704	0	74	0
1966	38,005	2,241	35,764	1,268	0	0	488	0	170	57
El Salvador (33)										
Average 1960-64	34,281	32,053	2,228	30,576	0	0	0	67	0	1
1962	38,758	36,088	2,670	36,034	0	0	0	0	0	0
1963	35,467	32,626	2,841	32,508	0	0	0	0	0	2
1964	38,853	35,751	3,102	35,221	0	0	0	337	0	3
1965	43,908	40,991	2,917	40,207	0	0	0	0	462	2
1966	37,891	32,020	5,871	31,253	0	0	0	15	0	1
Japan (34)										
Average 1960-64	44,403	24,034	20,369	0	39	0	4	0	773	43
1962	47,495	25,477	22,018	0	97	0	0	0	877	11
1963	46,420	25,360	21,080	0	5	0	13	0	744	8
1964	40,119	16,798	23,321	0	53	0	9	0	695	167
1965	37,231	11,557	25,674	0	5	84	0	0	704	42
1966	36,917	8,966	27,951	0	0	0	0	0	889	52
Nigeria (35)										
Average 1960-64	36,006	32,533	3,473	93	10,256	21,637	0	0	2	196
1962	41,393	38,174	3,219	121	10,317	27,213	0	0	0	209
1963	32,218	28,547	3,671	1	12,988	15,106	0	0	5	176
1964	25,986	22,673	3,313	238	6,878	14,623	0	0	6	458
1965	37,505	32,512	4,993	291	4,013	27,419	0	0	5	229
1966	35,944	28,422	7,522	838	4,588	22,277	0	0	8	379
Liberia (36)										
Average 1960-64	24,498	24,496	2	1,964	22,532	0	0	0	0	0
1962	21,664	21,663	1	690	20,973	0	0	0	0	0
1963	19,910	19,910	8/	1,446	18,464	0	0	0	0	0
1964	26,912	26,902	10	7,016	19,886	0	0	0	0	0
1965	29,038	29,035	3	6,706	22,283	46	0	0	0	0
1966	32,092	32,092	0	11,134	20,958	0	0	0	0	0
Taiwan (37)										
Average 1960-64	23,978	3,735	20,243	0	9	0	0	0	1,786	2
1962	26,233	3,754	22,479	0	47	0	0	0	1,683	2
1963	27,462	4,494	22,968	0	0	0	0	0	1,766	4
1964	29,212	3,626	25,586	0	0	0	0	0	1,769	4
1965	32,485	4,733	27,752	0	0	0	0	21	1,885	8
1966	31,982	3,894	28,088	0	0	0	0	0	1,868	17
Ceylon (38)										
Average 1960-64	33,478	33,344	134	1	7,622	15	0	0	24,596	647
1962	31,768	31,766	2	0	6,839	36	0	0	24,273	344
1963	33,128	33,103	25	6	7,063	0	0	0	24,770	771
1964	34,501	34,460	41	0	6,083	0	0	0	26,715	804
1965	31,909	31,750	159	0	4,535	0	0	0	24,922	1,025
1966	30,265	30,232	33	0	4,645	0	0	0	24,071	966
United Kingdom (39)										
Average 1960-64	24,472	8,611	15,861	8/	19	16	5,124	2	822	9
1962	25,420	8,015	17,405	8/	22	0	4,324	0	800	6
1963	26,506	9,758	16,748	0	6	0	7,504	0	315	2
1964	22,728	7,587	15,141	8/	0	14	5,380	11	423	16
1965	24,115	7,736	16,379	0	7	0	6,286	0	312	38
1966	29,615	8,621	20,994	1	0	0	6,120	0	416	31

Table 16.--U.S. agricultural imports: Major countries of origin by commodity groups, specified calendar years - Continued

Country and year	Selected supplementary products									Other suppl. and comple. products
	Cane sugar	Durable cattle and meats <u>3/</u>	Fruits, nuts and vegetables	Fats, oils, oilbearing materials <u>4/</u>	Tobacco, unmf.	Apparel wool	Hides and skins <u>5/</u>	Grains and preps. <u>6/</u>	Dairy products <u>7/</u>	
-- 1,000 dollars --										
Rep. of S. Africa (32)										
Average 1960-64.	9,088	0	1,304	406	2	22,220	729	104	1	1,768
1962	10,718	0	985	1,183	0	28,079	738	450	2	1,323
1963	19,668	0	1,295	459	8	20,183	522	41	3	3,846
1964	14,966	0	2,503	75	4	22,079	715	.	0	1,685
1965	13,586	0	2,075	130	5	21,902	617	0	0	1,078
1966	7,676	0	2,089	1,461	0	22,622	612	0	0	1,562
El Salvador (33)										
Average 1960-64.	1,707	0	10	222	0	0	0	0	8/	1,698
1962	1,991	0	7	314	0	0	0	0	1	411
1963	2,200	0	18	125	0	0	0	0	0	614
1964	2,593	0	29	196	0	0	0	0	1	473
1965	2,379	19	23	109	0	0	0	0	0	707
1966	5,404	21	19	34	0	0	0	3	0	1,141
Japan (34)										
Average 1960-64.	8/	1,023	14,311	1,195	2	488	38	481	48	25,958
1962	8/	1,367	14,596	1,860	6	333	38	502	24	27,784
1963	1	1,155	14,409	1,861	8/	155	66	532	164	27,307
1964	1	1,171	16,871	1,421	1	24	7	622	40	19,037
1965	0	1,253	18,446	2,124	8/	32	47	560	2	13,932
1966	1	1,530	18,377	3,466	0	0	109	688	1	11,804
Nigeria (35)										
Average 1960-64.	0	0	8/	244	35	0	3,143	0	0	400
1962	0	0	0	616	8	0	2,541	0	0	368
1963	0	0	0	536	39	0	3,045	0	0	328
1964	0	0	0	0	127	0	3,159	0	0	497
1965	0	0	0	0	123	0	5,253	0	0	618
1966	0	0	4	2,004	167	0	4,807	0	0	426
Liberia (36)										
Average 1960-64.	0	0	0	0	0	0	2	0	0	8/
1962	0	0	0	0	0	0	1	0	0	0
1963	0	0	0	0	0	0	0	0	0	8/
1964	0	0	0	0	0	0	10	0	0	0
1965	0	0	0	0	0	0	3	0	0	0
1966	0	0	0	0	0	0	0	0	0	0
Taiwan (37)										
Average 1960-64.	9,858	0	3,226	8/	0	0	8/	18	0	4,079
1962	11,938	0	8,520	0	0	0	0	19	0	4,024
1963	8,554	0	12,377	8/	0	0	0	13	0	4,748
1964	9,477	0	12,992	2	0	0	0	17	0	4,951
1965	6,706	5	17,948	3	0	139	0	21	0	5,749
1966	6,406	136	18,715	0	2	130	0	47	8/	4,661
Ceylon (38)										
Average 1960-64.	0	0	26	104	8/	0	2	8/	0	464
1962	0	0	8/	1	0	0	0	0	0	275
1963	0	0	17	3	0	0	0	3	0	495
1964	0	0	37	8/	8/	0	0	0	0	862
1965	0	18	140	1	0	0	0	0	0	1,268
1966	0	15	7	2	0	0	0	0	2	557
United Kingdom (39)										
Average 1960-64.	229	1,101	3,133	1,540	11	539	518	3,217	95	8,097
1962	599	2,419	3,235	1,544	11	515	450	3,671	77	7,747
1963	27	1,356	2,833	2,666	6	631	394	2,688	158	7,920
1964	23	96	3,489	506	4	617	381	3,436	108	8,224
1965	14	224	3,579	387	2	779	745	3,758	159	7,825
1966	142	339	2,250	503	5	1,103	1,042	4,579	1,841	11,243

Continued -

Table 16.--U.S. agricultural imports: Major countries of origin by commodity groups, specified calendar years - Continued

Country and year	Total	Complementary <sup>1/</sup>	Supplementary <sup>1/</sup>	Selected complementary products						
				Coffee	Crude rubber	Cocoa beans	Carpet wool	Bananas	Tea	Spices <sup>2/</sup>
-- 1,000 dollars --										
Ghana (40)										
Average 1960-64	50,243	50,154	89	530	2	49,102	0	0	0	8/
1962	49,426	49,426	0	1,096	1	48,127	0	0	0	0
1963	41,688	41,688	8/	364	0	41,291	0	0	0	0
1964	60,955	60,513	442	1,027	0	59,481	0	0	0	0
1965	44,623	43,708	915	781	0	42,733	0	0	0	0
1966	27,036	25,876	1,160	1,270	0	23,880	0	0	0	0
Nicaragua (41)										
Average 1960-64	25,077	12,211	12,866	9,122	0	29	0	862	0	0
1962	23,532	12,050	11,482	8,363	0	0	0	529	0	0
1963	31,245	14,215	17,030	9,556	0	33	0	1,351	0	0
1964	29,397	13,893	15,504	9,043	0	20	0	2,116	0	0
1965	31,084	17,206	13,878	13,937	0	0	0	893	0	0
1966	24,124	10,584	13,540	7,623	0	0	0	1,755	0	0
Uruguay (42)										
Average 1960-64	15,769	198	15,571	15	0	0	100	0	0	0
1962	18,529	166	18,363	0	0	0	108	0	0	0
1963	18,288	330	17,958	75	0	0	163	0	0	0
1964	9,191	78	9,113	0	0	0	6	0	0	0
1965	26,894	108	26,786	0	0	0	0	0	0	0
1966	22,900	133	22,767	0	0	0	1	0	0	0
Venezuela (43)										
Average 1960-64	19,505	18,768	737	14,880	0	3,029	0	53	0	236
1962	16,088	15,693	395	12,148	0	2,592	0	236	0	268
1963	19,628	17,503	2,125	13,548	0	3,142	0	6	0	119
1964	19,810	19,016	794	14,627	0	3,321	0	7	0	57
1965	17,713	16,321	792	13,452	28	1,967	0	17	0	87
1966	22,700	18,738	3,962	14,813	0	1,401	0	33	0	270
Ireland (44)										
Average 1960-64	23,074	1,193	21,881	0	0	0	1,038	0	9	0
1962	27,954	1,176	26,778	0	0	0	1,004	0	7	0
1963	29,128	1,066	28,062	0	0	0	848	0	9	0
1964	10,059	745	9,314	0	0	0	449	0	11	0
1965	7,967	1,357	6,610	0	0	0	963	0	24	0
1966	21,887	1,956	19,931	0	0	0	1,210	0	9	0
Belgium (45)										
Average 1960-64	9,709	1,603	8,106	8/	29	0	683	0	0	1
1962	10,235	1,063	9,172	8/	146	0	101	0	0	0
1963	10,619	2,393	8,226	0	0	0	1,357	0	0	1
1964	11,481	3,016	8,465	0	0	0	1,416	0	0	4
1965	10,921	1,847	9,074	8/	0	0	507	0	0	5
1966	21,334	1,076	20,258	0	0	0	1	0	0	30
Malagasy Rep. (46)										
Average 1960-64	14,557	13,743	814	4,058	5	17	4	0	0	7,385
1962	14,565	14,358	207	3,706	0	24	0	0	0	8,414
1963	16,417	14,462	1,955	5,586	0	42	0	0	0	6,162
1964	17,447	16,330	1,117	6,418	0	0	20	0	0	7,139
1965	27,932	26,385	1,547	14,003	50	6	0	0	0	8,742
1966	20,863	19,528	1,335	9,164	21	11	0	0	0	7,872
Yugoslavia (47)										
Average 1960-64	12,310	807	11,503	0	0	0	178	0	0	414
1962	12,447	1,079	11,368	0	0	0	153	0	0	405
1963	14,627	762	13,865	0	0	0	75	0	0	545
1964	15,876	434	15,442	0	0	0	33	0	0	230
1965	22,345	926	21,419	0	0	171	0	0	0	472
1966	20,170	662	19,508	0	0	0	22	0	0	273

Table 16--U.S. agricultural imports: Major countries of origin by commodity groups, specified calendar years - Continued

Country and year	Selected supplementary products								Other : suppl. : and : comple. : products	
	Cane sugar	Dutiable cattle and meats	Fruits, nuts and vegetables	Fats, oils, oilbearing materials	Tobacco, unmf.	Apparel wool	Hides and skins	Grains and preps.		Dairy products
	3/		4/			5/	6/	7/		
-- 1,000 dollars --										
<b>Ghana (40)</b>										
Average 1960-64.	0	0	0	89	0	0	8/	0	0	520
1962	0	0	0	0	0	0	0	0	0	202
1963	0	0	0	8/	0	0	0	0	0	33
1964	0	0	0	442	0	0	8/	0	0	5
1965	0	0	0	912	0	0	0	0	0	197
1966	0	0	0	1,160	0	0	0	0	0	726
<b>Nicaragua (41)</b>										
Average 1960-64.	4,654	5,695	37	2,099	0	0	3	8/	8/	2,576
1962	4,414	4,931	23	1,864	0	0	1	0	0	3,407
1963	6,278	7,945	24	2,181	0	0	1	0	0	3,876
1964	5,308	7,630	13	2,256	0	0	0	1	0	3,010
1965	4,848	6,323	37	1,959	38	0	0	0	0	3,049
1966	1,545	9,386	4	2,068	77	0	0	0	0	1,668
<b>Uruguay (42)</b>										
Average 1960-64.	0	4,696	31	8	8/	9,364	8	6	357	1,184
1962	0	5,549	0	0	0	11,624	8	0	269	971
1963	0	4,720	0	0	8/	11,302	2	0	583	1,443
1964	0	4,027	144	41	0	2,838	3	0	551	1,581
1965	0	5,064	3	179	27	19,823	6	4	513	1,270
1966	0	3,551	19	0	21	17,192	41	0	565	1,510
<b>Venezuela (43)</b>										
Average 1960-64.	402	0	92	142	3	0	3	8/	8/	665
1962	0	0	115	190	0	0	3	8/	0	536
1963	1,592	0	182	139	0	0	8/	2	0	898
1964	420	0	147	146	16	0	0	1	0	1,068
1965	326	0	351	63	0	0	7	6	0	1,409
1966	3,025	8/	250	91	0	0	5	13.	0	2,799
<b>Ireland (44)</b>										
Average 1960-64.	461	19,525	164	2	2	140	0	219	160	1,354
1962	1,113	23,966	129	1	0	199	0	174	237	1,124
1963	1,190	24,493	117	0	3	116	0	267	355	1,730
1964	0	6,916	387	0	6	153	0	287	156	1,694
1965	269	3,653	291	4	7	255	6	288	518	1,689
1966	690	16,549	200	1	6	154	45	231	681	2,111
<b>Belgium (45)</b>										
Average 1960-64.	478	19	1,404	251	8/	124	228	650	19	5,823
1962	784	1	1,380	290	8/	24	383	866	24	6,236
1963	809	26	1,454	181	0	231	234	563	3	5,760
1964	467	8	1,836	185	0	241	80	631	5	6,608
1965	557	7	2,157	337	16	58	115	464	36	6,662
1966	0	34	2,501	378	0	74	171	623	9,544	7,978
<b>Malagasy Rep. (46)</b>										
Average 1960-64.	592	0	153	0	3	0	3	0	0	2,337
1962	0	0	34	0	0	0	0	0	0	2,387
1963	1,923	0	24	0	0	0	0	0	0	2,680
1964	1,035	0	51	0	16	0	15	0	0	2,753
1965	1,237	0	162	0	148	0	0	0	0	3,584
1966	1,108	0	39	0	174	0	0	0	0	2,474
<b>Yugoslavia (47)</b>										
Average 1960-64.	0	2,213	533	318	4,985	8/	1	0	181	3,487
1962	0	2,066	483	373	4,505	0	0	0	223	4,239
1963	0	3,496	526	2	5,520	0	0	0	173	4,290
1964	0	4,585	411	3	6,995	1	0	0	203	3,415
1965	0	7,526	360	6	10,008	14	0	0	227	3,561
1966	0	6,091	345	0	8,816	21	0	0	317	4,285

Continued -



Table 16.--U.S. agricultural imports: Major countries of origin by commodity groups, specified calendar years -Continued

Country and year	Total	Complementary <u>1/</u>	Supplementary <u>1/</u>	Selected complementary products						
				Coffee	Crude rubber	Cocoa beans	Carpet wool	Bananas	Tea	Spices <u>2/</u>
-- 1,000 dollars --										
<b>Iran (48)</b>										
Average 1960-64	17,542	1,351	16,191	0	0	0	331	0	1	425
1962	15,039	1,123	13,916	0	0	0	152	0	0	362
1963	16,911	1,247	15,664	0	0	0	302	0	0	334
1964	20,142	1,469	18,673	0	0	0	365	0	0	560
1965	19,361	1,132	18,229	0	0	0	115	0	0	639
1966	19,707	1,757	17,950	0	0	0	75	0	0	813
<b>Cameroon (49)</b>										
Average 1960-64	6,179	5,992	187	3,215	152	2,276	0	0	<u>8/</u>	10
1962	6,441	6,071	370	2,971	0	2,776	0	0	0	49
1963	5,015	4,735	280	3,519	259	778	0	0	0	0
1964	8,898	8,613	285	7,101	201	829	0	0	1	0
1965	7,376	6,741	635	4,726	630	1,162	0	0	29	0
1966	19,435	18,950	485	13,681	221	4,885	0	0	29	0
<b>Jamaica (50)</b>										
Average 1960-64	14,750	1,476	13,274	46	0	296	0	16	0	895
1962	13,927	1,745	12,182	24	0	548	0	0	0	965
1963	17,641	1,632	16,009	1	0	391	0	69	0	985
1964	16,143	1,618	14,525	58	0	371	0	10	0	945
1965	13,334	1,615	11,719	10	0	636	0	0	0	685
1966	17,548	2,140	15,408	7	0	381	0	1	0	1,290
<b>L.A.F.T.A. <u>11/</u></b>										
Average 1960-64	1,235,447	813,383	422,064	692,675	291	30,714	28,831	38,255	425	2,091
1962	1,237,954	791,421	446,533	688,485	192	17,075	29,413	34,925	588	1,558
1963	1,274,258	759,164	515,094	629,919	260	36,510	28,749	39,610	396	1,123
1964	1,246,807	850,537	396,270	728,572	206	22,210	18,556	56,315	391	1,829
1965	1,203,274	743,279	459,995	618,375	224	24,410	18,899	56,130	572	3,388
1966	1,317,300	751,242	566,058	606,404	315	42,115	20,418	48,727	516	2,477
<b>E.E.C. <u>12/</u></b>										
Average 1960-64	235,377	29,919	205,458	59	55	14	5,284	<u>8/</u>	2,284	1,306
1962	232,069	26,179	205,890	33	149	41	3,440	0	3,712	1,194
1963	238,579	30,612	207,967	61	6	0	6,676	0	2,821	1,342
1964	257,899	35,170	222,729	96	<u>8/</u>	3	5,377	2	2,963	1,375
1965	269,917	32,393	237,524	20	6	2	1,811	10	2,492	1,598
1966	306,381	32,901	273,480	30	0	0	1,202	0	2,326	1,647
<b>E.P.T.A. <u>13/</u></b>										
Average 1960-64	103,013	12,029	90,984	72	19	45	5,829	2	322	23
1962	106,042	11,172	94,870	172	22	0	4,939	0	800	17
1963	115,757	13,594	102,163	70	6	0	8,505	0	315	25
1964	110,985	10,168	100,817	29	0	14	5,851	11	423	30
1965	128,160	10,308	117,852	175	153	1	6,454	0	312	62
1966	182,010	11,968	170,042	108	0	0	6,300	0	416	56

Table 16.--U.S. agricultural imports: Major countries of origin by commodity groups, specified calendar years - Continued

Country and year	Selected supplementary products									
	Cane sugar	Dutiable cattle and meats <sup>3/</sup>	Fruits, nuts and vegetables	Fats, oils, oilbearing materials <sup>4/</sup>	Tobacco, unmf'd.	Apparel Wool	Hides and skins <sup>5/</sup>	Grains and preps. <sup>6/</sup>	Dairy products <sup>7/</sup>	Other supple. and comple. products
-- 1,000 dollars --										
<b>Iran (48)</b>										
Average 1960-64..	0	0	3,799	53						
1962 .....	0	0	3,993	177	3	5,542	6,328	8/	2	1,058
1963 .....	0	0	4,765	37	2	4,049	5,609	8/	11	684
1964 .....	0	0	3,954	0	1	5,302	4,785	0	0	1,375
1965 .....	0	0	6,801	2	9	4,294	9,497	2	0	1,461
1966 .....	0	0	7,236	1	2	3,619	7,121	0	0	1,062
					6	2,580	7,226	2	0	1,768
<b>Cameroon (49)</b>										
Average 1960-64..	0	0	0	98	89	0	8/	0	0	339
1962 .....	0	0	0	357	13	0	0	0	0	275
1963 .....	0	0	0	104	176	0	0	0	0	179
1964 .....	0	0	0	31	254	0	0	0	0	481
1965 .....	0	0	0	0	631	0	0	0	0	198
1966 .....	0	0	0	0	484	0	0	0	0	135
<b>Jamaica (50)</b>										
Average 1960-64..	10,084	5	423	2	91	0	52	1	0	2,839
1962 .....	9,057	1	454	0	85	0	52	1	0	2,740
1963 .....	11,598	0	476	0	210	0	32	8/	0	3,879
1964 .....	10,714	23	460	0	161	0	32	6	0	3,363
1965 .....	8,655	8/	506	8/	182	0	39	1	0	2,620
1966 .....	13,130	1	487	63	90	0	31	0	0	2,067
<b>L.A.F.T.A. <sup>11/</sup></b>										
Average 1960-64..	149,449	94,044	63,671	30,015	3,495	21,855	6,679	1,082	8,317	63,518
1962 .....	156,532	114,090	57,071	32,169	2,463	23,664	7,264	882	7,648	63,937
1963 .....	207,399	109,245	68,248	29,075	5,098	26,950	6,373	1,448	7,672	76,183
1964 .....	128,203	71,696	83,661	27,055	8,199	20,531	5,826	1,856	9,414	62,287
1965 .....	136,942	100,269	85,373	27,834	7,193	40,711	6,738	1,536	10,155	64,525
1966 .....	177,626	121,815	122,008	27,650	7,493	40,411	9,593	1,381	8,579	79,772
<b>E.E.C. <sup>12/</sup></b>										
Average 1960-64..	2,222	32,704	28,213	13,497	1,348	2,434	8,276	4,246	19,646	113,789
1962 .....	1,449	34,392	28,638	15,259	1,114	1,939	8,352	3,803	19,457	109,097
1963 .....	5,466	33,201	28,231	10,941	1,257	1,734	8,449	2,837	19,054	116,503
1964 .....	832	28,324	28,995	12,714	1,260	2,600	9,880	5,800	21,760	135,918
1965 .....	1,449	33,242	27,316	16,371	1,233	3,824	7,056	5,146	23,335	145,006
1966 .....	8/	50,961	29,525	16,968	491	2,904	6,074	4,544	36,412	153,297
<b>E.F.T.A. <sup>13/</sup></b>										
Average 1960-64..	230	44,213	6,508	2,383	44	679	2,151	5,049	12,510	22,434
1962 .....	600	48,915	6,116	2,461	11	966	2,567	5,251	12,822	20,383
1963 .....	27	53,142	6,328	3,583	6	689	1,916	4,705	12,569	23,871
1964 .....	27	48,426	7,326	1,438	4	643	1,759	6,072	13,802	25,130
1965 .....	18	61,685	8,950	1,291	2	867	1,948	6,167	13,898	26,177
1966 .....	144	91,241	11,024	2,494	5	1,231	3,016	6,975	25,430	33,570

1/ Imports similar to agricultural commodities produced commercially in the United States and others that are interchangeable in use to any significant extent with such U.S. commodities are supplementary. All other commodities are complementary. 2/ Includes mainly pepper, vanilla beans, cassia and cassia vera, nutmegs, and caraway seed. 3/ Includes mainly beef and veal; pork; mutton, goat, and lamb; and poultry meat. 4/ Includes mainly coconut oil, castor oil, olive oil, palm oil, carnauba wax, cacao butter, tung oil, and palm kernel oil; also copra, sesame seed, poppy seed, and sunflower seed. Excludes essential and distilled oils. 5/ Includes mainly sheep and lamb skins; goat and kid skins; cattle hides; horses, colt, and ass hides; kip skins; and calf skins. 6/ Includes mainly barley, barley malt, wheat, wheat flour, rye, corn, rice and oats. 7/ Includes mainly cheese and casain. 8/ Less than \$500. 9/ Effective January 1, 1964. Includes the former Federation of Malaya and State of Singapore. 10/ Not separately classified prior to January 1, 1964. 11/ The Latin American Free Trade Association includes Argentina, Brazil, Chile, Colombia, Ecuador, Mexico, Paraguay, Peru, and Uruguay. Beginning 1966 also includes Venezuela. 12/ The European Economic Community (Common Market) includes the Netherlands, Belgium and Luxembourg, France, West Germany, and Italy. 13/ The European Free Trade Association includes the United Kingdom, Denmark, Switzerland, Sweden, Norway, Austria, and Portugal.



## SPECIAL in this issue

---

### EXPORTS COMPARED WITH PRODUCTION

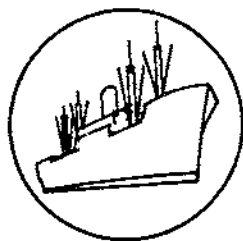
U.S. agricultural exports reached a new record of \$6.8 billion in the fiscal year that ended June 30, 1967. This is equivalent to 16 percent of cash receipts from farm marketings in the United States and represents the output of 1 out of 4 harvested acres. Some of the major commodities that contributed to rising farm exports are listed in table 17, along with the proportions of production which were shipped abroad. Significant increases in the percentage of output exported have taken place since 1962-64 for dried peas, cattle hides, rice, grain sorghums, tobacco, cotton, and flaxseed. The proportion of production moving into exports was somewhat less than the 1962-64 average for wheat, rye, soybeans, hops, nonfat dry milk, dry whole milk, lard, and variety meats. The remaining commodities in table 17 -- tallow, raisins, lemons and limes, barley, dried beans, and corn -- were the same or slightly above the 1962-64 average.

Over half of the dried peas, rice, cattle hides, and wheat produced in the United States was exported in the past fiscal year. From one-third to one-half of the hops, tallow, soybeans, grain sorghums, cotton, flaxseed, tobacco, and dried prunes was exported. Exported commodities accounting for one-tenth to one-third of production included raisins, lemons and limes, nonfat dry milk, dry whole milk, dry edible beans, rye, corn, barley, and variety meats.

Table 17.--U.S. agricultural exports of specified commodities compared with production: Quantity, fiscal years 1962-64 average, 1965, 1966, and 1967

Commodity	Unit	Production				Exports -- year ending June 30				Share of production exported year ending June 30			
		Average : 1961-63	1964	1965	1966	Average : 1962-64	1965	1966	1967 1/	Average : 1962-64	1965	1966	1967
		-- Million units --				-- Million units --				-- Percent --			
Dried edible peas	:Cwt.:	4.4	4.7	4.1	3.7	2.3	2.8	2.7	3.0	52	60	66	81
Rice (milled basis)	:Cwt.:	44.0	51.0	50.9	59.0	25.3	28.6	30.4	39.6	58	56	60	67
Cattle hides	:No.:	22.3	22.8	23.4	23.8	8.1	12.8	13.6	14.0	36	56	58	59
Wheat, incl. flour equiv.	:Bu.:	1,156.8	1,290.6	1,315.6	1,310.6	734.7	715.6	859.2	733.8	64	55	65	56
Cotton	:Bale:	14.8	15.2	15.0	9.6	4.5	4.5	5.1	4.6	30	30	21	48
Hops	:Lb.:	43.7	53.4	56.1	55.4	19.8	23.0	23.6	22.4	45	43	42	40
Tallow	:Lb.:	4,181.0	5,241.0	4,913.0	5,013.0	1,662.4	2,099.4	1,840.3	2,008.8	40	40	37	40
Grain Sorg' ms	:Bu.:	525.8	491.9	672.7	720.4	101.5	118.8	243.2	279.5	19	24	36	39
Soybeans 2/	:Bu.:	682.7	701.9	845.6	931.5	270.0	336.9	350.5	363.3	43	48	41	37
Dried prunes	:Lb.:	286.7	363.1	338.0	264.0	84.6	98.4	124.1	93.5	30	27	37	35
Tobacco (farm sales weight)	:Lb.:	2,240.2	2,227.3	1,854.6	1,847.3	574.9	551.0	536.3	627.3	26	25	29	34
Flaxseed	:Bu.:	28.5	24.4	35.4	23.9	3.1	6.5	5.2	7.5	11	27	15	31
Raisins	:Lb.:	453.3	460.0	544.0	556.0	109.4	113.6	126.9	132.8	24	25	23	24
Nonfat dry milk	:Lb.:	2,125.5	2,149.5	1,999.0	1,587.5	1,056.4	945.3	738.2	373.0	50	44	37	23
Lemons and limes	:Lb.:	1,239.9	1,155.2	1,269.0	1,363.6	199.7	196.6	264.3	261.4	16	17	21	19
Dried edible beans	:Cwt.:	19.8	17.8	16.5	20.3	3.2	3.1	2.8	3.6	16	17	17	18
Dried whole milk	:Lb.:	80.0	91.4	85.0	87.5	19.2	15.4	18.8	15.1	24	17	22	17
Rye, grain	:Bu.:	32.5	33.3	33.2	27.9	12.7	2.1	3.8	4.4	39	6	11	16
Corn, grain	:Bu.:	3,784.6	3,583.8	4,084.3	4,103.3	413.7	520.8	674.0	495.1	11	15	16	12
Barley, grain	:Bu.:	412.6	402.9	392.3	389.6	38.2	58.3	74.6	42.9	9	14	19	11
Variety meats	:Lb.:	1,996.0	2,219.0	2,143.0	2,212.0	230.7	226.3	206.9	231.6	12	10	10	10
Lard	:Lb.:	2,491.7	2,476.0	2,050.0	1,929.0	515.2	442.4	182.5	168.9	21	18	9	9

1/ Preliminary. 2/ Includes bean equivalent of soybean oil for export.



## Export Highlights

### U.S. AGRICULTURAL EXPORTS: JULY-AUGUST 1967

U.S. exports of farm products totaled \$948 million during July-August 1967, a decline of 11 percent from the \$1,061 million in July-August 1966 (table 18). Agricultural exports for July totaled \$472 million, 4 percent below those of July 1966. Grains and preparations were the principal contributors to the decline, although exports of tobacco were down slightly also. Somewhat offsetting these declines were increased exports of cotton, and oilseeds and products. Larger shipments of soybeans, cottonseed and soybean oil, and protein meal contributed to the increase in exports of oilseeds and products. Estimated exports in August followed somewhat the trend set in the month of July. August exports declined 17 percent from the total for the same month last year. The continuing decline in exports of grains and preparations, notably animals and animal products, feed grains, and tobacco accounted for the lower August exports.

Exports of animals and animal products were down 8 percent for July-August 1967, totaling \$107 million. Exports of dairy products dropped slightly (5 percent) to \$19 million from \$20 million in July-August 1966. The downward trend during 1966 in exports of processed dairy products appears to have about leveled. Other increases occurred in exports of fats, oils, and greases, partly offsetting the lower exports of dairy products, hides and skins, meat and meat products, and poultry products.

Cotton exports reached an estimated \$51 million in July-August 1967, down 12 percent from the value of cotton exports during the previous year. However, the higher level of cotton exports set during fiscal year 1966/67 is expected to continue through the remaining months of 1967, based on the anticipated consumption of cotton continuing at the near record highs in foreign Free-World countries and some rebuilding of cotton stocks abroad.

Grains and preparations continued to be the principal export commodity, although the total value of \$430 million for July-August 1967 was 18 percent below the total for July-August 1966. Among the feed grains, corn exports were down \$41 million from the same period a year earlier, and exports of barley increased.

Combined feed grains were down 22 percent or \$47 million from July-August 1966. Wheat and flour exports also dropped substantially, falling 17 percent to \$220 million in July-August 1967. Exports of rice totaled \$30 million, 19 percent below the same months of last year.

Oilseed and product exports rose 17 percent during July-August, reaching \$178 million. Soybean exports contributed substantially to the increase, rising to \$106 million, 38 percent above July-August 1966. Exports of cottonseed and soybean oils were down 12 percent, to \$22 million. Exports of protein meal were 34 percent higher than those during July-August 1966.

Table 18.--U.S. agricultural exports: Value by commodity,  
July-August 1966 and 1967

Commodity	July-August		Change
	1966	1967 <sup>1/</sup>	
	-- Million dollars --		Percent
<b>Animals and animal products:</b>			
Dairy products .....	20	19	-5
Fats, oils, and greases .....	32	34	+6
Hides and skins .....	24	18	-25
Meats and meat products .....	19	17	-11
Poultry products .....	10	9	-10
Other .....	11	10	-9
<b>Total animals, etc. ....</b>	<b>116</b>	<b>107</b>	<b>-8</b>
<b>Cotton, excluding linters .....</b>	<b>58</b>	<b>51</b>	<b>-12</b>
<b>Fruits and preparations .....</b>	<b>54</b>	<b>52</b>	<b>-4</b>
<b>Grains and preparations:</b>			
Feed grains, excluding products ...	211	164	-22
Rice, milled .....	37	30	-19
Wheat and flour .....	265	220	-17
Other .....	11	16	+45
<b>Total grains, etc. ....</b>	<b>524</b>	<b>430</b>	<b>-18</b>
<b>Oilseeds and products:</b>			
Cottonseed and soybean oils .....	25	22	+16
Soybeans .....	77	106	+38
Protein meal .....	29	39	+34
Other .....	21	11	-48
<b>Total oilseeds, etc. ....</b>	<b>152</b>	<b>178</b>	<b>+17</b>
<b>Tobacco, unmanufactured .....</b>	<b>86</b>	<b>54</b>	<b>-37</b>
<b>Vegetables and preparations .....</b>	<b>24</b>	<b>25</b>	<b>+4</b>
<b>Other .....</b>	<b>47</b>	<b>51</b>	<b>+9</b>
<b>Total exports .....</b>	<b>1,061</b>	<b>948</b>	<b>-11</b>

<sup>1/</sup> August estimated.

Among the remaining commodity group exports, fruits and preparations were down about 4 percent to \$52 million from \$54 million in July-August 1966. Tobacco exports also declined, falling 37 percent to \$54 million in July-August 1967. Exports of vegetables and preparations rose slightly; and for July-August 1967, were 4 percent higher than the \$24 million in July-August 1966.

Exports to the European Economic Community: July-June 1966/67

U.S. agricultural exports to the European Economic Community (EEC) totaled \$1,516 million in fiscal year 1966/67, 5 percent below the \$1,593 million in 1965/66 (table 19). However, for the 5-year period beginning in 1962/63, the last year was surpassed only by fiscal year 1965/66. In July 1962, the EEC instituted the system of variable levies against imports of feed grains, wheat and flour, poultry, eggs, pork (excluding variety meats), lard, and swine by EEC countries from nonmember countries. The EEC, which is the largest market for U.S. farm products, received 22 percent of total U.S. agricultural exports in 1966/67, compared with 23 percent in 1962/63. The United States' exports of farm products to the European Common Market were primarily dollar sales, and the EEC accounted for 28 percent of the U.S. foreign commercial market in 1966/67.

Exports of U.S. agricultural commodities to the EEC have expanded for both the commodities subject, and those not subject, to variable levies. However, in the past fiscal year, exports of those commodities subject to the variable levies of the EEC declined to \$545 million, down 26 percent from the \$737 million in 1965/66. The principal contributor to this decline was feed grains. There was \$368 million worth of feed grains exported in 1966/67, 32 percent below that of the previous fiscal year. In addition to this rather sharp drop, shipments of wheat, dairy products, and poultry products were down substantially. Partly offsetting the decline of these commodities was an increase in exports of rice, up 49 percent to \$22 million in 1966/67 and rye, which rose to nearly \$6 million. Among the poultry products, exports of broilers, fryers, and turkeys fell 26 percent to \$17 million.

Exports of non-variable-levy commodities in fiscal year 1966/67 totaled \$971 million, up 13 percent from the \$857 million in 1965/66. Soybeans continued to be the leading product among this group and for the year totaled \$294 million. In addition to the increase in soybean exports, shipments of oilcake and meal rose substantially, reaching \$154 million. In terms of both actual and percentage increases, exports of unmanufactured tobacco rose sharply, and in 1966/67 reached a total of \$154 million, 47 percent higher than the previous year. In addition to this substantial increase, exports of cotton rose substantially (56 percent) reaching \$84 million. Shipments of variety meats also rose, but less notably than the previously mentioned products. Among those products declining from 1965/66 were canned poultry, fruits and vegetables, hides and skins, tallow, and vegetable oils.

West Germany continued to be the largest recipient of agricultural exports from the United States. In fiscal year 1966/67, U.S. exports of farm products to West Germany reached a total value of \$494 million, 4 percent above fiscal year 1965/66. Among the variable-levy commodities, West German receipts of poultry products, and rice accounted for the largest shares of exports to the EEC. West Germany was the second largest market for feed grains and wheat. U.S. exports of variable-levy commodities to West Germany totaled \$136 million in 1966/67. This was 17 percent below that of 1965/66. Among the exports of non-variable commodities to West Germany, tobacco ranked first, followed by soybeans, oilcake and meal, fruits and vegetables, and cotton. West Germany accounted for the largest share of U.S. tobacco exports to the EEC and the second largest share of U.S. exports of soybeans. Exports of tobacco to West Germany totaled \$109 million, 66 percent higher than in 1965/66. The total value of U.S. exports of non-variable-levy commodities to West Germany in 1966/67 was \$358 million, 15 percent higher than those the previous year.

According to Bureau of Census data, the Netherlands ranked second among EEC recipients of U.S. agricultural exports. However, these data probably reflect some discrepancy, since the Netherlands is a major transshipping point for many U.S. agricultural exports. The major ports in the Netherlands serve as receiving points for U.S. agricultural exports ultimately destined for such countries as the United Kingdom, West Germany, France, and Eastern Europe. Total value of exports to the Netherlands in 1966/67 was \$474 million, and accounted for the largest share of variable-levy exports to the EEC. The principal farm products among the variable-levy commodities were feed grains, wheat, and rice. U.S. exports of feed grains to the Netherlands totaled \$152 million, down 15 percent from the \$179 million in 1965/66. Wheat exports declined 28 percent to \$30 million in 1966/67, while rice exports advanced 67 percent to \$6 million.

U.S. exports of farm products not subject to the EEC's variable levy totaled \$259 million in 1966/67. Among the non-variable-levy commodities exported to the Netherlands in 1966/67, soybeans accounted for the largest share and totaled \$106 million, about 41 percent of the total value of non-variable-levy commodities. Oilcake and meal exports ranked second among the non-variable-levy commodities, followed by tobacco, fruits and vegetables, and tallow.

U.S. agricultural exports to France totaled \$153 million in 1966/67, 7 percent higher than the \$142 million in 1965/66 and the highest in the past 5 years. Exports and commodities subject to the variable levies declined somewhat from 1965/66, falling \$3 million from \$29 million in 1965/66. This decline resulted from reduced exports of feed grains, wheat, and poultry products, although there were increased exports of rice during the year.

U.S. shipments of commodities not subject to the EEC's variable levies totaled \$127 million in 1966/67, 12 percent higher than those of 1965/66. Oilcake and meal exports accounted for the largest share of non-variable-levy commodities shipped to France and totaled \$39 million, slightly higher than in 1965/66. Cotton exports to France in 1966/67 were up substantially from those of 1965/66 and reached a total of \$21 million. In addition to the substantial increase in cotton exports, shipments of variety meats were also up considerably, rising 27 percent above the \$16 million in 1965/66. Other increases occurred in exports of fruits and vegetables, hides and skins, soybeans, and tobacco.

Agricultural exports to Italy from the United States totaled \$216 million in 1966/67, down 22 percent from the \$277 million in 1965/66. This decrease resulted from smaller exports of variable-levy commodities, which fell 52 percent from \$171 million in 1965/66 to \$81 million in 1966/67. Most of this decline was in feed grains, which in 1966/67 totaled \$66 million compared with \$154 million in 1965/66. In addition, wheat was down nearly \$1 million from 1965/66.

U.S. exports of non-variable-levy commodities to Italy totaled \$135 million in 1966/67, 27 percent higher than in 1965/66. This increase resulted primarily from larger exports of cotton, soybeans, oilcake and meal, fruits and vegetables, and hides and skins.

Exports to Belgium and Luxembourg in 1966/67 totaled \$179 million, down 2 percent from the \$183 million in 1965/66. All of this decline occurred in exports of variable-levy commodities, principally feed grains, wheat, and poultry. Exports of feed grains were down 21 percent from 1965/66, while wheat declined 1 percent. Increased exports of rice partly offset these declines and rose \$1.8 million to \$3.1 million in 1966/67. Exports of non-variable-levy commodities totaled \$93 million in 1966/67, 17 percent higher than in 1965/66. Substantial increases occurred in exports of soybeans, oilcake and meal, fruits and vegetables, cotton, tobacco, and variety meats.



Table 19.--U.S. agricultural exports to the European Economic Community: Value by commodity and country, 1962/63 through 1966/67

Commodity exported	Total EEC					Netherlands				
	Year ending June 30					Year ending June 30				
	1963	1964	1965	1966	1967 1/	1963	1964	1965	1966	1967 1/
-- 1,000 dollars --										
<b>Variable levy commodities:</b>										
Feed grains .....	273,709	277,655	377,238	536,987	367,694	120,219	121,154	141,649	179,192	152,446
Rice .....	13,028	15,569	9,817	14,911	22,255	2,143	6,677	1,656	3,618	6,041
Oya grain .....	24,160	8,080	1,753	2,834	5,528	7,331	6,081	466	1,543	3,167
Wheat grain .....	38,747	91,106	35,408	101,735	95,644	16,421	33,134	14,465	41,911	30,262
Wheat flour .....	3,203	2,896	1,553	1,209	1,562	1,725	1,831	1,490	1,107	1,484
Beef and veal (excluding variety meats) and cattle .....	111	599	2,066	1,818	890	7	42	376	301	22
Dairy products .....	7,091	40,744	44,280	18,482	1,245	1,678	18,206	16,032	16,301	193
Lard .....	2,568	2,703	1,170	1,231	1,189	88	207	54	28	25
Pork and swine (excluding variety meats) .....	383	10,200	520	1,250	414	63	3,665	89	121	107
<b>Poultry and eggs:</b>										
Live poultry .....	1,161	1,105	1,160	1,531	1,803	47	128	111	95	120
Broilers and fryers .....	13,143	12,671	7,038	6,484	3,108	3,011	3,097	1,231	1,516	425
Other chickens .....	4,405	7,772	4,558	1,359	1,943	698	930	830	359	162
Turkeys .....	7,905	9,595	12,823	16,595	14,021	1,037	2,279	1,668	2,732	1,006
Other fresh poultry .....	389	348	1,086	504	449	55	55	215	206	22
Eggs .....	2,824	2,466	1,671	2,354	1,203	153	26	115	183	50
Total poultry and eggs .....	29,827	33,957	28,336	28,827	22,527	5,001	5,515	4,170	5,091	1,779
Other .....	23,323	22,680	27,230	27,175	25,701	13,205	14,910	17,939	19,753	19,559
<b>Total</b> .....	<b>416,150</b>	<b>506,189</b>	<b>529,371</b>	<b>736,459</b>	<b>544,649</b>	<b>167,881</b>	<b>211,422</b>	<b>198,386</b>	<b>268,966</b>	<b>215,085</b>
<b>Non-variable levy commodities:</b>										
Canned poultry .....	1,572	2,986	3,864	2,925	2,663	26	61	106	165	45
Cotton, excluding linters .....	86,847	191,148	127,227	53,721	84,002	10,968	16,197	10,838	5,751	3,741
Fruits and vegetables .....	95,763	88,115	88,157	99,191	90,434	21,819	21,293	21,235	24,416	23,013
Hides and skins .....	16,610	23,623	27,844	31,159	22,369	8,285	9,815	11,462	13,914	5,537
Oilcake and meal .....	54,027	55,379	101,865	129,473	154,059	16,878	11,873	23,342	26,415	33,747
Soybeans .....	163,826	193,934	200,642	260,761	294,097	56,902	61,058	76,386	94,212	105,573
Tallow .....	22,926	32,691	35,396	36,277	30,473	5,211	11,715	13,509	16,784	13,952
Tobacco, unmanufactured .....	103,115	105,702	104,064	105,000	153,995	18,064	20,828	17,525	21,907	23,591
Variety meats .....	18,140	26,335	32,532	33,014	38,187	6,672	8,308	10,103	10,955	10,712
Vegetable oils, expressed .....	13,346	29,630	40,660	17,692	12,564	6,143	14,421	13,723	7,582	10,045
Food for relief or charity .....	9,964	8,535	5,348	2,118	3,784	13	139	43	184	0
Other .....	67,319	68,640	73,977	85,799	84,773	25,238	26,045	26,833	23,487	28,833
<b>Total</b> .....	<b>653,455</b>	<b>826,718</b>	<b>841,576</b>	<b>857,130</b>	<b>971,400</b>	<b>176,219</b>	<b>201,753</b>	<b>225,105</b>	<b>245,772</b>	<b>258,789</b>
<b>Total EEC</b> .....	<b>1,069,605</b>	<b>1,332,907</b>	<b>1,370,947</b>	<b>1,593,589</b>	<b>1,516,049</b>	<b>344,100</b>	<b>413,175</b>	<b>423,491</b>	<b>514,738</b>	<b>473,874</b>

Continued -

Table 19--U.S. agricultural exports to the European Economic Community: Value by commodity and country, 1962/63 through 1966/67 - Continued

Commodity exported	Belgium and Luxembourg					France				
	Year ending June 30					Year ending June 30				
	1963	1964	1965	1966	1967 1/	1963	1964	1965	1966	1967 1/
	-- 1,000 dollars --									
<b>Variable levy commodities:</b>										
Feed grains .....	48,237	50,167	56,327	89,714	71,039	1,786	1,251	6,572	4,798	3,223
Rice .....	1,803	1,960	1,706	1,332	3,089	504	634	878	2,336	3,519
Rye grain .....	185	184	0	123	170	0	0	0	0	0
Wheat grain .....	4,768	8,603	1,561	10,025	9,948	3,140	17,880	9,128	17,536	16,802
Wheat flour .....	39	45	21	19	24	35	12	11	38	22
Beef and veal (excluding variety meats) and cattle ..	8	91	34	80	24	96	448	539	987	223
Dairy products .....	458	7,190	7,723	312	156	354	58	15,028	70	25
Lard .....	176	343	53	45	328	1	8	0	0	0
Pork and swine (excluding variety meats) .....	9	706	303	32	145	10	5,189	83	1,033	107
Poultry and eggs:										
Live poultry .....	311	314	193	221	146	0	24	97	143	445
Broilers and fryers .....	5	2	3	16	8	3	23	6	36	21
Other chickens .....	55	10	3	18	17	8	25	8	10	22
Turkeys .....	66	56	125	173	160	5	15	7	17	2
Other fresh poultry .....	0	2	9	3	19	3	4	24	2/	2
Eggs .....	336	373	356	367	249	65	1	1	9	4
Total poultry and eggs .....	773	757	689	798	599	84	92	143	215	496
Other .....	2,254	691	1,005	877	783	2,806	1,087	3,066	1,987	1,509
<b>Total</b> .....	<b>58,710</b>	<b>70,737</b>	<b>69,422</b>	<b>103,357</b>	<b>86,305</b>	<b>8,816</b>	<b>26,659</b>	<b>35,448</b>	<b>29,000</b>	<b>25,926</b>
<b>Non-variable levy commodities:</b>										
Canned poultry .....	6	7	1	4	0	0	0	4	1	0
Cotton, excluding linters .....	9,905	19,018	13,849	5,866	6,515	25,171	48,676	28,696	15,320	21,083
Fruits and vegetables .....	12,575	14,845	13,635	14,582	15,796	10,151	14,166	12,522	16,224	18,783
Hides and skins .....	89	186	449	762	665	622	1,664	1,281	1,751	2,960
Oilcake and meal .....	7,365	7,901	15,654	12,824	16,142	15,307	18,090	28,015	38,185	39,337
Soybeans .....	12,984	16,357	19,271	24,452	28,567	7,944	10,097	7,792	6,257	6,518
Tallow .....	746	2,035	2,147	792	1,430	367	1,271	3,042	1,396	1,214
Tobacco, unmanufactured .....	8,768	10,662	9,007	10,490	14,699	4,384	4,048	4,175	4,142	4,730
Variety meats .....	581	833	1,435	1,419	1,793	4,475	9,358	13,927	15,871	20,088
Vegetable oils, expressed .....	65	882	1,356	234	91	73	164	675	945	889
Food for relief or charity .....	0	1	0	211	14	252	21	72	14	3
Others .....	7,697	7,019	6,839	7,765	7,078	6,987	8,078	10,050	13,295	11,180
<b>Total</b> .....	<b>60,781</b>	<b>79,746</b>	<b>83,643</b>	<b>79,491</b>	<b>92,790</b>	<b>75,733</b>	<b>115,633</b>	<b>110,251</b>	<b>113,401</b>	<b>126,785</b>
<b>Total EEC</b> .....	<b>119,491</b>	<b>150,483</b>	<b>153,065</b>	<b>182,758</b>	<b>179,095</b>	<b>84,549</b>	<b>142,292</b>	<b>145,699</b>	<b>142,401</b>	<b>152,711</b>

Continued -

- 47 -

Table 19--U.S. agricultural exports to the European Economic Community: Value by commodity and country, 1962/63 through 1966/67 - Continued

Commodity exported	West Germany					Italy				
	Year ending June 30					Year ending June 30				
	1963	1964	1965	1966	1967 1/	1963	1964	1965	1966	1967 1/
	-- 1,000 dollars --									
<b>Variable levy commodities:</b>										
Feed grains .....	50,892	50,470	66,390	109,681	74,771	52,575	54,613	106,300	153,602	66,215
Rice .....	8,531	6,296	5,575	7,623	9,597	47	2	2	2	9
Rye grain .....	16,442	1,815	1,287	1,168	2,191	202	0	0	0	0
Wheat grain .....	12,013	23,213	4,947	22,858	29,946	2,405	8,276	5,307	9,405	8,686
Wheat flour .....	17	23	17	28	14	1,387	985	14	17	18
Beef and veal (excluding variety meats) and cattle ...	2/	15	100	161	171	0	3	1,017	289	450
Dairy products .....	662	3,494	3,393	899	777	3,939	11,796	2,104	900	94
Lard .....	2,303	2,141	1,062	1,158	836	0	4	1	0	0
Pork and swine (excluding variety meats) .....	272	535	38	59	52	29	105	7	5	3
<b>Poultry and eggs:</b>										
Live poultry .....	7	111	52	30	47	796	528	707	1,042	1,045
Broilers and fryers .....	10,071	9,526	5,564	4,831	2,635	53	23	234	85	19
Other chickens .....	3,644	6,807	3,682	922	1,592	0	0	35	50	150
Turkeys .....	6,460	7,459	9,619	12,143	11,242	337	786	1,404	1,530	1,617
Other fresh poultry .....	331	264	805	265	361	0	23	33	30	45
Eggs .....	1,839	1,556	551	823	396	431	510	648	972	504
Total poultry and eggs ...	22,352	25,723	20,273	19,014	16,273	1,617	1,870	3,061	3,709	3,380
Other .....	2,743	3,333	2,414	1,314	1,379	2,315	2,659	2,806	3,244	2,471
<b>Total</b> .....	<b>116,227</b>	<b>117,058</b>	<b>105,496</b>	<b>163,963</b>	<b>136,007</b>	<b>64,516</b>	<b>80,313</b>	<b>120,619</b>	<b>171,173</b>	<b>81,326</b>
<b>Non-variable levy commodities:</b>										
Canned poultry .....	1,533	2,880	3,748	2,753	2,616	7	38	5	2	2
Cotton, excluding linters ...	13,969	52,191	32,822	12,749	20,334	26,834	55,066	41,022	14,035	32,329
Fruits and vegetables .....	45,494	32,217	36,126	39,257	27,173	5,724	5,594	4,639	4,712	5,669
Hides and skins .....	5,481	6,913	10,897	11,071	9,142	2,133	5,045	3,755	3,661	4,065
Oilcake and meal .....	9,796	8,356	24,575	38,825	46,779	4,681	9,159	10,279	13,224	18,054
Soybeans .....	57,790	74,608	65,343	91,667	102,344	28,206	31,814	31,850	44,173	51,095
Tallow .....	5,213	5,602	5,763	6,144	4,788	11,389	12,068	10,935	11,161	9,089
Tobacco, unmanufactured .....	58,314	67,853	66,048	66,055	109,376	13,585	2,311	7,309	2,406	1,599
Variety meats .....	6,403	7,427	7,011	4,716	5,569	9	409	56	53	25
Vegetable oils, expressed .....	6,285	13,240	23,897	8,674	1,113	780	923	1,009	257	426
Food for relief or charity ...	380	164	146	64	130	9,319	8,210	5,087	1,645	3,637
Others .....	21,116	21,633	24,555	30,546	28,933	6,281	5,865	5,700	10,706	8,749
<b>Total</b> .....	<b>231,774</b>	<b>293,084</b>	<b>300,931</b>	<b>312,521</b>	<b>358,297</b>	<b>108,948</b>	<b>136,502</b>	<b>121,646</b>	<b>106,035</b>	<b>134,739</b>
<b>Total EEC</b> .....	<b>348,001</b>	<b>410,142</b>	<b>406,427</b>	<b>476,484</b>	<b>494,304</b>	<b>173,464</b>	<b>216,815</b>	<b>242,265</b>	<b>277,208</b>	<b>216,065</b>

1/ Preliminary. 2/ Less than \$500.

Table 20.--U.S. agricultural exports: Quantity and value by commodity,  
July 1966 and 1967

Commodity exported	Unit	July 1/			
		Quantity		Value	
		1966	1967	1966	1967
		Thousands	Thousands	1,000 dollars	1,000 dollars
<b>ANIMALS AND ANIMAL PRODUCTS</b>					
<b>Animals, live:</b>					
Cattle .....	No.	2	3	723	1,275
Poultry, live -					
Baby chicks (chickens).....	No.	1,870	2,258	777	976
Other live poultry .....	---	2/	2/	186	256
Other .....	---	2/	2/	478	712
Total animals, live .....	---	---	---	2,164	3,219
<b>Dairy products:</b>					
Anhydrous milk fat, incl. donations..	Lb.	114	117	95	98
Butter, including donations .....	Lb.	25	33	15	24
Cheese, including donations .....	Lb.	510	527	309	316
Infants' and dietetic foods .....	Lb.	1,571	2,264	956	1,061
Milk and cream					
Condensed & evap., incl. donations:	Lb.	11,827	3,368	2,533	513
Dry, whole milk and cream .....	Lb.	1,208	709	335	165
Fresh .....	Gal.	124	84	185	123
Nonfat dry, including donations ..	Lb.	34,556	30,522	4,860	6,271
Other .....	---	2/	2/	765	513
Total dairy products .....	---	---	---	10,053	9,084
<b>Fats, oils, and greases:</b>					
Lard and other rendered pig fat ...	Lb.	10,166	19,607	1,208	1,905
Tallow -					
Edible .....	Lb.	326	270	42	24
Inedible (including grease) .....	Lb.	158,868	203,822	13,556	13,898
Other animal fats, oils, greases ..	Lb.	10,931	11,758	1,214	894
Total fats, oils, and greases ...	Lb.	180,291	235,457	16,020	16,721
<b>Meat and meat preparations:</b>					
Beef and veal (except offals) .....	Lb.	2,058	2,642	1,327	1,655
Pork (except offals) .....	Lb.	2,832	1,944	1,196	777
Offals, edible (variety meats) .....	Lb.	15,549	15,746	4,422	4,104
Sausage casings .....	Lb.	1,127	1,350	846	747
Other (including meat extracts) ...	Lb.	1,615	1,876	736	981
Total meats (except poultry) .....	Lb.	23,181	23,558	8,527	8,264
<b>Poultry products:</b>					
Eggs, dried and preserved .....	Lb.	240	167	227	131
Eggs in the shell, for hatching ...	Doz.	579	547	678	535
Eggs in the shell, other .....	Doz.	431	317	158	107
Poultry meat (whole or parts),					
fresh, chilled or frozen -					
Chickens .....	Lb.	7,956	6,731	2,174	1,575
Turkeys .....	Lb.	1,800	2,587	658	925
Other .....	Lb.	1,012	860	342	320
Poultry, canned and preserved, etc.:	Lb.	1,569	1,272	410	433
Total poultry products .....	---	---	---	4,647	4,026

Continued -

Table 20.--U.S. agricultural exports: Quantity and value by commodity,  
July 1966 and 1967 - Continued

Commodity exported	Unit	July 1/			
		Quantity		Value	
		1966	1967	1966	1967
		Thousands	Thousands	dollars	dollars
<b>Other animal products:</b>					
Feathers, etc., crude and dressed ...	Lb.	60	39	83	41
Gelatin, edible grade .....	Lb.	111	57	119	77
Hair, animal (except wool) .....	Lb.	420	367	120	100
Hides and skins (except furs) 3/...	No.	1,443	1,436	12,006	8,537
Honey, natural .....	Lb.	822	1,062	148	158
Wool, unmfed. (including fine hair)...	C.Lb.	1,472	280	1,170	252
Other .....	---	2/	2/	1,250	1,661
Total other animal products .....	---	---	---	14,896	10,826
Total animals and animal prods. ....	---	---	---	56,307	52,140
<b>VEGETABLE PRODUCTS</b>					
<b>Cotton, unmanufactured:</b>					
Cotton .....	RBale	143	228	18,311	27,197
Linters .....	RBale	18	20	549	823
Total cotton and linters .....	RBale	161	248	18,860	28,020
<b>Fruits and preparations:</b>					
<b>Canned (prepared or preserved) -</b>					
Fruit cocktail .....	Lb.	5,990	5,571	1,013	893
Peaches .....	Lb.	4,155	2,003	526	250
Pears .....	Lb.	198	154	39	30
Pineapples .....	Lb.	13,542	6,835	2,057	1,022
Other .....	Lb.	2,822	1,670	578	427
Total canned fruits .....	Lb.	26,707	16,233	4,213	2,622
<b>Dried -</b>					
Prunes .....	Lb.	6,696	5,377	1,440	1,244
Grapes (raisins) .....	Lb.	7,263	10,671	1,224	1,663
Other .....	Lb.	636	478	197	184
Total dried fruits .....	Lb.	14,595	16,526	2,861	3,091
<b>Fresh -</b>					
Apples .....	Lb.	3,539	6,262	359	630
Berries .....	Lb.	2,004	2,023	439	486
Grapefruit .....	Lb.	9,650	9,989	705	745
Grapes .....	Lb.	16,096	6,858	2,291	1,278
Lemons and limes .....	Lb.	29,198	33,692	2,258	2,889
Oranges and tangerines, etc. ....	Lb.	49,920	69,788	4,270	5,865
Pears .....	Lb.	2,887	70	292	13
Other .....	Lb.	62,351	58,091	4,551	4,644
Total fresh fruits .....	Lb.	175,645	186,773	15,165	16,550
<b>Fruit juices -</b>					
Grapefruit .....	Gal.	327	353	314	323
Orange .....	Gal.	885	1,448	1,462	1,808
Other .....	Gal.	946	1,206	987	949
Total fruit juices .....	Gal.	2,158	3,007	2,763	3,080
Frozen fruits .....	Lb.	1,153	524	218	112
Other .....	---	2/	2/	363	273
Total fruits and preparations ....	---	---	---	25,583	25,728

Continued -

Table 20.--U.S. agricultural exports: Quantity and value by commodity,  
July 1966 and 1967 - Continued

Commodity exported	Unit	July 1/			
		Quantity		Value	
		1966	1967	1966	1967
		Thousands	Thousands	dollars	dollars
<b>Grains and preparations:</b>					
Feed grains and products -					
Barley (48 lb.) .....	Bu.	2,710	7,774	3,351	9,456
Corn, incl. donations (56 lb.) ...	Bu.	43,118	27,582	62,009	38,505
Grain sorghums (56 lb.) .....	Bu.	18,648	25,014	22,547	32,768
Oats (32 lb.) .....	Bu.	3,626	2,739	2,688	2,118
Total feed grains .....	M. Ton:	1,681	1,545	90,595	82,847
Malt, etc. (incl. barley malt) ...	Lb.	10,925	5,493	674	386
Corn grits and hominy .....	Lb.	4,970	3,263	251	143
Corn meal, including donations ...	Cwt.	199	479	810	2,214
Corn starch .....	Lb.	6,225	5,881	683	652
Oat meal, groats, etc. ....	Lb.	96	1,144	14	333
Total feed grains and products ..	M. Ton:	1,713	1,596	93,027	86,575
Rice -					
Milled, including donations .....	Lb.	403,362	221,534	30,514	17,534
Paddy or rough .....	Lb.	1,303	1,757	125	155
Total rice (milled basis) .....	Lb.	404,209	222,676	30,639	17,689
Rye (56 lb.) .....	Bu.	91	384	137	512
Wheat and prods. incl. donations -					
Wheat (60 lb.) .....	Bu.	63,997	57,701	107,913	101,607
Wheat flour, wholly of U.S. ....	Cwt.	2,950	935	12,815	3,750
Other wheat products .....	Bu.	368	1,196	1,029	2,714
Total wheat and wheat products ..	Bu.	71,092	61,028	121,757	108,071
Bakery products .....	Lb.	1,233	1,262	794	550
Other, including donations .....	---	2/	2/	1,047	1,021
Total grains and preparations ...	---	---	---	247,401	214,418
<b>Oilseeds and products:</b>					
Oils, including donations -					
Cottonseed oil .....	Lb.	4,015	6,322	675	885
Soybean oil .....	Lb.	62,845	101,663	9,041	12,512
Other .....	Lb.	29,048	15,808	3,735	2,481
Total oils (except essential) ..	Lb.	95,908	123,793	13,451	15,878
Oilseeds -					
Flaxseed (56 lb.) .....	Bu.	523	843	1,666	2,571
Soybeans (60 lb.) .....	Bu.	12,086	16,816	40,705	49,570
Other .....	---	2/	2/	776	854
Total oilseeds .....	---	---	---	43,147	52,995
Oil-cake and meal .....	S. Ton:	139	229	12,430	19,690
Total oilseeds and products .....	---	---	---	69,028	88,563
<b>Tobacco, unmanufactured:</b>					
Burley .....	Lb.	4,852	5,367	4,023	4,460
Cigar wrapper .....	Lb.	370	315	955	1,000
Dark-fired Kentucky and Tennessee	Lb.	1,324	1,465	701	808
Flue-cured .....	Lb.	33,835	20,723	28,553	17,574
Maryland .....	Lb.	1,734	827	1,490	667
Other .....	Lb.	2,086	2,728	889	834
Total tobacco, unmanufactured ...	Lb.	44,201	31,425	36,611	25,343

Continued -

Table 20.--U.S. agricultural exports: Quantity and value by commodity,  
July 1966 and 1967 - Continued

Commodity exported	Unit	July 1/			
		Quantity		Value	
		1966	1967	1966	1967
		Thousands	Thousands	1,000 dollars	1,000 dollars
<b>Vegetables and preparations:</b>					
Canned (prepared or preserved) -					
Asparagus	Lb.	5,190	2,764	1,811	738
Corn	Lb.	460	786	86	144
Soups	Lb.	1,629	1,917	339	408
Tomatoes, sauce, puree, etc.	Lb.	1,154	1,236	203	225
Other	Lb.	4,943	2,348	711	404
Total canned vegetables	Lb.	13,376	9,051	3,150	1,919
Dried beans, including donations	Lb.	10,716	29,798	958	2,166
Dried peas, incl. cow and chick	Lb.	21,128	11,386	1,408	771
Fresh -					
Lettuce	Lb.	3,747	6,482	268	469
Onions	Lb.	9,129	18,663	447	764
Potatoes (except sweet potatoes)	Lb.	54,115	82,238	1,349	2,334
Tomatoes	Lb.	13,537	8,486	1,670	1,257
Other	Lb.	18,497	30,258	1,501	1,887
Total fresh vegetables	Lb.	99,025	146,127	5,235	6,711
Frozen vegetables	Lb.	1,940	894	364	222
Soups and vegetables, dehydrated	Lb.	2,653	1,973	910	699
Tomato juice, canned	Gal.	96	99	89	113
Vegetable seasonings	Lb.	302	384	160	271
Other		2/	2/	1,310	1,352
Total vegetables and preps.				13,584	14,224
<b>Other vegetable products:</b>					
Coffee	Lb.	1,775	1,650	1,460	1,377
Drugs, herbs, roots, etc.	Lb.	634	589	407	493
Essential oils and resinoids	Lb.	812	1,062	1,932	1,874
Feeds, etc. (except oil-cake)		2/	2/	8,232	7,352
Flavoring sirups, sugars, etc.		2/	2/	2,826	3,218
Hops	Lb.	729	328	468	183
Nursery stock		2/	2/	429	555
Nuts and preparations	Lb.	6,968	13,269	1,591	2,301
Seeds (except oilseeds)	Lb.	6,586	4,064	1,540	1,210
Spices	Lb.	510	508	340	359
Other, including donations		2/	2/	3,322	4,937
Total other vegetable products				22,547	23,859
Total vegetable products				433,614	420,155
TOTAL AGRICULTURAL EXPORTS				489,921	472,295
TOTAL NONAGRICULTURAL EXPORTS				1,907,493	1,654,951
TOTAL EXPORTS, ALL COMMODITIES				2,397,404	2,127,246

1/ Preliminary.

2/ Reported in value only.

3/ Excludes the number of "other hides and skins," reported in value only.

Table 21.--U.S. agricultural imports for consumption: Quantity and value by commodity, July 1966 and 1967

Commodity imported SUPPLEMENTARY	Unit:	July 1/			
		Quantity		Value	
		1966	1967	1966	1967
		Thousands	Thousands	1,000 dollars	1,000 dollars
<b>ANIMALS AND ANIMAL PRODUCTS</b>					
<u>Animals, live:</u>					
Cattle (durable) .....	No.	28	18	2,819	1,695
Cattle for breeding (free) .....	No.	1	1	503	444
Horses .....	No.	2/	2/	852	390
Other (including live poultry) .....	---	3/	3/	236	356
Total animals, live .....	---	---	---	4,410	2,885
<u>Dairy products:</u>					
Blue-mold cheese .....	Lb.	225	252	115	136
Cheddar .....	Lb.	359	3	144	1
Colby .....	Lb.	4,901	5,622	1,273	1,641
Edam and Gouda .....	Lb.	477	499	214	228
Pecorino .....	Lb.	598	1,040	424	577
Swiss .....	Lb.	1,642	1,529	838	854
Other .....	Lb.	1,512	3,082	752	1,298
Total cheese .....	Lb.	9,714	12,027	3,760	4,735
Butter .....	Lb.	25	23	7	12
Casein or lactarene .....	Lb.	12,561	9,355	3,185	2,450
Other 4/ .....	---	3/	3/	4,791	1,446
Total dairy products .....	---	---	---	11,743	8,643
<u>Hides and skins (ex. furs):</u>					
Calf skins .....	Lb.	170	234	134	141
Cattle hides .....	Lb.	458	774	130	100
Goat and kid skins .....	Lb.	1,198	909	1,176	963
Sheep and lamb skins .....	Lb.	4,905	4,898	3,827	2,382
Other 5/ .....	Lb.	2,164	2,370	1,527	1,180
Total hides and skins .....	Lb.	8,895	9,185	6,794	4,766
<u>Meat and meat preparations:</u>					
Beef and veal -					
Fresh, chilled, or frozen .....	Lb.	56,787	85,887	22,789	34,992
Other .....	Lb.	10,828	12,500	4,600	5,044
Total beef and veal .....	Lb.	67,615	98,387	27,389	40,036
Mutton, goat, and lamb .....	Lb.	5,784	3,735	1,697	1,029
Pork -					
Fresh, chilled, or frozen .....	Lb.	3,170	4,141	1,327	1,692
Hams and shoulders, canned, etc. .....	Lb.	14,317	17,692	11,240	13,261
Other .....	Lb.	4,471	3,718	2,638	1,885
Total pork .....	Lb.	21,958	25,551	15,205	16,838
Sausage casings .....	---	3/	3/	1,939	1,806
Other (incl. extracts) .....	Lb.	7,727	8,396	2,130	1,887
Total meats (except poultry) .....	---	---	---	48,360	61,596
<u>Poultry products:</u>					
Eggs, dried and otherwise preserved .....	Lb.	369	5	55	2
Eggs in the shell .....	Doz.	191	116	147	170
Poultry meat .....	Lb.	6	10	31	35
Total poultry products .....	---	---	---	233	207

Continued -



Table 21.--U.S. agricultural imports for consumption: Quantity and value by commodity, July 1966 and 1967 - Continued

Commodity imported SUPPLEMENTARY	Unit	July 1/			
		Quantity		Value	
		1966	1967	1966	1967
				1,000	1,000
		Thousands	Thousands	dollars	dollars
<b>Other animal products:</b>					
Bones, hoofs, and horns .....	---	3/	3/	365	377
Bristles, crude or prepared .....	Lb.	409	140	1,239	521
Fats, oils, and greases .....	Lb.	577	1,661	61	89
Feathers and down, crude and sorted..	Lb.	299	335	404	463
Gelatin, edible .....	Lb.	605	603	351	376
Hair, unmanufactured .....	Lb.	989	499	660	540
Honey .....	Lb.	781	1,329	74	123
Wool, unmf. (except free in bond)..	G.Lb.	12,974	9,784	8,444	5,434
Other .....	---	3/	3/	1,203	1,353
Total other animal products .....	---	---	---	12,801	9,276
Total animals and animal prods. ....	---	---	---	84,341	87,373
<b>VEGETABLE PRODUCTS</b>					
<b>Cotton, unmanufactured (480 lb.):</b>					
Cotton .....	Bale:	2	4	187	444
Linters .....	Bale:	18	14	406	495
Total cotton and linters .....	Bale:	20	18	593	939
<b>Fruits and preparations:</b>					
Apples, fresh .....	Lb.	1,364	845	82	50
Strawberries .....	Lb.	6,306	6,112	1,122	1,077
Other berries .....	Lb.	3,565	4,909	785	953
Cherries .....	Lb.	2,065	3,568	530	959
Dates .....	Lb.	0	227	0	22
Figs .....	Lb.	1,027	1,380	98	103
Grapes .....	Qu.Ft.	0	24	0	59
Melons .....	Lb.	130	391	2	16
Olives in brine .....	Gal.	1,355	952	2,365	2,444
Oranges, mandarin, canned .....	Lb.	5,946	6,539	1,194	1,235
Oranges, other .....	Lb.	2,329	181	121	13
Pineapples, canned, or preserved ...	Lb.	17,315	17,396	1,926	1,929
Pineapple juice .....	Gal.	50	262	20	63
Other .....	---	3/	3/	1,307	1,187
Total fruits and preparations .....	---	---	---	9,552	10,110
<b>Grains and preparations:</b>					
Barley grain (48 lb.) .....	Bu.	51	620	62	793
Barley malt .....	Cwt.	39	39	200	195
Corn grain (56 lb.) .....	Bu.	3	6	20	17
Oats grain (32 lb.) .....	Bu.	170	111	141	100
Rice .....	Lb.	14	46	2	9
Rye grain (56 lb.) .....	Bu.	186	43	233	52
Wheat grain (60 lb.) .....	Bu.	255	0	498	0
Wheat flour .....	Cwt.	0	0	0	0
Biscuits, cakes, wafers, etc. ....	Lb.	3,371	3,471	1,245	1,221
Bread, yeast-leavened .....	Lb.	1,027	1,343	127	211
Other .....	---	3/	3/	306	430
Total grains and preparations .....	---	---	---	2,834	3,028

Continued -

Table 21.--U.S. agricultural imports for consumption: Quantity and value by commodity, July 1966 and 1967 - Continued

Commodity imported SUPPLEMENTARY	Unit	July 1/			
		Quantity		Value	
		1966	1967	1966	1967
<b>Nuts and preparations:</b>				1,000	1,000
		Thousands	Thousands	dollars	dollars
Almonds .....	Lb.	54	18	36	6
Brazil nuts .....	Lb.	4,495	1,062	1,226	323
Cashew nuts .....	Lb.	4,974	5,828	2,748	2,882
Coconut meat, fresh, or preserved ..	Lb.	7,313	5,437	915	657
Pistache nuts .....	Lb.	985	1,887	522	1,267
Other .....	---	3/	3/	242	266
Total nuts and preparations .....	---	---	---	5,689	5,401
<b>Oilseeds and products:</b>					
<b>Oils, crude or refined-</b>					
Cocoa butter .....	Lb.	1,184	1,704	504	923
Carnauba wax .....	Lb.	1,131	692	388	229
Castor oil .....	Lb.	6,473	5,162	657	678
Coconut oil .....	Lb.	10,282	24,057	1,044	2,649
Olive oil, edible .....	Lb.	4,463	4,071	1,351	1,330
Palm oil .....	Lb.	2,851	0	264	0
Palm kernel oil .....	Lb.	11,713	9,034	1,577	1,037
Tung oil .....	Lb.	3,481	893	629	99
Other .....	Lb.	2,874	2,984	541	576
Total oils (except essential) ..	Lb.	44,452	48,597	6,955	7,521
<b>Oilseeds -</b>					
Copra .....	Lb.	68,822	49,567	5,083	3,733
Sesame seed .....	Lb.	1,557	3,040	248	500
Other .....	---	3/	3/	110	161
Total oilseeds .....	---	---	---	5,441	4,394
Oilcake and meal .....	Lb.	9,421	7,161	272	224
Total oilseeds and products .....	---	---	---	12,668	12,139
<b>Sugar and related products:</b>					
Sugar, cane or beet .....	S.Ton	509	503	61,783	63,781
Molasses unfit for consumption .....	Gal.	40,898	32,335	4,653	4,090
Other .....	---	3/	3/	266	908
Total sugar and related products .....	---	---	---	66,702	68,779
<b>Vegetables and preparations:</b>					
<b>Fresh, chilled, or frozen -</b>					
Cucumbers .....	Lb.	107	21	8	3
Garlic .....	Lb.	338	1,765	42	243
Onions .....	Lb.	1,517	1,477	117	207
Potatoes, white or Irish .....	Cwt.	7	24	22	63
Tomatoes .....	Lb.	1,405	4,969	181	557
Turnips or rutabagas .....	Cwt.	0	5	0	12
<b>Prepared or preserved -</b>					
Cassava, tapioca, flour, etc. ....	Lb.	26,238	20,276	869	730
Mushrooms .....	Lb.	1,577	1,810	834	994
Pickled vegetables .....	Lb.	702	1,209	113	248
Tomatoes, tomato paste and sauce ..	Lb.	4,331	11,392	487	1,279
Other .....	---	3/	3/	1,935	2,738
Total vegetables and preparations .....	---	---	---	4,608	7,074

Continued -

Table 21.--U.S. agricultural imports for consumption: Quantity and value by commodity, July 1966 and 1967 - Continued

Commodity imported SUPPLEMENTARY	Unit	July 1/			
		Quantity		Value	
		1966	1967	1966	1967
				1,000	1,000
		Thousands	Thousands	dollars	dollars
<b>Other vegetable products:</b>					
Feeds (except oil-cake), etc. ....	3/	3/		1,119	1,224
Hops .....	Lb. : 3	3	3	2	2
Jute and jute butts, unmanufactured. :L.Ton:	3	1		807	205
Malt liquors (ale, porter, and beer):Gal.:	2,157	1,950		2,395	2,078
Nursery and greenhouse stock .....	3/	3/		42	44
Seeds, field and garden .....	3/	3/		1,103	811
Spices .....	Lb. : 4,117	4,359		425	518
Tobacco, unmanufactured .....	Lb. : 13,877	14,942		9,920	9,724
Wines .....	Gal. : 1,101	1,267		4,860	5,851
Other .....	3/	3/		1,156	1,129
Total other vegetable products .....				21,859	21,586
Total vegetable products .....				124,505	129,056
<b>TOTAL SUPPLEMENTARY IMPORTS .....</b>				<b>208,846</b>	<b>216,429</b>
<b>COMPLEMENTARY</b>					
Bananas, fresh .....	Lb. : 264,763	237,937		12,823	10,829
Coffee .....	Lb. : 207,863	231,477		74,629	80,609
Coffee extracts, essences, etc. ....	Lb. : 874	3,167		924	2,277
Cocoa beans .....	Lb. : 45,410	36,877		9,290	8,837
Cocoa and chocolate .....	Lb. : 10,619	9,667		1,115	1,485
Drugs, herbs, roots, etc. ....	3/	3/		1,924	1,921
Essential or distilled oils .....	3/	3/		2,076	2,303
Fibers, unmanufactured .....	L.Ton: 10	8		1,863	1,446
Rubber, crude (natural) .....	Lb. : 58,113	52,132		11,338	8,779
Silk, raw .....	Lb. : 319	160		2,102	1,205
Spices .....	Lb. : 7,114	8,713		3,719	2,740
Tea .....	Lb. : 8,446	10,476		3,512	3,970
Wool, unmanufactured (free in bond) ..	G.Lb: 15,556	8,254		7,780	3,235
Other complementary agric. products .....	3/	3/		640	747
<b>TOTAL COMPLEMENTARY IMPORTS .....</b>				<b>133,735</b>	<b>130,383</b>
<b>TOTAL AGRICULTURAL IMPORTS .....</b>				<b>342,581</b>	<b>346,812</b>
<b>TOTAL NONAGRICULTURAL IMPORTS .....</b>				<b>1,708,703</b>	<b>1,769,149</b>
<b>TOTAL IMPORTS, ALL COMMODITIES .....</b>				<b>2,051,284</b>	<b>2,115,961</b>

1/ Preliminary.

2/ Less than 500.

3/ Reported in value only.

4/ Includes data for "articles containing over 20% by weight of butterfat" previously included in other vegetable preparations.

5/ Excludes the weight of "other hides and skins," reported in pieces only.

Table 22.— U. S. agricultural exports and imports (for consumption): Value by country, July 1967

Country	Agricultural				Country	Agricultural			
	Exports	Imports				Exports	Imports		
		Total	Complementary	Supplementary			Total	Complementary	Supplementary
-- Thousand dollars --					-- Thousand dollars --				
Greenland .....	0	0	0	0	Finland .....	823	162	0	162
Canada .....	46,771	15,456	1,087	14,369	Denmark .....	5,270	8,567	84	8,483
Miquelon and St. Pierre Is. ..	0	0	0	0	United Kingdom .....	20,181	2,036	712	1,324
<b>Latin American Republics:</b>					Ireland .....	1,119	2,772	318	2,454
Mexico .....	5,248	18,523	6,029	12,494	Netherlands .....	39,196	6,122	1,002	5,120
Guatemala .....	1,244	2,688	1,284	1,404	Netherlands and Luxembourg .....	11,959	1,673	2	1,671
El Salvador .....	212	1,688	888	800	Belgium .....	0	0	0	0
Honduras .....	471	3,225	3,037	188	Unidentified W. Europe 1/ ..	0	0	0	0
Nicaragua .....	303	4,369	2,363	2,006	France .....	9,337	5,712	719	5,003
Costa Rica .....	1,858	5,634	4,843	791	West Germany .....	24,220	3,018	208	2,810
Panama .....	1,556	3,567	2,879	688	East Germany .....	1,206	1	1	0
Cuba .....	0	70	0	70	Austria .....	294	157	18	139
Haiti .....	496	773	535	238	Czechoslovakia .....	113	191	16	175
Dominican Republic .....	2,227	13,904	1,808	12,096	Hungary .....	76	43	2	41
Colombia .....	2,695	16,029	14,603	1,426	Switzerland .....	4,780	1,387	290	1,097
Venezuela .....	6,248	2,518	904	1,614	Estonia .....	0	0	0	0
Ecuador .....	930	6,030	5,116	914	Latvia .....	0	0	0	0
Peru .....	2,936	9,031	2,998	6,033	Lithuania .....	0	0	0	0
Bolivia .....	1,533	308	233	75	Poland and Danzig .....	2,768	4,740	19	4,721
Chile .....	2,393	197	0	197	U.S.S.R. (Russia) .....	771	76	0	76
Brazil .....	14,141	44,924	32,280	12,644	Azores .....	3	0	0	0
Paraguay .....	3	600	13	587	Spain .....	10,210	4,137	89	4,048
Uruguay .....	50	396	9	387	Portugal .....	735	725	30	695
Argentina .....	174	7,572	1,038	6,534	Gibraltar .....	0	0	0	0
Total L. A. Republics .....	44,720	142,046	80,860	61,186	Malta and Gozo .....	49	0	0	0
<b>Other Latin America:</b>					Italy .....	17,066	5,021	804	4,217
British Honduras .....	201	71	39	32	Yugoslavia .....	10,639	1,624	12	1,612
Canal Zone .....	0	0	0	0	Albania .....	0	11	11	0
Bermuda .....	540	1	0	1	Greece .....	1,970	2,471	10	2,461
Bahamas .....	1,724	3 2/	0	3	Romania .....	63	58	0	58
Jamaica .....	2,056	2,638	56	2,582	Bulgaria .....	801	75	2/	75
Leeward and Windward Is. ...	233	63	28	35	Turkey .....	1,984	5,199	99	5,100
Barbados .....	174	144	0	144	Cyprus .....	72	35	0	35
Trinidad and Tobago .....	986	161	137	24	<b>Total Europe .....</b>	<b>172,895</b>	<b>56,516</b>	<b>4,450</b>	<b>52,066</b>
Netherlands Antilles .....	899	0	0	0	<b>Asia:</b>				
French West Indies .....	191	546	0	546	Syrian Arab Republic .....	0	66	20	46
Guyana .....	320	13	13	0	Lebanon .....	386	345	105	240
Surinam .....	246	146	141	5	Iraq .....	190	27	21	6
French Guiana .....	25	0	0	0	Iran .....	421	2,182	25	2,157
Falkland Islands .....	0	0	0	0	Israel .....	2,791	23	0	23
<b>Total Latin America .....</b>	<b>52,275</b>	<b>145,832</b>	<b>81,274</b>	<b>64,558</b>	Jordan .....	255	0	0	0
<b>Europe:</b>					Caza Strip .....	1	0	0	0
Iceland .....	228	27	0	27	Kuwait .....	342	0	0	0
Sweden .....	1,918	249	1	248	Saudi Arabia .....	1,126	0	0	0
Norway .....	5,044	217	3	214	Arabia Pen. States, n.s.c.: ..	72	75	52	23
					Aden .....	68	0	0	0
					Bahrain .....	99	0	0	0

Continued -

Table 22-- U. S. agricultural exports and imports (for consumption): Value by country,  
July 1967 - Continued

Country	Agricultural				Country	Agricultural			
	Exports	Imports				Exports	Imports		
	Total	Comple- mentary	Supple- mentary		Total	Comple- mentary	Supple- mentary		
<b>Asia - Continued:</b>					<b>Africa - Continued:</b>				
-- Thousand dollars --					-- Thousand dollars --				
Afghanistan .....	37	46	0	46	Spanish Africa, n.e.c. ....	13	0	0	0
India .....	42,798	4,911	888	4,023	Mauritania .....	0	0	0	0
Pakistan .....	14,964	448	108	340	Federal Rep. of Cameroon ..	50	3,268	3,132	136
Nepal .....	2/	17	0	17	Senegal .....	17	0	0	0
Ceylon .....	77	2,272	2,272	0	Guinea .....	2/	95	91	4
Burma .....	0	16	0	16	Sierra Leone .....	189	24	24	0
Thailand .....	1,669	1,189	522	667	Ivory Coast .....	1,094	2,074	2,071	3
North Viet-Nam .....	0	0	0	0	Ghana .....	1,938	670	116	554
South Viet-Nam .....	4,767	30	3	27	The Gambia .....	10	0	0	0
Laos .....	44	0	0	0	Togo .....	90	0	0	0
Cambodia .....	9	4	4	0	Nigeria .....	610	6,182	5,197	985
Malaysia .....	1,095	2,695	2,488	207	Central African Republic ..	0	0	0	0
Singapore .....	867	235	199	36	Gabon .....	9	0	0	0
Indonesia .....	38	9,045	8,919	126	Western Africa, n.e.c. ....	55	373	25	348
Philippines .....	13,608	28,320	456	27,864	British West Africa .....	0	0	0	0
Macao .....	61	10	0	10	Madeira Islands .....	7	5	0	5
S. and S.E. Asia, n.e.c. ..	2	0	0	0	Angola .....	55	4,393	4,313	80
China .....	0	0	0	0	West. Port. Africa, n.e.c. ..	23	0	0	0
Outer Mongolia .....	0	103	0	103	Liberia .....	962	1,705	1,705	0
North Korea .....	0	0	0	0	Congo (Kinshasa) .....	4,368	669	325	344
Korea, Republic of .....	13,929	538	451	87	Burundi and Rwanda .....	2	29	29	0
Hong Kong .....	3,370	180	15	165	Somali Republic ..	29	11	0	11
Taiwan .....	7,630	5,392	93	5,299	Ethiopia .....	192	1,926	1,889	37
Japan .....	69,151	2,559	263	2,296	French Somaliland .....	8	0	0	0
Nansei and Nanpo Islands ..	2,142	0	0	0	Uganda .....	28	3,047	3,036	11
Total Asia .....	182,009	60,728	16,904	43,824	Kenya .....	68	859	841	18
<b>Australia and Oceania:</b>					<b>Africa - Continued:</b>				
Australia .....	1,736	20,792	19	20,773	Seychelles and Depend. ....	0	24	24	0
New Guinea .....	2	511	511	0	Tanzania .....	440	794	768	28
New Zealand and W. Samoa ..	476	17,934	1,284	16,650	Mauritius and Depend. ....	27	0	0	0
British W. Pacific Is. ....	15	11	8	3	Mozambique .....	18	448	73	375
French Pacific Islands .....	244	0	0	0	Malagasy Republic .....	3	900	867	33
Trust Terr. of Pacific Is. ..	227	0	0	0	Rep. of South Africa .....	1,662	1,005	37	968
Total Australia and Oceania ..	2,700	39,248	1,822	37,426	Zambia .....	74	32	0	32
<b>Africa:</b>					<b>Africa - Continued:</b>				
Morocco .....	1,150	165	45	120	Rhodesia (Southern) .....	0	49	0	49
Algeria .....	123	28	28	0	Malawi .....	10	207	201	6
Tunisia .....	1,950	2	2	0	Southern Africa, n.e.c. ....	21	0	0	0
Libya .....	27	0	0	0	Total Africa .....	15,645	29,032	24,846	4,186
United Arab Rep. (Egypt) ..	128	9	7	2	Total all countries .....	472,295	346,812	130,383	216,429
Sudan .....	61	37	0	37	<b>Ma. or Trade Blocs:</b>				
Canary Islands .....	134	0	0	0	CACB .....	4,088	17,604	12,415	5,189
					LAPTA .....	34,818	105,820	62,990	42,830
					EEC .....	101,778	21,556	2,735	18,821
					EFTA .....	38,222	13,338	1,138	12,200

1/ Not available by countries.  
2/ Less than \$500.

### Explanatory Note

U.S. foreign agricultural trade statistics in this report include official U.S. data based on compilations of the Bureau of the Census. Agricultural commodities consist of (1) nonmarine food products and (2) other products of agriculture which have not passed through complex processes of manufacture such as raw hides and skins, fats and oils, and wine. Such manufactured products as textiles, leather, boots and shoes, cigarettes, naval stores, forestry products, and distilled alcoholic beverages are not considered agricultural.

The trade statistics exclude shipments between the 50 States and Puerto Rico, between the 50 States and the island possessions, between Puerto Rico and the island possessions, among the island possessions, and in transit through the United States from one foreign country to another when documented as such through U.S. Customs.

**EXPORTS** The export statistics also exclude shipments to the U.S. armed forces for their own use and supplies for vessels and planes engaged in foreign trade. Data on shipments valued at less than \$100 are not compiled by commodity and are excluded from agricultural statistics but are reflected in nonagricultural and overall export totals in this report. The agricultural exports statistics include shipments under P.L. 83-480 (Agricultural Trade Development and Assistance Act), and related laws; under P.L. 87-195 (Act for International Development); and involving Government payments to exporters. (USDA payments are excluded from the export value.) Separate statistics on Government program exports are compiled by USDA from data obtained from operating agencies.

The export value, the value at the port of exportation, is based on the selling price (or cost if not sold) and includes inland freight, insurance, and other charges to the port. The country of destination is the country of ultimate destination or where the commodities are to be consumed, further processed, or manufactured. When the shipper does not know the ultimate destination, the shipments are credited to the last country, as known to him at time of shipment from the United States, to which the commodities are to be shipped in their present form. Except for Canada, export shipments valued \$100-\$499 are included on the basis of sampling estimates; shipments to Canada valued \$100-\$1,999 are sampled.

**IMPORTS** Imports for consumption consist of commodities released from U.S. Customs custody upon arrival, or entered into bonded manufacturing warehouse, or withdrawn from bonded storage warehouse for consumption. The agricultural statistics exclude low-value shipments from countries not identified because of illegible reporting, but they are reflected in nonagricultural and overall import totals in this report.

The import value, defined generally as the market value in the foreign country, excludes import duties, ocean freight, and marine insurance. The country of origin is defined as the country where the commodities were grown or processed. Where the country of origin is not known, the imports are credited to the country of shipment.

Imports similar to agricultural commodities produced commercially in the United States and others that are interchangeable in use to any significant extent with such U.S. commodities are supplementary, or partly competitive. All other commodities are complementary, or noncompetitive.

Further explanatory material on foreign trade statistics and compilation procedures of the Bureau of the Census is contained in the publications of that agency.

END

DATE

FILMED

9-10-79

NITIS