



AgEcon SEARCH
RESEARCH IN AGRICULTURAL & APPLIED ECONOMICS

The World's Largest Open Access Agricultural & Applied Economics Digital Library

This document is discoverable and free to researchers across the globe due to the work of AgEcon Search.

Help ensure our sustainability.

Give to AgEcon Search

AgEcon Search

<http://ageconsearch.umn.edu>

aesearch@umn.edu

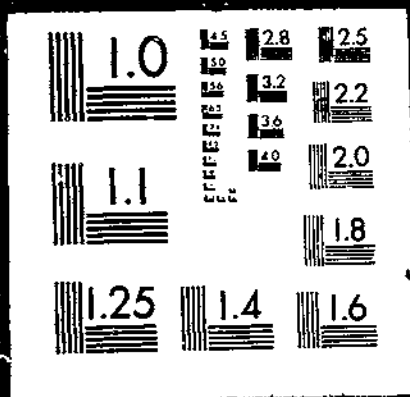
*Papers downloaded from **AgEcon Search** may be used for non-commercial purposes and personal study only. No other use, including posting to another Internet site, is permitted without permission from the copyright owner (not AgEcon Search), or as allowed under the provisions of Fair Use, U.S. Copyright Act, Title 17 U.S.C.*

USDA/FATUS-
MAY 67

FATUS/FOREIGN AGRICULTURAL TRADE OF THE UNITED STATES, 1967 MAY. Washington, DC:
Economic Research Service.

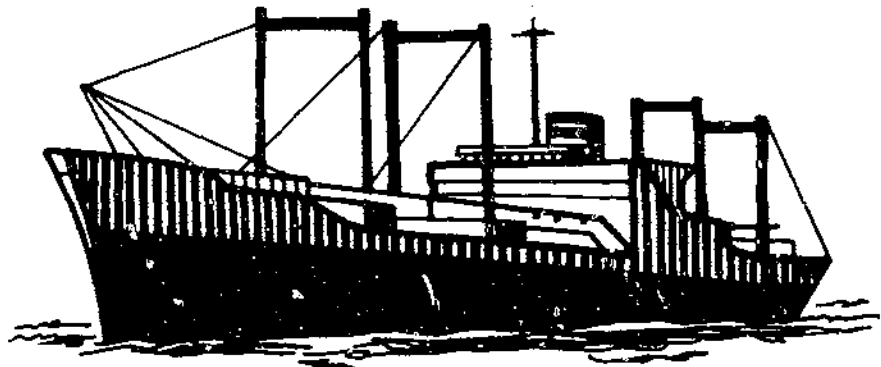
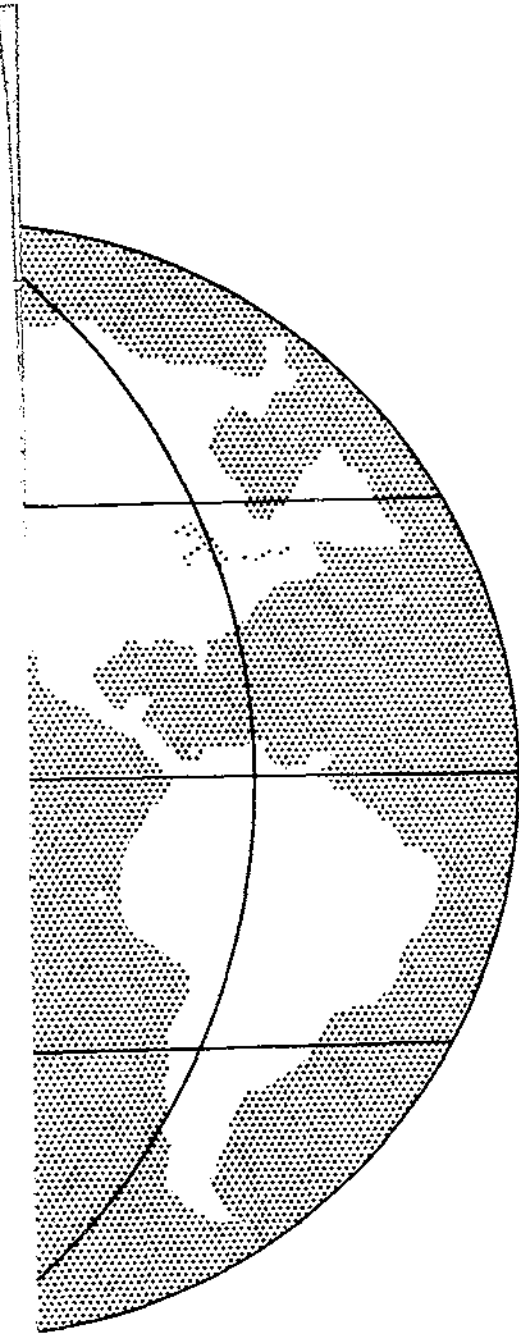
(NAT. CALL NO. A286 9/808)

1 OF 1 USDA/FAT- US-MAY67



MAY 1967

FOREIGN AGRICULTURAL TRADE OF THE UNITED STATES



IN THIS ISSUE:

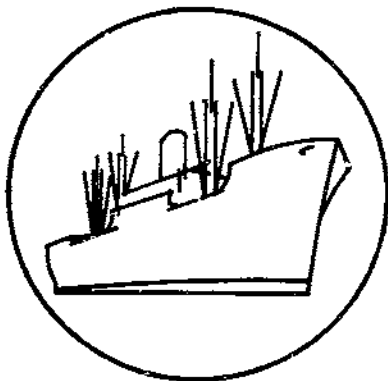
- U.S. Agricultural Exports to the European Trade-Bloc and Non-Trade-Bloc Countries
- Agricultural Exports Compared With Imports
- Export Highlights
- Import Highlights
- Trade Statistics, July-February 1966/67

Published Monthly by Economic Research Service U. S. Department of Agriculture

Contents

	<u>Page</u>
Digest	3
Special in This Issue:	
U.S. Agricultural Exports to the European Trade-Bloc and Non-Trade-Bloc Countries	5
Agricultural Exports Compared With Imports, 1966	11
Export Highlights	14
Import Highlights	19
Explanatory Note	34
Table 1.--U.S. agricultural exports to West European countries, 1961-66 .	6
Table 2.--Indexes of U.S. agricultural exports to selected European areas, and total U.S. agricultural exports, 1961-66	7
Table 3.--U.S. agricultural exports to 20 West European countries, Government-financed and commercial, 1961 and 1966	8
Table 4.--U.S. agricultural exports and imports for consumption: Value by commodity, 1965 and 1966	12
Table 5.--U.S. agricultural exports: Value by commodity, July-March 1965/66 and 1966/67	15
Table 6.--U.S. agricultural exports to the European Economic Community: Value by commodity, February and July-February 1965-67	18
Table 7.--U.S. agricultural imports for consumption: Value by commodity, July-February 1965/66 and 1966/67	21
Table 8.--U.S. agricultural exports: Quantity and value by commodity, February 1966 and 1967 and July-February 1965/66 and 1966/67	22
Table 9.--U.S. agricultural imports: Quantity and value by commodity, February 1966 and 1967 and July-February 1965/66 and 1966/67	26
Table 10.--U.S. agricultural exports and imports: Value by country, July-January 1966/67	30
Table 11.--U.S. agricultural exports and imports: Value by country, July-February 1966/67	32

Trade Statistics and Analysis Branch
Foreign Development and Trade Division
Economic Research Service



FOREIGN AGRICULTURAL TRADE OF THE UNITED STATES

Digest

U.S. Agricultural Exports to the European Trade-Bloc and Non-Trade-Bloc Countries (see page 5). The 20 countries of Western Europe represent the major market area for U.S. agricultural exports. In 1965/66, they received 41 percent of the U.S. farm product exports, almost one-third more than in 1960/61. The 20 West European countries include those of the EEC, EFTA, and 7 other countries. Of the agricultural exports to Western Europe, EEC countries received 58 percent, EFTA countries received 26 percent, and the "unattached" countries accounted for the remaining 16 percent. While total U.S. agricultural exports increased at an annual rate of 7 percent, those to Western Europe rose at a 6 percent rate. This lower growth rate resulted from a slower expansion rate for U.S. agricultural exports to EFTA countries. For the EEC countries and other West European countries, the rate of increase in U.S. agricultural exports was higher than the rate of total growth in U.S. agricultural exports.

* * * * *

Agricultural Exports Compared With Imports (see page 11). U.S. farm exports in 1966 rose at a faster rate than agricultural imports, producing an agricultural trade surplus of \$2,393 million. An increase in commercial exports of farm products resulted in a net increase of 12 percent over the previous year's surplus. Larger commercial shipments than in the preceding year were recorded for wheat, wheat flour, soybeans, tobacco, grain sorghums, corn, hides, and protein meal, and certain fruits and vegetables. A significant part of the increase in the value of exports was due to higher prices. The most rapid growth in agricultural imports took place for supplementary commodities, especially for animal products. Complementary imports increased only 1 percent. Nonagricultural imports, in contrast, grew faster than exports, resulting in a narrowing of the nonagricultural surplus and the total trade surplus from a year earlier.

* * * * *

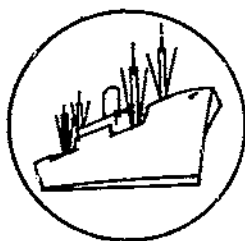
U.S. Agricultural Exports: July-March 1966/67 (see page 14). U.S. agricultural exports totaled an estimated \$5.2 billion for July-March 1966/67, 3 percent above those of the like period a year earlier. Cotton, tobacco, oilseeds and products,

and vegetables and preparations were up from July-March 1965/66, and more than offset declines in animals and animal products, fruits and preparations, and grains and preparations. Agricultural exports are currently running at an annual rate of \$6.9 billion for 1966/67. Exports for March were estimated at \$546 million, 13 percent below those of March 1966. Animal products, grains, and oilseeds and products contributed to the decline. However, exports of cotton continued to increase.

U.S. exports of farm products to the European Economic Community totaled \$1,055 million for July-February 1966/67, down slightly from July-February 1965/66. Variable-levy commodities declined substantially, dropping 22 percent below those of last year. Commodities not subject to the EEC's variable levies were up 9 percent to \$657 million in July-February 1966/67. For February, agricultural exports to the EEC were down 3 percent from the same month a year ago.

* * * * *

U.S. Agricultural Imports: July-February 1966/67 (see page 19). U.S. agricultural imports for consumption in July-February 1966/67 rose 2 percent to \$2,967 million from the comparable period a year before. Supplementary imports in July-February 1966/67 rose to \$1,783 million from \$1,576 million in 1965/66. Meat and meat product imports were 25 percent higher than the same period a year earlier. Imports of dairy products rose to \$68 million in 1966/67 from \$53 million a year before. Cheese accounted for the increase. Complementary imports in July-February 1966/67 were down 10 percent from the year-earlier period, mainly from reduced imports of coffee. Nonagricultural imports in July-February 1966/67 were \$14.6 billion, 22 percent above the previous year's total.



SPECIAL in this issue

U.S. AGRICULTURAL EXPORTS TO EUROPEAN TRADE-BLOC AND NON-TRADE-BLOC COUNTRIES

by
Joseph R. Corley ^{1/}

The 20 principal countries of Western Europe represent the major market for U.S. agricultural exports.^{2/} They received 41 percent of U.S. farm product exports in 1965/66, about the same as the average for the previous 5 fiscal years. Of the 20 West European countries, 6 are members of the European Economic Community (EEC) and 7 are members of the European Free Trade Association (EFTA). The remaining 7 countries are "unattached," except for Greece and Turkey which have an associate membership with the EEC, and Finland, which is associated with EFTA. These 7 countries are referred to as "other West European countries" in this article, though Yugoslavia technically more often is included in Eastern Europe.

U.S. agricultural exports to the 20 principal West European countries totaled \$2,772 million in 1965/66, one-third higher than the \$2,107 million in 1960/61 (table 1). Of the agricultural exports to Western Europe in 1965/66, the EEC countries received 58 percent, up from 52 percent in 1960/61. EFTA countries as a group received 26 percent of the U.S. agricultural exports to Western Europe in 1965/66, down from 33 percent in 1960/61. The share received by other West European countries was 16 percent in 1965/66, about 1 percentage point larger than in 1960/61.

A comparison of the growth of agricultural exports to West Europe with the growth of total U.S. agricultural exports shows that while total agricultural exports increased at an annual rate of 7 percent from 1960/61 to 1965/66, agricultural exports to Europe were up 6 percent a year (table 2). The growth rate of U.S. exports to Europe was lower because of a slower increase in exports to the member countries of EFTA. The expansion rate in agricultural exports to EFTA countries averaged 1 percent a year. The EEC increase was 9 percent and exports to other West European countries increased at an average rate of 8 percent.

In 1965/66, commercial agricultural exports to the 20 West European countries totaled \$2.6 billion, and accounted for 93 percent of total agricultural exports to those countries (table 3). Only 84 percent of total U.S. agricultural exports to the 20 countries in 1960/61 were commercial sales. Commercial agricultural exports rose 45 percent by value during the 5-year period.

^{1/} International Economist, Trade Statistics and Analysis Branch, Foreign Development and Trade Division, Economic Research Service.

^{2/} The 20 countries discussed in this article include the EEC countries (Belgium-Luxembourg, France, West Germany, Italy, and Netherlands), the EFTA countries (United Kingdom, Denmark, Norway, Sweden, Austria, Portugal, and Switzerland), and other West European countries (Iceland, Ireland, Spain, Finland, Yugoslavia, Greece, and Turkey).

Table 1.--U.S. agricultural exports to West European countries, 1961-66

Country	Year ending June 30					
	1961	1962	1963	1964	1965	1966
	-- 1,000 dollars --					
European Economic Community:						
Belgium-Luxembourg	130,825	130,276	119,491	150,483	153,065	182,758
France	112,107	99,244	84,549	142,292	145,699	142,401
West Germany	320,356	415,336	348,001	410,142	406,426	476,484
Italy	213,279	191,473	173,464	216,815	242,265	277,208
Netherlands	324,200	347,687	344,100	413,175	423,491	514,738
Total EEC	1,100,767	1,184,016	1,069,605	1,332,907	1,370,946	1,593,589
European Free Trade Association:						
United Kingdom	466,851	460,282	367,444	448,293	417,227	434,982
Denmark	48,140	57,491	71,776	73,952	81,217	84,683
Norway	28,811	37,553	39,654	37,155	32,650	49,171
Sweden	46,309	48,042	44,449	48,973	49,710	51,297
Austria	22,307	23,776	15,900	14,744	11,051	14,361
Portugal	19,818	26,830	15,982	23,314	19,449	24,568
Switzerland	58,303	64,529	53,586	73,166	56,860	69,827
Total EFTA	690,539	718,503	608,791	719,597	663,164	728,889
Other:						
Iceland	3,183	3,161	3,464	3,872	4,406	4,892
Ireland	20,974	24,064	34,709	27,392	22,213	25,614
Spain	157,435	125,954	128,059	87,786	127,109	200,568
Finland	14,453	14,864	19,528	16,530	18,174	17,232
Yugoslavia	56,640	115,637	127,281	65,225	105,496	124,415
Greece	26,610	21,772	24,423	27,848	37,542	33,186
Turkey	36,236	112,026	45,430	43,548	38,794	43,487
Total other	315,531	417,488	382,894	272,201	353,734	449,394
Total Western Europe	2,106,837	2,320,007	2,061,290	2,324,705	2,392,844	2,771,872

Table 2.--Indexes of U.S. agricultural exports to selected European areas,
and total U.S. agricultural exports, 1961-66

Year ending June 30	(1961=100)				
	EEC	EFTA	Other Western Europe	Total Western Europe	Total U.S. exports
1961	100	100	100	100	100
1962	108	104	132	110	104
1963	97	88	121	98	103
1964	121	104	86	110	123
1965	125	97	112	114	123
1966	145	106	142	132	135
Average annual increase :	9	1	8	6	7

The 7 countries that are not members of either the EEC or EFTA received the largest share of the Government-financed exports, although such exports declined to \$159 million in 1965/66 from \$223 million in 1960/61. The EEC countries received the second largest share of Government-financed exports in 1960/61, \$71 million but by 1965/66 such exports had declined to \$14 million. EFTA receipts of U.S. Government-financed agricultural exports declined to \$30 million in 1965/66 from \$47 million in 1960/61.

Exports of farm products from the United States to Western Europe have increased at a slightly slower rate than total U.S. agricultural exports. However, Western Europe has been primarily a commercial market. In 1960/61, it received 22 percent of the Government-financed agricultural exports, and by 1965/66, only 13 percent. Western Europe's share of our commercial exports increased from 52 percent in 1960/61 to 58 percent in 1965/66. Thus, in terms of commercial sales, Western Europe is becoming a more important market for our farm products.

Exports to the EEC

In fiscal 1966, the United States exported agricultural products valued at \$1,594 million to the EEC. Grains -- wheat, rice and feed grains -- were the primary commodities exported and accounted for 41 percent of the total to the EEC. Feed grains made up the largest share and totaled \$538 million. Oilseeds, principally soybeans, were in second place, amounting to \$278 million. Other major commodities in order of importance were portein meal, wheat and flour, and tobacco.

Since 1960/61, sharp increases have occurred in the exports of these commodities to the EEC, except for wheat and flour. Feed grain exports nearly tripled from the \$197 million in 1960/61. Rising needs for feed grains and feed ingredients have encouraged this rapid increase. During the 6-year period from 1960/61 through 1965/66, demand for feed grains rose more rapidly than EEC production. Feed grain production in 1966 was estimated at 26 million tons, 12 percent above the average for 1960-64. Cattle numbers in 1966 were 12 percent above the 1956-60 average and hog numbers were up 21 percent. The number of chickens was up 15 percent in 1965 from the 1956-60 average.

Exports of oilseeds and protein meal were up 165 percent from 1960/61, totaling \$408 million in 1965/66. Needs for protein meal as a feed additive have increased as a result of the expanding animal production in the EEC. U.S. exports of oilseeds -- mostly soybeans -- to the EEC have increased continuously since 1960/61, more than doubling during the 5-year period.

Table 3.--U.S. agricultural exports to 20 West European countries, Government-financed and commercial, 1961 and 1966

Country	Year ending June 30					
	1961			1966		
	Government-financed	Commercial	Total	Government-financed	Commercial	Total
	-- 1,000 dollars --					
European Economic Community:						
Belgium-Luxembourg	1,106	129,719	130,825	---	182,758	182,758
France	8,647	103,460	112,107	---	142,401	142,401
West Germany	20,284	300,072	320,356	8,099	468,385	476,484
Italy	40,321	172,958	213,279	4,086	273,122	277,208
Netherlands	268	323,932	324,200	1,600	513,138	514,738
Total EEC	70,626	1,030,141	1,100,767	13,785	1,579,804	1,593,589
European Free Trade Association:						
United Kingdom	27,259	439,592	466,851	18,054	416,928	434,982
Denmark	539	47,601	48,140	---	84,683	84,683
Norway	2,140	26,671	28,811	---	49,171	49,171
Sweden	111	46,198	46,309	1,848	49,449	51,297
Austria	13,811	8,496	22,307	---	14,361	14,361
Portugal	3,478	16,340	19,818	10,451	14,117	24,568
Switzerland	---	58,303	58,303	---	69,827	69,827
Total EFTA	47,358	643,201	690,539	30,353	698,536	728,889
Other:						
Iceland	1,690	1,493	3,183	1,483	3,409	4,892
Ireland	3,178	17,796	20,974	283	25,331	25,614
Spain	100,028	57,407	157,435	8,078	192,490	200,568
Finland	4,646	9,807	14,453	3,069	14,163	17,232
Yugoslavia	54,741	1,899	56,640	96,175	28,240	124,415
Greece	23,932	2,678	26,610	15,558	17,628	33,186
Turkey	34,602	1,634	36,236	34,322	9,165	43,487
Total other	222,817	92,714	315,531	153,968	290,426	449,394
Total Western Europe	340,781	1,766,056	2,106,837	203,106	2,568,766	2,771,872

U.S. exports of tobacco to the EEC maintained a fairly constant level from 1961/62 through 1965/66. However, the United States is the major source for the EEC's tobacco receipts.

Exports of wheat and flour from the United States to the EEC countries totaled \$105 million in 1965/66. This was above the level in 1964/65 but below that of 1960/61 and 1961/62, when exports of wheat and flour averaged \$133 million.

Exports to EFTA

U.S. agricultural exports to the EFTA countries reached a high in fiscal 1966 of \$729 million. Feed grains accounted for the largest share of the value of their exports, amounting to \$155 million in 1965/66. Exports of tobacco ranked next, followed by oilseeds, and wheat and flour. U.S. agricultural exports to EFTA have increased at an annual average rate of about 1 percent a year since 1960/61. The up trend has been erratic, rising and falling, but it reached a peak in 1965/66.

Although feed grain exports accounted for the largest share of agricultural exports in 1965/66, they ranked second to tobacco during the preceding 5 years of the 6-year period. During this 6-year period, the United Kingdom was the major market for feed grains, and in 1965/66 accounted for 76 percent of the feed grain receipts by the EFTA countries.

Tobacco, which accounted for the largest share of U.S. agricultural exports to the EFTA countries for the years 1960/61 through 1964/65, dropped to second place in 1965/66. As with feed grains, the United Kingdom was the principal tobacco market and received over three-fifths of the U.S. tobacco exports to EFTA countries. Tobacco exports declined from a high of \$184 million in 1960/61 to \$138 million in 1965/66. However, during the first half of 1966/67, U.S. exports of tobacco to the United Kingdom were up 58 percent from the previous year's corresponding period. This was chiefly due to the economic sanctions placed on Rhodesia, a major tobacco source for EFTA countries in prior years. Oilseeds partly offset the declines in tobacco exports to the EFTA countries through 1965/66. They increased from \$39 million in 1960/61 to \$81 million in 1965/66, primarily because of increased shipments to Denmark, the United Kingdom, and Norway. Denmark and Norway are importing increasing amounts of soybeans, and both export sizable quantities of soybean oil and cake to neighboring countries.

Exports of wheat and flour to the EFTA countries reached \$73 million in 1965/66. These exports have been rising at an average of about 9 percent a year for the past 6 years.

Exports to Other European Countries

U.S. agricultural exports to the other 7 countries reached \$449 million in 1965/66 -- up 42 percent from 1960/61. The principal markets were Spain, Yugoslavia, Turkey, Greece, and Ireland. Iceland and Finland together received only 5 percent of the total agricultural products exported to the 7 countries, and less than 1 percent of the value of agricultural exports to all 20 countries.

Agricultural exports to these 7 countries were primarily U.S. Government-financed shipments in 1960/61 (table 3). Of the \$316 million in agricultural exports that year, nearly three-fourths were under Government programs. Spain was the principal recipient of these Government-financed exports, receiving 45 percent of the total. Yugoslavia ranked second, receiving U.S. Government-financed exports valued at \$55 million. By 1965/66, Spain's share had declined to \$8 million from \$100 million in 1960/61. The value of Government-financed exports to Yugoslavia increased to \$96 million. Overall, Government-financed exports to the 7 countries declined 29 percent from 1960/61 to 1965/66.

Spain is the principal market for U.S. agricultural exports among the other European countries and in 1965/66 ranked eighth among the world's markets for U.S. agricultural exports. In 1965/66, U.S. exports of farm products to Spain totaled \$201 million, 27 percent above exports in 1960/61. Principal commodities exported were feed grains, oilseeds (soybeans), and oilcake and meal. Feed grain exports to Spain increased sharply, rising from \$22 million in 1960/61 to \$101 million in 1965/66. Whereas feed grains accounted for only 14 percent of U.S. exports of farm products to Spain in 1960/61, they were 50 percent in 1965/66. Similarly, U.S. exports of oilseeds rose from \$14,000 in 1960/61 to \$50 million in 1965/66. During the 6-year period Spain has shifted from a predominant recipient of U.S. agricultural products under Government-financed programs to a commercial buyer. In 1961, Government-financed exports to Spain accounted for about three-fifths of their receipts from the United States, but by fiscal 1966, U.S. Government-financed exports had declined to 4 percent.

U.S. agricultural exports to Yugoslavia were \$124 million in fiscal 1966. Most of the 1966 exports were wheat and flour, cotton, vegetable fats and oils, and oilcake and meal. U.S. exports to Yugoslavia have fluctuated sharply, from a low of \$57 million in fiscal 1961 to a high of \$127 million in 1963. Yugoslavia was a major recipient of Government-financed exports, but though total agricultural exports more than doubled from 1960/61 to 1965/66, Government-financed exports were only 77 percent of the total agricultural exports in 1965/66 compared with 97 percent in 1960/61.

U.S. agricultural exports to the remaining 5 countries (Finland, Greece, Iceland, Ireland, and Turkey), totaled \$124 million in 1965/66, 23 percent above the \$101 million in 1960/61. Government-financed exports to these countries declined to \$55 million in 1965/66 while commercial exports increased to \$70 million.



SPECIAL in this issue

AGRICULTURAL EXPORTS COMPARED WITH IMPORTS, 1966

U.S. farm exports in 1966 grew at a faster rate than agricultural imports, resulting in a net surplus of \$2,393 million, about 12 percent above the surplus of a year earlier. Exports of farm products in 1966 rose to \$6,885 million from \$6,229 million in 1965. Agricultural imports for consumption amounted to \$4,492 million compared with \$4,087 million in 1965 (table 4).

Commercial farm exports for dollars or convertible currencies in 1966 accounted for about \$5,322 million, \$830 million above total agricultural imports and \$2,694 million higher than supplementary (partially competitive) agricultural imports. Commercial shipments of agricultural products totaled \$4,777 million in 1965. The large increase in commercial farm exports in 1966 over a year earlier was due mainly to expanded sales of wheat, wheat flour, soybeans, tobacco, grain sorghums, feed corn, hides, protein meal, and certain fruits and vegetables. Higher prices accounted for a considerable portion of the increase in these exports. Export values were smaller in 1966 compared with the year before for animal products including lard, tallow, butter, dried milk, and poultry meat; cotton, rice, and vegetable oil exports were also below year-earlier levels.

The sharpest gains in agricultural imports occurred for supplementary products similar to those produced in the United States. High levels of economic activity and consumer demand raised imports of many high-protein and "luxury" type foods which are available seasonally or only in limited quantities. These imports rose to a value of \$2,628 million in 1966 from \$2,247 million a year earlier. Imports of animal products, which constitute more than 40 percent of supplementary imports, showed gains -- especially for meats of all types, cheese, eggs, and sheep and lamb skins. There were larger imports of such vegetable products as berries, olives, edible nuts, certain vegetable oils (coconut, oil, palm, palm kernel, and tung), cotton, grain preparations, sugar and molasses, vegetables and preparations (except potatoes and turnips), malt liquors and wines. Reductions in supplementary product imports from a year earlier included oilseeds, apparel wool, and tobacco.

Imports of complementary or noncompetitive agricultural commodities increased 1 percent in value in 1966 over 1965, mainly because of a 10 percent increase in the value of banana purchases. Complementary imports in 1966 had a value of \$1,864 million compared with \$1,840 million in 1965. Very slight upward movements in import values took place for coffee, cocoa beans, crude drugs, tea, silk (due to a rise in price), and coarse wools. Offsetting reductions were recorded for imports of crude rubber, spices, hard fibers, and essential oils.

Table 4.--U.S. agricultural exports and imports for consumption: Value by commodity, calendar years 1965 and 1966

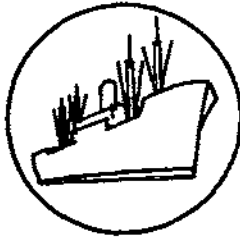
Commodity	1965			1966 1/		
	Exports	Imports	Net	Exports	Imports	Net
	: + exports	: - imports	: + exports	: + exports	: - imports	: + exports
	1,000	1,000	1,000	1,000	1,000	1,000
	dollars	dollars	dollars	dollars	dollars	dollars
EXPORTS AND SUPPLEMENTARY IMPORTS						
Animals, live, including poultry	35,467	116,785	-81,318	36,023	117,986	-81,963
Lard	30,214	2/	+30,214	19,595	0	+19,595
Tallow	179,919	49	+179,870	152,804	53	+152,751
Hides and skins, raw	108,528	72,661	+35,867	154,737	83,120	+71,617
Beef and veal, fresh or frozen	18,922	195,839	-176,917	13,517	298,646	-285,129
Beef, canned, including corned	---	32,802	-32,802	---	35,556	-35,556
Pork, canned	1,299	132,207	-130,908	1,572	175,606	-174,034
Other meats, excluding poultry	91,853	90,491	+1,362	100,908	115,410	-14,502
Poultry meat, eggs and egg products ..	70,099	1,292	+68,807	67,035	4,914	+62,121
Butter	19,415	385	+19,030	808	365	+443
Cheese	3,497	43,023	-39,526	3,634	60,110	-56,476
Milk, condensed and evaporated	19,783	316	+19,467	28,632	469	+28,163
Milk, dried	64,579	186	+64,393	31,596	429	+31,167
Wool, unmf., excluding free	7,906	157,294	-149,388	8,705	156,681	-147,976
Cotton and linters, unmanufactured ...:	494,720	22,670	+472,050	440,051	24,396	+415,655
Wheat grain	1,055,831	1,457	+1,054,374	1,386,362	2,786	+1,383,576
Wheat flour	82,504	224	+82,280	98,949	183	+98,766
Rice	244,056	3,501	+240,555	229,360	1,017	+228,343
Feed grains	1,133,596	14,040	+1,119,556	1,338,743	12,790	+1,325,953
Other grains and preparations	40,938	21,388	+19,550	57,531	25,498	+32,033
Oilcake and oilcake meal	186,855	2,627	+184,228	225,800	3,666	+222,134
Other feeds and fodders	83,239	16,854	+66,385	96,569	15,551	+81,018
Oilseeds	687,117	60,669	+626,448	807,760	49,298	+758,462
Vegetable oils, expressed	239,543	113,210	+126,333	160,182	137,407	+22,775
Tobacco, unmanufactured	382,686	129,813	+252,873	481,522	126,826	+354,696
Nuts and preparations	43,334	75,219	-31,885	38,470	81,758	-43,288
Citrus fruits	73,408	4,481	+68,927	80,995	3,994	+77,001
Other fresh fruits	71,840	23,127	+48,713	74,758	24,220	+50,538
Dried fruits	49,845	3,935	+45,910	47,256	3,083	+44,173
Canned fruits and juices	109,889	65,553	+44,336	103,254	68,880	+34,374
Other fruits and preparations	8,141	25,720	-17,579	8,972	30,153	-21,181
Sugar, cane or beet	479	447,502	-447,023	390	501,507	-501,117
Vegetables and preparations	153,911	115,831	+38,080	175,870	169,794	+6,076
Food for relief or charity	189,390	---	+189,390	155,204	---	+155,204
Other supplementary (imports)	---	262,420	-262,420	---	295,612	-295,612
EXPORTS AND COMPLEMENTARY IMPORTS						
Silk, raw	49	20,013	-19,964	83	22,833	-22,750
Wool, unmf., free in bond	---	71,176	-71,176	---	72,205	-72,205
Bananas, fresh	0	162,344	-162,344	0	178,607	-178,607
Cocoa or cacao beans	0	120,494	-120,494	0	122,207	-122,207
Coffee	30,866	1,061,012	-1,030,146	20,365	1,068,580	-1,048,215
Tea	483	57,017	-56,534	431	57,353	-56,922
Spices	3,687	46,586	-42,899	4,743	44,070	-39,327
Rubber, crude and allied gums	11,372	188,095	-176,723	10,585	180,946	-170,361
Other complementary (imports)	---	113,250	-113,250	---	117,165	-117,165
Other agricultural (exports)	199,439	---	+199,439	220,823	---	+220,823
Total supplementary	---	2,246,571	---	---	2,627,764	---
Total complementary	---	1,839,987	---	---	1,863,966	---
Total agricultural	6,228,699	4,086,558	+2,142,141	6,884,594	4,491,730	+2,392,864
Total nonagricultural	20,777,406	17,203,417	+3,573,989	23,027,439	20,916,035	+2,111,394
Total, all commodities	27,006,105	21,289,975	+5,716,130	29,912,023	25,407,765	+4,504,258

1/ Preliminary. 2/ Less than \$500.

Farm products made up 23 percent of total U.S. exports in 1966, the same proportion as in the previous year, but slightly below the constant 24 percent from 1960 through 1964. Agricultural commodities dropped to 18 percent of total U.S. imports in 1966 from 19 percent in 1965, a continuation of the downtrend of the last 25 years.

The nonagricultural trade surplus of the United States narrowed in 1966 to \$2,111 million from \$3,574 in 1965, as nonagricultural exports grew less rapidly than imports. Nonagricultural exports rose to \$23,027 million from \$20,777 million a year earlier, while imports climbed to \$20,916 million from \$17,203 million. Increases in imports of raw materials and manufactured goods were especially evident in 1966.

The value of U.S. exports is the value at the seaport, border point, or airport of exportation. It is based on the selling price and includes inland freight, insurance, and other charges to the port of exportation. The value of imports is defined generally as the market value in the foreign country's port of exportation, and excludes import duties, ocean freight, marine insurance, and other delivery costs.



Export Highlights

U.S. AGRICULTURAL EXPORTS: JULY-MARCH 1966/67

U.S. agricultural exports during the first 3 quarters of fiscal 1966/67 reached an estimated \$5.2 billion, 3 percent above the \$5.0 billion in July-March of last year (table 5). Cotton, rice, tobacco, and hide and skin exports were up sharply, with lesser increases for oilseeds and products, vegetables and preparations, meats and meat products, and wheat and flour. These increases were more than enough to offset declines that occurred in dairy and poultry products, animal fats, oils, and greases, fruits and preparations, and feed grains. Currently, agricultural exports are running at an annual rate of \$6.9 billion.

The quantity index of U.S. agricultural exports was 156 (1957-59=100) in July-February 1966/67 compared with 157 in the like period a year earlier. In July-February, the value of agricultural exports was 5 percent above a year earlier. Thus, the overall gain has resulted from higher prices in the current fiscal year.

Exports in March were estimated to total \$546 million, 13 percent below the same month a year ago. Larger exports of cotton and tobacco were not sufficient to offset declines in animals and animal products, and grains and preparations. March cotton exports maintained the pace set during earlier months and surpassed last year's monthly cotton exports. However, they have shown a slight decline from exports of earlier months in the current fiscal year. Grain exports in March were below those of March 1966, both for feed grains and for wheat and wheat flour. Dairy and poultry products fell behind last year's March total, thus continuing the declining pace set during earlier months of this fiscal year.

Exports of animals and animal products during July-March were \$526 million, 11 percent below those of the last year's first 3 quarters. Poultry and dairy products, and animal fats, oils, and greases contributed to the decline. In total, these products were nearly a fourth below last year's level. However, larger exports of hides and skins, and meats and meat products partially offset the overall decline in animals and animal products.

Cotton exports reached \$435 million in July-March 1966/67, 38 percent higher than last year's July-March period. February cotton exports were up somewhat from January, and anticipated March cotton exports should maintain the level of 500,000 bales exported in February. However, dwindling supplies of higher and middling qualities may affect cotton exports in coming months as exporters become less able to fill orders for these better qualities.

Table 5.--U.S. agricultural exports: Value by commodity,
July-March 1965/66 and 1966/67 ^{1/}

Commodity	1965/66	1966/67	Change
	-- Million dollars --		Percent
Animals and animal products:			
Dairy products	138	73	-47
Fats, oils, and greases	151	143	-5
Hides and skins	97	117	+21
Meats and meat products	89	91	+2
Poultry products	58	49	-16
Other	56	53	-6
Total animals, etc.	589	526	-11
Cotton, excluding linters	315	435	+38
Fruits and preparations	253	241	-5
Grains and preparations:			
Feed grains, excluding products	995	906	-9
Rice, milled	169	218	+29
Wheat and flour	1,010	1,034	+2
Other	60	66	+10
Total grains, etc.	2,234	2,224	0
Oilseeds and products:			
Cottonseed and soybean oils	153	111	-27
Soybeans	540	582	+8
Protein meal	164	174	+6
Other	61	66	+9
Total oilseeds, etc.	918	933	+2
Tobacco, unmanufactured	333	424	+27
Vegetables and preparations	120	127	+6
Other	265	263	-1
Total exports	5,027	5,173	+3

^{1/} March estimated.

March exports of fruits and preparations are expected to be up somewhat from February. The July-March 1966/67 total was 4 percent below exports for last year's corresponding period. Since January, exports of fruits and preparations have maintained a level about 4 percent below the preceding year, indicating that for the third quarter, their exports have been about the same as last year's third-quarter exports. Much of the decline in exports of fruits and preparations occurred in November and December, with some further drop in January. A slight upturn has been anticipated in exports of fruits and preparations during the remaining months of fiscal 1967.

Exports of grains and preparations totaled \$2.2 billion in July-March of this fiscal year, down slightly from the same period last year. All of the decline occurred in feed grain exports, which dropped 9 percent from last year's July-March period. All feed grains -- oats, barley, corn, and sorghums -- were down. Corn exports, which totaled 65 million bushels in March 1966, were estimated at 45 million in March 1967, while sorghums were estimated at 24 million bushels, down from 28 million in March of last year. Wheat and flour exports reached \$1.0 billion, up 2 percent from July-March of last year. Rice exports, although small compared with exports of wheat and flour and feed grains, showed the largest expansion, rising 29 percent to \$218 million from \$169 million during last year's July-March period. However, higher prices accounted for much of the increase, since the quantity of rice exports was up only 18 percent.

U.S. exports of oilseeds and products for July-March 1966/67 totaled \$933 million, 2 percent higher than last year's 9-month period. Soybean exports accounted for most of the increase, rising 8 percent to \$582 million for July-March of this year. Protein meal exports were up 6 percent, reaching \$174 million. Partially offsetting these increases was a continued decline in exports of cottonseed and soybean oils. They were down 27 percent from \$153 million in July-March 1965/66.

Tobacco exports were \$424 million in July-March 1966/67, 27 percent higher than the same period last year. Tobacco exports should maintain this higher level through the remaining months of this fiscal year. Exports of vegetables and preparations were \$127 million, 6 percent above last year's July-March total. For July-February, higher exports of dried peas and beans accounted for the increase. Fresh and canned vegetables were down in total although fresh tomatoes and canned soups were up slightly.

Exports to the European Economic Community, July-February 1966/67

U.S. agricultural exports to the European Economic Community (EEC) totaled \$1,053 million for July-February 1966/67 (table 6). This was down 5 percent from the corresponding period last year, but 20 percent higher than the same period in 1964/65. However, exports for July-February 1964/65 were low due to the longshoremen's strike which occurred in the early months of 1965. Variable-levy commodities declined substantially for the July-February period, dropping 22 percent from those of last year's corresponding period. Exports of commodities not subject to the EEC's variable levies were up 9 percent to \$655 million, but did not increase enough to offset the decline in products subject to the EEC's variable levies.

Agricultural exports to the EEC in February were down 3 percent from the \$124 million for February of last year. All of the decline occurred in exports of variable-levy commodities -- notably feed grains. They were about \$14 million below those of February 1966. Dairy and poultry products also declined, but to a lesser extent than feed grains. February exports of non-variable-levy commodities increased 10 percent to \$75 million over February 1966, primarily from larger exports of cotton, soybeans, variety meats, and tobacco.

For July-February 1966/67, feed grains accounted for most of the decline in variable-levy commodities, dropping about \$95 million from July-February 1965/66. The record French corn crop in 1966 may provide a surplus of 2 million metric tons for export, with West Germany ranking as an important market for this French corn. For the first 6 months of 1966/67 (July-December), France's exports to the EEC countries totaled almost 401,000 tons, more than twice the 169,000 tons for July-December 1965. U.S. corn exports to the EEC were down 18 percent from 3.8 million tons in July-December 1965. Additional factors to the declining U.S. feed grain exports to the EEC have been the sharp rise in Argentine exports. Corn exports from Argentina to the EEC rose 40 percent to 1.9 million tons in July-December 1966 from July-December 1965.

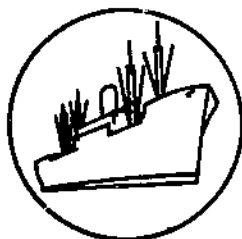
In addition to the reduction in exports of feed grains, dairy and poultry products have declined rather sharply. Dairy product exports dropped from \$18 million in July-February 1965/66 to \$1 million during the first 8 months of this fiscal year. Poultry products were down nearly one-third to \$16 million in July-February 1966/67. Broilers and fryers, stewing chickens, turkeys, and eggs were down considerably. The rapid increase in poultry production in European countries has lowered the demand for U.S. poultry.

Shipments of cotton, oilcake and meal, soybeans, tobacco, and variety meats contributed to the increase in non-variable-levy commodities, and more than offset declines in canned poultry, fruits and vegetables, hides and skins, tallow, and vegetable oils. Soybean exports made the largest increase, rising 12 percent, followed by cotton, tobacco, and oilcake and meal. The growing soybean crushing industry in the EEC countries, along with the rising demand for products of soybeans, has increased the need for soybean and oilcake and meal exports. The continuing rise in the use of soybeans and oilcake and meal may further be making itself felt through the decline in feed grain and vegetable oil exports. In the compound feed industry, less usage of grains has reduced the relative importance of some feed grains other than corn, where oilcake and meal are adequate substitutes.

Table 6.--U.S. agricultural exports to the European Economic Community:
Value by commodity February 1965-67 and July-February 1965-67

Commodity	February			July-February		
	1965	1966	1967	1964/65	1965/66	1966/67
-- 1,000 dollars --						
Variable levy commodities: 2/						
Feed grains	33,074	42,201	27,936	227,303	367,933	273,319
Rice	153	1,290	2,756	5,219	8,184	12,369
Rye grain	0	0	1,200	1,287	998	3,983
Wheat grain	666	8,253	9,596	17,983	65,843	71,524
Wheat flour	37	28	84	1,006	724	991
Beef and veal (excluding variety meats) and cattle	246	52	56	1,227	1,447	552
Dairy products	3,447	228	163	40,777	18,264	789
Lard 3/	13	137	279	830	1,080	1,121
Pork (excluding variety meats) and swine	7	34	116	243	132	322
Poultry and eggs:						
Live poultry	60	156	179	559	961	880
Broilers and fryers	304	542	14	4,833	4,840	2,683
Stewing chickens	384	128	447	3,076	1,054	741
Turkeys	614	833	607	9,257	14,925	11,151
Other fresh poultry	32	5/	53	591	413	265
Eggs	98	285	67	903	1,490	557
Total poultry and eggs	1,492	1,944	1,367	19,219	23,683	16,277
Other	979	1,322	937	19,666	18,552	16,541
Total	40,114	55,494	44,490	334,760	506,840	397,788
Non-variable levy commodities:						
Canned poultry 4/	95	234	186	2,164	1,944	1,229
Cotton, excluding linters	6,202	4,406	8,166	97,331	38,857	57,635
Fruits and vegetables	6,410	5,779	5,432	60,746	73,531	61,379
Hides and skins	1,348	2,160	1,390	14,786	21,099	16,345
Oilcake and meal	7,480	14,612	13,295	62,677	88,482	104,036
Soybeans	11,422	20,256	25,219	123,183	178,185	200,252
Tallow 4/	3,220	2,402	2,523	22,325	23,039	21,096
Tobacco, unmanufactured	635	9,027	9,957	60,454	77,206	94,831
Variety meats, fresh, frozen 4/ ...	1,068	2,083	2,385	18,568	23,474	25,717
Vegetable oils, expressed	4,860	860	641	24,812	12,406	8,833
Food for relief or charity	2	775	625	2,883	2,663	3,023
Other	2,743	5,613	5,246	51,001	59,051	61,110
Total	45,485	68,207	75,065	540,930	599,937	655,486
Total EEC	85,599	123,701	119,555	875,690	1,106,777	1,053,274

1/ Compiled from U.S. Bureau of the Census data. 2/ Grains, poultry, and pork were subject to variable levies beginning on July 30, 1962; rice, on September 1, 1964; and beef and dairy products, on November 1, 1964. The variable levy classification is designed to show overall changes in exports rather than to measure the impact of the variable levies. 3/ Lard for food is a variable levy commodity while lard for industrial use is bound in the General Agreement on Tariffs and Trade (GATT) at 3 percent ad valorem. U.S. lard is for food use. 4/ Although canned poultry, tallow, and variety meats are subject to variable levies, the import duties are bound in GATT. 5/ Less than \$500.



Import Highlights

U.S. AGRICULTURAL IMPORTS JULY-FEBRUARY 1966/67

U.S. agricultural imports for consumption in July-February 1966/67 rose 3 percent to \$2,976 million from \$2,895 million in the comparable period of 1965/66. All the increase was accounted for by gains of supplementary products, primarily dairy products, meats and meat products, sugar, fruits and vegetables. Imports of complementary products declined slightly, mainly because of lower imports of coffee.

Supplementary imports in July-February 1966/67 rose to \$1,783 million from \$1,576 million in 1965/66. Meats and meat products were valued at \$431 million and represented a gain of 25 percent over the like period a year earlier. Imports of beef and veal were \$263 million compared with \$185 million a year earlier. Pork imports of \$126 million were only slightly above the value of the previous year. However, quantity was slightly below that of a year earlier. The gain in imports of beef and veal represented about two-fifths of the overall increase in supplementary imports. Imports of dairy products rose to \$68 million in 1966/67 from \$53 million for the like period in 1965/66. Cheese accounted for the increase, rising to 110 million pounds from 60 million. Most of the increase in cheese was accounted for by Colby which rose to 44 million pounds from 13 million. Imports of Colby cheese, unlike most other cheeses, are not under a Section 22 quota.

Imports of apparel wool declined 31 percent to \$75 million in July-February 1966/67. The value of sugar imports rose to \$375 million -- a 24 percent gain from the \$303 million in the same period of 1965/66. The quantity of sugar imports increased by 18 percent. The average unit value of sugar in July-February 1966/67 was slightly above the value of a year earlier.

Vegetable and preparation imports were \$108 million in 1966/67, a gain of 46 percent over the previous period. The gain represented larger imports of canned and fresh tomatoes, and white potatoes. Fruit imports were up 16 percent to \$79 million because of larger imports of berries, olives, and canned pineapples. The 19 percent gain in oilseeds and products was accounted for by larger imports of coconut oil, cacao butter, and palm oil. Most of the increase in other vegetables and preparations is accounted for by imports of Junex, a butterfat-sugar product containing not more than 44 percent butterfat. Junex is not classified separately but is included in the miscellaneous classification of edible preparations.

April 3, at the recommendation of Secretary of Agriculture Orville L. Freeman, the President directed the U.S. Tariff Commission to undertake an investigation under Section 22 of the Agricultural Adjustment Act, as amended, to determine the advisability of establishing import quotas on certain dairy products not now subject to quotas. In his letter to the President, Secretary Freeman pointed out that dairy

product imports in 1966 totaled 2.7 billion pounds (milk-equivalent) as compared with about 0.9 billion pounds in 1965. Of this quantity, Junex -- which is a mixture of butterfat and sugar -- and Colby cheese made up about 1.8 billion pounds (milk-equivalent).

Complementary imports in July-February 1966/67 fell to \$1,193 million from \$1,319 million in 1965/66. Most of the 10 percent decline was accounted for by coffee. Imports of coffee dropped to \$654 million in 1966/67 from \$785 million. Imports of bananas mainly from the Central American Republics increased slightly to \$115 million in 1966/67. Quantity accounted for nearly all the increase as the unit value was about the same as in the same period a year earlier.

Nonagricultural imports in July-February were \$14,598 million in 1966/67 compared with \$11,958 million for the comparable period a year earlier.

Table 7.--U.S. agricultural imports for consumption:
Value by commodity, July-February 1965/66 and 1966/67

Commodity	July-February		Change
	1965/66	1966/67	
	-- Million dollars --		Percent
<u>Supplementary</u>			
Animals and animal products:			
Animals, live	99	78	-21
Dairy products	53	68	+28
Hides and skins	45	46	+2
Meats and meat products	345	431	+25
Wool, apparel	109	75	-31
Other	34	41	+21
Total animals and products	685	739	+8
Cotton, excluding linters	20	14	-30
Fruits and preparations	68	79	+16
Grains and preparations	28	30	+7
Nuts and preparations	59	54	-8
Oilseeds and products	113	134	+19
Sugar	303	375	+24
Tobacco, unmanufactured	83	84	+1
Vegetables and preparations	74	108	+46
Other	143	166	+16
Total supplementary	1,576	1,783	+13
<u>Complementary</u>			
Bananas	108	115	+6
Coffee	785	654	-17
Cocoa or cacao beans	90	97	+8
Rubber, crude, natural	119	112	-6
Tea	37	36	-3
Wool, carpet	48	43	-10
Other	132	136	+3
Total complementary	1,319	1,193	-10
Total agricultural imports	2,895	2,976	+3

Table 8 -- U. S. agricultural exports: Quantity and value by commodity, February 1966 and 1967 and July-February 1965/66 and 1966/67

Commodity exported	Unit	February 1/				July-February 1/			
		Quantity		Value		Quantity		Value	
		1966	1967	1,000	1,000	1965/66	1966/67	1,000	1,000
		Thousands	Thousands	dollars	dollars	Thousands	Thousands	dollars	dollars
ANIMALS AND ANIMAL PRODUCTS									
Animals, live:									
Cattle	No.	3	3	999	1,378	34	28	11,121	10,836
Poultry, live -									
Baby chicks (chickens)	No.	2,140	3,762	990	1,085	20,188	23,731	7,222	7,875
Other live poultry		2/	2/	253	297	2/	2/	1,790	1,734
Other		2/	2/	249	440	2/	2/	3,453	3,785
Total animals, live		---	---	2,491	3,200	---	---	23,586	24,230
Dairy products:									
Anhydrous milk fat, including donations	Lb.	1,833	177	1,359	150	8,104	2,805	5,463	2,473
Butter, including donations	Lb.	908	44	290	32	6,018	193	2,156	141
Cheese, including donations	Lb.	431	444	256	309	4,506	3,694	2,330	2,440
Infants' and dietetic foods, chiefly milk	Lb.	1,369	926	993	557	11,379	11,035	7,786	6,896
Milk and cream -									
Condensed and evaporated, incl. donations	Lb.	4,209	6,003	788	952	61,935	79,040	13,411	16,634
Dry, whole milk and cream	Lb.	1,656	1,612	249	266	12,966	10,674	5,342	3,228
Fresh	Gal.	82	112	137	157	631	748	893	1,088
Nonfat dry, including donations	Lb.	29,127	36,219	4,774	6,249	544,123	169,083	79,236	27,726
Other		2/	2/	234	489	2/	2/	2,994	3,628
Total dairy products		---	---	9,080	9,161	---	---	119,611	64,254
Fats, oils, and greases:									
Lard	Lb.	15,016	13,740	2,153	1,508	128,554	114,627	16,156	13,303
Tallow -									
Edible	Lb.	268	601	37	65	2,212	3,358	297	399
Inedible	Lb.	137,614	198,887	10,966	15,391	1,213,799	1,248,592	105,502	100,337
Other animal fats, oils, and greases	Lb.	18,438	14,223	2,053	1,442	112,228	104,883	12,357	10,694
Total fats, oils, and greases	Lb.	171,336	227,451	15,187	18,406	1,456,793	1,471,466	134,312	124,733
Meat and meat products:									
Beef and veal	Lb.	1,654	2,754	1,163	1,599	25,986	19,202	14,502	11,406
Pork	Lb.	3,583	6,306	1,561	2,353	29,864	39,578	11,784	15,539
Sausage casings	Lb.	746	658	542	477	8,921	8,469	5,964	6,027
Variety meats (edible offals)	Lb.	13,705	18,193	3,831	4,530	145,462	154,585	39,075	40,386
Other, including meat extracts	Lb.	1,852	2,083	1,041	933	15,462	14,867	7,056	7,114
Total meat and products (except poultry)	Lb.	21,540	29,994	8,138	9,887	225,695	236,701	78,381	80,472
Poultry products:									
Eggs, dried and otherwise preserved	Lb.	31	129	15	131	1,918	1,442	1,134	1,219
Eggs in the shell -									
Hatching	Doz.	1,060	1,270	923	864	4,805	6,328	4,632	5,614
Other	Doz.	103	298	45	121	6,384	5,433	2,454	2,317
Poultry meat -									
Chickens, fresh or frozen	Lb.	9,561	7,550	2,335	1,880	83,287	62,433	21,558	16,213
Turkeys, fresh or frozen	Lb.	2,976	2,333	977	796	49,750	38,896	17,541	13,658
Other, fresh or frozen	Lb.	380	1,198	145	389	6,603	7,225	2,297	2,548
Canned and otherwise preserved	Lb.	1,377	1,278	381	377	12,931	11,345	3,462	3,403
Total poultry products		---	---	4,821	4,558	---	---	53,078	44,972

Continued -

Table 8.— U. S. agricultural exports: Quantity and value by commodity,
February 1966 and 1967 and July-February 1965/66 and 1966/67 - Continued

Commodity exported	Unit	February 1/				July-February 1/				
		Quantity		Value		Quantity		Value		
		1966	1967	1966	1967	1965/66	1966/67	1965/66	1966/67	
		Thousands	Thousands	1,000 dollars	1,000 dollars	Thousands	Thousands	1,000 dollars	1,000 dollars	
Other animal products:										
Feathers, crude or dressed	:Lb.	78	54	96	79	931	765	1,113	894	
Gelatin, edible	:Lb.	173	98	137	93	1,356	830	979	823	
Hair, raw or dressed (except wool)	:Lb.	468	578	106	152	4,809	3,887	1,441	1,160	
Hides and skins, raw (except furs) 3/	:No.	1,755	2,000	13,741	15,440	12,581	13,540	81,359	101,505	
Honey	:Lb.	796	761	146	140	11,122	11,861	1,819	1,942	
Wool, unmanufactured	:C.Lb.	950	605	829	474	6,496	7,742	5,497	6,026	
Other		2/	2/	1,963	1,657	2/	2/	15,899	11,653	
Total other animal products		---	---	17,018	18,035	---	---	108,107	124,003	
Total animals and animal products		---	---	56,737	63,242	---	---	517,075	462,664	
VEGETABLE PRODUCTS										
Cotton, unmanufactured:										
Cotton	:RBale:	254	458	30,915	53,768	2,263	3,179	285,439	375,813	
Linters	:RBale:	28	13	831	550	181	132	5,187	4,559	
Total cotton and linters	:RBale:	282	471	31,746	54,318	2,444	3,311	290,626	380,372	
Fruits and preparations:										
Canned -										
Fruit cocktail	:Lb.	16,527	13,289	2,840	2,098	87,994	101,931	15,492	16,196	
Peaches	:Lb.	6,297	13,947	773	1,484	173,029	194,603	18,811	20,815	
Pears	:Lb.	467	484	83	88	3,589	5,199	725	844	
Pineapples	:Lb.	5,549	4,001	871	685	79,808	71,197	12,200	11,480	
Other	:Lb.	2,550	1,959	537	419	51,433	20,967	8,480	4,722	
Total canned fruits	:Lb.	31,390	33,680	5,104	4,774	296,853	393,897	55,708	54,057	
Dried -										
Prunes	:Lb.	9,670	7,053	1,893	1,711	100,082	68,659	18,225	14,960	
Raisins (dried grapes)	:Lb.	8,057	12,895	1,430	1,839	94,126	97,604	16,152	16,368	
Other	:Lb.	1,977	1,320	771	544	14,413	10,305	5,222	4,024	
Total dried fruits	:Lb.	19,704	21,268	4,094	4,094	208,621	178,568	39,599	35,352	
Fresh -										
Apples	:Lb.	46,098	26,022	4,192	2,474	217,472	152,531	19,898	14,588	
Berries	:Lb.	317	363	89	100	9,878	8,120	2,146	1,761	
Grapefruit	:Lb.	20,318	20,589	1,150	930	119,206	136,825	7,130	7,378	
Grapes	:Lb.	9,413	7,622	899	916	245,810	233,211	21,822	23,139	
Lemons and limes	:Lb.	18,624	17,680	1,260	1,520	162,155	149,413	12,900	12,987	
Oranges and tangerines	:Lb.	50,492	41,732	3,962	3,315	323,948	305,613	26,191	25,549	
Pears	:Lb.	3,012	2,598	315	242	64,010	61,225	6,250	5,215	
Other	:Lb.	1,958	1,485	267	208	138,464	122,429	10,496	9,322	
Total fresh fruits	:Lb.	150,232	118,091	12,134	9,705	1,280,943	1,169,367	106,833	99,949	
Fruit juices -										
Grapefruit	:Gal.	387	338	445	333	1,871	2,201	2,084	2,104	
Orange	:Gal.	1,246	1,250	2,007	1,858	6,085	6,890	11,083	11,033	
Other	:Gal.	1,185	915	1,007	995	7,199	6,910	7,206	7,201	
Total fruit juices	:Gal.	2,818	2,503	3,459	3,186	15,155	16,001	20,373	20,338	
Frozen fruits	:Lb.	241	372	64	82	13,699	9,621	2,337	2,047	
Other		2/	2/	564	354	2/	2/	4,414	4,554	
Total fruits and preparations		---	---	25,419	22,195	---	---	229,264	216,287	

Continued

Table 8. -- U. S. agricultural exports: Quantity and value by commodity, February 1966 and 1967 and July-February 1965/66 and 1966/67 - Continued

Commodity exported	Unit	February 1/				July-February 1/			
		Quantity		Value		Quantity		Value	
		1966	1967	1966	1967	1965/66	1966/67	1965/66	1966/67
		Thousands	Thousands	dollars	dollars	Thousands	Thousands	dollars	dollars
Grains and preparations:									
Feed grains and products -									
Barley grain (48 lb.)	Bu.	6,243	2,953	8,096	3,747	47,848	29,583	59,163	38,110
Corn grain, including donations (56 lb.)	Bu.	51,277	37,677	73,112	57,031	435,752	346,046	596,159	509,706
Grain sorghums (56 lb.)	Bu.	23,237	17,095	28,692	22,380	152,509	197,684	183,179	246,363
Oats grain (32 lb.)	Bu.	602	13	505	10	23,145	15,359	16,355	11,599
Total feed grains	M.Ton:	2,035	1,456	110,405	83,168	16,321	14,678	854,856	805,778
Malt and flour, including barley malt	Lb.	4,771	3,812	315	255	55,798	59,822	3,565	3,851
Corn grits and hominy	Lb.	3,724	2,395	155	104	24,511	22,982	1,070	997
Cornmeal, including donations	Qrt.	460	472	1,803	2,157	2,812	2,850	11,135	11,774
Cornstarch	Lb.	5,565	4,943	522	478	48,821	40,647	4,806	4,168
Oatmeal, groats, and rolled oats	Lb.	446	296	49	166	10,825	14,578	847	1,166
Total feed grains and products	M.Ton:	2,083	1,502	113,249	86,328	16,652	15,012	876,279	827,734
Rice -									
Milled, including donations	Lb.	206,548	391,654	15,119	29,923	2,086,229	2,345,620	151,408	184,881
Paddy or rough	Lb.	521	8	47	4/	6,191	6,943	528	633
Total rice (milled basis)	Lb.	206,887	391,659	15,166	29,923	2,090,253	2,350,133	151,936	185,514
Rye grain (56 lb.)	Bu.	5	776	7	1,200	1,588	2,877	1,924	4,056
Wheat and flour, including donations -									
Wheat grain (60 lb.)	Bu.	68,630	38,513	110,145	68,462	479,767	483,059	775,964	853,820
Wheat flour, wholly of U. S. wheat	Qrt.	2,047	1,332	8,080	5,899	20,502	20,779	82,132	92,020
Total wheat and flour	Bu.	73,297	41,550	118,225	74,361	526,511	530,434	858,096	945,840
Bakery products	Lb.	1,793	1,519	898	661	10,508	11,651	4,765	5,514
Other, including donations	2/	2/	2/	3,169	4,947	2/	2/	22,835	25,148
Total grains and preparations	---	---	---	250,694	197,420	---	---	1,915,835	1,993,806
Oilseeds and products:									
Oils, including donations -									
Cottonseed oil	Lb.	30,120	4,590	4,067	717	302,784	36,715	38,248	6,064
Soybean oil	Lb.	68,865	83,819	10,536	12,613	738,505	589,662	98,452	85,773
Other	Lb.	17,644	15,029	3,002	2,400	164,136	193,988	25,775	27,343
Total oils (except essential)	Lb.	116,629	103,438	17,605	15,730	1,205,425	820,365	162,475	119,180
Oilseeds -									
Flaxseed (56 lb.)	Bu.	4/	4/	1	1	3,271	4,664	9,784	13,711
Soybeans (60 lb.)	Bu.	17,081	20,354	48,923	62,867	173,689	168,425	476,217	528,345
Other	2/	2/	2/	910	970	2/	2/	21,047	20,804
Total oilseeds	---	---	---	49,834	63,838	---	---	507,048	562,860
Protein meal (oil-cake and meal)	S.Ton:	284	244	22,833	21,522	1,884	1,702	145,675	156,173
Total oilseeds and products	---	---	---	90,272	101,090	---	---	815,198	838,213
Tobacco, unmanufactured:									
Burley	Lb.	5,570	4,276	4,055	4,359	35,065	32,392	27,021	28,283
Cigar wrapper	Lb.	924	106	1,862	257	3,206	2,110	10,663	9,215
Dark-fired Kentucky and Tennessee	Lb.	1,662	1,454	875	802	16,933	13,034	8,760	6,911
Flue-cured	Lb.	18,986	25,200	15,822	23,649	268,089	348,629	237,514	327,837
Maryland	Lb.	295	254	253	224	7,753	8,776	6,063	6,823
Other	Lb.	2,088	3,501	955	1,402	27,177	42,487	11,374	16,876
Total tobacco, unmanufactured	Lb.	29,525	34,791	23,822	30,693	358,223	447,428	301,395	395,945

Continued

Table 8.-- U. S. agricultural exports: Quantity and value by commodity, February 1966 and 1967 and July-February 1965/66 and 1966/67 - Continued

Commodity exported	Unit	February 1/				July-February 1/			
		Quantity		Value		Quantity		Value	
		1966	1967	1,000 dollars	1,000 dollars	1965/66	1966/67	1,000 dollars	1,000 dollars
Vegetables and preparations:		Thousands	Thousands	Thousands	Thousands	Thousands	Thousands	Thousands	Thousands
Canned -									
Asparagus	:Lb.	1,170	1,630	345	430	26,990	20,974	8,005	6,504
Soups	:Lb.	1,416	1,722	325	347	12,805	14,466	2,840	3,103
Tomato paste and purée	:Lb.	1,276	585	336	167	9,217	6,140	2,233	1,601
Tomato sauce for cooking purposes	:Lb.	159	210	25	35	1,390	1,004	200	163
Other	:Lb.	5,412	5,175	834	852	47,178	44,796	6,848	7,061
Total canned vegetables	:Lb.	9,433	9,322	1,865	1,831	97,580	87,380	20,127	18,432
Dried beans, including donations	:Lb.	8,897	14,054	916	1,427	214,866	302,084	17,811	25,030
Dried peas, including cow and chick	:Lb.	20,046	33,258	1,268	2,316	198,362	239,697	12,766	16,522
Fresh -									
Lettuce	:Lb.	19,208	26,554	1,398	969	120,759	122,065	7,246	5,978
Onions	:Lb.	8,660	8,205	413	448	72,584	56,142	3,177	2,894
Potatoes (except sweet potatoes)	:Lb.	15,945	2,191	382	78	73,930	85,015	2,632	2,431
Tomatoes	:Lb.	5,013	4,876	489	425	61,875	63,509	6,162	6,376
Other	:Lb.	40,698	48,701	2,997	2,806	182,033	173,705	13,484	11,818
Total fresh vegetables	:Lb.	89,524	90,527	5,679	4,726	511,181	500,436	32,701	29,497
Frozen vegetables	:Lb.	1,540	4,259	239	727	11,521	17,063	2,517	3,046
Soups and vegetables, dehydrated	:Lb.	2,147	2,795	738	888	13,846	16,412	5,167	5,795
Vegetable seasonings	:Lb.	600	422	297	267	6,703	3,437	2,694	2,073
Tomato juices, canned	:Gal.	114	195	113	194	1,453	1,368	1,440	1,331
Other	:2/	2/	2/	1,354	1,380	2/	2/	9,910	10,620
Total vegetables and preparations		---	---	12,469	13,756	---	---	105,113	112,346
Other vegetable products:									
Coffee	:Lb.	2,873	2,053	3,075	1,679	18,883	14,021	23,778	11,928
Drugs, herbs, roots, leaves, etc., crude	:Lb.	335	487	743	359	5,839	5,552	5,733	5,508
Essential oils, natural	:Lb.	693	897	1,970	2,108	6,107	6,222	15,553	17,517
Feeds and fodders (except oil-cake and meal)	:2/	2/	2/	5,936	5,833	2/	2/	62,538	63,310
Flavoring sirups, sugars, and extracts	:2/	2/	2/	2,245	2,976	2/	2/	16,997	19,634
Hops	:Lb.	2,155	2,554	1,257	1,607	16,149	16,681	9,434	10,431
Nursery and greenhouse stock	:2/	2/	2/	987	1,326	2/	2/	5,392	6,608
Nuts and preparations	:Lb.	31,110	25,355	4,675	4,061	171,754	113,549	35,017	27,427
Seeds (except oilseeds)	:Lb.	9,480	10,661	2,972	3,066	70,148	70,142	23,133	23,777
Spices	:Lb.	565	499	341	260	4,703	4,486	2,782	2,864
Other, including donations	:2/	2/	2/	3,241	7,602	2/	2/	28,241	38,971
Total other vegetable products		---	---	27,442	30,877	---	---	228,598	227,975
Total vegetable products				461,864	450,349			3,885,029	4,164,944
TOTAL AGRICULTURAL EXPORTS				518,601	513,591			4,403,104	4,627,608
TOTAL NONAGRICULTURAL EXPORTS				1,745,414	1,946,130			13,933,419	15,456,001
TOTAL EXPORTS, ALL COMMODITIES				2,264,015	2,459,721			18,336,523	20,083,609

1/ Preliminary.

2/ Reported in value only.

3/ Excludes the number of "other hides and skins," reported in value only.

4/ Less than 500.

Table 9.-- U. S. agricultural imports for consumption: Quantity and value by commodity, February 1966 and 1967 and July-February 1965/66 and 1966/67

Commodity imported SUPPLEMENTARY	Unit	February 1/				July-February 1/			
		Quantity		Value		Quantity		Value	
		1966	1967	1,000	1,000	1965/66	1966/67	1,000	1,000
		Thousands	Thousands	dollars	dollars	Thousands	Thousands	dollars	dollars
ANIMALS AND ANIMAL PRODUCTS									
Animals, live:									
Cattle, dutiable	No.	76	41	6,719	3,073	919	658	86,467	63,544
Cattle, free (for breeding)	No.	1	1	412	419	12	8	4,230	3,689
Horses	No.	2/	2/	682	1,175	2	2	7,124	8,884
Other (including live poultry)		3/	3/	171	251	3/	3/	1,325	1,726
Total animals, live		---	---	7,984	4,918	---	---	99,146	77,843
Dairy products:									
Butter	Lb.	53	34	28	22	527	442	280	240
Cheese -									
Blue-mold	Lb.	304	246	154	132	2,790	2,852	1,407	1,476
Cheddar	Lb.	218	230	70	87	1,139	1,946	397	780
Edam and Gouda	Lb.	491	639	223	292	5,501	7,125	2,584	3,333
Pecorino	Lb.	826	1,061	771	737	12,183	11,794	10,278	8,180
Swiss	Lb.	1,445	1,979	772	933	12,207	18,497	6,831	9,035
Other	Lb.	3,948	9,080	1,371	2,950	25,681	67,504	10,968	23,448
Total cheese	Lb.	7,232	13,235	3,361	5,131	59,501	109,718	32,465	46,252
Casein or lactarane	Lb.	7,971	7,491	2,464	1,869	55,874	69,722	17,956	18,175
Other		3/	3/	518	407	3/	3/	2,307	2,875
Total dairy products		---	---	6,371	7,429	---	---	53,008	67,562
Hides and skins, raw (except furs):									
Calf skins	Lb.	128	224	62	104	1,619	1,371	901	723
Cattle hides	Lb.	1,028	343	189	86	13,166	4,898	2,138	1,017
Goat and kid skins	Lb.	1,063	1,026	938	1,052	11,925	8,488	9,650	9,193
Sheep and lamb skins	Lb.	5,562	4,157	3,750	2,372	35,913	33,270	22,006	24,547
Other 4/	Lb.	2,513	1,952	1,343	1,237	20,126	15,354	10,683	10,747
Total hides and skins, raw	Lb.	10,294	7,702	6,282	4,851	82,747	63,381	45,378	46,227
Meat and meat products:									
Beef and veal -									
Fresh, chilled, or frozen	Lb.	55,939	54,271	20,337	22,196	441,651	550,270	151,678	219,813
Other	Lb.	8,454	9,970	3,184	4,458	85,382	98,394	33,366	43,371
Total beef and veal	Lb.	64,393	64,241	23,521	26,654	527,033	648,664	185,044	263,184
Mutton, goat, and lamb	Lb.	6,325	4,833	1,702	1,216	36,686	38,539	9,487	10,475
Pork -									
Fresh, chilled, or frozen	Lb.	3,118	3,589	1,519	1,524	31,706	26,949	13,810	11,547
Hams and shoulders, canned cooked	Lb.	18,926	17,569	14,274	13,275	128,663	121,909	90,387	92,583
Other	Lb.	4,460	5,576	2,554	3,420	30,352	38,028	17,673	21,485
Total pork	Lb.	26,504	26,734	18,347	18,219	190,721	186,886	121,870	125,615
Sausage casings		3/	3/	1,543	1,460	3/	3/	13,657	13,521
Other (including meat extracts)	Lb.	6,273	8,354	1,492	1,957	60,665	69,105	14,895	18,588
Total meat and products (except poultry)		---	---	46,605	49,506	---	---	344,953	431,383
Poultry products:									
Eggs, dried, frozen, otherwise preserved	Lb.	100	168	72	114	140	3,165	101	1,491
Eggs in the shell	Doz.	508	106	199	89	884	1,074	470	886
Poultry meat	Lb.	13	23	37	75	200	268	489	654
Total poultry products		---	---	308	278	---	---	1,060	3,031

Continued -

Table 9.—U. S. agricultural imports for consumption: Quantity and value by commodity,
February 1966 and 1967 and July-February 1965/66 and 1966/67 - Continued

Commodity imported SUPPLEMENTARY	Unit	February 1/				July-February 1/			
		Quantity		Value		Quantity		Value	
		1966	1967	1966	1967	1965/66	1966/67	1965/66	1966/67
				1,000	1,000			1,000	1,000
		Thousands	Thousands	dollars	dollars	Thousands	Thousands	dollars	dollars
Wool, unmanufactured (except free in bond):									
40's to 56's	G.Lb.	4,351	2,575	2,328	1,454	28,113	17,608	15,721	10,099
Finer than 56's	G.Lb.	18,078	8,648	11,669	5,592	126,329	80,587	78,244	55,230
Other wools	G.Lb.	2,853	2,359	2,752	1,672	17,983	14,560	14,554	9,951
Total wool, unmanufactured	G.Lb.	25,282	13,582	16,749	8,718	172,425	112,755	108,519	75,300
Other animal products:									
Bones, hoofs, and horns, unmanufactured	3/	3/		283	327	3/	3/	2,178	3,578
Bristles, sorted, bunched, or prepared	Lb.	175	274	597	677	2,161	2,384	7,075	7,787
Fats, oils, greases, edible and inedible ...	3/	3/		465	128	3/	3/	1,265	1,120
Feathers, crude	Lb.	294	311	451	312	2,669	2,824	4,597	3,872
Galatin, edible	Lb.	781	675	453	403	6,330	6,570	3,261	4,046
Hair, unmanufactured	Lb.	499	652	442	466	7,076	8,575	5,834	6,559
Honey	Lb.	588	760	54	74	8,225	5,930	829	633
Other	3/	3/		885	1,353	3/	3/	8,105	9,937
Total other animal products		---	---	3,630	3,740	---	---	33,144	37,532
Total animals and animal products		---	---	87,929	79,440	---	---	685,208	738,858
VEGETABLE PRODUCTS									
Cotton, unmanufactured (480 lb.):									
Cotton	Bale	7	5	989	883	104	73	20,091	14,027
Linters	Bale	20	20	500	632	110	160	2,814	4,976
Total cotton and linters	Bale	27	25	1,489	1,515	214	233	22,905	19,003
Fruits and preparations:									
Apples, green or ripe (50 lb.)	Bu.	20	199	72	891	354	847	1,566	3,667
Berries	Lb.	8,446	5,637	1,616	812	47,220	63,067	9,490	11,308
Dates	Lb.	154	447	13	15	27,763	24,374	2,512	2,183
Figs	Lb.	2,175	876	233	72	15,555	8,935	1,747	1,028
Grapes (40 lb.)	Cu.Ft.	8	18	22	54	500	409	799	632
Melons	Lb.	12,355	7,010	473	227	33,156	17,774	1,425	702
Olives in brine	Gal.	821	920	1,444	2,111	6,907	9,725	13,658	19,829
Oranges, mandarin, canned	Lb.	2,320	2,966	448	562	36,125	41,920	7,324	8,316
Pineapples, canned, prepared or preserved ..	Lb.	13,449	14,286	1,561	1,569	107,366	127,060	12,217	14,134
Pineapple juice	Gal.	908	2,492	223	690	5,650	6,939	1,574	2,061
Other	3/	3/		1,641	1,706	3/	3/	15,596	15,014
Total fruits and preparations		---	---	7,746	8,709	---	---	67,908	78,874
Grains and preparations:									
Barley grain (48 lb.)	Bu.	108	2/	180	2/	4,787	4,018	6,664	5,446
Barley malt	Lb.	2,323	6,646	117	335	32,609	27,733	1,576	1,381
Corn grain (56 lb.)	Bu.	67	75	198	188	637	571	1,406	1,449
Oats grain (32 lb.)	Bu.	361	261	359	346	2,240	1,843	1,905	1,737
Rice	Lb.	5,801	44	295	42	47,518	451	2,485	490
Rye grain (56 lb.)	Bu.	0	10	0	14	813	705	889	898
Wheat grain for domestic use (60 lb.)	Bu.	63	31	128	65	249	1,057	493	2,155
Wheat flour	Lb.	0	0	0	0	709	13	39	2
Other	3/	3/		1,319	1,635	3/	3/	12,740	16,034
Total grains and preparations		---	---	2,596	2,625	---	---	26,197	29,592

Continued -

Table 9.— U. S. agricultural imports for consumption: Quantity and value by commodity, February 1966 and 1967 and July-February 1965/66 and 1966/67 - Continued

Commodity imported SUPPLEMENTARY	Unit	February 1/				July-February 1/				
		Quantity		Value		Quantity		Value		
		1966	1967	1966	1967	1965/66	1966/67	1965/66	1966/67	
		Thousands	Thousands	1,000 dollars	1,000 dollars	Thousands	Thousands	1,000 dollars	1,000 dollars	
Nuts and preparations:										
Almonds	Lb.	17	22	7	9	220	294	126	167	
Brazil nuts	Lb.	526	1,490	300	461	19,697	29,024	6,772	8,501	
Cashew nuts	Lb.	6,011	4,191	3,085	2,155	49,615	43,034	25,542	24,250	
Coconut meat, fresh, frozen, or prepared ...	Lb.	9,151	6,769	1,145	813	95,699	76,141	13,028	9,320	
Pistache nuts	Lb.	3,435	1,179	1,788	651	13,700	10,657	7,578	6,088	
Other	3/	3/		280	364	3/	3/	5,891	5,761	
Total nuts and preparations		---	---	6,605	4,453	---	---	58,937	54,167	
Oilseeds and products:										
Oils, edible and inedible -										
Cacao butter	Lb.	2,171	3,148	752	1,597	11,141	16,032	3,730	7,641	
Carnauba wax	Lb.	2,193	1,193	769	370	8,929	8,573	3,248	2,718	
Castor oil	Lb.	10,921	3,271	1,106	349	90,832	68,950	7,918	7,734	
Coconut oil	Lb.	43,726	79,600	5,313	8,915	269,492	442,207	34,262	46,923	
Olive oil, edible	Lb.	3,312	5,815	1,056	1,837	26,109	32,732	8,217	10,278	
Palm oil	Lb.	1,925	11,688	273	1,235	5,367	85,454	657	8,674	
Palm kernel oil	Lb.	7,563	9,073	1,024	1,132	58,965	67,465	8,948	8,724	
Tung oil	Lb.	2,202	2,465	483	298	13,768	20,203	3,132	3,195	
Other	Lb.	4,645	2,166	771	486	17,711	25,762	3,650	5,020	
Total oils (except essential)	Lb.	78,658	118,419	11,540	16,219	502,914	767,378	73,762	100,907	
Oilseeds -										
Copra	Lb.	15,456	8,848	1,294	604	356,718	342,659	32,230	25,007	
Sesame seed	Lb.	3,920	4,968	889	636	17,666	20,872	2,815	2,934	
Other	3/	3/		330	223	3/	3/	2,196	1,919	
Total oilseeds		---	---	2,513	1,463	---	---	37,241	29,860	
Protein meal (oilcake and meal)	Lb.	5,313	12,956	159	436	64,760	110,253	1,911	3,061	
Total oilseeds and products		---	---	14,212	18,118	---	---	112,914	133,828	
Sugar and related products:										
Cane sugar	S. Tons	261	306	28,822	37,150	2,641	3,128	302,892	375,438	
Molasses unfit for human consumption	Ca.	21,101	19,886	1,645	2,004	149,911	219,129	12,281	23,766	
Other	3/	3/		513	453	3/	3/	5,026	4,866	
Total sugar and related products		---	---	30,980	39,607	---	---	320,139	404,070	
Vegetables and preparations:										
Canned mushrooms	Lb.	278	1,128	156	742	7,007	8,237	3,863	4,710	
Canned tomatoes, tomato paste and sauce ...	Lb.	12,273	17,140	1,391	1,992	99,159	126,810	11,078	13,882	
Fresh or dried -										
Cucumbers	Lb.	22,062	26,625	1,668	2,052	46,552	53,414	3,263	4,100	
Garlic	Lb.	1,358	1,252	199	281	9,252	7,689	1,173	1,494	
Onions	Lb.	7,984	9,821	482	677	25,943	34,345	1,782	2,354	
Potatoes, white	Lb.	11,856	26,406	319	715	76,453	201,035	1,952	5,575	
Tomatoes, natural state	Lb.	70,933	72,222	10,463	8,491	131,490	164,102	18,858	21,144	
Turnips and rutabagas	Lb.	8,778	7,694	203	192	67,881	61,706	1,570	1,538	
Pickled vegetables	Lb.	1,540	1,310	236	223	18,707	12,440	2,149	2,033	
Tapioca, tapioca flour, and cassava	Lb.	28,090	27,872	874	952	212,182	207,058	7,191	7,252	
Other	3/	3/		3,505	7,507	3/	3/	20,743	43,508	
Total vegetables and preparations		---	---	19,496	23,824	---	---	73,604	107,590	

Continued -

Table 9.— U. S. agricultural imports for consumption: Quantity and value by commodity,
February 1966 and 1967 and July-February 1965/66 and 1966/67 - Continued

Commodity imported SUPPLEMENTARY	Unit	February 1/				July-February 1/			
		Quantity		Value		Quantity		Value	
		1966	1967	1966	1967	1965/66	1966/67	1965/66	1966/67
				1,000	1,000	Thousands	Thousands	1,000	1,000
		Thousands	Thousands	dollars	dollars	Thousands	Thousands	dollars	dollars
Other vegetable products:									
Feeds and fodders (except oilcake and meal):	---	3/	3/	1,107	1,284	3/	3/	10,787	12,462
Hops	Lb.	477	1,250	492	1,137	5,990	6,956	6,465	7,192
Jute and jute butts, unmanufactured	L.Ton:	6	4	1,249	843	23	22	5,078	5,323
Malt liquors	Gal.	1,066	1,352	1,207	1,531	12,978	13,765	14,248	15,212
Nursery and greenhouse stock	---	3/	3/	860	964	3/	3/	12,352	13,410
Seeds, field and garden	---	3/	3/	1,961	1,438	3/	3/	12,181	9,494
Spices	Lb.	7,187	9,401	1,315	1,139	42,957	62,415	7,309	8,096
Tobacco, unmanufactured	Lb.	14,495	16,494	10,124	11,237	115,038	122,242	82,919	84,134
Wines	Gal.	1,855	1,215	4,109	4,905	11,900	12,176	49,770	53,547
Other	---	3/	3/	641	712	3/	3/	5,557	7,793
Total other vegetable products	---	---	---	23,065	25,190	---	---	206,666	216,663
Total vegetable products	---	---	---	106,189	124,041	---	---	891,270	1,043,727
TOTAL SUPPLEMENTARY IMPORTS	---	---	---	194,118	203,481	---	---	1,576,478	1,782,585
COMPLEMENTARY									
Bananas	Lb.	318,434	240,444	15,273	11,347	2,285,476	2,404,350	108,255	115,176
Coffee (including into Puerto Rico)	Lb.	266,678	214,467	102,471	74,674	2,106,391	1,849,787	784,814	653,566
Coffee essences, substitutes and adulterants	Lb.	490	1,532	552	1,828	2,473	11,297	2,825	12,094
Cocoa or cacao beans	Lb.	129,327	113,907	18,017	25,904	661,359	441,169	89,730	96,971
Cocoa and chocolate, prepared	Lb.	8,868	12,150	1,124	1,653	82,773	101,754	12,553	14,612
Drugs, herbs, roots, etc.	---	3/	3/	1,700	3,316	3/	3/	15,872	20,557
Essential or distilled oils	---	3/	3/	2,315	2,049	3/	3/	21,356	19,452
Fibers, unmanufactured	L.Ton:	11	8	2,015	1,520	114	84	21,571	15,824
Rubber, crude	Lb.	100,654	74,052	18,339	13,541	677,815	594,483	118,796	111,731
Silk, raw	Lb.	345	267	2,180	1,879	2,628	2,212	15,396	15,005
Spices	Lb.	7,029	10,450	3,637	4,420	70,303	69,407	34,076	31,094
Tea	Lb.	9,352	11,633	4,131	4,714	84,070	86,239	37,402	35,904
Wool, unmanufactured (free in bond)	G.Lb.	8,591	5,028	4,568	2,367	93,437	85,784	48,120	42,736
Other complementary agricultural products	---	3/	3/	791	1,051	3/	3/	7,777	8,380
TOTAL COMPLEMENTARY IMPORTS	---	---	---	177,113	150,263	---	---	1,318,543	1,193,102
TOTAL AGRICULTURAL IMPORTS	---	---	---	371,231	353,744	---	---	2,895,021	2,975,687
TOTAL NONAGRICULTURAL IMPORTS	---	---	---	1,434,975	1,638,748	---	---	11,957,705	14,597,766
TOTAL IMPORTS, ALL COMMODITIES	---	---	---	1,806,206	1,992,492	---	---	14,852,726	17,573,453

1/ Preliminary.

2/ Less than 500.

3/ Reported in value only.

4/ Excludes the weight of "other hides and skins," reported in places only.

Table 10.-- U. S. agricultural exports and imports (for consumption): Value by country, July-January 1966/67

Country	Agricultural				Country	Agricultural			
	Exports	Total	Comple- mentary	Supple- mentary		Exports	Total	Comple- mentary	Supple- mentary
-- Thousand dollars --					-- Thousand dollars --				
Greenland	0	24	0	24	Norway	33,191	1,384	13	1,371
Canada	358,646	144,445	6,731	137,714	Denmark	49,971	65,721	604	65,117
Miquelon and St. Pierre Is.	4	0	0	0	United Kingdom	304,311	18,963	5,140	13,823
Latin American Republics:					Ireland	21,390	18,717	1,571	17,146
Mexico	42,450	161,320	40,078	121,242	Netherlands	290,734	57,562	6,715	50,827
Guatemala	7,718	35,250	28,881	6,369	Belgium and Luxembourg	121,498	15,934	628	15,306
El Salvador	4,681	29,931	25,753	4,178	Unidentified W. Europe 1/	0	---	---	---
Honduras	3,028	37,687	32,787	4,900	France	91,212	45,818	4,608	41,210
Nicaragua	4,716	11,776	4,510	7,266	West Germany	297,272	25,561	1,760	23,801
Costa Rica	4,258	34,044	24,704	9,340	East Germany	8,991	161	0	161
Panama	9,227	28,313	26,786	1,527	Austria	7,580	2,313	39	2,274
Cuba	0	682	0	682	Czechoslovakia	18,051	1,059	81	978
Haiti	5,018	6,141	4,083	2,058	Hungary	6,758	274	30	244
Dominican Republic	11,372	71,384	15,647	55,737	Switzerland	44,471	11,474	1,566	9,908
Colombia	13,883	92,030	84,513	7,517	Finland	10,621	1,902	0	1,902
Venezuela	49,914	11,914	8,403	3,511	Estonia	0	0	0	0
Ecuador	7,934	51,381	46,056	5,325	Latvia	0	0	0	0
Peru	24,420	52,592	14,673	37,919	Lithuania	0	7	0	7
Bolivia	7,764	2,566	2,019	547	Poland and Danzig	36,738	25,466	136	25,330
Chile	26,100	2,302	35	2,267	U.S.S.R. (Russia)	8,302	2,009	725	1,284
Brazil	72,548	305,778	222,796	82,982	Azores	498	66	0	66
Paraguay	2,170	6,091	367	5,724	Spain	88,653	33,005	939	32,066
Uruguay	1,567	6,908	71	6,837	Portugal	9,691	6,506	69	6,437
Argentina	3,272	62,898	9,871	53,027	Gibraltar	66	18	12	6
Total L. A. Republics	302,040	1,010,988	592,033	418,955	Malta and Gozo	379	329	0	329
Other Latin America:					Italy	133,003	48,143	6,284	41,859
British Honduras	1,421	2,231	1,027	1,204	Free Terr. of Trieste	0	0	0	0
Canal Zone	0	73	73	0	Yugoslavia	43,374	11,063	356	10,707
Bermuda	4,125	1	0	1	Albania	8	62	62	0
Bahamas	10,781	345	7	338	Greece	11,511	22,300	404	21,896
Jamaica	12,766	8,300	806	7,494	Rumania	3,363	654	156	498
Leeward and Windward Is.	2,374	867	305	562	Bulgaria	713	1,115	383	732
Barbados	1,659	279	0	279	Turkey	10,438	40,032	1,146	38,886
Trinidad and Tobago	7,488	1,229	511	718	Cyprus	1,312	477	186	291
Netherlands Antilles	6,391	214	13	201	Total Europe				
French West Indies	1,213	2,207	0	2,207	1,695,156	460,473	33,776	426,697	
British Guiana	2,563	6,083	18	6,065	Asia:				
Surinam	2,003	633	633	0	Syrian Arab Republic	8,314	2,136	1,639	497
French Guiana	125	0	0	0	Lebanon	10,902	3,570	902	2,669
Falkland Islands	0	0	0	0	Iraq	1,960	2,785	1,099	1,606
Total Latin America	354,949	1,033,450	595,426	438,024	Iran	12,795	11,254	1,491	9,763
Europe:					Israel	57,500	1,063	297	766
Iceland	2,344	314	27	287	Jordan	10,613	29	29	0
Sweden	38,712	2,084	136	1,948	Gaza Strip	12	9	0	9
					Kuwait	2,264	0	0	0
					Saudi Arabia	14,674	22	0	22
					Other Arabia Pan. States	1,060	189	124	65

Continued -

Table 10.-- U. S. agricultural exports and imports (for consumption): Value by country,
July-January 1966/67 - Continued

Country	Agricultural				Country	Agricultural			
	Exports	Imports				Exports	Imports		
	Total	Comple-	Supple-		Total	Comple-	Supple-		
		mentary	mentary			mentary	mentary		
	-- Thousand dollars --					-- Thousand dollars --			
Asia - Continued:					Africa - Continued:				
Aden	1,548	11	3	8	Canary Islands	4,237	0	0	0
Bahrain	786	1	0	1	Other Spanish Africa	211	0	0	0
Afghanistan	2,143	902	0	902	Federal Rep. of Cameroon ..	756	9,650	9,215	435
India	278,601	43,110	14,633	28,477	Central African Republic ..	31	0	0	0
Goa, Damao, and Diu	0	0	0	0	Gabon	77	0	0	0
Pakistan	65,162	6,863	869	5,994	Mauritania	32	1	0	1
Nepal	28	148	2	146	Senegal	2,386	34	0	34
Ceylon	6,641	16,638	16,627	11	Guinea	1,407	4,453	4,427	26
Burma	10,833	11	0	11	Ivory Coast	1,211	29,222	26,928	294
Thailand	14,123	10,218	2,757	7,461	Togo	200	244	235	9
Viet-Nam	101,669	673	345	328	Other Western Africa	2,518	806	49	757
Laos	258	54	54	0	Ghana	9,694	16,957	15,928	1,029
Cambodia	36	588	588	0	Nigeria	8,074	13,230	8,318	4,912
Malaysia	9,164	42,978	38,299	4,679	Sierra Leone	1,001	2,133	2,133	0
Indonesia	26,897	78,065	72,028	6,037	British West Africa	58	2	1	1
Philippines	44,202	165,302	5,130	160,172	Madeira Islands	848	97	0	97
Macao	11	0	0	0	Angola	541	29,616	29,190	426
Other S. and S.E. Asia	5	0	0	0	Other W. Port. Africa	273	361	315	46
China	0	0	0	0	Liberia	5,309	14,780	14,780	0
Outer Mongolia	0	1,300	0	1,300	Congo (Leopoldville)	9,143	5,051	3,564	1,487
North Korea	0	0	0	0	Burundi and Rwanda	858	15,958	15,942	16
Korea, Republic of	62,887	6,225	5,241	984	Somali Republic	356	93	0	93
Hong Kong	28,794	1,480	114	1,366	Ethiopia	1,206	19,042	16,563	2,479
Taiwan	52,094	17,763	1,975	15,788	French Somaliland	207	41	18	23
Japan	587,984	22,679	4,555	18,124	Uganda	169	27,687	27,585	102
Nansai and Nanpo Islands ..	9,839	2/	2/	0	Kenya	2,274	11,546	11,349	197
Total Asia	1,423,706	435,986	168,801	267,185	Tanzania (formerly Tangan- yika and Zanzibar)	775	12,231	11,891	340
Australia and Oceania:					Seychelles and Depend.	30	131	129	2
Australia	20,833	176,036	515	175,521	Mauritius and Depend.	83	2,920	1	2,919
New Guinea	147	1,915	1,915	2/	Mozambique	224	4,152	655	3,497
New Zealand and W. Samoa ..	5,456	94,916	20,661	74,255	Malagasy Republic	145	13,073	11,916	1,157
British W. Pacific Is.	580	4,673	90	4,583	Rep. of South Africa	33,693	24,132	526	23,606
French Pacific Islands	1,854	98	95	3	Zambia, S.Rhod., Malawi ...	1,334	1,105	586	519
Trust Terr. of Pacific Is. .	902	0	0	0	Total Africa	251,784	269,927	214,829	55,098
Total Australia and Oceania	29,772	277,638	23,276	254,362	Total all countries	4,114,017	2,621,943	1,042,839	1,579,104
Africa:					E. E. C. (Common Market):				
Morocco	29,042	1,502	390	1,112	Netherlands	290,734	57,542	6,715	50,827
Algeria	39,284	80	34	46	Belgium and Luxembourg ...	121,498	15,934	628	15,306
Tunisia	16,486	206	9	197	France	91,212	45,818	4,608	41,210
Libya	1,877	35	0	35	West Germany	297,272	25,561	1,760	23,801
United Arab Rep. (Egypt) ..	70,150	8,680	27	8,653	Italy	133,003	69,143	6,284	61,859
Sudan	5,584	676	125	551	Total E. E. C.	933,719	192,998	19,935	173,003

1/ Not available by countries.
2/ Less than \$500.

Table 11.-- U. S. agricultural exports and imports (for consumption): Value by country, July-February 1966/67

Country	Agricultural				Country	Agricultural			
	Exports	Total	Imports	Supple-		Exports	Total	Imports	Supple-
			Compre-	mentary			mentary	mentary	
	-- Thousand dollars --					-- Thousand dollars --			
Greenland	0	24	0	0	Norway	35,834	1,512	13	1,499
Canada	393,125	160,471	8,513	151,958	Denmark	55,364	74,291	664	73,647
Miquelon and St. Pierre Is. . .	4	0	0	0	United Kingdom	334,562	21,216	5,804	15,412
					Ireland	23,271	22,356	1,851	20,515
Latin American Republics:					Netherlands	324,291	65,853	7,707	58,146
Mexico	49,261	194,916	45,530	149,386	Belgium and Luxembourg ...	137,442	17,129	658	16,471
Guatemala	8,337	41,966	34,166	7,800	Unidentified W. Europe $\frac{1}{2}$..	0	---	---	---
El Salvador	5,387	37,329	33,094	4,235	France	106,645	51,115	5,454	45,661
Honduras	3,604	42,030	36,358	5,672	West Germany	335,670	28,275	1,949	26,326
Nicaragua	5,116	13,679	5,033	8,646	East Germany	10,274	161	0	161
Costa Rica	4,650	38,318	27,969	10,349	Austria	8,792	2,470	46	2,424
Panama	10,015	31,423	29,659	1,770	Czechoslovakia	19,792	1,165	81	1,084
Cuba	0	683	0	683	Hungary	6,857	378	51	327
Haiti	5,563	7,364	4,618	2,746	Switzerland	49,028	12,451	1,674	10,777
Dominican Republic	14,149	79,507	17,509	61,998	Finland	12,082	2,154	0	2,154
Colombia	15,621	106,077	97,807	8,270	Estonia	0	0	0	0
Venezuela	57,338	13,926	10,310	3,616	Latvia	0	0	0	0
Ecuador	8,604	58,348	51,793	6,555	Lithuania	0	7	0	7
Peru	27,615	59,717	16,302	43,415	Poland and Danzig	42,953	31,093	165	30,928
Bolivia	8,867	2,628	2,047	581	U.S.S.R. (Russia)	13,025	2,120	730	1,390
Chile	27,441	3,157	161	2,996	Azores	521	66	0	66
Brazil	79,808	336,728	246,787	89,941	Spain	108,756	37,737	1,152	36,585
Paraguay	2,179	6,643	468	6,175	Portugal	13,257	7,756	74	7,682
Uruguay	1,670	7,522	72	7,450	Gibraltar	67	18	12	6
Argentina	3,537	70,261	10,564	59,697	Malta and Gozo	482	329	0	329
Total L. A. Republics ..	338,762	1,152,228	670,247	481,981	Italy	149,226	53,590	7,261	46,329
					Free Terr. of Trieste	0	0	0	0
Other Latin Amer. Reps:					Yugoslavia	45,662	13,384	425	12,959
British Honduras	1,562	2,617	1,208	1,409	Albania	9	73	73	0
Canal Zone	0	107	88	19	Greece	12,475	25,824	459	25,365
Bermuda	4,523	1	0	1	Romania	3,920	795	159	636
Bahamas	12,312	929	7	922	Bulgaria	715	1,282	401	881
Jamaica	15,126	10,066	1,103	8,963	Turkey	12,146	46,047	1,445	44,602
Leeward and Windward Is. . .	2,800	1,051	431	620	Cyprus	1,920	513	186	327
Barbados	1,889	296	0	296					
Trinidad and Tobago	9,121	1,393	663	730	Total Europe	1,911,823	523,922	38,662	485,260
Netherlands Antilles	7,228	221	20	201					
French West Indies	1,392	2,427	15	2,412	Asia:				
British Guiana	2,923	6,083	18	6,065	Syrian Arab Republic	8,343	2,445	1,792	653
Surinam	2,376	637	637	0	Lebanon	11,949	3,871	913	2,958
French Guiana	137	0	0	0	Iraq	2,176	2,902	1,292	1,610
Falkland Islands	0	0	0	0	Iran	13,140	12,683	1,521	11,162
					Israel	67,686	1,243	339	904
Total Latin America	400,151	1,178,056	674,437	503,619	Jordan	11,814	29	29	0
					Gaza Strip	12	9	0	9
Europe:					Kuwait	2,764	0	0	0
Iceland	2,456	324	36	288	Saudi Arabia	16,366	22	0	22
Sweden	44,339	2,428	152	2,276	Other Arabia Pen. States ..	1,118	195	124	71

Continued -

Table 11.-- U. S. agricultural exports and imports (for consumption): Value by country.
July-February 1966/67 - Continued

Country	Agricultural				Country	Agricultural			
	Exports	Imports				Exports	Imports		
	Total	Comple- mentary	Supple- mentary		Total	Comple- mentary	Supple- mentary		
	-- Thousand dollars --					-- Thousand dollars --			
Asia - Continued:					Africa - Continued:				
Aden	1,712	11	3	8	Canary Islands	5,805	0	0	0
Bahrain	863	1	0	1	Other Spanish Africa	211	0	0	0
Afghanistan	2,143	968	0	968	Federal Rep. of Cameroon	764	11,220	10,754	466
India	324,947	47,336	16,630	30,706	Central African Republic	31	0	0	0
Goa, Damao, and Diu	0	0	0	0	Gabon	84	0	0	0
Pakistan	74,528	7,748	938	6,810	Mauritania	32	1	0	1
Nepal	30	183	2	181	Senegal	2,401	51	0	51
Ceylon	6,667	18,989	18,978	11	Guinea	1,407	4,463	4,427	36
Burma	10,834	13	0	13	Ivory Coast	1,345	34,076	34,151	825
Thailand	15,309	11,454	3,022	8,432	Togo	204	244	235	9
Viet-Nam	114,455	683	348	335	Other Western Africa	3,186	1,080	49	1,031
Laos	322	54	54	0	Ghana	10,236	29,657	28,321	1,336
Cambodia	37	712	712	0	Nigeria	9,185	16,424	10,922	5,502
Malaysia	11,521	47,960	43,127	4,833	Sierra Leone	1,134	2,221	2,221	0
Indonesia	26,920	88,871	81,483	7,388	British West Africa	58	2	1	1
Philippines	49,468	183,934	5,653	178,281	Madeira Islands	880	108	0	108
Macao	19	0	0	0	Angola	614	35,044	34,447	597
Other S. and S.E. Asia	5	0	0	0	Other W. Port. Africa	304	361	315	46
China	0	0	0	0	Liberia	5,506	16,996	16,996	0
Outer Mongolia	0	1,477	17	1,460	Congo (Leopoldville)	10,680	5,567	3,919	1,648
North Korea	0	0	0	0	Burundi and Rwanda	993	16,459	16,444	15
Korea, Republic of	73,158	7,350	6,310	1,040	Somali Republic	376	107	0	107
Hong Kong	33,040	1,698	120	1,578	Ethiopia	1,406	23,736	21,030	2,706
Taiwan	62,400	19,698	2,112	17,586	French Somaliland	214	93	70	23
Japan	656,184	24,014	4,760	19,254	Uganda	316	30,833	30,675	158
Manaei and Nanpo Islands	14,367	2/	2/	2/	Kenya	2,369	12,223	11,996	227
Total Asia	1,614,297	486,553	190,279	296,274	Tanzania (formerly Tangan- yika and Zanzibar)	955	13,141	12,705	436
					Seychelles and Depend.	30	136	134	2
Australia and Oceania:					Mauritius and Depend.	88	2,920	1	2,919
Australia	23,078	194,553	555	193,998	Mozambique	257	4,796	741	4,055
New Guinea	195	2,065	2,065	2/	Malagasy Republic	202	15,538	14,375	1,163
New Zealand and W. Samoa	6,075	103,095	21,513	81,582	Rep. of South Africa	38,715	30,277	392	29,685
British W. Pacific Is.	840	4,677	90	4,587	Zambia, S.Rhod., Malawi	1,457	1,257	624	633
French Pacific Islands	2,012	140	137	3	Total Africa	274,886	322,126	256,846	65,280
Trust Terr. of Pacific Is.	1,122	5	5	0	Total all countries	4,627,608	2,975,687	1,193,102	1,782,585
Total Australia and Oceania	33,322	304,535	24,365	280,170	E. E. C. (Common Market):				
					Netherlands	324,291	65,853	7,707	58,146
Africa:					Belgium and Luxembourg	137,442	17,129	658	16,471
Morocco	29,238	1,721	476	1,245	France	106,645	51,115	5,454	45,661
Algeria	40,089	80	34	46	West Germany	335,670	28,275	1,949	26,326
Tunisia	20,378	206	9	197	Italy	149,226	53,590	7,261	46,329
Libya	2,068	36	0	36	Total E. E. C.	1,053,274	215,962	23,029	192,933
United Arab Rep. (Egypt)	75,935	9,084	27	9,057					
Sudan	5,733	1,068	155	913					

1/ Not available by countries.
2/ Less than \$500.

Explanatory Note

U.S. foreign agricultural trade statistics in this report include official U.S. data based on compilations of the Bureau of the Census. Agricultural commodities consist of (1) nonmarine food products and (2) other products of agriculture which have not passed through complex processes of manufacture such as raw hides and skins, fats and oils, and wine. Such manufactured products as textiles, leather, boots and shoes, cigarettes, naval stores, forestry products, and distilled alcoholic beverages are not considered agricultural.

The trade statistics exclude shipments between the 50 States and Puerto Rico, between the 50 States and the island possessions, between Puerto Rico and the island possessions, among the island possessions, and intransit through the United States from one foreign country to another when documented as such through U.S. Customs.

EXPORTS The export statistics also exclude shipments to the U.S. armed forces for their own use and supplies for vessels and planes engaged in foreign trade. Data on shipments valued at less than \$100 are not compiled by commodity and are excluded from agricultural statistics but are reflected in nonagricultural and overall export totals in this report. The agricultural export statistics include shipments under P.L. 87-195 (Act for International Development), principally sales for foreign currency; under P.L. 83-480 (Agricultural Trade Development and Assistance Act), and related laws; and involving Government payments to exporters. (USDA payments are excluded from the export value.) Separate statistics on Government program exports are compiled by USDA from data obtained from operating agencies.

The export value, the value at the port of exportation, is based on the selling price (or cost if not sold) and includes inland freight, insurance, and other charges to the port. The country of destination is the country of ultimate destination or where the commodities are to be consumed, further processed, or manufactured. When the shipper does not know the ultimate destination, the shipments are credited to the last country, as known to him at time of shipment from the United States, to which the commodities are to be shipped in their present form. Except for Canada, export shipments valued \$100-\$499 are included on the basis of sampling estimates; shipments to Canada valued \$100-\$1,999 are sampled.

IMPORTS Imports for consumption consist of commodities released from U.S. Customs custody upon arrival, or entered into bonded manufacturing warehouse, or withdrawn from bonded storage warehouse for consumption. The agricultural statistics exclude low-value shipments from countries not identified because of illegible reporting, but they are reflected in nonagricultural and overall import totals in this report.

The import value, defined generally as the market value in the foreign country, excludes import duties, ocean freight, and marine insurance. The country of origin is defined as the country where the commodities were grown or processed. Where the country of origin is not known, the imports are credited to the country of shipment.

Imports similar to agricultural commodities produced commercially in the United States and others that are interchangeable in use to any significant extent with such U.S. commodities are supplementary, or partly competitive. All other commodities are complementary, or noncompetitive.

Further explanatory material on foreign trade statistics and compilation procedures of the Bureau of the Census is contained in the publications of that agency.

END
DATE
FILMED
11-8-79
NTIS