



AgEcon SEARCH
RESEARCH IN AGRICULTURAL & APPLIED ECONOMICS

The World's Largest Open Access Agricultural & Applied Economics Digital Library

This document is discoverable and free to researchers across the globe due to the work of AgEcon Search.

Help ensure our sustainability.

Give to AgEcon Search

AgEcon Search
<http://ageconsearch.umn.edu>
aesearch@umn.edu

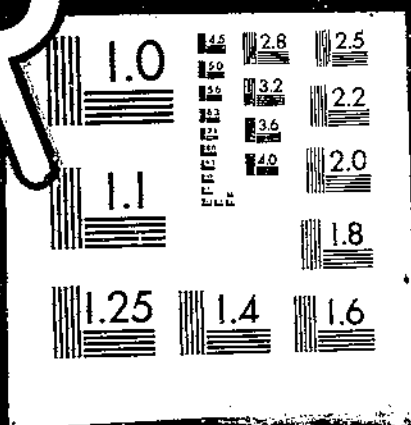
*Papers downloaded from **AgEcon Search** may be used for non-commercial purposes and personal study only. No other use, including posting to another Internet site, is permitted without permission from the copyright owner (not AgEcon Search), or as allowed under the provisions of Fair Use, U.S. Copyright Act, Title 17 U.S.C.*

USDA/FATUS-
MAR 67

FATUS/FOREIGN AGRICULTURAL TRADE OF THE UNITED STATES, 1967 MARCH. Washington, DC:
Economic Research Service.

(NAL Call No. A286.9/Ag8)

I O F I
U S D A
F A T U S
M A R 67



A286.9
Ag8
Cop. 2

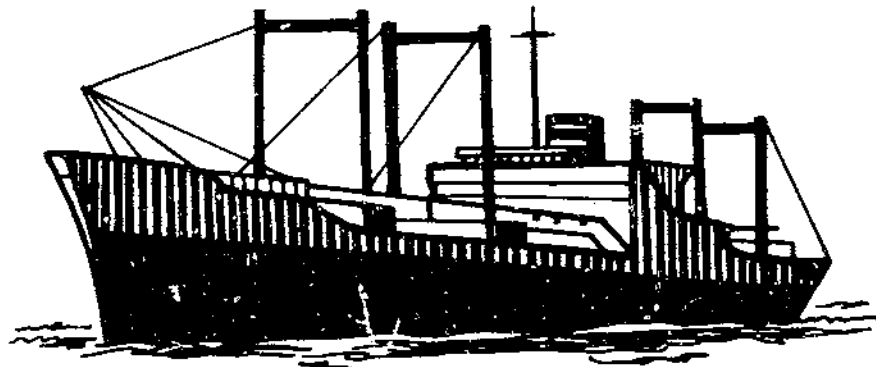
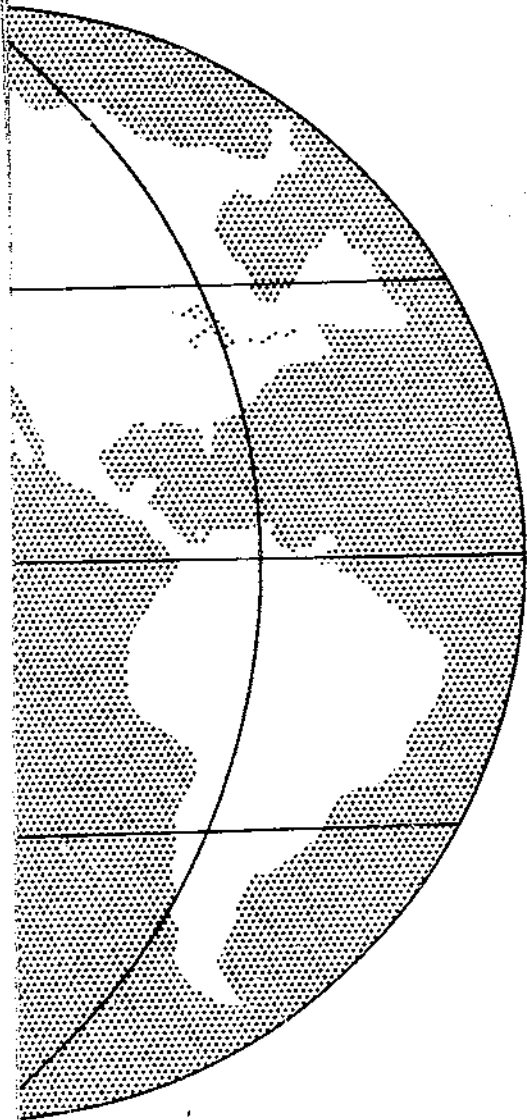
MARCH 1967

FOREIGN AGRICULTURAL TRADE OF THE UNITED STATES

U. S. DEPARTMENT OF AGRICULTURE
ECONOMIC RESEARCH SERVICE

MARCH 1967

CURRENT PRICE LEVELS



IN THIS ISSUE:

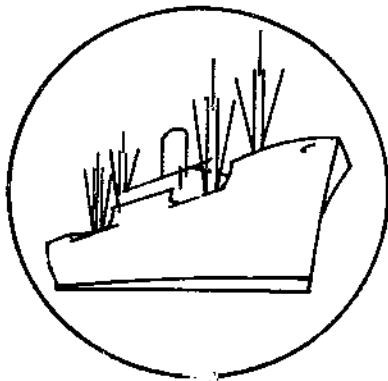
- U.S. Agricultural Exports Reached All-Time High in Calendar Year 1966
- U.S. Agricultural Exports to the European Economic Community Reached New High in 1966
- Larger Commercial Exports to European Economic Community and Japan Contributed to Record Exports in 1965/66
- Export Highlights
- Import Highlights
- Trade Statistics July-December 1965 and 1966

Published Monthly by Economic Research Service U. S. Department of Agriculture

Contents

	<u>Page</u>
Digest	3
Special in This Issue:	
U.S. Agricultural Exports Reached All-Time High of \$6.9 Billion in Calendar Year 1966	5
U.S. Agricultural Exports to the European Economic Community Reached New High in 1966	14
Larger Commercial Exports to European Economic Community and Japan Contributed to Record Exports in 1965/66	20
Export Highlights	41
Import Highlights	48
Explanatory Note	60
Table 1.--U.S. Agricultural Exports: Value by Commodity, Calendar Years 1965 and 1966	6
Table 2.--U.S. Agricultural Exports: Quantity and Value, Calendar Years 1965 and 1966	10
Table 3.--Total Imports of Cotton and Cotton Fabrics and Yarn, and Synthetic Fibers, Fabrics and Yarn by the EEC, 1963-65	16
Table 4.--Poultry Meat: EEC Production, Consumption, and Purchases from the United States, 1960-65	16
Table 5.--Per Capita Consumption of Meats in the EEC by Type, 1961-65	17
Table 6.--Livestock Numbers in the European Economic Community, Average 1956-60, Annual 1964-66	17
Table 7.--Grain Production, European Economic Community, Average 1960-64, Annual 1965-66	18
Table 8.--U.S. Agricultural Exports to the European Economic Community: Value by Commodity, Calendar Years 1962-66	19
Table 9.--U.S. Agricultural Exports: Value by Major World Areas, Fiscal Years 1960/61 Through 1965/66	22
Table 10.--U.S. Agricultural Exports: Value by Major Trade Blocs, Fiscal Years 1960/61 Through 1965/66	22
Table 11.--U.S. Agricultural Exports: Major Countries of Destination by Commodity Groups, Specified Fiscal Years	24
Table 12.--U.S. Agricultural Exports: Value by Country of Destination, Specified Fiscal Years	38
Table 13.--U.S. Agricultural Exports: Value by Commodity, July-January 1965/66 and 1966/67	42
Table 14.--U.S. Agricultural Exports to the European Economic Community: Value by Variable Levy and Other Commodities, December and July-December 1964-66	45
Table 15.--U.S. Agricultural Exports to the European Economic Community: Value by Selected Commodities, July-December 1964-66	46
Table 16.--U.S. Agricultural Exports to the European Economic Community: Value by Commodity and Country, July-December 1966	47
Table 17.--Imports: Value by Commodity, July-December 1965 and 1966	49
Table 18.--U.S. Agricultural Exports: Quantity and Value by Commodity, December and July-December 1965 and 1966	50
Table 19.--U.S. Agricultural Imports: Quantity and Value by Commodity, December and July-December 1965 and 1966	54
Table 20.--U.S. Agricultural Exports and Imports: Value by Country, July-December 1966	58

Trade Statistics and Analysis Branch
Foreign Development and Trade Division
Economic Research Service



FOREIGN AGRICULTURAL TRADE OF THE UNITED STATES

Digest

U.S. Agricultural Exports Reached All-Time High of \$6.9 Billion in Calendar Year 1966 (see page 5). U.S. agricultural exports rose to an all-time high of \$6.9 billion in calendar year 1966 from \$6.2 billion in the previous year. Expanded commercial sales for dollars accounted for nearly all of the \$700 million gain in 1966. Commercial exports for dollars were a record \$5.3 billion in 1966 compared with \$4.8 billion in the previous year. Food-for-Freedom shipments totaled an estimated \$1.6 billion -- about the same as in the previous year. The gain in exports of wheat and products accounted for over half the overall gain in 1966. Other substantial increases also occurred for feed grains, soybeans, oilcake and meal, tobacco, vegetables, and hides and skins. Offsetting the above increases were declines for cotton, dairy products, animal fats, oils and greases, and cottonseed and soybean oils.

* * * * *

U.S. Agricultural Exports to the EEC Reached New High in 1966 (see page 14). U.S. agricultural exports to the European Economic Community (EEC) totaled \$1.6 billion, one-third above those in 1962. During the 5-year span, annual exports not subject to variable levies accounted for more than half the total agricultural exports to the EEC. The EEC is the largest market for U.S. agricultural products, and in 1966 received nearly one-fourth of the farm products exported from the United States. By value, U.S. agricultural exports increased 36 percent from 1962 to 1966. Much of the increase was in exports of products subject to the variable levies. U.S. exports of wheat doubled during the 5-year period, and feed grains were up 50 percent. Exports of poultry products were affected most, declining 57 percent from 1962 to 1966.

* * * * *

Larger Commercial Exports to European Economic Community and Japan Contributed to Record Exports in 1965/66 (see page 20). Continued expansion of commercial exports of U.S. farm products to the European Economic Community (EEC) and Japan resulted in total agricultural exports being a record \$6.7 billion in 1965/66. Sustained economic growth in Europe and Japan provided higher income levels during the last year, which contributed to larger imports of most U.S. farm products. Record export levels were achieved for feed grains, wheat and flour, and soybeans; while oilcake and meal, hides and skins, fruits, vegetables, rice, poultry meats, and meats and meat products also increased. Besides larger exports to the EEC and Japan, exports increased to EFTA, COMECON, and CACM.

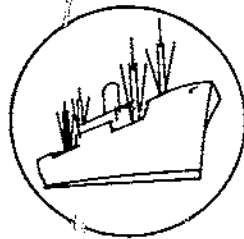
* * * * *

Export Highlights (see page 41). U.S. agricultural exports reached an estimated \$4,140 million for July-January 1966/67, 7 percent higher than the corresponding period a year earlier. Substantial increases occurred in cotton and tobacco, with lesser advances in grains and preparations, oilseeds and products, and vegetables and preparations. These increases offset declines in animals and animal products, and fruits and preparations. January 1967 exports were 10 percent higher than in January a year before. They were sparked by larger shipments of cotton, fruits and vegetables, oilseeds and products, and tobacco.

U.S. agricultural exports to the EEC totaled \$828 million for July-December 1966, down 3 percent from the same period in 1965. December exports to the EEC totaled \$131 million, 10 percent under those of December 1965. For the first half of 1966/67, exports of variable levy commodities accounted for the decline. They were down 19 percent from the first half of fiscal 1965/66. Exports of commodities not subject to variable levies were up in July-December 1966, and rose 10 percent above the \$462 million for July-December 1965/66.

* * * * *

Import Highlights (see page 48). U.S. agricultural imports for consumption were \$2,209 million in July-December 1966 compared with \$2,171 million for the same period a year earlier. A 13 percent increase in supplementary (partially competitive) product imports to \$1,343 million accounted for the increase in the total, since complementary (noncompetitive) product imports were down 12 percent to \$865 million in July-December 1966. Larger imports of meats and meat products, sugar, oilseeds and products, vegetables and preparations, and dairy products contributed most to the increase in imports. Agricultural product imports have been down from the preceding month during each of the last 3 months, while nonagricultural product imports declined during each of the last two months.



SPECIAL in this issue

U.S. AGRICULTURAL EXPORTS REACHED ALL-TIME HIGH OF \$6.9
BILLION IN CALENDAR YEAR 1966

by

Dewain H. Rahe ^{1/}

Exports of farm products in calendar year 1966 rose to a new record of \$6.9 billion, up nearly \$700 million over the previous year (see table 1). This record total was 23 percent above the 1961-65 average and 77 percent above the 1955-59 average. A substantial part of the overall gain was accounted for by record exports of wheat and wheat products, up nearly \$400 million. Other substantial gains occurred for feed grains, soybeans, tobacco, oilcake and meal, vegetables, and hides and skins. Exports of cotton in calendar year 1966 were down 8 percent to 3.6 million running bales. The decline in cotton took place in the first half of the year as exports were up about one-third in July-December 1966. There were also declines for lard, inedible tallow and greases, dairy products, and poultry products; rice exports were down slightly from the record level of the preceding year.

Commercial sales for dollars accounted for nearly all of the increase in U.S. agricultural exports in calendar year 1966. They rose to an estimated \$5.3 billion -- an increase of nearly \$600 million from the previous year. Shipments under Food-for-Freedom programs totaled about \$1.6 billion in 1966, compared with \$1.5 billion in 1965.

The buoyant economic growth in the principal industrialized countries of Western Europe, Japan, and Canada continued to provide a stimulating factor to U.S. agricultural exports. In 1966, industrial production as reported by the Organization for Economic Cooperation and Development increased 3 percent in Western Europe, 16 percent in Japan, and 6 percent in Canada. In addition to industrial growth of these countries, there has also been a substantial increase in their total exports. Exports of the EEC rose about 10 percent in 1966, those of the European Free Trade Association by 7 percent, Japan by 14 percent, and Canada by 19 percent.

The U.S. share of world agricultural exports increased in the past calendar year and accounted for over one-fifth of total world agricultural exports in 1966. The United States continued to maintain an aggressive promotion program in the major foreign markets. This program consisted of demonstrations and product displays at trade fairs and trade centers as well as technical assistance to importers to show the uses that U.S. products may have in their respective countries.

^{1/} Assistant Chief, Trade Statistics and Analysis Branch, Foreign Development and Trade Division, Economic Research Service.

Table 1.--U.S. agricultural exports: Value by commodity,
calendar years 1965 and 1966

Commodity	1965	1966 <u>1/</u>	Change
	-- Million dollars --		Percent
Animals and animal products:			
Dairy products	196	126	-36
Fats, oils, and greases	226	190	-16
Hides and skins	109	155	+42
Meats and meat products	112	116	+4
Poultry products	70	67	-4
Other	75	71	-5
Total animals, etc.	788	725	-8
Cotton, excluding linters	486	432	-11
Fruits and preparations	313	315	+1
Grains and preparations:			
Feed grains, excluding products ..	1,134	1,339	+18
Rice, milled	243	228	-6
Wheat and flour	1,183	1,535	+30
Other	72	90	+25
Total grains, etc.	2,632	3,192	+21
Oilseeds and products:			
Cottonseed and soybean oils	241	153	-37
Soybeans	650	760	+17
Protein meal	187	226	+21
Other	79	88	+11
Total oilseeds, etc.	1,157	1,227	+6
Tobacco, unmanufactured	383	482	+26
Vegetables and preparations	155	176	+14
Other	315	336	+7
Total exports	6,229	6,885	+11

1/ Preliminary.

Animals and animal products.--Exports of animals and animal products declined to \$725 million in calendar year 1966 from \$788 million a year earlier. This was the third consecutive year that exports of animals and animal products declined. Lard, tallow and dairy products contributed most to the downtrend. Offsetting these declines somewhat were value increases for hides and skins and meats and products.

Dairy product exports fell to \$126 million in 1966 from \$196 million a year earlier. Much of the decline reflects reduced shipments of butter as well as nonfat dry milk. Exports of nonfat dry milk totaled only 388 million pounds in 1966 compared with 863 million in 1965. However, the value was \$63 million as prices rose one-fourth from a year earlier. Most of the decline in dairy products reflected the sharp drop in U.S. dairy production in the past 2 years. U.S. production in 1966 was 3 percent below that of a year earlier. CCC stocks have been nearly depleted from the high level of 1962/63. Furthermore, dairy production has increased substantially in Western Europe. In 1964 the United States exported 130 million pounds of butter mainly to Western Europe because of short supplies. Exports fell to 46 million pounds in 1965 and to 2 million in 1966.

Exports of lard fell to 158 million pounds in 1966 from 231 million in 1965. Tallow exports were 1,830 million pounds in 1966 compared with 2,002 million in 1965. Domestic demand for animal fats increased in 1966 because of larger requirements for animal feeds and fatty acids as well as reduced cottonseed oil production. Increased European production of animal fats and olive oil reduced import requirements of this important market.

World demand for U.S. hides and skins continued to expand in calendar year 1966. U.S. exports of hides and skins rose to a record 20 million pieces from 19 million a year earlier. The most significant factor in the rapid growth in U.S. hide and skin exports has been the increased purchasing power in such areas as Western Europe and Japan. Japan purchased nearly two-fifths of U.S. cattle hides exported in 1966.

The volume of meats and products declined to 324 million pounds in 1966 from 346 million a year earlier. Value, however, increased to \$116 million from \$112 million a year earlier because of higher prices as well as the export of products of higher value. Variety meats account for about one-half of U.S. exports of meats and meat products.

Cotton.--Cotton exports in 1966 fell to 3.6 million bales from 3.8 million in the previous year. This is the second consecutive year that cotton exports were below the previous year. The decline in 1966 occurred during January-June when exports were only 1.3 million bales. However, exports during the last half of 1966 rose sharply as the result of the new cotton program which enhanced the competitive position of U.S. cotton in the major importing markets. Exports during July-December were 2.3 million bales -- about one-third above the comparable period in 1965. Foreign Free World cotton production has increased by one-fifth in the past 5 years. In recent years there has been a shift in world cotton trade from exports of raw cotton to exports of textile goods. The less developed countries have accounted for most of the gain in world cotton textile exports. In addition, increased production of man-made fibers has resulted in more competition for cotton in the major importing markets. In 1966, the United States accounted for about 20 percent of world cotton trade, down sharply from the average of 36 percent during 1955-59. The principal outlets for U.S. cotton were the European Economic Community, Japan, Canada, India, South Korea, United Kingdom, Hong Kong, and Taiwan.

Fruits and preparations.--Exports of fruits and preparations totaled \$315 million in 1966, compared with \$313 million in 1965. The increase resulted in gains in exports of fresh fruits, especially apples, oranges, tangerines, and grapes during the first half of the calendar year. In the latter half, fruit exports were down somewhat, reflecting mostly a decline in U.S. production and increased foreign competition.

Exports of canned fruits declined somewhat in 1966 from 1965 but were about equal to the level in 1964. Exports of dried fruits were down slightly from the previous year. Exports of raisins totaled 124 million pounds compared to 122 million in 1965.

Rapid economic growth and increased purchasing power in Japan and Western Europe have stimulated the demand for fruits in these areas. But increased self-sufficiency in fruit production in Western Europe has limited the expansion of U.S. exports. Furthermore, fruit production for export has been increased by such countries as Australia, South Africa, Japan, Spain, Italy, France, Greece, Argentina, and Chile.

Grains and preparations.--U.S. exports of grains and preparations rose to \$3.2 billion from the \$2.6 billion of 1965. Exports of wheat and products rose nearly \$400 million in calendar year 1966 from a year earlier. Exports of feed grains were \$200 million larger than in 1965.

Wheat and flour exports rose to 902 million bushels in 1966 from 720 million in 1965. They exceeded the previous record of 852 million bushels in calendar year 1964. A substantial part of the increase in 1966 represented increased exports for dollars to countries in Western Europe and Japan. Japan continued as the top commercial outlet for U.S. wheat, taking 82 million bushels in 1966 -- 21 percent more than in 1965. Shipments of wheat grain under the Food-for-Freedom program totaled an estimated 460 million bushels in 1966 compared with 429 million in 1965. Exports were up sharply to India under special programs mainly sales for foreign currency because of reduced production from drought conditions. Other main outlets under Government-financed programs were Yugoslavia, Brazil, Pakistan, UAR (Egypt), Algeria, and South Korea. The other important commercial markets included the United Kingdom, the Netherlands, West Germany, and Venezuela.

U.S. exports of milled rice were down in 1966 to 29.8 million bags, compared with the record 34.2 million in the previous year. Value was \$230 million, down \$14 million from a year earlier. In 1966, commercial sales were about one-third of total rice exports. Exports under Government-financed programs were sent primarily to Viet-Nam, India, and Indonesia. Japan purchased 2.6 million bags of U.S. rice in 1966 compared with 0.7 million in 1965 and only nominal amounts in prior years. In 1966, the United States was the second largest exporter of rice excluding communist countries. Thailand was the leading exporter. World demand for rice was up in 1966, but supplies were down somewhat. Rice prices in the major international markets were the highest in 10 years.

Feed grain exports, excluding products, rose to 24.7 million metric tons in 1966 from 21.3 million in 1965.

Commercial sales for dollars represented about 90 percent of total feed grain exports in 1966. Corn exports rose to a record 612 million bushels in 1966 from 597 million in 1965. Grain sorghum exports jumped 69 percent in 1966 to a record 291 million bushels. The European Economic Community purchased 8.8 million metric tons in 1966 compared with 9 million in 1965. Japan, the top country market, took 4.5 million tons in 1966 -- up 7 percent from the previous year. EEC and Japan together accounted for over half of the U.S. feed grain exports. Demand for animal products in these industrialized countries has increased substantially in the past few years because rapid economic growth has increased consumer purchasing power. This demand has stimulated U.S. feed grain exports. In 1966, the United States accounted for over one-half of world feed grain exports.

The increase in feed grain exports occurred in the first part of the year when supplies in Europe were short because of reduced production of coarse grains and root crops in 1965. European production of these crops increased in 1966, reducing import requirements for the last part of 1966.

Oilseeds and products.--Exports of oilseeds and products advanced to a record \$1,227 million in 1966 from \$1,157 million in the previous year. This was the fifth consecutive year that the value of oilseeds and products had increased over the previous year. The increase occurred for all major groupings this year except edible vegetable oils, which fell sharply from the previous year.

Exports of soybeans rose to a record 246 million bushels in 1966 from 228 million bushels in 1965. Demand for soybean meal for feed concentrate has increased sharply in Japan and Western Europe from the expanding livestock industries in these industrialized countries. The value increase in 1966 was even larger because of higher prices. Value of soybean exports rose to \$760 million in 1966 from \$650 million in 1965. Exports of soybeans are all commercial sales for dollars and do not benefit from export payment assistance. Japan continued to be the largest outlet for U.S. soybeans in 1966 with 65 million bushels -- about 85 percent of Japan's total soybean consumption. In recent years soybean production in Japan has declined sharply as production of other crops is more profitable. Exports of soybeans from Mainland China in 1966 were about 15 million bushels, about the same as in 1965. U.S. exports were over 90 percent of world soybean trade in 1966. Other important markets besides Japan include Canada, the Netherlands, West Germany, Spain, Italy, Denmark, Israel, and Belgium. The Netherlands is a transshipping point in Europe. U.S. exports to this country are overstated and other countries such as Western Germany and the United Kingdom are understated.

U.S. exports of cottonseed and soybean oils fell to 1 billion pounds in 1966 from 1.8 billion in 1965. The value was \$153 million in 1966 compared with \$241 million in 1965. In 1966 commercial sales for dollars were about one-third of total cottonseed and soybean oil exports. Demand for U.S. oils declined sharply in the past year because of increased production of olive oil in the Mediterranean Basin as well as larger production of animal fats in Western Europe. In addition, many of the importing countries are obtaining more of their oil requirements from increased crushing of U.S. soybeans. The principal foreign outlets for U.S. soybean and cottonseed oils in 1966 were India, Pakistan, Iran, Burma, Tunisia, and the UAR (Egypt).

U.S. exports of oilcake and meal rose to 2.6 million short tons in 1966 from 2.4 in 1965. The demand for protein meal is associated with the expanding livestock industry as in the case of feed grains. Producers in Japan and Western Europe have been emphasizing increased production efficiency which requires the feeding of high protein concentrates. The continued favorable price ratios for feeding, reduced supplies for fish and peanut meal, and a longer feeding period in EEC in the spring of 1966 also contributed to the increased exports.

Tobacco.--U.S. exports of unmanufactured tobacco totaled 551 million pounds in 1966 compared with 468 million in 1965. Nearly all of the increase resulted from expanded flue-cured tobacco exports, which rose to 421 million pounds in 1966 from 351 million a year earlier. The improvement in quality and quantity of flue-cured varieties encouraged the major importers to purchase more U.S. tobacco in 1966. In addition, U.N. economic sanctions on trade with Rhodesia have caused many importers to turn to the United States for tobacco. The United Kingdom continues to be the largest foreign market for U.S. tobacco, taking approximately 130 million pounds in 1966 compared with only 81 million in 1965. Other important markets in 1966 were West Germany, Sweden, Ireland, the Netherlands, Belgium, and Switzerland.

Vegetables and preparations.--U.S. exports of vegetables and preparations rose to \$176 million in 1966 from \$155 million in 1965. Exports of dry edible beans totaled \$31 million in 1966 compared with \$23 million a year earlier. Exports of fresh vegetables rose to \$65 million in 1966 from \$54 million in 1965. Canned vegetable exports were \$27 million in 1966 compared with \$30 million in 1964. Improved transportation and increased purchasing power in the industrialized countries have encouraged U.S. exports of vegetables and preparations. Canada continued as the best foreign outlet for our vegetables because of its proximity to the United States.

Table 2.--U.S. agricultural exports: Quantity and value by commodity, 1965 and 1966

Commodity exported	Unit	Year ended December 31 1/			
		Quantity		Value	
		1965	1966	1965	1966
		Thousands	Thousands	1,000 dollars	1,000 dollars
ANIMALS AND ANIMAL PRODUCTS					
Animals, live:					
Cattle	No.	54	35	17,084	14,285
Poultry, live -					
Baby chicks	No.	30,061	35,433	11,077	13,632
Other live poultry	2/	2/	2/	2,517	2,642
Other	2/	2/	2/	4,789	5,464
Total animals, live	---	---	---	35,467	36,023
Dairy products:					
Anhydrous milk fat, including donations	Lb.	15,831	9,053	10,198	7,084
Butter (excluding dehydrated) including donations	Lb.	45,966	2,377	19,540	810
Cheese, including donations	Lb.	6,831	6,003	3,499	3,649
Infants' and dietetic foods, chiefly milk	Lb.	16,002	17,014	11,124	11,292
Milk -					
Condensed and evaporated, including donations	Lb.	90,499	132,664	19,783	28,632
Dried whole	Lb.	19,852	16,517	8,124	4,869
Nonfat dry, including donations	Lb.	863,404	387,683	117,742	63,272
Other	2/	2/	2/	6,029	6,653
Total dairy products	---	---	---	196,039	126,261
Fats, oils, and greases:					
Lard	Lb.	250,872	157,621	30,214	19,595
Tallow, edible	Lb.	3,908	3,896	517	503
Tallow, inedible	Lb.	1,997,966	1,826,491	179,402	152,301
Other fats and greases	Lb.	146,479	165,280	16,260	17,496
Total fats, oils, and greases	Lb.	2,399,225	2,153,288	226,393	189,895
Meat and meat products:					
Beef and veal	Lb.	43,791	29,033	22,618	17,822
Pork	Lb.	47,654	50,885	16,406	20,589
Sausage casings	Lb.	12,887	12,729	8,682	9,395
Variety meats	Lb.	219,630	209,339	55,056	57,178
Other (including meat extracts)	Lb.	21,629	21,823	9,312	11,013
Total meat (except poultry)	Lb.	345,591	323,809	112,074	115,997
Poultry products:					
Eggs, dried, frozen, or preserved	Lb.	2,950	1,828	2,015	1,582
Eggs in the shell -					
Hatching	Doz.	7,508	10,627	7,326	9,803
Other	Doz.	6,264	8,200	2,338	3,387
Poultry meat -					
Chickens, fresh or frozen	Lb.	111,120	103,631	28,376	26,974
Turkeys, fresh or frozen	Lb.	58,499	46,950	20,636	16,615
Other, fresh or frozen	Lb.	11,138	9,871	3,898	3,529
Canned and preserved	Lb.	21,188	18,676	5,510	5,146
Total poultry products	---	---	---	70,099	67,036

Continued

Table 2.--U.S. agricultural exports: Quantity and value
by commodity, 1965 and 1966 - Continued

Commodity exported	Unit	Year ended December 31 1/			
		Quantity		Value	
		1965	1966	1965	1966
				1,000	1,000
<u>Other animal products:</u>		Thousands	Thousands	dollars	dollars
Feathers, crude	Lb.	1,556	1,249	1,633	1,557
Gelatin, edible	Lb.	2,419	1,587	1,807	1,353
Hair, raw or dressed, new	Lb.	7,764	6,261	2,358	1,970
Hides and skins, raw 3/	No.	18,981	19,812	108,528	154,737
Honey	Lb.	13,806	14,433	2,266	2,366
Wool, unmanufactured	Clb.	9,126	10,753	7,906	8,705
Other	2/	2/	2/	22,983	19,237
Total other animal products				147,481	189,925
Total animals and products				787,553	725,137
VEGETABLE PRODUCTS					
<u>Cotton, unmanufactured:</u>					
Cotton	RBle	3,795	3,597	486,169	432,181
Linters	RBle	301	262	8,551	7,870
Total cotton and linters	RBle	4,096	3,859	494,720	440,051
<u>Fruits and preparations:</u>					
Canned -					
Fruit cocktail	Lb.	143,447	148,301	22,999	24,418
Peaches	Lb.	243,669	201,501	26,179	21,834
Pears	Lb.	6,823	7,396	1,299	1,283
Pineapples	Lb.	100,327	91,118	15,491	14,712
Other	Lb.	65,658	33,818	10,955	7,219
Total canned fruits	Lb.	559,924	482,134	76,923	69,466
Dried -					
Prunes	Lb.	127,046	95,111	22,906	19,682
Raisins and currants	Lb.	121,745	124,457	20,792	21,888
Other	Lb.	17,662	15,102	6,147	5,686
Total dried fruits	Lb.	266,453	234,670	49,845	47,256
Fresh -					
Apples	Lb.	252,055	246,172	22,513	23,317
Berries	Lb.	19,869	19,946	4,654	4,714
Grapefruit	Lb.	195,994	214,569	11,394	13,209
Grapes	Lb.	247,539	252,950	22,712	25,252
Lemons and limes	Lb.	222,124	250,015	18,379	20,640
Oranges and tangerines	Lb.	506,654	569,965	43,460	47,005
Pears	Lb.	65,730	68,404	6,371	6,093
Other	Lb.	214,002	212,211	15,765	15,523
Total fresh fruits	Lb.	1,723,967	1,834,232	145,248	155,753
Fruit juices -					
Grapefruit	Gal.	4,514	3,648	4,272	3,843
Orange	Gal.	8,593	10,350	17,873	18,359
Other	Gal.	10,257	11,805	10,821	11,586
Total fruit juices	Gal.	23,364	25,803	32,966	33,788
Frozen fruits (incl. specialties)	Lb.	16,736	12,678	2,826	2,634
Other	2/	2/	2/	5,315	6,338
Total fruits and preparations				313,123	315,235

Continued -

Table 2.--U.S. agricultural exports: Quantity and value
by commodity, 1965 and 1966 - Continued

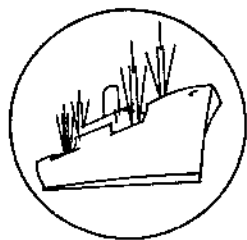
Commodity exported	Unit	Year ended December 31 1/			
		Quantity		Value	
		1965	1966	1965	1966
		Thousands	Thousands	dollars	dollars
Grains and preparations:					
Feed grains and products -					
Barley grain (48 lb.)	:Bu.	63,790	60,965	76,384	79,098
Corn grain, including donations (56 lb.)	:Bu.	596,750	612,120	832,216	880,857
Grain sorghums (56 lb.)	:Bu.	172,346	291,146	208,887	357,035
Oats grain (32 lb.)	:Bu.	23,585	28,760	16,618	22,156
Total feed grains	:MTon	21,268	24,689	1,134,105	1,339,146
Barley malt	:Lb.	83,042	90,076	5,287	5,792
Corn grits and hominy	:Lb.	34,251	46,980	1,456	2,102
Cornmeal & flour, incl. donations	:Cwt.	4,018	4,174	16,215	16,364
Cornstarch	:Lb.	69,547	71,330	6,795	7,319
Oatmeal, groats, and rolled oats	:Lb.	9,730	19,529	835	1,332
Total feed grains and products	:MTon	21,736	25,197	1,164,693	1,372,055
Rice -					
Milled, including donations	:Lb.	3,407,695	2,969,409	243,401	227,984
Paddy or rough	:Lb.	12,511	18,148	1,070	1,610
Total rice (milled basis)	:Lb.	3,415,827	2,981,205	244,471	229,594
Rye grain (56 lb.)	:Bu.	2,315	4,237	2,825	5,600
Wheat and flour, incl. donations -					
Wheat grain (60 lb.)	:Bu.	650,374	826,821	1,063,631	1,397,322
Wheat flour, wholly U.S. wheat	:Cwt.	30,441	32,889	119,567	138,163
Total wheat and flour	:Bu.	719,779	901,808	1,183,198	1,535,485
Bakery products	:Lb.	14,336	18,079	6,387	8,687
Other	:---	2/	2/	30,520	40,370
Total grains and preparations	:---	---	---	2,632,094	3,191,791
Oilseeds and products:					
Oils, edible and inedible, including donations -					
Cottonseed oil	:Lb.	564,816	175,987	75,932	24,451
Soybean oil	:Lb.	1,219,518	867,664	164,679	128,082
Other	:Lb.	264,343	278,004	42,074	41,179
Total oils (except essential)	:Lb.	2,048,677	1,321,655	282,685	193,712
Oilseeds -					
Flaxseed (56 lb.)	:Bu.	3,925	6,663	11,732	19,475
Soybeans (60 lb.)	:Bu.	227,660	245,723	650,066	759,905
Other	:---	2/	2/	25,319	28,380
Total oilseeds	:---	---	---	687,117	807,760
Protein meal (oilcake and meal)	:STon	2,441	2,643	186,855	225,800
Total oilseeds and products	:---	---	---	1,156,657	1,227,272
Tobacco, unmanufactured:					
Burley	:Lb.	45,295	45,705	34,315	39,272
Cigar wrapper	:Lb.	3,921	4,471	13,920	14,495
Dark-fired Kentucky and Tennessee	:Lb.	21,620	17,021	11,354	9,067
Flue-cured	:Lb.	350,596	421,110	298,490	389,029
Maryland	:Lb.	10,116	10,612	7,930	8,494
Other	:Lb.	36,527	52,243	16,677	21,165
Total tobacco, unmanufactured	:Lb.	468,075	551,162	382,686	481,522

Continued -

Table 2.--U.S. agricultural exports: Quantity and value by commodity, 1965 and 1966 - Continued

Commodity exported	Unit	Year ended December 31 1/			
		Quantity		Value	
		1965	1966	1965	1966
		Thousands	Thousands	1,000 dollars	1,000 dollars
Vegetables and preparations:					
Canned -					
Asparagus	Lb.	46,443	28,956	12,482	9,222
Soups	Lb.	17,787	19,969	4,039	4,371
Tomato paste and puree	Lb.	13,701	9,506	3,149	2,468
Tomato sauce (cooking purposes) ..	Lb.	3,505	1,851	485	300
Other	Lb.	73,327	66,292	10,163	10,342
Total canned vegetables	Lb.	154,763	126,574	30,318	26,703
Dry, ripe beans, incl. donations ..	Lb.	281,023	352,227	23,163	30,502
Dry, ripe peas (incl. cow & chick) ..	Lb.	300,098	272,666	17,705	18,895
Fresh -					
Lettuce	Lb.	180,801	219,027	9,721	11,869
Onions	Lb.	123,342	108,811	5,534	5,176
Potatoes, white	Lb.	166,624	313,936	6,776	8,611
Tomatoes	Lb.	97,871	102,718	9,671	10,503
Other	Lb.	341,944	414,082	21,937	28,655
Total fresh vegetables	Lb.	910,582	1,158,574	53,639	64,814
Frozen vegetables (including specialties)	Lb.	14,919	22,041	3,475	4,173
Tomato juice	Gal.	2,990	2,268	2,569	2,174
Soups and vegetables, dehydrated ..	Lb.	17,588	24,800	7,018	8,445
Vegetable seasonings	Lb.	9,219	6,785	3,801	3,570
Other		2/	2/	13,662	16,713
Total vegetables and preparations:--		---	---	155,350	175,989
Other vegetable products:					
Coffee	Lb.	24,855	20,927	30,866	20,365
Drugs, herbs, roots, crude	Lb.	10,782	8,403	7,084	7,984
Essential oils, natural	Lb.	9,990	9,958	22,593	24,936
Feeds & fodders (except oilcake) ..	2/	2/	2/	83,239	96,569
Flavoring sirups for beverages ..	2/	2/	2/	24,357	29,624
Hops	Lb.	20,702	24,543	12,850	15,067
Nursery and greenhouse stock	2/	2/	2/	8,378	9,843
Nuts and preparations	Lb.	217,852	172,533	43,334	38,470
Seeds, field and garden	Lb.	83,768	102,330	27,321	30,575
Spices	Lb.	5,809	7,837	3,687	4,743
Other, including donations	2/	2/	2/	42,807	49,421
Total other vegetable products ..		---	---	306,516	327,597
Total vegetable products		---	---	5,441,146	6,159,457
TOTAL AGRICULTURAL EXPORTS		---	---	6,228,699	6,884,594
TOTAL NONAGRICULTURAL EXPORTS		---	---	20,777,406	23,027,429
TOTAL EXPORTS, ALL COMMODITIES		---	---	27,006,105	29,912,023

1/ Preliminary. 2/ Reported in value only. 3/ Excludes the number of "other hides and skins," reported in value only.



SPECIAL in this issue

U.S. AGRICULTURAL EXPORTS TO THE EUROPEAN ECONOMIC COMMUNITY REACHED NEW HIGH IN 1966

by

Joseph R. Corley ^{1/}

This article briefly reviews agricultural exports from the United States to the European Economic Community (EEC) from 1962 through 1966 for commodities subject to variable import levies as well as those not subject to the levies. The latter are referred to as "non-variable levy" commodities. Supplementing the review of export magnitudes is an analysis of the relationship of the variable levies to U.S. agricultural exports.

Total U.S. agricultural exports to the EEC increased to \$1,561 million in 1966, one-third above the \$1,151 million in 1962 (table 8). During this 5-year span, exports not subject to variable levies accounted for more than half the total agricultural exports to the EEC. In 1962, variable levy products were 42 percent of the total. They declined to 38 percent in 1964, but were up to 43 percent in 1965 and 1966.

The EEC is the largest market for U.S. agricultural products. In 1966, it received nearly one-fourth of U.S. exports, about the same share as in 1962. In actual value, U.S. agricultural exports to the EEC increased about 38 percent from 1962 to 1966. A large part of this increase was in products subject to the EEC's variable import levies. U.S. exports of wheat to the EEC doubled during the 5-year period, and feed grain exports were up 52 percent. Poultry products were affected most by the levies, and declined 57 percent from 1962 to 1966.

Variable import levies were instituted as one of the means of improving the competitive position of EEC commodities by limiting imports of agricultural products from third countries when their commodities were competitive with those produced in the Community. Products falling under the CAP regulations from its outset in July 1962 were grains, pigmeat, eggs and poultry. Rice was made subject to variable levies in September 1964, and beef, veal, and dairy products in November 1964.

Since the 6 member countries represented a large trading bloc of highly developed countries, the implications of a united agreement for limiting their agricultural imports from third countries suggested far-reaching effects to countries which are not EEC members.

^{1/} International Economist, Trade Statistics and Analysis Branch, Foreign Development and Trade Division, Economic Research Service.

The Netherlands is a major European transshipment point, and an undetermined share of U.S. exports to the Netherlands are transshipped to other destinations. Some of the exports from the United States moving to the Netherlands may terminate in other EEC countries, or other European countries. The data shown with this article do not distinguish between shipments to and transshipments through the Netherlands.

U.S. Exports of Principal Variable Levy Commodities

Wheat and feed grains were the major variable levy commodities exported from the United States to the EEC, and in 1966 accounted for 88 percent of total variable levy commodities. Rice and poultry products were the next most important commodities. Total exports of variable levy products from the United States have continued to increase since 1962, rising steadily to \$663 million in 1966 from \$483 million in 1962. During this time, exports of feed grains increased almost continuously, except for a decline in 1963 from 1962. Wheat exports were off in 1964 from 1963. Exports of poultry and eggs declined sharply in 1963 from 1962, and have trended downward, falling to \$23 million in 1966 from \$32 million in 1964. Although poultry products have generally declined, certain components have increased. Live poultry, mainly baby chicks, have trended upward, as have turkeys. These increases, however, were not sufficient to offset declines in broilers and fryers, stewing chickens, and eggs. Rice exports have fluctuated, but reached a 5-year high in 1966.

Exports of Principal Non-variable Levy Commodities

The principal non-variable levy commodities exported from the United States to the EEC countries were cotton, fruits and vegetables, oilcake and meal, soybeans, and tobacco. These five commodity groups accounted for about three-fourths of total non-variable levy commodities each year from 1962 through 1966.

U.S. cotton exports to the EEC increased from 1962 to 1964, then declined through 1966. The decline was due partly to increased production in the foreign Free World countries and stronger competition from man-made fibers. During the last half of 1966, U.S. cotton exports to the EEC attained a higher level than during corresponding periods in 1965. This increase in exports probably reflected the lower price for cotton after August 1, 1966. Although cotton exports to the EEC increased in the last quarter of 1966, consumption by the EEC's spinning industry has trended downward during recent years. From 1957 through 1965, consumption declined by about 7,000 metric tons a year, while use of man-made fiber by the cotton spinning industry rose at a rate of over 4,000 metric tons a year. Although the consumption of man-made fiber has increased, total raw fiber consumption has declined during the 1957-65 period. This overall decline in textile fiber consumption probably has resulted from a continuing increase in imports of cotton and synthetic fiber textiles (table 3). While imports of raw cotton declined from 1963 to 1965 (although higher in 1964) imports of cotton textiles advanced each of the 3 years, rising 16 percent from 1963 to 1965. Imports of synthetic fibers, fabrics, and yarns increased even more, rising 39 percent during the 3-year period.

U.S. exports of fruits and vegetables to the EEC averaged about \$92 million annually from 1962 through 1966. Fruits and preparations -- principally canned and fresh fruits -- made up the largest share, totaling \$77 million in 1965 and \$61 million in 1964. The Netherlands was a large importer of fresh fruits, while West Germany was the principal recipient of canned fruits. U.S. exports of fruits and vegetables declined in 1966 from 1965. Larger crops in Italy and Spain have increased the competitive situation in the EEC, with resulting declines in U.S. exports of most products except fresh citrus fruits.

Shipments of oilcake and meal to the EEC from the United States have shown a sharp increase since 1962 -- tripling during the 5-year period. Exports in 1966 were \$144

million, compared with \$46 million in 1962. Soybean exports have also risen sharply, reaching \$279 million in 1966 from \$162 million in 1962. The continued expansion of livestock numbers has reflected a corresponding increase in demand for feed ingredients. Larger quantities of protein meal, a nutritive feed additive, was probably used to meet this expanding feed demand.

Annual tobacco exports remained relatively stable -- about \$105 million -- from 1962 through 1965. During these 4 years, they ranged from \$104 million in 1963 to \$106 million in 1965. In 1966, however, they jumped to \$120 million. This increase in the latest year occurred in the last 6 months of 1966, when the EEC's receipts of U.S. tobacco totaled \$84 million compared with \$59 million for the corresponding months of 1965. Larger exports occurred partly because of the increased quality and quantity of U.S. flue-cured tobacco, and partly because of a reduction in available supplies from other principal tobacco exporting countries.

Table 3.--Total imports of cotton and cotton fabrics and yarn, and synthetic fibers, fabrics, and yarn by the EEC, 1963-65

Commodity	1963	1964	1965
	: 1,000 dollars (c.i.f.)		
Cotton:			
raw	641,667	666,260	575,635
fabric	194,305	213,632	213,681
yarn	65,142	82,014	86,545
Total	901,114	961,906	875,861
Synthetics:			
fibers	82,661	94,264	126,557
fabrics	214,269	256,236	301,420
yarn	221,851	263,597	290,647
Total	518,781	614,097	718,624

Source: Trade by Commodities, Series C, Vol. II, Organization for Economic Co-operation and Development.

Relationship of Levies and U.S. Exports to the EEC Since 1962

The period since 1962 provides some indications of the effects of the EEC's variable levies on U.S. agricultural exports. Even though the levies were applied to some of the principal U.S. export commodities, declines have been limited to those accounting for the smaller shares. Increases in exports of feed grains and wheat have more than offset the declines in poultry and meat products.

Production of poultry meat in the EEC has increased steadily, rising 65 percent from 1960 to 1965. Per capita consumption rose from 9.9 pounds in 1960 to 14.7 pounds in 1965. Based on the estimated EEC population and per capita consumption of poultry, the EEC had its greatest deficit of about 316 million pounds in 1962 (table 4). That year, U.S. exports of poultry to the EEC also reached their highest point. During the years 1963 through 1965, EEC production relative to consumption increased, and U.S. exports dropped. The improved competitive position of the EEC countries brought about because of the variable levy on poultry imports no doubt influenced expansion in poultry production.

Table 4.--Poultry meat ^{1/}: EEC production, consumption, and purchases from the United States, 1960-65.

Item	1960	1961	1962	1963	1964	1965 ^{2/}
	: Million pounds --					
Production	1,517	1,682	1,861	2,036	2,316	2,505
Consumption ^{3/}	1,700	1,959	2,177	2,239	2,533	2,669
Deficit	183	277	316	203	217	164
Purchases from U.S. ^{4/}	93	152	177	85	103	95

^{1/} On ready-to-cook basis (70 percent of live weight).

^{2/} Preliminary.

^{3/} The product of the estimated population and the EEC per capita consumption of poultry meat for each of the years.

^{4/} Excluding canned poultry.

Source: Foreign Agriculture Circular, FPE 2-66, September 1966.

Meat consumption in the EEC increased from a per capita consumption of 100 pounds in 1961 to 109 pounds in 1965 (table 5). Consumption of beef and veal rose from 8.3 million pounds in 1961 to 9.4 million pounds in 1963, but then declined slightly in 1964 and 1965. World trade in beef was down in 1965, resulting in shorter supplies for imports. The shorter supplies likely encouraged the increased exports from the United States in 1965. U.S. exports of beef and veal to the EEC doubled from 1964 to 1965, but declined to about \$1 million in 1966.

Pork consumption has grown almost continuously except for a decline in 1963. It reached 9.6 million pounds in 1965 from 8.0 million in 1961. The substantial increase in hog production in the EEC, and their plentiful supplies probably affected the decline in U.S. exports of pork and lard from 1964 to 1965.

Table 5.--Per capita consumption of meats in the EEC, by type, 1961-65

Year	Population 1/	Beef and veal		Pork		Other 2/	
		Per capita consumption	Total	Per capita consumption	Total	Per capita consumption	Total
		: Pounds	: Million pounds	: Pounds	: Million pounds	: Pounds	: Million pounds
1961	173,381	48	8,322	46	7,976	6	1,040
1962	175,526	51	8,952	50	8,776	6	1,053
1963	177,661	53	9,416	49	8,705	6	1,066
1964	179,635	51	9,161	51	9,161	6	1,078
1965	181,596	50	9,080	53	9,625	6	1,090

1/ As reported in Main Economic Indicators, OECD, December 1966.

2/ Includes mutton, lamb, goat, and horse meat.

Source: World Agricultural Production and Trade, Statistical Report, FAS, U.S. Department of Agriculture, October 1966.

The restrictions on imports brought about by the variable levies have encouraged larger production of both cattle and hogs (table 6). Hog production in the EEC has increased substantially; rising 21 percent to 37.6 million head in 1966 from the 1956-60 average. West Germany is the principal hog producer in the EEC, and in 1965, accounted for almost half of the total EEC production.

The EEC's production of cattle rose 12 percent from the average 1956-60 production of 44 million head to 50 million head in 1966. Cattle production in the EEC countries has trended upward from the 1956-60 average.

Table 6.--Livestock numbers in the European Economic Community, average 1956-60, annual 1964-66

Commodity	Average: 1956-60	1964	1965	1966
	-- 1,000 head --			
Chickens	258,153	290,321	296,281	2/
Cattle	44,506	48,003	48,337	49,684
Hogs	30,999	35,323	37,685	37,550

1/ Preliminary.

2/ Not available.

Source: Chickens - Agricultural Statistics, 1966; Cattle - Foreign Agricultural Circular, FLM 5-66, June 1966; Hogs - Foreign Agricultural Circular, FLM 6-66, June 1966.

While U.S. exports of pork, lard, beef, veal, and poultry have declined under the variable levy system, exports of feed grains and wheat have trended upward (table 8). The EEC's production of feed grains has not increased rapidly enough to meet the expanding requirements of increased livestock and poultry production. As a result, the EEC has imported larger quantities of feed grains, with the United States maintaining its share of the increased demand. In 1966, U.S. feed grain exports to the EEC continued to increase, but not as much as in the preceding year. This leveling effect probably resulted from the larger 1966 production of corn, oats, and barley -- especially in France, the principal feed grain producer among the EEC countries.

Rice exports from the United States to the EEC were up sharply in 1966, reaching the highest level since 1962. France and Italy are the rice producers among the EEC countries, and both had smaller crops in 1966 than in the preceding year. Italy's rice production in 1966 was the lowest in 3 years, and below the average production for 1960-64. While rice production declined, per capita consumption of rice in the EEC countries increased in 1966. Although the variable levy applies on EEC imports of rice from third countries, the increased consumption and lower production resulted in greater imports.

When the EEC's common policy for agricultural products is completely in effect (the date is July 1968), the EEC will permit free movement of agricultural products among the member countries. The intent of the common agricultural policy is to encourage greater internal production of and self-sufficiency in the products subject to the levies. By limiting imports sufficiently to encourage EEC production of such commodities, exports to the EEC from third countries tend to become supplementary, satisfying the excess demand when EEC production is insufficient.

The effects of the variable levies on imports from the United States appear to indicate that the EEC is accomplishing, at least partly, the desired goal of the common agricultural policy. The rising production of poultry meat in the EEC and declining exports from the United States exemplify this. Feed grain exports by the United States to the EEC have continued to increase in spite of the levies. The rising living standards of the population in the EEC countries, the corresponding demand for higher quality meats, and the expanding livestock numbers have outpaced the production of feed grains. As a result, the EEC countries have drawn larger amounts of feed grains from the United States. U.S. exports of products such as feed grains to the EEC depend to a great extent on the success of production expansion in the EEC countries. Farming characteristics are presently not highly adaptable to large-scale production of feed grains in the EEC (two-thirds of the farms are under 25 acres). U.S. wheat exports to the EEC supplemented poor crops in 1966, when production dropped almost 4 million tons from the preceding year. In addition, the hard wheat varieties produced in the United States and Canada are used in blends with the soft wheat produced in France.

Agricultural commodities not subject to the EEC's variable levies have accounted for the larger share of U.S. exports. However, exports of variable levy commodities increased 40 percent from 1962 to 1966 while non-variable levy commodities increased 37 percent. Sharp declines occurred in U.S. cotton exports to the EEC from 1964 to 1966. On the other hand, sharp increases occurred for protein meal and soybeans. Soybean oil exports have declined. The expansion of crushing facilities has increased the EEC's demand for raw products such as soybeans, and decreased the demand for byproducts, such as oil. Although protein meal is a byproduct of soybeans, its demand as a feed ingredient has increased with livestock production.

Table 7.--Grain production, European Economic Community, average 1960-64, annual 1965-66

Commodity	Average : : 1960-64 :	1965	1966 ^{1/}
: -- 1,000 metric tons --			
Wheat	26,163	30,479	26,698
Feed grains:			
Barley	10,789	11,947	12,871
Oats	6,236	5,790	5,953
Corn	6,400	6,772	7,472
Total ...	23,425	24,509	26,296
Rice 2/	756	746	595

1/ Preliminary.

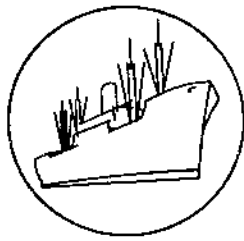
2/ Fiscal years.

Source: Wheat, Barley, and Oats - World Agricultural Production and Trade. Statistical Report, FAS, U.S. Department of Agriculture, October 1966, December 1966; Corn - Foreign Agricultural Circular, FG 10-66, December 1966; Rice - Foreign Agricultural Circular, FR 2-66, December 1966.

Table 8.--U.S. agricultural exports to the European Economic Community:
Value by commodity, Calendar years 1962-66 1/

Commodity	Years				
	1962	1963	1964	1965	1966
-- 1,000 dollars --					
Variable levy commodities <u>2/</u>:					
Feed grains	317,081	275,258	325,972	471,772	476,439
Rice	14,247	13,399	15,378	10,140	18,823
Rye grain	18,709	13,700	5,676	1,463	4,417
Wheat grain	50,603	63,655	59,228	67,674	107,096
Wheat flour	5,553	3,200	1,662	1,207	1,358
Beef and veal (excluding variety meats) and cattle	64	169	1,326	2,623	900
Dairy products	3,603	22,551	54,398	30,473	1,211
Lard <u>3/</u>	2,134	2,543	2 489	1,062	1,105
Pork (excluding variety meats) and swine	341	2,067	8,631	377	1,339
Poultry and eggs:					
Live poultry	790	1,388	1,059	1,380	1,496
Broilers and fryers	30,701	10,698	10,615	6,306	5,415
Stewing chickens	8,347	6,092	6,384	2,710	758
Turkeys	9,624	8,766	11,060	17,491	13,523
Other fresh poultry	574	338	938	304	
Eggs	3,443	3,331	1, 9	1,922	1,710
Total poultry and eggs	53,479	30,613	31,676	30,747	23,206
Other	16,972	25,864	26,523	24,463	26,763
Total	482,786	452,729	532,959	642,001	662,657
Non-variable levy commodities:					
Canned poultry <u>4/</u>	1,080	1,997	3,902	3,325	2,351
Cotton, excluding linters	105,973	131,557	189,143	70,258	63,885
Fruits and vegetables	91,169	97,314	84,525	99,615	87,091
Hides and skins	20,560	16,426	27,433	31,601	28,384
Oilcake and meal	46,020	61,520	76,637	110,736	143,998
Soybeans	162,320	159,436	213,867	226,201	278,676
Tallow <u>4/</u>	26,375	25,921	34,989	37,222	34,660
Tobacco, unmanufactured	105,543	104,215	105,824	106,315	119,917
Variety meats, fresh, frozen <u>4/</u> ..	16,327	21,087	32,280	34,371	35,051
Vegetable oils, expressed	13,161	18,405	33,083	35,590	15,851
Food for relief or charity	14,360	10,164	6,354	4,656	4,555
Other	65,057	70,640	74,881	74,562	82,156
Total	667,945	718,682	882,918	834,452	898,575
Total EEC	1,150,731	1,171,411	1,415,877	1,476,453	1,561,232

1/ Compiled from U.S. Bureau of the Census data. 2/ Grains, poultry, and pork were subject to variable levies beginning on July 30, 1962; rice on September 1, 1964; and beef and dairy products on November 1, 1964. The variable levy classification is designed to show overall changes in exports rather than to measure the impact of the variable levies. 3/ Lard for food is a variable levy commodity while lard for industrial use is bound in the General Agreement on Tariffs and Trade (GATT) at 3 percent ad valorem. U.S. lard is for food use. 4/ Although canned poultry, tallow, and variety meats are subject to variable levies, the import duties are bound in GATT.



SPECIAL in this issue

LARGER COMMERCIAL EXPORTS TO EUROPEAN ECONOMIC COMMUNITY AND JAPAN CONTRIBUTED TO RECORD EXPORTS IN 1965/66

by

Norman R. Kallemeyn ^{1/}

U.S. agricultural exports totaled a record \$6,681 million in fiscal year 1966 -- up 10 percent from the year before. The 1965/66 total was 32 percent above the 1961-65 average with the continuous expansion being mainly due to larger commercial exports to the European Economic Community and Japan. Such exports accounted for 76 percent of the total in 1965/66 with \$2,480 million or 49 percent going to the EEC and Japan. Commercial sales were 68 percent of total exports in 1960/61. Shipments of agricultural products under P.L. 480 and AID programs have been relatively stable in recent years at about the \$1.6 billion level.

The output of 78 million acres of U.S. cropland moved abroad last year -- up 30 percent from 1961. This is equal to one out of every four harvested acres in 1966 compared with one out of six in 1961. Record exports of feed grains, wheat and flour, and soybeans contributed most to the increase in exports. Exports of oilcake and meal, hides and skins, fruits, vegetables, rice, poultry meats, and meats and meat products also increased. Exports of cotton, dairy products, animal fats and oils, vegetable oils, and flaxseed were smaller.

Export Trends

U.S. agricultural exports have been increasing substantially and changing economic conditions in many regions of the world have resulted in significant changes in the export pattern. Probably most significant has been the continuous expansion of commercial exports, while exports under Government-financed programs have remained relatively stable. Continued economic expansion in Western Europe and Japan has provided substantial income growth for consumers, and this has contributed to larger commercial exports of practically all commodities to these major markets. However, the increased purchasing power and resulting growth in consumer demand for animal products as compared with cereal products has created a need for much larger imports of feed grains to supply the expanding livestock and poultry enterprises in Europe and Japan. U.S. feed grain exports, therefore, increased from \$531 million in 1960/61 to \$1,351 million in 1965/66. Increased exports to the EEC and Japan accounted for 65 percent of this increase.

While larger U.S. exports of feed grains point up the expansion of livestock production in some countries, commercial exports of products like fruits, vegetables, nuts, etc., are also expanding as incomes increase in many countries.

^{1/} Agricultural Economist, Trade Statistics and Analysis Branch, Foreign Development and Trade Division, Economic Research Service,

Total exports under P.L. 480 and AID programs were relatively stable during the 1961-66 period, but exports of wheat and flour under Government programs accounted for an increasing share of Government program shipments. This is undoubtedly due to the large shipments of wheat to India. For the 1961-66 period, Government-sponsored exports to India increased from 26 percent of the total of such exports to 38 percent.

U.S. agricultural exports go to over 150 countries, but about 72 percent of the \$6,681 million exported in 1965/66 went to 15 countries. Japan was the largest export market for U.S. agricultural commodities in 1965/66 and during each of the previous 5 years. U.S. exports to Japan in 1965/66 were \$914 million and Japan's share of U.S. farm exports increased from 11 percent in 1960/61 to 14 percent in the former year. U.S. exports to the next six largest markets -- Canada, India, the Netherlands, West Germany, the United Kingdom, and Italy -- showed a combined increase from \$2,125 million in 1960/61 to \$2,874 million in 1965/66. This \$749 million increase was due mainly to a 48 percent rise in exports to three EEC member countries -- the Netherlands, West Germany, and Italy.

Rotterdam, in the Netherlands, is a major transit port for large volumes of U.S. farm products that eventually enter other European markets. Because of the transshipment of U.S. products through Rotterdam and because U.S. exporters do not always know final country of destination on exports, U.S. exports to the Netherlands are overstated, while U.S. exports to the other major European markets are understated. A project is currently underway to analyze and correct this problem.

Exports by Area

Europe.--U.S. agricultural exports to Europe totaled \$2,904 million in 1965/66, and that area continued to be the largest outlet for U.S. farm products (table 9). Exports in 1965/66 were up 28 percent from the 1960/61 level of \$2,275 million. Commercial sales accounted for 93 percent of total exports to Europe in 1965/66 compared with 79 percent in 1960/61. The only European recipient of a sizeable volume of U.S. farm products under Government export programs is Yugoslavia, which imported \$96.2 million worth in 1965/66. Exports under Title IV (long-term supply and dollar credit sales), P.L. 480, accounted for 94 percent of the total.

The EEC was the major market in Europe for U.S. farm products in 1965/66. U.S. exports to the six member countries totaled \$1,593 million during the last fiscal year compared with \$1,101 million in 1960/61 (table 10). U.S. grain exports to the EEC have continued to grow substantially as the EEC countries strive for greater self-sufficiency in their livestock products. Grain production has increased in the EEC, but it has not kept pace with the needs of rapidly expanding livestock and poultry enterprises.

U.S. feed grain exports to the EEC were \$538 million in 1965/66 -- up 173 percent from 1960/61. Feed grain exports accounted for 34 percent of total exports to the EEC during the last fiscal year. Exports of oilcake and meal, products going mainly into prepared animal feeds, increased from \$17 million in 1960/61 to \$129 million in 1965/66.

Agricultural exports to the European Free Trade Association (EFTA) countries were \$729 million in 1965/66, 8 percent above the level in 1964/65 (table 10). Exports to EFTA in 1960/61 were \$691 million, so they have been relatively stable over the last 6 years. Exports to EFTA accounted for 11 percent of total exports during the last fiscal year.

The United Kingdom, the world's largest importer of agricultural products, accounted for 60 percent or \$435 million of total U.S. exports to EFTA countries. Feed grain exports were 27 percent of total exports to the United Kingdom, while exports of tobacco accounted for 22 percent of the total. Exports of wheat and flour were the third most important export items, and they recovered from a low level of \$8 million in 1964/65 to \$42 million in 1965/66.

Table 9.--U.S. agricultural exports: Value by major world areas, fiscal years 1960/61 through 1965/66

Area	1960/61	1961/62	1962/63	1963/64	1964/65	1965/66
-- Million dollars --						
Europe	2,275	2,415	2,169	2,643	2,497	2,904
Asia	1,511	1,309	1,528	1,851	2,050	2,180
Latin America	442	472	486	536	540	556
Canada	1/445	1/521	1/517	1/618	1/618	1/630
Africa	221	380	337	379	345	358
Oceania	42	44	41	47	47	53
Total	4,946	5,141	5,078	6,074	6,097	6,681

1/ Includes intransit commodities placed in bonded storage in Canada for shipment to other countries: Estimated at \$35 million in 1959/60, \$60 million in 1960/61, \$90 million in 1961/62, \$100 million in 1962/63, \$161 million in 1963/64, \$139 million in 1964/65, and \$148 million in 1965/66.

Table 10.--U.S. agricultural exports: Value by major trade blocs, fiscal years 1960/61 through 1965/66

Trade bloc	1960/61	1961/62	1962/63	1963/64	1964/65	1965/66
-- Million dollars --						
EEC	1,101	1,184	1,070	1,333	1,371	1,593
EFTA	691	719	609	720	668	729
LAFTA	212	266	274	282	299	292
COMECON	162	88	103	312	101	129
CACM	27	29	31	37	37	40
Total	2,193	2,286	2,087	2,684	2,476	2,783

U.S. farm exports to the Council of Mutual Economic Cooperation (Comecon) were \$129 million in 1965/66 -- up \$28 million from the previous year (table 10). Exports increased to all Comecon members but Hungary and Poland. Exports to Czechoslovakia increased from an average of only \$5 million during 1961-65 to \$40 million in 1965/66. Shipments to East Germany were valued at \$19 million in 1965/66 compared with an average of only \$6 million during 1961-65. The substantial increase for both countries was due mainly to larger shipments of feed grains. A 37 percent decline in exports to Poland was due to smaller shipments of wheat and flour, rice, feed grains, cotton, tobacco, oilseeds, animal fats and oils, and dairy products. Some of these products were exported to Poland under Titles II and III of P.L. 480.

U.S. exports to Spain, a country not associated with any trade bloc, totaled \$201 million in 1965/66. Although exports to Spain fluctuate substantially, the 1965/66 level was 28 percent above 1960/61 and 128 percent above 1963/64. Commercial exports accounted for 96 percent of total shipments to Spain in 1965/66 compared with only 36 percent 5 years earlier.

Asia.--The Asian countries purchased U.S. agricultural products valued at \$2,180 million in 1965/66 -- up 6 percent from 1964/65 and 44 percent from 1960/61. The huge Asian market was dominated by Japan and India. Together they accounted for 67 percent of the total in 1965/66. Exports to Japan of \$914 million were 98 percent commercial, while exports to India of \$541 million were mainly sales of wheat under Title I of P.L. 480. In 1965/66, the second largest commercial market in Asia for U.S. farm products was the Philippines, with dollar sales being \$55 million or practically three-fourths of total exports of \$74 million. Five expanding dollar markets in Asia have been Iran, Israel,

Lebanon, Taiwan, and Thailand. Total U.S. exports to these five countries increased from \$158 million in 1960/61 to \$228 million in 1965/66. During this period, their combined share of dollar purchases increased from 27 percent of the total to 68 percent.

Latin America.--U.S. exports of farm products to Latin America in 1965/66 were \$556 million compared with \$540 million in 1964/65 and \$442 million in 1960/61. Exports to this region have been relatively stable during the last 3 years. Economic integration is taking place in Latin America, and it undoubtedly affected third-country exports to this region.

Agricultural exports to the Latin American Free Trade Association (LAFTA), the major trade bloc in Latin America, were \$292 million in 1965/66 -- down 2 percent from 1964/65, but still \$80 million above the level of 1960/61 (table 10). Exports increased to Chile, Colombia, Ecuador, Mexico, and Peru; but a 26 percent decline in exports to Brazil caused the decline in the LAFTA total. The decrease in exports to Brazil was on shipments under Government programs and commercial sales. Until this past fiscal year, Brazil was the largest market in Latin America for U.S. farm products. Mexico, the major market in 1965/66, is primarily a dollar market; while Brazil imports U.S. farm products mainly under P.L. 480. Exports to Mexico were valued at \$84 million with 93 percent being commercial sales. Feed grains and cotton were the only major commodities to show an export increase to LAFTA in 1965/66 over a year earlier. Wheat and flour, the major product shipped, was down 11 percent.

As was the case in LAFTA, U.S. exports to the Central American Common Market (CACM) were also probably affected by trade policies adopted on certain commodities entering the CACM. Exports to CACM were \$40 million in 1965/66 compared with \$27 million in 1960/61 (table 10). The \$13 million increase was mainly achieved during 1961-64, however, when exports rose by \$10 million.

Africa.--Exports of U.S. farm products to Africa in 1965/66 were \$358 million -- up 4 percent from 1964/65 with the United Arab Republic (U.A.R.), South Africa, Congo, and Morocco being the major markets. South Africa and U.A.R. accounted for 59 percent of the total commercial sales to Africa of \$109 million. The U.A.R. also imported \$100 million worth of U.S. farm products under Government programs.

Oceania.--U.S. exports to Oceania were \$53 million in 1965/66, of which 98 percent were commercial sales. Exports to Australia accounted for 74 percent of the total, with cotton and tobacco being the major products shipped to this country.

Table 11.—U.S. agricultural exports: Major countries of destination by commodity groups, specified fiscal years

Country and year ended June 30	Total 1/	Grains and preparations			Cotton, excl. linters	Tobacco, unmanufactured	Vegetable fats and oils 2/ 3/	Oil-seeds	Oil-cake and meal (protein meal)
		Wheat and flour 1/	Rice milled 1/	Feed grains 1/ 2/					
— Thousand dollars —									
Total									
1961	4,945,583	1,150,947	132,089	531,133	936,673	385,165	173,351	378,993	44,647
1962	5,140,650	1,284,741	132,399	694,938	663,001	407,491	181,274	388,394	65,952
1963	5,078,204	1,157,917	161,485	730,693	491,491	378,400	191,230	469,792	116,342
1964	6,074,454	1,518,374	216,267	816,422	670,406	420,686	185,705	551,547	111,798
1965	6,096,963	1,240,265	202,593	940,235	583,895	395,269	302,625	635,287	177,756
1966	6,680,940	1,402,235	220,062	1,350,989	385,764	394,717	229,423	778,708	215,734
Japan (1)									
1961	552,817	52,090	68	37,618	233,117	16,195	3,689	114,014	4,302
1962	484,743	61,879	6	57,874	134,720	23,247	2,683	105,808	332
1963	510,643	62,236	184	68,998	114,680	21,267	3,095	129,245	193
1964	742,165	127,186	12,168	130,534	148,926	29,950	4,233	150,660	1,673
1965	750,238	101,036	30,188	171,590	122,855	25,827	1,298	149,323	2,766
1966	913,607	114,141	38,606	233,590	91,642	39,781	3,318	210,332	2,137
Canada (2)									
1961	454,667	18,181	2,219	38,979	41,768	2,784	14,360	45,015	11,456
1962	520,630	31,106	5,824	68,008	55,350	2,276	12,324	57,732	16,186
1963	517,444	25,240	7,475	84,769	38,801	1,898	10,600	61,076	20,734
1964	618,285	61,891	8,579	92,957	57,362	3,228	12,825	76,956	16,265
1965	618,290	28,126	9,106	106,205	51,647	3,909	16,866	101,336	19,482
1966	629,906	18,620	8,149	102,073	36,849	4,974	19,211	97,451	19,622
India (3)									
1961	345,836	210,692	39,736	8,233	73,572	1,978	1,045	0	1
1962	235,230	162,463	20,626	4,877	30,221	4	73	0	23
1963	348,359	236,001	39,138	4,576	53,246	2,564	47	0	45
1964	400,541	288,738	55,195	6,466	29,984	1,954	44	0	80
1965	528,720	372,558	51,199	10,190	59,794	789	10,101	28	90
1966	540,948	430,885	1,240	52,800	15,657	0	12,081	61	184
Netherlands (4)									
1961	324,200	20,767	4,381	108,656	28,287	18,772	7,994	68,574	6,827
1962	347,687	44,454	3,349	119,076	15,650	16,273	5,251	52,692	10,596
1963	344,100	18,146	2,143	120,303	10,968	18,064	6,143	65,107	16,878
1964	413,175	35,067	6,677	121,195	16,197	20,828	14,421	67,458	11,873
1965	423,491	15,973	1,656	141,665	10,838	17,525	13,723	88,134	23,342
1966	514,738	43,202	3,618	179,241	5,751	21,907	7,582	100,630	26,415
West Germany (5)									
1961	320,356	11,804	5,285	31,019	62,504	50,298	19,243	38,727	4,178
1962	415,336	28,177	12,498	72,252	29,891	63,480	12,387	48,072	7,048
1963	348,001	12,030	8,531	51,196	13,969	58,314	6,285	58,853	9,796
1964	410,142	23,236	6,296	50,795	52,191	67,853	13,240	75,838	8,356
1965	406,426	4,963	5,575	66,623	32,822	66,048	23,897	69,589	24,575
1966	476,484	22,886	7,623	110,138	12,749	66,055	8,674	98,609	38,825
United Kingdom (6)									
1961	466,851	30,000	3,161	105,723	58,320	138,176	3,801	12,394	1,439
1962	460,282	29,335	5,753	125,691	38,302	129,078	1,458	9,339	817
1963	367,444	5,588	6,886	99,702	19,239	94,470	939	18,335	515
1964	448,293	31,410	6,681	90,225	33,054	127,358	5,345	16,288	195
1965	417,227	7,862	5,670	97,021	23,386	117,213	7,206	20,297	2,398
1966	434,982	41,881	6,305	116,812	17,659	94,770	5,030	23,788	8,384
Italy (7)									
1961	213,279	90,573	327	9,079	66,562	4,084	439	10,945	1,175
1962	191,473	36,307	5	22,683	52,470	12,753	536	28,605	446
1963	173,464	10,612	47	52,592	26,834	13,585	780	28,273	4,681
1964	216,815	14,091	2	54,701	55,066	2,311	923	32,233	9,159
1965	242,265	8,894	2	106,445	41,022	7,309	1,734	32,380	10,279
1966	277,208	11,716	2	154,027	14,035	2,406	760	44,346	13,224

Table 11.—U.S. agricultural exports: Major countries of destination by commodity groups, specified fiscal years

Country and year ended June 30	Fruits and preparations	Vegetables and preparations	Nuts and preparations	Animal fats and oils	Poultry meat	Other meats and products	Hides and skins	Dairy products	Other
-- Thousand dollars --									
Total									
1961	253,520	126,894	16,606	174,521	57,453	67,552	82,746	130,696	302,597
1962	282,008	135,647	13,172	171,956	83,856	61,960	83,944	128,421	361,496
1963	279,774	162,800	15,610	148,176	54,221	73,416	78,916	154,416	413,525
1964	274,477	163,791	24,402	215,822	63,485	106,638	81,937	203,332	449,365
1965	289,289	153,777	33,336	244,264	55,340	101,026	99,550	216,054	426,402
1966	326,639	169,746	46,116	201,724	58,541	105,939	139,303	174,070	481,230
Japan (1)									
1961	4,965	932	754	30,367	4	632	28,062	5,713	20,295
1962	6,015	885	908	20,602	93	49	30,520	7,824	31,294
1963	7,117	2,423	2,026	18,767	377	934	32,391	10,269	36,441
1964	9,958	2,679	2,585	26,347	3,789	7,401	27,131	11,394	45,911
1965	12,200	2,755	2,812	38,721	2,678	415	29,595	10,892	45,287
1966	13,840	3,698	2,724	43,088	4,119	672	44,068	8,845	59,006
Canada (2)									
1961	114,550	58,367	6,625	5,470	6,969	21,630	9,416	1,747	55,131
1962	110,165	62,001	5,666	4,383	3,629	18,913	10,252	2,239	54,576
1963	107,006	55,160	5,832	4,953	3,625	28,091	7,316	1,662	53,206
1964	108,386	60,937	8,390	4,103	3,906	26,237	6,991	2,275	66,997
1965	111,574	62,514	10,791	5,200	2,829	15,707	8,389	3,140	61,469
1966	119,615	75,090	12,812	5,939	2,885	18,904	13,424	2,937	71,351
India (3)									
1961	22	41	1	15	2	13	5	8,852	1,628
1962	21	214	2	28	8	10	67	7,474	9,119
1963	121	334	3	104	7	31	46	8,215	3,881
1964	42	88	2	148	6	37	27	9,651	8,079
1965	45	199	0	5,610	9	65	75	9,560	8,408
1966	32	106	1	3,614	8	59	21	13,943	10,256
Netherlands (4)									
1961	12,081	2,792	639	12,845	4,516	6,437	9,411	381	10,840
1962	17,207	4,146	559	18,484	7,790	6,970	9,850	54	15,286
1963	15,885	5,951	261	10,848	4,827	6,933	8,285	1,690	31,668
1964	16,235	5,065	1,458	20,086	5,421	12,166	9,815	18,243	30,970
1965	16,709	4,540	3,181	15,458	4,109	10,830	11,462	16,351	27,995
1966	20,412	4,004	2,719	17,049	5,193	11,504	13,914	16,301	35,296
West Germany (5)									
1961	18,935	7,169	2,308	9,623	25,260	6,783	8,571	344	18,305
1962	26,281	10,133	1,113	8,532	52,626	6,904	3,804	489	26,649
1963	29,816	15,700	1,737	7,683	22,040	6,723	5,481	803	38,964
1964	20,588	11,741	2,611	7,991	26,935	8,036	6,913	3,494	24,028
1965	25,238	10,914	2,272	7,367	23,600	7,300	10,897	3,393	21,353
1966	29,254	10,042	3,288	7,617	21,426	5,312	11,071	902	22,013
United Kingdom (6)									
1961	26,098	12,922	119	33,523	1,017	10,015	3,044	581	26,518
1962	36,225	13,204	846	33,954	966	7,762	1,808	545	25,199
1963	28,697	24,095	129	33,405	1,105	8,094	2,456	441	23,348
1964	24,538	20,974	1,758	51,318	1,234	9,296	4,893	518	23,208
1965	24,095	14,185	2,915	47,099	1,423	13,277	6,632	6,023	20,525
1966	25,055	18,868	4,856	20,363	2,005	16,606	4,415	1,453	26,732
Italy (7)									
1961	1,677	484	106	14,010	7	173	2,834	4,094	6,710
1962	1,879	947	32	15,587	316	84	2,172	3,002	13,649
1963	3,012	2,743	20	11,820	398	71	2,133	5,270	10,563
1964	2,654	2,978	24	12,303	870	567	5,045	13,204	10,684
1965	3,079	1,568	59	11,144	1,712	139	3,755	2,293	10,451
1966	3,172	1,540	73	11,568	1,696	164	3,661	1,329	13,489

Continued -

Table 11.—U.S. agricultural exports: Major countries of destination by commodity groups, specified fiscal years - Continued

Country and year ended June 30	Total	Grains and preparations			Cotton, excl. linters	Tobacco, unmanufactured	Vegetable fats and oils	Oilseeds	Oil-cake and meal (protein meal)
		Wheat and flour	Rice milled	Feed grains					
	1/	1/	1/	2/		1/	2/		
— Thousand dollars —									
Spain (8)									
1961	157,435	52,642	405	21,611	27,324	1,499	44,621	14	1,077
1962	125,964	45,745	0	14,220	22,372	908	24,009	75	3,020
1963	128,059	553	0	43,057	14	1,185	48,409	2,809	14,278
1964	87,786	6,078	0	38,450	2,463	2,592	3,256	4,464	12,563
1965	127,109	981	0	45,672	2,688	2,737	24,110	22,147	7,075
1966	200,568	1,045	0	101,018	2,774	2,335	9,616	49,849	10,984
Belgium (9)									
1961	130,825	7,662	1,375	47,395	27,695	9,629	1,531	13,695	3,340
1962	130,276	11,432	1,312	53,991	14,521	8,693	135	14,903	4,909
1963	119,491	4,807	1,797	48,272	9,905	8,768	65	15,605	7,365
1964	150,483	8,647	1,960	50,181	19,018	10,662	882	18,435	7,901
1965	153,065	1,582	1,706	56,333	13,849	9,007	1,356	20,232	15,654
1966	182,758	10,045	1,331	89,718	5,866	10,490	277	25,771	12,824
France (10)									
1961	112,107	2,864	1	394	80,697	4,015	598	5,240	1,145
1962	99,244	11,228	6	3,588	44,561	3,330	59	7,659	9,303
1963	84,549	3,364	504	1,961	25,171	4,384	73	8,287	15,307
1964	142,292	17,893	634	1,289	48,676	4,048	164	10,710	18,090
1965	145,699	9,145	878	6,675	28,696	4,175	690	9,238	28,015
1966	142,401	17,574	2,336	4,892	15,320	4,142	945	8,755	38,185
U.A.R.- Egypt (11)									
1961	100,005	70,817	98	2,081	0	8,980	6,723	0	0
1962	161,981	103,036	14	20,707	0	8,115	13,730	0	13
1963	149,449	103,844	20	9,300	0	9,535	11,172	0	2
1964	161,360	105,027	10	23,487	0	10,413	7,955	0	0
1965	136,052	94,340	19	10,950	0	3,054	7,603	19	0
1966	124,997	82,844	57	284	0	13,420	14,171	1	175
Yugoslavia (12)									
1961	56,640	26,686	1,184	134	16,331	0	5,341	0	0
1962	115,637	68,263	0	3,038	18,092	0	14,514	246	186
1963	127,281	81,038	0	1,156	21,649	0	10,384	0	4,096
1964	65,225	20,639	0	13,155	6,129	0	7,386	14	5,134
1965	105,496	67,468	5/	0	16,802	83	5,230	0	8,461
1966	124,411	86,733	1	656	15,215	0	9,738	864	5,478
Viet-Nam (13)									
1961	26,315	5,257	994	5	3,960	3,715	102	5/	0
1962	31,387	4,715	6,910	0	4,202	2,590	151	0	0
1963	32,476	6,505	0	1,074	4,648	2,752	1,931	0	0
1964	43,558	5,844	0	3,348	10,545	4,361	1,941	0	0
1965	52,925	6,613	4,106	2,645	8,543	5,099	3,411	0	0
1966	102,616	6,492	45,327	1,905	8,278	6,319	2,876	0	5
Korea, Rep. of (14)									
1961	75,065	25,622	0	9,596	25,329	0	1,031	2,444	0
1962	74,407	24,337	0	1,127	33,484	0	87	2,114	6
1963	111,464	41,848	0	15,700	36,015	0	139	1,278	0
1964	108,665	46,060	1	12,680	33,044	0	101	1,442	0
1965	98,470	35,378	3	8,268	34,660	0	134	0	0
1966	89,134	36,410	1	571	39,023	0	85	0	0
Denmark (15)									
1961	48,140	158	109	6,198	3,895	10,429	95	17,818	3,216
1962	57,491	192	136	10,358	1,946	10,910	64	21,189	4,325
1963	71,776	71	310	8,167	1,885	11,275	56	30,851	10,773
1964	73,952	36	201	8,296	1,810	12,059	71	31,214	7,866
1965	81,217	9	453	6,338	1,037	13,128	51	33,204	16,018
1966	84,683	6	373	7,562	862	10,493	46	39,736	14,942

Table 11.—U.S. agricultural exports: Major countries of destination by commodity groups, specified fiscal years - Continued

Country and year ended June 30	Fruits and preparations	Vegetables: and preparations	Nuts and preparations	Animal fats and oils	Poultry meat	Other meats and products	Hides and skins	Dairy products	Other
-- Thousand dollars --									
Spain (8)									
1961	23	52	0	2,804	0	2	735	2,813	1,813
1962	204	189	0	6,392	2	53	481	3,470	4,824
1963	403	1,297	10	6,715	99	82	632	4,145	4,371
1964	536	2,191	30	7,473	67	169	1,309	3,318	2,827
1965	520	1,399	95	8,946	24	222	1,873	3,628	4,992
1966	763	2,240	73	7,963	357	821	3,190	2,987	4,553
Belgium (9)									
1961	9,394	1,151	190	1,476	22	320	721	222	5,007
1962	10,298	1,512	84	1,915	91	660	226	198	5,396
1963	10,835	1,751	149	1,080	131	635	89	458	7,779
1964	11,417	3,435	464	2,631	77	1,651	186	7,190	5,740
1965	11,843	1,796	2,044	2,257	141	1,794	449	7,757	5,265
1966	13,001	1,582	2,361	879	214	1,571	762	479	5,587
France (10)									
1961	6,184	577	1,453	216	87	2,175	627	37	5,797
1962	7,353	978	128	798	23	3,203	905	47	6,075
1963	6,766	3,478	223	474	18	4,601	622	380	8,936
1964	9,333	4,916	473	1,369	67	15,051	1,664	65	7,850
1965	8,775	3,772	466	3,142	61	14,714	1,281	15,250	10,726
1966	13,285	2,943	2,325	1,530	256	17,861	1,751	79	10,222
U.A.R. - Egypt (11)									
1961	53	33	11	4,272	446	3	0	3,040	3,448
1962	60	136	9	5,709	230	10	0	3,256	6,956
1963	56	709	12	7,376	433	33	3	4,627	2,327
1964	78	241	12	9,867	1,001	48	0	813	2,408
1965	55	50	9	5,202	998	6,682	0	4,942	2,129
1966	77	33	13	8,415	26	4	23	3,749	1,705
Yugoslavia (12)									
1961	847	6	0	901	0	2	767	4,230	211
1962	497	4	1	2,870	0	2	3,513	2,648	1,763
1963	143	496	0	2,218	0	5/	385	3,243	2,473
1964	161	162	1	3,671	0	50	66	4,325	4,332
1965	51	1,689	0	2,365	0	22	184	2,309	832
1966	43	1	0	1,337	0	13	1,222	2,806	308
Viet-Nam (13)									
1961	144	181	5/	2	6	55	0	10,866	1,028
1962	70	128	0	1	1	0	0	10,801	1,818
1963	90	281	0	5/	0	4	0	11,460	3,674
1964	81	160	5/	21	3	2	0	12,711	4,541
1965	90	303	0	9	0	0	0	16,899	5,198
1966	91	358	1	77	19	64	0	24,589	6,215
Korea, Rep. of (14)									
1961	38	19	4	1,870	3	10	624	3,279	5,196
1962	33	72	5	1,806	1	2	1,258	3,737	6,338
1963	58	223	6	3,743	3	43	1,693	3,744	6,971
1964	54	43	8	2,074	1	33	549	4,130	8,445
1965	150	197	7	2,318	4	36	365	3,944	13,006
1966	96	137	10	3,447	17	69	222	5,015	4,031
Denmark (15)									
1961	3,455	442	100	3	3	47	80	5	2,087
1962	4,905	490	90	4	5	60	93	46	2,678
1963	4,645	927	60	7	7	39	75	702	1,926
1964	4,707	938	130	28	6	51	96	3,298	3,145
1965	4,784	981	153	21	30	173	196	1,744	2,897
1966	6,289	1,087	266	51	9	225	115	22	2,599

Continued -

Table 13.—U.S. agricultural exports: Major countries of destination by commodity groups, specified fiscal years — Continued

Country and year ended June 30	Total 1/	Grains and preparations			Cotton excl. linters	Tobacco unmanufactured	Vegetable fats and oils 1/ 3/	Oilseeds	Oil-cake and meal (protein meal)
		Wheat and flour 1/	Rice milled 1/	Feed grains 1/ 2/					
— Thousand dollars —									
Mexico (16)									
1961	62,417	640	1,264	6,980	1	4,119	3,814	753	1,662
1962	56,624	2,045	266	6,237	20	4,606	4,358	831	996
1963	77,874	3,168	209	23,828	27	5,248	751	639	1,104
1964	75,455	4,053	327	16,022	10	4,874	669	538	1,170
1965	79,144	1,877	511	11,810	88	4,570	2,970	856	2,860
1966	84,469	82	3,150	9,183	0	2,292	8,589	803	3,634
Pakistan (17)									
1961	106,024	65,827	19,317	73	1,598	1,560	13,021	0	0
1962	82,563	44,453	0	91	7,690	3,134	20,603	0	0
1963	125,359	90,960	2	2,101	2,494	2,115	18,281	0	0
1964	138,308	104,159	6	660	2,505	994	19,364	0	0
1965	168,372	111,044	30	15	2,014	1,312	43,486	0	5/
1966	82,958	56,745	5/	1	1,261	947	18,018	1	0
Venezuela (18)									
1961	83,096	15,002	89	72	12	1,163	3,487	1,298	636
1962	86,559	19,604	195	2,775	2,687	678	3,998	1,548	1,573
1963	60,747	10,087	127	95	630	248	3,003	1,576	1,067
1964	82,849	19,786	11	4,207	1,869	146	4,073	2,381	1,241
1965	74,035	17,895	18	3,180	826	198	5,008	3,728	124
1966	82,319	23,485	10	3,558	842	105	6,766	3,774	24
Brazil (19)									
1961	69,756	65,008	0	0	0	4	97	4	0
1962	106,542	90,763	0	553	0	23	128	2	3
1963	109,448	92,391	12	45	0	7	193	1	0
1964	100,622	81,153	0	387	0	4	111	2	0
1965	107,023	75,183	0	795	1	7	8,561	13	0
1966	78,958	51,093	7	871	0	10	7,733	14	0
Israel (20)									
1961	50,820	12,860	934	15,378	1,529	278	3,242	13,777	0
1962	60,430	16,862	990	18,081	1,441	333	5,480	14,109	0
1963	57,203	17,664	1,458	14,587	1,161	335	6,296	12,142	0
1964	73,986	12,834	1,610	20,327	2,844	364	3,023	23,919	0
1965	74,621	11,958	2,048	16,851	3,895	352	6,233	24,083	6
1966	78,698	13,775	2,902	25,129	952	512	2,344	22,845	7
Philippines (21)									
1961	71,346	16,915	482	226	20,254	814	344	104	1,179
1962	71,051	18,090	2	16	21,491	4,391	488	134	1,216
1963	48,827	12,723	3	70	14,959	8	278	599	651
1964	60,141	17,313	3,749	655	15,076	35	389	1,564	410
1965	64,638	14,316	11,167	146	12,104	715	558	1,405	841
1966	73,560	27,242	4,847	298	11,616	1,138	1,794	3,826	199
Switzerland (22)									
1961	58,303	6,931	356	3,358	14,525	8,622	23	2,229	451
1962	64,529	11,237	618	5,875	11,114	11,547	16	546	2,014
1963	53,586	8,006	1,009	4,063	5,218	10,336	32	2,359	558
1964	73,166	16,073	1,516	5,498	12,520	10,004	416	2,577	1,493
1965	56,860	2,178	1,476	6,205	10,213	11,242	912	2,074	814
1966	69,827	13,934	2,104	6,105	5,001	13,053	529	4,638	1,300
Taiwan (23)									
1961	66,925	19,167	532	996	21,474	2,037	430	16,097	0
1962	72,627	21,636	0	1,510	28,508	1,898	1,045	10,611	5/
1963	75,624	23,938	20	1,331	27,981	2,830	200	12,968	15
1964	67,917	18,239	0	5/	23,817	1,755	1,835	14,175	5/
1965	84,599	23,326	0	1,669	21,974	4,241	1,666	21,327	0
1966	65,061	17,496	0	1,044	20,120	3,332	1,157	14,567	0

Table 11.--U.S. agricultural exports: Major countries of destination by commodity groups, specified fiscal year - Continued

Country and year ended June 30	Fruits and preparations	Vegetables and preparations	Nuts and preparations	Animal fats and oils	Poultry meat	Other meats and products	Hides and skins	Dairy products	Other
-- Thousand dollars --									
Mexico (16)									
1961	2,940	6,876	201	2,116	92	1,141	5,500	6,633	17,685
1962	2,699	2,462	354	2,109	244	1,222	3,701	6,840	17,634
1963	3,197	3,818	220	1,222	299	1,061	4,392	10,140	18,551
1964	3,664	4,289	431	1,359	175	1,624	4,654	9,079	22,517
1965	3,834	3,188	636	1,540	268	2,090	9,200	6,754	26,042
1966	4,604	2,874	822	2,670	291	2,871	7,543	6,887	28,174
Pakistan (17)									
1961	21	35	1	2,374	11	63	6	1,773	344
1962	17	136	1	4,589	2	47	0	974	826
1963	94	147	10	4,308	27	168	0	2,953	1,699
1964	81	83	12	5,786	32	65	0	2,629	1,932
1965	27	42	3	3,544	21	103	0	4,847	1,884
1966	51	46	5	2,640	35	155	1	1,655	1,397
Venezuela (18)									
1961	10,021	6,132	680	659	34	3,922	897	15,525	23,467
1962	8,012	6,284	468	1,387	42	3,133	949	12,815	20,411
1963	7,971	5,901	544	969	21	1,846	413	8,627	17,622
1964	7,328	6,502	597	1,597	19	3,886	815	7,331	21,060
1965	7,435	5,493	765	2,533	33	2,447	746	6,246	17,360
1966	8,236	6,269	772	1,677	5	1,569	821	3,594	20,812
Brazil (19)									
1961	33	528	1	16	0	4	0	1,597	2,464
1962	39	2,499	0	11	2	0	0	7,651	4,868
1963	26	577	0	12	3	5	0	9,763	6,413
1964	39	280	0	10	2	22	0	6,907	11,705
1965	38	1,696	1	2,420	1	12	34	9,467	8,794
1966	173	345	453	13	2	1	41	11,826	6,376
Israel (20)									
1961	137	50	31	5/	55	217	395	294	1,643
1962	192	95	14	35	44	204	286	1,004	1,260
1963	215	614	30	88	65	374	369	952	853
1964	205	684	49	242	70	3,721	775	2,336	963
1965	130	569	143	3	48	5,235	721	1,595	751
1966	220	301	226	0	29	6,513	876	1,317	750
Philippines (21)									
1961	1,700	1,470	29	1,441	1	143	164	22,466	3,614
1962	1,968	1,695	30	1,395	2/	112	154	14,488	5,381
1963	2,148	1,387	31	1,007	7	257	30	10,611	4,058
1964	2,853	1,228	69	1,510	49	528	272	8,430	6,011
1965	3,837	1,731	94	1,534	36	720	487	8,780	6,167
1966	3,192	1,487	83	1,346	80	663	145	9,060	6,544
Switzerland (22)									
1961	3,631	3,250	412	240	8,768	218	1,102	79	4,049
1962	4,174	3,202	282	1,305	6,162	329	768	67	5,273
1963	4,692	2,450	331	1,944	5,190	236	359	439	6,360
1964	3,953	3,380	654	3,653	2,549	406	523	2,909	5,042
1965	4,598	2,444	414	4,079	1,626	427	636	2,569	4,953
1966	5,113	2,793	1,517	3,586	1,405	526	741	442	7,040
Taiwan (23)									
1961	137	85	1	1,840	8	4	119	3,103	885
1962	16	152	0	2,647	0	2	143	2,132	2,327
1963	41	458	2	3,102	2	20	373	1,216	1,127
1964	2	182	4	3,568	0	1	451	1,092	2,796
1965	403	259	5/	4,469	2	0	461	2,081	2,721
1966	193	176	0	3,204	5/	2	285	1,454	2,031

Continued -

Table 11.—U.S. agricultural exports: Major countries of destination by commodity groups, specific fiscal years - Continued

Country and year ended June 30	Total 1/	Grains and preparations			Cotton, excl. linters	Tobacco, unmanufactured	Vegetable fats and oils 1/ 2/	Oilseeds	Oil-cake and meal (protein meal)
		Wheat and flour 1/	Rice milled 1/	Feed grains 1/ 2/					
-- Thousand dollars --									
Sweden (24)									
1961	46,309	1,069	462	843	12,942	14,959	70	38	2
1962	48,042	653	469	866	13,293	13,584	203	3	49
1963	44,449	682	536	672	7,227	12,946	551	46	171
1964	48,973	1,021	639	179	9,703	16,024	941	3	160
1965	49,710	113	971	217	7,480	14,218	948	671	731
1966	51,297	347	858	173	7,351	11,506	1,038	109	709
Norway (25)									
1961	28,811	2,958	80	4,026	1,851	5,422	17	6,419	653
1962	37,553	6,742	104	7,350	1,825	5,953	17	7,185	816
1963	39,654	1,332	109	9,196	1,316	6,154	63	9,146	3,143
1964	37,155	8,082	31	3,999	1,838	4,591	42	9,065	1,176
1965	32,650	6	29	5,423	1,832	4,044	53	11,884	560
1966	49,171	10,070	37	9,662	1,376	4,577	75	12,272	300
S. Africa, Rep. (26)									
1961	19,983	16	4,647	28	7,544	316	101	0	0
1962	18,271	18	6,142	31	6,985	18	132	14	0
1963	15,345	0	7,751	37	2,748	32	63	8	0
1964	34,429	10,006	9,949	56	4,474	11	91	5/	0
1965	28,772	70	9,464	124	6,191	72	123	58	18
1966	43,867	9,249	12,590	9,501	3,721	47	882	102	36
Turkey (27)									
1961	36,236	30,974	1,583	0	5/	0	3	33	0
1962	112,026	92,066	0	473	4	0	14,988	60	0
1963	45,430	27,192	0	812	0	0	9,657	83	0
1964	43,548	11,512	0	1,146	12	0	21,758	141	0
1965	38,794	20,689	0	644	79	0	9,034	69	0
1966	43,487	24,883	1,847	385	0	0	3,355	0	0
Hong Kong (28)									
1961	50,832	1,425	2,674	32	27,434	2,814	484	565	7
1962	43,722	1,548	731	131	13,584	4,722	4,716	407	29
1963	39,706	1,839	20	8	8,284	4,657	4,534	856	44
1964	51,111	1,598	47	144	19,993	4,508	5,230	272	5
1965	51,594	1,213	23	228	17,442	5,650	5,626	54	10
1966	41,590	1,482	84	352	11,158	4,210	1,762	77	72
Czechoslovakia (29)									
1961	3,147	0	0	35	0	236	446	2,335	0
1962	4,029	0	0	21	0	260	0	1,215	38
1963	3,492	0	0	1	0	0	0	887	0
1964	11,012	2,350	0	1,622	0	0	299	2,466	0
1965	3,213	0	0	47	0	81	0	1,535	120
1966	39,798	0	0	32,287	0	219	5/	3,113	816
Australia (30)									
1961	31,635	2	75	0	7,379	15,134	1,091	10	398
1962	35,360	0	160	0	9,168	15,071	1,692	16	399
1963	31,610	11	127	5/	5,558	15,858	1,361	1	763
1964	38,543	9	206	0	10,914	15,638	2,177	15	970
1965	36,404	10	248	6	9,140	13,111	3,284	237	1,333
1966	38,724	15	330	1,093	4,627	14,853	3,111	499	3,366
Colombia (31)									
1961	25,001	9,447	1,685	1,559	0	10	3,750	96	1
1962	27,356	9,776	36	1,419	93	65	2,892	144	0
1963	20,036	8,318	61	58	152	21	439	193	1
1964	31,762	11,496	90	1,810	1,232	68	4,084	183	0
1965	23,028	9,911	90	138	529	0	1,134	0	0
1966	38,204	12,738	68	3,759	6,932	3	5,349	38	0

Table 11.—U.S. agricultural exports: Major countries of destination by commodity groups, specified fiscal years - Continued

Country and year ended June 30	Fruits and preparations	Vegetables: and preparations	Nuts and preparations	Animal: fats and oils	Poultry: meat	Other: meats and products	Hides and skins	Dairy: products	Other
	1/	1/	1/					1/	1/ 4/
-- Thousand dollars --									
Sweden (24)									
1961	8,203	3,035	691	19	16	997	985	25	1,953
1962	11,811	3,233	660	42	6	837	531	13	1,789
1963	12,095	4,297	1,410	7	5	1,081	335	28	2,360
1964	10,401	3,760	1,569	13	45	998	638	241	2,638
1965	11,216	3,623	2,232	163	117	2,031	671	81	4,227
1966	14,010	5,120	3,277	345	200	1,657	474	136	3,987
Norway (25)									
1961	3,752	513	214	162	0	54	63	1	2,626
1962	4,767	865	170	216	0	40	105	15	1,383
1963	4,877	911	303	194	3	75	110	3	2,719
1964	4,615	886	454	279	2	122	238	17	1,718
1965	5,696	645	785	303	38	298	241	10	803
1966	6,728	1,046	946	379	4	203	227	25	1,244
S. Africa, Rep. (26)									
1961	90	579	31	4,135	4	19	5	404	2,056
1962	154	522	25	1,563	29	9	3	215	2,411
1963	135	704	40	935	25	11	1	297	2,558
1964	182	738	82	1,518	237	27	2	4,211	2,845
1965	242	776	125	4,009	8	27	5	4,705	2,755
1966	267	418	96	2,478	1	14	9	782	3,674
Turkey (27)									
1961	2	3	0	1	1	11	2,925	556	144
1962	9	90	5	438	10	10	2,187	1,307	379
1963	2	110	0	3,505	0	9	1,458	1,606	996
1964	15	6	0	5,126	5/	31	1,121	1,193	1,487
1965	25	19	0	3,036	18	27	2,133	1,275	1,746
1966	2	7	0	3,610	0	23	2,800	3,675	2,900
Hong Kong (28)									
1961	4,571	806	42	74	2,650	671	3	1,142	5,438
1962	6,075	1,153	64	321	3,146	622	0	1,023	5,450
1963	7,398	1,206	70	108	2,953	598	10	889	6,432
1964	8,007	1,195	103	146	2,596	242	37	941	6,047
1965	8,473	1,423	115	128	3,021	225	87	955	6,921
1966	8,414	1,587	99	87	2,616	254	109	1,061	7,966
Czechoslovakia (29)									
1961	9	0	0	0	0	0	75	0	11
1962	1	1	0	572	0	4	526	0	1,391
1963	2	0	0	138	0	0	414	0	2,050
1964	176	0	0	1,717	0	4	307	0	2,071
1965	0	0	0	89	0	49	974	3	315
1966	0	1	203	283	1	0	2,109	10	756
Australia (30)									
1961	163	951	806	18	866	14	248	22	4,458
1962	370	2,097	422	8	90	14	70	30	5,753
1963	123	1,262	767	20	94	43	17	33	5,572
1964	113	1,715	813	27	51	10	179	90	5,616
1965	141	1,974	1,419	40	73	13	196	130	5,049
1966	211	2,019	3,214	40	66	8	59	82	5,131
Colombia (31)									
1961	58	140	13	2,244	2	13	96	1,772	4,115
1962	45	1,055	7	2,919	14	10	61	2,489	6,331
1963	84	305	19	1,706	9	13	58	2,414	6,185
1964	163	956	22	1,869	99	40	15	2,452	7,283
1965	151	539	12	3,020	105	22	25	3,165	4,187
1966	56	260	2	1,733	2	12	85	2,821	4,346

Continued -

Table 11.--U.S. agricultural exports: Major countries of destination by commodity groups, specified fiscal years - Continued

Country and year ended June 30	Total 1/	Grains and preparations			Cotton, excl. linters	Tobacco, unmanufactured	Vegetable fats and oils 1/ 3/	Oilseeds	Oil-cake and meal (protein meal)
		Wheat and flour 1/	Rice milled 1/	Feed grains 1/ 2/					
-- Thousand dollars --									
Chile (32)									
1961	21,259	4,105	1,488	787	8,185	1,602	930	5	0
1962	33,614	16,363	868	656	2,013	1,359	5,972	0	0
1963	31,015	15,294	1,271	2	3,363	2,022	3,224 5/	0	0
1964	21,220	7,116	1,047	1	274	1,656	2,940	1	0
1965	29,222	12,398	1,052	655	304	2,303	4,596	1	0
1966	38,072	27,739	1,328	1,435	429	4,933	1,560	6	4
Iran (33)									
1961	21,770	13,098	513	3,587	0	0	2,129	1	0
1962	17,962	8,763	42	8	8	0	3,859	0	0
1963	32,370	16,986	19	653	0	0	9,245	1	0
1964	18,392	4,398	109	8	0	0	7,793	3	0
1965	44,006	19,017	21	2,785	0	0	16,533	7	23
1966	38,039	16,715	10	15	0	0	14,940	11	207
Peru (34)									
1961	17,439	8,424	509	759	337	0	1,403	1	4
1962	24,108	13,136	260	327	358	0	2,290	1	4
1963	20,246	9,332	131	83	130	0	2,010 5/	0	49
1964	33,130	11,448	5,338	695	102	0	1,328	2	83
1965	33,124	6,425	5,225	148	0	0	4,881	10	46
1966	34,211	13,289	2,102	182	447	0	2,653	407	75
Greece (35)									
1961	26,610	10,050	429	7,706	505	1	4,376	0	81
1962	21,772	7,193	368	6,550	229	0	1,804	0	290
1963	24,423	4,814	502	7,930	209	10	4,844	2	387
1964	27,848	6,575	563	13,237	443	10	3	0	791
1965	37,542	3,461	746	16,670	32	76	10,090	0	1,395
1966	33,186	2,174	605	19,084	684	42	4,581	98	715
Poland (36)									
1961	143,384	73,553	796	19,154	30,911	1,500	8,391	2,104	8
1962	69,740	31,296	2,237	5,687	16,492	18	4,979	479	139
1963	85,585	38,521	766	24,352	11,382	0	2,571	0	0
1964	129,792	65,989	2,339	9,145	16,464	2,599	11,468	2,749	258
1965	46,926	3,600	1,221	7,362	8,112	2,636	2,620	5,389	145
1966	29,355	2,024	0	1,601	5,016	0	3,062	1,598	4,928
U.S.S.R. (Russia) (37)									
1961	11,282	2	0	2	0	0	0	0	0
1962	9,555	0	0	1	0	0	0	0	0
1963	3,087 5/	0	0	1	0	44	0	0	0
1964	128,627	110,418	9,667	0	311	0	0	0	0
1965	25,211	0	0	5/	0	0	3	4,034	0
1966	28,157	0	0	5/	0	0	1	2,340	0
Congo (Leopold.) (38) 6/									
1961	---	---	---	---	---	---	---	---	---
1962	---	---	---	---	---	---	---	---	---
1963	---	---	---	---	---	---	---	---	---
1964	---	---	---	---	---	---	---	---	---
1965	20,869	4,432	5,068	349	3,682	3,329	136	0	0
1966	26,849	6,680	6,110 5/	5/	3,504	5,614	599	0	0
Ireland (39)									
1961	20,974	177	47	5,059	444	11,268	1	0	271
1962	24,064	350	46	7,398	661	11,148	1	0	212
1963	34,709	757	98	7,181	497	20,572	4	0	2,007
1964	27,392	328	138	6,973	618	13,440	4	0	1,946
1965	22,213	147	195	5,481	654	7,535	2	3	1,850
1966	25,614	1,980	75	9,447	431	7,695	19	0	2,111

Table 11.—U.S. agricultural exports: Major countries of destination by commodity groups, specified fiscal years - Continued

Country and year ended June 30	Fruits and preparations	Vegetables and preparations	Nuts and preparations	Animal fats and oils	Poultry meat	Other meats and products	Hides and skins	Dairy products	Other
	1/	1/	1/					1/	1/ 4/
— Thousand dollars —									
Chile (32)									
1961	106	150	9	265	22	6	13	1,308	2,278
1962	151	270	8	544	34	2	8	1,504	3,862
1963	95	106	2	108	15	1	0	3,198	2,314
1964	19	57	6	455	7	7	0	4,251	3,383
1965	6	63	4	110	6	7	0	5,278	2,439
1966	23	180	7	19	2,182	18	0	5,572	2,637
Iran (33)									
1961	177	190	13	1,132	61	35	3	574	257
1962	99	102	7	2,994	10	10	1	939	1,120
1963	61	198	4	3,052	7	3	1	751	1,389
1964	103	88	3	2,930	8	26	0	1,544	1,379
1965	122	91	8	2,744	74	35	5	1,725	816
1966	86	133	2	2,123	7	29	0	2,028	1,733
Peru (34)									
1961	366	235	48	1,062	81	77	54	1,372	2,707
1962	599	404	89	2,172	120	66	5	1,521	2,756
1963	866	630	71	1,410	179	71	1	1,866	3,417
1964	948	552	98	3,299	543	82	10	4,965	3,635
1965	715	667	85	3,781	813	136	0	6,124	4,048
1966	837	358	105	4,070	327	135	23	4,511	4,690
Greece (35)									
1961	16	20	0	542	327	2	319	738	1,498
1962	14	31	1	232	545	8	159	616	3,732
1963	22	278	0	399	1,816	11	221	1,219	1,759
1964	36	1,147	5/	695	1,555	10	247	429	2,107
1965	37	313	0	487	2,121	34	361	385	1,334
1966	59	338	5	203	1,789	51	344	1,208	1,206
Poland (36)									
1961	4	5/	0	2,855	0	0	1,033	1,945	1,130
1962	16	44	0	4,394	0	0	493	690	2,776
1963	6	223	0	2,796	0	42	341	1,468	3,117
1964	3	8	0	7,978	0	500	475	6,467	3,350
1965	1	19	0	8,606	21	295	1,409	4,214	1,276
1966	4	6	122	5,643	0	0	3,739	1,085	527
U.S.S.R. (Russia) (37)									
1961	0	0	0	9,981	0	0	1,178	0	119
1962	0	0	0	9,176	0	0	244	1	133
1963	0	783	0	437	0	0	1,696	0	126
1964	0	0	0	3,912	0	0	4,127	0	192
1965	0	0	0	18,637	0	0	2,535	0	2
1966	0	2	0	11,294	0	0	14,511	4	5
Congo (Leopold.) (38) 6/									
1961	—	—	—	—	—	—	—	—	—
1962	—	—	—	—	—	—	—	—	—
1963	—	—	—	—	—	—	—	—	—
1964	—	—	—	—	—	—	—	—	—
1965	13	323	0	3	137	7	0	1,526	1,864
1966	7	83	2	0	108	131	0	1,671	2,340
Ireland (39)									
1961	2,425	79	12	247	0	23	5	12	904
1962	2,916	170	69	36	3	4	3	19	1,028
1963	2,199	335	2	31	1	0	7	22	996
1964	2,268	305	75	206	1	1	18	16	755
1965	2,227	440	117	21	0	1	39	22	1,479
1966	2,052	352	252	24	1	15	22	18	1,120

Continued -

Table 11.—U.S. agricultural exports: Major countries of destination by commodity groups, specified fiscal years - Continued

Country and year ended June 30	Total 1/	Grains and preparations			Cotton, excl. linters	Tobacco, unmanufactured	Vegetable fats and oils 1/ 3/	Oilseeds	Oil-cake and meal (protein meal)
		Wheat and flour 1/	Rice milled 1/	Feed grains 1/ 2/					
-- Thousand dollars --									
Lebanon (40)									
1961	8,758	3,536	421	1,436	123	175	180	0	0
1962	5,862	3,286	44	164	14	0	320	0	28
1963	6,817	3,368	78	46	0	20	505	0	31
1964	7,207	2,821	134	58	255	0	407	138	70
1965	9,853	3,601	224	457	350	72	713	33	160
1966	25,450	16,285	103	3,114	0	0	704	44	439
Morocco (41)									
1961	25,155	14,331	0	1,630	1,239	83	4,609	1,306	0
1962	55,823	33,287	0	10,461	2,139	319	5,568	732	0
1963	28,583	14,421	0	0	1,029	297	6,989	1,503	0
1964	27,168	11,431	0	242	1,890	51	6,257	815	0
1965	42,052	18,809	0	322	1,835	356	13,127	2,027	0
1966	25,399	10,991	0	725	1,538	257	8,012	0	0
Portugal (42)									
1961	19,818	9,058	582	7	3,834	4,366	1	0	0
1962	26,830	17,761	0	9	2,732	3,744	3	5/	27
1963	15,982	3,734	115	9	990	4,357	2	1	0
1964	23,314	10,156	541	503	4,460	3,911	1	1	13
1965	19,449	7,991	3	31	3,755	2,385	63	1	0
1966	24,568	6,877	3,314	7,118	1,023	1,783	817	0	499
Dominican Republic (43)									
1961	2,706	526	0	9	0	3	23	7	0
1962	4,509	565	0	160	72	36	46	10	0
1963	17,706	1,877	4,764	73	0	88	92	12	0
1964	28,303	3,406	7,966	253	0	118	2,091	10	1
1965	23,027	2,327	2,663	764	0	121	5,462	7	0
1966	23,336	4,505	1,224	12	0	25	3,672	13	8
Jamaica (44)									
1961	10,270	1,394	609	419	555	282	50	0	7
1962	10,950	1,154	761	792	319	590	56	0	12
1963	12,443	919	1,460	818	141	570	50	0	14
1964	18,406	1,799	1,982	1,194	584	1,397	188	0	52
1965	19,968	1,569	2,850	1,465	755	1,171	594	1	94
1966	22,225	1,630	3,868	1,925	661	1,112	1,404	4	110
Macao Islands (45)									
1961	9,769	2,030	1,613	1	0	142	262	859	0
1962	12,683	1,838	4,261	2	973	167	330	1,064	0
1963	15,202	1,653	7,945	3	0	195	390	828	0
1964	20,678	2,326	10,018	131	38	164	688	1,455	0
1965	22,115	2,203	9,913	309	62	300	869	1,967	15
1966	21,849	2,871	10,055	251	55	185	818	752	12
Algeria (46)									
1961	8,005	6,849	72	0	12	286	0	0	0
1962	29,377	24,167	0	3,620	26	60	50	0	0
1963	33,658	21,908	0	0	57	64	4,945	0	0
1964	43,252	32,325	1	0	306	59	1,163	0	0
1965	17,465	10,460	0	0	235	8	2,658	0	0
1966	21,068	17,898	0	1	192	94	786	0	0
Thailand (47)									
1961	9,502	110	0	2	2,826	5,023	42	0	0
1962	13,956	127	0	4	3,839	8,723	24	0	0
1963	10,293	118	0	0	2,918	5,628	30	0	0
1964	12,746	178	0	0	4,376	6,571	29	0	0
1965	16,093	204	0	8	5,455	8,300	70	1	0
1966	20,539	169	17	4	6,973	9,766	115	6	1

Table 11—U.S. agricultural exports: Major countries of destination by commodity groups, specified fiscal years - Continued

Country and year ended June 30	Fruits and prepa-rations	Vegetables: and prepa-rations	Nuts and prepa-rations	Animal : fats and oils	Poultry : meat	Other : meats and products	Hides and skins	Dairy : products	Other : / /
— Thousand dollars —									
Lebanon (40)									
1961	258	170	19	0	77	18	2	1,185	1,158
1962	248	144	18	1	63	72	7	289	1,164
1963	319	173	11	2	52	68	0	657	1,487
1964	318	206	17	5	58	92	77	427	2,124
1965	371	201	17	3	87	131	16	383	3,034
1966	409	230	11	27	74	145	37	358	3,470
Morocco (41)									
1961	76	26	5	1,157	0	0	0	392	301
1962	44	116	4	1,510	0	5	0	757	881
1963	123	139	0	1,258	0	0	0	922	1,902
1964	52	4	1	1,646	0	0	18	987	3,774
1965	97	32	0	1,805	15	0	0	583	3,044
1966	16	6	0	2,462	0	0	0	532	860
Portugal (42)									
1961	3	16	0	33	0	22	81	1,402	413
1962	9	25	5/	43	0	53	0	1,270	1,154
1963	4	1,482	1	456	0	21	0	2,766	2,044
1964	23	25	0	1,017	5/	772	68	716	1,107
1965	16	64	0	1,405	1	756	122	1,878	978
1966	12	50	428	929	1	25	122	973	597
Dominican Republic (43)									
1961	266	338	12	348	10	61	0	129	974
1962	368	539	10	606	62	95	61	263	1,616
1963	814	1,351	23	526	531	176	185	1,753	5,441
1964	1,101	3,439	47	529	612	269	63	1,810	6,588
1965	981	2,907	23	657	76	176	34	1,521	5,308
1966	1,099	2,530	23	844	65	136	0	2,973	6,207
Jamaica (44)									
1961	438	704	14	327	326	1,173	0	327	3,645
1962	438	802	7	176	358	1,202	3	479	3,801
1963	429	860	10	171	433	1,327	3	759	4,479
1964	501	1,247	8	296	588	1,369	0	1,477	5,724
1965	602	1,338	14	1,574	425	1,803	0	1,353	4,360
1966	415	1,129	23	833	708	2,214	0	1,202	4,987
Mansei Islands (45)									
1961	216	228	6	638	41	155	20	2,275	1,283
1962	286	305	14	229	73	160	0	1,822	1,159
1963	304	372	21	263	136	278	13	1,949	852
1964	388	506	18	334	257	563	25	2,497	1,270
1965	376	537	17	235	475	801	0	2,050	1,986
1966	558	750	24	176	904	934	1	1,837	1,666
Algeria (46)									
1961	0	0	3	57	0	0	0	517	209
1962	15	5	0	0	0	27	0	484	923
1963	1	974	0	76	0	0	0	1,119	4,514
1964	47	0	0	426	0	0	0	4,538	4,387
1965	29	75	0	1,786	0	0	0	166	2,048
1966	150	55	0	1,824	0	2	0	0	66
Thailand (47)									
1961	49	159	7	3	5	14	0	499	763
1962	51	182	6	2	0	3	0	357	638
1963	87	178	10	13	1	17	3	405	885
1964	137	220	16	11	0	7	0	335	866
1965	124	272	15	11	3	6	5	386	1,233
1966	197	338	13	1	24	23	0	817	2,075

Continued -

Table 11.—U.S. agricultural exports: Major countries of destination by commodity groups, specified fiscal years - Continued

Country and year ended June 30	Total	Grains and preparations			Cotton, excl. linters	Tobacco, unmanufactured	Vegetable fats and oils	Oilseeds	Oil-cake and meal (protein meal)
		Wheat and flour	Rice milled	Feed grains					
— Thousand dollars —									
Saudi Arabia (48)									
1961	8,044	4,245	993	774	0	0	80	0	1
1962	7,839	3,358	2,420	20	0	0	69	0	0
1963	11,353	4,667	4,284	52	0	0	106	0	0
1964	15,268	5,119	7,289	53	0	0	154	0	0
1965	15,130	6,808	4,747	67	0	0	194	0	1
1966	19,813	7,147	7,909	81	0	5	337	0	11
East Germany (49)									
1961	1,827	0	0	0	0	265	1,560	0	0
1962	1,728	0	0	0	0	1,461	138	0	0
1963	2,452	0	0	0	0	794	0	0	0
1964	15,920	7,849	0	4,952	0	1,228	0	404	0
1965	9,669	0	0	1,947	69	1,302	0	1,621	0
1966	19,413	2,607	0	13,248	0	1,896	0	0	0
Panama (50)									
1961	9,403	1,447	41	407	0	135	392	0	121
1962	10,255	1,436	153	340	13	277	405	66	119
1963	10,589	1,594	37	204	0	308	314	0	193
1964	11,472	2,360	44	314	0	291	327	2	153
1965	12,144	2,256	14	108	0	409	331	2	343
1966	17,850	2,385	60	1,143	16	241	1,932	397	792
L.A.F.T.A. 7/									
1961	212,241	89,702	5,173	10,165	11,738	7,162	11,715	880	1,678
1962	266,385	137,801	1,430	9,331	4,819	7,491	16,500	1,010	1,024
1963	274,242	132,513	1,684	24,125	3,672	9,654	7,373	854	1,166
1964	282,004	119,484	6,803	19,990	1,631	8,820	10,902	728	1,266
1965	299,395	109,884	7,547	14,117	925	8,131	29,768	950	2,934
1966	292,086	97,517	6,655	15,645	7,908	7,611	28,064	1,389	3,748
E.E.C. 8/									
1961	1,100,767	133,670	11,369	196,543	265,745	86,798	29,805	137,181	16,665
1962	1,184,016	131,598	17,170	271,590	157,093	104,529	18,368	151,931	32,302
1963	1,069,605	48,989	13,022	274,324	86,847	103,115	13,346	176,125	54,027
1964	1,332,907	98,934	15,569	278,161	191,148	105,702	29,630	204,674	55,379
1965	1,370,946	40,557	9,817	377,741	127,227	104,064	41,400	219,573	101,865
1966	1,593,589	105,423	14,910	538,016	53,721	105,000	18,238	278,111	129,473
E.F.T.A. 9/									
1961	690,539	50,435	4,808	132,923	101,086	183,820	4,008	38,898	5,761
1962	718,503	66,487	7,100	162,499	74,337	178,532	1,776	38,267	8,048
1963	608,791	19,427	8,978	130,000	38,087	141,999	1,720	60,738	15,160
1964	719,597	67,040	9,651	113,864	66,224	177,174	7,009	59,148	10,903
1965	668,164	18,159	8,679	117,153	49,908	165,156	10,193	68,131	20,521
1966	728,889	73,115	13,061	154,713	33,824	137,514	7,654	80,543	26,134

Table 11. U.S. agricultural exports: Major countries of destination by commodity groups, specified fiscal years - Continued

Country and year ended June 30	Fruits and preparations	Vegetables and preparations 1/	Nuts and preparations	Animal fats and oils	Poultry meat	Other meats and products	Hides and skins	Dairy products 1/	Other 1/ 4/
-- Thousand dollars --									
Saudi Arabia (48)									
1961	205	543	42	1	260	121	0	235	544
1962	290	543	24	1	273	129	0	282	430
1963	342	672	79	7	226	164	0	234	520
1964	342	613	86	5/	416	88	0	382	726
1965	310	724	57	0	589	129	0	445	1,059
1966	336	782	78	1	713	112	0	511	1,790
East Germany (49)									
1961	0	0	0	0	0	0	0	0	2
1962	0	0	0	0	0	0	0	0	129
1963	364	0	0	0	0	202	20	0	1,072
1964	2	0	0	36	0	671	0	1	777
1965	236	176	0	0	0	2	0	4,164	152
1966	694	216	0	0	0	0	6	0	746
Panama (50)									
1961	916	1,524	140	429	52	638	0	1,118	2,044
1962	1,232	1,539	176	435	57	680	1	1,051	2,275
1963	1,229	1,667	173	433	48	679	1	1,185	2,524
1964	1,414	1,775	179	448	66	755	0	1,048	2,296
1965	1,383	2,138	160	437	74	742	5	976	2,637
1966	1,758	2,172	176	336	134	947	2	1,155	4,204
L.A.F.T.A. 7/									
1961	3,855	8,481	301	7,395	198	1,252	5,663	13,889	32,994
1962	3,826	7,370	486	9,239	421	1,314	3,775	21,339	39,209
1963	4,602	6,950	338	5,990	506	1,163	4,452	29,298	39,902
1964	5,228	6,599	599	9,255	828	1,795	4,679	29,292	54,105
1965	5,179	6,824	786	15,130	1,199	2,307	9,260	32,043	52,411
1966	6,025	4,495	1,450	11,935	2,807	3,065	7,715	32,916	53,141
E.E.C. 8/									
1961	48,271	12,173	4,696	38,170	29,892	15,888	22,164	5,078	46,659
1962	63,018	17,716	1,916	45,316	60,846	17,821	21,957	3,790	67,055
1963	66,314	29,703	2,390	31,905	27,414	18,963	16,610	8,601	97,910
1964	60,227	28,135	5,030	44,380	33,370	37,477	23,623	42,196	79,272
1965	65,644	22,590	8,022	39,368	29,623	34,777	27,844	45,044	75,790
1966	79,124	20,111	10,766	38,643	28,785	36,412	31,159	19,090	86,607
E.F.T.A. 9/									
1961	45,573	20,287	1,599	33,980	10,013	11,353	5,541	2,364	38,090
1962	62,522	21,131	2,049	35,578	7,735	9,101	3,401	1,965	37,975
1963	55,898	34,371	2,234	36,017	7,465	9,557	3,459	4,549	39,132
1964	49,143	30,288	4,571	56,335	4,676	11,656	6,918	7,731	37,266
1965	51,750	22,090	6,500	53,103	3,771	17,092	8,775	12,323	34,860
1966	58,793	29,341	11,300	25,744	4,100	19,255	6,441	3,220	44,137

1/ Includes food exported for relief or charity by individuals and private agencies. 2/ Feed grains: Berley, corn, oats, and grain sorghums, excluding products. 3/ Excludes essential oils which are included in "other". 4/ Other commodities: Mainly feeds and fodders, field and garden seeds, coffee, hops, essential oils, sugar and related products, and live animals. 5/ Less than \$500. 6/ Prior to 1965 not separately classified. 7/ The Latin American Free Trade Association includes Mexico, Colombia, Ecuador, Peru, Chile, Brazil, Paraguay, Uruguay, and Argentina. 8/ The European Economic Community (Common Market) includes the Netherlands, Belgium and Luxembourg, France, West Germany, and Italy. 9/ The European Free Trade Association includes the United Kingdom, Denmark, Switzerland, Sweden, Norway, Austria, and Portugal.

Table 12.-- U.S. agricultural exports: Value by country of destination, specified fiscal years

Country of destination	Year ended June 30					
	1961	1962	1963	1964	1965	1966
	-- Thousand dollars --					
Greenland	2	2	0	1/	3	0
Canada	434,667	520,630	517,444	618,285	618,290	629,906
Miquelon and St. Pierre Islands	43	65	52	17	8	31
Latin American Republics:						
Mexico	62,417	56,624	77,874	75,455	79,144	84,469
Guatemala	8,992	9,865	9,978	11,480	10,815	11,232
El Salvador	5,472	6,194	7,056	8,140	8,770	9,146
Honduras	4,089	3,605	4,322	4,175	4,577	6,217
Nicaragua	2,921	4,191	4,435	6,514	6,441	7,795
Costa Rica	5,472	5,124	5,073	6,536	6,393	5,508
Panama	9,403	10,255	10,589	11,472	12,144	27,850
Cuba	41,134	355	13,351	2,205	0	0
Haiti	6,341	9,394	7,416	8,991	8,701	9,454
Dominican Republic	2,706	4,509	17,706	28,303	23,027	23,336
Colombia	25,001	27,356	20,036	31,762	23,028	38,204
Venezuela	83,096	86,559	60,747	82,849	74,035	82,319
Ecuador	7,537	6,548	6,447	10,550	10,761	11,702
Peru	17,439	24,108	20,246	33,130	33,124	34,211
Bolivia	6,497	8,428	12,015	14,916	12,579	8,264
Chile	21,259	33,614	31,015	21,220	29,222	38,072
Brazil	69,756	106,542	109,448	100,622	107,023	78,958
Paraguay	978	4,867	3,521	3,001	2,801	733
Uruguay	4,940	4,053	2,996	3,331	2,569	1,618
Argentina	2,914	2,673	2,659	2,933	11,723	4,119
Total Latin American Republics	388,364	414,864	426,930	467,585	466,877	473,207
Other Latin America:						
British Honduras	1,554	2,337	2,029	2,010	2,249	2,315
Canal Zone	609	761	874	793	134	0
Bermuda	5,379	5,391	5,520	5,654	5,978	6,487
Bahamas	7,504	7,674	8,390	10,242	12,193	15,606
Jamaica	10,270	10,950	12,443	18,406	19,968	22,225
Leeward and Windward Islands	1,848	1,750	1,629	2,077	2,198	3,306
Barbados	1,839	2,234	2,025	1,824	1,897	2,362
Trinidad and Tobago	9,388	10,991	11,257	10,143	9,995	9,419
Netherlands Antilles	8,936	8,456	8,791	9,580	9,546	10,971
French West Indies	539	526	753	1,035	1,538	2,149
Guyana (British Guiana)	3,104	3,493	3,084	3,627	4,026	4,269
Surinam (Netherlands Guiana)	2,424	2,583	2,514	2,802	3,020	3,435
French Guiana	81	46	68	104	105	145
Falkland Islands	0	1/	1/	0	0	8
Total Latin America	441,839	472,056	486,507	535,882	539,724	555,904
Europe:						
Iceland	3,183	3,161	3,464	3,872	4,406	4,892
Sweden	46,309	48,042	44,449	48,973	49,710	51,297
Norway	28,811	37,553	39,654	37,155	32,650	49,171
Finland	14,453	14,864	19,528	16,530	18,174	17,232
Denmark	48,140	57,491	71,776	73,952	81,217	84,683
United Kingdom of Great Britain and Northern Ireland	466,851	460,282	367,444	448,293	417,227	434,982
Ireland (Eire)	20,974	24,064	34,709	27,392	22,213	25,614
Netherlands (Holland)	324,200	347,687	344,100	413,175	423,491	514,738
Belgium and Luxembourg	130,825	130,276	119,491	150,483	153,065	182,758
Unidentified Western Europe 2/	2	6	0	2	0	0
France	112,107	99,244	84,549	142,292	145,699	142,401
West Germany	320,356	415,336	348,001	410,142	406,426	476,484
East Germany	1,827	1,728	2,452	15,920	9,669	19,413
Austria	22,307	23,776	15,900	14,744	11,051	14,361
Czechoslovakia	3,147	4,029	3,492	11,012	3,213	39,798
Hungary	461	499	1,887	22,871	9,198	6,243
Switzerland	58,303	64,529	53,586	73,166	56,860	69,827
Estonia	0	0	0	0	0	0
Latvia	1,889	2,816	5,976	1,044	1,061	0
Lithuania	0	0	0	0	0	0

Table 12.--U.S. agricultural exports: Value by country of destination, specified fiscal years - Continued

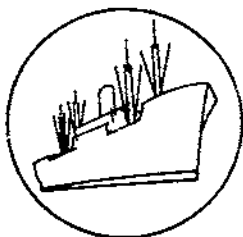
Country of destination	Year ended June 30					
	1961	1962	1963	1964	1965	1966
	-- Thousand dollars --					
Europe - Continued:						
Poland and Danzig	143,384	69,740	85,585	129,792	46,926	29,355
Union of Soviet Socialist Republics	11,282	9,555	3,087	128,627	25,211	28,157
Azores	50	141	441	678	858	572
Spain	157,435	125,964	128,059	87,786	127,109	200,568
Portugal	19,818	26,830	15,982	23,314	19,449	24,568
Gibraltar	102	157	140	141	108	156
Malta, Gozo, and Cyprus -	3,734	3,721	---	---	---	---
Malta and Gozo 2/	---	---	669	375	599	984
Cyprus 3/	---	---	2,206	3,428	566	885
Italy	213,279	191,473	173,464	216,815	242,265	277,208
Free Territory of Trieste	1,653	2,369	1,344	1,451	1,009	24
Yugoslavia	56,640	115,637	127,281	65,225	105,496	124,415
Albania	0	0	0	0	0	133
Greece	26,610	21,772	24,423	27,848	37,542	33,186
Rumania	253	216	170	62	3,357	4,413
Bulgaria	6	6	91	2,776	2,519	2,660
Turkey	36,236	112,026	45,430	43,548	38,794	43,487
Total Europe	2,274,627	2,414,990	2,168,830	2,642,884	2,497,138	2,904,665
Asia:						
Syrian Arab Republic	31,074	16,414	646	1,023	4,022	2,784
Lebanon	8,758	5,862	6,817	7,207	9,853	25,450
Iraq	2,729	5,238	2,432	21,017	4,295	3,039
Iran (Persia)	21,770	17,962	32,370	18,392	44,006	38,039
Israel	50,820	60,430	57,203	73,986	74,621	78,697
Gaza Strip (Palestine)	19	5	4	7	8	21
Jordan	15,636	9,386	14,267	13,624	10,710	9,826
Kuwait	2,541	4,518	3,549	3,947	5,870	5,898
Saudi Arabia	8,044	7,839	11,353	15,268	15,130	19,813
Other Arabia Peninsula States	1,885	930	893	482	911	1,001
Aden	349	337	1,063	1,078	1,445	1,573
Bahrain	1,077	953	1,515	1,131	1,092	1,366
Afghanistan	3,950	1,859	138	9,416	4,047	8,356
India	345,836	235,230	348,359	400,541	528,720	540,948
Goa, Damao, and Diu 3/	---	---	0	0	0	0
Pakistan	106,024	82,563	125,359	138,308	168,372	82,958
Nepal	2	6	0	13	91	32
Ceylon	8,994	7,492	9,528	4,417	4,196	3,697
Burma	859	639	672	1,264	7,902	5,047
Thailand (Siam)	9,502	13,956	10,293	12,746	16,093	20,539
Viet-Nam	26,315	31,387	32,476	43,558	32,925	102,616
Laos	115	112	713	1,737	1,134	745
Cambodia	3,555	1,398	888	388	139	403
Malaysia - 2/	---	---	---	11,821	13,334	17,777
Federation of Malaya	4,704	6,982	5,950	---	---	---
Singapore, State of	7,333	5,635	5,859	---	---	---
Indonesia	21,920	32,640	53,453	18,855	9,338	3,468
Philippines	71,346	71,051	48,827	60,141	64,638	73,560
Macao (Macau)	632	429	362	475	407	319
Other Portuguese Asia 6/	163	90	---	---	---	---
Other Southern and Southeastern Asia	22	29	1	1	11	20
China	0	0	0	0	0	0
Outer Mongolia	0	0	0	0	0	0
North Korea	0	0	0	0	0	0
Korea, Republic of	75,065	74,407	111,464	108,665	98,470	89,134
Hong Kong	50,832	43,722	39,706	51,111	51,594	41,590
Taiwan (Formosa)	66,925	72,627	75,624	67,917	84,599	65,061
Japan	552,817	484,743	510,643	742,165	750,238	913,607
Hansei and Nanpo Islands	9,769	12,683	15,202	20,678	22,115	21,849
Total Asia	1,511,382	1,309,554	1,527,629	1,851,379	2,050,326	2,179,233
Australia and Oceania:						
Australia	31,635	35,360	31,610	38,543	36,404	38,724
New Guinea	161	253	360	282	305	500

Continued -

Table 12.—U.S. agricultural exports: Value by country of destination, specified fiscal years - Continued

Country of destination	Year ended June 30					
	1961	1962	1963	1964	1965	1966
	-- Thousand dollars --					
Australia and Oceania - Continued:						
New Zealand and Western Samoa	8,542	6,138	6,776	5,154	5,496	7,698
British Western Pacific Islands	73	145	577	651	806	1,284
French Pacific Islands	492	976	897	1,170	1,857	3,074
Trust Territory of the Pacific Islands ..	888	757	801	1,455	1,776	1,530
Total Australia and Oceania	41,791	43,629	41,021	47,255	46,644	52,810
Africa:						
Morocco	25,155	55,823	28,583	27,168	42,052	25,399
Algeria	8,005	29,377	33,658	43,252	17,465	21,069
Tunisia	17,067	34,910	26,855	14,253	19,463	11,841
Libya	6,411	2,277	935	2,783	1,933	2,277
U.A.R. (Egypt)	100,005	161,981	149,449	161,360	136,052	124,997
Sudan	237	1,127	4,508	7,067	10,521	5,036
Canary Islands	5,382	4,402	3,570	4,210	6,668	11,144
Other Spanish Africa	338	35	147	148	148	293
Federal Republic of Cameroon	340	627	576	663	845	1,105
Other Western Equatorial Africa - 7/	114	72	61	104	—	—
Central African Republic	—	—	—	—	5	4
Gabon	—	—	—	—	54	137
Other Western Africa - 7/	2,519	9,373	10,823	20,390	—	—
Mauritania	—	—	—	—	67	28
Senegal	—	—	—	—	2,907	6,197
Guinea	—	—	—	—	7,352	5,511
Ivory Coast	—	—	—	—	4,061	3,985
Togo	—	—	—	—	321	455
Other Western Africa	—	—	—	—	1,165	1,714
Ghana	8,695	11,665	8,299	8,304	8,634	9,816
Nigeria	7,444	7,611	7,437	7,919	9,976	11,811
British West Africa and Sierra Leone - 7/:	571	438	948	1,208	—	—
Sierra Leone	—	—	—	—	2,482	1,967
British West Africa	—	—	—	—	55	56
Madeira Islands	412	714	588	1,409	1,159	123
Angola	1,249	1,310	2,204	2,303	2,139	2,084
Other Western Portuguese Africa	93	140	175	1,125	413	273
Liberia	4,022	5,811	7,337	8,065	7,651	8,837
Republic of the Congo; and						
Ruanda-Urundi - 7/	7,033	15,938	23,438	25,377	—	—
Congo (Leopoldville)	—	—	—	—	20,869	26,849
Burundi and Rwanda	—	—	—	—	154	585
Somali Republic	34	1,077	454	75	626	594
Ethiopia (Abyssinia)	1,475	3,396	2,979	1,730	1,156	5,954
French Somaliland	318	219	120	192	259	347
British East Africa and Tanganyika - 7/:	1,495	10,302	4,882	2,465	—	—
Uganda	—	—	—	—	391	519
Kenya	—	—	—	—	3,007	14,741
Tanzania	—	—	—	—	1,798	4,493
Seychelles and Dependencies	44	9	3	7	19	40
Mauritius and Dependencies	75	248	143	194	246	264
Mozambique	2,002	1,902	2,435	674	318	652
Malagasy Republic	53	75	284	458	918	990
Republic of South Africa	19,983	18,271	15,345	34,429	28,772	43,867
Zambia, Southern Rhodesia, and Malawi ..	661	594	481	1,420	2,709	2,337
Total Africa	221,232	379,724	336,721	378,752	344,830	358,391
Total all countries	4,945,583	5,140,650	5,078,204	6,074,454	6,096,963	6,680,940

1/ Less than \$500. 2/ Not available by countries. 3/ Not separately classified prior to 1962/63. 4/ July-December only. Not separately classified beginning January 1, 1966. 5/ Not separately classified beginning 1963/64. 6/ Not separately classified beginning 1962/63. 7/ Separately classified beginning 1964/65.



Export Highlights

U.S. AGRICULTURAL EXPORTS: JULY-JANUARY 1966/67

U.S. agricultural exports totaled an estimated \$4,140 million for July-January 1966/67, up 7 percent from the corresponding period the year before (table 13). Substantial increases were made in exports of cotton and tobacco, with lesser advances in grains and preparations, oilseeds and products, and vegetables and preparations. These increases were more than enough to offset declines in exports of animals and animal products, and fruits and preparations.

Agricultural exports during January 1967 were estimated at \$558 million, 10 percent more than the exports of January 1966. Cotton, fruits and vegetables, oilseeds and products, and tobacco exports were up, more than offsetting declines in animals and animal products, and grains and preparations. Estimated cotton exports in January 1967 were up more than 100 percent from the same month last year while fruits and vegetables were about 17 percent higher. Among the oilseeds and products, the quantity of protein meal was down, but higher prices resulted in an increase in the value of protein meal exports. Among the January exports of grains and preparations, wheat flour and grain sorghums were above those of January 1966. The value of rice exported in January increased over the same month last year, but quantity was down. Dairy products in January 1967 dropped to an estimated \$5 million from \$15 million in January of last year. This sharp decline contributed most to the overall decline in animal and animal product exports.

For July-January 1966/67, exports of animals and animal products were down 13 percent from the corresponding period in 1965/66. While exports of hides and skins continued at a higher level than last year, all other commodities among the animals and products declined. Exports of dairy products showed the largest drop, falling 52 percent to \$53 million from \$110 million in July-January 1965/66.

Cotton exports rose 32 percent from \$255 million in July-January 1965/66. Totalling an estimated 600,000 bales in January, cotton exports continued at the higher level set during November and December.

U.S. exports of fruits and preparations in July-January 1966/67 declined 4 percent to \$195 million from \$204 million during the same period last year. Exports of canned, dried and fresh fruits during July-December 1966 were below the preceding year. Larger 1966 production of apples and pears in Western Europe -- a record apple crop in Italy -- provided a larger supply of fruit in Western Europe. Larger supplies of citrus from the Republic of South Africa, Australia, and Brazil moved into Western Europe during 1966, increasing the competitive situation for fruits. These countries have been active in promoting fruit exports to Western Europe. Australia's production of canned deciduous fruits has expanded significantly in recent years and in 1966 increased amounts were marketed in EEC and Scandinavian countries. The United Kingdom was Australia's largest market for canned fruits.

Table 13.--U.S. agricultural exports: Value by commodity,
July-January 1965/66 and 1966/67

Commodity	1965	1966 ^{1/}	Change
	-- Million dollars --		Percent
Animals and animal products:	110	53	-52
Dairy products	118	108	-8
Fats, oils, and greases	68	84	+24
Hides and skins	70	70	0
Meats and meat products	48	42	-13
Poultry products	46	41	-11
Other	460	398	-13
Total animals, etc.			
Cotton, excluding linters	255	337	+32
Fruits and preparations	204	195	-4
Grains and preparations:	744	707	-5
Feed grains, excluding products	137	147	+7
Rice, milled	741	867	+17
Wheat and flour	44	48	+9
Other	1,666	1,769	+6
Total grains, etc.			
Oilseeds and products:	122	82	-33
Cottonseed and soybean oils	427	470	+10
Soybeans	123	135	+10
Protein meal	53	58	+9
Other	725	745	+3
Total oilseeds, etc.			
Tobacco, unmanufactured	278	392	+41
Vegetables and preparations	93	102	+10
Other	204	202	-1
Total exports	3,885	4,140	+7

^{1/} December estimated.

Shipments of grains and preparations from the United States rose 6 percent to \$1,769 million in July-January 1966/67 from July-January a year earlier. Wheat and flour, the principal commodities advanced 17 percent from the \$741 million in the previous fiscal year's July-January period. Larger quantities of wheat and flour were shipped to Japan, Brazil, and other countries. Of U.S. wheat export transactions during July-January 1966/67, over half were commercial sales compared with about one-third during the same months of 1965/66.

Rice exports valued at \$147 million in July-January 1966/67 were 7 percent higher than a year earlier. Larger shipments to India and Viet-Nam accounted for the increase. Among the feed grains, exports of oats, barley, and corn were down. Corn, the major feed grain exported, declined 15 percent. However, exports of grain sorghums were 42 percent above exports in July-January 1965/66. Feed grain exports to Canada, Latin America, and Western Europe have declined. Exports to Japan and India have increased -- especially to India. Production in West European, African, and Asian countries has increased. Corn production in Eastern Europe in 1966 was an estimated 801 million bushels, 19 percent higher than 1965. In the EEC countries, corn production rose 10 percent to an estimated 294 million bushels in 1966.

U.S. exports of oilseeds and oilseed products totaled an estimated \$745 million for July-January 1966/67, up 3 percent from the same months in 1965/66. Soybeans continued to be the principal commodity; exports were 10 percent above last year's July-January period. Although the quantity was down 7 million bushels from last year, higher soybean prices resulted in an increase in the overall value of soybean exports. Protein meal showed a similar pattern, with its export value increasing 10 percent to \$135 million while quantity decreased to 1.5 million short tons in July-January 1966/67 from 1.6 million during last year's corresponding period. Cottonseed and soybean oils continued to decline, dropping 33 percent during the 7-month period from a year earlier. Substantially reduced exports of cottonseed and soybean oils to Canada, Western Europe, the United Arab Republic, and the Latin American countries contributed to the decline.

Exports of tobacco advanced 41 percent to \$392 million in the 1966/67 period. Tobacco exports continued the higher level set in previous months although January's tobacco exports were lower than those of November and December.

Exports of vegetables and preparations reached \$102 million in July-January 1966/67, 10 percent above the same months of the previous fiscal year. For July-December 1966, declines in canned vegetables were more than offset by increases in exports of fresh vegetables, dried beans, and dried peas.

Exports to the European Economic Community: July-December 1966

The value of agricultural exports from the United States to the European Economic Community (EEC) totaled \$828 million for July-December 1966. This was 3 percent below the same months in 1965, but 10 percent above 1964's corresponding period (table 14).

For the month of December, U.S. agricultural exports were \$131 million, 10 percent below December 1965, and 13 percent below December 1964. Most of the December decline resulted from the lower value of feed grain exports, down \$16 million to \$30 million in December 1966 from the same month in 1965. Other declines occurred in poultry products, fruits and vegetables, hides and skins, tallow, tobacco, and variety meats. Advances in exports of wheat, cotton, oilcake and meal, and soybeans partly offset these declines in December exports. Overall, the decline occurred in exports of variable levy products -- down 29 percent from December 1965. The value of commodity exports not subject to variable levies rose slightly -- up 2 percent.

In July-December 1966, the value of U.S. agricultural exports subject to variable levies totaled \$320 million, compared with \$394 million in December 1965. Substantially reduced exports of feed grains, dairy products, and poultry products caused most of the drop. Feed grain exports, which totaled \$283 million in July-December 1965, fell to \$223 million in July-December 1966. U.S. feed grain exports to the EEC have been affected by the increased 1966 feed grain production in the EEC. Bailey and corn production in the EEC was up about 1.6 million metric tons from 1965. Dairy product exports from the United States have fallen off because of a decline in milk production. Lower exports of broilers, fryers, and turkeys contributed to the drop in exports of poultry products.

Exports of non-variable levy products continued to increase, reaching \$508 million in July-December 1966. This was 10 percent above the \$462 million of 1965's 6-month period. Cotton exports were up substantially, along with the total export value of oilcake and meal, soybeans, tobacco, and variety meats. Somewhat offsetting these increases were declines in the export value of fruits and preparations, hides and skins, tallow, and vegetable oils.

For July-December 1966, agricultural exports from the United States to Belgium-Luxembourg, France, and West Germany were up from the corresponding total in July-December 1965 (table 15). Exports to the Netherlands and Italy declined. The bulk of the increased exports to Belgium-Luxembourg was made up of products not subject to the EEC's variable levies. Cotton and fruits and vegetables were up slightly, while soybean exports increased from \$12 million to \$14 million. Among variable levy products, wheat exports to Belgium-Luxembourg increased while feed grains declined from \$50 million in July-December 1965 to \$47 million during the same months of 1966.

The value of exports to France in July-December 1966 was up 13 percent to \$77 million. Among the variable levy products, feed grains were up almost \$1 million. Cotton exports to France increased substantially, and rose 23 percent to almost \$11 million in July-December 1966.

U.S. agricultural exports to West Germany were up considerably in July-December 1966, 5 percent above the same months of 1965. Exports to West Germany -- the largest EEC market for U.S. agricultural exports -- were slightly above those to the Netherlands. (Exports to the Netherlands, however, are overstated. The Netherlands is a transshipment point, and some of the products consigned to the Netherlands are transhipped to other countries.) Of the variable levy commodities exported to West Germany, wheat was up 42 percent to \$18 million in July-December 1966. Feed grain exports declined about \$5 million. Among the non-variable levy commodities, fruit and vegetable exports declined sharply, dropping 44 percent to \$16 million in July-December 1966. Exports of soybeans and cotton increased; soybeans were up 16 percent and cotton 44 percent.

Italy's purchases from the United States declined to \$112 million in July-December 1966 from \$151 million in the same months of 1965. Feed grains accounted for the largest part of the drop; they were down 56 percent from \$85 million in July-December 1965. Production of oats and barley in Italy was up about 10 percent. Corn purchases by Italy were down due to overbuying earlier in the year. Of non-variable levy commodities, U.S. cotton exports to Italy were up about \$2 million from \$4 million in July-December 1965. Soybean exports declined about \$3 million.

U.S. soybean exports to the Netherlands increased 29 percent to \$59 million in July-December 1966 from the same months of the preceding year. Exports of the other principal commodities -- feed grains, wheat, fruits and vegetables, and poultry products -- were down. Total agricultural exports to the Netherlands declined to \$267 million during July-December 1966 from \$285 million during the corresponding period in 1965, a drop of 8 percent.

Table 14.--U.S. agricultural exports to the European Economic Community:
Value by commodity, December 1964=66, July-December 1964=66 1/

Commodity	December			July-December		
	1964	1965	1966	1964	1965	1966
-- 1,000 dollars --						
<u>Variable levy commodities 2/:</u>						
Feed grains	38,069	45,740	30,058	188,830	283,366	222,817
Rice	1,695	875	1,635	4,875	5,200	9,108
Rye grain	0	0	0	1,287	998	2,581
Wheat grain	1,498	5,112	6,803	16,496	48,757	54,121
Wheat flour	290	64	122	930	586	732
Beef and veal (excluding variety meats) and cattle ..	111	153	29	837	1,332	476
Dairy products	7,989	977	42	32,311	17,954	520
Lard <u>3/</u>	32	27	116	791	683	559
Pork (excluding variety meats) and swine	15	51	13	235	95	184
 Poultry and eggs:						
Live poultry	63	37	76	394	683	647
Broilers and fryers	536	646	465	4,434	3,701	2,635
Stewing chickens	468	80	16	2,598	747	147
Turkeys	971	1,289	831	8,265	12,935	9,863
Other fresh poultry	29	41	21	540	393	191
Eggs	127	389	136	750	1,046	403
Total poultry and eggs	2,194	2,482	1,545	16,981	19,505	13,886
Other	2,254	2,180	622	18,478	15,710	14,627
Total	54,147	57,661	40,985	282,051	394,186	319,611
 <u>Non-variable levy commodities:</u>						
Canned poultry <u>4/</u>	318	192	210	2,004	1,464	891
Cotton, excluding linters	24,805	5,993	9,306	85,669	28,666	40,833
Fruits and vegetables	7,256	6,250	5,496	50,909	62,362	50,267
Hides and skins	2,771	4,141	1,448	12,659	16,414	13,640
Oilcake and meal	13,650	14,438	15,403	53,572	62,472	76,997
Soybeans	19,616	33,122	39,627	108,315	134,430	152,343
Tallow <u>4/</u>	1,871	3,710	1,737	16,551	18,381	16,764
Tobacco, unmanufactured	12,154	6,924	6,063	59,373	61,627	76,540
Variety meats, fresh, frozen <u>1/</u>	3,321	3,718	1,869	16,801	18,644	20,679
Vegetable oils, expressed	4,437	1,750	1,451	13,377	8,861	7,021
Food for relief or charity ...	618	254	1	2,881	1,679	2,398
Other	5,899	7,741	7,335	45,749	46,834	50,042
Total	96,716	88,233	89,946	467,860	461,834	508,415
Total EEC	150,863	145,894	130,931	749,911	856,020	828,026

1/ Compiled from U.S. Bureau of the Census data. 2/ Grains, poultry, and pork were subject to variable levies beginning on July 30, 1962; rice on September 1, 1964; and beef and dairy products on November 1, 1964. The variable levy classification is designed to show overall changes in exports rather than to measure the impact of the variable levies. 3/ Lard for food is a variable levy commodity while lard for industrial use is bound in the General Agreement on Tariffs and Trade (GATT) at 3 percent ad valorem. U.S. lard is for food use. 4/ Although canned poultry, tallow, and variety meats are subject to variable levies, the import duties are bound in GATT.

Table 15.--U.S. agricultural exports to the European Economic Community: Value by selected commodities, July-December, 1964-66 1/

Year and commodity	Netherlands	Belgium- Luxembourg	France	West Germany	Italy	Total
-- Thousand dollars --						
<u>July-December, 1964:</u>						
<u>Variable levy commodities</u>						
Feed grains	72,235	33,297	2,987	35,131	45,180	188,830
Wheat grains	8,268	559	1,543	1,623	4,503	16,496
Poultry products	2,499	417	77	12,990	998	16,981
Others	29,264	6,822	12,302	8,060	3,206	59,744
<u>Non-variable levy commodities</u>						
Fruits and vegetables	11,093	7,486	6,565	22,810	2,955	50,909
Soybeans	40,188	12,211	4,379	35,325	16,212	108,315
Cotton	4,863	9,892	18,533	23,751	28,630	85,669
Others 2/	66,408	20,753	29,551	85,728	20,526	222,966
Total	234,818	91,437	76,027	225,418	122,210	749,910
<u>July-December, 1965:</u>						
<u>Variable levy commodities</u>						
Feed grains	96,152	49,739	1,950	51,001	84,524	283,366
Wheat grains	20,404	5,537	8,536	12,423	1,857	48,757
Poultry products	3,677	316	104	13,735	1,678	19,510
Others	30,582	1,722	2,327	5,486	2,339	42,456
<u>Non-variable levy commodities</u>						
Fruits and vegetables	13,549	8,086	9,292	28,026	3,411	62,364
Soybeans	45,698	12,276	3,019	45,943	27,494	134,430
Cotton	1,430	4,215	8,713	7,952	6,357	28,667
Others 2/	73,501	22,303	34,001	87,073	23,756	240,634
Total	284,993	104,194	67,942	251,639	151,416	860,184
<u>July-December, 1966</u>						
<u>Variable levy commodities</u>						
Feed grains	88,839	47,333	2,866	46,224	37,555	222,817
Wheat grain	17,517	5,828	8,589	17,633	4,554	54,121
Poultry products	1,262	326	254	11,074	970	13,886
Others	15,969	1,845	2,319	7,238	1,416	28,787
<u>Non-variable levy commodities</u>						
Fruits and vegetables	12,046	8,932	9,185	15,763	4,341	50,267
Soybeans	58,909	14,290	2,000	53,458	23,686	152,343
Cotton	1,509	4,397	10,684	11,454	12,789	40,833
Others 2/	66,040	22,538	40,626	108,823	26,945	264,972
Total	262,091	105,487	76,525	271,661	112,256	828,026

1/ Compiled from U.S. Bureau of Census data.

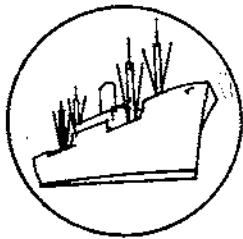
2/ Estimated.

Table 16.--U.S. agricultural exports to the European Economic Community:
Value by commodity and country, July-December 1966 ^{1/}

Commodity	: Belgium:					Total EEC
	: Nether- lands	: and Luxem- bourg	: France	: West Germany:	: Italy	
-- 1,000 dollars --						
<u>Variable levy commodities: ^{2/}</u>						
Feed grains	88,839	47,333	2,866	46,224	37,555	222,817
Rice	2,535	915	1,201	4,455	2	9,108
Rye grain	1,227	85	0	1,269	0	2,581
Wheat grain	17,517	5,828	8,589	17,633	4,554	54,121
Wheat flour	686	15	7	11	13	732
Beef and veal (excluding variety meats) and cattle ...	13	12	95	132	224	476
Dairy products	58	67	19	337	39	520
Lard ^{3/}	11	229	0	319	0	559
Pork (excluding variety meats) and swine	44	29	86	25	0	184
Poultry and eggs:						
Live poultry	71	55	223	33	265	647
Broilers and fryers	422	8	20	2,166	19	2,635
Stewing chickens	13	6	3	125	0	147
Turkeys	733	124	2	8,447	557	9,863
Other fresh poultry	3	8	2	178	0	191
Eggs	20	125	4	125	129	403
Total poultry and eggs ...	1,262	326	254	11,074	970	13,886
Other	11,395	493	911	690	1,138	14,627
Total	123,587	55,332	14,028	82,169	44,495	319,611
<u>Non-variable levy commodities:</u>						
Canned poultry ^{4/}	36	0	0	854	1	891
Cotton, excluding linters	1,509	4,397	10,684	11,454	12,789	40,833
Fruits and vegetables	12,046	8,932	9,185	15,763	4,341	50,267
Hides and skins	3,311	533	1,719	5,654	2,423	13,640
Oilcake and meal	14,966	7,341	18,419	25,361	10,910	76,997
Soybeans	58,909	14,290	2,000	53,458	23,686	152,343
Tallow ^{4/}	7,394	807	547	3,129	4,887	16,764
Tobacco, unmanufactured	10,635	8,651	2,943	52,844	1,467	76,540
Variety meats, fresh, frozen ^{4/} :	6,361	712	10,388	3,193	25	20,679
Vegetable oils, expressed	5,894	41	299	658	129	7,021
Food for relief or charity	0	12	2	18	2,366	2,398
Other	17,443	4,441	6,309	17,112	4,737	50,042
Total	138,504	50,157	62,495	189,498	67,761	508,415
Total EEC	262,091	105,489	76,523	271,667	112,256	828,026

^{1/} Compiled from U.S. Bureau of the Census data. ^{2/} Grains, poultry, and pork were subject to variable levies beginning on July 30, 1962; rice, on September 1, 1964; and beef and dairy products, on November 1, 1964. The variable levy classification is designed to show overall changes in exports rather than to measure the impact of the variable levies.

^{3/} Lard for food is a variable levy commodity while lard for industrial use is bound in the General Agreement on Tariffs and Trade (GATT) at 3 percent ad valorem. U.S. lard is for food use. ^{4/} Although canned poultry, tallow, and variety meats are subject to variable levies, the import duties are bound in GATT.



Import Highlights

U.S. AGRICULTURAL IMPORTS, JULY-DECEMBER 1966

U.S. agricultural imports for consumption in July-December 1966 were \$2,209 million compared with \$2,171 million a year earlier. The 2 percent increase was due to larger imports of supplementary (partially competitive) products, as imports of complementary (noncompetitive) products were down 12 percent (table 17).

During the first half of fiscal 1967, imports reached their monthly peak in September when they were \$415 million. From October through December, however, they averaged \$366 million.

Supplementary product imports were \$1,343 million during July-December 1966 -- up 13 percent from a year earlier. Larger imports of meats and meat products, sugar, oilseeds and products, vegetables and preparations, and dairy products accounted for most of the total increase. Meats and meat product imports were valued at \$326 million in the first half of fiscal 1967 -- up 28 percent from the same period a year earlier. Larger imports of beef and veal accounted for 87 percent of the value increase. Such product imports totaled 501 million pounds in July-December 1966 -- 97 million pounds above such imports for the same months of 1965. Sugar imports increased 19 percent to \$305 million. Imports of meats and meat products and sugar accounted for almost 50 percent of total supplementary imports.

Oilseeds and product imports were \$81 million in July-December 1966 compared with \$75 million a year earlier. Imports of copra, the major oilseed imported, actually declined to 274 million pounds during July-December 1966 from 318 million a year earlier. However, coconut oil imports were up from 102 million pounds to 166 million pounds, while palm oil imports increased a substantial 50 million pounds to 53 million. Palm kernel production in the major producing countries and thus exports were at relatively low levels in 1965 and 1966.

Vegetable and preparation imports increased from \$39 million a year earlier to \$59 million in July-December 1966, while dairy product imports were up from \$39 million to \$52 million. Larger cheese imports accounted for 85 percent of the increase in dairy product imports.

Complementary item imports were \$865 million in July-December 1966 -- down from \$983 million during the same period of a year earlier. Only banana imports of the major complementary products were larger than in 1965. Such imports were \$89 million during July-December 1966 compared with \$78 million a year earlier. Coffee imports during the first half of fiscal 1967 were \$486 million -- down 17 percent from the first half of fiscal 1966.

The quantity of cocoa beans imported during July-December 1966 was only 216 million pounds after being 438 million pounds for the same period in 1965. While quantity imported was down 51 percent, the value was down only 19 percent -- reflecting about an 8 cent per pound increase in the unit value of July-December 1966 imports.

Although nonagricultural product imports were up 22 percent to \$11.1 billion, such imports have declined during each of the last 2 months.

Table 17.--U.S. agricultural imports for consumption:
Value by commodity, July-December 1965 and 1966

Commodity	July-December		Change
	1965	1966	
	-- Million dollars --		Percent
<u>Supplementary</u>			
Animals and animal products:			
Animals, live	82	66	-20
Dairy products	39	52	+33
Hides and skins	34	37	+9
Meats and meat products	255	326	+28
Wool, apparel	74	57	-23
Other	26	30	+15
Total animals and products	510	568	+11
Cotton, excluding linters	16	12	-25
Fruits and preparations	53	61	+15
Grains and preparations	22	24	+9
Nuts and preparations	45	44	-2
Oilseeds and products	75	81	+8
Sugar	257	305	+19
Tobacco, unmanufactured	62	63	+2
Vegetables and preparations	39	59	+51
Other	109	126	+16
Total supplementary	1,188	1,343	+13
<u>Complementary</u>			
Bananas	78	89	+14
Coffee	589	486	-17
Cocoa or cacao beans	58	47	-19
Rubber, crude, natural	91	82	-10
Tea	29	26	-10
Wool, carpet	38	36	-5
Other	100	99	0
Total complementary	983	865	-12
Total agricultural imports	2,171	2,209	+2

Table 18.-- U. S. agricultural exports: Quantity and value by commodity,
December 1965 and 1966 and July-December 1965 and 1966

Commodity exported	Unit	December 1/				July-December 1/			
		Quantity		Value		Quantity		Value	
		1965	1966	1965	1966	1965	1966	1965	1966
		Thousands	Thousands	1,000 dollars	1,000 dollars	Thousands	Thousands	1,000 dollars	1,000 dollars
ANIMALS AND ANIMAL PRODUCTS									
Animals, live:									
Cattle	No.	3	8	1,237	2,825	30	20	9,298	8,156
Poultry, live -									
Baby chicks (chickens)	No.	2,167	2,369	751	935	15,198	16,757	5,077	5,789
Other live poultry		2/	2/	263	241	2/	2/	1,346	1,185
Other		2/	2/	510	580	2/	2/	2,852	3,060
Total animals, live		---	---	2,761	4,581	---	---	18,573	18,190
Dairy products:									
Anhydrous milk fat, including donations	Lb.	1,508	228	998	191	5,197	2,114	3,417	1,879
Butter, including donations	Lb.	444	25	180	19	4,309	127	1,651	92
Cheese, including donations	Lb.	562	492	300	329	3,292	2,811	1,706	1,829
Infants' and dietetic foods, chiefly milk	Lb.	1,437	1,118	990	722	8,949	8,504	6,076	5,347
Milk and cream -									
Condensed and evaporated, incl. donations	Lb.	12,722	8,775	2,849	1,880	46,972	71,480	10,173	15,436
Dry, whole milk and cream	Lb.	1,229	847	651	282	10,077	7,819	4,535	2,667
Fresh	Gal.	80	99	110	144	469	560	649	829
Nonfat dry, including donations	Lb.	38,655	9,397	6,079	1,566	461,393	110,837	65,289	17,318
Other		2/	2/	487	289	2/	2/	2,519	2,809
Total dairy products		---	---	12,644	5,422	---	---	96,015	48,206
Fats, oils, and greases:									
Lard	Lb.	20,579	13,971	2,662	1,638	107,873	82,988	13,216	9,751
Tallow -									
Edible	Lb.	221	352	33	39	1,676	2,211	222	271
Inedible	Lb.	183,720	157,885	16,013	12,468	937,547	927,159	82,472	75,267
Other animal fats, oils, and greases	Lb.	13,980	9,121	1,570	1,008	84,442	78,849	9,285	8,077
Total fats, oils, and greases	Lb.	218,500	181,329	20,278	15,153	1,131,538	1,091,207	105,195	93,366
Meat and meat products:									
Beef and veal	Lb.	3,200	2,569	1,934	1,601	19,507	13,486	10,781	8,170
Fork	Lb.	3,843	5,263	1,533	1,943	23,900	28,793	9,267	11,587
Sausage casings	Lb.	1,265	927	851	667	7,241	6,973	4,716	4,949
Variety meats (edible offals)	Lb.	20,932	13,190	5,934	3,303	115,537	117,917	30,482	31,315
Other, including meat extracts	Lb.	1,956	1,911	968	912	11,946	10,794	5,277	5,324
Total meat and products (except poultry)	Lb.	31,196	23,860	11,220	8,426	178,131	177,963	60,523	61,345
Poultry products:									
Eggs, dried and otherwise preserved	Lb.	114	160	88	130	1,788	1,133	1,043	945
Eggs in the shell -									
Hatching	Doz.	550	939	477	834	2,939	3,996	3,002	3,954
Other	Doz.	2,566	1,154	961	534	5,352	4,836	2,018	2,076
Poultry meat -									
Chickens, fresh or frozen	Lb.	13,468	8,023	3,570	2,030	62,911	50,844	16,433	13,428
Turkeys, fresh or frozen	Lb.	4,833	3,270	1,693	1,163	42,976	34,019	15,244	12,046
Other, fresh or frozen	Lb.	1,004	620	332	214	5,610	5,428	1,958	1,937
Canned and otherwise preserved	Lb.	1,252	1,383	392	454	10,229	8,813	2,697	2,643
Total poultry products		---	---	7,513	5,359	---	---	42,395	37,029

Continued -

Table 18-- U. S. agricultural exports: Quantity and value by commodity,
December 1965 and 1966 and July-December 1965 and 1966 - Continued

Commodity exported	Unit	December 1/				July-December 1/			
		Quantity		Value		Quantity		Value	
		1965	1966	1965	1966	1965	1966	1965	1966
		1,000	1,000	1,000	1,000	1,000	1,000	1,000	1,000
		Thousands	Thousands	dollars	dollars	Thousands	Thousands	dollars	dollars
Other animal products:									
Feathers, crude or dressed	:Lb.	138	110	229	99	732	606	863	701
Gelatin, edible	:Lb.	126	128	91	113	1,069	644	743	629
Hair, raw or dressed (except wool)	:Lb.	538	332	145	64	3,995	2,508	1,242	834
Hides and skins, raw (except furs) 2/	:No.	1,896	1,604	12,653	10,740	9,423	9,910	58,022	73,456
Honey	:Lb.	1,642	790	290	146	9,544	9,613	1,535	1,550
Wool, unmanufactured	:C.Lb.	213	1,077	206	767	4,991	6,512	4,152	5,039
Other		2/	2/	2,374	1,419	2/	2/	11,947	8,594
Total other animal products		---	---	15,988	13,348	---	---	78,504	90,803
Total animals and animal products		---	---	70,404	52,289	---	---	401,205	348,939
VEGETABLE PRODUCTS									
Cotton, unmanufactured:									
Cotton	:RBale:	447	608	56,212	72,403	1,730	2,262	219,024	265,442
Linters	:RBale:	34	13	910	543	122	101	3,500	3,333
Total cotton and linters	:RBale:	481	621	57,122	72,946	1,852	2,363	222,524	268,775
Fruits and preparations:									
Canned -									
Fruit cocktail	:Lb.	5,905	8,286	1,068	1,302	62,075	76,459	10,933	12,209
Peaches	:Lb.	13,429	14,875	1,459	1,621	156,102	156,481	16,868	16,858
Pears	:Lb.	510	699	98	124	2,609	4,280	539	680
Pineapples	:Lb.	5,048	2,090	841	339	72,670	64,467	11,020	10,377
Other	:Lb.	3,475	2,293	668	558	46,342	16,983	7,450	3,870
Total canned fruits	:Lb.	28,367	28,243	4,134	3,944	332,798	318,670	46,710	43,994
Dried -									
Prunes	:Lb.	14,893	6,610	2,733	1,559	82,873	53,836	14,860	11,512
Raisins (dried grapes)	:Lb.	9,256	8,381	1,634	1,606	79,369	76,883	13,594	13,214
Other	:Lb.	1,765	929	635	418	11,022	8,084	3,934	3,085
Total dried fruits	:Lb.	25,914	15,920	5,002	3,583	173,264	138,803	32,388	27,811
Fresh -									
Apples	:Lb.	52,497	35,703	4,769	3,357	126,626	92,509	11,558	8,929
Berries	:Lb.	917	1,017	177	220	9,377	7,525	2,016	1,602
Grapefruit	:Lb.	14,426	17,068	770	801	83,838	93,396	5,168	5,485
Grapes	:Lb.	24,360	25,902	2,452	2,968	223,624	214,080	19,648	20,767
Lemons and limes	:Lb.	12,972	13,845	1,193	1,322	132,189	117,909	10,573	10,198
Oranges and tangerines	:Lb.	47,688	41,705	3,758	3,341	230,189	212,440	18,863	18,361
Pears	:Lb.	9,015	9,767	846	893	55,261	53,886	5,365	4,587
Other	:Lb.	1,410	1,280	189	147	134,928	119,495	10,045	8,929
Total fresh fruits	:Lb.	163,285	146,287	14,154	13,049	996,032	911,240	83,236	78,858
Fruit juices -									
Grapefruit	:Gal.	209	357	195	261	1,134	1,512	1,292	1,506
Orange	:Gal.	794	1,002	1,408	1,336	3,965	4,587	7,583	7,655
Other	:Gal.	997	831	938	889	5,243	5,133	5,397	5,387
Total fruit juices	:Gal.	2,000	2,190	2,541	2,486	10,342	11,232	14,272	14,548
Frozen fruits	:Lb.	341	305	63	67	13,016	8,470	2,169	1,818
Other		2/	2/	389	486	2/	2/	3,456	3,899
Total fruits and preparations		---	---	26,283	23,615	---	---	182,331	170,927

Continued -

Table 18.— U. S. agricultural exports: Quantity and value by commodity,
December 1965 and 1966 and July-December 1965 and 1966 - Continued

Commodity exported	Unit	December 1/				July-December 1/			
		Quantity		Value		Quantity		Value	
		1965	1966	1965	1966	1965	1966	1965	1966
		Thousands	Thousands	1,000 dollars	1,000 dollars	Thousands	Thousands	1,000 dollars	1,000 dollars
Grains and preparations:									
Feed grains and products -									
Barley grain (48 lb.)	:Bu.	4,932	1,154	6,554	1,649	37,663	24,040	45,792	30,983
Corn grain, including donations (56 lb.)	:Bu.	66,407	43,845	88,332	65,612	335,746	273,817	456,198	400,667
Grain sorghums (56 lb.)	:Bu.	20,221	26,911	24,272	33,946	107,764	155,704	128,665	191,619
Oats grain (32 lb.)	:Bu.	882	46	632	25	22,361	14,910	15,700	11,243
Total feed grains	:M.Ton:	2,321	1,823	119,790	101,232	12,410	11,650	646,355	634,572
Malt and flour, including barley malt	:Lb.	6,107	7,928	399	512	45,535	52,590	2,880	3,374
Corn grits and hominy	:Lb.	4,422	3,647	212	147	16,265	18,637	707	811
Cornmeal, including donations	:Cwt.	364	397	1,430	1,619	1,872	1,892	7,516	7,575
Cornstarch	:Lb.	7,728	6,328	753	628	36,115	30,805	3,570	3,199
Oatmeal, groats, and rolled oats	:Lb.	2,361	2,495	175	151	8,297	13,682	664	870
Total feed grains and products	:M.Ton:	2,366	1,871	122,759	104,289	12,641	11,890	661,692	650,341
Rice -									
Milled, including donations	:Lb.	292,007	322,154	20,839	28,551	1,544,427	1,481,472	111,363	119,285
Paddy or rough	:Lb.	0	861	0	77	5,368	6,887	460	527
Total rice (milled basis)	:Lb.	292,007	322,713	20,839	28,628	1,547,916	1,485,949	111,823	119,512
Rye grain (56 lb.)	:Bu.	9	1	4	2	1,538	1,961	1,838	2,654
Wheat and flour, including donations -									
Wheat grain (60 lb.)	:Bu.	54,983	51,643	88,973	92,030	354,563	395,844	574,575	698,543
Wheat flour, wholly of U. S. wheat	:Cwt.	3,138	2,653	10,422	12,095	16,937	17,538	67,520	76,803
Total wheat and flour	:Bu.	62,139	57,692	99,395	104,125	393,179	435,830	642,095	775,346
Bakery products	:Lb.	1,292	1,320	601	618	7,572	8,894	3,371	4,310
Other, including donations	:---	2/	2/	3,107	3,451	2/	2/	16,458	16,317
Total grains and preparations	:---	---	---	246,705	241,113	---	---	1,437,277	1,568,880
Oilseeds and products:									
Oils, including donations -									
Cottonseed oil	:Lb.	48,846	5,327	6,045	843	232,844	28,325	29,414	4,753
Soybean oil	:Lb.	187,194	111,460	23,656	15,624	606,889	464,655	78,939	66,992
Other	:Lb.	18,785	25,273	3,327	3,253	134,715	155,084	20,554	21,452
Total oils (except essential)	:Lb.	254,825	142,060	33,028	19,720	974,448	648,064	128,907	93,197
Oilseeds -									
Flaxseed (56 lb.)	:Bu.	30	0	88	0	3,271	4,664	9,783	13,711
Soybeans (60 lb.)	:Bu.	31,376	27,573	83,354	85,528	137,024	126,164	372,703	398,241
Other	:---	2/	2/	6,068	2,171	2/	2/	19,048	18,633
Total oilseeds	:---	---	---	89,510	87,699	---	---	401,534	430,585
Protein meal (oil-cake and meal)	:S.Ton:	348	271	26,516	23,961	1,330	1,210	102,495	112,561
Total oilseeds and products	:---	---	---	149,054	131,380	---	---	632,936	636,343
Tobacco, unmanufactured:									
Burley	:Lb.	3,391	3,340	2,708	2,992	26,811	25,128	20,647	21,524
Cigar wrapper	:Lb.	185	219	933	1,176	1,999	1,902	8,239	8,598
Dark-fired Kentucky and Tennessee	:Lb.	3,432	1,820	1,756	1,106	14,932	9,722	7,696	5,130
Flue-cured	:Lb.	50,684	59,419	47,481	58,749	224,299	296,965	198,428	281,017
Maryland	:Lb.	547	1,452	379	1,041	6,967	7,083	5,405	5,574
Other	:Lb.	4,049	6,058	1,778	2,340	21,720	34,907	8,820	14,196
Total tobacco, unmanufactured	:Lb.	62,288	72,308	55,035	67,404	296,728	375,707	249,235	336,039

Continued -

Table 18-- U. S. agricultural exports: Quantity and value by commodity,
December 1965 and 1966 and July-December 1965 and 1966 - Continued

Commodity exported	Unit	December 1/				July-December 1/			
		Quantity		Value		Quantity		Value	
		1965	1966	1,000	1,000	1965	1966	1,000	1,000
		Thousands	Thousands	dollars	dollars	Thousands	Thousands	dollars	dollars
Vegetables and preparations:									
Canned -									
Asparagus	:Lb.	1,544	1,568	516	407	24,044	15,845	7,222	5,147
Soups	:Lb.	1,543	2,194	348	459	10,033	11,437	2,214	2,415
Tomato paste and puree	:Lb.	790	899	184	229	6,874	4,856	1,631	1,255
Tomato sauce for cooking purposes	:Lb.	231	86	33	11	1,152	557	163	92
Other	:Lb.	4,808	4,907	709	822	37,576	35,329	5,380	5,506
Total canned vegetables	:Lb.	8,916	9,654	1,790	1,934	79,679	68,024	16,610	14,415
Dried beans, including donations	:Lb.	17,731	30,265	1,790	2,818	192,846	269,589	15,586	21,936
Dried peas, including cow and chick	:Lb.	25,738	31,879	1,773	2,367	161,345	168,161	10,309	11,516
Fresh -									
Lettuce	:Lb.	20,447	20,584	1,089	848	77,248	74,760	4,221	4,037
Onions	:Lb.	9,464	7,697	425	403	45,534	40,561	2,069	2,022
Potatoes (except sweet potatoes)	:Lb.	4,321	4,079	142	175	51,345	79,830	2,021	2,243
Tomatoes	:Lb.	9,697	8,282	1,006	963	49,093	52,422	4,980	5,410
Other	:Lb.	33,822	32,817	2,410	2,144	99,286	94,615	7,649	7,223
Total fresh vegetables	:Lb.	77,751	73,459	5,072	4,533	322,506	342,188	20,940	20,935
Frozen vegetables	:Lb.	2,173	2,188	459	434	8,934	11,453	1,937	2,073
Soups and vegetables, dehydrated	:Lb.	2,111	1,975	680	683	9,372	11,713	3,652	4,178
Vegetable seasonings	:Lb.	1,429	357	497	237	5,029	2,594	1,975	1,564
Tomato juice, canned	:Gal.	161	238	147	221	1,225	1,018	1,097	989
Other	:Lb.	2/	2/	1,205	1,287	2/	2/	7,318	8,062
Total vegetables and preparations		---	---	13,413	14,514	---	---	79,424	85,668
Other vegetable products:									
Coffee	:Lb.	3,070	1,869	2,914	1,417	13,658	9,740	18,290	8,651
Drugs, herbs, roots, leaves, etc., crude	:Lb.	720	875	774	917	4,891	4,475	3,964	4,365
Essential oils, natural	:Lb.	740	883	2,176	2,298	4,769	4,699	11,907	13,116
Feeds and fodders (except oil-cake and meal)	:---	2/	2/	7,399	5,350	2/	2/	49,913	51,652
Flavoring sirups, sugars, and extracts	:---	2/	2/	2,128	2,573	2/	2/	12,831	14,193
Hops	:Lb.	4,058	3,625	2,319	2,417	10,756	11,702	6,261	7,271
Nursery and greenhouse stock	:---	2/	2/	832	932	2/	2/	3,615	4,185
Nuts and preparations	:Lb.	22,782	34	3,413	3,273	125,499	69,413	27,576	19,930
Seeds (except oilseeds)	:Lb.	11,719	1,435	4,266	4,903	46,538	46,158	15,821	16,056
Spices	:Lb.	611	642	300	353	3,259	3,577	2,016	2,296
Other, including donations	:---	2/	2/	3,778	4,285	2/	2/	21,645	25,139
Total other vegetable products		---	---	30,299	28,718	---	---	173,839	166,854
Total vegetable products		---	---	577,911	579,690	---	---	2,977,566	3,233,486
TOTAL AGRICULTURAL EXPORTS		---	---	648,315	631,979	---	---	3,376,771	3,582,425
TOTAL NONAGRICULTURAL EXPORTS		---	---	1,927,714	2,057,064	---	---	10,588,462	11,524,774
TOTAL EXPORTS, ALL COMMODITIES		---	---	2,576,029	2,689,043	---	---	13,967,233	15,107,199

1/ Preliminary.

2/ Reported in value only.

3/ Excludes the number of "other hides and skins," reported in value only.

Table 19— U. S. agricultural imports for consumption: Quantity and value by commodity, December 1965 and 1966 and July-December 1965 and 1966

Commodity imported SUPPLEMENTARY	Unit	December 1/				July-December 1/			
		Quantity		Value		Quantity		Value	
		1965	1966	1,000	1,000	1965	1966	1,000	1,000
		Thousands	Thousands	dollars	dollars	Thousands	Thousands	dollars	dollars
ANIMALS AND ANIMAL PRODUCTS									
Animals, live:									
Cattle, dutiable	No.	228	158	18,740	14,290	743	560	71,441	55,600
Cattle, free (for breeding)	No.	1	1	583	496	9	7	3,434	2,922
Horses	No.	2/	2/	1,639	1,785	1	2	5,911	6,340
Other (including live poultry)		3/	3/	206	188	3/	3/	968	1,201
Total animals, live		---	---	21,168	16,759	---	---	81,754	66,063
Dairy products:									
Butter	Lb.	47	50	28	32	409	342	212	180
Chesse -									
Blue-mold	Lb.	518	527	265	273	2,036	2,308	1,029	1,189
Cheddar	Lb.	80	281	39	114	420	1,571	175	638
Edam and Gouda	Lb.	1,094	1,164	513	534	4,326	5,871	2,047	2,755
Pecorino	Lb.	2,677	2,192	2,171	1,535	9,880	9,486	8,260	6,547
Swiss	Lb.	2,327	2,570	1,314	1,213	9,139	14,616	5,195	7,190
Other	Lb.	4,723	11,080	2,231	4,017	15,082	47,928	7,460	16,895
Total chesse	Lb.	11,419	17,814	6,533	7,686	40,883	81,781	24,166	35,214
Cassin or lactarene	Lb.	9,378	7,109	2,936	1,797	40,637	55,089	13,308	14,515
Other		3/	3/	249	466	3/	3/	1,328	1,815
Total dairy products		---	---	9,746	9,981	---	---	39,014	51,724
Hides and skins, raw (except furs):									
Calf skins	Lb.	245	192	160	103	1,324	854	790	498
Cattle hides	Lb.	1,738	1,263	306	247	9,420	3,825	1,441	761
Goat and kid skins	Lb.	1,880	460	1,556	534	9,261	6,298	7,348	6,960
Sheep and lamb skins	Lb.	3,481	2,597	2,024	1,944	27,869	26,304	16,821	20,217
Other 1/	Lb.	2,576	2,259	1,280	1,191	15,322	11,302	8,028	8,193
Total hides and skins, raw	Lb.	9,920	6,771	5,326	4,019	63,196	48,583	34,428	36,629
Meat and meat products:									
Beef and veal -									
Fresh, chilled, or frozen	Lb.	51,684	62,579	18,090	25,572	336,336	422,916	113,573	167,310
Other	Lb.	9,770	9,978	3,830	4,327	68,063	78,571	26,677	34,216
Total beef and veal	Lb.	61,454	72,557	21,920	29,899	404,399	501,487	140,250	201,526
Mutton, goat, and lamb	Lb.	3,079	4,092	829	1,097	26,641	28,612	6,712	7,943
Pork -									
Fresh, chilled, or frozen	Lb.	4,053	3,925	1,876	1,809	24,466	19,614	10,255	8,377
Hams and shoulders, canned cooked	Lb.	20,819	15,930	14,537	12,041	92,745	89,600	63,775	68,029
Other	Lb.	5,518	5,311	3,201	3,029	21,473	28,269	12,578	15,775
Total pork	Lb.	30,390	25,166	19,614	16,879	138,684	137,483	86,608	92,181
Sausage casings		3/	3/	1,818	1,468	3/	3/	10,625	10,309
Other (including meat extracts)	Lb.	7,577	9,425	1,966	2,474	44,656	51,786	11,178	14,401
Total meat and products (except poultry)		---	---	46,147	51,817	---	---	255,373	326,360
Poultry products:									
Eggs, dried, frozen, otherwise preserved ...	Lb.	1	106	1	67	17	2,459	14	928
Eggs in the shell	Doz.	29	43	31	47	192	846	195	701
Poultry meat	Lb.	72	73	155	112	163	214	392	513
Total poultry products		---	---	187	226	---	---	601	2,142

Continued -

Table 19.— U. S. agricultural imports for consumption: Quantity and value by commodity, December 1965 and 1966 and July-December 1965 and 1966 - Continued

Commodity imported SUPPLEMENTARY	Unit	December 1/				July-December 1/			
		Quantity		Value		Quantity		Value	
		1965	1966	1965	1966	1965	1966	1965	1966
		Thousands	Thousands	dollars	dollars	Thousands	Thousands	dollars	dollars
Wool, unmanufactured (except free in bond):				1,000	1,000			1,000	1,000
40's to 56's	G.Lb.	3,181	1,832	1,867	1,036	19,934	13,184	11,092	7,589
Finer than 56's	G.Lb.	16,252	12,952	10,030	8,961	85,295	61,102	52,838	42,374
Other wools	G.Lb.	1,091	1,525	1,034	1,029	12,361	10,645	9,613	7,056
Total wool, unmanufactured	G.Lb.	20,524	16,309	12,931	11,026	118,590	84,931	73,543	57,019
Other animal products:				339	560	2/	2/	1,448	2,925
Bones, hoofs, and horns, unmanufactured	Lb.	316	234	899	697	1,752	1,734	5,692	5,857
Bristles, sorted, bunched, or prepared	Lb.			107	53	3/	3/	712	453
Fats, oils, greases, edible and inedible	Lb.	469	295	745	437	2,071	2,037	3,556	2,915
Feathers, crude	Lb.	1,127	726	525	471	4,979	4,768	2,529	2,932
Gelatin, edible	Lb.	729	879	738	772	5,691	7,105	4,633	5,306
Hair, unmanufactured	Lb.	1,176	408	118	45	6,703	4,329	647	472
Honey	Lb.			1,199	955	3/	3/	6,109	7,236
Other				4,670	3,990			25,326	28,096
Total other animal products				100,175	97,818			510,039	568,033
Total animals and animal products									
VEGETABLE PRODUCTS									
Cotton, unmanufactured (480 lb.):				2,306	92	81	61	16,094	12,003
Cotton	Bale	15	2/	837	19	79	107	1,998	3,313
Linters	Bale	46	1	3,443	111	160	168	18,092	15,316
Total cotton and linters	Bale								
Fruits and preparations:				364	861	281	454	1,250	1,880
Apples, green or ripe (50 lb.)	Bu.	73	196	961	970	33,598	50,000	6,827	9,384
Berries	Lb.	4,859	6,259	534	1,137	26,353	16,160	2,396	1,463
Dates	Lb.	5,781	12,117	344	53	10,009	7,046	1,170	862
Figs	Lb.	3,295	629	51	16	491	387	775	566
Grapes (40 lb.)	Ca.Ft.	27	9	308	119	14,608	7,103	665	304
Melons	Lb.	6,699	2,679	1,425	2,149	4,945	7,834	10,199	15,502
Olives in brine	Gal.	740	947	1,129	1,090	32,371	36,978	6,609	7,349
Oranges, mandarin, canned	Lb.	5,554	5,351	1,831	1,245	83,234	96,168	9,497	10,769
Pineapples, canned, prepared or preserved	Lb.	16,282	11,730	149	195	3,782	4,099	1,095	1,279
Pineapple juice	Gal.	434	812	2,273	1,906	3/	3/	12,186	11,431
Other				9,369	9,741			52,669	60,789
Total fruits and preparations									
Grains and preparations:				1,824	2,274	4,260	4,016	5,890	5,442
Barley grain (48 lb.)	Bu.	1,302	1,663	167	111	25,890	17,343	1,243	868
Barley malt	Lb.	3,417	2,197	304	348	445	472	913	1,069
Corn grain (56 lb.)	Bu.	100	195	345	251	1,567	1,173	1,281	998
Oats grain (56 lb.)	Bu.	407	267	543	40	40,535	327	2,118	298
Rice	Lb.	9,176	88	65	289	499	695	526	884
Rye grain (56 lb.)	Bu.	93	230	36	44	160	994	315	2,022
Wheat grain for domestic use (60 lb.)	Bu.	18	19	0	2/	709	13	39	2
Wheat flour	Lb.	0	4	0	2/			10,065	12,709
Other				1,705	1,587	3/	3/	22,390	24,292
Total grains and preparations				4,989	4,944				

Continued

Table 19.-- U. S. agricultural imports for consumption: Quantity and value by commodity,
December 1965 and 1966 and July-December 1965 and 1966 - Continued

Commodity imported SUPPLEMENTARY	Unit	December 1/				July-December 1/				
		Quantity		Value		Quantity		Value		
		1965	1966	1965	1966	1965	1966	1965	1966	
		Thousands	Thousands	1,000 dollars	1,000 dollars	Thousands	Thousands	1,000 dollars	1,000 dollars	
Nuts and preparations:										
Almonds	Lb.	75	81	41	44	158	247	94	142	
Brazil nuts	Lb.	1,110	1,805	658	599	18,492	25,635	6,092	7,377	
Cashew nuts	Lb.	5,839	5,238	2,961	3,059	38,560	34,642	19,844	19,763	
Coconut meat, fresh, frozen, or prepared	Lb.	16,080	13,746	2,176	1,683	71,816	59,105	9,959	7,269	
Pistache nuts	Lb.	3,164	2,084	1,927	1,219	6,795	8,207	4,043	4,729	
Other	3/	3/		1,310	1,120	3/	3/	5,210	4,881	
Total nuts and preparations				9,073	7,724			45,242	44,161	
Oilseeds and products:										
Oils, edible and inedible -										
Cacao butter	Lb.	984	1,596	340	738	7,299	10,147	2,407	4,726	
Carnauba wax	Lb.	1,078	1,447	363	433	5,867	5,872	2,157	1,899	
Castor oil	Lb.	14,633	7,092	1,323	809	70,095	50,841	5,876	5,660	
Coconut oil	Lb.	9,790	9,276	794	919	102,314	165,841	13,062	17,146	
Olive oil, edible	Lb.	3,573	3,290	1,101	1,041	19,944	23,213	6,251	7,281	
Palm oil	Lb.	0	8,594	0	877	3,442	53,406	384	5,393	
Palm kernel oil	Lb.	8,091	7,878	1,276	1,055	44,142	51,565	6,912	6,739	
Tung oil	Lb.	2,353	2,148	523	308	9,661	15,422	2,228	2,570	
Other	Lb.	1,036	1,590	381	365	11,898	21,047	2,481	4,070	
Total oils (except essential)	Lb.	41,538	42,911	6,101	6,545	274,662	397,354	41,758	55,484	
Oilseeds -										
Copra	Lb.	119,020	8,400	9,907	599	317,742	273,779	28,940	20,288	
Sesame seed	Lb.	2,320	2,346	344	387	11,579	11,489	1,632	1,765	
Other	3/	3/		478	272	3/	3/	1,381	1,550	
Total oilseeds				10,729	1,258			31,953	23,603	
Protein meal (oilcake and meal)	Lb.	11,548	22,458	353	357	53,607	77,936	1,587	2,030	
Total oilseeds and products				17,183	8,160			75,298	81,117	
Sugar and related products:										
Cane sugar	S. Ton	438	294	51,723	35,443	2,221	2,542	257,347	304,527	
Molasses unfit for human consumption	Gal.	21,909	20,737	1,902	2,778	119,225	174,158	9,856	18,928	
Other	3/	3/		1,196	731	3/	3/	1,923	3,740	
Total sugar and related products				54,821	38,952			271,126	327,195	
Vegetables and preparations:										
Canned mushrooms	Lb.	749	969	439	553	6,406	6,753	3,510	3,734	
Canned tomatoes, tomato paste and sauce	Lb.	19,806	27,622	2,197	3,114	77,348	89,385	8,565	9,533	
Fresh or dried -										
Cucumbers	Lb.	6,329	5,715	385	456	6,934	7,226	424	574	
Garlic	Lb.	764	260	97	52	6,898	5,979	838	1,096	
Onions	Lb.	3,762	6,086	272	395	9,381	14,894	711	1,017	
Potatoes, white	Lb.	29,241	74,509	622	2,300	52,157	120,758	1,327	3,427	
Tomatoes, natural state	Lb.	13,278	23,932	1,677	3,403	20,168	39,648	2,413	4,707	
Turnips and rutabagas	Lb.	10,735	11,111	250	269	49,518	44,764	1,148	1,108	
Pickled vegetables	Lb.	3,280	2,038	463	336	15,036	9,469	1,537	1,506	
Tapioca, tapioca flour, and cassava	Lb.	25,820	26,747	833	964	150,084	158,340	5,207	5,511	
Other	3/	3/		3,008	4,775	3/	3/	13,204	27,258	
Total vegetables and preparations				10,243	16,617			38,884	59,471	

Continued -

Table 19.-- U. S. agricultural imports for consumption: Quantity and value by commodity,
December 1965 and 1966 and July-December 1965 and 1966 - Continued

Commodity imported SUPPLEMENTARY	Unit	December 1/				July-December 1/			
		Quantity		Value		Quantity		Value	
		1965	1966	1965	1966	1965	1966	1965	1966
				1,000	1,000			1,000	1,000
		Thousands	Thousands	dollars	dollars	Thousands	Thousands	dollars	dollars
Other vegetable products:									
Feeds and fodders (except oilcake and meal):	--- 2/		3/	1,598	2,050	3/	3/	8,527	9,359
Hops	Lb. :	3,098	1,541	3,414	1,769	4,130	3,975	4,457	4,256
Jute and jute batts, unmanufactured	L.Ton:	3	2	724	241	9	11	2,040	2,634
Malt liquors	Gal. :	1,954	1,429	2,129	1,561	10,476	11,138	11,411	12,207
Nursery and greenhouse stock	--- 2/		3/	498	637	13/	3/	10,248	11,508
Seeds, field and garden	--- 2/		3/	2,459	1,368	13/	3/	7,803	6,203
Spices	Lb. :	7,205	12,839	1,299	1,752	26,977	42,417	4,358	5,196
Tobacco, unmanufactured	Lb. :	11,527	13,129	8,362	9,085	85,298	90,715	61,756	62,942
Wines	Gal. :	2,254	1,628	9,730	6,914	9,213	9,597	39,417	42,602
Other	--- 3/		3/	635	782	13/	3/	4,062	6,038
Total other vegetable products	---	---	---	30,848	26,159	---	---	154,079	162,945
Total vegetable products	---	---	---	139,969	112,408	---	---	677,780	775,286
TOTAL SUPPLEMENTARY IMPORTS	---	---	---	240,144	210,226	---	---	1,187,819	1,343,318
COMPLEMENTARY									
Bananas	Lb. :	376,522	281,663	17,977	13,512	1,665,304	1,847,569	78,424	88,900
Coffee (including into Puerto Rico)	Lb. :	298,833	220,679	113,458	76,015	1,597,297	1,373,499	589,326	486,325
Coffee essences, substitutes and adulterants	Lb. :	56,452	1,365	516	1,457	1,570	7,704	1,812	7,910
Cocoa or cacao beans	Lb. :	56,404	59,988	7,448	12,842	438,113	215,698	58,355	46,584
Cocoa and chocolate, prepared	Lb. :	13,496	13,144	2,116	2,758	62,501	74,244	9,678	10,815
Drugs, herbs, roots, etc.	--- 2/		3/	3,006	2,414	3/	3/	11,661	13,891
Essential or distilled oils	--- 2/		3/	3,665	2,168	3/	3/	16,649	14,788
Fibers, unmanufactured	L.Ton:	28	8	4,073	1,561	90	63	16,731	11,907
Rubber, crude	Lb. :	99,828	66,169	17,195	12,331	513,755	432,245	91,096	81,608
Silk, raw	Lb. :	369	223	2,072	1,571	1,953	1,608	11,134	10,754
Spices	Lb. :	6,794	9,702	4,902	4,468	55,184	51,643	25,809	23,469
Tea	Lb. :	12,504	10,545	5,574	4,534	64,272	62,144	28,530	26,189
Wool, unmanufactured (free in bond)	G.Lb.:	9,212	10,521	4,833	5,056	73,441	72,395	37,603	36,275
Other complementary agricultural products	--- 3/		3/	1,145	1,246	3/	3/	6,268	6,050
TOTAL COMPLEMENTARY IMPORTS	---	---	---	187,980	141,333	---	---	983,076	865,465
TOTAL AGRICULTURAL IMPORTS	---	---	---	428,124	351,559	---	---	2,170,895	2,208,784
TOTAL NONAGRICULTURAL IMPORTS	---	---	---	1,701,669	1,842,085	---	---	9,074,850	11,108,239
TOTAL IMPORTS, ALL COMMODITIES	---	---	---	2,129,793	2,193,644	---	---	11,245,745	13,317,023

1/ Preliminary.

2/ Less than 500.

3/ Reported in value only.

4/ Excludes the weight of "other hides and skins," reported in pieces only.

Table 20 -- U. S. agricultural exports and imports (for consumption): Value by country,
July-December 1966

Country	Agricultural				Country	Agricultural			
	Exports	Imports				Exports	Imports		
	Total	Comple-	Supple-		Total	Comple-	Supple-		
	mentary	mentary	mentary		mentary	mentary	mentary		
	-- Thousand dollars --				-- Thousand dollars --				
Greenland	0	24	0	24	Norway	26,534	1,207	13	1,194
Canada	327,844	128,082	5,328	122,754	Denmark	43,075	55,483	500	54,983
Miquelon and St. Pierre Is.	1	0	0	0	United Kingdom	267,088	16,361	4,439	11,922
					Ireland	18,537	15,058	1,309	13,749
					Netherlands	262,091	50,310	5,813	44,497
Latin American Republics:					Netherland	105,489	11,193	550	10,643
Mexico	36,437	128,790	33,005	95,785	Belgium and Luxembourg	0	---	---	---
Guatemala	6,736	25,834	21,858	3,976	Unidentified W. Europe 1/2	0	---	---	---
El Salvador	3,936	27,026	23,190	3,836	France	76,523	39,071	3,814	35,257
Honduras	2,575	33,017	28,712	4,305	West Germany	271,667	21,638	1,468	20,170
Nicaragua	4,160	9,772	3,729	6,043	East Germany	7,240	61	0	61
Costa Rica	2,928	27,180	20,124	7,056	Austria	7,173	2,091	33	2,058
Panama	8,193	23,401	22,197	1,204	Czechoslovakia	13,398	760	57	703
Cuba	0	643	0	643	Hungary	4,797	223	25	198
Haiti	3,804	5,239	3,338	1,901	Switzerland	39,541	10,257	1,340	8,917
Dominican Republic	10,253	66,525	13,177	53,348	Finland	9,535	1,651	0	1,651
Colombia	12,032	71,494	66,135	5,359	Estonia	0	0	0	0
Venezuela	40,686	9,491	6,174	3,317	Latvia	0	0	0	0
Ecuador	5,939	43,450	39,095	4,355	Lithuania	0	7	0	7
Peru	19,173	44,079	11,621	32,458	Lithuania	0	0	105	23,047
Bolivia	6,709	2,379	1,902	477	Poland and Danzig	28,618	23,152	374	1,010
Chile	24,053	1,843	29	1,814	U.S.S.R. (Russia)	5,437	1,384	0	63
Brazil	64,596	263,398	189,636	73,762	Azores	496	63	0	63
Paraguay	2,052	5,557	263	5,294	Spain	71,258	28,072	781	27,291
Uruguay	1,258	6,380	63	6,317	Portugal	8,003	5,335	42	5,293
Argentina	3,024	53,678	8,603	45,075	Gibraltar	64	18	12	6
Total L. A. Republics	258,544	849,176	492,851	356,325	Malta and Gozo	350	329	0	329
					Italy	112,256	42,237	5,129	37,108
					Free Terr. of Trieste	0	0	0	0
Other Latin America:					Yugoslavia	40,141	8,970	298	8,672
British Honduras	1,287	1,819	803	1,016	Albania	0	53	53	0
Canal Zone	0	58	58	0	Greece	10,493	19,137	332	18,805
Bermuda	3,741	1	0	1	Rumania	3,028	598	125	473
Bahamas	9,120	84	7	77	Bulgaria	614	891	338	553
Jamaica	10,904	7,951	677	7,274	Turkey	9,247	34,976	1,113	33,863
Leeward and Windward Is.	2,080	781	291	490	Cyprus	1,305	435	175	258
Barbados	1,455	265	0	265					
Trinidad and Tobago	6,515	1,073	370	783	Total Europe	1,480,544	392,924	28,379	364,545
Netherlands Antilles	5,655	214	13	201					
French West Indies	1,009	2,207	0	2,207	Asia:				
British Guiana	2,280	5,946	18	5,928	Syrian Arab Republic	8,180	1,979	1,525	454
Surinam	1,772	566	566	0	Lebanon	9,849	3,097	866	2,231
French Guiana	110	0	0	0	Iraq	1,775	1,983	1,020	963
Falkland Islands	0	0	0	0	Iran	10,824	9,288	1,196	8,092
					Israel	48,663	917	247	670
					Jordan	8,778	29	29	0
Total Latin America	304,472	870,141	495,654	374,487	Gaza Strip	8	9	0	9
					Kuwait	1,875	0	0	0
Europe:					Saudi Arabia	12,663	22	0	22
Iceland	2,152	314	27	287	Oman Arab. Pen. States	799	169	104	65
Sweden	34,394	1,591	114	1,477					

Continued -

Table 20 -- U. S. agricultural exports and imports (for consumption): Value by country,
July-December 1966 - Continued

Country	Agricultural				Country	Agricultural					
	Exports	Imports				Exports	Imports				
	Total	Comple-	Supple-		Total	Comple-	Supple-				
	mentary	mentary	mentary		mentary	mentary	mentary				
Asia - Continued:				Africa - Continued:							
-- Thousand dollars --				-- Thousand dollars --							
Aden	1,295	11	3	8	Canary Islands	3,418	0	0	0		
Bahrain	674	1	0	1	Other Spanish Africa	205	0	0	0		
Afghanistan	2,037	768	0	768	Federal Rep. of Cameroon ..	637	8,341	7,978	363		
India	228,105	38,395	12,614	25,781	Central African Republic ..	31	0	0	0		
Goa, Damao, and Diu	0	0	0	0	Gabon	71	0	0	0		
Pakistan	58,906	4,989	730	4,259	Mauritania	32	1	0	1		
Nepal	27	148	2	146	Senegal	1,714	34	0	34		
Ceylon	6,613	14,020	14,009	11	Guinea	1,361	4,264	4,239	25		
Burma	10,154	11	0	11	Ivory Coast	1,082	19,809	19,573	236		
Thailand	11,600	6,739	2,392	4,347	Togo	133	244	235	9		
Viet-Nam	91,354	599	335	264	Other Western Africa	1,691	699	42	657		
Laos	249	54	54	0	Ghana	9,369	11,198	10,272	926		
Cambodia	35	538	538	0	Nigeria	6,671	10,893	6,364	4,529		
Malaysia	7,715	35,365	32,037	3,328	Sierra Leone	793	2,133	2,133	0		
Indonesia	23,506	68,009	63,120	4,889	British West Africa	29	2	1	1		
Philippines	39,328	128,651	4,216	124,435	Madeira Islands	836	82	0	82		
Macao	11	0	0	0	Angola	478	24,845	24,523	322		
Other S. and S.E. Asia	5	0	0	0	Other W. Port. Africa	235	315	315	0		
China	0	0	0	0	Liberia	3,606	11,366	11,366	0		
Outer Mongolia	0	1,248	0	1,248	Congo (Leopoldville)	6,976	4,348	3,075	1,273		
North Korea	0	0	0	0	Burundi and Rwanda	844	14,874	14,859	15		
Korea, Republic of	49,993	4,655	3,829	826	Somali Republic	300	93	0	93		
Hong Kong	24,806	1,217	89	1,128	Ethiopia	987	13,902	11,853	2,049		
Taiwan	47,196	12,871	1,832	11,039	French Somaliland	180	41	18	23		
Japan	506,773	20,046	4,324	15,722	Uganda	146	20,541	20,439	102		
Nansei and Nanpo Islands ..	8,379	2/	2/	0	Kenya	2,229	9,908	9,737	171		
Total Asia	1,222,175	355,828	145,111	210,717	Tanzania (formerly Tangan- yika and Zanzibar)	677	11,382	11,127	255		
Australia and Oceania:					Seychelles and Depend.	22	100	99	1		
Australia	18,483	151,641	422	151,219	Mauritius and Depend.	54	2,729	1	2,728		
New Guinea	136	1,340	1,340	2/	Mozambique	193	3,795	625	3,170		
New Zealand and W. Samoa ..	4,970	86,001	18,817	67,184	Malagasy Republic	141	10,975	9,823	1,152		
British W. Pacific Is.	558	3,374	90	3,284	Rep. of South Africa	29,394	21,135	495	20,640		
French Pacific Islands	1,726	71	68	3	Zambia, S.Rhod., Malawi ...	1,310	928	533	395		
Trust Terr. of Pacific Is. ..	746	0	0	0	Total Africa	220,770	219,358	170,256	49,102		
Total Australia and Oceania	26,619	242,427	20,737	221,690	Total all countries	3,582,425	2,208,784	865,465	1,343,319		
Africa:					E. E. C. (Common Market):						
Morocco	24,095	1,182	360	822	Netherlands	262,091	50,310	5,813	44,497		
Algeria	33,408	80	34	46	Belgium and Luxembourg ...	105,489	11,193	550	10,643		
Tunisia	14,844	206	9	197	France	76,523	39,071	3,814	35,257		
Libya	1,660	35	0	35	West Germany	271,667	21,638	1,468	20,170		
United Arab Rep. (Egypt) ..	65,349	8,428	7	8,421	Italy	112,256	42,237	5,129	37,108		
Sudan	5,569	450	121	329	Total E. E. C.	828,026	164,449	16,774	147,675		

1/ Not available by countries.
2/ Less than \$500.

U. S. Department of Agriculture
Washington, D. C. 20250.

POSTAGE AND FEES PAID
U. S. Department of Agriculture

OFFICIAL BUSINESS

NOTICE

If you no longer need this publication, check here return this sheet, and your name will be dropped from the mailing list.

If your address should be changed, write the new address on this sheet and return the whole sheet to:

Division of Administrative Services (ML)
Office of Management Services
U. S. Department of Agriculture
Washington, D. C. 20250.

MCO2666 HR18023FE2LI 4BA 0001
FE MOERHARDT
LIBRARY USCA
WASHINGTON DC 20000

Explanatory Note

U. S. foreign agricultural trade statistics in this report include official U.S. data based on compilations of the Bureau of the Census. Agricultural commodities consist of (1) nonmarine food products and (2) other products of agriculture which have not passed through complex processes of manufacture such as raw hides and skins, fats and oils, and wines. Such manufactured products as textiles, leather, boots and shoes, cigarettes, naval stores, forestry products, and distilled alcoholic beverages are not considered agricultural.

The trade statistics exclude shipments between the 50 States and Puerto Rico, between the 50 States and the island possessions, between Puerto Rico and the island possessions, among the island possessions, and in-transit through the United States from one foreign country to another when documented as such through U.S. Customs.

EXPORTS The export statistics also exclude shipments to the U.S. armed forces for their own use and supplies for vessels and planes engaged in foreign trade. Data on shipments valued at less than \$100 are not compiled by commodity and are excluded from agricultural statistics but are reflected in nonagricultural and overall export totals in this report. The agricultural export statistics include shipments under P.L. 87-195 (Act for International Development) principally sales for foreign currency; under P.L. 83-480 (Agricultural Trade Development and Assistance Act), and related laws; and involving Government payments to exporters. (USDA payments are excluded from the export value.) Separate statistics on Government program exports are compiled by USDA from data obtained from operating agencies.

The export value, the value at the port of exportation, is based on the selling price (or cost if not sold) and includes inland freight, insurance, and other charges to the port. The country of destination is the country of ultimate destination or where the commodities are to be consumed, further processed, or manufactured. When the shipper does not know the ultimate destination, the shipments are credited to the last country, as known to him at time of shipment from the United States, to which the commodities are to be shipped in their present form. Except for Canada, export shipments valued \$100-\$499 are included on the basis of sampling estimates; shipments to Canada valued \$100-\$1,999 are sampled.

IMPORTS Imports for consumption consist of commodities released from U. S. Customs custody upon arrival, or entered into bonded manufacturing warehouse, or withdrawn from bonded storage warehouse for consumption. The agricultural statistics exclude low-value shipments from countries not identified because of illegible reporting, but they are reflected in nonagricultural and overall import totals in this report.

The import value, defined generally as the market value in the foreign country, excludes import duties, ocean freight, and marine insurance. The country of origin is defined as the country where the commodities were grown or processed. Where the country of origin is not known, the imports are credited to the country of shipment.

Imports similar to agricultural commodities produced commercially in the United States and others that are interchangeable in use to any significant extent with such U. S. commodities are supplementary, or partly competitive. All other commodities are complementary, or noncompetitive.

Further explanatory material on foreign trade statistics and compilation procedures of the Bureau of the Census is contained in the publications of that agency.

END

DATE

FILMED

9-10-79

NTIS