



**AgEcon** SEARCH  
RESEARCH IN AGRICULTURAL & APPLIED ECONOMICS

*The World's Largest Open Access Agricultural & Applied Economics Digital Library*

**This document is discoverable and free to researchers across the globe due to the work of AgEcon Search.**

**Help ensure our sustainability.**

Give to AgEcon Search

AgEcon Search

<http://ageconsearch.umn.edu>

[aesearch@umn.edu](mailto:aesearch@umn.edu)

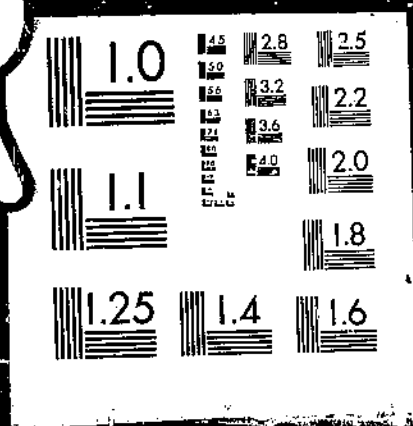
*Papers downloaded from **AgEcon Search** may be used for non-commercial purposes and personal study only. No other use, including posting to another Internet site, is permitted without permission from the copyright owner (not AgEcon Search), or as allowed under the provisions of Fair Use, U.S. Copyright Act, Title 17 U.S.C.*

USDA/FATUS-  
APR 67

FATUS/FOREIGN AGRICULTURAL TRADE OF THE UNITED STATES, 1967 APRIL. Washington, DC:  
Economic Research Service.

(NAL Call No. A286.9/Ag8)

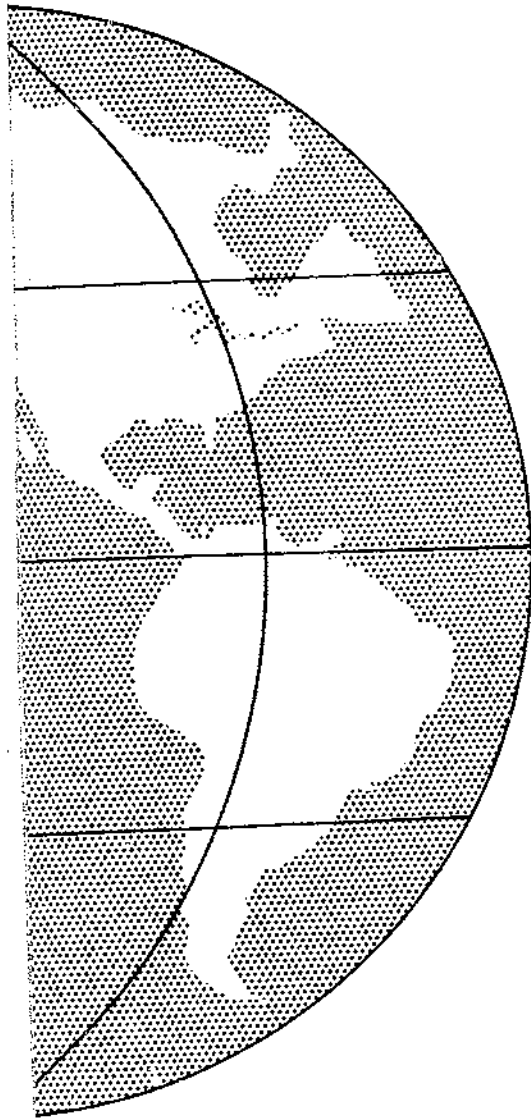
1 0 F 1  
U S D A  
F A T U S  
A P R 67



A286.9  
Agg  
Cop. 2

APRIL 1967

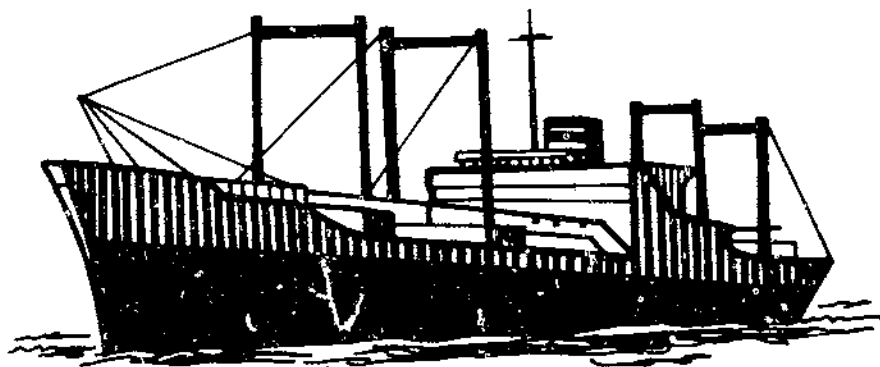
# FOREIGN AGRICULTURAL TRADE OF THE UNITED STATES



CURRENT SERIAL RECORDS

MAY - 5 1967

U. S. DEPT. OF AGRICULTURE  
NATIONAL AGRICULTURAL LIBRARY



## IN THIS ISSUE:

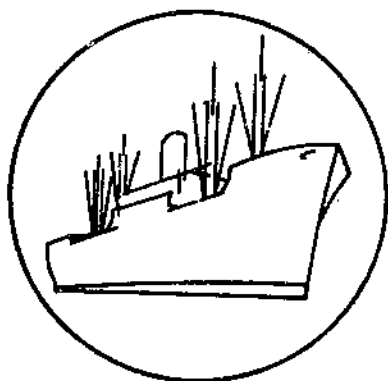
- Record Agricultural Trade Balance Achieved in 1966 Despite Increase in Imports
- U.S. Agricultural Trade with COMECON
- U.S. Agricultural Export Prices Sharply Up During Fourth-Quarter 1966
- U.S. Agricultural Imports by Country, 1960/61 Through 1965/66
- Export Highlights
- Trade Statistics, July-January 1966/67

Published Monthly by Economic Research Service / U. S. Department of Agriculture

## Contents

	<u>Page</u>
Digest .....	3
Special in This Issue:	
Record Agricultural Trade Balance Achieved in 1966 Despite Increase in Imports .	5
U.S. Agricultural Trade With COMECON .....	14
U.S. Agricultural Export Prices Sharply Up During Fourth-Quarter 1966 .....	29
U.S. Agricultural Imports by Country, 1960/61 Through 1965/66 .....	33
Export Highlights .....	52
Explanatory Note .....	66
Table 1.--U.S. agricultural imports for consumption: Value by commodity, 1965 and 1966 .....	6
Table 2.--U.S. agricultural imports for consumption: Quantity and value by commodity, 1965 and 1966 .....	7
Table 3.--U.S. agricultural trade with COMECON and all countries, 1960-65 .....	15
Table 4.--U.S. agricultural trade with Eastern Europe and USSR: Value by country, 1960-65 .....	16
Table 5.--U.S. agricultural exports to Poland under Titles I and III, P.L. 480: Quantity and value by program and commodity, 1960-65 .....	20
Table 6.--U.S. exports to Poland of food for relief or charity by private organization: Quantity and value by commodity, 1960-65 .....	21
Table 7.--U.S. agricultural exports to Eastern Europe and USSR: Quantity and value by countries and commodity, 1960-65 .....	22
Table 8.--U.S. agricultural imports from Eastern Europe and USSR: Quantity and value by country and commodity, 1960-65 .....	26
Table 9.--Unit values of 21 leading U.S. agricultural trade commodities, calendar years and fourth-quarters, 1966 and 1965 .....	30
Table 10.--Price index numbers of U.S. foreign agricultural trade by years and quarters, September 1965-December 1966 .....	31
Table 11.--Quantity indexes of principal U.S. agricultural exports and imports, by years and by quarters, September 1965-December 1966 .....	32
Table 12.--U.S. agricultural imports: Major countries of origin by commodity groups, specified fiscal years .....	34
Table 13.--U.S. agricultural imports: Value by major areas and trade blocs, 1961-66 .....	48
Table 14.--U.S. agricultural imports: Value by country of origin, specified fiscal years .....	49
Table 15.--U.S. agricultural exports: Value by commodity, July-February 1965/66 and 1966/67 .....	53
Table 16.--U.S. agricultural exports to the European Economic Community: Value by commodity, January and July-January 1965-67 .....	57
Table 17.--U.S. agricultural exports: Quantity and value by commodity, January 1966 and 1967 and July-January 1965/66 and 1966/67 .....	58
Table 18.--U.S. agricultural imports for consumption: Quantity and value by commodity, January 1966 and 1967 and July-January 1965/66 and 1966/67 .....	62
Fig. 1.--U.S. Agricultural Trade With COMECON .....	19

Trade Statistics and Analysis Branch  
Foreign Development and Trade Division  
Economic Research Service



# FOREIGN AGRICULTURAL TRADE OF THE UNITED STATES

---

## Digest

---

Record Agricultural Trade Balance Achieved in 1966 Despite Increase in Imports (see page 5). U.S. agricultural imports for consumption were \$4,492 million in 1966 compared with \$4,087 million in 1965. Imports of supplementary (partially competitive) products, at a record \$2,628 million, accounted for 94 percent of the total increase. The 17 percent increase in supplementary imports was due mainly to larger imports of meats and meat products, sugar, vegetables and preparations, and dairy products. Complementary (noncompetitive) product imports were \$1,864 million in 1966 -- up 1 percent from a year earlier. Tea and rubber were the only two major products that did not increase, but import increases for bananas, coffee, cocoa beans, and carpet wool were relatively small. Nonagricultural product imports totaled \$20,916 million in 1966 compared with \$17,203 million in 1965.

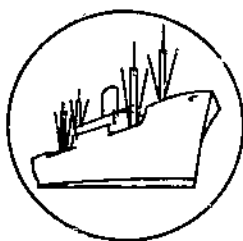
U.S. Agricultural Trade With COMECON (see page 14). Almost all of U.S. agricultural trade with centrally planned areas takes place with Committee on Mutual Economic Cooperation (COMECON) members in Eastern Europe and the USSR. Although this trade is a small fraction of total U.S. foreign agricultural trade, its value has increased. Exports of U.S. farm products to the area in 1961-65 averaged \$151 million compared with \$142 million in 1960 and only \$45 million in 1955-59. In addition, a growing proportion of total U.S. exports to COMECON consisted of farm products. A shift occurred in the principal destination of U.S. farm products shipped to the area. In 1964, the USSR replaced Poland as the leading COMECON importer of U.S. agricultural commodities. During the 1960's, the trend for U.S. farm exports to the other five members was upward. U.S. agricultural imports from COMECON increased in value in 1965 from previous years, but agricultural products declined as a proportion of total imports from the area. Canned hams from Poland dominate U.S. agricultural imports from COMECON. Major suppliers of agricultural commodities to COMECON members in 1965 included Cuba, Canada, Egypt, India, Australia, France, Argentina, and Yugoslavia.

U.S. Agricultural Export Prices Sharply Up During Fourth-Quarter 1966 (see page 29). Prices of 12 leading U.S. agricultural export commodities during the fourth quarter of 1966 averaged 9.4 percent above a year earlier. Prices of all but two of the 12 commodities were up. Similarly, the prices of all but two of the leading import commodities were up; but import prices rose only 1.7 percent on the average. For the calendar year 1966 as a whole, export prices were up 3.9 percent and import prices were up 2.2 percent.

U.S. Agricultural Imports by Country, 1960/61 Through 1965/66 (see page 33). Buoyant economic conditions in the United States during 1965/66 contributed greatly to a 12 percent increase in agricultural imports to \$4,454 million. Although imports from most of the major exporting countries were larger, the developed countries of Europe and Oceania were able to increase their combined share of the U.S. market by 5 percent between 1960/61 and 1965/66 to 25 percent in the latter year. This increase was mainly due to larger imports of animal products from these countries. Imports from Asia increased from \$701 million in 1960/61 to \$770 million in 1965/66, while imports from Latin America increased from \$1,690 million to \$1,801 million. Latin America continued to be the major supplier, although its market share dropped from 46 percent in 1960/61 to 40 percent in 1965/66.

U.S. Agricultural Exports: July-February 1966/67 (see page 52). U.S. agricultural exports reached \$4,617 million during July-February 1966/67, 5 percent higher than the \$4,403 million for the same months of last year. Exports of cotton, tobacco, grains and preparations, and oilseeds and products increased more than offsetting declines in animals and products, and fruits and preparations. February's agricultural exports were estimated at \$503 million, slightly higher than February of last year. Total agricultural exports in 1966/67 are forecast about 6 percent above 1965/66.

U.S. agricultural exports to the European Economic Community (EEC) declined 3 percent to \$934 million in July-January 1966/67 from \$983 million for the same months in 1965/66. Agricultural products subject to the EEC's variable levies accounted for the decline, dropping 22 percent. However, increased exports of commodities not subject to the variable levies partly offset the decline, advancing 9 percent from last year's July-January period to \$581 million in July-January 1966/67.



## SPECIAL in this issue

---

### RECORD AGRICULTURAL TRADE BALANCE ACHIEVED IN 1966 DESPITE INCREASE IN IMPORTS

In a year when U.S. agricultural exports were a record \$6.9 billion, U.S. imports of farm products also increased as the United States imported a record quantity of supplementary (partially competitive) products. Total agricultural imports (for consumption) were up 10 percent from the \$4,087 million total for 1965. The overall import gain was due mainly to a 17 percent increase in supplementary product imports. Supplementary imports totaled \$2,628 million in 1966. The agricultural trade balance in 1966 (exports less imports) was \$2.4 billion -- the highest on record.

During the last decade, agricultural imports have been relatively stable, but imports of supplementary items have continued to account for a larger share of total imports. U.S. consumers utilize more animal products than any other nation. Because of this, plus relatively high U.S. price levels in recent years, many countries exporting animal products look to the United States as a growing market outlet. Supplementary product imports increased by \$1,079 million between 1956 and 1966 and their share of total agricultural imports increased from 39 percent to 59 percent. In 1966 larger imports of partially competitive animal products accounted for 56 percent of the increase in supplementary items imported (table 1).

Complementary (noncompetitive) product imports have declined about \$500 million during the last decade. Such imports were \$1,864 million in 1966. This decline is due mainly to lower unit values on the major complementary items imported. From 1956 to 1966, the average unit value declined 29 percent on coffee, 34 percent on cocoa beans, and 40 percent on crude rubber. In 1966, these three commodities accounted for 73 percent of total complementary items imported (table 2).

Nonagricultural product imports rose to \$20,916 million in 1966 compared with \$17,203 million a year earlier. The increase was mainly due to larger imports of manufactured items, although raw material imports also increased significantly.

#### Supplementary Imports

Imports of supplementary products increased 17 percent to a new record of \$2,628 million in 1966. Most of the rise was due to sharp gains in imports of meats and meat products, sugar, vegetables and preparations, and dairy products. Lesser import gains occurred for hides and skins, fruits and preparations, nuts and preparations, oilseeds and products, and wines. Tobacco imports declined, while imports of live animals, apparel wool, cotton, and grains and preparations either were the same or about the same as in 1965.

Animals and animal products.--Dutiable cattle imports, which accounted for 82 percent of live animal imports in 1966, totaled 1.08 million head -- down 3 percent from 1965.



Table 1.--U.S. agricultural imports for consumption: Value by commodity, 1965 and 1966

Commodity	1965	1966	Change
	-- Million dollars --		Percent
<u>Supplementary</u>			
Animals and animal products:			
Animals, live .....	117	118	+1
Dairy products .....	73	93	+27
Hides and skins .....	73	83	+14
Meats and meat products .....	451	625	+39
Wool, apparel .....	157	157	0
Other .....	50	60	+20
Total animals, etc. ....	921	1,136	+23
Cotton, excluding linters .....	18	18	0
Fruits and preparations .....	123	130	+6
Grains and preparations .....	41	42	+2
Nuts and preparations .....	75	82	+9
Oilseeds and products .....	177	190	+7
Sugar, cane .....	441	502	+14
Tobacco, unmanufactured .....	130	127	-2
Vegetables and preparations .....	116	170	+47
Wines .....	68	77	+13
Other .....	137	154	+12
Total supplementary .....	2,247	2,628	+17
<u>Complementary</u>			
Bananas .....	162	179	+10
Coffee .....	1,061	1,069	+1
Cocoa beans .....	120	122	+2
Rubber, crude, natural .....	182	177	-3
Tea .....	57	57	0
Wool, carpet .....	71	72	+1
Other .....	187	188	+1
Total complementary .....	1,840	1,864	+1
Total imports .....	4,087	4,492	+10

Table 2.--U.S. agricultural imports for consumption: Quantity and value by commodity, 1965 and 1966

Commodity imported SUPPLEMENTARY	Unit	Year ended December 31 1/			
		Quantity		Value	
		1965	1966	1965	1966
		Thousands	Thousands	1,000 dollars	1,000 dollars
<b>ANIMALS AND ANIMAL PRODUCTS</b>					
<b>Animals, live:</b>					
Cattle, dutiable .....	No.	1,111	1,081	98,298	97,156
Cattle, free (for breeding) .....	No.	18	19	6,209	6,850
Horses .....	No.	3	3	10,580	11,207
Other (incl. live poultry) .....	---	2/	2/	1,698	2,773
Total animals, live .....	---	---	---	116,785	117,986
<b>Dairy products:</b>					
Butter .....	Lb.	748	667	385	365
<b>Cheese -</b>					
Blue-mold .....	Lb.	4,400	5,173	2,209	2,520
Cheddar .....	Lb.	1,858	4,181	641	1,530
Edam and Gouda .....	Lb.	7,566	10,897	3,537	4,990
Pecorino .....	Lb.	15,850	15,645	12,112	11,471
Swiss .....	Lb.	15,732	23,874	8,887	12,097
Other .....	Lb.	33,905	75,703	15,637	27,402
Total cheese .....	Lb.	79,311	135,473	43,023	60,110
Casein or lactarene .....	Lb.	91,788	107,906	26,621	28,719
Other .....	---	2/	2/	2,988	4,093
Total dairy products .....	---	---	---	73,017	93,287
<b>Hides and skins, raw:</b>					
Calf skins .....	Lb.	3,530	1,713	1,830	967
Cattle hides .....	Lb.	14,265	10,435	2,260	2,367
Goat and kid skins .....	Lb.	20,654	14,067	15,423	13,951
Sheep and lamb skins .....	Lb.	62,570	65,923	36,235	48,418
Other 3/ .....	Lb.	33,224	27,190	16,913	17,417
Total hides and skins, raw .....	Lb.	134,243	119,328	72,661	83,120
<b>Meat and meat products:</b>					
<b>Beef and veal -</b>					
Fresh, chilled or frozen .....	Lb.	584,182	763,546	195,839	298,646
Other .....	Lb.	116,961	130,388	45,935	55,519
Total beef and veal .....	Lb.	701,143	893,934	241,774	354,165
Mutton, goat, and lamb .....	Lb.	42,540	75,434	10,493	21,415
<b>Pork -</b>					
Fresh, chilled or frozen .....	Lb.	47,948	41,982	19,176	18,476
Hams and shoulders, canned .....	Lb.	175,328	198,231	117,546	150,724
Other .....	Lb.	38,993	58,136	22,340	32,401
Total pork .....	Lb.	262,269	298,349	159,062	201,601
Sausage casings .....	---	2/	2/	20,606	21,595
Other (incl. meat extracts) .....	Lb.	84,791	104,129	19,404	26,442
Total meat (except poultry) .....	---	---	---	451,339	625,218
<b>Poultry products:</b>					
Eggs, dried or preserved .....	Lb.	96	12,850	23	2,419
Eggs, in the shell .....	Doz.	634	2,562	682	1,704
Poultry meat .....	Lb.	205	329	587	791
Total poultry products .....	---	---	---	1,292	4,914

Continued -

Table 2.--U.S. agricultural imports for consumption: Quantity and value by commodity, 1965 and 1966 - Continued

Commodity imported SUPPLEMENTARY	Unit	Year ended December 31 1/			
		Quantity		Value	
		1965	1966	1965	1966
<b>Wool, unmd. (except free):</b>		Thousands	Thousands	1,000	1,000
40's to 56's .....	GLb.	41,533	40,926	23,653	23,168
Finer than 56's .....	GLb.	174,414	174,044	110,565	114,485
Other wools .....	GLb.	26,489	25,585	23,076	19,028
Total wool, unmd. ....	GLb.	242,436	240,555	157,294	156,681
<b>Other animal products:</b>					
Bones, hoofs, horns, unmd. ....	LTon:	41	55	2,607	5,148
Bristles, sorted or prepared ..	Lb.	3,417	3,926	11,576	12,019
Fats, oils, and greases .....	Lb.	11,007	9,564	2,121	1,369
Feathers, crude .....	Lb.	3,690	4,187	6,440	6,370
Gelatin, edible .....	Lb.	8,007	10,140	4,101	5,900
Hair, unmd. ....	Lb.	10,208	11,715	8,242	8,818
Honey .....	Lb.	13,344	9,538	1,331	1,067
Other .....	---	2/	2/	12,231	14,250
Total other animal products ..	---	---	---	48,649	54,941
Total animals and products ..	---	---	---	921,037	1,136,147
<b>VEGETABLE PRODUCTS</b>					
<b>Cotton, unmd. (480 lb.):</b>					
Cotton .....	Bale:	99	100	18,240	18,400
Linters .....	Bale:	169	212	4,430	5,996
Total cotton and linters .....	Bale:	268	312	22,670	24,396
<b>Fruits and preparations:</b>					
Apples, fresh (50 lb.) .....	Bu.	687	634	3,077	2,710
Berries .....	Lb.	82,739	127,059	14,206	24,167
Dates .....	Lb.	27,918	18,886	2,537	1,706
Figs .....	Lb.	23,220	19,636	2,526	2,138
Grapes (40 lb.) .....	CuFt:	1,582	1,301	3,454	3,166
Melons .....	Lb.	271,046	241,356	10,723	8,802
Olives in brine .....	Gal.	12,120	15,430	23,982	28,707
Oranges, mandarin, canned .....	Lb.	70,829	69,631	14,429	13,888
Pineapples, canned or pres. ....	Lb.	162,606	173,759	18,378	19,740
Pineapple juice .....	Gal.	10,426	8,781	3,055	2,479
Other .....	---	2/	2/	26,449	22,827
Total fruits and preps. ....	---	---	---	122,816	130,330
<b>Grains and preparations:</b>					
Barley grain (48 lb.) .....	Bu.	6,438	5,822	8,806	8,100
Barley malt .....	Cwt.	492	419	2,381	2,074
Corn grain (56 lb.) .....	Bu.	942	975	1,857	2,184
Oats grain (32 lb.) .....	Bu.	3,882	2,720	3,343	2,436
Rice .....	Lb.	66,687	14,257	3,501	1,017
Rye grain (56 lb.) .....	Bu.	1,834	1,949	2,143	2,099
Wheat grain (60 lb.) .....	Bu.	715	1,381	1,457	2,786
Wheat flour .....	Cwt.	39	38	224	183
Other .....	---	2/	2/	16,898	21,395
Total grains and preps. ....	---	---	---	40,610	42,274

Continued -

Table 2.--U.S. agricultural imports for consumption: Quantity and value by commodity, 1965 and 1966 - Continued

Commodity imported SUPPLEMENTARY	Unit	Year ended December 31 1/			
		Quantity		Value	
		1965	1966	1965	1966
		Thousands	Thousands	1,000 dollars	1,000 dollars
<b>Nuts and preparations:</b>					
Almonds	:Lb.	219	426	131	229
Brazil nuts	:Lb.	21,955	32,134	7,703	9,921
Cashew nuts	:Lb.	65,612	67,797	34,133	37,469
Coconut meat, fresh or prep.	:Lb.	116,172	116,948	15,808	14,744
Pistache nuts	:Lb.	17,720	22,288	9,825	12,201
Other	:---	2/	2/	7,619	7,194
Total nuts and preps.	:---	---	---	75,219	81,758
<b>Oilseeds and products:</b>					
<b>Oils, edible and inedible -</b>					
Cacao butter	:Lb.	17,494	21,233	7,104	8,979
Carnauba wax	:Lb.	13,628	14,407	5,524	4,765
Castor oil	:Lb.	129,475	104,121	11,295	11,075
Coconut oil	:Lb.	396,872	512,105	51,188	60,394
Olive oil, edible	:Lb.	44,470	48,603	13,558	15,037
Palm oil	:Lb.	6,557	75,887	720	7,775
Palm kernel oil	:Lb.	83,097	109,358	12,381	14,750
Tung oil	:Lb.	23,266	30,408	5,270	5,705
Other	:Lb.	32,759	45,794	6,170	8,927
Total oils	:Lb.	747,618	961,916	113,210	137,407
<b>Oilseeds -</b>					
Copra	:Lb.	614,933	536,360	54,987	41,569
Sesame seed	:Lb.	25,491	28,202	3,499	4,638
Other	:Lb.	16,063	32,186	2,183	3,091
Total oilseeds	:Lb.	656,487	596,748	60,669	49,298
Protein meal (oilcake and meal)	:Lb.	88,676	133,013	2,627	3,666
Total oilseeds and prods.	:Lb.	1,492,781	1,691,677	176,506	190,371
<b>Sugar and related products:</b>					
Cane sugar	:STon:	3,850	4,236	440,502	501,507
Molasses, inedible	:Gal.:	269,186	314,157	24,170	31,014
Other	:---	2/	2/	7,285	7,873
Total sugar and products	:---	---	---	471,957	540,394
<b>Vegetables and preparations:</b>					
Canned mushrooms	:Lb.	13,208	14,005	7,116	7,705
Canned tomatoes, paste, sauce	:Lb.	111,682	153,378	12,638	16,942
<b>Fresh -</b>					
Cucumbers	:Lb.	75,776	71,351	5,267	5,493
Garlic	:Lb.	16,847	15,095	2,106	2,447
Onions	:Lb.	48,342	60,712	2,785	3,697
Potatoes, white	:Lb.	247,385	181,546	8,656	5,341
Tomatoes, natural state	:Lb.	268,967	360,604	29,925	52,323
Turnips and rutabagas	:Lb.	85,816	79,727	2,018	1,779
Pickled vegetables	:Lb.	25,165	20,191	2,948	3,345
Tapioca and cassava flour, etc.	:Lb.	358,028	340,694	12,195	11,461
Other	:---	2/	2/	30,177	59,261
Total vegetables and preps.	:---	---	---	115,831	169,794

Continued -

Table 2.--U.S. agricultural imports for consumption: Quantity and value by commodity, 1965 and 1966 - Continued

Commodity imported SUPPLEMENTARY	Unit	Year ended December 31 1/			
		Quantity		Value	
		1965	1966	1965	1966
				1,000	1,000
Other vegetable products:		Thousands	Thousands	dollars	dollars
Feeds and fodders, exc. oilcake .....	---	2/	2/	16,854	15,551
Hops .....	Lb.	7,302	6,787	7,840	7,078
Jute and jute butts, unmf. ....	LTon:	41	51	7,709	10,461
Malt liquors .....	Gal.:	19,789	20,966	21,459	23,259
Nursery and greenhouse stock .....	---	2/	2/	13,464	14,098
Seeds, field and garden .....	Lb.	64,250	59,127	15,710	14,688
Spices .....	Lb.	60,660	82,669	9,429	11,677
Tobacco, unmf. ....	Lb.	182,558	179,336	129,813	126,826
Wines .....	Gal.:	16,441	18,090	67,834	77,018
Other .....	---	2/	2/	9,813	10,744
Total other vegetable prods. ....	---	---	---	299,925	312,300
Total vegetable products .....	---	---	---	1,325,534	1,491,617
Total supplementary imports .....	---	---	---	2,246,571	2,627,764
COMPLEMENTARY					
Bananas, fresh .....	Lb.	3,492,885	3,716,621	162,344	178,607
Coffee (incl. into Puerto Rico) ..	Lb.	2,823,626	2,921,442	1,061,012	1,068,580
Coffee essences, extracts, etc. ..	Lb.	2,849	10,567	3,430	10,964
Cocoa or cacao beans .....	Lb.	793,853	715,157	120,494	122,207
Cocoa and chocolate, prepared ....	Lb.	122,990	131,939	18,526	18,105
Drugs, herbs, roots, etc. ....	Lb.	70,467	77,271	23,893	27,055
Essential or distilled oils .....	---	2/	2/	30,957	29,266
Fibers, unmf. ....	LTon:	173	135	30,659	25,235
Rubber, crude .....	Lb.	997,510	966,913	182,331	176,918
Silk, raw .....	Lb.	3,638	3,504	19,996	22,830
Spices .....	Lb.	109,187	96,893	46,586	44,070
Tea .....	Lb.	129,192	132,994	57,017	57,353
Wool, unmf. (free in bond) .....	GLb.	136,051	142,010	71,176	72,205
Other complementary products .....	---	2/	2/	11,566	10,571
Total complementary imports .....	---	---	---	1,839,987	1,863,966
TOTAL AGRICULTURAL IMPORTS .....	---	---	---	4,086,558	4,491,730
TOTAL NONAGRICULTURAL IMPORTS .....	---	---	---	17,203,417	20,916,035
TOTAL IMPORTS, ALL COMMODITIES .....	---	---	---	21,289,975	25,407,765

1/ Preliminary.

2/ Reported in value only.

3/ Excludes the weight of "other hides and skins," reported in pieces only.

Dutiable cattle imports are mainly feeders and stockers from Mexico and Canada. Prices for domestic 550- to 750-pound feeder and stocker steers marketed at Kansas City averaged about 14 percent higher in 1966 than in 1965; but, due to a general shortage of marketable cattle in Canada and a lower export quota announced by Mexico, imports from these countries were below year-earlier levels in late 1966.

Calendar year 1966 imports of dairy products were a record \$93 million compared with \$73 million a year earlier. The increase was due mainly to a 40 percent increase in the value of cheese imported. Cheese imports totaled 135 million pounds in 1966 -- up from 79 million in 1965. Due mainly to a 5 percent decline in U.S. milk production since 1964, milk supplies available for use in manufactured dairy products have been down appreciably. Although cheese imports still account for less than 8 percent of domestic production, foreign suppliers have taken advantage of smaller supplies and higher prices in the U.S. market by supplying larger quantities -- mainly of foreign swiss and colby cheese. Imports of casein, the second major dairy product imported, totaled 108 million pounds in 1966 compared with 92 million pounds in 1965.

Meat imports increased 39 percent to \$625 million in 1966 as imports of boneless beef for use in processed meat products continued to increase. Beef and veal imports totaled 894 million pounds in 1966 compared with 701 million pounds in 1965. Boneless beef imports accounted for 81 percent of total beef and veal imports in 1966. Australia and New Zealand continued to be the major suppliers, accounting for 61 percent of total beef and veal imports.

Imports of fresh, chilled, or frozen cattle meat, and meat of goats and sheep, excluding lambs that are subject to possible import quotas authorized under P.L. 88-482, were 823 million pounds in 1966. This was 16 percent below the 1966 level that would have resulted in Presidential action to invoke a quota on meat imports.

Imports of pork advanced to 298 million pounds in 1966 from 262 million in 1965. Canned ham and shoulder imports accounted for 66 percent of the total, and imports of such products increased 13 percent.

Hides and skins.--Imports of hides and skins were \$83 million in 1966 -- up \$10 million from 1965. Although the value of imports increased, the quantity declined 15 million pounds to 119 million. The unit value on sheep and lamb skins, the major products imported, increased from 58 cents per pound in 1965 to 73 cents in 1966. Unit values on cattle hides and goat and kid skins also increased significantly.

Apparel wool.--The value of apparel wool imports in 1966 remained at the 1965 level of \$157 million. The quantity imported was down about 1 million pounds to 241 million.

Cotton.--Imports of cotton excluding linters totaled 100,000 bales in 1966 compared with 99,000 bales in 1965. Except for short Asiatic cotton, imports are regulated by quotas. Long-staple imports are limited to 95,000 bales on an August 1-July 31 year, while imports of upland cotton (under 1-1/8 inches) are limited to 30,000 bales on a September 19-September 18 year. Raw cotton is imported mainly from the United Arab Republic.

Fruits and preparations.--U.S. imports of fruits and preparations were \$130 million in 1966 -- up 6 percent from a year earlier. On a value basis, olives were the major product imported; imports were \$29 million -- \$5 million more than in 1965. Imports of berries increased from 83 million pounds to 127 million, while melon imports declined 30 million pounds to 241 million. These products came mainly from Mexico. Imports of pineapples -- mainly canned -- were 174 million pounds in 1966 with Taiwan, the Philippines, Malaysia, and Mexico the major suppliers.

Grains and preparations.--Imports of grains and preparations were \$42 million in 1966, about the same level as in 1965. Barley was the major grain imported and accounted for 19 percent of the total. Imports of wheat were regulated under Section 22 of the Agricultural Adjustment Act, as amended, while imports of the other grains were unrestricted.

Sugar.--Sugar imports by the United States in 1966 were 4.2 million short tons -- up 10 percent from 1965. The value of imports increased slightly more than 10 percent as the unit value on sugar imports in 1966 was \$118 per short ton compared with \$114 in 1965. The 1966 unit value was \$10 below the 1964 level, however.

Oilseeds and products.--The total value of imports of oilseeds and products in 1966 was \$190 million -- up 7 percent from 1965 and only about 11 percent below the levels of 1950 and 1951 when record quantities were imported and stockpiled due to the Korean conflict. Imports of coconut oil and copra accounted for 54 percent of total imports in 1966. Coconut oil imports increased 29 percent to 512 million pounds, while copra imports declined 13 percent to 536 million pounds.

Vegetables and preparations.--U.S. imports of vegetables and preparations increased 47 percent to \$170 million in 1966. Fresh tomato imports accounted for 31 percent of the total and increased from \$30 million to \$52 million. The quantity of tomatoes imported was 361 million pounds; Mexico supplied over 95 percent of the total. Canned tomato imports were 153 million pounds in 1966 -- up from 112 million a year earlier. Imports of potatoes declined from 247 million pounds to 182 million.

Tobacco.--Tobacco imports by the United States in 1966 were 179 million pounds compared with 183 million in 1965. Cigarette leaf comprised over 75 percent of imports, while most of the remainder was imported for use in cigars. Chiefly oriental type tobaccos are imported and they come mainly from Turkey and Greece.

#### Complementary Imports

Complementary product imports in 1966 were \$1,864 million -- up only 1 percent from 1965. Such imports accounted for 41 percent of total imports in 1966 -- the lowest share for such imports since the World War II years of 1942-45. Only imports of tea and rubber did not increase, but increases for the other products were, in most cases, relatively small.

Bananas.--U.S. imports of bananas in 1966 were 3,717 million pounds compared with 3,493 million in 1965. Due to new plantings -- mainly in Central America -- and to generally lower import prices, world banana trade has continued to increase even though there was some feeling that the major market, the United States, had reached a saturation point. The United States accounts for 35 to 40 percent of world banana imports. The transition to box packaging and shipment, as compared with stem delivery, has contributed to the fruit being in better condition after delivery and has allowed wider distribution in world trade channels. This has also contributed to a general increase in world trade.

Coffee.--Green coffee imports by the United States in 1966 were 2,921 million pounds -- a 3 percent gain over 1965 and the first increase since 1962 when imports were a record 3,248 million pounds. The average unit value of imports in 1962 and 1963, when U.S. imports averaged 3,203 million pounds, was only 30 cents a pound. In 1964 the unit value increased to 40 cents a pound as the world crop was down 27 percent. Unit values on U.S. imports have declined since 1964 but were still over 36 cents a pound in 1966.

The Latin American countries continued to be the major suppliers to the U.S. market in 1966, by supplying about 60 percent of the total. U.S. purchases of African coffee accounted for about 27 percent of the total compared with 29 percent in 1965 and 17 percent in 1960.

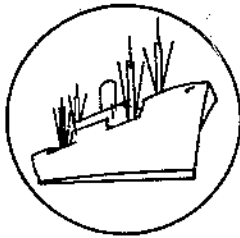
Cocoa beans.--U.S. cocoa bean imports declined to 715 million pounds in 1966 from 794 million in 1965, but the value of 1966 imports increased 2 percent from 1965 as prices strengthened from the low 1965 levels. The average unit import value in 1966 was 17 cents per pound after being 15 cents in 1965, but 22 cents in 1964. The sharp downturn in 1965 prices was due to a 22 percent production gain in the 1964/65 crop over a year earlier. Such a phenomenal rise in production was attributed to exceptionally favorable growing conditions in West Africa, new plantings coming into production, and also intensive campaigns against disease and pests. The 1965/66 crop was 1.2 million tons, 18 percent below the record 1964/65 crop. The 1966/67 crop has been forecast at 1.4 million tons.

Rubber.--Crude natural rubber imports decreased to 967 million pounds in 1966 from 998 million in 1965. Although imports have generally declined since the peak years of 1950-54, when they averaged 1,607 million pounds, they have been fairly stable during the last 7 years at a level about 5 to 10 percent below a billion pounds. The principal suppliers of U.S. imports were Indonesia, Malaysia, and Liberia.

Carpet wool.--U.S. imports of carpet wool were 142 million pounds in 1966 -- up 4 percent from 1965 but 25 percent below the 1960-64 average. U.S. carpet manufacturers continue to use more man-made fibers in carpets, and this has affected the quantity of carpet wool imported and also the use of domestic wool in carpet manufacture. Carpet wool consumption was 104 million pounds in 1966, down from an average of 145 million pounds a year during 1956-60.

Tea.--Tea imports by the United States in 1966 were 133 million pounds, compared with 129 million in 1965. Ceylon, India, Indonesia, and Kenya were the major suppliers.





## SPECIAL in this issue

---

### U.S. AGRICULTURAL TRADE WITH COMECON

by  
Thomas A. Warden <sup>1/</sup>

Almost all of U.S. agricultural trade with centrally planned areas takes place with Eastern European members of the Committee on Mutual Economic Cooperation (COMECON), the Soviet-sponsored economic coordinating organization made up of Bulgaria, Czechoslovakia, the Soviet zone of Germany including East Berlin, Hungary, Poland, Rumania, and the USSR. The COMECON organization, also referred to as CEMA, or Council for Mutual Economic Assistance, was created in 1949 in response to the European Recovery Program (Marshall Plan). COMECON is neither a free trade area nor a customs union; it is primarily a planning structure to coordinate the trade and clearing arrangements of the members, who are interconnected with one another through bilateral agreements. The members regulate trade through state monopoly agencies.

This article is concerned with the value and composition of U.S. agricultural commerce to and from these areas whose foreign trade is largely controlled by the State. The value of trade in this report consists of domestic exports and imports for consumption from 1960 through 1965. (see figure 1, page 19).

In general, exports of U.S. farm products to COMECON members require validated export licenses issued by the U.S. Commerce Department's Office of Export Control under the Export Control Act of 1949, as amended. Several agricultural commodities, including prepared breakfast cereals, dried leguminous vegetables, prepared animal feed such as alfalfa meal and feather meal, mohair, and certain crude animal and vegetable materials, were among 400 commodities removed from licensing requirements in October 1966. <sup>2/</sup> Exports to Mainland China, Mongolia, North Korea, North Viet-Nam, and Cuba are prohibited by the Mutual Defense Assistance Control (Battle) Act of 1951, as amended.

Currently, U.S. grain exports to COMECON members must meet certain shipping requirements. Half of the wheat exports, for example, must be shipped in U.S. flag vessels.

With the exception of goods from Poland, imports from COMECON are subject to duty rates under the Tariff Act of 1930. Imports from Poland received most-favored-nation (MFN) treatment, which means that duties are equal to the rates for West European countries.

Agricultural trade with COMECON is a small fraction of total U.S. agricultural trade. Farm exports to COMECON members since 1960 have ranged from a low in 1965 of 1.7 percent to a high in 1964 of 4.9 percent of the value of U.S. agricultural exports to all countries (table 3). The value of U.S. trade with COMECON has shown a rising trend, however.

---

<sup>1/</sup> Agricultural Economist, Trade Statistics and Analysis Branch, Foreign Development and Trade Division, Economic Research Service.

<sup>2/</sup> U.S. Department of Commerce, Office of Export Control, Current Export Bulletin No. 941, October 12, 1966. Excludes exports to East Germany.

Table 3.--U.S. agricultural trade with COMECON <sup>1/</sup>and all countries, average 1955-59, and annual 1960-65

Year	Exports to --			Imports from --		
	COMECON	All countries	COMECON share	COMECON	All countries	COMECON share
	-- Million dollars --		Percent	-- Million dollars --		Percent
Average:						
1955-59 .....	45	3,933	1.1	28	3,964	0.7
1960 .....	142	4,824	2.9	37	3,825	1.0
1961 .....	90	5,030	1.8	37	3,690	1.0
1962 .....	102	5,031	2.0	35	3,876	0.9
1963 .....	146	5,585	2.6	32	4,011	0.8
1964 .....	313	6,347	4.9	36	4,082	0.9
1965 .....	107	6,229	1.7	44	4,088	1.1

<sup>1/</sup> Bulgaria, Czechoslovakia, East Germany, Hungary, Poland, Rumania, and USSR.

U.S. agricultural exports to the area have fluctuated widely; during the 1960's they ranged from a low of \$90 million in 1961 to a high of \$313 million in 1964. The 5-year average for the period 1961-65 was \$151 million compared with \$142 million in 1960 and an average of \$45 million in 1955-59. In contrast, U.S. imports of agricultural products from COMECON were at a much lower level and showed less fluctuation. Imports rose to \$44 million in 1965 from \$32 million in 1963, \$37 million in 1960, and an average of \$28 million in 1955-59.

COMECON's agricultural trade deficit with the United States is offset by exports of manufactured goods, and platinum and gold sales by the USSR to other countries for convertible currencies.

Since 1960, a growing proportion of U.S. exports to COMECON has been composed of agricultural products. An average of 79 percent of the value of U.S. exports to the area in 1961-65 consisted of farm products; the range was between 67 percent in 1961 and 90 percent in 1964. In comparison, 71 percent of the 1960 value and 74 percent of the 1955-59 average was made up of agricultural goods. Agricultural imports as a percentage of total imports from the area declined steadily to 32 in 1965 from 46 in 1960.

#### Trade by Country

Exports.--Poland was the principal COMECON destination of U.S. farm exports from 1960 through 1963. The value of agricultural exports to Poland, as to all COMECON members, varied widely from year to year. Shipments to Poland ranged from a high of \$137 million in 1960 to a low of \$26 million in 1965 (table 4). Exports fell sharply in 1961 and 1962 to \$64 million and \$85 million, respectively, then rose to \$108 million and \$130 million in 1963 and 1964. The reduction in 1965 reflected the expiration of Title I, P. L. 480 exports to Poland. Exports to Poland in the 1960s shifted to commercial sales from shipments under U.S. Government programs. Government shipments in 1960, mainly wheat, cotton, and barley under Title I of P. L. 480 (foreign currency sales), amounted to \$126 million (table 5). In succeeding years, such shipments were less than half those of 1960, and by 1965 totaled slightly less than \$8 million. Shipments in 1965 under Government programs consisted largely of soybean salad oil and wheat flour sent by private charitable organizations (table 6).

Table 4.--U.S. agricultural trade with Eastern Europe and USSR:  
Value by country, 1960-65

Country	1960	1961	1962	1963	1964	1965
-- 1,000 dollars 4/ --						
<b>Exports to 1/ --</b>						
Bulgaria .....	52	6	6	91	4,367	2,507
Czechoslovakia .....	655	4,273	3,896	5,685	8,760	23,665
East Germany .....	1,009	2,581	1,663	6,070	16,670	10,871
Hungary .....	462	556	154	17,397	13,964	8,006
Poland .....	137,442	63,859	84,538	107,513	130,055	26,375
Rumania .....	143	253	256	137	2,059	2,378
USSR 2/ .....	2,727	18,084	11,014	9,069	136,932	33,244
Total .....	142,490	89,612	101,527	145,962	312,807	107,046
<b>Imports from --</b>						
Bulgaria .....	620	1,042	977	922	951	1,380
Czechoslovakia .....	1,744	1,357	1,207	1,124	955	1,630
East Germany .....	9	2	8	24	830	171
Hungary .....	801	802	430	237	331	434
Poland .....	31,753	31,136	30,766	27,653	30,851	37,773
Rumania .....	733	1,142	257	226	220	395
USSR 3/ .....	1,597	1,306	1,405	1,782	1,781	2,524
Total .....	37,257	36,787	35,050	31,968	35,919	44,307

1/ Includes transshipments of grains and oilseeds through Canadian ports estimated at \$6,356,000 in 1960, \$7,359,000 in 1963, \$12,696,000 in 1964, and \$3,977,000 in 1965.

2/ Includes exports separately recorded to Lithuania of \$824,000 in 1960, to Latvia of \$2,904,000 in 1961, \$4,886,000 in 1962, \$2,364,000 in 1963, and \$1,807,000 in 1964.

3/ Includes imports separately recorded from Lithuania of \$13,000 in 1960; Latvia \$114,000 and Estonia \$3,000 in 1963 and from Lithuania and Estonia \$2,000 each in 1965. 4/ Free-on-board (f.o.b.) basis.

The USSR was the leading destination within COMECON for U.S. farm products during 1964 and 1965. Large commercial sales of wheat and rice in 1964 and tallow and soybeans in 1965, plus a growing volume of cattle hides, resulted in the USSR becoming the principal COMECON buyer. Including transshipments through Canada estimated at \$7.5 million in 1964 and \$4.0 million in 1965, the USSR took \$137 million in 1964 and \$33 million in 1965. The largest postwar total previously recorded was \$18 million in 1961, of which over four-fifths was tallow.

Czechoslovakia was third largest COMECON destination for U.S. agricultural exports in 1965, due mainly to shipments of grain sorghums. Grain sorghums made up half of the \$24 million export total, adding to an increased volume of soybeans, corn, and barley.

Farm exports to East Germany totaled just under \$11 million in 1965, a reduction from the year before when they took nearly \$16 million, but considerably above the 1960-63 period. The 1964 gross was swelled by exports of wheat and butter. The 1964 levels of those two items were not met in 1965, but increases occurred for corn, unmanufactured tobacco, grain sorghums, fresh oranges, and cotton linters.

Hungary took \$8 million of U.S. agricultural exports in 1965 -- less than in the preceding 2 years when a large amount of wheat had swelled the totals. Shipments of feed corn also did not meet those of 1963 when nearly \$6 of the \$17 million consisted of corn. Soybean exports to Hungary have risen steadily since 1963, as have those of hides and skins. Soybean meal exports have also become more important in the last 3 years.

Agricultural exports to Bulgaria dropped to \$2.5 million in 1965 from a previous high of \$4.4 million in 1964. Large raw cotton purchases were made in 1964 but not in 1965. Exports of soybean meal, grain sorghums, and tallow rose in 1965 from the year before. Shipments to Bulgaria were negligible before 1964.

Farm exports to Rumania began to show some significance in 1964 when \$1.4 million of raw cotton boosted the agricultural total to \$2.1 million. Most of U.S. farm exports amounting to \$2.4 million in 1965 consisted of \$1.5 million in cattle hides (table 7).

Imports.--U.S. agricultural imports from COMECON are dominated by canned hams from Poland. Purchases of hams made up 67 percent of total agricultural imports from Poland in 1965 and 57 percent of agricultural imports from COMECON. Imports of hams and shoulders (canned, boned, or cooked) from Poland increased sharply in 1965 to just over \$25 million or slightly less than the 1961 total of almost \$26 million; a decline took place between 1960 and 1963 when the value reached a low of \$18 million before reversing itself. A general pork shortage and high demand in the United States in the last 2 years raised imports of hams and other pork products from Poland as well as from other areas. Imports of other pork products such as sausages and bacon from Poland grew steadily from year to year to \$7.5 million in 1965 and constituted the second major commodity group from the COMECON area. Other agricultural items from that area include, in order of 1965 value importance, cotton linters from the USSR (\$1.2 million), wild pig skins mainly from Poland but also from Czechoslovakia, East Germany, and Hungary (\$1.2 million); and berries from Poland, mainly frozen blueberries and strawberries (\$875,000). Other important items were crude feathers and downs, paprika, hides and skins other than pig, casein, licorice root, cheese, essential oils, crude bristles, poppy seed, angora rabbit hair, fermented alcoholic beverages, inedible molasses, sausage casings, crude drugs, caraway seed, chicory root, and lesser commodities such as horse hair, gelatin, dried mushrooms, shelled walnuts, dried onions, potato starch, sweetened chocolate, and oriental tobacco leaf.

U.S. agricultural imports from Poland, the principal COMECON source, rose to nearly \$38 million in 1965 from \$32 million in 1960 (table 8). A reduction in imports from 1960 to 1963 followed the decline in purchases of canned hams, then turned upward. Increases were recorded especially for other canned pork, prepared meats, gelatin, wild pig skins, kip skins, prepared berries of all types, potato starch, and caraway seed. Declines took place for casein, poppy seed, and chicory root. Irregular movements occurred for canned beef, cheese, fermented beverages, and molasses.

Second largest COMECON supplier of U.S. agricultural imports was the USSR. Imports from that country rose to \$2.5 million in 1965 from \$1.6 million in 1960. Chief products from the USSR were cotton linters and licorice root. Other imports included sausage casings, crude bristles, sheep and lamb skins, pine oil, horse hair, and mushrooms.

Agricultural imports from Czechoslovakia declined in value from \$1.7 million in 1960 to \$951,000 in 1964 then rose to \$1.6 million in 1965. Increases in canned pork, cheese, pig skins, and poppy seed imports were somewhat offset by reductions for bristles, feathers, angora rabbit hair, crude drugs, paprika, and sweetened chocolate.

Imports from Bulgaria rose slightly to \$1.4 million in 1965 from \$620,000 in 1960. Purchases of cheese, paprika, drugs, rose oil, and tobacco were higher, while those of bristles, pig skins, and dried onions were smaller.

Hungary shipped less agricultural products to the United States in 1965 than in 1960. Reductions took place mainly in bristles, feathers, paprika, and dried onions. Slightly higher were imports of cheese, pig skins, essential oils, crude drugs, crude basil, and wine. Total value declined to \$434,000 in 1965 from \$801,000 in 1960.

Imports from Rumania during the 1960's also fell. At their highest point in 1961 in-edible molasses made up the bulk (\$862,000) of agricultural imports which totaled \$1.1 million. In 1965, imports amounted to \$395,000, mainly cheese, poppy seed, shelled walnuts, and other products such as dried mushrooms, coriander seed, crude drugs, and marjoram. All except coriander seed were larger in 1965 than in 1960 when total agricultural imports from Rumania were \$733,000.

U.S. agricultural imports from East Germany are insignificant. The value went up to \$830,000 in 1964 from \$9,000 in 1960, then fell to \$171,000 in 1965. The 1964 total was swelled by \$601,000 in wild pig skins and \$172,000 in hops. In 1965, \$91,000 of the total consisted of pig skins.

#### Outlook for U.S. Exports

Potential exports of U.S. agricultural products to COMECON probably are greater than the imports of such products from that area. A record bread grain harvest reported by the USSR in 1965 will reduce import requirements this year, but variations in grain production seem likely to continue to occur. The area had to import wheat and other grains in comparatively large volumes between 1960 and 1965, evidently due to crop failures, increased food and feed grain consumption, insufficient investment in agriculture, and the inefficiencies of collective farming.

Expansion of U.S. farm exports to Eastern Europe is limited by the shortage of convertible currencies in the area with which to purchase U.S. products. Scarce foreign exchange coupled with restrictive trade controls in both directions have held down the increase in U.S.-COMECON agricultural trade as compared with a general rise in trade with other areas.

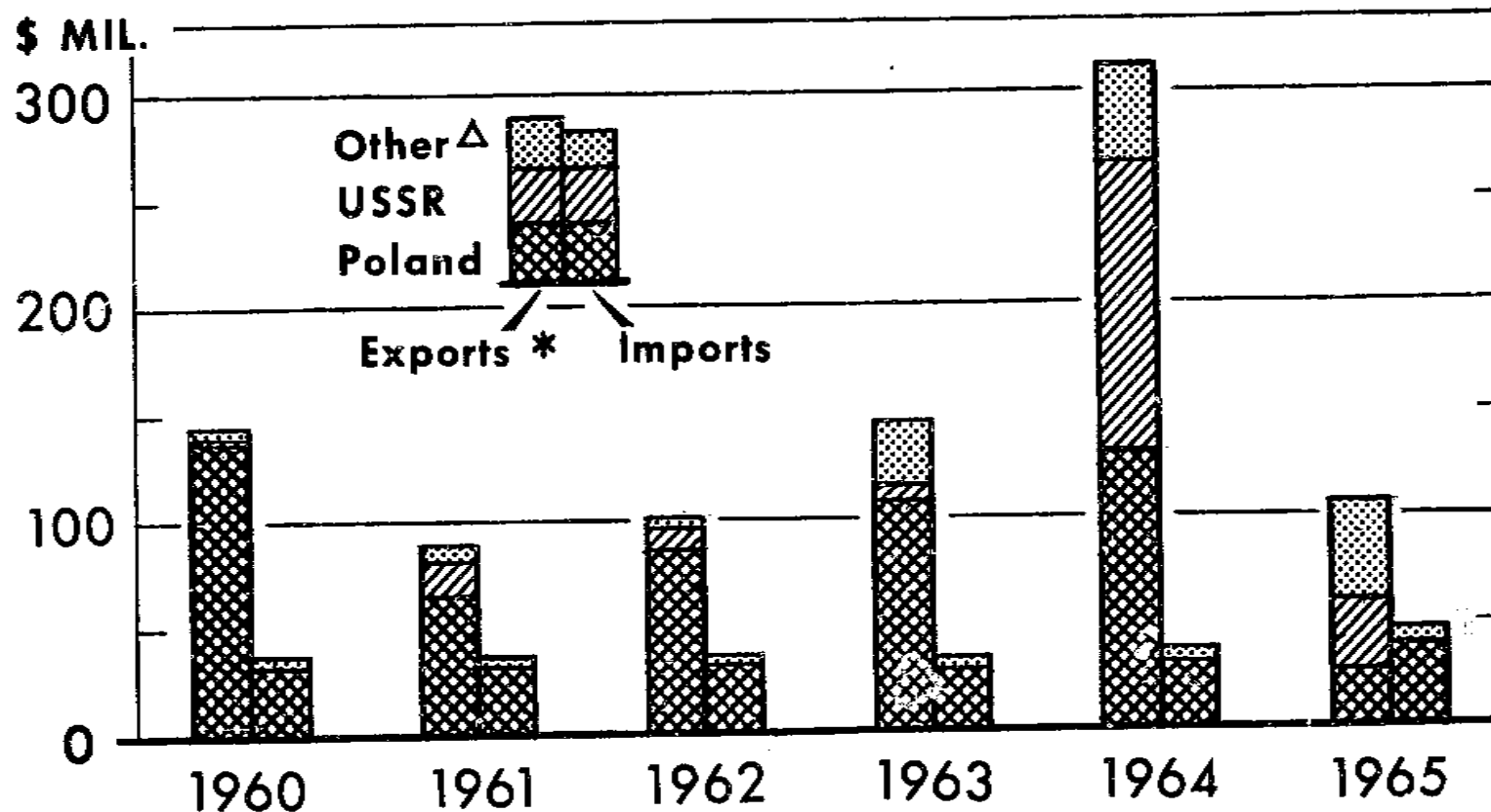
As the standard of living in Eastern Europe increases with economic development, the propensity to import agricultural products will likely rise. A study by the Food and Agriculture Organization of the United Nations recently estimated that 1965 per capita gross domestic product for the USSR and the East European countries in COMECON was \$951 and \$794, respectively, as against \$820 and \$696 in 1962. The high rates of economic growth -- nearly 16 percent for the USSR and 14 percent for Eastern Europe -- far exceed estimated population increases of 4.1 percent in the USSR and 2.2 percent in East European COMECON countries. 3/

U.S. farm exports are generally competitive in price and quality with those of other suppliers, and if trade controls are loosened can increase as they have to other areas. The principal direct effects of a larger volume of U.S. farm exports to the area would be larger incomes for farmers and the various handlers of farm commodities, and an improved U.S. balance of trade.

Principal suppliers of agricultural products to COMECON in 1965 were Cuba (sugar), Canada (wheat, \$248 million; \$174 million of this to the USSR), Egypt (cotton, \$180 million; rice \$17 million), India (tea, oilseeds, tobacco, coffee, skins, wool), Australia (wheat, \$65 million, all to USSR; wool, \$54 million), France (wheat, \$95 million, mostly to East Germany; wheat flour, \$5 million, mostly to USSR; wool \$2 million), Argentina (wheat, \$54 million to USSR; cattle hides, \$20 million; wool \$14 million; corn, \$4 million), and Yugoslavia (meat, \$35 million; tobacco, \$21 million; fruits and vegetables, \$11 million).

3/ Committee on Commodity Problems, 67/3, Agricultural Commodities - Projections for 1975 and 1985, FAO, Rome, August 1966, Table I. 3, p. 11, and Table I. 1, p. 2.

# U. S. AGRICULTURAL TRADE WITH COMECON



-19-

CALENDAR YEARS. \* INCLUDES TRANSSHIPMENTS THROUGH CANADA.  
 Δ INCLUDES BULGARIA, CZECHOSLOVAKIA, EAST GERMANY, HUNGARY, RUMANIA.

U. S. DEPARTMENT OF AGRICULTURE

NEG. ERS-5006-67 (2) ECONOMIC RESEARCH SERVICE

Fig. 1

Table 5.--U.S. agricultural exports to Poland under Titles I and III, P.L. 480:  
Quantity and value by program and commodity,  
1960-65

Program and commodity	Unit	1960		1961		1962		1963		1964		1965	
		Quantity	Value	Quantity	Value	Quantity	Value	Quantity	Value	Quantity	Value	Quantity	Value
		Thou- sands	1,000 dollars	Thou- sands	1,000 dollars	Thou- sands	1,000 dollars	Thou- sands	1,000 dollars	Thou- sands	1,000 dollars	Thou- sands	1,000 dollars
<u>Title I, P.L. 480</u>													
<u>(Foreign currency sales):</u>													
Wheat	Bu.	46,916	75,441	13,741	22,639	15,232	25,761	22,881	37,027	17,957	31,545	328	550
Corn	Bu.	3,040	3,768	---	---	---	---	---	---	---	---	---	---
Barley	Bu.	14,404	15,440	2,987	3,098	4,825	6,199	---	---	---	---	---	---
Grain sorghums	Bu.	4,496	4,741	818	967	---	---	---	---	---	---	---	---
Rice	Lb.	---	---	---	---	22,700	1,500	---	---	23,800	1,396	---	---
Milk, nonfat dry	Lb.	12,000	941	6,864	552	---	---	---	---	---	---	---	---
Soybean oil	Lb.	57,462	5,837	25,174	3,411	55,975	6,251	---	---	71,854	6,683	---	---
Cottonseed oil	Lb.	---	---	---	---	12,561	1,403	---	---	36,339	3,862	---	---
Tallow	Lb.	---	---	---	---	28,384	1,791	---	---	---	---	---	---
Cotton	Rbl.	142	18,996	93	12,374	97	14,373	54	6,180	84	10,421	---	---
Tobacco	Lb.	1,585	1,255	309	244	---	---	3,510	2,599	3,483	2,600	---	---
Total		---	126,419	---	43,285	---	57,278	---	45,806	---	56,507	---	550
<u>Title III, P.L. 480</u>													
<u>(Barter):</u>													
Wheat	Bu.	---	---	1/	1,653	400	686	---	---	3,018	5,257	---	---
Barley	Bu.	---	---	---	---	827	822	513	533	---	---	---	---
Corn	Bu.	---	---	---	---	---	---	---	---	222	298	---	---
Grain sorghums	Bu.	---	---	---	---	---	---	4,084	4,822	859	1,014	---	---
Butter	Lb.	---	---	---	---	---	---	---	---	1,843	316	---	---
Cotton	Rbl.	---	---	---	---	---	---	29	3,686	29	4,624	15	1,721
Total		---	---	---	1,653	---	1,508	---	9,041	---	11,509	---	1,721

1/ Quantity not available.

Source: Program Operations Division (Title I), and Office of Barter and Stockpiling (Title III), Foreign Agricultural Service, USDA.

Table 6.--U.S. exports to Poland of food for relief or charity by private organizations:  
Quantity and value by commodity, 1960-65

Commodity	Unit	1960		1961		1962		1963		1964		1965	
		Quantity	Value	Quantity	Value	Quantity	Value	Quantity	Value	Quantity	Value	Quantity	Value
		Thou- sands	1,000 dollars	Thou- sands	1,000 dollars	Thou- sands	1,000 dollars	Thou- sands	1,000 dollars	Thou- sands	1,000 dollars	Thou- sands	1,000 dollars
Wheat .....	Bu.	---	---	---	---	12	33	10	24	---	---	---	---
Wheat flour .....	Cwt.	314	1,778	394	2,621	508	3,101	318	2,156	290	1,135	365	1,567
Wheat, rolled .....	Lb.	---	---	---	---	---	---	---	---	---	---	795	79
Rice, milled .....	Lb.	11,775	1,100	1,785	161	---	---	---	---	---	---	---	---
Corn meal .....	Cwt.	39	235	20	90	22	121	22	131	24	118	36	137
Beans, dried .....	Lb.	---	---	501	40	2,709	190	---	---	160	11	160	9
Milk, nonfat dry .....	Lb.	8,705	782	6,544	535	13,318	949	10,485	778	18,304	1,494	7,026	912
Butter .....	Lb.	---	---	---	---	---	---	---	---	---	---	30	18
Cheese .....	Lb.	---	---	---	---	180	52	2,362	647	---	---	---	---
Soybean salad oil .....	Lb.	---	---	---	---	---	---	---	---	---	---	13,566	2,480
Cottonseed salad oil .....	Lb.	---	---	---	---	---	---	---	---	---	---	1,185	244
Shortening .....	Lb.	---	---	---	---	---	---	---	---	---	---	367	68
Other <sup>1/</sup> .....	---	---	159	---	943	---	2,884	---	3,420	---	2,334	---	92
Total .....	---	---	4,054	---	4,390	---	7,330	---	7,156	---	5,092	---	5,606

<sup>1/</sup> Commodity detail not reported before 1965. Includes items listed.  
Source: U.S. Bureau of the Census, Agricultural Specialist Reports.



Table 7.--U.S. agricultural exports to Eastern Europe and USSR: Quantity and value by country and commodity, 1960-65

Country and commodity	Unit	1960		1961		1962		1963		1964		1965	
		Quantity	Value	Quantity	Value	Quantity	Value	Quantity	Value	Quantity	Value	Quantity	Value
		Thou- sands	1,000 dollars	Thou- sands	1,000 dollars	Thou- sands	1,000 dollars	Thou- sands	1,000 dollars	Thou- sands	1,000 dollars	Thou- sands	1,000 dollars
<b>Bulgaria</b>													
Corn, unmilled	Bu.	1	26	1/	6	---	---	---	---	---	---	---	---
Grain sorghums	Bu.	---	---	---	---	---	---	---	---	460	654	---	---
Soybean meal	STon	---	---	---	---	---	---	---	---	---	---	399	483
Seeds, vegetable	Lb.	2	15	---	---	---	---	---	---	12	928	19	1,460
Tallow, inedible	Lb.	---	---	---	---	66	6	198	91	1/	1	2	15
Cotton, excl. linters	RBl.	---	---	---	---	---	---	---	---	2,205	154	2,205	213
Other		---	11	---	---	---	---	---	---	19	2,621	---	---
Total		---	52	---	6	---	6	---	91	---	4,367	---	2,507
<b>Czechoslovakia</b>													
Wheat, unmilled	Bu.	---	---	---	---	---	---	---	---	1,312	2,350	---	---
Rye	Bu.	---	---	---	---	---	---	---	---	378	569	---	---
Barley, unmilled	Bu.	---	---	---	---	---	---	---	---	---	---	---	---
Corn, unmilled	Bu.	11	72	1/	35	7	21	45	72	616	727	2,182	2,506
Grain sorghums	Bu.	---	---	---	---	---	---	---	---	601	894	2,548	3,321
Hops	Lb.	600	190	897	326	2,461	1,412	1/	1	1/	1	10,290	12,214
Soybeans 2/	Bu.	---	---	778	2,335	536	1,413	2,341	1,787	1,445	1,071	359	171
Soybean oil	Lb.	---	---	4,406	446	---	---	890	2,490	364	951	1,227	3,425
Soybean meal	STon	---	---	1	38	---	---	---	---	3,298	299	---	---
Seeds, other than corn	Lb.	165	66	11	16	989	210	---	---	2	120	1	74
Hides and skins, excl. fur	No.	25	140	47	3Pu	70	529	22	170	3	11	4	20
Lard	Lb.	---	---	---	---	1,102	125	8,084	836	69	532	230	1,641
Tallow, inedible	Lb.	---	---	3,743	271	2,626	175	1,347	105	7,948	881	---	---
Tobacco, unmanufactured	Lb.	49	167	399	417	---	---	---	---	1,759	121	---	---
Other		---	20	---	280	---	11	---	224	32	45	221	255
Total		---	655	---	4,273	---	3,896	---	5,685	---	8,760	---	23,665
<b>East Germany</b>													
Wheat, unmilled 3/	Bu.	---	---	---	---	---	---	---	---	4,847	8,554	1,642	2,607
Barley, unmilled	Bu.	---	---	---	---	---	---	---	---	251	261	---	---
Corn, unmilled	Bu.	---	---	---	---	---	---	455	451	---	---	---	---
Rye, unmilled	Bu.	---	---	---	---	---	---	2,224	2,910	1,153	1,591	1,764	2,517
Grain sorghums	Bu.	---	---	---	---	---	---	610	836	289	404	---	---
Soybeans	Bu.	---	---	---	---	---	---	---	---	---	---	744	883
Soybean oil	Lb.	---	---	---	---	---	---	---	---	---	---	---	---
Oranges, fresh	Lb.	---	---	14,583	1,697	---	---	135	404	374	1,061	187	560
Beans or lentils, dried	Lb.	---	---	---	---	8,508	334	---	---	---	---	16,202	635
		---	---	---	---	---	---	---	---	---	---	5,250	390

Continued-

Table 7.--U.S. agricultural exports to Eastern Europe and USSR: Quantity and value by country and commodity, 1960-65 - continued

Country and commodity	Unit	1960		1961		1962		1963		1964		1965	
		Quantity	Value	Quantity	Value	Quantity	Value	Quantity	Value	Quantity	Value	Quantity	Value
		Thou- sands	1,000 dollars	Thou- sands	1,000 dollars	Thou- sands	1,000 dollars	Thou- sands	1,000 dollars	Thou- sands	1,000 dollars	Thou- sands	1,000 dollars
<b>East Germany - continued</b>													
Tobacco, unmanufactured	:Lb.	658	1,006	862	884	1,121	1,067	613	685	1,127	1,053	1,427	1,423
Cotton linter	:RBl.	---	---	---	---	---	---	4	143	9	240	13	386
Beef or pork livers	:Lb.	---	---	---	---	194	37	2,220	367	1,367	211	---	---
Butter	:Lb.	---	---	---	---	---	---	---	---	7,517	2,938	2,895	1,226
Other		---	3	---	---	---	225	---	274	---	357	---	244
Total		---	1,009	---	2,581	---	1,663	---	6,070	---	16,670	---	10,871
<b>Hungary</b>													
Wheat, unmilled 4/	:Bu.	---	---	---	---	---	---	5,075	8,829	2,099	3,691	---	---
Corn, unmilled	:Bu.	1/	9	1/	5	5	5	4,485	5,960	116	164	1/	8
Grain sorghums	:Bu.	---	---	1/	1	1/	1/	---	---	3	32	1/	3
Soybeans	:Bu.	---	---	---	---	3	13	367	1,030	825	2,451	1,324	3,550
Soybean meal	:STon:	---	---	---	---	---	---	15	1,131	40	3,422	35	2,777
Seeds, vegetable, excl. corn	:Lb.	---	---	---	---	4	7	26	25	14	10	6	5
Hides and skins, excl. fur	:No.	14	94	21	214	11	76	61	264	23	189	188	1,095
Tallow, inedible	:Lb.	6,178	343	4,828	309	---	---	---	---	1,102	77	5,852	533
Cotton, excl. linters	:RBl.	---	---	---	---	---	---	---	---	18	2,267	---	---
Other 5/		---	16	---	27	---	53	---	158	---	1,810	---	35
Total		---	462	---	556	---	154	---	17,397	---	13,964	---	8,006
<b>Poland</b>													
Wheat, unmilled 6/	:Bu.	46,066	79,830	15,180	27,769	15,047	26,237	27,189	49,369	33,727	59,290	333	559
Barley, unmilled 7/	:Bu.	13,675	14,905	3,121	3,138	8,182	9,873	4,798	4,302	2,239	2,169	---	---
Corn, unmilled 8/	:Bu.	3,439	4,374	418	481	1,631	1,857	871	1,124	2,327	3,097	---	---
Grain sorghums	:Bu.	4,496	4,871	400	444	2,814	2,958	15,669	18,265	4,547	5,381	---	---
Rice, milled, excl. relief or charity	:Lb.	---	---	---	---	44,771	3,003	9,185	694	46,467	2,866	---	---
Flaxseed	:Bu.	123	375	347	1,079	---	---	---	---	---	---	---	---
Soybeans	:Bu.	---	---	363	1,025	179	479	983	2,529	1,404	4,145	953	2,850
Soybean meal	:STon:	9	548	2	139	---	---	3	258	---	---	33	2,646
Soybean oil, excl. relief or charity	:Lb.	57,438	6,217	25,328	3,177	55,958	5,852	8,099	789	89,660	8,147	---	---
Cottonseed oil, excl. relief or charity	:Lb.	---	---	1,101	164	12,583	1,699	---	---	36,683	4,001	---	---
Butter, excl. relief or charity	:Lb.	---	---	---	---	---	---	7,270	2,200	12,850	4,106	4,250	1,800
Nonfat dry milk, excl. relief or charity	:Lb.	10,462	828	5,281	418	---	---	129	8	190	23	---	---
Cattle hides	:No.	85	862	38	346	15	138	23	156	89	574	227	1,722
Hides and skins, other, excl. fur	:No.	124	598	100	446	89	248	58	166	59	204	---	---
Tallow, inedible	:Lb.	43,422	2,825	50,134	3,361	65,643	4,022	77,283	4,561	121,967	8,574	94,964	8,500
Tobacco, unmanufactured	:Lb.	1,577	1,233	320	284	---	---	3,510	2,599	3,410	2,636	---	---

Continued-

Table 7--U.S. agricultural exports from Eastern Europe and USSR: Quantity and value by country and commodity, 1960-65 - continued

Country and commodity	Unit	1960		1961		1962		1963		1964		1965	
		Quantity	Value	Quantity	Value	Quantity	Value	Quantity	Value	Quantity	Value	Quantity	Value
		Thou- sands	1,000 dollars	Thou- sands	1,000 dollars	Thou- sands	1,000 dollars	Thou- sands	1,000 dollars	Thou- sands	1,000 dollars	Thou- sands	1,000 dollars
<b>Poland - continued</b>													
Cotton, excl. linters	Rbl.	118	15,537	120	16,635	146	20,524	101	13,145	151	18,625	16	1,831
Alfalfa seed	Lb.	583	193	471	139	---	---	---	---	---	---	---	360
Seeds, other	Lb.	---	---	---	---	---	---	28	42	35	13	1/	3
Food for relief or charity 9/	---	---	4,054	---	4,390	---	7,330	---	7,156	---	5,092	---	5,606
Other 10/	---	---	192	---	424	---	318	---	150	---	1,125	---	498
Total	---	---	137,442	---	63,859	---	84,538	---	107,513	---	130,055	---	26,375
<b>Rumania</b>													
Wheat, unmilled	Bu.	---	---	---	---	---	---	---	---	41	169	---	---
Corn, unmilled	Bu.	5	78	2	143	---	---	---	---	---	---	---	---
Grain sorghums	Bu.	---	---	---	---	2	15	2	17	---	---	---	---
Soybeans	Bu.	18	65	---	---	---	---	4	15	---	---	---	---
Beans, dried	Lb.	---	---	440	46	---	---	1,102	95	---	---	---	---
Potatoes, white	Lb.	---	---	982	43	---	---	---	---	275	10	---	---
Seeds, grass or vegetable	Lb.	---	---	1	19	552	201	4	3	122	17	1	2
Cattle hides	No.	---	---	---	---	---	---	---	---	---	---	235	1,479
Tallow, inedible	Lb.	---	---	---	---	---	---	---	---	4,409	327	1,105	99
Animal fats, greases, other	Lb.	---	---	---	---	170	40	232	7	259	53	103	49
Cotton, excl. linters	Rbl.	---	---	---	---	---	---	---	---	10	1,387	---	---
Other 11/	---	---	---	---	2	---	---	---	---	---	96	---	749
Total	---	---	143	---	253	---	256	---	137	---	2,059	---	2,378
<b>USSR</b>													
Wheat, unmilled 12/	Bu.	1/	4	---	---	---	---	---	---	66,061	117,929	---	---
Rice, milled	Lb.	---	---	---	---	---	---	---	---	120,392	7,386	---	---
Soybeans 13/	Bu.	---	---	---	---	---	---	---	---	---	---	3,671	10,351
Beans, seed	Lb.	---	---	---	---	---	---	9,839	783	---	---	---	---
Seed, other	Lb.	---	---	---	---	1/	1	3	5	12	10	---	---
Animals, live	No.	1/	87	1/	31	1/	130	1/	292	1/	5	---	---
Cattle hides 14/	No.	298	2,622	319	2,904	690	6,789	845	5,916	514	3,038	922	6,087
Tallow, inedible	Lb.	---	---	197,437	15,122	66,187	4,011	33,400	2,066	121,690	8,250	185,503	16,719
Cotton, excl. linters	Rbl.	---	---	---	---	---	---	---	---	2	311	---	---
Other	---	---	14	---	27	---	83	---	7	---	3	---	87
Total	---	---	2,727	---	18,084	---	11,014	---	9,069	---	136,932	---	33,244

## FOOTNOTES

1/ Less than 500. 2/ Includes transshipments through Canada of soybeans totaling 108,000 bushels with an estimated value of \$286,000 in 1964. 3/ Includes transshipments through Canada of wheat totaling 387,000 bushel with an estimated value of \$705,000 in 1964. 4/ Includes transshipments through Canada of wheat totaling 511,000 bushel with estimated value of \$944,000 in 1963 and 661,000 bushels valued at \$1,205,000 in 1964. 5/ Consisted mainly of nonfat dry milk (\$1,352,000) and milled rice (\$108,000) in 1964. 6/ Includes transshipments through Canada of wheat totaling 3,113,000 bushels with estimated value of \$5,821,000 in 1960; 2,440,000 bushels valued at \$4,505,000 in 1963; and 1,640,000 bushels valued at \$2,989,000 in 1964. 7/ Transshipments of barley totaling 102,000 bushels valued at \$93,000 in 1960; and 844,000 bushels valued at \$786,000 in 1963. 8/ Transshipments of corn totaling 56,000 bushels valued at \$67,000 in 1960; and 871,000 bushels valued at \$1,125,000 in 1963. 9/ See table 6 for commodity breakdown. 10/ Principally prepared meat (\$785,000) and lard (\$221,000) in 1964. 11/ Principally inedible meat meal (\$487,000), other hides and skins (\$139,000), and yeast (\$114,000) in 1965. 12/ Includes transshipments through Canada of wheat totaling 4,121,000 bushels with estimated value of \$7,511,000 in 1964. 13/ Includes transshipments of soybeans totaling 1,441,000 bushels valued at \$3,977,000 in 1965. 14/ Includes cattle hides separately recorded to Latvia of \$824,000 in 1960, \$2,904,000 in 1961, \$4,886,000 in 1962, \$2,364,000 in 1963, and \$1,807,000 in 1964.

Sources: U.S. Bureau of the Census, and Board of Grain Commissioners of Canada.

Table 8.--U.S. agricultural imports from Eastern Europe and USSR: Quantity and value by country and commodity, 1960-65

Country and commodity	Unit	1960		1961		1962		1963		1964		1965	
		Quantity	Value	Quantity	Value	Quantity	Value	Quantity	Value	Quantity	Value	Quantity	Value
		Thou- sands	1,000 dollars	Thou- sands	1,000 dollars	Thou- sands	1,000 dollars	Thou- sands	1,000 dollars	Thou- sands	1,000 dollars	Thou- sands	1,000 dollars
<b>Bulgaria</b>													
Cheese	:Lb.	602	140	689	165	820	180	581	140	836	206	1,271	335
Bristles, crude or processed	:Lb.	29	52	15	38	1	9	9	29	3	19	1	7
Feathers and downs, crude	:Lb.	---	---	---	---	---	---	3	7	3	6	3	5
Skins, wild pig	:No.	2	11	9	19	---	---	20	27	---	---	---	---
Oil, rose	:A.Oz.	4	167	4	185	7	239	7	241	8	280	8	272
Onions, dried	:Lb.	502	114	698	162	88	30	174	49	253	75	91	25
Paprika	:Lb.	651	116	1,584	390	1,586	409	1,309	343	908	278	1,861	570
Drugs, crude	:Lb.	142	14	206	25	325	47	321	46	262	45	268	59
Tobacco, unmanufactured	:Lb.	2	1	47	29	17	13	---	---	---	---	47	43
Other		---	5	---	29	---	50	---	40	---	42	---	64
Total		---	620	---	1,042	---	977	---	922	---	951	---	1,380
<b>Czechoslovakia</b>													
Hams, shoulders, canned	:Lb.	1,127	677	1,135	672	1,018	579	1,158	624	944	503	1,676	937
Pork, other, canned	:Lb.	5	3	26	16	10	5	24	13	98	52	275	138
Cheese	:Lb.	56	13	35	8	94	20	68	14	63	13	77	18
Bristles, crude or processed	:Lb.	18	20	36	62	4	8	6	13	---	---	---	---
Feathers and downs, crude	:Lb.	124	171	30	95	12	35	19	27	25	45	25	62
Hair, angora rabbit	:Clb.	119	639	53	256	85	349	57	212	20	97	27	191
Skins, wild pig	:No.	---	---	---	---	---	---	---	---	26	29	58	89
Paprika	:Lb.	315	48	608	114	390	78	---	---	---	---	---	---
Poppy seed	:Lb.	---	---	---	---	43	4	109	10	142	15	249	25
Drugs, crude	:Lb.	29	5	8	2	3	1	1	1	4	2	---	---
Ale, beer	:Gal.	19	16	13	14	23	20	21	20	3	25	25	23
Chocolate, sweetened	:Lb.	102	75	123	82	119	85	124	88	156	88	83	58
Other		---	77	---	36	---	23	---	102	---	86	---	89
Total		---	1,744	---	1,357	---	1,207	---	1,124	---	955	---	1,630
<b>East Germany</b>													
Hams, shoulders, canned	:Lb.	---	---	---	---	---	---	---	---	---	---	33	20
Meat, other, prepared	:Lb.	---	---	---	---	---	---	36	8	5	3	9	5
Bristles, crude or processed	:Lb.	---	---	---	---	---	---	1	3	3	11	---	---
Skins, wild pig	:No.	---	---	---	---	---	---	3	4	366	601	64	91
Hops	:Lb.	---	---	---	---	---	---	---	---	174	172	---	---
Seed, grass	:Lb.	---	---	3	2	11	3	81	9	---	---	22	4
Other		---	9	---	---	---	5	---	---	---	43	---	51
Total		---	9	---	2	---	8	---	24	---	830	---	171

Continued-

Table 8.--U.S. agricultural imports from Eastern Europe and USSR: Quantity and value by country and commodity, 1960-65 - continued

Country and commodity	Unit	1960		1961		1962		1963		1964		1965	
		Quantity	Value	Quantity	Value	Quantity	Value	Quantity	Value	Quantity	Value	Quantity	Value
		Thou- sands	1,000 dollars	Thou- sands	1,000 dollars	Thou- sands	1,000 dollars	Thou- sands	1,000 dollars	Thou- sands	1,000 dollars	Thou- sands	1,000 dollars
<u>Hungary</u>													
Cheese	:Lb.	---	---	6	2	27	7	12	4	34	10	9	2
Bristles, crude or processed	:Lb.	14	22	17	29	1/	3	1	3	---	---	18	37
Feathers and downs, crude	:Lb.	126	277	53	94	33	61	15	20	---	---	40	53
Skins, wild pig	:No.	---	---	---	---	---	---	---	---	1	7	2	16
Oils, essential	:Lb.	4	6	3	9	1	30	3	14	8	3	42	12
Basil, crude	:Lb.	---	---	---	---	---	---	---	---	21	7	32	10
Onions, dried	:Lb.	161	34	307	58	208	48	95	28	21	7	32	10
Paprika	:Lb.	1,317	277	1,651	379	393	119	153	54	356	146	343	97
Drugs, crude	:Lb.	106	29	137	31	41	22	3	2	50	4	81	56
Wine	:Gal.	19	73	23	80	26	112	22	86	27	99	33	123
Other		---	83	---	120	---	28	---	26	---	45	---	28
Total		---	801	---	802	---	430	---	237	---	331	---	434
<u>Poland</u>													
Horses, live	:No.	---	---	1/	40	1/	14	1/	164	1/	3	1/	6
Hams, shoulders, canned	:Lb.	32,105	25,775	30,934	23,626	31,487	21,510	28,612	17,996	32,347	20,334	39,242	25,357
Pork, other, canned	:Lb.	2,954	2,101	3,744	2,470	8,276	4,029	11,396	5,511	10,961	6,351	13,635	7,475
Beef, canned	:Lb.	---	---	103	36	44	12	678	218	107	34	101	35
Meat, n.e.s., prepared	:Lb.	1/	1/	71	26	410	102	943	234	216	58	528	171
Cheese	:Lb.	130	25	68	11	103	16	166	28	106	21	85	18
Casein	:Lb.	7,781	1,389	12,492	2,058	8,281	1,383	935	158	716	135	1,751	579
Gelatin	:Lb.	---	---	25	4	272	36	86	14	160	24	672	84
Bristles, crude or processed	:Lb.	169	266	110	211	160	245	243	526	163	433	302	701
Feathers and downs, crude	:Lb.	453	769	290	974	326	1,091	328	765	203	469	685	967
Skins, wild pig	:No.	279	484	378	441	952	844	486	461	598	764	121	461
Skins, other	:Lb.	30	115	78	332	149	541	2/	402	268	775	3,096	559
Blueberries, frozen	:Lb.	44	6	662	81	767	95	361	55	2,199	395	1,313	242
Strawberries, frozen	:Lb.	28	4	262	31	308	43	596	90	823	137	455	74
Berries, other, prepared	:Lb.	---	---	59	10	18	4	395	58	517	85	---	---
Mushrooms, fresh or dried	:Lb.	1	1	190	20	---	---	8	33	3	11	---	---
Potato starch	:Lb.	---	---	---	---	44	2	77	3	240	11	1,449	54
Chicory root, crude	:Lb.	5,835	193	8,736	293	7,976	220	6,839	228	7,659	276	2,165	110
Vegetables, prepared n.e.s.	:Lb.	2/	32	2/	55	2/	71	2/	34	2/	31	261	22
Bakery products	:Lb.	2/	1	2/	4	2/	5	2/	16	76	13	88	13
Poppy seed	:Lb.	1,929	315	2,152	251	2,950	248	2,545	126	5,602	245	983	222
Caraway seed	:Lb.	308	43	715	102	752	99	884	126	717	101	778	118
Grass seed	:Lb.	---	---	---	---	11	5	851	182	195	58	139	29
Oils, essential	:Lb.	6	19	8	9	10	30	5	15	4	15	2	7

Continued-

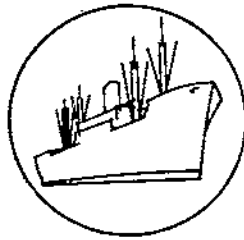
Table 8.--U.S. agricultural imports from Eastern Europe and USSR: Quantity and value by country and commodity, 1960-65 - continued

Country and commodity	Unit	1960		1961		1962		1963		1964		1965	
		Quantity	Value	Quantity	Value	Quantity	Value	Quantity	Value	Quantity	Value	Quantity	Value
		Thou- sands	1,000 dollars	Thou- sands	1,000 dollars	Thou- sands	1,000 dollars	Thou- sands	1,000 dollars	Thou- sands	1,000 dollars	Thou- sands	1,000 dollars
<b>Poland - continued</b>													
Ale, beer	:Gal.	36	48	19	23	26	24	11	9	23	22	15	13
Beverages, fermented, other	:Gal.	5	17	4	11	16	43	6	27	8	21	9	27
Molasses, inedible	:Gal.	978	124	---	---	---	---	---	---	---	---	1,116	179
Other		---	26	---	20	---	54	---	72	---	29	---	86
<b>Total</b>		---	31,753	---	31,136	---	30,766	---	27,653	---	30,851	---	37,773
<b>Rumania</b>													
Cheese	:Lb.	15	4	39	10	7	2	8	3	30	7	415	114
Bristles, crude or processed	:Lb.	6	12	---	---	---	---	4	5	---	---	---	---
Feathers and downs, crude	:Lb.	26	41	1/	1	84	67	1	2	22	37	1	2
Coriander seed	:Lb.	739	41	566	61	354	34	469	17	1,287	78	440	25
Marjoram, crude	:Lb.	---	---	---	---	---	---	---	---	---	---	43	15
Molasses, inedible	:Gal.	4,660	519	8,886	862	---	---	---	---	---	---	---	---
Mushrooms, fresh or dried	:Lb.	34	33	53	60	11	15	---	---	---	---	---	---
Onions, dried	:Lb.	---	---	41	6	20	3	---	---	28	19	45	35
Paprika	:Lb.	36	5	110	18	358	72	220	58	11	3	32	7
Poppy seed	:Lb.	---	---	---	---	---	---	---	---	---	---	1	1/
Walnuts, shelled	:Lb.	108	59	223	121	110	49	33	3	---	---	4	86
Drugs, crude	:Lb.	28	6	24	4	78	11	254	116	115	57	154	72
Other		---	13	---	---	---	4	---	16	---	8	---	21
<b>Total</b>		---	733	---	1,142	---	257	---	226	---	220	---	395
<b>USSR</b>													
Bristles, crude	:Lb.	27	145	67	307	44	159	40	193	25	168	40	164
Hair, animal	:Clb.	14	20	---	---	10	26	1	35	66	157	26	69
Skins, sheep and lamb	:No.	---	---	---	---	---	---	---	---	2	14	25	158
Casings, sausage	:Lb.	19	118	---	---	2/	31	2/	110	2/	166	2/	174
Licorice root, crude	:Lb.	8,994	405	6,432	287	8,747	395	15,193	726	8,114	385	11,766	543
Mushrooms, fresh or dried	:Lb.	24	29	9	28	12	45	18	47	12	27	9	24
Oils, essential	:Lb.	44	136	21	81	43	106	26	109	33	87	43	159
Cotton linters	:Lb.	15,652	680	13,298	541	12,793	597	8,718	495	12,279	747	21,070	1,169
Other		---	64	---	62	---	46	---	65	---	30	---	64
<b>Total</b>		---	1,597	---	1,306	---	1,405	---	1,782	---	1,781	---	2,524

1/ Less than 500.

2/ Quantity data not reported or not comparable.

Source: U.S. Bureau of Census, Agricultural Specialist Reports.



## SPECIAL in this issue

---

### U.S. AGRICULTURAL EXPORT PRICES SHARPLY UP DURING FOURTH-QUARTER 1966

by  
Hans G. Hirsch <sup>1/</sup>

The prices (unit values <sup>2/</sup>) of 12 leading U.S. agricultural export commodities averaged 9.4 percent higher in the fourth quarter of 1966 than 1 year earlier (table 9). This is by far the largest quarterly price change since the computation of this kind of index was begun with the third quarter of 1965 (table 10). The quarterly price index of U.S. agricultural exports stood at 99.0 during the first quarter of 1966. It increased from that level each successive quarter, rising to 102.2 during the second quarter and to 105.0 during the third quarter. The four quarterly indexes averaged 103.9 -- this is the price index which compares the average price level during 1966 with that during 1965.

Nearly all individual export commodity prices were up during the calendar year. Non-fat dry milk registered the steepest annual price increase with a 20 percent rise; the increases in the prices of most other commodities ranged from 7 to 10 percent. Wheat and feed grain prices rose more moderately -- from 1 to 3 percent. Only cotton and inedible tallow prices declined, cotton by 7 percent and tallow by 8 percent.

Import prices rose moderately. The average level of the prices of nine leading agricultural import commodities during 1966 was 102.2 percent of a year earlier. While this represented a smaller increase than the increase in the price level of the export commodities, calendar year 1966 was the first period since the computation of this index was begun during which the yearly import price index showed an increase over the immediately preceding year.

The relative prices of individual commodities varied less from this average than the relative prices of individual export commodities varied from their average. The two meat items (hams and fresh, chilled, or frozen beef and veal) led the price increases of the import commodities with 13 and 17 percent, respectively. They were closely followed by cocoa beans, the price of which recuperated from a depressed level. The relative prices of the other six import items ranged from 97 to 103; among these, coffee, wool, and tobacco were the only commodities registering slight price declines.

---

<sup>1/</sup> Agricultural Economist, Trade Statistics and Analysis Branch, Foreign Development and Trade Division, Economic Research Service.

<sup>2/</sup> Value divided by quantity. The terms price and unit value are used interchangeably here. Conceptually they differ. A unit value may change as a result of a change in the product mix, while prices, at the same time, remain stable. For instance, non-durum wheat and durum wheat prices may not change; but if more durum wheat is exported in one period than in the preceding period, the unit value of wheat exports rises, because durum wheat, the higher-priced product in the "mix" which is wheat, has become relatively more important.



Table 9.--Unit values of 21 leading U.S. agricultural trade commodities, calendar years and fourth quarters, 1966 and 1965 <sup>1/</sup>

Commodity	Unit	Unit value					
		Calendar year			Fourth quarter		
		1966	1965	$\frac{1966}{1965}$	1966	1965	$\frac{1966}{1965}$
		Cents	Cents	Percent	Cents	Cents	Percent
<u>Export commodities</u>							
Wheat .....	:Bu.	169.0	163.5	103.4	179.6	161.9	110.9
Wheat flour .....	:Cwt.	420.1	392.8	107.0	454.8	399.0	114.0
Corn .....	:Bu.	143.9	139.5	103.2	146.1	132.6	110.2
Sorghum grain .....	:Bu.	122.6	121.2	101.2	124.7	120.0	103.9
Soybeans .....	:Bu.	309.3	285.5	108.3	310.0	263.5	117.6
Soybean oil .....	:Lb.	14.8	13.5	109.6	14.3	12.7	112.6
Protein meal .....	:Cwt.	2/417.7	382.7	109.1	438.1	382.5	114.5
Cotton .....	:Lb.	24.2	25.9	93.4	23.5	25.3	92.9
Tobacco, flue-cured .....	:Lb.	92.4	85.1	108.6	97.6	90.8	107.5
Rice, milled .....	:Lb.	7.7	7.1	108.5	8.5	7.3	116.4
Tallow, inedible .....	:Lb.	8.3	9.0	92.2	8.0	8.7	92.0
Nonfat dry milk .....	:Lb.	16.3	13.6	119.9	18.5	15.0	123.3
Average, i.e., index number <sup>3/</sup> .....				103.9			109.4
<u>Import commodities</u>							
Coffee .....	:Lb.	36.6	37.6	97.3	34.7	37.2	93.3
Sugar .....	:Cwt.	592.0	572.1	103.5	597.8	578.4	103.4
Beef and veal, fresh, chilled, or frozen .....	:Lb.	39.1	33.5	116.7	40.1	34.7	115.6
Rubber .....	:Lb.	18.3	18.3	100.0	18.7	17.7	105.6
Wool .....	:Lb.	59.8	60.4	99.0	61.3	58.9	104.1
Cocoa beans .....	:Lb.	17.1	15.2	112.5	21.8	12.6	173.0
Tobacco .....	:Lb.	70.7	71.1	99.4	68.7	74.4	92.3
Bananas .....	:Cwt.	480.6	464.8	103.4	481.8	472.6	101.9
Hams .....	:Lb.	76.0	67.0	113.4	75.0	70.9	105.8
Average, i.e., index number <sup>3/</sup> .....				102.2			101.7
<u>All above commodities</u>							
Average, i.e., index number <sup>3/</sup> .....				103.3			106.8

-30-

<sup>1/</sup> Unit values were computed from the value and quantity figures published in Foreign Agricultural Trade of the United States. Cotton poundages were obtained from U.S. Bureau of the Census Reports, Supplement to EM 522. <sup>2/</sup> On advice of the Bureau of the Census, \$5 million were deducted from the export value figure from which the unit value was computed to correct for an error that occurred in September 1966. <sup>3/</sup> The index numbers are of "Fisher's Ideal" type.

Table 10.--Price index numbers of U.S. foreign agricultural trade, by years and quarters, September 1965-December 1966 <sup>1/</sup>

Period ending	Exports		Imports		Total	
	Yearly index	Quarterly index	Yearly index	Quarterly index	Yearly index	Quarterly index
September 1965 .....	102.8	102.5	96.2	91.3	100.4	98.2
December 1965 .....	<sup>2/</sup> 101.3	97.3	92.7	94.3	98.1	96.2
March 1966 .....	100.3	99.0	92.7	97.4	97.5	98.4
June 1966 .....	99.6	102.2	96.5	103.1	98.4	102.5
September 1966 .....	100.2	105.0	99.9	105.6	100.1	105.2
December 1966 .....	103.9	109.4	102.2	101.7	103.3	106.8

<sup>1/</sup> The index numbers are of "Fisher's Ideal" type. Each number is based on the same period (year or quarter) 1 year earlier.

<sup>2/</sup> Revised.

Sources: Foreign Agricultural Trade of the United States, January-February 1966, March-April 1966, September 1966, February 1964, and the preceding table in this paper.

The average price level of import commodities for the fourth quarter was 101.7 percent of a year earlier, slightly less than the corresponding annual index of 102.2. Variation of the price relatives of individual commodities around the quarterly index was much more extreme than variation from the annual average. During the fourth quarter, the cocoa bean price averaged 73 percent above a year earlier. The beef and veal price was up 16 percent. Most other commodity prices rose by 2 to 6 percent. The price of coffee, however, declined by 7 percent and the price of tobacco by 8 percent.

Quarterly prices of export commodities rose more than yearly prices. The quarterly export price index of 109.4 reflects steep quarterly price increases. Indeed, the price increase over the year-earlier period of nine commodities was more pronounced for the fourth quarter than for the year. Only the price of tobacco increased slightly less and the prices of cotton and tallow dropped slightly more during the quarter than during the year. Price increases for the other nine commodities ranged from 4 to 23 percent. The price of sorghum grain increased by only 4 percent, significantly less than the 10 percent rise in the price of corn. This means that sorghum grain had become a "better buy" for foreign feed grain importers compared with corn. During the fourth quarter of 1966, sorghum grain cost 85 percent as much as corn; a year earlier it cost 90 percent as much as corn. While sorghum exports increased to 75 million bushels during the fourth quarter of 1966, up from 50 million bushels a year earlier, corn exports declined from 193 to 135 million bushels.

The combined export and import price indexes were up. Both the annual and the quarterly overall price index numbers were up. The annual index stood at 103.3 and the quarterly index at 106.8. The terms of trade indexes (quotients of the export and import indexes) were favorable for the United States after they had been approximately in balance for the year and quarter ended in September 1966. The terms of trade were 101.7 for the calendar year and 107.6 for the fourth quarter.

The volume of trade during fourth-quarter 1966 declined. Quantity index numbers of U.S. foreign agricultural trade were obtained as a byproduct when the price index numbers were calculated (table 11). Like the price index numbers, each quantity index number measures the average change during a year or quarter, relative to such period 1 year earlier.

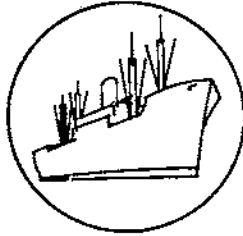
Table 11.--Quantity indexes of principal U.S. agricultural exports and imports, by years and by quarters, September 1965-December 1966 1/

Period ending	Exports		Imports		Total	
	Yearly	Quarterly	Yearly	Quarterly	Yearly	Quarterly
	: index	: index	: index	: index	: index	: index
September 1965 .....	96.2	104.5	96.5	101.8	96.3	103.5
December 1965 .....	96.9	105.7	101.6	115.6	98.5	109.1
March 1966 .....	112.5	139.2	115.8	140.2	113.7	139.6
June 1966 .....	110.9	99.2	113.8	103.6	112.0	100.8
September 1966 .....	111.4	106.9	116.1	111.6	113.1	108.7
December 1966 .....	108.8	98.6	105.8	81.9	107.7	92.6

1/ The index numbers are of "Fisher's Ideal" type. Each number is based on the same period (year or quarter) 1 year earlier.

During the fourth quarter of 1966, the export volume was down slightly and the import volume was 18 percent less than during that quarter a year earlier. Reductions in the imports of six of the nine principal commodities included in the index contributed to this decline. The volume of trade, both exports and imports, during the calendar year was up but less so than the trade volume during the years ended in March, June, and September 1966.

The heaviest rates of increase are shown for the year and quarter ended in March 1966. These increases reflect the unusually light volume of trade a year earlier when major ports were struck. Inversely, the decline in exports during the years ended in September and December 1965 primarily reflects the heavy volume of wheat shipments to the Soviet Union 1 year earlier; that is, during the base year 1964. The decline in the quantity of imports during the year ended September 1965 was primarily due to a decline in coffee imports and to some extent also to declines in beef and veal imports.



## SPECIAL in this issue

---

### U.S. AGRICULTURAL IMPORTS BY COUNTRY, 1960/61 THROUGH 1965/66

U.S. agricultural imports for consumption were \$4,454 million in 1965/66 -- up 12 percent from a year earlier and the largest increase since 1950/51, when imports grew substantially from the impetus of the Korean conflict. Greater supplementary (partially competitive) product imports accounted for 74 percent of the total increase over 1964/65. Such imports in 1965/66 were up 22 percent from 1960/61.

Buoyant economic conditions in the United States during 1965/66 undoubtedly contributed to the significant increase in imports. Relatively high domestic prices for cattle, beef, and dairy products resulted in a price incentive to Mexican, Canadian, Australian, New Zealand, and Danish exporters to supply larger volumes of animal products. With larger imports of animal products and imports of many vegetable-base products being fairly stable, the trend of larger supplementary item imports relative to total imports continued in 1965/66. Supplementary product imports accounted for 56 percent of the total in 1965/66 compared with 50 percent 5 years earlier.

Latin America, by far the largest supplier of farm products to the United States, experienced another decline in its share of the U.S. market in 1965/66. The Latin American share was 40 percent in 1965/66 -- down 6 percent from 1960/61. Asia's share of imports declined from 19 percent to 17 percent. Meanwhile, Europe, Oceania, and Canada -- which have been supplying larger quantities of animal products -- increased their shares from 14 percent to 16 percent, from 6 percent to 9 percent, and from 4 to 6 percent, respectively. Africa, which has been shipping more coffee to the United States, increased its share 2 percent to 12 percent (table 13).

Although Latin America's share declined from 41 percent in 1964/65 to 40 percent in 1965/66, U.S. imports from this region increased 10 percent to \$1,801 million in 1965/66. Imports during the last fiscal year were only 5 percent below 1959/60 when cessation of imports from Cuba resulted in much lower imports from Latin America.

The Latin American Free Trade Association (LAFTA) countries supplied \$1,325 million or 74 percent of U.S. imports from Latin America in 1965/66. Larger imports of coffee, cocoa beans, sugar, dutiable cattle, meats, vegetables, and apparel wool from Brazil, Mexico, and Argentina contributed most to the increase. Mexico replaced the Philippines as the second largest exporter to the United States in 1965/66.

The Central American Common Market (CACM) increased exports to the United States from \$236 million in 1964/65 to \$260 million in 1965/66 by supplying larger volumes of coffee and sugar.

U.S. farm product imports from Asia in 1965/66 were \$770 million -- up 1 percent from a year earlier and 10 percent from 5 years earlier. The Philippines by supplying large volumes of sugar, oils, oilseeds, and nuts accounted for 38 percent of the

Table 12.--U.S. agricultural imports: Major countries of origin by commodity groups, specified fiscal years

Country and year ended June 30	Total	Selected complementary products								
		Complementary 1/	Supplementary 1/	Coffee	Crude rubber	Cocos beans	Carpet wool	Bananas	Tea	Spices 2/
-- 1,000 dollars --										
<b>Total</b>										
1961	3,640,991	1,830,670	1,810,321	1,011,532	244,674	166,958	105,199	75,649	52,412	35,585
1962	3,766,910	1,715,338	2,051,572	946,525	231,102	139,827	95,742	77,981	57,2	34,499
1963	3,906,869	1,698,709	2,208,160	938,790	226,615	128,454	100,552	76,399	60,63	34,176
1964	4,095,707	1,871,105	2,224,602	1,120,678	185,375	122,004	110,083	93,081	59,083	32,060
1965	3,987,208	1,858,768	2,128,440	1,075,382	192,366	124,354	74,609	159,133	57,006	38,970
1966	4,453,841	1,981,577	2,472,264	1,171,582	186,406	133,978	73,534	168,132	59,694	46,410
<b>Brazil (1)</b>										
1961	470,542	414,924	55,618	380,347	249	25,027	137	13	281	237
1962	484,667	397,735	86,932	373,030	493	14,839	490	0	216	943
1963	451,041	349,760	101,281	332,888	135	9,237	90	10	242	500
1964	513,686	437,927	75,759	404,726	239	20,532	100	50	265	1,320
1965	408,146	329,400	78,746	303,562	106	15,637	107	0	424	1,664
1966	474,860	386,930	87,930	351,889	233	23,673	230	0	390	2,086
<b>Mexico (2)</b>										
1961	260,436	66,405	194,031	55,490	0	1,529	0	700	0	1,785
1962	274,284	79,760	194,524	68,123	3	2,567	0	1,253	0	1,229
1963	257,827	62,856	194,971	43,328	8/	8,401	0	324	0	564
1964	278,642	73,983	204,659	59,622	0	2,620	0	210	0	384
1965	269,728	91,589	178,139	80,967	0	2,429	0	564	0	628
1966	304,657	73,001	231,656	56,809	0	3,131	0	663	0	683
<b>Philippines (3)</b>										
1961	248,688	9,952	238,736	0	13	0	0	0	0	8/
1962	243,831	9,551	234,280	0	22	0	0	0	0	8/
1963	257,445	8,014	249,431	22	3	0	0	0	0	8/
1964	280,716	8,740	271,976	74	0	0	0	0	0	0
1965	299,764	8,565	291,199	0	0	0	3	0	0	0
1966	291,401	10,076	281,325	0	47	0	0	0	0	10
<b>Canada (4)</b>										
1961	158,944	2,987	155,957	1	9	0	226	0	790	1
1962	203,773	3,498	200,275	1	0	0	192	8/	982	8/
1963	185,530	5,881	179,649	12	14	0	140	1	1,363	3
1964	173,554	7,941	165,613	2	3	0	166	1	1,927	3
1965	186,811	8,393	178,418	38	31	17	214	73	2,171	1
1966	255,455	9,678	245,777	7	6	0	221	6	2,446	28
<b>Australia (5)</b>										
1961	102,168	412	101,756	0	37	0	167	0	0	0
1962	168,444	566	167,878	0	0	41	314	0	0	0
1963	241,767	504	241,263	0	0	42	228	0	0	0
1964	252,432	474	251,958	9	0	82	170	0	0	8/
1965	196,811	536	196,275	0	0	83	222	0	0	0
1966	254,121	777	253,344	0	0	78	127	0	0	0
<b>Colombia (6)</b>										
1961	260,059	258,727	1,332	258,403	0	32	0	214	0	0
1962	207,445	199,474	7,971	199,369	0	31	2	10	0	0
1963	218,017	208,986	9,031	208,852	0	57	1	0	0	0
1964	222,838	216,526	6,312	216,408	0	4	0	40	0	3
1965	224,330	214,678	9,652	214,592	0	16	0	0	0	0
1966	220,355	210,195	10,160	210,150	0	0	0	1	0	0
<b>New Zealand (7)</b>										
1961	114,666	33,809	80,857	0	0	394	33,296	0	0	0
1962	131,381	36,089	95,292	0	0	448	35,505	0	0	0
1963	146,911	35,891	111,110	0	0	844	34,848	0	0	0
1964	162,159	43,868	118,291	2	0	705	43,054	0	0	0
1965	127,114	33,261	93,853	0	0	384	32,781	0	0	0
1966	143,424	29,542	113,882	0	0	103	29,277	0	0	0

Table 12.--U.S. agricultural imports: Major countries of origin by commodity groups, specified fiscal years - continued

Country and year ended June 30	Selected supplementary products							Hides and skins 5/	Grains and preps. 6/	Dairy products 7/	Other suppl. and comple. products
	Cane sugar	Dutiable cattle and meats 3/	Fruits, nuts, and vegetables	Fats, oils, oilbearing materials 4/	Tobacco, unmd.	Apparel wool					
-- 1,000 dollars --											
<b>Total</b>											
1961	440,064	382,442	229,028	144,970	115,583	79,446	58,101	53,265	52,727	393,356	
1962	471,097	520,954	236,678	147,137	108,667	108,950	68,834	55,157	54,108	412,510	
1963	547,962	601,459	241,722	155,204	95,497	124,032	55,556	38,570	54,824	426,194	
1964	539,447	546,111	288,235	151,880	103,026	101,443	66,451	45,526	57,261	473,963	
1965	443,515	430,138	312,066	182,587	125,648	140,739	70,287	43,973	67,644	448,791	
1966	454,327	642,719	354,258	182,957	125,639	173,205	80,919	40,372	80,578	479,131	
<b>Brazil (1)</b>											
1961	15,157	3,220	11,488	20,218	72	208	3,459	0	26	10,003	
1962	36,036	8,537	8,814	25,560	232	147	5,013	0	12	10,005	
1963	59,869	3,876	7,313	23,166	1,045	374	3,617	0	54	8,625	
1964	36,005	4,405	7,339	18,391	2,279	297	4,806	275	2	12,655	
1965	26,696	5,932	10,452	22,807	3,365	2,266	4,456	89	176	10,407	
1966	35,609	8,461	10,665	20,428	1,953	1,617	6,086	488	124	10,928	
<b>Mexico (2)</b>											
1961	86,013	49,633	36,677	1,825	0	0	15	9	0	26,760	
1962	60,491	67,173	43,072	1,237	43	0	2	145	35	28,911	
1963	40,642	77,836	50,026	1,627	533	0	10	39	3	34,494	
1964	62,158	48,584	66,413	1,831	603	0	57	14	2	36,144	
1965	51,173	38,297	67,691	1,358	1,185	2	42	151	2	25,229	
1966	48,425	62,385	98,006	2,326	1,649	0	100	22	0	30,458	
<b>Philippines (3)</b>											
1961	142,326	0	23,384	68,213	3,710	0	31	2	0	11,009	
1962	144,577	1	19,938	64,482	2,909	0	8/	3	0	11,899	
1963	143,594	0	19,334	80,783	3,363	0	0	2	0	10,344	
1964	153,781	0	23,866	86,383	4,230	0	0	5	0	12,377	
1965	152,041	0	22,299	109,709	4,817	0	6	5	0	10,884	
1966	144,457	0	23,906	107,196	4,283	0	0	7	1	11,494	
<b>Canada (4)</b>											
1961	434	48,424	16,272	832	32	645	4,077	42,740	789	43,672	
1962	59	95,184	13,773	1,217	26	689	4,554	39,253	2,420	45,423	
1963	368	82,491	14,903	1,684	35	877	3,836	27,550	3,127	49,126	
1964	0	54,070	20,471	971	60	512	2,842	32,452	3,309	56,765	
1965	8/	68,318	28,419	649	85	711	4,437	27,463	3,568	50,616	
1966	8/	135,420	23,679	965	126	688	5,188	25,940	5,254	55,481	
<b>Australia (5)</b>											
1961	0	72,503	504	217	0	23,017	1,065	43	1,662	2,953	
1962	8,902	114,954	1,281	324	0	32,641	1,670	3,110	2,585	2,622	
1963	21,650	161,423	2,312	238	0	47,265	1,127	5	4,034	3,443	
1964	23,972	176,913	857	366	0	38,222	1,969	1,272	3,360	5,240	
1965	21,872	103,665	540	620	14	57,451	2,210	322	4,317	5,495	
1966	22,898	143,703	1,707	292	0	70,751	1,478	3	5,944	7,140	
<b>Colombia (6)</b>											
1961	877	0	16	12	368	0	19	0	0	118	
1962	6,803	0	12	85	938	0	41	0	0	154	
1963	6,968	0	11	29	1,806	0	38	0	0	255	
1964	2,554	118	18	6	3,312	8/	115	0	0	260	
1965	5,777	0	3	14	3,464	0	108	57	0	299	
1966	7,002	0	30	4	2,513	0	95	8/	0	560	
<b>New Zealand (7)</b>											
1961	0	50,795	157	654	0	6,288	12,328	0	7,387	3,367	
1962	0	56,522	270	462	0	9,997	17,340	1	6,981	3,855	
1963	0	77,487	236	416	0	11,810	11,689	8/	4,571	5,010	
1964	0	75,747	456	260	0	11,217	18,057	0	7,682	4,979	
1965	0	42,869	326	370	0	16,035	18,371	0	10,768	5,210	
1966	0	47,093	338	341	0	17,852	28,623	0	13,733	6,264	

Continued -

Table 12.--U.S. agricultural imports: Major countries of origin by commodity groups, specified fiscal years - continued

Country and year ended June 30	Total	Selected complementary products								
		Complementary 1/	Supplementary 1/	Coffee	Crude rubber	Cocoa beans	Carpet wool	Bananas	Tea	Spices 2/
-- 1,000 dollars --										
<b>Indonesia (8)</b>										
1961	106,101	104,072	2,029	1,652	81,851	18	0	0	5,605	13,394
1962	84,946	81,139	3,807	5,119	56,482	29	0	0	6,132	11,020
1963	70,797	69,517	1,280	8,663	41,008	0	0	0	5,613	12,528
1964	95,935	93,588	2,347	15,453	56,763	0	0	0	4,412	14,740
1965	117,410	114,463	2,947	8,238	82,863	35	0	0	4,515	15,882
1966	133,767	129,787	3,980	22,469	80,624	54	0	0	6,224	16,026
<b>Denmark (9)</b>										
1961	43,908	299	43,609	0	0	0	5	0	0	5
1962	57,088	386	56,702	0	0	0	24	0	0	0
1963	63,979	174	63,805	0	0	0	18	0	0	6
1964	63,147	211	62,936	0	0	0	43	0	0	3
1965	66,876	194	66,682	0	0	0	63	0	0	0
1966	102,159	333	101,826	0	0	0	0	0	0	3
<b>Dominican Republic (10)</b>										
1961	109,802	29,370	80,432	13,683	0	7,032	0	3,286	0	3
1962	98,789	28,882	69,907	15,762	0	6,753	0	1,249	0	15
1963	129,077	29,774	99,303	14,468	0	10,847	0	916	0	3
1964	123,093	35,874	87,219	20,116	0	10,319	0	698	0	16
1965	106,085	39,486	66,599	28,396	0	8,949	0	99	0	4
1966	97,080	24,989	72,091	15,081	0	9,178	0	40	0	11
<b>Argentina (11)</b>										
1961	84,897	32,302	52,595	106	0	0	31,749	0	88	36
1962	85,702	28,794	56,908	80	0	0	28,040	0	207	65
1963	99,852	31,346	68,506	0	0	0	30,689	0	256	11
1964	122,873	24,122	98,751	19	0	0	23,603	0	92	34
1965	81,397	17,954	63,443	0	0	20	17,531	0	51	9
1966	100,715	22,380	78,335	0	0	0	21,715	0	216	24
<b>Ecuador (12)</b>										
1961	55,431	54,642	789	14,841	29	12,440	0	26,786	0	0
1962	48,085	44,071	4,014	6,812	0	4,523	0	32,211	0	0
1963	65,939	56,768	9,171	15,323	66	6,545	0	34,175	0	0
1964	72,627	66,810	5,817	12,328	0	7,406	0	46,029	0	1
1965	87,900	81,145	6,755	14,170	0	5,826	0	59,637	0	0
1966	94,506	86,946	7,560	26,792	0	5,605	0	52,376	0	0
<b>Netherlands (13)</b>										
1961	80,114	14,327	65,787	0	0	21	2,154	0	690	1,154
1962	76,594	12,931	63,663	117	0	0	1,222	0	2,065	924
1963	78,920	14,554	64,366	8/	0	41	1,992	0	3,828	932
1964	74,933	14,282	60,651	0	0	0	2,390	0	2,877	1,044
1965	74,095	11,889	62,206	0	0	0	366	7	2,304	892
1966	92,189	10,824	81,365	0	0	0	152	0	2,246	1,156
<b>Peru (14)</b>										
1961	79,146	17,449	61,697	16,446	2	54	8	0	1	12
1962	94,747	15,862	78,885	14,842	14	53	0	0	0	10
1963	84,912	22,580	62,332	21,100	0	0	0	27	42	14
1964	75,015	22,166	52,849	20,446	6	0	0	288	62	37
1965	77,618	34,750	42,868	33,397	19	24	0	414	0	6
1966	80,912	26,345	54,567	25,276	31	0	0	49	0	10
<b>India (15)</b>										
1961	70,311	28,985	41,326	1,220	59	0	2,749	0	13,768	5,270
1962	89,707	30,496	59,211	973	270	0	1,649	0	15,240	6,738
1963	72,598	26,948	45,650	350	48	0	535	0	16,313	4,932
1964	86,501	26,633	59,868	1,977	65	0	2,976	0	14,447	2,273
1965	83,654	25,706	57,948	2,995	84	0	1,214	0	12,370	3,301
1966	78,838	27,908	50,930	3,847	85	0	600	0	11,043	6,338

Table 12--U.S. agricultural imports: Major countries of origin by commodity groups, specified fiscal years - continued

Country and year ended June 30	Selected supplementary products								Other supple. and comple. products	
	Cane sugar	Durable cattle and meats 3/	Fruits, nuts, and vegetables	Fats, oils, oilbearing materials 4/	Tobacco, unmd.	Apparel wool	Hides and skins 5/	Grains and preps 6/		Dairy products 7/
-- 1,000 dollars --										
Indonesia (8)										
1961	0	0	26	1,652	107	0	244	0	0	1,552
1962	0	0	2	2,662	321	0	237	0	0	2,942
1963	0	0	13	464	468	0	335	0	0	1,705
1964	0	0	43	181	991	0	1,132	0	0	2,220
1965	0	8	28	376	1,416	0	1,117	1	0	2,931
1966	0	12	4	1,479	599	0	1,008	0	0	5,268
Denmark (9)										
1961	0	32,113	308	212	153	94	264	522	3,936	6,296
1962	0	42,367	603	373	0	24	174	301	4,355	8,867
1963	0	50,316	232	440	0	47	65	731	4,898	7,226
1964	0	48,457	383	266	0	27	79	752	4,512	8,625
1965	2	50,815	312	280	0	0	203	1,450	4,701	9,050
1966	1	83,398	1,623	565	0	0	510	791	5,679	9,589
Dominican Republic (10)										
1961	68,165	1,549	810	2,126	402	0	0	1,132	7	11,607
1962	55,688	969	1,071	2,910	1,443	0	0	1,126	2	11,801
1963	86,814	5	901	1,932	2,840	0	0	713	0	9,638
1964	70,100	8/	994	2,407	5,408	0	0	8/	0	13,035
1965	50,179	25	1,848	1,159	7,936	0	1	8/	0	7,489
1966	60,049	8/	1,863	214	4,340	0	14	279	0	6,011
Argentina (11)										
1961	318	22,635	723	4,266	8	5,358	932	300	8,451	9,927
1962	8	24,072	1,231	6,753	52	5,265	1,715	188	6,392	11,634
1963	5,378	27,236	1,419	4,273	217	9,570	1,735	445	7,143	11,480
1964	33,481	26,593	3,191	4,558	198	9,884	1,146	1,436	8,027	10,611
1965	3,420	22,289	1,226	4,768	282	10,239	802	876	9,860	10,024
1966	6,177	27,983	1,492	2,553	156	18,353	1,568	190	8,322	11,966
Ecuador (12)										
1961	624	0	6	0	0	0	5	0	0	700
1962	3,030	0	7	734	0	0	3	0	0	765
1963	7,975	0	35	406	0	0	3	0	0	1,411
1964	4,721	11	27	86	0	6	5	0	0	2,007
1965	6,089	0	25	0	20	0	2	8/	0	2,131
1966	6,485	15	63	209	305	3	1	0	0	2,652
Netherlands (13)										
1961	1,960	30,956	1,515	5,324	137	46	1,018	725	3,008	31,406
1962	511	29,855	2,309	4,149	45	223	1,438	970	3,042	29,724
1963	195	32,053	1,892	4,156	55	35	1,234	7,721	3,335	28,451
1964	0	26,932	2,356	3,905	71	10	943	855	2,991	30,559
1965	3	25,855	3,299	4,681	125	12	1,213	1,020	2,951	31,367
1966	1	41,730	2,970	8,475	57	1	1,354	1,092	3,781	29,174
Peru (14)										
1961	53,491	0	658	0	264	2,094	755	72	0	5,289
1962	68,450	0	798	0	67	3,538	555	107	0	6,313
1963	46,930	0	984	0	26	5,642	364	87	0	9,696
1964	36,489	47	850	5	48	5,317	393	173	0	10,854
1965	32,483	7	762	0	54	5,489	319	195	0	4,449
1966	38,656	0	548	0	62	5,533	315	283	0	10,149
India (15)										
1961	0	456	27,433	3,614	10	72	5,808	0	0	9,852
1962	24,413	267	22,875	4	8/	42	5,771	0	0	11,465
1963	8,576	985	25,439	229	42	28	4,985	8/	0	10,136
1964	20,647	493	28,046	286	74	90	5,122	1	8/	10,004
1965	16,161	372	32,017	44	381	75	3,379	1	8/	11,260
1966	8,017	568	32,894	13	140	2	3,351	8/	8/	11,940

Continued -



Table 12.--U.S. agricultural imports: Major countries of origin by commodity groups, specified fiscal years - continued

Country and year ended June 30	Total	Complementary 1/	Supplementary 1/	Selected complementary products						
				Coffee	Crude rubber	Cocoa beans	Carpet wool	Bananas	Tea	Spices 2/
-- 1,000 dollars --										
<b>Italy (16)</b>										
1961	57,005	3,632	53,373	0	0	0	989	0	0	43
1962	62,132	3,194	58,938	13	0	0	623	0	0	42
1963	66,613	4,237	62,376	23	3/	0	694	0	0	36
1964	65,161	5,376	59,785	15	0	0	1,280	0	8/	46
1965	71,390	6,914	64,476	11	0	0	729	2	0	72
1966	75,885	9,480	66,405	16	0	0	830	0	0	22
<b>Guatemala (17)</b>										
1961	57,562	56,206	1,356	44,661	4	250	0	8,035	0	295
1962	50,759	46,037	4,722	40,879	0	164	0	2,827	0	136
1963	66,757	54,523	12,234	50,148	13	81	0	1,996	0	158
1964	60,356	47,664	12,692	42,958	24	153	0	1,914	0	235
1965	63,643	54,252	9,391	51,025	14	84	0	205	0	241
1966	74,000	63,034	10,966	60,126	12	195	0	241	0	349
<b>Honduras (18)</b>										
1961	32,239	29,782	2,457	13,198	12	0	0	16,407	0	31
1962	27,227	24,125	3,102	6,459	0	0	0	17,421	0	54
1963	26,647	22,825	3,822	8,616	0	0	0	13,843	0	11
1964	29,084	24,906	4,176	8,870	0	0	0	15,771	0	96
1965	53,345	49,393	3,952	16,400	0	0	0	32,745	0	69
1966	70,620	64,982	5,638	13,751	0	0	0	50,857	0	234
<b>Turkey (19)</b>										
1961	62,817	2,174	60,643	0	0	0	1,574	0	0	108
1962	57,425	1,315	56,110	0	0	0	938	0	0	116
1963	63,191	2,538	60,653	0	0	0	880	0	0	81
1964	58,163	3,200	54,963	0	0	0	1,816	0	10	156
1965	63,196	2,664	60,532	0	0	0	316	0	2	146
1966	70,195	2,101	68,094	0	0	0	126	0	0	188
<b>Malaysia (20)</b>										
1961	81,184	80,363	821	230	77,343	0	0	0	65	905
1962	101,239	99,725	1,514	258	96,778	0	0	0	43	297
1963	109,109	106,890	2,219	137	104,732	8/	0	0	18	350
1964	74,612	71,769	2,843	130	68,928	0	0	0	23	428
1965	73,679	70,484	3,195	68	66,318	0	0	0	32	424
1966	70,179	69,764	4,415	346	61,448	0	0	0	77	2,018
<b>France (21)</b>										
1961	45,487	6,479	39,008	0	80	0	1,384	0	1	141
1962	51,878	5,492	46,386	0	31	0	1,049	0	11	126
1963	50,070	5,398	44,672	0	8	0	767	0	4	229
1964	57,900	7,159	50,741	0	0	0	1,455	0	5	334
1965	70,186	9,966	60,220	0	0	0	606	1	4	422
1966	69,064	8,167	60,897	1	6	0	323	0	4	333
<b>Liberia (22)</b>										
1961	27,058	27,058	0	323	26,735	0	0	0	0	0
1962	23,656	23,655	1	525	213,130	0	0	0	0	0
1963	22,488	22,488	0	1,174	21,314	0	0	0	0	0
1964	22,354	22,354	8/	5,524	16,830	0	0	0	0	0
1965	24,247	24,228	19	3,092	21,136	0	0	0	0	0
1966	56,783	56,779	4	33,685	23,094	0	0	0	0	0
<b>Angola (23)</b>										
1961	23,610	23,191	419	22,860	0	0	0	0	0	0
1962	28,068	27,765	303	26,874	0	0	0	0	0	0
1963	38,187	37,777	410	37,702	0	0	0	0	0	0
1964	41,071	40,836	235	40,674	0	0	0	0	0	0
1965	48,045	47,666	379	47,607	0	7	0	0	0	0
1966	54,816	54,455	361	54,420	0	0	0	0	0	21

Table 12.--U.S. agricultural imports: Major countries of origin by commodity groups, specified fiscal years - continued

Country and year ended June 30	Selected supplementary products									Other suppl. and comple. products
	Cane sugar	Dutiable cattle and meats	Fruits, nuts, and vegetables	Fats, oils, and oilbearing materials	Tobacco, unmfed.	Apparel and wool	Hides and skins	Grains and preps.	Dairy products	
	3/		4/			5/	6/	2/		
-- 1,000 dollars --										
Italy (16)										
1961	0	1,204	17,160	4,751	1,307	17	162	917	13,478	16,977
1962	8/	1,321	20,181	5,064	1,037	7	1,114	993	12,394	19,343
1963	0	1,447	18,691	6,310	1,254	35	1,206	929	13,459	22,529
1964	8/	1,394	18,080	5,258	797	91	1,079	837	11,471	24,813
1965	0	1,331	17,706	6,041	1,645	44	1,166	816	14,450	27,377
1966	0	1,620	17,669	6,256	500	79	831	836	16,226	31,000
Guatemala (17)										
1961	855	0	45	287	0	0	0	1	0	3,129
1962	1,570	2,454	125	275	0	0	0	0	0	2,329
1963	6,810	4,669	99	331	0	0	0	0	0	2,452
1964	7,153	4,935	14	231	0	0	4	0	0	2,735
1965	4,168	4,339	16	315	0	0	0	0	0	3,236
1966	5,567	4,392	20	187	0	0	0	0	0	2,911
Honduras (18)										
1961	0	2,038	382	0	0	0	10	0	0	161
1962	0	2,764	314	0	2	0	3	0	0	210
1963	0	3,157	286	0	29	0	8	0	0	397
1964	378	2,988	323	12	269	0	16	0	0	361
1965	0	2,991	144	0	711	0	4	0	0	281
1966	292	3,932	213	0	1,098	0	1	0	0	242
Turkey (19)										
1961	0	0	7,122	244	50,391	193	1,712	0	1	1,472
1962	0	0	6,291	522	46,401	117	1,596	0	5	1,439
1963	6,797	0	6,811	269	44,785	133	675	0	0	2,760
1964	0	0	7,336	112	45,551	205	885	0	2	2,090
1965	151	0	7,338	1,015	50,138	99	1,212	0	5	2,774
1966	0	35	6,362	576	58,610	173	1,874	0	23	2,228
Malaysia (20)										
1961	0	0	729	0	0	0	78	0	0	1,834
1962	0	0	1,351	0	0	0	159	0	0	2,353
1963	0	0	2,078	0	0	0	128	8/	0	1,666
1964	0	0	2,660	14	0	0	131	0	0	2,298
1965	0	0	2,965	0	0	17	180	8/	0	3,675
1966	0	0	3,467	658	0	25	237	0	0	1,903
France (21)										
1961	2	341	5,708	517	193	2,923	4,090	171	2,631	27,305
1962	1,025	709	5,794	387	154	1,668	4,445	1,323	3,057	32,099
1963	1,197	443	5,119	541	4	1,809	4,377	239	2,805	32,528
1964	3,566	634	4,924	207	14	925	4,524	283	3,704	37,325
1965	1,055	802	4,349	232	7	3,887	4,548	3,158	4,240	46,875
1966	95	987	4,637	191	0	2,829	3,772	943	4,608	50,335
Liberia (22)										
1961	0	0	0	0	0	0	0	0	0	0
1962	0	0	0	0	0	0	8/	0	0	1
1963	0	0	0	0	0	0	0	0	0	0
1964	0	0	0	0	0	0	0	0	0	8/
1965	0	0	0	0	0	0	19	0	0	0
1966	0	0	0	0	0	0	4	0	0	0
Angola (23)										
1961	0	0	3	259	0	0	0	0	0	488
1962	0	0	0	0	0	0	0	0	0	1,194
1963	0	0	7	129	0	0	0	0	0	349
1964	0	0	4	0	0	37	0	0	0	356
1965	0	0	0	0	0	44	0	0	0	387
1966	0	0	0	0	0	0	0	0	0	375

Continued

Table 12.--U.S. agricultural imports: Major countries of origin by commodity groups, specified fiscal years - continued

Country and year ended June 30	Total	Selected complementary products								
		Complementary 1/	Supplementary 1/	Coffee	Crude rubber	Cocoa beans	Carpet wool	Bananas	Tes	Spices 2/
-- 1,000 dollars --										
<b>Uganda 9/(24)</b>										
1961	---	---	---	---	---	---	---	---	---	---
1962	---	---	---	---	---	---	---	---	---	---
1963	---	---	---	---	---	---	---	---	---	---
1964	---	---	---	---	---	---	---	---	---	---
1965	40,046	39,783	263	38,053	0	102	0	0	637	2
1966	54,639	54,484	155	52,959	0	494	0	0	555	23
<b>Ethiopia (25)</b>										
1961	30,078	29,148	930	29,148	0	0	0	0	0	0
1962	28,583	26,769	1,814	26,759	0	0	0	0	0	0
1963	32,524	30,878	1,646	30,865	0	11	0	0	0	2
1964	45,775	43,491	2,284	43,488	0	0	0	0	0	0
1965	56,629	53,756	2,873	53,751	0	0	3	0	0	0
1966	51,986	49,140	2,846	49,096	0	44	0	0	0	0
<b>Costa Rica (26)</b>										
1961	39,324	32,521	6,803	18,785	148	3,627	0	9,952	0	0
1962	35,719	31,717	4,002	18,697	119	1,951	0	10,899	0	0
1963	40,016	29,935	10,081	13,317	103	2,789	0	13,582	0	1
1964	45,754	34,070	11,684	18,031	64	3,400	0	12,496	0	1
1965	56,938	45,365	9,573	15,496	39	2,479	0	27,190	0	8
1966	51,476	40,900	10,576	13,895	37	932	0	25,641	0	29
<b>Nigeria (27)</b>										
1961	42,847	38,066	3,781	2	9,786	28,945	0	0	0	65
1962	45,136	41,759	3,377	152	11,080	29,953	0	0	0	116
1963	35,573	32,388	3,185	19	11,482	20,460	0	0	0	143
1964	25,733	22,300	3,433	122	9,821	11,646	0	0	7	399
1965	27,542	23,537	4,005	156	5,299	17,135	0	0	8	373
1966	47,248	41,565	5,683	891	5,436	34,612	0	0	2	186
<b>Spain (28)</b>										
1961	36,537	1,476	35,061	0	0	0	608	0	0	43
1962	40,399	1,056	39,343	0	0	0	427	0	0	9
1963	36,228	1,235	34,993	0	0	0	500	0	0	87
1964	42,797	1,953	40,844	0	0	0	1,029	0	0	320
1965	47,542	2,167	45,375	0	0	0	324	0	0	326
1966	46,726	2,035	44,691	0	0	0	430	0	0	368
<b>West Germany (29)</b>										
1961	29,245	3,098	26,147	0	1	0	423	0	18	14
1962	29,359	2,689	26,670	0	1	0	543	0	30	19
1963	29,152	2,402	26,750	0	0	0	430	0	2	14
1964	32,322	2,875	29,447	6	0	0	487	0	1	33
1965	38,183	3,071	35,112	4	8/	0	153	0	7	45
1966	41,426	2,792	38,634	1	0	11	229	2	14	128
<b>Poland and Danzig (30)</b>										
1961	29,588	40	29,548	0	0	0	0	0	0	29
1962	33,589	168	33,421	0	0	0	0	0	0	137
1963	27,750	167	27,583	0	0	0	0	0	0	137
1964	27,770	107	27,663	0	0	0	0	0	0	94
1965	34,600	108	34,492	0	0	0	0	0	0	90
1966	41,354	177	41,177	0	0	0	11	0	0	154
<b>Ivory Coast 9/ (31)</b>										
1961	---	---	---	---	---	---	---	---	---	---
1962	---	---	---	---	---	---	---	---	---	---
1963	---	---	---	---	---	---	---	---	---	---
1964	---	---	---	---	---	---	---	---	---	---
1965	48,003	46,506	1,497	37,114	86	9,246	0	0	2	0
1966	41,289	40,294	995	32,292	86	7,835	0	0	0	2

Table 12.--U.S. agricultural imports: Major countries of origin by commodity groups, specified fiscal years - continued

Country and year ended June 30	Selected supplementary products									Other supple. and comple. products
	Cane sugar	Dutiable cattle and meats	Fruits, nuts, and vegetables	Fats, oils, oilbearing materials	Tobacco, unsmf.	Apparel wool	Hides and skins	Grains and preps.	Dairy products	
		3/		4/			5/	6/	7/	
-- 1,000 dollars --										
Uganda 9/(24)										
1961	---	---	---	---	---	---	---	---	---	---
1962	---	---	---	---	---	---	---	---	---	---
1963	---	---	---	---	---	---	---	---	---	---
1964	---	---	---	---	---	---	---	---	---	---
1965	0	0	93	0	0	0	185	0	0	1,034
1966	0	0	0	3	0	0	41	0	0	564
Ethiopia (25)										
1961	0	0	0	29	0	0	536	0	0	365
1962	0	0	5	69	0	0	1,258	0	0	492
1963	0	0	3	263	0	0	1,017	0	0	363
1964	0	0	3	298	8/	2	1,394	0	0	565
1965	0	0	40	617	0	0	1,741	0	0	477
1966	0	0	44	1,059	0	0	1,162	0	0	581
Costa Rica (26)										
1961	2,388	3,857	1	354	0	0	0	0	0	212
1962	2,274	1,429	3	53	0	0	0	0	0	294
1963	5,618	4,052	16	67	9	0	0	0	0	462
1964	5,010	6,144	24	173	34	0	1	0	0	376
1965	4,521	4,431	29	63	8	0	0	0	0	674
1966	5,911	2,987	41	75	23	0	4	0	0	901
Nigeria (27)										
1961	0	0	0	72	0	0	3,633	0	0	344
1962	0	0	8/	611	0	0	2,723	0	0	501
1963	0	0	0	489	11	0	2,635	0	0	334
1964	0	0	0	52	124	0	3,241	0	0	341
1965	0	0	0	0	70	0	3,876	0	0	625
1966	0	0	4	1,166	183	0	4,248	0	0	520
Spain (28)										
1961	0	109	20,717	8,205	47	15	123	8/	9	6,661
1962	0	57	24,805	7,962	78	53	81	8/	1	6,926
1963	0	9	21,401	5,407	90	7	84	0	2	8,641
1964	0	3	21,492	9,479	61	48	532	2	11	9,820
1965	0	24	27,448	7,198	0	48	601	8/	2	11,571
1966	0	12	26,720	6,660	0	55	66	4	7	12,404
West Germany (29)										
1961	1	1,624	1,092	2,506	62	55	1,497	884	758	20,310
1962	1	1,187	932	4,093	0	17	1,573	685	752	19,526
1963	0	1,016	838	2,421	5	8/	1,937	414	380	21,695
1964	8/	967	954	950	6	8/	1,520	505	470	26,423
1965	0	974	1,051	2,367	20	23	1,619	1,044	429	30,447
1966	8/	1,583	1,169	3,179	0	76	1,156	1,949	675	31,254
Poland and Danzig (30)										
1961	1	25,783	252	249	0	0	616	3	1,538	1,117
1962	0	27,729	487	263	0	0	1,269	1	2,107	1,596
1963	0	23,543	436	195	0	0	908	19	861	1,651
1964	0	24,349	555	225	0	0	948	5	197	1,397
1965	0	30,241	1,032	172	0	0	1,720	13	172	1,160
1966	0	35,042	1,285	350	0	0	1,310	14	1,828	1,360
Ivory Coast 9/(31)										
1961	---	---	---	---	---	---	---	---	---	---
1962	---	---	---	---	---	---	---	---	---	---
1963	---	---	---	---	---	---	---	---	---	---
1964	---	---	---	---	---	---	---	---	---	---
1965	0	0	0	1,477	0	0	0	0	0	78
1966	0	0	4	983	0	0	2	0	0	85

Continued -

Table 12--U.S. agricultural imports: Major countries of origin by commodity groups, specified fiscal years - continued

Country and year ended June 30	Total	Selected complementary products								
		Complementary 1/	Supplementary 1/	Coffee	Crude rubber	Cocos beans	Carpet wool	Bananas	Tea	Spices 2/
-- 1,000 dollars --										
Panama (32)										
1961	13,254	12,213	1,041	356	1	1,727	0	9,818	0	0
1962	13,193	12,609	584	285	0	688	0	11,394	0	61
1963	12,129	10,953	1,176	45	0	1,324	0	9,380	0	0
1964	18,931	15,950	2,981	1,176	0	1,389	0	13,243	0	0
1965	32,435	30,771	1,664	23	0	926	0	29,705	0	8/
1966	40,434	38,444	1,990	1,131	0	613	0	36,569	0	0
Rep. of South Africa (33)										
1961	19,117	653	18,464	161	54	0	233	0	0	0
1962	36,270	805	35,465	235	104	25	238	0	49	1
1963	46,004	783	45,221	109	0	0	529	0	30	16
1964	45,784	1,131	44,653	227	75	0	638	0	23	0
1965	40,299	1,207	39,092	180	0	60	615	0	66	0
1966	39,378	2,922	36,456	1,829	0	0	657	0	164	3
Greece (34)										
1961	29,683	464	29,219	0	0	0	48	0	0	139
1962	29,259	362	28,897	0	0	0	16	0	0	202
1963	26,925	659	26,266	0	0	0	82	0	0	454
1964	28,102	373	27,729	0	0	0	38	0	0	291
1965	37,907	422	37,485	0	0	0	0	0	0	314
1966	37,800	464	37,336	0	0	0	0	0	0	443
Ghana (35)										
1961	58,864	58,864	0	90	0	58,096	0	0	0	8/
1962	56,211	56,210	1	814	2	54,460	0	0	0	0
1963	43,424	43,424	0	544	0	42,819	0	0	0	0
1964	44,108	44,108	8/	908	0	43,195	0	0	0	0
1965	54,066	53,143	923	533	0	52,532	0	0	0	0
1966	36,859	36,192	667	1,145	0	34,629	0	0	0	0
Japan (36)										
1961	42,208	25,389	16,819	0	25	0	0	0	799	7
1962	46,021	25,958	20,063	0	14	0	0	0	800	16
1963	45,906	24,925	20,981	0	97	0	0	0	812	7
1964	46,614	24,123	22,491	0	58	0	13	0	759	136
1965	38,294	13,364	24,930	0	5	84	9	0	681	52
1966	36,109	10,788	25,321	0	0	0	0	0	752	68
El Salvador (37)										
1961	24,019	22,660	1,359	18,881	0	0	0	0	0	1
1962	36,975	35,623	1,352	34,619	0	0	0	0	0	0
1963	36,869	32,232	4,637	32,175	0	0	0	24	0	8/
1964	40,199	38,381	1,818	38,197	0	0	0	313	0	3
1965	33,285	29,769	3,516	29,118	0	0	0	0	0	3
1966	35,806	32,653	3,153	32,346	0	0	0	0	0	0
Taiwan (38)										
1961	10,481	3,502	6,979	0	0	0	0	0	1,776	1
1962	33,749	3,034	30,715	0	0	0	0	0	1,838	2
1963	30,083	4,664	25,419	0	47	0	0	0	1,774	2
1964	30,897	4,294	26,603	0	0	0	0	0	1,821	6
1965	27,067	3,594	23,473	0	0	0	0	21	1,554	7
1966	35,071	4,781	30,290	0	0	0	0	0	2,141	5
Ceylon (39)										
1961	31,652	31,606	46	0	0	8,328	13	0	22,669	303
1962	31,278	31,246	32	0	0	7,383	31	0	23,226	291
1963	32,757	32,755	2	6	6	7,029	5	0	24,877	491
1964	33,371	33,319	52	0	0	6,563	0	0	25,318	767
1965	31,891	31,737	154	0	0	4,612	0	0	25,402	895
1966	33,422	33,381	41	0	0	5,055	0	0	26,292	940

Table 12--U.S. agricultural imports: Major countries of origin by commodity groups, specified fiscal years - continued

Country and year ended June 30	Selected supplementary products									
	Cane Sugar	Dutiable cattle and meats <u>3/</u>	Fruits, nuts, and vegetables	Fats, oils, oilbearing materials <u>4/</u>	Tobacco, unmf.	Apparel wool	Hides and skins <u>5/</u>	Grains and preps. <u>6/</u>	Dairy products <u>7/</u>	Other supple. and comple. products
-- 1,000 dollars --										
<b>Panama (32)</b>										
1961	1,019	0	0	0	0	0	0	0	0	333
1962	473	68	9	0	0	0	0	0	0	215
1963	1,060	103	2	0	0	0	0	0	0	215
1964	2,629	88	0	0	0	0	0	0	0	406
1965	1,577	14	<u>8/</u>	0	0	0	0	0	0	190
1966	1,671	267	8	0	0	0	0	0	0	175
<b>Rep. of South Africa (33)</b>										
1961	1	0	853	66	<u>8/</u>	16,491	625	24	0	609
1962	417	0	1,102	1,127	0	29,796	887	450	0	1,839
1963	15,699	0	877	554	8	25,267	483	0	2	2,430
1964	19,269	0	2,684	238	3	19,486	687	44	3	2,407
1965	13,311	0	2,202	102	4	21,392	629	0	0	1,738
1966	10,329	0	2,022	472	2	22,249	512	0	0	1,139
<b>Greece (34)</b>										
1961	0	0	1,565	89	26,901	0	74	<u>8/</u>	144	723
1962	0	0	1,773	219	26,452	0	2	<u>8/</u>	138	457
1963	0	0	2,296	1,388	22,189	0	9	0	70	437
1964	0	0	2,118	366	24,631	0	40	0	180	438
1965	0	0	2,396	228	33,841	0	87	0	401	640
1966	0	18	2,139	185	33,821	0	250	0	422	522
<b>Ghana (35)</b>										
1961	0	0	0	0	0	0	0	0	0	678
1962	0	0	0	1	0	0	0	0	0	934
1963	0	0	0	0	0	0	0	0	0	61
1964	0	0	0	<u>8/</u>	0	0	<u>8/</u>	0	0	5
1965	0	0	0	923	0	0	0	0	0	78
1966	0	0	0	663	0	0	0	0	0	422
<b>Japan (36)</b>										
1961	0	687	11,963	253	2	1,231	2	356	8	26,875
1962	1	826	14,313	1,210	6	643	59	457	4	27,672
1963	1	1,382	14,328	1,891	0	201	61	491	103	26,532
1964	1	1,188	15,863	1,817	<u>8/</u>	103	30	586	108	25,952
1965	1	1,133	17,876	1,799	1	32	17	598	15	15,991
1966	0	1,353	17,404	2,396	<u>8/</u>	8	94	604	2	13,428
<b>El Salvador (37)</b>										
1961	943	0	<u>8/</u>	255	0	0	0	0	<u>8/</u>	3,939
1962	810	0	6	306	0	0	0	0	1	1,233
1963	4,190	0	18	172	0	0	0	0	0	313
1964	1,056	0	25	147	0	0	0	0	0	750
1965	3,001	0	29	140	0	0	0	0	1	680
1966	2,707	39	18	52	0	0	0	0	0	641
<b>Taiwan (38)</b>										
1961	2,564	0	3,019	0	0	0	0	21	0	3,100
1962	20,748	0	8,047	0	0	0	1	28	0	3,085
1963	14,211	0	9,182	0	0	0	0	8	0	4,859
1964	10,536	0	13,546	1	0	0	0	18	0	4,949
1965	6,042	0	14,511	3	0	139	0	16	0	4,795
1966	8,222	6	18,486	1	0	130	0	32	0	6,027
<b>Ceylon (39)</b>										
1961	0	0	38	0	0	0	8	0	0	293
1962	0	0	31	1	0	0	0	0	0	315
1963	0	0	<u>8/</u>	2	0	0	0	0	0	347
1964	0	0	41	3	<u>8/</u>	0	0	3	0	676
1965	0	0	153	1	0	0	0	0	0	828
1966	0	29	2	2	0	0	0	0	0	1,102

Continued -

Table 12--U.S. agricultural imports: Major countries of origin by commodity groups, specified fiscal years - continued

Country and year ended June 30	Total	Complementary 1/	Supplementary 1/	Selected complementary products						
				Coffee	Crude rubber	Cocoa beans	Carpet wool	Bananas	Tea	Spices 2/
-- 1,000 dollars --										
Uruguay (40)										
1961	16,845	207	16,638	0	0	0	110	0	0	0
1962	20,117	162	19,955	12	0	0	74	0	0	0
1963	18,161	240	17,921	69	0	0	121	0	0	0
1964	10,826	182	10,644	6	0	0	86	0	0	0
1965	18,710	108	18,602	0	0	0	0	0	0	0
1966	29,893	116	29,777	0	0	0	0	0	0	0
United Kingdom (41)										
1961	22,228	8,550	13,678	0	13	0	4,116	0	1,308	17
1962	23,140	7,578	15,562	0	45	0	3,974	0	748	3
1963	28,062	9,793	18,269	8/	21	0	6,898	0	536	5
1964	24,027	8,843	15,184	0	4	0	6,396	0	355	11
1965	21,344	6,552	14,792	8/	4	0	5,192	11	355	16
1966	27,971	8,515	19,456	0	2	0	6,662	0	426	35
Nicaragua (42)										
1961	24,675	12,849	11,826	11,925	0	89	0	148	0	0
1962	22,361	11,071	11,290	8,309	0	0	0	106	0	0
1963	29,675	14,388	15,287	9,465	0	13	0	1,261	0	0
1964	24,230	10,148	14,082	5,690	0	39	0	1,248	0	0
1965	31,252	16,104	15,148	11,817	0	0	0	2,311	0	0
1966	27,906	14,023	13,883	11,568	0	0	0	528	0	0
Malagasy Republic (43)										
1961	10,592	10,018	574	1,908	25	21	0	0	0	6,163
1962	13,410	13,131	279	3,527	0	16	0	0	0	7,592
1963	17,321	15,263	2,058	4,466	0	16	0	0	0	8,310
1964	13,681	13,609	72	6,213	0	35	0	0	0	4,725
1965	21,970	20,659	1,311	9,542	0	0	20	0	0	8,070
1966	25,519	24,034	1,485	12,710	50	6	0	0	0	8,167
Yugoslavia (44)										
1961	10,174	891	9,283	0	0	0	341	0	0	444
1962	9,102	850	8,252	0	0	0	73	0	0	457
1963	14,035	932	13,103	0	0	0	164	0	0	435
1964	15,247	682	14,565	0	0	0	50	0	0	453
1965	19,003	652	18,351	0	0	171	5	0	0	269
1966	22,794	786	22,008	0	0	0	0	0	0	481
Venezuela (45)										
1961	24,548	24,346	202	20,719	0	2,578	0	14	0	640
1962	14,022	13,704	318	10,906	0	2,191	0	31	0	197
1963	16,673	16,256	417	12,597	0	2,610	0	210	0	231
1964	21,804	19,660	2,144	15,065	0	3,652	0	1	0	97
1965	17,498	16,636	862	12,875	0	2,688	0	11	0	44
1966	20,164	19,007	1,157	15,326	28	1,421	0	26	0	323
Iran (46)										
1961	15,495	1,082	14,413	0	0	0	217	0	0	341
1962	15,496	1,205	14,291	0	0	0	291	0	0	316
1963	14,856	1,124	13,732	0	0	0	173	0	0	365
1964	18,888	1,291	17,597	0	0	0	346	0	0	374
1965	20,684	1,600	19,084	0	0	0	251	0	0	740
1966	19,280	1,120	18,160	0	0	0	111	0	0	681
Burundi and Rwanda 2/(47)										
1961	---	---	---	---	---	---	---	---	---	---
1962	---	---	---	---	---	---	---	---	---	---
1963	---	---	---	---	---	---	---	---	---	---
1964	---	---	---	---	---	---	---	---	---	---
1965	24,349	24,349	0	24,309	0	0	0	0	0	0
1966	18,457	18,416	41	18,221	0	0	0	0	13	0

Table 12.--U.S. agricultural imports: Major countries of origin by commodity groups, specified fiscal years - continued

Country and year ended June 30	Selected supplementary products									Other supple. and comple. products
	Cane sugar	Dutiable cattle and meats <sup>3/</sup>	Fruits, nuts, and vege- tables	Fats, oils, oilbearing materials <sup>4/</sup>	Tobacco, unmd.	Apparel wool	Hides and skins <sup>5/</sup>	Grains and preps. <sup>6/</sup>	Dairy prod- ucts <sup>7/</sup>	
-- 1,000 dollars --										
Uruguay (40)										
1961	0	4,681	0	0	0	11,091	11	31	134	787
1962	0	5,591	13	0	0	12,981	8	0	394	1,044
1963	0	5,403	0	0	0	11,050	2	0	336	1,180
1964	0	4,505	0	41	8/	4,105	2	0	641	1,440
1965	0	4,053	147	58	10	12,392	6	4	501	1,539
1966	0	4,014	5	63	31	22,953	26	0	578	1,323
United Kingdom (41)										
1961	306	632	2,792	1,410	15	418	519	3,017	52	7,613
1962	585	914	3,397	977	15	340	643	3,127	58	8,313
1963	177	2,514	2,942	2,938	10	777	414	3,420	125	7,285
1964	3	798	3,224	816	1	600	313	3,010	125	8,371
1965	27	92	3,494	514	4	540	485	3,484	170	6,956
1966	8	364	3,484	456	4	1,115	997	4,288	133	9,957
Nicaragua (42)										
1961	5,241	3,943	29	2,412	0	0	8	8/	1	879
1962	3,981	4,912	100	1,772	0	0	0	0	1	3,180
1963	6,017	7,066	23	1,966	0	0	2	0	0	3,862
1964	3,559	7,744	25	2,126	0	0	0	0	0	3,799
1965	5,682	6,925	11	2,346	13	0	0	1	0	2,346
1966	3,241	8,086	37	2,092	79	0	0	0	0	2,275
Malagasy Republic (43)										
1961	0	0	448	0	0	0	0	0	0	2,027
1962	0	0	223	0	0	0	0	0	0	2,052
1963	1,923	0	18	0	0	0	0	0	0	2,588
1964	0	0	34	0	15	0	15	0	0	2,644
1965	1,035	0	128	0	148	0	0	0	0	3,027
1966	1,237	0	86	0	149	0	0	0	0	3,114
Yugoslavia (44)										
1961	0	354	810	970	4,060	0	7	0	143	3,045
1962	0	1,205	421	23	3,972	0	0	0	207	2,744
1963	0	2,903	545	355	4,730	0	0	0	193	4,710
1964	0	3,811	554	0	6,259	1	0	0	163	3,956
1965	0	6,035	356	7	9,162	14	0	0	211	2,773
1966	0	8,295	266	2	8,974	17	0	0	269	4,490
Venezuela (45)										
1961	0	0	3	155	0	0	9	0	8/	430
1962	0	0	64	168	1	0	0	0	0	464
1963	0	0	168	161	0	0	3	1	0	692
1964	1,592	0	175	147	0	0	8/	2	0	1,073
1965	420	0	267	111	16	0	7	3	0	1,056
1966	731	8/	308	48	0	0	5	10	0	1,938
Iran (46)										
1961	0	0	2,860	5	1	5,858	5,408	8/	0	805
1962	0	0	3,833	74	2	5,447	4,901	8/	11	621
1963	0	0	3,596	175	1	4,442	5,217	0	0	887
1964	0	0	4,529	0	1	4,644	7,443	2	0	1,549
1965	0	0	5,845	0	9	3,996	8,488	0	0	1,355
1966	0	0	6,868	3	8	0	7,050	2	0	4,577
Burundi and Rwanda (47)										
1961	---	---	---	---	---	---	---	---	---	---
1962	---	---	---	---	---	---	---	---	---	---
1963	---	---	---	---	---	---	---	---	---	---
1964	---	---	---	---	---	---	---	---	---	---
1965	0	0	0	0	0	0	0	0	0	40
1966	0	0	22	0	0	0	19	0	0	182

Continued -



Table 12.--U.S. agricultural imports: Major countries of origin by commodity groups, specified fiscal years - continued

Country and year ended June 30	Total	Comple-mentary 1/	Supple-mentary 1/	Selected complementary products						
				Coffee	Grude rubber	Cocoa beans	Carpet wool	Bananas	Tea	Spices 2/
-- 1,000 dollars --										
Thailand (48)										
1961	38,351	30,465	7,886	0	28,070	0	0	0	0	1
1962	33,446	24,470	8,976	0	21,598	0	0	0	0	1
1963	35,066	27,033	8,033	0	23,825	0	0	0	0	3
1964	24,090	15,179	8,911	8/	11,365	0	0	0	2	1
1965	18,022	7,145	10,877	0	3,282	0	0	0	8	39
1966	17,501	7,692	9,809	0	3,928	0	0	0	64	1
Pakistan (49)										
1961	21,594	9,721	11,873	0	0	0	9,680	0	0	0
1962	25,092	8,347	16,745	0	0	0	8,289	0	56	0
1963	21,585	7,426	14,159	0	0	0	7,417	0	0	0
1964	19,537	6,100	13,437	0	0	0	6,076	0	9	0
1965	15,536	4,752	10,784	0	0	0	4,689	0	0	0
1966	16,522	4,066	12,456	0	0	0	3,531	0	55	0
Jamaica (50)										
1961	15,536	1,178	14,358	26	0	141	0	0	0	746
1962	11,713	1,314	10,399	24	0	221	0	0	0	851
1963	22,720	1,607	21,113	8	0	594	0	0	0	812
1964	14,618	1,736	12,882	59	0	139	0	79	0	1,301
1965	14,402	1,604	12,798	1	0	665	0	0	0	691
1966	15,688	2,322	13,366	11	0	625	0	8/	0	1,212
L.A.F.T.A. 10/ :										
1961	1,239,005	847,121	391,884	727,400	280	39,082	32,020	27,713	370	2,071
1962	1,226,393	766,910	459,483	662,398	510	22,013	28,606	33,474	423	2,263
1963	1,207,441	733,706	473,735	622,205	201	2,240	30,901	34,536	540	1,089
1964	1,311,058	842,993	468,065	713,846	245	30,573	23,789	46,837	419	1,785
1965	1,182,384	771,136	411,248	647,348	125	23,952	17,638	60,800	475	2,307
1966	1,324,515	808,726	515,789	673,120	270	32,409	21,945	53,089	606	2,807
E.E.C. 11/ :										
1961	220,216	28,296	191,920	0	81	21	5,134	0	709	1,352
1962	229,229	25,340	203,889	130	178	0	3,574	0	2,106	1,111
1963	235,353	28,083	207,270	23	8	41	4,523	0	3,834	1,212
1964	240,916	32,696	208,220	21	0	0	7,343	0	2,863	1,460
1965	265,227	34,151	231,076	15	8/	0	2,612	10	2,315	1,437
1966	293,724	32,715	261,009	18	6	11	1,782	2	2,264	1,668
E.F.T.A. 12/ :										
1961	86,233	12,982	73,251	88	13	34	4,974	0	1,308	25
1962	101,992	10,639	91,353	190	45	0	4,676	0	748	13
1963	113,860	13,417	100,443	39	21	0	7,595	0	536	18
1964	111,250	12,010	99,240	75	4	0	7,264	0	355	33
1965	113,151	8,972	104,179	47	4	1	5,414	11	355	30
1966	162,764	11,276	151,488	176	148	1	6,770	0	426	63

Table 12--U.S. agricultural imports: Major countries of origin by commodity groups, specified fiscal years - continued

Country and year ended June 30	Selected supplementary products									
	Cane sugar	Dutiable cattle and meats <u>3/</u>	Fruits, nuts, and vegetables <u>4/</u>	Fats, oils, oilbearing materials <u>4/</u>	Tobacco, unmd.	Apparel wool	Hides and skins <u>5/</u>	Grains and preps. <u>6/</u>	Dairy products <u>7/</u>	Other supple. and comple. products
-- 1,000 dollars --										
Thailand (48)										
1961	0	0	7,501	0	0	0	11	1	0	2,767
1962	0	0	7,468	0	0	0	35	1	0	4,343
1963	0	0	5,967	0	0	0	58	3	0	5,200
1964	0	15	7,829	0	0	0	5	0	0	4,873
1965	0	0	9,408	0	1	0	2	1	0	5,281
1966	0	0	8,625	0	8/	0	2	8/	0	4,881
Pakistan (49)										
1961	0	1	15	0	0	10	4,030	0	0	7,858
1962	0	0	0	0	0	70	3,870	0	0	12,807
1963	0	1	0	0	0	94	2,811	0	0	11,262
1964	0	6	3	4	0	231	2,232	1	0	10,975
1965	0	11	25	0	0	525	1,542	1	0	8,743
1966	0	32	146	0	0	109	1,911	3	0	10,735
Jamaica (50)										
1961	12,044	1	280	11	0	0	72	8/	0	2,215
1962	7,616	1	369	0	17	0	65	1	0	2,548
1963	18,110	0	489	0	150	0	31	8/	0	2,526
1964	7,556	23	415	0	193	0	38	5	0	4,810
1965	9,431	8/	514	8/	195	0	33	1	0	2,871
1966	11,515	1	531	0	135	0	34	0	0	1,624
L.A.F.T.A. <u>10/</u>										
1961	156,480	83,509	52,937	26,813	748	19,089	5,455	664	8,611	55,763
1962	175,098	109,498	57,890	34,543	1,400	22,237	7,481	737	6,833	60,989
1963	167,992	117,398	64,006	30,455	3,741	27,093	6,086	813	7,536	68,609
1964	175,672	87,663	82,518	27,470	6,635	19,744	6,768	2,052	8,672	76,370
1965	126,307	75,253	84,174	30,484	8,643	30,713	5,907	1,752	10,539	55,967
1966	142,355	109,820	114,231	27,817	6,964	49,595	8,402	1,341	9,024	70,720
E.E.C. <u>11/</u>										
1961	2,250	34,145	26,643	13,417	1,699	3,143	6,922	3,242	19,895	101,563
1962	1,784	33,072	30,542	13,973	1,236	1,934	8,924	4,902	19,264	106,499
1963	2,762	34,970	27,976	13,595	1,318	2,013	9,094	2,917	20,001	111,066
1964	3,566	29,949	27,882	10,489	888	1,332	8,190	3,089	18,638	125,186
1965	2,051	28,968	28,456	13,545	1,802	4,065	8,658	6,630	22,075	142,588
1966	127	45,923	32,539	18,659	567	3,026	7,253	5,334	25,466	149,079
E.F.T.A. <u>12/</u>										
1961	307	32,961	5,702	2,130	168	519	1,865	4,525	11,491	20,123
1962	585	43,437	7,660	1,815	15	637	2,894	4,524	12,426	22,327
1963	178	53,251	5,744	3,994	10	986	2,086	5,344	12,946	21,112
1964	5	49,477	7,215	1,647	1	658	1,556	5,097	13,116	24,747
1965	33	51,060	7,380	1,412	4	589	1,969	6,300	13,801	24,741
1966	10	84,523	12,576	1,877	4	1,231	2,622	6,584	15,552	30,201

1/ Imports similar to agricultural commodities produced commercially in the United States and others that are interchangeable in use to any significant extent with such U.S. commodities are supplementary. All other commodities are complementary. 2/ Includes mainly pepper, vanilla beans, cassia and cassia vera, nutmegs, and caraway seed. 3/ Includes mainly beef and veal; pork; mutton, goat, and lamb; and poultry meat. 4/ Includes mainly coconut oil, castor oil, olive oil, palm oil, carnauba wax, cacao butter, tung oil, and palm kernel oil; also copra, sesame seed, poppy seed, and sunflower seed. Excludes essential and distilled oils. 5/ Includes mainly sheep and lamb skins; goat and kid skins; cattle hides; horse, colt, and ass hides; kip skins; and calf skins. 6/ Includes mainly barley, barley malt, wheat, wheat flour, rye, corn, rice, and oats. 7/ Includes mainly cheese and casein. 8/ Less than \$500. 9/ Not separately classified prior to 1964/65. 10/ The Latin American Free Trade Association includes Argentina, Brazil, Chile, Colombia, Ecuador, Mexico, Paraguay, Peru, and Uruguay. 11/ The European Economic Community (Common Market) includes the Netherlands, Belgium and Luxembourg, France, West Germany, and Italy. 12/ The European Free Trade Association includes the United Kingdom, Denmark, Switzerland, Sweden, Norway, Austria, and Portugal.

total in 1965/66. Due to large imports of crude rubber from Indonesia, that country is the second major Asian supplier to the U.S. market.

Due mainly to larger meat imports, U.S. imports from Europe of \$700 million in 1965/66 were \$106 million over a year earlier and practically \$200 million over 5 years earlier. The European Economic Community (EEC) countries and European Free Trade Association (EFTA) countries increased meat exports to the United States from \$80 million in 1964/65 to \$130 million in 1965/66.

Table 13.--U.S. agricultural imports: Value by major areas and trade blocs, 1961-66

Source of imports	Year ending June 30					
	1961	1962	1963	1964	1965	1966
	-- Million dollars --					
<b>Area:</b>						
Latin America:	1,690	1,606	1,656	1,739	1,641	1,801
Asia .....	701	739	726	753	761	770
Europe .....	506	535	554	555	594	700
Africa .....	366	381	393	451	472	520
Oceania .....	219	302	393	424	332	408
Canada .....	159	204	185	174	187	255
<b>Total .....</b>	<b>3,641</b>	<b>3,767</b>	<b>3,907</b>	<b>4,096</b>	<b>3,987</b>	<b>4,454</b>
<b>Trade bloc:</b>						
LAFTA .....	1,239	1,226	1,207	1,311	1,182	1,325
CACM .....	178	173	200	200	236	260
EEC .....	220	229	235	241	265	294
EFTA .....	86	102	114	111	113	163
COMECON .....	36	38	32	33	40	50
<b>Total .....</b>	<b>1,759</b>	<b>1,768</b>	<b>1,788</b>	<b>1,896</b>	<b>1,836</b>	<b>2,092</b>

U.S. agricultural imports from Oceania, mainly Australia and New Zealand, were \$408 million in 1965/66 compared with \$332 million in 1964/65 and \$219 million in 1960/61. Imports of supplementary items, mainly meat, from Australia and New Zealand accounted for 90 percent of the trade in 1965/66.

Canada, the fourth largest supplier of farm products to the United States supplied farm products valued at \$255 million in 1965/66 -- up 36 percent from 1964/65. Larger imports of dutiable cattle and meat accounted for 97 percent of this increase (tables 12 and 14).

Table 14.--U.S. agricultural imports: Value by country of origin, specified fiscal years

Country of origin	Year ended June 30					
	1961	1962	1963	1964	1965	1966
	-- 1,000 dollars --					
Greenland .....	0	1	0	8	12	15
Canada .....	158,944	203,773	185,530	173,554	186,811	255,455
Miquelon and St. Pierre Islands .....	0	0	0	0	0	1
<b>Latin American Republics:</b>						
Mexico .....	260,436	274,284	257,827	278,642	269,728	304,657
Guatemala .....	57,562	50,759	66,757	60,356	63,643	74,000
El Salvador .....	24,019	36,975	36,869	40,199	33,285	35,806
Honduras .....	32,239	27,227	26,647	29,084	53,345	70,620
Nicaragua .....	24,675	22,361	29,675	24,230	31,252	27,906
Costa Rica .....	39,324	35,719	40,016	45,754	54,938	51,476
Panama .....	13,254	13,193	12,129	18,931	22,435	40,434
Cuba .....	72,669	22,659	9,676	5,104	3,322	2,186
Haiti .....	12,581	14,275	18,896	15,353	14,974	13,694
Dominican Republic .....	109,802	98,789	129,077	123,093	106,085	97,080
Colombia .....	260,059	207,445	218,017	222,838	224,330	220,355
Venezuela .....	24,548	14,022	16,673	21,804	17,498	20,164
Ecuador .....	55,431	48,085	65,939	72,627	87,900	94,506
Peru .....	79,146	94,747	84,912	75,015	77,618	80,912
Bolivia .....	1,796	1,695	1,655	1,572	2,489	2,406
Chile .....	4,766	5,411	5,727	6,379	6,269	6,638
Brazil .....	470,542	484,667	451,041	513,686	408,146	474,860
Paraguay .....	6,883	5,935	5,965	8,172	8,286	11,979
Uruguay .....	16,845	20,117	18,161	10,826	18,710	29,893
Argentina .....	84,897	85,702	92,852	122,873	81,397	100,715
Total Latin American Republics .....	1,651,474	1,564,067	1,595,511	1,626,538	1,595,650	1,760,287
<b>Other Latin America:</b>						
British Honduras .....	241	522	395	2,276	6,496	905
Canal Zone .....	114	47	185	19	40	195
Bermuda .....	252	183	116	71	18	31
Bahamas .....	1,692	1,115	1,562	3,660	2,531	1,798
Jamaica .....	15,536	11,713	22,720	14,618	14,402	15,688
Leeward and Windward Islands .....	1,377	1,001	1,132	808	1,147	2,107
Barbados .....	948	1,521	2,354	1,420	1,666	1,961
Trinidad and Tobago .....	9,142	9,802	8,986	5,946	6,002	6,063
Netherlands Antilles .....	215	100	67	37	20	109
French West Indies .....	2,105	7,049	11,640	10,289	6,769	7,997
Guyana (British Guiana) .....	5,432	7,950	10,588	2,424	6,205	3,751
Surinam (Netherlands Guiana) .....	1,221	722	585	1,189	410	301
French Guiana .....	166	117	1	21	37	61
Falkland Islands .....	0	0	0	0	0	4
Total Latin America .....	1,689,915	1,605,909	1,655,842	1,739,316	1,641,393	1,801,258
<b>Europe:</b>						
Iceland .....	731	424	871	661	330	705
Sweden .....	2,380	2,364	2,687	2,765	2,717	3,827
Norway .....	872	983	1,693	2,104	2,668	2,641
Finland .....	771	966	1,007	1,363	1,337	1,739
Denmark .....	43,908	57,088	63,979	63,147	66,876	102,159
United Kingdom of Great Britain and Northern Ireland .....	22,228	23,140	28,062	24,027	21,344	27,971
Ireland (Eire) .....	22,226	27,592	29,652	22,459	5,558	11,931
Netherlands (Holland) .....	80,114	76,594	78,920	74,933	74,095	92,189
Belgium and Luxembourg .....	8,365	9,266	10,598	10,600	11,373	15,160
France .....	45,487	51,878	50,070	57,900	70,186	69,064
West Germany .....	29,245	29,359	29,152	32,322	38,183	41,426
East Germany .....	8	6	13	475	419	226
Austria .....	648	863	982	1,557	1,668	2,712
Czechoslovakia .....	1,667	1,023	1,049	1,139	1,004	2,220
Hungary .....	802	492	371	251	364	606
Switzerland .....	12,289	12,960	12,312	12,131	11,648	13,117
Estonia .....	0	0	0	3	2	3
Latvia .....	0	0	114	0	1/	37
Lithuania .....	0	0	0	0	0	2
Poland and Danzig .....	29,588	33,589	27,750	27,770	34,600	41,354

Continued

Table 14.--U.S. agricultural imports: Value by country of origin, specified fiscal years - continued

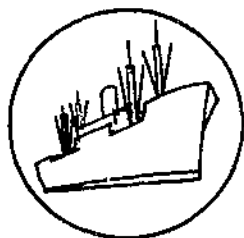
Country of origin	Year ended June 30					
	1961	1962	1963	1964	1965	1966
	-- 1,000 dollars --					
<b>Europe - Continued</b>						
Union of Soviet Socialist Republics .....	1,279	1,479	1,316	2,074	1,937	2,759
Azores .....	107	98	63	103	68	173
Spain .....	36,537	40,399	36,228	42,797	47,542	46,726
Portugal .....	3,908	4,594	4,145	5,519	6,230	10,337
Gibraltar .....	13	8	0	14	10	50
Malta, Gozo, and Cyprus .....	713	698	---	---	---	---
Malta and Gozo 2/ .....	---	---	20	13	0	0
Cyprus 2/ .....	---	---	743	907	1,016	1,068
Italy .....	57,005	62,132	66,613	65,161	71,390	75,885
Free Territory of Trieste .....	14	11	17	145	38	3/3
Yugoslavia .....	10,174	9,102	14,035	15,247	19,003	22,794
Albania .....	29	109	102	92	95	77
Greece .....	29,683	29,259	26,925	28,102	37,907	37,800
Romania .....	1,519	495	255	158	238	632
Bulgaria .....	948	976	861	907	1,170	1,806
Turkey .....	62,817	57,425	63,191	58,163	63,196	70,195
<b>Total Europe .....</b>	<b>506,075</b>	<b>535,372</b>	<b>553,796</b>	<b>555,009</b>	<b>594,212</b>	<b>689,394</b>
<b>Asia:</b>						
Syrian Arab Republic .....	4,867	3,222	3,045	5,970	3,010	2,862
Lebanon .....	2,864	3,460	4,108	5,758	4,945	5,401
Iraq .....	7,757	6,785	7,959	8,003	5,688	4,033
Iran (Persia) .....	15,495	15,496	14,856	18,888	20,684	19,280
Israel .....	713	1,058	1,272	1,732	1,844	2,047
Gaza Strip (Palestine) .....	0	0	0	0	0	13
Jordan .....	17	0	10	21	0	20
Kuwait .....	0	0	0	0	10	0
Saudi Arabia .....	27	10	6	14	49	0
Other Arabia Peninsula States .....	727	799	617	726	1,359	1,342
Aden .....	255	97	61	98	155	797
Bahrain .....	0	0	0	0	0	0
Afghanistan .....	2,716	737	1,574	1,147	1,372	3,257
India .....	70,311	89,707	72,598	86,501	83,654	78,838
Goa, Damao, and Diu 2/ .....	---	---	0	0	0	0
Pakistan .....	21,594	25,092	21,585	19,537	15,536	16,522
Nepal .....	0	0	0	0	0	14
Ceylon .....	31,652	31,278	32,757	33,371	31,891	33,422
Burma .....	550	663	453	272	62	168
Thailand (Siam) .....	38,351	33,446	35,066	24,090	18,022	17,501
Viet-Nam .....	3,631	4,310	2,184	1,388	2,219	1,131
Laos .....	0	0	0	19	116	429
Cambodia .....	3,000	3,620	5,990	5,668	2,267	1,724
Malaysia 4/ .....	---	---	---	74,612	73,679	70,179
Federation of Malaya .....	70,964	88,320	100,781	---	---	---
Singapore, State of .....	10,220	12,919	8,328	---	---	---
Indonesia .....	106,101	84,946	70,797	95,935	117,410	133,767
Philippines .....	248,688	243,831	257,445	280,716	299,764	291,401
Macao (Macau) .....	0	0	0	0	9	52
Other Portuguese Asia 2/ .....	971	661	---	---	---	---
Other Southern and Southeastern Asia .....	3	1	0	81	82	302
China .....	0	0	2	25	0	0
Outer Mongolia .....	1,821	3,638	2,800	3,556	2,926	2,882
North Korea .....	7	1/	0	0	0	0
Korea, Republic of .....	2,340	2,614	3,260	4,568	6,560	9,226
Hong Kong .....	2,390	2,286	2,272	2,665	2,751	2,190
Taiwan (Formosa) .....	10,481	33,749	30,083	30,897	27,057	35,071
Japan .....	42,208	46,021	45,906	46,614	38,294	36,109
Nansei and Nanpo Islands .....	0	1	0	14	16	17
<b>Total Asia .....</b>	<b>700,721</b>	<b>738,767</b>	<b>725,815</b>	<b>752,886</b>	<b>761,441</b>	<b>769,997</b>
<b>Australia and Oceania:</b>						
Australia .....	102,168	168,444	241,767	252,432	196,811	254,121
New Guinea .....	579	627	2,722	1,616	1,378	3,507
New Zealand and Western Samoa .....	114,666	131,381	146,911	162,159	127,114	143,424

Continued-

Table 14.--U.S. agricultural imports: Value by country of origin, specified fiscal years - continued

Country of origin	Year ended June 30					
	1961	1962	1963	1964	1965	1966
-- 1,000 dollars --						
<b>Australia and Oceania - Continued:</b>						
British Western Pacific Islands .....	6	18	1,609	7,207	6,283	5,957
French Pacific Islands .....	176	362	268	120	79	158
Trust Territory of the Pacific Islands ..	1,386	1,493	0	0	0	0
<b>Total Australia and Oceania .....</b>	<b>218,981</b>	<b>302,325</b>	<b>393,277</b>	<b>423,534</b>	<b>331,665</b>	<b>407,167</b>
<b>Africa:</b>						
Morocco .....	3,108	2,256	2,210	2,236	1,819	2,145
Algeria .....	440	138	477	251	285	215
Tunisia .....	365	573	1,520	131	1,691	601
Libya .....	18	1	1	0	1	2
U.A.R. (Egypt) .....	13,418	15,337	13,141	11,150	15,391	11,752
Sudan .....	929	884	946	1,476	1,811	1,303
Canary Islands .....	1	28	20	1	1	1
Other Spanish Africa .....	836	1	6	79	0	228
Federal Republic of Cameroon .....	5,867	6,633	4,676	7,723	6,298	14,428
Other Western Equatorial Africa - 6/ ..	297	1,090	183	1,991	---	---
Central African Republic .....	---	---	---	---	276	19
Gabon .....	---	---	---	---	418	206
Other Western Africa - 6/ .....	31,223	32,087	27,378	54,749	---	---
Mauritania .....	---	---	---	---	330	5
Senegal .....	---	---	---	---	20	29
Guinea .....	---	---	---	---	1,443	10,476
Ivory Coast .....	---	---	---	---	48,003	41,289
Togo .....	---	---	---	---	237	1,513
Other Western Africa .....	---	---	---	---	331	885
Ghana .....	58,864	56,211	43,424	44,108	54,066	36,859
Nigeria .....	42,847	45,136	35,573	25,753	27,542	47,248
British West Africa and Sierra Leone- 6/:	2,280	1,060	1,453	1,780	---	---
Sierra Leone .....	---	---	---	---	1,126	3,536
British West Africa .....	---	---	---	---	5	2
Madeira Islands .....	63	41	68	117	140	159
Angola .....	23,610	28,068	38,187	41,071	48,045	54,816
Other Western Portuguese Africa .....	1,600	1,024	2,232	650	981	924
Liberia .....	27,058	23,656	22,488	22,354	24,247	56,783
Republic of the Congo; and	---	---	---	---	---	---
Ruanda-Urundi - 6/ .....	38,203	35,878	34,031	33,584	---	---
Congo (Leopoldville) .....	---	---	---	---	15,788	15,123
Burundi and Rwanda .....	---	---	---	---	24,349	18,457
Somali Republic .....	287	283	200	182	261	342
Ethiopia (Abyssinia) .....	30,078	28,583	32,524	45,775	56,629	51,986
French Somaliland .....	419	437	256	347	200	323
British East Africa and Tanganyika - 6/:	50,652	45,051	59,964	77,452	---	---
Uganda .....	---	---	---	---	40,046	54,639
Kenya .....	---	---	---	---	16,728	12,047
Tanzania .....	---	---	---	---	12,213	8,550
Seychelles and Dependencies .....	88	85	104	106	121	299
Mauritius and Dependencies .....	17	1,415	3,278	10,918	837	2,064
Mozambique .....	3,193	3,687	3,676	4,477	4,401	3,955
Malagasy Republic .....	10,592	13,410	17,321	13,681	21,970	25,519
Republic of South Africa .....	19,117	36,270	46,004	45,784	40,299	39,378
Zambia, Southern Rhodesia, and Malawi ..	885	1,440	1,268	3,474	3,325	2,448
<b>Total Africa .....</b>	<b>366,355</b>	<b>380,763</b>	<b>392,609</b>	<b>451,400</b>	<b>471,674</b>	<b>520,554</b>
<b>Total all countries .....</b>	<b>3,640,991</b>	<b>3,766,910</b>	<b>3,906,869</b>	<b>4,095,707</b>	<b>3,987,208</b>	<b>4,453,841</b>

1/ Less than \$500. 2/ Not separately classified prior to 1962/63. 3/ July-December only. Not separately classified beginning January 1, 1966. 4/ Not separately classified beginning 1963/64. 5/ Not separately classified beginning 1962/63. 6/ Separately classified beginning 1964/65.



## Export Highlights

### U.S. AGRICULTURAL EXPORTS: JULY-FEBRUARY 1966/67

U.S. agricultural exports were estimated at \$4,617 million for July-February 1966/67, up 5 percent from the same period a year earlier (table 15). Exports of cotton, tobacco, grains and preparations, and oilseeds and products increased. Exports of animals and animal products, and fruits and preparations declined.

February's agricultural exports were estimated at \$503 million, 3 percent below February 1966. Increased exports of cotton, fruits and vegetables, oilseeds and products, and tobacco partially offset the declines in animals and animal products, and grains and preparations. Although estimated cotton exports in February were above the same month last year, they declined from the high level reached in December and January. Among the February exports of grains and preparations, barley, corn and grain sorghums were below those of February 1966. The decline in dairy products continued from the pace set in previous months, dropping to \$2 million from February 1966.

Current prospects for total agricultural exports in 1966/67 are anticipating an increase of about 6 percent over the exports of farm commodities in 1965/66. The advance in this year's exports are expected from larger shipments of cotton, oilseeds and products, tobacco, and vegetables and preparations. Declines are expected in animals and animal products and fruits and preparations.

Commercial sales for dollars are anticipated to account for most of the increase in this year's growth, rising \$0.4 billion above last year's \$5.1 billion. Exports under Government-financed programs are likely to total about \$1.6 billion, about the same as last year.

The record level of agricultural exports is expected to result from adequate U.S. supplies of most major U.S. commodities, continued economic growth in developing countries, a continuation of the high level of economic activity in most of the developed countries and a continually expanding world population. Increased production of commodities such as fruits, vegetables, and feed grains in other foreign Free World countries has somewhat weakened the competitive position of U.S. commodities in the world market. However, market promotion activities of the United States in developing and industrialized countries have continued to spur foreign purchases of U.S. agricultural commodities, as has the uncertainty arising out of the Viet-Nam conflict and increased international tensions.

Animals and products.--U.S. exports were \$453 million in July-February 1966/67, down 12 percent from the year-earlier period. Exports of animals and animal products in 1966/67 are expected to be down about 8 percent from the \$777 million in 1965/66. Dairy products will account for most of the decrease, dropping to about three-fifths of last year's \$174 million. Exports of nonfat dry milk during the first half of fiscal 1966/67 dropped to 111 million pounds, compared with 461 million in the corresponding 1965/66 year. Butter exports fell to 127,000 pounds from 4.3 million. These commodities accounted for the bulk of the decline

Table 15.--U.S. agricultural exports: Value by commodity,  
July-February 1965/66 and 1966/67

Commodity	1965	1966 <sup>1/</sup>	Change
	-- Million dollars --		Percent
<b>Animals and animal products:</b>			
Dairy products .....	120	62	-48
Fats, oils, and greases .....	134	120	-11
Hides and skins .....	81	99	+21
Meats and meat products .....	78	80	+2
Poultry products .....	53	44	-16
Other .....	51	48	-6
Total animals, etc. ....	517	453	-12
<b>Cotton, excluding linters .....</b>			
	285	384	+35
<b>Fruits and preparations .....</b>			
	229	219	-4
<b>Grains and preparations:</b>			
Feed grains, excluding products .....	855	802	-6
Rice, milled .....	152	180	+19
Wheat and flour .....	858	948	+10
Other .....	51	53	+4
Total grains, etc. ....	1,916	1,983	+3
<b>Oilseeds and products:</b>			
Cottonseed and soybean oils .....	137	90	-34
Soybeans .....	476	530	+11
Protein meal .....	146	157	+8
Other .....	56	63	+12
Total oilseeds, etc. ....	815	840	+3
<b>Tobacco, unmanufactured .....</b>			
	301	395	+31
<b>Vegetables and preparations .....</b>			
	105	111	+6
<b>Other .....</b>			
	235	232	-1
Total exports .....	4,403	4,617	+5

<sup>1/</sup> February estimated.



in 1966. Although output may increase during the latter half of fiscal 1966/67, somewhat larger exports will not be sufficient to offset the overall decline for the year.

Animal fats, oils, and greases will likely remain about the same this fiscal year as last year. Although they were running about 11 percent below last year's July-February period, exports of fats, oils, and greases are expected to show some upturn during the remaining 5 months of this fiscal year. Increased supplies and lower prices for both lard and inedible tallow are expected to bolster the export outlook. In addition, hog slaughter was reported to be about 5 percent lower in West European countries from mid-1965/66.

Hide and skin exports may be slightly higher than the volume of 19.3 million pieces in 1965/66. Cattle slaughter in calendar year 1967 is expected to be about the same as last year's level, and should maintain available supplies of hides for most of the remaining months of 1966/67. Exports of hides and skins for July-February 1966/67 were 21 percent higher than the same period of 1965/66. Exports of meat and meat products were up 2 percent, resulting from increased shipments of pork and variety meats. For 1966/67, exports of meat and meat products are expected to be about 10 percent higher than last year's \$115 million.

Cotton.--U.S. exports for July-February 1966/67 totaled 3.2 million bales, up 45 percent from the same months of the previous fiscal year. For 1966/67, cotton exports are expected to surpass last year's exports by as much as 67 percent, possibly reaching 5 million bales. U.S. cotton exports have increased this year to meet increased demand in foreign Free World countries and smaller available quantities for exports from foreign producing countries.

Fruits and preparations.--Exports in July-February 1966/67 totaled an estimated \$219 million, 4 percent below July-February exports in 1965/66. All categories -- canned, dried, fresh, and frozen fruits -- contributed to the decline. Canned fruit cocktail and fresh grapes were running ahead of last year's total during the first half of 1966/67. For the current fiscal year, exports of fruits and preparations may be slightly below the exports of \$327 million in 1965/66. This indicates that a small upturn will occur during the remaining months of this fiscal year. Larger quantities of citrus are expected to be available from the record 1966/67 crop. Substantially increased supplies and lower prices for both fresh and processed citrus items are indicated for the first half of 1967.

Grains and preparations.--Exports from the United States during July-February 1966/67 totaled \$1,983 million, about 3 percent above grain exports for the same period last year. Wheat and flour continued to be the major contributor, and was 10 percent above last year's total. Although exports of wheat and wheat flour have maintained a higher level during the first 7 months of 1966/67, a decline is anticipated. This decline will result in lower total exports for fiscal 1966/67 -- perhaps 1 percent below the 1965/66 total. Exports of feed grains for July-February 1966/67 were about 6 percent below those of 1965/66, and totaled an estimated \$802 million. Reduced corn exports contributed to the decline, but were partially offset by increased exports of grain sorghums. Corn shipments dropped 15 percent to \$506 million, while exports of grain sorghums were \$245 million, up 34 percent from 1965/66. The total export value of feed grains for fiscal 1966/67 is expected to be about 5 percent below last year's export total. Increased world production in the major corn producing countries has intensified the competitive situation in the world feed grain market. Corn production in France was up nearly a half million metric tons, while early prospects are generally favorable for the Argentine and South African corn crops harvested this spring. Grain sorghum exports are expected to total about 275 million bushels by the end of this

fiscal year, an increase of about 13 percent above 1965/66 exports of 243 million bushels. Rice exports for July-February totaled an estimated 2,286 million pounds (milled basis), up 9 percent from the same period last year. However, higher prices have resulted in an overall gain in the value of rice exports. For the current fiscal year, shipments of rice are expected to be up about 20 percent from the 1965/66 total.

Oilseeds and products.--Exports during July-February 1966/67 totaled \$840 million, up 3 percent from last year's corresponding period. Soybean exports continued to advance, rising 11 percent to \$530 million, although the volume of soybeans continued at a lower level than that of last year. Protein meal was also down, declining 9 percent to 1.7 million short tons. However, higher prices boosted the overall value of protein meal exports to \$157 million, 8 percent above July-February 1965/66.

For the current fiscal year, exports of oilseeds and products were estimated to advance 10 percent or more above last year's \$1.2 billion. Pacing the gain in oilseeds were soybeans, which are expected to reach 275 million bushels, up 7 percent from 1965/66. Exports of soybean and cottonseed oil may approximate last year's exports, although the present outlook is highly uncertain. A determining factor will be the level of activity under P.L. 480 programs, since dollar exports may be down again. Total exports of protein meal in 1966/67 were estimated at 2.8 million tons, also about the same as last year's exports.

Tobacco.--Exports reached an estimated \$395 million during July-February 1966/67, advancing 31 percent from \$301 million for July-February 1965/66. The value of tobacco exports for the current fiscal year is expected to reach \$522 million, almost a third higher than last year's total. The value increase will run higher than the quantity increase of about one-fourth, due to higher prices for this year's exports. The improved quality and quantity of flue-cured varieties encouraged the increase in foreign demand for U.S. tobacco. In addition, mandatory U.N. sanctions against Rhodesian tobacco have caused market demand for U.S. tobacco to increase.

Vegetables and preparations.--U.S. exports during July-February 1966/67 were \$111 million, 6 percent higher than the same months a year earlier. The principal contributors to this increase were dried beans, peas, and dehydrated soups and vegetables. Dried beans accounted for most of the increase. Slight declines occurred in canned vegetable exports, while fresh vegetables (through January) were about the same as the 1965/66 total.

Exports of vegetables and preparations for the current fiscal year are anticipated to be somewhat higher than last fiscal year's exports of \$170 million -- probably running 6 percent more. Supplies of fresh vegetables during winter months were expected to be slightly higher than last year, and canned vegetable stocks were about the same. Dry edible bean supplies are much larger than last season and exports of dry beans are expected to be well above last season.

#### Exports to the European Economic Community July-January 1966/67

U.S. agricultural exports to the European Economic Community (EEC) declined 5 percent to \$934 million in July-January 1966/67, compared with \$983 million during the previous fiscal year's corresponding period (table 16). A substantial drop in exports of variable levy commodities accounted for this decline. They were down 22 percent in this year's period from \$451 million in July-January a year earlier. Increased exports of commodities not subject to variable levies partly offset the decline. Non-variable-levy commodities reached \$581 million in July-January 1966/67.

During January 1967, total agricultural exports to the EEC were \$106 million, down 16 percent from January of last year, but nearly three times greater than January

1965. The longshoremen's strike in January and February of 1965 caused the unusually low exports in that year. January's exports of variable levy commodities dropped 41 percent below January 1966. The decline occurred principally in exports of feed grains. Non-variable-levy commodities continued to increase in January 1967, rising 4 percent above January 1966. The principal contributors to the increase were cotton, oilcake and meal, and tobacco.

For July-January 1966/67, smaller exports of feed grains, dairy products, and poultry products contributed to the decline in variable-levy commodities. However, rice, wheat, and rye were up, partially offsetting the decline. Exports of feed grains accounted for the largest drop, and were down \$80 million from last year's \$326 million. Dairy product exports dropped sharply, from \$18 million in July-January 1965/66 to \$626,000 during the same months in 1966/67. Poultry products were down to \$15 million from \$22 million during last year's corresponding period. Exports of rice, rye, and wheat, which totaled \$65 million in July-January 1965/66, were up to \$74 million during this year's July-January period.

Exports of commodities not subject to the EEC's variable levies totaled \$581 million, 9 percent above last year's July-January period. The principal non-variable-levy commodities that contributed to this increase were soybeans, up 11 percent; cotton, up 44 percent; oilcake and meal, up 23 percent; and tobacco, up 24 percent.

Table 16.--U.S. agricultural exports to the European Economic Community:  
Value by commodity, January and July-January, 1965-67 <sup>1/</sup>

Commodity	January			July-January		
	1965	1966	1967	1965	1966	1967
-- 1,000 dollars --						
<u>Variable levy commodities:</u> <sup>2/</sup>						
Feed grains .....	5,399	42,366	22,566	194,229	325,732	245,383
Rice .....	191	1,694	505	5,066	6,894	9,613
Rye grain .....	0	0	202	1,287	998	2,783
Wheat grain .....	821	8,828	7,807	17,317	57,585	61,928
Wheat flour .....	39	110	175	969	696	907
Beef and veal (excluding variety meats) and cattle .....	144	63	20	981	1,395	496
Dairy products .....	5,019	82	106	37,330	18,036	626
Lard <sup>3/</sup> .....	26	260	283	817	943	842
Pork (excluding variety meats) and swine .....	1	3	22	236	98	206
Poultry and eggs:						
Live poultry .....	105	122	54	499	805	701
Broilers and fryers .....	95	597	34	4,529	4,298	2,669
Stewing chickens .....	94	179	147	2,692	926	294
Turkeys .....	378	1,157	681	8,643	14,092	10,544
Other fresh poultry .....	19	20	21	559	413	212
Eggs .....	55	159	87	805	1,205	490
Total poultry and eggs .....	746	2,234	1,024	17,727	21,739	14,910
Other .....	209	1,520	977	18,687	17,230	15,604
<b>Total</b> .....	<b>12,595</b>	<b>57,160</b>	<b>33,687</b>	<b>294,646</b>	<b>451,346</b>	<b>353,298</b>
<u>Nonvariable levy commodities:</u>						
Canned poultry <sup>4/</sup> .....	65	246	152	2,069	1,710	1,043
Cotton, excluding linters .....	5,460	5,785	8,636	91,129	34,451	49,469
Fruits and vegetables .....	3,427	5,390	5,680	54,336	67,752	55,947
Hides and skins .....	779	2,525	1,315	13,438	18,939	14,955
Oilcake and meal .....	1,625	11,398	13,744	55,197	73,870	90,741
Soybeans .....	3,446	23,499	22,690	111,761	157,929	175,033
Tallow <sup>4/</sup> .....	2,554	2,256	1,809	19,105	20,637	18,573
Tobacco, unmanufactured .....	446	6,552	8,334	59,819	68,179	84,874
Variety meats, fresh, frozen <sup>4/</sup> .....	699	2,747	2,653	17,500	21,391	23,332
Vegetable oils, expressed .....	6,575	2,685	1,171	19,952	11,546	8,192
Food for relief or charity .....	0	209	0	2,881	1,888	2,398
Other .....	2,509	6,604	5/6,500	48,258	53,438	5/56,542
<b>Total</b> .....	<b>27,585</b>	<b>69,896</b>	<b>5/72,684</b>	<b>495,445</b>	<b>531,730</b>	<b>5/581,099</b>
<b>Total EEC</b> .....	<b>40,180</b>	<b>127,056</b>	<b>5/106,371</b>	<b>790,091</b>	<b>983,076</b>	<b>5/934,397</b>

<sup>1/</sup> Compiled from U.S. Bureau of the Census data. <sup>2/</sup> Grains, poultry, and pork were subject to variable levies beginning on July 30, 1962; rice on September 1, 1964; and beef and dairy products on November 1, 1964. The variable levy classification is designed to show overall changes in exports rather than to measure the impact of the variable levies. <sup>3/</sup> Lard for food is a variable levy commodity while lard for industrial use is bound in the General Agreement on Tariffs and Trade (GATT) at 3 percent ad valorem. U.S. lard is for food use. <sup>4/</sup> Although canned poultry, tallow, and variety meats are subject to variable levies, the import duties are bound in GATT. <sup>5/</sup> Estimated.

Table 17.-- U. S. agricultural exports: Quantity and value by commodity, January 1966 and 1967 and July-January 1965/66 and 1966/67

Commodity exported	Unit	January 1/				July-January 1/				
		Quantity		Value		Quantity		Value		
		1966	1967	1966	1967	1965/66	1966/67	1965/66	1966/67	
		Thousands	Thousands	1,000 dollars	1,000 dollars	Thousands	Thousands	1,000 dollars	1,000 dollars	
<b>ANIMALS AND ANIMAL PRODUCTS</b>										
<b>Animals, live:</b>										
Cattle	No.	2	4	823	1,302	32	24	10,122	9,458	
Poultry, live -										
Baby chicks (chickens)	No.	2,851	3,213	1,155	1,002	18,049	19,969	6,232	6,790	
Other live poultry		2/	2/	190	252	2/	2/	1,537	1,437	
Other		2/	2/	355	284	2/	2/	3,205	3,345	
Total animals, live				2,523	2,840			21,096	21,030	
<b>Dairy products:</b>										
Anhydrous milk fat, including donations	Lb.	1,074	514	687	444	6,271	2,628	4,104	2,322	
Butter, including donations	Lb.	801	21	215	17	5,110	148	1,865	109	
Cheese, including donations	Lb.	782	439	368	302	4,075	3,249	2,074	2,131	
Infants' and dietetic foods, chiefly milk	Lb.	1,062	1,605	717	993	10,010	10,109	6,793	6,340	
Milk and cream -										
Condensed and evaporated, incl. donations	Lb.	10,804	1,557	2,450	247	57,776	73,037	12,623	15,682	
Dry, whole milk and cream	Lb.	1,233	1,242	558	294	11,310	9,061	5,093	2,961	
Fresh	Gal.	80	75	108	102	549	635	756	931	
Nonfat dry, including donations	Lb.	53,603	22,028	9,173	4,160	514,996	132,864	74,462	21,477	
Other		2/	2/	240	329	2/	2/	2,761	3,140	
Total dairy products				14,506	6,888			110,531	55,093	
<b>Fats, oils, and greases:</b>										
Lard	Lb.	5,665	17,899	787	2,044	113,537	100,887	14,004	11,795	
Tallow -										
Edible	Lb.	268	547	39	63	1,944	2,758	261	334	
Inedible	Lb.	138,639	122,546	12,063	9,679	1,076,186	1,049,705	94,536	84,946	
Other animal fats, oils, and greases	Lb.	9,347	11,816	1,040	1,174	93,790	90,665	10,322	9,251	
Total fats, oils, and greases	Lb.	153,919	152,808	13,929	12,960	1,285,457	1,244,015	119,123	106,326	
<b>Meat and meat products:</b>										
Beef and veal	Lb.	4,825	2,762	2,558	1,646	24,332	16,448	13,339	9,817	
Pork	Lb.	2,381	4,480	956	1,599	26,281	33,273	10,223	13,186	
Sausage casings	Lb.	935	839	706	602	8,176	7,812	5,422	5,551	
Variety meats (edible offals)	Lb.	16,219	18,475	4,762	4,540	131,756	136,392	35,244	35,855	
Other, including meat extracts	Lb.	1,664	1,988	738	858	13,610	12,782	6,015	6,181	
Total meat and products (except poultry)	Lb.	26,024	28,544	9,720	9,245	204,155	206,707	70,243	70,590	
<b>Poultry products:</b>										
Eggs, dried and otherwise preserved	Lb.	99	180	76	142	1,887	1,313	1,119	1,088	
Eggs in the shell -										
Hatching	Doz.	806	1,062	707	797	3,745	5,058	3,709	4,750	
Other	Doz.	929	298	392	120	6,281	5,134	2,409	2,196	
Poultry meat -										
Chickens, fresh or frozen	Lb.	10,815	4,040	2,790	905	73,726	54,883	19,223	14,332	
Turkeys, fresh or frozen	Lb.	3,798	2,543	1,320	816	46,774	36,563	16,564	12,862	
Other, fresh or frozen	Lb.	614	599	194	222	6,224	6,027	2,152	2,160	
Canned and otherwise preserved	Lb.	1,326	1,255	384	384	11,554	10,068	3,081	3,027	
Total poultry products				5,863	3,386			48,257	40,415	

Continued -

Table 17.— U. S. agricultural exports: Quantity and value by commodity,  
January 1966 and 1967 and July-January 1965/66 and 1966/67 - Continued

Commodity exported	Unit	January 1/				July-January 1/			
		Quantity		Value		Quantity		Value	
		1966	1967	1966	1967	1965/66	1966/67	1965/66	1966/67
		1,000	1,000	1,000	1,000	1,000	1,000	1,000	
		Thousands	Thousands	dollars	dollars	Thousands	Thousands	dollars	dollars
<b>Other animal products:</b>									
Feathers, crude or dressed	:Lb.	121	105	154	114	853	710	1,017	815
Gelatin, edible	:Lb.	114	87	99	101	1,183	731	841	730
Hair, raw or dressed (except wool)	:Lb.	346	802	92	174	4,341	3,309	1,335	1,008
Hides and skins, raw (except furs) 3/	:No.	1,404	1,529	9,596	12,609	10,827	11,540	67,618	86,065
Honey	:Lb.	782	1,487	139	252	10,326	11,100	1,674	1,802
Wool, unmanufactured	:G.Lb.	555	625	517	513	5,546	7,136	4,669	5,552
Other		2/	2/	1,985	1,400	2/	2/	13,934	9,956
Total other animal products		---	---	12,582	15,163	---	---	91,088	105,968
Total animals and animal products		---	---	59,133	50,482	---	---	460,338	399,422
<b>VEGETABLE PRODUCTS</b>									
<b>Cotton, unmanufactured:</b>									
Cotton	:RBale:	278	458	35,500	56,603	2,008	2,720	254,525	322,045
Linters	:RBale:	31	18	856	676	153	119	4,355	4,009
Total cotton and linters	:RBale:	309	476	36,356	57,279	2,161	2,839	258,880	326,054
<b>Fruits and preparations:</b>									
<b>Canned -</b>									
Fruit cocktail	:Lb.	9,391	12,184	1,719	1,889	71,467	88,642	12,652	14,098
Peaches	:Lb.	10,630	24,175	1,170	2,472	166,732	180,657	18,038	19,330
Pears	:Lb.	512	435	103	76	3,122	4,714	642	756
Pineapples	:Lb.	1,589	2,728	309	418	74,259	67,195	11,329	10,795
Other	:Lb.	2,543	2,025	492	434	48,883	19,009	7,942	4,304
Total canned fruits	:Lb.	24,665	41,547	3,793	5,289	364,463	360,217	50,603	49,283
<b>Dried -</b>									
Prunes	:Lb.	7,539	7,771	1,473	1,738	90,412	61,606	16,333	13,250
Raisins (dried grapes)	:Lb.	6,699	7,825	1,127	1,315	86,069	84,709	14,722	14,529
Other	:Lb.	1,415	902	516	394	12,435	8,986	4,450	3,479
Total dried fruits	:Lb.	15,653	16,498	3,116	3,447	188,916	155,301	35,505	31,258
<b>Fresh -</b>									
Apples	:Lb.	44,747	34,001	4,148	3,185	171,373	126,510	15,706	12,114
Berries	:Lb.	185	233	41	59	9,561	7,758	2,057	1,661
Grapefruit	:Lb.	15,050	22,841	812	962	98,888	116,236	5,980	6,448
Grapes	:Lb.	12,772	11,508	1,275	1,456	236,396	225,589	20,923	22,223
Lemons and limes	:Lb.	11,341	15,824	1,067	1,270	143,531	131,733	11,640	11,468
Oranges and tangerines	:Lb.	43,266	51,441	3,366	3,873	273,456	263,882	22,229	22,234
Pears	:Lb.	5,737	4,740	570	386	60,998	58,626	5,935	4,973
Other	:Lb.	1,582	1,448	181	185	136,509	120,942	10,230	9,113
Total fresh fruits	:Lb.	134,680	140,036	11,464	11,376	1,130,712	1,051,276	94,700	90,234
<b>Fruit juices -</b>									
Grapefruit	:Gal.	349	351	346	265	1,483	1,863	1,639	1,772
Orange	:Gal.	875	1,052	1,492	1,520	4,839	5,639	9,076	9,175
Other	:Gal.	771	863	803	818	6,016	5,997	6,198	6,205
Total fruit juices	:Gal.	1,995	2,266	2,641	2,603	12,338	13,499	16,913	17,152
Frozen fruits	:Lb.	442	779	104	147	13,459	9,248	2,273	1,965
Other		2/	2/	396	303	2/	2/	3,852	4,200
Total fruits and preparations		---	---	21,514	23,165	---	---	203,846	194,092

Continued -

Table 17-- U. S. agricultural exports: Quantity and value by commodity,  
January 1966 and 1967 and July-January 1965/66 and 1966/67 - Continued

Commodity exported	Unit	January 1/				July-January 1/			
		Quantity		Value		Quantity		Value	
		1966	1967	1,000	1,000	1965/66	1966/67	1,000	1,000
		Thousands	Thousands	dollars	dollars	Thousands	Thousands	dollars	dollars
<b>Grains and preparations:</b>									
<b>Feed grains and products -</b>									
Barley grain (48 lb.)	Bu.	4,042	2,590	5,275	3,381	41,705	26,630	51,067	34,364
Corn grain, including donations (56 lb.)	Bu.	48,728	34,553	66,849	52,008	384,475	308,370	523,047	452,674
Grain sorghums (56 lb.)	Bu.	21,508	24,884	25,822	32,363	129,272	180,588	154,487	223,983
Oats grain (32 lb.)	Bu.	181	437	150	346	22,543	15,347	15,850	11,589
Total feed grains	M.Ton	1,875	1,573	98,096	88,098	14,285	13,223	744,451	722,610
Malt and flour, including barley malt	Lb.	5,492	3,421	370	223	51,027	56,011	3,251	3,596
Corn grits and hominy	Lb.	4,521	1,950	208	82	20,787	20,587	915	893
Cornmeal, including donations	Qrt.	480	486	1,815	2,042	2,352	2,378	9,331	9,617
Cornstarch	Lb.	7,141	4,899	714	490	43,256	35,704	4,284	3,689
Oatmeal, groats, and rolled oats	Lb.	2,083	600	134	129	10,379	14,282	798	1,000
Total feed grains and products	M.Ton	1,928	1,620	101,337	91,064	14,568	13,516	763,030	741,405
<b>Rice -</b>									
Milled, including donations	Lb.	335,254	472,493	24,926	35,674	1,879,681	1,953,966	136,289	154,959
Paddy or rough	Lb.	301	48	20	5	5,669	6,935	480	632
Total rice (milled basis)	Lb.	335,450	472,524	24,946	35,679	1,883,366	1,958,473	136,769	155,591
Rye grain (56 lb.)	Bu.	45	140	79	202	1,583	2,101	1,917	2,856
<b>Wheat and flour, including donations -</b>									
Wheat grain (60 lb.)	Bu.	56,575	48,702	91,244	86,816	411,138	444,546	665,818	785,359
Wheat flour, wholly of U. S. wheat	Qrt.	1,517	1,908	6,532	9,318	18,454	19,446	74,052	86,121
Total wheat and flour	Bu.	60,034	53,053	97,776	96,134	453,214	488,883	739,870	871,480
Bakery products	Lb.	1,143	1,238	496	544	8,715	10,132	3,867	4,853
Other, including donations	2/	2/	2/	3,230	3,883	2/	2/	19,688	20,201
Total grains and preparations		---	---	227,864	227,506	---	---	1,665,141	1,796,386
<b>Oilseeds and products:</b>									
<b>Oils, including donations -</b>									
Cottonseed oil	Lb.	39,819	3,800	4,767	594	272,663	32,125	34,181	5,347
Soybean oil	Lb.	62,751	41,189	9,977	6,168	669,640	505,843	87,916	73,160
Other	Lb.	11,779	23,874	2,219	3,492	146,494	178,959	22,773	24,944
Total oils (except essential)	Lb.	114,349	68,863	15,963	10,254	1,088,797	716,927	144,870	103,451
<b>Oilseeds -</b>									
Flaxseed (56 lb.)	Bu.	0	0	0	0	3,271	4,664	9,783	13,711
Soybeans (60 lb.)	Bu.	19,583	21,907	54,592	67,237	156,608	148,071	427,295	465,478
Other	2/	2/	2/	1,088	1,200	2/	2/	20,136	19,833
Total oilseeds		---	---	55,680	68,437	---	---	457,214	499,022
Protein meal (oil-cake and meal)	S.Ton	270	248	20,347	22,089	1,600	1,458	122,842	134,650
Total oilseeds and products		---	---	91,990	100,780	---	---	724,926	737,123
<b>Tobacco, unmanufactured:</b>									
Burley	Lb.	2,684	2,987	2,318	2,401	29,495	28,116	22,965	23,925
Cigar wrapper	Lb.	282	102	562	360	2,281	2,004	8,801	8,958
Dark-fired Kentucky and Tennessee	Lb.	339	1,858	189	979	15,272	11,580	7,885	6,110
Fine-cured	Lb.	24,804	26,463	23,264	23,172	249,103	323,429	221,692	304,189
Maryland	Lb.	491	1,439	404	1,025	7,458	8,522	5,810	6,599
Other	Lb.	3,370	4,081	1,602	1,276	25,089	38,986	10,420	15,471
Total tobacco, unmanufactured	Lb.	31,970	36,930	28,339	29,213	328,698	412,637	277,573	365,252

Continued -

Table 17-- U. S. agricultural exports: Quantity and value by commodity,  
January 1966 and 1967 and July-January 1965/66 and 1966/67 - Continued

Commodity exported	Unit	January 1/				July-January 1/			
		Quantity		Value		Quantity		Value	
		1966	1967	1966	1967	1965/66	1966/67	1965/66	1966/67
		Thousands	Thousands	dollars	dollars	Thousands	Thousands	dollars	dollars
<b>Vegetables and preparations:</b>									
Canned -				1,000	1,000			1,000	1,000
Asparagus	:Lb.	1,776	3,499	439	927	25,820	19,344	7,661	6,074
Soups	:Lb.	1,355	1,307	301	342	11,388	12,744	2,515	2,757
Tomato paste and puree	:Lb.	1,067	700	266	179	7,941	5,556	1,897	1,434
Tomato sauce for cooking purposes	:Lb.	79	237	12	36	1,230	794	175	128
Other	:Lb.	4,191	4,291	634	702	41,768	39,620	6,014	6,209
Total canned vegetables	:Lb.	8,468	10,034	1,652	2,186	88,147	78,058	18,262	16,502
Dried beans, including donations	:Lb.	13,124	18,441	1,308	1,667	205,969	288,030	16,894	23,602
Dried peas, including cow and chick	:Lb.	16,971	38,278	1,168	2,690	178,316	206,439	11,477	14,206
Fresh -									
Lettuce	:Lb.	24,304	20,751	1,627	972	101,551	95,511	5,848	5,009
Onions	:Lb.	18,391	7,377	695	424	63,925	47,937	2,765	2,445
Potatoes (except sweet potatoes)	:Lb.	6,640	2,994	228	111	57,985	82,824	2,250	2,353
Tomatoes	:Lb.	7,769	6,211	693	541	56,862	58,633	5,672	5,952
Other	:Lb.	42,046	30,098	2,839	1,788	141,333	125,004	10,487	9,012
Total fresh vegetables	:Lb.	99,150	67,721	6,082	3,836	421,656	409,909	27,022	24,771
Frozen vegetables	:Lb.	1,047	1,351	341	246	9,981	12,804	2,278	2,320
Soups and vegetables, dehydrated	:Lb.	2,326	1,904	778	729	11,698	13,618	4,430	4,907
Vegetable seasonings	:Lb.	1,074	420	421	242	6,103	3,014	2,397	1,806
Tomato juice, canned	:Gal.	114	156	229	147	1,339	1,174	1,326	1,137
Other		2/	2/	1,241	1,180	2/	2/	8,558	9,240
Total vegetables and preparations		---	---	13,220	12,923	---	---	92,644	98,591
<b>Other vegetable products:</b>									
Coffee	:Lb.	2,351	2,227	2,413	1,598	16,009	11,968	20,703	10,249
Drugs, herbs, roots, leaves, etc., crude	:Lb.	612	590	1,026	783	5,503	5,065	4,990	5,148
Essential oils, natural	:Lb.	645	626	1,677	2,293	5,414	5,325	13,583	15,410
Feeds and fodders (except oil-cake and meal)	:---	2/	2/	6,689	5,824	2/	2/	56,602	57,477
Flavoring sirups, sugars, and extracts	:---	2/	2/	1,921	2,465	2/	2/	14,752	16,658
Hops	:Lb.	3,237	2,426	1,916	1,552	13,993	14,127	8,177	8,824
Nursery and greenhouse stock	:---	2/	2/	789	1,097	2/	2/	4,404	5,282
Nuts and preparations	:Lb.	15,146	18,782	2,766	3,436	140,644	88,194	30,342	23,366
Seeds (except oilseeds)	:Lb.	14,130	13,324	4,339	4,655	60,668	59,482	20,161	20,711
Spices	:Lb.	879	409	425	309	4,138	3,986	2,441	2,604
Other, including donations	:---	2/	2/	3,355	6,231	2/	2/	25,001	31,368
Total other vegetable products		---	---	27,316	30,243	---	---	201,156	197,097
Total vegetable products		---	---	446,599	481,109	---	---	3,424,166	3,714,595
TOTAL AGRICULTURAL EXPORTS		---	---	505,732	531,591	---	---	3,884,504	4,114,017
TOTAL NONAGRICULTURAL EXPORTS		---	---	1,599,543	1,985,098	---	---	12,188,004	13,509,871
TOTAL EXPORTS, ALL COMMODITIES		---	---	2,105,275	2,516,689	---	---	16,072,508	17,623,888

1/ Preliminary.

2/ Reported in value only.

3/ Excludes the number of "other hides and skins," reported in value only.



Table 18.— U. S. agricultural imports for consumption: Quantity and value by commodity, January 1966 and 1967 and July-January 1965/66 and 1966/67

Commodity imported SUPPLEMENTARY	Unit	January 1/				July-January 1/			
		Quantity		Value		Quantity		Value	
		1966	1967	1966	1967	1965/66	1966/67	1965/66	1966/67
		Thousands	Thousands	1,000 dollars	1,000 dollars	Thousands	Thousands	1,000 dollars	1,000 dollars
<b>ANIMALS AND ANIMAL PRODUCTS</b>									
<b>Animals, live:</b>									
Cattle, draftable .....	No.	100	58	8,307	4,872	843	618	79,748	60,472
Cattle, free (for breeding) .....	No.	1	1	385	348	10	8	3,819	3,270
Horses .....	No.	2/	2/	532	1,369	2	2	6,442	7,709
Other (including live poultry) .....		3/	3/	184	273	3/	3/	1,153	1,474
Total animals, live .....		---	---	9,408	6,862	---	---	91,162	72,925
<b>Dairy products:</b>									
Butter .....	Lb.	65	66	40	39	474	408	252	219
<b>Cheese -</b>									
Blue-mold .....	Lb.	450	297	225	156	2,486	2,606	1,254	1,344
Cheddar .....	Lb.	501	146	152	55	921	1,716	327	693
Edam and Gouda .....	Lb.	685	614	313	286	5,011	6,485	2,361	3,041
Pecorino .....	Lb.	1,477	1,246	1,247	896	11,357	10,732	9,507	7,443
Swiss .....	Lb.	1,623	1,902	864	912	10,762	16,518	6,060	8,102
Other .....	Lb.	6,650	10,497	2,138	3,603	21,732	58,426	9,596	20,498
Total cheese .....	Lb.	11,386	14,702	4,939	5,908	52,269	96,483	29,105	41,121
Casein or lactarene .....	Lb.	7,266	7,143	2,184	1,791	47,903	62,231	15,491	16,306
Other .....		3/	3/	459	651	3/	3/	1,789	2,467
Total dairy products .....		---	---	7,622	8,389	---	---	46,637	60,113
<b>Hides and skins, raw (except furs):</b>									
Calf skins .....	Lb.	167	293	50	121	1,491	1,148	840	619
Cattle hides .....	Lb.	2,718	730	508	170	12,138	4,556	1,949	931
Goat and kid skins .....	Lb.	1,601	1,163	1,364	1,181	10,862	7,462	8,712	8,141
Sheep and lamb skins .....	Lb.	2,481	2,808	1,435	1,958	30,350	29,112	18,256	22,175
Other 4/ .....	Lb.	2,290	2,102	1,311	1,317	17,612	13,401	9,340	9,510
Total hides and skins, raw .....	Lb.	9,257	7,096	4,668	4,747	72,453	55,679	39,097	41,376
<b>Meat and meat products:</b>									
<b>Beef and veal -</b>									
Fresh, chilled, or frozen .....	Lb.	49,376	73,082	17,768	30,306	385,712	495,998	131,341	197,617
Other .....	Lb.	8,865	9,854	3,506	4,698	76,928	88,424	30,182	38,914
Total beef and veal .....	Lb.	58,241	82,936	21,274	35,004	462,640	584,422	161,523	236,531
Mutton, goat, and lamb .....	Lb.	3,720	5,094	1,074	1,316	30,361	33,706	7,785	9,259
<b>Pork -</b>									
Fresh, chilled, or frozen .....	Lb.	4,122	3,746	2,036	1,645	28,588	23,360	12,291	10,022
Hams and shoulders, canned cooked .....	Lb.	16,992	14,741	12,337	11,279	109,738	104,340	76,112	79,308
Other .....	Lb.	4,419	4,182	2,541	2,292	25,891	32,452	15,119	18,067
Total pork .....	Lb.	25,533	22,669	16,914	15,216	164,217	160,152	103,522	107,397
Sausage casings .....		3/	3/	1,489	1,752	3/	3/	12,114	12,061
Other (including meat extracts) .....	Lb.	9,735	8,966	2,223	2,228	54,392	60,751	13,403	16,628
Total meat and products (except poultry) ..		---	---	42,974	55,516	---	---	298,347	381,876
<b>Poultry products:</b>									
Eggs, dried, frozen, otherwise preserved ...	Lb.	24	539	15	448	40	2,998	29	1,376
Eggs in the shell .....	Doz.	184	122	76	96	376	968	271	798
Poultry meat .....	Lb.	24	31	60	66	187	245	453	579
Total poultry products .....		---	---	151	610	---	---	753	2,753

Continued -

Table 18.-- U. S. agricultural imports for consumption: Quantity and value by commodity, January 1966 and 1967 and July-January 1965/66 and 1966/67 - Continued

Commodity imported SUPPLEMENTARY	Unit	January 1/				July-January 1/				
		Quantity		Value		Quantity		Value		
		1966	1967	1966	1967	1965/66	1966/67	1965/66	1966/67	
		Thousands	Thousands	1,000 dollars	1,000 dollars	Thousands	Thousands	1,000 dollars	1,000 dollars	
<b>Wool, unmanufactured (except free in bond):</b>										
40's to 56's .....	G.Lb.:	3,829	1,850	2,302	1,057	23,763	15,034	13,393	8,646	
Finer than 56's .....	G.Lb.:	21,956	10,837	13,737	7,284	108,252	71,938	66,575	49,657	
Other wools .....	G.Lb.:	2,768	1,555	2,188	1,222	15,127	12,201	11,802	8,279	
Total wool, unmanufactured .....	G.Lb.:	28,553	14,242	18,227	9,563	147,142	99,173	91,770	66,582	
<b>Other animal products:</b>										
Bones, hoofs, and horns, unmanufactured .....	3/	3/		447	326	3/	3/	1,895	3,251	
Bristles, sorted, bunched, or prepared .....	Lb.:	234	376	786	1,253	1,986	2,110	6,477	7,110	
Fats, oils, greases, edible and inedible .....	3/	3/		88	540	3/	3/	800	992	
Feathers, crude .....	Lb.:	304	475	590	645	2,375	2,512	4,146	3,560	
Gelatin, edible .....	Lb.:	571	1,127	279	710	5,550	5,895	2,807	3,643	
Hair, unmanufactured .....	Lb.:	885	816	759	787	6,577	7,923	5,392	6,093	
Honey .....	Lb.:	934	841	127	87	7,637	5,170	774	558	
Other .....	3/	3/		1,113	1,350	3/	3/	7,221	8,586	
Total other animal products .....				4,189	5,698			29,512	33,793	
Total animals and animal products .....				87,239	91,385			597,278	659,418	
<b>VEGETABLE PRODUCTS</b>										
<b>Cotton, unmanufactured (480 lb.):</b>										
Cotton .....	Bale	16	7	3,008	1,141	97	68	19,102	13,144	
Linters .....	Bale	11	32	316	1,030	90	140	2,314	4,344	
Total cotton and linters .....	Bale	27	39	3,324	2,171	187	208	21,416	17,488	
<b>Fruits and preparations:</b>										
Apples, green or ripe (50 lb.) .....	Bu.:	53	194	244	896	334	648	1,495	2,776	
Berries .....	Lb.:	5,176	7,430	1,046	1,112	38,774	57,430	7,874	10,495	
Dates .....	Lb.:	1,256	7,767	103	705	27,608	23,927	2,499	2,168	
Figs .....	Lb.:	3,371	1,013	344	93	13,380	8,059	1,514	955	
Grapes (40 lb.) .....	Cu.Ft.:	2/	4	2	12	492	391	777	577	
Melons .....	Lb.:	6,193	3,661	287	172	20,801	10,764	952	475	
Olives in brine .....	Gal.:	1,141	971	2,015	2,215	6,086	8,805	12,214	17,718	
Oranges, mandarin, canned .....	Lb.:	1,435	1,976	267	406	33,806	38,954	6,876	7,755	
Pineapples, canned, prepared or preserved .....	Lb.:	10,683	16,607	1,159	1,796	93,917	112,775	10,656	12,566	
Pineapple juice .....	Gal.:	960	349	256	91	4,742	4,448	1,351	1,371	
Other .....	3/	3/		1,770	1,878	3/	3/	13,954	13,309	
Total fruits and preparations .....				7,493	9,376			60,162	70,165	
<b>Grains and preparations:</b>										
Barley grain (48 lb.) .....	Bu.:	420	2	594	4	4,679	4,018	6,484	5,446	
Barley malt .....	Lb.:	4,396	3,744	216	179	30,286	21,087	1,459	1,047	
Corn grain (56 lb.) .....	Bu.:	125	24	295	192	573	496	1,208	1,261	
Oats grain (32 lb.) .....	Bu.:	312	409	264	394	1,879	1,582	1,545	1,392	
Rice .....	Lb.:	1,182	80	72	150	41,717	407	2,190	448	
Rye grain (56 lb.) .....	Bu.:	314	0	363	0	813	695	889	884	
Wheat grain for domestic use (60 lb.) .....	Bu.:	26	32	51	68	185	1,026	365	2,090	
Wheat flour .....	Lb.:	0	0	0	0	709	13	39	2	
Other .....	3/	3/		1,356	1,688	3/	3/	11,422	14,397	
Total grains and preparations .....				3,211	2,675			25,601	26,967	

Continued -

Table 18.-- U. S. agricultural imports for consumption: Quantity and value by commodity, January 1966 and 1967 and July-January 1965/66 and 1966/67 - Continued

Commodity imported SUPPLEMENTARY	Unit	January 1/				July-January 1/			
		Quantity		Value		Quantity		Value	
		1966	1967	1966	1967	1965/66	1966/67	1965/66	1966/67
		1,000	1,000	1,000	1,000	1,000	1,000	1,000	1,000
		Thousands	Thousands	dollars	dollars	Thousands	Thousands	dollars	dollars
<b>Nuts and preparations:</b>									
Almonds	Lb.	45	25	24	16	203	272	119	158
Brazil nuts	Lb.	669	1,899	379	663	19,161	27,535	6,471	8,040
Cashew nuts	Lb.	5,044	4,202	2,613	2,333	43,604	38,843	22,457	22,096
Coconut meat, fresh, frozen, or prepared	Lb.	14,731	10,267	1,925	1,238	86,548	69,372	11,884	8,507
Pistache nuts	Lb.	3,470	1,272	1,746	708	10,265	9,478	5,789	5,437
Other		3/	3/	403	535	3/	3/	5,612	5,416
Total nuts and preparations		---	---	7,090	5,493	---	---	52,332	49,654
<b>Oilseeds and products:</b>									
<b>Oils, edible and inedible -</b>									
Cacao butter	Lb.	1,671	2,738	571	1,318	8,970	12,884	2,978	6,044
Carnauba wax	Lb.	869	1,509	327	449	6,736	7,381	2,484	2,348
Castor oil	Lb.	9,815	14,838	936	1,725	79,911	65,679	6,812	7,385
Coconut oil	Lb.	123,452	196,766	15,887	20,862	225,766	362,607	28,949	38,008
Olive oil, edible	Lb.	2,853	3,705	909	1,161	22,797	26,917	7,161	8,442
Palm oil	Lb.	0	20,360	0	2,046	3,442	73,766	384	7,439
Palm kernel oil	Lb.	7,260	6,827	1,011	853	51,402	58,392	7,924	7,592
Tung oil	Lb.	1,905	2,315	421	327	11,566	17,737	2,649	2,897
Other	Lb.	1,170	2,547	401	463	13,067	23,597	2,880	4,534
Total oils (except essential)	Lb.	148,995	251,605	20,463	29,204	423,657	648,960	62,221	84,689
<b>Oilseeds -</b>									
Copra	Lb.	23,520	60,032	1,996	4,116	341,262	333,811	30,936	24,403
Sesame seed	Lb.	2,166	4,415	293	533	13,745	15,903	1,925	2,298
Other		3/	3/	486	145	3/	3/	1,867	1,695
Total oilseeds		---	---	2,775	4,794	---	---	34,728	28,396
Protein meal (oilcake and meal)	Lb.	5,839	19,362	166	595	59,445	97,297	1,753	2,625
Total oilseeds and products		---	---	23,404	34,593	---	---	98,702	115,710
<b>Sugar and related products:</b>									
Cane sugar	S.Ton:	159	281	16,663	33,761	2,380	2,822	274,010	338,287
Molasses unfit for human consumption	Gal.	9,586	25,085	780	2,834	128,810	199,243	10,636	21,762
Other		3/	3/	590	672	3/	3/	4,513	4,414
Total sugar and related products		---	---	18,033	37,267	---	---	289,159	364,463
<b>Vegetables and preparations:</b>									
Canned mushrooms	Lb.	323	356	179	235	6,729	7,109	3,689	3,969
Canned tomatoes, tomato paste and sauce	Lb.	9,538	20,285	1,122	2,357	86,886	109,670	9,687	11,890
<b>Fresh or dried -</b>									
Cucumbers	Lb.	17,557	19,562	1,171	1,475	24,490	26,789	1,595	2,048
Garlic	Lb.	996	459	135	116	7,894	6,438	974	1,212
Onions	Lb.	8,578	9,430	590	660	17,959	24,324	1,300	1,677
Potatoes, white	Lb.	12,440	53,870	306	1,433	64,597	174,629	1,633	4,860
Tomatoes, natural state	Lb.	40,390	52,232	5,982	7,945	60,557	91,879	8,395	12,652
Turnips and rutabagas	Lb.	9,584	9,247	218	238	59,102	54,011	1,366	1,346
Pickled vegetables	Lb.	2,130	1,661	376	304	17,167	11,130	1,913	1,810
Tapioca, tapioca flour, and cassava	Lb.	34,007	20,846	1,110	789	184,091	179,186	6,317	6,300
Other		3/	3/	4,034	8,743	3/	3/	17,238	36,002
Total vegetables and preparations		---	---	15,223	24,295	---	---	54,107	83,766

Continued -

Table 1A.— U. S. agricultural imports for consumption: Quantity and value by commodity, January 1966 and 1967 and July-January 1965/66 and 1966/67 - Continued

Commodity imported SUPPLEMENTARY	Unit	January 1/				July-January 1/			
		Quantity		Value		Quantity		Value	
		1966	1967	1966	1967	1965/66	1966/67	1965/66	1966/67
<b>Other vegetable products:</b>				1,000	1,000			1,000	1,000
Feeds and fodders (except oilcake and meal):	—	Thousands	Thousands	dollars	dollars	Thousands	Thousands	dollars	dollars
Hops .....	Lb.	1,383	1,730	1,154	1,819	3/	3/	9,681	11,178
Jute and jute butts, unmanufactured .....	L.Ton:	7	7	1,788	1,798	5,513	5,706	5,973	6,055
Malt liquors .....	Gal.	1,436	1,276	1,630	1,846	17	18	3,828	4,480
Nursery and greenhouse stock .....	—	3/	3/	1,244	1,474	11,912	12,414	13,041	13,681
Seeds, field and garden .....	—	3/	3/	2,417	939	3/	3/	11,492	12,446
Spices .....	Lb.	8,794	10,596	2,417	1,853	3/	3/	10,220	8,056
Tobacco, unmanufactured .....	Lb.	15,245	15,032	11,040	1,760	35,770	53,014	5,994	6,957
Wines .....	Gal.	1,632	1,363	6,243	9,955	100,543	105,748	72,796	72,897
Other .....	—	3/	3/	856	6,040	10,845	10,961	45,661	48,642
<b>Total other vegetable products .....</b>				29,523	28,530	---	---	183,603	191,473
<b>Total vegetable products .....</b>				107,301	144,400	---	---	785,082	919,686
<b>TOTAL SUPPLEMENTARY IMPORTS .....</b>				194,540	235,785	---	---	1,382,360	1,579,104
<b>COMPLEMENTARY</b>									
Bananas .....	Lb.	301,739	316,337	14,558	14,929	1,967,043	2,163,906	92,982	103,829
Coffee (including into Puerto Rico) .....	Lb.	242,415	261,821	93,017	92,567	1,839,713	1,635,320	682,343	578,891
Coffee essences, substitutes and adulterants .....	Lb.	413	2,061	461	2,357	1,983	9,765	2,273	10,266
Cocoa or cacao beans .....	Lb.	93,919	111,563	13,358	24,483	532,033	327,261	71,713	71,067
Cocoa and chocolate, prepared .....	Lb.	11,404	15,361	1,751	2,144	73,905	89,604	11,429	12,959
Drugs, herbs, roots, etc. ....	—	3/	3/	2,511	3,350	3/	3/	14,171	17,241
Essential or distilled oils .....	—	3/	3/	2,392	2,615	3/	3/	19,042	17,403
Fibers, unmanufactured .....	L.Ton:	13	13	2,825	2,398	103	76	19,557	14,305
Rubber, crude .....	Lb.	63,407	88,185	9,361	16,582	577,162	520,430	100,457	98,190
Silk, raw .....	Lb.	330	337	2,082	2,372	2,283	1,945	13,215	13,126
Spices .....	Lb.	8,090	7,314	4,630	3,205	63,274	58,957	30,439	26,674
Tea .....	Lb.	10,447	12,461	4,742	5,001	74,719	74,606	33,271	31,190
Wool, unmanufactured (free in bond) .....	G.Lb.	11,405	8,361	5,949	4,095	84,846	80,756	43,552	40,370
Other complementary agricultural products .....	—	3/	3/	718	1,276	3/	3/	6,986	7,328
<b>TOTAL COMPLEMENTARY IMPORTS .....</b>				158,355	177,374	---	---	1,141,430	1,042,839
<b>TOTAL AGRICULTURAL IMPORTS .....</b>				352,895	413,159	---	---	2,523,790	2,621,943
<b>TOTAL NONAGRICULTURAL IMPORTS .....</b>				1,447,880	1,850,779	---	---	10,522,730	12,959,018
<b>TOTAL IMPORTS, ALL COMMODITIES .....</b>				1,800,775	2,263,938	---	---	13,046,520	15,580,961

1/ Preliminary.

2/ Less than 500.

3/ Reported in value only.

4/ Excludes the weight of "other hides and skins," reported in pieces only.

## Explanatory Note

U.S. foreign agricultural trade statistics in this report include official U.S. data based on compilations of the Bureau of the Census. Agricultural commodities consist of (1) nonmarine food products and (2) other products of agriculture which have not passed through complex processes of manufacture such as raw hides and skins, fats and oils, and wine. Such manufactured products as textiles, leather, boots and shoes, cigarettes, naval stores, forestry products, and distilled alcoholic beverages are not considered agricultural.

The trade statistics exclude shipments between the 50 States and Puerto Rico, between the 50 States and the island possessions, between Puerto Rico and the island possessions, among the island possessions, and intransit through the United States from one foreign country to another when documented as such through U.S. Customs.

**EXPORTS** The export statistics also exclude shipments to the U.S. armed forces for their own use and supplies for vessels and planes engaged in foreign trade. Data on shipments valued at less than \$100 are not compiled by commodity and are excluded from agricultural statistics but are reflected in nonagricultural and overall export totals in this report. The agricultural export statistics include shipments under P.L. 87-195 (Act for International Development), principally sales for foreign currency; under P.L. 83-480 (Agricultural Trade Development and Assistance Act), and related laws; and involving Government payments to exporters. (USDA payments are excluded from the export value.) Separate statistics on Government program exports are compiled by USDA from data obtained from operating agencies.

The export value, the value at the port of exportation, is based on the selling price (or cost if not sold) and includes inland freight, insurance, and other charges to the port. The country of destination is the country of ultimate destination or where the commodities are to be consumed, further processed, or manufactured. When the shipper does not know the ultimate destination, the shipments are credited to the last country, as known to him at time of shipment from the United States, to which the commodities are to be shipped in their present form. Except for Canada, export shipments valued \$100-\$499 are included on the basis of sampling estimates; shipments to Canada valued \$100-\$1,999 are sampled.

**IMPORTS** Imports for consumption consist of commodities released from U.S. Customs custody upon arrival, or entered into bonded manufacturing warehouse, or withdrawn from bonded storage warehouse for consumption. The agricultural statistics exclude low-value shipments from countries not identified because of illegible reporting, but they are reflected in nonagricultural and overall import totals in this report.

The import value, defined generally as the market value in the foreign country, excludes import duties, ocean freight, and marine insurance. The country of origin is defined as the country where the commodities were grown or processed. Where the country of origin is not known, the imports are credited to the country of shipment.

Imports similar to agricultural commodities produced commercially in the United States and others that are interchangeable in use to any significant extent with such U.S. commodities are supplementary, or partly competitive. All other commodities are complementary, or noncompetitive.

Further explanatory material on foreign trade statistics and compilation procedures of the Bureau of the Census is contained in the publications of that agency.

END

DATE

FILMED

9-10-79

NTIS