



**AgEcon** SEARCH  
RESEARCH IN AGRICULTURAL & APPLIED ECONOMICS

*The World's Largest Open Access Agricultural & Applied Economics Digital Library*

**This document is discoverable and free to researchers across the globe due to the work of AgEcon Search.**

**Help ensure our sustainability.**

Give to AgEcon Search

AgEcon Search  
<http://ageconsearch.umn.edu>  
[aesearch@umn.edu](mailto:aesearch@umn.edu)

*Papers downloaded from **AgEcon Search** may be used for non-commercial purposes and personal study only. No other use, including posting to another Internet site, is permitted without permission from the copyright owner (not AgEcon Search), or as allowed under the provisions of Fair Use, U.S. Copyright Act, Title 17 U.S.C.*

USDA/FATUS-  
OCT 66

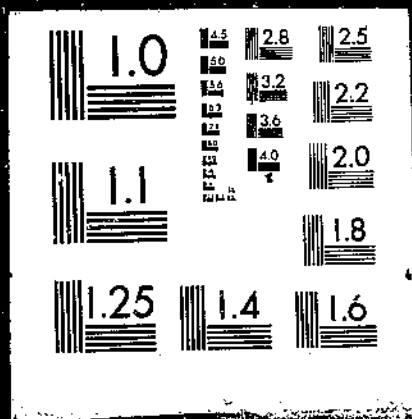
FATUS/FOREIGN AGRICULTURAL TRADE OF THE UNITED STATES, 1966 OCTOBER. Washington, DC  
Economic Research Service.

(NAL Call No. A286.9/Ag

# 1 OF 1

# USDA-FATUS

# OCT-66



A286.9  
Ag8  
Sup. 2

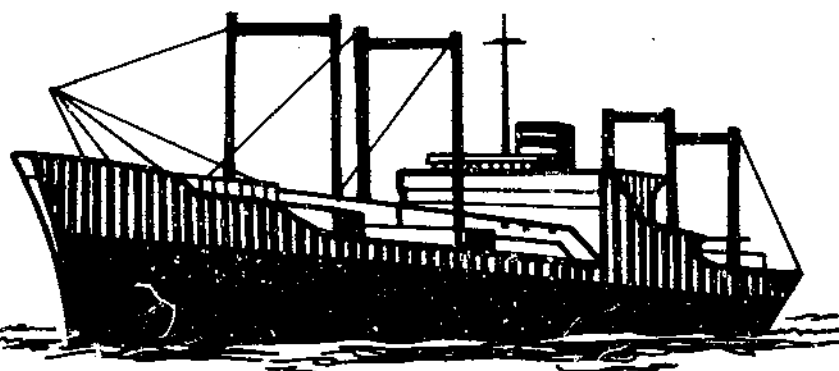
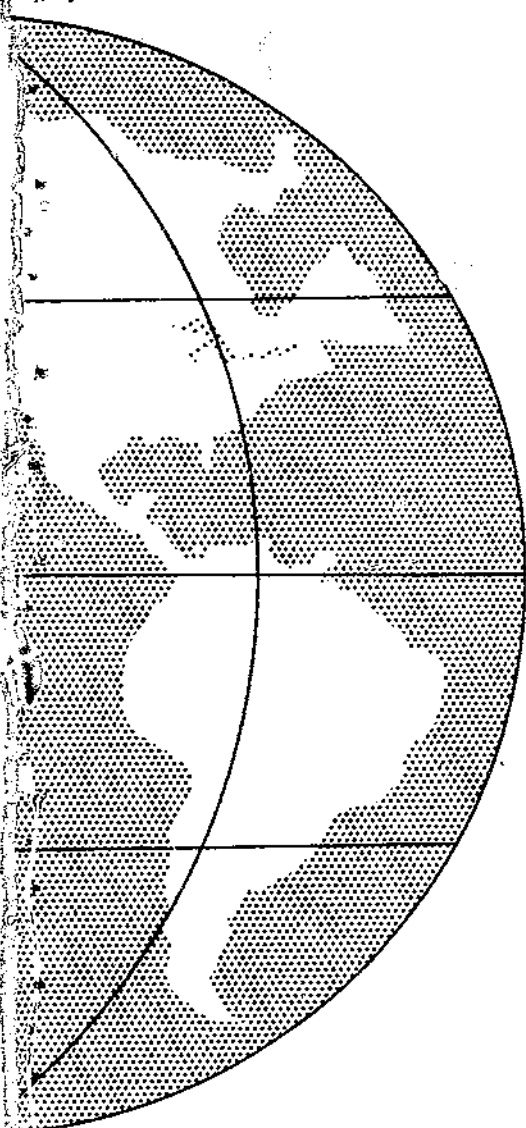
OCTOBER 1966

# FOREIGN AGRICULTURAL TRADE OF THE UNITED STATES

U. S. DEPT. OF AGRICULTURE  
NATIONAL AGRICULTURAL LIBRARY

OCT 4 1966

CURRENT SERIAL RECORDS



## IN THIS ISSUE:

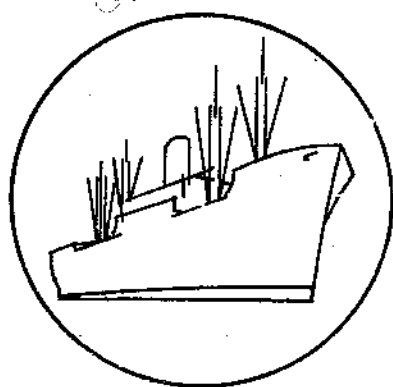
- U.S. Agricultural Imports Increased 12 Percent in Fiscal 1965-66
- U.S. Agricultural Exports -- 1954-1966
- Export Highlights
- Trade Statistics, July 1965 and 1966

Published Monthly by Economic Research Service U. S. Department of Agriculture

## Contents

	<u>Page</u>
Digest .....	3
U.S. Agricultural Imports Increased 12 Percent in Fiscal 1965-66 .....	5
U.S. Agricultural Exports -- 1954-66 .....	13
Export Highlights .....	18
Explanatory Note .....	35
 Table 1.--U.S. Agricultural Imports for Consumption: Value by Commodity, Fiscal Years 1964-65 and 1965-66 .....	 6
Table 2.--U.S. Agricultural Exports: Value by Months, July 1954 to June 1966 .....	15
Table 3.--Index of Agricultural Exports: Value by Quarters for Fiscal Years 1954-58, 1958-62, and 1962-66 .....	16
Table 4.--Exports by Major Commodity Groups, Fiscal Year 1965-66 .....	17
Table 5.--U.S. Agricultural Exports: Value by Commodity, July-August 1965 and 1966 .....	19
Table 6.--U.S. Agricultural Imports for Consumption: Quantity and Value by Commodity June 1965 and 1966, and July-June 1964-65 and 1965-66 ....	21
Table 7.--U.S. Agricultural Exports and Imports (for Consumption): Value by Country, July-June 1965-66 .....	25
Table 8.--U.S. Agricultural Exports: Quantity and Value by Commodity, July 1965 and 1966 .....	27
Table 9.--U.S. Agricultural Imports for Consumption: Quantity and Value by Commodity, July 1965 and 1966 .....	31
 Fig. 1.--U.S. Agricultural Imports .....	 7
Fig. 2.--Value of U.S. Agricultural Exports .....	14

Trade Statistics and Analysis Branch  
Foreign Development and Trade Division  
Economic Research Service



# FOREIGN AGRICULTURAL TRADE OF THE UNITED STATES

---

## Digest

---

U.S. agricultural imports for consumption totaled \$4,454 million in fiscal year 1965-66, up 12 percent from a year earlier. The increase in 1965-66 was the largest rise in imports since the Korean War year of 1950-51. Both supplementary (partially competitive) and complementary (noncompetitive) product imports increased, although larger imports of supplementary items accounted for 76 percent of the total increase. All the major supplementary items, except grains and preparations, cotton, fruit and preparations, and tobacco, showed an increase in imports. Imports of grains and preparations dropped 9 percent, while cotton, tobacco, and fruits and preparations remained at the same level as in 1964-65. Imports of animals and animal products of the supplementary items were \$1,079 million in 1965-66 -- up 36 percent from 1964-65. The increase was mainly due to larger imports of dutiable cattle and meat and meat products. As a result of relatively high U.S. prices for beef and beef products during the past year, suppliers of feeder cattle, such as Mexico and Canada, and suppliers of boneless beef, like Australia and New Zealand, shipped substantially larger quantities of these products to the United States. Of the complementary items, only imports of coffee and cocoa showed a significant increase in 1965-66. The quantity of cocoa imported rose 44 percent, while the value of imports advanced only 8 percent, reflecting the lower prices during the early part of 1965-66.

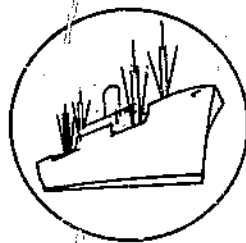
\* \* \* \* \*

On a monthly basis, agricultural exports averaged \$557 million in fiscal 1965-66, compared with \$508 million in 1964-65 and \$506 million in 1963-64. For the 12-year period from 1954-55 through 1965-66, agricultural exports trended upward, except for slight declines in 1957-58, 1958-59, and 1962-63. The decline in 1957-58 followed the Suez crisis, while longshoremen's strikes contributed to declines in 1958-59 and 1962-63. U.S. exports of agricultural products showed a seasonal trend. Exports reached their highest level during the second quarter of each fiscal year and their lowest point during the first quarter, although the quarterly index varied among commodities. This seasonality of agricultural exports corresponded generally to the growing and marketing seasons for most products.

\* \* \* \* \*

U.S. agricultural exports for July-August 1966 were valued at \$962 million, a decline of 4 percent from the same 2 months of the preceding year. Exports in July 1966 totaled \$491 million, down 10 percent from the \$548 million in July of last year. August exports increased 3 percent from the same month last year, thus partially offsetting the July 1966 decline.

Grains and preparations continued to be the principal export commodity, amounting to \$468 million for the 2-month period. Exports of cotton declined 22 percent from the same period last year. Exports of dairy products, animal fats and oils, oilseeds and products, and fruits and preparations were down. Hides and skins, meats and meat products, and tobacco exports rose, while vegetables and preparations remained about the same.



## SPECIAL in this issue

U.S. AGRICULTURAL IMPORTS INCREASED 12 PERCENT IN FISCAL 1965-66

by

Norman R. Kallemeyn <sup>1/</sup>

U.S. agricultural imports for consumption amounted to \$4,454 million in 1965-66 -- up 12 percent from 1964-65. This increase in imports is the largest since 1950-51, when imports grew substantially from the impetus of the Korean conflict. Larger imports of supplementary (partially competitive) products accounted for 74 percent of the total increase. Imports of practically all the major animal products were up, including live animals. Beef and veal, dairy products, hides and skins, and wool imports all showed a significant rise. The only crop product of supplementary items to expand significantly was imports of vegetables and preparations (table 1).

Complementary (noncompetitive) product imports advanced 7 percent, with coffee imports accounting for 78 percent of the total increase. Bananas and cocoa beans also rose in 1965-66.

Agricultural imports remained relatively stable during the last decade, until the past fiscal year. Buoyant economic conditions in the United States for 1965-66 undoubtedly contributed to the significant increase in imports. Relatively high cattle and beef prices helped to promote the larger imports of dutiable cattle and beef and veal. Imports of fresh vegetable products, nuts and preparations, and specialty cheeses have shown an unspectacular but steady rise for the last few years.

Although total imports have been relatively stable, a shift in the import trade pattern has occurred over the last 15 years (fig. 1). Imports of supplementary products now account for about 55 percent of total imports, compared with 44 percent during the 1949-53 period. Of supplementary items, vegetable product imports continue to be the largest, but their share dropped from an average of 63 percent during 1949-53 to 56 percent in 1965-66. The import value of supplementary vegetable products rose 18 percent from the 1949-53 average, while supplementary animal product imports increased 53 percent. The growth in vegetable products can be attributed mainly to larger imports of fruits and

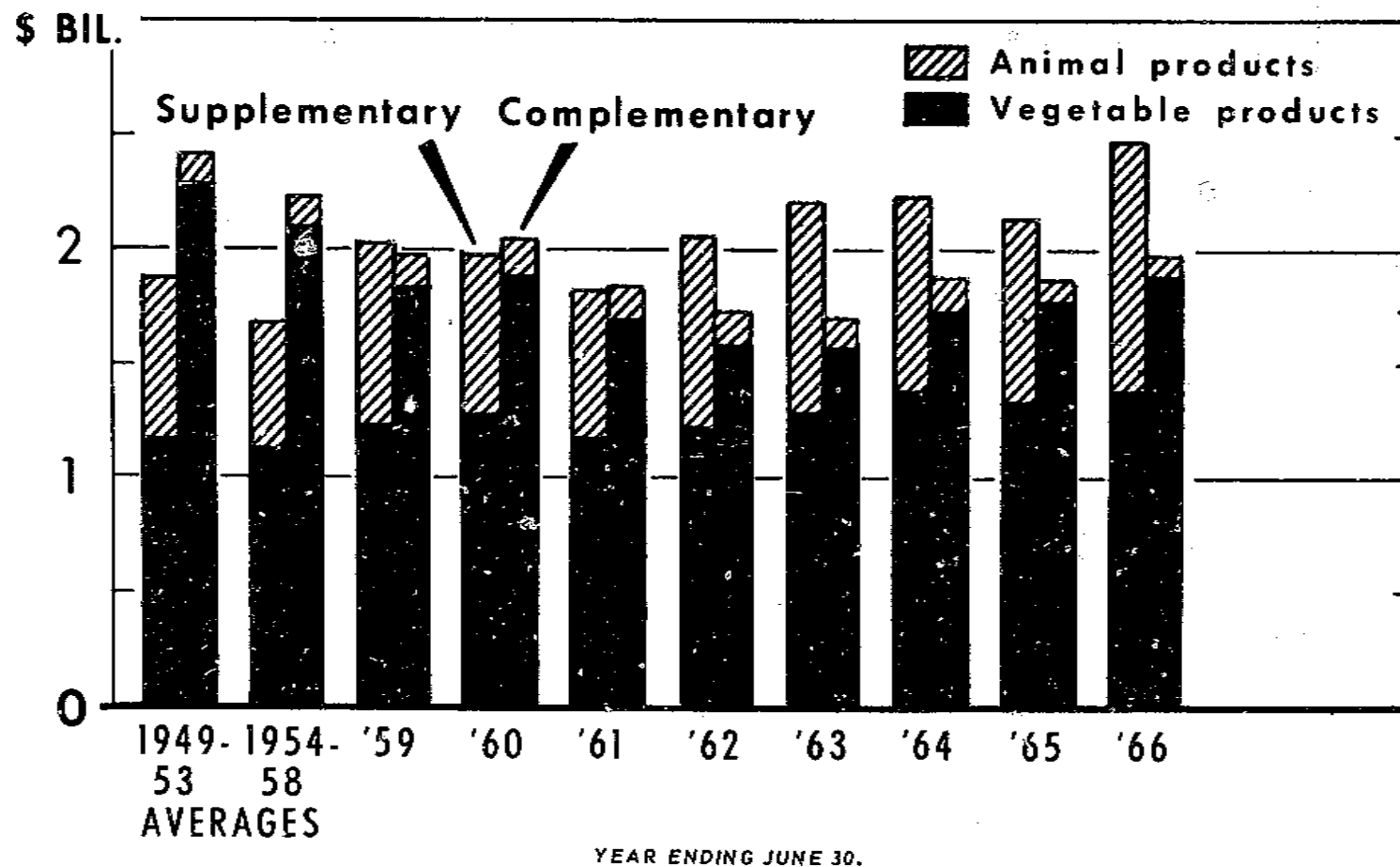
<sup>1/</sup> Agricultural Economist, Trade Statistics and Analysis Branch, Foreign Development and Trade Division, Economic Research Service.



Table 1.--U.S. agricultural imports for consumption: Value by commodity, fiscal years 1964-65 and 1965-66

Commodity	1964-65	1965-66	Change
	-- Million dollars --		Percent
<u>Supplementary</u>			
Animals and animal products:			
Animals, live.....	66	134	+103
Dairy products.....	68	81	+19
Hides and skins.....	70	81	+16
Meats and meat products.....	402	554	+38
Wool, apparel.....	140	174	+24
Other.....	46	55	+20
Total animals, etc.....	792	1,079	+36
Cotton, excluding linters.....	22	22	0
Fruits and preparations.....	122	122	0
Grains and preparations.....	44	40	-9
Nuts and preparations.....	75	83	+11
Oilseeds and products.....	182	185	+2
Sugar, cane.....	443	454	+2
Tobacco, unmanufactured.....	126	126	0
Vegetables and preparations.....	115	149	+30
Other.....	206	212	+3
Total supplementary.....	2,127	2,472	+16
<u>Complementary</u>			
Bananas.....	159	158	+6
Coffee.....	1,075	1,171	+9
Cocoa beans.....	124	134	+8
Rubber, crude, natural.....	192	186	-3
Tea.....	57	60	+5
Wool, carpet.....	75	74	-1
Other.....	177	189	+7
Total complementary.....	1,859	1,982	+7
Total imports.....	3,986	4,454	+12

# U. S. AGRICULTURAL IMPORTS



U. S. DEPARTMENT OF AGRICULTURE

NEG. ERS 4745-66 (8) ECONOMIC RESEARCH SERVICE

Fig. 1

vegetables and their preparations that are imported during the domestic off-season. Regarding animal products, the increase in imports is due principally to imports of dairy products, mainly cheese, and to larger imports of meat products, both beef and pork products.

Imports of nonagricultural products advanced to \$18.9 billion in 1965-66, compared with \$15.7 billion a year earlier. The high rate of economic activity in the United States contributed to large imports of raw materials and manufactured products.

#### Supplementary Products

Imports of supplementary products expanded to \$2,472 million in 1965-66 from \$2,127 million in 1964-65. Although all major supplementary items, except grains and preparations, advanced, meat and meat products, live animals, and dairy products contributed most to the total increase. The import value of sugar, the second largest import item of supplementary products, rose 3 percent. The quantity imported increased less than 1 percent, as prices partially recovered from the low level of 1964-65.

#### Animals and animal products

Dutiable cattle imports in 1965-66 rose to a record 1,265,000 head -- up from 612,000 head in 1964-65. The previous record occurred in 1962-63, when 1,032,000 head were imported. Most dutiable cattle imported were feeders and stockers imported by farmers and ranchers for feeding. The two major suppliers, Mexico and Canada, were able to take advantage of relatively high U.S. prices for stocker and feeder cattle, due to these countries, available supplies and proximity to the United States. Imports from Canada were 53 percent of the total, while Mexico supplied most of the remainder.

Dairy product imports in 1965-66 by the United States were \$81 million -- up 19 percent from the previous year. The increase was mainly due to an \$8 million rise in cheese imports. About 25 percent of dairy product imports were under quota regulations of Section 22 of the Agricultural Adjustment Act, as amended. While cheese imports represented about 60 percent of total dairy product imports, some of the cheeses imported were varieties not produced in this country in sufficient quantity to satisfy the increasing demand. The value of casein imports grew 14 percent during the year, but the quantity imported was down to 95 million pounds from 105 million pounds a year earlier. Like the price of many dairy products, casein prices in major world markets advanced substantially during 1965-66, compared with 1964-65.

After declining appreciably in 1964-65 from the high level of 1963-64, meat and meat product imports rebounded to a record level of \$554 million in 1965-66. Increased imports of both beef and pork products accounted for the substantial rise.

Beef and veal imports rose to 797 million pounds in 1965-66 from 665 million pounds the previous year, although the 1965-66 figure is 25 percent below the level of 1963-64. During 1965-66, Australia and New Zealand, major beef

exporting countries, again changed their exporting pattern by shipping more beef to the United States to take advantage of the relatively high prices in this country. In 1964-65, when imports from these countries were down appreciably, they shipped more of their beef to the large United Kingdom, Italian, and West German markets. Prices in the major European markets during late 1963 and through most of 1965 were at relatively high levels, as supplies lagged and demand continued to increase.

Australia and New Zealand continued to be the major suppliers. Imports from these two countries accounted for practically 60 percent of total imports of beef and veal. Imports from Mexico and Ireland totaled 50 million pounds and 16 million pounds, respectively.

Imports of pork advanced to 300 million pounds in 1965-66 from 231 million a year earlier. The increase was mainly due to a 31 percent rise in imports of canned hams and shoulders, which accounted for 67 percent of total imports. Imports of the canned products were made primarily from Denmark, the Netherlands, and Poland. The substantial growth in imports in 1965-66 was encouraged by higher prices resulting from the limited supply in the United States.

Hides and skins.--U.S. imports of hides and skins totaled \$81 million in 1965-66, compared with \$70 million in 1964-65. While the value of imports increased 15 percent, the quantity declined slightly. The average import value rose 12 cents per pound on sheep and lamb skins and advanced 14 cents per pound on goat and kid skins. Imports of these hides and skins accounted for 73 percent of total imports.

Apparel wool.--U.S. imports of apparel wool rose to 274 million pounds in 1965-66 -- up 38 percent from 1964-65. Mill use of apparel wool grew in the past year, while domestic production continued to decline slightly. During the past year, the milling industry expanded its per capita use of man-made fibers to 10.7 pounds or about 24 percent of total fiber use by mills in 1965. This figure is about double the percentage share of man-made fibers in 1960. Apparel wool use during the 1960-65 period was relatively stable at about 1.5 pounds per capita.

Fruits and preparations.--Imports of fruits and preparations totaled \$122 million in 1965-66 -- the same level as in 1964-65. This is the first year such imports have not shown an increase since 1957-58. Fresh products imported during the domestic off-season comprised a substantial part of fruit imports. The only products to show a significant growth were imports of berries, which amounted to 111 million pounds in the past year, compared with 74 million pounds in 1964-65. Imports of strawberries accounted for 81 percent of the total berry imports, and Mexico supplied 96 percent of strawberry imports. Mexico expanded strawberry acreage from 4,400 acres in 1960-61 to an estimated 11,000 acres in 1965-66. Most of the increased production is being exported to the United States in frozen form. Other major fruit product imports in 1965-66 consisted of melons, pineapples, mandarin oranges, dates, and figs.

Grains and preparations.--Grain and preparation imports declined to \$40 million in 1965-66 from \$44 million in 1964-65. All grain imports, except wheat, can enter the United States unrestricted, while wheat imports are regulated under Section 22 of the Agricultural Adjustment Act of 1934, as amended. On a value basis, barley accounted for 21 percent of total grain imports in 1965-66. Imports of rice showed the most dramatic increase during 1965-66, with imports doubling to 54 million pounds. Most of the imported rice is used by domestic breweries.

Sugar.--U.S. imports of sugar in 1965-66 remained at about the 1964-65 level of 3.9 million short tons. Prices in the last 6 months of the fiscal year recovered partially from the low level of the previous year, and so the value of imports increased more than the quantity. World sugar production in 1965-66 totaled about 68.7 million short tons -- 5.4 percent below the record output of 1964-65. The major suppliers to the United States were the Philippines, Mexico, Dominican Republic, Peru, Brazil, and Australia.

Oilbearing materials and products.--Oilbearing materials and product imports increased slightly to \$185 million in 1965-66. The major products imported were coconut oil, copra, castor oil, palm kernel oil, and oilcake and meal. Only imports of oilcake and meal showed a significant rise during 1965-66, advancing from 57 million pounds to 109 million pounds.

Vegetables and preparations.--Imports of vegetables and preparations rose 30 percent to \$149 million in 1965-66. This total is \$64 million over the 1959-63 average of such imports and \$91 million over the 1954-58 average. A substantial part of the vegetable product imports included imports of fresh vegetables during the domestic off-season. These fresh products came mainly from Mexico and the Central American Republics. Tomato product imports accounted for 44 percent of the total in 1965-66, with fresh tomato imports totaling 341 million pounds -- up from 262 million in 1964-65. Imports rose when adverse spring weather was unfavorable for tomatoes in eastern and midwestern States. Late spring output was down almost 25 percent from a year earlier. Imports of fresh tomatoes were at their peak in February, March, April, and May, when they accounted for nearly 80 percent of the total.

Tobacco.--U.S. imports of unmanufactured tobacco declined slightly to 174 million pounds in 1965-66. About 70 percent of U.S. tobacco imports are cigarette leaf, which consists mainly of oriental types used for blending with domestic tobacco and comes mainly from Turkey, Greece, and Yugoslavia.

#### Complementary Products

Complementary product imports advanced to \$1,982 million in 1965-66 from \$1,859 million in 1964-65. The rise was due primarily to growing imports of coffee, bananas, and cocoa or cacao beans. The value of crude natural rubber imports declined, while the quantity increased.

Bananas.--U.S. imports of bananas amounted to 3,534 million pounds in 1965-66, compared with 3,493 million in 1964-65. Ecuador, Honduras, Panama, and Costa Rica supplied 98 percent of total banana imports.

Coffee.--Coffee imports totaled 3,144 million pounds in 1965-66 -- up 17 percent from 1964-65. Brazil continued to be the major supplier, but its market share was 29 percent in 1965-66 after reaching 39 percent as recently as 1960-61. Colombia, Guatemala, Mexico, El Salvador, Ecuador, and Peru were other major Latin American suppliers. Imports from the major African producing countries of Ivory Coast, Angola, Ethiopia, Uganda, and Malagasy totaled about 620 million pounds in 1965-66, up about 30 percent from 1960-61. The United States is a member of the International Coffee Agreement, which regulates world coffee trade.

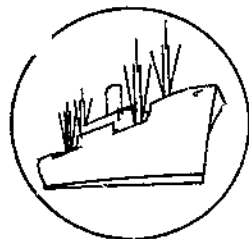
Cocoa Beans.--Cocoa bean imports rose to 938 million pounds in 1965-66 from 651 million in 1964-65. This amount is a new U.S. import record for cocoa beans. The value of imports advanced to only \$134 million from \$124 million, reflecting lower prices in the early part of the year. U.S. imports were especially large in the last six months of the year, when imports reflected product contracted for during the low-price period of July-December 1965. The New York spot price for "Acocoa" cocoa beans averaged 17 cents per pound in July-December 1965, compared with 23 cents per pound in July-December 1964. World cocoa bean production in 1965-66 was down an estimated 15 percent from the record 1964-65 crop of 1.5 million metric tons. The 1965-66 crop was the second largest on record, however. The major suppliers to the United States, including Ghana, Nigeria, Ivory Coast, Dominican Republic, and Ecuador, all reported lower production in 1965-66. Brazil, also a major supplier, increased production 34 percent from 1964-65 to 1965-66.

Carpet Wool.--U.S. imports of carpet wool increased to 143 million pounds in 1965-66 from 131 million pounds in 1964-65. Although imports rose slightly in 1965-66, domestic mill use of carpet wool continued its downward trend. Carpet wool use declined to 0.64 pound per capita in 1965, compared with 0.58 pound in 1964 and about 1.1 pound in 1960. New Zealand and Argentina were again the major suppliers in 1965-66.

Tea.--U.S. imports of tea were 136 million pounds in 1965-66 -- up 6 percent from 1964-65. Tea imports have remained relatively stable over the years, as U.S. consumers continue to consume small amounts in relation to total beverage use. Per capita consumption of tea in the United States is less than 1 pound per person, while per capita coffee use (bean equivalent basis) is about 15 pounds.

Hard Fibers.--Hard fiber imports by the United States were valued at \$24 million. Imports of sisal and henequen accounted for 54 percent of the total, with Mexico, Brazil, Haiti, Malagasy, and Tanzania being the largest suppliers. U.S. imports of sisal have been declining, as synthetic fibers replace sisal in the production of baler twine. Polypropylene baler twine was first manufactured in the United States in 1965, and despite its higher price, farmers find it more acceptable because of its lighter weight, higher tensile strength, and greater resistance to rot and insects.

Rubber.--U.S. imports of natural rubber totaled 1 billion pounds in 1965-66 -- about the same level as in 1964-65. The value of imports declined from \$192 million to \$186 million, however. Imports have been fairly stable at about the 1 billion pound level in recent years, after reaching 1.8 billion pounds in 1951-52. The use of synthetic rubbers in the developed countries advanced nearly 80 percent between the 1957-61 average to 1965. Increased use in the United States accounted for most of the rise.



## SPECIAL in this issue

---

### U.S. AGRICULTURAL EXPORTS -- 1954-1966

by

Joseph R. Corley 1/

#### General Trends

U.S. agricultural exports reached a record \$6.7 billion in fiscal year 1965-66, up 10 percent from the previous record years of 1963-64 and 1964-65 (table 2 ). On a monthly basis, agricultural exports averaged \$556.7 million in 1965-66, compared with \$508.1 million in 1964-65 and \$505.6 million in 1963-64. The increase occurred totally in dollar sales, as exports under Government-financed programs declined from fiscal 1964-65.

For the 12-year period from 1954-55 through 1965-66, agricultural exports trended upward (fig. 2 ). Slight variations occurred in the upward trend resulting from declines in 1957-58, 1958-59, and in 1962-63. However, the shift downward in 1957-58 was probably not an actual decline as much as a return to a more nearly normal level of exports. Shipments in the preceding year rose sharply due to the Suez crisis, which occurred in 1956-57. During that year, U.S. agricultural exports averaged on a monthly basis \$394 million, compared with \$291 million in 1955-56, and \$334 million in 1957-58.

The decline that occurred in 1958-59 resulted from substantially reduced exports of such commodities as dairy products, cotton, and fruits and preparations, which dropped 33 percent, 51 percent, and 13 percent, respectively. The 1962-63 downward turn was caused by a significant drop in cotton exports, down 26 percent from 1961-62, and by lesser declines in exports of animals and animal products, wheat and flour, and tobacco.

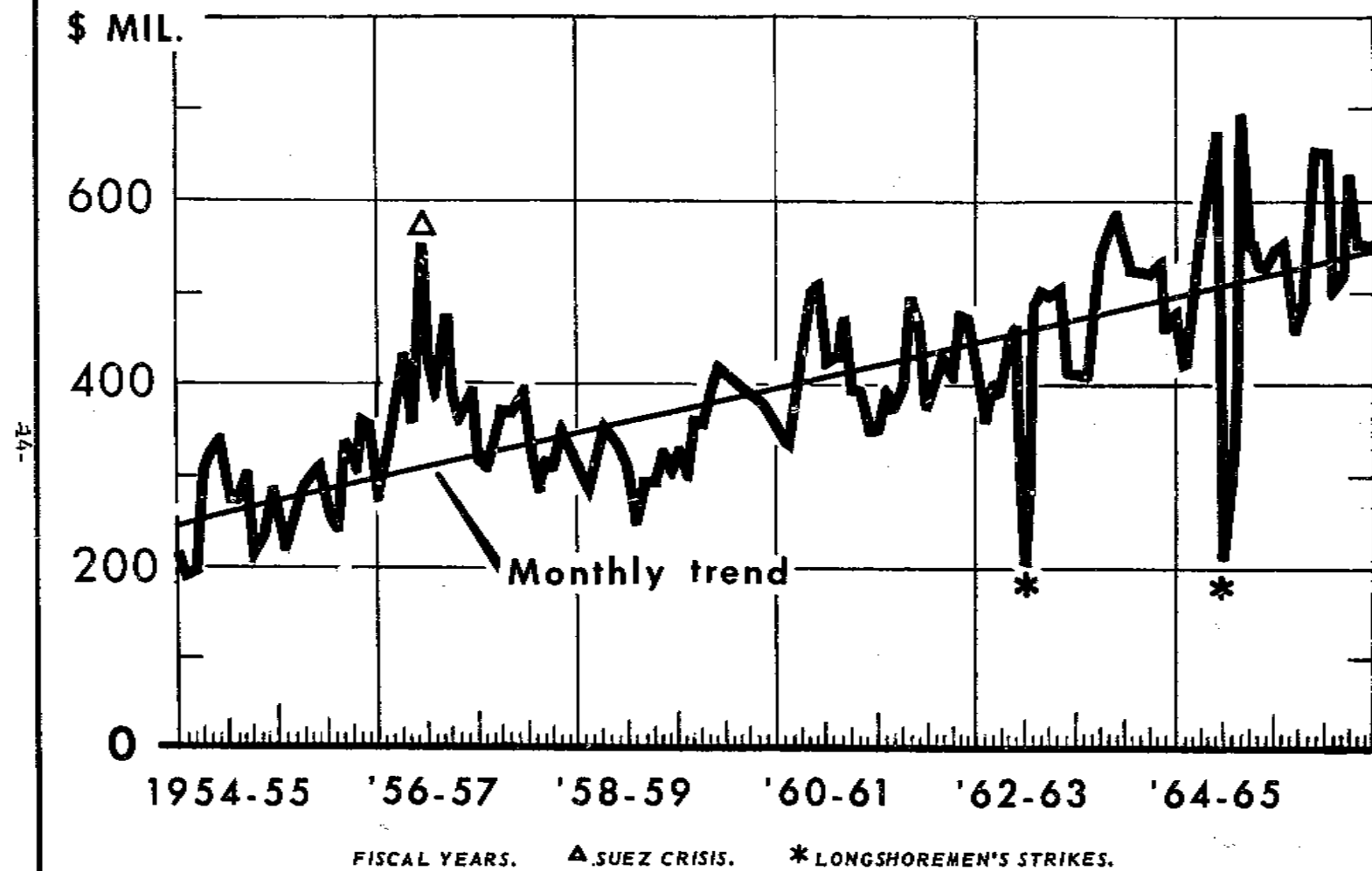
As a result of a longshoremen's strike in January and February 1965, agricultural exports in these months were \$210 million and \$326 million, respectively, down from \$670 million in December 1964 and \$696 million in March 1965. Although exports were low during the strike months, average monthly agricultural exports and total agricultural exports for the fiscal year 1964-65 were slightly higher than the previous year. Substantial increases occurred in exports of soybeans, feed grains, feeds and fodders, fruits and preparations, and animals and products.

---

1/ International Economist, Trade Statistics and Analysis Branch, Foreign Development and Trade Division, Economic Research Service.



# VALUE OF U. S. AGRICULTURAL EXPORTS



U. S. DEPARTMENT OF AGRICULTURE

NEG. ERS 3691-66 (8) ECONOMIC RESEARCH SERVICE

Fig. 2

Table 2 .--U.S. agricultural exports: Value by months, July 1954 to June 1966

Months	1954-55	1955-56	1956-57	1957-58	1958-59	1959-60	1960-61	1961-62	1962-63	1963-64	1964-65 1/	1965-66 1/
-- Million dollars --												
July .....	213.2	255.9	277.8	315.1	315.1	327.7	358.5	350.4	402.0	410.5	479.7	548.0
August .....	190.4	226.5	333.9	313.7	293.7	304.5	327.1	391.4	359.4	408.7	419.6	459.3
September .....	194.1	259.9	368.1	333.2	298.3	361.3	369.4	371.5	396.3	432.9	494.7	484.6
October .....	312.0	289.8	426.3	371.5	357.4	360.5	433.5	495.2	389.2	552.3	575.7	587.0
November .....	333.7	297.0	363.4	369.0	341.3	405.0	496.2	490.2	451.4	574.5	607.7	652.2
December .....	340.4	309.6	543.1	387.7	336.1	418.9	506.0	469.6	462.0	583.1	669.5	647.6
Total July-Decem- ber .....	1,583.8	1,638.7	2,312.6	2,090.2	1,941.9	2,177.9	2,490.7	2,568.3	2,460.3	2,967.0	3,246.9	3,378.7
January .....	273.4	258.3	421.4	323.4	310.0	412.6	422.2	379.1	201.9	542.8	210.4	505.8
February .....	274.4	243.5	394.9	285.4	249.6	401.3	425.6	410.8	492.2	523.2	325.7	518.6
March .....	295.9	330.1	466.9	315.7	292.0	388.2	469.4	428.0	505.2	523.6	696.2	624.8
April .....	208.8	312.5	385.1	315.5	296.3	388.5	394.4	410.9	499.7	521.1	553.8	552.3
May .....	229.1	360.2	362.8	344.9	325.3	383.7	395.3	474.2	505.4	530.5	532.9	549.6
June .....	278.8	352.4	384.6	328.0	304.2	366.8	348.7	470.7	412.9	459.4	530.9	551.1
Total January- June .....	1,560.4	1,857.0	2,415.7	1,912.9	1,777.4	2,341.1	2,455.6	2,573.7	2,617.3	3,100.6	2,849.9	3,302.2
Total fiscal year ...	3,144.2	3,495.7	4,728.3	4,003.1	3,719.3	4,519.0	4,946.3	5,142.0	5,077.6	6,067.6	6,096.8	6,680.9

1/ Preliminary.

### Seasonal Trends

Exports of U.S. agricultural products showed a seasonal trend. Exports reached their highest level during the second quarter of each fiscal year and their lowest point during the first quarter. For the period 1962-66, the second quarter (October-December) averaged \$563 million, 28 percent above the average for the first quarter (July-September). For the third and fourth quarters, average monthly exports were lower than the second-quarter average, but higher than first-quarter monthly exports.

The quarterly index covering first-quarter agricultural exports for periods 1954-58, 1958-62, and 1962-66 increased slightly over the 12-year period (table 3). The index of the second quarter remained constant at the higher level of about 113. The third-quarter index of agricultural exports declined from 101 for the 1954-58 period to 95 for the latest period. The fourth-quarter index rose from 101 to 104. Although the third- and fourth-quarter indexes of agricultural exports shifted, the relative position of the two quarters remained the same.

Table 3.--Index of agricultural exports, averaged by quarters  
for fiscal years 1954-58, 1958-62, and 1962-66 <sup>1/</sup>

Quarter	Total exports, July-June --		
	1954-58	1958-62	1962-66
July-September .....	85	89	89
October-December .....	113	112	113
January-March .....	101	100	95
April-June .....	101	100	104

<sup>1/</sup> Based on average exports per quarter.

The second quarter (October-December) accounted for the highest total value of agricultural exports, although the quarterly index of total agricultural exports varied considerably among commodities. This seasonality of agricultural exports corresponded generally to the growing and marketing seasons for most products. For individual commodities, such as fruits and vegetables, the exports corresponded to the seasonal production of the commodity. The export value of fruits and preparations reached the highest point during July-September and declined through the second and third quarters. Exports of vegetables and preparations rose to their highest level during the fourth quarter of the fiscal year, reflecting the harvesting of fresh vegetables during the late spring months.

While the export index of fruits and vegetables appeared to correspond to periods of harvest, exports of grain tended to be more evenly distributed, probably because it is easily stored.

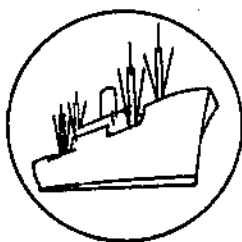
In 1965-66, exports of grains and preparations were lowest during the first quarter, and increased each quarter to the highest level during the fourth quarter.

Exports of tobacco and oilseeds for 1965-66 were highest during the second quarter (October-December) and corresponded to the harvesttime -- or the period immediately following -- for these crops.

Table 4.--Exports by major commodity groups, fiscal 1965-66 <sup>1/</sup>

Quarter	: Grains : : and : : prepara- : : tions :	: Cotton :	: Animals : : and : : products :	: Fruits : : and : : prepara- : : tions :	: Oilseeds : : and : : products :	: Tobacco :	: Vegetables : : and : : prepara- : : tions :
July-September	: 90	: 83	: 101	: 118	: 72	: 101	: 86
October-December	: 98	: 148	: 105	: 106	: 135	: 152	: 101
January-March	: 104	: 102	: 97	: 86	: 93	: 85	: 96
April-June	: 108	: 67	: 97	: 91	: 100	: 62	: 117

<sup>1/</sup> Based on the average exports per quarter.



## Export Highlights

### U.S. AGRICULTURAL EXPORTS, JULY-AUGUST 1966

U.S. agricultural exports totaled an estimated \$962 million during the first 2 months of fiscal 1966-67. This amount represents a decline of 4 percent from the same 2 months of the preceding year. Exports in July 1966 were valued at \$491 million, down 10 percent from the \$548 million in July last year. This decline resulted primarily from reduced exports of grains and preparations, cotton, animals and animal products, and oilseeds and products. These commodities alone declined to \$392 million in July 1966 from \$454 million in July 1965. August exports advanced 3 percent over the total in the same month last year, partially offsetting the July decline. Rising exports of cotton, grains and preparations, tobacco, and oilseeds and products accounted for a large part of the August increase (table 5).

Animals and animal products amounted to \$115 million, down 14 percent this year from July-August 1965. Exports of dairy products declined sharply to \$20 million from \$38 million in July-August of last year. Availability of manufactured products for export has been down substantially during 1966, as milk production has been running 4 percent below 1965 levels. Other declines occurred in exports of fats, oils, and greases. Partially offsetting these declines were increases in hides and skins, up 33 percent, and meats and meat products, up 12 percent.

Grains and preparations continued to be the principal export commodity, amounting to \$468 million in July-August 1966, or about the same level reached in these months last year. Wheat and flour exports, up 5 percent from 1965, accounted for half the exports of grains and preparations. Among the feed grains, corn exports were down \$25 million from the same period a year earlier. However, this decline was partially offset by increases of \$5.5 million in exports of oats, barley, and sorghums.

Exports of oilseeds and products fell 13 percent during July-August from the same period a year earlier. Cottonseed and soybean oil contributed substantially to the decline, dropping to \$28 million during July-August from \$43 million in July-August 1965. Soybeans were also down from a year earlier, declining \$9 million.

Exports of cotton reached an estimated \$39 million in July-August of this year, down 22 percent from the same period last year. August exports were up from July 1966. This may indicate an anticipated reverse in the declining cotton exports during the past year. Increased exports are based on the anticipated consumption of cotton reaching near record highs in foreign free-world countries, as well as some rebuilding of cotton stocks abroad.

Table 5 .--U.S. agricultural exports: Value by commodity,  
July-August 1965 and 1966

Commodity	1965	1966 1/	Change
	-- Million dollars --		Percent
Animals and animal products:			
Dairy products 2/ .....	38	20	-47
Fats, oils, and greases .....	37	33	-11
Hides and skins .....	18	24	+33
Meats and meat products .....	17	19	+12
Poultry products .....	10	10	0
Other .....	13	9	-31
Total animals, etc. 2/ .....	133	115	-14
Cotton, excluding linters .....	50	39	-22
Fruits and preparations .....	57	53	-7
Grains and preparations:			
Feed grains, excluding products ..	204	186	-9
Rice, milled .....	31	38	+23
Wheat and flour .....	223	235	+5
Other .....	12	9	-25
Total grains, etc. ....	470	468	0
Oilseeds and products:			
Cottonseed and soybean oils 3/ ...	43	28	-35
Soybeans .....	87	78	-10
Protein meal .....	24	23	-4
Other .....	13	17	+31
Total oilseeds, etc. 3/ .....	167	146	-13
Tobacco, unmanufactured .....	57	68	+19
Vegetables and preparations .....	25	26	+4
Other .....	48	47	-2
Total exports .....	1,007	962	-4

1/ Partly estimated.

2/ Prior to January 1, 1965, excludes Title III, P.L. 480 donations of butter and ghee, which are included in "Other" agricultural exports.

3/ Prior to January 1, 1965, excludes Title III, P.L. 480 donations, which are included in "Other" agricultural exports.

Of other commodity group exports, fruits and preparations dropped 7 percent from \$57 million in July-August 1965. Tobacco exports rose substantially, from \$57 million in July-August 1965. Exports of vegetables and preparations changed little from the earlier period.

Table 6.—U. S. agricultural imports for consumption: Quantity and value by commodity,  
June 1965 and 1966 and July-June 1964-65 and 1965-66

Commodity imported SUPPLEMENTARY	Unit	June 1/				July-June 1/			
		Quantity		Value		Quantity		Value	
		1965	1966	1965	1966	1964-65	1965-66	1964-65	1965-66
		Thousands	Thousands	dollars	dollars	Thousands	Thousands	dollars	dollars
<b>ANIMALS AND ANIMAL PRODUCTS</b>									
<b>Animals, live:</b>									
Cattle, dutiable .....	No.	62	49	6,028	3,843	612	1,265	49,855	112,997
Cattle, free (for breeding) .....	No.	1	2	491	571	17	21	5,965	7,361
Horses .....	No.	2/	2/	472	748	3	3	8,644	10,778
Other (including live poultry) .....	—	3/	3/	227	326	3/	3/	1,300	2,540
Total animals, live .....	—	—	—	7,218	5,488	—	—	65,764	133,676
<b>Dairy products:</b>									
Butter .....	Lb.	107	52	49	30	704	733	369	397
<b>Cheese —</b>									
Blue-mold .....	Lb.	513	568	252	284	4,289	4,901	2,147	2,461
Cheddar .....	Lb.	295	650	100	253	2,682	3,030	881	1,068
Edam and Gouda .....	Lb.	725	1,280	333	560	6,991	9,352	3,237	4,283
Pecorino .....	Lb.	1,074	823	650	603	16,349	16,039	10,747	13,184
Swiss .....	Lb.	1,163	1,653	648	849	15,850	18,397	8,914	10,102
Other .....	Lb.	2,526	5,289	1,303	2,223	31,768	42,857	14,851	17,964
Total cheese .....	Lb.	6,296	10,263	3,286	4,772	77,929	94,576	40,777	49,062
Casein or lactarene .....	Lb.	9,377	11,388	2,776	2,862	105,325	93,454	24,081	27,512
Other .....	—	3/	3/	218	193	3/	3/	2,417	3,607
Total dairy products .....	—	—	—	6,329	7,857	—	—	67,644	80,578
<b>Hides and skins, raw (except furs):</b>									
Calf skins .....	Lb.	552	205	306	118	7,001	2,183	3,025	1,259
Cattle hides .....	Lb.	1,099	406	188	84	10,577	16,029	1,757	3,047
Goat and kid skins .....	Lb.	2,062	1,087	1,547	1,009	19,340	12,030	13,451	14,339
Sheep and lamb skins .....	Lb.	3,612	6,596	2,110	4,896	59,157	67,488	32,782	45,022
Other 4/ .....	Lb.	3,234	3,724	1,601	1,946	39,095	31,212	19,272	17,252
Total hides and skins, raw .....	Lb.	10,559	12,018	5,758	8,053	135,170	133,942	70,287	80,919
<b>Meat and meat products:</b>									
<b>Beef and veal —</b>									
Fresh, chilled, or frozen .....	Lb.	39,662	90,168	13,063	37,077	568,722	676,966	185,846	244,908
Other .....	Lb.	14,238	12,008	5,640	5,275	96,701	119,880	36,271	47,980
Total beef and veal .....	Lb.	53,900	102,176	18,703	42,352	665,423	796,846	222,117	292,888
Mutton, goat, and lamb .....	Lb.	3,004	11,796	742	3,508	27,542	73,463	6,584	20,183
<b>Pork —</b>									
Fresh, chilled, or frozen .....	Lb.	4,911	3,204	2,031	1,359	42,710	46,834	15,836	20,354
Hams and shoulders, canned cooked .....	Lb.	14,226	17,489	9,330	13,457	153,659	201,376	100,583	146,470
Other .....	Lb.	2,931	5,136	1,663	2,821	34,392	51,340	20,418	29,206
Total pork .....	Lb.	22,068	25,829	13,024	17,637	230,761	299,550	136,837	196,030
Sausage casings .....	—	3/	3/	1,847	2,309	3/	3/	18,551	21,911
Other (including meat extracts) .....	Lb.	6,864	8,895	1,561	2,058	81,541	96,999	17,497	23,219
Total meat and products (except poultry) .....	—	—	—	35,877	67,864	—	—	401,586	554,231
<b>Poultry products:</b>									
Eggs, dried, frozen, otherwise preserved ...	Lb.	2/	548	2/	135	86	10,408	15	1,504
Eggs in the shell .....	Doz.	72	108	98	148	1,065	1,909	831	1,198
Poultry meat .....	Lb.	1	57	27	92	184	277	500	671
Total poultry products .....	—	—	—	125	375	—	—	1,346	3,373

Continued —



Table 6.—U. S. agricultural imports for consumption: Quantity and value by commodity,  
June 1965 and 1966 and July-June 1964-65 and 1965-66 - Continued

Commodity imported SUPPLEMENTARY	Unit	June 1/				July-June 1/			
		Quantity		Value		Quantity		Value	
		1965	1966	1965	1966	1964-65	1965-66	1964-65	1965-66
<b>Wool, unmanufactured (except free in bond):</b>		Thousands	Thousands	dollars	dollars	Thousands	Thousands	dollars	dollars
40's to 56's .....	G.Lb.	3,380	2,931	1,813	1,733	34,328	47,676	21,411	26,671
Finer than 56's .....	G.Lb.	12,844	16,619	8,043	10,901	139,269	199,237	95,495	125,321
Other wools .....	G.Lb.	2,421	1,826	2,166	1,628	25,633	27,301	23,548	21,585
Total wool, unmanufactured .....	G.Lb.	18,645	21,376	12,022	14,262	199,230	274,214	140,454	173,577
<b>Other animal products:</b>									
Bones, hoofs, and horns, unmanufactured .....	3/	2/	710	254	361	3/	3/	2,294	3,670
Bristles, sorted, bunched, or prepared .....	Lb.	262	710	944	1,490	3/	3/	11,517	11,854
Fats, oils, greases, edible and inedible .....	3/	3/	432	157	120	3/	3/	2,059	1,628
Feathers, crude .....	Lb.	309	432	448	723	3,559	4,221	5,904	7,011
Gelatin, edible .....	Lb.	470	1,095	234	644	6,767	10,351	3,485	5,497
Hair, unmanufactured .....	Lb.	691	640	606	503	9,644	10,300	7,825	8,146
Honey .....	Lb.	1,298	77	129	71	9,619	11,912	1,073	1,243
Other .....	3/	3/	---	1,033	1,165	3/	3/	11,251	13,123
Total other animal products .....				3,805	5,077			45,406	52,172
Total animals and animal products .....				71,134	108,976			792,487	1,078,526
<b>VEGETABLE PRODUCTS</b>									
<b>Cotton, unmanufactured (480 lb.):</b>									
Cotton .....	Bale	2	4	255	560	116	120	21,539	22,491
Linters .....	Bale	18	41	506	991	169	184	4,242	4,680
Total cotton and linters .....	Bale	20	45	761	1,551	285	304	25,781	27,171
<b>Fruits and preparations:</b>									
Apples, green or ripe (50 lb.) .....	Bu.	44	47	208	206	807	462	3,670	2,081
Berries .....	Lb.	6,620	7,760	1,040	1,469	74,235	110,657	11,727	21,610
Dates .....	Lb.	1	7	1	1	37,015	29,080	3,574	2,639
Figs .....	Lb.	1,384	929	149	85	23,547	22,600	2,524	2,446
Grapes (40 lb.) .....	Cu.Ft.	49	65	125	193	1,890	1,406	4,291	3,376
Melons .....	Lb.	38,783	36,907	1,395	1,134	269,536	248,861	10,613	9,163
Olives in brine .....	Gal.	1,146	1,425	2,248	2,424	15,171	12,541	25,244	23,403
Oranges, mandarin, canned .....	Lb.	7,134	7,078	1,420	1,410	65,462	65,024	13,482	13,148
Pineapples, canned, prepared or preserved .....	Lb.	14,210	16,156	1,689	1,853	146,593	160,825	16,455	18,468
Pineapple juice .....	Gal.	426	632	165	175	10,783	8,463	3,420	2,295
Other .....	3/	3/	---	2,025	1,568	3/	3/	27,414	23,629
Total fruits and preparations .....				10,465	10,518			122,414	122,258
<b>Grains and preparations:</b>									
Barley grain (48 lb.) .....	Bu.	565	372	790	521	10,044	6,066	13,354	8,548
Barley malt .....	Lb.	2,492	6,389	124	311	64,152	50,405	3,115	2,449
Corn grain (56 lb.) .....	Bu.	40	98	70	142	891	947	1,725	2,029
Oats grain (32 lb.) .....	Bu.	701	135	554	113	3,540	3,114	3,063	2,720
Rice .....	Lb.	6,807	36	349	4	27,789	54,466	1,896	2,837
Rye grain (56 lb.) .....	Bu.	304	86	343	98	2,415	1,754	2,911	1,741
Wheat grain for domestic use (60 lb.) .....	Bu.	9	0	13	0	343	547	1,587	1,079
Wheat flour .....	Lb.	3,115	3,815	183	181	3,226	4,524	185	20
Other .....	3/	3/	---	1,237	1,607	3/	3/	16,137	18,749
Total grains and preparations .....				3,663	2,977			43,973	40,372

Continued -

Table 6.—U. S. agricultural imports for consumption: Quantity and value by commodity,  
June 1965 and 1966 and July-June 1964-65 and 1965-66 - Continued

Commodity imported SUPPLEMENTARY	Unit	June 1/				July-June 1/			
		Quantity		Value		Quantity		Value	
		1965	1966	1965	1966	1964-65	1965-66	1964-65	1965-66
		Thousands	Thousands	1,000 dollars	1,000 dollars	Thousands	Thousands	1,000 dollars	1,000 dollars
<b>Nuts and preparations:</b>									
Almonds .....	Lb.	0	28	0	13	293	337	170	182
Brazil nuts .....	Lb.	1,271	3,299	488	1,040	26,519	24,991	7,900	8,635
Cashew nuts .....	Lb.	5,855	6,011	3,015	3,405	66,631	71,716	34,532	37,551
Coconut meat, fresh, frozen, or prepared ...	Lb.	8,681	9,441	1,209	1,185	117,210	129,659	15,323	17,434
Pistache nuts .....	Lb.	1,587	1,445	841	807	16,591	20,877	8,569	11,516
Other .....	3/	3/	3/	294	222	3/	3/	8,290	7,522
Total nuts and preparations .....		—	—	5,847	6,672	—	—	74,784	82,840
<b>Oilseeds and products:</b>									
<b>Oils, edible and inedible -</b>									
Cacao butter .....	Lb.	637	1,316	284	591	17,133	18,385	8,037	6,660
Carnauba wax .....	Lb.	1,547	1,499	691	460	12,965	14,402	5,599	5,023
Castor oil .....	Lb.	8,143	9,947	683	1,082	126,721	123,376	12,081	11,291
Coconut oil .....	Lb.	22,658	50,275	3,266	5,681	448,170	449,855	56,914	56,461
Olive oil, edible .....	Lb.	2,864	3,987	885	1,225	54,847	45,334	15,689	14,008
Palm oil .....	Lb.	0	10,189	0	999	6,077	7,923	627	2,766
Palm kernel oil .....	Lb.	7,883	4,933	1,174	701	90,401	101,935	11,740	14,923
Tung oil .....	Lb.	2,746	3,259	630	621	30,997	24,650	6,387	5,364
Other .....	Lb.	2,523	6,216	503	1,268	31,646	36,643	6,102	7,336
Total oils (except essential) .....	Lb.	49,001	91,721	8,116	12,628	818,357	840,503	123,176	123,832
<b>Oilseeds -</b>									
Copra .....	Lb.	41,947	80,260	4,174	6,047	624,234	580,323	52,006	50,222
Sesame seed .....	Lb.	2,451	2,447	334	372	23,746	28,292	3,452	4,505
Other .....	3/	3/	3/	95	174	3/	3/	1,894	2,921
Total oilseeds .....		—	—	4,603	6,593	—	—	57,352	57,648
Protein meal (oilcake and meal) .....	Lb.	11,519	7,775	338	231	57,432	108,685	1,656	3,223
Total oilseeds and products .....		—	—	13,057	19,452	—	—	182,184	184,703
<b>Sugar and related products:</b>									
Cane sugar .....	S.Ton:	373	399	42,510	47,208	3,887	3,915	442,724	454,327
Molasses unfit for human consumption .....	Gal.	40,112	28,210	3,600	3,406	258,139	259,224	27,036	21,942
Other .....	3/	3/	3/	583	548	3/	3/	6,990	8,056
Total sugar and related products .....		—	—	46,693	51,162	—	—	476,750	484,325
<b>Vegetables and preparations:</b>									
Canned mushrooms .....	Lb.	1,470	1,760	744	990	10,409	13,658	5,624	7,482
Canned tomatoes, tomato paste and sauce ...	Lb.	6,510	8,568	757	1,015	98,303	141,341	12,006	15,974
<b>Fresh or dried -</b>									
Cucumbers .....	Lb.	36	127	6	12	74,606	71,059	5,225	5,343
Garlic .....	Lb.	1,446	1,474	183	188	17,960	16,014	2,323	2,189
Onions .....	Lb.	3,430	2,643	277	190	43,310	55,198	2,389	3,390
Potatoes, white .....	Lb.	23,422	3,173	1,115	109	348,193	112,945	10,922	3,241
Tomatoes, natural state .....	Lb.	10,804	8,093	1,308	1,276	261,927	341,124	28,681	50,029
Turnips and rutabagas .....	Lb.	263	129	8	3	94,919	84,481	2,098	1,818
Pickled vegetables .....	Lb.	1,497	1,575	222	258	18,952	25,751	2,701	3,374
Tapioca, tapioca flour, and cassava .....	Lb.	38,580	41,781	1,323	1,423	366,197	332,439	11,902	11,157
Other .....	3/	3/	3/	2,480	12,232	3/	3/	30,999	45,184
Total vegetables and preparations .....		—	—	8,423	17,696	—	—	114,870	149,181

Continued -

Table 6.—U. S. agricultural imports for consumption: Quantity and value by commodity,  
June 1965 and 1966 and July-June 1964-65 and 1965-66 - Continued

Commodity imported SUPPLEMENTARY	Unit	June 1/				July-June 1/			
		Quantity		Value		Quantity		Value	
		1965	1966	1965	1966	1964-65	1965-66	1964-65	1965-66
		Thousands	Thousands	dollars	dollars	Thousands	Thousands	dollars	dollars
<b>Other vegetable products:</b>									
Feeds and fodders (except oilcake and meal):	—	3/	3/	1,108	965	3/	3/	17,481	14,719
Hops .....	Lb.	22	1	23	1	6,506	6,941	6,987	7,279
Jute and jute butts, unmanufactured .....	L.Ton:	5	2	990	428	53	49	9,008	9,867
Malt liquors .....	Gal.	1,902	2,153	2,044	2,376	20,628	20,304	22,565	22,463
Nursery and greenhouse stock .....	—	3/	3/	54	51	3/	3/	14,130	13,739
Seeds, field and garden .....	—	3/	3/	571	485	3/	3/	15,061	16,287
Spices .....	Lb.	3,630	5,591	475	723	55,476	67,229	8,357	10,839
Tobacco, unmanufactured .....	Lb.	16,687	15,107	12,231	10,871	184,206	173,919	125,648	125,639
Wines .....	Gal.	1,371	1,413	5,549	5,984	16,162	17,705	64,784	73,833
Other .....	—	3/	3/	802	864	3/	3/	10,341	8,768
Total other vegetable products .....	—	—	—	23,847	22,748	—	—	294,362	323,433
Total vegetable products .....	—	—	—	112,756	132,776	—	—	1,335,118	1,394,281
<b>TOTAL SUPPLEMENTARY IMPORTS</b> .....	—	—	—	183,890	241,752	—	—	2,127,605	2,472,809
<b>COMPLEMENTARY</b>									
Bananas .....	Lb.	318,138	348,277	14,740	16,940	3,492,775	3,534,355	159,133	168,132
Coffee (including into Puerto Rico) .....	Lb.	242,348	222,363	89,713	80,190	2,685,778	3,144,091	1,075,382	1,171,101
Coffee essences, substitutes and adulterants:	Lb.	398	706	478	705	3,277	4,432	4,314	4,866
Cocoa or cacao beans .....	Lb.	84,469	31,438	13,200	6,159	650,859	937,587	124,354	133,980
Cocoa and chocolate, prepared .....	Lb.	11,492	9,296	1,221	1,242	125,781	120,182	20,830	16,965
Drugs, herbs, roots, etc. ....	—	3/	3/	2,710	1,801	3/	3/	22,162	24,825
Essential or distilled oils .....	—	3/	3/	2,971	1,907	3/	3/	27,616	31,128
Fibers, unmanufactured .....	L.Ton:	11	9	2,319	1,968	147	161	30,403	30,066
Rubber, crude .....	Lb.	94,579	94,977	16,898	17,238	999,535	1,048,423	192,366	186,403
Silk, raw .....	Lb.	239	258	1,332	1,657	3,920	3,849	19,877	23,749
Spices .....	Lb.	7,656	6,691	3,244	2,935	105,684	99,800	38,970	46,410
Tea .....	Lb.	11,028	10,649	4,764	4,552	128,741	136,271	57,006	60,175
Wool, unmanufactured (free in bond) .....	G.Lb.	13,116	14,032	6,633	7,191	131,402	143,056	74,609	73,534
Other complementary agricultural products ....	—	3/	3/	937	838	3/	3/	11,745	10,786
<b>TOTAL COMPLEMENTARY IMPORTS</b> .....	—	—	—	161,160	145,323	—	—	1,858,767	1,981,577
<b>TOTAL AGRICULTURAL IMPORTS</b> .....	—	—	—	345,050	387,075	—	—	3,986,372	4,454,386
<b>TOTAL NONAGRICULTURAL IMPORTS</b> .....	—	—	—	1,532,934	1,788,527	—	—	15,750,603	18,882,102
<b>TOTAL IMPORTS, ALL COMMODITIES</b> .....	—	—	—	1,877,984	2,175,602	—	—	19,736,975	23,336,488

1/ Preliminary.

2/ Less than 500.

3/ Reported in value only.

4/ Excludes the weight of "other hides and skins," reported in pieces only.

Table 7.-- U. S. agricultural exports and imports (for consumption): Value by country,  
July-June 1965-66

Agricultural					Agricultural				
Country	Exports	Imports			Country	Exports	Imports		
		Total	Comple- mentary	Supple- mentary			Total	Comple- mentary	Supple- mentary
-- Thousand dollars --					-- Thousand dollars --				
Greenland .....	0	15	0	15	Norway .....	49,171	2,641	73	2,568
Canada .....	629,914	255,472	9,678	245,794	Denmark .....	84,683	102,159	333	101,826
Miquelon and St. Pierre Is. ....	31	1	1	0	United Kingdom .....	434,982	27,971	8,515	19,456
<u>Latin American Republics:</u>					Ireland .....	25,614	11,931	1,482	10,449
Mexico .....	84,469	304,658	73,001	231,657	Netherlands .....	514,539	92,189	10,824	81,365
Guatemala .....	11,232	74,000	63,034	10,966	Belgium and Luxembourg ....	182,758	15,160	1,452	13,708
El Salvador .....	9,146	35,806	32,653	3,153	Unidentified W. Europe 1/..	0	0	0	0
Honduras .....	6,217	70,620	64,982	5,638	France .....	142,401	69,107	8,167	60,940
Nicaragua .....	7,795	27,905	14,023	13,882	West Germany .....	476,484	41,429	2,792	38,637
Costa Rica .....	5,508	51,476	40,900	10,576	East Germany .....	19,413	226	12	214
Panama .....	17,850	40,435	38,444	1,991	Austria .....	14,361	2,712	87	2,625
Cuba .....	0	2,186	0	2,186	Czechoslovakia .....	39,798	2,220	13	2,207
Haiti .....	9,454	13,694	9,266	4,428	Hungary .....	6,243	606	125	481
Dominican Republic .....	23,336	97,083	24,989	72,094	Switzerland .....	69,827	13,117	1,855	11,262
Colombia .....	38,204	220,355	210,195	10,160	Finland .....	17,232	1,739	31	1,708
Venezuela .....	32,319	20,164	19,007	1,157	Estonia .....	0	3	0	3
Ecuador .....	11,702	94,506	86,946	7,560	Latvia .....	0	37	37	0
Peru .....	34,211	80,912	25,345	54,567	Lithuania .....	0	2	2	0
Bolivia .....	8,264	2,406	881	1,525	Poland and Danzig .....	29,355	41,354	177	41,177
Chile .....	38,072	6,637	229	6,408	U.S.S.R. (Russia) .....	27,384	2,759	734	2,025
Brazil .....	78,958	474,872	386,930	87,942	Azores .....	572	173	0	173
Paraguay .....	733	11,921	2,584	9,337	Spain .....	200,568	46,726	2,035	44,691
Uruguay .....	1,618	29,951	116	29,835	Portugal .....	24,568	10,337	170	10,167
Argentina .....	4,119	100,702	22,380	78,322	Gibraltar .....	156	50	43	7
Total L. A. Republics ..	473,207	1,766,289	1,116,905	643,384	Malta and Gozo .....	984	0	0	0
<u>Other Latin America:</u>					Italy .....	277,208	75,885	9,480	66,405
British Honduras .....	2,315	905	424	481	Free Terr. of Trieste ....	24	3	2	1
Canal Zone .....	0	195	195	0	Yugoslavia .....	124,415	22,794	786	22,008
Bermuda .....	6,487	31	0	31	Albania .....	133	119	77	42
Bahamas .....	15,606	1,798	6	1,792	Greece .....	33,186	37,787	464	37,323
Jamaica .....	22,225	15,688	2,322	13,366	Rumania .....	4,413	632	86	546
Leeward and Windward Is. ..	3,306	2,083	1,343	740	Bulgaria .....	2,660	1,806	414	1,392
Barbados .....	2,362	1,961	0	1,961	Turkey .....	43,487	70,166	2,101	68,065
Trinidad and Tobago .....	9,419	6,063	2,059	4,004	Cyprus .....	885	1,068	438	630
Netherlands Antilles .....	10,371	109	75	34	Total Europe .....	2,903,693	699,440	53,497	645,943
French West Indies .....	2,149	7,997	654	7,343	<u>Asia:</u>				
British Guiana .....	4,269	3,751	92	3,659	Syrian Arab Republic .....	2,784	2,862	2,374	488
Surinam .....	3,435	301	301	0	Lebanon .....	25,450	5,401	1,573	3,828
French Guiana .....	145	61	49	12	Iraq .....	3,039	4,033	2,474	1,559
Falkland Islands .....	8	4	0	4	Iran .....	38,039	19,280	1,120	18,160
Total Latin America .....	555,904	1,801,236	1,124,425	676,811	Israel .....	78,697	2,047	362	1,685
<u>Europe:</u>					Jordan .....	9,826	20	19	1
Iceland .....	4,892	705	447	258	Gaza Strip .....	21	13	0	13
Sweden .....	51,217	3,827	243	3,584	Kuwait .....	5,898	0	0	0
					Saudi Arabia .....	19,813	0	0	0
					Other Arabia Pen. States ..	1,001	1,342	1,320	22

Continued

Continued -

Table 7.-- U. S. agricultural exports and imports (for consumption): Value by country,  
July-June 1965-66 - Continued

Country	Agricultural				Country	Agricultural			
	Exports	Total	Imports	Supple-		Exports	Total	Imports	Supple-
			Comple-	mentary				Comple-	mentary
			mentary					mentary	
<b>Asia - Continued:</b>					<b>Africa - Continued:</b>				
Aden .....	1,574	797	767	30	Canary Islands .....	11,144	1	0	1
Bahrain .....	1,366	0	0	0	Other Spanish Africa .....	293	228	228	0
Afghanistan .....	8,356	3,257	35	3,222	Federal Rep. of Cameroon ..	1,105	14,428	13,852	576
India .....	540,948	78,838	27,908	50,930	Central African Republic ..	4	19	19	0
Goa, Damao, and Diu .....	0	0	0	0	Gabon .....	137	206	206	0
Pakistan .....	82,958	16,522	4,066	12,456	Mauritania .....	28	5	0	5
Nepal .....	32	14	0	14	Senegal .....	6,197	29	0	29
Ceylon .....	3,697	33,422	33,381	41	Guinea .....	5,511	10,476	10,446	30
Burma .....	5,047	168	0	168	Ivory Coast .....	3,985	41,289	40,294	995
Thailand .....	20,539	17,501	7,692	9,809	Togo .....	455	1,513	1,503	10
Viet-Nam .....	102,616	1,131	722	409	Other Western Africa .....	1,714	885	405	480
Laos .....	745	430	416	14	Ghana .....	9,816	36,859	36,192	667
Cambodia .....	403	1,724	1,721	3	Nigeria .....	11,811	47,248	41,565	5,683
Malaysia .....	17,777	70,331	65,916	4,415	Sierra Leone .....	1,967	3,536	3,525	11
Indonesia .....	3,468	133,843	129,287	4,056	British West Africa .....	56	2	2	0
Philippines .....	73,560	291,534	10,076	281,458	Madeira Islands .....	123	159	0	159
Macao .....	319	52	36	16	Angola .....	2,084	54,816	54,455	361
Other S. and S.E. Asia .....	20	302	281	21	Other W. Port. Africa .....	273	878	874	4
China .....	0	0	0	0	Liberia .....	8,837	56,829	56,325	4
Outer Mongolia .....	0	2,882	56	2,826	Congo (Leopoldville) .....	26,849	15,122	10,477	4,645
North Korea .....	0	0	0	0	Burundi and Rwanda .....	585	18,457	18,416	41
Korea, Republic of .....	89,994	9,226	8,330	896	Somali Republic .....	594	342	2	340
Hong Kong .....	41,590	2,190	227	1,963	Ethiopia .....	5,954	51,986	49,140	2,846
Taiwan .....	65,061	35,071	4,781	30,290	French Somaliland .....	347	323	297	26
Japan .....	913,636	36,109	10,788	25,321	Uganda .....	519	54,639	54,484	155
Mauaei and Nanpo Islands ..	21,849	17	17	0	Kenya .....	14,741	12,047	11,552	495
<b>Total Asia .....</b>	<b>2,180,123</b>	<b>770,359</b>	<b>316,245</b>	<b>454,114</b>	Tanzania (formerly Tangan-				
<b>Australia and Oceania:</b>					yika and Zanzibar) .....	4,493	8,550	8,196	354
Australia .....	38,724	254,493	777	253,716	Seychelles and Depend. ....	40	299	297	2
New Guinea .....	501	3,507	3,500	7	Mauritius and Depend. ....	264	2,077	25	2,052
New Zealand and W. Samoa ..	7,698	143,424	29,542	113,882	Mozambique .....	652	3,955	1,087	2,868
British W. Pacific Is. ....	1,284	5,957	56	5,901	Malagasy Republic .....	990	25,354	23,868	1,486
French Pacific Islands ....	3,074	158	155	3	Rep. of South Africa .....	43,867	39,377	2,922	36,455
Trust Terr. of Pacific Is. ..	1,529	0	0	0	Zambia, S. Rhod., Malawi ...	2,337	2,448	1,488	960
<b>Total Australia and</b>					<b>Total Africa .....</b>	<b>358,391</b>	<b>520,324</b>	<b>443,701</b>	<b>76,623</b>
<b>Oceania .....</b>	<b>52,810</b>	<b>407,539</b>	<b>34,030</b>	<b>373,509</b>	<b>Total all countries .....</b>	<b>6,680,866</b>	<b>4,454,386</b>	<b>1,581,577</b>	<b>2,472,809</b>
<b>Africa:</b>					<b>E. E. C. (Common Market):</b>				
Morocco .....	25,399	2,145	730	1,415	Netherlands .....	514,539	92,189	10,824	81,365
Algeria .....	21,069	215	90	125	Belgium and Luxembourg ...	182,758	15,160	1,452	13,708
Tunisia .....	11,841	525	0	525	France .....	142,401	69,107	8,167	60,940
Libya .....	2,277	2	0	2	West Germany .....	476,484	41,429	2,792	38,637
United Arab Rep. (Egypt) ..	124,997	11,752	56	11,696	Italy .....	277,208	75,885	9,480	66,405
Sudan .....	5,036	1,303	183	1,120	<b>Total E. E. C. ....</b>	<b>1,592,390</b>	<b>293,770</b>	<b>32,715</b>	<b>261,055</b>

1/ Not available by countries.

Table 8.— U. S. agricultural exports: Quantity and value by commodity,  
July 1965 and 1966

Commodity exported	Unit	July 1/			
		Quantity		Value	
		1965	1966	1965	1966
				1,000	1,000
		Thousands	Thousands	dollars	dollars
<b>ANIMALS AND ANIMAL PRODUCTS</b>					
<u>Animals, live:</u>					
Cattle .....	No.	12	2	2,476	723
Poultry, live -					
Baby chicks (chickens) .....	No.	2,377	1,870	817	777
Other live poultry .....		2/	2/	164	186
Other .....		2/	2/	190	478
Total animals, live .....		---	---	3,647	2,164
<u>Dairy products:</u>					
Anhydrous milk fat, incl. donations ..	Lb.	681	114	393	95
Butter, incl. donations .....	Lb.	981	25	406	15
Cheese, incl. donations .....	Lb.	404	510	199	309
Infants' and dietetic foods,					
chiefly milk .....	Lb.	1,396	1,571	1,022	956
Milk and cream -					
Condensed & evap., incl. donations ..	Lb.	7,184	11,827	1,496	2,533
Dry, whole milk and cream .....	Lb.	1,134	1,208	585	335
Fresh .....	Gal.	77	124	108	185
Nonfat dry, incl. donations .....	Lb.	85,822	34,556	11,903	4,860
Other .....		2/	2/	409	765
Total dairy products .....		---	---	16,521	10,053
<u>Fats, oils, and greases:</u>					
Lard .....	Lb.	29,332	10,166	3,421	1,208
Tallow -					
Edible .....	Lb.	330	326	42	42
Inedible .....	Lb.	154,857	158,868	14,333	13,556
Other animal fats, oils, etc. ....	Lb.	14,673	10,931	1,585	1,214
Total fats, oils, etc. ....	Lb.	199,192	180,291	19,381	16,020
<u>Meat and meat products:</u>					
Beef and veal .....	Lb.	1,816	2,058	1,121	1,327
Pork .....	Lb.	2,601	2,832	921	1,196
Sausage casings .....	Lb.	783	1,127	527	846
Variety meats (edible offals) .....	Lb.	17,456	15,549	3,929	4,422
Other, incl. meat extracts .....	Lb.	1,671	1,615	664	736
Total meat (except poultry) .....	Lb.	24,327	23,181	7,162	8,527
<u>Poultry products:</u>					
Eggs, dried and otherwise pres. ....	Lb.	322	240	304	227
Eggs in the shell -					
Hatching .....	Doz.	379	579	411	679
Other .....	Doz.	179	431	72	158
Poultry meat -					
Chickens, fresh or frozen .....	Lb.	7,539	7,956	1,885	2,174
Turkeys, fresh or frozen .....	Lb.	3,314	1,800	1,084	658
Other, fresh or frozen .....	Lb.	862	1,012	284	342
Canned and otherwise preserved ....	Lb.	2,015	1,569	466	409
Total poultry products .....		---	---	4,506	4,647

Continued -

Table 8.-- U. S. agricultural exports: Quantity and value by commodity,  
July 1965 and 1966 - Continued

Commodity exported	Unit	July 1/			
		Quantity		Value	
		1965	1966	1965	1966
				1,000	1,000
<b>Other animal products:</b>		<b>Thousands</b>	<b>Thousands</b>	<b>dollars</b>	<b>dollars</b>
Feathers, crude or dressed .....	Lb.	51	60	54	83
Gelatin, edible .....	Lb.	176	111	116	119
Hair, raw or dressed (ex. wool) .....	Lb.	632	420	259	120
Hides and skins, raw (ex. furs) 3/...	No.	1,538	1,443	9,637	12,006
Honey .....	Lb.	683	822	122	148
Wool, unmanufactured .....	C.Lb.	1,193	1,472	935	1,170
Other .....	---	2/	2/	1,793	1,250
Total other animal products .....	---	---	---	12,916	14,896
Total animals and products .....	---	---	---	64,133	56,307
<b>VEGETABLE PRODUCTS</b>					
<b>Cotton, unmanufactured:</b>					
Cotton .....	RBale	265	143	34,864	18,311
Linters .....	RBale	19	18	583	549
Total cotton and lintars .....	RBale	284	161	35,447	18,860
<b>Fruits and preparations:</b>					
<b>Canned -</b>					
Fruit cocktail .....	Lb.	5,336	5,990	866	1,013
Peaches .....	Lb.	9,463	4,155	1,064	526
Pears .....	Lb.	360	198	73	39
Pineapples .....	Lb.	22,804	13,542	3,290	2,057
Other .....	Lb.	4,147	2,822	749	578
Total canned fruits .....	Lb.	42,110	26,707	6,042	4,213
<b>Dried -</b>					
Prunes .....	Lb.	5,783	6,696	1,077	1,440
Raisins (dried grapes) .....	Lb.	4,585	7,263	857	1,224
Other .....	Lb.	664	636	219	197
Total dried fruits .....	Lb.	11,032	14,595	2,153	2,861
<b>Fresh -</b>					
Apples .....	Lb.	7,691	3,539	662	359
Berries .....	Lb.	3,035	2,004	699	439
Grapefruit .....	Lb.	10,117	9,650	763	705
Grapes .....	Lb.	11,675	16,096	1,577	2,291
Lemons and limes .....	Lb.	30,398	29,198	2,345	2,258
Oranges and tangerines .....	Lb.	49,637	49,920	4,226	4,270
Pears .....	Lb.	724	2,887	98	292
Other .....	Lb.	57,422	62,351	4,057	4,551
Total fresh fruits .....	Lb.	170,699	175,645	14,427	15,165
<b>Fruit juices -</b>					
Grapefruit .....	Gal.	255	326	255	314
Orange .....	Gal.	801	885	1,736	1,462
Other .....	Gal.	960	946	1,114	987
Total fruit juices .....	Gal.	2,016	2,158	3,105	2,763
Frozen fruits .....	Lb.	2,824	1,153	486	218
Other .....	---	2/	2/	261	363
Total fruits and preparations .....	---	---	---	26,474	25,583

Continued -

Table 8.-- U. S. agricultural exports: Quantity and value by commodity,  
July 1965 and 1966 - Continued

Commodity exported	Unit	July 1/			
		Quantity		Value	
		1965	1966	1965	1966
				1,000	1,000
		Thousands	Thousands	dollars	dollars
<b>Grains and preparations:</b>					
Feed grains and products -					
Barley grain (48 lb.) .....	Bu.	5,057	2,710	5,802	3,351
Corn grain, incl. donations (56 lb.) .....	Bu.	51,498	43,118	72,943	62,009
Grain sorghums (56 lb.) .....	Bu.	29,039	18,648	34,144	22,547
Oats grain (32 lb.) .....	Bu.	2,242	3,626	1,613	2,688
Total feed grains .....	M.Ton:	2,188	1,681	114,502	90,595
Malt & flour, incl. barley malt .....	Lb.	6,505	10,925	432	674
Corn grits and hominy .....	Lb.	2,579	4,970	108	251
Cornmeal, incl. donations .....	Cwt.	404	199	1,645	810
Cornstarch .....	Lb.	5,885	6,225	590	683
Oatmeal, groats, and rolled oats .....	Lb.	1,051	96	80	14
Total feed grains and products .....	M.Ton:	2,233	1,712	117,357	93,027
Rice -					
Milled, incl. donations .....	Lb.	322,235	403,362	23,959	30,514
Paddy or rough .....	Lb.	1,068	1,303	84	125
Total rice (milled basis) .....	Lb.	322,929	404,209	24,043	30,639
Rye grain (56 lb.) .....	Bu.	159	91	190	137
Wheat and flour, incl. donations -					
Wheat grain (60 lb.) .....	Bu.	65,142	64,702	106,542	109,021
Wheat flour, wholly of U.S. wheat .....	Cwt.	2,721	2,950	11,172	12,815
Total wheat and flour .....	Bu.	71,345	71,429	117,714	121,836
Bakery products .....	Lb.	994	1,233	464	794
Other, including donations .....	---	2/	2/	2,645	2,076
Total grains and preparations .....	---	---	---	262,413	248,509
<b>Oilseeds and products:</b>					
Oils, including donations -					
Cottonseed oil .....	Lb.	41,570	4,015	5,566	675
Soybean oil .....	Lb.	92,213	62,845	12,884	9,041
Other .....	Lb.	17,993	29,048	2,918	3,735
Total oils (ex. essential) .....	Lb.	151,776	95,908	21,368	13,451
Oilseeds -					
Flaxseed (56 lb.) .....	Bu.	1,168	523	3,566	1,666
Soybeans (60 lb.) .....	Bu.	17,421	12,086	52,722	40,705
Other .....	---	2/	2/	1,154	1,743
Total oilseeds .....	---	---	---	57,442	44,114
Protein meal (oil-cake and meal) .....	S.Ton:	173	127	13,535	11,463
Total oilseeds and products .....	---	---	---	92,345	69,028
<b>Tobacco, unmanufactured:</b>					
Burley .....	Lb.	4,900	4,852	3,653	4,023
Cigar wrapper .....	Lb.	463	370	1,823	955
Dark-fired Kentucky and Tennessee .....	Lb.	1,332	1,324	655	701
Flue-cured .....	Lb.	27,247	33,835	22,872	28,553
Maryland .....	Lb.	664	1,734	547	1,490
Other .....	Lb.	1,531	2,086	850	889
Total tobacco, unmanufactured .....	Lb.	36,137	44,201	30,400	36,611

Continued -



Table 8.-- U. S. agricultural exports: Quantity and value by commodity,  
July 1965 and 1966 - Continued

Commodity exported	Unit	July 1/			
		Quantity		Value	
		1965	1966	1965	1966
				1,000	1,000
		Thousands	Thousands	dollars	dollars
<b>Vegetables and preparations:</b>					
Canned -					
Asparagus .....	Lb.	8,549	5,190	2,665	1,811
Soups .....	Lb.	1,439	1,629	287	339
Tomato paste and puree .....	Lb.	984	343	212	94
Tomato sauce for cooking purposes .....	Lb.	218	93	30	16
Other .....	Lb.	5,852	6,121	708	890
Total canned vegetables .....	Lb.	17,042	13,376	3,902	3,150
Dried beans, incl. donations .....	Lb.	33,279	10,716	2,416	958
Dried peas, incl. cow and chick .....	Lb.	20,268	21,128	1,120	1,408
Fresh -					
Lettuce .....	Lb.	3,673	3,747	174	268
Onions .....	Lb.	8,948	9,129	438	447
Potatoes (ex. sweet potatoes) .....	Lb.	31,509	54,115	1,353	1,349
Tomatoes .....	Lb.	11,269	13,537	1,189	1,670
Other .....	Lb.	15,819	18,497	1,099	1,501
Total fresh vegetables .....	Lb.	71,218	99,025	4,253	5,235
Frozen vegetables .....	Lb.	1,459	1,940	282	364
Soups and vegetables, dehydrated .....	Lb.	725	2,653	455	910
Vegetable seasonings .....	Lb.	752	302	319	160
Tomato juice, canned .....	Gal.	262	96	243	89
Other .....		2/	2/	1,223	1,310
Total vegetables and preps. ....		---	---	14,213	13,584
<b>Other vegetable products:</b>					
Coffee .....	Lb.	2,473	1,775	3,940	1,460
Drugs, herbs, roots, leaves, etc. ....	Lb.	775	634	415	407
Essential oils, natural .....	Lb.	656	812	1,567	1,932
Feeds & fodders (ex. oilcake & meal) .....		2/	2/	7,933	8,232
Flavoring sirups, sugars, etc. ....		2/	2/	1,444	2,826
Hops .....	Lb.	435	729	268	468
Nursery and greenhouse stock .....		2/	2/	351	429
Nuts and preparations .....	Lb.	14,876	6,968	2,962	1,591
Seeds (except oilseeds) .....	Lb.	3,004	6,586	956	1,540
Spices .....	Lb.	547	510	320	340
Other, including donations .....		2/	2/	2,455	3,322
Total other vegetable products ....		---	---	22,611	22,547
Total vegetable products .....		---	---	483,903	434,722
TOTAL AGRICULTURAL EXPORTS .....		---	---	548,036	491,029
TOTAL NONAGRICULTURAL EXPORTS .....		---	---	1,664,116	1,906,375
TOTAL EXPORTS, ALL COMMODITIES .....		---	---	2,212,152	2,397,404

1/ Preliminary.

2/ Reported in value only.

3/ Excludes the number of "other hides and skins," reported in value only.

Table 9.--U.S. agricultural imports for consumption: Quantity and value by commodity, July 1965 and 1966

Commodity imported SUPPLEMENTARY	Unit	July 1/			
		Quantity		Value	
		1965	1966	1965	1966
		Thousands	Thousands	1,000 dollars	1,000 dollars
<b>ANIMALS AND ANIMAL PRODUCTS</b>					
<u>Animals, live:</u>					
Cattle, draftable .....	No.	52	28	5,639	2,819
Cattle, free (for breeding) .....	No.	2	1	566	503
Horses .....	No.	2/	2/	325	852
Other (incl. live poultry) .....	---	3/	3/	125	236
Total animals, live .....	---	---	---	6,655	4,410
<u>Dairy products:</u>					
Butter .....	Lb.	37	25	17	7
Cheese -					
Blue-mold .....	Lb.	292	225	146	115
Cheddar .....	Lb.	22	359	11	144
Edam and Gouda .....	Lb.	386	477	178	214
Pecorino .....	Lb.	752	598	561	424
Swiss .....	Lb.	1,091	1,642	626	838
Other .....	Lb.	1,683	6,413	873	2,025
Total cheese .....	Lb.	4,226	9,714	2,395	3,760
Casein or lactarene .....	Lb.	6,630	12,561	2,174	3,185
Other .....	---	3/	3/	246	164
Total dairy products .....	---	---	---	4,832	7,116
<u>Hides and skins, raw (ex. furs):</u>					
Calf skins .....	Lb.	189	170	63	134
Cattle hides .....	Lb.	708	458	84	130
Goat and kid skins .....	Lb.	1,231	1,198	920	1,176
Sheep and lamb skins .....	Lb.	7,746	4,905	4,524	3,827
Other 4/ .....	Lb.	2,755	2,164	1,466	1,527
Total hides and skins, raw .....	Lb.	12,629	8,895	7,057	6,794
<u>Meat and meat products:</u>					
Beef and veal -					
Fresh, chilled, or frozen .....	Lb.	55,371	56,787	17,957	22,789
Other .....	Lb.	10,171	10,828	4,109	4,600
Total beef and veal .....	Lb.	65,542	67,615	22,066	27,389
Mutton, goat, and lamb .....	Lb.	4,341	5,784	1,047	1,697
Pork -					
Fresh, chilled, or frozen .....	Lb.	3,868	3,170	1,658	1,327
Hams and shoulders, canned cooked .....	Lb.	14,230	14,317	9,345	11,240
Other .....	Lb.	2,423	4,471	1,437	2,638
Total pork .....	Lb.	20,521	21,958	12,440	15,205
Sausage casings .....	---	3/	3/	1,668	1,939
Other (incl. meat extracts) .....	Lb.	6,848	7,727	1,511	2,130
Total meat (except poultry) .....	---	---	---	38,732	48,360
<u>Poultry products:</u>					
Eggs, dried, frozen, otherwise pres. .....	Lb.	2	369	1	55
Eggs in the shell .....	Doz.	44	191	45	147
Poultry meat .....	Lb.	8	6	23	31
Total poultry products .....	---	---	---	69	233

Continued -

Table 9.--U.S. agricultural imports for consumption: Quantity and value by commodity,  
July 1965 and 1966 - Continued

Commodity imported SUPPLEMENTARY	Unit	July 1/			
		Quantity		Value	
		1965	1966	1965	1966
				1,000	1,000
Wool, unmf. (ex. free in bond):		Thousands	Thousands	dollars	dollars
40's to 56's .....	G.Lb.	3,180	2,439	1,667	1,396
Finer than 56's .....	G.Lb.	9,967	8,916	6,577	5,962
Other wools .....	G.Lb.	2,042	1,619	1,460	1,086
Total wool, unmanufactured .....	G.Lb.	15,189	12,974	9,704	8,444
Other animal products:					
Bones, hoofs, and horns, unmf. ....	3/	3/		234	365
Bristles, sorted, bunched, prep. ....	Lb.	228	409	721	1,239
Fats, oils, greases, edible & inedible. ....	3/	3/		177	61
Feathers, crude .....	Lb.	333	299	750	404
Gelatin, edible .....	Lb.	925	605	496	351
Hair, unmanufactured .....	Lb.	653	989	494	660
Honey .....	Lb.	1,207	781	112	74
Other .....	3/	3/		695	1,202
Total other animal products .....		---	---	3,679	4,356
Total animals and products .....		---	---	70,728	79,713
VEGETABLE PRODUCTS					
Cotton, unmanufactured (480 lb.):					
Cotton .....	Bale	4	2	422	187
Linters .....	Bale	15	18	343	406
Total cotton and linters .....	Bale	19	20	765	593
Fruits and preparations:					
Apples, green or ripe (50 lb.) ....	Bu.	11	27	50	82
Berries .....	Lb.	7,783	9,871	1,428	1,907
Dates .....	Lb.	0	0	0	0
Figs .....	Lb.	0	1,027	0	98
Grapes (40 lb.) .....	Cu.Ft.	4	0	13	0
Melons .....	Lb.	510	130	35	2
Olives in brine .....	Gal.	972	1,355	1,935	2,365
Oranges, mandarin, canned .....	Lb.	5,970	5,946	1,214	1,194
Pineapples, canned, prepared or pres. ....	Lb.	15,542	17,315	1,780	1,926
Pineapple juice .....	Gal.	423	50	111	20
Other .....	3/	3/		2,396	1,958
Total fruits and preparations .....		---	---	8,962	9,552
Grains and preparations:					
Barley grain (48 lb.) .....	Bu.	730	51	971	62
Barley malt .....	Lb.	8,981	3,920	426	200
Corn grain (56 lb.) .....	Bu.	78	3	106	20
Oats grain (32 lb.) .....	Bu.	269	170	215	141
Rice .....	Lb.	6,285	14	317	2
Rye grain (56 lb.) .....	Bu.	73	186	86	233
Wheat grain for domestic use (60 lb.) ..	Bu.	4	255	10	498
Wheat flour .....	Lb.	0		0	0
Other .....	3/	3/		1,007	1,678
Total grains and preparations .....		---	---	3,138	2,834

Table 9.--U.S. agricultural imports for consumption: Quantity and value by commodity,  
July 1965 and 1966 - Continued

Commodity imported SUPPLEMENTARY	Unit	July 1/			
		Quantity		Value	
		1965	1966	1965	1966
				1,000	1,000
		Thousands	Thousands	dollars	dollars
<b>Nuts and preparations:</b>					
Almonds .....	Lb.	11	54	8	36
Brazil nuts .....	Lb.	4,775	4,495	1,125	1,226
Cashew nuts .....	Lb.	5,148	4,974	2,669	2,748
Coconut meat, fresh, frozen, prep. ....	Lb.	6,850	7,313	893	915
Pistache nuts .....	Lb.	1,284	985	697	522
Other .....	---	3/	3/	301	242
Total nuts and preparations .....	---	---	---	5,693	5,689
<b>Oilseeds and products:</b>					
<b>Oils, edible and inedible -</b>					
Cacao butter .....	Lb.	1,224	1,184	447	504
Carneuba wax .....	Lb.	732	1,131	281	388
Castor oil .....	Lb.	7,383	6,473	587	657
Coconut oil .....	Lb.	7,534	10,282	1,150	1,044
Olive oil, edible .....	Lb.	2,629	4,463	810	1,351
Palm oil .....	Lb.	661	2,851	86	264
Palm kernel oil .....	Lb.	13,614	11,713	2,063	1,577
Tung oil .....	Lb.	1,213	3,481	282	629
Other .....	Lb.	2,063	2,874	369	541
Total oils (except essential) ....	Lb.	37,053	44,452	6,075	6,955
<b>Oilseeds -</b>					
Copra .....	Lb.	37,934	68,822	4,138	5,083
Sesame seed .....	Lb.	1,930	1,557	276	248
Other .....	---	3/	3/	33	110
Total oilseeds .....	---	---	---	4,447	5,441
Protein meal (oilcake and meal) ....	Lb.	7,219	9,421	193	272
Total oilseeds and products .....	---	---	---	10,715	12,668
<b>Sugar and related products:</b>					
Cane sugar .....	S.Ton	194	509	22,317	61,783
Molasses unfit for human consumption. ....	Gal.	14,756	40,898	1,003	4,653
Other .....	---	3/	3/	248	266
Total sugar and related products .....	---	---	---	23,568	66,702
<b>Vegetables and preparations:</b>					
Canned mushrooms .....	Lb.	1,829	1,577	947	834
Canned tomatoes, tomato paste & sauce. ....	Lb.	3,698	4,331	392	487
<b>Fresh or dried -</b>					
Cucumbers .....	Lb.	146	107	11	8
Garlic .....	Lb.	727	338	81	42
Onions .....	Lb.	1,943	1,517	165	117
Potatoes, white .....	Lb.	3,404	686	184	22
Tomatoes, natural state .....	Lb.	730	1,405	95	181
Turnips and rutabagas .....	Lb.	372	0	10	0
Pickled vegetables .....	Lb.	1,326	702	104	113
Tapioca, tapioca flour, & cassava ....	Lb.	32,489	26,238	1,190	869
Other .....	---	3/	3/	1,608	6,563
Total vegetables and preparations. ....	---	---	---	4,787	9,236

Table 9.--U.S. agricultural imports for consumption: Quantity and value by commodity,  
July 1965 and 1966 - Continued

Commodity imported SUPPLEMENTARY	Unit	July 1/			
		Quantity		Value	
		1965	1966	1965	1966
				1,000	1,000
Other vegetable products:		Thousands	Thousands	dollars	dollars
Feeds & fodders (ex. oilcake & meal).....	3/	3/		1,225	1,119
Hops .....	Lb. : 0	3		0	2
Jute and jute butts, unmd. ....	L.Ton: 3	3		665	807
Malt liquors .....	Gal. : 1,231	2,157		1,372	2,395
Nursery and greenhouse stock .....	3/	3/		52	42
Seeds, field and garden .....	3/	3/		667	1,103
Spices .....	Lb. : 2,987	4,117		346	455
Tobacco, unmanufactured .....	Lb. : 14,210	13,877		9,837	9,920
Wines .....	Gal. : 936	1,101		4,031	4,860
Other .....	3/	3/		679	1,156
Total other vegetable products .....				18,874	21,859
Total vegetable products .....				76,502	129,133
TOTAL SUPPLEMENTARY IMPORTS .....				147,230	208,846
COMPLEMENTARY					
Bananas .....	Lb. : 250,233	261,763		11,761	12,823
* Coffee (incl. into Puerto Rico) .....	Lb. : 159,756	207,863		59,378	74,629
Coffee essences, substitutes, etc. ....	Lb. : 150	874		178	924
Cocoa or cacao beans .....	Lb. : 58,342	45,410		8,597	9,290
Cocoa and chocolate, prepared .....	Lb. : 7,261	10,619		959	1,115
Drugs, herbs, roots, etc. ....	3/	3/		1,093	1,924
Essential or distilled oils .....	3/	3/		2,464	2,076
Fibers, unmanufactured .....	L.Ton: 9	10		1,965	1,863
Rubber, crude .....	Lb. : 68,683	58,113		12,769	11,338
Silk, raw .....	Lb. : 191	319		1,036	2,102
Spices .....	Lb. : 6,022	7,114		2,462	3,719
Tea .....	Lb. : 6,372	8,446		2,723	3,512
Wool, unmd. (free in bond) .....	C.Lb. : 14,458	15,556		7,441	7,780
Other complementary agri. products .....	3/	3/		613	640
TOTAL COMPLEMENTARY IMPORTS .....				113,439	132,735
TOTAL AGRICULTURAL IMPORTS .....				260,669	342,581
TOTAL NONAGRICULTURAL IMPORTS .....				1,374,792	1,708,703
TOTAL IMPORTS, ALL COMMODITIES .....				1,635,461	2,051,284

1/ Preliminary.

2/ Less than 500.

3/ Reported in value only.

4/ Excludes the weight of "other hides and skins," reported in pieces only.

### Explanatory Note

U.S. foreign agricultural trade statistics in this report include official U.S. data based on compilations of the Bureau of the Census. Agricultural commodities consist of (1) nonmarine food products and (2) other products of agriculture which have not passed through complex processes of manufacture such as raw hides and skins, fats and oils, and wine. Such manufactured products as textiles, leather, boots and shoes, cigarettes, naval stores, forestry products, and distilled alcoholic beverages are not considered agricultural.

The trade statistics exclude shipments between the 50 States and Puerto Rico, between the 50 States and the island possessions, between Puerto Rico and the island possessions, among the island possessions, and intransit through the United States from one foreign country to another when documented as such through U.S. Customs.

**EXPORTS** The export statistics also exclude shipments to the U.S. armed forces for their own use and supplies for vessels and planes engaged in foreign trade. Data on shipments valued at less than \$100 are not compiled by commodity and are excluded from agricultural statistics but are reflected in nonagricultural and overall export totals in this report. The agricultural export statistics include shipments under P.L. 87-195 (Act for International Development), principally sales for foreign currency; under P.L. 83-480 (Agricultural Trade Development and Assistance Act), and related laws; and involving Government payments to exporters. (USDA payments are excluded from the export value.) Separate statistics on Government program exports are compiled by USDA from data obtained from operating agencies.

The export value, the value at the port of exportation, is based on the selling price (or cost if not sold) and includes inland freight, insurance, and other charges to the port. The country of destination is the country of ultimate destination or where the commodities are to be consumed, further processed, or manufactured. When the shipper does not know the ultimate destination, the shipments are credited to the last country, as known to him at time of shipment from the United States, to which the commodities are to be shipped in their present form. Except for Canada, export shipments valued \$100-\$499 are included on the basis of sampling estimates; shipments to Canada valued \$100-\$1,999 are sampled.

**IMPORTS** Imports for consumption consist of commodities released from U.S. Customs custody upon arrival, or entered into bonded manufacturing warehouse, or withdrawn from bonded storage warehouse for consumption. The agricultural statistics exclude low-value shipments from countries not identified because of illegible reporting, but they are reflected in nonagricultural and overall import totals in this report.

The import value, defined generally as the market value in the foreign country, excludes import duties, ocean freight, and marine insurance. The country of origin is defined as the country where the commodities were grown or processed. Where the country of origin is not known, the imports are credited to the country of shipment.

Imports similar to agricultural commodities produced commercially in the United States and others that are interchangeable in use to any significant extent with such U.S. commodities are supplementary, or partly competitive. All other commodities are complementary, or noncompetitive.

Further explanatory material on foreign trade statistics and compilation procedures of the Bureau of the Census is contained in the publications of that agency.

UNITED STATES DEPARTMENT OF AGRICULTURE  
WASHINGTON, D.C. 20250

POSTAGE AND FEES PAID  
U.S. DEPARTMENT OF AGRICULTURE

OFFICIAL BUSINESS

END  
DATE  
FILMED  
9-20-79  
NTIS