



AgEcon SEARCH
RESEARCH IN AGRICULTURAL & APPLIED ECONOMICS

The World's Largest Open Access Agricultural & Applied Economics Digital Library

This document is discoverable and free to researchers across the globe due to the work of AgEcon Search.

Help ensure our sustainability.

Give to AgEcon Search

AgEcon Search

<http://ageconsearch.umn.edu>

aesearch@umn.edu

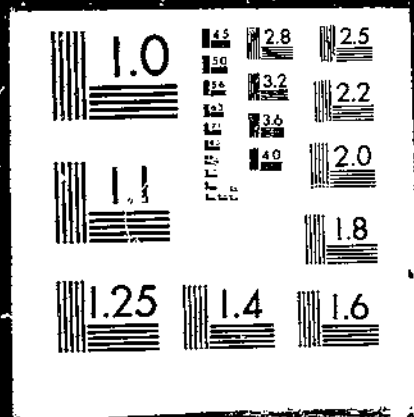
*Papers downloaded from **AgEcon Search** may be used for non-commercial purposes and personal study only. No other use, including posting to another Internet site, is permitted without permission from the copyright owner (not AgEcon Search), or as allowed under the provisions of Fair Use, U.S. Copyright Act, Title 17 U.S.C.*

USDA/PATUS-
MAY 66

PATUS/FOREIGN AGRICULTURAL TRADE OF THE UNITED STATES, 1966 MAY. Washington, DC:
Economic Research Service.

(NAL Call No: A286.9/Ag8)

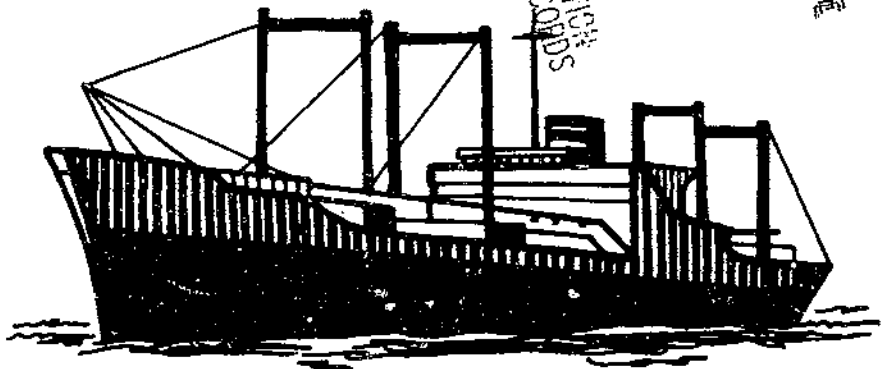
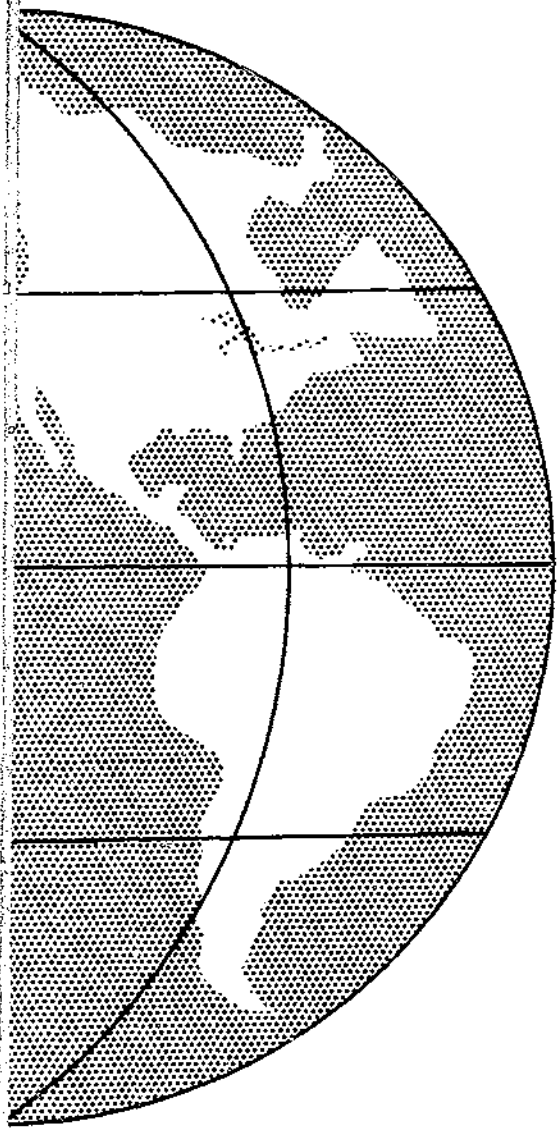
I O F I USDA-FATUS MAY - 66



A2869
Ag8
Cop-3

MAY 1966

FOREIGN AGRICULTURAL TRADE OF THE UNITED STATES



U.S. DEPT. OF AGRICULTURE
NATIONAL ARCHIVES
SERIALS ACQUISITION

NOV 11 1975
NATIONAL ARCHIVES
SERIALS ACQUISITION

IN THIS ISSUE:

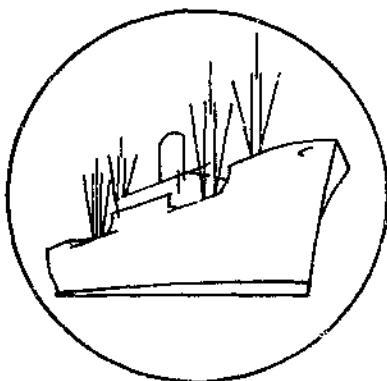
- VALUE OF AGRICULTURAL IMPORTS IN 1965 WAS LITTLE CHANGED FROM 1964
- U.S. AGRICULTURAL EXPORTS BY COUNTRY, FISCAL YEARS 1960 THROUGH 1965
- EXPORT HIGHLIGHTS
- TRADE STATISTICS, JULY-FEBRUARY

Published Monthly by Economic Research Service/U. S. Department of Agriculture

Contents

	<u>Page</u>
Digest	3
Value of Agricultural Imports in 1965 was Little Changed from 1964	5
Shipments of Farm Products to the European Economic Community and to Asia Increased the Value of U.S. Agricultural Exports Again in 1964-65	14
Export Highlights	38
Explanatory Note	54
Table 1.--Imports: Value by Commodity, Calendar Years 1964 and 1965	6
Table 2.--Imports: Quantity and Value by Commodity, Calendar Years 1964 and 1965	10
Table 3.--Exports: Value by Major Areas, Fiscal Years 1960-65	15
Table 4.--Exports to Council of Mutual Economic Cooperation (Comecon): Value by Country, Fiscal Years 1960-65	16
Table 5.--Exports to European Economic Community: Value by Country, Fiscal Years 1960-65	18
Table 6.--Exports to European Free Trade Association: Value by Country, Fiscal Years 1960-65	18
Table 7.--Exports to the Latin American Free Trade Association: Value by Country, Fiscal Years 1960-65	19
Table 8.--Exports to the Central American Common Market: Value by Country, Fiscal Years 1960-65	19
Table 9.--Exports of U.S. grains from Canadian Ports: Estimated Value by Country, Fiscal Year 1965	20
Table 10.--Exports: Value by Country of Destination, Specified Fiscal Year	21
Table 11.--Exports: Major Countries of Destination by Commodity Groups, Specified Fiscal Years	24
Table 12.--Exports: Value by Commodity, July-March 1964-65 and 1965-66 ..	39
Table 13.--Exports to the European Economic Community: Value by Variable Levy and Other Commodities, February 1964-66 and July-February 1963-64 .	43
Table 14.--Exports: Quantity and Value by Commodity, February 1965 and 1966 and July-February 1964-65 and 1965-66	44
Table 15.--Imports: Quantity and Value by Commodity, February 1965 and 1966 and July-February 1964-65 and 1965-66	48
Table 16.--Exports and Imports, July-January 1965-66	52

Trade Statistics and Analysis Branch
Foreign Development and Trade Division
Economic Research Service



FOREIGN AGRICULTURAL TRADE OF THE UNITED STATES

Digest

U.S. agricultural imports for consumption totaled \$4,088 million in 1965, about the same as the \$4,082 million in the previous year. A 7 percent increase in supplementary (partially competitive) products was offset by a decline of the same magnitude for complementary (noncompetitive) items. Supplementary imports totaled \$2,248 million in 1965 compared with \$2,096 million in 1964. The increase was due to sharp gains in dutiable cattle, apparel wool, tobacco, and dairy products. In addition, lesser gains occurred for hides and skins, meats, copra, coconut oil, wines, and vegetables. Complementary imports fell to \$1,840 million in 1965 from \$1,986 million a year earlier. The value of coffee imports fell sharply in 1965. Other reductions were noted for carpet wool, cocoa beans, crude natural rubber, and tea.

* * * * *

U.S. exports of farm products in fiscal year 1964-65 rose slightly from a year earlier to \$6,097 million primarily because of increased exports to the European Economic Community, Asia, and Latin America. Offsetting the above gains somewhat were declines in exports to EFTA, Comecon, and Africa. Exports to Japan reached an alltime high of \$750 million. There were substantial increases in exports to India and Pakistan under Government-financed programs. Record export levels were achieved for corn, grain sorghums, soybeans, soybean oil, oilcake and meal, tallow, hides and skins, and variety meats. Exports of wheat, rice, cotton, tobacco, vegetables, and poultry meat declined.

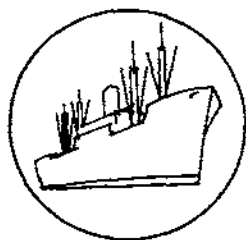
* * * * *

U.S. agricultural exports totaled an estimated \$5,000 million in July-March, 1965-66 -- up 12 percent from the same period in 1964-65. Large increases in exports of feed grains, hides and skins, milled rice, soybeans, protein meal, fruits and preparations, poultry products, and wheat and wheat flour more than offset declines in exports of cotton, cottonseed and soybean oils, dairy products, and fats and oils. The value of U.S. exports in the third quarter of the current fiscal year is about 31 percent above the same quarter a year earlier, reflecting the reduced trade in January and February 1965 because of the longshoremen's strike at Eastern and Gulf ports. The export value of grains and preparations accounted for 44 percent of agricultural exports during the 3 quarters of

1965-66 -- up from 38 percent a year earlier. Soybean exports were valued at \$548 million for July-March 1965-66, up 24 percent from the same months a year earlier.

* * * * *

The value of exports of agricultural products to the European Economic Community (EEC) from the United States totaled \$124 million in February 1966 -- 45 percent above February 1965. For the period July-February 1965-66, exports were 27 percent above the same period of the previous year. Feed grains accounted for the largest share of exports -- 33 percent. Export values also increased for soybeans, wheat, fruits and vegetables, oilcake and meal, and tobacco. Commodities subject to variable levies accounted for 46 percent of total agricultural exports in the 1965-66 period, compared to 38 percent in the corresponding months a year earlier.



SPECIAL in this issue

VALUE OF AGRICULTURAL IMPORTS IN 1965 WAS LITTLE CHANGED FROM 1964

U.S. agricultural imports for consumption totaled \$4,088 million in 1965, little changed from the \$4,082 million in the previous year. An increase in imports of supplementary (partially competitive) items was offset by a decline of the same magnitude for complementary (noncompetitive) products.

In the past 10 years, agricultural imports have averaged about \$4 billion a year. Imports of supplementary products increased to \$2.2 billion in 1965 from \$1.5 billion in 1956 while imports of complementary products decreased by a similar amount during this period. Larger imports of meats and products, hides and skins, dairy products, fruits and preparations, tobacco, and vegetables accounted for the increase in supplementary items. The increase in meats alone accounted for two-fifths of the total supplementary gain in the past decade. Imports of dutiable cattle have fluctuated sharply during the last 10 years, reflecting changing domestic price levels. However, imports of dutiable cattle from Mexico and Canada have shown a general uptrend.

The opposite trend has occurred for most complementary items. They have shown marked declines in the past 10 years, mainly because of lower world prices. The value of coffee imports declined to \$1.1 billion in 1965 from \$1.5 billion in 1955. In this period the average unit value of coffee declined to 37.6 cents per pound in 1965 from 52.2 cents in 1955.

Imports of nonagricultural products rose sharply to \$17.2 billion in 1965 from \$14.5 billion in 1964. Most of the increase reflects larger imports of manufactured products, although imports of raw materials -- especially metals and fuels -- have also increased.

Supplementary Imports

Imports of supplementary products increased to \$2,248 million in 1965 from \$2,096 million in 1964. Most of this increase occurred from sharp gains in imports of dutiable cattle, apparel wool, tobacco, and dairy products. In addition, lesser gains occurred in imports of hides and skins, meats, copra, coconut oil, wines, and vegetables. Increased imports of these commodities more than offset the decline in imports of cotton, grains and preparations, sugar, and fruits and preparations so that, overall, imports of supplementary commodities increased 7 percent.

Table 1.--U.S. agricultural imports for consumption: Value by commodity, calendar years 1964 and 1965

Commodity	1964	1965	Change
	Million dollars		Percent
<u>Supplementary</u>			
Animals and animal products:			
Animals, live	56	117	+109
Dairy products	62	73	+18
Hides and skins	71	73	+3
Meats and meat products	433	452	+4
Wool, apparel	115	158	+37
Other	47	49	+4
Total animals, etc.	784	922	+18
Cotton, excluding linters	21	18	-14
Fruits and preparations	124	123	-1
Grains and preparations	49	41	-16
Nuts and preparations	73	75	+3
Oilseeds and products	160	177	+11
Sugar, cane	458	441	-4
Tobacco, unmanufactured	110	130	+18
Vegetables and preparations	103	116	+13
Wines	62	68	+10
Other	152	137	-10
Total supplementary	2,096	2,248	+7
<u>Complementary</u>			
Bananas	127	162	+28
Coffee	1,200	1,061	-12
Cocoa beans	131	120	-8
Rubber, crude, natural	201	182	-9
Tea	60	57	-5
Wool, carpet	90	71	-21
Other	177	187	+6
Total complementary	1,986	1,840	-7
Total imports	4,082	4,088	---

Animals and animal products.--Calendar year 1965 imports of dutiable cattle rose to 1,111,000 head, or 582,000 head more than 1964 imports. Dutiable cattle imports are mainly feeders and stockers. Relatively high beef prices in the United States during 1965 induced the substantial increase in imports of stocker and feeder cattle. Mexico and Canada, traditional suppliers, both increased their shipments of cattle to the United States. U.S. imports from Canada were up to 575,000 head in 1965 from 198,000 in 1964. Imports from Mexico increased 61 percent to 535,300 head. Shipments by Mexico were also stimulated by the rumored increase in the cattle export tax on December 31, 1965. This was previously reduced by 65 percent and has not been increased.

U.S. imports of dairy products increased to \$73 million from \$62 million a year earlier. The increase was mainly due to larger imports of cheese. Casein imports in 1965 were 91.8 million pounds, 15 percent below 1964 due to relatively high world prices. However, casein prices have recently fallen -- from 40 cents per pound in mid-1965 to about 25 cents in February 1966.

Meat imports increased slightly to \$452 million in 1965 from \$433 million in 1964, mainly because of larger imports of pork products.

Beef and veal imports declined to 701 million pounds in 1965 from 800 million pounds in 1964. Imports of boneless beef, the major beef import item, declined by 135 million pounds. A major factor in the smaller beef imports has been the substantial increase in U.S. production of cow beef, a product similar to that imported. Cow slaughter increased substantially in the second half of 1964, and in 1965 continued well above year earlier levels. For 1965, cow slaughter was up about 25 percent.

Imports of pork increased to 262 million pounds in 1965 from 211 million in 1964. The increase reflects increased imports of fresh pork and hams, shoulders and bacon. Imports of fresh pork were up 9 million pounds, while hams, shoulders, and bacon imports were up 43 million pounds to 189 million pounds.

Hides and skins.--U.S. imports of hides and skins were \$73 million in 1965 compared with \$71 million in 1964. On a weight basis, imports were down from 145 million pounds to 134 million pounds. Imports of sheep, lamb, goat, and kid hides accounted for 62 percent of total imports.

Apparel wool.--Apparel wool imports increased to \$158 million in 1965 compared with \$115 million in 1964. The value increase was mainly due to stronger world wool prices and not to a substantial increase in quantity imported. Australia continued to be the principal supplier of apparel wools, followed by Uruguay, New Zealand, the Republic of South Africa, and Argentina.

Cotton.--U.S. imports of cotton excluding linters totaled 99,000 bales in 1965 compared with 118,000 bales in 1964. Except for short Asiatic cotton, imports are regulated by quotas. Long staple imports are limited to 95,000 bales on an August 1 - July 31 year, while imports of upland cotton (under 1-1/8 inches) are limited to 30,000 bales on a September 19 - September 18 year.

Fruits and preparations.--U.S. imports of fruits and preparations totaled \$123 million in 1965, or about the same level as in 1964. Import patterns did not materially change during 1965, as the United States continued to import such supplementary products as oranges, apples, melons, and pineapples in fairly large quantities. Imports of oranges were down 24.3 million pounds from the relatively high level of 1964.

Grains and preparations.--U.S. imports of grains and preparations declined 16 percent during 1965 to \$41 million. Barley was the major grain imported. Wheat imports were regulated under Section 22 of the Agricultural Adjustment Act of 1934, as amended, while imports of other grains were unrestricted.

Sugar.--Sugar imports by the United States in 1965 were 3.8 million short tons -- down 5 percent from the level of 1964. The value of imports declined 4 percent, indicating a slight strengthening of prices during the past year. The Philippines, Mexico, Dominican Republic, Peru, Brazil, and Australia were again the major suppliers.

Oilbearing materials and products.--U.S. imports of oilbearing materials and products increased to \$177 million in 1965 compared with \$160 million in 1964. The increase reflects the continued growth in imports of copra, coconut oil, and castor oil. These 3 products accounted for 67 percent of total imports. Imports of copra were valued at \$55 million. Copra imports were 615 million pounds -- up 67 million from 1964 and 94 million from 1963.

Vegetables and preparations.--Imports of vegetables and preparations rose to \$116 million in 1965 from \$103 million in 1964. The major vegetable products imported were potatoes, tomatoes, tapioca, onions, cucumbers, and carrots. During 1965, increased imports of all of these products contributed to the total increase in imports of vegetables and preparations.

Tobacco.--U.S. imports of unmanufactured tobacco increased to 183 million pounds in 1965 compared with 169 million in 1964. Imports of cigarette leaf accounted for about 70 percent of total U.S. imports. Such tobacco consisted mainly of oriental types used for blending with domestic tobacco to produce the taste and aroma desired by U.S. smokers. In 1965, 88 percent of the oriental type tobacco was imported from Turkey and Greece.

Complementary Imports

Imports of complementary products fell to \$1,840 million in 1965 from \$1,986 million in the previous year. The value of coffee imports declined sharply in 1965. Other reductions were noted for carpet wool, cocoa beans, crude natural rubber, and tea. Only imports of bananas, spices, essential oils, and herbs were above the levels of the previous year.

Bananas.--Imports totaled 3,493 million pounds in 1965 compared with 3,430 million in 1964. The higher value reported in 1965 reflected for the most part the undervaluation by importers in the previous year. The average wholesale

price for bananas averaged 7.4 cents per pound in 1965 compared with 6.2 cents in 1964. The Central American Republics continued to be the principal U.S. suppliers in 1965. Ecuador, Honduras, Panama, and Costa Rica accounted for 98 percent of U.S. imports in 1965.

Coffee.--U.S. imports of green coffee totaled 2,822 million pounds in 1965 as against the 3,027 million pounds in 1964. The average unit value of coffee fell to 37.6 cents per pound in 1965 from 39.7 cents a year earlier. In 1965 the United States imported more African coffee, which generally has a low price. Imports from Africa totaled 815 million pounds in 1965 compared with 797 million in 1964. Angola, Uganda, Ivory Coast, Ethiopia, and Burundi-Rwanda were the principal African suppliers. However, Latin America continued to be the major supplier of coffee to the U.S. market in 1965. Coffee imports from Latin America represented about 67 percent of the U.S. total. Brazil, Colombia, Mexico, and El Salvador were the principal Latin American suppliers.

Coffee trade is regulated by the International Coffee Agreement consisting of 21 importing countries and 34 exporting countries. The agreement represents about 97 percent of the world coffee trade.

Cocoa beans.--Imports of cocoa beans rose to 794 million pounds in 1965 from 597 million in 1964. However, lower prices resulted in the value declining to \$120 million in 1965 from \$131 million in 1964. The average unit import value fell 31 percent in 1965 from a year earlier. In 1965, Ghana, Nigeria, and Brazil were the major suppliers. In 1964-65 (October 1 - September 30 crop year), world cocoa bean production was a record 1,514,200 metric tons.

Rubber.--Crude natural rubber imports increased to 998 million pounds in 1965 from 988 million in 1964. Value declined by 9 percent to \$182 million. The principal suppliers were Indonesia, Malaysia, and Liberia. In 1965, crude natural rubber accounted for about 20 percent of total rubber used in the United States. In the early 1950s it represented over four-fifths of total use.

Carpet wool.--U.S. imports of carpet wool fell to 136 million pounds in 1965 from 144 million in 1964. In recent years there has been a considerable shift from the use of wool to man-made fibers for manufacturing carpets. In 1965, man-made fibers accounted for 50 percent of the total fiber in carpet production, up from 43 percent in 1964. New Zealand and Argentina supply most of the carpet wool used in this country.

Tea.--U.S. imports of tea totaled 130 million pounds in 1965, slightly below the 134 million a year earlier. Imports of tea have been relatively stable, averaging around 130 million pounds in the last 3 years. Ceylon, India, Indonesia, and Kenya were the principal suppliers.

Table 2.-- U.S. agricultural imports for consumption: Quantity and value by commodity, 1964 and 1965

Commodity imported SUPPLEMENTARY	Unit	Year ended December 31 1/			
		Quantity		Value	
		1964	1965	1964	1965
		Thousands	Thousands	1,000 dollars	1,000 dollars
ANIMALS AND ANIMAL PRODUCTS					
<u>Animals, live:</u>					
Cattle, dutiable	No.	529	1,111	41,724	98,298
Cattle, free (for breeding) ...	No.	18	18	6,446	6,209
Horses	No.	3	3	6,848	10,580
Other (incl. live poultry) ...	---	2/	2/	996	1,698
Total animals, live	---	---	---	56,014	116,785
<u>Dairy products:</u>					
Butter	Lb.	665	748	362	385
Cheese -					
Blue-mold	Lb.	4,249	4,400	2,136	2,209
Cheddar	Lb.	2,479	1,858	805	641
Edam and Gouda	Lb.	6,770	7,566	3,117	3,537
Pecorino	Lb.	16,639	15,850	10,420	12,112
Swiss	Lb.	16,680	15,732	9,206	8,887
Other	Lb.	31,061	33,905	13,808	15,637
Total cheese	Lb.	77,878	79,311	39,492	43,023
Casein or lactarene	Lb.	108,452	91,788	20,313	26,621
Other	---	2/	2/	2,332	2,992
Total dairy products	---	---	---	62,499	73,021
<u>Hides and skins, raw:</u>					
Calf skins	Lb.	6,468	3,530	2,566	1,830
Cattle hides	Lb.	13,639	14,265	2,180	2,260
Goat and kid skins	Lb.	21,134	20,654	13,842	15,423
Sheep and lamb skins	Lb.	62,378	62,570	32,489	36,235
Other 2/	Lb.	41,470	33,224	20,375	16,913
Total hides and skins, raw ..	Lb.	145,089	134,243	71,452	72,661
<u>Meat and meat products:</u>					
Beef and veal -					
Fresh, chilled or frozen ...	Lb.	705,610	584,182	228,599	195,839
Other	Lb.	94,792	116,961	32,344	45,935
Total beef and veal	Lb.	800,402	701,143	260,943	241,774
Mutton, goat, and lamb	Lb.	44,743	42,540	10,256	10,493
Pork -					
Fresh, chilled or frozen ...	Lb.	39,187	47,948	14,222	19,176
Hams and shoulders, canned ..	Lb.	140,535	175,328	94,263	117,546
Other	Lb.	30,902	38,993	18,493	22,340
Total pork	Lb.	210,624	262,269	126,978	159,062
Sausage casings	---	2/	2/	17,415	20,606
Other (incl. meat extracts) ...	Lb.	74,910	84,791	16,502	19,404
Total meat (except poultry) ..	---	---	---	432,094	451,339
<u>Poultry products:</u>					
Eggs, dried or preserved	Lb.	12	96	11	23
Eggs, in the shell	Doz.	2,295	634	1,208	682
Poultry meat	Lb.	208	205	583	587
Total poultry products	---	---	---	1,802	1,292

Table 2.-- U.S. agricultural imports for consumption: Quantity and value by commodity, 1964 and 1965 - Continued

Commodity imported SUPPLEMENTARY	Unit:	Year ended December 31 1/			
		Quantity		Value	
		1964	1965	1964	1965
				1,000	1,000
<u>Wool, unmf. (except free):</u>		<u>Thousands</u>	<u>Thousands</u>	<u>dollars</u>	<u>dollars</u>
40's to 56's	:GLb.:	22,168	41,533	15,478	23,652
Finer than 56's	:GLb.:	98,050	173,840	74,336	110,520
Other wools	:GLb.:	27,796	27,063	25,117	23,494
Total wool, unmf.	:GLb.:	148,014	242,436	115,431	157,666
<u>Other animal products:</u>					
Bones, hoofs, horns, unmf. ..	:LTon:	43	41	2,440	2,607
Bristles, sorted or prepared ..	:Lb.:	3,035	3,417	11,349	11,376
Fats, oils, and greases	:Lb.:	11,225	11,007	1,624	2,121
Feathers, crude	:Lb.:	3,834	3,690	6,046	6,440
Gelatin, edible	:Lb.:	7,660	8,007	3,792	4,101
Hair, unmf.	:Lb.:	10,186	10,208	8,097	8,242
Honey	:Lb.:	4,917	13,344	677	1,331
Other	:---	2/	2/	10,963	12,230
Total other animal products.	:---	---	---	44,988	48,648
Total animals and products.	:---	---	---	784,280	921,412
<u>VEGETABLE PRODUCTS</u>					
<u>Cotton, unmf. (480 lb.):</u>					
Cotton	:Bale:	118	99	21,484	18,240
Linters	:Bale:	183	169	4,090	4,430
Total cotton and linters ...	:Bale:	301	268	25,574	22,670
<u>Fruits and preparations:</u>					
Apples, fresh (50 lb.)	:Bu.:	1,159	687	4,248	3,077
Berries	:Lb.:	65,572	82,739	10,345	14,206
Dates	:Lb.:	39,407	27,918	3,825	2,537
Figs	:Lb.:	26,927	23,220	2,559	2,526
Grapes (40 lb.)	:Cuft:	1,950	1,582	4,754	3,454
Melons	:Lb.:	230,868	271,046	9,715	10,723
Olives in brine	:Gal.:	16,588	12,120	22,312	23,982
Oranges, mandarin, canned	:Lb.:	58,625	70,829	12,108	14,429
Pineapples, canned or pres.	:Lb.:	139,893	162,606	16,080	18,378
Pineapple juice	:Gal.:	12,592	10,426	3,840	3,055
Other	:---	2/	2/	33,980	26,496
Total fruits and preps.	:---	---	---	123,766	122,863
<u>Grains and preparations:</u>					
Barley grain (48 lb.)	:Bu.:	11,855	6,438	15,742	8,806
Barley malt	:Cwt.:	937	492	4,592	2,381
Corn grain (56 lb.)	:Bu.:	964	942	1,944	1,557
Oats grain (32 lb.)	:Bu.:	2,598	3,882	2,334	3,343
Rice	:Lb.:	1,946	66,687	582	3,501
Rye grain (56 lb.)	:Bu.:	1,416	1,834	1,800	2,143
Wheat grain (60 lb.)	:Bu.:	2,834	715	5,703	1,457
Wheat flour	:Cwt.:	38	39	161	224
Other	:---	2/	2/	15,766	16,898
Total grains and preps.	:---	---	---	48,624	40,610

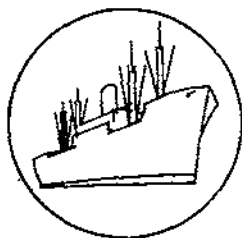
Table 2.-- U.S. agricultural imports for consumption: Quantity and value by commodity, 1964 and 1965 - Continued

Commodity imported SUPPLEMENTARY	Unit	Year ended December 31 1/			
		Quantity		Value	
		1964	1965	1964	1965
		Thousands	Thousands	1,000 dollars	1,000 dollars
Nuts and preparations:					
Almonds	Lb.	383	219	215	131
Brazil nuts	Lb.	29,892	21,955	8,074	7,703
Cashew nuts	Lb.	69,615	65,612	33,498	34,133
Coconut meat, fresh or prep.	Lb.	131,206	116,172	16,704	15,808
Pistache nuts	Lb.	10,837	17,720	5,665	9,825
Other	---	2/	2/	8,531	7,619
Total nuts and preps.	---	---	---	72,687	75,219
Oilseeds and products:					
Oils, edible and inedible -					
Cacao butter	Lb.	13,366	17,494	6,560	7,104
Carnauba wax	Lb.	12,793	13,628	5,408	5,524
Castor oil	Lb.	96,394	129,475	9,755	11,295
Coconut oil	Lb.	397,139	402,398	47,118	51,811
Olive oil, edible	Lb.	66,920	44,470	17,862	13,558
Palm oil	Lb.	6,257	6,557	628	720
Palm kernel oil	Lb.	85,127	83,097	10,500	12,381
Tung oil	Lb.	29,149	23,268	6,329	5,271
Other	Lb.	25,801	32,760	5,212	6,170
Total oils (ex. essential).:Lb.		732,946	753,147	109,372	113,834
Oilseeds -					
Copra	Lb.	547,517	614,933	43,133	54,987
Sesame seed	Lb.	24,815	25,491	3,602	3,499
Other	Lb.	16,120	16,063	1,779	2,183
Total oilseeds	Lb.	588,452	656,487	48,514	60,669
Protein meal (oilcake and meal)	Lb.	90,298	88,676	2,495	2,627
Total oilseeds and prods.:Lb.		1,411,696	1,498,310	160,381	177,130
Sugar and related products:					
Cane sugar	STon:	3,591	3,850	458,425	440,502
Molasses, inedible	Gal.:	266,421	269,186	34,093	24,170
Other	---	2/	2/	6,522	7,285
Total sugar and products ...	---	---	---	499,040	471,957
Vegetables and preparations:					
Canned mushrooms	Lb.	10,870	13,208	5,659	7,116
Canned tomatoes, paste, sauce.:Lb.		94,661	111,682	11,865	12,638
Fresh -					
Cucumbers	Lb.	51,416	75,776	4,740	5,267
Garlic	Lb.	17,838	16,847	2,524	2,106
Onions	Lb.	42,635	48,342	2,306	2,785
Potatoes, white	Lb.	273,317	247,385	6,289	8,656
Tomatoes, natural state:Lb.		249,208	268,967	27,692	29,925
Turnips and rutabagas	Lb.	99,668	85,816	2,059	2,019
Pickled vegetables	Lb.	16,876	25,158	2,547	2,946
Tapioca and cassava flour, etc.:Lb.		294,420	358,028	9,566	12,195
Other	---	2/	2/	28,108	30,149
Total vegetables and preps.:---		---	---	103,356	115,802

Table 2.-- U.S. agricultural imports for consumption: Quantity and value by commodity, 1964 and 1965 - Continued

Commodity imported SUPPLEMENTARY	Unit	Year ended December 31 1/			
		Quantity		Value	
		1964	1965	1964	1965
				1,000	1,000
Other vegetable products:		Thousands	Thousands	dollars	dollars
Feeds and fodders (ex. oilcake) ..	2/			19,052	16,854
Hops	Lb.	6,101	7,302	6,717	7,840
Jute and jute butts, unmf'd. ...	LTon	73	41	10,311	7,709
Malt liquors	Gal.	20,693	19,789	22,909	21,459
Nursery and greenhouse stock ..	2/			13,687	13,464
Seeds, field and garden	Lb.	76,164	64,250	16,305	15,710
Spices	Lb.	47,242	60,660	7,893	9,429
Tobacco, unmf'd.	Lb.	168,749	182,558	109,741	129,813
Wines	Gal.	15,705	16,441	62,287	67,834
Other	2/			9,685	9,812
Total other vegetable prods.	---	---	---	278,587	299,924
Total vegetable products	---	---	---	1,312,015	1,326,175
Total supplementary imports	---	---	---	2,096,295	2,247,587
COMPLEMENTARY					
Bananas, fresh	Lb.	3,429,849	3,492,885	126,509	162,344
Coffee (incl. into Puerto Rico) ..	Lb.	3,026,631	2,822,477	1,200,281	1,060,531
Coffee essences, extracts, etc. ..	Lb.	5,442	2,849	7,382	3,430
Cocoa or cacao beans	Lb.	596,985	793,871	130,811	120,495
Cocoa and chocolate, prepared ...	Lb.	131,241	122,972	23,064	18,523
Drugs, herbs, roots, etc.	Lb.	69,314	70,462	20,702	23,845
Essential or distilled oils	2/			23,230	30,957
Fibers, unmf'd.	LTon	128	173	35,265	30,671
Rubber, crude	Lb.	988,264	997,510	200,629	182,331
Silk, raw	Lb.	4,400	3,638	22,456	19,996
Spices	Lb.	104,082	109,187	34,908	46,586
Tea	Lb.	133,590	130,341	59,735	57,498
Wool, unmf'd. (free in bond)	GLb.	143,863	136,051	90,198	71,176
Other complementary products	2/			10,581	11,566
Total complementary imports	---	---	---	1,985,751	1,839,949
TOTAL AGRICULTURAL IMPORTS	---	---	---	4,082,046	4,087,536
TOTAL NONAGRICULTURAL IMPORTS	---	---	---	14,517,814	17,202,439
TOTAL IMPORTS, ALL COMMODITIES	---	---	---	18,599,860	21,289,975

1/ Preliminary. 2/ Reported in value only. 3/ Excludes the weight of "other hides and skins," reported in pieces only.



SPECIAL in this issue

SHIPMENTS OF FARM PRODUCTS TO THE EUROPEAN ECONOMIC COMMUNITY AND TO ASIA INCREASED THE VALUE OF U.S. AGRICULTURAL EXPORTS AGAIN IN 1964-65

by

Thomas A. Warden ^{1/}

U.S. agricultural exports were valued at \$6,097 million in the fiscal year ending June 30, 1965, slightly above the total of \$6,074 million for the same period in 1963-64. Record export levels were attained during the year for corn, grain sorghums, soybeans, soybean oil, oilcake and meal, tallow, hides and skins, and variety meats. Reductions in export values from 1963-64 levels were reported for wheat, rice, cotton, tobacco, vegetables, and poultry meat.

Commercial sales of farm commodities abroad in 1964-65 amounted to \$4,426 million, or 73 percent of total agricultural exports. Shipments of agricultural products under P.L. 480 and AID programs had an estimated value of \$1,670 million.

Export Trends

U.S. exports of farm products expanded to the \$6.1 billion level in the last 2 fiscal years from \$4.5 billion in 1959-60. Of the \$1.6 billion gain in agricultural exports between 1959-60 and 1964-65, 77 percent consisted of commercial sales and 23 percent were P.L. 480 and AID shipments.

Japan was the largest single country market for U.S. agricultural exports for 5 of the last 6 fiscal years; farm exports to the United Kingdom exceeded those to Japan in 1959-60. Japan's share of U.S. agricultural exports rose in value to 12 percent in the last 2 fiscal years from 10 percent in 1959-60. Canada continued to take 10 percent of the U.S. agricultural export total in 1964-65 as in the 3 preceding years. Shares increased over the last 6 years for the Netherlands, West Germany, Italy, Belgium, and France. Farm exports to the United Kingdom declined to 7 percent as compared with 10 percent in 1959-60. Virtually all of the agricultural exports to those 8 countries consisted of commercial sales for dollars. The increases in Government program shipments in the past 5 years have gone mainly to India and Pakistan, principally under Title I, P.L. 480.

^{1/} Agricultural Economist, Trade Statistics and Analysis Branch, Foreign Development and Trade Division, Economic Research Service.

Exports by Area

Europe.--Europe was the largest outlet for U.S. agricultural exports again in 1964-65, taking \$2,497 million, an increase of \$370 million over 1959-60 (table 3). Europe's share of the U.S. total in 1964-65 equaled 41 percent -- the largest share to any world area. Asia ranked second among world areas accounting for 33 percent of the total value of U.S. shipments. Commercial sales were 91 percent of U.S. farm exports to Europe in 1964-65 compared with 80 percent in 1959-60. Commercial sales to Asia were 52 percent of U.S. farm exports in 1964-65 compared with 50 percent in 1959-60.

Agricultural shipments to member countries of the European Economic Community (EEC) continued to expand in 1964-65 to \$1,371 million from \$1,121 million in 1959-60 (table 5). Shipments of feed grains between 1963-64 and 1964-65 grew by nearly \$100 million to \$378 million. Oilcake and meal sales in 1964-65 nearly doubled those of 1963-64, reaching \$102 million. Oilseed exports to EEC, the second largest component of U.S. farm exports to that trade area, totaled \$220 million in 1964-65. Gains also took place in 1964-65 over the previous year for vegetable oils, fruits, nuts, hides and skins, and dairy products. Value declines occurred for wheat, rice, cotton, tobacco, vegetable preparations, animal fats and oils, and poultry meat.

Farm exports to the European Free Trade Association (EFTA) countries declined to \$668 million in 1964-65, or 11 percent of the total value of U.S. agricultural exports from a high of \$720 million in 1963-64 (table 6). The value of exports to all EFTA countries except Denmark and Sweden decreased from the preceding year. Reduced shipments of wheat, cotton, tobacco, vegetables, animal fats and oils, and poultry meat were not offset by increases for feed grains, vegetable oils, oilseeds, oilcake and meal, fruits, nuts, hides and skins, dairy products, and variety meats.

Agricultural exports to Council of Mutual Economic Cooperation (Comecon) countries fell in 1964-65 to \$101 million from a high in 1963-64 of \$312 million (table 4). The decline resulted from reduced exports of wheat to Poland and the USSR from the large 1963-64 volume.

Table 3.--U.S. agricultural exports: Value by major world areas, fiscal years 1959-60 through 1964-65

Area	1959-60	1960-61	1961-62	1962-63	1963-64	1964-65
-- Million dollars --						
Europe	2,127	2,275	2,415	2,169	2,643	2,497
Asia	1,220	1,511	1,309	1,528	1,851	2,050
Latin America	547	442	472	486	536	540
Canada	1/410	1/445	1/521	1/517	1/618	1/618
Africa	184	221	380	337	379	345
Oceania	39	42	44	41	47	47
Total	4,527	4,946	5,141	5,078	6,074	6,097

1/ Includes intransit commodities placed in bonded storage in Canada for shipment to other countries: Estimated at \$35 million in 1959-60, \$60 million in 1960-61, \$90 million in 1961-62, \$100 million in 1962-63, \$161 million in 1963-64, and \$139 million in 1964-65.

Table 4.--U.S. agricultural exports to members of the Council of Mutual Economic Cooperation (Comecon): Value by country, fiscal years 1959-60 through 1964-65

Country	1959-60	1960-61	1961-62	1962-63	1963-64	1964-65
-- Million dollars --						
Bulgaria	0.1	1/	1/	0.1	2.8	2.5
Czechoslovakia ...	1.2	3.1	4.0	3.5	11.0	3.2
East Germany	0.9	1.8	1.7	2.5	15.9	9.7
Hungary	0.2	0.5	0.5	1.9	22.9	9.2
Poland and Danzig :	92.7	143.4	69.7	85.6	129.8	46.9
Rumania	1.0	0.3	0.2	0.2	0.1	3.4
USSR 2/	0.7	13.2	12.4	9.1	129.6	26.3
Total	96.8	162.3	88.5	102.9	312.1	101.2

1/ Less than \$50,000.

2/ Includes exports separately reported to Latvia, which amounted to \$1.9 million in 1960-61, \$2.8 million in 1961-62, \$6.0 million in 1962-63, \$1.0 million in 1963-64, and \$1.1 million in 1964-65.

Asia.--U.S. agricultural exports to Asia in 1964-65 increased to \$2,050 million or 33 percent of the total value of U.S. agricultural shipments. An increase in commercial exports to Japan and larger shipments of wheat to India and Pakistan following the drought were major factors behind the expansion in U.S. agricultural exports to Asia. Commercial sales for dollars accounted for 52 percent of U.S. agricultural exports to Asia in 1964-65.

Latin America.--U.S. farm exports to Latin America totaled \$540 million in 1964-65, up from \$536 in 1963-64. Increases were reported in 1964-65 over the previous year in exports to Mexico, El Salvador, Honduras, Panama, Ecuador, Chile, Brazil, the Guianas, and Argentina. Commercial sales accounted for 63 percent of agricultural shipments to Latin America in 1964-65.

Agricultural exports to Latin American Free Trade Association (LAFTA) members in 1964-65 amounted to \$299 million, \$17 million more than in 1963-64 (table). Exports to all LAFTA countries except Colombia, Paraguay, and Uruguay were greater. LAFTA's share of U.S. farm exports was steady at 5 percent over the last 5 years. Shipments of wheat to LAFTA in 1964-65 were less than in the 3 preceding fiscal years. Values in 1964-65 were less than a year earlier for feed grains, cotton, tobacco, and fruits. Exports to LAFTA in 1964-65 exceeded the previous year's values for rice, vegetable oils, oilseeds, oilcake and meal, vegetables, nuts, animal fats and oils, poultry meat, other meats and products, hides and skins, and dairy products. Government program shipments to LAFTA totaled \$164 million in 1964-65, mostly to Brazil under Title I, P.L. 480.

Farm exports to Central American Common Market (CACM) countries in 1964-65 had a value of \$37 million, about the same as the 1963-64 level, and \$10 million above the 1959-60 total (table 4). Expanded exports to El Salvador and Honduras in 1964-65 over the preceding year offset declines in exports to Costa Rica, Guatemala, and Nicaragua. Government programs shipments to CACM countries amounted to \$7.6 million in 1964-65.

Africa.--U.S. agricultural exports to Africa totaled \$345 million in 1964-65, down from a high of \$379 million in 1963-64. Africa's 1964-65 share of the value of U.S. farm exports dipped slightly below the 6 percent in the previous year but it remained well above the 4 percent level of the 1959-60 fiscal year. Leading markets in Africa this past fiscal year were Egypt, Morocco, and South Africa. Reductions in exports to Egypt and Algeria were largely responsible for the decline in farm exports to the area. Exports to Africa under Government programs in 1964-65 amounted to \$239 million, mostly to Egypt under Title I, P.L. 480.

Oceania.--U.S. farm exports to Oceania -- mostly to Australia -- remained at \$47 million in 1964-65, the same as in 1963-64. Oceania's share of U.S. agricultural exports has held at about 1 percent over the past 5 years. With the exception of a small volume of barter with Australia under Title III, P.L. 480 those exports were commercial sales -- mainly tobacco and cotton.

Effect of Intransit Shipments to Canada

Shipments of U.S. grains and soybeans from Canadian ports to other countries between July 1, 1964, and June 30, 1965, had an estimated value of \$139 million. Most of the intransit shipments went to the Netherlands and the United Kingdom. About \$67 million of the shipments went to EEC destinations and about \$33 million to EFTA.

Intransit shipments of U.S. corn, wheat, barley, rye, and soybeans were held in bonded storage at Canadian locations, mainly at ports along the St. Lawrence Seaway, and subsequently transshipped to other destinations. Exports to Canada were thus overstated by the amount of transshipments, and exports to the 15 destination countries listed in table were understated by the amounts shown. To estimate the value of these exports, the average U.S. export unit value of shipments to Canada is applied to the quantities of U.S. grains moving out of bonded storage from Canadian ports.

Table 5.--U.S. agricultural exports to the European Economic Community (EEC): Value by country, fiscal years 1959-60 through 1964-65

Country	1959-60	1960-61	1961-62	1962-63	1963-64	1964-65
-- Million dollars --						
Belgium-Luxembourg	134	131	130	119	151	153
France	119	112	99	85	142	146
Italy	155	213	192	174	217	242
Netherlands	339	324	348	344	413	424
West Germany	374	321	415	348	410	406
Total	1,121	1,101	1,184	1,070	1,333	1,371

Table 6.--U.S. agricultural exports to the European Free Trade Association (EFTA): Value by country, fiscal years 1959-60 through 1964-65

Country	1959-60	1960-61	1961-62	1962-63	1963-64	1964-65
-- Million dollars --						
Austria	25	22	24	16	15	11
Denmark	64	48	57	72	74	81
Norway	33	29	38	40	37	33
Portugal	8	20	27	16	24	19
Sweden	41	47	48	44	49	50
Switzerland	51	58	65	54	73	57
United Kingdom	475	467	460	367	448	417
Total	697	691	719	609	720	668

Table 7.--U.S. agricultural exports to the Latin American Free Trade Association (LAFTA): Value by country, fiscal years 1959-60 through 1964-65

Country	1959-60	1960-61	1961-62	1962-63	1963-64	1964-65
-- Million dollars --						
Argentina	4.0	2.9	2.7	2.7	2.9	11.7
Brazil	64.9	69.8	106.5	109.5	100.6	107.0
Chile	16.3	21.3	33.6	31.0	21.2	29.2
Colombia	20.6	25.0	27.4	20.0	31.8	23.0
Ecuador	4.9	7.5	6.5	6.4	10.6	10.8
Mexico	59.1	62.4	56.6	77.9	75.5	79.2
Paraguay	0.4	1.0	4.9	3.5	3.0	2.8
Peru	20.3	17.4	24.1	20.2	33.1	33.1
Uruguay	32.7	4.9	4.1	3.0	3.3	2.6
Total	223.2	212.2	266.4	274.2	282.0	299.4

Table 8.--U.S. agricultural exports to the Central American Common Market (CACM): Value by country, fiscal years 1959-60 through 1964-65

Country	1959-60	1960-61	1961-62	1962-63	1963-64	1964-65
-- Million dollars --						
Costa Rica	6.0	5.5	5.1	5.1	6.5	6.4
El Salvador	5.4	5.5	6.2	7.1	8.1	8.8
Guatemala	9.6	9.0	9.9	10.0	11.5	10.8
Honduras	3.6	4.1	3.6	4.3	4.2	4.6
Nicaragua	2.6	2.9	4.2	4.4	6.5	6.4
Total	27.2	27.0	29.0	30.9	36.8	37.0

Table 9.--U.S. grain shipments from Canadian ports:
 Estimated value by country of destination,
 fiscal year 1964-65 ^{1/}

Destination	Wheat	Corn	Barley	Rye	Soybeans	Total
-- 1,000 dollars --						
EEC:						
Belgium	705	2,771	---	---	1,419	4,895
France	---	176	---	---	260	436
Italy	---	5,226	2,668	---	4,247	12,141
Netherlands	1,140	27,151	318	106	12,818	41,533
West Germany	---	5,042	955	184	2,225	8,406
Total EEC	1,845	40,366	3,941	290	20,969	67,411
EFTA:						
Denmark	---	---	---	---	2,028	2,028
Portugal	846	---	---	---	---	846
United Kingdom	4,952	22,262	---	---	3,293	30,507
Total EFTA	5,798	22,262	---	---	5,321	33,381
OTHER:						
Canary Islands	654	---	---	---	---	654
Ireland	1,040	4,480	---	---	---	5,520
Japan	---	743	---	---	6,560	7,303
Spain	2,262	3,620	---	---	255	6,137
Trinidad	---	10	---	---	---	10
USSR	2,515	---	---	---	2,200	4,715
Yugoslavia	13,657	---	---	---	---	13,657
Total other countries ...	20,128	8,853	---	---	9,015	37,996
TOTAL	27,771	71,481	3,941	290	35,305	138,788

^{1/} Based on quantity data in Consumer and Marketing Service, USDA, Grain Market News, July 23 1965, valued at average fiscal year 1964-65 export unit values obtained from U.S. exports to Canada. Since wheat exports to Canada (Bureau of the Census data) were less than U.S. wheat shipments from Canadian ports (Grain Market News data), the latter were proportionately reduced so as not to exceed the former.

Table 10.— U.S. agricultural exports: Value by country of destination, specified fiscal years

Country of destination	Year beginning July 1					
	1959-60	1960-61	1961-62	1962-63	1963-64	1964-65
	-- Thousand dollars --					
Greenland	1	2	2	0	1/	3
Canada	410,277	454,667	520,630	517,444	618,285	618,290
Miquelon and St. Pierre Islands	20	43	65	52	17	8
Latin American Republics:						
Mexico	59,064	62,417	56,624	77,874	75,455	79,144
Guatemala	9,621	8,992	9,865	9,978	11,480	10,815
El Salvador	5,354	5,472	6,194	7,056	8,140	8,770
Honduras	3,632	4,089	3,605	4,322	4,175	4,577
Nicaragua	2,627	2,921	4,191	4,435	6,514	6,441
Costa Rica	6,030	5,472	5,124	5,073	6,536	6,393
Panama	9,791	9,403	10,255	10,589	11,472	12,144
Cuba	125,016	41,134	355	13,351	2,205	0
Haiti	7,263	6,341	9,394	7,416	8,991	8,701
Dominican Republic	5,511	2,706	4,509	17,706	28,303	23,027
Colombia	20,622	25,001	27,356	20,036	31,762	23,028
Venezuela	95,033	83,096	86,559	60,747	82,849	74,035
Ecuador	4,865	7,537	6,548	6,447	10,550	10,761
Peru	20,345	17,439	24,108	20,246	33,130	33,124
Bolivia	5,487	6,497	8,428	12,015	14,916	12,579
Chile	16,346	21,259	33,614	31,015	21,220	29,222
Brazil	64,861	69,756	106,542	109,448	100,622	107,023
Paraguay	375	978	4,867	3,521	3,001	2,801
Uruguay	32,739	4,940	4,053	2,996	3,331	2,569
Argentina	4,009	2,914	2,673	2,659	2,933	11,723
Total Latin American Republics	498,591	388,364	414,864	426,930	467,585	466,877
Other Latin America:						
British Honduras	1,643	1,554	2,337	2,029	2,010	2,249
Canal Zone	607	609	761	874	793	134
Bermuda	5,163	5,379	5,391	5,520	5,654	5,978
Bahamas	6,751	7,504	7,674	8,390	10,242	12,193
Jamaica	9,083	10,270	10,950	12,443	18,406	19,968
Leeward and Windward Islands	1,147	1,848	1,750	1,829	2,077	2,198
Barbados	1,393	1,839	2,234	2,025	1,824	1,897
Trinidad and Tobago	7,562	9,388	10,991	11,257	10,143	9,995
Netherlands Antilles	9,482	8,936	8,456	8,791	9,580	9,546
French West Indies	469	539	526	753	1,035	1,538
British Guiana	3,182	3,104	3,493	3,084	3,627	4,026
Surinam (Netherlands Guiana)	2,143	2,424	2,583	2,514	2,802	3,020
French Guiana	236	81	46	68	104	105
Falkland Islands	1	0	1/	1/	0	0
Total Latin America	547,453	441,839	472,056	486,507	535,882	539,724
Europe:						
Iceland	2,877	3,183	3,161	3,464	3,872	4,406
Sweden	41,417	46,309	48,042	44,449	48,973	49,710
Norway	33,313	28,811	37,553	39,654	37,155	32,650
Finland	11,203	14,453	14,864	19,528	16,530	18,174
Denmark	63,501	48,140	57,491	71,776	73,952	81,217
United Kingdom of Great Britain and Northern Ireland	474,448	466,851	460,282	367,444	448,293	417,227
Ireland (Eire)	19,767	20,974	24,064	34,709	27,392	22,213
Netherlands (Holland)	339,303	324,200	347,687	344,100	413,175	423,491
Belgium and Luxembourg	133,543	130,825	130,276	119,491	150,483	153,065
Unidentified Western Europe 2/	0	2	6	0	2	0
France	119,097	112,107	99,244	84,549	142,292	145,699
West Germany	374,289	320,356	415,336	348,001	410,142	406,426
East Germany	927	1,827	1,728	2,452	15,920	9,669
Austria	25,141	22,307	23,776	15,900	14,744	11,051
Czechoslovakia	1,151	3,147	4,029	3,492	11,012	3,213
Hungary	247	461	499	1,887	22,871	9,198
Switzerland	50,840	58,303	64,529	53,586	73,166	56,860
Estonia	0	0	0	0	0	0
Latvia	0	1,889	2,816	5,976	1,044	1,061
Lithuania	0	0	0	0	0	0
Poland and Danzig	92,690	143,384	69,740	85,585	129,792	46,926

Continued -

Table 10.-- U.S. agricultural exports: Value by country of destination, specified fiscal years - Continued

Country of destination	Year beginning July 1					
	1959-60	1960-61	1961-62	1962-63	1963-64	1964-65
	-- Thousand dollars --					
Europe - Continued:						
Union of Soviet Socialist Republics	661	11,282	9,555	3,087	128,627	25,211
Azores	26	50	141	441	678	858
Spain	66,177	157,435	125,964	128,059	87,786	127,109
Portugal	8,445	19,818	26,830	15,982	23,314	19,449
Gibraltar	10	102	157	140	141	108
Malta, Gozo, and Cyprus	1,839	3,734	3,721	---	---	---
Malta and Gozo 3/	---	---	---	669	375	599
Cyprus 2/	---	---	---	2,206	3,428	566
Italy	154,544	213,279	191,473	173,464	216,815	242,265
Free Territory of Trieste	1,811	1,653	2,369	1,344	1,451	1,009
Yugoslavia	37,681	56,640	115,637	127,281	65,225	105,496
Albania	0	0	0	0	0	0
Greece	12,916	26,610	21,772	24,423	27,848	37,542
Romania	971	253	216	170	62	3,357
Bulgaria	52	6	6	91	2,776	2,519
Turkey	57,985	36,236	112,026	45,430	43,548	38,794
Total Europe	2,126,872	2,274,627	2,414,990	2,168,830	2,642,884	2,497,138
Asia:						
Syrian Arab Republic	7,892	31,074	16,414	646	1,023	4,022
Lebanon	9,925	8,758	5,862	6,817	7,207	9,853
Iraq	3,228	2,729	5,238	2,432	21,017	4,295
Iran (Persia)	6,901	21,770	17,962	32,370	18,392	44,006
Israel	52,715	50,820	60,430	57,203	73,986	74,621
Palestine (Gaza Strip)	4	19	5	4	7	8
Jordan	9,000	15,636	9,386	14,267	13,624	10,710
Kuwait	2,116	2,541	4,518	3,549	3,947	5,870
Saudi Arabia	6,364	8,044	7,839	11,353	15,268	15,130
Other Arabia Peninsula States	730	1,885	930	893	482	911
Aden	530	349	337	1,063	1,078	1,445
Bahrain	586	1,077	953	1,515	1,131	1,092
Afghanistan	502	3,950	1,859	138	9,416	4,047
India	277,741	345,836	235,230	348,359	400,541	528,720
Goa, Damao, and Diu 3/	---	---	---	0	0	0
Pakistan	69,018	106,024	82,563	125,359	138,308	168,372
Nepal	0	2	6	0	13	91
Ceylon	11,808	8,994	7,492	9,528	4,417	4,196
Burma	1,522	859	639	672	1,264	7,902
Thailand (Siam)	9,156	9,502	13,956	10,293	12,746	16,093
Viet-Nam	18,453	26,315	31,387	32,476	43,558	52,925
Laos	69	115	112	713	1,737	1,134
Cambodia	1,449	3,555	1,398	888	388	139
Malaysia 4/	---	---	---	---	11,821	13,334
Federation of Malaya	1,429	4,704	6,982	5,950	---	---
Singapore, State of	5,521	7,333	5,635	5,859	---	---
Indonesia	35,535	21,920	32,640	53,453	18,855	9,338
Philippines	59,549	71,346	71,051	48,827	60,141	64,638
Macao (Macau)	177	632	429	362	475	407
Other Portuguese Asia 2/	9	163	90	---	---	---
Other Southern and Southeastern Asia	1	22	29	1	1	11
China	0	0	0	0	0	0
Outer Mongolia	0	0	0	0	0	0
North Korea	0	0	0	0	0	0
Korea, Republic of	74,377	75,065	74,407	111,464	108,665	98,470
Hong Kong	47,546	50,832	43,722	39,706	51,111	51,594
Taiwan (Formosa)	57,170	66,025	72,627	75,624	67,917	84,599
Japan	440,841	552,817	484,743	510,643	742,165	750,238
Nansai and Nanpo Islands	7,666	9,769	12,633	15,202	20,678	22,115
Total Asia	1,219,530	1,511,382	1,309,554	1,527,629	1,851,379	2,050,326
Australia and Oceania:						
Australia	31,378	31,635	35,360	31,610	38,543	36,404
New Guinea	100	161	253	360	282	305
New Zealand and Western Samoa	6,145	8,542	6,138	6,776	5,154	5,496
British Western Pacific Islands	203	73	145	577	651	806

Continued -

Table 10.-- U.S. agricultural exports: Value by country of destination, specified fiscal years - Continued

Country of destination	Year beginning July 1					
	1959-60	1960-61	1961-62	1962-63	1963-64	1964-65
	-- Thousand dollars --					
Australia and Oceania - Continued:						
French Pacific Islands	364	492	976	897	1,170	1,857
Trust Territory of the Pacific Islands	981	888	757	301	1,455	1,776
Total Australia and Oceania	39,171	41,791	43,629	41,021	47,255	46,644
Africa:						
Morocco	16,212	25,155	55,823	28,583	27,168	42,052
Algeria	1,155	8,005	29,377	33,658	43,252	17,465
Tunisia	7,941	17,067	34,910	26,855	14,253	19,463
Libya	5,871	6,411	2,277	935	2,783	1,933
United Arab Republic (Egypt)	93,748	100,005	161,981	149,449	161,360	136,052
Sudan	179	237	1,127	4,508	7,067	10,521
Canary Islands	6,444	5,382	4,402	3,570	4,210	6,668
Other Spanish Africa	395	338	35	147	148	148
Federal Republic of Cameroon	677	340	627	576	663	845
Other Western Equatorial Africa -	31	114	72	61	6/ 61	---
Central African Republic 7/	---	---	---	---	0	5
Gabon 7/	---	---	---	---	43	54
Other Western Africa -	3,064	2,519	9,373	10,823	6/ 6,113	---
Mauritania 7/	---	---	---	---	590	67
Senegal 7/	---	---	---	---	5,184	2,907
Guinea 7/	---	---	---	---	4,456	7,352
Ivory Coast 7/	---	---	---	---	3,430	4,061
Togo 7/	---	---	---	---	206	321
Other Western Africa 7/	---	---	---	---	411	1,165
Ghana	5,904	8,695	11,665	8,299	8,304	8,634
Nigeria	8,961	7,444	7,611	7,437	7,919	9,976
British West Africa and Sierra Leone - ..	638	571	438	948	6/ 632	---
Sierra Leone 7/	---	---	---	---	494	2,482
British West Africa 7/	---	---	---	---	82	55
Madeira Islands	670	412	714	588	1,409	1,159
Angola	415	1,249	1,310	2,204	2,303	2,139
Other Western Portuguese Africa	77	93	140	175	1,125	413
Liberia	4,008	4,022	5,811	7,337	8,065	7,651
Republic of the Congo; and						
Rwanda-Urundi -	4,017	7,033	15,938	23,438	6/22,807	---
Congo (Leopoldville) 7/	---	---	---	---	2,542	20,869
Burundi and Rwanda 7/	---	34	1,077	454	75	154
Somali Republic 8/ -	---	---	---	---	---	626
Somaliland (Italian Adm.)	125	---	---	---	---	---
British Somaliland	2	---	---	---	---	---
Ethiopia (Abyssinia)	4,248	1,475	3,396	2,979	1,730	1,156
French Somaliland	197	318	219	120	192	259
British East Africa and Tanganyika -	679	1,495	10,302	4,882	6/ 1,297	---
Uganda 7/	---	---	---	---	90	391
Kenya 7/	---	---	---	---	573	3,007
Tanzania 9/ -	---	---	---	---	---	1,798
Tanganyika 7/	---	---	---	---	413	---
Zanzibar 7/	---	---	---	---	92	---
Seychelles and Dependencies	50	44	9	3	7	19
Mauritius and Dependencies	144	75	248	143	194	246
Mozambique	974	2,002	1,902	2,435	674	318
Malagasy Republic	6	53	75	284	458	918
Republic of South Africa	16,208	19,983	18,271	15,345	34,429	28,772
Zambia, Southern Rhodesia, and Malawi ..	695	661	594	485	1,420	2,709
Total Africa	183,735	221,232	379,724	336,721	378,752	344,830
Total all countries	4,527,059	4,945,583	5,140,650	5,078,204	6,074,434	6,096,963

1/ Less than \$500. 2/ Not available by countries. 3/ Not separately classified prior to 1962-63. 4/ Effective 1963-64. Includes the former Federation of Malaya and State of Singapore. 5/ Not separately classified beginning 1962-63. 6/ July-December only. 7/ January-June only. New classification effective January 1, 1964. 8/ Effective 1960-61. Includes the former Somaliland (Italian Adm.) and British Somaliland. 9/ Effective 1964-65. Includes the former Tanganyika and Zanzibar.

Table 11.--U.S. agricultural exports: Major countries of destination by commodity groups, specified fiscal years

Country and year beginning July 1	Total 1/	Grains and preparations			Cotton, excl. linters	Tobacco, unmanufactured	Vegetable fats and oils 1/ 3/	Oilseeds	Oil-cake and meal (protein meal)
		Wheat and flour 1/	Rice, milled 1/	Feed grains 2/					
-- Thousand dollars --									
Total									
1959-60	4,527,059	874,726	136,224	543,191	825,671	341,851	207,450	338,724	56,953
1960-61	4,945,583	1,150,947	132,089	531,133	936,673	385,165	173,351	378,993	44,647
1961-62	5,140,650	1,284,741	132,399	694,938	663,001	407,491	181,274	388,394	65,952
1962-63	5,078,204	1,157,917	161,485	730,693	491,491	378,400	191,230	469,792	116,342
1963-64	6,074,454	1,518,374	216,267	816,422	670,406	420,686	185,705	551,547	111,798
1964-65	6,096,963	1,240,265	202,593	940,235	583,895	395,269	302,625	635,287	177,756
Japan (1)									
1959-60	440,841	55,768	16	13,756	195,230	12,245	2,801	103,482	121
1960-61	552,817	52,090	68	37,618	233,117	16,195	3,689	114,014	4,302
1961-62	484,743	61,879	6	57,874	134,720	23,247	2,683	105,808	332
1962-63	510,643	62,236	184	68,998	114,680	21,267	3,095	129,245	193
1963-64	742,165	127,186	12,168	130,534	148,926	29,950	4,233	150,660	1,673
1964-65	750,238	101,036	30,188	171,590	122,855	25,827	1,298	149,323	2,766
Canada (2)									
1959-60	410,277	4,054	2,402	26,590	38,110	1,636	13,276	38,165	13,126
1960-61	454,667	18,181	2,219	38,979	41,768	2,784	14,360	45,015	11,456
1961-62	520,630	31,106	5,824	68,008	55,350	2,276	12,324	57,732	16,186
1962-63	517,444	25,240	7,475	84,769	38,801	1,898	10,600	61,076	20,734
1963-64	618,285	61,891	8,579	92,957	57,362	3,228	12,825	76,956	16,265
1964-65	618,290	28,126	9,106	106,205	51,647	3,909	16,866	101,336	19,482
India (3)									
1959-60	277,741	189,908	26,314	5,268	51,565	461	21	0	0
1960-61	345,836	210,692	39,736	8,233	73,572	1,978	1,045	0	1
1961-62	235,230	162,463	20,626	4,877	30,221	4	73	0	23
1962-63	348,359	236,001	39,138	4,576	53,246	2,564	47	0	45
1963-64	400,541	288,738	55,195	6,466	29,984	1,954	44	0	80
1964-65	528,720	372,558	51,199	10,190	59,794	789	10,101	28	90
Netherlands (4)									
1959-60	339,303	19,512	2,879	105,351	27,124	13,098	15,626	68,216	9,918
1960-61	324,200	20,767	4,381	108,656	28,287	18,772	7,994	68,574	6,827
1961-62	347,687	44,454	3,349	119,076	15,650	16,273	5,251	52,692	10,596
1962-63	344,100	18,146	2,143	120,303	10,968	18,064	6,143	65,107	16,878
1963-64	413,175	35,067	6,677	121,195	16,197	20,828	14,421	67,458	11,873
1964-65	423,491	15,973	1,656	141,665	10,838	17,525	13,723	88,134	23,342
United Kingdom (5)									
1959-60	474,448	39,734	2,520	119,083	66,120	112,053	4,440	7,381	2,633
1960-61	466,851	30,000	3,161	105,723	58,320	138,176	3,801	12,394	1,439
1961-62	460,282	29,335	5,753	125,691	38,302	129,078	1,458	9,339	817
1962-63	367,444	5,588	6,886	99,702	19,239	94,470	939	18,335	515
1963-64	448,293	31,410	6,681	90,225	33,054	127,358	5,345	16,288	195
1964-65	417,227	7,862	5,670	97,021	23,386	117,213	7,206	20,297	2,398
West Germany (6)									
1959-60	374,289	18,701	3,803	68,388	70,341	49,939	27,706	33,010	5,603
1960-61	320,356	11,804	5,285	31,019	62,504	50,298	19,243	38,727	4,178
1961-62	475,336	28,177	12,498	72,252	29,891	63,480	12,387	48,072	7,048
1962-63	348,001	12,030	8,531	51,196	13,969	58,314	6,285	58,853	9,796
1963-64	410,142	23,236	6,296	50,795	52,191	67,853	13,240	75,838	8,356
1964-65	406,426	4,963	5,575	66,623	32,822	66,048	23,897	69,589	24,575
Italy (7)									
1959-60	154,544	16,500	192	3,604	70,649	6,182	7,410	7,811	4,270
1960-61	213,279	90,573	327	9,079	66,562	4,084	439	10,945	1,175
1961-62	191,473	36,307	5	22,683	52,470	12,753	536	28,605	446
1962-63	173,464	10,642	47	52,592	26,834	13,585	780	28,273	4,681
1963-64	216,815	14,091	2	54,701	55,066	2,311	923	32,233	9,159
1964-65	242,265	8,894	2	106,445	41,022	7,309	1,734	32,380	10,279

Table 11.--U.S. agricultural exports: Major countries of destination by commodity groups, specified fiscal years

Country and year beginning July 1	Fruits and preparations	Vegetables and preparations 1/	Nuts and preparations	Animal fats and oils	Poultry meat	Other meats and products	Hides and skins	Dairy products 1/	Other 1/ 4/
-- Thousand dollars --									
Total									
1959-60	249,536	150,090	19,696	185,262	40,501	61,966	69,297	126,846	299,075
1960-61	253,520	126,894	16,606	174,521	57,453	67,552	82,746	130,696	302,597
1961-62	282,008	135,647	13,172	171,956	83,856	61,960	83,944	128,421	361,496
1962-63	279,774	162,800	15,610	148,176	54,221	73,416	78,916	154,416	413,525
1963-64	274,477	163,791	24,402	215,822	63,485	106,638	81,937	203,332	449,365
1964-65	289,289	153,777	33,336	244,264	55,340	101,026	99,550	216,054	426,402
Japan (1)									
1959-60	1,199	846	1,112	22,892	16	106	16,323	5,304	9,624
1960-61	4,965	932	754	30,367	4	632	28,062	5,713	20,295
1961-62	6,015	885	908	20,602	93	49	30,520	7,828	31,294
1962-63	7,117	2,423	2,026	18,767	377	934	32,391	10,269	36,441
1963-64	9,598	2,679	2,585	26,347	3,789	7,401	27,131	11,394	45,911
1964-65	12,200	2,755	2,812	38,721	2,678	415	29,595	10,892	45,287
Canada (2)									
1959-60	113,288	63,612	6,148	2,582	5,142	12,280	9,251	1,280	59,335
1960-61	114,550	58,367	6,625	5,470	6,959	21,630	9,416	1,747	55,131
1961-62	110,165	62,001	5,666	4,383	3,629	18,913	10,252	2,239	54,576
1962-63	107,006	55,160	5,832	4,953	3,625	28,091	7,316	1,662	53,206
1963-64	108,386	60,937	8,390	4,103	3,906	26,237	6,991	2,275	66,997
1964-65	111,574	62,514	10,791	5,200	2,829	15,707	8,389	3,140	61,469
India (3)									
1959-60	31	34	5	1	1	3	6	3,333	790
1960-61	22	41	1	15	2	13	5	8,852	1,628
1961-62	21	214	2	28	8	10	67	7,474	9,119
1962-63	121	334	3	104	7	31	46	8,215	3,881
1963-64	42	88	2	148	6	37	27	9,651	8,079
1964-65	45	199	0	5,610	9	65	75	9,560	8,408
Netherlands (4)									
1959-60	10,905	2,650	1,374	21,400	2,480	6,924	12,642	1,860	17,344
1960-61	12,081	2,792	639	12,845	4,516	6,437	9,411	381	10,840
1961-62	17,207	4,146	559	18,484	7,790	6,970	9,850	54	15,286
1962-63	15,885	5,951	261	10,848	4,827	6,933	8,285	1,690	31,668
1963-64	16,235	5,065	1,458	20,086	5,421	12,166	9,815	18,243	30,970
1964-65	16,709	4,540	3,181	15,458	4,109	10,830	11,462	16,351	27,995
United Kingdom (5)									
1959-60	22,529	16,273	1,085	36,485	471	4,785	2,175	6,894	29,787
1960-61	26,098	12,922	119	33,523	1,017	10,015	3,044	581	26,518
1961-62	36,225	13,204	846	33,954	966	7,762	1,808	545	25,199
1962-63	28,697	24,095	129	33,405	1,105	8,094	2,456	441	23,248
1963-64	24,538	20,974	1,758	51,318	1,234	9,296	4,893	518	23,208
1964-65	24,095	14,185	2,915	47,099	1,423	13,277	6,632	6,023	20,525
West Germany (6)									
1959-60	19,150	8,733	2,714	9,652	18,061	6,801	9,133	3,896	18,658
1960-61	18,935	7,169	2,308	9,623	25,260	6,783	8,571	344	18,305
1961-62	26,281	10,133	1,113	8,532	52,626	6,904	8,804	489	26,649
1962-63	29,816	15,780	1,737	7,683	22,040	6,723	5,481	803	38,964
1963-64	20,588	11,741	2,611	7,991	26,935	8,036	6,913	3,494	24,028
1964-65	25,238	10,914	2,272	7,367	23,600	7,300	10,897	3,393	21,353
Italy (7)									
1959-60	880	390	0	21,123	3	14	1,909	4,735	8,872
1960-61	1,677	484	106	14,010	7	173	2,834	4,094	6,710
1961-62	1,879	947	32	15,587	316	84	2,172	3,002	13,649
1962-63	3,012	2,743	20	11,820	398	71	2,133	5,270	10,563
1963-64	2,654	2,978	24	12,303	870	567	5,045	13,204	10,684
1964-65	3,079	1,568	59	11,144	1,712	139	3,755	2,293	10,451

Continued --

Table 11.--U.S. agricultural exports: Major countries of destination by commodity groups, specified fiscal years - Continued

Country and year beginning July 1	Total 1/	Grains and preparations			Cotton, excl. lintera	Tobacco, unmanufactured	Vegetable fats and oils 2/	Oilseeds	Oil-cake and meal (protein meal)
		Wheat and flour 1/	Rice milled 1/	Feed grains 2/					
-- Thousand dollars --									
Pakistan (8)									
1959-60	69,018	55,459	1,696	38	1,589	1,127	6,106	0	0
1960-61	106,024	65,827	19,317	73	1,598	1,560	13,021	0	0
1961-62	82,563	44,453	0	91	7,690	3,134	20,603	0	0
1962-63	125,359	90,960	2	2,101	2,494	2,115	18,281	0	0
1963-64	138,308	104,159	6	660	2,505	994	19,364	0	0
1964-65	168,372	111,044	30	15	2,014	1,312	43,486	0	5/
Belgium (9)									
1959-60	133,543	5,498	1,631	50,208	23,700	9,701	1,510	11,501	4,525
1960-61	130,825	7,662	1,375	47,395	27,695	9,629	1,531	13,695	3,340
1961-62	130,276	11,432	1,312	53,991	14,521	8,693	135	12,903	4,909
1962-63	119,491	4,807	1,797	48,272	9,905	8,768	65	15,665	7,365
1963-64	150,483	8,647	1,960	50,181	19,018	10,662	882	18,435	7,901
1964-65	153,065	1,582	1,706	56,333	13,849	9,007	1,356	20,232	15,654
France (10)									
1959-60	119,097	11	24	1,239	82,037	3,854	1,117	10,974	990
1960-61	112,107	2,864	1	394	80,697	4,015	598	5,240	1,145
1961-62	99,244	11,228	6	3,588	44,561	3,330	59	7,659	9,303
1962-63	84,549	3,364	504	1,961	25,171	4,384	73	8,287	15,307
1963-64	142,292	17,893	634	1,289	48,676	4,048	164	10,710	18,090
1964-65	145,699	9,145	878	6,675	28,696	4,175	690	9,238	28,015
U.A.R. - Egypt (11)									
1959-60	93,748	59,895	4,901	4,551	0	11,113	5,102	0	0
1960-61	100,005	70,817	98	2,081	0	8,980	6,723	0	0
1961-62	161,981	103,036	14	20,707	0	8,115	13,730	0	13
1962-63	149,449	103,844	20	9,300	0	9,535	11,172	0	2
1963-64	161,360	105,027	10	23,487	0	10,413	7,955	0	0
1964-65	136,052	94,340	19	10,950	0	3,054	7,603	19	0
Spain (12)									
1959-60	66,177	1,867	675	5,506	5,882	2,710	35,076	150	3,387
1960-61	157,435	52,642	405	21,611	27,324	1,499	44,621	14	1,077
1961-62	125,964	45,745	0	14,220	22,372	908	24,009	75	3,020
1962-63	128,059	553	0	43,057	14	1,185	48,409	2,809	14,278
1963-64	87,786	6,078	0	38,450	2,463	2,592	3,256	4,464	12,563
1964-65	127,109	981	0	45,672	2,688	2,737	24,110	22,147	7,075
Brazil (13)									
1959-60	64,861	58,211	0	0	0	161	62	5	0
1960-61	69,756	65,008	0	0	0	4	97	4	0
1961-62	106,542	90,763	0	553	0	23	128	2	3
1962-63	109,448	92,391	12	45	0	7	193	1	0
1963-64	100,622	81,153	0	387	0	4	111	2	0
1964-65	107,023	75,183	0	795	1	7	8,561	13	0
Yugoslavia (14)									
1959-60	37,681	23,856	998	430	889	0	5,467	7	222
1960-61	56,640	26,686	1,184	134	16,331	0	5,341	0	0
1961-62	115,637	68,263	0	3,038	18,092	0	14,514	246	186
1962-63	127,281	81,038	0	1,156	21,649	0	10,384	0	4,096
1963-64	65,225	20,639	0	13,155	6,129	0	7,386	14	5,134
1964-65	105,496	67,468	5/	0	16,802	83	5,230	0	8,461
Korea, Rep. of (15)									
1959-60	74,377	24,995	0	499	30,924	0	1,705	3,834	0
1960-61	75,065	25,622	0	9,596	25,329	0	1,031	2,444	0
1961-62	74,407	24,337	0	1,127	33,484	0	87	2,114	6
1962-63	111,464	41,848	0	15,700	36,015	0	139	1,278	0
1963-64	108,665	46,060	1	12,680	33,044	0	101	1,442	0
1964-65	98,470	35,378	3	8,268	34,660	0	134	0	0

Table 11.--U.S. agricultural exports: Major countries of destination by commodity groups, specified fiscal years - Continued

Country and year beginning July 1	Fruits and preparations	Vegetables and preparations	Nuts and preparations	Animal fats and oils	Poultry meat	Other meats and products	Hides and skins	Dairy products	Other
								1/	1/ 4/
-- Thousand dollars --									
Pakistan (8)									
1959-60	22	61	2	2,002	15	75	0	644	182
1960-61	21	35	1	2,374	11	63	6	1,773	344
1961-62	17	136	1	4,589	2	47	0	974	826
1962-63	94	147	10	4,308	27	168	0	2,953	1,699
1963-64	81	83	12	5,786	32	65	0	2,629	1,932
1964-65	27	42	3	3,544	21	103	0	4,847	1,884
Belgium (9)									
1959-60	9,442	1,616	420	4,071	70	512	753	1,781	6,604
1960-61	9,394	1,151	190	1,476	22	320	721	222	5,007
1961-62	10,298	1,512	84	1,915	91	660	226	198	5,396
1962-63	10,835	1,751	149	1,080	131	635	89	458	7,779
1963-64	11,417	3,435	464	2,631	77	1,657	186	7,190	5,740
1964-65	11,843	1,796	2,044	2,257	141	1,794	449	7,757	5,265
France (10)									
1959-60	5,141	2,149	1,185	2,650	22	1,301	636	33	5,734
1960-61	6,184	577	1,453	216	87	2,175	627	37	5,797
1961-62	7,353	978	128	798	23	3,203	905	47	6,075
1962-63	6,766	3,478	223	474	18	4,601	622	380	8,936
1963-64	9,333	4,916	473	1,369	67	15,051	1,664	65	7,850
1964-65	8,775	3,772	466	3,142	61	14,714	1,281	15,250	10,726
U.A.R. - Egypt (11)									
1959-60	41	30	15	5,174	333	19	5	1,303	1,266
1960-61	53	33	11	4,272	446	3	0	3,040	3,448
1961-62	60	136	9	5,709	230	10	0	3,256	6,956
1962-63	56	709	12	7,376	433	33	3	4,627	2,327
1963-64	78	241	12	9,867	1,001	48	0	813	2,408
1964-65	55	50	9	5,202	998	6,682	0	4,942	2,129
Spain (12)									
1959-60	2/	1,650	2/	2,173	0	9	1	3,797	3,294
1960-61	23	52	0	2,804	0	2	735	2,813	1,813
1961-62	204	189	0	6,392	2	53	481	3,470	4,824
1962-63	403	1,297	10	6,715	99	82	632	4,145	4,371
1963-64	536	2,191	30	7,473	67	169	1,309	3,318	2,827
1964-65	520	1,399	95	8,946	24	222	1,873	3,628	4,992
Brazil (13)									
1959-60	36	1,516	0	30	0	0	0	2,071	2,769
1960-61	33	528	1	16	0	4	0	1,597	2,464
1961-62	39	2,499	0	11	2	0	0	7,651	4,868
1962-63	26	577	0	12	3	5	0	9,763	6,413
1963-64	39	280	0	10	2	22	0	6,907	11,705
1964-65	38	1,696	1	2,420	1	12	34	9,467	8,794
Yugoslavia (14)									
1959-60	442	607	0	786	0	0	1,180	2,601	196
1960-61	847	6	0	901	0	2	767	4,230	211
1961-62	497	4	1	2,870	0	2	3,513	2,648	1,763
1962-63	143	496	0	2,218	0	5/	385	3,243	2,473
1963-64	161	162	1	3,671	0	50	66	4,325	4,332
1964-65	51	1,689	0	2,365	0	22	184	2,309	832
Korea, Rep. of (15)									
1959-60	54	310	16	1,163	6	27	626	4,374	5,844
1960-61	38	19	4	1,870	3	10	624	3,279	5,196
1961-62	33	72	5	1,806	1	2	1,258	3,737	6,338
1962-63	58	223	6	3,743	3	43	1,693	3,744	6,971
1963-64	54	43	8	2,074	1	33	549	4,130	8,445
1964-65	150	197	7	2,313	4	36	365	3,944	13,006

Table 11.--U.S. agricultural exports: Major countries of destination by commodity groups, specified fiscal years - Continued

Country and year beginning July 1	Total 1/	Grains and preparations			Cotton, excl. linters	Tobacco, unmanufactured	Vegetable fats and oils 1/ 2/	Oilseeds	Oil-cake and meal (protein meal)
		Wheat and flour 1/	Rice, milled 1/	Feed grains 1/ 2/					
-- Thousand dollars --									
Taiwan (16)									
1959-60	57,170	17,088	1,360	0	21,214	2,545	706	10,665	0
1960-61	66,925	19,167	532	996	21,474	2,037	430	16,097	0
1961-62	72,627	21,636	0	1,510	28,508	1,898	1,045	10,611	5/
1962-63	75,624	23,938	20	1,331	27,981	2,830	200	12,968	15
1963-64	67,917	18,239	0	5/	23,817	1,755	1,835	14,175	5/
1964-65	84,599	23,326	0	1,669	21,974	4,241	1,666	21,327	0
Denmark (17)									
1959-60	63,501	1,285	93	25,701	2,637	9,445	63	13,903	4,131
1960-61	48,140	158	109	6,198	3,895	10,429	95	17,818	3,216
1961-62	57,491	192	136	10,358	1,946	10,910	64	21,189	4,325
1962-63	71,776	71	310	8,167	1,885	11,275	56	30,851	10,773
1963-64	73,952	36	201	8,296	1,810	12,059	71	31,214	7,866
1964-65	81,217	9	453	6,338	1,037	13,128	51	33,204	16,018
Mexico (18)									
1959-60	59,064	227	1,291	4,787	14	6,609	774	1,096	1,247
1960-61	62,417	640	1,264	6,980	1	4,119	3,814	753	1,662
1961-62	56,624	2,045	266	6,237	20	4,606	4,358	831	996
1962-63	77,874	3,168	209	23,828	27	5,248	751	639	1,104
1963-64	75,455	4,053	327	16,022	10	4,874	669	538	1,170
1964-65	79,144	1,877	511	11,810	88	4,570	2,970	856	2,860
Israel (19)									
1959-60	52,715	13,359	1,019	16,750	2,394	197	2,268	14,670	0
1960-61	50,820	12,860	934	15,378	1,529	278	3,242	13,777	0
1961-62	60,430	16,862	990	18,081	1,441	333	5,480	14,109	0
1962-63	57,203	17,664	1,458	14,587	1,161	335	6,296	12,142	0
1963-64	73,986	12,834	1,610	20,327	2,844	384	3,023	23,919	0
1964-65	74,621	11,958	2,048	18,851	3,895	352	6,233	24,083	6
Venezuela (20)									
1959-60	95,033	16,384	995	85	0	1,225	2,866	333	1,003
1960-61	83,096	15,002	89	72	12	1,163	3,487	1,298	636
1961-62	86,559	19,604	195	2,775	2,687	678	3,998	1,548	1,573
1962-63	60,747	10,087	127	95	630	248	3,003	1,576	1,067
1963-64	82,849	19,786	11	4,207	1,869	146	4,073	2,381	1,241
1964-65	74,035	17,895	18	3,180	826	198	5,008	3,728	124
Philippines (21)									
1959-60	59,549	11,834	583	7	15,521	2,622	257	273	776
1960-61	71,346	16,915	482	226	20,254	814	344	104	1,179
1961-62	71,051	18,090	2	16	21,491	4,391	488	134	1,216
1962-63	48,827	12,723	3	70	14,959	8	278	599	651
1963-64	60,141	17,313	3,749	655	15,076	35	389	1,564	410
1964-65	64,638	14,316	11,167	146	12,104	715	558	1,405	841
Switzerland (22)									
1959-60	50,840	1,535	234	3,388	13,281	9,553	1,474	2,038	285
1960-61	58,303	6,931	356	3,358	14,525	8,622	23	2,229	451
1961-62	64,529	11,237	618	5,875	11,114	11,547	16	546	2,014
1962-63	53,586	8,006	1,009	4,063	5,218	10,336	32	2,359	558
1963-64	73,166	16,073	1,516	5,498	12,520	10,004	416	2,577	1,493
1964-65	56,860	2,178	1,476	6,205	10,213	11,242	912	2,074	814
Viet-Nam (23)									
1959-60	18,453	3,756	1,438	3	952	714	248	0	0
1960-61	26,315	5,257	994	5	3,960	3,715	102	5/	0
1961-62	31,387	4,715	6,910	0	4,202	2,590	151	0	0
1962-63	32,476	6,505	0	1,074	4,648	2,752	1,931	0	0
1963-64	43,558	5,844	0	3,348	10,545	4,361	1,941	0	0
1964-65	52,925	6,613	4,106	2,645	8,543	5,099	3,411	0	0

Table 11.--U.S. agricultural exports: Major countries of destination by commodity groups, specified fiscal years - Continued

Country and year beginning July 1	Fruits and preparations	Vegetables and preparations 1/	Nuts and preparations	Animal fats and oils	Poultry meal	Other meats and products	Hides and skins	Dairy products 1/	Other 1/ 4/
-- Thousand dollars --									
Taiwan (16)									
1959-60	2	14	3	1,683	2	3	117	1,076	692
1960-61	137	85	1	1,850	8	4	119	3,103	885
1961-62	16	152	0	2,647	0	2	143	2,132	2,327
1962-63	41	458	2	3,102	2	20	373	1,216	1,127
1963-64	2	182	4	3,568	0	1	451	1,092	2,796
1964-65	403	259	5/	4,469	2	0	461	2,081	2,721
Denmark (17)									
1959-60	3,554	216	178	5/	11	19	89	218	1,958
1960-61	3,455	442	100	3	3	47	80	5	2,087
1961-62	4,905	490	90	4	5	60	93	46	2,678
1962-63	4,645	927	60	7	7	39	75	702	1,926
1963-64	4,707	938	130	28	6	51	96	3,298	3,145
1964-65	4,784	981	153	21	30	173	196	1,744	2,897
Mexico (18)									
1959-60	2,907	6,256	145	2,191	306	1,851	6,354	5,441	17,568
1960-61	2,940	6,876	201	2,116	92	1,141	5,500	6,633	17,685
1961-62	2,699	2,462	354	2,109	244	1,222	3,701	6,840	17,634
1962-63	3,197	3,818	220	1,222	299	1,061	4,392	10,140	18,551
1963-64	3,664	4,289	431	1,359	175	1,624	4,654	9,079	22,517
1964-65	3,884	3,188	636	1,540	268	2,090	9,200	6,754	26,042
Israel (19)									
1959-60	231	79	11	31	32	193	319	456	706
1960-61	137	50	31	5/	55	217	395	294	1,643
1961-62	192	95	14	35	44	204	286	1,004	1,260
1962-63	215	614	30	88	65	374	369	952	853
1963-64	205	684	49	242	70	3,721	775	2,336	963
1964-65	130	569	143	3	48	5,235	721	1,595	751
Venezuela (20)									
1959-60	11,593	6,067	722	907	79	5,308	348	20,806	26,212
1960-61	10,021	6,132	680	659	34	3,922	897	15,525	23,467
1961-62	8,012	6,284	468	1,387	42	3,133	949	12,815	20,411
1962-63	7,971	5,901	544	969	21	1,846	413	8,627	17,622
1963-64	7,328	6,502	597	1,597	19	3,886	815	7,331	21,060
1964-65	7,435	5,493	765	2,533	33	2,447	746	6,246	17,360
Philippines (21)									
1959-60	1,122	1,622	26	1,290	1	388	507	18,898	3,822
1960-61	1,700	1,470	29	1,441	1	143	164	22,466	3,614
1961-62	1,968	1,695	30	1,395	5/	112	154	14,488	5,381
1962-63	2,148	1,387	31	1,007	7	257	30	10,611	4,058
1963-64	2,853	1,228	69	1,510	49	528	272	8,430	6,011
1964-65	3,837	1,731	94	1,534	36	720	487	8,780	6,167
Switzerland (22)									
1959-60	3,984	2,734	605	941	5,827	283	661	5	4,012
1960-61	3,631	3,250	471	240	8,768	218	1,102	79	4,049
1961-62	4,174	3,202	232	1,305	6,162	329	768	67	5,273
1962-63	4,692	2,450	331	1,948	5,190	236	359	439	6,360
1963-64	3,953	3,380	654	3,653	2,549	406	523	2,909	5,042
1964-65	4,598	2,444	414	4,079	1,626	427	636	2,569	4,953
Viet-Nam (23)									
1959-60	195	115	0	10	8	54	0	9,189	1,771
1960-61	144	181	5/	2	6	55	0	10,866	1,028
1961-62	70	128	0	1	1	0	0	10,801	1,818
1962-63	30	281	0	57	0	4	0	11,460	3,674
1963-64	81	160	5/	21	3	2	0	12,711	4,547
1964-65	90	303	0	9	0	0	9	16,899	5,198

Table 11.--U.S. agricultural exports: Major countries of destination by commodity groups, specified fiscal years - Continued

Country and year beginning July 1	Total	Grains and preparations			Cotton, excl. linters	Tobacco, unmanufactured	Vegetable fats and oils		Oil-seeds	Oil-cake and meal (protein meal)
		Wheat and flour	Rice milled	Feed grains			1/3	1/3		
-- Thousand dollars --										
Hong Kong (24)										
1959-60	47,546	2,595	1,338	5	25,860	3,016	791	705	22	
1960-61	50,832	1,425	2,674	32	27,434	2,814	484	565	7	
1961-62	43,722	1,548	731	131	13,584	4,722	4,716	407	29	
1962-63	39,706	1,839	20	8	8,284	4,657	4,534	856	44	
1963-64	51,111	1,598	47	144	19,993	4,508	5,230	272	5	
1964-65	51,594	1,213	23	228	17,442	5,650	5,626	54	10	
Sweden (25)										
1959-60	41,417	216	407	3,799	11,520	7,836	366	20	179	
1960-61	46,309	1,069	462	843	12,942	14,959	70	38	2	
1961-62	48,042	653	469	866	13,293	13,584	203	3	49	
1962-63	44,449	682	536	672	7,227	12,946	551	46	171	
1963-64	48,973	1,021	639	179	9,703	16,024	941	3	160	
1964-65	49,710	113	971	217	7,480	14,218	948	671	731	
Poland (26)										
1959-60	92,690	46,489	465	21,706	9,596	0	4,626	595	1,059	
1960-61	143,384	73,553	796	19,154	30,911	1,500	8,391	2,104	8	
1961-62	69,740	31,296	2,237	5,687	16,492	18	4,979	479	139	
1962-63	85,585	38,521	766	24,352	11,382	0	2,571	0	0	
1963-64	129,792	65,989	2,339	9,145	16,464	2,599	11,468	2,749	258	
1964-65	46,926	3,600	1,221	7,362	8,112	2,636	2,620	5,389	145	
Iran (27)										
1959-60	6,901	388	219	4	0	0	2,538	0	0	
1960-61	21,770	13,098	513	3,587	0	0	2,129	1	0	
1961-62	17,962	8,763	42	8	8	0	3,859	0	0	
1962-63	32,370	16,986	19	653	0	0	9,245	1	0	
1963-64	18,392	4,398	109	8	0	0	7,793	3	0	
1964-65	44,006	19,017	21	2,785	0	0	16,533	7	23	
Morocco (28)										
1959-60	16,212	4,660	601	0	1,427	28	6,767	959	0	
1960-61	25,155	14,331	0	1,630	1,239	83	4,609	1,306	0	
1961-62	55,823	33,287	0	10,461	2,139	319	5,568	732	0	
1962-63	28,583	14,421	0	0	1,029	297	6,989	1,503	0	
1963-64	27,168	11,431	0	242	1,890	51	6,257	815	0	
1964-65	42,052	18,809	0	322	1,835	356	13,127	2,027	0	
Turkey (29)										
1959-60	57,985	23,323	196	1,289	16	0	30,720	39	0	
1960-61	36,236	30,974	1,583	0	5/	0	3	33	0	
1961-62	112,026	92,066	0	473	4	0	14,988	60	0	
1962-63	45,430	27,192	0	812	0	0	9,657	83	0	
1963-64	43,548	11,512	0	1,146	12	0	21,758	141	0	
1964-65	38,794	20,689	0	644	79	0	9,034	69	0	
Greece (30)										
1959-60	12,916	4,446	580	3,422	761	0	15	1	81	
1960-61	26,610	10,050	429	7,706	505	1	4,376	0	81	
1961-62	21,772	7,193	368	6,550	229	0	1,804	0	290	
1962-63	24,423	4,814	502	7,930	209	10	4,844	2	387	
1963-64	27,848	6,575	563	13,237	443	10	3	0	791	
1964-65	37,542	3,461	746	16,670	32	76	10,090	0	1,395	
Australia (31)										
1959-60	31,378	0	4	0	7,638	19,242	773	0	8	
1960-61	31,635	2	75	0	7,379	15,134	1,091	10	398	
1961-62	35,360	0	160	0	9,168	15,071	1,692	16	399	
1962-63	31,610	11	127	5/	5,558	15,858	1,361	1	763	
1963-64	38,543	9	206	0	10,914	15,638	2,177	15	970	
1964-65	36,404	10	248	6	9,140	13,111	3,284	237	1,333	

Table 11.--U.S. agricultural exports: Major countries of destination by commodity groups, specified fiscal years - Continued

Country and year beginning July 1	Fruits and preparations	Vegetables and preparations	Nuts and preparations	Animal fats and oils	Poultry meat	Other meats and products	Hides and skins	Dairy products	Other 1/4
-- Thousand dollars --									
Hong Kong (24)									
1959-60	4,745	1,019	30	78	2,113	327	20	751	4,131
1960-61	4,571	806	42	74	2,650	671	3	1,142	5,438
1961-62	6,075	1,153	54	321	3,146	622	0	1,023	5,450
1962-63	7,198	1,206	70	108	2,953	598	10	889	6,432
1963-64	8,007	1,195	103	146	2,596	242	37	941	6,047
1964-65	8,473	1,423	115	128	3,021	225	87	955	6,921
Sweden (25)									
1959-60	10,908	1,916	984	86	17	746	607	133	1,677
1960-61	8,203	3,035	691	19	16	997	985	25	1,953
1961-62	11,811	3,233	660	42	6	837	531	13	1,789
1962-63	12,095	4,297	1,410	?	5	1,081	335	28	2,360
1963-64	10,401	3,760	1,569	13	45	998	638	241	2,638
1964-65	11,216	3,623	2,232	163	117	2,031	671	81	4,227
Poland (26)									
1959-60	23	0	0	4,003	0	0	1,870	1,612	646
1960-61	4	5/	0	2,855	0	0	1,033	1,945	1,130
1961-62	16	44	0	4,394	0	0	493	690	2,776
1962-63	6	223	0	2,796	0	42	341	1,468	3,117
1963-64	3	8	0	7,978	0	500	475	6,467	3,350
1964-65	1	19	0	8,606	21	295	1,409	4,214	1,276
Iran (27)									
1959-60	233	143	16	2,615	79	33	9	341	283
1960-61	177	190	13	1,132	61	35	3	574	257
1961-62	99	102	7	2,994	10	10	1	939	1,120
1962-63	61	198	4	3,052	7	3	1	751	1,389
1963-64	103	88	3	2,930	8	26	0	1,544	1,379
1964-65	122	91	8	2,744	74	35	5	1,725	816
Morocco (28)									
1959-60	190	9	5/	1,255	0	1	1	148	156
1960-61	76	26	5	1,157	0	0	0	392	301
1961-62	44	116	4	1,510	0	5	0	757	881
1962-63	123	139	0	1,258	0	0	0	922	1,902
1963-64	52	4	1	1,646	0	0	18	987	3,774
1964-65	97	32	0	1,805	15	0	0	583	3,044
Turkey (29)									
1959-60	10	9	7	23	2	65	921	1,251	114
1960-61	2	3	0	1	1	11	2,925	556	144
1961-62	9	90	5	438	10	10	2,187	1,307	379
1962-63	2	110	0	3,505	0	9	1,458	1,606	996
1963-64	15	6	0	5,126	5/	31	1,121	1,193	1,487
1964-65	25	19	0	3,036	18	27	2,133	1,275	1,746
Greece (30)									
1959-60	46	357	0	182	289	2	277	946	1,511
1960-61	16	20	0	542	327	?	319	738	1,498
1961-62	14	31	1	232	545	8	159	616	3,732
1962-63	22	278	0	399	1,816	11	221	1,219	1,759
1963-64	36	1,147	5/	695	1,555	10	247	429	2,107
1964-65	37	313	0	487	2,121	34	361	385	1,334
Australia (31)									
1959-60	32	350	188	6	5	0	28	5	3,099
1960-61	163	951	806	18	866	14	248	22	4,458
1961-62	370	2,097	422	8	90	14	70	30	5,753
1962-63	123	1,262	767	20	94	43	17	33	5,572
1963-64	113	1,715	813	27	51	10	179	90	5,616
1964-65	141	1,974	1,419	40	73	13	196	130	5,049

Continued -

Table 11.—U.S. agricultural exports: Major countries of destination by commodity groups, specified fiscal years - Continued

Country and year beginning July 1	Total 1/	Grains and preparations			Cotton, excl. linters	Tobacco, unmanufactured	Vegetable fats and oils 1/ 3/	Oilseeds	Oil-cake and meal (protein meal)
		Wheat and flour 1/	Rice, milled 1/	Feed grains 1/ 2/					
— Thousand dollars —									
Peru (32)									
1959-60	20,345	8,509	4,226	15	101	0	2,993	0	4
1960-61	17,439	8,424	509	759	337	0	1,403	1	4
1961-62	24,108	13,136	260	327	358	0	2,290	1	4
1962-63	20,246	9,332	131	83	130	0	2,010	5/	49
1963-64	33,130	11,448	5,338	695	102	0	1,328	2	85
1964-65	33,124	6,425	5,225	168	0	0	4,881	10	46
Norway (33)									
1959-60	33,313	4,158	4	9,135	2,101	5,010	21	5,226	662
1960-61	28,811	2,958	80	4,026	1,851	5,422	17	6,419	653
1961-62	37,553	6,742	104	7,350	1,825	5,953	17	7,185	816
1962-63	39,654	1,332	109	9,196	1,316	6,154	63	9,146	3,143
1963-64	37,155	8,082	31	3,999	1,838	4,591	42	9,065	1,176
1964-65	32,650	6	29	5,423	1,832	4,014	53	11,884	560
Chile (34)									
1959-60	16,346	2,593	1,717	0	6,529	349	1,582	1	0
1960-61	21,259	4,105	1,488	787	8,185	1,602	930	5	0
1961-62	33,614	16,363	868	656	2,013	1,359	5,972	0	0
1962-63	31,015	15,294	1,271	2	3,363	2,022	3,224	5/	0
1963-64	21,220	7,116	1,047	1	274	1,656	2,940	1	0
1964-65	29,222	12,398	1,052	655	304	2,303	4,596	1	0
S. Africa, Rep. (35)									
1959-60	16,208	2,681	1,860	5	4,720	36	424	0	0
1960-61	19,983	16	4,647	28	7,544	316	101	0	0
1961-62	18,271	18	6,142	31	6,985	18	132	14	0
1962-63	15,345	0	7,751	37	2,748	32	63	8	0
1963-64	34,429	10,006	9,949	56	4,474	11	91	5/	0
1964-65	28,772	70	9,464	124	6,191	72	123	58	18
U.S.S.R. (Russia) (36)									
1959-60	661	2	0	4	0	0	0	0	0
1960-61	11,282	2	0	2	0	0	0	0	0
1961-62	9,555	0	0	1	0	0	0	0	0
1962-63	3,087	5/	0	1	0	44	0	0	0
1963-64	128,627	110,418	9,667	0	311	0	0	0	0
1964-65	25,211	0	0	5/	0	0	3	4,034	0
Colombia (37)									
1959-60	20,622	5,059	282	6	0	8	5,952	58	0
1960-61	25,001	9,447	1,685	1,559	0	10	3,750	96	1
1961-62	27,356	9,776	36	1,419	93	55	2,892	144	0
1962-63	20,036	8,318	61	58	152	21	439	193	1
1963-64	31,762	11,496	90	1,810	1,232	68	4,084	183	0
1964-65	23,028	9,911	90	138	529	0	1,134	0	0
Dominican Rep. (38)									
1959-60	5,511	2,159	0	4	0	25	48	12	1
1960-61	2,706	526	0	9	0	3	23	7	0
1961-62	4,509	565	0	160	72	36	46	10	0
1962-63	17,706	1,877	4,764	73	0	88	92	12	0
1963-64	28,303	3,406	7,966	253	0	118	2,091	10	1
1964-65	23,027	2,327	2,663	764	0	121	5,462	7	0
Nansei Islands (39)									
1959-60	7,666	762	2,267	283	8	177	202	519	0
1960-61	9,769	2,030	1,613	1	0	142	262	859	0
1961-62	12,683	1,838	4,261	2	973	167	330	1,064	0
1962-63	15,202	1,653	7,945	3	0	195	390	828	0
1963-64	20,678	2,326	10,018	131	38	164	688	1,455	0
1964-65	22,115	2,203	9,913	309	62	300	869	1,967	15

Table 11.—U.S. agricultural exports: Major countries of destination by commodity groups, specified fiscal years - Continued

Country and year beginning July 1	Fruits and preparations	Vegetables: and preparations 1/	Nuts and preparations	Animal fats and oils	Poultry meat	Other meats and products	Hides and skins	Dairy products 1/	Other 1/ 4/
— Thousand dollars —									
Peru (32)									
1959-60	346	331	49	982	117	64	10	976	1,622
1960-61	366	235	48	1,062	81	77	54	1,372	2,707
1961-62	599	404	89	2,172	120	66	5	1,521	2,756
1962-63	866	630	71	1,410	179	71	1	1,866	3,417
1963-64	948	552	98	3,299	543	82	10	4,965	3,635
1964-65	715	667	85	3,781	813	136	0	6,124	4,048
Norway (33)									
1959-60	4,782	472	312	136	0	49	120	5/	1,125
1960-61	3,752	513	214	162	0	54	63	1	2,626
1961-62	4,767	865	170	216	0	40	105	15	1,383
1962-63	4,877	911	303	194	3	75	110	3	2,719
1963-64	4,615	886	454	279	2	122	238	17	1,718
1964-65	5,696	645	785	303	38	298	241	10	803
Chile (34)									
1959-60	78	143	17	334	8	7	72	1,756	1,160
1960-61	106	150	9	265	22	6	13	1,308	2,278
1961-62	151	270	8	544	34	2	8	1,504	3,862
1962-63	95	106	2	108	15	1	0	3,198	2,314
1963-64	19	57	6	455	7	7	0	4,251	3,383
1964-65	6	63	4	110	6	7	0	5,278	2,439
S. Africa, Rep. (35)									
1959-60	181	651	52	3,562	1	16	14	231	1,774
1960-61	90	579	39	4,135	4	19	5	404	2,056
1961-62	154	522	25	1,563	29	9	3	215	2,411
1962-63	135	704	40	935	25	11	1	297	2,558
1963-64	182	738	82	1,518	237	27	2	4,211	2,845
1964-65	242	776	125	4,009	8	27	5	4,705	2,755
U.S.S.R. (Russia) (36)									
1959-60	0	0	0	0	0	0	620	0	35
1960-61	0	0	0	9,981	0	0	1,178	0	119
1961-62	0	0	0	9,176	0	0	244	1	133
1962-63	0	783	0	437	0	0	1,696	0	126
1963-64	0	0	0	3,912	0	0	4,127	0	192
1964-65	0	0	0	18,637	0	0	2,535	0	2
Colombia (37)									
1959-60	159	104	8	2,346	0	8	192	1,103	5,337
1960-61	58	140	13	2,244	2	13	96	1,772	4,115
1961-62	45	1,055	7	2,919	14	10	61	2,489	6,331
1962-63	84	305	19	1,706	9	13	58	2,414	6,185
1963-64	163	956	22	1,869	99	40	15	2,452	7,183
1964-65	151	539	12	3,020	105	22	25	3,165	4,187
Dominican Rep. (38)									
1959-60	424	472	12	509	13	103	0	196	1,533
1960-61	266	338	12	348	10	61	0	129	974
1961-62	368	539	10	606	62	95	61	263	1,616
1962-63	814	1,351	23	526	531	176	185	1,753	5,441
1963-64	1,101	3,439	47	529	612	269	63	1,810	6,588
1964-65	981	2,907	23	657	76	176	34	1,521	5,308
Nansei Islands (39)									
1959-60	201	269	15	321	27	122	15	1,416	1,062
1960-61	216	228	6	638	41	155	20	2,275	1,283
1961-62	286	305	14	229	73	160	0	1,822	1,159
1962-63	304	372	21	263	136	278	13	1,949	852
1963-64	388	506	18	334	257	563	25	2,497	1,270
1964-65	376	537	17	235	475	801	0	2,050	1,986

Table 11.--U.S. agricultural exports: Major countries of destination by commodity groups, specified fiscal years - Continued

Country and year beginning July 1	Total 1/	Grains and preparations			Cotton, excl. linters	Tobacco, unmanufactured	Vegetable fats and oils 1/ 2/	Oilseeds	Oil-cake and meal (protein meal)
		Wheat and flour 1/	Rice milled 1/	Feed grains 1/ 2/					
-- Thousand dollars --									
Ireland (40)									
1959-60	19,767	57	38	5,139	924	9,993	1	0	853
1960-61	20,974	177	47	5,059	444	11,268	1	0	271
1961-62	24,064	350	46	7,398	661	11,148	1	0	212
1962-63	34,709	757	98	7,181	497	20,572	4	0	2,007
1963-64	27,392	328	138	6,973	618	13,740	4	0	1,946
1964-65	22,213	147	195	5,481	654	9,535	2	3	1,850
Congo, (Leopold.) (41) 6/									
1959-60	---	---	---	---	---	---	---	---	---
1960-61	---	---	---	---	---	---	---	---	---
1961-62	---	---	---	---	---	---	---	---	---
1962-63	---	---	---	---	---	---	---	---	---
1963-64	---	---	---	---	---	---	---	---	---
1964-65	20,869	4,432	5,068	349	3,682	3,329	136	0	0
Jamaica (42)									
1959-60	9,083	1,321	259	832	443	44	281	1	25
1960-61	10,270	1,394	609	419	555	282	50	0	7
1961-62	10,950	1,154	761	792	319	590	56	0	12
1962-63	12,443	919	1,460	818	141	570	50	0	14
1963-64	18,406	1,799	1,982	1,194	584	1,397	183	0	52
1964-65	19,968	1,569	2,850	1,465	755	1,171	594	1	94
Tunisia (43)									
1959-60	7,941	6,928	344	124	0	56	0	0	0
1960-61	17,067	14,270	530	1,358	0	299	0	0	0
1961-62	34,910	27,570	570	5,678	0	0	0	0	0
1962-63	26,855	19,323	350	1,029	0	819	3,392	0	0
1963-64	14,253	7,495	0	114	319	627	4,544	0	0
1964-65	19,463	9,827	0	1,809	1,089	246	3,904	0	0
Portugal (44)									
1959-60	8,445	1,773	450	4	1,578	3,554	1	4	122
1960-61	19,818	9,058	582	7	3,834	4,356	1	0	0
1961-62	26,830	17,761	0	9	2,732	3,744	3	2/	27
1962-63	15,982	3,734	115	9	990	4,357	2	1	0
1963-64	23,314	10,156	541	503	4,460	3,911	1	1	13
1964-65	19,449	7,991	3	31	3,755	2,385	63	1	0
Finland (45)									
1959-60	11,203	0	0	115	4,165	3,012	1	0	0
1960-61	14,453	238	0	2	4,129	4,880	274	818	0
1961-62	14,864	509	0	4	2,989	5,410	1	0	0
1962-63	19,528	331	43	1,080	2,030	4,523	6	4,821	0
1963-64	16,530	364	100	15	1,338	5,219	23	1,095	0
1964-65	18,174	1,731	132	694	1,642	3,570	47	3,621	0
Algeria (46)									
1959-60	1,155	409	27	0	28	352	0	59	0
1960-61	8,005	6,849	72	0	12	286	0	0	0
1961-62	29,377	24,167	0	3,620	26	60	50	0	0
1962-63	33,658	21,908	0	0	57	64	4,945	0	0
1963-64	43,252	32,325	1	0	306	59	1,163	0	0
1964-65	17,465	10,460	0	0	235	8	2,658	0	0
Thailand (47)									
1959-60	9,156	102	1	7	1,744	6,070	18	0	0
1960-61	9,502	110	0	2	2,826	5,023	42	0	0
1961-62	13,956	127	0	4	3,839	8,723	24	0	0
1962-63	10,293	118	0	0	2,918	5,628	30	0	0
1963-64	12,746	178	0	0	4,376	6,571	29	0	0
1964-65	16,093	204	0	8	5,455	8,300	70	0	0

Table 1L--U.S. agricultural exports: Major countries of destination by commodity groups, specified fiscal years - Continued

Country and year beginning July 1	Fruits and preparations	Vegetables and preparations 1/	Nuts and preparations	Animal fats and oils	Poultry meat	Other meats and products	Hides and skins	Dairy products 1/	Other 1/ 2/
-- Thousand dollars --									
Ireland (40)									
1959-60	1,909	100	168	36	0	0	14	5	530
1960-61	2,425	79	12	247	0	23	5	12	904
1961-62	2,916	170	69	36	3	4	3	19	1,028
1962-63	2,199	335	2	31	1	0	7	22	996
1963-64	2,268	305	75	206	1	1	18	16	755
1964-65	2,227	440	117	21	0	1	39	22	1,479
Congo, (Leopold.) (41) 6/									
1959-60	---	---	---	---	---	---	---	---	---
1960-61	---	---	---	---	---	---	---	---	---
1961-62	---	---	---	---	---	---	---	---	---
1962-63	---	---	---	---	---	---	---	---	---
1963-64	---	---	---	---	---	---	---	---	---
1964-65	13	323	0	3	137	7	0	1,526	1,864
Jamaica (42)									
1959-60	382	618	10	286	262	853	0	287	3,179
1960-61	438	704	14	327	326	1,173	0	327	3,645
1961-62	438	802	7	176	358	1,202	3	479	3,801
1962-63	429	860	10	171	433	1,327	3	759	4,479
1963-64	501	1,247	8	296	588	1,369	0	1,477	5,724
1964-65	602	1,338	14	1,574	425	1,803	0	1,353	4,360
Tunisia (43)									
1959-60	0	2	0	0	0	0	0	477	10
1960-61	4 5/		0	0	0	0	18	537	51
1961-62	0	70	0	0	0	0	0	758	264
1962-63	4	70	0	0	0	0	0	1,246	622
1963-64	0	5	0	0	0	0	0	583	566
1964-65	0	178	0	0	37 5/		0	1,825	548
Portugal (44)									
1959-60	4	15	0	24	0	20	57	497	342
1960-61	3	16	0	33	0	22	81	1,402	413
1961-62	9	25 5/		43	0	53	0	1,270	1,154
1962-63	4	1,482	1	456	0	21	0	2,766	2,044
1963-64	23	25	0	1,017 5/		772	68	716	1,107
1964-65	16	64	0	1,405	1	756	122	1,878	978
Finland (45)									
1959-60	2,964	58	346	117	0	0	21	1	403
1960-61	3,217	86	100	4	0	24	111	1	569
1961-62	4,512	107	94	5	0	0	148	7	1,078
1962-63	5,239	143	251	16	2	29	25	3	986
1963-64	5,338	206	205	80	3	41	80	3	2,420
1964-65	4,588	127	316	121	0	35	297	7	1,246
Algeria (46)									
1959-60	4	61	0	0	0	0	0	107	108
1960-61	0	0	3	57	0	0	0	517	209
1961-62	15	5	0	0	0	27	0	484	923
1962-63	1	974	0	76	0	0	0	1,119	4,514
1963-64	47	0	0	426	0	0	0	4,538	4,387
1964-65	29	75	0	1,786	0	0	0	166	2,048
Thailand (47)									
1959-60	57	194	4	13	0	9	0	315	622
1960-61	49	159	7	3	5	14	0	499	763
1961-62	51	182	6	2	0	3	0	357	638
1962-63	87	178	10	13	1	17	3	405	885
1963-64	137	220	16	11	0	7	0	335	866
1964-65	124	272	15	11	3	6	5	386	1,233

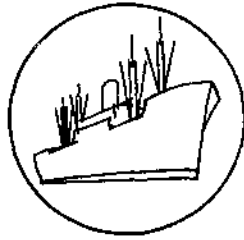
Table 11.—U.S. agricultural exports: Major countries of destination by commodity groups, specified fiscal years - Continued

Country and year beginning July 1	Total 1/	Grains and preparations			Cotton, excl. linters	Tobacco, unmanufactured	Vegetable fats and oils 1/ 2/	Oilseeds	Oil-cake and meal (protein meal)
		Wheat and flour 1/	Rice milled 1/	Feed grains 2/					
— Thousand dollars —									
Saudi Arabia (48)									
1959-60	6,364	3,468	854	300	0	0	57	0	0
1960-61	8,044	4,245	993	774	0	0	80	0	1
1961-62	7,839	3,358	2,420	20	0	0	69	0	0
1962-63	11,353	4,667	4,284	52	0	0	106	0	0
1963-64	15,268	5,119	7,289	53	0	0	154	0	0
1964-65	15,130	6,808	4,747	67	0	0	194	0	1
Malaysia (49)									
1959-60	6,950	167	159	4	807	1,735	37	9	16
1960-61	12,037	505	1,278	21	1,046	4,158	26	5	119
1961-62	12,617	427	1,368	33	304	5,054	42	0	61
1962-63	11,809	473	499	13	0	4,443	74	0	47
1963-64	11,821	466	365	14	184	3,948	46	0	15
1964-65	13,334	223	22	16	348	5,529	135	1	31
Bolivia (50)									
1959-60	5,488	2,962	0	0	684	1	390	5	0
1960-61	6,497	4,386	211	0	917	0	237	8	0
1961-62	8,428	5,902	336	0	607	0	154	10	0
1962-63	12,015	8,459	17	0	952	0	45	8	0
1963-64	14,916	6,553	0	0	853	0	782	11	4
1964-65	12,579	8,418	6	1	672	0	678	11	4
L. A. F. T. A. 7/									
1959-60	223,226	90,462	8,050	12,576	11,204	11,384	14,788	1,348	1,265
1960-61	212,241	89,702	5,173	10,165	11,738	7,162	11,715	880	1,678
1961-62	266,385	137,801	1,430	9,331	4,819	7,491	16,500	1,010	1,024
1962-63	274,242	132,513	1,684	24,125	3,672	9,654	7,373	854	1,166
1963-64	282,004	119,484	6,803	19,990	1,631	8,820	10,902	728	1,266
1964-65	299,395	109,884	7,547	14,117	925	8,131	29,768	950	2,934
E. E. C. 8/									
1959-60	1,120,776	60,222	8,529	228,790	273,851	82,774	53,369	131,512	25,306
1960-61	1,100,767	133,670	11,369	196,543	265,745	86,798	29,805	137,181	16,665
1961-62	1,184,016	131,598	17,170	271,590	157,093	104,529	18,368	151,931	32,302
1962-63	1,069,605	48,989	13,022	274,324	86,847	103,115	13,346	176,125	54,027
1963-64	1,332,907	98,934	15,569	278,161	191,148	105,702	29,630	204,674	55,379
1964-65	1,370,946	40,557	9,817	377,741	127,227	104,064	41,400	219,573	101,865
E. F. T. A. 9/									
1959-60	697,105	50,964	3,859	177,338	100,787	148,400	6,468	28,572	8,012
1960-61	690,539	50,435	4,808	132,923	101,086	183,820	4,008	38,898	5,761
1961-62	718,503	66,487	7,100	162,499	74,337	178,532	1,776	38,267	8,048
1962-63	608,791	19,427	8,978	130,000	38,087	141,999	1,720	60,738	15,160
1963-64	719,597	67,040	9,651	113,864	66,224	177,174	7,009	59,148	10,903
1964-65	668,164	18,159	8,679	117,153	49,908	165,156	10,193	68,131	20,521

Table 11.--U.S. agricultural exports: Major countries of destination by commodity groups, specified fiscal years - Continued

Country and year beginning July 1	Fruits and preparations	Vegetables and preparations	Nuts and preparations	Animal fats and oils	Poultry meat	Other meats and products	Hides and skins	Dairy products	Other
-- Thousand dollars --									
Saudi Arabia (48)									
1959-60	271	375	32	38	263	157	0	189	360
1960-61	205	543	42	1	260	121	0	235	544
1961-62	290	543	24	1	273	129	0	282	430
1962-63	342	672	79	7	226	164	0	234	520
1963-64	342	613	86	5/	416	88	0	382	724
1964-65	310	724	57	0	589	129	0	445	1,059
Malaysia (49)									
1959-60	1,522	802	30	21	305	135	5	477	719
1960-61	1,873	792	44	200	322	112	2	440	1,094
1961-62	1,799	816	40	125	390	155	73	589	1,341
1962-63	1,834	928	60	25	721	130	140	829	1,593
1963-64	2,125	1,018	60	0	815	85	149	988	1,543
1964-65	1,689	1,131	61	6	908	100	86	1,255	1,793
Bolivia (50)									
1959-60	29	35	2	1,061	0	2	0	141	176
1960-61	13	20	3	289	0	1	0	205	207
1961-62	23	84	1	636	1	5/	0	242	432
1962-63	29	173	1	369	5/	17	0	849	1,096
1963-64	31	63	4	2,170	1	23	0	2,084	2,337
1964-65	38	85	5	1,182	1	7	0	850	621
L. A. F. T. A. 7/									
1959-60	3,754	8,709	253	7,067	434	1,942	6,628	12,002	31,360
1960-61	3,855	8,481	301	7,395	198	1,252	5,663	13,889	32,994
1961-62	3,826	7,370	486	9,239	421	1,314	3,775	21,339	39,209
1962-63	4,602	6,950	338	5,990	506	1,163	4,452	29,258	39,902
1963-64	5,228	6,599	599	9,255	828	1,795	4,679	29,292	54,105
1964-65	5,179	6,824	786	15,130	1,199	2,307	9,260	32,043	52,411
E. E. C. 8/									
1959-60	45,518	15,538	5,693	58,896	20,636	15,552	25,073	12,305	57,212
1960-61	48,271	12,173	4,696	38,170	29,892	15,888	22,164	5,078	46,659
1961-62	63,018	17,716	1,916	45,316	60,846	17,821	21,957	3,790	67,055
1962-63	66,314	29,703	2,390	31,905	27,414	18,963	16,610	8,601	97,910
1963-64	60,227	28,135	5,030	44,380	33,370	37,477	23,623	42,196	79,272
1964-65	65,644	22,590	8,022	39,368	29,623	34,777	27,844	45,044	75,790
E. F. T. A. 9/									
1959-60	46,195	21,701	3,204	37,834	6,343	5,919	4,187	7,802	39,520
1960-61	45,573	20,287	1,599	33,980	10,013	11,353	5,541	2,364	38,090
1961-62	62,522	21,131	2,049	35,578	7,735	9,101	3,401	1,965	37,975
1962-63	55,898	34,371	2,234	36,017	7,465	9,557	3,459	4,549	39,132
1963-64	49,143	30,288	4,571	56,335	4,676	11,656	6,918	7,731	37,266
1964-65	51,750	22,090	6,500	53,103	3,771	17,092	8,775	12,323	34,860

1/ Includes food exported for relief or charity by individuals and private agencies.
 2/ Feed grains: Barley, corn, oats, and grain sorghums, excluding products.
 3/ Excludes essential oils which are included in "other".
 4/ Other commodities: Mainly feeds and fodders, field and garden seeds, coffee, hops, essential oils, sugar and related products, and live animals.
 5/ Less than \$500.
 6/ Prior to 1964-65 not separately classified.
 7/ The Latin American Free Trade Association includes Mexico, Colombia, Ecuador, Peru, Chile, Brazil, Paraguay, Uruguay, and Argentina.
 8/ The European Economic Community (Common Market) includes the Netherlands, Belgium and Luxembourg, France, West Germany, and Italy.
 9/ The European Free Trade Association includes the United Kingdom, Denmark, Switzerland, Sweden, Norway, Austria, and Portugal.



Export Highlights

JULY-MARCH 1965-66

U.S. agricultural exports for the first 3 quarters of the current fiscal year, 1965-66, were an estimated \$5,000 million -- up 12 percent from the \$4,480 million in the same period in 1964-65 (table 12). The figure for 1965-66 includes actual exports of \$4,403 million for July-February and an estimate of \$597 million for March. Large increases in exports of feed grains, hides and skins, milled rice, soybeans, protein meal, fruits and preparations, poultry products, and wheat and flour offset declines in exports of cotton, cottonseed and soybean oils, dairy products, and fats and oils. In addition, smaller percentage increases occurred for unmanufactured tobacco, meats and meat products, and vegetables and preparations.

Exports of agricultural products for the third quarter, January-March 1966, were running considerably higher than the same quarter a year ago. Exports during January-March 1965 were down because of the longshoremen's strike at East Coast and Gulf ports during January and February. U.S. agricultural exports amounted to an estimated \$1,618 million in third quarter 1965-66, 31 percent higher than the \$1,232 million in third quarter 1964-65.

The value of U.S. exports in March 1966 was 15 percent below the same month a year earlier. Agricultural exports in March 1965 were abnormally high because of the accumulation in January and February -- while the strike was in progress -- of commodities for export.

Exports for July-March 1965-66 were at an annual rate of \$6.6 billion. Feed grains, milled rice, wheat and flour, soybeans, and fruits and preparations were sharply above the July-March 1964-65 period. Offsetting declines occurred in cotton, cottonseed and soybean oils, dairy products, and animal fats and oils. Exports of feed grains in July-March 1965-66 surpassed the record set in all of fiscal year 1964-65.

Animals and animal products.--Dairy products were down 17 percent from the previous July-March period. Exports of dairy products declined because of lower domestic stocks as well as increased production and substantially higher stocks of butter in Western Europe in 1965.

Lower domestic supplies of lard, because of reduced pork production, accounted primarily for the decline in exports of animal fats and oils. For the period July-March 1965-66, exports of animal fats and oils were down 14 percent from the same period a year earlier.

Table 12.--U.S. agricultural exports: Value by commodity, July-March
1964-65 and 1965-66

Commodity	1964-65	1965-66 1/	Change
	-- Million dollars --		Percent
Animals and animal products:			
Dairy products <u>2/</u>	157	130	-17
Fats, oils, and greases.....	172	148	-14
Hides and skins.....	68	93	+37
Meats and meat products.....	84	88	+5
Poultry products.....	52	58	+12
Other.....	53	56	+6
Total animals, etc. <u>2/</u>	586	573	-2
Cotton, excluding linters.....	450	325	-28
Fruits and preparations.....	217	254	+17
Grains and preparations:			
Feed grains, excluding products....	663	984	+48
Rice, milled.....	133	170	+28
Wheat and flour.....	909	1,004	+10
Other.....	45	62	+38
Total grains, etc.	1,750	2,220	+27
Oilseeds and products:			
Cottonseed and soybean oils <u>3/</u>	191	148	-23
Soybeans.....	441	548	+24
Protein meal.....	138	166	+20
Other.....	65	60	-8
Total oilseeds, etc. <u>3/</u>	835	922	+10
Tobacco, unmanufactured.....	304	326	+7
Vegetables and preparations.....	112	118	+5
Other.....	226	262	+16
Total exports.....	4,480	5,000	+12

1/ Partly estimated.

2/ Prior to January 1, 1965, excludes Title III, P.L. 480 donations of butter and ghee, which are included in "Other" agricultural exports.

3/ Prior to January 1, 1965, excludes Title III, P.L. 480 donations, which are included in "Other" agricultural exports.

Cotton.--The value of cotton exports has continued the downward trend set earlier in the fiscal year. Exports to the EEC countries of West Germany, Italy, and France are lower, along with shipments to India, the United Kingdom, Poland, and Switzerland. Increased foreign competition and uncertainty over future cotton price developments are reasons for the decline, as well as the increased use of man-made fibers in the textile industry.

Grains and preparations.--Grains and preparations made up the major share of agricultural exports, and accounted for 44 percent during the first 3 quarters of 1965-66. Feed grain exports have increased substantially, and in the 3 quarters accounted for 44 percent of grains and preparations exported, compared to 38 percent in the first 3 quarters of 1964-65. The rapid increases in livestock production in Western Europe and Japan and the reduced coarse grain and root crop production in the EEC countries have increased the demand for U.S. exports of feed grains.

In addition to increases in feed grains, exports of wheat and flour increased 10 percent, from \$909 million in July-March 1964-65 to \$1,004 million in the same period 1965-66. Japan continued to be the leading cash buyer of U.S. wheat, with the Netherlands and the United Kingdom also making large purchases. Other principal foreign outlets for U.S. exports of wheat included India, Pakistan, Brazil, Yugoslavia, Korea, and Philippine Republic. India, which was the largest outlet for wheat sold under Government programs, received 4.7 million metric tons during July-February 1965-66.

Milled rice exports were up 28 percent, from \$133 million in July-March 1964-65 to \$170 million for the same period in 1965-66. This increase occurred because of increased rice shipments principally to Japan and South Viet-Nam. Rice exports declined from countries such as Thailand, Brazil, and Pakistan. In addition, rice crops in some of the major importing countries were short, resulting in increased imports. Higher incomes in developing countries further increased the demand for rice.

Fruits and preparations.--Exports of fruits and preparations in the July-March 1965-66 period increased 17 percent from the same period the previous year, up to \$254 million from \$217 million. Exports of fresh fruits through July-February 1965-66 rose to about 15 percent above the same period a year earlier, and accounted for the largest share of all fruits and preparations. Other substantial increases occurred in exports of dried fruits and frozen fruits, while exports of canned fruits and fruit juices declined during the July-February 1965-66 period from the same period in 1964-65.

Oilseeds and products.--U.S. exports of soybeans were \$548 million for July-March 1965-66, 24 percent above the \$441 million exported during the same period in 1964-65. Since soybean meal is a feed supplement, soybean and soybean meal exports have increased to outlets needing larger quantities of animal feeds. Protein meal for the July-March 1965-66 period was 20 percent above the same period last year. Japan continued to be the largest buyer of U.S. soybeans. The Japanese use about half their purchases for food and half for animal feed.

Exports of cottonseed and soybean oil were down 23 percent in July-March 1965-66 from the same period in 1964-65. Declines in exports of vegetable oils resulted from increased domestic use. A temporary tightening of domestic supplies occurred because of late harvesting and some delay in oil production from the new crop. Further, increased use of margarine resulted because of short supplies of butter, and greater use of vegetable oils to supplement the drop in available animal fats and oils increased the domestic demand for cottonseed and soybean oils.

Unmanufactured tobacco.--Exports of unmanufactured tobacco from the U.S. reached \$326 million for July-March 1965-66, up 7 percent from \$304 million in the preceding year. The higher quality of the 1965 flue-cured crop as well as the low level of stocks of U.S. tobacco in some countries, and the continued rise in tobacco consumption encouraged increased purchases of U.S. tobacco. Further, the political situation and smaller crops in Rhodesia have increased the demand for U.S. tobacco. Rhodesia is usually a large tobacco exporter.

Vegetables and preparations.--Exports of vegetables and preparations maintained an upward trend in March, so that the first 3 quarters of 1965-66 were 5 percent above the year earlier period. The current year is running ahead of the 1964-65 fiscal year partly because of the longshoremen's strike in January and February 1965. Exports of vegetables and preparations for March 1966 were below those of March 1965 which ran high because of the accumulation during the dock strike earlier in that year.

EXPORTS TO THE EUROPEAN ECONOMIC COMMUNITY, JULY-FEBRUARY 1965-66

The United States exported agricultural products to the European Economic Community (EEC) valued at \$124 million in February 1966 (table 13). This was an increase of 45 percent above the value of agricultural exports in the dock strike month of February 1965, and about the same as in February 1964.

Agricultural exports to EEC during July-February 1965-66 were 27 percent above the same period a year ago, and 22 percent above July-February 1963-64. Feed grains accounted for the largest share of exports -- one-third for July-February 1965-66, compared to one-fourth in 1964-65. Soybeans, wheat, fruits and vegetables, oilcake and meal, and tobacco were also up considerably from the same period in 1964-65. During July-February, U.S. agricultural exports to the EEC were at an annual rate of \$1.6 billion.

Commodities subject to variable levies amounting to \$507 million -- 46 percent of the total value of agricultural exports for July-February 1965-66 -- were up substantially from 38 percent of total agricultural products in the same months of 1964-65. Feed grains, wheat, turkeys, rice, and eggs increased, while dairy products, stewing chickens, wheat flour, and rye decreased.

U.S. exports of commodities not subject to variable levies were \$601 million for July-February 1965-66, up 11 percent from the same months in the preceding year. Soybean exports accounted for the major portion, and increased 45 percent from \$123 million in July-February 1964-65 to \$178 million in the current period. Oilcake and meal was up 41 percent, tobacco increased 28 percent, and fruits and vegetables rose 21 percent. The value of cotton exports showed a substantial drop, declining \$58 million or 60 percent from the July-February 1964-65 period. Other declines occurred in vegetable oils, down 50 percent, and canned poultry -- down 10 percent. Exports of agricultural commodities not subject to variable levies accounted for 54 percent of total agricultural exports in July-February 1965-66, compared to 62 percent for the same months in 1964-65.

Table 3--U.S. agricultural exports to the European Economic Community: Value by Commodity, February and July-February 1963-65 ^{1/}

Commodity	February		July-February			
	1964	1965	1966	1963-64	1964-65	1965-66
-- 1,000 dollars --						
<u>Variable levy commodities^{2/}:</u>						
Feed grains.....	21,475	33,075	42,201	188,294	227,304	367,933
Rice.....	1,378	153	1,290	7,371	5,219	8,185
Rye grain.....	458	0	0	5,223	1,287	998
Wheat grain.....	8,584	666	8,258	69,559	17,983	65,843
Wheat flour.....	131	37	28	2,548	1,006	725
Beef and veal (excluding variety meats) and cattle.....	68	246	52	209	1,227	1,551
Dairy products.....	2,236	3,448	228	23,974	40,778	18,098
Lard ^{3/}	480	13	137	1,838	830	1,080
Pork (excluding variety meats) and swine.....	3,217	7	34	7,221	243	130
Poultry and eggs:						
Live poultry.....	132	60	156	627	559	963
Broilers and fryers.....	879	304	542	8,167	4,833	4,841
Stewing chickens.....	441	384	128	5,191	3,076	1,055
Turkeys.....	585	614	833	7,953	9,257	14,925
Other fresh poultry.....	44	32	^{1/}	267	591	414
Eggs.....	194	98	285	1,636	903	1,492
Total poultry and eggs.....	2,275	1,492	1,944	23,841	19,219	23,690
Other.....	1,125	979	2,024	17,147	19,666	19,255
Total.....	41,427	40,116	56,196	347,225	334,762	507,448
<u>Non-variable levy commodities:</u>						
Canned poultry ^{4/}	317	95	234	1,726	2,164	1,945
Cotton, excluding linters.....	32,975	6,202	4,406	142,548	97,331	38,857
Fruits and vegetables.....	5,197	6,410	5,951	64,978	60,745	73,705
Hides and skins.....	2,140	1,348	2,160	13,173	14,786	21,099
Oilcake and meal.....	2,388	7,480	14,612	38,063	62,677	88,482
Soybeans.....	20,707	11,422	20,256	126,078	123,183	178,186
Tallow ^{4/}	2,763	3,220	2,402	19,620	22,325	23,038
Tobacco, unmanufactured..	5,410	635	9,027	70,008	60,454	77,205
Variety meats, fresh, frozen ^{4/}	2,531	1,068	2,083	15,968	18,568	23,474
Vegetable oils, expressed	2,389	4,860	860	15,546	24,812	12,407
Food for relief or charity.....	850	2	775	6,682	2,884	2,936
Other.....	4,631	2,741	5/5,000	49,250	50,998	5/60,126
Total.....	82,320	45,483	5/67,766	563,640	540,927	5/601,460
Total EEC.....	123,747	85,599	5/123,962	910,865	875,689	5/1,108,908

^{1/} Compiled from U.S. Bureau of the Census data. ^{2/} Grains, poultry, and pork were subject to variable levies beginning on July 30, 1962; rice on September 1, 1964; and beef and dairy products on November 1, 1964. The variable levy classification is designed to show overall changes in exports rather than to measure the impact of the variable levies. ^{3/} Lard for food is a variable levy commodity while lard for industrial use is bound in the General Agreement on Tariffs and Trade (GATT) at 3 percent ad valorem. U.S. lard is for food use. ^{4/} Although canned poultry, tallow, and variety meats are subject to variable levies, the import duties are bound in GATT. ^{5/} Partly estimated.

Table 14 -- U. S. agricultural exports: Quantity and value by commodity, February 1965 and 1966 and July-February 1964-65 and 1965-66

Commodity exported	Unit	February 1/				July-February 1/			
		Quantity		Value		Quantity		Value	
		1965	1966	1965	1966	1964-65	1965-66	1964-65	1965-66
		Thousands	Thousands	1,000 dollars	1,000 dollars	Thousands	Thousands	1,000 dollars	1,000 dollars
ANIMALS AND ANIMAL PRODUCTS									
Animals, live:									
Cattle	No.	4	3	1,209	999	28	34	9,146	11,121
Poultry, live -									
Baby chicks (chickens)	No.	2,467	2,140	672	990	16,138	20,188	5,460	7,222
Other live poultry		2/	2/	150	253	2/	2/	1,408	1,790
Other		2/	2/	579	249	2/	2/	4,393	3,453
Total animals, live		---	---	2,610	2,491	---	---	20,407	23,586
Dairy products:									
Anhydrous milk fat, including donations	Lb.	622	1,833	368	1,359	14,229	7,917	8,375	5,429
Butter, including donations	Lb.	10,502	908	4,442	290	101,529	6,018	42,343	2,156
Cheese, including donations	Lb.	694	431	335	256	5,669	4,506	2,777	2,330
Infants' and dietetic foods, chiefly milk	Lb.	1,319	1,369	1,037	993	9,817	11,379	6,447	7,786
Milk and cream -									
Condensed and evaporated, incl. donations	Lb.	7,649	4,209	1,613	788	69,829	61,985	14,616	13,411
Dry, whole milk and cream	Lb.	1,232	1,656	554	249	7,583	13,151	3,829	5,431
Fresh	Gal.	59	82	87	137	717	631	872	893
Nonfat dry, including donations	Lb.	29,481	29,127	3,870	4,774	594,421	543,793	56,442	79,147
Other		2/	2/	199	234	2/	2/	3,062	2,994
Total dairy products		---	---	12,505	9,080	---	---	138,763	119,577
Fats, oils, and greases:									
Lard	Lb.	29,862	15,016	3,154	2,153	352,264	128,554	37,581	16,156
Tallow -									
Edible	Lb.	160	268	20	37	3,090	2,212	353	297
Inedible	Lb.	173,439	137,614	15,638	10,966	1,299,673	1,213,799	101,674	104,729
Other animal fats, oils, and greases	Lb.	6,730	18,438	778	2,033	150,071	112,228	13,420	12,357
Total fats, oils, and greases	Lb.	210,191	171,336	19,590	15,189	1,805,098	1,456,793	153,028	133,539
Meat and meat products:									
Beef and veal	Lb.	5,581	1,654	2,553	1,163	41,988	25,986	17,292	14,502
Pork	Lb.	3,911	3,583	1,227	1,561	47,448	29,864	13,404	11,784
Sausage casings	Lb.	543	746	349	542	7,679	8,921	4,785	5,964
Variety meats (edible offals)	Lb.	11,191	13,705	2,976	3,831	137,928	145,462	29,380	39,075
Other, including meat extracts	Lb.	1,313	1,852	545	1,041	11,507	15,462	4,585	7,056
Total meat and products (except poultry)	Lb.	22,539	21,540	7,650	8,138	246,550	225,695	69,446	78,381
Poultry products:									
Eggs, dried and otherwise preserved	Lb.	141	31	104	15	2,084	1,918	2,316	1,134
Eggs in the shell -									
Hatching	Doz.	813	1,060	734	923	4,188	4,928	4,547	4,632
Other	Doz.	127	103	48	45	1,407	6,318	500	2,454
Poultry meat -									
Chickens, fresh or frozen	Lb.	7,359	9,561	1,781	2,335	89,148	83,287	20,702	21,558
Turkeys, fresh or frozen	Lb.	2,200	2,976	715	977	33,705	49,750	12,055	17,541
Other, fresh or frozen	Lb.	576	380	226	145	4,967	6,603	1,674	2,297
Canned and otherwise preserved	Lb.	600	1,377	204	381	12,503	12,931	3,137	3,462
Total poultry products		---	---	3,812	4,821	---	---	44,931	53,078

Continued -

Table 14.-- U. S. agricultural exports: Quantity and value by commodity, February 1965 and 1966 and July-February 1964-65 and 1965-66 - Continued

Commodity exported	Unit	February 1/				July-February 1/			
		Quantity		Value		Quantity		Value	
		1965	1966	1965	1966	1964-65	1965-66	1964-65	1965-66
		1,000	1,000			1,000	1,000		
		Thousands	Thousands	dollars	dollars	Thousands	Thousands	dollars	dollars
Other animal products:									
Feathers, crude or dressed	:Lb.	81	78	108	96	1,227	931	1,028	1,113
Gelatin, edible	:Lb.	258	173	197	137	2,281	1,356	4,684	979
Hair, raw or dressed (except wool)	:Lb.	306	468	77	106	3,941	4,809	1,478	1,441
Hides and skins, raw (except furs) 2/	:No.	1,008	1,755	5,086	13,741	10,601	12,581	58,616	81,359
Honey	:Lb.	273	796	65	146	4,889	11,122	960	1,819
Wool, unmanufactured	:C.Lb.	729	950	804	829	1,992	6,496	2,193	5,497
Other	:---	2/	2/	1,203	1,963	2/	2/	14,101	15,899
Total other animal products	:---	---	---	7,540	17,018	---	---	83,060	108,107
Total animals and animal products	:---	---	---	53,707	56,737	---	---	509,635	516,268
VEGETABLE PRODUCTS									
Cotton, unmanufactured:									
Cotton	:RBale:	181	254	24,614	30,915	2,851	2,263	374,534	285,439
Linters	:RBale:	13	28	413	831	149	181	4,140	5,187
Total cotton and linters	:RBale:	194	282	25,027	31,746	3,000	2,444	378,674	290,626
Fruits and preparations:									
Canned -									
Fruit cocktail	:Lb.	15,533	16,527	2,265	2,840	115,966	87,994	18,060	15,492
Peaches	:Lb.	21,656	6,297	2,203	773	182,300	173,029	19,538	18,811
Pears	:Lb.	599	467	110	83	4,358	3,589	807	725
Pineapples	:Lb.	2,753	5,549	409	871	69,018	79,808	10,145	12,200
Other	:Lb.	1,586	2,550	338	537	27,948	51,433	4,784	8,480
Total canned fruits	:Lb.	42,127	31,390	5,325	5,104	399,590	395,853	53,334	55,708
Dried -									
Prunes	:Lb.	9,842	9,670	1,657	1,893	71,560	100,082	13,348	18,225
Raisins (dried grapes)	:Lb.	4,867	8,057	860	1,430	80,219	94,126	14,544	16,152
Other	:Lb.	1,582	1,977	546	771	12,845	14,413	4,027	5,222
Total dried fruits	:Lb.	16,291	19,704	3,063	4,094	164,624	208,621	31,919	39,599
Fresh -									
Apples	:Lb.	31,608	46,098	2,767	4,192	151,849	217,472	13,573	19,898
Berries	:Lb.	259	317	64	89	13,189	9,878	2,407	2,146
Grapefruit	:Lb.	18,344	20,318	880	1,150	102,214	119,206	6,451	7,130
Grapes	:Lb.	4,392	9,413	514	899	189,017	245,810	18,155	21,822
Lemons and limes	:Lb.	6,633	18,624	656	1,260	118,105	162,155	9,481	12,900
Oranges and tangerines	:Lb.	27,610	50,492	2,582	3,962	219,959	323,948	20,787	26,191
Pears	:Lb.	3,040	3,012	279	315	52,229	64,010	4,805	6,250
Other	:Lb.	859	1,958	150	267	100,323	138,464	6,974	10,496
Total fresh fruits	:Lb.	92,785	150,232	7,892	12,134	946,885	1,280,943	82,633	106,833
Fruit juices -									
Grapefruit	:Gal.	140	387	188	445	1,569	1,871	1,942	2,084
Orange	:Gal.	608	1,246	1,515	2,007	4,069	6,085	10,625	11,083
Other	:Gal.	511	1,185	633	1,007	7,888	7,199	7,241	7,206
Total fruit juices	:Gal.	1,259	2,818	2,336	3,459	13,526	15,155	19,808	20,373
Frozen fruits	:Lb.	335	241	65	64	5,767	13,699	1,060	2,337
Other	:---	2/	2/	266	564	2/	2/	3,739	4,474
Total fruits and preparations	:---	---	---	18,947	25,419	---	---	192,493	229,244

Continued -

Table 14.— U. S. agricultural exports: Quantity and value by commodity,
February 1965 and 1966 and July-February 1964-65 and 1965-66 - Continued

Commodity exported	Unit	February 1/				July-February 1/			
		Quantity		Value		Quantity		Value	
		1965	1966	1965	1966	1964-65	1965-66	1964-65	1965-66
				1,000	1,000			1,000	1,000
		Thousands	Thousands	dollars	dollars	Thousands	Thousands	dollars	dollars
Grains and preparations:									
Feed grains and products -									
Barley grain (48 lb.)	Bu.	2,477	6,143	3,037	8,096	35,808	47,848	39,579	59,163
Corn grain, including donations (56 lb.)	Bu.	40,149	51,277	57,890	73,112	307,532	435,752	419,716	596,159
Grain sorghums (56 lb.)	Bu.	5,999	23,237	7,638	28,692	63,860	152,509	76,805	183,179
Oats grain (32 lb.)	Bu.	13	602	15	505	2,922	23,145	1,986	16,355
Total feed grains	M.Ton	1,226	2,035	68,580	110,405	10,256	16,321	538,086	854,856
Malt and flour, including barley malt	Lb.	1,299	4,771	196	315	47,053	55,798	2,969	3,565
Corn grits and hominy	Lb.	3,125	3,724	126	155	27,149	24,511	1,113	1,070
Cornmeal, including donations	Qrt.	173	460	702	1,803	2,896	2,812	11,114	11,135
Cornstarch	Lb.	3,946	5,565	334	522	46,849	48,821	4,027	4,806
Oatmeal, groats, and rolled oats	Lb.	546	446	41	49	7,372	10,825	542	847
Total feed grains and products	M.Ton	1,247	2,083	69,979	113,249	10,586	16,652	557,851	876,279
Rice -									
Milled, including donations	Lb.	142,719	206,548	9,827	15,119	1,324,251	2,086,229	94,296	151,408
Paddy or rough	Lb.	102	521	7	47	4,770	6,191	421	528
Total rice (milled basis)	Lb.	142,785	206,887	9,834	15,166	1,327,351	2,090,253	94,717	151,936
Rye grain (56 lb.)	Bu.	0	5	0	7	1,335	1,588	1,739	1,924
Wheat and flour, including donations -									
Wheat grain (60 lb.)	Bu.	22,586	68,630	38,572	110,145	382,164	479,767	681,733	775,964
Wheat flour, wholly of U. S. wheat	Qrt.	1,305	2,047	5,084	8,080	23,949	20,502	99,573	82,992
Total wheat and flour	Bu.	25,562	73,297	43,656	118,225	436,767	526,511	781,306	858,956
Bakery products	Lb.	1,114	1,793	457	898	10,056	10,508	4,216	4,765
Other, including donations	2/	2/	2/	823	3,149	2/	2/	9,851	22,751
Total grains and preparations				124,749	250,694			1,449,680	1,916,611
Oilseeds and products:									
Oils, including donations -									
Cottonseed oil	Lb.	50,496	30,120	7,064	4,067	410,541	302,724	51,618	38,242
Soybean oil	Lb.	72,688	68,865	9,467	10,536	911,581	738,505	108,966	98,452
Other	Lb.	15,706	17,544	2,662	3,002	199,484	165,588	27,607	25,996
Total oils (except essential)	Lb.	138,890	116,629	19,193	17,605	1,521,606	1,206,817	188,191	162,690
Oilseeds -									
Flaxseed (56 lb.)	Bu.	1/	1/	2	1	5,872	3,271	16,812	9,784
Soybeans (60 lb.)	Bu.	11,329	17,081	34,603	48,923	132,230	173,689	363,587	476,217
Other	2/	2/	2/	1,419	910	2/	2/	14,140	21,047
Total oilseeds				36,024	49,834			394,539	507,048
Protein meal (oil-cake and meal)	S.Ton	166	284	12,641	22,833	1,464	1,884	109,858	145,675
Total oilseeds and products				67,858	90,272			692,588	815,413
Tobacco, unmanufactured:									
Burley	Lb.	579	5,570	532	4,055	29,264	35,065	24,066	27,021
Cigar wrapper	Lb.	183	924	258	1,862	2,176	3,206	6,478	10,663
Dark-fired Kentucky and Tennessee	Lb.	217	1,662	139	875	12,357	16,933	6,279	8,760
Flue-cured	Lb.	4,032	18,986	3,699	15,822	254,322	268,089	218,672	237,514
Maryland	Lb.	385	295	254	253	7,676	7,753	5,967	6,063
Other	Lb.	1,629	2,088	1,058	955	19,855	27,177	9,528	11,374
Total tobacco, unmanufactured	Lb.	7,025	29,525	5,940	23,822	325,650	358,223	270,990	301,395

Continued -

Table 14.-- U. S. agricultural exports: Quantity and value by commodity,
February 1965 and 1966 and July-February 1964-65 and 1965-66 - Continued

Commodity exported	Unit	February 1/				July-February 1/			
		Quantity		Value		Quantity		Value	
		1965	1966	1,000	1,000	1964-65	1965-66	1,000	1,000
		Thousands	Thousands	dollars	dollars	Thousands	Thousands	dollars	dollars
Vegetables and preparations:									
Canned -									
Asparagus	Lb.	8,978	1,170	2,024	345	44,119	26,990	10,824	8,006
Soups	Lb.	1,579	1,416	357	325	10,576	12,805	2,048	2,840
Tomato paste and puree	Lb.	848	1,276	197	336	9,200	9,217	1,881	2,233
Tomato sauce for cooking purposes	Lb.	125	159	16	25	1,491	1,390	196	200
Other	Lb.	5,938	5,412	862	834	40,013	47,178	5,743	6,848
Total canned vegetables	Lb.	17,468	9,433	3,456	1,865	105,399	97,580	20,692	20,127
Dried beans, including donations	Lb.	10,578	8,897	1,097	916	241,257	214,866	19,864	17,811
Dried peas, including cow and chick	Lb.	34,380	20,046	1,755	1,268	191,922	198,362	11,816	12,746
Fresh -									
Lettuce	Lb.	9,117	19,208	404	1,398	92,073	120,759	4,251	7,246
Onions	Lb.	10,147	8,660	451	413	50,537	72,584	2,341	3,177
Potatoes (except sweet potatoes)	Lb.	1,980	15,945	96	382	51,754	73,930	2,395	2,632
Tomatoes	Lb.	4,932	5,013	395	489	67,353	61,875	5,966	6,162
Other	Lb.	28,653	40,698	1,557	2,997	156,529	182,033	9,321	13,484
Total fresh vegetables	Lb.	54,829	89,524	2,903	5,679	418,246	511,181	24,274	32,701
Frozen vegetables	Lb.	938	1,540	233	239	9,851	11,521	2,042	2,517
Soups and vegetables, dehydrated	Lb.	1,605	2,147	611	738	10,389	13,846	4,169	5,167
Vegetable seasonings	Lb.	950	600	471	297	4,576	6,703	2,682	2,694
Tomato juice, canned	Gal.	210	114	176	113	2,216	1,589	1,738	1,440
Other	2/	2/	2/	844	1,354	2/	2/	10,039	9,910
Total vegetables and preparations		---	---	11,546	12,469	---	---	97,316	105,113
Other vegetable products:									
Coffee	Lb.	1,728	2,873	1,583	3,075	15,765	18,883	20,265	23,778
Drugs, herbs, roots, leaves, etc., crude	Lb.	964	335	487	743	3,290	5,812	3,544	5,733
Essential oils, natural	Lb.	600	693	1,491	1,970	5,393	6,107	1,043	15,553
Feeds and fodders (except oil-cake and meal)	2/	2/	2/	4,032	5,936	2/	2/	44,862	62,369
Flavoring sirups, sugars, and extracts	2/	2/	2/	913	2,245	2/	2/	4,295	16,997
Hops	Lb.	1,166	2,155	748	1,257	16,305	16,149	5,720	9,434
Nursery and greenhouse stock	2/	2/	2/	943	987	2/	2/	4,712	5,392
Nuts and preparations	Lb.	3,443	31,110	1,213	4,675	71,355	171,754	19,970	35,017
Seeds (except oilseeds)	Lb.	9,319	9,480	3,303	2,972	69,370	70,148	19,473	23,133
Spices	Lb.	300	565	237	341	2,248	4,703	1,807	2,782
Other, including donations	2/	2/	2/	3,027	3,241	2/	2/	50,991	28,333
Total other vegetable products		---	---	17,977	27,442	---	---	191,632	228,521
Total vegetable products		---	---	272,044	461,864	---	---	3,272,423	3,886,943
TOTAL AGRICULTURAL EXPORTS		---	---	325,751	518,601	---	---	3,782,058	4,403,211
TOTAL NONAGRICULTURAL EXPORTS		---	---	1,249,882	1,745,414	---	---	12,242,515	13,933,312
TOTAL EXPORTS, ALL COMMODITIES		---	---	1,575,633	2,264,015	---	---	16,025,573	18,336,523

1/ Preliminary.

2/ Reported in value only.

3/ Excludes the number of "other hides and skins," reported in value only.

4/ Less than 500.

Table 15.— U. S. agricultural imports for consumption: Quantity and value by commodity, February 1965 and 1966 and July-February 1964-65 and 1965-66

Commodity imported SUPPLEMENTARY	Unit	February 1/				July-February 1/			
		Quantity		Value		Quantity		Value	
		1965	1966	1,000	1,000	1964-65	1965-66	1,000	1,000
		Thousands	Thousands	dollars	dollars	Thousands	Thousands	dollars	dollars
ANIMALS AND ANIMAL PRODUCTS									
Animals, live:									
Cattle, dutiable	No.	48	76	3,291	6,719	330	919	29,412	86,467
Cattle, free (for breeding)	No.	1	1	358	412	10	12	3,928	4,230
Horses	No.	2/	2/	1,012	682	2	2	6,826	7,124
Other (including live poultry)		3/	3/	68	171	3/	3/	699	1,325
Total animals, live				4,729	7,984			40,865	99,146
Dairy products:									
Butter	Lb.	41	53	20	28	449	527	240	280
Cheese -									
Blue-vein	Lb.	271	304	137	154	2,306	2,790	1,159	1,407
Cheddar	Lb.	296	218	88	70	1,576	1,139	520	397
Edam and Gouda	Lb.	381	491	175	223	4,293	5,501	1,996	2,584
Pecorino	Lb.	1,050	826	761	771	11,907	12,183	7,919	10,278
Swiss	Lb.	1,029	1,445	617	772	10,458	12,207	5,941	6,831
Other	Lb.	3,066	3,948	1,231	1,371	16,595	25,681	8,213	10,968
Total cheese	Lb.	6,093	7,232	3,009	3,261	47,135	59,501	25,748	32,465
Casain or lactarene	Lb.	5,429	7,971	1,350	2,464	63,328	55,874	12,964	17,956
Other		3/	3/	123	518	3/	3/	1,216	2,307
Total dairy products				4,502	6,371			40,168	53,008
Hides and skins, raw (except furs):									
Calf skins	Lb.	319	128	119	62	5,332	1,619	2,208	901
Cattle hides	Lb.	549	1,028	73	189	7,088	13,166	1,134	2,138
Goat and kid skins	Lb.	1,394	1,063	913	938	9,825	11,925	6,675	9,650
Sheep and lamb skins	Lb.	4,373	5,562	2,483	3,750	29,733	35,913	16,318	22,006
Other	Lb.	2,818	2,513	1,425	1,343	25,768	20,124	12,645	10,683
Total hides and skins, raw	Lb.	9,453	10,294	5,013	6,282	77,746	82,747	38,980	45,378
Meat and meat products:									
Beef and veal -									
Fresh, chilled, or frozen	Lb.	33,926	55,939	11,539	20,337	382,032	441,651	124,251	151,678
Other	Lb.	5,241	8,454	2,084	3,184	56,201	85,382	20,318	33,266
Total beef and veal	Lb.	39,167	64,393	13,623	23,521	438,233	527,033	144,569	185,044
utton, goat, and lamb	Lb.	1,049	6,325	263	1,702	13,661	36,686	3,285	9,487
Pork -									
Fresh, chilled, or frozen	Lb.	3,726	3,118	1,340	1,519	26,132	31,706	9,397	13,810
Hams and shoulders, canned cooked	Lb.	14,048	18,926	9,078	14,274	88,529	128,663	58,141	90,387
Other	Lb.	3,212	4,460	1,718	2,554	20,913	30,352	12,914	17,673
Total pork	Lb.	20,986	26,504	12,136	18,347	135,574	190,721	80,452	121,870
Sausage casings		3/	3/	1,305	1,543	3/	3/	10,748	13,657
Other (including meat extracts)	Lb.	5,580	6,273	1,244	1,492	52,067	60,665	11,583	14,895
Total meat and products (except poultry)				28,571	46,605			250,637	344,953
Poultry products:									
Eggs, dried, frozen, otherwise preserved	Lb.	1	100	1	72	11	140	10	101
Eggs in the shell	Doz.	55	508	37	199	810	884	443	470
Poultry meat	Lb.	7	13	20	37	164	200	359	489
Total poultry products				58	308			812	1,060

Continued -

Table 15.— U. S. agricultural imports for consumption: Quantity and value by commodity, February 1965 and 1966 and July-February 1964-65 and 1965-66 - Continued

Commodity imported SUPPLEMENTARY	Unit	February 1/				July-February 1/			
		Quantity		Value		Quantity		Value	
		1965	1966	1965	1966	1964-65	1965-66	1964-65	1965-66
Wool, unmanufactured (except free in bond):		Thousands	Thousands	1,000 dollars	1,000 dollars	Thousands	Thousands	1,000 dollars	1,000 dollars
40's to 56's	G.Lb.	1,414	4,351	877	2,328	16,184	28,113	11,101	15,721
Finer than 56's	G.Lb.	12,063	18,078	8,445	11,669	73,605	126,329	53,366	78,616
Other wools	G.Lb.	2,267	2,853	2,169	2,752	15,271	17,983	13,786	14,554
Total wool, unmanufactured	G.Lb.	15,744	25,282	11,491	16,749	105,060	172,425	78,253	108,891
Other animal products:									
Bones, hoofs, and horns, unmanufactured	Lb.	3/	3/	57	283	3/	3/	1,283	2,178
Bristles, sorted, bunched, or prepared	Lb.	79	175	234	597	1,692	2,161	6,494	7,075
Fats, oils, greases, edible and inedible	Lb.	3/	3/	694	465	3/	3/	1,362	1,265
Feathers, crude	Lb.	251	294	561	451	2,286	2,669	3,797	4,597
Gelatin, edible	Lb.	448	781	190	453	4,349	6,330	2,196	3,261
Hair, unmanufactured	Lb.	785	499	581	442	6,327	7,076	5,111	5,834
Honey	Lb.	739	588	84	54	3,906	8,225	495	829
Other	Lb.	3/	3/	858	885	3/	3/	6,392	8,105
Total other animal products	Lb.	---	---	3,259	3,630	---	---	27,130	33,144
Total animals and animal products	Lb.	---	---	57,623	87,929	---	---	476,845	685,580
VEGETABLE PRODUCTS									
Cotton, unmanufactured (480 lb.):									
Cotton	Bale	1	7	84	989	99	104	19,489	20,091
Linters	Bale	16	20	290	500	105	110	2,439	2,814
Total cotton and linters	Bale	17	27	374	1,489	204	214	21,928	22,905
Fruits and preparations:									
Apples, green or ripe (50 lb.)	Bu.	96	20	425	72	637	354	2,904	1,566
Berries	Lb.	5,844	8,446	871	1,616	33,595	47,220	5,613	9,490
Dates	Lb.	156	154	15	13	36,821	27,763	3,555	2,512
Figs	Lb.	4,037	2,175	360	233	14,814	15,555	1,567	1,747
Grapes (40 lb.)	Cu.Ft.	16	8	42	22	816	500	1,656	799
Melons	Lb.	8,256	12,355	351	473	22,855	33,156	983	1,425
Olives in brine	Gal.	1,113	821	2,012	1,444	9,268	6,907	13,754	13,658
Oranges, mandarin, canned	Lb.	4,874	2,320	1,005	448	33,721	36,125	7,040	7,324
Pineapples, canned, prepared or preserved	Lb.	10,104	13,449	1,053	1,561	88,329	107,366	9,761	12,217
Pineapple juice	Gal.	1,539	908	463	223	6,311	5,650	2,165	1,574
Other	Lb.	3/	3/	2,270	1,641	3/	3/	17,422	15,643
Total fruits and preparations	Lb.	---	---	8,867	7,746	---	---	66,420	67,925
Grains and preparations:									
Barley grain (48 lb.)	Bu.	174	108	222	180	8,276	4,787	10,947	6,664
Barley malt	Lb.	6,153	2,323	309	117	52,292	32,609	2,536	1,576
Corn grain (56 lb.)	Bu.	11	67	49	198	506	637	1,035	1,406
Oats grain (32 lb.)	Bu.	302	361	304	359	1,923	2,240	1,657	1,905
Rice	Lb.	920	5,800	68	296	3,164	47,517	638	2,486
Rye grain (56 lb.)	Bu.	368	0	439	0	1,523	813	1,834	889
Wheat grain for domestic use (60 lb.)	Bu.	84	63	188	128	432	249	769	493
Wheat flour	Lb.	1	0	2/	0	14	709	2	39
Other	Lb.	3/	3/	1,297	1,318	3/	3/	11,159	12,739
Total grains and preparations	Lb.	---	---	2,876	2,596	---	---	30,577	28,197

Continued -

Table 15.-- U. S. agricultural imports for consumption: Quantity and value by commodity,
February 1965 and 1966 and July-February 1964-65 and 1965-66 - Continued

Commodity imported SUPPLEMENTARY	Unit	February 1/				July-February 1/			
		Quantity		Value		Quantity		Value	
		1965	1966	1965	1966	1964-65	1965-66	1964-65	1965-66
		Thousands	Thousands	1,000 dollars	1,000 dollars	Thousands	Thousands	1,000 dollars	1,000 dollars
Nuts and preparations:									
Almonds	Lb.	1	17	1	7	246	220	141	126
Brazil nuts	Lb.	414	526	219	300	23,755	19,687	6,751	6,772
Cashew nuts	Lb.	2,839	6,011	1,559	3,085	45,234	49,615	23,285	25,542
Coconut meat, fresh, frozen, or prepared ...	Lb.	7,783	9,151	1,016	1,145	86,035	95,699	11,187	13,028
Pistache nuts	Lb.	1,816	3,435	930	1,788	7,965	13,700	3,967	7,578
Other		3/	3/	419	280	3/	3/	6,471	5,891
Total nuts and preparations		---	---	4,144	6,605	---	---	51,802	58,937
Oilseeds and products:									
Oils, edible and inedible -									
Cacao butter	Lb.	2,847	2,171	1,380	752	10,393	11,141	5,011	3,730
Carnauba wax	Lb.	835	2,193	353	763	6,822	8,929	2,928	3,248
Castor oil	Lb.	10,973	10,921	1,069	1,106	84,683	90,832	8,366	7,918
Coconut oil	Lb.	64,306	43,726	7,753	5,312	285,444	270,769	34,629	34,412
Olive oil, edible	Lb.	4,925	3,312	1,328	1,056	36,638	26,109	10,155	8,217
Palm oil	Lb.	0	1,925	0	273	4,374	5,367	442	657
Palm kernel oil	Lb.	4,587	7,563	585	1,024	59,063	58,965	7,220	8,948
Tung oil	Lb.	2,677	2,202	567	483	21,220	13,771	4,281	3,133
Other	Lb.	1,252	4,645	271	771	12,873	17,712	2,817	3,651
Total oils (except essential)	Lb.	92,402	78,658	13,306	11,540	521,510	503,595	75,849	73,914
Oilseeds -									
Copra	Lb.	23,088	15,456	1,893	1,294	411,730	356,718	32,638	32,230
Sesame seed	Lb.	1,191	3,920	185	889	12,069	17,666	1,904	2,815
Other		3/	3/	210	330	3/	3/	1,379	2,196
Total oilseeds		---	---	2,288	2,513	---	---	35,921	37,241
Protein meal (oilcake and meal)	Lb.	2,376	5,313	86	159	25,974	64,760	738	1,911
Total oilseeds and products		---	---	15,680	14,212	---	---	112,508	113,066
Sugar and related products:									
Cane sugar	S.Ton:	157	261	17,296	28,822	2,551	2,641	291,987	302,832
Molasses unfit for human consumption	Gal.	16,090	21,101	1,418	1,645	134,816	149,911	15,290	12,281
Other		3/	3/	415	513	3/	3/	4,623	5,026
Total sugar and related products		---	---	19,129	30,980	---	---	311,900	320,139
Vegetables and preparations:									
Canned mushrooms	Lb.	345	278	209	156	4,115	7,007	2,349	3,845
Canned tomatoes, tomato paste and sauce ...	Lb.	5,346	12,273	651	1,391	73,745	99,159	9,082	11,078
Fresh or dried -									
Cucumbers	Lb.	29,451	22,062	1,978	1,668	53,331	46,552	3,570	3,263
Garlic	Lb.	1,022	1,358	133	199	9,937	9,252	1,268	1,173
Onions	Lb.	10,323	7,984	546	482	20,819	25,943	1,218	1,782
Potatoes, white	Lb.	28,309	11,856	1,088	319	217,899	76,453	5,850	1,952
Tomatoes, natural state	Lb.	44,626	70,933	4,966	10,463	94,831	131,490	9,866	18,858
Turnips and rutabagas	Lb.	10,300	8,778	239	203	78,409	67,881	1,680	1,570
Pickled vegetables	Lb.	1,313	1,540	184	236	11,018	18,700	1,611	2,148
Tapioca, tapioca flour, and cassava	Lb.	31,362	28,090	1,002	874	205,860	212,182	6,431	7,191
Other		3/	3/	3,400	3,505	3/	3/	19,708	20,718
Total vegetables and preparations		---	---	14,396	19,496	---	---	62,633	73,578

Continued -

Table 15.— U. S. agricultural imports for consumption: Quantity and value by commodity, February 1965 and 1966 and July-February 1964-65 and 1965-66 - Continued

Commodity imported SUPPLEMENTARY	Unit	February 1/				July-February			
		Quantity		Value		Quantity		Value	
		1965	1966	1965	1966	1964-65	1965-66	1964-65	1965-66
				1,000	1,000			1,000	1,000
		Thousands	Thousands	dollars	dollars	Thousands	Thousands	dollars	dollars
Other vegetable products:									
Feeds and fodders (except oilcake and meal):	—	3/	3/	1,385	1,107	3/	3/	11,813	10,787
Hops	Lb.	1,862	477	1,974	492	5,471	5,990	5,902	6,465
Jute and jute butts, unmanufactured	L.Ton:	3	6	447	1,249	32	23	4,191	5,078
Malt liquors	Gal.	850	1,066	903	1,207	12,830	12,978	14,129	14,248
Nursery and greenhouse stock	—	3/	3/	936	860	3/	3/	12,215	12,352
Seeds, field and garden	—	3/	3/	1,843	1,961	3/	3/	10,408	12,181
Spices	Lb.	7,885	7,187	1,167	1,315	33,369	42,957	5,075	7,309
Tobacco, unmanufactured	Lb.	13,440	14,495	8,965	10,124	121,189	115,038	81,510	82,919
Wines	Gal.	938	1,055	3,191	4,109	10,437	11,900	41,922	49,770
Other	—	3/	3/	1,225	641	3/	3/	6,163	5,557
Total other vegetable products	—	—	—	22,036	23,065	—	—	193,328	206,666
Total vegetable products	—	—	—	87,502	106,189	—	—	851,096	891,443
TOTAL SUPPLEMENTARY IMPORTS	—	—	—	145,125	194,118	—	—	1,327,941	1,577,023
COMPLEMENTARY									
Bananas	Lb.	276,758	318,434	12,517	15,273	2,199,192	2,285,476	99,598	108,255
Coffee (including into Puerto Rico)	Lb.	171,975	266,678	69,135	102,471	1,592,557	2,105,242	597,758	784,333
Coffee essences, substitutes and adulterants	Lb.	133	490	192	552	2,380	2,473	3,240	2,825
Cocoa or cacao beans	Lb.	49,393	129,327	10,236	18,017	362,351	661,374	76,287	89,733
Cocoa and chocolate, prepared	Lb.	12,683	8,868	1,944	1,124	82,096	82,758	14,751	12,550
Drugs, herbs, roots, etc.	—	3/	3/	2,202	1,700	3/	3/	13,265	15,872
Essential or distilled oils	—	3/	3/	2,400	2,315	3/	3/	16,216	21,356
Fibers, unmanufactured	L.Ton:	10	10	2,365	2,015	101	114	20,533	21,571
Rubber, crude	Lb.	61,677	100,654	11,190	18,339	620,060	677,815	119,902	118,796
Silk, raw	Lb.	486	345	2,509	2,180	2,825	2,628	14,064	15,396
Spices	Lb.	9,790	7,028	3,413	3,637	65,517	70,303	22,825	34,076
Tea	Lb.	7,176	9,352	3,047	4,131	75,064	85,220	33,505	37,883
Wool, unmanufactured (free in bond)	G.Lb.	3,161	8,591	1,904	4,568	78,675	93,437	46,925	48,120
Other complementary agricultural products	—	3/	3/	1,120	791	3/	3/	7,911	7,777
TOTAL COMPLEMENTARY IMPORTS	—	—	—	124,174	177,113	—	—	1,186,780	1,318,543
TOTAL AGRICULTURAL IMPORTS	—	—	—	269,299	371,231	—	—	2,514,721	2,895,566
TOTAL NONAGRICULTURAL IMPORTS	—	—	—	1,219,338	1,434,975	—	—	9,804,769	11,957,160
TOTAL IMPORTS, ALL COMMODITIES	—	—	—	1,488,637	1,806,206	—	—	12,319,490	14,852,726

1/ Preliminary.

2/ Less than 500.

3/ Reported in value only.

4/ Excludes the weight of "other hides and skins," reported in pieces only.

Table 16 -- U. S. agricultural exports and imports (for consumption): Value by country, July-January 1965-66

Country	Agricultural				Country	Agricultural			
	Exports	Imports				Exports	Imports		
	Total	Comple- mentary	Supple- mentary		Total	Comple- mentary	Supple- mentary		
	-- Thousand dollars --					-- Thousand dollars --			
Greenland	0	0	0	0	Norway	25,560	1,676	62	1,614
Canada	363,809	161,982	5,625	156,357	Denmark	48,537	52,120	141	51,979
Miquelon and St. Pierre Is.	12	1	1	0	United Kingdom	270,945	16,935	5,165	11,770
					Ireland	15,276	6,285	898	5,387
<u>Latin American Republics:</u>					Netherlands	320,903	53,161	6,897	46,264
Mexico	53,467	136,471	43,215	93,256	Belgium and Luxembourg ...	119,347	6,982	1,086	5,796
Guatemala	5,946	30,439	27,477	2,962	Unidentified W. Europe 1/2	0			
El Salvador	4,054	26,901	25,778	1,123	France	83,026	42,214	4,801	37,413
Honduras	3,416	32,478	29,074	3,404	West Germany	286,848	25,964	1,671	24,293
Nicaragua	4,269	15,803	8,106	7,697	East Germany	9,182	199	0	199
Costa Rica	3,085	27,493	23,002	4,491	Austria	9,007	1,626	46	1,580
Panama	10,136	22,654	21,927	727	Czechoslovakia	26,094	1,314	6	1,308
Cuba	0	1,377	0	1,377	Hungary	3,420	306	88	216
Haiti	5,785	7,840	5,920	1,920	Switzerland	43,258	7,700	1,154	6,546
Dominican Republic	13,878	54,580	13,970	40,610	Finland	12,043	894	28	866
Colombia	20,559	134,731	128,132	6,599	Estonia	0	0	0	0
Venezuela	46,585	9,658	9,119	539	Latvia	0	0	0	0
Ecuador	6,505	62,592	57,193	5,399	Lithuania	0	2	2	0
Peru	17,956	53,835	16,491	37,345	Poland and Danzig	16,298	22,755	120	22,635
Bolivia	6,139	1,636	590	1,046	U.S.S.R. (Russia)	12,427	1,777	689	1,088
Chile	23,473	1,947	42	1,905	Azores	541	155	0	155
Brazil	52,294	292,667	232,896	59,771	Spain	94,840	25,110	1,344	23,766
Paraguay	228	8,579	1,781	6,798	Portugal	11,230	5,362	135	5,227
Uruguay	857	17,177	54	17,123	Gibraltar	114	2	0	2
Argentina	2,651	53,444	12,074	41,370	Malta and Gozo	622	0	0	0
Total L. A. Republics	281,283	992,303	656,841	335,462	Italy	172,949	48,944	5,265	43,679
					Free Terr. of Trieste	24	3	2	1
<u>Other Latin America:</u>					Yugoslavia	61,588	13,455	500	12,955
British Honduras	1,364	702	224	478	Albania	4	89	47	42
Canal Zone	0	189	189	0	Greece	13,114	22,100	265	21,835
Bermuda	3,612	0	0	0	Rumania	1,656	338	39	299
Bahamas	8,713	521	5	516	Bulgaria	1,578	951	245	706
Jamaica	12,453	6,526	1,223	5,303	Turkey	15,425	40,728	1,261	39,467
Leeward and Windward Is.	1,763	1,434	1,177	257	Cyprus	566	814	375	439
Barbados	1,255	1,635	0	1,635					
Trinidad and Tobago	5,531	2,684	844	1,840	Total Europe	1,708,527	402,195	32,775	369,420
Netherlands Antilles	6,275	73	48	25					
French West Indies	1,307	3,724	416	3,308	<u>Asia:</u>				
British Guiana	2,229	2,799	6	2,793	Syrian Arab Republic	1,082	1,569	1,289	280
Surinam	2,011	255	255	0	Lebanon	14,277	3,074	1,085	1,989
French Guiana	69	54	49	5	Iraq	1,598	3,359	1,914	1,445
Falkland Islands	8	0	0	0	Iran	27,214	11,024	797	10,227
					Israel	47,725	959	214	745
Total Latin America	327,873	1,012,899	661,277	351,622	Jordan	5,268	1	1	0
					Gaza Strip	9	6	0	6
<u>Europe:</u>					Kuwait	3,464	0	0	0
Iceland	2,865	372	246	126	Saudi Arabia	13,287	0	0	0
Sweden	29,240	1,962	197	1,765	Other Arabia Pen. States ..	453	793	785	8

Continued -

Table 16. -- U. S. agricultural exports and imports (for consumption): Value by country, July-January 1965-66 - Continued

Country	Agricultural				Country	Agricultural			
	Exports	Total	Comple- mentary	Supple- mentary		Exports	Total	Comple- mentary	Supple- mentary
<u>Asia - Continued:</u>					<u>Africa - Continued:</u>				
		-- Thousand dollars --					-- Thousand dollars --		
Aden	1,040	30	0	30	Canary Islands	6,282	1	0	1
Bahrain	824	0	0	0	Other Spanish Africa	109	0	0	0
Afghanistan	3,289	1,076	16	1,060	Federal Rep. of Cameroon ..	772	4,844	4,375	469
India	269,584	48,358	17,713	30,645	Central African Republic ..	3	17	17	0
Goa, Damao, and Diu	0	0	0	0	Gabon	35	0	0	0
Pakistan	73,946	7,663	2,553	5,110	Mauritania	26	1	0	1
Nepal	26	2	0	2	Senegal	5,611	21	0	21
Ceylon	1,866	19,635	19,615	20	Guinea	4,149	7,722	7,694	28
Burma	97	163	0	163	Ivory Coast	1,749	25,245	24,819	426
Thailand	10,069	10,191	4,852	5,339	Togo	332	703	693	10
Viet-Nam	58,253	527	353	174	Other Western Africa	915	407	151	256
Laos	498	284	284	0	Ghana	4,666	22,317	21,802	515
Cambodia	400	1,291	1,291	0	Nigeria	5,044	25,064	22,197	2,867
Malaysia	9,438	39,872	37,762	2,110	Sierra Leone	1,049	688	678	10
Indonesia	1,184	70,446	68,296	2,150	British West Africa	54	2	2	0
Philippines	41,100	166,061	6,547	159,514	Madeira Islands	42	93	0	93
Macao	95	52	36	16	Angola	1,084	32,075	31,895	180
Other S. and S.E. Asia	10	217	197	20	Other W. Fort. Africa	127	257	257	0
China	0	0	0	0	Liberia	4,511	20,769	20,765	4
Outer Mongolia	0	1,582	20	1,562	Congo (Leopoldville)	17,129	9,555	7,910	1,645
North Korea	0	0	0	0	Burundi and Rwanda	156	17,814	17,814	0
Korea, Republic of	62,530	4,598	3,905	693	Somali Republic	538	215	0	215
Hong Kong	25,480	1,369	165	1,204	Ethiopia	2,234	22,732	21,316	1,416
Taiwan	45,681	17,589	3,088	14,501	French Somaliland	127	80	68	12
Japan	546,599	21,741	7,295	14,446	Uganda	346	28,769	28,672	97
Nansei and Nanpo Islands ..	12,937	18	18	0	Kenya	8,111	5,531	5,252	279
Total Asia	1,279,373	433,550	180,091	253,459	Tanzania (formerly Tangan- yika and Zanzibar)	1,719	4,901	4,751	150
<u>Australia and Oceania:</u>					Seychelles and Depend.	29	247	244	3
Australia	25,614	143,985	409	143,576	Mauritius and Depend.	145	2,068	16	2,052
New Guinea	366	2,608	2,608	0	Mozambique	268	2,557	556	2,001
New Zealand and W. Samoa ..	4,719	70,241	17,785	52,456	Malagasy Republic	672	17,839	16,509	1,330
British W. Pacific Is.	750	5,885	53	5,832	Rep. of South Africa	16,673	25,160	1,292	23,868
French Pacific Islands	1,520	116	114	2	Zambia, S. Rhod., Malawi ..	1,336	843	362	481
Trust Terr. of Pacific Is. ..	768	0	0	0	Total Africa	171,099	290,873	240,692	50,181
Total Australia and Oceania	33,737	222,835	20,969	201,866	Total all countries	3,884,420	2,524,335	1,141,430	1,382,905
<u>Africa:</u>					<u>E. E. C. (Common Market):</u>				
Morocco	12,612	1,145	435	710	Netherlands	320,903	53,161	6,897	46,264
Algeria	4,700	127	41	86	Belgium and Luxembourg ...	119,347	6,882	1,086	5,796
Tunisia	8,094	315	0	315	France	83,026	42,214	4,801	37,413
Libya	1,254	1	0	1	West Germany	286,848	25,964	1,671	24,293
United Arab Rep. (Egypt) ..	55,183	9,930	42	9,888	Italy	172,949	48,944	5,265	43,679
Sudan	3,213	818	67	751	Total E. E. C.	983,073	177,165	19,720	157,445

1/ Not available by countries.

Explanatory Note

U.S. foreign agricultural trade statistics in this report include official U.S. data based on compilations of the Bureau of the Census. Agricultural commodities consist of (1) nonmarine food products and (2) other products of agriculture which have not passed through complex processes of manufacture such as raw hides and skins, fats and oils, and wine. Such manufactured products as textiles, leather, boots and shoes, cigarettes, naval stores, forestry products, and distilled alcoholic beverages are not considered agricultural.

The trade statistics exclude shipments between the 50 States and Puerto Rico, between the 50 States and the island possessions, between Puerto Rico and the island possessions, among the island possessions, and intransit through the United States from one foreign country to another when documented as such through U.S. Customs.

EXPORTS The export statistics also exclude shipments to the U.S. armed forces for their own use and supplies for vessels and planes engaged in foreign trade. Data on shipments valued at less than \$100 are not compiled by commodity and are excluded from agricultural statistics but are reflected in nonagricultural and overall export totals in this report. The agricultural export statistics include shipments under P.L. 87-195 (Act for International Development), principally sales for foreign currency; under P.L. 83-480 (Agricultural Trade Development and Assistance Act), and related laws; and involving Government payments to exporters. (USDA payments are excluded from the export value.) Separate statistics on Government program exports are compiled by USDA from data obtained from operating agencies.

The export value, the value at the port of exportation, is based on the selling price (or cost if not sold) and includes inland freight, insurance, and other charges to the port. The country of destination is the country of ultimate destination or where the commodities are to be consumed, further processed, or manufactured. When the shipper does not know the ultimate destination, the shipments are credited to the last country, as known to him at time of shipment from the United States, to which the commodities are to be shipped in their present form. Except for Canada, export shipments valued \$100-\$499 are included on the basis of sampling estimates; shipments to Canada valued \$100-\$1,999 are sampled.

IMPORTS Imports for consumption consist of commodities released from U.S. Customs custody upon arrival, or entered into bonded manufacturing warehouse, or withdrawn from bonded storage warehouse for consumption. The agricultural statistics exclude low-value shipments from countries not identified because of illegible reporting, but they are reflected in nonagricultural and overall import totals in this report.

The import value, defined generally as the market value in the foreign country, excludes import duties, ocean freight, and marine insurance. The country of origin is defined as the country where the commodities were grown or processed. Where the country of origin is not known, the imports are credited to the country of shipment.

Imports similar to agricultural commodities produced commercially in the United States and others that are interchangeable in use to any significant extent with such U.S. commodities are supplementary, or partly competitive. All other commodities are complementary, or noncompetitive.

Further explanatory material on foreign trade statistics and compilation procedures of the Bureau of the Census is contained in the publications of that agency.