



AgEcon SEARCH
RESEARCH IN AGRICULTURAL & APPLIED ECONOMICS

The World's Largest Open Access Agricultural & Applied Economics Digital Library

This document is discoverable and free to researchers across the globe due to the work of AgEcon Search.

Help ensure our sustainability.

Give to AgEcon Search

AgEcon Search
<http://ageconsearch.umn.edu>
aesearch@umn.edu

*Papers downloaded from **AgEcon Search** may be used for non-commercial purposes and personal study only. No other use, including posting to another Internet site, is permitted without permission from the copyright owner (not AgEcon Search), or as allowed under the provisions of Fair Use, U.S. Copyright Act, Title 17 U.S.C.*

USDA/FATUS-
OCT 65

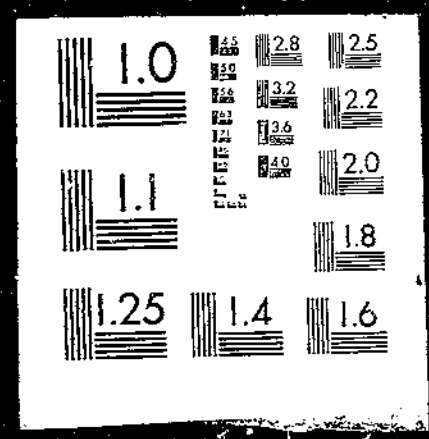
FATUS/FOREIGN AGRICULTURAL TRADE OF THE UNITED STATES, 1965 OCTOBER. Washington, DC:
Economic Research Service.

(NAL Call No. A286.9/Ag8)

1 OF 1 USDA FATUS

OCT

65



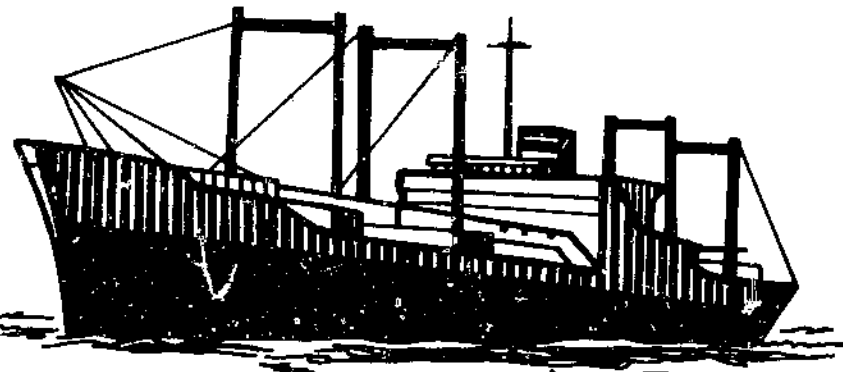
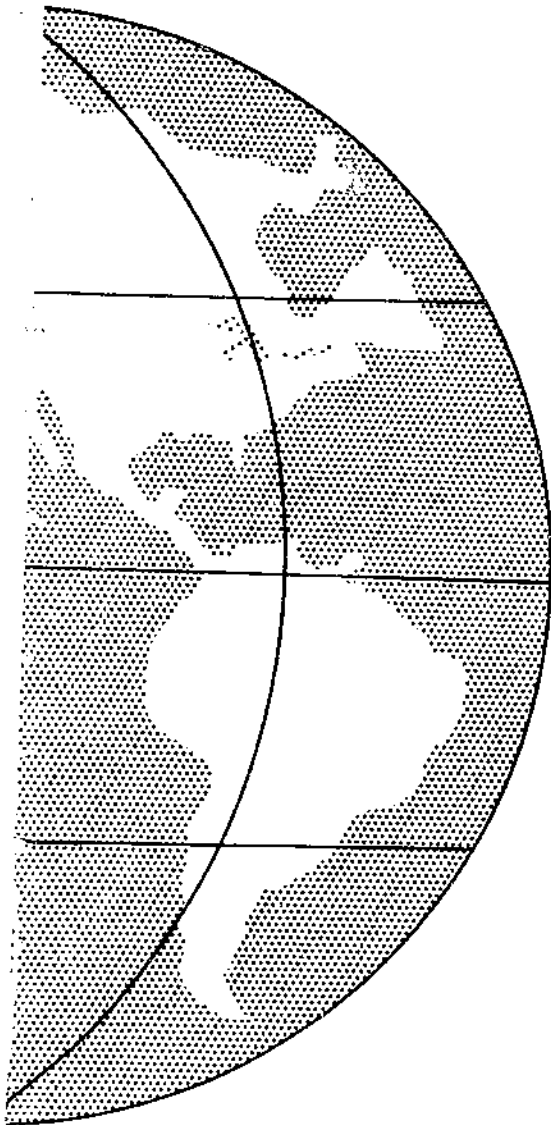
Reserve
A 286.9
A 98

OCTOBER 1965

FOREIGN AGRICULTURAL TRADE OF THE UNITED STATES

U. S. DEPARTMENT OF AGRICULTURE
NATIONAL AGRICULTURAL LIBRARY

CURRENT SERIAL RECORDS



IN THIS ISSUE:

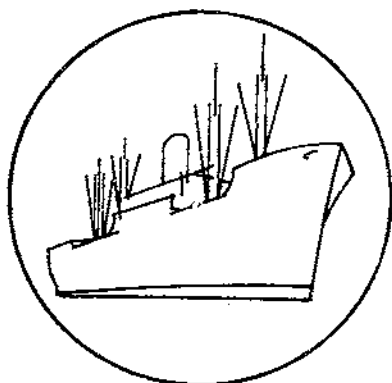
- Agricultural Imports Declined 3 Percent in Fiscal 1964-65
- Export Highlights
- Trade Statistics, July-June and July

Published Monthly by Economic Research Service/U. S. Department of Agriculture

Contents

	<u>PAGE</u>
Digest	3
U.S. Agricultural Imports Declined 3 Percent in Fiscal 1964-65	4
Export Highlights	11
Explanatory Note	33
Table 1.--Imports: Value by Commodity, Fiscal Years 1963-64 and 1964-65	5
Table 2.--Exports to the European Economic Community: Value by Commodity, June and July-June 1963-65	12
Table 3.--Exports of Specified Commodities Compared with Production: Quantity, Fiscal Years 1960-62 Average, 1963, 1964, and 1965	14
Table 4.--Exports: Quantity and Value by Commodity, June 1964 and 1965 and July-June 1963-64 and 1964-65	15
Table 5.--Imports: Quantity and Value by Commodity, June 1964 and 1965 and July-June 1963-64 and 1964-65	19
Table 6.--Exports and Imports: Value by Country, July-June 1964-65	23
Table 7.--Exports: Quantity and Value by Commodity, July 1964 and 1965	25
Table 8.--Imports: Quantity and Value by Commodity, July 1964 and 1965	29
Figure 1.--U.S. Imports of Meats	7

Trade Statistics and Analysis Branch
Foreign Development and Trade Division
Economic Research Service



FOREIGN AGRICULTURAL TRADE OF THE UNITED STATES

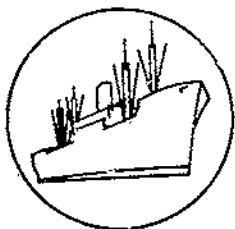
Digest

U.S. agricultural imports for consumption totaled \$3,988 million in fiscal 1964-65, down 3 percent from a year earlier. There were smaller purchases of both supplementary (partially competitive) and complementary (noncompetitive) products. The decrease in supplementary imports reflected smaller purchases of beef and veal, sugar, and cotton. The decline in sugar represented lower prices, since the quantity increased slightly. A significant decline in meat imports -- primarily reduced imports of boneless beef -- reflected a significant shift in the pattern of world meat trade. European demand for meat imports increased greatly because of relatively small production and higher incomes there. Argentina had less meat to export. U.S. imports of meat from Australia, New Zealand, and Mexico were considerably below the level of the voluntary agreement with these countries. Declines in complementary products occurred for coffee, tea, silk, unmanufactured fibers and carpet wool.

* * * * *

Agricultural exports to the European Economic Community totaled \$1,371 million in fiscal 1964-65 compared with \$1,333 million the year before. Exports of variable and non-variable levy commodities rose above the 1963-64 level despite a 2 month longshoremen's strike at East Coast and Gulf ports. Exports of feed grains rose sharply to \$378 million from \$278 million. This not only reflects the expanding demand for animal feeds accompanying the growth of livestock industries, but also an increase in the livestock feeding rate and a longer feeding period. Somewhat offsetting the gain for feed grains were declines for wheat and flour, pork, poultry meat, and rice. Commodities not subject to the variable levies rose to \$908 million from \$884 million. There were substantial increases in exports of soybeans, vegetable oils, variety meats, and tallow.

Table 3 highlights the foreign market for individual commodities. In fiscal 1964-65 the export market provided an outlet for over half the production of U.S. wheat, milled rice, dry edible peas, and soybeans; two-fifths of nonfat dry milk, tallow, and hops; about a third of the dry prunes and cottonseed; and about one-fourth of the cotton, tobacco, raisins, and flaxseed production. Exports accounted for 31 percent of the farm sales of grain sorghums, 30 percent for corn, and 20 percent for barley.



SPECIAL in this issue

U.S. AGRICULTURAL IMPORTS DECLINED 3 PERCENT IN FISCAL 1964-65

by

Dewain H. Rahe ^{1/}

U.S. agricultural imports for consumption totaled \$3,988 million in fiscal 1964-65 compared with \$4,096 million in the previous year. The 3 percent decline resulted from smaller purchases of both supplementary (partially competitive) and complementary (noncompetitive) products. The decrease in supplementary imports reflects smaller purchases of beef and veal, sugar, and cotton. Declines in complementary products occurred for coffee, tea, silk, unmanufactured fibers, and carpet wool (table 1).

Imports of agricultural products have remained relatively stable in the past 10 years, averaging around \$4 billion a year. However, there have been some shifts in the commodities imported. Imports of dutiable cattle, and beef and veal have generally increased. Beef imports declined sharply in the past year because of increased demand for beef and veal in Western Europe and relatively large production in the United States. There are also increases for tobacco, fruits and vegetables -- mostly fresh fruits and vegetables imported during the domestic U.S. off-season. There has been a downward trend for oilseeds and products, grains and preparations, and sugar.

Imports of nonagricultural products rose to \$15.7 billion in 1964-65 from \$13.7 billion a year earlier. The rise was associated with the continuing growth in economic activity in the United States for the past 3 years. Gains in nonagricultural imports have been for raw materials as well as manufactured products.

Supplementary Products

Imports of supplementary products fell to \$2,129 million in 1964-65 from \$2,225 million in the previous year. The principal value declines occurred for beef and veal, mutton, cotton, grain, and sugar. These declines were somewhat offset by gains in dairy products, apparel wool, nuts and preparations, oilseeds and products, vegetables and preparations, and tobacco. The decline in sugar reflects lower prices since quantity increased slightly.

^{1/} Agricultural Economist, Trade Statistics and Analysis Branch, Foreign Development and Trade Division, Economic Research Service.

Table 1.--U.S. agricultural imports for consumption: Value by commodity, fiscal years 1963-64 and 1964-65

Commodity	1963-64	1964-65	Change
	-- Million dollars --		Percent
<u>Supplementary</u>			
Animals and animal products:			
Animals, live	62	66	+6
Dairy products	57	68	+19
Hides and skins	66	70	+6
Meats and meat products	519	402	-23
Wool, apparel	101	141	+40
Other	47	46	-2
Total animals, etc.	852	793	-7
Cotton, excluding linters	24	22	-8
Fruits and preparations	121	122	+1
Grains and preparations	46	44	-4
Nuts and preparations	68	75	+10
Oilseeds and products	154	183	+19
Sugar, cane	539	444	-18
Tobacco, unmanufactured	103	126	+22
Vegetables and preparations	99	115	+16
Other	219	205	-6
Total supplementary	2,225	2,129	-4
<u>Complementary</u>			
Bananas	93	159	+71
Coffee	1,121	1,075	-4
Cocoa beans	122	124	+2
Rubber, crude, natural	185	192	+4
Tea	59	57	-3
Wool, carpet	110	75	-32
Other	181	177	-2
Total complementary	1,871	1,859	-1
Total imports	4,096	3,988	-3

Animals and animal products

Imports of dutiable cattle rose to 612,000 head in 1964-65 from 606,000 a year earlier. Imports of 1,032,000 head in 1962-63 were a record, because both Mexico and Canada were forced to ship large quantities to the United States because of drought. Most dutiable cattle imported are feeders and stockers imported by farmers and ranchers for feeding. The relatively high level of U.S. production has discouraged Mexican and Canadian producers from shipping these cattle to the United States. In addition, relatively high prices and meat shortages in certain areas of Mexico resulted in fewer shipments to the United States. In fiscal 1964-65, Mexico accounted for about 60 percent of the dutiable cattle imported to the United States; Canada accounted for the remainder.

U.S. imports of dairy products rose to \$68 million from \$57 million a year earlier. The increase resulted from larger imports of cheese and casein. About 26 percent of U.S. imports of dairy products are under quota regulations of Section 22 of Agricultural Adjustment Act, as amended. Cheese imports represented 60 percent of total imports of dairy products. The principal suppliers of cheese were Italy, Switzerland, Denmark, New Zealand, the Netherlands, and France.

U.S. imports of meats fell sharply to \$402 million from \$519 million in 1963-64. The decline resulted from substantial decreases in imports of beef and veal, and mutton and lamb. Pork imports increased slightly.

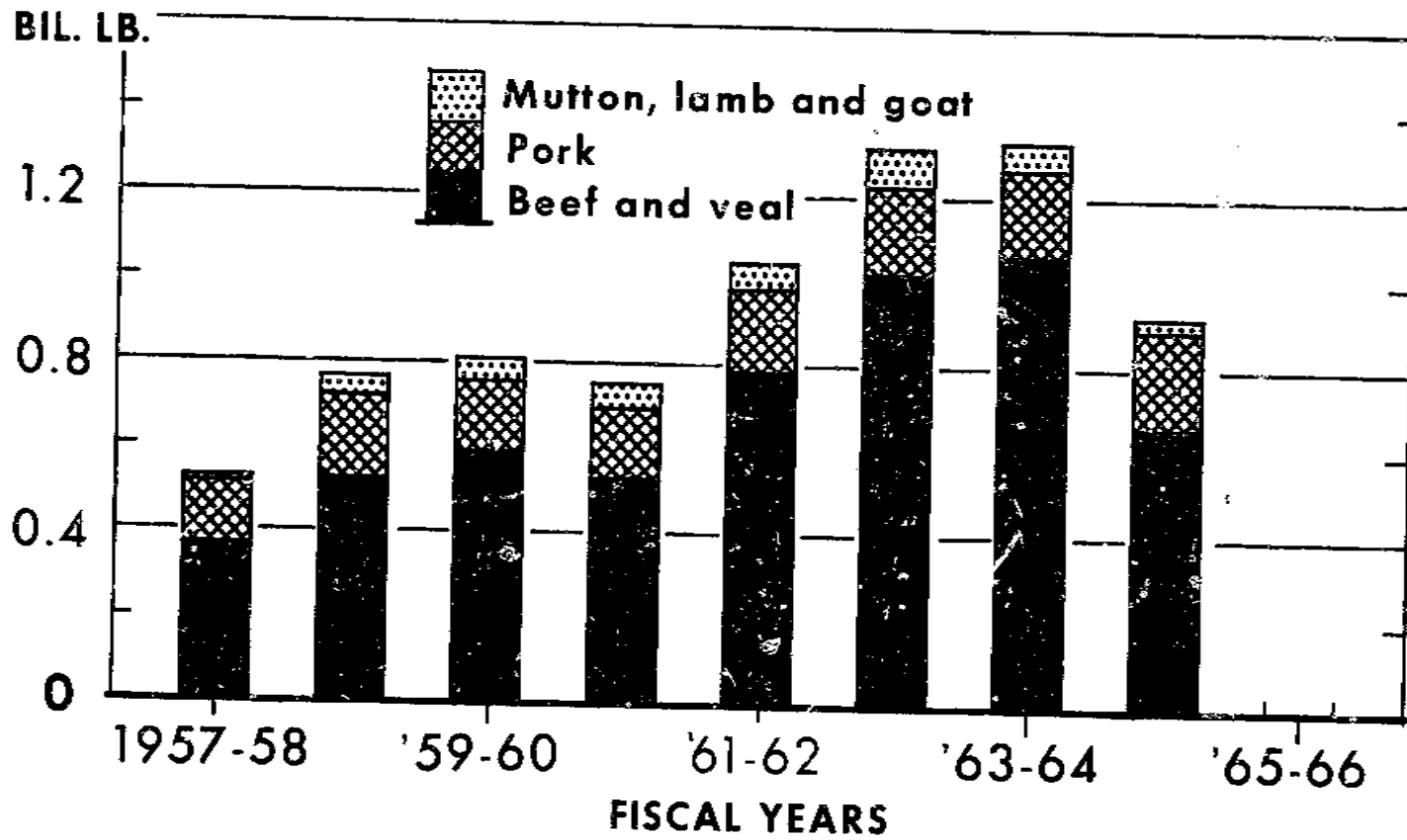
Imports of beef and veal fell to 665 million pounds in 1964-65 from 1,066 million, a drop of 38 percent. The decline resulted primarily from a substantial shift in the pattern of world beef trade. In the past year, Australia and New Zealand have been shipping more of their beef to Western Europe because of favorable European prices. In addition, U.S. production of cow beef, which is similar to imported beef, has increased sharply. Moreover, exports from Argentina have fallen considerably because of the rebuilding of herds from the low level of the previous year, when herds were reduced because of drought.

Although the United States has voluntary agreements with Australia, New Zealand, Ireland, and Mexico to limit shipments of fresh or frozen beef to the United States, imports from these countries were well below the agreed levels. Imports of certain meats may also be regulated under specified conditions as provided by P.L. 88-482. About 56 percent of U.S. boneless beef imports entered on the East Coast ports, 19 percent on the Gulf ports, and 14 percent on the West Coast ports. Most U.S. beef imports were used for manufacturing purposes to make such products as prepared hamburgers, luncheon meats, and frankfurters.

Imports of pork increased to 231 million pounds in 1964-65 from 206 million a year earlier. The increase reflects larger imports of fresh pork as well as canned hams and shoulders. About two-thirds of the pork imports were canned hams and shoulders mainly from Denmark, Poland, and the Netherlands. Canada accounted for most of the 43 million pounds of fresh pork. Imports of pork in the past year were encouraged by higher prices and the limited supply in the United States.

Hides and skins.--U.S. imports of hides and skins totaled \$70 million in 1964-65 compared with \$66 million in 1963-64. Most of the imports represented goat, sheep, kip, and lamb skins produced in small quantities in the United States.

U. S. IMPORTS OF MEATS



U. S. DEPARTMENT OF AGRICULTURE

NEG. ERS 3933-65 (9) ECONOMIC RESEARCH SERVICE

Fig. 1

Demand for leather products from these skins has expanded in the past few years, reflecting the larger purchasing power.

Apparel wool.--U.S. imports of apparel wool rose to 199 million pounds in 1964-65 from 131 million a year earlier. The increase resulted from a gain in U.S. mill use of apparel wool and a continued decline in domestic wool production. In addition, lower world prices encouraged imports. Apparel wool imports represent about two-fifths of total apparel wool consumption in the United States. In recent years there has been a large shift to synthetic fibers in the clothing industry. Mill consumption of man-made fibers has increased by over two-thirds in the past 5 years, while consumption of wool has been relatively stable.

Cotton.--U.S. agricultural imports of cotton excluding linters totaled 116,000 bales in 1964-65 compared with 136,000 a year earlier. Imports of cotton except short Asiatic are regulated by quotas. Long staple imports are limited to 95,000 bales on an August 1-July 31 year. Imports of upland cotton (under 1-1/8 inches) are limited to 30,000 on a September 1-September 18 year. Changes in cotton imports generally reflect the filling of the quota in different periods of the quota year.

Fruits and preparations.--U.S. imports of fruits and preparations totaled \$122 million, about the same as in the previous year. Increases for olives in the brine, canned mandarin oranges, pineapples, and berries were about offset by declines in apples and citrus products. Imports of citrus products in the previous year were up sharply because of reduced supplies from Florida because of frost damage in 1962-63. A substantial part of the imports of fruits was fresh products imported during the domestic off-season.

Grains and preparations.--U.S. imports of grains and preparations totaled \$44 million in 1964-65, slightly below the previous year. Imports of grains are very small when compared to exports. Barley accounted for 80 percent of total grain imports. The strong demand for grains in the industrial countries of Western Europe and Japan has discouraged most producers from shipping their products to the United States. Wheat imports are regulated under Section 22 of the Agricultural Adjustment Act of 1934, as amended, while imports of other grains are unrestricted.

Sugar.--U.S. imports of sugar rose to 3.9 million short tons from 3.5 million tons in 1963-64. However, the value fell to \$444 million from \$539 million because of lower prices. The lower prices resulted from the substantial gain in world sugar production, which rose to 70.1 million short tons in 1964-65 from 59.4 million in 1963-64. Sugar imports represented about two-fifths of U.S. sugar consumption. The principal suppliers were the Philippines, Mexico, Dominican Republic, Peru, Brazil, and Australia.

Oilbearing materials and products.--Imports of oilbearing materials and products rose to \$183 million in 1964-65 from \$154 million a year earlier. The increase reflects a substantial gain in imports of copra, coconut oil, cocoa butter, castor oil, and palm kernel oil. A substantial part of oil imports represents products with special properties not available from domestic oil. Imports of oilbearing materials and products have been relatively stable in the past few years. In contrast, exports of oilseeds and products have risen phenomenally in the past decade. In the 1930's the United States was a net importer of oilseeds and

products. Larger imports of copra, which accounted for nearly half the total increase in 1964-65, stemmed from increased purchases from the Philippines.

Vegetables and preparations.--U.S. imports of vegetables and preparations rose to \$115 million in 1964-65 from \$99 million in the previous year. The increase reflects larger imports of potatoes, tapioca, tomatoes, and fresh cucumbers. However, most of the rise was accounted for by white potatoes which were in short supply in the United States in the past year. A substantial part of the imports of vegetables and preparations represents imports of fresh vegetables during the domestic off-season, mainly from Mexico and the Central American Republics.

Tobacco.--U.S. imports of unmanufactured tobacco rose to 184 million pounds in 1964-65 from 166 million a year earlier. Cigarette leaf accounts for about 70 percent of U.S. imports of tobacco and consists mainly of oriental types used for blending with domestic tobacco to produce the taste and aroma desired by U.S. smokers. In recent years, imported tobacco has accounted for about 6 percent of tobacco use in making U.S. cigarettes. The principal sources of oriental tobaccos have been Turkey and Greece. In addition, the United States also imports some cigar tobacco and other tobaccos for other special uses.

Complementary Products

Imports of complementary products fell to \$1,859 million in 1964-65 from \$1,871 million in the previous year. Most of the decline was accounted for by smaller imports of coffee, carpet wool, hard fibers, and silk. Somewhat offsetting were gains for bananas, cocoa beans, essential oils, crude natural rubber, and spices.

Bananas.--U.S. imports of bananas totaled 3,493 million pounds in 1964-65 compared with 3,503 million a year earlier. The higher value reported in 1964-65 reflected undervaluation by importers in the previous year. The principal suppliers were the Latin American Republics -- mainly Ecuador, Honduras, Panama, and Costa Rica.

Coffee.--U.S. imports of coffee totaled 2,686 million pounds in 1964-65 compared with 3,267 million in the preceding year. The decline resulted in smaller imports from Brazil because of frost damage to the Brazilian coffee crop. Brazil accounted for only about 27 percent of U.S. coffee imports in fiscal 1964-65. The other principal suppliers were Colombia, Mexico, Guatemala, and Peru. In addition, there were large imports from Africa, especially Angola, Ethiopia, Ivory Coast, and Uganda. Coffee trade is regulated by the International Coffee Agreement of which the United States is a member.

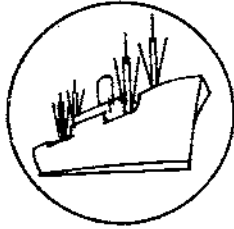
Cocoa beans.--U.S. imports of cocoa beans rose to 651 million pounds in 1964-65 from 536 million a year earlier. Value increased to only \$124 million from \$122 million reflecting a sharp decline in prices from the previous year. World cocoa production in the past year increased by 18 percent, causing the sharp drop in price. The principal suppliers were Ghana, Nigeria, Brazil, Ivory Coast, the Dominican Republic, and Ecuador. Cocoa bean prices have fluctuated widely from year to year because of sharp changes in production and small carryover stocks in producing countries.

Carpet wool.--U.S. imports of carpet wool fell to 131 million pounds in 1964-65 from 182 million a year earlier. Relatively higher prices for carpet wool discouraged importers from purchasing large quantities in the past year. In addition, the carpet industry has shifted to the use of more synthetic fibers in carpet manufacturing. In the past year it is estimated that about 48 percent of U.S. carpets are made of man-made fibers. The principal suppliers were New Zealand and Argentina, which accounted for about two-thirds of U.S. imports of carpet wool.

Tea.--U.S. imports of tea totaled 129 million pounds in 1964-65 compared with 131 million a year earlier. Tea imports have been relatively stable at around 125 to 130 million pounds for the last few years. The principal suppliers were Ceylon, India, Indonesia, and Kenya.

Hard fibers.--U.S. imports of hard fibers totaled \$30 million in 1964-65 compared with \$41 million a year earlier. There was an increase in quantity reflecting a change in the classification of imports. In recent years there has been a substantial demand for hard fibers in making baler and binder twine, despite the tendency of some manufacturers to use more synthetic fibers in twine production.

Rubber.--U.S. imports of natural rubber rose to 1 billion pounds in 1964-65 from 853 million pounds a year earlier. Value increased to \$192 million from \$185 million. Lower prices encouraged U.S. manufacturers to import more crude natural rubber in 1964-65. Principal suppliers were Indonesia, Malaysia, and Liberia. Crude natural rubber accounted for around one-fifth of total rubber used in the United States in the past year compared with over four-fifths in the early 1950's.



Export Highlights

EXPORTS TO THE EUROPEAN ECONOMIC COMMUNITY, JULY 1964-JUNE 1965

U.S. agricultural exports to the European Economic Community (EEC) in July-June of 1964-65 were \$1,371 million, slightly higher than the previous year's total of \$1,333 million (table 2). Exports of both variable levy and non-variable levy commodities rose above the 1963-64 level despite a 2 month longshoremen's strike at most East Coast and Gulf ports.

Feed grains are the only variable levy commodity showing a higher total in July-June of 1964-65 than in the previous year, rising sharply to \$378 million from \$278 million. This not only reflects expanding EEC demand for animal feeds accompanying the growth of its livestock industry, but also an increase in the livestock feeding rate in 1964-65 and a longer livestock feeding period because of the unusually wet spring in Western Europe. Moreover, yields of hay and pasture were low due to the drought of last summer, and EEC feed grain production was down slightly in 1964. The fall in U.S. exports of milled rice, wheat, and pork is exaggerated somewhat by the unusual circumstances of 1963-64. In that year, Italian rice production was down for the second consecutive year and crop losses led to a reduction in EEC wheat production. Pork exports were high due to meat shortages in France and the Netherlands. While exports of milled rice and wheat in July-June of 1964-65 were also below the 1962-63 total, pork exports were slightly above the corresponding figure for 2 years ago. Poultry and egg exports declined in 1964-65 from a year earlier. The rise in exports of turkeys, other fresh poultry, and canned poultry was not sufficient to offset the sharp decline in exports of broilers and fryers. The variable levies on broilers and fryers are considerably above the levies on turkeys.

The rise in U.S. exports of non-variable levy commodities was due chiefly to the sharp increase in oilseed cake and meal exports. The dock strike temporarily halted shipments of soybeans for crushing and shipments of cake and meals. When shipping was resumed, importers requested cake and meal rather than soybeans for crushing as they wanted to replenish their supplies, and facilities for crushing are limited. Correspondingly, soybean exports to the EEC in July-June of 1964-65 were only slightly higher than in the previous year. Exports of vegetable oils also rose sharply in 1964-65 to \$41 million from \$30 million. On the other hand, U.S. exports of fruits and vegetables did not recover from the decline of 1963-64, which was partly caused by a frost in Florida that sharply reduced U.S. supplies of citrus fruit. Unmanufactured tobacco exports to the EEC, which are facing increasing competition from Rhodesia, have not changed substantially since 1962-63. While exports of cotton fell in July-June of 1964-65 to \$127 million from \$191 million, they remained substantially above the 1962-63 level.

Table 2.--U.S. agricultural exports to the European Economic Community: Value by commodity, June and July-June 1963-65 ^{1/}

Commodity	June			July-June		
	1963	1964	1965	1962-63	1963-64	1964-65
-- 1,000 dollars --						
<u>Variable levy commodities ^{2/}:</u>						
Feed grains	24,912	17,653	34,597	274,324	278,161	377,738
Rice, milled	295	636	1,319	13,022	15,569	9,816
Rye, grain	2,107	53	---	24,160	8,080	1,754
Wheat grain	790	7,053	3,381	38,752	91,106	35,417
Wheat flour ^{3/}	137	208	389	10,237	7,829	5,158
Lard	---	17	---	2,325	2,233	1,027
Pork, except variety meats ..	7	241	28	383	10,192	514
Poultry and eggs:						
Broilers and fryers	824	1,056	421	13,143	12,670	7,038
Stewing chickens	517	429	231	4,405	7,771	4,559
Turkeys	208	453	894	7,906	9,595	12,823
Other fresh poultry	22	15	91	390	348	1,302
Canned poultry ^{4/}	91	295	232	1,573	2,986	3,902
Eggs	381	131	195	2,823	2,466	1,670
Total poultry and eggs ..	2,043	2,379	2,064	30,240	35,836	31,294
Total	30,291	28,240	41,778	393,443	449,006	462,718
<u>Non-variable levy commodities:</u>						
Cotton, excluding linters ...	2,548	6,899	3,261	86,847	191,052	127,262
Fruits and vegetables	10,104	7,387	8,316	96,014	88,363	88,235
Soybeans	10,804	16,458	10,732	163,826	193,934	200,086
Tallow	2,058	3,268	3,201	22,926	32,691	35,175
Tobacco, unmanufactured	14,802	10,054	12,476	103,115	105,702	104,065
Variety meats	1,850	2,754	2,640	18,140	26,335	32,533
Vegetable oils, expressed ...	1,182	2,243	4,308	13,346	29,630	41,462
Other	16,595	19,817	5/19,108	171,947	216,101	5/279,042
Total	59,943	68,880	5/64,042	676,161	883,808	5/907,860
Total EEC	90,234	97,120	5/105,820	1,069,604	1,332,814	5/1,370,578,

^{1/} Compiled from U.S. Bureau of the Census data.

^{2/} Classified for identification of commodities subject to the variable levies which were put into effect between July 30, 1962 and September 1, 1964. The classification is designed to show the overall change in exports of these commodities rather than to measure the impact of the variable levies on exports of these commodities.

^{3/} Exports of wheat flour to Italy include donations under Titles II and III of P.L. 480.

^{4/} Import duty for canned poultry is bound under the General Agreement on Tariffs and Trade at 21 percent ad valorem.

^{5/} Preliminary.

EXPORTS COMPARED WITH PRODUCTION

The portion of U.S. agricultural production marketed abroad has been increasing in recent years. Exports in fiscal 1964-65 were 16 percent of cash receipts from farm marketings. They were 14 percent in fiscal 1962-63.

Several commodities in table 3 have made a substantial contribution to the growing importance of exports. Exports of nonfat dry milk and soybeans expanded more than production between 1960-62 and 1965, and exports of hops increased, even though production declined. Most of the increased production of dried edible peas went into the export trade. Commodities showing a moderate increase in the share of production exported include wheat, rice, dried prunes, dried edible beans, and corn. Corn exports rose in 1964 despite a decline in production, while there was little change in production of wheat and dried edible beans. The share of production exported declined for cotton, tobacco, dried whole milk, and barley. While cotton production rose over the period, cotton exports declined. Although tobacco exports did not fall, they failed to match the rise in production.

The export market is particularly important for a number of commodities in table 3. In fiscal 1964-65 over half of the U.S. production of wheat, milled rice, dried edible peas, and soybeans was marketed overseas and over 40 percent of the nonfat dried milk, tallow and hops was exported. Exports of dried prunes and cottonseed were almost one-third of production. About one-fourth of the cotton, tobacco, raisins, and flaxseed produced in 1964 went to foreign markets. The share of production exported was 24 percent for grain sorghums, 15 percent for corn, and 14 percent for barley. However, a large part of the production of these 3 commodities is utilized on the farm for animal feeds. The portion of farm sales exported is therefore substantially higher than the share of production exported -- 31 percent for grain sorghums, 30 percent for corn, and 20 percent for barley.

Table 3.--U.S. agricultural exports of specified commodities compared with production: Quantity
fiscal years 1960-62 average, 1963, 1964, and 1965

Commodity	Unit	Production				Exports - fiscal years ending June 30				Share of production exported fiscal years ending June 30			
		Average : :1959-61 :	1962	1963	1964	Average : :1960-62 :	1963	1964	1965 1/	Average : :1960-62 :	1963	1964	1965
		-- Million units --				-- Million units --				-- Percent --			
Dried edible peas	Cwt.	3.9	5.0	4.9	4.7	2.0	2.5	2.4	2.8	51	50	49	60
Rice (milled basis)	Cwt.	38.5	46.2	49.2	51.2	20.8	24.3	31.3	28.6	54	53	64	56
Wheat, incl. flour equiv.	Bu.	1,239.6	1,093.7	1,142.0	1,290.5	629.5	637.1	847.9	714.7	51	58	74	55
Soybeans <u>2/</u>	Bu.	589.4	669.2	699.4	699.9	234.4	300.2	294.6	354.2	40	45	42	51
Nonfat dry milk	Lb.	1,853.9	2,230.3	2,096.5	2,149.5	636.6	1,005.7	1,315.4	945.3	34	45	63	44
Hops	Lb.	<u>2/</u> 67.8	44.2	51.4	53.4	18.0	20.2	21.0	22.9	27	46	41	43
Tallow	Lb.	3,933.3	4,175.0	4,491.0	5,041.0	1,555.4	1,441.4	1,914.2	2,099.4	40	35	43	42
Cottonseed <u>3/</u>	Ton	6.2	6.1	6.2	6.3	1.4	1.2	1.5	2.0	23	20	24	32
Dried prunes	Lb.	283.3	306.0	250.9	330.2	78.1	86.7	81.3	98.4	28	28	32	30
Cotton	Bale	14.4	14.9	15.3	15.4	6.1	3.6	5.1	4.5	42	24	33	29
Flaxseed	Bu.	24.8	32.2	31.2	24.4	5.6	4.3	3.6	6.5	23	13	12	27
Tobacco (farm sales weight)	Lb.	1,933.7	2,314.4	2,343.2	2,230.0	558.3	535.3	601.8	546.0	29	23	26	24
Grain sorghum	Bu.	561.7	509.7	587.9	490.3	90.0	118.8	99.9	18.8	16	23	17	24
Raisins	Lb.	429.3	382.0	532.0	475.6	111.2	90.4	110.0	113.6	26	24	21	24
Dried whole milk	Lb.	66.0	79.0	91.0	91.4	21.7	21.0	22.2	17.0	33	27	24	19
Lard	Lb.	2,560.3	2,494.0	2,476.0	2,476.0	533.1	444.3	668.4	442.5	21	18	27	18
Dried edible beans	Cwt.	19.0	18.6	20.6	17.8	2.6	3.6	4.2	3.1	14	19	20	17
Corn	Bu.	3,938.3	3,636.7	4,091.7	3,548.6	289.1	396.7	453.2	520.8	7	11	11	15
Barley, grain	Bu.	416.4	436.4	405.6	403.1	93.2	64.5	68.0	58.3	22	15	17	14
Rye, grain	Bu.	27.6	40.8	29.2	33.5	6.8	20.7	10.0	2.1	25	51	34	6

1/ Preliminary.

2/ Includes the oil equivalent of beans for exports.

3/ Includes the oil equivalent of seeds for exports.

Table 4.— U. S. agricultural exports: Quantity and value by commodity,
June 1964 and 1965 and July-June 1963-64 and 1964-65

Commodity exported	Unit	June 1/				July-June 1/			
		Quantity		Value		Quantity		Value	
		1964	1965	1964	1965	1963-64	1964-65	1963-64	1964-65
		1,000	1,000	1,000	1,000	1,000	1,000	1,000	
		Thousands	Thousands	dollars	dollars	Thousands	Thousands	dollars	dollars
ANIMALS AND ANIMAL PRODUCTS									
Animals, live:									
Cattle	No.	14	5	3,135	1,347	54	46	16,639	14,906
Poultry, live -									
Baby chicks (chickens)	No.	2,485	2,582	918	1,292	26,928	26,857	9,686	10,042
Other live poultry		2/	2/	287	204	2/	2/	1,578	2,299
Other		2/	2/	588	362	2/	2/	6,368	5,486
Total animals, live		---	---	4,928	3,205	---	---	34,271	32,733
Dairy products:									
Anhydrous milk fat, including donations	Lb.	1,526	1,794	773	1,125	23,811	23,168	11,098	14,138
Butter, including donations	Lb.	7,980	1,963	2,894	744	105,592	121,675	36,501	51,058
Cheese, including donations	Lb.	485	612	240	301	13,227	8,338	4,630	4,133
Infants' and dietetic foods, chiefly milk	Lb.	3,144	1,422	1,464	990	19,056	15,280	10,341	10,286
Milk and cream -									
Condensed and evaporated, incl. donations	Lb.	8,388	5,534	1,739	1,189	109,457	98,307	20,920	20,991
Dry, whole milk and cream	Lb.	593	1,177	268	476	22,247	16,994	9,335	6,615
Fresh	Gal.	61	126	82	170	1,402	1,093	1,500	1,446
Nonfat dry, including donations	Lb.	142,391	102,824	11,125	13,451	1,315,381	945,299	105,623	102,703
Other		2/	2/	248	439	2/	2/	3,384	4,806
Total dairy products		---	---	18,833	18,885	---	---	203,332	216,176
Fats, oils, and greases:									
Lard	Lb.	91,146	13,850	8,514	1,683	668,412	442,514	63,373	48,755
Tallow -									
Edible	Lb.	428	390	45	50	3,686	7,761	371	888
Inedible	Lb.	191,597	206,641	12,996	19,596	1,910,558	2,091,683	129,132	175,409
Other animal fats, oils, and greases	Lb.	30,859	19,064	2,348	1,967	284,115	202,188	22,621	19,212
Total fats, oils, and greases	Lb.	314,030	239,945	23,903	23,296	2,866,771	2,744,146	215,497	244,264
Meat and meat products:									
Beef and veal	Lb.	4,716	2,037	2,066	1,209	36,296	57,474	15,235	25,176
Pork	Lb.	12,891	3,474	3,437	1,126	162,153	65,019	47,536	18,670
Sausage casings	Lb.	963	1,133	670	919	18,432	12,440	10,832	8,187
Variety meats (edible offals)	Lb.	18,777	17,433	4,007	4,067	196,504	226,257	38,485	49,925
Other, including meat extracts	Lb.	1,789	1,381	533	655	14,726	18,369	5,968	7,555
Total meat and products (except poultry)	Lb.	39,136	25,458	10,713	7,996	418,111	379,559	118,056	109,513
Poultry products:									
Eggs, dried and otherwise preserved	Lb.	353	219	378	182	4,429	3,366	4,649	3,160
Eggs in the shell -									
Hatching	Doz.	604	602	657	717	8,235	7,376	8,547	7,635
Other	Doz.	104	128	44	47	2,951	1,960	1,139	691
Poultry meat -									
Chickens, fresh or frozen	Lb.	12,775	7,807	2,695	1,924	166,438	127,209	42,648	30,178
Turkeys, fresh or frozen	Lb.	2,839	2,980	1,021	1,047	36,215	45,746	13,364	16,272
Other, fresh or frozen	Lb.	408	658	127	232	4,642	9,567	1,607	3,275
Canned and otherwise preserved	Lb.	2,212	1,704	476	460	23,813	22,358	5,667	5,615
Total poultry products		---	---	5,598	4,609	---	---	77,821	66,826

Continued -

Table 4.-- U. S. agricultural exports: Quantity and value by commodity, June 1964 and 1965 and July-June 1963-64 and 1964-65 - Continued

Commodity exported	Unit	June 1/				July-June 1/			
		Quantity		Value		Quantity		Value	
		1964	1965	1964	1965	1963-64	1964-65	1963-64	1964-65
				1,000	1,000			1,000	1,000
Other animal products:		Thousands	Thousands	dollars	dollars	Thousands	Thousands	dollars	dollars
Feathers, crude or dressed	:Lb.	113	130	34	140	1,477	1,949	1,533	1,661
Gelatin, edible	:Lb.	344	301	639	199	3,202	3,123	7,303	5,280
Hair, raw or dressed (except wool)	:Lb.	618	881	215	272	7,029	7,333	2,326	2,451
Hides and skins, raw (except furs) 3/	:No.	1,433	1,744	8,252	9,964	15,415	18,053	81,937	99,550
Honey	:Lb.	497	800	86	132	22,676	8,534	3,859	1,562
Wool, unmanufactured	:C.Lb.	329	963	405	845	8,227	5,281	9,048	5,032
Other		2/	2/	2,045	1,809	2/	2/	17,863	22,943
Total other animal products		---	---	11,736	13,361	---	---	123,869	138,479
Total animals and animal products		---	---	75,711	71,352	---	---	772,846	807,991
VEGETABLE PRODUCTS									
Cotton, unmanufactured:									
Cotton	:RBale:	388	398	49,885	48,325	5,149	4,491	670,414	583,895
Linters	:RBale:	29	24	795	646	337	300	9,320	8,379
Total cotton and linters	:RBale:	417	422	50,680	48,971	5,486	4,791	679,734	592,274
Fruits and preparations:									
Canned -									
Fruit cocktail	:Lb.	4,971	8,163	894	1,351	127,608	169,950	21,014	26,091
Peaches	:Lb.	7,350	11,090	911	1,330	215,056	236,595	23,935	25,479
Pears	:Lb.	304	684	56	120	6,001	7,542	1,162	1,382
Pineapples	:Lb.	10,775	8,808	1,650	1,402	96,778	91,601	14,518	13,829
Other	:Lb.	985	4,133	234	701	30,346	44,573	5,913	7,734
Total canned fruits	:Lb.	24,385	32,878	3,745	4,904	475,789	550,261	66,542	74,515
Dried -									
Prunes	:Lb.	4,127	6,168	913	1,129	81,318	98,351	17,271	18,359
Raisins (dried grapes)	:Lb.	4,778	8,083	1,004	1,389	110,013	113,634	19,910	20,151
Other	:Lb.	750	612	261	215	14,192	16,645	5,375	5,298
Total dried fruits	:Lb.	9,655	14,863	2,178	2,733	205,523	228,630	42,556	43,808
Fresh -									
Apples	:Lb.	3,476	14,695	341	1,254	202,098	220,652	18,081	19,629
Berries	:Lb.	5,481	4,653	1,157	1,083	21,116	23,316	4,323	4,960
Grapefruit	:Lb.	13,171	14,448	969	1,117	172,897	181,993	11,531	11,089
Grapes	:Lb.	3,093	6,130	626	930	190,081	202,211	17,296	19,989
Lemons and limes	:Lb.	30,440	28,780	2,049	2,252	241,321	196,559	18,630	16,078
Oranges and tangerines	:Lb.	52,137	60,626	4,307	5,374	436,436	442,117	38,361	40,302
Pears	:Lb.	592	352	55	36	38,706	56,921	3,835	5,287
Other	:Lb.	37,223	48,248	2,983	3,849	167,853	177,547	10,646	12,418
Total fresh fruits	:Lb.	145,613	177,932	12,487	15,895	1,470,508	1,501,316	122,703	129,752
Fruit juices -									
Grapefruit	:Gal.	308	382	381	399	3,554	4,591	3,796	4,515
Orange	:Gal.	554	968	1,588	2,027	7,548	7,692	19,611	18,412
Other	:Gal.	966	971	1,116	1,039	11,456	11,915	12,263	11,481
Total fruit juices	:Gal.	1,828	2,321	3,085	3,465	22,558	24,198	35,670	34,408
Frozen fruits	:Lb.	881	1,338	169	230	11,364	8,918	2,294	1,607
Other		2/	2/	278	428	2/	2/	4,716	5,199
Total fruits and preparations		---	---	21,942	27,655	---	---	274,481	289,289

Continued -

Table 4.-- U. S. agricultural exports: Quantity and value by commodity, June 1964 and 1965 and July-June 1963-64 and 1964-65 - Continued

Commodity exported	Unit	June 1/				July-June 1/			
		Quantity		Value		Quantity		Value	
		1964	1965	1964	1965	1963-64	1964-65	1963-64	1964-65
		Thousands	Thousands	1,000 dollars	1,000 dollars	Thousands	Thousands	1,000 dollars	1,000 dollars
Grains and preparations:									
Feed grains and products -									
Barley grain (48 lb.)	:Bu.	7,370	8,965	7,935	10,225	67,978	58,254	73,374	65,661
Corn grain, including donations (56 lb.)	:Bu.	27,932	57,332	38,047	81,006	453,224	520,784	617,599	726,717
Grain sorghums (56 lb.)	:Bu.	6,097	10,556	7,055	12,740	99,892	118,826	123,188	144,975
Oats grain (32 lb.)	:Bu.	600	727	418	523	4,879	4,125	3,481	2,881
Total feed grains	:M.Ton	1,034	1,930	53,455	104,494	15,602	17,576	817,642	940,234
Malt and flour, including barley malt	:Lb.	11,901	9,901	696	767	90,853	69,937	5,462	5,062
Corn grits and hominy	:Lb.	5,283	3,146	217	132	41,720	41,131	1,722	1,697
Cornmeal, including donations	:Cwt.	307	417	1,180	1,712	5,127	4,833	19,433	18,945
Cornstarch	:Lb.	6,778	7,066	553	668	67,390	73,933	5,828	6,692
Oatmeal, groats, and rolled oats	:Lb.	422	282	42	34	10,947	8,222	960	658
Total feed grains and products	:M.Ton	1,076	1,978	56,143	107,807	16,171	18,109	851,047	973,288
Rice -									
Milled, including donations	:Lb.	217,964	246,192	15,909	16,602	3,119,857	2,848,665	213,986	202,594
Paddy or rough	:Lb.	170	755	16	66	10,557	11,810	862	1,023
Total rice (milled basis)	:Lb.	218,074	246,683	15,925	16,668	3,126,719	2,856,341	214,848	203,617
Rye grain (56 lb.)	:Bu.	149	68	173	93	10,043	2,111	14,205	2,726
Wheat and flour, including donations -									
Wheat grain (60 lb.)	:Bu.	54,925	56,622	98,667	91,091	754,671	634,827	1,353,897	1,096,365
Wheat flour, wholly of U. S. wheat	:Cwt.	2,755	2,581	10,685	10,553	40,870	35,039	163,880	142,623
Total wheat and flour	:Bu.	61,206	62,507	109,352	101,644	847,854	714,715	1,517,777	1,238,988
Bakery products	:Lb.	1,024	1,052	371	488	13,797	15,188	5,801	6,493
Other, including donations	:---	2/	2/	1,480	2,182	2/	2/	12,227	21,859
Total grains and preparations	:---	---	---	183,444	228,882	---	---	2,615,905	2,446,971
Oilseeds and products:									
Oils, including donations -									
Cottonseed oil	:Lb.	45,092	51,989	4,852	7,087	473,913	617,988	53,402	81,742
Soybean oil	:Lb.	99,519	105,537	9,964	14,933	1,014,450	1,379,370	106,251	175,419
Other	:Lb.	20,257	16,340	2,662	2,917	200,191	302,407	25,111	44,356
Total oils (except essential)	:Lb.	162,868	173,866	17,478	24,937	1,688,554	2,299,765	185,764	301,517
Oilseeds -									
Flaxseed (56 lb.)	:Bu.	236	371	683	1,098	3,576	6,524	10,583	18,754
Soybeans (60 lb.)	:Bu.	13,046	16,081	33,285	48,621	187,568	208,666	508,748	598,037
Other	:---	2/	2/	1,280	1,112	2/	2/	25,282	18,496
Total oilseeds	:---	---	---	35,248	50,831	---	---	544,613	635,287
Protein meal (oil-cake and meal)	:S.Ton	138	169	10,312	13,006	1,405	2,355	111,798	177,726
Total oilseeds and products	:---	---	---	63,038	82,774	---	---	842,175	1,114,530
Tobacco, unmanufactured:									
Burley	:Lb.	9,470	7,838	6,091	5,408	45,856	47,081	36,290	37,132
Cigar wrapper	:Lb.	804	450	1,850	1,290	5,647	3,842	12,382	11,668
Dark-fired Kentucky and Tennessee	:Lb.	1,812	403	881	188	16,315	18,755	8,373	9,760
Flue-cured	:Lb.	29,987	24,964	20,266	20,296	422,949	368,661	344,724	312,469
Maryland	:Lb.	859	422	598	348	11,627	10,406	8,689	8,223
Other	:Lb.	1,191	2,039	593	1,225	29,706	31,160	10,236	16,017
Total tobacco, unmanufactured	:Lb.	44,123	36,116	30,279	28,755	532,100	479,905	420,694	395,259

Continued -

Table 4.-- U. S. agricultural exports: Quantity and value by commodity, June 1964 and 1965 and July-June 1963-64 and 1964-65 - Continued

Commodity exported	Unit	June 1/				July-June 1/				
		Quantity		Value		Quantity		Value		
		1964	1965	1964	1965	1963-64	1964-65	1963-64	1964-65	
		Thousands	Thousands	1,000 dollars	1,000 dollars	Thousands	Thousands	1,000 dollars	1,000 dollars	
Vegetables and preparations:										
Canned -										
Asparagus	Lb.	10,114	1,956	2,627	618	61,222	54,033	15,406	13,226	
Soups	Lb.	1,320	1,457	233	325	16,494	16,306	3,047	3,384	
Tomato paste and puree	Lb.	725	1,362	133	301	14,068	13,623	2,887	2,875	
Tomato sauce for cooking purposes	Lb.	43	776	6	112	950	3,606	127	488	
Other	Lb.	4,008	6,017	613	815	59,054	66,836	8,536	9,301	
Total canned vegetables	Lb.	16,210	11,568	3,612	2,171	151,788	154,404	30,003	29,274	
Dried beans, including donations	Lb.	14,785	19,135	1,314	1,506	415,172	311,933	34,401	25,646	
Dried peas, including cow and chick	Lb.	16,121	11,871	1,146	673	236,787	278,699	16,178	16,423	
Fresh -										
Lettuce	Lb.	12,091	11,447	437	714	176,354	170,103	8,459	8,750	
Onions	Lb.	16,287	14,656	522	745	96,888	110,481	4,736	4,991	
Potatoes (except sweet potatoes)	Lb.	41,270	65,663	1,801	2,568	169,864	161,692	5,526	6,901	
Tomatoes	Lb.	16,286	16,501	1,984	1,607	99,199	105,550	9,638	9,759	
Other	Lt.	39,070	36,095	2,136	2,265	355,367	346,932	20,782	20,731	
Total fresh vegetables	Lb.	125,004	144,362	6,880	7,899	897,672	894,758	49,141	51,132	
Frozen vegetables	Lb.	1,641	1,105	305	231	33,040	14,286	5,948	3,184	
Soups and vegetables, dehydrated	Lb.	1,298	978	491	475	15,427	16,051	6,585	6,538	
Vegetable seasonings	Lb.	629	577	362	241	4,943	7,426	3,355	3,885	
Tomato juice, canned	Gal.	563	328	430	282	3,752	3,572	2,924	2,873	
Other		2/	2/	1,278	1,185	2/	2/	15,256	14,822	
Total vegetables and preparations		---	---	15,818	14,663	---	---	163,791	153,777	
Other vegetable products:										
Coffee	Lb.	2,127	2,149	2,700	2,942	31,811	23,705	34,741	29,882	
Drugs, herbs, roots, leaves, etc., crude	Lb.	297	774	178	379	3,596	7,625	4,555	5,759	
Essential oils, natural	Lb.	610	1,024	1,430	1,795	7,779	9,645	17,334	20,372	
Feeds and fodders (except oil-cake and meal)		2/	2/	3,919	6,872	2/	2/	39,098	72,160	
Flavoring sirups, sugars, and extracts	Gal.	130	450	846	1,627	1,170	3,262	8,016	14,567	
Rops	Lb.	580	600	348	483	21,046	22,887	13,838	14,204	
Nursery and greenhouse stock		2/	2/	508	588	2/	2/	6,896	7,911	
Nuts and preparations	Lb.	12,822	12,529	1,573	2,470	98,178	157,857	24,402	33,336	
Seeds (except oilseeds)	Lb.	4,618	3,094	1,027	963	101,474	90,116	26,480	25,111	
Spices	Lb.	215	412	207	249	3,456	4,333	2,552	3,127	
Other, including donations		2/	2/	5,736	3,491	2/	2/	99,946	69,963	
Total other vegetable products		---	---	18,472	21,859	---	---	297,858	296,392	
Total vegetable products		---	---	383,673	459,559	---	---	5,294,638	5,288,502	
TOTAL AGRICULTURAL EXPORTS		---	---	459,384	530,911	---	---	6,067,484	6,096,493	
TOTAL NONAGRICULTURAL EXPORTS		---	---	1,608,074	1,776,711	---	---	18,448,173	20,161,595	
TOTAL EXPORTS, ALL COMMODITIES		---	---	2,067,458	2,307,622	---	---	24,515,657	26,258,088	

1/ Preliminary.

2/ Reported in value only.

3/ Excludes the number of "other hides and skins," reported in value only.

Table 5.— U. S. agricultural imports for consumption: Quantity and value by commodity, June 1964 and 1965 and July-June 1963-64 and 1964-65

Commodity imported SUPPLEMENTARY	Unit	June 1/				July-June 1/			
		Quantity		Value		Quantity		Value	
		1964	1965	1,000	1,000	1963-64	1964-65	1,000	1,000
		Thousands	Thousands	dollars	dollars	Thousands	Thousands	dollars	dollars
ANIMALS AND ANIMAL PRODUCTS									
Animals, live:									
Cattle, dutiable	No.	11	62	816	6,028	606	612	47,041	49,855
Cattle, free (for breeding)	No.	7	1	498	491	19	17	6,581	5,965
Horses	No.	2/	2/	401	472	4	3	7,102	8,644
Other (including live poultry)	—	3/	3/	97	227	3/	3/	808	1,300
Total animals, live	—	—	—	1,812	7,218	—	—	61,532	65,764
Dairy products:									
Butter	Lb.	59	107	31	49	697	704	346	369
Chesse -									
Blue-mold	Lb.	460	513	227	252	3,917	4,289	1,968	2,147
Cheddar	Lb.	75	295	35	100	2,736	2,682	874	881
Edam and Gouda	Lb.	579	725	265	333	6,655	6,991	2,999	3,237
Pecorino	Lb.	957	1,074	480	650	14,188	16,349	7,955	10,747
Swiss	Lb.	1,225	1,163	660	648	16,787	15,850	9,047	8,914
Other	Lb.	2,073	2,526	1,100	1,303	34,304	31,768	13,833	14,851
Total chesse	Lb.	5,369	6,296	2,767	3,286	78,587	77,929	36,676	40,777
Casein or lactarone	Lb.	11,632	9,377	2,145	2,776	99,837	105,325	17,811	24,081
Other	—	3/	3/	364	218	3/	3/	2,392	2,417
Total dairy products	—	—	—	5,307	6,329	—	—	57,225	67,644
Hides and skins, raw (except furs):									
Calf skins	Lb.	612	552	248	306	4,789	7,001	1,649	3,025
Cattle hides	Lb.	1,218	1,099	192	188	14,918	10,577	2,041	1,757
Goat and kid skins	Lb.	1,843	2,062	1,206	1,547	25,514	19,340	16,528	13,451
Sheep and lamb skins	Lb.	5,722	3,612	2,918	2,116	58,814	59,157	28,346	32,782
Other	Lb.	4,776	3,234	2,345	1,601	38,568	39,095	17,887	19,272
Total hides and skins, raw	Lb.	14,171	10,559	6,909	5,758	142,603	135,170	66,451	70,287
Meat and meat products:									
Beef and veal -									
Fresh, chilled, or frozen	Lb.	92,138	39,662	30,325	13,063	952,583	568,722	306,604	185,846
Other	Lb.	7,416	14,238	2,695	5,640	113,693	96,701	36,437	36,271
Total beef and veal	Lb.	99,554	53,900	33,020	18,703	1,066,276	665,423	343,041	222,117
Mutton, goat, and lamb	Lb.	7,349	3,004	1,671	742	62,295	27,564	14,236	6,591
Pork -									
Fresh, chilled, or frozen	Lb.	3,291	4,911	1,212	2,031	37,828	42,710	13,940	15,836
Hams and shoulders, canned cooked	Lb.	11,417	14,226	7,690	9,330	139,259	153,659	95,315	100,583
Other	Lb.	2,271	2,931	1,301	1,663	29,407	34,392	16,612	20,418
Total pork	Lb.	16,979	22,068	10,203	13,024	206,494	230,761	125,867	136,837
Sausage casings	—	3/	3/	1,796	1,847	3/	3/	17,552	18,551
Other (including meat extracts)	Lb.	5,277	6,864	1,252	1,561	78,763	81,438	18,317	17,492
Total meat and products (except poultry)	—	—	—	47,942	35,877	—	—	519,013	401,588
Poultry products:									
Eggs, dried, frozen, otherwise preserved	Lb.	1	2/	1	2/	8	86	9	15
Eggs in the shell	Doz.	60	72	85	98	1,981	1,065	1,111	831
Poultry meat	Lb.	7	4	37	27	256	184	575	500
Total poultry products	—	—	—	123	125	—	—	1,695	1,346

Continued -

Table 5.— U. S. agricultural imports for consumption: Quantity and value by commodity, June 1964 and 1965 and July-June 1963-64 and 1964-65 - Continued

Commodity imported SUPPLEMENTARY	Unit	June 1/				July-June 1/			
		Quantity		Value		Quantity		Value	
		1964	1965	1,000 dollars	1,000 dollars	1963-64	1964-65	1963-64 1,000 dollars	1964-65 1,000 dollars
Wool, unmanufactured (except free in bond):		Thousands	Thousands	Thousands	Thousands	Thousands	Thousands	dollars	dollars
40's to 56's	G.Lb.	1,417	3,380	1,088	1,813	18,456	34,328	12,184	21,411
Finer than 56's	G.Lb.	6,477	12,844	5,335	8,043	84,684	139,269	63,538	95,495
Other wools	G.Lb.	1,989	2,421	1,974	2,166	28,232	25,633	25,721	23,833
Total wool, unmanufactured	G.Lb.	9,883	18,645	8,397	12,022	131,412	199,230	101,443	140,739
Other animal products:									
Bones, hoofs, and horns, unmanufactured	---	3/	3/	257	254	3/	3/	2,475	2,294
Bristles, sorted, bunched, or prepared	Lb.	272	252	1,015	944	3,326	3,155	11,716	11,510
Fats, oils, greases, edible and inedible	---	3/	3/	78	157	3/	3/	1,359	2,059
Feathers, crude	Lb.	408	309	621	448	3,462	3,539	5,335	5,894
Gelatin, edible	Lb.	547	470	260	234	8,000	6,767	8,341	3,485
Hair, unmanufactured	Lb.	996	691	780	606	11,593	9,644	8,397	7,823
Honey	Lb.	610	1,298	93	129	2,802	9,619	447	1,073
Other	---	3/	3/	994	1,033	3/	3/	44,584	45,389
Total other animal products	---	---	---	4,098	3,805	---	---	851,943	792,757
Total animals and animal products		---	---	74,588	71,134	---	---	---	---
VEGETABLE PRODUCTS									
Cotton, unmanufactured (480 lb.):									
Cotton	Bale	1	2	167	255	136	116	24,341	21,539
Linters	Bale	19	18	433	506	188	169	4,382	4,242
Total cotton and linters	Bale	20	20	600	761	324	285	28,723	25,781
Fruits and preparations:									
Apples, green or ripe (50 lb.)	Bu.	46	44	219	208	1,629	807	5,355	3,669
Berries	Lb.	5,094	6,620	802	1,040	67,234	74,235	10,186	11,727
Dates	Lb.	29	1	2	1	39,466	37,015	3,784	3,574
Figs	Lb.	2,044	1,384	163	149	27,389	23,547	2,522	2,524
Grapes (40 lb.)	Cu.Ft.	424	49	1,112	125	1,624	1,890	4,218	4,291
Melons	Lb.	65,881	38,783	2,471	1,395	228,927	269,536	9,631	10,613
Olives in brine	Gal.	1,692	1,146	2,134	2,248	14,175	15,189	19,345	25,244
Oranges, mandarin, canned	Lb.	6,970	7,134	1,398	1,420	55,265	65,462	11,323	13,482
Pineapples, canned, prepared or preserved	Lb.	15,615	14,210	1,811	1,689	135,002	146,592	15,534	16,455
Pineapple juice	Gal.	1,329	426	366	165	11,214	10,783	3,425	3,420
Other	---	3/	3/	2,785	2,025	3/	3/	35,330	27,425
Total fruits and preparations	---	---	---	13,263	10,465	---	---	121,313	122,424
Grains and preparations:									
Barley grain (48 lb.)	Bu.	308	565	433	790	9,437	10,044	12,111	13,354
Barley malt	Lb.	5,944	2,492	298	124	102,415	64,152	5,114	3,115
Corn grain (56 lb.)	Bu.	48	40	158	70	1,102	891	2,102	1,725
Oats grain (32 lb.)	Bu.	121	701	106	554	3,533	3,540	3,049	3,063
Rice	Lb.	30	6,807	6	349	1,252	27,789	151	1,896
Rye grain (56 lb.)	Bu.	0	304	0	343	649	2,415	960	2,911
Wheat grain for domestic use (60 lb.)	Bu.	704	9	1,328	13	3,587	843	7,305	1,587
Wheat flour	Lb.	3,813	3,115	160	183	3,840	3,226	16,573	16,137
Other	---	3/	3/	1,067	1,237	3/	3/	45,526	43,973
Total grains and preparations	---	---	---	3,556	3,663	---	---	---	---

Continued -

Table 5.-- U. S. agricultural imports for consumption: Quantity and value by commodity,
June 1964 and 1965 and July-June 1963-64 and 1964-65 - Continued

Commodity imported SUPPLEMENTARY	Unit	June 1/				July-June 1/			
		Quantity		Value		Quantity		Value	
		1964	1965	1964	1965	1963-64	1964-65	1963-64	1964-65
		Thousands	Thousands	1,000 dollars	1,000 dollars	Thousands	Thousands	1,000 dollars	1,000 dollars
Nuts and preparations:									
Almonds	Lb.	4	0	4	0	217	293	122	170
Brazil nuts	Lb.	3,029	1,271	606	488	29,251	26,519	6,162	7,900
Cashew nuts	Lb.	5,308	5,855	2,406	3,015	72,701	66,631	30,125	34,532
Coconut meat, fresh, frozen, or prepared ..	Lb.	12,146	8,681	1,506	1,209	135,776	117,210	16,805	15,323
Pistache nuts	Lb.	300	1,587	151	841	12,043	16,591	6,573	8,569
Other		3/	3/	325	294	3/	3/	8,039	8,290
Total nuts and preparations		---	---	5,008	5,847	---	---	67,826	74,784
Oilseeds and products:									
Oils, edible and inedible -									
Cacao butter	Lb.	958	637	461	284	12,697	17,133	6,483	8,037
Carnauba wax	Lb.	1,395	1,547	547	691	13,574	12,965	5,514	5,599
Castor oil	Lb.	4,627	8,143	475	683	86,997	126,721	9,191	12,081
Coconut oil	Lb.	36,446	22,658	4,306	3,266	415,017	448,170	46,594	57,322
Olive oil, edible	Lb.	5,123	2,864	1,328	885	53,679	54,803	15,513	15,678
Palm oil	Lb.	0	0	0	0	7,105	6,077	705	627
Palm kernel oil	Lb.	9,717	7,883	1,228	1,174	74,970	90,401	9,286	11,740
Tung oil	Lb.	3,457	2,746	761	630	26,038	30,397	7,421	6,387
Other	Lb.	2,288	2,523	420	503	28,906	31,646	5,428	6,102
Total oils (except essential)	Lb.	64,011	49,001	9,526	8,116	718,983	818,313	106,135	123,573
Oilseeds -									
Copra	Lb.	30,455	41,947	2,394	4,174	517,874	624,234	39,248	52,006
Sesame seed	Lb.	2,619	2,451	346	334	23,935	23,746	3,393	3,452
Other		3/	3/	114	95	3/	3/	1,904	1,894
Total oilseeds		---	---	2,854	4,603	---	---	44,545	57,352
Protein meal (oilcake and meal)	Lb.	9,775	11,519	273	338	110,374	57,432	3,186	1,656
Total oilseeds and products		---	---	12,653	13,057	---	---	153,866	182,581
Sugar and related products:									
Cane sugar	S.Ton	299	373	38,855	42,510	3,635	3,895	539,446	443,514
Molasses unfit for human consumption	Gal.	31,799	40,112	3,882	3,600	276,850	256,969	41,388	26,814
Other		3/	3/	303	583	3/	3/	6,686	6,990
Total sugar and related products		---	---	43,040	46,693	---	---	587,520	477,318
Vegetables and preparations:									
Canned mushrooms	Lb.	1,692	1,470	862	744	13,555	10,409	6,949	5,624
Canned tomatoes, tomato paste and sauce ...	Lb.	4,089	6,510	472	757	95,945	98,303	11,199	12,006
Fresh or dried -									
Cucumbers	Lb.	9	36	2/	6	52,640	74,606	4,889	5,225
Garlic	Lb.	1,246	1,446	149	183	18,857	17,945	2,889	2,321
Onions	Lb.	1,523	3,430	151	277	51,418	43,310	2,721	2,389
Potatoes, white	Lb.	9,724	23,422	308	1,115	148,988	348,193	3,530	10,922
Tomatoes, natural state	Lb.	9,039	10,804	1,119	1,308	251,229	261,927	27,845	28,681
Turnips and rutabagas	Lb.	360	263	11	8	95,302	94,919	1,904	2,098
Pickled vegetables	Lb.	1,336	1,497	210	222	14,781	18,952	2,333	2,701
Tapioca, tapioca flour, and cassava	Lb.	27,879	38,580	862	1,323	257,049	366,197	9,151	11,902
Other		3/	3/	1,937	2,480	3/	3/	25,684	30,999
Total vegetables and preparations		---	---	6,081	8,423	---	---	99,094	114,868

Continued -

Table 5.— U. S. agricultural imports for consumption: Quantity and value by commodity,
June 1964 and 1965 and July-June 1963-64 and 1964-65 - Continued

Commodity imported SUPPLEMENTARY	Unit	June 1/				July-June 1/			
		Quantity		Value		Quantity		Value	
		1964	1965	1964	1965	1963-64	1964-65	1963-64	1964-65
		Thousands	Thousands	1,000 dollars	1,000 dollars	Thousands	Thousands	1,000 dollars	1,000 dollars
Other vegetable products:									
Feeds and fodders (except oilcake and meal):	---	3/	3/	1,332	1,108	3/	3/	18,511	17,481
Hops	Lb.	43	22	45	23	5,646	6,506	5,963	6,987
Jute and jute butts, unmanufactured	L.Ton:	12	5	783	990	84	109	12,227	9,008
Malt liquors	Gal.	2,162	1,902	2,391	2,044	18,706	20,628	20,976	22,565
Nursery and greenhouse stock	---	2/	3/	19	54	3/	3/	13,127	14,130
Seeds, field and garden	---	3/	3/	677	571	2/	3/	18,055	15,061
Spices	Lb.	3,376	3,630	451	475	50,675	55,476	8,114	8,357
Tobacco, unmanufactured	Lb.	15,735	16,687	10,124	12,231	165,886	184,206	103,026	125,648
Wines	Gal.	1,302	1,371	5,008	5,549	14,125	16,162	58,194	64,784
Other	---	3/	3/	599	802	3/	3/	10,724	10,341
Total other vegetable products	---	---	---	21,430	23,847	---	---	268,917	294,362
Total vegetable products	---	---	---	105,631	112,756	---	---	1,372,785	1,336,091
TOTAL SUPPLEMENTARY IMPORTS	---	---	---	180,219	183,890	---	---	2,224,728	2,128,848
COMPLEMENTARY									
Bananas	Lb.	288,040	318,138	11,822	14,740	3,502,749	3,492,775	93,081	159,133
Coffee (including into Puerto Rico)	Lb.	178,711	242,348	73,174	89,713	3,266,581	2,685,778	1,120,678	1,075,382
Coffee essences, substitutes and adulterants	Lb.	586	398	907	478	6,426	3,277	8,233	4,314
Cocoa or cacao beans	Lb.	49,768	84,469	10,332	13,200	535,824	650,903	121,856	124,357
Cocoa and chocolate, prepared	Lb.	9,513	11,492	1,581	1,221	129,537	125,737	22,192	20,827
Drugs, herbs, roots, etc.	---	3/	3/	1,893	2,710	3/	3/	21,107	22,162
Essential or distilled oils	---	3/	3/	1,934	2,971	3/	3/	21,240	27,616
Fibers, unmanufactured	L.Ton:	10	11	2,943	2,319	143	382	40,591	30,403
Rubber, crude	Lb.	69,979	94,579	13,908	16,898	853,117	999,535	185,375	192,366
Silk, raw	Lb.	320	239	1,618	1,332	4,715	3,920	26,734	19,877
Spices	Lb.	8,422	7,656	2,751	3,244	100,418	105,684	32,069	38,970
Tea	Lb.	10,409	11,028	4,755	4,764	131,039	128,741	59,083	57,006
Wool, unmanufactured (free in bond)	G.Lb.	8,259	13,116	5,591	6,633	182,135	131,402	110,083	74,609
Other complementary agricultural products	---	3/	3/	648	937	3/	3/	8,643	11,746
TOTAL COMPLEMENTARY IMPORTS	---	---	---	133,857	161,160	---	---	1,870,965	1,858,768
TOTAL AGRICULTURAL IMPORTS	---	---	---	314,076	345,050	---	---	4,095,693	3,987,616
TOTAL NONAGRICULTURAL IMPORTS	---	---	---	1,262,704	1,532,934	---	---	13,718,106	15,749,359
TOTAL IMPORTS, ALL COMMODITIES	---	---	---	1,576,780	1,877,984	---	---	17,813,799	19,736,975

1/ Preliminary.

2/ Less than 500.

3/ Reported in value only.

4/ Excludes the weight of "other hides and skins," reported in pieces only.

Table 6.-- U. S. agricultural exports and imports (for consumption): Value by country, July-June 1964-65

Country	Agricultural			Country	Agricultural		
	Exports	Imports			Exports	Imports	
	Total	Comple- mentary	Supple- mentary		Total	Comple- mentary	Supple- mentary
	-- Thousand dollars --				-- Thousand dollars --		
Greenland	3	12	0	12			
Canada	618,616	186,811	8,393	178,418			
Miquelon and St. Pierre Is.	8	0	0	0			
Latin American Republics:				Europe - Continued:			
Mexico	79,144	269,674	91,589	178,085	Norway	32,650	2,668
Guatemala	10,813	63,643	54,252	9,391	Denmark	81,217	66,875
El Salvador	8,769	33,285	29,769	3,516	United Kingdom	416,693	21,358
Honduras	4,577	53,345	49,393	3,952	Ireland	22,213	5,558
Nicaragua	6,440	31,252	16,104	15,148	Netherlands	423,572	74,171
Costa Rica	6,392	54,938	45,365	9,573	Belgium and Luxembourg	152,999	11,373
Panama	12,145	32,435	30,771	1,664	Unidentified W. Europe 1/	0	
Cuba	0	3,322	0	3,322	France	145,700	70,186
Haiti	8,702	14,974	9,594	5,380	West Germany	406,072	38,183
Dominican Republic	23,026	106,041	39,442	66,599	East Germany	9,670	419
Colombia	23,030	224,330	214,678	9,652	Austria	11,052	1,668
Venezuela	74,036	17,498	16,636	862	Czechoslovakia	3,212	1,004
Ecuador	10,938	87,900	81,145	6,755	Hungary	9,197	364
Peru	33,125	77,618	34,750	42,868	Switzerland	56,860	11,648
Bolivia	12,580	2,489	1,179	1,310	Finland	18,172	1,337
Chile	29,222	6,269	281	5,988	Estonia	0	2
Brazil	107,022	408,070	329,324	78,746	Latvia	1,061	2/
Paraguay	2,801	8,286	1,231	7,055	Lithuania	0	0
Uruguay	2,569	18,710	108	18,602	Poland and Danzig	46,926	34,600
Argentina	11,769	81,397	17,954	63,443	U.S.S.R. (Russia)	25,210	1,937
Total L. A. Republics	467,100	1,595,476	1,063,565	531,911	Azores	858	68
Other Latin America:				Asia:			
British Honduras	2,248	6,496	5,062	1,434	Portugal	127,110	47,542
Canal Zone	134	40	23	17	Gibraltar	19,449	6,230
Bermuda	5,977	18	0	18	Malta and Gozo	108	10
Bahamas	12,193	2,531	18	2,513	Italy	242,235	71,390
Jamaica	19,967	14,402	1,604	12,798	Free Terr. of Trieste	1,009	38
Leeward and Windward Is.	2,197	1,148	608	540	Yugoslavia	105,496	19,003
Barbados	1,897	1,666	0	1,666	Albania	0	95
Trinidad and Tobago	9,996	6,002	2,306	3,656	Greece	37,541	37,907
Netherlands Antilles	9,546	20	3	17	Rumania	3,358	238
French West Indies	1,538	6,769	944	5,825	Bulgaria	2,520	1,170
British Guiana	4,027	6,206	103	6,103	Turkey	38,793	63,196
Surinam	3,020	410	406	37	Cyprus	566	1,016
French Guiana	106	37	0	0	Total Europe	2,496,232	594,301
Falkland Islands	0	0	0	0	Syrian Arab Republic	4,021	3,010
Total Latin America	539,926	1,641,221	1,074,642	566,579	Lebanon	9,852	4,945
Europe:				Other Arab States:			
Iceland	4,404	330	151	179	Iraq	4,295	5,688
Sweden	49,711	2,717	97	2,620	Iran	44,006	20,684
					Israel	74,620	1,844
					Palestine 2/	8	0
					Jordan	10,711	0
					Kuwait	5,871	0
					Saudi Arabia	15,130	49
					Other Arabia Pen. States	910	1,359

Continued -

Table 6.-- U. S. agricultural exports and imports (for consumption): Value by country, July-June 1964-65 - Continued

Country	Agricultural				Country	Agricultural			
	Exports	Imports				Exports	Imports		
	Total	Comple-	Supple-		Total	Comple-	Supple-		
	mentary	mentary	mentary		mentary	mentary	mentary		
	-- Thousand dollars --					-- Thousand dollars --			
Asia - Continued:					Africa - Continued:				
Aden	1,444	155	127	28	Canary Islands	6,668	1	0	1
Bahrain	1,092	0	0	0	Other Spanish Africa	148	0	0	0
Afghanistan	4,048	1,425	0	1,425	Federal Rep. of Cameroon ..	845	6,298	5,958	340
India	528,720	83,654	25,706	57,948	Central African Republic ..	5	276	274	2
Goa, Daman, and Diu	0	0	0	0	Gabon	54	418	410	8
Pakistan	168,372	15,536	4,752	10,784	Mauritania	67	330	330	0
Nepal	90	0	0	0	Senegal	2,907	20	0	20
Ceylon	4,196	31,891	31,737	154	Guinea	7,351	1,443	1,438	5
Burma	7,902	62	4	58	Ivory Coast	4,063	48,003	46,506	1,497
Thailand	16,093	18,022	7,145	10,877	Togo	322	237	231	6
Viet-Nam	52,925	2,219	1,785	434	Other Western Africa	1,166	331	234	97
Laos	1,135	116	113	3	Ghana	8,635	54,066	53,143	923
Cambodia	139	2,267	2,267	0	Nigeria	9,975	27,542	23,537	4,005
Malaysia	13,334	73,554	70,484	3,070	Sierra Leone	2,433	1,126	1,126	0
Indonesia	9,326	117,410	114,463	2,947	British West Africa	54	5	0	5
Philippines	64,637	300,216	8,609	291,607	Madeira Islands	1,160	140	0	140
Macao	408	9	7	2	Angola	2,139	48,045	47,666	379
Other S. and S.E. Asia	10	82	82	0	Other W. Port. Africa	413	981	970	11
China	0	0	0	0	Liberia	7,652	24,247	24,228	19
Outer Mongolia	0	2,926	30	2,896	Congo (Leopoldville)	20,869	15,768	9,968	5,820
North Korea	0	0	0	0	Burundi and Rwanda	154	24,349	24,349	0
Korea, Republic of	98,454	6,560	5,310	1,250	Somali Republic	627	261	8	253
Hong Kong	51,593	2,751	307	2,444	Ethiopia	1,156	56,629	53,756	2,873
Taiwan	84,600	26,953	3,594	23,359	French Somaliland	258	200	89	111
Japan	750,205	38,533	13,364	25,169	Uganda	389	40,046	39,783	263
Nansei and Nanpo Islands ..	22,116	16	12	4	Kenya	3,007	16,728	15,807	921
Total Asia	2,050,263	761,946	300,426	461,520	Tanzania (formerly Tangan-	1,797	12,213	11,955	258
					yika and Zanzibar)	19	121	109	12
Australia and Oceania:					Seychelles and Depend.	246	837	110	727
Australia	36,405	196,863	588	196,275	Mauritius and Depend.	318	4,401	1,281	3,120
New Guinea	306	1,312	1,312	0	Mozambique	918	21,970	20,659	1,311
New Zealand and W. Samoa ..	5,494	127,114	33,261	93,853	Rep. of South Africa	28,771	40,299	1,207	39,092
British W. Pacific Is.	806	6,283	29	6,254	Zambia, S. Rhod., Malawi ...	2,709	3,325	1,273	2,052
French Pacific Islands	1,858	79	73	6	Total Africa	344,781	471,674	387,935	83,739
Trust Terr. of Pacific Is. ..	1,775	0	0	0	Total all countries	6,096,493	3,987,616	1,858,768	2,128,848
Total Australia and Oceania	46,644	331,651	35,263	296,388	E. E. C. (Common Market):				
					Netherlands	423,572	74,171	11,965	62,206
Africa:					Belgium and Luxembourg ...	152,999	11,373	2,311	9,062
Morocco	42,052	1,819	970	849	France	145,700	70,186	9,966	60,220
Algeria	17,465	285	256	29	West Germany	406,072	38,183	3,071	35,112
Tunisia	19,463	1,691	13	1,678	Italy	242,235	71,390	6,914	64,476
Libya	1,934	1	0	1	Total E. E. C.	1,370,578	265,303	34,227	231,076
United Arab Rep. (Egypt) ..	136,052	15,391	140	15,251					
Sudan	10,520	1,811	151	1,660					

1/ Not available by countries.
 2/ Less than \$500.
 3/ Gaza Strip, effective May 1965.

Table 7.-- U. S. agricultural exports: Quantity and value by commodity, July 1964 and 1965

Commodity exported	Unit	July 1/			
		Quantity		Value	
		1964	1965	1964	1965
		Thou-	Thou-	1,000	1,000
		sands	sands	dollars	dollars
ANIMALS AND ANIMAL PRODUCTS					
<u>Animals, live:</u>					
Cattle	No.	4	12	1,247	2,476
Poultry, live -					
Eggs chicks (chickens)	No.	1,992	2,377	681	817
Other live poultry	2/	2/		280	164
Other	2/	2/		344	190
Total animals, live	---	---	---	2,552	3,647
<u>Dairy products:</u>					
Anhydrous milk fat, incl. donations ...	Lb.	2,426	639	1,311	376
Butter, including donations	Lb.	9,436	981	3,781	406
Cheese, including donations	Lb.	1,010	404	476	199
Infants' and dietetic foods	Lb.	1,678	1,396	996	1,022
Milk and cream -					
Condensed and evap., incl. donations ..	Lb.	8,733	7,184	1,825	1,496
Dry, whole milk and cream	Lb.	2,402	1,134	522	585
Fresh	Gal.	92	77	154	108
Nonfat dry, including donations	Lb.	108,499	85,822	9,047	11,903
Other	2/	2/		434	409
Total dairy products	---	---	---	18,546	16,504
<u>Fats, oils, and greases:</u>					
Lard	Lb.	45,809	29,332	4,373	3,421
Tallow -					
Edible	Lb.	681	330	67	42
Inedible	Lb.	239,072	154,857	16,201	14,333
Other animal fats, oils, and greases ..	Lb.	24,286	14,673	1,870	1,585
Total fats, oils, and greases	Lb.	309,848	199,192	22,511	19,381
<u>Meat and meat products:</u>					
Beef and veal	Lb.	3,497	1,816	1,386	1,121
Pork	Lb.	8,557	2,601	2,506	921
Sausage casings	Lb.	1,105	783	696	527
Variety meats (edible offals)	Lb.	16,816	17,456	3,487	3,929
Other, including meat extracts	Lb.	1,200	1,671	481	664
Total meat and prods. (ex. poultry) ..	Lb.	31,175	24,327	8,556	7,162
<u>Poultry products:</u>					
Eggs, dried and otherwise preserved ...	Lb.	414	322	485	304
Eggs in the shell -					
Hatching	Doz.	503	379	631	411
Other	Doz.	81	179	30	72
Poultry meat -					
Chickens, fresh or frozen	Lb.	13,036	7,539	2,856	1,885
Turkeys, fresh or frozen	Lb.	3,024	3,314	1,077	1,084
Other, fresh or frozen	Lb.	551	862	145	284
Canned and otherwise preserved	Lb.	2,033	2,015	554	466
Total poultry products	---	---	---	5,778	4,506

Continued -

Table 7.-- U. S. agricultural exports: Quantity and value by commodity,
July 1964 and 1965 - Continued

Commodity exported	Unit	July 1/			
		Quantity		Value	
		1964	1965	1964	1965
		Thou-	Thou-	1,000	1,000
		sands	sands	dollars	dollars
Other animal products:					
Feathers, crude or dressed	Lb.	133	51	95	54
Gelatin, edible	Lb.	345	176	801	116
Hair, raw or dressed (except wool)	Lb.	496	632	152	259
Hides and skins, raw 3/	No.	1,419	1,538	7,890	9,637
Honey	Lb.	463	683	106	122
Wool, unmanufactured	CLb.	76	1,193	102	935
Other	---	2/	2/	2,027	1,794
Total other animal products	---	---	---	11,173	12,917
Total animals and animal products	---	---	---	69,116	64,117
VEGETABLE PRODUCTS					
Cotton, unmanufactured:					
Cotton	RBle:	697	265	91,027	34,863
Linters	RBle:	18	19	519	583
Total cotton and linters	RBle:	715	284	91,546	35,446
Fruits and preparations:					
Canned -					
Fruit cocktail	Lb.	4,026	5,336	706	866
Peaches	Lb.	2,235	9,463	277	1,064
Pears	Lb.	183	360	39	73
Pineapples	Lb.	12,690	22,804	1,813	3,290
Other	Lb.	3,188	4,147	617	749
Total canned fruits	Lb.	22,322	42,110	3,452	6,042
Dried -					
Prunes	Lb.	4,606	5,783	983	1,077
Raisins (dried grapes)	Lb.	5,613	4,585	1,035	857
Other	Lb.	1,029	664	276	219
Total dried fruits	Lb.	11,248	11,032	2,294	2,153
Fresh -					
Apples	Lb.	2,187	7,691	208	662
Berries	Lb.	4,796	3,035	868	699
Grapefruit	Lb.	7,581	10,117	570	763
Grapes	Lb.	9,085	11,675	1,459	1,577
Lemons and limes	Lb.	30,710	30,398	2,022	2,345
Oranges and tangerines	Lb.	26,470	49,637	2,321	4,226
Pears	Lb.	3,357	724	347	98
Other	Lb.	50,850	57,422	3,249	4,057
Total fresh fruits	Lb.	135,036	170,699	11,044	14,427
Fruit juices -					
Grapefruit	Gal.	287	255	350	255
Orange	Gal.	586	801	1,649	1,736
Other	Gal.	872	960	1,069	1,114
Total fruit juices	Gal.	1,745	2,016	3,068	3,105
Frozen fruits	Lb.	628	2,824	123	486
Other	---	2/	2/	374	261
Total fruits and preparations	---	---	---	20,355	26,474

Continued -

Table 7.-- U. S. agricultural exports: Quantity and value by commodity,
July 1964 and 1965 - Continued

Commodity exported	Unit	July 1/			
		Quantity		Value	
		1964	1965	1964	1965
		Thou-	Thou-	1,000	1,000
		sands	sands	dollars	dollars
Grains and preparations:					
Feed grains and products -					
Barley grain (48 lb.)	:Bu.:	1,782	5,057	1,848	5,802
Corn grain, incl. donations (56 lb.)	:Bu.:	32,793	51,498	44,266	72,943
Grain sorghums (56 lb.)	:Bu.:	12,628	29,039	14,689	34,144
Oats grain (32 lb.)	:Bu.:	275	2,242	191	1,613
Total feed grains	:Mton:	1,197	2,188	60,994	114,502
Malt and flour, incl. barley malt	:Lb.:	5,942	6,505	359	432
Corn grits and hominy	:Lb.:	3,488	2,579	143	108
Cornmeal, including donations	:Cwt.:	187	404	716	1,645
Cornstarch	:Lb.:	8,402	5,885	624	590
Oatmeal, groats, and rolled oats	:Lb.:	369	1,051	30	80
Total feed grains and products	:Mton:	1,225	2,233	62,866	117,357
Rice -					
Milled, including donations	:Lb.:	122,035	322,235	8,755	23,959
Paddy or rough	:Lb.:	311	1,068	30	84
Total rice (milled basis)	:Lb.:	122,233	322,929	8,785	24,043
Rye grain (56 lb.)	:Bu.:	120	159	167	190
Wheat and flour, incl. donations -					
Wheat grain (60 lb.)	:Bu.:	52,945	65,142	92,044	106,542
Wheat flour, wholly of U.S. wheat	:Cwt.:	2,172	2,721	8,752	11,172
Total wheat and flour	:Bu.:	57,897	71,345	100,796	117,714
Bakery products	:Lb.:	1,274	994	515	464
Other, including donations	:---	2/	2/	976	2,560
Total grains and preparations	:---	---	---	174,105	262,328
Oilseeds and products:					
Oils, including donations -					
Cottonseed oil	:Lb.:	21,199	41,570	2,409	5,566
Soybean oil	:Lb.:	127,081	92,213	13,005	12,884
Other	:Lb.:	29,117	18,279	3,385	2,972
Total oils (except essential)	:Lb.:	177,397	152,062	18,799	21,422
Oilseeds -					
Flaxseed (56 lb.)	:Bu.:	542	1,168	1,537	3,566
Soybeans (60 lb.)	:Bu.:	11,911	17,421	31,166	52,722
Other	:---	2/	2/	1,181	1,154
Total oilseeds	:---	---	---	33,884	57,442
Protein meal (oil-cake and meal)	:STon:	153	173	11,828	13,534
Total oilseeds and products	:---	---	---	64,511	92,398
Tobacco, unmanufactured:					
Burley	:Lb.:	3,942	4,900	2,449	3,653
Cigar wrapper	:Lb.:	321	463	955	1,823
Dark-fired Kentucky and Tennessee	:Lb.:	621	1,332	277	655
Flue-cured	:Lb.:	25,120	27,247	20,972	22,872
Maryland	:Lb.:	532	664	462	547
Other	:Lb.:	2,218	1,531	984	850
Total tobacco, unmanufactured	:Lb.:	32,754	36,137	26,099	30,400

Continued -

Table 7.-- U. S. agricultural exports: Quantity and value by commodity,
July 1964 and 1965 - Continued

Commodity exported	Unit	July 1/			
		Quantity		Value	
		1964	1965	1964	1965
		Thou-	Thou-	1,000	1,000
		sands	sands	dollars	dollars
Vegetables and preparations:					
Canned -					
Asparagus	Lb.	4,523	8,549	1,210	2,665
Soups	Lb.	1,244	1,439	227	287
Tomato paste and puree	Lb.	586	984	124	212
Tomato sauce for cooking purposes	Lb.	50	218	7	30
Other	Lb.	3,736	5,852	575	708
Total canned vegetables	Lb.	10,139	17,042	2,143	3,902
Dried beans, including donations	Lb.	31,489	33,279	2,466	2,416
Dried peas, including cow and chick	Lb.	9,623	20,268	585	1,120
Fresh -					
Lettuce	Lb.	4,863	3,673	218	174
Onions	Lb.	7,318	8,948	271	438
Potatoes (except sweet potatoes)	Lb.	28,796	31,509	1,266	1,353
Tomatoes	Lb.	11,229	11,269	1,223	1,189
Other	Lb.	15,190	15,819	865	1,099
Total fresh vegetables	Lb.	67,396	71,218	3,843	4,253
Frozen vegetables	Lb.	1,486	1,459	276	282
Soups and vegetables, dehydrated	Lb.	1,626	725	644	455
Vegetable seasonings	Lb.	747	752	452	319
Tomato juice, canned	Gal.	291	262	246	243
Other	2/	---	2/	1,323	1,223
Total vegetables and preparations	---	---	---	11,978	14,213
Other vegetable products:					
Coffee	Lb.	1,907	2,473	2,783	3,940
Drugs, herbs, roots, etc., crude	Lb.	270	775	242	415
Essential oils, natural	Lb.	786	656	1,687	1,567
Feeds and fodders (except oilcake)	2/	---	2/	5,149	7,933
Flavoring sirups, sugars, extracts	Gal.	128	490	623	1,444
Hops	Lb.	459	435	301	268
Nursery and greenhouse stock	2/	---	2/	278	351
Nuts and preparations	Lb.	9,834	14,876	1,549	2,962
Seeds (except oilseeds)	Lb.	5,538	3,004	1,288	956
Spices	Lb.	386	547	257	320
Other, including donations	2/	---	2/	7,788	2,540
Total other vegetable products	---	---	---	21,945	22,696
Total vegetable products	---	---	---	410,539	483,955
TOTAL AGRICULTURAL EXPORTS	---	---	---	479,655	548,072
TOTAL NONAGRICULTURAL EXPORTS	---	---	---	1,608,487	1,664,080
TOTAL EXPORTS, ALL COMMODITIES	---	---	---	2,088,142	2,212,152

1/ Preliminary.

2/ Reported in value only.

3/ Excludes the number of "other hides and skins," reported in value only.

Table 8.-- U.S. agricultural imports for consumption: Quantity and value by commodity, July 1964 and 1965

Commodity imported SUPPLEMENTARY	Unit	July 1/			
		Quantity		Value	
		1964	1965	1964	1965
		Thou- sands	Thou- sands	1,000 dollars	1,000 dollars
ANIMALS AND ANIMAL PRODUCTS					
<u>Animals, live:</u>					
Cattle, dutiable	No.	10	52	888	5,639
Cattle, free (for breeding)	No.	2	2	534	566
Horses	No.	2/	2/	396	325
Other (including live poultry)	---	3/	3/	91	125
Total animals, live	---	---	---	1,909	6,655
<u>Dairy products:</u>					
Butter	Lb.	21	37	10	17
Cheese -					
Blue-mold	Lb.	187	292	95	146
Cheddar	Lb.	50	22	23	11
Edam and Gouda	Lb.	222	386	103	178
Pecorino	Lb.	813	752	470	561
Swiss	Lb.	1,138	1,091	642	626
Other	Lb.	1,156	1,683	631	873
Total cheese	Lb.	3,566	4,226	1,964	2,395
Casein or lactarene	Lb.	7,735	6,630	1,446	2,174
Other	---	3/	3/	54	246
Total dairy products	---	---	---	3,474	4,832
<u>Hides and skins, raw (except furs):</u>					
Calf skins	Lb.	890	189	347	63
Cattle hides	Lb.	1,454	708	205	84
Goat and kid skins	Lb.	1,902	1,231	1,228	920
Sheep and lamb skins	Lb.	7,084	7,746	3,764	4,524
Other //	Lb.	3,892	2,755	2,165	1,466
Total hides and skins, raw	Lb.	15,222	12,629	7,709	7,057
<u>Meat and meat products:</u>					
Beef and veal -					
Fresh, chilled, or frozen	Lb.	41,759	55,371	13,504	17,957
Other	Lb.	9,950	10,171	3,447	4,109
Total beef and veal	Lb.	51,709	65,542	16,951	22,066
Mutton, goat, and lamb	Lb.	3,149	4,341	725	1,047
Pork -					
Fresh, chilled, or frozen	Lb.	2,865	3,868	1,051	1,658
Hams and shoulders, canned cooked	Lb.	11,640	14,230	7,638	9,345
Other	Lb.	3,318	2,423	2,814	1,437
Total pork	Lb.	17,824	20,521	11,503	12,440
Sausage casings	---	3/	3/	1,657	1,668
Other (including meat extracts)	Lb.	5,591	6,848	1,369	1,511
Total meat and prods. (ex. poultry)	---	---	---	32,205	38,732
<u>Poultry products:</u>					
Eggs, dried, frozen, preserved	Lb.	3	2	2	1
Eggs in the shell	Doz.	64	44	64	45
Poultry meat	Lb.	4	8	22	23
Total poultry products	---	---	---	88	69

Continued -

Table 8.-- U.S. agricultural imports for consumption: Quantity and value by commodity, July 1964 and 1965 - Continued

Commodity imported SUPPLEMENTARY	Unit:	July 1/			
		Quantity		Value	
		1964	1965	1964	1965
Wool, unmfed. (except free in bond):		Thou-	Thou-	1,000	1,000
40's to 56's	:Glb.:	sands	sands	dollars	dollars
Finer than 56's	:Glb.:	2,653	3,180	1,857	1,667
Other wools	:Glb.:	6,331	9,967	4,944	6,577
Total wool, unmanufactured	:Glb.:	1,404	2,149	1,376	1,512
		10,388	15,296	8,177	9,756
Other animal products:					
Bones, hoofs, and horns, unmfed.	:3/		3/	204	234
Bristles, sorted, bunched, prepared ..	:Lb.:	323	228	1,206	721
Fats, oils, and greases	:3/		3/	149	177
Feathers, crude	:Lb.:	399	333	652	750
Gelatin, edible	:Lb.:	463	925	210	496
Hair, unmanufactured	:Lb.:	1,244	653	790	494
Honey	:Lb.:	376	1,207	51	112
Other	:3/		3/	51	112
Total other animal products				1,078	696
				4,340	3,680
Total animals and animal products ..				57,902	70,781
VEGETABLE PRODUCTS					
Cotton, unmanufactured (480 lb.):					
Cotton	:Bale:	1	4	198	422
Linters	:Bale:	19	15	328	343
Total cotton and linters	:Bale:	20	19	526	765
Fruits and preparations:					
Apples, green or ripe (50 lb.)	:Bu.:	17	11	77	50
Berries	:Lb.:	4,307	7,783	589	1,428
Dates	:Lb.:	15	0	1	0
Figs	:Lb.:	273	0	22	0
Grapes (40 lb.)	:Cwt:	24	4	63	13
Melons	:Lb.:	1,752	510	37	35
Olives in brine	:Gal.:	1,316	972	1,616	1,935
Oranges, mandarin, canned	:Lb.:	5,157	5,970	1,067	1,214
Pineapples, canned, or preserved	:Lb.:	10,421	15,542	1,191	1,780
Pineapple juice	:Gal.:	978	423	358	111
Other	:3/		3/	1,980	2,396
Total fruits and preparations				7,001	8,962
Grains and preparations:					
Barley grain (48 lb.)	:Bu.:	809	730	940	971
Barley malt	:Lb.:	11,923	8,981	586	460
Corn grain (56 lb.)	:Bu.:	86	78	138	106
Oats grain (32 lb.)	:Bu.:	93	269	87	215
Rice	:Lb.:	40	6,285	9	317
Rye grain (56 lb.)	:Bu.:	0	73	0	86
Wheat grain for domestic use (60 lb.) ..	:2/		4	1	10
Wheat flour	:Lb.:	0	0	0	0
Other	:3/		3/	0	0
Total grains and preparations				1,095	1,007
				2,856	3,172

Continued -

Table 8.-- U.S. agricultural imports for consumption: Quantity and value by commodity, July 1964 and 1965 - Continued

Commodity imported SUPPLEMENTARY	Unit	July 1/			
		Quantity		Value	
		1964	1965	1964	1965
		Thou-	Thou-	1,000	1,000
		sands	sands	dollars	dollars
Nuts and preparations:					
Almonds	Lb.	22	11	15	8
Brazil nuts	Lb.	5,786	4,775	1,241	1,125
Cashew nuts	Lb.	5,925	5,148	2,784	2,669
Coconut meat, fresh, or prepared	Lb.	13,693	6,856	1,697	893
Pistache nuts	Lb.	791	1,284	421	697
Other	3/	3/	3/	262	301
Total nuts and preparations	---	---	---	6,420	5,692
Oilseeds and products:					
Oils, edible and inedible -					
Cacao butter	Lb.	1,779	1,224	896	447
Carnauba wax	Lb.	667	732	268	281
Castor oil	Lb.	5,535	7,383	554	587
Coconut oil	Lb.	35,408	7,534	4,275	1,150
Olive oil, edible	Lb.	6,356	2,629	1,568	810
Palm oil	Lb.	0	661	0	86
Palm kernel oil	Lb.	12,163	13,614	1,445	2,063
Tung oil	Lb.	4,152	1,213	764	282
Other	Lb.	1,993	2,063	412	369
Total oils (except essential)	Lb.	68,053	37,053	10,182	6,075
Oilseeds -					
Copra	Lb.	46,323	37,934	3,613	4,138
Sesame seed	Lb.	1,988	1,930	308	276
Other	3/	3/	3/	71	33
Total oilseeds	---	---	---	3,992	4,447
Protein meal (oilcake and meal)	Lb.	3,554	7,218	100	193
Total oilseeds and products	---	---	---	14,274	10,715
Sugar and related products:					
Cane sugar	Ston.	378	194	49,708	22,317
Molasses unfit for human consumption	Gal.	20,049	14,756	2,715	1,003
Other	3/	3/	3/	614	248
Total sugar and related products	---	---	---	53,037	23,568
Vegetables and preparations:					
Canned mushrooms	Lb.	1,172	1,829	621	947
Canned tomatoes, paste and sauce	Lb.	1,898	3,698	235	392
Fresh or dried -					
Cucumbers	Lb.	122	146	8	11
Garlic	Lb.	830	727	93	81
Onions	Lb.	1,255	1,943	132	165
Potatoes, white	Lb.	427	3,404	18	184
Tomatoes, natural state	Lb.	771	730	86	95
Turnips and rutabagas	Lb.	3,769	372	12	10
Pickled vegetables	Lb.	896	1,326	146	104
Tapioca, tapioca flour, and cassava	Lb.	32,495	32,489	1,062	1,190
Other	3/	3/	3/	1,864	1,608
Total vegetables and preparations	---	---	---	4,277	4,787

Continued -

Table 8.-- U.S. agricultural imports for consumption: Quantity and value by commodity,
July 1964 and 1965 - Continued

Commodity imported SUPPLEMENTARY	Unit:	July 1/			
		Quantity		Value	
		1964	1965	1964	1965
		Thou-	Thou-	1,000	1,000
		sands	sands	dollars	dollars
Other vegetable products:					
Feeds and fodders (except oilcake) ...	3/			1,588	1,225
Hops	Lb. :	39	0	18	0
Jute and jute butts, unafd.	LTon:	6	3	688	665
Malt liquors	Gal.:	2,209	1,231	2,472	1,372
Nursery and greenhouse stock	3/			31	52
Seeds, field and garden	3/			778	667
Spices	Lb. :	2,861	2,987	324	346
Tobacco, unmanufactured	Lb. :	14,860	14,210	10,018	9,837
Wines	Gal.:	1,092	936	4,300	4,031
Other	3/			628	679
Total other vegetable products				20,845	18,874
Total vegetable products				109,236	76,536
TOTAL SUPPLEMENTARY IMPORTS				167,138	147,317
COMPLEMENTARY					
Bananas	Lb. :	279,858	250,233	12,099	11,761
Coffee (including into Puerto Rico) ...	Lb. :	206,368	159,756	84,740	59,378
Coffee essences, substitutes, etc.	Lb. :	203	150	265	178
Cocoa or cacao beans	Lb. :	41,141	58,342	8,494	8,597
Cocoa and chocolate, prepared	Lb. :	9,870	7,261	1,571	959
Drugs, herbs, roots, etc.	3/			1,757	1,093
Essential or distilled oils	3/			1,828	2,464
Fibers, unmanufactured	LTon:	11	9	3,043	1,965
Rubber, crude	Lb. :	90,740	68,683	17,078	12,769
Silk, raw	Lb. :	483	191	2,347	1,336
Spices	Lb. :	8,820	6,022	3,225	2,462
Tea	Lb. :	10,392	6,372	4,401	2,723
Wool, unmanufactured (free in bond) ...	GLb.:	12,456	14,351	7,836	7,389
Other complementary agri. products	3/			937	612
TOTAL COMPLEMENTARY IMPORTS				149,621	113,386
TOTAL AGRICULTURAL IMPORTS				316,759	260,703
TOTAL NONAGRICULTURAL IMPORTS				1,298,419	1,374,758
TOTAL IMPORTS, ALL COMMODITIES				1,615,178	1,635,461

1/ Preliminary.

2/ Less than 500.

3/ Reported in value only.

4/ Excludes the weight of "other hides and skins," reported in pieces only.

Explanatory Note

U.S. foreign agricultural trade statistics in this report include official U.S. data based on compilations of the Bureau of the Census. Agricultural commodities consist of (1) nonmarine food products and (2) other products of agriculture which have not passed through complex processes of manufacture such as raw hides and skins, fats and oils, and wine. Such manufactured products as textiles, leather, boots and shoes, cigarettes, naval stores, forestry products, and distilled alcoholic beverages are not considered agricultural.

The trade statistics exclude shipments between the 50 States and Puerto Rico, between the 50 States and the island possessions, between Puerto Rico and the island possessions, among the island possessions, and intransit through the United States from one foreign country to another when documented as such through U.S. Customs.

EXPORTS The export statistics also exclude shipments to the U.S. armed forces for their own use and supplies for vessels and planes engaged in foreign trade. Data on shipments valued at less than \$100 are not compiled by commodity and are excluded from agricultural statistics but are reflected in nonagricultural and overall export totals in this report. The agricultural export statistics include shipments under P.L.-87-195 (Act for International Development), principally sales for foreign currency; under P.L. 83-480 (Agricultural Trade Development and Assistance Act), and related laws; and involving Government payments to exporters. (USDA payments are excluded from the export value.) Separate statistics on Government program exports are compiled by USDA from data obtained from operating agencies.

The export value, the value at the port of exportation, is based on the selling price (or cost if not sold) and includes inland freight, insurance, and other charges to the port. The country of destination is the country of ultimate destination or where the commodities are to be consumed, further processed, or manufactured. When the shipper does not know the ultimate destination, the shipments are credited to the last country, as known to him at time of shipment, from the United States, to which the commodities are to be shipped in their present form. Except for Canada, export shipments valued \$100-\$499 are included on the basis of sampling estimates; shipments to Canada valued \$100-\$1,999 are sampled.

IMPORTS Imports for consumption consist of commodities released from U.S. Customs custody upon arrival, or entered into bonded manufacturing warehouse, or withdrawn from bonded storage warehouse for consumption. The agricultural statistics exclude low-value shipments from countries not identified because of illegible reporting, but they are reflected in nonagricultural and overall import totals in this report.

The import value, defined generally as the market value in the foreign country, excludes import duties, ocean freight, and marine insurance. The country of origin is defined as the country where the commodities were grown or processed. Where the country of origin is not known, the imports are credited to the country of shipment.

Imports similar to agricultural commodities produced commercially in the United States and others that are interchangeable in use to any significant extent with such U.S. commodities are supplementary, or partly competitive. All other commodities are complementary, or noncompetitive.

Further explanatory material on foreign trade statistics and compilation procedures of the Bureau of the Census is contained in the publications of that agency.

END

DATE

FILMED

9-10-79

NITIS