



**AgEcon** SEARCH  
RESEARCH IN AGRICULTURAL & APPLIED ECONOMICS

*The World's Largest Open Access Agricultural & Applied Economics Digital Library*

**This document is discoverable and free to researchers across the globe due to the work of AgEcon Search.**

**Help ensure our sustainability.**

Give to AgEcon Search

AgEcon Search

<http://ageconsearch.umn.edu>

[aesearch@umn.edu](mailto:aesearch@umn.edu)

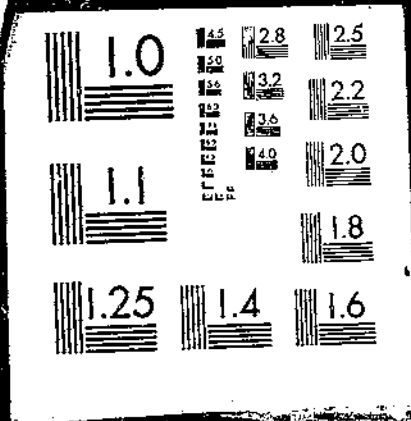
*Papers downloaded from **AgEcon Search** may be used for non-commercial purposes and personal study only. No other use, including posting to another Internet site, is permitted without permission from the copyright owner (not AgEcon Search), or as allowed under the provisions of Fair Use, U.S. Copyright Act, Title 17 U.S.C.*

USDA/FATUS-  
NOV 65

FATUS/FOREIGN AGRICULTURAL TRADE OF THE UNITED STATES, 1965 NOVEMBER. Washington, DC:  
Economic Research Service.

(NAT. Call No. A286.9/A28)

I OF I  
USDA  
FATUS  
NOV 65



Reserve  
A2869  
Ag 8

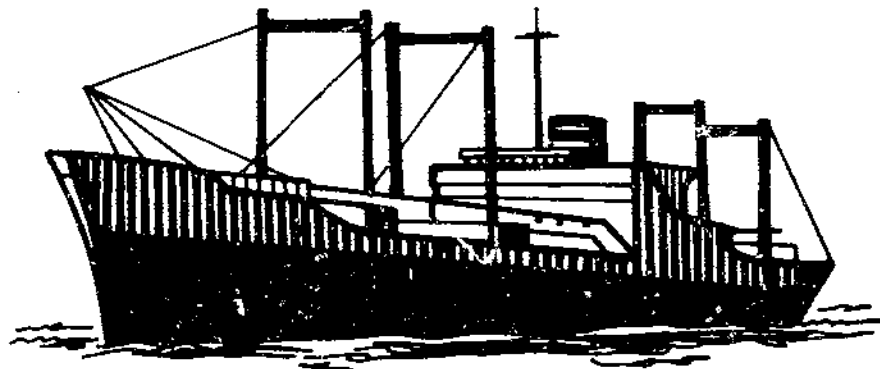
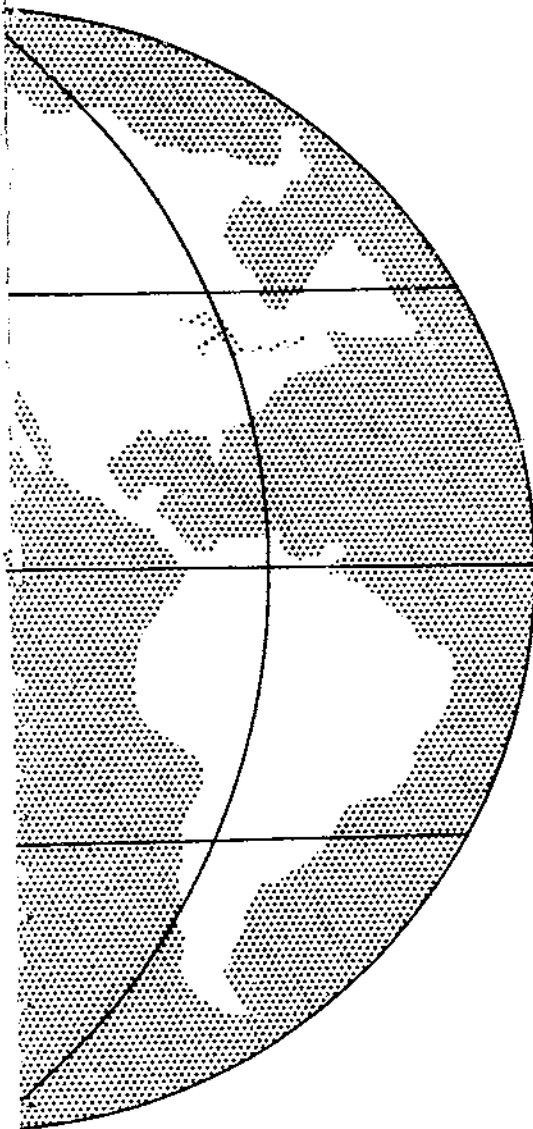
NOVEMBER 1965

# FOREIGN AGRICULTURAL TRADE OF THE UNITED STATES

U. S. GOVERNMENT PRINTING OFFICE  
NATIONAL AGRICULTURAL LIBRARY

APR

NUMBER SERIAL RECORDS



## IN THIS ISSUE:

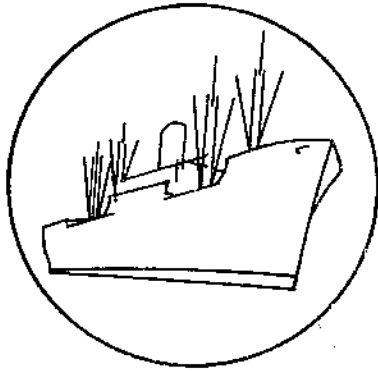
- U.S. Foreign Agricultural Trade in Calendar 1964 Reached \$10.4 Billion
- Export Highlights
- Trade Statistics, July-August

Published Monthly by Economic Research Service / U. S. Department of Agriculture

## Contents

	<u>Page</u>
Digest.....	3
U.S. Foreign Agricultural Trade in Calendar 1964 Reached \$10.4 Billion.....	5
Export Highlights.....	52
Explanatory Note.....	67
Table 1.--Exports: Value by Major Areas and Share of Total, Calendar Years 1959-64.....	7
Table 2.--Exports to the European Economic Community: Value by Country, Calendar Years 1959-64.....	7
Table 3.--Exports to the European Free Trade Association: Value by Country, Calendar Years 1959-64.....	7
Table 4.--Exports to Council of Mutual Economic Cooperation (Comecon) Countries: Value by Country, Calendar Years 1959-64.....	9
Table 5.--Exports to the Latin American Free Trade Association: Value by Country, Calendar Years 1959-64.....	9
Table 6.--Exports to the Central American Common Market: Value by Country, Calendar Years 1959-64.....	9
Table 7.--Exports to Canada of Commodities Placed in Bonded Storage for Trans- shipment: Estimated Value by Country of Destination, Calendar Year 1964.....	11
Table 8.--Imports: Value by Major Areas and Share of Total, Calendar Years 1959-64.....	12
Table 9.--Imports From the Latin American Free Trade Association: Value by Coun- try, Calendar Years 1959-64.....	13
Table 10.--Imports From the Central American Common Market: Value by Country, Calendar Years 1959-64.....	13
Table 11.--Imports From the European Economic Community: Value by Country, Calendar Years 1959-64.....	15
Table 12.--Imports From the European Free Trade Association: Value by Country, Calendar Years 1959-64.....	15
Table 13.--Imports From the Council of Mutual Economic Cooperation (Comecon): Value by Country, Calendar Years 1959-64.....	15
Table 14.--Exports: Value by Country of Destination, Specified Calendar Years....	16
Table 15.--Exports: Major Countries of Destination by Commodity Groups, Specified Calendar Years .....	20
Table 16.--Imports: Value by Country of Origin, Specified Calendar Years .....	34
Table 17.--Imports: Major Countries of Origin by Commodity Groups, Specified Calendar Years.....	38
Table 18.--Exports: Value by Commodity, July-August 1964 and 1965.....	53
Table 19.--Exports to the European Economic Community: Value by Commodity, August and July-August 1963-65.....	54
Table 20.--Exports: Quantity and Value by Commodity, August 1964 and 1965 and July-August 1964-65.....	55
Table 21.--Imports: Quantity and Value by Commodity, August 1964 and 1965 and July-August 1964-65.....	59
Table 22.--Exports and Imports: Value by Country, July 1965.....	63
Table 23.--Exports and Imports: Value by Country, July-August 1965.....	65

Trade Statistics and Analysis Branch  
Foreign Development and Trade Division  
Economic Research Service



# FOREIGN AGRICULTURAL TRADE OF THE UNITED STATES

---

## Digest

---

U.S. agricultural exports totaled \$1,007 million in July-August 1965, up 12 percent from a year earlier. Principal increases occurred for feed grains, wheat, rice, soybeans, cottonseed and soybean oils, tobacco, and fruits and vegetables. There were substantial declines in exports of cotton, lard, and poultry meat. July exports reached a record \$548 million, exceeding the previous record for this month by 14 percent. Exports in August totaled \$459 million compared with the \$419 million in 1964.

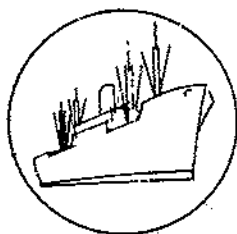
U.S. agricultural exports to the European Economic Community totaled \$236 million in July-August, up 24 percent from 1964. Exports of commodities subject to EEC variable levies rose to \$115 million from \$70 million a year earlier. The increase was accounted for by a sharp rise in exports of feed grains. Exports of commodities not subject to the variable levies totaled \$121 million in July-August 1965 compared with \$120 million a year earlier. Gains were noted for fruits, vegetables, hides and skins, oilcake and meal, soybeans, and tobacco.

\* \* \* \* \*

U.S. agricultural exports in calendar 1964 reached an alltime high of \$6.3 billion. Most of the increase was accounted for by larger exports to Europe and Asia. However, there were also increases to Latin America and Africa. A substantial amount of the gain reflected the unusually heavy shipments of wheat to the Soviet Union and Western Europe because of poor harvest in the previous year. Most of the gain in the past year represented increased commercial shipments for dollars, which rose to a record \$4.6 billion compared with the \$4.0 billion in 1963. Exports under Government-financed programs, mainly to the developing countries in Asia, Africa, and Latin America, totaled \$1.7 billion in 1964, about the same as in the previous year.

U.S. imports of agricultural commodities over the past 6 years have been relatively stable. U.S. agricultural imports totaled \$4.1 billion in 1964, the same as in 1959. Almost half of U.S. agricultural imports consist of complementary (noncompetitive) products. These imports are largely tropical products from the developing countries in Latin America, Asia, and Africa. The rest of U.S. imports are supplementary (partially competitive) items. The principal

supplementary commodities have been cane sugar, beef and veal, oilbearing materials, tobacco, and apparel wool. Imports from Africa increased in 1964 from 1963 due to Africa's rising importance as a source of coffee. Imports from Latin America declined over the past 5 years, reflecting the cessation of imports from Cuba, smaller imports of coffee, and a sharp price decline for cocoa beans. Imports from Oceania showed a pronounced upward trend between 1959 and 1963 because of large shipments of boneless beef. However, imports from this area fell sharply in 1964, as Australia and New Zealand exported larger quantities of beef and veal to Europe because of higher prices.



## SPECIAL in this issue

---

U.S. FOREIGN AGRICULTURAL TRADE IN CALENDAR 1964  
REACHED \$10.4 BILLION

by

Thomas A. Warden

The combined value of U.S. agricultural exports and imports rose to \$10.4 billion in calendar 1964 from \$9.6 billion the previous year. Increased exports accounted for nearly all of the trade expansion during the period, reaching \$6.3 billion in 1964 compared with \$5.6 billion in 1963. The value of imports totaled \$4.1 billion in 1964 compared with \$4.0 billion in the previous year.

Commercial shipments of farm commodities abroad were responsible for most of the 1964 export increase. Commercial sales amounted to \$4.6 billion compared with \$4.0 billion in 1963. The bulk of U.S. commercial farm exports went to developed countries in Western Europe, Japan, and Canada. Most of the agricultural exports under Government programs, which were valued at \$1.7 billion in 1964, went to less developed countries in Asia, Africa, and Latin America.

### Export and Import Trends

U.S. farm exports expanded steadily to \$6.3 billion in 1964 from \$3.9 billion in 1959, while imports in 1964 just equaled the 1959 level of \$4.1 billion. Exports in 1964 were 14 percent above the 1963 value, representing the highest rate of gain attained in a single year since 1960. Foreign demand for U.S. farm products was particularly high in the fourth quarter of 1964, due largely to importers' anticipation of the U.S. longshoremen's strike in January 1965. Shipments of all commodity groups except vegetables and preparations rose between 1963 and 1964; quite rapid gains occurred for exports of animal fats and oils, vegetable fats and oils, oilseeds, oilcake and meal, meat and meat products, and dairy products. The major factor behind such a rapid export expansion was the high rate of industrial growth in Western Europe and Japan. Higher personal incomes and demand for diversified, high-quality food products -- especially livestock products -- resulted in larger U.S. farm exports of feed grains, soybeans, and protein meal used to expand livestock and meat production in those countries.

---

<sup>1</sup>/ Agricultural Economist, Trade Statistics and Analysis Branch, Foreign Development and Trade Division, Economic Research Service.



The value of U.S. agricultural imports declined slightly from 1959 to 1962, then climbed back to the 1959 level of \$4.1 billion in 1964. The volume of agricultural imports increased about 5 percent over the period. Relatively lower world prices (compared to the 1954-59 period) for primary commodities, chiefly coffee, cocoa, and rubber, contributed to the lower values. Coffee prices reversed their declining trend in 1964 and rose above their 1959 levels, due primarily to a smaller Brazilian crop. Average monthly prices for Brazilian coffee in New York were over 46 cents per pound in 1964 compared with 37 cents in 1959. Cocoa bean prices declined 36 percent on the New York market to 23 cents per pound in 1964 from 36 cents per pound in 1959. Crude rubber prices in New York, about 35 to 37 cents per pound in 1959, declined to between 22 and 25 cents per pound in 1964.

Just under half of the value of agricultural imports by the United States in 1964 consisted of commodities not competitive with U.S. production (complementary products). This category is made up chiefly of tropical products such as coffee, rubber, cocoa, bananas, tea, and spices originating in Latin America, Asia, and Africa. Such imports showed a declining trend between 1959 and 1963 due to declining commodity prices. They increased in 1964 to nearly the 1959 level because of a recovery in coffee prices and a change in banana valuation by the Bureau of the Census. Imported commodities competitive or partially competitive with U.S. production (supplementary products) in 1964 had a total value of \$2.1 billion, 4 percent above the 1959 total. Imports of cane sugar and cattle and meats increased between 1959 and 1963, then fell below 1959 levels in 1964. Imports of fruits, nuts, and vegetables, apparel wool, and dairy products expanded over the period, while imports declined for fats and oils, tobacco, hides and skins, and grains and preparations.

#### Exports by Area

Europe remained the largest outlet for U.S. farm exports in 1964, taking \$2,742 million, or 43 percent of the total (table 1). This proportion has declined somewhat in the last 5 years from a high of 48 percent in 1959. A significant shift toward dollar sales has occurred in farm exports to Europe. Exports of farm commodities under Government programs in 1964 made about 9 percent of the total value of agricultural shipments to Europe compared with 25 percent in 1959.

Agricultural exports to the European Economic Community (EEC) reached \$1,416 million in 1964, as against \$1,171 million the year before, and \$926 million in 1959 (table 2). Substantial increases occurred between 1963 and 1964 for exports of feed grains, cotton, oilseeds, oilcake and meal, and dairy products. Exports under Government programs in 1964 amounted to less than 1 percent of the total, compared with 12 percent in 1959.

Agricultural shipments to the European Free Trade Association (EFTA) advanced to \$720 million in 1964 from \$648 million in 1963 (table 3). All but \$17 million of such exports were commercial sales for dollars. EFTA is a major market for U.S. tobacco, feed grains, cotton, fats and oils, oilseeds, and many other commodities.

Table 1.--U.S. agricultural exports: Value by major areas and share of total, calendar years 1959-64

Area	1959	1960	1961	1962	1963	1964
-- Million dollars --						
Europe .....	1,891	2,213	2,301	2,265	2,344	2,742
Asia .....	975	1,401	1,431	1,395	1,750	1,949
Canada .....	385	1/432	1/491	1/512	1/596	1/615
Latin America .....	503	482	491	438	500	604
Africa .....	160	194	281	374	351	390
Oceania .....	35	42	35	47	44	47
Total .....	3,949	4,824	5,030	5,031	5,585	6,347
-- Percent of total --						
Europe .....	48	46	46	45	42	43
Asia .....	25	30	28	28	31	31
Canada .....	9	9	10	10	11	10
Latin America .....	13	10	10	9	9	9
Africa .....	4	4	5	7	6	6
Oceania .....	1	1	1	1	1	1
Total .....	100	100	100	100	100	100

1/ Includes intransit commodities placed in bonded storage in Canada for shipments to other countries. The estimated value of such shipments totaled \$30 million in 1960, \$70 million in 1961, \$90 million in 1962, \$167 million in 1963, and \$121 million in 1964.

Table 2.--U.S. agricultural exports to the European Economic Community: Value by country, calendar years 1959-64

Country	1959	1960	1961	1962	1963	1964
-- Million dollars --						
Belgium-Luxembourg .....	123	137	120	132	132	165
France .....	62	128	112	86	114	149
Italy .....	117	159	236	176	207	222
Netherlands .....	319	320	318	366	357	445
West Germany .....	305	355	371	391	361	435
Total .....	926	1,099	1,157	1,151	1,171	1,416

Table 3.--U.S. agricultural exports to the European Free Trade Association: Value by country, calendar years 1959-64

Country	1959	1960	1961	1962	1963	1964
-- Million dollars --						
Austria .....	18	25	20	23	12	16
Denmark .....	63	55	49	64	77	71
Norway .....	32	33	31	39	36	40
Portugal .....	7	15	20	24	15	27
Sweden .....	37	47	48	47	41	55
Switzerland .....	40	54	63	61	59	71
United Kingdom .....	425	510	431	408	408	440
Total .....	622	739	662	666	648	720

Exports to Council of Mutual Economic Cooperation (Comecon) countries reached \$300 million in 1964, more than double the 1963 value (table 4). Wheat sales to the USSR, which were negligible between 1959 and 1963, amounted to \$110 million in 1964, and accounted for most of the increased exports. Three-fourths of the agricultural exports to the area consisted of commercial sales; sales for foreign currency and barter shipments to Poland had a value of \$75 million in 1964. Commercial sales of farm products to Poland rose to \$52 million in 1964 from \$9 million in 1959.

Shipments of farm products to Asia reached \$1,949 million in 1964, or 31 percent of U.S. agricultural exports (table 1). Commercial sales for dollars have risen steadily over the past 5 years -- to \$1,006 million in 1964 from \$445 million in 1959 -- due largely to increases to Japan, which became the largest commercial outlet for U.S. farm exports in 1963. Hong Kong, Israel, Taiwan, and the Philippines were also important commercial buyers in Asia. Government program food exports amounted to \$942 million in 1964 compared with \$531 million in 1959. The bulk of Government program exports went to India, Pakistan, Republic of Korea, and South Viet Nam.

Farm exports to Canada rose steadily during 1959-63 to \$615 million in 1964 (table 1). The total included bonded intransit shipments of grains and soybeans destined for other countries. Canada takes about 10 percent of U.S. agricultural exports, and is a major market for fruits, vegetables, oilseeds, cotton, and other specialties from the United States.

U.S. agricultural exports to Latin America have risen in value over the past 5 years to \$604 million in 1964, but their share has declined to about 9 percent of the total from 13 percent in 1959 (table 1). Most U.S. agricultural exports in 1964 went to Brazil, Venezuela, Mexico, Peru, Chile, Dominican Republic, and Colombia, in that order. Venezuela, Mexico, Peru, and the Dominican Republic were the largest dollar markets in the area. Commercial sales for dollars declined to \$348 million in 1964 from \$410 million in 1959, largely due to cessation of shipments to Cuba. Exports under Government programs amounted to \$256 million in 1964 as against \$93 million in 1959. Brazil has been the major recipient of commodities shipped under Government programs, mainly through Title I, P.L. 480 sales for foreign currency.

U.S. agricultural exports to the 9 members of the Latin American Free Trade Association (LAFTA) rose to \$344 million in 1964 from \$269 million in 1963 and \$183 million in 1959 (table 5). Commercial sales for dollars amounted to \$126 million in 1964 compared with \$98 million in 1959, while exports under Government programs totaled \$218 million in 1964 compared with \$85 million in 1959.

Agricultural exports to the 5 Central American Common Market countries advanced to \$38 million from \$32 million in 1963 and \$28 million in 1959 (table 6). Commercial sales for dollars made up \$30 million of the 1964 total and \$25 million of the 1959 total.

Table 4.--U.S. agricultural exports to Council of Mutual Economic Cooperation (Comecon) countries: Value by country, calendar years 1959-64

Country	1959	1960	1961	1962	1963	1964
-- Million dollars --						
Bulgaria.....	0.5	0.1	2/	2/	0.1	4.4
Czechoslovakia.....	0.9	0.7	4.3	3.9	5.7	8.5
East Germany.....	0.8	1.0	2.6	1.7	6.1	16.0
Hungary.....	0.5	0.5	0.6	0.2	16.4	12.7
Poland and Danzig...	60.7	131.1	63.9	84.5	101.1	127.1
Rumania.....	1.3	0.1	0.3	0.3	0.1	2.1
USSR 1/.....	0.1	2.7	18.1	11.0	9.1	129.4
Total.....	64.8	136.2	89.8	101.6	138.6	300.2

1/ Includes exports separately recorded to Latvia, which amounted to \$0.8 million in 1960, \$2.9 million in 1961, \$4.9 million in 1962, \$2.4 million in 1963, and \$1.8 million in 1964.

2/ Less than \$50,000.

Table 5.--U.S. agricultural exports to the Latin American Free Trade Association: Value by country, calendar years 1959-64

Country	1959	1960	1961	1962	1963	1964
-- Million dollars --						
Argentina.....	2.6	1.8	3.9	2.8	2.3	7.6
Brazil.....	46.3	44.2	112.2	94.5	102.0	147.1
Chile.....	10.5	21.8	34.3	27.0	21.8	31.0
Colombia.....	23.6	24.8	25.1	24.0	26.0	27.5
Ecuador.....	4.7	6.3	7.1	6.1	7.5	12.6
Mexico.....	61.5	55.9	60.1	63.4	83.5	75.3
Paraguay.....	0.3	0.8	5.2	0.4	4.3	3.6
Peru.....	18.0	18.5	25.5	22.3	19.6	35.9
Uruguay.....	15.9	23.6	5.7	3.7	2.0	3.5
Total.....	183.4	197.7	279.1	244.2	269.0	344.1

Table 6.--U.S. agricultural exports to the Central American Common Market: Value by country, calendar years 1959-64

Country	1959	1960	1961	1962	1963	1964
-- Million dollars --						
Costa Rica.....	6.4	5.2	5.6	4.8	5.6	6.6
El Salvador.....	5.2	5.8	5.3	7.4	7.0	8.3
Guatemala.....	9.5	8.6	9.5	10.5	10.4	10.9
Honduras.....	3.6	3.7	4.0	3.7	4.5	4.7
Nicaragua.....	2.9	2.8	3.5	4.8	4.2	7.1
Total.....	27.6	26.1	27.9	31.2	31.7	37.6

U.S. agricultural exports to Africa increased to \$390 million in 1964 or 6 percent of total farm exports, from \$160 million in 1959 or 4 percent in 1959 (table 1). The growth occurred in both commercial and Government program exports; commercial exports rose to \$92 million in 1964 from \$45 million in 1959. The largest U.S. dollar markets in Africa are the Republic of South Africa, UAR-Egypt, Nigeria, and Liberia. Government program exports increased to \$299 million in 1964 from \$115 million in 1959. The major recipient was UAR-Egypt, followed by Algeria, Morocco, and Tunisia.

The proportion of U.S. farm exports to Oceania remained steady over the past 5 years at about 1 percent of the total, as the export value increased to \$47 million in 1964 from \$35 million in 1959 (table 1). All shipments to the area are commercial sales. Most of the exports went to Australia and New Zealand. The major commodities shipped were tobacco and cotton.

#### Effect of Intransit Shipments to Canada

Intransit shipments to Canada of grains placed in bonded storage for other destinations amounted to \$121 million in 1964 (table 7). These shipments consisted mainly of corn, soybeans, wheat, barley, and rye. Such shipments, valued at \$30 million in 1960, grew steadily to a high of \$167 million in 1963. The following year, \$58 million of such shipments went to the EEC, mostly to the Netherlands. About \$30 million of the shipments went to EFTA countries, chiefly to the United Kingdom. An additional \$33 million went to various other countries. U.S. exports to those countries receiving transshipments were therefore understated by the amounts moving through Canada.

#### Imports by Area

U.S. agricultural imports originate mainly in Latin America, though the proportion coming from that area has declined in the past 5 years to 41 percent in 1964 from 48 percent in 1959 (table 8). Contributing factors in this decline include lower world prices for primary commodities, the cessation of imports from Cuba, and reduced beef imports from Argentina.

Nearly three-fourths of the value of imports from Latin America in 1964 came from the 9 member countries of the Latin American Free Trade Association (LAFTA), and the bulk of those imports came in the form of raw coffee from Brazil and Colombia. The quantity of coffee imported from these 2 countries declined in 1964 from 1959 levels; but higher coffee prices and increased imports of other commodities brought imports from LAFTA to \$1,247 million in 1964 -- only 1 percent less than in 1959 (table 9). Purchases from Mexico, the second largest LAFTA source, increased over the period.

Agricultural imports from the Central American Common Market (CACM) rose to 13 percent of U.S. agricultural imports from the Latin American area in 1964, compared with 8 percent in 1959. The value increased to \$212 million in 1964 from \$163 million in 1959 (table 10). Imports from that area are dominated by coffee and bananas.

Imports of agricultural commodities from Asia, accounting for about one-fifth of total U.S. agricultural imports, declined to \$771 million in 1964 from \$829 million in 1959, due mainly to reduced crude rubber imports from Indonesia, Malaysia, and Ceylon.

Table 7.--U.S. exports to Canada of commodities placed in bonded storage for transshipment: Estimated value by country of destination, calendar year 1964

Country of destination	Wheat	Rye	Corn	Barley	Soybeans	Total
	-- 1,000 dollars --					
<u>European Economic Community:</u>						
Belgium-Luxembourg...	563	---	1,750	---	---	2,313
France.....	508	---	181	---	---	689
West Germany.....	140	854	4,003	1,027	---	6,024
Italy and Trieste....	---	---	1,809	2,994	493	5,296
Netherlands.....	4,235	115	29,716	536	9,119	43,721
Total EEC.....	5,446	969	37,459	4,557	9,612	58,043
<u>European Free Trade Association:</u>						
United Kingdom.....	2,221	---	22,842	---	1,142	26,205
Denmark.....	---	---	---	---	2,804	2,804
Portugal.....	1,015	---	---	---	---	1,015
Total EFTA.....	3,236	---	22,842	---	3,946	30,024
<u>Other countries:</u>						
Japan.....	---	---	---	---	2,618	2,618
Yugoslavia.....	6,743	---	288	---	---	7,031
Spain.....	1,841	---	1,277	---	---	3,118
Canary Islands.....	1,604	---	---	---	---	1,604
Ireland.....	151	---	6,342	---	---	6,493
Hungary.....	1,190	---	---	---	---	1,190
Poland.....	1,190	---	---	---	---	2,952
USSR.....	2,952	---	---	---	---	7,420
Nigeria.....	7,420	---	---	---	---	452
Total Other countries.....	452	---	---	---	---	452
Total.....	22,353	---	7,907	---	2,618	32,878
Total.....	31,035	969	68,208	4,557	16,176	120,945

Table 8.--U.S. agricultural imports: Value by major areas and share of total, calendar years 1959-64

Area	1959	1960	1961	1962	1963	1964
-- Million dollars --						
Latin America .....	1,966	1,821	1,609	1,662	1,712	1,685
Asia .....	829	785	720	726	738	771
Europe .....	502	512	524	547	555	569
Africa .....	342	333	382	389	399	520
Oceania .....	264	207	261	364	432	361
Canada .....	196	167	194	188	175	176
<b>Total .....</b>	<b>4,099</b>	<b>3,825</b>	<b>3,690</b>	<b>3,876</b>	<b>4,011</b>	<b>4,082</b>
-- Percent of total --						
Latin America .....	48	48	44	43	43	41
Asia .....	20	21	20	19	18	19
Europe .....	12	13	14	14	14	14
Africa .....	8	9	10	10	10	13
Oceania .....	7	5	7	9	11	9
Canada .....	5	4	5	5	4	4
<b>Total .....</b>	<b>100</b>	<b>100</b>	<b>100</b>	<b>100</b>	<b>100</b>	<b>100</b>

Table 9.--U.S. agricultural imports from the Latin American Free Trade Association: Value by country, calendar years 1959-64

Country	1959	1960	1961	1962	1963	1964
-- Million dollars --						
Argentina .....	104.4	84.5	87.6	89.6	133.9	79.6
Brazil .....	552.6	495.5	483.6	462.2	492.9	471.2
Chile .....	5.6	4.6	4.3	5.4	5.8	7.4
Colombia .....	293.8	245.2	232.6	234.0	206.8	230.6
Ecuador .....	53.9	58.6	47.4	63.0	67.8	77.7
Mexico .....	201.2	223.0	262.7	271.0	252.2	292.3
Paraguay .....	5.5	6.4	6.2	5.1	7.4	8.9
Peru .....	31.0	52.2	91.0	89.2	89.2	69.9
Uruguay .....	15.0	14.3	18.5	18.5	18.3	9.2
Total .....	1,263.0	1,184.3	1,233.9	1,238.0	1,274.3	1,246.8

Table 10.--U.S. agricultural imports from the Central American Common Market: Value by country, calendar years 1959-64

Country	1959	1960	1961	1962	1963	1964
-- Million dollars --						
Costa Rica .....	31.5	33.0	37.5	37.5	39.2	50.3
El Salvador .....	35.7	27.5	30.8	38.8	35.5	38.9
Guatemala .....	61.3	54.0	54.7	56.8	64.6	57.8
Honduras .....	21.5	30.0	27.5	27.7	25.9	35.6
Nicaragua .....	12.7	18.2	23.0	23.5	31.2	29.4
Total .....	162.7	162.7	173.5	184.3	196.4	212.0



Europe's share of U.S. agricultural imports rose to 14 percent in 1964 from 12 percent in 1959. The EEC countries supplied 45 percent of these imports in 1964. The value of such imports from the EEC countries moved up to \$258 million in 1964 from \$221 million in 1959 (table 11). Major U.S. imports from EEC countries include wines, malt liquor, certain types of cheeses, olives, olive oil, and canned pork. Imports from the European Free Trade Association (EFTA) countries increased to \$111 million in 1964 from \$89 million in 1959 (table 12). Canned pork is a major import from the EFTA, mainly from Denmark. Council of Mutual Economic Cooperation (Comecon) countries supplied \$36 million of U.S. agricultural imports in 1964, compared with \$32 million in 1959 (table 13). These imports were almost entirely from Poland, consisting chiefly of canned pork.

U.S. agricultural imports from Oceania dropped in 1964 to \$361 million (9 percent of U.S. agricultural imports) from a peak of \$432 million in 1963 due primarily to smaller meat purchases from Australia and New Zealand. Imports from Oceania represented 7 percent of U.S. imports of agricultural products in 1959. The proportion fell to 5 percent in 1960, then climbed steadily to the 11 percent peak in 1963.

Canada's share of U.S. agricultural imports fell to 4 percent of the total in 1964 from 5 percent in 1959. The value declined to \$176 million from \$196 million. Practically all of the reduction occurred in cattle imports.

Table 11.--U.S. agricultural imports from the European Economic Community:  
Value by country, calendar years 1959-64

Country	1959	1960	1961	1962	1963	1964
-- Million dollars --						
Belgium-Luxembourg	5.8	7.7	8.5	10.2	10.6	11.5
France	39.9	43.2	52.5	48.6	54.0	65.0
Italy	57.7	56.4	59.7	63.9	66.7	72.0
Netherlands	88.5	82.3	76.4	79.9	77.6	73.2
West Germany	29.0	31.3	30.3	29.4	29.7	35.4
Total	220.9	220.9	227.4	232.0	238.6	257.9

Table 12.--U.S. agricultural imports from the European Free Trade Association:  
Value by country, calendar years 1959-64

Country	1959	1960	1961	1962	1963	1964
-- Million dollars --						
Austria	0.7	0.7	0.8	0.9	1.3	1.7
Denmark	44.2	44.4	49.8	59.1	66.2	63.9
Norway	0.8	0.8	1.0	1.2	2.0	2.5
Portugal	3.0	3.4	4.4	4.2	5.0	5.8
Sweden	2.2	2.5	2.5	2.6	2.6	2.7
Switzerland	10.9	11.9	12.3	12.6	12.2	11.7
United Kingdom	27.6	25.5	22.2	25.4	26.5	22.7
Total	89.4	89.3	93.0	106.0	115.8	111.0

Table 13.--U.S. agricultural imports from Council of Mutual Economic Cooperation (Comecon) countries: Value by country, calendar years 1959-64

Country	1959	1960	1961	1962	1963	1964
-- Million dollars --						
Bulgaria	0.8	0.6	1.0	1.0	0.9	1.0
Czechoslovakia	1.7	1.7	1.4	1.2	1.1	1.0
East Germany	2/	2/	2/	2/	2/	0.8
Hungary	1.4	0.8	0.8	0.4	0.2	0.3
Poland and Danzig	26.0	31.8	31.1	30.8	27.7	30.9
Rumania	0.2	0.7	1.1	0.3	0.2	0.2
USSR 1/	1.6	1.6	1.3	1.4	1.8	1.8
Total	31.7	37.2	36.7	35.1	31.9	36.0

1/ Includes imports from Estonia (\$3,000 in 1963), Latvia (\$114,000 in 1963) and Lithuania (\$13,000 in 1960).

2/ Less than \$50,000.

Table 14.-- U. S. agricultural exports: Value by country of destination, specified calendar years

Country of destination	Year ended December 31					
	Average 1950-54	Average 1955-59	Average 1960-64	1962	1963	1964
	-- Thousand dollars --					
Greenland .....	1	15	2	0	1/	3
Canada .....	270,639	341,308	529,267	511,712	596,527	615,092
Miquelon and St. Pierre Islands .....	19	25	35	63	34	15
<b>Latin American Republics:</b>						
Mexico .....	79,528	77,863	67,638	63,393	83,460	75,314
Guatemala .....	6,380	9,798	9,974	10,499	10,371	10,904
El Salvador .....	4,480	6,077	6,784	7,448	7,043	8,295
Honduras .....	2,994	4,145	4,113	3,689	4,520	4,653
Nicaragua .....	1,933	3,524	4,487	4,806	4,249	7,091
Costa Rica .....	4,778	6,031	5,578	4,814	5,587	6,641
Panama .....	8,709	9,757	10,562	10,293	10,869	12,118
Cuba .....	146,291	171,088	22,765	331	15,236	0
Haiti .....	6,127	7,672	7,935	8,503	8,444	8,982
Dominican Republic .....	4,796	5,476	13,330	9,911	21,304	28,828
Colombia .....	25,878	27,871	25,478	23,977	26,031	27,533
Venezuela .....	70,395	80,123	79,604	64,994	67,653	83,538
Ecuador .....	5,940	5,599	7,942	6,110	7,549	12,576
Peru .....	12,010	17,641	24,358	22,366	19,614	35,863
Bolivia .....	6,206	9,972	10,690	9,466	14,396	15,231
Chile .....	14,278	18,229	27,192	27,011	21,840	31,018
Brazil .....	39,238	36,554	100,011	94,471	102,018	147,120
Paraguay .....	670	670	2,859	395	4,298	3,562
Uruguay .....	2,450	5,637	7,711	3,682	2,013	3,547
Argentina .....	5,340	7,664	3,689	2,840	2,276	7,647
Total Latin American Republics .....	448,421	471,391	442,700	378,999	438,771	530,461
<b>Other Latin America:</b>						
British Honduras .....	790	1,226	1,994	2,080	1,860	2,237
Canal Zone .....	6,416	4,544	697	806	872	495
Bermuda .....	2,283	4,117	5,481	5,547	5,425	5,989
Bahamas .....	1,816	4,166	8,684	7,821	9,234	11,305
Jamaica .....	4,412	7,683	3,469	11,715	14,633	20,084
Leeward and Windward Islands .....	232	1,046	1,831	1,833	1,855	2,226
Barbados .....	504	894	1,938	2,100	2,027	1,868
Trinidad and Tobago .....	1,586	5,596	10,214	11,272	10,196	10,309
Netherlands Antilles .....	8,792	8,726	9,101	8,712	8,660	10,342
French West Indies .....	374	157	773	533	904	1,285
British Guiana .....	983	2,452	3,471	5,597	2,908	4,107
Surinam (Netherlands Guiana) .....	1,018	1,483	2,586	2,628	2,553	3,069
French Guiana .....	42	65	72	49	101	92
Falkland Islands .....	1/	0	1/	0	1/	0
Total Latin America .....	477,669	513,546	503,011	437,692	499,999	603,669
<b>Europe:</b>						
Iceland .....	2,493	2,620	3,461	3,416	3,445	4,363
Sweden .....	28,232	40,206	47,410	46,844	40,880	54,510
Norway .....	29,197	29,615	35,610	38,877	35,515	40,077
Denmark .....	72,887	44,901	63,261	63,712	77,195	70,842
United Kingdom of Great Britain and Northern Ireland .....	340,016	426,824	439,172	407,554	408,028	439,824
Ireland (Eire) .....	29,018	18,743	25,168	36,802	24,099	23,607
Netherlands (Holland) .....	166,839	255,537	361,047	365,829	356,618	445,154
Belgium and Luxembourg .....	112,577	128,855	137,204	131,754	132,379	165,388
Unidentified Western Europe 2/ .....	---	---	2	0	2	0
France .....	127,958	88,209	118,021	86,345	113,887	149,339
Germany - West Germany 3/ East Germany 3/ .....	297,919	321,904	382,802	391,131	361,433	435,343
Austria .....	---	367	5,458	1,663	6,070	15,965
Czechoslovakia .....	50,197	27,027	19,128	23,126	11,587	15,917
	1,529	763	4,597	3,896	5,685	8,474

Continued -

Table 14.-- U. S. agricultural export: Value by country of destination, specified calendar years - Continued

Country of destination	Year ended December 31					
	Average 1950-54	Average 1955-59	Average 1960-64	1962	1963	1964
-- Thousand dollars --						
<b>Europe - Continued:</b>						
Hungary .....	1,094	1,388	6,077	154	16,453	12,759
Switzerland .....	44,525	45,744	61,843	61,554	59,103	71,418
Finland .....	6,344	12,115	15,768	16,734	19,290	15,474
Estonia .....	1/	0	0	0	0	0
Latvia .....	0	196	2,557	4,886	2,364	1,807
Lithuania .....	0	0	0	0	0	0
Poland and Danzig .....	973	41,003	101,529	84,538	101,098	127,066
Union of Soviet Socialist Republics .....	23	835	31,506	6,128	6,705	127,614
Azores .....	356	91	348	556	91	1,014
Spain .....	46,795	118,685	116,310	98,733	122,453	92,996
Portugal .....	11,830	13,489	20,413	23,883	15,484	27,044
Gibraltar .....	59	24	297	1,028	143	121
Malta, Gozo, and Cyprus - .....	1,833	1,939	2,820	---	---	---
Malta and Gozo 1/ .....	---	---	---	336	591	554
Cyprus 1/ .....	---	---	---	3,821	1,290	2,688
Italy .....	150,474	145,262	199,685	175,671	207,094	220,653
Free Territory of Trieste .....	5,818	2,853	1,738	444	1,747	1,094
Yugoslavia .....	59,811	105,419	84,719	86,396	121,815	94,600
Albania .....	28	0	0	0	0	0
Greece .....	37,501	39,351	25,467	17,973	28,640	29,716
Rumania .....	181	582	570	256	137	2,059
Bulgaria .....	50	114	904	6	91	4,367
Turkey .....	3,511	43,052	58,017	81,099	62,535	40,024
Total Europe .....	1,580,068	1,957,713	2,372,913	2,265,145	2,343,947	2,741,871
<b>Asia:</b>						
Syrian Arab Republic .....	798	719	11,417	15,799	532	1,119
Lebanon .....	6,164	9,266	7,530	6,323	7,365	8,491
Iraq .....	601	1,060	7,091	3,269	5,430	19,054
Iran (Persia) .....	867	5,689	23,921	27,848	25,613	36,254
Israel and Palestine - .....	32,686	---	---	---	---	---
Israel 5/ .....	---	49,350	60,745	58,005	65,797	69,007
Palestine 5/ .....	---	2	7	2	10	1
Jordan .....	976	3,111	12,341	10,951	16,791	10,255
Kuwait .....	328	1,505	3,584	4,635	3,967	3,957
Saudia Arabia .....	6,595	6,781	10,647	10,155	13,519	14,148
Other Arabia Peninsula States .....	14	685	937	452	828	534
Aden .....	21	178	782	579	1,187	1,313
Bahrain .....	375	765	1,122	1,087	1,527	1,631
Afghanistan .....	316	1,309	3,123	139	3,290	6,386
India .....	160,837	153,787	364,536	296,149	360,579	480,904
Goa, Damao, and Diu 4/ .....	---	---	0	0	0	0
Pakistan .....	19,983	57,758	119,451	91,000	164,854	146,610
Nepal 3/ .....	---	1	12	0	9	42
Ceylon .....	4,996	8,430	7,316	7,499	8,630	3,682
Burma .....	392	1,373	2,420	474	1,612	7,844
Thailand (Siam) .....	5,619	9,250	11,359	10,222	11,864	13,098
Viet-Nam, Laos, and Cambodia	---	---	---	---	---	---
(Indochina) - .....	5,260	22,948	---	---	---	---
Viet-Nam 6/ .....	---	---	34,606	36,638	38,331	50,223
Laos 6/ .....	---	---	643	350	933	1,706
Cambodia 6/ .....	---	---	1,407	1,309	733	124
Malaysia (British Malaya) - .....	4,048	4,749	11,811	---	---	12,316
Federation of Malaya 7/ .....	---	---	---	7,327	5,608	---
State of Singapore 7/ .....	---	---	---	5,732	6,089	---
Indonesia .....	21,412	24,011	30,501	44,395	44,144	15,742
Philippines .....	54,493	61,607	62,663	55,542	55,003	61,484
Portuguese Asia - .....	372	---	---	---	---	---
Macao (Macau) 3/ .....	---	50	449	252	520	443
Other Portuguese Asia 3/ .....	---	152	52	0	---	---
Other Southern and Southeastern Asia .....	24	13	11	1	1	2
China .....	7,453	0	0	0	0	0

Continued -

Table 14.— U. S. agricultural exports: Value by country of destination, specified calendar years - Continued

Country of destination	Year ended December 31					
	Average 1950-54	Average 1955-59	Average 1960-64	1962	1963	1964
-- Thousand dollars --						
<b>Asia - Continued:</b>						
Outer Mongolia 8/	—	0	0	0	0	0
Korea (Chosen) -	42,416	—	—	—	—	—
North Korea 3/	—	0	0	0	0	0
Korea, Republic of 3/	—	83,208	94,934	92,407	111,437	112,355
Hong Kong (British Crown Colony)	14,419	24,820	46,838	42,255	43,089	50,943
Taiwan (Formosa)	28,999	53,119	72,107	72,257	79,009	79,898
Japan	397,213	385,389	578,347	481,362	651,311	719,569
Nansai and Nanpo Islands 5/	—	4,077	14,576	11,169	20,301	20,306
<b>Total Asia</b>	<b>817,677</b>	<b>975,162</b>	<b>1,597,286</b>	<b>1,395,584</b>	<b>1,749,912</b>	<b>1,948,841</b>
<b>Australia and Oceania:</b>						
Australia	24,123	32,561	33,939	37,695	35,898	36,768
New Guinea	20	35	245	293	324	246
New Zealand and Western Samoa	5,594	7,540	6,423	6,707	5,103	5,870
British Western Pacific Islands	4	87	377	534	471	727
French Pacific Islands	376	312	922	879	1,012	1,460
Trust Territory of the Pacific Islands	255	906	1,060	553	1,069	1,797
<b>Total Australia and Oceania</b>	<b>30,372</b>	<b>41,435</b>	<b>42,966</b>	<b>46,661</b>	<b>43,877</b>	<b>46,868</b>
<b>Africa:</b>						
Morocco -	—	10,295	31,369	33,786	36,559	21,703
French Morocco 9/	4,107	—	—	—	—	—
Tangier 9/	690	—	—	—	—	—
Algeria	4,015	3,021	25,279	34,334	29,433	37,197
Tunisia	665	3,688	20,811	33,235	14,748	12,373
Libya	270	2,794	2,901	1,327	1,919	2,482
United Arab Republic (Egypt)	22,218	37,695	141,511	171,218	149,265	190,798
Sudan	8	122	3,649	3,710	6,090	8,020
Canary Islands	2,554	2,906	5,057	3,533	3,358	6,437
Other Spanish Africa	255	756	176	108	136	152
Federal Republic of Cameroon	276	290	636	697	523	825
Other Western Equatorial Africa -	92	66	81	48	112	—
Central African Republic 10/	—	—	—	—	—	2
Gabon 10/	—	—	—	—	—	83
Other Western Africa -	647	3,504	10,002	13,053	12,484	—
Mauritania 10/	—	—	—	—	—	635
Senegal 10/	—	—	—	—	—	6,169
Guinea 10/	—	—	—	—	—	6,426
Ivory Coast 10/	—	—	—	—	—	5,587
Togo 10/	—	—	—	—	—	401
Other Western Africa 10/	—	—	—	—	—	851
Ghana (Gold Coast)	4,160	5,224	8,871	10,952	7,768	9,387
Nigeria	4,834	7,357	8,055	6,628	8,851	8,774
British West Africa and Sierra Leone -	393	599	808	616	1,226	—
Sierra Leone 10/	—	—	—	—	—	1,077
British West Africa 10/	—	—	—	—	—	82
Madeira Islands	823	346	798	691	761	1,370
Angola	1,038	1,029	1,742	1,700	2,018	2,462
Other Western Portuguese Africa	236	58	384	179	647	881
Liberia	1,287	2,968	6,302	6,965	7,808	8,175
Republic of the Congo; and	—	—	—	—	—	—
Ruanda-Urundi -	3,291	4,439	17,087	21,502	34,793	—
Congo (Leopoldville) 10/	—	—	—	—	—	14,381
Burundi and Rwanda 10/	—	—	—	—	—	68
Somali Republic -	—	—	372	994	458	116
Somaliland (Italian Adm.) 11/	4	31	—	—	—	—
British Somaliland 11/	0	9	—	—	—	—
Ethiopia	1,157	1,110	2,413	2,777	2,744	1,317
French Somaliland	105	241	223	200	200	173
Seychelles and Dependencies	1	11	20	7	5	18

Table 14.— U. S. agricultural exports: Value by country of destination,  
specified calendar years - Continued

Country of destination	Year ended December 31					
	Average 1950-54	Average 1955-59	Average 1960-64	1962	1963	1964
— Thousand dollars —						
<b>Africa - Continued:</b>						
Mauritius and Dependencies .....	71	92	173	226	191	247
British East Africa and Tanganyika - ..	1,606	648	4,134	8,522	2,546	---
Uganda 10/ .....	---	---	---	---	---	225
Kenya 10/ .....	---	---	---	---	---	941
Tanganyika 10/ .....	---	---	---	---	---	886
Zanzibar 10/ .....	---	---	---	---	---	308
Mozambique .....	970	757	1,571	1,634	1,980	229
Malagasy Republic (Madagascar) .....	19	77	251	254	349	576
Republic of South Africa .....	13,244	12,393	22,482	15,035	23,621	36,369
Northern Rhodesia, Southern Rhodesia, and Malawi .....	466	884	898	615	516	2,188
Southern British Africa 12/ .....	0	---	---	---	---	---
<b>Total Africa .....</b>	<b>69,502</b>	<b>103,410</b>	<b>318,056</b>	<b>374,546</b>	<b>351,109</b>	<b>390,391</b>
<b>Total all countries .....</b>	<b>3,245,947</b>	<b>3,932,614</b>	<b>5,363,536</b>	<b>5,031,403</b>	<b>5,585,406</b>	<b>6,346,950</b>

- 1/ Less than \$500.
- 2/ Not available by countries.
- 3/ Not separately classified prior to 1952.
- 4/ Not separately classified prior to 1962.
- 5/ Not separately classified prior to 1954.
- 6/ Not separately classified prior to 1958.
- 7/ Separately classified 1958 through 1963.
- 8/ Not separately classified prior to 1953.
- 9/ Not separately classified beginning 1957.
- 10/ Not separately classified prior to 1964.
- 11/ Not separately classified beginning 1960.
- 12/ Not separately classified beginning 1958.

Table 15.-- U.S. agricultural exports: Major countries of destination by commodity groups, specified calendar years

Country and year ended Dec. 31	Total 1/	Grains and preparations			Cotton, excl. lintens	Tobacco, unmanufactured	Vegetable fats and oils 1/ 3/	Oilseeds	Oil-cake and meal (protein meal)
		Wheat and rice flour 1/	Rice milled 1/	Feed grains 1/ 2/					
-- Thousand dollars --									
Total									
1959	3,949,318	769,586	102,382	554,394	465,201	346,219	200,609	316,572	53,049
1960	4,824,187	1,026,174	147,537	515,115	980,335	378,443	186,280	361,339	45,362
1961	5,029,732	1,298,421	111,126	517,125	874,574	390,794	152,070	366,558	47,470
1962	5,031,403	1,133,865	152,697	788,092	527,866	373,390	204,527	428,354	90,996
1963	5,585,406	1,330,560	177,032	793,618	576,382	403,105	185,317	505,989	124,955
1964	6,346,950	1,532,394	204,427	855,701	681,734	412,832	246,467	609,147	144,510
Japan (1)									
1959	334,075	61,141	64	22,549	91,321	11,172	1,932	95,453	111
1960	485,363	59,481	16	12,659	215,147	17,324	3,048	104,803	51
1961	554,128	54,854	68	39,954	219,108	23,344	3,013	107,767	4,446
1962	481,362	59,188	20	73,009	110,462	22,125	2,953	111,737	326
1963	651,311	92,107	166	109,389	140,101	27,105	2,795	148,270	959
1964	719,569	110,024	12,503	140,791	132,306	31,690	3,931	148,019	843
Canada (2)									
1959	384,590	3,351	1,900	28,131	19,310	1,564	12,402	37,128	15,236
1960	432,297	12,989	2,335	31,055	44,867	2,396	14,112	42,020	11,200
1961	490,708	27,934	2,775	52,826	47,603	2,425	14,087	48,863	13,409
1962	511,712	27,415	7,274	76,134	46,702	1,712	10,421	62,078	19,859
1963	596,527	50,565	8,336	100,523	46,888	2,860	12,036	75,601	19,292
1964	615,092	32,537	7,592	99,818	57,462	3,702	14,313	95,192	17,149
India (3)									
1959	209,073	173,674	99	7,040	15,121	1,937	20	0	0
1960	425,250	272,299	49,418	8,777	88,374	488	20	0	1
1961	259,799	150,202	26,442	6,531	60,151	1,937	1,077	0	1
1962	296,149	206,452	30,779	3,506	37,170	2,564	42	0	67
1963	360,579	247,473	50,040	2,915	43,447	1,954	54	0	47
1964	480,904	370,963	43,957	8,300	37,138	789	58	0	77
Netherlands (4)									
1959	318,559	17,760	2,948	116,956	9,965	12,047	5,323	64,733	8,501
1960	319,665	19,164	3,241	94,137	32,429	21,780	11,566	64,480	7,350
1961	317,969	39,863	3,880	97,762	22,351	15,954	7,631	54,016	6,533
1962	365,829	29,274	2,437	136,093	11,916	16,123	4,351	66,648	16,715
1963	356,618	23,210	3,284	117,053	12,521	18,209	10,328	54,580	14,038
1964	445,154	28,248	5,781	132,195	13,533	18,603	15,976	85,358	18,447
United Kingdom (5)									
1959	425,434	33,250	2,286	125,848	32,980	111,212	1,767	8,928	1,979
1960	509,826	35,187	2,765	119,297	71,132	145,181	4,827	11,252	2,087
1961	430,629	27,818	4,129	89,632	53,011	129,409	2,890	8,579	613
1962	407,554	21,687	5,144	135,824	26,013	84,445	1,544	14,027	420
1963	408,028	15,799	6,978	88,221	25,492	122,189	2,449	15,131	466
1964	439,824	19,373	7,182	92,787	30,748	116,785	7,379	19,638	491
West Germany (6)									
1959	305,222	20,164	5,494	59,760	25,306	47,228	20,021	32,345	4,568
1960	354,905	11,440	2,938	52,631	75,785	50,105	27,603	38,084	4,556
1961	371,200	29,605	9,026	37,836	55,382	59,311	19,634	41,367	3,406
1962	391,131	11,834	10,534	75,236	15,036	63,417	7,879	52,568	8,615
1963	361,433	15,926	7,367	44,898	35,432	64,477	7,157	61,090	9,722
1964	435,343	14,064	7,407	66,153	49,092	67,091	14,471	81,669	18,225
Italy (7)									
1959	116,723	17,430	58	7,653	32,056	8,251	6,468	3,741	5,039
1960	159,140	26,607	240	3,792	76,652	4,245	1,492	10,274	2,685
1961	235,865	99,178	246	8,586	65,470	8,455	498	20,197	471
1962	175,671	11,452	6	41,240	39,895	12,834	741	30,839	491
1963	207,094	15,410	41	64,220	34,284	8,392	627	28,284	12,043
1964	220,653	9,944	1	67,424	59,057	5,778	1,032	32,651	5,486

Table 15.— U.S. agricultural exports: Major countries of destination by commodity groups, specified calendar years

Country and year ended Dec. 31	Fruits and preparations	Vegetables and preparations	Nuts and preparations	Animal fats and oils	Poultry meat	Other meats and products	Hides and skins	Dairy products	Other 1/ 4/
-- Thousand dollars --									
<b>Total</b>									
1959	240,062	145,390	15,078	176,182	35,855	58,708	62,807	132,957	294,267
1960	248,695	139,946	21,068	175,774	49,656	65,317	76,410	116,964	289,772
1961	271,816	124,409	11,770	181,214	67,270	65,692	86,153	134,008	329,262
1962	285,536	147,946	15,574	147,479	75,785	61,688	82,900	130,071	384,637
1963	276,171	172,728	21,534	172,259	56,849	86,547	74,577	181,480	446,303
1964	278,604	158,016	27,160	249,336	61,309	114,725	92,694	223,710	454,184
<b>Japan (1)</b>									
1959	856	513	1,235	21,000	23	39	14,584	3,708	8,374
1960	2,231	1,026	934	26,190	1	573	23,530	6,013	12,336
1961	5,866	963	787	29,422	54	160	29,690	6,363	28,269
1962	8,308	1,652	1,564	16,232	269	49	31,828	9,549	32,091
1963	7,496	2,954	2,084	23,018	2,538	5,606	30,277	12,264	44,182
1964	11,094	1,844	3,009	32,859	2,934	2,847	28,244	10,366	46,265
<b>Canada (2)</b>									
1959	112,405	57,423	7,149	2,304	3,038	10,781	10,298	1,206	60,964
1960	110,884	62,877	5,827	4,103	6,816	16,151	8,309	1,472	54,884
1961	115,054	58,073	6,331	5,015	5,247	21,718	10,640	2,044	56,664
1962	106,117	59,355	5,241	4,501	3,732	19,739	9,422	2,012	49,998
1963	110,171	57,730	7,262	4,377	3,061	30,439	6,076	1,908	59,402
1964	109,205	61,465	8,351	5,117	4,095	21,405	7,812	2,540	67,337
<b>India (3)</b>									
1959	27	18	5	16	1	4	0	10,414	697
1960	20	43	0	3	3	5	6	4,732	1,061
1961	21	203	2	28	4	14	5	8,970	4,211
1962	21	298	3	71	8	14	104	6,813	8,237
1963	137	117	3	116	9	46	28	9,920	4,273
1964	41	202	5/	109	4	66	51	6,456	12,693
<b>Netherlands (4)</b>									
1959	11,129	2,525	961	20,204	1,742	7,133	8,028	1,847	16,817
1960	11,089	2,227	899	16,886	3,344	6,654	12,791	219	12,109
1961	15,579	3,174	703	17,272	5,674	6,866	8,246	226	11,989
1962	16,195	5,448	350	12,178	7,800	6,666	10,171	191	23,273
1963	16,893	6,284	928	15,149	4,910	8,138	8,231	6,325	35,537
1964	15,052	4,271	1,737	18,498	4,553	13,329	10,609	28,550	30,414
<b>United Kingdom (5)</b>									
1959	19,499	14,913	426	29,440	57	2,787	1,985	6,527	31,550
1960	24,859	17,443	832	35,874	1,043	8,654	2,457	685	26,251
1961	31,268	11,124	133	31,960	1,033	8,611	2,699	627	27,093
1962	33,804	17,003	844	33,911	1,053	7,701	1,938	432	21,764
1963	23,990	28,012	1,056	39,054	1,079	7,710	3,388	606	26,408
1964	22,998	15,025	2,009	58,630	1,364	12,209	6,693	5,682	20,831
<b>West Germany (6)</b>									
1959	18,906	7,163	975	10,392	13,521	7,382	9,744	4,805	19,448
1960	18,714	7,959	4,077	8,168	21,415	6,440	7,687	857	16,446
1961	22,392	7,770	202	9,575	36,655	7,080	9,412	362	22,185
1962	31,127	13,392	2,266	7,382	42,099	6,223	7,521	536	35,466
1963	24,307	14,382	2,844	7,454	22,153	6,948	4,741	2,712	29,823
1964	23,467	11,842	1,822	8,932	26,841	8,674	10,030	2,337	23,226
<b>Italy (7)</b>									
1959	943	393	0	21,803	2	8	1,409	4,649	6,820
1960	1,480	417	13	17,256	8	85	2,241	3,886	7,767
1961	1,651	583	100	14,459	203	147	2,981	4,611	8,029
1962	2,767	1,596	34	13,988	284	63	1,983	3,761	13,697
1963	3,022	3,931	22	10,979	689	123	2,521	10,283	12,217
1964	2,483	1,784	61	12,360	1,040	561	4,891	6,889	9,211

Continued -



Table 15.-- U.S. agricultural exports: Major countries of destination by commodity groups, specified calendar years - Continued

Country and year ended Dec. 31	Total 1/	Grains and preparations			Cotton, excl. linters	Tobacco, unmanufactured	Vegetable fats and oils 1/ 3/	Oilseeds	Oil-cake and meal (protein meal)
		Wheat and flour 1/	Rice, milled 1/	Feed grains 2/					
-- Thousand dollars --									
U.A.R. - Egypt (8)									
1959	77,382	46,871	4,901	3,367	0	10,591	3,199	0	0
1960	99,137	73,545	48	3,264	0	8,683	4,649	0	0
1961	97,135	72,165	54	5,049	0	945	5,074	0	0
1962	171,218	103,720	13	20,245	0	8,595	23,598	0	13
1963	149,265	115,481	17	9,974	0	10,220	641	0	2
1964	190,798	122,638	20	23,167	0	8,827	13,807	11	0
Belgium (9)									
1959	123,037	5,617	2,296	57,721	8,302	10,362	228	10,100	3,346
1960	136,857	6,828	1,002	46,664	34,494	9,220	2,211	14,045	3,127
1961	119,642	12,594	1,873	42,080	18,634	8,319	575	11,979	3,516
1962	131,754	6,232	763	60,304	10,783	9,743	136	16,223	6,440
1963	132,379	7,309	2,062	48,420	12,712	9,337	200	15,437	7,580
1964	165,388	3,711	1,766	57,046	21,531	9,671	1,186	23,453	12,776
France (10)									
1959	62,470	5,702	40	1,627	28,819	4,255	220	8,280	851
1960	128,157	670	6	422	93,531	3,607	1,480	8,581	886
1961	112,375	10,833	1	311	71,060	4,462	71	6,388	2,348
1962	86,345	5,461	507	4,719	28,343	3,426	54	7,721	13,759
1963	113,887	11,141	633	1,298	35,608	3,800	93	10,048	18,137
1964	149,339	8,801	423	3,680	45,930	4,681	418	10,873	21,703
Brazil (11)									
1959	46,315	41,257	0	0	0	0	15	1	0
1960	44,226	38,926	0	0	0	165	147	8	0
1961	112,220	105,682	0	0	0	11	50	2	3
1962	94,471	77,472	12	554	0	14	134	1	0
1963	102,018	82,164	0	46	0	9	167	1	0
1964	147,120	116,566	0	485	0	5	5,163	5	0
Pakistan (12)									
1959	56,450	36,335	7,602	5	2,092	766	8,208	0	0
1960	99,014	70,892	12,867	89	1,604	1,448	7,805	0	0
1961	95,777	70,057	6,765	78	1,492	1,816	10,968	0	0
1962	91,000	46,265	0	3,010	7,335	1,928	25,087	0	0
1963	164,854	121,155	8	299	2,594	2,255	28,684	0	0
1964	146,610	106,819	8	74	1,883	854	25,476	0	0
U.S.S.R. (Russia) (13)									
1959	142	0	0	1	0	0	0	0	0
1960	1,903	4	0	6	0	0	0	0	0
1961	15,180	0	0	5/	0	0	0	0	0
1962	6,128	0	0	1	0	44	0	0	0
1963	6,705	5/	0	1	0	0	0	0	0
1964	127,614	110,418	7,386	0	311	0	3	0	0
Poland (14)									
1959	60,698	17,119	65	13,523	14,323	0	7,297	351	518
1960	131,086	75,802	1,100	23,990	15,537	1,233	6,217	0	548
1961	63,859	30,390	161	4,062	16,635	285	3,341	2,104	139
1962	84,538	29,371	3,003	14,687	20,524	0	7,550	479	0
1963	101,098	47,053	694	21,780	13,145	2,599	789	2,529	258
1964	127,066	57,448	2,866	10,648	18,625	2,636	12,148	4,145	0
Korea, Rep. of (15)									
1959	59,688	15,144	374	0	26,383	0	2,820	3,139	11
1960	71,463	25,745	0	655	27,692	0	2,083	3,290	0
1961	26,289	0	0	10,193	35,512	0	67	2,012	6
1962	92,407	30,185	0	11,487	34,263	0	100	2,238	0
1963	111,437	50,903	1	8,321	35,745	0	96	920	0
1964	112,355	41,479	3	16,485	35,221	0	152	832	0

Table 15.-- U.S. agricultural exports: Major countries of destination by commodity groups, specified calendar years - Continued

Country and year ended Dec. 31	Fruits and preparations	Vegetables: and preparations	Nuts and preparations	Animal fats and oils	Poultry and meat	Other meats and products	Hides and skins	Dairy products	Other
		1/						1/	1/ 4/
-- Thousand dollars --									
U.A.R. - Egypt (8)									
1959	56	54	13	4,633	189	5	0	2,210	1,293
1960	48	30	10	4,515	462	15	5	1,978	1,885
1961	60	142	10	4,389	313	10	0	3,426	5,498
1962	47	696	10	6,153	235	10	2	3,970	3,911
1963	79	49	11	8,220	660	41	1	2,293	1,576
1964	77	251	13	8,844	1,307	5,237	0	3,517	3,082
Belgium (9)									
1959	9,862	1,511	343	3,434	82	509	708	1,949	6,587
1960	9,026	1,193	263	2,410	22	335	666	194	5,157
1961	10,527	1,152	355	2,033	81	500	486	226	4,912
1962	10,420	1,559	112	1,230	126	662	95	177	6,749
1963	11,046	3,297	211	1,627	90	661	128	4,987	7,265
1964	11,565	2,179	1,706	3,083	137	2,179	228	8,056	5,115
France (10)									
1959	3,574	2,013	160	993	12	894	225	53	4,752
1960	5,571	703	2,250	1,860	25	1,571	645	46	6,303
1961	6,602	681	278	554	93	2,889	862	44	4,898
1962	6,223	2,650	262	436	15	3,505	790	354	8,120
1963	9,271	5,163	334	990	50	7,768	795	42	8,716
1964	8,443	3,601	463	2,186	59	17,752	1,675	9,001	9,650
Brazil (11)									
1959	28	1,345	2	15	1	3	0	1,012	2,636
1960	41	474	1	21	0	5/	0	1,949	2,494
1961	40	727	0	18	2	4	0	2,743	2,938
1962	26	2,440	0	11	2	0	0	7,854	5,951
1963	34	291	0	16	3	10	0	9,957	9,320
1964	43	1,770	1	2,377	1	19	14	8,452	12,219
Pakistan (12)									
1959	19	43	2	735	14	104	0	361	164
1960	22	46	3	2,366	12	68	0	1,529	263
1961	12	145	0	2,713	6	36	6	1,016	667
1962	50	49	3	4,413	9	118	0	1,391	1,342
1963	118	141	19	4,207	45	105	0	3,471	1,753
1964	23	48	2	5,624	17	80	0	3,940	1,762
U.S.S.R. (Russia) (13)									
1959	0	0	0	0	0	0	105	0	36
1960	0	0	0	0	0	0	1,798	0	95
1961	0	0	0	15,145	0	0	0	0	35
1962	0	0	0	4,011	0	0	1,939	1	132
1963	0	783	0	2,067	0	0	3,552	0	302
1964	0	0	0	8,250	0	0	1,231	0	15
Poland (14)									
1959	0	0	0	4,046	0	0	1,680	1,376	400
1960	23	0	0	2,825	0	0	1,459	1,610	742
1961	17	43	0	3,514	0	0	792	1,099	1,277
1962	10	194	0	4,022	0	1	386	1,001	3,310
1963	0	31	0	4,561	0	53	322	3,661	3,623
1964	3	24	0	8,795	0	785	778	5,660	2,505
Korea, Rep. of (15)									
1959	52	394	9	1,738	7	43	459	4,234	4,881
1960	29	308	8	1,864	9	21	370	3,687	5,702
1961	38	53	4	1,981	1	4	1,329	3,743	5,778
1962	45	155	7	2,556	2	40	1,143	3,186	6,940
1963	49	106	7	2,016	1	18	1,069	3,935	8,250
1964	101	81	9	2,848	5	48	509	4,123	10,455

Continued -

Table 15.-- U.S. agricultural exports: Major countries of destination by commodity groups, specified calendar years - Continued

Country and year ended Dec. 31	Total 1/	Grains and preparations			Cotton, excl. linters	Tobacco, unmanufactured	Vegetable fats and oils 1/ 3/	Oil-cake and meal (protein meal)	
		Wheat and flour 1/	Rice milled 1/	Feed grains 1/ 2/					
-- Thousand dollars --									
<b>Yugoslavia (16)</b>									
1959	102,008	61,420	19	819	18,787	0	11,635	0	116
1960	34,136	7,718	1,514	430	11,791	0	5,341	7	107
1961	86,649	50,062	649	134	15,778	0	9,430	246	41
1962	86,396	50,207	0	4,181	15,189	0	9,061	0	1,630
1963	121,815	77,716	0	7,670	14,165	0	6,407	0	4,079
1964	94,600	39,361	5/	5,499	20,104	0	10,890	14	8,439
<b>Spain (17)</b>									
1959	89,922	0	0	9,941	21,813	4,820	43,523	0	1,846
1960	113,100	13,384	990	8,337	30,556	4	46,432	150	2,715
1961	154,266	64,574	90	25,039	24,770	2,358	23,572	15	3,068
1962	98,733	22,296	0	12,206	18	44	43,172	380	3,241
1963	122,453	5,835	0	52,173	251	1,259	24,660	2,503	16,362
1964	92,996	1,237	0	30,918	3,292	2,545	14,820	10,812	12,471
<b>Venezuela (18)</b>									
1959	89,304	15,064	648	69	0	332	3,097	679	1,301
1960	92,208	15,637	1,021	83	0	1,486	3,297	742	602
1961	89,626	19,226	185	1,809	2,644	683	3,885	1,489	1,313
1962	64,994	12,203	125	1,040	79	761	3,008	1,600	796
1963	67,653	13,822	48	113	1,565	143	3,312	1,478	1,404
1964	83,538	20,038	14	6,021	1,250	171	4,260	3,286	728
<b>Taiwan (19)</b>									
1959	53,556	15,938	0	0	20,379	1,752	601	8,468	0
1960	58,367	17,179	1,610	725	17,498	1,808	129	15,867	0
1961	71,005	19,888	282	591	26,088	2,438	522	14,047	5/
1962	72,257	19,688	0	1,775	30,643	3,086	1,054	9,317	15
1963	79,009	27,284	20	747	26,442	2,630	384	14,026	5/
1964	79,898	18,836	0	445	25,012	1,586	2,829	21,151	0
<b>Mexico (20)</b>									
1959	61,488	372	69	5,067	14	6,297	610	690	690
1960	55,915	289	2,040	6,103	5	3,816	772	948	1,812
1961	60,108	866	726	6,444	1	4,687	7,259	733	1,335
1962	63,393	3,268	23	11,151	43	5,228	979	817	1,414
1963	83,460	3,666	255	29,426	23	4,477	664	640	807
1964	75,314	3,332	457	8,397	87	4,641	1,196	577	2,728
<b>Switzerland (21)</b>									
1959	39,407	561	133	2,960	5,798	8,688	471	1,253	102
1960	54,121	2,581	337	2,689	15,346	8,829	1,426	2,246	442
1961	63,018	12,013	536	1,970	14,757	11,073	20	1,358	263
1962	61,554	9,000	745	8,251	6,684	10,379	18	2,150	2,330
1963	59,103	10,681	979	4,250	9,122	9,450	359	1,299	924
1964	71,418	9,515	1,883	6,020	13,218	12,519	123	2,076	1,144
<b>Denmark (22)</b>									
1959	63,262	2,029	69	25,218	1,281	10,691	37	15,207	3,273
1960	55,380	405	102	15,193	3,275	9,152	117	18,232	2,456
1961	49,196	139	121	6,302	3,221	10,901	75	18,268	3,225
1962	63,712	151	256	10,755	2,048	11,598	55	22,009	8,420
1963	77,195	69	214	6,406	1,753	11,097	62	37,197	10,682
1964	70,842	7	394	7,494	1,694	10,919	48	25,028	11,101
<b>Israel (23)</b>									
1959	55,179	13,161	917	16,157	2,714	215	2,331	15,289	0
1960	56,575	14,616	1,271	17,802	2,276	333	4,168	13,603	386
1961	54,340	13,801	947	16,170	962	221	4,099	14,797	0
1962	58,005	19,809	865	15,843	1,516	379	5,339	11,010	0
1963	65,797	14,294	1,418	18,818	1,156	404	5,344	19,228	0
1964	69,007	13,149	1,790	16,040	4,431	284	3,949	20,923	0

Table 15.— U.S. agricultural exports: Major countries of destination by commodity groups, specified calendar years - Continued

Country and year ended Dec. 31	Fruits and preparations	Vegetables and preparations 1/	Nuts and preparations	Animal fats and oils	Poultry meat	Other meats and products	Hides and skins	Dairy products 1/	Other 1/ 4/
-- Thousand dollars --									
Yugoslavia (16)									
1959	443	1,198	0	2,203	0	0	1,897	3,286	185
1960	561	609	0	1,129	0	2	706	4,065	156
1961	515	2	0	2,765	0	0	2,755	3,185	1,087
1962	413	4	1	336	0	2	1,182	2,598	1,592
1963	156	497	0	3,095	0	5/	373	4,260	3,397
1964	5	1,799	1	2,881	0	7	92	2,277	3,166
Spain (17)									
1959	0	1,537	0	770	427	9	1	3,172	2,063
1960	13	780	5/	2,999	0	3	285	3,809	2,643
1961	38	94	0	4,933	1	3	654	2,688	2,369
1962	390	696	1	5,746	95	56	553	4,146	5,693
1963	636	2,132	36	7,490	54	175	724	4,389	3,774
1964	393	1,644	66	7,998	24	97	1,827	1,658	3,194
Venezuela (18)									
1959	12,079	6,786	715	1,012	122	5,269	295	17,941	23,895
1960	11,008	5,657	749	744	60	5,204	629	19,709	25,580
1961	9,072	6,538	525	1,125	34	3,170	921	14,753	22,254
1962	7,548	5,661	466	1,135	37	2,398	767	9,418	17,952
1963	7,319	6,680	597	1,105	20	2,219	877	7,289	19,662
1964	8,100	6,196	658	2,606	25	4,020	523	6,947	18,695
Taiwan (19)									
1959	3	13	3	2,371	2	4	59	2,696	1,267
1960	4	34	1	1,430	0	2	145	1,379	556
1961	149	155	1	2,377	8	4	121	3,382	952
1962	38	131	1	2,394	2	21	128	1,707	2,257
1963	6	152	4	3,710	0	5/	606	772	2,226
1964	281	298	5/	4,133	0	0	483	1,699	3,145
Mexico (20)									
1959	3,083	9,580	94	2,585	516	2,120	6,236	5,430	18,035
1960	2,906	6,240	188	1,870	94	1,046	5,512	5,650	16,624
1961	2,758	3,851	296	1,967	179	1,219	4,410	6,514	16,863
1962	2,937	2,961	286	1,674	320	1,127	4,075	8,060	19,030
1963	3,551	3,905	344	1,388	179	1,343	3,712	10,064	19,016
1964	3,686	4,178	577	1,339	252	1,864	7,733	8,588	25,682
Switzerland (21)									
1959	4,065	2,622	433	923	6,406	355	316	3	4,318
1960	3,974	2,918	469	441	7,539	178	937	14	3,755
1961	3,696	3,195	266	911	6,771	316	1,112	71	4,690
1962	4,656	2,885	306	1,362	6,241	245	500	326	5,476
1963	4,323	2,753	697	2,596	3,320	312	339	1,729	6,470
1964	4,387	3,193	452	4,677	2,242	400	637	3,471	5,461
Denmark (22)									
1959	3,133	139	96	0	10	9	105	217	1,748
1960	3,741	352	179	3	4	30	72	5	2,062
1961	3,818	370	57	3	5	89	152	36	2,414
1962	5,250	762	84	9	7	19	69	48	2,172
1963	4,710	1,022	138	9	3	52	174	1,199	2,534
1964	4,476	969	155	22	14	140	174	4,492	3,715
Israel (23)									
1959	351	468	11	97	26	203	313	1,869	1,057
1960	212	49	27	5/	48	132	371	121	1,160
1961	166	100	18	21	54	223	387	901	1,473
1962	180	423	1	26	45	324	304	913	1,028
1963	229	617	71	317	58	1,073	519	1,313	938
1964	163	600	106	3	64	4,098	815	1,792	800

Continued -

Table 15.-- U.S. agricultural exports: Major countries of destination by commodity groups, specified calendar years - Continued

Country and year ended Dec. 31	Total 1/	Grains and preparations			Cotton, excl. linters	Tobacco, unmanufactured	Vegetable fats and oils 1/ 2/	Oilseeds	Oil-cake and meal (protein meal)
		Wheat and flour 1/	Rice milled 1/	Feed grains 1/ 2/					
-- Thousand dollars --									
Philippines (24)									
1959	50,377	8,546	62	11	13,373	2,353	264	204	957
1960	65,290	12,655	1,046	7	21,293	785	299	223	1,016
1961	75,995	21,690	16	230	17,113	4,914	481	194	1,265
1962	55,542	13,104	4	69	20,936	7	332	19	690
1963	55,003	18,077	2	612	13,991	24	393	1,688	480
1964	61,484	11,126	11,286	74	15,350	504	287	570	733
Sweden (25)									
1959	36,424	584	380	5,717	5,919	7,827	298	24	136
1960	46,486	816	469	1,273	12,256	13,801	206	39	51
1961	48,330	886	402	506	14,386	15,429	72	2	44
1962	46,844	511	558	1,171	9,477	13,046	456	39	172
1963	40,880	1,111	528	251	8,548	9,658	847	11	8
1964	54,510	334	922	208	9,786	19,082	621	567	474
Hong Kong (26)									
1959	35,263	2,560	228	2	16,165	2,923	207	743	0
1960	46,437	1,585	2,715	5	23,703	2,410	883	497	23
1961	51,464	1,610	2,028	33	24,193	4,342	1,727	631	11
1962	42,255	1,585	20	136	11,022	4,137	6,164	936	24
1963	43,089	1,865	21	3	12,836	5,340	3,525	181	49
1964	50,943	1,367	49	209	16,722	4,938	6,532	238	0
Viet-Nam (27)									
1959	20,332	4,922	342	5	20	3,134	423	0	0
1960	22,012	4,317	2,019	3	2,036	2,204	53	0	0
1961	25,827	4,887	413	2	4,885	2,429	199	5/	0
1962	36,638	7,205	6,910	14	5,157	2,222	697	0	0
1963	38,331	4,349	0	2,467	6,797	5,540	2,763	0	0
1964	50,223	6,658	193	3,712	9,968	6,149	2,732	0	0
Norway (28)									
1959	31,835	6,889	0	7,988	622	4,738	19	4,961	829
1960	32,886	3,814	4	7,131	2,194	5,718	29	5,853	847
1961	30,696	5,157	90	4,061	2,102	4,992	15	6,495	468
1962	38,877	4,615	128	8,268	1,523	6,138	14	7,975	1,906
1963	35,515	2,456	89	7,482	1,516	5,135	78	7,136	2,658
1964	40,077	5,754	36	5,232	2,060	5,156	22	12,091	832
Turkey (29)									
1959	36,969	621	704	0	2	0	30,443	18	0
1960	36,368	26,575	396	1,289	14	0	5,674	39	0
1961	70,059	63,217	1,373	473	4	0	2	33	0
1962	81,099	60,360	0	29	0	0	15,071	141	0
1963	62,535	31,990	0	1,909	12	0	20,817	1	0
1964	40,024	9,337	0	21	79	0	18,865	141	0
Algeria (30)									
1959	3,725	2,836	0	0	136	340	2	0	0
1960	1,573	757	63	0	0	270	0	59	0
1961	23,859	21,650	36	776	26	255	0	0	0
1962	34,334	23,132	0	2,844	12	76	1,446	0	0
1963	29,433	20,901	1	0	85	18	4,182	0	0
1964	37,197	26,797	0	0	340	66	1,284	0	0
Australia (31)									
1959	25,236	0	0	0	5,125	16,904	415	0	0
1960	33,433	0	33	0	8,916	16,558	1,147	3	223
1961	25,900	2	84	0	6,248	9,921	1,417	22	344
1962	37,695	8	146	5/	8,039	19,341	1,171	2	673
1963	35,898	9	167	0	8,855	16,107	2,136	10	859
1964	36,768	13	256	6	10,948	12,338	2,652	146	1,253

Table 15-- U.S. agricultural exports: Major countries of destination by commodity groups, specified calendar years - Continued

Country and year ended Dec. 31	Fruits and preparations	Vegetables: and preparations	Nuts and preparations	Animal: fats and oils	Poultry: meat	Other: meats and products	Hides: and skins	Dairy: products	Other 1/ 4/
-- Thousand dollars --									
Philippines (24)									
1959	1,031	1,595	22	1,276	2	225	421	16,379	3,656
1960	1,203	1,621	28	1,244	2	246	262	19,272	4,088
1961	2,351	2,054	34	1,514	0	133	125	20,377	3,504
1962	1,779	986	19	1,266	6	157	85	11,075	5,008
1963	2,733	1,256	51	1,181	41	392	166	8,824	5,092
1964	3,172	1,732	113	1,478	26	636	295	7,722	6,380
Sweden (25)									
1959	9,785	1,916	602	84	6	783	610	129	1,624
1960	10,672	2,360	1,047	22	15	849	897	14	1,699
1961	9,610	3,061	300	8	17	926	709	26	1,946
1962	12,967	3,615	1,350	42	5	826	330	9	2,270
1963	10,036	4,195	1,663	2	26	994	553	90	2,359
1964	11,022	3,672	1,933	14	75	1,639	618	244	3,299
Hong Kong (26)									
1959	3,830	994	31	68	2,257	357	12	922	3,964
1960	4,767	942	40	59	2,200	567	20	1,026	4,995
1961	5,036	1,031	46	262	3,203	689	3	1,096	5,523
1962	7,145	1,123	77	138	2,760	470	0	859	5,659
1963	7,134	1,175	94	150	2,750	460	27	966	6,513
1964	8,212	1,366	116	186	3,172	255	85	925	6,571
Viet-Nam (27)									
1959	172	89	0	8	18	75	0	9,084	2,040
1960	163	175 5/		12	4	51	0	9,833	1,142
1961	100	138 5/		0	4	12	0	11,362	1,396
1962	94	238	0	1	0	1	0	11,421	2,678
1963	79	205	0	75	1	5	0	10,981	5,069
1964	90	140 5/		12	2 5/		0	15,670	4,897
Norway (28)									
1959	3,721	274	261	103	0	49	117	13	1,251
1960	4,586	604	258	146	0	28	57	1	1,616
1961	4,418	487	68	222	0	70	87	3	1,955
1962	4,755	989	304	225	3	35	80	13	1,906
1963	4,715	999	533	186	2	126	133	5	2,266
1964	5,113	798	783	283	6	196	320	20	1,375
Turkey (29)									
1959	15	20	23	8	2,245	76	1,320	1,333	141
1960	1	3 5/		17	3	23	1,878	353	103
1961	7	85	0	48	10	14	3,134	1,484	175
1962	4	112	5	2,503	0	1	877	1,105	891
1963	15	7	0	3,799 5/		25	1,663	1,052	1,245
1964	25	23	0	5,751	15	26	2,090	1,365	2,286
Algeria (30)									
1959	0	61	0	0	0	0	0	247	103
1960	4	0	3	57	0	0	0	164	196
1961	4	3	0	0	0	27	0	641	441
1962	12	738	0	0	0	0	0	1,257	4,817
1963	41	6	0	76	0	0	0	1,932	2,191
1964	30	73	0	1,092	0	0	0	2,838	4,677
Australia (31)									
1959	5	126	6	4	0	0	6	4	2,641
1960	106	607	834	16	643	1	170	20	4,156
1961	238	2,179	303	8	285	16	156	11	4,666
1962	290	1,140	593	13	75	52	34	33	6,085
1963	108	1,544	870	27	83	10	95	64	4,954
1964	143	1,870	1,029	24	41	7	251	99	5,692

Continued -

Table 15.-- U.S. agricultural exports: Major countries of destination by commodity groups, specified calendar years - Continued

Country and year ended Dec. 31	Total 1/	Grains and preparations			Cotton, excl. linters	Tobacco, unmanufactured	Vegetable fats and oils 1/ 3/	Oilseeds	Oil-cake and meal (protein meal)
		Wheat and flour 1/	Rice milled 1/	Feed grains 2/					
-- Thousand dollars --									
<b>S. Africa, Rep. (32)</b>									
1959	16,001	6,384	972	0	2,454	135	57	4	0
1960	17,393	31	2,751	31	6,857	75	429	0	0
1961	19,991	4	5,909	32	7,599	293	130	14	0
1962	15,035	15	6,176	35	4,164	31	109	8	0
1963	23,621	5,798	8,721	50	3,478	2	55	1	0
1964	36,369	4,210	10,285	121	6,082	81	114	1	0
<b>Iran (33)</b>									
1959	5,197	581	14	5	0	0	877	0	0
1960	11,550	3,278	721	2,680	0	0	1,814	1	0
1961	18,339	11,078	52	912	0	0	2,671	0	0
1962	27,848	14,657	8	332	8	0	7,148	5/	0
1963	25,613	12,962	12	328	0	0	7,362	1	0
1964	36,254	15,358	126	1,257	0	0	13,413	3	18
<b>Peru (34)</b>									
1959	17,991	10,585	46	16	17	134	2,163	0	0
1960	18,479	8,113	4,368	154	130	0	917	1	4
1961	25,466	14,291	441	769	494	0	2,474	0	9
1962	22,366	11,197	168	221	147	0	3,056	2	20
1963	19,614	6,697	201	385	167	0	594	2	29
1964	35,863	9,378	6,189	406	64	0	2,825	10	85
<b>Chile (35)</b>									
1959	10,532	2,619	628	0	1,171	251	1,505	0	0
1960	21,802	4,529	2,032	323	9,596	766	1,011	5	0
1961	34,291	14,677	1,116	948	5,972	1,372	4,032	1	0
1962	27,011	13,933	1,069	174	129	2,107	5,119	5/	0
1963	21,840	6,217	955	1	3,494	1,676	1,749	0	0
1964	31,018	15,590	1,138	4	250	2,951	3,294	2	0
<b>Gracoe (36)</b>									
1959	15,796	6,926	1,076	4,040	13	0	16	0	114
1960	16,983	5,814	612	5,668	970	0	657	1	76
1961	34,025	10,038	518	8,455	361	1	4,762	0	149
1962	17,973	4,747	228	6,157	277	0	1	0	364
1963	28,640	6,333	618	9,456	95	11	4,844	2	553
1964	29,716	4,552	572	11,736	462	25	6,038	0	980
<b>Dominican Rep. (37)</b>									
1959	5,748	1,549	0	8	0	45	48	17	1
1960	4,063	1,457	0	8	0	1	31	6	0
1961	2,542	417	0	32	47	3	24	5	0
1962	9,911	1,395	806	199	24	78	52	8	0
1963	21,304	2,515	5,703	85	0	102	203	16	1
1964	28,828	2,864	6,256	291	0	166	3,849	12	0
<b>Colombia (38)</b>									
1959	23,603	7,481	1	241	1,176	44	4,988	41	3
1960	24,764	8,777	600	0	0	3	5,949	61	1
1961	25,087	9,489	1,386	2,962	0	37	372	190	0
1962	23,977	9,894	58	19	93	57	2,862	205	0
1963	26,031	9,015	55	62	644	38	4,184	12	1
1964	27,533	11,296	103	1,899	1,169	30	446	172	0
<b>Portugal (39)</b>									
1959	7,301	1,751	0	3	603	3,208	3	4	122
1960	15,244	5,046	1,032	4	3,466	4,641	1	0	0
1961	20,409	10,898	0	7	3,728	3,617	3	0	9
1962	23,883	14,578	0	9	1,283	4,511	2	5/	18
1963	15,484	3,446	964	9	1,739	3,158	2	1	13
1964	27,044	12,298	541	503	4,691	4,044	2	1	0

Table 15.— U.S. agricultural exports: Major countries of destination by commodity groups, specified calendar years - Continued

Country and year ended Dec. 31	Fruits and preparations	Vegetables and preparations 1/	Nuts and preparations	Animal fats and oils	Poultry meat	Other meats and products	Hides and skins	Dairy products 1/	Other 1/ 4/
-- Thousand dollars --									
<b>S. Africa, Rep. (32)</b>									
1959	135	662	46	3,479	0	3	0	256	1,414
1960	152	541	50	4,080	5	21	14	314	2,042
1961	164	531	23	2,825	29	16	8	307	2,107
1962	120	529	33	744	25	5 5/		290	2,751
1963	129	868	60	1,369	140	14	1	418	2,517
1964	285	792	118	2,945	103	32	6	8,322	2,872
<b>Iran (33)</b>									
1959	187	92	16	2,621	59	25	0	435	285
1960	250	253	16	1,802	69	52	9	388	217
1961	82	93	9	2,024	31	10	3	752	622
1962	84	218	6	3,014	5	6	1	867	1,494
1963	84	50	2	3,139	7	10	1	762	893
1964	138	120	9	2,426	10	40	3	2,108	1,225
<b>Peru (34)</b>									
1959	338	342	52	1,360	110	96	0	1,152	1,580
1960	380	263	50	870	70	51	60	762	2,286
1961	523	346	78	1,734	112	73	7	1,528	2,587
1962	754	521	65	1,623	129	73	2	1,551	2,837
1963	989	575	82	1,894	366	81	10	3,763	3,779
1964	769	518	99	4,664	792	105	0	6,007	3,952
<b>Chile (35)</b>									
1959	54	124	12	399	5	3	40	2,468	1,253
1960	100	153	13	117	13	7	39	1,406	1,692
1961	155	301	11	372	42	6	21	1,580	3,685
1962	127	98	1	445	17	1	0	1,694	2,097
1963	32	79	5	333	9	7	0	3,888	3,395
1964	3	52	5	261	3	5	0	4,705	2,755
<b>Greece (36)</b>									
1959	16	360	0	78	238	6	213	1,476	1,224
1960	38	31	0	368	289	3	367	609	1,480
1961	18	20	0	449	369	4	82	606	8,193
1962	15	148	1	231	890	9	298	935	3,672
1963	31	1,017	0	335	2,213	12	249	822	2,049
1964	32	454 5/		721	2,058	27	206	345	1,508
<b>Dominican Rep. (37)</b>									
1959	513	536	15	489	17	127	0	249	2,134
1960	324	419	15	439	15	88	0	149	1,111
1961	233	323	7	431	5	51	0	122	842
1962	705	1,333	21	642	280	158	212	673	3,325
1963	906	2,193	41	446	725	235	69	1,906	6,158
1964	1,211	3,980	30	796	264	219	60	1,854	6,976
<b>Colombia (38)</b>									
1959	173	101	4	2,275	0	7	265	1,013	5,790
1960	92	138	17	2,214	1	10	86	1,419	5,396
1961	65	1,031	8	2,650	8	10	79	2,262	4,538
1962	35	305	5	2,233	13	9	37	2,266	5,886
1963	130	173	34	1,616	43	33	63	2,854	7,074
1964	193	1,309	16	2,610	124	29	2	2,531	5,604
<b>Portugal (39)</b>									
1959	4	17	0	1	0	20	17	1,193	355
1960	5	14	0	46	0	1	94	518	376
1961	3	8	0	47	0	62	34	1,345	648
1962	10	150 5/		8	0	23	0	1,317	1,994
1963	5	1,390	1	1,063	0	25	5	2,257	1,406
1964	30	47	0	991 5/		1,491	71	1,357	977

Continued -



Table 15.-- U.S. agricultural exports: Major countries of destination by commodity groups, specified calendar years - Continued

Country and year ended Dec. 31	Total 1/	Grains and preparations			Cotton, excl. linters	Tobacco, unmanufactured	Vegetable fats and oils 1/3/	Oilseeds	Oil-cake and meal (protein meal)
		Wheat and flour 1/	Rice milled 1/	Feed grains 1/3/					
-- Thousand dollars --									
<b>Ireland (40)</b>									
1959	16,637	235	37	3,853	214	8,341	5/	0	739
1960	19,658	53	41	3,610	1,080	10,761	1	0	340
1961	21,672	187	54	5,212	454	11,964	1	0	314
1962	36,802	707	56	11,052	792	18,871	0	0	1,607
1963	24,099	535	132	5,072	245	12,814	7	0	1,335
1964	23,607	280	154	6,182	710	10,132	1	0	2,279
<b>Morocco (41)</b>									
1959	12,411	2,047	227	5	932	0	4,612	2,806	0
1960	16,384	5,348	600	0	1,444	38	5,731	1,313	0
1961	48,412	28,636	0	8,620	1,960	206	5,484	1,053	0
1962	33,786	20,164	0	3,471	1,654	219	2,907	1,503	0
1963	36,559	17,079	0	2	1,168	317	11,358	815	0
1964	21,703	8,794	0	242	1,961	186	4,290	723	0
<b>Nansei Islands (42)</b>									
1959	4,848	863	777	13	13	275	163	216	0
1960	11,193	1,830	3,483	277	6	73	264	928	0
1961	9,909	1,544	2,039	2	945	222	267	666	0
1962	11,169	1,850	3,384	3	27	157	339	1,076	0
1963	20,301	2,117	11,133	130	38	209	563	1,128	0
1964	20,306	2,260	9,523	4	0	194	706	1,593	0
<b>Jamaica (43)</b>									
1959	8,479	1,893	50	726	144	43	152	1	27
1960	10,127	1,371	470	727	628	151	171	0	14
1961	10,787	1,102	773	602	537	459	53	0	11
1962	11,715	1,226	1,028	861	155	523	56	0	17
1963	14,633	1,077	1,642	1,004	222	1,043	44	0	8
1964	20,084	2,098	2,267	1,238	871	1,162	374	0	62
<b>Iraq (44)</b>									
1959	2,301	58	1,605	4	0	0	4	0	0
1960	3,352	1,498	967	40	0	0	7	0	0
1961	4,348	3	3,383	4	0	0	10	0	0
1962	3,269	32	1,685	6	0	0	234	0	0
1963	5,430	3,142	282	6	0	965	1	0	0
1964	19,054	8,745	4,800	14	2,396	152	7	0	0
<b>East Germany (45)</b>									
1959	764	0	0	0	0	758	0	0	0
1960	1,010	0	0	0	0	1,006	0	0	0
1961	2,581	0	0	0	0	884	1,697	0	0
1962	1,663	0	0	0	0	1,067	0	0	0
1963	6,070	0	3,361	0	0	768	0	404	0
1964	15,965	7,849	0	1,852	0	1,053	0	1,061	0
<b>Austria (46)</b>									
1959	18,253	2,222	4	10,818	1,708	1,673	101	0	0
1960	24,980	1,048	184	15,193	4,424	2,350	2	0	0
1961	20,632	221	41	11,241	6,464	262	8	5	0
1962	23,126	444	0	12,923	3,410	4,151	10	0	0
1963	11,587	0	25	3,410	2,299	2,428	154	0	0
1964	15,917	262	73	5,625	3,365	3,189	117	0	0
<b>Indonesia (47)</b>									
1959	19,123	686	11,505	17	3,361	1,666	28	0	0
1960	23,624	6,056	9,854	8	6,694	129	4	12	0
1961	24,598	1,124	13,095	8	6,435	2,129	2	0	0
1962	44,395	3,838	30,094	31	6,281	2,067	21	2	2
1963	44,144	5,082	29,240	204	6,100	967	84	0	0
1964	15,742	124	4,846	605	6,940	0	68	0	0

Table 15.-- U.S. agricultural exports: Major countries of destination by commodity groups, specified calendar years - Continued

Country and year ended Dec. 31	Fruits and preparations	Vegetables and preparations	Nuts and preparations	Animal fats and oils	Poultry meat	Other meats and products	Hides and skins	Dairy products	Other
-- Thousand dollars --									
<b>Ireland (40)</b>									
1959	1,792	170	59	154	0	0	21	2	1,020
1960	2,640	73	122	15	0	23	13	7	879
1961	2,379	67	54	254	2	4	4	13	709
1962	2,376	304	17	32	3	0	6	22	957
1963	2,584	341	75	53	1	0	5	20	880
1964	1,986	355	111	182	0	1	28	21	1,185
<b>Morocco (41)</b>									
1959	89	14	2	1,106	0	1	1	444	125
1960	163	30	3	1,399	0	0	0	138	177
1961	73	115	6	1,076	0	5	0	640	538
1962	44	136	0	1,397	0	0	0	1,029	1,262
1963	125	9	0	1,399	0	0	13	568	3,706
1964	60	29	1	1,590	0	0	5	878	2,944
<b>Nansei Islands (42)</b>									
1959	163	284	10	283	31	167	15	686	889
1960	209	239	10	514	32	57	17	1,797	1,357
1961	237	251	11	393	54	129	3	2,159	987
1962	328	349	21	240	107	212	10	1,938	1,128
1963	362	447	16	326	186	410	26	2,020	1,190
1964	334	522	21	291	410	754	2	2,157	1,535
<b>Jamaica (43)</b>									
1959	303	543	5	224	372	740	7	229	3,020
1960	417	690	16	238	311	951	0	346	3,626
1961	473	700	8	355	300	1,264	0	474	3,676
1962	410	879	11	80	400	1,267	6	557	4,239
1963	437	962	4	207	488	1,336	1	1,202	4,936
1964	602	1,410	12	1,404	495	1,606	0	1,265	5,218
<b>Iraq (44)</b>									
1959	30	20	2	262	0	2	20	227	67
1960	42	26	6	406	1	1	36	227	95
1961	52	50	3	414	3	5	13	286	122
1962	79	65	1	711	5	1	0	254	196
1963	29	24	3	506	5	6	0	157	304
1964	40	154	2	552	5	3	60	467	1,657
<b>East Germany (45)</b>									
1959	0	0	0	0	0	3	0	0	3
1960	0	0	0	0	0	0	0	0	4
1961	0	0	0	0	0	0	0	0	0
1962	364	0	0	0	0	37	20	0	175
1963	2	0	0	36	0	367	0	0	1,132
1964	0	0	0	0	0	471	0	2,940	739
<b>Austria (46)</b>									
1959	369	55	31	269	1	17	283	178	524
1960	466	102	13	29	41	0	357	218	553
1961	476	104	1	15	472	9	136	74	503
1962	722	123	1	0	800	16	124	8	394
1963	1,036	300	5	0	1,135	17	149	172	457
1964	1,189	256	2	27	720	129	505	35	423
<b>Indonesia (47)</b>									
1959	62	47	4	68	5	2	0	1,627	45
1960	53	60	8	49	11	5	0	626	55
1961	60	46	0	46	5	13	0	1,451	184
1962	28	39	7	26	17	123	0	1,588	231
1963	25	22	2	38	22	95	0	1,807	456
1964	66	58	4	33	25	95	0	1,832	996

Continued -

Table 15.-- U.S. agricultural exports: Major countries of destination by commodity groups, specified calendar years - Continued

Country and year ended Dec. 31	Total 1/	Grains and preparations			Cotton, excl. linters	Tobacco, unmanufactured	Vegetable fats and oils 1/ 3/	Oilseeds	Oil-cake and meal (protein meal)
		Wheat and flour 1/	Rice milled 1/	Feed grains 2/					
-- Thousand dollars --									
Finland (48)									
1959	10,324	1,127	0	315	2,728	3,955	0	0	0
1960	12,523	0	0	57	4,067	2,858	274	818	0
1961	14,818	747	0	3	3,843	4,722	2	0	0
1962	16,734	0	40	3	1,269	5,822	3	2,718	0
1963	19,290	331	51	1,091	2,140	5,503	4	2,502	0
1964	15,474	708	173	176	1,469	3,066	50	2,215	0
Bolivia (49)									
1959	3,050	1,250	0	0	358	0	246	5	0
1960	6,127	4,002	210	0	886	1	244	8	0
1961	8,228	5,719	337	0	657	0	277	10	0
1962	9,466	7,092	7	0	751	0	86	8	0
1963	14,396	7,450	10	0	787	0	304	11	4
1964	15,231	8,030	6	1	1,155	0	869	11	4
Congo (Leopold.) (50) 6/									
1959	---	---	---	---	---	---	---	---	---
1960	---	---	---	---	---	---	---	---	---
1961	---	---	---	---	---	---	---	---	---
1962	---	---	---	---	---	---	---	---	---
1963	---	---	---	---	---	---	---	---	---
1964	14,381	4,638	3,128	560	0	3,513	14	0	0
E. E. G. 7/									
1959	926,011	66,673	10,836	241,717	104,468	82,143	42,260	119,199	22,305
1960	1,098,724	64,709	7,427	197,646	312,891	88,257	44,352	135,464	18,604
1961	1,157,051	192,073	15,026	185,575	232,897	96,501	28,659	133,947	16,274
1962	1,150,730	64,253	14,247	317,592	105,973	105,543	3,161	173,999	46,020
1963	1,171,411	72,996	13,393	275,889	131,557	104,215	18,405	169,439	61,520
1964	1,415,877	64,768	15,378	326,498	189,143	105,824	33,083	234,004	76,637
E. F. T. A. 8/									
1959	621,916	47,286	2,872	178,552	48,911	148,037	2,696	30,377	6,441
1960	738,923	48,897	4,893	160,780	112,093	189,672	6,608	37,622	5,883
1961	662,310	57,132	5,319	113,719	97,675	175,683	3,083	34,707	4,622
1962	665,550	50,986	6,831	177,201	50,438	134,268	2,099	45,200	13,265
1963	647,792	33,562	9,777	110,029	50,469	163,115	3,951	60,775	14,751
1964	719,632	47,543	11,031	117,869	65,562	171,694	8,312	59,401	14,042
L. A. F. T. A. 9/									
1959	183,432	63,360	1,163	7,455	9,655	12,642	11,027	888	711
1960	197,734	75,813	9,378	12,262	10,259	6,011	11,657	1,066	1,834
1961	279,136	151,133	3,679	11,243	11,132	7,379	15,656	948	1,375
1962	244,245	116,618	1,330	12,258	885	9,866	13,090	1,055	1,440
1963	269,099	112,706	1,466	30,472	4,341	7,406	8,355	666	849
1964	344,180	161,835	7,888	12,247	1,570	9,904	16,813	793	2,834

Table 15.-- U.S. agricultural exports: Major countries of destination by commodity groups, specified calendar years - Continued

Country and year ended Dec. 31	Fruits and preparations	Vegetables and preparations	Nuts and preparations	Animal fats and oils	Fowlry meat	Other meats and products	Hides and skins	Dairy products	Other
-- Thousand dollars --									
<b>Finland (48)</b>									
1959	1,539	21	179	184	0	0	16	0	260
1960	3,482	73	264	101	0	0	82	2	445
1961	4,276	116	31	9	0	24	92	5/	953
1962	5,345	99	260	8	2	17	122	9	1,017
1963	5,191	199	251	48	3	53	49	2	1,872
1964	5,443	174	294	111	0	6	147	7	1,435
<b>Bolivia (49)</b>									
1959	25	39	2	884	0	3	0	124	114
1960	19	21	1	412	0	3	0	120	200
1961	20	42	3	615	0	5/	0	244	304
1962	28	148	2	326	2	15	0	317	684
1963	28	106	1	990	1	2	0	2,244	2,458
1964	29	92	4	2,470	1	25	0	1,101	1,433
<b>Congo (Leopold.) (50) 6/</b>									
1959	---	---	---	---	---	---	---	---	---
1960	---	---	---	---	---	---	---	---	---
1961	---	---	---	---	---	---	---	---	---
1962	---	---	---	---	---	---	---	---	---
1963	---	---	---	---	---	---	---	---	---
1964	37	356	0	3	145	9	0	650	1,328
<b>E. E. C. 7/</b>									
1959	44,414	13,605	2,439	56,826	15,359	15,926	20,114	13,303	54,424
1960	45,880	12,499	7,502	46,580	24,814	15,085	24,030	5,202	47,782
1961	56,751	13,300	1,438	43,893	42,706	17,482	21,987	5,469	52,013
1962	66,732	24,645	3,024	35,214	50,324	17,119	20,560	5,019	87,305
1963	64,539	33,057	4,339	36,199	27,892	23,638	16,426	24,349	93,558
1964	61,010	23,677	5,789	45,059	32,630	42,495	27,433	54,833	77,616
<b>E. F. T. A. 8/</b>									
1959	40,576	19,936	1,849	30,820	6,480	4,020	3,433	8,260	41,370
1960	48,303	23,793	2,798	36,561	8,642	9,740	4,871	1,455	36,312
1961	53,289	18,349	225	33,166	8,298	10,083	4,929	2,182	39,249
1962	62,164	25,507	2,889	35,557	8,109	8,865	3,041	2,153	35,976
1963	48,815	38,671	4,093	42,910	5,565	9,236	4,615	5,558	41,900
1964	49,215	23,960	5,334	64,644	4,421	16,204	9,018	15,301	36,081
<b>L. A. F. T. A. 9/</b>									
1959	3,877	11,748	183	7,583	635	2,242	6,541	11,700	32,022
1960	3,842	7,626	302	6,827	178	1,123	5,697	11,972	31,867
1961	3,840	7,153	425	8,203	349	1,328	4,517	16,281	34,495
1962	4,218	7,813	380	7,603	483	1,222	4,115	22,614	39,255
1963	5,104	5,446	500	7,008	602	1,488	3,785	32,249	46,656
1964	5,088	8,620	750	15,819	1,174	2,064	7,750	31,985	57,046

1/ Includes food exported for relief or charity by individuals or private agencies.  
 2/ Feed grains: Barley, corn, oats, and grain sorghums, excluding products.  
 3/ Excludes essential oils which are included in "other".  
 4/ Other commodities: Mainly feeds and fodders, field and garden seeds, coffee, hops, essential oils, sugar and related products, and live animals.  
 5/ Less than \$500.  
 6/ Not separately classified prior to January 1, 1964.  
 7/ The European Economic Community (Common Market) includes the Netherlands, Belgium and Luxembourg, France, West Germany, and Italy.  
 8/ The European Free Trade Association includes the United Kingdom, Denmark, Switzerland, Sweden, Norway, Austria, and Portugal.  
 9/ The Latin American Free Trade Association includes Argentina, Brazil, Chile, Colombia, Ecuador, Mexico, Paraguay, Peru, and Uruguay.

Table 16.-- U. S. agricultural imports: Value by country of origin specified calendar years

Country of origin	Year ended December 31					
	Average 1950-54	Average 1955-59	Average 1960-64	1962	1963	1964
-- Thousand dollars --						
Greenland .....	2	3	3	0	0	16
Canada .....	285,109	203,512	180,047	188,276	174,796	175,844
Miquelon and St. Pierre Islands .....	0	0	1	0	0	0
<b>Latin American Republics:</b>						
Mexico .....	138,504	181,447	260,237	270,951	252,195	292,304
Guatemala .....	59,479	66,554	57,580	56,791	64,589	57,831
El Salvador .....	60,151	49,546	34,281	38,758	35,467	38,853
Honduras .....	23,337	23,592	29,256	27,666	25,940	35,577
Nicaragua .....	20,792	18,599	25,077	23,532	31,245	29,397
Costa Rica .....	29,503	27,761	39,503	37,519	39,182	50,274
Panama .....	11,190	15,697	16,439	11,074	15,667	25,181
Cuba .....	376,175	404,567	70,781	15,087	6,578	4,601
Haiti .....	24,134	14,124	14,832	15,814	17,516	15,745
Dominican Republic .....	52,022	59,486	109,576	139,844	127,478	111,096
Colombia .....	363,899	344,891	229,827	233,977	206,807	230,590
Venezuela .....	41,455	35,749	19,505	16,088	19,628	19,810
Ecuador .....	39,259	50,054	62,918	63,052	67,796	77,727
Peru .....	18,528	28,503	78,278	89,181	89,147	69,915
Bolivia .....	1,101	1,584	1,854	1,540	1,387	2,686
Chile .....	8,444	4,616	5,508	5,409	5,817	7,358
Brazil .....	738,521	590,801	481,078	462,152	492,916	471,205
Paraguay .....	2,507	3,419	6,796	5,119	7,362	8,918
Uruguay .....	65,496	13,542	15,769	18,529	18,288	9,191
Argentina .....	143,168	107,007	95,036	89,584	133,930	79,599
Total Latin American Republics .....	2,217,665	2,041,539	1,654,131	1,621,667	1,658,935	1,637,858
<b>Other Latin America:</b>						
British Honduras .....	156	187	1,703	169	1,896	6,117
Canal Zone .....	383	258	141	181	34	20
Bermuda .....	68	32	161	132	120	43
Bahamas .....	189	111	1,820	1,096	1,664	3,661
Jamaica .....	2,223	2,787	14,750	13,927	17,641	16,143
Leeward and Windward Islands .....	1,821	1,664	1,044	1,059	1,092	768
Barbados .....	388	1,008	1,474	1,382	2,189	1,893
Trinidad and Tobago .....	3,973	4,337	7,914	6,900	8,014	5,912
Netherlands Antilles .....	131	243	105	80	73	25
French West Indies .....	256	338	6,926	5,693	14,202	6,181
British Guiana .....	252	148	6,246	8,243	5,459	5,121
Surinam (Netherlands Guiana) .....	121	926	979	649	581	1,057
French Guiana .....	20	428	65	50	10	16
Falkland Islands .....	19	0	0	0	0	0
Total Latin America .....	2,227,665	2,054,006	1,697,459	1,661,228	1,711,910	1,684,835
<b>Europe:</b>						
Iceland .....	734	1,296	723	912	503	611
Sweden .....	2,546	1,481	2,613	2,638	2,614	2,728
Norway .....	630	800	1,491	1,208	1,967	2,514
Denmark .....	17,613	34,260	56,676	59,106	66,180	63,861
United Kingdom of Great Britain and Northern Ireland .....	19,225	23,845	24,472	25,420	26,506	22,728
Ireland (Eire) .....	4,505	9,060	23,074	27,954	29,128	10,059
Netherlands (Holland) .....	51,446	73,306	77,878	79,887	77,564	73,250
Belgium and Luxembourg .....	8,711	6,467	9,709	10,235	10,619	11,481
France .....	28,914	37,839	52,812	48,608	53,962	65,780
Germany - West Germany 1/ .....	16,975	25,908	31,230	29,444	29,712	35,390
East Germany 1/ .....	---	50	175	8	24	830
Austria .....	285	472	1,059	874	1,318	1,660
Czechoslovakia .....	1,967	1,418	1,277	1,207	1,124	955

Continued -

Table 16.-- U. S. agricultural imports: Value by country of origin specified calendar years - Continued

Country of origin	Year ended December 31					
	Average 1950-54	Average 1955-59	Average 1960-64	1962	1963	1964
-- Thousand dollars --						
<b>Europe - Continued:</b>						
Hungary	1,439	768	520	430	237	331
Switzerland	9,928	10,640	12,145	12,629	12,205	11,704
Finland	468	453	1,018	1,017	1,126	1,384
Estonia	0	0	1	0	3	0
Latvia	0	0	23	0	114	2/
Lithuania	0	1	3	0	0	0
Poland and Danzig	11,338	23,311	30,432	30,766	27,653	30,851
Union of Soviet Socialist Republics	4,600	1,998	1,548	1,405	1,665	1,781
Azores	244	94	91	80	98	73
Spain	35,937	34,112	39,550	38,886	36,545	47,114
Portugal	3,522	3,049	4,557	4,167	4,967	5,790
Gibraltar	4	7	8	2/	11	9
Malta, Gozo, and Cyprus	644	809	818	---	---	---
Malta and Gozo 3/	---	---	---	117	13	0
Cyprus 3/	---	---	---	695	704	1,009
Italy	44,787	51,205	63,747	63,895	66,722	71,998
Free Territory of Trieste	28	32	56	13	134	42
Yugoslavia	4,797	6,864	12,310	12,447	14,627	15,876
Albania	1	58	83	113	110	76
Greece	14,233	23,288	29,185	28,093	26,567	32,139
Rumania	257	206	516	257	226	220
Bulgaria	1,102	511	902	977	922	951
Turkey	45,586	52,090	60,897	63,708	59,403	55,840
Total Europe	332,466	425,698	541,599	547,196	555,273	569,035
<b>Asia:</b>						
Syrian Arab Republic	11,397	8,859	4,499	2,726	4,649	4,749
Lebanon	3,988	2,851	4,037	3,603	5,158	5,247
Iraq	11,795	12,377	7,715	6,440	8,479	7,253
Iran (Persia)	13,868	21,075	17,542	15,039	16,901	20,142
Israel and Palestine	323	---	---	---	---	---
Israel 4/	---	568	1,174	933	1,628	1,696
Palestine 4/	---	21	0	0	0	0
Jordan	2	2/	10	7	4	20
Kuwait	6	2/	2/	0	0	1
Saudia Arabia	117	60	14	10	6	34
Other Arabia Peninsula States	2,334	3,230	815	700	609	1,353
Aden	38	306	114	70	47	155
Bahrain	2	0	0	0	0	0
Afghanistan	3,243	2,181	1,620	1,400	1,399	1,059
India	99,569	73,500	80,887	78,755	78,204	83,294
Goa, Damao, and Diu 3/	---	---	0	0	0	0
Pakistan	28,326	26,624	21,980	24,247	22,307	16,870
Nepal 1/	---	0	0	0	0	0
Ceylon	41,966	30,921	33,478	31,768	33,128	34,501
Burma	364	1,201	417	676	349	207
Thailand (Siam)	71,706	76,603	33,475	33,541	33,333	19,017
Viet-Nam, Laos, and Cambodia (Indochina)	15,577	21,856	---	---	---	---
Viet-Nam 5/	---	---	3,124	3,022	1,921	1,881
Laos 5/	---	---	12	0	19	43
Cambodia 5/	---	---	4,820	4,892	6,098	4,296
Malaysia (British Malaya)	209,956	116,431	92,829	---	---	73,886
Federation of Malaya 6/	---	---	---	100,495	86,355	---
State of Singapore 6/	---	---	---	9,945	5,711	---
Indonesia	180,366	132,204	97,600	71,525	71,008	119,833
Philippines	216,657	214,986	264,322	254,073	277,077	294,972
Portuguese Asia	486	---	---	---	---	---
Macao (Macau) 1/	---	3	0	0	0	0
Other Portuguese Asia 1/	---	414	365	145	---	---
Other Southern and Southeastern Asia	14	12	25	1	21	97
China	34,589	18	3	2	11	0

Continued -

Table 16.-- U. S. agricultural imports: Value by country of origin specified calendar years - Continued

Country of origin	Year ended December 31					
	Average 1950-54	Average 1955-59	Average 1960-64	1962	1963	1964
-- Thousand dollars --						
<b>Asia - Continued:</b>						
Outer Mongolia 2/	---	5,611	2,892	3,591	3,189	2,505
Korea (Chosen) -	918	---	---	---	---	---
North Korea 1/	---	2/	3	10	0	0
Korea, Republic of 1/	---	1,610	3,438	2,368	3,679	6,498
Hong Kong (British Crown Colony)	2,070	2,201	2,519	2,456	2,399	2,737
Taiwan (Formosa)	4,113	5,869	23,978	26,233	27,462	29,212
Japan	31,589	36,428	44,403	47,495	46,420	40,119
Nansai and Nanpo Islands 4/	---	0	4	2/	4	14
<b>Total Asia</b>	<b>985,379</b>	<b>798,020</b>	<b>748,114</b>	<b>726,168</b>	<b>737,575</b>	<b>771,691</b>
<b>Australia and Oceania:</b>						
Australia	137,050	70,342	182,958	223,900	256,515	211,207
New Guinea	28	49	1,244	1,667	2,361	1,323
New Zealand and Western Samoa	65,238	78,515	136,819	136,193	166,010	141,969
British Western Pacific Islands	35	109	3,015	1,597	7,116	6,338
French Pacific Islands	274	454	214	285	223	148
Trust Territory of the Pacific Islands	84	600	809	565	0	0
<b>Total Australia and Oceania</b>	<b>202,709</b>	<b>150,069</b>	<b>325,059</b>	<b>364,207</b>	<b>432,225</b>	<b>360,985</b>
<b>Africa:</b>						
Morocco -	---	2,567	2,376	2,214	2,034	2,335
French Morocco 2/	2,229	---	---	---	---	---
Tangier 2/	102	---	---	---	---	---
Algeria	943	934	318	480	281	216
Tunisia	1,050	2,109	657	1,134	745	589
Libya	20	1	4	2/	1	0
United Arab Republic (Egypt)	24,705	15,409	13,714	13,282	11,437	15,176
Sudan	1,140	894	1,140	1,042	1,098	1,786
Canary Islands	41	10	10	26	14	0
Other Spanish Africa	2,315	535	272	1	6	79
Federal Republic of Cameroon	6,233	6,802	6,179	6,441	5,015	8,898
Other Western Equatorial Africa -	232	761	848	1,091	1,142	---
Central African Republic 2/	---	---	---	---	---	766
Gabon 2/	---	---	---	---	---	664
Other Western Africa -	10,936	26,734	37,164	28,807	36,790	---
Mauritania 2/	---	---	---	---	---	345
Senegal 2/	---	---	---	---	---	96
Guinea 2/	---	---	---	---	---	2,541
Ivory Coast 2/	---	---	---	---	---	60,705
Togo 2/	---	---	---	---	---	2,339
Other Western Africa 2/	---	---	---	---	---	913
Ghana (Gold Coast)	53,974	37,594	50,243	49,426	41,688	60,955
Nigeria	38,085	26,573	36,006	41,393	32,218	25,986
British West Africa and Sierra Leone -	788	1,625	1,697	1,312	1,442	---
Sierra Leone 2/	---	---	---	---	---	1,947
British West Africa 2/	---	---	---	---	---	10
Madeira Islands	54	65	78	41	93	147
Angola	27,357	32,044	35,331	37,474	34,505	53,342
Other Western Portuguese Africa	2,879	1,391	1,257	1,193	1,632	1,084
Liberia	27,741	28,419	24,498	21,664	19,910	26,912
Republic of the Congo; and	---	---	---	---	---	---
Ruanda-Urundi -	24,603	45,767	39,125	31,628	30,083	---
Congo (Leopoldville) 2/	---	---	---	---	---	23,475
Burundi and Rwanda 2/	---	---	---	---	---	24,105
Somali Republic -	---	---	287	311	180	174
Somaliland (Italian Adm.) 10/	794	511	---	---	---	---
British Somaliland 10/	714	270	---	---	---	---
Ethiopia	23,254	26,152	34,211	28,212	33,772	52,233
French Somaliland	41	128	367	564	224	293
Seychelles and Dependencies	76	106	92	103	98	101

Continued -

Table 16.-- U. S. agricultural imports: Value by country of origin specified calendar years - Continued

Country of origin	Year ended December 31					
	Average 1950-54	Average 1955-59	Average 1960-64	1962	1963	1964
-- Thousand dollars --						
<b>Africa - Continued:</b>						
Mauritius and Dependencies .....	114	79	3,274	2,862	10,972	1,681
British East Africa and Tanganyika - ..	35,041	40,351	58,968	53,783	63,549	---
Uganda 2/ .....	---	---	---	---	---	46,274
Kenya 2/ .....	---	---	---	---	---	21,260
Tanganyika 9/ .....	---	---	---	---	---	13,190
Zanzibar 9/ .....	---	---	---	---	---	224
Mozambique .....	4,115	2,470	3,740	3,861	4,445	3,653
Malagasy Republic (Madagascar) .....	6,209	13,488	14,557	14,565	16,417	17,447
Republic of South Africa .....	31,734	18,190	36,314	44,153	46,798	42,995
Northern Rhodesia, Southern Rhodesia, and Malawi .....	530	555	1,831	1,429	2,852	3,096
Southern British Africa 11/ .....	11	---	---	---	---	---
<b>Total Africa .....</b>	<b>328,060</b>	<b>332,537</b>	<b>404,558</b>	<b>388,492</b>	<b>399,441</b>	<b>520,032</b>
<b>Total all countries .....</b>	<b>4,361,390</b>	<b>3,963,845</b>	<b>3,896,840</b>	<b>3,875,567</b>	<b>4,011,220</b>	<b>4,082,438</b>

- 1/ Not separately classified prior to 1952.
- 2/ Less than \$500.
- 3/ Not separately classified prior to 1962.
- 4/ Not separately classified prior to 1954.
- 5/ Not separately classified prior to 1958.
- 6/ Separately classified 1958 through 1963.
- 7/ Not separately classified prior to 1953.
- 8/ Not separately classified beginning 1957.
- 9/ Not separately classified prior to 1964.
- 10/ Not separately classified beginning 1960.
- 11/ Not separately classified beginning 1958.



Table 17.-- U. S. agricultural imports: Major countries of origin by commodity groups, specific calendar years

Country and year ended Dec. 31	Total	Complementary 1/	Supplementary 1/	Selected complementary products						
				Coffee	Crude rubber	Cocoa beans	Carpet wool	Bananas	Tea	Spices 2/
-- Thousand dollars --										
<b>Total</b>										
1959	4,098,879	2,082,707	2,016,172	1,096,636	382,501	164,947	123,258	77,428	51,853	35,816
1960	3,824,647	1,907,116	1,917,531	1,003,988	321,772	143,073	111,950	78,639	56,474	45,275
1961	3,690,328	1,751,798	1,938,530	964,018	216,553	159,479	107,759	77,467	54,329	35,302
1962	3,875,567	1,740,649	2,134,918	989,591	228,233	131,407	89,225	77,432	60,336	35,073
1963	4,011,220	1,718,875	2,292,345	956,875	197,396	135,154	114,698	81,968	58,236	32,089
1964	4,082,438	1,985,726	2,096,712	1,200,281	200,629	130,788	90,198	126,509	59,735	34,908
<b>Brazil (1)</b>										
1959	552,559	499,296	53,263	452,660	186	33,911	162	57	125	369
1960	495,482	443,016	52,466	398,888	257	32,492	120	26	330	987
1961	483,636	399,604	84,032	368,141	478	21,804	328	0	257	970
1962	462,152	377,996	84,156	362,528	185	7,355	261	10	225	585
1963	492,916	393,303	99,613	363,864	188	19,611	128	50	234	594
1964	471,205	406,666	64,539	377,664	186	17,119	95	0	285	1,408
<b>Philippines (2)</b>										
1959	241,970	11,221	230,749	0	10	0	0	0	0	0
1960	240,809	10,374	230,435	0	48	0	0	0	0	0
1961	254,680	10,620	244,060	0	9	0	0	0	0	8/
1962	254,073	8,424	245,649	14	17	0	0	0	0	8/
1963	277,077	8,248	268,829	83	0	0	0	0	0	8/
1964	294,972	8,360	286,612	0	0	44	0	0	0	0
<b>Mexico (3)</b>										
1959	201,161	74,027	127,134	55,722	0	3,309	0	1,945	0	2,893
1960	223,046	68,101	154,945	57,621	0	1,309	1	482	0	2,454
1961	262,690	76,236	186,454	64,859	0	1,816	0	1,278	0	1,457
1962	270,951	80,383	190,568	65,485	3	4,202	0	442	0	894
1963	252,195	56,767	195,428	37,367	8/	8,249	0	260	0	466
1964	292,304	95,212	197,092	84,175	0	1,257	0	398	0	372
<b>Colombia (4)</b>										
1959	293,767	293,500	267	291,874	0	194	0	1,399	0	0
1960	245,172	244,948	224	244,469	0	59	0	337	0	0
1961	232,587	226,852	5,735	226,609	0	8	2	167	0	0
1962	233,977	226,488	7,489	226,334	0	88	1	9	0	0
1963	206,807	197,539	9,268	197,416	0	4	0	40	0	3
1964	230,590	223,619	6,971	223,524	0	6	0	0	0	0
<b>Australia (5)</b>										
1959	131,194	614	130,580	0	0	8	279	0	0	0
1960	91,256	395	90,861	0	37	0	131	0	0	0
1961	131,910	326	131,584	0	0	0	149	0	0	0
1962	223,900	600	223,300	0	0	1	347	0	0	0
1963	256,515	584	255,931	0	0	103	275	0	0	8/
1964	211,207	482	210,725	7	0	87	156	0	0	0
<b>Canada (6)</b>										
1959	195,622	2,691	192,931	1	8/	1	0	0	725	1
1960	167,481	2,817	164,664	1	10	8/	73	0	823	2
1961	193,839	3,057	190,782	0	9	0	248	8/	800	1
1962	188,276	4,438	183,838	13	0	0	138	0	1,180	3
1963	174,796	7,382	167,414	11	16	0	157	1	1,653	4
1964	175,844	8,352	167,492	15	0	0	213	71	1,969	1
<b>New Zealand (7)</b>										
1959	130,023	32,078	97,945	0	0	693	31,292	0	0	0
1960	113,056	33,818	79,238	0	0	546	33,148	0	0	0
1961	126,868	35,686	91,182	0	0	181	35,384	0	0	0
1962	136,193	30,966	105,227	0	0	938	29,904	0	0	0
1963	166,010	45,717	120,293	0	0	757	44,825	0	0	0
1964	141,969	37,811	104,158	2	0	621	37,109	0	0	0

Table 17.-- U. S. agricultural imports: Major countries of origin by commodity groups, specified calendar years

Country and year ended Dec. 31	Selected supplementary products									
	Cane sugar	Dutiable cattle and meats 2/	Fruits, nuts, and vegetables	Fats, oils, oilbearing materials 4/	Tobacco, umfd.	Apparel wool	Hides and skins 5/	Grains and preps. 6/	Dairy products 7/	Other supple. and comple. products
-- Thousand dollars --										
<b>Total</b>										
1959	495,771	464,241	216,198	176,236	111,760	101,066	84,427	55,449	49,477	413,815
1960	507,055	372,954	237,482	162,314	115,457	84,965	67,606	54,589	49,896	411,158
1961	457,502	465,870	227,641	146,650	114,213	89,961	61,266	54,430	54,335	403,553
1962	509,344	576,184	230,668	152,124	101,200	120,177	62,695	42,879	54,166	414,833
1963	610,661	589,892	263,046	145,598	98,977	111,322	58,861	42,577	55,289	262,948
1964	658,425	453,575	299,845	159,927	109,741	115,396	71,452	48,624	62,499	459,906
<b>Brazil (1)</b>										
1959	1,292	10,889	8,199	23,914	1	237	6,836	0	219	13,502
1960	10,903	3,125	11,178	20,677	1	190	4,596	0	37	11,675
1961	34,362	6,479	10,361	26,224	171	146	4,435	0	14	9,466
1962	40,042	6,332	6,878	22,972	539	306	4,331	0	51	9,552
1963	58,287	3,936	7,462	21,362	1,818	288	4,156	242	16	10,680
1964	21,805	3,746	9,293	19,012	3,064	1,473	4,391	33	57	11,574
<b>Philippines (2)</b>										
1959	109,804	0	25,607	91,139	2,475	0	2	3	0	12,930
1960	123,730	0	25,666	76,927	3,145	0	0	2	0	11,291
1961	151,478	1	22,634	64,928	3,341	0	31	3	0	12,255
1962	150,492	0	17,604	72,025	3,151	0	0	2	0	10,768
1963	163,347	0	21,299	77,598	4,291	0	0	5	0	10,454
1964	162,417	0	24,143	91,581	4,619	0	0	3	0	12,165
<b>Mexico (3)</b>										
1959	7,937	56,907	37,933	1,839	1	8/	1	1	8/	32,673
1960	43,487	45,779	44,544	1,971	0	1	25	66	0	25,306
1961	66,530	61,040	33,893	1,475	1	0	2	1	0	30,338
1962	47,214	76,544	44,158	1,379	125	0	0	170	36	30,299
1963	48,440	64,817	53,117	1,669	537	0	42	14	3	37,214
1964	68,893	38,994	65,980	1,771	745	2	41	128	0	29,548
<b>Colombia (4)</b>										
1959	23	0	7	8	8/	0	56	0	0	206
1960	1	0	2	7	154	0	11	0	0	132
1961	5,000	0	19	47	575	0	30	0	0	130
1962	5,750	0	16	65	1,502	0	41	36	0	135
1963	6,451	118	10	11	2,395	0	59	0	0	300
1964	2,718	0	12	7	3,902	8/	125	0	0	296
<b>Australia (5)</b>										
1959	0	92,080	199	281	0	28,793	3,397	64	1,966	4,127
1960	0	60,097	784	138	0	23,599	1,392	69	1,651	3,358
1961	8,504	89,367	569	279	0	25,078	1,099	2,223	2,282	2,360
1962	17,576	150,638	1,747	295	0	44,297	1,679	930	3,127	3,263
1963	28,319	177,305	2,013	275	0	38,588	1,380	95	3,908	4,254
1964	21,996	129,124	629	400	14	46,274	2,630	1,502	3,130	5,258
<b>Canada (6)</b>										
1959	73	79,702	12,981	816	53	1,041	6,751	46,094	573	46,810
1960	216	60,064	14,406	773	27	462	4,472	42,294	782	43,076
1961	289	84,740	13,765	1,002	26	827	4,100	40,989	1,647	45,396
1962	389	87,175	14,136	1,710	45	746	4,050	29,439	2,703	46,549
1963	1	58,987	18,953	1,174	57	758	3,468	31,761	3,523	54,272
1964	8/	56,642	23,270	744	89	617	3,693	31,797	3,056	53,667
<b>New Zealand (7)</b>										
1959	0	61,287	303	657	0	11,479	15,620	0	5,958	2,734
1960	0	48,706	108	618	0	7,563	13,227	0	5,834	3,306
1961	0	55,855	150	654	0	7,842	15,766	0	7,805	3,231
1962	0	70,161	299	462	0	11,153	13,953	1	5,260	4,062
1963	0	81,181	292	416	0	12,074	14,633	8/	6,394	5,438
1964	0	56,719	47	260	0	13,840	18,858	0	9,063	5,070

Continued -

Table 17.— U.-S. agricultural imports: Major countries of origin by commodity groups, specified calendar years - Continued

Country and year ended Dec. 31	Total	Selected complementary products								
		Complementary 1/	Supplementary 1/	Coffee	Crude rubber	Cocoa beans	Carpet wool	Bananas	Tea	Spices 2/
-- Thousand dollars --										
<b>Indonesia (8)</b>										
1959	118,034	117,108	926	747	96,709	4	0	0	5,109	12,522
1960	131,961	130,915	1,046	917	108,000	42	0	0	6,220	13,581
1961	93,672	90,098	3,574	3,078	65,635	0	0	0	6,306	13,422
1962	71,525	69,232	2,293	6,521	44,739	29	0	0	5,622	10,069
1963	71,008	69,148	1,860	12,322	35,792	0	0	0	4,731	14,405
1964	119,833	116,912	2,921	13,677	81,454	31	0	0	4,633	14,849
<b>Dominican Rep. (9)</b>										
1959	62,275	38,971	23,304	15,056	0	14,738	0	3,397	0	g/
1960	96,291	43,223	53,068	19,096	0	14,297	0	4,169	0	5
1961	73,172	24,528	48,644	11,386	0	4,865	0	2,057	0	5
1962	139,844	29,882	109,962	17,142	0	7,620	0	1,080	0	14
1963	127,478	30,366	97,112	15,057	0	10,925	0	1,161	0	10
1964	111,096	43,859	67,237	28,310	0	10,852	0	88	0	10
<b>India (10)</b>										
1959	68,794	29,316	39,478	305	235	0	7,105	0	14,848	1,942
1960	79,776	34,998	44,778	394	77	0	3,638	0	13,942	10,042
1961	84,404	32,377	52,027	2,025	314	0	2,878	0	15,293	5,360
1962	78,755	29,692	49,063	383	1	8	824	0	16,002	7,838
1963	78,204	25,053	53,151	846	48	0	925	0	15,169	2,674
1964	83,294	27,529	55,765	3,938	64	0	3,156	0	13,549	2,186
<b>Argentina (11)</b>										
1959	104,424	37,609	66,815	0	0	0	36,565	0	0	19
1960	84,513	34,846	49,667	26	0	0	34,211	0	52	23
1961	87,554	33,097	54,457	79	0	0	32,525	0	85	36
1962	89,584	29,856	59,728	80	0	0	29,043	0	327	50
1963	133,930	29,058	104,872	19	0	0	28,458	0	128	22
1964	79,599	18,909	60,690	0	0	0	18,455	0	72	27
<b>Ecuador (12)</b>										
1959	53,898	53,582	316	11,343	19	10,971	0	31,046	0	0
1960	58,599	58,311	288	14,536	51	12,416	0	30,948	0	0
1961	47,417	43,741	3,676	7,944	0	7,821	0	27,389	0	0
1962	63,052	55,444	7,608	15,118	0	5,375	0	34,449	0	0
1963	67,796	60,055	7,741	11,289	66	8,635	0	39,196	0	0
1964	77,727	72,407	5,320	12,320	0	3,821	0	55,046	0	1
<b>Malaysia (13) 2/</b>										
1959	134,915	134,755	160	32	132,120	0	0	0	16	899
1960	107,411	106,353	1,058	130	103,758	0	0	0	45	778
1961	80,342	79,250	1,092	297	75,950	0	0	0	66	670
1962	110,440	108,455	1,985	171	106,550	0	0	0	22	262
1963	92,066	89,225	2,841	104	86,619	g/	0	0	17	271
1964	73,886	71,090	2,796	170	67,250	0	0	0	31	328
<b>Netherlands (14)</b>										
1959	88,471	18,723	69,748	0	32	199	4,091	0	1,803	902
1960	82,292	15,924	66,368	0	3	0	2,745	0	1,233	1,138
1961	76,399	12,662	63,737	93	0	21	1,506	0	639	1,020
1962	79,887	14,502	65,385	25	0	41	1,623	0	3,698	961
1963	77,564	14,091	63,473	38	0	0	2,374	0	2,817	951
1964	73,250	13,588	59,662	76	0	0	1,399	0	2,955	975
<b>Italy (15)</b>										
1959	57,694	5,154	52,540	0	0	0	1,594	0	0	48
1960	56,428	3,786	52,642	0	0	0	1,042	0	0	76
1961	59,693	3,445	56,248	13	0	0	917	0	0	30
1962	63,895	3,419	60,476	8	g/	0	614	0	0	47
1963	66,722	5,049	61,673	19	0	0	1,101	0	0	30
1964	71,998	6,303	65,695	14	0	0	995	2	g/	53

Table 17.-- U. S. agricultural imports: Major countries of origin by commodity groups, specified calendar years - Continued

Country and year ended Dec. 31	Selected supplementary products									Other suppl. and comple. products
	Cane sugar	Dutiable cattle and meats	Fruits, nuts, and veg- tables	Fats, oils, oilbearing materials	Tobacco, unmf.	Apparel wool	Hides and skins	Grains and preps.	Dairy products	
	2/			4/		5/	6/	7/		
-- Thousand dollars --										
<b>Indonesia (8)</b>										
1959	0	0	50	154	139	0	384	0	0	2,216
1960	0	0	34	372	58	8/	329	0	0	2,408
1961	0	0	6	2,678	153	0	153	0	0	2,241
1962	0	0	13	1,402	525	0	353	0	0	2,252
1963	0	0	30	483	695	0	643	0	0	1,899
1964	0	3	33	135	1,532	0	1,218	8/	0	2,268
<b>Dominican Rep. (9)</b>										
1959	14,129	1,818	547	38	71	0	85	1,220	0	11,176
1960	43,057	1,983	699	607	92	0	44	1,126	4	10,912
1961	35,046	1,386	1,034	3,231	673	0	0	1,089	6	12,394
1962	95,933	275	880	2,069	2,341	0	0	1,024	0	11,466
1963	80,422	5	991	2,461	4,002	0	0	305	0	12,139
1964	52,393	17	1,234	1,563	6,512	0	0	8/	0	10,117
<b>India (10)</b>										
1959	0	90	23,825	3,698	0	729	6,614	0	0	9,403
1960	0	414	26,746	7,265	0	405	5,884	0	0	10,969
1961	16,845	259	24,855	0	10	46	5,283	0	0	11,236
1962	12,993	555	24,205	121	19	35	5,244	0	0	10,527
1963	13,754	926	27,250	297	98	8	5,622	3	0	10,584
1964	15,462	335	31,322	122	75	120	3,526	1	1	9,437
<b>Argentina (11)</b>										
1959	0	35,263	1,111	3,809	0	6,689	2,820	241	8,687	9,220
1960	0	17,387	1,255	4,110	3	6,118	1,946	127	9,322	9,933
1961	327	24,943	644	6,003	15	4,695	871	293	7,099	9,939
1962	949	22,849	1,346	6,341	185	6,826	2,146	316	7,292	11,834
1963	35,919	31,875	2,386	4,406	171	9,743	1,487	845	7,070	11,401
1964	2,553	20,880	2,321	3,613	273	10,783	653	1,252	8,806	9,911
<b>Ecuador (12)</b>										
1959	0	0	3	236	0	0	4	0	0	276
1960	0	0	8/	94	0	0	4	0	0	550
1961	3,263	0	8	249	0	0	5	0	0	738
1962	6,299	0	9	808	0	0	2	0	0	992
1963	6,401	11	41	169	0	6	3	0	0	1,979
1964	4,922	0	39	0	8	0	4	0	0	1,566
<b>Malaysia (13) 2/</b>										
1959	0	0	51	51	0	0	55	0	0	1,691
1960	0	0	543	473	0	0	36	0	0	1,648
1961	0	0	987	0	0	0	91	0	0	2,281
1962	0	0	1,802	0	0	0	172	8/	0	1,461
1963	0	0	2,676	12	0	0	143	0	0	2,224
1964	0	0	2,605	2	0	17	134	8/	0	3,349
<b>Netherlands (14)</b>										
1959	364	32,754	1,669	9,625	67	112	1,399	825	3,021	31,608
1960	681	29,698	1,703	7,216	71	53	1,398	771	3,005	32,577
1961	1,323	30,655	1,914	3,898	119	101	1,063	716	3,169	30,162
1962	663	31,246	2,358	4,878	25	155	1,410	962	2,954	28,888
1963	0	30,208	2,060	4,016	65	34	1,000	685	3,272	30,044
1964	1	25,271	2,920	4,241	87	2	1,260	1,013	2,858	30,192
<b>Italy (15)</b>										
1959	0	1,335	16,100	7,040	1,223	32	274	966	12,246	16,836
1960	0	1,201	16,026	4,803	1,358	74	197	966	12,370	18,315
1961	8/	1,243	20,338	4,870	1,161	11	145	897	12,407	17,661
1962	0	1,358	18,736	5,962	988	34	1,603	1,060	12,942	20,543
1963	8/	1,505	19,017	5,072	1,169	65	1,030	844	12,640	24,230
1964	0	1,406	18,698	6,557	1,153	64	1,603	850	14,090	26,513

Continued -

Table 17.-- U. S. agricultural imports: Major countries of origin by commodity groups, specified calendar years - Continued

Country and year ended Dec. 31	Total	Complementary 1/	Supplementary 1/	Selected complementary products						
				Coffee	Grade rubber	Cocoa beans	Carpet wool	Bananas	Tea	Spices 2/
-- Thousand dollars --										
<b>Peru (16)</b>										
1959	31,036	12,868	18,168	11,399	4	17	0	0	0	10
1960	52,177	16,670	35,507	15,446	8/	54	0	0	24	7
1961	90,970	16,770	74,200	15,867	12	0	8	0	0	9
1962	89,181	19,949	69,232	18,681	4	53	0	15	36	13
1963	89,147	20,813	68,334	19,312	6	0	0	33	34	32
1964	69,915	32,196	37,719	30,337	20	7	0	682	34	21
<b>France (17)</b>										
1959	39,921	6,289	33,632	0	43	0	1,491	0	33	127
1960	43,181	6,714	36,467	0	83	0	1,499	0	0	258
1961	52,527	6,741	45,786	0	31	0	1,430	0	10	63
1962	48,608	4,790	43,818	0	2	0	614	0	5	173
1963	53,962	6,249	47,713	0	6	0	1,279	0	3	335
1964	65,780	9,340	56,440	0	0	0	1,185	0	4	306
<b>Denmark (18)</b>										
1959	44,184	556	43,628	0	0	0	0	0	0	19
1960	44,388	342	44,046	0	0	0	14	0	0	13
1961	49,843	332	49,511	0	0	0	24	0	0	8/
1962	59,106	245	58,861	0	0	0	0	0	0	0
1963	66,160	211	65,949	0	0	0	26	0	0	9
1964	63,861	193	63,668	0	0	0	54	0	0	8/
<b>Ghana (19)</b>										
1959	48,864	48,864	0	217	0	47,019	0	0	0	0
1960	36,818	36,818	0	43	10	35,837	0	0	0	8/
1961	62,327	62,326	1	121	1	60,772	0	0	0	0
1962	49,426	49,426	0	1,096	1	48,127	0	0	0	0
1963	41,688	41,688	8/	364	0	41,291	0	0	0	0
1964	60,955	60,513	442	1,027	0	59,481	0	0	0	0
<b>Ivory Coast (20)10/:</b>										
1959	---	---	---	---	---	---	---	---	---	---
1960	---	---	---	---	---	---	---	---	---	---
1961	---	---	---	---	---	---	---	---	---	---
1962	---	---	---	---	---	---	---	---	---	---
1963	---	---	---	---	---	---	---	---	---	---
1964	60,705	60,665	40	51,504	88	9,069	0	0	0	0
<b>Guatemala (21)</b>										
1959	61,325	61,169	156	49,779	0	350	0	5,724	0	222
1960	54,033	53,804	229	40,932	4	191	0	8,277	0	272
1961	54,658	52,519	2,139	43,721	0	251	0	6,322	0	233
1962	56,791	47,371	9,420	42,505	13	84	0	2,135	0	154
1963	64,589	51,655	12,934	47,062	24	131	0	2,102	0	173
1964	57,831	47,925	9,906	43,780	9	87	0	1,131	0	242
<b>Turkey (22)</b>										
1959	61,247	3,064	58,183	0	0	0	1,692	0	0	141
1960	65,411	3,004	62,407	0	0	0	2,119	0	0	97
1961	60,121	1,848	58,273	0	0	0	1,260	0	0	124
1962	63,708	1,429	62,279	0	0	0	846	0	0	61
1963	59,403	3,134	56,269	0	0	0	1,370	0	0	103
1964	55,840	2,475	53,365	0	0	0	1,015	0	10	182
<b>Angola (23)</b>										
1959	27,319	26,924	395	26,419	0	17	0	0	0	0
1960	24,383	23,988	395	23,727	0	0	0	0	0	0
1961	26,953	26,462	491	24,437	0	1,065	0	0	0	0
1962	37,474	37,097	377	36,883	0	0	0	0	0	0
1963	34,505	34,225	280	34,039	0	0	0	0	0	0
1964	53,342	53,003	339	52,928	0	7	0	0	0	0

Table 17.-- U. S. agricultural imports: Major countries of origin by commodity groups, specified calendar year - Continued

Country and year ended Dec. 31	Selected supplementary products									
	Cane sugar	Dutiable cattle and meats 2/	Fruits, nuts, and vegetables	Fats, oils, oilbearing materials 4/	Tobacco, unmd.	Apparel wool	Hides and skins 5/	Grains and preps. 6/	Dairy products 7/	Other supple. and comple. products
-- Thousand dollars --										
<b>Peru (16)</b>										
1959	9,669	0	242	11	17	4,350	871	68	0	4,378
1960	27,068	0	383	10	560	2,804	878	101	0	4,842
1961	64,172	0	807	0	162	2,445	577	66	0	6,845
1962	55,998	0	805	0	0	4,548	512	125	0	8,391
1963	51,407	47	951	0	67	5,248	312	142	0	11,556
1964	26,644	0	1,073	5	7	5,245	394	162	0	5,284
<b>France (17)</b>										
1959	1	471	4,493	1,295	242	1,633	2,837	116	2,118	25,021
1960	1	536	4,450	876	199	2,909	3,099	140	2,195	26,936
1961	1,027	633	6,390	237	128	2,400	4,937	1,316	3,197	30,728
1962	1	582	5,362	764	99	1,723	3,241	226	2,921	32,895
1963	4,657	530	4,780	310	15	1,404	4,433	256	2,732	33,222
1964	364	734	4,545	173	0	2,284	5,434	2,844	4,342	43,565
<b>Ark (18)</b>										
1959	0	30,125	307	1,721	0	78	595	238	3,427	7,674
1960	0	32,757	201	317	48	45	476	375	3,734	6,408
1961	0	35,698	566	191	105	64	178	460	4,123	8,434
1962	0	46,102	343	408	0	70	73	482	4,716	6,912
1963	0	51,542	331	459	0	27	33	719	4,515	8,519
1964	1	48,123	372	256	0	8/	129	1,300	4,768	8,858
<b>Ghana (19)</b>										
1959	0	0	0	0	0	0	0	0	0	1,628
1960	0	0	0	0	0	0	0	0	0	928
1961	0	0	0	1	0	0	0	0	0	1,432
1962	0	0	0	0	0	0	0	0	0	202
1963	0	0	0	0	0	0	0	0	0	33
1964	0	0	0	442	0	0	8/	0	0	5
<b>Ivory Coast (20)10/:</b>										
1959	---	---	---	---	---	---	---	---	---	---
1960	---	---	---	---	---	---	---	---	---	---
1961	---	---	---	---	---	---	---	---	---	---
1962	---	---	---	---	---	---	---	---	---	---
1963	---	---	---	---	---	---	---	---	---	---
1964	0	0	25	0	0	0	0	0	0	19
<b>Guatemala (21)</b>										
1959	1	0	7	8/	0	0	19	0	0	5,223
1960	0	0	4	116	0	0	0	11	0	4,226
1961	855	676	49	281	0	0	0	1	0	2,269
1962	4,412	4,268	140	300	0	0	0	0	0	2,780
1963	7,174	4,984	89	318	0	0	0	0	0	2,532
1964	4,918	4,235	4	291	0	0	4	0	0	3,130
<b>Turkey (22)</b>										
1959	0	0	6,273	255	48,640	194	1,770	0	0	2,282
1960	0	0	8,391	326	50,341	124	1,631	0	0	2,382
1961	0	0	5,931	149	49,282	188	1,767	0	1	1,419
1962	5,909	0	7,772	684	45,580	123	1,190	0	5	1,538
1963	888	0	7,393	99	46,064	177	467	0	0	2,842
1964	0	0	6,867	386	44,040	162	1,258	0	2	1,918
<b>Angola (23)</b>										
1959	0	0	0	144	0	0	0	0	0	739
1960	0	0	0	186	0	0	0	0	0	470
1961	0	0	3	259	0	0	0	0	0	1,189
1962	0	0	7	39	0	0	0	0	0	545
1963	0	0	4	89	0	24	0	0	0	349
1964	0	0	0	0	0	56	0	0	0	351

Continued -

Table 17.-- U. S. agricultural imports: Major countries of origin by commodity groups, specified calendar years - Continued

Country and year ended Dec. 31	Total	Complementary 1/	Supplementary 1/	Selected complementary products						
				Coffee	Crude rubber	Cocoa beans	Carpet wool	Bananas	Tea	Spices 2/
-- Thousand dollars --										
<b>Ethiopia (24)</b>										
1959	15,210	11,670	3,540	11,670	0	0	0	0	0	0
1960	26,217	24,669	1,548	24,669	0	0	0	0	0	0
1961	30,620	29,459	1,161	29,453	0	0	0	0	0	0
1962	28,212	26,581	1,631	26,577	0	0	0	0	0	0
1963	33,772	31,955	1,817	31,953	0	0	0	0	0	2
1964	52,233	49,449	2,784	49,442	0	0	3	0	0	0
<b>Costa Rica (25)</b>										
1959	31,528	27,687	3,841	13,168	104	5,165	0	7,714	0	0
1960	32,992	26,140	6,852	14,150	200	3,314	0	8,463	0	0
1961	37,547	31,115	6,432	17,350	119	2,842	0	10,754	0	0
1962	37,519	31,995	5,524	17,119	114	2,459	0	12,220	0	1
1963	39,182	28,142	11,040	12,767	78	2,995	0	12,197	0	1
1964	50,274	39,342	10,932	16,078	49	3,002	0	20,126	0	1
<b>Spain (26)</b>										
1959	36,926	831	36,095	0	0	21	17	0	0	92
1960	35,687	1,919	33,768	0	0	0	1,095	0	0	16
1961	39,519	1,076	38,443	0	0	0	399	0	0	33
1962	38,886	1,235	37,651	0	0	0	539	0	0	67
1963	36,545	1,562	34,983	0	0	0	714	0	0	171
1964	47,114	1,898	45,216	0	0	0	787	0	0	342
<b>Uganda (27) 10/</b>										
1959	---	---	---	---	---	---	---	---	---	---
1960	---	---	---	---	---	---	---	---	---	---
1961	---	---	---	---	---	---	---	---	---	---
1962	---	---	---	---	---	---	---	---	---	---
1963	---	---	---	---	---	---	---	---	---	---
1964	46,274	46,149	125	45,131	0	0	0	0	521	1
<b>S. Africa, Rep. (28)</b>										
1959	22,687	749	21,938	122	64	0	322	0	64	0
1960	19,978	717	19,261	164	72	0	285	0	13	0
1961	27,648	732	26,916	269	0	0	199	0	46	0
1962	44,153	774	43,375	150	104	25	351	0	44	1
1963	46,798	963	45,835	98	28	0	621	0	10	16
1964	42,995	1,226	41,769	233	47	60	600	0	25	0
<b>Japan (29)</b>										
1959	38,264	24,522	13,742	0	25	0	0	0	781	10
1960	43,307	27,007	16,300	0	25	0	0	0	820	17
1961	44,676	25,547	19,129	0	14	0	0	0	730	10
1962	47,495	25,477	22,018	0	97	0	0	0	877	11
1963	46,420	25,340	21,080	0	5	0	13	0	744	8
1964	40,119	16,798	23,321	0	53	0	9	0	695	167
<b>El Salvador (30)</b>										
1959	35,720	35,245	475	30,288	0	0	0	0	0	2
1960	27,528	26,452	1,076	22,337	0	0	0	0	0	1
1961	30,801	29,348	1,453	26,778	0	0	0	0	0	0
1962	38,758	36,088	2,670	36,034	0	0	0	0	0	0
1963	35,467	32,626	2,841	32,508	0	0	0	0	0	2
1964	38,853	35,751	3,102	35,221	0	0	0	337	0	3
<b>Honduras (31)</b>										
1959	21,498	20,700	798	7,020	0	0	0	13,541	0	12
1960	29,597	27,938	1,659	15,474	41	0	0	12,251	0	30
1961	27,502	24,881	2,621	6,467	0	0	0	18,221	0	54
1962	27,666	23,977	3,689	6,967	0	0	0	16,668	0	9
1963	25,940	22,354	3,586	9,127	0	0	0	12,915	0	73
1964	35,577	31,279	4,298	10,823	0	0	0	20,218	0	90

Table 17.-- U. S. agricultural imports: Major countries of origin by commodity groups, specified calendar years - Continued

Country and year ended Dec. 31	Selected supplementary products									
	Cane sugar	Dutiable cattle and meats 2/	Fruits, nuts, and vegetables	Fats, oils, oilbearing materials 4/	Tobacco, unmd.	Apparel, wool	Hides and skins 5/	Grains and preps. 5/	Dairy products 7/	Other supple. and comple. products
-- Thousand dollars --										
Ethiopia (24)										
1959	0	0	25	12	0	0	3,180	0	0	323
1960	0	0	0	29	0	0	1,102	0	0	417
1961	0	0	4	0	0	0	778	0	0	385
1962	0	0	2	69	0	0	1,130	0	0	434
1963	0	0	4	269	0	0	1,150	0	0	394
1964	0	0	8/	476	8/	2	1,696	0	0	614
Costa Rica (25)										
1959	414	3,267	4	29	0	0	0	0	0	1,663
1960	1,195	5,324	2	163	0	0	0	0	0	181
1961	3,235	2,739	1	250	0	0	0	0	0	257
1962	2,550	2,649	5	63	0	0	0	0	0	329
1963	5,478	4,998	26	152	29	0	1	0	0	460
1964	4,622	5,776	36	91	17	0	1	0	0	475
Spain (26)										
1959	0	93	23,882	4,960	176	3	381	0	0	7,201
1960	0	73	20,231	7,815	29	5	200	8/	8	6,215
1961	0	71	22,941	9,045	84	44	68	1	1	6,832
1962	0	50	23,110	7,226	89	19	31	0	2	7,753
1963	0	10	20,351	5,556	99	55	453	2	7	9,127
1964	0	22	24,214	10,430	0	0	644	1	5	10,669
Uganda (27) 10/										
1959	---	---	---	---	---	---	---	---	---	---
1960	---	---	---	---	---	---	---	---	---	---
1961	---	---	---	---	---	---	---	---	---	---
1962	---	---	---	---	---	---	---	---	---	---
1963	---	---	---	---	---	---	---	---	---	---
1964	0	0	33	0	0	0	66	0	0	522
S. Africa, Rep. (28)										
1959	0	0	295	139	1	20,156	872	18	0	634
1960	0	0	858	63	0	16,805	1,076	24	2	616
1961	88	0	878	253	3/	23,956	593	0	0	1,366
1962	10,718	0	985	1,183	0	28,079	738	450	2	1,323
1963	19,668	0	1,295	459	8	20,183	522	41	3	3,846
1964	14,966	0	2,503	75	4	22,079	715	3	0	1,685
Japan (29)										
1959	1	428	9,874	304	8/	304	183	277	6	26,071
1960	8/	661	12,029	282	8/	631	37	351	8	28,396
1961	1	762	13,649	552	2	1,248	44	398	2	27,264
1962	8/	1,367	14,596	1,860	6	333	38	502	24	27,784
1963	1	1,155	14,409	1,861	8/	155	66	532	164	27,307
1964	1	1,171	16,871	1,421	1	24	7	622	40	19,037
El Salvador (30)										
1959	0	0	0	366	0	0	6	0	8/	5,058
1960	740	0	0	194	0	0	0	0	0	4,256
1961	1,013	0	8/	281	0	0	0	0	8/	2,729
1962	1,991	0	7	314	0	0	0	0	0	411
1963	2,200	0	18	125	0	0	0	0	0	614
1964	2,593	0	29	196	0	0	0	0	1	473
Honduras (31)										
1959	0	482	295	0	0	0	12	0	0	136
1960	0	1,268	359	0	0	0	22	0	0	142
1961	0	2,265	322	0	0	0	7	0	0	166
1962	0	3,344	303	0	13	0	4	0	0	358
1963	0	2,864	589	12	60	0	9	0	0	291
1964	378	2,886	221	0	585	0	18	0	0	358

Continued -



Table 17.-- U. S. agricultural imports: Major countries of origin by commodity groups, specified calendar years - Continued

Country and year ended Dec. 31	Total	Complementary 1/	Supplementary 1/	Selected complementary products						
				Coffee	Crude rubber	Cocoa beans	Carpet wool	Bananas	Tea	Spices 2/
-- Thousand dollars --										
West Germany (32)										
1959	28,960	4,098	24,862	0	1	44	766	0	4	29
1960	31,339	3,942	27,397	0	0	5	791	0	18	17
1961	30,267	2,878	27,389	0	1	0	452	0	23	17
1962	29,444	2,405	27,039	0	1	0	488	0	9	13
1963	29,712	2,830	26,882	4	0	0	565	0	1	25
1964	35,390	2,923	32,467	6	8/	3	382	0	4	37
Ceylon (33)										
1959	33,610	32,160	1,450	0	9,586	125	0	0	21,599	336
1960	37,692	37,146	546	0	10,894	30	0	0	24,777	1,047
1961	30,301	30,243	58	0	7,231	13	0	0	22,447	267
1962	31,768	31,766	2	0	6,839	36	0	0	24,273	344
1963	33,128	33,103	25	6	7,063	0	0	0	24,770	771
1964	34,501	34,460	41	0	6,083	0	0	0	26,715	804
Greece (34)										
1959	28,632	290	28,342	0	0	0	64	0	0	109
1960	28,961	435	28,526	0	0	0	88	0	0	162
1961	30,166	459	29,707	0	0	0	34	0	0	190
1962	28,093	487	27,606	0	0	0	20	0	0	438
1963	26,567	371	26,196	0	0	0	101	0	0	232
1964	32,139	412	31,727	0	0	0	8	0	0	286
Poland (35)										
1959	26,045	194	25,851	0	0	0	0	0	0	159
1960	31,753	65	31,688	0	0	0	0	0	0	43
1961	31,136	117	31,019	0	0	0	0	0	0	102
1962	30,766	142	30,624	0	0	0	0	0	0	107
1963	27,653	146	27,507	0	0	0	0	0	0	129
1964	30,851	124	30,727	0	0	0	0	0	0	102
Nicaragua (36)										
1959	12,714	7,665	5,049	7,438	0	75	0	152	0	0
1960	18,225	8,740	9,485	8,423	0	90	0	220	0	0
1961	22,986	12,159	10,827	10,227	0	0	0	96	0	0
1962	23,532	12,050	11,482	8,363	0	0	0	529	0	0
1963	31,245	14,215	17,030	9,556	0	33	0	1,351	0	0
1964	29,397	13,893	15,504	9,043	0	20	0	2,116	0	0
Taiwan (37)										
1959	6,183	2,479	3,704	0	0	0	0	0	1,407	4
1960	5,737	3,390	6,347	0	0	0	0	0	2,056	2
1961	27,244	3,409	23,835	0	0	0	0	0	1,656	0
1962	26,233	3,754	22,479	0	47	0	0	0	1,683	2
1963	27,462	4,494	22,968	0	0	0	0	0	1,766	4
1964	29,212	3,626	25,586	0	0	0	0	0	1,769	4
Liberia (38)										
1959	29,362	29,362	0	429	23,899	34	0	0	0	0
1960	29,881	29,881	0	301	29,580	0	0	0	0	0
1961	24,124	24,124	0	368	23,756	0	0	0	0	0
1962	21,664	21,663	1	690	20,973	0	0	0	0	0
1963	19,910	19,910	8/	1,446	18,464	0	0	0	0	0
1964	26,912	26,902	10	7,016	19,886	0	0	0	0	0
Nigeria (39)										
1959	29,886	25,597	4,289	138	7,406	17,644	0	0	0	62
1960	33,717	31,521	4,196	54	11,518	19,535	0	0	0	72
1961	44,714	41,752	2,962	51	9,578	31,709	0	0	0	71
1962	41,393	38,174	3,219	121	10,317	27,213	0	0	0	209
1963	32,218	28,547	3,671	1	12,988	15,106	0	0	5	170
1964	25,986	22,673	3,313	238	6,878	14,623	0	0	6	458

Table 17.-- U. S. agricultural imports: Major countries of origin by commodity groups, specified calendar years - Continued

Country and year ended Dec. 31	Selected supplementary products								Other supple. and comple. products	
	Cane sugar	Durable cattle and meats 3/	Fruits, nuts, and vegetables	Fats, oils, oilbearing materials 4/	Tobacco, unmd.	Apparel wool	Hides and skins 5/	Grains and preps. 6/		Dairy products 7/
-- Thousand dollars --										
West Germany (32)										
1959	1	3,546	596	1,697	31	289	1,447	718	673	19,118
1960	1	2,154	915	2,565	63	185	1,983	2,378	809	19,455
1961	1	1,422	1,111	3,507	11	42	1,435	416	747	21,082
1962	1	1,205	802	3,365	2	3	1,715	689	616	20,535
1963	8/	932	920	1,362	8	8/	1,752	489	407	23,247
1964	0	905	996	1,558	20	9	1,503	462	465	29,040
Ceylon (33)										
1959	0	0	566	883	0	0	0	0	0	515
1960	0	0	19	519	0	0	8	0	0	398
1961	0	0	57	1	0	0	0	0	0	285
1962	0	0	8/	1	0	0	0	0	0	275
1963	0	0	17	3	0	0	0	3	0	495
1964	0	0	37	8/	8/	0	0	0	0	862
Greece (34)										
1959	0	0	2,036	259	25,632	0	4	8/	72	456
1960	0	0	1,442	156	26,241	0	128	8/	105	639
1961	0	0	1,665	61	27,493	0	34	0	163	529
1962	0	0	2,005	962	24,198	0	1	8/	99	370
1963	0	0	2,316	954	22,437	0	48	0	85	393
1964	0	0	2,362	122	28,519	0	60	0	251	531
Poland (35)										
1959	0	21,887	248	348	0	0	947	8/	1,551	905
1960	0	27,876	243	315	0	0	599	1	1,415	1,261
1961	1	26,158	478	251	0	0	773	4	2,068	1,301
1962	0	25,649	438	248	0	0	1,385	5	1,398	1,536
1963	0	23,960	517	228	0	0	865	17	187	1,750
1964	0	26,778	950	246	0	0	1,539	13	156	1,067
Nicaragua (36)										
1959	1,470	1,843	19	1,472	0	0	2	0	0	243
1960	3,951	3,209	30	2,046	0	0	8	0	0	248
1961	3,320	4,759	102	2,148	0	0	3	8/	1	2,330
1962	4,414	4,931	23	1,864	0	0	1	0	0	3,407
1963	6,278	7,945	24	2,181	0	0	1	0	0	3,876
1964	5,308	7,630	13	2,256	0	0	0	1	0	3,010
Taiwan (37)										
1959	391	0	1,044	0	0	0	0	18	0	3,319
1960	1,281	0	3,047	0	0	0	0	18	0	3,333
1961	18,038	0	4,192	0	0	0	1	21	0	3,336
1962	11,938	0	8,520	0	0	0	0	19	0	4,024
1963	8,554	0	12,377	8/	0	0	0	13	0	4,748
1964	9,477	0	12,952	2	0	0	0	17	0	4,951
Liberia (38)										
1959	0	0	0	0	0	0	0	0	0	0
1960	0	0	0	0	0	0	0	0	0	0
1961	0	0	0	0	0	0	0	0	0	0
1962	0	0	0	0	0	0	1	0	0	0
1963	0	0	0	0	0	0	0	0	0	8/
1964	0	0	0	0	0	0	10	0	0	0
Nigeria (39)										
1959	0	0	0	0	0	0	4,249	0	0	387
1960	0	0	0	72	0	0	4,080	0	0	386
1961	0	0	8/	0	0	0	2,890	0	0	415
1962	0	0	0	616	8	0	2,541	0	0	368
1963	0	0	0	536	39	0	3,045	0	0	328
1964	0	0	0	0	127	0	3,159	0	0	497

Continued -

Table 17.— U. S. agricultural imports: Major countries of origin by commodity groups, specified calendar years - Continued

Country and year ended Dec. 31	Total	Complementary 1/	Supplementary 1/	Selected complementary products						
				Coffee	Crude rubber	Cocoa beans	Carpet wool	Bananas	Tea	Spices 2/
-- Thousand dollars --										
<b>Panama (40)</b>										
1959	16,918	16,133	785	1,047	0	2,446	0	12,329	0	8
1960	16,671	15,939	732	813	1	1,617	0	13,759	0	0
1961	13,602	12,611	991	269	0	1,255	0	10,877	0	0
1962	11,074	10,650	424	41	0	1,094	0	9,263	0	61
1963	15,667	14,128	1,539	1,070	0	1,203	0	11,667	0	0
1964	25,181	22,425	2,756	173	0	1,196	0	20,922	0	0
<b>Burundi and Rwanda (41) 10/</b>										
1959	---	---	---	---	---	---	---	---	---	---
1960	---	---	---	---	---	---	---	---	---	---
1961	---	---	---	---	---	---	---	---	---	---
1962	---	---	---	---	---	---	---	---	---	---
1963	---	---	---	---	---	---	---	---	---	---
1964	24,105	24,105	0	24,008	16	0	0	0	0	0
<b>Congo (Laopold.) (42) 10/</b>										
1959	---	---	---	---	---	---	---	---	---	---
1960	---	---	---	---	---	---	---	---	---	---
1961	---	---	---	---	---	---	---	---	---	---
1962	---	---	---	---	---	---	---	---	---	---
1963	---	---	---	---	---	---	---	---	---	---
1964	23,475	16,967	6,508	9,141	7,251	0	0	0	132	0
<b>Kenya (43) 10/</b>										
1959	---	---	---	---	---	---	---	---	---	---
1960	---	---	---	---	---	---	---	---	---	---
1961	---	---	---	---	---	---	---	---	---	---
1962	---	---	---	---	---	---	---	---	---	---
1963	---	---	---	---	---	---	---	---	---	---
1964	23,260	22,495	765	15,239	0	0	0	0	3,329	5
<b>United Kingdom (44)</b>										
1959	27,607	12,334	15,273	0	40	0	5,149	0	2,071	8/
1960	25,476	8,829	16,647	0	15	64	3,412	0	1,524	14
1961	22,232	8,864	13,368	0	51	0	5,000	0	1,050	5
1962	25,420	8,015	17,405	8/	22	0	4,324	0	800	6
1963	26,506	9,758	16,748	0	6	0	7,504	0	315	2
1964	22,728	7,587	15,141	8/	0	14	5,380	11	423	16
<b>Iran (45)</b>										
1959	21,196	2,410	18,786	0	0	0	1,163	0	1	678
1960	21,753	1,872	19,881	0	0	0	577	0	7	567
1961	13,874	1,042	12,832	0	0	0	259	0	0	302
1962	15,039	1,123	13,916	0	0	0	152	0	0	362
1963	16,901	1,247	15,654	0	0	0	302	0	0	334
1964	20,142	1,469	18,673	0	0	0	365	0	0	560
<b>Venezuela (46)</b>										
1959	25,555	25,411	144	20,586	0	4,640	0	0	0	106
1960	22,431	22,287	144	17,988	0	3,933	0	0	0	34
1961	19,570	19,343	227	16,088	0	2,157	0	14	0	701
1962	16,088	15,693	395	12,148	0	2,592	0	236	0	268
1963	19,628	17,503	2,125	13,548	0	3,142	0	6	0	119
1964	19,810	19,016	794	14,627	0	3,321	0	7	0	57
<b>Thailand (47)</b>										
1959	78,033	71,920	6,113	0	70,130	0	0	0	0	5
1960	48,069	41,019	7,050	0	38,768	0	0	0	0	3
1961	33,415	24,478	8,937	0	21,897	0	0	0	0	2
1962	33,541	26,012	7,529	0	23,006	0	0	0	0	8/
1963	33,333	24,120	9,213	8/	20,133	0	0	0	8/	1/
1964	19,017	9,898	9,119	0	6,290	0	0	0	10	39

Table 17.-- U. S. agricultural imports: Major countries of origin by commodity groups, specified calendar years - Continued

Country and year ended Dec. 31	Selected supplementary products									Other suppl. and comple. products
	Cane sugar	Dutiable cattle and meats 3/	Fruits, nuts, and vegetables	Fats, oils, oilbearing materials 4/	Tobacco, unmd.	Apparel wool	Hides and skins 5/	Grains and preps. 6/	Dairy products 7/	
-- Thousand dollars --										
Panama (40)										
1959	475	249	0	0	0	0	0	46	0	318
1960	706	0	0	0	0	0	0	0	0	375
1961	892	50	4	0	0	0	0	0	0	255
1962	336	77	5	0	0	0	0	0	0	197
1963	1,409	116	2	0	0	0	0	0	0	200
1964	2,416	19	0	0	0	0	0	0	0	455
Rurundi and Rwanda (41) 10/										
1959	---	---	---	---	---	---	---	---	---	---
1960	---	---	---	---	---	---	---	---	---	---
1961	---	---	---	---	---	---	---	---	---	---
1962	---	---	---	---	---	---	---	---	---	---
1963	---	---	---	---	---	---	---	---	---	---
1964	0	0	0	0	0	0	0	0	0	81
Congo (Leopold.) (42) 10/										
1959	---	---	---	---	---	---	---	---	---	---
1960	---	---	---	---	---	---	---	---	---	---
1961	---	---	---	---	---	---	---	---	---	---
1962	---	---	---	---	---	---	---	---	---	---
1963	---	---	---	---	---	---	---	---	---	---
1964	0	0	0	6,508	0	0	0	0	0	443
Kenya (43) 10/										
1959	---	---	---	---	---	---	---	---	---	---
1960	---	---	---	---	---	---	---	---	---	---
1961	---	---	---	---	---	---	---	---	---	---
1962	---	---	---	---	---	---	---	---	---	---
1963	---	---	---	---	---	---	---	---	---	---
1964	0	3	268	15	7	0	103	0	0	4,291
United Kingdom (44)										
1959	52	761	2,598	1,235	12	568	1,303	2,298	59	11,461
1960	201	1,160	3,031	2,284	18	542	795	3,350	81	8,985
1961	295	473	3,073	700	15	391	570	2,939	50	7,620
1962	599	2,419	3,235	1,544	11	515	450	3,671	77	7,747
1963	27	1,356	2,833	2,666	6	631	394	2,688	158	7,920
1964	23	96	3,489	506	4	617	381	3,436	108	8,224
Iran (45)										
1959	0	0	3,246	11	3	6,591	8,277	0	0	1,226
1960	0	0	3,332	15	2	9,234	6,811	1	0	1,207
1961	0	0	2,948	36	1	4,833	4,937	8/	0	558
1962	0	0	3,993	177	2	4,049	5,609	8/	11	684
1963	0	0	4,765	37	1	5,302	4,785	0	0	1,375
1964	0	0	3,954	0	9	4,294	9,497	2	0	1,461
Venezuela (46)										
1959	0	0	23	77	0	0	0	0	0	123
1960	0	0	0	105	0	0	13	0	0	358
1961	0	0	15	130	1	0	0	0	8/	464
1962	0	0	115	190	0	0	3	8/	0	536
1963	1,592	0	182	139	0	0	8/	2	0	898
1964	420	0	147	146	16	0	0	1	0	1,068
Thailand (47)										
1959	0	0	5,896	0	0	0	25	6	0	1,971
1960	0	0	6,823	0	0	0	52	8/	0	2,423
1961	0	0	8,468	0	0	0	10	1	0	3,037
1962	0	0	4,856	0	0	0	77	1	0	5,601
1963	0	15	7,991	0	0	0	14	2	0	5,174
1964	0	0	8,062	0	0	0	2	1	0	4,613

Continued -

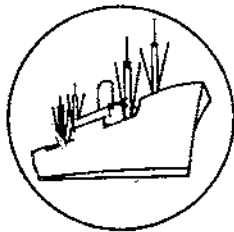
Table 17.-- U. S. agricultural imports: Major countries of origin by commodity groups, specified calendar years - Continued

Country and year ended Dec. 31	Total	Complementary 1/	Supplementary 1/	Selected complementary products						
				Coffee	Crude rubber	Cocoa beans	Carpet wool	Bananas	Tea	Spices 2/
-- Thousand dollars --										
<b>Malagasy, Rep. (48)</b>										
1959	10,634	10,569	65	1,170	0	10	0	0	0	7,396
1960	12,596	12,573	23	2,073	0	21	0	0	0	8,716
1961	11,758	10,993	765	2,506	25	0	0	0	0	6,495
1962	14,565	14,358	207	3,706	0	24	0	0	0	8,414
1963	16,417	14,462	1,955	5,586	0	42	0	0	0	6,162
1964	17,447	16,330	1,117	6,418	0	0	20	0	0	7,139
<b>Pakistan (49)</b>										
1959	25,606	10,156	15,450	0	0	0	9,979	0	43	0
1960	23,564	8,457	15,107	0	0	0	8,228	0	40	6
1961	22,910	10,264	12,646	0	0	0	10,235	0	22	0
1962	24,247	7,778	16,469	0	0	0	7,739	0	34	0
1963	22,307	7,382	14,925	0	0	0	7,370	0	0	0
1964	16,870	4,762	12,108	0	0	0	4,739	0	9	0
<b>Jamaica (50)</b>										
1959	2,991	1,412	1,579	168	0	160	0	0	0	822
1960	9,932	1,412	8,520	125	0	169	0	0	0	840
1961	16,105	971	15,134	20	0	0	0	0	0	738
1962	13,927	1,745	12,182	24	0	548	0	0	0	965
1963	17,641	1,632	16,009	1	0	391	0	69	0	985
1964	16,143	1,618	14,525	58	0	371	0	10	0	945
<b>E. E. C. 11/</b>										
1959	220,878	34,595	186,283	0	76	243	8,045	0	1,840	1,106
1960	220,949	31,035	189,914	0	86	5	6,404	0	1,251	1,489
1961	227,387	26,600	200,787	106	32	21	4,521	0	672	1,130
1962	232,069	26,179	205,890	33	149	41	3,440	0	3,712	1,194
1963	238,579	30,612	207,967	61	6	0	6,676	0	2,821	1,342
1964	257,899	35,170	222,729	96	8/	3	5,377	2	2,963	1,375
<b>E. F. T. A. 12/</b>										
1959	89,389	14,817	74,572	138	40	0	5,251	0	2,071	29
1960	89,287	13,345	75,942	88	15	179	4,034	0	1,524	32
1961	92,996	11,868	81,128	3	51	34	5,818	0	1,050	10
1962	106,042	11,172	94,870	172	22	0	4,939	0	800	17
1963	115,757	13,594	102,163	70	6	0	8,505	0	315	25
1964	110,985	10,168	100,817	29	0	14	5,851	11	423	30
<b>L. A. F. T. A. 13/</b>										
1959	1,262,973	971,648	291,325	823,126	209	48,402	36,802	34,447	125	3,291
1960	1,184,284	867,933	316,351	732,278	308	46,330	34,466	31,793	406	3,472
1961	1,233,933	797,860	436,073	684,120	490	31,449	32,970	28,834	342	2,472
1962	1,237,954	791,421	446,533	688,485	192	17,073	29,413	34,925	588	1,558
1963	1,274,258	759,164	515,094	629,919	260	36,510	28,749	39,610	396	1,123
1964	1,246,807	850,537	396,270	728,572	206	22,210	18,556	56,315	391	1,829

Table 17.-- U. S. agricultural imports: Major countries of origin by commodity groups, specified calendar years - Continued

Country and year ended Dec. 31	Selected supplementary products									Other suppl. and comple. products
	Cane sugar	Dutiable cattle and meats 3/	Fruits, nuts, and vegetables	Fats, oils, oilbearing materials 4/	Tobacco: unmf.	Apparel: wool	Hides and skins 5/	Grains and preps. 6/	Dairy products: 7/	
-- Thousand dollars --										
Malagasy, Rep. (48):										
1959 .....	0	0	39	0	0	0	6	0	0	2,013
1960 .....	0	0	21	0	0	0	0	0	0	1,765
1961 .....	0	0	638	0	0	0	0	0	0	2,094
1962 .....	0	0	34	0	0	0	0	0	0	2,387
1963 .....	1,923	0	24	0	0	0	0	0	0	2,680
1964 .....	1,035	0	51	0	16	0	15	0	0	2,753
Pakistan (49)										
1959 .....	0	0	29	0	0	23	2,936	0	0	12,596
1960 .....	0	0	0	0	0	0	4,181	0	0	11,109
1961 .....	0	1	15	0	0	68	3,744	0	0	8,825
1962 .....	0 8/	0	0	0	0	62	3,322	0	0	13,090
1963 .....	0 8/	0	0	4	0	170	2,880	0	0	11,883
1964 .....	0	16	4	0	0	232	1,294	1	0	10,575
Jamaica (50)										
1959 .....	0	2	221	45	0	0	93	0	0	1,480
1960 .....	6,159	1	352	11	0	0	76	0	0	2,199
1961 .....	12,891 8/	375	0 8/	0	0	0	70 8/	0	0	2,011
1962 .....	9,057	1	454	0	85	0	52	1	0	2,740
1963 .....	11,598	0	476	0	210	0	32 8/	0	0	3,879
1964 .....	10,714	23	460	0	161	0	32	6	0	3,363
E. E. C. 11/										
1959 .....	388	38,153	23,792	19,855	1,563	2,070	6,264	2,950	18,093	96,440
1960 .....	756	33,632	24,199	15,839	1,691	3,326	6,886	4,737	18,425	102,223
1961 .....	2,607	33,970	30,999	12,735	1,419	2,573	7,813	4,051	19,536	105,202
1962 .....	1,449	34,392	28,638	15,259	1,114	1,935	8,352	3,803	19,457	109,097
1963 .....	5,466	33,201	28,231	10,941	1,257	1,734	8,449	2,837	19,054	116,503
1964 .....	832	28,324	28,955	12,714	1,260	2,600	9,880	5,800	21,760	135,918
E. F. T. A. 12/										
1959 .....	52	31,018	5,187	3,429	12	663	3,383	3,603	11,174	23,339
1960 .....	202	34,228	5,401	2,930	81	603	2,284	4,798	11,162	21,726
1961 .....	295	36,354	7,364	1,503	120	495	2,231	4,420	12,195	21,053
1962 .....	600	48,915	6,116	2,461	11	966	2,567	5,251	12,822	20,383
1963 .....	27	53,142	6,328	3,583	6	689	1,916	4,705	12,569	23,871
1964 .....	27	48,426	7,326	1,438	4	643	1,759	6,072	13,802	25,130
L. A. F. T. A. 13/										
1959 .....	18,921	111,153	51,362	30,164	19	22,336	10,881	630	9,032	62,073
1960 .....	81,459	73,626	60,467	27,346	721	18,880	7,841	531	9,411	54,945
1961 .....	173,654	101,563	48,904	34,433	993	19,248	6,050	694	7,442	60,235
1962 .....	156,532	114,090	57,071	32,169	2,463	23,664	7,264	882	7,648	63,937
1963 .....	207,399	109,245	68,248	29,075	5,098	26,950	6,373	1,448	7,672	76,183
1964 .....	128,203	71,696	83,661	27,055	8,199	20,531	5,826	1,856	9,414	62,287

1/ Imports similar to agricultural commodities produced commercially in the United States and others that are interchangeable in use to any significant extent with such U.S. commodities are supplementary. All other commodities are complementary. 2/ Includes mainly pepper, vanilla beans, cassia and cassia vera, nutmegs, and caraway seed. 3/ Includes mainly beef and veal; pork; mutton, goat, and lamb; and poultry meat. 4/ Includes mainly coconut oil, castor oil, olive oil, palm oil, carnauba wax, cacao butter, tung oil, and palm kernel oil; also copra, sesame seed, poppy seed, and sunflower seed. Excludes essential and distilled oils. 5/ Includes mainly sheep and lamb skins; goat and kid skins; cattle hides; horse, colt, and ass hides; kip skins; and calf skins. 6/ Includes mainly barley, barley malt, wheat, wheat flour, rye, corn, rice, and oats. 7/ Includes mainly cheese and casein. 8/ Less than \$500. 9/ Effective January 1, 1964. Includes the former Federation of Malaya and State of Singapore. 10/ Not separately classified prior to January 1, 1964. 11/ The European Economic Community (Common Market) includes the Netherlands, Belgium and Luxembourg, France, West Germany, and Italy. 12/ The European Free Trade Association includes the United Kingdom, Denmark, Switzerland, Sweden, Norway, Austria, and Portugal. 13/ The Latin American Free Trade Association includes Argentina, Brazil, Chile, Colombia, Ecuador, Mexico, Paraguay, Peru, and Uruguay.



## Export Highlights

JULY-AUGUST 1965

U.S. agricultural exports totaled \$1,007 million in July-August 1965, up 12 percent from the same months in 1964 (table 18). The gain resulted from a substantial rise in exports of corn. Gains occurred also for rice, wheat, soybeans, cottonseed and soybean oils, tobacco, fruits, and vegetables. Somewhat offsetting were substantial declines in exports of cotton, lard, and poultry meat.

Exports in July totaled a record \$548 million, exceeding the previous record for this month by 14 percent. Exports in August were \$459 million compared with \$419 million in 1964. The decline from July to August reflected the limited supplies of soybeans available for export because of low year-end stocks. In addition, there were reduced exports of feed grains, cotton, and rice in August.

### EXPORTS TO THE EUROPEAN ECONOMIC COMMUNITY JULY-AUGUST 1965

U.S. exports of agricultural products to the European Economic Community totaled \$236 million in July-August 1965 compared with \$190 million in the same months in 1964. Exports of commodities subject to the EEC system of variable levies rose to \$115 million from \$70 million in 1964. Most of the increase was accounted for by the substantial rise in exports of feed grains, to \$84 million from \$45 million in 1964. Other increases occurred for wheat, rice, beef and veal, and turkeys. Declines occurred in rye, wheat flour, dairy products, pork, and broilers and fryers.

U.S. exports of commodities not subject to the variable levies totaled an estimated \$121 million in July-August 1965 compared with \$120 million in 1964. Gains occurred for fruits and vegetables, hides and skins, oilcake and meal, soybeans, and tobacco. The increase for fruits and vegetables mainly reflected larger gains in shipments of fresh oranges from the low levels of the preceding year. Exports of hides and skins rose because of increased demand in the EEC area, smaller supplies from other exporting countries, and a rise in prices. Exports of soybeans and oilcake and meal have continued to be stimulated by the expanding livestock industry in the EEC area. The gain in U.S. exports of unmanufactured tobacco reflected the improved quality of the 1965 U.S. flue-cured crop, a decline in production in Rhodesia, and increased cigarette use in the EEC. The sharp decline in cotton exports offset most of the above gains.

Table 18.--U.S. agricultural exports: Value by commodity,  
July-August 1964 and 1965

Commodity	1964	1965 <sup>1/</sup>	Change
	-- Million dollars --		Percent
Animals and animal products:			
Dairy products <sup>2/</sup> .....	35	38	+9
Fats, oils, and greases .....	41	37	-10
Hides and skins .....	16	18	+13
Meats and meat products .....	17	17	---
Poultry products .....	12	10	-17
Other .....	10	13	+30
Total animals, etc. <sup>2/</sup> .....	131	133	+2
Cotton, excluding linters .....	107	50	-53
Fruits and preparations .....	47	57	+21
Grains and preparations:			
Feed grains, excluding products ...	130	2	+57
Rice, milled .....	15	31	+107
Wheat and flour .....	199	223	+12
Other .....	9	12	+33
Total grains, etc. ....	353	470	+33
Oilseeds and products:			
Cottonseed and soybean oils <sup>3/</sup> ...	38	43	+13
Soybeans .....	66	87	+32
Protein meal .....	25	24	-4
Other .....	16	13	-19
Total oilseeds, etc. <sup>3/</sup> .....	145	167	+15
Tobacco, unmanufactured .....	50	57	+14
Vegetables and preparations .....	21	25	+19
Other .....	45	48	+7
Total exports .....	899	1,007	+12

<sup>1/</sup> Preliminary. <sup>2/</sup> Prior to January 1, 1965 excludes Title III, P.L. 480 donations of butter and ghee, which are included in "Other" agricultural exports.

<sup>3/</sup> Prior to January 1, 1965 excludes Title III, P.L. 480 donations, which are included in "Other" agricultural exports.



Table 19.--U.S. agricultural exports to the European Economic Community:  
Value by commodity, August and July-August 1963-65 <sup>1/</sup>

Commodity	August			July-August		
	1963	1964	1965	1963	1964	1965
-- 1,000 dollars --						
<u>Variable levy commodities <sup>2/</sup>:</u>						
Feed grains .....	11,542	23,265	37,799	33,546	45,395	84,051
Rice .....	209	687	223	1,588	1,622	1,777
Rye grain .....	139	0	0	449	166	114
Wheat grain .....	2,843	1,446	5,699	6,910	5,686	11,574
Wheat flour <sup>3/</sup> .....	1,279	36	102	1,433	139	161
Beef and veal (ex. variety meats) and cattle .....	14	179	230	32	419	580
Dairy products .....	3,552	3,057	3,595	5,903	8,295	6,372
Lard .....	236	105	14	401	116	25
Pork (ex. variety meats) and swine ..	14	32	4	27	119	16
Poultry and eggs:						
Live poultry .....	153	47	173	254	142	383
Broilers and fryers .....	1,458	660	592	2,303	1,504	1,024
Stewing chickens .....	384	409	95	774	640	225
Turkeys .....	1,053	907	1,855	1,404	1,382	2,731
Other fresh poultry .....	13	58	106	51	88	173
Eggs .....	388	56	143	725	238	240
Total poultry and eggs .....	3,449	2,137	2,964	5,511	3,994	4,776
Other .....	2,698	1,523	2,379	5,066	3,936	5,068
<b>Total .....</b>	<b>25,975</b>	<b>32,467</b>	<b>53,009</b>	<b>60,866</b>	<b>69,887</b>	<b>114,514</b>
<u>Non-variable levy commodities:</u>						
Canned poultry <sup>4/</sup> .....	152	346	369	301	684	612
Cotton, excluding linters .....	11,839	7,123	2,817	14,611	24,966	5,821
Fruits and vegetables .....	9,254	9,716	11,160	17,865	14,612	22,115
Hides and skins .....	1,452	1,835	2,212	2,526	3,422	4,463
Oilcake and meal .....	4,251	9,060	6,512	9,854	14,300	15,240
Soybeans .....	11,224	7,417	10,619	19,226	17,180	24,448
Tallow <sup>4/</sup> .....	1,607	2,288	1,883	3,648	4,789	4,840
Tobacco, unmanufactured .....	9,244	7,672	10,326	20,574	17,526	23,367
Variety meats, fresh, frozen <sup>4/</sup> .....	1,745	2,486	3,012	3,164	4,677	5,237
Vegetable oils, expressed .....	217	2,374	1,383	949	4,077	3,354
Food for relief or charity .....	2,072	578	569	2,435	868	833
Other .....	5,360	6,879	4,225	9,512	12,615	10,726
<b>Total .....</b>	<b>58,417</b>	<b>57,774</b>	<b>55,087</b>	<b>104,665</b>	<b>119,716</b>	<b>121,056</b>
<b>Total EEC .....</b>	<b>84,392</b>	<b>90,241</b>	<b>108,096</b>	<b>165,531</b>	<b>189,603</b>	<b>235,570</b>

<sup>1/</sup> Compiled from U.S. Bureau of the Census data. <sup>2/</sup> Grains, poultry, and pork were subject to variable levies beginning on July 30, 1962; rice on September 1, 1964; and beef and dairy products on November 1, 1964. The variable levy classification is designed to show overall changes in exports rather than to measure the impact of the variable levies. <sup>3/</sup> Lard for food is a variable levy commodity while lard for industrial use is bound under the General Agreement on Tariffs and Trade (GATT) at 3 percent ad valorem. U.S. lard is for food use. <sup>4/</sup> Although canned poultry, tallow, and variety meats are subject to variable levies, the import duties are bound under GATT.

Table 20.— U. S. agricultural exports: Quantity and value by commodity,  
August 1964 and 1965 and July-August 1964 and 1965

Commodity exported	Unit	August 1/				July-August 1/			
		Quantity		Value		Quantity		Value	
		1964	1965	1,000	1,000	1964	1965	1,000	1,000
		Thousands	Thousands	dollars	dollars	Thousands	Thousands	dollars	dollars
<b>ANIMALS AND ANIMAL PRODUCTS</b>									
<b>Animals, live:</b>									
Cattle .....	No.	3	5	872	1,581	7	17	2,119	4,058
Poultry, live -									
Baby chicks (chickens) .....	No.	1,618	3,006	553	1,026	3,610	5,382	1,234	1,843
Other live poultry .....		2/	2/	195	160	2/	2/	475	324
Other .....		2/	2/	495	768	2/	2/	839	957
Total animals, live .....		---	---	2,115	3,535	---	---	4,667	7,182
<b>Dairy products:</b>									
Anhydrous milk fat, including donations .....	Lb.	2,654	1,416	1,800	963	5,080	2,055	3,111	1,339
Butter, including donations .....	Lb.	6,537	1,170	2,784	394	15,993	2,151	6,566	800
Cheese, including donations .....	Lb.	658	436	334	227	1,669	840	810	426
Infants' and dietetic foods, chiefly milk .....	Lb.	1,087	1,482	716	1,109	2,765	2,878	1,712	2,131
Milk and cream -									
Condensed and evaporated, incl. donations .....	Lb.	9,918	9,323	2,117	2,065	18,651	16,508	3,942	3,561
Dry, whole milk and cream .....	Lb.	934	3,132	493	1,061	1,776	4,266	894	1,646
Fresh .....	Gal.	150	108	131	134	242	185	287	243
Nonfat dry, including donations .....	Lb.	87,493	107,274	7,993	14,841	195,992	193,097	17,037	26,744
Other .....		2/	2/	341	344	2/	2/	774	752
Total dairy products .....		---	---	16,709	21,138	---	---	35,133	37,642
<b>Fats, oils, and greases:</b>									
Lard .....	Lb.	46,322	12,861	4,593	1,510	92,132	42,193	8,966	4,931
Tallow -									
Edible .....	Lb.	663	385	68	49	1,344	715	135	91
Inedible .....	Lb.	163,592	174,063	11,651	15,615	402,664	328,920	27,853	29,949
Other animal fats, oils, and greases .....	Lb.	29,503	8,232	2,518	879	53,788	22,905	4,387	2,462
Total fats, oils, and greases .....	Lb.	240,080	195,541	18,830	18,053	549,928	394,733	41,341	37,433
<b>Meat and meat products:</b>									
Beef and veal .....	Lb.	2,809	2,184	1,214	1,265	6,305	3,999	2,600	2,386
Pork .....	Lb.	5,926	3,619	1,666	1,385	14,483	5,221	4,172	2,307
Sausage casings .....	Lb.	1,184	1,269	732	735	2,289	2,053	1,428	1,262
Variety meats (edible offals) .....	Lb.	20,310	20,025	4,150	5,348	37,126	37,481	7,637	9,277
Other, including meat extracts .....	Lb.	1,262	2,268	522	930	2,563	3,938	1,002	1,593
Total meat and products (except poultry) .....	Lb.	31,591	29,365	8,284	9,563	62,766	53,692	16,839	16,825
<b>Poultry products:</b>									
Eggs, dried and otherwise preserved .....	Lb.	478	845	566	269	892	1,167	1,051	573
Eggs in the shell -									
Hatching .....	Doz.	470	400	557	378	973	779	1,188	789
Other .....	Doz.	100	230	37	85	180	409	67	157
Poultry meat -									
Chickens, fresh or frozen .....	Lb.	11,430	8,180	2,777	2,074	24,466	15,720	5,632	3,959
Turkeys, fresh or frozen .....	Lb.	3,206	6,086	1,156	2,067	6,230	9,400	2,233	3,151
Other, fresh or frozen .....	Lb.	723	869	207	270	1,274	1,731	352	554
Canned and otherwise preserved .....	Lb.	2,228	2,241	493	556	4,261	4,256	1,048	1,022
Total poultry products .....		---	---	5,793	5,699	---	---	11,571	10,205

Continued -

Table 20.— U. S. agricultural exports: Quantity and value by commodity,  
August 1964 and 1965 and July-August 1964 and 1965 - Continued

Commodity exported	Unit	August 1/				July-August 1/			
		Quantity		Value		Quantity		Value	
		1964	1965	1964	1965	1964	1965	1964	1965
				1,000	1,000			1,000	1,000
<b>Other animal products:</b>		Thousands	Thousands	dollars	dollars	Thousands	Thousands	dollars	dollars
Feathers, crude or dressed	Lb.	188	110	131	120	321	160	226	174
Gelatin, edible	Lb.	206	224	722	143	551	399	1,523	259
Hair, raw or dressed (except wool)	Lb.	613	1,419	242	278	1,108	2,051	395	537
Hides and skins, raw (except furs) 3/	No.	1,320	1,280	8,032	8,041	2,739	2,818	15,922	17,678
Honey	Lb.	562	1,257	111	194	1,025	1,940	217	316
Wool, unmanufactured	C.Lb.	105	653	117	630	181	1,846	218	1,565
Other		2/	2/	1,247	1,781	2/	2/	3,397	3,576
Total other animal products		---	---	10,602	11,187	---	---	21,898	24,105
Total animals and animal products		---	---	62,333	69,275	---	---	131,449	133,392
VEGETABLE PRODUCTS									
<b>Cotton, unmanufactured:</b>									
Cotton	RBale	120	117	16,286	15,230	817	383	107,313	50,094
Linters	RBale	11	11	330	334	30	29	849	917
Total cotton and linters	RBale	131	128	16,616	15,564	847	412	108,162	51,011
<b>Fruits and preparations:</b>									
Canned -									
Fruit cocktail	Lb.	15,113	10,283	2,355	1,722	19,139	15,619	3,061	2,587
Peaches	Lb.	25,963	42,029	2,829	4,492	28,198	51,492	3,106	5,556
Pears	Lb.	303	576	62	108	486	936	101	180
Pineapples	Lb.	17,249	13,859	2,397	2,147	29,939	36,662	4,210	5,437
Other	Lb.	5,448	6,637	862	1,088	8,636	10,785	1,479	1,839
Total canned fruits	Lb.	64,076	73,384	8,505	9,557	86,398	115,494	11,957	15,599
Dried -									
Prunes	Lb.	4,004	8,209	895	1,483	8,610	13,983	1,878	2,560
Raisins (dried grapes)	Lb.	8,772	7,286	1,574	1,194	14,385	11,871	2,609	2,051
Other	Lb.	895	705	240	262	1,924	1,369	517	482
Total dried fruits	Lb.	13,671	16,191	2,709	2,939	24,919	27,223	5,004	5,093
Fresh -									
Apples	Lb.	4,607	3,773	411	323	6,794	11,464	620	985
Berries	Lb.	917	1,490	216	354	5,712	4,525	1,084	1,053
Grapefruit	Lb.	10,797	10,583	820	785	18,378	20,700	1,391	1,548
Grapes	Lb.	15,417	22,842	1,998	2,677	24,502	34,517	3,457	4,254
Lemons and limes	Lb.	23,821	27,409	1,774	2,168	54,531	57,807	3,796	4,514
Oranges and tangerines	Lb.	44,163	45,433	4,035	3,875	70,633	95,070	6,356	8,101
Pears	Lb.	6,316	4,886	621	615	9,673	5,609	967	713
Other	Lb.	30,759	47,561	1,960	3,548	81,649	104,983	5,207	7,604
Total fresh fruits	Lb.	136,837	163,977	11,835	14,345	271,872	334,675	22,878	28,772
Fruit juices -									
Grapefruit	Gal.	186	244	247	265	473	500	597	520
Orange	Gal.	521	621	1,419	1,142	1,107	1,422	3,069	2,878
Other	Gal.	1,031	707	1,187	740	1,903	1,666	2,255	1,853
Total fruit juices	Gal.	1,738	1,572	2,853	2,147	3,483	3,588	5,921	5,251
Frozen fruits	Lb.	2,013	3,429	369	583	2,640	6,253	492	1,070
Other		2/	2/	666	825	2/	2/	1,040	1,085
Total fruits and preparations		---	---	26,937	30,396	---	---	47,292	56,870

Continued -

Table 20.-- U. S. agricultural exports: Quantity and value by commodity,  
August 1964 and 1965 and July-August 1964 and 1965 - Continued

Commodity exported	Unit	August 1/				July-August 1/				
		Quantity		Value		Quantity		Value		
		1964	1965	1,000	1,000	1964	1965	1,000	1,000	
		Thousands	Thousands	dollars	dollars	Thousands	Thousands	dollars	dollars	
<b>Grains and preparations:</b>										
Feed grains and products -										
Barley grain (48 lb.)	Bu.	3,139	4,706	3,366	5,480	4,921	9,763	5,213	11,283	
Corn grain, including donations (56 lb.)	Bu.	41,951	48,637	56,318	68,361	74,744	100,134	100,584	141,304	
Grain sorghums (56 lb.)	Bu.	7,733	11,788	8,897	14,044	20,361	40,827	23,586	48,188	
Oats grain (32 lb.)	Bu.	598	2,791	399	1,977	873	5,033	584	3,590	
Total feed grains	M.Ton	1,329	1,678	68,974	89,862	2,526	3,866	129,967	204,365	
Malt and flour, including barley malt	Lb.	8,260	11,683	495	694	14,201	18,188	854	1,126	
Corn grits and hominy	Lb.	4,128	3,051	173	128	7,613	5,630	317	236	
Cornmeal, including donations	Qrt.	662	392	2,534	1,621	849	796	3,250	3,266	
Cornstarch	Lb.	6,649	4,731	554	472	15,051	10,616	1,178	1,061	
Oatmeal, groats, and rolled oats	Lb.	483	1,255	44	108	852	2,306	74	188	
Total feed grains and products	H.Ton	1,407	1,724	72,774	92,885	2,632	3,957	135,640	210,242	
Rice -										
Milled, including donations	Lb.	78,604	96,900	5,886	6,834	200,639	419,135	14,642	30,793	
Paddy or rough	Lb.	75	9	8	4/	386	1,077	37	85	
Total rice (milled basis)	Lb.	78,653	96,906	5,894	6,834	200,890	419,835	14,679	30,878	
Rye grain (56 lb.)	Bu.	161	7	206	11	281	166	373	200	
Wheat and flour, including donations -										
Wheat grain (60 lb.)	Bu.	44,730	58,373	80,402	94,542	97,675	123,515	172,446	201,085	
Wheat flour, wholly of U. S. wheat	Qrt.	4,277	2,718	18,409	10,522	6,449	5,438	27,162	21,694	
Total wheat and flour	Bu.	54,482	64,569	98,811	105,064	112,379	135,914	199,608	222,779	
Bakery products	Lb.	1,190	1,080	470	537	2,465	2,074	985	1,002	
Other, including donations	2/	2/	2/	1,544	2,673	2/	2/	2,519	5,231	
Total grains and preparations		---	---	179,699	208,004	---	---	353,804	470,332	
<b>Oilseeds and products:</b>										
Oils, including donations -										
Cottonseed oil	Lb.	75,339	55,081	9,049	6,988	96,537	96,651	11,459	12,554	
Soybean oil	Lb.	132,130	133,972	13,911	17,578	259,212	226,185	26,916	30,462	
Other	Lb.	31,132	26,094	3,788	3,507	60,250	44,374	7,173	6,479	
Total oils (except essential)	Lb.	238,601	215,147	26,748	28,073	415,999	367,210	45,548	49,495	
Oilseeds -										
Flaxseed (56 lb.)	Bu.	1,312	87	3,747	267	1,854	1,255	5,284	3,833	
Soybeans (60 lb.)	Bu.	13,741	11,741	34,973	34,089	25,652	29,162	66,139	86,811	
Other	2/	2/	2/	1,912	1,554	2/	2/	3,093	2,707	
Total oilseeds		---	---	40,632	35,910	---	---	74,516	93,351	
Protein meal (oil-cake and meal)	S.Ton	185	131	13,570	10,411	338	304	25,428	23,946	
Total oilseeds and products		---	---	80,950	74,394	---	---	145,492	166,792	
<b>Tobacco, unmanufactured:</b>										
Burley	Lb.	3,211	2,713	2,336	2,332	7,154	7,613	4,785	5,985	
Cigar wrapper	Lb.	510	440	1,686	1,268	832	903	2,641	3,092	
Dark-fired Kentucky and Tennessee	Lb.	1,277	1,445	601	721	1,897	2,777	879	1,376	
Flue-cured	Lb.	21,301	25,335	17,822	21,016	46,420	52,583	38,794	43,888	
Maryland	Lb.	872	584	799	459	1,404	1,249	1,261	1,006	
Other	Lb.	1,351	2,037	888	802	3,569	3,566	1,871	1,651	
Total tobacco, unmanufactured	Lb.	28,522	32,554	24,132	26,598	61,276	68,691	50,231	56,998	

Continued -

Table 20.-- U. S. agricultural exports: Quantity and value by commodity,  
August 1964 and 1965 and July-August 1964 and 1965 - Continued

Commodity exported	Unit	August 1/				July-August 1/			
		Quantity		Value		Quantity		Value	
		1964	1965	1964	1965	1964	1965	1964	1965
		Thousands	Thousands	dollars	dollars	Thousands	Thousands	dollars	dollars
<b>Vegetables and preparations:</b>									
<b>Canned -</b>									
Asparagus	:Lb.	5,417	5,304	1,354	1,565	9,940	13,853	2,564	4,230
Soups	:Lb.	1,052	1,340	190	303	2,296	2,778	416	590
Tomato paste and puree	:Lb.	440	601	88	133	1,027	1,585	212	344
Tomato sauce for cooking purposes	:Lb.	49	245	12	34	149	463	19	65
Other	:Lb.	4,339	5,011	602	768	8,075	10,864	1,178	1,475
Total canned vegetables	:Lb.	11,347	12,501	2,246	2,803	21,487	29,543	4,389	6,704
Dried beans, including donations	:Lb.	20,681	32,730	1,601	2,378	52,170	66,009	4,067	4,794
Dried peas, including cow and chick	:Lb.	15,374	20,387	960	1,313	24,997	40,656	1,545	2,434
<b>Fresh -</b>									
Lettuce	:Lb.	3,298	3,639	166	196	8,161	7,312	384	370
Onions	:Lb.	6,280	6,060	271	284	13,598	15,008	542	721
Potatoes (except sweet potatoes)	:Lb.	5,887	4,992	262	203	34,683	36,500	1,528	1,555
Tomatoes	:Lb.	6,279	4,834	496	440	17,508	16,103	1,719	1,629
Other	:Lb.	10,026	8,050	524	692	25,215	23,871	1,390	1,793
Total fresh vegetables	:Lb.	31,770	27,575	1,719	1,815	99,165	98,794	5,563	6,068
Frozen vegetables	:Lb.	1,346	1,185	248	254	2,831	2,644	524	536
Soups and vegetables, dehydrated	:Lb.	795	1,132	313	573	2,421	1,857	957	1,028
Vegetable seasonings	:Lb.	309	704	220	356	1,056	1,456	672	675
Tomato juice, canned	:Gal.	154	165	132	137	446	426	378	380
Other		2/	2/	1,402	1,042	2/	2/	2,724	2,265
Total vegetables and preparations		---	---	8,841	10,671	---	---	20,819	24,884
<b>Other vegetable products:</b>									
Coffee	:Lb.	1,159	1,807	1,699	3,185	3,066	4,280	4,482	7,125
Drugs, herbs, roots, leaves, etc., crude	:Lb.	369	869	350	506	639	1,644	592	921
Essential oils, natural	:Lb.	642	932	1,202	1,822	1,428	1,588	2,888	3,388
Feeds and fodders (except oil-cake and meal)	:---	2/	2/	4,158	7,808	2/	2/	9,308	15,741
Flavoring sirups, sugars, and extracts	:Gal.	124	599	676	2,209	252	1,089	1,299	3,653
Hops	:Lb.	650	316	394	176	1,109	751	694	444
Nursery and greenhouse stock	:---	2/	2/	400	597	2/	2/	678	949
Nuts and preparations	:Lb.	9,939	11,130	1,646	2,616	19,773	26,006	3,196	5,577
Seeds (except oilseeds)	:Lb.	3,145	3,057	836	1,067	8,683	6,061	2,124	2,023
Spices	:Lb.	226	384	208	287	613	931	465	606
Other, including donations		2/	2/	8,546	4,112	2/	2/	16,333	5,654
Total other vegetable products		---	---	20,115	24,385	---	---	42,059	47,081
Total vegetable products		---	---	37,290	39,012	---	---	767,859	873,968
TOTAL AGRICULTURAL EXPORTS		---	---	419,623	459,287	---	---	899,308	1,007,360
TOTAL NONAGRICULTURAL EXPORTS		---	---	1,521,991	1,701,760	---	---	3,130,448	3,365,839
TOTAL EXPORTS, ALL COMMODITIES		---	---	1,941,614	2,161,047	---	---	4,029,756	4,373,199

-38-

1/ Preliminary. 2/ Reported in value only. 3/ Excludes the number of "other hides and skins", reported in value only. 4/ Less than 500.

Table 21.— U. S. agricultural imports for consumption: Quantity and value by commodity,  
August 1964 and 1965 and July-August 1964 and 1965

Commodity imported SUPPLEMENTARY	Unit	August 1/				July-August 1/			
		Quantity		Value		Quantity		Value	
		1964	1965	1,000 dollars	1,000 dollars	1964	1965	1,000 dollars	1,000 dollars
<b>ANIMALS AND ANIMAL PRODUCTS</b>									
<b>Animals, live:</b>									
Cattle, dutiable .....	No.	9	55	1,281	6,555	19	107	2,169	12,194
Cattle, free (for breeding) .....	No.	1	2	456	574	3	4	990	1,140
Horses .....	No.	2/	2/	375	330	1	2/	770	656
Other (including live poultry) .....	—	3/	3/	60	107	3/	3/	152	232
Total animals, live .....	—	---	---	2,172	7,566	---	---	4,081	14,222
<b>Dairy products:</b>									
Butter .....	Lb.	53	177	27	81	74	214	37	97
<b>Cheese -</b>									
Blue-mold .....	Lb.	303	314	150	157	489	606	244	303
Cheddar .....	Lb.	21	27	8	17	70	49	32	28
Edam and Gouda .....	Lb.	394	427	181	200	616	813	284	378
Pecorino .....	Lb.	1,011	867	587	522	1,824	1,619	1,057	1,182
Swiss .....	Lb.	1,283	1,252	705	681	2,420	2,343	1,347	1,307
Other .....	Lb.	1,567	1,333	811	766	2,726	3,016	1,442	1,640
Total cheese .....	Lb.	4,579	4,220	2,442	2,443	8,145	8,446	4,406	4,838
Casein or lactarene .....	Lb.	8,497	4,671	1,548	1,558	16,233	11,301	2,994	3,732
Other .....	—	3/	3/	120	64	3/	3/	174	311
Total dairy products .....	—	---	---	4,137	4,146	---	---	7,611	8,978
<b>Hides and skins, raw (except furs):</b>									
Calf skins .....	Lb.	810	189	311	106	1,700	378	658	169
Cattle hides .....	Lb.	917	1,209	139	184	2,371	1,917	343	268
Goat and kid skins .....	Lb.	1,327	1,776	914	1,387	3,229	3,007	2,141	2,307
Sheep and lamb skins .....	Lb.	3,761	4,052	2,144	2,422	10,845	11,798	5,908	6,945
Other 4/ .....	Lb.	3,534	2,319	1,527	1,013	7,426	5,074	3,794	2,480
Total hides and skins, raw .....	Lb.	10,349	9,545	5,135	5,112	25,571	22,174	12,844	12,169
<b>Meat and meat products:</b>									
<b>Beef and veal -</b>									
Fresh, chilled, or frozen .....	Lb.	78,637	55,879	24,953	18,264	120,396	111,249	38,457	36,221
Other .....	Lb.	8,627	13,953	3,127	5,545	18,577	24,125	6,574	9,654
Total beef and veal .....	Lb.	87,264	69,832	28,080	23,809	138,973	135,374	45,031	45,875
Mutton, goat, and lamb .....	Lb.	1,468	5,014	362	1,242	4,617	9,355	1,087	2,288
<b>Pork -</b>									
Fresh, chilled, or frozen .....	Lb.	2,952	3,654	1,069	1,541	5,818	7,523	2,120	3,199
Hams and shoulders, canned cooked .....	Lb.	10,332	14,313	6,900	9,658	21,972	28,543	14,537	19,003
Other .....	Lb.	2,610	3,068	1,509	1,775	5,928	5,490	4,325	3,212
Total pork .....	Lb.	15,894	21,035	9,478	12,974	33,718	41,556	20,982	25,414
Sausage casings .....	—	3/	3/	1,415	1,918	3/	3/	3,072	3,585
Other (including meat extracts) .....	Lb.	5,719	6,322	1,267	1,585	11,310	13,170	2,634	3,096
Total meat and products (except poultry) .....	—	---	---	40,602	41,528	---	---	72,808	80,259
<b>Poultry products:</b>									
Eggs, dried, frozen, otherwise preserved ..	Lb.	2/	0	2/	0	4	2	2	1
Eggs in the shell .....	Doz.	43	48	35	46	107	92	99	91
Poultry meat .....	Lb.	6	5	10	22	10	13	32	45
Total poultry products .....	—	---	---	45	68	---	---	133	137

Continued -

Table 21.-- U. S. agricultural imports for consumption: Quantity and value by commodity,  
August 1964 and 1965 and July-August 1964 and 1965 - Continued

Commodity imported SUPPLEMENTARY	Unit	August 1/				July-August 1/			
		Quantity		Value		Quantity		Value	
		1964	1965	1964	1965	1964	1965	1964	1965
<b>Wool, unmanufactured (except free in bond):</b>		Thousands	Thousands	dollars	dollars	Thousands	Thousands	dollars	dollars
40's to 56's .....	G.Lb.	1,769	3,081	1,286	1,720	4,422	6,261	3,143	3,388
Finer than 56's .....	G.Lb.	7,659	14,999	6,030	9,196	13,990	24,966	10,973	15,773
Other wools .....	G.Lb.	1,418	2,980	1,323	1,862	2,822	5,129	2,700	3,373
Total wool, unmanufactured .....	G.Lb.	10,846	21,060	8,639	12,778	21,234	36,356	16,816	22,534
<b>Other animal products:</b>									
Bones, hoofs, and horns, unmanufactured .....	3/	3/		120	111	3/	3/	324	345
Bristles, sorted, bunched, or prepared .....	Lb.	214	252	797	856	538	480	2,003	1,578
Fats, oils, greases, edible and inedible .....	3/	3/		93	113	3/	3/	242	290
Feathers, crude .....	Lb.	322	185	442	264	721	518	1,094	1,014
Gelatin, edible .....	Lb.	533	412	267	227	996	1,336	478	723
Hair, unmanufactured .....	Lb.	650	1,143	616	878	1,894	1,796	1,406	1,372
Honey .....	Lb.	287	951	37	90	662	2,158	88	202
Other .....	3/	3/		738	942	3/	3/	1,815	1,636
Total other animal products .....				3,110	3,481			7,450	7,160
Total animals and animal products .....				63,840	74,679			121,741	145,459
<b>VEGETABLE PRODUCTS</b>									
<b>Cotton, unmanufactured (480 lb.):</b>									
Cotton .....	Bale	49	53	9,957	11,291	51	56	10,154	11,713
Linters .....	Bale	16	16	379	359	34	32	707	702
Total cotton and linters .....	Bale	65	69	10,336	11,650	85	88	10,861	12,415
<b>Fruits and preparations:</b>									
Apples, green or ripe (50 lb.) .....	Bu.	7	7	22	27	24	18	99	76
Berries .....	Lb.	5,381	5,519	932	1,034	9,688	13,302	1,521	2,462
Dates .....	Lb.	64	13	5	1	78	13	6	
Figs .....	Lb.	216	116	17	10	489	116	39	10
Grapes (40 lb.) .....	Cu.Ft.	11	0	38	0	35	4	101	13
Melons .....	Lb.	46	162	2/	5	1,797	671	38	41
Olives in brine .....	Gal.	1,408	1,034	1,866	2,293	2,724	2,006	3,482	4,228
Oranges, mandarin, canned .....	Lb.	5,629	5,713	1,178	1,185	10,786	11,683	2,245	2,348
Pineapples, canned, prepared or preserved .....	Lb.	15,397	12,240	1,721	1,476	25,818	27,783	2,912	3,256
Pineapple juice .....	Gal.	1,051	698	442	208	2,030	1,120	800	320
Other .....	3/	3/		2,020	1,484	3/	3/	4,000	3,879
Total fruits and preparations .....				8,241	7,723			15,243	16,684
<b>Grains and preparations:</b>									
Barley grain (48 lb.) .....	Bu.	904	357	1,076	453	1,712	1,086	2,016	1,425
Barley malt .....	Lb.	8,643	977	421	48	20,566	9,958	1,007	508
Corn grain (56 lb.) .....	Bu.	23	162	75	237	109	240	213	343
Oats grain (32 lb.) .....	Bu.	135	232	112	194	229	500	199	408
Rice .....	Lb.	23	6,818	5	339	63	13,103	14	656
Rye grain (56 lb.) .....	Bu.	82	102	118	120	82	175	118	206
Wheat grain for domestic use (60 lb.) .....	Bu.	128	20	89	42	128	24	90	51
Wheat flour .....	Lb.	0	706	0	38	0	706	0	38
Other .....	3/	3/		1,477	1,324	3/	3/	2,572	2,332
Total grains and preparations .....				3,373	2,795			6,229	5,967

Continued -

Table 21.— U. S. agricultural imports for consumption: Quantity and value by commodity, August 1964 and 1965 and July-August 1964 and 1965 - Continued

Commodity Imported SUPPLEMENTARY	Unit	August 1/				July-August 1/			
		Quantity		Value		Quantity		Value	
		1964	1965	1,000 dollars	1,000 dollars	1964	1965	1,000 dollars	1,000 dollars
<b>Nuts and preparations:</b>									
Almonds	Lb.	40	7	20	3	63	18	35	11
Brazil nuts	Lb.	4,532	3,745	1,012	1,032	10,319	8,520	2,253	2,158
Cashew nuts	Lb.	5,996	7,172	2,970	3,630	11,921	12,320	5,753	6,300
Coconut meat, fresh, frozen, or prepared	Lb.	11,531	10,107	1,498	1,437	25,224	16,957	3,194	2,330
Pistache nuts	Lb.	183	854	87	476	973	2,138	568	1,173
Other	3/	3/		205	300	3/	3/	469	599
Total nuts and preparations				5,792	6,878			12,212	12,571
<b>Oilseeds and products:</b>									
<b>Oils, edible and inedible -</b>									
Cacao butter	Lb.	623	312	296	100	2,401	1,536	1,192	547
Carnauba wax	Lb.	997	554	399	202	1,664	1,285	668	483
Castor oil	Lb.	7,830	6,187	768	515	13,365	13,570	1,341	1,103
Coconut oil	Lb.	68,793	7,067	8,667	1,079	104,200	14,602	12,942	2,229
Olive oil, edible	Lb.	5,507	3,798	1,474	1,138	11,863	6,426	3,042	1,947
Palm oil	Lb.	1,008	0	106	0	1,008	661	106	86
Palm kernel oil	Lb.	9,270	4,237	1,137	713	21,433	17,851	2,582	2,776
Tung oil	Lb.	3,791	2,090	775	513	7,943	3,303	1,539	795
Other	Lb.	1,401	1,065	269	299	3,326	3,129	682	668
Total oils (except essential)	Lb.	99,220	25,310	13,911	4,559	167,273	62,363	24,094	10,634
<b>Oilseeds -</b>									
Copra	Lb.	56,896	40,899	4,563	4,340	103,219	78,833	8,176	8,478
Sesame seed	Lb.	869	1,780	162	264	2,857	3,710	471	539
Other	3/	3/		122	115	3/	3/	192	149
Total oilseeds				4,847	4,719			8,839	9,166
Protein meal (oilcake and meal)	Lb.	9,503	15,214	256	472	13,058	22,432	356	665
Total oilseeds and products				19,014	9,750			33,289	20,465
<b>Sugar and related products:</b>									
Cane sugar	S. Ton	278	365	33,926	42,710	656	558	83,634	65,027
Molasses unfit for human consumption	Gal.	16,834	26,651	1,818	2,406	36,884	41,407	4,534	3,409
Other	3/	3/		858	331	3/	3/	1,471	579
Total sugar and related products				36,602	45,447			89,639	69,015
<b>Vegetables and preparations:</b>									
Canned mushrooms	Lb.	1,100	1,246	568	711	2,273	3,076	1,190	1,658
Canned tomatoes, tomato paste and sauce	Lb.	2,400	1,708	274	184	4,298	5,406	509	576
<b>Fresh or dried -</b>									
Cucumbers	Lb.	5	32	1	2	127	178	9	13
Garlic	Lb.	1,816	1,300	241	158	2,646	2,028	334	238
Onions	Lb.	522	1,372	43	91	1,777	3,315	175	256
Potatoes, white	Lb.	5,775	1,571	3	103	6,202	4,975	21	287
Tomatoes, natural state	Lb.	595	626	49	71	1,366	1,356	136	166
Turnips and rutabagas	Lb.	3,446	2,470	79	59	7,215	2,842	91	69
Pickled vegetables	Lb.	737	1,074	127	158	1,633	2,400	273	263
Tapioca, tapioca flour, and cassava	Lb.	23,284	26,250	738	968	55,779	58,739	1,800	2,158
Other	3/	3/		1,675	2,023	3/	3/	3,537	3,630
Total vegetables and preparations				3,798	4,528			8,075	9,314

Continued -



Table 21.— U. S. agricultural imports for consumption: Quantity and value by commodity, August 1964 and 1965 and July-August 1964 and 1965 - Continued

Commodity Imported SUPPLEMENTARY	Unit	August 1/				July-August 1/			
		Quantity		Value		Quantity		Value	
		1964	1965	1964	1965	1964	1965	1964	1965
		Thousands	Thousands	1,000 dollars	1,000 dollars	Thousands	Thousands	1,000 dollars	1,000 dollars
<b>Other vegetable products:</b>									
Feeds and fodders (except oilcake and meal):	---	3/	3/	1,298	1,305	3/	3/	2,886	2,530
Hops .....	Lb.	0	0	0	0	39	0	18	0
Jute and jute butts, unmanufactured .....	L.Ton:	6	2	739	378	11	5	1,427	1,044
Malt liquors .....	Gal.	2,042	2,048	2,269	2,292	4,251	3,279	4,741	3,664
Nursery and greenhouse stock .....	---	3/	3/	2,516	645	3/	3/	2,547	696
Seeds, field and garden .....	---	3/	3/	648	587	3/	3/	1,426	1,254
Spices .....	Lb.	3,145	2,146	362	355	6,007	5,133	687	701
Tobacco, unmanufactured .....	Lb.	15,012	16,181	9,907	11,494	29,872	30,391	19,926	21,331
Wines .....	Gal.	1,159	1,037	4,425	4,514	2,251	2,022	8,725	8,546
Other .....	---	3/	3/	729	680	3/	3/	1,354	1,361
Total other vegetable products .....	---	---	---	22,893	22,250	---	---	43,737	41,127
Total vegetable products .....	---	---	---	110,049	111,021	---	---	219,285	187,558
TOTAL SUPPLEMENTARY IMPORTS .....	---	---	---	173,889	185,700	---	---	341,026	333,017
<b>COMPLEMENTARY</b>									
Bananas .....	Lb.	244,961	158,984	10,845	7,405	524,818	409,216	22,944	19,166
Coffee (including into Puerto Rico) .....	Lb.	189,302	206,868	77,739	77,763	395,670	366,624	162,479	137,141
Coffee essences, substitutes and adulterants .....	Lb.	506	327	750	400	709	477	1,015	578
Cocoa or cacao beans .....	Lb.	60,057	81,187	12,835	11,329	101,197	139,529	21,329	19,926
Cocoa and chocolate, prepared .....	Lb.	6,570	8,402	1,168	898	16,440	15,663	2,740	1,857
Drugs, herbs, roots, etc. ....	---	3/	3/	1,627	1,852	3/	3/	3,384	2,944
Essential or distilled oils .....	---	3/	3/	1,638	2,526	3/	3/	3,666	4,990
Fibers, unmanufactured .....	L.Ton:	11	14	2,747	2,829	21	23	5,790	4,793
Rubber, crude .....	Lb.	87,449	63,658	18,089	11,222	178,189	132,341	35,166	23,991
Silk, raw .....	Lb.	355	290	1,281	1,666	738	481	3,628	2,782
Spices .....	Lb.	7,534	6,646	2,044	3,543	16,354	12,668	5,270	6,005
Tea .....	Lb.	8,533	9,173	3,537	4,194	18,925	15,545	7,938	6,917
Wool, unmanufactured (free in bond) .....	G.Lb.	9,065	13,392	5,423	6,798	21,522	27,743	13,259	14,187
Other complementary agricultural products .....	---	3/	3/	1,351	625	3/	3/	2,288	1,239
TOTAL COMPLEMENTARY IMPORTS .....	---	---	---	141,274	133,050	---	---	290,896	246,436
TOTAL AGRICULTURAL IMPORTS .....	---	---	---	315,163	318,750	---	---	631,922	579,453
TOTAL NONAGRICULTURAL IMPORTS .....	---	---	---	1,175,604	1,410,009	---	---	2,474,023	2,784,767
TOTAL IMPORTS, ALL COMMODITIES .....	---	---	---	1,490,767	1,728,759	---	---	3,105,945	3,364,220

1/ Preliminary. 2/ Less than 500. 3/ Reported in value only. 4/ Excludes the weight of "other hides and skins", reported in pieces only.

Table 22.-- U. S. agricultural exports and imports (for consumption): Value by country, July 1965

Country	Agricultural				Country	Agricultural			
	Exports	Imports				Exports	Imports		
		Total	Comple- mentary	Supple- mentary			Total	Comple- mentary	Supple- mentary
-- Thousand dollars --				-- Thousand dollars --					
Greenland .....	0	0	0	0	Europe - Continued:				
Canada .....	64,223	18,320	482	17,838	Norway .....	3,253	111	3	108
Miquelon and St. Pierre Is.:	7	0	0	0	Denmark .....	7,738	6,110	4	6,106
<b>Latin American Republics:</b>					United Kingdom .....	30,999	1,762	450	1,312
Mexico .....	8,343	10,304	4,744	5,560	Ireland .....	1,205	153	32	121
Guatemala .....	799	2,491	2,343	148	Netherlands .....	44,926	5,612	807	4,805
El Salvador .....	747	5,186	4,599	587	Belgium and Luxembourg .....	19,779	639	139	500
Honduras .....	343	3,612	3,420	192	Unidentified W. Europe 2/:	0			
Nicaragua .....	563	1,373	498	875	France .....	10,174	4,821	547	4,274
Costa Rica .....	651	2,801	2,699	102	West Germany .....	37,113	2,771	184	2,587
Panama .....	1,199	3,130	3,130	0	East Germany .....	79	0	0	0
Cuba .....	0	155	0	155	Austria .....	884	92	2	0
Haiti .....	904	424	330	94	Czechoslovakia .....	95	121	2	90
Dominican Republic .....	2,501	6,841	989	94	Hungary .....	38	29	0	121
Colombia .....	558	12,549	11,560	5,852	Switzerland .....	5,595	781	2	27
Venezuela .....	6,112	275	258	989	Finland .....	444	67	0	714
Ecuador .....	806	8,001	6,772	17	Estonia .....	0	87	0	87
Peru .....	2,178	5,817	3,403	1,229	Latvia .....	0	0	0	0
Bolivia .....	735	215	124	2,414	Lithuania .....	0	0	0	0
Chile .....	2,040	121	9	91	Poland and Danzig .....	567	2,159	1	2,158
Brazil .....	1,687	21,501	14,994	112	U.S.S.R. (Russia) .....	1,488	157	5	152
Paraguay .....	22	803	1	6,507	Azores .....	6	40	0	40
Uruguay .....	33	1,588	0	802	Spain .....	12,269	3,012	111	2,901
Argentina .....	259	2,546	1,601	1,588	Gibraltar .....	3,417	392	7	385
Total L. A. Republics .....	30,480	92,733	61,474	3,945	Malta and Gozo .....	14	0	0	0
<b>Other Latin America:</b>					Italy .....	132	0	0	0
British Honduras .....	155	23	23	0	Free Terr. of Trieste .....	15,482	3,846	659	3,187
Canal Zone .....	0	0	0	0	Yugoslavia .....	15	0	0	0
Bermuda .....	539	0	0	0	Albania .....	14,522	1,816	105	1,711
Bahamas .....	1,128	16	1	0	Greece .....	4	12	12	0
Jamaica .....	1,870	275	124	15	Rumania .....	616	2,842	3	2,839
Leeward and Windward Is.:	243	51	27	151	Bulgaria .....	895	59	0	59
Barbados .....	121	8	0	24	Turkey .....	0	67	42	25
Trinidad and Tobago .....	698	230	146	8	Cyprus .....	2,338	4,826	7	4,819
Netherlands Antilles .....	980	8	8	84	Total Europe .....	55	103	48	55
French West Indies .....	218	0	1/	0: Asia:					
British Guiana .....	363	54	0	54:	Syrian Arab Republic .....	123	270	204	66
Surinam .....	308	6	6	0:	Lebanon .....	1,063	406	177	229
French Guiana .....	7	18	14	4:	Iraq .....	195	443	443	0
Falkland Islands .....	0	0	0	0:	Iran .....	4,687	1,280	0	1,280
Total Latin America .....	37,110	93,422	61,823	31,599	Israel .....	2,509	64	16	48
<b>Europe:</b>					Jordan .....	731	1	1	0
Iceland .....	194	0	0	0:	Gaza Strip .....	4	0	0	0
Sweden .....	1,988	179	11	0:	Kuwait .....	596	0	0	0
				168:	Saudi Arabia .....	1,710	0	0	0
					Other Arabia Pen. States ..	63	86	79	?

Continued -

Table 22.-- U. S. agricultural exports and imports (for consumption): Value by country,  
July 1965 - Continued

Country	Agricultural				Country	Agricultural			
	Exports	Imports				Exports	Imports		
	Total	Comple-	Supple-		Total	Comple-	Supple-		
		mentary	mentary			mentary	mentary		
	-- Thousand dollars --					-- Thousand dollars --			
<b>Asia - Continued:</b>					<b>Africa - Continued:</b>				
Aden .....	85	28	0	28	Canary Islands .....	1,025	0	0	0
Bahrain .....	106	0	0	0	Other Spanish Africa .....	6	0	0	0
Afghanistan .....	644	0	0	0	Federal Rep. of Cameroon ..	77	38	38	0
India .....	59,482	5,256	1,905	3,351	Central African Republic ..	1/	0	0	0
Goa, Damao, and Diu .....	0	0	0	0	Gabon .....	2	0	0	0
Pakistan .....	9,626	954	323	631	Mauritania .....	2	0	0	0
Nepal .....	0	0	0	0	Senegal .....	13	0	0	0
Ceylon .....	46	2,411	2,411	0	Guinea .....	2	5	5	0
Burma .....	5	35	0	35	Ivory Coast .....	1	656	610	46
Thailand .....	1,499	1,535	354	1,181	Togo .....	7	0	0	0
Viet-Nam .....	8,009	157	110	47	Other Western Africa .....	28	109	0	109
Laos .....	100	32	32	0	Ghana .....	387	2,560	2,560	0
Cambodia .....	5	14	14	0	Nigeria .....	643	5,088	4,957	131
Malaysia .....	1,125	5,820	5,304	516	Sierra Leone .....	144	60	60	0
Indonesia .....	322	7,957	7,726	231	British West Africa .....	5	2	2	0
Philippines .....	5,704	17,279	767	16,512	Madeira Islands .....	0	4	0	4
Macao .....	25	49	36	13	Angola .....	109	4,692	4,663	29
Other S. and S.E. Asia .....	2	0	0	0	Other W. Port. Africa .....	33	12	12	0
China .....	0	0	0	0	Liberia .....	1,134	1,084	1,084	0
Outer Mongolia .....	0	352	0	352	Congo (Leopoldville) .....	1,810	627	281	346
North Korea .....	0	0	0	0	Burundi and Rwanda .....	8	9	9	0
Korea, Republic of .....	9,055	164	159	5	Somali Republic .....	7	5	0	5
Hong Kong .....	3,680	149	17	132	Ethiopia .....	249	6,119	5,979	140
Taiwan .....	4,532	2,390	171	2,219	French Somaliland .....	4	0	0	0
Japan .....	87,540	2,540	548	1,992	Uganda .....	15	1,270	1,268	2
Nansei and Nanpo Islands ..	2,931	0	0	0	Kenya .....	861	606	597	9
Total Asia .....	206,204	49,672	20,797	28,875	Tanzania (formerly Tanzan- yika and Zanzibar) .....	32	426	411	15
<b>Australia and Oceania:</b>					<b>Total Africa .....</b>				
Australia .....	2,321	16,320	14	16,306	Seychelles and Depend. ....	4	26	26	0
New Guinea .....	3	21	21	0	Mauritius and Depend. ....	26	0	0	0
New Zealand and W. Samoa ..	532	14,894	4,072	10,822	Mozambique .....	18	137	76	61
British W. Pacific Is. ....	15	2	2	1/	Malagasy Republic .....	4	136	108	28
French Pacific Islands .....	227	12	12	0	Rep. of South Africa .....	2,578	1,311	16	1,295
Trust Terr. of Pacific Is. ..	47	0	0	0	Zambia, S. Rhod., Malawi ...	55	180	78	22
Total Australia and Oceania .....	3,145	31,249	4,121	27,128	Total Africa .....	21,060	25,441	22,915	2,526
<b>Africa:</b>					<b>Total all countries .....</b>				
Morocco .....	1,744	120	33	87	E. E. C. (Common Market):				
Algeria .....	58	0	0	0	Netherlands .....	44,926	5,612	507	4,805
Tunisia .....	1,854	29	0	29	Belgium and Luxembourg ...	19,799	639	139	500
Libya .....	157	1	0	1	France .....	10,874	4,821	547	4,274
United Arab Rep. (Egypt) ..	7,923	37	2	35	West Germany .....	37,119	2,771	184	2,587
Sudan .....	35	172	40	132	Italy .....	15,482	3,846	659	3,187
					Total E. E. C. ....	127,474	17,689	2,336	15,353

1/ Less than \$500.

2/ Not available by countries.

Table 23.-- U. S. agricultural exports and imports (for consumption): Value by country,  
July - August 1965

Country	Agricultural Exports			Agricultural Imports		
	Exports	Total	Complementary	Imports	Complementary	Supplementary
	Thousand dollars					
Greenland	0	0	0	35,727	0	0
Canada	117,667	36,709	982	0	0	0
Miquelon and St. Pierre Is.	7	1	1	0	0	0
<b>Latin American Republics:</b>						
Mexico	16,348	22,728	10,965	11,763	0	0
Guatemala	1,860	5,602	5,312	290	619	0
El Salvador	1,451	9,317	8,698	397	2,437	0
Honduras	818	6,128	5,731	2,437	1,170	0
Nicaragua	1,555	4,227	1,790	1,170	141	0
Costa Rica	1,132	5,990	4,820	314	475	0
Costa Rica	2,753	4,639	4,498	314	475	0
Panama	0	314	0	475	0	0
Cuba	1,747	1,163	688	15,304	1,866	0
Haiti	4,714	16,947	1,643	1,866	57	0
Dominican Republic	1,725	31,075	29,209	57	1,922	0
Colombia	13,738	539	482	1,922	10,933	0
Venezuela	1,377	16,322	14,400	10,933	230	0
Ecuador	3,941	16,829	5,896	230	416	0
Peru	1,759	372	142	416	13,844	0
Bolivia	3,888	437	19	13,844	2,333	0
Chile	5,276	50,576	36,732	2,333	3,906	0
Brazil	101	2,397	64	3,906	10,213	0
Paraguay	182	3,906	0	10,213	0	0
Uruguay	862	13,947	3,734	0	0	0
Argentina	0	0	0	0	0	0
Total L. A. Republics	65,227	213,455	134,823	78,632	0	0
<b>Other Latin America:</b>						
British Honduras	380	118	33	35	0	0
Canal Zone	0	0	0	0	0	0
Bermuda	1,040	0	0	0	0	0
Bahamas	2,166	22	4	18	0	0
Jamaica	3,785	501	198	303	52	0
Leeward and Windward Is.	443	277	225	52	21	0
Barbados	288	21	0	21	0	0
Trinidad and Tobago	1,473	600	398	202	1	0
Netherlands Antilles	1,925	8	7	1	409	0
French West Indies	391	409	0	409	54	0
British Guiana	651	60	6	0	0	0
Surinam	526	6	6	3	0	0
French Guiana	13	17	14	0	0	0
Falkland Islands	0	0	0	0	0	0
Total Latin America	78,308	215,494	135,714	79,780	0	0
<b>Europe:</b>						
Iceland	444	35	33	2	0	0
Sweden	4,330	406	17	389	0	0
<b>Europe - Continued:</b>						
Norway	5,867	324	6	0	0	318
Denmark	10,736	11,447	24	0	0	11,423
United Kingdom	53,937	3,871	1,293	0	0	2,578
Ireland	1,579	527	104	0	0	423
Netherlands	84,630	10,489	1,528	0	0	8,961
Belgium and Luxembourg	33,431	1,271	189	0	0	1,082
Unidentified W. Europe 1/2	0	0	0	0	0	0
France	18,889	9,148	1,046	0	0	8,102
West Germany	69,229	5,940	362	0	0	5,578
East Germany	586	0	0	0	0	0
Austria	1,409	253	5	0	0	248
Czechoslovakia	226	622	0	0	0	622
Hungary	44	39	4	0	0	35
Switzerland	10,300	1,500	143	0	0	1,357
Finland	1,229	230	10	0	0	220
Estonia	0	0	0	0	0	0
Latvia	0	0	0	0	0	0
Lithuania	0	0	3	0	0	5,717
Poland and Danzig	3,285	5,720	346	0	0	273
U.S.S.R. (Russia)	3,609	619	0	0	0	99
Azores	29	99	268	0	0	6,168
Spain	24,832	6,436	12	0	0	938
Portugal	4,483	950	0	0	0	0
Gibraltar	22	0	0	0	0	0
Malta and Gozo	144	0	0	0	0	0
Italy	29,391	8,201	1,491	0	0	6,710
Free Terr. of Trieste	24	0	0	0	0	0
Yugoslavia	17,250	3,912	180	0	0	3,732
Albania	4	12	12	0	0	0
Greece	2,129	6,270	6	0	0	6,264
Rumania	897	80	2	0	0	78
Bulgaria	0	103	50	0	0	53
Turkey	7,932	10,657	299	0	0	10,358
Cyprus	109	278	163	0	0	115
Total Europe	391,006	89,439	7,596	0	0	81,843
<b>Asia:</b>						
Syrian Arab Republic	335	382	276	0	0	106
Lebanon	2,870	760	270	0	0	490
Iraq	350	486	477	0	0	9
Iran	6,561	2,374	95	0	0	2,279
Israel	5,450	102	31	0	0	71
Jordan	1,125	1	1	0	0	0
Gaza Strip	4	0	0	0	0	0
Kuwait	1,134	0	0	0	0	0
Saudi Arabia	3,275	0	156	0	0	8
Other Arabia Pen. States	167	164	0	0	0	0

Continued -

Table 23.-- U. S. agricultural exports and imports (for consumption): Value by country,  
July - August 1965 - Continued

Country	Agricultural				Country	Agricultural			
	Exports	Imports				Exports	Imports		
	Total	Comple- mentary	Supple- mentary		Total	Comple- mentary	Supple- mentary		
	-- Thousand dollars --					-- Thousand dollars --			
<b>Asia - Continued:</b>					<b>Africa - Continued:</b>				
Adan .....	255	29	0	29	Canary Islands .....	1,563	0	0	0
Bahrain .....	199	0	0	0	Other Spanish Africa .....	34	0	0	0
Afghanistan .....	649	14	0	14	Federal Rep. of Cameroon ..	220	1,007	979	28
India .....	95,244	13,717	3,995	9,722	Central African Republic ..	2/	0	0	0
Goa, Damao, and Diu .....	0	0	0	0	Gabon .....	2	0	0	0
Pakistan .....	25,827	1,940	577	1,363	Mauritania .....	2	0	0	0
Nepal .....	1	1	0	1	Senegal .....	304	7	0	7
Ceylon .....	515	4,989	4,989	0	Guinea .....	15	5	5	0
Burma .....	5	68	0	68	Ivory Coast .....	90	3,156	3,110	46
Thailand .....	3,474	2,904	903	2,001	Togo .....	59	15	15	0
Viet-Nam .....	13,302	259	203	56	Other Western Africa .....	264	256	0	256
Laos .....	157	84	84	0	Ghana .....	777	7,331	7,291	40
Cambodia .....	5	90	90	0	Nigeria .....	1,148	11,363	10,575	788
Malaysia .....	2,332	11,258	10,261	997	Sierra Leone .....	417	157	157	0
Indonesia .....	516	15,179	14,778	401	British West Africa .....	5	2	2	0
Philippines .....	10,258	45,174	1,716	43,458	Madeira Islands .....	17	8	0	8
Macao .....	25	49	36	13	Angola .....	174	8,188	8,141	47
Other S. and S.E. Asia .....	2	0	0	0	Other W. Port. Africa .....	51	25	25	0
China .....	0	0	0	0	Liberia .....	1,695	2,038	2,038	0
Outer Mongolia .....	0	415	0	415	Congo (Leopoldville) .....	2,558	1,183	723	460
North Korea .....	0	0	0	0	Burundi and Rwanda .....	8	1,128	1,128	0
Korea, Republic of .....	20,158	387	330	57	Somali Republic .....	90	82	0	82
Hong Kong .....	6,529	329	74	255	Ethiopia .....	305	11,364	11,151	213
Taiwan .....	7,267	4,104	316	3,788	French Somaliland .....	11	2	2	0
Japan .....	151,006	5,881	1,678	4,203	Uganda .....	15	3,388	3,386	2
Hansei and Nanpo Islands ..	4,012	10	10	0	Kenya .....	957	1,305	1,281	24
Total Asia .....	363,009	111,150	41,346	69,804	Tanzania (formerly Tanfan- yika and Zanzibar) .....	310	1,247	1,231	16
<b>Australia and Oceania:</b>					Seychelles and Depend. ....	9	41	41	0
Australia .....	4,842	33,741	28	33,713	Mauritius and Depend. ....	26	23	2	21
New Guinea .....	50	152	152	0	Mozambique .....	47	538	159	379
New Zealand and W. Samoa ..	1,947	25,843	7,039	18,804	Malagasy Republic .....	74	1,778	1,721	57
British W. Pacific Is. ....	79	24	21	3	Rep. of South Africa .....	3,962	3,546	54	3,492
French Pacific Islands .....	431	14	14	0	Zambia, S. Rhod., Malawi ..	136	200	146	54
Trust Terr. of Pacific Is. ..	141	0	0	0	Total Africa .....	49,873	66,886	53,543	13,343
Total Australia and Oceania .....	7,440	59,774	7,254	52,520	Total all countries .....	1,007,360	579,453	246,436	333,017
<b>Africa:</b>					<b>E. E. C. (Common Market):</b>				
Morocco .....	3,606	255	124	131	Netherlands .....	84,630	10,489	1,528	8,961
Algeria .....	357	0	0	0	Belgium and Luxembourg .....	33,431	1,271	189	1,082
Tunisia .....	3,090	69	0	69	France .....	18,889	9,148	1,046	8,102
Libya .....	426	1	0	1	West Germany .....	69,229	5,940	362	5,578
United Arab Rep. (Egypt) ..	26,711	6,926	16	6,910	Italy .....	29,391	8,201	1,491	6,710
Sudan .....	337	252	40	212	Total E. E. C. ....	235,570	35,049	4,616	30,433

1/ Not available by countries. 2/ Less than \$500.

## Explanatory Note

U.S. foreign agricultural trade statistics in this report include official U.S. data based on compilations of the Bureau of the Census. Agricultural commodities consist of (1) nonmarine food products and (2) other products of agriculture which have not passed through complex processes of manufacture such as raw hides and skins, fats and oils, and wine. Such manufactured products as textiles, leather, boots and shoes, cigarettes, naval stores, forestry products, and distilled alcoholic beverages are not considered agricultural.

The trade statistics exclude shipments between the 50 States and Puerto Rico, between the 50 States and the island possessions, between Puerto Rico and the island possessions, among the island possessions, and intransit through the United States from one foreign country to another when documented as such through U.S. Customs.

**EXPORTS** The export statistics also exclude shipments to the U.S. armed forces for their own use and supplies for vessels and planes engaged in foreign trade. Data on shipments valued at less than \$100 are not compiled by commodity and are excluded from agricultural statistics but are reflected in nonagricultural and overall export totals in this report. The agricultural export statistics include shipments under P.L. 87-195 (Act for International Development), principally sales for foreign currency; under P.L. 83-480 (Agricultural Trade Development and Assistance Act), and related laws; and involving Government payments to exporters. (USDA payments are excluded from the export value.) Separate statistics on Government program exports are compiled by USDA from data obtained from operating agencies.

The export value, the value at the port of exportation, is based on the selling price (or cost if not sold) and includes inland freight, insurance, and other charges to the port. The country of destination is the country of ultimate destination or where the commodities are to be consumed, further processed, or manufactured. When the shipper does not know the ultimate destination, the shipments are credited to the last country, as known to him at time of shipment from the United States, to which the commodities are to be shipped in their present form. Except for Canada, export shipments valued \$100-\$499 are included on the basis of sampling estimates; shipments to Canada valued \$100-\$1,999 are sampled.

**IMPORTS** Imports for consumption consist of commodities released from U.S. Customs custody upon arrival, or entered into bonded manufacturing warehouse, or withdrawn from bonded storage warehouse for consumption. The agricultural statistics exclude low-value shipments from countries not identified because of illegible reporting, but they are reflected in nonagricultural and overall import totals in this report.

The import value, defined generally as the market value in the foreign country, excludes import duties, ocean freight, and marine insurance. The country of origin is defined as the country where the commodities were grown or processed. Where the country of origin is not known, the imports are credited to the country of shipment.

Imports similar to agricultural commodities produced commercially in the United States and others that are interchangeable in use to any significant extent with such U.S. commodities are supplementary, or partly competitive. All other commodities are complementary, or noncompetitive.

Further explanatory material on foreign trade statistics and compilation procedures of the Bureau of the Census is contained in the publications of that agency.

END

DATE

FILMED

9-10-79

NTIS