



The World's Largest Open Access Agricultural & Applied Economics Digital Library

This document is discoverable and free to researchers across the globe due to the work of AgEcon Search.

Help ensure our sustainability.

Give to AgEcon Search

AgEcon Search

<http://ageconsearch.umn.edu>

aesearch@umn.edu

*Papers downloaded from **AgEcon Search** may be used for non-commercial purposes and personal study only. No other use, including posting to another Internet site, is permitted without permission from the copyright owner (not AgEcon Search), or as allowed under the provisions of Fair Use, U.S. Copyright Act, Title 17 U.S.C.*

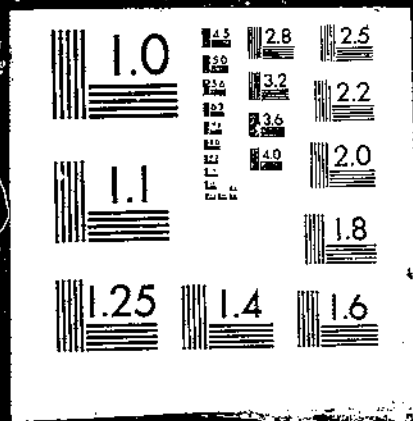
No endorsement of AgEcon Search or its fundraising activities by the author(s) of the following work or their employer(s) is intended or implied.

USDA/FATUS-
SEP 64

FATUS/FOREIGN AGRICULTURAL TRADE OF THE UNITED STATES, 1964 SEPTEMBER. Washington,
DC: Economic Research Service.

(NAL Call No. A286.9/A28)

I OF I USDA FATUS SEP 64



Reserve
A286.9
A98

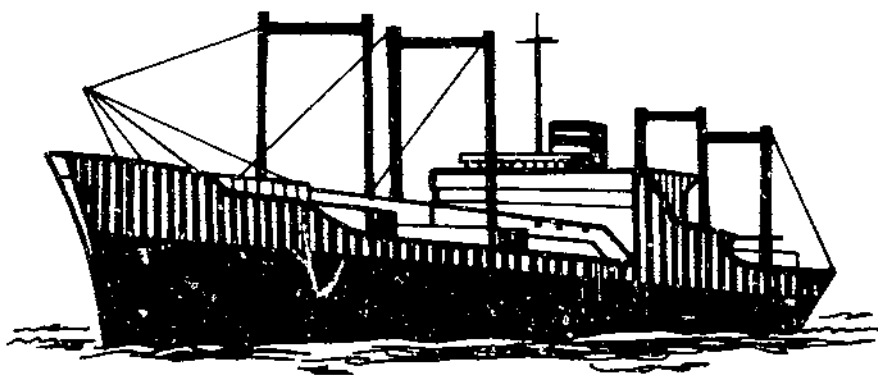
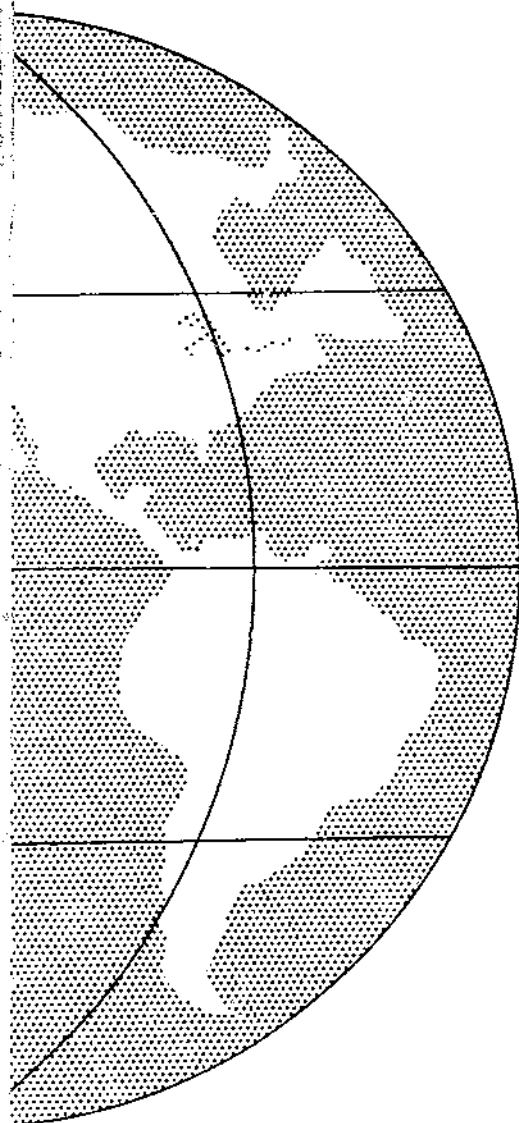
SEPTEMBER 1964

FOREIGN AGRICULTURAL TRADE OF THE UNITED STATES

U. S. DEPT. OF AGRICULTURE
NATIONAL AGRICULTURAL LIBRARY

AUG 25 1964

CURRENT SERIAL RECORDS



IN THIS ISSUE:

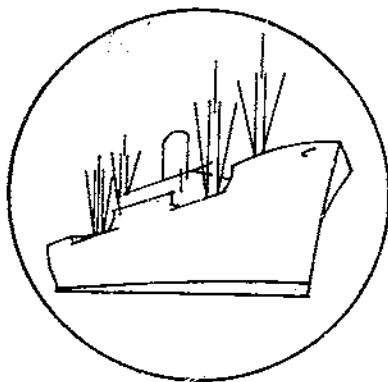
- Preliminary Export Statistics, Fiscal Year 1963-64
- Government Program Exports, July 1963-March 1964
- Imports, Fiscal Year 1963-64

Published Monthly by Economic Research Service/U. S. Department of Agriculture

Contents

	<u>Page</u>
Digest	3
Export Highlights	5
Government Program Export Highlights	14
Import Highlights	25
Explanatory Note	43
 Table 1.--Exports: Value by Commodity Group, Fiscal Year 1962-63 and 1963-64 (Preliminary)	 6
Table 2.--Exports: Quantity and Value by Commodity, June 1963 and 1964 and July-June 1962-63 and 1963-64	 7
Table 3.--Exports: Quantity and Value by Commodity, Fiscal Year 1963-64 (Preliminary) with Comparisons	 11
Table 4.--Exports to the European Economic Community: Value by Commodity, July-June and August-June 1961-62 through 1963-64	 12
Table 5.--Government Program and Commercial Exports: Value by Commodity, July 1963-March 1964	 15
Table 6.--Government Program and Commercial Exports: Quantity by Commodity, July 1963-March 1964	 18
Table 7.--Government Program and Commercial Exports: Value by Commodity Group, July 1962-March 1963 and July 1963-March 1964	 21
Table 8.--Credit-Sale Exports: Value by Commodity, July 1963-March 1964 .	22
Table 9.--Imports: Value by Commodity, Fiscal Year 1962-63 and 1963-64 (Preliminary)	 26
Table 10.--Imports: Quantity and Value by Commodity, June 1963 and 1964 and July-June 1962-63 and 1963-64	 27
Table 11.--Exports: Quantity and Value by Commodity, May 1963 and 1964 and July-May 1962-63 and 1963-64	 35
Table 12.--Imports: Quantity and Value by Commodity, May 1963 and 1964 and July-May 1962-63 and 1963-64	 39

Trade Statistics and Analysis Branch
Development and Trade Analysis Division
Economic Research Service



FOREIGN AGRICULTURAL TRADE OF THE UNITED STATES

Digest

U.S. agricultural exports attained a record level of \$6,076 million in fiscal year 1963-64, approximately 20 percent larger than the \$5,078 million for 1962-63. The \$6,076 million figure is based on 12 months of actual exports. Practically all of the increase occurred in sales for dollars. Exports in 1963-64 are summarized in tables 1 and 2. Commodities that set export records are listed in table 3. Some of them are wheat and flour, corn, soybeans, rice, tallow, nonfat dry milk, hides and skins, and variety meats. Principal increases in 1963-64 occurred in wheat and flour, cotton, feed grains, soybeans, rice, tobacco, animal fats, dairy products, poultry products, and meats. Small declines took place in fruits and vegetable oils. Developments affecting exports in 1963-64 were described in the July-August issue of this publication.

* * * * *

U.S. agricultural exports to the European Economic Community (EEC) advanced to \$1,321 million in fiscal year 1963-64 from \$1,070 million a year earlier, a gain of nearly one-fourth. Shipments increased for commodities subject to EEC variable levies and those not subject to the variable levy system. Exports of commodities subject to the variable levies rose to \$434 million from \$380 million. Exports of commodities not subject to variable levies rose to \$888 million compared with \$689 million a year earlier.

* * * * *

Over 90 percent of the \$900 million increase in agricultural exports in July 1963-March 1964 over a year earlier occurred in commercial sales for dollars, which reached a record \$3,477 million, 76 percent of total U.S. agricultural exports. Exports under Government-financed programs amounted to \$1,089 million, about \$70 million above a year earlier. With the exception of long-term supply and dollar credit sales under Title IV, exports under all titles of P.L. 480 (Agricultural Trade Development and Assistance Act of 1954) rose moderately from the comparable 9 months of the preceding year. Largest increases were in donations and barter under Title III, rising to \$143 million and \$68 million, respectively. July-March exports under AID (Agency for International Development) programs were double the \$10 million in 1962-63. Sales for foreign currency under Title I amounted to \$726 million compared with \$715 million a year earlier.

The \$20 million of agricultural commodities exported under AID programs included \$17 million under commodity (nonproject) programs and \$3 million under development loans. Shipments under development loans, previously relatively small, are now reported for the first time. Such loans, authorized under P.L. 87-195 (Act for International Development), are designed to stimulate economic development and include Alliance for Progress loans to Latin America.

Disbursements under credit guarantees extended by the Export-Import Bank and purchases under the CCC (Commodity Credit Corporation) credit sales program amounted to \$166 million in the July 1963-March 1964 period compared with \$119 million a year earlier. Shipments under the CCC credit sales program increased by \$46 million while disbursements under Export-Import Bank guarantees remained about the same as the \$64 million in 1962-63. Largest disbursements under Export-Import Bank guarantees were for shipments of cotton to Japan. Major items under the CCC credit sales program were cotton and grain sorghums principally for Japan, wheat for export to 16 countries, and corn, nearly half of which was for export to Mexico.

Among the commercial sales for dollars, which include loans and credits, largest commodity increases in July 1963-March 1964 over a year earlier were scored in wheat and wheat flour, cotton, feed grains, and animals and animal products. Among the exports under Government-financed programs, largest gains over a year earlier took place in wheat and wheat flour and dairy products. Smaller shipments under Government programs occurred for cotton, feed grains, rice, vegetables and preparations, oilseeds and products, and tobacco.

* * * * *

U.S. imports of agricultural products rose to an estimated \$4,095 million in fiscal year 1963-64 from \$3,907 million in the previous year, a gain of 5 percent. Primary gains were in the complementary, or noncompetitive, commodities, which advanced to \$1,871 million, 10 percent above the year before. Imports of supplementary, or partially competitive, items were only slightly in excess of the previous year's level of \$2,208 million. Complementary value gains occurred because of larger imports of coffee and bananas along with higher prices for coffee, cocoa beans, and carpet wool. Among the supplementary commodities, value declines in imports of dutiable cattle and apparel wool were about offset by larger imports of hides and skins, fruits, grains, nuts, tobacco, and vegetables. Declines in U.S. beef prices discouraged Canadian and Mexican shipments of cattle to the United States. Imports of meats and meat products were up 1 percent in value to \$519 million. Sugar imports, largest supplementary commodity, declined 2 percent to \$539 million.



Export Highlights

FISCAL YEAR 1963-64

With the release of official agricultural export statistics for the month of June 1964, preliminary information is available on U.S. agricultural exports in fiscal year 1963-64 (tables 1 and 2). Actual exports for the 12-month period totaled \$6,076 million as compared with the estimate of \$6,115 million published in the July-August 1964 issue of this publication. The figure of \$6,115 million was based on actual exports for the first 11 months and an estimate for June 1964. Actual exports of \$6,076 million in 1963-64 were 20 percent above the \$5,078 million in 1962-63. The total of \$6,076 million is the largest ever attained for a single year.

Measured in terms of quantity, new export records were established for wheat and flour, corn and corn products, soybeans, rice, inedible tallow and greases, nonfat dry milk, hides and skins, variety meats, butter, and dry edible beans. Exports of grain sorghums, oilcake and meal, poultry meat, lemons and limes, and fresh grapes were at their second highest levels on record, while third highest peaks were attained by soybean oil, canned fruits, and fresh tomatoes. While exports of tobacco were tenth largest in terms of quantity, export value was the highest on record. Cotton exports were at their seventh highest mark in the postwar period (table 3).

Exports to the European Economic Community, July 1963-May 1964

U.S. agricultural exports to the European Economic Community (EEC) advanced to \$1,321 million in fiscal year 1963-64 from \$1,070 million a year earlier, a gain of nearly one-fourth. Shipments increased for commodities subject to EEC variable levies and those not subject to the variable levy system (table 4).

Exports of commodities subject to the variable levies rose to \$434 million from \$380 million. The gain included a sharp rise in wheat and pork, with smaller ones for feed grains, turkey meat, stewing chickens, and canned poultry. The sharp rise in wheat reflected the poor EEC wheat harvest. Moreover, the unusually wet season produced a substantially lower quality of wheat in 1963, necessitating larger EEC imports of foreign wheat for blending with local wheat. The advance in pork and poultry meat exports resulted from the relatively short supply of meat in the EEC area and increased demand from consumers with larger incomes. Rye exports were appreciably reduced from the previous year's high level. Lard exports continued to lag. The variable levies continued to hold down U.S. shipments of wheat flour, broilers and fryers.

Table 1.--U.S. agricultural exports: Value by commodity, fiscal years
1962-63 and 1963-64

Commodity	1962-63	1963-64 <u>1/</u>	Change
	-- Million dollars --		Percent
Animals and animal products:			
Dairy products <u>2/</u>	154	203	+32
Fats, oils, and greases	148	216	+46
Hides and skins	79	82	+4
Meats and meat products	87	118	+36
Poultry products	70	78	+12
Other	67	75	+12
Total animals, etc. <u>2/</u>	605	772	+28
Cotton, excluding linters	491	670	+36
Fruits and preparations	280	274	-2
Grains and preparations:			
Feed grains, excluding products ...	731	816	+12
Rice, milled	162	217	+32
Wheat and flour	1,158	1,519	+31
Other	78	67	-14
Total grains, etc	2,129	2,619	+23
Oilseeds and products:			
Cottonseed and soybean oils <u>3/</u> ...	173	159	-8
Soybeans	441	516	+17
Other	163	174	+7
Total oilseeds, etc. <u>3/</u>	777	849	+9
Tobacco, unmanufactured	378	421	+11
Vegetables and preparations	163	164	+1
Other	255	307	+20
Total	5,078	6,076	+20

1/ Preliminary.

2/ Excludes Title III, P.L. 480 donations of butter and ghee, which are included in "Other" agricultural exports.

3/ Excludes Title III, P.L. 480 donations, which are included in "Other" agricultural exports.

Table 2.—U. S. agricultural exports: Quantity and value by commodity,
June 1963 and 1964 and July-June 1962-63 and 1963-64

Commodity exported	Unit	June 1/				July-June 1/			
		Quantity		Value		Quantity		Value	
		1963	1964	1963	1964	1962-63	1963-64	1962-63	1963-64
		Thousands	Thousands	1,000 dollars	1,000 dollars	Thousands	Thousands	1,000 dollars	1,000 dollars
ANIMALS AND ANIMAL PRODUCTS									
Animals, live:	No.	2	14	909	3,135	20	54	8,425	16,637
Cattle	No.	2	14	909	3,135	20	54	8,425	16,637
Poultry, live -	No.	2,268	2,465	942	918	22,789	26,928	8,103	9,686
Baby chicks	Lb.	317	960	137	287	2,331	4,232	1,219	1,578
Other live poultry	Lb.	2/	2/	486	588	2/	2/	6,118	6,378
Other		---	---	2,474	4,928	---	---	23,865	34,281
Total animals, live		---	---	---	---	---	---	---	---
Dairy products:	Lb.	942	1,526	532	775	7,349	23,111	5,106	11,058
Anhydrous milk fat	Lb.	184	7,960	55	2,894	6,449	105,592	2,141	36,501
Butter (except dehydrated)	Lb.	2,970	485	926	240	40,353	13,227	12,958	4,630
Cheese, including donations	Lb.	1,337	3,144	769	1,464	16,834	19,056	10,205	10,341
Infants' and dietetic foods, chiefly milk	Lb.	6,984	5,398	1,570	1,295	50,197	64,437	11,604	14,373
Milk -	Lb.	753	593	513	262	20,981	22,247	9,652	9,535
Condensed sweetened	Lb.	10,761	2,990	1,328	444	68,565	45,018	9,759	6,547
Dried whole	Lb.	91,218	142,391	6,386	11,125	1,005,741	1,315,381	69,314	105,273
Evaporated, unsweetened, incl. donations	Lb.	2/	2/	253	330	2/	2/	3,712	4,833
Nonfat dry, including donations	Lb.	---	---	12,332	18,833	---	---	154,454	202,941
Other		---	---	---	---	---	---	---	---
Total dairy products		---	---	---	---	---	---	---	---
Fats, oils, and greases:	Lb.	24,249	91,146	2,234	8,514	444,276	668,412	41,214	63,373
Lard	Lb.	350	428	33	45	4,716	3,686	452	371
Tallow, edible	Lb.	732	427	109	68	5,864	7,932	1,014	1,187
Other edible fats, oils, and greases	Lb.	153,091	191,597	9,920	13,321	1,439,670	1,917,724	90,204	129,457
Tallow, inedible	Lb.	78,675	30,432	2,093	1,380	22,364	276,183	15,295	21,434
Other inedible fats, oils, and greases	Lb.	206,597	314,030	14,369	24,228	2,113,890	2,673,937	148,175	215,822
Total fats, oils, and greases		---	---	---	---	---	---	---	---
Meat and meat products:	Lb.	1,685	4,992	714	2,166	25,352	38,574	11,868	16,066
Beef and veal	Lb.	11,467	12,891	3,280	3,437	101,576	162,153	28,367	47,536
Pork	Lb.	1,612	963	956	670	19,219	18,432	12,904	10,832
Sausage casings	Lb.	13,171	18,777	2,586	4,007	144,074	186,504	28,449	38,435
Variety meats	Lb.	68	1,513	431	453	11,533	12,446	5,265	5,157
Other (including meat extracts)	Lb.	13,795	36,136	7,967	10,712	302,156	410,111	86,853	118,055
Total meat and products (except poultry)		---	---	---	---	---	---	---	---
Poultry products:	Lb.	655	353	723	378	5,226	4,429	5,065	4,649
Eggs, dried, frozen, otherwise preserved	Lb.	606	604	736	657	8,645	8,735	8,318	8,547
Eggs in the shell -	Doz.	579	104	220	44	6,182	2,951	2,214	1,139
Hatching	Doz.	---	---	---	---	---	---	---	---
Other		---	---	---	---	---	---	---	---
Poultry meat -	Lb.	12,332	12,775	3,330	3,595	150,513	166,438	38,581	42,548
Chickens, fresh or frozen	Lb.	609	2,839	337	1,021	30,377	36,215	10,643	13,364
Turkeys, fresh or frozen	Lb.	926	406	99	127	5,521	4,642	1,816	1,608
Other, fresh or frozen	Lb.	65	2,212	199	476	10,010	23,913	3,181	5,666
Canned	Lb.	---	---	5,626	5,598	---	---	69,836	77,821
Total poultry products		---	---	---	---	---	---	---	---

Continued

Table 2.— U. S. agricultural exports: Quantity and value by commodity,
June 1963 and 1964 and July-June 1962-63 and 1963-64 - Continued

Commodity exported	Unit	June 1/				July-June 1/			
		Quantity		Value		Quantity		Value	
		1963	1964	1963	1964	1962-63	1963-64	1962-63	1963-64
Other animal products:		Thousands	Thousands	1,000 dollars	1,000 dollars	Thousands	Thousands	1,000 dollars	1,000 dollars
Feathers, crude	Lb.	180	113	78	54	1,687	1,477	1,814	1,533
Gelatin, edible	Lb.	327	344	727	639	3,837	3,202	7,946	7,303
Hair, raw or dressed, new	Lb.	501	618	122	215	7,038	7,029	2,343	2,326
Hides and skins, raw (except furs) 3/	No.	906	1,433	5,249	8,252	11,614	15,415	79,916	81,937
Honey	Lb.	1,454	497	268	86	18,700	22,676	2,773	3,859
Wool, unmanufactured	Lb.	877	329	868	405	13,320	8,227	11,894	9,048
Other	C.Lb.	2/	2/	1,551	1,045	2/	2/	16,233	17,347
Total other animal products		---	---	8,863	11,736	---	---	121,919	123,353
Total animals and animal products		---	---	51,881	76,036	---	---	605,108	772,314
VEGETABLE PRODUCTS									
Cotton, unmanufactured:									
Cotton	R.Bale:	244	388	33,466	49,876	3,632	5,147	491,417	677,138
Linters	R.Bale:	35	29	1,008	795	325	337	10,444	9,320
Total cotton and linters	R.Bale:	279	417	34,474	50,671	3,957	5,484	501,872	679,458
Fruits and preparations:									
Canned -									
Fruit cocktail	Lb.	7,226	4,971	1,101	804	146,412	127,608	21,500	21,014
Peaches	Lb.	4,791	7,350	575	911	286,325	215,056	30,672	23,935
Pears	Lb.	676	304	115	56	11,190	6,001	1,753	1,162
Pineapples	Lb.	7,630	10,775	1,193	1,650	102,761	96,778	15,329	14,518
Other	Lb.	3,077	985	531	234	48,929	30,346	7,889	5,913
Total canned fruits	Lb.	23,600	24,365	3,515	3,745	595,617	475,789	77,143	66,542
Dried -									
Prunes	Lb.	3,109	4,127	662	913	86,662	81,316	12,651	17,271
Raisins and currants	Lb.	3,318	4,778	619	1,094	90,365	110,013	16,614	19,910
Other	Lb.	829	750	301	261	19,099	14,192	7,109	5,375
Total dried fruits	Lb.	7,256	9,655	1,582	2,178	196,123	205,523	42,374	42,556
Fresh -									
Apples	Lb.	3,624	3,476	353	341	139,313	202,098	12,947	18,081
Berries	Lb.	6,180	5,481	1,093	1,157	22,965	21,116	4,502	4,323
Grapefruit	Lb.	13,878	13,171	1,245	969	160,069	172,897	9,533	11,531
Grapes	Lb.	5,194	3,093	1,032	626	200,304	190,081	16,174	17,296
Lemons and limes	Lb.	26,883	30,440	3,382	2,047	154,978	241,321	13,675	18,630
Oranges and tangerines	Lb.	53,976	52,137	5,330	4,307	370,505	436,395	34,651	38,357
Pears	Lb.	169	592	23	55	70,752	36,706	6,268	3,655
Other	Lb.	56,534	37,265	3,221	2,937	170,544	167,894	10,092	10,650
Total fresh fruits	Lb.	176,436	176,655	15,679	12,491	1,282,436	1,470,508	109,842	122,703
Fruit juices -									
Grapefruit	Gal.	406	308	286	381	6,527	3,554	5,042	3,796
Orange	Gal.	656	554	1,008	1,588	13,202	7,548	24,744	19,611
Other	Gal.	1,224	966	1,351	1,116	14,626	11,456	13,600	12,263
Total fruit juices	Gal.	2,286	1,828	3,545	3,085	34,357	22,558	43,386	35,670
Frozen fruits (including specialties)	Lb.	2,338	881	420	169	17,003	11,364	2,674	2,294
Other		2/	2/	346	278	2/	2/	4,355	4,716
Total fruits and preparations		---	---	25,067	21,946	---	---	279,774	274,481

Continued -

Table 2.— U. S. agricultural exports: Quantity and value by commodity,
June 1963 and 1964 and July-June 1962-63 and 1963-64 - Continued

Commodity exported	Unit	June 1/		July-June 1/		July-June 1/		July-June 1/	
		Quantity		Value		Quantity		Value	
		1963	1964	1962-63	1964	1962-63	1963-64	1962-63	1963-64
		Thousands	Thousands	dollars	dollars	Thousands	Thousands	dollars	dollars
Grains and preparations:									
Feed grains and products -									
Barley grain (48 lb.)	Bu.	5,039	7,270	5,116	7,935	64,490	67,317	70,933	72,777
Corn grain, including donations (56 lb.)	Bu.	43,245	27,932	57,377	38,047	396,709	453,194	508,575	617,546
Grain sorghums (56 lb.)	Bu.	7,615	5,616	8,951	6,485	118,815	99,243	134,627	122,275
Oats grain (32 lb.)	Bu.	593	600	699	419	22,784	4,879	16,556	3,461
Total feed grains	M.Ton	1,417	1,021	72,143	52,865	14,831	15,570	730,693	816,079
Barley malt (34 lb.)	Bu.	260	350	582	696	3,010	2,672	5,351	5,463
Corn grits and hominy	Lb.	5,457	5,263	232	217	40,966	41,720	1,732	1,722
Cornmeal and corn flour, incl. donations	Cwt.	413	307	1,931	1,180	4,569	5,127	20,824	19,767
Cornstarch	Lb.	4,092	6,778	347	553	46,062	67,350	4,094	5,828
Oatmeal, groats, and rolled oats	Lb.	997	422	128	42	22,036	10,947	2,709	960
Total feed grains and products	M.Ton	1,463	1,064	75,303	55,573	15,359	16,139	766,404	849,619
Rice -									
Milled, including donations	Lb.	99,395	236,964	6,765	15,909	2,420,127	3,160,970	162,354	216,266
Paddy or rough	Lb.	3,136	170	299	16	13,946	16,557	1,265	862
Total rice (milled basis)	Lb.	101,433	237,074	7,064	15,925	2,434,073	3,177,527	163,619	217,130
Rye grain (56 lb.)	Bu.	2,058	149	2,673	173	20,652	10,543	27,470	14,205
Wheat and flour, including donations -									
Wheat grain (60 lb.)	Bu.	39,129	54,925	71,151	98,667	534,394	755,735	973,819	1,354,495
Wheat flour, wholly of U. S. wheat	Cwt.	4,607	7,755	18,534	10,665	44,823	40,792	184,086	164,673
Total wheat and flour	Bu.	43,736	62,680	89,685	109,332	579,217	806,527	1,157,905	1,519,168
Bakery products	Lb.	885	1,024	367	371	11,405	13,757	4,661	5,301
Other		2/	2/	653	1,489	2/	2/	9,650	12,759
Total grains and preparations				175,505	185,574			2,129,237	2,618,662
Oilseeds and products:									
Oils, edible and inedible -									
Cottonseed oil	Lb.	16,156	43,642	1,246	4,352	361,379	473,942	45,734	55,402
Soybean oil	Lb.	77,710	96,519	8,501	9,664	1,135,763	1,913,157	127,527	106,062
Other	Lb.	8,244	20,557	1,246	2,662	114,776	201,463	17,454	26,221
Total oils (except essential)	Lb.	102,110	160,728	11,000	17,478	1,711,918	2,586,562	191,215	187,705
Oilseeds -									
Flaxseed (56 lb.)	Bu.	353	236	1,000	683	4,355	3,576	13,237	10,583
Soybeans (60 lb.)	Bu.	15,608	13,046	41,207	33,285	171,001	137,598	441,323	515,681
Other	Lb.	29,127	25,540	1,497	1,260	282,700	571,262	15,232	25,265
Total oilseeds				43,704	35,248			469,792	551,527
Protein meal (oilcake and meal)	S.Ton	145	135	11,097	10,312	1,551	1,405	116,342	111,798
Total oilseeds and products				66,454	63,939			777,349	669,050
Tobacco, unmanufactured:									
Burley	Lb.	5,937	6,644	4,321	4,291	46,471	43,030	36,803	34,439
Cigar wrapper	Lb.	405	404	756	1,650	4,389	5,647	8,228	12,382
Dark-fired Kentucky and Tennessee	Lb.	1,556	1,646	794	734	17,301	16,150	9,616	8,225
Flue-cured	Lb.	30,751	32,939	22,467	22,196	370,491	425,501	302,662	346,664
Maryland	Lb.	673	850	719	596	11,391	11,627	8,767	8,689
Other	Lb.	1,369	1,193	646	557	22,821	29,705	9,505	10,237
Total tobacco, unmanufactured	Lb.	40,891	44,384	29,702	30,271	475,294	532,860	376,241	420,666

Continued -

Table 2.— U. S. agricultural exports: Quantity and value by commodity,
June 1963 and 1964 and July-June 1962-63 and 1963-64 - Continued

Commodity exported	Unit	June 1/				July-June 1/			
		Quantity		Value		Quantity		Value	
		1963	1964	1,000	1,000	1962-63	1963-64	1,000	1,000
		Thousands	Thousands	dollars	dollars	Thousands	Thousands	dollars	dollars
Vegetables and preparations:									
Canned -									
Asparagus	Lb.	21,636	10,114	2,471	2,627	62,149	61,222	14,282	15,406
Soups	Lb.	1,167	1,320	216	233	15,371	16,494	2,849	3,047
Tomato juice	Lb.	3,540	4,785	287	430	26,479	31,894	2,554	2,924
Tomato paste and puree	Lb.	1,001	725	184	133	12,786	14,066	2,618	2,887
Tomato sauce for cooking purposes	Lb.	86	43	10	6	1,093	950	145	127
Other	Lb.	3,974	4,008	560	613	70,550	59,054	9,610	8,535
Total canned vegetables	Lb.	21,406	20,955	3,328	4,042	186,428	183,682	32,358	32,926
Dry, ripe beans, including donations	Lb.	29,076	14,785	1,663	1,314	359,526	415,172	29,154	34,401
Dry, ripe peas (excluding cow and chick) ..	Lb.	12,146	15,714	782	1,112	247,640	231,691	16,528	15,713
Fresh -									
Lettuce	Lb.	10,300	12,091	494	437	159,462	176,354	6,877	8,459
Onions	Lb.	11,852	16,287	516	522	143,099	96,868	5,938	4,736
Potatoes, white	Lb.	63,167	41,270	1,182	1,601	335,895	169,864	6,059	5,526
Tomatoes	Lb.	14,985	16,286	1,471	1,764	58,919	99,199	8,410	9,636
Other	Lb.	37,026	39,070	1,774	2,136	438,412	355,567	23,332	20,782
Total fresh vegetables	Lb.	137,332	125,034	5,437	6,460	1,165,787	897,677	52,616	49,141
Frozen vegetables (including specialties) ..	Lb.	1,153	1,641	258	305	28,776	35,040	5,216	5,948
Soups and vegetables, dehydrated	Lb.	689	1,298	420	491	19,055	15,427	7,892	6,585
Vegetable seasonings	Lb.	276	629	350	362	5,471	4,943	3,925	3,355
Other		2/	2/	1,272	1,312	2/	2/	15,144	15,722
Total vegetables and preparations		---	---	13,930	15,818	---	---	162,533	163,791
Other vegetable products:									
Coffee	Lb.	1,635	2,127	1,606	2,700	24,056	31,811	28,820	34,741
Drugs, herbs, roots, crude	Lb.	269	297	213	176	3,729	3,596	3,924	4,555
Essential oils, natural	Lb.	629	610	1,269	1,430	7,910	7,775	14,988	17,334
Feeds and fodders (except oilcake and meal) ..	S.Ton	99	64	5,727	3,919	954	929	58,023	59,098
Flavoring sirups for beverages	Gal.	115	130	756	846	1,113	1,170	7,209	8,016
Hops	Lb.	373	580	262	348	20,177	21,046	12,955	13,838
Nursery and greenhouse stock		2/	2/	455	508	2/	2/	5,882	6,896
Nuts and preparations	Lb.	4,690	12,822	709	1,573	47,374	98,178	15,610	24,402
Seeds, field and garden	Lb.	4,132	4,618	870	1,027	83,352	101,474	19,527	26,480
Spices	Lb.	210	215	119	207	3,795	3,456	2,209	2,552
Other, including donations		2/	2/	3,618	5,726	2/	2/	74,474	98,930
Total other vegetable products		---	---	15,604	18,472	---	---	243,621	296,842
Total vegetable products		---	---	361,056	383,090	---	---	4,472,627	5,303,190
TOTAL AGRICULTURAL EXPORTS		---	---	412,937	459,126	---	---	5,072,735	6,075,504
TOTAL NONAGRICULTURAL EXPORTS		---	---	1,425,331	1,603,332	---	---	16,490,376	18,440,153
TOTAL EXPORTS, ALL COMMODITIES		---	---	1,838,268	2,062,458	---	---	21,563,011	24,515,657

1/ Preliminary.

2/ Reported in value only.

3/ Excludes the number of "other hides and skins," reported in value only.

Table 3.--U.S. agricultural exports: Quantity and value, fiscal year 1963-64 with comparisons

Commodity and year	Unit	Quantity			Rank (total quantity)	Value		
		Government	Dollar	Total		Government	Dollar	Total
		programs 1/	sales			programs 1/	sales	
		Million	Million	Million		Million dollars	Million dollars	Million dollars
Wheat and flour	1963-64 :Bu. :	497	352	849	Record	934	585	1,519
	1961-62 :Bu. :	504	212	716	Previous record	895	388	1,283
Corn and products	1963-64 :Bu. :	61	412	473	Record	86	559	645
	1962-63 :Bu. :	60	354	414	Previous record	78	463	541
Soybeans	1963-64 :Bu. :	0.7	186.9	187.6	Record	2	514	516
	1962-63 :Bu. :	4	167	171	Previous record	9	433	442
Rice	1963-64 :Lb. :	1,473	1,703	3,176	Record	84	133	217
	1956-57 :Lb. :	2,175	472	2,647	Previous record	137	53	190
Inedible tallow and greases	1963-64 :Lb. :	315	1,879	2,194	Record	25	126	151
	1961-62 :Lb. :	217	1,613	1,830	Previous record	19	108	127
Nonfat dry milk	1963-64 :Lb. :	707	608	1,315	Record	57	48	105
	1962-63 :Lb. :	753	238	991	Previous record	69	20	89
Hides and skins	1963-64 :Fc. :	0.1	15.3	15.4	Record	1	81	82
	1960-61 :Fc. :	0.4	12.7	13.1	Previous record	6	77	83
Butter	1963-64 :Lb. :	46	98	3/144	Record	16	34	3/50
	1955-56 :Lb. :	109	28	137	Previous record	47	12	59
Variety meats	1963-64 :Lb. :	---	187	187	Record	---	38	38
	1962-63 :Lb. :	---	144	144	Previous record	---	28	28
Dry edible beans	1963-64 :Lb. :	2/	415	415	Record	1	33	34
	1959-60 :Lb. :	20	366	386	Previous record	2	28	30
Grain sorghums	1963-64 :Bu. :	6	93	99	2nd highest	8	114	122
	1962-63 :Bu. :	17	102	119	Record	19	116	135
Oilcake and meal	1963-64 :S.T. :	2/	1.4	1.4	2nd highest	2/	112	112
	1962-63 :S.T. :	2/	1.6	1.6	Record	3	113	116
Poultry meat	1963-64 :Lb. :	12	219	231	2nd highest	3	60	63
	1961-62 :Lb. :	1	308	309	Record	0.3	80.7	81.0
Lemons and limes	1963-64 :Lb. :	n.a.	n.a.	241	2nd highest	n.a.	n.a.	19
	1957-58 :Lb. :	n.a.	n.a.	274	Record	n.a.	n.a.	18
Grapes, fresh	1963-64 :Lb. :	n.a.	n.a.	190	2nd highest	n.a.	n.a.	17
	1962-63 :Lb. :	n.a.	n.a.	200	Record	n.a.	n.a.	18
Soybean oil	1963-64 :Lb. :	594	436	3/1,030	3rd highest	68	40	3/108
	1962-63 :Lb. :	513	752	3/1,265	Record	60	72	3/132
Canned fruits	1963-64 :Lb. :	n.a.	n.a.	476	3rd highest	n.a.	n.a.	67
	1962-63 :Lb. :	n.a.	n.a.	596	Record	n.a.	n.a.	77
Tomatoes, fresh	1963-64 :Lb. :	---	99	99	3rd highest	---	10	10
	1958-59 :Lb. :	---	127	127	Record	---	9	9
Cottonseed oil	1963-64 :Lb. :	128	348	3/476	4th highest	14	40	3/54
	1955-56 :Lb. :	387	278	665	Record	63	37	100
Dry edible peas	1963-64 :Lb. :	---	232	232	5th highest	---	16	16
	1945-46 :Lb. :	n.a.	n.a.	330	Record	n.a.	n.a.	26
Barley grain	1963-64 :Bu. :	7	60	67	7th highest	7	66	73
	1959-60 :Bu. :	50	64	114	Record	54	66	120
Tobacco	1963-64 :Lb. :	50	482	532	10th highest	34	387	421
	1919-20 :Lb. :	---	648	648	Record	---	273	273
Cotton	1963-64 :Bale :	1.1	4.0	5.1	7th postwar high	139	531	670
	1956-57 :Bale :	3.1	4.2	7.3	Postwar record	455	661	1,116

1/ Government programs partly estimated for fiscal year 1963-64. 2/ Less than 50,000 tons. 3/ Exports of butter, soybean oil, and cottonseed oil include amounts reported by the Bureau of the Census plus amounts donated under Title III, which are not separately reported by the Bureau of the Census.

Table 4.--U.S. agricultural exports to the European Economic Community: Value by commodity, July-June and August-June 1961-62 through 1963-64 ^{1/}

Commodity	July-June			August-June		
	1961-62	1962-63	1963-64	1961-62	1962-63	1963-64
-- 1,000 dollars --						
<u>Variable levy commodities ^{2/}:</u>						
Feed grains	271,410	274,324	278,462	262,858	251,737	256,478
Rye grain	9,206	24,160	8,082	9,103	20,983	7,772
Wheat grain	114,380	38,752	90,945	110,276	37,376	86,878
Wheat flour ^{3/}	17,218	10,237	7,826	15,601	10,152	7,465
Lard	2,954	2,325	2,232	2,663	2,316	2,091
Pork, except variety meats	444	383	10,191	425	362	10,178
Poultry and eggs:						
Broilers and fryers	38,219	13,144	12,670	35,700	10,636	11,826
Stewing chickens	10,924	4,404	7,772	9,973	3,681	7,382
Turkeys	9,159	7,905	9,593	8,675	7,500	9,243
Other fresh poultry	847	389	346	761	329	308
Canned poultry ^{4/}	1,696	1,572	2,988	1,574	1,468	2,838
Eggs	5,095	2,825	2,469	4,720	2,502	2,132
Total poultry and eggs	65,940	30,239	35,838	61,403	26,116	33,729
Total	481,552	380,420	433,596	462,329	349,042	404,591
<u>Non-variable levy commodities:</u>						
Cotton, excluding linters	157,093	86,847	191,053	152,094	83,135	188,281
Fruits and vegetables	80,808	96,017	88,366	73,681	89,436	79,712
Rice, milled	17,170	13,022	15,570	16,359	11,534	14,191
Soybeans	146,955	163,826	193,935	142,793	156,724	185,933
Tallow	32,266	22,926	32,693	29,063	21,483	30,652
Tobacco, unmanufactured	104,529	103,115	105,701	97,328	88,683	94,371
Variety meats	16,778	18,140	26,337	15,541	16,996	24,918
Vegetable oils, expressed	18,368	13,346	29,629	17,686	13,169	28,897
Other	129,032	171,945	5/204,615	119,893	162,241	5/191,444
Total	702,999	689,184	5/887,899	664,438	643,401	5/838,399
Total EEC	1,184,551	1,069,604	5/1,321,495	1,126,767	992,443	5/1,242,990

^{1/} Compiled from U.S. Bureau of the Census data. ^{2/} Classified for identification of commodities subject to the variable levies which were put into effect on July 30, 1962. The classification is designed to show the overall change in exports of these commodities rather than to measure the impact of the variable levies on exports of these commodities. ^{3/} Exports of wheat flour to Italy include donations under Titles II and III of P.L. 480. ^{4/} Amount of variable levy may not exceed bound duty under GATT. ^{5/} Partly estimated.

Agricultural commodities exported to EEC have been classified as variable levy and non-variable levy commodities for identification purposes. This classification is designed to show the overall change in these commodities rather than to measure the impact of the variable levies on U.S. exports.

Exports of commodities not subject to variable levies rose to \$888 million in 1963-64 compared with \$689 million a year earlier. Over half of the nearly 30 percent increase in this category was due to exports of cotton, which rose to \$191 million in 1963-64 from \$87 million. Exports of rice, soybeans, tallow, tobacco, variety meats and vegetable oils were also larger. Declines were noted for fruits and vegetables due to limited supplies of some commodities in the United States along with higher U.S. prices.



Government Program Export Highlights

JULY 1963-MARCH 1964

U.S. exports of farm products during the first three quarters of fiscal year 1963-64 reached a high of \$4,566.4 million, over \$900 million above exports in the same period a year earlier. Over 90 percent of the increase was in commercial sales for dollars, which reached a record \$3,477.0 million. Exports under Government-financed programs totaled \$1,089.4 million, about \$70 million above program shipments for July 1962-March 1963 (table 5).

Government Programs

With the exception of long-term supply and dollar credit sales under Title IV, exports under all titles of P.L. 480 (Agricultural Trade Development and Assistance Act of 1954) rose moderately from the comparable 9 months of the preceding year. The largest increases were in donations and barter under Title III. July-March exports under AID programs were \$10 million above the 1962-63 level.

Sales for foreign currency under Title I amounted to \$725.6 million in the July-March period of 1963-64 compared with \$715.2 million a year earlier. Nearly 60 percent of the Title I shipments consisted of wheat valued at \$418.1 million. Shipments of wheat to India under this Title amounted to over \$200 million; followed by Pakistan, \$84 million; United Arab Republic (Egypt), \$50 million; and Brazil, \$17 million.

Exports to the United Arab Republic (Egypt), South Viet-Nam, Republic of the Congo, and Bolivia accounted for over 90 percent of the \$39.7 million of wheat flour shipments under Title I.

Exports of cotton under Title I totaled \$80.6 million, most of which moved under agreements with India, South Korea, Indonesia, Republic of China (Taiwan), South Viet-Nam, and Burma. Part of the cotton exported under agreements with Burma and Indonesia went to other countries for processing.

About three-fourths of the \$59.6 million worth of rice exported under Title I went to India. The Republic of the Congo, Guinea, Iceland, Indonesia, Israel, and Peru also received rice shipments under this program during the 9-month period.

Table 5.--U.S. agricultural exports under specified Government-financed programs, exports outside specified Government-financed programs, and total agricultural exports: Value by commodity, July-March 1963-64

Commodity	Public Law 480				P.L. 87-195:		Total	Total	
	Title I	Title II	Title III	Title IV	Agency for	agricultural:	agricultural:		
	Sales	Famine	Foreign	Barter	Long-term	Inter-	exports	exports	Total
	for	and other	donations:	2/	supply and:	national	under	outside	agricultural
	foreign	emergency	1/		dollar	Development:	specified	specified	exports
	currency	relief			credit	(A., D.)	Government	Government	
					sales	programs 3/	programs	programs 4/	
	-- Million dollars --								
Wheat.....	418.1	71.7	4.9	36.4	13.8	.8	545.7	440.6	986.3
Wheat Flour.....	39.7	17.0	30.9	---	.8	.2	88.6	34.1	122.7
Corn.....	30.2	3.3	1.2	9.0	.1	---	43.8	430.0	473.8
Grain sorghums.....	.1	1.0	---	3.0	5/	---	4.1	95.3	99.4
Barley.....	5.3	---	---	.3	---	---	5.8	40.4	46.2
Corn meal.....	---	.2	11.7	---	---	.2	12.1	3.8	15.9
Wheat cereal foods to be cooked.....	---	6/4.9	6/11.4	---	6/5/	---	16.3	7/-2.3	8/14.0
Barley malt.....	---	---	---	---	---	.8	.8	2.9	3.7
Rice, milled.....	59.6	---	---	---	2.7	2.4	64.7	90.2	154.9
Cotton.....	2/80.6	---	---	13.2	---	1.4	95.2	425.9	521.1
Tobacco, unmanufactured.....	11.7	---	---	4.7	3.0	.4	19.8	326.4	346.2
Soybeans.....	---	---	---	---	.4	1.2	1.6	396.6	398.2
Flaxseed.....	---	---	---	---	---	.1	.1	7.4	7.5
Lard.....	.4	---	---	---	.3	---	.7	41.6	42.3
Tallow, edible and inedible.....	12.2	---	---	---	.8	1.0	14.0	73.5	87.5
Soybean oil.....	38.4	2.6	10/.1	---	3.3	4.7	49.1	28.9	8/78.0
Cottonseed oil.....	11.2	.6	10/5/	---	5/	1.7	13.5	25.1	8/38.6
Linseed oil.....	---	---	---	---	---	5/	5/	1.4	1.4
Shortening, 100 percent vegetable oil..	---	---	.3	---	---	---	.3	.9	8/1.2
Oilcake and meal.....	---	---	---	---	---	.1	.1	83.0	83.1
Feeds and fodders, except oilcake	---	---	---	---	---	.3	.3	46.0	46.3
and meal.....	---	---	---	---	---	.4	.4	12.3	12.7
Essential oils.....	---	---	---	---	---	.7	11.4	3.6	15.0
Milk, evaporated and condensed.....	9.8	---	---	---	.9	---	3.4	4.6	8.0
Milk, whole dried.....	3.2	---	---	---	---	.2	38.7	31.1	69.8
Milk, nonfat dry.....	1.6	11/.1	35.8	1.2	---	5/	1.5	2.3	3.8
Cheese.....	.1	.4	1.0	---	---	.1	7.2	24.7	8/31.9
Butter.....	.2	.1	6.6	.2	---	---	43.6	4.4	8/48.0
Anhydrous milk fat.....	---	3.4	39.3	---	.9	---	.5	6.4	6.9
Infants' and dietetic foods.....	---	---	---	---	---	.5	2.7	42.7	45.4
Poultry, fresh or frozen.....	2.7	---	---	---	---	.7	.7	57.3	58.0
Hides and skins.....	---	---	---	---	---	.1	.1	22.7	22.8
Seeds.....	---	---	---	---	---	---	.5	29.3	29.8
Beans, dry edible.....	.5	---	---	---	---	.4	.4	12.6	13.0
Hops.....	---	---	---	---	---	---	---	---	---
Fruits and juices, fresh, frozen and	---	---	---	---	---	.2	.2	178.5	178.7
canned.....	---	---	---	---	---	12/1.5	1.5	452.8	454.3
Other agricultural commodities.....	---	---	---	---	---	---	---	---	---
Total agricultural exports.....	725.6	105.3	143.2	68.2	27.0	20.1	1,089.4	3,477.0	4,566.4

--Continued

Table 5.--U.S. agricultural exports under specified Government-financed programs, exports outside specified Government-financed programs, and total agricultural exports: Value by commodity, July-March 1963-64 - Continued

- 1/ Foreign donations are authorized under Sec. 416 of the Agricultural Act of 1949 and Sec. 302, Title III, P.L. 480.
- 2/ The barter program is authorized under the Charter Act of the Commodity Credit Corporation; Sec. 303, Title III, P.L. 480; and other legislation.
- 3/ Includes expenditures under commodity (non-project) programs and economic development loans.
- 4/ "Total Agricultural exports outside specified Government-financed programs" (sales for dollars) include, in addition to unassisted commercial transactions, shipments of some commodities with governmental assistance in the form of (1) extension of credit for relatively short periods, (2) sales of Government-owned commodities at less than domestic market prices, and (3) export payments in cash or in kind.
- 5/ Less than \$50,000.
- 6/ Bulgur wheat \$4.7 million and rolled wheat \$0.2 million under Title II. Bulgur wheat \$9.7 million and rolled wheat \$1.7 million under Title III, donations. Bulgur wheat under Title IV.
- 7/ The excess of the Government portion over total agricultural exports may be attributed to lags in reporting or to differences in valuation or classification procedures.
- 8/ The value shown for wheat cereal foods to be cooked, soybean oil, cottonseed oil, shortening 100 percent vegetable oil, butter, and anhydrous milk fat includes the value reported by the Bureau of the Census plus the value shown as foreign donations under Title III. Relief shipments of these commodities are not separately reported by the Bureau of the Census.
- 9/ Includes \$0.2 million for cotton fabric.
- 10/ Reported as soybean and cottonseed oil. Breakdown between the two oils estimated.
- 11/ Nonfat dry milk exported under Title II totaled \$2.4 million less a downward adjustment for a previous period of \$2.3 million.
- 12/ Includes the following: Soap stock and fatty acids, \$50,278; wheat and rye products, \$151,033; other miscellaneous vegetable oils, \$75,081; confectioneries and other sugar products, \$62,114; meats and meat products, \$413,398; vegetables fresh, frozen, or canned, \$171,500; miscellaneous edible vegetable products, \$186,078; non-alcoholic beverages, \$133,313; cattle, \$68,891; and baby chicks, \$167,669; total, \$1,479,355. These commodities are not reported separately as information is not readily available to determine the actual commodity exported.

Major recipients of the \$38.4 million worth of soybean oil exports in July 1963-March 1964 were Pakistan, Turkey, Tunisia, and Israel.

Title I exports to United Arab Republic (Egypt), Israel, India, and Greece accounted for \$25 million of the \$30.2 million of corn shipped under this Title.

Donations for disaster relief and economic development under Title II totaled \$105.3 million (CCC cost) compared with \$91.0 million during the same period of the preceding year. The most substantial increase was in exports of wheat and flour. Principal recipients of Title II donations during the period were Algeria, to which shipments of \$21 million were reported; Afghanistan, South Korea, Tunisia, and the United Nations Relief and Works Agency (UNRWA) for the relief of Palestine refugees, \$11 million each; and Morocco, \$10 million.

Donations through voluntary relief agencies under Title III rose to \$143.2 million in July 1963-March 1964 from \$116.5 million in the like period of 1962-63. With the exception of vegetable oils and cheese, donations of most commodities were larger in the 1963-64 period. Donations of bulgur and rolled wheat increased to 271 million from 200 million pounds; nonfat dry milk, to 447 million from 391 million pounds; and anhydrous milk fat, to 112 million from 19 million pounds. Donations of vegetable oils in the July-March period fell to 2 million in 1963-64 from 78 million pounds in 1962-63. The requirements for fats and oils under the Title III donations program were largely met with butter, butter-oil, and ghee in the 1963-64 period (table 6).

Shipments under the barter program under Title III rose \$27.4 million to \$68.1 million in the first three quarters of fiscal year 1963-64 from \$40.8 million in the comparable period of the previous year. Activity under the barter program has increased substantially under the new barter program policy in which the emphasis has shifted to offshore barter procurement for other Federal agencies, mostly to supply the Department of Defense and the Agency for International Development.

Exports of wheat under this program rose \$32.2 million from the previous year. No cotton was exported under the barter program during 1962-63, but under more favorable terms for the sale of cotton under this program than those in effect for the previous year, exports of cotton reached \$13.2 million during the July 1963-March 1964 period. Decreases in shipments of feed grains and tobacco partially offset the increases in wheat and cotton shipments under the program.

Shipments of wheat to Latin America under the barter program totaled \$27.9 million, including \$19.2 million to Brazil, \$3.6 million to Peru, and \$2.8 million to Colombia. Major recipients of cotton were the Republic of the Philippines, \$4.0 million; Poland, \$3.7 million; Republic of China (Taiwan), \$2.6 million; and South Korea, \$1.0 million.

Long-term supply and dollar credit sales under Title IV totaled \$27.0 million, 60 percent of those of the previous year. Over half of the shipments consisted of wheat, which totaled \$13.9 million. The principal country of destination for wheat was Iraq, followed by Colombia, Chile, Ecuador, Portugal, and the

Table 6.--U.S. agricultural exports under specified Government-financed programs, exports outside specified Government-financed programs, and total agricultural exports: Quantity by commodity, July-March 1963-64

Commodity	Unit	Public Law 480				P.L. 87-195:		Total	Total	Total agricultural exports
		Title I	Title II	Title III	Title IV	Agency for		agricultural	agricultural	
		Sales	Famine	Foreign	Barter	Long-term	Inter-	exports	exports	
		for	and other	donations:		supply and:	national	under	outside	
		foreign	emergency	1/	2/	dollar	Development:	specified	specified	
		currency:	relief			credit	(A.I.D.)	Government	Government	
						sales	programs 3/	programs	programs 4/	
-- Thousand units --										
Wheat (60 lb.).....	Bu.	240,643	18,567	2,530	20,821	7,840	403	290,804	263,328	554,132
Wheat flour.....	Cwt.	10,984	3,245	8,583	---	218	32	23,062	6,893	29,955
Corn (56 lb.).....	Bu.	21,725	1,586	812	6,583	79	---	30,785	316,789	347,574
Grain sorghums (56 lb.).....	Bu.	60	488	---	2,525	20	---	3,093	77,309	80,402
Barley (48 lb.).....	Bu.	4,744	---	---	513	---	---	5,257	37,671	42,928
Corn meal.....	Cwt.	---	37	3,181	---	---	34	3,252	871	4,123
Wheat cereal foods to be cooked.....	Lb.	---	5/63,207	5/270,593	---	5/330	---	334,130	6/-3,758	7/330,372
Barley malt (48 lb.).....	Bu.	---	---	---	---	---	398	398	1,387	1,785
Rice, milled.....	Cwt.	10,517	---	---	---	447	581	11,545	11,149	22,694
Cotton, running bale.....	Bale	614	---	---	106	---	11	731	3,247	3,978
Tobacco, unmanufactured.....	Lb.	17,009	---	---	8,170	3,231	527	28,937	398,087	427,024
Soybeans (60 lb.).....	Bu.	---	---	---	---	147	411	558	142,381	142,939
Flaxseed (56 lb.).....	Bu.	---	---	---	---	---	33	33	2,500	2,533
Lard.....	Lb.	4,063	---	---	---	2,526	---	6,589	445,993	452,582
Tallow, edible and inedible.....	Lb.	152,590	---	---	---	10,964	12,206	175,760	1,149,276	1,325,036
Soybean oil.....	Lb.	332,765	13,973	8/668	---	27,403	32,728	407,537	318,118	7/725,655
Cottonseed oil.....	Lb.	98,924	3,712	8/82	---	170	11,815	114,707	223,892	7/338,599
Linseed oil.....	Lb.	---	---	---	---	---	211	211	13,556	13,767
Shortening, 100 percent vegetable:										
oil.....	Lb.	---	---	1,689	---	---	---	1,689	4,233	7/5,922
Oilcake and meal.....	S.T.	---	---	---	---	---	1	1	1,033	1,034
Feeds and fodders, except oilcake:										
and meal.....	S.T.	---	---	---	---	---	2	2	732	734
Essential oils.....	Lb.	---	---	---	---	---	202	202	5,443	5,645
Milk, evaporated and condensed.....	Lb.	54,908	---	---	---	4,700	2,822	62,430	19,016	81,446
Milk, whole dried.....	Lb.	6,155	---	---	---	---	232	6,387	12,889	19,276
Milk, nonfat dry.....	Lb.	20,263	14,356	447,342	19,919	---	253	502,133	369,230	871,363
Cheese.....	Lb.	202	846	3,501	---	---	---	4,549	7,023	11,572
Butter.....	Lb.	801	142	23,730	874	---	370	25,917	71,883	7/97,800
Anhydrous milk fat.....	Lb.	---	3,676	112,148	---	2,098	---	117,922	13,093	7/131,015
Infants' and dietetic foods.....	Lb.	---	---	---	---	---	564	564	11,732	12,296
Poultry, fresh or frozen.....	Lb.	10,114	---	---	---	---	---	10,114	149,656	159,770
Hides and skins.....	No.	---	---	---	---	---	99	99	10,892	10,991
Seeds.....	Cwt.	---	---	---	---	---	3	3	853	856
Beans, dry edible.....	Cwt.	73	---	---	---	---	---	73	3,562	3,635
Hops.....	Lb.	---	---	---	---	---	497	497	19,122	19,619
Fruits and juices, fresh, frozen:										
and canned.....	Lb.	---	---	---	---	---	1,412	1,412	1,661,110	1,662,522

--Continued

Table 6.--U.S. agricultural exports under specified Government-financed programs, exports outside specified Government-financed programs, and total agricultural exports: Quantity by commodity, July-March 1963-64 - Continued

- 1/ Foreign donations are authorized under Sec. 416 of the Agricultural Act of 1949 and Sec. 302, Title III, P.L. 480.
- 2/ The barter program is authorized under the Charter Act of the Commodity Credit Corporation; Sec. 303, Title III, P.L. 480; and other legislation.
- 3/ Includes expenditures under commodity (non-project) programs and economic development loans.
- 4/ "Total agricultural exports outside specified Government-financed programs" (sales for dollars) include, in addition to unassisted commercial transactions, shipments of some commodities with governmental assistance in the form of (1) extension of credit for relatively short periods, (2) sales of Government-owned commodities at less than domestic market prices, and (3) export payments in cash or in kind.
- 5/ Bulgur wheat 59,900,000 lbs. and rolled wheat 3,307,000 lbs. under Title II. Bulgur wheat 242,917,000 lbs. and rolled wheat 27,676,000 lbs. under Title III. Bulgur wheat under Title IV.
- 6/ The excess of the Government program portion over total agricultural exports may be attributed to lags in reporting or to differences in classification procedures.
- 7/ The quantity shown for total agricultural exports of wheat cereal foods to be cooked, soybean oil, cottonseed oil, shortening 100 percent vegetable oil, butter, and anhydrous milk fat includes the quantity reported by the Bureau of the Census plus the quantity shown as foreign donations under Title III. Relief shipments of these commodities are not separately reported by the Bureau of the Census.
- 8/ Reported as soybean and cottonseed oil. Breakdown between the two oils is estimated.

Ryukyu Islands. Exports of soybean oil totaling \$3.3 million went to Colombia, Ecuador, and Bolivia. Countries taking the \$3.0 million of tobacco were Iraq, Ecuador, Colombia, the Ryukyu Islands, and Iceland.

Exports of agricultural commodities under AID programs authorized by P.L. 87-195, the Act for International Deveopment, totaled \$20.1 million. These exports included \$17.5 million under commodity (non-project) programs and an additional \$2.6 million under development loans. Prior to this report, the relatively small exports of agricultural commodities under development loans have not been reported. Development loans authorized under P.L. 87-195 are designed to stimulate economic development; they include Alliance for Progress loans to Latin America. The repayment period for development loans may extend to a maximum of 40 years, with annual repayments beginning at the expiration of a grace period of varying lengths. Interest charges are made during the grace period, as well as during the repayment period.

Commercial Sales for Dollars

Commercial sales for dollars reached a record high of \$3,477.0 million during the 9-month period. Dollar sales of oilseeds and products amounted to \$579.7 million; feed grains, \$568.5 million; and wheat and flour, \$474.7 million (table 7).

Included in dollar sales are disbursements under credit guarantees extended by the Export-Import Bank and purchases under the CCC credit sales program, which totaled \$166.0 million during the period, compared with \$118.6 million during July 1962-March 1963. Purchases under the CCC credit sales program increased by \$46 million, while disbursements under Export-Import Bank guarantees against political and/or financial risk remained at about the same level (table 8).

Disbursements under Export-Import Bank guarantees included \$46.6 million for exports of cotton, including \$46.1 million for export to Japan, \$0.3 million to Austria, and \$0.2 million to Hungary. The disbursements for exports of wheat, corn, soybeans, and soybean meal were for export to Hungary. Export-Import Bank guarantees for exports to Hungary cover only 75 percent of the invoice value of the commodities, since cash down payments of at least 25 percent are required.

Purchases of cotton under the CCC credit sales program totaled \$33.5 million of which \$27.4 million was for export to Japan. Purchases of grain sorghums amounting to \$25.5 million included \$21.7 million for export to Japan. Purchases of wheat totaling \$19.8 million were for export to 16 countries of Latin America, Europe, Asia, and Africa. Nearly half of the purchases of corn in the amount of \$19.7 million were for Mexico.

The largest commodity increase in commercial sales for dollars was in exports of wheat and flour, which rose \$262.1 million from a year earlier to a total of \$474.7 million during the first 9 months of fiscal year 1963-64. The demand for U.S. wheat during fiscal year 1963-64 was stimulated by a decline in wheat production in Western Europe and the Soviet Bloc.

Table 7.--Exports under specified Government-financed programs, commercial sales for dollars, and total agricultural exports: Value by commodity, July 1963-March 1964 compared with July 1962-March 1963

Commodity	Exports under			Commercial			Total agricultural		
	Govt.-financed programs			sales for dollars ^{1/}			exports		
	1962-63	1963-64	Change	1962-63	1963-64	Change	1962-63	1963-64	Change
	Million dollars			Million dollars			Million dollars		
Wheat and wheat flour ..	561.2	634.3	+73.1	212.6	474.7	+262.1	773.8	1,109.0	+335.2
Feed grains, excluding products	65.6	53.7	-11.9	446.0	568.5	+122.5	511.6	622.2	+110.6
Rice, milled	73.0	64.7	-8.3	45.6	90.2	+44.6	118.6	154.9	+36.3
Cotton	118.4	95.2	-23.2	257.4	425.9	+168.5	375.8	521.1	+145.3
Tobacco, unmanufactured ..	24.6	19.8	-4.8	277.6	326.4	+48.8	302.2	346.2	+44.0
Oilseeds and products ..	71.3	64.8	-6.5	516.8	579.7	+62.9	<u>2/</u> 588.1	<u>2/</u> 644.5	+56.4
Dairy products	62.4	106.3	+43.9	50.7	80.6	+29.9	<u>3/</u> 113.1	<u>3/</u> 186.9	+73.8
Animal and products, except dairy	13.2	18.8	+5.6	307.3	383.7	+75.9	321.0	402.5	+81.5
Fruits and preparations ..	.1	.2	+1.1	214.2	214.8	+6.6	214.3	215.0	+7.7
Vegetables and preparations	7.3	.9	-6.4	111.5	121.3	+9.8	118.8	122.2	+3.4
Other	21.3	30.7	+9.4	201.2	211.2	+10.0	222.5	241.9	+19.4
Total agricultural exports	1,018.4	1,089.4	+71.0	2,641.4	3,477.0	+835.6	3,659.8	4,566.4	+906.6

^{1/} Exports outside Government-financed programs. ^{2/} Total exports of oilseeds and products include the estimated value of donations of vegetable oils under Title III, P.L. 480, not separately reported by the Bureau of the Census, as follows: 1962-63, \$13.7 million, and 1963-64, \$0.4 million. ^{3/} Total exports of dairy products include the estimated value of donations of butter and butteroil under Title III, P.L. 480, not separately reported by the Bureau of the Census, as follows: 1962-63, \$8.6 million and 1963-64, \$45.9 million.

Table 8.--U.S. credit sales of agricultural commodities: Value by commodity, July-March 1963-64 1/

Commodity	: Export-Import :			Total credit sales
	: Bank loans : CCC			
	: and : credit			
	: medium-term : sales <u>3/</u>			
	: guarantees 2/ :			
	-- <u>Million dollars</u> --			
Wheat.....	11.4	19.8	31.2	
Corn.....	4.7	19.7	24.4	
Grain sorghums.....	---	25.5	25.5	
Barley.....	---	2.7	2.7	
Soybeans.....	0.8	---	0.8	
Soybean meal.....	0.5	---	0.5	
Cotton.....	46.6	33.5	80.1	
Tobacco.....	---	.7	.7	
Butter.....	---	.1	.1	
Total.....	64.0	102.0	166.0	

1/ Credits for relatively short periods repayable in dollars plus interest (covering the financing costs of the lending agency).

2/ Includes disbursements by U.S. commercial banks under Export-Import Bank medium-term guarantees against political and/or financial risk.

3/ Purchases during the period.

U.S. dollar exports of feed grains amounted to \$568.5 million, compared with \$446.0 million during the 9-month period of the previous year. Dollar sales of corn totaled \$430.0 million and accounted for all the increase in the commodity group. The increased demand for feed grains from the United States was associated with the rapid growth of the livestock industries in Western Europe and Japan.

Dollar sales of rice from the United States advanced \$44.6 million to \$90.2 million in the first 9 months of fiscal year 1963-64 from the same months a year earlier. Program exports declined \$8.3 million. Dollar sales were 58 percent of total exports of this commodity compared with 38 percent in the same period of the preceding year.

U.S. cotton sold for dollars in foreign markets in the first three quarters of fiscal year 1963-64 rose \$168.5 million to \$425.9 million from the like period of fiscal year 1962-63. Program exports were \$23.2 million less than those of the preceding period. Sales for export from CCC stocks at competitive prices, a decline in production in foreign exporting countries, and relatively low stocks in major importing countries contributed to the increase in U.S. cotton exports.

U.S. dollar exports of unmanufactured tobacco advanced \$48.8 million to \$326.4 million in the July 1963-March 1964 period from the same period of the preceding year. Dollar sales increased more than total exports of this commodity; exports under Government programs declined \$4.8 million. U.S. exportable supplies of tobacco included a higher proportion of high quality leaf, and stocks in many foreign importing countries were at relatively low levels.

Dollar sales of oilseeds and products, amounting to \$579.7 million in July 1963-March 1964, led all other commodity groups. The increase of \$62.9 million over the first 9 months of fiscal year 1962-63 may be attributed to increased dollar exports of soybeans which totaled \$396.6 million during the 9-month period. Communist China, once a leading world supplier of soybeans, continued to have smaller quantities available for export. The growth of the livestock industry in the industrialized countries of Western Europe and Japan has resulted in an increased demand for oilseeds and protein meal.

U.S. exports of dairy products (including the estimated value of donations of butter, butteroil, and ghee under Title III, not separately reported by the Bureau of the Census) rose \$73.8 million to \$186.9 million in the first three quarters of fiscal year 1963-64 over the comparable period of a year earlier. Exports for dollars rose \$29.9 million and Government program shipments advanced \$43.9 million.

Dollar sales of butter totaled \$24.7 million in fiscal year 1963-64 compared with \$1.2 million a year earlier. Exports of nonfat dry milk for dollars were \$31.1 million in the first 9 months of 1963-64, up \$10.1 million from 1962-63. The payment-in-kind programs for nonfat dry milk and for butter, butteroil, ghee, and other products containing 75 percent or more milkfat encouraged exports from commercial stocks, in addition to those sold from Government-owned stocks at less than domestic market prices.

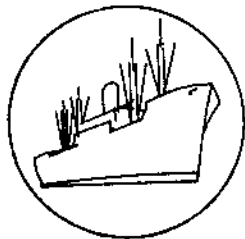
On June 10, 1964, the Department announced a modified payment-in-kind program for exports of nonfat dry milk. The program previously in effect, which provided for announced rates for specified periods, was terminated on May 22, 1964, to provide time for the reassessment of world supply and demand. The modified program, on a competitive bid basis, became effective August 4, 1964.

U.S. dollar exports of animals and products except dairy products advanced to \$383.7 million in July-March of 1963-64 from \$307.8 million in the same months a year earlier. Largest gains were in exports of meats and meat products and tallow and lard. Pork and variety meats, rose \$17.9 million and \$6.2 million, respectively. Competitive prices for U.S. meats and increased demand associated with higher disposable incomes in Western Europe, Japan, and Canada have contributed to the increase in U.S. exports of meats and meat products. Dollar sales of tallow amounted to \$73.5 million in the first 9 months of 1963-64 compared with \$48.6 million in the same period of the prior year and exports of lard for dollars advanced \$14.1 million.

Despite the variable import levies in effect for U.S. exports to the European Common Market countries -- the most important market for U.S. poultry and poultry products (poultry meat and eggs) -- dollar sales of these commodities increased to \$57.4 million from \$51.2 million in the previous 9-month period.

U.S. exports of fruits and preparations, all but \$0.2 million for dollars, remained at relatively the same level during the first three quarters of fiscal years 1963-64 and 1962-63. A rise of \$14.1 million in exports of fresh fruits, principally apples, grapefruit, lemons and limes and oranges and tangerines, was offset by declines of \$9.1 million in shipments of canned fruits and \$5.3 million in fruit juices.

Exports of vegetables and preparations, all but \$0.9 million for dollars, increased \$3.4 million in July-March of 1963-64 compared with the like period of 1962-63. Dollar sales gained \$9.8 million, while Government program exports were down \$6.4 million. Exports of dry edible beans for dollars rose \$13.3 million, and frozen and canned vegetables showed relatively small increases. These increases were partially offset by declines in exports of dry peas, fresh vegetables, and other products.



Import Highlights

U.S. AGRICULTURAL IMPORTS INCREASED 5 PERCENT IN FISCAL YEAR 1963-64

U.S. imports of agricultural products for consumption in fiscal year 1963-64 rose to an estimated \$4,095 million from \$3,907 million in the previous year -- a gain of 5 percent. The increase resulted primarily from larger imports of complementary (noncompetitive) products, since imports of supplementary (partially competitive) commodities were about equal to the level of the previous year (table 9).

Nonagricultural imports totaled an estimated \$13.7 billion, 10 percent above the \$12.5 billion of the year before. Imports of nonagricultural products have been growing steadily due to increased consumer incomes in the United States as well as expanded programs by many countries to ship more products to the United States. The increase included both raw materials and finished products.

Supplementary Imports

Imports of supplementary products totaled an estimated \$2,224 million, slightly above last year's \$2,208 million. Declines in imports of cane sugar, dutiable cattle, apparel wool, and oilseeds and products were offset by larger imports of fruits, grains, nuts, vegetables, and tobacco. While less sugar was imported last year, the value of supplementary imports was well maintained by higher sugar prices.

Animals and animal products

Dutiable cattle.--Imports of dutiable cattle fell to 606,000 head in 1963-64 from 1,217,000 in 1962-63 (table 10). Value also declined. Imports from both Canada and Mexico were unusually heavy in the summer of 1962, when drought conditions encouraged ranchers to export. Nearly all imports from Canada and Mexico in 1962-63 were stocker and feeder cattle imported by U.S. feeders and ranchers for finishing with relatively cheap domestic feeds. In 1963-64, Mexico accounted for about two-thirds of cattle imports by the United States; and Canada, for the remaining third. The sharp decline in U.S. prices since 1962 discouraged Canadian and Mexican farmers and ranchers from sending additional cattle to the United States.

Meats.--Total imports of meats and products increased to \$519 million in 1963-64 from \$514 million in the previous year. Declines occurred in imports of pork, principally hams and shoulders, and mutton. Imports of beef and veal were increased slightly over year-ago levels; however, they have been declining since January 1964. From January through June 1964, they totaled 432 million pounds

Table 9.--U.S. agricultural imports for consumption: Value by commodity, fiscal years 1962-63 and 1963-64

Commodity	1962-63	1963-64 <u>1/</u>	Change
	<u>-- Million dollars --</u>		<u>Percent</u>
<u>Supplementary</u>			
Animals and animal products:			
Animals, live	118	62	-47
Dairy products	55	57	+4
Hides and skins	56	66	+18
Meats and meat products	514	519	+1
Wool, apparel	124	101	-19
Other	42	47	+12
Total animals, etc	909	852	-6
Cotton, excluding linters	24	24	0
Fruits and preparations	93	121	+30
Grains and preparations	39	46	+18
Nuts and preparations	62	68	+10
Oilseeds and products	157	154	-2
Sugar, cane	548	539	-2
Tobacco, unmanufactured	95	103	+8
Vegetables and preparations	86	98	+14
Other	195	219	+12
Total supplementary	2,208	2,224	+1
<u>Complementary</u>			
Bananas	76	93	+22
Coffee	939	1,121	+19
Cocoa beans	128	122	-5
Rubber, crude, natural	227	185	-19
Tea	61	59	-3
Wool, carpet	101	110	+9
Other	167	181	+8
Total complementary	1,699	1,871	+10
Total imports	3,907	4,095	+5

1/ Preliminary

Table 10.— U. S. agricultural imports for consumption: Quantity and value by commodity,
June 1963 and 1964 and July-June 1962-63 and 1963-64

		June 1/				July-June 1/			
Commodity Imported SUPPLEMENTARY	Unit	Quantity		Value		Quantity		Value	
		1963	1964	1963	1964	1962-63	1963-64	1962-63	1963-64
		Thousands	Thousands	dollars	dollars	Thousands	Thousands	dollars	dollars
ANIMALS AND ANIMAL PRODUCTS									
Animals, live:									
Cattle, draftable	No.	31	11	1,855	816	1,217	606	106,274	47,041
Cattle, free (for breeding)	No.	2	1	629	498	18	19	6,142	6,581
Horses	No.	2/	2/	427	401	4	4	4,925	7,102
Other (including live poultry)	No.	3/	3/	94	97	3/	3/	1,068	808
Total animals, live		---	---	3,005	1,812	---	---	118,409	61,532
Dairy products:									
Butter	Lb.	108	59	59	31	759	697	352	346
Cheese -									
Blue-mold	Lb.	660	460	320	227	4,540	3,917	2,242	1,968
Cheddar	Lb.	787	75	216	35	2,550	2,736	754	874
Edam and Gouda	Lb.	843	579	367	265	7,399	6,655	3,216	2,999
Pecorino	Lb.	588	957	260	480	19,496	14,188	9,647	7,955
Swiss	Lb.	1,078	1,225	559	660	17,576	16,787	9,356	9,047
Other	Lb.	2,661	2,073	1,051	1,103	30,801	34,458	12,382	13,869
Total cheese	Lb.	6,617	5,369	2,773	2,767	82,362	78,741	37,597	36,712
Casein or lactarene	Lb.	7,561	11,632	1,379	2,145	87,610	99,837	15,737	17,811
Other	Lb.	3/	3/	119	364	3/	3/	1,139	2,392
Total dairy products		---	---	4,330	5,307	---	---	54,825	57,261
Hides and skins, raw (except furs):									
Calf skins	Lb.	818	612	257	248	5,870	4,729	2,644	1,649
Cattle hides	Lb.	1,941	1,218	249	192	14,621	14,918	2,230	2,041
Goat and kid skins	Lb.	2,050	1,843	1,261	1,206	24,780	25,514	13,980	16,528
Sheep and lamb skins	Lb.	3,583	5,722	1,324	2,918	49,757	58,814	19,435	28,346
Other 4/	Lb.	3,708	4,776	1,415	2,345	38,377	38,568	17,274	17,887
Total hides and skins, raw	Lb.	12,106	14,171	4,506	6,909	133,405	142,603	55,563	66,451
Meat and meat products:									
Beef and veal -									
Fresh, chilled, or frozen	Lb.	71,075	92,138	27,545	30,325	921,670	952,583	293,469	306,604
Other	Lb.	7,503	7,416	2,432	2,695	99,266	113,093	32,109	36,437
Total beef and veal	Lb.	78,578	99,554	29,977	33,020	1,020,936	1,065,676	325,578	343,041
Mutton, goat, and lamb	Lb.	6,082	7,349	1,340	1,671	89,787	62,295	19,619	14,236
Pork -									
Fresh, chilled, or frozen	Lb.	2,588	3,291	950	1,212	36,588	37,828	13,987	13,940
Hams and shoulders, canned cooked	Lb.	9,393	11,417	6,728	7,690	135,403	139,259	97,248	95,315
Other	Lb.	2,481	2,271	1,334	1,301	34,930	29,407	18,236	16,612
Total pork	Lb.	14,462	16,979	9,012	10,203	206,921	206,494	129,471	125,867
Sausage casings	Lb.	3/	3/	1,258	1,796	3/	3/	16,672	17,552
Other (including meat extracts)	Lb.	5,559	5,277	1,594	1,252	82,607	78,763	22,929	18,314
Total meat and products (except poultry)		---	---	38,181	47,942	---	---	514,469	519,010
Poultry products:									
Eggs, dried, frozen, otherwise preserved ..	Lb.	2/	1	1	1	3	8	5	9
Eggs in the shell	Doz.	56	60	95	85	1,701	1,981	940	1,111
Poultry meat	Lb.	6	7	11	37	204	256	430	575
Total poultry products		---	---	107	123	---	---	1,375	1,695

Continued

Continued -

Table 10.— U. S. agricultural imports for consumption: Quantity and value by commodity,
June 1963 and 1964 and July-June 1962-63 and 1963-64 - Continued

Commodity Imported SUPPLEMENTARY	Unit	June 1/				July-June 1/			
		Quantity		Value		Quantity		Value	
		1963	1964	1963	1964	1962-63	1963-64	1962-63	1963-64
		Thousands	Thousands	dollars	dollars	Thousands	Thousands	dollars	dollars
Wool, unmanufactured (except free in bond):									
40's to 56's	G.Lb.	1,869	1,417	1,083	1,083	27,168	18,496	14,919	12,184
Finer than 56's	G.Lb.	7,960	6,477	5,238	5,335	143,652	84,664	87,398	63,538
Other wools	G.Lb.	2,250	1,989	1,717	1,974	26,708	23,535	21,715	25,721
Total wool, unmanufactured	G.Lb.	12,099	9,883	8,043	8,397	197,528	131,412	124,932	101,443
Other animal products:									
Bones, hoofs, and horns, unmanufactured	---	3/	3/	209	257	3/	3/	3,976	2,475
Bristles, sorted, bunched, or prepared	Lb.	277	272	661	1,015	3,324	3,326	8,416	11,716
Fats, oils, greases, edible and inedible ..	---	3/	3/	68	78	3/	3/	1,057	1,359
Feathers, crude	Lb.	380	408	325	621	3,187	3,462	4,435	5,335
Gelatin, edible	Lb.	570	547	262	260	8,271	8,000	4,165	3,641
Hair, unmanufactured	Lb.	762	996	533	780	9,588	11,503	7,260	8,997
Honey	Lb.	192	610	30	95	4,523	2,802	550	447
Other	---	3/	3/	953	994	3/	3/	10,351	11,013
Total other animal products	---	---	---	3,042	4,098	---	---	40,710	44,583
Total animals and animal products	---	---	---	61,214	74,568	---	---	909,363	851,975
VEGETABLE PRODUCTS									
Cotton, unmanufactured (480 lb.):									
Cotton	Bale	5	1	681	167	126	136	24,113	24,341
Linters	Bale	13	19	329	433	120	158	3,563	4,382
Total cotton and linters	Bale	18	20	1,010	600	246	294	27,676	28,723
Fruits and preparations:									
Apples, green or ripe (50 lb.)	Bu.	41	46	167	219	1,554	1,620	5,677	5,355
Berries	Lb.	3,994	5,094	521	802	51,074	67,234	6,766	10,185
Dates	Lb.	275	29	25	2	32,396	39,460	3,369	3,784
Figs	Lb.	721	2,044	46	163	14,550	27,389	1,281	2,551
Grapes (40 lb.)	Cu.Ft.	147	424	432	1,112	717	1,624	2,169	4,218
Melons	Lb.	4,679	65,861	121	2,471	515,316	228,927	7,367	9,631
Olive oil in brine	Gal.	809	1,692	1,432	2,134	11,574	14,175	21,157	19,345
Oranges, mandarin, canned	Lb.	4,126	6,570	637	1,398	43,225	55,265	9,572	11,323
Pineapples, canned, prepared or preserved ..	Lb.	10,190	15,615	1,170	1,311	103,661	135,992	12,075	15,534
Pineapple juice	Gal.	433	1,320	277	366	3,457	11,214	2,361	4,425
Other	---	3/	3/	2,521	3,765	3/	3/	71,331	39,987
Total fruits and preparations	---	---	---	7,669	13,263	---	---	53,125	121,339
Grains and preparations:									
Barley grain (48 lb.)	Bu.	254	308	360	433	1,466	1,497	3,761	12,111
Barley malt	Lb.	11,005	5,944	556	298	115,727	102,415	6,242	5,114
Corn grain (56 lb.)	Bu.	47	43	65	158	587	1,192	1,734	2,102
Oats grain (32 lb.)	Bu.	454	121	303	100	4,235	3,533	3,561	3,049
Rice	Lb.	16	30	2	6	4,431	1,871	286	151
Rye grain (56 lb.)	Bu.	0	0	0	0	545	649	629	960
Wheat grain for domestic use (60 lb.)	Bu.	818	704	1,450	1,320	5,053	3,567	9,656	7,305
Wheat flour	Lb.	3,873	3,613	169	160	3,723	3,640	171	161
Other	---	3/	3/	741	1,667	3/	3/	13,457	14,573
Total grains and preparations	---	---	---	3,748	3,556	---	---	28,571	28,500

Continued -

Table 10.-- U. S. agricultural imports for consumption: Quantity and value by commodity,
June 1963 and 1964 and July-June 1962-63 and 1963-64 - Continued

Commodity imported SUPPLEMENTARY	Unit	June 1963				July-June 1962-63			
		Quantity		Value		Quantity		Value	
		1963	1964	1,000	1,000	1962-63	1963-64	1,000	1,000
		Thousands	Thousands	dollars	dollars	Thousands	Thousands	dollars	dollars
Nuts and preparations:									
Almonds	Lb.	12	4	14	4	198	217	118	172
Brazil nuts	Lb.	2,683	3,029	520	076	25,974	19,251	6,127	6,162
Cashew nuts	Lb.	3,794	5,308	1,400	2,406	69,368	71,751	26,687	30,125
Coconut meat, fresh, frozen, or prepared	Lb.	7,075	12,146	868	1,506	171,755	135,776	13,695	16,703
Pistache nuts	Lb.	615	300	405	151	14,948	12,043	7,164	6,575
Other	Lb.	3/	3/	345	335	3/	3/	7,846	8,039
Total nuts and preparations				2,560	2,036			62,335	67,826
Oilseeds and products:									
Oils, edible and inedible -									
Cacao butter	Lb.	904	568	481	461	12,449	12,697	10,771	6,483
Garnauha wax	Lb.	1,251	1,391	519	547	12,317	13,574	5,327	5,514
Castor oil	Lb.	6,509	4,627	717	475	97,935	66,597	11,070	9,191
Coconut oil	Lb.	19,942	36,446	2,077	4,366	372,051	415,617	37,474	46,564
Olive oil, edible	Lb.	3,362	5,123	1,060	1,326	43,904	53,626	14,530	15,487
Palm oil	Lb.	2,562	2	333	0	28,855	7,105	2,570	705
Palm kernel oil	Lb.	4,287	9,717	537	1,228	85,542	74,970	9,577	9,286
Tung oil	Lb.	441	3,457	156	761	14,936	26,038	5,138	7,421
Other	Lb.	1,353	2,286	315	420	57,260	28,926	8,393	5,428
Total oils (except essential)	Lb.	40,967	64,011	6,727	9,526	736,238	718,936	104,850	106,109
Oilseeds -									
Copra	Lb.	61,787	30,455	4,684	2,394	631,830	517,674	42,750	39,686
Sesame seed	Lb.	1,244	2,619	213	346	24,067	23,935	3,446	3,393
Other	Lb.	3/	3/	87	114	3/	3/	3,170	1,904
Total oilseeds				4,969	2,854			49,366	44,985
Protein meal (oilcake and meal)	Lb.	14,979	9,775	422	273	104,786	110,374	3,267	3,186
Total oilseeds and products				12,138	12,653			157,483	153,680
Sugar and related products:									
Cane sugar	S.Ton:	482	299	72,952	38,855	4,716	3,635	548,170	559,446
Molasses unfit for human consumption	Gal.	33,511	31,799	5,530	3,882	270,704	276,554	36,183	41,321
Other	Lb.	3/	3/	490	303	3/	3/	9,863	6,686
Total sugar and related products				78,972	43,040			590,216	587,453
Vegetables and preparations:									
Canned mushrooms	Lb.	1,321	1,692	665	862	10,499	15,555	5,520	6,949
Canned tomatoes, tomato paste and sauce	Lb.	3,560	4,069	579	472	149,444	95,945	12,951	11,199
Fresh or dried -									
Cucumbers	Lb.	1	9	2/	2/	57,208	52,640	3,436	4,889
Garlic	Lb.	544	1,246	131	149	16,372	18,851	3,426	2,869
Onions	Lb.	1,432	1,523	88	151	38,958	51,466	2,056	2,723
Potatoes, white	Lb.	1,343	9,724	23	308	91,193	148,986	1,851	3,536
Tomatoes, natural state	Lb.	1,147	9,039	99	1,119	238,544	251,229	20,596	27,845
Turnips and rutabagas	Lb.	42	360	3	11	74,978	95,302	1,564	1,904
Pickled vegetables	Lb.	835	1,336	133	210	13,915	14,781	2,260	2,333
Tapioca, tapioca flour, and cassava	Lb.	20,102	27,879	966	862	191,591	257,049	7,296	9,151
Other	Lb.	3/	3/	1,983	1,437	3/	3/	25,300	24,665
Total vegetables and preparations				4,370	6,061			166,262	186,377

Continued -

Table 10.— U. S. agricultural imports for consumption: Quantity and value by commodity,
June 1963 and 1964 and July-June 1962-63 and 1963-64 - Continued

Commodity imported	Unit	June 1/		July-June 1/	
		Quantity		Quantity	
		1963	1964	1962-63	1963-64
SUPPLEMENTARY		1,000	1,000	1,000	1,000
		Thousands	Thousands	Thousands	Thousands
Other vegetable products:					
Feeds and fodders (except oilcake and meal):	Lb.	3/	3/	3/	3/
Hops	Lb.	3	43	5,507	5,646
Jute and jute butts, unmanufactured	L.Ton:	5	12	74	84
Malt liquors	Gal.	1,612	2,162	16,398	18,706
Nursery and greenhouse stock		3/	3/	3/	3/
Seeds, field and garden		3/	3/	3/	3/
Spices	Lb.	2,367	3,376	46,860	50,675
Tobacco, unmanufactured	Lb.	13,458	15,735	161,865	165,886
Wines	Gal.	1,055	1,302	13,608	15,125
Other		3/	3/	3/	3/
Total other vegetable products					
		17,422	21,430	343,123	268,922
Total vegetable products		128,882	105,631	1,298,790	1,371,546
TOTAL SUPPLEMENTARY IMPORTS		190,103	180,219	2,208,173	2,223,521
COMPLEMENTARY					
Bananas	Lb.	283,900	285,040	3,350,675	3,502,749
Coffee (including into Puerto Rico)	Lb.	176,635	172,711	3,135,745	3,266,581
Coffee essences, substitutes and adulterants	Lb.	338	586	6,049	6,426
Cocoa or cacao beans	Lb.	52,417	49,768	634,741	535,824
Cocoa and chocolate, prepared	Lb.	8,711	9,513	103,016	129,537
Drugs, herbs, roots, etc.		3/	3/	3/	3/
Essential or distilled oils		3/	3/	3/	3/
Fibers, unmanufactured	L.Ton:	10	10	139	173
Rubber, crude	Lb.	57,283	69,979	956,131	853,117
Silk, raw	Lb.	171	320	4,697	4,715
Spices	Lb.	7,260	8,422	92,760	100,418
Tea	Lb.	7,155	10,409	130,721	130,851
Wool, unmanufactured (free in bond)	G.Lb.	14,555	8,259	204,568	182,125
Other complementary agricultural products		3/	3/	3/	3/
TOTAL COMPLEMENTARY IMPORTS		105,559	133,857	1,699,300	1,871,178
TOTAL AGRICULTURAL IMPORTS		295,662	314,076	3,907,473	4,094,699
TOTAL NONAGRICULTURAL IMPORTS		1,031,974	1,262,704	12,514,315	13,719,100
TOTAL IMPORTS, ALL COMMODITIES		1,327,636	1,576,780	16,421,788	17,813,799

1/ Preliminary.

2/ Less than 500.

3/ Reported in value only.

4/ Excludes the weight of "other hides and skins," reported in pieces only.

compared with 470 million a year earlier, a drop of 8 percent. The reduction resulted from voluntary agreements that the United States made with Australia, New Zealand, Ireland, and Mexico; higher meat prices in other world markets; a substantial increase in U.S. production; and lower prices in the United States. In January-June about two-thirds of the boneless beef imports came into the country through Eastern ports, one-fifth through Western ports, and the remainder through other ports of entry.

Apparel wool.--Declines in mill activity resulted in a 29 percent drop in the quantity of apparel wool imported last year. Imports amounted to 131 million pounds (actual weight) in 1963-64 compared with 198 million a year earlier. In addition to the decline in wool consumption, there has been a continued switch to synthetic fibers in the past year. Principal suppliers of apparel wool were Australia, South Africa, New Zealand, Uruguay, and Argentina.

Hides and skins.--Imports of hides and skins increased to 143 million pounds in 1963-64 from 133 million a year earlier. Most of the increase was in sheep and lamb skins. Goat, kid, lamb, and sheep skins accounted for about two-thirds of overall imports of hides and skins. Production of goat, kid, sheep, and lamb skins in the United States is not adequate to meet demand. Imports of calf skins declined, reflecting the rather substantial gain in production in the United States along with lower prices for these items.

Cotton

Cotton imports, excluding linters, were the same as last year's 136,000 bales. Imports of cotton have been relatively stable in recent years except for larger purchases of picker lap in 1959-60 and 1960-61. However, imports of picker lap were sharply restricted by U.S. Government action in 1962. Two-thirds of the cotton imports consisted of long staple fiber (1-1/8 inches or longer). Imports other than short Asiatic cotton are regulated by quotas. Long staple imports are limited to 95,000 bales on an August 1-July 30 year, while imports of upland cotton (under 1-1/8 inches) are limited to 30,000 bales on a September 19-September 18 year. Principal suppliers of cotton were Egypt, Mexico, Peru, India, and Pakistan.

Grains and preparations

Imports of grains and preparations advanced somewhat in 1963-64 after falling sharply in 1962-63. Imports totaled \$46 million in 1963-64 compared with \$39 million a year earlier. Most of the increase was in barley grain, which advanced to \$12 million from \$3 million. Substantial quantities of barley are imported for malting purposes. Imports of barley malt declined to \$5.1 million in 1963-64 from \$6.2 million in 1962-63. Imports of rice, oats, and wheat declined slightly in 1963-64, while imports of corn, rye, and other grains increased somewhat.

Sugar

Imports of cane sugar totaled an 3.6 million short tons in fiscal year 1963-64 compared with 4.7 million a year earlier, at that basis as reported by the Bureau of the Census. However, the value of sugar imports fell to \$539 million in 1963-64 from \$548 million a year earlier. While quantity

dropped 23 percent, value fell only 2 percent due to higher prices. Principal suppliers were the Philippines, Dominican Republic, Brazil, Peru, Mexico, Argentina, and Australia. Imports accounted for about 45 percent of U.S. sugar consumption last year -- somewhat less than in the previous year because of amendments to the Sugar Act of 1948 that provided domestic producers with a larger share of the U.S. market.

Oilbearing materials and products

Imports of oilbearing materials and products totaled an estimated \$154 million in 1963-64 compared with the previous year's \$157 million. The decline was primarily in cocoa butter, palm oil, and copra. Imports of oilbearing materials and products have been declining in recent years as U.S. production of oils has increased sharply. Moreover, demand for oilbearing materials and products in other industrialized countries has increased sharply, and production has not kept pace with foreign demand. However, the United States continues to import considerable amounts of oilbearing materials and products that have special properties and uses in U.S. industries and food manufacturing.

Vegetables and preparations

Imports of vegetables and preparations increased to \$98 million in 1963-64 from \$86 million a year earlier. The increase was almost entirely in fresh vegetables, mainly cucumbers and tomatoes. Imports of canned mushrooms and tapioca also increased. Somewhat offsetting the increases were declines for canned tomatoes and garlic.

Tobacco

Imports of unmanufactured tobacco increased to 166 million pounds in fiscal year 1963-64 from 162 million in 1962-63. The rise occurred in scrap, while a slight decline occurred in cigarette leaf. Value increased to \$103 million from \$95 million. Principal suppliers were Turkey and Greece. Tobacco imports accounted for about one-tenth of tobacco use in the United States.

Fruits and preparations

Imports of fruits and preparations increased to \$121 million in 1963-64 from \$93 million in 1962-63. A substantial part of the advance was in citrus products, reflecting relatively limited supplies and higher prices in the United States following the Florida freeze in the 1962-63 winter. In addition, gains were noted in berries, figs, grapes, and pineapples. Declines were noted for apples and olives.

Complementary Imports

Imports of complementary items rose to \$1,871 million from \$1,699 million a year earlier. The gain resulted both from larger amounts of coffee and bananas along with higher prices for coffee, cocoa beans, and carpet wool. Complementary imports in fiscal year 1963-64 accounted for 46 percent of total U.S. agricultural imports compared with 43 percent in the previous year and nearly 50 percent in the 1950-54 period. The recent gain in the complementary share of the total resulted from a substantial price increase for a

number of complementary items as well as a cutback in imports of supplementary commodities, especially meats and meat products. The downward trend in complementary imports since the early 1950's has been brought about by overabundant world supplies and production of most components of the class that consists of items for which demand tends to be inelastic. The oversupply has resulted in substantial price declines and has tended to depress values.

Bananas

Imports of bananas increased to 3,503 million pounds in fiscal year 1963-64 from 3,351 million in 1962-63. Value increased to \$93 million from \$76 million. More bananas were imported because of lower prices abroad and greater demand in the United States. Bananas are being increasingly imported in boxes rather than on stems. Boxed bananas contain more fruit per pound than do bananas on the stem, which is waste. Principal suppliers were the Central American Republics, mainly Ecuador, Costa Rica, Honduras, Panama, and Guatemala. The import increase in 1963-64 was the first significant gain in several years.

Coffee

Imports of coffee increased to 3,267 million pounds in 1963-64 from 3,136 million in 1962-63. Value increased to over \$1.1 billion after declining to less than \$1 billion during the past 2 years. The price of coffee increased sharply in January 1964, indicating that Brazil's coffee crop would be down considerably in 1964. Over 80 percent of U.S. coffee imports came from Latin America, principally Brazil, Colombia, Guatemala, and Mexico. In recent years there has been an increase in the amount of coffee supplied from Africa, mainly British East Africa and Angola. Per capita coffee consumption in the United States has remained relatively stable since World War II, averaging nearly 16 pounds annually for the past 5 years. International trade in coffee is regulated by the International Coffee Agreement of which the United States is a member. In 1964 the export quota was increased to provide adequate coffee supplies to consuming countries. The objectives of the International Coffee Agreement are to stabilize international coffee prices and to provide adequate returns to coffee producing countries.

Cocoa beans

U.S. cocoa bean imports declined to an estimated 536 million pounds in 1963-64 from 635 million in 1962-63. But the value was only slightly lower because of higher prices. The principal suppliers were Ghana, Nigeria, Dominican Republic, Brazil, and West Africa. Major producing countries have been marketing all their production in the year in which it is produced, leaving no carryover to hedge against lower crops in some years. As a result, prices of cocoa beans fluctuate from year to year in keeping with the size of the total bean crop. There is no international agreement among the producing and consuming countries to regulate the marketing of cocoa beans.

Carpet wool

Imports of carpet wool declined to 182 million pounds in 1963-64 from 205 million a year earlier. However, value increased to \$110 million from \$101 million. The increase in price largely reflected the strong world demand. New Zealand

and Argentina accounted for about two-thirds of total U.S. imports of carpet wool. Other major suppliers were the United Kingdom, Pakistan, Iraq, and Syria.

Tea

Imports of tea, amounting to 131 million pounds in 1963-64, were unchanged from 1962-63. Value declined slightly. Principal suppliers were Ceylon, India, Indonesia, and British East Africa.

Hard fibers

Imports of hard fibers rose to 173 million long tons in 1963-64 from 139 million in 1962-63. In recent years a substantial demand has developed in the United States for hard fibers for use in the manufacture of baler and binder twine. Principal suppliers were Mexico, Pakistan, and the Philippines.

Rubber

Imports of crude natural rubber declined to 853 million pounds in 1963-64 from 956 million in 1962-63. Value fell to \$185 million from \$227 million. Principal suppliers were Malaysia, Liberia, Indonesia, and Thailand. In 1964, crude rubber accounted for around one-fourth of total use in the United States compared with over four-fifths in the early 1950's.

Table 11.-- U. S. agricultural exports: Quantity and value by commodity,
May 1963 and 1964 and July-May 1962-63 and 1963-64

Commodity exported	Unit	May 1/				July-May 1/			
		Quantity		Value		Quantity		Value	
		1963	1964	1963	1964	1962-63	1963-64	1962-63	1963-64
		Thousands	Thousands	1,000 dollars	1,000 dollars	Thousands	Thousands	1,000 dollars	1,000 dollars
ANIMALS AND ANIMAL PRODUCTS									
Animals, live:									
Cattle	No.	2	17	827	3,666	18	47	7,516	13,503
Poultry, live -									
Baby chicks	No.	2,793	2,242	1,183	1,160	20,521	24,443	7,162	8,768
Other live poultry	Lb.	847	211	256	167	3,015	3,272	1,082	1,290
Other	2/	2/	2/	909	744	2/	2/	5,631	5,292
Total animals, live		---	---	3,175	5,740	---	---	21,391	29,353
Dairy products:									
Anhydrous milk fat	Lb.	1,399	1,017	822	610	6,407	22,284	4,574	10,325
Butter (except dehydrated)	Lb.	288	17,230	99	5,967	6,265	97,613	2,086	33,607
Cheese, including donations	Lb.	6,169	604	1,921	292	37,383	12,742	12,033	4,390
Infants' and dietetic foods, chiefly milk	Lb.	1,323	2,324	723	1,189	15,497	15,911	9,439	8,877
Milk -									
Condensed sweetened	Lb.	4,059	8,613	517	2,081	43,234	59,041	10,034	13,078
Dried whole	Lb.	1,584	1,278	756	481	20,228	21,654	9,138	9,067
Evaporated, unsweetened, incl. donations	Lb.	5,491	2,777	758	420	57,804	42,028	8,431	6,103
Nonfat dry, including donations	Lb.	116,577	179,101	9,559	14,637	914,523	1,172,990	82,928	94,148
Other	2/	2/	2/	412	690	2/	2/	3,460	4,554
Total dairy products		---	---	15,967	26,367	---	---	142,123	184,149
Fats, oils, and greases:									
Lard	Lb.	70,148	51,526	5,565	5,094	420,027	577,266	38,980	54,859
Tallow, edible	Lb.	308	456	26	47	4,366	3,257	418	326
Other edible fats, oils, and greases	Lb.	681	1,841	115	185	5,132	7,506	506	1,119
Tallow, inedible	Lb.	179,818	236,863	11,709	17,229	1,283,579	1,726,127	80,284	116,136
Other inedible fats, oils, and greases	Lb.	21,922	38,029	1,517	3,005	192,689	245,751	13,202	15,154
Total fats, oils, and greases	Lb.	272,869	329,115	19,332	25,560	1,905,593	2,559,507	132,790	181,594
Meat and meat products:									
Beef and veal	Lb.	1,821	5,728	906	2,298	23,696	33,582	11,154	13,900
Pork	Lb.	12,956	13,598	3,350	3,812	63,111	140,262	25,086	44,599
Sausage casings	Lb.	2,038	1,117	1,253	770	17,637	17,470	11,548	10,163
Variety meats	Lb.	13,744	22,562	2,706	4,613	130,503	167,727	25,863	34,478
Other (including meat extracts)	Lb.	1,002	1,366	500	583	11,046	10,934	4,835	7,703
Total meat and products (except poultry)	Lb.	31,561	44,281	8,721	12,082	273,363	378,975	78,886	107,343
Poultry products:									
Eggs, dried, frozen, otherwise preserved ...	Lb.	827	574	841	619	4,572	4,076	4,362	4,211
Eggs in the shell -									
Hatching	Doz.	1,021	722	1,628	879	8,338	7,630	7,580	7,350
Other	Doz.	1,146	97	408	36	5,003	2,848	1,665	1,095
Poultry meat -									
Chickens, fresh or frozen	Lb.	13,712	15,383	3,382	3,898	138,181	153,663	35,211	37,953
Turkeys, fresh or frozen	Lb.	580	1,747	234	615	25,570	33,376	10,206	12,344
Other, fresh or frozen	Lb.	787	281	237	77	4,554	4,234	1,517	1,480
Canned	Lb.	968	2,006	251	501	5,114	21,601	2,581	5,180
Total poultry products		---	---	6,381	6,625	---	---	63,922	72,222

Continued -

Table 11. - U. S. agricultural exports: Quantity and value by commodity,
May 1963 and 1964 and July-May 1962-63 and 1963-64 - Continued

Commodity exported	Unit	May 1/				July-May 1/			
		Quantity		Value		Quantity		Value	
		1963	1964	1962	1963	1962-63	1963-64	1962-63	1963-64
		Thousands	Thousands	1,000 dollars	1,000 dollars	Thousands	Thousands	1,000 dollars	1,000 dollars
Other animal products:									
Feathers, crude	Lb.	110	45	102	67	1,507	1,503	1,730	1,635
Gelatin, edible	Lb.	380	239	747	608	3,510	2,858	7,219	6,664
Hair, raw or dressed, new	Lb.	1,000	610	337	347	6,537	6,411	2,221	2,111
Hides and skins, raw (except furs) 3/	No.	1,109	1,667	6,000	8,000	10,000	13,582	75,667	73,665
Honey	Lb.	1,527	651	245	123	17,446	22,187	2,585	3,772
Wool, unmanufactured	C.Lb.	1,126	106	1,101	134	12,443	7,898	11,026	8,642
Other		2/	2/	1,318	1,719	2/	2/	14,681	15,257
Total other animal products				10,624	11,618			113,055	111,617
Total animals and animal products				64,233	67,552			453,227	466,338
VEGETABLE PRODUCTS									
Cotton, unmanufactured:									
Cotton	R.Bale:	311	381	41,564	48,296	3,388	4,755	457,952	620,762
Linters	R.Bale:	20	18	805	1,205	251	208	9,447	8,525
Total cotton and linters	R.Bale:	341	420	42,369	49,501	3,639	4,963	467,399	629,287
Fruits and preparations:									
Canned -									
Fruit cocktail	Lb.	17,724	5,630	2,578	1,027	130,184	122,637	20,355	26,121
Peaches	Lb.	8,745	7,477	1,072	967	281,534	207,706	30,657	23,074
Pears	Lb.	1,022	353	173	55	10,517	5,689	1,638	1,105
Pineapples	Lb.	7,128	2,657	1,251	1,550	54,034	86,003	14,156	12,667
Other	Lb.	4,540	2,237	730	486	45,851	29,362	7,359	5,687
Total canned fruits	Lb.	39,159	24,071	5,405	4,011	312,017	451,405	73,628	62,752
Dried -									
Prunes	Lb.	4,231	1,800	887	1,018	82,533	57,101	17,585	16,358
Raisins and currants	Lb.	5,085	3,608	583	701	87,041	105,435	15,666	18,706
Other	Lb.	986	512	353	207	18,209	12,442	6,807	5,114
Total dried fruits	Lb.	10,302	5,920	2,223	2,140	108,807	195,968	40,752	40,372
Fresh -									
Apples	Lb.	6,889	8,642	604	811	135,680	158,622	12,594	17,740
Berries	Lb.	3,512	2,782	821	714	10,785	15,635	3,405	3,167
Grapefruit	Lb.	10,629	17,769	825	1,356	140,192	159,726	8,287	10,562
Grapes	Lb.	136	328	16	40	125,110	186,987	17,142	16,000
Lemons and limes	Lb.	25,724	38,143	2,211	2,575	118,005	210,821	10,294	16,581
Oranges and tangerines	Lb.	43,290	45,363	4,390	3,823	316,526	384,258	29,322	34,650
Pears	Lb.	576	1,252	66	110	70,589	38,114	6,244	3,780
Other	Lb.	16,115	17,405	752	910	114,005	130,631	6,871	7,663
Total fresh fruits	Lb.	106,861	131,684	9,833	10,355	1,112,958	1,324,257	94,163	110,212
Fruit juices -									
Grapefruit	Gal.	875	200	755	287	6,221	3,246	4,756	3,415
Orange	Gal.	1,001	781	2,170	1,974	12,545	6,954	22,836	16,023
Other	Gal.	1,809	1,088	1,546	1,261	13,403	10,492	12,245	11,166
Total fruit juices	Gal.	3,685	2,069	4,471	3,522	32,169	20,730	39,841	32,584
Frozen fruits (including specialties)	Lb.	2/	2/	305	125	14,668	10,483	2,254	2,125
Other		2/	2/	329	331	12/	2/	4,390	4,430
Total fruits and preparations				22,895	20,484			254,687	252,535

Continued -

Table 11.— U. S. agricultural exports: Quantity and value by commodity,
May 1963 and 1964 and July-May 1962-63 and 1963-64 - Continued

Commodity exported	Unit	May 1/				July-May 1/			
		Quantity		Value		Quantity		Value	
		1963	1964	1,000	1,000	1962-63	1963-64	1,000	1,000
		Thousands	Thousands	dollars	dollars	Thousands	Thousands	dollars	dollars
Grains and preparations:									
Feed grains and products -									
Barley grain (48 lb.)	Bu.	3,397	12,312	7,412	15,435	55,452	59,947	65,817	64,841
Corn grain, including donations (56 lb.)	Bu.	39,450	35,246	52,129	47,635	353,464	425,262	451,178	579,390
Grain sorghums (56 lb.)	Bu.	9,800	6,795	11,569	8,137	111,188	57,652	125,616	115,283
Oats grain (32 lb.)	Bu.	1,446	342	1,117	231	21,850	4,555	15,846	2,763
Total feed grains	M.Ton:	1,433	1,341	32,227	40,738	13,416	11,549	658,530	763,154
Barley malt (34 lb.)	Bu.	633	287	794	585	2,750	2,322	5,359	4,767
Corn grits and hominy	Lb.	4,400	5,438	166	221	35,510	36,437	1,500	1,506
Cornmeal and corn flour, incl. donations	Cwt.	504	374	2,408	1,453	4,176	4,720	18,953	18,587
Cornstarch	Lb.	5,102	6,992	469	688	41,573	60,612	3,748	5,575
Oatmeal, groats, and rolled oats	Lb.	846	427	113	45	21,121	10,536	2,571	1,242
Total feed grains and products	M.Ton:	1,490	1,388	76,197	72,431	13,806	15,075	690,441	774,246
Rice -									
Milled, including donations	Lb.	257,169	264,575	15,893	18,881	2,520,020	2,532,005	155,868	200,355
Paddy or rough	Lb.	276	287	25	26	10,612	10,327	605	605
Total rice (milled basis)	Lb.	257,345	264,763	15,918	18,907	2,530,632	2,542,332	156,473	200,960
Rye grain (56 lb.)	Bu.	1,455	1,664	1,918	2,275	18,954	9,894	24,890	14,032
Wheat and flour, including donations -									
Wheat grain (60 lb.)	Bu.	34,771	32,610	133,649	132,543	495,760	700,497	502,668	1,235,838
Wheat flour, wholly of U. S. wheat	Cwt.	4,508	4,221	20,853	15,832	30,516	32,037	165,375	154,458
Total wheat and flour	Bu.	39,279	36,831	154,502	148,375	526,276	732,534	668,043	1,390,296
Bakery products	Lb.	1,074	981	435	391	10,570	12,773	4,294	5,430
Other	2/	---	---	871	1,011	2/	---	8,997	11,280
Total grains and preparations				249,511	243,208	---	---	1,953,432	2,236,050
Oilseeds and products:									
Oils, edible and inedible -									
Cottonseed oil	Lb.	52,196	53,860	6,796	5,840	349,224	430,849	43,823	48,557
Soybean oil	Lb.	95,530	92,880	10,643	9,175	1,117,971	913,638	119,858	96,128
Other	Lb.	12,724	10,866	1,782	1,324	161,244	181,227	16,428	23,436
Total oils (except essential)	Lb.	160,450	157,606	18,656	15,359	1,628,439	1,525,714	179,109	168,121
Oilseeds -									
Flaxseed (56 lb.)	Bu.	451	602	1,334	2,026	3,972	3,240	12,176	9,900
Soybeans (60 lb.)	Bu.	11,557	14,003	30,762	30,071	155,384	174,552	400,316	482,294
Other	Lb.	26,125	17,914	1,570	1,970	253,573	145,360	15,037	21,202
Total oilseeds				34,066	41,074	---	---	426,029	547,006
Protein meal (oilcake and meal)	S.Ton:	136	133	10,460	10,425	1,466	1,367	135,244	121,476
Total oilseeds and products				44,526	51,499	---	---	561,273	668,476
Tobacco, unmanufactured:									
Burley	Lb.	3,540	4,040	3,363	3,076	40,534	36,286	34,483	30,199
Cigar wrapper	Lb.	360	681	603	1,210	3,585	4,843	7,472	10,532
Dark-fired Kentucky and Tennessee	Lb.	941	387	631	190	16,244	14,504	8,222	7,451
Flue-cured	Lb.	20,524	23,515	14,449	17,008	339,670	392,562	280,375	324,458
Maryland	Lb.	849	951	573	836	10,518	10,768	8,040	8,771
Other	Lb.	1,118	1,712	655	732	21,452	28,214	8,372	10,777
Total tobacco, unmanufactured	Lb.	27,232	31,286	20,274	23,058	432,403	487,977	349,530	402,135

Continued -

Table 11. -- U. S. agricultural exports: Quantity and value by commodity,
May 1963 and 1964 and July-May 1962-63 and 1963-64 - Continued

Commodity exported	Unit	May 1/				July-May 1/			
		Quantity		Value		Quantity		Value	
		1963	1964	1963	1964	1962-63	1963-64	1962-63	1963-64
		Thousands	Thousands	dollars	dollars	Thousands	Thousands	dollars	dollars
Vegetables and preparations:									
Canned -									
Asparagus	Lb.	6,674	4,501	1,394	992	50,510	51,108	11,811	12,779
Soups	Lb.	1,032	1,112	192	200	14,203	15,174	2,633	2,814
Tomato juice	Lb.	3,453	3,785	301	372	22,938	27,109	2,268	2,493
Tomato paste and puree	Lb.	1,084	655	189	137	11,785	13,342	2,434	2,755
Tomato sauce for cooking purposes	Lb.	61	94	8	12	1,007	907	134	121
Other	Lb.	6,314	5,698	987	845	66,580	55,047	8,951	7,922
Total canned vegetables	Lb.	18,618	15,845	3,071	2,552	167,023	162,687	28,231	28,884
Dry, ripe beans, including donations	Lb.	29,714	25,105	2,439	2,126	336,448	300,387	27,470	23,087
Dry, ripe peas (excluding cow and chick)	Lb.	9,557	8,766	653	611	235,694	215,977	15,747	14,601
Fresh -									
Lettuce	Lb.	26,147	23,114	895	802	149,162	164,263	6,383	8,022
Onions	Lb.	13,079	11,186	586	496	131,247	80,601	5,422	4,214
Potatoes, white	Lb.	39,859	25,611	956	998	272,728	128,594	6,877	3,725
Tomatoes	Lb.	17,628	11,093	1,453	1,204	73,934	82,913	6,939	7,654
Other	Lb.	56,284	47,590	2,673	2,456	401,384	316,297	21,558	18,647
Total fresh vegetables	Lb.	152,997	118,594	6,563	5,956	1,028,455	772,668	47,179	42,262
Frozen vegetables (including specialties) ..	Lb.	1,855	1,534	407	301	27,623	31,399	4,958	5,643
Soups and vegetables, dehydrated	Lb.	1,935	1,591	713	552	18,406	14,129	7,473	6,095
Vegetable seasonings	Lb.	325	739	271	423	5,194	4,315	3,675	2,993
Other		2/	2/	1,569	1,467	2/	2/	13,869	14,409
Total vegetables and preparations		---	---	15,686	13,994	---	---	148,602	147,974
Other vegetable products:									
Coffee	Lb.	2,226	2,175	2,507	2,239	22,421	29,683	27,214	32,041
Drugs, herbs, roots, crude	Lb.	256	246	152	229	3,460	3,299	3,711	4,377
Essential oils, natural	Lb.	665	835	1,370	1,843	7,281	7,170	13,719	15,904
Feeds and fodders (except oilcake and meal) ..	S.Ton	87	80	5,829	5,262	854	865	52,297	55,179
Flavoring sirups for beverages	Gal.	92	98	726	746	999	1,340	6,454	7,170
Hops	Lb.	750	365	557	215	19,804	20,466	12,693	13,490
Nursery and greenhouse stock		2/	2/	709	930	2/	2/	5,427	6,383
Nuts and preparations	Lb.	4,919	12,086	998	1,724	42,664	85,356	14,901	22,629
Seeds, field and garden	Lb.	4,801	5,616	941	1,175	79,219	96,857	18,657	25,453
Spices	Lb.	215	225	218	104	3,585	3,240	2,089	2,346
Other, including donations		2/	2/	12,370	9,292	2/	2/	70,857	93,191
Total other vegetable products		---	---	26,377	23,839	---	---	228,019	276,368
Total vegetable products				441,142	440,873			4,111,572	4,920,100
TOTAL AGRICULTURAL EXPORTS				505,375	538,865			4,664,799	5,616,373
TOTAL NONAGRICULTURAL EXPORTS				1,632,115	1,696,587			15,064,944	16,831,821
TOTAL EXPORTS, ALL COMMODITIES				2,137,490	2,235,452			19,729,743	22,448,199

1/ Preliminary.

2/ Reported in value only.

2/ Excludes the number of "other hides and skins." reported in value only.

Table 12.— U. S. agricultural imports for consumption: Quantity and value by commodity,
May 1963 and 1964 and July-May 1962-63 and 1963-64

Commodity imported SUPPLEMENTARY	Unit	May 1/				July-May 1/			
		Quantity		Value		Quantity		Value	
		1963	1964	1963	1964	1962-63	1963-64	1962-63	1963-64
		Thousands	Thousands	dollars	dollars	Thousands	Thousands	dollars	dollars
ANIMALS AND ANIMAL PRODUCTS									
Animals, live:									
Cattle, dutiable	No.	72	42	4,730	2,203	1,186	594	104,418	46,225
Cattle, free (for breeding)	No.	2	2	622	637	16	18	5,513	6,083
Horses	No.	2/	2/	363	289	4	3	4,498	6,701
Other (including live poultry)	No.	3/	3/	85	85	3/	3/	975	711
Total animals, live		---	---	5,801	3,214	---	---	115,404	59,720
Dairy products:									
Butter	Lb.	51	50	26	27	651	638	294	314
Cheese -									
Blue-mold	Lb.	376	386	182	192	3,880	3,457	1,522	1,741
Cheddar	Lb.	204	429	65	123	1,762	2,660	538	839
Edam and Gouda	Lb.	870	564	366	270	6,557	6,077	2,849	2,734
Pecorino	Lb.	1,740	1,192	811	649	18,908	13,231	9,367	7,475
Swiss	Lb.	1,316	1,108	667	593	16,498	15,562	8,797	8,367
Other	Lb.	3,328	3,346	1,163	1,198	28,140	32,385	11,331	12,769
Total cheese	Lb.	7,834	7,045	3,254	3,015	75,745	73,372	34,624	33,945
Casein or lactarene	Lb.	8,863	7,864	1,577	1,405	80,049	86,205	14,558	15,665
Other	Lb.	3/	3/	54	141	3/	3/	1,019	2,630
Total dairy products		---	---	4,911	4,588	---	---	50,495	51,954
Hides and skins, raw (except furs):									
Calf skins	Lb.	748	194	248	55	5,052	4,177	2,386	1,401
Cattle hides	Lb.	1,474	1,361	193	235	12,680	13,699	1,951	1,849
Goat and kid skins	Lb.	2,693	2,459	1,571	1,768	22,724	23,672	12,719	15,322
Sheep and lamb skins	Lb.	6,359	7,242	2,570	3,733	46,174	53,092	18,111	25,428
Other 4/	Lb.	5,082	3,461	2,031	1,711	34,669	33,792	15,860	15,542
Total hides and skins, raw	Lb.	16,356	14,717	6,613	7,502	121,299	128,432	51,057	59,542
Meat and meat products:									
Beef and veal -									
Fresh, chilled, or frozen	Lb.	77,435	48,521	24,530	15,789	850,595	860,445	270,924	276,279
Other	Lb.	10,596	4,507	3,464	1,542	91,763	105,677	29,676	33,742
Total beef and veal	Lb.	88,031	53,108	28,294	17,331	942,358	966,122	300,600	310,021
Mutton, goat, and lamb	Lb.	5,881	3,372	1,304	756	83,705	54,547	18,480	12,565
Pork -									
Fresh, chilled, or frozen	Lb.	3,589	3,323	1,172	1,174	34,000	34,537	13,038	12,728
Hams and shoulders, canned cooked	Lb.	12,867	11,543	9,184	7,693	126,010	127,841	90,520	67,625
Other	Lb.	3,142	2,825	1,586	1,533	32,449	27,137	16,501	15,311
Total pork	Lb.	19,618	17,591	11,942	10,400	192,459	189,515	120,459	115,664
Sausage casings	Lb.	3/	3/	1,579	1,559	3/	3/	15,414	15,756
Other (including meat extracts)	Lb.	7,845	5,448	2,230	1,166	77,048	3,486	21,335	17,062
Total meat and products (except poultry)		---	---	45,349	31,212	---	---	476,288	471,022
Poultry products:									
Eggs, dried, frozen, otherwise preserved	Lb.	0	2	0	1	3	6	4	7
Eggs in the shell	Doz.	84	51	161	64	1,645	1,921	945	1,026
Poultry meat	Lb.	8	3	44	8	196	249	419	539
Total poultry products		---	---	205	73	---	---	1,268	1,572

Continued -

Table 12.— U. S. agricultural imports for consumption: Quantity and value by commodity,
May 1963 and 1964 and July-May 1962-63 and 1963-64 - Continued

Table 12 - U. S. agricultural imports for May 1963 and 1964 and July-May 1962-63 and 1963-64 - Continued									
Commodity imported SUPPLEMENTARY	Unit	May 1/		Value		Quantity		Value	
		Quantity		1963		1962-63		1963-64	
		1963	1964	1,000 dollars	1,000 dollars	1962-63 Thousands	1963-64 Thousands	1962-63 1,000 dollars	1963-64 1,000 dollars
Wool, unmanufactured (except free in bond):									
40's to 56's	G.Lb.	2,815	1,914	1,445	1,305	25,279	17,079	13,831	11,056
Finer than 56's	G.Lb.	2,305	5,893	5,251	4,771	135,182	78,266	82,160	58,205
Other wools	G.Lb.	2,004	1,782	1,792	1,779	54,498	26,244	12,297	23,747
Total wool, unmanufactured	G.Lb.	13,044	8,589	8,488	7,855	195,425	121,529	115,569	83,048
Other animal products:									
Bones, hoofs, and horns, unmanufactured	Lb.	371	237	1,147	513	3,047	3,053	3,707	2,215
Bristles, sorted, bunched, or prepared	Lb.	3/	3/	12	100	3/	3/	2,214	10,701
Fats, oils, greases, edible and inedible	Lb.	232	350	511	575	2,207	3,054	4,110	4,714
Feathers, crude	Lb.	661	653	305	285	7,701	7,453	5,903	3,530
Gelatin, edible	Lb.	745	620	663	625	1,626	17,596	3,727	7,517
Hair, unmanufactured	Lb.	256	792	43	103	4,350	2,192	520	354
Honey	3/	3/	3/	94	1,064	3/	3/	9,335	10,929
Other	---	---	---	4,029	4,316	---	---	27,005	40,425
Total other animal products	---	---	---	75,450	58,478	---	---	646,170	777,357
VEGETABLE PRODUCTS									
Cotton, unmanufactured (480 lb.)	Bale	1	4	161	352	151	154	23,432	24,174
Cotton	Bale	11	17	321	234	113	170	3,734	3,943
Linters	Bale	12	21	432	720	244	204	16,666	22,133
Total cotton and linters	---	---	---	---	---	---	---	---	---
Fruits and preparations:									
Apples, green or ripe (50 lb.)	Bu.	36	34	244	167	1,513	1,533	5,511	5,136
Berries	Lb.	7,411	6,412	941	965	47,080	51,143	6,245	3,384
Dates	Lb.	26	184	115	166	32,123	19,437	3,544	5,781
Figs	Lb.	1,723	1,965	115	166	13,829	25,345	1,235	2,588
Grapes (40 lb.)	Cu.Ft.	253	380	342	901	570	1,198	1,607	3,105
Melons	Lb.	61,562	64,524	2,097	2,160	210,637	163,041	19,725	17,211
Olives in brine	Gal.	539	1,455	1,478	1,054	11,165	12,683	8,735	9,925
Oranges, mandarin, canned	Lb.	4,200	3,143	539	1,043	44,167	48,294	10,905	15,713
Pineapples, canned, prepared or preserved	Lb.	9,142	12,411	1,073	1,407	93,499	119,367	2,004	2,059
Pineapple juice	Gal.	305	460	125	170	3,463	9,885	15,740	23,204
Other	---	---	---	10,956	12,446	---	---	65,497	108,976
Total fruits and preparations	---	---	---	---	---	---	---	---	---
Grains and preparations:									
Barley grain (48 lb.)	Bu.	261	1,271	411	1,253	1,675	9,129	2,401	11,676
Barley malt	Lb.	9,452	8,704	402	420	104,722	96,472	5,614	4,816
Corn grain (56 lb.)	Bu.	66	173	140	337	839	1,033	1,665	1,945
Oats grain (32 lb.)	Bu.	822	129	645	109	3,761	3,412	3,198	2,942
Rice	Lb.	70	73	10	26	4,415	1,222	267	145
Rye grain (56 lb.)	Bu.	0	220	0	331	546	649	629	960
Wheat grain for domestic use (60 lb.)	Bu.	51	27	93	59	4,230	2,853	8,206	5,970
Wheat flour	Lb.	3/	3/	857	1,941	3/	3/	12,746	13,507
Other	---	---	---	2,674	3,954	---	---	24,822	41,970
Total grains and preparations	---	---	---	---	---	---	---	---	---

Continued -

Table 12.-- U. S. agricultural imports for consumption: Quantity and value by commodity,
May 1963 and 1964 and July-May 1962-63 and 1963-64 - Continued

Commodity imported SUPPLEMENTARY	Unit	July-May 1/				July-May 1/			
		Quantity		Value		Quantity		Value	
		1963	1964	1963	1964	1962-63	1963-64	1962-63	1963-64
		1,000	1,000	1,000	1,000	1,000	1,000	1,000	1,000
		Thousands	Thousands	dollars	dollars	Thousands	Thousands	dollars	dollars
Nuts and preparations:									
Almonds	Lb.	2/	59	27	176	212	102	119	
Brazil nuts	Lb.	1,093	1,109	233	23,291	26,222	6,307	5,556	
Cashew nuts	Lb.	7,075	5,235	2,770	2,368	65,575	67,392	25,279	27,718
Coconut meat, fresh, frozen, or prepared ...	Lb.	8,915	11,373	1,062	1,343	114,680	123,629	12,827	15,299
Pistache nuts	Lb.	1,149	708	635	356	14,083	11,743	6,754	6,422
Other		3/	3/	621	362	3/	3/	7,501	7,704
Total nuts and preparations		---	---	5,390	4,723	---	---	56,775	62,816
Oilseeds and products:									
Oils, edible and inedible -									
Cacao butter	Lb.	1,461	1,159	776	569	21,540	11,739	10,290	6,022
Carnauba wax	Lb.	1,451	1,137	601	459	11,066	12,178	4,798	4,967
Castor oil	Lb.	6,548	2,967	776	300	91,427	82,370	10,353	8,716
Coconut oil	Lb.	31,117	27,755	3,223	3,204	352,958	376,571	35,377	42,289
Olive oil, edible	Lb.	3,106	5,791	1,502	1,520	40,542	48,504	12,870	14,160
Palm oil	Lb.	5,153	1,055	76	106	26,236	7,105	2,337	705
Palm kernel oil	Lb.	9,009	5,132	1,092	637	81,259	65,252	9,040	8,058
Tung oil	Lb.	673	1,327	211	262	14,534	22,581	4,979	5,660
Other	Lb.	5,267	3,357	855	997	55,907	26,619	8,079	5,608
Total oils (except essential)	Lb.	64,195	49,690	9,512	7,673	695,575	654,919	98,123	96,584
Oilseeds -									
Copra	Lb.	17,242	59,590	1,246	3,737	570,043	487,420	39,061	36,693
Sesame seed	Lb.	2,714	2,899	362	428	22,623	21,315	3,233	3,046
Other		3/	2/	116	91	3/	3/	3,083	1,792
Total oilseeds		---	---	1,724	4,256	---	---	44,377	41,531
Protein meal (oilcake and meal)	Lb.	18,460	9,315	560	242	94,607	100,599	2,845	2,912
Total oilseeds and products		---	---	11,796	12,171	---	---	145,345	141,027
Sugar and related products:									
Cane sugar	S.Tons	389	341	42,026	47,621	4,235	3,338	475,218	500,591
Molasses unfit for human consumption	Gal.	25,006	35,810	4,164	4,570	237,193	244,755	50,654	57,440
Other		3/	3/	865	459	3/	3/	5,372	6,393
Total sugar and related products		---	---	53,075	52,650	---	---	511,244	544,614
Vegetables and preparations:									
Canned mushrooms	Lb.	1,514	1,212	762	617	9,178	11,663	4,655	6,087
Canned tomatoes, tomato paste and sauce ...	Lb.	6,014	3,837	531	462	145,665	91,855	12,573	10,727
Fresh or dried -									
Cucumbers	Lb.	220	10	14	1	57,297	52,630	3,436	4,686
Garlic	Lb.	822	1,169	140	136	15,528	17,605	3,295	2,740
Onions	Lb.	310	524	11	35	37,529	49,945	1,971	2,572
Potatoes, white	Lb.	8,459	30,242	150	729	89,850	139,264	1,827	3,222
Potatoes, natural state	Lb.	22,320	34,712	1,683	3,754	237,327	242,190	20,500	26,725
Turnips and rutabagas	Lb.	486	1,537	12	46	74,936	94,942	1,562	1,894
Pickled vegetables	Lb.	1,841	1,866	278	260	13,080	13,446	2,127	2,123
Tapioca, tapioca flour, and cassava	Lb.	23,186	21,217	905	694	166,288	229,171	6,332	8,289
Other		3/	3/	1,655	1,605	3/	3/	25,414	22,729
Total vegetables and preparations		---	---	6,362	8,556	---	---	81,692	91,556

Continued -

Table 12.— U. S. agricultural imports for consumption: Quantity and value by commodity,
May 1963 and 1964 and July-May 1962-63 and 1963-64 - Continued

Commodity imported SUPPLEMENTARY	Unit	May 1/				July-May 1/			
		Quantity		Value		Quantity		Value	
		1963	1964	1963	1964	1962-63	1963-64	1962-63	1963-64
Other vegetable products:		Thousands	Thousands	1,000	1,000	Thousands	Thousands	1,000	1,000
Feeds and fodders (except oilcake and meal):	—	3/	3/	dollars	dollars	3/	3/	dollars	dollars
Hops	Lb.	124	101	888	1,313	5,504	5,603	11,307	17,177
Jute and jute butts, unmanufactured	L.Ton:	9	9	1,406	1,389	69	72	5,535	5,918
Malt liquors	Gal.	1,725	1,863	1,947	2,046	14,786	16,544	11,125	11,444
Nursery and greenhouse stock	—	3/	3/	38	72	3/	3/	17,338	18,584
Seeds, field and garden	—	3/	3/	912	517	3/	3/	13,250	13,107
Spices	Lb.	2,888	3,224	458	455	44,493	47,299	17,962	17,378
Tobacco, unmanufactured	Lb.	14,547	14,147	8,406	9,244	148,512	150,151	6,609	7,663
Wines	Gal.	1,204	1,265	4,546	5,297	12,552	13,823	87,295	92,901
Other	—	3/	3/	1,301	668	3/	3/	46,920	53,185
Total other vegetable products	—	---	---	19,977	21,094	---	---	8,360	10,134
Total vegetable products	—	---	---	110,732	116,620	---	---	1,169,902	1,265,915
TOTAL SUPPLEMENTARY IMPORTS	—	---	---	186,188	175,098	---	---	2,018,072	2,043,302
COMPLEMENTARY									
Bananas	Lb.	339,351	289,009	7,750	9,781	3,066,775	3,214,708	69,744	81,259
Coffee (including into Puerto Rico)	Lb.	238,314	212,147	70,966	84,548	2,959,109	3,087,870	887,700	1,047,504
Coffee essences, substitutes and adulterants: Lb. :	Lb.	693	435	762	623	5,662	5,841	6,345	7,327
Cocoa or cacao beans	Lb.	46,075	35,146	11,099	8,070	582,324	486,056	116,378	111,672
Cocoa and chocolate, prepared	Lb.	7,709	10,233	1,112	1,896	94,305	120,024	17,321	20,611
Drugs, herbs, roots, etc.	—	3/	3/	2,085	1,986	3/	3/	19,493	19,215
Essential or distilled oils	—	3/	3/	1,717	1,470	3/	3/	21,305	19,306
Fibers, unmanufactured	L.Ton:	12	12	2,861	3,577	129	163	28,501	37,655
Rubber, crude	Lb.	77,391	96,718	16,039	20,224	898,848	783,138	213,956	171,467
Silk, raw	Lb.	351	352	2,072	2,031	4,526	4,395	26,119	25,116
Spices	Lb.	7,729	11,290	2,576	3,449	85,499	91,996	31,458	29,310
Tea	Lb.	11,293	11,552	5,212	5,151	123,566	120,442	5,696	54,328
Wool, unmanufactured (free in bond)	G.Lb.	19,978	14,482	10,427	9,784	190,010	173,876	92,920	104,492
Other complementary agricultural products	—	3/	3/	399	777	3/	3/	4,804	8,059
TOTAL COMPLEMENTARY IMPORTS	—	---	---	137,117	153,367	---	---	1,593,740	1,737,321
TOTAL AGRICULTURAL IMPORTS	—	---	---	323,305	328,465	---	---	3,611,812	3,780,623
TOTAL NONAGRICULTURAL IMPORTS	—	---	---	1,115,177	1,105,330	---	---	11,482,340	12,456,396
TOTAL IMPORTS, ALL COMMODITIES	—	---	---	1,438,482	1,433,795	---	---	15,094,152	16,237,019

1/ Preliminary.

2/ Less than 500.

3/ Reported in value only.

4/ Excludes the weight of "other hides and skins". reported in pieces only.

Explanatory Note

U.S. foreign agricultural trade statistics in this report include official U.S. data based on compilations of the Bureau of the Census. Agricultural commodities consist of (1) nonmarine food products and (2) other products of agriculture which have not passed through complex processes of manufacture such as raw hides and skins, fats and oils, and wine. Such manufactured products as textiles, leather, boots and shoes, cigarettes, naval stores, forestry products, and distilled alcoholic beverages are not considered agricultural.

The trade statistics exclude shipments between the 50 States and Puerto Rico, between the 50 States and the island possessions, between Puerto Rico and the island possessions, among the island possessions, and intransit through the United States from one foreign country to another when documented as such through U.S. Customs.

EXPORTS The export statistics also exclude shipments to the U.S. armed forces for their own use and supplies for vessels and planes engaged in foreign trade. Data on shipments valued at less than \$100 are not compiled by commodity and are excluded from agricultural statistics but are reflected in nonagricultural and overall export totals in this report. The agricultural export statistics include shipments under P.L. 87-195 (Act for International Development), principally sales for foreign currency; under P.L. 83-480 (Agricultural Trade Development and Assistance Act), and related laws; and involving Government payments to exporters. (USDA payments are excluded from the export value.) Separate statistics on Government program exports are compiled by USDA from data obtained from operating agencies.

The export value, the value at the port of exportation, is based on the selling price (or cost if not sold) and includes inland freight, insurance, and other charges to the port. The country of destination is the country of ultimate destination or where the commodities are to be consumed, further processed, or manufactured. When the shipper does not know the ultimate destination, the shipments are credited to the last country, as known to him at time of shipment from the United States, to which the commodities are to be shipped in their present form. Except for Canada, export shipments valued \$100-\$499 are included on the basis of sampling estimates; shipments to Canada valued \$100-\$1,999 are sampled.

IMPORTS Imports for consumption consist of commodities released from U.S. Customs custody upon arrival, or entered into bonded manufacturing warehouse, or withdrawn from bonded storage warehouse for consumption. The agricultural statistics exclude low-value shipments from countries not identified because of illegible reporting, but they are reflected in nonagricultural and overall import totals in this report.

The import value, defined generally as the market value in the foreign country, excludes import duties, ocean freight, and marine insurance. The country of origin is defined as the country where the commodities were grown or processed. Where the country of origin is not known, the imports are credited to the country of shipment.

Imports similar to agricultural commodities produced commercially in the United States and others that are interchangeable in use to any significant extent with such U.S. commodities are supplementary, or partly competitive. All other commodities are complementary, or noncompetitive.

Further explanatory material on foreign trade statistics and compilation procedures of the Bureau of the Census is contained in the publications of that agency.

U. S. Department of Agriculture
Washington, D. C. 20250.

OFFICIAL BUSINESS

POSTAGE AND FEES PAID
U. S. Department of Agriculture

NOTICE

If you no longer need this publication,
check here ☐ return this sheet,
and your name will be dropped from
the mailing list.

If your address should be changed,
write the new address on this sheet
and return the whole sheet to:

Division of Administrative Services (ML)
Office of Management Services
U. S. Department of Agriculture
Washington, D. C. 20250.

National Agr. Library
12-31-62 USDA
ERS FP

Foreign Agricultural Trade
of the United States

END
DATE
FILMED
9-10-79
NTIS