



AgEcon SEARCH
RESEARCH IN AGRICULTURAL & APPLIED ECONOMICS

The World's Largest Open Access Agricultural & Applied Economics Digital Library

This document is discoverable and free to researchers across the globe due to the work of AgEcon Search.

Help ensure our sustainability.

Give to AgEcon Search

AgEcon Search

<http://ageconsearch.umn.edu>

aesearch@umn.edu

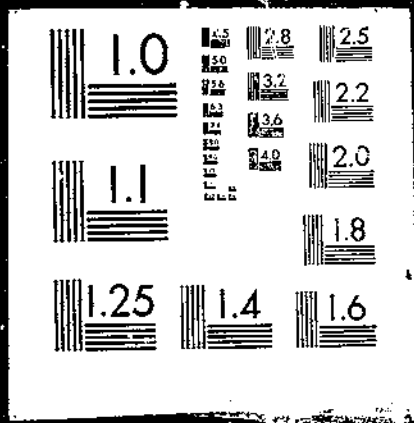
*Papers downloaded from **AgEcon Search** may be used for non-commercial purposes and personal study only. No other use, including posting to another Internet site, is permitted without permission from the copyright owner (not AgEcon Search), or as allowed under the provisions of Fair Use, U.S. Copyright Act, Title 17 U.S.C.*

USDA/FATUS-
MAY 64

FATUS/FOREIGN AGRICULTURAL TRADE OF THE UNITED STATES, 1964 MAY. Washington, DC:
Economic Research Service.

(NAL Call No. A286.97A88)

10 OF 1
USDA
FATUS
MAY 64



Reserve
A286.9
Ag8

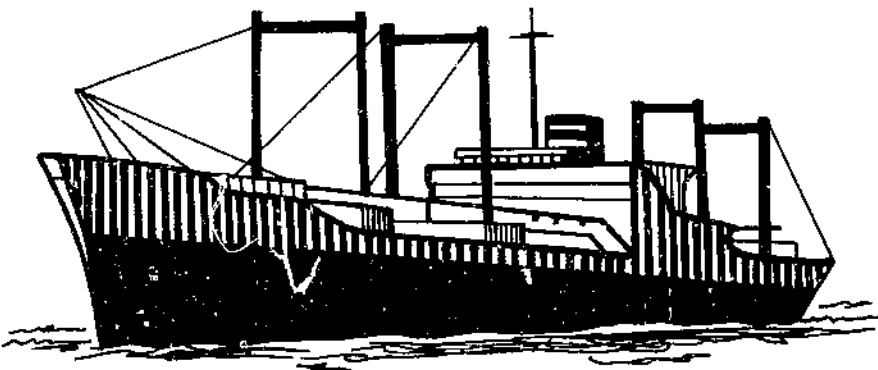
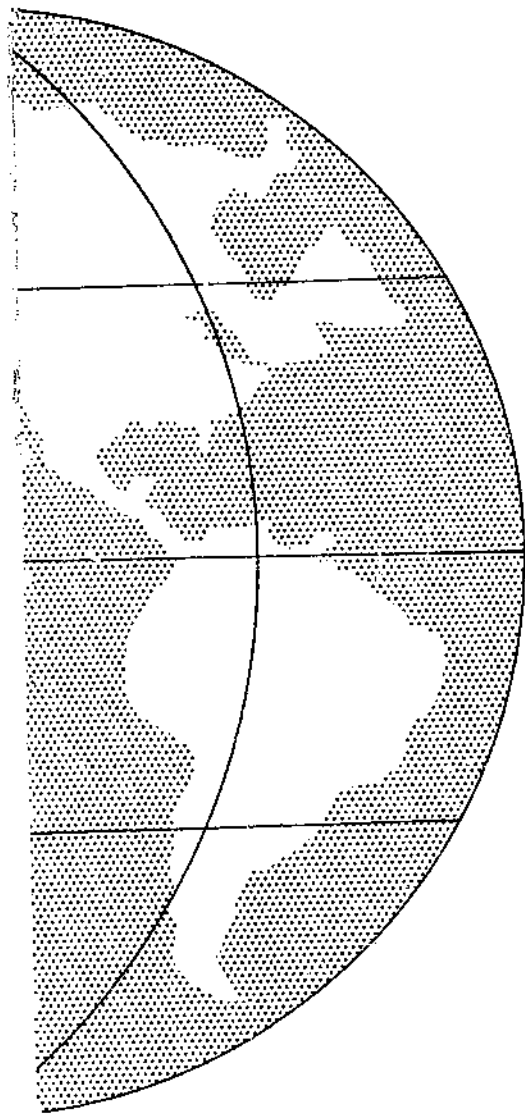
U. S. DEPT. OF AGRICULTURE
NATIONAL AGRICULTURAL LIBRARY

MAY 1964

MAY 23 1964

LIBRARY OF CONGRESS

FOREIGN AGRICULTURAL TRADE OF THE UNITED STATES



IN THIS ISSUE:

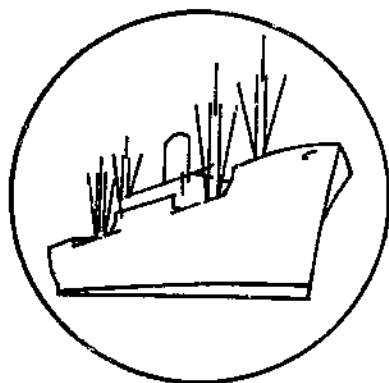
- Export Highlights, July-February
- Import Highlights, July-January and Calendar Year 1963
- Government Program Highlights, 1962-63
- Trade Statistics, July-January

Published Monthly by Economic Research Service / U.S. DEPARTMENT OF AGRICULTURE

Contents

	<u>Page</u>
Digest.....	3
Export Highlights.....	5
Import Highlights.....	9
Government Program Export Highlights.....	17
Explanatory Note.....	35
Table 1.--Exports: Value by Commodity, July-February 1962-63 and 1963-64.....	6
Table 2.--Exports to the European Economic Community: Value by Commodity, July-January and August-January 1961-62 through 1963-64.....	7
Table 3.--Imports: Value by Commodity, July-January 1962-63 and 1963-64.....	10
Table 4.--Imports: Value by Commodity, Calendar Years 1962 and 1963.....	11
Table 5.--Imports: Quantity and Value by Commodity, Calendar Years 1962 and 1963.....	13
Table 6.--Government Program and Commercial Exports: Value by Country, Fiscal Year 1962-63.....	18
Table 7.--Credit-Sale Exports: Value by Country, Fiscal Year 1962-63.....	25
Table 8.--Exports: Quantity and Value by Commodity, January 1963 and 1964 and July-January 1962-63 and 1963-64.....	27
Table 9.--Imports: Quantity and Value by Commodity, January 1963 and 1964 and July-January 1962-63 and 1963-64.....	31

Trade Statistics and Analysis Branch
Development and Trade Analysis Division
Economic Research Service



FOREIGN AGRICULTURAL TRADE OF THE UNITED STATES

Digest

Agricultural exports for the first 8 months of fiscal year 1963-64 (July-February) were estimated at \$4,035 million, up 28 percent from \$3,155 million in 1962-63. The upsurge reflects gains in wheat, cotton, feed grains, soybeans, animal fats, dairy products, and rice. Although fiscal year exports of wheat and vegetable oils are not expected to be as high as estimated at the National Agricultural Outlook Conference last November, the estimate for total exports of \$6.0 billion for the year will likely be realized because of improved prospects for cotton, feed grains, rice, and animal products.

* * * * *

Agricultural exports to the European Economic Community (EEC) for the first 7 months of 1963-64 (July-January) rose to \$777 million from the year-ago level of \$613 million. Commodities subject to EEC variable import levies registered a gain of 28 percent, and other items advanced 26 percent. Among the variable-levy commodities, large advances were scored in wheat and feed grains, accompanied by smaller increases in pork (except variety meats) and ready-to-cook turkeys. The gain in wheat and feed grains reflects unfavorable grain conditions in several EEC countries last year. Over half of the gain in nonvariable-levy items was in cotton exports, which were relatively low last year due to larger foreign production and smaller foreign consumption.

* * * * *

Agricultural imports in the first 7 months of 1963-64 (July-January) amounted to \$2,416 million, 9 percent more than the \$2,213 million in 1962-63. Both supplementary and complementary products participated in the rise, a large part of which was due to higher prices. The July-January gain among supplementary commodities was mainly in meat and cane sugar. A gain of 8 percent for complementary imports included principally coffee, cocoa beans, carpet wool, and fibers. The value of coffee imports rose relatively more than volume, reflecting sharp increases in price in recent months as a consequence of the relatively unfavorable coffee crop in Brazil. Importers and roasters in recent months have imported substantially more coffee to build up their stocks. Stronger U.S. demand and a larger world crop have combined to boost U.S. imports of cocoa beans although at slightly higher prices.

* * * * *

Agricultural imports in calendar year 1963 advanced to \$4,012 million, 4 percent more than the previous year's \$3,868 million. By comparison agricultural exports advanced 11 percent to a record \$5.6 billion and exceeded imports in 1963 by \$1.6 billion. Increased imports of supplementary (partially competitive) products dominated the gain in total agricultural imports. Imports of complementary (noncompetitive) products were 1 percent lower in value. While imports of dutiable cattle fell to 834,000 head from 1,332,000 a year earlier, meat and meat products advanced to \$542 million from \$485 million. Meat imports have risen in the past 5 years, largely because of strong U.S. demand. The value of sugar imports increased to \$611 million from \$505 million, reflecting higher prices as a result of limited world supplies and increased world consumption.

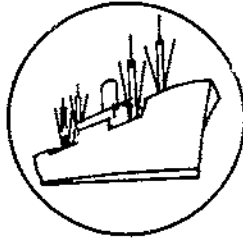
* * * * *

The largest proportion of the \$1,534 million of U.S. agricultural exports under specified Government-financed programs in fiscal year 1962-63 went to Asia. Of the total of \$792 million for Asia, principal amounts went to India, Pakistan, and Republic of Korea, followed by Taiwan, Indonesia, Viet-Nam, Israel, and other countries. Europe and Africa received approximately equal amounts: \$278 million for Europe, chiefly Yugoslavia, Poland, and Turkey; and \$275 million for Africa, principally United Arab Republic (Egypt), Algeria, Tunisia, Morocco, and Republic of the Congo and Ruanda-Urundi. Lesser amounts went to Latin America and Oceania.

Principal dollar market was Europe, where the United Kingdom led the list, followed by West Germany, the Netherlands, Italy, Belgium-Luxembourg, Spain, France, and Denmark. Asia ranked second as a dollar-sales area, with the chief country market being Japan, followed by the Philippines, Hong Kong, and other countries. In Latin America, important dollar markets were Mexico and Venezuela. All shipments to Canada were for dollars.

* * * * *

Export-Import Bank loans and medium-term guarantees together with Commodity Credit Corporation (CCC) credit sales contributed to the movement of dollar exports. Exports aided by Export-Import Bank loans and medium-term guarantees amounted to \$85 million in fiscal year 1962-63 -- all for Japan and Austria. CCC credit sales were instrumental in moving \$76 million of agricultural commodities to countries such as Italy, Poland, Denmark, Spain, Japan, Brazil, Mexico, Guatemala, Haiti, Venezuela, Australia, New Zealand, and the Canary Islands.



Export Highlights

JULY 1963 - FEBRUARY 1964

U.S. agricultural exports totaled an estimated \$4,035 million in July-February of fiscal year 1963-64, up 28 percent from the \$3,155 million in the same months in 1962-63 (table 1). The figure for 1963-64 includes actual exports of \$3,509 million for July-January and an estimate of \$525 million for February. A year ago actual exports in February totaled \$492 million, reflecting in part a recovery from January 1963 when shipments were reduced by the longshoremen's strike at East Coast and Gulf Coast facilities.

The export trend in the first 8 months of fiscal year 1963-64 indicates that the estimate for total exports of \$6.0 billion made at the National Agricultural Outlook Conference last November will materialize. Declines in the estimates for wheat and vegetable oil exports have been offset by larger estimates for shipments of cotton, feed grains, rice, and animal products.

The upsurge in exports in fiscal year 1963-64 results from significant gains in wheat, cotton, feed grains, soybeans, animal fats, dairy products, and rice over 1962-63. Smaller gains occurred for fruits and vegetables, protein meal, poultry products, and meat products. Value declines were noted only for such commodities as soybean oil, flaxseed, rye, and hides and skins.

Most of the July-February increase resulted from increased dollar sales. However, shipments under Government-financed export programs have gained some. Main factors contributing to the export gain have been the relatively poor wheat harvest in Western Europe and the Soviet Bloc; a slight decline in foreign production of cotton; a change in the CCC cotton program permitting sales of CCC cotton stocks at competitive world prices; and the continued advance in economic activity in the highly industrialized areas of Western Europe and Japan.

Agricultural exports to the European Economic Community-(EEC) in July-January 1963-64 (latest period for which data are available) rose to \$777 million from \$613 million for the like period a year earlier (table 2). Exports subject to the Common Market variable levies rose to \$262 million from \$205 million a year earlier, a 28 percent rise.

Most of the increase in exports of commodities subject to variable levies resulted from large advances in wheat and feed grains and smaller gains for pork (except variety meats) and ready-to-cook turkeys. Exports of other poultry products (except hatching eggs) again in 1963-64, as in 1962-63, were below the level of 1961-62, before the variable import levies were imposed.

Table 1.--U.S. agricultural exports: Value by commodity, July-February
1962-63 and 1963-64

Commodity	July-February		Change
	1962-63	1963-64 ^{1/}	
	-- Million dollars --		Percent
Animals and animal products:			
Dairy products ^{2/}	87	124	+43
Fats, oils, and greases.....	84	122	+45
Hides and skins.....	54	50	- 7
Meats and meat products.....	53	74	+40
Poultry products.....	47	54	+15
Other.....	38	48	+26
Total animals, etc. ^{2/}	363	472	+30
Cotton, excluding linters.....	318	465	+46
Fruits and preparations.....	194	193	- 1
Grains and preparations:			
Feed grains, excluding products...	448	565	+26
Rice, milled.....	95	130	+37
Wheat and flour.....	655	948	+45
Other.....	52	46	-12
Total grains, etc.....	1,250	1,689	+35
Oilseeds and products:			
Cottonseed and soybean oils ^{3/}	99	101	+ 2
Soybeans.....	293	349	+19
Other.....	100	120	+20
Total oilseeds, etc. ^{3/}	492	570	+16
Tobacco, unmanufactured.....	275	324	+18
Vegetables and preparations.....	101	113	+12
Other.....	162	209	+29
Total.....	3,155	4,035	+28

^{1/} Partly estimated.

^{2/} Excludes Title III, P.L. 480 donations of butter and ghee, which are included in "Other" agricultural exports.

^{3/} Excludes Title III, P.L. 480 donations, which are included in "Other" agricultural exports.

Table 2.--U.S. agricultural exports to the European Economic Community: Value by commodity, July-January and August-January 1961-62 through 1963-64 ^{1/}

Commodity	July-January			August-January		
	1961-62	1962-63	1963-64	1961-62	1962-63	1963-64
-- 1,000 dollars --						
<u>Variable-levy commodities ^{2/}:</u>						
Feed grains.....	118,922	154,142	167,181	110,370	131,555	145,177
Wheat grain.....	90,977	24,542	60,975	86,873	23,166	56,908
Wheat flour ^{3/}	9,753	5,502	5,827	8,136	5,417	5,466
Lard.....	2,116	1,015	1,158	1,825	1,006	1,017
Pork, except variety meats.....	266	129	3,999	247	108	3,986
Poultry and eggs:						
Broilers and fryers:	18,263	9,035	7,287	15,744	6,527	6,443
Stewing chickens...	5,408	2,324	4,752	4,457	1,601	4,362
Turkeys.....	6,064	6,229	7,366	5,580	5,824	7,016
Other fresh poultry:	570	269	221	484	209	183
Canned poultry.....	1,329	675	1,388	1,207	566	1,238
Eggs.....	2,717	915	1,445	2,342	592	1,108
Total poultry and eggs.....	34,351	19,442	22,459	29,814	15,319	20,350
Total.....	256,385	204,772	261,599	237,265	176,571	232,904
<u>Nonvariable-levy commodities:</u>						
Cotton, excluding linters.....	105,813	50,976	109,573	100,814	47,264	106,801
Fruits and vegetables:	48,450	60,171	59,932	41,323	53,590	51,278
Rice, milled.....	9,010	4,886	5,994	8,199	3,398	4,615
Soybeans.....	92,467	99,643	105,371	88,305	92,541	97,369
Tallow.....	19,370	12,110	16,857	16,167	10,667	14,816
Tobacco, unmanufactured.....	60,178	59,694	64,597	52,977	45,262	53,267
Variety meats.....	9,570	8,522	13,437	8,333	7,378	12,018
Vegetable oils, expressed.....	12,416	5,181	13,160	11,734	5,004	12,428
Other.....	74,567	106,910	4/126,688	65,325	94,029	4/110,954
Total.....	431,841	408,093	4/515,609	393,177	359,133	4/463,546
Total E.E.C.....	688,226	612,865	4/777,208	630,442	535,704	4/696,450

^{1/} Compiled from U.S. Bureau of Census data.

^{2/} Classified for identification of commodities subject to the variable levies which were put into effect on July 30, 1962. The classification is designed to show the overall change in exports of these commodities rather than to measure the impact of the variable levies on exports of these commodities.

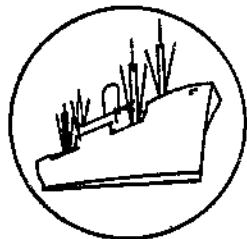
^{3/} Exports of wheat flour to Italy include donations under Titles II and III of P.L. 480.

^{4/} Estimated.

Agricultural exports to the EEC have been classified into variable-levy and nonvariable-levy commodities for identification purposes. The classification is designed to show the overall change in exports of these commodities rather than to measure the impact of the variable levies on U.S. agricultural exports.

Exports of commodities not subject to variable levies to the EEC increased 26 percent to \$516 million in July-January 1963-64 from \$409 million for the like period a year earlier. Over half of the gain was in cotton exports, which were relatively low a year ago due to larger foreign production and smaller foreign consumption.

Factors encouraging cotton exports this year include: Lower foreign production, a change in the CCC cotton program permitting sales of CCC stocks at competitive prices, and some increase in foreign consumption. In addition to the gain in cotton, exports of soybeans, tallow, tobacco, variety meats, vegetable oils, and rice to the EEC also increased. Fruits and vegetables declined slightly.



Import Highlights

JULY 1963 - JANUARY 1964

U.S. agricultural imports for consumption in the first 7 months (July-January) of fiscal year 1963-64 totaled \$2,416 million, 9 percent more than the \$2,213 million a year earlier (table 3). The increase resulted from larger imports of both supplementary (partially competitive) and complementary (noncompetitive) products. Higher prices for major agricultural imports -- both complementary and supplementary -- have accounted for a large part of the overall increase in 1963-64. Imports of nonagricultural products in July-January totaled \$7,943 million in 1963-64 compared with \$7,201 million in 1962-63.

Supplementary Imports

July-January imports of supplementary products increased to \$1,369 million this year from \$1,245 million a year earlier. The gain consisted mainly of meats and cane sugar, with smaller increases for dairy products, hides and skins, fruits, grains, nuts, and vegetables.

Complementary Imports

Complementary imports were \$1,046 million for July-January 1963-64 compared with \$968 million a year earlier, representing a gain of 8 percent. Principal gainers were coffee, cocoa beans, carpet wool, and fibers. Partly offsetting these increases were reduced imports of crude natural rubber.

CALENDAR YEAR 1963

U.S. agricultural imports for consumption in 1963 totaled \$4,012 million, up 4 percent over the previous year's \$3,868 million (table 4). The gain resulted from increased imports of supplementary (partially competitive) items. Imports of complementary (noncompetitive) products declined 1 percent, reflecting less coffee and crude natural rubber as well as lower prices for some items. By comparison agricultural exports totaling a record \$5,584 million in 1963 were 11 percent above a year earlier and exceeded imports by \$1,572 million.

Imports of nonagricultural items rose to \$13 billion in 1963 from the level of \$12.4 billion a year earlier. Such imports have been increasing for a number of years due to the continued expansion of U.S. consumer income and export promotion programs undertaken by other countries for marketing their commodities in the United States. Nonagricultural imports have been gaining about 4 percent annually in the past 5 years.

Table 3.--U.S. agricultural imports for consumption: Value by commodity,
July-January 1962-63 and 1963-64

Commodity	July-January		Change
	1962-63	1963-64	
	-- Million dollars --		Percent
<u>Supplementary</u>			
Animals and animal products:			
Animals, live.....	86	42	-51
Dairy products.....	30	33	+10
Hides and skins.....	26	31	+19
Meats and meat products.....	295	336	+14
Wool, apparel.....	65	54	-17
Other.....	24	26	+ 8
Total animals, etc.....	526	522	- 1
Cotton, excluding linters.....	22	22	0
Fruits and preparations.....	43	58	+35
Grains and preparations.....	21	26	+24
Nuts and preparations.....	39	46	+18
Oilseeds and products.....	96	91	- 5
Sugar, cane.....	296	367	+24
Tobacco, unmanufactured.....	56	59	+ 5
Vegetables and preparations.....	39	45	+15
Other.....	107	134	+25
Total supplementary.....	1,245	1,370	+10
<u>Complementary</u>			
Bananas.....	42	49	+17
Coffee.....	555	611	+10
Cocoa beans.....	55	68	+24
Rubber, crude, natural.....	133	105	-21
Tea.....	34	33	- 3
Wool, carpet.....	52	70	+35
Other.....	97	110	+13
Total complementary.....	968	1,046	+ 8
Total imports.....	2,213	2,416	+ 9

Table 4.--U.S. agricultural imports for consumption: Value by commodity, calendar years 1962 and 1963

Commodity	1962	1963	Change
	-- Million dollars --		Percent
<u>Supplementary</u>			
Animals and animal products:			
Animals, live.....	122	81	-34
Dairy products.....	54	55	+ 2
Hides and skins.....	63	59	- 6
Meats and meat products.....	485	542	+12
Wool, apparel.....	120	111	- 8
Other.....	40	45	+12
Total animals, etc.....	884	893	+ 1
Cotton, excluding linters.....	25	24	- 4
Fruits and preparations.....	88	104	+18
Grains and preparations.....	43	43	0
Nuts and preparations.....	60	68	+13
Oilseeds and products.....	155	148	- 5
Sugar, cane.....	505	611	+21
Tobacco, unmanufactured.....	101	99	- 2
Vegetables and preparations.....	83	91	+10
Other.....	184	212	+15
Total supplementary.....	2,128	2,293	+ 8
<u>Complementary</u>			
Bananas.....	77	82	+ 6
Coffee.....	989	957	- 3
Cocoa beans.....	132	135	+ 2
Rubber, crude, natural.....	228	197	-14
Tea.....	60	58	- 3
Wool, carpet.....	89	115	+29
Other.....	165	175	+ 6
Total complementary.....	1,740	1,719	- 1
Total imports.....	3,868	4,012	+ 4

Imports of supplementary commodities rose to \$2,293 million in 1963 from \$2,128 million a year earlier. Gains occurred in meats, cane sugar, fruits and preparations, nuts and preparations, coconut oil, and molasses. Somewhat offsetting the increases were declines for dutiable cattle, apparel wool, copra, hides and skins, and cotton.

Imports of complementary products declined to \$1,719 million from \$1,740 million a year earlier. Declines occurred mainly in coffee and crude natural rubber, with smaller reductions for spices and tea. More bananas, hard fibers, and carpet wool were imported. Higher prices resulted in an overall value increase for cocoa bean imports although volume declined slightly in 1963.

Imports of complementary items have been moving downward since the early 1950's. A substantial part of the value decline has resulted from lower prices, reflecting surplus supplies of many items, especially coffee. In the past decade coffee prices have declined by about 35 percent mainly because of the continued expansion of production in both Latin America and Africa. The demand for most complementary commodities is highly inelastic -- that is, a small supply increase in coffee, for instance, will create a sharp drop in price, resulting in lower total value.

While the complementary imports have been declining, imports of supplementary commodities have increased in the past decade. Supplementary imports averaged 43 percent of total agricultural imports in 1950-54 and 57 percent of total imports in 1963.

Commodity detail is given in table 5.

Table 5.-- U. S. agricultural imports for consumption: Quantity and value by commodity, 1962 and 1963

Commodity imported SUPPLEMENTARY	Unit	Year ended December 31 1/			
		Quantity		Value	
		1962	1963	1962	1963
		Thousands	Thousands	dollars	dollars
ANIMALS AND ANIMAL PRODUCTS					
Animals, live:					
Cattle, dutiable	No.	1,232	834	110,490	67,589
Cattle, free (for breeding)	No.	18	19	6,084	6,475
Horses	No.	3	4	4,431	6,431
Other (including live poultry)	---	2/	2/	1,031	815
Total animals, live	---	---	---	122,036	81,310
Dairy products:					
Butter	Lb.	789	746	368	361
Cheese -					
Blue-mold	Lb.	4,363	3,910	2,157	1,941
Cheddar	Lb.	2,544	3,157	775	969
Edam and Gouda	Lb.	6,687	7,489	2,921	3,279
Pecorino	Lb.	17,976	17,505	9,239	9,019
Swiss	Lb.	17,323	16,522	9,421	8,774
Other	Lb.	28,721	34,449	11,832	13,273
Total cheese	Lb.	77,614	83,032	36,345	37,255
Casein or lactarene	Lb.	95,576	87,878	17,284	15,794
Other	---	2/	2/	169	1,879
Total dairy products	---	---	---	54,166	52,289
Hides and skins, raw (except furs):					
Calf skins	Lb.	5,132	6,230	2,876	2,268
Cattle hides	Lb.	18,177	16,657	3,412	2,162
Goat and kid skins	Lb.	25,477	25,862	14,586	15,797
Sheep and lamb skins	Lb.	56,459	52,605	23,915	21,443
Other 3/	Lb.	35,138	40,458	17,852	17,191
Total hides and skins, raw	Lb.	140,383	141,812	62,641	58,861
Meat and meat products:					
Beef and veal -					
Fresh, chilled, or frozen	Lb.	863,335	986,706	272,718	315,808
Other	Lb.	84,485	118,238	28,807	37,872
Total beef and veal	Lb.	947,820	1,104,944	301,525	353,680
Mutton, goat, and lamb	Lb.	78,169	81,791	16,182	18,411
Pork -					
Fresh, chilled, or frozen	Lb.	40,458	37,036	15,252	13,828
Hams & shoulders, canned cooked	Lb.	131,269	140,016	95,256	98,410
Other	Lb.	32,055	33,397	17,002	18,032
Total pork	Lb.	203,782	210,449	127,510	130,270
Sausage casings	---	2/	2/	15,885	17,279
Other (including meat extracts)	Lb.	80,687	86,170	23,422	22,602
Total meat (except poultry)	---	---	---	484,524	542,242
Poultry products:					
Eggs, dried, frozen, or preserved	Lb.	4	5	5	7
Eggs in the shell	Doz.	1,560	1,335	778	954
Poultry meat	Lb.	264	242	523	451
Total poultry products	---	---	---	1,306	1,412

Continued -

Table 5.-- U. S. agricultural imports for consumption: Quantity and value by commodity, 1962 and 1963 - Continued

Commodity imported SUPPLEMENTARY	Unit	Year ended December 31 1/			
		Quantity		Value	
		1962	1963	1962	1963
				1,000	1,000
		Thousands	Thousands	dollars	dollars
<u>Wool, unmanufactured (except free):</u>					
40's to 56's	GLb.	23,705	25,011	13,261	14,491
Finer than 56's	GLb.	140,881	114,470	85,591	73,617
Other wools	GLb.	26,407	26,633	21,151	23,214
Total wool, unmanufactured	GLb.	190,993	166,114	120,003	111,322
<u>Other animal products:</u>					
Bones, hoofs, horns, unmf'd.	2/	2/		4,176	2,911
Bristles, sorted, or prepared	Lb.	3,067	3,529	8,016	11,029
Fats, oils, and greases	2/	2/		1,163	1,237
Feathers, crude	Lb.	2,448	3,247	4,058	4,543
Gelatin, edible	Lb.	7,436	8,313	3,792	4,097
Hair, unmanufactured	Lb.	9,756	11,634	7,125	8,093
Honey	Lb.	7,111	2,601	782	394
Other	2/	2/		10,160	10,621
Total other animal products				39,272	42,925
Total animals and products				883,948	893,361
<u>VEGETABLE PRODUCTS</u>					
<u>Cotton, unmanufactured (480 lb.):</u>					
Cotton	Bale:	143	132	24,715	24,009
Linters	Bale:	173	148	4,939	3,863
Total cotton and linters	Bale:	316	280	29,654	27,872
<u>Fruits and preparations:</u>					
Apples, green or ripe (50 lb.)	Bu.	1,200	1,663	4,584	5,996
Berries	Lb.	48,228	61,827	6,534	8,721
Dates	Lb.	27,138	43,522	2,772	4,254
Figs	Lb.	27,531	17,524	2,266	1,611
Grapes (40 lb.)	CuFt:	830	1,148	2,142	3,167
Melons	Lb.	179,898	212,198	6,847	7,339
Olives in brine	Gal.	12,973	11,890	22,466	19,352
Oranges, mandarin, canned	Lb.	48,193	46,260	9,190	9,483
Pineapples, canned, or preserved ..	Lb.	100,984	118,522	11,967	13,412
Pineapple juice	Gal.	3,162	4,839	1,903	2,397
Other	2/	2/		17,520	28,300
Total fruits and preparations				88,191	104,032
<u>Grains and preparations:</u>					
Barley grain (48 lb.)	Bu.	4,976	6,335	6,866	8,074
Barley malt	Lb.	148,486	99,823	8,466	5,076
Corn grain (56 lb.)	Bu.	1,334	950	2,510	1,794
Oats grain (32 lb.)	Bu.	2,371	4,749	2,112	4,014
Rice	Lb.	21,332	1,251	1,185	129
Rye grain (56 lb.)	Bu.	226	658	265	853
Wheat grain, domestic use (60 lb.):	Bu.	4,841	4,828	8,278	9,309
Wheat flour	Lb.	3,885	3,927	154	171
Other	2/	2/		13,043	13,341
Total grains and preparations				42,879	42,761

Continued -

Table 5.-- U. S. agricultural imports for consumption: Quantity and value by commodity, 1962 and 1963 - Continued

Commodity imported SUPPLEMENTARY	Unit	Year ended December 31 1/			
		Quantity		Value	
		1962	1963	1962	1963
		Thousands	Thousands	1,000 dollars	1,000 dollars
Nuts and preparations:					
Almonds	Lb.	222	193	107	127
Brazil nuts	Lb.	26,171	30,049	6,586	6,595
Cashew nuts	Lb.	64,481	75,810	25,213	29,404
Coconut meat, fresh, or prepared	Lb.	112,494	131,069	12,532	15,706
Pistache nuts	Lb.	20,083	13,738	8,192	7,348
Other	2/	2/	2/	6,875	8,643
Total nuts and preparations	---	---	---	59,505	67,823
Oilseeds and products:					
Oils, edible and inedible -					
Cacao butter	Lb.	22,579	16,479	10,810	8,220
Carnauba wax	Lb.	9,623	13,248	4,702	5,434
Castor oil	Lb.	105,613	97,561	12,115	10,575
Coconut oil	Lb.	265,742	372,247	25,358	38,927
Olive oil, edible	Lb.	57,526	32,885	15,547	12,524
Palm oil	Lb.	35,529	23,529	3,279	2,108
Palm kernel oil	Lb.	84,196	83,479	8,908	10,066
Tung oil	Lb.	21,219	19,466	6,707	6,280
Other	Lb.	66,893	37,750	10,344	6,195
Total oils (except essential)	Lb.	668,920	696,644	97,770	100,329
Oilseeds -					
Copra	Lb.	714,789	520,960	46,640	38,091
Sesame seed	Lb.	20,139	25,320	2,879	3,694
Other	2/	2/	2/	3,672	2,246
Total oilseeds	---	---	---	53,191	44,031
Protein meal (oilcake and meal)	Lb.	152,685	104,530	3,961	3,170
Total oilseeds and products	---	---	---	154,922	147,530
Sugar and related products:					
Cane sugar	STon	4,572	4,469	504,593	610,903
Molasses, unfit for consumption	Gal.	265,063	270,127	28,847	42,959
Other	2/	2/	2/	6,819	7,127
Total sugar and related products	---	---	---	540,259	660,989
Vegetables and preparations:					
Canned mushrooms	Lb.	10,185	13,868	5,319	7,187
Canned tomatoes, paste, and sauce	Lb.	164,026	116,430	14,085	12,194
Fresh or dried -					
Cucumbers	Lb.	59,049	61,155	2,396	3,707
Garlic	Lb.	16,083	20,204	2,706	3,904
Onions	Lb.	74,060	44,188	3,860	2,376
Potatoes, white	Lb.	107,937	72,875	2,133	1,844
Tomatoes, natural state	Lb.	236,188	241,974	17,598	20,926
Turnips and rutabagas	Lb.	88,344	82,218	1,790	1,683
Pickled vegetables	Lb.	13,303	14,650	2,106	2,285
Tapioca, tapioca flour, cassava	Lb.	163,248	244,438	6,040	9,125
Other	2/	2/	2/	24,661	25,960
Total vegetables and preparations	---	---	---	82,694	91,191

Continued -

Table 5.-- U. S. agricultural imports for consumption: Quantity and value by commodity, 1962 and 1963 - Continued

Commodity imported SUPPLEMENTARY	Unit	Year ended December 31 ^{1/}			
		Quantity		Value	
		1962	1963	1962	1963
		Thousands	Thousands	dollars	dollars
Other vegetable products:					
Feeds & fodders (except oilcake) ..	2/	2/			
Hops	Lb.	5,495	5,129	4,841	5,078
Jute and jute butts, unmf'd.	LTon:	78	77	13,676	13,128
Malt liquors	Gal.:	15,585	16,980	18,354	19,440
Nursery and greenhouse stock	2/	2/			
Seeds, field and garden	2/	2/			
Spices	Lb.	46,809	50,595	7,578	7,432
Tobacco, unmanufactured	Lb.	163,307	167,821	100,682	98,977
Wines	Gal.:	14,041	14,457	52,320	53,966
Other	2/	2/			
Total other vegetable products ..				245,929	257,464
Total vegetable products				1,244,033	1,399,662
Total supplementary imports				2,127,981	2,293,023
COMPLEMENTARY					
Bananas	Lb.	3,450,455	3,485,407	77,465	81,968
Coffee (including into Puerto Rico) ..	Lb.	3,247,527	3,159,392	989,249	956,912
Coffee essences, substitutes, etc.	Lb.	4,126	6,300	4,793	7,378
Cocoa or cacao beans	Lb.	640,051	631,239	131,519	135,276
Cocoa and chocolate, prepared	Lb.	104,471	115,601	19,357	19,460
Drugs, herbs, roots, etc.	2/	2/			
Essential or distill ^d oils	2/	2/			
Fibers, unmanufactured	LTon:	159	174	32,744	37,151
Rubber, crude	Lb.	943,255	850,142	227,992	197,395
Silk, raw	Lb.	5,277	4,404	26,810	27,212
Spices	Lb.	91,399	94,571	35,073	32,089
Tea	Lb.	129,692	127,032	60,028	58,236
Wool, unmanufactured (free in bond) ..	GLb.:	181,296	213,454	89,207	114,698
Other complementary products	2/	2/			
Total complementary imports				1,739,976	1,719,027
TOTAL AGRICULTURAL IMPORTS				3,867,957	4,012,050
TOTAL NONAGRICULTURAL IMPORTS				12,381,455	13,020,389
TOTAL IMPORTS, ALL COMMODITIES				16,249,412	17,032,439

^{1/} Preliminary. ^{2/} Reported in value only. ^{3/} Excludes the weight of "other hides and skins," reported in pieces only.



Government Program Export Highlights

FISCAL YEAR 1962-63

P.L. 480 and AID programs accounted for \$1,534 million of the \$5,078 million of U.S. agricultural exports in fiscal year 1962-63, the year ending June 30, 1963 (table 6). Exports of agricultural commodities for foreign currencies, provided for by Title I of P.L. 480, (The Agricultural Trade Development and Assistance Act of 1954, as amended), totaled \$1,075 million, followed by lesser amounts for famine and other emergency relief shipments, foreign donations, barter, long-term supply and dollar credit sales, and sales for foreign currency and economic aid under Section 402 of P.L. 87-195 (Act for International Development).

The largest proportion, \$792 million, of Government program exports went to Asia, chiefly India, Pakistan, and Republic of Korea, followed by Taiwan, Indonesia, Viet-Nam, Israel, and other countries. Europe and Africa received approximately equal amounts. The \$278 million for Europe included Yugoslavia, the leading recipient with \$117 million, followed by Poland, Turkey, and other countries. The \$275 million for Africa included United Arab Republic-Egypt with \$125 million, followed by Algeria, Tunisia, Morocco, Republic of the Congo and Ruanda-Urundi, and other countries.

Shipments to Latin America under programs amounted to \$176 million, including \$93 million for Brazil, \$19 million for Chile, and lesser amounts for other countries.

Program shipments to Oceania -- going to the Trust Territory of the Pacific Islands and British Western Pacific Islands -- amounted to \$298,000 in 1962-63.

Shipments outside of specified Government-financed export programs -- usually referred to as commercial exports or dollar sales -- totaled \$3,544 million of the \$5,078 million exports. The largest area of dollar sales was Europe, with \$1,891 million. Principal dollar markets were the United Kingdom, West Germany, the Netherlands, Italy, Belgium-Luxembourg, Spain, France, and Denmark.

Second largest dollar-sales area was Asia, with \$736 million. Chief country markets were Japan, with \$485 million, followed by the Philippines, Hong Kong, and other countries.

Dollar exports to Latin America amounted to \$311 million, including \$68 million for Mexico, \$59 million for Venezuela, and lesser amounts for other countries. Shipments to Canada were \$517 million, all dollar sales.

Dollar exports to Africa totaled \$61 million, going principally to United Arab Republic-Egypt, Republic of South Africa, Ghana, Federation of Nigeria, and Liberia. Dollar shipments to Oceania amounted to \$41 million, principally to Australia and New Zealand.

Table 6.--U.S. agricultural exports under specified Government-financed programs, exports outside specified Government-financed programs, and total agricultural exports, value, by country of destination, year ending June 30, 1963

Country	Public Law 480				P.L. 87-195 : Sec. 402	Total : agricultural : exports : under : specified : Government : programs	Total : agric'l : exports : outside : specified : Government : programs	Total : agricultural : exports
	Title I : Sales : for : foreign : currency	Title II : Famine : and other : emergency : relief	Title III : Foreign : donations : 1/	Title IV : Barter : 2/				
-- Thousand dollars --								
<u>North America</u>							517,444	517,444
Canada.....	---	---	---	---	---	---	---	---
Greenland.....	---	---	---	---	---	---	7	52
Miquelon and St. Pierre Isls...	---	---	---	7	---	---	7	517,496
Total.....	---	---	---	7	---	---	7	517,496
<u>Latin American Republics and Canal Zone</u>							2,659	2,659
Argentina.....	---	---	---	---	512	---	10,580	1,435
Bolivia.....	7,577	78	2,413	---	---	---	93,181	16,267
Brazil.....	66,250	10,710	10,798	5,423	---	---	---	874
Canal Zone.....	---	---	---	---	---	---	---	874
Chile.....	---	---	3,397	98	15,822	---	19,317	11,698
Colombia.....	1,293	---	7,233	5/	---	---	8,526	11,510
Costa Rica.....	---	75	67	---	---	---	142	4,931
Cuba.....	---	---	---	---	---	---	---	13,351
Dominican Republic.....	---	338	5,264	---	4,463	---	10,065	7,641
Ecuador.....	214	154	1,295	---	186	---	1,849	4,598
El Salvador.....	---	---	1,547	---	---	---	1,547	5,509
Guatemala.....	---	---	588	275	---	---	663	9,115
Haiti.....	---	---	666	---	---	---	666	6,750
Honduras.....	---	---	172	61	---	---	233	4,089
Mexico.....	---	525	9,000	---	---	---	9,525	68,349
Nicaragua.....	---	---	934	6	---	---	940	3,495
Panama, Republic of.....	---	---	414	---	---	---	414	10,175
Paraguay.....	2,260	---	470	---	---	---	2,730	791
Peru.....	283	1,148	2,310	4,463	1,764	---	9,968	10,278
Uruguay.....	1,224	---	361	---	---	---	1,585	1,411
Venezuela.....	---	---	1,099	375	---	---	1,474	59,273
Total Latin American Republics and Canal Zone...	79,101	13,028	48,028	10,701	22,747	---	173,605	254,199
<u>Other Latin America</u>				1			1	8,389
Bahamas.....	---	---	---	---	---	---	---	2,025
Barbados.....	---	---	---	---	---	---	---	2,025
Bermuda.....	---	---	---	---	---	---	---	5,520
British Guiana.....	---	---	19	---	---	---	19	3,065
British Honduras.....	---	---	255	19	---	---	274	1,755

--Continued

Table 6.--U.S. agricultural exports under specified Government-financed programs, exports outside specified Government-financed programs, and total agricultural exports, value, by country of destination, year ending June 30, 1963 - Continued

Country	Public Law 480				P.L. 87-195	Total	Total	Total
	Title I	Title II	Title III	Title IV	Sec. 402	agricultural	agric'l	
	Sales for foreign currency	Famine and other emergency relief	Foreign donations 1/	Barter 2/	Long-term supply and dollar credit sales 3/	sales for foreign currency, and econ. aid 3/	exports under specified Government programs	
-- Thousand dollars --								
Other Latin America (continued)							5/	5/
Falkland Islands.....	---	---	---	---	---	---	58	58
French Guiana.....	---	---	---	---	---	63	690	753
French West Indies.....	---	---	63	---	---	---	10,971	12,443
Jamaica.....	---	---	1,393	79	---	---	177	1,830
Leeward and Windward Isls.....	---	10	167	---	---	---	8,791	8,791
Netherlands Antilles.....	---	---	---	---	---	---	55	2,514
Surinam.....	---	---	51	4	---	---	19	11,238
Trinidad and Tobago.....	---	---	19	---	---	---	---	2,080
Total Other Latin America.....	---	10	1,987	103	---	---	56,624	58,704
Total Latin America.....	79,101	13,038	49,995	10,804	22,747	---	175,685	310,823
Europe								
Austria.....	---	6/-59	---	2,846	---	---	2,787	13,113
Azores.....	---	---	---	---	---	---	441	441
Belgium and Luxembourg.....	---	---	---	224	---	---	224	119,491
Bulgaria.....	---	---	---	---	---	---	91	91
Cyprus.....	---	1,353	93	---	---	---	760	2,206
Czechoslovakia.....	---	---	---	---	---	---	3,492	3,492
Denmark.....	---	---	---	---	---	---	71,776	71,776
Finland.....	408	---	---	---	---	---	19,121	19,529
France.....	---	---	72	---	---	---	84,477	84,549
Germany, East.....	---	---	---	---	---	---	2,452	2,452
Germany, West.....	---	---	147	1,100	---	---	1,247	346,754
Gibraltar.....	---	---	---	---	---	---	140	140
Greece.....	7,814	6/-51	5,117	2	---	678	13,560	10,863
Hungary.....	---	---	---	---	---	---	1,887	24,423
Iceland.....	1,840	---	---	---	---	387	2,227	1,887
Ireland.....	---	---	---	1,779	---	---	1,779	1,237
Italy (incl. Trieste).....	---	3,104	6,323	934	---	6/-140	10,221	34,709
Latvia.....	---	---	---	---	---	---	5,976	164,587
Malta and Gozo.....	---	---	247	---	---	---	247	5,976
Netherlands.....	---	---	---	233	---	---	233	422
Norway.....	---	---	---	---	---	---	343,867	344,100
Poland and Danzig.....	43,561	---	4,657	5,335	---	---	39,654	39,654
Portugal.....	---	---	4,710	1,001	---	---	53,553	32,032
Rumania.....	---	---	---	---	---	---	5,711	10,271
							170	170

--Continued

Table 6.--U.S. agricultural exports under specified Government-financed programs, exports outside specified Government-financed programs, and total agricultural exports, value, by country of destination, year ending June 30, 1963 - Continued

Country	Public Law 480				P.L. 87-195 : Sec. 402 : sales for : foreign : currency, : and econ. : aid 3/	Total : agricultural : exports : under : specified : Government : programs	Total : agric'l : exports : outside : specified : Government : programs 4/	Total : agricultural : exports	
	Title I	Title II	Title III	Title IV					
	Sales : for : foreign : currency	Famine : and other : emergency : relief	Foreign : donations : 1/	Barter : 2/ : Long-term : supply and : dollar cred- : it sales					
-- Thousand dollars --									
<u>Europe (continued)</u>									
Spain.....	---	---	3,062	11,181	---	1,743	15,986	112,073	128,059
Sweden.....	---	---	---	---	---	---	---	44,449	44,449
Switzerland.....	---	---	---	---	---	---	---	53,586	53,586
Turkey.....	38,208	6/44	2,785	---	---	1,814	42,763	2,667	45,430
United Kingdom.....	---	---	---	8,347	---	---	8,347	359,097	367,444
Union of Soviet Socialist Republics.....	---	---	---	---	---	---	---	3,087	3,087
Yugoslavia.....	7/85,265	---	6,758	---	24,464	310	116,797	10,464	127,261
Total Europe.....	177,096	4,303	33,971	32,982	24,464	4,792	277,608	1,891,223	2,168,831
<u>Asia</u>									
Aden.....	---	---	1	---	---	---	---	1,062	1,063
Afghanistan.....	---	---	38	---	---	---	38	100	138
Arabia Pen. States, n.e.c.....	---	444	---	---	---	---	444	449	893
Bahrain, State of.....	---	---	---	---	---	---	---	1,515	1,515
Burma.....	7/1,216	---	153	---	---	---	1,369	8/-697	672
Cambodia.....	---	---	6	---	---	892	898	8/-10	888
Ceylon.....	3,311	---	2,820	---	---	---	6,131	3,379	9,528
Goa, Damao and Diu.....	---	---	---	---	---	---	---	---	---
Hong Kong.....	7/2,710	---	2,130	705	---	---	5,545	34,161	39,706
India.....	314,281	9/1,132	9,054	1,050	---	6/-5	325,512	22,846	348,358
Indonesia, Republic of.....	7/47,125	223	1,804	---	---	---	49,152	4,301	53,453
Iran.....	6,423	12,351	2,398	---	---	---	21,172	11,198	32,370
Iraq.....	---	---	42	---	---	---	42	2,390	2,432
Israel.....	29,601	---	557	3,273	---	6/-4	33,427	23,776	57,203
Japan.....	7/14,835	---	537	10,148	---	---	25,520	485,123	510,643
Jordan.....	---	9,526	996	---	---	---	10,522	3,745	14,267
Korea, Republic of.....	82,414	491	7,120	---	---	359	90,384	21,080	111,464
Kuwait.....	---	---	---	---	---	---	---	3,549	3,549
Laos.....	---	---	267	---	---	---	267	446	713
Lebanon.....	---	---	59	---	---	---	59	6,758	6,817
Macao.....	---	---	498	---	---	---	498	8/-136	362
Malaya, Federation of.....	---	---	626	---	---	---	626	5,324	5,950
Nansei and Nanpo Isls., n.e.c.....	---	---	1,395	---	---	---	1,395	13,807	15,202
Nepal.....	---	9/	---	---	---	---	---	---	---
Pakistan.....	103,756	10,852	2,488	---	---	51	117,157	8,202	125,359

--Continued

Table 6.--U.S. agricultural exports under specified Government-financed programs, exports outside specified Government-financed programs, and total agricultural exports, value, by country of destination, year ending June 30, 1963 - Continued

Country	Public Law 480				Title IV	P.L. 87-195 Sec. 402	Total agricultural exports under Government programs	Total agric'l exports outside Government programs	Total agricultural exports
	Title I	Title II	Title III	Barter					
	Sales for foreign currency	Famine and other emergency relief	Foreign donations 1/	2/	Long-term supply and dollar cred- it sales	sales for foreign currency, and econ. aid 3/	4/	5/	6/
-- Thousand dollars --									
Asia (continued)									
Palestine.....	---	---	---	---	---	308	12,080	36,747	48,827
Philippines, Republic of.....	6,396	---	5,362	14	---	---	1	11,352	11,353
Saudi Arabia.....	---	---	---	---	---	---	---	---	---
Singapore, State of and British Borneo.....	---	---	320	---	---	---	320	5,539	5,859
Southern and Southeastern Asia, n.e.c.....	---	---	---	---	---	---	---	1	1
Syrian Arab Republic.....	180	6/-114	69	6	---	---	141	505	646
Taiwan (Formosa).....	37,496	2,127	5,694	---	8,252	220	53,789	21,835	75,624
Thailand.....	---	---	28	---	---	---	28	10,265	10,293
Viet-Nam.....	22,992	7,335	4,280	---	---	485	35,092	8/-2,616	32,476
Total Asia.....	672,736	44,377	48,742	15,197	8,252	2,306	791,610	736,018	1,527,628
Oceania									
Australia.....	---	---	---	---	---	---	---	31,610	31,610
British Western Pacific Isls... French Pacific Islands.....	---	---	15	---	---	---	15	562	577
New Guinea.....	---	---	---	---	---	---	---	897	897
New Zealand and Western Samoa... Trust Territory of the Pacific Isls.....	---	---	---	---	---	---	---	360	360
	---	---	283	---	---	---	283	6,776	6,776
	---	---	---	---	---	---	---	518	801
Total Oceania.....	---	---	298	---	---	---	298	40,723	41,021
Africa									
Algeria.....	---	38,805	9,441	---	---	---	48,246	8/-14,588	33,658
Angola.....	---	---	---	---	---	---	---	2,204	2,204
British East Africa and Tanganyika.....	---	2,681	362	---	---	2,647	5,690	8/ -808	4,882
British West Africa and Sierra Leone.....	---	---	356	---	---	---	356	592	948
Cameroon, Federal Republic of... Canary Islands.....	---	---	13	12	---	---	25	551	576
	---	---	---	104	---	---	104	3,466	3,570
Congo, Rep. of and Ruanda- Urundi.....	12,160	3,652	2,528	6	---	---	18,346	5,092	23,438

--Continued

Table 6.--U.S. agricultural exports under specified Government-financed programs, exports outside specified Government-financed programs, and total agricultural exports, value, by country of destination, year ending June 30, 1963 - Continued

Country	Public Law 480				P.L. 87-195 Sec. 402 sales for foreign currency, and econ. aid 3/ programs	Total agricultural exports under specified Government programs	Total agric'l exports outside specified Government programs 4/	Total agricultural exports	
	Title I Sales for foreign currency	Title II Famine and other emergency relief	Title III Foreign donations 1/	Title IV Barter 2/ Long-term supply and dollar cred- it sales					
-- Thousand dollars --									
Africa (continued)									
Ethiopia.....	---	---	445	---	1,340	---	1,785	1,194	2,979
French Somaliland.....	---	---	---	2	---	---	2	118	120
Ghana.....	---	---	333	---	---	---	333	7,966	8,299
Liberia.....	---	---	115	---	625	---	740	6,597	7,337
Libya.....	---	6/-1	---	---	---	---	6/-1	936	935
Madeira Islands.....	---	---	---	---	---	---	---	588	588
Malagasy, Rep. of (Madagascar):	---	---	360	---	---	---	360	8/-76	284
Mauritius and Dependencies.....	---	---	39	---	---	---	39	104	143
Morocco.....	6,250	13,961	7,562	---	---	1,457	29,230	8/-647	28,583
Mozambique.....	---	---	---	---	---	---	---	2,435	2,435
Nigeria, Federation of.....	---	---	202	---	---	---	202	7,235	7,437
Rhodesia and Nyasaland, Fed. of.....	---	---	2	---	---	---	2	483	485
Seychelles and Dependencies.....	---	---	---	---	---	---	---	3	3
Somali Republic.....	---	699	51	---	---	---	750	8/-296	454
South Africa, Rep. of.....	---	---	55	---	---	---	55	15,290	15,345
Spanish Africa, n.e.c.....	---	---	---	---	---	---	---	146	146
Sudan.....	3,365	---	---	---	---	---	3,365	1,143	4,508
Tunisia.....	10,976	18,772	1,267	---	---	350	31,365	8/-4,510	26,855
United Arab Rep. (Egypt Region).....	108,387	3,915	12,478	52	---	6/-41	124,791	24,658	149,449
Western Africa, n.e.c. (French: West Africa).....	4,954	599	1,114	938	---	1,908	9,513	1,310	10,823
Western Equatorial Africa (French Equatorial Africa).....	---	---	48	---	---	---	48	13	61
Western Portuguese Africa, n.e.c.....	---	---	---	9	---	---	9	166	175
Total Africa.....	146,092	83,083	36,771	1,123	1,965	6,321	275,355	61,365	336,720
Country of destination not reported.....	---	10/13,918	---	---	---	---	13,918	-13,918	---
Total.....	1,075,025	158,719	169,777	60,113	57,428	13,419	1,534,481	3,543,723	5,078,204

--Continued

Table 6.--U.S. agricultural exports under specified Government-financed programs, exports outside specified Government-financed programs, and total agricultural exports, value, by country of destination, year ending June 30, 1963 - Continued

- 1/ Foreign donations are authorized under Sec. 416 of the Agricultural Act of 1949 and Sec. 302, Title III, P.L. 480.
 2/ The barter program is authorized under the Charter Act of the Commodity Credit Corporation; Sec. 303, Title III, P.L. 480; and other legislation.
 3/ AID programs.
 4/ "Total Agricultural exports outside specified Government-financed programs" (sales for dollars) include, in addition to unassisted commercial transactions, shipments of some commodities with governmental assistance in the form of (1) extension of credit for relatively short periods, (2) sales of Government-owned commodities at less than domestic market prices, and (3) export payments in cash or in kind.
 5/ Less than \$500.
 6/ Net adjustment from a previous period.
 7/ Under agreements with Burma and Indonesia, raw cotton was exported to third countries for processing. In exchange, processed goods are exported to the agreement country. The Title I values shown for the above-mentioned countries do not include the value of the raw cotton exported to third countries as follows:

<u>Agreement Country</u>	<u>Value (Thousand dollars)</u>
Burma	8
Indonesia	18,473
Total	18,481

The cotton not included in the values for the agreement countries is included in the Title I value for the processing countries as follows:

<u>Processing Country</u>	<u>Agreement Country</u>	<u>Value (Thousand dollars)</u>
Japan	Burma	8
Hong Kong	Indonesia	2,710
Japan	Indonesia	14,827
Yugoslavia	Indonesia	936
Total cotton processed in third countries		18,481

8/ The non-comparability of the data available for the reporting of Government-financed programs may affect the reliability of the totals for any country, but the discrepancies are most apparent when exports under Government programs exceed total exports. These excesses may be attributed to lags in reporting or to differences in valuation procedures. Exports under Title II are shown in this report at cost to CCC, whereas these shipments are at times reported to the Bureau of the Census at market value.

9/ The Title II value shown for India includes commodities exported to India to replace stocks advanced for emergency relief for people of Nepal.

10/ Donations through the United Nations Relief and Works Agency (UNRWA) for the relief of Palestine refugees.

Dollar sales included, in addition to regular transactions, Export-Import Bank loans and medium-term guarantees along with Commodity Credit Corporation (CCC) credit sales. Such credit sales in fiscal year 1962-63 amounted to \$85 million and \$76 million, respectively, for these 2 programs, and they aggregated \$161 million (table 7). Export-Import Bank loans were used principally to finance shipments of agricultural commodities to Japan. CCC credit sales were instrumental in moving \$30 million of agricultural commodities to Europe including Italy, Poland, Denmark, Spain, and other countries. Credit shipments to Asia totaled \$24 million, primarily to Japan. Such shipments to Latin American countries totaled \$17 million, including Brazil, Mexico, Guatemala, Haiti, and Venezuela. Such shipments to Oceania amounted to \$4 million and went entirely to Australia and New Zealand, while those to Africa were \$1 million, all to the Canary Islands.

Table 7.--U.S. credit sales of agricultural commodities: Value by country, year ending June 30, 1963 ^{1/}

Country	Export-Import : bank loans : and medium term : guarantees 2/ :	CCC credit sales 3/	Total credit sales
-- Thousand dollars --			
Latin American Republics			
Brazil.....	---	5,689	5,689
Chile.....	---	1,808	1,808
Colombia.....	---	861	861
Ecuador.....	---	185	185
Guatemala.....	---	1,754	1,754
Haiti.....	---	1,490	1,490
Honduras.....	---	151	151
Mexico.....	---	2,783	2,783
Panama, Republic of.....	---	48	48
Peru.....	---	806	806
Venezuela.....	---	1,124	1,124
Total Latin American Republics.....	---	16,699	16,699
Other Latin America			
Jamaica.....	---	28	28
Total Other Latin America.....	---	28	28
Total Latin America.....	---	16,727	16,727
Europe			
Austria.....	1,426	354	1,780
Belgium.....	---	66	66
Cyprus.....	---	98	98
Denmark.....	---	4,200	4,200
France.....	---	130	130
Ireland.....	---	194	194
Italy.....	---	13,014	13,014
Netherlands.....	---	243	243
Norway.....	---	892	892
Poland.....	---	7,185	7,185
Spain.....	---	3,674	3,674
Total Europe.....	1,426	30,050	31,476
Asia			
Israel.....	---	1,102	1,102
Japan.....	4/83,558	22,365	105,923
Philippines, Republic of.....	---	827	827
Total Asia.....	83,558	24,294	107,852

--Continued

Table 7.--U.S. credit sales of agricultural commodities: Value by country, year ending June 30, 1963 ^{1/} - Continued

Country	: Export-Import :		: Total credit sales
	: bank loans and medium term guarantees 2/ :	: CCC credit sales 3/ :	
	-- Thousand dollars --		
<u>Oceania</u>			
Australia.....	---	3,349	3,349
New Zealand.....	---	490	490
Total Oceania.....	---	3,839	3,839
<u>Africa</u>			
Canary Islands.....	---	1,259	1,259
Total Africa.....	---	1,259	1,259
Total.....	84,984	76,169	161,153

^{1/} Credits for relatively short periods repayable in dollars plus interest (covering the financing costs of the lending agency).

^{2/} Includes disbursements during the period under Export-Import Bank loans (in which U.S. commercial banks participated at their own or at Export-Import bank risk) and guarantees against political and/or financial risk.

^{3/} Purchases during the period.

^{4/} Included in the above amount is \$21.3 million for cotton under a credit of \$125 million for agricultural and other commodities to Japan. The total disbursed for agricultural commodities except cotton is not available.

Table 8.— U. S. agricultural exports: Quantity and value by commodity,
January 1963 and 1964 and July-January 1962-63 and 1963-64

Commodity exported	Unit	January 1/				July-January 1/			
		Quantity		Value		Quantity		Value	
		1963	1964	1963	1964	1962-63	1963-64	1962-63	1963-64
ANIMALS AND ANIMAL PRODUCTS									
Animals, live:									
Cattle	No.	1	2	391	822	11	16	4,426	6,999
Poultry, live -									
Baby chicks	No.	1,649	2,040	863	811	11,038	15,815	3,447	4,963
Other live poultry	Lb.	210	136	81	41	1,737	2,374	595	785
Other		2/	2/	377	291	2/	2/	2,894	3,132
Total animals, live		---	---	1,712	1,965	---	---	11,362	15,879
Dairy products:									
Anhydrous milk fat	Lb.	401	5,073	330	1,822	3,211	16,124	2,504	7,223
Butter (except dehydrated)	Lb.	45	9,307	19	3,152	4,442	64,572	1,461	22,177
Cheese, including donations	Lb.	3,433	611	1,054	258	19,133	9,550	6,313	3,185
Infants' and dietetic foods, chiefly milk	Lb.	899	1,487	411	789	8,462	10,217	5,387	5,560
Milk -									
Condensed sweetened	Lb.	3,392	3,282	787	790	29,029	38,790	6,789	8,192
Dried whole	Lb.	2,201	2,096	224	678	8,941	17,664	3,775	7,384
Evaporated, unsweetened, incl. donations	Lb.	2,715	2,470	403	366	36,556	30,648	5,536	4,382
Nonfat dry, including donations	Lb.	26,166	60,842	2,961	5,327	460,813	608,938	41,057	48,218
Other		2/	2/	252	319	2/	2/	2,075	2,642
Total dairy products		---	---	6,441	13,481	---	---	74,897	108,963
Fats, oils, and greases:									
Lard	Lb.	19,055	62,716	1,833	6,310	211,582	348,642	19,838	31,632
Tallow, edible	Lb.	264	348	24	33	2,073	1,844	205	181
Other edible fats, oils, and greases	Lb.	23	579	6	102	2,990	3,817	543	653
Tallow, inedible	Lb.	61,313	145,502	3,598	9,915	702,088	978,684	45,816	63,988
Other inedible fats, oils, and greases	Lb.	13,358	23,098	825	1,822	102,077	139,593	7,031	10,955
Total fats, oils, and greases	Lb.	94,013	232,243	6,286	18,182	1,020,810	1,472,560	71,433	107,409
Meat and meat products:									
Beef and veal	Lb.	1,923	3,458	861	1,381	15,895	19,397	7,474	7,965
Fork	Lb.	7,850	22,914	2,150	6,857	41,734	93,345	12,337	27,146
Sausage casings	Lb.	998	1,167	759	834	10,246	12,218	6,960	6,583
Variety meats	Lb.	6,100	16,509	1,129	3,437	71,544	95,749	14,150	19,691
Other (including meat extracts)	Lb.	732	759	266	378	7,053	6,705	2,935	2,864
Total meat and products (except poultry)	Lb.	17,603	44,807	5,165	12,887	146,472	227,414	43,856	64,249
Poultry products:									
Eggs, dried, frozen, otherwise preserved	Lb.	52	164	54	162	1,993	2,754	1,929	2,843
Eggs in the shell -									
Hatching	Doz.	971	610	737	635	3,928	4,629	3,671	4,409
Other	Doz.	96	144	40	57	924	2,475	374	943
Poultry meat -									
Chickens, fresh or frozen	Lb.	1,983	13,157	550	3,380	84,471	99,487	22,855	26,281
Turkeys, fresh or frozen	Lb.	1,081	1,768	386	649	23,778	24,974	8,248	9,261
Other, fresh or frozen	Lb.	199	336	82	139	2,848	2,797	951	995
Canned	Lb.	206	1,373	60	339	4,523	13,941	1,824	3,399
Total poultry products		---	---	1,909	5,361	---	---	39,852	48,131

Continued =

Table 8.— U. S. agricultural exports: Quantity and value by commodity,
January 1963 and 1964 and July-January 1962-63 and 1963-64 - Continued

Commodity exported	Unit	January 1/				July-January 1/			
		Quantity		Value		Quantity		Value	
		1963	1964	1963	1964	1962-63	1963-64	1962-63	1963-64
		Thousands	Thousands	1,000	1,000	Thousands	Thousands	1,000	1,000
				dollars	dollars			dollars	dollars
Other animal products:									
Feathers, crude	Lb.	15	136	34	184	935	890	1,133	987
Gelatin, edible	Lb.	224	177	400	509	2,245	1,762	4,315	4,089
Hair, raw or dressed, new	Lb.	194	270	99	121	3,034	4,020	1,194	1,251
Hides and skins, raw (except furs) 3/	No.	508	1,337	3,961	6,525	6,363	8,288	46,586	44,813
Honey	Lb.	787	1,087	124	207	12,450	19,095	1,710	3,164
Wool, unmanufactured	C.Lb.	1,009	193	839	239	6,557	6,795	5,413	7,275
Other		2/	2/	407	2,003	2/	2/	7,764	9,182
Total other animal products		---	---	5,864	9,788	---	---	68,115	70,761
Total animals and animal products		---	---	27,377	61,664	---	---	309,515	415,392
VEGETABLE PRODUCTS									
Cotton, unmanufactured:									
Cotton	R.Bales	211	587	29,474	78,314	1,816	2,919	249,673	383,478
Linters	R.Bales	23	27	824	701	137	178	4,854	4,832
Total cotton and linters	R.Bales	234	614	30,298	79,015	1,953	3,097	254,527	388,310
Fruits and preparations:									
Canned -									
Fruit cocktail	Lb.	11,074	13,243	1,578	2,235	90,138	95,404	13,230	15,285
Peaches	Lb.	28,603	18,475	2,917	2,166	237,324	171,402	25,072	18,859
Pears	Lb.	540	333	76	66	6,611	4,077	1,031	776
Pineapples	Lb.	2,023	2,317	294	348	69,004	53,075	10,113	7,611
Other	Lb.	1,619	1,438	245	312	30,030	19,757	4,702	3,699
Total canned fruits	Lb.	43,859	35,806	5,110	5,127	433,107	343,715	54,148	46,230
Dried -									
Prunes	Lb.	6,728	4,910	1,374	1,155	59,941	54,402	12,825	11,424
Raisins and currants	Lb.	3,831	4,732	765	860	64,252	84,252	11,865	14,673
Other	Lb.	1,111	1,494	421	528	13,595	9,727	5,128	3,758
Total dried fruits	Lb.	11,670	11,136	2,560	2,543	137,788	148,381	29,818	29,855
Fresh -									
Apples	Lb.	17,996	32,043	1,669	2,709	92,285	113,660	8,587	10,371
Berries	Lb.	108	832	32	122	10,507	10,008	1,847	1,797
Grapefruit	Lb.	9,185	15,985	520	950	87,405	93,152	4,570	6,021
Grapes	Lb.	9,455	6,454	979	733	185,319	179,462	15,942	15,788
Lemons and limes	Lb.	4,620	7,283	507	589	57,406	126,710	4,752	10,700
Oranges and tangerines	Lb.	23,674	37,002	2,437	2,966	216,336	212,809	18,294	19,527
Pears	Lb.	5,702	2,531	524	248	64,239	31,202	5,648	3,101
Other	Lb.	447	883	55	98	93,940	106,943	5,646	6,136
Total fresh fruits	Lb.	71,187	103,013	6,723	8,415	807,437	873,946	65,286	73,441
Fruit juices -									
Grapefruit	Gal.	328	280	254	309	3,129	2,190	2,049	2,129
Orange	Gal.	906	513	1,830	1,453	7,813	4,102	12,872	10,391
Other	Gal.	749	621	832	685	7,659	6,738	7,215	6,737
Total fruit juices	Gal.	1,983	1,414	2,916	2,447	18,601	13,030	22,136	19,257
Frozen fruits (including specialties)	Lb.	612	734	104	158	10,182	7,681	1,526	1,578
Other		2/	2/	324	329	2/	2/	2,800	3,032
Total fruits and preparations		---	---	17,737	19,019	---	---	175,714	173,393

Continued -

Table 8.— U. S. agricultural exports: Quantity and value by commodity,
January 1963 and 1964 and July-January 1962-63 and 1963-64 - Continued

Commodity exported	Unit	January 1/				July-January 1/			
		Quantity		Value		Quantity		Value	
		1963	1964	1,000	1,000	1962-63	1963-64	1,000	1,000
		Thousands	Thousands	dollars	dollars	Thousands	Thousands	dollars	dollars
Grains and preparations:									
Feed grains and products -									
Barley grain (48 lb.)	Bu.	4,300	5,333	4,929	6,441	42,571	33,656	47,646	35,386
Corn grain, including donations (56 lb.)	Bu.	11,849	47,007	15,602	64,118	203,227	280,439	249,896	380,754
Grain sorghums (56 lb.)	Bu.	4,258	10,860	4,767	13,805	60,860	64,564	67,129	79,546
Oats grain (32 lb.)	Bu.	1,457	30	1,271	35	18,452	3,907	13,056	2,795
Total feed grains	M.Ton	524	1,567	26,569	84,399	7,903	9,553	377,727	498,481
Barley malt (34 lb.)	Bu.	50	138	108	293	1,485	1,467	3,273	3,001
Corn grits and hominy	Lb.	1,640	2,014	64	85	18,830	20,080	801	852
Cornmeal and corn flour, incl. donations	Cwt.	114	619	612	2,413	2,552	3,346	11,229	12,823
Cornstarch	Lb.	1,296	5,694	154	491	25,223	37,421	2,190	3,121
Oatmeal, groats, and rolled oats	Lb.	191	174	25	25	16,766	8,868	1,896	754
Total feed grains and products	M.Ton	537	1,645	27,532	87,706	8,194	9,909	397,116	519,032
Rice -									
Milled, including donations	Lb.	201,315	314,052	12,940	22,357	1,173,937	1,497,157	78,356	102,472
Paddy or rough	Lb.	128	75	10	8	3,338	2,937	273	251
Total rice (milled basis)	Lb.	201,398	314,101	12,950	22,365	1,176,106	1,499,055	78,629	102,723
Rye grain (56 lb.)	Bu.	687	806	965	1,234	12,521	6,534	16,281	9,156
Wheat and flour, including donations -									
Wheat grain (60 lb.)	Bu.	14,244	66,563	25,292	117,827	245,794	405,122	452,603	718,846
Wheat flour, wholly of U. S. wheat	Cwt.	1,119	3,196	5,123	12,291	21,260	23,201	90,509	96,624
Total wheat and flour	Bu.	16,818	73,913	30,415	130,118	294,693	458,485	543,112	815,470
Bakery products	Lb.	510	1,105	245	454	5,700	7,370	2,421	3,267
Other	2/	2/	2/	261	645	2/	2/	4,579	7,449
Total grains and preparations				72,369	242,522			1,042,138	1,457,097
Oilseeds and products:									
Oils, edible and inedible -									
Cottonseed oil	Lb.	17,344	53,306	2,285	5,989	177,687	213,539	23,149	25,692
Soybean oil	Lb.	49,429	70,159	4,380	7,077	690,735	565,642	68,077	63,467
Other	Lb.	10,256	14,516	1,531	2,055	64,557	96,342	9,945	13,050
Total oils (except essential)	Lb.	77,029	137,981	8,196	15,131	932,979	875,523	101,171	102,209
Oilseeds -									
Flaxseed (56 lb.)	Bu.	0	0	0	0	3,426	2,500	10,577	7,352
Soybeans (60 lb.)	Bu.	3,703	17,036	9,551	46,407	196,093	113,128	241,884	308,937
Other	Lb.	15,652	33,952	848	1,620	141,909	394,134	6,911	15,907
Total oilseeds				10,399	48,027			259,372	333,196
Protein meal (oilcake and meal)	S.Ton	40	79	2,926	6,762	746	837	55,150	67,599
Total oilseeds and products				21,521	69,920			415,693	503,004
Tobacco, unmanufactured:									
Barley	Lb.	332	1,703	296	1,305	23,874	23,271	21,282	18,871
Cigar wrapper	Lb.	43	240	160	438	2,148	2,562	4,185	6,561
Dark-fired Kentucky and Tennessee	Lb.	30	2,415	13	1,222	11,193	9,949	5,987	5,150
Flue-cured	Lb.	5,779	28,626	5,222	23,622	246,476	302,339	208,625	255,334
Maryland	Lb.	0	1,115	0	806	7,211	7,678	5,538	5,561
Other	Lb.	300	2,802	105	1,440	13,679	21,389	4,994	7,035
Total tobacco, unmanufactured	Lb.	6,484	36,901	5,795	28,833	304,581	367,188	250,611	298,512

Continued -

Table 8.— U. S. agricultural exports: Quantity and value by commodity,
January 1963 and 1964 and July-January 1962-63 and 1963-64 - Continued

Commodity exported	Unit	January 1/				July-January 1/				
		Quantity		Value		Quantity		Value		
		1963	1964	1963	1964	1962-63	1963-64	1962-63	1963-64	
		Thousands	Thousands	1,000 dollars	1,000 dollars	Thousands	Thousands	1,000 dollars	1,000 dollars	
Vegetables and preparations:										
Canned -										
Asparagus	Lb.	5,863	3,338	1,502	957	36,877	34,450	8,483	8,757	
Scups	Lb.	593	1,653	111	304	8,317	9,052	1,556	1,693	
Tomato juice	Lb.	1,637	2,127	167	194	10,292	12,663	1,078	1,162	
Tomato paste and puree	Lb.	967	964	176	187	6,630	9,602	1,386	1,947	
Tomato sauce for cooking purposes	Lb.	75	121	12	17	732	547	99	72	
Other	Lb.	2,891	4,354	362	655	33,628	33,333	4,611	4,695	
Total canned vegetables	Lb.	12,026	12,557	2,330	2,314	96,476	99,647	17,213	18,326	
Dry, ripe beans, including donations	Lb.	22,170	21,058	1,955	2,050	227,777	336,290	17,845	27,299	
Dry, ripe peas (excluding cow and chick) ..	Lb.	28,044	27,728	1,798	1,759	165,752	153,882	11,129	10,458	
Fresh -										
Lettuce	Lb.	12,689	19,390	631	1,242	74,676	86,365	3,301	4,613	
Onions	Lb.	14,325	10,464	507	635	68,699	53,628	2,621	2,799	
Potatoes, white	Lb.	5,779	5,952	166	164	85,072	75,261	2,681	1,828	
Tomatoes	Lb.	2,099	5,900	308	540	44,452	59,481	4,266	5,062	
Other	Lb.	35,255	31,259	1,996	2,023	139,385	135,142	8,307	8,327	
Total fresh vegetables	Lb.	70,178	72,957	3,608	4,604	412,284	409,877	21,176	22,629	
Frozen vegetables (including specialties) ..	Lb.	971	1,668	210	312	12,136	23,261	2,269	4,050	
Scups and vegetables, dehydrated	Lb.	1,079	1,837	562	669	9,143	8,262	4,176	3,709	
Vegetable seasonings	Lb.	386	284	293	195	3,830	2,005	2,577	1,646	
Other	Lb.	2/	2/	698	1,277	2/	2/	8,501	8,690	
Total vegetables and preparations		---	---	11,454	13,180	---	---	84,886	96,807	
Other vegetable products:										
Coffee	Lb.	1,834	2,692	2,617	2,819	12,730	18,368	16,362	19,397	
Drugs, herbs, roots, crude	Lb.	130	322	212	583	2,229	2,332	2,651	3,460	
Essential oils, natural	Lb.	161	774	473	1,852	3,973	4,235	7,536	9,492	
Feeds and fodders (except oilcake and meal) S.Ton		61	70	3,049	4,720	541	612	32,001	38,187	
Flavoring sirups for beverages	Gal.	43	81	142	471	559	583	3,710	3,844	
Hops	Lb.	1,955	2,675	1,142	1,756	13,017	13,542	7,842	9,053	
Nursery and greenhouse stock	Lb.	2/	2/	572	659	2/	2/	2,594	3,084	
Nuts and preparations	Lb.	4,025	6,424	1,073	1,787	24,363	47,599	9,969	16,607	
Seeds, field and garden	Lb.	6,665	14,605	2,134	4,740	51,066	69,956	11,895	18,779	
Spices	Lb.	105	252	114	245	2,565	1,843	1,247	1,442	
Other, including donations	Lb.	2/	2/	3,874	8,448	2/	2/	33,409	54,389	
Total other vegetable products		---	---	15,402	28,080	---	---	129,216	177,734	
Total vegetable products		---	---	174,577	480,569	---	---	2,352,785	3,094,857	
TOTAL AGRICULTURAL EXPORTS		---	---	201,954	542,233	---	---	2,662,300	3,510,249	
TOTAL NONAGRICULTURAL EXPORTS		---	---	790,148	1,548,341	---	---	8,720,111	10,327,963	
TOTAL EXPORTS, ALL COMMODITIES		---	---	992,102	2,090,574	---	---	11,382,411	13,838,212	

1/ Preliminary.

2/ Reported in value only.

3/ Excludes the number of "other hides and skins", reported in value only.

Table 9.— U. S. agricultural imports for consumption: Quantity and value by commodity,
January 1963 and 1964 and July-January 1962-63 and 1963-64

Commodity imported SUPPLEMENTARY	Unit	January 1/				July-January 1/			
		Quantity		Value		Quantity		Value	
		1963	1964	1963	1964	1962-63	1963-64	1962-63	1963-64
		Thousands	Thousands	1,000 dollars	1,000 dollars	Thousands	Thousands	1,000 dollars	1,000 dollars
ANIMALS AND ANIMAL PRODUCTS									
Animals, live:									
Cattle, dutiable	No.	142	57	12,285	4,378	845	377	79,284	32,692
Cattle, free (for breeding)	No.	1	1	341	379	10	11	3,332	3,704
Horses	No.	2/	2/	453	651	2	2	3,177	4,881
Other (including live poultry)		3/	3/	58	48	3/	3/	694	430
Total animals, live		---	---	13,137	5,456	---	---	86,487	41,707
Dairy products:									
Butter	Lb.	32	52	17	27	441	446	189	208
Cheese -									
Blue-mold	Lb.	122	355	60	180	2,346	1,948	1,160	979
Cheddar	Lb.	287	112	91	38	1,180	1,613	359	522
Edam and Gouda	Lb.	249	402	106	175	3,795	4,038	1,673	1,804
Pecorino	Lb.	821	911	393	567	10,737	8,839	5,451	4,997
Swiss	Lb.	621	1,260	307	699	11,039	10,624	5,952	5,762
Other	Lb.	1,695	3,569	527	1,223	14,238	19,757	6,335	7,922
Total cheese	Lb.	3,795	6,609	1,484	2,882	43,335	46,819	20,930	21,986
Casein or lactarene	Lb.	3,182	7,251	596	1,256	48,473	52,811	8,803	9,520
Other		3/	3/	321	399	3/	3/	396	1,214
Total dairy products		---	---	2,428	4,564	---	---	30,318	32,928
Hides and skins, raw (except furs):									
Calf skins	Lb.	325	323	102	100	3,082	3,439	1,546	1,167
Cattle hides	Lb.	777	890	144	144	5,751	7,900	1,010	942
Goat and kid skins	Lb.	1,216	2,407	640	1,525	12,462	14,735	6,885	9,586
Sheep and lamb skins	Lb.	498	2,432	165	1,314	18,542	23,325	7,382	10,539
Other	Lb.	2,017	2,647	948	1,311	18,225	20,937	8,931	9,213
Total hides and skins, raw	Lb.	4,833	8,699	1,999	4,394	58,062	70,336	25,754	31,447
Meat and meat products:									
Beef and veal -									
Fresh, chilled, or frozen	Lb.	52,245	79,542	17,308	25,913	555,554	647,391	176,720	207,498
Other	Lb.	4,607	9,738	1,450	2,897	51,739	75,843	16,793	24,003
Total beef and veal	Lb.	56,852	89,280	18,758	28,810	607,293	723,234	193,513	231,501
Mutton, goat, and lamb	Lb.	5,114	9,554	1,113	2,180	42,304	38,748	9,395	8,963
Pork -									
Fresh, chilled, or frozen	Lb.	2,949	3,411	1,175	1,239	20,371	21,281	7,967	7,871
Hams and shoulders, canned cooked	Lb.	7,631	11,026	5,474	7,463	72,814	80,826	52,174	55,328
Other	Lb.	2,396	2,311	1,292	1,241	19,304	17,687	10,271	10,017
Total pork	Lb.	12,976	16,748	7,941	9,943	112,489	119,794	70,412	73,216
Sausage casings		3/	3/	1,103	1,135	3/	3/	9,202	9,841
Other (including meat extracts)	Lb.	5,846	5,368	1,375	1,215	47,569	50,654	12,788	12,302
Total meat and products (except poultry)		---	---	30,290	43,284	---	---	295,310	335,823
Poultry products:									
Eggs, dried, frozen, otherwise preserved	Lb.	0	1	0	1	1	4	2	5
Eggs in the shell	Doz.	668	777	235	299	1,343	1,085	468	546
Poultry meat	Lb.	19	27	38	63	172	218	314	361
Total poultry products		---	---	273	363	---	---	784	912

Continued

Table 9.-- U. S. agricultural imports for consumption: Quantity and value by commodity,
January 1963 and 1964 and July-January 1962-63 and 1963-64 - Continued

Commodity imported SUPPLEMENTARY	Unit	January 1/				July-January 1/			
		Quantity		Value		Quantity		Value	
		1963	1964	1963	1964	1962-63	1963-64	1962-63	1963-64
		1,000	1,000	1,000	1,000	1,000	1,000	1,000	1,000
		Thousands	Thousands	dollars	dollars	Thousands	Thousands	dollars	dollars
Wool, unmanufactured (except free in bond):									
40's to 56's	G.Lb.	2,040	1,233	836	814	12,750	10,289	6,821	6,370
Finer than 56's	G.Lb.	12,430	8,591	7,496	6,616	79,228	46,206	47,587	32,926
Other wools	G.Lb.	829	4,018	1,304	3,344	13,534	16,145	10,688	14,229
Total wool, unmanufactured	G.Lb.	15,299	13,842	9,636	10,774	105,512	72,640	65,096	53,525
Other animal products:									
Bones, hoofs, and horns, unmanufactured	---	3/	3/	141	202	3/	3/	2,375	1,371
Bristles, sorted, bunched, or prepared	Lb.	133	205	319	875	1,710	1,987	4,206	6,875
Fats, oils, greases, edible and inedible	---	3/	3/	623	58	3/	3/	829	444
Feathers, crude	Lb.	189	377	258	609	1,676	1,925	2,460	2,919
Gelatin, edible	Lb.	579	721	310	347	4,616	4,800	2,340	2,308
Hair, unmanufactured	Lb.	418	939	3.5	688	4,705	7,472	3,986	5,201
Honey	Lb.	106	15	12	5	2,890	878	327	165
Other	---	3/	3/	538	713	3/	3/	5,446	5,890
Total other animal products	---	---	---	2,506	3,497	---	---	21,969	25,173
Total animals and animal products	---	---	---	60,259	72,332	---	---	525,718	521,515
VEGETABLE PRODUCTS									
Cotton, unmanufactured (480 lb.):									
Cotton	Bale	2/	1	17	142	120	117	22,373	22,392
Linters	Bale	9	26	252	497	71	110	2,053	2,599
Total cotton and linters	Bale	9	27	269	639	191	227	24,426	24,991
Fruits and preparations:									
Apples, green or ripe (50 lb.)	Bu.	163	194	716	626	925	1,054	3,347	3,576
Berries	Lb.	2,039	1,352	275	215	18,043	28,109	2,509	4,405
Dates	Lb.	3,008	2,247	356	230	27,392	37,755	2,862	3,621
Figs	Lb.	237	3,290	22	278	8,062	14,089	854	1,440
Grapes (40 lb.)	Cu.Ft.	2/	1	1	2	43	474	80	1,079
Melons	Lb.	2,322	2,355	90	98	16,595	13,511	588	569
Olives in brine	Gal.	450	1,351	696	1,831	6,093	6,933	10,996	10,325
Oranges, mandarin, canned	Lb.	1,641	2,071	315	410	27,320	25,714	5,281	5,287
Pineapples, canned, prepared or preserved	Lb.	5,181	8,153	610	904	52,670	70,483	6,301	7,933
Pineapple juice	Gal.	95	881	34	248	1,915	3,642	1,042	1,292
Other	---	3/	3/	1,442	3,019	3/	3/	9,633	18,177
Total fruits and preparations	---	---	---	4,557	7,861	---	---	43,493	57,704
Grains and preparations:									
Barley grain (48 lb.)	Bu.	167	326	254	505	1,370	5,773	1,951	7,312
Barley malt	Lb.	7,977	9,593	425	489	73,432	59,144	4,090	2,988
Corn grain (56 lb.)	Bu.	56	80	113	178	524	612	994	1,119
Oats grain (32 lb.)	Bu.	448	260	394	251	2,094	2,420	1,675	1,966
Rice	Lb.	31	64	5	10	4,153	1,006	248	93
Rye grain (56 lb.)	Bu.	0	0	0	0	203	313	230	455
Wheat grain for domestic use (60 lb.)	Bu.	482	496	922	1,053	1,748	1,537	3,315	3,099
Wheat flour	Lb.	9	0	1	0	17	12	1	1
Other	---	3/	3/	607	979	3/	3/	8,865	9,088
Total grains and preparations	---	---	---	2,721	3,465	---	---	21,369	26,121

Continued -

Table 9.-- U. S. agricultural imports for consumption: Quantity and value by commodity,
January 1963 and 1964 and July-January 1962-63 and 1963-64 - Continued

Commodity imported SUPPLEMENTARY	Unit	January 1/				July-January 1/			
		Quantity		Value		Quantity		Value	
		1963	1964	1963	1964	1962-63	1963-64	1962-63	1963-64
		Thousands	Thousands	dollars	dollars	Thousands	Thousands	dollars	dollars
Nuts and preparations:									
Almonds	Lb.	11	65	6	39	81	131	35	79
Brazil nuts	Lb.	1,017	1,178	406	402	19,358	23,593	5,015	4,779
Cashew nuts	Lb.	4,391	5,929	1,701	2,594	40,614	48,594	15,854	19,464
Coconut meat, fresh, frozen, or prepared	Lb.	13,506	14,352	1,376	1,762	81,616	91,775	8,940	11,337
Pistache nuts	Lb.	1,547	1,650	790	953	9,579	8,522	4,301	4,653
Other	Lb.	3/	3/	312	558	3/	3/	4,880	5,923
Total nuts and preparations				4,591	6,313			39,025	46,235
Oilseeds and products:									
Oils, edible and inedible -									
Cacao butter	Lb.	2,641	1,124	1,219	572	14,879	7,392	7,033	3,836
Carnauba wax	Lb.	821	1,215	354	532	5,875	7,200	2,586	2,870
Castor oil	Lb.	3,710	6,247	415	634	62,028	64,191	7,007	6,731
Coconut oil	Lb.	45,294	61,129	4,549	6,996	213,338	228,370	20,887	24,787
Olive oil, edible	Lb.	1,651	4,555	508	1,272	29,698	21,582	8,522	7,279
Palm oil	Lb.	4,214	1,575	351	170	13,296	5,386	1,181	539
Palm kernel oil	Lb.	5,821	3,448	638	423	49,171	44,736	5,206	5,480
Tung oil	Lb.	576	1,210	210	341	9,772	14,892	3,506	4,779
Other	Lb.	8,253	1,581	947	361	41,653	15,471	5,776	2,990
Total oils (except essential)	Lb.	72,981	82,084	9,191	11,301	439,710	409,220	61,704	59,291
Oilseeds -									
Copra	Lb.	28,521	63,694	1,948	5,004	436,792	361,095	28,679	27,078
Sesame seed	Lb.	979	1,762	163	264	8,680	10,716	1,292	1,641
Other	Lb.	3/	3/	209	164	3/	3/	2,328	1,361
Total oilseeds				2,320	5,432			32,299	30,080
Protein meal (oilcake and meal)	Lb.	7,488	12,446	227	376	55,184	54,885	95,633	91,058
Total oilseeds and products				11,738	17,109				
Sugar and related products:									
Cane sugar	S.Ton:	162	165	17,735	26,304	2,706	2,466	295,836	366,987
Molasses unfit for human consumption	Gal.	15,019	16,377	1,786	2,830	133,907	134,687	14,961	22,781
Other	Lb.	3/	3/	372	788	3/	3/	2,898	4,579
Total sugar and related products				19,893	29,922			313,695	394,247
Vegetables and preparations:									
Canned mushrooms	Lb.	289	1,043	160	507	3,212	7,334	1,801	3,815
Canned tomatoes, tomato paste and sauce	Lb.	6,997	6,088	592	841	105,264	71,340	8,615	8,107
Fresh or dried -									
Cucumbers	Lb.	18,220	15,556	1,357	1,200	21,261	22,544	1,617	1,731
Garlic	Lb.	1,052	810	270	195	6,243	9,834	1,212	1,615
Onions	Lb.	7,942	9,014	463	433	15,971	22,272	897	1,175
Potatoes, white	Lb.	14,151	17,876	278	460	61,105	46,512	1,119	1,293
Tomatoes, natural state	Lb.	37,388	32,210	4,037	4,347	49,107	47,359	5,031	5,667
Turnips and rutabagas	Lb.	11,569	12,071	238	278	58,585	66,326	1,191	1,350
Pickled vegetables	Lb.	925	1,297	145	203	6,919	8,026	1,196	1,279
Tapioca, tapioca flour, and cassava	Lb.	10,167	16,687	388	592	78,002	137,570	3,061	5,092
Other	Lb.	3/	3/	2,809	2,678	3/	3/	13,741	14,274
Total vegetables and preparations				10,737	11,734			39,471	45,328

Continued -

Table 9.— U. S. agricultural imports for consumption: Quantity and value by commodity,
January 1963 and 1964 and July-January 1962-63 and 1963-64 - Continued

Commodity imported	Unit	January 1/				July-January 1/			
		Quantity		Value		Quantity		Value	
		1963	1964	1963	1964	1962-63	1963-64	1962-63	1963-64
SUPPLEMENTARY									
Other vegetable products:		Thousands	Thousands	1,000 dollars	1,000 dollars	Thousands	Thousands	1,000 dollars	1,000 dollars
Feeds and fodders (except oilcake and meal):	---	3/	3/	1,198	2,039	3/	3/	7,062	10,652
Hops	Lb.	333	2,008	297	2,282	3,590	4,886	3,608	5,132
Jute and jute butts, unmanufactured	L.Ton:	4	9	649	1,472	32	42	4,572	6,727
Malt liquors	Gal.	589	1,041	759	1,215	9,335	10,370	11,063	11,798
Nursery and greenhouse stock	---	3/	3/	389	782	3/	3/	10,840	11,136
Seeds, field and garden	---	3/	3/	2,586	2,537	3/	3/	10,073	11,442
Spices	Lb.	5,773	5,718	786	1,214	27,264	30,944	3,765	4,721
Tobacco, unmanufactured	Lb.	15,172	12,438	8,886	8,114	93,404	96,522	56,065	58,990
Wines	Gal.	552	851	2,015	2,907	8,058	9,206	31,173	35,181
Other	---	3/	3/	592	636	3/	3/	4,441	6,262
Total other vegetable products	---	---	---	18,157	23,198	---	---	142,662	162,041
Total vegetable products	---	---	---	72,663	100,241	---	---	719,774	847,891
TOTAL SUPPLEMENTARY IMPORTS	---	---	---	132,922	172,573	---	---	1,245,492	1,369,406
COMPLEMENTARY									
Bananas	Lb.	239,546	294,736	5,625	7,216	1,842,908	2,032,829	41,841	49,001
Coffee (including into Puerto Rico)	Lb.	164,788	261,683	48,726	87,367	1,840,672	1,961,083	555,135	611,460
Coffee essences, substitutes and adulterants	Lb.	428	381	460	422	3,159	3,363	3,466	3,970
Cocoa or cacao beans	Lb.	37,125	59,723	7,932	14,358	275,223	293,789	54,518	67,644
Cocoa and chocolate, prepared	Lb.	5,678	14,118	844	2,486	56,683	77,709	11,176	13,596
Drugs, herbs, roots, etc.	---	3/	3/	1,806	2,431	3/	3/	10,910	12,814
Essential or distilled oils	---	3/	3/	1,374	2,061	3/	3/	13,450	13,379
Fibers, unmanufactured	L.Ton:	9	11	1,980	3,457	82	120	17,578	25,254
Rubber, crude	Lb.	68,705	86,862	17,314	19,366	555,327	467,495	132,600	105,242
Silk, raw	Lb.	540	404	3,289	2,302	3,383	2,954	18,666	17,594
Spices	Lb.	6,463	8,294	2,110	3,023	52,768	56,311	19,551	18,378
Tea	Lb.	7,275	10,823	3,452	4,914	73,037	71,904	33,916	32,780
Wool, unmanufactured (free in bond)	G.Lb.	10,078	14,601	4,788	9,061	108,256	121,665	51,562	69,982
Other complementary agricultural products	---	3/	3/	274	645	3/	3/	3,237	5,223
TOTAL COMPLEMENTARY IMPORTS	---	---	---	99,974	159,109	---	---	967,606	1,046,317
TOTAL AGRICULTURAL IMPORTS	---	---	---	232,896	331,682	---	---	2,213,098	2,415,723
TOTAL NONAGRICULTURAL IMPORTS	---	---	---	906,331	1,141,573	---	---	7,200,521	7,942,575
TOTAL IMPORTS, ALL COMMODITIES	---	---	---	1,139,227	1,473,255	---	---	9,413,619	10,358,298

1/ Preliminary.

2/ Less than 500.

3/ Reported in value only.

4/ Excludes the weight of "other hides and skins," reported in pieces only.

Explanatory Note

U.S. foreign agricultural trade statistics in this report include official U.S. data based on compilations of the Bureau of the Census. Agricultural commodities consist of (1) nonmarine food products and (2) other products of agriculture which have not passed through complex processes of manufacture such as raw hides and skins, fats and oils, and wine. Such manufactured products as textiles, leather, boots and shoes, cigarettes, naval stores, forestry products, and distilled alcoholic beverages are not considered agricultural.

The trade statistics exclude shipments between the 50 States and Puerto Rico, between the 50 States and the island possessions, between Puerto Rico and the island possessions, among the island possessions, and intransit through the United States from one foreign country to another when documented as such through U.S. Customs.

EXPORTS The export statistics also exclude shipments to the U.S. armed forces for their own use and supplies for vessels and planes engaged in foreign trade. Data on shipments valued at less than \$100 are not compiled by commodity and are excluded from agricultural statistics but are reflected in nonagricultural and overall export totals in this report. The agricultural export statistics include shipments under P.L.-87-195 (Act for International Development), principally sales for foreign currency; under P.L. 83-480 (Agricultural Trade Development and Assistance Act), and related laws; and involving Government payments to exporters. (USDA payments are excluded from the export value.) Separate statistics on Government program exports are compiled by USDA from data obtained from operating agencies.

The export value, the value at the port of exportation, is based on the selling price (or cost if not sold) and includes inland freight, insurance, and other charges to the port. The country of destination is the country of ultimate destination or where the commodities are to be consumed, further processed, or manufactured. When the shipper does not know the ultimate destination, the shipments are credited to the last country, as known to him at time of shipments from the United States, to which the commodities are to be shipped in their present form. Except for Canada, export shipments valued \$100-\$499 are included on the basis of sampling estimates; shipments to Canada valued \$100-\$1,999 are sampled.

IMPORTS Imports for consumption consist of commodities released from U.S. Customs custody upon arrival, or entered into bonded manufacturing warehouse, or withdrawn from bonded storage warehouse for consumption. The agricultural statistics exclude low-value shipments from countries not identified because of illegible reporting, but they are reflected in nonagricultural and overall import totals in this report.

The import value, defined generally as the market value in the foreign country, excludes import duties, ocean freight, and marine insurance. The country of origin is defined as the country where the commodities were grown or processed. Where the country of origin is not known, the imports are credited to the country of shipment.

Imports similar to agricultural commodities produced commercially in the United States and others that are interchangeable in use to any significant extent with such U.S. commodities are supplementary, or partly competitive. All other commodities are complementary, or noncompetitive.

Further explanatory material on foreign trade statistics and compilation procedures of the Bureau of the Census is contained in the publications of that agency.

END

DATE

FILMED

9-10-79

NTIS