



AgEcon SEARCH
RESEARCH IN AGRICULTURAL & APPLIED ECONOMICS

The World's Largest Open Access Agricultural & Applied Economics Digital Library

This document is discoverable and free to researchers across the globe due to the work of AgEcon Search.

Help ensure our sustainability.

Give to AgEcon Search

AgEcon Search

<http://ageconsearch.umn.edu>

aesearch@umn.edu

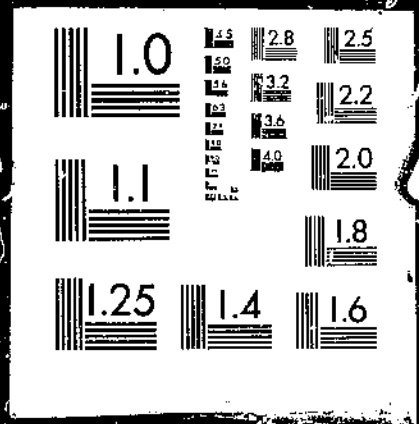
*Papers downloaded from **AgEcon Search** may be used for non-commercial purposes and personal study only. No other use, including posting to another Internet site, is permitted without permission from the copyright owner (not AgEcon Search), or as allowed under the provisions of Fair Use, U.S. Copyright Act, Title 17 U.S.C.*

USDA/FATUS-
JUL/AUG 64

FATUS/FOREIGN AGRICULTURAL TRADE OF THE UNITED STATES, 1964 JULY/AUGUST. Washington,
DC: Economic Research Service.

(NAL Call No. A286.9/Ag8)

I OF I
USD A
FATUS
JUL AUG



64

Course
A 286.9
A 98

JULY-AUGUST 1964

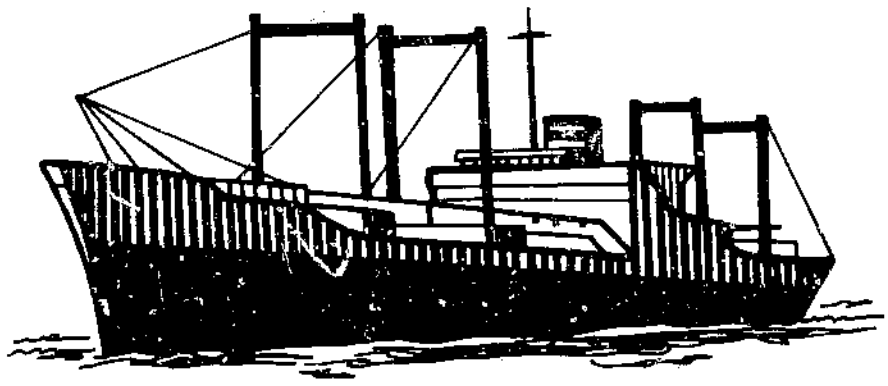
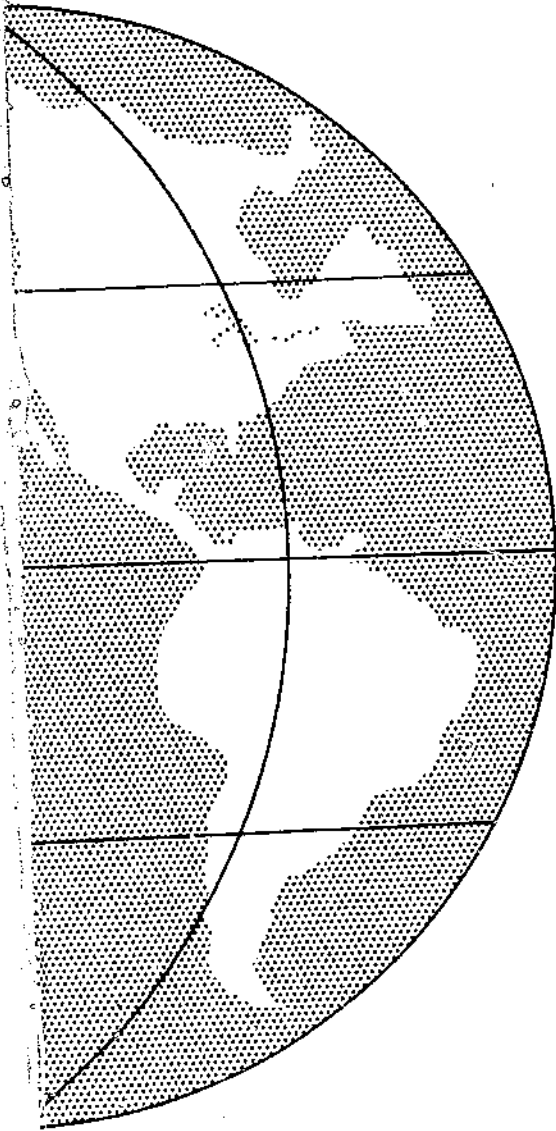
FOREIGN AGRICULTURAL TRADE

U. S. DEPT. OF AGRICULTURE
NATIONAL AGRICULTURAL LIBRARY

AUG 14 1964

CURRENT SERIAL RECORDS

OF THE UNITED STATES



IN THIS ISSUE:

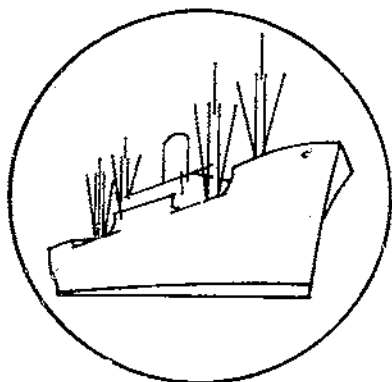
- Exports Reached \$6.1 Billion Record in 1963-64
- Exports to the EEC, July-April
- Government Program and Dollar Exports by Country, 1963
- Import Highlights, July-April
- Trade Statistics, July-March and July-April

Published Monthly by Economic Research Service / U. S. Department of Agriculture

Contents

	<u>Page</u>
Digest.....	3
U.S. Agricultural Exports Reached Alltime High of \$6.1 Billion in Fiscal Year 1963-64.....	5
Export Highlights.....	12
Government Program Export Highlights.....	14
Import Highlights.....	27
Explanatory Note.....	46
Table 1.--Exports: Value by Commodity, Fiscal Years 1962-63 and 1963-64.....	6
Table 2.--Exports to the European Economic Community: Value by Commodity, July-April and August-April 1961-62 through 1963-64.....	13
Table 3.--Exports under Government Programs and Commercial Sales: Value by Area of Destination, Calendar Years 1955-1963.....	15
Table 4.--Exports under Government Programs and Commercial Sales: Value by Country of Destination, Calendar Year 1963.....	21
Table 5.--Credit-Sale Exports: Value by Country, Calendar Year 1963.....	24
Table 6.--Imports: Value by Commodity, July-April 1962-63 and 1963-64...	28
Table 7.--Exports: Quantity and Value by Commodity, March 1963 and 1964 and July-March 1962-63 and 1963-64.....	30
Table 8.--Exports: Quantity and Value by Commodity, April 1963 and 1964 and July-April 1962-63 and 1963-64.....	34
Table 9.--Imports: Quantity and Value by Commodity, March 1963 and 1964 and July-March 1962-63 and 1963-64.....	38
Table 10.--Imports: Quantity and Value by Commodity, April 1963 and 1964 and July-April 1962-63 and 1963-64.....	42
Figure 1.--U.S. Agricultural Exports and Imports.....	7

Trade Statistics and Analysis Branch
Development and Trade Analysis Division
Economic Research Service



FOREIGN AGRICULTURAL TRADE OF THE UNITED STATES

Digest

The United States exported an estimated record \$6.1 billion of agricultural commodities in fiscal year 1963-64, 20 percent more than in the previous year. Principal increases occurred in wheat and flour, cotton, feed grains, soybeans, rice, tobacco, tallow, lard, dairy products, poultry products, and meat. Small declines took place for fruits, vegetables, and vegetable oils. Practically all of the \$1 billion increase in agricultural exports occurred in sales for dollars. Exports were stimulated by a number of factors, including market development efforts abroad, the unfavorable wheat harvests in the Soviet Union and Western Europe, continuing rapid development of livestock industries in Western Europe and Japan, a change in the CCC cotton program that permitted sales at competitive prices from CCC stocks, and generally heightened economic activity in Western Europe and Japan. Dollar exports hit a record of nearly \$4.6 billion, three-fourths of the export total, while Food-for-Peace exports totaled around \$1.5 billion.

* * * * *

U.S. agricultural exports to the European Economic Community advanced to \$1,173 million in the July-April period of 1963-64 from \$904 million a year earlier. There were larger shipments both of commodities subject to the variable import levies and those not subject to the levies. Variable levy commodities rose to \$367 million from \$306 million, reflecting a sharp rise in wheat, with smaller gains for feed grains, pork, and turkey meat. Variable levies continued to reduce shipments of wheat flour, broilers, and fryers. Commodities not subject to the variable levies totaled \$806 million this July-April compared with \$598 million a year earlier, with cotton alone accounting for nearly half of the total gain, followed by soybeans, tallow, tobacco, variety meats, and vegetable oils. Declines were noted only in shipments of fruits and vegetables.

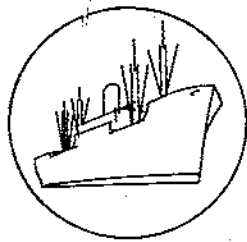
* * * * *

Exports under Government programs in calendar year 1963 totaled \$1,621 million. Over half of the shipments under programs, \$850 million, went to Asia, principally to India. Europe and Africa received approximately the same amounts, \$285 million and \$292 million, respectively. Four-fifths of program shipments to

Europe were destined for Yugoslavia, Turkey, and Poland. Principal African destinations were the United Arab Republic (Egypt), Algeria, Morocco, Republic of the Congo, and Tunisia. Program shipments to Latin America totaled \$178 million, about half consisting principally of sales to Brazil for foreign currency under Title I, P.L. 480. Oceania accounted for \$0.2 million. Dollar sales totaled a record \$3,964 million in 1963, up \$445 million from a year earlier. Shipments by area were as follows: Europe, over \$2 billion; Asia, \$900 million; Canada, \$596 million; Latin America, \$322 million; Africa, \$59 million; and Oceania, \$44 million.

* * * * *

U.S. agricultural imports for consumption rose to \$3,452 million in the July-April period of fiscal year 1963-64, 5 percent more than a year earlier. Over three-fourths of the increase represented larger imports of complementary (noncompetitive) items, reflecting mainly higher prices for a number of commodities such as coffee, carpet wool, and cocoa beans. A 9-percent rise in imports of complementary products stemmed from larger imports of coffee, bananas, and carpet wool. Supplementary (partially competitive) commodities were up 2 percent as increases in fruits, barley, hides and skins, vegetables, cane sugar, and meats and meat products were about offset by declines in dutiable cattle, apparel wool, and oilseeds and products. Imports of meats and meat products have been below year-earlier levels since January 1964.



SPECIAL in this issue

U.S. AGRICULTURAL EXPORTS REACHED ALLTIME HIGH OF \$6.1 BILLION
IN FISCAL YEAR 1963-64

by

Robert L. Tontz and Dewain H. Rahe

U.S. agricultural exports are estimated at a record \$6,115 million in fiscal year 1963-64, up 20 percent from the \$5,078 million for the previous fiscal year (table 1). The figure for 1963-64 includes actual exports of \$5,616 million for July-May and an estimate of \$499 million for June. Principal increases occurred in wheat and flour, cotton, feed grains, soybeans, rice, tobacco, tallow, lard, dairy products, poultry products, and meat. Small declines took place for fruits, vegetables, and vegetable oils.

Agricultural exports in 1963-64 were \$2 billion larger than agricultural imports. This is the largest agricultural export balance on record in the past half century. The balance of trade for the past several years has been highly favorable, reflecting the pronounced upward trend in agricultural exports (fig. 1).

Dollar exports rose to an estimated record high of almost \$4,600 million in 1963-64 and accounted for three-fourths of the \$6,115 million total. Dollar sales are expected to exceed the previous record of \$3,600 million set in fiscal year 1962-63 by \$1 billion and account for practically all of the gain in total U.S. agricultural exports in fiscal year 1963-64. Most gains in dollar sales in fiscal year 1963-64 were brought about by larger exports of wheat and flour, feed grains, soybeans, animal products, rye, tobacco, and cotton.

Exports under the Food-for-Peace program are estimated at around \$1,550 million in 1963-64, the same as in the previous year. Substantial quantities of wheat and flour, rice, vegetable oils, and dairy products continued to move to the developing countries under the Food-for-Peace program. Food-for-Peace exports accounted for 25 percent of total U.S. agricultural exports compared with 30 percent in the previous year.

Of the \$6,115 million of U.S. agricultural exports in 1963-64, an estimated \$2,300 million benefited from export payment assistance: \$1,400 million as

1/ Chief and Agricultural Economist, respectively, Trade Statistics and Analysis Branch, Development and Trade Analysis Division, Economic Research Service.

Table 1.—U.S. agricultural exports: Value by commodity, fiscal years 1962-63 and 1963-64

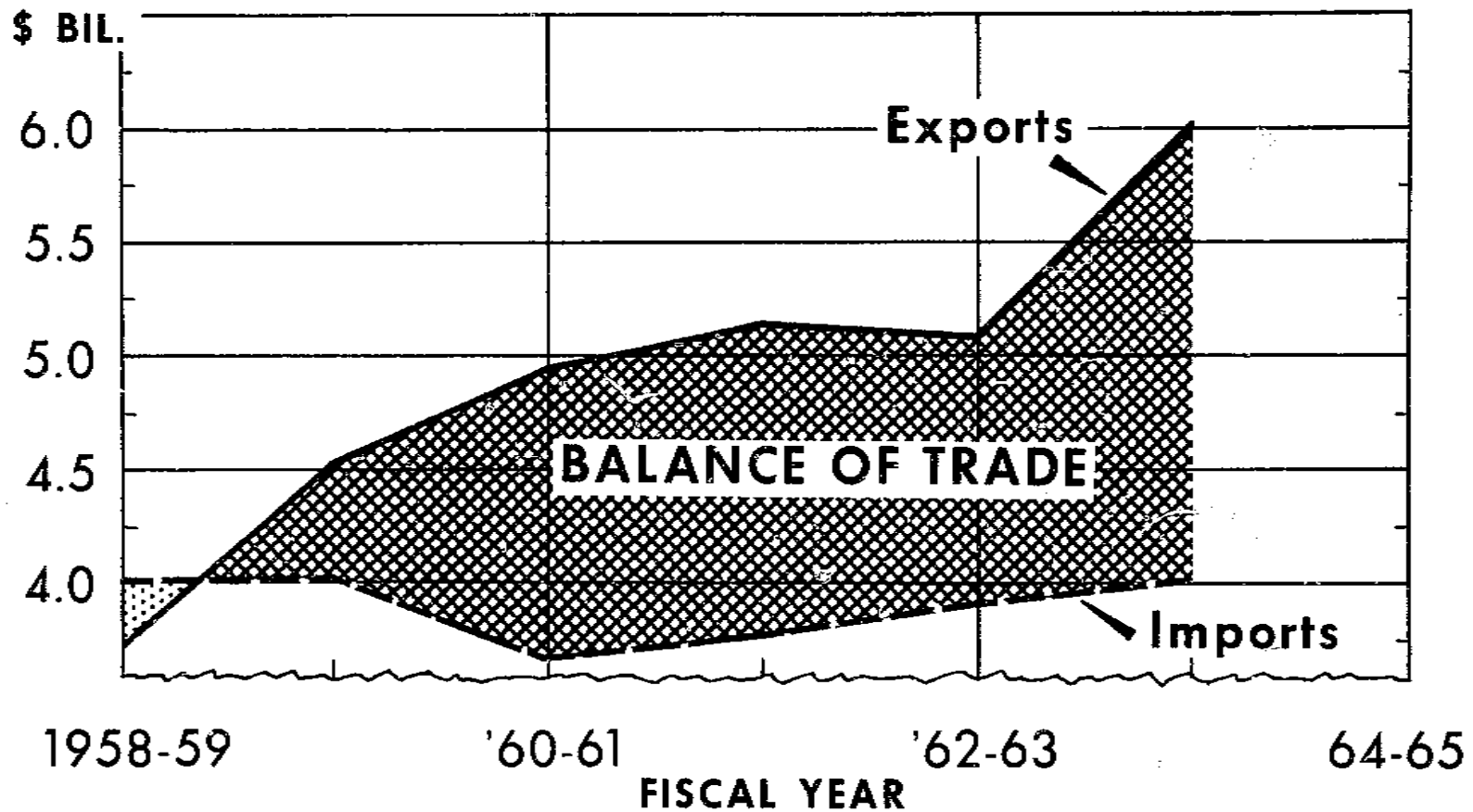
Commodity	1962-63	1963-64 ^{1/}	Change
	-- Million dollars --		
Animals and animal products:			
Dairy products ^{2/}	154	209	+36
Fats, oils, and greases.....	148	217	+47
Hides and skins.....	79	82	+4
Meats and meat products.....	87	120	+38
Poultry products.....	70	79	+13
Other.....	67	76	+13
Total animals, etc. ^{2/}	605	783	+29
Cotton, excluding linters.....	491	671	+37
Fruits and preparations.....	280	273	-2
Grains and preparations:			
Feed grains, excluding products....	731	831	+14
Rice, milled.....	162	224	+38
Wheat and flour.....	1,158	1,519	+31
Other.....	78	69	-12
Total grains, etc.....	2,129	2,643	+24
Oilseeds and products:			
Cottonseed and soybean oils ^{3/}	173	157	-9
Soybeans.....	441	525	+19
Other.....	163	176	+8
Total oilseeds, etc. ^{3/}	777	858	+10
Tobacco, unmanufactured.....	378	413	+9
Vegetables and preparations.....	163	162	-1
Other.....	255	312	+22
Total.....	5,078	6,115	+20

^{1/} Partly estimated.

^{2/} Excludes Title III, P.L. 480 donations of butter and ghee, which are included in "Other" agricultural exports.

^{3/} Excludes Title III, P.L. 480 donations, which are included in "Other" agricultural exports.

U. S. AGRICULTURAL EXPORTS AND IMPORTS



1963-64 PARTLY ESTIMATED.

U. S. DEPARTMENT OF AGRICULTURE

NEG. ERS 2867-64(5) ECONOMIC RESEARCH SERVICE

FIG. 1

sales for dollars and \$900 million moving under Government-financed programs. This export assistance, in the form of export payments, and sales below domestic market prices, is estimated at about \$800 million. The latter amount is not included in the value of agricultural exports. Last year's payments of \$800 million were about one-third above those of other recent years due mainly to larger sales of wheat and flour and cotton.

A number of factors contributed to the \$1 billion gain in U.S. agricultural exports in 1963-64, including U.S. market development efforts abroad, the economic advancement of Western Europe and Japan, expanding population, improving diets, competitive pricing, better quality of U.S. exports, and improved service to exporters. Inflationary trends in Western Europe also encouraged countries there to increase imports as a way to combat inflation.

The unfavorable wheat harvest in the Soviet Union and Western Europe contributed most to the substantial gain in exports of wheat and flour. In addition, exports of feed grains continued to be encouraged by the rapidly developing livestock industries in the more industrialized countries of Western Europe and Japan. Cotton exports were stimulated by a change in the Commodity Credit Corporation (CCC) cotton program permitting sales at competitive prices from CCC stocks, a slight decline in foreign free world production in the 1963 season, and relatively small stocks in most exporting and importing countries. In the previous year, relatively more cotton exports moved under the payment-in-kind program.

The rapid growth in disposable incomes in the industrialized countries of Western Europe and Japan encouraged consumers in these countries to upgrade their diets with a greater variety of foods, especially livestock products. U.S. exports included not only substantially larger amounts of feed grains and protein meal for livestock production but also somewhat increased shipments of meat and other livestock consumer products. Most industrialized countries encouraged indigenous production of meat, poultry, and dairy products and also imported raw materials such as feed grains, soybeans, and protein meal to produce livestock consumer products.

It is estimated that 75 million U.S. acres were required to produce the various quantities of agricultural commodities exported in fiscal year 1963-64. This is equivalent to 1 out of every 4 harvested acres in the United States. On a value basis, agricultural exports were equivalent to 17 percent of total cash receipts from U.S. farm marketings.

Although the export market is of significance to all U.S. agricultural producers, it is of particular significance as an outlet for certain U.S. commodities. In fiscal year 1963-64 the export market provided an outlet for three-fourths of the wheat production; two-thirds of the rice and nonfat dry milk; half of the dry edible peas; over two-fifths of the tallow, soybeans and hops; about a third of the cotton, rye, prunes, and dried whole milk; around a fourth of the lard and tobacco; and one-fifth of the raisins, dry edible beans, cottonseed, grain sorghums, and barley.

Animals and animal products. Exports of animals and animal products in 1963-64, estimated at \$783 million, were 29 percent above the \$605 million a year earlier.

The substantial increase resulted from notably larger exports of dairy products, animal fats, and red meats, with a moderate gain in poultry meat. Exports of meat and meat products rose to 425 million pounds (product weight) in 1963-64 from 302 million a year earlier, reflecting mainly larger exports of fresh pork to Japan, Western Europe, and Canada. Pork exports advanced to an estimated 160 million pounds in 1963-64 from 102 million a year earlier. In addition, exports of variety meats increased substantially in this period, going mostly to Western Europe to supplement the relatively limited meat production there. U.S. prices, especially for variety meats, continued relatively low and encouraged European importers to purchase more U.S. meat. The rapid growth in disposable incomes in the industrialized countries has resulted in a heavy demand for meat products. Production in these countries in 1963-64 could not keep pace with the substantial increase in demand for meat products.

Exports of dairy products rose to \$209 million in 1963-64, up 36 percent from \$154 million a year earlier. Much of the increase resulted from dollar exports of butter from CCC stocks to Western Europe. In addition, large quantities of dairy products -- especially nonfat dry milk, butter, and butteroil -- were exported under the Food-for-Peace program.

The improvement in exports of animal fats resulted from large gains in shipments of both inedible tallow and greases and lard. Lard exports increased to \$62 million in 1963-64 from \$41 million a year earlier, reflecting stepped-up shipments to the United Kingdom, which took about 80 percent of U.S. lard exports during the past year. The gain in tallow exports principally reflected larger sales for dollars. Principal outlets for U.S. tallow last year were Japan, Italy, Netherlands, UAR (Egypt), Poland, and Spain.

U.S. exports of poultry meat increased over 1962-63 despite the effects of the European Economic Community (EEC) system of variable levies. Overall exports of poultry meat increased to an estimated 230 million pounds in 1963-64 from 196 million a year earlier. Demand was stronger for turkey meat in West Germany and broilers in Japan. Increases occurred in sales to other outlets due in large measure to an expanded market development program that offset much of the sales loss in the EEC market.

The volume of hides and skins exported rose one-third to 15.7 million pieces in 1963-64 from 11.6 million a year earlier. However, value advanced 4 percent over the previous year. Export prices were lower in 1963-64 as a result of substantially increased production in the United States and some other major producing countries.

Cotton. U.S. cotton exports, excluding linters, totaled an estimated 5.2 million running bales in 1963-64 compared with 3.6 million a year earlier. Exports were encouraged by (1) a change in the U.S. cotton export program that permitted exports from CCC cotton stocks at competitive prices, (2) some gain in cotton consumption in Western Europe and Japan, (3) smaller foreign free world production of cotton, and (4) relatively low stocks in major importing and exporting countries. Principal outlets were the European Economic Community, Japan, Canada, United Kingdom, India, and South Korea. In the 1963-64 marketing year (August 1963-July 1964), the United States is expected to account for about 30 percent of world cotton exports, up from 21 percent in 1962-63.

Grains and preparations. U.S. exports of wheat and flour totaled an estimated 850 million bushels in 1963-64 compared with the previous year's 637 million bushels. The gain resulted from larger shipments to Western Europe and the Soviet Union because of adverse weather that substantially reduced crops there. Production in the Soviet Union was down by an estimated 25 percent and in Western Europe by 17 percent. In addition, Japan continued to buy considerable quantities of wheat and became the top dollar market for U.S. wheat. Main outlets in order of importance last year were India, Japan, Pakistan, UAR-Egypt, the Soviet Union, Brazil, and Poland. During the first 11 months of 1963-64, exports to the Soviet Union totaled 62 million bushels and to other Bloc countries, 48 million bushels. The United States exported over half of its wheat under the Food-for-Peace program in 1963-64 compared with three-fourths in the year before. U.S. wheat exports represented two-fifths of world exports in 1963-64.

In 1963-64 hard red winter wheat accounted for 61 percent of U.S. exports; hard red spring wheat, 6 percent; soft red winter wheat, 11 percent; white wheat, 19 percent; and durum, 3 percent.

U.S. exports of rice (milled basis) totaled an estimated 32.6 million bags in 1963-64, an alltime high compared with the previous year's 24.2 million bags. The increase resulted primarily from gains in commercial sales for dollars. Commercial sales for dollars are estimated at half of the total exports, up from 38 percent in the previous year. Leading outlets were India, the Soviet Union, Nansai and Nanpo Islands, Indonesia, Canada, South Africa, and Saudi Arabia.

Exports of feed grains totaled an estimated 15.9 million metric tons (excluding products) in 1963-64 compared with 14.8 million in the previous year. Exports of corn totaled 460 million bushels in 1963-64 compared with 397 million a year earlier. Exports of other feed grains -- oats, barley, and grain sorghums -- were somewhat below the levels of a year earlier. Exports to the European Economic Community accounted for about 35 percent of total feed grain shipments. Japan took an estimated 2.7 million tons of feed grains. The rapid growth in livestock industries in both Western Europe and Japan has resulted in a rising demand for feed grains. The United States had abundant supplies available at competitive prices to meet this demand, while most other major producers had relatively little to export in the past year. The United States accounted for slightly over half of world feed grain exports last year.

Fruits and preparations. Exports of fruits and preparations were slightly below the level of the previous year. An estimated \$273 million moved out compared with 1962-63's \$280 million. Gains in fresh apples, lemons, oranges, and raisins were more than offset by declines in canned peaches, dried prunes, fresh pears, fruit juices, and canned pineapples. Somewhat smaller supplies of some commodities, especially canned peaches and oranges, and higher prices were the main factors in the overall decline for fruits and preparations.

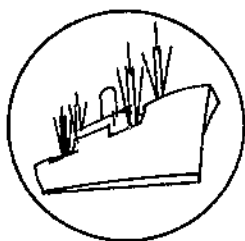
Oilseeds and products. U.S. exports of oilseeds and products set a record in 1963-64. Exports are estimated at \$858 million compared with \$777 million a year earlier. The increase was brought about by larger exports of soybeans at

higher prices. Exports of vegetable oils, protein meal, and flaxseed were somewhat below the levels of a year earlier. Soybean exports increased to an estimated 190 million bushels in 1963-64 from 171 million in the previous year. The value increase of \$84 million resulted in part from higher prices. Exports of protein meal totaled 1.4 million short tons in 1963-64, slightly below a year earlier. Combined exports of cottonseed and soybean oils totaled 1,464 million pounds in 1963-64 against 1,601 million in the previous year. The continuing rise in exports of oilseeds and products in the past 6 years -- averaging 15 percent annually -- has been associated with the continued growth of the live-stock industries in the industrialized countries of Western Europe and Japan where demand for protein meal for mixed feeds has been strong. In addition, foreign production of oilseeds and products during this period has not kept pace with the demand for oils either in the developing or the more industrialized countries.

The United States accounted for about one-third of world trade in oilseeds and products in 1963-64. Soybean production in Communist China, once the leading producer, continued at relatively low levels with only small amounts available for export.

Tobacco. U.S. exports of unmanufactured tobacco totaled an estimated 515 million pounds in 1963-64 compared with the previous year's 473 million. The gain resulted primarily from larger takings by the United Kingdom, West Germany, and the Netherlands. Exports also benefited from the relatively high quality of the 1963 crop, small production in some foreign producing countries, and the low stock position of U.S. leaf in many important world markets. Moreover, the quality of tobacco produced in some of the other producing countries was below that of recent years. U.S. exports accounted for 31 percent of calendar year 1963 world tobacco exports.

Flue-cured leaf accounted for 81 percent of 1963-64 U.S. exports; burley, 7 percent; dark-fired, 3 percent; Maryland, 2 percent; and cigar wrapper, 1 percent.



Export Highlights

EXPORTS TO THE EUROPEAN ECONOMIC COMMUNITY JULY 1963-APRIL 1964

U.S. agricultural exports to the European Economic Community (EEC) advanced to \$1,173 million in the July-April period of 1963-64 from \$904 million a year earlier (table 2). The gain resulted from larger shipments both of commodities subject to EEC variable levies and those not subject to the levy system. Exports of commodities subject to the levies rose to \$367 million from \$306 million. The gain reflected a sharp rise in exports of wheat, with smaller gains for feed grains, pork, and turkey meat. The sharp gain in exports of wheat to EEC reflected the poor EEC wheat harvest, which was 205 million bushels below the previous year's total. Moreover, the unusually wet season produced a substantially lower quality of wheat in 1963, necessitating larger EEC imports of foreign wheat for blending with local wheat.

The gain in pork exports resulted from the relatively short supply of meat in the EEC area and increased demand from consumers with larger incomes.

The system of variable levies continued to reduce U.S. shipments of wheat flour, broilers, and fryers.

Agricultural commodities exported to EEC have been classified into variable levy and non-variable levy commodities for identification purposes. This classification is designed to show the overall change in exports of the commodities rather than to measure the impact of the variable levies on U.S. exports.

Commodities not subject to the variable levies totaled \$806 million in July-April of 1963-64 compared with \$598 million for the same months a year earlier. Cotton alone accounted for nearly half of the total increase for this group, reflecting a gain in EEC consumption, lower free world production, and a change in the U.S. export program permitting the selling of CCC stocks for export at competitive prices. Exports of soybeans, tallow, tobacco, variety meats, and vegetable oils also were larger. Declines were noted only in shipments of fruits and vegetables, associated with relatively limited supplies of some commodities in the United States along with higher U.S. prices.

Table 2.--U.S. agricultural exports to the European Economic Community: Value by commodity, July-April and August-April 1961-62 through 1963-64 ^{1/}

Commodity	July-April			August-April		
	1961-62	1962-63	1963-64	1961-62	1962-63	1963-64
-- 1,000 dollars --						
<u>Variable levy commodities ^{2/}:</u>						
Feed grains.....	199,455	232,352	239,712	190,903	209,765	217,708
Wheat grain.....	102,925	35,423	78,234	98,821	34,047	74,167
Wheat flour ^{3/}	14,033	9,599	7,247	12,416	9,514	6,886
Lard.....	2,542	2,142	2,210	2,251	2,133	2,069
Pork, except variety meats....	405	352	9,245	386	331	9,232
Poultry and eggs:						
Broilers and fryers.....	25,425	11,576	10,316	22,906	9,068	9,472
Stewing chickens..	8,015	3,360	6,700	7,064	2,637	6,310
Turkeys.....	7,491	7,580	8,833	7,007	7,175	8,483
Other fresh poultry.....	675	317	318	589	257	280
Canned poultry....	1,484	1,307	2,327	1,362	1,203	2,177
Eggs.....	3,652	1,920	2,056	3,277	1,597	1,719
Total poultry and eggs....	46,742	26,060	30,550	42,205	21,937	28,441
Total.....	366,102	305,923	367,198	346,982	277,727	338,503
<u>Non-variable levy commodities:</u>						
Cotton, excluding linters.....	139,634	79,138	173,580	134,635	75,426	170,808
Fruits and vegetable tables.....	65,574	79,801	74,988	58,447	73,220	66,354
Rice, milled.....	14,909	10,707	12,119	14,098	9,219	10,740
Soybeans.....	130,789	145,728	161,517	126,627	138,626	153,615
Tallow.....	26,965	18,475	27,287	23,762	17,032	25,246
Tobacco, unmanufactured.....	80,512	80,967	85,653	73,311	66,535	74,323
Variety meats.....	13,505	14,509	20,731	12,268	13,365	19,312
Vegetable oils, expressed.....	17,828	8,380	25,365	17,146	8,203	24,633
Other.....	109,298	160,334	^{4/} 224,468	100,056	147,453	^{4/} 209,383
Total.....	599,014	598,039	^{4/} 805,808	560,350	549,079	^{4/} 754,394
Total EEC.....	965,116	903,967	^{4/} 1,173,006	907,332	826,806	^{4/} 1,092,897

^{1/} Compiled from U.S. Bureau of the Census data.

^{2/} Classified for identification of commodities subject to the variable levies which were put into effect on July 30, 1962. The classification is designed to show the overall change in exports of these commodities rather than to measure the impact of the variable levies on exports of these commodities.

^{3/} Exports of wheat flour to Italy include donations under Titles II and III of P.L. 480.

^{4/} Partly estimated.



Government Program Export Highlights

GOVERNMENT PROGRAM EXPORTS AND DOLLAR EXPORTS BY COUNTRY OF DESTINATION, CALENDAR YEAR 1963

P.L. 480 and AID program shipments reached a calendar year record of \$1,621 million in 1963, 29 percent of total U.S. agricultural exports which amounted to an alltime high of \$5,585 million (table 3). Exports for foreign currencies under Title I of P.L. 480 totaled \$1,151 million, over 70 percent of all program exports, with the remaining 30 percent consisting of donations, barter, and long-term supply and dollar credit sales under P.L. 480 and exports under AID programs authorized by P.L. 87-195, the Act for International Development.

Government Program Exports

Over half of the shipments under programs, \$850 million, went to Asia, where principal countries of destination were India, followed by Pakistan, Republic of Korea, Taiwan, South Viet-Nam, Indonesia, Israel, and other countries. Asia has been the principal recipient of program exports from the United States since 1959, receiving from 43 to 53 percent of U.S. exports under programs during this 5-year period (table 4).

Program exports to Europe, totaling \$285 million in 1963, were 18 percent of Government-financed exports. For the first 4 calendar years after the inception of P.L. 480, Europe was the principal area of destination of shipments under programs, accounting for 63 percent of all program shipments in 1955 and falling to 47 percent in 1958. Since that time the proportion of program exports to this area decreased more rapidly. Yugoslavia, Turkey, and Poland received 80 percent of all Government-financed exports to Europe in 1963.

Exports under Government-financed programs to Africa amounted to \$292 million in 1963, only slightly above those to Europe. Program shipments to the area increased from 1 and 2 percent of the total during the first 4 years of the operation of P.L. 480 to 21 percent in 1962, and fell to 18 percent in 1963. Principal African countries of destination in 1963 were United Arab Republic (Egypt), Algeria, Morocco, Republic of the Congo, and Tunisia. Although sales for foreign currency under Title I comprised the largest proportion of program exports to Africa, donations under Title II for the relief of emergency conditions were higher in 1963 for Africa than for any other geographic area except Asia.

Shipments under programs to Latin America totaled \$178 million. Government-financed exports to this area were 5 percent of the total in 1955, 12 percent in 1961, 10 percent in 1962, and 11 percent in 1963. Program shipments to

Table 3.--U.S. agricultural exports under specified Government-financed programs, exports outside specified Government-financed programs, and total agricultural exports: Value by country of destination, calendar year 1963

Country	Public Law 480				P.L. 87-195		Total	Total	Total
	Title I	Title II	Title III	Title IV	Sec. 402	agricultural	agricultural	Total	
	Sales for foreign currency	Famine and other emergency relief	Foreign donations: 1/	Barter 2/	Long-term supply and dollar credit sales	sales for foreign currency and economic aid 3/	exports under specified Government programs 4/	exports outside specified Government programs 4/	agricultural exports
-- Thousand dollars --									
North America									
Canada.....	---	---	---	339	---	---	339	596,188	596,527
Greenland.....	---	---	---	---	---	---	---	5/	5/
Miquelon and St. Pierre Islands..	---	---	---	4	---	---	4	30	34
Total.....	---	---	---	343	---	---	343	596,218	596,561
Latin American Republics and Canal Zone									
Argentina.....	---	---	---	---	---	---	---	2,276	2,276
Bolivia.....	7,767	276	3,282	---	2,413	---	13,738	658	14,396
Brazil.....	48,735	5,927	13,140	18,675	---	---	86,477	15,541	102,018
Canal Zone.....	---	---	---	---	---	---	---	872	872
Chile.....	---	---	4,383	162	10,542	---	15,087	6,753	21,840
Colombia.....	---	---	8,025	1,218	5,017	---	14,260	11,771	26,031
Costa Rica.....	---	725	67	---	---	---	792	4,795	5,587
Cuba.....	---	---	---	---	---	---	---	15,236	15,236
Dominican Republic.....	---	769	4,781	239	4,089	---	9,878	11,426	21,304
Ecuador.....	52	69	1,090	---	2,142	---	3,353	4,196	7,549
El Salvador.....	---	---	1,501	---	---	---	1,501	5,542	7,043
Guatemala.....	---	---	1,240	379	---	---	1,619	8,752	10,371
Haiti.....	---	---	751	33	---	---	784	7,660	8,444
Honduras.....	---	---	297	118	---	---	415	4,105	4,520
Mexico.....	---	332	8,840	---	---	---	9,172	74,288	83,460
Nicaragua.....	---	---	850	3	---	---	853	3,396	4,249
Panama.....	---	---	339	---	---	---	339	10,530	10,869
Paraguay.....	2,889	---	1,154	---	---	---	4,043	255	4,298
Peru.....	---	2,272	2,547	4,845	---	---	9,664	9,950	19,614
Uruguay.....	73	---	553	---	---	---	626	1,387	2,013
Venezuela.....	---	---	3,682	31	---	---	3,713	63,940	67,653
Total Latin American Republics and Canal Zone....	59,516	10,370	56,522	25,703	24,203	---	176,314	263,329	439,643
Other Latin America									
Bahamas.....	---	---	---	---	---	---	---	9,234	9,234
Barbados.....	---	---	---	---	---	---	---	2,027	2,027
Bermuda.....	---	---	---	---	---	---	---	5,425	5,425
British Guiana.....	---	---	---	---	---	---	---	2,908	2,908
British Honduras.....	---	---	169	---	---	---	169	1,691	1,860
Falkland Islands.....	---	---	---	---	---	---	---	5/	5/

--Continued

Table 3.--U.S. agricultural exports under specified Government-financed programs, exports outside specified Government-financed programs, and total agricultural exports: Value by country of destination, calendar year 1963 - Continued

Country	Public Law 480				P.L. 47-195: Sec. 402 agricultural sales for foreign and econom- ic aid 3/ programs	Total agricultural exports under specified Government programs 4/	Total agricultural exports outside specified Government programs 4/	Total agricultural exports
	Title I:	Title II:	Title III:	Title IV:				
	Sales for foreign currency	Famine and other emergency relief	Foreign donations: 1/	Barter 2/				
-- Thousand dollars --								
Other Latin America (Continued)								
French Guiana.....	---	---	---	---	---	---	101	101
French West Indies.....	---	---	7	---	---	---	867	904
Jamaica.....	---	11	1,660	---	---	---	1,671	14,633
Leeward and Windward Islands.....	---	5	72	---	---	---	77	1,778
Netherlands Antilles.....	---	---	---	---	---	---	8,660	8,660
Surinam.....	---	---	---	---	---	---	2,553	2,553
Trinidad and Tobago.....	---	---	---	1	---	---	1	10,195
Total Other Latin America.....	---	16	1,938	1	---	---	7,255	58,401
Total Latin America.....	59,516	13,386	58,460	25,704	24,203	---	172,269	321,730
Europe								
Albania.....	---	---	---	---	---	---	---	---
Austria.....	---	---	---	---	---	---	11,587	11,587
Azores.....	---	---	---	---	---	---	91	91
Belgium and Luxembourg.....	---	---	---	33	---	---	33	132,346
Bulgaria.....	---	---	---	---	---	---	91	91
Cyprus.....	648	---	111	---	---	---	759	531
Czechoslovakia.....	---	---	---	---	---	---	5,685	5,685
Denmark.....	---	---	---	---	---	---	77,195	77,195
Estonia.....	---	---	---	---	---	---	---	---
Finland.....	---	---	---	425	---	---	425	18,865
France.....	---	---	17	---	---	---	17	113,870
Germany, East.....	---	---	---	---	---	---	---	6,070
Germany, West.....	---	---	---	818	---	---	818	360,615
Gibraltar.....	---	---	---	---	---	---	---	143
Greece.....	10,068	67-51	4,791	1	---	4	14,813	13,827
Hungary.....	---	---	---	---	---	---	---	16,453
Iceland.....	1,642	---	---	---	---	281	1,922	1,522
Ireland.....	---	---	---	1,459	---	---	1,499	22,600
Italy (incl. Trieste).....	---	3,499	4,621	650	---	---	8,720	230,121
Latvia.....	---	---	---	---	---	---	---	2,364
Lithuania.....	---	---	---	---	---	---	---	---
Malta and Gozo.....	---	---	147	---	---	---	147	444
Netherlands.....	---	---	---	86	---	---	86	356,532
Norway.....	---	---	---	---	---	---	---	35,515
Poland and Danzig.....	46,715	---	4,686	9,041	---	---	60,442	40,656
Portugal.....	---	---	4,648	624	650	---	5,922	9,552
Rumania.....	---	---	---	---	---	---	---	137

--Continued

Table 3.--U.S. agricultural exports under specified Government-financed programs, exports outside specified Government-financed programs, and total agricultural exports: Value by country of destination, calendar year 1963 - Continued

Country	Public Law 480				P.L. 87-195: Sec. 402	Total agricultural exports under Government programs	Total agricultural exports outside Government programs	Total agricultural exports
	Title I	Title II	Title III	Title IV				
	Sales for foreign currency	Famine and other emergency relief	Foreign donations: 1/	Barter 2/				
-- Thousand dollars --								
Europe (Continued)								
Spain.....	---	---	3,714	11,513	---	106	15,333	107,120
Sweden.....	---	---	---	---	---	---	---	40,880
Switzerland.....	---	---	---	---	---	---	---	52,103
Turkey.....	59,249	---	2,170	1	---	1,672	63,092	77,557
United Kingdom.....	---	---	---	6,789	---	---	---	6,789
Union of Soviet Socialist Rep.....	---	---	---	---	---	---	---	6,705
Unidentified Western Europe.....	---	---	---	---	---	---	---	2
Yugoslavia.....	8/80,899	---	6,883	400	15,585	310	101,077	17,738
Total Europe.....	179,221	3,448	31,788	31,830	16,235	2,373	284,895	2,059,052
Asia								
Aden.....	---	---	1	---	---	---	---	1,186
Afghanistan.....	---	4,553	38	---	---	---	4,591	7/-1,301
Arabia Peninsula States, n.e.c.....	---	896	---	---	---	---	896	7/-68
Bahrain, State of.....	---	---	---	---	---	---	---	1,527
Burma.....	8/1,439	---	61	---	---	---	1,500	112
Cambodia.....	---	---	---	---	---	491	491	242
Ceylon.....	---	---	3,121	---	---	---	3,121	5,509
China.....	---	---	---	---	---	---	---	---
Goa, Damao, and Diu.....	---	---	---	---	---	---	---	---
Hong Kong.....	8/1,825	---	1,676	61	---	---	3,562	39,527
India.....	8/325,858	9/59	8,721	---	---	---	334,638	25,911
Indonesia.....	8/38,729	223	585	---	---	---	39,537	4,607
Iran.....	1,997	10,487	1,712	---	---	---	14,196	11,417
Iraq.....	---	---	42	---	3,658	---	3,700	1,730
Israel.....	26,238	225	181	1,839	---	6/-2	28,481	37,316
Japan.....	8/12,197	---	674	4,609	---	---	17,480	633,831
Jordan.....	---	10,490	1,078	---	---	---	11,668	5,123
Korea, North.....	---	---	---	---	---	---	---	---
Korea, Republic.....	81,308	10,788	9,735	670	---	339	102,840	8,597
Kuwait.....	---	---	---	---	---	---	---	3,967
Laos.....	---	---	38	---	---	---	38	895
Lebanon.....	---	---	59	73	---	---	132	7,233
Macao.....	---	---	587	---	---	---	587	7/-6,
Malaya, Federation of.....	---	---	479	---	---	---	479	5,129
Mongolia, Outer.....	---	---	---	---	---	---	---	---
Nansei and Nanpo Islands, n.e.c.....	---	---	1,494	---	1,472	---	2,966	17,335
Nepal.....	---	9/	---	---	---	---	---	9
Pakistan.....	149,548	16,945	2,906	4	---	21	169,425	7 -4,571

--Continued

Table 3.--U.S. agricultural exports under specified Government-financed programs, exports outside specified Government-financed programs, and total agricultural exports: Value by country of destination, calendar year 1963 - Continued

Country	Public Law 480				P.L. 87-195: Sec. 402 Long-term : sales for : supply and : dollar : credit : sales	Total : agricultural : exports : specified : Government : programs	Total : agricultural : exports : specified : Government : programs	Total : agricultural : exports
	Title I	Title II	Title III	Title IV				
	Sales for foreign currency	Famine and other emergency relief	Foreign donations: 1/	Barter 2/				
-- Thousand dollars --								
Asia (Continued)								
Palestine.....	---	---	---	---	---	---	10	10
Philippines, Republic of.....	289	84	3,370	2,227	---	8	49,025	5,003
Saudi Arabia.....	---	---	---	1	---	---	13,518	13,519
Singapore, State of and British Borneo.....	---	---	225	---	---	---	225	6,089
Southern and Southeastern Asia, n.e.c.....	---	---	6	---	---	---	6	7/-5
Syrian Arab Republic.....	---	50	4 ^a	6	---	---	104	428
Taiwan (Formosa).....	44,155	5,830	3,210	1,386	5,337	10	59,928	79,009
Thailand.....	---	---	28	---	---	---	28	11,836
Viet-Nam, South.....	26,872	13,047	2,561	---	---	---	28	11,864
Total Asia.....	716,455	73,778	42,636	16,876	10,467	1,411	849,623	1,749,913
Oceania								
Australia.....	---	---	---	---	---	---	---	35,898
British Western Pacific Islands.....	---	---	15	---	---	---	15	456
French Pacific Islands.....	---	---	---	---	---	---	---	1,012
New Guinea.....	---	---	---	---	---	---	---	324
New Zealand and Western Samoa.....	---	---	---	---	---	---	---	5,103
Trust Territory of the Pacific Islands.....	---	---	204	---	---	---	204	865
Total Oceania.....	---	---	219	---	---	---	219	43,877
Africa								
Algeria.....	---	35,296	5,183	---	---	---	40,479	7/-11,045
Angola.....	---	---	---	---	---	---	---	2,018
British East Africa and Tanganyika.....	---	861	505	---	---	264	1,630	916
British East Africa and Sierra Leone.....	---	---	205	---	---	---	205	1,021
Cameroon, Federal Republic of.....	---	---	---	---	---	---	---	523
Canary Islands.....	---	---	---	225	---	---	225	3,133
Congo, Republic of and Ruanda-Urundi.....	26,681	3,352	2,220	---	---	---	26,681	3,352
Ethiopia.....	870	267	192	---	1,115	---	33,368	1,425
Ghana.....	---	---	655	---	---	---	1,329	1,415
Liberia.....	---	---	125	---	---	---	665	7,103
Libya.....	---	---	700	---	---	---	125	7,683
Madeira Islands.....	---	---	---	---	---	---	700	1,219
Malagasy, Republic.....	---	---	266	---	---	---	761	761
	---	---	---	---	---	---	266	83

--Continued

Table 3.--U.S. agricultural exports under specified Government-financed programs, exports outside specified Government-financed programs, and total agricultural exports: Value by country of destination, calendar year 1963 - Continued

Country	Public Law 480				P.L. 87-195		Total	Total	Total
	Title I	Title II	Title III	Title IV	Sec. 402	agricultural	agricultural	agricultural	
	Sales for foreign currency	Famine and other emergency relief	Foreign donations: 1/	Barter: 2/	Long-term supply and dollar credit sales	foreign currency, and economic aid 3/	exports under specified Government programs 4/	exports outside specified Government programs 4/	agricultural exports
-- Thousand dollars --									
Africa (Continued)									
Mauritius and Dependencies.....			15				15	176	191
Morocco.....	6,087	17,972	8,802	195		3,049	35,205	1,354	36,559
Mozambique.....								1,980	1,980
Nigeria, Federation of.....			108				108	8,743	8,851
Rhodesia and Nyasaland, Federation of.....								516	516
Seychelles and Dependencies.....								5	5
Somali Republic.....		520	11				531	7/-73	458
Somaliland, French.....								200	200
South Africa, Republic of.....			30	3,912			3,942	19,679	23,621
Spanish Africa, n.e.c.....								136	136
Sudan.....	5,373						5,373	717	6,090
Tunisia.....	4,986	13,940	1,275	141		350	20,712	7/-5,964	14,748
United Arab Republic (Egypt).....	133,202	6/-269	5,767	1		6/-41	138,640	10,625	149,265
Western Africa, n.e.c.....	5,047	95	432	886		1,992	8,452	4,032	12,484
Western Equatorial Africa.....			20					92	112
Western Portuguese Africa, n.e.c.....								647	647
Total Africa.....	182,246	21,114	26,541	5,360		6,729	291,990	59,119	351,109
Country of destination not reported...		10/15,659					15,659	-15,659	
Total all countries.....	1,151,438	174,385	159,644	11/74,113	50,905	10,513	1,620,998	3,264,408	5,585,406

1/ Foreign donations are authorized under Sec. 416 of the Agricultural Act of 1949 and Sec. 302, Title III, P.L. 480.
 2/ The barter program is authorized under the Charter Act of the Commodity Credit Corporation; Sec. 303, Title III, P.L. 480; and other legislation.
 3/ AID programs.
 4/ "Total agricultural exports outside specified Government-financed programs" (sales for dollars) include, in addition to unassisted commercial transactions, shipments of some commodities with governmental assistance in the form of (1) extension of credit and credit guarantees for relatively short periods, (2) sales of Government-owned commodities at less than domestic market prices, and (3) export payments in cash or in kind.
 5/ Less than \$500.
 6/ Net adjustment from a previous period.
 7/ The non-comparability of the data available for the reporting of Government-financed programs may affect the reliability of the totals for any country, but the discrepancies are most apparent when exports under Government programs exceed total exports. These excesses may be attributed to lags in reporting or to differences in valuation procedures. Exports under Title II are shown in this report at cost to C.C.C., whereas these shipments are at times reported to the Bureau of the Census at market value.

Table 3.--U.S. agricultural exports under specified Government-financed programs, exports outside specified Government-financed programs, and total agricultural exports: Value by country of destination, calendar year 1963 - Continued

8/ Under agreements with Burma and Indonesia, raw cotton was exported to third countries for processing. In exchange, processed goods are exported to the agreement country. The Title I values shown for the above-mentioned countries do not include the value of raw cotton exported to third countries as follows:

<u>Agreement Country</u>	<u>Value (Thousand dollars)</u>
Burma	4,862
Indonesia	9,637
Total	14,499

The cotton not included in the values for the agreement countries is included in the Title I value for the processing countries as follows:

<u>Processing Country</u>	<u>Agreement Country</u>	<u>Value (Thousand dollars)</u>
Hong Kong	Burma	281
India	Burma	441
Japan	Burma	4,140
Hong Kong	Indonesia	1,544
Japan	Indonesia	8,057
Yugoslavia	Indonesia	36
Total cotton processed in third countries		14,499

9/ The Title II value shown for India includes commodities exported to India to replace stocks advanced for emergency relief for the people of Nepal and Tibetan refugees.

10/ Donations through the United Nations Relief and Works Agency (UNRWA) for the relief of Palestine refugees.

11/ Since shipments to U.S. territories are not included in U.S. exports, shipments to Guam in the amount of \$3,000 are excluded from the total of exports under the barter program.

Table 4.--U.S. agricultural exports under specified Government-financed programs, exports outside Government-financed programs (commercial sales for dollars), and total agricultural exports: Value by area of destination, calendar years 1955-1963

Area	Exports under specified Government programs		Exports outside specified Government programs		Total agricultural exports
	Area total	Area exports as percent of annual U.S. total	Area total	Area exports as percent of annual U.S. total	
	Million dollars	Percent	Million dollars	Percent	Million dollars
<u>Canada, Greenland, Miquelon, and St. Pierre Islands</u>					
1955.....	---	---	282	14	282
1956.....	---	---	341	14	341
1957.....	---	---	354	12	354
1958.....	---	---	344	13	344
1959.....	3	2/	382	14	385
1960.....	1/	2/	432	13	432
1961.....	1/	2/	491	14	491
1962.....	1/	2/	512	14	512
1963.....	1/	2/	596	15	596
Total.....	3	2/	3,734	14	3,737
<u>Latin America</u>					
1955.....	58	5	364	18	422
1956.....	136	8	387	16	523
1957.....	93	6	483	16	576
1958.....	103	8	447	17	544
1959.....	93	8	417	15	503
1960.....	97	7	386	11	483
1961.....	187	12	304	9	491
1962.....	149	10	289	8	438
1963.....	178	11	322	8	500
Total.....	1,094	8	3,386	12	4,480
<u>Europe</u>					
1955.....	741	63	893	44	1,634
1956.....	1,007	58	1,161	48	2,168
1957.....	770	50	1,485	50	2,255
1958.....	591	47	1,249	48	1,840
1959.....	473	39	1,418	52	1,891
1960.....	442	30	1,771	53	2,213
1961.....	459	29	1,842	53	2,301
1962.....	338	22	1,927	55	2,265
1963.....	285	18	2,059	52	2,344
Total.....	5,106	39	13,865	51	18,971
<u>Asia</u>					
1955.....	341	29	391	19	732
1956.....	564	32	406	17	970
1957.....	642	41	543	18	1,185
1958.....	550	43	463	18	1,013
1959.....	531	43	445	16	976
1960.....	782	53	679	20	1,461
1961.....	656	42	775	22	1,431
1962.....	698	46	698	20	1,396
1963.....	850	52	900	23	1,750
Total.....	5,614	43	5,300	20	10,914
<u>Oceania</u>					
1955.....	---	---	41	2	41
1956.....	---	---	35	2	35
1957.....	---	---	54	2	54
1958.....	6	2/	37	2	43
1959.....	1/	2/	35	1	35

--Continued

Table 4.--U.S. agricultural exports under specified Government-financed programs, exports outside Government-financed programs (commercial sales for dollars), and total agricultural exports: Value by area of destination, calendar years 1955-1963 - Continued

Area	Exports under specified Government programs		Exports outside specified Government programs		Total agricultural exports
	Area total	as percent of annual U.S. total	Area total	as percent of annual U.S. total	
	Million dollars	Percent	Million dollars	Percent	Million dollars
Oceania (Continued)					
1960.....	1/	2/	42	1	42
1961.....	1/	2/	35	1	35
1962.....	1	2/	46	1	47
1963.....	1/	2/	44	1	44
Total.....	7	2/	369	1	376
Africa					
1955.....	27	2	56	3	83
1956.....	40	2	81	3	121
1957.....	20	1	63	2	83
1958.....	21	2	49	2	70
1959.....	114	9	45	2	159
1960.....	135	9	58	2	193
1961.....	239	15	42	1	281
1962.....	311	21	63	2	374
1963.....	292	18	59	1	351
Total.....	1,199	9	516	2	1,715
Country of destination not reported ^{3/}					
1955.....	17	1	-17	---	---
1956.....	1	2/	-1	---	---
1957.....	29	2	-29	---	---
1958.....	2	2/	-2	---	---
1959.....	12	1	-12	---	---
1960.....	14	1	-14	---	---
1961.....	23	2	-23	---	---
1962.....	16	1	-16	---	---
1963.....	16	1	-16	---	---
Total.....	130	1	-130	---	---
Total U.S. exports					
1955.....	1,184	100	2,010	100	3,194
1956.....	1,748	100	2,410	100	4,158
1957.....	1,554	100	2,953	100	4,507
1958.....	1,273	100	2,581	100	3,854
1959.....	1,226	100	2,723	100	3,949
1960.....	1,470	100	3,354	100	4,824
1961.....	1,564	100	3,466	100	5,030
1962.....	1,513	100	3,519	100	5,032
1963.....	1,621	100	3,964	100	5,585
Total.....	13,153	100	26,980	100	40,133

^{1/} Less than \$500,000.

^{2/} Less than .5 percent.

^{3/} Country of destination is not available for certain relief shipments.

Brazil in 1963 totaled \$86 million, principally sales for foreign currency under Title I. Donations through voluntary relief agencies under Title III, which made up nearly a third of program shipments to Latin America, were widely distributed throughout the area.

Government-financed exports to Oceania totaled \$0.2 million in 1963. Program exports to this area have varied from zero to a high of \$1 million in 1962 and have been less than 1 percent of total shipments under programs during the 9-year period since inception of P.L. 480 in 1955.

Exports for Dollars

U.S. commercial sales of agricultural commodities for dollars reached a record high of \$3,964 million in calendar year 1963, \$445 million above a year earlier and nearly \$2 billion above the \$2,010 million in 1955.

Credit sales of U.S. agricultural commodities during 1963 reached a record level of \$194 million, up \$47 million from 1962. All of the increase was in purchases under the CCC export sales program, which totaled \$117 million. From the inception of the program in 1956 through December 1963, credit purchases totaled \$270 million.

Purchases under the CCC credit sales program were principally for exports to Asia, followed by Europe, Latin America, and Oceania.

Medium-term guarantees extended by the Export-Import Bank during the year were for exports of cotton to Japan and Austria and corn to Hungary.

Credit sales are included in exports outside specified Government programs in table 3 and are shown separately in table 5.

Dollar sales to Europe in 1963 reached a high of over \$2 billion. This highly industrialized area has taken from 44 percent of total dollar sales in 1955 to 55 percent in 1962 and 52 percent in 1963. Europe included all but 2 of the 10 largest dollar markets in 1963. The United Kingdom purchased for dollars \$401 million of U.S. farm products during the year; West Germany, \$361 million; Netherlands, \$357 million; Italy, \$200 million; Belgium-Luxembourg, \$132 million; France, \$114 million; Spain, \$107 million; and Denmark, \$77 million. Dollar exports to these 8 countries were surpassed only by dollar sales to Japan and Canada.

Of the countries mentioned above, Italy and Spain may be cited as countries which during part of the P.L. 480 period received most of their agricultural imports from the United States under Government-financed programs; but, with increasing economic activity and larger gold and dollar assets, they have become major cash markets for U.S. farm products. Dollar exports to Italy increased from \$25 million in 1955 to \$200 million in 1963, and it has ranked among the 10 leading U.S. dollar markets since 1957. Dollar sales to Spain were in the neighborhood of \$10 million or less during the first 5 years of the P.L. 480 period. Although Government-financed program exports were still the larger proportion of U.S. agricultural exports to Spain in 1961, dollar sales reached \$62 million, climbed to \$87 million in 1962 -- exceeding program exports -- and then rose to \$107 million in 1963, placing Spain among the 10 leading U.S. dollar markets for the second consecutive year.

Table 5.--U.S. credit sales of agricultural commodities: Value by country, calendar year 1963 ^{1/}

Country	Export-Import :		Total credit sales
	bank loans and medium-term guarantees 2/	CCC credit sales 3/	
-- Thousand dollars --			
<u>Latin American Republics</u>			
Brazil.....	---	3,774	3,774
Colombia.....	---	124	124
Ecuador.....	---	186	186
Guatemala.....	---	1,042	1,042
Haiti.....	---	2,214	2,214
Honduras.....	---	247	247
Mexico.....	---	11,808	11,808
Peru.....	---	168	168
Venezuela.....	---	2,184	2,184
Total Latin American Republics.....	---	21,747	21,747
<u>Other Latin America</u>			
Jamaica.....	---	28	28
Total Other Latin America.....	---	28	28
Total Latin America.....	---	21,775	21,775
<u>Europe</u>			
Austria.....	1,270	---	1,270
Belgium.....	---	2,076	2,076
Denmark.....	---	4,200	4,200
France.....	---	687	687
Germany, West.....	---	1,248	1,248
Hungary.....	3,623	---	3,623
Italy.....	---	3,105	3,105
Netherlands.....	---	5,334	5,334
Norway.....	---	1,740	1,740
Poland.....	---	8,867	8,867
Spain.....	---	1,976	1,976
Switzerland.....	---	189	189
United Kingdom.....	---	6,608	6,608
Total Europe.....	4,893	36,030	40,923
<u>Asia</u>			
Hong Kong.....	---	579	579
Israel.....	---	8	8
Japan.....	72,300	51,138	123,438
Korea, Republic of.....	---	82	82
Philippines, Republic of.....	---	2,505	2,505
Thailand.....	---	138	138
Total Asia.....	72,300	54,450	126,750

--Continued

Table 5.--U.S. credit sales of agricultural commodities: Value by country, calendar year 1963 ^{1/} - Continued

Country	Export-Import	CCC	Total
	bank loans	credit	credit
	and medium-term	sales ^{3/}	sales
	guarantees ^{2/}		
-- Thousand dollars --			
Oceania			
Australia.....	---	3,849	3,849
New Zealand.....	---	730	730
Total Oceania.....	---	4,579	4,579
Total.....	77,193	116,834	194,027

^{1/} Credits for relatively short periods repayable in dollars plus interest (covering the financing costs of the lending agency).

^{2/} Includes disbursements by U.S. commercial banks under Export-Import Bank medium-term guarantees against political and/or financial risk.

^{3/} Purchases during the period.

Asia was the second largest dollar market for U.S. farm products in 1963. Dollar exports to this area increased from \$391 million in 1955 to \$900 million in 1963 and comprised from 16 to 23 percent of all sales for dollars during the 9-year period. Japan, the leading commercial market in 1963, purchased for dollars a record \$634 million of U.S. agricultural products. Although Japan received a large volume of Government-financed exports in 1956 and 1957, it has been among the first 3 dollar markets during the entire 9-year period. Commercial exports to Hong Kong, Israel, India, and the Philippines each totaled between \$20 million and \$40 million during 1963.

Shipments to Canada, nearly all dollar sales, totaled \$596 million in 1963, 15 percent of all dollar exports. Dollar sales to Canada were second only to those to Japan. Canada and other countries of North America have accounted for 12 to 15 percent of all U.S. dollar exports since 1955.

Exports for dollars to Latin America totaled \$322 million in 1963 compared with \$289 million a year earlier. Sales for dollars to this area were 15 to 18 percent of total dollar sales during the earlier years of the 9-year period, but dropped to 8 to 9 percent since the substantial drop in exports to Cuba. Shipments for dollars to Mexico in 1963 totaled \$74 million and to Venezuela, \$64 million.

Sales for dollars to Africa amounted to \$59 million, 1 percent of the total. This area accounts for 1 to 3 percent of all U.S. dollar exports. Largest dollar markets during 1963 were the Republic of South Africa, United Arab Republic (Egypt), Federation of Nigeria, Liberia, and Ghana.

Dollar shipments to Oceania totaled \$44 million in 1963, with Australia and New Zealand accounting for over 90 percent of the total. Such shipments were 1 to 2 percent of total dollar sales during the 1955-63 period.

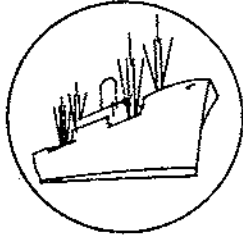
Asia was the second largest dollar market for U.S. farm products in 1963. Dollar exports to this area increased from \$391 million in 1955 to \$900 million in 1963 and comprised from 16 to 23 percent of all sales for dollars during the 9-year period. Japan, the leading commercial market in 1963, purchased for dollars a record \$634 million of U.S. agricultural products. Although Japan received a large volume of Government-financed exports in 1956 and 1957, it has been among the first 3 dollar markets during the entire 9-year period. Commercial exports to Hong Kong, Israel, India, and the Philippines each totaled between \$20 million and \$40 million during 1963.

Shipments to Canada, nearly all dollar sales, totaled \$596 million in 1963, 15 percent of all dollar exports. Dollar sales to Canada were second only to those to Japan. Canada and other countries of North America have accounted for 12 to 15 percent of all U.S. dollar exports since 1955.

Exports for dollars to Latin America totaled \$322 million in 1963 compared with \$289 million a year earlier. Sales for dollars to this area were 15 to 18 percent of total dollar sales during the earlier years of the 9-year period, but dropped to 8 to 9 percent since the substantial drop in exports to Cuba. Shipments for dollars to Mexico in 1963 totaled \$74 million and to Venezuela, \$64 million.

Sales for dollars to Africa amounted to \$59 million, 1 percent of the total. This area accounts for 1 to 3 percent of all U.S. dollar exports. Largest dollar markets during 1963 were the Republic of South Africa, United Arab Republic (Egypt), Federation of Nigeria, Liberia, and Ghana.

Dollar shipments to Oceania totaled \$44 million in 1963, with Australia and New Zealand accounting for over 90 percent of the total. Such shipments were 1 to 2 percent of total dollar sales during the 1955-63 period.



Import Highlights

JULY 1963-APRIL 1964

U.S. agricultural imports for consumption rose to \$3,452 million in the July 1963-April 1964 period from \$3,289 million in the comparable 10 months of the previous year. Over three-fourths of the 5-percent increase resulted from larger imports of complementary (noncompetitive) items, reflecting mainly higher prices for a number of commodities such as coffee, carpet wool, and cocoa beans. Complementary items advanced to \$1,584 million this July-April from \$1,457 million for the same months a year earlier. Imports of supplementary (partially competitive) commodities advanced slightly to \$1,868 million from \$1,832 million (table 6).

Supplementary Imports

July-April imports of supplementary commodities were 2 percent higher in 1963-64 than in the previous fiscal year. Increases in fruits and preparations, barley, hides and skins, vegetables, cane sugar, and meat and meat products were about offset by declines in dutiable cattle, apparel wool, and oilseeds and products.

Imports of animals and animal products declined by 7 percent in the July-April period, reflecting mainly smaller imports of dutiable cattle and apparel wool. Moreover, imports of meats and meat products have been below the levels of a year earlier since January 1964. Mexico and Canada have been shipping fewer cattle to the United States because of relatively unfavorable prices for live cattle in the United States. Cattle imports were unusually heavy in 1962-63 because of unfavorable grazing conditions in both Mexico and Canada.

Less apparel wool was also imported in 1962-63 than in 1961-62 because of reduced mill use and a slight decline in the share of wool used in making textile products. The increase in imports of hides and skins resulted mainly from larger imports of goat, kid, sheep, and lamb skins.

The value of sugar imports rose by 7 percent, whereas the quantity declined by 27 percent. Increases in grains and preparations were due to gains in shipments of barley for malting. The increase in fruits and vegetables resulted mainly from larger imports of citrus juice in response to relatively low production in the United States following the severe Florida freeze in 1962. The gain in vegetables and preparations represented larger imports of fresh cucumbers, white potatoes, and tomatoes during the U.S. off-season.

Table 6.--U.S. agricultural imports for consumption: Value by commodity,
July-April 1962-63 and 1963-64

Commodity	July-April		Change
	1962-63	1963-64	
	--Million dollars--		--Percent--
<u>Supplementary</u>			
Animals and animal products:			
Animals, live.....	110	57	-48
Dairy products.....	46	47	+2
Hides and skins.....	44	52	+18
Meats and meat products.....	431	440	+2
Wool, apparel.....	108	85	-21
Other.....	34	38	+12
Total animals, etc.....	<u>773</u>	<u>719</u>	-7
Cotton, excluding linters.....	23	24	+4
Fruits and preparations.....	75	96	+28
Grains and preparations.....	32	38	+19
Nuts and preparations.....	53	58	+9
Oilseeds and products.....	134	129	-3
Sugar, cane.....	427	453	+6
Tobacco, unmanufactured.....	79	84	+6
Vegetables and preparations.....	75	83	+10
Other.....	161	184	+14
Total supplementary.....	<u>1,832</u>	<u>1,868</u>	+2
<u>Complementary</u>			
Bananas.....	62	71	+15
Coffee.....	817	963	+18
Cocoa beans.....	105	104	-1
Rubber, crude, natural.....	196	151	-23
Tea.....	52	49	-6
Wool, carpet.....	82	95	+16
Other.....	143	151	+6
Total complementary.....	<u>1,457</u>	<u>1,584</u>	+9
Total imports.....	<u>3,289</u>	<u>3,452</u>	+5

Complementary Imports

A 9-percent rise in imports of complementary products stemmed from larger imports of coffee, bananas, and carpet wool. In addition, higher prices for coffee, cocoa beans, and carpet wool also added to the value gain. Coffee imports increased to 2,876 million pounds in July 1963-April 1964 from 2,721 million a year earlier. Coffee prices have increased since January 1964 as a result of a relatively poor crop in Brazil. Crude natural rubber imports continued their downward trend of the past several years, reflecting lower prices and greater reliance on synthetic rubber.

Imports of carpet wool rose to \$95 million in July 1963-April 1964 from \$82 million a year earlier; but quantity fell to 159 million from 170 million pounds.

Table 7. — U. S. agricultural exports: Quantity and value by commodity, March 1963 and 1964 and July-March 1962-63 and 1963-64

Commodity exported	Unit	March 1/				July-March 1/				
		Quantity		Value		Quantity		Value		
		1963	1964	1963	1964	1962-63	1963-64	1962-63	1963-64	
		Thousands	Thousands	1,000 dollars	1,000 dollars	Thousands	Thousands	1,000 dollars	1,000 dollars	
ANIMALS AND ANIMAL PRODUCTS										
Animals, live:										
Cattle	No.	2	2	732	752	15	21	6,031	8,619	
Poultry, live -										
Baby chicks	No.	2,530	1,909	827	871	14,896	19,920	4,734	6,556	
Other live poultry	Lb.	167	248	84	107	1,990	2,706	727	930	
Other		2/	2/	439	413	2/	2/	1,648	3,924	
Total animals, live				2,078	2,145			12,190	20,029	
Dairy products:										
Anhydrous milk fat	Lb.	426	1,535	353	960	4,168	18,867	3,275	3,700	
Butter (except dehydrated)	Lb.	308	4,955	107	1,694	5,253	74,070	1,732	25,333	
Cheese, including donations	Lb.	6,672	546	2,061	266	38,425	11,572	9,225	3,246	
Infants' and dietetic foods, chiefly milk	Lb.	2,135	1,282	1,280	869	12,162	12,256	7,671	6,941	
Milk -										
Condensed sweetened	Lb.	3,956	3,386	914	317	36,151	45,216	8,425	9,743	
Dried whole	Lb.	3,693	826	1,829	375	14,750	19,276	6,352	8,039	
Evaporated, unsweetened, incl. donations	Lb.	4,585	2,462	637	376	43,794	36,730	6,566	5,231	
Nonfat dry, including donations	Lb.	108,013	162,465	10,354	13,583	651,526	871,363	58,571	69,843	
Other		2/	2/	275	277	2/	2/	2,696	3,357	
Total dairy products				17,810	19,122			104,519	141,030	
Fats, oils, and greases:										
Lard	Lb.	40,496	51,635	3,733	5,340	289,629	450,982	27,573	42,338	
Tallow, edible	Lb.	481	262	49	27	2,790	2,436	286	243	
Other edible fats, oils, and greases	Lb.	505	392	92	64	3,937	5,089	705	841	
Tallow, inedible	Lb.	137,304	208,473	8,170	14,455	957,568	1,322,600	59,377	87,297	
Other inedible fats, oils, and greases	Lb.	28,508	23,816	1,868	1,809	152,673	190,790	10,373	14,803	
Total fats, oils, and greases		207,294	284,578	13,962	21,695	1,406,597	1,975,497	98,314	145,522	
Meat and meat products:										
Beef and veal	Lb.	2,075	2,461	980	1,093	19,968	23,926	9,442	10,054	
Pork	Lb.	14,132	13,004	3,843	3,936	66,685	124,862	19,151	37,116	
Sausage casings	Lb.	1,722	1,447	1,282	920	13,653	15,043	9,368	8,535	
Variety meats	Lb.	16,368	17,543	3,202	3,669	104,798	130,630	20,730	26,926	
Other (including meat extracts)	Lb.	1,720	943	541	442	9,230	8,535	3,946	3,718	
Total meat and products (except poultry)		35,407	35,398	9,848	10,060	214,334	302,996	62,637	86,349	
Poultry products:										
Eggs, dried, frozen, otherwise preserved	Lb.	641	241	481	284	3,332	3,134	3,061	3,263	
Eggs in the shell -										
Hatching	Doz.	1,025	896	1,008	1,028	5,891	6,240	5,478	6,202	
Other	Doz.	405	92	193	40	3,471	2,684	1,271	1,027	
Poultry meat -										
Chickens, fresh or frozen	Lb.	14,167	14,162	3,030	3,525	111,591	126,586	29,053	33,095	
Turkeys, fresh or frozen	Lb.	1,512	2,491	539	920	28,117	29,628	9,756	11,011	
Other, fresh or frozen	Lb.	335	300	107	115	3,407	3,556	1,149	1,263	
Canned	Lb.	1,725	1,982	290	479	7,161	12,573	2,477	4,264	
Total poultry products				5,648	6,391			52,205	60,128	

Continued -

Table 7.—U. S. agricultural exports: Quantity and value by commodity,
March 1963 and 1964 and July-March 1962-63 and 1963-64 - Continued

Commodity exported	Unit	March 1/				July-March 1/			
		Quantity		Value		Quantity		Value	
		1963	1964	1963	1964	1962-63	1963-64	1962-63	1963-64
		1,000	1,000	1,000	1,000	Thousands	Thousands	1,000	1,000
		Thousands	Thousands	dollars	dollars	Thousands	Thousands	dollars	dollars
Other animal products:									
Feathers, crude	Lb.	176	114	159	90	1,323	1,187	1,538	1,249
Gelatin, edible	Lb.	382	259	823	717	2,889	2,304	5,874	5,422
Hair, raw or dressed, new	Lb.	731	426	224	168	4,372	4,917	1,701	1,587
Hides and skins, raw (except furs) 2/	No.	1,102	1,325	7,677	6,385	8,586	10,991	61,367	57,977
Honey	Lb.	1,064	560	178	114	14,618	21,066	2,069	3,543
Wool, unmanufactured	C.Lb.	1,372	548	1,324	718	9,706	7,595	8,386	8,288
Other		2/	2/	2,381	1,451	2/	2/	11,745	12,365
Total other animal products				12,766	9,643			92,680	90,431
Total animals and animal products				62,112	69,054			425,545	543,489
VEGETABLE PRODUCTS									
Cotton, unmanufactured:									
Cotton	R.Bale	440	490	58,085	63,442	2,778	3,978	375,784	521,069
Linters	R.Bale	36	24	1,150	956	224	230	7,529	6,515
Total cotton and linters	R.Bale	476	514	59,235	64,398	3,002	4,208	383,313	527,584
Fruits and preparations:									
Canned -									
Fruit cocktail	Lb.	13,374	5,295	1,948	929	112,225	111,840	16,455	18,179
Peaches	Lb.	14,310	13,479	1,589	1,504	263,679	195,531	27,962	21,572
Pears	Lb.	1,151	252	171	53	8,723	4,842	1,348	924
Pineapples	Lb.	8,136	6,988	1,264	1,040	81,356	64,582	12,026	9,409
Other	Lb.	3,884	2,525	687	520	38,788	25,503	6,238	4,840
Total canned fruits	Lb.	40,855	28,539	5,659	4,046	504,771	402,298	64,029	54,924
Dried -									
Prunes	Lb.	6,706	6,409	1,482	1,364	74,341	68,232	16,004	14,416
Raisins and currants	Lb.	5,529	6,831	943	1,359	74,277	97,450	13,647	17,288
Other	Lb.	1,343	1,027	457	383	16,209	11,887	6,054	4,546
Total dried fruits	Lb.	13,578	14,267	2,882	3,106	164,827	177,569	35,705	36,250
Fresh -									
Apples	Lb.	10,407	24,489	985	2,136	123,363	177,810	11,536	15,794
Berries	Lb.	955	994	253	198	11,659	11,235	2,153	2,049
Grapefruit	Lb.	17,185	21,627	1,069	1,393	119,807	130,810	6,532	8,410
Grapes	Lb.	3,455	3,014	452	360	193,611	186,288	16,904	16,572
Lemons and limes	Lb.	11,803	17,980	1,100	1,321	74,691	156,187	6,383	12,912
Oranges and tangerines	Lb.	22,113	42,195	2,627	3,600	254,219	296,513	22,720	26,501
Pears	Lb.	2,236	2,101	205	221	68,606	35,012	6,040	3,507
Other	Lb.	1,020	1,840	125	198	96,239	110,051	5,907	6,458
Total fresh fruits	Lb.	69,174	114,240	6,816	9,427	942,195	1,103,906	78,175	92,203
Fruit juices -									
Grapefruit	Gal.	604	220	543	256	4,596	2,796	3,362	2,804
Orange	Gal.	1,221	684	2,386	2,015	10,399	5,518	18,059	14,337
Other	Gal.	1,782	709	1,329	851	10,711	8,402	9,781	8,724
Total fruit juices	Gal.	3,607	1,613	4,258	3,122	25,706	16,716	31,202	25,865
Frozen fruits (including specialties)	Lb.	546	996	101	191	11,492	9,217	1,762	1,872
Other		2/	2/	323	324	2/	2/	3,395	3,843
Total fruits and preparations				20,039	20,216			214,568	214,957

Continued -

Table 7. — U. S. agricultural exports: Quantity and value by commodity, March 1963 and 1964 and July-March 1962-63 and 1963-64 - Continued

Commodity exported	Unit	March 1/				July-March 1/			
		Quantity		Value		Quantity		Value	
		1963	1964	1,000 dollars	1,000 dollars	1962-63	1963-64	1,000 dollars	1,000 dollars
Grains and preparations:		Thousands	Thousands	dollars	dollars	Thousands	Thousands	dollars	dollars
Feed grains and products -									
Barley grain (48 lb.)	Bu.	2,915	2,719	3,336	3,272	50,035	42,928	56,184	46,184
Corn grain, including donations (56 lb.)	Bu.	36,452	33,703	49,669	46,372	272,707	347,574	343,347	473,788
Grain sorghums (56 lb.)	Bu.	8,159	4,745	9,568	6,356	87,446	80,402	97,684	99,382
Oats grain (32 lb.)	Bu.	942	12	835	15	20,008	3,927	14,432	2,823
Total feed grains	M.Ton	1,210	1,036	63,408	56,015	10,529	11,863	511,647	622,177
Barley malt (34 lb.)	Bu.	239	165	496	342	1,892	1,785	4,116	3,665
Corn grits and hominy	Lb.	3,426	5,084	144	206	27,468	27,826	1,161	1,163
Cornmeal and corn flour, incl. donations	Cwt.	199	288	868	1,135	3,155	4,123	13,944	15,860
Cornstarch	Lb.	3,941	5,837	366	520	32,919	47,945	2,891	4,018
Oatmeal, groats, and rolled oats	Lb.	1,137	551	190	44	19,484	9,699	2,337	834
Total feed grains and products	M.Ton	1,239	1,072	65,472	58,262	10,893	12,304	536,096	647,713
Rice -									
Milled, including donations	Lb.	348,424	354,305	23,164	24,179	1,777,631	2,269,419	118,571	154,928
Paddy or rough	Lb.	5,688	2,382	476	191	9,088	7,592	754	620
Total rice (milled basis)	Lb.	352,121	355,684	23,640	24,370	1,783,528	2,274,254	119,325	155,550
Rye grain (56 lb.)	Bu.	1,269	226	1,880	371	16,370	7,307	21,871	10,430
Wheat and flour, including donations -									
Wheat grain (60 lb.)	Bu.	55,245	82,632	99,012	148,742	352,999	554,132	646,298	986,297
Wheat flour, wholly of U. S. wheat	Cwt.	5,095	3,268	20,065	12,782	30,722	29,955	127,544	122,731
Total wheat and flour	Bu.	66,963	90,148	119,077	161,524	423,659	623,029	773,842	1,109,035
Bakery products	Lb.	1,443	1,374	523	521	8,362	10,704	3,416	4,582
Other		2/	2/	1,124	1,083	2/	2/	7,098	9,255
Total grains and preparations				211,716	246,131			1,461,648	1,936,569
Oilseeds and products:									
Oils, edible and inedible -									
Cottonseed oil	Lb.	63,307	76,290	7,209	7,722	261,235	338,517	33,076	55,400
Soybean oil	Lb.	153,425	69,214	17,355	6,714	882,617	724,987	90,259	77,934
Other	Lb.	13,393	19,561	2,288	2,708	85,678	132,519	13,605	17,925
Total oils (except essential)	Lb.	230,125	165,065	26,852	17,144	1,229,530	1,196,023	136,940	134,505
Oilseeds -									
Flaxseed (56 lb.)	Bu.	4/	19	4/	86	3,497	2,533	10,805	7,502
Soybeans (60 lb.)	Bu.	14,358	13,633	38,551	44,558	129,712	142,939	331,796	398,205
Other	Lb.	29,336	47,100	1,770	2,365	200,827	473,199	10,371	20,733
Total oilseeds				40,321	46,909			352,972	426,438
Protein meal (oilcake and meal)	S.Ton	202	83	15,398	6,358	1,134	1,034	84,492	83,130
Total oilseeds and products				82,571	70,451			574,404	644,073
Tobacco, unmanufactured:									
Burley	Lb.	6,710	3,471	4,807	3,288	32,535	28,881	27,833	24,391
Cigar wrapper	Lb.	315	681	799	1,036	3,199	3,521	5,941	8,095
Dark-fired Kentucky and Tennessee	Lb.	2,354	348	1,269	181	14,326	10,595	7,670	5,480
Flue-cured	Lb.	23,800	17,213	18,598	13,269	293,880	350,662	246,321	293,248
Maryland	Lb.	855	723	766	580	8,499	9,118	6,523	6,697
Other	Lb.	1,993	1,093	1,172	742	19,096	24,247	7,942	8,338
Total tobacco, unmanufactured	Lb.	36,027	23,529	27,411	19,096	371,535	427,024	302,330	346,249

Continued -

Table 7.— U. S. agricultural exports: Quantity and value by commodity, March 1963 and 1964 and July-March 1962-63 and 1963-64 - Continued

Commodity exported	Unit	March 1/				July-March 1/				
		Quantity		Value		Quantity		Value		
		1963	1964	1963	1964	1962-63	1963-64	1962-63	1963-64	
		Thousands	Thousands	1,000 dollars	1,000 dollars	Thousands	Thousands	1,000 dollars	1,000 dollars	
Vegetables and preparations:										
Canned -										
Asparagus	Lb.	1,938	5,108	537	1,294	42,273	45,353	10,012	11,425	
Soups	Lb.	1,682	1,834	304	338	11,978	12,983	2,222	2,405	
Tomato juice	Lb.	2,073	4,838	211	429	16,207	19,580	1,641	1,787	
Tomato paste and puree	Lb.	2,137	1,445	452	321	9,660	11,913	2,029	2,451	
Tomato sauce for cooking purposes	Lb.	64	72	9	10	877	703	118	94	
Other	Lb.	10,929	5,347	1,325	819	52,838	44,685	6,957	6,386	
Total canned vegetables	Lb.	18,823	18,644	2,838	3,211	133,833	135,217	22,979	24,548	
Dry, ripe beans, including donations	Lb.	31,661	9,768	2,900	975	288,088	363,528	23,314	29,758	
Dry, ripe peas (excluding cow and chick) ..	Lb.	25,102	16,463	1,677	1,115	208,522	188,917	13,915	12,816	
Fresh -										
Lettuce	Lb.	13,101	17,577	760	947	100,012	121,608	4,566	6,512	
Onions	Lb.	13,534	4,891	582	312	112,764	64,113	4,567	3,465	
Potatoes, white	Lb.	66,385	8,889	1,343	258	218,523	89,249	5,601	2,225	
Tomatoes	Lb.	4,789	4,221	425	449	49,852	66,892	4,773	5,859	
Other	Lb.	82,543	46,973	4,096	2,757	277,449	217,746	15,511	13,177	
Total fresh vegetables	Lb.	180,352	82,551	7,206	4,723	758,600	559,608	35,018	31,238	
Frozen vegetables (including specialties) ..	Lb.	4,516	2,334	768	468	20,390	27,640	3,684	4,953	
Soups and vegetables, dehydrated	Lb.	1,844	1,575	699	722	12,805	11,153	5,585	5,035	
Vegetable seasonings	Lb.	230	651	225	356	4,505	3,120	3,120	2,296	
Other		2/	2/	1,330	1,521	2/	2/	11,188	11,602	
Total vegetables and preparations		—	—	17,643	13,091	—	—	118,803	122,246	
Other vegetable products:										
Coffee	Lb.	2,363	3,500	3,044	3,709	17,762	24,619	22,473	26,042	
Drugs, herbs, roots, crude	Lb.	434	243	427	246	2,929	2,764	3,370	3,968	
Essential oils, natural	Lb.	830	718	1,510	1,726	5,561	5,645	11,073	12,670	
Feeds and fodders (except oilcake and meal): S.Ton:		73	63	4,930	4,286	709	734	42,610	46,346	
Flavoring sirups for beverages	Gal.	100	93	677	727	813	778	5,090	5,220	
Hops	Lb.	2,426	2,762	1,683	1,710	17,061	19,619	10,592	12,973	
Nursery and greenhouse stock		2/	2/	773	939	2/	2/	3,998	4,806	
Nuts and preparations	Lb.	4,657	7,236	1,430	1,612	33,272	61,323	12,651	19,499	
Seeds, field and garden	Lb.	8,864	5,611	1,939	1,620	68,733	85,593	16,449	22,832	
Spices	Lb.	341	482	234	257	3,168	2,639	1,706	1,927	
Other, including donations		2/	2/	7,815	11,365	2/	2/	49,530	74,936	
Total other vegetable products		—	—	24,462	28,397	—	—	179,542	231,219	
Total vegetable products		—	—	443,077	461,740	—	—	3,234,208	4,022,897	
TOTAL AGRICULTURAL EXPORTS		—	—	505,189	530,794	—	—	3,659,753	4,566,386	
TOTAL NONAGRICULTURAL EXPORTS		—	—	1,593,144	1,620,519	—	—	11,902,023	13,486,094	
TOTAL EXPORTS, ALL COMMODITIES		—	—	2,098,333	2,151,313	—	—	15,561,776	18,052,480	

-33-

1/ Preliminary.

2/ Reported in value only.

3/ Excludes the number of "other hides and skins," reported in value only.

4/ Less than 500.

Table 8.—U. S. agricultural exports: Quantity and value by commodity, April 1963 and 1964 and July-April 1962-63 and 1963-64

Commodity exported	Unit	April 1/				July-April 1/			
		Quantity		Value		Quantity		Value	
		1963	1964	1963	1964	1962-63	1963-64	1962-63	1963-64
		1,000	1,000	1,000	1,000	Thousands	Thousands	dollars	dollars
		Thousands	Thousands	dollars	dollars	Thousands	Thousands	dollars	dollars
ANIMALS AND ANIMAL PRODUCTS									
Animals, live:									
Cattle	No.	1	4	659	1,219	16	24	6,689	9,838
Poultry, live -									
Baby chicks	No.	2,833	2,222	1,194	1,053	17,729	22,202	5,978	7,608
Other live poultry	Lb.	177	354	99	194	2,167	3,050	826	1,123
Other		2/	2/	1,074	1,118	2/	2/	4,223	5,044
Total animals, live		---	---	3,026	3,584	---	---	18,216	23,613
Dairy products:									
Anhydrous milk fat	Lb.	820	2,401	477	1,012	5,008	21,267	3,752	9,714
Butter (except dehydrated)	Lb.	724	6,312	249	2,306	5,977	80,362	1,987	27,641
Cheese, including donations	Lb.	2,789	566	887	252	31,215	12,138	10,112	4,097
Infants' and dietetic foods, chiefly milk	Lb.	2,011	1,291	1,044	747	14,174	13,587	8,716	7,688
Milk -									
Condensed sweetened	Lb.	3,023	5,212	653	1,254	39,174	50,428	9,118	10,597
Dried whole	Lb.	3,893	1,100	2,030	547	18,644	20,376	8,282	8,586
Evaporated, unsweetened, incl. donations	Lb.	8,519	3,021	1,108	452	52,313	35,251	7,673	5,683
Nonfat dry, including donations	Lb.	146,421	122,526	14,797	9,668	797,946	993,889	73,368	75,511
Other		2/	2/	352	511	2/	2/	3,047	3,864
Total dairy products		---	---	21,637	16,751	---	---	126,155	157,781
Fats, oils, and greases:									
Lard	Lb.	60,249	72,758	5,442	7,427	349,878	525,340	33,016	49,765
Tallow, edible	Lb.	1,276	365	106	37	4,066	2,601	392	279
Other edible fats, oils, and greases	Lb.	515	575	85	92	4,451	5,665	790	934
Tallow, inedible	Lb.	146,193	166,663	9,198	11,610	1,103,762	1,489,263	68,575	98,507
Other inedible fats, oils, and greases	Lb.	18,094	16,933	1,313	1,347	170,267	207,223	11,685	16,150
Total fats, oils, and greases	Lb.	226,327	257,294	16,144	20,513	1,632,924	2,230,792	114,458	166,035
Meat and meat products:									
Beef and veal	Lb.	1,908	3,929	807	1,548	21,875	27,855	10,249	11,602
Pork	Lb.	10,470	10,893	2,576	3,170	77,154	135,754	21,727	40,287
Sausage casings	Lb.	1,916	1,310	1,327	852	15,569	16,353	10,655	9,386
Variety meats	Lb.	12,361	14,535	2,427	2,939	117,159	145,165	23,157	29,865
Other (including meat extracts)	Lb.	813	1,031	389	403	10,045	9,567	4,334	4,123
Total meat and products (except poultry)	Lb.	27,468	31,698	7,526	8,912	241,802	334,694	70,162	95,261
Poultry products:									
Eggs, dried, frozen, otherwise preserved	Lb.	413	367	460	384	3,745	3,501	3,521	3,652
Eggs in the shell -									
Hatching	Doz.	1,126	688	1,074	809	7,017	6,908	6,552	7,011
Other	Doz.	986	66	345	32	4,456	2,750	1,576	1,060
Poultry meat -									
Chickens, fresh or frozen	Lb.	12,879	11,695	2,817	2,962	124,469	138,281	31,869	36,054
Turkeys, fresh or frozen	Lb.	872	2,008	316	717	28,990	31,636	10,072	11,728
Other, fresh or frozen	Lb.	400	397	131	141	3,807	3,953	1,280	1,404
Canned	Lb.	985	2,019	253	425	8,146	19,592	2,731	4,689
Total poultry products		---	---	5,396	5,470	---	---	57,601	65,598

Continued

Table 8.— U. S. agricultural exports: Quantity and value by commodity,
April 1963 and 1964 and July-April 1962-63 and 1963-64 - Continued

Commodity exported	Unit	April 1/				July-April 1/			
		Quantity		Value		Quantity		Value	
		1963	1964	1962	1964	1962-63	1963-64	1962-63	1963-64
		1,000	1,000	1,000	1,000	1,000	1,000	1,000	
		Thousands	Thousands	dollars	dollars	Thousands	Thousands	dollars	dollars
Other animal products:									
Feathers, crude	Lb.	73	127	96	123	1,396	1,314	1,634	1,371
Gelatin, edible	Lb.	241	315	597	634	3,130	2,619	6,471	6,056
Hair, raw or dressed, new	Lb.	475	584	183	177	4,847	5,501	1,884	1,764
Hides and skins, raw (except furs) 3/	No.	1,072	1,299	5,501	7,088	9,598	12,290	66,868	65,065
Honey	Lb.	1,101	463	186	107	15,719	21,529	2,256	3,649
Wool, unmanufactured	C.Lb.	1,610	198	1,539	221	11,317	7,792	9,925	8,509
Other	—	2/	2/	1,618	1,217	2/	2/	13,363	13,564
Total other animal products	—	---	---	9,720	9,587	---	---	102,401	99,998
Total animals and animal products	—	---	---	63,449	64,797	---	---	488,993	608,286
VEGETABLE PRODUCTS									
Cotton, unmanufactured:									
Cotton	R.Bale:	299	400	40,204	50,934	3,077	4,379	415,988	572,003
Linters	R.Bale:	37	31	1,039	805	261	260	8,566	7,320
Total cotton and linters	R.Bale:	336	431	41,243	51,739	3,338	4,639	424,556	579,323
Fruits and preparations:									
Canned -									
Fruit cocktail	Lb.	9,227	5,158	1,366	915	121,462	116,998	17,822	19,094
Peaches	Lb.	9,505	4,695	1,107	585	273,184	200,226	29,069	22,157
Pears	Lb.	740	496	117	107	9,463	5,339	1,466	1,030
Pineapples	Lb.	6,447	12,464	889	1,902	87,802	77,046	12,915	11,311
Other	Lb.	2,123	1,622	389	354	42,912	27,124	6,426	5,194
Total canned fruits	Lb.	28,052	24,435	3,868	3,863	532,823	426,733	67,898	58,786
Dried -									
Prunes	Lb.	4,981	4,063	1,097	925	79,321	72,294	17,102	15,340
Raisins and currants	Lb.	7,682	4,088	1,365	827	81,960	101,537	15,013	18,115
Other	Lb.	1,074	641	402	236	17,284	12,530	6,454	4,783
Total dried fruits	Lb.	13,737	8,792	2,864	1,988	178,565	186,361	38,569	38,238
Fresh -									
Apples	Lb.	5,437	12,170	455	1,135	128,801	189,980	11,991	16,929
Berries	Lb.	1,614	1,619	434	402	13,273	12,854	2,587	2,451
Grapefruit	Lb.	15,756	11,147	931	796	135,562	141,957	7,463	9,206
Grapes	Lb.	1,373	372	220	51	194,984	186,660	17,144	16,623
Lemons and limes	Lb.	17,681	16,552	1,599	1,094	92,372	172,738	7,982	14,007
Oranges and tangerines	Lb.	19,020	42,381	2,211	3,726	273,238	338,895	24,931	30,227
Pears	Lb.	1,407	1,850	138	163	70,012	36,862	6,178	3,670
Other	Lb.	1,654	3,173	167	288	97,895	113,224	6,074	6,744
Total fresh fruits	Lb.	63,942	89,264	6,155	7,655	1,006,137	1,193,170	84,330	99,857
Fruit juices -									
Grapefruit	Gal.	750	250	636	324	5,346	3,046	3,998	3,127
Orange	Gal.	1,144	695	2,608	1,712	11,543	6,213	20,666	16,049
Other	Gal.	884	1,000	921	1,161	11,595	9,402	12,762	9,886
Total fruit juices	Gal.	2,778	1,945	4,165	3,197	28,484	18,661	35,366	29,062
Frozen fruits (including specialties)	Lb.	1,143	649	187	129	12,635	9,867	1,549	2,001
Other	—	2/	2/	285	263	2/	2/	3,680	4,107
Total fruits and preparations	—	---	---	17,524	17,055	---	---	231,792	232,051

Continued -

Table B.— U. S. agricultural exports: Quantity and value by commodity,
April 1963 and 1964 and July-April 1962-63 and 1963-64 - Continued

Commodity exported	Unit	April 1/				July-April 1/			
		Quantity		Value		Quantity		Value	
		1963	1964	1963	1964	1962-63	1963-64	1962-63	1963-64
		1,000	1,000			1,000	1,000		
		Thousands	Thousands	dollars	dollars	Thousands	Thousands	dollars	dollars
Grains and preparations:									
Feed grains and products -									
Barley grain (48 lb.)	Bu.	2,919	4,706	2,220	5,222	52,055	47,634	58,405	51,406
Corn grain, including donations (56 lb.)	Bu.	41,306	42,442	55,723	58,077	314,014	390,017	399,069	531,864
Grain sorghums (56 lb.)	Bu.	13,941	6,430	16,423	8,270	101,387	86,832	114,107	107,653
Oats grain (32 lb.)	Bu.	436	10	309	10	20,444	3,937	14,741	2,833
Total feed grains	M.Ton:	1,454	1,344	74,675	71,579	11,983	13,207	586,322	693,756
Barley malt (34 lb.)	Bu.	224	249	470	516	2,116	2,835	4,585	4,181
Corn grits and hominy	Lb.	3,642	3,172	153	122	31,110	30,998	1,314	1,284
Cornmeal and corn flour, incl. donations	Cwt.	517	323	2,541	1,275	3,672	4,446	16,485	17,134
Cornstarch	Lb.	3,862	5,675	388	569	36,781	53,620	3,279	4,588
Oatmeal, groats, and rolled oats	Lb.	801	399	121	37	20,284	10,098	2,458	872
Total feed grains and products	M.Ton:	1,507	1,383	78,348	74,058	12,400	13,687	614,444	721,815
Rice -									
Killed, including donations	Lb.	305,942	398,008	21,105	26,750	2,083,563	2,667,427	139,676	181,678
Paddy or rough	Lb.	1,448	2,511	127	201	10,536	10,103	882	822
Total rice (milled basis)	Lb.	306,884	399,640	21,232	26,951	2,090,411	2,673,924	140,558	182,500
Rye grain (56 lb.)	Bu.	769	922	1,016	1,327	17,139	8,230	22,887	11,797
Wheat and flour, including donations -									
Wheat grain (60 lb.)	Bu.	67,999	73,665	122,721	136,988	420,998	627,796	765,020	1,123,285
Wheat flour, wholly of U. S. wheat	Cwt.	4,096	4,081	17,085	15,398	34,818	34,036	144,628	128,136
Total wheat and flour	Bu.	77,420	83,050	139,806	152,386	501,079	706,079	911,648	1,261,421
Bakery products	Lb.	1,084	1,089	444	457	9,446	11,793	3,860	5,039
Other		2/	2/	1,027	1,013	2/	2/	8,125	10,269
Total grains and preparations				241,873	256,232			1,703,522	2,192,801
Oilseeds and products:									
Oils, edible and inedible -									
Cottonseed oil	Lb.	29,793	38,372	4,016	4,062	291,027	376,889	37,092	42,710
Soybean oil	Lb.	179,412	125,993	18,720	12,080	1,062,029	850,979	108,979	90,014
Other	Lb.	7,949	19,608	1,319	2,253	93,828	152,128	14,924	20,176
Total oils (except essential)	Lb.	217,154	183,973	24,055	18,395	1,446,884	1,379,996	160,995	152,900
Oilseeds -									
Flaxseed (5 1/2 lb.)	Bu.	24	125	37	373	3,521	2,658	10,843	7,875
Soybeans (60 lb.)	Bu.	14,125	17,605	37,558	47,121	143,837	160,544	369,355	445,324
Other	Lb.	26,591	29,279	1,393	1,293	227,418	502,478	11,763	22,025
Total oilseeds				38,988	48,787			391,961	475,224
Protein meal (oilcake and meal)	S.Ton:	134	100	10,290	7,931	1,268	1,134	94,782	91,062
Total oilseeds and products				73,333	75,113			647,738	719,186
Tobacco, unmanufactured:									
Barley	Lb.	4,059	3,465	3,286	2,732	36,594	32,346	31,119	27,122
Cigar wrapper	Lb.	426	641	929	1,226	3,625	4,163	6,869	9,322
Dark-fired Kentucky and Tennessee	Lb.	977	3,522	521	1,815	15,303	14,117	8,191	7,295
Flue-cured	Lb.	25,266	18,785	19,626	14,202	319,146	369,447	265,946	307,450
Maryland	Lb.	1,170	698	954	559	9,669	9,817	7,476	7,255
Other	Lb.	1,237	2,556	219	573	20,334	26,801	8,664	8,913
Total tobacco, unmanufactured	Lb.	33,135	29,667	26,035	21,107	404,671	456,691	328,265	367,357

Continued -

Table 3.— U. S. agricultural exports: Quantity and value by commodity,
April 1963 and 1964 and July-April 1962-63 and 1963-64 - Continued

Commodity exported	Unit	April 1/				July-April 1/			
		Quantity		Value		Quantity		Value	
		1963	1964	1963	1964	1962-63	1963-64	1962-63	1963-64
		1,000	1,000	1,000	1,000	Thousands	Thousands	dollars	dollars
		Thousands	Thousands	dollars	dollars	Thousands	Thousands	dollars	dollars
Vegetables and preparations:									
Canned -									
Asparagus	Lb.	1,564	1,254	404	361	43,836	46,607	10,417	11,786
Soups	Lb.	1,194	1,078	219	209	13,172	14,062	2,441	2,614
Tomato juice	Lb.	3,278	3,745	326	334	19,485	23,324	1,967	2,122
Tomato paste and puree	Lb.	1,040	775	216	166	10,700	12,687	2,245	2,618
Tomato sauce for cooking purposes	Lb.	69	110	8	15	946	813	126	109
Other	Lb.	7,426	4,663	1,009	674	60,266	48,348	7,964	7,077
Total canned vegetables	Lb.	14,571	11,625	2,182	1,779	148,485	166,841	25,160	26,326
Dry, ripe beans, including donations	Lb.	18,646	11,754	1,717	1,203	306,734	37,281	25,031	20,961
Dry, ripe peas (excluding cow and chick) ..	Lb.	17,615	18,295	1,178	1,174	226,137	207,211	15,094	13,991
Fresh -									
Lettuce	Lb.	23,003	19,541	923	708	123,015	141,149	5,488	7,221
Onions	Lb.	5,404	5,332	269	253	118,168	69,415	4,836	3,718
Potatoes, white	Lb.	14,346	13,734	320	502	232,869	102,983	5,922	2,727
Tomatoes	Lb.	6,454	4,928	713	591	54,306	71,820	5,486	6,450
Other	Lb.	67,652	50,960	3,272	3,014	345,101	268,706	18,824	16,350
Total fresh vegetables	Lb.	116,858	94,495	5,558	5,068	879,439	654,273	43,656	36,446
Frozen vegetables (including specialties) ..	Lb.	5,378	2,226	667	389	25,788	79,865	4,551	5,342
Soups and vegetables, dehydrated	Lb.	3,667	1,283	1,174	507	16,472	12,528	6,755	5,542
Vegetable seasonings	Lb.	365	456	284	274	4,870	3,576	2,404	2,572
Other	2/	2/	2/	1,114	1,348	2/	2/	12,532	12,942
Total vegetables and preparations		---	---	14,114	11,734	---	---	122,817	133,990
Other vegetable products:									
Coffee	Lb.	2,433	2,826	2,234	3,759	26,195	27,505	24,707	29,801
Drugs, herbs, roots, crude	Lb.	276	290	189	179	3,204	3,054	3,559	4,147
Essential oils, natural	Lb.	655	689	1,276	1,392	6,616	6,334	12,349	14,061
Feeds and fodders (except oilcake and meal) ..	S.Ton	58	51	3,856	3,570	767	785	46,467	49,916
Flavoring sirups for beverages	Gal.	94	164	638	1,205	906	942	5,728	6,424
Hops	Lb.	1,992	483	1,544	303	19,053	20,102	12,136	13,276
Nursery and greenhouse stock	2/	2/	2/	719	652	2/	2/	4,717	5,458
Nuts and preparations	Lb.	4,453	11,947	1,252	1,665	37,765	73,270	13,903	21,105
Seeds, field and garden	Lb.	5,685	5,648	1,266	1,446	74,419	91,241	17,715	24,277
Spices	Lb.	202	376	165	234	3,370	3,015	1,871	2,161
Other, including donations	2/	2/	2/	8,961	8,965	2/	2/	58,488	83,953
Total other vegetable products		---	---	22,180	23,334	---	---	201,640	254,527
Total vegetable products		---	---	436,222	456,330	---	---	3,670,430	4,479,227
TOTAL AGRICULTURAL EXPORTS		---	---	499,671	511,777	---	---	4,152,423	5,087,513
TOTAL NONAGRICULTURAL EXPORTS		---	---	1,530,806	1,649,141	---	---	13,432,837	15,135,235
TOTAL EXPORTS, ALL COMMODITIES		---	---	2,030,477	2,170,268	---	---	17,592,253	20,222,748

1/ Preliminary.

2/ Reported in value only.

2/ Excludes the number of "other hides and skins," reported in value only.

Table 4.— U. S. agricultural imports for consumption: Quantity and value by commodity, March 1963 and 1964 and July-March 1962-63 and 1963-64

Commodity imported SUPPLEMENTARY	Unit	March 1/				July-March 1/			
		Quantity		Value		Quantity		Value	
		1963	1964	1,000	1,000	1962-63	1963-64	1,000	1,000
		Thousands	Thousands	dollars	dollars	Thousands	Thousands	dollars	dollars
ANIMALS AND ANIMAL PRODUCTS									
Animals, live:									
Cattle, dutiable	No.	67	51	5,078	3,340	1,012	482	92,583	39,877
Cattle, free (for breeding)	No.	1	2	557	569	12	14	4,267	4,747
Horses	No.	2/	2/	155	631	3	3	3,665	5,864
Other (including live poultry)	No.	3/	3/	45	70	3/	3/	801	553
Total animals, live				5,835	4,610			101,316	51,041
Dairy products:									
Butter	Lb.	46	45	20	30	526	536	229	261
Cheese -									
Blue-mold	Lb.	310	431	155	217	2,925	2,733	1,451	1,373
Cheddar	Lb.	55	150	25	57	1,295	1,781	401	587
Edam and Gouda	Lb.	653	560	275	265	4,958	5,028	2,168	2,255
Pecorino	Lb.	2,404	1,200	1,225	688	14,312	10,738	7,229	6,084
Swiss	Lb.	1,467	1,322	775	712	13,882	13,221	7,449	7,157
Other	Lb.	4,265	4,856	1,533	1,836	21,554	26,425	8,923	10,491
Total cheese	Lb.	9,164	8,519	3,988	3,775	58,926	59,926	27,621	27,947
Casein or lactarene	Lb.	7,250	8,455	1,256	1,441	64,660	72,899	11,617	12,953
Other	Lb.	3/	3/	219	26	3/	3/	734	1,542
Total dairy products				5,483	5,272			40,201	42,703
Hides and skins, raw (except furs):									
Calf skins	Lb.	443	132	230	30	4,015	3,694	2,002	1,227
Cattle hides	Lb.	1,947	1,230	282	242	9,740	10,664	1,582	1,372
Goat and kid skins	Lb.	2,033	1,893	1,116	1,234	17,540	18,953	9,680	12,132
Sheep and lamb skins	Lb.	9,726	9,142	3,766	4,602	33,603	38,926	13,143	18,270
Other	Lb.	3,682	2,679	1,733	1,435	25,242	26,328	12,175	11,991
Total hides and skins, raw	Lb.	17,831	15,076	7,127	7,543	90,140	98,565	38,582	44,992
Meat and meat products:									
Beef and veal -									
Fresh, chilled, or frozen	Lb.	74,818	63,216	23,678	20,063	719,021	753,497	228,785	241,465
Other	Lb.	10,579	8,217	3,355	2,660	72,638	93,087	23,452	29,524
Total beef and veal	Lb.	85,397	71,433	27,033	22,723	791,659	846,584	252,237	270,989
Mutton, goat, and lamb	Lb.	9,865	6,432	2,304	1,378	70,639	48,238	15,638	11,050
Pork -									
Fresh, chilled, or frozen	Lb.	3,472	3,322	1,359	1,173	27,306	27,799	10,722	10,266
Hams and shoulders, canned cooked	Lb.	14,283	14,164	12,403	9,857	100,830	106,012	72,566	72,866
Other	Lb.	3,488	2,191	1,850	1,288	26,020	21,683	13,703	12,311
Total pork	Lb.	21,243	19,677	13,612	12,358	154,156	155,494	96,991	95,443
Sausage casings	Lb.	3/	3/	1,486	1,421	3/	3/	12,144	12,599
Other (including meat extracts)	Lb.	7,154	5,829	1,844	1,330	61,731	61,081	16,638	4,666
Total meat and products (except poultry)				46,279	39,210			393,648	404,747
Poultry products:									
Eggs, dried, frozen, otherwise preserved	Lb.	0	2/	0	2/	2	4	2	6
Eggs in the shell	Doz.	63	362	61	144	1,508	1,810	588	844
Poultry meat	Lb.	6	10	22	77	186	242	368	512
Total poultry products				83	221			958	1,362

Continued -

Table 9.— U. S. agricultural imports for consumption: Quantity and value by commodity,
 March 1963 and 1964 and July-March 1962-63 and 1963-64 - Continued

Commodity imported	Unit	March 1/				July-March 1/			
		Quantity		Value		Quantity		Value	
		1963	1964	1,000	1,000	1962-63	1963-64	1,000	1,000
SUPPLEMENTARY									
Wool, unmanufactured (except free in bond):		Thousands	Thousands	dollars	dollars	Thousands	Thousands	dollars	dollars
40's to 56's	G.Lb.:	3,712	1,876	2,092	1,343	20,258	13,908	11,009	8,894
Finer than 56's	G.Lb.:	15,145	7,735	9,289	6,152	114,943	64,407	69,334	47,047
Other wools	G.Lb.:	3,292	2,815	2,833	2,750	19,747	21,402	15,823	19,162
Total wool, unmanufactured	G.Lb.:	22,149	12,425	14,214	10,245	154,948	99,713	96,166	75,103
Other animal products:									
Bones, hoofs, and horns, unmanufactured	---	3/	3/	256	176	3/	3/	3,052	1,757
Bristles, sorted, bunched, or prepared	Lb.:	312	290	794	880	2,280	2,623	5,770	8,977
Fats, oils, greases, edible and inedible	---	3/	3/	27	127	3/	3/	897	1,089
Feathers, crude	Lb.:	306	251	367	416	2,213	2,372	3,005	3,595
Gelatin, edible	Lb.:	932	549	460	260	6,265	5,857	3,142	2,798
Hair, unmanufactured	Lb.:	800	1,008	733	697	6,859	9,353	5,485	6,456
Honey	Lb.:	314	125	39	21	3,581	1,020	410	193
Other	---	3/	3/	998	1,160	3/	3/	7,467	7,951
Total other animal products	---	---	---	3,674	3,737	---	---	29,228	32,816
Total animals and animal products	---	---	---	82,695	70,838	---	---	700,099	652,764
VEGETABLE PRODUCTS									
Cotton, unmanufactured (480 lb.):		Bale	Bale	dollars	dollars	Bale	Bale	dollars	dollars
Cotton	Bale:	5	5	448	495	127	125	23,060	23,223
Linters	Bale:	9	15	240	380	90	140	2,607	3,280
Total cotton and linters	Bale:	14	20	688	875	217	265	25,667	26,503
Fruits and preparations:									
Apples, green or ripe (50 lb.)	Bu.:	220	215	827	569	1,328	1,475	4,791	4,802
Berries	Lb.:	8,238	14,648	1,075	32	30,410	45,372	4,133	6,871
Dates	Lb.:	450	330	56	303	31,795	39,075	3,307	3,745
Figs	Lb.:	1,149	3,692	72	55	10,089	19,564	993	1,891
Grapes (40 lb.)	Cu.Ft.:	97	20	208	144	512	293	1,185	1,185
Melons	Lb.:	29,391	33,850	1,188	1,457	55,853	55,279	2,135	2,347
Olives in brine	Gal.:	1,749	1,380	2,952	1,694	8,905	9,575	15,796	13,580
Oranges, mandarin, canned	Lb.:	3,920	6,824	785	1,393	34,923	37,140	6,777	7,637
Pineapples, canned, prepared or preserved	Lb.:	12,214	18,512	1,319	2,129	75,012	98,224	8,793	11,180
Pineapple juice	Gal.:	72	3,447	23	944	2,300	8,228	1,166	2,517
Other	---	3/	3/	2,321	4,525	3/	3/	13,767	26,004
Total fruits and preparations	---	---	---	10,826	15,192	---	---	61,951	81,759
Grains and preparations:									
Berley grain (48 lb.)	Bu.:	9	461	14	729	1,387	6,277	1,978	8,106
Berley malt	Lb.:	7,327	7,142	372	348	87,732	75,669	4,808	3,792
Corn grain (56 lb.)	Bu.:	109	60	210	235	760	758	1,484	1,418
Oats grain (32 lb.)	Bu.:	281	326	282	351	2,682	3,038	2,263	2,611
Rice	Lb.:	62	55	10	9	4,272	1,115	266	112
Rye grain (56 lb.)	Bu.:	0	41	0	62	548	355	629	517
Wheat grain for domestic use (60 lb.)	Bu.:	1,185	526	2,241	1,135	3,546	2,619	6,803	5,412
Wheat flour	Lb.:	0	15	0	1	25	27	2	1
Other	---	3/	3/	994	1,198	3/	3/	10,939	11,380
Total grains and preparations	---	---	---	4,123	3,968	---	---	29,172	33,349

Continued -

Table 9.— U. S. agricultural imports for consumption: Quantity and value by commodity, March 1963 and 1964 and July-March 1962-63 and 1963-64 - Continued

Commodity imported SUPPLEMENTARY	Unit	March 1/				July-March 1/			
		Quantity		Value		Quantity		Value	
		1963	1964	1,000 dollars	1,000 dollars	1962-63	1963-64	1,000 dollars	1,000 dollars
Nuts and preparations:									
Almonds	Lb.	66	5	47	3	163	153	91	92
Brazil nuts	Lb.	625	528	215	190	21,662	24,949	5,828	5,264
Cashew nuts	Lb.	7,194	4,927	2,516	2,109	53,045	57,504	20,400	23,302
Coconut meat, fresh, frozen, or prepared ..	Lb.	7,851	8,020	889	1,034	99,715	105,477	11,039	13,091
Pistache nuts	Lb.	546	1,366	293	771	11,323	10,375	5,253	5,693
Other	3/	3/		636	433	3/	3/	5,949	6,886
Total nuts and preparations		---	---	4,596	4,540	---	---	48,560	54,328
Oilseeds and products:									
Oils, edible and inedible -									
Cacao butter	Lb.	1,312	1,208	634	645	19,046	9,273	9,006	4,814
Carnauba wax	Lb.	1,917	1,051	845	458	8,672	9,517	3,812	3,825
Castor oil	Lb.	7,996	5,796	886	667	79,683	76,895	8,987	8,159
Coconut oil	Lb.	40,223	46,083	4,159	5,476	291,957	316,013	29,002	35,087
Olive oil, edible	Lb.	2,552	7,960	981	2,003	5,196	34,199	10,417	10,538
Palm oil	Lb.	2,595	0	233	0	17,512	6,050	1,538	599
Palm kernel oil	Lb.	5,473	2,988	669	392	63,458	54,890	6,524	6,772
Tung oil	Lb.	2,757	2,392	931	598	13,566	18,678	4,768	5,743
Other	Lb.	3,008	2,590	508	492	46,914	20,609	6,553	3,951
Total oils (except essential)	Lb.	67,833	70,068	9,846	10,731	573,004	546,124	80,607	79,488
Oilseeds -									
Copra	Lb.	31,472	25,110	2,269	1,913	495,592	423,165	32,688	31,927
Sesame seed	Lb.	4,764	3,365	641	466	16,676	15,311	2,375	2,293
Other	3/	3/		197	78	3/	3/	2,765	1,593
Total oilseeds		---	---	3,107	2,457	---	---	37,828	35,813
Protein meal (oilcake and meal)	Lb.	931	7,421	33	205	64,447	73,319	1,924	2,211
Total oilseeds and products		---	---	12,986	13,393	---	---	120,359	117,512
Sugar and related products:									
Cane sugar	S.Ton:	382	227	43,714	37,205	3,469	2,787	381,229	420,734
Molasses unfit for human consumption	Gal.	23,218	25,077	3,775	3,093	183,072	175,330	22,076	28,439
Other	3/	3/		556	457	3/	3/	3,928	5,495
Total sugar and related products		---	---	48,045	40,755	---	---	407,233	454,668
Vegetables and preparations:									
Canned mushrooms	Lb.	1,034	1,099	534	549	4,816	9,167	2,651	4,727
Canned tomatoes, tomato paste and sauce ..	Lb.	12,838	4,370	1,249	831	125,337	82,918	10,471	9,610
Fresh or dried -									
Cucumbers	Lb.	8,172	13,214	328	1,245	53,771	51,826	3,248	4,794
Garlic	Lb.	3,637	2,451	801	321	12,674	14,145	2,673	2,275
Onions	Lb.	12,915	17,692	667	911	34,999	45,809	1,877	2,363
Potatoes, white	Lb.	5,831	13,823	146	268	73,086	67,281	1,399	1,702
Potatoes, natural state	Lb.	52,733	54,324	4,551	5,808	163,529	153,714	16,550	17,050
Turnips and rutabagas	Lb.	5,821	9,751	141	203	72,642	84,477	1,514	1,745
Pickled vegetables	Lb.	1,453	1,366	218	223	9,597	10,307	1,591	1,643
Tapioca, tapioca flour, and cassava	Lb.	22,185	23,933	744	841	125,171	182,905	4,783	6,697
Other	3/	3/		2,785	2,383	3/	3/	19,164	18,811
Total vegetables and preparations		---	---	12,164	13,583	---	---	65,921	71,417

Continued -

Table 9.— U. S. agricultural imports for consumption: Quantity and value by commodity,
March 1963 and 1964 and July-March 1962-63 and 1963-64 - Continued

Commodity Imported SUPPLEMENTARY	Unit	March 1/				July-March 1/			
		Quantity		Value		Quantity		Value	
		1963	1964	1963	1964	1962-63	1963-64	1962-63	1963-64
Other vegetable products:		Thousands	Thousands	1,000 dollars	1,000 dollars	Thousands	Thousands	1,000 dollars	1,000 dollars
Feeds and fodders (except oilcake and meal):	---	3/	3/	1,268	1,890	3/	3/	9,542	14,186
Hops	Lb.	439	256	529	323	4,679	5,468	4,865	5,793
Jute and jute butts, unmanufactured	L.Ton:	10	7	1,773	1,223	53	56	8,327	8,942
Malt liquors	Gal.	1,270	1,491	1,468	1,616	11,814	12,914	13,906	14,595
Nursery and greenhouse stock	---	3/	3/	1,017	746	3/	3/	12,948	12,871
Seeds, field and garden	---	3/	3/	2,498	1,815	3/	3/	15,118	15,408
Spices	Lb.	5,014	4,386	835	784	37,916	40,258	5,505	6,497
Tobacco, unmanufactured	Lb.	13,492	12,876	7,646	8,020	120,730	121,316	71,349	74,278
Wines	Gal.	1,104	1,188	3,668	4,407	10,075	11,227	37,836	42,629
Other	---	3/	3/	735	1,185	3/	3/	6,073	8,343
Total other vegetable products	---	---	---	21,437	22,009	---	---	185,469	203,542
Total vegetable products	---	---	---	114,865	114,315	---	---	944,332	1,043,078
TOTAL SUPPLEMENTARY IMPORTS	---	---	---	197,560	185,153	---	---	1,644,431	1,695,842
COMPLEMENTARY									
Bananas	Lb.	329,651	304,904	7,302	7,343	2,411,685	2,614,526	54,795	62,875
Coffee (including into Puerto Rico)	Lb.	285,894	328,123	82,966	125,676	2,423,186	2,549,982	726,644	831,171
Coffee essences, substitutes and adulterants	Lb.	712	954	815	1,285	4,341	4,984	4,835	6,110
Cocoa or cacao beans	Lb.	65,712	65,811	13,097	15,207	445,774	413,180	68,031	95,371
Cocoa and chocolate, prepared	Lb.	11,802	11,001	1,711	1,580	77,668	98,843	14,879	16,897
Drugs, herbs, roots, etc.	---	3/	3/	2,388	1,516	3/	3/	15,684	15,714
Essential or distilled oils	---	3/	3/	2,269	1,644	3/	3/	17,902	16,345
Fibers, unmanufactured	L.Ton:	13	13	3,016	3,882	108	141	23,405	31,461
Rubber, crude	Lb.	75,841	93,510	17,938	19,427	740,368	619,923	176,855	137,911
Silk, raw	Lb.	285	567	1,963	1,904	3,917	3,679	22,219	21,400
Spices	Lb.	10,292	10,254	3,691	3,254	70,182	74,849	25,821	24,028
Tea	Lb.	14,758	12,377	6,815	5,548	99,998	94,908	46,660	43,042
Wool, unmanufactured (free in bond)	G.Lb.	21,689	10,989	10,937	7,215	153,313	147,208	74,086	66,509
Other complementary agricultural products	---	3/	3/	266	835	3/	3/	3,887	6,572
TOTAL COMPLEMENTARY IMPORTS	---	---	---	155,174	196,316	---	---	1,295,703	1,395,406
TOTAL AGRICULTURAL IMPORTS	---	---	---	352,734	381,469	---	---	2,940,134	3,091,248
TOTAL NONAGRICULTURAL IMPORTS	---	---	---	1,065,423	1,185,837	---	---	9,258,645	10,156,646
TOTAL IMPORTS, ALL COMMODITIES	---	---	---	1,418,157	1,567,306	---	---	12,198,779	13,247,894

1/ Preliminary.

2/ Less than 500.

3/ Reported in value only.

4/ Excludes the weight of "other hides and skins," reported in pieces only.

Table 13.— U. S. agricultural imports for consumption: Quantity and value by commodity,
April 1963 and 1964 and July-April 1962-63 and 1963-64

Commodity Imported SUPPLEMENTARY	Unit	April 1/				July-April 1/			
		Quantity		Value		Quantity		Value	
		1963	1964	1,000	1,000	1962-63	1963-64	1,000	1,000
		Thousands	Thousands	dollars	dollars	Thousands	Thousands	dollars	dollars
ANIMALS AND ANIMAL PRODUCTS									
Animals, live:									
Cattle, dutiable	No.	102	70	7,105	4,144	1,114	552	99,688	44,022
Cattle, free (for breeding)	No.	2	2	624	699	14	16	4,891	5,446
Horses	No.	2/	2/	470	548	3	3	4,135	6,412
Other (including live poultry)		3/	3/	88	74	3/	3/	889	625
Total animals, live		---	---	8,287	5,465	---	---	109,603	56,505
Dairy products:									
Butter	Lb.	74	52	39	26	600	588	268	287
Cheese -									
Blue-mold	Lb.	580	338	289	175	3,505	3,071	1,740	1,549
Cheddar	Lb.	264	450	72	128	1,558	2,232	473	716
Edam and Gouda	Lb.	729	464	315	209	5,687	5,493	2,483	2,464
Pecorino	Lb.	2,856	1,300	1,326	742	17,168	12,039	8,576	6,826
Swiss	Lb.	1,300	1,232	680	637	15,182	14,454	6,150	7,794
Other	Lb.	2,256	2,616	1,247	1,093	24,811	28,038	10,168	11,581
Total cheese	Lb.	8,985	6,401	3,949	2,584	67,911	66,327	21,570	20,930
Casein or lactarene	Lb.	6,526	7,442	1,164	1,307	71,186	80,341	12,781	14,260
Other		3/	3/	231	347	3/	3/	965	1,890
Total dairy products		---	---	5,282	4,664	---	---	45,584	47,517
Hides and skins, raw (except furs):									
Calf skins	Lb.	290	289	137	110	4,304	3,983	2,132	1,346
Cattle hides	Lb.	1,466	1,675	206	241	11,206	12,338	1,788	1,614
Goat and kid skins	Lb.	2,491	2,260	1,468	1,422	20,031	21,212	11,148	13,553
Sheep and lamb skins	Lb.	6,212	6,924	2,398	3,425	39,815	45,850	15,541	21,695
Other	Lb.	4,344	4,001	1,653	1,842	29,587	30,332	13,829	12,832
Total hides and skins, raw	Lb.	14,803	15,149	5,862	7,048	104,943	113,715	44,444	52,040
Meat and meat products:									
Beef and veal -									
Fresh, chilled, or frozen	Lb.	54,089	58,427	17,309	19,025	773,110	811,924	246,094	260,450
Other	Lb.	8,530	8,003	2,761	2,676	81,168	101,050	26,212	32,208
Total beef and veal	Lb.	62,619	66,430	20,070	21,701	854,278	913,014	272,306	292,658
Mutton, goat, and lamb									
Fresh, chilled, or frozen	Lb.	7,186	3,356	1,537	759	77,824	51,574	17,175	11,809
Pork -									
Fresh, chilled, or frozen	Lb.	3,105	3,416	1,143	1,288	30,411	31,215	11,865	11,554
Hams and shoulders, canned cooked	Lb.	12,293	10,287	8,769	7,065	113,123	116,298	81,335	79,932
Other	Lb.	3,286	2,627	1,613	1,469	29,307	24,311	15,317	13,778
Total pork	Lb.	18,684	16,330	11,525	9,822	172,841	171,824	108,517	105,264
Sausage casings		3/	3/	1,651	1,598	3/	3/	13,836	14,197
Other (including meat extracts)	Lb.	7,472	6,956	2,467	2,225	69,203	68,037	19,104	15,895
Total meat and products (except poultry)		---	---	37,290	35,108	---	---	430,938	439,855
Poultry products:									
Eggs, dried, frozen, otherwise preserved	Lb.	1	1	2	2/	3	5	4	6
Eggs in the shell	Doz.	53	61	97	98	1,561	1,870	684	942
Poultry meat	Lb.	4	3	6	12	190	246	375	531
Total poultry products		---	---	105	116	---	---	1,063	1,479

Continued -

Table 10.— U. S. agricultural imports for consumption: Quantity and value by commodity,
April 1963 and 1964 and July-April 1962-63 and 1963-64 - Continued

Commodity imported SUPPLEMENTARY	Unit	April 1/				July-April 1/			
		Quantity		Value		Quantity		Value	
		1963	1964	1963 1,000	1964 1,000	1962-63 Thousands	1963-64 Thousands	1962-63 1,000 dollars	1963-64 1,000 dollars
Wool, unmanufactured (except free in bond):									
40's to 56's	G.Lb.	2,405	1,257	1,376	898	22,664	15,165	12,386	9,792
Finer than 56's	G.Lb.	12,413	7,910	7,575	6,378	127,356	72,314	76,909	53,424
Other wools	G.Lb.	2,620	3,059	2,384	2,808	22,365	24,460	18,206	21,971
Total wool, unmanufactured	G.Lb.	17,438	12,226	11,335	10,085	172,385	111,939	107,501	85,187
Other animal products:									
Bones, hoofs, and horns, unmanufactured	Lb.	3/	3/	373	148	3/	3/	3,424	1,905
Bristles, sorted, bunched, or prepared	Lb.	396	194	1,337	802	2,676	2,816	7,107	9,779
Fats, oils, greases, edible and inedible	Lb.	3/	3/	40	92	3/	3/	937	1,181
Feathers, crude	Lb.	362	332	592	545	2,576	2,704	3,597	4,139
Gelatin, edible	Lb.	775	943	395	497	7,040	6,801	3,537	3,295
Hair, unmanufactured	Lb.	1,022	624	571	536	7,881	1,400	6,064	6,992
Honey	Lb.	293	380	67	55	4,075	---	477	248
Other	Lb.	3/	3/	969	982	3/	3/	8,437	8,937
Total other animal products		---	---	4,352	3,658	---	---	33,580	36,476
Total animals and animal products		---	---	72,614	66,144	---	---	772,713	718,909
VEGETABLE PRODUCTS									
Cotton, unmanufactured (480 lb.):									
Cotton	Bale	2	6	211	569	129	131	23,271	23,792
Linters	Bale	12	12	306	332	102	152	2,913	3,612
Total cotton and linters	Bale	14	18	517	901	231	283	26,184	27,404
Fruits and preparations:									
Apples, green or ripe (50 lb.)	Bu.	98	74	376	167	1,427	1,549	5,166	4,969
Berries	Lb.	9,229	10,347	1,171	1,548	39,639	55,719	5,304	8,419
Dates	Lb.	301	177	34	15	32,096	39,253	3,341	3,760
Figs	Lb.	2,017	3,816	128	331	12,106	23,380	1,120	2,223
Grapes (40 lb.)	Cu.Ft.	144	299	452	939	287	811	745	2,125
Melons	Lb.	73,222	43,243	2,414	1,853	129,075	98,522	4,550	4,200
Olives in brine	Gal.	1,429	1,411	2,452	1,778	10,335	10,985	18,248	15,357
Oranges, mandarin, canned	Lb.	5,158	6,011	1,119	1,246	40,081	43,151	7,696	8,882
Pineapples, canned, prepared or preserved	Lb.	9,287	8,752	1,039	1,057	84,299	106,976	9,832	12,236
Pineapple juice	Gal.	795	1,178	791	372	3,095	9,405	1,956	2,889
Other		3/	3/	2,574	4,364	3/	3/	16,343	30,569
Total fruits and preparations		---	---	12,550	13,870	---	---	74,501	95,627
Grains and preparations:									
Barley grain (48 lb.)	Bu.	8	1,581	12	1,919	1,395	7,858	1,990	10,025
Barley malt	Lb.	7,538	12,039	387	596	95,270	87,708	5,196	4,388
Corn grain (56 lb.)	Bu.	13	123	45	219	773	881	1,529	1,637
Oats grain (32 lb.)	Bu.	277	245	289	222	2,959	3,283	2,553	2,833
Rice	Lb.	73	34	11	7	4,345	1,149	277	119
Rye grain (56 lb.)	Bu.	0	75	0	112	548	430	625	625
Wheat grain for domestic use (60 lb.)	Bu.	638	237	1,310	505	4,184	2,856	8,114	5,917
Wheat flour	Lb.	4	0	2/	0	29	27	2	1
Other		3/	3/	922	1,087	3/	3/	11,856	12,467
Total grains and preparations		---	---	2,976	4,667	---	---	32,148	38,016

Continued -

Table 10.-- U. S. agricultural imports for consumption: Quantity and value by commodity,
April 1963 and 1964 and July-April 1962-63 and 1963-64 - Continued

Commodity imported SUPPLEMENTARY	Unit	April 1/				July-April 1/			
		Quantity		Value		Quantity		Value	
		1963	1964	1962	1964	1962-63	1963-64	1962-63	1963-64
		Thousands	Thousands	1,000 dollars	1,000 dollars	Thousands	Thousands	1,000 dollars	1,000 dollars
Nuts and preparations:									
Almonds	Lb.	13	0	10	0	176	153	102	92
Brazil nuts	Lb.	536	164	187	60	22,198	25,113	6,015	5,324
Cashew nuts	Lb.	5,456	4,656	2,110	2,029	58,500	62,159	22,509	25,331
Coconut meat, fresh, frozen, or prepared	Lb.	6,051	6,779	726	864	105,766	112,256	11,764	13,955
Pistache nuts	Lb.	1,610	660	871	373	12,933	11,055	6,124	6,065
Other	3/	3/		930	435	3/	3/	6,881	7,322
Total nuts and preparations				4,834	3,761			53,395	58,089
Oilseeds and products:									
Oils, edible and inedible -									
Cacao butter	Lb.	1,013	1,297	508	640	20,059	10,570	5,514	5,454
Carnauba wax	Lb.	943	1,524	386	683	9,615	11,041	4,197	4,508
Castor oil	Lb.	5,196	2,508	590	257	84,879	79,403	9,576	8,416
Coconut oil	Lb.	29,984	34,802	3,151	3,996	321,540	350,815	32,154	39,083
Olive oil, edible	Lb.	2,240	8,514	951	2,102	37,436	42,713	11,368	12,640
Palm oil	Lb.	3,543	0	323	0	21,056	6,050	1,860	559
Palm kernel oil	Lb.	11,732	5,231	1,424	649	72,190	60,121	7,948	7,421
Tung oil	Lb.	0	2,576	0	635	13,566	21,254	4,766	6,378
Other	Lb.	3,726	2,653	671	461	50,640	23,262	7,226	4,412
Total oils (except essential)	Lb.	58,377	59,105	8,004	9,423	631,381	605,225	88,611	88,911
Oilseeds -									
Gopra	Lb.	57,209	13,664	4,127	1,030	552,801	436,829	36,815	32,957
Sesame seed	Lb.	3,423	3,105	495	326	20,099	18,416	2,870	2,619
Other	3/	3/		203	106	3/	3/	2,968	1,659
Total oilseeds				4,825	1,462			42,653	37,235
Protein meal (oilcake and meal)	Lb.	11,900	17,965	360	460	76,347	91,284	2,284	2,671
Total oilseeds and products				13,189	11,345			133,548	128,857
Sugar and related products:									
Cane sugar	S.Ton:	376	208	45,963	32,128	3,845	2,995	427,192	452,770
Molasses unfit for human consumption	Gal.	25,115	33,615	4,394	4,330	212,187	208,945	26,470	32,769
Other	3/	3/		575	429	3/	3/	4,507	5,924
Total sugar and related products				50,936	36,887			458,169	491,463
Vegetables and preparations:									
Canned mushrooms	Lb.	2,848	1,484	1,442	749	7,664	10,651	4,084	5,476
Canned tomatoes, tomato paste and sauce	Lb.	14,534	5,101	1,471	655	135,871	88,019	11,942	10,265
Fresh or dried -									
Cucumbers	Lb.	3,216	793	173	93	56,987	52,619	3,421	4,887
Garlic	Lb.	2,032	2,292	482	327	14,706	16,437	3,155	2,601
Onions	Lb.	2,220	3,612	82	174	37,219	49,421	1,959	2,537
Potatoes, white	Lb.	10,305	41,740	260	791	83,391	109,022	1,659	2,453
Tomatoes, natural state	Lb.	51,548	53,765	2,267	5,921	215,077	207,478	18,617	22,972
Turnips and rutabagas	Lb.	1,808	8,928	35	103	74,450	93,405	1,530	1,848
Pickled vegetables	Lb.	1,643	1,273	257	200	11,239	1,580	1,848	1,843
Tapioca, tapioca flour, and cassava	Lb.	17,931	25,049	744	899	145,102	207,954	5,527	7,546
Other	3/	3/		2,366	2,112	3/	3/	21,528	20,523
Total vegetables and preparations				9,579	12,924			75,500	83,447

Continued -

Table 14— U. S. agricultural imports for consumption: Quantity and value by commodity,
April 1963 and 1964 and July-April 1962-63 and 1963-64 - Continued

Commodity Imported	Unit	April 1/				July-April 1/			
		Quantity		Value		Quantity		Value	
		1963	1964	1963	1964	1962-63	1963-64	1962-63	1963-64
SUPPLEMENTARY									
		Thousands	Thousands	dollars	dollars	Thousands	Thousands	dollars	dollars
Other vegetable products:		3/	3/	877	1,678	3/	3/	10,419	15,864
Feeds and fodders (except oilcake and meal):	Lb.	701	33	596	32	5,380	5,502	5,461	5,825
Hops	L.Ton:	8	7	1,392	1,113	61	63	9,718	10,055
Jute and jute butts, unmanufactured	Gal.	1,247	1,767	1,485	1,943	13,061	14,681	15,391	16,538
Malt liquors	Gal.			264	164	3/	3/	13,212	13,035
Nursery and greenhouse stock		3/	3/	1,932	1,454	3/	3/	17,050	16,862
Seeds, field and garden	Lb.	3,689	3,817	645	711	41,605	44,075	6,150	7,208
Spices	Lb.	13,235	14,687	7,540	9,379	133,965	136,004	78,890	83,658
Tobacco, unmanufactured	Lb.	1,274	1,331	4,538	5,260	11,349	12,558	42,374	47,888
Mines	Gal.			988	1,120	3/	3/	7,060	9,463
Other		3/	3/	20,257	22,854			205,725	226,396
Total other vegetable products								1,059,170	1,149,295
Total vegetable products				114,838	106,309			1,831,883	1,868,204
TOTAL SUPPLEMENTARY IMPORTS				187,452	172,453				
COMPLEMENTARY									
Bananas	Lb.	315,740	311,173	7,200	8,603	2,727,425	2,925,699	61,995	71,478
Coffee (including into Puerto Rico)	Lb.	297,609	325,741	90,090	131,785	2,720,795	2,875,723	816,734	572,956
Coffee essences, substitutes and adulterants	Lb.	629	422	729	595	4,969	5,406	5,564	6,704
Cocoa or cacao beans	Lb.	88,475	37,728	17,247	8,231	534,249	450,908	105,278	103,602
Cocoa and chocolate, prepared	Lb.	8,929	10,948	1,329	1,817	86,596	109,791	16,208	18,715
Drugs, herbs, roots, etc.	Lb.			1,724	1,515	3/	3/	17,408	17,229
Essential or distilled oils		3/	3/	1,686	1,491	3/	3/	19,588	17,826
Fibers, unmanufactured	L.Ton:	9	7	2,215	2,618	117	151	25,620	34,078
Rubber, crude	Lb.	81,099	64,497	19,062	13,333	821,467	684,420	195,517	151,243
Silk, raw	Lb.	259	324	1,828	1,684	4,176	4,003	24,046	23,084
Spices	Lb.	7,588	5,858	3,061	1,833	77,771	80,707	28,882	25,860
Tea	Lb.	12,276	13,982	5,824	6,135	112,273	108,890	52,484	49,177
Wool, unmanufactured (free in bond)	G.Lb.	16,719	12,186	8,408	8,199	170,032	159,394	82,493	94,708
Other complementary agricultural products		3/	3/	517	710	3/		4,406	7,284
TOTAL COMPLEMENTARY IMPORTS				160,920	188,549			1,456,627	1,583,954
TOTAL AGRICULTURAL IMPORTS				348,372	361,002			3,288,506	3,452,158
TOTAL NONAGRICULTURAL IMPORTS				1,102,519	1,194,326			10,367,164	11,351,066
TOTAL IMPORTS, A: COMMODITIES				1,456,891	1,555,330			13,655,670	14,803,224

1/ Preliminary.

2/ Less than 500.

3/ Reported in value only.

4/ Excludes the weight of "other hides and skins," reported in pieces only.

Explanatory Note

U.S. foreign agricultural trade statistics in this report include official U.S. data based on compilations of the Bureau of the Census. Agricultural commodities consist of (1) nonmarine food products and (2) other products of agriculture which have not passed through complex processes of manufacture such as raw hides and skins, fats and oils, and wine. Such manufactured products as textiles, leather, boots and shoes, cigarettes, naval stores, forestry products, and distilled alcoholic beverages are not considered agricultural.

The trade statistics exclude shipments between the 50 States and Puerto Rico, between the 50 States and the island possessions, between Puerto Rico and the island possessions, among the island possessions, and intransit through the United States from one foreign country to another when documented as such through U.S. Customs.

EXPORTS The export statistics also exclude shipments to the U.S. armed forces for their own use and supplies for vessels and planes engaged in foreign trade. Data on shipments valued at less than \$100 are not compiled by commodity and are excluded from agricultural statistics but are reflected in nonagricultural and overall export totals in this report. The agricultural export statistics include shipments under P.L. 87-195 (Act for International Development), principally sales for foreign currency; under P.L. 83-480 (Agricultural Trade Development and Assistance Act), and related laws; and involving Government payments to exporters. (USDA payments are excluded from the export value.) Separate statistics on Government program exports are compiled by USDA from data obtained from operating agencies.

The export value, the value at the port of exportation, is based on the selling price (or cost if not sold) and includes inland freight, insurance, and other charges to the port. The country of destination is the country of ultimate destination or where the commodities are to be consumed, further processed, or manufactured. When the shipper does not know the ultimate destination, the shipments are credited to the last country, as known to him at time of shipment from the United States, to which the commodities are to be shipped in their present form. Except for Canada, export shipments valued \$100-\$499 are included on the basis of sampling estimates; shipments to Canada valued \$100-\$1,999 are sampled.

IMPORTS Imports for consumption consist of commodities released from U.S. Customs custody upon arrival, or entered into bonded manufacturing warehouse, or withdrawn from bonded storage warehouse for consumption. The agricultural statistics exclude low-value shipments from countries not identified because of illegible reporting, but they are reflected in nonagricultural and overall import totals in this report.

The import value, defined generally as the market value in the foreign country, excludes import duties, ocean freight, and marine insurance. The country of origin is defined as the country where the commodities were grown or processed. Where the country of origin is not known, the imports are credited to the country of shipment.

Imports similar to agricultural commodities produced commercially in the United States and others that are interchangeable in use to any significant extent with such U.S. commodities are supplementary, or partly competitive. All other commodities are complementary, or noncompetitive.

Further explanatory material on foreign trade statistics and compilation procedures of the Bureau of the Census is contained in the publications of that agency.

END

DATE

FILMED

9-10-79

NTIS