



AgEcon SEARCH
RESEARCH IN AGRICULTURAL & APPLIED ECONOMICS

The World's Largest Open Access Agricultural & Applied Economics Digital Library

This document is discoverable and free to researchers across the globe due to the work of AgEcon Search.

Help ensure our sustainability.

Give to AgEcon Search

AgEcon Search

<http://ageconsearch.umn.edu>

aesearch@umn.edu

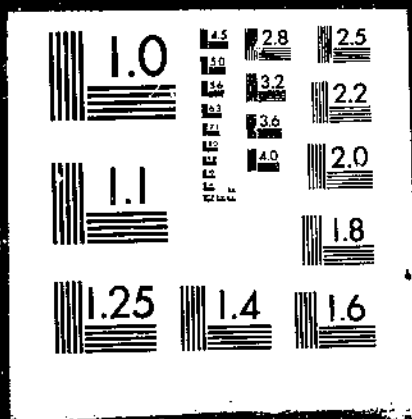
*Papers downloaded from **AgEcon Search** may be used for non-commercial purposes and personal study only. No other use, including posting to another Internet site, is permitted without permission from the copyright owner (not AgEcon Search), or as allowed under the provisions of Fair Use, U.S. Copyright Act, Title 17 U.S.C.*

USDA/FATUS-
NOV/DEC 63

FATUS/FOREIGN AGRICULTURAL TRADE OF THE UNITED STATES, 1963 NOVEMBER/DECEMBER. Wash-
ington, DC: Economic Research Service.

(NAL Call No. A286.9/Ag8)

1 OF 1 USDA-FATUS NOV-DEC



63

A286.9
A98
Cop. 2

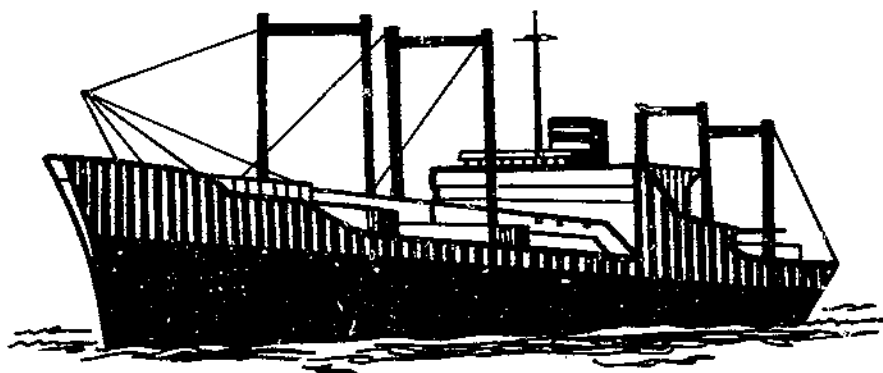
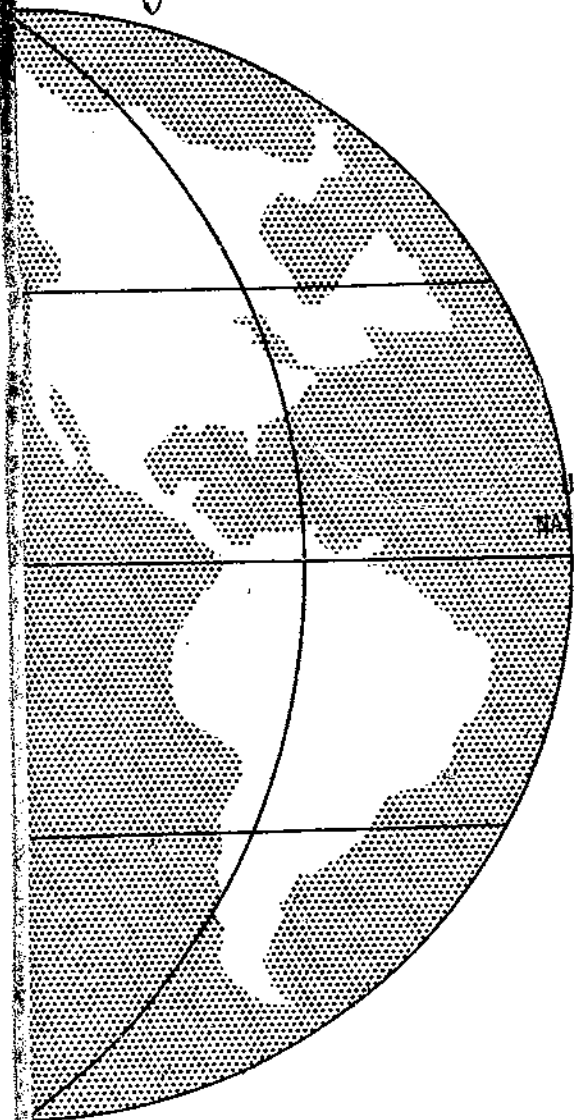
NOVEMBER-DECEMBER 1963

FOREIGN AGRICULTURAL TRADE OF THE UNITED STATES

U. S. DEPT. OF AGRICULTURE
NATIONAL AGRICULTURAL LIBRARY

JAN 20 1964

CURRENT SERIAL RECORDS



IN THIS ISSUE:

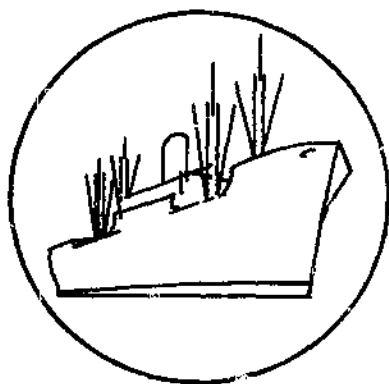
- Export Prospects in 1963-64
- Exports by Country, Calendar Years 1957-62
- Imports by Country, Calendar Years 1957-62
- Trade Statistics, July-September

Published Monthly by Economic Research Service / U.S. DEPARTMENT OF AGRICULTURE

Contents

	<u>Page</u>
Digest.....	3
U.S. Agricultural Export Prospects for Fiscal Year 1963-64.....	5
Regional Distribution of Exports.....	12
Explanatory Note.....	66
Table 1.--Exports: Value by Commodity, July-October 1962 and 1963.....	6
Table 2.--Exports to European Common Market: Value by Commodity, July-September and August-September 1961-63.....	11
Table 3.--Exports: Value by Major Area and Share of Total, 1957-62....	13
Table 4.--Exports to European Economic Community: Value by Country, 1957-62.....	14
Table 5.--Exports to European Free Trade Association: Value by Country, 1957-62.....	15
Table 6.--Exports to European Soviet Bloc: Value by Country, 1957-62..	17
Table 7.--Exports to the 10 Leading Foreign Markets: Value by Country, 1957-62.....	17
Table 8.--Exports: Value by Country, 1957-62.....	19
Table 9.--Exports: Value by Major Country and Commodity Groups, 1957-62.....	22
Table 10.--Imports: Value by Major Area and Share of Total, 1957-62...	36
Table 11.--Imports: Value by Country, Calendar Years 1957-62.....	37
Table 12.--Supplementary Imports: Value by Country, Calendar Years 1957-62.....	40
Table 13.--Complementary Imports: Value by Country, Calendar Years 1957-62.....	43
Table 14.--Imports: Value by Major Country and Commodity Groups, Calendar Years 1957-62.....	46
Table 15.--Exports: Quantity and Value by Commodity, September and July-September 1962 and 1963.....	60
Table 16.--Exports and Imports: Value by Country, July-August 1963....	64

Trade Statistics and Analysis Branch
Development and Trade Analysis Division
Economic Research Service



FOREIGN AGRICULTURAL TRADE OF THE UNITED STATES

Digest

U.S. agricultural exports are likely to advance to \$6 billion in fiscal year 1963-64 (the year ending next June 30), up sharply from the \$5.1 billion record in 1961-62 and 1962-63. The outlook is particularly favorable for exports of wheat, cotton, soybeans, dairy products, and vegetable oils. Exports of wheat are likely to total a record 1 billion bushels in response to an exceptionally strong demand in Western Europe and the Soviet Union, where wheat harvests have been poor. Cotton exports in 1963-64 will benefit from an upturn in the cotton cycle in Western Europe and Japan, reduced foreign production and stocks, and the new CCC export program that became effective August 1.

Exports of soybeans will continue to benefit from the substantial increase in demand for oils and protein meal in Western Europe and Japan. Foreign output has not been able to keep up with the rapid gain in demand for these products, and soybean supplies from Communist China will continue to be available for export in relatively small volume. A substantial part of the improvement in exports of dairy products this year will reflect butter sales for dollars from CCC stocks. Exports of edible vegetable oils are expected to top last year's 1.6 billion pounds by 300 million, with the gain likely to occur in both commercial sales for dollars and shipments under Government-financed programs.

July-October, 1963 agricultural exports were up 15 percent from a year earlier, mainly because of larger exports of wheat, cotton, soybeans, dairy products, tobacco, and animal fats. Based on the July-October rate of gain over 1962-63, agricultural exports would total \$5.8 billion for 1963-64; however, exports of a number of commodities probably will accelerate later in the year.

* * * * *

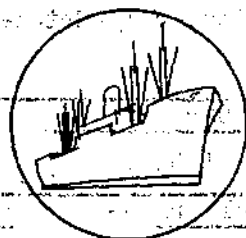
U.S. agricultural exports were valued at \$5,031 million in calendar year 1962 and \$5,030 million in 1961. The regional distribution of this trade reflected advances of \$93 million in shipments to Africa, \$21 million to Canada, and \$12 million to Oceania offset by declines of \$53 million to Latin America and \$36 million each to Europe and Asia. Agricultural exports to Africa have risen substantially since 1957, mostly under Government-financed programs. They expanded to 7 percent from 2 percent of overall U.S. farm exports during this 6-year period. About 83 percent of the exports to Africa in 1962 were under programs, especially P.L. 480 Title I sales for foreign currency, a good share of which went to UAR-Egypt.

The gradual decline in exports to Latin America over the past several years reflects to a large degree the area's relatively slow economic growth, the low level of foreign exchange reserves, and since 1961, the loss of the Cuban market. Reduced agricultural shipments to Spain, the 10th leading market -- due to smaller P.L. 480 sales of wheat and flour, feed grains, cotton, and tobacco only partly made up by increases in vegetable fats and oils -- constituted the principal development in the drop in exports to Europe as a whole in 1962. It is noteworthy that shipments to EEC, EFTA, and the European Soviet Bloc in 1962 were about the same or higher than in 1961.

The setback in exports to Asia last year reflected for the most part declines in shipments to Japan and the Philippines that were not fully offset by increases to India and Indonesia. As expected, Japan took less cotton, the principal U.S. farm product exported to that country.

NOTICE

Effective September 1963, U.S. import statistics are being compiled on the basis of the Tariff Schedules of The United States Annotated, a new commodity classification system that is not comparable with the previous Schedule A system used for many years. Until the agricultural components of this new system can be identified and tabulated, publication of agricultural import statistics in this report is suspended.



SPECIAL in this issue

U.S. AGRICULTURAL EXPORT PROSPECTS FOR FISCAL YEAR 1963-64

by

Robert L. Tontz and Dewain H. Rahe ^{1/}

Recent developments here and abroad point to a record high for U.S. agricultural exports in fiscal year 1963-64 (the year ending next June 30). Indications are that agricultural exports will advance to \$6 billion, up sharply from \$5.1 billion a year earlier. Commercial sales for dollars may advance to \$4.2 billion and account for over 70 percent of total U.S. agricultural exports in 1963-64. Exports under Government-financed programs are expected to exceed the \$1.5 billion in 1962-63.

Available information on U.S. agricultural exports for the first third (July-October) of 1963-64 shows that they were running 15 percent ahead of a year earlier. In July-October 1963, U.S. agricultural exports advanced to \$1,772 million from \$1,547 million a year earlier (table 1). The current year's figure includes actual exports of \$1,251 million for July-September and an estimate of \$521 million for October. Based on the rate of gain in July-October, U.S. agricultural exports were at an annual rate of \$5.8 billion.

The common agricultural policy (CAP) of the European Economic Community (EEC) will probably affect U.S. agricultural exports less in fiscal year 1963-64 than in 1962-63. The CAP system of variable import levies was implemented on July 30, 1962. In fiscal year 1962-63 U.S. agricultural exports to the EEC fell 10 percent from a year earlier. The United States will continue to negotiate to maintain favorable access to this important market.

The export increase this year to date resulted mainly from larger exports of wheat, cotton, soybeans, dairy products, tobacco, and animal fats. Somewhat offsetting were declines in exports of fruits and preparations, rye, and vegetable oils.

^{1/} Chief and Agricultural Economist, respectively, Trade Statistics and Analysis Branch, Development and Trade Analysis Division, Economic Research Service.

Table 1.--U.S. agricultural exports: Value by commodity, July-October 1962 and 1963

Commodity	July-October		Change
	1962	1963 ^{1/}	
	-- Million dollars --		Percent
Animals and animal products:			
Dairy products ^{2/}	43	66	+53
Fats, oils, and greases.....	44	61	+39
Hides and skins.....	30	24	-20
Meats and meat products.....	25	29	+16
Poultry products.....	26	27	+4
Other.....	19	25	+32
Total animals, etc. ^{2/}	187	232	+24
Cotton, excluding linters.....	129	160	+24
Fruits and preparations.....	111	102	-8
Grains and preparations:			
Feed grains, excluding products.....	220	220	0
Rice, milled.....	38	43	+13
Wheat and flour.....	339	439	+29
Other.....	29	22	-24
Total grains, etc.....	626	724	+16
Oilseeds and products:			
Cottonseed and soybean oils ^{3/}	59	55	-7
Soybeans.....	115	139	+21
Other.....	46	61	+33
Total oilseeds, etc. ^{3/}	220	255	+16
Tobacco, unmanufactured.....	158	172	+9
Vegetables and preparations.....	46	44	-4
Other.....	70	83	+19
Total.....	1,547	1,772	+15

^{1/} Partly estimated.

^{2/} Excludes Title III, P.L. 480 donations of butter and ghee, which are included in "Other" agricultural exports.

^{3/} Excludes Title III, P.L. 480 donations, which are included in "Other" agricultural exports.

Major gains for the fiscal year as a whole are expected in exports of wheat, cotton, soybeans, dairy products, and vegetable oils.

One factor in the expected gain is the poor wheat harvest in the Soviet Union and Western Europe. Wheat exports are likely to total a record 1 billion bushels compared with last year's 639 million and the previous record of 720 million in 1960-61.

In addition to the favorable outlook for wheat, economic activity abroad -- especially in Western Europe and Japan -- continues to advance at a high rate. Moreover, most countries that purchase U.S. agricultural commodities for dollars possess record gold and dollar holdings. U.S. cotton exports in fiscal year 1963-64 will benefit from an upturn in the cotton cycle in Western Europe and Japan as well as from reduced foreign production and stocks of raw cotton. The new CCC program that became effective on August 1 permits exports of cotton from CCC stocks at competitive prices. The United States will continue to provide agricultural commodities under Government-financed export programs to countries short of gold and dollars. Export payments will continue for a number of commodities to enable them to move into the world market at competitive prices.

Animals and animal products. Exports of animals and animal products in July-October 1963 were nearly one-fourth above the level for the same period a year earlier. They totaled \$232 million compared with \$187 million a year ago. The increase resulted mainly from substantial gains in exports of dairy products, animal fats, and meat products. A substantial part of the advance in dairy products reflected larger exports of CCC butter at competitive prices to Western Europe. Exports of meat and meat products rose mainly because of larger sales of variety meats from large U.S. supplies at relatively low prices. The volume of hides and skins shipped abroad was up sharply, but lower prices resulted in an overall decline.

Exports of animal products for fiscal year 1963-64 are expected to be considerably above the \$604 million in 1962-63. A substantial part of the improvement is likely to occur in dairy products, particularly butter sold for dollars from CCC stocks. In addition, dairy product exports under Government-financed programs to newly-developing countries will continue at the high level of recent years. The market for lard in the United Kingdom appears to be favorable, but the value of inedible tallow and greases may decline somewhat from the high level of 1962-63 because of lower export prices.

Although increased import duties on imports of variety meats into the EEC became effective in September 1963, the removal of quota restrictions by some member countries is expected to offset the effects of the increased duties. Moreover, U.S. variety meat production is high, and prices are lower.

Exports of poultry meat to West Germany, the principal market in the EEC, will likely continue to decline unless a substantial downward adjustment is made in the overall level of EEC import charges on imports from third countries (including the United States). However, moderate gains in poultry meat exports to other countries and increased shipments of eggs and egg products generally should only slightly reduce total U.S. exports of poultry and poultry products.

Cotton: Exports of cotton, excluding linters, totaled an estimated 4,818,000 running bales in July-October 1963 compared with 923,000 a year earlier. Exports for all of fiscal year 1963-64 are expected to be 5 million bales compared with 3.6 million in 1962-63. The increase this year reflects to a large degree lower cotton production in the foreign free world as well as lower stocks in exporting and importing countries. In addition, the new CCC program that became effective on August 1 permits exports of cotton from CCC stocks at competitive prices. In the previous year, the export payment of 8½ cents per pound was limited to exports from privately-held stocks. The upturn in the cotton cycle in Western Europe and Japan also is encouraging U.S. exports this season, and exports could increase further if major world importers decide to rebuild stocks above the current low levels.

Grains and preparations: Wheat exports in July-October totaled an estimated 251 million bushels compared with 185 million for the same months a year earlier. Poor crops in Western Europe and the Soviet Bloc have greatly stimulated demand for U.S. wheat and flour. Exports of wheat and flour this year may reach 1 billion bushels of which it is anticipated that about 200 million will be shipped to the Soviet Union and Eastern European Bloc nations. This year's volume would be considerably above 1962-63's 639 million bushels and the previous record of 720 million in 1961-62. Western Europe is expected to increase its purchases as adverse weather reduced both the quality and size of its harvest. Present indications are that the smaller harvest of wheat in Western Europe and the Soviet Bloc was only partly offset by increased output in other areas. The most significant increase occurred in North America where the harvest in Canada was the best ever experienced, and production exceeded the record output in 1952, more than offsetting the decline of around 90 million bushels in U.S. supplies. The expected decline in Western Europe's crop this year -- 300 million bushels less than the record output last year -- occurred mainly in France, Italy, and the United Kingdom. In France the heavy losses from the severe winter brought acreage sharply below the 1962 wheat area. Only part of the damaged acreage was resown with spring wheat. Current estimates of French acreage harvested indicate that production was 17 percent less and yields 20 percent less than in 1962.

Rice exports totaled 6.4 million bags in July-October 1963 compared with 5.9 million bags in the same months a year earlier. Much of the rise occurred under Government-financed programs, mainly in exports to the developing countries in Asia and Africa. Production declines in Asia may result in some increase in exports to this area. Exports for all of fiscal year 1963-64 are expected to be somewhat above the 24.2 million bags a year earlier. Over half of the rice exports in 1963-64 will probably move under Government-financed programs, mainly Title I of P.L. 480.

Feed grain exports totaled an estimated 4.1 million metric tons in July-October 1963 compared with 4.6 million a year earlier. Value, however, remained about the same, reflecting higher grain prices this year. Import requirements in Western Europe are less this year. Western Europe's unusually wet season during the past summer forced farmers to feed substantial quantities of the wheat harvest because of high moisture content. In addition, the wet weather improved pastures and reduced concentrate-feed requirements for dairy cattle. Furthermore, barley production was higher in the 1963 season than a year earlier. Exports for all of fiscal year 1963-64 are expected to be somewhat below the

year earlier record of over 15 million metric tons. However, U.S. exports will continue to benefit in both Western Europe and Japan from the continued expansion of livestock industries. In addition, other foreign suppliers do not have as much feed grains to export in 1963-64 as a year earlier.

Fruits and preparations. U.S. exports of fruits and preparations in July-October 1963 totaled \$102 million compared with \$111 million for the same period a year earlier. Short supplies of fresh fruits and processed citrus products will limit U.S. exports this fiscal year. However, a much larger output should increase exports of raisins. Higher prices for canned peaches and fruit cocktail weakened their U.S. competitive position, especially in Western Europe. The overall level of exports of fruits and preparations in fiscal year 1963-64 will probably be somewhat below the high level of \$280 million in 1962-63.

Oilseeds and products. Exports of oilseeds and products were larger in July-October 1963 than a year earlier. They totaled \$255 million compared with \$220 million in July-October 1962. Most of the increase resulted from a substantial gain in soybeans, protein meal, and flaxseed. The overall level of exports of oilseeds and products will likely set a new record in fiscal year 1963-64. U.S. exports will continue to benefit from the substantial increase in demand for oils and protein meal in Western Europe and Japan. Foreign output has not been able to keep up with the rapid gain in demand for these products. In addition, soybean supplies from Communist China will continue to be available for export in relatively small volume. Exports of edible vegetable oils are expected to top last year's 1.6 million pounds by 300 million pounds. This gain will likely occur in both commercial sales for dollars and shipments under Government-financed programs. The United States accounts for about one-third of world exports of vegetable oils and products, and the share may become larger in fiscal year 1963-64.

Tobacco. Exports of unmanufactured tobacco totaled an estimated 208 million pounds in July-October 1963 compared with 193 million for the same months in 1962. Exports for all of fiscal year 1963-64 are expected to be 510 million pounds, representing a gain of about 8 percent over fiscal year 1962-63. The tobacco crop in 1963 contained a much higher proportion of the qualities desired by importers than in 1962. Other developments favoring U.S. leaf exports include the smaller production in some major producing countries, the relatively low stock position of U.S. leaf in a number of the important markets, and the continued gains in cigarette smoking abroad.

Vegetables and preparations. Exports of vegetables and preparations in July-October 1963 amounted to \$44 million, slightly below the \$46 million for the like 4 months a year earlier. Exports in fiscal year 1963-64 as a whole are likely to increase somewhat, reflecting mainly an increase in dry edible beans. Bean output in Western Europe was down substantially in 1963. In addition, exports of beans under Government-financed programs are expected to be larger this fiscal year. Shipments of fresh vegetables to Canada and processed vegetables to Western Europe promise to continue at the strong rates of recent years.

Exports to the European Economic Community, July-September 1963

U.S. agricultural exports to the EEC gained 7 percent in July-September 1963 over the same 3 months a year earlier. They totaled \$261 million compared with

\$245 million a year earlier (table 2). Exports of commodities not subject to variable levies increased to \$184 million from \$156 million, reflecting a sharp increase in cotton and smaller rises in animal fats, soybeans, and tobacco. Exports of commodities subject to variable import levies were down 14 percent, with declines in feed grains and poultry meat and slight gains in wheat, wheat flour, and turkey meat.

Table 2.--U.S. agricultural exports to the European Common Market: Value by commodity, July-September and August-September 1961-63 ^{1/}

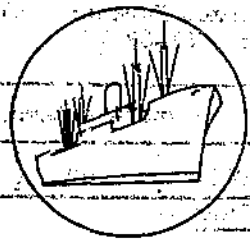
Commodity	July-September			August-September		
	1961	1962	1963	1961	1962	1963
-- 1,000 dollars --						
<u>Variable-levy commodities</u>						
Feed grains.....	37,759	66,980	51,956	29,207	44,393	29,952
Wheat grain.....	27,084	10,529	12,076	22,980	9,153	8,009
Wheat flour ^{2/}	4,707	1,365	3,028	3,090	1,280	2,667
Poultry and eggs:						
Broilers and fryers...	6,877	5,616	3,599	4,357	3,108	2,754
Stewing chickens.....	2,554	1,558	1,436	1,603	835	1,046
Turkeys.....	2,481	2,107	3,338	1,997	1,702	2,988
Other fresh poultry...	246	131	85	160	71	49
Canned poultry.....	589	319	486	467	215	336
Eggs.....	1,250	540	836	876	216	498
Total poultry and eggs.....	13,997	10,271	9,780	9,460	6,147	7,671
Total.....	83,547	89,145	76,840	64,737	60,973	48,299
<u>Nonvariable-levy commodities</u>						
Cotton, excluding linters.....	53,240	16,013	31,633	48,241	12,301	28,861
Fruits and vegetables:	20,882	28,080	28,623	13,755	21,499	19,969
Lard and tallow.....	10,290	5,638	6,671	6,796	4,186	4,489
Pork ^{3/}	107	47	42	88	27	29
Rice, milled.....	2,470	2,137	1,854	1,659	649	475
Soybeans.....	15,681	23,175	24,114	11,519	16,073	16,112
Tobacco, unmanufactured.....	29,477	32,194	33,141	22,276	17,762	21,811
Vegetable oils, expressed.....	2,043	1,508	1,377	1,362	1,332	645
Other.....	29,081	46,866	4,57,000	18,601	32,840	4,41,000
Total.....	163,271	155,658	4,184,455	124,297	106,669	4,133,391
Total.....	246,818	244,803	4,261,295	189,034	167,642	4,181,690

^{1/} The variable import levies were imposed effective July 30, 1962. Comparisons are given for August-September as well as for July-September to show the impact of these levies on U.S. agricultural exports since the levies were imposed and for the fiscal year to date.

^{2/} Exports of wheat flour to Italy include donations under Title III and III of P.L. 480.

^{3/} Although pork is a variable-levy commodity, the imposition of the levy on pork variety meats -- the kind exported by the United States -- has been postponed.

^{4/} Partly estimated.



SPECIAL in this issue

REGIONAL DISTRIBUTION OF EXPORTS

by

Alex D. Angelidis and Dewain H. Rahe ^{2/}

U.S. agricultural exports to all areas in the past 2 calendar years averaged over \$5 billion -- substantially above the \$4.1 billion average in 1957-59. Exports of \$4.5 billion in 1957, reflected to a large degree expanded sales resulting from the Suez crisis.

Since 1959 the relatively high level of agricultural exports to all areas stemmed mostly from the continued expansion of business activity in Western Europe and Japan, and record gold and dollar holdings in most trading countries of the industrialized world. Economic and financial strength in industrial economies permitted many countries to liberalize agricultural imports, especially from the dollar area. Moreover, accompanying higher income levels in Western Europe and Japan encouraged consumers in these areas to purchase larger quantities, greater varieties, and improved qualities of foods.

U.S. exports were also encouraged in no small measure by abundant supplies of agricultural products at relatively low prices in the United States. In instances where U.S. commodities were priced above the world level, competitive pricing programs were made available, especially for such commodities as cotton, wheat, feed grains, and rice. The marked shrinkage in cotton exports in 1958 and 1959 reflected in part a special situation when this raw material was not competitively priced for export and in part a substantial decrease in foreign consumption of cotton textiles.

Exports by Area

In recent years gradual shifts have taken place in the pattern of U.S. agricultural exports to the important world markets. Exports to Europe increased to \$2,265 million in 1962 from \$1,840 million in 1958, but their share of the total declined to 45 percent in 1962 from 48 percent in 1958 (table 3). In 1957, when exports to Europe were nearly as large as in 1962, that area's

^{2/} International Economist and Agricultural Economist, respectively, Trade Statistics and Analysis Branch, Development and Trade Analysis Division, ERS.

Table 3.--U.S. agricultural exports: Value by major area and share of total for calendar years 1957-62

Area	1957	1958	1959	1960	1961	1962
--Million dollars--						
Europe	2,255	1,840	1,891	2,213	2,301	2,265
Asia	1,185	1,013	975	1,461	1,431	1,395
Canada	354	344	385	432	491	512
Latin America	576	544	503	482	491	438
Africa	83	70	160	194	281	374
Oceania	54	43	35	42	35	47
Total	4,507	3,854	3,949	4,824	5,030	5,031
--Percent of total--						
Europe	50	48	48	46	46	45
Asia	26	26	25	30	28	28
Canada	8	9	9	9	10	10
Latin America	13	14	13	10	10	9
Africa	2	2	4	4	5	7
Oceania	1	1	1	1	1	1
Total	100	100	100	100	100	100

share of the total was 50 percent. Last year, one-sixth of agricultural exports to Europe moved under Government-financed programs, largely P.L. 480 Title I foreign currency sales, Title III donations, Title III barter, and Title IV long-term supply and dollar credit sales. (See FATUS October 1963 for additional information on exports under Government programs.)

Exports to Asia, on the other hand, increased in absolute as well as relative terms, but not steadily. In 1962 Asia took \$1,395 million in agricultural commodities compared with 1957's \$1,185 million while the relative growth advanced to 28 percent from 26 percent. Half of last year's shipments of agricultural commodities to Asia were made under Government-financed programs. Four-fifths of these program shipments moved under P.L. 480 Title I foreign currency sales.

Exports to Canada increased substantially during this period, but part of the growth is only apparent, since recent years' data include grains and soybeans moved north for shipment through the St. Lawrence Seaway to be stored and used to finish loading ships en route to overseas ports. Exports to Canada in 1962 totaled \$512 million (including \$90 million of intransit trade) compared with the 1957 total of \$354 million (table 3).

A gradual decline has developed in exports to Latin America. This reflects to a large degree the area's relatively slow economic growth and the low level of foreign exchange reserves, which are needed to purchase commodities from the

United States. A substantial part of the export drop came as the result of the loss of the Cuban market since 1961, when the United States embargoed most shipments to Cuba. One-third of last year's exports to Latin America was made under Government-financed programs, for the most part P.L. 480 Title I foreign currency sales, Title III donations for relief and charity, and Title III barter.

Since 1957 there has been a substantial rise in U.S. agricultural exports to Africa -- mostly under Government-financed programs. Exports to Africa climbed to \$375 million in 1962 from \$83 million in 1957, or to 7 percent from 2 percent of overall U.S. farm exports. About 83 percent of the exports to Africa in 1962 were under Government-financed programs, especially P.L. 480 Title I sales for foreign currency, a good portion of which went to UAR-Egypt.

Agricultural exports to Oceania declined relatively little since 1957. Exports to this area in 1957 totaled \$54 million; and in 1962, \$47 million. In each of the past 6 years exports were but 1 percent of the total.

Exports to the European Economic Community

U.S. agricultural exports to the EEC were nearly as high in 1962 as in 1961. Last year's exports amounted to \$1,151 million, only \$6 million less than in 1961 (table 4). The 1962 level compares with \$822 million in 1958 and \$1,094 million in 1957, when exports received unusual stimulation because of the Suez crisis.

Full EEC members are Belgium, France, Italy, Luxembourg, the Netherlands, and West Germany. Greece is an associate member. Because Belgium and Luxembourg are organized in a customs union, their trade statistics are compiled for the union and not the individual countries.

Larger Sales to Belgium, the Netherlands, and West Germany

Compared with 1961, last year's increases in exports to Belgium-Luxembourg, the Netherlands, and West Germany were more than offset by smaller shipments to France and Italy. Belgium, the ninth largest market for American farm products,

Table 4.--U.S. agricultural exports to the European Economic Community: Value by country, calendar years 1957-62

Country	1957	1958	1959	1960	1961	1962
-- Million dollars --						
Belgium and Luxembourg.....	145	103	123	137	120	132
France.....	85	87	62	128	112	86
Italy.....	214	142	117	159	236	176
Netherlands.....	238	205	319	320	318	366
West Germany.....	411	285	305	355	371	391
Total.....	1,094	822	926	1,099	1,157	1,151

last year took appreciably more feed grains, oilseeds, protein meal, and less wheat and flour and cotton. Last year's exports were at a 6-year high for feed grains, oilseeds, protein meal, vegetables, and poultry meat. The Netherlands, the fifth largest market, bought considerably more feed grains, oilseeds, and protein meal and less wheat and flour, cotton, and fats and oils. Last year's exports of feed grains, oilseeds, protein meal, vegetables and preparations, and poultry meat to the Netherlands were the largest in 6 years.

The increase in exports to West Germany, fourth ranking market, represented upsurges in shipments of feed grains, oilseeds, protein meal, fruits, vegetables, nuts, and poultry meat that were offset in part by reduced shipments of wheat and flour, cotton, and fats and oils. Six-year highs were attained for rice, feed grains, tobacco, oilseeds, protein meal, fruits, vegetables, and poultry meat.

Smaller Sales to France and Italy

France, the 15th ranking market, took notably less wheat and flour and cotton and more feed grains and protein meal. Last year, exports to France were at a 6-year peak for rice, feed grains, protein meal, vegetables, and dairy products. Increases in exports to Italy, the seventh largest taker of U.S. farm products, were in feed grains, tobacco, and oilseeds that were more than offset by big reductions in wheat and flour and cotton.

For the Common Market as a whole, larger U.S. exports of feed grains, tobacco, oilseeds, protein meal, fruits, vegetables, nuts, and poultry meat were more than offset by reductions in exports of wheat and flour, cotton, and fats and oils. Six-year highs were reached by feed grains, tobacco, oilseeds, protein meal, fruits, vegetables, and poultry meat.

Exports to the European Free Trade Association

Just as U.S. agricultural exports to the EEC changed but little from 1961 to 1962, so did U.S. exports to the European Free Trade Association (EFTA) (table 5).

Table 5.--U.S. agricultural exports to the European Free Trade Association:
Value by country, calendar years 1957-62

Country	1957	1958	1959	1960	1961	1962
-- Million dollars --						
Austria.....	32	21	18	25	20	23
Denmark.....	40	40	63	55	49	64
Norway.....	26	25	32	33	31	39
Portugal.....	20	10	7	15	20	24
Sweden.....	50	44	36	46	48	47
Switzerland.....	60	36	39	54	63	62
United Kingdom.....	501	409	425	510	431	408
Total.....	729	585	622	739	662	666

Last year's exports to EFTA amounted to \$666 million compared with 1961's \$662 million. EFTA consists of 7 full-member countries, of which the United Kingdom is by far the leading one. The other countries are Austria, Denmark, Norway, Portugal, Sweden, and Switzerland. Finland is an associate member.

Increases in exports to Austria, Denmark, Norway, Portugal, and Switzerland were not fully offset by reductions in exports to Sweden and the United Kingdom. The increase in exports to Denmark and the reduction to the United Kingdom were the important changes.

Last year's exports to the United Kingdom, the third leading market for U.S. agricultural products, were the lowest in 6 years and represented reduced takings of wheat and flour, cotton, and tobacco offset in part by increases in feed grains, oilseeds, fruits, vegetables, and animal fats and oils. Despite the drop in overall farm exports to the British market, exports were at a 6-year peak for rice, feed grains, oilseeds, fruits, nuts, and poultry meats.

The larger exports to Denmark, the 20th ranking market, were the result of increased purchases of feed grains, oilseeds, and protein meal.

For EFTA as a whole, U.S. agricultural exports in 1962 were larger for feed grains, oilseeds, protein meal, fruits, vegetables, and nuts and smaller for wheat and flour, cotton, and tobacco. Last year's exports to EFTA were at a 6-year high for oilseeds, protein meal, fruits, and vegetables.

Exports to the European Soviet Bloc

Negotiations underway for the sale of U.S. wheat and flour to the Soviet Union have stimulated interest in information on U.S. agricultural exports to the European Soviet Bloc. Agricultural exports to the Bloc in 1962 amounted to \$101 million compared with \$90 million in 1961 (table 6). By far the principal outlet in the Bloc for U.S. agricultural exports has been Poland, which is not subject to the same export control requirements as other Bloc countries. Poland receives agricultural commodities under P.L. 480. Aside from shipments to Poland, which were \$85 million in 1962 compared with \$64 million in 1961; exports to the European Soviet Bloc are negligible.

Exports to Leading Country Markets

Ten countries accounted for 59 percent of overall agricultural exports in 1962 (table 7). Seven of these countries -- Canada, Japan, United Kingdom, West Germany, the Netherlands, Italy, and Belgium -- are economically advanced while India, Egypt, and Spain are relatively less developed. Shipments to the 7 developed countries, of course, were paid for in dollars, whereas shipments to the 3 other countries moved mostly under Government-financed programs such as P.L. 480.

Shipments to Canada in 1962 included \$90 million of grains and soybeans shipped to Canada for storage and for use in finishing the loading of vessels that moved through the St. Lawrence Seaway en route to foreign ports. These commodities did not enter Canadian consumption channels. After allowing for this

Table 6.--U.S. agricultural exports to the European Soviet Bloc: Value by country, calendar years 1957-62 1/

Country	1957	1958	1959	1960	1961	1962
--Million dollars--						
Bulgaria	2/	2/	2/	2/	2/	2/
East Germany	2	3	8	1.0	2.6	1.7
Czechoslovakia	7.0	6.6	4.9	7	4.3	3.9
Hungary	3.3	6	5	5	6	2
Latvia	1.0	0	0	8	2.9	4.9
Poland and Danzig	62.6	79.2	60.7	131.1	63.9	84.5
USSR	2.4	3	1	1.9	15.2	6.1
Total	70.2	81.0	63.5	136.1	89.5	101.3

1/ Includes Estonia, Lithuania, and Albania in addition to the countries shown in this table.

2/ Less than \$50,000.

Table 7.--U.S. agricultural exports to the 10 leading (in 1962) foreign markets: Value by country, calendar years 1957-62

Country	1957	1958	1959	1960	1961	1962
--Million dollars--						
Canada	354	344	385	432	491	512
Japan	454	361	334	485	554	481
United Kingdom	501	409	425	510	431	408
West Germany	411	285	305	355	371	391
Netherlands	238	205	319	320	318	366
India	253	176	209	425	260	296
Italy	214	142	117	159	236	176
UAE-Egypt	113	15	77	99	97	171
Belgium	115	103	123	137	120	132
Spain	100	144	90	113	154	99
Total (10)	2,683	2,184	2,384	3,035	3,032	2,985
Total (All)	4,507	3,854	3,949	4,824	5,030	5,031
10/All %	60	57	60	63	60	59.3

1/ Includes \$30 million intransit commodities placed in bonded storage in Canada and used to finish loading of ships that have moved through the St. Lawrence Seaway.

2/ Includes \$70 million of such shipments.

3/ Includes \$90 million of such shipments.

special situation in the export statistics, Japan and the United Kingdom were the leading markets for U.S. agricultural exports in 1962.

Because of the distortion in U.S. export statistics resulting from the inclusion of these intransit shipments to Canada, a study has been started to determine the "true export" figures. When completed, results will be presented in this publication.

Japan was the second largest recipient of U.S. farm products in 1962. After rising in 1961 to the highest level on record, agricultural exports to Japan dropped in 1962 to a bit below the 1960 level. As expected, the reduction was primarily in exports of cotton, the principal U.S. farm product purchased by Japan. As a result, U.S. oilseeds, principally soybeans, advanced to the leading position in the Japanese market. Last year's exports of oilseeds to Japan were the highest in 6 years. This was true also of feed grains, fruits, vegetables, nuts, poultry meat, and hides and skins.

Agricultural exports to India, the sixth largest outlet for U.S. agricultural commodities, were at their highest level in 6 years in 1962. Increased shipments of wheat and flour were partly offset by reductions in cotton. Wheat and flour, rice, and cotton are the principal U.S. agricultural commodities exported to India.

U.S. agricultural exports to UAR-Egypt, which amounted to only \$13 million in 1957, attained a high of \$171 million in 1962, making it the eighth ranking outlet. The appreciable advance over the \$97 million in 1961 was made in exports of wheat and flour, feed grains, tobacco, and vegetable fats and oils. With the exception of tobacco, exports of these commodities were at the highest levels in 6 years.

Agricultural shipments to Spain, the 10th market, were considerably reduced in 1962 from 1961 because of smaller shipments of wheat and flour, feed grains, cotton, and tobacco that were only partly made up by larger shipments of vegetable fats and oils. Shipments of cotton totaled \$18,000 in 1962 compared with \$24,770,000 in 1961 and \$53,013,000 in 1958.

Regional Trade Statistics

U.S. agricultural exports by country of destination for calendar years 1957-62 are presented in table 8. Information for the 50 leading countries in 1962 is presented in table 9, where country totals for the 6-year period are supplemented with selected important commodity groupings. These figures include both commercial (dollar) sales and shipments under Government-financed programs. Separate figures have not been compiled for either of these categories, whether arranged in commodity-by-country or country-by-commodity order.

U.S. agricultural imports for calendar years 1957-62 are summarized, without analysis, in tables 10-14.

Table 8.-- U. S. agricultural exports: Value by country of destination, specified calendar years

Country of destination	Year ended December 31					
	1957	1958	1959	1960	1961	1962
	Thousand dollars					
Greenland	11	7	8	1	4	0
Canada (incl. Newfoundland & Labrador) ..	354,490	344,372	384,590	432,297	490,708	511,712
Miquelon & St. Pierre Islands	39	20	34	21	44	63
Latin American Republics:						
Mexico	103,512	106,338	61,488	55,915	60,108	63,393
Guatemala	9,117	9,484	9,547	8,587	9,509	10,499
El Salvador	5,664	5,270	5,173	5,830	5,305	7,448
Honduras	4,124	3,955	3,638	3,745	3,956	3,689
Nicaragua	3,704	3,806	2,913	2,825	3,463	4,806
Costa Rica	5,450	4,990	6,420	5,234	5,616	4,814
Panama, Republic of	12,385	10,129	9,480	9,218	10,310	10,293
Cuba	146,813	145,116	132,307	88,591	9,666	331
Haiti	8,318	7,345	7,030	6,736	7,011	8,503
Dominican Republic	5,980	5,766	5,748	4,063	2,542	9,911
Colombia	33,588	25,565	23,603	24,764	25,087	23,977
Venezuela	82,305	83,611	89,304	92,208	89,626	64,994
Ecuador	6,888	5,303	4,696	6,343	7,133	6,110
Peru	19,550	22,310	17,991	18,479	25,466	22,366
Bolivia	8,765	3,312	3,050	6,127	8,228	9,466
Chile	26,787	14,401	10,532	21,802	34,291	27,011
Brazil	40,727	40,119	46,315	44,226	112,220	94,471
Paraguay	296	90	273	793	5,247	395
Uruguay	5,756	1,227	15,945	23,616	5,698	3,682
Argentina	1,511	962	2,582	1,796	3,886	2,840
Total Latin American Republics	531,240	499,099	458,042	430,898	434,368	378,999
Other Latin America:						
Bahamas	4,423	4,540	5,790	7,368	7,693	7,821
Barbados	1,013	970	1,182	1,718	1,976	2,100
Bermuda	3,848	4,481	5,193	5,169	5,276	5,547
Jamaica	8,474	8,892	8,479	10,127	10,787	11,715
Leeward & Windward Islands	1,004	1,240	1,150	1,128	2,112	1,833
Trinidad & Tobago	6,590	7,054	6,805	8,859	10,434	11,272
British Honduras	1,194	1,362	1,438	1,716	2,077	2,080
French West Indies	181	150	286	512	631	533
Netherlands Antilles	8,869	9,531	9,632	9,032	8,757	8,712
British Guiana	2,520	2,555	2,457	3,215	3,529	3,597
Surinam (Netherlands Guiana)	1,371	1,542	1,895	2,163	2,517	2,628
French Guiana	39	7	223	82	36	49
Falkland Islands	0	0	0	1	1	0
Canal Zone	4,804	2,082	580	650	662	806
Total Latin America	575,570	543,445	503,152	482,638	490,856	437,692
Europe:						
Iceland	3,011	2,836	3,086	2,604	3,476	3,416
Sweden	50,401	44,408	36,424	46,486	48,330	46,844
Norway	25,951	24,801	31,835	32,886	30,696	38,877
Denmark	39,842	39,765	63,262	55,380	49,196	63,712
United Kingdom	500,661	409,273	425,434	509,826	430,629	407,554
Ireland (Eire)	12,743	16,493	16,637	19,658	21,672	36,802
Netherlands (Holland)	238,375	205,384	318,559	319,665	317,969	365,829
Belgium & Luxembourg	144,844	102,530	123,037	136,857	119,642	131,754
Unidentified Western Europe 1/	---	0	0	0	8	0
France	85,118	86,652	62,470	128,157	112,375	86,345
West Germany	411,412	285,464	305,222	354,905	371,200	391,131
East Germany	218	290	764	1,010	2,581	1,663
Austria	32,290	20,724	18,253	24,980	20,032	23,126
Czechoslovakia	722	558	851	655	4,273	3,896
Hungary	3,316	649	519	462	556	154

Continued -

Table 8.-- U. S. agricultural exports: Value by country of destination, specified calendar years - Continued

Country of destination	Year ended December 31					
	1957	1958	1959	1960	1961	1962
	Thousand dollars					
Europe - Continued:						
Switzerland	59,780	36,471	39,407	54,121	63,018	61,554
Finland	7,524	11,154	10,324	12,523	14,818	16,734
Estonia	0	0	0	0	0	0
Latvia	977	0	0	824	2,904	4,886
Lithuania	0	0	0	0	0	0
Poland & Danzig	62,561	79,215	60,698	131,086	63,859	84,538
U.S.S.R. (Russia)	2,400	262	142	1,903	15,180	6,128
Azores	58	64	146	29	51	556
Spain	99,746	144,418	89,922	113,100	154,266	98,733
Portugal	19,670	9,522	7,301	15,244	20,409	23,883
Gibraltar	24	1	22	10	186	1,028
Malta & Gozo	1,475	1,414	2,629	462	4,358	336
Italy	213,916	141,553	116,723	159,140	235,865	175,671
Free Territory of Trieste	4,034	1,275	930	3,056	2,351	444
Yugoslavia	128,591	94,657	102,008	34,136	86,649	86,396
Albania	0	0	0	0	0	0
Greece	46,278	24,385	15,796	16,983	34,025	17,973
Rumania	702	572	1,258	143	253	256
Bulgaria	0	20	548	52	6	6
Turkey	58,537	55,345	36,969	36,368	70,059	81,099
Cyprus 2/	---	---	---	---	---	3,821
Total Europe	2,255,177	1,840,155	1,891,176	2,212,711	2,300,892	2,265,145
Asia:						
Syrian Arab Republic	971	592	715	22,851	16,786	15,799
Lebanon	4,890	7,542	11,837	7,718	7,753	6,323
Iraq (Mesopotamia)	1,107	472	2,301	3,352	4,348	3,269
Iran (Persia)	6,213	3,926	5,197	11,550	18,339	27,848
Israel	45,359	53,617	55,179	56,575	54,340	58,005
Palestine	0	0	4	2/	22	2
Jordan	1,157	3,615	8,508	10,059	13,647	10,951
Kuwait	1,654	1,857	2,464	2,362	2,998	4,635
Saudi Arabia	8,168	6,166	5,613	7,043	8,371	10,155
Other Arabia Peninsula States	172	299	2,520	1,933	940	452
Aden	22	49	756	527	306	579
State of Bahrain	854	712	612	867	1,099	1,087
Afghanistan	1,106	1,790	2,483	639	5,162	139
India	252,900	175,949	209,073	425,250	259,799	296,149
Goa, Damao, & Diu 4/	---	---	---	---	---	0
Pakistan	59,500	65,295	56,450	99,014	95,777	91,000
Nepal	0	2	0	1	7	0
Ceylon	5,493	15,500	16,093	7,577	9,191	7,499
Burma	2,910	544	1,413	1,266	905	474
Thailand (Siam)	12,024	8,266	10,318	6,682	14,928	10,222
Viet-Nam, Laos, Cambodia (Indochina)-:	23,865	---	---	---	---	---
Viet-Nam 5/	---	18,708	20,332	22,312	25,827	36,638
Laos 5/	---	234	71	73	156	350
Cambodia 5/	---	1,316	1,571	1,843	3,029	1,309
British Malaya	4,881	---	---	---	---	---
Federation of Malaya 5/	---	1,190	1,159	2,803	5,631	7,327
Singapore, State of; Br. Borneo 5/:	---	3,359	4,024	7,005	6,542	5,732
Indonesia, Republic of	22,056	11,935	19,123	23,624	24,598	44,395
Republic of the Philippines	68,270	75,695	50,377	65,290	75,995	55,542
Macao (Macau)	101	10	61	441	588	252
Other Portuguese Asia	83	69	22	9	250	0
Other Southern & Southeastern Asia ..:	1	30	17	21	30	1
China (including Manchuria)	0	0	0	0	0	0
Outer Mongolia	0	0	0	0	0	0
North Korea	0	0	0	0	0	0
Korea, Republic of	123,191	110,835	59,688	71,463	87,010	92,407
Hong Kong	27,889	25,314	35,263	46,437	51,464	42,255
Taiwan (Formosa)	52,196	52,366	53,556	58,367	71,005	72,257

Continued -

Table 8.-- U. S. agricultural exports: Value by country of destination, specified calendar years - Continued

Country of destination	Year ended December 31					
	1957	1958	1959	1960	1961	1962
	Thousand dollars					
Asia - Continued:						
Japan	454,136	361,116	334,075	485,363	554,128	481,362
Nansei & Nanpo Islands	4,183	4,845	4,848	11,193	9,909	11,169
Total Asia	1,185,352	1,013,215	975,723	1,461,210	1,430,880	1,395,584
Australia & Oceania:						
Australia	44,958	34,050	25,236	33,433	25,900	37,695
New Guinea (Australian)	49	71	52	173	189	293
New Zealand & Western Samoa	7,178	7,510	8,217	6,740	7,694	6,707
British Western Pacific Islands	40	93	212	65	89	534
French Pacific Islands	316	367	284	457	801	879
Trust Territory of Pacific Islands ..	1,145	973	879	931	952	553
Total Australia & Oceania	53,686	43,064	34,880	41,792	35,625	46,661
Africa:						
Morocco	14,558	10,435	12,411	16,384	48,412	33,786
Algeria	3,452	587	3,725	1,573	23,859	34,334
Tunisia	3,615	3,934	4,830	11,681	32,019	33,235
Libya	2,226	1,316	5,290	5,259	3,517	1,327
United Arab Republic - Egypt	13,447	15,275	77,382	99,137	97,135	171,218
Sudan	2	7	90	320	103	3,710
Canary Islands	1,477	1,379	4,183	6,758	5,200	3,533
Other Spanish Africa	1,099	199	302	406	79	108
Federal Republic of Cameroon	333	277	276	649	487	697
Other Western Equatorial Africa	80	77	77	30	132	48
Other Western Africa	3,559	1,516	5,532	2,050	2,354	13,053
Ghana	5,677	5,656	5,772	7,165	9,084	10,952
Federation of Nigeria	7,789	7,741	7,879	8,639	7,381	6,628
British West Africa & Sierra Leone ..	749	630	625	518	523	616
Madeira Islands	756	133	486	675	493	491
Angola	968	650	746	1,148	1,380	1,700
Other Western Portuguese Africa	41	49	59	91	120	179
Liberia	3,122	2,975	3,919	3,875	4,688	6,965
Rep. of the Congo; & Ruanda-Urundi ..	5,617	4,628	3,820	4,121	10,568	21,502
Somali Republic -	---	---	---	145	146	994
Somaliland (Italian Admin.) 6/	79	32	14	---	---	---
British Somaliland 6/	1	38	0	---	---	---
Ethiopia (Abbyssinia)	158	216	3,781	2,369	2,857	2,777
French Somaliland	69	423	90	397	144	200
Seychelles & Dependencies	0	28	29	64	8	7
Mauritius & Dependencies	50	80	126	83	119	226
British East Africa & Tanganyika	167	392	550	443	6,798	8,522
Mozambique	487	1,540	1,107	1,564	2,449	1,634
Malagasy Republic	3	2	47	2	76	254
Republic of South Africa	11,683	9,118	16,001	17,393	19,991	15,035
The Fed. of Rhodesia & Nyasaland	1,790	422	606	571	601	615
Southern British Africa 7/	0	---	---	---	---	---
Total Africa	83,054	69,755	159,755	193,510	280,723	374,546
Total all countries	4,507,379	3,854,033	3,949,318	4,824,187	5,029,732	5,031,403

1/ Not available by countries.

2/ Prior to 1962 included in Malta, Gozo, & Cyprus.

3/ Less than \$500.

4/ Prior to 1962 included in Other Portuguese Asia.

5/ Not separately classified prior to 1958.

6/ Not separately classified beginning 1960.

7/ Beginning 1958 included with Union of South Africa.

Table 9.--U. S. agricultural exports: Major countries of destination by commodity groups, specified calendar years

Country and year	Total 1/	Grains and preparations			Cotton excl. linters	Tobacco, unmanufactured	Vegetable fats and oils 1/ 2/	Oilseeds	Oil-cake and meal (protein meal)
		Wheat and flour 1/	Rice, milled 1/	Feed grains 1/ 2/					
Thousand dollars									
Total									
1957	4,507,379	844,852	121,535	348,042	1,048,295	359,125	206,935	245,446	23,892
1958	3,854,033	732,837	98,615	466,018	655,869	354,394	173,567	215,704	24,174
1959	3,949,318	769,586	102,382	554,394	445,201	346,219	200,609	316,572	53,049
1960	4,824,187	1,026,174	147,537	515,115	980,335	378,443	186,280	361,339	45,362
1961	5,029,732	1,298,421	111,126	517,125	874,574	390,794	152,070	366,558	47,470
1962	5,031,403	1,133,865	152,697	788,092	527,866	373,390	204,527	428,354	90,996
Canada (1)									
1957	354,490	901	2,632	13,977	42,120	2,141	13,305	27,150	9,467
1958	344,372	402	1,878	18,181	28,181	2,467	12,474	26,743	9,064
1959	384,590	3,351	1,900	28,131	19,310	1,564	12,402	37,128	15,236
1960	432,297	12,989	2,335	31,055	44,867	2,396	14,112	42,020	11,200
1961	490,708	27,934	2,775	52,826	47,603	2,425	14,087	48,863	13,409
1962	511,712	27,415	7,274	76,136	46,702	1,712	10,421	62,078	19,859
Japan (2)									
1957	454,136	84,604	165	27,071	215,813	3,332	1,465	62,993	85
1958	361,116	71,963	98	39,421	117,370	10,410	1,294	71,881	82
1959	334,075	61,141	64	22,549	91,321	11,172	1,932	95,453	111
1960	485,363	59,481	16	12,659	215,147	17,324	3,048	104,803	51
1961	554,128	54,854	68	39,954	219,108	23,344	3,013	107,767	4,446
1962	481,362	59,188	20	73,009	110,462	22,125	2,953	111,737	326
United Kingdom (3)									
1957	500,661	51,346	1	84,018	143,147	128,394	4,819	12,174	1,704
1958	409,273	42,493	1,042	99,023	63,340	124,295	1,140	4,164	1,116
1959	425,434	33,250	2,286	125,848	32,980	111,212	1,767	8,928	1,979
1960	509,826	35,187	2,765	119,297	71,132	145,181	4,827	11,252	2,087
1961	430,629	27,818	4,129	89,632	53,011	129,409	2,890	8,579	613
1962	407,554	21,687	5,144	135,824	26,013	84,445	1,544	14,027	420
West Germany (4)									
1957	411,412	41,172	162	18,861	144,024	46,792	37,443	36,140	480
1958	285,464	36,306	1,607	30,636	48,681	59,946	6,128	22,958	670
1959	305,222	20,164	5,494	57,760	25,306	47,228	20,021	32,345	4,568
1960	354,905	11,440	2,938	52,631	75,785	50,105	27,603	38,984	4,556
1961	371,200	29,605	9,026	37,836	55,382	59,311	19,634	41,367	3,406
1962	391,131	11,834	10,534	75,236	15,036	63,417	7,879	52,568	8,615
Netherlands (5)									
1957	238,375	17,025	72	41,534	27,634	15,980	19,881	39,786	1,050
1958	205,384	15,544	532	76,777	11,788	11,567	1,358	33,476	968
1959	318,559	17,760	2,948	116,956	9,905	12,047	15,323	64,733	8,501
1960	319,665	19,164	3,241	94,137	32,429	21,080	11,566	64,480	7,350
1961	317,969	39,863	3,880	97,762	22,351	15,954	7,881	54,016	6,533
1962	365,829	29,274	2,437	136,093	11,916	16,123	4,351	66,648	16,715
India (6)									
1957	252,900	177,374	20,361	8	36,878	2,731	2	0	0
1958	175,949	144,070	116	6,977	11,366	2,923	56	0	0
1959	209,073	173,674	99	7,040	15,121	1,937	20	0	0
1960	425,250	272,259	49,418	8,777	88,374	488	20	0	1
1961	259,799	150,202	26,442	6,531	60,151	1,937	1,077	0	1
1962	296,149	206,452	30,779	3,506	37,170	2,564	42	0	67
Italy (7)									
1957	213,916	15,867	3	4,385	98,059	4,548	22,200	1,317	2,994
1958	141,553	22,081	21	2,488	59,074	5,809	9,154	2,162	4,481
1959	116,723	17,430	58	7,653	32,056	8,251	6,468	3,741	5,039
1960	159,140	26,607	240	3,792	76,652	4,245	1,492	10,274	2,685
1961	235,865	99,178	246	8,586	65,470	8,455	498	20,197	471
1962	175,671	11,452	6	41,240	39,895	12,834	741	30,839	491

Table 9.--U. S. agricultural exports: Major countries of destination by commodity groups, specified calendar years

Country and year	Fruits and preparations	Vegetables and preparations	Nuts and preparations	Animal fats and oils	Poultry meat	Other meats and products	Hides and skins	Dairy products	Other
Thousand dollars									
Total	235,101	125,089	17,412	197,595	14,224	85,635	67,572	121,212	445,417
1957	235,101	125,089	17,412	197,595	14,224	85,635	67,572	121,212	445,417
1958	255,819	125,363	11,047	151,368	17,012	54,286	55,759	187,796	274,405
1959	240,062	145,390	15,078	176,182	35,855	58,708	62,807	132,957	294,267
1960	248,695	139,946	21,068	175,774	49,656	65,317	76,410	116,964	289,772
1961	271,816	124,409	11,770	181,214	67,270	65,692	86,153	134,008	329,262
1962	285,536	147,946	15,574	147,479	75,785	61,688	82,900	130,071	384,637
Canada (1)									
1957	99,463	59,136	5,712	5,239	4,709	7,494	8,369	1,103	51,572
1958	106,957	55,175	5,123	2,657	3,960	8,980	7,192	1,113	53,825
1959	112,405	57,423	7,149	2,304	3,038	10,781	10,298	1,206	60,964
1960	110,884	62,877	5,827	4,103	6,816	16,151	8,309	1,472	54,884
1961	115,054	58,073	6,331	5,015	5,247	21,718	10,640	2,044	56,664
1962	106,117	59,355	5,241	4,501	3,732	19,739	9,422	2,012	49,998
Japan (2)									
1957	1,378	939	341	19,775	0	17	15,652	9,613	10,893
1958	948	724	787	19,055	5	17	13,464	6,163	7,434
1959	856	513	1,235	21,000	23	39	14,584	3,708	8,374
1960	2,231	1,026	934	26,190	1	573	23,530	6,013	12,336
1961	5,866	963	787	29,422	54	160	29,690	6,363	28,269
1962	8,308	1,652	1,564	16,432	269	49	31,828	9,549	32,091
United Kingdom (3)									
1957	11,352	6,807	17	24,160	1	1,504	5,262	52	26,313
1958	20,028	4,141	3	21,283	0	1,486	2,317	37	24,363
1959	19,499	14,913	426	29,440	57	2,787	1,985	6,527	31,550
1960	24,859	17,443	832	35,874	1,043	8,654	2,457	685	26,251
1961	31,268	11,124	133	31,960	1,033	8,611	2,699	627	27,093
1962	33,804	17,003	844	33,941	1,053	7,701	1,938	432	21,764
West Germany (4)									
1957	23,495	4,729	1,783	8,304	1,491	4,975	10,597	349	30,615
1958	29,455	6,207	1,185	4,324	2,397	5,599	8,017	6,506	14,842
1959	18,906	7,163	975	10,392	13,521	7,382	9,744	4,805	19,448
1960	18,714	7,959	4,077	8,168	21,415	6,440	7,687	857	16,446
1961	22,392	7,770	202	9,575	36,655	7,080	9,412	362	22,185
1962	31,127	13,392	2,266	7,382	42,099	6,223	7,521	536	35,466
Netherlands (5)									
1957	19,462	1,604	707	20,342	326	8,213	11,303	198	13,258
1958	15,334	1,454	271	12,126	893	6,550	7,676	1	9,069
1959	11,129	2,525	961	20,204	1,742	7,133	8,028	1,847	16,817
1960	11,089	2,227	899	16,886	3,344	6,654	12,791	219	12,109
1961	15,579	3,174	703	17,272	5,674	6,866	8,246	226	11,989
1962	16,195	5,448	350	12,178	7,800	6,666	10,171	191	23,273
India (6)									
1957	67	28	23	3	0	6	0	3,909	11,510
1958	20	15	1	1	0	6	0	9,901	497
1959	27	18	5	16	1	4	0	10,474	697
1960	20	43	0	3	3	5	6	4,732	1,061
1961	21	203	2	28	4	14	5	8,970	4,211
1962	21	298	3	71	8	14	104	6,813	8,237
Italy (7)									
1957	592	393	218	19,582	1	8	1,872	10,158	31,719
1958	506	408	2	21,215	12	6	1,982	5,728	6,424
1959	943	393	0	21,803	2	8	1,409	4,649	6,820
1960	1,480	417	13	17,256	8	85	2,241	3,886	7,767
1961	1,651	583	100	14,459	203	147	2,981	4,611	8,029
1962	2,767	1,596	34	13,988	284	63	1,983	3,761	13,697

Continued -

Table 9.--U. S. agricultural exports: Major countries of destination by commodity groups, specified calendar years - Continued

Country and year	Total 1/	Grains and preparations			Cotton excel. linters	Tobacco, unmanufactured	Vegetable fats and oils 1/ 3/	Oilseeds	Oil-cake and meal (protein meal)
		Wheat and flour 1/	Rice, milled 1/	Feed grains 1/ 2/					
Thousand dollars									
UAR-Egypt (8)									
1957	13,447	1,476	24	0	0	4,710	48	0	0
1958	15,275	2,122	0	0	0	5,777	7	0	0
1959	77,382	46,871	4,901	3,367	0	10,591	3,199	0	0
1960	99,137	73,545	48	3,264	0	8,683	4,649	0	0
1961	97,135	72,165	54	5,049	0	945	5,074	0	0
1962	171,218	103,720	13	20,245	0	8,595	23,598	0	13
Belgium (9)									
1957	144,844	11,611	1,715	38,927	41,912	8,413	3,759	9,176	1,391
1958	102,530	5,431	846	46,018	12,192	6,613	355	7,278	1,663
1959	123,037	5,617	2,296	57,721	8,382	10,362	223	10,100	3,346
1960	136,857	6,828	1,002	46,664	34,494	9,220	2,211	14,045	3,127
1961	119,642	12,594	1,873	42,080	18,634	8,319	575	11,979	3,516
1962	131,754	6,232	763	60,304	10,783	9,743	136	16,223	6,440
Spain (10)									
1957	99,746	1,042	0	5,518	14,543	2,051	40,361	2	19
1958	144,418	4	0	6,152	53,013	3,804	64,307	0	73
1959	89,922	0	0	9,941	21,813	4,820	43,523	0	1,846
1960	113,100	13,384	990	8,337	30,556	4	46,432	150	2,715
1961	154,266	64,574	90	25,039	24,770	2,358	23,572	15	3,068
1962	98,733	22,296	0	12,206	18	44	43,172	380	3,241
Brazil (11)									
1957	40,727	33,342	0	0	0	40	71	4	0
1958	40,119	30,263	0	0	0	323	1,497	3	0
1959	46,315	41,257	0	0	0	0	15	1	0
1960	44,226	38,926	0	0	0	165	147	8	0
1961	112,220	105,682	0	0	0	11	50	2	3
1962	94,471	77,472	12	554	0	14	134	1	0
Korea, Rep. (12)									
1957	123,191	24,020	23,499	15,283	22,227	2,117	2,302	6,251	4
1958	110,835	35,096	333	16,832	32,456	0	2,444	6,327	6
1959	59,688	15,144	374	0	26,383	0	2,820	3,139	11
1960	71,463	25,745	0	655	27,692	0	2,083	3,290	0
1961	87,010	26,289	0	10,193	35,512	0	67	2,012	6
1962	92,407	30,185	0	11,487	34,263	0	160	2,238	0
Pakistan (13)									
1957	59,500	23,798	19,536	5	5,265	2,563	2,100	0	0
1958	65,295	45,698	14,103	0	1,616	235	85	0	0
1959	56,450	36,335	7,602	5	2,092	766	8,208	0	0
1960	99,014	70,892	12,867	89	1,604	1,448	7,805	0	0
1961	95,777	70,057	6,765	78	1,492	1,816	10,968	0	0
1962	91,000	46,265	0	3,010	7,335	1,928	25,087	0	0
Yugoslavia (14)									
1957	128,591	60,888	0	0	18,497	7	5,763	1	0
1958	94,657	48,132	0	131	14,903	0	10,826	1	0
1959	102,008	61,420	19	819	18,787	0	11,635	0	116
1960	34,136	7,718	1,514	430	11,791	0	5,341	7	107
1961	86,649	50,062	649	134	15,778	0	9,430	246	41
1962	86,396	50,207	0	4,181	15,189	0	9,061	0	1,630
France (15)									
1957	85,118	13,022	2	3,059	46,646	4,819	758	6,906	73
1958	86,652	34	4	2,072	65,624	5,565	71	5,138	0
1959	62,470	5,702	40	1,627	28,819	4,255	220	8,280	851
1960	128,157	670	6	422	93,531	3,607	1,480	8,581	886
1961	112,375	10,833	1	311	71,060	4,462	71	6,388	2,348
1962	86,345	5,461	507	4,719	28,343	3,426	54	7,721	13,759

Table 9.--U. S. agricultural exports: Major countries of destination by commodity groups, specified calendar years - Continued

Country and year	Fruits and preparations	Vegetables and preparations	Nuts and preparations	Animal fats and oils	Poultry meat	Other meats and products	Hides and skins	Dairy products	Other
Thousand dollars									
UAR-Egypt (8)									
1957	23	14	1	6,220	0	1	0	267	663
1958	26	31	4	6,340	26	5	0	698	239
1959	56	54	13	4,633	189	5	0	2,210	1,293
1960	48	30	10	4,515	462	15	5	1,978	1,885
1961	60	142	10	4,389	313	10	0	3,426	5,498
1962	47	696	10	6,153	235	10	2	3,970	3,911
Belgium (9)									
1957	14,215	1,091	250	2,925	51	1,354	648	710	6,696
1958	12,233	1,057	98	2,107	59	681	288	562	5,049
1959	9,862	1,511	343	3,434	82	509	708	1,949	6,587
1960	9,026	1,193	263	2,410	22	335	666	194	5,157
1961	10,527	1,152	155	2,033	81	500	486	226	4,912
1962	10,420	1,559	112	1,230	126	662	95	177	6,749
Spain (10)									
1957	2	56	0	3,335	0	12,699	0	0	20,118
1958	5	42	0	143	2	0	4	13,598	3,271
1959	0	1,537	0	770	427	9	1	3,172	2,063
1960	13	780	5/	2,999	0	3	285	3,809	2,643
1961	38	94	0	4,933	1	3	654	2,688	2,369
1962	390	696	1	5,746	95	56	553	4,146	5,693
Brazil (11)									
1957	239	136	3	1,232	3	14	0	3,171	2,472
1958	19	515	0	15	0	10	0	4,416	3,058
1959	28	1,345	2	15	1	3	0	1,012	2,636
1960	41	474	1	21	0	5/	0	1,949	2,494
1961	40	727	0	18	2	4	0	2,743	2,938
1962	26	2,440	0	11	2	0	0	7,854	5,951
Korea, Rep. (12)									
1957	22	546	12	1,837	3	8,022	792	534	15,720
1958	36	661	1	1,666	15	58	280	5,423	9,201
1959	52	394	9	1,738	7	43	459	4,234	4,881
1960	29	308	8	1,864	9	21	370	3,687	5,702
1961	38	53	4	1,981	1	4	1,329	3,743	5,778
1962	45	155	7	2,556	2	40	1,143	3,186	5,940
Pakistan (13)									
1957	40	109	3	11	2	107	0	1,538	4,423
1958	20	28	8	322	10	132	6	2,923	109
1959	19	43	2	735	14	104	0	361	164
1960	22	46	3	2,366	12	68	0	1,529	263
1961	12	145	0	2,713	6	36	6	1,016	667
1962	50	49	3	4,413	5	118	0	1,391	1,342
Yugoslavia (14)									
1957	0	0	1	12,341	0	2	1,782	0	29,309
1958	0	0	0	4,880	0	1	1,860	13,718	205
1959	443	1,198	0	2,203	0	0	1,897	3,286	185
1960	561	609	0	1,129	0	2	706	4,065	156
1961	515	2	0	2,765	0	0	2,755	3,185	1,087
1962	413	4	1	396	0	2	1,182	2,598	1,592
France (15)									
1957	1,870	471	914	890	23	622	834	23	4,186
1958	2,234	525	22	39	12	1,134	758	171	3,249
1959	3,574	2,013	160	993	12	894	225	53	4,752
1960	5,571	703	2,250	1,860	25	1,571	645	46	6,303
1961	6,602	681	278	554	93	2,889	862	44	4,898
1962	6,223	2,650	262	436	15	3,505	790	354	8,120

Continued -

Table 9.--U. S. agricultural exports: Major countries of destination by commodity groups, specified calendar years - Continued

Country and year	Total 1/	Grains and preparations			Cotton excl. linters	Tobacco, unmanufactured	Vegetable fats and oils 1/ 2/	Oilseeds	Oil-cake and meal (protein meal)
		wheat and flour 1/	Rice, milled 1/	Feed grains 1/ 2/					
Thousand dollars									
Poland (16)									
1957	62,561	28,279	0	0	23,326	99	311	4,237	0
1958	79,215	20,346	1	12,347	25,003	0	6,579	835	0
1959	60,698	17,119	65	15,523	14,323	0	7,297	351	518
1960	131,086	75,802	1,100	23,990	15,537	1,233	6,217	0	548
1961	63,859	30,390	161	4,062	16,635	285	3,341	2,104	139
1962	84,538	29,371	3,003	14,687	20,524	0	7,550	479	0
Turkey (17)									
1957	58,537	37,642	0	4,311	30	0	4,091	0	0
1958	55,345	16,056	0	2,177	0	0	26,199	0	0
1959	36,969	621	704	0	2	0	30,443	18	0
1960	36,368	26,575	396	1,289	14	0	5,674	39	0
1961	70,059	63,217	1,373	473	4	0	2	33	0
1962	81,099	60,360	0	29	0	0	15,071	141	0
Taiwan (18)									
1957	52,196	11,785	0	0	18,745	964	4	10,021	0
1958	52,366	16,522	0	39	17,169	2,280	1,335	9,143	0
1959	53,556	15,938	0	0	20,379	1,752	601	8,468	0
1960	58,367	17,179	1,610	725	17,498	1,808	129	15,867	0
1961	71,005	19,888	282	591	26,088	2,438	522	14,047	2/
1962	72,257	19,688	0	1,775	30,643	3,086	1,054	9,317	15
Venezuela (19)									
1957	82,305	13,256	33	62	954	101	3,172	61	187
1958	83,611	13,375	33	79	166	39	2,856	258	375
1959	89,304	15,064	648	69	0	332	3,097	679	1,301
1960	92,208	15,637	1,021	83	0	1,486	3,297	742	602
1961	89,626	19,226	185	1,809	2,644	683	3,885	1,489	1,313
1962	64,994	12,203	125	1,040	79	761	3,008	1,600	796
Denmark (20)									
1957	39,842	3,877	24	624	5,005	8,987	81	14,216	1,633
1958	39,765	1,855	86	11,904	1,627	8,302	147	10,542	861
1959	63,262	2,029	69	25,218	1,281	10,691	37	15,207	3,273
1960	55,380	405	102	15,193	3,275	9,152	117	18,232	2,456
1961	49,196	139	121	6,302	3,221	10,901	75	18,268	3,225
1962	63,712	151	256	10,755	2,048	11,598	55	22,009	8,420
Mexico (21)									
1957	103,512	130	5	51,843	4	2,529	1,521	1,405	544
1958	106,338	103	42	46,755	7	3,987	5,577	1,452	672
1959	61,488	372	69	5,067	14	6,297	610	690	690
1960	55,915	289	2,040	6,103	5	3,816	772	948	1,812
1961	60,108	866	726	6,444	1	4,687	7,259	733	1,335
1962	63,393	3,268	23	11,151	43	5,228	979	817	1,414
Switzerland (22)									
1957	59,780	7,210	183	1,822	14,662	10,565	1,367	1,301	46
1958	36,471	430	273	3,029	5,542	7,797	544	1,124	37
1959	39,407	561	133	2,960	5,798	8,688	471	1,253	102
1960	54,121	2,581	337	2,689	15,346	8,829	1,426	2,246	442
1961	63,018	12,013	536	1,970	14,757	11,073	20	1,358	263
1962	61,554	9,000	745	8,251	6,684	10,379	18	2,150	2,330
Israel (23)									
1957	45,359	17,957	50	7,288	2,043	305	29	6,732	5
1958	53,617	12,723	21	13,141	2,965	198	1,916	8,343	0
1959	55,179	13,161	917	16,157	2,714	215	2,331	15,289	0
1960	56,575	14,616	1,271	17,802	2,276	333	4,168	13,603	386
1961	54,340	13,801	947	16,170	962	221	4,099	14,797	0
1962	58,005	19,809	865	15,843	1,516	379	5,339	11,010	0

Table 9.--U. S. agricultural exports: Major countries of destination by commodity groups, specified calendar years - Continued

Country and year	Fruits and preparations	Vegetables and preparations	Nuts and preparations	Animal fats and oils	Poultry meat	Other meats and products	Hides and skins	Dairy products	Other
<u>Thousand dollars</u>									
Poland (16)									
1957	0	0	0	6,061	0	0	36	5/	212
1958	206	1	0	2,959	0	2	2,621	1,821	6,494
1959	0	0	0	4,046	0	0	1,680	1,376	400
1960	23	0	0	2,825	0	0	1,459	1,610	742
1961	17	43	0	3,514	0	0	792	1,099	1,277
1962	10	194	0	4,022	0	1	386	1,001	3,310
Turkey (17)									
1957	0	7	0	3,471	2	4,496	1,392	225	2,870
1958	11	16	1	53	5/	40	1,860	2,688	6,244
1959	15	20	23	8	2,245	76	1,320	1,333	141
1960	1	3	5/	17	3	23	1,878	353	103
1961	7	85	0	48	10	14	3,134	1,484	175
1962	4	112	5	2,503	0	1	877	1,105	891
Taiwan (18)									
1957	20	9	4	2,045	0	3	249	2,450	5,897
1958	28	2	2	1,810	0	1	359	2,363	1,313
1959	3	13	3	2,371	2	4	59	2,696	1,267
1960	4	34	1	1,430	0	2	145	1,379	556
1961	149	155	1	2,377	8	4	121	3,382	952
1962	38	131	1	2,394	2	21	128	1,707	2,257
Venezuela (19)									
1957	8,479	5,535	873	1,017	71	3,241	61	20,851	24,351
1958	11,261	6,578	821	837	85	4,042	193	16,943	25,670
1959	12,079	6,786	715	1,012	122	5,269	295	17,941	23,895
1960	11,008	5,657	749	744	60	5,204	629	19,709	25,580
1961	9,072	6,538	525	1,125	34	3,170	921	14,753	22,254
1962	7,548	5,661	466	1,135	37	2,398	767	9,418	17,952
Denmark (20)									
1957	2,302	77	11	0	8	49	170	366	2,412
1958	2,761	72	66	4	5	20	165	3	1,345
1959	3,133	139	96	0	10	9	105	217	1,748
1960	3,741	352	179	3	4	30	72	5	2,062
1961	3,818	370	57	3	5	89	152	36	2,414
1962	5,250	762	84	9	7	19	69	48	2,172
Mexico (21)									
1957	2,368	3,315	879	5,479	351	1,272	3,354	4,453	21,060
1958	3,020	10,313	105	6,502	505	1,343	2,667	5,293	17,995
1959	3,083	9,580	94	2,585	516	2,120	6,236	5,430	18,035
1960	2,906	6,240	188	1,870	94	1,046	5,512	5,650	16,624
1961	2,758	3,851	296	1,967	179	1,219	4,410	6,514	16,863
1962	2,937	2,961	286	1,674	320	1,127	4,075	8,060	19,030
Switzerland (22)									
1957	6,238	3,199	2,911	1,531	2,364	394	816	468	4,703
1958	4,994	2,641	67	1,000	4,214	307	728	12	3,732
1959	4,065	2,622	433	923	6,406	355	316	3	4,318
1960	3,974	2,918	469	441	7,539	178	937	14	3,755
1961	3,696	3,195	266	911	6,771	316	1,112	71	4,690
1962	4,656	2,885	306	1,362	6,241	245	500	326	5,476
Israel (23)									
1957	423	116	3	182	30	5,486	933	1,591	2,186
1958	925	209	3	531	43	168	529	10,767	1,135
1959	351	468	11	97	26	203	313	1,869	1,057
1960	212	49	27	5/	48	132	371	121	1,160
1961	166	100	18	21	54	223	387	901	1,473
1962	180	423	1	26	45	324	304	913	1,028

Continued -

Table 9.--U. S. agricultural exports: Major countries of destination by commodity groups, specified calendar years - Continued

Country and year	Total 1/	Grains and preparations			Cotton excl. linters	Tobacco, unmanufactured	Vegetable fats and oils 1/ 2/	Oilseeds	Oil-cake and meal (protein meal)
		Wheat and flour 1/	Rice, milled 1/	Feed grains 1/ 2/					
Thousand dollars									
Philippines (24)									
1957	68,270	14,467	2,519	685	6,000	190	631	294	526
1958	75,695	20,026	8,520	5	11,595	2,804	430	207	572
1959	50,377	8,546	62	11	13,373	2,353	264	204	957
1960	65,290	12,655	1,046	7	21,293	785	299	223	1,016
1961	75,995	21,690	16	230	17,113	4,914	481	194	1,265
1962	55,542	13,104	4	69	20,936	7	332	19	690
Sweden (25)									
1957	50,401	2,241	144	354	19,250	11,660	171	0	418
1958	44,408	3,354	269	2,077	11,618	9,518	188	0	2
1959	36,424	584	380	5,717	5,919	7,827	298	24	136
1960	46,486	816	469	1,273	12,256	13,801	206	39	51
1961	48,330	886	402	506	14,386	15,429	72	2	44
1962	46,844	511	558	1,171	9,477	13,046	456	39	172
Indonesia (26)									
1957	22,056	1,950	4,351	0	6,168	7,510	16	0	0
1958	11,935	24	5,400	22	4,518	1,159	13	0	0
1959	19,123	686	11,505	17	3,361	1,666	28	0	0
1960	23,624	6,056	9,854	8	6,694	129	4	12	0
1961	24,598	1,124	13,095	8	6,435	2,129	2	0	0
1962	44,395	3,838	30,094	31	6,281	2,067	21	2	2
Hong Kong (27)									
1957	27,889	1,085	1	2	12,672	2,052	73	39	0
1958	25,314	2,261	160	3	13,038	1,797	66	86	0
1959	35,263	2,560	228	2	16,165	2,923	207	743	0
1960	46,437	1,585	2,715	5	23,703	2,410	883	497	23
1961	51,464	1,610	2,028	33	24,193	4,342	1,727	631	11
1962	42,255	1,585	20	136	11,022	4,137	6,164	936	24
Norway (28)									
1957	25,951	2,705	0	4,419	3,120	4,772	13	4,313	776
1958	24,801	4,026	0	5,227	930	5,125	24	2,459	952
1959	31,835	6,889	0	7,988	622	4,738	19	4,961	829
1960	32,886	3,814	4	7,131	2,194	5,718	29	5,853	847
1961	30,696	5,157	90	4,061	2,108	4,992	15	6,495	468
1962	38,877	4,615	128	8,268	1,523	6,138	14	7,975	1,906
Australia (29)									
1957	44,958	0	0	0	11,264	30,662	796	0	1
1958	34,050	0	0	0	9,190	21,633	755	0	0
1959	25,236	0	0	0	5,125	16,904	415	0	0
1960	33,433	0	33	0	8,916	16,558	1,147	3	223
1961	25,900	2	84	0	6,248	9,821	1,417	22	344
1962	37,695	8	146	5/	8,039	19,341	1,171	2	673
Ireland (30)									
1957	12,743	773	0	526	629	7,588	29	0	434
1958	16,493	1,414	14	522	591	10,546	0	0	428
1959	16,637	235	37	3,853	214	8,341	5/	0	739
1960	19,658	53	41	3,610	1,080	10,761	1	0	340
1961	21,672	187	54	5,212	454	11,964	1	0	314
1962	36,802	707	56	11,052	792	18,871	0	0	1,607
Viet-Nam (31) 6/									
1957	---	---	---	---	---	---	---	---	---
1958	18,708	3,743	580	754	51	2,942	458	0	0
1959	20,332	4,922	342	5	20	3,134	423	0	0
1960	22,012	4,317	2,019	3	2,036	2,204	53	0	0
1961	25,827	4,887	413	2	4,885	2,429	199	5/	0
1962	36,638	7,205	6,910	14	5,157	2,222	697	0	0

Table 9.--U. S. agricultural exports: Major countries of destination by commodity groups, specified calendar years - Continued

Country and year	Fruits and preparations	Vegetables and preparations	Nuts and preparations	Animal fats and oils	Poultry meat	Other meats and products	Hides and skins	Dairy products	Other
Thousand dollars									
Philippines (24)									
1957	2,279	2,796	62	1,369	48	2,871	348	25,709	7,476
1958	776	1,218	7	1,236	15	877	145	24,246	3,046
1959	1,031	1,595	22	1,276	2	225	421	16,399	3,656
1960	1,203	1,621	28	1,244	2	246	262	19,272	4,088
1961	2,351	2,054	34	1,514	0	133	125	20,377	3,504
1962	1,779	986	19	1,266	6	157	85	11,075	5,008
Sweden (25)									
1957	10,697	1,250	740	0	7	1,496	400	39	1,534
1958	11,813	1,643	327	109	10	1,345	544	11	1,580
1959	9,785	1,916	602	84	6	783	610	129	1,624
1960	10,672	2,360	1,047	22	15	849	897	14	1,699
1961	9,610	3,061	300	8	17	926	709	26	1,946
1962	12,967	3,615	1,350	42	5	826	330	9	2,270
Indonesia (26)									
1957	133	93	1	66	0	29	0	1,319	420
1958	33	37	10	55	2	17	0	606	39
1959	62	47	4	68	5	2	0	1,627	45
1960	53	60	8	49	11	5	0	626	55
1961	60	46	0	46	5	13	0	1,451	184
1962	28	39	7	26	17	123	0	1,588	231
Hong Kong (27)									
1957	2,398	1,015	15	42	553	687	3	413	6,839
1958	2,408	795	35	30	163	84	8	1,064	3,316
1959	3,830	994	31	68	2,257	357	12	922	3,964
1960	4,767	942	40	59	2,200	567	20	1,026	4,995
1961	5,036	1,031	46	262	3,203	689	3	1,096	5,523
1962	7,145	1,123	77	138	2,760	470	0	859	5,659
Norway (28)									
1957	4,455	204	322	114	0	151	27	0	560
1958	4,786	163	266	96	0	44	13	0	690
1959	3,721	274	261	103	0	49	117	13	1,251
1960	4,586	604	258	146	0	28	57	1	1,616
1961	4,418	487	68	222	0	70	87	3	1,955
1962	4,755	989	304	225	3	35	80	13	1,906
Australia (29)									
1957	5	27	0	0	0	4	0	1	2,158
1958	0	16	0	0	0	0	0	3	2,453
1959	5	126	6	4	0	0	6	4	2,641
1960	106	607	834	16	643	1	170	20	4,156
1961	238	2,179	303	8	285	16	156	11	4,666
1962	290	1,140	593	13	75	52	34	33	6,085
Ireland (30)									
1957	1,524	87	167	120	0	0	21	2	843
1958	2,060	99	0	29	0	1	17	12	760
1959	1,792	170	59	154	0	0	21	2	1,020
1960	2,640	73	122	15	0	23	13	7	879
1961	2,379	67	54	254	2	4	4	13	709
1962	2,376	304	17	32	3	0	6	22	957
Viet-Nam (31) 6/									
1957	---	---	---	---	---	---	---	---	---
1958	263	109	3	1	16	87	3	8,964	734
1959	172	89	0	8	18	75	0	9,084	2,040
1960	163	175	5/	12	4	51	0	9,833	1,142
1961	100	138	5/	0	4	12	0	11,362	1,396
1962	94	238	0	1	0	1	0	11,421	2,678

Continued -

Table 9.--U. S. agricultural exports: Major countries of destination by commodity groups, specified calendar years - Continued

Country and year	Total 1/	Grains and preparations			Cotton : excl. linters	Tobacco, unmanufactured	Vegetable : fats and oils 1/3/	Oilseeds	Oil-cake and meal (protein meal)
		Wheat and flour 1/	Rice, milled 1/	Feed grains 1/2/					
Thousand dollars									
Algeria (32)									
1957	3,452	0	0	4	225	604	1,909	0	0
1958	587	95	0	4	114	278	0	0	0
1959	3,725	2,836	0	0	136	340	2	0	0
1960	1,573	757	63	0	0	270	0	59	0
1961	23,859	21,650	36	776	26	255	0	0	0
1962	34,334	23,132	0	2,844	12	76	1,446	0	0
Morocco (33)									
1957	14,558	2,498	2	6	2,138	409	5,530	0	0
1958	10,435	2,032	6	5	1,767	50	3,069	558	0
1959	12,411	2,047	227	5	932	0	4,612	2,806	0
1960	16,384	5,348	600	0	1,444	38	5,731	1,313	0
1961	48,412	28,636	0	8,620	1,960	206	5,484	1,053	0
1962	33,786	20,164	0	3,471	1,654	219	2,907	1,503	0
Tunisia (34)									
1957	3,615	2,567	0	0	0	217	0	0	0
1958	3,934	2,549	4	0	0	341	0	0	0
1959	4,830	4,356	1	0	0	56	0	0	0
1960	11,681	10,237	603	223	0	265	0	0	0
1961	32,019	25,934	841	4,426	0	34	0	0	0
1962	33,235	24,960	0	3,539	0	374	2,273	0	0
Iran (35)									
1957	6,213	4,582	2	8	0	0	159	1	0
1958	3,926	1,210	1	1	0	0	84	0	0
1959	5,197	581	14	5	0	0	877	0	0
1960	11,550	3,278	721	2,680	0	0	1,814	1	0
1961	18,339	11,078	52	912	0	0	2,671	0	0
1962	27,848	14,657	8	332	8	0	7,148	5/	0
Chile (36)									
1957	26,787	7,119	1	3	10,488	103	6,167	0	0
1958	14,401	2,212	121	0	1,309	316	132	2	0
1959	10,532	2,619	628	0	1,171	251	1,505	0	0
1960	21,802	4,529	2,032	323	9,596	766	1,011	5	0
1961	34,291	14,677	1,116	948	5,972	1,372	4,032	1	0
1962	27,011	13,933	1,069	174	129	2,107	5,119	5/	0
Colombia (37)									
1957	33,588	7,318	3	6	10,218	0	4,582	135	0
1958	25,565	6,167	1	482	6,534	77	1,004	52	0
1959	23,603	7,481	1	241	1,176	44	4,988	41	3
1960	24,764	8,777	600	0	0	3	5,949	61	1
1961	25,087	9,489	1,386	2,962	0	37	372	190	0
1962	23,977	9,894	58	19	93	57	2,862	205	0
Portugal (38)									
1957	19,670	3,973	0	7	9,607	2,886	1	0	0
1958	9,522	847	0	3	2,837	3,600	3	1	15
1959	7,301	1,751	0	3	603	3,208	3	4	122
1960	15,244	5,046	1,032	4	3,466	4,641	1	0	0
1961	20,409	10,898	0	7	3,728	3,617	3	0	9
1962	23,883	14,578	0	9	1,283	4,511	2	5/	18
Austria (39)									
1957	32,290	3,170	45	13,459	8,921	1,243	240	0	0
1958	20,724	2,586	0	6,514	6,345	2,723	227	0	0
1959	18,253	2,222	4	10,818	1,708	1,673	101	0	0
1960	24,980	1,048	184	13,193	4,424	2,350	2	0	0
1961	20,032	221	41	11,241	6,464	262	8	5	0
1962	23,126	444	0	12,923	3,410	4,151	10	0	0

Table 9.--U. S. agricultural exports: Major countries of destination by commodity groups, specified calendar years - Continued

Country and year	Fruits and preparations	Vegetables and preparations	Nuts and preparations	Animal fats and oils	Poultry meat	Other meats and products	Hides and skins	Dairy products	Other
Thousand dollars									
Algeria (32)									
1957	13	2	0	0	0	1	0	0	694
1958	1	3	0	0	0	0	0	6	86
1959	0	61	0	0	0	0	0	247	103
1960	4	0	3	57	0	0	0	164	196
1961	4	3	0	0	0	27	0	641	441
1962	12	738	0	0	0	0	0	1,257	4,817
Morocco (33)									
1957	276	38	12	492	5	30	0	109	3,013
1958	116	22	10	1,051	0	4	0	1,446	299
1959	89	14	2	1,106	0	1	1	444	125
1960	163	30	3	1,399	0	0	0	138	177
1961	73	115	6	1,076	0	5	0	640	538
1962	44	136	0	1,397	0	0	0	1,029	1,262
Tunisia (34)									
1957	4	0	0	0	0	0	0	782	45
1958	0	2	0	0	0	2	0	1,029	7
1959	0	1	0	0	0	0	0	399	17
1960	5/	2	0	0	0	0	17	324	10
1961	3	70	0	0	0	0	1	512	198
1962	4	51	0	0	0	0	0	1,730	304
Iran (35)									
1957	96	80	3	354	27	59	113	462	267
1958	155	180	21	1,147	61	41	44	524	457
1959	187	92	16	2,621	59	25	0	435	285
1960	250	253	16	1,802	69	52	9	388	217
1961	82	93	9	2,024	31	10	3	752	622
1962	84	218	6	3,014	5	6	1	867	1,494
Chile (36)									
1957	43	105	16	25	10	7	10	248	2,442
1958	86	65	10	47	6	9	4	8,518	1,564
1959	54	124	12	399	5	3	40	2,468	1,253
1960	100	153	13	117	13	7	39	1,406	1,692
1961	155	301	11	372	42	6	21	1,580	3,685
1962	127	98	1	445	17	1	0	1,694	2,097
Colombia (37)									
1957	172	102	24	2,061	0	5	76	607	8,279
1958	101	123	1	1,944	2	17	16	3,954	5,090
1959	173	101	4	2,275	0	7	265	1,013	5,790
1960	92	138	17	2,214	1	10	86	1,419	5,396
1961	65	1,031	8	2,650	8	10	79	2,262	4,538
1962	35	305	5	2,233	13	9	37	2,266	5,886
Portugal (38)									
1957	7	7	0	13	0	11	113	11	3,034
1958	3	6	0	0	0	2	106	1,805	294
1959	4	17	0	1	0	20	17	1,193	355
1960	5	14	0	46	0	1	94	518	376
1961	3	8	0	47	0	62	34	1,345	648
1962	10	130	5/	8	0	23	0	1,317	1,994
Austria (39)									
1957	164	31	0	1,565	0	51	326	81	2,994
1958	304	18	1	453	0	1	312	998	242
1959	369	55	31	269	1	17	283	178	524
1960	466	102	13	29	41	0	357	218	553
1961	476	104	1	15	472	9	136	74	503
1962	722	123	1	0	800	16	124	3	394

Continued -

Table 9.—U. S. agricultural exports: Major countries of destination by commodity groups, specified calendar years - Continued

Country and year	Total 1/	Grains and preparations			Cotton excl. linters	Tobacco unmanufactured	Vegetable fats and oils 1/ 3/	Oilseeds	Oil-cake and meal (protein meal)
		Wheat and flour 1/	Rice, milled 1/	Feed grains 1/ 2/					
Thousand dollars									
Peru (40)									
1957	19,550	9,050	10	2,548	0	1	529	2	0
1958	22,310	7,901	6,539	1,307	0	176	89	0	0
1959	17,991	10,585	46	16	17	134	2,163	0	0
1960	18,479	8,113	4,368	154	130	0	917	1	4
1961	25,466	14,291	441	769	494	0	2,474	0	9
1962	22,366	11,197	168	221	147	0	3,056	2	20
Congo, Rep. (41)									
1957	5,617	3,170	12	0	0	615	21	0	0
1958	4,628	2,446	13	0	0	1,100	3	0	0
1959	3,820	2,007	32	0	0	444	7	1	0
1960	4,121	1,687	154	0	0	37	69	5/	0
1961	10,568	4,132	2,208	30	0	358	3	0	0
1962	21,502	5,520	3,909	385	0	1,577	156	0	0
Greece (42)									
1957	46,278	20,087	177	1,943	4,453	0	6,832	7	18
1958	24,385	8,861	1,100	5,778	60	0	14	48	38
1959	15,796	6,926	1,076	4,040	13	0	16	0	114
1960	16,983	5,814	612	5,668	970	0	657	1	76
1961	34,025	10,038	518	8,455	361	1	4,762	0	149
1962	17,973	4,747	228	6,157	277	0	1	0	364
Finland (43)									
1957	7,524	1,889	0	0	3,075	2,225	9	0	0
1958	11,154	3,227	0	1	2,957	2,742	5	0	0
1959	10,324	1,127	0	315	2,728	3,955	0	0	0
1960	12,523	0	0	57	4,067	2,858	274	818	0
1961	14,818	747	0	3	3,843	4,722	2	0	0
1962	16,734	0	40	3	1,269	5,822	3	2,718	0
Syrian A. Rep. (44)									
1957	971	0	0	0	0	30	250	299	0
1958	592	22	0	1	6	38	60	200	0
1959	715	150	0	76	0	0	20	209	0
1960	22,851	15,131	2	7,442	0	24	23	0	0
1961	16,786	15,728	17	693	10	29	2	48	0
1962	15,799	12,586	1,502	1,059	0	195	10	115	0
S. Africa, Rep. (45)									
1957	11,683	0	84	2	4,677	463	102	185	6
1958	9,118	1	51	0	4,151	40	54	4	0
1959	16,001	6,384	972	0	2,454	135	57	4	0
1960	17,393	31	2,751	31	6,857	75	429	0	0
1961	19,991	4	5,909	32	7,599	293	130	14	0
1962	15,035	15	6,176	35	4,164	31	109	8	0
O. W. Africa (46)									
1957	3,559	2,125	0	918	91	341	0	0	0
1958	1,516	653	6	413	0	435	0	0	0
1959	5,532	369	3,519	1,223	0	287	0	0	0
1960	2,050	184	282	736	55	166	0	0	0
1961	2,354	425	699	238	0	193	0	0	0
1962	13,053	1,265	7,933	1,536	0	315	437	0	0
Jamaica (47)									
1957	8,474	2,951	58	469	607	1	13	0	24
1958	8,832	2,338	63	877	340	41	44	0	23
1959	8,479	1,893	50	726	144	43	152	1	27
1960	10,127	1,371	470	727	628	151	171	0	14
1961	10,787	1,102	773	602	537	459	53	0	11
1962	11,715	1,226	1,028	861	155	523	56	0	17

Table 9.--U. S. agricultural exports: Major countries of destination by commodity groups, specified calendar years - Continued

Country and year	Fruits and preparations	Vegetables and preparations	Nuts and preparations	Animal fats and oils	Poultry meat	Other meats and products	Hides and skins	Dairy products	Other
Thousand dollars									
Peru (40)									
1957	969	711	91	1,305	150	124	22	1,285	2,753
1958	639	464	50	773	103	159	4	2,196	1,510
1959	338	342	52	1,360	110	96	0	1,152	1,580
1960	380	263	50	870	70	51	60	762	2,286
1961	523	346	78	1,734	112	73	7	1,528	2,587
1962	754	521	65	1,623	129	73	2	1,551	2,837
Congo, Rep. (41)									
1957	137	144	54	2	0	16	0	406	1,040
1958	93	128	44	0	1	12	0	75	713
1959	111	125	34	4	2	6	0	94	953
1960	132	319	17	0	72	280	0	565	789
1961	432	344	42	1	109	164	0	941	1,804
1962	321	771	38	1	1,038	341	22	4,203	3,220
Greece (42)									
1957	10	18	0	1,075	3	10	153	892	10,600
1958	5	31	0	158	76	6	328	6,199	1,683
1959	16	360	0	78	238	6	213	1,476	1,224
1960	38	31	0	368	289	3	367	609	1,480
1961	18	20	0	449	369	4	82	606	8,193
1962	15	148	1	231	890	9	298	935	3,672
Finland (43)									
1957	132	2	0	26	0	1	6	0	159
1958	2,042	80	0	23	0	0	26	1	50
1959	1,539	21	179	184	0	0	16	0	260
1960	3,482	73	264	101	0	0	82	2	445
1961	4,276	116	31	9	0	24	92	5/	953
1962	5,345	99	260	8	2	17	122	9	1,017
Syrian A. Rep. (44)									
1957	4	2	0	105	0	0	57	13	211
1958	2	11	2	1	0	0	58	21	170
1959	5/	1	0	5	0	0	0	235	19
1960	8	6	5/	0	0	0	51	89	75
1961	0	2	0	0	0	0	42	163	52
1962	9	21	5/	0	6	0	4	88	204
S. Africa, Rep. (45)									
1957	229	654	63	3,408	2	21	0	193	1,594
1958	167	584	24	2,412	10	16	30	162	1,412
1959	135	662	46	3,479	0	3	0	256	1,414
1960	152	541	50	4,080	5	21	14	314	2,042
1961	164	531	23	2,825	29	16	8	307	2,107
1962	120	529	33	744	25	5	5/	290	2,751
O. W. Africa (46)									
1957	2	0	0	0	0	1	0	75	6
1958	0	1	0	0	0	1	0	0	7
1959	0	1	15	20	0	0	0	48	50
1960	3	1	3	0	0	0	0	199	421
1961	9	16	0	195	1	1	0	378	199
1962	7	81	0	196	2	5	0	482	794
Jamaica (47)									
1957	261	423	8	124	250	743	0	335	2,207
1958	405	507	5	197	362	815	6	371	2,438
1959	303	543	5	224	372	740	7	229	3,020
1960	417	690	16	238	311	951	0	346	3,626
1961	473	700	8	355	300	1,264	0	474	3,676
1962	410	879	11	80	400	1,267	6	557	4,239

Continued -

Table 9.--U. S. agricultural exports: Major countries of destination by commodity groups, specified calendar years - Continued

Country and year	Total 1/	Grains and preparations			Cotton excl. linters	Tobacco, unmanufactured	Vegetable fats and oils		Oilseeds	Oil-cake and meal (protein meal)
		Wheat and flour 1/	Rice, milled 1/	Feed grains 1/ 2/			1/	2/		
Thousand dollars										
Trin. & Tobago (48)										
1957	6,590	1,913	368	9	337	480	13	0	28	
1958	7,054	1,908	480	45	308	326	7	0	7	
1959	6,805	1,280	1	257	293	499	11	0	73	
1960	8,859	1,872	12	266	199	746	12	0	55	
1961	10,434	2,632	24	460	240	649	15	0	104	
1962	11,272	2,663	752	479	174	748	27	0	94	
Nansei Is. (49)										
1957	4,183	873	17	4	0	310	177	73	0	
1958	4,845	1,036	123	5	16	269	156	3	0	
1959	4,848	863	777	13	13	275	163	216	0	
1960	11,193	1,830	3,483	277	6	73	264	928	0	
1961	9,909	1,544	2,039	2	945	222	267	666	0	
1962	11,169	1,850	3,384	3	27	157	339	1,076	0	
Ghana (50)										
1957	5,677	4,475	10	1	0	1,049	1	0	0	
1958	5,656	4,009	96	246	0	1,150	0	0	0	
1959	5,772	2,202	529	0	0	2,358	2	0	0	
1960	7,165	2,594	2,183	0	0	1,814	0	0	0	
1961	9,084	1,556	4,861	15	0	1,768	2	0	0	
1962	10,952	1,078	8,063	0	0	899	4	0	0	
Other 1/										
1957	369,686	66,247	45,264	4,073	12,821	31,526	13,818	225	2,389	
1958	323,825	66,870	54,032	7,547	5,511	22,831	10,363	256	3,067	
1959	361,345	83,504	51,265	16,652	12,228	32,451	11,608	1,555	2,561	
1960	322,083	91,272	25,947	19,214	12,316	21,197	11,718	2,854	1,701	
1961	291,997	86,846	13,654	12,050	11,939	31,163	9,786	2,977	606	
1962	266,301	75,393	17,957	12,022	7,175	27,398	7,300	1,771	858	
E. E. C. 2/										
1957	1,093,665	98,697	1,954	106,766	358,275	80,552	84,041	93,325	5,988	
1958	821,583	79,396	3,010	157,991	197,359	89,500	17,066	71,012	7,782	
1959	926,011	66,673	10,836	241,717	104,468	82,143	42,260	119,199	22,305	
1960	1,098,724	64,709	7,427	197,646	312,891	88,257	44,352	135,464	18,604	
1961	1,157,051	192,073	15,026	186,575	232,897	96,501	28,659	133,947	16,274	
1962	1,150,730	64,253	14,247	317,592	105,973	105,543	13,161	173,999	46,020	
E. F. T. A. 2/										
1957	728,595	74,522	397	104,703	203,712	168,507	6,692	32,004	4,167	
1958	584,964	55,591	1,670	127,777	92,239	161,360	2,273	18,290	1,985	
1959	621,916	47,286	2,872	178,552	48,911	148,037	2,696	30,377	6,441	
1960	738,923	48,897	4,893	160,780	112,093	189,672	6,608	37,622	5,883	
1961	662,310	57,132	5,319	113,719	97,675	175,583	3,083	34,707	4,622	
1962	665,550	50,986	6,831	177,201	50,438	134,268	2,099	46,200	13,266	

Table 9.--U. S. agricultural exports: Major countries of destination by commodity groups, specified calendar years - Continued

Country and year	Fruits and preparations	Vegetables and preparations	Nuts and preparations	Animal fats and oils	Poultry meat	Other meats and products	Hides and skins	Dairy products	Other
<u>Thousand dollars</u>									
Trin. & Tobago (48)									
1957	231	339	5	1	707	779	4	109	1,267
1958	238	517	7	7	885	734	0	24	1,561
1959	345	637	13	20	1,015	619	0	68	1,674
1960	243	771	14	58	1,234	904	0	95	2,378
1961	271	850	17	11	1,583	1,088	0	131	2,359
1962	253	784	15	5	1,598	1,034	0	151	2,495
Nansei Is. (49)									
1957	150	223	5	447	43	145	21	985	710
1958	145	234	9	331	29	94	3	1,579	843
1959	163	284	10	283	31	167	15	686	889
1960	209	239	10	514	32	157	17	1,797	1,357
1961	237	251	11	393	54	129	3	2,159	987
1962	328	349	21	240	107	212	10	1,938	1,128
Ghana (50)									
1957	10	3	0	0	25	4	0	6	93
1958	17	6	3	0	47	5	0	32	45
1959	13	20	12	0	123	17	0	47	449
1960	22	34	16	0	143	15	0	203	141
1961	30	37	8	0	218	14	0	314	261
1962	16	59	7	2	193	9	0	313	309
Other 7/									
1957	18,650	28,416	1,158	38,899	2,958	18,410	1,750	25,101	57,981
1958	18,134	27,486	1,642	31,399	2,981	19,325	1,126	13,102	38,153
1959	15,297	26,047	1,007	31,367	3,168	17,753	1,101	13,831	39,950
1960	11,882	18,456	1,496	29,344	3,593	13,903	3,097	12,647	41,446
1961	10,984	11,185	844	29,661	3,998	7,846	3,767	16,348	38,343
1962	10,910	13,350	896	13,240	5,310	8,013	7,901	14,818	41,989
E. E. C. 8/									
1957	59,634	8,288	3,872	52,043	1,892	15,172	25,254	11,438	86,474
1958	59,762	9,651	1,578	39,811	3,373	13,970	18,721	12,968	38,633
1959	44,414	13,605	2,439	56,826	15,359	15,926	20,114	13,303	54,424
1960	45,880	12,499	7,502	46,580	24,814	15,085	24,030	5,202	47,782
1961	56,751	13,360	1,438	43,893	42,706	17,482	21,987	5,469	52,013
1962	66,732	24,645	3,024	35,214	50,324	17,119	20,560	5,019	87,305
E. F. T. A. 9/									
1957	35,215	11,575	4,001	27,383	2,380	3,656	7,114	1,017	41,550
1958	44,689	8,684	730	22,945	4,229	3,205	4,185	2,866	32,246
1959	40,576	19,936	1,849	30,820	6,480	4,020	3,433	8,260	41,370
1960	48,303	23,793	2,798	36,561	8,642	3,740	4,871	1,455	36,312
1961	53,289	18,349	825	33,166	8,298	10,083	4,929	2,182	39,249
1962	62,164	25,507	2,889	35,557	8,109	8,665	3,041	2,153	35,976

- 1/ Includes food exported for relief or charity by individuals and private agencies.
 2/ Feed grains: Barley, corn, oats, and grain sorghums, excluding products.
 3/ Excludes essential oils which are included in "other".
 4/ Other commodities: Mainly feeds and fodders, field and garden seeds, coffee, hops, essential oils, sugar and related products, and live animals.
 5/ Less than \$500.
 6/ Not separately classified prior to 1958.
 7/ Values for "other countries", being residuals, are overstated because allowances were not made for cumulative effect of items under \$500 (footnote 5).
 8/ The European Economic Community (Common Market) includes the Netherlands, Belgium and Luxembourg, France, West Germany, and Italy.
 9/ The European Free Trade Association includes the United Kingdom, Denmark, Switzerland, Sweden, Norway, Austria, and Portugal.

Table 10.--U.S. agricultural imports: Value by major area and share of total, calendar years, 1957-62

Area	1957	1958	1959	1960	1961	1962
--Million dollars--						
Latin America.....	2,076	2,028	1,966	1,820	1,609	1,662
Asia.....	782	650	829	785	720	726
Europe.....	403	447	502	512	524	547
Africa.....	329	337	342	332	382	389
Oceania.....	112	153	264	207	261	364
Canada.....	219	266	196	167	194	188
Total.....	3,923	3,882	4,099	3,825	3,690	3,876
--Percent of total--						
Latin America.....	53	52	48	48	44	43
Asia.....	20	17	20	21	20	19
Europe.....	10	11	12	13	14	14
Africa.....	8	9	8	9	10	10
Oceania.....	3	4	7	5	7	9
Canada.....	6	7	5	4	5	5
Total.....	100	100	100	100	100	100

Table 11.-- U. S. agricultural imports - Value by country of origin specified calendar years

Country of origin	Year ended December 31					
	1957	1958	1959	1960	1961	1962
	Thousand dollars					
Greenland	0	8	0	0	1	0
Canada (incl. Newfoundland & Labrador) ..	218,619	265,680	195,622	167,481	193,839	188,276
Miquelon & St. Pierre Islands	0	0	0	3	0	0
Latin American Republics:						
Mexico	182,710	222,347	201,161	223,046	262,690	270,951
Guatemala	68,968	61,951	61,325	54,033	54,658	56,791
El Salvador	54,978	47,134	35,720	27,528	30,801	38,758
Honduras	23,496	25,248	21,498	29,597	27,502	27,666
Nicaragua	19,996	19,166	12,714	18,225	22,986	23,532
Costa Rica	26,710	34,877	31,528	32,992	37,547	37,519
Panama, Republic of	16,363	16,495	16,918	16,671	13,602	11,074
Cuba	404,608	451,507	407,575	298,551	29,087	15,087
Haiti	13,601	18,343	11,549	11,762	13,324	15,814
Dominican Republic	55,654	66,219	62,275	96,291	73,172	139,844
Colombia	350,312	292,669	293,767	245,172	232,587	233,977
Venezuela	34,748	42,935	25,555	22,431	19,570	16,088
Ecuador	51,403	50,441	53,898	58,599	47,417	63,052
Peru	27,503	34,445	31,036	52,177	90,970	89,181
Bolivia	1,175	1,584	1,871	1,833	1,825	1,540
Chile	4,152	4,835	5,568	4,625	4,331	5,409
Brazil	615,093	496,349	552,559	495,482	483,636	462,152
Paraguay	3,674	4,646	5,536	6,358	6,223	5,119
Uruguay	10,588	7,963	15,024	14,312	18,525	18,529
Argentina	102,184	114,144	104,424	84,513	87,554	89,584
Total Latin American Republics	2,067,916	2,013,298	1,951,501	1,794,198	1,558,007	1,621,667
Other Latin America:						
Bahamas	102	145	213	973	1,707	1,096
Barbados	1,544	956	946	813	1,095	1,382
Bermuda	26	25	34	352	157	132
Jamaica	2,992	2,524	2,991	9,932	16,105	13,927
Leeward & Windward Islands	1,030	1,389	1,341	1,515	764	1,059
Trinidad & Tobago	3,514	5,763	5,488	5,881	12,861	6,900
British Honduras	185	131	192	138	193	169
French West Indies	407	489	262	276	8,277	5,693
Netherlands Antilles	89	260	280	173	173	80
British Guiana	15	82	465	3,688	8,719	8,243
Surinam (Netherlands Guiana)	257	1,408	1,530	1,914	692	649
French Guiana	32	1,443	645	172	77	50
Falkland Islands	0	0	0	0	0	0
Canal Zone	54	285	430	413	56	181
Total Latin America	2,078,163	2,028,198	1,966,318	1,820,438	1,608,883	1,661,228
Europe:						
Iceland	1,352	1,121	1,829	1,153	435	912
Sweden	1,438	1,516	2,156	2,549	2,538	2,638
Norway	921	862	855	801	965	1,208
Denmark	31,552	42,873	44,184	44,388	49,843	59,106
United Kingdom	20,404	21,113	27,607	25,476	22,232	25,420
Ireland	3,993	11,310	21,529	22,599	25,631	27,954
Netherlands	68,281	80,591	88,471	82,292	76,399	79,887
Belgium & Luxembourg	7,050	5,789	5,832	7,709	8,501	10,235
France	37,861	37,103	39,921	43,181	52,527	48,608
West Germany	25,586	26,050	28,960	31,339	30,267	29,444
East Germany	10	9	34	9	2	8
Austria	391	537	711	674	771	874
Czechoslovakia	1,447	1,503	1,737	1,744	1,357	1,207
Hungary	380	900	1,386	801	802	430

Continued -

Table 11.-- U. S. agricultural imports - Value by country of origin
specified calendar years - Continued

Country of origin	Year ended December 31					
	1957	1958	1959	1960	1961	1962
	Thousand dollars					
Europe - Continued:						
Switzerland	11,479	9,825	10,855	11,919	12,268	12,629
Finland	341	478	812	765	798	1,017
Estonia	0	0	0	0	0	0
Latvia	0	0	0	0	0	0
Lithuania	0	0	0	13	0	0
Poland & Danzig	23,759	24,645	26,045	31,753	31,136	30,766
U.S.S.R. (Russia)	1,977	1,252	1,558	1,584	1,306	1,405
Azores	93	118	118	116	88	80
Spain	30,705	33,683	36,926	35,687	39,519	38,886
Portugal	3,275	2,929	3,021	3,430	4,379	4,167
Gibraltar	18	3	4	13	8	1/
Malta & Gozo	717	728	969	816	735	117
Italy	48,685	53,372	57,694	56,428	59,693	63,895
Free Territory of Trieste	27	90	15	84	8	13
Yugoslavia	6,983	7,364	7,354	9,242	9,360	12,447
Albania	72	16	81	58	55	113
Greece	24,325	28,519	28,632	28,961	30,166	28,093
Rumania	313	283	174	733	1,142	257
Bulgaria	413	645	836	620	1,042	977
Turkey	49,582	51,998	61,247	65,411	60,121	63,708
Cyprus 2/	---	---	---	---	---	695
Total Europe	403,430	447,225	501,553	512,398	524,094	547,196
Asia:						
Syrian Arab Republic	9,422	4,663	8,895	5,924	4,446	2,726
Lebanon	3,550	2,186	2,180	3,223	2,954	3,603
Iraq	13,524	7,801	12,249	8,355	8,047	6,440
Iran	19,399	25,433	21,196	21,753	13,874	15,039
Israel	684	571	673	789	824	933
Palestine	0	1	70	0	0	0
Jordan	0	0	0	0	17	7
Kuwait	0	2	0	0	0	0
Saudi Arabia	6	35	30	27	0	10
Other Arabia Peninsula States	3,668	3,024	863	719	695	700
Aden	163	736	326	186	112	70
State of Bahrain	0	0	0	0	0	0
Afghanistan	3,461	1,717	2,123	3,087	1,153	1,400
India	70,966	59,999	68,794	79,776	84,404	78,755
Goa, Damao, and Diu 3/	---	---	---	---	---	0
Pakistan	31,975	18,388	25,606	23,564	22,910	24,247
Nepal	0	0	0	0	0	0
Ceylon	30,898	26,187	33,610	37,692	30,301	31,768
Burma	2,588	860	1,687	188	665	676
Thailand (Siam)	80,248	53,468	78,033	48,069	33,415	33,541
Viet-Nam, Laos, Cambodia (Indochina)-:	22,307	---	---	---	---	---
Viet-Nam 4/	---	4,891	10,642	4,246	4,550	3,022
Laos 4/	---	0	43	0	0	0
Cambodia 4/	---	9,258	12,814	6,603	2,212	4,892
British Malaya	105,543	---	---	---	---	---
Federation of Malaya 4/	---	50,151	111,281	93,222	68,656	100,495
Singapore, State of; Br. Borneo 4/ ..	---	25,625	23,634	14,189	11,686	9,945
Indonesia, Republic of	128,086	95,198	118,034	131,961	93,672	71,525
Republic of the Philippines	207,022	220,291	241,970	240,809	254,680	254,073
Macao (Macau)	11	0	0	0	0	0
Other Portuguese Asia	272	363	232	770	909	145
Other Southern & Southeastern Asia ..	2	10	3	3	1	1
China (including Manchuria)	6	2	4	1	0	2
Outer Mongolia	3,284	5,259	5,337	2,070	3,105	3,591
North Korea	0	0	0	0	7	10
Korea, Republic of	1,223	820	1,480	1,721	2,925	2,368
Hong Kong	1,951	2,412	2,855	2,986	2,018	2,456
Taiwan (Formosa)	6,063	6,031	6,183	9,737	27,244	26,233

Continued -

Table 11.-- U. S. agricultural imports - Value of country by origin
specified calendar years - Continued

Country of origin	Year ended December 31					
	1957	1958	1959	1960	1961	1962
	Thousand dollars					
Asia - Continued:						
Japan	35,843	25,008	38,264	43,307	44,676	47,495
Nansei & Nanpo Islands	0	0	0	1/	1/	1/
Total Asia	782,165	650,390	829,111	784,977	720,158	726,168
Australia & Oceania:						
Australia	52,851	43,309	131,194	91,256	131,910	223,900
New Guinea (Australian)	2	49	55	518	351	1,667
New Zealand & Western Samoa	58,407	109,491	130,023	113,056	126,868	136,193
British Western Pacific Islands	46	14	72	3	20	1,397
French Pacific Islands	460	444	612	127	288	285
Trust Territory of Pacific Islands	0	52	2,493	1,989	1,494	565
Total Australia & Oceania	111,766	153,359	264,449	206,949	260,931	364,207
Africa:						
Morocco	2,751	1,479	2,218	2,416	2,882	2,214
Algeria	875	476	870	527	85	480
Tunisia	3,537	2,880	2,406	245	573	1,134
Libya	1	0	1/	18	2	1/
United Arab Republic - Egypt	15,288	14,725	12,310	13,434	15,243	13,282
Sudan	672	950	971	926	849	1,042
Canary Islands	3	44	2	0	10	26
Other Spanish Africa	106	30	97	1,072	200	1
Federal Republic of Cameroon	5,777	6,687	5,436	4,497	6,046	6,441
Other Western Equatorial Africa	599	1,057	1,471	286	292	1,091
Other Western Africa	23,487	29,174	23,826	23,155	30,127	28,807
Ghana	28,026	43,603	48,864	36,818	62,327	49,426
Federation of Nigeria	23,461	21,393	29,886	35,717	44,714	41,393
British West Africa & Sierra Leone	1,882	2,011	2,440	1,572	2,202	1,312
Madeira Islands	57	73	79	45	62	47
Angola	36,909	33,593	27,319	24,383	26,953	37,474
Other Western Portuguese Africa	1,784	1,368	1,575	499	1,877	1,193
Liberia	26,269	24,483	29,362	29,881	24,124	21,664
Rep. of the Congo: & Ruanda-Urundi	47,160	43,461	60,334	49,010	37,323	31,628
Somali Republic -	---	---	---	563	206	311
Somaliland (Italian Admin.) 5/	313	255	648	---	---	---
British Somaliland 5/	86	236	275	---	---	---
Ethiopia	32,319	28,214	15,210	26,217	30,620	28,212
French Somaliland	36	146	387	524	230	564
Seychelles & Dependencies	29	175	129	69	87	103
Mauritius & Dependencies	4	73	16	3	846	2,862
British East Africa & Tanganyika	43,679	45,860	39,564	44,167	50,395	53,783
Mozambique	2,531	2,023	2,301	3,038	3,703	3,861
Malagasy Republic	18,210	15,884	10,634	12,596	11,758	14,565
Republic of South Africa	13,158	15,398	22,687	19,978	27,648	44,153
The Fed. of Rhodesia & Nyasaland	116	1,548	509	740	1,038	1,429
Southern British Africa 6/	0	---	---	---	---	---
Total Africa	329,125	337,299	341,826	332,401	382,422	388,492
Total all countries	3,923,268	3,882,159	4,098,879	3,824,647	3,690,328	3,875,567

1/ Less than \$500.

2/ Prior to 1962 included in Malta, Gozo & Cyprus.

3/ Prior to 1962 included in Other Portuguese Asia.

4/ Not separately classified prior to 1958.

5/ Not separately classified beginning 1960.

6/ Beginning 1958 included with Union of South Africa.

Table 12.--U.S. complementary agricultural imports: Value by country of origin, specified calendar years

Country of origin	Year ended December 31					
	1957	1958	1959	1960	1961	1962
	Thousand dollars					
Greenland	0	0	0	0	0	0
Canada (incl. Newfoundland & Labrador) ..	2,622	2,510	2,691	2,817	3,057	4,438
Miquelon & St. Pierre Islands	0	0	0	3	0	0
Latin American Republics:						
Mexico	107,882	90,770	74,027	68,101	76,236	80,383
Guatemala	68,730	61,838	61,169	53,804	52,519	47,371
El Salvador	54,351	46,361	35,245	26,452	29,348	36,088
Honduras	23,155	24,832	20,709	27,938	24,881	23,977
Nicaragua	17,197	15,365	7,665	8,740	12,159	12,050
Costa Rica	26,233	34,077	27,687	26,140	31,115	31,995
Panama, Republic of	15,864	15,897	16,133	15,939	12,611	10,650
Cuba	10,190	7,066	3,216	1,434	224	0
Haiti	11,450	16,912	10,080	7,733	7,451	9,707
Dominican Republic	41,676	52,011	38,971	43,223	24,528	29,882
Colombia	350,031	292,292	293,500	244,948	226,852	226,488
Venezuela	34,445	42,728	25,411	22,287	19,343	15,693
Ecuador	51,104	49,813	53,582	58,311	43,741	55,444
Peru	8,361	15,908	12,868	16,670	16,770	19,949
Bolivia	220	365	430	792	639	569
Chile	204	257	99	54	125	415
Brazil	570,091	452,510	499,296	443,016	399,604	377,996
Paraguay	602	314	498	1,749	1,259	724
Uruguay	165	105	169	238	176	166
Argentina	40,343	28,671	37,609	34,846	33,097	29,856
Total Latin American Republics	1,432,294	1,248,062	1,218,364	1,102,415	1,012,678	1,009,403
Other Latin America:						
Bahamas	31	11	12	1	8	12
Barbados	0	0	0	0	0	0
Bermuda	2	2	0	109	9	67
Jamaica	1,845	1,414	1,412	1,412	971	1,745
Leeward & Windward Islands	520	929	869	782	458	488
Trinidad & Tobago	3,429	5,433	4,573	4,445	3,529	3,281
British Honduras	106	42	80	19	133	96
French West Indies	19	42	10	5	15	57
Netherlands Antilles	83	259	279	173	171	75
British Guiana	4	71	145	19	77	108
Surinam (Netherlands Guiana)	252	1,178	1,326	1,850	692	649
French Guiana	4	1,427	474	171	77	50
Falkland Islands	0	0	0	0	0	0
Canal Zone	47	285	423	413	51	34
Total Latin America	1,438,636	1,259,155	1,227,967	1,111,814	1,018,869	1,016,065
Europe:						
Iceland	647	674	1,094	633	334	751
Sweden	338	190	270	295	195	98
Norway	49	73	88	45	10	33
Denmark	671	468	556	342	332	245
United Kingdom	7,978	7,085	12,334	8,829	8,864	8,015
Ireland	463	1,025	1,743	1,674	1,304	1,176
Netherlands	13,891	14,320	18,723	15,924	12,662	14,502
Belgium & Luxembourg	224	375	331	669	874	1,063
France	7,448	5,004	6,289	6,714	6,741	4,790
West Germany	3,251	3,086	4,098	3,942	2,878	2,405
East Germany	3	0	1	0	2	0
Austria	63	97	132	86	86	113
Czechoslovakia	22	28	59	81	91	99
Hungary	21	12	24	34	40	54

Continued -

Table 12.--U.S. complementary agricultural imports: Value by country of origin, specified calendar years - Continued

Country of origin	Year ended December 31					
	1957	1958	1959	1960	1961	1962
	Thousand dollars					
Europe - Continued:						
Switzerland	3,480	1,906	1,379	3,050	1,542	2,035
Finland	3	1/	34	1	2	35
Estonia	0	0	0	0	0	0
Latvia	0	0	0	0	0	0
Lithuania	0	0	0	0	0	0
Poland & Danzig	24	183	194	65	117	142
U.S.S.R. (Russia)	597	34	474	588	371	514
Azores	0	6	9	18	17	21
Spain	795	1,078	831	1,919	1,076	1,235
Portugal	960	180	58	698	839	633
Gibraltar	0	0	4	12	8	0
Malta & Gozo	164	135	524	292	238	114
Italy	4,077	2,993	5,154	3,786	3,445	3,419
Free Territory of Trieste	0	0	0	1	1	2
Yugoslavia	375	607	626	1,076	685	1,079
Albania	72	16	81	58	55	113
Greece	559	324	290	435	459	487
Rumania	79	17	14	61	65	45
Bulgaria	320	400	327	176	218	278
Turkey	1,595	689	3,064	3,004	1,848	1,429
Cyprus 2/	---	---	---	---	---	396
Total Europe	48,972	41,312	58,805	54,508	45,399	45,321
Asia:						
Syrian Arab Republic	7,589	3,606	7,253	4,903	3,606	2,208
Lebanon	1,076	444	351	719	1,316	1,577
Iraq	8,566	3,829	8,688	5,911	5,694	4,141
Iran	2,781	2,688	2,410	1,872	1,042	1,123
Israel	117	91	120	134	110	181
Palestine	0	0	51	0	0	0
Jordan	0	0	0	0	4	0
Kuwait	0	0	0	0	0	0
Saudi Arabia	6	34	18	25	0	10
Other Arabia Peninsula States	3,668	2,991	832	655	486	527
Aden	153	498	314	179	87	12
State of Bahrain	0	0	0	0	0	0
Afghanistan	2,546	724	1,222	1,895	289	46
India	30,685	26,210	29,316	34,998	32,377	29,692
Goa, Damao, & Diu 2/	---	---	---	---	---	0
Pakistan	11,503	7,241	10,156	8,457	10,264	7,778
Nepal	0	0	0	0	0	0
Ceylon	30,748	26,101	32,160	37,146	30,243	31,766
Burma	2,559	778	1,502	23	0	122
Thailand (Siam)	74,395	47,557	71,920	41,019	24,478	26,012
Viet-Nam, Laos, Cambodia (Indochina)-:	21,794	---	---	---	---	---
Viet-Nam 4/	---	4,550	10,444	4,007	4,481	2,832
Laos 4/	---	0	43	0	0	0
Cambodia 4/	---	9,258	12,812	6,603	2,212	4,867
British Malaya	105,296	---	---	---	---	---
Federation of Malaya 4/	---	49,976	111,151	92,352	67,613	98,591
Singapore, State of; Br. Borneo 4/ ..	---	25,583	23,604	14,001	11,637	9,864
Indonesia, Republic of	126,687	93,864	117,108	130,915	90,098	69,232
Republic of the Philippines	15,092	10,886	11,221	10,374	10,620	8,424
Macao (Macau)	0	0	0	0	0	0
Other Portuguese Asia	110	7	111	140	3	0
Other Southern & Southeastern Asia ...	2	10	3	3	1	1
China (including Manchuria)	2	2	2	1	0	0
Outer Mongolia	0	328	813	712	270	0
North Korea	0	0	0	0	0	0
Korea, Republic of	925	563	776	998	2,012	1,660
Hong Kong	226	309	316	413	242	341
Taiwan (Formosa)	3,704	3,307	2,479	3,390	3,409	3,754

Continued -

Table 12.--U.S. complementary agricultural imports: Value by country of origin, specified calendar years - Continued

Country of origin	Year ended December 31					
	1957	1958	1959	1960	1961	1962
	Thousand dollars					
Asia - Continued:						
Japan	25,840	16,248	24,522	27,007	25,547	25,477
Nansei & Nampo Islands	0	0	0	0	0	0
Total Asia	476,070	337,683	481,723	428,852	328,141	330,238
Australia & Oceania:						
Australia	677	382	614	395	326	600
New Guinea (Australian)	2	31	11	518	351	1,667
New Zealand & Western Samoa	11,049	20,647	32,078	33,818	35,686	30,966
British Western Pacific Islands	0	1	1	3	15	109
French Pacific Islands	456	441	610	121	282	281
Trust Territory of Pacific Islands	0	0	0	0	0	0
Total Australia & Oceania	12,184	21,502	33,314	34,855	36,660	33,623
Africa:						
Morocco	246	166	393	1,174	1,099	735
Algeria	222	140	430	463	27	381
Tunisia	4	0	0	1	6	9
Libya	1/	0	0	0	0	0
United Arab Republic - Egypt	90	66	37	21	98	43
Sudan	33	51	75	106	28	12
Canary Islands	0	0	0	0	0	0
Other Spanish Africa	106	10	70	1,072	193	0
Federal Republic of Cameroon	5,439	6,567	5,425	4,495	6,046	6,071
Other Western Equatorial Africa	574	1,025	1,391	283	290	1,036
Other Western Africa	23,045	28,734	23,390	22,894	29,994	28,720
Ghana	28,023	43,603	48,864	36,815	62,326	49,426
Federation of Nigeria	21,602	19,112	25,597	31,521	41,752	38,174
British West Africa & Sierra Leone	1,824	1,918	2,279	1,517	2,169	1,244
Madeira Islands	0	6	5	0	0	0
Angola	36,495	32,885	26,924	23,988	26,462	37,097
Other Western Portuguese Africa	1,661	1,326	1,544	467	1,866	1,193
Liberia	26,269	24,483	29,362	29,881	24,124	21,663
Rep. of the Congo; & Ruanda-Urundi	39,646	33,642	49,892	35,935	28,549	26,148
Somali Republic -	---	---	---	54	0	54
Somaliland (Italian Admin.) 2/	1/	2	6	---	---	---
British Somaliland 5/	1	0	3	---	---	---
Ethiopia	29,743	25,454	11,670	24,669	29,459	26,581
French Somaliland	0	140	387	524	148	536
Seychelles & Dependencies	29	175	120	69	87	103
Mauritius & Dependencies	4	0	16	0	0	1
British East Africa & Tanganyika	42,507	44,623	37,330	42,579	49,719	52,922
Mozambique	1,440	1,314	1,521	2,083	2,997	2,672
Malagasy Republic	18,030	15,801	10,569	12,573	10,993	14,358
Republic of South Africa	646	576	749	717	732	574
The Fed. of Rhodesia & Nyasaland	65	99	158	363	508	1,011
Southern British Africa 6/	0	---	---	---	---	---
Total Africa	277,744	281,918	278,207	274,267	319,672	310,964
Total all countries	2,256,228	1,944,080	2,082,707	1,907,116	1,751,798	1,740,649

1/ Less than \$500.

2/ Prior to 1962 included Malta, Gozo, and Cyprus.

3/ Prior to 1962 included in Other Portuguese Asia.

4/ Not separately classified prior to 1958.

5/ Not separately classified beginning 1960.

6/ Beginning 1958 included with Union of South Africa.

Table 13.--U.S. supplementary agricultural imports: Value by country of origin, specified calendar years

Country of origin	Year ended December 31					
	1957	1958	1959	1960	1961	1962
	Thousand dollars					
Greenland	0	8	0	0	1	0
Canada (incl. Newfoundland & Labrador) ..	215,997	263,170	192,931	164,664	190,782	183,838
Miquelon & St. Pierre Islands	0	0	0	0	0	0
Latin American Republics:						
Mexico	74,828	131,577	127,134	154,945	186,454	190,569
Guatemala	238	143	156	229	2,139	9,420
El Salvador	627	773	475	1,076	1,453	2,670
Honduras	341	416	789	1,659	2,621	3,689
Nicaragua	2,799	3,801	5,049	9,485	10,827	11,482
Costa Rica	477	800	3,841	6,852	6,432	5,524
Panama, Republic of	499	598	785	732	991	424
Cuba	394,418	444,441	404,359	297,117	28,863	15,087
Haiti	2,151	1,431	1,469	4,029	5,873	6,107
Dominican Republic	13,978	14,208	23,304	53,068	48,644	109,962
Colombia	281	377	267	224	5,735	7,489
Venezuela	303	207	144	144	227	395
Ecuador	299	628	316	288	3,676	7,608
Peru	19,142	18,537	18,168	35,507	74,200	69,232
Bolivia	955	1,219	1,441	1,041	1,186	971
Chile	3,948	4,578	5,469	4,571	4,206	4,994
Brazil	45,002	43,839	53,263	52,466	84,032	84,156
Paraguay	3,072	4,332	5,038	4,609	4,964	4,395
Uruguay	10,423	7,858	14,855	14,074	18,349	18,363
Argentina	61,841	85,473	66,815	49,667	54,457	59,726
Total Latin American Republics	635,622	765,236	733,137	691,783	545,329	612,264
Other Latin America:						
Bahamas	71	134	201	972	1,699	1,084
Barbados	1,544	956	946	813	1,095	1,382
Bermuda	24	23	34	243	148	65
Jamaica	1,147	1,110	1,579	8,520	15,134	12,182
Leeward & Windward Islands	510	460	472	733	306	571
Trinidad & Tobago	85	330	915	1,436	9,332	3,619
British Honduras	79	89	112	119	60	73
French West Indies	388	447	252	271	8,262	5,636
Netherlands Antilles	6	1	1	1/	2	5
British Guiana	11	11	320	3,669	8,642	8,135
Surinam (Netherlands Guiana)	5	230	204	64	0	0
French Guiana	28	16	171	1	0	0
Falkland Islands	0	0	0	0	0	0
Canal Zone	7	1/	7	1/	3	147
Total Latin America	639,527	769,043	738,351	708,624	592,014	645,163
Europe:						
Iceland	705	447	735	520	101	161
Sweden	1,100	1,326	1,896	2,254	2,343	2,540
Norway	872	789	767	756	955	1,175
Denmark	30,881	42,405	43,628	44,046	49,511	58,861
United Kingdom	12,426	14,028	15,273	16,647	13,368	17,405
Ireland	3,530	10,285	19,786	20,925	24,327	26,778
Netherlands	54,387	66,271	69,748	66,368	63,737	65,385
Belgium & Luxembourg	6,826	5,414	5,501	7,040	7,627	9,172
France	30,413	32,099	33,632	36,467	45,786	43,818
West Germany	22,335	22,964	24,862	27,397	27,389	27,039
East Germany	7	9	33	9	0	8
Austria	328	440	579	588	685	761
Czechoslovakia	1,425	1,475	1,678	1,663	1,266	1,108
Hungary	359	888	1,362	767	762	376

Continued -

Table 13.--U.S. supplementary agricultural imports: Value by country of origin, specified calendar years - continued

Country of origin	Year ended December 31					
	1957	1958	1959	1960	1961	1962
	Thousand dollars					
Europe - Continued:						
Switzerland	7,999	7,919	9,476	8,869	10,726	10,594
Finland	338	478	778	764	796	982
Estonia	0	0	0	0	0	0
Latvia	0	0	0	0	0	0
Lithuania	0	0	0	13	0	0
Poland & Danzig	23,735	24,462	25,851	31,688	31,019	30,624
U.S.S.R. (Russia)	1,380	911	1,084	996	935	891
Azores	93	112	109	98	71	59
Spain	29,910	32,605	36,095	33,768	38,443	37,651
Portugal	2,315	2,749	2,963	2,782	3,540	3,534
Gibraltar	18	3	0	1	0	1/
Malta & Gozo	253	593	445	524	497	3
Italy	44,608	50,379	52,540	52,642	56,248	60,476
Free Territory of Trieste	27	90	15	83	7	11
Yugoslavia	6,108	6,757	6,728	8,166	8,675	11,368
Albania	0	0	0	0	0	1/
Greece	23,766	28,195	28,342	28,526	29,707	27,606
Rumania	234	266	160	672	1,077	212
Bulgaria	93	245	509	444	824	699
Turkey	47,987	51,309	58,183	62,407	58,273	62,279
Cyprus 2/	---	---	---	---	---	299
Total Europe	354,458	405,913	442,748	457,890	478,695	501,875
Asia:						
Syrian Arab Republic	1,833	1,057	1,642	1,021	840	518
Lebanon	2,474	1,742	1,829	2,504	1,638	2,026
Iraq	4,958	3,972	3,561	2,444	2,353	2,299
Iran	16,618	22,745	18,786	19,881	12,832	13,916
Israel	567	480	553	655	714	752
Palestine	0	1	19	0	0	0
Jordan	0	0	0	0	13	7
Kuwait	0	2	0	0	0	0
Saudi Arabia	0	1	12	2	0	0
Other Arabia Peninsula States	0	33	31	64	209	173
Aden	10	238	12	7	25	58
State of Bahrain	0	0	0	0	0	0
Afghanistan	915	993	901	1,192	864	1,354
India	40,281	33,789	39,478	44,778	52,027	49,063
Goa, Damao, & Diu 2/	---	---	---	---	---	0
Pakistan	20,472	11,147	15,450	15,107	12,646	16,469
Nepal	0	0	0	0	0	0
Ceylon	150	86	1,450	546	58	2
Burma	29	82	185	165	665	554
Thailand (Siam)	5,853	5,911	6,113	7,050	8,937	7,529
Viet-Nam, Laos, Cambodia (Indochina)-:	513	---	---	---	---	---
Viet-Nam 4/	---	341	198	239	69	190
Laos 4/	---	0	0	0	0	0
Cambodia 4/	---	0	2	1/	0	25
British Malaya -	247	---	---	---	---	---
Federation of Malaya 4/	---	175	130	870	1,043	1,904
Singapore, State of; Br. Borneo 4/	---	42	30	188	49	81
Indonesia, Republic of	1,399	1,334	926	1,046	3,574	2,293
Republic of the Philippines	191,930	209,405	230,749	230,435	244,060	245,649
Macao (Macau)	11	0	0	0	0	0
Other Portuguese Asia	162	356	121	630	906	145
Other Southern & Southeastern Asia ..:	0	0	0	0	0	0
China (including Manchuria)	4	0	2	0	0	2
Outer Mongolia	3,284	4,931	4,519	1,358	2,835	3,591
North Korea	0	0	0	0	7	10
Korea, Republic of	298	257	704	723	913	708
Hong Kong	1,725	2,103	2,539	2,573	1,776	2,115
Taiwan (Formosa)	2,359	2,724	3,704	6,347	23,835	22,479

Continued -

Table 13.--U.S. supplementary agricultural imports: Value by country of origin, specified calendar years - continued

Country of origin	Year ended December 31					
	1957	1958	1959	1960	1961	1962
	Thousand dollars					
Asia - Continued:						
Japan	10,003	8,760	13,742	16,300	19,129	22,018
Nansei & Nanpo Islands	0	0	0	1/	1/	1/
Total Asia	306,095	312,707	347,388	356,125	392,017	395,930
Australia & Oceania:						
Australia	52,174	42,927	130,580	90,861	131,584	223,300
New Guinea (Australian)	1/	18	44	0	0	0
New Zealand & Western Samoa	47,358	88,844	97,945	79,238	91,182	105,227
British Western Pacific Islands	46	13	71	0	5	1,488
French Pacific Islands	4	3	2	6	6	4
Trust Territory of Pacific Islands ..	0	52	2,493	1,989	1,494	565
Total Australia & Oceania	99,582	131,857	231,135	172,094	224,271	330,584
Africa:						
Morocco	2,505	1,313	1,825	1,242	1,783	1,479
Algeria	653	336	440	64	58	99
Tunisia	3,533	2,880	2,406	244	567	1,125
Libya	1	0	1/	18	2	1/
United Arab Republic - Egypt	15,198	14,659	12,273	13,413	15,145	13,239
Sudan	639	899	896	820	821	1,030
Canary Islands	3	44	2	0	10	26
Other Spanish Africa	0	20	27	0	7	1
Federal Republic of Cameroon	338	120	11	2	0	370
Other Western Equatorial Africa	25	32	80	3	2	55
Other Western Africa	442	440	436	261	133	87
Ghana	3	0	0	0	1	0
Federation of Nigeria	1,859	2,281	4,289	4,196	2,962	3,219
British West Africa & Sierra Leone ..	58	93	161	55	33	68
Madeira Islands	57	67	74	45	62	41
Angola	414	708	395	395	491	377
Other Western Portuguese Africa	123	42	31	32	11	0
Liberia	0	0	0	0	0	1
Rep. of the Congo; & Ruanda-Urundi ..	7,514	9,819	10,442	13,075	8,774	5,480
Somali Republic -	---	---	---	509	206	257
Somaliland (Italian Admin.) 5/	313	253	642	---	---	---
British Somaliland 5/	85	236	272	---	---	---
Ethiopia	2,576	2,760	3,540	1,548	1,161	1,631
French Somaliland	36	6	0	0	82	28
Seychelles & Dependencies	0	0	9	0	0	0
Mauritius & Dependencies	0	73	0	8	846	2,861
British East Africa & Tanganyika	1,172	1,237	2,234	1,588	676	861
Mozambique	1,091	709	780	955	706	1,189
Malagasy Republic	180	83	65	23	765	207
Republic of South Africa	12,512	14,822	21,938	19,261	26,916	43,379
The Fed. of Rhodesia & Nyasaland	51	1,449	351	377	530	418
Southern British Africa 6/	0	---	---	---	---	---
Total Africa	51,381	55,381	63,619	58,134	62,750	77,528
Total all countries	1,667,040	1,938,079	2,016,172	1,917,531	1,938,530	2,134,918

1/ Less than \$500.

2/ Prior to 1962 included in Malta, Gozo, and Cyprus.

3/ Prior to 1962 included in Other Portuguese Asia.

4/ Not separately classified prior to 1958.

5/ Not separately classified beginning 1960.

6/ Beginning 1958 included with Union of South Africa.

Table 14.--U.S. agricultural imports: Major countries of origin by commodity groups, specified calendar years

Country and year	Total	Complementary 1/	Supplementary 1/	Selected complementary products						
				Coffee	Crude rubber	Cocoa beans	Carpet wool	Bananas	Tea	Spices 2/
Thousand dollars										
Total										
1957	3,923,268	2,256,228	1,667,040	1,375,828	349,713	134,705	101,504	69,818	50,614	26,959
1958	3,882,159	1,944,080	1,938,079	1,170,687	248,174	172,458	79,578	69,388	48,001	30,709
1959	4,098,879	2,082,707	2,016,172	1,096,636	382,501	164,947	123,258	77,428	51,853	33,816
1960	3,824,647	1,907,116	1,917,531	1,003,988	321,772	143,073	111,950	78,639	56,474	45,275
1961	3,690,328	1,751,798	1,938,530	964,018	216,553	159,479	107,759	77,467	54,329	35,302
1962	3,875,567	1,740,649	2,134,918	989,591	228,233	131,407	89,225	77,432	60,336	35,073
Brazil (1)										
1957	615,093	570,091	45,002	528,402	115	31,455	141	2	117	187
1958	496,349	452,510	43,839	406,468	540	38,555	63	0	115	155
1959	552,559	499,296	53,263	452,660	186	33,911	162	57	125	369
1960	495,482	443,016	52,466	398,888	257	32,492	120	26	330	987
1961	483,636	399,604	84,032	368,141	478	21,804	328	0	257	970
1962	462,152	377,996	84,156	362,528	185	7,355	261	10	225	585
Mexico (2)										
1957	182,710	107,882	74,828	92,996	2	3,907	0	2,150	0	1,557
1958	222,347	90,770	131,577	73,554	0	3,431	0	1,841	0	1,549
1959	201,161	74,027	127,134	55,722	0	3,309	0	1,945	0	2,893
1960	223,046	68,101	154,945	57,621	0	1,309	1	482	0	2,454
1961	262,690	76,236	186,454	64,859	0	1,816	0	1,278	0	1,457
1962	270,951	80,383	190,568	65,485	3	4,202	0	442	0	894
Philippines (3)										
1957	207,022	15,092	191,930	0	0	0	0	0	0	0
1958	220,291	10,886	209,405	0	21	0	8	0	0	0
1959	241,970	11,221	230,749	0	10	0	0	0	0	0
1960	240,809	10,374	230,435	0	48	0	0	0	0	0
1961	254,680	10,620	244,060	0	9	0	0	0	0	8/
1962	254,073	8,424	245,649	14	17	0	0	0	0	8/
Colombia (4)										
1957	350,312	350,031	281	348,977	0	36	0	993	0	0
1958	292,669	292,292	377	290,956	0	196	0	1,030	0	0
1959	293,767	293,500	267	291,874	0	194	0	1,399	0	0
1960	245,172	244,948	224	244,409	0	59	0	337	0	0
1961	232,587	226,852	5,735	226,609	0	8	2	167	0	0
1962	233,977	226,488	7,489	226,334	0	88	1	9	0	0
Australia (5)										
1957	52,851	677	52,174	0	0	6	0	0	0	0
1958	43,309	382	42,927	0	0	0	25	0	0	0
1959	131,194	614	130,580	0	0	8	279	0	0	0
1960	91,256	395	90,861	0	37	0	131	0	0	0
1961	131,910	326	131,584	0	0	0	149	0	0	0
1962	223,900	600	223,300	0	0	1	347	0	0	0
Canada (6)										
1957	218,619	2,622	215,997	1	0	0	0	1	610	8/
1958	265,680	2,510	263,170	3	0	1	0	0	576	8
1959	195,622	2,691	192,931	1	8/	1	0	0	725	1
1960	167,481	2,817	164,664	1	10	8/	73	0	823	2
1961	193,839	3,057	190,782	0	9	0	248	8/	800	1
1962	188,276	4,438	183,838	13	0	0	138	0	1,180	3
Dominican Rep. (7)										
1957	55,654	41,676	13,978	21,199	0	13,393	0	2,007	0	2
1958	66,219	52,011	14,208	21,927	0	20,205	0	2,940	0	13
1959	62,275	38,971	23,304	15,056	0	14,738	0	3,397	0	8/
1960	96,291	43,223	53,068	19,096	0	14,297	0	4,169	0	5
1961	73,172	24,528	48,644	11,386	0	4,865	0	2,057	0	5
1962	139,844	29,882	109,962	17,142	0	7,620	0	1,080	0	14

Table 11.--U.S. agricultural imports: Major countries of origin by commodity groups, specified calendar years

Country and year	Selected supplementary products									
	Cane sugar	Dutiable cattle & meats 2/	Fruits, nuts, & vegetables	Fats, oils, oilbearing materials 4/	Tobacco, unmf'd.	Apparel: wool	Hides and skins 5/	Grains & preparations 6/	Dairy products 7/	Other supple. and comple. products
Thousand dollars										
Total										
1957	458,313	233,167	184,296	146,934	96,475	109,202	46,702	83,549	41,196	414,293
1958	520,029	449,991	201,984	148,388	104,875	84,451	51,767	66,139	45,440	390,100
1959	495,771	464,241	216,198	176,236	111,760	101,066	84,427	55,449	49,477	413,815
1960	507,055	372,954	237,482	162,314	115,457	84,965	67,606	54,589	49,896	411,158
1961	457,502	465,870	227,641	146,650	114,213	89,961	61,266	54,430	54,335	403,553
1962	509,344	576,184	230,668	152,124	101,200	120,177	62,695	42,879	54,166	414,833
Brazil (1)										
1957	0	986	7,478	30,842	0	93	4,420	0	37	10,818
1958	0	3,779	7,632	26,117	0	13	5,007	0	47	7,858
1959	1,292	10,889	8,199	23,914	1	237	6,836	0	219	13,502
1960	10,903	3,125	11,178	20,677	1	190	4,596	0	37	11,675
1961	34,362	6,479	10,361	26,224	171	146	4,435	0	14	9,466
1962	40,042	6,332	6,878	22,972	539	306	4,331	0	51	9,552
Mexico (2)										
1957	4,318	24,639	19,434	2,569	0	0	6	1	0	30,731
1958	7,731	66,593	35,645	1,732	1	0	4	1	1	30,264
1959	7,937	56,907	37,933	1,839	1	8/	1	1	8/	32,673
1960	43,487	45,779	44,544	1,971	0	1	25	66	0	25,306
1961	66,530	61,040	33,893	1,475	1	0	2	1	0	30,338
1962	47,214	76,544	44,158	1,379	125	0	0	170	36	30,299
Philippines (3)										
1957	101,237	0	24,157	61,186	2,012	0	0	0	0	18,430
1958	110,246	0	20,278	74,113	1,906	0	4	0	0	13,715
1959	109,804	0	25,607	91,139	2,475	0	2	3	0	12,930
1960	123,730	0	25,666	76,927	3,145	0	0	2	0	11,291
1961	151,478	1	22,634	64,928	3,341	0	31	3	0	12,255
1962	150,492	0	17,604	72,025	3,151	0	0	2	0	10,768
Colombia (4)										
1957	4	0	3	34	0	0	188	0	0	77
1958	194	0	4	23	0	8/	69	0	0	197
1959	23	0	7	8	8/	0	56	0	0	206
1960	1	0	2	7	154	0	11	0	0	132
1961	5,000	0	19	47	575	0	30	0	0	130
1962	5,750	0	16	65	1,502	0	41	36	0	135
Australia (5)										
1957	0	2,425	75	283	0	44,309	1,014	0	979	3,760
1958	0	9,553	80	186	0	25,795	1,278	6	2,622	3,764
1959	0	92,080	199	281	0	28,793	3,397	64	1,966	4,127
1960	0	60,097	784	138	0	23,599	1,392	69	1,651	3,358
1961	8,504	89,367	569	279	0	25,078	1,099	2,223	2,282	2,360
1962	17,576	150,638	1,747	295	0	44,297	1,679	930	3,127	3,263
Canada (6)										
1957	73	78,363	14,006	1,400	6	363	3,370	76,262	550	43,614
1958	83	138,243	17,441	1,033	13	350	4,024	56,026	467	47,412
1959	73	79,702	12,811	816	53	1,041	6,751	46,094	573	46,810
1960	216	60,064	14,406	773	27	462	4,472	42,294	782	43,076
1961	289	84,740	13,765	1,002	26	827	4,100	40,989	1,647	45,396
1962	389	87,175	14,136	1,710	45	746	4,050	29,439	2,703	46,549
Dominican Rep. (7)										
1957	7,875	284	485	11	0	0	14	1,092	0	9,352
1958	8,211	1,246	550	24	6	0	6	1,046	0	10,045
1959	14,129	1,818	547	38	71	0	85	1,220	0	11,176
1960	43,057	1,987	699	607	292	0	44	1,126	4	10,912
1961	35,046	1,386	1,034	3,231	673	0	0	1,089	6	12,394
1962	95,933	275	880	2,069	2,341	0	0	1,024	0	11,466

Continued -

Table 14.--U.S. agricultural imports: Major countries of origin by commodity groups, specified calendar years - Continued

Country and year	Total	Selected complementary products								
		Complementary 1/	Supplementary 1/	Coffee	Crude rubber	Cocoa beans	Carpet wool	Bananas	Tea	Spices 2/
Thousand dollars										
New Zealand (8)										
1957	58,407	11,049	47,358	0	0	362	10,589	0	0	0
1958	109,491	20,647	88,844	0	0	559	20,000	0	0	0
1959	130,023	32,078	97,945	0	0	693	31,292	0	0	0
1960	113,056	33,818	79,238	0	0	526	33,748	0	0	0
1961	126,868	35,686	91,182	0	0	181	35,384	0	0	0
1962	136,193	30,966	105,227	0	0	938	29,904	0	0	0
Malaya Fed. (9) 9/										
1957	---	---	---	---	---	---	---	---	---	---
1958	50,151	49,976	175	0	49,248	0	0	0	3	169
1959	111,281	111,151	130	0	110,011	0	0	0	7	333
1960	93,222	92,352	870	56	91,630	0	0	0	45	51
1961	68,656	67,613	1,043	257	66,411	0	0	0	61	152
1962	100,495	98,591	1,904	126	97,782	0	0	0	22	63
Argentina (10)										
1957	102,184	40,343	61,841	0	0	0	39,855	0	0	29
1958	114,144	28,671	85,473	0	0	0	27,986	0	0	11
1959	104,424	37,609	66,815	0	0	0	36,565	0	0	19
1960	84,513	34,846	49,667	26	0	0	34,211	0	52	23
1961	87,554	33,097	54,457	79	0	0	32,525	0	85	36
1962	89,584	29,856	59,728	80	0	0	29,043	0	327	50
Peru (11)										
1957	27,503	8,361	19,142	6,633	17	34	0	0	22	27
1958	34,445	15,908	18,537	14,165	20	204	0	0	21	12
1959	31,036	12,868	18,168	11,399	4	17	0	0	0	10
1960	52,177	16,670	35,507	15,446	8/	54	0	0	24	7
1961	90,970	16,770	74,200	15,867	12	0	8	0	0	9
1962	89,181	19,949	69,232	18,681	4	53	0	15	36	13
Netherlands (12)										
1957	68,281	13,894	54,387	0	1	33	3,004	0	702	997
1958	80,591	14,320	66,271	0	1	146	2,384	0	1,215	646
1959	88,471	18,723	69,748	0	32	199	4,091	0	1,803	902
1960	82,292	15,924	66,368	0	3	0	2,745	0	1,233	1,138
1961	76,399	12,662	63,737	93	0	21	1,506	0	639	1,020
1962	79,887	14,502	65,385	25	0	41	1,623	0	3,698	961
India (13)										
1957	70,966	30,685	40,281	428	281	0	6,075	0	14,988	3,593
1958	59,999	26,210	33,789	441	34	0	4,494	0	15,467	1,974
1959	68,794	29,316	39,478	305	235	0	7,105	0	14,848	1,942
1960	79,776	34,998	44,778	394	77	0	3,638	0	13,942	10,042
1961	84,404	32,377	52,027	2,025	314	0	2,878	0	15,293	5,360
1962	78,755	29,692	49,063	383	1	8	824	0	16,002	7,838
Indonesia (14)										
1957	128,086	126,687	1,399	3,918	105,219	46	0	0	6,608	7,755
1958	95,198	93,864	1,334	1,161	73,485	67	0	0	5,963	10,819
1959	118,034	117,108	926	747	96,709	4	0	0	5,109	12,522
1960	131,961	130,915	1,046	917	108,000	42	0	0	6,220	13,581
1961	93,672	90,098	3,574	3,078	65,635	0	0	0	6,306	13,422
1962	71,525	69,232	2,293	6,521	44,739	29	0	0	5,622	10,069
Italy (15)										
1957	48,685	4,077	44,608	0	0	0	1,593	0	0	76
1958	53,372	2,993	50,379	0	0	1	355	0	0	51
1959	57,694	5,154	52,540	0	0	0	1,594	0	0	48
1960	56,428	3,786	52,642	0	0	0	1,042	0	0	76
1961	59,693	3,445	56,248	13	0	0	917	0	0	30
1962	63,895	3,419	60,476	8	8/	0	614	0	0	47

Table 14.--U.S. agricultural imports: Major countries of origin by commodity groups, specified calendar years - Continued

Country and year	Selected supplementary products									
	Cane sugar	Dutiable cattle & meats 3/	Fruits, nuts, & vegetables	Fats, oils, oilbearing materials 4/	Tobacco, unmf.	Apparel wool	Hides and skins 5/	Grains & preparations 6/	Dairy products 7/	Other supple. and comple. products
Thousand dollars										
New Zealand (8)										
1957	0	12,750	3,740	592	0	13,888	10,984	0	2,653	2,849
1958	0	62,716	161	654	0	10,041	8,088	0	4,168	3,104
1959	0	61,287	303	657	0	11,479	15,620	0	5,958	2,734
1960	0	48,706	108	616	0	7,563	13,227	0	5,834	3,306
1961	0	55,855	150	654	0	7,842	15,766	0	7,805	3,231
1962	0	70,161	299	462	0	11,153	13,953	1	5,260	4,062
Malaya Fed. (9) 9/										
1957	0	0	115	8/	0	0	48	0	0	568
1958	0	0	28	51	0	0	48	0	0	803
1959	0	0	521	317	0	0	27	0	0	575
1960	0	0	945	0	0	0	85	0	0	745
1961	0	0	1,741	0	0	0	153	8/	0	608
1962	0	0								
Argentina (10)										
1957	0	24,295	1,777	5,408	0	7,600	721	213	11,252	11,034
1958	0	51,610	955	5,192	0	4,925	707	520	9,416	12,822
1959	0	35,263	1,111	3,809	0	6,689	2,820	241	8,687	9,220
1960	0	17,387	1,255	4,110	3	6,118	1,946	127	9,322	9,933
1961	327	24,943	644	6,003	15	4,695	871	293	7,099	9,939
1962	949	22,849	1,346	6,341	185	6,826	2,146	316	7,292	11,834
Peru (11)										
1957	8,807	0	325	0	0	4,921	769	66	0	5,882
1958	8,584	1	251	103	0	3,400	740	21	0	6,923
1959	9,669	0	242	11	17	4,350	871	68	0	4,378
1960	27,068	0	383	10	560	2,804	878	101	0	4,842
1961	64,172	0	807	0	162	2,445	577	66	0	6,845
1962	55,998	0	805	0	0	4,548	512	125	0	8,391
Netherlands (12)										
1957	389	29,023	1,684	1,705	6	78	770	741	2,005	27,143
1958	463	35,860	1,830	4,478	66	230	964	745	2,515	29,048
1959	364	22,754	1,669	9,625	67	112	1,399	825	3,021	31,608
1960	681	29,698	1,703	7,216	71	53	1,398	771	3,005	32,577
1961	1,323	30,655	1,914	3,898	119	101	1,063	716	3,169	30,162
1962	663	31,246	2,358	4,878	25	155	1,410	962	2,954	28,888
India (13)										
1957	0	221	23,092	8,417	0	401	4,112	0	0	9,358
1958	0	199	24,728	2	0	371	4,843	0	0	7,446
1959	0	90	23,825	3,698	0	729	6,614	0	0	9,403
1960	0	414	26,746	7,265	0	405	5,884	0	0	10,969
1961	16,845	259	24,855	0	10	46	5,283	0	0	11,236
1962	12,993	555	24,205	121	19	35	5,244	0	0	10,527
Indonesia (14)										
1957	0	0	209	104	778	0	308	0	0	3,141
1958	0	0	105	264	509	0	271	0	0	2,554
1959	0	0	50	154	139	0	384	0	0	2,216
1960	0	0	34	372	58	8/	329	0	0	2,408
1961	0	0	6	2,678	153	0	153	0	0	2,241
1962	0	0	13	1,402	525	0	353	0	0	2,252
Italy (15)										
1957	0	724	13,710	6,530	1,322	5	178	844	10,539	13,164
1958	0	1,429	15,849	6,653	1,227	0	227	967	11,387	15,226
1959	0	1,335	16,100	7,040	1,223	32	274	966	12,246	16,836
1960	0	1,201	16,026	4,803	1,358	74	197	966	12,370	18,315
1961	8/	1,243	20,338	4,870	1,161	11	145	897	12,407	17,661
1962	0	1,358	18,736	5,962	988	34	1,603	1,060	12,942	20,543

Continued -

Table 14.--U.S. agricultural imports: Major countries of origin by commodity groups, specified calendar years - Continued

Country and year	Total	Complementary 1/	Supplementary 1/	Selected complementary products						
				Coffee	Crude rubber	Cocoa beans	Carpet wool	Bananas	Tea	Spices 2/
<u>Thousand dollars</u>										
Turkey (16)										
1957	49,582	1,595	47,987	0	0	0	0	0	0	39
1958	51,998	629	51,369	0	0	0	0	0	0	47
1959	61,247	3,064	58,183	0	0	0	1,692	0	0	141
1960	65,411	3,004	62,407	0	0	0	2,119	0	0	97
1961	60,121	1,848	58,273	0	0	0	1,260	0	0	124
1962	63,708	1,429	62,279	0	0	0	826	0	0	61
Ecuador (17)										
1957	51,403	51,104	299	19,683	0	8,335	0	22,823	0	0
1958	50,441	49,813	628	19,785	0	10,639	0	19,921	0	0
1959	53,898	53,582	316	11,343	19	10,971	0	31,046	0	0
1960	58,599	58,311	288	14,536	51	12,416	0	30,948	0	0
1961	47,417	43,741	3,676	7,944	0	7,821	0	27,389	0	0
1962	63,052	55,444	7,608	15,118	0	5,375	0	34,449	0	0
Denmark (18)										
1957	31,552	671	30,881	0	0	0	16	0	0	0
1958	42,873	468	42,405	0	0	0	0	0	0	11
1959	44,184	556	43,628	0	0	0	0	0	0	19
1960	44,388	342	44,046	0	0	0	14	0	0	13
1961	49,843	332	49,511	0	0	0	24	0	0	8/
1962	59,106	245	58,861	0	0	0	0	0	0	0
Guatemala (19)										
1957	68,968	68,730	238	61,027	0	251	0	4,074	0	240
1958	61,951	61,808	143	53,326	0	263	0	5,373	0	194
1959	61,325	61,169	156	49,779	0	350	0	5,724	0	222
1960	54,033	53,804	229	40,932	4	191	0	8,277	0	272
1961	54,658	52,519	2,139	43,721	0	251	0	6,322	0	233
1962	56,791	47,371	9,420	42,505	13	84	0	2,135	0	154
Br. E. Africa(20)										
1957	43,679	42,507	1,172	37,277	35	1	0	0	1,272	144
1958	45,860	44,623	1,237	37,753	0	13	0	0	1,796	123
1959	39,564	37,330	2,234	27,702	0	0	0	0	2,213	267
1960	44,167	42,579	1,588	29,618	0	0	0	0	2,844	678
1961	50,395	49,719	676	36,876	0	0	0	0	3,116	75
1962	53,783	52,922	861	39,325	65	0	0	0	3,325	358
Ghana (21)										
1957	28,026	28,023	3	15	0	27,995	0	0	0	0
1958	43,603	43,603	0	0	0	43,408	0	0	0	0
1959	48,864	48,864	0	217	0	47,019	0	0	0	0
1960	36,818	36,818	0	43	10	35,837	0	0	0	8/
1961	62,327	62,326	1	121	1	60,772	0	0	0	0
1962	49,426	49,426	0	1,096	1	48,127	0	0	0	0
France (22)										
1957	37,861	7,448	30,413	0	29	0	1,378	0	1	95
1958	37,103	5,004	32,099	0	0	0	615	0	1	162
1959	39,921	6,289	33,632	0	43	0	1,491	0	33	127
1960	43,181	6,714	36,467	0	83	0	1,499	0	0	258
1961	52,527	6,741	45,786	0	31	0	1,430	0	10	63
1962	48,608	4,790	43,818	0	2	0	614	0	5	173
Japan (23)										
1957	35,843	25,840	10,003	0	0	0	0	0	971	9
1958	25,008	16,248	8,760	0	31	0	0	0	994	12
1959	38,264	24,522	13,742	0	25	0	0	0	781	10
1960	43,307	27,007	16,300	0	25	0	0	0	820	17
1961	44,676	25,547	19,129	0	14	0	0	0	730	10
1962	47,495	25,477	22,018	0	97	0	0	0	877	11

Table 14.--U.S. agricultural imports: Major countries of origin by commodity groups, specified calendar years - Continued

Country and year	Selected supplementary products									
	Cane sugar	Dutiable cattle & meats 3/	Fruits, nuts, & vegetables	Fats, oils, oilbearing materials 4/	Tobacco, unmd.	Apparel, wool	Hides and skins 5/	Grains & preparations 6/	Dairy products 7/	Other supply and comple. products
Thousand dollars										
Turkey (16)										
1957	0	0	4,584	204	42,101	109	306	0	0	2,239
1958	0	0	2,985	172	46,396	198	835	0	0	1,365
1959	0	0	6,273	255	48,640	194	1,770	0	0	2,282
1960	0	0	8,391	326	50,341	124	1,631	0	0	2,382
1961	0	0	5,931	149	49,282	188	1,767	0	1	1,419
1962	5,909	0	7,772	684	45,580	123	1,190	0	5	1,538
Ecuador (17)										
1957	0	0	0	0	0	0	7	0	0	555
1958	1	0	3	70	0	0	9	0	0	713
1959	0	0	3	236	0	0	4	0	0	276
1960	0	0	8/	94	0	0	4	0	0	550
1961	3,263	0	8	249	0	0	5	0	0	738
1962	6,299	0	9	808	0	0	2	0	0	992
Denmark (18)										
1957	0	21,562	201	497	8/	12	391	107	2,567	6,199
1958	0	32,207	290	455	8/	0	274	239	3,050	6,347
1959	0	30,125	307	1,721	0	78	595	238	3,427	7,674
1960	0	32,757	201	317	0	48	476	375	3,734	6,408
1961	0	35,698	566	191	105	64	178	460	4,123	8,434
1962	0	46,102	343	408	0	70	73	482	4,716	6,912
Guatemala (19)										
1957	0	0	0	9	0	0	0	0	0	3,367
1958	0	0	1	54	0	0	0	0	0	2,740
1959	1	0	7	8/	0	0	19	0	0	5,223
1960	0	0	4	116	0	0	0	11	0	4,226
1961	855	676	49	281	0	0	0	1	0	2,269
1962	4,412	4,268	140	300	0	0	0	0	0	2,780
Br. E. Africa (20)										
1957	0	0	118	7	0	0	991	0	0	3,834
1958	0	0	150	94	0	0	948	0	0	4,983
1959	0	0	127	108	0	0	1,925	0	0	7,222
1960	0	0	160	14	0	0	1,312	0	0	9,541
1961	0	2	250	36	0	0	257	0	0	9,783
1962	0	1	133	73	0	0	476	0	0	10,027
Ghana (21)										
1957	0	0	0	0	0	0	0	0	0	16
1958	0	0	0	0	0	0	0	0	0	195
1959	0	0	0	0	0	0	0	0	0	1,628
1960	0	0	0	0	0	0	0	0	0	928
1961	0	0	0	1	0	0	0	0	0	1,432
1962	0	0	0	0	0	0	0	0	0	202
France (22)										
1957	1	506	4,955	1,319	182	1,171	1,697	56	1,875	24,596
1958	1	524	4,709	606	1,034	1,193	2,550	95	1,878	23,735
1959	1	471	4,493	1,295	242	1,633	2,837	116	2,118	25,021
1960	1	536	4,450	876	199	2,909	3,099	140	2,195	26,936
1961	1,027	633	6,390	237	128	2,400	4,937	1,316	3,197	30,728
1962	1	582	5,362	764	99	1,723	3,241	226	2,921	32,895
Japan (23)										
1957	8/	1,029	5,766	184	0	536	112	184	4	27,048
1958	8/	647	5,173	156	8/	444	80	284	2	17,185
1959	1	428	9,874	304	8/	304	183	277	6	26,071
1960	8/	661	12,029	282	8/	681	37	351	8	28,396
1961	1	762	13,649	552	2	1,248	44	398	2	27,264
1962	8/	1,367	14,596	1,860	6	333	38	502	24	27,784

Continued -

Table 14.--U.S. agricultural imports: Major countries of origin by commodity groups, specified calendar years - Continued

Country and year	Total	Complementary 1/	Supplementary 1/	Selected complementary products						
				Coffee	Crude rubber	Cocoa beans	Carpet wool	Bananas	Tea	Spices 2/
<u>Thousand dollars</u>										
S. Africa, Rep. (24)										
1957	13,158	646	12,512	61	6	0	366	0	0	0
1958	15,398	576	14,822	45	0	0	236	0	22	0
1959	22,687	749	21,938	122	64	0	322	0	64	0
1960	19,978	717	19,261	164	72	0	285	0	13	0
1961	27,648	732	26,916	269	0	0	199	0	46	0
1962	44,153	774	43,379	150	104	25	351	0	44	1
Nigeria (25)										
1957	23,461	21,602	1,859	92	4,044	16,993	0	0	0	80
1958	21,393	19,112	2,281	584	4,178	13,926	0	0	0	67
1959	29,886	25,597	4,289	138	7,406	17,644	0	0	0	62
1960	35,717	31,521	4,196	54	14,518	19,535	0	0	0	72
1961	44,714	41,752	2,962	51	3,578	31,709	0	0	0	71
1962	41,393	38,174	3,219	121	13,317	27,213	0	0	0	209
Spain (26)										
1957	30,705	795	29,910	0	0	0	0	0	0	55
1958	33,683	1,078	32,605	0	0	0	0	0	0	34
1959	36,926	831	36,095	0	0	21	17	0	0	92
1960	35,687	1,919	33,768	0	0	0	1,095	0	0	16
1961	39,519	1,076	38,443	0	0	0	399	0	0	33
1962	38,886	1,235	37,651	0	0	0	539	0	0	67
El Salvador (27)										
1957	54,978	54,351	627	47,682	0	0	0	0	0	1
1958	47,134	46,361	773	40,699	0	0	0	0	0	0
1959	35,720	35,245	475	30,288	0	0	0	0	0	2
1960	27,528	26,452	1,076	22,337	0	0	0	0	0	1
1961	30,801	29,348	1,453	26,778	0	0	0	0	0	0
1962	38,758	36,088	2,670	36,034	0	0	0	0	0	0
Costa Rica (28)										
1957	26,710	26,233	477	13,358	115	2,471	0	9,626	0	0
1958	34,877	34,077	800	19,264	73	3,553	0	9,844	0	0
1959	31,528	27,687	3,841	13,168	104	5,165	0	7,714	0	0
1960	32,992	26,140	6,852	14,150	200	3,314	0	8,463	0	0
1961	37,547	31,115	6,432	17,350	119	2,842	0	10,754	0	0
1962	37,519	31,995	5,524	17,119	114	2,459	0	12,220	0	1
Angola (29)										
1957	36,909	36,495	414	36,025	0	101	0	0	0	0
1958	33,593	32,885	708	32,553	0	0	0	0	0	0
1959	27,319	26,924	395	26,419	0	17	0	0	0	0
1960	24,383	23,988	395	23,727	0	0	0	0	0	0
1961	26,953	26,462	491	24,437	0	1,065	0	0	0	0
1962	37,474	37,097	377	36,883	0	0	0	0	0	0
Thailand (30)										
1957	80,248	74,395	5,853	0	93,271	0	0	0	0	11
1958	53,468	47,557	5,911	0	46,438	0	0	0	0	8/
1959	78,033	71,920	6,113	0	70,130	0	0	0	0	5
1960	48,069	41,019	7,050	0	38,768	0	0	0	0	3
1961	33,415	24,478	8,937	0	21,897	0	0	0	0	2
1962	33,541	26,012	7,529	0	23,006	0	0	0	0	8/
Ceylon (31)										
1957	30,898	30,748	150	0	6,514	0	0	0	22,660	751
1958	26,187	26,101	86	0	5,881	0	0	0	18,919	703
1959	33,610	32,160	1,450	0	9,586	125	0	0	21,599	336
1960	37,692	37,146	546	0	10,894	30	0	0	24,777	1,047
1961	30,301	30,243	58	0	7,231	13	0	0	22,447	257
1962	31,768	31,766	2	0	6,839	36	0	0	24,273	344

Table 14.—U.S. agricultural imports: Major countries of origin by commodity groups, specified calendar years.—Continued

Country and year	Selected supplementary products							Other supple. and comple. products	
	Cane sugar	Dutiable cattle & meats	Fruits, nuts, & vegetables	Fats, oils, oilbearing materials	Tobacco unmd.	Apparel wool	Hides and skins		Grains & preparations
	3/	3/	4/	4/	8/	2/	5/	7/	
Thousand dollars									
S. Africa, Rep. (24)									
1957	0	0	119	61	0	11,408	577	0	0
1958	0	0	108	74	16	13,644	631	0	0
1959	0	0	295	139	1	20,156	872	18	0
1960	0	0	858	63	0	16,805	1,076	24	2
1961	88	0	878	253	8/	23,956	593	0	0
1962	10,718	0	985	1,183	0	28,079	738	450	2
Nigeria (25)									
1957	0	0	0	20	0	0	1,789	0	0
1958	0	0	0	99	0	0	2,135	0	0
1959	0	0	0	0	0	0	4,249	0	0
1960	0	0	0	72	0	0	4,080	0	0
1961	0	0	8/	0	0	0	2,890	0	0
1962	0	0	0	616	8	0	2,541	0	0
Spain (26)									
1957	0	69	21,189	3,331	3	108	278	2	8
1958	0	41	23,737	3,107	256	19	73	1	1
1959	0	93	23,882	4,960	176	3	381	0	0
1960	0	73	20,231	7,815	29	5	200	8/	8
1961	0	71	22,941	9,045	84	44	68	1	1
1962	0	50	23,110	7,226	89	19	31	0	2
El Salvador (27)									
1957	0	0	0	507	0	0	0	0	0
1958	0	0	8/	596	0	0	0	0	0
1959	0	0	0	366	0	0	6	8/	0
1960	740	0	0	194	0	0	0	0	0
1961	1,013	0	8/	281	0	0	0	8/	0
1962	1,991	0	7	314	0	0	0	0	0
Costa Rica (28)									
1958	104	175	8/	76	0	0	0	0	0
1958	118	530	8/	57	0	0	0	0	0
1959	414	3,267	4	29	0	0	0	0	0
1960	1,195	5,324	2	163	0	0	0	0	0
1961	3,235	2,739	1	250	0	0	0	0	0
1962	2,560	2,649	5	63	0	0	0	0	0
Angola (29)									
1957	0	0	0	162	0	0	0	0	0
1958	0	0	0	502	0	0	0	0	0
1959	0	0	0	144	0	0	0	0	0
1960	0	0	0	186	0	0	0	0	0
1961	0	0	3	259	0	0	0	0	0
1962	0	0	7	39	0	0	0	0	0
Thailand (30)									
1957	0	0	5,477	0	0	0	59	12	0
1958	0	0	5,720	0	0	0	11	9	0
1959	0	0	5,896	0	0	0	25	6	0
1960	0	0	6,823	0	0	0	52	8/	0
1961	0	0	8,468	0	0	0	10	1	0
1962	0	0	4,856	0	0	0	77	1	0
Ceylon (31)									
1957	0	0	150	0	0	0	0	0	0
1958	0	0	85	1	0	0	0	0	0
1959	0	0	566	883	0	0	0	0	0
1960	0	0	19	519	0	0	8	0	0
1961	0	0	57	1	0	0	0	0	0
1962	0	0	8/	1	0	0	0	0	0

Continued -

Table 14.—U.S. agricultural imports: Major countries of origin by commodity groups, specified calendar years - Continued

Country and year	Total	Selected complementary products							Tea	Spices 2/
		Comple-mentary 1/	Supple-mentary 1/	Coffee	Crude rubber	Cocoa beans	Carpet wool	Bananas		
Thousand dollars										
Congo. Rep. (32)										
1957	47,160	39,646	7,514	32,292	5,795	0	0	0	222	0
1958	43,461	33,642	9,819	27,499	4,739	0	0	0	211	1
1959	60,334	49,892	10,442	36,248	10,834	43	0	0	223	9
1960	49,010	35,935	13,075	25,631	7,721	0	0	0	515	0
1961	37,323	28,549	8,774	21,957	5,634	19	0	0	200	B/
1962	31,628	26,148	5,480	17,942	7,487	27	0	0	281	0
Poland (33)										
1957	23,759	24	23,735	0	0	0	0	0	0	0
1958	24,645	183	24,462	0	0	0	0	0	0	173
1959	26,045	194	25,851	0	0	0	0	0	0	159
1960	31,753	65	31,688	0	0	0	0	0	0	43
1961	31,136	117	31,019	0	0	0	0	0	0	102
1962	30,766	142	30,624	0	0	0	0	0	0	107
West Germany (34)										
1957	25,586	3,251	22,335	0	0	0	317	0	0	2
1958	26,050	3,086	22,964	0	0	11	294	0	0	20
1959	28,960	4,098	24,862	0	1	44	766	0	4	29
1960	31,339	3,942	27,397	0	0	5	791	0	18	17
1961	30,267	2,878	27,389	0	1	0	452	0	23	17
1962	29,444	2,405	27,039	0	1	0	488	0	9	13
Other W. Africa (35)										
1957	23,487	23,045	442	10,659	106	12,262	0	0	0	0
1958	29,174	28,734	440	14,411	239	13,983	0	0	0	0
1959	23,826	23,390	436	11,649	314	11,411	0	0	0	0
1960	23,155	22,894	261	15,895	19	6,969	0	0	0	0
1961	30,127	29,994	133	16,905	19	13,059	0	0	0	0
1962	28,807	28,720	87	13,718	61	14,925	0	0	0	0
Ethiopia (36)										
1957	32,319	29,743	2,576	29,743	0	0	0	0	0	0
1958	28,214	25,454	2,760	25,446	0	0	0	0	0	0
1959	15,210	11,670	3,540	11,670	0	0	0	0	0	0
1960	26,217	24,669	1,548	24,669	0	0	0	0	0	0
1961	30,620	29,459	1,161	29,453	0	0	0	0	0	0
1962	28,212	26,581	1,631	26,577	0	0	0	0	0	0
Greece (37)										
1957	24,325	559	23,766	0	0	0	369	0	0	162
1958	28,519	324	28,195	0	0	0	59	0	0	101
1959	28,632	290	28,342	0	0	0	64	0	0	109
1960	28,961	435	28,526	0	0	0	88	0	0	162
1961	30,166	459	29,707	0	0	0	34	0	0	190
1962	28,093	487	27,606	0	0	0	20	0	0	438
Ireland (38)										
1957	3,993	463	3,530	0	0	0	459	0	0	0
1958	11,310	1,025	10,285	0	0	0	1,013	0	11	0
1959	21,529	1,743	19,786	0	0	0	1,720	0	8	0
1960	22,599	1,674	20,925	0	0	0	1,630	0	8	0
1961	25,631	1,304	24,327	0	0	0	1,257	0	8	0
1962	27,954	1,176	26,778	0	0	0	1,004	0	7	0
Honduras (39)										
1957	23,496	23,155	341	8,248	0	0	0	13,604	0	8/
1958	25,248	24,832	416	8,759	0	0	0	15,177	0	16
1959	21,498	20,709	789	7,020	0	0	0	13,541	0	12
1960	29,597	27,938	1,659	15,474	41	0	0	12,261	0	30
1961	27,502	24,881	2,621	6,467	0	0	0	18,221	0	54
1962	27,666	23,977	3,689	6,967	0	0	0	16,668	0	9

Table 14.--U.S. agricultural imports: Major countries of origin by commodity groups, specified calendar years - Continued

Country and year	Selected supplementary products									
	Cane sugar	Dutiable cattle & meats 3/	Fruits, nuts, & vegetables	Fats, oils, oilbearing materials 4/	Tobacco, unaffd.	Apparel, wool	Hides and skins 5/	Grains & preparations 6/	Dairy products 7/	Other supple. and couple. products
<u>Thousand dollars</u>										
Congo, Rep. (32)										
1957	0	0	0	7,244	0	0	263	0	0	1,344
1958	0	0	0	9,593	0	0	216	0	0	1,202
1959	0	0	0	10,221	0	0	204	0	0	2,552
1960	0	0	0	12,993	0	0	68	0	0	2,082
1961	0	0	0	8,762	0	0	8	0	0	743
1962	0	0	0	5,473	0	0	7	0	0	411
Poland (33)										
1957	0	22,479	62	396	0	0	185	2	66	569
1958	0	22,025	54	192	0	0	277	0	1,252	672
1959	0	21,887	248	348	0	0	947	8/	1,551	905
1960	0	27,876	243	315	0	0	599	1	1,415	1,261
1961	1	26,158	478	251	0	0	773	4	2,068	1,301
1962	0	25,649	438	248	0	0	1,385	5	1,398	1,536
West Germany (34)										
1957	0	4,239	399	1,436	59	286	1,015	481	178	17,174
1958	0	5,209	543	950	223	49	957	508	379	16,907
1959	1	3,546	596	1,697	31	289	1,447	718	673	19,118
1960	1	2,154	915	2,565	63	185	1,983	2,378	809	19,455
1961	1	1,422	1,111	3,507	11	42	1,435	416	747	21,082
1962	1	1,205	802	3,365	2	3	1,715	689	616	20,535
Other W. Africa (35)										
1957	0	0	110	0	0	0	241	0	0	109
1958	0	0	119	0	8/	0	309	0	0	113
1959	0	0	45	0	0	0	358	0	0	49
1960	0	0	2	0	0	0	252	0	0	18
1961	0	0	79	0	0	0	24	0	0	41
1962	0	0	0	8/	0	0	40	0	0	63
Ethiopia (36)										
1957	0	0	11	94	0	0	1,878	0	0	593
1958	0	0	107	0	0	0	2,153	0	0	508
1959	0	0	25	12	0	0	3,180	0	0	320
1960	0	0	0	29	0	0	1,102	0	0	417
1961	0	0	4	0	0	0	778	0	0	385
1962	0	0	2	69	0	0	1,130	0	0	434
Greece (37)										
1957	0	0	1,569	1,482	20,236	79	0	4	145	279
1958	0	0	1,692	2,671	23,466	0	8/	2	94	434
1959	0	0	2,036	259	25,632	0	4	8/	72	456
1960	0	0	1,442	156	26,241	0	128	8/	105	639
1961	0	0	1,665	61	27,493	0	34	0	160	529
1962	0	0	2,005	962	24,198	0	1	8/	99	370
Ireland (38)										
1957	0	1,855	106	0	1	347	0	95	0	1,130
1958	0	8,664	99	0	4	182	0	71	15	1,251
1959	0	17,534	164	0	7	162	0	122	23	1,789
1960	1	19,333	89	6	1	99	0	229	24	1,179
1961	1	22,916	101	3	0	134	0	136	28	1,047
1962	1,113	23,966	129	1	0	199	0	174	237	1,124
Honduras (39)										
1957	0	0	339	0	0	0	1	0	0	1,304
1958	0	99	313	0	0	0	4	0	0	880
1959	0	482	295	0	0	0	12	0	0	136
1960	0	1,268	359	0	0	0	22	0	0	142
1961	0	2,265	322	0	0	0	7	0	0	166
1962	0	3,344	303	0	13	0	4	0	0	358

Continued -

Table 14.--U.S. agricultural imports: Major countries of origin by commodity groups, specified calendar years - Continued

Country and year	Total	Complementary 1/	Supplementary 1/	Selected complementary products						
				Coffee	Crude rubber	Cocoa beans	Carpet wool	Bananas	Tea	Spices 2/
Thousand dollars										
Taiwan (40)										
1957	6,063	3,704	2,359	0	0	0	0	0	1,241	0
1958	6,031	3,307	2,724	0	0	0	0	0	1,620	2
1959	6,183	2,479	3,704	0	0	0	0	0	1,407	4
1960	9,737	3,390	6,347	0	0	0	0	0	2,056	2
1961	27,244	3,409	23,835	0	0	0	0	0	1,656	0
1962	26,233	3,754	22,479	0	47	0	0	0	1,683	2
United Kingdom (41)										
1957	20,404	7,978	12,426	0	16	0	1,962	0	473	2
1958	21,113	7,085	14,028	0	42	0	3,503	0	510	27
1959	27,607	12,334	15,273	0	40	0	5,149	0	2,071	8/
1960	25,476	8,829	16,647	0	15	64	3,412	0	1,524	14
1961	22,232	8,864	13,368	0	51	0	5,000	0	1,050	5
1962	25,420	8,015	17,405	8/	22	0	4,324	0	800	6
Pakistan (42)										
1957	31,975	11,503	20,472	0	0	0	11,381	0	113	0
1958	18,388	7,241	11,147	0	0	0	7,159	0	1	0
1959	25,606	10,156	15,450	0	0	0	9,979	0	43	0
1960	23,564	8,457	15,107	0	0	0	8,228	0	40	6
1961	22,910	10,264	12,646	0	0	0	10,235	0	22	0
1962	24,247	7,778	16,469	0	0	0	7,739	0	34	0
Nicaragua (43)										
1957	19,996	17,197	2,799	17,086	0	9	0	101	0	0
1958	19,166	15,365	3,801	15,217	0	19	0	129	0	0
1959	12,714	7,665	5,049	7,438	0	75	0	152	0	0
1960	18,225	8,740	9,485	8,423	0	90	0	220	0	0
1961	22,986	12,159	10,827	10,227	0	0	0	96	0	0
1962	23,532	12,050	11,482	8,363	0	0	0	529	0	0
Liberia (44)										
1957	26,269	26,269	0	31	26,226	12	0	0	0	0
1958	24,483	24,483	0	139	24,344	0	0	0	0	0
1959	29,362	29,362	0	429	28,939	34	0	0	0	0
1960	29,881	29,881	0	301	29,580	0	0	0	0	0
1961	24,124	24,124	0	368	23,756	0	0	0	0	0
1962	21,664	21,663	1	690	20,973	0	0	0	0	0
Uruguay (45)										
1957	10,588	165	10,423	0	0	0	0	0	0	0
1958	7,963	105	7,858	0	0	0	8	0	0	0
1959	15,024	169	14,855	0	0	0	75	0	0	0
1960	14,312	238	14,074	0	0	0	134	0	0	0
1961	18,525	176	18,349	0	0	0	91	0	0	0
1962	18,529	166	18,363	0	0	0	108	0	0	0
Venezuela (46)										
1957	34,748	34,447	303	28,898	0	5,402	0	0	0	76
1958	42,935	42,728	207	34,061	0	8,241	0	0	0	290
1959	25,555	25,411	144	20,586	0	4,640	0	0	0	106
1960	22,431	22,287	144	17,988	0	3,933	0	0	0	34
1961	19,570	19,343	227	16,088	0	2,157	0	14	0	701
1962	16,088	15,693	395	12,143	0	2,592	0	236	0	268
Haiti (47)										
1957	13,601	11,450	2,151	4,509	80	1,147	0	96	0	0
1958	18,343	16,912	1,431	10,441	9	1,408	0	29	0	8/
1959	11,549	10,080	1,469	3,498	109	1,575	0	7	0	0
1960	11,762	7,733	4,029	2,634	195	608	3	167	0	0
1961	13,324	7,451	5,873	2,818	122	401	0	237	0	0
1962	15,814	9,707	6,107	5,669	106	189	0	316	0	8/

Table 14.--U.S. agricultural imports: Major countries of origin by commodity groups, specified calendar years - Continued

Country and year	Selected supplementary products								Other supple. and comple. products	
	Cane sugar	Dutiable cattle & meats 3/	Fruits, nuts, & vegetables	Fats, oils, oilbearing materials 4/	Tobacco, unmf'd.	Apparel, wool	Hides and skins 5/	Grains & preparations 6/		Dairy products 7/
Thousand dollars										
Taiwan (40)										
1957	388	2	636	0	0	0	5	5	0	3,786
1958	418	0	438	0	2	0	0	16	0	3,535
1959	391	0	1,044	0	0	0	0	18	0	3,319
1960	1,281	0	3,047	0	0	0	0	18	0	3,333
1961	18,038	0	4,192	0	0	0	1	21	0	3,336
1962	11,938	0	8,520	0	0	0	0	19	0	4,024
United Kingdom (41)										
1957	56	484	1,828	971	16	487	1,235	1,524	19	11,331
1958	65	58	1,765	1,351	13	416	886	2,926	78	9,473
1959	52	761	2,598	1,235	12	568	1,303	2,298	59	11,461
1960	201	1,160	3,031	2,284	18	542	795	3,350	81	8,985
1961	295	473	3,073	700	15	391	570	2,939	50	7,620
1962	599	2,419	3,235	1,544	11	515	450	3,671	77	7,747
Pakistan (42)										
1957	0	0	43	0	0	358	1,865	0	0	18,215
1958	0	0	12	0	0	28	1,565	0	0	9,623
1959	0	0	29	0	0	23	2,936	0	0	12,596
1960	0	0	0	0	0	0	4,181	0	0	11,109
1961	0	1	15	0	0	68	3,744	0	0	8,825
1962	0	8/	0	0	0	62	3,322	0	0	13,090
Nicaragua (43)										
1957	1,027	0	18	1,420	0	0	8	0	0	327
1958	1,869	12	14	1,630	0	0	1	0	0	275
1959	1,470	1,843	19	1,472	0	0	2	0	0	243
1960	3,951	3,209	30	2,046	0	0	8	0	0	248
1961	3,320	4,759	102	2,148	0	0	3	8/	1	2,330
1962	4,414	4,931	23	1,864	0	0	1	0	0	3,407
Liberia (44)										
1957	0	0	0	0	0	0	0	0	0	0
1958	0	0	0	0	0	0	0	0	0	8/
1959	0	0	0	0	0	0	0	0	0	0
1960	0	0	0	0	0	0	0	0	0	0
1961	0	0	0	0	0	0	0	0	0	0
1962	0	0	0	0	0	0	1	0	0	0
Uruguay (45)										
1957	0	3,433	0	0	0	5,502	35	0	158	1,460
1958	0	2,781	2	0	0	4,148	35	0	175	814
1959	0	3,861	0	0	0	10,303	45	69	126	545
1960	0	3,796	0	0	0	9,363	20	0	52	947
1961	0	5,390	13	0	0	11,692	7	31	329	972
1962	0	5,549	0	0	0	11,624	8	0	269	971
Venezuela (46)										
1957	164	0	0	108	0	0	9	8/	0	91
1958	0	0	8/	158	0	0	0	0	0	185
1959	0	0	23	77	0	0	0	0	0	123
1960	0	0	0	105	0	0	13	0	0	358
1961	0	0	15	130	1	0	0	0	8/	464
1962	0	0	115	190	0	0	3	8/	0	536
Haiti (47)										
1957	656	0	7	142	0	0	124	1	0	6,839
1958	751	0	47	100	0	0	56	0	0	5,502
1959	740	0	14	153	8/	0	5	0	0	5,448
1960	3,379	0	79	105	0	0	5	0	0	4,590
1961	4,658	129	80	8	0	0	2	0	0	4,869
1962	3,640	898	387	216	0	0	0	0	0	4,393

Continued -

Table 14.—U.S. agricultural imports: Major countries of origin by commodity groups, specified calendar years - Continued

Country and year	Total	Comple- mentary 1/	Supple- mentary 1/	Selected complementary products						
				Coffee	Grude rubber	Cocoa beans	Carpet wool	Bananas	Tea	Spices 2/
Thousand dollars										
Cuba (48)										
1957	404,608	10,190	394,418	8,286	0	989	0	25	0	10
1958	451,507	7,066	444,441	5,439	0	713	0	14	0	21
1959	407,575	3,216	404,359	1,614	0	607	16	25	0	15
1960	298,551	1,434	297,117	81	0	306	0	1	0	9
1961	29,087	224	28,863	10	0	0	0	1	0	1
1962	15,087	0	15,087	0	0	0	0	0	0	0
Iran (49)										
1957	19,399	2,781	16,618	0	0	0	2,379	0	3	284
1958	25,433	2,688	22,745	0	0	0	2,241	0	42	339
1959	21,196	2,410	18,786	0	0	0	1,163	0	1	678
1960	21,753	1,872	19,881	0	0	0	577	0	7	567
1961	13,874	1,042	12,832	0	0	0	259	0	0	302
1962	15,039	1,123	13,916	0	0	0	152	0	0	362
Malagasy Rep. (50)										
1957	18,210	18,030	180	10,323	0	0	0	0	0	6,492
1958	15,884	15,801	83	6,605	0	38	0	0	0	7,788
1959	10,634	10,569	65	1,170	0	10	0	0	0	7,396
1960	12,596	12,573	23	2,073	0	21	0	0	0	8,716
1961	11,758	10,993	765	2,506	25	0	0	0	0	6,495
1962	14,565	14,358	207	3,706	0	24	0	0	0	8,414
Other 10/										
1957	282,928	198,280	84,648	7,979	127,841	9,465	21,620	14,316	611	4,283
1958	185,467	100,066	85,401	10,686	38,851	12,878	9,135	13,090	514	5,171
1959	208,559	116,054	92,505	8,374	47,740	12,122	19,716	12,421	789	4,977
1960	188,816	90,466	98,350	8,344	22,514	10,955	16,969	13,288	1,183	4,835
1961	208,330	75,158	133,172	7,265	15,206	10,675	13,174	10,931	1,580	4,095
1962	198,630	72,043	126,587	8,120	16,247	9,996	10,285	9,323	1,886	3,538
E. E. C. 11/										
1957	187,463	28,894	158,569	0	30	33	6,292	0	703	1,170
1958	202,905	25,778	177,127	0	1	158	3,648	0	1,216	879
1959	220,878	34,595	186,283	0	76	243	8,045	0	1,840	1,106
1960	220,949	31,035	189,914	0	86	5	6,404	0	1,251	1,489
1961	227,387	26,600	200,787	106	32	21	4,521	0	672	1,130
1962	232,069	26,179	205,890	33	149	41	3,440	0	3,712	1,194
E. F. T. A. 12/										
1957	69,460	13,539	55,921	11	16	46	2,882	0	473	11
1958	79,655	9,999	69,656	140	42	0	3,612	0	510	48
1959	89,389	14,817	74,572	138	40	0	5,251	0	2,071	29
1960	89,287	13,345	75,942	88	15	179	4,034	0	1,524	32
1961	92,996	11,868	81,128	3	51	34	5,818	0	1,050	10
1962	106,042	11,172	94,870	172	22	0	4,939	0	800	17

Table 14.--U.S. agricultural imports: Major countries of origin by commodity groups, specified calendar years - Continued

Country and year	Selected supplementary products									Other supple. and comple. products
	Cane sugar	Dutiable cattle & meats ^{3/}	Fruits, nuts, & vegetables	Fats, oils, oilbearing materials ^{4/}	Tobacco, unmfed.	Apparel, wool	Hides and skins ^{5/}	Grains & preparations ^{6/}	Dairy products ^{7/}	
Thousand dollars										
Cuba (48)										
1957	332,786	648	9,564	278	26,056	0	0	498	0	25,468
1958	380,675	818	9,721	294	25,437	0	36	28	4	28,307
1959	348,885	1,462	9,094	285	27,890	0	161	4	0	17,517
1960	234,999	912	11,107	245	26,572	0	11	3	0	24,305
1961	0	328	2,461	0	24,265	0	0	2	0	2,019
1962	0	2	18	0	15,066	0	0	0	0	1
Iran (49)										
1957	0	0	2,675	10	2	9,690	3,317	1	0	1,038
1958	0	0	3,701	101	3	11,565	6,673	8/	0	768
1959	0	0	3,246	11	3	6,591	8,277	0	0	1,226
1960	0	0	3,332	15	2	9,234	6,811	1	0	1,207
1961	0	0	2,948	36	1	4,833	4,937	8/	0	558
1962	0	0	3,993	177	2	4,049	5,609	8/	11	684
Malagasy Rep. (50)										
1957	0	0	171	0	0	0	0	0	0	1,224
1958	0	0	41	0	0	0	0	0	0	1,412
1959	0	0	39	0	0	0	6	0	0	2,013
1960	0	0	21	0	0	0	0	0	0	1,765
1961	0	0	638	0	0	0	0	0	0	2,094
1962	0	0	34	0	0	0	0	0	0	2,387
Other ^{10/}										
1957	488	2,976	14,024	7,495	3,695	7,451	3,460	1,358	8,161	47,705
1958	619	5,147	14,731	4,731	4,297	7,440	4,773	2,628	7,889	42,887
1959	524	6,356	16,155	6,946	5,079	7,300	7,516	2,083	8,752	41,709
1960	12,163	5,441	16,562	4,602	6,274	3,704	5,207	2,186	8,458	46,131
1961	37,830	5,480	19,219	3,970	6,419	3,710	4,554	2,427	9,199	52,596
1962	27,750	6,069	18,417	3,995	6,681	5,278	5,137	2,595	9,423	53,890
E. E. C. ^{11/}										
1957	417	34,904	21,582	11,161	1,569	1,554	4,099	2,691	14,669	86,589
1958	487	43,053	23,746	13,024	2,551	1,543	5,224	2,638	16,175	88,562
1959	388	38,153	23,792	19,855	1,563	2,070	6,264	2,950	18,093	96,440
1960	756	33,632	24,199	15,839	1,691	3,326	6,886	4,737	18,425	102,223
1961	2,607	33,970	30,999	12,735	1,419	2,573	7,813	4,051	19,536	105,202
1962	1,449	34,392	28,638	15,259	1,114	1,939	8,352	3,803	19,457	109,097
E. F. T. A. ^{12/}										
1957	56	22,169	3,399	1,680	44	600	1,925	2,271	10,127	23,750
1958	65	32,407	4,062	1,957	13	467	1,757	3,936	10,359	20,280
1959	52	31,018	5,187	3,429	12	663	3,383	3,603	11,174	23,339
1960	202	34,228	5,401	2,930	81	603	2,264	4,798	11,162	21,726
1961	295	36,354	7,364	1,503	120	495	2,231	4,420	12,195	21,053
1962	600	48,915	6,116	2,461	11	966	2,567	5,251	12,822	20,383

1/ Imports similar to agricultural commodities produced commercially in the United States and others that are interchangeable in use to any significant extent with such U.S. commodities are supplementary. All other commodities are complementary. 2/ Includes mainly pepper, vanilla beans, cassia and cassia vera, nutmegs, and caraway seed. 3/ Includes mainly beef and veal; pork; mutton, goat, and lamb; and poultry meat. 4/ Includes mainly coconut oil, castor oil, olive oil, palm oil, carnauba wax, cacao butter, tung oil, and palm kernel oil; also copra, sesame seed, poppy seed, and sunflower seed. Excludes essential and distilled oils. 5/ Includes mainly sheep and lamb skins; goat and kid skins; cattle hides; horse, colt, and ass hides; kip skins; and calf skins. 6/ Includes mainly barley, barley malt, wheat, wheat flour, rye, corn, rice, and oats. 7/ Includes mainly cheese and casein. 8/ Less than \$500. 9/ Not separately classified prior to 1958. 10/ Values for "other countries", being residuals, are overstated because allowances were not made for cumulative effect of items under \$500 (foot-note 8). 11/ The European Economic Community (Common Market) includes the Netherlands, Belgium and Luxembourg, France, West Germany, and Italy. 12/ The European Free Trade Association includes the United Kingdom, Denmark, Switzerland, Sweden, Norway, Austria, and Portugal.

Table 15-- U. S. agricultural exports: Quantity and value by commodity,
September 1962 and 1963 and July-September 1962 and 1963

Commodity exported	Unit	September 1/				July-September 1/			
		Quantity		Value		Quantity		Value	
		1962	1963	1,000	1,000	1962	1963	1,000	1,000
		Thousands	Thousands	dollars	dollars	Thousands	Thousands	dollars	dollars
ANIMALS AND ANIMAL PRODUCTS									
Animals, live:									
Cattle	No.	1	3	559	1,539	3	8	1,383	3,765
Poultry, live -									
Baby chicks	No.	1,264	2,291	381	646	3,653	6,703	1,011	2,029
Other live poultry	Lb.	190	200	77	96	561	1,000	267	344
Other		2/	2/	270	333	2/	2/	1,320	941
Total animals, live		---	---	1,287	2,614	---	---	3,981	7,079
Dairy products:									
Anhydrous milk fat	Lb.	271	3,566	222	1,478	1,296	7,470	1,078	3,430
Butter (except dehydrated)	Lb.	717	6,450	232	2,037	1,438	17,074	543	6,800
Cheese, including donations	Lb.	485	775	230	391	1,651	2,922	786	1,217
Infants' and dietetic foods, chiefly milk	Lb.	1,709	998	1,207	661	4,258	4,440	2,962	2,435
Milk -									
Condensed sweetened	Lb.	2,456	5,882	576	1,348	10,554	20,344	2,471	4,287
Dried whole	Lb.	1,283	2,635	478	1,421	3,775	9,085	2,208	4,477
Evaporated, unsweetened, incl. donations	Lb.	2,586	10,128	382	1,252	14,109	18,113	2,131	2,490
Nonfat dry, including donations	Lb.	60,090	77,543	5,800	6,236	226,644	295,946	19,871	24,336
Other		2/	2/	330	389	2/	2/	1,052	992
Total dairy products		---	---	9,457	15,213	---	---	33,102	50,464
Fats, oils, and greases:									
Lard	Lb.	33,565	53,199	2,989	4,494	106,319	170,384	9,555	14,371
Tallow, edible	Lb.	232	302	24	30	674	906	67	82
Other edible fats, oils, and greases	Lb.	374	405	64	67	1,287	1,648	234	260
Tallow, inedible	Lb.	117,719	147,653	7,038	9,795	350,924	420,533	22,629	27,462
Other inedible fats, oils, and greases	Lb.	13,196	11,533	961	909	37,276	54,823	2,710	4,042
Total fats, oils, and greases		165,086	213,092	11,076	15,295	496,480	648,294	35,195	46,217
Meat and meat products:									
Beef and veal	Lb.	2,309	2,834	945	1,012	6,587	7,458	3,015	2,995
Pork	Lb.	3,583	9,674	1,087	2,580	15,333	24,338	4,638	6,957
Sausage casings	Lb.	1,850	2,030	1,120	972	4,909	6,351	3,417	3,071
Variety meats	Lb.	10,938	10,663	2,258	2,391	30,545	34,831	6,180	7,100
Other (including meat extracts)	Lb.	870	1,205	414	448	2,911	3,571	1,250	1,460
Total meat and products (except poultry)		19,550	26,406	5,804	7,403	60,285	76,549	18,500	21,585
Poultry products:									
Eggs, dried, frozen, otherwise preserved	Lb.	334	277	314	273	1,295	1,420	1,236	1,506
Eggs in the shell -									
Hatching	Doz.	367	628	349	572	1,206	1,844	1,203	1,796
Other	Doz.	93	396	41	153	335	1,216	132	425
Poultry meat -									
Chickens, fresh or frozen	Lb.	14,934	14,261	4,135	3,556	48,132	39,707	13,051	10,213
Turkeys, fresh or frozen	Lb.	5,505	6,017	1,833	2,192	9,371	10,838	3,169	3,994
Other, fresh or frozen	Lb.	530	317	160	89	1,308	1,117	395	376
Canned	Lb.	1,320	2,302	426	534	2,572	5,894	977	1,411
Total poultry products		---	---	7,258	7,369	---	---	20,163	19,721

Continued -

Table 15.— U. S. agricultural exports: Quantity and value by commodity,
September 1962 and 1963 and July-September 1962 and 1963 - Continued

Commodity exported	Unit	September 1/				July-September 1/			
		Quantity		Value		Quantity		Value	
		1962	1963	1962	1963	1962	1963	1962	1963
		1,000	1,000	1,000	1,000	1,000	1,000	1,000	
		Thousands	Thousands	dollars	dollars	Thousands	Thousands	dollars	dollars
Other animal products:									
Feathers, crude	Lb.	192	94	210	100	460	293	526	327
Gelatin, edible	Lb.	369	210	684	604	980	724	2,039	1,804
Hair, raw or dressed, new	Lb.	615	481	212	182	1,470	2,405	529	654
Hides and skins, raw (except furs) 3/	No.	945	1,015	6,746	5,861	3,035	3,106	22,769	18,197
Honey	Lb.	2,933	3,490	410	549	5,144	8,832	731	1,424
Wool, unmanufactured	C.Lb.	1,493	1,627	1,193	1,634	3,039	3,151	2,538	3,100
Other	2/	2/	2/	1,085	1,088	2/	2/	3,764	3,362
Total other animal products		---	---	10,540	10,022	---	---	32,896	28,868
Total animals and animal products		---	---	45,422	57,916	---	---	143,837	173,932
VEGETABLE PRODUCTS.									
Cotton, unmanufactured:									
Cotton	R.Bales	164	361	22,151	41,304	767	818	107,518	102,206
Linters	R.Bales	28	22	1,007	623	46	84	1,724	2,325
Total cotton and linters	R.Bales	192	383	23,158	41,927	813	902	109,242	104,531
Fruits and preparations:									
Canned -									
Fruit cocktail	Lb.	20,449	20,640	2,977	3,242	44,968	41,325	6,645	5,471
Peaches	Lb.	64,027	47,503	6,831	5,038	125,168	83,044	13,395	9,048
Pears	Lb.	969	705	159	134	2,477	1,659	409	309
Pineapples	Lb.	10,380	10,327	1,635	1,430	41,539	31,005	5,939	4,393
Other	Lb.	4,924	3,610	842	663	10,067	8,463	1,729	1,556
Total canned fruits	Lb.	100,749	82,785	12,444	10,507	224,219	165,496	28,117	21,777
Dried -									
Prunes	Lb.	7,168	7,380	1,555	1,412	18,650	17,146	4,018	3,375
Raisins and currants	Lb.	7,835	9,437	1,403	1,814	20,367	21,748	3,469	4,009
Other	Lb.	2,047	2,229	916	565	4,500	2,676	1,822	1,071
Total dried fruits	Lb.	17,050	18,226	3,874	3,791	43,517	41,570	9,309	8,455
Fresh -									
Apples	Lb.	9,492	9,825	895	990	16,683	15,963	1,525	1,583
Berries	Lb.	1,904	1,264	321	227	6,901	4,896	1,257	964
Grapefruit	Lb.	8,887	8,378	544	602	29,616	24,198	1,708	1,958
Grapes	Lb.	34,116	29,754	2,583	2,468	58,473	55,203	5,634	5,920
Lemons and limes	Lb.	9,320	27,837	777	2,316	32,420	95,345	2,346	8,375
Oranges and tangerines	Lb.	23,303	21,632	2,120	2,047	113,168	107,197	9,397	10,214
Pears	Lb.	9,479	4,345	769	417	20,493	7,455	1,811	781
Other	Lb.	7,905	8,618	570	565	81,178	98,823	5,055	5,443
Total fresh fruits	Lb.	104,406	111,653	8,579	9,632	364,932	410,080	28,733	32,248
Fruit juices -									
Grapefruit	Gal.	360	206	210	188	1,406	850	960	829
Orange	Gal.	1,088	343	1,713	937	3,399	1,775	5,328	4,507
Other	Gal.	856	1,095	802	762	3,507	3,675	3,680	3,638
Total fruit juices	Gal.	2,304	1,644	2,725	1,887	8,312	6,300	9,968	8,974
Frozen fruits (including specialties)	Lb.	846	1,322	139	231	5,305	4,761	834	948
Other	2/	2/	2/	465	603	2/	2/	1,222	1,289
Total fruits and preparations		---	---	28,226	26,651	---	---	78,183	76,681

Continued

Table 15.— U. S. agricultural exports: Quantity and value by commodity,
September 1962 and 1963 and July-September 1962 and 1963 - Continued

Commodity exported	Unit	September 1/				July-September 1/				
		Quantity		Value		Quantity		Value		
		1962	1963	1962	1963	1962	1963	1962	1963	
		Thousands	Thousands	1,000 dollars	1,000 dollars	Thousands	Thousands	1,000 dollars	1,000 dollars	
Grains and preparations:										
Feed grains and products -										
Barley grain (48 lb.)	Bu.	6,380	5,261	7,058	4,907	15,834	10,723	18,454	10,060	
Corn grain, including donations (56 lb.)	Bu.	22,948	27,890	27,852	39,398	89,146	89,972	108,436	124,159	
Grain sorghums (56 lb.)	Bu.	8,317	6,477	8,784	8,007	27,439	21,328	30,278	26,088	
Oats grain (32 lb.)	Bu.	4,871	724	3,275	495	11,897	3,369	8,222	2,376	
Total feed grains	M.Ton	1,004	998	46,969	52,807	3,479	3,110	165,390	162,683	
Barley malt (34 lb.)	Bu.	263	283	576	570	815	730	1,797	1,483	
Corn grits and hominy	Lb.	2,599	3,078	106	133	9,543	9,584	406	410	
Cornmeal and corn flour, incl. donations	Cwt.	451	270	2,053	1,501	1,236	940	5,803	4,345	
Cornstarch	Lb.	3,714	4,176	305	360	11,536	14,929	980	1,246	
Oatmeal, groats, and rolled oats	Lb.	1,379	479	177	80	5,623	1,903	784	285	
Total feed grains and products	M.Ton	1,052	1,032	50,186	55,451	3,619	3,223	175,160	170,452	
Rice -										
Hilled, including donations	Lb.	133,319	86,870	8,758	5,904	364,915	428,120	25,061	28,848	
Paddy or rough	Lb.	19	30	2	3	62	469	6	44	
Total rice (milled basis)	Lb.	133,331	86,889	8,760	5,907	364,955	428,424	25,067	28,892	
Rye grain (56 lb.)	Bu.	4,199	1,212	5,255	1,559	7,793	2,353	10,254	3,019	
Wheat and flour, including donations -										
Wheat grain (60 lb.)	Bu.	44,791	51,559	82,557	88,952	124,035	154,316	226,129	268,120	
Wheat flour, wholly of U. S. wheat	Cwt.	3,810	3,146	16,451	12,864	10,432	8,566	42,605	37,095	
Total wheat and flour	Bu.	53,554	58,795	99,008	101,816	148,029	174,018	268,734	305,215	
Bakery products	Lb.	1,089	877	434	414	2,526	2,720	1,028	1,137	
Other		2/	2/	844	1,350	2/	2/	2,177	4,112	
Total grains and preparations		---	---	164,487	166,497	---	---	482,420	512,827	
Oilseeds and products:										
Oils, edible and inedible -										
Cottonseed oil	Lb.	6,449	21,516	807	2,845	77,438	61,255	10,950	6,047	
Soybean oil	Lb.	110,786	142,677	10,164	16,234	418,669	310,869	42,087	35,190	
Other	Lb.	6,962	7,666	1,170	1,178	24,281	34,186	3,747	4,750	
Total oils (except essential)	Lb.	124,197	171,859	12,141	20,257	520,388	406,310	56,784	47,987	
Oilseeds -										
Flaxseed (56 lb.)	Bu.	548	443	1,725	1,311	864	1,171	2,759	3,475	
Soybeans (60 lb.)	Bu.	7,290	7,174	18,061	19,169	23,849	33,194	60,609	88,603	
Other	Lb.	21,658	103,267	703	4,064	51,506	228,447	2,219	9,578	
Total oilseeds		---	---	20,489	24,544	---	---	65,587	101,656	
Protein meal (oilcake and meal)	S.Ton	85	104	6,271	8,391	256	329	18,957	26,037	
Total oilseeds and products		---	---	38,901	53,192	---	---	141,328	175,680	
Tobacco, unmanufactured:										
Burley	Lb.	3,668	4,067	3,362	3,230	10,645	10,621	9,341	8,650	
Cigar wrapper	Lb.	401	650	722	2,151	1,226	1,423	2,425	3,544	
Dark-fired Kentucky and Tennessee	Lb.	3,601	642	1,845	344	5,052	3,427	2,642	1,810	
Flue-cured	Lb.	65,018	55,205	56,243	48,234	119,250	112,623	99,211	93,775	
Maryland	Lb.	1,332	1,175	1,013	919	3,985	3,322	2,857	2,295	
Other	Lb.	3,031	3,088	1,172	617	6,451	6,660	2,680	2,051	
Total tobacco, unmanufactured	Lb.	77,051	64,827	64,357	55,495	146,609	138,076	119,156	112,125	

Continued -

Table 15.— U. S. agricultural exports: Quantity and value by commodity,
September 1962 and 1963 and July-September 1962 and 1963 - Continued

Commodity exported	Unit	September 1/				July-September 1/			
		Quantity		Value		Quantity		Value	
		1962	1963	1962	1963	1962	1963	1962	1963
		1,000	1,000	1,000	1,000	1,000	1,000	1,000	
		Thousands	Thousands	dollars	dollars	Thousands	Thousands	dollars	dollars
Vegetables and preparations:									
Canned -									
Asparagus	Lb.	5,864	4,045	1,294	952	21,158	20,565	4,610	4,992
Soups	Lb.	1,229	1,040	231	197	3,600	3,818	660	724
Tomato juice	Lb.	881	1,908	97	175	3,484	5,787	367	499
Tomato paste and puree	Lb.	687	2,374	156	471	2,426	4,260	532	857
Tomato sauce for cooking purposes	Lb.	37	58	5	8	257	163	34	21
Other	Lb.	5,233	4,747	829	650	13,236	12,629	2,021	1,691
Total canned vegetables	Lb.	13,931	14,172	2,612	2,453	44,161	47,222	8,224	8,784
Dry, ripe beans, including donations	Lb.	22,663	34,599	1,682	2,670	83,985	109,925	6,231	8,419
Dry, ripe peas (excluding cow and chick) ..	Lb.	26,752	20,190	1,862	1,466	47,801	33,938	3,156	2,453
Fresh -									
Lettuce	Lb.	5,916	7,756	332	274	13,114	19,134	623	818
Onions	Lb.	4,200	4,956	152	245	13,178	17,315	512	811
Potatoes, white	Lb.	3,345	2,753	105	66	39,245	54,664	1,142	1,179
Tomatoes	Lb.	4,222	8,410	241	449	17,821	27,121	1,665	2,359
Other	Lb.	7,249	11,106	459	600	34,034	36,803	2,041	2,094
Total fresh vegetables	Lb.	24,932	34,981	1,289	1,634	117,392	155,037	5,983	7,261
Frozen vegetables (including specialties) ..	Lb.	1,951	3,661	348	598	5,526	7,571	1,072	1,365
Soups and vegetables, dehydrated	Lb.	1,674	676	708	295	4,562	3,144	1,984	1,444
Vegetable seasonings	Lb.	571	200	406	183	1,871	713	1,255	617
Other		2/	2/	1,401	1,081	2/	2/	3,642	3,539
Total vegetables and preparations		---	---	10,308	10,380	---	---	31,547	33,682
Other vegetable products:									
Coffee	Lb.	2,182	1,790	2,486	2,252	5,355	6,195	6,646	7,493
Drugs, herbs, roots, crude	Lb.	356	329	323	436	1,166	1,253	887	1,284
Essential oils, natural	Lb.	616	568	1,210	1,091	1,833	1,684	3,206	3,433
Feeds and fodders (except oilcake and meal):	S.Ton:	89	105	6,122	6,405	242	301	15,510	18,167
Flavoring sirups for beverages	Gal.	84	84	927	488	307	285	2,354	1,761
Hops	Lb.	648	237	407	142	1,303	1,174	806	910
Nursery and greenhouse stock		2/	2/	379	450	2/	2/	965	1,147
Nuts and preparations	Lb.	3,339	4,114	1,543	1,861	10,027	13,462	4,678	3,330
Seeds, field and garden	Lb.	3,535	4,852	836	1,166	13,396	17,159	2,350	3,338
Spices	Lb.	281	167	160	185	1,302	741	554	578
Other, including donations		2/	2/	6,987	6,377	2/	2/	14,066	20,256
Total other vegetable products		---	---	21,480	20,853	---	---	52,024	61,697
Total vegetable products		---	---	350,917	374,995	---	---	1,013,900	1,077,423
TOTAL AGRICULTURAL EXPORTS		---	---	396,339	432,911	---	---	1,157,737	1,251,355
TOTAL NONAGRICULTURAL EXPORTS		---	---	1,346,003	1,368,493	---	---	3,938,275	4,229,737
TOTAL EXPORTS, ALL COMMODITIES		---	---	1,742,342	1,801,404	---	---	5,096,012	5,481,092

1/ Preliminary.

2/ Reported in value only.

3/ Excludes the number of "other hides and skins", reported in value only.

Table 16.-- U. S. agricultural exports and imports for consumption: Value by country,
July-August 1963

Country	Agricultural Exports				Country	Agricultural Imports			
	Exports	Total	Imports			Exports	Total	Supple- mentary	Comple- mentary
			Supple- mentary	Comple- mentary					
	1,000 dollars	1,000 dollars	1,000 dollars	1,000 dollars		1,000 dollars	1,000 dollars	1,000 dollars	1,000 dollars
Greenland	0	0	0	0	Europe:				
Canada	108,402	22,868	21,970	898	Iceland	578	91	14	77
Miquelon and St. Pierre Is.	3	0	0	0	Sweden	4,920	457	366	91
Latin American Republics:					Norway	2,737	309	307	2
Mexico	14,989	23,783	18,639	5,144	Denmark	10,661	10,453	10,422	31
Guatemala	1,951	6,667	3,921	2,746	United Kingdom	44,370	4,141	2,289	1,852
El Salvador	1,265	7,301	148	7,153	Ireland	3,999	3,394	3,247	147
Honduras	771	3,968	475	3,493	Unidentified W. Europe 2/ ..	2	0	0	0
Nicaragua	988	3,015	1,875	1,140	East Germany	249	0	0	0
Costa Rica	1,004	6,207	1,655	4,552	Austria	1,645	254	241	13
Panama, Republic of	2,020	3,551	320	3,231	Czechoslovakia	1,526	272	272	0
Cuba	2,202	697	697	0	Hungary	47	31	29	2
Haiti	853	2,254	514	1,740	Switzerland	10,071	1,681	1,479	202
Dominican Republic	4,479	29,724	25,773	3,951	Finland	1,538	206	193	13
Colombia	4,643	41,705	1,952	39,753	Estonia	0	0	0	0
Venezuela	10,837	3,266	1,820	1,446	Latvia	298	0	0	0
Ecuador	1,033	10,855	186	10,669	Lithuania	0	0	0	0
Peru	3,016	20,142	14,874	5,268	Poland and Banat	11,149	5,115	5,103	12
Bolivia	2,080	343	160	183	U.S.S.R. (Russia)	2,032	95	83	12
Chile	4,275	157	145	12	Azores	1	37	37	0
Brazil	13,926	72,942	9,624	63,318	Spain	14,439	5,062	4,863	199
Paraguay	932	1,552	1,475	77	Portugal	1,256	556	448	108
Uruguay	575	2,244	2,201	43	Gibraltar	21	0	0	0
Argentina	427	24,723	18,326	6,397	Malta and Gozo	11	3	3	0
Total L. A. Republics	72,266	265,096	104,780	160,316	Free Territory of Trieste ..	156	12	12	0
Other Latin America:					Yugoslavia	2,408	2,193	2,137	56
British Honduras	335	420	407	13	Albania	0	12	0	12
Canal Zone	132	1/	1/	0	Greece	3,056	4,275	4,255	20
Bermuda	952	0	0	0	Romania	0	22	22	0
Bahamas	1,432	6	1	5	Bulgaria	0	43	39	4
Jamaica	2,309	3,274	2,934	340	Turkey	7,153	8,987	8,690	297
Leeward and Windward Is. ..	340	186	46	140	Cyprus	722	283	81	202
Barbados	310	320	320	0	Total Europe (excl. EEC) ..	125,045	47,984	44,632	3,352
Trinidad and Tobago	1,285	930	188	742	European Economic Com- munity (Common Market):				
Netherlands Antilles	1,325	7	1	6	Netherlands	51,153	11,469	9,455	2,014
French West Indies	107	6,048	5,777	271	Belgium and Luxembourg ..	21,414	1,143	860	283
British Guiana	471	0	0	0	France	12,721	8,860	7,962	898
Surinam	434	22	0	22	West Germany	45,855	4,743	4,384	359
French Guiana	6	10	10	0	Italy	34,389	7,580	6,976	604
Falkland Islands	0	0	0	0	Total E. E. C.	165,532	33,795	29,637	4,158
Total Latin America	81,704	276,319	114,464	161,855	Total Europe	290,577	81,779	74,269	7,510

Continued -

Table 16.— U. S. agricultural exports and imports for consumption: Value by country,
July-August 1963 - Continued

Country	Agricultural				Country	Agricultural			
	Exports	Total	Imports	Comple-		Exports	Total	Imports	Comple-
	1,000	1,000	1,000	mentary		1,000	1,000	1,000	mentary
	dollars	dollars	dollars	dollars		dollars	dollars	dollars	dollars
Asia:					Australia and Oceania - Con-:				
Syrian Arab Republic	194	1,062	65	997	New Zealand and W. Samoa ..	980	41,664	28,714	12,950
Lebanon	675	917	493	424	British W. Pacific Is.	28	13	1/	13
Iraq	275	325	33	292	French Pacific Islands ...	146	6	1	5
Iran	1,895	2,401	2,098	303	Trust Terr. of Pacific Is.:	108	0	0	0
Israel	12,056	249	244	5	Total Australia and				
Palestine	1/	0	0	0	Oceania	5,265	88,893	75,534	13,359
Jordan	2,447	1	0	1	Africa:				
Kuwait	604	0	0	0	Morocco	4,920	239	96	143
Saudia Arabia	1,602	0	0	0	Algeria	5,577	64	16	48
Other Arabia Pen. States ..	60	60	13	47	Tunisia	855	27	0	27
Aden	171	0	0	0	Libya	214	0	0	0
State of Bahrain	170	0	0	0	United Arab Rep. (Egypt) ..	17,631	9,728	9,722	6
Afghanistan	1,493	154	37	117	Sudan	2,865	219	192	27
Coa, Damao, and Diu	0	0	0	0	Canary Islands	959	0	0	0
India	57,325	16,881	14,079	2,802	Other Spanish Africa	31	0	0	0
Pakistan	23,959	2,408	1,292	1,116	Federal Rep. of Cameroon ..	93	545	29	516
Nepal	1	0	0	0	Other W. Equatorial Africa ..	10	48	0	48
Ceylon	395	4,423	2	4,421	Other Western Africa	1,598	4,494	15	4,479
Burma	1,089	7	7	0	Ghana	579	5,858	1/	5,858
Thailand	1,205	5,599	1,337	4,262	Federation of Nigeria	1,688	4,658	646	4,012
Viet-Nam	9,258	147	29	116	British West Africa	94	432	0	432
Laos	315	0	0	0	Madeira Islands	171	9	9	0
Cambodia	279	820	0	820	Angola	657	4,456	25	4,431
Federation of Malaya	1,202	15,418	569	14,849	Other W. Portuguese Africa ..	398	68	42	26
Singapore, State of	1,207	439	90	349	Liberia	1,871	2,351	0	2,351
Republic of Indonesia	2,539	11,450	287	11,163	Republic of the Congo	14,552	6,428	670	5,758
Rep. of the Philippines ..	8,512	65,142	63,873	1,269	Somali Republic	32	37	37	0
Macao	75	0	0	0	Ethiopia	220	4,161	247	3,914
Other Southern & S.E. Asia ..	0	0	0	0	French Somaliland	32	0	0	0
China (incl. Manchuria) ..	0	0	0	0	Seychelles & Dependencies ..	1	32	0	32
Outer Mongolia	0	859	752	107	Mauritius & Dependencies ..	29	5	0	5
North Korea	0	0	0	0	British East Africa	422	10,647	34	10,613
South Korea, Republic of ..	27,030	541	366	175	Mozambique	321	884	477	407
Hong Kong	7,323	358	318	40	Malagasy Republic	25	1,711	12	1,699
Taiwan	13,973	2,638	1,939	699	Republic of South Africa ..	3,079	12,526	12,369	137
Japan	92,811	8,832	4,502	4,330	Rhodesia & Nyasaland Fed..	77	1,049	753	296
Nansei and Nanpo Islands ..	3,352	4	4	0					
Total Asia	273,492	141,135	92,429	48,706	Total Africa	59,001	70,676	25,411	45,265
Australia and Oceania:									
Australia	3,969	46,936	46,819	117	TOTAL ALL COUNTRIES	816,444	681,670	404,977	277,593
New Guinea	34	274	0	274					

1/ Less than \$500.

2/ Not available by countries.

Explanatory Note

U.S. foreign agricultural trade statistics in this report include official U.S. data based on compilations of the Bureau of the Census. Agricultural commodities consist of (1) nonmarine food products and (2) other products of agriculture which have not passed through complex processes of manufacture such as raw hides and skins, fats and oils, and wine. Such manufactured products as textiles, leather, boots and shoes, cigarettes, naval stores, forestry products, and distilled alcoholic beverages are not considered agricultural.

The trade statistics exclude shipments between the 50 States and Puerto Rico, between the 50 States and the island possessions, between Puerto Rico and the island possessions, among the island possessions, and in-transit through the United States from one foreign country to another when documented as such through U.S. Customs.

EXPORTS The export statistics also exclude shipments to the U.S. armed forces for their own use and supplies for vessels and planes engaged in foreign trade. Data on shipments valued at less than \$100 are not compiled by commodity and are excluded from agricultural statistics but are reflected in nonagricultural and overall export totals in this report. The agricultural export statistics include shipments under P.L. 87-195 (Act for International Development), principally sales for foreign currency; under P.L. 83-480 (Agricultural Trade Development and Assistance Act), and related laws; and involving Government payments to exporters. (USDA payments are excluded from the export value.) Separate statistics on Government program exports are compiled by USDA from data obtained from operating agencies.

The export value, the value at the port of exportation, is based on the selling price (or cost if not sold) and includes inland freight, insurance, and other charges to the port. The country of destination is the country of ultimate destination or where the commodities are to be consumed, further processed, or manufactured. When the shipper does not know the ultimate destination, the shipments are credited to the last country, as known to him at time of shipments from the United States, to which the commodities are to be shipped in their present form. Export shipments valued \$100-\$499 are included on the basis of sampling estimates.

IMPORTS Imports for consumption consist of commodities released from U.S. Customs custody upon arrival, or entered into bonded manufacturing warehouse, or withdrawn from bonded storage warehouse for consumption. The agricultural statistics exclude low-value shipments from countries not identified because of illegible reporting, but they are reflected in nonagricultural and overall import totals in this report.

The import value, defined generally as the market value in the foreign country, excludes import duties, ocean freight, and marine insurance. The country of origin is defined as the country where the commodities were grown or processed. Where the country of origin is not known, the imports are credited to the country of shipment.

Imports similar to agricultural commodities produced commercially in the United States and others that are interchangeable in use to any significant extent with such U.S. commodities are supplementary, or partly competitive. All other commodities are complementary, or noncompetitive.

Further explanatory material on foreign trade statistics and compilation procedures of the Bureau of the Census is contained in the publications of that agency.

END

DATE

FILMED

7-9-79

NITIS