



**AgEcon** SEARCH  
RESEARCH IN AGRICULTURAL & APPLIED ECONOMICS

*The World's Largest Open Access Agricultural & Applied Economics Digital Library*

**This document is discoverable and free to researchers across the globe due to the work of AgEcon Search.**

**Help ensure our sustainability.**

Give to AgEcon Search

AgEcon Search  
<http://ageconsearch.umn.edu>  
[aesearch@umn.edu](mailto:aesearch@umn.edu)

*Papers downloaded from **AgEcon Search** may be used for non-commercial purposes and personal study only. No other use, including posting to another Internet site, is permitted without permission from the copyright owner (not AgEcon Search), or as allowed under the provisions of Fair Use, U.S. Copyright Act, Title 17 U.S.C.*

USDA/FATUS-  
MAR 63

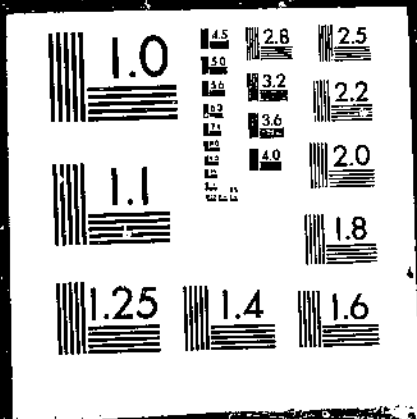
FATUS/FOREIGN AGRICULTURAL TRADE OF THE UNITED STATES, 1963 MARCH. Washington, DC:  
Economic Research Service.

(NAL Call No. A296:9/Ag8)

# 1 OF 1

# USDA-FATUS

# MAR-63



~~Recd~~  
A286.9  
Ag8

March 1963

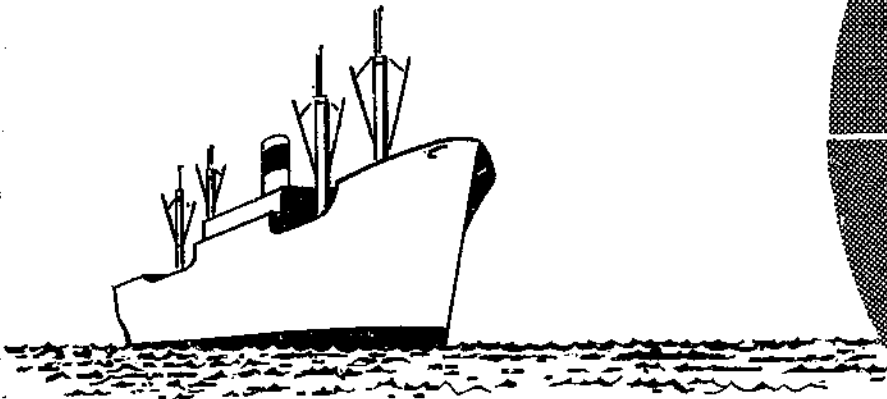
# FOREIGN AGRICULTURAL TRADE

OF THE UNITED STATES

U. S. DEPT. OF AGRICULTURE  
NATIONAL AGRICULTURAL LIBRARY

APR 3 - 1963

CURRENT SERIAL RECORDS



## IN THIS ISSUE

- Agricultural Imports Up 5 Percent in 1962
- Export Highlights, July-January
- Net Trade, 1960-61 and 1961-62
- Govt. Program Exports by Country, 1960-61
- Trade Statistics, July-December 1962

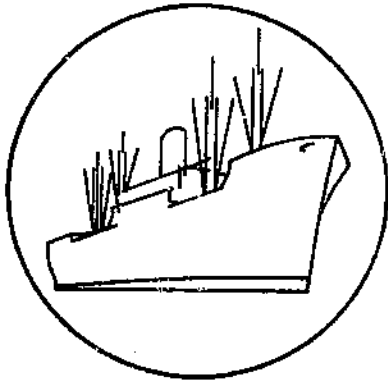
Published Monthly by  
Economic Research Service

U. S. DEPARTMENT OF AGRICULTURE

## Contents

	<u>Page</u>
Digest.....	3
Agricultural Imports in 1962 Increased 5 Percent -- Dewain H. Rahe.....	6
Export Highlights.....	11
Explanatory Note.....	33
Table 1.--Imports: Value by Commodity, Calendar Year 1961 and 1962....	7
Table 2.--Exports: Value by Commodity, July-January 1961-62 and 1962-63.....	12
Table 3.--Exports to the European Common Market: Value by Commodity, August-December 1961 and 1962.....	13
Table 4.--Exports: Value for 15 Leading Countries, July-December 1961 and 1962.....	14
Table 5.--Exports: Value by Commodity, Calendar Year 1961 and 1962....	15
Table 6.--Exports and Imports: Value by Commodity, Fiscal Year 1960-61 and 1961-62 (Net Trade).....	16
Table 7.--Government Program and Commercial Exports: Quantity by Commodity, July-December 1962.....	17
Table 8.--Government Program and Commercial Exports: Value by Commodity, July-December 1962.....	18
Table 9.--Government Program and Commercial Exports: Value by Country, July-June 1960-61.....	19
Table 10.--Exports: Quantity and Value by Commodity, December 1961 and 1962 and July-December 1961 and 1962.....	23
Table 11.--Imports: Quantity and Value by Commodity, December 1961 and 1962 and July-December 1961 and 1962.....	27
Table 12.--Exports and Imports: Value by Country, July-December 1962..	31

Prepared in  
Trade Statistics and Analysis Branch  
Development and Trade Analysis Division



# FOREIGN AGRICULTURAL TRADE OF THE UNITED STATES

---

## Digest

---

U.S. agricultural imports in calendar year 1962 were 5 percent greater in value than in 1961. Agricultural imports totaled \$3,875 million last year, \$185 million larger than the 1961 value. The increase occurred in commodities partly competitive with products of American agriculture, particularly in imports of animal products such as boneless beef, apparel wool, and dutiable cattle.

Imports of beef were stimulated in 1962 by unusually strong U.S. demand for manufactured meat products and the relatively low level of U.S. cow slaughter. The upturn in imports of wool reflected the strong demand for woolen textiles in the United States. U.S. cattlemen found it profitable to import feeders and stockers and convert relatively cheap U.S. feed into meat.

Among the complementary agricultural commodities -- items not competitive with American agricultural production -- declines in the value of imports of cocoa beans and carpet wool were offset by increases in coffee, rubber, and tea. Lower prices for some commodities kept the full impact of a larger volume of imports in 1962 from being reflected in the value of the complementary imports.

\* \* \* \* \*

July-January agricultural exports were \$285 million smaller than for the same period last year, primarily because of the reduced volume of shipments leaving the country during the longshoremen's strike. The value of exports in the 7-month period was \$2,662 million compared with \$2,947 million the previous year. Less cotton, tobacco, and wheat is moving abroad in the current fiscal year while feed grains, rice, soybeans, vegetable oils, and fruits and vegetables are ahead of last year's volume.

\* \* \* \* \*

Agricultural exports to the European Economic Community were down by 10 percent in the August-December 1962 period. This is the period during which variable import levies were imposed on wheat, wheat flour, feed grains, poultry,

and eggs. U.S. exports of these variable-levy commodities to the EEC were down 21 percent while exports of other commodities were down only 3 percent. It should be pointed out, however, that other factors as well as the imposition of these variable import levies accounted for the shifts in trade.

\* \* \* \* \*

The three leading markets abroad for U.S. agricultural products in the July-December 1962 period were Canada, Japan, and the United Kingdom. Canada registered as the leading foreign market because official trade statistics include shipments of grains and soybeans to Canada intransit for countries in Europe. These intransit shipments are stored in Canada and used to finish loading vessels moving through the St. Lawrence Seaway. It is estimated that these shipments to Canada totaled approximately \$50 million in the last 6 months of calendar year 1962. Excluding these intransit commodities, Canada placed third, and Japan ranked first, followed by the United Kingdom. However, because some of these intransit shipments to Canada may have ultimately been shipped to the United Kingdom, it is quite probable that the United Kingdom may actually have been the top market for U.S. agricultural commodities in the July-December 1962 period. A study is currently underway to determine the true geographical distribution of these intransit shipments to Canada.

\* \* \* \* \*

Preliminary figures on agricultural exports for calendar year 1962 show that exports totaled \$5,031 million compared with \$5,024 million in 1961. (See table 5.) Previous estimate for 1962 was \$5,040 million. (See February issue.)

\* \* \* \* \*

The United States is a net exporter of agricultural commodities. In fiscal year 1961-62 agricultural exports of \$5.1 billion exceeded agricultural imports of \$3.8 billion by \$1.3 billion. (See table 6.) There is a two-way trade in nearly all commodity groups; and, for most, the United States is a net exporter. However, a combination of demand and supply factors has made the United States a net importer of several commodities similar to American agricultural products, including live animals, beef and veal, cheese, apparel wool, and certain fruits. The United States is also a net importer of silk, carpet wool, bananas, cocoa beans, coffee, tea, spices, and rubber, but these are complementary (noncompetitive) commodities not produced in commercial volume in the United States. The live-animal imports -- mostly stockers and feeders -- are imported by U.S. cattlemen to convert cheap feed to meat. Beef imports supplement the domestic supply of low-grade beef needed to make certain manufactured meat products. Apparel wool imports also supplement domestic output. Consumer preference for foreign canned hams and cheeses accounts for the bulk of the imports of these products.

\* \* \* \* \*

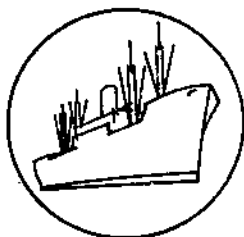
About 25 percent of the \$2,460 million of agricultural exports in July-December 1962 moved under Government programs. (See tables 7 and 8.) About two-thirds of these program shipments moved under Title I, the foreign currency sales

program, of P.L. 480. The shipments were followed, in descending order of importance, by foreign donations under Title III, famine and other emergency relief under Title II, barter under Title III, and long-term supply and dollar credit sales under Title IV. Relatively small shipments were made under P.L. 87-195, Section 402, sales for foreign currency and economic aid.

\* \* \* \* \*

The bulk of U.S. agricultural exports under Government-financed programs valued at \$1.6 billion in fiscal year 1960-61 went to countries in Asia and Europe. Principal Asian countries were India, Pakistan, Republic of Korea, Taiwan, United Arab Republic (Syria Region), and Israel. Principal European countries were Poland, Spain, Yugoslavia, Italy, and Turkey. Elsewhere, large shipments were made to Brazil, Tunisia, and United Arab Republic (Egypt Region). The eight leading dollar markets for agricultural commodities in 1960-61 were Japan, Canada, the United Kingdom, the Netherlands, West Germany, Italy, Belgium, and France. Shipments to Canada included grains and soybeans used to finish loading vessels that have passed through the St. Lawrence Seaway en route to destinations in Europe.





## SPECIAL in this issue

---

### AGRICULTURAL IMPORTS IN 1962 INCREASED 5 PERCENT X

by

Dewain H. Rahe <sup>1/</sup>

U.S. agricultural imports for consumption totaled \$3,875 million in 1962, 5 percent more than the \$3,690 million in the previous year. (Table 1.) All of the increase occurred in supplementary (partially competitive) items as complementary (noncompetitive) imports declined slightly. Agricultural products continued to account for about one-fourth of total U.S. imports. Imports of nonagricultural products totaled \$12,384 million compared with \$10,667 million in 1961.

Imports of supplementary commodities totaled \$2,134 million in 1962 compared with \$1,938 million a year earlier. Three-fourths of the increase was in animal products, principally boneless beef, apparel wool, and dutiable cattle. There were increases in oilseeds and products, cane sugar, and vegetables. These gains were partly offset by lower imports of cotton, grains, and unmanufactured tobacco.

Imports of complementary items declined for the third consecutive year. They totaled \$1,741 million compared with the previous year's \$1,752 million. The decline reflected lower prices as quantity increased. Declines in the value of cocoa beans and carpet wool were offset by increases in the value of coffee, crude natural rubber, and tea. Imports of bananas totaled \$77 million in both years.

#### Supplementary Imports

Dutiable cattle. Imports of dutiable cattle rose to 1,232,000 head in 1962 from 1,023,000 in 1961. The increase resulted mainly from larger imports of feeders and stockers from Mexico. Drought conditions in Mexico encouraged farmers and ranchers there to increase shipments to the United States. Imports from Canada were only slightly larger. Mexico supplied 60 percent of U.S. imports of dutiable cattle; and Canada, the rest. U.S. cattlemen found it profitable to import feeders and stockers and convert relatively cheap U.S. feed into meat. In recent years, the strong demand for beef in the United States also has encouraged imports of cattle.

---

<sup>1/</sup> Agricultural Economist, Trade Statistics and Analysis Branch, Development and Trade Analysis Division, ERS.

Table 1.--U.S. agricultural imports for consumption: Value by commodity,  
Calendar years 1961 and 1962

Commodity	1961	1962	Change
	--Million dollars--		Percent
<u>Supplementary</u>			
Animals and animal products:			
Animals, live.....	105	122	+16
Dairy products.....	54	54	0
Hides and skins.....	61	63	+3
Meats and meat products.....	372	485	+30
Wool, apparel.....	90	120	+33
Other.....	55	41	-25
Total animals, etc.....	737	885	+20
Cotton, excluding linters.....	31	25	-19
Fruits and preparations.....	88	88	0
Grains and preparations.....	54	43	-20
Nuts and preparations.....	62	60	-3
Oilseeds and products.....	145	155	+7
Sugar, cane.....	458	509	+11
Tobacco, unmanufactured.....	114	101	-11
Vegetables and preparations.....	78	83	+6
Other.....	171	185	+8
Total supplementary.....	1,938	2,134	+10
<u>Complementary</u>			
Bananas.....	77	77	0
Coffee.....	964	990	+3
Cocoa beans.....	159	131	-18
Rubber, crude, natural.....	216	228	+6
Tea.....	54	60	+11
Wool, carpet.....	108	89	-18
Other.....	174	166	-5
Total complementary.....	1,752	1,741	-1
Total imports.....	3,690	3,875	+5

Meats. Imports of beef and veal increased to a record 948 million pounds (product weight) from 665 million pounds in 1961. Australia and New Zealand continued to be the top foreign suppliers of beef in the U.S. market; however, there were increases in imports from other areas, especially the Central American Republics. Nearly all imports consisted of low-grade boneless beef used for manufacturing meat products such as prepared hamburgers, luncheon meat, and frankfurters. Imports of beef were encouraged by a strong U.S. demand for manufactured meat products and the relatively low level of U.S. cow slaughter.

Imports of pork totaled 204 million pounds (product weight) in 1962 compared with 174 million pounds a year earlier. Imports of canned hams and shoulders accounted for about two-thirds of pork imports. Main suppliers of canned products were the Netherlands, Denmark, and Poland. Canada supplied 40 million pounds of fresh or frozen pork.

Apparel wool. Imports of apparel wool advanced to 191 million pounds (actual weight) from 137 million pounds in 1961. This gain reflected a strong demand for woolen textiles in the past 2 years. The increase in imports in the past 2 years reversed a downward movement that started in the early 1950's when noncellulose manmade fibers for many uses were introduced. About one-third of the apparel wool used in this country is imported, principally from Australia, South Africa, and New Zealand. The National Wool Act of 1954 has supported wool prices at around 62 cents a pound. However, domestic production of shorn wool has been relatively stable, averaging 256 million pounds in the past 5 years.

Hides and skins. Imports of hides and skins increased to 140 million pounds in 1962 from 135 million pounds in 1961. Over two-thirds were sheep and goat skins, not produced in large volume in the United States. There was a relatively strong demand for leather products in this country last year.

Tobacco. Imports of unmanufactured tobacco of 164 million pounds in 1962 were slightly below the 166 million a year earlier. About 10 percent of U.S. cigarette production consists of foreign tobacco for blending with U.S. tobaccos. Most of the decline in 1962 reflected restrictions on imports from Cuba. In prior years, the United States imported 20-30 million pounds from Cuba for cigar manufacturing in Florida.

Cotton. Imports of cotton, including picker lap, declined to 69,000 bales (480 pounds net) from 173,000 in the previous year. About 65 percent of the year's imports consisted of long-staple cotton (1 1/8 inches or longer). Imports of cotton, except short harsh Asiatic cotton, are regulated by quotas. Long-staple imports are limited to 95,000 bales on an August 1 - July 30 year while imports of upland type (under 1 1/8 inches) are limited to 30,000 bales on a September 20-September 19 year. Imports of picker lap in 1962 were sharply restricted by Government action.

Grains. Imports of grains and preparations in 1962 declined from the previous year. Most of the decline occurred in barley which totaled 5 million bushels in 1962 compared with 15 million in 1961. In 1961 large quantities of barley for malting purposes were imported into the United States because of reduced domestic supplies. Most grain imports were from Canada and represented border trading. In recent years grain price relationships in Canada have not favored the shipping of grains to the United States. In fact, Canada has been importing substantial quantities of U.S. grains because of poor crops following drought in 1961.

Oilbearing materials and products. Combined imports of oilbearing materials and products totaled somewhat more in value in 1962 than in 1961, but quantities of principal commodities such as copra and vegetable oils were smaller. Imports of copra totaled 713 million pounds in 1962 compared with 770 million in 1961.

Copra imports in the last half of 1962 were above the volume in the same period a year earlier, reflecting larger imports from the Philippines. In the later half of 1962 larger supplies were available for export from the major exporting countries. Total imports of vegetable oil, fats, and waxes totaled 492 million pounds in 1962 compared with 584 million in 1961. Coconut oil imports -- about two-fifths of all oil imports -- increased substantially from the previous year. Less imports were required in 1961 when large quantities of coconut oil were released from U.S. strategic stockpiles.

Cane sugar. Imports of cane sugar totaled 4.6 million short tons (telquei basis as reported by the Bureau of the Census) compared with 4.2 million in 1961. Value increased to \$509 million from \$458 million. Indications are that the value of sugar imports as reported by the Bureau of the Census was overstated by some \$30 million because new sugar fees were included in the import price. Imports accounted for about 45 percent of U.S. sugar consumption last year -- somewhat less than in previous years -- as recent Sugar Act amendments provided domestic producers with a larger share of the U.S. market. Principal foreign suppliers were the Philippines, Mexico, and the Dominican Republic. Imports in the later months of 1962 were unusually heavy in anticipation of the longshoremen's strike which began December 23.

#### Complementary Imports

Bananas. Imports of bananas totaled \$77 million in both 1962 and 1961. Nearly all the bananas were imported from the Central American Republics, mainly Ecuador, Honduras, Costa Rica, and Panama. Imports have remained relatively stable in the past 5 years.

Coffee. Imports of coffee increased to a record 3.2 billion pounds in 1962 from 3 billion in 1961. Value increased to \$990 million in 1962 from \$964 million. Except for these 2 years, annual imports were above a billion dollars since 1950. A new coffee agreement among major producing and leading consuming countries was signed in 1962 to provide a more orderly and stable market. Since 1950 the value of imports has been trending downward because of relatively large supplies in major producing countries and the relatively inelastic demand in consuming countries. Over 80 percent of U.S. coffee imports comes from Latin America, principally Brazil, Colombia, Mexico, and Guatemala. Imports in the later part of 1962 were stimulated by the threat of a longshoremen's strike in the United States. U.S. per capita consumption of coffee has been relatively stable during the postwar period, averaging about 15.8 pounds for the past 5 years.

Cocoa beans. Imports of cocoa beans declined to 639 million pounds in 1962 from an alltime high of 767 million in 1961, reflecting reduced world production, higher prices, and large U.S. stocks. There are relatively wide price fluctuations in the international cocoa market because producing countries market their output in the same year in which it is produced. Thus, major cocoa producing countries do not have buffer stocks to prevent wide price fluctuations associated with poor crops.

Rubber. Imports of crude natural rubber in 1962 amounted to 943 million pounds compared with 876 million in 1961. Value in 1962 increased by \$12 million and

totaled \$228 million. Since World War II the United States has gradually shifted to the use of synthetic in lieu of crude natural rubber. In the early 1950's crude natural rubber accounted for some two-fifths of all U.S. rubber use, but in 1962 it declined to around 28 percent of use. Principal factors in the greater use of synthetic rubber has been the price advantage as well as the improved properties of synthetic rubber in recent years.

Carpet wool. Imports of carpet wool in 1962 declined to 181 million pounds (actual weight) from 206 million in 1961. Lower mill use and a shift to the greater use of synthetic fibers in carpet manufacturing contributed to the decline. All the carpet wool used in manufacturing carpets is obtained from abroad.



## Export Highlights

---

### SUMMARY: JULY 1962 - JANUARY 1963

U.S. agricultural exports in July-January of 1962-63 were \$285 million below the level of a year earlier. They totaled \$2,662 million compared with the previous year's level of \$2,947 million (table 2). The principal reason for the decline was the longshoremen's strike from late December until late January. Exports in January 1963 totaled only \$202 million compared with the previous year's \$379 million. Exports prior to the strike were running about 4 percent below the level of a year earlier, mainly because of smaller exports of cotton, tobacco, and wheat. Offsetting these declines were sharp increases in feed grains, rice, soybeans, vegetable oils, fruits, and vegetables. Much of the decline occurring as the result of the strike is expected to be offset before the end of the fiscal year on June 30.

### EXPORTS TO THE EEC: AUGUST-DECEMBER 1962

Agricultural exports to the European Economic Community (EEC) were down by 10 percent in the 5-month period following imposition of the variable import levies on and after July 30, 1962. Exports to the EEC totaled \$489 million in August-December 1962 compared with \$541 million for the like period a year earlier (table 3). Variable-levy commodities were down 21 percent, with principal declines in wheat flour, wheat, and poultry meat. Among the variable-levy commodities, exports of feed grains increased 38 percent, reflecting trade liberalization by Italy and reduced supplies available from other major producers. There were increases for soybeans, fruits, and vegetables, and declines for cotton, tobacco, lard and tallow, pork, rice, and vegetable oils.

Nonvariable-import-levy-commodity exports were down only 3 percent. Indications are that EEC imports from other nonmember suppliers also declined since the variable import levies went into effect. However, there has been an increase in agricultural trade among the EEC countries during this period.

### LEADING MARKETS: JULY-DECEMBER 1962

Canada was the leading foreign market in July-December 1962 if intransit commodities are included in the total. Commodities moving intransit through Canada totaled approximately \$50 million. Excluding these intransit commodities, Canada was in third place, and Japan continued to be the largest foreign outlet, taking commodities worth \$228 million in July-December 1962 compared with \$231 million in July-December 1961 (table 4). The United Kingdom continued to be the second best foreign outlet, taking \$218 million in 1962 compared with \$270 million a year earlier. Of the 15 leading foreign markets,

Table 2.--U.S. agricultural exports: Value by commodity, July-January 1961-62 and 1962-63

Commodity	July-January		Change
	1961-62	1962-63	
	--Million dollars--		Percent
Animals and animal products:			
Dairy products.....	75	74	-1
Fats, oils, and greases.....	102	71	-30
Hides and skins.....	52	47	-10
Meats and meat products.....	47	44	-6
Poultry products.....	55	40	-27
Other.....	32	33	+3
Total animals, etc.....	363	309	-15
Cotton, excluding linters.....	408	250	-39
Fruits and preparations.....	175	176	+1
Grains and preparations:			
Feed grains, excluding products.....	332	379	+18
Rice, milled.....	62	78	+26
Wheat and flour.....	745	542	-27
Other.....	32	43	+34
Total grains, etc.....	1,161	1,042	-10
Oilseeds and products:			
Cottonseed and soybean oils <sup>1/</sup> .....	73	91	+25
Soybeans.....	226	241	+7
Other.....	55	83	+51
Total oilseeds, etc. <sup>1/</sup> .....	354	415	+17
Tobacco, unmanufactured.....	293	251	-14
Vegetables and preparations.....	69	84	+22
Other.....	124	135	+9
Total exports.....	2,947	2,662	-10

<sup>1/</sup> Excludes Title III, P.L. 480 donations, which are included in "Other."

3 took less, namely Canada, Japan, the United Kingdom, West Germany, Italy, Brazil, Spain, and France. But increases occurred for the Netherlands, India, Belgium, UAR-Egypt, South Korea, Pakistan, and Denmark.

A substantial part of the decline in exports to the advanced industrial countries in Western Europe and Japan reflected sharply smaller exports of cotton. Wheat exports to Western Europe also were down sharply in July-December from a year earlier because of substantially increased European wheat production. Somewhat offsetting these declines were increases in feed grains and soybeans. The newly-developing countries, particularly in Asia (India, Pakistan, and South Korea) took more U.S. agricultural products in July-December 1962 because their grain production was less favorable than in the previous year.

Table 3.--U.S. agricultural exports to the European Common Market: Value by commodity, August through December 1961 and 1962

Commodity	August-December 1961	August-December 1962	Change
	-- Thousand dollars --		Percent
<u>Variable-levy commodities</u>			
Feed grains.....	84,465	116,400	+38
Poultry and eggs:			
Broilers and fryers.....	13,937	6,428	-54
Stewing chickens.....	3,924	1,575	-60
Turkeys.....	4,992	5,535	+11
Eggs.....	2,109	508	-76
Total.....	26,571	14,814	-44
Wheat.....	83,424	22,379	-73
Wheat flour.....	7,451	5,413	-27
Total.....	201,911	195,006	-21
<u>Non-variable-levy commodities</u>			
Cotton.....	88,976	39,156	-56
Fruits and vegetables.....	35,301	46,656	+32
Lard and tallow.....	15,203	10,661	-30
Pork <sup>1/</sup> .....	271	98	-64
Rice.....	6,809	3,207	-53
Soybeans.....	73,618	85,904	+17
Tobacco.....	49,935	44,266	-11
Vegetable oils, expressed.....	9,431	4,728	-50
Other.....	59,214	94,998	+60
Total.....	338,758	329,674	-3
<b>Total.....</b>	<b>540,669</b>	<b>488,680</b>	<b>-10</b>

<sup>1/</sup> Although pork is a variable-levy commodity, the imposition of the levy on pork variety meat -- the kind exported by the United States -- has been postponed.

PRELIMINARY TOTALS: CALENDAR YEAR 1962

Actual agricultural exports in calendar year 1962 totaled \$5,031 million compared with the previous year's \$5,024 million (table 5). <sup>1/</sup>

<sup>1/</sup> For an analysis of these exports, see Foreign Agricultural Trade of the United States, Feb. 1962.



Table 4.--U.S. agricultural exports: Value for 15 leading countries,  
July-December 1961 and 1962

Country	1961	1962	Change
	-- Million dollars --		Percent
Canada <sup>1/</sup> .....	263	255	-3
Japan.....	231	228	-1
United Kingdom.....	270	218	-19
Netherlands.....	172	190	+10
West Germany.....	211	188	-11
India.....	125	186	+49
Italy.....	101	85	-16
Belgium.....	62	64	+3
UAR-Egypt.....	52	62	+19
Korea, Republic of.....	38	56	+47
Brazil.....	63	51	-19
Pakistan.....	41	50	+22
Spain.....	74	47	-36
France.....	53	40	-25
Denmark.....	31	37	+19
Other.....	787	703	-11
Total.....	2,574	2,460	-4

<sup>1/</sup> Includes commodities intransit through Canada for shipment to other countries.

Table 5.--U.S. agricultural exports: Value by commodity,  
calendar years 1961 and 1962

Commodity	1961	1962 <sup>1/</sup>	Change
	-- Million dollars --		Percent
Animals and animal products:			
Dairy products.....	134	130	-3
Fats, oils, and greases.....	181	147	-19
Hides and skins.....	86	83	-3
Meats and meat products.....	81	76	-6
Poultry products.....	85	89	+5
Other.....	67	64	-4
Total animals, etc.....	634	589	-7
Cotton, excluding linters.....	875	528	-40
Fruits and preparations.....	272	286	+5
Grains and preparations:			
Feed grains, excluding products.....	518	788	+52
Rice, milled.....	111	153	+38
Wheat and flour.....	1,300	1,134	-13
Other.....	57	70	+23
Total grains, etc.....	1,986	2,145	+8
Oilseeds and products:			
Cottonseed and soybean oils <sup>2/</sup> .....	127	185	+46
Soybeans.....	343	406	+18
Other.....	96	133	+39
Total oilseeds, etc. <sup>2/</sup> .....	566	724	+28
Tobacco, unmanufactured.....	391	373	-5
Vegetables and preparations.....	124	148	+19
Other.....	176	238	+35
Total exports.....	5,024	5,031	0

<sup>1/</sup> Preliminary.

<sup>2/</sup> Excludes Title III, P.L. 480 donations, which are included in "Other."

Table 6.-- U. S. agricultural exports and imports for consumption: Value by commodity, fiscal years 1960-61 and 1961-62

Commodity	1960-61			1961-62 1/		
	Exports	Imports	Net	Exports	Imports	Net
	1,000 dollars	1,000 dollars	+ exports - imports dollars	1,000 dollars	1,000 dollars	+ exports - imports dollars
<b>SUPPLEMENTARY</b>						
Animals, live, except poultry ..	18,434	66,109	-47,675	14,449	119,642	-105,193
Lard .....	55,520	2/	+55,520	43,119	2/	+43,119
Tallow, inedible .....	100,040	1	+100,039	110,515	48	+110,467
Hides and skins, raw .....	82,746	58,161	+24,585	83,944	68,834	+15,110
Beef and veal, fresh or frozen ..	6,538	158,639	-152,101	6,363	224,848	-218,485
Beef, canned, including corned ..	752	29,279	-28,527	625	33,544	-32,919
Pork, canned .....	2,055	83,562	-81,507	1,000	92,512	-91,512
Other meats, except poultry .....	58,207	56,143	+2,064	53,971	61,342	-7,371
Poultry, eggs and egg products ..	87,093	2,127	+84,966	107,425	1,466	+105,959
Butter .....	325	384	-59	807	426	+381
Cheese .....	4,131	35,364	-31,233	4,163	35,380	-31,217
Milk, condensed and evaporated ..	29,233	36	+29,197	21,099	31	+21,068
Milk, dry, whole and nonfat .....	35,900	178	+35,722	39,999	184	+39,815
Wool, unmf., excluding free ....	15,648	79,446	-63,798	12,126	108,950	-96,824
Cotton and linters, unmf. ....	945,985	30,273	+915,712	672,203	33,076	+639,127
Wheat grain .....	964,584	3/ 1,762	+962,822	1,089,099	3/ 2,077	+1,087,022
Wheat flour .....	117,544	229	+117,315	125,741	160	+125,581
Rice .....	119,469	1,103	+118,366	132,966	1,522	+131,444
Corn grain .....	325,444	2,285	+323,159	483,996	2,526	+481,470
Oilcake and oilcake meal .....	44,647	2,491	+42,156	65,952	4,717	+61,235
Other feed grains, feeds, etc. ..	4/ 235,560	5/ 38,864	+196,696	4/ 248,130	5/ 38,893	+209,237
Oilseeds .....	378,993	60,036	+318,957	388,394	51,640	+336,754
Vegetable oils, expressed .....	173,342	83,771	+89,571	181,274	94,314	+86,960
Tobacco, unmanufactured .....	385,206	115,615	+269,591	407,491	108,667	+298,824
Citrus fruits .....	56,703	1,315	+55,388	60,837	1,251	+59,586
Deciduous fruits, fresh .....	23,453	6,486	+16,967	30,741	6,149	+24,592
Dried fruits .....	41,319	4,939	+36,380	46,154	5,063	+41,091
Canned fruits and juices .....	99,027	25,572	+73,455	112,772	27,600	+85,172
Other fruits and preparations ..	33,018	49,411	-16,393	31,504	50,117	-18,613
Sugar .....	679	440,679	-440,000	750	471,097	-470,347
Food for relief or charity .....	149,664	—	—	180,247	—	—
<b>COMPLEMENTARY</b>						
Silk, raw .....	6	26,343	-26,337	31	27,240	-27,209
Wool, unmf., free in bond .....	—	105,199	—	—	95,742	—
Bananas .....	0	75,649	-75,649	0	77,981	-77,981
Cocoa or cacao beans .....	0	166,958	-166,958	93	139,827	-139,734
Coffee .....	16,008	1,011,697	-995,689	30,586	946,525	-915,939
Tea .....	606	52,412	-51,806	742	57,142	-56,400
Spices .....	2,187	35,591	-33,404	2,124	34,499	-32,375
Rubber, crude .....	0	244,674	-244,674	22	231,102	-231,080
Other agricultural 6/ .....	336,251	491,816	-155,565	349,196	510,776	-161,580
Total agricultural .....	4,946,317	3,644,599	+1,301,718	5,140,650	3,766,910	+1,373,740
Total nonagricultural .....	15,514,896	10,292,097	+5,222,799	16,247,832	11,879,562	+4,368,270
Total all commodities .....	20,461,213	13,936,696	+6,524,517	21,388,482	15,646,472	+5,742,010

1/ Preliminary.

2/ Less than \$500.

3/ Excludes wheat unfit for human consumption.

4/ Includes barley, sorghums, oats, and other feeds and fodders.

5/ Includes barley, oats, wheat unfit for human consumption, and other feeds and fodders.

6/ Includes both supplementary and complementary commodities.

Table 7.--U.S. agricultural exports under specified Government-financed programs, exports outside specified Government-financed programs, and total agricultural exports: Quantity by commodity, July-December 1962

Commodity	Unit	Public Law 480				P.L. 87-195	Total	Total	Total	
		Title I	Title II	Title III	Title IV	Sec. 402	agricultural	agricultural	Total	
		Sales for foreign currency	Famine and other emergency relief	Foreign donations 1/	Barter 2/	Long-term supply and dollar credit sales	sales for foreign currency and aid 3/	exports under specified Government programs	exports outside specified Government programs 4/	agricultural exports
-- Thousand units --										
Wheat (60 lb.).....	Bu.	132,296	7,903	649	2,262	2,463	5/1,111	146,584	84,218	230,802
Wheat flour.....	Cwt.	6,025	1,457	5,569	23	10	102	13,185	6,944	20,130
Corn, except seed (56 lb.).....	Bu.	10,384	3,011	628	8,760	---	508	23,291	168,088	191,379
Grain sorghums (56 lb.).....	Bu.	1,449	29	---	5,339	---	---	6,817	49,785	56,602
Barley (48 lb.).....	Bu.	8,918	230	---	595	---	---	9,743	29,117	38,860
Corn meal.....	Cwt.	---	32	1,991	---	---	---	2,023	415	2,438
Wheat cereal foods to be cooked.....	Lb.	---	6/ 6,000	6/ 137,356	---	---	---	143,356	8,784	7/152,140
Rice, milled.....	Cwt.	5,533	15	---	---	180	64	5,792	965,830	972,622
Cotton, running bale.....	Bale	503	---	---	---	61	---	564	1,046	1,610
Tobacco, unmanufactured.....	Lb.	10,815	---	---	9,568	428	---	20,811	277,985	298,796
Soybeans (60 lb.).....	Bu.	---	---	---	---	1,122	770	1,892	90,075	91,967
Tallow, edible and inedible.....	Lb.	79,844	---	---	---	---	---	79,844	562,933	642,777
Soybean oil.....	Lb.	155,254	7,716	8/ 19,499	---	30,940	1,274	215,683	445,106	7/660,789
Cottonseed oil.....	Lb.	44,208	---	8/ 11,452	---	---	---	55,660	116,497	7/172,157
Shortening, 100 percent vegetable oil.....	Lb.	---	334	33,038	---	---	---	33,372	4,457	7/ 37,829
Oilcake and meal.....	S.T.	---	---	---	---	25	20	45	661	706
Feeds and fodders, except oilcake and meal.....	S.T.	---	---	---	---	2	2	4	476	480
Essential oils.....	Lb.	---	---	---	---	---	50	50	3,762	3,812
Milk, evaporated and condensed.....	Lb.	23,037	---	---	---	---	3,297	26,334	33,146	59,480
Milk, whole dried.....	Lb.	1,495	---	---	---	---	17	1,512	5,158	6,670
Milk, nonfat dry.....	Lb.	7,821	12,936	297,032	9,772	---	---	327,561	105,808	433,369
Cheese.....	Lb.	---	---	13,698	---	---	---	13,698	2/ -195	13,503
Butter.....	Lb.	---	---	4,986	1,135	---	---	6,121	3,262	7/ 9,383
Anhydrous milk fat.....	Lb.	8	---	14,259	---	---	---	14,267	2,805	7/ 17,070
Infants' and dietetic foods.....	Lb.	---	---	---	---	---	242	242	7,322	7,564
Poultry, fresh or frozen.....	Lb.	3,158	---	---	---	---	---	3,158	104,675	107,833
Hides and skins.....	No.	---	---	---	---	---	17	17	5,838	5,855
Beans, dry edible, except seed.....	Cwt.	22	185	668	---	---	---	875	1,097	1,972
Fruits and juices, fresh, frozen and canned.....	Lb.	1,606	---	---	---	---	14	1,620	1,282,808	1,284,428
Crude rubber and allied gums.....	Lb.	---	---	---	---	---	320	320	553	873

1/Foreign donations are authorized under Sec. 416 of the Agricultural Act of 1949 and Sec. 302, Title III, P.L. 480.

2/The barter program is authorized under the Charter Act of the Commodity Credit Corporation: Sec. 303, Title III, P.L. 480; and other legislation.

3/Agency for International Development (AID) Programs.

4/"Total agricultural exports outside specified Government-financed programs" (sales for dollars) include, in addition to unassisted commercial transactions, shipments of some commodities with governmental assistance in the form of (1) extension of credit for relatively short periods, (2) sales of Government-owned commodities at less than domestic market prices, and (3) export payments in cash or in kind.

5/Quantity estimated.

6/Bulgur wheat under Title II and rolled wheat under Title III.

7/The quantity shown for total agricultural exports of wheat cereal foods to be cooked, soybean oil, cottonseed oil, shortening, 100 percent vegetable oil, butter, and anhydrous milk fat includes quantity reported by the Bureau of the Census, plus the quantity shown as foreign donations under Title III, P.L. 480. Relief shipments of these commodities are not separately reported by the Bureau of the Census.

8/Reported as soybean and cottonseed oil. Breakdown between the two oils estimated.

9/ Excess of program portion over total may be attributed to lags in reporting or to differences in classification procedures.

Table 8.--U.S. agricultural exports under specified Government-financed programs, exports outside specified Government-financed programs, and total agricultural exports: Value by commodity, July-December 1962

Commodity	Public Law 480				P.L. 87-195	Total	Total	Total agricultural exports	
	Title I	Title II	Title III		Sec. 402	agricultural	agricultural		
	Sales for foreign currency	Famine and other emergency relief	Foreign donations 1/	Barter 2/	Long-term supply and dollar credit sales	sales for foreign currency and economic aid 3/	exports under Government programs 4/		exports outside Government programs 4/
-- Thousand dollars --									
Wheat.....	225,912	31,051	1,233	3,789	4,285	2,502	268,772	157,097	425,869
Wheat flour.....	18,983	8,201	22,890	67	43	561	50,745	34,558	85,303
Corn, except seed.....	12,923	7,100	765	10,841	---	774	32,404	201,927	234,331
Grain sorghams.....	1,596	68	---	5,527	---	---	7,191	55,172	62,363
Barley.....	10,210	541	---	628	---	---	11,379	32,409	43,788
Corn meal.....	---	126	8,352	---	---	---	8,488	2,128	10,616
Wheat cereal foods to be cooked.....	---	5/ 586	5/ 6,858	---	---	---	7,454	145	6/ 7,599
Rice, milled.....	35,915	134	---	---	1,270	462	37,781	27,635	65,416
Cotton, running bale.....	68,586	---	---	---	8,400	---	76,986	143,252	220,238
Tobacco, unmanufactured.....	8,614	---	---	6,430	441	---	15,485	229,663	245,148
Soybeans.....	---	---	---	---	2,778	1,434	4,212	226,990	231,202
Tallow, edible and inedible.....	6,691	---	---	---	---	---	6,691	33,708	40,399
Soybean oil.....	17,380	1,172	3,120	---	3,079	55	24,806	42,009	6/ 66,815
Cottonseed oil.....	5,069	---	2,061	---	---	---	7,130	15,850	6/ 22,980
Shortening, 100 percent vegetable oil.....	---	61	5,947	---	---	---	6,008	981	6,989
Oilcake and meal.....	---	---	---	---	1,915	1,637	3,552	48,672	52,224
Feeds and fodders, except oilcake and meal.....	---	---	---	---	146	106	252	28,701	28,953
Essential oils.....	---	---	---	---	---	75	75	6,989	7,064
Milk, evaporated and condensed.....	4,599	---	---	---	---	579	5,178	5,957	11,135
Milk, whole dried.....	598	---	---	---	---	---	598	2,861	3,459
Milk, nonfat dry.....	432	2,374	25,545	574	---	12	28,937	9,151	38,088
Cheese.....	---	---	4,657	---	---	---	4,657	7/ -35	4,622
Butter.....	---	---	1,845	256	---	---	2,101	1,186	6/ 3,287
Anhydrous milk fat.....	4	---	11,834	---	---	---	11,838	2,170	14,008
Infants' and dietetic foods.....	---	---	---	---	---	200	200	4,776	4,976
Poultry, fresh or frozen.....	924	---	---	---	---	---	924	30,111	31,035
Hides and skins.....	---	---	---	---	---	116	116	42,510	42,626
Beans, dry edible, except seed.....	180	1,752	4,678	---	---	---	6,610	8,660	15,270
Fruits and juices, fresh, frozen and canned.....	107	---	---	---	---	3	110	129,025	129,135
Crude rubber and allied gums.....	---	---	---	---	---	83	83	189	272
Other agricultural commodities.....	---	---	---	---	---	---	---	304,432	304,432
Total agricultural exports.....	418,723	53,166	99,806	28,112	22,357	8,599	630,763	1,828,879	2,459,642

1/ Foreign donations are authorized under Sec. 416 of the Agricultural Act of 1949 and Sec. 302, Title III, P.L. 480.

2/ The barter program is authorized under the Charter Act of the Commodity Credit Corporation: Sec. 303, Title III, P.L. 480; and other legislation.

3/ Agency for International Development (AID) Programs.

4/ "Total agricultural exports outside specified Government-financed programs" (sales for dollars) include, in addition to unassisted commercial transactions, shipments of some commodities with governmental assistance in the form of (1) extension of credit for relatively short periods, (2) sales of Government-owned commodities at less than domestic market prices, and (3) export payments in cash or in kind.

5/ Bulgur wheat under Title II and rolled wheat under Title III.

6/ The value shown for total agricultural exports of wheat cereal foods to be cooked, soybean oil, cottonseed oil, shortening, 100 percent vegetable oil, butter, and anhydrous milk fat includes value reported by the Bureau of the Census, plus the value shown as foreign donations under Title III, P.L. 480. Relief shipments of these commodities are not separately reported by the Bureau of the Census.

7/ Excess of program portion over total may be attributed to lags in reporting or to differences in classification procedures.

Table 9.--U.S. agricultural exports under specified Government-financed programs, exports outside specified Government-financed programs, and total agricultural exports, value, by country of destination, July-June 1960-61

Country	Public Law 480				P.L. 665	Total	Total	Total agricultural exports
	Title I	Title II	Title III	Barter	Sec. 402	agricultural exports under specified Government programs	agricultural exports outside specified Government programs	
	Sales for foreign currency	Famine and other emergency relief	Foreign donations 1/	Barter 2/	sales for foreign currency and aid 3/	exports under specified Government programs	exports outside specified Government programs 4/	Total agricultural exports
-- Thousand dollars --								
<b>North America</b>								
Canada.....	---	---	---	---	---	---	454,667	454,667
Greenland.....	---	---	---	---	---	---	2	2
Miquelon and St. Pierre Islands.....	---	---	---	41	---	41	2	43
Total.....	---	---	---	41	---	41	454,671	454,712
<b>Latin American Republics and Canal Zone</b>								
Argentina.....	---	---	---	---	---	---	2,914	2,914
Bolivia.....	---	---	246	2,942	1,338	4,526	1,971	6,497
Brazil.....	53,358	---	1,774	6,455	---	61,587	8,170	69,757
Canal Zone.....	---	---	---	1	---	1	608	609
Chile.....	8,351	---	4,025	14	---	12,390	8,869	21,259
Colombia.....	6,860	---	1,928	2,046	---	10,834	14,167	25,001
Costa Rica.....	---	---	---	140	---	140	5,332	5,472
Cuba.....	---	---	36	292	---	328	40,806	41,134
Dominican Republic.....	---	---	---	125	---	125	2,581	2,706
Ecuador.....	1,050	---	386	---	---	1,436	6,101	7,537
El Salvador.....	---	---	33	---	---	33	5,439	5,472
Guatemala.....	---	---	409	16	---	425	8,567	8,992
Haiti.....	---	---	865	1,798	---	2,663	3,678	6,341
Honduras.....	---	---	220	10	---	230	3,859	4,089
Mexico.....	---	---	1,739	363	---	2,102	60,315	62,417
Nicaragua.....	---	---	88	4	---	92	2,829	2,921
Panama, Republic of.....	---	---	276	---	---	276	9,127	9,403
Paraguay.....	---	---	813	---	---	813	165	978
Peru.....	918	5/ -1	2,332	4,601	---	7,850	9,589	17,439
Uruguay.....	---	---	228	---	---	228	4,712	4,940
Venezuela.....	---	---	---	106	---	106	82,991	83,097
Total Latin American Republics and Canal Zone.....	70,537	5/ -1	15,398	18,913	1,338	106,185	282,790	388,975
<b>Other Latin America</b>								
Bahamas.....	---	---	---	12	---	12	7,492	7,504
Barbados.....	---	---	6/	---	---	---	1,838	1,838
Bermuda.....	---	---	---	---	---	---	5,378	5,378
British Guiana.....	---	---	113	1	---	114	2,990	3,104
British Honduras.....	---	---	---	---	---	---	1,554	1,554
Falkland Islands.....	---	---	---	---	---	---	1	1
French Guiana.....	---	---	---	---	---	---	81	81
French West Indies.....	---	---	48	---	---	48	491	539
Jamaica.....	---	---	6/	41	---	41	10,229	10,270
Leeward and Windward Islands.....	---	---	6/ 689	2	---	691	1,157	1,848
Netherlands Antilles.....	---	---	---	2	---	2	8,934	8,936
Surinam.....	---	---	74	---	---	74	2,350	2,424
Trinidad and Tobago.....	---	---	6/	---	---	---	2,388	2,388
Total Other Latin America.....	---	---	924	58	---	982	51,883	52,865
Total Latin America.....	70,537	5/ -1	16,322	18,971	1,338	107,167	334,673	441,840
<b>Europe</b>								
Austria.....	18	---	617	13,176	---	13,811	8,496	22,307
Azores.....	---	---	---	---	---	---	50	50

--Continued

Table 9.--U.S. agricultural exports under specified Government-financed programs, exports outside specified Government-financed programs, and total agricultural exports, value, by country of destination, July-June 1960-61 - Continued

Country	Public Law 480				P.L. 665 Sec. 402 sales for foreign currency and economic aid 3/	Total agricultural exports under specified Government programs 4/	Total agricultural exports outside specified Government programs 4/	Total agricultural exports
	Title I	Title II	Title III					
	Sales for foreign currency	Famine and other emergency relief	Foreign donations 1/	Barter 2/				
-- Thousand dollars --								
Europe (continued)								
Belgium and Luxembourg.....	---	---	---	1,106	---	1,106	129,719	130,825
Bulgaria.....	---	---	---	---	---	---	6	6
Czechoslovakia.....	---	---	---	---	---	---	3,147	3,147
Denmark.....	---	---	---	539	---	539	47,601	48,140
Finland.....	4,146	---	---	500	---	4,646	9,807	14,453
France.....	2,488	---	20	5,848	291	8,647	103,460	112,107
Germany, East.....	---	---	---	---	---	---	1,827	1,827
Germany, West.....	2/ 1	---	1,093	1,853	17,337	20,284	300,072	320,356
Gibraltar.....	---	---	---	---	---	---	102	102
Greece.....	13,664	3,328	5,606	4	1,330	23,932	2,678	26,610
Hungary.....	---	---	---	---	---	---	461	461
Iceland.....	1,661	---	---	---	29	1,690	1,493	3,183
Ireland.....	---	---	---	3,178	---	3,178	17,797	20,975
Italy (incl. Trieste).....	---	5,065	14,661	77	20,518	40,321	174,611	214,932
Latvia.....	---	---	---	---	---	---	1,889	1,889
Malta, Gozo, and Cyprus.....	---	6,765	204	---	---	---	5/ -3,235	3,734
Netherlands.....	---	---	---	268	---	268	323,932	324,200
Norway.....	---	---	---	2,140	---	2,140	26,671	28,811
Poland and Danzig.....	131,462	---	3,876	---	---	135,338	8,046	143,384
Portugal.....	---	---	3,478	---	---	3,478	16,340	19,818
Romania.....	---	---	---	---	---	---	253	253
Spain.....	59,638	607	4,311	7,140	28,332	100,028	57,407	157,435
Sweden.....	---	---	---	111	---	111	46,198	46,309
Switzerland.....	---	---	---	---	---	---	58,303	58,303
Turkey.....	28,411	---	773	2,317	3,101	34,602	1,635	36,237
United Kingdom.....	---	---	87	12,173	14,999	27,259	459,592	486,851
Union of Soviet Socialist Republics.....	---	---	---	---	---	---	11,282	11,282
Yugoslavia.....	7/ 33,391	---	8,737	12,603	10	54,741	1,899	56,640
Total Europe.....	274,880	15,765	43,463	63,033	85,947	483,088	1,791,539	2,274,627
Asia								
Aden.....	---	---	4	---	---	4	345	349
Afghanistan.....	---	7,976	246	---	---	8,222	5/ -4,272	3,950
Arabia Peninsula States, n.e.c.....	---	2,172	---	4	---	2,176	5/ -291	1,885
Bahrain, State of.....	---	---	---	8	---	8	5/ 1,069	1,077
Burma.....	7/ 624	---	144	---	---	768	91	259
Cambodia.....	---	---	---	---	2,894	2,894	661	3,555
Ceylon.....	3,786	---	3,462	---	---	7,248	1,746	8,994
Hong Kong.....	7/ 2,528	---	4,184	353	---	7,065	43,767	50,832
India.....	7/ 288,345	256	13,633	10,750	5/ -101	312,883	32,753	345,636
Indonesia, Republic of.....	7/ 17,287	---	747	---	---	18,034	3,880	21,920
Iran.....	14,572	6,271	1,428	3	---	22,274	5/ -504	21,770
Iraq.....	---	---	331	2,250	---	2,581	148	2,729
Israel.....	19,534	---	1,011	7,664	7,075	35,284	15,536	50,820
Japan.....	7/ 8,002	---	1,065	11,115	---	20,182	532,635	552,817
Jordan.....	---	15,531	1,905	31	---	17,467	5/ -1,811	15,656
Korea, Republic of.....	28,247	12,386	6,679	---	26,044	73,356	1,709	75,065
Kuwait.....	---	---	---	63	---	63	2,478	2,541

--Continued

Table 9.--U.S. agricultural exports under specified Government-financed programs, exports outside specified Government-financed programs, and total agricultural exports, value, by country of destination, July-June 1960-61 - Continued

Country	Public Law 480				P.L. 665	Total	Total	Total agricultural exports
	Title I	Title II	Title III	Barter	Sec. 402	agricultural exports	agricultural exports	
	Sales for foreign currency	Famine and other emergency relief	Foreign donations 1/	Barter 2/	sales for foreign currency and economic aid 3/	under specified Government programs	outside specified Government programs 4/	
-- Thousand dollars --								
<b>Asia (continued)</b>								
Laos.....	---	---	250	---	---	250	5/ -135	115
Lebanon.....	---	4,095	111	1 995	---	6,201	2,557	8,758
Macao.....	---	---	482	---	---	482	150	632
Malaya, Federation of.....	---	---	323	---	---	323	4,381	4,704
Nansei and Nanpo Islands, n.e.c.....	---	5/ -56	1,778	4	---	1,726	8,043	9,769
Nepal.....	---	---	---	---	---	---	2	?
Pakistan.....	95,756	---	1,388	---	2,021	99,165	6,859	106,024
Palestine.....	---	---	---	---	---	---	19	19
Philippines, Republic of.....	---	---	4,621	535	13,364	18,520	52,826	71,346
Portuguese Asia, n.e.c.....	---	---	---	---	---	---	163	163
Saudi Arabia.....	---	---	---	242	---	242	7,802	8,044
Singapore and British Borneo.....	7/ 184	---	188	---	---	372	6,961	7,333
Southern and Southeastern Asia, n.e.c.....	---	---	21	---	---	21	1	22
Taiwan (Formosa).....	17,522	6	7,472	---	27,938	52,938	13,987	66,925
Thailand.....	---	---	36	---	---	36	9,464	9,502
United Arab Republic (Syria Region).....	15,884	16,510	---	3,198	---	35,592	5/-4,518	31,074
Vietnam.....	10,332	5/ -1	3,292	---	12,416	26,039	276	26,315
<b>Total Asia.....</b>	<b>522,603</b>	<b>65,146</b>	<b>54,803</b>	<b>38,195</b>	<b>91,651</b>	<b>772,398</b>	<b>738,984</b>	<b>1,511,382</b>
<b>Oceania</b>								
Australia.....	---	---	---	---	---	---	31,635	31,635
British Western Pacific Islands.....	---	---	---	---	---	---	73	73
French Pacific Islands.....	---	---	---	---	---	---	492	492
New Guinea.....	---	---	---	---	---	---	161	161
New Zealand.....	---	---	---	---	---	---	8,542	8,542
Trust Territory of the Pacific Islands.....	---	---	142	---	---	142	746	888
<b>Total Oceania.....</b>	<b>---</b>	<b>---</b>	<b>142</b>	<b>---</b>	<b>---</b>	<b>142</b>	<b>41,649</b>	<b>41,791</b>
<b>Africa</b>								
Algeria.....	---	---	1,743	---	---	1,743	6,262	8,005
Angola.....	---	---	---	---	---	---	1,249	1,249
British East Africa.....	---	1,337	139	---	---	1,476	19	1,495
British West Africa, n.e.c.....	---	---	120	23	---	143	428	571
Cameroons.....	---	---	71	---	---	71	269	340
Canary Islands.....	---	---	---	4,653	---	4,653	729	5,382
Congo, Republic of (Belgian Congo).....	---	4,696	373	573	---	5,642	1,391	7,033
Ethiopia.....	---	928	204	2	---	1,134	341	1,475
French Somaliland.....	---	---	---	35	---	35	283	318
Ghana.....	---	---	671	1,606	---	2,277	6,418	8,695
Liberia.....	---	---	303	76	---	379	3,643	4,022
Libya.....	---	8,049	1,011	---	---	9,060	5/-2,649	6,411
Maderia Islands.....	---	---	---	---	---	---	422	422
Malagasy, Republic of (Madagascar).....	---	---	6	---	---	6	47	53
Mauritius and Dependencies.....	---	---	54	---	---	54	21	75
Morocco.....	---	11,051	4,379	363	4,852	20,645	4,510	25,155
Mozambique.....	---	---	---	1,160	---	1,160	842	2,002
Nigeria.....	---	---	74	633	---	707	6,737	7,444
Rhodesia and Nyasaland, Federation of.....	---	---	4	---	---	4	659	661

--Continued



Table 9.--U.S. agricultural exports under specified Government-financed programs, exports outside specified Government-financed programs, and total agricultural exports, value, by country of destination, July-June 1960-61 - Continued

Country	Public Law 460				P.L. 665	Total	Total	Total agricultural exports
	Title I	Title II	Title III	Sec. 402	agricultural	agricultural		
	Sales for foreign currency	Famine and other emergency relief	Foreign donations 1/	Barter 2/	sales for foreign currency and economic aid 3/	exports under specified Government programs	exports outside specified Government programs 4/	
-- Thousand dollars --								
Africa (continued)								
Seychelles and Dependencies.....	---	---	---	---	---	---	44	44
Somali, Republic (Somaliland and British Somaliland).....	---	280	2	---	---	282	5/ -248	34
Spanish Africa, n.e.c.....	---	---	---	---	---	---	338	338
Sudan.....	---	---	---	---	---	---	237	237
Tunisia.....	---	35,248	384	---	---	35,632	5/-18,565	17,067
United Arab Republic (Egypt Region).....	65,670	---	19,026	---	1,245	85,941	14,064	100,005
Union of South Africa.....	---	---	25	59	---	84	19,899	19,983
Western Africa, n.e.c. (French West Africa): Western Equatorial Africa, n.e.c. (French Equatorial Africa).....	---	---	934	110	1,000	2,044	475	2,519
Western Portuguese Africa n.e.c.....	---	---	15	---	---	15	99	114
	---	---	---	15	---	15	78	93
Total Africa.....	65,670	61,589	29,538	9,308	7,097	173,202	48,030	221,232
Country of destination not reported.....	---	3,704	---	17,206	---	20,910	5/-20,910	---
Total.....	933,690	146,203	144,268	146,754	186,033	1,556,948	3,388,636	4,945,584

-22-

- 1/ Foreign donations are authorized under Sec. 416 of the Agricultural Act of 1949 and Sec. 302, Title III, P.L. 460.  
2/ The barter program is authorized under the Charter Act of the Commodity Credit Corporation; Sec. 303, Title III, P.L. 460; and other legislation.  
3/ Mutual security programs, sales for foreign currency, except \$.6 million. Includes ocean transportation when not reported separately.  
4/ "Agricultural exports outside specified Government programs" (sales for dollars) include, in addition to unassisted commercial transactions, shipments of some commodities with governmental assistance in the form of (1) extension of credit for relatively short periods, (2) sales of Government-owned commodities at less than domestic market prices, and (3) export payments in cash or in kind.  
5/ The noncomparability of the data available for the reporting of Government-financed programs may affect the reliability of the totals for any country, but the discrepancies are most apparent when exports under Government programs exceed total exports. These excesses may be attributed to lags in reporting or to differences in valuation procedures. Exports under Title II are shown in this report at cost to CCC, whereas these shipments are at times reported to the Bureau of the Census at market value.  
6/ The value shown for Jamaica was reported as the West Indies, which includes Barbados, Jamaica, Leeward and Windward Islands, and Trinidad and Tobago.  
7/ Under agreements with Burma, Iceland, and Indonesia, raw cotton was exported to third countries for processing. In exchange, processed goods are exported to the agreement country. The Title I values shown for the above-mentioned countries do not include the value of the raw cotton exported to third countries as follows:

Processing Country	Agreement Country	Value (Thousand dollars)
France	Burma	19
Germany, West	Burma	325
Hong Kong	Burma	101
India	Burma	1,606
Japan	Burma	3,498
Netherlands	Burma	29
United Kingdom	Burma	530
Yugoslavia	Burma	319
Finland	Iceland	398
Hong Kong	Indonesia	2,136
Japan	Indonesia	11,120
Singapore	Indonesia	850
Total cotton processed in third countries		20,931

Table 10.-- U. S. agricultural exports: Quantity and value by commodity, December 1961 and 1962 and July-December 1961 and 1962

Commodity exported	Unit	December 1/				July-December 1/			
		Quantity		Value		Quantity		Value	
		1961	1962	1,000	1,000	1,000	1,000	1,000	1,000
		Thousands	Thousands	dollars	dollars	Thousands	Thousands	dollars	dollars
<b>ANIMALS AND ANIMAL PRODUCTS</b>									
<b>Animals, live:</b>									
Cattle .....	No.	3	2	986	898	10	10	4,321	4,035
Poultry, live -									
Baby chicks .....	No.	1,258	1,800	303	531	8,226	9,389	2,086	2,584
Other live poultry .....	Lb.	276	490	87	123	1,011	1,526	413	514
Other .....		2/	2/	459	453	2/	2/	2,518	2,517
Total animals, live .....		---	---	1,835	2,005	---	---	9,338	9,650
<b>Dairy products:</b>									
Anhydrous milk fat .....	Lb.	350	894	294	575	2,163	2,811	1,812	2,174
Butter (except dehydrated) .....	Lb.	192	1,532	94	464	517	4,397	249	1,442
Cheese, including donations .....	Lb.	1,130	4,710	571	1,460	4,762	13,503	2,502	4,622
Infants' and dietetic foods, chiefly milk .....	Lb.	2,027	1,356	1,220	735	10,476	7,564	6,901	4,976
Milk -									
Condensed sweetened .....	Lb.	3,925	3,616	914	861	22,624	25,637	5,361	6,002
Dried whole .....	Lb.	1,058	910	629	626	7,703	6,670	4,862	3,549
Evaporated, unsweetened, incl. donations .....	Lb.	2,667	2,622	401	373	35,187	33,843	5,599	5,133
Nonfat dry, including donations .....	Lb.	35,191	72,940	4,242	7,179	373,292	433,369	36,492	38,088
Other .....		2/	2/	575	265	2/	2/	2,422	1,825
Total dairy products .....		---	---	8,940	12,538	---	---	66,195	67,811
<b>Fats, oils, and greases:</b>									
Lard .....	Lb.	13,589	15,931	1,421	1,666	203,317	192,527	20,489	18,005
Tallow, edible .....	Lb.	253	487	26	45	1,861	1,809	189	181
Other edible fats, oils, and greases .....	Lb.	609	548	98	94	4,219	2,967	726	537
Tallow, inedible .....	Lb.	143,131	92,394	10,023	5,576	839,758	640,968	58,910	40,218
Other inedible fats, oils, and greases .....	Lb.	26,449	22,608	2,149	1,466	115,607	88,719	9,311	6,206
Total fats, oils, and greases .....	Lb.	184,031	131,968	13,717	8,847	1,164,762	926,990	89,625	65,147
<b>Meat and meat products:</b>									
Beef and veal .....	Lb.	2,105	2,621	979	1,294	14,146	13,972	5,719	6,613
Fork .....	Lb.	5,523	3,210	1,597	1,985	34,561	30,443	10,391	10,204
Sausage casings .....	Lb.	1,519	1,401	1,438	971	10,444	9,223	8,561	6,186
Variety meats .....	Lb.	10,489	10,396	2,164	2,067	64,775	62,230	13,618	13,020
Other (including meat extracts) .....	Lb.	1,526	1,117	525	455	6,315	6,319	2,588	2,669
Total meat and products (except poultry) .....	Lb.	21,162	18,745	6,803	6,772	130,841	122,187	41,277	38,692
<b>Poultry products:</b>									
Eggs, dried, frozen, otherwise preserved ...	Lb.	643	168	447	176	5,199	1,964	3,635	1,887
Eggs in the shell -									
Hatching .....	Doz.	782	617	693	653	4,412	2,956	3,981	2,933
Other .....	Doz.	538	132	204	57	2,972	828	1,166	334
Poultry meat -									
Chickens, fresh or frozen .....	Lb.	20,186	9,614	5,139	2,710	119,841	82,487	30,423	22,305
Turkeys, fresh or frozen .....	Lb.	2,236	2,135	774	757	20,831	22,697	7,114	7,862
Other, fresh or frozen .....	Lb.	626	389	206	156	3,964	2,649	1,257	868
Canned .....	Lb.	671	628	209	192	6,490	4,317	2,067	1,768
Total poultry products .....		---	---	7,672	4,701	---	---	49,653	37,954

Continued -

Table 10.— U. S. agricultural exports: Quantity and value by commodity,  
December 1961 and 1962 and July-December 1961 and 1962 - Continued

Commodity exported	Unit	December 1/				July-December 1/			
		Quantity		Value		Quantity		Value	
		1961	1962	1961	1962	1961	1962	1961	1962
		Thousands	Thousands	dollars	dollars	Thousands	Thousands	dollars	dollars
<b>Other animal products:</b>				1,000	1,000			1,000	1,000
Feathers, crude .....	Lb.	224	155	246	194	1,154	921	1,340	1,099
Gelatin, edible .....	Lb.	183	402	518	701	1,902	2,021	3,472	3,914
Hair, raw or dressed, new .....	Lb.	206	419	123	186	3,735	2,840	1,197	1,095
Hides and skins, raw (except furs) 3/ .....	No.	1,111	820	7,844	5,510	5,951	5,895	43,674	42,626
Honey .....	Lb.	529	1,250	85	183	5,091	11,663	754	1,586
Wool, unmanufactured .....	C.Lb.	497	724	502	572	5,108	5,576	5,475	4,577
Other .....		2/	2/	1,504	1,219	2/	2/	7,132	7,365
Total other animal products .....		---	---	10,822	8,565	---	---	63,044	62,262
Total animals and animal products .....		---	---	49,739	43,428	---	---	319,136	281,516
<b>VEGETABLE PRODUCTS</b>									
<b>Cotton, unmanufactured:</b>									
Cotton .....	R.Bales	537	383	76,653	51,239	2,511	1,610	355,080	220,238
Linters .....	R.Bales	25	24	887	789	116	115	3,854	4,041
Total cotton and linters .....	R.Bales	562	407	77,540	52,028	2,627	1,725	358,934	224,279
<b>Fruits and preparations:</b>									
<b>Canned -</b>									
Fruit cocktail .....	Lb.	5,935	10,390	926	1,510	69,865	79,064	10,825	11,652
Peaches .....	Lb.	14,925	30,455	1,661	3,122	147,885	208,721	16,449	22,155
Pears .....	Lb.	693	706	116	107	6,371	6,072	1,051	955
Pineapples .....	Lb.	3,721	3,324	576	476	43,669	66,981	6,532	9,818
Other .....	Lb.	3,250	3,567	529	574	30,416	28,410	4,605	4,459
Total canned fruits .....	Lb.	28,524	48,442	3,808	5,789	298,206	389,248	39,562	49,038
<b>Dried -</b>									
Prunes .....	Lb.	7,932	8,290	1,894	1,832	47,002	53,213	11,607	11,451
Raisins and currants .....	Lb.	13,457	6,147	1,803	1,157	74,881	60,421	10,422	11,100
Other .....	Lb.	1,912	2,410	665	842	12,247	12,484	4,286	4,777
Total dried fruits .....	Lb.	23,301	16,847	4,362	3,831	134,130	126,118	26,315	27,258
<b>Fresh -</b>									
Apples .....	Lb.	49,678	30,537	4,378	2,823	122,819	74,289	10,349	6,918
Berries .....	Lb.	1,397	1,407	225	230	9,116	10,400	1,612	1,815
Grapefruit .....	Lb.	13,679	14,546	548	697	81,074	78,220	4,403	4,050
Grapes .....	Lb.	14,455	19,006	1,581	1,909	145,303	175,775	13,454	14,958
Lemons and limes .....	Lb.	9,695	6,191	630	578	103,381	52,786	6,486	4,246
Oranges and tangerines .....	Lb.	25,482	34,635	2,340	3,153	191,422	192,562	16,391	15,857
Pears .....	Lb.	7,726	12,782	733	1,157	58,355	58,537	5,479	5,124
Other .....	Lb.	722	1,036	85	108	98,981	93,491	5,732	5,590
Total fresh fruits .....	Lb.	122,841	120,140	10,520	10,655	810,451	736,160	63,906	58,558
<b>Fruit juices -</b>									
Grapefruit .....	Gal.	544	490	395	273	2,371	2,867	1,516	1,801
Orange .....	Gal.	1,209	1,237	2,269	1,955	5,347	6,906	11,216	11,042
Other .....	Gal.	910	842	918	879	7,576	6,911	7,717	6,382
Total fruit juices .....	Gal.	2,663	2,569	3,582	3,107	15,294	16,684	20,549	19,225
Frozen fruits (including specialties) .....	Lb.	304	839	72	132	5,627	9,571	1,089	1,422
Other .....		2/	2/	375	314	2/	2/	3,028	2,475
Total fruits and preparations .....		---	---	22,719	23,828	---	---	154,449	157,976

Continued -

Table 10.— U. S. agricultural exports: Quantity and value by commodity,  
December 1961 and 1962 and July-December 1961 and 1962 - Continued

Commodity exported	Unit	December 1/				July-December 1/			
		Quantity		Value		Quantity		Value	
		1961	1962	1,000	1,000	1961	1962	1,000	1,000
		Thousands	Thousands	dollars	dollars	Thousands	Thousands	dollars	dollars
<b>Grains and preparations:</b>									
Feed grains and products -									
Barley grain (48 lb.)	Bu.	5,116	6,871	6,067	8,235	23,410	38,860	26,827	43,788
Corn grain, including donations (56 lb.)	Bu.	34,362	35,505	43,441	44,072	155,322	191,379	190,737	234,331
Grain sorghums (56 lb.)	Bu.	7,946	10,633	9,283	11,769	32,441	56,602	36,551	62,363
Oats grain (32 lb.)	Bu.	23	350	24	291	7,653	16,996	5,448	11,785
Total feed grains	M.Ton	1,186	1,327	58,815	64,367	5,390	7,392	259,563	352,267
Barley malt (34 lb.)	Bu.	177	289	373	646	1,259	1,435	2,698	3,165
Corn grits and hominy	Lb.	2,241	2,553	91	108	15,618	17,190	684	737
Cornmeal and corn flour, incl. donations	Cwt.	253	348	1,157	1,545	1,976	2,438	8,164	10,616
Cornstarch	Lb.	5,771	4,658	354	381	23,950	23,911	1,853	2,030
Oatmeal, groats, and rolled oats	Lb.	3,798	5,526	396	456	20,195	16,574	2,203	1,871
Total feed grains and products	M.Ton	1,221	1,373	61,166	67,503	5,630	7,670	275,165	370,686
Rice -									
Killed, including donations	Lb.	255,400	213,716	18,338	13,744	695,793	972,622	45,118	65,416
Paddy or rough	Lb.	42	146	3	12	3,630	3,210	328	263
Total rice (milled basis)	Lb.	255,427	213,811	18,341	13,756	698,153	974,708	45,446	65,679
Rye grain (56 lb.)	Bu.	517	1,470	769	1,976	3,743	11,836	5,066	15,316
Wheat and flour, including donations -									
Wheat grain (60 lb.)	Bu.	54,709	48,266	97,045	88,892	319,744	230,802	578,631	425,869
Wheat flour, wholly of U. S. wheat	Cwt.	3,336	3,606	14,257	16,442	20,689	20,130	84,745	85,303
Total wheat and flour	Bu.	62,382	56,561	111,302	105,334	367,329	277,102	663,376	511,172
Bakery products	Lb.	1,081	891	364	388	7,001	5,190	2,476	2,174
Other		2/	2/	858	765	2/	2/	5,516	4,327
Total grains and preparations		---	---	122,820	189,722	---	---	997,145	969,354
<b>Oilseeds and products:</b>									
Oils, edible and inedible -									
Cottonseed oil	Lb.	31,548	31,518	4,232	3,485	142,577	160,705	20,331	20,919
Soybean oil	Lb.	35,620	93,449	4,604	9,000	301,290	641,290	38,953	63,695
Other	Lb.	11,866	12,600	2,033	1,752	62,246	54,321	10,383	8,416
Total oils (except essential)	Lb.	79,034	137,567	10,919	14,237	506,113	856,316	69,717	93,030
Oilseeds -									
Flaxseed (56 lb.)	Bu.	24	71	75	213	985	3,426	3,295	10,577
Soybeans (60 lb.)	Bu.	16,465	18,710	40,671	47,514	78,985	91,967	199,329	231,202
Other	Lb.	5,409	20,589	385	1,159	104,680	126,358	5,257	6,397
Total oilseeds		---	---	41,131	48,886	---	---	207,881	248,176
Protein meal (oilcake and meal)	S.Ton	82	130	5,265	9,530	418	706	27,180	52,224
Total oilseeds and products		---	---	57,315	72,653	---	---	304,778	393,430
<b>Tobacco, unmanufactured:</b>									
Burley	Lb.	1,840	3,708	1,680	3,398	22,501	23,253	18,489	20,634
Cigar wrapper	Lb.	225	389	480	678	2,610	2,105	5,547	4,025
Dark-fired Kentucky and Tennessee	Lb.	2,859	4,055	1,562	2,162	16,269	11,162	8,341	5,973
Flue-cured	Lb.	36,411	41,036	30,166	34,754	289,077	242,220	236,020	204,249
Maryland	Lb.	638	982	548	806	6,946	7,211	5,393	5,538
Other	Lb.	1,039	2,448	481	790	11,827	12,845	5,125	4,729
Total tobacco, unmanufactured	Lb.	43,012	52,588	34,917	42,588	349,230	298,796	278,915	245,148

Continued -

Table 10.— U. S. agricultural exports: Quantity and value by commodity,  
December 1961 and 1962 and July-December 1961 and 1962 - Continued

Commodity exported	Unit	December 1/				July-December 1/				
		Quantity		Value		Quantity		Value		
		1961	1962	1961	1962	1961	1962	1961	1962	
		Thousands	Thousands	1,000 dollars	1,000 dollars	Thousands	Thousands	1,000 dollars	1,000 dollars	
<b>Vegetables and preparations:</b>										
Canned -										
Asparagus .....	Lb.	4,926	4,153	965	967	25,878	31,015	6,012	6,981	
Soups .....	Lb.	964	1,393	181	256	7,283	7,725	1,348	1,445	
Tomato juice .....	Lb.	946	1,756	100	180	12,523	8,655	1,194	910	
Tomato paste and puree .....	Lb.	1,155	1,213	227	259	8,067	5,664	1,699	1,210	
Tomato sauce for cooking purposes .....	Lb.	67	154	7	20	531	657	70	87	
Other .....	Lb.	4,470	6,211	627	777	24,406	30,734	3,542	4,250	
Total canned vegetables .....	Lb.	12,528	14,880	2,107	2,452	78,688	84,450	13,855	14,883	
Dry, ripe beans, including donations .....	Lb.	18,800	25,744	1,879	2,399	95,369	197,179	7,916	15,270	
Dry, ripe peas (excluding cow and chick) .....	Lb.	19,567	28,813	1,275	2,006	107,157	137,085	7,362	9,275	
Fresh -										
Lettuce .....	Lb.	15,575	19,280	682	734	60,592	61,987	2,578	2,670	
Onions .....	Lb.	5,739	20,170	286	820	26,838	54,374	1,200	2,114	
Potatoes, white .....	Lb.	3,181	7,466	98	225	86,289	79,293	1,926	2,515	
Tomatoes .....	Lb.	8,838	8,209	604	820	50,945	42,353	4,391	3,957	
Other .....	Lb.	36,542	36,776	1,875	2,184	115,212	104,099	6,383	6,312	
Total fresh vegetables .....	Lb.	69,875	91,901	3,545	4,784	339,876	342,106	16,478	17,568	
Frozen vegetables (including specialties) .....	Lb.	1,393	1,900	291	331	17,333	11,164	3,354	2,059	
Soups and vegetables, dehydrated .....	Lb.	1,114	1,030	409	579	4,541	8,064	2,307	3,615	
Vegetable seasonings .....	Lb.	386	604	289	378	3,407	3,439	2,509	2,262	
Other .....		2/	2/	1,064	1,728	2/	2/	6,748	7,881	
Total vegetables and preparations .....		---	---	10,859	14,664	---	---	60,529	72,813	
<b>Other vegetable products:</b>										
Coffee .....	Lb.	3,190	2,076	2,621	2,644	12,817	10,895	15,112	13,745	
Drugs, herbs, roots, crude .....	Lb.	243	244	463	309	2,105	2,099	2,427	2,439	
Essential oils, natural .....	Lb.	523	792	1,160	1,398	3,755	3,812	7,135	7,064	
Feeds and fodders (except oilcake and meal) .....	S.Ton	47	68	2,961	3,992	270	480	18,145	28,953	
Flavoring sirups for beverages .....	Gal.	75	79	533	577	632	516	3,456	3,569	
Hops .....	Lb.	3,621	3,691	1,961	2,360	8,129	11,062	4,385	6,699	
Nursery and greenhouse stock .....		2/	2/	567	412	2/	2/	2,374	2,022	
Nuts and preparations .....	Lb.	2,328	3,805	796	1,363	25,058	20,339	6,493	8,895	
Seeds, field and garden .....	Lb.	12,513	12,897	2,813	3,260	42,005	44,401	8,993	9,761	
Spices .....	Lb.	282	436	187	195	1,664	2,461	1,216	1,133	
Other, including donations .....		2/	2/	9,582	6,437	2/	2/	24,766	30,846	
Total other vegetable products .....		---	---	23,644	22,955	---	---	94,502	115,126	
Total vegetable products .....		---	---	419,514	418,439	---	---	2,249,252	2,178,126	
TOTAL AGRICULTURAL EXPORTS .....		---	---	469,603	461,866	---	---	2,568,398	2,459,642	
TOTAL NONAGRICULTURAL EXPORTS .....		---	---	1,337,324	1,414,966	---	---	7,753,312	7,930,667	
TOTAL EXPORTS, ALL COMMODITIES .....		---	---	1,806,927	1,876,832	---	---	10,321,700	10,390,309	

1/ Preliminary.

2/ Reported in value only.

3/ Excludes the number of "other hides and skins," reported in value only.

Table 11.— U. S. agricultural imports for consumption: Quantity and value by commodity, December 1961 and 1962 and July-December 1961 and 1962

Commodity imported SUPPLEMENTARY	Unit	December 1/				July-December 1/			
		Quantity		Value		Quantity		Value	
		1961	1962	1961	1962	1961	1962	1961	1962
				1,000	1,000	1,000	1,000	1,000	1,000
		Thousands	Thousands	dollars	dollars	Thousands	Thousands	dollars	dollars
<b>ANIMALS AND ANIMAL PRODUCTS</b>									
<b>Animals, live:</b>									
Cattle, dutiable	No.	131	200	11,059	18,912	653	704	64,629	66,998
Cattle, free (for breeding)	No.	1	1	491	355	9	9	3,282	2,991
Horses	No.	2/	2/	632	742	2	2	2,607	2,723
Other (including live poultry)	—	3/	3/	92	58	3/	3/	602	637
Total animals, live	—	---	---	12,274	20,067	---	---	71,120	73,349
<b>Dairy products:</b>									
Butter	Lb.	182	75	78	32	528	408	230	172
Cheese -									
Blue-mold	Lb.	449	440	217	220	2,029	2,224	969	1,100
Cheddar	Lb.	40	114	20	32	683	893	234	268
Edam and Gouda	Lb.	752	587	323	259	3,678	3,546	1,590	1,567
Pecorino	Lb.	1,689	2,517	993	1,281	8,017	9,902	4,716	5,053
Swiss	Lb.	1,514	2,186	803	1,155	9,260	10,418	5,123	5,645
Other	Lb.	2,494	3,766	1,098	1,436	13,165	12,557	5,649	5,812
Total cheese	Lb.	6,938	9,610	3,454	4,383	36,832	39,540	18,481	19,445
Casein or lactarane	Lb.	7,910	6,638	1,417	1,177	50,069	45,292	9,010	8,207
Other	—	3/	3/	16	27	3/	3/	121	76
Total dairy products	—	---	---	6,965	5,619	---	---	27,842	27,900
<b>Hides and skins, raw (except furs):</b>									
Calf skins	Lb.	356	274	188	106	3,245	2,757	1,889	1,443
Cattle hides	Lb.	1,894	1,081	442	190	8,150	4,974	1,551	866
Goat and kid skins	Lb.	1,800	2,105	1,031	1,078	11,856	11,246	7,125	6,245
Sheep and lamb skins	Lb.	1,767	2,031	981	746	23,527	18,044	10,364	7,217
Other 4/	Lb.	3,541	2,323	1,776	1,088	17,530	16,209	8,995	7,984
Total hides and skins, raw	Lb.	9,358	7,814	4,418	3,208	64,308	53,230	29,924	23,755
<b>Meat and meat products:</b>									
<b>Beef and veal -</b>									
Fresh, chilled, or frozen	Lb.	45,825	77,640	14,021	25,583	338,293	506,602	111,727	159,503
Other	Lb.	6,894	8,422	2,487	2,619	56,108	47,384	20,581	15,402
Total beef and veal	Lb.	52,719	86,062	16,508	28,202	394,401	553,986	132,308	174,905
Mutton, goat, and lamb	Lb.	3,819	12,668	779	2,918	20,507	37,190	4,700	8,282
<b>Pork -</b>									
Fresh, chilled, or frozen	Lb.	2,993	3,350	1,081	1,354	19,053	17,422	7,063	6,793
Hams and shoulders, canned cooked	Lb.	10,619	10,989	7,569	7,947	59,368	65,183	43,992	46,800
Other	Lb.	2,193	3,281	1,402	1,736	11,274	16,908	7,322	8,978
Total pork	Lb.	15,805	17,620	10,052	11,037	89,695	99,513	58,357	62,571
Sausage casings	—	3/	3/	843	1,176	3/	3/	6,677	8,099
Other (including meat extracts)	Lb.	5,272	5,340	1,415	1,324	29,408	41,723	9,772	11,394
Total meat and products (except poultry)	—	---	---	29,597	44,657	---	---	211,794	255,251
<b>Poultry products:</b>									
Eggs, dried, frozen, otherwise preserved	Lb.	1	2/	1	2/	4	1	3	2
Eggs in the shell	Doz.	75	171	26	54	379	675	165	233
Poultry meat	Lb.	155	12	145	31	220	153	340	276
Total poultry products	—	---	---	172	85	---	---	508	511

Continued -

Table 11.— U. S. agricultural imports for consumption: Quantity and value by commodity,  
December 1961 and 1962 and July-December 1961 and 1962 - Continued

Commodity imported SUPPLEMENTARY	Unit	December 1/				July-December 1/			
		Quantity		Value		Quantity		Value	
		1961	1962	1961	1962	1961	1962	1961	1962
<b>Wool, unmanufactured (except free in bond):</b>		Thousands	Thousands	dollars	dollars	Thousands	Thousands	dollars	dollars
40's to 56's .....	G.Lb.	867	2,594	522	1,420	6,726	10,710	3,908	5,984
Finer than 56's .....	G.Lb.	11,467	16,730	7,195	9,800	51,674	67,147	31,612	40,267
Other wools .....	G.Lb.	1,406	2,729	1,380	1,711	8,256	12,706	8,888	9,385
<b>Total wool, unmanufactured .....</b>	<b>G.Lb.</b>	<b>13,740</b>	<b>22,053</b>	<b>9,097</b>	<b>12,931</b>	<b>66,656</b>	<b>90,563</b>	<b>44,408</b>	<b>55,636</b>
<b>Other animal products:</b>									
Bones, hoofs, and horns, unmanufactured ....	L.Ton	5	2	345	208	33	35	2,097	2,235
Bristles, sorted, bunched, or prepared ....	Lb.	241	332	521	874	1,294	1,577	3,814	4,587
Fats, oils, greases, edible and inedible ....	3/	3/	3/	69	42	3/	3/	227	207
Feathers, crude .....	Lb.	183	234	320	459	931	1,488	1,916	2,202
Gelatin, edible .....	Lb.	457	886	223	465	2,525	4,037	1,251	2,030
Hair, unmanufactured .....	Lb.	1,069	669	806	504	5,404	4,266	3,466	3,631
Honey .....	Lb.	258	302	40	39	2,853	2,784	428	315
Other .....	3/	3/	3/	773	876	3/	3/	4,149	4,907
<b>Total other animal products .....</b>	<b>---</b>	<b>---</b>	<b>---</b>	<b>3,097</b>	<b>3,467</b>	<b>---</b>	<b>---</b>	<b>17,348</b>	<b>20,154</b>
<b>Total animals and animal products .....</b>	<b>---</b>	<b>---</b>	<b>---</b>	<b>63,620</b>	<b>90,034</b>	<b>---</b>	<b>---</b>	<b>402,944</b>	<b>466,566</b>
<b>VEGETABLE PRODUCTS</b>									
<b>Cotton, unmanufactured (480 lb.):</b>									
Cotton .....	Bale	3	1	372	103	135	120	25,128	22,516
Linters .....	Bale	16	13	456	253	91	62	2,451	1,801
<b>Total cotton and linters .....</b>	<b>Bale</b>	<b>19</b>	<b>14</b>	<b>828</b>	<b>356</b>	<b>226</b>	<b>182</b>	<b>27,579</b>	<b>24,317</b>
<b>Fruits and preparations:</b>									
Apples, green or ripe (50 lb.) .....	Bu.	170	286	643	955	430	752	1,855	2,631
Berries .....	Lb.	2,064	679	304	100	17,705	16,003	2,698	2,235
Dates .....	Lb.	5,932	10,786	565	1,209	29,334	26,791	2,940	2,749
Figs .....	Lb.	1,614	281	149	28	8,252	7,825	905	832
Grapes (40 lb.) .....	Cu.Ft.	2/	2/	1	1	25	43	57	78
Melons .....	Lb.	2,380	4,534	101	202	7,806	14,274	284	498
Olives in brine .....	Gal.	1,553	916	2,362	1,707	8,398	5,641	11,855	10,335
Oranges, canned, canned .....	Lb.	2,083	2,955	382	567	23,075	25,678	4,260	4,966
Pineapples, canned, prepared or preserved .	Lb.	5,718	4,656	684	574	58,458	47,489	6,874	5,691
Pineapple juice .....	Gal.	171	191	62	118	2,803	1,820	1,458	1,008
Other .....	3/	3/	3/	925	1,491	3/	3/	7,701	8,190
<b>Total fruits and preparations .....</b>	<b>---</b>	<b>---</b>	<b>---</b>	<b>6,178</b>	<b>6,952</b>	<b>---</b>	<b>---</b>	<b>40,897</b>	<b>39,213</b>
<b>Grains and preparations:</b>									
Berley grain (48 lb.) .....	Bu.	3,105	371	3,961	506	11,200	1,202	14,281	1,697
Berley malt .....	Lb.	7,332	8,239	402	406	70,383	65,455	3,795	3,665
Corn grain (56 lb.) .....	Bu.	89	101	140	159	482	468	897	881
Oats grain (32 lb.) .....	Bu.	80	543	79	419	363	1,646	389	1,281
Rice .....	Lb.	2,381	90	115	13	11,098	4,122	580	243
Rye grain (56 lb.) .....	Bu.	0	0	0	0	720	203	783	230
Wheat grain for domestic use (60 lb.) .....	Bu.	405	580	810	1,094	1,856	1,265	3,242	2,393
Wheat flour .....	Lb.	0	0	0	0	108	8	7	2/
Other .....	3/	3/	3/	817	1,081	3/	3/	6,423	8,259
<b>Total grains and preparations .....</b>	<b>---</b>	<b>---</b>	<b>---</b>	<b>6,324</b>	<b>3,678</b>	<b>---</b>	<b>---</b>	<b>30,397</b>	<b>18,649</b>

Continued -

Table 11.-- U. S. agricultural imports for consumption: Quantity and value by commodity,  
December 1961 and 1962 and July-December 1961 and 1962 - Continued

Commodity imported SUPPLEMENTARY	Unit	December 1/				July-December 1/			
		Quantity		Value		Quantity		Value	
		1961	1962	1961 1,000 dollars	1962 1,000 dollars	1961 Thousands	1962 Thousands	1961 1,000 dollars	1962 1,000 dollars
<b>Nuts and preparations:</b>									
Almonds	Lb.	44	2/	21	2/	311	70	113	29
Brazil nuts	Lb.	2,080	1,227	690	371	25,082	18,340	6,597	4,608
Cashew nuts	Lb.	4,894	7,337	1,920	2,880	30,209	36,223	12,826	14,153
Coconut meat, fresh, frozen, or prepared	Lb.	11,336	10,459	1,298	1,156	73,000	68,110	8,220	7,564
Pistache nuts	Lb.	703	1,462	283	738	1,683	8,032	794	3,511
Other		3/	3/	662	905	3/	3/	4,809	4,569
Total nuts and preparations		---	---	4,874	6,050	---	---	33,359	34,434
<b>Oilseeds and products:</b>									
Oils, edible and inedible -									
Cacao butter	Lb.	1,364	1,912	630	886	9,799	12,238	4,397	5,815
Carnauba wax	Lb.	352	597	221	240	4,861	5,054	2,736	2,231
Castor oil	Lb.	8,510	9,460	1,031	1,059	71,809	58,318	8,922	6,592
Coconut oil	Lb.	18,646	41,447	1,650	4,013	106,636	168,044	10,280	15,350
Olive oil, edible	Lb.	4,667	5,282	1,193	1,560	26,107	28,047	6,590	8,014
Palm oil	Lb.	5,223	599	485	46	30,175	9,082	2,940	830
Palm kernel oil	Lb.	7,963	7,807	877	768	48,016	43,350	5,461	4,568
Tung oil	Lb.	725	2,433	194	909	13,175	9,196	3,402	3,296
Other	Lb.	5,212	3,353	852	551	25,001	40,197	4,320	4,829
Total oils (except essential)	Lb.	52,662	72,890	7,133	10,032	335,578	373,526	49,058	52,525
Oilseeds -									
Copra	Lb.	62,734	52,963	4,114	3,563	408,287	406,658	26,325	26,625
Sesame seed	Lb.	845	1,150	144	212	5,599	7,701	824	1,129
Other		3/	3/	263	392	3/	3/	1,279	2,120
Total oilseeds		---	---	4,521	4,167	---	---	28,428	29,874
Protein meal (oilcake and meal)	Lb.	24,855	3,805	578	116	95,159	47,695	2,158	1,402
Total oilseeds and products		---	---	12,232	14,315	---	---	79,644	83,801
<b>Sugar and related products:</b>									
Cane sugar	S. Ton	333	425	34,550	43,175	2,238	2,587	241,678	282,685
Molasses unfit for human consumption	Gal.	22,131	31,326	2,365	1,937	117,263	132,202	12,032	13,157
Other		3/	3/	436	704	3/	3/	3,127	2,526
Total sugar and related products		---	---	37,351	45,816	---	---	256,837	298,368
<b>Vegetables and preparations:</b>									
Canned mushrooms	Lb.	240	219	176	132	2,751	2,923	1,689	1,641
Canned tomatoes, tomato paste and sauce	Lb.	23,464	13,340	1,936	1,195	123,633	98,257	10,027	8,023
Fresh or dried -									
Cucumbers	Lb.	1,429	2,917	99	251	2,759	3,041	174	260
Garlic	Lb.	775	470	111	93	5,383	5,191	658	942
Onions	Lb.	1,708	3,002	116	176	9,703	8,029	608	424
Potatoes, white	Lb.	21,343	27,257	448	461	26,084	46,954	561	841
Potatoes, natural state	Lb.	5,170	9,460	360	786	13,117	11,719	891	994
Turnips and rutabagas	Lb.	11,094	10,196	270	212	55,119	47,016	1,379	953
Pickled vegetables	Lb.	1,103	1,368	179	233	7,055	5,994	1,047	1,051
Tapioca, tapioca flour, and cassava	Lb.	23,581	19,966	840	768	160,587	67,825	5,570	2,673
Other		3/	3/	2,166	2,172	3/	3/	11,504	10,932
Total vegetables and preparations		---	---	6,701	6,479	---	---	34,108	28,734

Continued



Table 11.-- U. S. agricultural imports for consumption: Quantity and value by commodity, December 1961 and 1962 and July-December 1961 and 1962 - Continued

Commodity imported SUPPLEMENTARY	Unit	December 1/				July-December 1/			
		Quantity		Value		Quantity		Value	
		1961	1962	1961	1962	1961	1962	1961	1962
<b>Other vegetable products:</b>		Thousands	Thousands	dollars	dollars	Thousands	Thousands	dollars	dollars
Feeds and fodders (except oilcake and meal):	3/			1,037	1,293	3/		5,720	5,859
Hops	Lb.	536	2,232	402	2,225	1,992	3,257	1,747	3,321
Jute and jute butts, unmanufactured	L.Ton	5	3	999	502	9	29	2,403	3,922
Malt liquors	Gal.	882	1,335	991	1,556	7,415	8,746	8,554	10,304
Nursery and greenhouse stock	No.	10,456	12,338	490	518	341,047	322,402	10,660	10,451
Seeds, field and garden	3/			2,248	2,081	3/		8,237	7,487
Spices	Lb.	10,597	6,842	1,448	917	39,463	21,492	4,787	2,979
Tobacco, unmanufactured	Lb.	10,131	10,335	6,878	6,170	80,258	79,236	55,260	47,816
Wines	Gal.	1,125	1,437	4,320	5,396	6,865	7,514	26,508	29,157
Other	3/			517	587	3/		3,242	3,848
Total other vegetable products				19,330	21,245			127,118	125,144
Total vegetable products				92,818	104,891			622,939	652,660
TOTAL SUPPLEMENTARY IMPORTS				157,438	194,925			1,032,883	1,119,226
<b>COMPLEMENTARY</b>									
Bananas	5/	5/		5,872	5,168	5/	5/	36,732	36,183
Coffee (including into Puerto Rico)	Lb.	276,220	335,074	87,233	98,150	1,446,288	1,675,631	461,879	506,450
Coffee essences, substitutes and adulterants	Lb.	90	628	115	723	1,655	2,731	2,352	3,006
Cocoa or cacao beans	Lb.	24,970	32,906	5,263	6,260	279,958	238,097	55,006	46,586
Cocoa and chocolate, prepared	Lb.	9,313	8,315	1,641	1,846	63,636	51,050	12,323	10,334
Drugs, herbs, roots, etc.	Lb.	2,048	4,444	1,487	1,491	41,471	39,387	9,537	9,005
Essential or distilled oils	3/	3/		1,872	2,310	3/	3/	9,547	12,076
Fibers, unmanufactured	L.Ton	13	10	2,921	2,196	78	78	17,743	15,606
Rubber, crude	Lb.	87,525	82,203	21,655	19,349	475,729	486,957	118,460	115,357
Silk, raw	Lb.	672	328	3,259	1,840	3,349	2,843	15,806	15,401
Spices	Lb.	5,662	7,622	2,755	2,442	40,569	46,306	16,867	17,441
Tea	Lb.	8,659	12,536	4,111	6,243	55,952	65,763	27,579	30,772
Wool, unmanufactured (fres in bond)	G.Lb.	10,124	16,144	5,322	7,761	101,901	98,227	53,310	46,793
Other complementary agricultural products	3/	3/		636	518	3/	3/	3,954	2,964
TOTAL COMPLEMENTARY IMPORTS				144,142	156,297			841,105	867,974
TOTAL AGRICULTURAL IMPORTS				301,580	351,222			1,873,988	1,987,200
TOTAL NONAGRICULTURAL IMPORTS				954,649	985,218			5,698,703	6,287,191
TOTAL IMPORTS, ALL COMMODITIES				1,256,229	1,336,440			7,572,691	8,274,391

1/ Preliminary.

2/ Less than 500.

3/ Reported in value only.

4/ Excludes the weight of "other hides and skins," reported in pieces only.

5/ Quantity reported in pounds beginning January 1, 1962 cannot be compared with bunches reported previously.

Table 12.-- U. S. agricultural exports and imports for consumption: Value by country,  
July-December 1962

Country	Agricultural				Country	Agricultural			
	Exports	Total	Imports			Exports	Total	Imports	
			Supple- mentary	Comple- mentary				Supple- mentary	Comple- mentary
1,000 dollars	1,000 dollars	1,000 dollars	1,000 dollars	1,000 dollars	1,000 dollars	1,000 dollars	1,000 dollars	1,000 dollars	
Greenland .....	0	0	0	0	Iceland .....	1,797	625	77	548
Canada .....	254,518	104,425	102,048	2,377	Sweden .....	30,573	1,542	1,467	75
Miquelon and St. Pierre Is..	21	0	0	0	Norway .....	18,217	747	720	27
<b>Latin American Republics:</b>					Denmark .....	36,816	29,947	29,857	80
Mexico .....	34,501	91,399	61,001	30,398	United Kingdom .....	218,070	14,816	10,361	4,455
Guatemala .....	5,374	29,308	5,533	23,775	Ireland .....	25,762	15,617	14,869	748
El Salvador .....	3,983	17,067	2,230	14,837	Unidentified W. Europe 1/2	0	0	0	0
Honduras .....	1,836	10,134	1,939	8,195	East Germany .....	776	4	4	0
Nicaragua .....	2,579	7,077	4,583	2,494	Austria .....	8,486	500	431	69
Costa Rica .....	2,320	18,614	4,129	14,485	Czechoslovakia .....	1,120	607	560	47
Panama, Republic of .....	5,726	4,696	64	4,632	Hungary .....	47	242	196	46
Cuba .....	321	5,576	5,576	0	Switzerland .....	31,345	7,008	5,760	1,248
Haiti .....	3,239	8,791	4,611	4,180	Finland .....	3,369	560	558	2
Dominican Republic .....	6,836	68,020	52,524	15,496	Estonia .....	0	0	0	0
Colombia .....	9,410	136,037	4,067	131,950	Latvia .....	3,909	0	0	0
Venezuela .....	31,393	6,024	223	5,801	Lithuania .....	0	0	0	0
Ecuador .....	3,088	40,282	6,622	33,660	Poland and Danzig .....	21,340	13,901	13,823	78
Peru .....	13,295	51,316	35,198	16,118	U.S.S.R. (Russia) .....	1,741	741	400	341
Bolivia .....	5,682	986	511	475	Azores .....	430	56	47	9
Chile .....	18,220	624	581	43	Spain .....	47,337	18,762	18,059	703
Brazil .....	51,041	248,776	58,347	190,429	Portugal .....	7,605	1,884	1,696	188
Paraguay .....	293	2,760	2,522	238	Gibraltar .....	85	0	0	0
Uruguay .....	2,094	6,753	6,694	59	Malta and Gozo .....	186	20	1	19
Argentina .....	1,950	44,786	28,440	16,346	Free Territory of Trieste..	192	3	3	0
Total L. A. Republics .....	203,181	799,026	285,415	513,611	Yugoslavia .....	24,893	7,242	6,675	567
<b>Other Latin America:</b>					Albania .....	0	46	1	45
British Honduras .....	1,076	52	44	8	Romania .....	7,881	13,845	13,429	416
Canal Zone .....	433	157	146	11	Bulgaria .....	40	61	56	5
Bermuda .....	2,868	25	21	4	Turkey .....	0	375	226	149
Bahamas .....	3,946	42	34	8	Cyprus .....	9,653	33,938	32,987	951
Jamaica .....	6,124	10,712	9,772	940	Total Europe (excl. EEC) .....	1,939	434	136	298
Leeward and Windward Is. .	933	525	335	190	<b>European Economic Com- munity (Common Market):</b>	511,109	163,523	152,409	11,114
Barbados .....	944	601	601	0	Netherlands .....	190,435	43,622	35,964	7,658
Trinidad and Tobago .....	6,195	3,523	2,778	745	Belgium and Luxembourg ..	64,155	4,897	4,419	478
Netherlands Antilles .....	4,623	20	1	19	France .....	39,582	26,710	24,171	2,539
French West Indies .....	342	4,991	4,951	40	West Germany .....	186,792	15,886	14,855	1,031
British Guiana .....	1,774	7,239	7,133	106	Italy .....	84,877	36,323	34,574	1,749
Surinam .....	1,233	306	0	306	Total E. E. C. ....	565,841	127,438	113,983	13,455
French Guiana .....	22	0	0	0					
Falkland Islands .....	0	0	0	0					
Total Latin America .....	233,694	827,219	311,231	515,988	Total Europe .....	1,076,950	290,961	266,392	24,569

Continued -

Table 12.-- U. S. agricultural exports and imports for consumption: Value by country,  
July-December 1962 - Continued

Country	Agricultural				Country	Agricultural			
	Exports	Total	Imports : Supple- mentary	Comple- mentary		Exports	Total	Imports : Supple- mentary	Comple- mentary
	1,000 dollars	1,000 dollars	1,000 dollars	1,000 dollars		1,000 dollars	1,000 dollars	1,000 dollars	1,000 dollars
<b>Asia:</b>					<b>Australia and Oceania - Con.:</b>				
Syrian Arab Republic .....	423	1,561	217	1,344	New Zealand and W. Samoa ..	3,838	68,578	53,660	14,918
Lebanon .....	3,161	1,922	1,050	872	British W. Pacific Is. ....	455	1,595	1,486	109
Iraq .....	1,732	4,578	2,061	2,517	French Pacific Islands ...	459	84	2	82
Iran .....	14,087	6,885	6,158	727	Trust Terr. of Pacific Is. .	263	0	0	0
Israel .....	29,457	298	205	93	Total Australia and				
Palestine .....	0	0	0	0	Oceania .....	21,668	206,744	190,207	16,537
Jordan .....	6,287	7	7	0					
Kuwait .....	1,814	0	0	0	<b>Africa:</b>				
Saudi Arabia .....	5,758	0	0	0	Morocco .....	8,547	1,250	894	356
Other Arabia Pen. States ..	287	217	11	206	Algeria .....	21,741	376	23	353
Aden .....	377	15	4	11	Tunisia .....	18,652	806	802	4
State of Bahrain .....	678	0	0	0	Libya .....	391	0	0	0
Afghanistan .....	28	884	838	46	United Arab Rep. (Egypt) ..	61,623	12,490	12,481	9
Coa., Damsa, and Diu .....	0	0	0	0	Sudan .....	2,641	712	706	6
India .....	185,581	37,761	23,989	13,772	Canary Islands .....	1,654	7	7	0
Pakistan .....	49,805	8,763	4,814	3,949	Other Spanish Africa .....	78	1	1	0
Nepal .....	0	0	0	0	Federal Rep. of Cameroon ..	330	880	27	853
Ceylon .....	4,136	15,658	2	15,656	Other W. Equatorial Africa ..	10	94	45	49
Burma .....	252	173	173	0	Other Western Africa .....	4,451	7,181	37	7,144
Thailand .....	4,447	16,623	3,073	13,550	Ghana .....	4,025	15,401	0	15,401
Viet-Nam .....	16,384	1,097	121	976	Federation of Nigeria .....	2,826	15,356	1,357	13,999
Laos .....	314	0	0	0	British West Africa .....	354	607	39	568
Cambodia .....	510	2,693	0	2,693	Madeira Islands .....	392	27	27	0
Federation of Malaya .....	3,225	53,492	1,047	52,445	Angola .....	1,372	22,162	228	21,934
Singapore, State of .....	3,242	4,091	53	4,038	Other W. Portuguese Africa ..	110	783	0	783
Republic of Indonesia .....	20,457	35,401	584	34,817	Liberia .....	3,750	10,937	0	10,937
Rep. of the Philippines ..	24,780	134,088	130,102	3,986	Republic of the Congo .....	11,332	23,446	2,700	20,746
Macao .....	105	0	0	0	Somali Republic .....	53	103	101	2
Other Southern & S.E. Asia ..	1	0	0	0	Ethiopia .....	1,138	7,734	459	7,275
China (incl. Manchuria) ...	0	2	2	0	French Somaliland .....	52	152	10	142
Outer Mongolia .....	0	1,654	1,654	0	Seychelles & Dependancies ..	3	61	0	61
North Korea .....	0	10	10	0	Mauritius & Dependancies ..	61	2,276	2,276	0
Korea, Republic of .....	55,809	1,206	406	800	British East Africa .....	3,633	29,553	321	29,232
Hong Kong .....	19,008	1,146	962	184	Mozambique .....	1,042	2,122	694	1,428
Taiwan .....	30,955	14,758	12,339	2,419	Malagasy Republic .....	205	6,642	126	6,516
Japan .....	228,236	27,254	12,366	14,888	Republic of South Africa ..	6,408	23,788	23,435	353
Nansei and Nanpo Islands ..	4,322	0	0	0	Rhodesia & Nyasaland Fed...	259	667	304	363
Total Asia .....	715,658	372,237	202,248	169,989	Total Africa .....	157,133	185,614	47,100	138,514
<b>Australia and Oceania:</b>									
Australia .....	16,476	135,253	135,059	194					
New Guinea .....	177	1,234	0	1,234	<b>TOTAL ALL COUNTRIES .....</b>	<b>2,459,642</b>	<b>1,987,200</b>	<b>1,119,226</b>	<b>867,974</b>

32-

1/ Not available by countries.

## Explanatory Note

U.S. foreign agricultural trade statistics in this report include official U.S. data based on compilations of the Bureau of the Census. Agricultural commodities consist of (1) nonmarine food products and (2) other products of agriculture which have not passed through complex processes of manufacture such as raw hides and skins, fats and oils, and wine. Such manufactured products as textiles, leather, boots and shoes, cigarettes, naval stores, forestry products, and distilled alcoholic beverages are not considered agricultural.

The trade statistics exclude shipments between the 50 States and Puerto Rico, between the 50 States and the island possessions, between Puerto Rico and the island possessions, among the island possessions, and in-transit through the United States from one foreign country to another when documented as such through U.S. Customs.

**EXPORTS** The export statistics also exclude shipments to the U.S. armed forces for their own use and supplies for vessels and planes engaged in foreign trade. Data on shipments valued at less than \$100 are not compiled by commodity and are excluded from agricultural statistics but are reflected in nonagricultural and overall export totals in this report. The agricultural export statistics include shipments under P.L. 665 (Mutual Security Act of 1954, as Amended), principally sales for foreign currency; under P.L. 480 (Agricultural Trade Development and Assistance Act, as Amended), and related laws; and involving Government payments to exporters. (USDA payments are excluded from the export value.) Separate statistics on Government program exports are compiled by USDA from data obtained from operating agencies.

The export value, the value at the port of exportation, is based on the selling price (or cost if not sold) and includes inland freight, insurance, and other charges to the port. The country of destination is the country of ultimate destination or where the commodities are to be consumed, further processed, or manufactured. When the shipper does not know the ultimate destination, the shipments are credited to the last country, as known to him at time of shipment from the United States, to which the commodities are to be shipped in their present form. Export shipments valued \$100-\$499 are included on the basis of sampling estimates.

**IMPORTS** Imports for consumption consist of commodities released from U.S. Customs custody upon arrival, or entered into bonded manufacturing warehouse, or withdrawn from bonded storage warehouse for consumption. The agricultural statistics exclude low-value shipments from countries not identified because of illegible reporting, but they are reflected in nonagricultural and overall import totals in this report.

The import value, defined generally as the market value in the foreign country, excludes import duties, ocean freight, and marine insurance. The country of origin is defined as the country where the commodities were grown or processed. Where the country of origin is not known, the imports are credited to the country of shipment.

Imports similar to agricultural commodities produced commercially in the United States and others that are interchangeable in use to any significant extent with such U.S. commodities are supplementary, or partly competitive. All other commodities are complementary, or noncompetitive.

Further explanatory material on foreign trade statistics and compilation procedures of the Bureau of the Census is contained in the publications of that agency.

END

DATE

FILMED

7-9-79

NTIS