



AgEcon SEARCH
RESEARCH IN AGRICULTURAL & APPLIED ECONOMICS

The World's Largest Open Access Agricultural & Applied Economics Digital Library

This document is discoverable and free to researchers across the globe due to the work of AgEcon Search.

Help ensure our sustainability.

Give to AgEcon Search

AgEcon Search

<http://ageconsearch.umn.edu>

aesearch@umn.edu

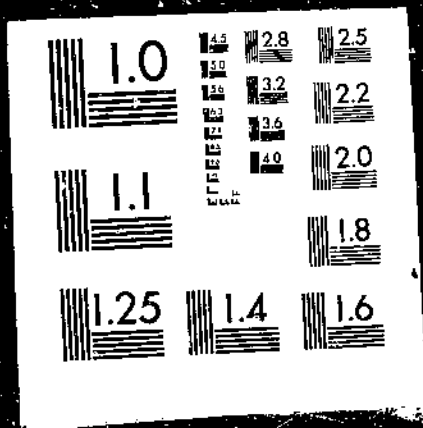
*Papers downloaded from **AgEcon Search** may be used for non-commercial purposes and personal study only. No other use, including posting to another Internet site, is permitted without permission from the copyright owner (not AgEcon Search), or as allowed under the provisions of Fair Use, U.S. Copyright Act, Title 17 U.S.C.*

USDA/FATUS-
SEP 62

FATUS/FOREIGN AGRICULTURAL TRADE OF THE UNITED STATES, 1962 SEPTEMBER, Washington,
DC: Economic Research Service.

(NAL Call No. A286.9/Ag8)

1 OF 1
USDA-FATUS
SEPT - 62



Reserve
A286.9
A98

SEPTEMBER 1962

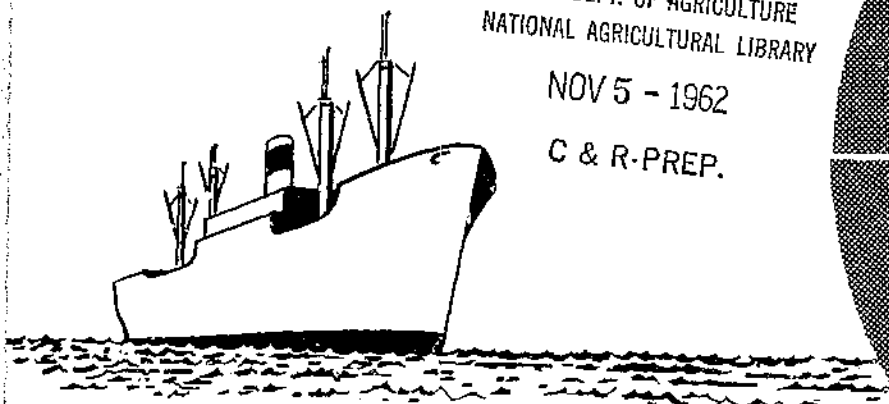
FOREIGN AGRICULTURAL TRADE

OF THE UNITED STATES

U. S. DEPT. OF AGRICULTURE
NATIONAL AGRICULTURAL LIBRARY

NOV 5 - 1962

C & R-PREP.



IN THIS ISSUE

- Agricultural Imports Larger in 1961-62
- Export Highlights, July 1962
- Gov't. Program Exports, July-March 1961-62
- Trade Statistics, July-May 1961-62

Published Monthly by
Economic Research Service

U. S. DEPARTMENT OF AGRICULTURE

Contents

	<u>Page</u>
Digest.....	1
1961-62 Agricultural Imports Rose 3 Percent in Value.....	3
Export Highlights.....	9
Government Program Export Highlights.....	12
Table 1.--Imports: Value by Commodity, Fiscal Years 1960-61 and 1961-62..	4
Table 2.--Exports: Value by Commodity, July 1961 and 1962.....	9
Table 3.--Exports: Value by Commodity, Fiscal Years 1960-61 and 1961-62..	10
Table 4.--Exports: Percentage of Production, Fiscal Years 1954-60, Average, 1960-61, and 1961-62.....	11
Table 5.--Credit Sales: Value by Commodity, July-March 1961-62.....	14
Table 6.--Exports under Government Programs and Commercial Exports: Value by Commodity, July-March 1961-62.....	15
Table 7.--Exports under Government Programs and Commercial Exports: Quantity by Commodity, July-March 1961-62.....	16
Table 8.--Exports and Imports: Value by Country, July-May 1961-62.....	17
Table 9.--Exports: Quantity and Value by Commodity, May 1961 and 1962, July-May 1960-61 and 1961-62.....	20
Table 10.--Imports: Quantity and Value by Commodity, May 1961 and 1962, July-May 1960-61 and 1961-62.....	26
Figure 1.--Animals and Animal Products Contribute Most to Supplementary Import Gain.....	5
Figure 2.--Lower Prices Cause Value Drop for Most Complementary Import Products.....	6

Foreign Agricultural Trade of the United States incorporates the former Foreign Agricultural Trade Digest of the United States, Foreign Agricultural Trade of the United States Statistical Reports, and Government program export series. Annual fiscal and calendar year export and import statistics will be released in yearly supplements to this report.

Prepared in
Trade Statistics and Analysis Branch
Development and Trade Analysis Division

Explanatory Note

U.S. foreign agricultural trade statistics in this report include official U.S. data based on compilations of the Bureau of the Census. Agricultural commodities consist of (1) nonmarine food products and (2) other products of American agriculture which have not passed through complex processes of manufacture such as raw hides and skins, fats and oils, and wine. Such manufactured products as textiles, leather, boots and shoes, cigarettes, naval stores, forestry products, and distilled alcoholic beverages are not considered agricultural.

The trade statistics exclude shipments between the 50 States and Puerto Rico, between the 50 States and the island possessions, between Puerto Rico and the island possessions, among the island possessions, and in-transit through the United States from one foreign country to another when documented as such through U.S. Customs.

EXPORTS The export statistics also exclude shipments to the U.S. armed forces for their own use and supplies for vessels and planes engaged in foreign trade. Data on shipments valued at less than \$100 are not compiled by commodity and are excluded from agricultural statistics but are reflected in nonagricultural and overall export totals in this report. The agricultural export statistics include shipments under P.L. 665 (Mutual Security Act of 1954, as Amended), principally sales for foreign currency; under P.L. 480 (Agricultural Trade Development and Assistance Act, as Amended), and related laws; and involving Government payments to exporters. (USDA payments are excluded from the export value.) Separate statistics on Government program exports are compiled by USDA from data obtained from operating agencies.

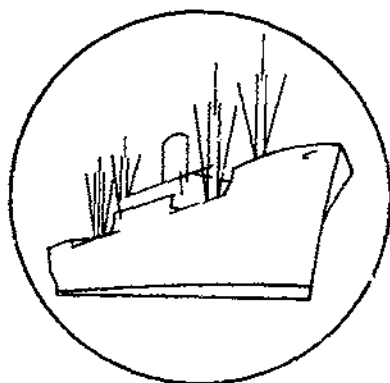
The export value, the value at the port of exportation, is based on the selling price (or cost if not sold) and includes inland freight, insurance, and other charges to the port. The country of destination is the country of ultimate destination or where the commodities are to be consumed, further processed, or manufactured. When the shipper does not know the ultimate destination, the shipments are credited to the last country, as known to him at time of shipment from the United States, to which the commodities are to be shipped in their present form. Export shipments valued \$100-\$499 are included on the basis of sampling estimates.

IMPORTS Imports for consumption consist of commodities released from U.S. Customs custody upon arrival, or entered into bonded manufacturing warehouse, or withdrawn from bonded storage warehouse for consumption. The agricultural statistics exclude low-value shipments from countries not identified because of illegible reporting, but they are reflected in nonagricultural and overall export totals in this report.

The import value, defined generally as the market value in the foreign country, excludes import duties, ocean freight, and marine insurance. The country of origin is defined as the country where the commodities were grown or processed. Where the country of origin is not known, the imports are credited to the country of shipment.

Imports similar to agricultural commodities produced commercially in the United States and others that are interchangeable in use to any significant extent with such U.S. commodities are supplementary, or partly competitive. All other commodities are complementary, or noncompetitive.

Further explanatory material on foreign trade statistics and compilation procedures of the Bureau of the Census is contained in the publications of that agency.



FOREIGN AGRICULTURAL TRADE OF THE UNITED STATES

Digest

Agricultural imports increased in fiscal year 1961-62 over 1960-61. U.S. agricultural imports for consumption for the year ending June 30, 1962, rose to \$3,767 million, a gain of 3 percent from \$3,645 million a year earlier. Quantity was up 7 percent. Divergent movements left supplementary (partly competitive) products ahead 13 percent in value and 15 percent in quantity and complementary (noncompetitive) products 6 percent less in value though 1 percent larger in volume than last year. Increases in the value of supplementary imports were attributed primarily to increased imports of animals and animal products such as dutiable cattle, beef and veal, apparel wool, and hides and skins. Lower prices for most of the complementary imports resulted in value reductions for coffee, cocoa beans, crude natural rubber, and carpet wool. (page 3.)

New fiscal year opens with July exports ahead of 1961-62. Agricultural exports in July 1962, the first month of fiscal year 1962-63, are estimated at \$440 million, or one-fourth larger than in July a year ago. Gains were substantial in feed grains, vegetable oils, cotton, vegetables, and poultry meat. Some exports moved ahead in July in anticipation of new European Common Market import regulations put into effect on August 1. This was particularly true of feed grains and poultry meat. (page 9.)

Fiscal year 1961-62 agricultural exports were near estimated level. Agricultural exports of \$5,139 million in fiscal year 1961-62 based on 12 months of actual exports were close to the \$5,130 million reported a month ago based on 11 months of actual exports and an estimate for June. Exports were 4 percent above 1960-61's \$4,946 million. Latest figures on actual exports of major commodities in 1961-62 are given in table 3 on page 10.

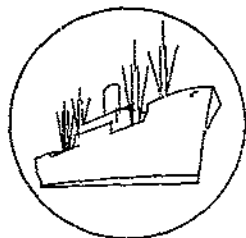
Government-financed programs accounted for 30 percent of U.S. agricultural exports in July-March of 1961-62. Government-financed program (P.L. 480 and 665) shipments totaled \$1,156 million in the 9 months ending March 1962, or 30 percent of all farm product exports valued at \$3,790 million. Wheat, cotton, vegetable oils, corn, and rice were the leading commodities exported under these programs. P.L. 480 foreign currency sales accounted for 60 percent of total agricultural exports under Government-financed programs. Among the

dollar exports, which comprised 70 percent of all agricultural exports, the leading commodities were cotton, wheat and flour, tobacco, soybeans, corn, and fresh, frozen, and canned fruits and juices. These dollar exports as a group included substantial amounts of some commodities with Government assistance in the form of (1) extension of credit for relatively short periods, (2) sales of Government-owned commodities at less-than-domestic prices, and (3) export payments-in-cash or -in-kind. (page 12.)

Large shares of many commodities are exported. The importance of agricultural exports to the American farmer is measured in several ways. Exports in fiscal year 1961-62 added up to 15 percent of cash receipts from farm marketings. In terms of acreage, one out of every five acres harvested produced for export in that year. Another way compares exports of individual commodities with production. Such comparisons for 1961-62 and other years are given in table 4. (page 11.)



Growth Through Agricultural Progress



SPECIAL in this issue

1961-62 Agricultural Imports Rose 3 Percent in Value

U.S. agricultural imports for consumption for the fiscal year that ended June 30, 1962, increased 3 percent to \$3,767 million from \$3,645 million in 1960-61. The volume of imports increased by 7 percent. The import picture in 1961-62 was marked by divergent movements of complementary (noncompetitive) and supplementary (partially competitive) products. Supplementary imports gained 13 percent in value and 15 percent in quantity while complementary items fell 6 percent in value but increased 1 percent in quantity. Developments both at home and in the major supplying countries influenced the movement of agricultural commodities into the United States.

Imports of supplementary products totaled \$2,051 million compared with \$1,814 million in 1960-61. The gain consisted mainly of animals and animal products, principally dutiable cattle, beef and veal, apparel wool, and hides and skins. Dutiable cattle imports were encouraged by droughts in Canada and Mexico. Beef and veal imports were stimulated by the continued strong demand for meat products in the United States. Other increases were in vegetable oils, cane sugar, vegetables and preparations, and cotton while imports of copra were smaller (table 1 and fig. 1).

Complementary imports fell to \$1,716 million from \$1,831 million in the previous year. This, together with the 1-percent drop in quantity, reflected generally lower prices for major items. Lower prices resulted in smaller import values for coffee, cocoa beans, crude natural rubber, and carpet wool. Lower prices were the outcome of surplus supplies of these commodities in the major producing countries in Latin America, Asia, and Africa (fig. 2).

Supplementary Imports

Imports of dutiable cattle reached a record 1,217 thousand head in 1961-62 compared with 636 thousand in 1960-61, and the previous record of 1,059 thousand in 1958-59. Drought conditions in Canada and Mexico in the summer of 1961 forced ranchers and farmers to sell more feeders and stockers to the United States. These cattle, placed in feedlots in the United States, converted low priced feed into meat.

Imports of beef and veal rose to a record 788 million pounds (product weight) from 532 million in 1960-61. They were stimulated by the relatively favorable U.S. price situation due to reduced cow slaughter during the past year and the strong demand for prepared meat products, such as ready-to-cook hamburgers, frankfurters, and luncheon meats. Although U.S. production of low grade meats has been relatively small, output in Australia, New Zealand, and the Central American Republics increased substantially during the past year.

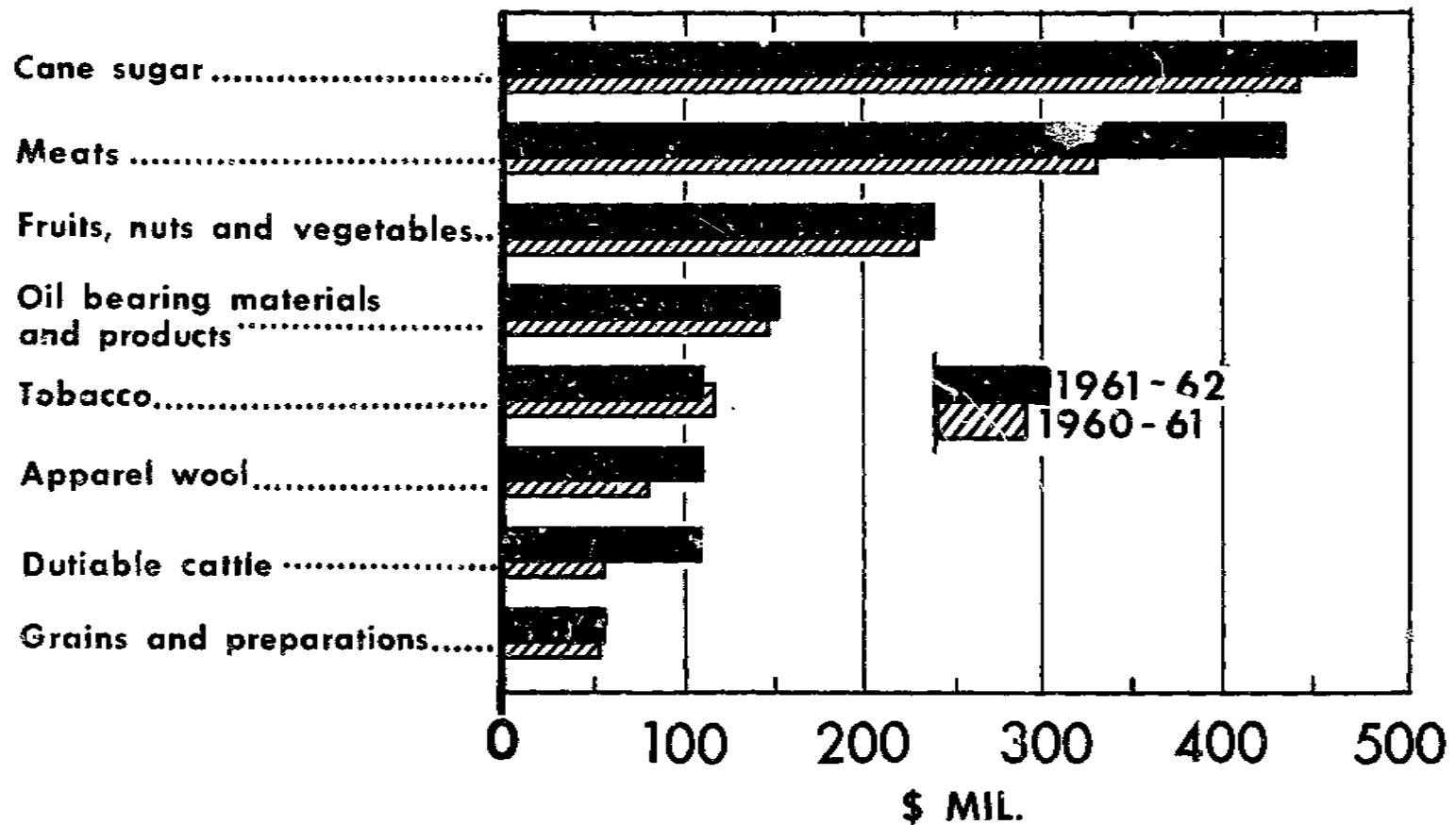
The average price of boneless beef imports was 32 cents per pound last year compared with 36 cents in 1960-61. Per capita consumption of prepared meat products manufactured from low grade beef has increased from 19.4 pounds in 1955-59 to 21.2 pounds in 1961-62.

U.S. imports of pork products totaled 194 million pounds (product weight) in 1961-62 compared with 166 million in the previous year. The increase consisted mainly of canned hams and shoulders from Western Europe which accounted for

Table 1.--U.S. agricultural imports for consumption: Value by commodity, fiscal years 1960-61 and 1961-62

Commodity	Fiscal year ending June 30		Change
	1961	1962	
	--Million dollars--		Percent
<u>Supplementary</u>			
Animals and animal products:			
Animals, live.....	66	120	+82
Dairy products.....	53	54	+ 2
Hides and skins.....	58	69	+19
Meats and meat products.....	343	431	+26
Wool, apparel.....	79	109	+38
Other.....	41	38	- 7
Total animals, etc.	640	821	+28
Cotton, excluding linters.....	27	27	0
Fruits and preparations.....	88	90	+ 2
Grains and preparations.....	53	55	+ 4
Nuts and preparations.....	67	58	-13
Oilseeds and products.....	146	151	+ 3
Sugar, cane.....	441	471	+ 7
Tobacco, unmanufactured.....	116	109	- 6
Vegetables and preparations.....	74	88	+19
Other.....	162	181	+12
Total supplementary.....	1,814	2,051	+13
<u>Complementary</u>			
Bananas.....	76	78	+ 3
Coffee.....	1,012	947	- 6
Cocoa beans.....	167	140	-16
Rubber, crude, natural.....	245	231	- 6
Tea.....	52	56	+ 8
Wool, carpet.....	105	96	- 9
Other.....	174	168	- 3
Total complementary.....	1,831	1,716	- 6
Total imports.....	3,645	3,767	+ 3

Animals and Animal Products Contribute Most to Supplementary Import Gain



YEAR ENDING JUNE 30TH

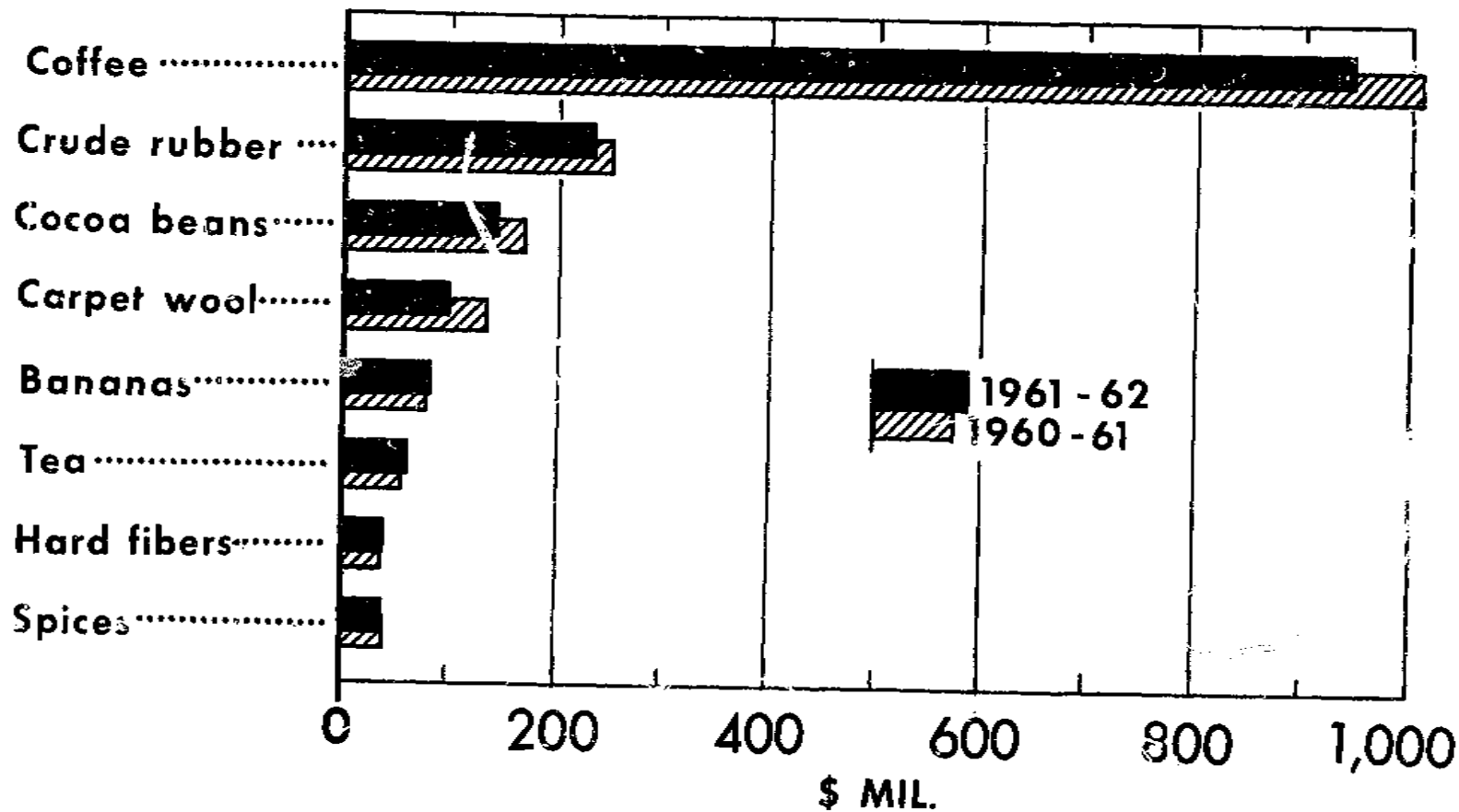
1961-62 PRELIMINARY

U. S. DEPARTMENT OF AGRICULTURE

NEG. ERS 1299-62 (8) ECONOMIC RESEARCH SERVICE

FIG. 1

Lower Prices Cause Value Drop for Most Complementary Import Products



-9-

YEAR ENDING JUNE 30TH

1961-62 PRELIMINARY

U. S. DEPARTMENT OF AGRICULTURE

NEG. ERS 1298-62 (8) ECONOMIC RESEARCH SERVICE

FIG. 2

two-thirds of all pork imports. Prices of imported canned pork averaged above similar domestic items. Canada was the principal supplier of the 42 million pounds of fresh and frozen pork imported last year.

Apparel wool imports advanced to 170 million pounds (actual weight) in 1961-62 from 117 million a year earlier due to stepped-up textile activity. In recent years there has been a substantial shift from imports of apparel wool to finished woolen textiles. About one-third of the apparel wool used in this country is imported, principally from Australia, the Republic of South Africa, and New Zealand. The price of imported wool averaged 65 cents per pound (actual weight) in 1961-62 compared with 68 cents in the previous year.

The increase in imports of hides and skins to 153 million pounds from 128 million in 1960-61 resulted from a sharp rise in U.S. consumer demand for leather products. Over two-thirds of the imports were sheep and goat skins, which are produced in relatively small volume in the United States.

Cotton imports, excluding picker-lap, totaled 151 thousand bales in 1961-62 compared with 129 thousand in 1960-61. All imports except short harsh Asiatic are regulated by quotas. The long-staple quota is 95 thousand bales on an August 1-July 31 year while the short-staple quota is 30 thousand bales on a September 20-September 19 year. Egypt, Mexico, Peru, India, and Pakistan supplied nearly all the cotton imported into the United States.

Among the grains, imports of wheat and rye declined; corn and oats were unchanged; and barley gained. Wheat imports (mostly feed wheat) declined to 5.7 million bushels from 7.8 million in 1960-61. Wheat imports for human consumption are regulated by quota. Rye imports of 0.7 million bushels were 1 million below the level in 1960-61. Imports of corn and oats totaling 1.3 million and 1.1 million bushels, respectively, were about equal to the low levels of the previous year. Corn imports into the United States were marketed mainly in Puerto Rico, which purchases most of its grains from nearby Latin American producers because of lower transportation costs. Barley imports increased to 15 million bushels from 11 million in 1960-61, and barley malt increased to 149 million pounds from 132 million. The gain in barley reflected the relatively small supplies of high quality malting barley in the United States. Canada is the main supplier of imported feed grains in the U.S. market, but U.S. exports of feed grains to Canada are many times larger than U.S. imports from that country.

Among the oilseeds and products, imports of copra fell to 715 million pounds from 792 million in 1960-61. Prices fell about 7 percent, reflecting government sales from stockpiles and a decline in the use of coconut oil in Western Europe. U.S. demand for coconut oil is fairly inelastic, reflecting special industrial uses and the lack of a suitable domestic substitute. Over the years, imports of coconut oil have been displacing imports of copra.

Imports of vegetable oils increased to 638 million pounds in 1961-62 from 524 million a year earlier. The rise was accounted for by larger imports of coconut, castor, olive, and tung oils--stimulated by lower world prices. Coconut oil accounted for about one-third of the total imports of vegetable oils.

Imports of cane sugar increased to 4.3 million short tons (on equal basis as reported by the Bureau of the Census) compared with 4 million in 1960-61. The principal suppliers were the Philippines, Mexico, Peru, and the Dominican Republic. Imports are regulated under the Sugar Act of 1948, as Amended. During 1961, foreign producers supplied about 45 percent of U.S. consumption.

Tobacco imports showed relatively little change from the previous year. Unmanufactured leaf totaled 165 million pounds, about equal to the 164 million imported a year earlier. About three-fourths consisted of oriental types used for blending with U.S. tobaccos in making cigarettes. The principal suppliers were Turkey and Greece.

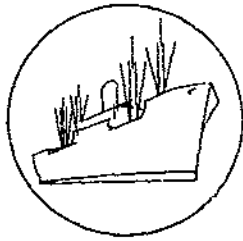
Complementary Imports

Imports of cocoa beans in 1961-62 totaled 681 million pounds compared with 735 million in the previous year. Lower world prices, reflecting surplus production and large inventories in the major importing countries, resulted in an 18 percent decline in value. Ghana, Brazil, Nigeria, Ivory Coast and the Dominican Republic were the principal suppliers. Unlike many other agricultural products, cocoa is sold in the year in which it is produced and little if any stocks are held in the producing country. This marketing procedure, which relies heavily on current output, results in wide price fluctuations from year to year.

Coffee imports in 1961-62 totaled 3,022 million pounds compared with the previous year's 3,013 million. Value of imports was below \$1 billion for the first time since fiscal year 1949-50. Brazil and Colombia supplied over half of U.S. imports. The value of imports declined 5 percent, reflecting lower world prices. Prices have been somewhat stabilized by the International Coffee Agreement among coffee producers in Latin America and Africa. The situation in recent years has been marked by excess supplies which depressed prices in 1961 to the lowest level since 1949. Stocks held by exporters totaled an estimated record 3.9 million tons in the 1961-62 season.

Imports of carpet wool fell to 180 million pounds (actual weight) in 1961-62 from 197 million a year earlier. The decline reflected unstable mill use and the working down of commercial stocks. Principal suppliers were Argentina, New Zealand, Pakistan, Syria, and Iraq. Imports account for nearly all of the wool used in manufacturing carpets in this country. In recent years there has been a substantial increase in the use of synthetic fibers in carpet making.

Crude natural rubber imports increased to 938 million pounds in 1961-62 from 848 million a year earlier. However, value fell by 6 percent, reflecting lower world prices. The proportion of natural rubber relative to synthetic consumed in the United States has been declining sharply in recent years. In 1955-59 crude natural rubber accounted for 37 percent of total consumption, but in 1961-62 it accounted for only 28 percent.



Export Highlights

July agricultural exports in 1962 are estimated \$90 million ahead of 1961. The July total is expected to be \$440 million this year, one-fourth above the \$350 million reached in July a year earlier. There were substantial gains in feed grains, vegetable oils, cotton, vegetables, and poultry meat. Smaller increases were registered in rice and tobacco. Exports of fruits, hides and skins, and dairy products remained near the levels of July 1961. Wheat and tallow exports were down slightly from a year ago (table 2).

New trade regulations of the European Economic Community (EEC) that became effective on Aug. 1, 1962, stimulated purchases of U.S. feed grains, poultry meat, and some other commodities during July in anticipation of increased import charges. The continued strong demand for soybeans and fats and oils in Western Europe and the stepped-up shipments of vegetable oils under P.L. 480 also contributed to larger exports in July.

Table 2.--U.S. agricultural exports: Value by commodity, July 1961 and 1962

Commodity	1961	1962 ^{1/}	Change
	--Million dollars--		Percent
Animals and animal products.....	60	64	+ 7
Cotton, excluding linters.....	45	69	+53
Fruits and preparations.....	22	22	0
Grains and preparations.....	135	161	+19
Oilseeds and products.....	38	67	+81
Tobacco, unmanufactured.....	22	25	+14
Vegetables and preparations.....	11	16	+45
Other.....	17	16	- 6
Total exports.....	350	440	+26

^{1/} Estimated.

Agricultural exports for the fiscal year that ended June 30, 1962, totaled a record \$5,139 million compared with the 1960-61's \$4,946 million. The gain resulted mainly from larger shipments of feed grains and wheat (table 3). Smaller increases occurred in soybeans, fruits, poultry meat, tobacco, and vegetables. Rice, variety meats, animal fats, hides and skins, and dairy products remained close to the levels of a year earlier. Only cotton, declining \$272 million, was substantially below the level of the previous year. (Analysis of fiscal year 1961-62 exports was published in the August issue.)

Exports are important to U.S. agriculture. The export record in fiscal year 1961-62 represented 15 percent of total cash receipts from farm marketings. One acre of every five harvested produced for export--a total of 60 million acres. Exports accounted for important portions of the 1961 output of many individual agricultural commodities: Over half of the wheat, dried edible peas, rice, and hops; about two-fifths of the tallow and nonfat dry milk; about one-third of the cotton and soybeans; nearly one-third of the dried prunes, and tobacco; about one-fourth of the raisins and rye; one-fifth of the barley and cottonseed; and lesser shares of grain sorghums, dried whole milk, lard, dried edible beans, and flaxseed. Actual figures for 1961-62 with comparisons for 1960-61 and 1954-60 are given in table 4.

Table 3.--U.S. agricultural exports: Value by commodity, fiscal years 1960-61 and 1961-62

Commodity	Fiscal year ending		Change
	June 30		
	1961	1962 ^{1/}	
	--Million dollars--		Percent
Animals and animal products:			
Dairy products.....	131	128	- 2
Fats, oils, and greases.....	175	172	- 2
Hides and skins.....	83	84	+ 1
Meats and meat products.....	138	163	+18
Other.....	86	80	- 7
Total animals, etc.	613	627	+ 2
Cotton, excluding linters.....	946	674	-29
Fruits and preparations.....	254	282	+11
Grains and preparations:			
Feed grains, excluding products.....	531	693	+31
Rice, milled.....	135	132	- 2
Wheat and flour.....	1,151	1,283	+11
Other.....	57	61	+ 7
Total grains, etc.	1,874	2,169	+16
Oilseeds and products:			
Cottonseed and soybean oils ^{2/}	148	160	+ 8
Soybeans.....	344	374	+ 9
Other.....	105	101	- 4
Total oilseeds, etc. ^{2/}	597	635	+ 6
Tobacco, unmanufactured.....	385	407	+ 6
Vegetables and preparations.....	127	136	+ 7
Other.....	150	209	+39
Total exports.....	4,946	5,139	+ 4

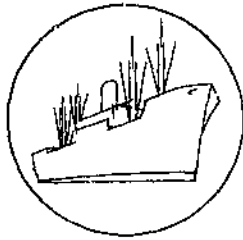
^{1/} Preliminary.

^{2/} Excludes Title III, P.L. 480 donations, which are included in "other."

Table 4.--U.S. agricultural exports: Exports total production and percentage of production exported, principal commodities, 1954-62

Commodity	Unit	Exports fiscal years ending June 30			Production			Share of production exported fiscal years ending June 30		
		Average	1961	1962	Average	1960	1961	Average	1961	1962
		1954-60			1953-59			1954-60		
--Million units--				--Million units--			Percent			
Wheat.....	Bu.	1/391.6	1/660.9	1/716.5	1,090.6	1,357.3	1,234.7	36	49	58
Dried edible peas.....	Cwt.	1.2	1.8	2.0	3.3	3.2	3.5	36	56	57
Rice (milled basis).....	Cwt.	15.2	21.5	20.4	35.7	38.2	37.5	43	56	54
Hops.....	Lb.	14.9	17.2	18.3	43.2	46.0	35.5	34	37	52
Tallow.....	Lb.	1,229.6	1,465.7	1,631.5	3,077.3	3,856.0	3,666.0	40	38	44
Nonfat dry milk	Lb.	521.3	633.8	809.2	1,494.0	1,892.3	2,050.0	55	33	39
Cotton.....	Bale	4.6	7.0	4.8	13.6	14.3	14.3	34	49	34
Soybeans.....	Bu.	2/139.9	2/228.7	2/236.6	433.7	555.3	693.0	32	41	34
Dried prunes	Lb.	91.1	72.7	85.8	305.7	278.0	280.3	30	26	31
Tobacco (farm sales weight)	Lb.	548.6	569.5	584.5	1,982.1	1,944.1	2,022.8	28	29	29
Raisins.....	Lb.	93.6	123.5	127.9	399.1	388.0	456.0	23	32	28
Rye, grain.....	Bu.	5.4	7.7	7.5	25.3	33.1	27.3	21	23	27
Barley, grain	Bu.	73.4	83.0	81.7	389.1	431.3	393.4	19	19	21
Cottonseed.....	Ton	3/1.4	3/1.2	3/1.1	5.6	5.9	5.9	25	20	19
Grain sorghums	Bu.	54.4	86.4	85.8	361.0	619.9	482.6	15	14	18
Dried whole milk.....	Lb.	39.2	19.0	14.3	105.1	88.5	85.0	37	21	17
Lard.....	Lb.	522.9	470.1	432.9	2,558.7	2,361.0	2,525.0	20	21	17
Dried edible beans.....	Cwt.	2.6	2.3	1.7	17.2	17.9	20.0	15	13	8
Flaxseed.....	Bu.	6.7	7.0	1.5	36.5	30.4	21.9	18	23	7

- 1/ Includes grain equivalent of flour.
 2/ Includes bean equivalent of oil.
 3/ Includes seed equivalent of oil.



Government Program Export Highlights

Total agricultural exports under Public Law 480 (Agricultural Trade Development and Assistance Act of 1954, as Amended) and Public Law 665 (Mutual Security Act of 1954, as Amended) amounted to \$1,156 million during July-March of fiscal year 1961-62. ^{1/} These Government program shipments accounted for 30 percent of the \$3,790 million of agricultural exports in this 9-month period. Leading commodities among the Government program exports were wheat and flour, valued at \$661 million; cotton, \$121 million; vegetable oils, \$77 million; corn, \$71 million; and rice, \$46 million. The value for wheat and flour accounted for 69 percent of total wheat and flour exports. Percentages of total exports for the other commodities were cotton, 23 percent; vegetable oils, 61 percent; corn, 21 percent; and rice, 51 percent. (Table 6 for value figures and table 7 for quantity data.)

Shipments under Government-financed programs included those under Titles I, II, III, and IV of Public Law 480 and Section 402 of Public Law 665. Those made under Title I of Public Law 480 -- the foreign currency sales program -- during the 9-month period amounted to \$695 million, or 60 percent of all agricultural exports under Government-financed programs. Wheat and flour accounted for 66 percent of the Title I exports, followed by cotton, feed grains, rice, vegetable oils, and tobacco.

Title II, famine and other emergency relief shipments, amounted to \$119 million, or 10 percent of total program shipments. Leading commodities were wheat and flour, feed grains, nonfat dry milk, and rice. Expanded programs in which food is used as partial wages for persons engaged in economic development projects were emphasized.

Title III foreign donations amounted to \$132 million, or 11 percent of all program shipments. Principal products exported under this program included wheat flour, nonfat dry milk, vegetable oil shortening, and cornmeal. The overseas distribution of surplus foods is an integral and effective part of the Food-for-Peace program. It is based on the people-to-people concept that foods come as a gift of the American people through U.S. private and church-affiliated welfare agencies and intergovernmental organizations.

^{1/} A brief description of these programs and an explanation of the sources of the data used in the compilation of the statistical reports, as well as reports for prior periods, may be obtained from the Trade Statistics and Analysis Branch, Development and Trade Analysis Division, Economic Research Service.

Barter shipments under Title III totaled \$134 million, or 12 percent of total program shipments, and included principally wheat, feed grains, and tobacco.

Shipments under Title IV, long-term supply and dollar credit sales, included \$9.4 million of wheat in this 9-month period. A total of \$8.9 million was shipped to Portugal; and \$0.5 million, to El Salvador. Title IV agreements under which these shipments were made are discussed in the August issue of this report.

Under Title IV the U.S. Government may enter into agreements for delivery of surplus agricultural commodities for periods up to 10 years. Credit periods up to 20 years are authorized.

Agricultural exports under Section 402 of Public Law 665, sales for foreign currency and economic aid, amounted to \$66 million, or 6 percent of total program exports. Principal products moving abroad under this program were cotton, soybeans, evaporated and condensed milk, tallow, hides and skins, wheat, vegetable oils, and rice.

Total agricultural exports outside these specified Government-financed export programs totaled \$2,634 million in the July-March period of fiscal year 1961-62. A substantial portion included shipments of some commodities with Government assistance in the form of (1) extension of credit for relatively short periods, (2) sales of Government-owned commodities at less-than-domestic market prices, and (3) export payments-in-cash or -in-kind. Altogether, these dollar sales accounted for 70 percent of total agricultural exports.

Short and medium-term credits extended by Government agencies for exporting agricultural commodities are included in this report with exports outside specified Government-financed programs (dollar sales). These credits are for relatively short periods; the principal plus interest is repayable in dollars, and the programs result in no net financing cost to the Government. Credit sales include the CCC's export credit sales program and loans by the Export-Import Bank for exporting agricultural commodities. A separate report of exports under credit sales programs is presented in table 5.

The principal commodities sold for dollars (including those assisted by export payments) were cotton, valued at \$394 million; wheat and flour, \$294 million; tobacco, \$290 million; soybeans, \$271 million; corn, \$265 million; and fresh, frozen, and canned fruits and juices, \$180 million.

Dollar sales accounted for more than half of the exports of corn, grain sorghums, oats, barley, rye, cotton, tobacco, soybeans, tallow, cottonseed oil, oilcake and meal, feeds and fodders, dry whole milk, poultry, hides and skins, field and garden seeds, dry edible beans, and fruits and preparations.

Commodities for which dollar sales accounted for less than half of total exports during this 9-month period included wheat, wheat flour, cornmeal, rice, soybean oil, peanut oil, 100-percent-vegetable-oil shortening, evaporated and condensed milk, and nonfat dry milk.

The distribution of fiscal year 1961-62 agricultural exports among the various types of Government-financed programs by commodity and the distribution of commercial sales for dollars by commodity will be published in a subsequent issue of this report as soon as information for the full year becomes available.

Table 5.--U.S. credit sales of agricultural commodities: Value by commodity, July-March 1961-62 1/

Commodity	: Export-Import : Bank loans : <u>2/</u> :	: CCC : credit : sales <u>3/</u> :	: Total : credit : sales :
		<u>Million dollars</u>	
Wheat.....	---	5.4	5.4
Corn.....	---	11.7	11.7
Grain sorghums.....	---	1.1	1.1
Cotton.....	35.6	---	35.6
Tobacco.....	---	<u>4/</u>	<u>4/</u>
Total.....	35.6	18.2	53.8

1/ Credits for relatively short periods repayable in dollars plus interest (covering the financing costs of the lending agency).

2/ Disbursements during the period.

3/ Purchases during the period.

4/ Less than \$50 thousand.

Table 6.--U.S. agricultural exports under specified Government-financed programs, exports outside specified Government-financed programs, and total agricultural exports: Value by commodity, July-March 1961-62

Commodity	Public Law 480				P.L. 665 Sec. 402	Total agricultural exports specified Government programs	Total agricultural exports outside specified Government programs	Total agri- cultural exports	
	Title I Sales for foreign currency	Title II Famine and other emergency relief	Title III Foreign donations 1/	Title IV Barter 2/					Title IV Long-term apply and dollar credit sales
								Million dollars	
Wheat.....	412.7	62.0	.7	54.8	9.4	3.7	543.3	270.0	813.3
Wheat flour.....	44.0	24.5	46.2	2.6	---	5/	117.3	24.2	141.5
Rye.....	---	---	---	.4	---	---	.4	5.6	6.0
Corn, except seed.....	27.4	12.4	.5	30.5	---	.4	71.2	265.4	336.6
Grain sorghums.....	3.3	3.4	---	10.2	---	---	16.9	50.5	67.4
Oats.....	---	---	---	---	---	---	---	5.3	5.6
Barley.....	11.2	6.9	---	1.8	---	.3	.3	35.0	56.0
Corn meal.....	---	6/ -1	12.5	---	---	1.1	21.0	.8	13.2
Wheat cereal foods to be cooked.....	---	7/ 5/	7/ 2.1	---	---	---	12.4	.3	8/ 2.4
Rice, milled.....	39.2	3.9	---	---	---	---	2.1	---	89.6
Cotton.....	101.8	.1	---	3.7	---	3.2	46.3	43.3	514.6
Tobacco, unmanufactured.....	11.7	---	---	29.1	---	15.0	120.6	394.0	332.7
Soybeans.....	---	---	---	---	---	1.6	42.6	290.1	280.4
Tallow, edible and inedible.....	2.9	---	---	---	---	9.7	9.7	270.7	82.8
Soybean oil.....	31.7	.6	4.7	---	---	8.0	10.9	71.9	63.1
Cottonseed oil.....	8.2	.8	5.5	---	---	3.6	40.6	22.5	8/ 41.3
Peanut oil.....	---	---	1.7	---	---	1.4	15.9	25.4	8/ 1.8
Shortening, 100-percent vegetable oil.....	---	5/	18.5	---	---	---	1.7	.1	8/ 20.0
Oilcake and meal.....	---	---	---	---	---	2.8	18.5	1.5	46.4
Feeds and fodders, except oilcake and meal.....	---	---	---	---	---	.4	2.8	43.6	27.3
Milk, evaporated and condensed.....	---	---	---	---	---	.4	.4	26.7	16.9
Milk, whole, dried.....	---	---	---	---	---	8.6	8.6	8.3	6.0
Milk, nonfat dry.....	.6	4.5	37.3	.9	---	.2	.2	5.8	55.7
Cheese.....	---	---	---	5/	---	---	43.3	12.4	3.3
Butter.....	---	---	---	.2	---	---	.2	.4	.6
Infants' and dietetic foods.....	---	---	---	---	---	.6	.6	8.7	9.3
Poultry, fresh or frozen.....	.2	---	---	---	---	---	.2	51.9	52.1
Hides and skins.....	---	---	---	---	---	5.5	5.5	57.9	63.4
Seeds, other than oilseeds.....	---	---	---	---	---	5/	5/	18.8	18.8
Beans, dry edible, except seed.....	---	.1	2.0	---	---	---	2.1	6.7	8.8
Fruits and juices, fresh, frozen, and canned....	.3	---	---	---	---	---	.3	180.2	180.5
Crude rubber and allied gums.....	---	---	---	---	---	5/	5/	.4	.4
Other agricultural commodities.....	---	---	---	---	---	---	---	432.6	432.6
Total agricultural exports.....	695.2	119.1	131.7	134.2	9.4	66.3	1,155.9	2,634.5	3,790.4

1/ Foreign donations are authorized under Sec. 416 of the Agricultural Act of 1949 and Sec. 302, Title III, P.L. 480.

2/ The barter program is authorized under the Charter Act of the Commodity Credit Corporation; Sec. 303, Title III, P.L. 480; and other legislation.

3/ Mutual Security programs, sales for foreign currency except \$6.4 million. Includes ocean transportation when not reported separately. Exports under Sec. 402 during July-March 1961-62 were programed during the prior fiscal year. There is no mandatory requirement in P.L. 87-195, the Act for International Development, Sept. 4, 1961, for a sales for foreign currency program for agricultural commodities.

4/ Include, in addition to unassisted commercial transactions, shipments of some commodities with governmental assistance in the form of (1) extension of credit for relatively short periods, (2) sales of Government-owned commodities at less-than-domestic market prices, and (3) export payments-in-cash or -in-kind.

5/ Less than \$50,000.

6/ Net adjustment from a previous period.

7/ Bulgar wheat.

8/ The value shown for total agricultural exports of wheat cereal foods to be cooked, soybean oil, cottonseed oil, peanut oil, and shortening, 100-percent vegetable oil, includes the value reported by the Bureau of the Census, plus the value shown as foreign donations under Title III, P.L. 480. Relief shipments of these commodities are not separately reported by the Bureau of the Census.

Table 7.--U.S. agricultural exports under specified Government-financed programs, exports outside specified Government-financed programs, and total agricultural exports: Quantity by commodity, July-March 1961-62

Commodity	Unit	Public Law 480				P.L. 565 Sec. 402	Total agricultural exports under Government programs	Total agricultural exports outside specified Government programs	Total agri- cultural exports	
		Title I Sales for foreign currency	Title II Famine and other emergency relief	Title III Foreign donations 1/ 2/	Title IV Barter 3/ 4/					Long-term supply and dollar credit sales
Thousand units										
Wheat (60 lb.)	:Bu.	246,253	15,052	336	32,626	5,621	2,184	302,132	150,265	452,397
Wheat flour	:Cwt.	14,117	4,459	10,400	807	---	4	29,787	5,465	35,252
Rye (56 lb.)	:Bu.	---	---	---	419	---	---	419	3,946	4,365
Corn, except seed (56 lb.)	:Bu.	22,239	3,922	325	24,831	---	354	51,671	219,696	271,367
Grain sorghums (56 lb.)	:Bu.	3,179	1,457	---	9,704	---	---	14,340	45,420	59,760
Oats (32 lb.)	:Bu.	---	---	---	---	---	---	---	---	---
Barley (48 lb.)	:Bu.	10,238	3,523	---	2,168	---	557	557	7,297	7,854
Corn meal	:Cwt.	---	5/ -18	---	2,991	---	1,008	16,937	29,641	46,578
Wheat cereal foods to be cooked	:Lb.	---	6/ 1	6/ 42,119	---	---	---	2,973	286	3,259
Rice, milled	:Cwt.	5,842	404	---	---	---	---	42,120	3,620	7/ 45,740
Cotton, running bale	:Bale	715	8/	---	---	---	450	6,696	7,276	13,972
Tobacco, unmanufactured	:Lb.	15,477	---	---	---	---	99	839	2,842	3,681
Soybeans (60 lb.)	:Bu.	---	---	---	49,635	---	2,817	67,929	353,144	421,073
Tallow, edible and inedible	:Lb.	33,155	---	---	---	---	3,231	3,231	107,859	111,090
Soybean oil	:Lb.	239,213	4,031	9/ 29,810	---	---	89,725	122,880	1,079,654	1,202,534
Cottonseed oil	:Lb.	60,131	4,241	9/ 31,027	---	---	26,930	299,984	191,413	7/ 491,397
Peanut oil	:Lb.	---	---	9/ 10,061	---	---	7,831	103,230	181,923	7/ 285,153
Shortening, 100 percent vegetable oil	:Lb.	---	---	103,178	---	---	---	10,061	723	7/ 10,784
Oilcake and meal	:S.T.	---	---	---	---	---	---	103,273	7,058	7/ 110,341
Feeds and fodders, except oilcake and meal	:S.T.	---	---	---	---	---	37	37	---	711
Milk, evaporated and condensed	:Lb.	---	---	---	---	---	7	453	---	460
Milk, whole, dried	:Lb.	---	---	---	---	---	34,475	34,475	55,342	89,817
Milk, nonfat dry	:Lb.	9,753	21,891	439,690	15,253	---	271	271	9,329	9,600
Cheese	:Lb.	---	---	---	---	---	---	486,587	99,205	585,792
Butter	:Lb.	---	---	---	---	---	---	37	6,251	6,288
Infants' and dietetic foods	:Lb.	---	---	---	---	---	---	870	451	1,321
Poultry, fresh or frozen	:Lb.	---	---	---	---	---	---	818	13,827	14,645
Hides and skins	:No.	716	---	---	---	---	---	716	194,241	194,957
Seeds, other than oilseeds	:Cwt.	---	---	---	---	---	---	634	634	7,975
Beans, dry edible, except seed	:Cwt.	---	---	---	---	---	---	8/	960	960
Fruits and juices, fresh, frozen, and canned	:Lb.	4,607	---	---	---	---	---	307	785	1,092
Crude rubber and allied gums	:Lb.	---	---	---	---	---	76	4,607	1,756,565	1,761,172
								76	10	86

1/ Foreign donations are authorized under Sec. 416 of the Agricultural Act of 1949 and Sec. 302, Title III, P.L. 480.

2/ The barter program is authorized under the Charter Act of the Commodity Credit Corporation; Sec. 303, Title III, P.L. 480; and other legislation.

3/ Mutual Security programs, principally sales for foreign currency.

4/ Include, in addition to unassisted commercial transactions, shipments of some commodities with governmental assistance in the form of (1) extension of credit for relatively short periods, (2) sales of Government-owned commodities at less-than-domestic market prices, and (3) export payments-in-cash or -in-kind.

5/ Net adjustment from a previous period.

6/ Bulgur wheat.

7/ The quantity shown for total agricultural exports of wheat cereal foods to be cooked, soybean oil, cottonseed oil, peanut oil, and shortening, 100-percent vegetable oil, includes the quantity reported by the Bureau of the Census, plus the quantity shown as foreign donations under Title III, P.L. 480. Relief shipments of these commodities are not separately reported by the Bureau of the Census.

8/ Less than 500 units.

9/ The Food Distribution Division, Agricultural Marketing Service, USDA, reports a total of 60,837,000 pounds of soybean and cottonseed oil exported under the Title III, foreign donations program, during July-March 1961-62. This total has been distributed between the two oils in the proportion of shipments of cottonseed and soybean oils, reported by the Oils and Peanuts Division, Agricultural Stabilization and Conservation Service, USDA.

Table 8.-- U. S. agricultural exports and imports for consumption: Value by country, July-May 1961-62

Country	Agricultural exports	Agricultural imports		
		Total	Supplementary	Complementary
	1,000 dollars	1,000 dollars	1,000 dollars	1,000 dollars
Greenland	2	1	1	0
Canada	456,130	189,885	186,687	3,198
Miquelon & St. Pierre Islands	52	0	0	0
<u>Latin American Republics -</u>				
Mexico	51,806	262,241	185,277	76,964
Guatemala	8,333	47,679	3,791	43,978
El Salvador	5,596	30,637	1,304	29,333
Honduras	3,263	25,292	2,867	22,425
Nicaragua	3,761	20,511	10,256	10,255
Costa Rica	4,708	33,264	3,723	29,481
Panama, Republic of	9,433	12,124	581	11,543
Cuba	360	21,407	21,354	53
Haiti	7,953	13,342	4,765	8,577
Dominican Republic	3,815	85,241	58,331	26,910
Colombia	24,860	189,734	7,811	181,923
Venezuela	80,382	13,179	279	12,900
Ecuador	5,920	44,680	3,932	40,748
Peru	22,212	85,994	71,499	14,495
Bolivia	8,006	1,555	1,121	434
Chile	31,376	5,036	4,699	357
Brazil	93,707	456,215	80,337	375,878
Paraguay	4,842	5,415	4,791	624
Uruguay	3,696	18,843	18,719	124
Argentina	2,542	77,278	51,028	26,250
Total Latin American Republics	376,571	1,449,627	536,375	913,252
<u>Other Latin America -</u>				
British Honduras	2,181	157	53	104
Canal Zone	691	47	a/	47
Bermuda	4,901	158	117	41
Bahamas	7,110	1,115	1,104	11
Jamaica	9,987	11,549	10,377	1,172
Leeward & Windward Islands	1,598	922	416	506
Barbados	2,047	1,267	1,267	0
Trinidad & Tobago	10,037	9,299	6,437	2,862
Netherlands Antilles	7,761	64	5	59
French West Indies	507	6,970	6,944	26
British Guiana	3,157	7,258	7,252	6
Surinam	2,307	690	0	690
French Guiana	39	117	0	117
Falkland Islands	a/	0	0	0
Total Latin America	428,894	1,489,240	570,347	918,893
<u>Europe -</u>				
Iceland	3,041	392	107	285
Sweden	45,788	2,170	2,084	86
Norway	35,032	912	902	10
Denmark	52,588	52,068	51,698	370
United Kingdom	435,947	21,392	14,377	7,015
Ireland	22,677	26,152	24,901	1,251
Netherlands	31,251	71,342	59,405	11,937
Belgium & Luxembourg	117,859	8,646	7,653	993
Unidentified Western Europe b/	6	0	0	0
France	91,854	48,134	43,003	5,131
West Germany	376,979	27,304	24,786	2,518
East Germany	1,666	6	4	2
Austria	20,296	812	728	84

Continued -

Table 8.-- U. S. agricultural exports and imports for consumption: Value by country, July-May 1961-62 - Continued

Country	Agri- cultural exports	Agricultural imports		
		Total	Supple- mentary	Comple- mentary
	1,000 dollars	1,000 dollars	1,000 dollars	1,000 dollars
<u>Europe, continued -</u>				
Czechoslovakia	3,960	1,012	928	84
Hungary	474	467	425	42
Switzerland	58,685	12,107	10,505	1,602
Finland	13,372	909	874	35
Estonia	0	0	0	0
Latvia	2,816	0	0	0
Lithuania	0	0	0	0
Poland & Danzig	56,843	30,705	30,547	158
U.S.S.R. (Russia)	8,133	1,432	952	480
Azores	30	90	61	29
Spain	118,447	36,517	35,552	965
Portugal	24,614	4,203	3,613	590
Gibraltar	146	8	a/	8
Malta & Gozo	1,834	437	207	230
Italy	174,868	58,522	55,652	2,870
Free Territory of Trieste	2,348	7	5	2
Yugoslavia	97,053	8,202	7,564	638
Albania	0	92	0	92
Greece	20,508	27,177	26,829	348
Rumania	216	459	360	99
Bulgaria	6	971	708	263
Turkey	95,910	53,116	51,872	1,244
Cyprus	997	212	137	75
Total E.E.C. countries g/	1,078,811	213,948	190,499	23,449
Total Europe	2,202,244	495,975	456,439	39,536
<u>Asia -</u>				
Syrian Arab Republic	15,969	3,075	666	2,409
Lebanon	5,651	3,289	1,693	1,596
Iraq	4,879	6,617	2,185	4,432
Iran	16,619	14,501	13,308	1,193
Israel	55,589	1,043	919	124
Palestine	5	0	0	0
Jordan	8,829	0	0	0
Kuwait	3,840	0	0	0
Saudi Arabia	7,036	10	0	10
Other Arabia Peninsula States	900	781	231	550
Aden	219	94	70	24
State of Bahrein	912	0	0	0
Afghanistan	1,858	547	449	98
India	217,112	83,833	54,546	29,287
Pakistan	67,006	23,955	16,166	7,789
Nepal	6	0	0	0
Ceylon	7,364	29,093	32	29,061
Burma	633	516	516	0
Thailand	13,391	31,588	8,485	23,103
Viet-Nam	28,644	4,213	109	4,104
Laos	107	0	0	0
Cambodia	918	3,496	25	3,471
Federation of Malaya	5,780	80,510	1,268	79,242
Singapore, Col. of; British Borneo	4,962	12,322	34	12,288
Indonesia, Republic of	28,387	79,809	3,673	76,136
Republic of the Philippines	66,394	219,608	210,794	8,814
Macao	427	0	0	0
Other Portuguese Asia	90	661	658	3
Other Southern & Southeastern Asia	29	1	0	1
China (including Manchuria)	0	0	0	0

Continued -

Table 8.-- U. S. agricultural exports and imports for consumption: Value by country, July-May 1961-62 - Continued

Country	: Agri- cultural : exports : 1,000 : dollars	: Agricultural imports		
		: Total : 1,000 : dollars	: Supple- : mentary : 1,000 : dollars	: Comple- : mentary : 1,000 : dollars
Asia, continued -				
Outer Mongolia	0	3,352	3,352	0
North Korea	0	a/	a/	0
Korea, Republic of	63,635	2,465	810	1,655
Hong Kong	41,024	2,120	1,852	268
Taiwan	66,938	31,003	28,020	2,983
Japan	447,690	42,631	18,108	24,523
Nansei & Nanpo Islands	11,964	1	1	0
Total Asia	1,194,807	681,134	367,970	313,164
Australia & Oceania -				
Australia	31,569	156,163	155,669	494
New Guinea	218	538	0	538
New Zealand & Western Samoa	5,409	116,775	84,423	32,352
British Western Pacific Islands	83	17	2	15
French Pacific Islands	898	303	3	300
Trust Terr. of the Pacific Islands .	668	1,493	1,493	0
Total Australia & Oceania	38,845	275,289	241,590	33,699
Africa -				
Morocco	52,804	2,035	1,206	829
Algeria	28,664	98	53	45
Tunisia	33,904	529	518	11
Libya	2,231	1	1	0
United Arab Republic (Egypt)	145,963	15,299	15,187	112
Sudan	807	642	631	11
Canary Islands	3,799	25	25	0
Other Spanish Africa	31	1	1	a/
Federal Republic of Cameroun	515	6,408	222	6,186
Other Western Equatorial Africa	72	910	10	900
Other Western Africa	7,195	30,640	91	30,549
Ghana	11,096	48,566	1	48,565
Federation of Nigeria	6,990	37,823	3,000	34,793
British West Africa & Sierra Leone .	409	893	58	835
Madeira Islands	495	37	37	0
Angola	1,218	26,691	272	26,419
Other Western Portuguese Africa	135	1,003	0	1,003
Liberia	4,847	22,155	a/	22,155
Rep. of the Congo; & Ruanda-Urundi .	13,063	34,205	7,107	27,098
Somali Republic	1,077	232	180	57
Ethiopia	3,133	25,499	1,665	23,834
French Somaliland	213	386	24	362
Seychelles & Dependencies	9	78	0	78
Mauritius & Dependencies	231	1,414	1,414	0
British East Africa & Tanganyika ...	9,153	41,477	816	40,661
Mozambique	1,858	3,381	639	2,742
Malagasy Republic	26	11,422	280	11,142
Republic of South Africa	16,948	33,980	33,200	780
The Fed. of Rhodesia & Nyasaland ...	506	1,288	500	788
Total Africa	347,392	347,118	67,168	279,950
Total all countries	4,668,366	3,478,642	1,890,202	1,588,440

a/ Less than 500.

b/ Not available by countries.

c/ The European Economic Community (Common Market) includes the Netherlands, Belgium and Luxembourg, France, West Germany, and Italy.

Table 9.-- U. S. agricultural exports: Quantity and value by commodity,
May 1961 and 1962

Commodity exported	Unit	May			
		Quantity		Value	
		1961	1962	1961	1962
ANIMALS AND ANIMAL PRODUCTS:					
Animals, live:					
Cattle	No.	2	1	650	506
Poultry -					
Baby chicks	No.	2,150	2,122	724	721
Other live poultry	Lb.	467	459	184	181
Other		b/	b/	729	773
Total animals, live				2,287	2,181
Dairy products:					
Anhydrous milk fat	Lb.	298	438	250	408
Butter (ex. dehydrated)	Lb.	20	122	14	68
Cheese*	Lb.	708	563	354	273
Infants' and dietetic foods, chiefly milk	Lb.	1,898	1,459	1,161	995
Milk -					
Condensed, sweetened	Lb.	2,938	4,651	693	1,122
Dried whole	Lb.	219	1,034	150	711
Evaporated, unsweetened*	Lb.	12,069	2,535	941	365
Nonfat dry*	Lb.	79,482	67,055	8,403	5,978
Other		b/	b/	310	290
Total dairy products*				13,276	10,210
Fats, oils, and greases:					
Lard	Lb.	41,003	24,752	4,909	2,691
Tallow, edible	Lb.	154	351	17	34
Other edible fats, oils, and greases	Lb.	1,023	508	165	101
Tallow, inedible	Lb.	129,753	154,481	9,545	10,208
Other inedible fats, oils, and greases	Lb.	22,776	15,599	2,079	1,111
Total fats, oils, and greases	Lb.	194,709	195,691	16,715	11,145
Meat and meat products:					
Beef and veal	Lb.	2,591	2,350	973	1,062
Pork	Lb.	3,930	5,246	1,163	1,484
Sausage casings	Lb.	1,385	1,729	1,185	1,216
Variety meats	Lb.	9,966	12,461	2,336	2,500
Other (incl. meat extracts)	Lb.	1,294	1,053	451	442
Total meat and products (ex. poultry)	Lb.	19,166	22,839	6,108	6,704
Poultry products:					
Eggs, dried, frozen, otherwise preserved	Lb.	855	992	682	875
Eggs in the shell, hatching	Doz.	750	609	840	765
Eggs in the shell, other	Doz.	628	144	263	51
Poultry meat -					
Chickens, fresh or frozen	Lb.	16,866	33,960	4,295	8,975
Turkeys, fresh or frozen	Lb.	885	3,406	290	1,156
Other, fresh or frozen	Lb.	316	588	116	209
Canned	Lb.	756	931	261	280
Total poultry products				6,747	12,311
Other animal products:					
Feathers, crude	Lb.	193	166	227	157
Gelatin, edible	Lb.	285	360	552	638
Hair, raw or dressed, new	Lb.	578	991	264	261
Hides and skins, raw (ex. furs) g/	No.	995	1,010	6,350	6,957
Honey	Lb.	257	219	53	43
Wool, unmanufactured	C.Lb.	1,212	1,519	1,346	1,349
Other		b/	b/	923	1,438
Total other animal products				9,715	10,843
TOTAL ANIMALS AND ANIMAL PRODUCTS*					
				54,848	56,394
VEGETABLE PRODUCTS:					
Cotton, unmanufactured:					
Cotton	RBale	387	361	52,146	49,403
Linters	RBale	31	26	862	1,046
Total cotton and linters	RBale	418	387	53,008	50,449
Fruits and preparations:					
Canned -					
Fruit cocktail	Lb.	5,754	10,689	954	1,672
Peaches	Lb.	14,170	14,137	1,660	1,624
Pears	Lb.	702	837	120	141

Continued -

Table 9.-- U. S. agricultural exports: Quantity and value by commodity, July-May 1960-61 and 1961-62 - Continued

Commodity exported	Unit	July-May			
		Quantity		Value	
		1960-61	1961-62	1960-61	1961-62
ANIMALS AND ANIMAL PRODUCTS:				1,000	1,000
Animals, live:		Thousands	Thousands	dollars	dollars
Cattle	No.	31	18	10,350	7,417
Poultry -					
Baby chicks	No.	30,053	16,156	7,448	5,113
Other live poultry	Lb.	5,811	1,974	2,240	838
Other	b/	b/	b/	7,020	5,715
Total animals, live				27,058	19,083
Dairy products:					
Anhydrous milk fat	Lb.	4,055	3,828	3,384	3,250
Butter (ex. dehydrated)	Lb.	502	1,688	283	743
Cheese*	Lb.	7,626	7,432	3,842	3,863
Infants' and dietetic foods, chiefly milk	Lb.	15,976	17,407	11,490	10,931
Milk -					
Condensed, sweetened	Lb.	41,671	38,819	9,744	9,173
Dried whole	Lb.	16,247	12,121	9,045	7,530
Evaporated, unsweetened*	Lb.	103,903	61,369	16,530	9,627
Nonfat dry*	Lb.	565,039	731,466	60,334	66,309
Other	b/	b/	b/	3,102	3,939
Total dairy products*				117,754	115,385
Fats, oils, and greases:					
Lard	Lb.	458,166	382,348	51,994	38,317
Fallow, edible	Lb.	5,793	3,353	554	343
Other edible fats, oils, and greases	Lb.	7,769	7,756	1,227	1,356
Fallow, inedible	Lb.	1,321,557	1,460,374	88,350	99,826
Other inedible fats, oils, and greases ..	Lb.	181,000	188,408	15,215	15,719
Total fats, oils, and greases	Lb.	1,974,285	2,042,239	157,340	155,061
Meat and meat products:					
Beef and veal	Lb.	28,997	24,712	11,506	10,663
Pork	Lb.	61,934	56,981	18,815	16,548
Sausage casings	Lb.	15,219	17,893	11,000	15,370
Variety meats	Lb.	112,334	112,182	25,165	23,587
Other (incl. meat extracts)	Lb.	15,632	12,941	6,881	5,336
Total meat and products (ex. poultry) .	Lb.	234,116	224,709	73,367	71,504
Poultry products:					
Eggs, dried, frozen, otherwise preserved.	Lb.	7,810	8,475	6,203	5,966
Eggs in the shell, hatching	Doz.	6,734	7,725	7,928	7,745
Eggs in the shell, other	Doz.	8,539	3,780	3,470	1,495
Poultry meat -					
Chickens, fresh or frozen	Lb.	138,659	218,472	37,109	56,073
Turkeys, fresh or frozen	Lb.	23,647	31,913	8,164	10,730
Other, fresh or frozen	Lb.	4,760	5,958	1,780	1,994
Canned	Lb.	12,362	8,788	3,493	2,921
Total poultry products				66,147	86,924
Other animal products:					
Feathers, crude	Lb.	1,993	2,007	1,951	2,384
Gelatin, edible	Lb.	3,034	3,488	5,213	6,740
Hair, raw or dressed, new	Lb.	4,272	6,854	1,907	2,202
Hides and skins, raw (ex. furs) g/	No.	12,148	10,397	76,705	75,992
Honey	Lb.	6,738	6,610	1,021	1,023
Wool, unmanufactured	C.Lb.	13,910	11,259	14,911	11,227
Other	b/	b/	b/	11,182	14,670
Total other animal products				112,890	114,238
TOTAL ANIMALS AND ANIMAL PRODUCTS*				556,556	562,195
VEGETABLE PRODUCTS:					
Cotton, unmanufactured:					
Cotton	RBale	6,755	4,343	900,938	605,821
Linters	RBale	299	241	8,370	9,174
Total cotton and linters	RBale	7,054	4,584	909,308	614,995
Fruits and preparations:					
Canned -					
Fruit cocktail	Lb.	89,237	118,131	14,754	18,274
Peaches	Lb.	179,702	229,605	20,669	25,754
Pears	Lb.	8,739	10,097	1,495	1,687

Table 9.-- U. S. agricultural exports: Quantity and value by commodity, May 1961 and 1962 - Continued

Commodity exported	Unit	Quantity		Value	
		1961	1962	1961	1962
VEGETABLE PRODUCTS - CONTINUED:					
Fruits and preparations - Continued:					
Canned - continued					
Pineapples	Lb.	4,374	7,690	735	1,150
Other	Lb.	2,850	3,151	482	537
Total canned fruits	Lb.	27,850	36,504	3,951	5,124
Dried -					
Prunes	Lb.	4,202	5,570	1,082	1,245
Raisins and currants	Lb.	2,132	5,057	374	851
Other	Lb.	1,005	979	347	387
Total dried fruits	Lb.	7,339	11,606	1,806	2,483
Fresh -					
Apples	Lb.	6,018	5,996	600	532
Berries	Lb.	4,636	4,250	981	924
Grapefruit	Lb.	27,625	29,964	1,132	1,284
Grapes	Lb.	388	1,211	96	153
Lemons and limes	Lb.	21,407	17,766	1,266	1,038
Oranges and tangerines	Lb.	52,789	53,591	4,742	4,227
Pears	Lb.	261	145	31	20
Other	Lb.	15,797	12,834	756	628
Total fresh fruits	Lb.	128,921	125,757	9,604	8,806
Fruit juices -					
Grapefruit	Gal.	1,239	918	752	575
Orange	Gal.	1,326	1,580	2,802	2,399
Other	Gal.	1,531	1,374	1,563	1,266
Total fruit juices	Gal.	4,096	3,872	5,117	4,240
Frozen fruits (incl. specialties)					
Other	Lb.	860	1,141	181	226
Total fruits and preparations	b/	b/	b/	310	373
Grains and preparations:					
Feed grains and products -					
Berley grain (48 lb.)	Bu.	8,284	16,110	8,490	19,895
Corn grain (56 lb.)*	Bu.	23,899	41,937	29,827	52,241
Grain sorghums (56 lb.)	Bu.	6,396	6,645	7,717	7,625
Oats grain (32 lb.)	Bu.	2,630	4,485	1,762	3,354
Total feed grains*	M.Ton	988	1,650	47,796	83,115
Barley malt (34 lb.)	Bu.	146	344	313	642
Corn grits and hominy	Lb.	2,292	3,692	94	1,4
Cornmeal and corn flour*	Cwt.	267	734	1,151	2,999
Cornstarch	Lb.	4,830	3,495	368	299
Oatmeal, groats, and rolled oats	Lb.	1,957	2,014	282	256
Total feed grains and products*	M.Ton	1,020	1,724	50,004	87,465
Rice -					
Milled*	Lb.	201,036	222,692	11,429	15,446
Paddy or rough	Lb.	3,178	315	271	29
Total rice (milled basis)*	Lb.	203,102	222,897	11,700	15,475
Rye grain (56 lb.)	Bu.	1,516	1,332	1,502	1,812
Wheat and flour -					
Wheat grain (60 lb.)*	Bu.	53,144	57,485	91,573	104,430
Wheat flour, wholly of U.S. wheat*	Cwt.	3,638	4,496	14,569	18,400
Total wheat and flour*	Bu.	61,511	67,825	106,142	122,830
Bakery products	Lb.	1,109	1,194	397	435
Other	b/	b/	b/	1,008	666
Total grains and preparations*				170,753	228,683
Oilseeds and products:					
Oils, edible and ined. (ex. essential) -					
Cottonseed oil	Lb.	37,893	38,048	5,606	5,719
Soybean oil	Lb.	22,061	94,437	3,246	11,654
Other	Lb.	12,292	8,573	1,902	1,724
Total oils, etc. (ex. essential)	Lb.	72,246	141,058	10,754	19,097
Oilseeds -					
Flaxseed (56 lb.)	Bu.	2,099	132	6,384	478
Soybeans (60 lb.)	Bu.	11,440	12,711	33,184	32,710
Other	Lb.	1,912	586	209	49
Total oilseeds				39,777	33,237
Protein meal (oilcake and meal)	S.Ton	43	97	3,194	6,751
Total oilseeds and products				53,725	59,085

Continued -

Table 9.-- U. S. agricultural exports: Quantity and value by commodity, July-May 1960-61 and 1961-62 - Continued

Commodity exported	Unit	July-May ^{a/}			
		Quantity		Value	
		1960-61	1961-62	1960-61	1961-62
VEGETABLE PRODUCTS - CONTINUED:				1,000	1,000
Fruits and preparations - Continued:		Thousands	Thousands	dollars	dollars
Canned - continued					
Pineapples	Lb.	65,702	79,552	10,317	12,256
Other	Lb.	35,284	43,693	6,158	6,797
Total canned fruits	Lb.	378,664	481,078	53,393	64,768
Dried -					
Prunes	Lb.	69,099	80,871	17,760	19,258
Raisins and currants	Lb.	120,340	123,164	17,061	17,681
Other	Lb.	14,173	19,825	4,639	7,137
Total dried fruits	Lb.	203,612	223,860	39,460	44,076
Fresh -					
Apples	Lb.	124,545	219,556	11,105	18,601
Berries	Lb.	18,711	15,628	3,456	3,067
Grapefruit	Lb.	176,373	208,685	8,047	9,950
Grapes	Lb.	188,702	159,974	15,997	15,146
Lemons and limes	Lb.	151,361	187,989	10,020	11,654
Oranges and tangerines	Lb.	343,544	381,530	30,466	32,847
Pears	Lb.	52,653	68,185	5,099	6,473
Other	Lb.	165,982	117,890	8,329	6,863
Total fresh fruits	Lb.	1,221,871	1,359,437	92,519	104,601
Fruit juices -					
Grapefruit	Gal.	5,768	6,439	3,776	4,193
Orange	Gal.	11,425	11,935	21,357	21,924
Other	Gal.	12,113	13,167	12,273	13,113
Total fruit juices	Gal.	29,306	31,541	37,406	39,230
Frozen fruits (incl. specialties)	Lb.	10,366	8,856	1,996	1,764
Other	b/	b/	b/	3,901	4,520
Total fruits and preparations				228,675	258,969
Grains and preparations:					
Feed grains and products -					
Barley grain (48 lb.)	Bu.	78,743	71,783	83,816	87,574
Corn grain (56 lb.)*	Bu.	239,374	349,697	300,226	435,551
Grain sorghums (56 lb.)	Bu.	80,072	77,134	89,541	86,562
Oats grain (32 lb.)	Bu.	25,786	12,429	18,822	9,020
Total feed grains*	M.Ton	10,203	12,585	492,405	618,707
Barley malt (34 lb.)	Bu.	2,453	2,240	5,324	4,755
Corn grits and hominy	Lb.	25,868	30,024	1,092	1,298
Cornmeal and corn flour*	Cwt.	3,563	4,363	15,068	17,760
Cornstarch	Lb.	42,100	43,467	3,627	3,490
Oatmeal, groats, and rolled oats	Lb.	30,666	29,273	3,620	3,523
Total feed grains and products*	M.Ton	10,630	13,074	521,136	649,533
Rice -					
Milled*	Lb.	2,057,348	1,850,295	128,123	119,879
Paddy or rough	Lb.	36,899	8,298	2,980	720
Total rice (milled basis)*	Lb.	2,081,332	1,855,688	131,103	120,599
Rye grain (56 lb.)	Bu.	7,295	5,875	8,002	8,040
Wheat and flour -					
Wheat grain (60 lb.)*	Bu.	515,416	559,272	888,311	1,004,619
wheat flour, wholly of U.S. wheat*	Cwt.	40,821	43,838	172,634	176,659
Total wheat and flour*	Bu.	609,304	660,100	1,060,945	1,181,278
Bakery products	Lb.	13,756	12,996	4,892	4,703
Other	b/	b/	b/	10,007	10,058
Total grains and preparations*				1,736,085	1,974,211
Oilseeds and products:					
Oils, edible and ined. (ex. essential) -					
Cottonseed oil	Lb.	374,639	315,912	46,949	45,106
Soybean oil	Lb.	754,360	708,089	86,345	88,525
Other	Lb.	149,504	108,090	22,717	19,087
Total oils, etc. (ex. essential)	Lb.	1,278,503	1,132,091	156,011	152,718
Oilseeds -					
Flaxseed (56 lb.)	Bu.	5,522	1,117	16,897	3,773
Soybeans (60 lb.)	Bu.	135,439	135,503	322,647	343,331
Other	Lb.	251,390	169,591	13,263	8,815
Total oilseeds				352,807	355,919
Protein meal (oilcake and meal)	S.Ton	630	915	39,480	59,700
Total oilseeds and products				548,298	568,337

Continued -

Table 9.-- U. S. agricultural exports: Quantity and value by commodity, May 1961 and 1962 - Continued

Commodity exported	Unit	Quantity		Value	
		1961	1962	1961	1962
VEGETABLE PRODUCTS - CONTINUED:					
Tobacco, unmanufactured:					
Burley	Lb.	2,779	2,033	2,185	1,839
Cigar wrapper	Lb.	265	897	521	1,079
Dark-fired Kentucky and Tennessee	Lb.	223	1,338	92	670
Flue-cured	Lb.	18,851	23,351	13,373	17,440
Maryland	Lb.	490	595	367	500
Other	Lb.	1,039	1,001	633	648
Total tobacco, unmf.	Lb.	23,647	29,215	17,171	22,176
Vegetables and preparations:					
Canned -					
Asparagus	Lb.	6,269	5,199	1,384	1,041
Soups	Lb.	799	1,434	151	262
Tomato juice	Lb.	2,192	4,340	209	401
Tomato paste and puree	Lb.	563	687	121	169
Tomato sauce for cooking purposes	Lb.	80	135	10	19
Other	Lb.	3,045	3,613	465	595
Total canned vegetables	Lb.	12,948	15,408	2,340	2,487
Dry, ripe -					
Beans*	Lb.	18,894	30,396	1,400	2,343
Cowpeas and chickpeas	Lb.	128	261	13	23
Peas	Lb.	9,101	12,131	577	762
Fresh -					
Lettuce	Lb.	21,728	22,821	879	1,513
Onions	Lb.	12,524	16,309	376	755
Potatoes, white	Lb.	42,510	46,786	909	1,248
Tomatoes	Lb.	18,946	13,665	1,338	1,326
Other	Lb.	57,435	57,975	2,861	3,392
Total fresh vegetables	Lb.	152,503	157,759	6,363	8,241
Frozen vegetables (incl. specialties)	Lb.	2,199	1,997	401	357
Soups and vegetables, dehydrated	Lb.	1,011	1,677	392	622
Vegetable seasonings	Lb.	507	629	397	445
Other	b/	b/	b/	1,391	1,285
Total vegetables and preparations*				13,274	16,575
Other vegetable products:					
Coffee	Lb.	689	2,485	828	2,813
Drugs, herbs, roots, crude	Lb.	109	285	196	227
Essential oils, natural	Lb.	388	832	1,070	1,453
Feeds and fodders (ex. oilcake and meal)	S.Ton.	32	49	2,406	3,717
Flavoring sirups for beverages	Gal.	135	142	507	748
Glucose and dextrose (ex. pharmaceutical)	Lb.	3,854	4,478	304	327
Hops	Lb.	508	1,223	279	782
Nursery and greenhouse stock	b/	b/	b/	785	777
Nuts and preparations	Lb.	4,093	3,335	789	1,451
Seeds, field and garden	Lb.	7,214	6,744	885	1,181
Spices	Lb.	231	231	172	152
Other*	b/	b/	b/	3,019	5,086
Total other vegetable products*				11,540	18,714
TOTAL VEGETABLE PRODUCTS*				340,440	416,934
TOTAL AGRICULTURAL EXPORTS				395,288	473,328
TOTAL NONAGRICULTURAL EXPORTS				1,330,120	1,472,888
TOTAL EXPORTS, ALL COMMODITIES				1,725,408	1,946,216

Table 9.-- U. S. agricultural exports: Quantity and value by commodity, July-May 1960-61 and 1961-62 - Continued

Commodity exported	Unit	July-May a/			
		Quantity		Value	
		1960-61	1961-62	1960-61	1961-62
VEGETABLE PRODUCTS - CONTINUED:					
Tobacco, unmanufactured:					
Burley	Lb.	29,795	33,172	1,000	1,000
Cigar wrapper	Lb.	2,715	4,597	24,692	27,772
Dark-fired Kentucky and Tennessee	Lb.	19,033	21,815	6,817	8,362
Flue-cured	Lb.	392,853	393,442	9,152	11,325
Maryland	Lb.	11,852	10,281	304,817	313,399
Other	Lb.	20,701	17,868	9,063	8,150
Total tobacco, unmf.	Lb.	476,949	481,175	10,180	8,630
Vegetables and preparations:					
Canned -					
Asparagus	Lb.	35,473	43,132	7,179	9,382
Soups	Lb.	11,713	13,570	2,213	2,489
Tomato juice	Lb.	25,608	23,954	2,360	2,311
Tomato paste and puree	Lb.	15,210	11,966	2,773	2,606
Tomato sauce for cooking purposes	Lb.	1,195	1,227	155	166
Other	Lb.	43,495	41,677	6,399	6,185
Total canned vegetables	Lb.	132,694	135,526	21,079	23,139
Dry, ripe -					
Beans*	Lb.	227,173	149,567	17,990	12,737
Cowpeas and chickpeas	Lb.	2,766	3,782	234	345
Peas	Lb.	169,902	185,466	11,315	12,195
Fresh -					
Lettuce	Lb.	138,002	150,972	5,488	7,371
Onions	Lb.	106,073	73,274	3,649	3,819
Potatoes, white	Lb.	159,242	183,769	4,073	4,391
Tomatoes	Lb.	73,934	79,039	6,181	7,152
Other	Lb.	342,642	341,981	17,876	20,904
Total fresh vegetables	Lb.	819,893	829,035	37,267	43,637
Frozen vegetables (incl. specialties)	Lb.	27,208	25,644	4,859	4,831
Soups and vegetables, dehydrated	Lb.	10,961	9,823	4,831	4,498
Vegetable seasonings	Lb.	4,130	5,955	3,210	4,309
Other		b/	b/	13,749	13,675
Total vegetables and preparations*				114,534	119,366
Other vegetable products:					
Coffee	Lb.	14,545	24,298	14,759	28,017
Drugs, herbs, roots, crude	Lb.	5,058	3,263	4,473	3,700
Essential oils, natural	Lb.	6,669	7,414	12,609	13,938
Feeds and fodders (ex. oilcake and meal)	S.Ton	403	557	28,107	34,444
Flavoring sirups for beverages	Gal.	1,299	1,157	7,847	6,748
Glucose and dextrose (ex. pharmaceutical)	Lb.	47,413	32,180	3,410	2,424
Hops	Lb.	16,830	17,726	9,567	9,904
Nursery and greenhouse stock		b/	b/	5,523	5,661
Nuts and preparations	Lb.	78,370	41,514	16,187	11,953
Seeds, field and garden	Lb.	84,334	78,640	18,225	16,812
Spices	Lb.	2,456	2,765	1,987	1,959
Other*		b/	b/	16,753	57,095
Total other vegetable products*				139,447	192,655
TOTAL VEGETABLE PRODUCTS*				4,041,068	4,106,171
TOTAL AGRICULTURAL EXPORTS				4,597,624	4,668,366
TOTAL NON/GRICULTURAL EXPORTS				14,087,650	14,600,003
TOTAL EXPORTS, ALL COMMODITIES				18,685,274	19,268,369

* Includes food exported for relief or charity by individuals and private agencies.
a/ Preliminary.
b/ Reported in value only.
c/ Excludes the number of "other hides and skins," reported in value only.

Table 10.-- U.S. agricultural imports for consumption: Quantity and value by commodity, May 1961 and 1962

Commodity imported SUPPLEMENTARY	Unit	May			
		Quantity		Value	
		1961	1962	1961	1962
ANIMALS AND ANIMAL PRODUCTS:					
Animals, live:					
Cattle, dutiable	No.	57	88	1,000	1,000
Cattle, free (for breeding)	No.	2	2	dollars	dollars
Horses	No.	b/	b/	4,036	7,410
Poultry, live	c/	c/	c/	751	594
Other	c/	c/	c/	158	261
Total animals, live	c/	c/	c/	22	20
				52	36
Dairy products:					
Butter	Lb.			5,019	8,321
Casein or lactarene	Lb.	20	29		
Cheese -					
Blue-mold	Lb.	9,287	9,983	1,510	1,790
Cheddar	Lb.	356	514	170	251
Edam and Gouda	Lb.	60	142	22	44
Pecorino	Lb.	457	643	190	275
Swiss	Lb.	1,320	1,486	736	753
Other	Lb.	1,143	1,221	583	650
Total cheese	Lb.	1,850	3,812	780	1,289
Milk, dried or malted	Lb.	5,186	7,818	2,481	3,262
Other	Lb.	58	452	5	33
Total dairy products	c/	c/	b/	b/	
				4,006	5,101
Hides and skins, raw (except furs):					
Calf skins	Lb.	415	446	207	230
Cattle hides	Lb.	1,706	1,568	230	286
Goat and kid skins	Lb.	2,181	2,236	1,392	1,328
Sheep and lamb skins	Lb.	5,650	6,957	2,398	2,812
Other d/	Lb.	2,708	3,625	1,338	2,032
Total hides and skins, raw	Lb.	12,660	14,832	5,565	6,688
Meat and meat products:					
Beef and veal -					
Fresh, chilled, or frozen	Lb.	32,593	45,312	11,927	14,100
Other	Lb.	9,042	6,137	3,250	2,180
Total beef and veal	Lb.	41,635	51,449	15,177	16,280
Mutton, goat, and lamb	Lb.	5,324	3,392	1,365	627
Pork -					
Fresh, chilled, or frozen	Lb.	3,418	4,896	1,256	1,790
Hams and shoulders, canned cooked	Lb.	7,076	11,424	5,358	8,175
Other	Lb.	1,682	2,775	1,130	1,388
Total pork	Lb.	12,176	19,095	7,744	11,353
Sausage casings	Lb.	1,375	c/	1,006	1,430
Other (incl. meat extracts)	Lb.	2,313	6,254	1,263	1,935
Total meat and products (ex. poultry)	Lb.	62,823		26,555	31,625
Poultry products:					
Eggs, dried, frozen, otherwise preserved	Lb.	0	1	0	1
Eggs in the shell	Doz.	22	78	40	122
Poultry meat	Lb.	8	?	9	30
Total poultry products				49	153
Wool, unmf. (except free in bond):					
40's to 44's	g.Lb.	118	593	74	305
44's to 56's	g.Lb.	1,160	1,696	661	962
Finer than 56's	g.Lb.	8,582	9,334	4,831	5,956
Other wools	g.Lb.	1,748	2,193	1,610	2,136
Total wool, unmf.	g.Lb.	11,608	13,816	7,176	9,359
Other animal products:					
Bones, hoofs, and horns, unmf.	l.Ton	4	6	311	365
Bristles, sorted, bunched, or prepared ..	Lb.	282	303	896	1,002
Fats, oils, and greases, edible	Lb.	21	32	2	14
Fats, oils, and greases, inedible					
Feathers, crude	Lb.	s/	s/	33	43
Gelatin, edible	Lb.	133	141	348	282
Hair, unmanufactured	Lb.	423	441	228	240
Honey	Lb.	575	596	489	404
Other	Lb.	1,469	716	146	77
Total other animal products	c/	c/		888	969
				3,341	3,396
TOTAL ANIMALS AND ANIMAL PRODUCTS				51,711	64,643

Table 10.-- U.S. agricultural imports for consumption: Quantity and value by commodity, July-May 1960-61 and 1961-62 - Continued

Commodity imported SUPPLEMENTARY	Unit	July-May			
		Quantity		Value	
		1960-61	1961-62	1960-61	1961-62
ANIMALS AND ANIMAL PRODUCTS:					
Animals, live:					
		Thousands	Thousands	dollars	dollars
Cattle, dutiable	No.	615	1,137	52,800	104,436
Cattle, free (for breeding)	No.	18	17	5,876	5,835
Horses	No.	3	3	4,023	3,972
Poultry, live		c/	c/	81	131
Other		c/	c/	877	805
Total animals, live				63,657	115,179
Dairy products:					
Butter	Lb.	753	770	354	352
Casein or lactarone	Lb.	83,082	92,418	15,282	16,527
Cheese -					
Blue-mold	Lb.	3,750	3,740	1,749	1,816
Cheddar	Lb.	2,125	1,677	629	546
Edam and Gouda	Lb.	6,156	6,186	2,580	2,677
Pecorino	Lb.	15,172	15,152	9,180	8,485
Swiss	Lb.	14,095	15,186	7,656	8,378
Other	Lb.	25,701	26,845	10,509	10,914
Total cheese	Lb.	66,999	68,786	32,303	32,816
Milk, dried or malted	Lb.	1,821	2,161	155	164
Other		c/	c/	1	29
Total dairy products				48,095	49,888
Hides and skins, raw (except furs):					
Calf skins	Lb.	4,982	4,880	2,547	2,879
Cattle hides	Lb.	12,289	20,193	1,844	3,895
Goat and kid skins	Lb.	22,506	23,810	15,373	14,153
Sheep and lamb skins	Lb.	47,250	56,153	20,133	24,825
Other d/	Lb.	26,574	33,179	12,332	17,453
Total hides and skins, raw	Lb.	114,001	138,215	52,229	63,205
Meat and meat products:					
Beef and veal -					
Fresh, chilled, or frozen	Lb.	391,204	634,944	139,889	206,478
Other	Lb.	72,842	83,828	25,625	30,658
Total beef and veal	Lb.	464,046	718,772	165,514	237,136
Mutton, goat, and lamb	Lb.	49,962	58,483	12,187	12,039
Pork -					
Fresh, chilled, or frozen	Lb.	32,020	38,838	12,583	14,243
Hams and shoulders, canned cooked	Lb.	100,043	113,312	75,973	84,110
Other	Lb.	19,679	24,043	13,520	14,130
Total pork	Lb.	151,742	176,193	102,076	112,483
Sausage casings	Lb.	14,913	c/	11,741	12,926
Other (incl. meat extracts)	Lb.	31,757	60,170	14,442	18,936
Total meat and products (ex. poultry)	Lb.	712,420		305,960	393,520
Poultry products:					
Eggs, dried, frozen, otherwise preserved	Lb.	42	6	49	6
Eggs in the shell	Doz.	4,206	1,231	1,734	670
Poultry meat	Lb.	152	314	194	470
Total poultry products				1,977	1,146
Wool, unmf. (except free in bond):					
40's to 44's	g.Lb.	1,899	4,197	1,105	2,261
44's to 56's	g.Lb.	9,064	13,459	5,340	7,744
Finer than 56's	g.Lb.	80,166	117,734	48,012	72,219
Other wools	g.Lb.	14,721	19,192	17,660	18,714
Total wool, unmf.	g.Lb.	105,850	154,582	72,117	100,938
Other animal products:					
Bones, hoofs, and horns, unmf.	L.Ton	53	59	3,331	3,802
Bristles, sorted, bunched, or prepared	Lb.	3,123	2,572	8,982	7,368
Fats, oils, and greases, edible	Lb.	1,490	1,524	794	753
Fats, oils, and greases, inedible		c/	c/	343	407
Feathers, crude	Lb.	1,837	1,700	2,978	3,410
Gelatin, edible	Lb.	6,859	5,321	3,253	2,699
Hair, unmanufactured	Lb.	8,479	10,367	5,637	6,413
Honey	Lb.	13,062	6,338	1,298	802
Other		c/	c/	8,445	8,529
Total other animal products				35,061	34,243
TOTAL ANIMALS AND ANIMAL PRODUCTS				579,096	750,119

Table 10.-- U.S. agricultural imports for consumption: Quantity and value by commodity, May 1961 and 1962 - Continued

Commodity imported SUPPLEMENTARY	Unit	May		a/	
		Quantity		Value	
		1961	1962	1961	1962
VEGETABLE PRODUCTS:					
Cotton, unmanufactured (480 lb.):		Thousands	Thousands	dollars	dollars
Cotton	Bale	6	3	912	301
Linters	Bale	10	15	201	454
Total cotton and linters	Bale	16	18	1,113	755
Fruits and preparations:					
Apples, green or ripe (50 lb.)	Bu.	75	84	319	292
Berries	Lb.	6,812	5,766	829	752
Cherries	Lb.	1,184	910	275	221
Dates	Lb.	132	27	11	2
Figs	Lb.	3,285	4,473	256	315
Grapes (40 lb.)	Cu.Ft.	166	331	364	947
Melons	Lb.	60,036	71,549	2,201	2,492
Olives in brine	Gal.	1,206	1,488	1,649	2,642
Oranges, mandarin, canned	Lb.	4,711	6,093	864	1,162
Pineapples, canned, prepared or preserved	Lb.	12,026	8,865	1,339	1,077
Pineapple juice	Gal.	743	474	266	197
Other		c/	c/	1,691	1,553
Total fruits and preparations				10,064	11,652
Grains and preparations:					
Barley grain (48 lb.)	Bu.	1,867	884	2,409	1,326
Barley malt	Lb.	13,634	16,647	735	940
Corn grain (56 lb.)	Bu.	42	243	72	422
Oats grain (32 lb.)	Bu.	91	82	89	98
Rice	Lb.	235	5,617	14	308
Rye grain (56 lb.)	Bu.	68	b/	86	b/
Wheat grain for domestic use (60 lb.) ...	Bu.	361	154	574	232
Wheat flour	Lb.	108	7	6	b/
Other		c/	c/	632	804
Total grains and preparations				4,617	4,130
Nuts and preparations:					
Almonds	Lb.	228	14	112	9
Brazil nuts	Lb.	2,790	587	611	170
Cashew nuts	Lb.	5,833	6,754	2,603	2,656
Coconut meat, fresh, frozen, or prepared	Lb.	6,617	8,735	747	958
Pistache nuts	Lb.	968	1,261	518	505
Other		c/	c/	537	479
Total nuts and preparations				5,120	4,777
Oilseeds and products:					
Oils, edible and ined. (ex. essential) -					
Cacao butter	Lb.	1,632	2,433	714	1,173
Carnauba wax	Lb.	820	407	570	218
Castor oil	Lb.	9,883	6,748	1,185	748
Coconut oil	Lb.	11,388	18,976	1,108	1,805
Olive oil, edible	Lb.	5,847	5,633	1,479	1,479
Palm oil	Lb.	5,992	6,561	593	617
Palm kernel oil	Lb.	5,308	5,739	625	595
Tung oil	Lb.	1,101	1,133	219	366
Other	Lb.	4,598	4,183	708	683
Total oils, etc. (ex. essential)	Lb.	46,569	51,813	7,201	7,684
Oilseeds -					
Copra	Lb.	79,632	37,570	5,075	2,416
Sesame seed	Lb.	2,909	1,951	362	270
Other		c/	c/	96	205
Total oilseeds				5,533	2,891
Protein meal (oilcake and meal)	Lb.	19,127	10,750	415	268
Total oilseeds and products				13,149	10,843
Sugar and related products:					
Cane sugar	S.Ton	351	511	38,719	58,340
Molasses unfit for human consumption	Gal.	25,587	35,138	2,577	3,784
Other		c/	c/	1,076	922
Total sugar and related products				42,376	63,046
Tobacco, unmanufactured:					
Cigar leaf	Lb.	758	854	1,085	1,209
Cigarette leaf, unstemmed	Lb.	11,494	11,569	7,775	7,087
Other	Lb.	3,232	2,631	1,291	1,037
Total tobacco, unmf.	Lb.	15,484	15,054	10,151	9,333

Table 10.-- U.S. agricultural imports for consumption: Quantity and value by commodity, July-May 1960-61 and 1961-62 - Continued

Commodity Imported SUPPLEMENTARY	Unit	Quantity		July-May a/ Value	
		1960-61	1961-62	1960-61	1961-62
VEGETABLE PRODUCTS:				1,000	1,000
Cotton, unmanufactured (480 lb.):		Thousands	Thousands	dollars	dollars
Cotton	Bales	150	155	25,574	27,145
Linters	Bales	131	195	3,187	5,383
Total cotton and linters	Bales	281	350	28,761	32,528
Fruits and preparations:					
Apples, green or ripe (50 lb.)	Bu.	960	828	4,562	3,657
Berries	Lb.	51,072	43,425	7,567	6,140
Cherries	Lb.	15,562	10,397	3,703	2,623
Dates	Lb.	35,877	32,088	2,963	3,205
Figs	Lb.	31,098	24,715	2,629	2,141
Grapes (40 lb.)	Cu.Ft.	813	713	1,614	1,831
Melons	Lb.	152,951	160,681	6,256	6,143
Olives in brine	Gal.	13,503	13,979	17,473	21,104
Oranges, mandarin, canned	Lb.	31,133	40,371	5,804	7,500
Pineapples, canned, prepared or preserved	Lb.	98,704	104,540	11,412	12,252
Pineapple juice	Gal.	4,755	3,802	3,134	2,154
Other		c/	c/	13,275	12,916
Total fruits and preparations				80,392	81,666
Grains and preparations:					
Barley grain (48 lb.)	Bu.	10,166	14,363	12,916	18,589
Barley malt	Lb.	120,951	139,155	6,504	7,772
Corn grain (56 lb.)	Bu.	909	1,218	1,815	2,308
Oats grain (32 lb.)	Bu.	1,172	1,031	1,262	1,163
Rice	Lb.	22,795	23,711	1,041	1,268
Rye grain (56 lb.)	Bu.	2,678	743	3,019	818
Wheat grain for domestic use (60 lb.) ...	Bu.	6,807	4,628	11,036	7,595
Wheat flour	Lb.	2,101	179	67	8
Other		c/	c/	10,367	10,456
Total grains and preparations				48,027	49,977
Nuts and preparations:					
Almonds	Lb.	860	463	342	191
Brazil nuts	Lb.	26,146	29,292	8,679	7,904
Cashew nuts	Lb.	59,890	55,112	27,032	22,630
Coconut meat, fresh, frozen, or prepared	Lb.	99,847	109,311	13,652	12,292
Pistache nuts	Lb.	8,370	11,958	4,214	4,858
Other		c/	c/	9,110	6,753
Total nuts and preparations				63,029	54,628
Oilseeds and products:					
Oils, edible and ined. (ex. essential) -					
Cacao butter	Lb.	11,764	17,432	5,798	8,084
Carnauba wax	Lb.	9,819	9,196	6,747	5,060
Castor oil	Lb.	100,257	114,728	12,694	13,915
Coconut oil	Lb.	132,160	188,321	14,339	17,794
Olive oil, edible	Lb.	49,215	52,600	12,242	13,359
Palm oil	Lb.	45,436	55,453	4,575	5,279
Palm kernel oil	Lb.	79,162	79,900	10,210	8,829
Tung oil	Lb.	19,852	24,041	3,864	6,429
Other	Lb.	42,103	54,429	6,908	9,217
Total oils, etc. (ex. essential) ...	Lb.	490,768	596,100	77,377	87,966
Oilseeds -					
Copra	Lb.	720,013	673,157	50,273	43,536
Sesame seed	Lb.	22,860	15,733	3,090	2,223
Other		c/	c/	1,859	2,617
Total oilseeds				55,222	48,376
Protein meal (oilcake and meal)	Lb.	91,680	186,474	2,154	4,348
Total oilseeds and products				134,753	140,690
Sugar and related products:					
Cane sugar	S.Ton	3,671	3,878	403,486	424,428
Molasses unfit for human consumption ...	Gal.	322,259	240,121	28,097	25,174
Other		c/	c/	7,307	6,560
Total sugar and related products				438,890	456,162
Tobacco, unmanufactured:					
Cigar leaf	Lb.	11,072	10,861	16,505	15,440
Cigarette leaf, unstemmed	Lb.	111,990	116,249	77,622	74,340
Other	Lb.	26,650	25,814	11,438	11,267
Total tobacco, unmf.	Lb.	149,712	152,924	105,565	101,047

Table 10.-- U.S. agricultural imports for consumption: Quantity and value by commodity, May 1961 and 1962 - Continued

Commodity imported SUPPLEMENTARY	Unit	Quantity		Value	
		1961	1962	1961	1962
VEGETABLES PRODUCTS - CONTINUED:					
Vegetables and preparations:					
Canned -					
Mushrooms	Lb.	233	1,828	151	915
Tomatoes	Lb.	8,596	4,724	645	341
Tomato paste and sauce	Lb.	2,648	2,641	294	319
Fresh or dried -					
Beans, dried	Lb.	3,338	1,267	310	131
Cucumbers	Lb.	46	1,256	5	174
Garlic	Lb.	1,982	1,485	208	227
Onions	Lb.	414	2,029	16	151
Potatoes, white	Lb.	10,529	16,987	306	369
Tomatoes, natural	Lb.	7,748	24,129	722	1,926
Turnips and rutabagas	Lb.	2,323	2,648	56	47
Pickled vegetables	Lb.	898	1,491	135	209
Tapioca, tapioca flour and cassava	Lb.	24,731	11,864	857	425
Other	c/			1,558	2,119
Total vegetables and preparations				5,263	7,353
Other vegetable products:					
Feeds and fodders (ex. oilcake and meal)	c/			1,072	802
Hops	Lb.	301	1	173	1
Jute and jute butts, unmf.	L.Ton	1	7	516	1,031
Malt liquors	Gal.	1,441	1,520	1,710	1,846
Nursery and greenhouse stock	No.	2,786	1,521	54	50
Seeds, field and garden	c/			804	638
Spices	Lb.	3,173	3,082	528	470
Wines	Gal.	1,012	1,389	3,895	5,125
Other	c/			499	740
Total other vegetable products				9,251	10,703
TOTAL VEGETABLE PRODUCTS				101,112	122,592
TOTAL SUPPLEMENTARY AGRI. IMPORTS				152,823	187,235
COMPLEMENTARY					
Bananas				8,007	7,794
Coffee (incl. into Puerto Rico)	Lb.	228,121	269,628	74,668	83,406
Coffee essences, substitutes, etc.	Lb.	151	199	224	229
Cocoa or cacao beans	Lb.	89,263	64,661	16,254	12,632
Cocoa and chocolate, prepared	Lb.	14,330	10,056	2,041	1,616
Drugs, herbs, roots, etc.	Lb.	2,165	2,350	1,682	1,398
Essential or distilled oils	c/			1,598	1,309
Fibers, unmanufactured	L.Ton	12	14	2,757	3,034
Rubber, crude	Lb.	66,912	84,770	15,463	21,069
Silk, raw	Lb.	534	359	2,331	1,718
Spices	Lb.	7,919	9,133	3,438	2,766
Tea	Lb.	9,331	12,747	4,609	6,136
Wool, unmf. (free in bond for carpets) ...	G.Lb.	16,838	12,392	8,718	6,359
Other complementary agricultural products	c/			277	455
TOTAL COMPLEMENTARY AGRI. IMPORTS				142,067	149,921
TOTAL AGRICULTURAL IMPORTS				294,890	337,156
TOTAL NONAGRICULTURAL IMPORTS				893,718	1,061,891
TOTAL IMPORTS, ALL COMMODITIES				1,188,608	1,399,047

Table 10.-- U.S. agricultural imports for consumption: Quantity and value by commodity, July-May 1960-61 and 1961-62 - Continued

Commodity imported SUPPLEMENTARY	Unit	July-May		a/	
		Quantity		Value	
		1960-61	1961-62	1960-61	1961-62
VEGETABLE PRODUCTS - CONTINUED:					
Vegetables and preparations:					
Canned -					
Mushrooms	Lb.	2,680	8,808	1,750	4,752
Tomatoes	Lb.	115,890	144,902	8,440	9,895
Tomato paste and sauce	Lb.	12,970	47,366	1,608	5,831
Fresh or dried -					
Beans, dried	Lb.	9,362	8,273	930	797
Cucumbers	Lb.	46,365	58,696	2,003	2,300
Garlic	Lb.	18,755	15,484	1,959	2,294
Onions	Lb.	42,546	73,026	1,867	3,894
Potatoes, white	Lb.	69,942	79,079	2,077	1,688
Tomatoes, natural	Lb.	200,073	233,826	15,032	17,156
Turnips and rutabagas	Lb.	98,021	95,930	2,593	2,207
Pickled vegetables	Lb.	12,002	13,706	1,678	1,997
Tapioca, tapioca flour and cassava	Lb.	276,998	247,137	9,893	8,596
Other	c/	c/	c/	19,731	22,567
Total vegetables and preparations.....				69,561	83,974
Other vegetable products:					
Feeds and fodders (ex. oilcake and meal)	c/	c/		10,844	9,904
Hops	Lb.	5,461	4,229	3,613	3,277
Jute and jute butts, unmf.	L.Ton	20	55	6,199	11,693
Malt liquors	Gal.	11,629	12,705	13,636	14,801
Nursery and greenhouse stock	No.	519,063	475,875	14,622	14,016
Seeds, field and garden	c/	c/		12,052	16,579
Spices	Lb.	44,425	62,240	6,879	8,958
Wines	Gal.	10,166	12,463	38,606	46,054
Other	c/	c/		5,466	6,129
Total other vegetable products				111,917	131,411
TOTAL VEGETABLE PRODUCTS				1,080,895	1,132,083
TOTAL SUPPLEMENTARY AGRI. IMPORTS				1,659,991	1,890,202
COMPLEMENTARY					
Bananas	e/	e/		69,232	70,872
Coffee (incl. into Puerto Rico)	Lb.	2,745,375	2,824,631	920,242	882,697
Coffee essences, substitutes, etc.	Lb.	3,724	2,821	6,529	3,835
Cocoa or cacao beans	Lb.	637,954	598,562	149,072	123,145
Cocoa and chocolate, prepared	Lb.	115,108	109,185	23,725	20,138
Drugs, herbs, roots, etc.	Lb.	60,880	63,053	18,944	17,659
Essential or distilled oils	c/	c/		18,012	17,316
Fibers, unmanufactured	L.Ton	123	178	30,282	32,836
Rubber, crude	Lb.	761,752	873,704	226,440	215,294
Silk, raw	Lb.	5,592	5,455	24,292	25,652
Spices	Lb.	66,008	79,644	32,600	31,776
Tea	Lb.	98,141	111,862	48,608	53,520
Wool, unmf. (free in bond for carpets) ...	G.Lb.	180,865	168,167	96,451	87,495
Other complementary agricultural products	c/	c/		5,361	6,205
TOTAL COMPLEMENTARY AGRI. IMPORTS				1,669,790	1,588,440
TOTAL AGRICULTURAL IMPORTS				3,329,781	3,478,642
TOTAL NONAGRICULTURAL IMPORTS				9,321,304	10,741,265
TOTAL IMPORTS, ALL COMMODITIES				12,651,085	14,219,907

a/ Preliminary.

b/ Less than 500.

c/ Reported in value only.

d/ Excludes the weight of "other hides and skins", reported in pieces only.

e/ Quantity reported in pounds beginning January 1, 1962 cannot be compared with bunches reported previously.

END

DATE

FILMED

7-9-79

NTIS