



AgEcon SEARCH
RESEARCH IN AGRICULTURAL & APPLIED ECONOMICS

The World's Largest Open Access Agricultural & Applied Economics Digital Library

This document is discoverable and free to researchers across the globe due to the work of AgEcon Search.

Help ensure our sustainability.

Give to AgEcon Search

AgEcon Search
<http://ageconsearch.umn.edu>
aesearch@umn.edu

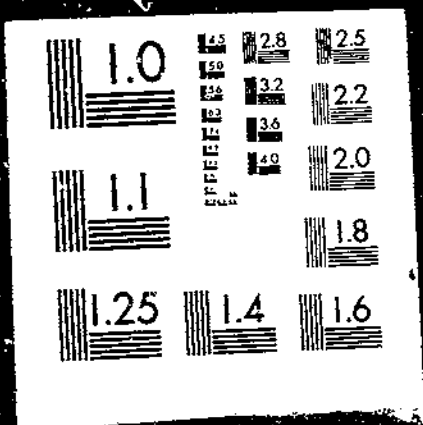
*Papers downloaded from **AgEcon Search** may be used for non-commercial purposes and personal study only. No other use, including posting to another Internet site, is permitted without permission from the copyright owner (not AgEcon Search), or as allowed under the provisions of Fair Use, U.S. Copyright Act, Title 17 U.S.C.*

USDA/FATUS -
AUG 62

FATUS/FOREIGN AGRICULTURAL TRADE OF THE UNITED STATES, 1962 AUGUST. Washington, DC:
Economic Research Service.

(NAL Call No. A286.9/Ag8)

H O F I
USDA-FATUS
AUG - 62



#286.9
#98
cop. 2

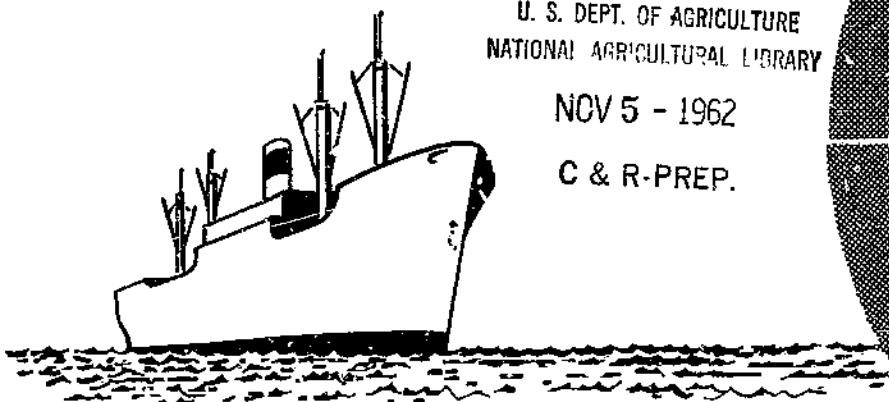
FOREIGN AGRICULTURAL TRADE

OF THE UNITED STATES

U. S. DEPT. OF AGRICULTURE
NATIONAL AGRICULTURAL LIBRARY

NOV 5 - 1962

C & R-PREP.



IN THIS ISSUE

- Record Agricultural Exports, 1961 - 62
- Government-Financed Program Exports, 1961
- Import Highlights, July - April 1962
- Trade Statistics, July - April 1962

Published Monthly by
Economic Research Service

AUGUST 1962
U. S. DEPARTMENT OF AGRICULTURE

Contents

	<u>Page</u>
Digest.....	1
1961-62 U.S. Farm Exports Set Records in Value and Volume -- by Dewain H. Rahe.....	3
Exports under Government-Financed Programs and Commercial Exports, Calendar Year 1961 -- by Eleanor N. DeBlois.....	7
Import Highlights.....	17
Table 1.--Exports: Value by Commodity, Fiscal Years 1960-61 and 1961-62..	5
Table 2.--Exports under Government Programs and Commercial Exports: Value by Commodity, Calendar Years 1960 and 1961.....	9
Table 3.--Exports under Government Programs and Commercial Exports: Value by Commodity, Calendar Year 1961.....	12
Table 4.--Exports under Government Programs and Commercial Exports: Quantity by Commodity, Calendar Year 1961.....	13
Table 5.--Credit Sales: Value by Commodity, Calendar Year 1961.....	15
Table 6.--Exports: Quantity and Value by Commodity, April and July- April 1960-61 and 1961-62.....	20
Table 7.--Imports: Quantity and Value by Commodity, April and July- April 1960-61 and 1961-62.....	26
Table 8.--Exports and Imports: Value by Country, July-April 1961-62.....	32
Figure 1.--Wheat and Feed Grains Dominated 1961-62 Advance in U.S. Agricultural Exports.....	2
Figure 2.--Dollar Sales Rise More Than Program Exports as U.S. Agricul- tural Exports Reach Record \$5 Billion.....	10

Note to Recipients

With this issue, ERS begins publication of an expanded monthly Foreign Agricultural Trade of the United States, which incorporates the now-discontinued Foreign Agricultural Trade Digest of the United States, Foreign Agricultural Trade of the United States Statistical Reports, and Government program export series. The expanded monthly report also will, from time to time, include analyses previously published in the ERS-FOREIGN series.

Annual fiscal and calendar year export and import statistics will be released in yearly supplements to the expanded monthly report.

Explanatory Note

U.S. foreign agricultural trade statistics in this report include official U.S. data based on compilations of the Bureau of the Census. Agricultural commodities consist of (1) nonmarine food products and (2) other products of American agriculture which have not passed through complex processes of manufacture such as raw hides and skins, fats and oils, and wine. Such manufactured products as textiles, leather, boots and shoes, cigarettes, naval stores, forestry products, and distilled alcoholic beverages are not considered agricultural.

The trade statistics exclude shipments between the 50 States and Puerto Rico, between the 50 States and the island possessions, between Puerto Rico and the island possessions, among the island possessions, and in-transit through the United States from one foreign country to another when documented as such through U.S. Customs.

EXPORTS The export statistics also exclude shipments to the U.S. armed forces for their own use and supplies for vessels and planes engaged in foreign trade. Data on shipments valued at less than \$100 are not compiled by commodity and are excluded from agricultural statistics but are reflected in nonagricultural and overall export totals in this report. The agricultural export statistics include shipments under P.L. 665 (Mutual Security Act of 1954, as Amended), principally sales for foreign currency; under P.L. 480 (Agricultural Trade Development and Assistance Act, as Amended), and related laws; and involving Government payments to exporters. (USDA payments are excluded from the export value.) Separate statistics on Government program exports are compiled by USDA from data obtained from operating agencies.

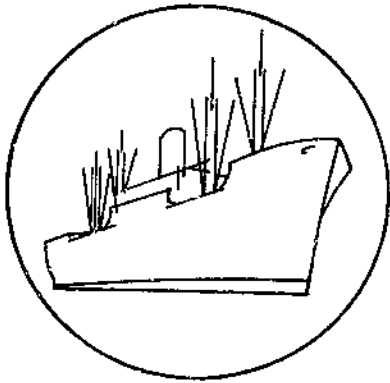
The export value, the value at the port of exportation, is based on the selling price (or cost if not sold) and includes inland freight, insurance, and other charges to the port. The country of destination is the country of ultimate destination or where the commodities are to be consumed, further processed, or manufactured. When the shipper does not know the ultimate destination, the shipments are credited to the last country, as known to him at time of shipment from the United States, to which the commodities are to be shipped in their present form. Export shipments valued \$100-\$499 are included on the basis of sampling estimates.

IMPORTS Imports for consumption consist of commodities released from U.S. Customs custody upon arrival, or entered into bonded manufacturing warehouse, or withdrawn from bonded storage warehouse for consumption. The agricultural statistics exclude low-value shipments from countries not identified because of illegible reporting, but they are reflected in nonagricultural and overall export totals in this report.

The import value, defined generally as the market value in the foreign country, excludes import duties, ocean freight, and marine insurance. The country of origin is defined as the country where the commodities were grown or processed. Where the country of origin is not known, the imports are credited to the country of shipment.

Imports similar to agricultural commodities produced commercially in the United States and others that are interchangeable in use to any significant extent with such U.S. commodities are supplementary, or partly competitive. All other commodities are complementary, or noncompetitive.

Further explanatory material on foreign trade statistics and compilation procedures of the Bureau of the Census is contained in the publications of that agency.



FOREIGN AGRICULTURAL TRADE OF THE UNITED STATES

Digest

Fiscal year 1961-62 was a record-breaker for farm exports. Export value for the year ending June 30, 1962, is estimated at \$5,130 million, up 4 percent from 1960-61's \$4,946 million. Volume, up slightly, also set a new record. Feed grains and wheat, rising by \$160 million and \$135 million, respectively, dominated the overall advance. Nearly all of the gains in these two commodities were offset by the decline of \$285 million in cotton shipments. There were moderate increases in soybeans, fruits, cottonseed and soybean oils, poultry meat, tobacco, and vegetables. Individual volume export records were set for wheat, feed grains, soybeans, tallow, poultry meat, fruits, and nonfat dry milk. Tobacco exports reached a new value peak. Nearly 70 percent of the agricultural exports in 1961-62 were sold for dollars. The dollar-export total of \$3.5 billion broke the previous records in 1951-52 and 1960-61. (See page 3.)

Calendar year 1961 exports under Government-financed programs totaled \$1,569 million, \$83 million above 1960. These exports -- made under P.L. 480 (Agricultural Trade Development and Assistance Act of 1954, as Amended) and P.L. 665 (Mutual Security Act of 1954, as Amended) -- amounted to nearly one-third of all U.S. agricultural exports. All program exports increased in 1961 except Title I, P.L. 480 foreign currency sales. Title IV, P.L. 480 long term dollar credit exports were made for the first time. Over two-thirds of the 1961 exports were commercial sales. They increased by \$115 million over the exports in 1960, to total \$3,461 million. Total exports of agricultural commodities in 1961 advanced to a calendar year record \$5,030 million. (See page 7.)

Agricultural imports were up 3 percent in July-April. Imports of agricultural commodities for consumption totaled \$3,141 million in the first 10 months of fiscal year 1961-62, compared with \$3,035 million for the like period in 1960-61. These 10 months are the latest for which data are available. The past year's import picture has been marked by divergent movements in supplementary (partially competitive) and complementary (noncompetitive) products. Supplementary imports registered a gain of 13 percent while complementary imports declined by 6 percent. Principal supplementary increases occurred among the animals and animal products, backed by strong domestic demand. Lower prices for major complementary products such as coffee, cocoa beans, and crude natural rubber figured in the complementary value decline. (See page 17.)

Wheat and Feed Grains Dominated 1961-62 Advance in Agricultural Exports

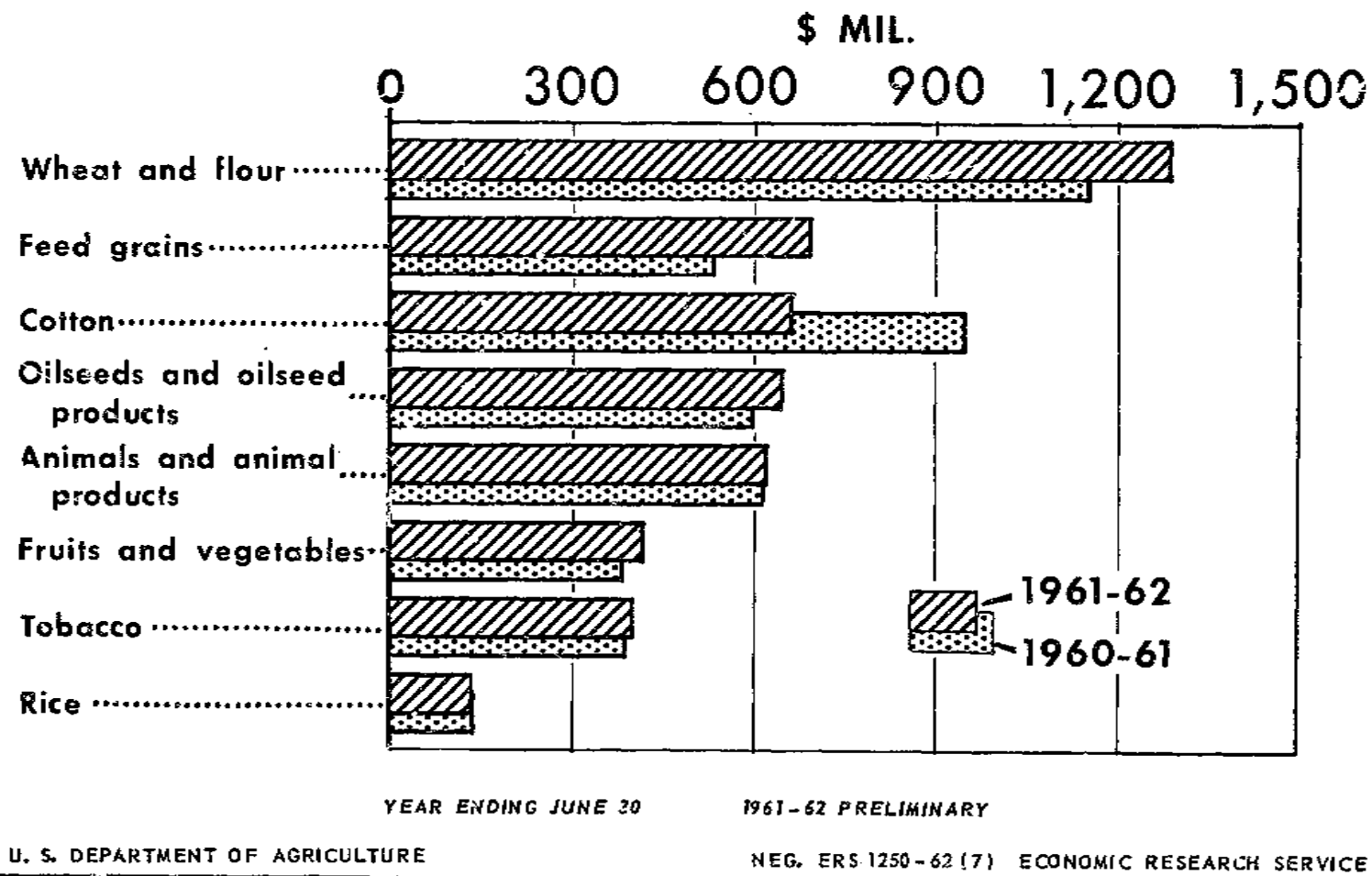
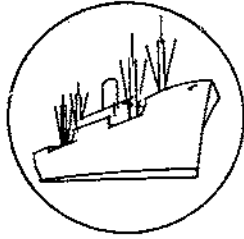


FIG. 1



SPECIAL in this issue

1961-62 U.S. Farm Exports Set Records in Value and Volume

by Dewain H. Rahe

The fiscal year that ended June 30, 1962, was another historic one for U.S. agricultural exports. Value reached an alltime high of \$5,130 million, \$184 million above the previous record of \$4,946 million in 1960-61. The volume of exports was slightly above last year's record.

Major shifts in feed grains, wheat, and cotton dominated the export picture in 1961-62. (See figure 1 and table 1.) Feed grain exports increased \$160 million and wheat, \$135 million, while cotton shipments declined \$285 million. Soybeans, fruits, cottonseed and soybean oil, poultry meat, tobacco, and vegetables increased moderately. Rice, variety meats, animal fats, hides and skins, and dairy products showed little or no change.

The export record in fiscal year 1961-62 represented 15 percent of total cash receipts from farm marketings. The foreign market provided an outlet for over half of the wheat, rice, and dried peas produced; two-fifths of the tallow; and around a third of the tobacco, cotton, soybeans (including bean equivalent of oil), nonfat dry milk, and hides and skins.

Nearly 70 percent of U.S. exports in 1962 were sales for dollars; these totaled \$3.5 billion, compared with \$3.4 billion in the previous year. Dollar sales included, in addition to unassisted commercial sales, shipments of some commodities with Government assistance in the form of (1) credits for relatively short periods, (2) sales of Government-owned commodities at less than domestic prices, and (3) export payments-in-cash or -in-kind. The principal gain in dollar sales occurred in feed grains which increased by one-fourth in value. The other dollar gainers included wheat, tobacco, soybeans, fruits, and animal products. During this period, however, there was a one-third decline in dollar exports of cotton.

The remaining 30 percent of exports moved under P.L. 480 (The Trade Development and Assistance Act of 1954, as Amended) and P.L. 665 (The Mutual Security Act of 1954, as Amended). Shipments under these programs totaled \$1.6 billion compared with \$1.5 billion in the previous year.

Continued advances in economic activity in the industrialized countries of Western Europe contributed most to the record level of exports in the past year. Economic activity in Western Europe increased 4 percent in the past year. Record amounts of gold and dollars held by many U.S. trading partners indicated the availability of foreign purchasing power. In addition, exports were encouraged by the vigorous market promotion program carried out jointly by USDA and industry groups, the redoubled efforts to negotiate favorable trade access terms, and competitive pricing of export commodities, in some cases through the use of export payments.

Exports of animals and animal products totaled an estimated \$618 million compared with \$613 million a year ago. Gains in tallow, variety meats, and poultry meat were about offset by declines in exports of lard and other products. Smaller lard exports reflected the loss of the Cuban market and increased European production. Exports of hides and skins and dairy products were substantially unchanged in value from a year earlier.

Cotton exports in fiscal year 1961-62, excluding linters, totaled an estimated 4.7 million running bales compared with 7 million in 1960-61. The decline reflected mainly the substantial drop in inventories and consumption in foreign importing countries, moderately larger supplies abroad, and greater competition from foreign producers as prices of U.S. cotton in foreign markets continued somewhat above the levels of a year earlier. Cotton exports were smaller to Western Europe and Japan, the principal foreign markets.

Exports of fruits and preparations in 1961-62 totaled a record estimated \$280 million compared with \$254 million in 1960-61. Exports in 1961-62 were stimulated by the small deciduous crop and further relaxation of trade restrictions in Western Europe. Substantial export gains occurred in fresh apples, and canned fruits, with smaller increases for raisins, prunes, fresh oranges, and fruit juices. Larger U.S. production of apples and oranges coupled with lower prices aided exports.

Among the grains, shipments of wheat and grain equivalent of flour were an estimated 715 million bushels in 1961-62 compared with 661 million a year ago. Increases occurred in both commercial sales for dollars and shipments under Government-financed programs. Shipments amounting to over 7 million bushels moved for the first time under Title IV (long-term dollar credit sales) of P.L. 480. Increases occurred in barter transactions under Title III and in donations under Titles II and III of P.L. 480. Title I sales for foreign currency were larger. Total wheat and flour exports to Brazil, the Netherlands, Yugoslavia, Turkey, and Chile increased substantially. Major reductions were in exports to Italy, Poland, and India.

Feed grain exports, excluding products, in 1961-62 are estimated at 14 million metric tons, a new record compared with 11 million a year earlier. The gain was brought about largely by heavy corn exports since January. Exports of feed grains prior to that month were below the levels of a year earlier. Exports of oats, grain sorghums, and barley were smaller in 1961-62 compared with the previous year. Shipments to Canada, West Germany, the United Kingdom, Japan, and UAR-Egypt gained substantially. More corn was shipped to Canada to supplement reduced feed supplies resulting from the 1961 drought. The United Kingdom

substituted corn imports for other grains in 1961-62. Smaller exportable supplies in other major producing countries also encouraged purchases from the United States.

Exports of feed grains to Japan and Western Europe were stimulated by expanding livestock production and continued rapid industrial advances there. Cattle numbers in Western Europe rose to 85 million head in 1961 from an average of 73 million in 1951-55. Annual increases averaged 3 percent in the past 3 years. Cattle numbers in Japan increased by 3.4 million head, or 19 percent, since 1951-55. In recent years annual increases in Japan averaged 6 percent.

Table 1.--U.S. agricultural exports: Value by commodity, fiscal years 1960-61 and 1961-62

Commodity	1960-61	1961-62 ^{1/}	Change
	Million dollars		Percent
Animals and animal products:			
Dairy products.....	131	125	-5
Fats, oils, and greases.....	175	170	-3
Hides and skins.....	83	83	0
Meats and meat products.....	138	159	+15
Other.....	86	81	-6
Total animals, etc.....	613	613	+1
Cotton, excluding linters.....	946	661	-30
Fruits and preparations.....	254	280	+10
Grains and preparations:			
Feed grains, excluding products.....	531	691	+30
Rice, milled.....	135	132	-2
Wheat and flour.....	1,151	1,286	+12
Other.....	57	63	+11
Total grains, etc.....	1,874	2,172	+16
Oilseeds and products:			
Cottonseed and soybean oils ^{2/}	148	171	+15
Soybeans.....	344	372	+8
Other.....	105	101	-4
Total oilseeds, etc. ^{2/}	597	644	+8
Tobacco, unmanufactured.....	385	398	+3
Vegetables and preparations.....	127	135	+6
Other.....	150	222	+48
Total exports.....	4,946	5,130	+4

^{1/} Partly estimated.

^{2/} Excludes Title III, P.L. 480 donations, which are included in "Other."

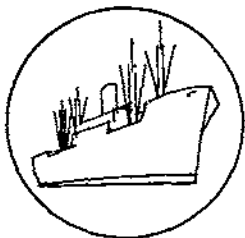
Exports of milled rice totaled an estimated 20.3 million bags in fiscal year 1961-62 compared with 21.5 million in 1960-61. The decline occurred mainly in exports to Asia under Government-financed programs, principally to Pakistan and India. Exports for dollars gained about one-fourth, principally to Western Europe. Exports of rice under programs to Africa also showed a substantial increase.

Among the oilseeds and products, soybean exports in 1961-62 totaled an estimated 147 million bushels, breaking the previous record of 143 million in 1960-61. Higher prices advanced value by 8 percent. Exports were relatively slow during the first part of 1961-62 because of limited supplies available for export and the anticipation of lower-priced beans from the record 1961 harvest. In recent years, many of the industrialized countries in Western Europe have been increasing their purchases of soybeans in lieu of vegetable oils to obtain by-product protein meal for livestock feeding. Other developments that have tended to encourage exports of soybeans in recent years included the record level of U.S. production and relatively small quantities of beans available for export from Communist China. Also, foreign exportable supplies have not been able to keep pace with demand. U.S. exports increased from about 20 percent of world trade in 1950-54 to 30 percent in 1958. It is estimated that the U.S. share will rise to about 33 percent in 1962.

Exports of cottonseed and soybean oils, excluding Title III, P.L. 480 donations, totaled an estimated 1,314 million pounds in fiscal year 1961-62, 7 percent above actual exports of 1,231 million a year earlier. USDA estimates of Title III donations indicated exports of 238 million pounds in 1961-62 and 31 million in 1960-61. Including these donations, exports were 23 percent larger in 1961-62 than the previous year. During 1961-62 about 60 percent of the vegetable oil exports moved under specified Government programs, particularly Titles I and III of P.L. 480.

Exports of unmanufactured tobacco in 1961-62 totaled an estimated 508 million pounds, export weight, slightly above last year's 504 million. Exports in recent years have been relatively stable. The annual 3 percent rise in foreign tobacco use has been met mainly by increased foreign production, chiefly in Rhodesia-Nyasaland, Greece, and Turkey. Exports have been maintained at a fairly high level because of continued rising use of tobacco in foreign countries and availability of high quality leaf in the United States. Higher prices last year advanced export value to a new record.

Vegetables and preparations in 1961-62 totaled an estimated \$135 million, compared with \$127 million in 1960-61. Exports were marked by major shifts in dried beans, white potatoes, and canned vegetables. Bean exports fell considerably, reflecting larger crops in Mexico and other Latin American countries and apparently large canned stocks in Western Europe. The gain in white potatoes reflected the substantial increase in the 1961 harvest in the United States and lower production in Western Europe. Exports of canned vegetables have increased principally to Western Europe, reflecting advancing standards of living and the gradual relaxation of trade barriers.



SPECIAL in this issue

Exports Under Government-Financed Programs and Commercial Exports, Calendar Year 1961

by Eleanor N. DeBlois

This article analyzes the distribution of the 1961 calendar year agricultural exports among the various types of Government-financed programs by commodity and provides information on the distribution of commercial sales for dollars by commodity.

Exports under Government-financed programs totaled \$1,564 million in calendar year 1961, 31 percent of total exports of \$5,030 million. Commercial sales for dollars (exports outside specified Government-financed programs) were \$3,466 million, 69 percent of the total. U.S. agricultural exports passed the \$5 billion mark for the first time in 1961, reflecting a high level of economic activity and foreign purchasing power in many important foreign markets. Two-fifths of the nearly \$200 million increase in agricultural exports over the preceding year was in Government program shipments and three-fifths in commercial sales for dollars. Exports of certain commodities, principally grains and cotton, continued to be assisted by export payments.

Government-Financed Programs ^{1/}

Government program exports include shipments under P.L. 480 (Agricultural Trade Development and Assistance Act of 1954, as Amended): Title I, sales for foreign currency; Title II, donations for famine and emergency relief and for the promotion of economic development in under developed areas; Title III, foreign donations through U.S. voluntary relief agencies and inter-governmental organizations; Title III, barter; and Title IV, long-term supply and dollar credit sales. Long-term supply and dollar credit sales under Title IV are included under specified Government-financed programs. Under this Title the

^{1/} A brief description of these programs and an explanation of the sources of the data used in the compilation of the statistical reports, as well as reports for prior periods, may be obtained from the Trade Statistics and Analysis Branch, Development and Trade Analysis Division, Economic Research Service.

U.S. Government may enter into agreements for delivery of surplus agricultural commodities for periods up to 10 years. Credit periods up to 20 years are authorized.

Short and medium-term credits extended by the Commodity Credit Corporation and the Export-Import Bank to facilitate commercial exportation of agricultural commodities, are included with exports outside Government-financed programs. (See "Credit Sales Programs.")

Exports under Government programs also include sales for foreign currency under Sec. 402, of P.L. 665 (Mutual Security Act of 1954, as Amended).

Exports under P.L. 480 and P.L. 665 increased nearly \$80 million in 1961, with all programs except Title I of P.L. 480 showing increases over the previous year. (See figure 2 and table 2.) Exports under Title IV, P.L. 480, were made for the first time during the last quarter of the year.

TITLE I, Sales for foreign currency under Title I, which made up more than P.L. 480 half of Government program shipments, fell by more than \$150 million from record calendar year exports of over \$1 billion in 1960 to \$853 million in 1961. The principal decreases were in wheat, barley, grain sorghums, rice, cotton, and soybean oil. Exports of wheat to India under Title I decreased by over \$150 million. A larger proportion of India's minimum grain requirements has been met by increased domestic production of wheat and other grains. (See tables 3 and 4.)

TITLE II, Donations under Title II reached a high level of \$195 million, P.L. 480 nearly two and one-half times that of the preceding period. Expanded programs in which food is used as partial wages for persons engaged in economic development projects were emphasized during the year. At the close of 1961 these projects were underway in the following countries: Afghanistan, Republic of China, Dahomey, Ethiopia, Iran, Republic of Korea, Libya, Morocco, Tanganyika, and Tunisia, and reached approximately 5 million persons.

U.S. surplus foods were provided through the United Nations to meet the emergency food requirements of the Congo. Surplus foods helped to alleviate widespread drought conditions in a number of African and Middle Eastern countries and to provide the necessities of life for refugees almost completely dependent upon charitable distributions. Child feeding programs, partially supported by U.S. surplus foods furnished under Title II, were underway in Italy, Tunisia, and Peru.

TITLE III, P.L. 480, Foreign donations under Title III of P.L. 480 rose to **FOREIGN DONATIONS** an export value of \$155 million in 1961, \$33 million higher than the previous year. Available surplus foods included wheat, wheat flour, corn, cornmeal, rice, nonfat dry milk, beans, bulgur wheat, and refined vegetable oils and shortening -- a much broader commodity composition than in recent years.

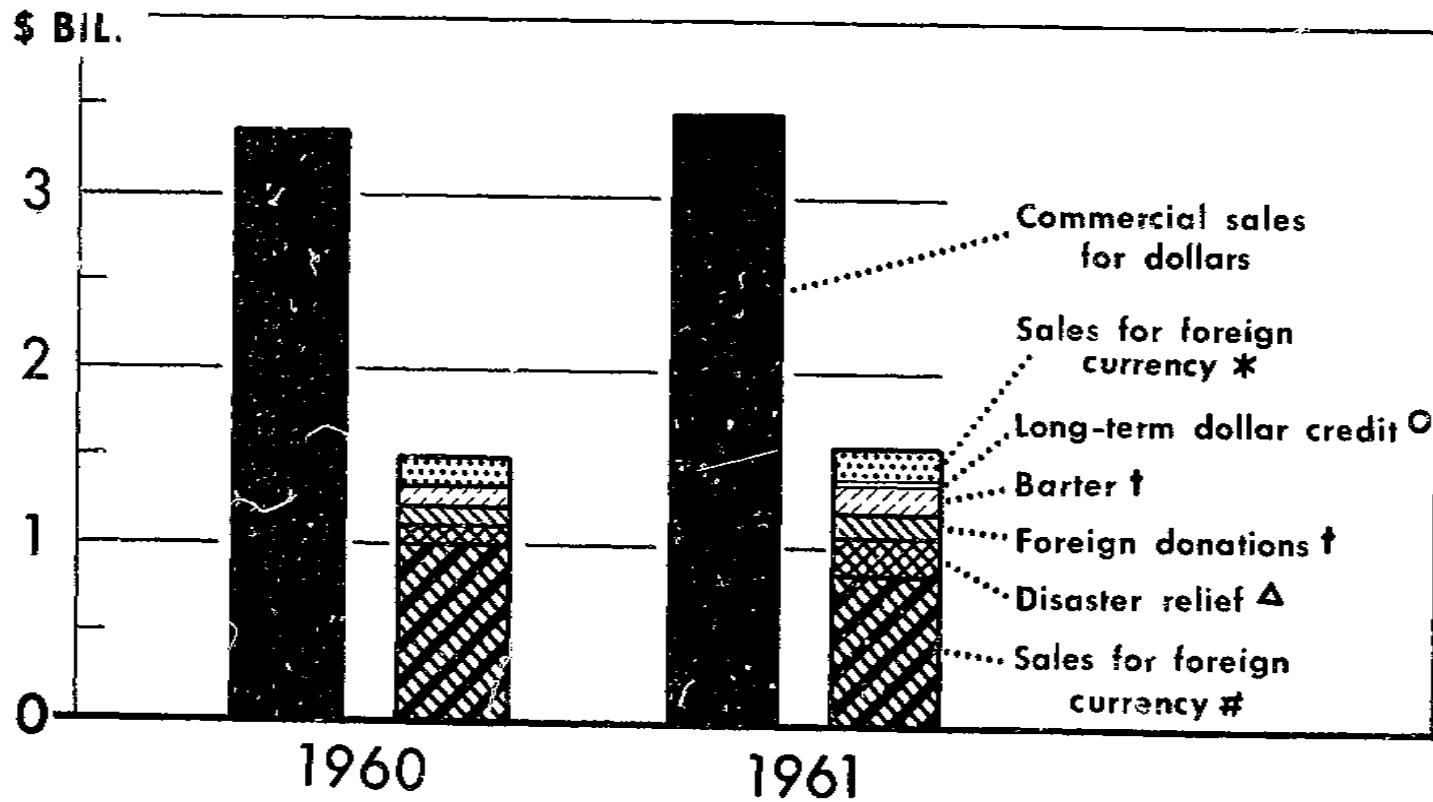
The Commodity Credit Corporation's (CCC) uncommitted stocks of nonfat dry milk increased to the extent that over 577 million pounds were exported under this program in 1961 compared with 260 million pounds in 1960. These commodities

Table 2.--Exports under specified Government-financed programs, commercial sales for dollars, and total agricultural exports: Value by commodity, calendar year 1961 compared with 1960

Commodity	Exports under Govt.-financed programs			Commercial sales for dollars ^{1/}			Total agricultural exports		
	1960	1961	Change	1960	1961	Change	1960	1961	Change
	Million dollars			Million dollars			Million dollars		
Wheat and wheat flour....	768.9	887.4	+118.5	260.1	411.0	+150.9	1,029.0	1,298.4	+269.4
Feed grains, excl. products.....	144.5	157.8	+13.3	371.8	357.7	-14.1	516.3	515.5	-.8
Rice, milled.....	87.0	48.5	-38.5	60.0	62.6	+2.6	147.0	111.1	-35.9
Cotton.....	228.7	196.9	-31.8	751.5	677.7	-73.8	980.2	874.6	-105.6
Tobacco, unmanufactured..	60.8	72.0	+11.2	318.5	318.8	+.3	379.3	390.8	+11.5
Oilseeds and products....	115.0	91.9	-23.1	479.4	494.7	+15.3	594.4	2/586.6	-7.8
Dairy products.....	51.9	71.7	+19.8	65.2	62.3	-2.9	117.1	134.0	+16.9
Animals and products.....	9.8	15.8	+6.0	448.9	483.7	+34.8	458.7	499.5	+40.8
Fruits and preparations..	1.2	.6	-.6	247.5	271.2	+23.7	248.7	271.8	+23.1
Vegetables and preparations.....	.8	2.1	+1.3	139.3	122.3	-17.0	140.1	124.4	-15.7
Other.....	17.7	19.1	+1.4	203.3	203.9	+.6	221.0	223.0	+2.0
Total agricultural exports.....	1,486.3	1,563.8	+77.5	3,345.5	3,465.9	+120.4	4,831.8	5,029.7	+197.9

^{1/} Exports outside specified Government-financed programs. ^{2/} Includes an estimated \$20.5 million donations of vegetable oils reported by the Bureau of the Census with "Other foods for relief and charity."

Dollar Sales Rise More Than Program Exports as U. S. Agricultural Exports Reach Record \$5 Billion



* P. L. 665, SECT. 402 (MUTUAL SECURITY PROGRAM).

○ P. L. 480, TITLE IV.

† P. L. 480, TITLE III.

Δ P. L. 480, TITLE II.

P. L. 480, TITLE I.

U. S. DEPARTMENT OF AGRICULTURE

NEG. ERS 1216-62 (7) ECONOMIC RESEARCH SERVICE

FIG. 2

were distributed in about 100 countries under school and institutional feeding programs, through maternal and child health centers, and resettlement projects. Foods were distributed to people in family groups and to refugees.

The overseas distribution of surplus foods is an integral and effective part of the Food-for-Peace program. It is based on the people-to-people concept that foods come as a gift of the American people through U.S. private and church-affiliated welfare agencies and intergovernmental organizations.

TITLE III, Exports of wheat, corn, grain sorghums and tobacco under the P.L. 480, Title III barter program rose over \$80 million in 1961. Increases BARTER in exports of these four commodities were partially offset by decreases in shipments of flour, barley, and cotton, resulting in a net increase of over \$60 million in exports under the barter program.

TITLE IV, The authority provided under Title IV of P.L. 480 to enter into P.L. 480 long-term supply and credit sales agreements with repayment in dollars was used for the first time in August 1961. An agreement was signed with El Salvador on August 21, 1961, under which wheat and/or flour is being furnished during fiscal year 1961-62 in the amount of \$2 million. The agreement with El Salvador assists the country in meeting a temporary balance of payments situation and in financing economic and social development programs, including expansion of the poultry and livestock industries. During the last quarter of 1961, 88,000 bushels of wheat, valued at \$147,000, were exported under this agreement.

A Title IV agreement also has been entered into with Venezuela providing that the United States supply: (1) 18,000 bales of cotton and 120,000 metric tons of corn valued at \$8.9 million during fiscal year 1961-62 and calendar year 1962 respectively; and (2) other agricultural commodities valued at \$5 million during 1962 and 1963 for use by the Government to expand its program of providing low-cost nutritious meals for low-income and needy persons. (The \$5 million phase of the sales program was originally \$25 million to be supplied over a 5-year period under a Title IV agreement signed in November 1961 which was voided June 1962.)

No exports under the agreement were made during 1961. The credit will be utilized by the Government of Venezuela in financing economic and social development projects and programs contemplated under the Act of Bogota.

A Title IV agreement also was signed with Portugal November 1961, which provided for the supply of wheat and barley during the fiscal year 1961-62 valued at \$13.2 million. Exports under this agreement in 1961 totaled 380,000 bushels of wheat valued at \$663,984. The Government will utilize part of the credit provided under the agreement to expand livestock production.

During the first 6 months of 1962, Title IV agreements have been concluded with Peru, Liberia, and Yugoslavia. The total market value of the 6 agreements is \$57 million.

Table 3.--U.S. agricultural exports under specified Government-financed programs, exports outside specified Government-financed programs, and total agricultural exports: Value by commodity, calendar year 1961

Commodity	Public Law 480				P.L. 665 : Sec. 402 :	Total : agric'l :	Total : agric'l :	Total : exports :	Total : exports :
	Title I :	Title II :	Title III :	Title IV :					
	Sales for foreign currency :	Famine and other emergency relief :	Foreign donations 1/ :	Barter 2/ :	Long-term supply and dollar credit sales :	sales for foreign currency and econ. aid 3/ :	exports under specified Gov't progs. 4/ :	exports outside specified Gov't progs. 4/ :	Total agric'l exports
Million Dollars									
Wheat	508.6	114.0	2.6	71.3	.8	53.6	750.9	367.8	1,118.7
Wheat flour	40.6	34.2	55.4	4.5	---	1.8	136.5	43.2	179.7
Rye	---	---	---	1.4	---	---	1.4	9.2	10.6
Corn, except seed	28.9	12.4	.6	44.0	---	3.0	88.9	273.2	362.1
Grain sorghums	4.8	5.0	---	9.2	---	5/	19.0	54.0	73.0
Oats	---	---	---	---	---	.7	.7	11.9	12.6
Barley	15.1	17.5	---	4.3	---	12.3	49.2	18.6	67.8
Corn meal	---	.4	15.4	---	---	---	15.8	7.0	22.8
Wheat cereal foods to be cooked. 6/	.1	---	6/ 1.4	---	---	---	1.5	.3	7/ 1.8
Rice, milled	37.7	4.2	5.5	.6	---	.5	48.5	62.6	111.1
Cotton	8/ 147.2	2.7	---	8/9.4	---	37.6	196.9	677.7	874.6
Tobacco, unmanufactured	20.3	---	---	35.2	---	16.5	72.0	318.8	390.8
Soybeans	---	---	---	---	---	17.2	17.2	326.1	343.3
Tallow, edible and inedible	1.1	---	---	---	---	8.9	10.0	103.9	113.9
Soybean oil	36.4	---	---	---	---	3.1	39.5	38.3	77.8
Cottonseed oil	9.8	.1	4.7	---	---	1.8	16.4	37.8	7/ 54.2
Linseed oil	---	---	---	---	---	5/	5/	2.8	2.8
Peanut oil	---	---	1.8	---	---	---	1.8	1.0	7/ 2.8
Shortening, 100 percent vegetable oil	---	5/	14.0	---	---	---	14.0	2.1	7/ 16.1
Oilcake and meal	---	---	---	---	---	3.0	3.0	44.5	47.5
Feeds and fodders, except oilcake and meal	---	---	---	---	---	.4	.4	32.7	33.1
Milk, evaporated and condensed .	---	---	---	---	---	11.8	11.8	13.9	25.7
Milk, whole dried	---	---	---	---	---	.3	.3	9.5	9.8
Milk, nonfat dry	1.3	4.2	52.0	1.4	---	5/	58.9	13.5	72.4
Butter	---	---	---	.1	---	---	.1	.3	.4
Infants' and dietetic foods	---	---	---	---	---	.6	.6	12.4	13.0
Poultry, fresh or frozen3	---	---	---	---	---	.3	63.0	63.3
Hides and skins	---	---	---	---	---	5.5	5.5	80.7	86.2
Seeds, other than oilseeds	---	---	---	---	---	5/	5/	.7	.7
Beans, dry edible, except seed .	---	.1	2.0	---	---	---	2.1	10.6	12.7
Dried fruit	5/	---	---	---	---	---	5/	41.7	41.7
Fruits and juices, fresh, frozen, and canned6	---	---	---	---	---	.6	229.5	230.1
Other agricultural commodities .	---	---	---	---	---	---	---	556.6	556.6
Total agricultural exports ...	852.8	194.8	155.4	181.4	.8	178.6	1,563.8	3,465.9	5,029.7

1/ Foreign donations are authorized under Sec. 416 of the Agricultural Act of 1949 and Sec. 302, Title III, P.L. 480.
2/ The barter program is authorized under the Charter Act of the Commodity Credit Corporation; Sec. 303, Title I, P.L. 480; and other legislation.

3/ Mutual Security programs, sales for foreign currency, except \$2.7 million. Includes ocean transportation when not reported separately. Exports under Sec. 402 during July-December 1961 were programed during the prior fiscal year. There is no mandatory requirement in P.L. 87-195, the Act for International Development, September 4, 1961, for a sales for foreign currency program for agricultural commodities.

4/ "Agricultural exports outside specified Government-financed programs" (sales for dollars) include, in addition to unassisted commercial transactions, shipments of some commodities with governmental assistance in the form of (1) extension of credit for relatively short periods, (2) sales of Government-owned commodities at less than domestic market prices, and (3) export payments in cash or in kind.

5/ Less than \$50,000.

6/ Bulgur wheat.

7/ The value shown for total agricultural exports of wheat cereal foods to be cooked, cottonseed oil, peanut oil, and shortening, 100 percent vegetable oil, includes the value reported by the Bureau of the Census, plus the value shown as foreign donations under Title III, P.L. 480. Relief shipments of these commodities are not separately reported by the Bureau of the Census.

8/ Title I based partly on vessel bookings and barter based on invoices to contractors during period.

MUTUAL SECURITY ACT Exports under the Mutual Security Act, principally sales for local currency, rose \$22 million to \$179 million in 1961. Exports of wheat increased over \$40 million, but were partially offset by decreases in shipments of corn, cotton, and soybeans. Exports during the latter half of the year declined to \$47 million compared with \$131 million during January-June. July-December exports were principally sales for foreign currency programed prior to June 30, 1961.

There is no mandatory requirement for a sales-for-foreign currency program for agricultural commodities in P.L. 87-195, the Act for International Development, enacted September 4, 1961, which superseded the Mutual Security Act.

Commercial Sales for Dollars

Commercial sales for dollars, including short and medium-term credits extended by Governmental agencies, were \$120 million higher in 1961 than a year earlier. The principal increase was in wheat, which gained over \$150 million. Increased sales for dollars also took place for corn, soybeans, tallow, all major animal products except lard, and fruits. The most significant decrease was in dollar sales of cotton, which were more than \$70 million smaller than during the previous year.

CREDIT SALES PROGRAMS Short and medium-term credits extended by Governmental agencies for the exportation of agricultural commodities are included with exports outside specified Government-financed programs (dollar sales) in this report. These credits are for relatively short periods; the principal plus interest is repayable in dollars and the programs result in no net financing cost to the Government. Credit sales include the CCC's export credit sales program and loans by the Export-Import Bank for the exportation of agricultural commodities. A separate report of exports under credit sales programs is presented in Table 5 of this publication. (See page 15.)

Exports under credits extended by the CCC under its credit sales program and by the Export-Import Bank rose to over \$68 million in 1961 from \$38 million in 1960. Exports under the CCC credit sales program increased by \$20 million, and disbursements under Export-Import Bank credits rose by about \$10 million.

GRAINS The overall agricultural export rise in 1961 was dominated by an unprecedented increase in exports of wheat and flour. Larger sales for dollars accounted for well over half of the nearly \$270 million increase in exports of this commodity. Nearly three-fourths of the \$80 million increase in exports of corn was in dollar sales. Declines in exports of other feed grains resulted in total feed grain exports just under those of the previous year.

The shipment of smaller quantities of rice under Government programs accounted for the decrease of nearly \$36 million in exports of milled rice.

Table 5.--U.S. credit sales of agricultural commodities: Value by commodity, calendar year 1961 ^{1/}

Commodity	Export-Import:	CCC	Total
	Bank loans	credit	credit
	2/	sales 3/	sales
	<u>Million dollars</u>		
Wheat.....	---	6.7	6.7
Corn.....	---	16.6	16.6
Grain sorghums.....	---	1.6	1.6
Barley.....	---	.8	.8
Cotton.....	42.4	---	42.4
Tobacco.....	---	.1	.1
Milk, nonfat dry.....	---	.5	.5
Total.....	42.4	26.3	68.7

^{1/} Credits for relatively short periods repayable in dollars plus interest (covering the financing costs of the lending agency).

^{2/} Disbursements during the period.

^{3/} Purchases during the period.

COTTON Exports of cotton declined by more than \$100 million in 1961, with dollar sales falling by over \$70 million and exports under Government programs by over \$30 million. Exports of cotton in 1960 were the largest in over a quarter century. Record cotton production in the foreign free world reduced the demand for U.S. cotton in 1961, and during the latter half of the year foreign textile manufacturing countries were reducing rather than building up their stocks.

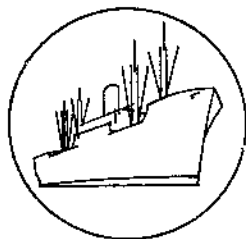
TOBACCO Exports of tobacco were up about \$12 million from 1960, with most of the increase occurring in exports under Government programs. Commercial sales for dollars continued to account for by far the larger proportion of tobacco exports, representing over 80 percent of exports of this commodity in 1961.

OILSEEDS AND PRODUCTS About 80 percent of exports of oilseeds and products were commercial sales for dollars in both 1960 and 1961. Commercial sales accounted for 95 percent of the soybean exports in 1961, 94 percent of the oilcake and meal, 70 percent of the cottonseed oil, and 50 percent of the soybean oil.

Last year's slight decline in overall exports of oilseeds and products to \$587 million (including Title III donations estimated at about \$20 million) from \$594 million in 1960 was the result of smaller shipments of vegetable oils under Title I and Mutual Security Programs offset by substantial donations under Title III. Vegetable oils were made available in 1961 for foreign donation under Title III for the first time since 1956.

ANIMALS AND ANIMAL PRODUCTS Increased foreign donations of nonfat dry milk accounted for the rise of nearly \$17 million in exports of dairy products. Most of the over \$40 million increase in exports of animals and animal products except dairy was in commercial sales for dollars. All major animal products gained with the exception of lard. The high level of economic activity in Europe and Japan has greatly stimulated demand for U.S. livestock products.

FRUITS AND VEGETABLES Exports of fruits and vegetables, of which Government program exports were negligible, totaled \$396 million in 1961 compared with \$389 million a year earlier. Exports of fruits were stimulated by the small deciduous crops and further relaxation of trade restrictions in Europe. Exports of vegetables decreased, principally due to sharp declines in bean exports to Europe and Latin America.



Import Highlights

Agricultural import value was up 3 percent in July-April. Value totaled \$3,141 million in these 10 months (latest period for which data are available), 3 percent above the \$3,035 million for the comparable period in 1960-61. The picture in 1961-62 was marked by divergent movements in supplementary (partially competitive) and complementary (noncompetitive) products.

Value of supplementary imports was 13 percent larger. Total of \$1,703 million in July-April of fiscal year 1961-62 compared with \$1,507 million in the previous year. The gain reflected 31 percent larger purchases of animals and animal products, principally dutiable cattle, beef and veal, apparel wool, and hides and skins. Imports of vegetable oils, fats, and waxes also gained substantially in this period. Other increases were in cotton, grains and preparations, and oilseeds and products. Nuts and preparations declined. Tobacco showed little change. Cane sugar imports were unchanged from a year earlier.

Complementary imports were 6 percent smaller. July-April value declined to \$1,438 million from \$1,528 million in 1960-61, reflecting lower prices for major commodities such as coffee, cocoa beans, and crude natural rubber.

ANIMALS AND ANIMAL PRODUCTS July-April cattle imports were at near-record numbers in 1961-62. Imports of dutiable cattle in July-April of 1961-62 rose to 1,049 thousand head from 558 thousand in the like period a year ago. Drought conditions in Canada and Mexico in the summer of 1961 caused ranchers and farmers to sell large numbers of feeders and stockers. Strong U.S. demand for beef encouraged the near-record level of imports. Most imports of dutiable cattle were placed in feedlots for finishing before slaughtering.

Strong U.S. demand also encouraged beef and veal imports. Imports increased to a record 667 million pounds in July-April from 422 million for the like period a year earlier. The United States has become an attractive market for imports of boneless beef and veal resulting from the strong demand for meat products. The relatively low level of cow slaughter in the United States also contributed to increased imports of boneless beef and veal during the past 10 months. On the other hand, production of low grade meats has increased substantially in Australia, New Zealand, and the Central American Republics.

More mutton also was imported for processing. Imports of lamb and mutton increased to 55 million pounds this July-April from 45 million a year ago.

Imports consisted mainly of boneless mutton which is used interchangeably with beef in processed products. Australia is the major supplier.

Pork imports were up slightly. Imports increased to 157 million pounds in July-April of 1961-62 from 140 million a year earlier. The 17 million pound increase consisted mainly of canned pork from Western Europe. The main suppliers of canned products were the Netherlands, Denmark, and Poland. Canada was the principal supplier of fresh and frozen pork.

Improved demand for textiles encouraged apparel wool imports. Imports of apparel wool advanced to 141 million pounds in July-April from 94 million a year earlier, reflecting stepped-up mill activity and rebuilding of stocks drawn down in the previous year.

Sheep and goat skins dominated imports of hides and skins. Imports of hides and skins advanced to 123 million pounds in July-April of 1961-62 from 101 million a year earlier. The gain generally reflected the strong consumer demand for leather products in this country. Over two-thirds of the imports were sheep and goat skins, which are produced in relatively small volume in the United States.

GRAINS July-April grain imports showed mixed trends in quantity. Wheat imports (mostly feed wheat) declined to 4.4 million bushels from 6 million for the like period in 1960-61. Barley imports advanced to 13 million bushels from 8 million, reflecting larger imports of malting barley, of which supplies in the United States have been limited in the past year. Oats were 1.1 million bushels, up from 0.9 million.

SUGAR, CANE Imports of cane sugar were slightly above last year's volume. Imports totaled 3,367 thousand short tons (tel. quel basis as reported by the Bureau of the Census) compared with 3,320 thousand a year earlier. Sugar imports are stabilized under the Sugar Act of 1948, as Amended. The principal suppliers are the Philippines, Mexico, Peru, and the Dominican Republic.

OILSEEDS AND PRODUCTS Copra imports declined; vegetable oils, advanced. Imports of copra declined to 636 million pounds in July-April from 640 million for the comparable period a year earlier. Imports of principal vegetable oils, fats, and waxes advanced to 544 million pounds from 444 million, including increases in castor, coconut, olive, and tung oils. Lower prices stimulated oil purchases in 1961-62.

TOBACCO Unmanufactured tobacco imports were a record. Imports totaled 138 million pounds in July-April of 1961-62 compared with 134 million a year earlier. However, value declined to \$92 million from \$95 million, reflecting imports of lower-priced tobacco. The rise in import volume has been associated with larger cigarette output in this country. Nearly all imports are oriental types used for blending with U.S. tobaccos in cigarette manufacture.

COCOA BEANS Less cocoa beans were imported this July-April. Imports totaled 534 million pounds compared with 549 million a year ago. Lower world prices caused the value to decline by 17 percent. Over two-thirds of the

imports came from Africa, with Ghana supplying the largest share. Latin America supplied nearly all of the remaining third, with Brazil the major supplier.

COFFEE Coffee imports were up slightly in volume while value declined somewhat. Imports of coffee totaled 2,555 million pounds in July-April of 1961-62 compared with 2,517 million for the same months a year ago. Value declined by 6 percent, reflecting lower world prices.

RUBBER Lower world prices encouraged imports of crude rubber. Imports of crude natural rubber amounted to 789 million pounds in July-April of 1961-62 compared with 695 million for the like period a year ago. Lower prices and high level U.S. economic activity contributed to the increase in import volume. Lower prices pulled value down by 8 percent.

WOOL, CARPET Imports of carpet wool declined slightly. Imports of carpet wool totaled 156 million pounds in July-April of 1961-62 compared with 164 million for the same months in 1960-61. The greater use of synthetic fibers in making carpets has resulted in a relatively low level of carpet wool imports in recent years. Nearly all of the carpet wool used in this country is imported.

Table 6.-- U. S. agricultural exports: Quantity and value by commodity,
April 1961 and 1962

Commodity exported	Unit	April a/			
		Quantity		Value	
		1961	1962	1961	1962
ANIMALS AND ANIMAL PRODUCTS:				1,000	1,000
Animals, live:		Thousands	Thousands	dollars	dollars
Cattle	No.	2	2	729	677
Poultry -					
Baby chicks	No.	4,003	1,847	1,158	788
Other live poultry	Lb.	533	154	317	62
Other	b/	b/	b/	1,300	890
Total animals, live				3,504	2,417
Dairy products:					
Anhydrous milk fat	Lb.	137	262	115	219
Butter (ex. dehydrated)	Lb.	21	245	14	89
Cheese*	Lb.	571	587	306	283
Infants' and dietetic foods, chiefly milk	Lb.	984	1,302	636	652
Milk -					
Condensed, sweetened	Lb.	4,683	443	1,092	101
Dried whole	Lb.	900	1,488	615	836
Evaporated, unsweetened*	Lb.	12,951	2,401	2,043	325
Nonfat dry*	Lb.	45,534	77,816	4,888	4,564
Other	b/	b/	b/	292	296
Total dairy products*				10,001	7,365
Fats, oils, and greases:					
Lard	Lb.	26,065	42,365	3,330	4,308
Tallow, edible	Lb.	153	517	16	54
Other edible fats, oils, and greases	Lb.	790	750	152	130
Tallow, inedible	Lb.	120,633	105,845	9,162	7,111
Other inedible fats, oils, and greases ..	Lb.	16,175	18,505	1,559	1,420
Total fats, oils, and greases	Lb.	163,816	167,982	14,219	13,023
Meat and meat products:					
Beef and veal	Lb.	2,582	1,992	1,041	956
Pork	Lb.	4,876	4,554	1,422	1,314
Sausage casings	Lb.	1,065	1,599	929	1,493
Variety meats	Lb.	8,394	6,859	1,922	1,434
Other (incl. meat extracts)	Lb.	1,231	944	566	380
Total meat and products (ex. poultry) .	Lb.	18,148	15,948	5,880	5,577
Poultry products:					
Eggs, dried, frozen, otherwise preserved.	Lb.	424	970	329	679
Eggs in the shell, hatching	Doz.	773	758	964	864
Eggs in the shell, other	Doz.	245	84	99	32
Poultry meat -					
Chickens, fresh or frozen	Lb.	11,747	21,815	3,085	5,823
Turkeys, fresh or frozen	Lb.	823	1,234	298	369
Other, fresh or n	Lb.	480	382	162	137
Canned	Lb.	775	277	245	129
Total poultry products				5,182	8,033
Other animal products:					
Feathers, crude	Lb.	178	153	182	141
Gelatin, edible	Lb.	226	376	479	663
Hair, raw or dressed, new	Lb.	422	470	240	166
Hides and skins, raw (ex. furs)g/	No.	1,000	514	6,456	5,677
Honey	Lb.	194	269	37	52
Wool, unmanufactured	C.Lb.	1,794	1,104	2,000	1,024
Other	b/	b/	b/	1,160	1,757
Total other animal products				10,554	9,480
TOTAL ANIMALS AND ANIMAL PRODUCTS*				49,340	45,895
VEGETABLE PRODUCTS:					
Cotton, unmanufactured:					
Cotton	RBale	585	303	78,493	41,829
Linters	RBale	49	23	1,339	772
Total cotton and linters	RBale	634	326	79,832	42,601
Fruits and preparations:					
Canned -					
Fruit cocktail	Lb.	5,761	7,234	954	1,160
Peaches	Lb.	8,779	12,562	1,044	1,314
Pears	Lb.	674	777	113	133

Continued -

Table 6.-- U. S. agricultural exports: Quantity and value by commodity,
July-April 1960-61 and 1961-62

Commodity exported	Unit	July-April a/			
		Quantity		Value	
		1960-61	1961-62	1960-61	1961-62
ANIMALS AND ANIMAL PRODUCTS:				1,000	1,000
Animals, live:		<u>Thousands</u>	<u>Thousands</u>	<u>dollars</u>	<u>dollars</u>
Cattle	No.	29	17	9,700	6,912
Poultry -					
Baby chicks	No.	27,903	14,034	6,724	4,392
Other live poultry	Lb.	5,324	1,515	2,056	658
Other	b/	b/	b/	6,291	4,941
Total animals, live				24,771	16,903
Dairy products:					
Anhydrous milk fat	Lb.	3,757	3,390	3,134	2,842
Butter (ex. dehydrated)	Lb.	482	1,566	269	675
Cheese*	Lb.	6,918	6,868	3,488	3,610
Infants' and dietetic foods, chiefly milk	Lb.	14,078	15,947	10,329	9,936
Milk -					
Condensed, sweetened	Lb.	38,733	34,167	9,051	8,051
Dried whole	Lb.	16,028	11,088	8,895	6,820
Evaporated, unsweetened*	Lb.	91,834	58,834	14,590	9,262
Nonfat dry*	Lb.	485,557	664,411	51,931	60,331
Other	b/	b/	b/	2,791	3,648
Total dairy products*				104,478	105,175
Fats, oils, and greases:					
Lard	Lb.	417,163	357,597	47,085	35,626
Tallow, edible	Lb.	5,639	3,002	537	309
Other edible fats, oils, and greases	Lb.	6,746	7,248	1,062	1,254
Tallow, inedible	Lb.	1,191,804	1,305,893	78,805	89,618
Other inedible fats, oils, and greases	Lb.	158,224	172,807	13,136	14,108
Total fats, oils, and greases		1,779,576	1,846,547	140,625	140,915
Meat and meat products:					
Beef and veal	Lb.	26,406	22,362	10,533	9,601
Pork	Lb.	58,004	51,735	17,651	15,064
Sausage casings	Lb.	13,834	16,165	9,816	14,154
Variety meats	Lb.	102,368	99,721	22,830	21,087
Other (incl. meat extracts)	Lb.	14,339	11,887	6,430	4,893
Total meat and products (ex. poultry) .	Lb.	214,951	201,870	67,260	64,799
Poultry products:					
Eggs, dried, frozen, otherwise preserved.	Lb.	6,954	7,482	5,521	5,091
Eggs in the shell, hatching	Doz.	5,984	7,116	7,088	6,980
Eggs in the shell, other	Doz.	7,911	3,636	3,207	1,443
Poultry meat -					
Chickens, fresh or frozen	Lb.	121,793	184,513	32,814	47,098
Turkeys, fresh or frozen	Lb.	22,762	28,507	7,874	9,575
Other, fresh or frozen	Lb.	4,444	5,559	1,664	1,784
Canned	Lb.	11,606	7,357	3,232	2,642
Total poultry products				61,400	74,613
Other animal products:					
Feathers, crude	Lb.	1,800	1,841	1,725	2,227
Gelatin, edible	Lb.	2,749	3,128	4,661	6,102
Hair, raw or dressed, new	Lb.	3,695	5,863	1,644	1,941
Hides and skins, raw (ex. furs) c/	No.	11,152	9,387	70,355	69,035
Honey	Lb.	6,481	6,390	969	981
Wool, unmanufactured	C.Lb.	12,698	9,740	13,565	9,879
Other	b/	b/	b/	10,255	13,230
Total other animal products				103,174	103,395
TOTAL ANIMALS AND ANIMAL PRODUCTS*				501,708	505,800
VEGETABLE PRODUCTS:					
Cotton, unmanufactured:					
Cotton	RBale:	6,368	3,982	848,792	556,418
Linters	RBale:	268	215	7,507	8,128
Total cotton and linters	RBale:	6,636	4,197	856,299	564,546
Fruits and preparations:					
Canned -					
Fruit cocktail	Lb.	83,483	107,442	13,800	16,602
Peaches	Lb.	165,531	215,468	19,009	24,130
Pears	Lb.	8,037	9,260	1,375	1,546

Continued -

Table 6.-- U. S. agricultural exports: quantity and value by commodity, April 1961 and 1962 - Continued

Commodity exported	Unit	April a/			
		Quantity		Value	
		1961	1962	1961	1962
VEGETABLE PRODUCTS - CONTINUED:				1,000	1,000
Fruits and preparations - Continued:		Thousands	Thousands	dollars	dollars
Canned - continued					
Pineapples	Lb.	4,368	6,700	756	1,937
Other	Lb.	2,360	2,314	373	404
Total canned fruits	Lb.	21,942	29,587	3,240	4,048
Dried -					
Prunes	Lb.	2,907	6,117	800	1,436
Raisins and currants	Lb.	5,224	4,637	887	812
Other	Lb.	976	1,255	305	492
Total dried fruits	Lb.	9,107	12,009	1,992	2,740
Fresh -					
Apples	Lb.	6,785	7,748	542	643
Berries	Lb.	1,828	1,227	393	309
Grapefruit	Lb.	32,100	30,124	1,385	1,290
Grapes	Lb.	1,710	1,975	171	239
Lemons and limes	Lb.	14,379	24,258	902	1,363
Oranges and tangerines	Lb.	36,858	38,475	3,373	3,259
Pears	Lb.	1,457	573	153	70
Other	Lb.	1,330	2,982	135	191
Total fresh fruits	Lb.	96,447	107,362	7,054	7,364
Fruit juices -					
Grapefruit	Gal.	832	842	506	550
Orange	Gal.	1,189	1,425	2,449	2,059
Other	Gal.	1,390	1,236	1,329	1,182
Total fruit juices	Gal.	3,411	3,503	4,284	3,791
Frozen fruits (incl. specialties)	Lb.	714	678	159	158
Other	b/	b/	b/	272	299
Total fruits and preparations				17,001	18,400
Grains and preparations:					
Feed grains and products -					
Barley grain (48 lb.)	Bu.	8,206	9,095	8,390	11,652
Corn grain (56 lb.)*	Bu.	24,661	36,067	31,532	45,355
Grain sorghums (56 lb.)	Bu.	6,574	10,611	7,308	11,440
Oats grain (32 lb.)	Bu.	626	90	451	60
Total feed grains*	M.Ton	981	1,385	47,681	68,507
Barley malt (34 lb.)	Bu.	193	119	446	275
Corn grits and hominy	Lb.	2,641	2,894	113	128
Cornmeal and corn flour*	Cwt.	361	370	1,613	1,521
Cornstarch	Lb.	2,862	2,763	263	291
Oatmeal, groats, and rolled oats	Lb.	1,416	1,975	200	292
Total feed grains and products*	M.Ton	1,020	1,424	50,316	71,014
Rice -					
Milled*	Lb.	183,514	230,441	10,290	14,841
Paddy or rough	Lb.	4,871	478	399	44
Total rice (milled basis)*	Lb.	188,385	230,919	10,689	14,885
Rye grain (56 lb.)	Bu.	1,223	178	1,569	255
Wheat and flour -					
Wheat grain (60 lb.)*	Bu.	49,225	49,390	85,225	86,935
Wheat flour, wholly of U.S. wheat*	Cwt.	3,548	4,091	15,925	16,847
Total wheat and flour*	Bu.	57,386	58,799	101,150	103,782
Bakery products	Lb.	1,290	1,279	464	513
Other	b/	b/	b/	1,244	629
Total grains and preparations*				165,432	191,078
Oilseeds and products:					
Oils, edible and ined. (ex. essential) -					
Cottonseed oil	Lb.	66,715	23,739	9,256	3,558
Soybean oil	Lb.	61,475	152,066	7,623	18,512
Other	Lb.	21,830	10,371	3,478	1,999
Total oils, etc. (ex. essential)	Lb.	150,020	186,176	20,357	24,069
Oilseeds -					
Flaxseed (56 lb.)	Bu.	d/	0	1	0
Soybeans (60 lb.)	Bu.	7,651	11,703	21,002	30,200
Other	Lb.	492	454	64	45
Total oilseeds				21,067	30,245
Protein meal (oilcake and meal)	S.Ton	21	105	1,577	6,451
Total oilseeds and products				43,001	60,765

Continued -

Table 6.-- U. S. agricultural exports: Quantity and value by commodity,
July-April 1960-61 and 1961-62 - Continued

Commodity exported	Unit	July-April a/			
		Quantity		Value	
		1960-61	1961-62	1960-61	1961-62
VEGETABLE PRODUCTS - CONTINUED:				1,000	1,000
Fruits and preparations - Continued:		Thousands	Thousands	dollars	dollars
Canned - continued					
Pineapples	Lb.	61,328	71,862	9,582	11,106
Other	Lb.	32,435	40,543	5,676	6,259
Total canned fruits	Lb.	350,814	444,575	49,442	59,643
Dried -					
Prunes	Lb.	64,897	75,301	16,675	18,013
Raisins and currants	Lb.	118,207	118,107	16,687	16,830
Other	Lb.	13,169	18,846	4,292	6,750
Total dried fruits	Lb.	196,273	212,254	37,654	41,593
Fresh -					
Apples	Lb.	118,527	213,561	10,505	18,069
Berries	Lb.	14,075	11,378	2,475	2,142
Grapefruit	Lb.	148,749	178,722	6,916	8,665
Grapes	Lb.	188,314	158,763	15,901	14,993
Lemons and limes	Lb.	129,954	170,223	8,754	10,615
Oranges and tangerines	Lb.	290,756	327,939	25,724	28,620
Pears	Lb.	52,393	68,040	5,068	6,453
Other	Lb.	150,182	105,054	7,572	6,237
Total fresh fruits	Lb.	1,092,950	1,233,680	82,915	95,794
Fruit juices -					
Grapefruit	Gal.	4,528	5,522	3,023	3,618
Orange	Gal.	10,098	10,355	18,554	19,525
Other	Gal.	10,584	11,791	10,712	11,847
Total fruit juices	Gal.	25,210	27,668	32,289	34,990
Frozen fruits (incl. specialties)	Lb.	9,507	7,715	1,815	1,538
Other		b/	b/	3,591	4,159
Total fruits and preparations				207,706	237,717
Grains and preparations:					
Feed grains and products -					
Barley grain (40 lb.)	Bu.	70,459	55,673	75,326	67,679
Corn grain (56 lb.)*	Bu.	215,475	307,760	270,399	383,310
Grain sorghums (56 lb.)	Bu.	73,676	70,490	81,825	78,937
Oats grain (32 lb.)	Bu.	23,156	7,944	17,060	5,666
Total feed grains*	M.Ton	9,215	10,935	444,610	535,592
Barley malt (34 lb.)	Bu.	2,306	1,896	5,011	4,113
Corn grits and hominy	Lb.	23,576	26,332	998	1,144
Cornmeal and corn flour*	Cwt.	3,296	3,629	13,916	14,761
Cornstarch	Lb.	37,270	39,972	3,259	3,191
Oatmeal, groats, and rolled oats	Lb.	28,709	27,260	3,338	3,267
Total feed grains and products*	M.Ton	9,609	11,351	471,132	562,068
Rice -					
Milled*	Lb.	1,856,312	1,627,603	116,694	104,434
Paddy or rough	Lb.	33,721	7,983	2,709	690
Total rice (milled basis)*	Lb.	1,878,231	1,632,791	119,403	105,124
Rye grain (56 lb.)	Bu.	5,780	4,543	6,500	6,228
Wheat and flour -					
Wheat grain (60 lb.)*	Bu.	462,272	501,787	796,738	900,189
Wheat flour, wholly of U.S. wheat*	Cwt.	37,183	39,343	158,065	158,259
Total wheat and flour*	Bu.	547,793	592,275	954,803	1,058,448
Bakery products	Lb.	12,647	11,802	4,496	4,268
Other		b/	b/	8,998	9,392
Total grains and preparations*				1,565,332	1,745,328
Oilseeds and products:					
Oils, edible and ined. (ex. essential) -					
Cottonseed oil	Lb.	336,746	277,864	41,343	39,387
Soybean oil	Lb.	732,299	613,652	83,099	76,871
Other	Lb.	137,212	99,517	20,815	17,363
Total oils, etc. (ex. essential)	Lb.	1,206,257	991,033	145,257	133,621
Oilseeds -					
Flaxseed (56 lb.)	Bu.	3,423	985	10,513	3,295
Soybeans (60 lb.)	Bu.	123,998	122,792	289,464	310,622
Other	Lb.	249,477	169,006	13,053	8,765
Total oilseeds				313,030	322,682
Protein meal (oilcake and meal)	S.Ton	588	817	36,287	52,949
Total oilseeds and products				494,574	509,252

Continued -

Table 6.-- U. S. agricultural exports: Quantity and value by commodity, April 1961 and 1962 - Continued

Commodity exported	Unit	Quantity		Value	
		1961	1962	1961	1962
VEGETABLE PRODUCTS - CONTINUED:					
Tobacco, unmanufactured:					
Burley	Lb.	1,072	1,405	941	1,262
Cigar wrapper	Lb.	276	395	542	520
Dark-fired Kentucky and Tennessee	Lb.	2,827	1,974	1,346	1,049
Fire-cured	Lb.	18,339	25,432	13,469	18,897
Maryland	Lb.	1,291	197	1,053	160
Other	Lb.	1,305	1,364	502	809
Total tobacco, unmf.	Lb.	25,110	30,767	17,853	22,697
Vegetables and preparations:					
Canned -					
Asparagus	Lb.	549	852	144	219
Soups	Lb.	1,190	1,159	221	220
Tomato juice	Lb.	2,506	1,778	232	182
Tomato paste and puree	Lb.	712	539	155	122
Tomato sauce for cooking purposes	Lb.	184	252	23	32
Other	Lb.	3,085	3,657	465	573
Total canned vegetables	Lb.	8,226	8,237	1,240	1,348
Dry, ripe -					
Beans*	Lb.	12,862	6,514	1,090	695
Cowpeas and chickpeas	Lb.	83	471	9	45
Peas	Lb.	11,625	12,349	823	882
Fresh -					
Lettuce	Lb.	18,635	21,522	606	1,023
Onions	Lb.	11,899	14,517	410	831
Potatoes, white	Lb.	16,130	30,184	453	605
Tomatoes	Lb.	2,977	3,138	335	369
Other	Lb.	53,847	60,570	2,740	3,979
Total fresh vegetables	Lb.	103,488	129,931	4,544	6,807
Frozen vegetables (incl. specialties)	Lb.	1,942	2,333	373	369
Soups and vegetables, dehydrated	Lb.	815	1,319	385	445
Vegetable seasonings	Lb.	322	614	263	422
Other	b/	b/	b/	1,321	1,292
Total vegetables and preparations*				10,048	12,305
Other vegetable products:					
Coffee	Lb.	1,621	1,969	1,637	2,655
Drugs, herbs, roots, crude	Lb.	140	193	282	353
Essential oils, natural	Lb.	528	780	950	1,479
Feeds and feedders (ex. oilcake and meal)	S.Ton	38	47	2,725	3,401
Flavoring sirups for beverages	Gal.	124	114	725	807
Glucose and dextrose (ex. pharmaceutical)	Lb.	3,484	3,028	253	212
Hops	Lb.	981	672	588	456
Nursery and greenhouse stock	b/	b/	b/	520	655
Nuts and preparations	Lb.	7,470	4,740	1,010	1,498
Seeds, field and garden	Lb.	4,201	4,935	951	981
Spices	Lb.	273	242	157	165
Other*	b/	b/	b/	2,051	4,511
Total other vegetable products*				11,849	17,173
TOTAL VEGETABLE PRODUCTS*				345,016	365,019
TOTAL AGRICULTURAL EXPORTS				394,356	410,914
TOTAL NONAGRICULTURAL EXPORTS				1,293,154	1,446,536
TOTAL EXPORTS, ALL COMMODITIES				1,687,510	1,857,450

Table 6.-- U. S. agricultural exports: Quantity and value by commodity,
July-April 1960-61 and 1961-62 - Continued

Commodity exported	Unit	July-April ^{a/}			
		Quantity		Value	
		1960-61	1961-62	1960-61	1961-62
VEGETABLE PRODUCTS - CONTINUED:					
Tobacco, unmanufactured:					
		Thousands	Thousands	dollars	dollars
Burley	Lb.	27,016	31,139	22,507	25,933
Cigar wrapper	Lb.	2,450	3,700	6,296	7,283
Dark-fired Kentucky and Tennessee	Lb.	18,810	20,477	9,060	10,655
Flue-cured	Lb.	374,002	370,091	291,445	295,960
Maryland	Lb.	11,362	9,686	8,696	7,650
Other	Lb.	19,662	16,867	9,547	7,981
Total tobacco, unmf.	Lb.	453,302	451,950	347,551	355,462
Vegetables and preparations:					
Canned -					
Asparagus	Lb.	29,204	37,934	5,795	8,341
Soups	Lb.	10,914	12,136	2,062	2,227
Tomato juice	Lb.	23,416	19,614	2,151	1,910
Tomato paste and puree	Lb.	14,547	11,279	2,652	2,437
Tomato sauce for cooking purposes	Lb.	1,115	1,093	145	146
Other	Lb.	40,451	38,063	5,934	5,590
Total canned vegetables	Lb.	119,747	120,119	18,739	20,651
Dry, ripe -					
Beans*	Lb.	208,880	119,172	16,590	10,394
Cowpeas and chickpeas	Lb.	2,639	3,522	221	322
Peas	Lb.	160,801	173,335	10,738	11,434
Fresh -					
Lettuce	Lb.	116,914	128,152	4,609	5,858
Onions	Lb.	93,549	56,965	3,273	3,064
Potatoes, white	Lb.	116,732	136,783	3,164	3,143
Tomatoes	Lb.	54,987	65,371	4,843	5,826
Other	Lb.	285,207	284,005	15,015	17,505
Total fresh vegetables	Lb.	667,389	671,276	30,904	35,396
Frozen vegetables (incl. specialties) ...	Lb.	25,709	23,646	4,459	4,464
Soups and vegetables, dehydrated	Lb.	9,950	8,146	4,439	3,875
Vegetable seasonings	Lb.	3,623	5,326	2,814	3,864
Other	b/	b/	b/	12,356	12,390
Total vegetables and preparations*				101,260	102,790
Other vegetable products:					
Coffee	Lb.	13,856	21,813	13,931	25,203
Drugs, herbs, roots, crude	Lb.	2,949	2,978	4,277	3,474
Essential oils, natural	Lb.	6,081	6,581	11,539	12,485
Feeds and fodders (ex. oilcake and meal) ..	S.Ton	371	508	25,701	30,728
Flavoring sirups for beverages	Gal.	1,164	1,015	7,039	5,999
Glucose and dextrose (ex. pharmaceutical) ..	Lb.	43,559	27,702	3,106	2,096
Hops	Lb.	16,322	16,503	9,288	9,122
Nursery and greenhouse stock	b/	b/	b/	4,739	4,885
Nuts and preparations	Lb.	74,277	38,179	15,398	10,502
Seeds, field and garden	Lb.	77,120	71,896	17,339	15,632
Spices	Lb.	2,225	2,535	1,815	1,808
Other*	b/	b/	b/	13,734	52,008
Total other vegetable products*				127,906	173,942
TOTAL VEGETABLE PRODUCTS*				3,700,628	3,689,237
TOTAL AGRICULTURAL EXPORTS					
				4,202,336	4,195,037
TOTAL NONAGRICULTURAL EXPORTS					
				12,757,530	13,127,116
TOTAL EXPORTS, ALL COMMODITIES					
				16,959,866	17,322,153

* Includes food exported for relief or charity by individuals and private agencies.

^{a/} Preliminary.

^{b/} Reported in value only.

^{c/} Excludes the number of "other hides and skins," reported in value only.

^{d/} Less than 500.

Table 7.-- U.S. agricultural imports for consumption: Quantity and value by commodity, April 1961 and 1962

Commodity imported SUPPLEMENTARY	Unit	April			
		Quantity		Value	
		1961	1962	1961	1962
ANIMALS AND ANIMAL PRODUCTS:				1,000	1,000
Animals, live:		Thousands	Thousands	dollars	dollars
Cattle, draftable	No.	72	116	5,208	9,131
Cattle, free (for breeding)	No.	2	2	542	584
Horses	No.	b/	b/	149	362
Poultry, live	c/	c/		10	25
Other	c/	c/		39	53
Total animals, live				5,948	10,155
Dairy products:					
Butter	Lb.	34	59	17	30
Casein or lactarene	Lb.	7,964	6,850	1,359	1,145
Cheese -					
Blue-mold	Lb.	289	361	139	182
Cheddar	Lb.	240	278	75	93
Edam and Gouda	Lb.	669	475	281	206
Pecorino	Lb.	1,278	1,266	764	633
Swiss	Lb.	1,139	1,299	667	720
Other	Lb.	3,006	2,732	1,028	983
Total cheese	Lb.	6,621	6,411	2,954	2,817
Milk, dried or malted	Lb.	100	54	11	4
Other	c/	c/	b/		1
Total dairy products				4,341	3,997
Hides and skins, raw (except furs):					
Calf skins	Lb.	284	516	170	337
Cattle hides	Lb.	704	1,910	126	452
Goat and kid skins	Lb.	1,973	2,623	1,214	1,520
Sheep and lamb skins	Lb.	7,216	3,645	2,754	1,613
Other d/	Lb.	2,612	2,977	1,178	1,626
Total hides and skins, raw	Lb.	12,789	11,671	5,442	5,548
Meat and meat products:					
Beef and veal -					
Fresh, chilled, or frozen	Lb.	46,525	55,921	16,945	17,400
Other	Lb.	6,968	5,444	2,497	2,025
Total beef and veal	Lb.	53,493	61,365	19,442	19,425
Mutton, goat, and lamb	Lb.	9,344	6,232	2,317	1,161
Pork -					
Fresh, chilled, or frozen	Lb.	2,638	3,282	1,003	1,195
Hams and shoulders, canned cooked	Lb.	8,179	10,159	6,252	7,703
Other	Lb.	1,801	2,802	1,171	1,541
Total pork	Lb.	12,618	16,243	8,426	10,439
Sausage casings	Lb.	1,182	c/	939	1,064
Other (incl. meat extracts)	Lb.	3,893	7,334	1,679	2,095
Total meat and products (ex. poultry)	Lb.	80,530		32,803	34,184
Poultry products:					
Eggs, dried, frozen, otherwise preserved	Lb.	0	b/	0	b/
Eggs in the shell	Doz.	55	64	51	72
Poultry meat	Lb.	6	5	20	6
Total poultry products				71	78
Wool, unmf. (except free in bond):					
40's to 44's	g.Lb.	256	444	144	235
44's to 56's	g.Lb.	1,233	1,594	694	879
Finer than 56's	g.Lb.	9,379	11,796	5,495	7,212
Other wools	g.Lb.	1,712	1,834	2,016	1,394
Total wool, unmf.	g.Lb.	12,580	15,668	8,349	9,720
Other animal products:					
Bones, hoofs, and horns, unmf.	L.Ton	7	6	448	360
Bristles, sorted, bunched, or prepared ..	Lb.	227	189	841	591
Fats, oils, and greases, edible	Lb.	180	125	16	56
Fats, oils, and greases, inedible	c/	c/		48	45
Feathers, crude	Lb.	77	193	173	366
Gelatin, edible	Lb.	419	630	247	335
Hair, unmanufactured	Lb.	626	519	370	467
Honey	Lb.	750	691	79	74
Other	c/	c/		915	821
Total other animal products				3,137	3,115
TOTAL ANIMALS AND ANIMAL PRODUCTS				60,091	66,797

Continued -

Table 7.-- U.S. agricultural imports for consumption: Quantity and value by commodity, July-April 1960-61 and 1961-62

Commodity imported SUPPLEMENTARY	Unit:	July-April a/			
		Quantity		Value	
		1960-61	1961-62	1960-61	1961-62
ANIMALS AND ANIMAL PRODUCTS:				1,000	1,000
Animals, live:		Thousands	Thousands	dollars	dollars
Cattle, dutiable	No.	558	1,049	48,764	97,026
Cattle, free (for breeding)	No.	15	15	5,125	5,241
Horses	No.	3	2	3,864	3,711
Poultry, live	c/			59	110
Other	c/			826	770
Total animals, live				58,638	106,858
Dairy products:					
Butter	Lb.	733	741	344	336
Casein or lactarene	Lb.	73,795	82,435	13,772	14,737
Cheese -					
Blue-mold	Lb.	3,395	3,226	1,580	1,565
Cheddar	Lb.	2,065	1,535	607	503
Edam and Gouda	Lb.	5,698	5,544	2,390	2,402
Pecorino	Lb.	13,853	13,666	8,443	7,731
Swiss	Lb.	12,952	13,965	7,073	7,727
Other	Lb.	23,851	23,033	9,729	9,626
Total cheese	Lb.	61,814	60,969	29,822	29,554
Milk, dried or malted	Lb.	1,763	1,709	151	131
Other	c/		c/	b/	28
Total dairy products				44,089	44,786
Hides and skins, raw (except furs):					
Calf skins	Lb.	4,568	4,434	2,340	2,649
Cattle hides	Lb.	10,583	18,626	1,615	3,601
Goat and kid skins	Lb.	20,325	21,574	13,981	12,825
Sheep and lamb skins	Lb.	41,600	49,196	17,735	22,013
Other d/	Lb.	24,265	29,553	10,992	15,421
Total hides and skins, raw	Lb.	101,341	123,383	46,663	56,517
Meat and meat products:					
Beef and veal -					
Fresh, chilled, or frozen	Lb.	358,612	589,631	127,962	192,377
Other	Lb.	63,800	77,692	22,374	28,479
Total beef and veal	Lb.	422,412	667,323	150,336	220,856
Mutton, goat, and lamb	Lb.	44,637	55,091	10,821	11,411
Pork -					
Fresh, chilled, or frozen	Lb.	28,602	33,942	11,327	12,453
Hams and shoulders, canned cooked	Lb.	92,967	101,888	70,616	75,935
Other	Lb.	17,996	21,268	12,389	12,742
Total pork	Lb.	139,565	157,098	94,332	101,130
Sausage casings	Lb.	13,538	c/	10,735	11,496
Other (incl. meat extracts)	Lb.	29,444	53,916	13,180	17,002
Total meat and products (ex. poultry)	Lb.	649,596		279,404	361,895
Poultry products:					
Eggs, dried, frozen, otherwise preserved	Lb.	42	5	49	5
Eggs in the shell	Doz.	4,183	1,153	1,694	548
Poultry meat	Lb.	144	304	185	440
Total poultry products				1,928	993
Wool, unmf. (except free in bond):					
40's to 44's	g.Lb.	1,781	3,603	1,032	1,956
44's to 56's	g.Lb.	7,905	11,763	4,679	6,782
Finer than 56's	g.Lb.	71,585	108,400	43,181	66,263
Other wools	g.Lb.	12,971	17,000	16,049	16,578
Total wool, unmf.	g.Lb.	94,242	140,766	64,941	91,579
Other animal products:					
Bones, hoofs, and horns, unmf.	L.Ton	49	54	3,020	3,438
Bristles, sorted, bunched, or prepared ..	Lb.	2,841	2,269	8,086	6,366
Fats, oils, and greases, edible	Lb.	1,470	1,492	792	739
Fats, oils, and greases, inedible	c/		c/	310	364
Feathers, crude	Lb.	1,704	1,560	2,630	3,128
Gelatin, edible	Lb.	6,436	4,880	3,025	2,460
Hair, unmanufactured	Lb.	7,903	9,771	5,147	6,009
Honey	Lb.	11,594	5,621	1,152	725
Other	c/		c/	7,559	7,619
Total other animal products				31,721	30,848
TOTAL ANIMALS AND ANIMAL PRODUCTS				527,384	693,476

Continued -

Table 7. -- U.S. agricultural imports for consumption: quantity and value by commodity, April 1961 and 1962 - Continued

Commodity imported SUPPLEMENTARY	Unit	April a/			
		Quantity		Value	
		1961	1962	1961	1962
VEGETABLE PRODUCTS:					
Cotton, unmanufactured (480 lb.):		Thousands	Thousands	dollars	dollars
Cotton	Bale:	14	4	2,005	401
Linters	Bale:	15	17	340	531
Total cotton and linters	Bale:	29	21	2,345	932
Fruits and preparations:					
Apples, green or ripe (50 lb.)	Bu.:	77	46	342	200
Berries	Lb.:	9,409	9,559	1,190	1,247
Cherries	Lb.:	1,027	602	245	143
Dates	Lb.:	1	b/	b/	b/
Figs	Lb.:	4,115	3,092	306	227
Grapes (40 lb.)	Cu.Ft:	157	264	442	700
Melons	Lb.:	44,117	45,748	1,931	1,826
Olives in brine	Gal.:	960	896	1,333	1,396
Oranges, mandarin, canned	Lb.:	3,547	4,319	648	821
Pineapples, canned, prepared or preserved	Lb.:	6,689	7,857	825	916
Pineapple juice	Gal.:	453	260	457	229
Other	c/	c/		1,171	1,382
Total fruits and preparations				8,890	9,087
Grains and preparations:					
Barley grain (48 lb.)	Bu.:	680	611	855	884
Berley malt	Lb.:	12,258	14,243	667	797
Corn grain (56 lb.)	Bu.:	80	180	275	265
Oats grain (32 lb.)	Bu.:	162	97	120	132
Rice	Lb.:	221	5,051	14	268
Rye grain (56 lb.)	Bu.:	250	4	264	6
Wheat grain for domestic use (60 lb.)	Bu.:	620	681	1,049	1,078
Wheat flour	Lb.:	103	60	6	1
Other	c/	c/		600	730
Total grains and preparations				3,850	4,161
Nuts and preparations:					
Almonds	Lb.:	14	15	7	8
Brazil nuts	Lb.:	2,171	431	401	108
Cashew nuts	Lb.:	5,090	5,179	2,299	1,957
Coconut meat, fresh, frozen, or prepared	Lb.:	5,054	4,809	601	523
Pistache nuts	Lb.:	1,163	2,560	627	1,016
Other	c/	c/		598	366
Total nuts and preparations				4,533	3,978
Oilseeds and products:					
Oils, edible and ined. (ex. essential) -					
Cacao butter	Lb.:	725	1,871	362	904
Carnauba wax	Lb.:	1,356	626	889	372
Castor oil	Lb.:	7,465	6,997	884	785
Coconut oil	Lb.:	6,686	17,898	669	1,635
Olive oil, edible	Lb.:	5,722	5,093	1,380	1,306
Palm oil	Lb.:	7,517	4,022	693	379
Palm kernel oil	Lb.:	6,551	6,938	728	704
Tung oil	Lb.:	0	2,395	0	707
Other	Lb.:	1,946	9,196	369	1,411
Total oils, etc. (ex. essential)	Lb.:	37,968	55,036	5,974	8,203
Oilseeds -					
Copra	Lb.:	45,471	30,464	3,025	1,906
Sesame seed	Lb.:	5,804	2,504	537	326
Other	c/	c/		175	223
Total oilseeds				3,837	2,455
Protein meal (oilcake and meal)	Lb.:	13,496	13,860	299	347
Total oilseeds and products				10,110	11,005
Sugar and related products:					
Cane sugar	S.Ton:	229	341	25,578	38,152
Molasses unfit for human consumption	Gal.:	25,475	28,289	2,727	2,943
Other	c/	c/		669	874
Total sugar and related products				28,974	41,969
Tobacco, unmanufactured:					
Cigar leaf	Lb.:	832	576	1,289	955
Cigarette leaf, unstemmed	Lb.:	10,449	10,613	7,139	6,437
Other	Lb.:	2,921	2,756	1,211	1,091
Total tobacco, unmf.	Lb.:	14,202	13,945	9,639	8,483

Continued -

Table 7.-- U.S. agricultural imports for consumption: Quantity and value by commodity, July-April 1960-61 and 1961-62 - Continued

Commodity imported SUPPLEMENTARY	Unit	July-April a/			
		Quantity		Value	
		1960-61	1961-62	1960-61	1961-62
VEGETABLE PRODUCTS:				1,000	1,000
Cotton, unmanufactured (480 lb.):					
Cotton	Bale:	143	152	24,663	26,844
Linters	Bale:	122	181	2,984	4,929
Total cotton and linters	Bale:	265	333	27,647	31,773
Fruits and preparations:					
Apples, green or ripe (50 lb.)	Bu.:	885	744	4,242	3,364
Berries	Lb.:	44,260	37,659	6,738	5,388
Cherries	Lb.:	14,378	9,487	3,429	2,403
Dates	Lb.:	35,745	32,061	2,952	3,203
Figs	Lb.:	27,813	20,242	2,373	1,826
Grapes (40 lb.)	Cu.Ft:	647	382	1,250	884
Melons	Lb.:	92,915	89,132	4,056	3,651
Olives in brine	Gal.:	12,297	12,491	15,824	18,462
Oranges, mandarin, canned	Lb.:	26,422	34,278	4,940	6,338
Pineapples, canned, prepared or preserved	Lb.:	86,679	95,676	10,073	11,175
Pineapple juice	Gal.:	4,013	3,329	2,868	1,957
Other		c/	c/	11,583	11,363
Total fruits and preparations				70,328	70,014
Grains and preparations:					
Barley grain (48 lb.)	Bu.:	8,298	13,479	10,507	17,264
Barley malt	Lb.:	107,317	122,508	5,769	6,832
Corn grain (56 lb.)	Bu.:	867	975	1,742	1,886
Oats grain (32 lb.)	Bu.:	1,082	948	1,172	1,065
Rice	Lb.:	22,560	18,094	1,026	960
Rye grain (56 lb.)	Bu.:	2,609	743	2,933	818
Wheat grain for domestic use (60 lb.) ...	Bu.:	6,445	4,471	10,462	7,363
Wheat flour	Lb.:	1,993	172	61	8
Other		c/	c/	9,738	9,652
Total grains and preparations				43,410	45,848
Nuts and preparations:					
Almonds	Lb.:	632	449	230	183
Brazil nuts	Lb.:	23,356	28,705	8,068	7,734
Cashew nuts	Lb.:	54,057	48,358	24,429	19,974
Coconut meat, fresh, frozen, or prepared	Lb.:	93,231	100,576	12,905	11,334
Pistache nuts	Lb.:	7,402	10,698	3,697	4,353
Other		c/	c/	8,572	6,273
Total nuts and preparations				57,901	49,851
Oilseeds and products:					
Oils, edible and ined. (ex. essential) -					
Cacao butter	Lb.:	10,132	14,999	5,084	6,911
Carnauba wax	Lb.:	8,999	8,789	6,178	4,842
Castor oil	Lb.:	90,373	107,980	11,509	13,167
Coconut oil	Lb.:	120,772	169,345	13,231	15,989
Olive oil, edible	Lb.:	43,369	46,967	10,764	11,880
Palm oil	Lb.:	40,444	48,892	3,982	4,662
Palm kernel oil	Lb.:	73,854	74,161	9,585	8,233
Tung oil	Lb.:	18,751	22,908	3,645	6,063
Other	Lb.:	37,563	50,246	6,198	8,534
Total oils, etc. (ex. essential)	Lb.:	444,199	544,287	70,176	80,281
Oilseeds -					
Copra	Lb.:	640,381	635,587	45,198	41,120
Sesame seed	Lb.:	19,951	13,783	2,728	1,953
Other		c/	c/	1,763	2,412
Total oilseeds				49,689	45,485
Protein meal (oilcake and meal)	Lb.:	72,553	175,724	1,739	4,081
Total oilseeds and products				121,604	129,847
Sugar and related products:					
Cane sugar	S.Ton:	3,320	3,367	364,767	366,088
Molasses unfit for human consumption	Gal.:	296,672	204,983	25,524	21,390
Other		c/	c/	6,224	5,638
Total sugar and related products				396,515	393,116
Tobacco, unmanufactured:					
Cigar leaf	Lb.:	10,314	10,006	15,420	14,231
Cigarette leaf, unstemmed	Lb.:	100,495	104,680	69,847	67,253
Other	Lb.:	23,419	23,183	10,147	10,229
Total tobacco, unmf.	Lb.:	134,228	137,869	95,414	91,713

Continued -

Table 7.-- U.S. agricultural imports for consumption: Quantity and value by commodity, April 1961 and 1962 - Continued

Commodity imported SUPPLEMENTARY	Unit	April			
		Quantity		Value	
		1961	1962	1961	1962
				1,000	1,000
				dollars	dollars
VEGETABLE PRODUCTS - CONTINUED:					
Vegetables and preparations:					
Canned -					
Mushrooms	Lb.	232	1,464	146	664
Tomatoes	Lb.	7,750	12,715	597	990
Tomato paste and sauce	Lb.	1,390	2,008	154	280
Fresh or dried -					
Beans, dried	Lb.	628	52	59	7
Cucumbers	Lb.	1,476	3,814	78	170
Garlic	Lb.	2,257	2,442	280	411
Onions	Lb.	2,599	7,329	101	285
Potatoes, white	Lb.	7,272	14,449	232	294
Tomatoes, natural	Lb.	34,069	56,552	2,701	4,301
Turnips and rutabagas	Lb.	5,343	5,756	137	114
Pickled vegetables	Lb.	918	1,093	127	161
Tapioca, tapioca flour and cassava	Lb.	22,752	19,025	887	690
Other	c/			1,692	2,541
Total vegetables and preparations				7,191	10,908
Other vegetable products:					
Feeds and fodders (ex. oilcake and meal)	c/			798	774
Hops	Lb.	1,043	378	670	218
Jute and jute butts, unmf.	L.Ton	1	8	553	1,454
Malt liquors	Gal.	1,035	1,147	1,124	1,344
Nursery and greenhouse stock	No.	21,824	12,885	284	238
Seeds, field and garden	c/			1,354	1,717
Spices	Lb.	2,870	3,837	511	717
Wines	Gal.	864	1,126	3,167	4,014
Other	c/			429	562
Total other vegetable products				8,890	11,038
TOTAL VEGETABLE PRODUCTS				84,422	101,561
TOTAL SUPPLEMENTARY AGRI. IMPORTS				144,513	168,358
COMPLEMENTARY					
Bananas	e/			7,401	6,811
Coffee (incl. into Puerto Rico)	Lb.	235,077	247,136	75,825	75,445
Coffee essences, substitutes, etc.	Lb.	425	247	624	334
Cocoa or cacao beans	Lb.	37,932	79,851	19,594	17,203
Cocoa and chocolate, prepared	Lb.	9,075	7,393	1,618	1,090
Drugs, herbs, roots, etc.	Lb.	1,885	4,885	1,079	1,670
Essential or distilled oils	c/			1,464	1,686
Fibers, unmanufactured	L.Ton	10	14	2,438	2,873
Rubber, crude	Lb.	55,067	74,375	13,223	18,476
Silk, raw.....	Lb.	383	389	1,747	1,802
Spices	Lb.	6,907	10,279	2,898	5,000
Tea	Lb.	8,997	11,782	4,554	5,452
Wool, unmf. (free in bond for carpets) ...	G.Lb.	18,271	12,407	9,537	6,423
Other complementary agricultural products	c/			346	350
TOTAL COMPLEMENTARY AGRI. IMPORTS				142,348	144,615
TOTAL AGRICULTURAL IMPORTS				286,861	312,973
TOTAL NONAGRICULTURAL IMPORTS				758,812	1,012,672
TOTAL IMPORTS, ALL COMMODITIES				1,045,673	1,325,645

Table 7.-- U.S. agricultural imports for consumption: Quantity and value by commodity, July-April 1960-61 and 1961-62 - Continued

Commodity imported SUPPLEMENTARY	Unit	July-April ^{a/}			
		Quantity		Value	
		1960-61	1961-62	1960-61	1961-62
		Thousands	Thousands	dollars	dollars
VEGETABLE PRODUCTS - CONTINUED:					
Vegetables and preparations:					
Canned -					
Mushrooms	Lb.	2,447	6,981	1,599	3,837
Tomatoes	Lb.	107,293	140,178	7,795	9,554
Tomato paste and sauce	Lb.	10,322	44,725	1,314	5,512
Fresh or dried -					
Beans, dried	Lb.	6,024	7,005	620	666
Cucumbers	Lb.	46,319	57,440	1,999	2,126
Garlic	Lb.	16,774	14,000	1,750	2,067
Onions	Lb.	42,132	70,997	1,850	3,742
Potatoes, white	Lb.	59,413	62,091	1,772	1,319
Tomatoes, natural	Lb.	192,326	209,697	14,309	15,230
Turnips and rutabagas	Lb.	95,698	93,282	2,537	2,160
Pickled vegetables	Lb.	11,104	12,215	1,544	1,787
Tapioca, tapioca flour and cassava	Lb.	252,267	235,272	9,036	8,171
Other	c/			18,172	20,450
Total vegetables and preparations				64,297	76,621
Other vegetable products:					
Feeds and fodders (ex. silckake and meal).	c/			9,772	9,103
Hops	Lb.	5,161	4,228	3,440	3,276
Jute and jute butts, unmf.	L.Ton	19	48	5,683	10,662
Malt liquors	Gal.	10,188	11,185	11,927	12,954
Nursery and greenhouse stock	No.	516,277	474,354	14,569	13,966
Seeds, field and garden	c/			11,248	15,940
Spices	Lb.	41,252	59,158	6,351	8,488
Wines	Gal.	9,154	11,074	34,711	40,930
Other	c/			4,966	5,389
Total other vegetable products				102,667	120,708
TOTAL VEGETABLE PRODUCTS				979,783	1,009,491
TOTAL SUPPLEMENTARY AGRI. IMPORTS				1,507,167	1,702,967
COMPLEMENTARY					
Bananas	e/			61,225	63,077
Coffee (incl. into Puerto Rico)	Lb.	2,517,254	2,555,004	845,574	799,292
Coffee essences, substitutes, etc.	Lb.	3,573	2,622	6,305	3,606
Cocoa or cacao beans	Lb.	548,691	533,901	132,818	110,512
Cocoa and chocolate, prepared	Lb.	100,778	99,129	21,683	18,522
Drugs, herbs, roots, etc.	Lb.	58,716	60,703	17,262	16,261
Essential or distilled oils	c/			16,414	16,007
Fibers, unmanufactured	L.Ton	111	164	27,525	29,803
Rubber, crude	Lb.	694,841	788,935	210,977	194,226
Silk, raw	Lb.	5,058	5,097	21,961	23,934
Spices	Lb.	58,089	70,511	29,162	29,010
Tea	Lb.	88,810	99,115	43,999	47,384
Wool, unmf. (free in bond for carpets) ...	G.Lb.	164,027	155,775	87,733	81,136
Other complementary agricultural products	c/			5,086	5,749
TOTAL COMPLEMENTARY AGRI. IMPORTS				1,527,724	1,438,519
TOTAL AGRICULTURAL IMPORTS				3,034,891	3,141,486
TOTAL NONAGRICULTURAL IMPORTS				8,427,586	9,679,374
TOTAL IMPORTS, ALL COMMODITIES				11,462,477	12,820,860

a/ Preliminary.

b/ Less than 500.

c/ Reported in value only.

d/ Excludes the weight of "other hides and skins", reported in pieces only.

e/ Quantity reported in pounds beginning January 1, 1962 cannot be compared with bunches reported previously.

Table 8.-- U. S. agricultural exports and imports for consumption: Value by country, July-April 1961-62

Country	Agri- cultural exports	Agricultural imports		
		Total	Supple- mentary	Comple- mentary
	1,000 dollars	1,000 dollars	1,000 dollars	1,000 dollars
Greenland	2	1	1	0
Canada	397,947	175,007	172,051	2,956
Miquelon & St. Pierre Islands	52	0	0	0
<u>Latin American Republics -</u>				
Mexico	47,354	229,064	161,686	67,378
Guatemala	7,619	45,347	3,382	41,965
El Salvador	5,052	25,943	1,182	24,761
Honduras	2,850	22,172	2,580	19,592
Nicaragua	3,533	16,605	7,824	8,781
Costa Rica	4,381	30,748	3,578	27,170
Panama, Republic of	8,732	11,191	579	10,612
Cuba	360	19,929	19,876	53
Haiti	7,665	11,956	4,504	7,452
Dominican Republic	3,315	63,113	38,934	24,179
Colombia	23,028	169,208	6,020	163,188
Venezuela	75,051	12,229	257	11,972
Ecuador	5,432	40,651	3,879	36,772
Peru	21,479	82,539	68,320	14,219
Bolivia	6,710	1,443	1,027	416
Chile	30,474	4,214	3,897	317
Brazil	80,578	422,660	77,436	345,224
Paraguay	4,829	5,106	4,561	545
Uruguay	3,471	17,975	17,859	116
Argentina	2,451	70,452	45,813	24,639
Total Latin American Republics ...	344,364	1,302,545	473,194	829,351
<u>Other Latin America -</u>				
British Honduras	1,969	145	41	104
Canal Zone	649	36	a/	36
Bermuda	4,489	155	114	41
Bahamas	6,472	1,093	1,084	9
Jamaica	9,161	10,182	9,165	1,017
Leeward & Windward Islands	1,463	829	366	463
Barbados	1,863	771	771	0
Trinidad & Tobago	9,239	8,779	6,431	2,348
Netherlands Antilles	7,102	48	3	45
French West Indies	468	6,530	6,510	20
British Guiana	2,835	7,256	7,252	4
Surinam	2,069	666	0	666
French Guiana	37	117	0	117
Falkland Islands	a/	0	0	0
Total Latin America	392,180	1,339,152	504,931	834,221
<u>Europe -</u>				
Iceland	2,701	351	89	262
Sweden	43,590	1,946	1,866	80
Norway	30,749	818	808	10
Denmark	45,008	47,227	46,881	346
United Kingdom	405,742	19,528	13,261	6,267
Ireland	19,944	24,545	23,360	1,185
Netherlands	280,711	65,783	54,992	10,791
Belgium & Luxembourg	106,281	7,697	6,772	925
Unidentified Western Europe b/	6	0	0	0
France	80,865	43,632	38,934	4,698
West Germany	333,937	24,866	22,541	2,325
East Germany	1,008	6	4	2
Austria	17,397	769	688	81

Continued -

Table 8.-- U. S. agricultural exports and imports for consumption: Value by country, July-April 1961-62 - Continued

Country	Agri- cultural exports	Agricultural imports		
		Total	Supple- mentary	Comple- mentary
		1,000 dollars	1,000 dollars	1,000 dollars
Europe, continued -				
Czechoslovakia	2,705	969	885	84
Hungary	474	443	401	42
Switzerland	54,973	11,134	9,602	1,532
Finland	12,339	829	794	35
Estonia	0	0	0	0
Latvia	2,543	0	0	0
Lithuania	0	0	0	0
Poland & Danzig	47,217	28,131	27,973	158
U.S.S.R. (Russia)	5,542	1,308	854	454
Azores	25	78	61	17
Spain	109,640	32,679	31,810	869
Portugal	22,085	3,831	3,275	556
Gibraltar	143	8	a/	8
Malta & Gozo	1,820	437	207	230
Italy	163,322	53,620	51,055	2,565
Free Territory of Trieste	2,311	5	4	1
Yugoslavia	90,232	7,418	6,847	571
Albania	0	70	0	70
Greece	18,424	24,547	24,201	346
Rumania	15	371	277	94
Bulgaria	6	930	677	253
Turkey	79,472	47,873	46,704	1,169
Cyprus	16	183	108	75
Total E.E.C. countries c/	965,116	195,598	174,294	21,304
Total Europe	1,981,243	452,032	415,931	36,101
Asia -				
Syrian Arab Republic	15,037	2,960	605	2,355
Lebanon	4,891	2,934	1,490	1,444
Iraq	4,766	6,334	2,116	4,218
Iran	13,584	12,766	11,607	1,159
Israel	48,489	1,003	893	110
Palestine	5	0	0	0
Jordan	7,364	0	0	0
Kuwait	3,426	0	0	0
Saudi Arabia	6,182	10	0	10
Other Arabia Peninsula States	882	711	214	497
Aden	209	79	55	24
State of Bahrain	864	0	0	0
Afghanistan	1,857	508	410	98
India	195,122	77,042	50,474	26,568
Pakistan	59,749	22,092	14,985	7,107
Nepal	6	0	0	0
Ceylon	6,495	25,570	32	25,538
Burma	628	345	345	0
Thailand	12,901	28,937	7,757	21,180
Viet-Nam	22,908	4,027	107	3,920
Laos	94	0	0	0
Cambodia	722	3,134	25	3,109
Federation of Malaya	5,266	69,802	1,011	68,791
Singapore, Col. of; British Borneo	4,377	11,667	25	11,642
Indonesia, Republic of	26,525	73,089	3,377	69,712
Republic of the Philippines	60,535	189,393	181,637	7,756
Macao	427	0	0	0
Other Portuguese Asia	90	661	658	3
Other Southern & Southeastern Asia	29	1	0	1
China (including Manchuria)	0	0	0	0

Continued -

Table 8.-- U. S. agricultural exports and imports for consumption: Value by country, July-April 1961-62 - Continued

Country	Agri-	Agricultural imports		
	cultural	Total	Supple-	Comple-
	exports		mentary	mentary
	1,000	1,000	1,000	1,000
	dollars	dollars	dollars	dollars
<u>Asia, continued</u>				
Outer Mongolia	0	3,026	3,026	0
North Korea	0	a/	a/	0
Korea, Republic of	56,951	2,102	754	1,348
Hong Kong	37,807	1,845	1,602	243
Taiwan	60,282	28,671	25,817	2,854
Japan	411,273	39,304	16,148	23,156
Nansei & Nanpo Islands	11,140	a/	a/	0
Total Asia	1,080,883	608,013	325,170	282,843
<u>Australia & Oceania -</u>				
Australia	27,628	144,290	143,842	448
New Guinea	211	480	0	480
New Zealand & Western Samoa	5,043	106,688	77,066	29,622
British Western Pacific Islands	81	17	2	15
French Pacific Islands	776	245	2	243
Trust Terr. of the Pacific Islands .	573	1,492	1,492	0
Total Australia & Oceania	34,312	253,212	222,404	30,808
<u>Africa -</u>				
Morocco	48,928	1,933	1,116	817
Algeria	26,103	73	51	22
Tunisia	31,370	304	298	6
Libya	2,174	1	1	0
United Arab Republic (Egypt)	126,678	15,273	15,161	112
Sudan	452	553	543	10
Canary Islands	3,736	24	24	0
Other Spanish Africa	9	1	1	a/
Federal Republic of Cameroun	462	5,508	97	5,411
Other Western Equatorial Africa	46	559	9	550
Other Western Africa	5,663	28,995	51	28,944
Ghana	9,278	43,970	1	43,969
Federation of Nigeria	6,112	32,163	2,792	29,371
British West Africa & Sierra Leone .	357	589	58	531
Madeira Islands	459	36	36	0
Angola	1,211	25,007	267	24,740
Other Western Portuguese Africa	119	926	0	926
Liberia	3,793	20,794	1	20,793
Rep. of the Congo; & Ruanda-Urundi .	11,576	32,524	6,629	25,895
Somali Republic	1,003	210	158	845
Ethiopia	2,745	20,161	1,497	18,664
French Somaliland	205	311	24	287
Seychelles & Dependencies	9	61	0	61
Mauritius & Dependencies	159	1,176	1,176	0
British East Africa & Tanganyika ...	8,176	36,937	726	36,211
Mozambique	1,838	2,949	487	2,462
Malagasy Republic	25	10,714	277	10,437
Republic of South Africa	15,245	31,270	30,547	723
The Fed. of Rhodesia & Nyasaland ...	487	1,047	451	596
Total Africa	308,418	314,069	62,479	251,590
Total all countries	4,195,037	3,141,486	1,702,967	1,438,519

a/ Less than \$500.

b/ Not available by countries.

c/ The European Economic Community (Common Market) includes the Netherlands, Belgium and Luxembourg, France, West Germany, and Italy.

END

DATE

FILMED

7-9-79

NTIS