



AgEcon SEARCH
RESEARCH IN AGRICULTURAL & APPLIED ECONOMICS

The World's Largest Open Access Agricultural & Applied Economics Digital Library

This document is discoverable and free to researchers across the globe due to the work of AgEcon Search.

Help ensure our sustainability.

Give to AgEcon Search

AgEcon Search

<http://ageconsearch.umn.edu>

aesearch@umn.edu

*Papers downloaded from **AgEcon Search** may be used for non-commercial purposes and personal study only. No other use, including posting to another Internet site, is permitted without permission from the copyright owner (not AgEcon Search), or as allowed under the provisions of Fair Use, U.S. Copyright Act, Title 17 U.S.C.*

Social Advertising Using Facebook:

Some Experimental Results Using Duck Dynasty Ads to Promote Rural Tourism in Mississippi

Working Paper 2323-14

Department of Agricultural Economics
Mississippi State University

Selected Paper for presentation at the 2014 Southern
Agricultural Economics Association Annual Meeting,
February 1-4, 2013, Dallas, TX

James Barnes, Ph.D.

Assistant Extension Professor

Department of Agricultural Economics
Mississippi State University

Email: barnes@agecon.msstate.edu

(662) 325-1796

Kalyn Coatney, Ph.D.

Assistant Professor

Department of Agricultural Economics
Mississippi State University

Email: coatney@agecon.msstate.edu

(662) 325-7983

Social Advertising Using Facebook:

Some Experimental Results Using Duck Dynasty Ads to Promote Rural Tourism in Mississippi

Abstract:

In this paper, we explain how the Mississippi Bricks to Clicks Extension Program assisted in the promotion of a rural tourism event using Facebook paid advertisements. We estimate a binomial regression model to explore the factors that affect business page likes. Implications for future research and Extension programming are discussed.

Key Words: Facebook economics, rural tourism, social advertising, Mississippi Bricks to Clicks, rural business

JEL: L26, M31, M37

Selected Paper for presentation at the 2014 Southern
Agricultural Economics Association Annual Meeting,
February 1-4, 2013, Dallas, TX

Introduction

Social advertising has received significant attention since the introduction of innovations such as Facebook, Twitter, and other social media platforms. For example, Facebook now has over 1.1 billion followers so it stands to reason that social advertising could be beneficial to many organizations, institutions, and businesses of any type. And with the increase in mobile users via smartphones (e.g. iPhones, Android and Windows), many mobile advertising options also exist. For example, Facebook offers advertising aimed at the type of device a user may be using, both desktop and mobile platforms. This has provided access to an enormous, online market of potential customers that can be reached through paid advertisements.

But much remains unknown about the use of social media platforms and what we call “the profit gap.” The profit gap is the gap between engaging with fans on social media and actual sales of products or services. For example, Facebook businesses can establish a page for their respective businesses. They can also use paid advertisement campaigns to boost their posts, increase the number of page likes, and much more. But how does the acquisition of more likes translate into more sales? This is a critical assumption about using social media; by connecting with potential customers, the probability of selling a product or service increases, other things equal. This is a testable hypothesis provided a business owner has data regarding page likes and sales. However, to our knowledge, that kind of study has not been conducted yet.

However, the first step in understanding more about the profit gap is to understand the factors that drive the acquisition of more Facebook page likes. Two options exist. First, a business owner can do his/her own engagement with fans through promotions to provide incentives for fans to share and like posts with their respective friends. This increases the probability of a business owner’s produce/service being seen by others in these friend networks.

Second, a business owner can choose to pay Facebook for marketing assistance through the promotion of posts, promotion of his/her website, etc. One paid advertisement option is increasing the number of likes for a business page. In this paper, we focus on this last option and use data from a natural experiment to understand the relationship between page likes and other factors we believe to be economically important. The paid advertisement campaign was conducted from September 12 to October 12, 2013 for the Woodville Deer and Wildlife Festival Facebook page. The annual event was held in Woodville, Mississippi starting on October 12. The Wilkinson/Woodville County Chamber of Commerce inquired about using Facebook advertising after participating in a new Extension program called Mississippi Bricks to Clicks. We worked with chamber and Facebook to craft four advertisements. The 2013 event was different than past events in a special way: The chamber had decided to bring A&E's Duck Dynasty Star John Godwin to the event from 11 a.m. to 2 p.m. on the day of the event. As a result, each of the four advertisements created within Facebook were structured using some information about the presence of Duck Dynasty.

This paper has six parts. First, we review the literature on social advertising and focus on its growth in the larger social media networks such as Facebook, Twitter, and others. Within this literature, we examine the types of social advertisement experiments conducted and highlight the lessons learned from recent studies. Next, we explain the natural experiment that took place within Facebook to market the presence of Duck Dynasty at the annual Deer and Wildlife Festival in Woodville, Mississippi. We provide summary statistics and effectiveness measures collected by Facebook during each of the campaigns. We unearth the most successful mobile and desktop campaigns used to gain more likes. Next, we describe the conceptual model we developed to understand the relationship between page likes and other important factors. We

then explain the data, empirical model, and results. We conclude by discussing future research plans and how this empirical process can inform about the design and redesign of Extension programs, and in this case, the Mississippi Bricks to Clicks Program. To our knowledge, this represents the first paid advertising experiment conducted in Facebook with the promotion of a rural event in mind where the goal was to model page likes across natural experiments and considering both paid and organic advertisement effects. We suggest several lessons learned that can be used by business owners conducting Facebook advertisements, social media consultants, researchers and Extension economists conducting social media Extension programs around the country.

The Social Advertising Literature

The social advertising literature is vast and it is well beyond the scope of this paper to summarize all the literature. Instead, we focused on social networks, Facebook experiments and any related studies in the field of agricultural food systems, value-added businesses and small business development. Using Mississippi State University's online library, we located 35 articles, reports and industry studies that related to one of our three areas of interest. MSU's library aggregates its databases, digital collections, and online catalog, and also has EBSCO as its discovery search tool, which contains more than 300 full text and secondary aggregated databases. Additional queries using the key terms were also carried out using the search engines "Google," "Google Scholar," and "Bing." The results dated in range from 1997-2013.

The initial category of searches were for a concept we defined as "social media marketing" and aimed to supplement the introduction to the research topic; it provided articles that could serve as a general overview of advertisements through the use of social media. These searches were conducted using key words such as "social media advertising," "online social

advertising,” “social media marketing industry,” “social media advertising and business,” “social media effectiveness,” and “online advertising.” 9 of the 35 titles found were included in this category.

For the second category of searches, we limited our focus strictly to social media advertising and/or marketing through Facebook. This concept was deemed as “Facebook advertising,” and the targeted terms used in searching were: “Facebook advertising and effectiveness,” “Facebook and social network advertising,” “Facebook and small business” “company targeted advertising with Facebook,” “Facebook and business,” and “Facebook experiment.” Particular attention was given to studies involving experiments with ads in Facebook. In total, 16 of the 35 titled articles were included under this concept.

In an effort to refine the topic of this synthesis even further, the third category of searches carried out was exclusive to the use of Facebook as it relates to the food marketing and/or tourism industries. This concept was termed with the phrase “Facebook advertising and food marketing.” Keywords included in the searches for literature relevant to this topic include: “Facebook food marketing,” “Facebook and food,” “social media and tourism,” “social media and event promotion,” and “Facebook and tourism.” Of the 35 titled articles found, 10 were contained within this categorical concept. These 10 studies are the most relevant to our work within Facebook advertising, rural tourism, and small business development.

Facebook advertising experimentation may be required for each organization, institution and business to learn what works within Facebook. That was the conclusion drawn by Chan (2012) after conducting an experiment for an academic library in Hong Kong. He also concluded that the use of social messaging was an effective component of successfully marketing an academic library. He noted that while he only studied a Facebook advertising experiment from

one institution's perspective, his work provided a basis for future research as other academic libraries may consider using Facebook for marketing purposes. But other studies have been more business focused and have answered some part of the "profit gap" issue.

For example, studies by Wang and Chang (2013), Forrester (2012), Haigh et al (2012) and Lee et al (2012) explore the connection between Facebook page engagement with users and the impact those engagements have on the intent to purchase products or services. Wang and Chang (2013) found that production information shared with customers who had strong friendships (ties) increased the probability of purchasing the product or service. Forrester (2012) points to the fact that fans of brand on Facebook are far more likely to purchase the product or service offered as compared to non-fans. Haigh et al (2012) concluded an organization should employ the corporate social responsibility communication strategy when engaging with fans to boost public value of an organization. Further, regardless of the strategy employed, interacting with fans contributes to an enhanced value associated with organizational-public relationships, corporate responsibility, attitudes, and purchase intent. Finally, Lee et al (2012) found that when fans have an emotional attachment or interaction with an event Facebook page, fans perceive greater value from social marketing.

In concert, these studies have attempted to bridge the gap between the use of social media and its usefulness in business to make profits. Although these early studies point to the fact that greater engagement on a Facebook page increases the probability of purchase intent, much remains unknown about the use of social media marketing and business prosperity because of it. Simply put, we lack empirical evidence of the connection. In this paper, we take an initial step to bridge this gap by developing a conceptual model that explains the factors that drive the acquisition of Facebook likes, a necessary step that is a must if actual purchases of products

and/or services are to occur at a later time period. In what follows, we identify the role of organic and paid advertisement engagements in a Facebook advertising conceptual model, explain the natural experiment involving Duck Dynasty in Woodville, Mississippi, and estimate a binomial regression model that identifies the key factors that drove the acquisition of likes during this natural experiment.

The Duck Dynasty Experiment

Starting in the fall of 2013, we launched a new community and economic development Extension program at Mississippi State called [Mississippi Bricks to Clicks](#). The purpose of the program is take a group of small businesses and assist them with launching their own social media strategies which typically requires the creation of new social media accounts and learning how to use each social media platform. The program also teaches business owners how to use iPads and productivity applications to manage their businesses more efficiently. In concert, the program provides a dose of technology and knowledge about how to use social media to increase business profits.

From mid-June until the first of September 2013, six businesses in Woodville, Mississippi participated after the Wilkinson/Woodville County Chamber of Commerce took the lead to have the program implemented in Woodville. The Executive Director Polly Rosenblatt played an important part in having the pilot program in Woodville. During the next several weeks, business owners learned about iPad applications and how to manage their newfound social media tools, namely Facebook. We decided to focus exclusively on Facebook at the request of the businesses. Each business received technical assistance to develop a new Facebook page. At the end of the classes, Polly Rosenblatt requested that we also assist with using

Facebook advertising to help promote their annual Deer and Wildlife Festival (DWF) held in Woodville. We agreed. Admittedly so, this was the first time we had engaged directly with Facebook to create specific advertisements that would feature the main attraction for 2013's festival: A&E Duck Dynasty star John Godwin. In what follows, we describe the advertisements created and document various aspects which might be useful for other business owners to learn.

Duck Dynasty's John Godwin and the Deer Festival

We began by educating the chamber about the various options to promote their DWF Facebook business page: <https://www.facebook.com/WoodvilleFest>. With input from the chamber, we decided to promote the page to increase its number of likes. We consulted Facebook's website and learned of a new program, [Start to Success](#). The program provides direct technical assistance four times over the course of a thirty day campaign. The minimum advertisement investment recommended equaled \$1,500 for a thirty day period. The chamber approved. The next step was to create specific advertisement messages.

To create messages, we consulted the social advertising literature and located a paper by Tucker (2010). We followed some of the structure for advertisements found in Tucker (2010). Other details were provided by an advertising agent at Facebook. Figures 1-3 shows the images of John Godwin that were used across four campaigns for mobile and desktop advertisements. Figures 4-6 show the actual advertisements created using the various images. But this was not a typical experiment where a set of advertisements were selected and then the advertisements were allowed to run to a completed state over some time period. Instead, this process represented a natural experiment. At the end of week one, we had our first phone conference call with Facebook to optimize our ads across both platforms. We did this each week. In some cases, we

were recommended to change photo images to increase the number of impressions gained for the advertisements. Facebook defines impressions as number of times an ad was viewed. We changed the desktop campaign as noted in the figures. The mobile campaign was very successful and was never changed throughout the thirty days. Finally, we conducted a promotional giveaway on October 7th: We gave away two free tickets to see John Godwin at the event. Fans were asked to share and like the post. The post reached more than 20,000 people, 40 comments, 280 shares and 345 likes within nine hours of posting (Figure 7).

Table 2 shows the messages and targeted area for the DWF page advertisements. The target region was selected as those individuals 18 and older, living within 150 miles of Woodville, Mississippi, who had a strong affinity for having liked similar pages were discussing various topics on Facebook related to the DWF event (targeted using hashtags). We used four similar, yet slightly different messages. We used the words “Don’t Miss”, “Fun Times”, “Eat Alligator” and “Attend” as the call to action wording in our advertisements. Each of the first three advertisements associated “Don’t Miss”, “Fun Times”, and “Eat Alligator” with Duck Dynasty’s John Godwin (Table 3). Only one advertisement used the statement “with your friends”: the fourth advertisement in Table 2.

With these advertisements in place, we began this natural experiment on September 12th with an ending date of October 12th, the day of the DWF event in Woodville. At the end of week one, we visited via conference call with our Facebook ad agent. She recommended that, based on early performance, we stop running some ads and keep the high performing ones and run them another week. At the end of each week, we would “optimize” advertisements – the process of removing advertisements that were underperforming and shifting our daily budget of \$25 for mobile and \$25 to the remaining advertisements. This process required that we change the

desktop image twice from the original image of John Godwin. Mobile remained in place throughout the entire thirty days because of its high performance.

Table 3 shows the experimental results for each advertisement. Desktop 1, 2 and 3 and mobile results are provided. Desktop 2 gained the highest number of impressions and social impressions among desktop advertisements. And although mobile only had 100,366 impressions, it led all advertisements in the number of clicks, yet trailed all others in the number of social clicks (see table 4 for a detailed definitions for Facebook advertisement performance metrics reported herein). Notice that Desktop 2 received more impressions and this campaign used a picture of John Godwin without camouflage face paint. Perhaps that image resonated with users more than Desktop 1 (with camouflage) or Desktop 3 (the event logo).

Experimental Performance

Table 5 shows the advertisement performance across platforms. Because of the “optimize” process Facebook used, the advertisements had different durations; the mobile advertisement ran the longest. Across all advertisements, the average cost of an ad was \$388, gained 1,560 actions, 1,227 unique clicks, 883 page likes, lasted 16 days and gained 50 likes per day. Given the goal of increasing the number of pages likes, the advertisements performed well, garnering some 3,532 page likes. We also monitored the organic likes gained during this time period. The page began the campaign with approximately 1,200 page likes, gained 3,532 page likes from the Facebook advertisements and another 1,000 likes from organic engagement. The page increased from 1,200 (pre-campaign) to 5,500 likes by the day of the event, October 12th – a total gain of 4,300 likes in only a 30 day period. Table 4 also shows that among all advertisements, mobile outperformed all others by generating 58 percent (2,031/3,532) of all page likes. A total of \$1,554 was spent during the experiment across all campaigns. The average

cost per campaign ranged from \$0.37 (Mobile) to \$0.62 (Desktop 3) (Figure 8). Figures 9 and 10 showed again that mobile was king of all advertisements. Finally, we show the actions across all ads by city. Woodville led all cities with more than 8,000 actions of engagement during the campaign. Other cities within the 150 mile radius are also shown.

Conceptual Model

The goal of the Facebook advertisement campaign was to increase the number of page likes for the DWF Facebook page. To that end, page likes certainly did increase. But which factors contributed to this process of gaining likes? If average cost ranged from \$0.37 to \$0.62, then what was the marginal cost of acquiring an additional like? In what follows, we identify a conceptual model that begins to answer some of these questions. As we noted before, we believe the first step in understanding the “profit gap” is to first understand the relationship between page likes gained during a paid advertisement campaign (or multiple campaigns) and intuitive factors that affect those acquisitions.

We hypothesize that the following relationship holds for the key factors driving page likes:

$$\mathbf{Page\ Likes = F (Campaigns, Organic\ advertising, Paid\ advertising, time)} \quad (1).$$

We hypothesis that various campaigns will have either adverse or a stimulating effect on page likes. For instance, mobile devices are used more during leisure than work hours. Therefore, we expect impressions of the Deer Festival to be higher with mobile devices and subsequently page likes.

Generally speaking, we hypothesis that organic and paid advertising are significant factors that drive the acquisition of page likes. Organic advertising is what a business owner does

with his/her own engagement with fans through making posts and status updates which include tagging fans in posts and pictures, and also reciprocating likes and comments on all post engagements. Often, business owners provide a giveaway of some coupon or some prize to gain greater access to people within Facebook. The rules of the game are simple: Share and like this status to be entered into the contest drawing for two free tickets – the very thing we did in the Duck Dynasty event in Woodville. An increase in shares also increases the probability of friends seeing friends engaged with the DWF page, for example. And that bodes well for greater impressions, actions, clicks and eventually page likes, perhaps.

Paid advertisements can be targeted to gain new page likes, which first materialize as greater impressions, social impressions, actions, and eventually, page likes. Both actions by a business owner are supposed to increase the probability of gaining more page likes, other things equal. Hence, both organic and paid advertising are hypothesized to have a positive relationship with page likes, other things equal.

Data Analyzed

The data for this natural experiment represented four treatments that were conducted during a 30 day period when Facebook advertisements were used to promote the DWF page by way of gaining new likes from non-fans. From September 12th to October 12th, four campaigns were conducted (Desktop 1, Desktop 2, Desktop 3, and Mobile). This provided 63 observations of daily Facebook advertisement performance for analysis (Table 6). Daily page likes ranged from 4 to 117. Daily shares of posts made on the DWF Facebook page ranged from 0 to 169. The average daily amount spent was \$24.66; the range was between \$6 and \$25. The four campaigns were structured as T1DeskCamo (Desktop 1), T2DeskNoCamo (Desktop 2), T3 Event Logo

(Desktop 3) and T4Mobile (Mobile) to represent four alternative treatments in the natural experiment.

Empirical Model and Estimation

The empirical model we estimate is generally described as:

$$\text{Page Likes} = F(\text{Campaign treatment}, \text{Daily Shares}, \text{Spent}, \text{time}) \quad (2).$$

The basis of comparison for the campaign treatment impacts is the mobile device. We use daily shares as a variable to proxy organic advertisement and the spent variable to proxy paid advertisement. In both cases, as people share (daily) we would expect that because of increased impressions and subsequent actions on the business page (social networking) that the probability of acquiring page likes would also increase, other things equal. Also, the spent variable was chosen to represent the investment into paid Facebook advertisement; the more a business owner spends, the more he/she expects to gain Facebook page likes, other things equal. Spent squared and daily shares squared were variables included to test for non-linearity regarding organic and paid advertisement marketing. The time variable is included to account for any unexplained trends.

The assumptions of ordinary least squares estimation require the dependent variable to be continuous and normally distributed (McCullagh and Nelder, 1989). Page Likes, the dependent variable of the model, is discrete count data. Therefore, our strategy is to estimate model (2) using a generalized linear model. There are many choices of general linearized models such as normal, gamma, Poisson and negative binomial. We elect to estimate the negative binomial as it can be derived from the Poisson when the mean parameters are not equal for all members within the sample population. In our case, the mean population of Page Likes is not identical across the

treatments (figure 10). Furthermore, the negative binomial naturally accounts for overdispersion. Overdispersion is greater than expected volatility than would otherwise be expected given the assumed distribution. Overdispersion arises, among other things, when i) the counts are not independent, and ii) the experimental conditions are not perfectly under the control of the experimenter. Though parameter estimates are unaffected, inference tests are less reliable. Accounting for overdispersion requires the covariance matrix to be inflated by the degree of overdispersion. Given the data are collected across time and not conducted in a laboratory setting, overdispersion is expected.

Results

The results are provided in table 7. The model as a whole is significant in explaining the variation of page likes. The parameter related to overdispersion was nearly zero indicating the counts were nearly independent, and the apparent lack of control of the experimental conditions were fairly adequate. Finally, when interpreting the model parameters it must be kept in mind that count regression techniques estimate the log of the dependent variable.

Of major interest is the impact of the various advertising campaigns. We find that in relation to the mobile campaign, page likes are significantly less for all desktop campaigns. These results indicate that targeting mobile devices are more efficient at garnering page likes at the same cost.

We find that daily shares significantly impact page likes in a nonlinear fashion. The signs of the coefficients suggest a U-shaped relationship with an estimated minimum of roughly 50 daily shares. In other words, decreasing/increasing number of page likes are associated with a

low/high number of daily shares. Therefore, it appears that increasing page likes requires a certain level of inertia from people sharing their information.

Given these results, increasing the amount spent significantly increases page likes in a linear fashion. This result is indicative of positive returns to investment, if and only if, the probability of later sale is increased. Finally, page likes tend to diminish with time regardless of changing campaigns,

Concluding Remarks

In this paper, we have attempted to understand the conceptual and empirical nature of the factors that drive the acquisition of more page likes by examining a natural experiment that took place in the fall of 2013 in Woodville, Mississippi. From our analysis, we have unearthed the importance of organic and paid advertisement factors as key to driving the acquisition of page likes. Practically speaking, a business owner would be better off targeting engagement using both types of marketing within Facebook. Further, mobile advertisements were a better investment than desktop advertisements. Incorporating organic engagement that promotes fans sharing information combined with paid mobile advertisements would seem to bode well for business owners who are looking to increase the size of their potential market. Other factors may also drive page likes. We tested only one measure of organic engagement. How do other organic engagement strategies impact page likes? Do organic engagement strategies differ in their effectiveness to gain page likes? Future research will attempt to answer these questions and more.

References

- Dholakia, U. M. & Durham, E. (2010). One cafe's chain's facebook experiment. *Harvard Business Review*, 88 (3), p. 26.
- Forrester. (2012). *The facebook factor: quantifying the impact of a facebook fan on brand interactions*. For Marketing Insights Professionals. [report] Cambridge: Forrester Research, Inc., pp. 1-15.
- Haigh, M. M., Brubaker, P. J. & Whiteside, E. (2012). Facebook: examining the information presented and its impact on stakeholders. *Corporate Communications: An International Journal*, 18 (1), pp. 3--3.
- Lee, W., Xiong, L. & Hu, C. (2012). The effect of facebook users' arousal and valence on intention to go to the festival: applying an extension of the technology acceptance model. *International Journal of Hospitality Management*, 31 (3), pp. 819--827.
- Lohse, B. (2013). Facebook is an effective strategy to recruit low-income women to online nutrition education. *Journal of Nutrition Education and Behavior*, 45 (1), pp. 69--76.
- Mayer, A. B. & Harrison, J. A. (2012). Safe eats: an evaluation of the use of social media for food safety education. *Journal of Food Protection*, 75 (8), pp. 1453--1463.
- Tucker, Catherine, Social Advertising (February 15, 2012). Available at SSRN: <http://ssrn.com/abstract=1975897> or <http://dx.doi.org/10.2139/ssrn.1975897>
- Wang, J. & Chang, C. (2013). How online social ties and product-related risks influence purchase intentions: a facebook experiment. *Electronic Commerce Research and Applications*.

Figure 1. Desktop 1 and Mobile Campaign Image for the Woodville Deer and Wildlife Festival Facebook Advertisement Program, 2013



Figure 2. Desktop 2 Image for the Woodville Deer and Wildlife Festival Facebook Advertisement Program, 2013



Figure 3. Desktop 3 Campaign Image for the Woodville Deer and Wildlife Festival Facebook Advertisement Program, 2013



Figure 4. Example Facebook Ad for Desktop 1 and Mobile Campaigns

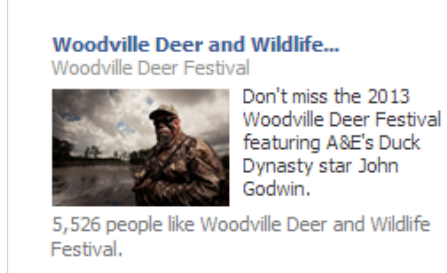


Figure 5. Example Facebook Ad for the Desktop 2 Campaign

Woodville Deer and Wildlife...
Woodville Deer Festival



Attend the Deer Festival with A&E's Duck Dynasty Star John Godwin 10/12 with your friends!

5,526 people like Woodville Deer and Wildlife Festival.

Figure 6. Example Facebook Ad for the Desktop 3 Campaign

Woodville Deer and Wildlife...
Fun times in Woodville MS



Attend the Deer Festival with A&E's Duck Dynasty Star John Godwin with your friends Oct. 12

5,526 people like Woodville Deer and Wildlife Festival.

Figure 7. Promotional Giveaway for Festival Tickets to see Duck Dynasty Star John Godwin at the 2013 Woodville Deer and Wildlife Festival

Woodville Deer and Wildlife Festival
October 7, 2013 · 4h

Who Wants to Win a Free Ticket to see John Godwin? Please Like & Share This Post! Winner Will Be Chosen at 12pm CST on Thursday, Oct. 10th. Who Will Win?



Unlike · Comment · Share 345 40 280

20,072 people saw this post Boost Complete

Table 1. Literature Review Search Process

Search Category	Number of Articles	Search Terms
Social Media Marketing	9	Social media advertising, online social advertising, social media marketing industry, social media advertising and business, social media effectiveness, and online advertising
Facebook Advertising	16	Facebook advertising and effectiveness, Facebook and social network advertising, Facebook and small business, company targeted advertising with Facebook, Facebook and business, and Facebook experiments
Facebook Advertising and Food Marketing	10	Facebook food marketing, Facebook and food, social media and tourism, social media and event promotion, and Facebook and tourism.
TOTAL	35	

Table 2. Advertisement Messages used for Mobile and Desktop Campaigns

Advertisement Description	Social Message ?	Targeted Group	Similar Page Interests	Similar Conversations (#)
<u>Don't Miss</u> the 2013 Woodville Deer and Wildlife Festival featuring A&E's Duck Dynasty Star John Godwin	No	All people living within a 100 mile radius of Woodville, MS over the age of 18 who are NOT fans of the Deer and Wildlife Fan Page.	Duck Dynasty, Willie Robertson, Swamp People, Gander Mountain, Ducks Unlimited, Cabelas, BassPro	#Willie Robertson, #Cabelas, #Ducks Unlimited, #National Wild Turkey Federation, #Duck Dynasty
<u>Fun times</u> at the Woodville Deer and Wildlife Festival featuring A&E's Duck Dynasty Star John Godwin	No	Same	Same	Same

Eat Alligator at the Woodville Deer Festival with A&E's Duck Dynasty Star John Godwin	No	Same	Same	Same
Attend the Deer Festival featuring A&E's Duck Dynasty Star John Godwin <i>with your friends</i>	Yes	Same	Same	Same

Table 3. Woodville Deer and Wildlife Festival Facebook Paid Advertisement Campaign Performance, 2013

Campaign	Image	Impressions	Social Impressions	Clicks	Social Clicks
<i>Desktop 1</i>	John Godwin with camouflage face paint	219,676	99,771	892	75
<i>Desktop 2</i>	John Godwin without camouflage face paint	259,092	181,830	1,192	55
<i>Desktop 3</i>	Event logo	77,448	37,498	518	13
<i>Mobile</i>	John Godwin with camouflage face paint	100,366	18	2,883	3

Table 4. Facebook Advertisement Terms and Definitions

Variable Name	Definition
Impressions	The number of times a post from your Page is displayed, whether the post is clicked on or not. Reach is the number of unique people who received impressions of a Page post.
Social Impressions	The number of times your ad was viewed with social information. For example, if 3 people see an ad 2 times each and it includes information about a friend liking your Page, it counts as 6 social impressions.
Social Percent	The percent of impressions where the ad was shown with social context (i.e. with information about a viewer's friend(s) who connected with your Page, Place, Event, or App).
Clicks	Clicks are the total number of clicks on your ad. Depending on what

	you're promoting, this can include Page likes, event responses or app installs.
Social Clicks	The number of clicks your ad receives when it's shown with social information (ex: Jane Doe likes this).
Click Through Rate (CTR)	Click-through rate (CTR) is the number of clicks you received divided by the number of times an ad was shown (impressions) on Facebook.
Social CTR	The Social Click Rate is Social Clicks divided by Social Impressions
CPC	Cost Per Click is the average cost per click for these ads, calculated as the amount spent divided by the number of clicks received.
CPM	CPM is the average cost you've paid to have 1,000 impressions on your ad.
Spent	The total dollar amount spend during the campaign across all ads.
Reach	Post reach is the number of people who have seen your post.
Frequency	Frequency is the average number of times each person saw your ad.
Social Reach	Social Reach is the number of unique people who saw an ad with social information. For example, if 3 people see an ad 2 times each that says a friend likes your Page, it counts as 3 social reaches.
Actions	The number of unique people who took an action such as liking your Page or installing your app as a result of your ad. For example, if the same person likes and comments on a post, they will be counted as 1 unique person. People's actions are counted within 1 day of someone viewing your ad or 28 days after clicking on it.
Page Likes	The number of likes on your Page as result of your ad. Actions occurred within 1 day of someone viewing or 28 days after clicking on your ad
Unique Clicks	The total number of unique people who have clicked on your ad. For example, if 3 people click on the same ad 5 times, it will count as 3 unique people who clicked.
Unique CTR	The number of unique clicks as result of your ad divided by the number of unique people you reached. For example, if you received 20 unique clicks and 1,000 unique people saw your ad, your unique click-through rate will be 2%.

Table 5. Woodville Deer and Wildlife Festival Facebook Paid Advertisement Experimental Results, 2013

Campaign	Dollars Spent	Actions	Unique Clicks	Page Likes	Duration of Ad	Likes/Day	Ad Frequency
<i>Desktop 1</i>	\$306	2,078	737	543	13	41.77	5.34
<i>Desktop 2</i>	\$298	1,011	1,092	636	12	53.00	5.23
<i>Desktop 3</i>	\$200	433	474	322	8	40.25	2.53
Mobile	\$750	2,717	2,603	2,031	30	65.52	2.08
Total	\$1,554	6,239	4,906	3,532	N/A	201	N/A
Average	\$388	1,560	1,227	883	16	50	4

Figure 8. Woodville Deer and Wildlife Festival Facebook Campaign Average Cost, 2013

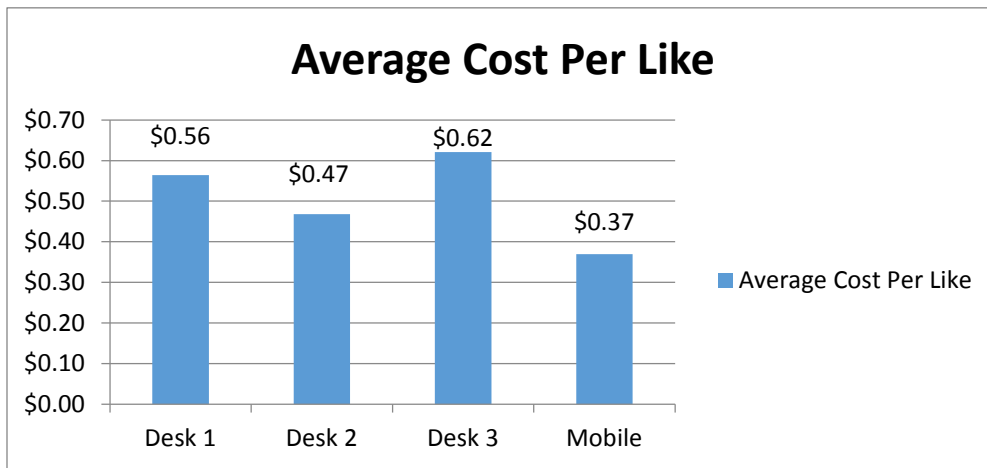


Figure 9. Woodville Deer and Wildlife Festival Facebook Campaign Overall Performance, 2013

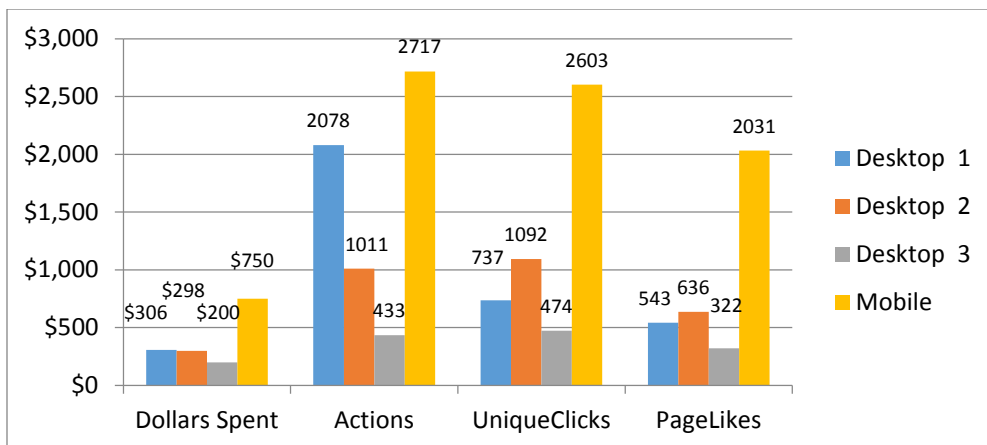


Figure 10. Woodville Deer and Wildlife Festival Facebook Likes Summary, 2013

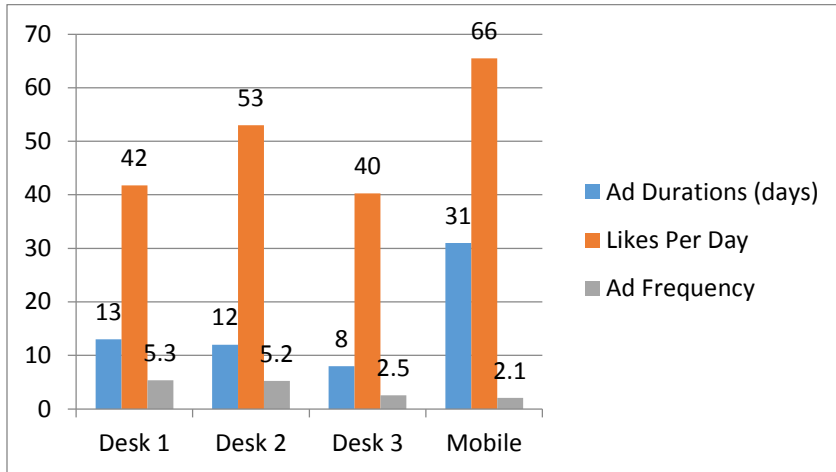


Figure 11. Top 20 Engagement Results by Towns/Cities Near Woodville, MS, 2013

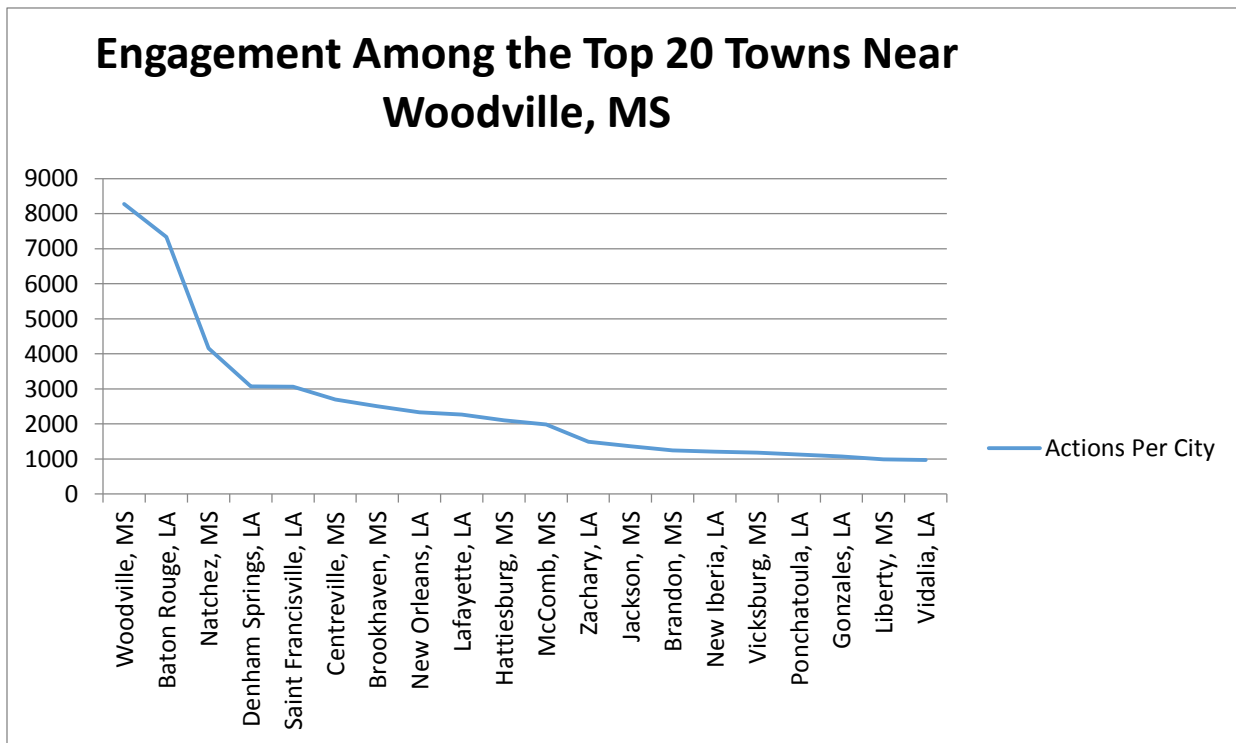


Table 6. Experimental Data

Variable	Mean	Std. Dev.	Min	Max
Page Likes	56.06	21.97	4	117
Daily Shares	7.62	25.69	0	169
Daily Shares Squared	707.76	3,891.15	0	28,426
Time	10.63	8.03	1	30
T1 DeskCamo	0.21	0.41	0	1
T2 DeskNoCamo	0.19	0.40	0	1
T3 Event Logo	0.13	0.34	0	1
T4 Mobile	0.48	0.50	0	1
Spent	24.66	2.39	6	25
Spent Squared	613.84	75.13	38	625

Table 7. Negative Binomial Regression Model for Page Likes

Page Likes [^]	Coefficient	Robust Std. Error ^{^^}	z	P>z	[95% Conf. Interval]
Constant	1.83	0.26	7.19	0	1.33 2.34
T1DeskCamo*	-0.67	0.07	-9.29	0	-0.81 -0.53
T2DeskNoCamo*	-0.47	0.08	-5.7	0	-0.63 -0.31
T3EventLogo*	-0.83	0.14	-5.97	0	-1.10 -0.56
Daily Shares**	-0.01	0.004	-2.36	0.018	-0.01780 -0.00166
Daily Shares Squared*	0.0001	0.00003	2.99	0.003	0.00003 0.0001
Spent***	0.10	0.05	1.84	0.07	-0.01 0.21
Spent Squared	0.001	0.002	0.34	0.74	-0.003 0.004
Time*	-0.03	0.005	-6.64	0	-0.04 -0.02
Overdispersion	0.03	0.01			0.02 0.06
Psuedo R ²	0.14				

[^]Page Likes is the dependent variable.

^{^^}Negative Binomial regression model used with corrected standard errors for heteroskedasticity.

*Significant at the 1% level; ** Significant at the 5% level; and ***Significant at the 10% level.