



**AgEcon** SEARCH  
RESEARCH IN AGRICULTURAL & APPLIED ECONOMICS

*The World's Largest Open Access Agricultural & Applied Economics Digital Library*

**This document is discoverable and free to researchers across the globe due to the work of AgEcon Search.**

**Help ensure our sustainability.**

Give to AgEcon Search

AgEcon Search

<http://ageconsearch.umn.edu>

[aesearch@umn.edu](mailto:aesearch@umn.edu)

*Papers downloaded from **AgEcon Search** may be used for non-commercial purposes and personal study only. No other use, including posting to another Internet site, is permitted without permission from the copyright owner (not AgEcon Search), or as allowed under the provisions of Fair Use, U.S. Copyright Act, Title 17 U.S.C.*

**HAS5-SB-906**

**SHEEP AND GOATS: FINAL ESTIMATES 1989-93. (STATISTICAL  
BULLETIN.) NATIONAL AGRICULTURAL STATISTICS SERVICE,  
WASHINGTON, DC. JAN 95 30P**

**01/01**

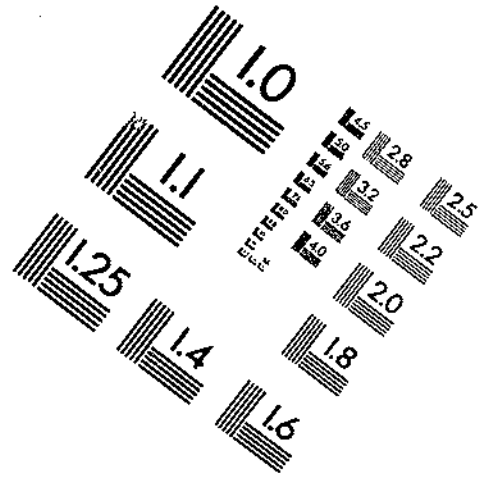
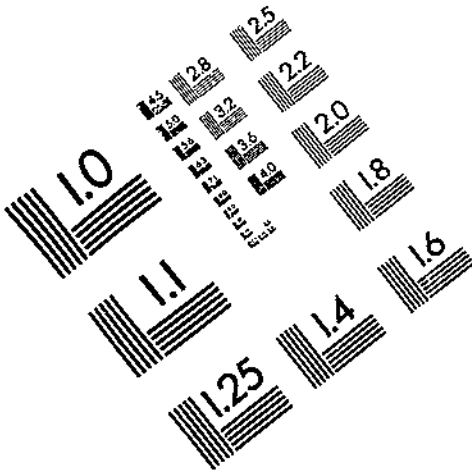


**AIM**

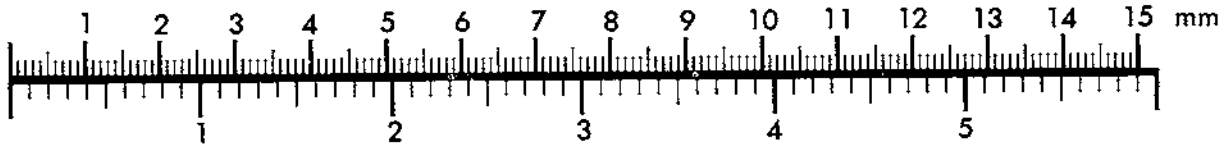
**Association for Information and Image Management**

1100 Wayne Avenue, Suite 1100  
Silver Spring, Maryland 20910

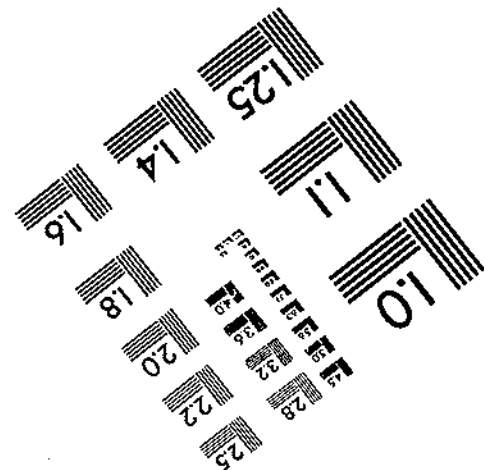
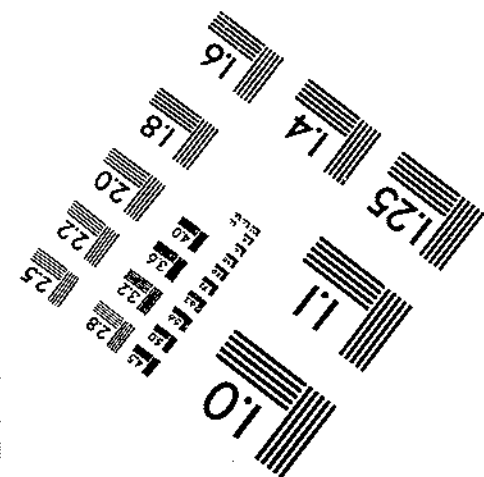
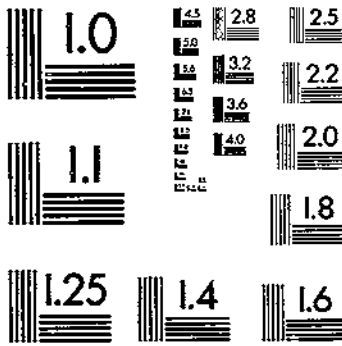
301/587-8202



Centimeter



Inches



MANUFACTURED TO AIM STANDARDS  
BY APPLIED IMAGE, INC.



NASS-SB-906

**NTIS**  
Information is our business.

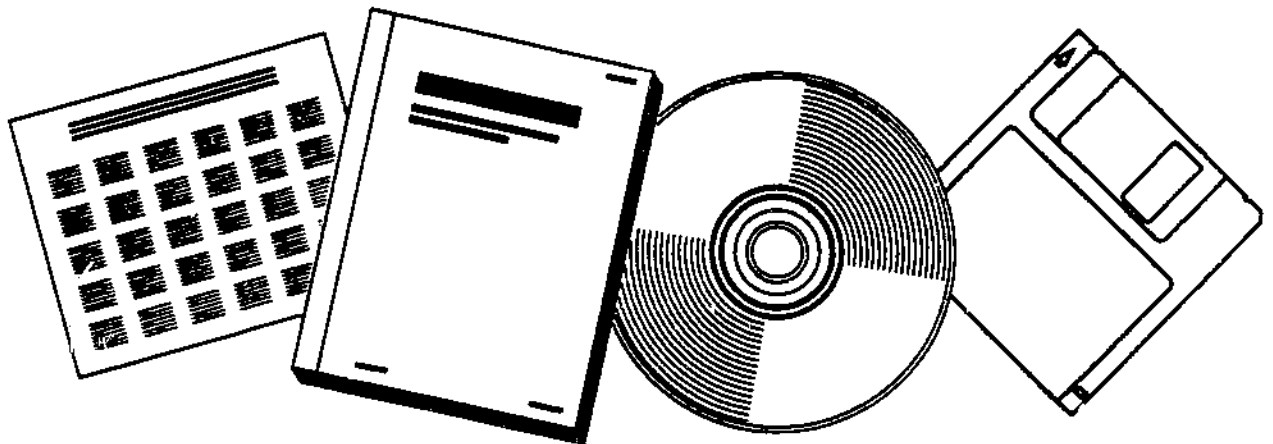
---

---

## SHEEP AND GOATS: FINAL ESTIMATES 1989-93

(U.S.) NATIONAL AGRICULTURAL STATISTICS SERVICE, WASHINGTON, DC

JAN 95



U.S. DEPARTMENT OF COMMERCE  
National Technical Information Service

---



**Sheep and Goats:** Final estimates for inventory for 1989-1993. Agricultural Statistics Board. National Agricultural Statistics Service, U. S. Department of Agriculture.

### Abstract

This publication presents final sheep and goat inventory estimates for the period 1989-1993 and wool and mohair estimates for the period 1988-1992, made by the Agricultural Statistics Board including some revisions and continues the official series published in Statistical Bulletin No. 800 "Sheep and Goats: Final Estimates 1984-88" issued January 1990. This series includes annual estimates for sheep and goat inventory, sheep and lambs on feed for January 1, 1993, lamb crop, wool and mohair production and number of operations with sheep and value of inventory on January 1. Also included is the price per pound of wool and mohair and total value. Estimates contained in this publication provide a historical record and benchmark for current estimates.

### Introduction

Sheep and goat estimates were published on a current basis during 1989-93 in annual reports. Primary data used in preparing the current sheep and goat estimates were obtained from producers using probability surveys. Survey procedures ensured that all sheep and goat producers, regardless of size, had a chance to be included in the survey. Large producers were sampled more heavily than small operations. Information was collected by mail, telephone, and face-to-face personal interviews.

Since all operations raising sheep and goats are not included in the sample, survey estimates are subject to sampling variability. This variability, as measured by the relative standard error, is about 1.6 percent at the U.S. level for the sheep and lambs inventory. This means that chances are approximately 95 out of 100 that a survey estimate will be within 3.2 percent of the complete coverage value if the same procedures are used to survey all producers.

Survey results are also subject to non-sampling errors, such as omissions, duplication, and mistakes in reporting, recording, and processing the data. The effects of these errors cannot be measured directly. They are minimized through rigid quality controls in the data collection process and through a careful review of all reported data for consistency and reasonableness. Lists of sheep and goat producers are updated annually in each State prior to sampling.

The Agricultural Statistics Board (ASB) also constructs a U. S. balance sheet for an additional check on inventory estimates. The balance sheet begins with the previous inventory estimate, adds estimates of births and imports, and subtracts estimates of slaughter, exports, and deaths. This indicated ending inventory level is compared with the ASB estimate for reasonableness.

Revisions were made only after a thorough review of the original data, with consideration given to all additional data now available, including the 1992 Census of Agriculture. At the national level, revisions of estimates of all sheep and lambs and lamb crop were less than two percent.

---

For information call Linda Simpson (202) 720-3578. Office hours are 8:00 a.m. to 4:30 p.m. ET.

Wool Production: United States, 1988-92

Shorn Wool					
Year	Sheep Shorn <u>1/</u>	Weight per Fleece	Production	Price per Pound	Value
	1,000 Head	Pounds	1,000 Pounds	Cents	1,000 Dollars
1988	11,529	7.76	89,467	1.38	110,724
1989	11,311	7.89	89,243	1.24	110,573
1990	11,212	7.85	87,959	.80	69,486
1991	10,994	7.97	87,644	.55	47,124
1992	10,521	7.88	82,943	.74	60,162

1/ Includes shearing at commercial feeding yards.

New Crop Lambs: Number, Selected States,  
January 1, 1989-93 1/

State	1989	1990	1991	1992	1993
1,000 Head					
AZ	56.0	53.0	45.0	45.0	45.0
CA	385.0	300.0	315.0	320.0	280.0
CO	4.0	5.0	3.0	4.0	3.0
ID	12.0	13.0	15.0	14.0	16.0
IA	10.0	15.0	15.0	10.0	8.0
KS	40.0	51.0	28.0	37.0	33.0
KY	3.0	5.0	5.0	3.5	4.0
MO	5.0	7.0	6.0	3.0	5.0
NE	5.0	8.0	5.0	4.0	5.0
OH	10.0	11.0	15.0	12.0	9.0
OK	15.0	13.0	15.0	17.0	12.0
OR	15.0	15.0	15.0	20.0	24.0
PA	6.0	7.0	8.0	7.0	7.0
SD	10.0	8.0	11.0	8.0	9.0
TX	180.0	190.0	180.0	140.0	180.0
VA	12.0	15.0	16.0	12.0	10.0
Oth Sts	53.3	57.7	59.3	53.7	54.8
US	821.3	773.7	756.3	710.2	704.8

1/ New crop lamb inventory includes all lambs born after Sep 30 the previous year that are on hand Jan 1. New crop lambs are not included in the inventory estimate of all sheep and lambs in this publication.

All Goats: Inventory, Value per Head, and Total Value,  
Texas, January 1, 1989-93

Year	Number	Value <u>1/</u>	
		per Head	Total
		1,000 Head Dollars	1,000 Dollars
1989	1,850	54.20	100.270
1990	1,900	49.00	93.100
1991	1,830	40.00	73.200
1992	2,000	42.00	84.000
1993	1,960	43.00	84.280

1/ Based on reporters' estimates of average price per head.

Angora Goats: Inventory, Value per Head and Total Value,  
Selected States, January 1, 1989-93

State	Number					Value per Head				
	1989	1990	1991	1992	1993	1989	1990	1991	1992	1993
	1,000 Head					Dollars				
AZ	100	98	108	98	88	55.00	50.00	45.00	40.00	40.00
MI	15	12	9	8	7	70.00	65.00	65.00	55.00	60.00
NM	135	105	100	110	105	56.00	43.00	39.00	42.00	44.00
OK	70	65	63	60	45	56.00	55.00	50.00	50.00	40.00
TX	1,600	1,620	1,500	1,620	1,560	56.00	50.00	39.00	43.00	44.00
Total 5 Sts	1,920	1,900	1,780	1,896	1,805	56.10	49.90	39.90	43.10	43.80
	Total Value									
	1989	1990	1991	1992	1993					
	1,000 Dollars									
AZ	5,500	4,900	4,860	3,920	3,520					
MI	1,050	780	585	440	420					
NM	7,560	4,515	3,900	4,620	4,620					
OK	3,920	3,575	3,150	3,000	1,800					
TX	89,600	81,000	58,500	69,660	68,640					
Total 5 Sts	107,630	94,770	70,995	81,640	79,000					



Mohair: Production and Value, 5-State Total, 1988-92

Year	Goats Clipped <sup>1/</sup> 1,000 Head	Average Clip per Goat Pounds	Production 1,000 Pounds	Price per Pound Dollars	Value 1,000 Dollars
1988	2,321	7.5	17,323	1.89	32,769
1989	2,467	7.0	17,255	1.58	27,198
1990	2,174	7.5	16,304	.93	15,117
1991	2,250	7.3	16,328	1.28	20,812
1992	2,254	6.9	15,582	.86	13,389

Mohair: Production and Value, Selected States, 1988-92

State	Goats Clipped <sup>1/</sup>					Average Clip per Goat				
	1988	1989	1990	1991	1992	1988	1989	1990	1991	1992
	1,000 Head					Dollars				
AZ	85	90	95	90	82	4.7	4.1	4.2	4.4	4.4
MI	22	20	17	14	11	7.9	8.0	8.2	8.0	8.6
NM	135	125	120	110	105	5.5	5.0	5.0	4.5	4.5
OK	79	92	82	66	56	7.7	7.6	8.1	7.9	8.1
TX	2,000	2,140	1,860	1,970	2,000	7.7	7.2	7.8	7.5	7.1
Total 5 Sts	2,321	2,467	2,174	2,250	2,254	7.5	7.0	7.5	7.3	6.9
	Production					1,000 Pounds				
	1988	1989	1990	1991	1992					
AZ	400		370		400	400				360
MI	173		160		140	112				95
NM	745		625		600	495				473
OK	605		700		664	521				454
TX	15,400		15,400		14,500	14,800				14,200
Total 5 Sts	17,323		17,255		16,304	16,328				15,582
	Price per Pound					Value				
	1988	1989	1990	1991	1992	1988	1989	1990	1991	1992
	Dollars					1,000 Dollars				
AZ	1.13	.99	.52	.49	.60	452	366	208	196	216
MI	1.65	1.39	.70	1.39	.77	285	222	98	156	73
NM	1.44	1.27	.73	.84	.78	1,073	794	438	416	369
OK	1.79	1.46	.90	1.26	.83	1,083	1,022	598	656	377
TX	1.94	1.61	.95	1.31	.87	29,876	24,794	13,775	19,388	12,354
Total 5 Sts	1.89	1.58	.93	1.28	.86	32,769	27,198	15,117	20,812	13,389

<sup>1/</sup> Number clipped is the number of goats and kids clipped at any time during the year.

All Sheep and Lambs: Number by State and United States.  
January 1, 1989-93

State	All Sheep and Lambs <u>1/</u>				
	1989	1990	1991	1992	1993
	1,000 Head				
AL	2/	2/	11.5	12.3	10.9
AK	2.7	2.5	2.5	2.4	2.1
AZ	284.0	262.0	235.0	220.0	205.0
CA	940.0	1,000.0	1,015.0	995.0	895.0
CO	825.0	840.0	710.0	710.0	660.0
CT	8.8	9.9	9.3	7.9	8.5
ID	287.0	286.0	272.0	273.0	265.0
IL	140.0	159.0	145.0	129.0	103.0
IN	95.0	90.0	100.0	95.0	88.0
IA	420.0	490.0	465.0	345.0	352.0
KS	257.0	287.0	213.0	190.0	210.0
KY	32.0	38.0	35.0	35.5	34.0
LA	17.0	17.0	16.0	15.0	16.0
ME	15.0	20.0	16.0	13.0	15.0
MD	30.0	27.0	26.0	28.0	26.0
MA	14.0	16.8	14.0	14.0	13.5
MI	115.0	121.0	115.0	103.0	103.0
MN	290.0	285.0	300.0	293.0	245.0
MO	125.0	138.0	134.0	122.0	100.0
MT	600.0	663.0	683.0	678.0	564.0
NE	169.0	177.0	165.0	144.0	136.0
NV	87.0	101.0	98.5	85.0	91.0
NH	11.0	12.6	10.8	11.6	9.5
NJ	15.0	14.0	11.4	13.0	13.7
NM	516.0	495.0	462.0	445.0	405.0
NY	89.0	92.0	92.0	72.0	78.0
NC	13.0	15.0	17.0	17.9	20.8
ND	164.0	186.0	222.0	214.0	205.0
OH	246.0	270.0	305.0	215.0	190.0
OK	136.0	119.0	135.0	145.0	115.0
OR	475.0	455.0	466.0	433.0	415.0
PA	134.0	134.0	140.0	134.0	129.0
SD	590.0	590.0	640.0	602.0	591.0
TN	10.0	12.0	14.0	13.0	16.0
TX	1,870.0	2,090.0	2,000.0	2,140.0	2,040.0
UT	503.0	509.0	508.0	488.0	490.0
VT	25.0	29.5	26.0	21.0	19.0
VA	158.0	165.0	157.0	143.0	122.0
WA	74.0	83.0	81.0	78.0	75.0
WV	82.0	80.0	85.0	68.0	76.0
WI	94.0	105.0	103.0	105.0	99.0
WY	837.0	805.0	830.0	870.0	880.0
Oth Sts <u>3/ 4/</u>	57.0	67.0	87.9	58.3	69.0
US	10,852.5	11,358.3	11,173.9	10,796.9	10,201.0

See footnotes on page 7.

All Sheep and Lambs: Total Value by State and United States.  
January 1, 1989-93

State	Total Value				
	1989	1990	1991	1992	1993
	1,000 Dollars				
AL	2/	2/	1,323	873	763
AK	204	178	170	170	155
AZ	25,560	23,318	18,800	18,040	17,630
CA	81,780	86,000	77,140	75,620	72,495
CO	74,250	70,560	56,800	46,860	47,520
CT	933	1,040	1,070	830	935
ID	23,821	26,312	18,768	17,745	20,670
IL	12,460	14,946	11,020	9,288	8,755
IN	9,453	7,830	8,300	6,935	7,656
IA	34,860	38,710	26,970	18,975	27,456
KS	18,504	18,081	11,715	9,310	12,600
KY	3,040	3,268	2,275	2,521	2,652
LA	1,267	1,275	1,312	1,290	1,408
ME	1,425	1,840	1,680	1,196	1,650
MD	3,240	2,619	2,860	3,080	3,250
MA	1,610	1,932	1,610	1,540	1,350
MI	9,028	9,317	8,050	7,931	7,725
MN	22,620	22,515	20,100	16,701	18,375
MO	9,125	10,764	7,504	6,466	6,300
MT	53,400	56,355	43,712	38,646	37,224
NE	13,520	12,744	11,055	7,344	8,568
NV	7,482	9,292	7,289	5,185	6,097
NH	1,199	1,386	1,242	1,392	1,235
NJ	1,695	1,610	1,368	1,365	1,439
NM	38,700	38,610	28,644	28,925	26,730
NY	9,968	8,832	7,728	6,192	7,488
NC	1,105	1,260	1,088	1,074	1,602
ND	14,678	15,624	14,874	13,054	14,145
OH	23,370	22,680	22,265	14,835	14,630
OK	11,492	8,568	7,155	8,410	7,935
OR	32,063	30,030	25,164	21,217	23,240
PA	10,117	10,586	12,320	10,050	10,836
SD	50,150	49,560	39,680	33,712	41,961
TN	785	1,128	1,232	1,131	1,360
TX	137,445	133,760	108,000	111,280	118,320
UT	42,504	47,846	32,512	31,720	39,690
VT	2,288	2,714	2,600	1,995	1,995
VA	11,771	12,045	8,478	7,150	7,442
WA	5,661	7,055	6,642	5,460	5,850
WV	6,642	5,760	5,015	3,604	4,788
WI	8,272	8,820	7,622	7,035	7,227
WY	72,819	69,230	53,120	50,460	59,840
Oth Sts <u>3/ 4/</u>	4,104	5,092	6,328	4,139	5,176
US	894,410	901,092	732,600	660,746	714,163

1/ New crop lambs not included in the inventory estimate of all sheep and lambs.

2/ Included in Other States for 1989 and 1990.

3/ 1989-90 includes AL, AR, DE, FL, GA, HI, MS, RI, and SC.

4/ 1991-93 includes AR, DE, FL, GA, HI, MS, RI, and SC.

Sheep and Lambs: Number by Class, State, and United States.  
January 1, 1989-93

State	Sheep and Lambs on Feed <u>1/</u>				
	1989	1990	1991	1992	1993
	1,000 Head				
AZ	45.0	42.0	45.0	45.0	55.0
CA	160.0	225.0	280.0	285.0	305.0
CO	380.0	385.0	250.0	310.0	315.0
ID	10.0	16.0	17.0	18.0	20.0
IL	14.0	21.0	30.0	21.0	16.0
IN	9.0	8.0	10.0	13.0	14.0
IA	70.0	90.0	85.0	95.0	85.0
KS	98.0	102.0	63.0	48.0	82.0
MI	26.0	29.0	30.0	26.0	28.0
MN	65.0	75.0	80.0	83.0	60.0
MO	16.0	18.0	17.0	17.0	20.0
MT	30.0	23.0	33.0	38.0	34.0
NE	50.0	42.0	45.0	44.0	42.0
NV	2.0	4.0	2.5	13.0	21.0
NM	31.0	22.0	27.0	35.0	20.0
NY				12.0	14.0
ND	21.0	34.0	55.0	44.0	37.0
OH	46.0	65.0	75.0	40.0	35.0
OK	16.0	14.0	20.0	20.0	20.0
OR	125.0	110.0	106.0	81.0	95.0
PA				16.0	17.0
SD	70.0	55.0	85.0	85.0	91.0
TX	170.0	200.0	180.0	210.0	200.0
UT	23.0	24.0	28.0	28.0	40.0
VA	43.0	43.0	38.0	35.0	25.0
WI	9.0	15.0	18.0	20.0	15.0
WY	117.0	100.0	110.0	150.0	190.0
25 Sts	1,646.0	1,762.0	1,729.5		
27 Sts				1,832.0	1,896.0

See footnotes at end of table.

-- continued

Sheep and Lambs: Number by Class, State, and United States.  
January 1, 1989-93 (continued)

State	Total Stock Sheep and Lambs				
	1989	1990	1991	1992	1993
	1,000 Head				
AL	3/	3/	11.5	12.3	10.9
AK	2.7	2.5	2.5	2.4	2.1
AZ	239.0	220.0	190.0	175.0	150.0
CA	780.0	775.0	735.0	710.0	590.0
CO	445.0	455.0	460.0	400.0	345.0
CT	8.8	9.9	9.3	7.9	8.5
ID	277.0	270.0	255.0	255.0	245.0
IL	126.0	138.0	115.0	108.0	87.0
IN	86.0	82.0	90.0	82.0	74.0
IA	350.0	400.0	380.0	250.0	267.0
KS	159.0	185.0	150.0	142.0	128.0
KY	32.0	38.0	35.0	35.5	34.0
LA	17.0	17.0	16.0	15.0	16.0
ME	15.0	20.0	16.0	13.0	15.0
MD	30.0	27.0	26.0	28.0	26.0
MA	14.0	16.8	14.0	14.0	13.5
MI	89.0	92.0	85.0	77.0	75.0
MN	225.0	210.0	220.0	210.0	185.0
MO	109.0	120.0	117.0	105.0	80.0
MT	570.0	640.0	650.0	640.0	530.0
NE	119.0	135.0	120.0	100.0	94.0
NV	85.0	97.0	96.0	72.0	70.0
NH	11.0	12.6	10.8	11.6	9.5
NJ	15.0	14.0	11.4	13.0	13.7
NM	485.0	473.0	435.0	410.0	385.0
NY	89.0	92.0	92.0	2/60.0	2/64.0
NC	13.0	15.0	17.0	17.9	20.8
ND	143.0	152.0	167.0	170.0	168.0
OH	200.0	205.0	230.0	175.0	155.0
OK	120.0	105.0	115.0	125.0	95.0
OR	350.0	345.0	360.0	352.0	320.0
PA	134.0	134.0	140.0	2/118.0	2/112.0
SD	520.0	535.0	555.0	517.0	500.0
TN	10.0	12.0	14.0	13.0	16.0
TX	1,700.0	1,890.0	1,820.0	1,930.0	1,840.0
UT	480.0	485.0	480.0	460.0	450.0
VT	25.0	29.5	26.0	21.0	19.0
VA	115.0	122.0	119.0	108.0	97.0
WA	74.0	83.0	81.0	78.0	75.0
WV	82.0	80.0	85.0	68.0	76.0
WI	85.0	90.0	85.0	85.0	84.0
WY	720.0	705.0	720.0	720.0	690.0
Oth Sts 4/ 5/	57.0	67.0	87.9	58.3	69.0
US	9,206.5	9,596.3	9,444.4	8,964.9	8,305.0

See footnotes at end of table.

-- continued

Sheep and Lambs: Number by Class, State, and United States.  
January 1, 1989-93 (continued)

State	Stock Sheep-One Year Old and Older				
	Ewes				
	1989	1990	1991	1992	1993
	1,000 Head				
AL	3/	3/	7.8	9.1	7.7
AK	1.4	1.5	1.4	1.3	1.2
AZ	185.0	170.0	150.0	140.0	125.0
CA	632.0	620.0	576.0	562.0	450.0
CO	355.0	375.0	363.0	320.0	280.0
CT	5.8	7.0	6.7	5.6	5.9
ID	220.0	215.0	199.0	210.0	202.0
IL	98.0	106.0	89.0	85.0	70.0
IN	68.0	67.0	74.0	67.0	58.0
IA	293.0	332.0	315.0	210.0	225.0
KS	130.0	155.0	126.0	120.0	105.0
KY	25.0	28.0	25.0	25.0	23.0
LA	12.0	12.2	12.5	11.2	12.0
ME	11.0	14.0	10.8	8.5	10.0
MD	22.0	20.0	19.0	20.0	18.5
MA	9.7	12.0	9.5	9.5	9.0
MI	72.0	75.0	68.0	63.0	60.0
MN	170.0	165.0	170.0	170.0	145.0
MO	87.0	100.0	95.0	82.0	66.0
MT	434.0	490.0	504.0	504.0	423.0
NE	97.0	111.0	98.0	81.0	78.0
NV	70.0	80.0	79.0	60.0	56.0
NH	7.6	8.8	7.1	7.1	6.5
NJ	9.0	9.5	7.6	8.8	9.5
NM	384.0	373.0	338.0	325.0	295.0
NY	57.0	60.0	61.0	2/48.0	2/50.0
NC	9.5	10.5	11.5	12.6	15.4
ND	111.0	120.0	138.0	142.0	140.0
OH	165.0	166.0	184.0	135.0	120.0
OK	94.0	82.0	86.0	95.0	73.0
OR	280.0	279.0	285.0	280.0	250.0
PA	91.0	95.0	100.0	2/94.0	2/89.0
SD	430.0	441.0	438.0	430.0	415.0
TN	8.1	9.2	10.0	9.4	8.9
TX	1,250.0	1,490.0	1,420.0	1,500.0	1,400.0
UT	405.0	407.0	403.0	388.0	378.0
VT	17.0	19.0	16.9	13.0	13.0
VA	95.0	100.0	98.0	93.0	83.0
WA	51.0	58.0	59.0	57.0	50.0
WV	62.0	62.0	67.0	55.0	60.0
WI	66.0	71.0	67.0	67.0	65.0
WY	555.0	545.0	555.0	570.0	550.0
Oth Sts 4/ 5/	41.0	46.0	58.0	35.1	35.8
US	7,186.1	7,607.7	7,408.8	7,129.2	6,537.4

See footnotes at end of table.

-- continued

Sheep and Lambs: Number by Class, State, and United States.  
January 1, 1989-93 (continued)

State	Stock Sheep-One Year Old and Older				
	Rams and Wethers				
	1989	1990	1991	1992	1993
	1,000 Head				
AL	3/	3/	.7	.8	.6
AK	.7	.7	.6	.6	.6
AZ	9.0	8.0	7.0	5.0	5.0
CA	24.0	25.0	27.0	23.0	23.0
CO	13.0	13.0	13.0	12.0	9.0
CT	.6	.6	.4	.4	.4
ID	6.0	6.0	6.0	6.0	5.0
IL	5.0	6.0	6.0	6.0	5.0
IN	5.0	4.0	4.0	4.0	4.0
IA	10.0	12.0	12.0	9.0	10.0
KS	8.0	9.0	5.0	7.0	7.0
KY	1.5	2.0	1.7	2.5	2.5
LA	1.8	1.5	1.5	1.5	1.8
ME	.9	1.3	1.1	.8	.9
MD	2.5	2.8	2.2	3.0	2.5
MA	.9	1.1	1.0	.7	.6
MI	4.0	4.0	3.0	3.0	3.0
MN	8.0	8.0	7.0	9.0	8.0
MO	5.0	5.0	7.0	5.0	4.0
MT	15.0	17.0	17.0	18.0	15.0
NE	4.0	5.0	5.0	5.0	4.0
NV	2.0	3.0	3.0	3.0	2.0
NH	.9	.9	.7	.7	.5
NJ	1.3	1.0	1.7	1.1	1.8
NM	21.0	21.0	21.0	20.0	20.0
NY	2.0	3.0	3.0	2/3.0	2/3.0
NC	.9	1.0	1.0	1.1	1.1
ND	5.0	5.0	5.0	5.0	5.0
OH	7.0	8.0	10.0	9.0	8.0
OK	5.0	5.0	5.0	5.0	4.0
OR	14.0	14.0	15.0	15.0	20.0
PA	10.0	10.0	8.0	2/7.0	2/7.0
SD	12.0	14.0	17.0	15.0	15.0
TN	.8	.8	1.5	1.3	1.5
TX	70.0	80.0	70.0	80.0	75.0
UT	12.0	13.0	12.0	12.0	12.0
VT	1.8	1.5	1.0	.7	.6
VA	5.0	5.0	5.0	5.0	4.0
WA	4.0	4.0	3.0	3.0	3.0
WV	3.0	3.0	4.0	3.0	3.0
WI	4.0	4.0	4.0	4.0	4.0
WY	23.0	20.0	20.0	23.0	20.0
Oth Sts 4/ 5/	4.0	5.0	9.3	11.0	11.0
US	333.6	355.2	348.4	~350.2	333.4

See footnotes at end of table.

-- continued

Sheep and Lambs: Number by Class, State, and United States.  
January 1, 1989-93 (continued)

State	Stock Sheep-Lambs				
	Ewes				
	1989	1990	1991	1992	1993
	1,000 Head				
AL	3/	3/	1.5	1.6	1.7
AK	.4	.2	.3	.3	.2
AZ	26.0	27.0	22.0	20.0	12.0
CA	100.0	97.0	91.0	85.0	80.0
CO	64.0	55.0	71.0	56.0	45.0
CT	1.6	1.6	1.5	1.3	1.4
ID	46.0	44.0	43.0	35.0	34.0
IL	19.0	22.0	17.0	13.0	10.0
IN	11.0	9.0	10.0	10.0	10.0
IA	42.0	46.0	43.0	23.0	25.0
KS	16.0	16.0	15.0	13.0	10.0
KY	4.0	3.8	3.8	4.5	4.5
LA	2.1	2.3	1.5	1.9	1.8
ME	1.9	2.9	2.7	2.5	3.0
MD	4.0	3.2	3.8	3.3	3.8
MA	2.3	2.6	2.3	2.5	2.7
MI	10.0	11.0	12.0	9.0	10.0
MN	40.0	31.0	36.0	26.0	27.0
MO	14.0	12.0	12.0	11.0	7.0
MT	111.0	124.0	117.0	106.0	83.0
NE	15.0	15.0	14.0	10.0	9.0
NV	12.0	13.0	13.0	8.0	11.0
NH	1.7	2.0	2.1	2.6	1.7
NJ	2.2	2.0	1.3	2.0	1.5
NM	70.0	66.0	60.0	54.0	55.0
NY	18.0	18.0	18.0	2/7.0	2/8.0
NC	2.0	2.5	3.5	2.0	2.0
ND	22.0	23.0	22.0	19.0	18.0
OH	24.0	27.0	32.0	28.0	24.0
OK	14.0	12.0	15.0	17.0	12.0
OR	42.0	40.0	43.0	41.0	36.0
PA	22.0	20.0	19.0	2/14.0	2/12.0
SD	70.0	74.0	94.0	64.0	62.0
TN	.8	1.4	1.7	1.6	2.9
TX	270.0	250.0	240.0	250.0	275.0
UT	57.0	58.0	58.0	53.0	53.0
VT	3.8	5.4	5.1	4.7	3.3
VA	12.0	13.0	12.0	8.0	8.0
WA	14.5	15.5	15.0	12.0	13.0
WV	10.0	7.0	9.0	7.0	7.0
WI	12.0	13.0	10.0	12.0	13.0
WY	125.0	125.0	130.0	117.0	110.0
Oth Sts 4/ 5/	6.0	9.0	16.1	6.8	16.8
US	1,341.3	1,322.4	1,340.2	1,165.6	1,126.3

See footnotes at end of table.

-- continued



Sheep and Lambs: Number by Class, State, and United States.  
January 1, 1989-93 (continued)

State	Stock Sheep-Lambs				
	Rams and Wethers				
	1989	1990	1991	1992	1993
	1,000 Head				
AL	3/	3/	1.5	.8	.9
AK	.2	.1	.2	.2	.1
AZ	19.0	15.0	11.0	10.0	8.0
CA	24.0	32.0	41.0	40.0	37.0
CO	13.0	12.0	13.0	12.0	11.0
CT	.8	.7	.7	.6	.8
ID	5.0	5.0	7.0	4.0	4.0
IL	4.0	4.0	3.0	4.0	2.0
IN	2.0	2.0	2.0	1.0	2.0
IA	5.0	10.0	10.0	8.0	7.0
KS	5.0	5.0	4.0	2.0	6.0
KY	1.5	4.2	4.5	3.5	4.0
LA	1.1	1.0	.5	.4	.4
ME	1.2	1.8	1.4	1.2	1.1
MD	1.5	1.0	1.0	1.7	1.2
MA	1.1	1.1	1.2	1.3	1.2
MI	3.0	2.0	2.0	2.0	2.0
MN	7.0	6.0	7.0	5.0	5.0
MO	3.0	3.0	3.0	7.0	3.0
MT	10.0	9.0	12.0	12.0	9.0
NE	3.0	4.0	3.0	4.0	3.0
NV	1.0	1.0	1.0	1.0	1.0
NH	.8	.9	.9	1.2	.8
NJ	2.5	1.5	.8	1.1	.9
NM	10.0	13.0	16.0	11.0	15.0
NY	12.0	11.0	10.0	2/2.0	2/3.0
NC	.6	1.0	1.0	2.2	2.3
ND	5.0	4.0	2.0	4.0	5.0
OH	4.0	4.0	4.0	3.0	3.0
OK	7.0	6.0	9.0	8.0	6.0
OR	14.0	12.0	17.0	16.0	14.0
PA	11.0	9.0	13.0	2/3.0	2/4.0
SD	8.0	6.0	6.0	8.0	8.0
TN	.3	.6	.8	.7	2.7
TX	110.0	70.0	90.0	100.0	90.0
UT	6.0	7.0	7.0	7.0	7.0
VT	2.4	3.6	3.0	2.6	2.1
VA	3.0	4.0	4.0	2.0	2.0
WA	4.5	5.5	4.0	6.0	9.0
WV	7.0	8.0	5.0	3.0	6.0
WI	3.0	2.0	4.0	2.0	2.0
WY	17.0	15.0	15.0	10.0	10.0
Oth Sts 4/ 5/	6.0	7.0	4.5	5.4	5.4
US	345.5	311.0	347.0	319.9	307.9

- 1/ Sheep and Lambs on Feed for AK, CT, KY, LA, ME, MD, MA, NH, NJ, NY, NC, PA, TN, VT, WA, WV, and Oth Sts were combined with stock sheep for 1989-90. AL was added for 1991-93. These States totaled 49,600 in 1989, 49,000 in 1990, 68,600 in 1991, 46,300 in 1992, and 44,100 in 1993.
- 2/ Sheep and Lambs on Feed excluded from Stock Sheep and Lambs.
- 3/ Included in Other States for 1989 and 1990.
- 4/ 1989-90 includes AL, AR, DE, FL, GA, HI, MS, RI, and SC.
- 5/ 1991-93 includes AR, DE, FL, GA, HI, MS, RI, and SC.

All Sheep and Lambs: Value per Head by State  
and United States, January 1, 1989-93

State	Value per Head				
	1989	1990	1991	1992	1993
	Dollars				
AL	1/	1/	115.00	71.00	70.00
AK	75.50	71.00	68.00	71.00	74.00
AZ	90.00	89.00	80.00	82.00	86.00
CA	87.00	86.00	76.00	76.00	81.00
CO	90.00	84.00	80.00	66.00	72.00
CT	106.00	105.00	115.00	105.00	110.00
ID	83.00	92.00	69.00	65.00	78.00
IL	89.00	94.00	76.00	72.00	85.00
IN	99.50	87.00	83.00	73.00	87.00
IA	83.00	79.00	58.00	55.00	78.00
KS	72.00	63.00	55.00	49.00	60.00
KY	95.00	86.00	65.00	71.00	78.00
LA	74.50	75.00	82.00	86.00	88.00
ME	95.00	92.00	105.00	92.00	110.00
MD	108.00	97.00	110.00	110.00	125.00
MA	115.00	115.00	115.00	110.00	100.00
MI	78.50	77.00	70.00	77.00	75.00
MN	78.00	79.00	67.00	57.00	75.00
MO	73.00	78.00	56.00	53.00	63.00
MT	89.00	85.00	64.00	57.00	66.00
NE	80.00	72.00	67.00	51.00	63.00
NV	86.00	92.00	74.00	61.00	67.00
NH	109.00	110.00	115.00	120.00	130.00
NJ	113.00	115.00	120.00	105.00	105.00
NM	75.00	78.00	62.00	65.00	66.00
NY	112.00	96.00	84.00	86.00	96.00
NC	85.00	84.00	64.00	60.00	77.00
ND	89.50	84.00	67.00	61.00	69.00
OH	95.00	84.00	73.00	69.00	77.00
OK	84.50	72.00	53.00	58.00	69.00
OR	67.50	66.00	54.00	49.00	56.00
PA	75.50	79.00	88.00	75.00	84.00
SD	85.00	84.00	62.00	56.00	71.00
TN	78.50	94.00	88.00	87.00	85.00
TX	73.50	64.00	54.00	52.00	58.00
UT	84.50	94.00	64.00	65.00	81.00
VT	91.50	92.00	100.00	95.00	105.00
VA	74.50	73.00	54.00	50.00	61.00
WA	76.50	85.00	82.00	70.00	78.00
WV	81.00	72.00	59.00	53.00	63.00
WI	88.00	84.00	74.00	67.00	73.00
WY	87.00	86.00	64.00	58.00	68.00
Oth Sts <u>2/</u> <u>3/</u>	72.00	76.00	72.00	71.00	75.00
US	82.40	79.30	65.60	61.20	70.00

1/ Included in Other States for 1989 and 1990.

2/ 1989-90 includes AL, AR, DE, FL, GA, HI, MS, RI, and SC.

3/ 1991-93 includes AR, DE, FL, GA, HI, MS, RI, and SC.

Lamb Crop: Breeding Ewes 1 Year Old and Older by State  
and United States, January 1, 1988-92

State	Breeding Ewes 1 Year Old and Older on January 1				
	1988	1989	1990	1991	1992
	1,000 Head				
AL	1/	1/	1/	7.8	9.1
AK	1.2	1.4	1.5	1.4	1.3
AZ	180.0	185.0	170.0	150.0	140.0
CA	685.0	632.0	620.0	576.0	562.0
CO	320.0	355.0	375.0	363.0	320.0
CT	5.8	5.8	7.0	6.7	5.6
ID	247.0	220.0	215.0	199.0	210.0
IL	94.0	98.0	106.0	89.0	85.0
IN	57.0	68.0	67.0	74.0	67.0
IA	291.0	293.0	332.0	315.0	210.0
KS	142.0	130.0	155.0	126.0	120.0
KY	27.0	25.0	28.0	25.0	25.0
LA	12.0	12.0	12.2	12.5	11.2
ME	12.0	11.0	14.0	10.8	8.5
MD	22.0	22.0	20.0	19.0	20.0
MA	11.0	9.7	12.0	9.5	9.5
MI	67.0	72.0	75.0	68.0	63.0
MN	143.0	170.0	165.0	170.0	170.0
MO	76.0	87.0	100.0	95.0	82.0
MT	430.0	434.0	490.0	504.0	504.0
NE	105.0	97.0	111.0	98.0	81.0
NV	78.0	70.0	80.0	79.0	60.0
NH	8.0	7.6	8.8	7.1	7.1
NJ	9.0	9.0	9.5	7.6	8.8
NM	367.0	384.0	373.0	338.0	325.0
NY	48.0	57.0	60.0	61.0	4/48.0
NC	10.0	9.5	10.5	11.5	12.6
ND	114.0	111.0	120.0	138.0	142.0
OH	170.0	165.0	166.0	184.0	135.0
OK	78.0	94.0	82.0	86.0	95.0
OR	320.0	280.0	279.0	285.0	280.0
PA	76.0	91.0	95.0	100.0	4/94.0
SD	453.0	430.0	441.0	438.0	430.0
TN	8.9	8.1	9.2	10.0	9.4
TX	1,370.0	1,250.0	1,490.0	1,420.0	1,500.0
UT	390.0	405.0	407.0	403.0	388.0
VT	14.0	17.0	19.0	16.9	13.0
VA	92.0	95.0	100.0	98.0	93.0
WA	54.0	51.0	58.0	59.0	57.0
WV	67.0	62.0	62.0	67.0	55.0
WI	63.0	66.0	71.0	67.0	67.0
WY	590.0	555.0	545.0	555.0	570.0
Oth Sts 2/ 3/	40.0	41.0	46.0	58.0	35.1
US	7,347.9	7,186.1	7,607.7	7,408.8	7,129.2

See footnotes on page 17.

Lamb Crop: Per Ewes 1+ by State and United States,  
January 1, 1988-92 5/

State	Lamb Crop per 100 Ewes 1+ on January 1				
	1988	1989	1990	1991	1992
	Percent				
AL	1/	1/	1/	87	69
AK	58	50	53	50	46
AZ	69	70	65	67	71
CA	86	87	86	90	94
CO	113	113	113	106	109
CT	145	148	117	104	134
ID	113	123	119	138	129
IL	122	163	108	118	113
IN	132	132	134	132	127
IA	127	131	130	127	136
KS	99	112	86	100	98
KY	100	124	111	112	112
LA	100	92	86	80	94
ME	117	145	93	97	100
MD	95	86	100	116	100
MA	118	134	96	105	111
MI	134	132	113	115	124
MN	140	132	133	132	124
MO	132	126	110	111	98
MT	107	115	109	116	101
NE	105	129	108	112	125
NV	95	120	100	82	103
NH	125	158	114	141	127
NJ	122	111	126	145	131
NM	82	76	70	74	74
NY	127	118	107	93	125
NC	100	116	114	120	132
ND	124	141	143	130	120
OH	115	121	123	90	107
OK	103	96	104	110	100
OR	100	111	115	112	107
PA	112	108	105	101	107
SD	110	120	122	121	121
TN	79	120	109	90	85
TX	69	92	77	89	81
UT	97	106	106	99	103
VT	107	147	100	101	131
VA	128	137	124	122	124
WA	120	147	121	119	114
WV	107	121	121	97	127
WI	135	152	132	143	143
WY	97	99	101	103	102
Oth Sts <u>2/ 3/</u>	113	120	83	50	82
US	98	107	101	103	101

See footnotes on page 17.

Lamb Crop: By State and United States, 1988-92 <sup>5/</sup>

State	1988	1989	1990	1991	1992
	1,000 Head				
AL	1/	1/	7.4	6.8	6.3
AK	.7	.7	.8	.7	.6
AZ	125.0	130.0	110.0	100.0	100.0
CA	590.0	550.0	535.0	520.0	530.0
CO	360.0	400.0	425.0	385.0	350.0
CT	8.4	8.6	8.2	7.0	7.5
ID	280.0	270.0	255.0	275.0	270.0
IL	115.0	160.0	115.0	105.0	96.0
IN	75.0	90.0	90.0	98.0	85.0
IA	370.0	385.0	430.0	400.0	285.0
KS	140.0	145.0	134.0	126.0	118.0
KY	27.0	31.0	31.0	28.0	28.0
LA	12.0	11.0	10.5	10.0	10.5
ME	14.0	16.0	13.0	10.5	8.5
MD	21.0	19.0	20.0	22.0	20.0
MA	13.0	13.0	11.5	10.0	10.5
MI	90.0	95.0	85.0	78.0	78.0
MN	200.0	225.0	220.0	225.0	210.0
MO	100.0	110.0	110.0	105.0	80.0
MT	460.0	500.0	535.0	585.0	510.0
NE	110.0	125.0	120.0	110.0	101.0
NV	74.0	84.0	80.0	65.0	62.0
NH	10.0	12.0	10.0	10.0	9.0
NJ	11.0	10.0	12.0	11.0	11.5
NM	300.0	290.0	260.0	250.0	240.0
NY	61.0	67.0	64.0	57.0	60.0
NC	10.0	11.0	12.0	13.8	16.6
ND	141.0	156.0	171.0	180.0	170.0
OH	195.0	200.0	205.0	165.0	145.0
OK	80.0	90.0	85.0	95.0	95.0
OR	320.0	310.0	320.0	320.0	300.0
PA	85.0	98.0	100.0	101.0	101.0
SD	500.0	515.0	540.0	530.0	520.0
TN	7.0	9.7	10.0	9.0	8.0
TX	950.0	1,150.0	1,150.0	1,270.0	1,210.0
UT	380.0	430.0	430.0	400.0	400.0
VT	15.0	25.0	19.0	17.0	17.0
VA	118.0	130.0	124.0	120.0	115.0
WA	65.0	75.0	70.0	70.0	65.0
WV	72.0	75.0	75.0	65.0	70.0
WI	85.0	100.0	94.0	96.0	96.0
WY	570.0	550.0	550.0	570.0	580.0
Oth Sts <sup>2/ 3/</sup>	45.0	49.0	38.1	28.8	28.8
US	7,205.1	7,721.0	7,685.5	7,650.6	7,224.8

<sup>1/</sup> Included in Other States

<sup>2/</sup> 1988-90 includes AL, AR, DE, FL, GA, HI, MS, RI, and SC.

<sup>3/</sup> 1991-92 includes AR, DE, FL, GA, HI, MS, RI, and SC.

<sup>4/</sup> Excludes Sheep on Feed.

<sup>5/</sup> Lamb crop defined as born in the Native States, plus lambs docked or branded in the Western States for the period Oct 1 - Sep 30.

Wool: Sheep and Lambs Shorn by State and United States, 1988-92

State	Sheep and Lambs Shorn <u>1/</u>				
	1988	1989	1990	1991	1992
	1,000 Head				
AL	2/	2/	7.0	6.0	10.0
AK	2.0	1.9	1.7	1.8	.7
AZ	267.0	240.0	228.0	205.0	210.0
CA	955.0	990.0	1,015.0	930.0	880.0
CO	960.0	824.0	770.0	769.0	758.0
CT	6.0	7.5	7.0	5.5	6.0
ID	295.0	283.0	271.0	279.0	253.0
IL	153.0	155.0	134.0	114.0	116.0
IN	82.0	82.0	86.0	97.0	92.0
IA	525.0	496.0	500.0	480.0	390.0
KS	251.0	238.0	216.0	197.0	185.0
KY	35.0	36.0	33.0	32.0	30.0
LA	17.0	16.0	14.0	13.0	13.0
ME	13.0	14.0	12.0	10.0	11.0
MD	28.0	27.0	23.0	26.0	28.0
MA	12.0	14.0	13.0	9.0	9.0
MI	99.0	108.0	105.0	95.0	83.0
MN	250.0	280.0	245.0	260.0	225.0
MO	115.0	126.0	120.0	122.0	106.0
MT	567.0	577.0	627.0	641.0	620.0
NE	190.0	170.0	180.0	154.0	139.0
NV	91.0	82.0	86.0	90.0	73.0
NH	8.0	9.0	7.0	8.5	8.0
NJ	11.0	11.0	11.0	9.5	10.4
NM	444.0	459.0	453.0	427.0	410.0
NY	63.0	68.0	73.0	70.0	61.0
NC	11.0	12.0	13.0	14.5	14.8
ND	169.0	188.0	185.0	195.0	185.0
OH	260.0	268.0	282.0	285.0	220.0
OK	110.0	112.0	108.0	113.0	92.0
OR	520.0	475.0	465.0	468.0	419.0
PA	104.0	105.0	107.0	101.0	99.0
SD	620.0	565.0	590.0	630.0	590.0
TN	11.0	11.0	11.0	8.5	8.1
TX	2,500.0	2,550.0	2,470.0	2,330.0	2,450.0
UT	467.0	452.0	464.0	456.0	440.0
VT	22.0	25.0	22.0	16.0	14.5
VA	132.0	135.0	125.0	112.0	94.0
WA	72.0	74.0	70.0	70.0	60.0
WV	77.0	70.0	71.0	78.0	67.0
WI	94.0	94.0	84.0	91.0	88.0
WY	877.0	815.0	850.0	900.0	900.0
Oth Sts <u>3/ 4/</u>	44.0	46.0	57.0	74.7	52.4
US	11,529.0	11,311.4	11,211.7	10,994.0	10,520.9

See footnotes on page 20.

Wool: Weight per Fleece by State and United States, 1988-92

State	Weight per Fleece				
	1988	1989	1990	1991	1992
	Pounds				
AL	2/	2/	6.1	6.7	6.0
AK	9.0	8.4	8.8	8.9	7.1
AZ	6.6	6.8	6.8	7.3	6.9
CA	7.4	7.7	7.5	7.7	7.7
CO	6.6	7.7	7.4	7.4	7.9
CT	7.5	7.5	7.3	7.5	7.7
ID	9.9	10.0	10.2	10.1	10.0
IL	6.8	6.9	6.9	7.0	7.0
IN	6.8	6.8	6.8	7.0	7.0
IA	7.0	6.9	6.6	6.6	6.4
KS	6.9	6.7	7.1	7.8	7.3
KY	6.7	6.6	6.5	6.7	6.8
LA	6.7	6.7	6.3	6.7	6.8
ME	8.0	7.2	7.6	7.2	7.6
MD	7.0	7.6	6.3	6.6	6.6
MA	7.2	7.2	7.3	7.3	7.6
MI	7.6	7.4	7.2	7.9	7.7
MN	7.2	7.0	7.0	7.0	7.0
MO	6.8	7.1	6.5	6.8	6.6
MT	10.0	10.0	9.9	10.2	9.6
NE	7.3	7.4	7.2	7.3	7.2
NV	10.0	9.5	9.7	9.5	9.5
NH	7.6	7.4	7.3	7.6	7.4
NJ	7.0	6.6	6.4	7.1	6.7
NM	9.2	9.8	9.8	9.7	9.4
NY	7.1	7.0	7.2	7.1	7.1
NC	7.1	7.1	6.8	6.6	6.9
ND	9.6	9.3	8.9	9.4	9.2
OH	7.1	6.8	6.4	6.6	6.9
OK	7.0	6.7	6.7	6.6	6.7
OR	6.2	6.2	6.3	6.4	6.6
PA	6.5	7.1	6.9	7.0	7.0
SD	8.6	9.0	9.0	9.0	8.7
TN	6.5	6.5	6.6	7.1	6.8
TX	7.3	7.1	7.0	7.2	7.2
UT	9.8	10.2	10.2	10.4	9.9
VT	7.2	7.4	7.4	7.2	7.7
VA	5.8	6.0	6.1	6.1	6.2
WA	8.6	8.7	8.6	8.6	9.0
WV	6.0	6.2	6.3	5.8	6.0
WI	7.5	7.3	7.4	7.2	7.5
WY	9.3	9.7	9.6	9.4	9.0
Oth Sts 3/ 4/	6.0	6.0	6.3	6.5	6.2
US	7.76	7.89	7.85	7.97	7.88

Wool: Shorn Wool Production by State and United States, 1988-92

State	1988	1989	1990	1991	1992
	1,000 Pounds				
AL	2/	2/	43	40	60
AK	18	16	15	16	5
AZ	1,750	1,630	1,550	1,490	1,450
CA	7,103	7,624	7,646	7,160	6,780
CO	6,330	6,344	5,698	5,724	5,954
CT	45	56	51	41	46
ID	2,929	2,835	2,775	2,816	2,527
IL	1,038	1,070	925	800	810
IN	558	554	582	681	644
IA	3,701	3,422	3,323	3,150	2,491
KS	1,722	1,604	1,544	1,535	1,353
KY	236	238	215	214	204
LA	114	107	88	87	88
ME	104	101	91	72	84
MD	197	205	144	172	185
MA	86	101	95	66	68
MI	750	796	756	746	640
MN	1,798	1,950	1,707	1,816	1,565
MO	777	889	778	832	703
MT	5,666	5,762	6,204	6,542	5,967
NE	1,394	1,260	1,293	1,130	998
NV	910	779	831	854	697
NH	61	67	51	65	59
NJ	77	73	70	67	70
NM	4,079	4,480	4,422	4,130	3,835
NY	447	476	525	498	431
NC	78	85	88	96	102
ND	1,620	1,750	1,650	1,825	1,700
OH	1,845	1,822	1,816	1,871	1,523
OK	770	752	725	750	620
OR	3,228	2,930	2,919	3,005	2,752
PA	681	750	739	707	692
SD	5,333	5,082	5,317	5,684	5,119
TN	72	72	73	60	55
TX	18,200	18,000	17,400	16,700	17,600
UT	4,575	4,598	4,723	4,741	4,377
VT	158	185	163	115	112
VA	770	809	767	679	580
WA	621	642	600	600	540
WV	462	434	447	452	402
WI	705	687	618	654	660
WY	8,195	7,930	8,135	8,475	8,068
Oth Sts <u>3/</u> <u>4/</u>	264	276	357	486	327
US	89,467	89,243	87,959	87,644	82,943

1/ Includes shearing at commercial feeding yards.

2/ Included in Other States for 1988-89.

3/ 1988-89 includes AL, AR, DE, FL, GA, HI, MS, RI, and SC.

4/ 1990-92 includes AR, DE, FL, GA, HI, MS, RI, and SC.



Wool: Price per Pound by State and United States, 1988-92

State	Price per Pound <u>1/</u>				
	1988	1989	1990	1991	1992
	Cents				
AL	<u>2/</u>	<u>2/</u>	.37	.36	.33
AK	1.25	1.17	1.25	1.00	1.20
AZ	1.08	1.10	.63	.42	.56
CA	1.43	1.37	.82	.56	.67
CO	1.40	1.34	.71	.52	.74
CT	.74	.77	.59	.60	.62
ID	1.18	1.16	.65	.47	.68
IL	.68	.67	.35	.17	.28
IN	.62	.63	.28	.18	.26
IA	.74	.73	.35	.21	.32
KS	1.04	1.06	.65	.38	.52
KY	.76	.73	.38	.26	.40
LA	.76	.72	.31	.29	.33
ME	.83	.86	.76	.66	.64
MD	.87	.75	.40	.34	.44
MA	.83	.85	.60	.53	.62
MI	.75	.75	.40	.26	.36
MN	.77	.78	.40	.25	.34
MO	.74	.75	.42	.25	.39
MT	1.48	1.36	.91	.57	.85
NE	.89	.86	.47	.29	.44
NV	1.43	1.42	.84	.52	.74
NH	.73	.89	.59	.56	.64
NJ	.92	.76	.40	.45	.44
NM	1.85	1.48	1.07	.65	.91
NY	.88	.79	.47	.39	.56
NC	.84	.70	.36	.25	.42
ND	1.06	1.08	.59	.37	.58
OH	.71	.74	.39	.25	.34
OK	1.07	1.00	.67	.39	.51
OR	.94	.95	.57	.34	.48
PA	.86	.75	.39	.29	.42
SD	1.32	1.31	.80	.54	.72
TN	.85	.80	.37	.39	.40
TX	1.97	1.51	1.13	.83	.96
UT	1.36	1.30	.72	.51	.78
VT	.82	.80	.71	.65	.60
VA	.91	.81	.40	.25	.44
WA	1.01	1.04	.58	.41	.59
WV	.91	.81	.36	.25	.40
WI	.77	.77	.36	.21	.33
WY	1.65	1.37	.89	.61	.86
Oth Sts <u>3/ 4/</u>	.85	.81	.52	.28	.40
US	1.38	1.24	.80	.55	.74

See footnotes on page 22.

Wool: Value by State and United States, 1988-92

State	Value <u>5/</u>				
	1988	1989	1990	1991	1992
	1,000 Dollars				
AL	2/	2/	16	14	20
AK	21	19	19	16	6
AZ	1,925	1,793	977	626	812
CA	9,731	10,445	6,270	4,010	4,543
CO	8,482	8,501	4,046	2,976	4,406
CT	35	43	30	25	29
ID	3,398	3,289	1,804	1,324	1,718
IL	695	717	324	136	227
IN	352	349	163	123	167
IA	2,702	2,498	1,163	662	797
KS	1,825	1,700	1,004	583	704
KY	172	174	82	56	82
LA	82	77	27	25	29
ME	89	87	69	48	54
MD	148	154	58	58	81
MA	73	86	57	35	42
MI	563	597	302	194	230
MN	1,402	1,521	683	454	532
MO	583	667	327	208	274
MT	7,706	7,836	5,646	3,729	5,072
NE	1,199	1,084	608	328	439
NV	1,292	1,106	698	444	516
NH	54	60	30	36	38
NJ	59	55	28	30	31
NM	6,037	6,630	4,732	2,685	3,490
NY	353	376	247	194	241
NC	55	60	32	24	43
ND	1,750	1,890	974	675	986
OH	1,365	1,348	708	468	518
OK	770	752	486	293	316
OR	3,067	2,784	1,664	1,022	1,321
PA	511	563	288	205	291
SD	6,986	6,657	4,254	3,069	3,686
TN	58	58	27	23	22
TX	27,482	27,180	19,662	13,861	16,896
UT	5,948	5,977	3,401	2,418	3,414
VT	126	148	116	75	67
VA	624	655	307	170	255
WA	646	668	348	246	319
WV	374	352	161	113	161
WI	543	529	222	137	218
WY	11,227	10,864	7,240	5,170	6,938
Oth Sts <u>3/ 4/</u>	214	224	186	136	131
US	110,724	110,573	69,486	47,124	60,162

- 1/ Weighted by sales of wool. U.S. price weighted by State sales.  
 2/ Included in Other States for 1988-89.  
 3/ 1988-89 included AL, AR, DE, FL, GA, HI, MS, RI, and SC.  
 4/ 1990-92 included AR, DE, FL, GA, HI, MS, RI, and SC.  
 5/ Production multiplied by annual average price.

Sheep Operations: Number of Operations with Sheep or Lambs by State  
and United States, 1988-92 <sup>1/</sup>

State	1988	1989	1990	1991	1992
	Number				
AL	<sup>2/</sup>	<sup>2/</sup>	<sup>2/</sup>	350	350
AK	40	40	40	40	40
AZ	500	450	450	450	450
CA	6,500	6,000	5,500	5,300	5,300
CO	2,400	2,300	2,200	2,000	1,900
CT	450	470	500	500	450
ID	2,500	2,000	2,000	1,800	1,600
IL	5,000	5,400	4,500	4,000	4,000
IN	3,800	3,800	3,500	3,500	3,500
IA	11,000	10,000	9,000	8,000	7,500
KS	2,500	2,600	2,600	2,400	2,400
KY	1,200	1,200	1,100	1,100	1,000
LA	1,200	1,300	1,200	1,300	1,300
ME	700	700	700	700	650
MD	1,100	1,200	1,200	1,000	1,200
MA	700	700	650	650	650
MI	2,500	2,600	2,600	2,500	2,400
MN	4,800	5,000	5,200	5,000	4,800
MO	3,500	3,500	3,400	3,400	3,300
MT	2,800	2,800	2,800	2,800	2,500
NE	3,300	3,200	3,200	2,900	2,600
NV	300	300	300	350	350
NH	550	600	550	550	500
NJ	800	700	700	750	800
NM	1,200	1,200	1,200	1,200	1,200
NY	2,100	2,200	2,400	2,400	1,900
NC	600	600	600	600	600
ND	1,800	1,900	1,900	1,900	1,800
OH	6,700	6,200	6,300	6,000	5,500
OK	2,700	2,800	2,700	2,500	2,300
OR	5,100	4,700	4,100	3,900	3,900
PA	4,000	3,900	3,800	3,600	3,400
SD	4,500	4,100	4,100	4,100	4,000
TN	600	600	650	650	650
TX	8,400	8,200	8,200	8,000	8,000
UT	2,100	2,100	2,100	2,200	2,300
VT	650	700	700	700	750
VA	3,000	2,800	2,500	2,400	2,200
WA	2,200	2,200	2,200	2,200	2,200
WV	2,200	2,000	2,000	1,900	1,800
WI	2,800	2,800	2,800	2,600	2,500
WY	1,500	1,500	1,500	1,500	1,500
Oth Sts <sup>3/</sup> <sup>4/</sup>	2,000	2,000	2,000	1,500	1,850
US	112,290	109,360	105,640	101,190	97,890

<sup>1/</sup> Operations with one or more sheep or lambs.

<sup>2/</sup> Included in Other States for 1988-90.

<sup>3/</sup> 1988-89 includes AL, AR, DE, FL, GA, HI, MS, RI, and SC.

<sup>4/</sup> 1990-92 includes AR, DE, FL, GA, HI, MS, RI, and SC.

Lambs on Feed for Slaughter Market: Number on Feed by Weight Group  
and Total Sheep on Feed, Selected States, January 1, 1993

State	Feedlot				Pasture/Crop Residue			
	Under 85 Pounds	85 to 105 lbs	Over 105 lbs	Total	Under 85 Pounds	85 to 105 lbs	Over 105 lbs	Total
	1,000 Head							
AZ	0	0	0	0	27.0	20.0	3.0	50.0
CA	3.0	1.5	.5	5.0	140.0	110.0	30.0	280.0
CO	37.5	175.0	87.5	300.0	.5	11.0	.5	12.0
IL	2.5	5.5	4.0	12.0	1.5	1.0	.5	3.0
IA	13.0	29.5	37.5	80.0	0	0	0	0
KS	30.5	18.5	7.0	56.0	8.0	14.0	1.0	23.0
MN	15.0	20.0	19.0	54.0	2.0	1.0	1.0	4.0
MT	7.0	16.0	1.0	24.0	2.0	4.0	1.0	7.0
NE	7.0	12.0	18.0	37.0	.5	2.0	.5	3.0
ND	6.0	17.0	11.0	34.0	.5	.5	0	1.0
OH	7.0	14.0	1.0	22.0	2.5	6.5	0	9.0
OR	7.0	15.0	6.0	28.0	16.5	40.0	9.5	66.0
SD	11.0	43.5	24.5	79.0	1.5	2.5	2.0	6.0
TX	30.0	70.0	25.0	125.0	35.0	13.0	7.0	55.0
VA	4.0	3.0	1.0	8.0	4.0	11.0	1.0	16.0
WY	13.5	38.0	60.5	112.0	26.0	38.0	6.0	70.0
Total	194.0	478.5	303.5	976.0	267.5	274.5	63.0	605.0
	Total Lambs on Feed				Total Sheep and Lambs on Feed			
	1,000 Head							
AZ	50.0				5.0			
CA	285.0				20.0			
CO	312.0				3.0			
IL	15.0				1.0			
IA	80.0				5.0			
KS	79.0				3.0			
MN	58.0				2.0			
MT	31.0				3.0			
NE	40.0				2.0			
ND	35.0				2.0			
OH	31.0				4.0			
OR	94.0				1.0			
SD	85.0				6.0			
TX	180.0				20.0			
VA	24.0				1.0			
WY	182.0				8.0			
Total	1,581.0				86.0			

Lambs on Feed for Slaughter Market: Placements, Marketings,  
and Replacements, Selected States, November and December 1992

State	Placed on Feed and/or Pasture for Slaughter	Marketed for Slaughter	Ewe Lambs Returned to Breeding Herd as Replacements
1,000 Head			
AZ	20.0	3.5	.5
CA	70.0	35.0	5.0
CO	116.0	230.0	2.0
IL	7.0	12.0	3.0
IA	54.0	65.0	6.0
KS	43.0	12.0	1.0
MN	29.0	36.0	3.0
MT	38.0	27.0	2.0
NE	17.0	13.0	.5
ND	22.0	13.0	4.0
OH	15.0	11.0	1.0
OR	47.0	33.0	1.0
SD	51.0	55.0	6.0
TX	79.0	42.0	2.5
VA	17.0	7.0	3.0
WY	92.0	75.0	10.0
Total	717.0	669.5	50.5

## Index

	Page
All Goats, Inventory, Value per Head, Total Value, Texas.....	4
Angora Goats, Inventory, Value per Head, Total Value, Selected States.....	4
 <b>All Sheep and Lambs</b>	
Inventory, by State and U. S.....	6
Inventory, U. S.....	2
Shorn, by State and U. S.....	18
Total Value, by State and U. S.....	7
Value per Head, by State and U. S.....	14
Breeding Ewes One Year old and Older, by State and U. S.....	15
 <b>Lamb Crop</b>	
U. S.....	2
Number, by State and U. S.....	17
Per Ewes One Year Old and Older, by State and U. S.....	16
 <b>Lambs on Feed for Slaughter Market</b>	
Inventory, Selected States, by Weight Group.....	24
Placements, Marketings and Replacements, Selected States.....	25
Mohair, Production and Value, 5 States and Total.....	5
New Crop Lambs, Selected States and U. S.....	3
Sheep and Lambs on Feed, Inventory, by State and U. S.....	8
Sheep Operations, by State and U. S.....	23
 <b>Stock Sheep and Lambs</b>	
Inventory, by State and U. S.....	9
Ewe Lambs, Inventory, by State and U. S.....	12
Ewes One Year Old and Older, Inventory, by State and U. S....	10
Ram Lambs, Inventory, by State and U. S.....	13
Rams One Year Old and Older, Inventory, by State and U. S....	11
 <b>Wool</b>	
Price per Pound, by State and U. S.....	21
Shorn Wool Production, by State and U. S.....	20
Value, by State and U. S.....	22
Weight per Fleece, by State and U. S.....	19

The United States Department of Agriculture (USDA) prohibits discrimination in its programs on the basis of race, color, national origin, sex, religion, age, disability, political beliefs, and marital or familial status. Persons with disabilities who require alternative means for communication of program information (braille, large print, audiotape, etc.) should contact the USDA Office of Communications at (202) 720-5881 (voice) or (202) 720-7808 (TDD).

To file a complaint, write the Secretary of Agriculture, USDA, Washington, D.C., 20250, or call (202) 720-7327 (voice) or (202) 720-1127 (TDD). USDA is an equal employment opportunity employer.

---

#### Subscription Information

Statistical Bulletins may be obtained in hard copy or on diskette by calling the ERS-NASS order desk toll free at, 1-800-999-6779 (weekdays 8:30 a.m.-5:00 p.m. ET) or by mail from ERS/NASS, 341 Victory Drive, Herndon VA 22070.

Bulletins cost \$10.00 each for paper products or diskettes. The bulletins will also be available on Internet through the Mann Library at Cornell University (gopher usda.mannlib.cornell.edu 70). For technical information, call George Patton at 202-720-9579.

---

**END  
FILMED**

**DATE**

**10-9-97**

**NTIS**

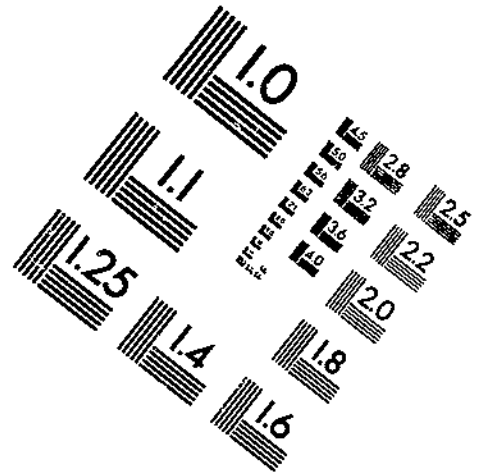
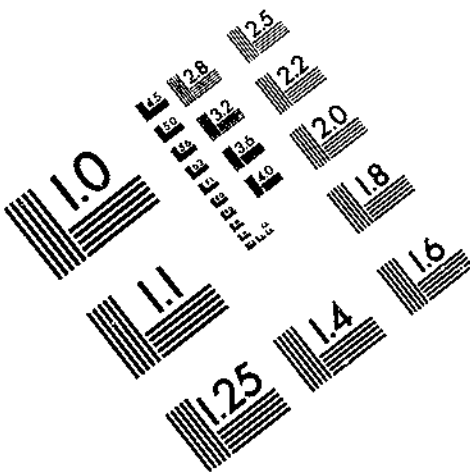




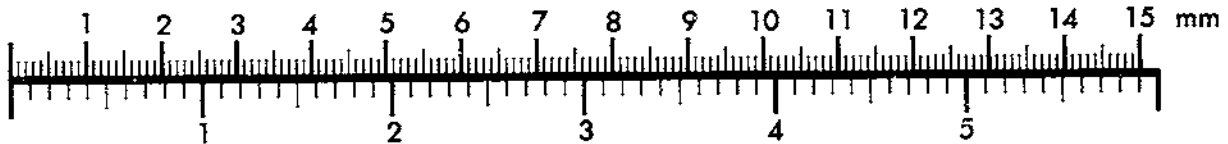
**AIM**

**Association for Information and Image Management**

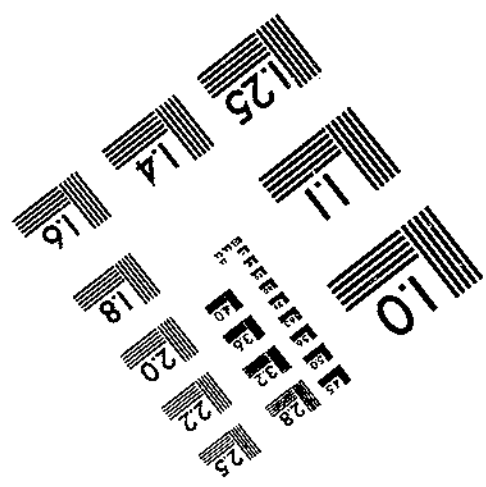
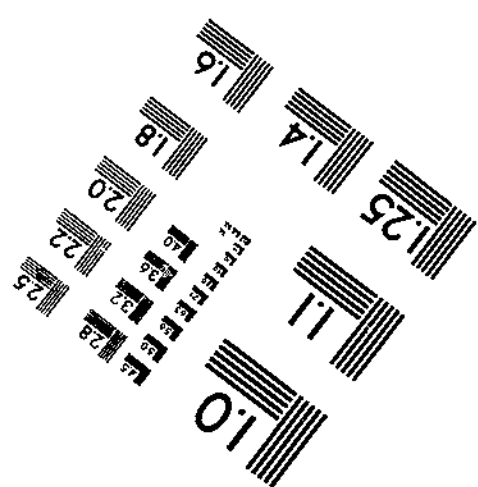
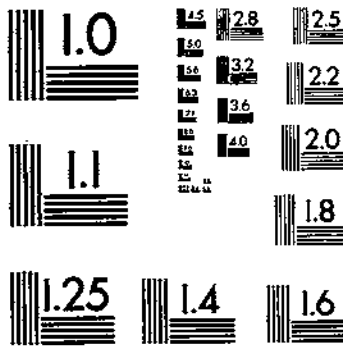
1100 Wayne Avenue, Suite 1100  
Silver Spring, Maryland 20910  
301/587-8202



Centimeter



Inches



MANUFACTURED TO AIM STANDARDS  
BY APPLIED IMAGE, INC.