



AgEcon SEARCH
RESEARCH IN AGRICULTURAL & APPLIED ECONOMICS

The World's Largest Open Access Agricultural & Applied Economics Digital Library

This document is discoverable and free to researchers across the globe due to the work of AgEcon Search.

Help ensure our sustainability.

Give to AgEcon Search

AgEcon Search

<http://ageconsearch.umn.edu>

aesearch@umn.edu

*Papers downloaded from **AgEcon Search** may be used for non-commercial purposes and personal study only. No other use, including posting to another Internet site, is permitted without permission from the copyright owner (not AgEcon Search), or as allowed under the provisions of Fair Use, U.S. Copyright Act, Title 17 U.S.C.*

P893-228401

USDA/SB-859 U.S. IMPORTS OF FRUITS AND VEGETABLES UNDER
PLANT QUARANTINE REGULATIONS, FISCAL YEAR 1991. (STATISTICAL
BULLETIN.) / C. R. GREENE, ET AL. ECONOMIC RESEARCH SERVICE,
WASHINGTON, DC. COMMODITY ECONOMICS DIV. AUG 93 56P

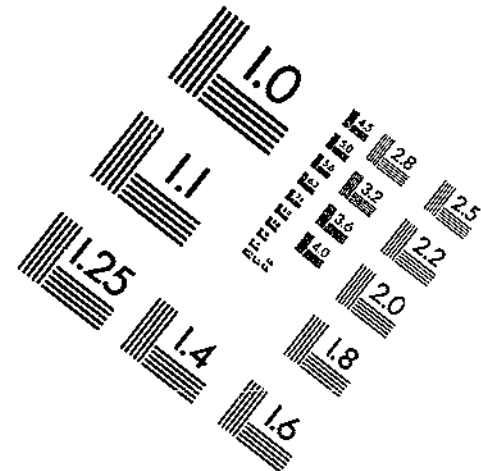
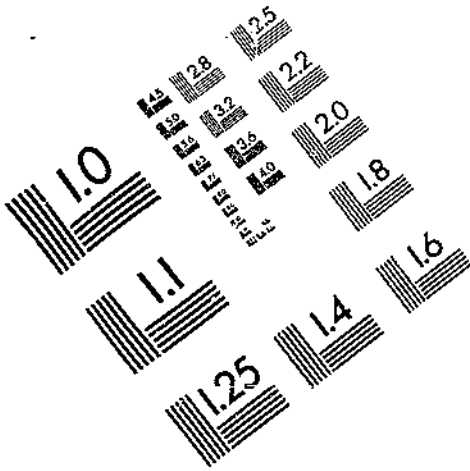
01/01



AIM

Association for Information and Image Management

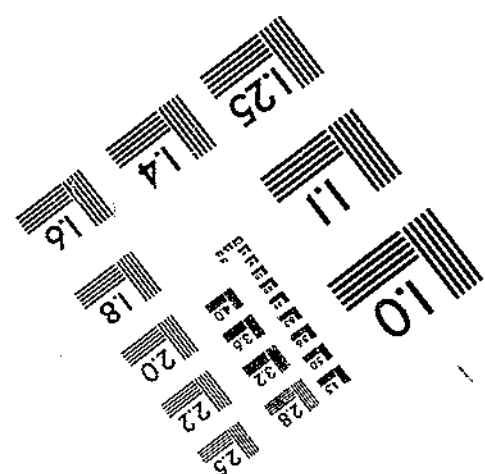
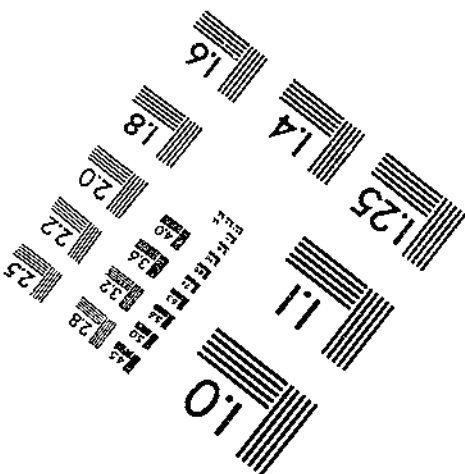
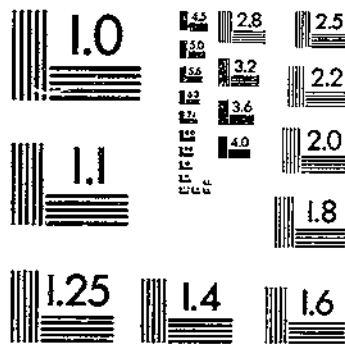
1100 Wayne Avenue, Suite 1100
Silver Spring, Maryland 20910
301/587-8202



Centimeter



Inches



MANUFACTURED TO AIM STANDARDS
BY APPLIED IMAGE, INC.

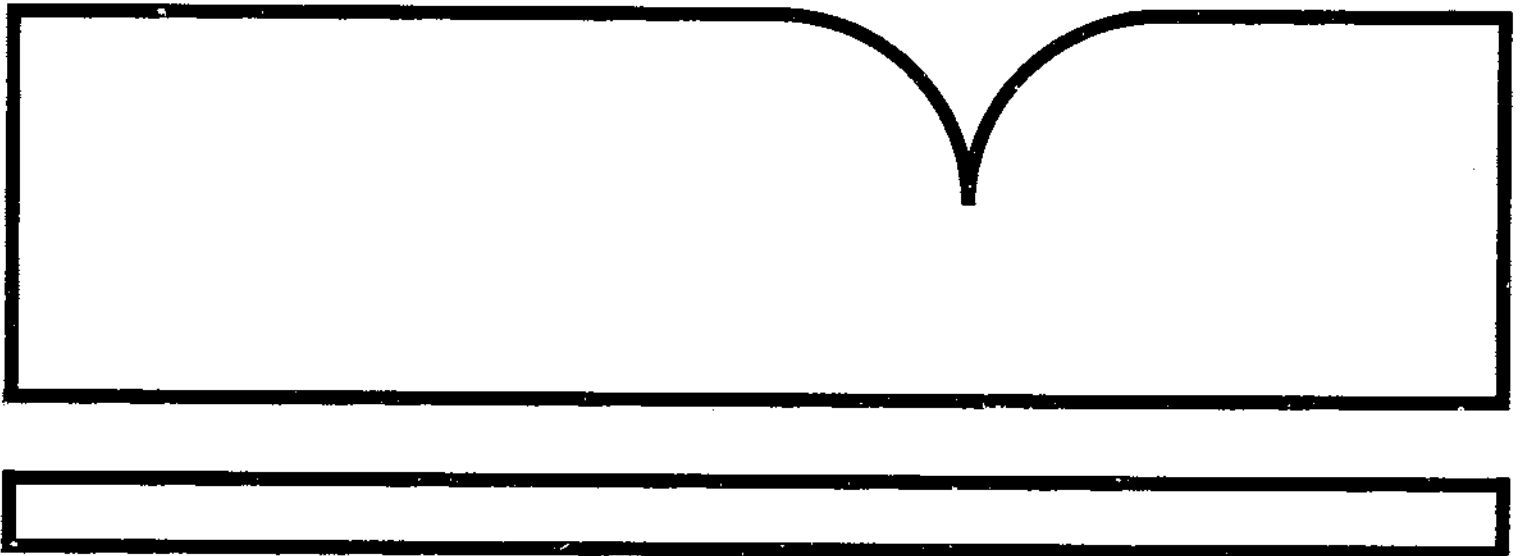


PB93-228401

U.S. Imports of Fruits and Vegetables under
Plant Quarantine Regulations, Fiscal Year 1991

(U.S.) Economic Research Service, Washington, DC

Aug 93



U.S. DEPARTMENT OF COMMERCE
National Technical Information Service

NTIS

BIBLIOGRAPHIC INFORMATION

PB93-228401

Report Nos: USDA/SB-859

Title: U.S. Imports of Fruits and Vegetables under Plant Quarantine Regulations, Fiscal Year 1991.

Date: Aug 93

Authors: C. R. Greene, and C. S. Plummer.

Performing Organization: Economic Research Service, Washington, DC. Commodity Economics Div.

Type of Report and Period Covered: Statistical bulletin.

Supplementary Notes: See also PB92-187814.

NTIS Field/Group Codes: 98B, 96C

Price: PC A04/MF A01

Availability: Available from the National Technical Information Service,
Springfield, VA. 22161

Number of Pages: 56p

Keywords: *United States, *Imports, *Fruits, *Vegetables, Quarantine, Regulations, Commodities, Protection, Foreign countries, Tables(Data).

Abstract: U.S. imports of most fruits and vegetables are subject to regulations administered by the USDA's Animal and Plant Health Inspection Service. The statistical report summarizes imports of over 200 commodities by country of origin and port of entry from October 1, 1990, through September 30, 1991.

REPORT DOCUMENTATION PAGE



PB93-228401

Public reporting burden for this collection of information is estimated to average 1 hour per response, including the time for reviewing instructions, searching existing data sources, gathering and maintaining the data needed, and completing and reviewing the collection of information. Send comments regarding this burden estimate or any other aspect of this collection of information, including suggestions for reducing this burden, to Washington Headquarters Services, Directorate for Information Operations and Reports, 1215 Jefferson Davis Highway, Suite 1204, Arlington, VA 22202-4302, and to the Office of Management and Budget, Paperwork Reduction Project (0704-0188), Washington, DC 20503.

1. AGENCY USE ONLY (Leave blank)	2. REPORT DATE August 1993	3. REPORT TYPE AND DATES COVERED	
4. TITLE AND SUBTITLE U.S. Imports of Fruits and Vegetables Under Plant Quarantine Regulations, Fiscal Year 1991		5. FUNDING NUMBERS	
6. AUTHOR(S) Catherine R. Greene Charles S. Plummer		8. PERFORMING ORGANIZATION REPORT NUMBER SB-859	
7. PERFORMING ORGANIZATION NAME(S) AND ADDRESS(ES) Commodity Economics Division Economic Research Service U.S. Department of Agriculture 1301 New York Avenue, NW. Washington, DC 20005-4788		10. SPONSORING/MONITORING AGENCY REPORT NUMBER	
9. SPONSORING/MONITORING AGENCY NAME(S) AND ADDRESS(ES)		11. SUPPLEMENTARY NOTES	
12a. DISTRIBUTION/AVAILABILITY STATEMENT		12b. DISTRIBUTION CODE	
13. ABSTRACT (Maximum 200 words) U.S. imports of most fruits and vegetables are subject to regulations administered by the USDA's Animal and Plant Health Inspection Service. This statistical report summarizes imports of over 200 commodities by country of origin and port of entry from October 1, 1990, through September 30, 1991. Users should note that data for Puerto Rico are excluded from table 1 and are included in table 2.			
14. SUBJECT TERMS U.S. imports, fruits, vegetables, plant quarantine regulations			15. NUMBER OF PAGES 56
17. SECURITY CLASSIFICATION OF REPORT UNclassified			16. PRICE CODE
18. SECURITY CLASSIFICATION OF THIS PAGE Unclassified	19. SECURITY CLASSIFICATION OF ABSTRACT Unclassified	20. LIMITATION OF ABSTRACT None	



PB93-228401



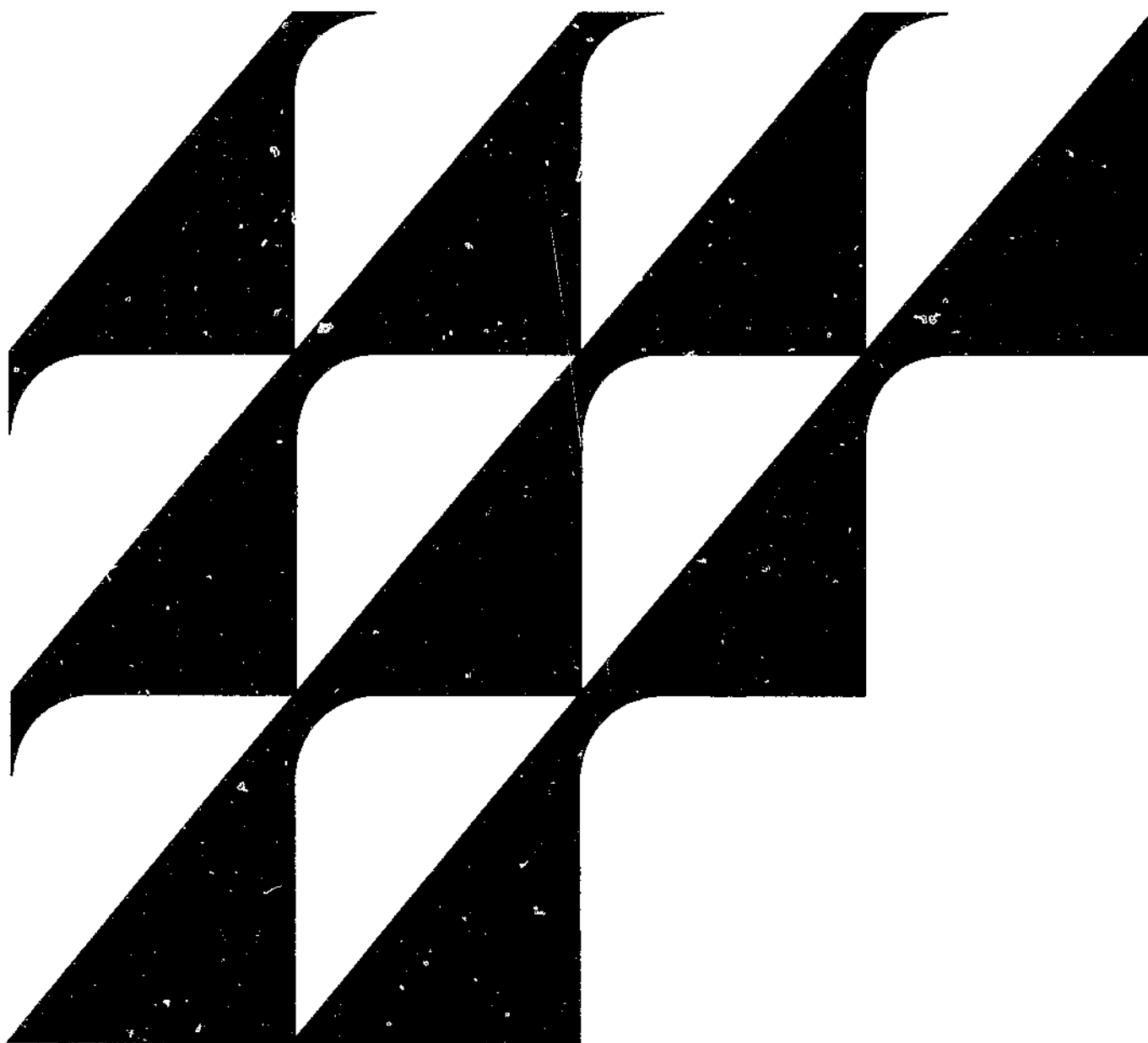
United States
Department of
Agriculture

Economic
Research
Service

Statistical
Bulletin
Number 859

U.S. Imports of Fruits and Vegetables Under Plant Quarantine Regulations, Fiscal Year 1991

Catherine R. Greene
Charles S. Plummer



Reproduced by:
National Technical Information Service
U.S. Department of Commerce
Springfield, VA 22161

U.S. Imports of Fruits and Vegetables Under Plant Quarantine Regulations, Fiscal Year 1991.
By Catherine R. Greene and Charles S. Plummer, Commodity Economics Division, Economic
Research Service, U.S. Department of Agriculture. Statistical Bulletin No. 859.

Abstract

U.S. imports of most fruits and vegetables are subject to regulations administered by the USDA's Animal and Plant Health Inspection Service. This statistical report summarizes imports of over 200 commodities by country of origin and port of entry from October 1, 1990, through September 30, 1991. Users should note that data for Puerto Rico are excluded from table 1 and are included in table 2.

Keywords: U.S. imports, fruits, vegetables, plant quarantine regulations.

Notice

The release of the fiscal 1991 data was made possible by the special efforts of Ronald P. Sponaugle (APHIS), who compiled the primary data.

Acknowledgments

We wish to thank the reviewers, Thomas A. Warden and Gary Lucier of the Economic Research Service, and Ronald P. Sponaugle, Animal and Plant Health Inspection Service, for their comments and suggestions. We also thank Philip Friend, Economic Research Service, for his programming expertise in generating the tables.

TABLE 1--U.S. IMPORTS OF FRUITS AND VEGETABLES UNDER REGULATIONS ADMINISTERED BY THE PLANT PROTECTION AND QUARANTINE PROGRAMS, APHIS, USDA, FOR THE FISCAL YEAR ENDING SEPTEMBER 30, 1991

COMMODITY	KILOGRAMS	COMMODITY	KILOGRAMS
TOTAL	6,254,077,953	APPLE (Cont)	
ALLIUM	918,362	ARGENTINA	4,066,871
ARGENTINA	21	DOVER	1,213,875
JFK	21	JFK	18,626
AUSTRALIA	1	MIAMI	120,750
LOS ANGELES	1	PHILADELPHIA	2,713,620
CHILE	288,449	BRAZIL	88,906
JFK	15	ELIZABETH	88,906
LOS ANGELES	288,434	CHILE	25,641,314
CHINA	533,189	BALTIMORE	3
LOS ANGELES	533,189	DOVER	2,759,296
DOMINICAN REPUBLIC	7,054	JFK	27
JFK	7,054	MONTPELIER	25,378
FRANCE	8,806	PHILADELPHIA	22,856,610
LOS ANGELES	8,806	NEW ZEALAND	16,359,257
GUATEMALA	10	BALTIMORE	2
LOS ANGELES	10	DOVER	14,774,877
ISRAEL	79	HONOLULU	1,584,315
JFK	79	LOS ANGELES	21
ITALY	8,310	SAN FRANCISCO	42
JFK	3,123	APRICOT	1,174,280
LOS ANGELES	5,187	CHILE	1,047,066
JAMAICA	38	HOUSTON	144,671
JFK	38	JFK	8,470
MEXICO	26,168	LOS ANGELES	249,253
HOUSTON	105	MIAMI	65,818
JFK	6,074	PHILADELPHIA	578,854
LOS ANGELES	14,192	NEW ZEALAND	127,214
SAN LUIS	5,797	HONOLULU	2,953
MOROCCO	1,334	LOS ANGELES	124,261
JFK	1,334	ARROWHEAD	115,079
NETHERLANDS	54	CHINA	108,922
JFK	54	BROOKLYN	21,000
NEW ZEALAND	4,349	BUFFALO	5,600
LOS ANGELES	4,349	HONOLULU	11,323
PHILIPPINES	500	LOS ANGELES	45,101
HONOLULU	500	SAN FRANCISCO	25,898
TAIWAN	40,000	DOMINICAN REPUBLIC	1,298
LOS ANGELES	40,000	LOS ANGELES	1,298
AMARANTHUS	77,784	JAPAN	2
JAMAICA	73,257	HONOLULU	2
JFK	73,257	TAIWAN	4,857
MEXICO	4,527	LOS ANGELES	4,857
SAN LUIS	4,527	ARROWROOT	64,214
APIO	7,835	CHINA	56,243
DOMINICAN REPUBLIC	7,835	HONOLULU	11,550
WEST PALM BEACH	7,835	SAN FRANCISCO	44,693
APPLE	46,156,348	HONG KONG	2,843
		SAN FRANCISCO	2,843

TABLE 1--U.S. IMPORTS OF FRUITS AND VEGETABLES UNDER REGULATIONS ADMINISTERED BY THE PLANT PROTECTION AND QUARANTINE PROGRAMS, APHIS, USDA, FOR THE FISCAL YEAR ENDING SEPTEMBER 30, 1991--CONTINUED

COMMODITY	KILOGRAMS	COMMODITY	KILOGRAMS
ARROWROOT (Cont)		ASPARAGUS (Cont)	
TAIWAN	5,128	GUATEMALA (Cont)	
LOS ANGELES	5,128	LOS ANGELES	8,813
ARTICHOKE	697,412	MIAMI	280,063
CHILE	468,425	TAMPA	31,965
ELIZABETH	12,025	MEXICO	18,723,494
JFK	92	BALTIMORE	2
LOS ANGELES	212,724	CALEXICO	11,122,520
MIAMI	24	DALLAS	1,215
PHILADELPHIA	243,560	HIDALGO	1,982,813
COLOMBIA	227,975	JFK	15,291
JFK	98,545	LAREDO	17,480
MIAMI	129,430	LOS ANGELES	30,953
MEXICO	1,012	MIAMI	23,764
CALEXICO	1,012	NOGALES	974,747
ASIAN PEAR	57,812	ROMA	202,024
NEW ZEALAND	57,812	SAN ANTONIO	5,846
LOS ANGELES	54,279	SAN DIEGO	51,381
SAN FRANCISCO	3,533	SAN FRANCISCO	53,612
ASPARAGUS	24,492,789	SAN LUIS	4,241,846
ARGENTINA	77,914	NEW ZEALAND	519,408
JFK	33,054	HONOLULU	19,599
LOS ANGELES	19,772	LOS ANGELES	459,481
MIAMI	25,088	SAN FRANCISCO	40,328
AUSTRALIA	1,254	PERU	2,035,245
LOS ANGELES	1,254	JFK	5,440
BAHAMAS	11,702	LOS ANGELES	54,938
FT. LAUDERDALE	11,702	MIAMI	1,974,795
CHILE	2,619,728	SAN FRANCISCO	72
JFK	1,273,831	VENEZUELA	2,000
LOS ANGELES	187,902	JFK	2,000
MIAMI	1,130,343	ASPARAGUS, WHITE	22,545
PHILADELPHIA	11,520	FRANCE	1,085
SAN FRANCISCO	16,132	DULLES	24
COLOMBIA	1,263	JFK	102
JFK	8	LOS ANGELES	959
LOS ANGELES	5	GERMANY	30
MIAMI	1,250	BOSTON	30
COSTA RICA	25,172	NETHERLANDS	21,430
LOS ANGELES	13,194	BALTIMORE	60
MIAMI	11,978	CHICAGO	19,028
ECUADOR	118,490	ELIZABETH	222
ELIZABETH	5	HOUSTON	100
HIDALGO	12	JFK	1,051
JFK	23,131	LOS ANGELES	919
LOS ANGELES	2,075	PHILADELPHIA	50
MIAMI	93,267	AVOCADO	2,613,279
GUATEMALA	357,119	BAHAMAS	129,033
FT. LAUDERDALE	36,278	FT. LAUDERDALE	129,033

TABLE 1--U.S. IMPORTS OF FRUITS AND VEGETABLES UNDER REGULATIONS ADMINISTERED BY THE PLANT PROTECTION AND QUARANTINE PROGRAMS, APHIS, USDA, FOR THE FISCAL YEAR ENDING SEPTEMBER 30, 1991--CONTINUED

COMMODITY	KILOGRAMS	COMMODITY	KILOGRAMS
AVOCADO (Cont)		BANANA (Cont)	
CHILE	1,780,629	COLOMBIA (Cont)	
JFK	12,408	TAMPA	117,195,576
MIAMI	1,597,832	WALLINGFORD	62,980,432
PHILADELPHIA	170,389	COSTA RICA	767,996,186
DOMINICAN REPUBLIC	694,910	BALTIMORE	8
ELIZABETH	600,884	DOVER	362,816,832
FT. LAUDERDALE	28,486	FT. LAUDERDALE	9,737,714
JFK	23,301	GALVESTON	7,383,560
MIAMI	1,320	GULFPORT	3,456,360
WEST PALM BEACH	40,919	LOS ANGELES	6,857,253
GRENADA	3,891	MIAMI	1,800
BALTIMORE	17	NEW ORLEANS	1,740,059
DULLES	974	PHILADELPHIA	209,766,816
JFK	2,900	SAVANNAH	141,974,864
ISRAEL	3,300	TAMPA	24,260,920
JFK	3,300	DOMINICAN REPUBLIC	100,229
JAMAICA	1,484	ELIZABETH	34,140
BALTIMORE	702	JFK	14,523
JFK	782	MIAMI	47,148
ST. VINCENT	32	WEST PALM BEACH	4,418
JFK	32	ECUADOR	903,337,109
BAMBOO SHOOT	43,897	BALTIMORE	20
CHINA	5	BROOKLYN	54,771
HONOLULU	5	CHICAGO	8,877
DOMINICAN REPUBLIC	14,704	DOVER	293,733,184
JFK	10,499	ELIZABETH	47,192,352
LOS ANGELES	4,205	GULFPORT	277,875
HONG KONG	19,421	HOUSTON	17,511
SAN FRANCISCO	311	JFK	232,002
SEATTLE	19,110	LOS ANGELES	495,690,778
JAPAN	119	MIAMI	369,705
HONOLULU	76	SAVANNAH	14,017,035
JFK	43	TAMPA	5,127,399
TAIWAN	9,648	WALLINGFORD	46,615,600
SAN FRANCISCO	9,648	EL SALVADOR	12,612
BANANA	3,005,515,222	FT. LAUDERDALE	12,574
BRAZIL	12	MIAMI	38
JFK	12	GRENADA	11,167
COLOMBIA	377,773,978	DULLES	228
BALTIMORE	10	JFK	10,939
DOVER	6,342,607	GUATEMALA	283,050,595
ELIZABETH	2,711,008	FT. LAUDERDALE	3,587,055
GALVESTON	37,048,420	GALVESTON	102,531,160
JACKSONVILLE	78,192,168	GULFPORT	83,235,872
JFK	185	LOS ANGELES	18
LOS ANGELES	600	MIAMI	90
MIAMI	38,987,388	NEW ORLEANS	638,764
PHILADELPHIA	34,315,584	PHILADELPHIA	2,196,120

TABLE 1--U.S. IMPORTS OF FRUITS AND VEGETABLES UNDER REGULATIONS ADMINISTERED BY THE PLANT PROTECTION AND QUARANTINE PROGRAMS, APHIS, USDA, FOR THE FISCAL YEAR ENDING SEPTEMBER 30, 1991--CONTINUED

COMMODITY	KILOGRAMS	COMMODITY	KILOGRAMS
BANANA (Cont)		BANANA (Cont)	
GUATEMALA (Cont)		VENEZUELA (Cont)	
SAVANNAH	22,146,388	JFK	9,000
TAMPA	68,715,128	MIAMI	5,095,424
GUYANA	118	BANANA, RED MACABU	49,948
JFK	118	COSTA RICA	49,948
HONDURAS	456,761,902	PHILADELPHIA	30,240
BALTIMORE	5	SAVANNAH	19,708
DOVER	57,387,396	BASIL	680,156
FT. LAUDERDALE	991,204	COLOMBIA	2,352
GALVESTON	106,251,240	JFK	2,352
GULFPORT	249,860,032	DOMINICAN REPUBLIC	4
HOUSTON	6,425	JFK	4
MIAMI	6,847,704	GUYANA	2
NEW ORLEANS	209,592	JFK	2
SAVANNAH	35,208,304	ISRAEL	41,153
JAMAICA	1,251	JFK	41,153
BALTIMORE	1,188	MEXICO	636,645
JFK	22	HOUSTON	3,586
MIAMI	41	LOS ANGELES	110,861
MEXICO	179,156,293	NOGALES	286
ATLANTA	36	SAN DIEGO	314,593
BROWNSVILLE	1,423,828	SAN FRANCISCO	206,214
CALEXICO	175,307	SAN LUIS	1,105
CHICAGO	18	BEAN, CLUSTER	5,231
EAGLE PASS	73	JAMAICA	5,231
EL PASO	28,781,764	BALTIMORE	5,231
FT. LAUDERDALE	70,252	BEAN, FABA	386,072
GULFPORT	58,253,664	MEXICO	386,072
HIDALGO	71,636,520	HIDALGO	8,319
LAREDO	1,019	LAREDO	458
LOS ANGELES	1,574	PROGRESO	720
NOGALES	291,606	SAN DIEGO	376,575
PROGRESO	3,992,889	BEAN, GREEN	10,775,352
SAN DIEGO	14,328,389	DOMINICAN REPUBLIC	39,723
SAN LUIS	199,304	JFK	23,143
SEATTLE	50	MIAMI	16,580
PANAMA	29,579,384	ECUADOR	6
LOS ANGELES	29,579,384	JFK	6
SAMOA	40	FRANCE	3,547
HONOLULU	40	DULLES	1,880
ST. LUCIA	61,948	JFK	198
WEST PALM BEACH	61,948	LOS ANGELES	1,469
TRINIDAD	36,027	GUATEMALA	607,039
DULLES	1,235	DULLES	611
JFK	34,792	FT. LAUDERDALE	163
VENEZUELA	7,636,371	HOUSTON	3,849
FT. LAUDERDALE	1,489,373	JFK	6,462
JACKSONVILLE	1,042,574	LOS ANGELES	3,324

TABLE 1--U.S. IMPORTS OF FRUITS AND VEGETABLES UNDER REGULATIONS ADMINISTERED BY THE PLANT PROTECTION AND QUARANTINE PROGRAMS, APHIS, USDA, FOR THE FISCAL YEAR ENDING SEPTEMBER 30, 1991--CONTINUED

COMMODITY	KILOGRAMS	COMMODITY	KILOGRAMS
BEAN, GREEN (Cont)		BEAN, OTHER (Cont)	
GUATEMALA (Cont)		GUATEMALA (Cont)	
MIAMI	548,353	MIAMI	123,649
NEW ORLEANS	44,245	HAITI	4,303
TAMPA	32	JFK	4,303
GUYANA	3,552	JAMAICA	9,024
JFK	3,552	MIAMI	9,024
HAITI	17,637	MEXICO	3,105,003
JFK	17,637	NOGALES	2,747,761
ITALY	5	SAN DIEGO	357,242
JFK	5	SURINAM	635
JAMAICA	36,670	JFK	635
BALTIMORE	900	TRINIDAD	217
JFK	5,990	JFK	217
MIAMI	29,780	BEAN, YARD LONG	43,847
MEXICO	10,066,048	MEXICO	43,847
BLAINE	10	LOS ANGELES	120
BROWNSVILLE	3,415	PROGRESO	29,645
CALEXICO	322,149	SAN FRANCISCO	11,617
EAGLE PASS	1,907	TAMPA	2,465
HIDALGO	53,230	BEET	1,120,108
HOUSTON	100	GUATEMALA	11,455
LAREDO	7,200	FT. LAUDERDALE	5,772
LOS ANGELES	118,198	HOUSTON	32
NOGALES	8,896,984	MIAMI	5,651
SAN DIEGO	291,712	MEXICO	1,108,653
SAN LUIS	371,143	CALEXICO	404,018
NETHERLANDS	129	HIDALGO	555
JFK	45	PROGRESO	27,325
LOS ANGELES	84	SAN DIEGO	63,616
TRINIDAD	996	SAN LUIS	613,139
DULLES	50	BITTER MELON	1,389,895
JFK	946	COSTA RICA	1,609
BEAN, INDIAN	1,284	MIAMI	1,609
MEXICO	1,284	DOMINICAN REPUBLIC	39,492
PROGRESO	344	MIAMI	39,492
TAMPA	940	EL SALVADOR	16
BEAN, LIMA	37,745	MIAMI	16
MEXICO	37,745	GUATEMALA	19,541
CALEXICO	19,210	MIAMI	19,541
EL PASO	1,182	HAITI	45,844
HIDALGO	5,148	MIAMI	45,844
LAREDO	1,695	HONDURAS	224,061
SAN DIEGO	10,510	MIAMI	224,061
BEAN, OTHER	3,245,383	JAMAICA	1,197
DOMINICAN REPUBLIC	2,552	MIAMI	1,197
JFK	685	MEXICO	1,057,460
MIAMI	1,867	LOS ANGELES	72
GUATEMALA	123,649	MIAMI	4,722

TABLE 1--U.S. IMPORTS OF FRUITS AND VEGETABLES UNDER REGULATIONS ADMINISTERED BY THE PLANT PROTECTION AND QUARANTINE PROGRAMS, APHIS, USDA, FOR THE FISCAL YEAR ENDING SEPTEMBER 30, 1991--CONTINUED

COMMODITY	KILOGRAMS	COMMODITY	KILOGRAMS
BITTER MELON (Cont)		BOYSENBERRY	121,397
MEXICO (Cont)		CHILE	121,393
NOGALES	39,297	LOS ANGELES	2,623
PROGRESO	40,779	MIAMI	118,770
SAN DIEGO	873,626	GUATEMALA	4
SAN FRANCISCO	266	SAN FRANCISCO	4
SAN LUIS	73,945	BRASSICA OLERACEA	1,146
TAMPA	24,753	FRANCE	1,146
NETHERLANDS	675	DULLES	225
TAMPA	675	JFK	921
BLACKBERRY	389,222	BRASSICA SP.	45,166
CHILE	77,179	FRANCE	240
LOS ANGELES	2	JFK	240
MIAMI	77,177	GUATEMALA	1,400
COLOMBIA	70,229	JFK	1,400
MIAMI	70,229	MEXICO	43,516
COSTA RICA	17,369	SAN LUIS	43,516
LOS ANGELES	412	NETHERLANDS	10
MIAMI	16,957	JFK	10
GUATEMALA	206,368	BREADFRUIT	576,240
HOUSTON	58	BARBADOS	17,012
LOS ANGELES	3,081	JFK	12,650
MIAMI	184,401	MIAMI	4,362
NEW ORLEANS	18,622	DOMINICAN REPUBLIC	36,922
TAMPA	206	JFK	29,967
HONDURAS	305	MIAMI	6,955
HOUSTON	305	GRENADA	18,057
MEXICO	185	DULLES	1,163
LOS ANGELES	185	JFK	16,894
NEW ZEALAND	17,587	HAITI	60,881
LOS ANGELES	17,400	JFK	3,261
SAN FRANCISCO	187	MIAMI	57,620
BLUEBERRY	349,915	HONDURAS	3,026
CHILE	72,819	MIAMI	651
JFK	2,246	NEW ORLEANS	2,375
LOS ANGELES	954	JAMAICA	292,600
MIAMI	69,619	ATLANTA	196
NETHERLANDS	2	BALTIMORE	4,841
LOS ANGELES	2	JFK	231,861
NEW ZEALAND	277,094	MIAMI	55,702
HONOLULU	3,436	ST. LUCIA	59,449
LOS ANGELES	266,883	JFK	14,033
MIAMI	830	MIAMI	27,936
SAN FRANCISCO	5,945	WALLINGFORD	17,480
BOK CHOY	826,374	ST. VINCENT	42,657
MEXICO	826,374	JFK	42,657
CALEXICO	201,855	TRINIDAD	45,636
SAN DIEGO	1,970	DULLES	616
SAN LUIS	622,549	JFK	45,020

TABLE 1--U.S. IMPORTS OF FRUITS AND VEGETABLES UNDER REGULATIONS ADMINISTERED BY THE PLANT PROTECTION AND QUARANTINE PROGRAMS, APHIS, USDA, FOR THE FISCAL YEAR ENDING SEPTEMBER 30, 1991--CONTINUED

COMMODITY	KILOGRAMS	COMMODITY	KILOGRAMS
BROCCOFLOWER	49,862	BURDOCK (Cont)	
MEXICO	49,862	TAIWAN	4,312
SAN LUIS	49,862	HONOLULU	4,312
BROCCOLI	15,397,046	CABBAGE	5,644,064
CHILE	6,826	FRANCE	152
DALLAS	1,774	JFK	152
LOS ANGELES	2	ITALY	1,570
MIAMI	5,050	CHICAGO	1,570
COSTA RICA	23,836	MEXICO	5,642,342
DOVER	23,836	BROWNSVILLE	1,855
FRANCE	100	CALEXICO	890,253
JFK	100	CHICAGO	192
GUATEMALA	5,102,134	EL PASO	1,345
FT. LAUDERDALE	576	HIDALGO	1,224,007
GALVESTON	265,455	LAREDO	18,409
LOS ANGELES	13	NOGALES	998,899
MIAMI	4,818,400	PROGRESO	715,281
TAMPA	17,690	SAN DIEGO	32,062
MEXICO	10,263,823	SAN LUIS	1,760,039
BROWNSVILLE	166,695	CABBAGE SPROUTS	3,278
CALEXICO	839,018	MEXICO	3,278
HIDALGO	1,705,316	PROGRESO	3,278
LAREDO	154,664	CACTUS FRUIT	1,853,848
NOGALES	4,939	CHILE	7,622
PROGRESO	71,680	JFK	1,697
ROMULUS	257,041	LOS ANGELES	2,224
SAN DIEGO	190,291	MIAMI	3,701
SAN LUIS	6,874,179	MEXICO	1,846,226
NETHERLANDS	327	CHICAGO	716
ROMULUS	327	DALLAS	250
BRUSSELS SPROUTS	4,097,851	EL PASO	23,343
GUATEMALA	18,990	HIDALGO	548,291
NEW ORLEANS	18,990	LAREDO	432,676
MEXICO	4,076,766	LOS ANGELES	13,533
BALTIMORE	2	NOGALES	97,559
CALEXICO	355,731	PROGRESO	12,825
HIDALGO	190,092	ROMA	3,285
LAREDO	11,607	SAN DIEGO	705,699
SAN DIEGO	3,519,334	SAN FRANCISCO	18
NETHERLANDS	2,095	SAN LUIS	8,031
JFK	2,095	CACTUS PAD	1,528,938
BURDOCK	142,049	CHILE	1,474
JAPAN	137,737	JFK	1,474
BALTIMORE	4,564	MEXICO	1,527,464
ELIZABETH	700	CHICAGO	400
HONOLULU	8,180	DALLAS	18
LOS ANGELES	121,223	EAGLE PASS	2,084
SAN FRANCISCO	2,670	EL PASO	99,771
SEATTLE	400	HIDALGO	238,723

TABLE 1--U.S. IMPORTS OF FRUITS AND VEGETABLES UNDER REGULATIONS ADMINISTERED BY THE PLANT PROTECTION AND QUARANTINE PROGRAMS, APHIS, USDA, FOR THE FISCAL YEAR ENDING SEPTEMBER 30, 1991--CONTINUED

COMMODITY	KILOGRAMS	COMMODITY	KILOGRAMS
CACTUS PAD (Cont)		CANTALOUPE (Cont)	
MEXICO (Cont)		MEXICO (Cont)	
LAREDO	429,186	ROMA	1,025,972
LOS ANGELES	51,550	SAN DIEGO	386,066
NOGALES	60	SAN LUIS	8,289,268
PROGRESO	110,458	PANAMA	396,153
ROMA	3,542	FT. LAUDERDALE	395,153
SAN DIEGO	591,672	MIAMI	1,000
CANTALOUPE	208,844,699	CANTALOUPE CHUNK	115,449
COSTA RICA	16,686,934	MEXICO	115,449
DOVER	2,036,462	HIDALGO	115,449
FT. LAUDERDALE	7,330,990	CARROT	14,277,406
MIAMI	1,082,598	COSTA RICA	1,082
SAVANNAH	6,236,884	MIAMI	1,082
DOMINICAN REPUBLIC	3,864,487	DOMINICAN REPUBLIC	780
ELIZABETH	947,309	JFK	780
FT. LAUDERDALE	1,858,638	GUATEMALA	8,449
JACKSONVILLE	24,717	FT. LAUDERDALE	100
MIAMI	83,750	HOUSTON	52
WEST PALM BEACH	950,073	MIAMI	8,292
EL SALVADOR	2,289,247	NEW ORLEANS	5
FT. LAUDERDALE	1,214,393	HONDURAS	45
HIDALGO	237,870	NEW ORLEANS	45
MIAMI	379,589	ISRAEL	72,574
TAMPA	457,395	ELIZABETH	72,574
GUATEMALA	10,531,494	JAPAN	10
FT. LAUDERDALE	6,857,925	HONOLULU	10
GULFPORT	1,953,796	MEXICO	14,194,466
MIAMI	1,144,815	CALEXICO	3,785,095
NEW ORLEANS	29,587	EL PASO	7,038
TAMPA	545,371	HIDALGO	7,837,722
HAITI	14,426	LAREDO	511,203
MIAMI	14,426	PROGRESO	133,179
HONDURAS	24,317,593	ROMA	360
DOVER	469,342	SAN DIEGO	80,012
FT. LAUDERDALE	13,101,461	SAN LUIS	1,839,857
GULFPORT	5,930,309	CASSAVA	13,421,697
HIDALGO	66,684	BRAZIL	2,412
MIAMI	2,142,255	ELIZABETH	2,412
WEST PALM BEACH	2,607,542	COLOMBIA	26
MEXICO	150,744,365	JFK	6
BILLINGS	181	MIAMI	20
BROWNSVILLE	24,680	COSTA RICA	10,316,440
CALEXICO	9,177,880	DOVER	817,803
EL PASO	15,215,906	ELIZABETH	17,400
HIDALGO	29,879,332	FT. LAUDERDALE	2,847,494
LAREDO	58,732	MIAMI	5,240,548
NOGALES	64,126,968	NEW ORLEANS	208,479
PROGRESO	22,559,380	PHILADELPHIA	1,152,807

TABLE 1--U.S. IMPORTS OF FRUITS AND VEGETABLES UNDER REGULATIONS ADMINISTERED BY THE PLANT PROTECTION AND QUARANTINE PROGRAMS, APHIS, USDA, FOR THE FISCAL YEAR ENDING SEPTEMBER 30, 1991--CONTINUED

COMMODITY	KILOGRAMS	COMMODITY	KILOGRAMS
CASSAVA (Cont)		CELERY (Cont)	
COSTA RICA (Cont)		DOMINICAN REPUBLIC (Cont)	
SAVANNAH	31,909	ELIZABETH	74,924
DOMINICAN REPUBLIC	2,734,254	JFK	5,287
ELIZABETH	2,391,491	WEST PALM BEACH	2,055
JFK	2,800	GUATEMALA	92,215
MIAMI	181	FT. LAUDERDALE	57,898
WEST PALM BEACH	339,782	TAMPA	34,317
ECUADOR	65,946	MEXICO	17,704,846
FT. LAUDERDALE	21,462	CALEXICO	2,819,988
LOS ANGELES	44,484	HIDALGO	240
GUATEMALA	17,740	NOGALES	7,184,108
NEW ORLEANS	15,040	SAN DIEGO	755,903
TAMPA	2,700	SAN LUIS	6,944,592
HAITI	11,525	TUCSON	15
MIAMI	11,525	CELERY ROOT	2,925
HONDURAS	172,380	COSTA RICA	2,921
FT. LAUDERDALE	51,154	FT. LAUDERDALE	2,921
HOUSTON	2,727	NETHERLANDS	4
MIAMI	117,806	JFK	4
NEW ORLEANS	693	CHAYOTE	9,718,414
MEXICO	79,808	COSTA RICA	7,124,691
HIDALGO	79,208	DOVER	36,148
SAN LUIS	600	FT. LAUDERDALE	1,530,760
NICARAGUA	16,699	LOS ANGELES	55,680
FT. LAUDERDALE	16,674	MIAMI	2,858,832
MIAMI	25	PHILADELPHIA	2,356,709
VENEZUELA	4,467	SAN FRANCISCO	40,740
JFK	47	SAVANNAH	74,959
MIAMI	4,420	TAMPA	170,863
CAULIFLOWER	8,515,423	DOMINICAN REPUBLIC	2,583
ENGLAND	17	ELIZABETH	2,192
SEATTLE	17	MIAMI	391
GUATEMALA	1,629	GUATEMALA	16,937
TAMPA	1,629	LOS ANGELES	16,937
MEXICO	8,513,765	HONDURAS	45
BROWNSVILLE	5,513	NEW ORLEANS	45
HIDALGO	73,557	MEXICO	2,574,158
LAREDO	47,446	BROWNSVILLE	9,392
NOGALES	9,902	CALEXICO	399
SAN DIEGO	42,018	EL PASO	1,289
SAN LUIS	8,335,329	HIDALGO	293,910
PANAMA	12	IAREDO	117,168
FT. LAUDERDALE	12	LOS ANGELES	1,501
CELERY	17,888,459	NOGALES	681,691
COSTA RICA	9,132	PROGRESO	6,420
FT. LAUDERDALE	2,668	ROMA	883
MIAMI	6,464	SAN DIEGO	1,461,505
DOMINICAN REPUBLIC	82,266	CHERIMOYA	633

TABLE 1--U.S. IMPORTS OF FRUITS AND VEGETABLES UNDER REGULATIONS ADMINISTERED BY THE PLANT PROTECTION AND QUARANTINE PROGRAMS, APHIS, USDA, FOR THE FISCAL YEAR ENDING SEPTEMBER 30, 1991--CONTINUED

COMMODITY	KILOGRAMS	COMMODITY	KILOGRAMS
CHERIMOYA (Cont)		CHICORY (Cont)	
NEW ZEALAND	633	ITALY	3,390
LOS ANGELES	633	SAN FRANCISCO	3,390
CHERRY	1,118,583	MEXICO	7,238
CHILE	1,102,405	SAN DIEGO	7,238
JFK	129,385	NETHERLANDS	7,650
LOS ANGELES	33,000	DULLES	711
MIAMI	324,348	HOUSTON	1,495
PHILADELPHIA	615,672	MINNEAPOLIS	34
NEW ZEALAND	16,178	ORLANDO	460
LOS ANGELES	16,178	TAMPA	4,950
CHERVIL	1,306	CHINESE BROCCOLI	742,999
ISRAEL	1,306	MEXICO	742,999
JFK	1,306	SAN LUIS	742,999
CHESTNUT	3,261,236	CHINESE CABBAGE	528,234
HONG KONG	500	MEXICO	528,234
SAN FRANCISCO	500	CALEXICO	180,473
ITALY	2,954,805	PROGRESO	32,605
BLAINE	3,000	SAN LUIS	315,156
CHICAGO	9,000	CHINESE KALE	1,342
ELIZABETH	753,545	MEXICO	1,342
JFK	685,410	SAN LUIS	1,342
PHILADELPHIA	1,503,850	CHINESE OKRA	52,751
JAPAN	1,785	DOMINICAN REPUBLIC	7,001
LOS ANGELES	1,785	MIAMI	7,001
KOREA	206,822	HAITI	4,103
BLAINE	35,420	MIAMI	4,103
LOS ANGELES	171,402	HONDURAS	8,214
NEW ZEALAND	8	MIAMI	8,214
LOS ANGELES	8	JAMAICA	1,924
PORTUGAL	52,515	MIAMI	1,924
BLAINE	19,500	MEXICO	31,029
ELIZABETH	27,500	LOS ANGELES	884
JFK	5,515	MIAMI	2,040
SPAIN	44,000	PROGRESO	17,811
JFK	44,000	TAMPA	10,294
TAIWAN	801	NETHERLANDS	480
ELIZABETH	801	TAMPA	480
CHICKPEA	9,179,447	CHINESE SPINACH	2,378
MEXICO	9,179,447	MEXICO	2,334
HIDALGO	2,965	SAN LUIS	2,334
NOGALES	9,176,232	TRINIDAD	44
PROGRESO	250	JFK	44
CHICORY	31,704	CHIVE	84,828
BELGIUM	11,806	COLOMBIA	300
MIAMI	4,630	MIAMI	300
SAN FRANCISCO	7,176	COSTA RICA	563
GUATEMALA	1,620	MIAMI	563
MIAMI	1,620	DOMINICAN REPUBLIC	16,666

TABLE 1--U.S. IMPORTS OF FRUITS AND VEGETABLES UNDER REGULATIONS ADMINISTERED BY THE PLANT PROTECTION AND QUARANTINE PROGRAMS, APHIS, USDA, FOR THE FISCAL YEAR ENDING SEPTEMBER 30, 1991--CONTINUED

COMMODITY	KILOGRAMS	COMMODITY	KILOGRAMS
CHIVE (Cont)		CICHORIUM (Cont)	
DOMINICAN REPUBLIC (Cont)		NETHERLANDS	324,311
MIAMI	16,666	BALTIMORE	2,100
GUATEMALA	1,329	BOSTON	170
MIAMI	1,271	DULLES	6,409
NEW ORLEANS	58	ELIZABETH	5,220
MEXICO	54,508	HOUSTON	1,303
HOUSTON	496	JFK	272,184
LOS ANGELES	8,077	LOS ANGELES	26,667
SAN DIEGO	43,966	MIAMI	5,900
SAN FRANCISCO	1,969	MINNEAPOLIS	478
NEW ZEALAND	11,462	SAN FRANCISCO	1,260
LOS ANGELES	11,462	TAMPA	2,620
CICHORIUM	3,876,316	NEW ZEALAND	1,309
BELGIUM	874,884	LOS ANGELES	1,309
BALTIMORE	700	CILANTRO	7,287,991
BOSTON	2,110	COSTA RICA	89,837
JFK	750,039	MIAMI	89,837
LOS ANGELES	47,493	DOMINICAN REPUBLIC	139,766
MIAMI	44,126	JFK	117,948
SAN FRANCISCO	30,416	MIAMI	21,818
CHILE	226,923	GRENADA	200
JFK	196,233	DULLES	200
LOS ANGELES	1,154	ISRAEL	4,672
MIAMI	29,536	JFK	4,672
FRANCE	3,825	MEXICO	6,878,367
DULLES	110	BROWNSVILLE	56,304
JFK	1,466	CALEXICO	52,780
LOS ANGELES	2,249	CHICAGO	981
GUATEMALA	12,493	EL PASO	32,044
HOUSTON	216	HIDALGO	718,976
LOS ANGELES	2,626	LAREDO	2,012,475
MIAMI	5,300	LOS ANGELES	86
NEW ORLEANS	4,351	NOGALES	43,559
HONDURAS	645	PROGRESO	7,356
HOUSTON	645	ROMA	3,464
ITALY	2,388,285	SAN DIEGO	3,849,643
BOSTON	4,043	SAN FRANCISCO	79
DULLES	2,657	SAN LUIS	100,620
ELIZABETH	428,466	TRINIDAD	175,149
HOUSTON	7,355	DULLES	197
JFK	1,507,178	JFK	174,952
LOS ANGELES	358,792	CIPOLLINO	17,302
MIAMI	260	ITALY	7,902
SAN FRANCISCO	79,534	JFK	7,902
MEXICO	43,641	MOROCCO	9,400
HOUSTON	706	NORFOLK	9,400
SAN DIEGO	27,676	CITRUS	182
SAN LUIS	15,259	GRENADA	127

TABLE 1--U.S. IMPORTS OF FRUITS AND VEGETABLES UNDER REGULATIONS ADMINISTERED BY THE PLANT PROTECTION AND QUARANTINE PROGRAMS, APHIS, USDA, FOR THE FISCAL YEAR ENDING SEPTEMBER 30, 1991--CONTINUED

COMMODITY	KILOGRAMS	COMMODITY	KILOGRAMS
CITRUS (Cont)		COCONUT (Cont)	
GRENADA (Cont)		SRI LANKA	700
JFK	127	SAN FRANCISCO	700
JAMAICA	55	W. SAMOA	67,590
JFK	55	LOS ANGELES	67,540
CLEMENTINE	7,396,349	SAN FRANCISCO	50
SPAIN	7,396,349	COLLARD GREENS	265,344
ELIZABETH	5,080,882	MEXICO	265,344
PHILADELPHIA	2,315,467	CALEXICO	254,850
COCONUT	20,866,085	SAN LUIS	10,494
COSTA RICA	1,177,907	CORN	16,902,815
FT. LAUDERDALE	147,495	ARGENTINA	421
LOS ANGELES	84,480	ROMULUS	421
MIAMI	221,710	CHILE	6,185
PHILADELPHIA	436,416	MIAMI	6,172
SAVANNAH	287,806	SAN FRANCISCO	13
DOMINICAN REPUBLIC	10,870,994	COLOMBIA	1,384
ELIZABETH	1,996,093	MIAMI	1,384
FT. LAUDERDALE	283,126	COSTA RICA	1,899
JACKSONVILLE	4,286,348	MIAMI	1,899
JFK	725	EL SALVADOR	142
MIAMI	677,421	LOS ANGELES	110
WEST PALM BEACH	3,627,281	MIAMI	32
GRENADA	559	GUATEMALA	2,147
JFK	559	JFK	44
GUYANA	10	MIAMI	2,103
JFK	10	HONDURAS	34,172
HAITI	37,422	FT. LAUDERDALE	34,172
MIAMI	37,422	MEXICO	16,855,293
HONDURAS	240,271	BROWNSVILLE	6,277
GALVESTON	90,896	CALEXICO	22,917
GULFPORT	139,610	COLOMBUS NM	122,406
MIAMI	2,000	EL PASO	100,531
NEW ORLEANS	7,720	HIDALGO	144,983
TAMPA	45	LOS ANGELES	9,270
JAMAICA	3,205	NOGALES	16,225,171
ELIZABETH	3,205	PRESIDIO	880
MEXICO	8,421,157	PROGRESO	1,027
EAGLE PASS	436	ROMA	9,000
EL PASO	2,367	SAN DIEGO	27,680
HIDALGO	901,038	SAN LUIS	185,151
LAREDO	1,651	PERU	1,172
NOGALES	195,946	MIAMI	1,172
PROGRESO	1,440	CORNSALAD	3,387
ROMA	1,830	FRANCE	3,387
SAN DIEGO	7,300,519	DULLES	2,259
SAN LUIS	15,930	JFK	389
PHILIPPINES	46,270	LOS ANGELES	739
SEATTLE	46,270	COW PEA	4,932,557

TABLE 1--U.S. IMPORTS OF FRUITS AND VEGETABLES UNDER REGULATIONS ADMINISTERED BY THE PLANT PROTECTION AND QUARANTINE PROGRAMS, APHIS, USDA, FOR THE FISCAL YEAR ENDING SEPTEMBER 30, 1991--CONTINUED

COMMODITY	KILOGRAMS	COMMODITY	KILOGRAMS
COW PEA (Cont)		CUCUMBER (Cont)	
MEXICO	4,932,557	MEXICO (Cont)	
BROWNSVILLE	7,321	PHILADELPHIA	14,104
PROGRESO	4,925,236	PROGRESO	612,539
CRANBERRY	230	SAN DIEGO	12,928,991
CHILE	230	SAN FRANCISCO	16,892
MIAMI	230	SAN LUIS	687,234
CUCUMBER	214,358,047	TUCSON	95
BAHAMAS	1,355,428	NETHERLANDS	45,384
FT. LAUDERDALE	1,355,428	ATLANTA	781
BELGIUM	1,840	BALTIMORE	23,421
JFK	500	BOSTON	2,950
MIAMI	1,340	CHICAGO	10
CANARY ISLANDS	792	DULLES	3,284
JFK	792	ELIZABETH	3,880
DOMINICAN REPUBLIC	5	HOUSTON	625
ELIZABETH	5	LOS ANGELES	3,525
FRANCE	28,000	MIAMI	330
DALLAS	28,000	MINNEAPOLIS	6,070
GUATEMALA	204,167	PHILADELPHIA	160
FT. LAUDERDALE	182,387	TAMPA	348
TAMPA	21,780	SPAIN	64,939
GUYANA	40	BOSTON	5,940
JFK	40	JFK	58,999
HAITI	81,876	CUCUMBER, SLICED	105,493
MIAMI	81,876	MEXICO	105,493
HONDURAS	1,148,233	HIDALGO	105,493
FT. LAUDERDALE	706,785	CUCURBIT	1,116,348
MIAMI	365,991	DOMINICAN REPUBLIC	328,161
WEST PALM BEACH	75,457	JFK	315,518
JAMAICA	47,756	WEST PALM BEACH	12,643
BALTIMORE	2,349	FRANCE	6,569
MIAMI	45,407	DULLES	250
JAPAN	100	JFK	6,319
HONOLULU	100	GUATEMALA	7,785
MEXICO	211,379,487	HOUSTON	3,478
BILLINGS	163	JFK	4,307
BLAINE	430	HAITI	40,239
BROWNSVILLE	89,561	JFK	40,239
CALEXICO	278,998	HONDURAS	2,410
CHICAGO	450	HOUSTON	2,410
COLOMBUS NM	1,262,171	ISRAEL	3,300
DALLAS	5,406	JFK	3,300
EAGLE PASS	10	JAMAICA	304,961
EL PASO	849,474	JFK	304,961
HIDALGO	44,888,040	MEXICO	26,968
LAREDO	326,516	HOUSTON	20,500
MIAMI	9,325	JFK	6,468
NOGALES	149,409,088	NETHERLANDS	116,213

TABLE 1--U.S. IMPORTS OF FRUITS AND VEGETABLES UNDER REGULATIONS ADMINISTERED BY THE PLANT PROTECTION AND QUARANTINE PROGRAMS, APHIS, USDA, FOR THE FISCAL YEAR ENDING SEPTEMBER 30, 1991--CONTINUED

COMMODITY	KILOGRAMS	COMMODITY	KILOGRAMS
CUCURBIT (Cont)		DASHEEN (Cont)	
NETHERLANDS (Cont)		HONDURAS (Cont)	
DULLES	275	FT. LAUDERDALE	19,350
HOUSTON	2,535	NEW ORLEANS	1,982
JFK	113,373	JAMAICA	932,047
MINNEAPOLIS	30	ATLANTA	704
TRINIDAD	279,742	BALTIMORE	4,404
DULLES	100	ELIZABETH	75,473
JFK	279,642	JFK	509,943
CURRENT	954	MIAMI	341,523
CHILE	954	JAPAN	49,123
MIAMI	954	ELIZABETH	12,092
DASHEEN	9,449,547	JFK	232
ARGENTINA	12,350	LOS ANGELES	17,934
PHILADELPHIA	12,350	SAN FRANCISCO	18,865
AZORES	10,675	MEXICO	108,855
BOSTON	10,675	HIDALGO	27,988
BRAZIL	164,272	SAN DIEGO	8,000
ELIZABETH	38,432	SAN FRANCISCO	550
LOS ANGELES	10,006	SAN LUIS	72,317
PHILADELPHIA	115,834	PANAMA	1,180
CHINA	30,540	MIAMI	1,180
HONOLULU	3,300	PORTUGAL	28,395
LOS ANGELES	1,250	BOSTON	17,395
SAN FRANCISCO	25,990	ELIZABETH	11,000
COSTA RICA	4,677,915	TONGA	772
DOVER	42,932	HONOLULU	772
FT. LAUDERDALE	1,773,935	TRINIDAD	9,999
MIAMI	2,820,745	DULLES	5,205
NEW ORLEANS	3,000	JFK	4,794
PHILADELPHIA	32,585	VENEZUELA	26,635
SAVANNAH	4,718	MIAMI	26,635
DOMINICAN REPUBLIC	3,169,429	W. SAMOA	171,916
ELIZABETH	2,067,582	LOS ANGELES	129,500
FT. LAUDERDALE	44,565	SAN FRANCISCO	42,416
JFK	4,642	DATE	175,709
MIAMI	122,459	MEXICO	175,709
WEST PALM BEACH	930,181	CALEXICO	49,434
ECUADOR	25,379	SAN LUIS	126,275
LOS ANGELES	25,379	DILL	10,736
FIJI	4,094	MEXICO	10,736
LOS ANGELES	4,070	LOS ANGELES	91
SAN FRANCISCO	24	SAN DIEGO	7,178
GRENADA	2,708	SAN FRANCISCO	3,467
DULLES	690	DURIAN	380,668
JFK	2,018	THAILAND	380,668
GUYANA	1,931	HONOLULU	3,085
JFK	1,931	LOS ANGELES	248,838
HONDURAS	21,332	SAN FRANCISCO	52,565

TABLE 1--U.S. IMPORTS OF FRUITS AND VEGETABLES UNDER REGULATIONS ADMINISTERED BY THE PLANT PROTECTION AND QUARANTINE PROGRAMS, APHIS, USDA, FOR THE FISCAL YEAR ENDING SEPTEMBER 30, 1991--CONTINUED

COMMODITY	KILOGRAMS	COMMODITY	KILOGRAMS
DURIAN (Cont)		ENDIVE (Cont)	
THAILAND (Cont)		BELGIUM (Cont)	
SEATTLE	76,180	ATLANTA	1,480
EGGPLANT	22,447,649	BALTIMORE	124,628
DOMINICAN REPUBLIC	129,293	BOSTON	2,222
JFK	3,554	CHICAGO	19,588
MIAMI	125,739	DULLES	2,925
FRANCE	2	ELIZABETH	1,412,561
DULLES	2	LOS ANGELES	72,147
GUATEMALA	810	MIAMI	135,609
MIAMI	810	PHILADELPHIA	3,960
GUYANA	3,068	SAN FRANCISCO	13,649
JFK	3,068	FRANCE	71,237
HAITI	36,142	DALLAS	20
JFK	4,864	ELIZABETH	70,942
MIAMI	31,278	LOS ANGELES	275
HONDURAS	243,560	GUATEMALA	149,148
MIAMI	243,560	FT. LAUDERDALE	133,049
JAMAICA	20,390	HOUSTON	7
BALTIMORE	7,816	LOS ANGELES	10,714
JFK	45	MIAMI	3,956
MIAMI	12,529	NEW ORLEANS	538
JAPAN	1,082	TAMPA	884
HONOLULU	1,082	HONDURAS	2,436
MEXICO	21,999,839	HOUSTON	2,436
BLAINE	16	ITALY	299,116
CALEXICO	145,445	ATLANTA	15,026
HIDALGO	182,420	BOSTON	1,162
LOS ANGELES	37,002	CHICAGO	66,876
NOGALES	20,314,260	DALLAS	25,372
SAN DIEGO	1,202,669	DULLES	2,012
SAN FRANCISCO	11,858	HOUSTON	4,111
SAN LUIS	101,279	LOS ANGELES	63,415
TAMPA	4,890	MIAMI	109,210
NETHERLANDS	7,272	PHILADELPHIA	405
BALTIMORE	20	SAN FRANCISCO	11,527
BOSTON	14	MEXICO	90,875
CHICAGO	17	SAN LUIS	90,875
DULLES	171	NETHERLANDS	262,781
ELIZABETH	30	ATLANTA	2,185
HOUSTON	5	BALTIMORE	2,318
JFK	3,853	BOSTON	64,792
LOS ANGELES	3,162	CHICAGO	13,760
NEW ZEALAND	6,116	DULLES	2,974
LOS ANGELES	6,116	ELIZABETH	144,361
TRINIDAD	75	HOUSTON	852
JFK	75	LOS ANGELES	10,966
ENDIVE	2,664,362	MIAMI	18,017
BELGIUM	1,788,769	MINNEAPOLIS	955

TABLE 1--U.S. IMPORTS OF FRUITS AND VEGETABLES UNDER REGULATIONS ADMINISTERED BY THE PLANT PROTECTION AND QUARANTINE PROGRAMS, APHIS, USDA, FOR THE FISCAL YEAR ENDING SEPTEMBER 30, 1991--CONTINUED

COMMODITY	KILOGRAMS	COMMODITY	KILOGRAMS
ENDIVE (Cont)		FROZ. ASPARAGUS (Cont)	
NETHERLANDS (Cont)		MEXICO	194,840
TAMPA	1,601	HIDALGO	11,800
ESCAROLE	85,294	LAREDO	183,040
MEXICO	85,294	PERU	84,370
SAN LUIS	85,294	HOUSTON	48,618
ETHROG	65,315	LOS ANGELES	24
ISRAEL	57,138	MIAMI	8
JFK	57,138	SAN FRANCISCO	35,720
ITALY	3,872	THAILAND	18
JFK	3,872	SEATTLE	18
MOROCCO	4,305	FROZ. AVOCADO	2,003,471
JFK	4,305	MEXICO	2,003,471
FEIJOA	50,884	BROWNSVILLE	20,379
CHILE	1,705	CALEXICO	46,239
JFK	1,702	EAGLE PASS	426,997
LOS ANGELES	3	HIDALGO	75,077
NEW ZEALAND	49,179	LAREDO	1,434,779
HONOLULU	3	FROZ. AVOCADO PULP*	23,348
LOS ANGELES	49,176	MEXICO	23,348
FENNEL	47,961	HIDALGO	23,348
BELGIUM	2,396	FROZ. BAMBOO SHOOT	2,413
ELIZABETH	90	HONG KONG	552
JFK	364	SAN FRANCISCO	552
MIAMI	1,942	PHILIPPINES	400
ITALY	8,406	SEATTLE	400
JFK	8,406	TAIWAN	780
NETHERLANDS	37,159	LOS ANGELES	4
BALTIMORE	1,563	PORTLAND	14
CHICAGO	10,370	SAN FRANCISCO	762
DULLES	4,158	THAILAND	681
JFK	20,608	BALTIMORE	681
MIAMI	400	FROZ. BANANA	30,191
MINNEAPOLIS	30	COSTA RICA	28,805
ROMULUS	30	DOVER	8,260
FROZ. APPLE	27	PHILADELPHIA	10,980
NEW ZEALAND	27	SAN FRANCISCO	9,565
SEATTLE	27	MEXICO	22
FROZ. ARTICHOKE	722	LOS ANGELES	22
CHILE	2	THAILAND	1,364
LOS ANGELES	2	LOS ANGELES	1,364
SPAIN	720	FROZ. BANANA LEAF	198,195
BALTIMORE	720	PHILIPPINES	146,084
FROZ. ASPARAGUS	300,379	SAN FRANCISCO	136,170
CHILE	17,803	SEATTLE	9,914
HOUSTON	17,797	THAILAND	52,111
LOS ANGELES	6	BALTIMORE	1,768
GUATEMALA	3,348	LOS ANGELES	43,636
FT. LAUDERDALE	3,348	SAN FRANCISCO	6,707

TABLE 1--U.S. IMPORTS OF FRUITS AND VEGETABLES UNDER REGULATIONS ADMINISTERED BY THE PLANT PROTECTION AND QUARANTINE PROGRAMS, APHIS, USDA, FOR THE FISCAL YEAR ENDING SEPTEMBER 30, 1991--CONTINUED

COMMODITY	KILOGRAMS	COMMODITY	KILOGRAMS
FROZ. BASIL	2,352	FROZ. BLUEBERRY (Cont)	
FRANCE	2,352	CHILE	75,662
SAN FRANCISCO	2,352	LOS ANGELES	75,662
FROZ. BILLIMBI	9,116	NETHERLANDS	10,100
PHILIPPINES	9,116	NORFOLK	10,100
SAN FRANCISCO	1,481	SWEDEN	1,000
SEATTLE	7,635	SAN FRANCISCO	1,000
FROZ. BITTER MELON	2,146	FROZ. BOYSENBERRY	169,788
PHILIPPINES	2,146	CHILE	134,938
SAN FRANCISCO	100	LOS ANGELES	19,933
SEATTLE	2,046	PORTLAND	10,000
FROZ. BLACK-EYED PEA	4,762	SEATTLE	105,005
EL SALVADOR	4,762	NEW ZEALAND	34,850
NEW ORLEANS	4,762	LOS ANGELES	34,850
FROZ. BLACKBERRY	672,654	FROZ. BROCCOFLOWER	348,046
CHILE	536,054	GUATEMALA	348,046
PORTLAND	10,005	FT. LAUDERDALE	248,046
SEATTLE	526,049	FROZ. BROCCOLI	112,499,366
COLOMBIA	2,859	EL SALVADOR	142,438
BROOKLYN	2,858	NEW ORLEANS	124,068
LOS ANGELES	1	TAMPA	18,370
ENGLAND	36	GUATEMALA	9,888,712
SEATTLE	36	BATON ROUGE	514,174
GERMANY	19,000	FT. LAUDERDALE	7,398,610
SEATTLE	19,000	HIDALGO	76,907
GUATEMALA	407	MIAMI	91,990
NEW ORLEANS	407	NEW ORLEANS	1,208,893
MEXICO	19,690	TAMPA	598,138
LAREDO	19,690	MEXICO	102,468,216
NETHERLANDS	75	BROWNSVILLE	2,564,932
SAN FRANCISCO	25	HIDALGO	45,132,444
SEATTLE	50	LAREDO	54,770,440
NEW ZEALAND	92,536	FROZ. BRUSSEL SPROUT	1,247,338
NEW ORLEANS	11,210	BELGIUM	194,278
SEATTLE	81,326	HOUSTON	175,032
NORWAY	15	NORFOLK	19,246
SEATTLE	15	GUATEMALA	642,113
YUGOSLAVIA	1,982	FT. LAUDERDALE	642,113
BALTIMORE	1,982	MEXICO	350,276
FROZ. BLACKKEYED PEA	220,103	HIDALGO	350,276
EL SALVADOR	97,101	POLAND	60,671
NEW ORLEANS	57,729	HOUSTON	60,671
TAMPA	39,372	FROZ. BYRSONIMA	28,045
GUATEMALA	101,752	EL SALVADOR	2,812
BATON ROUGE	64,672	LOS ANGELES	2,812
NEW ORLEANS	37,080	GUATEMALA	25,233
HONDURAS	21,250	LOS ANGELES	24,215
BATON ROUGE	21,250	NEW ORLEANS	1,018
FROZ. BLUEBERRY	86,762	FROZ. CABBAGE	8

TABLE 1--U.S. IMPORTS OF FRUITS AND VEGETABLES UNDER REGULATIONS ADMINISTERED BY THE PLANT PROTECTION AND QUARANTINE PROGRAMS, APHIS, USDA, FOR THE FISCAL YEAR ENDING SEPTEMBER 30, 1991--CONTINUED

COMMODITY	KILOGRAMS	COMMODITY	KILOGRAMS
FROZ. CABBAGE (Cont)		FROZ. CASSAVA (Cont)	
NETHERLANDS	8	COSTA RICA	2,817,787
PHILADELPHIA	8	DOVER	19,958
FROZ. CACTUS FRUIT	39,010	FT. LAUDERDALE	834,312
MEXICO	39,010	MIAMI	188,800
LAREDO	39,010	NEW ORLEANS	800,235
FROZ. CALATHEA	1,007	PHILADELPHIA	972,002
EL SALVADOR	1,007	SAN FRANCISCO	2,480
LOS ANGELES	1,007	DOMINICAN REPUBLIC	62,565
FROZ. CANTALOUPE	22,680	ELIZABETH	62,565
MEXICO	22,680	GUATEMALA	18,037
CALEXICO	22,680	NEW ORLEANS	18,037
FROZ. CARAMBOLA	350	HONDURAS	16,918
COSTA RICA	350	FT. LAUDERDALE	16,873
PHILADELPHIA	350	MIAMI	45
FROZ. CARROT	469,152	PHILIPPINES	7,287
BELGIUM	29,431	SAN FRANCISCO	6,747
ELIZABETH	10,057	SEATTLE	540
NORFOLK	19,374	THAILAND	994
FRANCE	17,577	BALTIMORE	580
SAN FRANCISCO	17,577	SAN FRANCISCO	414
GUATEMALA	28	FROZ. CASSAVA LEAF	181
FT. LAUDERDALE	28	PHILIPPINES	18
ISRAEL	343,777	SAN FRANCISCO	18
BALTIMORE	39,000	THAILAND	163
CHICAGO	16	SAN FRANCISCO	163
ELIZABETH	19,636	FROZ. CAULIFLOWER	23,109,856
HOUSTON	74,550	ECUADOR	65
LOS ANGELES	37,613	ELIZABETH	65
NEW ORLEANS	19,997	EL SALVADOR	54
NORFOLK	57,925	LOS ANGELES	54
SAN FRANCISCO	95,040	GUATEMALA	1,636,654
JAPAN	6	FT. LAUDERDALE	1,636,654
SAN FRANCISCO	6	MEXICO	21,473,083
MEXICO	78,333	BROWNSVILLE	560,842
BROWNSVILLE	56,723	HIDALGO	7,852,030
HIDALGO	21,610	LAREDO	13,060,211
FROZ. CASHEW APPLE	7,714	FROZ. CHAYOTE	9,724
DOMINICAN REPUBLIC	7,714	GUATEMALA	9,724
FT. LAUDERDALE	7,714	SAN FRANCISCO	9,724
FROZ. CASHEW FRUIT	13,328	FROZ. CHERRY	102
EL SALVADOR	181	GUATEMALA	45
LOS ANGELES	181	MIAMI	45
GUATEMALA	13,147	JAPAN	52
LOS ANGELES	9,074	SEATTLE	52
NEW ORLEANS	4,073	NEW ZEALAND	5
FROZ. CASSAVA	2,953,665	SAN FRANCISCO	5
COLOMBIA	30,077	FROZ. CHERVIL	480
BROOKLYN	30,077	FRANCE	480

TABLE 1--U.S. IMPORTS OF FRUITS AND VEGETABLES UNDER REGULATIONS ADMINISTERED BY THE PLANT PROTECTION AND QUARANTINE PROGRAMS, APHIS, USDA, FOR THE FISCAL YEAR ENDING SEPTEMBER 30, 1991--CONTINUED

COMMODITY	KILOGRAMS	COMMODITY	KILOGRAMS
FROZ. CHERVIL (Cont)		FROZ. DASHEEN (Cont)	
FRANCE (Cont)		COSTA RICA (Cont)	
SAN FRANCISCO	480	NEW ORLEANS	428
FROZ. CHESTNUT	250	DOMINICAN REPUBLIC	22,759
SPAIN	250	ELIZABETH	8,979
BALTIMORE	250	FT. LAUDERDALE	8,580
FROZ. CICHORIUM	45	NEW ORLEANS	5,200
GUATEMALA	45	THAILAND	1
MIAMI	45	LOS ANGELES	1
FROZ. CILANTRO	2,000	FROZ. DATE	500
FRANCE	2,000	GUATEMALA	500
SAN FRANCISCO	2,000	MIAMI	500
FROZ. COCONUT	35,761	FROZ. DILL	48,394
COSTA RICA	33,513	DENMARK	14,500
FT. LAUDERDALE	18,513	NEW ORLEANS	14,500
PHILADELPHIA	15,000	SWEDEN	13,404
DOMINICAN REPUBLIC	2,248	NEW ORLEANS	13,404
FT. LAUDERDALE	2,248	TURKEY	20,490
FROZ. CORN	39,206	NEW ORLEANS	20,490
CHILE	12	FROZ. DURIAN	499,474
LOS ANGELES	12	PHILIPPINES	50
JAPAN	18	SAN FRANCISCO	50
PORTLAND	18	THAILAND	499,424
MEXICO	903	BALTIMORE	6,642
BROWNSVILLE	903	LOS ANGELES	57,815
THAILAND	38,273	SAN FRANCISCO	434,319
PORTLAND	16,835	SEATTLE	648
SAN FRANCISCO	20	FROZ. DURIAN LEAF	21,452
SEATTLE	21,418	THAILAND	21,452
FROZ. CROTOLARIA	19,713	BALTIMORE	21,452
EL SALVADOR	25	FROZ. ERYTHRINA	2,923
LOS ANGELES	25	GUATEMALA	2,923
GUATEMALA	7,638	LOS ANGELES	2,923
LOS ANGELES	7,638	FROZ. FABA BEAN	100
THAILAND	12,050	JAPAN	100
LOS ANGELES	12,050	SAN FRANCISCO	100
FROZ. CURRANT	11,369	FROZ. FERNALDIA	14,861
SWEDEN	11,369	EL SALVADOR	1,464
SAN FRANCISCO	11,369	LOS ANGELES	1,464
FROZ. CUSTARD APPLE	14,316	GUATEMALA	13,397
COSTA RICA	1,341	LOS ANGELES	13,397
FT. LAUDERDALE	628	FROZ. GALANGA	1,980
NEW ORLEANS	713	THAILAND	1,980
VENEZUELA	12,975	BALTIMORE	1,980
MIAMI	12,975	FROZ. GINGER	68
FROZ. DASHEEN	55,441	THAILAND	68
COSTA RICA	32,681	BALTIMORE	68
FT. LAUDERDALE	25,765	FROZ. GOLDEN APPLE	2,572
MIAMI	6,488	DOMINICAN REPUBLIC	2,572

TABLE 1--U.S. IMPORTS OF FRUITS AND VEGETABLES UNDER REGULATIONS ADMINISTERED BY THE PLANT PROTECTION AND QUARANTINE PROGRAMS, APHIS, USDA, FOR THE FISCAL YEAR ENDING SEPTEMBER 30, 1991--CONTINUED

COMMODITY	KILOGRAMS	COMMODITY	KILOGRAMS
FROZ. GOLDEN APPLE (Cont)		FROZ. GREEN PEA (Cont)	
DOMINICAN REPUBLIC (Cont)		GUATEMALA	21,700
ELIZABETH	2,572	BATON ROUGE	21,700
FROZ. GRAPE	381,466	HONG KONG	154,000
CHILE	122,133	SEATTLE	154,000
NEW ORLEANS	2,175	HUNGARY	18,178
PORTLAND	35,399	HOUSTON	18,178
SAN FRANCISCO	84,559	MEXICO	9,661
CHINA	221,333	BROWNSVILLE	3,917
SEATTLE	221,333	LAREDO	5,744
GUATEMALA	38,000	NEW ZEALAND	16,035
SAN FRANCISCO	38,000	PHILADELPHIA	16,027
FROZ. GRAPEFRUIT	3,996	SAN FRANCISCO	8
MEXICO	3,996	PHILIPPINES	2
CALEXICO	3,996	SAN FRANCISCO	2
FROZ. GREEN BEAN	801,479	FROZ. GUAVA	8,792
BELGIUM	18,625	COLOMBIA	2
CHARLESTON	18,625	LOS ANGELES	2
CHILE	2	EL SALVADOR	6,782
LOS ANGELES	2	LOS ANGELES	6,782
CHINA	54,491	GUATEMALA	670
SAN FRANCISCO	54,491	LOS ANGELES	670
GUATEMALA	49,249	PHILIPPINES	1,251
FT. LAUDERDALE	49,249	SAN FRANCISCO	1,251
HONG KONG	40,124	VENEZUELA	87
LOS ANGELES	40,124	LOS ANGELES	77
HUNGARY	18,178	MIAMI	10
HOUSTON	18,178	FROZ. GUAVA PULP	11,872
JAPAN	10,020	BRAZIL	11,872
MINNEAPOLIS	2	JACKSONVILLE	11,872
SAN FRANCISCO	10,000	FROZ. HORSERADISH LE	91
SEATTLE	18	PHILIPPINES	91
MEXICO	383,409	SAN FRANCISCO	91
BROWNSVILLE	224,648	FROZ. JACKFRUIT	3,917
HIDALGO	158,761	PHILIPPINES	3,917
NEW ZEALAND	21,240	SAN FRANCISCO	3,517
PHILADELPHIA	21,220	SEATTLE	400
SAN FRANCISCO	20	FROZ. JUTE LEAF	4,995
PERU	166,546	PHILIPPINES	4,995
HOUSTON	166,546	SAN FRANCISCO	91
TAIWAN	39,595	SEATTLE	4,904
LOS ANGELES	39,595	FROZ. KAMIA	228
FROZ. GREEN PEA	289,615	PHILIPPINES	228
BELGIUM	14,125	SAN FRANCISCO	228
PHILADELPHIA	14,125	FROZ. KIWI	66,634
CHILE	36,000	NEW ZEALAND	66,634
BALTIMORE	36,000	PHILADELPHIA	65,454
FRANCE	19,914	SAN FRANCISCO	1,180
SAN FRANCISCO	19,914	FROZ. LEEK	5

TABLE 1--U.S. IMPORTS OF FRUITS AND VEGETABLES UNDER REGULATIONS ADMINISTERED BY THE PLANT PROTECTION AND QUARANTINE PROGRAMS, APHIS, USDA, FOR THE FISCAL YEAR ENDING SEPTEMBER 30, 1991--CONTINUED

COMMODITY	KILOGRAMS	COMMODITY	KILOGRAMS
FROZ. LEEK (Cont)		FROZ. MANGO (Cont)	
NETHERLANDS	5	COSTA RICA	69,008
PHILADELPHIA	5	FT. LAUDERDALE	5,377
FROZ. LEMON	110,335	LOS ANGELES	95
MEXICO	110,335	MIAMI	2,003
CALEXICO	110,335	NEW ORLEANS	51,179
FROZ. LIMA BEAN	16,391	PHILADELPHIA	7,512
GUATEMALA	14,515	SAN FRANCISCO	2,842
FT. LAUDERDALE	14,515	DOMINICAN REPUBLIC	41,433
MEXICO	1,876	FT. LAUDERDALE	41,433
BROWNSVILLE	1,876	EL SALVADOR	175
FROZ. LINGONBERRY	56	LOS ANGELES	175
GERMANY	56	GUATEMALA	15,849
ELIZABETH	56	LOS ANGELES	8,067
FROZ. LONGAN	13,300,900	NEW ORLEANS	1,629
THAILAND	13,300,900	SAN FRANCISCO	6,153
BALTIMORE	318	HONDURAS	3,457
LOS ANGELES	13,247,383	MIAMI	3,457
SAN FRANCISCO	53,199	MEXICO	330,311
FROZ. LULO	6,707	HIDALGO	4,572
COLOMBIA	6,707	LAREDO	325,555
BROOKLYN	6,706	LOS ANGELES	184
LOS ANGELES	1	PERU	47,033
FROZ. MAMEY	33,060	CHARLESTON	46,638
COLOMBIA	1,400	LOS ANGELES	395
MIAMI	1,400	PHILIPPINES	55,297
COSTA RICA	2,174	CHARLESTON	38,252
FT. LAUDERDALE	1,961	HONOLULU	11,045
MIAMI	213	SAN FRANCISCO	6,000
DOMINICAN REPUBLIC	2,581	VENEZUELA	5,821
ELIZABETH	2,581	MIAMI	5,821
EL SALVADOR	796	FROZ. MANGO PULP	37,794
LOS ANGELES	796	COLOMBIA	37,794
GUATEMALA	5,232	JACKSONVILLE	37,794
LOS ANGELES	4,332	FROZ. MANGOSTEEN	2
MIAMI	900	THAILAND	2
HONDURAS	11,697	LOS ANGELES	2
MIAMI	11,697	FROZ. MELON	333,757
MEXICO	4,095	COSTA RICA	95
LOS ANGELES	2,995	LOS ANGELES	95
MIAMI	1,100	GUATEMALA	315,493
VENEZUELA	5,085	NEW ORLEANS	270,357
MIAMI	5,085	SAN FRANCISCO	45,136
FROZ. MANGO	568,744	MEXICO	18,167
BRAZIL	8	HIDALGO	18,167
LOS ANGELES	8	PERU	2
COLOMBIA	352	MIAMI	2
LOS ANGELES	2	FROZ. MELON BALL	876,148
MIAMI	350	CHILE	6,888

TABLE 1--U.S. IMPORTS OF FRUITS AND VEGETABLES UNDER REGULATIONS ADMINISTERED BY THE PLANT PROTECTION AND QUARANTINE PROGRAMS, APHIS, USDA, FOR THE FISCAL YEAR ENDING SEPTEMBER 30, 1991--CONTINUED

COMMODITY	KILOGRAMS	COMMODITY	KILOGRAMS
FROZ. MELON BALL (Cont)		FROZ. OKRA (Cont)	
CHILE (Cont)		EL SALVADOR (Cont)	
NEW ORLEANS	6,888	NEW ORLEANS	303,239
GUATEMALA	622,311	TAMPA	247,675
BATON ROUGE	26,761	GUATEMALA	7,666,792
FT. LAUDERDALE	261,261	BATON ROUGE	1,117,619
NEW ORLEANS	315,227	FT. LAUDERDALE	6,094,078
SAN FRANCISCO	19,062	NEW ORLEANS	140,480
MEXICO	227,448	TAMPA	314,615
CALEXICO	173,016	HONDURAS	21,700
HIDALGO	54,432	BATON ROUGE	21,700
PANAMA	19,501	MEXICO	560,687
FT. LAUDERDALE	19,501	BROWNSVILLE	545,571
FROZ. MIX VEGETABLE	19,713	HIDALGO	15,116
GUATEMALA	19,713	FROZ. ONION	138,250
NEW ORLEANS	19,713	ISRAEL	36,000
FROZ. MIXED FRUIT	19,524	NORFOLK	36,000
CHILE	19,486	JAPAN	176
NEW ORLEANS	19,486	PORTLAND	176
MEXICO	38	MEXICO	102,074
LAREDO	38	BROWNSVILLE	13,011
FROZ. MIXED VEGETABL	664,456	CALEXICO	89,063
COSTA RICA	20,107	FROZ. ORANGE	16,405
BATON ROUGE	18,732	MEXICO	16,405
PHILADELPHIA	1,375	CALEXICO	16,405
EGYPT	2,200	FROZ. PACAYA	4,748
LOS ANGELES	2,200	GUATEMALA	4,748
GUATEMALA	393,836	LOS ANGELES	4,748
BATON ROUGE	379,106	FROZ. PANDANUS LEAF	45
NEW ORLEANS	14,730	THAILAND	45
MEXICO	121,313	BALTIMORE	45
LAREDO	121,313	FROZ. PAPAYA	130,463
TAIWAN	127,000	COLOMBIA	19,032
LOS ANGELES	127,000	BROOKLYN	18,532
FROZ. MOMBIN	59,554	MIAMI	500
EL SALVADOR	2,958	COSTA RICA	70,365
LOS ANGELES	2,958	ELIZABETH	11,936
GUATEMALA	56,596	FT. LAUDERDALE	14,997
LOS ANGELES	56,596	MIAMI	23,402
FROZ. MUSHROOM	5,283	NEW ORLEANS	3,545
CHILE	2	PHILADELPHIA	13,874
LOS ANGELES	2	SAN FRANCISCO	2,611
MEXICO	5,281	DOMINICAN REPUBLIC	28,636
BROWNSVILLE	5,281	ELIZABETH	6,287
FROZ. OKRA	8,961,623	FT. LAUDERDALE	20,149
EGYPT	500	NEW ORLEANS	2,200
LOS ANGELES	500	GUATEMALA	6,153
EL SALVADOR	711,944	SAN FRANCISCO	6,153
BATON ROUGE	161,030	MEXICO	6,277

TABLE 1--U.S. IMPORTS OF FRUITS AND VEGETABLES UNDER REGULATIONS ADMINISTERED BY THE PLANT PROTECTION AND QUARANTINE PROGRAMS, APHIS, USDA, FOR THE FISCAL YEAR ENDING SEPTEMBER 30, 1991--CONTINUED

COMMODITY	KILOGRAMS	COMMODITY	KILOGRAMS
FROZ. PAPAYA (Cont)		FROZ. PEA POD (Cont)	
MEXICO (Cont)		CHINA	417,232
LAREDO	6,277	LOS ANGELES	409,732
FROZ. PARSLEY	2,850	SAN FRANCISCO	7,500
GUATEMALA	2,850	GUATEMALA	60,437
NEW ORLEANS	2,850	NEW ORLEANS	60,437
FROZ. PASSION FRUIT	120,810	HONG KONG	61,562
BRAZIL	35,420	BALTIMORE	910
JACKSONVILLE	35,420	LOS ANGELES	60,652
COLOMBIA	18,402	NEW ZEALAND	14,800
JACKSONVILLE	18,400	LOS ANGELES	14,800
LOS ANGELES	2	TAIWAN	476,804
COSTA RICA	781	BALTIMORE	15,834
MIAMI	327	LOS ANGELES	341,749
NEW ORLEANS	454	NORFOLK	85,000
DOMINICAN REPUBLIC	19,248	PORTLAND	34,221
FT. LAUDERDALE	19,248	FROZ. PEACH	135,719
GUATEMALA	1,063	CHILE	97,384
MIAMI	1,063	BROOKLYN	88,320
VENEZUELA	45,896	NEW ORLEANS	9,064
JACKSONVILLE	37,200	MEXICO	38,335
MIAMI	8,696	EL PASO	38,320
FROZ. PEA	967,177	LOS ANGELES	15
CHINA	144,488	FROZ. PEPPER	28,117
LOS ANGELES	134,528	INDIA	19,447
SEATTLE	9,960	SEATTLE	19,447
DOMINICAN REPUBLIC	40,537	MEXICO	8,532
ELIZABETH	40,537	EAGLE PASS	8,532
EL SALVADOR	28,147	THAILAND	138
NEW ORLEANS	28,147	BALTIMORE	136
FRANCE	19	LOS ANGELES	2
SAN FRANCISCO	19	FROZ. PEPPER LEAF	1,381
GUATEMALA	91,755	PHILIPPINES	1,381
BATON ROUGE	31,750	SEATTLE	1,381
NEW ORLEANS	60,005	FROZ. PIGEON PEA	64,751
HUNGARY	43,416	DOMINICAN REPUBLIC	64,751
BALTIMORE	21,887	ELIZABETH	37,274
CHARLESTON	19,620	FT. LAUDERDALE	6,612
HOUSTON	1,909	MIAMI	20,865
MEXICO	41,448	FROZ. PINEAPPLE	353,284
BROWNSVILLE	24,095	COLOMBIA	2,396
LAREDO	17,353	JACKSONVILLE	1,145
NEW ZEALAND	354,646	LOS ANGELES	1
SAN FRANCISCO	10,936	MIAMI	1,250
SEATTLE	343,710	COSTA RICA	312,662
TAIWAN	222,721	FT. LAUDERDALE	2,012
LOS ANGELES	217,441	LOS ANGELES	254,417
SEATTLE	5,280	MIAMI	2,717
FROZ. PEA POD	1,030,835	NEW ORLEANS	830

TABLE 1--U.S. IMPORTS OF FRUITS AND VEGETABLES UNDER REGULATIONS ADMINISTERED BY THE PLANT PROTECTION AND QUARANTINE PROGRAMS, APHIS, USDA, FOR THE FISCAL YEAR ENDING SEPTEMBER 30, 1991--CONTINUED

COMMODITY	KILOGRAMS	COMMODITY	KILOGRAMS
FROZ. PINEAPPLE (Cont)		FROZ. RASPBERRY (Cont)	
COSTA RICA (Cont)		CHILE	823,830
PHILADELPHIA	48,600	BALTIMORE	82,707
SAN FRANCISCO	4,086	ELIZABETH	81,008
HONDURAS	3,465	HOUSTON	82,993
MIAMI	3,465	LOS ANGELES	41,506
MEXICO	34,708	PORTLAND	20,000
LAREDO	34,708	SAN FRANCISCO	36,336
PHILIPPINES	52	SEATTLE	479,280
HONOLULU	52	ITALY	36,707
THAILAND	1	NORFOLK	36,707
SAN FRANCISCO	1	NETHERLANDS	20
FROZ. PITAHAYA	378	LOS ANGELES	20
MEXICO	378	NEW ZEALAND	330
LOS ANGELES	378	LOS ANGELES	330
FROZ. PITO	191	SWITZERLAND	4
GUATEMALA	191	BOSTON	4
LOS ANGELES	191	YUGOSLAVIA	124,425
FROZ. PLANTAIN	37,242	BALTIMORE	65,000
DOMINICAN REPUBLIC	1,424	BROOKLYN	3,755
FT. LAUDERDALE	1,424	LOS ANGELES	37,670
GUATEMALA	35,818	ROMULUS	18,000
TAMPA	35,818	FROZ. RED CURRANT	2
FROZ. PLUM	10,291	POLAND	2
CHILE	84	SAN FRANCISCO	2
SAN FRANCISCO	84	FROZ. SAPOTE	27,716
GUATEMALA	10,207	EL SALVADOR	390
MIAMI	25	LOS ANGELES	390
NEW ORLEANS	10,182	GUATEMALA	27,029
FROZ. POTATO	39,241	LOS ANGELES	4,779
CHILE	30	SAN FRANCISCO	22,250
LOS ANGELES	30	MEXICO	297
COSTA RICA	39,133	CHICAGO	297
PHILADELPHIA	39,133	FROZ. SAVORY	60
ENGLAND	35	GUATEMALA	60
LOS ANGELES	35	MIAMI	60
JAPAN	4	FROZ. SNOW PEA	782,739
SEATTLE	4	CHINA	177,820
NETHERLANDS	1	LOS ANGELES	177,820
LOS ANGELES	1	GUATEMALA	500,393
SWEDEN	38	FT. LAUDERDALE	266,498
SEATTLE	38	NEW ORLEANS	203,848
FROZ. PUMPKIN	1	TAMPA	30,047
JAPAN	1	MEXICO	27,735
MINNEAPOLIS	1	BROWNSVILLE	25,213
FROZ. RAMBUTAN	2	HIDALGO	2,522
THAILAND	2	TAIWAN	76,791
LOS ANGELES	2	BALTIMORE	42,000
FROZ. RASPBERRY	985,316	CHARLESTON	16,931

TABLE 1--U.S. IMPORTS OF FRUITS AND VEGETABLES UNDER REGULATIONS ADMINISTERED BY THE PLANT PROTECTION AND QUARANTINE PROGRAMS, APHIS, USDA, FOR THE FISCAL YEAR ENDING SEPTEMBER 30, 1991--CONTINUED

COMMODITY	KILOGRAMS	COMMODITY	KILOGRAMS
FROZ. SNOW PEA (Cont)		FROZ. STRAWBERRY (Cont)	
TAIWAN (Cont)		MEXICO (Cont)	
LOS ANGELES	17,860	BROWNSVILLE	4,419,593
FROZ. SOURSOP	48,668	CALEXICO	43,850
COLOMBIA	552	HIDALGO	13,642,089
LOS ANGELES	2	LAREDO	7,825,174
MIAMI	550	NETHERLANDS	165,072
COSTA RICA	938	BALTIMORE	114,072
PHILADELPHIA	938	NORFOLK	51,000
DOMINICAN REPUBLIC	47,054	POLAND	119,537
ELIZABETH	3,810	BALTIMORE	101,910
FT. LAUDERDALE	35,649	HOUSTON	17,627
MIAMI	1,395	FROZ. TAMARIND	25,494
NEW ORLEANS	6,200	COSTA RICA	6,842
HONDURAS	124	MIAMI	2,774
MIAMI	124	NEW ORLEANS	4,068
FROZ. SOYBEAN	36,020	DOMINICAN REPUBLIC	8,901
CHINA	1,105	ELIZABETH	305
SAN FRANCISCO	1,105	FT. LAUDERDALE	8,596
TAIWAN	34,915	HONDURAS	308
SAN FRANCISCO	34,915	MIAMI	308
FROZ. SPINACH	846,575	PHILIPPINES	100
MEXICO	765,791	SEATTLE	100
BROWNSVILLE	571,709	VENEZUELA	9,343
HIDALGO	4,082	MIAMI	9,343
LAREDO	190,000	FROZ. TAMARIND LEAF	388
NETHERLANDS	4	PHILIPPINES	35
PHILADELPHIA	4	SEATTLE	35
URUGUAY	80,780	THAILAND	353
PHILADELPHIA	80,780	BALTIMORE	353
FROZ. SQUASH	1,515,973	FROZ. TARO	459
MEXICO	1,515,973	JAPAN	99
BROWNSVILLE	27,254	SAN FRANCISCO	99
HIDALGO	1,417,344	PHILIPPINES	360
LAREDO	71,375	SEATTLE	360
FROZ. STRAWBERRY	26,397,439	FROZ. TOMATO	20,800
COLOMBIA	162,052	ITALY	20,800
JACKSONVILLE	162,052	PHILADELPHIA	20,800
DENMARK	29	FROZ. TUMERIC	207
PORTLAND	5	THAILAND	207
SEATTLE	24	BALTIMORE	207
ENGLAND	20,000	FROZ. WATERCHESTNUT	74,294
BALTIMORE	20,000	CHINA	56,110
FRANCE	6	LOS ANGELES	19,110
DULLES	6	SAN FRANCISCO	37,000
JAPAN	37	HONG KONG	18,184
LOS ANGELES	36	SAN FRANCISCO	18,184
MINNEAPOLIS	1	FROZ. WINTERMIX	520,090
MEXICO	25,930,706	MEXICO	520,090

TABLE 1--U. S. IMPORTS OF FRUITS AND VEGETABLES UNDER REGULATIONS ADMINISTERED BY THE PLANT PROTECTION AND QUARANTINE PROGRAMS, APHIS, USDA, FOR THE FISCAL YEAR ENDING SEPTEMBER 30, 1991--CONTINUED

COMMODITY	KILOGRAMS	COMMODITY	KILOGRAMS
FROZ. WINTERMIX (Cont)		GARLIC (Cont)	
MEXICO (Cont)		CHILE (Cont)	
HIDALGO	520,090	LOS ANGELES	101,802
FROZ. YAM	85,209	MIAMI	44,965
COSTA RICA	52,456	PHILADELPHIA	213,953
FT. LAUDERDALE	46,694	CHINA	1,400,378
MIAMI	2,812	BLAINE	65,600
NEW ORLEANS	950	CHICAGO	11
PHILADELPHIA	2,000	ELIZABETH	193,000
DOMINICAN REPUBLIC	32,753	LOS ANGELES	550,118
ELIZABETH	18,053	PHILADELPHIA	52,488
FT. LAUDERDALE	11,500	SAN FRANCISCO	518,271
NEW ORLEANS	3,200	SEATTLE	20,890
FROZ. ZUCCHINI	225,832	EGYPT	10
COSTA RICA	16,870	MIAMI	10
NEW ORLEANS	16,870	EL SALVADOR	629
GUATEMALA	18,681	MIAMI	629
NEW ORLEANS	18,681	GUATEMALA	114,703
MEXICO	190,281	MIAMI	17,005
BROWNSVILLE	3,460	TAMPA	97,698
LAREDO	186,821	HONG KONG	341,197
FRUIT SALAD	3,096,152	ELIZABETH	22,000
MEXICO	3,096,152	HONOLULU	18,000
HIDALGO	3,096,152	LOS ANGELES	105,370
GARDEN CRESS	44	SAN FRANCISCO	195,827
NETHERLANDS	44	KOREA	74,000
CHICAGO	21	SAN FRANCISCO	74,000
JFK	23	MEXICO	10,545,856
GARLIC	17,226,798	BROWNSVILLE	194
ARGENTINA	3,263,049	CALEXICO	1,579,599
BROOKLYN	272,918	EL PASO	817,700
DOVER	95,329	HIDALGO	2,921,996
ELIZABETH	283,100	LAREDO	4,035,267
HOUSTON	30,000	NOGALES	799,313
JACKSONVILLE	751,109	PROGRESO	4,181
LOS ANGELES	40,800	ROMA	228,782
MIAMI	3,742	SAN DIEGO	143,106
NEW ORLEANS	111,629	SAN FRANCISCO	7,232
NORFOLK	155,400	SAN LUIS	8,486
PHILADELPHIA	1,170,022	PERU	10
SAN FRANCISCO	349,000	MIAMI	10
AUSTRALIA	70,000	TAIWAN	795,365
HOUSTON	70,000	BALTIMORE	60,000
BOLIVIA	539	BLAINE	30
MIAMI	539	HOUSTON	22
BRAZIL	158,424	LOS ANGELES	78,860
PHILADELPHIA	158,424	MIAMI	178,003
CHILE	415,284	SAN FRANCISCO	478,450
ELIZABETH	54,564	URUGUAY	47,354

TABLE 1--U.S. IMPORTS OF FRUITS AND VEGETABLES UNDER REGULATIONS ADMINISTERED BY THE PLANT PROTECTION AND QUARANTINE PROGRAMS, APHIS, USDA, FOR THE FISCAL YEAR ENDING SEPTEMBER 30, 1991--CONTINUED

COMMODITY	KILOGRAMS	COMMODITY	KILOGRAMS
GARLIC (Cont)		GINGER (Cont)	
URUGUAY (Cont)		GRENADA (Cont)	
HOUSTON	8,400	JFK	37
JACKSONVILLE	38,954	GUATEMALA	29,711
GENIP	409,196	FT. LAUDERDALE	17,716
DOMINICAN REPUBLIC	167,987	MIAMI	11,995
JFK	142,925	GUYANA	7
MIAMI	25,062	JFK	7
HAITI	233,385	HONDURAS	938
JFK	77,652	HOUSTON	938
MIAMI	155,733	INDIA	145,773
JAMAICA	7,824	ELIZABETH	145,773
ATLANTA	40	INDONESIA	640,529
BALTIMORE	2,157	BLAINE	3,845
JFK	4,644	LOS ANGELES	618,956
MIAMI	983	SAN FRANCISCO	17,728
GINGER	4,797,936	JAMAICA	3,294
BRAZIL	1,410,203	JFK	9
BALTIMORE	14,700	MIAMI	3,285
BROOKLYN	29,376	JAPAN	51
ELIZABETH	241,895	JFK	41
JFK	5,762	LOS ANGELES	10
MIAMI	57,642	MEXICO	1,311
PHILADELPHIA	1,060,828	LOS ANGELES	7
CHINA	79,580	SAN DIEGO	1,296
JFK	5	SAN FRANCISCO	8
LOS ANGELES	78,578	PANAMA	4,137
SAN FRANCISCO	997	MIAMI	4,137
COSTA RICA	598,462	PERU	20
DOVER	55,431	MIAMI	20
ELIZABETH	11,260	THAILAND	58,868
FT. LAUDERDALE	118,498	ELIZABETH	10,274
HOUSTON	1,987	LOS ANGELES	32,082
JFK	6,061	MIAMI	15,960
MIAMI	349,521	SAN FRANCISCO	484
NEW ORLEANS	2,310	SEATTLE	68
PHILADELPHIA	44,954	GOOSEBERRY	1,106
SAVANNAH	8,440	NEW ZEALAND	1,106
ECUADOR	22,659	HONOLULU	3
JFK	1,005	LOS ANGELES	1,103
LOS ANGELES	18,994	GOVERNOR'S PLUM	14,056
MIAMI	2,660	GRENADA	14,056
FIJI	1,802,356	JFK	14,056
BLAINE	2,745	GRAPE	355,438,815
HONOLULU	179,855	CHILE	311,807,566
LOS ANGELES	881,349	BALTIMORE	1
SAN FRANCISCO	655,788	BILLINGS	62,992
SEATTLE	82,619	DOVER	18,508,352
GRENADA	37	ELIZABETH	59,828

TABLE 1--U.S. IMPORTS OF FRUITS AND VEGETABLES UNDER REGULATIONS ADMINISTERED BY THE PLANT PROTECTION AND QUARANTINE PROGRAMS, APHIS, USDA, FOR THE FISCAL YEAR ENDING SEPTEMBER 30, 1991--CONTINUED.

COMMODITY	KILOGRAMS	COMMODITY	KILOGRAMS
GRAPE (Cont)		HUSK TOMATO (Cont)	
CHILE (Cont)		MEXICO (Cont)	
HOUSTON	18,525,220	LAREDO	2,515,081
JFK	253	LOS ANGELES	9,358
LOS ANGELES	61,937,856	NOGALES	2,505,354
MIAMI	46,546	PROGRESO	5,316
PHILADELPHIA	212,608,528	ROMA	9,438
ROMULUS	13,924	SAN DIEGO	11,584,468
SEATTLE	44,066	SAN LUIS	47,280
FRANCE	703	JACKFRUIT	6,012
JFK	703	MEXICO	6,012
ITALY	56,900	NOGALES	57
JFK	56,900	SAN DIEGO	5,955
MEXICO	43,573,334	JICAMA	13,004,421
CALEXICO	115,716	CHINA	840
HIDALGO	3,682	SAN FRANCISCO	840
NOGALES	43,453,936	HONG KONG	8,675
NETHERLANDS	274	SAN FRANCISCO	8,675
JFK	274	JAPAN	3,950
NEW ZEALAND	38	SAN FRANCISCO	3,950
HONOLULU	38	MEXICO	12,990,956
GRAPEFRUIT	745,063	BROWNSVILLE	122,463
BAHAMAS	344,560	CALEXICO	14,500
WEST PALM BEACH	344,560	DALLAS	22
ISRAEL	11,309	EAGLE PASS	348
ELIZABETH	10,909	EL PASO	108,613
JFK	400	HIDALGO	378,751
MEXICO	389,194	LAREDO	658,248
HIDALGO	389,194	LOS ANGELES	9
GRAPEFRUIT SEGMENT	2,831,950	NOGALES	1,106,886
MEXICO	2,831,950	PROGRESO	11,796
HIDALGO	2,831,950	ROMA	3,289
GRAPEFRUIT, SLICED	44,560	SAN DIEGO	10,583,269
DOMINICAN REPUBLIC	44,560	SAN LUIS	1,547
ELIZABETH	44,560	TAMPA	1,215
HORSERADISH	429	KALE	3,465,636
JAPAN	411	MEXICO	3,465,636
HONOLULU	10	CALEXICO	994,232
JFK	100	SAN DIEGO	651,652
LOS ANGELES	301	SAN LUIS	1,819,752
NETHERLANDS	18	KAVA	3,686
JFK	18	FIJI	136
HUSK TOMATO	18,680,985	LOS ANGELES	113
MEXICO	18,680,985	SAN FRANCISCO	23
BROWNSVILLE	46,716	TONGA	3,550
CALEXICO	13,749	LOS ANGELES	3,550
DALLAS	75	KIWANO	104,958
EL PASO	615,903	NEW ZEALAND	104,958
HIDALGO	1,328,247	LOS ANGELES	104,958

TABLE 1--U.S. IMPORTS OF FRUITS AND VEGETABLES UNDER REGULATIONS ADMINISTERED BY THE PLANT PROTECTION AND QUARANTINE PROGRAMS, APHIS, USDA, FOR THE FISCAL YEAR ENDING SEPTEMBER 30, 1991--CONTINUED

COMMODITY	KILOGRAMS	COMMODITY	KILOGRAMS
KIWI	26,062,511	LEAVES, BANANA (Cont)	
CHILE	2,669,238	MEXICO	2,290
BALTIMORE	16,576	PROGRESO	1,260
BROOKLYN	16,576	ROMA	880
DOVER	267,406	SAN LUIS	150
ELIZABETH	50,549	LEAVES, DASHEEN	364,893
JFK	26	DOMINICAN REPUBLIC	275
LOS ANGELES	3	JFK	275
PHILADELPHIA	2,318,102	GRENADA	2,226
NEW ZEALAND	23,393,273	JFK	2,226
DOVER	14,111,235	JAMAICA	256,769
HONOLULU	169,529	BALTIMORE	26,851
HOUSTON	15	JFK	912
LOS ANGELES	2,218,408	MIAMI	229,006
ROUSES POINT	7,800	TRINIDAD	105,623
SAN FRANCISCO	12	JFK	105,623
SEATTLE	6,886,274	LEAVES, PLANTAIN	504,751
KOHLRABI	123,206	DOMINICAN REPUBLIC	540
MEXICO	123,206	ELIZABETH	540
CALEXICO	33,179	GUATEMALA	490,963
PROGRESO	13,704	LOS ANGELES	490,963
SAN DIEGO	8,360	MEXICO	13,248
SAN LUIS	67,963	LOS ANGELES	13,248
KOLA NUT	48	LEEK	2,892,074
JAMAICA	48	GUATEMALA	197,282
BALTIMORE	48	FT. LAUDERDALE	195,717
KUDZU	149,882	MIAMI	1,560
CHINA	142,074	NEW ORLEANS	5
BROOKLYN	4,500	JAPAN	574
BUFFALO	5,600	HONOLULU	574
ELIZABETH	28	MEXICO	2,694,218
HONOLULU	2,760	CALEXICO	196,634
LOS ANGELES	33,750	SAN DIEGO	768,283
SAN FRANCISCO	91,292	SAN LUIS	1,729,301
SEATTLE	4,144	LEMON	5,711,064
JAPAN	544	CHILE	4,138,273
HONOLULU	544	BROOKLYN	20,480
TAIWAN	7,264	ELIZABETH	50,371
BUFFALO	7,264	LOS ANGELES	134,862
LAMBSQUARTERS	18,836	PHILADELPHIA	3,932,560
MEXICO	18,836	COLOMBIA	11,574
CHICAGO	2,586	MIAMI	11,574
LAREDO	16,230	COSTA RICA	621
PROGRESO	20	FT. LAUDERDALE	621
LEAVES, BANANA	5,481	DOMINICAN REPUBLIC	396,758
COLOMBIA	336	ELIZABETH	393,860
WALLINGFORD	336	JFK	2,898
ECUADOR	2,855	ECUADOR	11,469
WALLINGFORD	2,855	JFK	1,719

TABLE 1--U.S. IMPORTS OF FRUITS AND VEGETABLES UNDER REGULATIONS ADMINISTERED BY THE PLANT PROTECTION AND QUARANTINE PROGRAMS, APHIS, USDA, FOR THE FISCAL YEAR ENDING SEPTEMBER 30, 1991--CONTINUED

COMMODITY	KILOGRAMS	COMMODITY	KILOGRAMS
LEMON (Cont)		LETTUCE (Cont)	
ECUADOR (Cont)		NETHERLANDS (Cont)	
LOS ANGELES	9,750	ELIZABETH	6
GUATEMALA	1,136	JFK	456
MIAMI	1,136	PERU	31,033
HONDURAS	29,759	MIAMI	31,033
MIAMI	29,759	LILY BULB	31
NICARAGUA	60	JAPAN	31
MIAMI	60	HONOLULU	31
SPAIN	1,040,581	LIME, SOUR	77,709,253
BALTIMORE	39,690	BAHAMAS	525,612
ELIZABETH	931,339	FT. LAUDERDALE	399,572
PHILADELPHIA	69,552	WEST PALM BEACH	126,040
TURKEY	71,502	COLOMBIA	26,416
ELIZABETH	71,470	ELIZABETH	998
JFK	32	MIAMI	6,150
VENEZUELA	9,331	NEW ORLEANS	19,268
MIAMI	9,331	COSTA RICA	92,309
LEMONGRASS	7,424	FT. LAUDERDALE	6,054
BARBADOS	3	MIAMI	34,465
MIAMI	3	NEW ORLEANS	10,000
DOMINICAN REPUBLIC	7,418	PHILADELPHIA	41,790
MIAMI	7,418	DOMINICAN REPUBLIC	11,551
HAITI	3	ELIZABETH	245
MIAMI	3	FT. LAUDERDALE	9,400
LEMONGRASS (DRIED)	47	MIAMI	1,906
BARBADOS	47	ECUADOR	3,797,546
MIAMI	47	BROOKLYN	10,368
LENTIL	992	ELIZABETH	3,761,395
MEXICO	992	LOS ANGELES	14,562
HIDALGO	992	MIAMI	11,221
LETTUCE	16,420,753	EL SALVADOR	18,837
COSTA RICA	1,408	HOUSTON	22
MIAMI	1,408	MIAMI	18,815
GUATEMALA	22,399	GUATEMALA	40,761
HOUSTON	20	BATON ROUGE	8,000
MIAMI	8,647	HOUSTON	8,663
NEW ORLEANS	13,732	LOS ANGELES	600
MEXICO	16,365,446	MIAMI	20,110
BROWNSVILLE	495	NEW ORLEANS	2,988
CALEXICO	2,308,663	SAN FRANCISCO	400
HIDALGO	565	GUYANA	34
NOGALES	3,004,339	JFK	34
ROMA	92,736	HAITI	14
SAN DIEGO	185,940	MIAMI	14
SAN LUIS	10,772,083	HONDURAS	499,146
TUCSON	625	HOUSTON	29,779
NETHERLANDS	467	MIAMI	406,758
CHICAGO	5	NEW ORLEANS	19,490

TABLE 1--U.S. IMPORTS OF FRUITS AND VEGETABLES UNDER REGULATIONS ADMINISTERED BY THE PLANT PROTECTION AND QUARANTINE PROGRAMS, APHIS, USDA, FOR THE FISCAL YEAR ENDING SEPTEMBER 30, 1991--CONTINUED

COMMODITY	KILOGRAMS	COMMODITY	KILOGRAMS
LIME, SOUR (Cont)		MANGO (Cont)	
HONDURAS (Cont)		BRAZIL	1,574,721
WEST PALM BEACH	43,119	JFK	62,918
JAMAICA	8	LOS ANGELES	31,064
BALTIMORE	8	MIAMI	307,327
MEXICO	72,607,397	PHILADELPHIA	1,173,412
BROWNSVILLE	70,221	DOMINICAN REPUBLIC	21,023
CHICAGO	720	ELIZABETH	21,023
EL PASO	50,937	GRENADA	55,721
HIDALGO	71,287,080	DULLES	150
LAREDO	806,815	JFK	55,060
LOS ANGELES	818	MIAMI	511
NEW ORLEANS	117	HAITI	8,331,371
NOGALES	182,397	ELIZABETH	757,058
ROMA	100	JFK	518,122
SAN DIEGO	203,327	MIAMI	7,056,191
SAN FRANCISCO	4,865	MEXICO	85,305,881
NICARAGUA	31,305	BROWNSVILLE	35,680
MIAMI	31,305	CALEXICO	18,289
VENEZUELA	58,317	DALLAS	6,861
MIAMI	58,317	EL PASO	558,974
LITCHI	91,507	HIDALGO	23,083,690
MEXICO	91,507	HOUSTON	5,645
LOS ANGELES	19,324	LAREDO	844,583
MIAMI	1,000	NOGALES	53,457,140
NOGALES	64,603	PROGRESO	3,434,718
SAN DIEGO	6,580	SAN DIEGO	383,978
LOQUAT	14,241	SAN LUIS	3,476,323
CHILE	14,241	PERU	36,314
JFK	6,399	FT. LAUDERDALE	15,009
MIAMI	1,570	MIAMI	21,305
PHILADELPHIA	6,272	ST. VINCENT	2,047
LOTUS ROOT	841,706	JFK	2,047
CHINA	723,955	VENEZUELA	557,462
BLAINE	18,360	JFK	173,745
BUFFALO	42,916	MIAMI	383,717
ELIZABETH	10,300	MANGO, SLICED	270,496
HONOLULU	10,477	MEXICO	270,496
LOS ANGELES	310,784	HIDALGO	270,496
SAN FRANCISCO	325,718	MANGOSTEEN	1,081
SEATTLE	5,400	BARBADOS	1,081
HONG KONG	74,668	JFK	1,081
SAN FRANCISCO	74,668	MARIGOLD(GARNISH)	161
JAPAN	50	MEXICO	161
LOS ANGELES	50	SAN DIEGO	161
TAIWAN	43,033	MARJORAM	4,717
BUFFALO	29,624	ISRAEL	2,187
LOS ANGELES	13,409	JFK	2,187
MANGO	95,884,540	MEXICO	2,530

TABLE 1--U.S. IMPORTS OF FRUITS AND VEGETABLES UNDER REGULATIONS ADMINISTERED BY THE PLANT PROTECTION AND QUARANTINE PROGRAMS, APHIS, USDA, FOR THE FISCAL YEAR ENDING SEPTEMBER 30, 1991--CONTINUED

COMMODITY	KILOGRAMS	COMMODITY	KILOGRAMS
MARJORAM (Cont)		MELON, OTHER (Cont)	
MEXICO (Cont)		GUATEMALA (Cont)	
LOS ANGELES	379	MIAMI	784,071
SAN DIEGO	2,151	NEW ORLEANS	42,556
MELON, OTHER	124,833,629	SAN FRANCISCO	57,312
ANTIGUA	113,291	TAMPA	1,814,053
MIAMI	57,672	HAITI	205,717
WEST PALM BEACH	55,619	MIAMI	205,717
BAHAMAS	52,776	HONDURAS	2,269,493
FT. LAUDERDALE	52,776	DOVER	390,261
BRAZIL	1,566,554	FT. LAUDERDALE	750,307
PHILADELPHIA	1,566,554	GULFPORT	305,100
CHILE	644	MIAMI	455,935
JFK	644	WEST PALM BEACH	367,890
COSTA RICA	28,860,544	ISRAEL	98,085
BATON ROUGE	88,000	JFK	98,085
DOVER	262,586	JAMAICA	50
ELIZABETH	518	BALTIMORE	50
FT. LAUDERDALE	3,633,011	MEXICO	68,720,962
LOS ANGELES	118	ATLANTA	600
MIAMI	145,120	BILLINGS	57
NEW ORLEANS	172,663	CALEXICO	2,603,692
PHILADELPHIA	18,953,132	CHICAGO	528
SAN FRANCISCO	28,600	EL PASO	13,794,787
SAVANNAH	5,576,796	HIDALGO	14,432,628
DOMINICAN REPUBLIC	41,961	LOS ANGELES	2,137
JACKSONVILLE	16,000	NOGALES	27,775,608
MIAMI	15,165	PRESIDIO	20,628
WEST PALM BEACH	10,796	PROGRESO	4,300,413
ECUADOR	1,708,908	SAN DIEGO	286,705
BALTIMORE	171,240	SAN FRANCISCO	1,224
BROOKLYN	148,106	SAN LUIS	5,491,983
DOVER	1,053,888	TAMPA	9,972
ELIZABETH	335,674	NETHERLANDS	12
EL SALVADOR	3,567,461	LOS ANGELES	12
EL PASO	34,020	NEW ZEALAND	1,795
FT. LAUDERDALE	1,381,365	LOS ANGELES	1,050
HIDALGO	942,242	PORTLAND	720
MIAMI	472,837	SAN FRANCISCO	25
TAMPA	736,997	NICARAGUA	1,438,188
FRANCE	351	BATON ROUGE	132,000
DULLES	351	FT. LAUDERDALE	1,089,540
GRENADA	105	MIAMI	121,379
DULLES	105	NEW ORLEANS	95,269
GUATEMALA	9,029,052	PANAMA	7,157,053
EL PASO	53,241	FT. LAUDERDALE	4,927,363
FT. LAUDERDALE	4,232,237	MIAMI	2,229,690
GULFPORT	2,014,282	SPAIN	477
HIDALGO	31,300	JFK	477

TABLE 1--U.S. IMPORTS OF FRUITS AND VEGETABLES UNDER REGULATIONS ADMINISTERED BY THE PLANT PROTECTION AND QUARANTINE PROGRAMS, APHIS, USDA, FOR THE FISCAL YEAR ENDING SEPTEMBER 30, 1991--CONTINUED

COMMODITY	KILOGRAMS	COMMODITY	KILOGRAMS
MELON, OTHER (Cont)		MUSHROOM (Cont)	
TRINIDAD	150	JAPAN (Cont)	
DULLES	150	JFK	4,626
MINT	28,649	LOS ANGELES	51,515
DOMINICAN REPUBLIC	65	KOREA	638
JFK	65	LOS ANGELES	638
JAMAICA	70	MEXICO	2,744
JFK	70	HIDALGO	66
MEXICO	28,514	LOS ANGELES	658
CHICAGO	40	SAN FRANCISCO	2,020
LAREDO	19	NETHERLANDS	690
LOS ANGELES	532	DULLES	120
PROGRESO	325	JFK	60
SAN DIEGO	25,502	LOS ANGELES	10
SAN FRANCISCO	2,096	SEATTLE	500
MOMBIN	283,285	NEW ZEALAND	14
GRENADA	283,285	HONOLULU	14
BALTIMORE	22	PERU	27
DULLES	5,341	LOS ANGELES	27
ELIZABETH	16,054	PORTUGAL	689
JFK	246,814	LOS ANGELES	689
PHILADELPHIA	15,054	SINGAPORE	2,637
MUSHROOM	157,786	HONOLULU	606
AUSTRIA	220	LOS ANGELES	2,031
JFK	220	SPAIN	580
CHILE	979	DULLES	580
JFK	979	SWITZERLAND	425
FRANCE	20,664	JFK	425
DULLES	2,846	TAIWAN	11,131
ELIZABETH	190	LOS ANGELES	11,131
JFK	2,136	TURKEY	200
LOS ANGELES	6,087	JFK	200
SAN FRANCISCO	9,405	MUSTARD GREENS	407,450
GERMANY	600	MEXICO	407,450
LOS ANGELES	600	CALEXICO	171,358
HUNGARY	2,560	SAN DIEGO	928
PHILADELPHIA	2,560	SAN LUIS	235,164
INDONESIA	128	NECTARINE	28,167,728
JFK	4	CHILE	28,140,417
LOS ANGELES	124	DOVER	370,224
ISRAEL	2,695	HOUSTON	1,431,452
JFK	2,695	JFK	66,467
ITALY	48,576	LOS ANGELES	8,144,519
BOSTON	80	MIAMI	175,535
JFK	43,419	PHILADELPHIA	17,952,220
LOS ANGELES	3,084	NEW ZEALAND	27,311
SAN FRANCISCO	1,993	HONOLULU	72
JAPAN	61,589	LOS ANGELES	27,239
HONOLULU	5,448	OKRA	47,320,359

TABLE 1--U.S. IMPORTS OF FRUITS AND VEGETABLES UNDER REGULATIONS ADMINISTERED BY THE PLANT PROTECTION AND QUARANTINE PROGRAMS, APHIS, USDA, FOR THE FISCAL YEAR ENDING SEPTEMBER 30, 1991--CONTINUED

COMMODITY	KILOGRAMS	COMMODITY	KILOGRAMS
OKRA (Cont)		ONION (Cont)	
DOMINICAN REPUBLIC	4,306	CHINA (Cont)	
JFK	846	SAN FRANCISCO	1,095
MIAMI	3,460	SEATTLE	500
EL SALVADOR	57,847	COLOMBIA	188
MIAMI	324	MIAMI	188
NEW ORLEANS	57,523	DOMINICAN REPUBLIC	91
GRENADA	1	MIAMI	91
JFK	1	FRANCE	19,872
GUATEMALA	69,996	SAN FRANCISCO	19,872
HIDALGO	5,035	GUATEMALA	281
MIAMI	64,961	LOS ANGELES	8
HAITI	18,512	MIAMI	273
JFK	8,315	HONG KONG	924
MIAMI	10,197	HONOLULU	909
HONDURAS	56,436	SAN FRANCISCO	15
MIAMI	56,436	ITALY	4,307
JAMAICA	4,669	BOSTON	55
DULLES	200	CHICAGO	320
JFK	20	DALLAS	60
MIAMI	4,449	LOS ANGELES	280
MEXICO	47,108,592	MIAMI	199
ATLANTA	720	SAN FRANCISCO	3,393
BROWNSVILLE	31,045,172	JAPAN	12
CALEXICO	443	HONOLULU	12
CHICAGO	910	MEXICO	92,245,632
HIDALGO	353,871	BROWNSVILLE	2,044
JFK	28,947	CALEXICO	6,256,318
LOS ANGELES	163,438	CHICAGO	1,429
MIAMI	5,734	EAGLE PASS	45
NOGALES	7,674	EL PASO	3,374,708
PROGRESO	15,481,697	HIDALGO	57,082,292
ROMA	6,666	LAREDO	2,830,499
SAN DIEGO	62	LOS ANGELES	1,164
SAN FRANCISCO	16	NOGALES	5,704,797
TAMPA	13,242	PROGRESO	15,397,059
ONION	95,354,747	ROMA	295,112
AUSTRALIA	998,090	SAN DIEGO	568,449
PHILADELPHIA	940,220	SAN FRANCISCO	69
SEATTLE	57,870	SAN LUIS	731,647
BAHAMAS	23	NETHERLANDS	317
WEST PALM BEACH	23	CHICAGO	25
CHILE	1,601,282	MIAMI	292
BROOKLYN	73,600	NEW ZEALAND	481,235
MIAMI	103,350	HONOLULU	481,235
PHILADELPHIA	1,424,280	PERU	120
ROMULUS	52	MIAMI	120
CHINA	2,373	ORANGE	47,631,617
HONOLULU	778	DOMINICAN REPUBLIC	123,009

TABLE 1--U.S. IMPORTS OF FRUITS AND VEGETABLES UNDER REGULATIONS ADMINISTERED BY THE PLANT PROTECTION AND QUARANTINE PROGRAMS, APHIS, USDA, FOR THE FISCAL YEAR ENDING SEPTEMBER 30, 1991--CONTINUED

COMMODITY	KILOGRAMS	COMMODITY	KILOGRAMS
ORANGE (Cont)		OREGANO (Cont)	
DOMINICAN REPUBLIC (Cont)		ISRAEL	6,925
ELIZABETH	51,062	JFK	6,925
FT. LAUDERDALE	3,558	MEXICO	24,534
JFK	70	CALEXICO	17,398
MIAMI	68,319	LOS ANGELES	875
ISRAEL	4,482,613	SAN DIEGO	5,784
ELIZABETH	18,182	SAN FRANCISCO	477
JFK	100	ORTAN	40,108
PHILADELPHIA	4,464,331	JAMAICA	40,108
JAMAICA	301,684	ATLANTA	100
ATLANTA	100	SAVANNAH	40,008
BALTIMORE	50	PALM HEART	40
ELIZABETH	301,504	COSTA RICA	40
MIAMI	30	MIAMI	40
MEXICO	24,162,368	PANSY(GARNISH)	480
HIDALGO	3,650,890	MEXICO	480
NOGALES	20,416,330	SAN DIEGO	480
PROGRESO	95,148	PAPAYA	11,571,544
MOROCCO	11,033,118	BAHAMAS	1,944,163
PHILADELPHIA	7,246,593	FT. LAUDERDALE	1,926,005
WALLINGFORD	3,786,525	MIAMI	16,233
SPAIN	7,528,825	WEST PALM BEACH	1,925
BALTIMORE	5	BARBADOS	2,148
ELIZABETH	6,137,945	MIAMI	2,148
PHILADELPHIA	1,390,875	BELIZE	127,666
ORANGE SEGMENT	2,447,823	MIAMI	38,020
MEXICO	2,447,823	WEST PALM BEACH	89,646
HIDALGO	2,447,823	DOMINICAN REPUBLIC	1,503,379
ORANGE, SLICED	48,044	ELIZABETH	20,209
DOMINICAN REPUBLIC	44,560	JFK	60,833
ELIZABETH	44,560	MIAMI	1,422,337
MEXICO	3,484	GRENADA	286
PROGRESO	3,484	DULLES	90
ORANGE, SOUR	460,125	JFK	196
DOMINICAN REPUBLIC	460,125	HAITI	6,860
ELIZABETH	142,475	MIAMI	6,860
FT. LAUDERDALE	68,794	JAMAICA	345,336
MIAMI	152,075	BALTIMORE	1,805
WEST PALM BEACH	96,781	JFK	29,187
ORANGE, UNSHU	697,529	MIAMI	313,469
JAPAN	697,529	MINNEAPOLIS	360
ELIZABETH	23,004	TAMPA	515
JFK	57	MEXICO	7,633,822
SEATTLE	674,468	BROWNSVILLE	119,444
OREGANO	32,251	EAGLE PASS	48
DOMINICAN REPUBLIC	792	EL PASO	264,038
JFK	405	HIDALGO	1,019,674
MIAMI	387	LAREDO	476,313

TABLE 1--U.S. IMPORTS OF FRUITS AND VEGETABLES UNDER REGULATIONS ADMINISTERED BY THE PLANT PROTECTION AND QUARANTINE PROGRAMS, APHIS, USDA, FOR THE FISCAL YEAR ENDING SEPTEMBER 30, 1991--CONTINUED

COMMODITY	KILOGRAMS	COMMODITY	KILOGRAMS
PAPAYA (Cont)		PEA, GREEN (Cont)	
MEXICO (Cont)		MEXICO (Cont)	
NOGALES	19,994	HIDALGO	10,202
PROGRESO	29,011	LAREDO	3,012
ROMA	1,326	NOGALES	1,921,082
SAN DIEGO	5,073,563	PROGRESO	31,560
SAN FRANCISCO	395	SAN DIEGO	48,923
SAN LUIS	630,016	SAN LUIS	83,524
TRINIDAD	7,884	NEW ZEALAND	28,900
DULLES	1,155	LOS ANGELES	28,900
JFK	6,729	SPAIN	1,884
PAPAYA PULP	2,342	SEATTLE	1,884
COSTA RICA	2,342	TRINIDAD	30
MIAMI	2,342	JFK	30
PARSLEY	1,785,502	VENEZUELA	2,734
DOMINICAN REPUBLIC	2,002	JFK	2,734
JFK	2,002	PEA, OTHER	655,050
GUATEMALA	4	MEXICO	652,680
NEW ORLEANS	4	BROWNSVILLE	4,672
MEXICO	1,783,496	SAN DIEGO	648,008
CALEXICO	518,295	VENEZUELA	2,370
CHICAGO	170	JFK	2,370
HIDALGO	17,250	PEA, PIGEON	13,083
LAREDO	1,012	DOMINICAN REPUBLIC	12,484
PROGRESO	25,768	JFK	12,484
SAN DIEGO	172,785	GRENADA	581
SAN LUIS	1,048,216	JFK	581
PASSION FRUIT	42,199	JAMAICA	18
GRENADA	9	ATLANTA	18
JFK	9	PEA, SNOW	9,246,603
NEW ZEALAND	42,094	COSTA RICA	8,981
LOS ANGELES	42,019	HOUSTON	1,045
SAN FRANCISCO	75	MIAMI	7,936
ST. VINCENT	96	DOMINICAN REPUBLIC	58,271
JFK	96	MIAMI	58,271
PEA, GREEN	2,414,798	ECUADOR	5,600
DOMINICAN REPUBLIC	133,628	MIAMI	5,600
ELIZABETH	118,452	EL SALVADOR	35
JFK	15,176	MIAMI	35
ECUADOR	18	GUATEMALA	8,150,140
JFK	18	BALTIMORE	13
GRENADA	504	DALLAS	1,350
JFK	504	FT. LAUDERDALE	1,640,275
GUATEMALA	1,943	HIDALGO	6,552
HOUSTON	227	HOUSTON	21,908
JFK	360	LOS ANGELES	335,862
NEW ORLEANS	1,356	MIAMI	5,329,770
MEXICO	2,245,157	NEW ORLEANS	148,133
CALEXICO	146,854	SAN FRANCISCO	11,200

TABLE 1--U.S. IMPORTS OF FRUITS AND VEGETABLES UNDER REGULATIONS ADMINISTERED BY THE PLANT PROTECTION AND QUARANTINE PROGRAMS, APHIS, USDA, FOR THE FISCAL YEAR ENDING SEPTEMBER 30, 1991--CONTINUED

COMMODITY	KILOGRAMS	COMMODITY	KILOGRAMS
PEA, SNOW (Cont)		PEAR (Cont)	
GUATEMALA (Cont)		NEW ZEALAND (Cont)	
TAMPA	655,077	HONOLULU	18
HONDURAS	10,711	LOS ANGELES	199,616
FT. LAUDERDALE	7,729	PHILADELPHIA	14,310
MIAMI	2,977	SAN FRANCISCO	21,952
NEW ORLEANS	5	SEATTLE	10,281,640
MEXICO	1,012,865	PEPINO	58,848
CALEXICO	399	ECUADOR	14,624
HIDALGO	219,331	JFK	14,624
JFK	6,179	NEW ZEALAND	44,224
LOS ANGELES	21,322	HONOLULU	4
NOGALES	421,245	LOS ANGELES	44,157
PROGRESO	328,409	SAN FRANCISCO	63
SAN FRANCISCO	39	PEPPER	149,366,613
SAN LUIS	15,941	BAHAMAS	10,344
PEACH	27,218,797	WEST PALM BEACH	10,344
CHILE	26,961,705	BARBADOS	5,790
DOVER	212,040	JFK	618
ELIZABETH	6,097	MIAMI	5,172
HOUSTON	1,647,772	BELGIUM	10,149
JFK	127,725	BOSTON	10,149
LOS ANGELES	6,011,381	DOMINICAN REPUBLIC	922,205
MIAMI	322,080	BUFFALO	3,213
PHILADELPHIA	18,634,610	ELIZABETH	38,722
MEXICO	180,396	FT. LAUDERDALE	306
NOGALES	180,396	JFK	332,546
NEW ZEALAND	76,696	LOS ANGELES	1,763
HONOLULU	150	MIAMI	529,438
LOS ANGELES	70,695	WEST PALM BEACH	16,217
SAN FRANCISCO	5,851	GRENADA	16,790
PEAR	51,536,916	DULLES	1,602
ARGENTINA	12,355,278	JFK	15,184
BALTIMORE	3	MIAMI	4
DOVER	3,801,828	GUYANA	5,448
PHILADELPHIA	8,553,447	JFK	5,448
AUSTRALIA	3,274,320	HAITI	38,833
HONOLULU	12,795	JFK	5,958
LOS ANGELES	282,524	MIAMI	32,875
PHILADELPHIA	2,979,001	JAMAICA	369,317
CHILE	24,399,581	ATLANTA	102
BALTIMORE	1	BALTIMORE	14,565
DOVER	1,485,345	DULLES	1,020
JFK	47	ELIZABETH	1,045
LOS ANGELES	20	JFK	148,444
MIAMI	6,192	MIAMI	204,141
PHILADELPHIA	22,907,976	JAPAN	71
NEW ZEALAND	11,507,737	HONOLULU	71
DOVER	990,201	MEXICO	138,403,393

TABLE 1--U.S. IMPORTS OF FRUITS AND VEGETABLES UNDER REGULATIONS ADMINISTERED BY THE PLANT PROTECTION AND QUARANTINE PROGRAMS, APHIS, USDA, FOR THE FISCAL YEAR ENDING SEPTEMBER 30, 1991--CONTINUED

COMMODITY	KILOGRAMS	COMMODITY	KILOGRAMS
PEPPER (Cont)		PEPPER (Cont)	
MEXICO (Cont)		TRINIDAD	121,391
BILLINGS	12	DULLES	12,227
BLAINE	3,298	JFK	109,164
BROWNSVILLE	711,344	PERILLA	708
CALEXICO	619,667	JAPAN	708
CHICAGO	2,948	HONOLULU	48
COLOMBUS NM	915,879	JFK	98
DALLAS	922	LOS ANGELES	562
DOUGLAS AZ	983	PERSIMMON	1,722,791
EAGLE PASS	14,879	CHILE	262,657
EL PASO	8,033,256	DOVER	20,733
HIDALGO	7,023,009	JFK	1,102
JFK	979	MIAMI	44,478
LAREDO	2,306,694	PHILADELPHIA	196,344
LOS ANGELES	45,512	ISRAEL	1,460,134
NOGALES	95,497,296	ELIZABETH	1,460,134
PRESIDIO	358,995	PINEAPPLE	123,449,689
PROGRESO	795,544	BRAZIL	8
ROMA	63,996	JFK	8
ROMULUS	2,854	COLOMBIA	100,888
SAN DIEGO	21,940,454	MIAMI	100,888
SAN FRANCISCO	5,992	COSTA RICA	51,726,277
SAN LUIS	58,868	DOVER	158,090
TUCSON	12	FT. LAUDERDALE	103,383
NETHERLANDS	9,412,113	LOS ANGELES	241,682
ATLANTA	47,809	MIAMI	170,461
BALTIMORE	306,774	PHILADELPHIA	28,814,376
BOSTON	386,605	ROMULUS	346
BUFFALO	5,357	SAVANNAH	21,353,480
CHICAGO	564,915	TAMPA	884,459
DALLAS	11,700	DOMINICAN REPUBLIC	37,526,904
DULLES	223,127	DOVER	27,829,656
ELIZABETH	356,402	ELIZABETH	3,059,924
HOUSTON	48,919	FT. LAUDERDALE	2,059,799
JFK	5,793,530	JACKSONVILLE	2,370,072
LOS ANGELES	682,184	MIAMI	1,077,307
MIAMI	371,815	WEST PALM BEACH	1,130,146
MINNEAPOLIS	148,150	GUATEMALA	1,923
ORLANDO	1,950	MIAMI	1,825
PHILADELPHIA	38,778	NEW ORLEANS	98
ROMULUS	153,847	GUYANA	496
SAN FRANCISCO	165,364	JFK	496
SEATTLE	9,736	HONDURAS	22,312,507
TAMPA	95,151	DOVER	16,494
ST. LUCIA	5,313	GALVESTON	5,343,800
JFK	5,313	GULFPORT	16,854,956
ST. VINCENT	45,456	HOUSTON	42
JFK	45,456	MIAMI	96,592

TABLE 1--U.S. IMPORTS OF FRUITS AND VEGETABLES UNDER REGULATIONS ADMINISTERED BY THE PLANT PROTECTION AND QUARANTINE PROGRAMS, APHIS, USDA, FOR THE FISCAL YEAR ENDING SEPTEMBER 30, 1991--CONTINUED

COMMODITY	KILOGRAMS	COMMODITY	KILOGRAMS
PINEAPPLE (Cont)		PLANTAIN (Cont)	
HONDURAS (Cont)		COLOMBIA (Cont)	
NEW ORLEANS	623	WALLINGFORD	20,958,288
IVORY COAST	5	COSTA RICA	2,650,939
JFK	5	DOVER	25,397
JAMAICA	135	FT. LAUDERDALE	1,053,424
BALTIMORE	60	GALVESTON	184,400
MIAMI	75	MIAMI	233,640
MEXICO	11,526,622	NEW ORLEANS	3,798
BROWNSVILLE	61,445	PHILADELPHIA	477,711
DALLAS	59	SAVANNAH	406,920
EAGLE PASS	1,785	TAMPA	265,649
EL PASO	274,473	DOMINICAN REPUBLIC	33,369
GULFPORT	124,621	ELIZABETH	320
HIDALGO	9,634,610	MIAMI	33,049
LAREDO	166,317	ECUADOR	61,741,020
NOGALES	51,464	BROOKLYN	5,680
PRESIDIO	215	DOVER	34,995,720
PROGRESO	7,100	ELIZABETH	6,639,369
ROMA	2,046	FT. LAUDERDALE	72,559
SAN ANTONIO	60	HOUSTON	3,069
SAN DIEGO	1,201,725	LOS ANGELES	4,246,757
SAN LUIS	702	MIAMI	113,535
NIGERIA	173	TAMPA	965,240
JFK	120	WALLINGFORD	14,699,091
SAN FRANCISCO	53	GUATEMALA	262,840
SRI LANKA	16	BATON ROUGE	9,000
SAN FRANCISCO	16	FT. LAUDERDALE	89,675
TAHITI	39,075	LOS ANGELES	9
LOS ANGELES	38,602	MIAMI	92,766
SAN FRANCISCO	473	NEW ORLEANS	1,368
VENEZUELA	214,660	TAMPA	70,022
MIAMI	214,660	HAITI	35
PINEAPPLE CHUNK	3,326,278	MIAMI	35
DOMINICAN REPUBLIC	40,591	HONDURAS	1,229,600
ELIZABETH	40,591	FT. LAUDERDALE	355,671
MEXICO	3,285,687	HOUSTON	94,895
HIDALGO	3,285,687	MIAMI	353,254
PINEAPPLE PULP	811	NEW ORLEANS	204,545
COSTA RICA	811	WEST PALM BEACH	221,235
MIAMI	811	JAMAICA	1,520
PLANTAIN	149,112,155	ATLANTA	33
COLOMBIA	76,758,082	BALTIMORE	348
DOVER	153,869	MIAMI	1,139
ELIZABETH	276,164	MEXICO	28,753
GALVESTON	7,888,450	GULFPORT	27,625
MIAMI	5,468,744	SAN DIEGO	1,128
PHILADELPHIA	16,093,171	PANAMA	329,413
TAMPA	25,919,396	FT. LAUDERDALE	302,317

TABLE 1--U.S. IMPORTS OF FRUITS AND VEGETABLES UNDER REGULATIONS ADMINISTERED BY THE PLANT PROTECTION AND QUARANTINE PROGRAMS, APHIS, USDA, FOR THE FISCAL YEAR ENDING SEPTEMBER 30, 1991--CONTINUED

COMMODITY	KILOGRAMS	COMMODITY	KILOGRAMS
PLANTAIN (Cont)		PUMPKIN (Cont)	
PANAMA (Cont)		NEW ZEALAND (Cont)	
MIAMI	27,096	HONOLULU	46,269
VENEZUELA	6,076,584	PANAMA	6,970
FT. LAUDERDALE	146,032	FT. LAUDERDALE	6,970
MIAMI	5,930,552	TRINIDAD	324,864
PLUM	23,138,694	BALTIMORE	2,835
CHILE	23,133,601	DULLES	60,473
DOVER	226,619	ELIZABETH	261,556
HOUSTON	1,673,931	PURSLANE	211,537
JFK	59,633	MEXICO	211,537
LOS ANGELES	5,534,188	CHICAGO	190
MIAMI	180,608	SAN DIEGO	211,347
PHILADELPHIA	15,458,622	QUINCE	1,082
NEW ZEALAND	5,093	CHILE	1,082
LOS ANGELES	5,093	LOS ANGELES	1,082
PUMPKIN	4,462,259	RADISH	15,505,936
BAHAMAS	5,444	CHILE	27,080
WEST PALM BEACH	5,444	MIAMI	27,080
COLOMBIA	5	DOMINICAN REPUBLIC	34
JFK	5	MIAMI	34
COSTA RICA	2,299,289	GUATEMALA	64,012
DOVER	43,396	FT. LAUDERDALE	59,992
FT. LAUDERDALE	807,144	MIAMI	4,020
MIAMI	1,395,327	JAPAN	1,094
PHILADELPHIA	53,422	HONOLULU	1,094
DOMINICAN REPUBLIC	1,143,712	MEXICO	15,413,716
ELIZABETH	433,272	BILLINGS	18
FT. LAUDERDALE	110,753	BROWNSVILLE	10
MIAMI	581,549	CALEXICO	8,590,710
WEST PALM BEACH	18,138	CHICAGO	1,480
GRENADA	2,454	EL PASO	3,000
DULLES	2,454	HIDALGO	4,473
GUYANA	113	NOGALES	79,416
JFK	113	PROGRESO	11,396
HAITI	193,896	SAN DIEGO	868,931
MIAMI	193,896	SAN LUIS	5,854,282
JAMAICA	138,349	RAPE	222,872
ATLANTA	182	MEXICO	222,872
BALTIMORE	6,095	CALEXICO	120,457
ELIZABETH	85,409	SAN LUIS	102,415
MIAMI	46,663	RASPBERRY	1,781,111
MEXICO	300,894	CHILE	1,749,064
BROWNSVILLE	288,039	BALTIMORE	22,201
EL PASO	5,430	ELIZABETH	42,534
HIDALGO	1,887	LOS ANGELES	60,762
LAREDO	4,098	MIAMI	1,567,247
PROGRESO	1,440	PHILADELPHIA	22,320
NEW ZEALAND	46,269	SAN FRANCISCO	34,000

TABLE 1--U.S. IMPORTS OF FRUITS AND VEGETABLES UNDER REGULATIONS ADMINISTERED BY THE PLANT PROTECTION AND QUARANTINE PROGRAMS, APHIS, USDA, FOR THE FISCAL YEAR ENDING SEPTEMBER 30, 1991--CONTINUED

COMMODITY	KILOGRAMS	COMMODITY	KILOGRAMS
RASPBERRY (Cont)		RUTABAGA (Cont)	
COLOMBIA	2,678	MEXICO	20,484
MIAMI	2,678	CALEXICO	18,933
COSTA RICA	6	SAN LUIS	1,551
MIAMI	6	SAGE	8,174
FRANCE	81	DOMINICAN REPUBLIC	4
LOS ANGELES	81	JFK	4
GERMANY	8	ISRAEL	5,517
MIAMI	8	JFK	5,517
GUATEMALA	9,800	MEXICO	2,653
LOS ANGELES	55	LOS ANGELES	289
MIAMI	9,719	SAN DIEGO	1,713
NEW ORLEANS	26	SAN FRANCISCO	651
NEW ZEALAND	19,474	SALICORNIA SP.	8
HONOLULU	25	FRANCE	8
LOS ANGELES	19,319	DULLES	8
SAN FRANCISCO	130	SALSIFY	30,348
RHUBARB	6,070	BELGIUM	29,948
NETHERLANDS	6,070	ELIZABETH	23,935
ATLANTA	12	JFK	2,818
BALTIMORE	176	LOS ANGELES	2,665
CHICAGO	1,339	SAN FRANCISCO	530
DULLES	190	NETHERLANDS	400
ELIZABETH	140	JFK	400
JFK	4,213	SAND PEAR	1,720,856
RIBES SP.	717	CHILE	781,857
CHILE	717	DOVER	105,604
JFK	717	JFK	397
ROSEMARY	21,942	PHILADELPHIA	675,856
COLOMBIA	13	JAPAN	806,461
JFK	13	ELIZABETH	225,308
DOMINICAN REPUBLIC	4	HONOLULU	138,143
JFK	4	LOS ANGELES	66,500
ISRAEL	14,013	SEATTLE	376,510
JFK	14,013	KOREA	111,085
MEXICO	7,912	ELIZABETH	22,670
LOS ANGELES	138	HONOLULU	33,000
SAN DIEGO	7,774	SAVANNAH	10,800
RUBUS SP.	377,712	SEATTLE	44,615
CHILE	371,252	NEW ZEALAND	21,453
JFK	371,252	HONOLULU	21,453
COLOMBIA	4,683	SAVORY	1,467
JFK	4,683	ISRAEL	1,467
COSTA RICA	180	JFK	1,467
JFK	180	SCALLION	77,711,688
GUATEMALA	1,597	GUATEMALA	615,984
HOUSTON	877	FT. LAUDERDALE	615,984
JFK	720	HONDURAS	20,810
RUTABAGA	20,484	FT. LAUDERDALE	20,810

TABLE 1--U.S. IMPORTS OF FRUITS AND VEGETABLES UNDER REGULATIONS ADMINISTERED BY THE PLANT PROTECTION AND QUARANTINE PROGRAMS, APHIS, USDA, FOR THE FISCAL YEAR ENDING SEPTEMBER 30, 1991--CONTINUED

COMMODITY	KILOGRAMS	COMMODITY	KILOGRAMS
SCALLION (Cont)		SORREL (Cont)	
ITALY	50	GRENADA (Cont)	
BOSTON	50	JFK	34
JAMAICA	460	ISRAEL	1,015
MIAMI	460	JFK	1,015
MEXICO	77,074,384	JAMAICA	1,877
BILLINGS	113	JFK	1,877
CALEXICO	28,327,632	TRINIDAD	863
HIDALGO	6,106	JFK	863
LAREDO	10,384	SPINACH	2,135,080
PROGRESO	20,623	JAMAICA	450
SAN DIEGO	8,796,666	JFK	450
SAN LUIS	39,912,860	MEXICO	2,133,310
SHALLOT	2,259,151	BROWNSVILLE	30
BELGIUM	363,651	CALEXICO	1,079,211
CHICAGO	1,750	HIDALGO	287,560
ELIZABETH	339,872	SAN DIEGO	623,234
JFK	9,819	SAN LUIS	143,275
MIAMI	12,210	TRINIDAD	1,320
CHINA	7,103	DULLES	980
SAN FRANCISCO	7,103	JFK	340
DOMINICAN REPUBLIC	23,880	SQUASH	110,641,914
ELIZABETH	23,880	BAHAMAS	25
FRANCE	1,747,747	FT. LAUDERDALE	25
BOSTON	100	COSTA RICA	666,850
DULLES	418	ELIZABETH	1,037
ELIZABETH	626,497	FT. LAUDERDALE	135,244
JFK	175,682	MIAMI	523,492
LOS ANGELES	525,553	SAVANNAH	7,077
PHILADELPHIA	20,240	DOMINICAN REPUBLIC	293,935
SAN FRANCISCO	399,257	ELIZABETH	60,484
ITALY	2,529	MIAMI	184,503
CHICAGO	1,051	WEST PALM BEACH	48,948
MIAMI	1,478	GUATEMALA	333,464
NETHERLANDS	49,726	LOS ANGELES	3,047
BALTIMORE	7,245	MIAMI	315,617
CHICAGO	2,389	NEW ORLEANS	14,168
JFK	18	TAMPA	632
LOS ANGELES	8,844	HAITI	26,204
MIAMI	1,030	MIAMI	26,204
SAN FRANCISCO	30,200	HONDURAS	543,213
NEW ZEALAND	64,515	FT. LAUDERDALE	41,734
LOS ANGELES	42,265	MIAMI	463,230
SAN FRANCISCO	22,250	NEW ORLEANS	69
SNOW CABBAGE	11,024	WEST PALM BEACH	38,180
MEXICO	11,024	JAMAICA	374,466
SAN LUIS	11,024	MIAMI	374,466
SORREL	3,789	MEXICO	107,653,225
GRENADA	34	ATLANTA	1,260

TABLE 1--U.S. IMPORTS OF FRUITS AND VEGETABLES UNDER REGULATIONS ADMINISTERED BY THE PLANT PROTECTION AND QUARANTINE PROGRAMS, APHIS, USDA, FOR THE FISCAL YEAR ENDING SEPTEMBER 30, 1991--CONTINUED

COMMODITY	KILOGRAMS	COMMODITY	KILOGRAMS
SQUASH (Cont)		STRAWBERRY (Cont)	
MEXICO (Cont)		GUATEMALA (Cont)	
BROWNSVILLE	2,171,082	NEW ORLEANS	2,693
CALEXICO	2,349,087	ISRAEL	50
CHICAGO	3,752	JFK	50
EL PASO	353,219	ITALY	287
HIDALGO	5,443,328	JFK	287
LAREDO	364,523	JAPAN	12
LOS ANGELES	22,110	LOS ANGELES	12
MIAMI	10,326	MEXICO	12,210,718
NOGALES	80,614,240	CHICAGO	1
PROGRESO	1,892,186	HIDALGO	2,633,266
ROMA	8,846	JFK	68
SAN DIEGO	12,009,041	LAREDO	23,480
SAN FRANCISCO	5,438	LOS ANGELES	8,532
SAN LUIS	2,367,263	NOGALES	1,800,585
TAMPA	37,524	SAN DIEGO	7,676,919
NETHERLANDS	1,619	SAN LUIS	67,867
DULLES	23	NETHERLANDS	25
TAMPA	1,596	SEATTLE	25
NEW ZEALAND	92,656	NEW ZEALAND	209,743
HONOLULU	92,656	HONOLULU	66,670
PANAMA	656,257	LOS ANGELES	137,535
FT. LAUDERDALE	570,496	SAN FRANCISCO	5,538
MIAMI	85,761	PERU	10
STRAWBERRY	13,649,928	MIAMI	10
ARGENTINA	3	POLAND	39,865
MIAMI	3	MINNEAPOLIS	14
AUSTRALIA	3	ROMULUS	39,848
LOS ANGELES	3	SAN FRANCISCO	3
CHILE	25,055	SPAIN	7
ELIZABETH	19,745	TUCSON	7
LOS ANGELES	5	SWISS CHARD	133,885
MIAMI	5,305	MEXICO	133,885
COLOMBIA	464,114	CALEXICO	120,187
JFK	192,980	HIDALGO	672
LOS ANGELES	6,395	SAN LUIS	13,026
MIAMI	264,739	TAMARILLO	94,006
COSTA RICA	294,889	NEW ZEALAND	94,006
MIAMI	133,445	LOS ANGELES	93,843
PHILADELPHIA	34,152	SAN FRANCISCO	163
SAVANNAH	127,292	TAMARIND	794,137
FRANCE	178	COSTA RICA	20,553
JFK	35	MIAMI	20,553
LOS ANGELES	143	DOMINICAN REPUBLIC	212,702
GUATEMALA	404,969	ELIZABETH	112,952
HOUSTON	569	FT. LAUDERDALE	27,298
LOS ANGELES	11,774	JFK	5,265
MIAMI	389,933	LOS ANGELES	1,043

TABLE 1--U.S. IMPORTS OF FRUITS AND VEGETABLES UNDER REGULATIONS ADMINISTERED BY THE PLANT PROTECTION AND QUARANTINE PROGRAMS, APHIS, USDA, FOR THE FISCAL YEAR ENDING SEPTEMBER 30, 1991--CONTINUED

COMMODITY	KILOGRAMS	COMMODITY	KILOGRAMS
TAMARIND (Cont)		TARO (Cont)	
DOMINICAN REPUBLIC (Cont)		PHILIPPINES (Cont)	
MIAMI	66,144	LOS ANGELES	7
ECUADOR	12,367	SAMOA	91
LOS ANGELES	12,367	HONOLULU	91
FIJI	625	TAIWAN	1,500
LOS ANGELES	625	LOS ANGELES	1,500
GRENADA	920	TONGA	61,408
JFK	920	HONOLULU	61,168
JAMAICA	1,331	LOS ANGELES	240
JFK	315	W. SAMOA	1,038,053
MIAMI	1,016	HONOLULU	394,213
MEXICO	542,036	LOS ANGELES	537,370
CALEXICO	13,584	SAN FRANCISCO	106,470
EL PASO	953	TARRAGON	40,942
HIDALGO	71,356	ISRAEL	19,713
PROGRESO	900	JFK	19,713
SAN DIEGO	401,370	MEXICO	13,079
SAN LUIS	53,873	HOUSTON	16
THAILAND	3,603	LOS ANGELES	1,134
LOS ANGELES	3,603	SAN DIEGO	11,339
TANGELO	152,453	SAN FRANCISCO	590
JAMAICA	152,453	NEW ZEALAND	8,150
ELIZABETH	152,453	LOS ANGELES	8,150
TANGERINE	11,477,455	THYME	169,863
MEXICO	11,402,611	BARBADOS	9,480
HIDALGO	10,710,193	MIAMI	9,480
PROGRESO	692,418	COLOMBIA	1,865
SPAIN	74,844	JFK	66
PHILADELPHIA	74,844	MIAMI	1,799
TARO	1,347,942	COSTA RICA	896
AMERICAN SAMOA	388	MIAMI	896
ANCHORAGE	388	DOMINICAN REPUBLIC	3,019
CHINA	127,815	JFK	3,019
BLAINE	375	HAITI	96
SAN FRANCISCO	127,440	MIAMI	96
COOK ISLANDS	20	ISRAEL	11,345
LOS ANGELES	20	JFK	11,345
FIJI	89,952	JAMAICA	136,286
HONOLULU	2,450	BALTIMORE	4,536
LOS ANGELES	84,522	JFK	49,411
SAN FRANCISCO	2,980	MIAMI	82,339
HONG KONG	26,945	MEXICO	6,741
SAN FRANCISCO	26,945	LOS ANGELES	500
JAPAN	1,758	SAN DIEGO	6,241
SAN FRANCISCO	1,758	TRINIDAD	135
NEW GUINEA	5	DULLES	135
LOS ANGELES	5	TOMATO	367,322,288
PHILIPPINES	7	BELGIUM	530,294

TABLE 1--U.S. IMPORTS OF FRUITS AND VEGETABLES UNDER REGULATIONS ADMINISTERED BY THE PLANT PROTECTION AND QUARANTINE PROGRAMS, APHIS, USDA, FOR THE FISCAL YEAR ENDING SEPTEMBER 30, 1991--CONTINUED

COMMODITY	KILOGRAMS	COMMODITY	KILOGRAMS
TOMATO (Cont)		TOMATO (Cont)	
BELGIUM (Cont)		NETHERLANDS (Cont)	
BOSTON	30,775	DULLES	23,693
DULLES	714	ELIZABETH	62,209
ELIZABETH	3,102	HOUSTON	367
JFK	481,823	JFK	1,863,342
MIAMI	13,880	LOS ANGELES	280,383
CANARY ISLANDS	1,248	MIAMI	29,051
JFK	1,248	MINNEAPOLIS	2,414
CHILE	2,760	ORLANDO	210
MIAMI	2,760	PHILADELPHIA	3,850
DOMINICAN REPUBLIC	991,972	ROMULUS	3,074
ELIZABETH	69,102	SAN FRANCISCO	83,616
JFK	837,461	SEATTLE	21,000
MIAMI	85,409	TAMPA	3,750
ENGLAND	8,675	NEW ZEALAND	75
BOSTON	8,675	HONOLULU	75
GUATEMALA	366	TOMATO, GREEN	533,421
JFK	1	ISRAEL	531,773
MIAMI	15	JFK	531,336
TAMPA	350	LOS ANGELES	437
ISRAEL	664,990	ITALY	1,648
JFK	641,691	JFK	1,598
LOS ANGELES	23,299	MIAMI	50
MEXICO	362,222,241	TRUFFLE	11,303
BALTIMORE	5	FRANCE	1,987
BLAINE	708,970	JFK	25
BROWNSVILLE	73,209	LOS ANGELES	1,095
CALEXICO	636,139	SAN FRANCISCO	867
CHICAGO	998	ITALY	9,223
EAGLE PASS	47	JFK	8,962
EL PASO	274,585	LOS ANGELES	261
HIDALGO	3,044,209	JAPAN	73
JFK	358	LOS ANGELES	73
LAREDO	294,154	SPAIN	20
LOS ANGELES	46,154	LOS ANGELES	20
NOGALES	272,560,128	TUMERIC	23,457
PRESIDIO	60	FIJI	23,457
PROGRESO	1,781,226	HONOLULU	1,442
ROMA	61,463	LOS ANGELES	21,975
SAN DIEGO	82,535,272	SAN FRANCISCO	40
SAN FRANCISCO	179,253	TURNIP	1,938,736
SAN LUIS	26,002	GUATEMALA	82
TUCSON	9	MIAMI	25
NETHERLANDS	2,899,667	TAMPA	57
ATLANTA	7,205	MEXICO	1,938,654
BALTIMORE	51,533	CALEXICO	337,611
BOSTON	291,009	EL PASO	7,753
CHICAGO	172,961	HIDALGO	4,313

TABLE 1--U.S. IMPORTS OF FRUITS AND VEGETABLES UNDER REGULATIONS ADMINISTERED BY THE PLANT PROTECTION AND QUARANTINE PROGRAMS, APHIS, USDA, FOR THE FISCAL YEAR ENDING SEPTEMBER 30, 1991--CONTINUED

COMMODITY	KILOGRAMS	COMMODITY	KILOGRAMS
TURNIP (Cont)		WATERMELON (Cont)	
MEXICO (Cont)		GUATEMALA (Cont)	
PROGRESO	6,878	FT. LAUDERDALE	56,582
SAN DIEGO	5,877	HIDALGO	17,463
SAN LUIS	1,576,222	HONDURAS	2,316,560
TURNIP GREENS	2,613,952	FT. LAUDERDALE	1,474,705
MEXICO	2,613,952	MIAMI	307,988
CALEXICO	333,660	WEST PALM BEACH	533,867
PROGRESO	11,118	MEXICO	135,176,982
SAN LUIS	2,269,174	BROWNSVILLE	37,660
UDO	332	CALEXICO	4,980,160
JAPAN	332	EAGLE PASS	2,986
HONOLULU	33	EL PASO	226,372
JFK	70	HIDALGO	48,761,200
LOS ANGELES	229	LAREDO	5,971
VACCINIUM SP.	1,574	NOGALES	71,403,856
CHILE	1,574	PROGRESO	863,412
JFK	1,574	ROMA	130,265
WATERCHESTNUT	670,241	SAN DIEGO	2,839,996
CHINA	552,885	SAN LUIS	5,925,104
BLAINE	450	PANAMA	215,141
BROOKLYN	6,250	FT. LAUDERDALE	173,067
ELIZABETH	55	MIAMI	42,074
HONOLULU	9,319	YAM	10,470,794
LOS ANGELES	123,121	BRAZIL	961,254
SAN FRANCISCO	413,690	BROOKLYN	302,041
HONG KONG	110,198	ELIZABETH	536,387
SAN FRANCISCO	110,198	PHILADELPHIA	122,826
JAPAN	4,784	CHINA	818
HONOLULU	284	LOS ANGELES	818
LOS ANGELES	4,500	COLOMBIA	2,127,778
TAIWAN	2,372	BROOKLYN	75,000
LOS ANGELES	2,372	MIAMI	688,061
THAILAND	2	TAMPA	1,364,717
SAN FRANCISCO	2	COSTA RICA	1,297,019
WATERCRESS	281	ELIZABETH	1,036
MEXICO	135	FT. LAUDERDALE	510,052
CHICAGO	60	MIAMI	722,599
LOS ANGELES	75	PHILADELPHIA	43,200
NETHERLANDS	146	SAVANNAH	20,132
JFK	146	DOMINICAN REPUBLIC	128,139
WATERMELON	138,191,950	ELIZABETH	97,015
COSTA RICA	344,066	FT. LAUDERDALE	19,090
FT. LAUDERDALE	344,066	MIAMI	2,000
EL SALVADOR	65,156	WEST PALM BEACH	10,034
FT. LAUDERDALE	31,142	FIJI	6,000
HIDALGO	18,264	LOS ANGELES	6,000
MIAMI	15,750	GHANA	357,512
GUATEMALA	74,045	ELIZABETH	111,800

TABLE 1--U.S. IMPORTS OF FRUITS AND VEGETABLES UNDER REGULATIONS ADMINISTERED BY THE PLANT PROTECTION AND QUARANTINE PROGRAMS, APHIS, USDA, FOR THE FISCAL YEAR ENDING SEPTEMBER 30, 1991--CONTINUED

COMMODITY	KILOGRAMS	COMMODITY	KILOGRAMS
YAM (Cont)		ZUCCHINI (Cont)	
GHANA (Cont)		MEXICO (Cont)	
HOUSTON	32,992	LAREDO	9,838
JFK	16,142		
NEW ORLEANS	137,853		
NORFOLK	40,000		
SAVANNAH	18,725		
HONDURAS	16,890		
MIAMI	16,890		
INDIA	13,246		
JFK	13,246		
IVORY COAST	13,800		
JFK	4		
NEW ORLEANS	13,796		
JAMAICA	5,169,043		
ATLANTA	15		
BALTIMORE	6,104		
ELIZABETH	1,135,385		
FT. LAUDERDALE	976,887		
JFK	2,512,861		
MIAMI	537,791		
JAPAN	126,001		
BALTIMORE	2,237		
CHICAGO	2		
HONOLULU	23,329		
JFK	56		
LOS ANGELES	100,067		
SAN FRANCISCO	310		
NIGERIA	60,221		
HOUSTON	10,221		
SAVANNAH	50,000		
PANAMA	21,336		
MIAMI	21,336		
TONGA	33,973		
HONOLULU	31,083		
LOS ANGELES	2,890		
VENEZUELA	137,764		
MIAMI	137,764		
ZUCCHINI	252,005		
COSTA RICA	3,567		
MIAMI	3,567		
GUATEMALA	19,581		
MIAMI	19,114		
NEW ORLEANS	408		
TAMPA	59		
MEXICO	228,857		
BILLINGS	61		
BLAINE	15		
BROWNSVILLE	218,943		

TABLE 2--PUERTO RICO AND U.S. VIRGIN ISLANDS: IMPORTS OF FRUITS AND VEGETABLES UNDER REGULATIONS ADMINISTERED BY THE PLANT PROTECTION AND QUARANTINE PROGRAMS, APHIS, USDA FOR THE FISCAL YEAR ENDING SEPTEMBER 30, 1991

COMMODITY	KILOGRAMS	COMMODITY	KILOGRAMS
MAYAGUEZ	137,182	ONION	606,496
CASSAVA	985	ORANGE	1,020,830
COCONUT	11,067	OREGANO	1,879
DASHEEN	12,013	PAPAYA	2,186
PUMPKIN	60,427	PEA, PIGEON	220,336
SWEET POTATO	30,165	PEACH	125,016
YAM	22,525	PEAR	57,056
PONCE	4,829,240	PEPPER	317,001
CASSAVA	1,608,601	PLUM	275,135
CILANTRO	198	POTATO	7,325,780
DASHEEN	864,126	PUMPKIN	1,036,460
FROZ. CASSAVA	846,116	SQUASH	63,546
GINGER	16,611	SWEET POTATO	6,904,362
ORANGE	255,584	TAMARIND	69,462
PUMPKIN	31,232	TOMATO	237,481
SQUASH	48,170	WATERCRESS	72,802
TANNIA	24,160	YAM	1,006,469
YAM	1,134,442	ST. CROIX	1,085,665
SAN JUAN	33,640,308	ALLIUM	1
APPLE	137,357	AVOCADO	52,360
AVOCADO	1,667,453	BANANA	196,004
BAMBOO SHOOT	17,491	BEET	56
BANANA	339,130	BREADFRUIT	24,872
BEAN, CLUSTER	50	CABBAGE	313
BEAN, GREEN	19,448	CANTALOUPE	907
BEAN, YARD LONG	113,046	CASSAVA	622
BITTER MELON	70,157	CHAYOTE	1,823
CANTALOUPE	41,041	COCONUT	18,106
CASSAVA	507,145	CUCUMBER	2,936
CHAYOTE	211	DASHEEN	111,423
CHICKPEA	18,181	EGGPLANT	2,703
CHINESE OKRA	15,744	GINGER	5,585
CHINESE SQUASH	20,115	GRAPEFRUIT	16,583
CHIVE	19,829	LEMON	8,965
CILANTRO	45,979	LETTUCE	11
CITRUS	935,433	LIME, SOUR	7,123
COCONUT	1,117,730	MANGO	63,828
CUCUMBER	9,197	ONION	10
CUCURBIT	362,826	ORANGE	92,968
DASHEEN	6,313,926	PAPAYA	8
EGGPLANT	45,079	PARSLEY	13
GARLIC	861,039	PEA, PIGEON	5,118
GINGER	68,730	PEPPER	7,781
GRAPE	804,426	PINEAPPLE	4,974
GRAPEFRUIT	11,297	PLANTAIN	208,340
LEAVES, DASHEEN	8,666	POTATO	13,594
LEMON	32,307	PUMPKIN	35,513
LIME, SOUR	3,703	SORREL	9
MELON	588,695	SWEET POTATO	111,812
NECTARINE	102,580	TAMARIND	809

TABLE 2--PUERTO RICO AND U.S. VIRGIN ISLANDS: IMPORTS OF FRUITS AND VEGETABLES UNDER REGULATIONS ADMINISTERED BY THE PLANT PROTECTION AND QUARANTINE PROGRAMS, APHIS, USDA FOR THE FISCAL YEAR ENDING SEPTEMBER 30, 1991

COMMODITY	KILOGRAMS	COMMODITY	KILOGRAMS
TANGERINE	21,208		
TANNIA	28,674	TOTAL	163,208,670
THYME	258		
TOMATO	1,704	ALLIUM	2,602
WATERMELON	1,708	AMARANTHUS	850
YAM	36,943	APPLE	194,982
ST. THOMAS	1,938,720	APRICOT	39,683
AVOCADO	163,796	ARECA NUT	56
BANANA	438,423	ARROWHEAD	24,030
BEET	304	ARROWROOT	78,652
BREADFRUIT	5,100	ARTICHOKE	2,256
BREADNUT	400	ASPARAGUS	11,553
CABBAGE	40	AVOCADO	27,360,429
CANTALOUPE	7,345	BAMBOO	5,440
CARROT	217	BAMBOO SHOOT	16,627
CASSAVA	8,885	BANANA	4,530,335
CHAYOTE	10,078	BANANA FLOWER	2,035
CHIVE	77	BASIL	25,434
COCONUT	26,381	BEAN, FABA	2,700
CUCUMBER	1,926	BEAN, GREEN	146,555
DASHEEN	139,193	BEAN, MUNG	64,500
GINGER	9,028	BEAN, OTHER	4,889
GRAPEFRUIT	15,182	BEAN, YARD LONG	2,308
LEMON	2,217	BITTER LUPINE	18,812
LIME, SOUR	25,332	BROCCOLI	454,053
MANGO	35,494	BRUSSELS SPROUTS	51,392
OKRA	512	BURDOCK	4,400
ORANGE	69,316	CABBAGE	14,608
PAPAYA	388	CACTUS FRUIT	287,992
PARSLEY	23	CANTALOUPE	500
PEA, PIGEON	3,852	CAPSICUM SP.	45
PEANUT	77	CARAMBOLA	38,238
PEPPER	18,624	CARROT	61,290
PINEAPPLE	87,245	CASSAVA	35,867
PLANTAIN	340,390	CELERY	13,097
POTATO	25	CHEERY	4,827
PUMPKIN	82,851	CHERVIL	79
SORREL	212	CHESTNUT	432,083
SPINACH	11	CHICKPEA	21,016
SWEET POTATO	316,885	CHINESE LEAVES	835
TAMARIND	175	CHIVE	30,842
TANGERINE	14,517	CICHORIUM	13,550
TANNIA	61,040	CILANTRO	99
THYME	1,483	CITRUS	455,852
TOMATO	2,731	CLEMENTINE	14,526,450
WATERCRESS	92	COCONUT	5,395,031
WATERMELON	925	CORN	76
YAM	47,928	CUCUMBER	73,894

TABLE 3--ENTRIES OF FRUITS AND VEGETABLES FOR EXPORTATION OR TRANSPORTATION AND EXPORTATION, SUPERVISED UNDER REGULATIONS ADMINISTERED BY THE PLANT PROTECTION AND QUARANTINE PROGRAMS, APHIS, USDA, FOR THE FISCAL YEAR ENDING SEPTEMBER 30, 1991--CONTINUED

COMMODITY	KILOGRAMS	COMMODITY	KILOGRAMS
CUCURBIT	769,211	HOG PLUM	2,457
CURUBA	198	JICAMA	8,466
DASHEEN	37,582	KIWI	7,756,745
DATE	12,200	KUDZU	46,832
DRUMSTICK	19,098	KUMQUAT	30
DURIAN	66,272	LEAVES, BANANA	30
EGGPLANT	314,321	LEAVES, BETEL	10
ETHROG	85	LEAVES, CITRUS	15
FIG	5,011	LEAVES, DASHEEN	9,087
FROZ. BANANA	2,115	LEAVES, SNOW PEA	1,886
FROZ. BANANA LEAF	1,471	LEMON	4,275,516
FROZ. BILIMBI	732	LEMONGRASS	23,083
FROZ. BROCCOLI	2,271,957	LENTIL	271,285
FROZ. CANTALOUPE	17,956	LIME, SOUR	568,884
FROZ. CARROT	19,718	LITCHI	2,309,828
FROZ. CASSAVA	39,090	LONGAN	350,911
FROZ. CAULIFLOWER	38,410	LOQUAT	608
FROZ. CHESTNUT	22,046	LOTUS ROOT	345,673
FROZ. CORN	11	LULU	50
FROZ. CUCURBIT LEAF	25	MAMEY	564
FROZ. GRAPE	25,077	MANGO	16,672,483
FROZ. GREEN PEA	38,006	MANGO, SLICED	1,905
FROZ. GUAVA	200	MANGOSTEEN	146
FROZ. JACKFRUIT	50	MARJORAM	529
FROZ. JUTE LEAF	893	MELON	1,400,731
FROZ. LEMON	18,332	MINT	67
FROZ. MANGO	188,737	MIXED VEGETABLE	18,459
FROZ. MELON	16,993	MUSHROOM	1,977
FROZ. PAPAYA	5,341	NECTARINE	1,890
FROZ. PEA	21,955	OKRA	35,674
FROZ. PEPPER LEAF	25	ONION	213,577
FROZ. PIGEON PEA	20,866	ORANGE	31,896,346
FROZ. PINEAPPLE	254,454	ORANGE SEGMENT	334,854
FROZ. RASPBERRY	19,745	ORANGE, MANDARIN	4,595,860
FROZ. SPINACH	12,658	ORANGE, UNSHU	5,591,576
FROZ. STRAWBERRY	1,130,722	OREGANO	555
FROZ. TAMARIND	199	ORTAN	412,020
FROZ. TAMARIND LEAF	45	PAPAYA	132,496
FRUIT SALAD	33,230	PARSLEY	290
GARLIC	1,816,109	PASSION FRUIT	82,948
GENIP	1,219	PEA, GREEN	1,088,805
GINGER	1,577,871	PEA, PIGEON	8,442
GRANADILLA	1,662	PEA, SNOW	2,228
GRAPE	1,711,923	PEACH	51,023
GRAPEFRUIT	241,854	PEANUT	2,044,426
GRAPEFRUIT SEGMENT	181,403	PEAR	979,619
GUAVA	50,712	PEPINO	650

TABLE 3--ENTRIES OF FRUITS AND VEGETABLES FOR EXPORTATION OR TRANSPORTATION AND EXPORTATION, SUPERVISED UNDER REGULATIONS ADMINISTERED BY THE PLANT PROTECTION AND QUARANTINE PROGRAMS, APHIS, USDA, FOR THE FISCAL YEAR ENDING SEPTEMBER 30, 1991--CONTINUED

COMMODITY	KILOGRAMS
PEPPER	676,579
PERSIMMON	1,495
PHYSALIS SP.	3,113
PINEAPPLE	5,906,358
PINEAPPLE CHUNK	309,931
PITAHAYA	1,585
PLANTAIN	385,952
PLUM	7,644
POMELO	334,247
POTATO	342,073
PUMPKIN	85,584
RADISH	6,000
RAMBUTAN	2,478
RASPBERRY	238,543
ROSEMARY	1,078
SAGE	469
SAND PEAR	599,872
SAVORY	234
SHALLOT	220,464
SORREL	328
SPINACH	353,530
SQUASH	3,249,047
STAR FRUIT	13,401
STRAWBERRY	341,972
SUGAR CANE	60,803
SWEET POTATO	92,484
TAMARILLO	2,538
TAMARIND	3,098
TANGELO	18,000
TANGERINE	1,308,351
TARO	80,460
TARRAGON	3,337
THYME	1,372
TOMATO	1,172,119
TUMERIC	50
TURNIP	1,800
WATERCHESTNUT	46,310
WATERCRESS	37
WATERMELON	120,032
YAM	215,682
ZUCCHINI	50

SUMMARY OF REPORT

U.S. Initiative Supports Economic and Trade Reform in Latin America and the Caribbean

Number 17, May 1993

Contact: Liana Neff, (202) 219-0610.

Western Hemisphere countries are seeking trade liberalization that may eventually lead to a hemispheric free trade zone. The Enterprise for the Americas Initiative (EAI) is a U.S. program supporting economic and trade reform underway in Latin America and the Caribbean. The program's major provisions are described in a new USDA report by the Economic Research Service, *The U.S. Enterprise for the Americas Initiative: Support for Western Hemisphere Economic and Trade Reform*.

The initiative's objectives are to promote liberalized trade, reduce official debt, and increase foreign investment in the Latin American and Caribbean countries. These countries have renewed regional agreements and have taken new steps toward stabilizing their domestic economies. No longer following protectionist import-substitution policies, regional and subregional groups of countries are promoting unilateral reductions

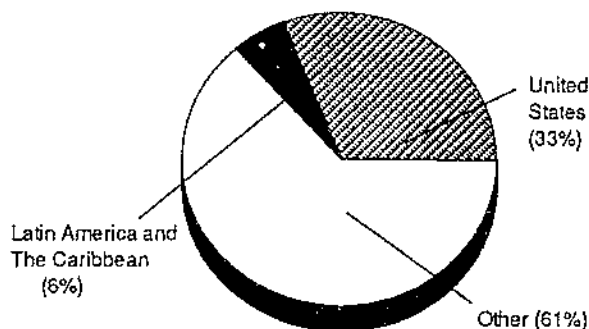
in trade barriers and greater international interaction by their members.

Trade liberalization began in the Western Hemisphere in the 1960's, but was largely unsuccessful. Latin American initiatives renewed the effort in the 1980's, and the EAI has given added focus and direction to ongoing trade and investment liberalization in the 1990's. The United States has completed a free trade agreement with Canada and initialed a North American Free Trade Agreement (NAFTA) including Mexico on October 7, 1992. The EAI begins to expand this process throughout Latin America and the Caribbean, a process that may take many years because of the complex issues involved.

The EAI proposes action in three areas for the Western Hemisphere: (1) liberalizing trade, (2) reducing the debt owed to the United States by less-developed countries (LDC's), and (3) increasing foreign investment in LDC's.

Figure 1
Latin American and Caribbean agricultural exports, 1987

Only 6 percent of the agricultural exports of Latin American and Caribbean countries go to other Latin American and Caribbean countries; nearly a third of the exports go to the United States.



Source: Salazar and Zorilla.

To Order This Report...

The information presented here is excerpted from *The U.S. Enterprise for the Americas Initiative: Support for Western Hemisphere Economic and Trade Reform* (AIB-660), by Kenneth Forsythe and Liana Neff. The cost is \$9 per copy.

To order, dial 1-800-999-6779 (toll free in the United States and Canada) and ask for the report by title.

Please add 25 percent to foreign addresses (including Canada). Charge to VISA or MasterCard. Or send a check (made payable to ERS-NASS) to:

ERS-NASS
341 Victory Drive
Herndon, VA 22070.

We'll fill your order by first-class mail.

**END
FILMED**

DATE:
11-01-93

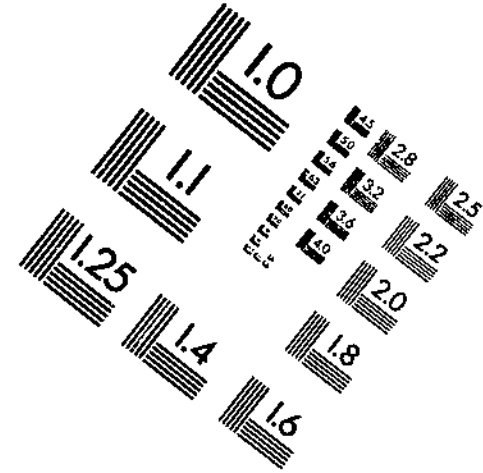
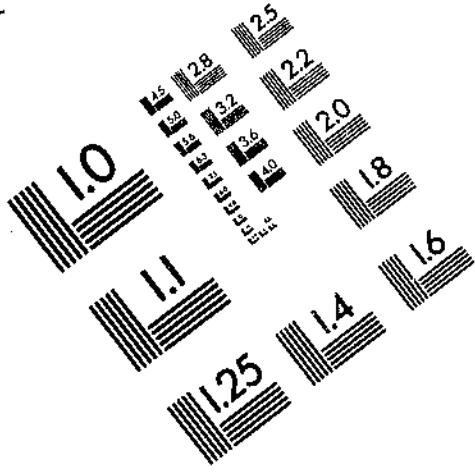
NTIS



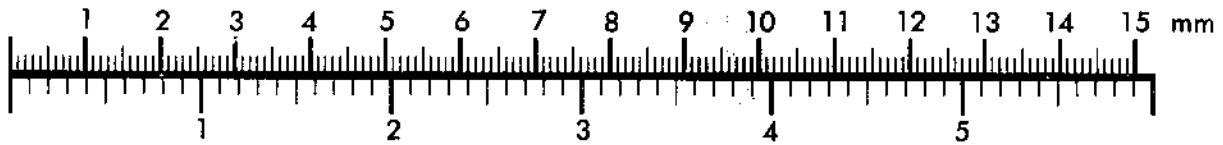
AIM

Association for Information and Image Management

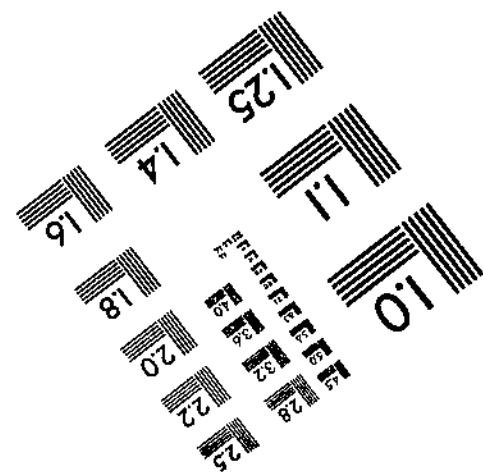
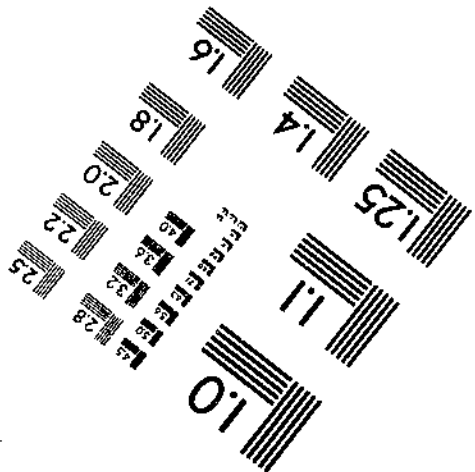
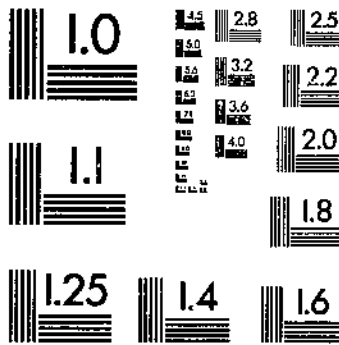
1100 Wayne Avenue, Suite 1100
Silver Spring, Maryland 20910
301/587-8202



Centimeter



Inches



MANUFACTURED TO AIM STANDARDS
BY APPLIED IMAGE, INC.