



AgEcon SEARCH
RESEARCH IN AGRICULTURAL & APPLIED ECONOMICS

The World's Largest Open Access Agricultural & Applied Economics Digital Library

This document is discoverable and free to researchers across the globe due to the work of AgEcon Search.

Help ensure our sustainability.

Give to AgEcon Search

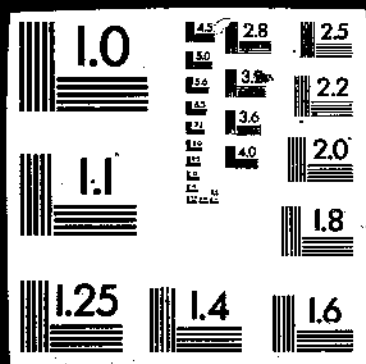
AgEcon Search
<http://ageconsearch.umn.edu>
aesearch@umn.edu

*Papers downloaded from **AgEcon Search** may be used for non-commercial purposes and personal study only. No other use, including posting to another Internet site, is permitted without permission from the copyright owner (not AgEcon Search), or as allowed under the provisions of Fair Use, U.S. Copyright Act, Title 17 U.S.C.*

PB92-128602

USDA/SB-831 FARM SECTOR BALANCE SHEET, INCLUDING OPERATOR
HOUSEHOLDS, 1960-89, AND EXCLUDING OPERATOR HOUSEHOLDS, 1974-89:
BY SALES CLASS. / K. ERICKSON, ET AL. ECONOMIC RESEARCH SERVICE,
WASHINGTON, DC. AGRICULTURE AND RURAL ECONOMY DIV. NOV 91 52P

1 OF 1
PB-92
128 602

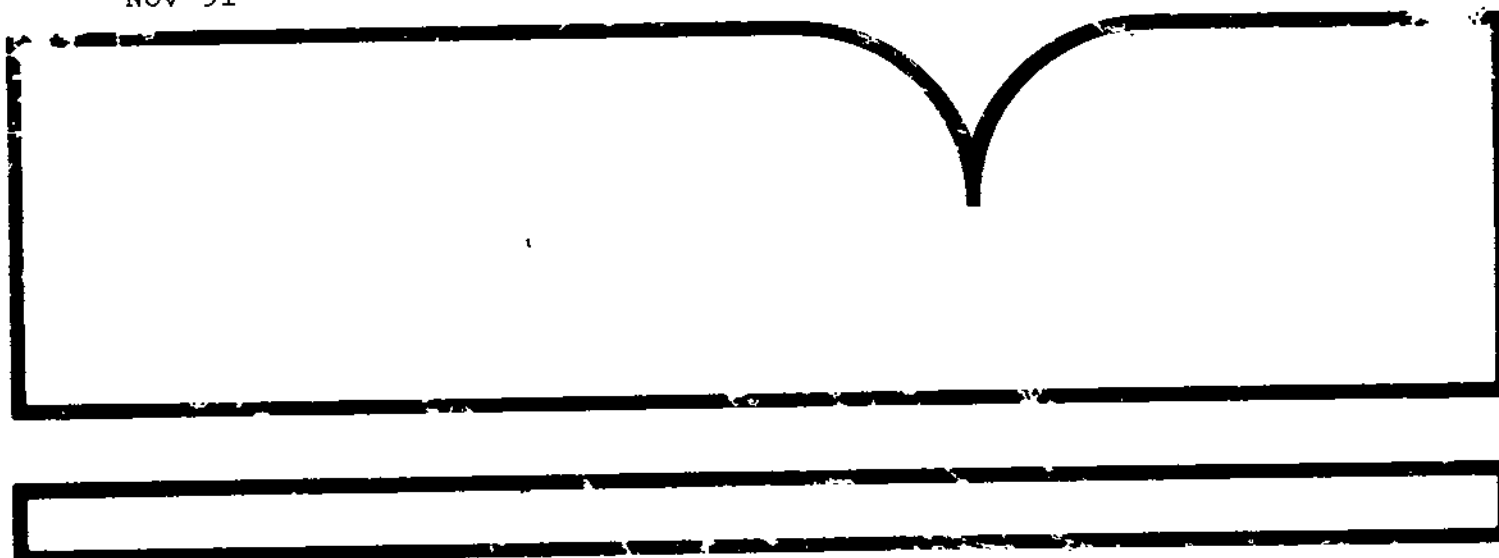


PB92-128602

Farm Sector Balance Sheet, Including Operator Households
1960-89, and Excluding Operator Households, 1974-89: By Sales Class

(U.S.) Economic Research Service, Washington, DC

Nov 91



U.S. Department of Commerce
National Technical Information Service

NTIS

REPORT DOCUMENTATION PAGE

Form Approved
OMB No. 0704-0188

Public reporting burden for this collection of information is estimated to average 1 hour per response, including the time for reviewing instructions, searching existing data sources, gathering and maintaining the data needed, and completing and reviewing the collection of information. Send comments regarding this burden estimate or any other aspect of this collection of information, including suggestions for reducing this burden, to Washington Headquarters Services, Directorate for Information Operations and Reports, 1215 Jefferson Davis Highway, Suite 1204, Arlington, VA 22202-4302, and to the Office of Management and Budget, Paperwork Reduction Project (0704-0188), Washington, DC 20503.

1. PB92-128602		2. REPORT DATE November 1991		3. REPORT TYPE AND DATES COVERED	
4. TITLE AND SUBTITLE U.S. Farm Sector Balance Sheet, Including Operator Households, 1960-89, by Sales Class				5. FUNDING NUMBERS	
6. AUTHOR(S) Kenneth Erickson, Janusz Kubica, Duane Hacklander, Charles Barnard, James Ryan, and Helen Devlin					
7. PERFORMING ORGANIZATION NAME(S) AND ADDRESS(ES) Agricultural and Rural Economy Division Economic Research Service U.S. Department of Agriculture 1301 New York Ave. NW Washington, DC 20005-4788				8. PERFORMING ORGANIZATION REPORT NUMBER SB 831	
9. SPONSORING / MONITORING AGENCY NAME(S) AND ADDRESS(ES)				10. SPONSORING / MONITORING AGENCY REPORT NUMBER	
11. SUPPLEMENTARY NOTES					
12a. DISTRIBUTION / AVAILABILITY STATEMENT				12b. DISTRIBUTION CODE	
13. ABSTRACT (Maximum 200 words) This report furnishes the latest farm sector balance sheet estimates developed by the U.S. Department of Agriculture's Economic Research Service. These estimates incorporate numerous revisions in estimating procedures and changes in available data. National estimates of assets, debt, and equity, by sales class, are presented for 1960-89. Keywords: Balance sheet, assets, debt, equity, sales class, United States.					
14. SUBJECT TERMS Balance sheet, assets, debt, equity, sales class				15. NUMBER OF PAGES 52	
				16. PRICE CODE	
17. SECURITY CLASSIFICATION OF REPORT	18. SECURITY CLASSIFICATION OF THIS PAGE	19. SECURITY CLASSIFICATION OF ABSTRACT	20. LIMITATION OF ABSTRACT		



United States
Department of
Agriculture

Economic
Research
Service

Statistical
Bulletin
Number 831

Farm Sector Balance Sheet, Including Operator Households, 1960-89, and Excluding Operator Households, 1974-89: By Sales Class

Kenneth Erickson Charles Barnard
Janusz Kubica James Ryan
Duane Hacklander Helen Devlin



REPRODUCED BY
U.S. DEPARTMENT OF COMMERCE
NATIONAL TECHNICAL
INFORMATION SERVICE
SPRINGFIELD, VA 22161

Farm Sector Balance Sheet, Including Operator Households, 1960-89, and Excluding Operator Households, 1974-89: By Sales Class. By Kenneth Erickson, Janusz Kubica, Duane Hacklander, Charles Barnard, James Ryan, and Helen Devlin. Agriculture and Rural Economy Division and Data Services Center, Economic Research Service, U.S. Department of Agriculture. Statistical Bulletin No. 831.

Abstract

This report furnishes the latest farm sector balance sheet estimates developed by the U.S. Department of Agriculture's Economic Research Service. These estimates incorporate numerous revisions in estimating procedures and changes in available data. National estimates of assets, debt, and equity, by sales class, are presented for 1960-89.

Keywords: Balance sheet, assets, debt, equity, sales class, United States.

Farm Sector Balance Sheet, Including Operator Households, 1960-89, and Excluding Operator Households, 1974-89

By Sales Class

**Kenneth Erickson
Janusz Kubica
Duane Hacklander
Charles Barnard
James Ryan
Helen Devlin**

Introduction

The U.S. Department of Agriculture (USDA) has published a comprehensive set of farm sector balance sheet estimates since the mid-1940's. These balance sheets provide detailed data on farm sector assets, debts, and equity. USDA's Economic Research Service (ERS) publishes the balance sheet of the farm sector in *Economic Indicators of the Farm Sector: National Financial Summary* each fall. Balance sheet accounts for the most recent 5-year period, by the value of gross sales class, allow readers to evaluate economic conditions for different size farms. ERS also publishes *Economic Indicators of the Farm Sector: State Financial Summary*, which includes individual State estimates of assets, debt, and equity.

USDA defines a farm as any establishment that sells or normally would sell \$1,000 worth of agricultural products in a calendar year. The principal operator of a farm is defined as the individual making the largest number of the day-to-day management decisions of planting, purchasing, harvesting, and marketing. When partners share equally in the decisionmaking, the oldest partner (age) is considered the principal operator. The operator category includes owner-operators, partners, tenants, paid and unpaid managers associated with corporate or institutional farms, and contractors that raise crops or livestock for a fee.

Balance Sheet Accounts

The balance sheet accounts can be used to assess wealth in the farm sector. They include assets, debt, and equity, where equity equals assets minus debt. Assets are valued at current market prices on December 31 of each year, or as close to December 31 as possible.

The balance sheet accounts contain one set of statistics that includes farm operator households' assets and debt and another set that excludes them. Both sets include operators' and landlords' shares of the assets and debt for the farming operation. The balance sheet account excluding operator households subtracts the value of the operator dwelling, the household portion of automobiles and trucks, household equipment, financial assets, and related debt on these assets from the balance sheet account including operator households. Debt is classified as either real estate or nonreal estate depending upon how the loan is secured. If the loan is secured by farm real estate, then it is classified as real estate farm debt, regardless of how loan proceeds are used.

Farm organizations, analysts, farmers, administrators, and legislators use the balance sheet statistics to assess prevailing farm financial conditions. The balance sheet and income statistics reveal much about the current wealth and financial performance of the farm sector. ERS receives numerous requests for farm balance sheet time series data.

Sales Class Distributions

Financial conditions vary greatly by the size of the farm. A customary way to measure farm size is according to the value of agricultural sales. This report furnishes the latest ERS estimates of the U.S. farm sector balance sheet, both including operator households, 1960-89, and excluding operator households, 1974-89, by sales class. In 1974, the largest sales class of \$100,000 and over was further disaggregated into three classes: \$100,000 to \$249,000, \$250,000 to \$499,999, and over \$500,000. Sales are defined as the market value of all production plus net Commodity Credit Corporation loans and government payments for the calendar year. This definition is consistent with the U.S. Department of Commerce and with USDA's sector income accounts.

Considerable care must be exercised in interpreting the averages computed on a per-farm or per-operation basis by sales class. Per-farm sales class statistics should not be interpreted as being per-farmer statistics, which would be higher or lower, depending on the number of farm operators in each class relative to the number of farms. For example, in the smaller sales classes, one farm operator may manage several farms. However, in the larger sales classes, a higher proportion of agricultural operations involves multiple operators who share in the risk of production activities. These operators conduct business under various legal arrangements, including corporations, partnerships, multifamily farms, and other multiple-interest operations.

The reader may wish to read the handbooks on farm income and the balance sheet for more information on these accounts.¹

¹See *Major Statistical Series of the U.S. Department of Agriculture, Vol. 11: The Balance Sheet*, AH-671, by Kenneth Erickson, Duane Hacklander, James Ryan, Linda Farmer, and Curtis Bednarz, Economic Research Service, U.S. Department of Agriculture, May 1989, for a description of how ERS constructs the balance sheet.

Table 1--Farm sector balance sheet (including operator households), by value of sales class,
December 31, 1960

Item	\$100,000 and over	\$40,000 to \$99,999	\$20,000 to \$39,999	\$10,000 to \$19,999	Less than \$10,000	Total
Billion dollars						
Total:						
Farm assets	18.4	25.7	33.8	42.5	89.5	210.0
Real estate	12.6	18.2	23.0	28.4	57.6	139.7
Livestock and poultry	1.7	1.7	2.5	3.4	6.4	15.6
Machinery and motor vehicles	1.3	2.6	3.7	4.9	9.8	22.2
Crops stored 1/	0.5	0.8	1.3	1.6	2.0	6.2
Purchased inputs	NA	NA	NA	NA	NA	NA
Household goods	0.2	0.3	0.6	1.1	6.5	8.7
Investments in cooperatives	0.7	0.7	0.8	0.9	1.2	4.2
Other financial	1.5	1.5	1.9	2.3	6.0	13.3
Debt	2.9	3.5	4.5	5.6	8.4	24.8
Real estate 2/	0.9	1.8	2.2	3.1	4.9	12.9
Nonreal estate	2.0	1.7	2.3	2.5	3.5	12.0
Equity	15.5	22.2	29.3	36.9	81.2	185.1
Percent						
Debt-to-asset ratio	15.9	13.5	13.2	13.2	9.3	11.8
Percent of total:						
Farm assets	8.8	12.2	16.1	20.2	42.6	100.0
Real estate	9.0	13.0	16.5	20.3	41.2	100.0
Livestock and poultry	10.7	10.8	16.0	21.5	41.0	100.0
Machinery and motor vehicles	5.8	11.6	16.5	21.9	44.2	100.0
Crops stored 1/	7.6	12.7	20.3	26.5	32.9	100.0
Purchased inputs	NA	NA	NA	NA	NA	NA
Household goods	2.0	3.6	7.0	12.8	74.6	100.0
Investments in cooperatives	17.0	15.5	18.3	20.5	28.8	100.0
Other financial	11.5	11.5	14.5	17.4	45.1	100.0
Debt	11.8	14.0	18.0	22.6	33.7	100.0
Real estate 2/	7.0	14.0	17.0	24.0	38.0	100.0
Nonreal estate	17.0	14.0	19.0	21.0	29.0	100.0
Equity	8.4	12.0	15.8	19.9	43.8	100.0
Thousand dollars						
Per farm:						
Farm assets	801.0	285.8	148.8	85.5	28.6	53.0
Real estate	546.6	201.8	101.5	57.1	18.4	35.3
Livestock and poultry	72.3	18.8	11.0	6.7	2.0	3.9
Machinery and motor vehicles	56.0	28.6	16.1	9.8	3.1	5.6
Crops stored 1/	20.5	8.7	5.5	3.3	0.7	1.7
Purchased inputs	NA	NA	NA	NA	NA	NA
Household goods	7.6	3.5	2.7	2.2	2.1	2.2
Investments in cooperatives	31.0	7.2	3.4	1.7	0.4	1.0
Other financial	67.0	17.1	8.5	4.7	1.9	3.4
Debt	127.6	38.6	19.7	11.3	2.7	6.3
Real estate 2/	39.1	20.0	9.6	6.2	1.6	3.2
Nonreal estate	88.4	18.6	10.0	5.1	1.1	3.0
Equity	673.4	247.1	129.1	74.3	26.0	46.8

1/ Non-CCC crops held on farms plus value above loan rate for crops held under CCC.

2/ Includes CCC storage and drying facilities loans.

NA = not available.

Numbers may not add due to rounding.

Table 2--Farm sector balance sheet (including operator households), by value of sales class,
December 31, 1961

Item	\$100,000 and over	\$40,000 to \$99,999	\$20,000 to \$39,999	\$10,000 to \$19,999	Less than \$10,000	Total
Billion dollars						
Total:						
Farm assets	20.9	28.8	36.5	43.2	88.4	217.8
Real estate	14.3	20.4	24.9	28.9	57.3	145.8
Livestock and poultry	1.9	1.9	2.8	3.6	6.3	16.4
Machinery and motor vehicles	1.4	2.8	3.9	4.9	9.4	22.5
Crops stored 1/	0.5	0.9	1.3	1.6	1.9	6.3
Purchased inputs	NA	NA	NA	NA	NA	NA
Household goods	0.2	0.4	0.7	1.2	6.5	8.9
Investments in cooperatives	0.8	0.7	0.8	0.9	1.2	4.5
Other financial	1.7	1.6	2.0	2.3	5.7	13.3
Debt	3.7	3.7	4.9	5.9	8.5	26.7
Real estate 2/	1.1	2.0	2.5	3.4	5.0	14.0
Nonreal estate	2.5	1.8	2.4	2.5	3.4	12.7
Equity	17.3	25.0	31.6	37.3	79.9	191.1
Percent						
Debt-to-asset ratio	17.5	13.0	13.5	13.6	9.6	12.2
Percent of total:						
Farm assets	9.6	13.2	16.8	19.8	40.6	100.0
Real estate	9.8	14.0	17.1	19.8	39.3	100.0
Livestock and poultry	11.8	11.5	16.8	21.6	38.3	100.0
Machinery and motor vehicles	6.4	12.6	17.5	21.6	41.9	100.0
Crops stored 1/	8.7	14.3	21.4	25.6	30.1	100.0
Purchased inputs	NA	NA	NA	NA	NA	NA
Household goods	2.3	4.1	7.6	13.2	72.8	100.0
Investments in cooperatives	18.5	16.2	18.6	19.9	26.8	100.0
Other financial	12.7	12.2	14.9	17.0	43.3	100.0
Debt	13.7	14.0	18.5	22.1	31.7	100.0
Real estate 2/	8.0	14.0	18.0	24.0	36.0	100.0
Nonreal estate	20.0	14.0	19.0	20.0	27.0	100.0
Equity	9.0	13.1	16.5	19.5	41.8	100.0
Thousand dollars						
Per farm:						
Farm assets	805.2	296.4	152.7	87.7	29.8	57.0
Real estate	549.7	210.5	104.3	58.6	19.3	38.1
Livestock and poultry	74.3	19.4	11.6	7.2	2.1	4.3
Machinery and motor vehicles	55.4	29.2	16.5	9.9	3.2	5.9
Crops stored 1/	21.1	9.3	5.6	3.3	0.6	1.8
Purchased inputs	NA	NA	NA	NA	NA	NA
Household goods	7.9	3.8	2.8	2.4	2.2	2.3
Investments in cooperatives	32.1	7.5	3.5	1.8	0.4	1.1
Other financial	64.6	16.7	8.3	4.6	1.9	3.5
Debt	140.7	38.5	20.6	12.0	2.8	7.0
Real estate 2/	43.0	20.2	10.5	6.8	1.7	3.7
Nonreal estate	97.7	18.3	10.1	5.2	1.2	3.3
Equity	664.6	258.0	132.0	75.7	26.9	50.0

1/ Non-CCC crops held on farms plus value above loan rate for crops held under CCC.

2/ Includes CCC storage and drying facilities loans.

NA = not available.

Numbers may not add due to rounding.

Table 3--Farm sector balance sheet (including operator households), by value of sales class,
December 31, 1962

Item	\$100,000 and over	\$40,000 to \$99,999	\$20,000 to \$39,999	\$10,000 to \$19,999	Less than \$10,000	Total
Billion dollars						
Total:						
Farm assets	22.9	31.2	39.3	44.1	88.1	225.7
Real estate	15.6	22.1	26.8	29.4	57.6	151.5
Livestock and poultry	2.1	2.1	3.0	3.7	6.4	17.3
Machinery and motor vehicles	1.6	3.2	4.3	5.1	9.3	23.5
Crops stored 1/	0.6	1.0	1.4	1.6	1.8	6.4
Purchased inputs	NA	NA	NA	NA	NA	NA
Household goods	0.2	0.4	0.7	1.2	6.2	8.8
Investments in cooperatives	0.9	0.8	0.9	0.9	1.1	4.6
Other financial	1.8	1.7	2.1	2.3	5.8	13.6
Debt	4.3	4.4	5.6	6.3	8.7	29.4
Real estate 2/	1.4	2.3	2.9	3.7	5.0	15.2
Nonreal estate	3.0	2.1	2.7	2.7	3.7	14.2
Equity	18.6	26.8	33.7	37.7	79.4	196.3
Percent						
Debt-to-asset ratio	19.0	14.1	14.2	14.4	9.9	13.0
Percent						
Percent of total:						
Farm assets	10.2	13.8	17.4	19.5	39.1	100.0
Real estate	10.3	14.6	17.7	19.4	38.0	100.0
Livestock and poultry	12.3	12.0	17.5	21.3	37.0	100.0
Machinery and motor vehicles	6.9	13.5	18.5	21.6	39.5	100.0
Crops stored 1/	9.7	15.5	22.3	24.6	27.8	100.0
Purchased inputs	NA	NA	NA	NA	NA	NA
Household goods	2.5	4.5	8.3	13.6	71.1	100.0
Investments in cooperatives	20.1	16.9	19.0	19.3	24.6	100.0
Other financial	13.2	12.6	15.2	16.7	42.3	100.0
Debt	14.8	15.0	19.0	21.6	29.6	100.0
Real estate 2/	9.0	15.0	19.0	24.0	33.0	100.0
Nonreal estate	21.0	15.0	19.0	19.0	26.0	100.0
Equity	9.5	13.7	17.2	19.2	40.5	100.0
Thousand dollars						
Per farm:						
Farm assets	790.5	294.7	154.7	89.4	31.4	61.3
Real estate	538.1	208.7	105.6	59.6	20.5	41.0
Livestock and poultry	73.3	19.6	11.9	7.5	2.3	4.7
Machinery and motor vehicles	55.8	29.9	17.1	10.3	3.3	6.4
Crops stored 1/	21.4	9.4	5.6	3.2	0.6	1.9
Purchased inputs	NA	NA	NA	NA	NA	NA
Household goods	7.6	3.7	2.9	2.4	2.2	2.4
Investments in cooperatives	32.3	7.4	3.5	1.8	0.4	1.3
Other financial	62.0	16.1	8.1	4.6	2.0	3.7
Debt	149.8	41.6	22.0	12.9	3.1	8.0
Real estate 2/	47.3	21.6	11.4	7.4	1.8	4.1
Nonreal estate	102.5	20.0	10.6	5.5	1.3	3.8
Equity	640.7	253.1	132.7	76.5	28.3	53.3

1/ Non-CCC crops held on farms plus value above loan rate for crops held under CCC.

2/ Includes CCC storage and drying facilities loans.

NA = not available.

Numbers may not add due to rounding.

Table 4--Farm sector balance sheet (including operator households), by value of sales class,
December 31, 1963

Item	\$100,000 and over	\$40,000 to \$99,999	\$20,000 to \$39,999	\$10,000 to \$19,999	Less than \$10,000	Total
Billion dollars						
Total:						
Farm assets	24.5	32.7	40.8	45.4	90.5	233.9
Real estate	16.9	23.3	28.1	30.8	60.5	159.7
Livestock and poultry	2.0	1.9	2.8	3.3	5.9	15.9
Machinery and motor vehicles	1.7	3.3	4.5	5.1	9.3	23.9
Crops stored 1/	0.7	1.1	1.7	1.8	2.0	7.2
Purchased inputs	NA	NA	NA	NA	NA	NA
Household goods	0.2	0.4	0.7	1.2	6.2	8.8
Investments in cooperatives	1.1	0.9	1.0	0.9	1.1	5.0
Other financial	1.8	1.8	2.1	2.2	5.6	13.5
Debt	5.0	5.2	6.3	7.0	9.0	32.5
Real estate 2/	1.5	2.7	3.4	4.0	5.2	16.9
Nonreal estate	3.4	2.5	3.0	3.0	3.8	15.7
Equity	19.6	27.4	34.5	38.4	81.6	201.4
Percent						
Debt-to-asset ratio	20.2	15.9	15.6	15.5	9.9	13.9
Percent						
Percent of total:						
Farm assets	10.5	14.0	17.4	19.4	38.7	100.0
Real estate	10.6	14.6	17.6	19.3	37.9	100.0
Livestock and poultry	12.8	11.8	17.4	21.1	36.9	100.0
Machinery and motor vehicles	7.2	13.8	18.9	21.4	38.7	100.0
Crops stored 1/	10.1	15.6	22.9	24.4	27.0	100.0
Purchased inputs	NA	NA	NA	NA	NA	NA
Household goods	2.7	4.7	8.5	13.7	70.4	100.0
Investments in cooperatives	21.1	17.6	19.5	18.9	22.9	100.0
Other financial	13.6	13.0	15.2	16.3	41.8	100.0
Debt	15.3	16.0	19.5	21.6	27.6	100.0
Real estate 2/	9.0	16.0	20.0	24.0	30.9	100.0
Nonreal estate	22.0	16.0	19.0	19.0	24.0	100.0
Equity	9.7	13.6	17.1	19.0	40.5	100.0
Thousand dollars						
Per farm:						
Farm assets	791.0	289.0	152.9	92.4	33.9	65.6
Real estate	546.0	206.3	105.3	62.8	22.7	44.7
Livestock and poultry	65.3	16.6	10.4	6.8	2.2	4.4
Machinery and motor vehicles	55.6	29.2	16.9	10.4	3.5	6.7
Crops stored 1/	23.6	10.0	6.2	3.6	0.7	2.1
Purchased inputs	NA	NA	NA	NA	NA	NA
Household goods	7.6	3.6	2.8	2.4	2.3	2.5
Investments in cooperatives	33.9	7.7	3.6	1.9	0.4	1.4
Other financial	58.9	15.5	7.7	4.5	2.1	3.8
Debt	160.1	46.0	23.8	14.3	3.4	9.1
Real estate 2/	48.9	23.9	12.6	8.2	2.0	4.7
Nonreal estate	111.1	22.2	11.1	6.1	1.4	4.4
Equity	630.9	242.9	129.1	78.1	30.5	56.4

1/ Non-CCC crops held on farms plus value above loan rate for crops held under CCC.

2/ Includes CCC storage and drying facilities loans.

NA = not available.

Numbers may not add due to rounding.

Table 5--Farm sector balance sheet (including operator households), by value of sales class,
December 31, 1964

Item	\$100,000 and over	\$40,000 to \$99,999	\$20,000 to \$39,999	\$10,000 to \$19,999	Less than \$10,000	Total
Billion dollars						
Total:						
Farm assets	27.3	35.3	43.2	44.6	91.7	242.1
Real estate	19.1	25.5	30.4	30.9	62.9	168.7
Livestock and poultry	2.1	1.9	2.6	2.8	5.0	14.4
Machinery and motor vehicles	1.9	3.6	4.8	5.1	9.4	24.8
Crops stored 1/	0.9	1.2	1.6	1.5	1.7	6.8
Purchased inputs	NA	NA	NA	NA	NA	NA
Household goods	0.3	0.4	0.8	1.1	5.8	8.4
Investments in cooperatives	1.1	0.9	1.0	1.0	1.1	5.2
Other financial	2.0	1.8	2.1	2.2	5.7	13.8
Debt	5.5	5.8	6.9	7.3	9.8	35.3
Real estate 2/	1.9	3.0	3.8	4.4	5.9	18.9
Nonreal estate	3.6	2.8	3.1	2.9	3.9	16.4
Equity	21.9	29.5	36.3	37.3	81.9	206.8
Percent						
Debt-to-asset ratio	20.1	16.5	16.0	16.4	10.7	14.6
Percent of total:						
Farm assets	11.3	14.6	17.9	18.4	37.9	100.0
Real estate	11.3	15.1	18.0	18.3	37.3	100.0
Livestock and poultry	14.7	12.9	18.0	19.5	34.9	100.0
Machinery and motor vehicles	7.8	14.6	19.3	20.5	37.8	100.0
Crops stored 1/	12.7	17.0	23.1	22.3	24.9	100.0
Purchased inputs	NA	NA	NA	NA	NA	NA
Household goods	3.1	5.2	9.1	13.5	69.1	100.0
Investments in cooperatives	21.8	17.8	19.6	18.6	22.2	100.0
Other financial	14.3	13.0	15.4	15.9	41.4	100.0
Debt	15.6	16.5	19.5	20.7	27.8	100.0
Real estate 2/	10.0	16.0	20.0	23.0	31.0	100.0
Nonreal estate	22.0	17.0	19.0	18.0	24.0	100.0
Equity	10.6	14.2	17.6	18.0	39.6	100.0
Thousand dollars						
Per farm:						
Farm assets	854.7	309.4	161.3	92.5	35.8	70.1
Real estate	595.9	223.5	113.3	64.1	24.6	48.8
Livestock and poultry	66.3	16.3	9.7	5.8	2.0	4.2
Machinery and motor vehicles	60.5	31.8	17.9	10.6	3.7	7.2
Crops stored 1/	27.0	10.1	5.8	3.1	0.7	2.1
Purchased inputs	NA	NA	NA	NA	NA	NA
Household goods	8.1	3.8	2.9	2.4	2.3	2.4
Investments in cooperatives	35.3	8.1	3.8	2.0	0.4	1.5
Other financial	61.6	15.7	7.9	4.6	2.2	4.0
Debt	171.7	51.0	25.7	15.2	3.8	10.2
Real estate 2/	59.2	26.6	14.1	9.0	2.3	5.5
Nonreal estate	112.5	24.4	11.6	6.1	1.5	4.7
Equity	683.0	258.4	135.6	77.4	32.0	59.9

1/ Non-CCC crops held on farms plus value above loan rate for crops held under CCC.

2/ Includes CCC storage and drying facilities loans.

NA = not available.

Numbers may not add due to rounding.

Table 6--Farm sector balance sheet (including operator households), by value of sales class,
December 31, 1965

Item	\$100,000 and over	\$40,000 to \$99,999	\$20,000 to \$39,999	\$10,000 to \$19,999	Less than \$10,000	Total
Billion dollars						
Total:						
Farm assets	33.2	40.2	48.3	44.9	93.3	259.9
Real estate	23.0	28.7	33.6	30.9	64.5	180.8
Livestock and poultry	3.0	2.6	3.4	3.2	5.4	17.6
Machinery and motor vehicles	2.3	4.1	5.3	5.0	9.3	26.0
Crops stored 1/	1.0	1.4	1.9	1.6	1.7	7.7
Purchased inputs	NA	NA	NA	NA	NA	NA
Household goods	0.3	0.5	0.8	1.1	5.6	8.4
Investments in cooperatives	1.3	1.0	1.1	0.9	1.1	5.4
Other financial	2.3	1.9	2.2	2.1	5.6	14.1
Debt	6.3	6.1	7.9	7.7	11.3	39.3
Real estate 2/	2.1	3.4	4.2	4.7	6.8	21.2
Nonreal estate	4.2	2.7	3.6	3.1	4.5	18.1
Equity	26.9	34.1	40.4	37.1	82.0	220.6
Percent						
Debt-to-asset ratio	18.9	15.2	16.3	17.3	12.1	15.1
Percent of total:						
Farm assets	12.8	15.5	18.6	17.3	35.9	100.0
Real estate	12.7	15.9	18.6	17.1	35.7	100.0
Livestock and poultry	16.8	14.6	19.4	18.3	30.8	100.0
Machinery and motor vehicles	8.9	15.6	20.4	19.2	35.9	100.0
Crops stored 1/	13.3	18.4	24.2	21.3	22.8	100.0
Purchased inputs	NA	NA	NA	NA	NA	NA
Household goods	3.8	6.1	10.1	13.3	66.7	100.0
Investments in cooperatives	23.6	18.7	19.8	17.3	20.6	100.0
Other financial	16.5	13.8	15.4	14.6	39.8	100.0
Debt	16.0	15.5	20.0	19.7	28.8	100.0
Real estate 2/	10.0	16.0	20.0	22.0	32.0	100.0
Nonreal estate	23.0	15.0	20.0	17.0	25.0	100.0
Equity	12.2	15.5	18.3	16.8	37.2	100.0
Thousand dollars						
Per farm:						
Farm assets	748.6	273.1	154.1	97.8	39.0	77.5
Real estate	518.1	195.1	107.3	67.4	27.0	53.9
Livestock and poultry	66.8	17.4	10.9	7.0	2.3	5.2
Machinery and motor vehicles	52.2	27.5	16.9	10.9	3.9	7.7
Crops stored 1/	23.0	9.6	5.9	3.6	0.7	2.3
Purchased inputs	NA	NA	NA	NA	NA	NA
Household goods	7.2	3.5	2.7	2.4	2.3	2.5
Investments in cooperatives	28.9	6.9	3.4	2.0	0.5	1.6
Other financial	52.3	13.1	6.9	4.5	2.3	4.2
Debt	141.7	41.4	25.1	16.9	4.7	11.7
Real estate 2/	47.9	23.0	13.6	10.2	2.8	6.3
Nonreal estate	93.8	18.4	11.5	6.7	1.9	5.4
Equity	606.9	231.6	129.1	81.0	34.3	65.8

1/ Non-CCC crops held on farms plus value above loan rate for crops held under CCC.

2/ Includes CCC storage and drying facilities loans.

NA = not available.

Numbers may not add due to rounding.

Table 7--Farm sector balance sheet (including operator households), by value of sales class,
December 31, 1966

Item	\$100,000 and over	\$40,000 to \$99,999	\$20,000 to \$39,999	\$10,000 to \$19,999	Less than \$10,000	Total
Billion dollars						
Total:						
Farm assets	35.0	42.0	50.8	46.7	98.8	273.2
Real estate	23.8	29.8	35.3	32.4	69.4	190.7
Livestock and poultry	3.4	2.8	3.6	3.4	5.8	19.0
Machinery and motor vehicles	2.4	4.5	5.6	5.2	10.0	27.4
Crops stored 1/	1.0	1.5	2.0	1.7	1.7	7.8
Purchased inputs	NA	NA	NA	NA	NA	NA
Household goods	0.3	0.5	0.9	1.1	5.5	8.3
Investments in cooperatives	1.5	1.1	1.1	0.9	1.0	5.7
Other financial	2.5	2.1	2.3	2.0	5.3	14.2
Debt	9.3	8.6	8.8	7.5	8.7	42.9
Real estate 2/	3.3	4.9	5.1	4.5	5.3	23.1
Nonreal estate	5.9	3.8	3.8	3.0	3.4	19.8
Equity	25.7	33.4	41.9	39.2	90.1	230.3
Percent						
Debt-to-asset ratio	26.5	20.5	17.4	16.1	8.8	15.7
Percent						
Percent of total:						
Farm assets	12.8	15.4	18.6	17.1	36.2	100.0
Real estate	12.5	15.6	18.5	17.0	36.4	100.0
Livestock and poultry	17.9	14.9	19.1	17.8	30.4	100.0
Machinery and motor vehicles	8.8	15.5	20.4	19.0	36.3	100.0
Crops stored 1/	12.6	18.9	25.3	21.3	22.0	100.0
Purchased inputs	NA	NA	NA	NA	NA	NA
Household goods	3.9	6.2	10.3	13.2	66.4	100.0
Investments in cooperatives	26.4	19.7	19.9	15.5	18.4	100.0
Other financial	17.7	14.7	16.1	14.0	37.6	100.0
Debt	21.6	20.1	20.6	17.5	20.2	100.0
Real estate 2/	14.4	21.0	22.0	19.6	23.0	100.0
Nonreal estate	30.0	19.0	19.0	15.0	17.0	100.0
Equity	11.2	14.5	18.2	17.0	39.1	100.0
Thousand dollars						
Per farm:						
Farm assets	813.3	293.9	167.0	104.8	42.5	84.0
Real estate	554.5	208.1	116.1	72.9	29.9	58.6
Livestock and poultry	78.9	19.8	11.9	7.6	2.5	5.8
Machinery and motor vehicles	56.2	29.7	18.4	11.7	4.3	8.4
Crops stored 1/	22.9	10.3	6.5	3.7	0.7	2.6
Purchased inputs	NA	NA	NA	NA	NA	NA
Household goods	7.5	3.6	2.8	2.5	2.4	2.6
Investments in cooperatives	34.9	7.8	3.7	2.0	0.4	1.7
Other financial	58.5	14.6	7.5	4.5	2.3	4.4
Debt	215.4	60.2	29.1	16.8	3.7	13.2
Real estate 2/	77.3	33.9	16.7	10.2	2.3	7.1
Nonreal estate	138.1	26.3	12.4	6.7	1.4	6.1
Equity	597.9	233.7	137.9	88.0	38.8	70.9

1/ Non-CCC crops held on farms plus value above loan rate for crops held under CCC.

2/ Includes CCC storage and drying facilities loans.

NA = not available.

Numbers may not add due to rounding.

Table 8--Farm sector balance sheet (including operator households), by value of sales class,
December 31, 1967

Item	\$100,000 and over	\$40,000 to \$99,999	\$20,000 to \$39,999	\$10,000 to \$19,999	Less than \$10,000	Total
Billion dollars						
Total:						
Farm assets	37.3	45.2	54.0	47.5	103.2	287.1
Real estate	25.6	32.0	37.7	33.2	72.9	201.4
Livestock and poultry	3.6	3.0	3.7	3.2	5.3	18.8
Machinery and motor vehicles	2.7	4.7	6.2	5.5	10.7	29.8
Crops stored 1/	1.0	1.6	2.0	1.6	1.6	7.7
Purchased inputs	NA	NA	NA	NA	NA	NA
Household goods	0.4	0.6	1.0	1.1	5.8	8.8
Investments in cooperatives	1.6	1.2	1.2	0.9	1.1	5.8
Other financial	2.5	2.1	2.3	2.0	5.8	14.7
Debt	8.8	8.7	9.5	8.4	10.6	46.0
Real estate 2/	2.8	4.8	5.5	5.3	6.8	25.2
Nonreal estate	6.0	4.0	4.0	3.1	3.8	20.8
Equity	28.6	36.6	44.6	39.1	92.2	241.1
Percent						
Debt-to-asset ratio	23.6	19.3	17.6	17.7	10.2	16.0
Percent						
Percent of total:						
Farm assets	13.0	15.7	18.8	16.5	35.9	100.0
Real estate	12.7	15.9	18.7	16.5	36.2	100.0
Livestock and poultry	19.2	16.1	19.7	16.9	28.0	100.0
Machinery and motor vehicles	9.1	15.9	20.8	18.3	35.9	100.0
Crops stored 1/	13.1	20.2	25.8	20.3	20.6	100.0
Purchased inputs	NA	NA	NA	NA	NA	NA
Household goods	4.2	6.7	10.8	13.0	65.3	100.0
Investments in cooperatives	26.5	19.8	20.0	15.3	18.3	100.0
Other financial	16.9	14.3	15.6	13.6	39.6	100.0
Debt	19.1	19.0	20.6	18.3	22.9	100.0
Real estate 2/	11.0	19.0	22.0	21.0	27.0	100.0
Nonreal estate	29.0	19.0	19.0	15.0	18.0	100.0
Equity	11.9	15.2	18.5	16.2	38.2	100.0
Thousand dollars						
Per farm:						
Farm assets	867.9	318.4	180.6	110.2	45.9	90.9
Real estate	595.0	225.6	126.0	77.1	32.5	63.7
Livestock and poultry	84.2	21.4	12.4	7.4	2.4	6.0
Machinery and motor vehicles	63.1	33.4	20.7	12.7	4.8	9.4
Crops stored 1/	23.4	10.9	6.6	3.6	0.7	2.5
Purchased inputs	NA	NA	NA	NA	NA	NA
Household goods	8.6	4.2	3.2	2.7	2.6	2.8
Investments in cooperatives	36.1	8.2	3.9	2.1	0.5	1.8
Other financial	57.6	14.8	7.7	4.6	2.6	4.6
Debt	205.0	61.6	31.8	19.5	4.7	14.6
Real estate 2/	64.5	33.7	18.5	12.3	3.0	8.0
Nonreal estate	140.5	27.9	13.2	7.3	1.7	6.6
Equity	665.1	257.6	149.3	90.8	41.0	76.3

1/ Non-CCC crops held on farms plus value above loan rate for crops held under CCC.

2/ Includes CCC storage and drying facilities loans.

NA = not available.

Numbers may not add due to rounding.

Table 9--Farm sector balance sheet (including operator households), by value of sales class,
December 31, 1968

Item	\$100,000 and over	\$40,000 to \$99,999	\$20,000 to \$39,999	\$10,000 to \$19,999	Less than \$10,000	Total
Billion dollars						
Total:						
Farm assets	41.7	50.1	58.6	46.8	103.2	300.4
Real estate	28.7	35.7	40.7	32.7	73.2	211.0
Livestock and poultry	4.3	3.6	4.1	3.1	5.1	20.2
Machinery and motor vehicles	3.1	5.4	6.8	5.4	10.6	31.3
Crops stored 1/	0.8	1.2	2.2	1.5	1.4	7.2
Purchased inputs	NA	NA	NA	NA	NA	NA
Household goods	0.5	0.7	1.1	1.2	5.9	9.4
Investments in cooperatives	1.7	1.2	1.2	0.9	1.1	6.1
Other financial	2.7	2.3	2.4	2.0	5.9	15.2
Debt	9.9	9.7	9.9	7.8	10.6	47.9
Real estate 2/	3.6	5.8	6.1	5.0	7.2	27.5
Nonreal estate	6.3	3.9	3.9	2.9	3.5	20.4
Equity	31.8	40.5	49.1	39.2	91.9	252.5
Percent						
Debt-to-asset ratio	23.7	19.3	17.0	16.7	10.3	16.0
Percent of total:						
Farm assets	13.9	16.7	19.5	15.6	34.3	100.0
Real estate	13.6	16.9	19.3	15.5	34.7	100.0
Livestock and poultry	21.1	18.0	20.2	15.4	25.4	100.0
Machinery and motor vehicles	9.8	17.3	21.8	17.3	33.8	100.0
Crops stored 1/	11.6	16.6	31.0	21.3	19.5	100.0
Purchased inputs	NA	NA	NA	NA	NA	NA
Household goods	4.8	7.8	11.8	12.8	62.8	100.0
Investments in cooperatives	27.5	20.4	20.1	14.5	17.4	100.0
Other financial	17.7	14.9	15.8	12.9	38.7	100.0
Debt	20.7	20.1	20.7	16.3	22.2	100.0
Real estate 2/	13.0	21.0	22.0	18.0	26.0	100.0
Nonreal estate	31.0	19.0	19.0	14.0	17.0	100.0
Equity	12.6	16.0	19.4	15.5	36.4	100.0
Thousand dollars						
Per farm:						
Farm assets	926.5	336.5	191.5	112.8	47.9	97.9
Real estate	637.6	239.3	133.1	78.8	34.0	68.7
Livestock and poultry	94.8	24.4	13.4	7.5	2.4	6.6
Machinery and motor vehicles	68.1	36.3	22.3	13.0	4.9	10.2
Crops stored 1/	18.5	8.0	7.3	3.7	0.6	2.4
Purchased inputs	NA	NA	NA	NA	NA	NA
Household goods	10.0	4.9	3.6	2.9	2.7	3.1
Investments in cooperatives	37.3	8.4	4.0	2.1	0.5	2.0
Other financial	60.1	15.2	7.9	4.7	2.7	5.0
Debt	220.0	64.8	32.5	18.8	4.9	15.6
Real estate 2/	79.6	38.8	19.8	11.9	3.3	9.0
Nonreal estate	140.4	26.0	12.7	6.9	1.6	6.6
Equity	706.8	271.9	160.3	94.4	42.6	82.3

1/ Non-CCC crops held on farms plus value above loan rate for crops held under CCC.

2/ Includes CCC storage and drying facilities loans.

NA = not available.

Numbers may not add due to rounding.

Table 10--Farm sector balance sheet (including operator households), by value of sales class,
December 31, 1969

Item	\$100,000 and over	\$40,000 to \$99,999	\$20,000 to \$39,999	\$10,000 to \$19,999	Less than \$10,000	Total
Billion dollars						
Total:						
Farm assets	47.4	53.9	57.9	45.9	106.4	311.5
Real estate	32.6	37.6	39.7	31.9	75.3	217.1
Livestock and poultry	4.8	4.0	4.4	3.3	5.9	22.5
Machinery and motor vehicles	3.5	5.7	6.7	5.3	11.1	32.3
Crops stored 1/	1.1	2.0	2.2	1.5	1.4	8.1
Purchased inputs	NA	NA	NA	NA	NA	NA
Household goods	0.5	0.8	1.1	1.2	5.9	9.6
Investments in cooperatives	1.9	1.4	1.3	0.8	1.0	6.4
Other financial	3.1	2.5	2.5	1.9	5.7	15.6
Debt	11.6	11.6	10.2	7.4	9.6	50.5
Real estate 2/	5.3	6.8	6.2	4.7	6.5	29.4
Nonreal estate	6.3	4.9	4.0	2.8	3.2	21.2
Equity	35.9	42.5	48.0	38.6	96.0	261.0
Percent						
Debt-to-asset ratio	24.5	21.6	17.6	16.2	9.1	16.2
Percent						
Percent of total:						
Farm assets	15.2	17.3	18.6	14.7	34.1	100.0
Real estate	15.0	17.3	18.3	14.7	34.7	100.0
Livestock and poultry	21.4	18.0	19.6	14.8	26.2	100.0
Machinery and motor vehicles	10.8	17.7	20.8	16.3	34.4	100.0
Crops stored 1/	13.1	24.5	26.7	18.3	17.4	100.0
Purchased inputs	NA	NA	NA	NA	NA	NA
Household goods	5.4	8.2	11.8	12.6	62.0	100.0
Investments in cooperatives	29.5	21.6	20.3	13.2	15.3	100.0
Other financial	19.7	15.7	16.0	12.1	36.5	100.0
Debt	23.0	23.0	20.2	14.7	19.1	100.0
Real estate 2/	18.0	23.0	21.0	16.0	22.0	100.0
Nonreal estate	30.0	23.0	19.0	13.0	15.0	100.0
Equity	13.7	16.3	18.4	14.8	36.8	100.0
Thousand dollars						
Per farm:						
Farm assets	817.6	297.8	174.7	115.8	52.3	103.9
Real estate	561.6	207.4	119.8	80.4	37.1	72.4
Livestock and poultry	83.2	22.4	13.3	8.4	2.9	7.5
Machinery and motor vehicles	60.2	31.6	20.3	13.3	5.5	10.8
Crops stored 1/	18.2	10.9	6.5	3.7	0.7	2.8
Purchased inputs	NA	NA	NA	NA	NA	NA
Household goods	8.9	4.3	3.4	3.0	2.9	3.2
Investments in cooperatives	32.5	7.6	3.9	2.1	0.5	2.1
Other financial	53.0	13.5	7.5	4.8	2.8	5.2
Debt	200.6	64.2	30.7	18.8	4.7	16.8
Real estate 2/	91.1	37.3	18.6	11.8	3.2	9.8
Nonreal estate	109.5	26.9	12.1	6.9	1.6	7.1
Equity	618.9	234.9	144.7	97.2	47.2	87.0

1/ Non-CCC crops held on farms plus value above loan rate for crops held under CCC.

2/ Includes CCC storage and drying facilities loans.

NA = not available.

Numbers may not add due to rounding.

Table 11--Farm sector balance sheet (including operator households), by value of sales class,
December 31, 1970

Item	\$100,000 and over	\$40,000 to \$99,999	\$20,000 to \$39,999	\$10,000 to \$19,999	Less than \$10,000	Total
Billion dollars						
Total:						
Farm assets	52.8	57.4	57.5	45.8	110.8	324.3
Real estate	36.1	39.7	39.1	31.7	77.9	224.5
Livestock and poultry	5.1	4.2	4.4	3.3	6.6	23.7
Machinery and motor vehicles	4.0	6.3	6.9	5.3	11.9	34.4
Crops stored 1/	1.3	2.2	2.2	1.4	1.4	8.5
Purchased inputs	NA	NA	NA	NA	NA	NA
Household goods	0.6	0.9	1.2	1.2	6.1	10.0
Investments in cooperatives	2.3	1.6	1.4	0.9	1.0	7.2
Other financial	3.3	2.5	2.4	1.9	5.8	16.0
Debt	14.2	11.8	10.4	7.2	9.1	52.8
Real estate 2/	6.4	7.3	6.4	4.6	5.8	30.5
Nonreal estate	7.8	4.5	4.0	2.7	3.3	22.3
Equity	38.7	45.8	47.3	38.6	101.2	271.5
Percent						
Debt-to-asset ratio	26.9	20.5	18.1	15.8	8.2	16.3
Percent of total:						
Farm assets	16.3	17.7	17.7	14.1	34.2	100.0
Real estate	16.1	17.7	17.4	14.1	34.7	100.0
Livestock and poultry	21.5	17.8	18.6	14.1	28.0	100.0
Machinery and motor vehicles	11.7	18.3	20.0	15.5	34.5	100.0
Crops stored 1/	15.3	25.8	25.3	16.9	16.7	100.0
Purchased inputs	NA	NA	NA	NA	NA	NA
Household goods	6.0	8.7	11.7	12.4	61.2	100.0
Investments in cooperatives	31.8	21.9	19.4	12.4	14.5	100.0
Other financial	20.7	15.8	15.3	11.7	36.5	100.0
Debt	26.9	22.3	19.7	13.7	17.3	100.0
Real estate 2/	21.0	24.0	21.0	15.0	19.0	100.0
Nonreal estate	35.0	20.0	18.0	12.0	15.0	100.0
Equity	14.2	16.9	17.4	14.2	37.3	100.0
Thousand dollars						
Per farm:						
Farm assets	926.0	322.5	176.4	117.3	55.5	109.8
Real estate	634.2	223.3	119.8	81.2	39.0	76.1
Livestock and poultry	89.5	23.7	13.6	8.5	3.3	8.0
Machinery and motor vehicles	70.6	35.3	21.1	13.7	5.9	11.7
Crops stored 1/	22.9	12.3	6.6	3.7	0.7	3.4
Purchased inputs	NA	NA	NA	NA	NA	NA
Household goods	10.5	4.9	3.6	3.2	3.1	3.4
Investments in cooperatives	40.1	8.8	4.3	2.3	0.5	2.3
Other financial	58.3	14.2	7.5	4.8	2.9	5.4
Debt	249.0	66.1	31.9	18.6	4.6	17.9
Real estate 2/	112.3	41.1	19.6	11.7	2.9	10.3
Nonreal estate	136.7	25.0	12.3	6.9	1.7	7.5
Equity	678.5	257.6	145.1	98.9	50.6	91.9

1/ Non-CCC crops held on farms plus value above loan rate for crops held under CCC.

2/ Includes CCC storage and drying facilities loans.

NA = not available.

Numbers may not add due to rounding.

Table 12--Farm sector balance sheet (including operator households), by value of sales class,
December 31, 1971

Item	\$100,000 and over	\$40,000 to \$99,999	\$20,000 to \$39,999	\$10,000 to \$19,999	Less than \$10,000	Total
Billion dollars						
Total:						
Farm assets	66.9	66.1	58.0	44.7	114.4	350.1
Real estate	46.0	45.5	39.3	30.6	79.5	240.9
Livestock and poultry	6.4	5.1	4.6	3.6	7.7	27.3
Machinery and motor vehicles	5.2	7.3	6.8	5.1	12.2	36.7
Crops stored 1/	2.0	2.7	2.2	1.4	1.4	9.7
Purchased inputs	NA	NA	NA	NA	NA	NA
Household goods	0.8	1.1	1.3	1.3	6.3	10.8
Investments in cooperatives	2.7	1.8	1.5	0.9	1.1	7.9
Other financial	3.8	2.6	2.3	1.8	6.3	16.8
Debt	16.7	13.9	10.7	7.3	8.8	57.5
Real estate 2/	7.1	8.4	6.5	4.5	5.8	32.4
Nonreal estate	9.5	5.5	4.3	2.8	3.0	25.1
Equity	50.4	52.4	47.4	37.4	105.0	292.6
Percent						
Debt-to-asset ratio	24.9	21.1	18.5	16.3	7.7	16.4
Percent of total:						
Farm assets	19.1	18.9	16.6	12.8	32.7	100.0
Real estate	19.1	18.9	16.3	12.7	33.0	100.0
Livestock and poultry	23.4	18.5	16.9	13.0	28.1	100.0
Machinery and motor vehicles	14.3	20.0	18.5	14.0	33.2	100.0
Crops stored 1/	20.4	28.0	22.8	14.3	14.5	100.0
Purchased inputs	NA	NA	NA	NA	NA	NA
Household goods	7.8	10.1	11.6	11.9	58.6	100.0
Investments in cooperatives	33.8	22.2	18.7	11.7	13.6	100.0
Other financial	22.4	15.7	13.9	10.8	37.3	100.0
Debt	29.0	24.3	18.7	12.7	15.4	100.0
Real estate 2/	22.0	26.0	20.0	14.0	18.0	100.0
Nonreal estate	38.0	22.0	17.0	11.0	12.0	100.0
Equity	17.2	17.9	16.2	12.8	35.9	100.0
Thousand dollars						
Per farm:						
Farm assets	1,062.1	353.6	180.0	117.3	58.7	120.6
Real estate	730.4	243.5	122.0	80.3	40.8	83.0
Livestock and poultry	101.5	27.0	14.3	9.3	3.9	9.4
Machinery and motor vehicles	83.3	39.3	21.1	13.5	6.3	12.6
Crops stored 1/	31.5	14.6	6.9	3.7	0.7	3.4
Purchased inputs	NA	NA	NA	NA	NA	NA
Household goods	13.4	5.8	3.9	3.4	3.2	3.7
Investments in cooperatives	42.4	9.4	4.6	2.4	0.6	2.5
Other financial	59.7	14.1	7.3	4.8	3.2	5.8
Debt	264.6	74.6	33.4	19.1	4.5	19.8
Real estate 2/	113.1	45.0	20.1	11.9	3.0	11.2
Nonreal estate	151.5	29.5	13.3	7.3	1.5	8.7
Equity	800.6	279.2	147.1	98.2	53.9	100.7

1/ Non-CCC crops held on farms plus value above loan rate for crops held under CCC.

2/ Includes CCC storage and drying facilities loans.

NA = not available.

Numbers may not add due to rounding.

Table 13--Farm sector balance sheet (including operator households), by value of sales class,
December 31, 1972

Item	\$100,000 and over	\$40,000 to \$99,999	\$20,000 to \$39,999	\$10,000 to \$19,999	Less than \$10,000	Total
Billion dollars						
Total:						
Farm assets	101.4	89.5	56.5	39.7	105.9	393.0
Real estate	69.6	61.5	37.9	26.9	72.8	268.7
Livestock and poultry	9.9	7.4	5.0	3.5	8.0	33.7
Machinery and motor vehicles	8.1	9.7	6.4	4.4	10.6	39.3
Crops stored 1/	3.8	4.1	2.3	1.3	1.3	12.7
Purchased inputs	NA	NA	NA	NA	NA	NA
Household goods	1.5	1.7	1.4	1.3	6.1	11.9
Investments in cooperatives	3.5	2.0	1.4	0.9	1.0	8.7
Other financial	5.0	3.1	2.2	1.7	6.0	18.0
Debt	22.9	16.3	10.2	5.8	8.0	63.3
Real estate 2/	10.6	9.9	6.0	3.9	5.0	35.4
Nonreal estate	12.3	6.4	4.2	2.0	3.1	28.0
Equity	78.8	73.3	46.4	33.9	97.4	329.7
Percent						
Debt-to-asset ratio	22.6	18.2	18.1	14.7	7.6	16.1
Percent of total:						
Farm assets	25.8	22.8	14.4	10.1	26.9	100.0
Real estate	25.9	22.9	14.1	10.0	27.1	100.0
Livestock and poultry	29.4	21.9	14.7	10.3	23.7	100.0
Machinery and motor vehicles	20.7	24.8	16.3	11.1	27.1	100.0
Crops stored 1/	29.8	32.3	18.0	9.9	10.0	100.0
Purchased inputs	NA	NA	NA	NA	NA	NA
Household goods	12.6	13.9	11.5	10.6	51.4	100.0
Investments in cooperatives	39.9	22.8	15.9	9.8	11.6	100.0
Other financial	27.9	17.2	12.3	9.2	33.5	100.0
Debt	36.2	25.8	16.1	9.2	12.7	100.0
Real estate 2/	30.0	28.0	17.0	11.0	14.0	100.0
Nonreal estate	44.0	23.0	15.0	7.0	11.0	100.0
Equity	23.9	22.2	14.1	10.3	29.5	100.0
Thousand dollars						
Per farm:						
Farm assets	1,236.7	412.4	176.0	108.3	56.5	137.3
Real estate	848.7	283.6	118.0	73.2	38.9	94.0
Livestock and poultry	120.7	34.0	15.4	9.5	4.3	11.8
Machinery and motor vehicles	99.2	44.9	19.9	11.9	5.7	13.7
Crops stored 1/	46.3	19.0	7.1	3.4	0.7	4.5
Purchased inputs	NA	NA	NA	NA	NA	NA
Household goods	18.3	7.6	4.3	3.4	3.3	4.2
Investments in cooperatives	42.4	9.2	4.3	2.3	0.5	2.9
Other financial	61.3	14.3	6.9	4.5	3.2	6.3
Debt	279.4	75.3	31.8	15.9	4.3	22.1
Real estate 2/	129.4	45.6	18.7	10.6	2.6	12.4
Nonreal estate	150.0	29.6	13.1	5.3	1.6	9.8
Equity	960.5	337.8	144.4	92.3	52.0	115.2

1/ Non-CCC crops held on farms plus value above loan rate for crops held under CCC.

2/ Includes CCC storage and drying facilities loans.

NA = not available.

Numbers may not add due to rounding.

Table 14--Farm sector balance sheet (including operator households), by value of sales class,
December 31, 1973

Item	\$100,000 and over	\$40,000 to \$99,999	\$20,000 to \$39,999	\$10,000 to \$19,999	Less than \$10,000	Total
Billion dollars						
Total:						
Farm assets	127.2	112.7	66.6	45.2	126.1	477.8
Real estate	85.3	77.0	45.4	31.3	90.2	329.2
Livestock and poultry	12.0	9.5	6.2	4.2	10.5	42.4
Machinery and motor vehicles	9.8	11.3	6.9	4.6	11.6	44.2
Crops stored 1/	7.2	6.9	3.4	1.8	1.8	21.1
Purchased inputs	NA	NA	NA	NA	NA	NA
Household goods	1.7	1.8	1.4	1.3	6.1	12.3
Investments in cooperatives	4.7	2.3	1.2	0.6	0.8	9.7
Other financial	6.6	3.8	2.1	1.4	5.2	19.0
Debt	32.4	19.2	9.3	5.1	6.8	72.9
Real estate 2/	17.5	11.9	4.4	2.8	3.2	39.8
Nonreal estate	14.9	7.3	5.0	2.3	3.6	33.1
Equity	95.1	93.5	57.3	40.1	119.0	404.9
Percent						
Debt-to-asset ratio	25.5	17.0	14.0	11.3	5.4	15.2
Percent of total:						
Farm assets	26.6	23.6	13.9	9.5	26.4	100.0
Real estate	25.9	23.4	13.8	9.5	27.4	100.0
Livestock and poultry	28.3	22.4	14.6	10.0	24.7	100.0
Machinery and motor vehicles	22.1	25.6	15.6	10.4	26.3	100.0
Crops stored 1/	34.1	32.8	16.1	8.4	8.6	100.0
Purchased inputs	NA	NA	NA	NA	NA	NA
Household goods	13.7	14.8	11.4	10.3	49.8	100.0
Investments in cooperatives	49.0	24.2	12.2	6.6	8.0	100.0
Other financial	34.4	19.8	11.1	7.6	27.1	100.0
Debt	44.5	26.4	12.8	7.0	9.4	100.0
Real estate 2/	44.0	30.0	11.0	7.0	8.0	100.0
Nonreal estate	45.0	22.0	15.0	7.0	11.0	100.0
Equity	23.5	23.1	14.1	9.9	29.4	100.0
Thousand dollars						
Per farm:						
Farm assets	928.3	362.4	202.4	133.8	73.9	169.2
Real estate	622.3	247.7	138.1	92.5	52.8	116.6
Livestock and poultry	87.6	30.5	18.8	12.5	6.1	15.0
Machinery and motor vehicles	71.3	36.4	21.0	13.6	6.8	15.7
Crops stored 1/	52.5	22.2	10.3	5.2	1.1	7.6
Purchased inputs	NA	NA	NA	NA	NA	NA
Household goods	12.3	5.8	4.2	3.7	3.6	4.3
Investments in cooperatives	34.5	7.5	3.6	1.9	0.5	3.2
Other financial	47.8	12.2	6.4	4.3	3.0	6.7
Debt	236.4	51.8	28.4	15.1	4.0	25.8
Real estate 2/	127.8	38.4	13.3	8.2	1.9	14.1
Nonreal estate	108.6	23.4	15.1	6.8	2.1	11.7
Equity	694.5	300.6	174.1	118.5	69.6	143.4

1/ Non-CCC crops held on farms plus value above loan rate for crops held under CCC.

2/ Includes CCC storage and drying facilities loans.

NA = not available.

Numbers may not add due to rounding.

Table 15--Farm sector balance sheet (including operator households), by value of sales class, December 31, 1974

Item	\$500,000 and over	\$250,000 to \$499,999	\$100,000 to \$249,999	\$40,000 to \$99,999	\$20,000 to \$39,999	\$10,000 to \$19,999	Less than \$10,000	Total
Billion dollars								
Total:								
Farm assets	29.1	44.6	65.6	119.9	71.9	47.9	134.1	513.2
Real estate	20.9	32.8	48.0	86.6	51.3	35.2	94.8	369.5
Livestock and poultry	2.3	2.2	2.9	5.4	3.5	2.4	5.8	24.6
Machinery and motor vehicles	2.2	3.7	6.4	13.7	8.3	5.7	13.7	53.6
Crops stored 1/	1.1	2.9	4.4	7.9	3.1	1.3	1.8	22.4
Purchased inputs	NA	NA	NA	NA	NA	NA	NA	NA
Household goods	0.1	0.4	0.9	2.0	1.3	1.4	7.9	14.0
Investments in cooperatives	2.1	1.3	2.2	1.8	2.4	0.3	1.0	11.2
Other financial	0.4	1.1	0.9	2.5	1.9	1.8	9.1	17.8
Debt	2.9	4.8	8.5	23.9	12.8	7.9	20.8	81.7
Real estate 2/	2.5	4.0	5.8	10.5	6.2	4.3	11.5	44.9
Nonreal estate	0.4	0.8	2.6	13.4	6.6	3.6	9.3	36.7
Equity	26.2	39.8	57.2	95.9	59.1	40.1	113.3	431.5
Percent								
Debt-to-asset ratio	10.0	10.8	12.9	20.0	17.9	16.4	15.5	15.9
Percent of total:								
Farm assets	5.7	8.7	12.8	23.4	14.0	9.3	26.1	100.0
Real estate	5.7	8.9	13.0	23.4	13.9	9.5	25.6	100.0
Livestock and poultry	9.3	9.0	11.9	22.1	14.4	9.7	23.6	100.0
Machinery and motor vehicles	4.1	6.9	11.9	25.5	15.5	10.6	25.5	100.0
Crops stored 1/	4.7	13.1	19.5	35.0	14.0	5.6	8.0	100.0
Purchased inputs	NA	NA	NA	NA	NA	NA	NA	NA
Household goods	1.0	3.2	6.3	14.2	9.4	9.7	56.3	100.0
Investments in cooperatives	19.1	11.8	19.2	16.4	21.4	3.0	9.2	100.0
Other financial	2.4	6.4	5.2	14.0	10.8	9.9	51.1	100.0
Debt	3.6	5.9	10.4	29.3	15.7	9.6	25.5	100.0
Real estate 2/	5.7	8.9	13.0	23.4	13.9	9.5	25.7	100.0
Nonreal estate	1.0	2.3	7.1	36.5	18.0	9.8	25.3	100.0
Equity	6.1	9.2	13.3	22.2	13.7	9.3	26.3	100.0
Thousand dollars								
Per farm:								
Farm assets	2,586.0	1,128.5	657.5	362.9	218.0	145.5	81.0	183.6
Real estate	1,855.9	830.0	480.9	262.1	155.4	106.7	57.3	132.2
Livestock and poultry	202.4	56.0	29.2	16.5	10.7	7.3	3.5	8.8
Machinery and motor vehicles	194.1	94.0	63.7	41.5	25.3	17.2	8.3	19.2
Crops stored 1/	93.6	74.6	43.9	23.8	9.5	3.8	1.1	8.0
Purchased inputs	NA	NA	NA	NA	NA	NA	NA	NA
Household goods	12.1	11.2	8.9	6.0	4.0	4.1	4.8	5.0
Investments in cooperatives	190.1	33.5	21.5	5.6	7.3	1.0	0.6	4.0
Other financial	37.8	29.1	9.4	7.6	5.9	5.4	5.5	6.4
Debt	259.4	122.1	84.7	72.5	38.9	23.9	12.6	29.2
Real estate 2/	225.7	100.9	58.5	31.9	18.9	13.0	7.0	16.1
Nonreal estate	33.7	21.2	26.2	40.6	20.0	10.9	5.6	13.1
Equity	2,326.6	1,006.4	572.8	290.5	179.1	121.6	68.4	154.4

1/ Non-CCC crops held on farms plus value above loan rate for crops held under CCC.

2/ Includes CCC storage and drying facilities loans.

NA = not available.

Numbers may not add due to rounding.

Table 16--Farm sector balance sheet (including operator households), by value of sales class, December 31, 1975

Item	\$500,000 and over	\$250,000 to \$499,999	\$100,000 to \$249,999	\$40,000 to \$99,999	\$20,000 to \$39,999	\$10,000 to \$19,999	Less than \$10,000	Total
Billion dollars								
Total:								
Farm assets	32.8	51.7	76.9	139.2	83.9	54.7	140.4	579.4
Real estate	23.1	38.2	56.6	101.6	60.4	40.4	100.6	421.0
Livestock and poultry	2.9	2.7	3.7	6.8	4.3	2.9	6.1	29.4
Machinery and motor vehicles	2.6	4.7	8.1	16.7	10.1	6.5	14.4	63.1
Crops stored 1/	1.0	2.7	4.0	7.2	2.9	1.2	1.6	20.5
Purchased inputs	NA	NA	NA	NA	NA	NA	NA	NA
Household goods	0.1	0.5	1.0	2.1	1.4	1.5	7.6	14.2
Investments in cooperatives	2.5	1.6	2.5	2.1	2.7	0.4	1.2	13.0
Other financial	0.5	1.3	1.0	2.7	2.1	1.9	8.9	18.4
Debt	3.1	5.5	9.7	27.5	14.7	9.0	22.0	91.5
Real estate 2/	2.7	4.5	6.7	12.0	7.2	4.8	11.9	49.9
Nonreal estate	0.4	1.0	3.0	15.4	7.6	4.2	10.1	41.6
Equity	29.6	46.2	67.2	111.7	69.2	45.7	118.4	488.0
Percent								
Debt-to-asset ratio	9.6	10.6	12.6	19.7	17.6	16.4	15.7	15.8
Percent								
Percent of total:								
Farm assets	5.7	8.9	13.3	24.0	14.5	9.4	24.2	100.0
Real estate	5.5	9.1	13.4	24.1	14.4	9.6	23.9	100.0
Livestock and poultry	9.8	9.3	12.6	23.1	14.6	9.8	20.9	100.0
Machinery and motor vehicles	4.2	7.5	12.8	26.5	16.0	10.3	22.8	100.0
Crops stored 1/	4.8	13.1	19.5	35.0	14.1	5.6	7.9	100.0
Purchased inputs	NA	NA	NA	NA	NA	NA	NA	NA
Household goods	1.0	3.4	6.8	15.0	9.9	10.2	53.6	100.0
Investments in cooperatives	19.5	12.1	19.6	16.0	20.9	2.9	9.0	100.0
Other financial	2.6	6.9	5.6	14.7	11.3	10.4	48.5	100.0
Debt	3.4	6.0	10.6	30.0	16.1	9.8	24.0	100.0
Real estate 2/	5.5	9.1	13.4	24.1	14.4	9.6	23.9	100.0
Nonreal estate	1.0	2.3	7.2	37.1	18.2	10.0	24.2	100.0
Equity	6.1	9.5	13.8	22.9	14.2	9.4	24.3	100.0
Thousand dollars								
Per farm:								
Farm assets	3,000.2	1,348.1	797.2	439.9	266.8	174.2	98.1	229.8
Real estate	2,118.2	998.0	586.6	321.2	192.2	128.7	70.3	167.0
Livestock and poultry	262.4	71.2	38.3	21.4	13.6	9.2	4.3	11.6
Machinery and motor vehicles	241.0	122.8	83.8	52.8	32.1	20.7	10.0	25.0
Crops stored 1/	89.8	69.7	41.4	22.6	9.1	3.7	1.1	8.1
Purchased inputs	NA	NA	NA	NA	NA	NA	NA	NA
Household goods	13.6	12.5	10.0	6.7	4.5	4.6	5.3	5.6
Investments in cooperatives	232.1	40.9	26.4	6.6	8.6	1.2	0.8	5.1
Other financial	43.0	33.0	10.6	8.6	6.6	6.1	6.2	7.3
Debt	287.7	143.1	100.5	86.9	46.9	28.5	15.4	36.3
Real estate 2/	250.6	118.1	69.5	38.0	22.8	15.2	8.3	19.8
Nonreal estate	37.0	24.9	31.0	48.8	24.1	13.3	7.0	16.5
Equity	2,712.5	1,205.0	696.7	353.0	219.9	145.7	82.8	193.5

1/ Non-CCC crops held on farms plus value above loan rate for crops held under CCC.

2/ Includes CCC storage and drying facilities loans.

NA = not available.

Numbers may not add due to rounding.

Table 17--Farm sector balance sheet (including operator households), by value of sales class, December 31, 1976

Item	\$500,000 and over	\$250,000 to \$499,999	\$100,000 to \$249,999	\$40,000 to \$99,999	\$20,000 to \$39,999	\$10,000 to \$19,999	Less than \$10,000	Total
Billion dollars								
Total:								
Farm assets	40.9	66.3	95.7	161.1	93.0	59.8	150.9	667.8
Real estate	29.6	50.4	72.4	121.2	69.3	45.6	111.3	499.8
Livestock and poultry	3.3	3.1	3.9	6.5	3.9	2.6	5.7	29.0
Machinery and motor vehicles	3.3	6.1	10.1	19.0	10.6	6.7	14.4	70.1
Crops stored 1/	1.1	2.9	4.3	7.0	2.7	1.1	1.5	20.6
Purchased inputs	NA	NA	NA	NA	NA	NA	NA	NA
Household goods	0.2	0.6	1.1	2.3	1.5	1.5	7.9	15.2
Investments in cooperatives	2.9	1.8	2.9	2.2	2.9	0.4	1.3	14.3
Other financial	0.5	1.5	1.1	2.8	2.1	1.9	8.8	18.7
Debt	3.9	7.0	12.1	31.6	15.8	9.5	23.2	103.2
Real estate 2/	3.3	5.6	8.0	13.4	7.7	5.0	12.3	55.4
Nonreal estate	0.6	1.4	4.1	18.2	8.1	4.5	10.9	47.8
Equity	37.0	59.3	83.6	129.5	77.3	50.3	127.7	564.6
Percent								
Debt-to-asset ratio	9.6	10.5	12.7	19.6	17.0	15.9	15.4	15.5
Percent of total:								
Farm assets	6.1	9.9	14.3	24.1	13.9	9.0	22.6	100.0
Real estate	5.9	10.1	14.5	24.2	13.9	9.1	22.3	100.0
Livestock and poultry	11.4	10.7	13.3	22.5	13.5	9.1	19.7	100.0
Machinery and motor vehicles	4.7	8.7	14.3	27.1	15.1	9.6	20.5	100.0
Crops stored 1/	5.4	14.1	20.6	34.1	13.1	5.3	7.4	100.0
Purchased inputs	NA	NA	NA	NA	NA	NA	NA	NA
Household goods	1.2	3.9	7.5	15.4	9.7	10.1	52.1	100.0
Investments in cooperatives	20.0	12.4	20.1	15.6	20.4	2.9	8.7	100.0
Other financial	2.9	7.8	6.1	15.0	11.0	10.2	46.9	100.0
Debt	3.8	6.8	11.7	30.6	15.3	9.2	22.5	100.0
Real estate 2/	5.9	10.1	14.5	24.3	13.9	9.1	22.3	100.0
Nonreal estate	1.3	2.9	8.6	38.0	16.9	9.4	22.8	100.0
Equity	6.6	10.5	14.8	22.9	13.7	8.9	22.6	100.0
Thousand dollars								
Per farm:								
Farm assets	3,247.4	1,502.0	894.7	496.5	301.7	193.7	108.4	267.4
Real estate	2,350.5	1,141.6	676.7	373.6	224.9	147.5	80.0	200.1
Livestock and poultry	262.2	70.2	36.0	20.1	12.7	8.5	4.1	11.6
Machinery and motor vehicles	261.5	137.6	94.0	58.5	34.4	21.8	10.3	28.1
Crops stored 1/	88.2	65.9	39.8	21.7	8.8	3.5	1.1	8.3
Purchased inputs	NA	NA	NA	NA	NA	NA	NA	NA
Household goods	14.6	13.4	10.7	7.2	4.8	5.0	5.7	6.1
Investments in cooperatives	227.0	40.1	26.9	6.9	9.5	1.3	0.9	5.7
Other financial	43.4	33.2	10.7	8.6	6.7	6.1	6.3	7.5
Debt	311.2	158.2	113.3	97.4	51.2	30.9	16.7	41.3
Real estate 2/	260.7	126.5	75.0	41.4	24.9	16.3	8.9	22.2
Nonreal estate	50.5	31.7	38.3	56.0	26.2	14.5	7.8	19.1
Equity	2,936.2	1,343.8	781.4	399.1	250.6	162.9	91.7	226.1

1/ Non-CCC crops held on farms plus value above loan rate for crops held under CCC.

2/ Includes CCC storage and drying facilities loans.

NA = not available.

Numbers may not add due to rounding.

Table 18--Farm sector balance sheet (including operator households), by value of sales class, December 31, 1977

Item	\$500,000 and over	\$250,000 to \$499,999	\$100,000 to \$249,999	\$40,000 to \$99,999	\$20,000 to \$39,999	\$10,000 to \$19,999	Less than \$10,000	Total
Billion dollars								
Total:	45.8	75.7	108.6	178.4	101.4	64.4	160.9	735.2
Farm assets	33.5	58.0	82.9	135.8	76.7	49.5	120.1	556.5
Real estate	3.9	3.7	4.5	7.3	4.2	2.8	5.6	31.9
Livestock and poultry	3.7	7.0	11.6	20.8	11.5	7.0	14.9	76.4
Machinery and motor vehicles	1.2	3.0	4.4	6.9	2.6	1.0	1.4	20.6
Crops stored 1/	NA	NA	NA	NA	NA	NA	NA	NA
Purchased inputs	0.2	0.7	1.3	2.7	1.7	1.7	8.9	17.2
Household goods	2.8	1.7	2.8	2.1	2.7	0.4	1.1	13.5
Investments in cooperatives	0.6	1.6	1.2	2.9	2.1	1.9	8.8	19.0
Other financial	4.6	8.4	14.4	36.6	17.9	10.8	26.4	178.9
Debt	3.8	6.7	9.5	15.6	8.8	5.7	13.8	63.9
Real estate 2/	0.7	1.7	4.9	21.0	9.1	5.1	12.6	55.0
Nonreal estate	41.3	67.3	94.2	141.8	83.5	53.6	134.6	616.2
Equity	Percent							
Debt-to-asset ratio	9.9	11.1	13.3	20.5	17.7	16.7	16.4	16.2
Percent of total:								
Farm assets	6.2	10.3	14.8	24.3	13.8	8.8	21.9	100.0
Real estate	6.0	10.4	14.9	24.4	13.8	8.9	21.6	100.0
Livestock and poultry	12.2	11.5	14.0	22.7	13.1	8.9	17.6	100.0
Machinery and motor vehicles	4.8	9.2	15.1	27.2	15.0	9.1	19.5	100.0
Crops stored 1/	NA	NA	NA	NA	NA	NA	NA	NA
Purchased inputs	1.3	4.1	7.8	15.6	9.7	10.0	51.6	100.0
Household goods	20.4	12.6	20.5	15.2	19.9	2.8	8.5	100.0
Investments in cooperatives	3.1	8.2	6.3	15.1	10.9	10.1	46.4	100.0
Other financial	3.8	7.1	12.1	30.7	15.0	9.1	22.2	100.0
Debt	6.0	10.4	14.9	24.4	13.8	8.9	21.6	100.0
Real estate 2/	1.3	3.1	8.9	38.1	16.5	9.2	22.8	100.0
Nonreal estate	6.7	10.9	15.3	23.0	13.5	8.7	21.8	100.0
Equity	Thousand dollars							
Per farm:	3,525.9	1,663.5	996.4	552.5	335.5	212.4	118.3	299.4
Farm assets	2,576.1	1,275.0	760.4	420.7	253.9	163.4	88.3	226.6
Real estate	299.6	80.4	41.1	22.5	13.9	9.4	4.1	13.0
Livestock and poultry	282.2	154.3	106.0	64.5	38.0	23.0	10.9	31.1
Machinery and motor vehicles	94.7	66.7	40.3	21.4	8.5	3.4	1.1	8.4
Crops stored 1/	NA	NA	NA	NA	NA	NA	NA	NA
Purchased inputs	16.7	15.4	12.3	8.3	5.5	5.7	6.5	7.0
Household goods	211.6	37.4	25.3	6.4	8.9	1.2	0.8	5.5
Investments in cooperatives	44.9	34.2	11.0	8.9	6.9	6.3	6.5	7.8
Other financial	350.4	184.5	132.0	113.3	59.2	35.5	19.4	48.4
Debt	296.2	146.5	87.4	48.3	29.2	18.8	10.1	26.0
Real estate 2/	54.2	38.0	44.6	64.9	30.1	16.8	9.2	22.4
Nonreal estate	3,175.5	1,478.9	864.3	439.3	276.3	176.9	98.9	250.9
Equity								

1/ Non-CCC crops held on farms plus value above loan rate for crops held under CCC.
2/ Includes CCC storage and drying facilities loans.

NA = not available.
Numbers may not add due to rounding.

Table 19--Farm sector balance sheet (including operator households), by value of sales class, December 31, 1978

Item	\$500,000 and over	\$250,000 to \$499,999	\$100,000 to \$249,999	\$40,000 to \$99,999	\$20,000 to \$39,999	\$10,000 to \$19,999	Less than \$10,000	Total
Billion dollars								
Total:								
Farm assets	65.4	107.5	145.8	207.8	106.5	67.0	162.1	862.1
Real estate	47.2	82.8	111.9	159.5	81.2	51.8	121.6	656.0
Livestock and poultry	7.6	6.8	7.9	11.1	5.7	3.8	7.2	50.1
Machinery and motor vehicles	4.4	8.7	13.5	20.9	10.1	6.1	12.7	76.4
Crops stored 1/	1.7	4.0	5.7	7.6	2.5	1.0	1.4	23.9
Purchased inputs	NA	NA	NA	NA	NA	NA	NA	NA
Household goods	0.3	1.1	1.9	3.3	1.8	1.9	9.6	20.0
Investments in cooperatives	3.4	2.1	3.4	2.4	3.1	0.4	1.3	16.1
Other financial	0.8	2.1	1.5	3.1	2.0	1.9	8.4	19.7
Debt	6.5	12.3	20.3	43.2	18.0	10.9	25.4	136.6
Real estate 2/	5.2	9.2	12.4	17.7	9.0	5.7	13.5	72.8
Nonreal estate	1.3	3.1	7.9	25.5	9.0	5.1	12.0	63.8
Equity	58.9	95.2	125.5	164.6	88.5	56.1	136.7	725.5
Percent								
Debt-to-asset ratio	9.9	11.5	13.9	20.8	16.9	16.2	15.7	15.8
Percent of total:								
Farm assets	7.6	12.5	16.9	24.1	12.4	7.8	18.8	100.0
Real estate	7.2	12.6	17.1	24.3	12.4	7.9	18.5	100.0
Livestock and poultry	15.2	13.6	15.7	22.1	11.3	7.6	14.4	100.0
Machinery and motor vehicles	5.8	11.4	17.7	27.3	13.2	8.0	16.6	100.0
Crops stored 1/	6.9	16.9	23.7	32.0	10.6	4.1	5.7	100.0
Purchased inputs	NA	NA	NA	NA	NA	NA	NA	NA
Household goods	1.6	5.3	9.6	16.5	9.2	9.7	48.1	100.0
Investments in cooperatives	20.9	12.9	21.0	14.9	19.4	2.7	8.3	100.0
Other financial	3.9	10.4	7.6	15.7	10.2	9.5	42.6	100.0
Debt	4.8	9.0	14.8	31.6	13.2	7.9	18.6	100.0
Real estate 2/	7.2	12.6	17.1	24.3	12.4	7.9	18.5	100.0
Nonreal estate	2.0	4.9	12.3	40.0	14.1	8.0	18.7	100.0
Equity	8.1	13.1	17.3	22.7	12.2	7.7	18.8	100.0
Thousand dollars								
Per farm:								
Farm assets	3,833.5	1,794.3	1,076.0	599.5	364.6	226.6	125.7	353.9
Real estate	2,770.3	1,381.0	826.2	460.0	278.1	175.2	94.3	269.3
Livestock and poultry	445.6	114.1	58.2	31.9	19.4	12.9	5.6	20.6
Machinery and motor vehicles	259.6	145.1	99.7	60.2	34.5	20.7	9.8	31.3
Crops stored 1/	96.9	67.5	41.9	22.1	8.7	3.3	1.0	9.8
Purchased inputs	NA	NA	NA	NA	NA	NA	NA	NA
Household goods	19.2	17.7	14.1	9.5	6.3	6.5	7.5	8.2
Investments in cooperatives	196.9	34.7	24.9	6.9	10.7	1.5	1.0	6.6
Other financial	45.1	34.3	11.0	8.9	6.9	6.4	6.5	8.1
Debt	380.8	205.6	149.7	124.6	61.6	36.7	19.7	56.1
Real estate 2/	307.2	153.2	91.6	51.0	30.8	19.4	10.5	29.9
Nonreal estate	73.6	52.3	58.1	73.6	30.7	17.3	9.3	26.2
Equity	3,452.8	1,588.7	926.3	474.9	303.0	189.9	106.0	297.8

1/ Non-CCC crops held on farms plus value above loan rate for crops held under CCC.

2/ Includes CCC storage and drying facilities loans.

NA = not available.

Numbers may not add due to rounding.

Table 20--Farm sector balance sheet (including operator households), by value of sales class, December 31, 1979

Item	\$500,000 and over	\$250,000 to \$499,999	\$100,000 to \$249,999	\$40,000 to \$99,999	\$20,000 to \$39,999	\$10,000 to \$19,999	Less than \$10,000	Total
Billion dollars								
Total:								
Farm assets	83.0	132.3	171.3	236.5	117.0	74.9	186.6	1,001.6
Real estate	60.0	101.0	130.9	183.9	90.2	58.6	143.2	767.8
Livestock and poultry	10.1	8.9	9.9	13.0	6.6	4.5	8.5	61.4
Machinery and motor vehicles	5.4	10.6	15.3	21.4	10.2	6.3	13.7	82.9
Crops stored 1/	2.4	5.7	7.4	8.9	2.8	1.1	1.6	30.0
Purchased inputs	NA	NA	NA	NA	NA	NA	NA	NA
Household goods	0.4	1.3	2.3	3.5	1.9	2.0	10.0	21.5
Investments in cooperatives	3.9	2.4	3.9	2.6	3.4	0.5	1.5	18.1
Other financial	0.9	2.4	1.6	3.1	2.0	1.8	8.1	19.9
Debt	8.7	16.3	25.7	49.9	19.9	12.3	29.7	162.5
Real estate 2/	6.8	11.4	14.8	20.8	10.2	6.6	16.2	86.8
Nonreal estate	2.0	4.9	10.9	29.1	9.7	5.7	13.5	75.7
Equity	74.3	116.0	145.6	186.6	97.2	62.6	157.0	839.2
Percent								
Debt-to-asset ratio	10.5	12.3	15.0	21.1	17.0	16.4	15.9	16.2
Percent of total:								
Farm assets	8.3	13.2	17.1	23.6	11.7	7.5	18.6	100.0
Real estate	7.8	13.2	17.0	24.0	11.7	7.6	18.7	100.0
Livestock and poultry	16.4	14.5	16.2	21.1	10.7	7.3	13.8	100.0
Machinery and motor vehicles	6.5	12.7	18.5	25.9	12.3	7.6	16.5	100.0
Crops stored 1/	8.0	19.1	24.7	29.8	9.4	3.7	5.3	100.0
Purchased inputs	NA	NA	NA	NA	NA	NA	NA	NA
Household goods	1.9	6.2	10.5	16.5	8.9	9.4	46.6	100.0
Investments in cooperatives	21.3	13.2	21.4	14.5	18.9	2.7	8.1	100.0
Other financial	4.5	12.0	8.2	15.5	9.8	9.2	40.8	100.0
Debt	5.4	10.0	15.8	30.7	12.2	7.6	18.3	100.0
Real estate 2/	7.8	13.2	17.0	24.0	11.7	7.6	18.7	100.0
Nonreal estate	2.6	6.5	14.4	38.5	12.8	7.5	17.8	100.0
Equity	8.8	13.8	17.3	22.2	11.6	7.5	18.7	100.0
Thousand dollars								
Per farm:								
Farm assets	4,075.8	1,876.7	1,135.9	674.5	407.9	256.2	147.4	411.0
Real estate	2,944.9	1,432.6	867.8	524.6	314.3	200.5	113.2	315.0
Livestock and poultry	493.9	126.5	65.8	37.0	22.9	15.3	6.7	25.2
Machinery and motor vehicles	264.2	149.9	101.5	61.1	35.5	21.7	10.8	34.0
Crops stored 1/	117.9	81.2	49.1	25.4	9.8	3.8	1.2	12.3
Purchased inputs	NA	NA	NA	NA	NA	NA	NA	NA
Household goods	20.4	18.8	15.0	10.1	6.7	7.0	7.9	8.8
Investments in cooperatives	189.9	33.9	25.8	7.5	11.9	1.7	1.2	7.4
Other financial	44.4	33.8	10.9	8.8	6.8	6.3	6.4	8.2
Debt	428.9	231.3	170.4	142.4	69.2	42.1	23.4	66.7
Real estate 2/	332.8	161.9	98.0	59.3	35.5	22.7	12.8	35.6
Nonreal estate	96.1	69.4	72.4	83.1	33.7	19.4	10.6	31.1
Equity	3,646.9	1,645.4	965.5	532.1	338.7	214.1	124.0	344.3

1/ Non-CCC crops held on farms plus value above loan rate for crops held under CCC.

2/ Includes CCC storage and drying facilities loans.

NA = not available.

Numbers may not add due to rounding.

Table 21--Farm sector balance sheet (including operator households), by value of sales class, December 31, 1980

Item	\$500,000 and over	\$250,000 to \$499,999	\$100,000 to \$249,999	\$40,000 to \$99,999	\$20,000 to \$39,999	\$10,000 to \$19,999	Less than \$10,000	Total
Billion dollars								
Total:								
Farm assets	102.9	160.9	195.1	242.3	117.7	77.6	192.7	1,089.2
Real estate	78.1	126.2	151.5	190.1	91.7	61.4	151.1	850.1
Livestock and poultry	10.3	9.3	10.2	12.3	6.1	4.3	8.2	60.6
Machinery and motor vehicles	6.1	12.1	16.8	21.7	9.9	6.6	13.6	86.9
Crops stored 1/	2.7	6.7	8.3	9.4	2.9	1.2	1.6	32.8
Purchased inputs	NA	NA	NA	NA	NA	NA	NA	NA
Household goods	0.4	1.4	2.2	3.2	1.7	1.8	8.7	19.4
Investments in cooperatives	4.2	2.6	4.2	2.7	3.5	0.5	1.5	19.3
Other financial	1.0	2.7	1.8	3.0	1.9	1.8	7.8	20.0
Debt	11.4	20.9	30.7	51.8	19.9	12.7	31.3	178.7
Real estate 2/	9.0	14.5	17.4	21.8	10.5	7.0	17.3	97.5
Nonreal estate	2.4	6.5	13.3	30.0	9.4	5.7	13.9	81.2
Equity	91.5	140.0	164.4	190.5	97.8	64.8	161.4	910.5
Percent								
Debt-to-asset ratio	11.0	13.0	15.7	21.4	16.9	16.4	16.2	16.4
Percent								
Percent of total:								
Farm assets	9.4	14.8	17.9	22.3	10.8	7.1	17.7	100.0
Real estate	9.2	14.9	17.8	22.4	10.8	7.2	17.8	100.0
Livestock and poultry	16.9	15.3	16.8	20.2	10.1	7.1	13.5	100.0
Machinery and motor vehicles	7.1	13.9	19.3	24.9	11.4	7.6	15.7	100.0
Crops stored 1/	8.3	20.3	25.4	28.6	8.9	3.6	5.0	100.0
Purchased inputs	NA	NA	NA	NA	NA	NA	NA	NA
Household goods	2.2	7.0	11.4	16.4	8.7	9.2	45.1	100.0
Investments in cooperatives	21.8	13.5	21.8	14.1	18.4	2.6	7.9	100.0
Other financial	5.2	13.4	8.9	15.2	9.4	8.9	39.1	100.0
Debt	6.4	11.7	17.2	29.0	11.1	7.1	17.5	100.0
Real estate 2/	9.2	14.9	17.8	22.4	10.8	7.2	17.8	100.0
Nonreal estate	3.0	7.9	16.4	36.9	11.6	7.0	17.1	100.0
Equity	10.1	15.4	18.1	20.9	10.7	7.1	17.7	100.0
Thousand dollars								
Per farm:								
Farm assets	4,344.4	1,983.4	1,173.3	683.0	417.8	268.3	155.0	446.5
Real estate	3,297.9	1,555.7	911.5	535.6	325.3	212.4	121.6	348.5
Livestock and poultry	433.2	114.7	61.3	34.6	21.7	14.9	6.6	24.9
Machinery and motor vehicles	259.6	148.9	101.2	61.1	35.3	22.9	11.0	35.6
Crops stored 1/	114.8	82.3	50.1	26.5	10.3	4.1	1.3	13.5
Purchased inputs	NA	NA	NA	NA	NA	NA	NA	NA
Household goods	18.1	16.7	13.3	9.0	5.9	6.2	7.0	7.9
Investments in cooperatives	177.4	32.0	25.4	7.7	12.6	1.7	1.2	7.9
Other financial	43.5	33.1	10.6	8.6	6.7	6.1	6.3	8.2
Debt	479.8	258.0	184.6	146.0	70.7	44.1	25.2	73.3
Real estate 2/	378.4	178.4	104.5	61.4	37.3	24.4	13.9	40.0
Nonreal estate	101.4	79.6	80.1	84.6	33.4	19.7	11.2	33.3
Equity	3,864.6	1,725.4	988.7	537.0	347.1	224.2	129.9	373.2

1/ Non-CCC crops held on farms plus value above loan rate for crops held under CCC.

2/ Includes CCC storage and drying facilities loans.

NA = not available.

Numbers may not add due to rounding.

Table 22--Farm sector balance sheet (including operator households), by value of sales class, December 31, 1981

Item	\$500,000 and over	\$250,000 to \$499,999	\$100,000 to \$249,999	\$40,000 to \$99,999	\$20,000 to \$39,999	\$10,000 to \$19,999	Less than \$10,000	Total
Billion dollars								
Total:								
Farm assets	115.3	176.5	202.0	228.3	108.9	73.7	184.7	1,089.4
Real estate	89.5	139.8	157.5	178.3	84.4	58.2	144.0	851.7
Livestock and poultry	9.4	8.6	9.3	10.6	5.1	3.7	6.9	53.5
Machinery and motor vehicles	7.1	14.1	18.7	22.2	9.7	6.8	14.0	92.5
Crops stored 1/	3.0	6.6	7.5	7.9	2.4	1.0	1.6	30.0
Purchased inputs	NA	NA	NA	NA	NA	NA	NA	NA
Household goods	0.5	1.6	2.6	3.4	1.7	1.9	9.1	20.8
Investments in cooperatives	4.6	2.8	4.6	2.8	3.7	0.5	1.6	20.6
Other financial	1.2	3.0	1.9	3.1	1.8	1.7	7.6	20.3
Debt	14.2	26.0	36.0	53.8	19.9	13.1	32.4	195.4
Real estate 2/	11.3	17.6	19.8	22.5	10.6	7.3	18.1	107.2
Nonreal estate	2.9	8.4	16.2	31.3	9.3	5.8	14.3	88.2
Equity	101.1	150.5	166.0	174.5	88.9	60.6	152.3	894.0
Percent								
Debt-to-asset ratio	12.3	14.7	17.8	23.6	18.3	17.8	17.6	17.9
Percent of total:								
Farm assets	10.6	16.2	18.5	21.0	10.0	6.8	17.0	100.0
Real estate	10.5	16.4	18.5	20.9	9.9	6.8	16.9	100.0
Livestock and poultry	17.6	16.1	17.3	19.7	9.4	6.9	13.0	100.0
Machinery and motor vehicles	7.7	15.2	20.2	24.0	10.5	7.3	15.1	100.0
Crops stored 1/	10.0	21.9	25.1	26.5	8.0	3.2	5.3	100.0
Purchased inputs	NA	NA	NA	NA	NA	NA	NA	NA
Household goods	2.5	7.8	12.3	16.4	8.4	9.0	43.6	100.0
Investments in cooperatives	22.2	13.7	22.3	13.7	17.9	2.5	7.7	100.0
Other financial	5.7	14.8	9.4	15.1	9.0	8.6	37.4	100.0
Debt	7.3	13.3	18.4	27.5	10.2	6.7	16.6	100.0
Real estate 2/	10.5	16.4	18.5	20.9	9.9	6.8	16.9	100.0
Nonreal estate	3.3	9.5	18.4	35.5	10.5	6.6	16.2	100.0
Equity	11.3	16.8	18.6	19.5	9.9	6.8	17.0	100.0
Thousand dollars								
Per farm:								
Farm assets	4,273.3	1,924.0	1,112.5	636.4	393.7	258.1	151.6	446.5
Real estate	3,317.5	1,523.8	867.2	497.1	305.3	203.7	118.1	349.0
Livestock and poultry	349.3	94.0	51.1	29.4	18.3	12.9	5.7	21.9
Machinery and motor vehicles	263.6	153.2	102.8	61.9	35.2	23.8	11.5	37.9
Crops stored 1/	111.1	71.6	41.5	22.2	8.7	3.4	1.3	12.3
Purchased inputs	NA	NA	NA	NA	NA	NA	NA	NA
Household goods	19.2	17.7	14.1	9.5	6.3	6.5	7.4	8.5
Investments in cooperatives	169.4	30.8	25.3	7.9	13.3	1.8	1.3	8.4
Other financial	43.2	32.9	10.6	8.5	6.6	6.1	6.2	8.3
Debt	526.2	283.0	198.4	150.0	72.0	45.9	26.6	80.1
Real estate 2/	417.6	191.8	109.2	62.6	38.4	25.6	14.9	44.0
Nonreal estate	108.6	91.1	89.2	87.4	33.6	20.2	11.7	36.1
Equity	3,747.1	1,641.0	914.1	486.5	321.7	212.3	124.9	366.4

1/ Non-CCC crops held on farms plus value above loan rate for crops held under CCC.

2/ Includes CCC storage and drying facilities loans.

NA = not available.

Numbers may not add due to rounding.

Table 23--Farm sector balance sheet (including operator households), by value of sales class, December 31, 1982

Item	\$500,000 and over	\$250,000 to \$499,999	\$100,000 to \$249,999	\$40,000 to \$99,999	\$20,000 to \$39,999	\$10,000 to \$19,999	Less than \$10,000	Total
Billion dollars								
Total:								
Farm assets	126.4	120.1	247.9	215.0	100.9	70.4	176.2	1,056.8
Real estate	99.1	94.2	192.5	166.3	77.0	54.9	135.2	819.1
Livestock and poultry	9.8	5.7	11.7	10.5	4.9	3.6	6.8	53.0
Machinery and motor vehicles	7.7	9.8	24.1	21.4	9.3	6.7	13.6	92.6
Crops stored 1/	2.8	3.9	8.4	6.9	2.0	0.9	1.5	26.4
Purchased inputs	NA	NA	NA	NA	NA	NA	NA	NA
Household goods	0.6	1.2	3.6	3.8	1.9	2.0	9.8	23.0
Investments in cooperatives	5.0	3.1	5.0	2.9	3.8	0.5	1.6	21.9
Other financial	1.4	2.2	2.6	3.2	1.9	1.8	7.8	20.9
Debt	17.0	16.8	52.6	53.0	19.0	12.8	31.9	203.1
Real estate 2/	13.5	12.8	26.1	22.5	10.5	7.4	18.4	111.3
Nonreal estate	3.5	4.0	26.5	30.5	8.5	5.4	13.4	91.8
Equity	109.3	103.4	195.3	162.0	81.8	57.6	144.4	853.7
Percent								
Debt-to-asset ratio	13.5	14.0	21.2	24.7	18.8	18.2	18.1	19.2
Percent								
Percent of total:								
Farm assets	12.0	11.4	23.5	20.3	9.5	6.7	16.7	100.0
Real estate	12.1	11.5	23.5	20.3	9.4	6.7	16.5	100.0
Livestock and poultry	18.4	10.8	22.1	19.8	9.3	6.8	12.8	100.0
Machinery and motor vehicles	8.3	10.6	26.0	23.1	10.1	7.2	14.7	100.0
Crops stored 1/	10.6	14.8	31.7	26.2	7.7	3.3	5.7	100.0
Purchased inputs	NA	NA	NA	NA	NA	NA	NA	NA
Household goods	2.8	5.4	15.9	16.5	8.2	8.8	42.5	100.0
Investments in cooperatives	22.6	14.0	22.7	13.3	17.4	2.5	7.5	100.0
Other financial	6.6	10.5	12.5	15.5	9.0	8.6	37.3	100.0
Debt	8.4	8.3	25.9	26.1	9.4	6.3	15.7	100.0
Real estate 2/	12.1	11.5	23.5	20.3	9.4	6.7	16.5	100.0
Nonreal estate	3.9	4.3	28.8	33.2	9.3	5.9	14.6	100.0
Equity	12.8	12.1	22.9	19.0	9.6	6.7	16.9	100.0
Thousand dollars								
Per farm:								
Farm assets	4,229.7	1,905.4	1,068.4	601.3	377.2	252.8	149.6	439.1
Real estate	3,317.4	1,494.0	829.6	465.0	287.9	197.2	114.7	340.4
Livestock and poultry	326.8	90.8	50.5	29.4	18.4	12.9	5.7	22.0
Machinery and motor vehicles	258.2	155.3	103.9	59.7	34.9	23.9	11.6	38.5
Crops stored 1/	93.7	62.0	36.1	19.3	7.6	3.1	1.3	11.0
Purchased inputs	NA	NA	NA	NA	NA	NA	NA	NA
Household goods	21.4	19.7	15.7	10.6	7.0	7.3	8.3	9.5
Investments in cooperatives	166.3	48.8	21.5	8.2	14.3	1.9	1.4	9.1
Other financial	45.8	34.8	11.2	9.0	7.0	6.5	6.6	8.7
Debt	570.3	266.1	226.7	148.3	71.1	46.0	27.0	84.4
Real estate 2/	451.9	203.0	112.7	63.1	39.2	26.7	15.6	46.3
Nonreal estate	118.4	63.1	114.1	85.2	31.9	19.3	11.4	38.1
Equity	3,659.4	1,639.3	841.6	453.0	306.1	206.8	122.5	354.8

1/ Non-CCC crops held on farms plus value above loan rate for crops held under CCC.

2/ Includes CCC storage and drying facilities loans.

NA = not available.

Numbers may not add due to rounding.

Table 24--Farm sector balance sheet (including operator households), by value of sales class, December 31, 1983

Item	\$500,000 and over	\$250,000 to \$499,999	\$100,000 to \$249,999	\$40,000 to \$99,999	\$20,000 to \$39,999	\$10,000 to \$19,999	Less than \$10,000	Total
Billion dollars								
Total:								
Farm assets	99.9	124.7	263.3	217.4	112.0	68.9	178.1	1,064.3
Real estate	78.0	98.7	206.5	169.2	86.2	53.9	136.8	829.3
Livestock and poultry	7.3	5.5	11.6	10.1	5.2	3.4	6.5	49.5
Machinery and motor vehicles	5.9	9.8	24.9	21.4	10.3	6.4	13.4	92.1
Crops stored 1/	1.9	3.7	8.2	6.4	2.1	0.8	1.3	24.4
Purchased inputs	NA	NA	NA	NA	NA	NA	NA	NA
Household goods	0.5	1.3	4.1	4.0	2.2	2.1	10.3	24.4
Investments in cooperatives	5.3	3.3	5.3	3.0	3.8	0.5	1.7	22.8
Other financial	1.1	2.4	2.9	3.4	2.2	1.8	8.1	21.8
Debt	12.8	17.8	57.1	53.3	21.8	12.2	31.6	206.5
Real estate 2/	10.7	13.5	28.3	23.2	11.9	7.4	18.7	113.7
Nonreal estate	2.2	4.2	28.7	30.0	9.9	4.9	12.8	92.7
Equity	87.1	106.9	206.3	164.1	90.2	56.7	146.5	857.9
Percent								
Debt-to-asset ratio	12.8	14.2	21.7	24.5	19.4	17.7	17.7	19.4
Percent of total:								
Farm assets	10.6	11.7	24.3	20.2	10.2	6.4	16.6	100.0
Real estate	9.4	11.9	24.9	20.4	10.4	6.5	16.5	100.0
Livestock and poultry	14.7	11.1	23.3	20.3	10.5	6.8	13.2	100.0
Machinery and motor vehicles	6.4	10.7	27.0	23.2	11.2	7.0	14.6	100.0
Crops stored 1/	7.9	15.2	33.6	26.3	8.5	3.2	5.3	100.0
Purchased inputs	NA	NA	NA	NA	NA	NA	NA	NA
Household goods	2.1	5.5	16.6	16.4	9.0	8.5	42.0	100.0
Investments in cooperatives	23.1	14.3	23.2	12.9	16.9	2.4	7.2	100.0
Other financial	5.0	10.8	13.1	15.6	9.9	8.3	37.2	100.0
Debt	6.2	8.6	27.6	25.8	10.6	5.9	15.3	100.0
Real estate 2/	9.4	11.9	24.9	20.4	10.4	6.5	16.5	100.0
Nonreal estate	2.3	4.6	31.0	32.4	10.7	5.2	13.8	100.0
Equity	10.2	12.5	24.0	19.1	10.5	6.6	17.1	100.0
Thousand dollars								
Per farm:								
Farm assets	4,437.7	1,960.0	1,098.2	617.7	387.4	261.3	155.1	447.5
Real estate	3,462.2	1,551.4	861.2	480.7	298.3	204.4	119.2	348.6
Livestock and poultry	322.5	86.6	48.2	28.6	18.1	12.8	5.7	20.8
Machinery and motor vehicles	261.8	154.3	103.8	60.8	35.5	24.3	11.7	38.7
Crops stored 1/	85.4	58.2	34.1	18.2	7.2	3.0	1.1	10.2
Purchased inputs	NA	NA	NA	NA	NA	NA	NA	NA
Household goods	23.0	21.2	16.9	11.4	7.6	7.8	8.9	10.3
Investments in cooperatives	233.8	51.2	22.1	8.4	13.3	2.1	1.4	9.6
Other financial	48.9	37.1	11.9	9.6	7.5	6.9	7.1	9.2
Debt	568.9	279.2	237.9	151.4	75.3	46.3	27.5	86.8
Real estate 2/	473.3	212.6	118.1	66.1	41.1	28.0	16.3	47.8
Nonreal estate	95.6	66.6	119.9	85.4	34.3	18.4	11.2	39.0
Equity	3,868.8	1,680.8	860.3	466.3	312.0	215.0	127.6	360.7

1/ Non-CCC crops held on farms plus value above loan rate for crops held under CCC.

2/ Includes CCC storage and drying facilities loans.

NA = not available.

Numbers may not add due to rounding.

Table 25--Farm sector balance sheet (including operator households), by value of sales class, December 31, 1984

Item	\$500,000 and over	\$250,000 to \$499,999	\$100,000 to \$249,999	\$40,000 to \$99,999	\$20,000 to \$39,999	\$10,000 to \$19,999	Less than \$10,000	Total
Billion dollars								
Total:								
Farm assets	122.0	96.6	207.8	177.4	92.0	63.9	216.3	975.9
Real estate	89.7	64.7	152.1	130.1	69.8	49.2	179.3	735.0
Livestock and poultry	9.8	6.4	10.7	9.3	4.3	3.2	5.8	49.5
Machinery and motor vehicles	8.2	11.4	22.9	20.1	8.6	6.3	13.5	91.1
Crops stored 1/	2.8	4.6	8.1	6.5	1.9	0.8	1.5	26.3
Purchased inputs	0.6	0.3	0.5	0.3	0.1	0.1	0.1	2.0
Household goods	3.0	2.1	5.0	4.3	2.3	1.6	5.9	24.3
Investments in cooperatives	6.2	3.9	5.5	3.3	3.1	0.6	1.6	24.3
Other financial	1.7	3.0	2.9	3.5	2.0	1.9	8.4	23.4
Debt	26.4	19.0	47.0	39.2	18.2	12.9	41.6	204.3
Real estate 2/	12.7	9.9	23.5	20.1	10.8	7.6	27.7	112.3
Nonreal estate	13.7	9.1	23.6	19.0	7.5	5.2	13.9	92.0
Equity	95.6	77.6	160.7	138.3	73.7	51.0	174.7	771.5
Percent								
Debt-to-asset ratio	21.6	19.7	22.6	22.1	19.8	20.2	19.2	20.9
Percent of total:								
Farm assets	12.5	9.9	21.3	18.2	9.4	6.5	22.2	100.0
Real estate	12.2	8.8	20.7	17.7	9.5	6.7	24.4	100.0
Livestock and poultry	19.8	13.0	21.6	18.7	8.6	6.5	11.8	100.0
Machinery and motor vehicles	9.0	12.5	25.2	22.1	9.4	7.0	14.8	100.0
Crops stored 1/	10.8	17.6	30.9	24.8	7.1	3.1	5.6	100.0
Purchased inputs	31.0	16.8	24.0	13.7	5.3	2.7	6.5	100.0
Household goods	12.2	8.8	20.7	17.7	9.5	6.7	24.4	100.0
Investments in cooperatives	25.7	16.2	22.6	13.7	12.6	2.5	6.7	100.0
Other financial	7.1	12.9	12.4	14.9	8.3	8.3	36.0	100.0
Debt	12.9	9.3	23.0	19.2	8.9	6.3	20.4	100.0
Real estate 2/	11.3	8.8	20.9	17.9	9.6	6.8	24.7	100.0
Nonreal estate	14.9	9.9	25.6	20.7	8.1	5.7	15.1	100.0
Equity	12.4	10.1	20.8	17.9	9.6	6.6	22.6	100.0
Thousand dollars								
Per farm:								
Farm assets	3,779.0	1,246.4	901.7	515.0	371.1	239.1	190.7	418.1
Real estate	2,777.7	834.7	660.3	377.6	281.8	184.4	158.1	314.9
Livestock and poultry	304.0	83.1	46.3	26.9	17.2	12.1	5.1	21.2
Machinery and motor vehicles	253.9	147.0	99.5	58.4	34.7	23.7	11.9	39.0
Crops stored 1/	87.8	59.8	35.2	18.9	7.5	3.1	1.3	11.2
Purchased inputs	19.2	4.3	2.1	0.8	0.4	0.2	0.1	0.9
Household goods	91.7	27.6	21.8	12.5	9.3	6.1	5.2	10.4
Investments in cooperatives	193.1	50.7	23.8	9.6	12.3	2.3	1.4	10.4
Other financial	51.6	39.2	12.6	10.2	7.9	7.3	7.4	10.0
Debt	817.8	245.1	204.1	113.6	73.6	48.2	36.7	87.5
Real estate 2/	393.1	127.5	101.9	58.4	43.5	28.6	24.5	48.1
Nonreal estate	424.7	117.6	102.2	55.3	30.1	19.6	12.3	39.4
Equity	2,961.1	1,001.3	697.6	401.3	297.5	190.9	154.0	330.6

1/ Non-CCC crops held on farms plus value above loan rate for crops held under CCC.

2/ Includes CCC storage and drying facilities loans.

NA = not available.

Numbers may not add due to rounding.

Table 26--Farm sector balance sheet (including operator households), by value of sales class, December 31, 1985

Item	\$500,000 and over	\$250,000 to \$499,999	\$100,000 to \$249,999	\$40,000 to \$99,999	\$20,000 to \$39,999	\$10,000 to \$19,999	Less than \$10,000	Total
Billion dollars								
Total:								
Farm assets	110.5	89.4	189.9	161.2	84.4	59.7	197.6	892.8
Real estate	80.2	57.8	136.0	116.3	62.4	44.0	160.3	657.0
Livestock and poultry	8.2	6.2	10.1	8.7	4.1	3.3	5.6	46.3
Machinery and motor vehicles	6.9	10.9	22.0	19.2	8.5	6.8	13.9	88.3
Crops stored 1/	3.7	4.5	7.1	4.9	1.5	0.9	0.3	22.9
Purchased inputs	0.4	0.2	0.3	0.2	0.1	0.0	0.1	1.2
Household goods	3.4	2.4	5.8	4.9	2.6	1.9	6.8	27.8
Investments in cooperatives	6.2	3.9	5.5	3.3	3.1	0.6	1.6	24.3
Other financial	1.5	3.3	3.1	3.6	2.1	2.2	9.1	25.0
Debt	24.2	17.4	43.1	35.9	16.8	11.9	38.5	187.9
Real estate 2/	11.9	9.3	22.1	18.9	10.2	7.2	26.1	105.7
Nonreal estate	12.2	8.1	21.0	17.0	6.7	4.7	12.4	82.2
Equity	86.3	72.0	146.8	125.3	67.6	47.9	159.1	704.9
Percent								
Debt-to-asset ratio	21.9	19.5	22.7	22.3	19.9	19.9	19.5	21.0
Percent of total:								
Farm assets	12.4	10.0	21.3	18.1	9.4	6.7	22.1	100.0
Real estate	12.2	8.8	20.7	17.7	9.5	6.7	24.4	100.0
Livestock and poultry	17.7	13.5	21.9	18.9	8.8	7.1	12.1	100.0
Machinery and motor vehicles	7.8	12.4	25.0	21.8	9.6	7.7	15.7	100.0
Crops stored 1/	16.0	19.8	31.1	21.4	6.6	3.8	1.3	100.0
Purchased inputs	31.0	16.8	24.0	13.7	5.3	2.7	6.5	100.0
Household goods	12.2	8.8	20.7	17.7	9.5	6.7	24.4	100.0
Investments in cooperatives	25.7	16.2	22.6	13.7	12.6	2.5	6.7	100.0
Other financial	6.2	13.1	12.3	14.6	8.5	9.0	36.3	100.0
Debt	12.9	9.3	23.0	19.1	8.9	6.3	20.5	100.0
Real estate 2/	11.3	8.8	20.9	17.9	9.6	6.8	24.7	100.0
Nonreal estate	14.9	9.9	25.6	20.7	8.1	5.7	15.1	100.0
Equity	12.2	10.2	20.8	17.8	9.6	6.8	22.6	100.0
Thousand dollars								
Per farm:								
Farm assets	4,050.7	1,170.6	851.6	491.7	345.5	211.8	177.8	389.5
Real estate	2,938.6	757.1	610.0	354.6	255.6	156.1	144.2	286.6
Livestock and poultry	300.6	81.8	45.4	26.7	16.7	11.6	5.0	20.2
Machinery and motor vehicles	253.7	143.4	98.8	58.7	34.7	24.1	12.5	38.5
Crops stored 1/	134.1	59.3	31.9	14.9	6.2	3.1	0.3	10.0
Purchased inputs	13.7	2.7	1.3	0.5	0.3	0.1	0.1	0.5
Household goods	124.5	32.1	25.8	15.0	10.8	6.6	6.1	12.1
Investments in cooperatives	228.9	51.5	24.6	10.1	12.5	2.2	1.5	10.6
Other financial	56.8	42.8	13.8	11.1	8.7	8.0	8.2	10.9
Debt	886.9	228.4	193.5	109.6	68.8	42.1	34.7	82.0
Real estate 2/	438.0	121.8	99.1	57.7	41.6	25.5	23.5	46.1
Nonreal estate	448.9	106.5	94.3	51.9	27.3	16.6	11.2	35.8
Equity	3,163.9	942.3	658.2	382.1	276.7	169.7	143.1	307.5

1/ Non-CCC crops held on farms plus value above loan rate for crops held under CCC.

2/ Includes CCC storage and drying facilities loans.

NA = not available.

Numbers may not add due to rounding.

Table 27--Farm sector balance sheet (including operator households), by value of sales class, December 31, 1986

Item	\$500,000 and over	\$250,000 to \$499,999	\$100,000 to \$249,999	\$40,000 to \$99,999	\$20,000 to \$39,999	\$10,000 to \$19,999	Less than \$10,000	Total
Billion dollars								
Total:								
Farm assets	92.9	82.4	186.4	150.2	82.4	65.5	188.3	848.0
Real estate	61.3	52.7	133.6	107.9	59.5	49.0	149.0	613.0
Livestock and poultry	9.5	6.1	10.6	8.5	4.3	3.4	5.3	47.8
Machinery and motor vehicles	7.6	9.9	21.3	17.8	8.7	6.7	14.1	86.1
Crops stored 1/	2.7	3.3	5.0	3.3	1.4	0.6	0.3	16.6
Purchased inputs	0.6	0.3	0.5	0.3	0.1	0.1	0.1	2.1
Household goods	2.9	2.5	6.3	5.1	2.8	2.3	7.0	28.7
Investments in cooperatives	6.3	4.0	5.5	3.3	3.1	0.6	1.6	24.4
Other financial	2.0	3.6	3.6	4.1	2.6	2.7	10.8	29.4
Debt	18.3	15.7	38.4	31.1	15.3	11.8	35.9	166.6
Real estate 2/	8.9	8.2	21.1	17.1	9.4	7.7	23.5	95.9
Nonreal estate	9.4	7.5	17.3	14.1	5.9	4.2	12.4	70.8
Equity	74.5	66.7	148.0	119.0	67.1	53.6	152.4	681.3
Percent								
Debt-to-asset ratio	19.7	19.1	20.6	20.7	18.5	18.1	19.1	19.7
Percent								
Percent of total:								
Farm assets	11.0	9.7	22.0	17.7	9.7	7.7	22.2	100.0
Real estate	10.0	8.6	21.8	17.6	9.7	8.0	24.3	100.0
Livestock and poultry	19.8	12.8	22.2	17.8	9.1	7.1	11.1	100.0
Machinery and motor vehicles	8.8	11.5	24.7	20.6	10.1	7.8	16.4	100.0
Crops stored 1/	16.2	20.2	30.1	19.7	8.2	3.7	1.9	100.0
Purchased inputs	31.0	16.8	24.0	13.7	5.3	2.7	6.5	100.0
Household goods	10.0	8.6	21.8	17.6	9.7	8.0	24.3	100.0
Investments in cooperatives	25.7	16.2	22.6	13.7	12.6	2.5	6.7	100.0
Other financial	6.9	12.3	12.3	13.9	8.7	9.2	36.8	100.0
Debt	11.0	9.4	23.1	18.7	9.2	7.1	21.5	100.0
Real estate 2/	9.3	8.6	22.0	17.8	9.8	8.0	24.5	100.0
Nonreal estate	13.3	10.6	24.5	19.9	8.3	5.9	17.5	100.0
Equity	10.9	9.8	21.7	17.5	9.8	7.9	22.4	100.0
Thousand dollars								
Per farm:								
Farm assets	3,106.2	1,181.0	857.9	492.8	333.4	233.2	171.1	376.9
Real estate	2,050.3	755.4	615.0	354.0	240.7	174.7	135.4	272.5
Livestock and poultry	316.2	87.6	48.9	27.9	17.5	12.2	4.8	21.2
Machinery and motor vehicles	254.3	141.5	98.0	58.3	35.1	24.0	12.8	38.3
Crops stored 1/	89.9	48.0	22.9	10.7	5.5	2.2	0.3	7.4
Purchased inputs	21.4	5.0	2.3	0.9	0.4	0.2	0.1	0.9
Household goods	96.0	35.4	28.8	16.6	11.3	8.2	6.3	12.8
Investments in cooperatives	210.0	56.7	25.4	11.0	12.5	2.2	1.5	10.9
Other financial	68.1	51.6	16.6	13.4	10.4	9.6	9.8	13.1
Debt	613.0	225.6	176.9	102.2	61.8	42.2	32.6	74.1
Real estate 2/	298.2	118.2	97.1	56.0	38.0	27.3	21.3	42.6
Nonreal estate	314.8	107.5	79.8	46.2	23.8	14.9	11.3	31.5
Equity	2,493.2	955.4	681.0	390.6	271.6	191.0	138.5	302.8

1/ Non-CCC crops held on farms plus value above loan rate for crops held under CCC.

2/ Includes CCC storage and drying facilities loans.

NA = not available.

Numbers may not add due to rounding.

Table 28--Farm sector balance sheet (including operator households), by value of sales class, December 31, 1987

Item	\$500,000 and over	\$250,000 to \$499,999	\$100,000 to \$249,999	\$40,000 to \$99,999	\$20,000 to \$39,999	\$10,000 to \$19,999	Less than \$10,000	Total
Billion dollars								
Total:								
Farm assets	82.1	86.4	192.8	166.6	100.5	77.3	205.8	911.4
Real estate	48.1	59.3	136.3	118.6	75.7	58.6	162.0	658.6
Livestock and poultry	11.6	6.0	12.3	11.0	5.3	4.5	7.4	58.0
Machinery and motor vehicles	7.9	8.4	20.3	18.4	8.1	6.7	14.8	84.5
Crops stored 1/	2.7	3.4	5.8	3.7	1.0	0.5	0.7	17.8
Purchased inputs	0.9	0.5	0.7	0.4	0.2	0.1	0.2	3.0
Household goods	2.4	3.0	6.8	5.9	3.8	2.9	8.1	32.9
Investments in cooperatives	6.5	4.1	5.7	3.5	3.2	0.6	1.7	25.3
Other financial	1.9	1.8	4.9	5.2	3.2	3.5	11.0	31.4
Debt	25.2	18.9	37.5	28.5	12.8	6.9	23.8	153.7
Real estate 2/	11.8	10.1	21.2	16.1	7.4	4.0	17.2	87.7
Nonreal estate	13.4	8.8	16.3	12.5	5.4	2.9	6.6	66.0
Equity	56.9	67.5	155.2	138.1	87.7	70.4	182.0	757.7
Percent								
Debt-to-asset ratio	30.6	21.9	19.5	17.1	12.7	9.0	11.6	16.9
Percent of total:								
Farm assets	9.0	9.5	21.2	18.3	11.0	8.5	22.6	100.0
Real estate	7.3	9.0	20.7	18.0	11.5	8.9	24.6	100.0
Livestock and poultry	20.0	10.4	21.2	18.9	9.1	7.7	12.7	100.0
Machinery and motor vehicles	9.4	9.9	24.0	21.8	9.6	7.9	17.5	100.0
Crops stored 1/	15.4	19.2	32.4	20.7	5.8	2.7	3.8	100.0
Purchased inputs	31.0	16.8	24.0	13.7	5.3	2.7	6.5	100.0
Household goods	7.3	9.0	20.7	18.0	11.5	8.9	24.6	100.0
Investments in cooperatives	25.7	16.2	22.6	13.7	12.6	2.5	6.7	100.0
Other financial	6.0	5.7	15.5	16.7	10.2	11.0	34.9	100.0
Debt	16.4	12.3	24.4	18.5	8.3	4.5	15.5	100.0
Real estate 2/	13.4	11.5	24.2	18.3	8.4	4.6	19.6	100.0
Nonreal estate	20.3	13.4	24.7	18.9	8.2	4.4	10.0	100.0
Equity	7.5	8.9	20.5	18.2	11.6	9.3	24.0	100.0
Thousand dollars								
Per farm:								
Farm assets	2,417.6	1,333.5	897.9	546.7	420.1	291.1	188.8	411.8
Real estate	1,416.5	914.5	635.0	388.9	316.6	220.7	148.7	297.6
Livestock and poultry	341.6	93.0	57.2	35.9	22.1	16.8	6.8	26.2
Machinery and motor vehicles	233.9	129.0	94.4	60.4	33.9	25.1	13.6	38.2
Crops stored 1/	80.8	52.8	26.9	12.1	4.3	1.8	0.6	8.1
Purchased inputs	27.1	7.7	3.3	1.3	0.7	0.3	0.2	1.3
Household goods	70.7	45.7	31.7	19.4	15.8	11.0	7.4	14.9
Investments in cooperatives	191.4	63.2	26.6	11.4	13.3	2.4	1.6	11.4
Other financial	55.5	27.6	22.7	17.2	13.4	13.0	10.1	14.2
Debt	741.0	292.1	174.8	93.6	53.4	26.1	21.8	69.5
Real estate 2/	346.3	155.6	98.9	52.7	30.8	15.2	15.8	39.6
Nonreal estate	394.7	136.4	75.9	40.9	22.6	10.9	6.1	29.8
Equity	1,676.6	1,041.5	723.1	453.1	366.7	265.0	167.0	342.4

1/ Non-CCC crops held on farms plus value above loan rate for crops held under CCC.

2/ Includes CCC storage and drying facilities loans.

NA = not available.

Numbers may not add due to rounding.

Table 29--Farm sector balance sheet (including operator households), by value of sales class, December 31, 1988

Item	\$500,000 and over	\$250,000 to \$499,999	\$100,000 to \$249,999	\$40,000 to \$99,999	\$20,000 to \$39,999	\$10,000 to \$19,999	Less than \$10,000	Total
Billion dollars								
Total:								
Farm assets	105.8	87.7	206.7	171.8	106.2	71.2	207.4	956.8
Real estate	65.3	60.5	147.0	123.0	75.6	51.5	164.2	687.0
Livestock and poultry	13.6	6.2	13.1	11.3	5.8	4.7	7.5	62.2
Machinery and motor vehicles	9.0	8.5	21.1	18.4	8.7	6.8	14.3	86.7
Crops stored 1/	5.6	3.3	7.1	4.3	1.2	0.5	0.6	22.7
Purchased inputs	1.0	0.6	0.8	0.5	0.2	0.1	0.2	3.3
Household goods	3.5	3.3	7.9	6.6	4.1	2.8	8.8	37.0
Investments in cooperatives	5.3	3.4	5.0	3.2	6.2	0.6	1.4	25.1
Other financial	2.5	2.1	4.8	4.5	4.4	4.2	10.4	32.9
Debt	24.0	17.4	37.6	28.9	12.1	6.8	21.9	148.5
Real estate 2/	11.4	9.4	20.3	15.8	7.0	4.1	15.1	83.0
Nonreal estate	12.6	8.1	17.2	13.1	5.2	2.7	6.8	65.6
Equity	81.9	70.3	169.2	142.9	94.0	64.4	185.6	808.3
Percent								
Debt-to-asset ratio	22.6	19.9	18.2	16.8	11.4	9.6	10.5	15.5
Percent								
Percent of total:								
Farm assets	11.0	9.2	21.6	18.0	11.1	7.4	21.7	100.0
Real estate	9.5	8.8	21.4	17.9	11.0	7.5	23.9	100.0
Livestock and poultry	21.9	10.0	21.0	18.2	9.4	7.5	12.0	100.0
Machinery and motor vehicles	10.4	9.8	24.3	21.2	10.0	7.9	16.5	100.0
Crops stored 1/	24.6	14.5	31.4	18.8	5.5	2.3	2.8	100.0
Purchased inputs	30.1	16.7	24.5	14.6	5.3	2.8	6.0	100.0
Household goods	9.5	8.8	21.4	17.9	11.0	7.5	23.9	100.0
Investments in cooperatives	21.1	13.4	19.8	12.9	24.6	2.5	5.7	100.0
Other financial	7.7	6.4	14.5	13.8	13.4	12.7	31.5	100.0
Debt	16.1	11.7	25.3	19.4	8.2	4.6	14.7	100.0
Real estate 2/	13.7	11.3	24.5	19.0	8.4	5.0	18.2	100.0
Nonreal estate	19.2	12.3	26.3	20.0	7.9	4.1	10.3	100.0
Equity	10.1	8.7	20.9	17.7	11.6	8.0	23.0	100.0
Thousand dollars								
Per farm:								
Farm assets	3,014.5	1,302.7	940.7	571.8	419.8	263.5	197.3	435.5
Real estate	1,859.2	897.7	669.0	409.3	298.8	190.6	156.2	312.7
Livestock and poultry	388.1	92.4	59.4	37.7	23.1	17.3	7.1	28.3
Machinery and motor vehicles	256.9	126.2	95.9	61.2	34.3	25.3	13.6	39.5
Crops stored 1/	158.8	48.8	32.4	14.2	4.9	1.9	0.6	10.3
Purchased inputs	28.5	8.2	3.7	1.6	0.7	0.3	0.2	1.5
Household goods	100.1	48.3	36.0	22.0	16.1	10.3	8.4	16.8
Investments in cooperatives	150.8	49.9	22.6	10.8	24.4	2.3	1.4	11.4
Other financial	72.2	31.3	21.7	15.1	17.5	15.5	9.9	15.0
Debt	682.5	259.0	171.0	96.1	48.0	25.3	20.8	67.6
Real estate 2/	323.8	139.2	92.5	52.5	27.6	15.3	14.4	37.8
Nonreal estate	358.8	119.8	78.5	43.7	20.5	9.9	6.4	29.9
Equity	2,332.0	1,043.8	769.7	475.7	371.8	238.2	176.5	367.9

1/ Non-CCC crops held on farms plus value above loan rate for crops held under CCC.

2/ Includes CCC storage and drying facilities loans.

NA = not available.

Numbers may not add due to rounding.

Table 30--Farm sector balance sheet (including operator households), by value of sales class, December 31, 1989

Item	\$500,000 and over	\$250,000 to \$499,999	\$100,000 to \$249,999	\$40,000 to \$99,999	\$20,000 to \$39,999	\$10,000 to \$19,999	Less than \$10,000	Total
Billion dollars								
Total:								
Farm assets	126.1	109.9	192.9	179.4	109.8	65.9	192.0	976.0
Real estate	79.0	76.9	133.0	128.1	81.0	47.8	146.9	692.7
Livestock and poultry	16.4	7.2	12.7	11.7	6.4	4.5	7.4	66.2
Machinery and motor vehicles	10.8	9.8	20.4	18.9	9.5	6.6	14.3	90.2
Crops stored 1/	4.6	4.3	7.0	4.2	1.5	0.7	1.1	23.3
Purchased inputs	0.8	0.5	0.7	0.4	0.1	0.1	0.1	2.7
Household goods	4.8	4.7	8.1	7.8	4.9	2.9	8.9	42.2
Investments in cooperatives	6.8	4.3	6.9	3.3	2.0	0.5	2.2	26.1
Other financial	2.8	2.2	4.1	4.9	4.4	2.9	11.1	32.5
Debt	24.5	19.0	34.4	25.8	12.3	6.9	23.1	146.0
Real estate 2/	10.5	9.5	19.2	14.2	6.8	3.5	16.8	80.5
Nonreal estate	13.9	9.5	15.2	11.7	5.5	3.4	6.3	65.5
Equity	101.6	90.9	158.5	153.5	97.6	59.1	168.9	830.0
Percent								
Debt-to-asset ratio	19.4	17.3	17.8	14.4	11.2	10.4	12.0	15.0
Percent								
Percent of total:								
Farm assets	12.9	11.3	19.8	18.4	11.3	6.7	19.7	100.0
Real estate	11.4	11.1	19.2	18.5	11.7	6.9	21.2	100.0
Livestock and poultry	24.7	10.9	19.2	17.6	9.6	6.8	11.2	100.0
Machinery and motor vehicles	12.0	10.9	22.6	21.0	10.5	7.3	15.8	100.0
Crops stored 1/	19.7	18.5	30.0	17.9	6.4	2.8	4.8	100.0
Purchased inputs	31.2	17.1	24.6	14.4	4.9	2.7	5.1	100.0
Household goods	11.4	11.1	19.2	18.5	11.7	6.9	21.2	100.0
Investments in cooperatives	26.2	16.6	26.6	12.7	7.6	2.0	8.3	100.0
Other financial	8.7	6.7	12.7	15.2	13.6	8.9	34.2	100.0
Debt	16.8	13.0	23.6	17.7	8.4	4.7	15.9	100.0
Real estate 2/	13.1	11.8	23.9	17.6	8.4	4.3	20.9	100.0
Nonreal estate	21.3	14.5	23.2	17.8	8.4	5.2	9.6	100.0
Equity	12.2	11.0	19.1	18.5	11.7	7.2	20.3	100.0
Thousand dollars								
Per farm:								
Farm assets	3,273.0	1,494.5	916.2	591.3	407.8	257.4	188.4	449.7
Real estate	2,050.3	1,045.5	631.6	422.5	300.9	186.6	144.1	319.1
Livestock and poultry	424.5	98.1	60.4	38.4	23.6	17.6	7.3	30.5
Machinery and motor vehicles	281.1	133.7	96.8	62.5	35.2	25.7	14.0	41.6
Crops stored 1/	119.2	58.6	33.2	13.7	5.5	2.5	1.1	10.7
Purchased inputs	22.0	6.3	3.2	1.3	0.5	0.3	0.1	1.3
Household goods	124.9	63.7	38.5	25.7	18.3	11.4	8.8	19.4
Investments in cooperatives	177.5	58.9	33.0	10.9	7.4	2.0	2.1	12.0
Other financial	73.4	29.6	19.6	16.3	16.4	11.3	10.9	15.0
Debt	635.9	258.2	163.5	85.1	45.5	26.8	22.7	67.2
Real estate 2/	273.7	129.1	91.3	46.7	25.1	13.5	16.5	37.1
Nonreal estate	362.2	129.1	72.2	38.4	20.4	13.3	6.2	30.2
Equity	2,637.1	1,236.2	752.7	506.2	362.3	230.6	165.7	382.4

1/ Non-CCC crops held on farms plus value above loan rate for crops held under CCC.

2/ Includes CCC storage and drying facilities loans.

NA = not available.

Numbers may not add due to rounding.

Table 31--Farm sector balance sheet (excluding operator households), by value of sales class, December 31, 1974

Item	\$500,000 and over	\$250,000 to \$499,999	\$100,000 to \$249,999	\$40,000 to \$99,999	\$20,000 to \$39,999	\$10,000 to \$19,999	Less than \$10,000	Total
Billion dollars								
Total:								
Farm assets	28.2	42.0	61.4	110.3	65.5	41.6	100.1	449.1
Real estate	20.6	31.7	45.9	81.8	48.1	31.9	75.7	335.6
Livestock and poultry	2.3	2.2	2.9	5.4	3.5	2.4	5.8	24.6
Machinery and motor vehicles	2.0	3.4	5.7	12.4	7.5	5.1	12.4	48.5
Crops stored 1/	1.1	2.9	4.4	7.9	3.1	1.3	1.8	22.4
Purchased inputs	NA	NA	NA	NA	NA	NA	NA	NA
Investments in cooperatives	2.1	1.3	2.2	1.8	2.4	0.3	1.0	11.2
Other financial	0.2	0.5	0.4	1.0	0.8	0.7	3.4	6.9
Debt	2.9	4.7	8.1	22.7	12.2	7.3	18.1	75.9
Real estate 2/	2.5	3.9	5.6	9.9	5.8	3.9	9.2	40.8
Nonreal estate	0.4	0.8	2.5	12.8	6.3	3.4	8.9	35.1
Equity	25.3	37.4	53.3	87.5	53.3	34.3	82.0	373.2
Percent								
Debt-to-asset ratio	10.2	11.1	13.1	20.6	18.6	17.5	18.0	16.9
Percent of total:								
Farm assets	6.3	9.4	13.7	24.6	14.6	9.3	22.3	100.0
Real estate	6.1	9.5	13.7	24.4	14.3	9.5	22.5	100.0
Livestock and poultry	9.3	9.0	11.9	22.1	14.4	9.7	23.6	100.0
Machinery and motor vehicles	4.1	6.9	11.9	25.5	15.5	10.6	25.5	100.0
Crops stored 1/	4.7	13.1	19.5	35.0	14.0	5.6	8.0	100.0
Purchased inputs	NA	NA	NA	NA	NA	NA	NA	NA
Investments in cooperatives	19.1	11.8	19.2	16.4	21.4	3.0	9.2	100.0
Other financial	2.2	6.6	5.5	14.7	11.1	9.9	50.1	100.0
Debt	3.8	6.1	10.6	30.0	16.0	9.6	23.8	100.0
Real estate 2/	6.1	9.5	13.7	24.4	14.3	9.5	22.5	100.0
Nonreal estate	1.0	2.3	7.1	36.5	18.0	9.8	25.3	100.0
Equity	6.8	10.0	14.3	23.5	14.3	9.2	22.0	100.0
Thousand dollars								
Per farm:								
Farm assets	2,501.6	1,063.6	615.3	333.9	198.4	126.4	60.5	160.6
Real estate	1,826.6	803.0	459.3	247.6	145.8	96.8	45.7	120.0
Livestock and poultry	202.4	56.0	29.2	16.5	10.7	7.3	3.5	8.8
Machinery and motor vehicles	175.3	84.9	57.5	37.4	22.8	15.5	7.5	17.3
Crops stored 1/	93.6	74.6	43.9	23.8	9.5	3.8	1.1	8.0
Purchased inputs	NA	NA	NA	NA	NA	NA	NA	NA
Investments in cooperatives	190.1	33.5	21.5	5.6	7.3	1.0	0.6	4.0
Other financial	13.6	11.5	3.8	3.0	2.3	2.1	2.1	2.5
Debt	254.3	117.8	80.9	68.9	36.8	22.2	10.9	27.1
Real estate 2/	222.1	97.6	55.8	30.1	17.7	11.8	5.6	14.6
Nonreal estate	32.1	20.2	25.1	38.8	19.1	10.4	5.4	12.5
Equity	2,247.3	945.8	534.4	265.0	161.5	104.3	49.6	133.5

1/ Non-CCC crops held on farms plus value above loan rate for crops held under CCC.

2/ Includes CCC storage and drying facilities loans.

NA = not available.

Numbers may not add due to rounding.

Table 32--Farm sector balance sheet (excluding operator households), by value of sales class, December 31, 1975

Item	\$500,000 and over	\$250,000 to \$499,999	\$100,000 to \$249,999	\$40,000 to \$99,999	\$20,000 to \$39,999	\$10,000 to \$19,999	Less than \$10,000	Total
Billion dollars								
Total:								
Farm assets	31.7	48.7	72.0	128.3	76.6	47.6	105.8	510.7
Real estate	22.7	37.0	54.0	96.0	56.7	36.6	80.5	383.6
Livestock and poultry	2.9	2.7	3.7	6.8	4.3	2.9	6.1	29.4
Machinery and motor vehicles	2.4	4.3	7.4	15.2	9.2	5.9	13.1	57.4
Crops stored 1/	1.0	2.7	4.0	7.2	2.9	1.2	1.6	20.5
Purchased inputs	NA	NA	NA	NA	NA	NA	NA	NA
Investments in cooperatives	2.5	1.6	2.5	2.1	2.7	0.4	1.2	13.0
Other financial	0.2	0.5	0.4	1.1	0.8	0.7	3.3	6.9
Debt	3.1	5.3	9.2	26.1	13.9	8.3	19.1	85.0
Real estate 2/	2.7	4.4	6.4	11.4	6.7	4.3	9.5	45.3
Nonreal estate	0.4	0.9	2.9	14.7	7.2	4.0	9.6	39.7
Equity	28.6	43.4	62.8	102.2	62.7	39.3	86.7	425.7
Percent								
Debt-to-asset ratio	9.7	10.9	12.8	20.3	18.2	17.4	18.0	16.6
Percent								
Percent of total:								
Farm assets	6.2	9.5	14.1	25.1	15.0	9.3	20.7	100.0
Real estate	5.9	9.6	14.1	25.0	14.8	9.5	21.0	100.0
Livestock and poultry	9.8	9.3	12.6	23.1	14.6	9.8	20.9	100.0
Machinery and motor vehicles	4.2	7.5	12.8	26.5	16.0	10.3	22.8	100.0
Crops stored 1/	4.8	13.1	19.5	35.0	14.1	5.6	7.9	100.0
Purchased inputs	NA	NA	NA	NA	NA	NA	NA	NA
Investments in cooperatives	19.5	12.1	19.6	16.0	20.9	2.9	9.0	100.0
Other financial	2.4	7.0	5.8	15.4	11.6	10.4	47.5	100.0
Debt	3.6	6.2	10.9	30.7	16.4	9.8	22.4	100.0
Real estate 2/	5.9	9.6	14.1	25.0	14.8	9.5	20.9	100.0
Nonreal estate	1.0	2.3	7.2	37.1	18.2	10.0	24.2	100.0
Equity	6.7	10.2	14.7	24.0	14.7	9.2	20.4	100.0
Thousand dollars								
Per farm:								
Farm assets	2,901.3	1,271.3	746.9	405.5	243.6	151.7	73.9	202.5
Real estate	2,082.4	964.9	560.3	303.4	180.4	116.5	56.3	152.1
Livestock and poultry	262.4	71.2	38.3	21.4	13.6	9.2	4.3	11.6
Machinery and motor vehicles	219.4	111.8	76.3	48.1	29.3	18.8	9.1	22.8
Crops stored 1/	89.8	69.7	41.4	22.6	9.1	3.7	1.1	8.1
Purchased inputs	NA	NA	NA	NA	NA	NA	NA	NA
Investments in cooperatives	232.1	40.9	26.4	6.6	8.6	1.2	0.8	5.1
Other financial	15.2	12.7	4.2	3.4	2.6	2.3	2.3	2.8
Debt	281.6	137.9	95.8	82.5	44.3	26.4	13.3	33.7
Real estate 2/	246.3	114.2	66.3	35.9	21.3	13.8	6.6	18.0
Nonreal estate	35.3	23.8	29.6	46.6	23.0	12.7	6.7	15.7
Equity	2,619.7	1,133.3	651.0	323.0	199.3	125.3	60.6	168.8

1/ Non-CCC crops held on farms plus value above loan rate for crops held under CCC.

2/ Includes CCC storage and drying facilities loans.

NA = not available.

Numbers may not add due to rounding.

Table 33--Farm sector balance sheet (excluding operator households), by value of sales class, December 31, 1976

Item	\$500,000 and over	\$250,000 to \$499,999	\$100,000 to \$249,999	\$40,000 to \$99,999	\$20,000 to \$39,999	\$10,000 to \$19,999	Less than \$10,000	Total
Billion dollars								
Total:	39.5	62.5	89.6	148.5	85.0	52.1	113.4	590.8
Farm assets	29.1	48.7	69.1	114.5	65.1	41.2	88.8	456.5
Real estate	3.3	3.1	3.9	6.5	3.9	2.6	5.7	29.0
Livestock and poultry	3.0	5.5	9.1	17.1	9.6	6.1	13.0	63.3
Machinery and motor vehicles	1.1	2.9	4.3	7.0	2.7	1.1	1.5	20.6
Crops stored 1/	NA	NA	NA	NA	NA	NA	NA	NA
Purchased inputs	2.9	1.8	2.9	2.2	2.9	0.4	1.3	14.3
Investments in cooperatives	0.2	0.6	0.4	1.1	0.8	0.7	3.2	6.9
Other financial								
Debt	3.8	6.7	11.6	30.0	14.9	8.9	20.2	96.1
Real estate 2/	3.2	5.4	7.7	12.7	7.2	4.6	9.8	50.5
Nonreal estate	0.6	1.3	3.9	17.3	7.7	4.3	10.4	45.6
Equity	35.7	55.8	78.0	118.5	70.1	43.2	93.2	494.7
Percent								
Debt-to-asset ratio	9.7	10.7	12.9	20.2	17.6	17.0	17.8	16.3
Percent of total:								
Farm assets	6.7	10.6	15.2	25.1	14.4	8.8	19.2	100.0
Real estate	6.4	10.7	15.1	25.1	14.3	9.0	19.4	100.0
Livestock and poultry	11.4	10.7	13.3	22.5	13.5	9.1	19.7	100.0
Machinery and motor vehicles	4.7	8.7	14.3	27.1	15.1	9.6	20.5	100.0
Crops stored 1/	5.4	14.1	20.6	34.1	13.1	5.3	7.4	100.0
Purchased inputs	NA	NA	NA	NA	NA	NA	NA	NA
Investments in cooperatives	20.0	12.4	20.1	15.6	20.4	2.9	8.7	100.0
Other financial	2.7	8.0	6.3	15.6	11.2	10.1	45.9	100.0
Debt	4.0	7.0	12.0	31.2	15.5	9.2	21.0	100.0
Real estate 2/	6.4	10.7	15.2	25.1	14.3	9.0	19.4	100.0
Nonreal estate	1.3	2.9	8.6	38.0	16.9	9.4	22.9	100.0
Equity	7.2	11.3	15.8	24.0	14.2	8.7	18.8	100.0
Thousand dollars								
Per farm:								
Farm assets	3,137.5	1,416.3	837.8	457.8	275.8	168.7	81.5	236.6
Real estate	2,309.1	1,103.4	646.2	353.0	211.2	133.4	63.8	182.8
Livestock and poultry	262.2	70.2	36.0	20.1	12.7	8.5	4.1	11.6
Machinery and motor vehicles	235.9	124.1	84.8	52.8	31.0	19.7	9.3	25.3
Crops stored 1/	88.2	65.9	39.8	21.7	8.8	3.5	1.1	8.3
Purchased inputs	NA	NA	NA	NA	NA	NA	NA	NA
Investments in cooperatives	227.0	40.1	26.9	6.9	9.5	1.3	0.9	5.7
Other financial	15.1	12.6	4.1	3.3	2.5	2.3	2.3	2.8
Debt	304.3	151.7	108.1	92.5	48.4	28.7	14.5	38.5
Real estate 2/	256.0	122.2	71.6	39.1	23.4	14.7	7.0	20.2
Nonreal estate	48.4	29.5	36.5	53.4	25.0	13.9	7.5	18.3
Equity	2,833.2	1,264.6	729.7	365.3	227.4	140.0	67.0	198.1

1/ Non-CCC crops held on farms plus value above loan rate for crops held under CCC.

2/ Includes CCC storage and drying facilities loans.

NA = not available.

Numbers may not add due to rounding.

Table 34--Farm sector balance sheet (excluding operator households), by value of sales class, December 31, 1977

Item	\$500,000 and over	\$250,000 to \$499,999	\$100,000 to \$249,999	\$40,000 to \$99,999	\$20,000 to \$39,999	\$10,000 to \$19,999	Less than \$10,000	Total
Billion dollars								
Total:								
Farm assets	44.3	71.4	101.8	164.6	92.8	56.0	120.6	651.7
Real estate	32.9	56.1	79.2	128.4	72.2	44.8	95.7	509.3
Livestock and poultry	3.9	3.7	4.5	7.3	4.2	2.8	5.6	31.9
Machinery and motor vehicles	3.3	6.4	10.5	18.9	10.4	6.3	13.5	69.3
Crops stored 1/	1.2	3.0	4.4	6.9	2.6	1.0	1.4	20.6
Purchased inputs	NA	NA	NA	NA	NA	NA	NA	NA
Investments in cooperatives	2.8	1.7	2.8	2.1	2.7	0.4	1.1	13.5
Other financial	0.2	0.6	0.5	1.1	0.8	0.7	3.2	7.0
Debt	4.5	8.1	13.7	34.7	16.9	10.0	22.9	110.9
Real estate 2/	3.8	6.4	9.1	14.7	8.3	5.1	11.0	58.4
Nonreal estate	0.7	1.6	4.6	20.0	8.7	4.8	12.0	52.4
Equity	39.8	63.4	88.1	129.9	75.8	46.1	97.7	540.8
Percent								
Debt-to-asset ratio	10.1	11.3	13.5	21.1	18.3	17.8	19.0	17.0
Percent of total:								
Farm assets	6.8	11.0	15.6	25.3	14.2	8.6	18.5	100.0
Real estate	6.5	11.0	15.6	25.2	14.2	8.8	18.8	100.0
Livestock and poultry	12.2	11.5	14.0	22.7	13.1	8.9	17.6	100.0
Machinery and motor vehicles	4.8	9.2	15.1	27.2	15.0	9.1	19.5	100.0
Crops stored 1/	6.0	14.7	21.3	33.6	12.5	4.9	7.0	100.0
Purchased inputs	NA	NA	NA	NA	NA	NA	NA	NA
Investments in cooperatives	20.4	12.6	20.5	15.2	19.9	2.8	8.5	100.0
Other financial	2.9	8.3	6.5	15.7	11.1	10.1	45.4	100.0
Debt	4.0	7.3	12.4	31.3	15.3	9.0	20.7	100.0
Real estate 2/	6.5	11.0	15.6	25.2	14.2	8.8	18.8	100.0
Nonreal estate	1.3	3.1	8.9	38.1	16.5	9.2	22.8	100.0
Equity	7.4	11.7	16.3	24.0	14.0	8.5	18.1	100.0
Thousand dollars								
Per farm:								
Farm assets	3,407.8	1,570.1	933.7	510.1	307.1	184.9	88.7	265.4
Real estate	2,530.2	1,232.7	726.6	397.9	238.8	147.8	70.4	207.4
Livestock and poultry	299.6	80.4	41.1	22.5	13.9	9.4	4.1	13.0
Machinery and motor vehicles	256.0	140.0	96.1	58.5	34.5	20.9	9.9	28.2
Crops stored 1/	94.7	66.7	40.3	21.4	8.5	3.4	1.1	8.4
Purchased inputs	NA	NA	NA	NA	NA	NA	NA	NA
Investments in cooperatives	211.6	37.4	25.3	6.4	8.9	1.2	0.8	5.5
Other financial	15.6	12.9	4.2	3.4	2.6	2.3	2.3	2.9
Debt	342.5	177.8	126.0	107.6	56.1	32.9	16.9	45.1
Real estate 2/	290.8	141.6	83.5	45.7	27.4	17.0	8.1	23.8
Nonreal estate	51.7	36.2	42.5	61.9	28.7	16.0	8.8	21.3
Equity	3,065.3	1,392.3	807.7	402.5	251.0	152.0	71.8	220.2

1/ Non-CCC crops held on farms plus value above loan rate for crops held under CCC.

2/ Includes CCC storage and drying facilities loans.

NA = not available.

Numbers may not add due to rounding.

Table 35--Farm sector balance sheet (excluding operator households), by value of sales class, December 31, 1978

Item	\$500,000 and over	\$250,000 to \$499,999	\$100,000 to \$249,999	\$40,000 to \$99,999	\$20,000 to \$39,999	\$10,000 to \$19,999	Less than \$10,000	Total
Billion dollars								
Totals:								
Farm assets	63.2	101.4	136.3	191.5	97.3	58.0	119.7	767.5
Real estate	46.4	79.9	106.7	150.5	76.2	46.5	95.5	601.8
Livestock and poultry	7.6	6.8	7.9	11.1	5.7	3.8	7.2	50.1
Machinery and motor vehicles	4.0	7.8	12.1	18.7	9.0	5.5	11.3	68.5
Crops stored 1/	1.7	4.0	5.7	7.6	2.5	1.0	1.4	23.9
Purchased inputs	NA	NA	NA	NA	NA	NA	NA	NA
Investments in cooperatives	3.4	2.1	3.4	2.4	3.1	0.4	1.3	16.1
Other financial	0.3	0.8	0.6	1.2	0.7	0.7	3.0	7.1
Debt	6.3	11.8	19.3	41.0	17.0	10.0	21.9	127.4
Real estate 2/	5.1	8.9	11.8	16.7	8.4	5.2	10.6	66.7
Nonreal estate	1.2	3.0	7.5	24.3	8.5	4.9	11.4	60.7
Equity	56.9	89.6	117.0	150.6	80.4	47.9	97.8	640.1
Percent								
Debt-to-asset ratio	10.0	11.7	14.2	21.4	17.4	17.3	18.3	16.6
Percent								
Percent of total:								
Farm assets	8.2	13.2	17.8	25.0	12.7	7.6	15.6	100.0
Real estate	7.7	13.3	17.7	25.0	12.7	7.7	15.9	100.0
Livestock and poultry	15.2	13.6	15.7	22.1	11.3	7.6	14.4	100.0
Machinery and motor vehicles	5.8	11.4	17.7	27.3	13.2	8.0	16.6	100.0
Crops stored 1/	6.9	16.9	23.7	32.0	10.6	4.1	5.7	100.0
Purchased inputs	NA	NA	NA	NA	NA	NA	NA	NA
Investments in cooperatives	20.9	12.9	21.0	14.9	19.4	2.7	8.3	100.0
Other financial	3.7	10.6	7.8	16.3	10.4	9.5	41.7	100.0
Debt	5.0	9.3	15.2	32.2	13.3	7.9	17.2	100.0
Real estate 2/	7.7	13.3	17.7	25.0	12.7	7.7	15.9	100.0
Nonreal estate	2.0	4.9	12.3	40.0	14.1	8.0	18.7	100.0
Equity	8.9	14.0	18.3	23.5	12.6	7.5	15.3	100.0
Thousand dollars								
Per farm:								
Farm assets	3,705.7	1,692.0	1,006.5	552.4	333.2	196.1	92.8	315.0
Real estate	2,718.3	1,333.0	788.0	434.2	260.9	157.5	74.0	247.0
Livestock and poultry	445.6	114.1	58.2	31.9	19.4	12.9	5.6	20.6
Machinery and motor vehicles	232.7	130.1	89.4	54.0	31.0	18.6	8.8	28.1
Crops stored 1/	96.9	67.5	41.9	22.1	8.7	3.3	1.0	9.8
Purchased inputs	NA	NA	NA	NA	NA	NA	NA	NA
Investments in cooperatives	196.9	34.7	24.9	6.9	10.7	1.5	1.0	6.6
Other financial	15.3	12.6	4.1	3.3	2.5	2.3	2.3	2.9
Debt	371.4	197.6	142.6	118.2	58.1	33.9	17.0	52.3
Real estate 2/	301.4	147.9	87.4	48.1	28.9	17.4	8.2	27.4
Nonreal estate	70.0	49.8	55.2	70.0	29.2	16.5	8.8	24.9
Equity	3,334.4	1,494.4	863.9	434.3	275.1	162.2	75.8	262.7

1/ Non-CCC crops held on farms plus value above loan rate for crops held under CCC.

2/ Includes CCC storage and drying facilities loans.

NA = not available.

Numbers may not add due to rounding.

Table 36--Farm sector balance sheet (excluding operator households), by value of sales class, December 31, 1979

Item	\$500,000 and over	\$250,000 to \$499,999	\$100,000 to \$249,999	\$40,000 to \$99,999	\$20,000 to \$39,999	\$10,000 to \$19,999	Less than \$10,000	Total
Billion dollars								
Total:								
Farm assets	80.3	124.8	160.1	218.9	107.4	65.3	141.4	898.2
Real estate	58.8	97.2	124.4	173.8	84.6	52.8	114.5	706.1
Livestock and poultry	10.1	8.9	9.9	13.0	6.6	4.5	8.5	61.4
Machinery and motor vehicles	4.9	9.6	13.9	19.5	9.3	5.8	12.5	75.4
Crops stored 1/	2.4	5.7	7.4	8.9	2.8	1.1	1.6	30.0
Purchased inputs	NA	NA	NA	NA	NA	NA	NA	NA
Investments in cooperatives	3.9	2.4	3.9	2.6	3.4	0.5	1.5	18.1
Other financial	0.3	0.9	0.6	1.2	0.7	0.7	2.9	7.3
Debt	8.5	15.6	24.4	47.3	18.7	11.3	25.7	151.6
Real estate 2/	6.6	11.0	14.0	19.6	9.6	6.0	12.9	79.7
Nonreal estate	1.9	4.6	10.4	27.6	9.2	5.4	12.8	71.8
Equity	71.8	109.1	135.7	171.7	88.7	53.9	115.7	746.7
Percent								
Debt-to-asset ratio	10.6	12.5	15.2	21.6	17.4	17.4	18.2	16.9
Percent of total:								
Percent								
Farm assets	8.9	13.9	17.8	24.4	12.0	7.3	15.7	100.0
Real estate	8.3	13.8	17.6	24.6	12.0	7.5	16.2	100.0
Livestock and poultry	16.4	14.5	16.2	21.1	10.7	7.3	13.8	100.0
Machinery and motor vehicles	6.5	12.7	18.5	25.9	12.3	7.6	16.5	100.0
Crops stored 1/	8.0	19.1	24.7	29.8	9.4	3.7	5.3	100.0
Purchased inputs	NA	NA	NA	NA	NA	NA	NA	NA
Investments in cooperatives	21.3	13.2	21.4	14.5	18.9	2.7	8.1	100.0
Other financial	4.3	12.2	8.5	16.0	10.0	9.2	39.9	100.0
Debt	5.6	10.3	16.1	31.2	12.4	7.5	17.0	100.0
Real estate 2/	8.3	13.8	17.6	24.6	12.0	7.5	16.2	100.0
Nonreal estate	2.6	6.5	14.4	38.5	12.8	7.5	17.8	100.0
Equity	9.6	14.6	18.2	23.0	11.9	7.2	15.5	100.0
Thousand dollars								
Per farm:								
Farm assets	3,943.8	1,769.1	1,062.0	624.4	374.5	223.4	111.7	368.5
Real estate	2,886.5	1,378.7	824.9	495.6	295.0	180.6	90.4	289.7
Livestock and poultry	493.9	126.5	65.8	37.0	22.9	15.3	6.7	25.2
Machinery and motor vehicles	240.2	136.3	92.3	55.6	32.3	.7	9.8	30.9
Crops stored 1/	117.9	81.2	49.1	25.4	9.8	3.8	1.2	12.3
Purchased inputs	NA	NA	NA	NA	NA	NA	NA	NA
Investments in cooperatives	189.9	33.9	25.8	7.5	11.9	1.7	1.2	7.4
Other financial	15.3	12.6	4.1	3.3	2.5	2.3	2.3	3.0
Debt	417.3	221.6	161.8	134.8	65.3	38.8	20.3	62.2
Real estate 2/	326.1	155.7	93.1	56.0	33.3	20.4	10.2	32.7
Nonreal estate	91.2	65.8	68.7	78.8	32.0	18.4	10.1	29.5
Equity	3,526.5	1,547.6	900.1	489.6	309.2	184.6	91.4	306.4

1/ Non-CCC crops held on farms plus value above loan rate for crops held under CCC.
2/ Includes CCC storage and drying facilities loans.

NA = not available.

Numbers may not add due to rounding.

Table 37--Farm sector balance sheet (excluding operator households), by value of sales class, December 31, 1980

Item	\$500,000 and over	\$250,000 to \$499,999	\$100,000 to \$249,999	\$40,000 to \$99,999	\$20,000 to \$39,999	\$10,000 to \$19,999	Less than \$10,000	Total
Billion dollars								
Total:								
Farm assets	99.9	152.3	182.8	224.6	108.3	67.9	147.4	983.3
Real estate	76.6	121.6	143.9	179.0	85.8	55.2	120.7	782.8
Livestock and poultry	10.3	9.3	10.2	12.3	6.1	4.3	8.2	60.6
Machinery and motor vehicles	5.7	11.2	15.5	20.0	9.2	6.1	12.6	80.3
Crops stored 1/	2.7	6.7	8.3	9.4	2.9	1.2	1.6	32.8
Purchased inputs	NA	NA	NA	NA	NA	NA	NA	NA
Investments in cooperatives	4.2	2.6	4.2	2.7	3.5	0.5	1.5	19.3
Other financial	0.4	1.0	0.7	1.2	0.7	0.7	2.8	7.4
Debt	11.1	20.1	29.1	49.0	18.8	11.7	27.0	166.8
Real estate 2/	8.8	13.9	16.5	20.5	9.8	6.3	13.8	89.7
Nonreal estate	2.3	6.1	12.6	28.5	8.9	5.4	13.2	77.1
Equity	88.8	132.3	153.7	175.6	89.5	56.2	120.4	816.5
Percent								
Debt-to-asset ratio	11.1	13.2	15.9	21.8	17.3	17.3	18.3	17.0
Percent of total:								
Farm assets	10.2	15.5	18.6	22.8	11.0	6.9	15.0	100.0
Real estate	9.8	15.5	18.4	22.9	11.0	7.1	15.4	100.0
Livestock and poultry	16.9	15.3	16.8	20.2	10.1	7.1	13.5	100.0
Machinery and motor vehicles	7.1	13.9	19.3	24.9	11.4	7.6	15.7	100.0
Crops stored 1/	8.3	20.3	25.4	28.6	8.9	3.6	5.0	100.0
Purchased inputs	NA	NA	NA	NA	NA	NA	NA	NA
Investments in cooperatives	21.8	13.5	21.8	14.1	18.4	2.6	7.9	100.0
Other financial	4.8	13.7	9.1	15.8	9.5	8.8	38.2	100.0
Debt	6.6	12.0	17.5	29.4	11.3	7.0	16.2	100.0
Real estate 2/	9.8	15.5	18.4	22.9	11.0	7.0	15.4	100.0
Nonreal estate	3.0	7.9	16.4	36.9	11.6	7.0	17.1	100.0
Equity	10.9	16.2	18.8	21.5	11.0	6.9	14.7	100.0
Thousand dollars								
Per farm:								
Farm assets	4,216.7	1,877.2	1,099.7	633.0	384.4	235.1	118.6	403.1
Real estate	3,236.3	1,498.1	865.5	504.5	304.6	191.0	97.1	320.9
Livestock and poultry	433.2	114.7	61.3	34.6	21.7	14.9	6.6	24.9
Machinery and motor vehicles	239.9	137.6	93.5	56.5	32.6	21.2	10.1	32.9
Crops stored 1/	114.8	82.3	50.1	26.5	10.3	4.1	1.3	13.5
Purchased inputs	NA	NA	NA	NA	NA	NA	NA	NA
Investments in cooperatives	177.4	32.0	25.4	7.7	12.6	1.7	1.2	7.9
Other financial	15.0	12.4	4.0	3.3	2.5	2.2	2.3	3.0
Debt	467.6	247.3	175.2	138.2	66.6	40.6	21.7	68.4
Real estate 2/	371.2	171.7	99.2	57.8	34.9	21.9	11.1	36.8
Nonreal estate	96.3	75.5	76.0	80.3	31.7	18.7	10.6	31.6
Equity	3,749.2	1,629.9	924.5	494.9	317.8	194.5	96.9	334.7

1/ Non-CCC crops held on farms plus value above loan rate for crops held under CCC.

2/ Includes CCC storage and drying facilities loans.

NA = not available.

Numbers may not add due to rounding.

Table 38--Farm sector balance sheet (excluding operator households), by value of sales class, December 31, 1981

Item	\$500,000 and over	\$250,000 to \$499,999	\$100,000 to \$249,999	\$40,000 to \$99,999	\$20,000 to \$39,999	\$10,000 to \$19,999	Less than \$10,000	Total
Billion dollars								
Total:								
Farm assets	111.9	166.8	188.8	210.5	99.7	64.3	140.7	982.8
Real estate	88.0	134.7	149.4	167.5	78.9	52.2	114.9	785.6
Livestock and poultry	9.4	8.6	9.3	10.6	5.1	3.7	6.9	53.5
Machinery and motor vehicles	6.6	13.0	17.3	20.5	9.0	6.3	12.9	85.5
Crops stored 1/	3.0	6.6	7.5	7.9	2.4	1.0	1.6	30.0
Purchased inputs	NA	NA	NA	NA	NA	NA	NA	NA
Investments in cooperatives	4.6	2.8	4.6	2.8	3.7	0.5	1.6	20.6
Other financial	0.4	1.1	0.7	1.2	0.7	0.6	2.8	7.6
Debt	13.8	24.9	34.1	50.8	18.7	12.0	28.0	182.4
Real estate 2/	11.1	16.9	18.8	21.1	9.9	6.6	14.4	98.8
Nonreal estate	2.8	7.9	15.3	29.7	8.8	5.5	13.6	83.6
Equity	98.1	142.0	154.6	159.7	81.0	52.3	112.7	800.4
Percent								
Debt-to-asset ratio	12.4	14.9	18.1	24.1	18.8	18.7	19.9	18.6
Percent								
Percent of total:								
Farm assets	11.4	17.0	19.2	21.4	10.1	6.5	14.3	100.0
Real estate	11.2	17.1	19.0	21.3	10.0	6.6	14.6	100.0
Livestock and poultry	17.6	16.1	17.3	19.7	9.4	6.9	13.0	100.0
Machinery and motor vehicles	7.7	15.2	20.2	24.0	10.5	7.3	15.1	100.0
Crops stored 1/	10.0	21.9	25.1	26.5	8.0	3.2	5.3	100.0
Purchased inputs	NA	NA	NA	NA	NA	NA	NA	NA
Investments in cooperatives	22.2	13.7	22.3	13.7	17.9	2.5	7.7	100.0
Other financial	5.4	15.1	9.7	15.6	9.1	8.5	36.6	100.0
Debt	7.6	13.6	18.7	27.8	10.3	6.6	15.3	100.0
Real estate 2/	11.2	17.2	19.0	21.3	10.0	6.6	14.6	100.0
Nonreal estate	3.3	9.5	18.4	35.5	10.5	6.6	16.2	100.0
Equity	12.3	17.7	19.3	20.0	10.1	6.5	14.1	100.0
Thousand dollars								
Per farm:								
Farm assets	4,148.0	1,818.8	1,039.6	586.8	360.6	225.2	115.4	402.8
Real estate	3,259.1	1,465.4	822.7	467.0	285.3	182.9	94.3	322.0
Livestock and poultry	349.3	94.0	51.1	29.4	18.3	12.9	5.7	21.9
Machinery and motor vehicles	243.7	141.6	95.0	57.2	32.5	22.0	10.6	35.0
Crops stored 1/	111.4	71.5	41.5	22.1	8.6	3.4	1.3	12.3
Purchased inputs	NA	NA	NA	NA	NA	NA	NA	NA
Investments in cooperatives	169.4	30.8	25.3	7.9	13.3	1.8	1.3	8.4
Other financial	15.1	12.4	4.1	3.3	2.5	2.3	2.3	3.1
Debt	513.1	271.1	188.0	141.6	67.7	42.2	23.0	74.7
Real estate 2/	410.1	184.8	103.5	58.7	35.9	23.0	11.8	40.5
Nonreal estate	102.9	86.4	84.5	82.8	31.8	19.2	11.1	34.3
Equity	3,634.9	1,547.7	851.6	445.3	292.9	183.0	92.5	328.0

1/ Non-CCC crops held on farms plus value above loan rate for crops held under CCC.

2/ Includes CCC storage and drying facilities loans.

NA = not available.

Numbers may not add due to rounding.

Table 39--Farm sector balance sheet (excluding operator households), by value of sales class, December 31, 1982

Item	\$500,000 and over	\$250,000 to \$499,999	\$100,000 to \$249,999	\$40,000 to \$99,999	\$20,000 to \$39,999	\$10,000 to \$19,999	Less than \$10,000	Total
Billion dollars								
Total:								
Farm assets	122.1	112.7	229.5	195.8	91.6	60.5	133.0	945.1
Real estate	96.9	90.1	181.1	154.3	71.4	48.6	107.6	750.0
Livestock and poultry	9.8	5.7	11.7	10.5	4.9	3.6	6.8	53.0
Machinery and motor vehicles	7.2	9.1	22.4	19.8	8.7	6.2	12.7	86.0
Crops stored 1/	2.8	3.9	8.4	6.9	2.0	0.9	1.5	26.4
Purchased inputs	NA	NA	NA	NA	NA	NA	NA	NA
Investments in cooperatives	5.0	3.1	5.0	2.9	3.8	0.5	1.6	21.9
Other financial	0.5	0.8	1.0	1.2	0.7	0.7	2.8	7.8
Debt	16.5	16.0	49.7	49.8	17.8	11.7	27.3	188.8
Real estate 2/	13.2	12.2	24.6	21.0	9.7	6.6	14.6	101.8
Nonreal estate	3.4	3.8	25.1	28.9	8.1	5.1	12.7	87.0
Equity	105.6	96.7	179.8	145.9	73.8	48.8	105.7	756.3
Percent								
Debt-to-asset ratio	13.5	14.2	21.6	25.5	19.4	19.3	20.5	20.0
Percent of total:								
Farm assets	12.9	11.9	24.3	20.7	9.7	6.4	14.1	100.0
Real estate	12.9	12.0	24.1	20.6	9.5	6.5	14.3	100.0
Livestock and poultry	18.4	10.8	22.1	19.8	9.3	6.8	12.8	100.0
Machinery and motor vehicles	8.3	10.6	26.0	23.1	10.1	7.2	14.7	100.0
Crops stored 1/	10.6	14.8	31.7	26.2	7.7	3.3	5.7	100.0
Purchased inputs	NA	NA	NA	NA	NA	NA	NA	NA
Investments in cooperatives	22.6	14.0	22.7	13.3	17.4	2.5	7.5	100.0
Other financial	6.2	10.7	12.9	16.0	9.1	8.6	36.5	100.0
Debt	8.7	8.5	26.3	26.4	9.4	6.2	14.5	100.0
Real estate 2/	12.9	12.0	24.1	20.6	9.5	6.5	14.3	100.0
Nonreal estate	3.9	4.3	28.8	33.2	9.3	5.9	14.6	100.0
Equity	14.0	12.8	23.8	19.3	9.8	6.5	14.0	100.0
Thousand dollars								
Per farm:								
Farm assets	4,085.9	1,787.7	989.1	547.4	342.5	217.3	112.9	392.7
Real estate	3,243.2	1,428.8	780.3	431.5	267.0	174.7	91.3	311.7
Livestock and poultry	326.8	90.8	50.5	29.4	18.4	12.9	5.7	22.0
Machinery and motor vehicles	239.9	144.3	96.5	55.5	32.4	22.2	10.7	35.7
Crops stored 1/	93.6	61.9	36.0	19.4	7.6	3.1	1.3	11.0
Purchased inputs	NA	NA	NA	NA	NA	NA	NA	NA
Investments in cooperatives	166.3	48.8	21.5	8.2	14.3	1.9	1.4	9.1
Other financial	16.1	13.2	4.3	3.5	2.7	2.4	2.4	3.2
Debt	552.9	253.9	214.0	139.3	66.5	42.0	23.2	78.5
Real estate 2/	440.6	194.1	105.9	58.6	36.3	23.7	12.4	42.3
Nonreal estate	112.2	59.8	108.1	80.8	30.2	18.3	10.8	36.1
Equity	3,533.0	1,533.8	775.0	408.1	276.0	175.3	89.7	314.3

1/ Non-CCC crops held on farms plus value above loan rate for crops held under CCC.

2/ Includes CCC storage and drying facilities loans.

NA = not available.

Numbers may not add due to rounding.

Table 40--Farm sector balance sheet (excluding operator households), by value of sales class, December 31, 1983

Item	\$500,000 and over	\$250,000 to \$499,999	\$100,000 to \$249,999	\$40,000 to \$99,999	\$20,000 to \$39,999	\$10,000 to \$19,999	Less than \$10,000	Total
Billion dollars								
Total:								
Farm assets	95.5	116.1	242.1	197.2	101.1	58.9	133.0	944.0
Real estate	75.2	93.6	192.8	156.6	79.6	47.5	108.1	753.4
Livestock and poultry	7.3	5.5	11.6	10.1	5.2	3.4	6.5	49.5
Machinery and motor vehicles	5.5	9.1	23.2	19.9	9.6	6.0	12.5	85.8
Crops stored 1/	1.9	3.7	8.2	6.4	2.1	0.8	1.3	24.4
Purchased inputs	NA	NA	NA	NA	NA	NA	NA	NA
Investments in cooperatives	5.3	3.3	5.3	3.0	3.8	0.5	1.7	22.8
Other financial	0.4	0.9	1.1	1.3	0.8	0.7	2.9	8.1
Debt	12.3	16.8	53.7	49.9	20.3	11.1	26.9	191.1
Real estate 2/	10.3	12.8	26.4	21.4	10.9	6.5	14.8	103.2
Nonreal estate	2.0	4.0	27.2	28.5	9.4	4.6	12.1	87.9
Equity	83.2	99.3	188.5	147.3	80.8	47.8	106.1	752.9
Percent								
Debt-to-asset ratio	12.9	14.5	22.2	25.3	20.1	18.9	20.2	20.2
Percent of total:								
Farm assets	10.1	12.3	25.6	20.9	10.7	6.2	14.1	100.0
Real estate	10.0	12.4	25.6	20.8	10.6	6.3	14.3	100.0
Livestock and poultry	14.7	11.1	23.3	20.3	10.5	6.8	13.2	100.0
Machinery and motor vehicles	6.4	10.7	27.0	23.2	11.2	7.0	14.6	100.0
Crops stored 1/	7.9	15.2	33.6	26.3	8.5	3.1	5.3	100.0
Purchased inputs	NA	NA	NA	NA	NA	NA	NA	NA
Investments in cooperatives	23.1	14.3	23.2	12.9	16.9	2.4	7.2	100.0
Other financial	4.7	11.0	13.5	16.1	10.0	8.3	36.3	100.0
Debt	6.5	8.8	28.1	26.1	10.6	5.8	14.1	100.0
Real estate 2/	10.0	12.4	25.6	20.8	10.6	6.3	14.3	100.0
Nonreal estate	2.3	4.6	31.0	32.4	10.7	5.2	13.8	100.0
Equity	11.0	13.2	25.0	19.6	10.7	6.3	14.1	100.0
Thousand dollars								
Per farm:								
Farm assets	4,242.5	1,825.7	1,009.8	560.4	349.8	223.3	115.9	396.9
Real estate	3,339.5	1,471.9	804.1	444.8	275.3	180.3	94.1	316.7
Livestock and poultry	322.5	86.6	48.2	28.6	18.1	12.8	5.7	20.8
Machinery and motor vehicles	244.0	143.8	96.7	56.7	33.1	22.7	10.9	36.1
Crops stored 1/	85.5	58.2	34.1	18.2	7.2	2.9	1.1	10.2
Purchased inputs	NA	NA	NA	NA	NA	NA	NA	NA
Investments in cooperatives	233.8	51.2	22.1	8.4	13.3	2.1	1.4	9.6
Other financial	17.0	14.0	4.6	3.7	2.8	2.5	2.6	3.4
Debt	548.3	264.8	223.8	141.8	70.2	42.1	23.4	80.3
Real estate 2/	457.8	201.7	110.2	60.9	37.7	24.7	12.9	43.4
Nonreal estate	90.6	63.1	113.6	80.9	32.5	17.4	10.6	36.9
Equity	3,694.2	1,560.9	786.0	418.6	279.6	181.1	92.4	316.5

1/ Non-CCC crops held on farms plus value above loan rate for crops held under CCC.

2/ Includes CCC storage and drying facilities loans.

NA = not available.

Numbers may not add due to rounding.

Table 41--Farm sector balance sheet (excluding operator households), by value of sales class, December 31, 1984

Item	\$500,000 and over	\$250,000 to \$499,999	\$100,000 to \$249,999	\$40,000 to \$99,999	\$20,000 to \$39,999	\$10,000 to \$19,999	Less than \$10,000	Total
Billion dollars								
Total:								
Farm assets	114.4	88.2	192.7	159.6	79.7	53.3	169.1	857.1
Real estate	87.1	61.6	145.2	120.4	60.8	42.1	144.5	661.7
Livestock and poultry	9.8	6.4	10.7	9.3	4.3	3.2	5.8	49.5
Machinery and motor vehicles	7.6	10.6	21.4	18.8	8.0	5.9	12.6	85.0
Crops stored 1/	2.8	4.6	8.1	6.5	1.9	0.8	1.5	26.3
Purchased inputs	0.7	0.3	0.5	0.3	0.1	0.0	0.1	2.0
Investments in cooperatives	5.7	3.5	5.8	3.0	4.0	0.5	1.7	24.3
Other financial	0.6	1.1	1.1	1.3	0.7	0.7	2.9	8.3
Debt	26.0	18.4	45.8	37.7	17.0	11.0	37.0	193.8
Real estate 2/	12.8	9.8	23.4	19.6	10.0	7.0	24.1	106.7
Nonreal estate	13.1	8.6	22.4	18.1	7.0	4.9	12.9	87.1
Equity	88.5	69.8	146.9	121.9	62.7	41.4	132.1	663.3
Percent								
Debt-to-asset ratio	22.7	20.9	23.8	23.6	21.3	22.3	21.9	22.6
Percent								
Percent of total:								
Farm assets	13.4	10.3	22.5	18.6	9.3	6.2	19.7	100.0
Real estate	13.2	9.3	21.9	18.2	9.2	6.4	21.8	100.0
Livestock and poultry	19.8	13.0	21.6	18.7	8.6	6.5	11.8	100.0
Machinery and motor vehicles	9.0	12.5	25.2	22.1	9.4	7.0	14.8	100.0
Crops stored 1/	10.8	17.6	30.7	24.8	7.1	3.1	5.6	100.0
Purchased inputs	37.0	14.9	23.3	15.7	3.6	2.1	3.5	100.0
Investments in cooperatives	23.6	14.6	23.8	12.6	16.3	2.2	6.9	100.0
Other financial	6.7	13.2	12.8	15.5	8.5	8.2	35.2	100.0
Debt	13.4	9.5	23.7	19.4	8.8	6.1	19.1	100.0
Real estate 2/	12.0	9.2	21.9	18.3	9.3	6.5	22.6	100.0
Nonreal estate	15.1	9.8	25.7	20.8	8.0	5.7	14.8	100.0
Equity	13.3	10.5	22.1	18.4	9.4	6.2	19.9	100.0
Thousand dollars								
Per farm:								
Farm assets	3,545.3	1,138.1	836.3	463.2	321.5	199.7	149.1	367.3
Real estate	2,699.2	794.3	630.2	349.4	245.3	157.6	127.4	283.5
Livestock and poultry	304.0	83.1	46.3	26.9	17.2	12.1	5.1	21.2
Machinery and motor vehicles	236.9	137.2	92.9	54.5	32.4	22.2	11.1	36.4
Crops stored 1/	87.8	59.8	35.2	18.9	7.5	3.1	1.3	11.2
Purchased inputs	22.9	3.8	2.0	0.9	0.3	0.2	0.1	0.9
Investments in cooperatives	177.3	45.7	25.0	8.8	16.0	2.0	1.5	10.4
Other financial	17.2	14.1	4.6	3.7	2.8	2.6	2.6	3.6
Debt	804.4	237.7	198.9	109.4	68.5	44.6	32.6	83.0
Real estate 2/	398.0	127.0	101.6	56.8	40.3	26.1	21.2	45.7
Nonreal estate	406.4	110.6	97.3	52.6	28.3	18.4	11.4	37.3
Equity	2,740.9	900.4	637.4	353.8	253.0	155.1	116.5	284.2

1/ Non-CCC crops held on farms plus value above loan rate for crops held under CCC.

2/ Includes CCC storage and drying facilities loans.

Numbers may not add due to rounding.

Table 42--Farm sector balance sheet (excluding operator households), by value of sales class, December 31, 1985

Item	\$500,000 and over	\$250,000 to \$499,999	\$100,000 to \$249,999	\$40,000 to \$99,999	\$20,000 to \$39,999	\$10,000 to \$19,999	Less than \$10,000	Total
Billion dollars								
Total:								
Farm assets	102.7	80.7	174.5	143.1	72.0	49.0	150.5	772.6
Real estate	77.7	54.8	129.3	106.9	53.7	37.1	126.6	586.1
Livestock and poultry	8.2	6.2	10.2	8.8	4.0	3.3	5.6	46.3
Machinery and motor vehicles	6.5	10.3	20.7	18.0	8.0	6.3	13.1	82.9
Crops stored 1/	3.7	4.5	7.1	4.9	1.5	0.9	0.3	22.9
Purchased inputs	0.4	0.2	0.3	0.2	0.1	0.0	0.1	1.2
Investments in cooperatives	5.7	3.5	5.8	3.0	4.0	0.5	1.7	24.3
Other financial	0.5	1.2	1.1	1.4	0.8	0.8	3.2	9.0
Debt	23.9	17.0	42.1	34.5	15.5	10.9	33.7	177.6
Real estate 2/	12.1	9.3	22.0	18.4	9.3	6.5	22.5	100.1
Nonreal estate	11.8	7.8	20.1	16.1	6.2	4.3	11.2	77.5
Equity	78.8	63.7	132.4	108.6	56.5	38.1	116.8	595.0
Percent								
Debt-to-asset ratio	23.3	21.1	24.1	24.1	21.6	22.2	22.4	23.0
Percent								
Percent of total:								
Farm assets	13.3	10.4	22.6	18.5	9.3	6.3	19.5	100.0
Real estate	13.3	9.3	22.1	18.2	9.2	6.3	21.6	100.0
Livestock and poultry	17.7	13.5	21.9	18.9	8.8	7.1	12.1	100.0
Machinery and motor vehicles	7.8	12.4	25.0	21.8	9.6	7.6	15.7	100.0
Crops stored 1/	16.0	19.8	31.1	21.4	6.6	3.8	1.3	100.0
Purchased inputs	36.3	13.7	23.6	13.4	5.0	2.3	5.8	100.0
Investments in cooperatives	23.6	14.6	23.8	12.6	16.3	2.2	6.9	100.0
Other financial	5.8	13.3	12.7	15.2	8.6	9.0	35.5	100.0
Debt	13.5	9.6	23.7	19.4	8.7	6.1	19.0	100.0
Real estate 2/	12.1	9.2	22.0	18.3	9.3	6.5	22.5	100.0
Nonreal estate	15.3	10.0	25.9	20.8	8.0	5.6	14.4	100.0
Equity	13.2	10.7	22.3	18.3	9.5	6.4	19.6	100.0
Thousand dollars								
Per farm:								
Farm assets	3,765.7	1,057.1	782.7	436.5	294.9	173.7	135.4	337.0
Real estate	2,847.5	717.1	580.0	325.9	219.9	131.7	113.9	255.7
Livestock and poultry	300.6	81.5	45.5	26.7	16.6	11.6	5.0	20.2
Machinery and motor vehicles	238.2	135.0	92.9	55.0	32.7	22.4	11.7	36.2
Crops stored 1/	134.1	59.2	31.9	15.0	6.1	3.1	0.3	10.0
Purchased inputs	16.1	2.2	1.3	0.5	0.2	0.1	0.1	0.5
Investments in cooperatives	210.2	46.4	25.9	9.3	16.2	1.9	1.5	10.6
Other financial	19.1	15.7	5.1	4.2	3.2	2.9	2.9	3.9
Debt	876.5	222.9	188.9	105.2	63.6	38.5	30.3	77.5
Real estate 2/	443.0	121.2	98.7	56.0	38.3	23.2	20.2	43.7
Nonreal estate	433.5	101.8	90.2	49.2	25.3	15.3	10.1	33.8
Equity	2,889.2	834.1	593.8	331.3	231.3	135.2	105.1	259.5

1/ Non-CCC crops held on farms plus value above loan rate for crops held under CCC.

2/ Includes CCC storage and drying facilities loans.

NA = not available.

Numbers may not add due to rounding.

Table 43--Farm sector balance sheet (excluding operator households), by value of sales class, December 31, 1986

Item	\$500,000 and over	\$250,000 to \$499,999	\$100,000 to \$249,999	\$40,000 to \$99,999	\$20,000 to \$39,999	\$10,000 to \$19,999	Less than \$10,000	Total
Billion dollars								
Total:								
Farm assets	85.2	73.6	170.3	131.9	69.7	54.1	139.8	724.5
Real estate	58.8	49.7	127.0	98.5	50.8	42.2	115.3	542.2
Livestock and poultry	9.5	6.1	10.6	8.5	4.3	3.4	5.3	47.8
Machinery and motor vehicles	7.2	9.4	20.2	16.8	8.2	6.4	13.4	81.5
Crops stored 1/	2.7	3.3	5.0	3.3	1.4	0.6	0.3	16.6
Purchased inputs	0.6	0.3	0.5	0.3	0.1	0.1	0.2	2.1
Investments in cooperatives	5.8	3.6	5.8	3.1	4.0	0.5	1.7	24.4
Other financial	0.7	1.3	1.3	1.4	0.9	0.9	3.6	10.0
Debt	18.0	15.3	37.5	29.8	14.1	10.9	31.4	157.0
Real estate 2/	8.9	8.1	20.9	16.5	8.6	7.1	20.2	90.4
Nonreal estate	9.1	7.2	16.5	13.3	5.4	3.8	11.2	66.6
Equity	67.2	58.3	132.9	102.1	55.6	43.2	108.4	567.6
Percent								
Debt-to-asset ratio	21.1	20.8	22.0	22.6	20.2	20.2	22.5	21.7
Percent								
Percent of total:								
Farm assets	11.8	10.2	23.5	18.2	9.6	7.5	19.3	100.0
Real estate	10.8	9.2	23.4	18.2	9.4	7.8	21.3	100.0
Livestock and poultry	19.8	12.8	22.2	17.8	9.1	7.1	11.1	100.0
Machinery and motor vehicles	8.8	11.5	24.7	20.6	10.1	7.8	16.4	100.0
Crops stored 1/	16.2	20.2	30.1	19.7	8.2	3.7	1.9	100.0
Purchased inputs	28.4	15.3	24.7	14.8	6.0	2.6	8.0	100.0
Investments in cooperatives	23.6	14.6	23.7	12.6	16.3	2.3	6.9	100.0
Other financial	6.5	12.5	12.7	14.4	8.9	9.1	36.0	100.0
Debt	11.5	9.8	23.9	19.0	9.0	7.0	20.0	100.0
Real estate 2/	9.9	9.0	23.2	18.2	9.6	7.9	22.3	100.0
Nonreal estate	13.6	10.8	24.8	20.0	8.2	5.8	16.8	100.0
Equity	11.8	10.3	23.4	18.0	9.8	7.6	19.1	100.0
Thousand dollars								
Per farm:								
Farm assets	2,848.7	1,054.9	783.9	432.7	281.9	192.7	127.1	322.0
Real estate	1,967.4	711.8	584.4	323.1	205.4	150.2	104.8	241.0
Livestock and poultry	316.2	87.6	48.9	27.9	17.5	12.2	4.8	21.2
Machinery and motor vehicles	240.8	134.0	92.8	55.2	33.3	22.8	12.2	36.2
Crops stored 1/	89.9	48.0	22.9	10.7	5.5	2.2	0.3	7.4
Purchased inputs	19.6	4.5	2.3	1.0	0.5	0.2	0.2	0.9
Investments in cooperatives	192.8	51.1	26.7	10.1	16.1	2.0	1.5	10.9
Other financial	21.9	17.9	5.9	4.7	3.6	3.3	3.3	4.5
Debt	601.8	219.3	172.4	97.8	57.0	38.9	28.5	69.8
Real estate 2/	298.2	116.7	96.4	54.0	35.0	25.3	18.3	40.2
Nonreal estate	303.7	102.6	76.0	43.8	22.0	13.7	10.2	29.6
Equity	2,246.9	835.6	611.5	334.9	225.0	153.8	98.5	252.3

1/ Non-CCC crops held on farms plus value above loan rate for crops held under CCC.

2/ Includes CCC storage and drying facilities loans.

NA = not available.

Numbers may not add due to rounding.

Table 44--Farm sector balance sheet (excluding operator households), by value of sales class, December 31, 1987

Item	\$500,000 and over	\$250,000 to \$499,999	\$100,000 to \$249,999	\$40,000 to \$99,999	\$20,000 to \$39,999	\$10,000 to \$19,999	Less than \$10,000	Total
Billion dollars								
Total:								
Farm assets	75.1	78.4	174.0	145.5	84.2	63.9	151.4	772.5
Real estate	45.3	55.8	128.8	107.9	65.9	50.9	124.0	578.6
Livestock and poultry	11.6	6.0	12.3	11.0	5.3	4.5	7.4	58.0
Machinery and motor vehicles	7.5	7.9	19.2	17.4	7.7	6.3	14.0	80.0
Crops stored 1/	2.7	3.4	5.8	3.7	1.0	0.5	0.7	17.8
Purchased inputs	0.9	0.5	0.7	0.4	0.2	0.1	0.2	3.0
Investments in cooperatives	6.5	4.1	5.7	3.5	3.2	0.6	1.7	25.3
Other financial	0.6	0.6	1.5	1.6	1.0	1.1	3.4	9.9
Debt	23.6	17.8	35.3	26.8	12.0	6.6	22.4	144.4
Real estate 2/	11.0	9.5	19.9	15.1	6.9	3.8	16.2	82.4
Nonreal estate	12.6	8.3	15.3	11.7	5.1	2.9	6.2	62.0
Equity	51.5	60.6	138.8	118.7	72.2	57.3	129.0	628.1
Percent								
Debt-to-asset ratio	31.4	22.7	20.3	18.4	14.3	10.4	14.8	18.7
Percent								
Percent of total:								
Farm assets	9.7	10.1	22.5	18.8	10.9	8.3	19.6	100.0
Real estate	7.8	9.7	22.3	18.7	11.4	8.8	21.4	100.0
Livestock and poultry	20.0	10.4	21.2	18.9	9.1	7.7	12.7	100.0
Machinery and motor vehicles	9.4	9.9	24.0	21.8	9.6	7.9	17.5	100.0
Crops stored 1/	15.4	19.2	32.4	20.7	5.8	2.7	3.7	100.0
Purchased inputs	31.0	16.8	24.0	13.7	5.3	2.7	6.5	100.0
Investments in cooperatives	25.7	16.2	22.6	13.7	12.6	2.5	6.7	100.0
Other financial	6.0	5.7	15.5	16.7	10.2	11.0	34.9	100.0
Debt	16.3	12.3	24.4	18.5	8.3	4.6	15.5	100.0
Real estate 2/	13.4	11.5	24.2	18.3	8.4	4.6	19.6	100.0
Nonreal estate	20.3	13.4	24.7	18.9	8.2	4.6	10.0	100.0
Equity	8.2	9.6	20.6	18.9	11.5	9.1	20.5	100.0
Thousand dollars								
Per farm:								
Farm assets	2,213.8	1,209.0	810.6	477.3	352.2	240.6	138.9	347.1
Real estate	1,334.0	861.5	600.0	354.0	275.5	191.5	113.8	261.5
Livestock and poultry	341.6	93.0	57.2	35.9	22.1	16.8	6.8	26.2
Machinery and motor vehicles	221.4	122.1	89.4	57.2	32.1	23.8	12.8	36.1
Crops stored 1/	80.8	52.8	26.9	12.1	4.3	1.8	0.6	8.1
Purchased inputs	27.1	7.7	3.3	1.3	0.7	0.3	0.2	1.3
Investments in cooperatives	191.4	63.2	26.6	11.4	13.3	2.4	1.6	11.4
Other financial	17.4	8.7	7.1	5.4	4.2	4.1	3.2	4.5
Debt	696.2	274.4	164.2	87.9	50.2	25.0	20.5	65.3
Real estate 2/	325.3	146.2	92.9	49.5	28.9	14.3	14.8	37.2
Nonreal estate	370.9	128.2	71.3	38.4	21.3	10.7	5.7	28.0
Equity	1,517.7	934.5	646.3	389.4	302.0	215.6	118.4	283.8

1/ Non-CCC crops held on farms plus value above loan rate for crops held under CCC.

2/ Includes CCC storage and drying facilities loans.

NA = not available.

Numbers may not add due to rounding.

Table 45--Farm sector balance sheet (excluding operator households), by value of sales class, December 31, 1988

Item	\$500,000 and over	\$250,000 to \$499,999	\$100,000 to \$249,999	\$40,000 to \$99,999	\$20,000 to \$39,999	\$10,000 to \$19,999	Less than \$10,000	Total
Billion dollars								
Total:								
Farm assets	97.1	78.9	186.2	149.4	87.9	56.7	149.1	805.1
Real estate	62.2	56.7	138.8	111.3	64.8	43.0	122.6	599.4
Livestock and poultry	13.7	6.2	13.1	11.3	5.8	4.7	7.5	62.2
Machinery and motor vehicles	8.5	8.0	19.9	17.4	8.2	6.5	13.5	82.0
Crops stored 1/	5.6	3.3	7.1	4.3	1.2	0.5	0.7	22.7
Purchased inputs	1.0	0.6	0.8	0.5	0.2	0.1	0.2	3.3
Investments in cooperatives	5.3	3.4	5.0	3.2	6.2	0.6	1.4	25.1
Other financial	0.8	0.7	1.5	1.4	1.4	1.3	3.3	10.4
Debt	22.5	16.4	35.3	27.1	11.4	6.4	20.5	139.4
Real estate 2/	10.6	8.8	19.0	14.7	6.5	3.9	14.1	77.6
Nonreal estate	11.9	7.6	16.2	12.3	4.9	2.5	6.4	61.7
Equity	74.6	62.5	150.9	122.3	76.5	50.3	128.6	665.7
Percent								
Debt-to-asset ratio	23.2	20.8	18.9	18.1	13.0	11.3	13.7	17.3
Percent of total:								
Farm assets	12.1	9.8	23.1	18.6	10.9	7.0	18.5	100.0
Real estate	10.4	9.5	23.2	18.6	10.8	7.2	20.5	100.0
Livestock and poultry	22.0	10.0	21.0	18.1	9.4	7.5	12.0	100.0
Machinery and motor vehicles	10.4	9.8	24.3	21.2	10.0	7.9	16.4	100.0
Crops stored 1/	24.6	14.5	31.4	18.8	5.5	2.3	2.9	100.0
Purchased inputs	30.1	16.7	24.5	14.6	5.3	2.8	6.0	100.0
Investments in cooperatives	21.1	13.4	19.8	12.9	24.6	2.5	5.7	100.0
Other financial	7.7	6.4	14.5	13.8	13.4	12.7	31.5	100.0
Debt	16.1	11.7	25.3	19.4	8.2	4.6	14.7	100.0
Real estate 2/	13.7	11.3	24.5	19.0	8.4	5.0	18.2	100.0
Nonreal estate	19.2	12.3	26.3	20.0	7.9	4.1	10.3	100.0
Equity	11.2	9.4	22.7	18.4	11.5	7.6	19.3	100.0
Thousand dollars								
Per farm:								
Farm assets	2,766.7	1,171.0	847.2	497.3	347.4	209.8	141.8	366.4
Real estate	1,772.9	842.4	631.5	370.6	256.4	159.1	116.6	272.8
Livestock and poultry	389.9	92.4	59.5	37.5	23.1	17.3	7.1	28.3
Machinery and motor vehicles	243.1	119.4	90.7	57.9	32.4	24.0	12.8	37.3
Crops stored 1/	158.8	48.8	32.4	14.2	4.9	1.9	0.6	10.3
Purchased inputs	28.5	8.2	3.7	1.6	0.7	0.3	0.2	1.5
Investments in cooperatives	150.8	49.9	22.6	10.8	24.4	2.3	1.4	11.4
Other financial	22.7	9.8	6.8	4.8	5.5	4.9	3.1	4.7
Debt	640.6	243.0	160.4	90.2	45.1	23.7	19.5	63.4
Real estate 2/	303.0	130.2	86.5	49.1	25.8	14.4	13.4	35.3
Nonreal estate	337.7	112.8	73.9	41.1	19.3	9.4	6.0	28.1
Equity	2,126.1	928.0	686.7	407.1	302.4	186.1	122.3	303.0

1/ Non-CCC crops held on farms plus value above loan rate for crops held under CCC.

2/ Includes CCC storage and drying facilities loans.

NA = not available.

Numbers may not add due to rounding.

Table 46--Farm sector balance sheet (excluding operator households), by value of sales class, December 31, 1989

Item	\$500,000 and over	\$250,000 to \$499,999	\$100,000 to \$249,999	\$40,000 to \$99,999	\$20,000 to \$39,999	\$10,000 to \$19,999	Less than \$10,000	Total
Billion dollars								
Total:								
Farm assets	115.7	99.5	172.8	155.6	90.7	52.2	133.2	819.7
Real estate	75.9	73.1	124.8	116.5	70.3	39.3	105.3	605.1
Livestock and poultry	16.4	7.2	12.7	11.7	6.4	4.5	7.4	66.2
Machinery and motor vehicles	10.3	9.4	19.4	18.0	9.0	6.3	13.5	85.8
Crops stored 1/	4.6	4.3	7.0	4.2	1.5	0.7	1.1	23.3
Purchased inputs	0.8	0.5	0.7	0.4	0.1	0.1	0.1	2.7
Investments in cooperatives	6.8	4.3	7.0	3.3	2.0	0.5	2.2	26.1
Other financial	0.9	0.7	1.3	1.6	1.4	0.9	3.6	10.4
Debt	23.0	17.8	32.3	24.2	11.5	6.4	21.7	137.1
Real estate 2/	9.9	8.9	18.0	13.2	6.3	3.2	15.7	75.3
Nonreal estate	13.2	9.0	14.3	11.0	5.2	3.2	5.9	61.8
Equity	92.7	81.7	140.5	131.4	79.1	45.8	111.5	682.6
Percent								
Debt-to-asset ratio	19.9	17.9	18.7	15.6	12.7	12.3	16.3	16.7
Percent of total:								
Farm assets	14.1	12.1	21.1	19.0	11.0	6.4	16.2	100.0
Real estate	12.5	12.1	20.6	19.3	11.6	6.5	17.4	100.0
Livestock and poultry	24.7	10.9	19.2	17.6	9.6	6.8	11.2	100.0
Machinery and motor vehicles	12.0	10.9	22.6	21.0	10.5	7.3	15.7	100.0
Crops stored 1/	19.7	18.5	30.0	17.9	6.4	2.8	4.8	100.0
Purchased inputs	31.2	17.1	24.6	14.4	4.9	2.7	5.1	100.0
Investments in cooperatives	26.2	16.6	26.6	12.7	7.6	2.0	8.3	100.0
Other financial	8.7	6.7	12.7	15.2	13.6	8.9	34.2	100.0
Debt	16.8	13.0	23.6	17.7	8.4	4.7	15.8	100.0
Real estate 2/	13.1	11.8	23.9	17.6	8.4	4.3	20.9	100.0
Nonreal estate	21.3	14.5	23.2	17.8	8.4	5.2	9.6	100.0
Equity	13.5	12.0	20.6	19.3	11.6	6.7	16.3	100.0
Thousand dollars								
Per farm:								
Farm assets	3,005.3	1,353.1	820.7	513.1	336.7	203.9	130.7	377.7
Real estate	1,970.8	994.3	592.5	384.1	260.9	153.4	103.3	278.8
Livestock and poultry	424.5	98.1	60.4	38.4	23.6	17.6	7.3	30.5
Machinery and motor vehicles	267.4	127.2	92.1	59.4	33.5	24.5	13.2	39.5
Crops stored 1/	119.2	58.6	33.2	13.7	5.5	2.5	1.1	10.7
Purchased inputs	22.0	6.3	3.2	1.3	0.5	0.3	0.1	1.3
Investments in cooperatives	177.8	59.0	33.0	10.9	7.4	2.0	2.1	12.0
Other financial	23.6	9.5	6.3	5.2	5.3	3.6	3.5	4.8
Debt	598.2	242.4	153.6	79.9	42.8	25.1	21.3	63.2
Real estate 2/	256.3	120.5	85.5	43.6	23.5	12.6	15.4	34.7
Nonreal estate	341.9	121.9	68.1	36.3	19.3	12.5	5.8	28.5
Equity	2,407.1	1,110.6	667.0	433.3	293.8	178.8	109.4	314.5

1/ Non-CCC crops held on farms plus value above loan rate for crops held under CCC.

2/ Includes CCC storage and drying facilities loans.

NA = not available.

Numbers may not add due to rounding.

END
DATE
FILMED
2-28-92
NTIS