



AgEcon SEARCH
RESEARCH IN AGRICULTURAL & APPLIED ECONOMICS

The World's Largest Open Access Agricultural & Applied Economics Digital Library

This document is discoverable and free to researchers across the globe due to the work of AgEcon Search.

Help ensure our sustainability.

Give to AgEcon Search

AgEcon Search

<http://ageconsearch.umn.edu>

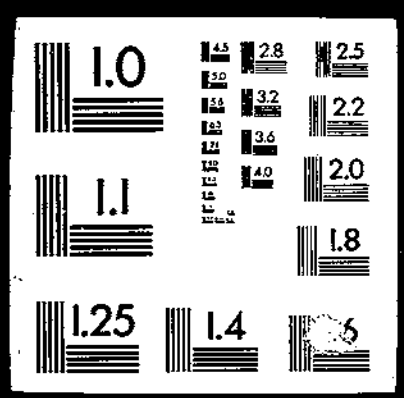
aesearch@umn.edu

*Papers downloaded from **AgEcon Search** may be used for non-commercial purposes and personal study only. No other use, including posting to another Internet site, is permitted without permission from the copyright owner (not AgEcon Search), or as allowed under the provisions of Fair Use, U.S. Copyright Act, Title 17 U.S.C.*

PB90-165994

USDA/SB-786 REPRESENTATIVE U.S. WHEAT FARMS. (STATISTICAL
BULLETIN.) / M. E. SALASSI ECONOMIC RESEARCH SERVICE, WASHINGTON,
DC. AGRICULTURE AND RURAL ECONOMY DIV. JAN 90. 78P

1 OF 1
PB 90
165 9994

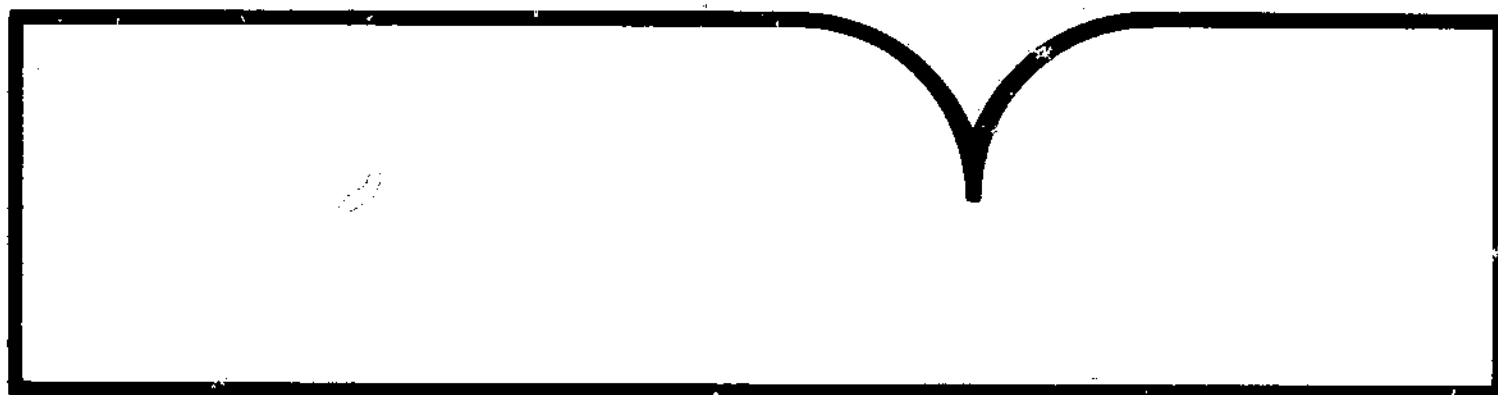


PB90-165994

Representative U.S. Wheat Farms

(U.S.) Economic Research Service, Washington, DC

Jan 90



U.S. Department of Commerce
National Technical Information Service
NTIS

REPORT DOCUMENTATION PAGE	1. REPORT NO. SB-786	2.	3. Recipient's Accession No. PB 90 165994 AS
4. Title and Subtitle Representative U.S. Wheat Farms		5. Report Date January 1990	
7. Author(s) Michael E. Salassi		6.	
9. Performing Organization Name and Address Agriculture and Rural Economy Division Economic Research Service U.S. Department of Agriculture Washington, D.C. 20005-4788		3. Performing Organization Rept. No. SB-786	
		10. Project/Task/Work Unit No.	
		11. Contract(C) or Grant(G) No. (C) (G)	
12. Sponsoring Organization Name and Address		13. Type of Report & Period Covered	
		14.	
15. Supplementary Notes			
16. Abstract (Limit: 200 words)			
<p>The average planted wheat acreage on representative farms in major wheat-producing States ranged from 52 acres per farm in Illinois to 458 acres per farm in Montana. Estimates of operator and unpaid labor were similar for small, mid-sized, and large wheat farms, while estimates for part-time hired labor were proportional to farm size. This report presents average organizational and financial characteristics of representative farms producing wheat in 12 States by farm size. Basic data for the study came from the 1986 Farm Costs and Returns Survey conducted in February and March 1987 by the National Agricultural Statistics Service.</p>			
17. Document Analysis a. Descriptors			
Farm Costs and Returns Survey		Sales class	
Wheat		Farm characteristics	
State			
Region			
b. Identifiers/Open-Ended Terms			
c. COSATI Field/Group 02-B, 05-C		Prices as of 10/1/85: Paper: 17.00 Fiche: \$8.00 Cost codes are: A05 for Paper and A01 for Fiche	
18. Availability Statement: National Technical Information Service 5285 Port Royal Road, Springfield, VA 22161		19. Security Class (This Report) Unclassified	21. No. of Pages 80
		20. Security Class (This Page) Unclassified	22. Price See box 17

PB90-165994




United States
Department of
Agriculture

Economic
Research
Service

Statistical
Bulletin
Number 786

Representative U.S. Wheat Farms

Michael E. Salassi



REPRODUCED BY
U.S. DEPARTMENT OF COMMERCE
NATIONAL TECHNICAL INFORMATION SERVICE
SPRINGFIELD, VA 22161

REPRESENTATIVE U.S. WHEAT FARMS. Michael E. Salassi, Agriculture and Rural Economy Division, Economic Research Service, U.S. Department of Agriculture, Statistical Bulletin No. 786.

Abstract

The average planted wheat acreage on representative farms in major wheat-producing States ranged from 52 acres per farm in Illinois to 458 acres per farm in Montana. Estimates of operator and unpaid labor were similar for small, mid-sized, and large wheat farms, while estimates for part-time hired labor were proportional to farm size. This report presents average organizational and financial characteristics of representative farms producing wheat in 12 States by farm size. Basic data for the study came from the 1986 Farm Costs and Returns Survey conducted in February and March 1987 by the National Agricultural Statistics Service.

Keywords: Farm Costs and Returns Survey, wheat, State, region, sales class, farm characteristics.

Acknowledgments

The author wishes to express his appreciation to Mir Ali, David Banker, and Gerald Plato, Economic Research Service (ERS), for their suggestions and review of the manuscript and to Bonnie Moore, Economics Management Staff, for her editorial assistance.

Contents

	<u>Page</u>
Introduction.....	1
Sources of Data.....	1
Farm Characteristics.....	2
Representative Wheat Farms by State.....	3
Representative Wheat Farms by Size and Region.....	6
Appendix Tables	
State share by wheat farms, harvested acreage, and production, 1982	
1. Acres of wheat for grain per farm.....	11
2. Farm size.....	12
3. Total farm sales.....	13
State share of wheat farms by acres of wheat, 1982	
4. Farm size.....	14
5. Total farm sales.....	15
State Information	
Colorado wheat farm with gross sales of \$40,000-\$99,999, 1986	
6. Land use and tenure.....	16
7. Value of assets and debt.....	17
8. Farm labor.....	17
9. Income and expenses.....	18
Idaho wheat farm with gross sales of \$100,000-\$249,999, 1986	
10. Land use and tenure.....	19
11. Value of assets and debt.....	20
12. Farm labor.....	20
13. Income and expenses.....	21
Illinois wheat farm with gross sales of \$40,000-\$99,999, 1986	
14. Land use and tenure.....	22
15. Value of assets and debt.....	23
16. Farm labor.....	23
17. Income and expenses.....	24
Kansas wheat farm with gross sales of \$40,000-\$99,999, 1986	
18. Land use and tenure.....	25
19. Value of assets and debt.....	26
20. Farm labor.....	26
21. Income and expenses.....	27

Contents--Continued

	<u>Page</u>
Minnesota wheat farm with gross sales of \$100,000-\$249,999, 1986	
22. Land use and tenure.....	28
23. Value of assets and debt.....	29
24. Farm labor.....	29
25. Income and expenses.....	30
Montana wheat farm with gross sales of \$40,000-\$99,999, 1986	
26. Land use and tenure.....	31
27. Value of assets and debt.....	32
28. Farm labor.....	32
29. Income and expenses.....	33
Nebraska wheat farm with gross sales of \$100,000-\$249,999, 1986	
30. Land use and tenure.....	34
31. Value of assets and debt.....	35
32. Farm labor.....	35
33. Income and expenses.....	36
North Dakota wheat farm with gross sales of \$40,000-\$99,999, 1986	
34. Land use and tenure.....	37
35. Value of assets and debt.....	38
36. Farm labor.....	38
37. Income and expenses.....	39
Oklahoma wheat farm with gross sales of \$40,000-\$99,999, 1986	
38. Land use and tenure.....	40
39. Value of assets and debt.....	41
40. Farm labor.....	41
41. Income and expenses.....	42
South Dakota wheat farm with gross sales of \$40,000-\$99,999, 1986	
42. Land use and tenure.....	43
43. Value of assets and debt.....	44
44. Farm labor.....	44
45. Income and expenses.....	45
Texas wheat farm with gross sales of \$40,000-\$99,999, 1986	
46. Land use and tenure.....	46
47. Value of assets and debt.....	47
48. Farm labor.....	47
49. Income and expenses.....	48
Washington wheat farm with gross sales of \$100,000-\$249,999, 1986	
50. Land use and tenure.....	49
51. Value of assets and debt.....	50
52. Farm labor.....	50
53. Income and expenses.....	51

Contents--Continued

	<u>Page</u>
Regional Information	
Central Plains wheat farms by size of farm, 1986	
54. Land use and tenure.....	52
55. Value of assets and debt.....	53
56. Farm labor.....	54
57. Income and expenses.....	55
North Central wheat farms by size of farm, 1986	
58. Land use and tenure.....	56
59. Value of assets and debt.....	57
60. Farm labor.....	58
61. Income and expenses.....	59
Northern Plains wheat farms by size of farm, 1986	
62. Land use and tenure.....	60
63. Value of assets and debt.....	61
64. Farm labor.....	62
65. Income and expenses.....	63
Northwest wheat farms by size of farm, 1986	
66. Land use and tenure.....	64
67. Value of assets and debt.....	65
68. Farm labor.....	66
69. Income and expenses.....	67
Southern Plains wheat farms by size of farm, 1986	
70. Land use and tenure.....	68
71. Value of assets and debt.....	69
72. Farm labor.....	70
73. Income and expenses.....	71

Representative U.S. Wheat Farms

Michael E. Salassi

Introduction

Wheat is one of the major crops produced in the United States. It grows in most States. Each year, 70-80 million acres of U.S. land are planted in wheat, producing nearly 2.5 billion bushels. U.S. wheat acreage and production account for about 20 percent of total world wheat acreage and production.

This report presents average characteristics of representative U.S. wheat farms. The class of wheat grown and quantity produced vary from one area to another due to differences in topography, soil, and climate. More than 200 different varieties of wheat are grown in the United States. The five basic classes of wheat are: Hard Red Winter, Hard Red Spring, White Winter, Soft Red Winter, and Durum. Production practices associated with a particular class of wheat as well as the relationship of the wheat enterprise to the overall farm operation can vary from State to State or region to region. This report provides some information concerning differences in the organizational and financial structure of U.S. wheat farms. Average operating and financial characteristics of wheat farms are presented for selected States and regions. Characteristics of representative wheat farms are presented for 12 leading wheat-producing States, as well as for three different sizes of wheat farms in five leading wheat-producing regions.

Sources of Data

Basic data used in estimating the characteristics of representative U.S. wheat farms presented in this report came from the 1986 Farm Costs and Returns Survey (FCRS) conducted in February and March 1987 by the National Agricultural Statistics Service (NASS). Some comparisons are made between the 1986 FCRS and the 1982 Census of Agriculture for items such as the distribution of wheat farms, acreage, and production across alternative farm classifications.

The FCRS is a stratified, multiframe survey consisting of a list frame and an area frame. List frame farms were stratified by economic size, while area frame farms were stratified by land use type. Multiple versions of the FCRS were integrated into a single survey to simultaneously obtain data such as farm income and expenses, assets and liabilities, operator and household characteristics, as well as production practices for individual enterprises from various target farm groups. Data from the 1986 FCRS were used because wheat farms were one of the target farm groups surveyed during that year.

Farm Characteristics

Characteristics of U.S. wheat farms are divided into four categories: (1) land use and tenure, (2) farm assets and debt, (3) farm labor, and (4) farm income and expenses. Average estimates per farm are presented for characteristics within each category along with corresponding coefficients of variation. The coefficient of variation provides a means of evaluating the reliability of survey estimates. The smaller the coefficient of variation, the greater the reliability of the estimate. Estimates with coefficients of variation greater than 50 percent were determined to be unreliable estimates and were not published. These estimates are denoted with a 'd' in the tables, indicating that data are insufficient for disclosure.

Average land tenure categories for wheat farms were estimated for acres owned, acres cash-rented, acres share-rented, and total acres operated by the farm. Tenure categories (such as land rented on an animal-unit-month (AUM) basis, land rented free from others, and land cash- or share-rented to others) were not estimated as separate items, although all items are reflected in total acres operated.

Land use is divided into four categories: average planted crop acreage for several major as well as minor crops, pasture and hay, land idled for Government programs, and land in summer fallow.

The farm assets and debt category provides estimates on the market value of farm assets and the total unpaid balance of farm debt as of December 31, 1986. Farm assets include land and buildings, equipment, livestock, crop inventory (including crops under CCC loan), purchased inputs on hand, and other farm assets. Farm debt is classified by lender, including Production Credit Association, Farmers Home Administration, commercial banks, Federal land banks, merchants and dealers, insurance companies, other individuals, Commodity Credit Corporation, and other lenders.

Farm labor on representative wheat farms was estimated for the operator, unpaid labor, and hired labor. Labor that was provided by the operator and unpaid workers was estimated on an hours-per-week basis. Hired labor estimates were based on the number of persons hired. Two estimates of hired labor are presented. Full-time employees include paid workers hired for the entire year on a full-time basis. The second estimate of hired labor represents the peak number of hired workers used on the operation at any one time during the year.

The farm income and expense category presents cash farm income, nonfarm income, and cash farm operating expense estimates for the 1986 calendar year. These estimates represent income and expenses associated with the entire farm operation and not just the wheat enterprise. Nonfarm income estimates are included to show that off-farm income sources supplement income from the farm business. Cash farm operating expenses are separated into expense estimates for seed, fertilizer, pesticides, fuel and oil, feed, livestock purchases, livestock services, equipment lease, marketing, hired labor, contract labor, custom work, interest, property taxes, general business, cash rent, and miscellaneous expenses.

Representative Wheat Farms by State

The primary objective of this report was to estimate characteristics of representative wheat farms in major wheat-producing States. This objective involves two basic decisions: (1) the selection of States considered to be major wheat producers, and (2) the selection of a subset of farms within each State considered to be representative of wheat farms in that State. As a means of providing some background to this selection process, as well as providing a point of comparison, information on wheat farms from the 1982 Census of Agriculture was used.

Table 1 shows the 10 States with the largest number of wheat farms in 1982. Kansas was the leading State with 49,231 farms, representing 11 percent of all U.S. wheat farms. The number of wheat farms in other leading States ranged from 32,648 in Ohio to 20,182 in Nebraska. In terms of harvested wheat acreage, Kansas and North Dakota were the two leading States (table 2). Kansas harvested 11.7 million acres in 1982, representing 16.4 percent of total U.S. wheat acreage. North Dakota harvested 9.8 million acres, accounting for 13.8 percent of the U.S. total. Kansas and North Dakota were also leaders in total wheat production, with 372.6 million and 295.9 million bushels (table 3), with each State accounting for more than 12 percent of total U.S. wheat production in 1982. Wheat production in other leading States ranged from 171.7 million bushels in Oklahoma to 85.9 million bushels in South Dakota.

Twelve States were selected as major wheat-producing States (fig. 1). The selection was based on each State's share of total U.S. wheat acreage and production and also on the different classes of wheat produced in different regions of the country. Relative shares of U.S. planted acreage, harvested acreage, and total production for 1986 and 1987 for these States are shown in table 4. Kansas and North Dakota were the leading States in all three categories and both years. Relative shares for all 12 States changed little

Table 1--Wheat farms by State ranking, 1982

Rank	State	Farms	Share of U.S. total
		<u>Number</u>	<u>Percent</u>
1	Kansas	49,231	11.0
2	Ohio	32,648	7.3
3	Missouri	29,507	6.6
4	North Dakota	29,277	6.6
5	Illinois	28,080	6.3
6	Indiana	23,764	5.3
7	Oklahoma	22,999	5.2
8	Texas	22,647	5.1
9	Minnesota	21,070	4.7
10	Nebraska	20,182	4.5

Source: 1982 Census of Agriculture, Bureau of the Census, U.S. Department of Commerce.

Table 2--Harvested wheat acreage by State ranking, 1982

Rank	State	Acres	Share of U.S. total
		<u>1,000 acres</u>	<u>Percent</u>
1	Kansas	11,664	16.4
2	North Dakota	9,819	13.8
3	Oklahoma	5,972	8.4
4	Montana	5,216	7.4
5	Texas	5,087	7.2
6	South Dakota	3,332	4.7
7	Minnesota	2,972	4.2
8	Colorado	2,856	4.0
9	Washington	2,716	3.8
10	Nebraska	2,585	3.6

Source: 1982 Census of Agriculture, Bureau of the Census, U.S. Department of Commerce.

Table 3--Wheat production by State ranking, 1982

Rank	State	Quantity	Share of U.S. total
		<u>1,000 bushels</u>	<u>Percent</u>
1	Kansas	372,590	15.7
2	North Dakota	295,850	12.5
3	Oklahoma	171,665	7.2
4	Montana	159,093	6.7
5	Washington	128,069	5.4
6	Texas	123,040	5.2
7	Minnesota	111,501	4.7
8	Idaho	87,980	3.7
9	Nebraska	87,960	3.7
10	South Dakota	85,896	3.6

Source: 1982 Census of Agriculture, Bureau of the Census, U.S. Department of Commerce.

Figure 1

Leading wheat-producing States

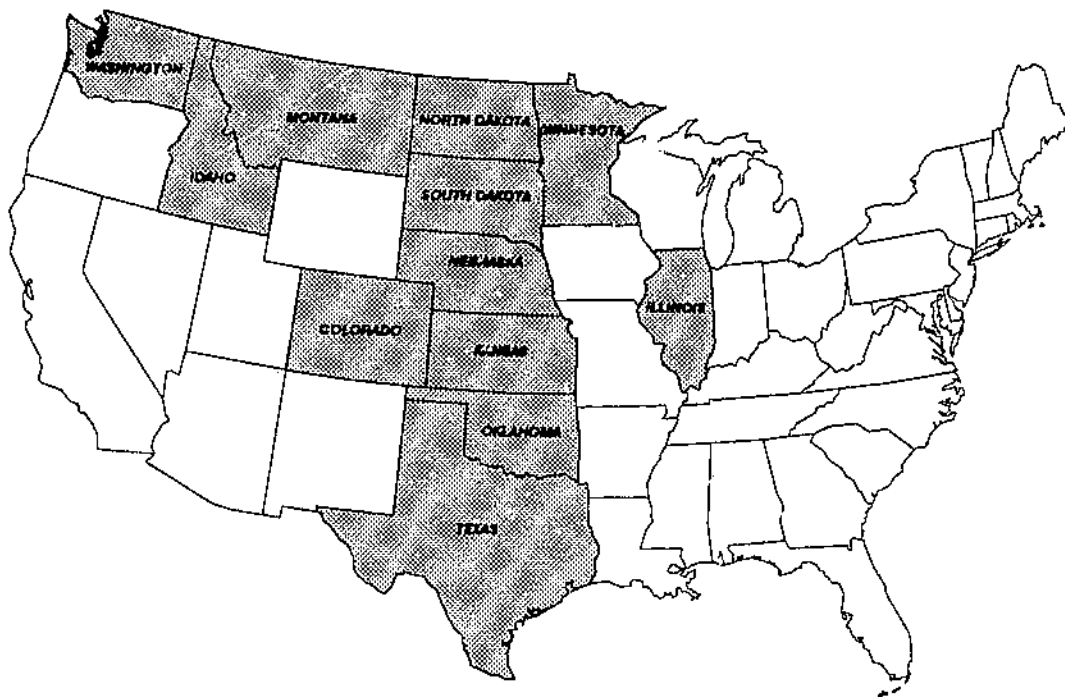


Table 4--Leading States: Share of U.S. wheat acreage and production

State	Acres				Total production	
	Planted		Harvested		1986	1987
	1986	1987	1986	1987		
	<u>Percent</u>					
Colorado	4.7	4.8	4.9	4.6	4.6	4.6
Idaho	2.0	1.8	2.2	2.0	3.9	4.1
Illinois	1.8	1.7	1.4	1.7	1.7	2.7
Kansas	16.0	16.3	16.8	17.7	16.1	17.4
Minnesota	4.1	3.9	4.6	4.5	5.0	4.9
Montana	7.0	7.4	7.8	8.4	6.6	7.2
Nebraska	3.2	3.3	3.3	3.5	3.6	4.1
North Dakota	13.3	14.1	15.4	16.3	14.0	12.8
Oklahoma	10.3	10.9	8.6	8.6	7.2	6.2
South Dakota	5.6	5.6	6.3	6.3	5.2	5.1
Texas	11.2	10.3	7.9	6.4	5.7	4.8
Washington	3.6	3.2	4.0	3.6	5.6	5.4
Other States	17.2	16.7	19.8	16.4	20.8	20.7
U.S. total	100.0	100.0	100.0	100.0	100.0	100.0

Source: Crop Production, 1987 Summary. CrPr 2-1. National Agricultural Statistics Service, U.S. Department of Agriculture, Jan. 1988.

from 1986 to 1987. Collectively, these States account for approximately 80 percent of the harvested acreage and production of U.S. wheat.

Acreage, yield, and production for selected States by wheat class are shown in table 5. All 12 States produced winter wheat with harvested acreages ranging from 9.9 million acres in Kansas to 90,000 acres in Minnesota. Winter wheat yields ranged from 27 bushels per acre in Oklahoma to 75 bushels per acre in Idaho. Durum wheat was produced in four States, with most of the Durum wheat being produced in North Dakota (2.8 million acres). Other types of spring wheat were produced in 7 of the 12 States, with North Dakota, Minnesota, Montana, and South Dakota being the leading producers.

State distribution of wheat farms and production was estimated using the 1986 FCRS (table 6). Percentages are based on total farm sales. Although allowances for time differences must be recognized, some general comparisons can be made between data from the 1986 FCRS and the 1982 Census of Agriculture (app. table 3). Both surveys indicate that most wheat farms are in the lowest sales classes (less than \$40,000 and \$40,000-\$99,999), while most of the wheat is produced by farms in the middle sales classes (\$40,000-\$99,999 and \$100,000-\$249,999). Many of the estimates for a particular sales class in the 1986 FCRS are similar to those in the 1982 Census of Agriculture.

Selection of a subset of wheat farms within each State from which to estimate average characteristics of representative farms was accomplished in two steps. The first step was to exclude farms with total farm sales of less than \$40,000. This was done in order to focus on commercial-sized farms, which under most current definitions are assumed to be farms with total sales of \$40,000 or more. The second step involved selecting a particular sales class that accounted for a significant portion of both wheat farms and wheat production within each State.

This process resulted in selecting subsets of representative wheat farms from only two sales classes. The \$40,000-\$99,999 sales class was selected for Colorado, Illinois, Kansas, Montana, North Dakota, Oklahoma, South Dakota, and Texas. The \$100,000-\$249,999 sales class was selected for Idaho, Minnesota, Nebraska, and Washington. In 8 of the 12 States, the sales class with the largest percentage of commercial-sized wheat farms also had the largest percentage of wheat production accounted for by commercial-sized farms. These subsets of farms were used to estimate the average characteristics of farms producing wheat in major wheat-producing States presented in appendix tables 6-53. Some additional information related to the distribution of wheat farms by alternative farm size definitions from the 1982 Census of Agriculture is included in appendix tables 1-5.

Representative Wheat Farms by Size and Region

Farms producing wheat in the 1986 FCRS were combined into production regions to estimate average characteristics of wheat farms by size. Five regions representing major wheat-producing areas were selected (fig. 2). States were combined into these regions based primarily upon the types of wheat grown in each area. The Northern Plains region produces most of the Durum wheat and also produces Hard Red Spring wheat and some Hard Red Winter wheat. The Central Plains and Southern Plains regions produce Hard Red Winter wheat. The North Central region produces primarily Soft Red Winter wheat, while the Northwest region produces mainly White Winter wheat.

Table 5--Wheat acreage, yield, and production in major wheat-producing States by class of wheat, 1987

State	Acres		Yield per harvested acre	Production 1,000 bushels
	Planted	Harvested		
	- - - 1,000 acres - - -		Bushels	
All wheat:				
Colorado	3,160	2,555	38.1	97,380
Idaho	1,210	1,140	75.0	85,500
Illinois	1,100	950	59.0	56,050
Kansas	10,700	9,900	37.0	366,300
Minnesota	2,580	2,519	40.7	102,588
Montana	4,895	4,690	32.2	151,220
Nebraska	2,200	1,950	44.0	85,800
North Dakota	9,300	9,135	29.5	269,120
Oklahoma	7,200	4,800	27.0	129,600
South Dakota	3,660	3,528	30.2	106,704
Texas	6,800	3,600	28.2	100,800
Washington	2,100	2,015	56.7	114,285
Winter wheat:				
Colorado	3,100	2,500	37.5	93,750
Idaho	860	800	75.0	60,000
Illinois	1,100	950	59.0	56,050
Kansas	10,700	9,900	37.0	366,300
Minnesota	100	90	33.0	2,970
Montana	2,300	2,200	36.0	79,200
Nebraska	2,200	1,950	44.0	85,800
North Dakota	200	185	32.0	5,920
Oklahoma	7,200	4,800	27.0	129,600
South Dakota	1,700	1,620	34.0	55,080
Texas	6,800	3,600	28.0	100,800
Washington	1,900	1,825	57.0	104,025
Durum wheat:				
Minnesota	30	29	42.0	1,218
Montana	195	190	28.0	5,320
North Dakota	2,900	2,850	26.0	74,100
South Dakota	110	108	28.0	3,024
Other spring wheat:				
Colorado	60	55	66.0	3,630
Idaho	350	340	75.0	25,500
Minnesota	2,450	2,400	41.0	98,400
Montana	2,400	2,300	29.0	66,700
North Dakota	6,200	6,100	31.0	189,100
South Dakota	1,850	1,800	27.0	48,600
Texas	200	190	54.0	10,260

Source: Crop Production, 1987 Annual Summary. CrPr 2-1. National Agricultural Statistics Service, U.S. Department of Agriculture, Jan. 1988.

Table 6--State share of wheat farms and production by total farm sales, 1986

Item	Total farm sales					Total
	\$500,000 or more	\$250,000- \$499,999	\$100,000- \$249,999	\$40,000- \$99,999	Less than \$40,000	
	<u>Percent</u>					
Colorado:						
Farms	d	d	d	53	d	100
Production	d	d	d	38	d	100
Idaho:						
Farms	d	11	31	30	d	100
Production	d	30	38	15	d	100
Illinois:						
Farms	d	d	27	31	34	100
Production	d	d	30	35	15	100
Kansas:						
Farms	d	d	20	28	46	100
Production	d	d	32	32	19	100
Minnesota:						
Farms	d	d	34	23	32	100
Production	d	d	40	21	12	100
Montana:						
Farms	d	d	26	39	d	100
Production	d	d	37	34	d	100
Nebraska:						
Farms	d	d	40	26	d	100
Production	d	d	66	21	d	100
North Dakota:						
Farms	d	d	30	40	23	100
Production	d	d	39	34	7	100
Oklahoma:						
Farms	d	d	16	27	51	100
Production	d	d	23	25	43	100
South Dakota:						
Farms	d	d	29	40	d	100
Production	d	d	38	25	d	100
Texas:						
Farms	d	d	19	23	51	100
Production	d	d	29	26	16	100
Washington:						
Farms	d	d	55	d	d	100
Production	d	d	49	d	d	100
United States:						
Farms	3	6	25	28	38	100
Production	11	15	35	26	13	100

d - Insufficient data for disclosure.

Source: 1986 Farm Costs and Returns Survey, U.S. Department of Agriculture.

Figure 2

Leading wheat-producing regions

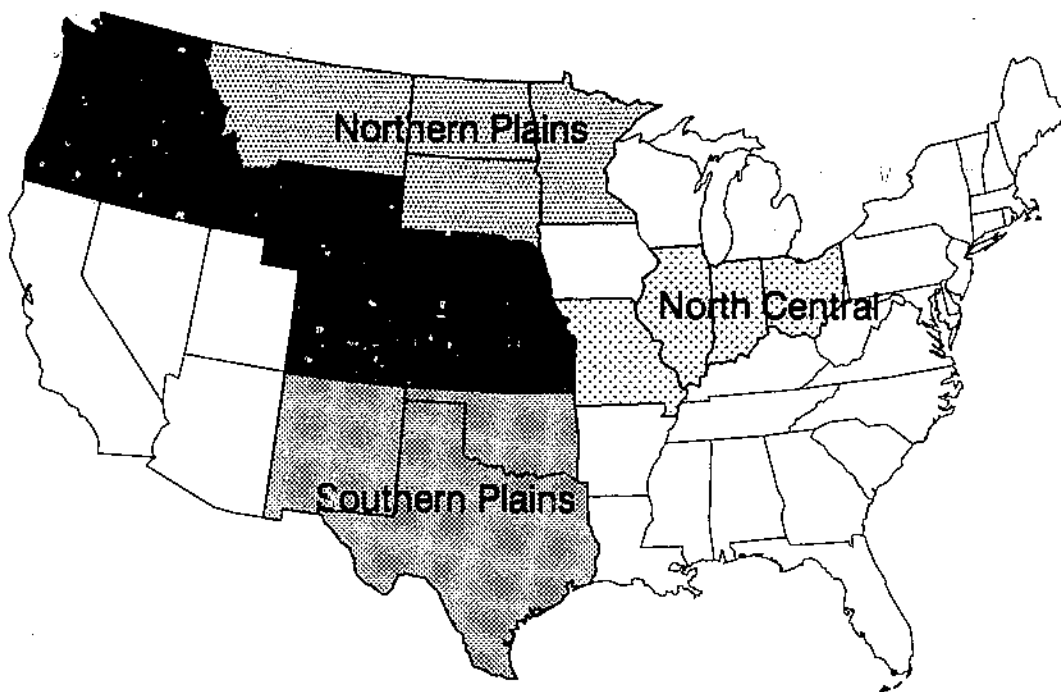


Table 7--Regional share of U.S. wheat acreage and production

Region	Acres				Total production	
	Planted		Harvested		1986	1987
	1986	1987	1986	1987		
	<u>Percent</u>					
Central Plains	24.3	24.9	25.4	26.3	24.7	26.5
North Central	6.1	5.5	5.2	5.6	6.4	8.2
Northern Plains	30.1	31.1	34.2	35.5	30.7	29.9
Northwest	7.0	6.3	7.8	7.1	12.3	12.0
Southern Plains	22.5	22.3	17.2	15.6	13.4	11.5
Other	10.0	9.9	10.2	9.9	12.5	11.9
U.S. total	100.0	100.0	100.0	100.0	100.0	100.0

Source: Crop Production, 1987 Summary. CrPr 2-1. National Agricultural Statistics Service, U.S. Department of Agriculture, Jan. 1988.

Regional shares of U.S. wheat acreage and production are shown in table 7. The Northern Plains had the largest share of U.S. acreage and production with 31.1 percent of the planted acreage, 35.5 percent of the harvested acreage, and 29.9 percent of the total production in 1987. The Central Plains has approximately 25 percent of U.S. wheat acreage and production in both years. Collectively, these five regions accounted for about 90 percent of total U.S. wheat acreage and production in both 1986 and 1987.

The regional distribution of wheat farms and production by total farm sales, estimated from the 1986 FCRS, is shown in table 8. The process of selecting a subset of wheat farms from which to estimate average farm characteristics within each region was similar to that used for State subsets. Wheat farms with less than \$40,000 in total farm sales were again excluded. However, rather than selecting a subset from one sales class, as was done for States, we selected subsets from several sales classes to estimate average farm characteristics for different sizes of wheat farms within a region.

Three sizes of farms producing wheat were studied in this report. Small farms were those with \$40,000-\$99,999 in total farm sales, mid-sized farms had \$100,000-\$249,999 in total farm sales, and large farms had \$250,000-\$499,999 in total farm sales. By selecting farms in these three sales classes, the smallest and largest farms in each region are excluded. The remaining farms were assumed to be representative of farms producing wheat in each region. These subsets of farms were used to estimate the average characteristics of wheat farms by region and size of farm shown in appendix tables 54-73.

Table 8--Regional share of wheat farms and production by total farm sales, 1986

Item	Total farm sales					Total
	\$500,000 or more	\$250,000- \$499,999	\$100,000- \$249,999	\$40,000- \$99,999	Less than \$40,000	
<u>Percent</u>						
Central Plains:						
Farms	d	5	25	30	38	100
Production	d	15	35	26	13	100
North Central:						
Farms	d	7	23	29	40	100
Production	d	16	28	30	22	100
Northern Plains:						
Farms	d	6	31	35	26	100
Production	d	14	39	31	9	100
Northwest:						
Farms	5	11	35	23	26	100
Production	15	26	41	14	4	100
Southern Plains:						
Farms	d	5	18	25	50	100
Production	d	11	26	26	29	100
United States:						
Farms	3	6	25	28	38	100
Production	11	15	35	26	13	100

d = Insufficient data for disclosure.

Source: 1986 Farm Costs and Returns Survey, U.S. Department of Agriculture.

Appendix table 1--Acres of wheat for grain per farm: State share by wheat farms, harvested acreage, and production, 1982

State	Acres of wheat for grain per farm					Total
	1-24	25-99	100-249	250-499	500 or more	
	<u>Percent</u>					
Colorado:						
Farms	9.4	23.4	23.4	19.0	24.8	100.0
Acreage	.3	3.3	9.5	16.7	70.2	100.0
Production	.4	3.8	9.9	16.6	69.3	100.0
Idaho:						
Farms	22.9	36.0	20.3	11.4	9.4	100.0
Acreage	1.6	9.8	16.6	20.7	51.3	100.0
Production	1.9	11.7	17.6	20.6	48.2	100.0
Illinois:						
Farms	40.1	46.5	11.5	1.6	.3	100.0
Acreage	10.8	43.6	31.2	10.0	4.4	100.0
Production	10.3	43.9	31.4	10.3	4.1	100.0
Kansas:						
Farms	10.6	29.2	28.5	18.9	12.8	100.0
Acreage	.6	6.9	19.2	27.6	45.7	100.0
Production	.5	6.2	18.3	27.6	47.4	100.0
Minnesota:						
Farms	23.2	40.1	21.6	9.2	5.9	100.0
Acreage	2.3	14.7	23.6	22.2	37.2	100.0
Production	2.1	13.6	22.8	22.2	39.3	100.0
Montana:						
Farms	4.5	16.3	21.5	21.5	36.2	100.0
Acreage	.1	1.8	6.8	14.8	76.5	100.0
Production	.2	2.0	6.9	14.1	76.8	100.0
Nebraska:						
Farms	20.6	43.4	22.8	8.7	4.5	100.0
Acreage	2.4	18.0	27.1	23.5	29.0	100.0
Production	2.2	16.9	26.9	24.2	29.8	100.0
North Dakota:						
Farms	1.9	15.5	32.5	30.0	20.1	100.0
Acreage	.1	2.9	16.3	31.2	49.5	100.0
Production	.1	2.7	15.3	30.8	51.1	100.0
Oklahoma:						
Farms	8.5	28.8	28.2	18.9	15.6	100.0
Acreage	.5	6.3	17.4	25.4	50.4	100.0
Production	.4	5.9	16.6	25.0	52.1	100.0
South Dakota:						
Farms	5.7	32.5	31.9	18.1	11.8	100.0
Acreage	.4	7.7	20.5	25.5	45.9	100.0
Production	.4	7.6	19.6	24.5	47.9	100.0
Texas:						
Farms	12.6	34.5	26.9	14.6	11.4	100.0
Acreage	.8	8.3	18.8	22.5	49.3	100.0
Production	.7	8.1	18.8	22.6	49.8	100.0
Washington:						
Farms	9.9	21.4	21.3	19.3	28.1	100.0
Acreage	.3	2.7	7.9	15.7	73.4	100.0
Production	.3	4.1	10.6	18.5	66.5	100.0
United States:						
Farms	28.7	34.1	19.1	10.3	7.8	100.0
Acreage	2.3	11.0	18.7	22.4	45.6	100.0
Production	2.4	11.6	18.7	21.9	45.3	100.0

Source: 1982 Census of Agriculture, Bureau of the Census, U.S. Department of Commerce.

Appendix table 2--Farm size: State share by wheat farms, harvested acreage, and production, 1982

Item	Farm size (acres)				Total
	1-499	500-999	1,000-1,999	2,000 or more	
	<u>Percent</u>				
Colorado:					
Farms	29.8	20.8	22.4	27.0	100.0
Acreage	5.9	10.4	20.9	62.8	100.0
Production	6.6	11.2	20.8	61.4	100.0
Idaho:					
Farms	58.7	18.6	13.0	9.7	100.0
Acreage	16.7	18.3	23.8	41.2	100.0
Production	20.3	19.7	24.1	35.9	100.0
Illinois:					
Farms	71.3	21.4	6.4	.9	100.0
Acreage	45.6	32.2	17.0	5.2	100.0
Production	44.3	33.0	17.5	5.2	100.0
Kansas:					
Farms	49.2	24.6	17.8	8.4	100.0
Acreage	18.0	23.8	30.3	27.9	100.0
Production	16.9	23.2	30.8	29.1	100.0
Minnesota:					
Farms	63.6	24.6	9.3	2.5	100.0
Acreage	25.1	29.5	26.4	19.0	100.0
Production	23.5	28.8	27.7	20.0	100.0
Montana:					
Farms	16.1	14.2	22.7	47.0	100.0
Acreage	2.5	5.8	17.1	74.6	100.0
Production	2.8	5.8	16.6	74.8	100.0
Nebraska:					
Farms	48.1	27.7	16.0	8.2	100.0
Acreage	19.0	23.9	28.4	28.7	100.0
Production	17.3	23.3	29.2	30.2	100.0
North Dakota:					
Farms	24.2	29.7	31.8	14.1	100.0
Acreage	8.1	21.0	38.2	32.7	100.0
Production	7.9	20.8	38.3	33.0	100.0
Oklahoma:					
Farms	53.1	23.4	16.3	7.2	100.0
Acreage	20.9	25.8	31.1	22.2	100.0
Production	20.6	25.6	31.6	22.2	100.0
South Dakota:					
Farms	25.9	28.2	26.7	19.2	100.0
Acreage	8.0	17.2	28.6	46.2	100.0
Production	7.5	16.5	27.4	48.6	100.0
Texas:					
Farms	46.2	23.6	17.7	12.5	100.0
Acreage	14.9	19.5	26.2	39.4	100.0
Production	13.8	19.2	26.6	40.4	100.0
Washington:					
Farms	37.5	20.7	20.2	21.6	100.0
Acreage	6.6	11.9	22.5	59.0	100.0
Production	9.2	14.7	24.2	51.9	100.0
United States:					
Farms	59.5	20.4	12.7	7.4	100.0
Acreage	18.1	20.8	26.6	34.5	100.0
Production	18.5	20.9	26.4	34.2	100.0

Source: 1982 Census of Agriculture, Bureau of the Census, U.S. Department of Commerce.

Appendix table 3--Total farm sales: State share by wheat farms, harvested acreage, and production, 1982

Item	Total farm sales					Total
	\$500,000 or more	\$250,000- \$499,999	\$100,000- \$249,999	\$40,000- \$99,999	Less than \$40,000	
<u>Percent</u>						
Colorado:						
Farms	3.5	5.5	17.6	27.6	45.8	100.0
Acreage	12.0	12.4	29.0	27.4	19.2	100.0
Production	14.8	13.8	30.4	26.1	14.9	100.0
Idaho:						
Farms	5.2	8.3	21.8	28.4	36.4	100.0
Acreage	24.5	18.6	29.0	17.9	10.0	100.0
Production	30.4	19.7	27.1	15.6	7.2	100.0
Illinois:						
Farms	1.4	5.7	22.1	27.6	43.2	100.0
Acreage	4.2	12.7	32.4	28.6	22.1	100.0
Production	4.6	13.5	34.0	27.9	20.0	100.0
Kansas:						
Farms	1.4	3.5	14.2	25.8	55.1	100.0
Acreage	5.5	10.0	27.9	31.6	25.0	100.0
Production	6.5	11.3	29.8	30.9	21.5	100.0
Minnesota:						
Farms	1.2	4.6	21.5	32.5	40.2	100.0
Acreage	8.0	14.1	32.8	28.2	16.9	100.0
Production	9.2	15.9	34.3	26.9	13.7	100.0
Montana:						
Farms	1.7	5.0	23.8	34.1	35.4	100.0
Acreage	9.1	14.5	35.8	28.4	12.2	100.0
Production	10.9	16.9	37.5	25.2	9.5	100.0
Nebraska:						
Farms	1.7	4.5	20.7	32.6	40.5	100.0
Acreage	4.7	9.4	30.1	33.8	22.0	100.0
Production	5.6	10.9	31.9	32.6	19.0	100.0
North Dakota:						
Farms	.7	2.8	16.7	35.6	44.2	100.0
Acreage	3.7	8.2	29.1	37.2	21.8	100.0
Production	4.6	9.8	32.1	35.7	17.8	100.0
Oklahoma:						
Farms	.9	2.5	11.9	23.2	61.2	100.0
Acreage	4.5	8.3	26.6	32.4	28.2	100.0
Production	5.2	9.7	29.2	31.7	24.2	100.0
South Dakota:						
Farms	1.1	3.5	18.1	36.9	40.4	100.0
Acreage	5.9	12.0	29.6	34.0	18.5	100.0
Production	6.6	13.7	31.6	32.6	15.5	100.0
Texas:						
Farms	2.4	4.8	13.8	22.5	56.5	100.0
Acreage	10.5	13.1	25.1	26.0	25.3	100.0
Production	14.2	15.9	26.6	23.8	19.5	100.0
Washington:						
Farms	5.1	12.1	31.6	27.8	23.4	100.0
Acreage	14.6	24.9	38.5	17.3	4.7	100.0
Production	17.7	26.7	37.2	14.9	3.5	100.0
United States:						
Farms	2.0	4.9	17.4	26.2	49.5	100.0
Acreage	9.0	12.7	29.2	28.5	20.6	100.0
Production	12.2	14.8	30.5	26.1	16.4	100.0

Source: 1982 Census of Agriculture, Bureau of the Census, U.S. Department of Commerce.

Appendix table 4--Farm size: State share of wheat farms by acres of wheat, 1982

State and acres	Farm size (acres)			
	1-499	500-999	1,000-1,999	2,000 or more
	<u>Percent</u>			
Colorado:				
1-24	24.3	5.3	2.3	2.0
25-99	45.6	24.3	12.8	7.1
100-249	27.3	34.1	21.5	12.3
250 or more	2.8	36.3	63.4	78.6
Idaho:				
1-24	35.9	5.0	4.7	3.3
25-99	48.4	24.8	13.7	12.4
100-249	14.2	41.6	22.3	13.6
250 or more	1.5	28.6	59.3	70.7
Illinois:				
1-24	49.8	17.8	10.1	6.7
25-99	46.2	51.6	34.9	26.3
100-249	3.9	28.4	38.2	26.3
250 or more	.1	2.2	16.8	40.7
Kansas:				
1-24	19.6	2.9	1.2	.6
25-99	46.7	18.8	7.0	3.7
100-249	28.8	38.9	21.7	10.3
250 or more	4.9	39.4	70.1	85.4
Minnesota:				
1-24	33.2	7.4	2.4	.4
25-99	50.0	29.5	10.6	3.0
100-249	15.4	39.5	21.3	5.1
250 or more	1.4	23.6	65.7	91.5
Montana:				
1-24	18.7	3.2	1.9	1.1
25-99	48.4	20.6	9.4	7.4
100-249	31.0	38.8	21.8	13.0
250 or more	1.9	37.4	66.9	78.5
Nebraska:				
1-24	34.1	11.5	4.8	2.5
25-99	53.3	45.4	24.7	15.5
100-249	12.3	33.1	35.9	24.1
250 or more	.3	10.0	34.6	57.9
North Dakota:				
1-24	6.1	.9	.3	.3
25-99	43.6	10.2	4.6	3.1
100-249	45.6	46.2	19.8	9.9
250 or more	4.7	42.7	75.3	86.7
Oklahoma:				
1-24	14.4	2.5	1.2	.7
25-99	44.9	14.4	8.0	4.6
100-249	32.6	30.5	17.1	13.2
250 or more	8.1	52.6	73.7	81.5
South Dakota:				
1-24	14.8	4.2	1.7	1.0
25-99	59.1	36.7	18.8	9.7
100-249	23.8	41.3	37.1	21.7
250 or more	2.3	17.8	42.4	67.6
Texas:				
1-24	23.0	5.9	2.6	1.1
25-99	52.0	27.3	16.0	9.6
100-249	22.0	39.6	29.6	16.9
250 or more	3.0	27.2	51.8	72.4
Washington:				
1-24	24.0	2.6	1.0	.7
25-99	46.8	11.9	3.9	2.8
100-249	26.6	37.1	11.2	6.5
250 or more	2.6	48.4	83.9	90.0
United States:				
1-24	44.5	8.6	2.8	1.4
25-99	41.8	33.2	14.9	7.8
100-249	12.2	35.5	27.3	15.4
250 or more	1.5	22.7	55.0	75.4

Source: 1982 Census of Agriculture, Bureau of the Census, U.S. Department of Commerce.

Appendix table 5--Total farm sales: State share of wheat by acres of wheat, 1982

State and acres	Total farm sales				
	\$500,000 or more	\$250,000-\$499,999	\$100,000-\$249,999	\$40,000-\$99,999	Less than \$40,000
	<u>Percent</u>				
Colorado:					
1-24	2.0	2.8	5.2	6.5	14.2
25-99	13.8	18.3	18.0	16.4	31.0
100-249	18.3	15.5	14.2	17.5	31.8
250 or more	65.9	63.4	62.6	59.6	23.0
Idaho:					
1-24	.7	4.3	7.5	17.3	44.1
25-99	5.1	14.8	30.0	45.5	41.5
100-249	17.3	27.3	28.6	23.5	11.5
250 or more	76.9	53.6	33.9	13.7	2.9
Illinois:					
1-24	17.6	20.6	23.3	28.1	59.5
25-99	40.3	39.6	49.4	58.2	38.6
100-249	22.9	27.4	23.5	13.2	1.9
250 or more	19.2	12.4	3.8	.5	1/
Kansas:					
1-24	.4	1.0	1.5	3.1	17.3
25-99	4.7	6.3	10.6	16.0	42.2
100-249	14.5	16.9	21.4	29.9	30.7
250 or more	80.4	75.8	66.5	51.0	9.8
Minnesota:					
1-24	4.7	8.4	14.7	18.5	33.8
25-99	14.7	24.6	31.4	38.7	48.5
100-249	15.5	18.4	23.5	28.8	15.3
250 or more	65.1	48.6	30.4	14.0	2.4
Montana:					
1-24	.6	.4	1.0	2.3	9.5
25-99	3.0	4.0	7.3	10.9	29.8
100-249	11.5	5.6	9.5	18.8	35.0
250 or more	84.9	90.0	82.2	68.0	25.7
Nebraska:					
1-24	7.4	8.1	12.4	16.0	30.3
25-99	28.3	29.0	37.8	43.8	48.3
100-249	22.9	29.8	28.4	25.1	17.2
250 or more	41.4	33.1	21.4	15.1	4.2
North Dakota:					
1-24	.4	0	.2	.3	4.0
25-99	1.5	1.6	2.5	5.7	29.5
100-249	1.9	3.3	12.1	28.4	45.9
250 or more	96.2	95.1	85.2	65.6	20.6
Oklahoma:					
1-24	.0	.5	.7	1.3	13.1
25-99	6.9	5.2	6.2	9.5	41.7
100-249	5.9	8.3	14.5	24.0	33.5
250 or more	87.2	86.0	78.6	65.2	11.7
South Dakota:					
1-24	.0	.6	2.1	3.4	9.9
25-99	7.2	13.2	17.6	26.1	47.4
100-249	13.1	14.0	26.0	35.5	33.3
250 or more	79.7	72.2	54.3	35.0	9.4
Texas:					
1-24	.7	1.4	2.5	4.6	19.7
25-99	4.8	10.4	17.6	23.8	46.1
100-249	15.2	22.1	26.4	33.3	25.3
250 or more	79.3	66.1	53.5	38.3	8.9
Washington:					
1-24	.9	2.4	2.2	5.0	32.0
25-99	10.1	8.4	12.1	24.4	39.5
100-249	18.9	15.2	17.0	30.3	20.0
250 or more	70.1	74.0	68.7	40.3	8.5
United States:					
1-24	5.0	8.5	13.3	18.0	42.8
25-99	16.4	24.2	30.8	34.7	36.6
100-249	20.7	24.3	23.1	22.5	15.4
250 or more	57.9	43.0	32.8	24.8	5.2

1/ Less than 0.1 percent.

Source: 1982 Census of Agriculture, Bureau of the Census, U.S. Department of Commerce.

Appendix table 6--Land use and tenure: Colorado wheat farm with gross sales of \$40,000-\$99,999, 1986

Item	Average per farm	Coefficient of variation ^{1/}
	Acres	Percent
Land tenure:		
Owned	1,737	37.18
Cash-rented	182	32.89
Share-rented	361	34.48
Total operated ^{2/}	3,227	34.92
Land use:		
Planted crops--		
Wheat	320	13.69
Barley	16	44.94
Beans	d	na
Corn	16	42.64
Cotton	0	na
Fruit	0	na
Nursery products	0	na
Oats	d	na
Peanuts	0	na
Potatoes	0	na
Rice	0	na
Silage	d	na
Sorghum	d	na
Soybeans	d	na
Sugarbeets	0	na
Sunflowers	d	na
Tobacco	0	na
Vegetables	0	na
Other	52	32.15
Pasture and hay	2,415	46.79
Government programs	104	25.23
Summer fallow	274	16.99

d = Insufficient data for disclosure.

na = Not applicable.

^{1/} The coefficient of variation provides a means of evaluating survey results. The smaller the coefficient, the greater the reliability of the estimate.

^{2/} Data may not add because categories (such as land rented on an animal-unit-month basis, land rented free from others, and land cash- or share-rented to others) were deleted.

Source: 1986 Farm Costs and Returns Survey, U.S. Department of Agriculture.

Appendix table 7--Value of assets and debt: Colorado wheat farm with gross sales of \$40,000-\$99,999, 1986

Item	Average per farm	Coefficient of variation <u>1/</u>
	<u>Dollars</u>	<u>Percent</u>
Assets:		
Land and buildings	173,151	28.24
Machinery and equipment	42,233	29.20
Livestock	26,759	26.65
Crop inventory	12,655	24.73
Purchased inputs	646	35.93
Other assets	8,814	44.28
Total <u>2/</u>	264,258	24.92
Debt:		
Production Credit Assoc.	d	na
Farmers Home Admin.	16,227	42.00
Commercial banks	12,903	45.37
Federal land banks	18,635	44.11
Merchants and dealers	d	na
Insurance companies	d	na
Individuals	15,170	42.85
Commodity Credit Corp.	5,606	44.68
Other lenders	18,896	5.34
Total <u>2/</u>	91,642	22.05

d - Insufficient data for disclosure.

na - Not applicable.

1/ The coefficient of variation provides a means of evaluating survey results. The smaller the coefficient, the greater the reliability of the estimate.

2/ Data may not add due to rounding or nondisclosure of data.

Source: 1986 Farm Costs and Returns Survey, U.S. Department of Agriculture.

Appendix table 8--Farm labor: Colorado wheat farm with gross sales of \$40,000-\$99,999, 1986

Item	Average per farm	Coefficient of variation <u>1/</u>
	<u>Hours per week</u>	<u>Percent</u>
Labor hours:		
Operator	58	6.67
Unpaid labor	16	35.50
<u>Number</u>		
Hired labor:		
Full-time employees	d	na
Hired workers (peak) <u>2/</u>	1	25.43

d - Insufficient data for disclosure.

na - Not applicable.

1/ The coefficient of variation provides a means of evaluating survey results. The smaller the coefficient, the greater the reliability of the estimate.

2/ Peak number of workers hired at any one time during the year.

Source: 1986 Farm Costs and Returns Survey, U.S. Department of Agriculture.

Appendix table 9--Income and expenses: Colorado wheat farm with gross sales of \$40,000-\$99,999, 1986

Item	Average per farm	Coefficient of variation ^{1/}
	Dollars	Percent
Income:		
Crop sales, including CCC	18,498	28.60
Livestock sales	27,338	22.01
Government payments	10,508	19.88
Other farm income	1,909	35.47
Gross cash farm income ^{2/}	58,253	8.66
Nonfarm income	13,238	32.80
Expenses:		
Seed	2,129	41.90
Fertilizer	3,005	19.43
Pesticides	764	39.68
Fuel and oil	4,835	7.92
Feed	4,744	20.34
Livestock purchases	3,303	24.57
Livestock services	872	35.57
Equipment lease	238	40.00
Marketing	1,059	24.20
Hired labor ^{3/}	856	48.94
Contract labor	d	na
Custom work	2,262	27.99
Interest	8,461	29.82
Property taxes	1,700	13.52
General business	3,564	10.31
Cash rent	1,533	26.64
Miscellaneous	7,410	10.50
Total ^{2/}	47,034	11.77

d = Insufficient data for disclosure.

na = Not applicable.

^{1/} The coefficient of variation provides a means of evaluating survey results. The smaller the coefficient, the greater the reliability of the estimate.

^{2/} Data may not add due to rounding or nondisclosure of data.

^{3/} Excludes wages paid to operator and family members.

Source: 1986 Farm Costs and Returns Survey, U.S. Department of Agriculture.

Appendix table 10--Land use and tenure: Idaho wheat farm with gross sales of \$100,000-\$249,999, 1986

Item	Average per farm	Coefficient of variation <u>1/</u>
	<u>Acres</u>	<u>Percent</u>
Land tenure:		
Owned	635	35.35
Cash-rented	141	32.67
Share-rented	202	27.98
Total operated <u>2/</u>	1,143	23.65
Land use:		
Planted crops--		
Wheat	173	15.23
Barley	151	42.60
Beans	d	na
Corn	d	na
Cotton	0	na
Fruit	d	na
Nursery products	0	na
Oats	d	na
Peanuts	0	na
Potatoes	9	40.49
Rice	0	na
Silage	d	na
Sorghum	0	na
Soybeans	0	na
Sugarbeets	26	24.90
Sunflowers	0	na
Tobacco	0	na
Vegetables	11	47.78
Other	43	46.63
Pasture and hay	417	41.62
Government programs	135	40.19
Summer fallow	61	31.63

d - Insufficient data for disclosure.

na - Not applicable.

1/ The coefficient of variation provides a means of evaluating survey results. The smaller the coefficient, the greater the reliability of the estimate.

2/ Data may not add because categories (such as land rented on an animal-unit-month basis, land rented free from others, and land cash- or share-rented to others) were deleted.

Source: 1986 Farm Costs and Returns Survey, U.S. Department of Agriculture.

Appendix table 11--Value of assets and debt: Idaho wheat farm with gross sales of \$100,000-\$249,999, 1986

Item	Average per farm	Coefficient of variation <u>1/</u>
	<u>Dollars</u>	<u>Percent</u>
Assets:		
Land and buildings	328,894	12.39
Machinery and equipment	111,523	13.88
Livestock	31,881	22.48
Crop inventory	31,620	25.23
Purchased inputs	3,748	45.04
Other assets	15,746	46.41
Total <u>2/</u>	523,414	10.95
Debt:		
Production Credit Assoc.	16,568	35.10
Farmers Home Admin.	24,543	23.21
Commercial banks	10,297	39.85
Federal land banks	49,341	40.51
Merchants and dealers	d	na
Insurance companies	d	na
Individuals	21,385	26.30
Commodity Credit Corp.	12,251	24.72
Other lenders	2,965	34.57
Total <u>2/</u>	141,967	18.22

d = Insufficient data for disclosure.

na = Not applicable.

1/ The coefficient of variation provides a means of evaluating survey results. The smaller the coefficient, the greater the reliability of the estimate.

2/ Data may not add due to rounding or nondisclosure of data.

Source: 1986 Farm Costs and Returns Survey, U.S. Department of Agriculture.

Appendix table 12--Farm labor: Idaho wheat farm with gross sales of \$100,000-\$249,999, 1986

Item	Average per farm	Coefficient of variation <u>1/</u>
	<u>Hours per week</u>	<u>Percent</u>
Labor hours:		
Operator	61	4.30
Unpaid labor	10	27.18
<u>Number</u>		
Hired labor:		
Full-time employees	d	na
Hired workers (peak) <u>2/</u>	9	29.55

d = Insufficient data for disclosure.

na = Not applicable.

1/ The coefficient of variation provides a means of evaluating survey results. The smaller the coefficient, the greater the reliability of the estimate.

2/ Peak number of workers hired at any one time during the year.

Source: 1986 Farm Costs and Returns Survey, U.S. Department of Agriculture.

Appendix table 13--Income and expenses: Idaho wheat farm with gross sales of \$100,000-\$249,999, 1986

Item	Average per farm	Coefficient of variation <u>1/</u>
	<u>Dollars</u>	<u>Percent</u>
Income:		
Crop sales, including CCC	95,051	7.56
Livestock sales	33,430	22.18
Government payments	20,026	15.80
Other farm income	d	na
Gross cash farm income <u>2/</u>	150,195	5.49
Nonfarm income	d	na
Expenses:		
Seed	6,313	17.02
Fertilizer	16,746	16.77
Pesticides	5,711	18.76
Fuel and oil	7,168	11.47
Feed	3,363	32.25
Livestock purchases	10,268	31.60
Livestock services	1,146	23.49
Equipment lease	418	39.43
Marketing	d	na
Hired labor <u>3/</u>	7,899	36.12
Contract labor	1,978	37.51
Custom work	3,786	13.94
Interest	18,621	16.96
Property taxes	3,330	12.33
General business	7,985	13.09
Cash rent	5,281	26.80
Miscellaneous	13,653	9.59
Total <u>2/</u>	121,159	11.66

d = Insufficient data for disclosure.

na = Not applicable.

1/ The coefficient of variation provides a means of evaluating survey results. The smaller the coefficient, the greater the reliability of the estimate.

2/ Data may not add due to rounding or nondisclosure of data.

3/ Excludes wages paid to operator and family members.

Source: 1986 Farm Costs and Returns Survey, U.S. Department of Agriculture.

Appendix table 14--Land use and tenure: Illinois wheat farm with gross sales of \$40,000-\$99,999, 1986

Item	Average per farm	Coefficient of variation ^{1/}
	<u>Acres</u>	<u>Percent</u>
Land tenure:		
Owned	184	11.57
Cash-rented	23	40.10
Share-rented	211	17.20
Total operated ^{2/}	406	8.63
Land use:		
Planted crops--		
Wheat	52	11.46
Barley	0	na
Beans	0	na
Corn	111	8.07
Cotton	0	na
Fruit	0	na
Nursery products	0	na
Oats	5	43.16
Peanuts	0	na
Potatoes	0	na
Rice	0	na
Silage	d	na
Sorghum	4	49.78
Soybeans	124	9.25
Sugarbeets	0	na
Sunflowers	0	na
Tobacco	0	na
Vegetables	d	na
Other	d	na
Pasture and hay	31	26.85
Government programs	30	10.98
Summer fallow	d	na

d - Insufficient data for disclosure.

na - Not applicable.

^{1/} The coefficient of variation provides a means of evaluating survey results. The smaller the coefficient, the greater the reliability of the estimate.

^{2/} Data may not add because categories (such as land rented on an animal-unit-month basis, land rented free from others, and land cash- or share-rented to others) were deleted.

Source: 1986 Farm Costs and Returns Survey, U.S. Department of Agriculture.

Appendix table 15--Value of assets and debt: Illinois wheat farm with gross farm sales of \$40,000-\$99,999, 1986

Item	Average per farm		Coefficient of variation ^{1/}
	Dollars	Percent	
Assets:			
Land and buildings	159,199		10.80
Machinery and equipment	54,598		12.65
Livestock	12,755		18.76
Crop inventory	19,416		15.48
Purchased inputs	997		32.55
Other assets	15,065		21.54
Total ^{2/}	262,029		8.09
Debt:			
Production Credit Assoc.	d		na
Farmers Home Admin.	d		na
Commercial banks	22,459		32.12
Federal land banks	7,667		45.88
Merchants and dealers	d		na
Insurance companies	d		na
Individuals	10,231		36.00
Commodity Credit Corp.	9,222		28.84
Other lenders	0		na
Total ^{2/}	61,191		20.63

d - Insufficient data for disclosure.

na - Not applicable.

^{1/} The coefficient of variation provides a means of evaluating survey results. The smaller the coefficient, the greater the reliability of the estimate.

^{2/} Data may not add due to rounding or nondisclosure of data.

Source: 1986 Farm Costs and Returns Survey, U.S. Department of Agriculture.

Appendix table 16--Farm labor: Illinois wheat farm with gross sales of \$40,000-\$99,999, 1986

Item	Average per farm		Coefficient of variation ^{1/}
	Hours per week	Percent	
Labor hours:			
Operator	44		6.23
Unpaid labor	10		20.58
Number			
Hired labor:			
Full-time employees	d		na
Hired workers (peak) ^{2/}	2		15.15

d - Insufficient data for disclosure.

na - Not applicable.

^{1/} The coefficient of variation provides a means of evaluating survey results. The smaller the coefficient, the greater the reliability of the estimate.

^{2/} Peak number of workers hired at any one time during the year.

Source: 1986 Farm Costs and Returns Survey, U.S. Department of Agriculture.

Appendix table 17--Income and expenses: Illinois wheat farm with gross sales of \$40,000-\$99,999, 1986

Item	Average per farm	Coefficient of variation <u>1/</u>
	<u>Dollars</u>	<u>Percent</u>
Income:		
Crop sales, including CCC	34,854	8.52
Livestock sales	15,794	18.55
Government payments	7,271	9.76
Other farm income	2,130	33.49
Gross cash farm income <u>2/</u>	60,049	4.61
Nonfarm income	12,097	24.14
Expenses:		
Seed	3,111	6.92
Fertilizer	6,691	8.10
Pesticides	3,344	12.44
Fuel and oil	3,714	7.10
Feed	4,134	26.27
Livestock purchases	802	43.46
Livestock services	534	46.62
Equipment lease	d	na
Marketing	1,331	19.37
Hired labor <u>3/</u>	860	30.30
Contract labor	d	na
Custom work	515	25.24
Interest	5,737	20.08
Property taxes	1,689	12.31
General business	4,820	15.93
Cash rent	1,379	38.43
Miscellaneous	5,034	11.35
Total <u>2/</u>	43,971	6.31

d = Insufficient data for disclosure.

na = Not applicable.

1/ The coefficient of variation provides a means of evaluating survey results. The smaller the coefficient, the greater the reliability of the estimate.

2/ Data may not add due to rounding or nondisclosure of data.

3/ Excludes wages paid to operator and family members.

Source: 1986 Farm Costs and Returns Survey, U.S. Department of Agriculture.

Appendix table 18--Land use and tenure: Kansas wheat farm with gross sales of \$40,000-\$99,999, 1986

Item	Average per farm	Coefficient of variation ^{1/}
	<u>Acres</u>	<u>Percent</u>
Land tenure:		
Owned	403	11.94
Cash-rented	156	30.77
Share-rented	513	11.40
Total operated ^{2/}	1,031	7.54
Land use:		
Planted crops--		
Wheat	286	9.19
Barley	8	43.38
Beans	0	na
Corn	30	34.75
Cotton	0	na
Fruit	0	na
Nursery products	0	na
Oats	5	39.44
Peanuts	0	na
Potatoes	0	na
Rice	0	na
Silage	4	33.35
Sorghum	113	12.91
Soybeans	48	25.67
Sugarbeets	0	na
Sunflowers	d	na
Tobacco	0	na
Vegetables	0	na
Other	d	na
Pasture and hay	267	18.97
Government programs	121	7.85
Summer fallow	189	15.91

d - Insufficient data for disclosure.

na - Not applicable.

^{1/} The coefficient of variation provides a means of evaluating survey results. The smaller the coefficient, the greater the reliability of the estimate.

^{2/} Data may not add because categories (such as land rented on an animal-unit-month basis, land rented free from others, and land cash- or share-rented to others) were deleted.

Source: 1986 Farm Costs and Returns Survey, U.S. Department of Agriculture.

Appendix table 19--Value of assets and debt: Kansas wheat farm with gross sales of \$40,000-\$99,999, 1986

Item	Average per farm	Coefficient of variation <u>1/</u>
	<u>Dollars</u>	<u>Percent</u>
Assets:		
Land and buildings	171,190	8.86
Machinery and equipment	69,628	7.89
Livestock	22,137	20.16
Crop inventory	13,732	14.54
Purchased inputs	725	26.46
Other assets	16,282	25.09
Total <u>2/</u>	293,694	6.22
Debt:		
Production Credit Assco.	d	na
Farmers Home Admin.	15,438	40.23
Commercial banks	22,287	21.78
Federal land banks	26,226	23.83
Merchants and dealers	1,596	43.56
Insurance companies	d	na
Individuals	4,877	30.61
Commodity Credit Corp.	8,914	23.41
Other lenders	d	na
Total <u>2/</u>	82,556	15.44

d = Insufficient data for disclosure.

na = Not applicable.

1/ The coefficient of variation provides a means of evaluating survey results. The smaller the coefficient, the greater the reliability of the estimate.

2/ Data may not add due to rounding or nondisclosure of data.

Source: 1986 Farm Costs and Returns Survey, U.S. Department of Agriculture.

Appendix table 20--Farm labor: Kansas wheat farm with gross sales of \$40,000-\$99,999, 1986

Item	Average per farm	Coefficient of variation <u>1/</u>
	<u>Hours per week</u>	<u>Percent</u>
Labor hours:		
Operator	44	6.29
Unpaid labor	12	17.64
Number		
Hired labor:		
Full-time employees	<u>3/</u>	49.69
Hired workers (peak) <u>2/</u>	1	18.70

d = Insufficient data for disclosure.

na = Not applicable.

1/ The coefficient of variation provides a means of evaluating survey results. The smaller the coefficient, the greater the reliability of the estimate.

2/ Peak number of workers hired at any one time during the year.

3/ Average is less than one but greater than zero.

Source: 1986 Farm Costs and Returns Survey, U.S. Department of Agriculture.

Appendix table 21--Income and expenses: Kansas wheat farm with gross sales of \$40,000-\$99,999, 1986

Item	Average per farm	Coefficient of variation <u>1/</u>
	<u>Dollars</u>	<u>Percent</u>
Income:		
Crop sales, including CCC	33,548	7.64
Livestock sales	17,246	15.92
Government payments	19,011	8.62
Other farm income	3,878	22.01
Gross cash farm income <u>2/</u>	73,683	3.78
Nonfarm income	12,572	18.18
Expenses:		
Seed	2,108	7.88
Fertilizer	4,299	10.55
Pesticides	1,605	11.31
Fuel and oil	5,052	8.12
Feed	3,463	24.22
Livestock purchases	4,127	33.83
Livestock services	406	22.24
Equipment lease	d	na
Marketing	2,206	17.34
Hired labor <u>3/</u>	790	22.24
Contract labor	d	na
Custom work	1,747	18.81
Interest	9,364	14.94
Property taxes	2,106	7.55
General business	3,554	6.86
Cash rent	2,071	22.71
Miscellaneous	6,697	7.24
Total <u>2/</u>	49,839	7.44

d - Insufficient data for disclosure.

na - Not applicable.

1/ The coefficient of variation provides a means of evaluating survey results. The smaller the coefficient, the greater the reliability of the estimate.

2/ Data may not add due to rounding or nondisclosure of data.

3/ Excludes wages paid to operator and family members.

Source: 1986 Farm Costs and Returns Survey, U.S. Department of Agriculture.

Appendix table 22--Land use and tenure: Minnesota wheat farm with gross sales of \$100,000-\$249,999, 1986

Item	Average per farm	Coefficient of variation <u>1/</u>
	<u>Acres</u>	<u>Percent</u>
Land tenure:		
Owned	302	12.77
Cash-rented	330	16.19
Share-rented	132	25.31
Total operated <u>2/</u>	762	7.09
Land use:		
Planted crops--		
Wheat	152	12.73
Barley	53	17.70
Beans	d	na
Corn	131	12.85
Cotton	0	na
Fruit	0	na
Nursery products	0	na
Oats	18	23.42
Peanuts	0	na
Potatoes	d	na
Rice	0	na
Silage	8	27.24
Sorghum	0	na
Soybeans	136	13.24
Sugarbeets	20	44.21
Sunflowers	6	31.62
Tobacco	0	na
Vegetables	d	na
Other	6	38.09
Pasture and hay	25	25.34
Government programs	92	8.90
Summer fallow	14	36.61

d - Insufficient data for disclosure.

na - Not applicable.

1/ The coefficient of variation provides a means of evaluating survey results. The smaller the coefficient, the greater the reliability of the estimate.

2/ Data may not add because categories (such as land rented on an animal-unit-month basis, land rented free from others, and land cash- or share-rented to others) were deleted.

Source: 1986 Farm Costs and Returns Survey, U.S. Department of Agriculture.

Appendix table 23--Value of assets and debt: Minnesota wheat farm with gross sales of \$100,000-\$249,999, 1986

Item	Average per farm	Coefficient of variation ^{1/}
	<u>Dollars</u>	<u>Percent</u>
Assets:		
Land and buildings	181,579	13.26
Machinery and equipment	119,847	10.61
Livestock	26,176	15.05
Crop inventory	72,672	15.34
Purchased inputs	4,769	14.95
Other assets	19,253	37.60
Total ^{2/}	424,296	9.53
Debt:		
Production Credit Assoc.	6,971	37.54
Farmers Home Admin.	17,680	26.14
Commercial banks	26,516	22.73
Federal land banks	16,266	28.89
Merchants and dealers	2,646	38.63
Insurance companies	d	na
Individuals	22,156	32.86
Commodity Credit Corp.	35,793	28.58
Other lenders	5,838	40.17
Total ^{2/}	136,393	9.14

d - Insufficient data for disclosure.

na - Not applicable.

^{1/} The coefficient of variation provides a means of evaluating survey results. The smaller the coefficient, the greater the reliability of the estimate.

^{2/} Data may not add due to rounding or nondisclosure of data.

Source: 1986 Farm Costs and Returns Survey, U.S. Department of Agriculture.

Appendix table 24--Farm labor: Minnesota wheat farm with gross sales of \$100,000-\$249,999, 1986

Item	Average per farm	Coefficient of variation ^{1/}
	<u>Hours per week</u>	<u>Percent</u>
Labor hours:		
Operator	58	4.89
Unpaid labor	17	21.55
Hired labor:		
	<u>Number</u>	
Full-time employees	^{3/}	43.75
Hired workers (peak) ^{2/}	3	16.02

d - Insufficient data for disclosure.

na - Not applicable.

^{1/} The coefficient of variation provides a means of evaluating survey results. The smaller the coefficient, the greater the reliability of the estimate.

^{2/} Peak number of workers hired at any one time during the year.

^{3/} Average is less than one but greater than zero.

Source: 1986 Farm Costs and Returns Survey, U.S. Department of Agriculture.

Appendix table 25--Income and expenses: Minnesota wheat farm with gross sales of \$100,000-\$249,999, 1986

Item	Average per farm	Coefficient of variation ^{1/}
	Dollars	Percent
Income:		
Crop sales, including CCC	68,508	8.40
Livestock sales	39,292	15.99
Government payments	22,780	9.25
Other farm income	3,407	21.55
Gross cash farm income ^{2/}	133,987	3.81
Nonfarm income	8,070	18.65
Expenses:		
Seed	6,013	9.47
Fertilizer	10,190	10.58
Pesticides	6,207	9.48
Fuel and oil	7,025	7.24
Feed	8,415	19.49
Livestock purchases	4,118	32.43
Livestock services	1,187	17.96
Equipment lease	d	na
Marketing	3,107	18.47
Hired labor ^{3/}	2,701	24.47
Contract labor	d	na
Custom work	2,208	39.10
Interest	10,287	13.85
Property taxes	2,004	14.85
General business	6,646	9.48
Cash rent	16,406	23.04
Miscellaneous	10,156	7.07
Total ^{2/}	98,165	7.83

d - Insufficient data for disclosure.

na - Not applicable.

^{1/} The coefficient of variation provides a means of evaluating survey results. The smaller the coefficient, the greater the reliability of the estimate.

^{2/} Data may not add due to rounding or nondisclosure of data.

^{3/} Excludes wages paid to operator and family members.

Source: 1986 Farm Costs and Returns Survey, U.S. Department of Agriculture.

Appendix table 26--Land use and tenure: Montana wheat farm with gross sales of \$40,000-\$99,999, 1986

Item	Average per farm	Coefficient of variation <u>1/</u>
	<u>Acres</u>	<u>Percent</u>
Land tenure:		
Owned	1,807	13.44
Cash-rented	486	34.87
Share-rented	644	30.76
Total operated <u>2/</u>	3,041	10.64
Land use:		
Planted crops--		
Wheat	458	12.26
Barley	161	12.40
Beans	0	na
Corn	0	na
Cotton	0	na
Fruit	0	na
Nursery products	0	na
Oats	4	30.68
Peanuts	0	na
Potatoes	0	na
Rice	0	na
Silage	d	na
Sorghum	0	na
Soybeans	0	na
Sugarbeets	d	na
Sunflowers	0	na
Tobacco	0	na
Vegetables	0	na
Other	d	na
Pasture and hay	1,583	19.80
Government programs	159	18.09
Summer fallow	553	12.95

d = Insufficient data for disclosure.

na = Not applicable.

1/ The coefficient of variation provides a means of evaluating survey results. The smaller the coefficient, the greater the reliability of the estimate.

2/ Data may not add because categories (such as land rented on an animal-unit-month basis, land rented free from others, and land cash- or share-rented to others) were deleted.

Source: 1986 Farm Costs and Returns Survey, U.S. Department of Agriculture.

Appendix table 27--Value of assets and debt: Montana wheat farm with gross sales of \$40,000-\$99,999, 1986

Item	Average per farm	Coefficient of variation <u>1/</u>
	Dollars	Percent
Assets:		
Land and buildings	385,736	10.90
Machinery and equipment	78,363	6.39
Livestock	41,157	14.72
Crop inventory	19,161	17.76
Purchased inputs	1,364	26.87
Other assets	4,485	34.65
Total <u>2/</u>	530,266	8.86
Debt:		
Production Credit Assoc.	d	na
Farmers Home Admin.	60,760	28.81
Commercial banks	28,272	35.60
Federal land banks	35,364	39.50
Merchants and dealers	d	na
Insurance companies	d	na
Individuals	21,826	36.63
Commodity Credit Corp.	4,820	29.36
Other lenders	7,413	44.93
Total <u>2/</u>	168,277	15.16

d - Insufficient data for disclosure.

na - Not applicable.

1/ The coefficient of variation provides a means of evaluating survey results. The smaller the coefficient, the greater the reliability of the estimate.

2/ Data may not add due to rounding or nondisclosure of data.

Source: 1986 Farm Costs and Returns Survey, U.S. Department of Agriculture.

Appendix table 28--Farm labor: Montana wheat farm with gross sales of \$40,000-\$99,999, 1986

Item	Average per farm	Coefficient of variation <u>1/</u>
	Hours per week	Percent
Labor hours:		
Operator	53	5.28
Unpaid labor	7	19.52
<u>Number</u>		
Hired labor:		
Full-time employees	d	na
Hired workers (peak) <u>2/</u>	1	17.60

d - Insufficient data for disclosure.

na - Not applicable.

1/ The coefficient of variation provides a means of evaluating survey results. The smaller the coefficient, the greater the reliability of the estimate.

2/ Peak number of workers hired at any one time during the year.

Source: 1986 Farm Costs and Returns Survey, U.S. Department of Agriculture.

Appendix table 29--Income and expenses: Montana wheat farm with gross sales of \$40,000-\$99,999, 1986

Item	Average per farm	Coefficient of variation ^{1/}
	<u>Dollars</u>	<u>Percent</u>
Income:		
Crop sales, including CCC	24,869	11.49
Livestock sales	20,639	15.77
Government payments	22,102	14.92
Other farm income	4,524	24.33
Gross cash farm income ^{2/}	72,134	4.10
Nonfarm income	12,206	25.71
Expenses:		
Seed	1,680	16.37
Fertilizer	3,158	16.15
Pesticides	2,368	17.22
Fuel and oil	5,477	7.35
Feed	3,381	19.23
Livestock purchases	3,884	31.18
Livestock services	555	26.18
Equipment lease	d	na
Marketing	478	19.14
Hired labor ^{3/}	1,128	35.16
Contract labor	321	41.78
Custom work	1,669	28.08
Interest	13,957	15.41
Property taxes	3,203	10.85
General business	6,808	7.23
Cash rent	2,310	24.36
Miscellaneous	8,004	9.60
Total ^{2/}	58,731	5.39

d - Insufficient data for disclosure.

na - Not applicable.

^{1/} The coefficient of variation provides a means of evaluating survey results. The smaller the coefficient, the greater the reliability of the estimate.

^{2/} Data may not add due to rounding or nondisclosure of data.

^{3/} Excludes wages paid to operator and family members.

Source: 1986 Farm Costs and Returns Survey, U.S. Department of Agriculture.

Appendix table 30--Land use and tenure: Nebraska wheat farm with gross sales of \$100,000-\$249,999, 1986

Item	Average per farm	
	Acres	Coefficient of variation <u>1/</u> Percent
Land tenure:		
Owned	777	17.20
Cash-rented	167	27.54
Share-rented	676	31.70
Total operated <u>2/</u>	1,621	12.41
Land use:		
Planted crops--		
Wheat	297	18.47
Barley	d	na
Beans	13	23.23
Corn	176	23.96
Cotton	0	na
Fruit	0	na
Nursery products	0	na
Oats	d	na
Peanuts	0	na
Potatoes	0	na
Rice	0	na
Silage	9	36.46
Sorghum	72	28.52
Soybeans	52	34.01
Sugarbeets	d	na
Sunflowers	0	na
Tobacco	0	na
Vegetables	0	na
Other	d	na
Pasture and hay	453	26.31
Government programs	129	11.26
Summer fallow	306	27.40

d - Insufficient data for disclosure.

na - Not applicable.

1/ The coefficient of variation provides a means of evaluating survey results. The smaller the coefficient, the greater the reliability of the estimate.

2/ Data may not add because categories (such as land rented on an animal-unit-month basis, land rented free from others, and land cash- or share-rented to others) were deleted.

Source: 1986 Farm Costs and Returns Survey, U.S. Department of Agriculture.

Appendix table 31--Value of assets and debt: Nebraska wheat farm with gross sales of \$100,000-\$249,999, 1986

Item	Average per farm	Coefficient of variation ^{1/}
	<u>Dollars</u>	<u>Percent</u>
Assets:		
Land and buildings	316,609	14.68
Machinery and equipment	114,156	13.65
Livestock	32,406	26.01
Crop inventory	51,447	21.22
Purchased inputs	2,382	30.69
Other assets	9,507	28.13
Total ^{2/}	526,506	11.17
Debt:		
Production Credit Assoc.	d	na
Farmers Home Admin.	8,519	46.50
Commercial banks	57,282	15.68
Federal land banks	31,718	36.28
Merchants and dealers	2,537	44.63
Insurance companies	d	na
Individuals	20,105	46.32
Commodity Credit Corp.	33,271	23.17
Other lenders	2,237	35.24
Total ^{2/}	173,628	16.25

d = Insufficient data for disclosure.

na = Not applicable.

^{1/} The coefficient of variation provides a means of evaluating survey results. The smaller the coefficient, the greater the reliability of the estimate.

^{2/} Data may not add due to rounding or nondisclosure of data.

Source: 1986 Farm Costs and Returns Survey, U.S. Department of Agriculture.

Appendix table 32--Farm labor: Nebraska wheat farm with gross sales of \$100,000-\$249,999, 1986

Item	Average per farm	Coefficient of variation ^{1/}
	<u>Hours per week</u>	<u>Percent</u>
Labor hours:		
Operator	53	4.58
Unpaid labor	14	24.46
Number		
Hired labor:		
Full-time employees	d	na
Hired workers (peak) ^{2/}	2	22.53

d = Insufficient data for disclosure.

na = Not applicable.

^{1/} The coefficient of variation provides a means of evaluating survey results. The smaller the coefficient, the greater the reliability of the estimate.

^{2/} Peak number of workers hired at any one time during the year.

Source: 1986 Farm Costs and Returns Survey, U.S. Department of Agriculture.

Appendix table 33--Income and expense: Nebraska wheat farm with gross sales of \$100,000-\$249,999, 1986

Item	Average per farm	Coefficient of variation <u>1/</u>
	<u>Dollars</u>	<u>Percent</u>
Income:		
Crop sales, including CCC	87,089	18.17
Livestock sales	36,989	22.58
Government payments	31,829	11.61
Other farm income	7,087	33.28
Gross cash farm income <u>2/</u>	162,994	8.11
Nonfarm income	6,968	27.17
Expenses:		
Seed	6,236	19.87
Fertilizer	10,374	17.19
Pesticides	4,960	12.53
Fuel and oil	8,782	8.14
Feed	6,730	26.23
Livestock purchases	9,517	37.40
Livestock services	1,983	38.20
Equipment lease	707	39.03
Marketing	3,837	13.17
Hired labor <u>3/</u>	1,979	25.02
Contract labor	d	na
Custom work	3,388	24.57
Interest	19,309	17.99
Property taxes	5,018	13.85
General business	11,082	16.17
Cash rent	3,674	26.15
Miscellaneous	12,460	13.72
Total <u>2/</u>	110,301	7.11

d = Insufficient data for disclosure.

na = Not applicable.

1/ The coefficient of variation provides a means of evaluating survey results. The smaller the coefficient, the greater the reliability of the estimate.

2/ Data may not add due to rounding or nondisclosure of data.

3/ Excludes wages paid to operator and family members.

Source: 1986 Farm Costs and Returns Survey, U.S. Department of Agriculture.

Appendix table 34--Land use and tenure: North Dakota wheat farm with gross sales of \$40,000-\$99,999, 1986

Item	Average per farm	Coefficient of variation ^{1/}
	<u>Acres</u>	<u>Percent</u>
Land tenure:		
Owned	655	13.48
Cash-rented	433	37.92
Share-rented	286	15.77
Total operated ^{2/}	1,326	7.44
Land use:		
Planted crops--		
Wheat	318	7.25
Barley	115	12.85
Beans	d	na
Corn	11	30.88
Cotton	0	na
Fruit	0	na
Nursery products	0	na
Oats	29	22.62
Peanuts	0	na
Potatoes	d	na
Rice	0	na
Silage	12	37.47
Sorghum	0	na
Soybeans	d	na
Sugarbeets	d	na
Sunflowers	44	25.01
Tobacco	0	na
Vegetables	0	na
Other	42	19.47
Pasture and hay	414	17.86
Government programs	141	11.76
Summer fall	176	26.84

d - Insufficient data for disclosure.

na - Not applicable.

^{1/} The coefficient of variation provides a means of evaluating survey results. The smaller the coefficient, the greater the reliability of the estimate.

^{2/} Data may not add because categories (such as land rented on an animal-unit-month basis, land rented free from others, and land cash- or share-rented to others) were deleted.

Source: 1986 Farm Costs and Returns Survey, U.S. Department of Agriculture.

Appendix table 35--Value of assets and debt: North Dakota wheat farm with gross sales of \$40,000-\$99,999, 1986

Item	Average per farm	Coefficient of variation ^{1/}
	Dollars	Percent
Assets:		
Land and buildings	186,835	10.93
Machinery and equipment	63,193	6.88
Livestock	28,010	21.72
Crop inventory	23,089	10.28
Purchased inputs	1,196	18.40
Other assets	12,205	21.32
Total ^{2/}	314,528	7.18
Debt:		
Production Credit Assoc.	5,285	30.17
Farmers Home Admin.	33,007	23.04
Commercial banks	26,876	16.42
Federal land banks	22,142	24.35
Merchants and dealers	582	37.99
Insurance companies	d	na
Individuals	10,347	25.51
Commodity Credit Corp.	9,835	19.84
Other lenders	3,238	38.59
Total ^{2/}	111,441	9.53

d - Insufficient data for disclosure.

na - Not applicable.

^{1/} The coefficient of variation provides a means of evaluating survey results. The smaller the coefficient, the greater the reliability of the estimate.

^{2/} Data may not add due to rounding or nondisclosure of data.

Source: 1986 Farm Costs and Returns Survey, U.S. Department of Agriculture.

Appendix table 36--Farm labor: North Dakota wheat farm with gross sales of \$40,000-\$99,999, 1986

Item	Average per farm	Coefficient of variation ^{1/}
	Hours per week	Percent
Labor hours:		
Operator	55	2.32
Unpaid labor	17	18.51
Number		
Hired labor:		
Full-time employees	d	na
Hired workers (peak) ^{2/}	1	42.37

d - Insufficient data for disclosure.

na - Not applicable.

^{1/} The coefficient of variation provides a means of evaluating survey results. The smaller the coefficient, the greater the reliability of the estimate.

^{2/} Peak number of workers hired at any one time during the year.

Source: 1986 Farm Costs and Returns Survey, U.S. Department of Agriculture.

Appendix table 37--Income and expenses: North Dakota wheat farm with gross sales of \$40,000-\$99,999, 1986

Item	Average per farm	Coefficient of variation ^{1/}
	<u>Dollars</u>	<u>Percent</u>
Income:		
Crop sales, including CCC	26,108	12.44
Livestock sales	22,257	22.12
Government payments	16,524	5.33
Other farm income	4,137	15.43
Gross cash farm income ^{2/}	69,026	4.61
Nonfarm income	10,221	17.90
Expenses:		
Seed	2,750	8.29
Fertilizer	4,116	16.60
Pesticides	2,491	12.75
Fuel and oil	5,159	4.33
Feed	d	na
Livestock purchases	1,733	22.94
Livestock services	420	13.99
Equipment lease	d	na
Marketing	576	17.84
Hired labor ^{3/}	378	22.02
Contract labor	d	na
Custom work	1,062	27.89
Interest	10,972	11.12
Property taxes	1,370	13.70
General business	4,691	6.03
Cash rent	6,425	31.39
Miscellaneous	6,829	7.37
Total ^{2/}	52,082	6.22

d - Insufficient data for disclosure.

na - Not applicable.

^{1/} The coefficient of variation provides a means of evaluating survey results. The smaller the coefficient, the greater the reliability of the estimate.

^{2/} Data may not add due to rounding or nondisclosure of data.

^{3/} Excludes wages paid to operator and family members.

Source: 1986 Farm Costs and Returns Survey, U.S. Department of Agriculture.

Appendix table 38--Land use and tenure: Oklahoma wheat farm with gross sales of \$40,000-\$99,999, 1986

Item	Average per farm	Coefficient of variation ^{1/}
	Acres	Percent
Land tenure:		
Owned	544	26.48
Cash-rented	393	29.73
Share-rented	277	33.32
Total operated ^{2/}	1,091	15.62
Land use:		
Planted crops--		
Wheat	320	14.21
Barley	d	na
Beans	0	na
Corn	0	na
Cotton	10	47.93
Fruit	0	na
Nursery products	0	na
Oats	1	48.08
Peanuts	0	na
Potatoes	0	na
Rice	0	na
Silage	0	na
Sorghum	19	38.05
Soybeans	d	na
Sugarbeets	0	na
Sunflowers	0	na
Tobacco	0	na
Vegetables	0	na
Other	d	na
Pasture and hay	674	19.00
Government programs	108	17.82
Summer fallow	32	29.63

d - Insufficient data for disclosure.

na - Not applicable.

^{1/} The coefficient of variation provides a means of evaluating survey results. The smaller the coefficient, the greater the reliability of the estimate.

^{2/} Data may not add because categories (such as land rented on an animal-unit-month basis, land rented free from others, and land cash- or share-rented to others) were deleted.

Source: 1986 Farm Costs and Returns Survey, U.S. Department of Agriculture.

Appendix table 39--Value of assets and debt: Oklahoma wheat farm with gross sales of \$40,000-\$99,999, 1986

Item	Average per farm		Coefficient of variation ^{1/}
	Dollars	Percent	
Assets:			
Land and buildings	219,678		22.55
Machinery and equipment	97,874		24.96
Livestock	66,964		13.25
Crop inventory	5,015		40.50
Purchased inputs	2,178		49.52
Other assets	12,857		34.87
Total ^{2/}	404,567		11.75
Debt:			
Production Credit Assoc.	d		na
Farmers Home Admin.	11,245		41.00
Commercial banks	21,918		24.13
Federal land banks	d		na
Merchants and dealers	d		na
Insurance companies	3,075		10.92
Individuals	6,537		39.57
Commodity Credit Corp.	1,804		38.95
Other lenders	5,450		47.22
Total ^{2/}	104,019		31.00

d - Insufficient data for disclosure.

na - Not applicable.

^{1/} The coefficient of variation provides a means of evaluating survey results. The smaller the coefficient, the greater the reliability of the estimate.

^{2/} Data may not add due to rounding or nondisclosure of data.

Source: 1986 Farm Costs and Returns Survey, U.S. Department of Agriculture.

Appendix table 40--Farm labor: Oklahoma wheat farm with gross sales of \$40,000-\$99,999, 1986

Item	Average per farm		Coefficient of variation ^{1/}
	Hours per week	Percent	
Labor hours:			
Operator	49		5.80
Unpaid labor	12		31.87
<u>Number</u>			
Hired labor:			
Full-time employees	$\frac{3}{1}$		40.64
Hired workers (peak) ^{2/}	1		22.46

^{1/} The coefficient of variation provides a means of evaluating survey results. The smaller the coefficient, the greater the reliability of the estimate.

^{2/} Peak number of workers hired at any one time during the year.

^{3/} Average is less than one but greater than zero.

Source: 1986 Farm Costs and Returns Survey, U.S. Department of Agriculture.

Appendix table 41--Income and expenses: Oklahoma wheat farm with gross sales of \$40,000-\$99,999, 1986

Item	Average per farm	Coefficient of variation ^{1/}
	<u>Dollars</u>	<u>Percent</u>
Income:		
Crop sales, including CCC	12,332	20.17
Livestock sales	44,084	16.36
Government payments	14,906	18.91
Other farm income	3,246	45.45
Gross cash farm income ^{2/}	74,568	5.23
Nonfarm income	37,113	30.77
Expenses:		
Seed	1,212	19.90
Fertilizer	4,052	12.25
Pesticides	946	27.20
Fuel and oil	4,447	11.29
Feed	d	na
Livestock purchases	17,040	32.19
Livestock services	991	14.01
Equipment lease	d	na
Marketing	746	47.09
Hired labor ^{3/}	1,371	25.76
Contract labor	1,005	27.61
Custom work	1,869	24.19
Interest	10,703	40.78
Property taxes	2,085	42.89
General business	3,592	13.29
Cash rent	3,396	29.61
Miscellaneous	7,847	16.39
Total ^{2/}	69,368	13.40

d = Insufficient data for disclosure.

na = Not applicable.

^{1/} The coefficient of variation provides a means of evaluating survey results. The smaller the coefficient, the greater the reliability of the estimate.

^{2/} Data may not add due to rounding or nondisclosure of data items.

^{3/} Excludes wages paid to operator and family members.

Source: 1986 Farm Costs and Returns Survey, U.S. Department of Agriculture.

Appendix table 42--Land use and tenure: South Dakota wheat farm with gross sales of \$40,000-\$99,999, 1986

Item	Average per farm	Coefficient of variation ^{1/}
	Acres	Percent
Land tenure:		
Owned	564	13.12
Cash-rented	322	25.22
Share-rented	173	22.85
Total operated ^{2/}	1,043	11.72
Land use:		
Planted crops--		
Wheat	119	15.70
Barley	33	23.51
Beans	0	na
Corn	118	11.82
Cotton	0	na
Fruit	0	na
Nursery products	0	na
Oats	39	18.21
Peanuts	0	na
Potatoes	0	na
Rice	0	na
Silage	8	41.81
Sorghum	d	na
Soybeans	54	22.59
Sugarbeets	0	na
Sunflowers	d	na
Tobacco	0	na
Vegetables	0	na
Other	18	27.59
Pasture and hay	424	22.32
Government programs	119	35.74
Summer fallow	31	25.74

d - Insufficient data for disclosure.

na - Not applicable.

^{1/} The coefficient of variation provides a means of evaluating survey results. The smaller the coefficient, the greater the reliability of the estimate.

^{2/} Data may not add because categories (such as land rented on an animal-unit-month basis, land rented free from others, and land cash- or share-rented to others) were deleted.

Source: 1986 Farm Costs and Returns Survey, U.S. Department of Agriculture.

Appendix table 43--Value of assets and debt: South Dakota wheat farm with gross sales of \$40,000-\$99,999, 1986

Item	Average per farm	Coefficient of variation ^{1/}
	Dollars	Percent
Assets:		
Land and buildings	136,748	9.88
Machinery and equipment	58,683	9.19
Livestock	37,979	14.15
Crop inventory	18,757	15.09
Purchased inputs	850	29.05
Other assets	21,101	41.01
Total ^{2/}	274,118	8.17
Debt:		
Production Credit Assoc.	d	na
Farmers Home Admin.	23,692	28.77
Commercial banks	18,463	25.37
Federal land banks	9,620	35.02
Merchants and dealers	1,094	47.62
Insurance companies	d	na
Individuals	6,220	43.06
Commodity Credit Corp.	12,612	20.15
Other lenders	2,648	43.23
Total ^{2/}	74,719	16.63

d - Insufficient data for disclosure.

na - Not applicable.

^{1/} The coefficient of variation provides a means of evaluating survey results. The smaller the coefficient, the greater the reliability of the estimate.

^{2/} Data may not add due to rounding or nondisclosure of data.

Source: 1986 Farm Costs and Returns Survey, U.S. Department of Agriculture.

Appendix table 44--Farm labor: South Dakota wheat farm with gross sales of \$40,000-\$99,999, 1986

Item	Average per farm	Coefficient of variation ^{1/}
	Hours per week	Percent
Labor hours:		
Operator	48	9.51
Unpaid labor	15	22.53
Number		
Hired labor:		
Full-time employees	d	na
Hired workers (peak) ^{2/}	1	23.35

d - Insufficient data for disclosure.

na - Not applicable.

^{1/} The coefficient of variation provides a means of evaluating survey results. The smaller the coefficient, the greater the reliability of the estimate.

^{2/} Peak number of workers hired at any one time during the year.

Source: 1986 Farm Costs and Returns Survey, U.S. Department of Agriculture.

Appendix table 45--Income and expenses: South Dakota wheat farm with gross sales of \$40,000-\$99,999, 1986

Item	Average per farm	Coefficient of variation <u>1/</u>
	<u>Dollars</u>	<u>Percent</u>
Income:		
Crop sales, including CCC	21,024	10.88
Livestock sales	28,830	10.35
Government payments	9,778	12.92
Other farm income	3,268	44.69
Gross cash farm income <u>2/</u>	62,900	5.75
Nonfarm income	7,976	24.01
Expenses:		
Seed	3,487	13.79
Fertilizer	3,067	10.56
Pesticides	1,591	15.87
Fuel and oil	4,854	8.44
Feed	2,824	17.40
Livestock purchases	3,985	33.88
Livestock services	633	17.60
Equipment lease	45	47.36
Marketing	564	21.25
Hired labor <u>3/</u>	436	48.11
Contract labor	d	na
Custom work	1,659	20.58
Interest	7,836	11.84
Property taxes	2,527	11.58
General business	3,999	8.80
Cash rent	3,981	22.10
Miscellaneous	6,402	16.07
Total <u>2/</u>	48,054	6.24

d - Insufficient data for disclosure.

na = Not applicable.

1/ The coefficient of variation provides a means of evaluating survey results. The smaller the coefficient, the greater the reliability of the estimate.

2/ Data may not add due to rounding or nondisclosure of data items.

3/ Excludes wages paid to operator and family members.

Source: 1986 Farm Costs and Returns Survey, U.S. Department of Agriculture.

Appendix table 46--Land use and tenure: Texas wheat farm with gross sales of \$40,000-\$99,999, 1986

Item	Average per farm	Coefficient of variation ^{1/}
	<u>Acres</u>	<u>Percent</u>
Land tenure:		
Owned	509	13.94
Cash-rented	299	25.47
Share-rented	388	16.24
Total operated ^{2/}	1,116	8.14
Land use:		
Planted crops--		
Wheat	256	11.78
Barley	d	na
Beans	0	na
Corn	20	36.82
Cotton	76	18.03
Fruit	0	na
Nursery products	0	na
Oats	8	36.86
Peanuts	d	na
Potatoes	0	na
Rice	0	na
Silage	d	na
Sorghum	114	24.69
Soybeans	d	na
Sugarbeets	0	na
Sunflowers	d	na
Tobacco	0	na
Vegetables	d	na
Other	d	na
Pasture and hay	451	16.94
Government programs	121	14.23
Summer fallow	27	26.80

d - Insufficient data for disclosure.

na - Not applicable.

^{1/} The coefficient of variation provides a means of evaluating survey results. The smaller the coefficient, the greater the reliability of the estimate.

^{2/} Data may not add because categories (such as land rented on an animal-unit-month basis, land rented free from others, and land cash- or share-rented to others) were deleted.

Source: 1986 Farm Costs and Returns Survey, U.S. Department of Agriculture.

Appendix table 47--Value of assets and debt: Texas wheat farm with gross sales of \$40,000-\$99,999, 1986

Item	Average per farm	Coefficient of variation <u>1/</u>
	<u>Dollars</u>	<u>Percent</u>
Assets:		
Land and buildings	302,210	16.76
Machinery and equipment	70,576	8.55
Livestock	33,581	17.31
Crop inventory	6,320	41.73
Purchased inputs	800	23.39
Other assets	13,708	42.71
Total <u>2/</u>	427,195	12.69
Debt:		
Production Credit Assoc.	7,734	33.83
Farmers Home Admin.	21,230	34.88
Commercial banks	31,393	28.52
Federal land banks	26,396	33.80
Merchants and dealers	d	na
Insurance companies	d	na
Individuals	d	na
Commodity Credit Corp.	2,462	31.14
Other lenders	7,318	44.77
Total <u>2/</u>	103,206	14.59

d - Insufficient data for disclosure.

na - Not applicable.

1/ The coefficient of variation provides a means of evaluating survey results. The smaller the coefficient, the greater the reliability of the estimate.

2/ Data may not add due to rounding or nondisclosure of data items.

Source: 1986 Farm Costs and Returns Survey, U.S. Department of Agriculture.

Appendix table 48--Farm labor: Texas wheat farm with gross sales of \$40,000-\$99,999, 1986

Item	Average per farm	Coefficient of variation <u>1/</u>
	<u>Hours per week</u>	<u>Percent</u>
Labor hours:		
Operator	49	4.34
Unpaid labor	12	22.18
<u>Number</u>		
Hired labor:		
Full-time employees	$\frac{3}{2}$	34.00
Hired workers (peak) <u>2/</u>	$\frac{2}{2}$	14.82

1/ The coefficient of variation provides a means of evaluating survey results. The smaller the coefficient, the greater the reliability of the estimate.

2/ Peak number of workers hired at any one time during the year.

3/ Average is less than one but greater than zero.

Source: 1986 Farm Costs and Returns Survey, U.S. Department of Agriculture.

Appendix table 49--Income and expenses: Texas wheat farm with gross sales of \$40,000-\$99,999, 1986

Item	Average per farm	Coefficient of variation <u>1/</u>
	<u>Dollars</u>	<u>Percent</u>
Income:		
Crop sales, including CCC	23,886	10.04
Livestock sales	16,607	14.69
Government payments	15,174	11.32
Other farm income	4,524	23.02
Gross cash farm income <u>2/</u>	60,191	4.56
Nonfarm income	31,777	20.23
Expenses:		
Seed	2,562	11.08
Fertilizer	5,063	13.16
Pesticides	1,440	14.32
Fuel and oil	8,231	11.90
Feed	3,226	37.42
Livestock purchases	5,950	27.82
Livestock services	d	na
Equipment lease	d	na
Marketing	2,227	16.33
Hired labor <u>3/</u>	2,490	23.11
Contract labor	950	19.50
Custom work	3,086	12.70
Interest	12,021	14.44
Property taxes	1,188	11.41
General business	4,214	8.34
Cash rent	2,258	20.81
Miscellaneous	8,757	12.68
Total <u>2/</u>	64,810	6.57

d - Insufficient data for disclosure.

na - Not applicable.

1/ The coefficient of variation provides a means of evaluating survey results. The smaller the coefficient, the greater the reliability of the estimate.

2/ Data may not add due to rounding or nondisclosure of data.

3/ Excludes wages paid to operator and family members.

Source: 1986 Farm Costs and Returns Survey, U.S. Department of Agriculture.

Appendix table 50--Land use and tenure: Washington wheat farm with gross sales of \$100,000-\$249,999, 1986

Item	Average per farm	Coefficient of variation <u>1/</u>
	<u>Acres</u>	<u>Percent</u>
Land tenure:		
Owned	1,195	20.10
Cash-rented	194	40.58
Share-rented	783	30.04
Total operated <u>2/</u>	2,107	8.45
Land use:		
Planted crops--		
Wheat	497	13.83
Barley	212	35.27
Beans	d	na
Corn	d	na
Cotton	0	na
Fruit	d	na
Nursery products	0	na
Oats	d	na
Peanuts	0	na
Potatoes	d	na
Rice	0	na
Silage	0	na
Sorghum	0	na
Soybeans	0	na
Sugarbeets	0	na
Sunflowers	0	na
Tobacco	0	na
Vegetables	d	na
Other	51	39.41
Pasture and hay	694	40.30
Government programs	189	15.13
Summer fallow	384	38.96

d = Insufficient data for disclosure.

na = Not applicable.

1/ The coefficient of variation provides a means of evaluating survey results. The smaller the coefficient, the greater the reliability of the estimate.

2/ Data may not add because categories (such as land rented on an animal-unit-month basis, land rented free from others, and land cash- or share-rented to others) were deleted.

Source: 1986 Farm Costs and Returns Survey, U.S. Department of Agriculture.

Appendix table 51--Value of assets and debt: Washington wheat farm with gross sales of \$100,000-\$249,999, 1986

Item	Average per farm	Coefficient of variation ^{1/}
	Dollars	Percent
Assets:		
Land and buildings	493,157	34.71
Machinery and equipment	149,730	11.79
Livestock	d	na
Crop inventory	38,501	32.27
Purchased inputs	2,246	46.98
Other assets	23,978	38.09
Total ^{2/}	774,171	21.65
Debt:		
Production Credit Assoc.	d	na
Farmers Home Admin.	d	na
Commercial banks	32,371	37.70
Federal land banks	61,487	26.54
Merchants and dealers	d	na
Insurance companies	d	na
Individuals	12,351	47.84
Commodity Credit Corp.	23,377	38.45
Other lenders	5,105	43.47
Total ^{2/}	206,201	9.36

d - Insufficient data for disclosure.

na - Not applicable.

^{1/} The coefficient of variation provides a means of evaluating survey results. The smaller the coefficient, the greater the reliability of the estimate.

^{2/} Data may not add due to rounding or nondisclosure of data.

Source: 1986 Farm Costs and Returns Survey, U.S. Department of Agriculture.

Appendix table 52--Farm labor: Washington wheat farm with gross sales of \$100,000-\$249,999, 1986

Item	Average per farm	Coefficient of variation ^{1/}
	Hours per week	Percent
Labor hours:		
Operator	57	7.44
Unpaid labor	8	41.66
Number		
Hired labor:		
Full-time employees	^{3/}	42.51
Hired workers (peak) ^{2/}	5	24.39

^{1/} The coefficient of variation provides a means of evaluating survey results. The smaller the coefficient, the greater the reliability of the estimate.

^{2/} Peak number of workers hired at any one time during the year.

^{3/} Average is less than one but greater than zero.

Source: 1986 Farm Costs and Returns Survey, U.S. Department of Agriculture.

Appendix table 53--Income and expenses: Washington wheat farm with gross sales of \$100,000-\$249,999, 1986

Item	Average per farm	Coefficient of variation ^{1/}
	<u>Dollars</u>	<u>Percent</u>
Income:		
Crop sales, including CCC	80,584	15.07
Livestock sales	25,232	42.25
Government payments	43,481	11.27
Other farm income	5,379	33.41
Gross cash farm income ^{2/}	154,676	3.72
Nonfarm income	7,705	32.38
Expenses:		
Seed	5,226	31.61
Fertilizer	18,134	14.39
Pesticides	8,737	10.40
Fuel and oil	10,220	11.13
Feed	2,774	37.06
Livestock purchases	372	49.79
Livestock services	875	44.61
Equipment lease	d	na
Marketing	2,891	40.93
Hired labor ^{3/}	16,228	21.96
Contract labor	d	na
Custom work	1,816	32.82
Interest	14,367	30.26
Property taxes	4,302	9.22
General business	7,760	12.01
Cash rent	5,112	40.53
Miscellaneous	18,909	5.31
Total ^{2/}	118,975	5.96

d = Insufficient data for disclosure.

na = Not applicable.

^{1/} The coefficient of variation provides a means of evaluating survey results. The smaller the coefficient, the greater the reliability of the estimate.

^{2/} Data may not add due to rounding or nondisclosure of data.

^{3/} Excludes wages paid to operator and family members.

Source: 1986 Farm Costs and Returns Survey, U.S. Department of Agriculture.

Appendix table 54--Land use and tenure: Central Plains wheat farms
by size of farm, 1986

Item	Small farm 1/		Mid-sized farm 2/		Large farm 3/	
	Average	Coefficient	Average	Coefficient	Average	Coefficient
	per farm	of varia- tion 4/	per farm	of varia- tion 4/	per farm	of varia- tion 4/
	Acres	Percent	Acres	Percent	Acres	Percent
Land tenure:						
Owned	677	25.22	855	9.74	1,830	16.97
Cash-rented	162	19.02	356	19.07	448	29.38
Share-rented	454	10.01	727	14.30	876	25.48
Total operated 5/	1,453	19.29	1,923	7.32	3,154	11.16
Land use:						
Planted crops--						
Wheat	261	7.15	389	8.90	504	26.29
Barley	10	24.93	19	29.50	11	45.05
Beans	1	47.58	7	21.29	d	na
Corn	40	20.96	107	21.45	269	27.21
Cotton	0	na	0	na	0	na
Fruit	0	na	0	na	0	na
Nursery products	0	na	0	na	0	na
Oats	6	28.95	8	30.07	d	na
Peanuts	0	na	0	na	0	na
Potatoes	0	na	0	na	d	na
Rice	0	na	0	na	0	na
Silage	3	28.20	12	22.17	18	38.06
Sorghum	87	12.32	137	13.81	206	27.30
Soybeans	44	26.34	52	21.12	43	37.05
Sugarbeets	0	na	d	na	d	na
Sunflowers	d	na	d	na	d	na
Tobacco	0	na	0	na	0	na
Vegetables	0	na	0	na	0	na
Other	15	32.41	d	na	d	na
Pasture and hay	710	39.47	675	14.02	1,343	25.67
Government programs	107	7.24	164	7.11	256	14.20
Summer fallow	189	10.51	326	13.89	472	41.44

d - Insufficient data for disclosure.

na - Not applicable.

1/ \$40,000-\$99,999 gross farm sales.

2/ \$100,000-\$249,999 gross farm sales.

3/ \$250,000-\$499,999 gross farm sales.

4/ The coefficient of variation provides a means of evaluating survey results. The smaller the coefficient, the greater the reliability of the estimate.

5/ Data may not add because categories (such as land rented on an animal-unit-month basis, land rented free from others, and land cash- or share-rented to others) were deleted.

Source: 1986 Farm Costs and Returns Survey, U.S. Department of Agriculture.

Appendix table 55--Value of assets and debt: Central Plains wheat farms
by size of farm, 1986

Item	Small farm 1/		Mid-sized farm 2/		Large farm 3/	
	Average	Coefficient	Average	Coefficient	Average	Coefficient
	per farm	of varia- tion 4/	per farm	of varia- tion 4/	per farm	of varia- tion 4/
	Dollars	Percent	Dollars	Percent	Dollars	Percent
Assets:						
Land and buildings	156,736	8.71	288,406	8.19	583,142	14.87
Machinery and equipment	63,238	8.25	112,143	7.72	201,969	16.38
Livestock	24,031	13.20	48,720	13.11	105,178	17.23
Crop inventory	17,283	13.67	39,348	13.10	94,013	22.47
Purchased inputs	861	23.51	1,947	18.85	7,825	29.94
Other assets	15,081	19.72	13,693	16.54	31,150	30.84
Total 5/	277,229	6.52	504,256	5.97	1,023,277	11.46
Debt:						
Production Credit Association	2,875	36.80	6,005	31.28	d	na
Farmers Home Administration	14,411	26.63	19,587	24.87	d	na
Commercial banks	20,343	17.10	56,336	10.90	100,477	20.42
Federal land banks	22,050	19.61	41,445	20.42	98,206	20.97
Merchants and dealers	1,319	34.07	1,989	33.57	d	na
Insurance companies	d	na	d	na	d	na
Individuals	8,269	30.05	14,335	31.65	18,758	41.23
Commodity Credit Corporation	9,203	16.17	27,636	14.76	47,445	20.46
Other lenders	4,990	8.43	4,250	24.73	6,053	48.89
Total 5/	84,742	10.72	179,146	9.37	318,965	12.40

d - Insufficient data for disclosure.

na - Not applicable.

1/ \$40,000-\$99,999 gross farm sales.

2/ \$100,000-\$249,999 gross farm sales.

3/ \$250,000-\$499,999 gross farm sales.

4/ The coefficient of variation provides a means of evaluating survey results. The smaller the coefficient, the greater the reliability of the estimate.

5/ Data may not add due to rounding or nondisclosure of data.

Source: 1986 Farm Costs and Returns Survey, U.S. Department of Agriculture.

Appendix table 56--Farm labor: Central Plains wheat farms by size of farm, 1986

Item	Small farm 1/		Mid-sized farm 2/		Large farm 3/	
	Average per farm	Coefficient of variation 4/	Average per farm	Coefficient of variation 4/	Average per farm	Coefficient of variation 4/
	<u>Hours per week</u>	<u>Percent</u>	<u>Hours per week</u>	<u>Percent</u>	<u>Hours per week</u>	<u>Percent</u>
Labor hours:						
Operator	48	4.35	55	3.06	50	6.98
Unpaid labor	13	15.96	15	13.04	12	25.34
	<u>Number</u>		<u>Number</u>		<u>Number</u>	
Hired labor:						
Full-time employees	5/	36.51	5/	43.09	5/	27.24
Hired workers (peak) 6/	1	13.51	2	11.56	4	15.42

1/ \$40,000-\$99,999 gross farm sales.

2/ \$100,000-\$249,999 gross farm sales.

3/ \$250,000-\$499,999 gross farm sales.

4/ The coefficient of variation provides a means of evaluating survey results. The smaller the coefficient, the greater the reliability of the estimate.

5/ Average is less than one but greater than zero.

6/ Peak number of workers hired at any one time during the year.

Source: 1986 Farm Costs and Returns Survey, U.S. Department of Agriculture.

Appendix table 57--Income and expenses: Central Plains wheat farms
by size of farm, 1986

Item	Small farm 1/		Mid-sized farm 2/		Large farm 3/	
	Average	Coefficient	Average	Coefficient	Average	Coefficient
	per farm	of varia- tion 4/	per farm	of varia- tion 4/	per farm	of varia- tion 4/
	Dollars	Percent	Dollars	Percent	Dollars	Percent
Income:						
Crop sales, including GOC	31,266	8.34	69,914	11.98	121,716	12.55
Livestock sales	17,955	12.27	49,260	10.90	113,177	15.35
Government payments	16,575	7.82	30,751	7.15	46,807	9.23
Other farm income	3,430	16.41	6,020	19.30	15,011	34.98
Gross cash farm income 5/	69,227	3.40	155,945	4.41	296,710	5.28
Nonfarm income	12,939	12.73	9,975	15.47	d	na
Expenses:						
Seed	2,183	10.03	5,029	13.75	9,950	17.85
Fertilizer	4,273	9.41	9,559	9.44	21,906	21.98
Pesticides	1,545	10.74	4,360	8.88	6,727	17.62
Fuel and oil	4,913	5.32	9,418	6.14	19,185	14.80
Feed	3,144	16.40	8,428	13.58	18,312	26.05
Livestock purchases	3,574	23.29	12,341	19.27	44,374	30.23
Livestock services	524	18.40	2,567	20.92	3,390	28.21
Equipment lease	158	40.13	499	28.01	1,020	43.52
Marketing	1,928	14.02	4,640	11.71	4,828	22.27
Hired labor 6/	743	17.60	2,437	14.48	7,829	17.45
Contract labor	172	31.95	284	33.35	d	na
Custom work	2,024	12.11	3,093	15.10	5,155	29.42
Interest	8,855	11.13	19,460	10.25	38,213	11.75
Property taxes	2,051	6.84	4,107	9.08	7,354	9.10
General business	3,485	4.91	8,885	10.08	11,496	10.45
Cash rent	2,310	16.76	4,664	13.77	7,813	29.46
Miscellaneous	6,669	5.20	12,514	7.60	19,714	7.58
Total 5/	48,552	5.12	112,284	3.94	227,603	7.23

d - Insufficient data for disclosure.

na - Not applicable.

1/ \$40,000-\$99,999 gross farm sales.

2/ \$100,000-\$249,999 gross farm sales.

3/ \$250,000-\$499,999 gross farm sales.

4/ The coefficient of variation provides a means of evaluating survey results. The smaller the coefficient, the greater the reliability of the estimate.

5/ Data may not add due to rounding or nondisclosure of data.

6/ Excludes wages paid to operator and family members.

Source: 1986 Farm Costs and Returns Survey, U.S. Department of Agriculture.

Appendix table 58--Land use and tenure: North Central wheat farms
by size of farm, 1986

Item	Small farm 1/		Mid-sized farm 2/		Large farm 3/	
	Average per farm	Coefficient of variation 4/	Average per farm	Coefficient of variation 4/	Average per farm	Coefficient of variation 4/
	Acres	Percent	Acres	Percent	Acres	Percent
Land tenure:						
Owned	169	12.58	224	6.75	357	8.61
Cash-rented	72	21.57	156	14.33	314	13.02
Share-rented	166	14.12	235	10.86	382	15.28
Total operated 5/	405	5.67	614	5.07	1,054	6.08
Land use:						
Planted crops--						
Wheat	50	13.44	55	7.00	89	10.74
Barley	0	na	d	na	d	na
Beans	0	na	0	na	0	na
Corn	100	7.73	207	6.02	377	9.21
Cotton	d	na	4	43.53	0	na
Fruit	0	na	d	na	0	na
Nursery products	0	na	0	na	0	na
Oats	3	26.30	8	23.97	9	49.88
Peanuts	0	na	0	na	0	na
Potatoes	0	na	d	na	0	na
Rice	0	na	0	na	0	na
Silage	d	na	4	27.40	5	30.24
Sorghum	6	33.95	8	29.16	d	na
Soybeans	127	9.79	195	7.43	323	10.59
Sugarbeets	0	na	d	na	d	na
Sunflowers	0	na	0	na	0	na
Tobacco	0	na	d	na	0	na
Vegetables	d	na	0	na	d	na
Other	d	na	3	41.89	8	43.79
Pasture and hay	46	16.31	55	12.96	63	25.37
Government programs	30	9.41	46	6.96	88	11.32
Summer fallow	d	na	d	na	d	na

d - Insufficient data for disclosure.

na - Not applicable.

1/ \$40,000-\$99,999 gross farm sales.

2/ \$100,000-\$249,999 gross farm sales.

3/ \$250,000-\$499,999 gross farm sales.

4/ The coefficient of variation provides a means of evaluating survey results. The smaller the coefficient, the greater the reliability of the estimate.

5/ Data may not add because categories (such as land rented on an animal-unit-month basis, land rented free from others, and land cash- or share-rented to others) were deleted.

Source: 1986 Farm Costs and Returns Survey, U.S. Department of Agriculture.

Appendix table 59--Value of assets and debt: North Central wheat farms
by size of farm, 1986

Item	Small farm 1/		Mid-sized farm 2/		Large farm 3/	
	Average per farm	Coefficient of variation 4/	Average per farm	Coefficient of variation 4/	Average per farm	Coefficient of variation 4/
	Dollars	Percent	Dollars	Percent	Dollars	Percent
Assets:						
Land and buildings	175,081	15.10	254,202	7.18	498,405	17.66
Machinery and equipment	60,651	9.28	102,083	7.29	196,408	10.63
Livestock	18,870	14.90	38,254	9.81	73,851	14.63
Crop inventory	17,515	10.35	36,291	10.73	72,773	13.01
Purchased inputs	1,592	21.45	3,808	31.32	10,408	17.35
Other assets	8,701	17.89	18,322	33.95	50,458	46.24
Total 5/	282,409	10.98	452,960	5.31	902,303	11.07
Debt:						
Production Credit Association	3,065	29.62	3,755	29.49	d	na
Farmers Home Administration	10,763	34.50	16,203	31.72	8,350	44.64
Commercial banks	17,835	22.68	42,516	17.41	80,697	18.84
Federal land banks	6,095	27.30	34,890	20.96	64,743	20.46
Merchants and dealers	d	na	394	43.19	5,272	35.90
Insurance companies	d	na	d	na	d	na
Individuals	6,506	32.73	10,646	37.07	13,876	24.71
Commodity Credit Corporation	5,865	20.94	13,583	15.36	30,464	17.40
Other lenders	d	na	4,650	29.89	9,435	32.78
Total 5/	55,796	14.49	128,700	10.33	248,567	9.96

d - Insufficient data for disclosure.

na - Not applicable.

1/ \$40,000-\$99,999 gross farm sales.

2/ \$100,000-\$249,999 gross farm sales.

3/ \$250,000-\$499,999 gross farm sales.

4/ The coefficient of variation provides a means of evaluating survey results. The smaller the coefficient, the greater the reliability of the estimate.

5/ Data may not add due to rounding or nondisclosure of data.

Source: 1986 Farm Costs and Returns Survey, U.S. Department of Agriculture.

Appendix table 60--Farm labor: North Central wheat farms by size of farm, 1986

Item	Small farm 1/		Mid-sized farm 2/		Large farm 3/	
	Average per farm	Coefficient of variation 4/	Average per farm	Coefficient of variation 4/	Average per farm	Coefficient of variation 4/
	Hours per week	Percent	Hours per week	Percent	Hours per week	Percent
Labor hours:						
Operator	48	4.11	56	2.41	58	4.54
Unpaid labor	14	27.45	17	12.74	15	24.77
	<u>Number</u>		<u>Number</u>		<u>Number</u>	
Hired labor:						
Full-time employees	5/	47.32	5/	26.35	5/	25.10
Hired workers (peak) 6/	2	11.69	2	9.07	4	21.62

1/ \$40,000-\$99,999 gross farm sales.

2/ \$100,000-\$249,999 gross farm sales.

3/ \$250,000-\$499,999 gross farm sales.

4/ The coefficient of variation provides a means of evaluating survey results. The smaller the coefficient, the greater the reliability of the estimate.

5/ Average is less than one but greater than zero.

6/ Peak number of workers hired at any one time during the year.

Source: 1986 Farm Costs and Returns Survey, U.S. Department of Agriculture.

Appendix table 61--Income and expenses: North Central wheat farms
by size of farm, 1986

Item	Small farm 1/		Mid-sized farm 2/		Large farm 3/	
	Average	Coefficient	Average	Coefficient	Average	Coefficient
	per farm	of varia- tion 4/	per farm	of varia- tion 4/	per farm	of varia- tion 4/
	Dollars	Percent	Dollars	Percent	Dollars	Percent
Income:						
Crop sales, including CCC	33,386	6.46	57,754	10.85	133,727	9.80
Livestock sales	20,671	11.03	63,375	9.38	131,822	12.85
Government payments	7,139	13.25	12,983	10.06	22,812	11.67
Other farm income	1,831	33.95	3,282	19.63	4,548	28.28
Gross cash farm income 5/	63,028	3.94	137,394	5.18	292,908	5.35
Nonfarm income	13,109	13.66	9,708	15.20	13,835	21.06
Expenses:						
Seed	3,353	6.57	6,643	7.13	11,733	8.54
Fertilizer	7,763	6.89	13,593	6.24	26,531	10.83
Pesticides	3,188	8.61	6,054	8.30	11,916	9.43
Fuel and oil	3,907	8.08	6,254	4.80	10,904	7.41
Feed	5,404	12.04	18,612	21.19	36,120	14.53
Livestock purchases	2,640	27.18	9,043	18.85	10,754	27.11
Livestock services	577	18.63	1,547	13.38	5,406	19.41
Equipment lease	145	45.02	d	na	1,580	46.79
Marketing	1,022	13.52	3,330	14.20	4,898	16.10
Hired labor 6/	789	20.50	2,528	16.83	9,055	15.13
Contract labor	91	37.53	d	na	d	na
Custom work	592	21.16	799	16.92	821	33.70
Interest	5,657	12.38	14,947	10.29	29,190	15.12
Property taxes	1,434	11.89	2,372	7.34	3,457	8.54
General business	3,613	8.55	6,427	7.23	15,355	12.33
Cash rent	3,875	19.30	10,734	16.06	21,571	13.24
Miscellaneous	5,868	10.57	11,079	5.20	19,388	7.48
Total 5/	49,918	3.75	114,895	5.36	219,406	5.40

d = Insufficient data for disclosure.

na = Not applicable.

1/ \$40,000-\$99,999 gross farm sales.

2/ \$100,000-\$249,999 gross farm sales.

3/ \$250,000-\$499,999 gross farm sales.

4/ The coefficient of variation provides a means of evaluating survey results. The smaller the coefficient, the greater the reliability of the estimate.

5/ Data may not add due to rounding or nondisclosure of data.

6/ Excludes wages paid to operator and family members.

Source: 1986 Farm Costs and Returns Survey, U.S. Department of Agriculture.

Appendix table 62--Land use and tenure: Northern Plains wheat farms
by size of farm, 1986

Item	Small farm 1/		Mid-sized farm 2/		Large farm 3/	
	Average per farm	Coefficient of variation 4/	Average per farm	Coefficient of variation 4/	Average per farm	Coefficient of variation 4/
	<u>Acres</u>	<u>Percent</u>	<u>Acres</u>	<u>Percent</u>	<u>Acres</u>	<u>Percent</u>
Land tenure:						
Owned	756	8.41	852	9.07	1,777	26.05
Cash-rented	374	21.81	507	8.27	1,184	20.56
Share-rented	281	14.52	357	14.07	337	22.50
Total operated 5/	1,403	5.85	1,882	8.16	3,788	24.24
Land use:						
Planted crops--						
Wheat	267	6.72	348	8.20	560	10.29
Barley	91	9.54	126	9.88	200	13.11
Beans	d	na	5	38.65	d	na
Corn	42	14.18	81	12.45	134	20.05
Cotton	0	na	0	na	0	na
Fruit	0	na	0	na	0	na
Nursery products	0	na	0	na	0	na
Oats	24	15.31	27	21.80	35	35.69
Peanuts	0	na	0	na	0	na
Potatoes	d	na	d	na	d	na
Rice	0	na	0	na	0	na
Silage	9	26.37	17	28.22	23	26.69
Sorghum	d	na	d	na	0	na
Soybeans	31	21.87	52	16.32	120	19.20
Sugarbeets	d	na	7	41.00	44	33.52
Sunflowers	23	22.13	45	14.00	48	32.22
Tobacco	0	na	0	na	0	na
Vegetables	0	na	d	na	15	45.16
Other	26	16.81	27	18.18	38	31.68
Pasture and hay	527	11.68	706	16.32	1,890	47.03
Government programs	127	10.55	163	8.18	227	9.44
Summer fallow	173	15.56	174	10.87	247	21.74

d = Insufficient data for disclosure.

na = Not applicable.

1/ \$40,000-\$99,999 gross farm sales.

2/ \$100,000-\$249,999 gross farm sales.

3/ \$250,000-\$499,999 gross farm sales.

4/ The coefficient of variation provides a means of evaluating survey results. The smaller the coefficient, the greater the reliability of the estimate.

5/ Data may not add because categories (such as land rented on an animal-unit-month basis, land rented free from others, and land cash- or share-rented to others) were deleted.

Source: 1986 Farm Costs and Returns Survey, U.S. Department of Agriculture.

Appendix table 63--Value of assets and debt: Northern Plains wheat farms
by size of farm, 1986

Item	Small farm 1/		Mid-sized farm 2/		Large farm 3/	
	Average per farm	Coefficient of variation 4/	Average per farm	Coefficient of variation 4/	Average per farm	Coefficient of variation 4/
	<u>Dollars</u>	<u>Percent</u>	<u>Dollars</u>	<u>Percent</u>	<u>Dollars</u>	<u>Percent</u>
Assets:						
Land and buildings	196,996	6.68.	246,931	7.00	463,387	10.72
Machinery and equipment	64,800	5.23	115,013	5.71	191,694	6.75
Livestock	30,005	10.70	46,600	9.20	77,775	17.67
Crop inventory	23,795	6.93	54,643	10.77	124,655	11.57
Purchased inputs	1,186	12.02	3,260	13.40	9,709	19.21
Other assets	12,209	19.82	17,870	20.89	33,876	16.72
Total 5/	328,990	4.69	484,317	4.91	901,096	7.47
Debt:						
Production Credit Association	4,799	26.41	5,975	21.54	d	na
Farmers Home Administration	34,641	16.07	26,664	15.34	42,283	27.55
Commercial banks	24,494	13.10	30,332	10.56	94,211	18.96
Federal land banks	20,928	17.36	27,682	13.36	62,888	24.39
Merchants and dealers	658	26.84	2,287	23.37	4,988	33.25
Insurance companies	d	na	d	na	d	na
Individuals	11,885	18.95	22,551	16.87	32,456	26.14
Commodity Credit Corporation	12,999	11.83	29,749	15.56	60,621	17.09
Other lenders	4,058	23.51	7,625	25.16	2,590	41.53
Total 5/	114,576	7.42	154,936	5.63	329,036	11.55

d = Insufficient data for disclosure.

na = Not applicable.

1/ \$40,000-\$99,999 gross farm sales.

2/ \$100,000-\$249,999 gross farm sales.

3/ \$250,000-\$499,999 gross farm sales.

4/ The coefficient of variation provides a means of evaluating survey results. The smaller the coefficient, the greater the reliability of the estimate.

5/ Data may not add due to rounding or nondisclosure of data.

Source: 1986 Farm Costs and Returns Survey, U.S. Department of Agriculture.

Appendix table 64--Farm labor: Northern Plains wheat farms by size of farm, 1986

Item	Small farm 1/		Mid-sized farm 2/		Large farm 3/	
	Average per farm	Coefficient of variation 4/	Average per farm	Coefficient of variation 4/	Average per farm	Coefficient of variation 4/
	Hours per week	Percent	Hours per week	Percent	Hours per week	Percent
Labor hours:						
Operator	52	2.94	59	2.51	56	4.37
Unpaid labor	14	12.90	17	10.76	20	21.55
	<u>Number</u>		<u>Number</u>		<u>Number</u>	
Hired labor:						
Full-time employees	5/	40.05	5/	25.68	5/	28.03
Hired workers (peak) 6/	1	24.59	2	8.43	4	13.11

1/ \$40,000-\$99,999 gross farm sales.

2/ \$100,000-\$249,999 gross farm sales.

3/ \$250,000-\$499,999 gross farm sales.

4/ The coefficient of variation provides a means of evaluating survey results. The smaller the coefficient, the greater the reliability of the estimate.

5/ Average is less than one but greater than zero.

6/ Peak number of workers hired at any one time during the year.

Source: 1986 Farm Costs and Returns Survey, U.S. Department of Agriculture.

Appendix table 65--Income and expenses: Northern Plains wheat farms
by size of farm, 1986

Item	Small farm 1/		Mid-sized farm 2/		Large farm 3/	
	Average	Coefficient	Average	Coefficient	Average	Coefficient
	per farm	of varia- tion 4/	per farm	of varia- tion 4/	per farm	of varia- tion 4/
	Dollars	Percent	Dollars	Percent	Dollars	Percent
Income:						
Crop sales, including CCC	26,359	7.23	55,852	8.88	139,425	10.26
Livestock sales	22,070	11.12	49,019	10.28	95,407	18.00
Government payments	15,498	5.30	27,171	6.47	51,819	10.39
Other farm income	3,700	13.31	5,473	13.43	12,339	17.67
Gross cash farm income 5/	67,626	2.86	137,514	2.58	298,990	4.03
Nonfarm income	10,193	12.61	8,283	13.41	14,060	31.88
Expenses:						
Seed	2,873	6.35	5,209	8.48	10,854	9.82
Fertilizer	4,182	9.43	9,053	9.08	22,142	9.98
Pesticides	2,387	9.41	5,041	7.47	11,161	14.79
Fuel and oil	5,142	3.61	8,244	3.72	13,825	6.25
Feed	3,022	26.16	7,084	10.78	13,220	22.99
Livestock purchases	2,603	17.54	7,095	15.14	25,970	28.13
Livestock services	497	9.28	1,302	10.15	2,915	21.55
Equipment lease	197	40.23	748	35.84	1,100	29.70
Marketing	681	11.08	2,460	12.11	4,519	16.29
Hired labor 6/	551	18.02	2,347	13.98	9,449	14.76
Contract labor	145	28.68	290	28.73	1,802	33.12
Custom work	1,201	14.44	2,474	16.82	2,991	19.77
Interest	10,624	7.31	14,040	6.73	32,581	14.35
Property taxes	1,977	7.41	2,560	8.44	5,572	12.12
General business	4,700	4.04	8,003	5.39	13,446	7.83
Cash rent	5,315	19.96	11,172	11.71	28,292	12.68
Miscellaneous	6,722	5.54	11,540	3.73	19,670	7.16
Total 5/	52,819	3.82	98,662	3.49	219,507	4.77

d = Insufficient data for disclosure.

na = Not applicable.

1/ \$40,000-\$99,999 gross farm sales.

2/ \$100,000-\$249,999 gross farm sales.

3/ \$250,000-\$499,999 gross farm sales.

4/ The coefficient of variation provides a means of evaluating survey results. The smaller the coefficient, the greater the reliability of the estimate.

5/ Data may not add due to rounding or nondisclosure of data.

6/ Excludes wages paid to operator and family members.

Source: 1986 Farm Costs and Returns Survey, U.S. Department of Agriculture.

Appendix table 66--Land use and tenure: Northwest wheat farms
by size of farm, 1986

Item	Small farm 1/		Mid-sized farm 2/		Large farm 3/	
	Average per farm	Coefficient of variation 4/	Average per farm	Coefficient of variation 4/	Average per farm	Coefficient of variation 4/
	Acres	Percent	Acres	Percent	Acres	Percent
Land tenure:						
Owned	434	17.01	905	19.82	1,089	18.91
Cash-rented	65	22.76	170	24.68	331	21.04
Share-rented	403	26.84	504	19.80	892	25.02
Total operated 5/	1,475	41.84	1,735	12.37	3,048	19.30
Land use:						
Planted crops--						
Wheat	206	17.91	329	12.67	614	13.21
Barley	81	17.89	174	25.11	264	20.33
Beans	d	na	d	na	d	na
Corn	d	na	d	na	d	na
Cotton	0	na	0	na	0	na
Fruit	0	na	d	na	0	na
Nursery products	0	na	d	na	0	na
Oats	d	na	d	na	d	na
Peanuts	0	na	0	na	0	na
Potatoes	d	na	5	33.72	60	20.02
Rice	0	na	0	na	0	na
Silage	d	na	d	na	3	49.39
Sorghum	0	na	0	na	0	na
Soybeans	0	na	0	na	0	na
Sugarbeets	d	na	12	31.19	d	na
Sunflowers	0	na	0	na	0	na
Tobacco	0	na	0	na	0	na
Vegetables	d	na	9	40.47	14	43.24
Other	36	29.48	47	26.87	99	27.93
Pasture and hay	287	34.34	635	26.43	1,022	41.03
Government programs	98	20.01	164	17.60	288	17.28
Summer fallow	133	25.62	231	28.83	392	25.11

d = Insufficient data for disclosure.

na = Not applicable.

1/ \$40,000-\$99,999 gross farm sales.

2/ \$100,000-\$249,999 gross farm sales.

3/ \$250,000-\$499,999 gross farm sales.

4/ The coefficient of variation provides a means of evaluating survey results. The smaller the coefficient, the greater the reliability of the estimate.

5/ Data may not add because categories (such as land rented on an animal-unit-month basis, land rented free from others, and land cash- or share-rented to others) were deleted.

Source: 1986 Farm Costs and Returns Survey, U.S. Department of Agriculture.

Appendix table 67--Value of assets and debt: Northwest wheat farms
by size of farm, 1986

Item	Small farm 1/		Mid-sized farm 2/		Large farm 3/	
	Average	Coefficient	Average	Coefficient	Average	Coefficient
	per farm	of varia- tion 4/	per farm	of varia- tion 4/	per farm	of varia- tion 4/
	Dollars	Percent	Dollars	Percent	Dollars	Percent
Assets:						
Land and buildings	221,341	16.16	415,699	18.51	539,583	12.45
Machinery and equipment	70,105	12.89	130,817	8.15	190,044	12.29
Livestock	16,970	19.46	47,182	42.44	47,857	29.59
Crop inventory	19,063	20.67	35,024	18.42	87,509	23.37
Purchased inputs	757	26.53	2,982	31.25	4,781	24.59
Other assets	7,531	34.40	20,321	24.70	16,774	19.99
Total 5/	335,766	12.81	652,025	12.26	886,548	8.94
Debt:						
Production Credit Association	2,730	49.67	8,896	34.39	20,710	32.52
Farmers Home Administration	24,101	43.06	d	na	23,063	33.33
Commercial banks	16,617	25.80	19,782	26.78	48,998	25.56
Federal land banks	14,872	34.84	51,414	23.37	65,530	21.13
Merchants and dealers	d	na	1,494	39.57	9,824	45.56
Insurance companies	d	na	6,377	41.49	d	na
Individuals	d	na	16,456	24.36	53,093	21.49
Commodity Credit Corporation	9,013	10.06	17,229	22.34	34,103	21.76
Other lenders	d	na	4,262	27.37	38,481	46.61
Total 5/	92,201	15.01	162,444	11.57	307,896	10.08

d = Insufficient data for disclosure.

na = Not applicable.

1/ \$40,000-\$99,999 gross farm sales.

2/ \$100,000-\$249,999 gross farm sales.

3/ \$250,000-\$499,999 gross farm sales.

4/ The coefficient of variation provides a means of evaluating survey results. The smaller the coefficient, the greater the reliability of the estimate.

5/ Data may not add due to rounding or nondisclosure of data.

Source: 1986 Farm Costs and Returns Survey, U.S. Department of Agriculture.

Appendix table 68--Farm labor: Northwest wheat farms by size of farm, 1986

Item	<u>Small farm 1/</u>		<u>Mid-sized farm 2/</u>		<u>Large farm 3/</u>	
	Average per farm	Coefficient of variation 4/	Average per farm	Coefficient of variation 4/	Average per farm	Coefficient of variation 4/
	<u>Hours per week</u>	<u>Percent</u>	<u>Hours per week</u>	<u>Percent</u>	<u>Hours per week</u>	<u>Percent</u>
Labor hours:						
Operator	63	4.13	59	3.52	58	3.35
Unpaid labor	16	25.95	10	18.53	11	35.15
	<u>Number</u>		<u>Number</u>		<u>Number</u>	
Hired labor:						
Full-time employees	d	na	5/	30.18	5/	31.31
Hired workers (peak) 6/	5	26.09	7	21.37	12	23.29

d = Insufficient data for disclosure.

na = Not applicable.

1/ \$40,000-\$99,999 gross farm sales.

2/ \$100,000-\$249,999 gross farm sales.

3/ \$250,000-\$499,999 gross farm sales.

4/ The coefficient of variation provides a means of evaluating survey results. The smaller the coefficient, the greater the reliability of the estimate.

5/ Average is less than one but greater than zero.

6/ Peak number of workers hired at any one time during the year.

Source: 1986 Farm Costs and Returns Survey, U.S. Department of Agriculture.

Appendix table 69--Income and expenses: Northwest wheat farms
by size of farm, 1986

Item	Small farm 1/		Mid-sized farm 2/		Large farm 3/	
	Average per farm	Coefficient of variation 4/	Average per farm	Coefficient of variation 4/	Average per farm	Coefficient of variation 4/
	Dollars	Percent	Dollars	Percent	Dollars	Percent
Income:						
Crop sales, including CCC	38,996	12.47	87,405	8.01	182,607	7.98
Livestock sales	14,990	31.72	28,460	19.58	48,703	26.98
Government payments	14,645	12.13	31,188	11.46	45,249	14.87
Other farm income	5,349	30.45	4,122	24.42	13,498	26.54
Gross cash farm income 5/	73,980	5.40	151,175	2.98	290,057	5.15
Nonfarm income	12,201	21.71	11,561	33.09	20,199	39.03
Expenses:						
Seed	4,559	14.36	5,674	15.54	16,101	10.63
Fertilizer	8,251	13.77	16,897	9.97	36,028	7.27
Pesticides	4,275	16.55	7,260	9.73	15,479	11.04
Fuel and oil	5,020	6.16	8,480	10.21	14,422	6.86
Feed	1,278	33.59	3,171	21.90	8,934	45.54
Livestock purchases	d	na	4,888	35.07	10,987	40.22
Livestock services	724	33.19	1,127	21.41	1,856	36.06
Equipment lease	d	na	666	39.64	1,813	34.66
Marketing	1,365	17.67	5,094	48.86	6,227	21.53
Hired labor 6/	3,511	42.27	11,848	21.05	18,869	10.93
Contract labor	362	48.48	1,024	34.32	3,582	36.08
Custom work	1,439	26.29	2,801	15.60	4,138	29.70
Interest	9,767	13.77	15,597	15.80	31,751	9.68
Property taxes	2,596	14.65	3,909	7.04	6,082	17.63
General business	5,010	9.44	7,980	8.04	14,555	10.48
Cash rent	2,433	28.61	5,355	21.03	18,627	18.89
Miscellaneous	8,143	7.60	16,119	6.60	24,587	9.35
Total 5/	64,461	6.03	117,891	5.98	234,038	5.86

d - Insufficient data for disclosure.

na - Not applicable.

1/ \$40,000-\$99,999 gross farm sales.

2/ \$100,000-\$249,999 gross farm sales.

3/ \$250,000-\$499,999 gross farm sales.

4/ The coefficient of variation provides a means of evaluating survey results. The smaller the coefficient, the greater the reliability of the estimate.

5/ Data may not add due to rounding or nondisclosure of data.

6/ Excludes wages paid to operator and family members.

Source: 1986 Farm Costs and Returns Survey, U.S. Department of Agriculture.

Appendix table 70--Land use and tenure: Southern Plains wheat farms
by size of farm, 1986

Item	Small farm 1/		Mid-sized farm 2/		Large farm 3/	
	Average	Coefficient	Average	Coefficient	Average	Coefficient
	per farm	of varia- tion 4/	per farm	of varia- tion 4/	per farm	of varia- tion 4/
	<u>Acres</u>	<u>Percent</u>	<u>Acres</u>	<u>Percent</u>	<u>Acres</u>	<u>Percent</u>
Land tenure:						
Owned	556	14.02	823	16.11	1,365	19.40
Cash-rented	330	20.32	777	22.95	695	20.60
Share-rented	351	15.87	485	12.72	451	35.71
Total operated 5/	1,148	8.43	2,142	10.48	2,497	10.65
Land use:						
Planted crops--						
Wheat	300	9.24	407	8.89	689	16.22
Barley	d	na	d	na	d	na
Beans	0	na	d	na	0	na
Corn	10	39.23	38	32.07	d	na
Cotton	42	20.62	99	19.23	114	42.33
Fruit	0	na	0	na	0	na
Nursery products	0	na	0	na	0	na
Oats	5	35.12	11	29.03	d	na
Peanuts	d	na	4	47.63	d	na
Potatoes	0	na	0	na	0	na
Rice	0	na	0	na	0	na
Silage	d	na	d	na	0	na
Sorghum	67	23.64	126	13.12	156	28.73
Soybeans	d	na	d	na	d	na
Sugarbeets	0	na	0	na	0	na
Sunflowers	d	na	d	na	0	na
Tobacco	0	na	0	na	0	na
Vegetables	d	na	d	na	d	na
Other	d	na	d	na	d	na
Pasture and hay	568	12.55	1,184	19.63	1,106	18.02
Government programs	119	11.03	211	11.90	279	14.60
Summer fallow	28	20.19	64	23.97	95	43.36

d - Insufficient data for disclosure.

na - Not applicable.

1/ \$40,000-\$99,999 gross farm sales.

2/ \$100,000-\$249,999 gross farm sales.

3/ \$250,000-\$499,999 gross farm sales.

4/ The coefficient of variation provides a means of evaluating survey results. The smaller the coefficient, the greater the reliability of the estimate.

5/ Data may not add because categories (such as land rented on an animal-unit-month basis, land rented free from others, and land cash- or share-rented to others) were deleted.

Source: 1986 Farm Costs and Returns Survey, U.S. Department of Agriculture.

Appendix table 71--Value of assets and debt: Southern Plains wheat farms by size of farm, 1986

Item	Small farm 1/		Mid-sized farm 2/		Large farm 3/	
	Average per farm	Coefficient of variation 4/	Average per farm	Coefficient of variation 4/	Average per farm	Coefficient of variation 4/
	Dollars	Percent	Dollars	Percent	Dollars	Percent
Assets:						
Land and buildings	251,826	14.27	402,899	11.89	466,855	13.56
Machinery and equipment	83,808	13.83	120,821	13.89	155,061	19.56
Livestock	47,439	14.40	72,255	15.49	112,835	15.76
Crop inventory	5,985	27.17	18,823	15.17	28,485	35.28
Purchased inputs	1,399	37.53	2,508	24.33	d	na
Other assets	15,203	26.68	24,680	19.47	28,227	40.86
Total 5/	405,660	8.78	641,986	9.66	796,167	9.73
Debt:						
Production Credit Association	4,926	30.94	9,186	31.01	d	na
Farmers Home Administration	15,755	27.98	24,882	23.40	23,130	44.41
Commercial banks	25,480	20.23	54,083	16.11	57,719	21.44
Federal land banks	39,517	44.43	58,639	50.00	22,602	36.07
Merchants and dealers	318	38.20	1,052	44.02	d	na
Insurance companies	2,461	31.58	2,558	49.26	d	na
Individuals	5,081	36.44	7,880	35.17	15,655	31.90
Commodity Credit Corporation	2,039	25.02	14,563	18.55	25,167	39.44
Other lenders	6,109	32.87	9,794	31.73	d	na
Total 5/	101,707	16.17	182,636	16.59	215,075	17.31

d - Insufficient data for disclosure.

na - Not applicable.

1/ \$40,000-\$99,999 gross farm sales.

2/ \$100,000-\$249,999 gross farm sales.

3/ \$250,000-\$499,999 gross farm sales.

4/ The coefficient of variation provides a means of evaluating survey results. The smaller the coefficient, the greater the reliability of the estimate.

5/ Data may not add due to rounding or nondisclosure of data.

Source: 1986 Farm Costs and Returns Survey, U.S. Department of Agriculture.

Appendix table 72--Farm labor: Southern Plains wheat farms by size of farm, 1986

Item	<u>Small farm 1/</u>		<u>Mid-sized farm 2/</u>		<u>Large farm 3/</u>	
	Average	Coefficient	Average	Coefficient	Average	Coefficient
	per	of varia-	per	of varia-	per	of varia-
	farm	tion 4/	farm	tion 4/	farm	tion 4/
	<u>Hours</u>	<u>Percent</u>	<u>Hours</u>	<u>Percent</u>	<u>Hours</u>	<u>Percent</u>
	<u>per week</u>		<u>per week</u>		<u>per week</u>	
Labor hours:						
Operator	50	3.73	56	2.95	49	7.02
Unpaid labor	12	19.21	18	29.52	9	39.77
	<u>Number</u>		<u>Number</u>		<u>Number</u>	
Hired labor:						
Full-time employees	5/	25.76	5/	17.97	5/	28.34
Hired workers (peak) 6/	2	12.43	4	15.69	3	16.67

1/ \$40,000-\$99,999 gross farm sales.

2/ \$100,000-\$249,999 gross farm sales.

3/ \$250,000-\$499,999 gross farm sales.

4/ The coefficient of variation provides a means of evaluating survey results. The smaller the coefficient, the greater the reliability of the estimate.

5/ Average is less than one but greater than zero.

6/ Peak number of workers hired at any one time during the year.

Source: 1986 Farm Costs and Returns Survey, U.S. Department of Agriculture.

Appendix table 73--Income and expenses: Southern Plains wheat farms
by size of farm, 1986

Item	Small farm 1/		Mid-sized farm 2/		Large farm 3/	
	Average	Coefficient	Average	Coefficient	Average	Coefficient
	per farm	of varia- tion 4/	per farm	of varia- tion 4/	per farm	of varia- tion 4/
	<u>Dollars</u>	<u>Percent</u>	<u>Dollars</u>	<u>Percent</u>	<u>Dollars</u>	<u>Percent</u>
Income:						
Crop sales, including CCC	19,631	12.18	52,553	8.34	119,364	20.45
Livestock sales	30,047	15.08	66,554	9.85	167,975	14.89
Government payments	15,513	10.31	27,095	9.35	37,809	12.38
Other farm income	3,943	21.17	6,552	22.92	6,642	32.22
Gross cash farm income 5/	69,135	4.32	152,754	4.31	331,790	6.00
Nonfarm income	32,874	18.70	23,466	16.75	25,858	17.24
Expenses:						
Seed	1,826	12.18	4,471	10.13	6,710	20.12
Fertilizer	4,374	10.24	10,549	8.42	14,229	15.33
Pesticides	1,156	13.86	3,581	13.25	5,733	23.21
Fuel and oil	6,319	9.90	11,030	7.51	15,761	19.98
Feed	5,243	43.40	9,646	18.83	15,499	27.91
Livestock purchases	10,812	27.54	29,760	15.33	92,035	21.51
Livestock services	1,081	32.82	2,696	25.48	10,700	42.14
Equipment lease	d	na	511	33.83	d	na
Marketing	1,908	24.78	3,703	14.74	5,856	29.13
Hired labor 6/	1,868	18.23	7,229	15.90	9,135	20.25
Contract labor	933	17.07	2,405	20.92	2,881	42.22
Custom work	2,406	13.46	3,597	13.14	2,988	26.61
Interest	11,222	19.16	20,132	18.95	20,439	15.52
Property taxes	1,561	27.14	1,991	8.41	3,743	16.76
General business	3,913	7.07	7,061	7.55	13,365	27.41
Cash rent	2,674	19.91	7,629	15.00	10,834	27.46
Miscellaneous	8,051	10.25	12,601	6.62	16,963	13.90
Total 5/	65,426	7.71	138,591	4.70	247,249	8.35

d - Insufficient data for disclosure.

na - Not applicable.

1/ \$40,000-\$99,999 gross farm sales.

2/ \$100,000-\$249,999 gross farm sales.

3/ \$250,000-\$499,999 gross farm sales.

4/ The coefficient of variation provides a means of evaluating survey results. The smaller the coefficient, the greater the reliability of the estimate.

5/ Data may not add due to rounding or nondisclosure of data.

6/ Excludes wages paid to operator and family members.

Source: 1986 Farm Costs and Returns Survey, U.S. Department of Agriculture.

END
DATE
FILMED
4-6-90
NTIS