



**AgEcon** SEARCH  
RESEARCH IN AGRICULTURAL & APPLIED ECONOMICS

*The World's Largest Open Access Agricultural & Applied Economics Digital Library*

**This document is discoverable and free to researchers across the globe due to the work of AgEcon Search.**

**Help ensure our sustainability.**

Give to AgEcon Search

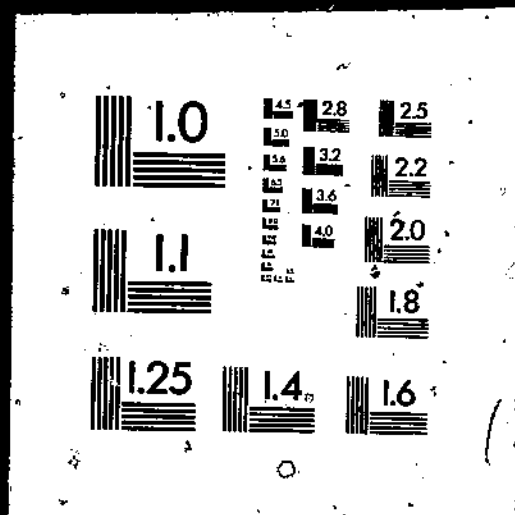
AgEcon Search  
<http://ageconsearch.umn.edu>  
[aesearch@umn.edu](mailto:aesearch@umn.edu)

*Papers downloaded from **AgEcon Search** may be used for non-commercial purposes and personal study only. No other use, including posting to another Internet site, is permitted without permission from the copyright owner (not AgEcon Search), or as allowed under the provisions of Fair Use, U.S. Copyright Act, Title 17 U.S.C.*

PB89-139844

USDA/SB-767 IRRIGATED AGRICULTURE IN THE UNITED STATES: STATE LEVEL DATA. (STATISTICAL BULLETIN) / J. J. HANCHAR ECONOMIC RESEARCH SERVICE, WASHINGTON, DC. RESOURCES AND TECHNOLOGY DIV. JAN 89 79P

1 OF 1  
PB89  
139 844

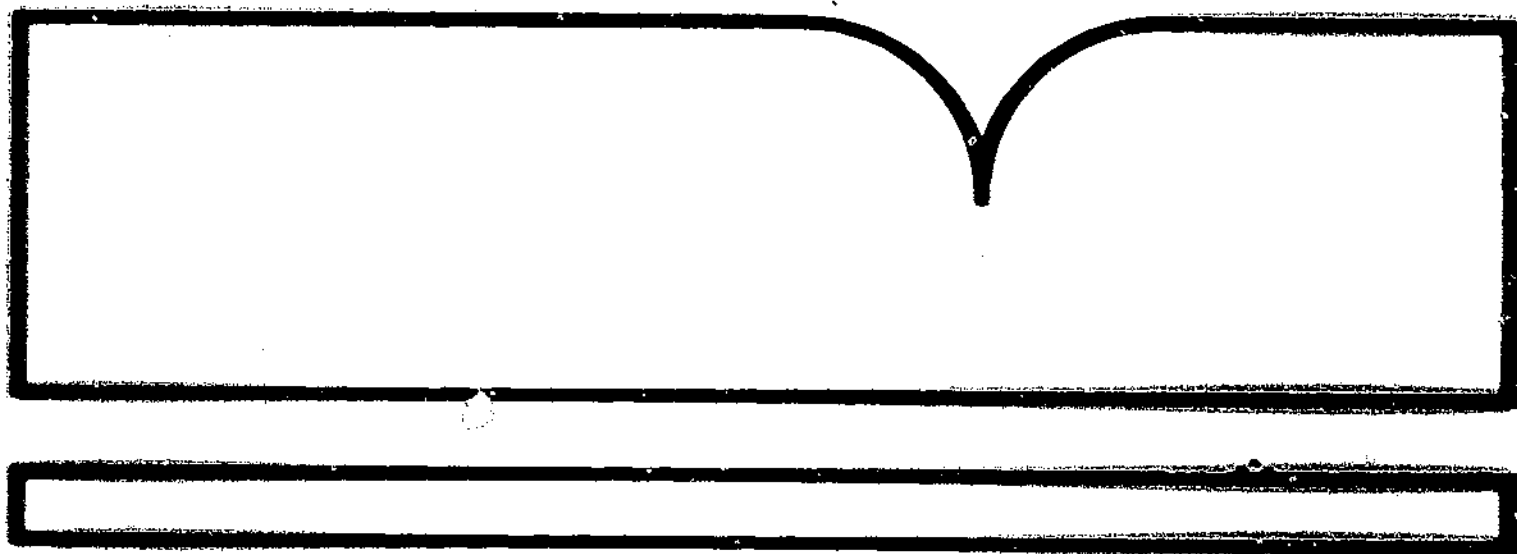


PB89-139844

Irrigated Agriculture in the United States  
State Level Data

(U.S.) Economic Research Service, Washington, DC

Jan 89



U.S. Department of Commerce  
National Technical Information Service

**NTIS**

PB89-139844



United States  
Department of  
Agriculture

Economic  
Research  
Service

Statistical  
Bulletin  
Number 767

# Irrigated Agriculture in the United States

## State-Level Data

John J. Hanchar



REPRODUCED BY  
U.S. DEPARTMENT OF COMMERCE  
NATIONAL TECHNICAL INFORMATION SERVICE  
SPRINGFIELD, VA. 22161

#### SALES INFORMATION

Purchase copies of this report from ERS/NASS Reports, P.O. Box 1608, Rockville, MD, 20850. Order Irrigated Agriculture in the United States: State-Level Data, SB-767. Write to the above address for price information, or call the ERS/NASS order desk at (301) 953-2515. You may also charge your purchase by telephone to VISA or MasterCard. Foreign customers, please add 25 percent for postage (includes Canada).

#### Microfiche

Purchase microfiche copies (\$6.95 each) from the National Technical Information Service (NTIS), 5285 Port Royal Road, Springfield, VA 22161. Order Irrigated Agriculture in the United States: State-Level Data, SB-767. Enclose a check or money order payable to NTIS; add \$3 handling charge for each order. Call NTIS at (703) 487-4650 and charge your purchase to your VISA, MasterCard, American Express, or NTIS Deposit Account. NTIS will RUSH your order within 24 hours for an extra \$10; call (800) 336-4700.

#### Electronic database

An electronic database containing the data used in the preparation of this report is available for sale from the Economic Research Service. This database is in the form of EBCDIC files on 9-track, unlabeled, magnetic tape. To order, write to ERS/Data, Room 228, 1301 New York Ave., NW., Washington, DC 20005-4788. Specify Irrigated Farms, indicate desired tape density (1600 or 6250 bpi), and include a check or money order payable to ERS/Data for \$125. For further information on this database, write to John Hanchar, Room 534, 1301 New York Ave., NW., Washington, DC 20005-4788, or call (202) 786-1410.

<b>REPORT DOCUMENTATION PAGE</b>		<b>1. REPORT NO.</b> SB-767	<b>2.</b>	<b>3. Recipient's Accession No.</b> PB89 139844/AS	
<b>4. Title and Subtitle</b> Irrigated Agriculture in the United States: State-Level Data				<b>5. Report Date</b> December 1988	
<b>7. Author(s)</b> John J. Hanchar				<b>8. Performing Organization Rept. No.</b> SB-767	
<b>9. Performing Organization Name and Address</b> Economic Research Service U.S. Department of Agriculture Washington, D.C. 20005-4788				<b>10. Project/Task/Work Unit No.</b>	
<b>12. Sponsoring Organization Name and Address</b>				<b>11. Contract(G) or Grant(G) No.</b> (C) (G)	
				<b>13. Type of Report &amp; Period Covered</b>	
<b>15. Supplementary Notes</b>				<b>14.</b>	
<b>16. Abstract (Limit: 200 words)</b>  This report presents previously unreported State-level data on the structure and characteristics of irrigated farms in Arkansas, Louisiana, Florida, and the 17 Western States, which together account for 93 percent of all irrigated acres in the Nation. Irrigated farms produce about 30 percent of the sales of agricultural products from all U.S. farms. Data include distributions of irrigated farms, irrigated acres, and value of agricultural products sold from irrigated farms for a variety of farm operation and farm operator characteristics. Data are derived from a special tabulation of the 1982 Census of Agriculture.					
<b>17. Document Analysis a. Descriptors</b>					
<b>b. Identifiers/Open-Ended Terms</b> Irrigated farms, irrigated acres, agricultural product sales value, farm operator characteristics					
<b>c. COSATI Field/Group</b> 02-B, 05-C					
<div style="float: right; border: 1px solid black; padding: 5px; width: fit-content;"> <b>Prices as of 1/1/89</b>  <b>Paper:</b>  <b>Fiche: \$6.95</b>  <b>Cost codes are: A45 for Paper and A01 for Fiche</b> </div>					
<b>18. Availability Statement:</b> National Technical Information Service 5285 Port Royal Road, Springfield, VA 22161				<b>19. Security Class (This Report)</b> Unclassified	
				<b>21. No. of Pages</b> 79	
				<b>22. Price</b>	
<b>20. Security Class (This Page)</b> Unclassified					

IRRIGATED AGRICULTURE IN THE UNITED STATES: STATE-LEVEL DATA. John J. Hanchar, Resources and Technology Division, Economic Research Service, U.S. Department of Agriculture. Statistical Bulletin No. 767.

#### ABSTRACT

This report presents previously unreported State-level data on the structure and characteristics of irrigated farms in Arkansas, Louisiana, Florida, and the 17 Western States, which together account for 93 percent of all irrigated acres in the Nation. Irrigated farms produce about 30 percent of the sales of agricultural products from all U.S. farms. Data include distributions of irrigated farms, irrigated acres, and value of agricultural products sold from irrigated farms for a variety of farm operation and farm operator characteristics. Data are derived from a special tabulation from the 1982 Census of Agriculture.

KEYWORDS: Irrigated farms, irrigated acres, agricultural product sales value, farm operator characteristics.

#### ACKNOWLEDGMENTS

The author acknowledges the reviews and helpful suggestions provided by Michael E. Salassi, Dean E. Eisenhauer, and Stanley D. Miles. The author thanks Teri Davis for editorial assistance and Lucille Milligan for manuscript preparation.

1301 New York Ave., NW.  
Washington, DC 20005-4788

January 1989



# CONTENTS

	<u>Page</u>
Introduction .....	1
Characteristics of Irrigated Farm Operations.....	3
Characteristics of Operators of Irrigated Farms.....	8
References.....	9

## TABLES

### Table

1	Distribution of irrigated farms by Standard Industrial Classification and by State.....	10
2	Distribution of irrigated harvested acres by crops harvested and by State.....	13
3	Distribution of sales from irrigated farms by agricultural products sold and by State.....	16
4	Distribution of irrigated farms by type of farm organization and by State.....	19
5	Distribution of irrigated acres by type of farm organization and by State.....	22
6	Distribution of agricultural product sales from irrigated farms by type of farm organization and by State.....	25
7	Distribution of irrigated farms by tenure of operator and by State.....	28
8	Distribution of irrigated farms by farm size and by State.....	31
9	Distribution of irrigated acres by farm size and by State.....	34
10	Distribution of agricultural product sales from irrigated farms by farm size and by State.....	37
11	Distribution of irrigated farms by agricultural product sales value and by State.....	40
12	Distribution of irrigated acres by agricultural product sales value and by State.....	43
13	Distribution of agricultural product sales from irrigated farms by agricultural product sales value and by State.....	46
14	Distribution of irrigated farms by principal source of irrigation water and by State.....	49

# TABLES (cont'd)

<u>Table</u>		<u>Page</u>
15	Distribution of irrigated acres by principal source of irrigation water and by State.....	52
16	Distribution of agricultural product sales from irrigated farms by principal source of irrigation water and by State.....	55
17	Distribution of operators of irrigated farms by principal occupation and by State.....	58
18	Distribution of operators of irrigated farms by days of work off farm and by State.....	61
19	Distribution of operators of irrigated farms by age of operator and by State.....	64
20	Distribution of operators of irrigated farms by place of residence and by State.....	67
21	Distribution of operators of irrigated farms by years on present farm and by State.....	70

# Irrigated Agriculture in the United States

## State-Level Data

John J. Hanchar \*

### INTRODUCTION

The irrigated farm sector is an important part of the Nation's agricultural system. In 1982, irrigated farms generated agricultural product sales valued at \$39.7 billion, or 30 percent of agricultural product sales value from all farms (3).<sup>1/</sup> Irrigated farms produced crops, including nursery and greenhouse products, valued at \$26.6 billion or 43 percent of the Nation's farm sales of these products. Also, the irrigated farm sector accounted for \$13.1 billion of the nearly \$70 billion of livestock, poultry, and associated products sold. Irrigation accounts for 34 percent of offstream water withdrawals, while industry, public supply, and rural uses account for 58 percent, 7 percent, and 1 percent, of offstream water withdrawals (2). Irrigation also accounts for 81 percent of fresh water consumption, making much fresh water unavailable for subsequent uses. Industry, public supply, and rural uses account for 8 percent, 7 percent, and 4 percent of fresh water consumption.

This report presents State-level data on the structure and characteristics of irrigated farms in the 20 principal irrigation States, which include Arkansas, Louisiana, Florida, and the 17 Western States (See map). These States account for the majority of irrigated farms (85 percent), irrigated acres (93 percent), and agricultural product sales from irrigated farms (85 percent).

The report also indicates when concentration of irrigated acres or agricultural product sales value occurs. Concentration exists when farm characteristics such as sales class or type of organization account for disproportionate shares of irrigated acres or agricultural product sales value compared with the number of farms.

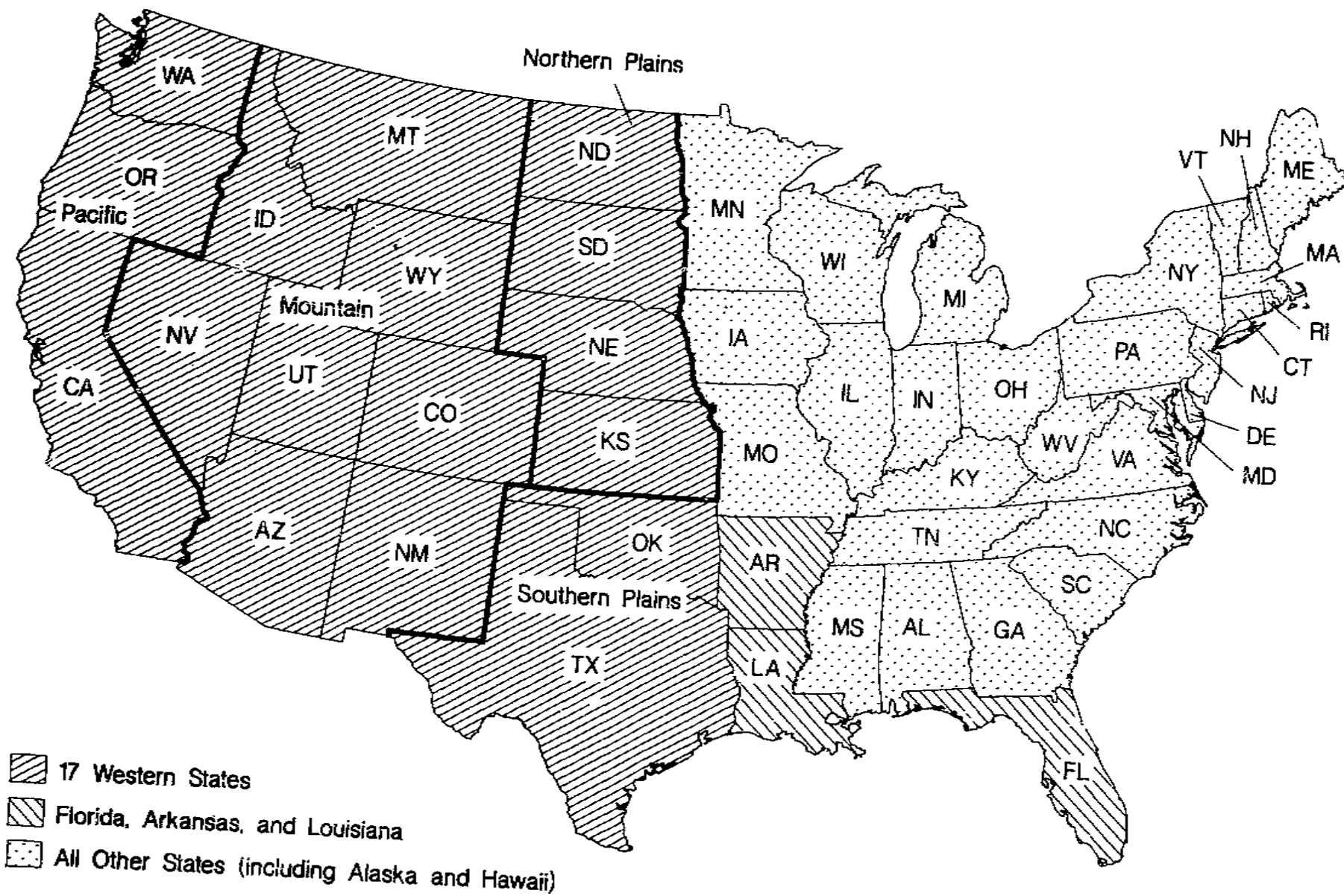
State-level data include distributions of irrigated farms, irrigated acres, and value of agricultural products sold from irrigated farms for a variety of farm operation and farm operator characteristics. The data were generated from a special tabulation of the 1982 Census of Agriculture for farms that are irrigated (4). This report fills the void created by the absence of a special census volume presenting irrigation data from the 1982 Census of Agriculture. The Census Bureau published the last special irrigation volume in conjunction with the 1978 Census of Agriculture (3).

---

\* The author is an agricultural economist with the Resources and Technology Division, Economic Research Service, U.S. Department of Agriculture.

<sup>1/</sup> Underscored numbers in parentheses refer to sources cited in the References section.

## Regional groupings used in the report



## CHARACTERISTICS OF IRRIGATED FARM OPERATIONS

Distributions of data for the type of farm, size of farm, and the principal source of irrigation water describe the characteristics of irrigated farms.

### Type of Farm

Farm numbers by Standard Industrial Classification (SIC) (a code that classifies farms by the type of enterprise accounting for a majority of the farm's agricultural sales), irrigated harvested acres by crops harvested, and value of agricultural products sold by product describe the types of irrigated farms. The description of type of farm incorporates distributions of irrigated farms, irrigated acres, and sales value from irrigated farms by type of farm organization, and irrigated farms by tenure of operator.

### Number of Irrigated Farms by Standard Industrial Classification (SIC)

The SIC that accounted for the largest share of irrigated farms differed among States (table 1). Cash grain farms represented the largest share of irrigated farms in North Dakota, Nebraska, Kansas, Texas, Arkansas, and Louisiana. Fruit and tree nut farms represented the largest share of irrigated farms in Washington, California, and Florida. Livestock farms represented the largest share of irrigated farms in Oregon, Idaho, Montana, Wyoming, Colorado, Utah, Nevada, New Mexico, Arizona, South Dakota, and Oklahoma.

### Irrigated Harvested Acres by Crops Harvested

Grains or hay, silage, and field seed as a group accounted for the largest share of irrigated harvested acres in most of the 20 principal irrigation States (table 2). Exceptions included California, where irrigated harvested acres were evenly distributed among fruits, tree nuts, and berries; grains; other crops; and hay, silage, and field seed. Other exceptions were Arizona, where other crops accounted for the largest share of irrigated harvested acres; and Florida, where fruits, tree nuts, and berries accounted for the largest share of irrigated harvested acres.

### Value of Agricultural Products Sold by Product

Grains and livestock products accounted for more than half of the value of agricultural products sold from irrigated farms in most of the 20 principal irrigation States (table 3). Exceptions included Washington, California, Arizona, and Florida. In Washington and California, livestock products and fruits, tree nuts, and berries as a group accounted for a majority of agricultural product sales from irrigated farms. Other crops and livestock products accounted for a majority of agricultural product sales in Arizona; while fruits, tree nuts, and berries as a group and vegetable products accounted for a majority of agricultural product sales in Florida.

### Type of Organization

Irrigated farms can be characterized by type of organization. This section examines the number of irrigated farms, irrigated acres, and agricultural product sales value from irrigated farms by five types of farm organization: individual or family farm operations, partnerships, family-held corporations, other-than-family-held corporations, and other types.

Number of Irrigated Farms. In all 20 States, individual or family farm operations represented the majority of irrigated farms (table 4). New Mexico reported the largest percentage (87 percent) of irrigated farms organized as individual or family farm operations, while Florida reported the smallest percentage (67 percent). Arizona had the largest share of irrigated farms that were organized as partnerships (16 percent), while about 20 percent of irrigated farms in Florida were organized as corporations. About 80 percent of Florida's corporate irrigated farms were family farms.

Irrigated Acres. Individual or family-operated irrigated farms accounted for at least half of irrigated acres in the 20 principal irrigation States except California, Arizona, Nevada, and Florida (table 5). Florida reported the smallest percentage of irrigated acres on individual or family-operated farms (22 percent), while California reported 38 percent. Twenty-eight percent of irrigated acres in California were on farms that were organized as partnerships.

Individual or family-operated irrigated farms in the 20 principal irrigation States accounted for a smaller percentage of irrigated acres than of irrigated farms. In contrast, partnerships, family-held corporations, and other-than-family-held corporations accounted for larger percentages of irrigated acres than of irrigated farms. The tendency for types of organization to account for disproportionate shares of irrigated acres compared with the shares of irrigated farms indicates concentration. Irrigated acres were most concentrated in partnerships and corporate-structured irrigated farms in Washington, Oregon, California, Arizona, Nevada, and Florida and least concentrated in North Dakota, South Dakota, Nebraska, Kansas, Oklahoma, Texas, and Louisiana. In Florida, for example, individual and family-operated farms accounted for 67 percent of irrigated farms, but only 22 percent of irrigated acres. Family-held and other-than-family-held corporations accounted for 16 percent and 4 percent of irrigated farms, and 39 percent and 23 percent of irrigated acres. In California, individual and family farm operations, partnerships, family-held corporations, and other-than-family-held corporations accounted for 77, 15, 6, and 1 percent of irrigated farms, and 38, 28, 26, and 7 percent of irrigated acres. In contrast, the same groups in North Dakota accounted for 83, 15, 1, and 0 percent of irrigated farms, and 77, 22, 1, and 0 percent of irrigated acres. This fact suggests that little concentration of irrigated acres occurred in North Dakota.

Value of Agricultural Products Sold. In 10 of the 20 principal irrigation States, individual or family-operated irrigated farms accounted for a majority of the agricultural product sales value from irrigated farms (table 6). The data on sales contrasts with the data on irrigated farms and irrigated acres in that individual or family farm operations accounted for a majority of irrigated farms in all the 20 States, and for a majority of irrigated acres in all but 4 of the 20 principal irrigation States. Individual or family-operated irrigated farms accounted for the smallest share of sales (21 percent) in Florida and the largest share (68 percent) in North Dakota and Louisiana.

Sales of agricultural products from irrigated farms were concentrated in partnerships and corporate-structured irrigated farms. Concentration was greatest in the Pacific States, Colorado, Arizona, and Florida, and was least in North Dakota, Arkansas, and Louisiana. Individual or family farm operations in Washington, for example, accounted for 82 percent of irrigated farms, but only 43 percent of agricultural product sales while family-held and

other-than-family-held corporations accounted for 7 percent and 1 percent of irrigated farms, and 35 percent and 7 percent of agricultural product sales. This concentration was also very evident in Florida where individual or family operations, partnerships, family-held corporations, and other-than-family-held corporations accounted for 67, 12, 16, and 4 percent of irrigated farms, and 21, 11, 41, and 25 percent of agricultural product sales. In comparison, the tendency toward concentration was least in North Dakota, where these organizational types accounted for 83, 15, 1, and 0 percent of irrigated farms and 68, 26, 4, and 0 percent of agricultural product sales.

#### Number of Irrigated Farms by Tenure of Operator

Full owners operated the majority of irrigated farms in 11 of the 20 principal irrigation States (table 7). Exceptions included Wyoming, the Northern and Southern Plains States, Arkansas, and Louisiana. Full owners operated large shares of irrigated farms in Florida (76 percent), California (73 percent), and Nevada (71 percent). Part owners operated 61 percent of irrigated farms in North Dakota, and tenants operated 26 percent of irrigated farms in Arkansas and 22 percent of irrigated farms in Louisiana.

#### Size of Farm

Farm size is based on both the number of acres in farms and the value of agricultural products sold from irrigated farms.

#### Number of Acres in Farms

Distributions of irrigated farms, irrigated acres, and sales value of agricultural products are presented by acres in the farm.

Irrigated Farms. Farms with fewer than 50 acres of land accounted for a majority of irrigated farms in Washington, California, and Florida (table 8). These small farms also represented more than 40 percent of irrigated farms in Oregon, New Mexico, Arizona, and Utah. The small size of irrigated farms in these States is associated with the fruit and tree nut farms that represented a large percentage of irrigated farms in these States (table 1). Fruit and tree nut farms have fewer acres in farms than do other types of farms. Fruit and tree nut farms accounted for 35, 55, 17, and 45 percent of irrigated farms in Washington, California, Arizona, and Florida. In contrast, large irrigated farms with 500 or more acres represented more than 40 percent of irrigated farms in many of the Mountain States and in all of the Plains States. In these regions, cash grain and livestock operations, which have a greater number of acres in farms than do other types of farms, accounted for a large share of irrigated farms.

Irrigated Acres. Irrigated farms with 2,000 or more acres accounted for the largest share of irrigated acres in the 20 principal irrigation States except Utah, Nebraska, Arkansas, and Louisiana (table 9). In Utah, irrigated farms with 220-499 acres accounted for the largest share of irrigated acres, while irrigated farms with 500-999 acres accounted for the largest share in Nebraska and Louisiana. Irrigated farms with 1,000-1,999 acres accounted for the largest share of irrigated acres in Arkansas.

For most of the 20 principal irrigation States, large farm size classifications accounted for a disproportionate share of irrigated acres compared with their share of irrigated farms. In Florida and California, for

example, irrigated farms with 2,000 or more acres represented about 4 percent and 3 percent of irrigated farms, but accounted for 56 percent and 41 percent of irrigated acres. Concentration of irrigated acres was least in North and South Dakota where irrigated farms with 2,000 acres or more represented 34 percent and 26 percent of irrigated farms, and 47 percent and 41 percent of irrigated acres.

Sales Value of Agricultural Products. In most of the 20 principal irrigation States, irrigated farms with 2,000 or more acres accounted for the largest share of agricultural product sales from irrigated farms (table 10). Exceptions included Utah, where irrigated farms with 220-499 acres accounted for the largest share of agricultural product sales, and Nebraska and Louisiana, where irrigated farms with 1,000-1,999 acres accounted for the largest sales share. The magnitude of the sales share generated by the largest farms varied among the 20 principal irrigation States. In Washington, for example, the sales share from the largest farms was 22 percent, while sales shares from other size classes ranged from 8 percent to 17 percent. In contrast, sales share from the largest farms in North Dakota was 59 percent, while sales share from other size classes ranged from 0 percent to 20 percent.

For most of the 20 principal irrigation States, farms in the larger size classes accounted for a disproportionate share of sales from irrigated farms compared with their share of irrigated farms. Irrigated farms in California and Florida with 2,000 acres or more, for example, accounted for 3 percent and 4 percent of irrigated farms, and 31 percent and 40 percent of agricultural product sales. In contrast, irrigated farms in California with 1-49 acres accounted for 61 percent of irrigated farms and 11 percent of agricultural product sales, while irrigated farms in Florida with fewer than 50 acres accounted for 56 percent of irrigated farms and 11 percent of agricultural product sales. The extent of concentration was less in Kansas where irrigated farms with 1-49 acres accounted for 4 percent of irrigated farms and 1 percent of agricultural product sales, while farms with 2,000 acres or more accounted for 22 percent of irrigated farms and 45 percent of agricultural product sales.

#### Value of Agricultural Products Sold

Distributions of irrigated farms, irrigated acres, and value of agricultural products sold from irrigated farms are presented by sales value class.

Irrigated Farms. Farms with less than \$10,000 in agricultural product sales represented the largest share of irrigated farms in all of the 20 principal irrigation States except the Northern Plains States, Oklahoma, Arkansas, and Louisiana (table 11). In the States where the farms in the smallest sales class represented the largest share of irrigated farms, the sales share of the smallest farms ranged from 30 percent in Texas to 64 percent in New Mexico. In the Northern Plains States, Oklahoma, Arkansas, and Louisiana, farms with sales between \$40,000 and \$99,999 or between \$100,000 and \$249,999 represented the largest share of irrigated farms.

Irrigated Acres. Irrigated farms with agricultural product sales of \$40,000 or more accounted for the vast majority of irrigated acres in most of the 20 principal irrigation States (table 12). Utah was an exception wherein irrigated farms with agricultural product sales of less than \$40,000 accounted for about 41 percent of irrigated acres. In Florida, Arizona, and California,



irrigated farms with agricultural product sales of \$500,000 or more represented 68 percent, 59 percent, and 57 percent of irrigated acres.

Individual sales classes accounted for disproportionate shares of irrigated acres compared with irrigated farms. Concentration of irrigated acres was most evident in Florida, California, and Arizona. In Florida and California, for example, irrigated farms with \$500,000 or more in agricultural product sales accounted for 9 percent and 7 percent of irrigated farms, but 68 percent and 57 percent of irrigated acres.

Value of Agricultural Products Sold. Irrigated farms with agricultural product sales of \$500,000 or more accounted for at least 40 percent of agricultural product sales from irrigated farms in all but a few of the 20 principal irrigation States (table 13). Exceptions included Montana, Wyoming, Utah, North Dakota, Arkansas, and Louisiana. In these States, the three or four largest sales classes accounted for most of the agricultural product sales. Irrigated farms in the largest sales class in Arizona, Florida, and California accounted for the largest share of agricultural product sales from each State's irrigated farms (77, 75, and 72 percent).

Irrigated farms and agricultural product sales from irrigated farms were distributed differently among sales class. Irrigated farms in the large sales classes accounted for disproportionate sales shares compared with their shares of farms. This concentration was evident in New Mexico, California, and Florida, where the largest sales class accounted for 2, 7, and 9 percent of irrigated farms but 48, 72, and 75 percent of agricultural product sales. Even in States where concentration was less, larger farms accounted for disproportionate shares of agricultural product sales compared with the number of farms. The largest farms in Arkansas, for example, accounted for 5 percent of irrigated farms but 26 percent of agricultural product sales, while the smallest farms in Arkansas accounted for 10 percent of irrigated farms but less than 1 percent of agricultural product sales.

#### Principal Source of Irrigation Water

Irrigated farms were classified by the source from which the largest percentage of irrigation water was obtained. The distributions of irrigated farms, irrigated acres, and agricultural product sales value from irrigated farms are presented by principal source of irrigation water.

#### Irrigated Farms

Farms that obtained the largest percentage of irrigation water from off-farm surface supplies represented the majority of irrigated farms in all but one of the Pacific and Mountain States (table 14). In contrast, farms that obtained the largest percentage of irrigation water from onfarm wells represented the majority of irrigated farms in the Plains States, Florida, Arkansas, and Louisiana.

#### Irrigated Acres

For most of the 20 principal irrigation States, distributions of irrigated acres among principal sources of irrigation water were similar to distributions of irrigated farms (table 15). Exceptions included New Mexico, where 33 percent of farms using onfarm wells as the principal source of

irrigation water accounted for 65 percent of irrigated acres; and Florida, where 6 percent of irrigated farms using off-farm surface supplies as the principal source accounted for 27 percent of irrigated acres.

#### Value of Agricultural Products Sold

For most of the 20 principal irrigation States, distributions of agricultural product sales among principal sources of irrigation water were similar to distributions of irrigated farms (table 16). New Mexico was an exception where 33 percent of farms using onfarm wells as the principal source of irrigation water accounted for 69 percent of agricultural product sales.

### CHARACTERISTICS OF OPERATORS OF IRRIGATED FARMS

Distributions of farm operators by principal occupation, days of off-farm work, age of operator, place of residence, and years on present farm describe the characteristics of operators of irrigated farms.

#### Principal Occupation

In all of the 20 principal irrigation States except New Mexico and Utah, the majority of operators of irrigated farms indicated that farming was their principal occupation, taking 50 percent or more of their work time in 1982 (table 17). Operators who indicated that farming was their principal occupation represented more than 60 percent of operators of irrigated farms in Montana, Idaho, Wyoming, Colorado, Nevada, the Plains States, Arkansas, and Louisiana.

#### Days of Off-Farm Work

Compared with other States, the Plains States, Arkansas, and Louisiana had larger percentages of operators of irrigated farms indicating that they did not work off the farm (table 18). More than 55 percent of operators of irrigated farms in the Northern Plains States indicated no off-farm work, while less than 40 percent of operators of irrigated farms in New Mexico, Arizona, and Utah indicated no off-farm work days.

#### Age of Operator

In all of the 20 principal irrigation States a small percentage of operators of irrigated farms were younger than 35 years of age in 1982 while more than half were between the ages of 35 and 64 (table 19). North Dakota, Nebraska, and Louisiana differed slightly, with a larger percentage of operators between the ages of 25 and 34.

#### Place of Residence

For most of the 20 principal irrigation States, the vast majority of operators of irrigated farms lived on the farm that they operated (table 20). Florida was an exception, where 51 percent of operators indicated that they lived on the farm that they operated. In comparison, 85 percent of operators in Oregon reported that they lived on the farm that they operated.

### Years on Present Farm

In more than half of the 20 principal irrigation States, the majority of operators of irrigated farms indicated that they had been on the present farm for 10 or more years (table 21). Arizona had the smallest percentage (40 percent) while South Dakota had the largest percentage (61 percent) of operators reporting 10 or more years on the present farm.

### REFERENCES

- (1) Isard, Walter. Methods of Regional Analysis: An Introduction to Regional Science. Cambridge, MA: The Massachusetts Institute of Technology Press, 1960.
- (2) Solley, Wayne B., Edith B. Chase, and William B. Mann IV. Estimated Use of Water in the United States in 1980. Circular 1001. U.S. Department of the Interior, U.S. Geological Survey, 1983.
- (3) U.S. Department of Commerce, Bureau of Census. Census of Agriculture. Vols. for 1978 and 1982. U.S. Government Printing Office.
- (4) \_\_\_\_\_. Unpublished Special Tabulations from the 1982 Census of Agriculture.

Table 1—Distribution of irrigated farms by Standard Industrial Classification and by State

Region and State	Unit	Standard Industrial Classification 1/								All farms
		Cash grain	Field crop except cash grain	Vegetable including melon	Fruit and tree nut	Horticultural specialty	General farm, primarily crop	All livestock 2/	General farm, primarily livestock	
Pacific:										
Washington	Number	1,532	1,920	742	5,598	584	546	5,227	87	16,236
	Row percent	9.4	11.8	4.6	34.5	3.6	3.4	32.2	.5	100.0
	Column percent	2.6	5.0	6.1	10.5	3.7	5.2	6.0	4.3	5.8
	Total percent	.6	.7	.3	2.0	.2	.2	1.9	0	5.8
Oregon	No.	1,041	1,944	716	1,825	838	717	8,094	133	15,308
	Row pct.	6.8	12.7	4.7	11.9	5.5	4.7	52.9	.9	100.0
	Column pct.	1.8	5.0	5.8	3.4	5.3	6.8	9.3	6.6	5.5
	Total pct.	.4	.7	.3	.7	.3	.3	2.9	0	5.5
California	No.	2,690	4,369	2,612	32,004	2,345	1,086	13,053	171	58,330
	Row pct.	4.6	7.5	4.5	54.9	4.0	1.9	22.4	.3	100.0
	Column pct.	4.6	11.3	21.3	60.2	14.8	10.3	15.0	8.5	21.0
	Total pct.	1.0	1.6	.9	11.5	.8	.4	4.7	.1	21.0
Mountain:										
Montana	No.	1,369	1,197	30	145	62	426	5,878	92	9,199
	Row pct.	14.9	13.0	.3	1.6	.7	4.6	63.9	1.0	100.0
	Column pct.	2.3	3.1	.2	.3	.4	4.0	6.8	4.6	3.3
	Total pct.	.5	.4	0	.1	0	.2	2.1	0	3.3
Idaho	No.	3,616	3,253	188	254	165	1,340	8,273	240	17,329
	Row pct.	20.9	18.8	1.1	1.5	1.0	7.7	47.7	1.4	100.0
	Column pct.	6.2	8.4	1.5	.5	1.0	12.7	9.5	11.9	6.2
	Total pct.	1.3	1.2	.1	.1	.1	.5	3.0	.1	6.2
Wyoming	No.	550	773	4	4	25	320	3,536	54	5,266
	Row pct.	10.4	14.7	.1	.1	.5	6.1	67.1	1.0	100.0
	Column pct.	.9	2.0	0	0	.2	3.0	4.1	2.7	1.9
	Total pct.	.2	.3	0	0	0	.1	1.3	0	1.9
Colorado	No.	3,012	2,491	297	517	301	960	7,450	180	15,208
	Row pct.	19.8	16.4	2.0	3.4	2.0	6.3	49.0	1.2	100.0
	Column pct.	5.2	6.4	2.4	1.0	1.9	9.1	8.6	8.9	5.5
	Total pct.	1.1	.9	.1	.2	.1	.3	2.7	.1	5.5
New Mexico	No.	479	1,793	294	637	72	376	3,137	90	6,878
	Row pct.	7.0	26.1	4.3	9.3	1.0	5.5	45.6	1.3	100.0
	Column pct.	.8	4.6	2.4	1.2	.5	3.6	3.6	4.5	2.5
	Total pct.	.2	.6	.1	.2	0	.1	1.1	0	2.5

See footnotes at end of table.

continued—

Table 1--Distribution of irrigated farms by Standard Industrial Classification and by State--continued

Region and State	Unit	Standard Industrial Classification 1/								All farms
		Cash grain	Field crop except cash grain	Vegetable including melon	Fruit and tree nut	Horticultural specialty	General farm, primarily crop	All livestock 2/	General farm, primarily livestock	
Mountain (continued):										
Arizona	No.	120	1,457	177	766	105	137	1,585	46	4,393
	Row pct.	2.7	33.2	4.0	17.4	2.4	3.1	36.1	1.0	100.0
	Column pct.	.2	3.8	1.4	1.4	.7	1.3	1.8	2.3	1.6
	Total pct.	0	.5	.1	.3	0	0	.6	0	1.6
Utah	No.	912	1,887	184	581	123	533	6,788	154	11,162
	Row pct.	8.2	16.9	1.6	5.2	1.1	4.8	60.8	1.4	100.0
	Column pct.	1.6	4.9	1.5	1.1	.8	5.1	7.8	7.6	4.0
	Total pct.	.3	.7	.1	.2	0	.2	2.4	.1	4.0
Nevada	No.	51	708	12	19	18	61	1,245	21	2,135
	Row pct.	2.4	33.2	.6	.9	.8	2.9	58.3	1.0	100.0
	Column pct.	.1	1.8	.1	0	.1	.6	1.4	1.0	.8
	Total pct.	0	.3	0	0	0	0	.4	0	.8
Northern Plains:										
North Dakota	No.	331	90	13	5	22	25	257	14	757
	Row pct.	43.7	11.9	1.7	.7	2.9	3.3	33.9	1.8	100.0
	Column pct.	.6	.2	.1	0	.1	.2	.3	.7	.3
	Total pct.	.1	0	0	0	0	0	.1	0	.3
South Dakota	No.	557	83	15	4	23	44	1,041	42	1,809
	Row pct.	30.8	4.6	.8	.2	1.3	2.4	57.5	2.3	100.0
	Column pct.	1.0	.2	.1	0	.1	.4	1.2	2.1	.7
	Total pct.	.2	0	0	0	0	0	.4	0	.7
Nebraska	No.	14,037	353	22	8	72	468	6,980	233	22,173
	Row pct.	63.3	1.6	.1	0	.3	2.1	31.5	1.1	100.0
	Column pct.	24.1	.9	.2	0	.5	4.4	8.0	11.5	8.0
	Total pct.	5.1	.1	0	0	0	.2	2.5	.1	8.0
Kansas	No.	5,063	243	58	47	87	153	1,558	37	7,246
	Row pct.	69.9	3.4	.8	.6	1.2	2.1	21.5	.5	100.0
	Column pct.	8.7	.6	.5	.1	.5	1.5	1.8	1.8	2.6
	Total pct.	1.8	.1	0	0	0	.1	.6	0	2.6
Southern Plains:										
Oklahoma	No.	804	710	52	76	135	340	921	19	3,057
	Row pct.	26.3	23.2	1.7	2.5	4.4	11.1	30.1	.6	100.0
	Column pct.	1.4	1.8	.4	.1	.8	3.2	1.1	.9	1.1
	Total pct.	.3	.3	0	0	0	.1	.3	0	1.1

See footnotes at end of table.

continued—

Table 1—Distribution of irrigated farms by Standard Industrial Classification and by State—continued

Region and State	Unit	Standard Industrial Classification 1/								All farms
		Cash grain	Field crop except cash grain	Vegetable including melon	Fruit and tree nut	Horticultural specialty	General farm, primarily crop	All livestock <u>2/</u>	General farm, primarily livestock	
Southern Plains (continued):										
Texas	No.	6,442	4,407	801	1,945	742	822	4,530	55	19,744
	Row pct.	32.6	22.3	4.1	9.9	3.8	4.2	22.9	.3	100.0
	Column pct.	11.1	11.4	6.5	3.7	4.7	7.8	5.2	2.7	7.1
	Total pct.	2.3	1.6	.3	.7	.3	.3	1.6	0	7.1
Florida, Arkansas, Louisiana:										
Florida	No.	125	558	1,110	4,699	2,628	147	1,236	22	10,525
	Row pct.	1.2	5.3	10.5	44.6	25.0	1.4	11.7	.2	100.0
	Column pct.	.2	1.4	9.1	8.8	16.5	1.4	1.4	1.1	3.8
	Total pct.	0	.2	.4	1.7	.9	.1	.4	0	3.8
Arkansas	No.	5,626	289	184	111	91	27	330	8	6,666
	Row pct.	84.4	4.3	2.8	1.7	1.4	.4	5.0	.1	100.0
	Column pct.	9.7	.7	1.5	.2	.6	.3	.4	.4	2.4
	Total pct.	2.0	.1	.1	0	0	0	.1	0	2.4
Louisiana	No.	2,554	377	144	114	221	29	237	5	3,681
	Row pct.	69.4	10.2	3.9	3.1	6.0	.8	6.4	.1	100.0
	Column pct.	4.4	1.0	1.2	.2	1.4	.3	.3	.2	1.3
	Total pct.	.9	.1	.1	0	.1	0	.1	0	1.3
All Other States	No.	7,377	9,762	4,607	3,824	7,234	1,962	5,529	316	40,611
	Row pct.	18.2	24.0	11.3	9.4	17.8	4.8	13.6	.8	100.0
	Column pct.	12.7	25.2	37.6	7.2	45.5	18.7	6.4	15.7	14.6
	Total pct.	2.7	3.5	1.7	1.4	2.6	.7	2.0	.1	14.6
United States	No.	58,288	38,664	12,262	53,183	15,893	10,519	86,885	2,019	277,713
	Row pct.	21.0	13.9	4.4	19.2	5.7	3.8	31.3	.7	100.0
	Column pct.	100.0	100.0	100.0	100.0	100.0	100.0	100.0	100.0	100.0
	Total pct.	21.0	13.9	4.4	19.2	5.7	3.8	31.3	.7	100.0

1/ See (3) p. A-8 for descriptions.

2/ All livestock including dairy, poultry and egg, and animal specialty.

Table 2—Distribution of irrigated harvested acres by crops harvested and by State

Region and State	Unit	Crops harvested					All crops
		Grains <u>1/</u>	Other crops <u>2/</u>	Hay, silage, field seed	Vegetables	Fruits, tree nuts, berries	
Pacific:							
Washington	Acres	631,035	100,012	377,049	105,840	214,150	1,428,086
	Row percent	44.2	7.0	26.4	7.4	15.0	100.0
	Column percent	2.7	1.8	3.8	5.2	6.2	3.2
	Total percent	1.4	.2	.8	.2	.5	3.2
Oregon	Acres	334,576	62,183	760,307	109,798	51,865	1,318,729
	Row pct.	25.4	4.7	57.7	8.3	3.9	100.0
	Column pct.	1.4	1.1	7.7	5.4	1.5	3.0
	Total pct.	.8	.1	1.7	.2	.1	3.0
California	Acres	2,047,077	1,531,056	1,414,435	894,460	2,072,799	7,959,827
	Row pct.	25.7	19.2	17.8	11.2	26.0	100.0
	Column pct.	8.6	28.1	14.4	44.2	60.4	17.9
	Total pct.	4.6	3.4	3.2	2.0	4.7	17.9
Mountain:							
Montana	Acres	447,402	48,546	1,041,503	405	1,303	1,539,159
	Row pct.	29.1	3.2	67.7	0	.1	100.0
	Column pct.	1.9	.9	10.6	0	0	3.5
	Total pct.	1.0	.1	2.3	0	0	3.5
Idaho	Acres	1,513,437	456,547	999,659	34,473	11,751	3,015,867
	Row pct.	50.2	15.1	33.1	1.1	.4	100.0
	Column pct.	6.4	8.4	10.2	1.7	.3	6.8
	Total pct.	3.4	1.0	2.2	.1	0	6.8
Wyoming	Acres	238,072	45,673	869,568	70	49	1,153,432
	Row pct.	20.6	4.0	75.4	0	0	100.0
	Column pct.	1.0	.8	8.9	0	0	2.6
	Total pct.	.5	.1	2.0	0	0	2.6
Colorado	Acres	1,323,376	100,136	1,199,773	28,662	11,378	2,663,325
	Row pct.	49.7	3.8	45.0	1.1	.4	100.0
	Column pct.	5.6	1.8	12.2	1.4	.3	6.0
	Total pct.	3.0	.2	2.7	.1	0	6.0
New Mexico	Acres	251,200	88,788	258,059	22,061	21,403	641,511
	Row pct.	39.2	13.8	40.2	3.4	3.3	100.0
	Column pct.	1.1	1.6	2.6	1.1	.6	1.4
	Total pct.	.6	.2	.6	0	0	1.4
Arizona	Acres	191,056	520,620	172,334	66,568	74,005	1,024,583
	Row pct.	18.6	50.8	16.8	6.5	7.2	100.0
	Column pct.	.8	9.6	1.8	3.3	2.2	2.3
	Total pct.	.4	1.2	.4	.1	.2	2.3

See footnotes at end of table.

continued—

Table 2—Distribution of irrigated harvested acres by crops harvested and by State—continued

Region and State	Unit	Crops harvested					All crops
		Grains <u>1/</u>	Other crops <u>2/</u>	Hay, silage, field seed	Vegetables	Fruits, tree nuts, berries	
Mountain (continued):							
Utah	Acres	198,042	6,423	603,619	6,964	11,943	826,991
	Row pct.	23.9	0.8	73.0	0.8	1.4	100.0
	Column pct.	.8	.1	6.1	.3	.3	1.9
	Total pct.	.4	0	1.4	0	0	1.9
Nevada	Acres	50,782	14,400	523,483	1,409	260	590,334
	Row pct.	8.6	2.4	88.7	.2	0	100.0
	Column pct.	.2	.3	5.3	.1	0	1.3
	Total pct.	.1	0	1.2	0	0	1.3
Northern Plains:							
North Dakota	Acres	105,567	10,034	44,227	225	31	160,084
	Row pct.	65.9	6.3	27.6	.1	0	100.0
	Column pct.	.4	.2	.5	0	0	.4
	Total pct.	.2	0	.1	0	0	.4
South Dakota	Acres	238,367	1,575	124,035	349	31	364,357
	Row pct.	65.4	.4	34.0	.1	0	100.0
	Column pct.	1.0	0	1.3	0	0	.8
	Total pct.	.5	0	.3	0	0	.8
Nebraska	Acres	5,266,398	55,981	613,567	616	127	5,936,689
	Row pct.	88.7	.9	10.3	0	0	100.0
	Column pct.	22.2	1.0	6.2	0	0	13.4
	Total pct.	11.8	.1	1.4	0	0	13.4
Kansas	Acres	2,368,832	12,883	293,116	1,182	695	2,676,708
	Row pct.	88.5	.5	11.0	0	0	100.0
	Column pct.	10.0	.2	3.0	.1	0	6.0
	Total pct.	5.3	0	.7	0	0	6.0
Southern Plains:							
Oklahoma	Acres	274,810	112,437	79,494	4,504	1,885	473,130
	Row pct.	58.1	23.8	16.8	1.0	.4	100.0
	Column pct.	1.2	2.1	.8	.2	.1	1.1
	Total pct.	.6	.3	.2	0	0	1.1
Texas	Acres	3,422,650	1,389,494	257,473	157,891	120,839	5,348,347
	Row pct.	64.0	26.0	4.8	3.0	2.3	100.0
	Column pct.	14.4	25.5	2.6	7.8	3.5	12.0
	Total pct.	7.7	3.1	.6	.4	.3	12.0

See footnotes at end of table.

continued—



Table 2--Distribution of irrigated harvested acres by crops harvested and by State--continued

Region and State	Unit	Crops harvested					All crops
		Grains <u>1/</u>	Other crops <u>2/</u>	Hay, silage, field seed	Vegetables	Fruits, tree nuts, berries	
<hr/>							
Florida, Arkansas, Louisiana:							
Florida	Acres	84,395	233,756	44,490	249,963	685,781	1,298,385
	Row pct.	6.5	18.0	3.4	19.3	52.8	100.0
	Column pct.	.4	4.3	.5	12.4	20.0	2.9
	Total pct.	.2	.5	.1	.6	1.5	2.9
Arkansas	Acres	1,963,650	73,147	6,834	4,281	1,655	2,049,567
	Row pct.	95.8	3.6	.3	.2	.1	100.0
	Column pct.	8.3	1.3	.1	.2	0	4.6
	Total pct.	4.4	.2	0	0	0	4.6
Louisiana	Acres	624,881	58,656	2,765	1,443	1,167	688,913
	Row pct.	90.7	8.5	.4	.2	.2	100.0
	Column pct.	2.6	1.1	0	.3	0	1.5
	Total pct.	1.4	.1	0	0	0	1.5
All Other States	Acres	2,170,602	518,063	134,402	330,778	150,732	3,304,577
	Row pct.	65.7	15.7	4.1	10.0	4.6	100.0
	Column pct.	9.1	9.5	1.4	16.4	4.4	7.4
	Total pct.	4.9	1.2	.3	.7	.3	7.4
United States	Acres	23,746,207	5,440,410	9,820,193	2,021,942	3,433,849	44,462,601
	Row pct.	53.4	12.2	22.1	4.5	7.7	100.0
	Column pct.	100.0	100.0	100.0	100.0	100.0	100.0
	Total pct.	53.4	12.2	22.1	4.5	7.7	100.0

1/ Corn and sorghum for grain or seed, wheat, barley, oats, and rye for grain, flaxseed, rice, sunflower seed, soybeans for beans, dry edible beans, excluding linas.

2/ Cotton, tobacco, Irish potatoes, sweet potatoes, sugar beets and sugarcane for sugar, peanuts for nuts.

Table 3—Distribution of sales from irrigated farms by agricultural products sold and by State

Region and State	Unit	Agricultural products sold							All com- modities
		Grains 1/	Other crops 2/	Hay, silage, field seed	Vegetables	Fruit, tree nuts, berries	Nursery, green- house	Livestock products	
Pacific:									
Washington	\$1,000	273,112	247,129	88,307	88,899	466,348	86,064	500,843	1,750,702
	Row percent	15.6	14.1	5.0	5.1	26.6	4.9	28.6	100.0
	Column percent	3.2	5.2	7.0	2.5	9.1	2.5	3.9	4.4
	Total percent	.7	.6	.2	.2	1.2	.2	1.3	4.4
Oregon	\$1,000	156,136	127,027	96,765	98,928	113,024	120,993	468,483	1,181,356
	Row pct.	13.2	10.8	8.2	8.4	9.6	10.2	39.7	100.0
	Column pct.	1.8	2.7	7.7	2.8	2.2	3.5	3.6	3.0
	Total pct.	.4	.3	.2	.3	.3	.3	1.2	3.0
California	\$1,000	758,111	1,210,208	418,975	1,785,118	2,937,678	935,934	2,211,604	10,257,628
	Row pct.	7.4	11.8	4.1	17.4	28.6	9.1	21.6	100.0
	Column pct.	9.0	25.3	33.3	50.1	57.4	27.3	17.1	25.9
	Total pct.	1.9	3.1	1.1	4.5	7.4	2.4	5.6	25.9
Mountain:									
Montana	\$1,000	156,562	40,596	32,820	407	1,677	4,924	448,450	685,436
	Row pct.	22.8	5.9	4.8	.1	.2	.7	65.4	100.0
	Column pct.	1.9	.8	2.6	0	0	.1	3.5	1.7
	Total pct.	.4	.1	.1	0	0	0	1.1	1.7
Idaho	\$1,000	408,990	425,239	104,380	25,308	14,472	17,511	762,325	1,758,225
	Row pct.	23.3	24.2	5.9	1.4	.8	1.0	43.4	100.0
	Column pct.	4.8	8.9	8.3	.7	.3	.5	5.9	4.4
	Total pct.	1.0	1.1	.3	.1	0	0	1.9	4.4
Wyoming	\$1,000	48,811	31,565	24,403	66	1	1,026	319,442	425,314
	Row pct.	11.5	7.4	5.7	0	0	.2	75.1	100.0
	Column pct.	.6	.7	1.9	0	0	0	2.5	1.1
	Total pct.	.1	.1	.1	0	0	0	.8	1.1
Colorado	\$1,000	361,881	79,895	91,582	44,784	8,110	72,505	1,056,105	1,714,862
	Row pct.	21.1	4.7	5.3	2.6	.5	4.2	61.6	100.0
	Column pct.	4.3	1.7	7.3	1.3	.2	2.1	8.2	4.3
	Total pct.	.9	.2	.2	.1	0	.2	2.7	4.3
New Mexico	\$1,000	49,968	32,112	50,473	34,580	14,960	11,953	203,512	397,558
	Row pct.	12.6	8.1	12.7	8.7	3.8	3.0	51.2	100.0
	Column pct.	.6	.7	4.0	1.0	.3	.3	1.6	1.0
	Total pct.	.1	.1	.1	.1	0	0	.5	1.0

See footnotes at end of table.

continued—

Table 3—Distribution of sales from irrigated farms by agricultural products sold and by State—continued

Region and State	Unit	Agricultural products sold							All com- modities
		Grains 1/	Other crops 2/	Hay, silage, field seed	Vegetables	Fruit, tree nuts, berries	Nursery, green- house	Livestock products	
Mountain (continued):									
Arizona	\$1,000	58,244	365,044	59,373	199,743	84,470	21,641	246,603	1,035,118
	Row pct.	5.6	35.3	5.7	19.3	8.2	2.1	23.8	100.0
	Column pct.	.7	7.6	4.7	5.6	1.7	.6	1.9	2.6
	Total pct.	.1	.9	.2	.5	.2	.1	.6	2.6
Utah	\$1,000	31,802	6,325	41,574	7,087	9,950	21,332	318,608	436,678
	Row pct.	7.3	1.4	9.5	1.6	2.3	4.9	73.0	100.0
	Column pct.	.4	.1	3.3	.2	.2	.6	2.5	1.1
	Total pct.	.1	0	.1	0	0	.1	.8	1.1
Nevada	\$1,000	9,590	12,192	46,961	1,799	48	968	109,046	180,604
	Row pct.	5.3	6.8	26.0	1.0	0	.5	60.4	100.0
	Column pct.	.1	.3	3.7	.1	0	0	.8	.5
	Total pct.	0	0	.1	0	0	0	.3	.5
Northern Plains:									
North Dakota	\$1,000	52,989	9,016	3,190	177	44	2,718	34,234	102,368
	Row pct.	51.8	8.8	3.1	.2	0	2.7	33.4	100.0
	Column pct.	.6	.2	.3	0	0	.1	.3	.3
	Total pct.	.1	0	0	0	0	0	.1	.3
South Dakota	\$1,000	88,253	1,686	7,467	266	33	7,035	228,055	332,795
	Row pct.	26.5	.5	2.2	.1	0	2.1	68.5	100.0
	Column pct.	1.0	0	.6	0	0	.2	1.8	.8
	Total pct.	.2	0	0	0	0	0	.6	.8
Nebraska	\$1,000	1,565,362	39,519	54,064	743	277	6,697	2,450,541	4,117,203
	Row pct.	38.0	1.0	1.3	0	0	.2	59.5	100.0
	Column pct.	18.5	.8	4.3	0	0	.2	18.9	10.4
	Total pct.	4.0	.1	.1	0	0	0	6.2	10.4
Kansas	\$1,000	725,015	6,808	52,622	1,632	266	16,908	1,035,031	1,838,282
	Row pct.	39.4	.4	2.9	.1	0	.9	56.3	100.0
	Column pct.	8.6	.1	4.2	0	0	.5	8.0	4.6
	Total pct.	1.8	0	.1	0	0	0	2.6	4.6
Southern Plains:									
Oklahoma	\$1,000	90,698	53,502	11,208	2,998	1,393	39,746	170,417	369,962
	Row pct.	24.5	14.5	3.0	.8	.4	10.7	46.1	100.0
	Column pct.	1.1	1.1	.9	.1	0	1.2	1.3	.9
	Total pct.	.2	.1	0	0	0	.1	.4	.9

See footnotes at end of table.

continued—

Table 3—Distribution of sales from irrigated farms by agricultural products sold and by State—continued

Region and State	Unit	Agricultural products sold						Livestock products	All commodities
		Grains 1/	Other crops 2/	Hay, silage, field seed	Vegetables	Fruit, tree nuts, berries	Nursery, green- house		
Southern Plains (continued):									
Texas	\$1,000	936,185	431,779	43,442	227,296	88,705	156,467	1,017,070	2,900,944
	Row pct.	32.3	14.9	1.5	7.8	3.1	5.4	35.1	100.0
	Column pct.	11.1	9.0	3.5	6.4	1.7	4.6	7.9	7.3
	Total pct.	2.4	1.1	.1	.6	.2	.4	2.6	7.3
Florida, Arkansas, Louisiana:									
Florida	\$1,000	31,913	285,242	6,398	553,992	888,546	470,483	246,993	2,483,567
	Row pct.	1.3	11.5	.3	22.3	35.8	18.9	9.9	100.0
	Column pct.	.4	6.0	.5	15.6	17.4	13.7	1.9	6.3
	Total pct.	.1	.7	0	1.4	2.2	1.2	.6	6.3
Arkansas	\$1,000	916,496	85,781	1,156	5,117	2,257	9,815	46,865	1,067,487
	Row pct.	85.9	8.0	.1	.5	.2	.9	4.4	100.0
	Column pct.	10.9	1.8	.1	.1	0	.3	.4	2.7
	Total pct.	2.3	.2	0	0	0	0	.1	2.7
Louisiana	\$1,000	302,030	73,863	313	1,722	1,299	17,821	12,428	409,476
	Row pct.	73.8	18.0	.1	.4	.3	4.4	3.0	100.0
	Column pct.	3.6	1.5	0	0	0	.5	.1	1.0
	Total pct.	.8	.2	0	0	0	0	0	1.0
All Other States	\$1,000	1,421,516	1,223,905	22,444	480,920	483,386	1,407,514	1,069,621	6,109,306
	Row pct.	23.3	20.0	.4	7.9	7.9	23.0	17.5	100.0
	Column pct.	16.8	25.6	1.8	13.5	9.4	41.0	8.3	15.4
	Total pct.	3.6	3.1	.1	1.2	1.2	3.6	2.7	15.4
United States	\$1,000	8,443,664	4,788,433	1,257,917	3,561,582	5,116,944	3,430,055	12,956,276	39,554,871
	Row pct.	21.3	12.1	3.2	9.0	12.9	8.7	32.8	100.0
	Column pct.	100.0	100.0	100.0	100.0	100.0	100.0	100.0	100.0
	Total pct.	21.3	12.1	3.2	9.0	12.9	8.7	32.8	100.0

1/ Corn for grain, wheat, soybeans, sorghum for grain, oats, and other grains as defined on p. A-7 of the 1982 Census of Agriculture (3).

2/ Cotton and cottonseed, tobacco, and "other crops" from the 1982 Census of Agriculture, Summary Tables, market value of agricultural products sold section (3).

Table 4—Distribution of irrigated farms by type of farm organization and by State

Region and State	Unit	Type of farm organization					Other	All farms
		Individual or family	Partnership	Corporation				
				Total	Family- held	Other-than- family-held		
<hr/>								
Pacific:								
Washington	Number	13,368	1,553	1,257	1,118	139	58	16,236
	Row percent	82.3	9.6	7.7	6.9	.9	.4	100.0
	Column percent	6.1	4.5	5.6	5.7	5.4	2.9	5.8
	Total percent	4.8	.6	.5	.4	.1	0	5.8
<hr/>								
Oregon	No.	12,837	1,503	917	827	90	51	15,308
	Row pct.	83.9	9.8	6.0	5.4	.6	.3	100.0
	Column pct.	5.9	4.3	4.1	4.2	3.5	2.5	5.5
	Total pct.	4.6	.5	.3	.3	0	0	5.5
<hr/>								
California	No.	44,732	8,932	4,145	3,507	638	521	58,330
	Row pct.	76.7	15.3	7.1	6.0	1.1	.9	100.0
	Column pct.	20.4	25.8	18.6	17.8	24.7	26.0	21.0
	Total pct.	16.1	3.2	1.5	1.3	.2	.2	21.0
<hr/>								
Mountain:								
Montana	No.	7,288	894	977	925	52	40	9,199
	Row pct.	79.2	9.7	10.6	10.1	.6	.4	100.0
	Column pct.	3.3	2.6	4.4	4.7	2.0	2.0	3.3
	Total pct.	2.6	.3	.4	.3	0	0	3.3
<hr/>								
Idaho	No.	14,605	1,686	915	852	63	123	17,329
	Row pct.	84.3	9.7	5.3	4.9	.4	.7	100.0
	Column pct.	6.7	4.9	4.1	4.3	2.4	6.1	6.2
	Total pct.	5.3	.6	.3	.3	0	0	6.2
<hr/>								
Wyoming	No.	4,062	552	593	557	36	59	5,266
	Row pct.	77.1	10.5	11.3	10.6	.7	1.1	100.0
	Column pct.	1.9	1.6	2.7	2.8	1.4	2.9	1.9
	Total pct.	1.5	.2	.2	.2	0	0	1.9
<hr/>								
Colorado	No.	12,413	1,840	870	776	94	85	15,208
	Row pct.	81.6	12.1	5.7	5.1	.6	.6	100.0
	Column pct.	5.7	5.3	3.9	3.9	3.6	4.2	5.5
	Total pct.	4.5	.7	.3	.3	0	0	5.5
<hr/>								
New Mexico	No.	5,977	548	292	250	42	61	6,878
	Row pct.	86.9	8.0	4.2	3.6	.6	.9	100.0
	Column pct.	2.7	1.6	1.3	1.3	1.6	3.0	2.5
	Total pct.	2.2	.2	.1	.1	0	0	2.5
<hr/>								
Arizona	No.	3,165	702	467	386	81	59	4,393
	Row pct.	72.0	16.0	10.6	8.8	1.8	1.3	100.0
	Column pct.	1.4	2.0	2.1	2.0	3.1	2.9	1.6
	Total pct.	1.1	.3	.2	.1	0	0	1.6

continued—

Table 4—Distribution of irrigated farms by type of farm organization and by State—continued

Region and State	Unit	Type of farm organization					Other	All farms
		Individual or family	Partnership	Corporation				
				Total	Family- held	Other-than- family-held		
Mountain (continued):								
Utah	No.	9,270	1,238	427	380	47	227	11,162
	Row pct.	83.0	11.1	3.8	3.4	.4	2.0	100.0
	Column pct.	4.2	3.6	1.9	1.9	1.8	11.3	4.0
	Total pct.	3.3	.4	.2	.1	0	.1	4.0
Nevada	No.	1,598	319	180	162	18	38	2,135
	Row pct.	74.8	14.9	8.4	7.6	.8	1.8	100.0
	Column pct.	.7	.9	.8	.8	.7	1.9	.8
	Total pct.	.6	.1	.1	.1	0	0	.8
Northern Plains:								
North Dakota	No.	629	115	9	9	0	4	757
	Row pct.	83.1	15.2	1.2	1.2	0	.5	100.0
	Column pct.	.3	.3	0	0	0	.2	.3
	Total pct.	.2	0	0	0	0	0	.3
South Dakota	No.	1,391	241	167	158	9	10	1,809
	Row pct.	76.9	13.3	9.2	8.7	.5	.6	100.0
	Column pct.	.6	.7	.7	.8	.3	.5	.7
	Total pct.	.5	.1	.1	.1	0	0	.7
Nebraska	No.	17,961	2,376	1,760	1,653	107	76	22,173
	Row pct.	81.0	10.7	7.9	7.5	.5	.3	100.0
	Column pct.	8.2	6.9	7.9	8.4	4.1	3.8	8.0
	Total pct.	6.5	.9	.6	.6	0	0	8.0
Kansas	No.	5,666	925	604	565	39	51	7,246
	Row pct.	78.2	12.8	8.3	7.8	.5	.7	100.0
	Column pct.	2.6	2.7	2.7	2.9	1.5	2.5	2.6
	Total pct.	2.0	.3	.2	.2	0	0	2.6
Southern Plains:								
Oklahoma	No.	2,551	336	157	143	14	13	3,057
	Row pct.	83.4	11.0	5.1	4.7	.5	.4	100.0
	Column pct.	1.2	1.0	.7	.7	.5	.6	1.1
	Total pct.	.9	.1	.1	.1	0	0	1.1
Texas	No.	16,139	2,332	1,145	964	181	128	19,744
	Row pct.	81.7	11.8	5.8	4.9	.9	.6	100.0
	Column pct.	7.4	6.7	5.1	4.9	7.0	6.4	7.1
	Total pct.	5.8	.8	.4	.3	.1	0	7.1

continued—

Table 4—Distribution of irrigated farms by type of farm organization and by State—continued

Region and State	Unit	Type of farm organization					Other	All farms
		Individual or family	Partnership	Corporation				
				Total	Family- held	Other-than- family-held		
Florida, Arkansas, Louisiana:								
Florida	No.	6,995	1,303	2,094	1,709	385	133	10,525
	Row pct.	66.5	12.4	19.9	16.2	3.7	1.3	100.0
	Column pct.	3.2	3.8	9.4	8.7	14.9	6.6	3.8
	Total pct.	2.5	.5	.8	.6	.1	0	3.8
Arkansas	No.	4,943	1,017	670	640	30	36	6,666
	Row pct.	74.2	15.3	10.1	9.6	.5	.5	100.0
	Column pct.	2.3	2.9	3.0	3.2	1.2	1.8	2.4
	Total pct.	1.8	.4	.2	.2	0	0	2.4
Louisiana	No.	3,045	415	175	157	18	46	3,681
	Row pct.	82.7	11.3	4.8	4.3	.5	1.2	100.0
	Column pct.	1.4	1.2	.8	.8	.7	2.3	1.3
	Total pct.	1.1	.1	.1	.1	0	0	1.3
All Other States	No.	30,216	5,747	4,464	3,967	497	184	40,611
	Row pct.	74.4	14.2	11.0	9.8	1.2	.5	100.0
	Column pct.	13.8	16.6	20.0	20.1	19.3	9.2	14.6
	Total pct.	10.9	2.1	1.6	1.4	.2	.1	14.6
United States	No.	218,851	34,574	22,285	19,705	2,580	2,003	277,713
	Row pct.	78.8	12.4	8.0	7.1	.9	.7	100.0
	Column pct.	100.0	100.0	100.0	100.0	100.0	100.0	100.0
	Total pct.	78.8	12.4	8.0	7.1	.9	.7	100.0

Table 5—Distribution of irrigated acres by type of farm organization and by State

Region and State 1/	Unit	Type of farm organization					Other	All farms
		Individual or family	Partnership	Corporation		Other-than-family-held		
				Total	Family-held			
Pacific:								
Washington (.29)	Acres	896,177	244,831	485,577	396,663	88,914	7,482	1,634,067
	Row percent	54.8	15.0	29.7	24.3	5.4	0.5	100.0
	Column percent	3.2	2.6	4.3	4.2	4.9	1.9	3.4
	Total percent	1.8	.5	1.0	.8	.2	0	3.4
Oregon (.32)	Acres	948,719	397,071	442,000	393,971	48,029	8,590	1,796,380
	Row pct.	52.8	22.1	24.6	21.9	2.7	.5	100.0
	Column pct.	3.4	4.3	3.9	4.2	2.6	2.2	3.7
	Total pct.	2.0	.8	.9	.8	.1	0	3.7
California (.42)	Acres	3,204,349	2,359,794	2,798,305	2,177,752	620,553	77,560	8,440,008
	Row pct.	38.0	28.0	33.2	25.8	7.4	.9	100.0
	Column pct.	11.6	25.4	24.7	22.9	34.0	19.5	17.3
	Total pct.	6.6	4.9	5.8	4.5	1.3	.2	17.3
Mountain:								
Montana (.23)	Acres	1,147,349	273,403	560,110	532,994	27,116	14,639	1,995,501
	Row pct.	57.5	13.7	28.1	26.7	1.4	.7	100.0
	Column pct.	4.2	2.9	5.0	5.6	1.5	3.7	4.1
	Total pct.	2.4	.6	1.2	1.1	.1	0	4.1
Idaho (.23)	Acres	2,131,916	615,071	653,999	619,641	34,358	23,247	3,424,233
	Row pct.	62.3	18.0	19.1	18.1	1.0	.7	100.0
	Column pct.	7.7	6.6	5.8	6.5	1.9	5.8	7.0
	Total pct.	4.4	1.3	1.3	1.3	.1	0	7.0
Wyoming (.22)	Acres	882,095	223,614	424,553	397,422	27,131	26,855	1,557,117
	Row pct.	56.6	14.4	27.3	25.5	1.7	1.7	100.0
	Column pct.	3.2	2.4	3.8	4.2	1.5	6.7	3.2
	Total pct.	1.8	.5	.9	.8	.1	.1	3.2
Colorado (.20)	Acres	1,984,196	634,346	533,370	471,567	61,803	18,598	3,170,510
	Row pct.	62.6	20.0	16.8	14.9	1.9	.6	100.0
	Column pct.	7.2	6.8	4.7	5.0	3.4	4.7	6.5
	Total pct.	4.1	1.3	1.1	1.0	.1	0	6.5
New Mexico (.21)	Acres	486,407	106,020	126,652	108,881	17,771	11,057	730,136
	Row pct.	66.6	14.5	17.3	14.9	2.4	1.5	100.0
	Column pct.	1.8	1.1	1.1	1.1	1.0	2.8	1.5
	Total pct.	1.0	.2	.3	.2	0	0	1.5

See footnote at end of table.

continued—



Table 5—Distribution of irrigated acres by type of farm organization and by State—continued

Region and State 1/	Unit	Type of farm organization					Other	All farms
		Individual or family	Partnership	Corporation				
				Total	Family-held	Other-than-family-held		
Mountain (continued):								
Arizona (.35)	Acres	433,676	271,769	341,697	244,423	97,274	6,802	1,053,944
	Row pct.	41.1	25.8	32.4	23.2	9.2	0.6	100.0
	Column pct.	1.6	2.9	3.0	2.6	5.3	1.7	2.2
	Total pct.	.9	.6	.7	.5	.2	0	2.2
Utah (.18)	Acres	701,349	196,943	128,588	116,906	11,682	32,569	1,059,449
	Row pct.	66.2	18.6	12.1	11.0	1.1	3.1	100.0
	Column pct.	2.5	2.1	1.1	1.2	.6	8.2	2.2
	Total pct.	1.4	.4	.3	.2	0	.1	2.2
Nevada (.35)	Acres	342,403	198,971	243,955	222,221	21,734	11,914	797,243
	Row pct.	42.9	25.0	30.6	27.9	2.7	1.5	100.0
	Column pct.	1.2	2.1	2.2	2.3	1.2	3.0	1.6
	Total pct.	.7	.4	.5	.5	0	0	1.6
Northern Plains:								
North Dakota (.07)	Acres	123,985	35,577	1,772	1,772	0	333	161,667
	Row pct.	76.7	22.0	1.1	1.1	0	.2	100.0
	Column pct.	.4	.4	0	0	0	.1	.3
	Total pct.	.3	.1	0	0	0	0	.3
South Dakota (.12)	Acres	246,958	60,908	63,277	61,006	2,271	2,777	373,920
	Row pct.	66.0	16.3	16.9	16.3	.6	.7	100.0
	Column pct.	.9	.7	.6	.6	.1	.7	.8
	Total pct.	.5	.1	.1	.1	0	0	.8
Nebraska (.12)	Acres	4,217,335	804,671	982,005	929,783	52,222	25,955	6,029,966
	Row pct.	69.9	13.3	16.3	15.4	.9	.4	100.0
	Column pct.	15.3	8.7	8.7	9.8	2.9	6.5	12.4
	Total pct.	8.7	1.7	2.0	1.9	.1	.1	12.4
Kansas (.11)	Acres	1,816,209	442,161	397,334	376,922	20,412	19,204	2,674,908
	Row pct.	67.9	16.5	14.9	14.1	.8	.7	100.0
	Column pct.	6.6	4.8	3.5	4.0	1.1	4.8	5.5
	Total pct.	3.7	.9	.8	.8	0	0	5.5
Southern Plains:								
Oklahoma (.15)	Acres	340,628	79,706	67,008	57,504	9,504	3,150	490,492
	Row pct.	69.4	16.3	13.7	11.7	1.9	.6	100.0
	Column pct.	1.2	.9	.6	.6	.5	.8	1.0
	Total pct.	.7	.2	.1	.1	0	0	1.0

See footnote at end of table.

continued—

Table 5—Distribution of irrigated acres by type of farm organization and by State—continued

Region and State 1/	Unit	Type of farm organization						All farms
		Individual or family	Partnership	Corporation			Other	
				Total	Family-held	Other-than-family-held		
Southern Plains (continued)								
Texas (.13)	Acres	3,865,010	975,704	689,312	591,328	97,984	40,654	5,570,680
	Row pct.	69.4	17.5	12.4	10.6	1.8	0.7	100.0
	Column pct.	14.0	10.5	6.1	6.2	5.4	10.2	11.5
	Total pct.	7.9	2.0	1.4	1.2	.2	.1	11.5
Florida, Arkansas, Louisiana:								
Florida (.52)	Acres	349,458	225,349	969,274	606,556	362,718	18,059	1,562,140
	Row pct.	22.4	14.4	62.0	38.8	23.2	1.2	100.0
	Column pct.	1.3	2.4	8.6	6.4	19.9	4.5	3.2
	Total pct.	.7	.5	2.0	1.2	.7	0	3.2
Arkansas (.17)	Acres	1,180,019	401,997	424,002	411,222	12,780	14,638	2,020,656
	Row pct.	58.4	19.9	21.0	20.4	.6	.7	100.0
	Column pct.	4.3	4.3	3.7	4.3	.7	3.7	4.2
	Total pct.	2.4	.8	.9	.8	0	0	4.2
Louisiana (.13)	Acres	491,830	115,404	78,674	61,082	17,592	7,428	693,336
	Row pct.	70.9	16.6	11.3	8.8	2.5	1.1	100.0
	Column pct.	1.8	1.2	.7	.6	1.0	1.9	1.4
	Total pct.	1.0	.2	.2	.1	0	0	1.4
All Other States (.22)	Acres	1,846,954	634,951	902,741	711,261	191,480	26,730	3,411,376
	Row pct.	54.1	18.6	26.5	20.8	5.6	.8	100.0
	Column pct.	6.7	6.8	8.0	7.5	10.5	6.7	7.0
	Total pct.	3.8	1.3	1.9	1.5	.4	.1	7.0
United States (.24)	Acres	27,637,022	9,298,261	11,314,205	9,490,877	1,823,328	398,241	48,647,729
	Row pct.	56.8	19.1	23.3	19.5	3.7	.8	100.0
	Column pct.	100.0	100.0	100.0	100.0	100.0	100.0	100.0
	Total pct.	56.8	19.1	23.3	19.5	3.7	.8	100.0

1/ Coefficient in parentheses (the coefficient associated with localization curves (1)) measures the extent of deviation between the distribution of irrigated acres and the distribution of irrigated farms (table 4) for a given State. The coefficient is a measure of concentration and ranges in value from 0 to 1: the greater the value, the greater the deviation between distributions and the greater the concentration. Distributions compared include values for the following types of organization: individual or family, partnership, family held corporation, other-than-family-held corporations, and other.

Table 6—Distribution of agricultural product sales from irrigated farms by type of farm organization and by State

Region and State 1/	Unit	Type of farm organization						All farms
		Individual or family	Partnership	Corporation			Other	
				Total	Family-held	Other-than-family-held		
<hr/>								
Pacific:								
Washington (.58)	\$1,000	759,827	243,462	743,777	613,741	130,036	3,635	1,750,702
	Row percent	43.4	13.9	42.5	35.1	7.4	0.2	100.0
	Column percent	4.6	3.3	4.8	5.2	3.5	1.4	4.4
	Total percent	1.9	.6	1.9	1.6	.3	0	4.4
Oregon (.42)	\$1,000	526,042	208,431	443,739	389,005	54,734	3,144	1,181,357
	Row pct.	44.5	17.6	37.6	32.9	4.6	.3	100.0
	Column pct.	3.2	2.9	2.9	3.3	1.5	1.2	3.0
	Total pct.	1.3	.5	1.1	1.0	.1	0	3.0
California (.49)	\$1,000	3,329,273	2,687,987	4,170,573	3,132,831	1,037,743	69,794	10,257,628
	Row pct.	32.5	26.2	40.7	30.5	10.1	.7	100.0
	Column pct.	20.2	36.8	26.8	26.4	28.2	26.0	25.9
	Total pct.	8.4	6.8	10.5	7.9	2.6	.2	25.9
Mountain:								
Montana (.31)	\$1,000	346,497	97,750	236,342	213,987	22,355	4,849	685,437
	Row pct.	50.6	14.3	34.5	31.2	3.3	.7	100.0
	Column pct.	2.1	1.3	1.5	1.8	.6	1.8	1.7
	Total pct.	.9	.2	.6	.5	.1	0	1.7
Idaho (.34)	\$1,000	924,864	286,520	537,083	515,969	21,114	9,756	1,758,224
	Row pct.	52.6	16.3	30.5	29.3	1.2	.6	100.0
	Column pct.	5.6	3.9	3.5	4.3	.6	3.6	4.4
	Total pct.	2.3	.7	1.4	1.3	.1	0	4.4
Wyoming (.28)	\$1,000	215,479	64,485	139,437	130,553	8,884	5,914	425,314
	Row pct.	50.7	15.2	32.8	30.7	2.1	1.4	100.0
	Column pct.	1.3	.9	.9	1.1	.2	2.2	1.1
	Total pct.	.5	.2	.4	.3	0	0	1.1
Colorado (.42)	\$1,000	733,629	361,747	613,458	512,734	100,724	6,027	1,714,861
	Row pct.	42.8	21.1	35.8	29.9	5.9	.4	100.0
	Column pct.	4.5	5.0	3.9	4.3	2.7	2.2	4.3
	Total pct.	1.9	.9	1.6	1.3	.3	0	4.3
New Mexico (.37)	\$1,000	209,115	43,050	140,873	95,863	45,010	4,520	397,558
	Row pct.	52.6	10.8	35.4	24.1	11.3	1.1	100.0
	Column pct.	1.3	.6	.9	.8	1.2	1.7	1.0
	Total pct.	.5	.1	.4	.2	.1	0	1.0

See footnote at end of table.

continued—

Table 6—Distribution of agricultural product sales from irrigated farms by type of farm organization and by State—continued

Region and State 1/	Unit	Type of farm organization					Other	All farms
		Individual or family	Partnership	Corporation				
				Total	Family- held	Other-than- family-held		
Mountain (continued):								
Arizona (.48)	\$1,000	318,468	208,551	501,484	354,381	147,102	6,615	1,035,118
	Row pct.	30.8	20.1	48.4	34.2	14.2	0.6	100.0
	Column pct.	1.9	2.9	3.2	3.0	4.0	2.5	2.6
	Total pct.	.8	.5	1.3	.9	.4	0	2.6
Utah (.33)	\$1,000	228,736	98,808	93,553	79,524	14,029	15,582	436,678
	Row pct.	52.4	22.6	21.4	18.2	3.2	3.6	100.0
	Column pct.	1.4	1.4	.6	.7	.4	5.8	1.1
	Total pct.	.6	.2	.2	.2	0	0	1.1
Nevada (.39)	\$1,000	73,010	37,400	67,773	56,611	11,162	2,421	180,604
	Row pct.	40.4	20.7	37.5	31.3	6.2	1.3	100.0
	Column pct.	.4	.5	.4	.5	.3	.9	.5
	Total pct.	.2	.1	.2	.1	0	0	.5
Northern Plains:								
North Dakota (.15)	\$1,000	69,668	26,793	4,487	4,487	0	1,421	102,369
	Row pct.	68.1	26.2	4.4	4.4	0	1.4	100.0
	Column pct.	.4	.4	0	0	0	.5	.3
	Total pct.	.2	.1	0	0	0	0	.3
South Dakota (.35)	\$1,000	155,131	46,163	126,581	92,190	34,391	4,920	332,795
	Row pct.	46.6	13.9	38.0	27.7	10.3	1.5	100.0
	Column pct.	.9	.6	.8	.8	.9	1.8	.8
	Total pct.	.4	.1	.3	.2	.1	0	.8
Nebraska (.30)	\$1,000	2,206,165	544,943	1,353,492	1,215,547	137,945	12,603	4,117,203
	Row pct.	53.6	13.2	32.9	29.5	3.4	.3	100.0
	Column pct.	13.4	7.5	8.7	10.2	3.8	4.7	10.4
	Total pct.	5.6	1.4	3.4	3.1	.3	0	10.4
Kansas (.39)	\$1,000	826,857	242,740	759,406	503,221	256,185	13,341	1,842,344
	Row pct.	44.9	13.2	41.2	27.3	13.9	.7	100.0
	Column pct.	5.0	3.3	4.9	4.2	7.0	5.0	4.7
	Total pct.	2.1	.6	1.9	1.3	.6	0	4.7
Southern Plains:								
Oklahoma (.35)	\$1,000	192,816	46,895	127,819	102,421	25,398	2,430	369,960
	Row pct.	52.1	12.7	34.5	27.7	6.9	.7	100.0
	Column pct.	1.2	.6	.8	.9	.7	.9	.9
	Total pct.	.5	.1	.3	.3	.1	0	.9

See footnote at end of table.

continued—

Table 6--Distribution of agricultural product sales from irrigated farms by type of farm organization and by State--continued

Region and State 1/	Unit	Type of farm organization					Other	All farms
		Individual or family	Partnership	Corporation				
				Total	Family-held	Other-than-family-held		
Southern Plains (continued):								
Texas (.38)	\$1,000	1,388,606	450,985	1,041,865	639,843	402,022	19,490	2,900,945
	Row pct.	47.9	15.5	35.9	22.1	13.9	0.7	100.0
	Column pct.	8.4	6.2	6.7	5.4	10.9	7.3	7.3
	Total pct.	3.5	1.1	2.6	1.6	1.0	0	7.3
Florida, Arkansas, Louisiana:								
Florida (.55)	\$1,000	517,908	281,289	1,651,841	1,027,971	623,870	32,530	2,483,567
	Row pct.	20.9	11.3	66.5	41.4	25.1	1.3	100.0
	Column pct.	3.1	3.9	10.6	8.7	17.0	12.1	6.3
	Total pct.	1.3	.7	4.2	2.6	1.6	.1	6.3
Arkansas (.20)	\$1,000	590,393	217,493	250,902	241,627	9,275	8,698	1,067,487
	Row pct.	55.3	20.4	23.5	22.6	.9	.8	100.0
	Column pct.	3.6	3.0	1.6	2.0	.3	3.2	2.7
	Total pct.	1.5	.5	.6	.6	0	0	2.7
Louisiana (.16)	\$1,000	277,406	69,958	58,373	45,099	13,274	3,894	409,631
	Row pct.	67.7	17.1	14.3	11.0	3.2	1.0	100.0
	Column pct.	1.7	1.0	.4	.4	.4	1.4	1.0
	Total pct.	.7	.2	.1	.1	0	0	1.0
All Other States (.37)	\$1,000	2,562,722	1,034,517	2,474,905	1,894,430	580,476	37,163	6,109,307
	Row pct.	41.9	16.9	40.5	31.0	9.5	.6	100.0
	Column pct.	15.6	14.2	15.9	16.0	15.8	13.8	15.4
	Total pct.	6.5	2.6	6.3	4.8	1.5	.1	15.4
United States (.41)	\$1,000	16,452,612	7,299,969	15,537,763	11,862,034	3,675,729	268,747	39,559,091
	Row pct.	41.6	18.5	39.3	30.0	9.3	.7	100.0
	Column pct.	100.0	100.0	100.0	100.0	100.0	100.0	100.0
	Total pct.	41.6	18.5	39.3	30.0	9.3	.7	100.0

1/ Coefficient in parentheses (the coefficient associated with localization curves (1)) measures the extent of deviation between the distribution of value of sales from irrigated farms and the distribution of irrigated farms (table 4) for a State. The coefficient is a measure of concentration and ranges in value from 0 to 1; the greater the value, the greater the deviation between distributions and the greater the concentration. Distributions compared include values for the following types of organization: individual or family, partnership, family-held corporation, other-than-family-held corporations, and other.

Table 7--Distribution of irrigated farms by tenure of operator and by State

Region and State	Unit	Tenure of operator			All farms
		Full owners	Part owners	Tenants	
Pacific:					
Washington	Number	11,071	3,903	1,262	16,236
	Row percent	68.2	24.0	7.8	100.0
	Column percent	7.1	4.5	3.7	5.8
	Total percent	4.0	1.4	.5	5.8
Oregon	No.	10,243	3,931	1,134	15,308
	Row pct.	66.9	25.7	7.4	100.0
	Column pct.	6.5	4.5	3.4	5.5
	Total pct.	3.7	1.4	.4	5.5
California	No.	42,837	9,569	5,924	58,330
	Row pct.	73.4	16.4	10.2	100.0
	Column pct.	27.4	10.9	17.5	21.0
	Total pct.	15.4	3.4	2.1	21.0
Mountain:					
Montana	No.	4,766	3,642	791	9,199
	Row pct.	51.8	39.6	8.6	100.0
	Column pct.	3.0	4.2	2.3	3.3
	Total pct.	1.7	1.3	.3	3.3
Idaho	No.	10,173	5,252	1,904	17,329
	Row pct.	58.7	30.3	11.0	100.0
	Column pct.	6.5	6.0	5.6	6.2
	Total pct.	3.7	1.9	.7	6.2
Wyoming	No.	2,562	2,137	567	5,266
	Row pct.	48.7	40.6	10.8	100.0
	Column pct.	1.6	2.4	1.7	1.9
	Total pct.	.9	.8	.2	1.9
Colorado	No.	8,497	4,742	1,969	15,208
	Row pct.	55.9	31.2	12.9	100.0
	Column pct.	5.4	5.4	5.8	5.5
	Total pct.	3.1	1.7	.7	5.5
New Mexico	No.	4,462	1,939	477	6,878
	Row pct.	64.9	28.2	6.9	100.0
	Column pct.	2.9	2.2	1.4	2.5
	Total pct.	1.6	.7	.2	2.5
Arizona	No.	2,860	1,021	512	4,393
	Row pct.	65.1	23.2	11.7	100.0
	Column pct.	1.8	1.2	1.5	1.6
	Total pct.	1.0	.4	.2	1.6

continued--

Table 7--Distribution of irrigated farms by tenure of operator and by State--continued

Region and State	Unit	Tenure of operator			
		Full owners	Part owners	Tenants	All farms
Mountain (continued):					
Utah	No.	6,933	3,531	698	11,162
	Row pct.	62.1	31.6	6.3	100.0
	Column pct.	4.4	4.0	2.1	4.0
	Total pct.	2.5	1.3	.3	4.0
Nevada	No.	1,519	444	172	2,135
	Row pct.	71.1	20.8	8.1	100.0
	Column pct.	1.0	.5	.5	.8
	Total pct.	.5	.2	.1	.8
Northern Plains:					
North Dakota	No.	235	458	64	757
	Row pct.	31.0	60.5	8.5	100.0
	Column pct.	.2	.5	.2	.3
	Total pct.	.1	.2	0	.3
South Dakota	No.	634	1,011	164	1,809
	Row pct.	35.0	55.9	9.1	100.0
	Column pct.	.4	1.2	.5	.7
	Total pct.	.2	.4	.1	.7
Nebraska	No.	6,579	11,273	4,321	22,173
	Row pct.	29.7	50.8	19.5	100.0
	Column pct.	4.2	12.9	12.8	8.0
	Total pct.	2.4	4.1	1.6	8.0
Kansas	No.	1,708	4,236	1,302	7,246
	Row pct.	23.6	58.5	18.0	100.0
	Column pct.	1.1	4.8	3.9	2.6
	Total pct.	.6	1.5	.5	2.6
Southern Plains:					
Oklahoma	No.	1,183	1,515	359	3,057
	Row pct.	38.7	49.6	11.7	100.0
	Column pct.	.8	1.7	1.1	1.1
	Total pct.	.4	.5	.1	1.1
Texas	No.	8,913	7,060	3,771	19,744
	Row pct.	45.1	35.8	19.1	100.0
	Column pct.	5.7	8.1	11.2	7.1
	Total pct.	3.2	2.5	1.4	7.1

continued--

Table 7--Distribution of irrigated farms by tenure of operator and by State--continued

Region and State	Unit	Tenure of operator			All farms
		Full owners	Part owners	Tenants	
<hr/>					
Florida, Arkansas, Louisiana:					
Florida	No.	8,040	1,637	848	10,525
	Row pct.	76.4	15.6	8.1	100.0
	Column pct.	5.1	1.9	2.5	3.8
	Total pct.	2.9	.6	.3	3.8
Arkansas	No.	1,760	3,144	1,762	6,666
	Row pct.	26.4	47.2	26.4	100.0
	Column pct.	1.1	3.6	5.2	2.4
	Total pct.	.6	1.1	.6	2.4
Louisiana	No.	1,313	1,568	800	3,681
	Row pct.	35.7	42.6	21.7	100.0
	Column pct.	.8	1.8	2.4	1.3
	Total pct.	.5	.6	.3	1.3
All Other States	No.	20,168	15,479	4,964	40,611
	Row pct.	49.7	38.1	12.2	100.0
	Column pct.	12.9	17.7	14.7	14.6
	Total pct.	7.3	5.6	1.8	14.6
United States	No.	156,456	87,492	33,765	277,713
	Row pct.	56.3	31.5	12.2	100.0
	Column pct.	100.0	100.0	100.0	100.0
	Total pct.	56.3	31.5	12.2	100.0



Table 8—Distribution of irrigated farms by farm size and by State

Region and State	Unit	Acres in farm							All farms
		1 to 49	50 to 99	100 to 219	220 to 499	500 to 999	1,000 to 1,999	2,000 or more	
Pacific:									
Washington	Number	8,818	1,953	2,016	1,657	792	445	555	16,236
	Row percent	54.3	12.0	12.4	10.2	4.9	2.7	3.4	100.0
	Column percent	8.8	7.1	5.7	4.1	2.5	2.0	2.7	5.8
	Total percent	3.2	.7	.7	.6	.3	.2	.2	5.8
Oregon	No.	7,275	1,857	2,047	1,750	880	534	965	15,308
	Row pct.	47.5	12.1	13.4	11.4	5.7	3.5	6.3	100.0
	Column pct.	7.3	6.8	5.8	4.3	2.7	2.4	4.8	5.5
	Total pct.	2.6	.7	.7	.6	.3	.2	.3	5.5
California	No.	35,362	6,676	6,080	4,399	2,574	1,640	1,599	58,330
	Row pct.	60.6	11.4	10.4	7.5	4.4	2.8	2.7	100.0
	Column pct.	35.3	24.4	17.2	10.8	8.0	7.5	7.9	21.0
	Total pct.	12.7	2.4	2.2	1.6	.9	.6	.6	21.0
Mountain:									
Montana	No.	1,699	754	1,193	1,298	1,034	916	2,305	9,199
	Row pct.	18.5	8.2	13.0	14.1	11.2	10.0	25.1	100.0
	Column pct.	1.7	2.8	3.4	3.2	3.2	4.2	11.4	3.3
	Total pct.	.6	.3	.4	.5	.4	.3	.8	3.3
Idaho	No.	5,316	2,327	3,187	2,981	1,712	978	828	17,329
	Row pct.	30.7	13.4	18.4	17.2	9.9	5.6	4.8	100.0
	Column pct.	5.3	8.5	9.0	7.4	5.3	4.5	4.1	6.2
	Total pct.	1.9	.8	1.1	1.1	.6	.4	.3	6.2
Wyoming	No.	690	421	699	1,006	665	522	1,263	5,266
	Row pct.	13.1	8.0	13.3	19.1	12.6	9.9	24.0	100.0
	Column pct.	.7	1.5	2.0	2.5	2.1	2.4	6.2	1.9
	Total pct.	.2	.2	.3	.4	.2	.2	.5	1.9
Colorado	No.	3,697	1,624	2,418	2,571	1,775	1,319	1,804	15,208
	Row pct.	24.3	10.7	15.9	16.9	11.7	8.7	11.9	100.0
	Column pct.	3.7	5.9	6.8	6.3	5.5	6.0	8.9	5.5
	Total pct.	1.3	.6	.9	.9	.6	.5	.6	5.5
New Mexico	No.	3,076	744	840	755	533	397	533	6,878
	Row pct.	44.7	10.8	12.2	11.0	7.7	5.8	7.7	100.0
	Column pct.	3.1	2.7	2.4	1.9	1.7	1.8	2.6	2.5
	Total pct.	1.1	.3	.3	.3	.2	.1	.2	2.5
Arizona	No.	2,012	371	441	503	447	302	317	4,393
	Row pct.	45.8	8.4	10.0	11.5	10.2	6.9	7.2	100.0
	Column pct.	2.0	1.4	1.2	1.2	1.4	1.4	1.6	1.6
	Total pct.	.7	.1	.2	.2	.2	.1	.1	1.6

continued—

Table 8—Distribution of irrigated farms by farm size and by State—continued

Region and State	Unit	Acres in farm							All farms
		1 to 49	50 to 99	100 to 219	220 to 499	500 to 999	1,000 to 1,999	2,000 or more	
Mountain (continued):									
Utah	No.	4,615	1,565	1,790	1,462	768	445	517	11,162
	Row pct.	41.3	14.0	16.0	13.1	6.9	4.0	4.6	100.0
	Column pct.	4.6	5.7	5.1	3.6	2.4	2.0	2.6	4.0
	Total pct.	1.7	.6	.6	.5	.3	.2	.2	4.0
Nevada	No.	593	253	290	336	201	158	304	2,135
	Row pct.	27.8	11.9	13.6	15.7	9.4	7.4	14.2	100.0
	Column pct.	.6	.9	.8	.8	.6	.7	1.5	.8
	Total pct.	.2	.1	.1	.1	.1	.1	.1	.8
Northern Plains:									
North Dakota	No.	51	19	32	67	147	185	256	757
	Row pct.	6.7	2.5	4.2	8.9	19.4	24.4	33.8	100.0
	Column pct.	.1	.1	.1	.2	.5	.8	1.3	.3
	Total pct.	0	0	0	0	.1	.1	.1	.3
South Dakota	No.	81	44	122	319	412	365	466	1,809
	Row pct.	4.5	2.4	6.7	17.6	22.8	20.2	25.8	100.0
	Column pct.	.1	.2	.3	.8	1.3	1.7	2.3	.7
	Total pct.	0	0	0	.1	.1	.1	.2	.7
Nebraska	No.	545	710	2,586	6,650	6,076	3,439	2,167	22,173
	Row pct.	2.5	3.2	11.7	30.0	27.4	15.5	9.8	100.0
	Column pct.	.5	2.6	7.3	16.4	19.0	15.7	10.7	8.0
	Total pct.	.2	.3	.9	2.4	2.2	1.2	.8	8.0
Kansas	No.	284	161	459	1,115	1,626	2,033	1,568	7,246
	Row pct.	3.9	2.2	6.3	15.4	22.4	28.1	21.6	100.0
	Column pct.	.3	.6	1.3	2.7	5.1	9.3	7.7	2.6
	Total pct.	.1	.1	.2	.4	.6	.7	.6	2.6
Southern Plains:									
Oklahoma	No.	349	158	385	644	649	544	328	3,057
	Row pct.	11.4	5.2	12.6	21.1	21.2	17.8	10.7	100.0
	Column pct.	.3	.6	1.1	1.6	2.0	2.5	1.6	1.1
	Total pct.	.1	.1	.1	.2	.2	.2	.1	1.1
Texas	No.	4,684	1,305	1,875	3,106	3,768	2,898	2,108	19,744
	Row pct.	23.7	6.6	9.5	15.7	19.1	14.7	10.7	100.0
	Column pct.	4.7	4.8	5.3	7.7	11.8	13.2	10.4	7.1
	Total pct.	1.7	.5	.7	1.1	1.4	1.0	.8	7.1

continued—

Table 8--Distribution of irrigated farm numbers by farm size and by State--continued

Region and State	Unit	Acres in farm							All farms
		1 to 49	50 to 99	100 to 219	220 to 499	500 to 999	1,000 to 1,999	2,000 or more	
Florida, Arkansas, Louisiana:									
Florida	No.	5,936	1,140	1,217	921	595	320	396	10,525
	Row pct.	56.4	10.8	11.6	8.8	5.7	3.0	3.8	100.0
	Column pct.	5.9	4.2	3.4	2.3	1.9	1.5	2.0	3.8
	Total pct.	2.1	.4	.4	.3	.2	.1	.1	3.8
Arkansas	No.	477	409	670	1,407	1,828	1,294	581	6,666
	Row pct.	7.2	6.1	10.1	21.1	27.4	19.4	8.7	100.0
	Column pct.	.5	1.5	1.9	3.5	5.7	5.9	2.9	2.4
	Total pct.	.2	.1	.2	.5	.7	.5	.2	2.4
Louisiana	No.	706	292	440	807	788	461	187	3,681
	Row pct.	19.2	7.9	12.0	21.9	21.4	12.5	5.1	100.0
	Column pct.	.7	1.1	1.2	2.0	2.5	2.1	.9	1.3
	Total pct.	.3	.1	.2	.3	.3	.2	.1	1.3
All Other States	No.	13,982	4,612	6,574	6,799	4,745	2,710	1,189	40,611
	Row pct.	34.4	11.4	16.2	16.7	11.7	6.7	2.9	100.0
	Column pct.	13.9	16.8	18.6	16.8	14.8	12.4	5.9	14.6
	Total pct.	5.0	1.7	2.4	2.4	1.7	1.0	.4	14.6
United States	No.	100,248	27,395	35,361	40,553	32,015	21,905	20,236	277,713
	Row pct.	36.1	9.9	12.7	14.6	11.5	7.9	7.3	100.0
	Column pct.	100.0	100.0	100.0	100.0	100.0	100.0	100.0	100.0
	Total pct.	36.1	9.9	12.7	14.6	11.5	7.9	7.3	100.0

Table 9—Distribution of irrigated acres by farm size and by State

Region and State 1/	Unit	Acres in farm							All farms
		1 to 49	50 to 99	100 to 219	220 to 499	500 to 999	1,000 to 1,999	2,000 or more	
Pacific:									
Washington (.69)	Acres	102,166	87,343	189,590	327,832	294,543	222,298	410,295	1,634,067
	Row percent	6.3	5.3	11.6	20.1	18.0	13.6	25.1	100.0
	Column percent	9.4	7.8	6.6	4.8	3.1	2.2	2.4	3.4
	Total percent	.2	.2	.4	.7	.6	.5	.8	3.4
Oregon (.70)	Acres	73,026	68,122	148,016	285,883	230,981	219,429	770,923	1,796,380
	Row pct.	4.1	3.8	8.2	15.9	12.9	12.2	42.9	100.0
	Column pct.	6.7	6.1	5.2	4.2	2.5	2.2	4.4	3.7
	Total pct.	.2	.1	.3	.6	.5	.5	1.6	3.7
California (.79)	Acres	425,916	351,188	640,855	1,009,029	1,186,923	1,394,183	3,431,914	8,440,008
	Row pct.	5.0	4.2	7.6	12.0	14.1	16.5	40.7	100.0
	Column pct.	39.1	31.4	22.4	14.8	12.6	13.9	19.8	17.3
	Total pct.	.9	.7	1.3	2.1	2.4	2.9	7.1	17.3
Mountain:									
Montana (.44)	Acres	24,455	32,113	106,876	220,597	264,589	261,668	1,085,203	1,995,501
	Row pct.	1.2	1.6	5.4	11.1	13.3	13.1	54.4	100.0
	Column pct.	2.2	2.9	3.7	3.2	2.8	2.6	6.3	4.1
	Total pct.	.1	.1	.2	.5	.5	.5	2.2	4.1
Idaho (.60)	Acres	81,752	127,714	356,737	688,350	685,765	607,651	876,264	3,424,233
	Row pct.	2.4	3.7	10.4	20.1	20.0	17.7	25.6	100.0
	Column pct.	7.5	11.4	12.5	10.1	7.3	6.0	5.1	7.0
	Total pct.	.2	.3	.7	1.4	1.4	1.2	1.8	7.0
Wyoming (.46)	Acres	11,402	18,869	64,791	185,340	211,668	200,204	864,843	1,557,117
	Row pct.	.7	1.2	4.2	11.9	13.6	12.9	55.5	100.0
	Column pct.	1.0	1.7	2.3	2.7	2.3	2.0	5.0	3.2
	Total pct.	0	0	.1	.4	.4	.4	1.8	3.2
Colorado (.53)	Acres	50,882	75,204	231,458	513,729	566,924	549,695	1,182,618	3,170,510
	Row pct.	1.6	2.4	7.3	16.2	17.9	17.3	37.3	100.0
	Column pct.	4.7	6.7	8.1	7.6	6.0	5.5	6.8	6.5
	Total pct.	.1	.2	.5	1.1	1.2	1.1	2.4	6.5
New Mexico (.62)	Acres	33,302	28,552	59,465	119,484	137,323	141,369	210,641	730,136
	Row pct.	4.6	3.9	8.1	16.4	18.8	19.4	28.8	100.0
	Column pct.	3.1	2.6	2.1	1.8	1.5	1.4	1.2	1.5
	Total pct.	.1	.1	.1	.2	.3	.3	.4	1.5
Arizona (.71)	Acres	19,597	15,128	37,700	106,429	203,941	240,548	430,601	1,053,944
	Row pct.	1.9	1.4	3.6	10.1	19.4	22.8	40.9	100.0
	Column pct.	1.8	1.4	1.3	1.6	2.2	2.4	2.5	2.2
	Total pct.	0	0	.1	.2	.4	.5	.9	2.2

See footnote at end of table.

continued—

Table 9—Distribution of irrigated acres by farm size and by State—continued

Region and State 1/	Unit	Acres in farm							All farms
		1 to 49	50 to 99	100 to 219	220 to 499	500 to 999	1,000 to 1,999	2,000 or more	
Mountain (continued):									
Utah (.55)	Acres	65,348	73,621	156,303	241,796	185,723	132,111	204,547	1,059,449
	Row pct.	6.2	6.9	14.8	22.8	17.5	12.5	19.3	100.0
	Column pct.	6.0	6.6	5.5	3.6	2.0	1.3	1.2	2.2
	Total pct.	.1	.2	.3	.5	.4	.3	.4	2.2
Nevada (.68)	Acres	8,510	12,112	26,523	66,548	76,460	89,792	517,298	797,243
	Row pct.	1.1	1.5	3.3	8.3	9.6	11.3	64.9	100.0
	Column pct.	.8	1.1	.9	1.0	.8	.9	3.0	1.6
	Total pct.	0	0	.1	.1	.2	.2	1.1	1.6
Northern Plains:									
North Dakota (.20)	Acres	216	692	2,606	12,586	29,990	38,945	76,632	161,667
	Row pct.	.1	.4	1.6	7.8	18.6	24.1	47.4	100.0
	Column pct.	0	.1	.1	.2	.3	.4	.4	.3
	Total pct.	0	0	0	0	.1	.1	.2	.3
South Dakota (.24)	Acres	774	1,749	8,984	43,866	82,282	82,725	153,540	373,920
	Row pct.	.2	.5	2.4	11.7	22.0	22.1	41.1	100.0
	Column pct.	.1	.2	.3	.6	.9	.8	.9	.8
	Total pct.	0	0	0	.1	.2	.2	.3	.8
Nebraska (.30)	Acres	9,059	37,611	263,677	1,200,436	1,758,979	1,467,598	1,292,606	6,029,966
	Row pct.	.2	.6	4.4	19.9	29.2	24.3	21.4	100.0
	Column pct.	.8	3.4	9.2	17.7	18.7	14.6	7.5	12.4
	Total pct.	0	.1	.5	2.5	3.6	3.0	2.7	12.4
Kansas (.35)	Acres	2,445	5,939	40,545	190,125	412,456	835,059	1,188,339	2,674,908
	Row pct.	.1	.2	1.5	7.1	15.4	31.2	44.4	100.0
	Column pct.	.2	.5	1.4	2.8	4.4	8.3	6.8	5.5
	Total pct.	0	0	.1	.4	.8	1.7	2.4	5.5
Southern Plains:									
Oklahoma (.48)	Acres	2,194	3,749	19,860	55,027	96,199	135,222	178,241	490,492
	Row pct.	.4	.8	4.0	11.2	19.6	27.6	36.3	100.0
	Column pct.	.2	.3	.7	.8	1.0	1.3	1.0	1.0
	Total pct.	0	0	0	.1	.2	.3	.4	1.0
Texas (.55)	Acres	48,568	42,508	136,471	527,829	1,240,470	1,558,593	2,016,241	5,570,680
	Row pct.	.9	.8	2.4	9.5	22.3	28.0	36.2	100.0
	Column pct.	4.5	3.8	4.8	7.8	13.2	15.5	11.6	11.5
	Total pct.	.1	.1	.3	1.1	2.5	3.2	4.1	11.5

See footnote at end of table.

continued—

Table 9—Distribution of irrigated acres by farm size and by State—continued

Region and State <sup>1/</sup>	Unit	Acres in farm						All farms
		1 to 49	50 to 99	100 to 219	220 to 499	500 to 999	1,000 to 1,999	2,000 or more
Florida, Arkansas, Louisiana:								
Florida (.81)	Acres	53,161	43,546	92,617	141,225	179,917	183,575	868,099
	Row pct.	3.4	2.8	5.9	9.0	11.5	11.8	55.6
	Column pct.	4.9	3.9	3.2	2.1	1.9	1.8	5.0
	Total pct.	.1	.1	.2	.3	.4	.4	1.8
Arkansas (.44)	Acres	5,051	12,459	41,476	213,997	554,541	661,181	531,951
	Row pct.	.2	.6	2.1	10.6	27.4	32.7	26.3
	Column pct.	.5	1.1	1.5	3.1	5.9	6.6	3.1
	Total pct.	0	0	.1	.4	1.1	1.4	1.1
Louisiana (.52)	Acres	5,151	8,451	26,631	116,356	191,651	182,954	162,142
	Row pct.	.7	1.2	3.8	16.8	27.6	26.4	23.4
	Column pct.	.5	.8	.9	1.7	2.0	1.8	.9
	Total pct.	0	0	.1	.2	.4	.4	.3
All Other States (.68)	Acres	65,737	70,875	203,549	531,768	804,470	839,863	895,114
	Row pct.	1.9	2.1	6.0	15.6	23.6	24.6	26.2
	Column pct.	6.0	6.3	7.1	7.8	8.6	8.4	5.2
	Total pct.	.1	.1	.4	1.1	1.7	1.7	1.8
United States (.63)	Acres	1,088,712	1,117,545	2,854,730	6,798,232	9,395,795	10,044,663	17,348,052
	Row pct.	2.2	2.3	5.9	14.0	19.3	20.6	35.7
	Column pct.	100.0	100.0	100.0	100.0	100.0	100.0	100.0
	Total pct.	2.2	2.3	5.9	14.0	19.3	20.6	35.7

<sup>1/</sup> Coefficient in parentheses (the coefficient associated with localization curves (1)) measures the extent of deviation between the distribution of irrigated acres and the distribution of irrigated farms (table 8) for a State. The coefficient is a measure of concentration and ranges in value from 0 to 1; the greater the value, the greater the deviation between distributions and the greater the concentration.

Table 10—Distribution of agricultural product sales from irrigated farms by farm size and by State

Region and State 1/	Unit	Acres in farm							All farms
		1 to 49	50 to 99	100 to 219	220 to 499	500 to 999	1,000 to 1,999	2,000 or more	
Pacific:									
Washington (.60)	\$1,000	182,138	139,667	266,416	293,006	287,105	196,856	385,513	1,750,702
	Row percent	10.4	8.0	15.2	16.7	16.4	11.2	22.0	100.0
	Column percent	6.5	8.3	8.5	5.3	4.4	2.8	3.0	4.4
	Total percent	.5	.4	.7	.7	.7	.5	1.0	4.4
Oregon (.60)	\$1,000	75,794	70,213	151,380	230,777	180,116	140,965	332,113	1,181,357
	Row pct.	6.4	5.9	12.8	19.5	15.2	11.9	28.1	100.0
	Column pct.	2.7	4.2	4.8	4.2	2.7	2.0	2.6	3.0
	Total pct.	.2	.2	.4	.6	.5	.4	.8	3.0
California (.68)	\$1,000	1,074,352	719,635	1,106,237	1,459,329	1,352,769	1,378,528	3,166,779	10,257,628
	Row pct.	10.5	7.0	10.8	14.2	13.2	13.4	30.9	100.0
	Column pct.	38.4	42.9	35.2	26.3	20.6	19.5	24.8	25.9
	Total pct.	2.7	1.8	2.8	3.7	3.4	3.5	8.0	25.9
Mountain:									
Montana (.45)	\$1,000	9,840	9,018	33,072	85,694	80,967	80,756	386,090	685,437
	Row pct.	1.4	1.3	4.8	12.5	11.8	11.8	56.3	100.0
	Column pct.	.4	.5	1.1	1.5	1.2	1.1	3.0	1.7
	Total pct.	0	0	.1	.2	.2	.2	1.0	1.7
Idaho (.59)	\$1,000	52,723	77,976	182,207	334,582	356,876	279,210	474,651	1,758,224
	Row pct.	3.0	4.4	10.4	19.0	20.3	15.9	27.0	100.0
	Column pct.	1.9	4.6	5.8	6.0	5.4	4.0	3.7	4.4
	Total pct.	.1	.2	.5	.8	.9	.7	1.2	4.4
Wyoming (.48)	\$1,000	2,442	3,627	15,791	48,386	55,746	45,027	254,295	425,314
	Row pct.	.6	.9	3.7	11.4	13.1	10.6	59.8	100.0
	Column pct.	.1	.2	.5	.9	.9	.6	2.0	1.1
	Total pct.	0	0	0	.1	.1	.1	.6	1.1
Colorado (.50)	\$1,000	74,079	39,095	132,594	242,275	288,641	280,409	657,768	1,714,861
	Row pct.	4.3	2.3	7.7	14.1	16.8	16.4	38.4	100.0
	Column pct.	2.6	2.3	4.2	4.4	4.4	4.0	5.2	4.3
	Total pct.	.2	.1	.3	.6	.7	.7	1.7	4.3
New Mexico (.63)	\$1,000	18,062	15,546	35,788	54,660	65,313	77,793	130,398	397,558
	Row pct.	4.5	3.9	9.0	13.7	16.4	19.6	32.8	100.0
	Column pct.	.6	.9	1.1	1.0	1.0	1.1	1.0	1.0
	Total pct.	0	0	.1	.1	.2	.2	.3	1.0
Arizona (.68)	\$1,000	38,165	24,724	34,542	140,476	153,451	197,654	446,106	1,035,118
	Row pct.	3.7	2.4	3.3	13.6	14.8	19.1	43.1	100.0
	Column pct.	1.4	1.5	1.1	2.5	2.3	2.8	3.5	2.6
	Total pct.	.1	.1	.1	.4	.4	.5	1.1	2.6

See footnote at end of table.

continued—

Table 10—Distribution of agricultural product sales from irrigated farms by farm size and by State—continued

Region and State 1/	Unit	Acres in farm							All farms
		1 to 49	50 to 99	100 to 219	220 to 499	500 to 999	1,000 to 1,999	2,000 or more	
Mountain (continued):									
Utah (.48)	\$1,000	44,193	37,138	71,088	96,838	70,993	38,421	78,006	436,678
	Row pct.	10.1	8.5	16.3	22.2	16.3	8.8	17.9	100.0
	Column pct.	1.6	2.2	2.3	1.7	1.1	.5	.6	1.1
	Total pct.	.1	.1	.2	.2	.2	.1	.2	1.1
Nevada (.59)	\$1,000	3,921	3,703	8,175	23,055	25,212	28,498	88,040	180,604
	Row pct.	2.2	2.1	4.5	12.8	14.0	15.8	48.7	100.0
	Column pct.	.1	.2	.3	.4	.4	.4	.7	.5
	Total pct.	0	0	0	.1	.1	.1	.2	.5
Northern Plains:									
North Dakota (.31)	\$1,000	1,972	243	800	5,140	13,086	20,439	60,690	102,369
	Row pct.	1.9	.2	.8	5.0	12.8	20.0	59.3	100.0
	Column pct.	.1	0	0	.1	.2	.3	.5	.3
	Total pct.	0	0	0	0	0	.1	.2	.3
South Dakota (.33)	\$1,000	3,029	461	3,031	21,120	76,771	68,330	160,054	332,795
	Row pct.	.9	.1	.9	6.3	23.1	20.5	48.1	100.0
	Column pct.	.1	0	.1	.4	1.2	1.0	1.3	.8
	Total pct.	0	0	0	.1	.2	.2	.4	.8
Nebraska (.39)	\$1,000	10,510	48,586	150,111	627,258	1,000,342	1,142,625	1,137,771	4,117,203
	Row pct.	.3	1.2	3.6	15.2	24.3	27.8	27.6	100.0
	Column pct.	.4	2.9	4.8	11.3	15.3	16.2	8.9	10.4
	Total pct.	0	.1	.4	1.6	2.5	2.9	2.9	10.4
Kansas (.24)	\$1,000	9,566	5,663	36,081	306,951	195,812	457,591	830,680	1,842,344
	Row pct.	.5	.3	2.0	16.7	10.6	24.8	45.1	100.0
	Column pct.	.3	.3	1.1	5.5	3.0	6.5	6.5	4.7
	Total pct.	0	0	.1	.8	.5	1.2	2.1	4.7
Southern Plains:									
Oklahoma (.47)	\$1,000	12,718	4,363	11,165	39,512	61,064	90,379	150,758	369,960
	Row pct.	3.4	1.2	3.0	10.7	16.5	24.4	40.7	100.0
	Column pct.	.5	.3	.4	.7	.9	1.3	1.2	.9
	Total pct.	0	0	0	.1	.2	.2	.4	.9
Texas (.54)	\$1,000	80,777	42,000	87,310	253,643	518,310	720,323	1,198,582	2,900,945
	Row pct.	2.8	1.4	3.0	8.7	17.9	24.8	41.3	100.0
	Column pct.	2.9	2.5	2.8	4.6	7.9	10.2	9.4	7.3
	Total pct.	.2	.1	.2	.6	1.3	1.8	3.0	7.3

See footnote at end of table.

continued—



Table 10--Distribution of agricultural product sales from irrigated farms by farm size and by State--continued

Region and State 1/	Unit	Acres in farm							All farms
		1 to 49	50 to 99	100 to 219	220 to 499	500 to 999	1,000 to 1,999	2,000 or more	
Florida, Arkansas, Louisiana:									
Florida (.66)	\$1,000	286,082	133,020	215,255	245,705	301,046	297,942	1,004,516	2,483,567
	Row pct.	11.5	5.4	8.7	9.9	12.1	12.0	40.4	100.0
	Column pct.	10.2	7.9	6.9	4.4	4.6	4.2	7.9	6.3
	Total pct.	.7	.3	.5	.6	.8	.8	2.5	6.3
Arkansas (.48)	\$1,000	7,547	10,687	21,881	93,363	250,399	338,511	345,098	1,067,487
	Row pct.	.7	1.0	2.0	8.7	23.5	31.7	32.3	100.0
	Column pct.	.3	.6	.7	1.7	3.8	4.8	2.7	2.7
	Total pct.	0	0	.1	.2	.6	.9	.9	2.7
Louisiana (.53)	\$1,000	12,489	4,656	13,972	55,229	103,590	111,982	107,714	409,631
	Row pct.	3.0	1.1	3.4	13.5	25.3	27.3	26.3	100.0
	Column pct.	.4	.3	.4	1.0	1.6	1.6	.8	1.0
	Total pct.	0	0	0	.1	.3	.3	.3	1.0
All Other States (.47)	\$1,000	796,297	287,846	562,474	899,300	1,118,845	1,071,403	1,373,144	6,109,307
	Row pct.	13.0	4.7	9.2	14.7	18.3	17.5	22.5	100.0
	Column pct.	28.5	17.2	17.9	16.2	17.1	15.2	10.8	15.4
	Total pct.	2.0	.7	1.4	2.3	2.8	2.7	3.5	15.4
United States (.53)	\$1,000	2,796,696	1,677,866	3,139,370	5,556,298	6,556,455	7,063,642	12,768,765	39,559,091
	Row pct.	7.1	4.2	7.9	14.0	16.6	17.9	32.3	100.0
	Column pct.	100.0	100.0	100.0	100.0	100.0	100.0	100.0	100.0
	Total pct.	7.1	4.2	7.9	14.0	16.6	17.9	32.3	100.0

1/ Coefficient in parentheses (the coefficient associated with localization curves (1)) measures the extent of deviation between the distribution of sales from irrigated farms and the distribution of irrigated farms (table 8) for a State. The coefficient is a measure of concentration and ranges in value from 0 to 1; the greater the value the greater the deviation between distributions and the greater the concentration.

Table 11—Distribution of irrigated farms by agricultural product sales value and by State

Region and State	Unit	Market value of agricultural products sold							All farms
		Less than \$10,000	\$10,000 to \$19,999	\$20,000 to \$39,999	\$40,000 to \$99,999	\$100,000 to \$249,999	\$250,000 to \$499,999	\$500,000 or more	
Pacific:									
Washington	Number	7,016	1,506	1,639	2,530	2,068	921	600	16,236
	Row percent	43.2	9.3	10.1	15.6	12.7	5.7	3.7	100.0
	Column percent	7.4	5.8	5.2	5.0	4.7	5.1	4.5	5.8
	Total percent	2.5	.5	.6	.9	.7	.3	.2	5.8
Oregon	No.	7,971	1,541	1,451	1,765	1,606	648	379	15,308
	Row pct.	52.1	10.1	9.5	11.5	10.5	4.2	2.5	100.0
	Column pct.	8.4	5.9	4.6	3.5	3.7	3.6	2.9	5.5
	Total pct.	2.9	.6	.5	.6	.6	.2	.1	5.5
California	No.	26,005	5,727	5,889	7,464	6,035	3,250	4,148	58,330
	Row pct.	44.6	9.8	10.1	12.8	10.3	5.6	7.1	100.0
	Column pct.	27.4	21.9	18.8	14.7	13.8	18.0	31.3	21.0
	Total pct.	9.4	2.1	2.1	2.7	2.2	1.2	1.5	21.0
Mountain:									
Montana	No.	3,065	1,081	1,294	1,999	1,299	330	158	9,199
	Row pct.	33.3	11.8	14.1	21.7	14.1	3.6	1.7	100.0
	Column pct.	3.2	4.1	4.1	3.9	3.0	1.8	1.2	3.3
	Total pct.	1.1	.4	.5	.7	.5	.1	.1	3.3
Idaho	No.	5,925	1,933	2,258	3,458	2,338	873	577	17,329
	Row pct.	34.2	11.2	13.0	20.0	13.5	5.0	3.3	100.0
	Column pct.	6.2	7.4	7.2	6.8	5.3	4.8	4.3	6.2
	Total pct.	2.1	.7	.8	1.2	.8	.3	.2	6.2
Wyoming	No.	1,766	628	773	1,098	689	205	118	5,266
	Row pct.	33.5	11.9	14.7	20.9	13.1	3.9	2.2	100.0
	Column pct.	1.9	2.4	2.5	2.2	1.6	1.1	.9	1.9
	Total pct.	.6	.2	.3	.4	.2	.1	0	1.9
Colorado	No.	6,063	1,643	1,752	2,609	1,962	714	507	15,208
	Row pct.	39.9	10.8	11.5	17.2	12.9	4.7	3.3	100.0
	Column pct.	6.4	6.3	5.6	5.1	4.5	4.0	3.8	5.5
	Total pct.	2.2	.6	.6	.9	.7	.3	.2	5.5
New Mexico	No.	4,385	603	519	651	451	174	121	6,878
	Row pct.	63.8	8.8	7.5	9.5	6.6	2.5	1.8	100.0
	Column pct.	4.6	2.3	1.7	1.3	1.0	1.0	.9	2.5
	Total pct.	1.6	.2	.2	.2	.2	.1	0	2.5

continued—

Table 11—Distribution of irrigated farms by agricultural product sales value and by State—continued

Region and State	Unit	Market value of agricultural products sold							All farms
		Less than \$10,000	\$10,000 to \$19,999	\$20,000 to \$39,999	\$40,000 to \$99,999	\$100,000 to \$249,999	\$250,000 to \$499,999	\$500,000 or more	
Mountain (continued):									
Arizona	No.	2,194	326	292	401	447	331	424	4,393
	Row pct.	49.9	7.4	6.6	9.1	10.2	7.5	9.7	100.0
	Column pct.	2.3	1.2	.9	.8	1.0	1.8	3.2	1.6
	Total pct.	.8	.1	.1	.1	.2	.1	.2	1.6
Utah	No.	6,390	1,386	1,179	1,163	759	234	99	11,162
	Row pct.	57.2	12.4	10.6	10.4	6.8	2.1	.9	100.0
	Column pct.	6.7	5.3	3.8	2.3	1.7	1.3	.7	4.0
	Total pct.	2.3	.5	.4	.4	.3	.1	0	4.0
Nevada	No.	909	251	267	329	216	103	63	2,135
	Row pct.	42.6	11.8	12.5	15.4	10.1	4.8	3.0	100.0
	Column pct.	1.0	1.0	.9	.6	.5	.6	.5	.8
	Total pct.	.3	.1	.1	.1	.1	0	0	.8
Northern Plains:									
North Dakota	No.	66	47	101	213	232	65	33	757
	Row pct.	8.7	6.2	13.3	28.1	30.6	8.6	4.4	100.0
	Column pct.	.1	.2	.3	.4	.5	.4	.2	.3
	Total pct.	0	0	0	.1	.1	0	0	.3
South Dakota	No.	174	124	213	524	522	163	90	1,809
	Row pct.	9.6	6.9	11.8	29.0	28.9	9.0	5.0	100.0
	Column pct.	.2	.5	.7	1.0	1.2	.9	.7	.7
	Total pct.	.1	0	.1	.2	.2	.1	0	.7
Nebraska	No.	800	1,071	2,941	7,623	6,909	1,875	954	22,173
	Row pct.	3.6	4.8	13.3	34.4	31.2	8.5	4.3	100.0
	Column pct.	.8	4.1	9.4	15.0	15.7	10.4	7.2	8.0
	Total pct.	.3	.4	1.1	2.7	2.5	.7	.3	8.0
Kansas	No.	404	374	744	2,047	2,311	924	446	7,246
	Row pct.	5.6	5.2	10.3	28.3	31.9	12.8	6.2	100.0
	Column pct.	.4	1.4	2.4	4.0	5.3	5.1	3.4	2.6
	Total pct.	.1	.1	.3	.7	.8	.3	.2	2.6
Southern Plains:									
Oklahoma	No.	601	335	476	815	594	166	74	3,057
	Row pct.	19.7	11.0	15.6	26.7	19.4	5.4	2.4	100.0
	Column pct.	.6	1.3	1.5	1.6	1.4	.9	.6	1.1
	Total pct.	.2	.1	.2	.3	.2	.1	0	1.1

continued—

Table 11—Distribution of irrigated farms by agricultural product sales value and by State—continued

Region and State	Unit	Market value of agricultural products sold							All farms
		Less than \$10,000	\$10,000 to \$19,999	\$20,000 to \$39,999	\$40,000 to \$99,999	\$100,000 to \$249,999	\$250,000 to \$499,999	\$500,000 or more	
Southern Plains (continued):									
Texas									
	No.	5,978	1,720	2,313	4,092	3,383	1,441	859	19,744
	Row pct.	30.3	8.7	11.7	20.7	17.1	7.3	4.4	100.0
	Column pct.	6.3	6.6	7.4	8.1	7.7	8.0	6.5	7.1
	Total pct.	2.2	.6	.8	1.5	1.2	.5	.3	7.1
Florida, Arkansas, Louisiana:									
Florida									
	No.	3,627	1,128	1,240	1,657	1,316	689	922	10,525
	Row pct.	34.5	10.7	11.8	15.7	12.5	6.5	8.8	100.0
	Column pct.	3.8	4.3	4.0	3.3	3.0	3.8	6.9	3.8
	Total pct.	1.3	.4	.4	.6	.5	.2	.3	3.8
Arkansas									
	No.	666	398	708	1,550	2,047	944	355	6,666
	Row pct.	10.0	6.0	10.6	23.3	30.7	14.2	5.3	100.0
	Column pct.	.7	1.5	2.3	3.1	4.7	5.2	2.7	2.4
	Total pct.	.2	.1	.3	.6	.7	.3	.1	2.4
Louisiana									
	No.	776	302	435	910	884	275	112	3,681
	Row pct.	21.1	8.2	11.8	24.7	24.0	7.5	3.0	100.0
	Column pct.	.8	1.2	1.4	1.8	2.0	1.5	.8	1.3
	Total pct.	.3	.1	.2	.3	.3	.1	0	1.3
All Other States									
	No.	10,246	3,993	4,894	7,844	7,807	3,708	2,228	40,611
	Row pct.	25.2	9.8	12.1	19.3	19.2	9.1	5.5	100.0
	Column pct.	10.8	15.3	15.6	15.5	17.8	20.6	16.8	14.6
	Total pct.	3.7	1.4	1.8	2.8	2.8	1.3	.8	14.6
United States									
	No.	95,027	26,117	31,378	50,742	43,875	18,033	13,267	277,713
	Row pct.	34.2	9.4	11.3	18.3	15.8	6.5	4.8	100.0
	Column pct.	100.0	100.0	100.0	100.0	100.0	100.0	100.0	100.0
	Total pct.	34.2	9.4	11.3	18.3	15.8	6.5	4.8	100.0

Table 12—Distribution of irrigated acres by agricultural product sales value and by State

Region and State 1/	Unit	Market value of agricultural products sold							All farms
		Less than \$10,000	\$10,000 to \$19,999	\$20,000 to \$39,999	\$40,000 to \$99,999	\$100,000 to \$249,999	\$250,000 to \$499,999	\$500,000 or more	
Pacific:									
Washington (.65)	Acres	86,960	47,555	86,579	242,783	363,173	293,093	514,263	1,634,067
	Row percent	5.3	2.9	5.3	14.9	22.2	17.9	31.5	100.0
	Column percent	4.8	3.6	3.2	3.1	3.0	3.5	3.6	3.4
	Total percent	.2	.1	.2	.5	.7	.6	1.1	3.4
Oregon (.65)	Acres	131,831	77,363	139,788	276,124	459,404	314,976	397,512	1,796,380
	Row pct.	7.3	4.3	7.8	15.4	25.6	17.5	22.1	100.0
	Column pct.	7.3	5.9	5.2	3.5	3.7	3.7	2.8	3.7
	Total pct.	.3	.2	.3	.6	.9	.6	.8	3.7
California (.74)	Acres	319,040	158,379	262,046	631,240	1,104,294	1,140,186	4,826,045	8,440,008
	Row pct.	3.8	1.9	3.1	7.5	13.1	13.5	57.2	100.0
	Column pct.	17.8	12.0	9.7	8.0	9.0	13.5	34.0	17.3
	Total pct.	.7	.3	.5	1.3	2.3	2.3	9.9	17.3
Mountain:									
Montana (.50)	Acres	118,639	111,431	202,550	513,563	544,937	269,219	235,942	1,995,501
	Row pct.	5.9	5.6	10.2	25.7	27.3	13.5	11.8	100.0
	Column pct.	6.6	8.5	7.5	6.5	4.4	3.2	1.7	4.1
	Total pct.	.2	.2	.4	1.1	1.1	.6	.5	4.1
Idaho (.59)	Acres	143,165	130,576	257,809	677,419	800,833	555,672	859,430	3,424,233
	Row pct.	4.2	3.8	7.5	19.8	23.4	16.2	25.1	100.0
	Column pct.	8.0	9.9	9.6	8.6	6.5	6.6	6.1	7.0
	Total pct.	.3	.3	.5	1.4	1.6	1.1	1.8	7.0
Wyoming (.49)	Acres	110,246	85,214	177,936	378,195	379,898	171,931	254,187	1,557,117
	Row pct.	7.1	5.5	11.4	24.3	24.4	11.0	16.3	100.0
	Column pct.	6.1	6.5	6.6	4.8	3.1	2.0	1.8	3.2
	Total pct.	.2	.2	.4	.8	.8	.4	.5	3.2
Colorado (.52)	Acres	245,699	170,047	279,909	668,740	824,395	432,010	551,135	3,170,510
	Row pct.	7.7	5.4	8.8	21.1	26.0	13.6	17.4	100.0
	Column pct.	13.7	12.9	10.4	8.4	6.7	5.1	3.9	6.5
	Total pct.	.5	.3	.6	1.4	1.7	.9	1.1	6.5
New Mexico (.65)	Acres	90,798	39,728	54,340	144,428	171,421	105,641	124,404	730,136
	Row pct.	12.4	5.4	7.4	19.8	23.5	14.5	17.0	100.0
	Column pct.	5.1	3.0	2.0	1.8	1.4	1.2	.9	1.5
	Total pct.	.2	.1	.1	.3	.4	.2	.3	1.5

See footnote at end of table.

continued—

Table 12—Distribution of irrigated acres by agricultural product sales value and by State—continued

Region and State 1/	Unit	Market value of agricultural products sold							All farms
		Less than \$10,000	\$10,000 to \$19,999	\$20,000 to \$39,999	\$40,000 to \$99,999	\$100,000 to \$249,999	\$250,000 to \$499,999	\$500,000 or more	
Mountain (continued):									
Arizona (.73)	Acres	38,908	13,206	18,492	53,116	133,191	173,653	623,569	1,053,944
	Row pct.	3.7	1.3	1.8	5.0	12.6	16.5	59.2	100.0
	Column pct.	2.2	1.0	.7	.7	1.1	2.1	4.4	2.2
	Total pct.	.1	0	0	.1	.3	.4	1.3	2.2
Utah (.51)	Acres	173,052	112,665	155,075	239,419	216,077	99,032	65,202	1,059,449
	Row pct.	16.3	10.6	14.6	22.6	20.4	9.3	6.2	100.0
	Column pct.	9.6	8.6	5.7	3.0	1.8	1.2	.5	2.2
	Total pct.	.4	.2	.3	.5	.4	.2	.1	2.2
Nevada (.66)	Acres	39,775	24,835	60,176	138,430	177,722	147,177	209,171	797,243
	Row pct.	5.0	3.1	7.5	17.4	22.3	18.5	26.2	100.0
	Column pct.	2.2	1.9	2.2	1.7	1.4	1.7	1.5	1.6
	Total pct.	.1	.1	.1	.3	.4	.3	.4	1.6
Northern Plains:									
North Dakota (.35)	Acres	1,433	3,201	9,905	32,799	65,019	29,471	19,839	161,667
	Row pct.	.9	2.0	6.1	20.3	40.2	18.2	12.3	100.0
	Column pct.	.1	.2	.4	.4	.5	.3	.1	.3
	Total pct.	0	0	0	.1	.1	.1	0	.3
South Dakota (.33)	Acres	6,746	10,803	21,277	88,601	120,174	63,411	62,938	373,920
	Row pct.	1.8	2.9	5.7	23.7	32.1	17.0	16.8	100.0
	Column pct.	.4	.8	.8	1.1	1.0	.7	.4	.8
	Total pct.	0	0	0	.2	.2	.1	.1	.8
Nebraska (.36)	Acres	27,682	74,936	299,220	1,333,875	2,245,126	1,067,862	981,265	6,029,966
	Row pct.	.5	1.2	5.0	22.1	37.2	17.7	16.3	100.0
	Column pct.	1.5	5.7	11.1	16.9	18.3	12.6	6.9	12.4
	Total pct.	.1	.2	.6	2.7	4.6	2.2	2.0	12.4
Kansas (.41)	Acres	9,577	26,557	80,397	408,245	887,250	694,975	567,913	2,674,908
	Row pct.	.4	1.0	3.0	15.3	33.2	26.0	21.2	100.0
	Column pct.	.5	2.0	3.0	5.2	7.2	8.2	4.0	5.5
	Total pct.	0	.1	.2	.8	1.8	1.4	1.2	5.5
Southern Plains:									
Oklahoma (.49)	Acres	12,583	15,993	37,383	114,746	149,135	83,002	77,661	490,492
	Row pct.	2.6	3.3	7.6	23.4	30.4	16.9	15.8	100.0
	Column pct.	.7	1.2	1.4	1.4	1.2	1.0	.5	1.0
	Total pct.	0	0	.1	.2	.3	.2	.2	1.0

See footnote at end of table.

continued—

Table 12—Distribution of irrigated acres by agricultural product sales value and by State—continued

Region and State 1/	Unit	Market value of agricultural products sold							All farms
		Less than \$10,000	\$10,000 to \$19,999	\$20,000 to \$39,999	\$40,000 to \$99,999	\$100,000 to \$249,999	\$250,000 to \$499,999	\$500,000 or more	
Southern Plains (continued):									
Texas (.57)	Acres	123,386	115,424	306,861	1,060,182	1,606,322	1,141,716	1,217,308	5,570,680
	Row pct.	2.2	2.1	5.5	19.0	28.8	20.5	21.9	100.0
	Column pct.	6.9	8.8	11.4	13.4	13.1	13.5	8.6	11.5
	Total pct.	.3	.2	.6	2.2	3.3	2.3	2.5	11.5
Florida, Arkansas, Louisiana:									
Florida (.74)	Acres	43,679	21,393	45,143	97,702	146,103	150,864	1,057,810	1,562,140
	Row pct.	2.8	1.4	2.9	6.3	9.4	9.7	67.7	100.0
	Column pct.	2.4	1.6	1.7	1.2	1.2	1.8	7.4	3.2
	Total pct.	.1	0	.1	.2	.3	.3	2.2	3.2
Arkansas (.45)	Acres	9,161	16,229	55,412	254,760	707,776	585,559	391,761	2,020,656
	Row pct.	.5	.8	2.7	12.6	35.0	29.0	19.4	100.0
	Column pct.	.5	1.2	2.1	3.2	5.8	6.9	2.8	4.2
	Total pct.	0	0	.1	.5	1.5	1.2	.8	4.2
Louisiana (.51)	Acres	8,819	11,764	32,789	139,019	250,865	144,887	105,214	693,336
	Row pct.	1.3	1.7	4.7	20.1	36.2	20.9	15.2	100.0
	Column pct.	.5	.9	1.2	1.8	2.0	1.7	.7	1.4
	Total pct.	0	0	.1	.3	.5	.3	.2	1.4
All Other States (.61)	Acres	55,140	49,109	115,259	421,062	903,820	804,645	1,062,746	3,411,376
	Row pct.	1.6	1.4	3.4	12.3	26.5	23.6	31.2	100.0
	Column pct.	3.1	3.7	4.3	5.3	7.4	9.5	7.5	7.0
	Total pct.	.1	.1	.2	.9	1.9	1.7	2.2	7.0
United States (.59)	Acres	1,796,319	1,316,408	2,698,346	7,914,448	12,256,935	8,468,982	14,205,315	48,647,729
	Row pct.	3.7	2.7	5.5	16.3	25.2	17.4	29.2	100.0
	Column pct.	100.0	100.0	100.0	100.0	100.0	100.0	100.0	100.0
	Total pct.	3.7	2.7	5.5	16.3	25.2	17.4	29.2	100.0

1/ Coefficient in parentheses (the coefficient associated with localization curves (1)) measures the extent of deviation between the distribution of irrigated acres and the distribution of irrigated farms (table 11) for a State. The coefficient is a measure of concentration and ranges in value from 0 to 1; the greater the value, the greater the deviation between distributions and the greater the concentration.

Table 13—Distribution of agricultural product sales from irrigated farms by agricultural product sales value and by State

Region and State 1/	Unit	Market value of agricultural products sold							All farms
		Less than \$10,000	\$10,000 to \$19,999	\$20,000 to \$39,999	\$40,000 to \$99,999	\$100,000 to \$249,999	\$250,000 to \$499,999	\$500,000 or more	
Pacific:									
Washington (.79)	\$1,000	20,702	21,481	46,567	165,553	323,937	317,345	855,228	1,750,702
	Row percent	1.2	1.2	2.7	9.5	18.5	18.1	48.9	100.0
	Column percent	6.9	5.7	5.1	5.0	4.7	5.1	4.0	4.4
	Total percent	.1	.1	.1	.4	.8	.8	2.2	4.4
Oregon (.81)	\$1,000	24,379	21,863	41,494	114,061	254,003	221,568	504,122	1,181,357
	Row pct.	2.1	1.9	3.5	9.7	21.5	18.8	42.7	100.0
	Column pct.	8.2	5.8	4.6	3.4	3.7	3.6	2.3	3.0
	Total pct.	.1	.1	.1	.3	.6	.6	1.3	3.0
California (.83)	\$1,000	72,174	81,706	167,461	479,031	954,071	1,142,322	7,361,333	10,257,628
	Row pct.	.7	.8	1.6	4.7	9.3	11.1	71.8	100.0
	Column pct.	24.2	21.8	18.5	14.3	13.9	18.4	34.1	25.9
	Total pct.	.2	.2	.4	1.2	2.4	2.9	18.6	25.9
Mountain:									
Montana (.69)	\$1,000	10,583	15,628	37,727	130,243	197,981	110,861	182,481	685,437
	Row pct.	1.5	2.3	5.5	19.0	28.9	16.2	26.6	100.0
	Column pct.	3.5	4.2	4.2	3.9	2.9	1.8	.8	1.7
	Total pct.	0	0	.1	.3	.5	.3	.5	1.7
Idaho (.75)	\$1,000	20,871	27,778	65,564	227,153	362,618	300,369	753,954	1,758,224
	Row pct.	1.2	1.6	3.7	12.9	20.6	17.1	42.9	100.0
	Column pct.	7.0	7.4	7.2	6.8	5.3	4.8	3.5	4.4
	Total pct.	.1	.1	.2	.6	.9	.8	1.9	4.4
Wyoming (.72)	\$1,000	6,255	8,938	22,361	71,207	106,291	69,507	140,783	425,314
	Row pct.	1.5	2.1	5.3	16.7	25.0	16.3	33.1	100.0
	Column pct.	2.1	2.4	2.5	2.1	1.5	1.1	.7	1.1
	Total pct.	0	0	.1	.2	.3	.2	.4	1.1
Colorado (.80)	\$1,000	18,977	23,508	50,829	171,254	307,296	246,520	896,582	1,714,861
	Row pct.	1.1	1.4	3.0	10.0	17.9	14.4	52.3	100.0
	Column pct.	6.4	6.3	5.6	5.1	4.5	4.0	4.2	4.3
	Total pct.	0	.1	.1	.4	.8	.6	2.3	4.3
New Mexico (.85)	\$1,000	11,403	8,533	14,812	41,606	71,491	59,671	190,108	397,558
	Row pct.	2.9	2.1	3.7	10.5	18.0	15.0	47.8	100.0
	Column pct.	3.8	2.3	1.6	1.2	1.0	1.0	.9	1.0
	Total pct.	0	0	0	.1	.2	.2	.5	1.0

See footnote at end of table.

continued—



Table 13—Distribution of agricultural product sales from irrigated farms  
by agricultural product sales value and by State—continued

Region and State 1/	Unit	Market value of agricultural products sold							All farms
		Less than \$10,000	\$10,000 to \$19,999	\$20,000 to \$39,999	\$40,000 to \$99,999	\$100,000 to \$249,999	\$250,000 to \$499,999	\$500,000 or more	
Mountain (continued):									
Arizona (.83)	\$1,000	5,706	4,629	8,287	25,810	75,294	116,520	798,928	1,035,118
	Row pct.	0.6	0.4	0.8	2.5	7.3	11.3	77.2	100.0
	Column pct.	1.9	1.2	.9	.8	1.1	1.9	3.7	2.6
	Total pct.	0	0	0	.1	.2	.3	2.0	2.6
Utah (.77)	\$1,000	20,623	19,530	33,521	73,939	115,233	78,313	95,640	436,678
	Row pct.	4.7	4.5	7.7	16.9	26.4	17.9	21.9	100.0
	Column pct.	6.9	5.2	3.7	2.2	1.7	1.3	.4	1.1
	Total pct.	.1	0	.1	.2	.3	.2	.2	1.1
Nevada (.78)	\$1,000	3,119	3,602	7,613	21,453	33,386	35,013	76,426	180,604
	Row pct.	1.7	2.0	4.2	11.9	18.5	19.4	42.3	100.0
	Column pct.	1.0	1.0	.8	.6	.5	.6	.4	.5
	Total pct.	0	0	0	.1	.1	.1	.2	.5
Northern Plains:									
North Dakota (.53)	\$1,000	284	690	3,070	14,686	35,340	21,710	26,589	102,369
	Row pct.	.3	.7	3.0	14.3	34.5	21.2	26.0	100.0
	Column pct.	.1	.2	.3	.4	.5	.4	.1	.3
	Total pct.	0	0	0	0	.1	.1	.1	.3
South Dakota (.64)	\$1,000	743	1,856	6,400	35,570	82,004	55,869	150,357	332,795
	Row pct.	.2	.6	1.9	10.7	24.6	16.8	45.2	100.0
	Column pct.	.2	.5	.7	1.1	1.2	.9	.7	.8
	Total pct.	0	0	0	.1	.2	.1	.4	.8
Nebraska (.61)	\$1,000	4,038	16,225	88,479	513,662	1,059,119	633,105	1,802,574	4,117,203
	Row pct.	.1	.4	2.1	12.5	25.7	15.4	43.8	100.0
	Column pct.	1.4	4.3	9.8	15.4	15.4	10.2	8.4	10.4
	Total pct.	0	0	.2	1.3	2.7	1.6	4.6	10.4
Kansas (.66)	\$1,000	1,694	5,655	22,471	139,723	363,447	314,845	994,518	1,842,344
	Row pct.	.1	.3	1.2	7.6	19.7	17.1	54.0	100.0
	Column pct.	.6	1.5	2.5	4.2	5.3	5.1	4.6	4.7
	Total pct.	0	0	.1	.4	.9	.8	2.5	4.7
Southern Plains:									
Oklahoma (.69)	\$1,000	2,312	4,917	14,130	53,804	90,099	56,193	148,514	369,960
	Row pct.	.6	1.3	3.8	14.5	24.4	15.2	40.1	100.0
	Column pct.	.8	1.3	1.6	1.6	1.3	.9	.7	.9
	Total pct.	0	0	0	.1	.2	.1	.4	.9

See footnote at end of table.

continued—

Table 13—Distribution of agricultural product sales from irrigated farms  
by agricultural product sales value and by State—continued

Region and State 1/	Unit	Market value of agricultural products sold							All farms
		Less than \$10,000	\$10,000 to \$19,999	\$20,000 to \$39,999	\$40,000 to \$99,999	\$100,000 to \$249,999	\$250,000 to \$499,999	\$500,000 or more	
Southern Plains (continued):									
Texas (.76)	\$1,000	18,062	24,912	67,490	269,369	533,388	494,532	1,493,298	2,900,945
	Row pct.	0.6	0.9	2.3	9.3	18.4	17.0	51.5	100.0
	Column pct.	6.0	6.6	7.4	8.1	7.8	8.0	6.9	7.3
	Total pct.	0	.1	.2	.7	1.3	1.3	3.8	7.3
Florida, Arkansas, Louisiana:									
Florida (.82)	\$1,000	11,452	15,895	35,570	104,705	206,137	238,111	1,871,834	2,483,567
	Row pct.	.5	.6	1.4	4.2	8.3	9.6	75.4	100.0
	Column pct.	3.8	4.2	3.9	3.1	3.0	3.8	8.7	6.3
	Total pct.	0	0	.1	.3	.5	.6	4.7	6.3
Arkansas (.53)	\$1,000	2,906	5,836	20,704	106,331	329,178	320,464	282,073	1,067,487
	Row pct.	.3	.5	1.9	10.0	30.8	30.0	26.4	100.0
	Column pct.	1.0	1.6	2.3	3.2	4.8	5.2	1.3	2.7
	Total pct.	0	0	.1	.3	.8	.8	.7	2.7
Louisiana (.60)	\$1,000	3,000	4,366	12,628	61,929	139,066	93,142	95,533	409,631
	Row pct.	.7	1.1	3.1	15.1	33.9	22.7	23.3	100.0
	Column pct.	1.0	1.2	1.4	1.9	2.0	1.5	.4	1.0
	Total pct.	0	0	0	.2	.4	.2	.2	1.0
All Other States (.72)	\$1,000	39,291	57,149	140,279	519,488	1,236,756	1,273,524	2,843,092	6,109,307
	Row pct.	.6	.9	2.3	8.5	20.2	20.8	46.5	100.0
	Column pct.	13.2	15.3	15.5	15.6	18.0	20.5	13.2	15.4
	Total pct.	.1	.1	.4	1.3	3.1	3.2	7.2	15.4
United States (.77)	\$1,000	298,572	374,695	907,456	3,340,578	6,876,135	6,199,504	21,563,966	39,559,091
	Row pct.	.8	.9	2.3	8.4	17.4	15.7	54.5	100.0
	Column pct.	100.0	100.0	100.0	100.0	100.0	100.0	100.0	100.0
	Total pct.	.8	.9	2.3	8.4	17.4	15.7	54.5	100.0

<sup>1/</sup> Coefficient in parentheses (the coefficient associated with localization curves (1)) measures the extent of deviation between the distribution of value of sales from irrigated farms and the distribution of irrigated farms (table 11) for a State. The coefficient is a measure of concentration and ranges in value from 0 to 1; the greater the value, the greater the deviation between distributions and the greater the concentration.

Table 14--Distribution of irrigated farms by principal source of irrigation water and by State

Region and State	Unit	Principal source of irrigation water			All farms
		Onfarm wells	Onfarm surface supply	Off-farm surface supply	
Pacific:					
Washington	Number	4,307	2,252	9,677	16,236
	Row percent	26.5	13.9	59.6	100.0
	Column percent	3.5	4.8	9.0	5.8
	Total percent	1.6	.8	3.5	5.8
Oregon	No.	4,491	3,967	6,850	15,308
	Row pct.	29.3	25.9	44.7	100.0
	Column pct.	3.6	8.5	6.3	5.5
	Total pct.	1.6	1.4	2.5	5.5
California	No.	24,744	3,433	30,153	58,330
	Row pct.	42.4	5.9	51.7	100.0
	Column pct.	20.1	7.4	27.9	21.0
	Total pct.	8.9	1.2	10.9	21.0
Mountain:					
Montana	No.	661	2,858	5,680	9,199
	Row pct.	7.2	31.1	61.7	100.0
	Column pct.	.5	6.1	5.3	3.3
	Total pct.	.2	1.0	2.0	3.3
Idaho	No.	3,010	1,548	12,771	17,329
	Row pct.	17.4	8.9	73.7	100.0
	Column pct.	2.4	3.3	11.8	6.2
	Total pct.	1.1	.6	4.6	6.2
Wyoming	No.	486	1,099	3,681	5,266
	Row pct.	9.2	20.9	69.9	100.0
	Column pct.	.4	2.4	3.4	1.9
	Total pct.	.2	.4	1.3	1.9
Colorado	No.	3,870	1,666	9,672	15,208
	Row pct.	25.4	11.0	63.6	100.0
	Column pct.	3.1	3.6	9.0	5.5
	Total pct.	1.4	.6	3.5	5.5
New Mexico	No.	2,302	709	3,867	6,878
	Row pct.	33.5	10.3	56.2	100.0
	Column pct.	1.9	1.5	3.6	2.5
	Total pct.	.8	.3	1.4	2.5

continued--

Table 14--Distribution of irrigated farms by principal source of irrigation water and by State--continued

Region and State	Unit	Principal source of irrigation water			All farms
		Onfarm wells	Onfarm surface supply	Off-farm surface supply	
Mountain (continued):					
Arizona	No.	1,860	259	2,274	4,393
	Row pct.	42.3	5.9	51.8	100.0
	Column pct.	1.5	.6	2.1	1.6
	Total pct.	.7	.1	.8	1.6
Utah	No.	1,093	911	9,158	11,162
	Row pct.	9.8	8.2	82.0	100.0
	Column pct.	.9	2.0	8.5	4.0
	Total pct.	.4	.3	3.3	4.0
Nevada	No.	604	410	1,121	2,135
	Row pct.	28.3	19.2	52.5	100.0
	Column pct.	.5	.9	1.0	.8
	Total pct.	.2	.1	.4	.8
Northern Plains:					
North Dakota	No.	364	<u>1/</u>	<u>1/</u>	757
	Row pct.	48.1			100.0
	Column pct.	.3			.3
	Total pct.	.1			.3
South Dakota	No.	920	346	543	1,809
	Row pct.	50.9	19.1	30.0	100.0
	Column pct.	.7	.7	.5	.7
	Total pct.	.3	.1	.2	.7
Nebraska	No.	18,858	826	2,489	22,173
	Row pct.	85.0	3.7	11.2	100.0
	Column pct.	15.3	1.8	2.3	8.0
	Total pct.	6.8	.3	.9	8.0
Kansas	No.	6,524	<u>1/</u>	<u>1/</u>	7,246
	Row pct.	90.0			100.0
	Column pct.	5.3			2.6
	Total pct.	2.3			2.6
Southern Plains:					
Oklahoma	No.	2,135	643	279	3,057
	Row pct.	69.8	21.0	9.1	100.0
	Column pct.	1.7	1.4	.3	1.1
	Total pct.	.8	.2	.1	1.1

See footnote at end of table.

continued--

Table 14--Distribution of irrigated farms by principal source  
of irrigation water and by State--continued

Region and State	Unit	Principal source of irrigation water			All farms
		Onfarm wells	Onfarm surface supply	Off-farm surface supply	
Southern Plains (continued):					
Texas	No.	13,309	1,556	4,879	19,744
	Row pct.	67.4	7.9	24.7	100.0
	Column pct.	10.8	3.3	4.5	7.1
	Total pct.	4.8	.6	1.8	7.1
Florida, Arkansas, Louisiana:					
Florida	No.	8,682	1,251	592	10,525
	Row pct.	82.5	11.9	5.6	100.0
	Column pct.	7.0	2.7	.5	3.8
	Total pct.	3.1	.5	.2	3.8
Arkansas	No.	5,581	934	151	6,666
	Row pct.	83.7	14.0	2.3	100.0
	Column pct.	4.5	2.0	.1	2.4
	Total pct.	2.0	.3	.1	2.4
Louisiana	No.	2,485	845	351	3,681
	Row pct.	67.5	23.0	9.5	100.0
	Column pct.	2.0	1.8	.3	1.3
	Total pct.	.9	.3	.1	1.3
All Other States	No.	16,906	20,350	3,355	40,611
	Row pct.	41.6	50.1	8.3	100.0
	Column pct.	13.7	43.7	3.1	14.6
	Total pct.	6.1	7.3	1.2	14.6
United States	No.	123,192	46,552	107,969	277,713
	Row pct.	44.4	16.8	38.9	100.0
	Column pct.	100.0	100.0	100.0	100.0
	Total pct.	44.4	16.8	38.9	100.0

1/ Data withheld.

Table 15--Distribution of irrigated acres by principal source of irrigation water and by State

Region and State 1/	Unit	Principal source of irrigation water			All farms
		Onfarm wells	Onfarm surface supply	Off-farm surface supply	
Pacific:					
Washington (.04)	Acres	459,202	177,013	997,852	1,634,067
	Row percent	28.1	10.8	61.1	100.0
	Column percent	1.7	3.0	6.3	3.4
	Total percent	.9	.4	2.1	3.4
Oregon (.06)	Acres	434,824	514,176	847,380	1,796,380
	Row pct.	24.2	28.6	47.2	100.0
	Column pct.	1.6	8.7	5.4	3.7
	Total pct.	.9	1.1	1.7	3.7
California (.06)	Acres	3,118,664	690,618	4,630,726	8,440,008
	Row pct.	37.0	8.2	54.9	100.0
	Column pct.	11.6	11.6	29.3	17.3
	Total pct.	6.4	1.4	9.5	17.3
Mountain:					
Montana (.09)	Acres	90,718	774,079	1,130,704	1,995,501
	Row pct.	4.5	38.8	56.7	100.0
	Column pct.	.3	13.1	7.2	4.1
	Total pct.	.2	1.6	2.3	4.1
Idaho (.23)	Acres	1,290,650	344,349	1,789,234	3,424,233
	Row pct.	37.7	10.1	52.3	100.0
	Column pct.	4.8	5.8	11.3	7.0
	Total pct.	2.7	.7	3.7	7.0
Wyoming (.09)	Acres	128,277	471,381	957,459	1,557,117
	Row pct.	8.2	30.3	61.5	100.0
	Column pct.	.5	7.9	6.1	3.2
	Total pct.	.3	1.0	2.0	3.2
Colorado (.20)	Acres	1,324,474	442,248	1,403,788	3,170,510
	Row pct.	41.8	13.9	44.3	100.0
	Column pct.	4.9	7.5	8.9	6.5
	Total pct.	2.7	.9	2.9	6.5
New Mexico (.33)	Acres	478,577	43,381	208,178	730,136
	Row pct.	65.5	5.9	28.5	100.0
	Column pct.	1.8	.7	1.3	1.5
	Total pct.	1.0	.1	.4	1.5

See footnotes at end of table.

continued--

Table 15--Distribution of irrigated acres by principal source of irrigation water and by State--continued

Region and State 1/	Unit	Principal source of irrigation water			All farms
		Onfarm wells	Onfarm surface supply	Off-farm surface supply	
Mountain (continued):					
Arizona (.11)	Acres	561,308	40,884	451,752	1,053,944
	Row pct.	53.3	3.9	42.9	100.0
	Column pct.	2.1	.7	2.9	2.2
	Total pct.	1.2	.1	.9	2.2
Utah (.10)	Acres	182,512	114,086	762,851	1,059,449
	Row pct.	17.2	10.8	72.0	100.0
	Column pct.	.7	1.9	4.8	2.2
	Total pct.	.4	.2	1.6	2.2
Nevada (.15)	Acres	207,380	256,301	333,562	797,243
	Row pct.	26.0	32.1	41.8	100.0
	Column pct.	.8	4.3	2.1	1.6
	Total pct.	.4	.5	.7	1.6
Northern Plains:					
North Dakota	Acres	95,501	2/	2/	161,667
	Row pct.	59.1			100.0
	Column pct.	.4			.3
	Total pct.	.2			.3
South Dakota (.01)	Acres	193,452	67,656	112,812	373,920
	Row pct.	51.7	18.1	30.2	100.0
	Column pct.	.7	1.1	.7	.8
	Total pct.	.4	.1	.2	.8
Nebraska (.04)	Acres	5,371,598	137,538	520,830	6,029,966
	Row pct.	89.1	2.3	8.6	100.0
	Column pct.	20.0	2.3	3.3	12.4
	Total pct.	11.0	.3	1.1	12.4
Kansas	Acres	2,573,610	2/	2/	2,674,908
	Row pct.	96.2			100.0
	Column pct.	9.6			5.5
	Total pct.	5.3			5.5
Southern Plains:					
Oklahoma (.13)	Acres	400,825	47,374	42,293	490,492
	Row pct.	81.7	9.7	8.6	100.0
	Column pct.	1.5	.8	.3	1.0
	Total pct.	.8	.1	.1	1.0

See footnotes at end of table.

continued--

Table 15--Distribution of irrigated acres by principal source of irrigation water and by State--continued

Region and State <u>1/</u>	Unit	Principal source of irrigation water			All farms
		Onfarm wells	Onfarm surface supply	Off-farm surface supply	
Southern Plains (continued):					
Texas (.13)	Acres	4,474,917	234,164	861,599	5,570,680
	Row pct.	80.3	4.2	15.5	100.0
	Column pct.	16.6	3.9	5.5	11.5
	Total pct.	9.2	.5	1.8	11.5
Florida, Arkansas, Louisiana:					
Florida (.27)	Acres	908,933	228,961	424,246	1,562,140
	Row pct.	58.2	14.7	27.2	100.0
	Column pct.	3.4	3.9	2.7	3.2
	Total pct.	1.9	.5	.9	3.2
Arkansas (.05)	Acres	1,801,021	186,014	33,621	2,020,656
	Row pct.	89.1	9.2	1.7	100.0
	Column pct.	6.7	3.1	.2	4.2
	Total pct.	3.7	.4	.1	4.2
Louisiana (.02)	Acres	453,542	174,596	65,198	693,336
	Row pct.	65.4	25.2	9.4	100.0
	Column pct.	1.7	2.9	.4	1.4
	Total pct.	.9	.4	.1	1.4
All Other States (.28)	Acres	2,373,101	901,224	137,051	3,411,376
	Row pct.	69.6	26.4	4.0	100.0
	Column pct.	8.8	15.2	.9	7.0
	Total pct.	4.9	1.9	.3	7.0
United States (.12)	Acres	26,923,086	5,929,806	15,794,837	48,647,729
	Row pct.	55.3	12.2	32.5	100.0
	Column pct.	100.0	100.0	100.0	100.0
	Total pct.	55.3	12.2	32.5	100.0

<sup>1/</sup> Coefficient in parentheses (the coefficient associated with localization curves (1)) measures the extent of deviation between the distribution of irrigated acres and the distribution of irrigated farms (table 14) for a State. The coefficient is a measure of concentration and ranges in value from 0 to 1; the greater the value, the greater the deviation between distributions and the greater the concentration.

<sup>2/</sup> Data withheld.



Table 16--Distribution of agricultural product sales from irrigated farms by principal source of irrigation water and by State

Region and State <u>1/</u>	Unit	Principal source of irrigation water			All farms
		Onfarm wells	Onfarm surface supply	Off-farm surface supply	
<hr/>					
Pacific:					
Washington (.02)	\$1,000	466,119	274,986	1,009,597	1,750,702
	Row percent	26.6	15.7	57.7	100.0
	Column percent	2.2	4.8	8.2	4.4
	Total percent	1.2	.7	2.6	4.4
Oregon (.03)	\$1,000	373,477	299,907	507,973	1,181,357
	Row pct.	31.6	25.4	43.0	100.0
	Column pct.	1.7	5.2	4.1	3.0
	Total pct.	.9	.8	1.3	3.0
California (.02)	\$1,000	4,564,200	569,948	5,123,480	10,257,628
	Row pct.	44.5	5.6	49.9	100.0
	Column pct.	21.2	9.9	41.8	25.9
	Total pct.	11.5	1.4	13.0	25.9
Mountain:					
Montana (.07)	\$1,000	43,982	260,970	380,485	685,437
	Row pct.	6.4	38.1	55.5	100.0
	Column pct.	.2	4.5	3.1	1.7
	Total pct.	.1	.7	1.0	1.7
Idaho (.19)	\$1,000	624,087	146,095	988,042	1,758,224
	Row pct.	35.5	8.3	56.2	100.0
	Column pct.	2.9	2.5	8.1	4.4
	Total pct.	1.6	.4	2.5	4.4
Wyoming (.16)	\$1,000	72,662	120,578	232,074	425,314
	Row pct.	17.1	28.4	54.6	100.0
	Column pct.	.3	2.1	1.9	1.1
	Total pct.	.2	.3	.6	1.1
Colorado (.22)	\$1,000	815,377	124,434	775,050	1,714,861
	Row pct.	47.5	7.3	45.2	100.0
	Column pct.	3.8	2.2	6.3	4.3
	Total pct.	2.1	.3	2.0	4.3
New Mexico (.36)	\$1,000	274,460	21,118	101,980	397,558
	Row pct.	69.0	5.3	25.7	100.0
	Column pct.	1.3	.4	.8	1.0
	Total pct.	.7	.1	.3	1.0

See footnotes at end of table.

continued--

Table 16--Distribution of agricultural product sales from irrigated farms  
by principal source of irrigation water and by State--continued

Region and State 1/	Unit	Principal source of irrigation water			All farms
		Onfarm wells	Onfarm surface supply	Off-farm surface supply	
Mountain (continued):					
Arizona (.02)	\$1,000	423,560	57,130	554,428	1,035,118
	Row pct.	40.9	5.5	53.6	100.0
	Column pct.	2.0	1.0	4.5	2.6
	Total pct.	1.1	.1	1.4	2.6
Utah (.13)	\$1,000	87,408	44,602	304,668	436,678
	Row pct.	20.0	10.2	69.8	100.0
	Column pct.	.4	.8	2.5	1.1
	Total pct.	.2	.1	.8	1.1
Nevada (.05)	\$1,000	55,474	38,480	86,650	180,604
	Row pct.	30.7	21.3	48.0	100.0
	Column pct.	.3	.7	.7	.5
	Total pct.	.1	.1	.2	.5
Northern Plains:					
North Dakota	\$1,000	61,310	<u>2/</u>	<u>2/</u>	102,369
	Row pct.	59.9			100.0
	Column pct.	.3			.3
	Total pct.	.2			.3
South Dakota (.07)	\$1,000	178,183	44,709	109,903	332,795
	Row pct.	53.5	13.4	33.0	100.0
	Column pct.	.8	.8	.9	.8
	Total pct.	.5	.1	.3	.8
Nebraska (.03)	\$1,000	3,626,295	142,499	348,410	4,117,203
	Row pct.	88.1	3.5	8.5	100.0
	Column pct.	16.8	2.5	2.8	10.4
	Total pct.	9.2	.4	.9	10.4
Kansas	\$1,000	1,607,647	<u>2/</u>	<u>2/</u>	1,842,344
	Row pct.	87.3			100.0
	Column pct.	7.5			4.7
	Total pct.	4.1			4.7
Southern Plains:					
Oklahoma (.03)	\$1,000	254,281	72,606	43,073	369,960
	Row pct.	68.7	19.6	11.6	100.0
	Column pct.	1.2	1.3	.4	.9
	Total pct.	.6	.2	.1	.9

See footnotes at end of table.

continued--

Table 16--Distribution of agricultural product sales from irrigated farms  
by principal source of irrigation water and by State--continued

Region and State 1/	Unit	Principal source of irrigation water			All farms
		Onfarm wells	Onfarm surface supply	Off-farm surface supply	
Southern Plains (continued):					
Texas (.06)	\$1,000	1,964,054	336,702	600,190	2,900,945
	Row pct.	67.7	11.6	20.7	100.0
	Column pct.	9.1	5.8	4.9	7.3
	Total pct.	5.0	.9	1.5	7.3
Florida, Arkansas, Louisiana:					
Florida (.17)	\$1,000	1,659,408	337,730	486,429	2,483,567
	Row pct.	66.8	13.6	19.6	100.0
	Column pct.	7.7	5.9	4.0	6.3
	Total pct.	4.2	.9	1.2	6.3
Arkansas (.05)	\$1,000	942,224	107,029	18,234	1,067,487
	Row pct.	88.3	10.0	1.7	100.0
	Column pct.	4.4	1.9	.1	2.7
	Total pct.	2.4	.3	0	2.7
Louisiana (.04)	\$1,000	291,163	86,571	31,897	409,631
	Row pct.	71.1	21.1	7.8	100.0
	Column pct.	1.4	1.5	.3	1.0
	Total pct.	.7	.2	.1	1.0
All Other States (.10)	\$1,000	3,139,700	2,483,220	486,387	6,109,307
	Row pct.	51.4	40.6	8.0	100.0
	Column pct.	14.6	43.1	4.0	15.4
	Total pct.	7.9	6.3	1.2	15.4
United States (.10)	\$1,000	21,525,071	5,762,932	12,271,087	39,559,091
	Row pct.	54.4	14.6	31.0	100.0
	Column pct.	100.0	100.0	100.0	100.0
	Total pct.	54.4	14.6	31.0	100.0

<sup>1/</sup> Coefficient in parentheses (the coefficient associated with localization curves (1)) measures the extent of deviation between the distribution of sales from irrigated farms and the distribution of irrigated farms (table 14) for a State. The coefficient is a measure of concentration and ranges in value from 0 to 1; the greater the value, the greater the deviation between distributions and the greater the concentration.

<sup>2/</sup> Data withheld.

Table 17--Distribution of operators of irrigated farms by principal occupation and by State

Region and State	Unit	Principal occupation		All operators
		Farming	Other	
Pacific:				
Washington	Number	9,449	6,787	16,236
	Row percent	58.2	41.8	100.0
	Column percent	5.2	7.0	5.8
	Total percent	3.4	2.4	5.8
Oregon	No.	8,637	6,671	15,308
	Row pct.	56.4	43.6	100.0
	Column pct.	4.8	6.9	5.5
	Total pct.	3.1	2.4	5.5
California	No.	31,311	27,019	58,330
	Row pct.	53.7	46.3	100.0
	Column pct.	17.3	27.9	21.0
	Total pct.	11.3	9.7	21.0
Mountain:				
Montana	No.	6,509	2,690	9,199
	Row pct.	70.8	29.2	100.0
	Column pct.	3.6	2.8	3.3
	Total pct.	2.3	1.0	3.3
Idaho	No.	11,419	5,910	17,329
	Row pct.	65.9	34.1	100.0
	Column pct.	6.3	6.1	6.2
	Total pct.	4.1	2.1	6.2
Wyoming	No.	3,598	1,668	5,266
	Row pct.	68.3	31.7	100.0
	Column pct.	2.0	1.7	1.9
	Total pct.	1.3	.6	1.9
Colorado	No.	9,772	5,436	15,208
	Row pct.	64.3	35.7	100.0
	Column pct.	5.4	5.6	5.5
	Total pct.	3.5	2.0	5.5
New Mexico	No.	3,434	3,444	6,878
	Row pct.	49.9	50.1	100.0
	Column pct.	1.9	3.6	2.5
	Total pct.	1.2	1.2	2.5
Arizona	No.	2,242	2,151	4,393
	Row pct.	51.0	49.0	100.0
	Column pct.	1.2	2.2	1.6
	Total pct.	.8	.8	1.6

continued--

Table 17--Distribution of operators of irrigated farms  
by principal occupation and by State--continued

Region and State	Unit	Principal occupation		All operators
		Farming	Other	
Mountain (continued):				
Utah	No.	5,150	6,012	11,162
	Row pct.	46.1	53.9	100.0
	Column pct.	2.8	6.2	4.0
	Total pct.	1.9	2.2	4.0
Nevada	No.	1,345	790	2,135
	Row pct.	63.0	37.0	100.0
	Column pct.	.7	.8	.8
	Total pct.	.5	.3	.8
Northern Plains:				
North Dakota	No.	651	106	757
	Row pct.	86.0	14.0	100.0
	Column pct.	.4	.1	.3
	Total pct.	.2	0	.3
South Dakota	No.	1,593	216	1,809
	Row pct.	88.1	11.9	100.0
	Column pct.	.9	.2	.7
	Total pct.	.6	.1	.7
Nebraska	No.	19,983	2,190	22,173
	Row pct.	90.1	9.9	100.0
	Column pct.	11.0	2.3	8.0
	Total pct.	7.2	.8	8.0
Kansas	No.	6,378	868	7,246
	Row pct.	88.0	12.0	100.0
	Column pct.	3.5	.9	2.6
	Total pct.	2.3	.3	2.6
Southern Plains:				
Oklahoma	No.	2,199	858	3,057
	Row pct.	71.9	28.1	100.0
	Column pct.	1.2	.9	1.1
	Total pct.	.8	.3	1.1
Texas	No.	13,438	6,306	19,744
	Row pct.	68.1	31.9	100.0
	Column pct.	7.4	6.5	7.1
	Total pct.	4.8	2.3	7.1

continued--

Table 17--Distribution of operators of irrigated farms  
by principal occupation and by State--continued

Region and State	Unit	Principal occupation		All operators
		Farming	Other	
<hr/>				
Florida, Arkansas, Louisiana:				
Florida	No.	5,985	4,540	10,525
	Row pct.	56.9	43.1	100.0
	Column pct.	3.3	4.7	3.8
	Total pct.	2.2	1.6	3.8
Arkansas	No.	5,909	757	6,666
	Row pct.	88.6	11.4	100.0
	Column pct.	3.3	.8	2.4
	Total pct.	2.1	.3	2.4
Louisiana	No.	2,881	800	3,681
	Row pct.	78.3	21.7	100.0
	Column pct.	1.6	.8	1.3
	Total pct.	1.0	.3	1.3
All other States	No.	28,972	11,639	40,611
	Row pct.	71.3	28.7	100.0
	Column pct.	16.0	12.0	14.6
	Total pct.	10.4	4.2	14.6
United States	No.	180,855	96,858	277,713
	Row pct.	65.1	34.9	100.0
	Column pct.	100.0	100.0	100.0
	Total pct.	65.1	34.9	100.0

Table 18—Distribution of operators of irrigated farms by days of work off farm and by State

Region and State	Unit	Days of work off farm				Total	Not reported	All operators
		None	1 to 99	100 to 199	200 or more			
Pacific:								
Washington	Number	6,608	1,509	1,556	5,505	8,570	1,058	16,236
	Row percent	40.7	9.3	9.6	33.9	52.8	6.5	100.0
	Column percent	5.3	5.0	6.7	7.2	6.6	4.6	5.8
	Total percent	2.4	.5	.6	2.0	3.1	.4	5.8
Oregon	No.	5,787	1,668	1,595	5,243	8,506	1,015	15,308
	Row pct.	37.8	10.9	10.4	34.3	55.6	6.6	100.0
	Column pct.	4.6	5.5	6.8	6.9	6.5	4.4	5.5
	Total pct.	2.1	.6	.6	1.9	3.1	.4	5.5
California	No.	22,421	5,462	5,811	20,922	32,195	3,714	58,330
	Row pct.	38.4	9.4	10.0	35.9	55.2	6.4	100.0
	Column pct.	18.0	18.0	25.0	27.4	24.8	16.0	21.0
	Total pct.	8.1	2.0	2.1	7.5	11.6	1.3	21.0
Mountain:								
Montana	No.	4,304	1,138	828	2,139	4,105	790	9,199
	Row pct.	46.8	12.4	9.0	23.3	44.6	8.6	100.0
	Column pct.	3.5	3.8	3.6	2.8	3.2	3.4	3.3
	Total pct.	1.5	.4	.3	.8	1.5	.3	3.3
Idaho	No.	7,378	2,139	1,486	4,863	8,488	1,463	17,329
	Row pct.	42.6	12.3	8.6	28.1	49.0	8.4	100.0
	Column pct.	5.9	7.0	6.4	6.4	6.5	6.3	6.2
	Total pct.	2.7	.8	.5	1.8	3.1	.5	6.2
Wyoming	No.	2,377	644	449	1,360	2,453	436	5,266
	Row pct.	45.1	12.2	8.5	25.8	46.6	8.3	100.0
	Column pct.	1.9	2.1	1.9	1.8	1.9	1.9	1.9
	Total pct.	.9	.2	.2	.5	.9	.2	1.9
Colorado	No.	6,506	1,876	1,407	4,188	7,471	1,231	15,208
	Row pct.	42.8	12.3	9.3	27.5	49.1	8.1	100.0
	Column pct.	5.2	6.2	6.0	5.5	5.7	5.3	5.5
	Total pct.	2.3	.7	.5	1.5	2.7	.4	5.5
New Mexico	No.	2,133	810	842	2,542	4,194	551	6,878
	Row pct.	31.0	11.8	12.2	37.0	61.0	8.0	100.0
	Column pct.	1.7	2.7	3.6	3.3	3.2	2.4	2.5
	Total pct.	.8	.3	.3	.9	1.5	.2	2.5

continued—

Table 18—Distribution of operators of irrigated farms by days of work off farm and by State—continued

Region and State	Unit	Days of work off farm				Total	Not reported	All operators
		None	1 to 99	100 to 199	200 or more			
Mountain (continued):								
Arizona	No.	1,616	363	384	1,705	2,452	325	4,393
	Row pct.	36.8	8.3	8.7	38.8	55.8	7.4	100.0
	Column pct.	1.3	1.2	1.6	2.2	1.9	1.4	1.6
	Total pct.	.6	.1	.1	.6	.9	.1	1.6
Utah	No.	3,385	993	1,212	4,821	7,026	751	11,162
	Row pct.	30.3	8.9	10.9	43.2	62.9	6.7	100.0
	Column pct.	2.7	3.3	5.2	6.3	5.4	3.2	4.0
	Total pct.	1.2	.4	.4	1.7	2.5	.3	4.0
Nevada	No.	875	260	237	605	1,102	158	2,135
	Row pct.	41.0	12.2	11.1	28.3	51.6	7.4	100.0
	Column pct.	.7	.9	1.0	.8	.8	.7	.8
	Total pct.	.3	.1	.1	.2	.4	.1	.8
Northern Plains:								
North Dakota	No.	449	106	38	87	231	77	757
	Row pct.	59.3	14.0	5.0	11.5	30.5	10.2	100.0
	Column pct.	.4	.3	.2	.1	.2	.3	.3
	Total pct.	.2	0	0	0	.1	0	.3
South Dakota	No.	1,079	280	93	170	543	187	1,809
	Row pct.	59.6	15.5	5.1	9.4	30.0	10.3	100.0
	Column pct.	.9	.9	.4	.2	.4	.8	.7
	Total pct.	.4	.1	0	.1	.2	.1	.7
Nebraska	No.	13,190	3,220	883	2,037	6,140	2,843	22,173
	Row pct.	59.5	14.5	4.0	9.2	27.7	12.8	100.0
	Column pct.	10.6	10.6	3.8	2.7	4.7	12.2	8.0
	Total pct.	4.7	1.2	.3	.7	2.2	1.0	8.0
Kansas	No.	4,209	983	342	837	2,162	875	7,246
	Row pct.	58.1	13.6	4.7	11.6	29.8	12.1	100.0
	Column pct.	3.4	3.2	1.5	1.1	1.7	3.8	2.6
	Total pct.	1.5	.4	.1	.3	.8	.3	2.6
Southern Plains:								
Oklahoma	No.	1,393	409	240	706	1,355	309	3,057
	Row pct.	45.6	13.4	7.9	23.1	44.3	10.1	100.0
	Column pct.	1.1	1.3	1.0	.9	1.0	1.3	1.1
	Total pct.	.5	.1	.1	.3	.5	.1	1.1

continued—



Table 18—Distribution of operators of irrigated farms by days of work off farm and by State—continued

Region and State	Unit	Days of work off farm				Total	Not reported	All operators
		None	1 to 99	100 to 199	200 or more			
Southern Plains (continued):								
Texas	No.	9,206	2,235	1,281	5,126	8,642	1,896	19,744
	Row pct.	46.6	11.3	6.5	26.0	43.8	9.6	100.0
	Column pct.	7.4	7.4	5.5	6.7	6.7	8.2	7.1
	Total pct.	3.3	.8	.5	1.8	3.1	.7	7.1
Florida, Arkansas, Louisiana:								
Florida	No.	4,563	846	776	3,474	5,096	866	10,525
	Row pct.	43.4	8.0	7.4	33.0	48.4	8.2	100.0
	Column pct.	3.7	2.8	3.3	4.6	3.9	3.7	3.8
	Total pct.	1.6	.3	.3	1.3	1.8	.3	3.8
Arkansas	No.	4,318	526	281	697	1,504	844	6,666
	Row pct.	64.8	7.9	4.2	10.5	22.6	12.7	100.0
	Column pct.	3.5	1.7	1.2	.9	1.2	3.6	2.4
	Total pct.	1.6	.2	.1	.3	.5	.3	2.4
Louisiana	No.	1,940	368	305	557	1,230	511	3,681
	Row pct.	52.7	10.0	8.3	15.1	33.4	13.9	100.0
	Column pct.	1.6	1.2	1.3	.7	.9	2.2	1.3
	Total pct.	.7	.1	.1	.2	.4	.2	1.3
All Other States	No.	20,813	4,508	3,242	8,738	16,488	3,310	40,611
	Row pct.	51.2	11.1	8.0	21.5	40.6	8.2	100.0
	Column pct.	16.7	14.9	13.9	11.4	12.7	14.3	14.6
	Total pct.	7.5	1.6	1.2	3.1	5.9	1.2	14.6
United States	No.	124,550	30,343	23,288	76,322	129,953	23,210	277,713
	Row pct.	44.8	10.9	8.4	27.5	46.8	8.4	100.0
	Column pct.	100.0	100.0	100.0	100.0	100.0	100.0	100.0
	Total pct.	44.8	10.9	8.4	27.5	46.8	8.4	100.0

Table 19—Distribution of operators of irrigated farms by age of operator and by State

Region and State	Unit	Age of operator (years)						All operators
		Less than 25	25 to 34	35 to 44	45 to 54	55 to 64	65 and over	
Pacific:								
Washington	Number	200	2,103	3,690	3,992	3,970	2,281	16,236
	Row percent	1.2	13.0	22.7	24.6	24.5	14.0	100.0
	Column percent	3.6	5.9	6.4	5.9	5.7	5.6	5.8
	Total percent	.1	.8	1.3	1.4	1.4	.8	5.8
Oregon	No.	206	1,831	3,464	3,668	3,782	2,357	15,308
	Row pct.	1.3	12.0	22.6	24.0	24.7	15.4	100.0
	Column pct.	3.7	5.1	6.0	5.4	5.4	5.8	5.5
	Total pct.	.1	.7	1.2	1.3	1.4	.8	5.5
California	No.	522	5,268	11,823	14,118	16,106	10,493	58,330
	Row pct.	.9	9.0	20.3	24.2	27.6	18.0	100.0
	Column pct.	9.4	14.7	20.4	20.8	23.2	25.7	21.0
	Total pct.	.2	1.9	4.3	5.1	5.8	3.8	21.0
Mountain:								
Montana	No.	139	1,107	1,933	2,291	2,265	1,464	9,199
	Row pct.	1.5	12.0	21.0	24.9	24.6	15.9	100.0
	Column pct.	2.5	3.1	3.3	3.4	3.3	3.6	3.3
	Total pct.	.1	.4	.7	.8	.8	.5	3.3
Idaho	No.	448	2,566	3,746	3,991	4,102	2,476	17,329
	Row pct.	2.6	14.8	21.6	23.0	23.7	14.3	100.0
	Column pct.	8.1	7.2	6.4	5.9	5.9	6.1	6.2
	Total pct.	.2	.9	1.3	1.4	1.5	.9	6.2
Wyoming	No.	83	665	1,080	1,246	1,285	907	5,266
	Row pct.	1.6	12.6	20.5	23.7	24.4	17.2	100.0
	Column pct.	1.5	1.9	1.9	1.8	1.8	2.2	1.9
	Total pct.	0	.2	.4	.4	.5	.3	1.9
Colorado	No.	296	1,875	3,061	3,742	3,846	2,388	15,208
	Row pct.	1.9	12.3	20.1	24.6	25.3	15.7	100.0
	Column pct.	5.4	5.2	5.3	5.5	5.5	5.9	5.5
	Total pct.	.1	.7	1.1	1.3	1.4	.9	5.5
New Mexico	No.	91	714	1,399	1,806	1,702	1,166	6,878
	Row pct.	1.3	10.4	20.3	26.3	24.7	17.0	100.0
	Column pct.	1.6	2.0	2.4	2.7	2.4	2.9	2.5
	Total pct.	0	.3	.5	.7	.6	.4	2.5
Arizona	No.	34	450	1,020	1,173	1,103	613	4,393
	Row pct.	.8	10.2	23.2	26.7	25.1	14.0	100.0
	Column pct.	.6	1.3	1.8	1.7	1.6	1.5	1.6
	Total pct.	0	.2	.4	.4	.4	.2	1.6

continued—

Table 19—Distribution of operators of irrigated farms by age of operator and by State—continued

Region and State	Unit	Age of operator (years)						All operators
		Less than 25	25 to 34	35 to 44	45 to 54	55 to 64	65 and over	
Mountain (continued):								
Utah	No.	142	1,122	1,957	2,846	2,834	2,261	11,162
	Row pct.	1.3	10.1	17.5	25.5	25.4	20.3	100.0
	Column pct.	2.6	3.1	3.4	4.2	4.1	5.5	4.0
	Total pct.	.1	.4	.7	1.0	1.0	.8	4.0
Nevada	No.	26	185	408	540	581	395	2,135
	Row pct.	1.2	8.7	19.1	25.3	27.2	18.5	100.0
	Column pct.	.5	.5	.7	.8	.8	1.0	.8
	Total pct.	0	.1	.1	.2	.2	.1	.8
Northern Plains:								
North Dakota	No.	35	136	185	206	146	49	757
	Row pct.	4.6	18.0	24.4	27.2	19.3	6.5	100.0
	Column pct.	.6	.4	.3	.3	.2	.1	.3
	Total pct.	0	0	.1	.1	.1	0	.3
South Dakota	No.	29	290	369	471	456	194	1,809
	Row pct.	1.6	16.0	20.4	26.0	25.2	10.7	100.0
	Column pct.	.5	.8	.6	.7	.7	.5	.7
	Total pct.	0	.1	.1	.2	.2	.1	.7
Nebraska	No.	990	4,020	4,268	5,391	5,458	2,046	22,173
	Row pct.	4.5	18.1	19.2	24.3	24.6	9.2	100.0
	Column pct.	17.9	11.2	7.3	7.9	7.9	5.0	8.0
	Total pct.	.4	1.4	1.5	1.9	2.0	.7	8.0
Kansas	No.	257	1,251	1,399	1,759	1,742	838	7,246
	Row pct.	3.5	17.3	19.3	24.3	24.0	11.6	100.0
	Column pct.	4.6	3.5	2.4	2.6	2.5	2.1	2.6
	Total pct.	.1	.5	.5	.6	.6	.3	2.6
Southern Plains:								
Oklahoma	No.	79	395	666	748	755	414	3,057
	Row pct.	2.6	12.9	21.8	24.5	24.7	13.5	100.0
	Column pct.	1.4	1.1	1.1	1.1	1.1	1.0	1.1
	Total pct.	0	.1	.2	.3	.3	.1	1.1
Texas	No.	503	2,901	3,747	5,005	4,931	2,657	19,744
	Row pct.	2.5	14.7	19.0	25.3	25.0	13.5	100.0
	Column pct.	9.1	8.1	6.5	7.4	7.1	6.5	7.1
	Total pct.	.2	1.0	1.3	1.8	1.8	1.0	7.1

continued—

Table 19—Distribution of operators of irrigated farms by age of operator and by State—continued

Region and State	Unit	Age of operator (years)						All operators
		Less than 25	25 to 34	35 to 44	45 to 54	55 to 64	65 and over	
Florida, Arkansas, Louisiana:								
Florida	No.	100	1,132	2,091	2,624	2,717	1,861	10,525
	Row pct.	1.0	10.8	19.9	24.9	25.8	17.7	100.0
	Column pct.	1.8	3.2	3.6	3.9	3.9	4.6	3.8
	Total pct.	0	.4	.8	.9	1.0	.7	3.8
Arkansas	No.	215	1,097	1,635	1,771	1,452	496	6,666
	Row pct.	3.2	16.5	24.5	26.6	21.8	7.4	100.0
	Column pct.	3.9	3.1	2.8	2.6	2.1	1.2	2.4
	Total pct.	.1	.4	.6	.6	.5	.2	2.4
Louisiana	No.	180	685	895	802	741	378	3,681
	Row pct.	4.9	18.6	24.3	21.8	20.1	10.3	100.0
	Column pct.	3.3	1.9	1.5	1.2	1.1	.9	1.3
	Total pct.	.1	.2	.3	.3	.3	.1	1.3
All Other States	No.	952	6,050	9,249	9,812	9,504	5,044	40,611
	Row pct.	2.3	14.9	22.8	24.2	23.4	12.4	100.0
	Column pct.	17.2	16.9	15.9	14.4	13.7	12.4	14.6
	Total pct.	.3	2.2	3.3	3.5	3.4	1.8	14.6
United States	No.	5,527	35,843	58,085	68,002	69,478	40,778	277,713
	Row pct.	2.0	12.9	20.9	24.5	25.0	14.7	100.0
	Column pct.	100.0	100.0	100.0	100.0	100.0	100.0	100.0
	Total pct.	2.0	12.9	20.9	24.5	25.0	14.7	100.0

Table 20--Distribution of operators of irrigated farms  
by place of residence and by State

Region and State	Unit	Place of residence			All operators
		On farm operated	Not on farm operated	Not reported	
Pacific:					
Washington	Number	12,914	2,439	883	16,236
	Row percent	79.5	15.0	5.4	100.0
	Column percent	6.6	3.9	4.1	5.8
	Total percent	4.7	.9	.3	5.8
Oregon	No.	12,961	1,498	849	15,308
	Row pct.	84.7	9.8	5.5	100.0
	Column pct.	6.7	2.4	4.0	5.5
	Total pct.	4.7	.5	.3	5.5
California	No.	38,178	16,459	3,693	58,330
	Row pct.	65.5	28.2	6.3	100.0
	Column pct.	19.6	26.6	17.3	21.0
	Total pct.	13.7	5.9	1.3	21.0
Mountain:					
Montana	No.	7,586	981	632	9,199
	Row pct.	82.5	10.7	6.9	100.0
	Column pct.	3.9	1.6	3.0	3.3
	Total pct.	7.7	.4	.2	3.3
Idaho	No.	13,610	2,422	1,297	17,329
	Row pct.	78.5	14.0	7.5	100.0
	Column pct.	7.0	3.9	6.1	6.2
	Total pct.	4.9	.9	.5	6.2
Wyoming	No.	4,224	698	344	5,266
	Row pct.	80.2	13.3	6.5	100.0
	Column pct.	2.2	1.1	1.6	1.9
	Total pct.	1.5	.3	.1	1.9
Colorado	No.	11,971	2,178	1,059	15,208
	Row pct.	78.7	14.3	7.0	100.0
	Column pct.	6.2	3.5	5.0	5.5
	Total pct.	4.3	.8	.4	5.5
New Mexico	No.	4,906	1,392	580	6,878
	Row pct.	71.3	20.2	8.4	100.0
	Column pct.	2.5	2.2	2.7	2.5
	Total pct.	1.8	.5	.2	2.5

continued--

Table 20--Distribution of operators of irrigated farms  
by place of residence and by State--continued

Region and State	Unit	Place of residence			All operators
		On farm operated	Not on farm operated	Not reported	
Mountain:					
Arizona	No.	2,614	1,380	399	4,393
	Row pct.	59.5	31.4	9.1	100.0
	Column pct.	1.3	2.2	1.9	1.6
	Total pct.	.9	.5	.1	1.6
Utah	No.	7,243	2,992	927	11,162
	Row pct.	64.9	26.8	8.3	100.0
	Column pct.	3.7	4.8	4.3	4.0
	Total pct.	2.6	1.1	.3	4.0
Nevada	No.	1,629	364	142	2,135
	Row pct.	76.3	17.0	6.7	100.0
	Column pct.	.8	.6	.7	.8
	Total pct.	.6	.1	.1	.8
Northern Plains:					
North Dakota	No.	578	104	75	757
	Row pct.	76.4	13.7	9.9	100.0
	Column pct.	.3	.2	.4	.3
	Total pct.	.2	0	0	.3
South Dakota	No.	1,438	227	144	1,809
	Row pct.	79.5	12.5	8.0	100.0
	Column pct.	.7	.4	.7	.7
	Total pct.	.5	.1	.1	.7
Nebraska	No.	16,380	3,657	2,136	22,173
	Row pct.	73.9	16.5	9.6	100.0
	Column pct.	8.4	5.9	10.0	8.0
	Total pct.	5.9	1.3	.8	8.0
Kansas	No.	4,792	1,658	796	7,246
	Row pct.	66.1	22.9	11.0	100.0
	Column pct.	2.5	2.7	3.7	2.6
	Total pct.	1.7	.6	.3	2.6
Southern Plains:					
Oklahoma	No.	1,941	790	326	3,057
	Row pct.	63.5	25.8	10.7	100.0
	Column pct.	1.0	1.3	1.5	1.1
	Total pct.	.7	.3	.1	1.1

continued--

Table 20--Distribution of operators of irrigated farms  
by place of residence and by State--continued

Region and State	Unit	Place of residence			All operators
		On farm operated	Not on farm operated	Not reported	
Southern Plains (continued):					
Texas					
	No.	10,720	7,251	1,773	19,744
	Row pct.	54.3	36.7	9.0	100.0
	Column pct.	5.5	11.7	8.3	7.1
	Total pct.	3.9	2.6	.6	7.1
Florida, Arkansas, Louisiana:					
Florida					
	No.	5,345	4,306	874	10,525
	Row pct.	50.8	40.9	8.3	100.0
	Column pct.	2.7	6.9	4.1	3.8
	Total pct.	1.9	1.6	.3	3.8
Arkansas					
	No.	3,837	2,077	752	6,666
	Row pct.	57.6	31.2	11.3	100.0
	Column pct.	2.0	3.4	3.5	2.4
	Total pct.	1.4	.7	.3	2.4
Louisiana					
	No.	2,275	883	523	3,681
	Row pct.	61.8	24.0	14.2	100.0
	Column pct.	1.2	1.4	2.5	1.3
	Total pct.	.8	.3	.2	1.3
All Other States					
	No.	29,299	8,202	3,110	40,611
	Row pct.	72.1	20.2	7.7	100.0
	Column pct.	15.1	13.2	14.6	14.6
	Total pct.	10.6	3.0	1.1	14.6
United States					
	No.	194,441	61,958	21,314	277,713
	Row pct.	70.0	22.3	7.7	100.0
	Column pct.	100.0	100.0	100.0	100.0
	Total pct.	70.0	22.3	7.7	100.0

Table 21--Distribution of operators of irrigated farms by years on present farm and by State

Region and State	Unit	Years on present farm				Not reported	All operators
		2 or less	3 or 4	5 to 9	10 or more		
Pacific:							
Washington	Number	1,133	1,895	3,681	7,864	1,663	16,236
	Row percent	7.0	11.7	22.7	48.4	10.2	100.0
	Column percent	6.6	6.9	6.8	5.7	4.0	5.8
	Total percent	.4	.7	1.3	2.8	.6	5.8
Oregon	No.	919	1,940	3,611	7,071	1,767	15,308
	Row pct.	6.0	12.7	23.6	46.2	11.5	100.0
	Column pct.	5.4	7.1	6.7	5.1	4.3	5.5
	Total pct.	.3	.7	1.3	2.5	.6	5.5
California	No.	3,991	6,914	13,863	25,861	7,701	58,330
	Row pct.	6.8	11.9	23.8	44.3	13.2	100.0
	Column pct.	23.4	25.2	25.7	18.8	18.6	21.0
	Total pct.	1.4	2.5	5.0	9.3	2.8	21.0
Mountain:							
Montana	No.	500	783	1,659	5,062	1,195	9,199
	Row pct.	5.4	8.5	18.0	55.0	13.0	100.0
	Column pct.	2.9	2.9	3.1	3.7	2.9	3.3
	Total pct.	.2	.3	.6	1.8	.4	3.3
Idaho	No.	1,217	1,730	3,197	8,740	2,445	17,329
	Row pct.	7.0	10.0	18.4	50.4	14.1	100.0
	Column pct.	7.1	6.3	5.9	6.3	5.9	6.2
	Total pct.	.4	.6	1.2	3.1	.9	6.2
Wyoming	No.	327	499	962	2,760	718	5,266
	Row pct.	6.2	9.5	18.3	52.4	13.6	100.0
	Column pct.	1.9	1.8	1.8	2.0	1.7	1.9
	Total pct.	.1	.2	.3	1.0	.3	1.9
Colorado	No.	940	1,491	2,941	7,796	2,040	15,208
	Row pct.	6.2	9.8	19.3	51.3	13.4	100.0
	Column pct.	5.5	5.4	5.5	5.7	4.9	5.5
	Total pct.	.3	.5	1.1	2.8	.7	5.5
New Mexico	No.	473	703	1,241	3,222	1,239	6,878
	Row pct.	6.9	10.2	18.0	46.8	18.0	100.0
	Column pct.	2.8	2.6	2.3	2.3	3.0	2.5
	Total pct.	.2	.3	.4	1.2	.4	2.5
Arizona	No.	398	599	966	1,758	672	4,393
	Row pct.	9.1	13.6	22.0	40.0	15.3	100.0
	Column pct.	2.3	2.2	1.8	1.3	1.6	1.6
	Total pct.	.1	.2	.3	.6	.2	1.6

continued—



Table 21—Distribution of operators of irrigated farms by years on present farm and by State—continued

Region and State	Unit	Years on present farm				Not reported	All operators
		2 or less	3 or 4	5 to 9	10 or more		
Mountain (continued):							
Utah	No.	562	922	1,697	5,918	2,063	11,162
	Row pct.	5.0	8.3	15.2	53.0	18.5	100.0
	Column pct.	3.3	3.4	3.2	4.3	5.0	4.0
	Total pct.	.2	.3	.6	2.1	.7	4.0
Nevada	No.	164	257	433	966	315	2,135
	Row pct.	7.7	12.0	20.3	45.2	14.8	100.0
	Column pct.	1.0	.9	.8	.7	.8	.8
	Total pct.	.1	.1	.2	.3	.1	.8
Northern Plains:							
North Dakota	No.	34	46	109	443	125	757
	Row pct.	4.5	6.1	14.4	58.5	16.5	100.0
	Column pct.	.2	.2	.2	.3	.3	.3
	Total pct.	0	0	0	.2	0	.3
South Dakota	No.	51	111	269	1,103	275	1,809
	Row pct.	2.8	6.1	14.9	61.0	15.2	100.0
	Column pct.	.3	.4	.5	.8	.7	.7
	Total pct.	0	0	.1	.4	.1	.7
Nebraska	No.	975	1,403	3,076	12,943	3,776	22,173
	Row pct.	4.4	6.3	13.9	58.4	17.0	100.0
	Column pct.	5.7	5.1	5.7	9.4	9.1	8.0
	Total pct.	.4	.5	1.1	4.7	1.4	8.0
Kansas	No.	310	481	946	4,153	1,356	7,246
	Row pct.	4.3	6.6	13.1	57.3	18.7	100.0
	Column pct.	1.8	1.8	1.8	3.0	3.3	2.6
	Total pct.	.1	.2	.3	1.5	.5	2.6
Southern Plains:							
Oklahoma	No.	128	252	446	1,704	527	3,057
	Row pct.	4.2	8.2	14.6	55.7	17.2	100.0
	Column pct.	.8	.9	.8	1.2	1.3	1.1
	Total pct.	0	.1	.2	.6	.2	1.1
Texas	No.	1,417	2,020	3,816	9,410	3,081	19,744
	Row pct.	7.2	10.2	19.3	47.7	15.6	100.0
	Column pct.	8.3	7.4	7.1	6.8	7.4	7.1
	Total pct.	.5	.7	1.4	3.4	1.1	7.1

continued—

Table 21—Distribution of operators of irrigated farms by years on present farm and by State—continued

Region and State	Unit	Years on present farm				Not reported	All operators
		2 or less	3 or 4	5 to 9	10 or more		
Florida, Arkansas, Louisiana:							
Florida	No.	816	1,264	2,253	4,455	1,737	10,525
	Row pct.	7.8	12.0	21.4	42.3	16.5	100.0
	Column pct.	4.8	4.6	4.2	3.2	4.2	3.8
	Total pct.	.3	.5	.8	1.6	.6	3.8
Arkansas	No.	421	545	1,012	3,466	1,222	6,666
	Row pct.	6.3	8.2	15.2	52.0	18.3	100.0
	Column pct.	2.5	2.0	1.9	2.5	2.9	2.4
	Total pct.	.2	.2	.4	1.2	.4	2.4
Louisiana	No.	207	299	654	1,607	914	3,681
	Row pct.	5.6	8.1	17.8	43.7	24.8	100.0
	Column pct.	1.2	1.1	1.2	1.2	2.2	1.3
	Total pct.	.1	.1	.2	.6	.3	1.3
All Other States	No.	2,072	3,301	7,025	21,618	6,595	40,611
	Row pct.	5.1	8.1	17.3	53.2	16.2	100.0
	Column pct.	12.1	12.0	13.0	15.7	15.9	14.6
	Total pct.	.7	1.2	2.5	7.8	2.4	14.6
United States	No.	17,055	27,455	53,857	137,920	41,426	277,713
	Row pct.	6.1	9.9	19.4	49.7	14.9	100.0
	Column pct.	100.0	100.0	100.0	100.0	100.0	100.0
	Total pct.	6.1	9.9	19.4	49.7	14.9	100.0

END  
DATE  
FILMED  
4-5-89  
NTIS